



VOL. 132

SYMBOLS/ABBREVIATIONS

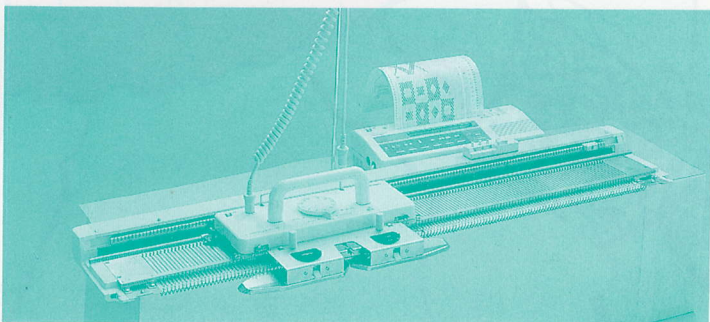
S.D.	— Stitch Dial (The figure in circle indicates Stitch Dial number.)
pos.	— position
sec.	— section
st. (sts.)	— stitch or stitches
r. (rs.)	— row or rows
nd. (nds.)	— needle or needles
PR No.	— Pattern Row Number
F	— Yarn Feeder

Electronic Knitter SK860 & Optional Pattern Controller EC1

The SK860 is the newest knitting machine and the first of its kind anywhere!

With a 6.5mm needle pitch, the SK860 is designed to work with all the yarns typically used by hand knitters. By knitting yarns that fall in the top range for a standard gauge machine and in the lower range for a chunky machine, this machine can deliver the best of both worlds.

The Pattern Controller EC1 provides multi-functional, cost saving electronic intelligence. Adding the EC1 to your SK860 is a must. Insert any one of the pre-printed pattern cards into the EC1 and you can reproduce any section of the pattern any time. In addition you can create a wide variety of pattern variations such as reversing colour and direction, mirror image, as well as vertical and horizontal expansion. All this is achieved at the simple touch of a finger.

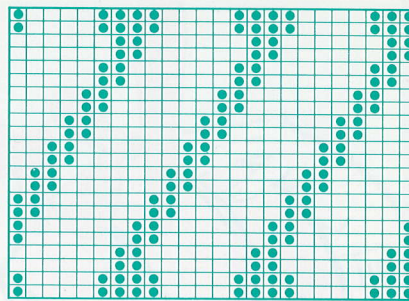


Your letters to "Knits for Joy" are always welcomed at the following address:—

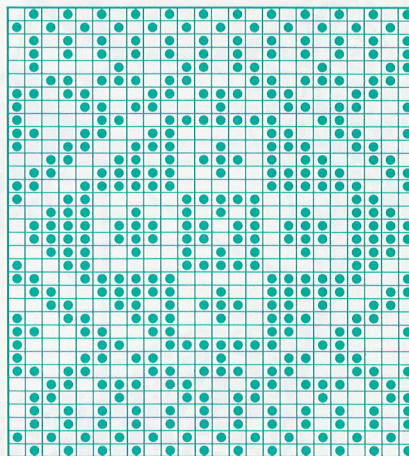
S.S.C.
P.O. Box 5095, Tokyo International
Tokyo, 100-31, Japan

©Silver Knitting Institute, Tokyo, Japan
Printed in Japan 91.02.4M(42)

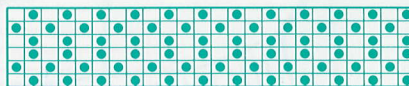
Card 1



Card 2



Card 3



BOY'S SWEATER

Finished measurements Size: cm.

	A	B	C
Chest	84	86	90
Sweater Length	45	46	48
Sleeve Length	43	45	48

Materials/others:

4 ply wool

- Col. A (white)..... 230 ~ 250gs.
- Col. B (green)..... 10 ~ 15gs.
- Col. C (yellow)..... 10 ~ 15gs.
- Col. D (brown)..... 10 ~ 15gs.
- Col. E (dark blue)..... 10 ~ 15gs.

Punch Card or Design Card (Punch the Card or draw on the Design Card as illustrated on page 1.)

Machine..... Standard gauge machine with ribbing attachment.

Tension Gauges:

30sts. by 40rs. over a swatch of Stockinet with S.D. ⑦.

30sts. by 38rs. over a swatch of Fair Isle with S.D. ⑧.

30sts. by 96rs. over a swatch of Slip Stitch with S.D. ⑧.

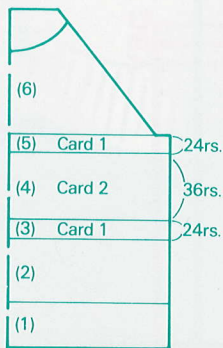
36sts. by 50rs. over a swatch of K1.P1. Rib. with S.D. ②/②.

Select one of those three sizes and knit back, front and sleeves following the pattern given on pages 4 ~ 5 and instructions below.

The instructions are on the Punch Card Knitter.

To knit

Back



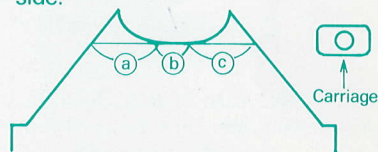
- (1) — Set Pattern Paper for back and lock at the starting line.
 - Arrange the required number of nds. on both beds for K1.P1. Rib.
 - Work closed edge cast-on for tighter edge in the following manner.
 - Set Carriages as follows:
 - Knitter — Cam Lever..... Stockinet
 - Side Levers..... ●
 - Ribber — Set Levers..... ①
 - Half Pitch Lever..... P
 - Carriage at left, S.D. ①/①, Col. A into F ①, knit 1r.
 - Suspend Cast-on Comb with Weights.
 - Disconnect Ribber Carriage from Arm and move it across the nds. twice to drop Ribber sts.
 - Connect Ribber Carriage with Arm.
 - Knit 1r. with the same Carriage settings.
 - Set Carriages as follows:
 - Knitter — Cam Lever..... Slip
 - Side Levers..... ● ▼
 - Ribber — Set Levers..... ① ①
 - Knit 3rs.
 - S.D. ②/②, release Pattern Paper and knit the required number of rs. for welt.
- (2) — Transfer Ribber sts. onto the corresponding Knitter nds.
 - N.B.** Reset Row Number for Stockinet.
 - S.D. ⑦, Col. A into F ①, knit the required number of rs. in Stockinet.
- (3) — Lock Pattern Paper and remove the knitting on waste knitting.
 - Turn over the knitting and put back the sts. onto the nds. in B pos.
 - Set Punch Card 1 and lock at PR No.1 and release Pattern Paper.
 - N.B.** Reset Row Number for Slip Stitch.
 - S.D. ⑧, Col. A into F ①, knit 1r. in Stockinet.
 - Release Punch Card and knit 22rs. in Slip Stitch.
 - Knit 1r. in Stockinet, lock Pattern Paper and remove the knitting on waste knitting.
- (4) — Turn over the knitting and put back the sts. onto the nds. in B pos.
 - Set Punch Card 2 and lock at PR No.1.

N.B. Reset Row Number for Fair Isle.

- S.D. ⑧, Col. A into F ①, release Pattern Paper and knit 1r. in Stockinet.
 - Col. B into F ②, release Punch Card and knit 2rs. in Fair Isle.
 - Exchange Col. B for Col. C and knit 2rs. in Fair Isle.
 - Exchange Col. C for Col. D and knit 4rs. in Fair Isle.
 - Exchange Col. D for Col. B and knit 6rs. in Fair Isle.
 - Exchange Col. B for Col. E and knit 6rs. in Fair Isle.
 - Exchange Col. E for Col. B and knit 6rs. in Fair Isle.
 - Exchange Col. B for Col. D and knit 4rs. in Fair Isle.
 - Exchange Col. D for Col. C and knit 2rs. in Fair Isle.
 - Exchange Col. C for Col. B and knit 2rs. in Fair Isle.
 - Remove Col. B from F ② and knit 1r. in Stockinet.
- (5) — Repeat step (3).
 - (6) — Turn over the knitting and put back the sts. onto the nds. in B pos.
 - Release Pattern Paper.
 - N.B.** Reset Row Number for Stockinet.
 - S.D. ⑦, Col. A into F ①, knit up to back neckline in Stockinet, decreasing sts. on both sides.
 - Remove the knitting on waste knitting.

Front

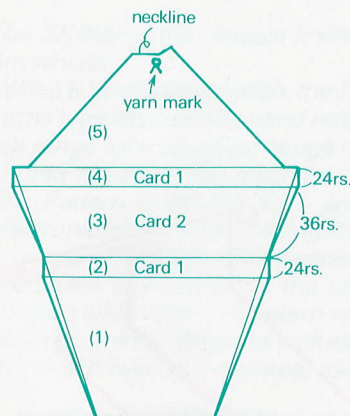
- (1) ~ (5) — Work in the same manner as instructed in steps (1) ~ (5) for back.
- (6) — Knit up to front neckline in the same manner as instructed in step (6) for back.
 - From neckline knit right and left separately and start with Carriage side.



- Lock Pattern Paper, set both Russel Levers to I and place Carriage on the opposite side.

- Push the nds. for sec. (b) and (c) to D pos. and remove the sts. for sec. (a) on waste knitting.
- Remove the sts. for sec. (b) on waste knitting.
- Place Carriage on the original side.
- Release Pattern Paper and set both Russel Levers to II.
- Knit up to neck point, shaping neckline and raglan seam by decreasing sts.
- Place the sts. for sec. (a) onto the original nds.
- Work sec. (a) in the same manner as for sec. (c) but reverse shapings.

Sleeves



- Redraw pattern as shown above, not to increase sts. while knitting in Slip Stitch.
 - Knit right and left sleeve alike but reverse shapings.
- (1) — Set Pattern Paper for sleeve and lock at the starting line.
 - Cast on the required number of sts. and knit several rs. with waste yarn.
 - S.D. (7), Col. A into F (1), release Pattern Paper and knit the required number of rs. in Stockinet, increasing sts. on both sides.
 - (2) — Knit 24rs. in the same manner as instructed in step (3) for back.
 - (3) — Knit 36rs. in the same manner as instructed in step (4) for back, increasing sts. on both sides.
 - (4) — Knit 24rs. in the same manner as instructed in step (3) for back.

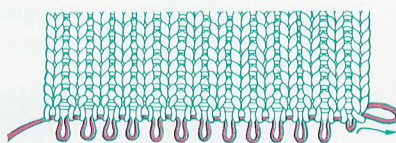
- (5) — Turn over the knitting and put back the sts. onto the nds. in B pos.
 - Release Pattern Paper.
 - N.B.** Reset Row Number for Stockinet.
 - S.D. (7), Col. A into F (1), knit up to neckline in Stockinet, decreasing sts. on both sides.
 - Shape neckline by partial knitting by decreasing sts.
 - Put yarn mark for shoulder at center(O).
 - Remove the knitting on waste knitting.

Cuffs

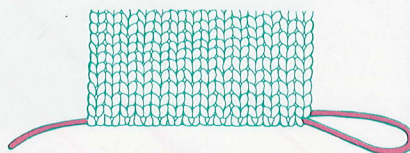
- Knit right and left cuff in the same manner as for welt.

Neckband

- Pin out each piece to correct size and shape and press with a steam iron.
 - N.B.** When steaming welts and cuffs, pull the yarn of initial row from the opposite side to the yarn end. This will hold the cast-on edge tight during steaming.



After steaming, pull out the yarn completely in the same direction as above.

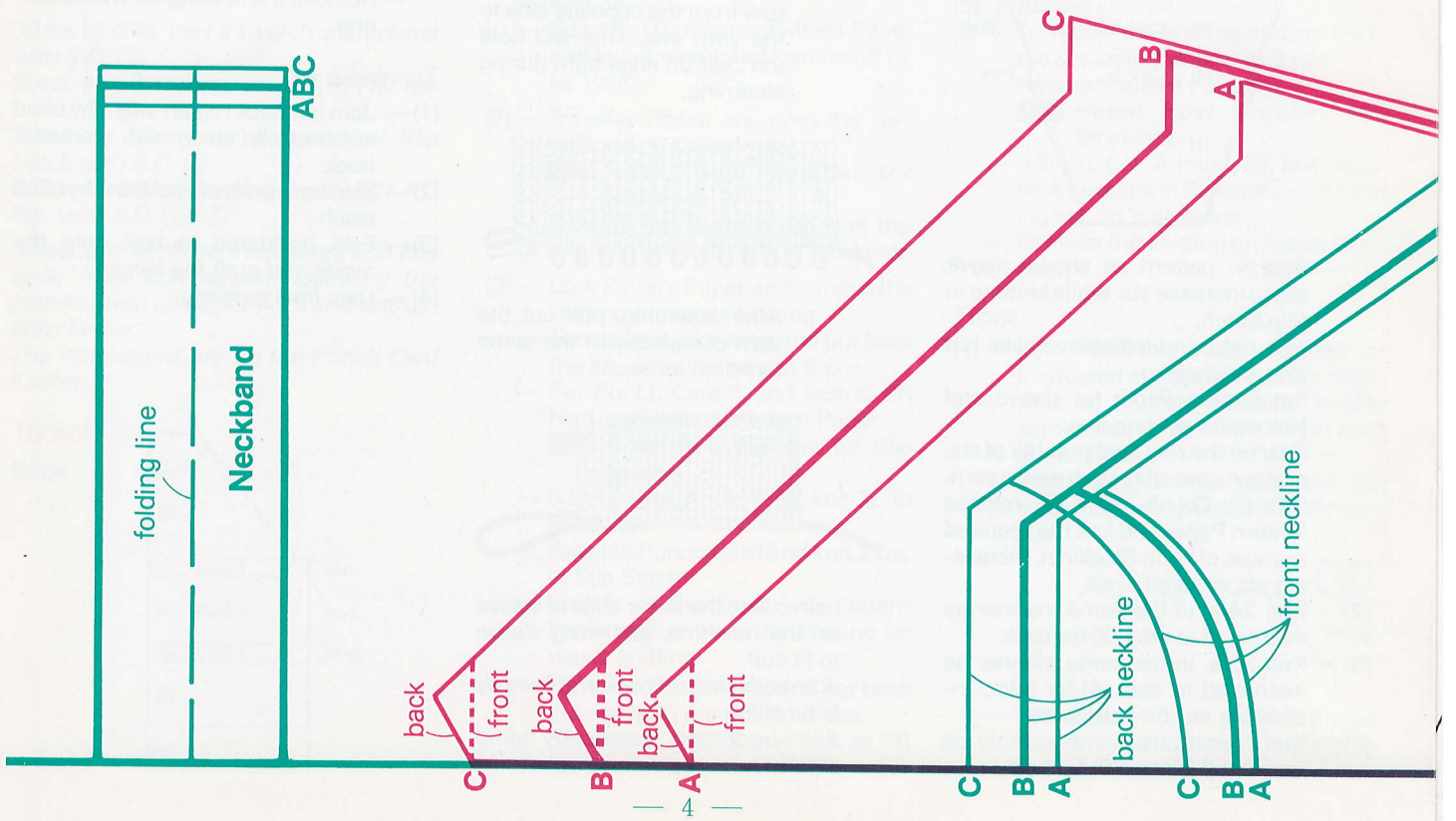


- Join cuff to the lower edge of sleeve on the machine, gathering sleeve to fit cuff.
- Join both sides of back and front by blind stitch.
- Join underarm seams by blind stitch.

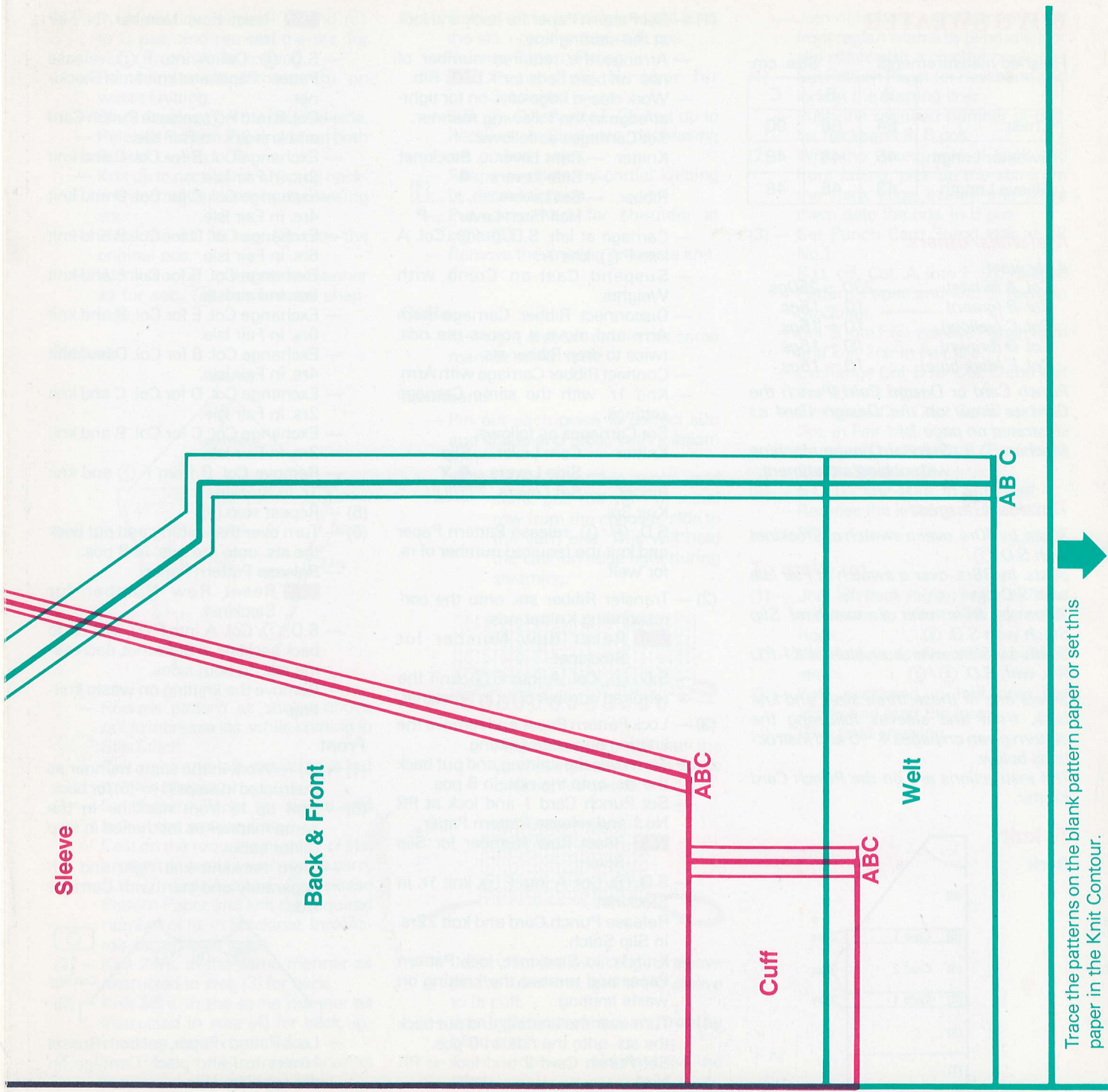
- Join right back, right front and left front raglan seams by blind stitch or slip stitch with a crochet hook.
- (1) — Set Pattern Paper for neckband and lock at the starting line.
 - Push the required number of nds. for neckband to B pos.
 - (2) — With the wrong side of back and front facing, pick up the sts. from the neck edge evenly and place them onto the nds. in B pos.
 - (3) — Set Punch Card 3 and lock at PR No.1.
 - S.D. (7), Col. A into F (1), release Pattern Paper and knit 2 rows in Stockinet.
 - Col. B into F (2), release Punch Card and knit 2rs. in Fair Isle.
 - Exchange Col. B for Col. C and knit 2rs. in Fair Isle.
 - Exchange Col. C for Col. B and knit 2rs. in Fair Isle.
 - Remove Col. B from F (2) and knit 2rs. in Stockinet.
 - (4) — S.D. (6), knit 10rs. in Stockinet.
 - Remove the knitting on waste knitting.

To make up

- (1) — Join left back raglan seam by blind stitch or slip stitch with a crochet hook.
- (2) — Join both ends of neckband by blind stitch.
- (3) — Fold neckband in half onto the inside and graft the loops.
- (4) — Give final pressing.



The diagram shows the construction of a neckband. The neckband is a rectangular piece of fabric, shown in green, with a dashed line indicating the "folding line". The corners of the neckband are labeled "A", "B", and "C". The neckband is attached to the neckline of a garment, which is shown in red. The neckline is a trapezoidal shape with points "A", "B", and "C" at its top corners. The neckband is folded over the neckline, and the corners are sewn together. The diagram also shows the "back neckline" and "front neckline" curves. A horizontal line at the bottom is marked with "4" in the center.



Trace the patterns on the blank pattern paper or set this paper in the Knit Contour.