



SYMBOLS/ABBREVIATIONS

- S.D. — Stitch Dial (The figure in circle indicates Stitch Dial number.)
 pos. — position
 sec. — section
 st. (sts.) — stitch or stitches
 nd. (nds.) — needle or needles
 PR No. — Pattern Row Number

THE NEEDLE SELECTOR LS6/LS9

The Needle Selector helps you to place the desired combination of needles in the correct position on the needle bed, for various pattern stitches such as Tuck Stitch, Slip Stitch and Fair Isle.

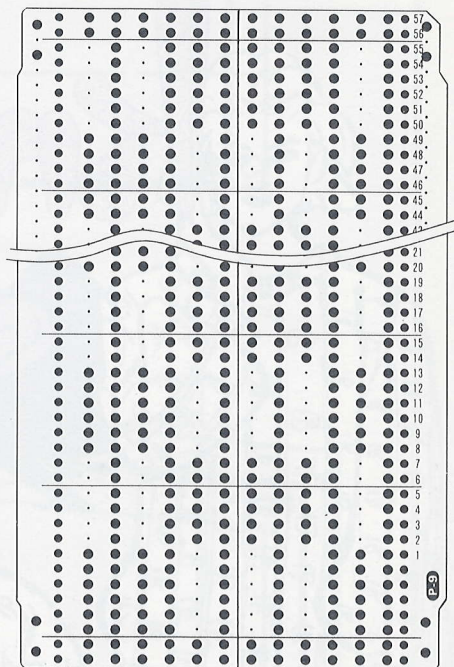
The Needle Selector can automatically select needles in combinations or groups of 8 needles. The desired combination is set ready by hand over the first group and slide the Selector across the needles.

The Needle Selector does not knit. It pushes the selected needles to C position by sliding it across the needles in B and C position.

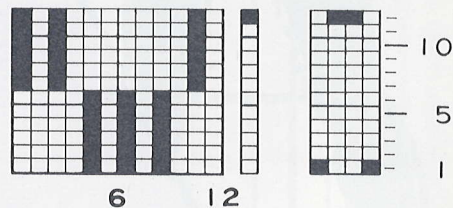
The Needle Selector LS6 is suitable for use with LK140 and LK150, and LS9 is suitable for use with LK100.



Punch Card



Design Card



Your letters to "Knits for Joy" are always welcomed at the following address:—

S.S.C.
 P.O. Box 5095, Tokyo International
 Tokyo, 100-31, Japan

©Silver Knitting Institute, Tokyo, Japan
 Printed in Japan 91.08.4M(44)

LADY'S SWEATER

Finished measurements Size: cm.

	A	B	C
Bust	108	112	116
Sweater Length	68	70	72
Sleeve Length	49	50	51

Materials/others:

Extra thick yarn (100% wool)
off-white 850 ~ 900gs.

Punch Card or Design Card (Punch the Card or draw on the Design Card as illustrated on page 1.

9mm pitch machine with ribbing attachment and knit contour. (When using SK890, set EC1 to the machine.)

Tension Gauges:

16.5 sts. by 35 rows over a swatch of Tuck Stitch with S.D. at ④.

16.5 sts. by 30 rows over a swatch of K1.P1. Rib. with S.D. at ① / ①.

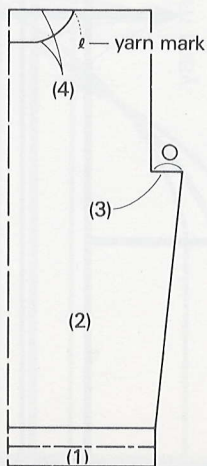
Purl side is worn as right side.

Select one of those sizes given to fit you and knit back, front and sleeves following the patterns given on pages 4 ~ 5 and instructions below.

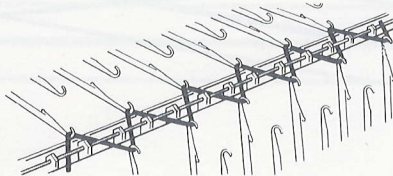
The instructions are on Punch Card machine.

To knit

Back



- (1) — Set Row Number and Stitch Scale according to the tension gauge.
- Set the pattern paper and lock at the starting line for welt.
- Set the Carriage as follows.
(Knitter)
Cam Lever..... Stockinet (Λ)
Side Levers..... ●
Russel Levers..... ||
(Ribber)
Cam Lever..... 0
Set Levers..... 1
Russel Levers..... =
Swing Indicator..... P-3
- Arrange the required number of nds. for K1.P1. Rib. on both beds.
- Knit 1 row with waste yarn and suspend Cast-on Comb without weights as shown below.



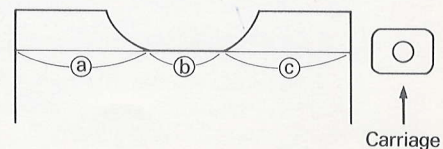
- Disconnect the ribber Carriage from the Arm and move it across the nds. to drop sts. on ribber nds.
- Hook weights onto the Cast-on Comb.
- Push empty knitter nds. up to B pos. and knit several rows with waste yarn only on the knitter.
- With S.D. at ④, knit 1 row with Ravel Cord and knit 1 row with main yarn.
- Transfer every other sts. from the knitter to their corresponding empty ribber nds. in B pos. to knit K1.P1. Rib. and push empty knitter nds. back to A pos.
- Connect the ribber Carriage with the Arm and release the pattern paper.
- With S.D. at ① / ①, knit the required number of rows (6cms.) in K1.P1. Rib.
- Transfer ribber sts. onto the corresponding empty knitter nds.
- Remove weights and Cast-on Comb, disconnect the ribber Carriage from the Arm and lower the

ribber bed to the lowest pos. by Drop Levers.

- Pick up sinker loops on the first row knitted with main yarn, place them onto their corresponding nds, and push the nds. to D pos.
- Set punch card and lock at PR No.1.
- With S.D. at ④, knit 1 row in Stockinet using main yarn.
- (2) — Set the pattern paper for back and Row Number of Tuck Stitch.
- Set Cam Lever to Tuck Stitch and Side Levers to ▼ and attach Tuck Brushes at both sides of the Arm.
- Hang the Claw Weights on both edges of the knitting and Wide Claw Weights evenly across the knitting.
- Release the punch card.
- Knit up to armhole in Tuck Stitch pushing both end nds. to D pos. every row and increasing the sts. on both sides following the contour line.
(N.B.) Move up Claw Weights and Wide Claw Weights as knitting progresses (every 10 rows.)
- (3) — Decrease the required number of sts. for armhole (O) on both sides on waste knitting.
- (4) — Knit up to the shoulder.
- Knit 1 row in Stockinet and put the yarn marks for neckline on marked pos.
- Remove the sts. on waste knitting.

Front

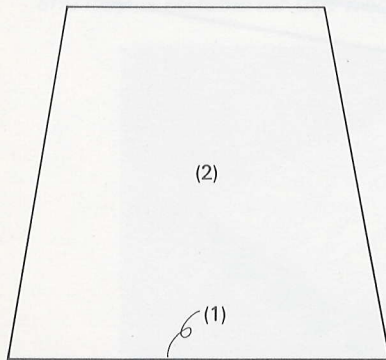
- (1) ~ (3) — Knit up to front neckline in the same manner as done in steps (1) ~ (3) for back.
- (4) — From neckline knit right and left separately and start with the Carriage side.



- Lock pattern paper and punch card.
- Set Cam Lever to Stockinet and Russel Levers at I.

- Place the Carriage on the opposite side by using Release Lever.
- Push the nds. for sec. (b) and (c) to D pos. and remove the sts. for sec. (a) on waste knitting.
- Push the nds. for sec. (b) back to C pos. and remove the sts. for sec. (b) on waste knitting.
- Place the Carriage on the original side.
- Push the nds. for sec. (c) to B pos. using a Transfer Tool.
- Release pattern paper and punch card.
- Set Cam Lever to Tuck Stitch and Russel Levers to II.
- Knit up to the shoulder shaping neckline by decreasing sts.
- Knit 1 row in Stockinet and remove the sts. on waste knitting.
- Pick up the sts. for sec. (a) and place them onto the original nds.
- Work sec. (a) in the same manner as done for sec. (c) but reverse shaping.

Sleeves



- Knit right and left alike.
- (1) — Set pattern paper for sleeve and lock at the starting line.
 - return punch card to PR No.1 and lock it.
 - Arrange the required number of nds. for sleeve in B pos. and knit several rows with waste yarn.
 - With S.D. at (4), knit 1 row in Stockinet using main yarn.
- (2) — Release pattern paper and punch card.

- Knit sleeve in the same manner as done for back and shape underarm by decreasing the sts.
- Knit 1 row in Stockinet and remove the sts. on waste knitting.
- Knit the other sleeve in the same manner as done for the first one.

Cuffs

- Set Row Number for K1.P1. Rib. and lock at the starting line.
- Arrange the required number of nds. on both beds.
- With S.D. at (R) / (R), work closed edge cast-on with main yarn.
- Release pattern paper and knit the required number of rows in K1.P1. Rib. with S.D. at (0.1) / (0.1).
- Transfer the ribber sts. onto the corresponding empty knitter nds. and remove the sts. on waste knitting.
- Knit the other cuff in the same manner as for the first one.

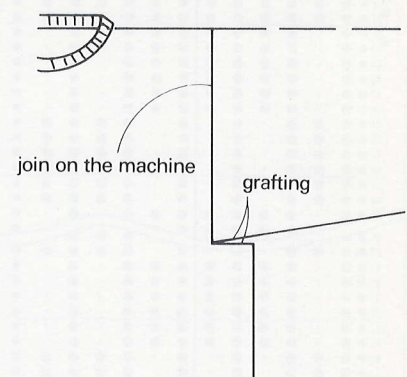
Neckband

- Knit neckband in the same manner as done for cuffs.

To make up

- (1) — Block out each piece to size and press with a steam iron.
- (2) — Join cuffs to the lower edges of sleeve on the machine.
 - With the right side of sleeve facing you, hook the sts. on the last row onto the nds. in B pos. gathering the sts. to fit cuff and push the nds. to D pos. so that the sts. will be behind latches.
 - With wrong side of cuff facing you, hook the sts. on the last row onto the same nds. and push back the nds. to B pos. The rear sts. will slip off the nds.
 - Cast off the sts. by using the Back Stitch method.
 - Fold cuffs in half to inside and sew on.
- (3) — Join the right shoulder on the machine.
- (4) — Join neckband to back and front in the same manner as done for cuffs.
- (5) — Join the left shoulder on the machine.

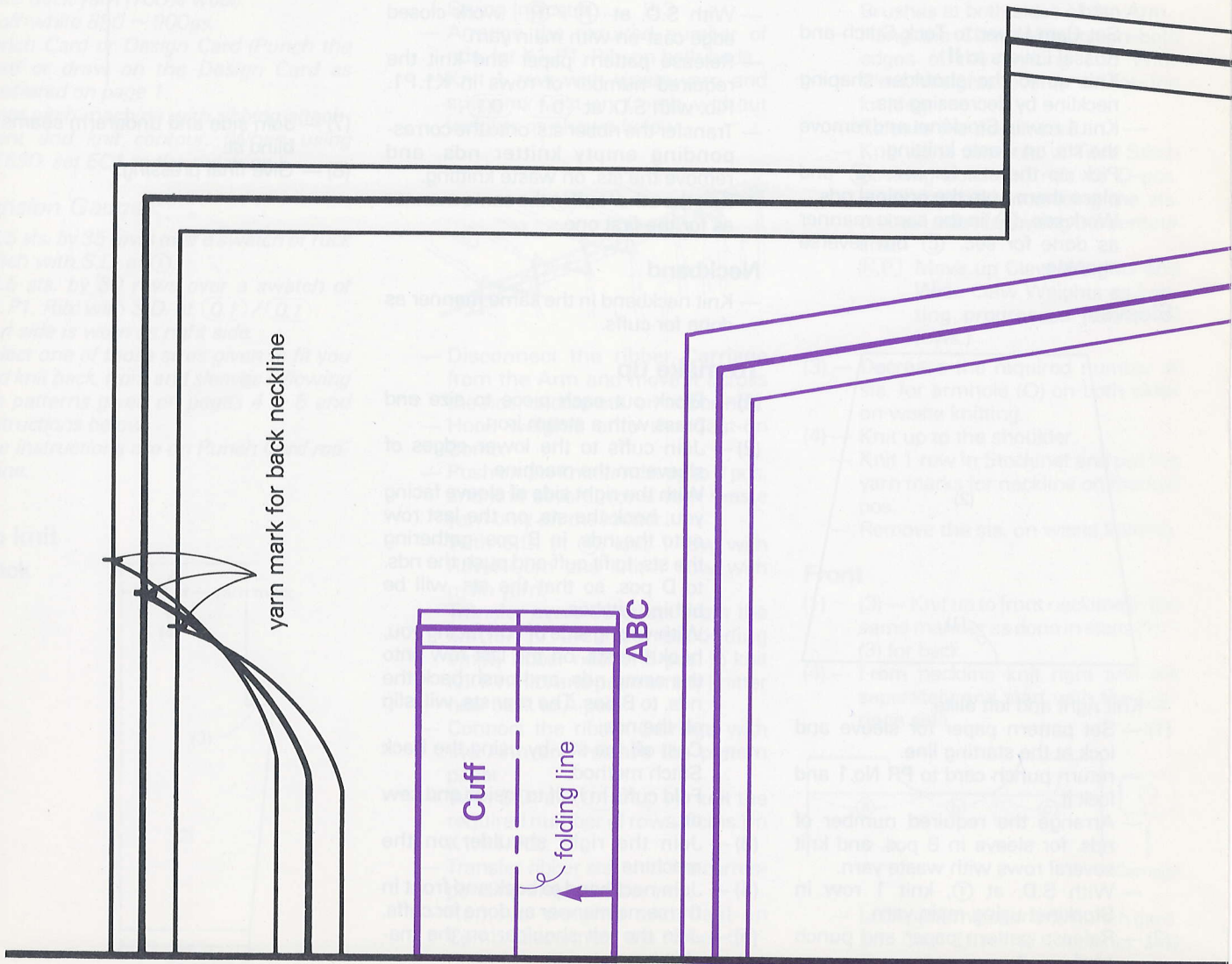
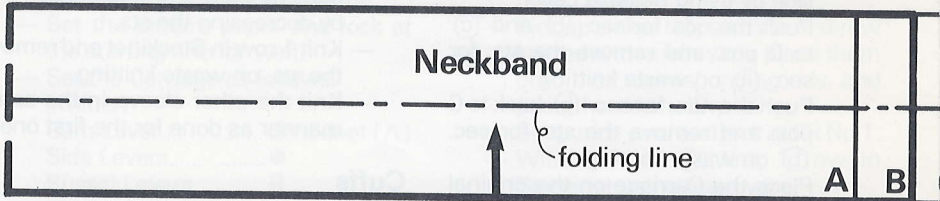
- (6) — Join sleeves to armholes as shown below.



- (7) — Join side and underarm seams by blind st.
- (8) — Give final pressing.

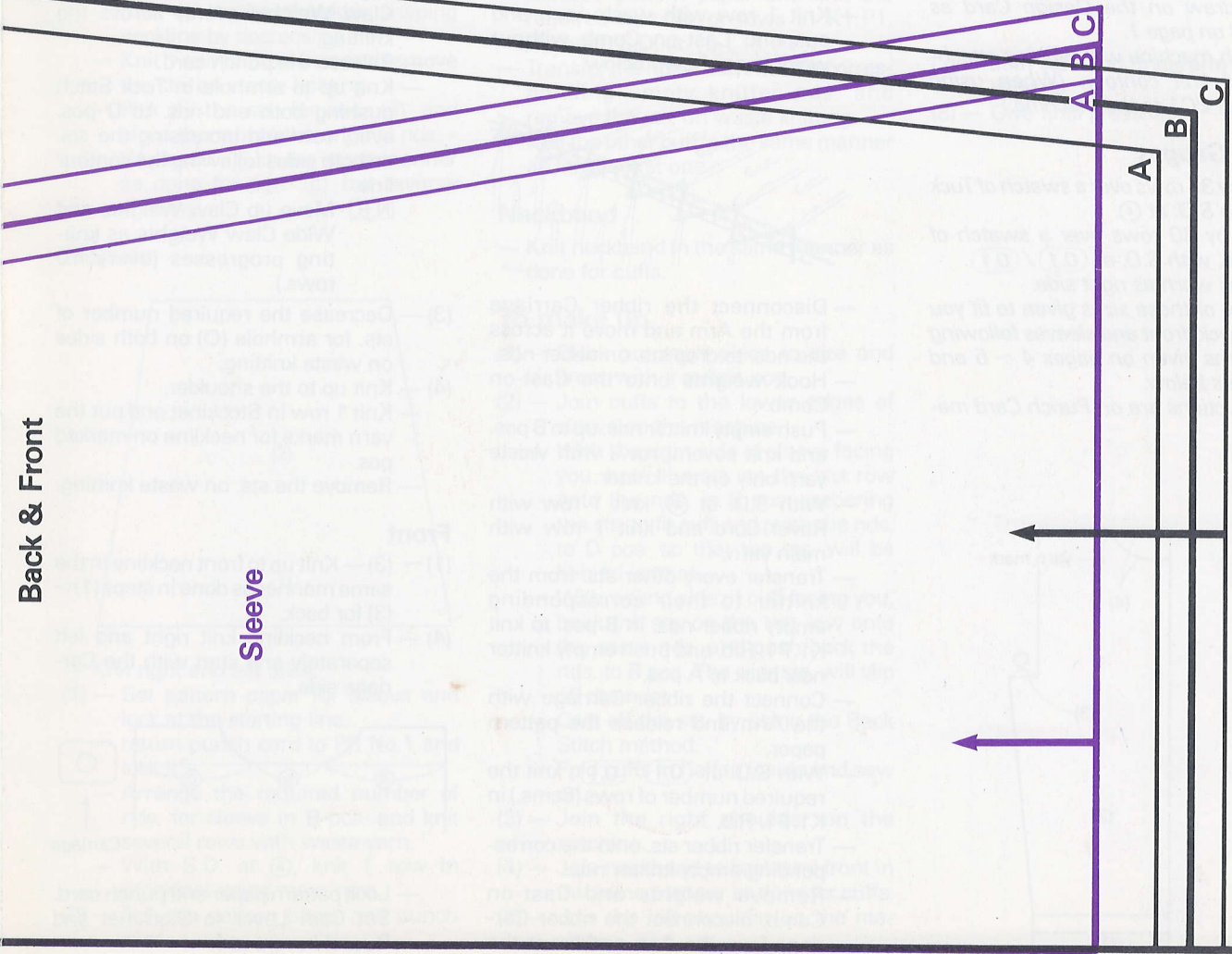
(b) — You agree to provide a copy of this document to the following:

Year	100	110	116
Shoulder Length	68	70	72
Sleeve Length	1/2 inch over the shoulder		



Back & Front

Sleeve



Trace the pattern on the blank pattern paper or set this paper in the Knit Contour.