

VOL. 137

## SYMBOLS/ABBREVIATIONS

- S.D. — Stitch Dial (The figure in circle indicates  
Stitch Dial number.)  
pos. — position  
st. (sts.) — stitch or stitches  
nd. (nds.) — needle or needles  
PR No. — Pattern Row Number

## CHANGING THE BATTERY IN A PE1 MEMORY CARD:

*A battery in a Memory Card will last about 5 years. The display will show "CHANGE CEL"...when your battery is low. The Memory Cards are initially supplied with CR2016 but you can also use BR2016.*

*Do not remove the battery from the Memory Card or you will loose all of the patterns you have stored!*

*Press (LOAD – SAVE =)*

*Insert your card when the display asks for the Master Card.*

*Press (=)*

*The display will tell you to change cards.*

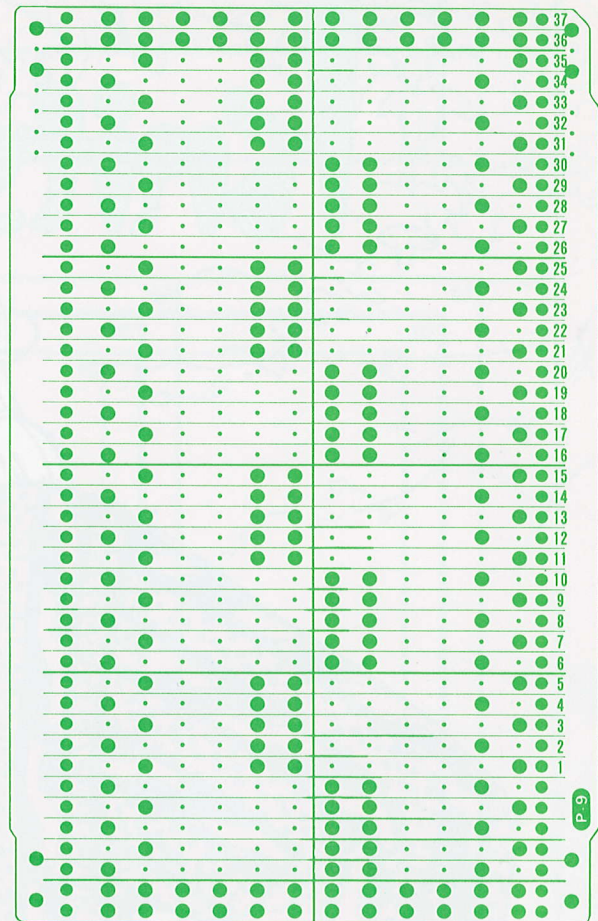
*Remove the card, change the battery and then re-insert the same card. When you press (=) the card will be automatically formatted and all of the patterns will be returned to the original card. (Refer to page 22 of PE1 Instruction Book)*

Your letters to "Knits for Joy" are always welcomed at the following address:—

S.S.C.  
P.O. Box 5095, Tokyo International  
Tokyo, 100-31, Japan

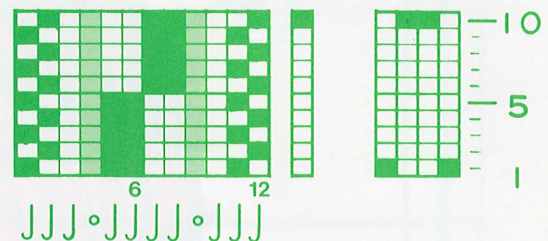
©Silver Knitting Institute, Tokyo, Japan  
Printed in Japan 92.08.4M(47)

## Punch Card for Fair Isle



J .....needles in B position  
o .....needles in A position

## Design Card for Fair Isle



# LADY'S CARDIGAN

Finished measurements Size: cm.

	A	B	C
Bust	112	116	120
Cardigan Length	62	64	66
Sleeve Length	56	57	58

## Materials/others:

Very Thick Yarn

Col. A..... 300~400gs.

Col. B..... 400~500gs.

6 Buttons (1.5cm. in diameter)

9mm pitch machine (SK155 or SK890) with ribbing attachment and Knit Contour. (When using SK890, connect EC1 to the machine.)

## Tension Gauges:

(a) 18 sts. by 17 rows over a swatch of Fair Isle with S.D. at (5.2).

(b) 15 sts. by 21 rows over a swatch of K2.P2. Rib with S.D. at (1)/(1) (for welts, cuffs and neck band)

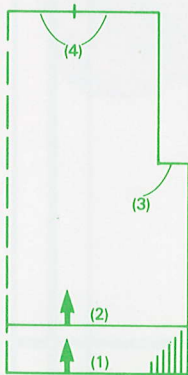
(c) 17 sts. by 20 rows over a swatch of K2.P2. Rib with S.D. at (1)/(1) (for front bands)

## To knit

Knit back, fronts and sleeves following the patterns given on pages 5 ~ 7 and instructions below.

The instructions are on Punch Card Machine.

## Back



- Set Row Number and Stitch Scale on the tension gauge (b).
- Set Pattern Paper for back and lock at the starting line.
- Arrange the required number of nds. on both beds for K2.P2. Rib as shown below.



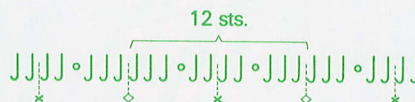
Half Pitch Lever to H-3

- S.D. (R) / (R), work closed edge cast-on with yarn B.
- Set the Swing Indicator to H-2.
- Transfer the right end ribber st. onto the right end knitter nd. as shown below.



Half Pitch Lever to H-2

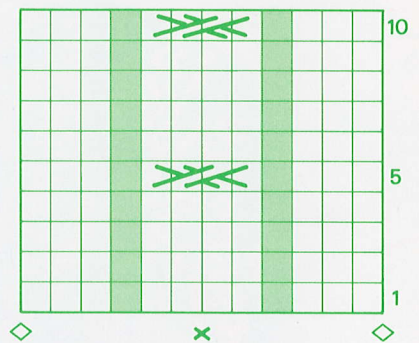
- Release Pattern Paper.
  - S.D. (1)/(1), knit the required number of rows for the welt in K2.P2. Rib.
  - Stop Pattern Paper.
  - Set Half Pitch Lever to P and transfer the ribber sts. onto the corresponding knitter nds.
  - Lower the Ribber to its lowest pos. and exchange Ribber Arm for Knitter Arm.
  - Remove the sts. on waste knitting.
- Reset Row Number and Stitch Scale on the tension gauge (a).
  - Push the required number of nds. for back to B pos., leaving the nds. marked with o in A pos. as follows.



- With the wrong side of welt facing you, hook the sts. on the last row onto the nds. in B pos.
- Set Punch Card and lock at PR No.1.

- Memorize the Pattern of the first row in the following manner. Set Side Levers to ●, move the Carriage once without knitting (using the Release Lever).
- Set Carriage as follows. Cam Lever..... Fair Isle (F) Side Levers (both)..... ▼ Russel Levers (both)..... II
- Release the Pattern Paper and Punch Card.
- Hang Claw Weights on both edges. (N.B.) It is recommended to hang more weights evenly across the knitting.
- Put yarn A into Yarn Feeder (1) and yarn B into Yarn Feeder (2).
- S.D. (5.2), knit in Fair Isle crossing the sts. every 5 rows following the pattern chart as shown below.

Pattern chart for Cable Stitch

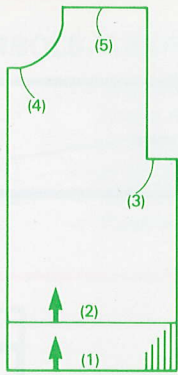


... Cross the left 2 sts. over the right 2 sts.

..... Needles in A pos.

- (N.B.) Knit the first row after crossing carefully to knit the crossed sts. completely.
  - Continue to knit up to armhole.
- Remove the required number of sts. for armhole on both sides on waste knitting.
  - Continue to knit up to shoulder.
  - Remove the sts. for neckline and shoulders respectively on waste knitting.

## Fronts



— Knit right and left fronts alike but reverse shapings.

(1)~(3) — Work in the same way as done for back but arrange the nds. for welts (K2.P2.Rib) as shown below.

### ※ Left Front

for closed edge cast-on



for K2.P2.Rib



### ※ Right Front

for closed edge cast-on



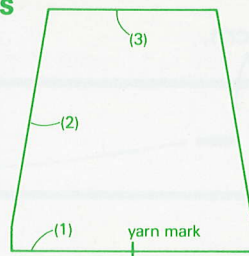
for K2.P2.Rib



(4) — Continue to knit up to shoulder shaping the neckline by decreasing sts. following the contour line.

(5) — Remove the sts. on waste knitting.

## Sleeves



— Knit right and left alike.

(1) — Set Row Number and Stitch Scale on the tension gauge (a).

— Set Pattern Paper for sleeves and lock at the starting line.

— Set Punch Card and lock at PR No.1.

— Cast on the required number of sts. with waste yarn.

— Release the Pattern Paper and Punch Card.

(2) — Knit sleeve in Fair Isle decreasing sts. on both edges.

(3) — Remove the sts. on waste knitting.

### Cuffs

— Knit cuffs in the same manner as done for back welt.

### Neckband

— Knit neckband in the same manner as done for back welt.

### Front bands

(1) — On the tension gauge (c), knit right and left front bands alike in the same manner as done for back welt but make buttonholes on the left front band.

(2) — Make buttonholes in the following manner.

— Knit up to buttonhole pos.

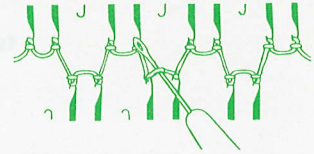
— Transfer 2 ribber sts. at the pos. instructed on page 4 onto the knitter needles as shown below.



— Align the empty ribber nds. in B pos.

— Knit 1 row.

— Using a transfer tool, hook the yarn between two ribber nds. at buttonhole pos. onto the knitter nd. as follows.



— continue to knit.

### To make up

(1) — Pin out each piece to correct size and press with a steam iron.

(2) — Join cuff to the lower edge of sleeve in the following manner.

— Push the same number of needles as the number of sts. on the last row of cuff to B pos.

— With the right side of sleeve facing you, hook the sts. on the last row onto the nds. in B pos., decreasing sts. evenly to fit cuff.

— Push the nds. to D pos. holding the knitting against Sinker Posts, so that the sts. will be behind latches.

— With the wrong side of cuff facing you, place the sts. on the last row inside the hooks of needles in D pos.

— Push the nds. back to B pos. holding cuff by hand, so that the rear sts. will slip off the nds.

— Cast off the sts. using back st. method.

(3) — Join both shoulders on the machine.

(4) — Join neckband to back and front neck edge on the machine in the following manner.

— Push the same number of nds. as the number of sts. on the last row of neckband to B pos.

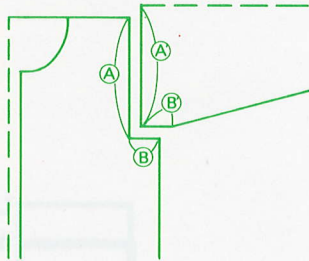
— With the right side of back and fronts facing you, pick up and place the sts. along neck edge onto nds. in B pos.

— Push the nds. in B pos. to D pos. holding the knitting against Sinker Posts, so that the sts. will be behind latches.

— With the wrong side of neckband

facing you, place the sts. on the last row inside the hook of the nds. in D pos.

- Push the nds. in D pos. carefully back to B pos., so that the rear sts. will slip off the nds.
  - S.D. ⑩, knit 1 row and cast off the sts. with a Tappet Tool.
- (5) — Join Front Bands to front edges on the machine in the same manner as done for neckband.
- (6) — Join sleeve to back and front armhole in the following manner.

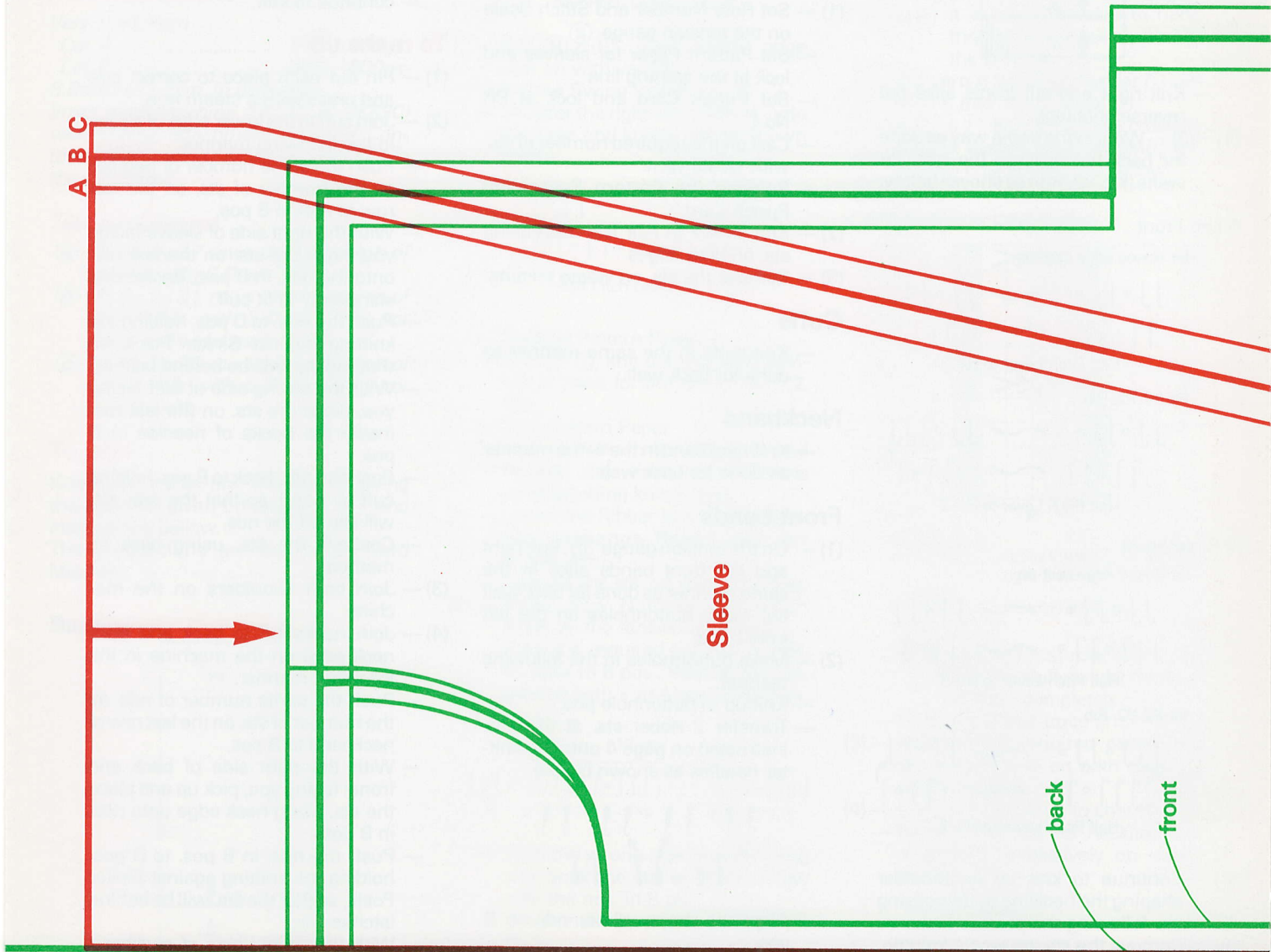
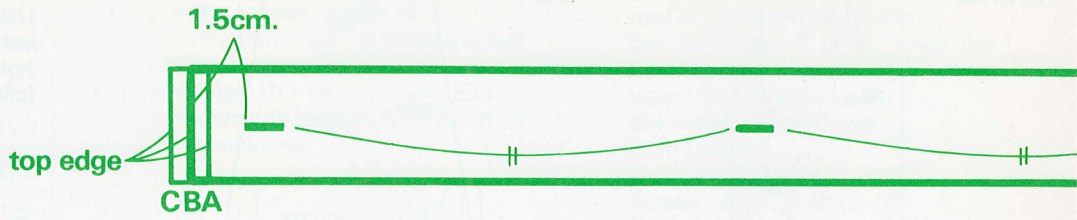


- Push the same number of nds. as the number of sts. for (A) to B pos. on both sides of center O.
- With the right side of back and front facing you, hook the sts. along the side edge (A) evenly onto the nds. in B pos.
- Push the nds. in B pos. to D pos., so that the sts. will be behind latches.
- With the wrong side of sleeve facing you, place the sts. for (A) inside the hooks of nds. in D pos.
- Push the nds. back to B pos., holding sleeve by hand so that the rear sts. will slip off the nds.
- S.D. ⑩, knit 1 row and cast off the sts. using a Tappet Tool.
- Join (B) to (B) by grafting as shown below.



- Join the other sleeve to armhole in the same manner.
- (7) — Join side and underarm seams by blind st.
- (8) — Give final pressing.
- (9) — Sew on buttons correspond to the button holes.





Front Band

3cm.

A B C

Back & Front

A B C

A B C

A B C

Cuff

ABC

Welt

Trace the pattern on the blank pattern paper or set this paper in the Knit Contour.