

# Knits for Joy



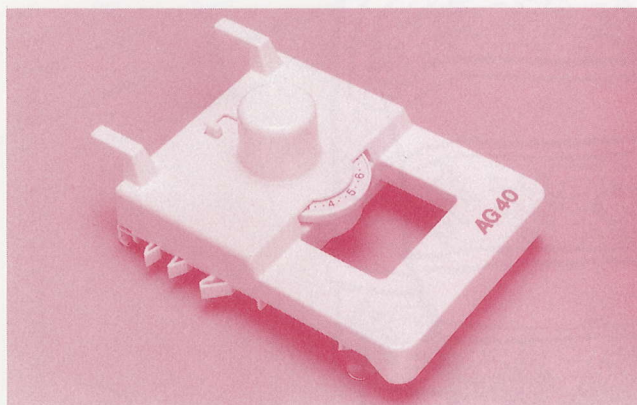
VOL. 139

## SYMBOLS/ABBREVIATIONS

S.D.	— Stitch Dial (The figure in circle indicates Stitch Dial number.)
pos.	— position
st. (sts.)	— stitch or stitches
nd. (nds.)	— needle or needles
PR No.	— Pattern Row Number

## Intarsia Carriage MODEL AG40

*Manual needle selection type Intarsia Carriage. Specially designed so as to be used on the SK860, 6.5mm pitch electronic knitter. You can knit fashionable intarsia patterns without floating yarns on the reverse side of your garment.*

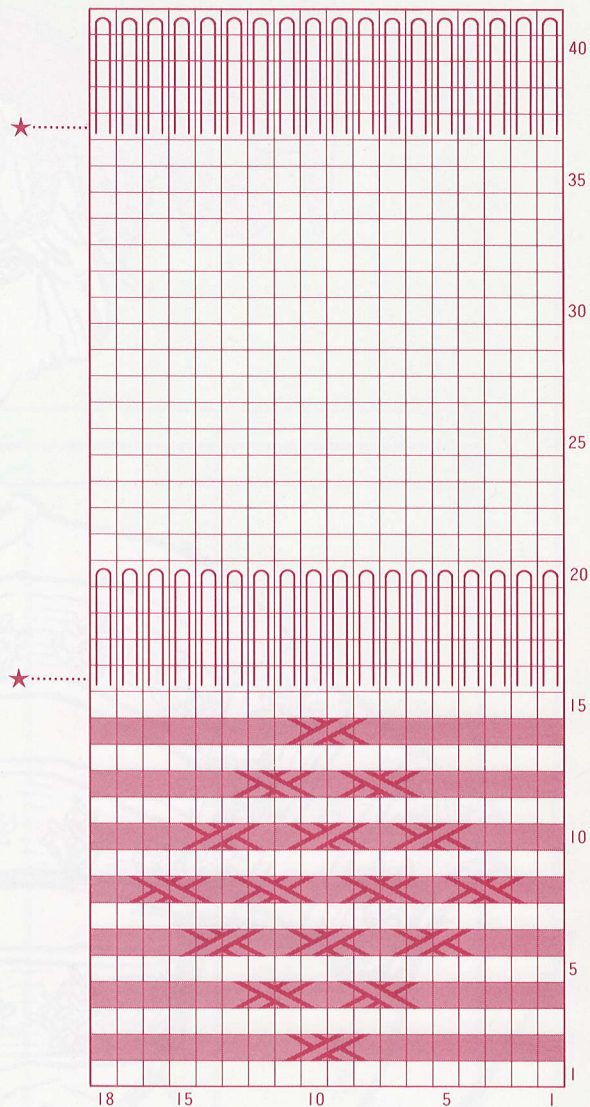


Your letters to "Knits for Joy" are always welcomed at the following address:—

SILVER SEIKO LTD.  
28-15, Shinjuku 1-chome, Shinjuku-ku, Tokyo, 160 Japan

©Silver Knitting Institute, Tokyo, Japan  
Printed in Japan 93.4.4M(49)

## Pattern Chart



 .....Knit Stockinet with S.D. ⑦.

 .....Cross the right 2 sts. over the left 2 sts.

 .....Cross the left 2 sts. over the right 2 sts.

 .....Pin Tuck

# LADY'S SWEATER

Finished measurements Size: cm.

	A	B	C
Bust	98	102	106
Sweater Length	54	56	58
Sleeve Length	22	23	24

## Materials/others:

Ribbon Yarn (medium type).....  
320 ~ 380gs.  
6.5mm pitch machine (LK 150 or SK 860)  
and Knit contour

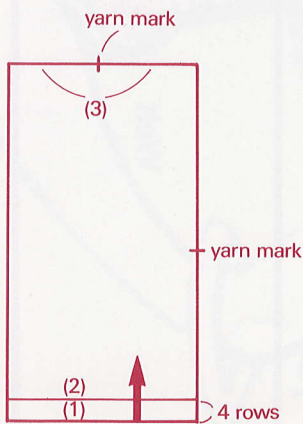
## Tension Gauges (On LK 150):

- (A) 25 sts. by 33 rows over a swatch of Pattern Knitting (Cable Stitch, Pin Tuck and Stockinet) with S.D. at (2) (7) for Cable Stitch)
- (B) 25 sts. by 36 rows over a swatch of K1.P1. Rib with S.D. at (R) (For Welts)
- (C) 24 sts. by 40 rows over a swatch of Stockinet with S.D. at (1) (For Neckband & Cuffs)

## To knit

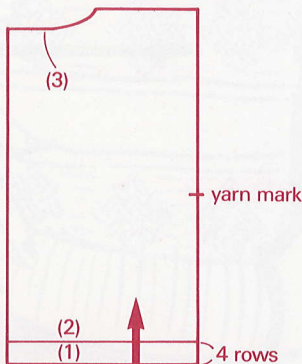
Knit back, front and sleeves following the patterns given on pages 4 ~ 5 and instructions bellow. The instructions are on LK 150.

### Back



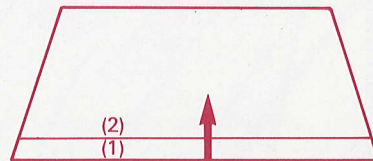
- (1) — Set Row Number and Stitch Scale on the tension gauge (A).  
— Set Pattern Paper for back and lock at the starting line.  
— Cast on the required number of sts. for back and knit several rows with waste yarn.  
— Release Pattern Paper and knit 4 rows in Stockinet with S.D. (2) using main yarn.
- (2) — Start Pattern Knitting following the Pattern Chart given on page 1.
  - (a) Knit 1 row with S.D. (2) for PR No.1.
  - (b) Knit 1 row with S.D. (7), and cross the sts. as shown on the Pattern Chart.
  - (c) Repeat steps (a) and (b) up to the 15th row.
  - (d) Knit 5 rows with S.D. (2) for Pin Tuck.
  - (e) Pick up the sinker loops on the PR No.16 marked with ★ on the Pattern Chart and place them onto the nds. in B pos.
  - (f) S.D. (2), knit 16 rows in Stockinet. (Up to PR No.36)
  - (g) Repeat steps (d) & (e) but pick up the sinker loops on the PR No.37.
  - (h) Repeat steps (a) ~ (g) up to the shoulders putting yarn marks for armholes.
- (3) — Remove the sts. for neckline and shoulders respectively on waste knitting.

### Front



- (1) ~ (2) — Work in the same manner as done for back but shaping the neckline by partial knitting.
- (3) — Remove the sts. for neckline and shoulders respectively on waste knitting.

## Sleeves



Knit the right and left sleeves alike.

- (1) — Set Row Number and Stitch Scale on the tension gauge (A).  
— Set Pattern Paper for Sleeves and lock at the starting line.  
— Cast on the required number of sts. for sleeve, and knit several rows with waste yarn.  
— Release Pattern Paper and knit 2 rows in Stockinet with S.D. (2) using main yarn.
- (2) — Start Pattern Knitting in the same manner as done for back but decreasing sts. on both edges.  
— Remove the sts. on waste knitting.

## Neckband and Cuffs

- (1) — Cast on the required number of sts. for neckband and cuffs and knit several rows with waste yarn.  
— S.D. (2), knit 1 row using main yarn.  
— Reset the S.D. at (1), knit the required number of rows on the tension gauge (C) for neckband and cuffs.
- (2) — Remove the sts. on waste knitting.

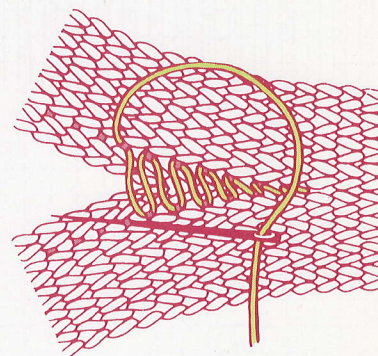
## To make up

- (1) — Pin out each piece to correct size and press with a steam iron.
- (2) — Knit back and front welts in the following manner.  
— Push the same number of nds. as the number of sts. on the first row of back or front to B pos.  
— With the wrong side of back or front facing you, pick up the sts. on the first row onto the nds. in B pos.

- S.D. (R), knit the required number of rows on the tension gauge (B) for the welts and purl the sts. for K1.P1. Rib.
- Remove the sts. on waste knitting in the following way.
  - a. Push the alternate nds. with reformed sts. to D pos.
  - b. Set the Side Levers to ● and Russel Levers to II. (Set Cam Lever to S on SK860)
  - c. Knit 1 row with a contrast waste yarn, so that only the reformed sts. are knitted and all working nds. are aligned in B pos.
  - d. Reset the Side Levers to ▲ (Cam Lever to O on SK860), knit several rows and remove the knitting.
- (3) — Join the right shoulder on the machine.
  - Push the same number of nds. as the number of sts. on the shoulder to B pos.
  - With the right side of back facing you, pick up the sts. onto the nds. in B pos.
  - Push the nds. in B pos. to D pos. holding the knitting against sinker posts, so that the sts. all go behind the latches.
  - With the wrong side of front facing you, pick up the sts. onto the nds. in D pos.
  - Push the nds. in D pos. carefully back to B pos., so that the rear sts. slip off the nds.
  - S.D. (C), knit 1 row and cast off the sts. with a Tappet Tool.
- (4) — Join neckband to back and front neckedge on the machine as follows.
  - Push the same number of nds. as the number of sts. on the first row of neckband to B pos.
  - With the right side of back and front facing you, pick up the sts. along neckedge onto the nds. in B pos.
  - Push the nds. in B pos. to D pos. holding the knitting against sinker posts, so that all the sts. go behind the latches.
  - With the wrong side of neckband facing you, pick up the sts. on the first row onto the nds. in D pos.
- Push the nds. in D pos. carefully back to B pos., so that the rear sts. slip off the nds.
- Push the nds. in B pos. to D pos., so that all the sts. go behind the latches.
- Pick up the sts. on the last row of neckband onto the nds. in D pos.
- Push the nds. in D pos. carefully back to B pos., so that the rear sts. slip off the nds.
- S.D. (7), knit 1 row and cast off the sts. with a Tappet Tool.
- (5) — Join cuffs to the sleeves in the same manner as done for neckband, but pick up the sts. on the lower edge of sleeve decreasing sts. evenly to fit cuff.
- (6) — Join left shoulder on the machine in the same manner as done for right shoulder.
- (7) — Join sleeves to back and front armhole in the following manner.
  - Push the same number of nds. as the number of sts. on the first row of the sleeve to B pos.
  - With the right side of back and front facing you, pick up the sts. along the side edge evenly onto the nds. in B pos.
  - Push the nds. in B pos. to D pos., so that all the sts. go behind the latches.
  - With the wrong side of sleeve facing you, pick up the sts. on the first row onto the nds. in D pos.
  - Push the nds. in D pos. carefully back to B pos. holding sleeve by hand, so that the rear sts. will slip off the nds.
  - S.D. (7), knit 1 row and cast off the sts. using Tappet Tool.
  - Join the other sleeve to armhole in the same manner.
- (8) — Join side and underarm seams by blind st. ....\*
- (9) — Join neckband seam by blind st. ....\*
- (10) — Give final pressing.

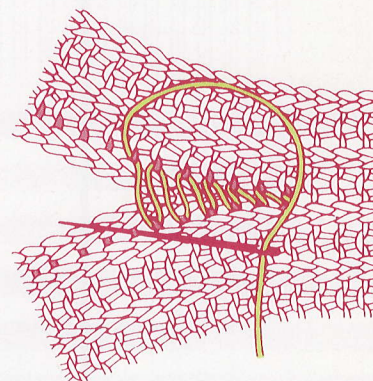
### \* Blind stitch

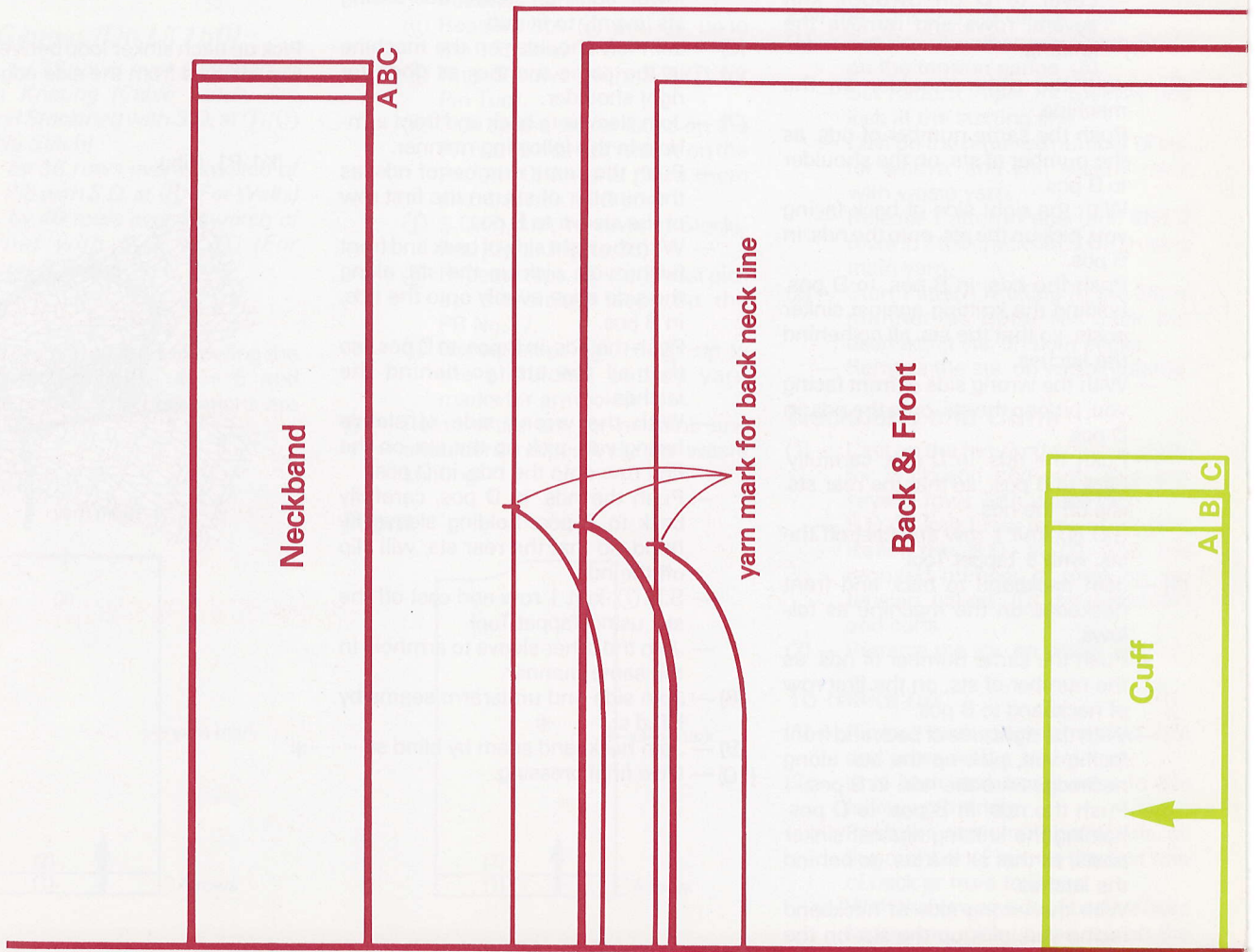
(Knit side to be worn)



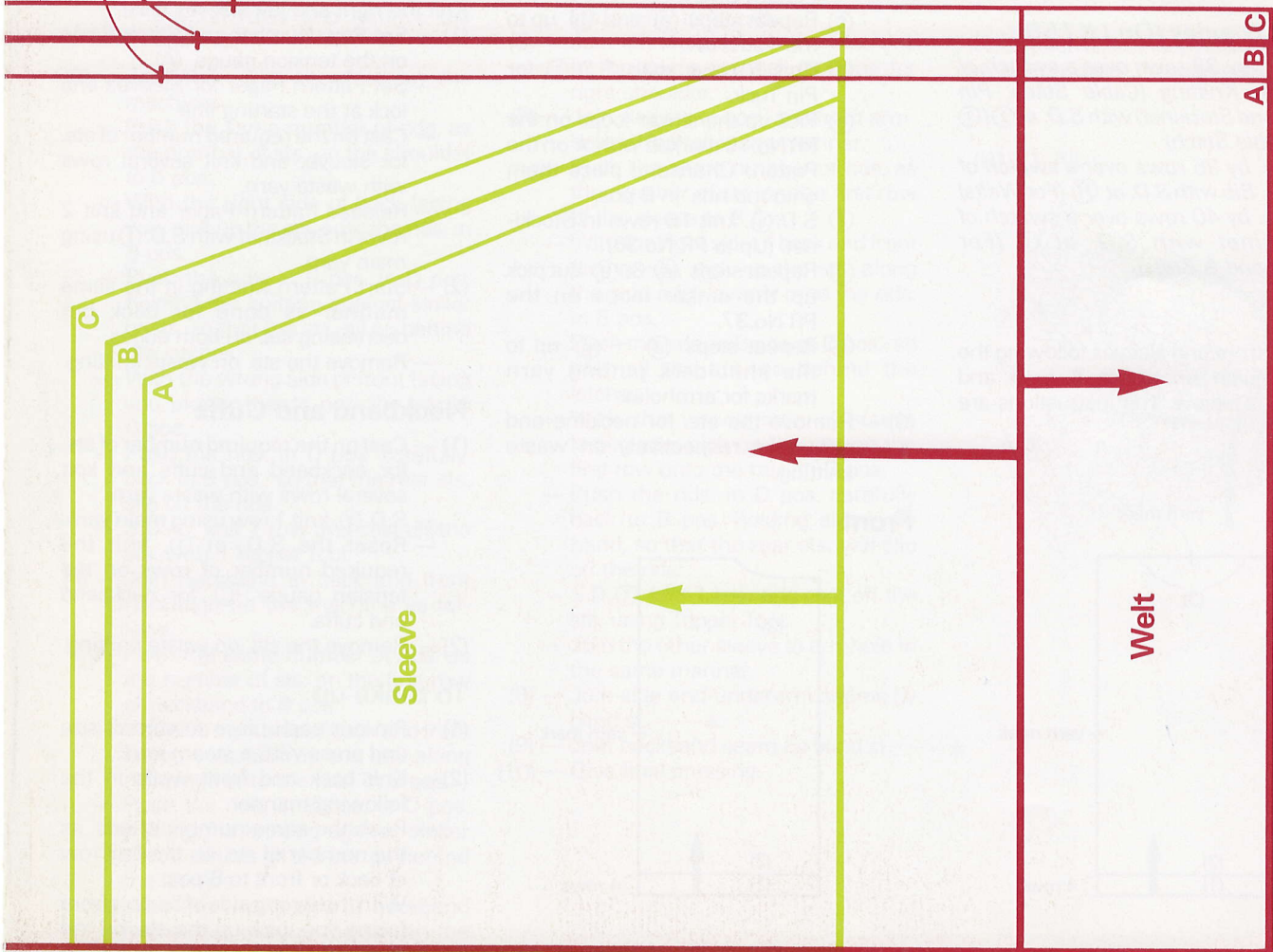
Pick up each sinker loop between the last two stitches from the side edge.

(K1.P1. Rib.)





yarn mark for armhole



Trace the pattern on the blank pattern paper or set this paper in the Knit Contour.