

# SINGER\*

1000



**SMOCK TOP** SIZES 75cms–95cms (30'–38')

---

# SINGER\* SMOCK TOP

**Materials:** 4 ply. Approximately 350(375-375-400-425) g in colour A, 175(200-200-225-225) g in colour B.

**Measurements:** To fit bust sizes 75(80-85-90-95) cms [30(32-34-36-38) ins]. Length to shoulder 63(64-65.5-66-67) cms [25(25½-26-26¼-26½) ins]. Sleeve seam 20 cms [8 ins].

## Tension

**Plain knitting tension:** 30 sts and 40 rows = 10 cms [4 ins] square measured over plain knitting. Try T7.

**2-colour pattern tension:** 30 sts and 33 rows = 10 cms [4 ins] square measured over 2-colour pattern using card No 17. Try T10.

**Pattern stitch:** Plain knitting tension. Both operation dials on PLAIN. Using colour A only knit 7 rows. Insert card on row 1. Pattern switch on ■. Card feed switch ☺. Needle selection lever forward. Knit 1 row. \*Card feed switch ●. 2-colour pattern tension. Left hand operation dial on PLAIN, right hand dial on 2-COLOUR. With colour A in threadmouth A and colour B in threadmouth B knit 10 rows. Card feed switch ☺. Needle selection lever-back. Plain knitting tension. Both operation dials on PLAIN. Knit 7 rows with colour A only. Needle selection lever forward. Knit 1 row\*. Rep from \* to \* throughout for pattern stitch.

**Notes:** When dividing the work for neck shaping, after pushing the needles to F position place the returning levers on II. Note the number on the row counter, the number on the pattern card and whether you are working a plain or a patterned stripe at this point.

After completing the first side of the work, **if you divided at a plain knitting stripe** place the returning levers on I, reset the pattern card and carriage, re-thread the yarn and knit the row. Reset the row counter to the row previously noted and complete second side.

**If you divided at a patterned stripe** return the needles in F position to B position using a transfer tool. Return the pattern card to 1 number less than the pattern row noted, reset carriage, set both operation dials on SLIP and take the carriage across. Reset the operation dials for the pattern, re-thread the yarn, reset the row counter to the row previously noted and complete second side.

**Abbreviations:** Alt = alternate; beg = beginning; cms = centimetres; dec = decrease; inc = increase; ins = inches; rep = repeat; st = stitch; sts = stitches; 000 = return row counter to 000.

## Back

Using colour A cast on 158(166-174-180-186) sts by hand. Tension 1 number tighter than plain knitting tension. Knit 7 rows. Knit 1 loose row for foldline.

000. Working in pattern stitch as given above knit 10 rows. Dec 1 st at each end of next and every following 7th row 21 times in all. 116(124-132-138-144) sts remain. Knit straight to 162 rows.

## Shape Armholes

000. Cast off 8 sts at beg of next 2 rows ★. Knit 4 rows. Inc 1 st at each end of next and every following 6th(6th-8th-8th-8th) row 8 times in all. 116(124-132-138-146) sts. Knit straight to 56(62-66-68-70) rows.

## Shape Shoulders and Back Neck

Cast off 8(8-9-10-10) sts at beg of next 4 rows. Using a length of matching yarn cast off the centre 18(20-22-22-24) sts. Push needles at side opposite carriage to F position (see notes). Work on remaining sts first.

Cast off 8(8-9-10-10) sts at beg of next row and 6 sts at beg of next row. Rep the last 2 rows once more. Cast off.

Complete second side to match first reversing shaping (see notes).

## Front

Knit as given for Back to ★. Knit 2 rows.

## Divide for Neck

Push 50(54-58-61-64) needles at side opposite carriage to F position. Work on remaining sts first (see notes).

Knit 2 rows. Inc 1 st at armhole edge on next and every following 6th(6th-8th-8th-8th) row, **at the same time** dec 1 st at neck edge on next and every alt row 21(22-23-23-24) times in all.

**1st, 3rd, 4th and 5th sizes only:** Keeping neck edge straight continue to inc at armhole edge as before until there are 37(43-46-48) sts.

**All sizes:** 37(40-43-46-48) sts. Knit straight to 56(62-66-68-70) rows.

## Shape Shoulder

Cast off 8(8-9-10-10) sts at beg of next and every alt row 4 times in all. 5(8-7-6-8) sts remain. Knit 1 row. Cast off.

Complete second side to match first reversing shaping and taking care to keep pattern correct (see notes).

## Sleeves

Using colour A cast on 134(140-146-152-158) sts by hand. Tension 1 number tighter than plain knitting tension. Knit 7 rows. Knit 1 loose row for foldline.

000. Working in pattern knit 10 rows. Dec 1 st at each end of next and every following 3rd row 17(17-17-18-19) times in all. 100(106-112-116-120) sts remain. Knit straight to 72 rows. Tie a marker to each end of last row. Plain knitting tension. Knit 10 rows in plain knitting only. Knit 1 row at T10 and cast off.

## Finishing and Neckband

Read pressing instructions.

**Front Neckband:** With wrong side of front facing pick up and place on machine 54(56-60-62-64) sts all along right front neck edge making sure that first st is picked up at point of V. Plain knitting tension. Using colour A knit 2 rows. Dec 1 st (using the 3-st transfer tool) at left hand side of next 3 rows. Knit 1 loose row for foldline. Tension 1 number tighter than plain knitting. Inc 1 st at left hand side of next 3 rows. Knit 1 row. Knit 1 row at T10 and cast off.

Knit other side to match reversing shaping.

**Back Neckband:** With wrong side of back facing pick up and place on machine 41(43-45-47-49) sts along back neck edge. Plain knitting tension. Using colour A knit 5 rows. Knit 1 loose row for foldline. Tension 1 number tighter than plain knitting. Knit 4 rows. Knit 1 row at T10 and cast off.

Join shoulder and side seams. Join sleeve seams to markers and insert sleeves. Join front neckband at point of V. Fold hems at lower edge, sleeves and neckband to inside and slip stitch in place. Press seams.

## Pressing Instructions

**Wool:** Press work on wrong side using a hot iron and a damp cloth.

**Synthetics:** Press lightly on wrong side using a cool iron and a dry cloth, unless label states that yarn should not be pressed.

\*A Trademark of THE SINGER COMPANY

The Singer Co., (U.K.) Ltd., Consumer Division, 255 High St., Guildford, Surrey  
PRINTED IN ENGLAND



# SINGER\*

1001



**OVERTOP** SIZES 80cms–100cms (32"–40")

---

# SINGER\* OVERTOP

**Materials:** 4 ply. Approximately 700(725-775-825-875) g.

**Measurements:** To fit bust sizes 80(85-90-95-100) cms [32(34-36-38-40) ins]. Finished measurement 86(90-96-100-106) cms [34(36-38-40-42) ins]. Length to shoulder 71(72-73-73-74) cms [28(28¼-28¾-28¾-29) ins]. Sleeve seam 30 cms [12 ins].

**Main Tension:** 33 sts and 58 rows = 10 cms [4 ins] square measured over slip stitch pattern using card No 12. Try T7.1.

**Abbreviations:** Alt = alternate; beg = beginning; cms = centimetres; dec = decrease; inc = increase; ins = inches; rep = repeat; st = stitch; sts = stitches; 000 = return row counter to 000.

## Back

Cast on 169(177-185-191-199) sts by hand.★ Tension 2 numbers tighter than main. Knit 11 rows. 000. Main tension. Carriage at left. Insert card No 12 on row 3. Needle selection lever forward. Card feed switch on ☉. Pattern switch on ■. Knit 1 row. \*Both operation dials on SLIP. Knit 4 rows. Both operation dials on PLAIN. Knit 1 row; rep from \* 4 times more.

000. Set card on row 6 and card feed switch on ●. Both operation dials on PLAIN. Main tension. Knit 1 row. Both operation dials on SLIP ★. Knit straight to 14 rows. Dec 1 st at each end of next and every following 18th row 14 times in all. 141(149-157-163-171) sts remain ★★. Knit straight to 290 rows. This will give a length to armholes of 53 cms [21 ins].

## Shape Armholes

000. Cast off 5(5-6-6-6) sts at beg of next 2 rows. Dec 1 st at each end of next 9 rows, then every alt row 9 times. Knit straight to 104(110-116-116-122) rows.

## Shape Shoulders and Back Neck

Using length of matching yarn cast off the centre 23(27-29-31-35) sts by hand. Push needles at side opposite carriage to F position. Place returning levers on II. Make a note of the pattern row number now showing on the card. Work on remaining sts first.

Cast off 5(5-6-6-7) sts at beg of next row and 3 sts at beg of following row. Rep the last 2 rows 3 times more. 4(6-4-6-4) sts remain. Cast off.

Return needles in F position to B position by hand. Set both operation dials on SLIP. Return the pattern card to one number less than the pattern row previously noted and take the carriage across to other side. Re-thread yarn. Complete second side to match first reversing shaping.

## Front

Work as given for Back to ★★. Knit straight to 264 rows.

## Divide for Front Opening

Using a length of matching yarn cast off the centre 15 sts. Push needles at side opposite carriage to F position. Place returning levers on II. Make a note of the pattern row number now showing on the card. Work on remaining sts first. 63(67-71-74-78) sts. Knit straight to 290 rows.

## Shape Armhole

000. Cast off 5(5-6-6-6) sts at beg of next row. Knit 1 row. Dec 1 st at armhole edge on next 9 rows, then every alt row 9 times. 40(44-47-50-54) sts remain. Knit straight to 63(69-75-75-81) rows.

## Shape Neck

Cast off 5(7-8-9-11) sts at beg of next row. Dec 1 st at neck edge on next 3 rows, then every alt row 4 times, then every following 4th row 4 times. 24(26-28-30-32) sts remain. Knit straight to 104(110-116-116-122) rows.

## Shape Shoulder

Cast off 5(5-6-6-7) sts at beg of next and every alt row 4 times in all. Knit 1 row. Cast off remaining 4(6-4-6-4) sts.

Return needles in F position to B position as given on Back. Complete to match first side reversing shaping.

## Sleeves

Cast on 83(85-89-93-95) sts by hand. Work as given for Back from ★ to ★. Knit straight to 12 rows. Inc 1 st at each end of next and every following 12th(10th-8th-7th-6th) row 11(13-15-17-19) times in all. 105(111-119-127-133) sts. Knit straight to 156 rows. This will give a sleeve seam length of 30 cms [12 ins].

## Shape Top

000. Cast off 5(5-6-6-6) sts at beg of next 2 rows. Dec 1 st at each end of next and every

following 3rd row 8 times in all, then every alt row 17(18-19-20-21) times. Dec 1 st at each end of next 7 rows. Cast off 4 sts at beg of next 2(2-4-4-4) rows. Cast off.

## Collar

Cast on 139(145-151-159-165) sts by hand. Tension 2 numbers tighter than main. Knit 13 rows. 000. Main tension. Carriage at left. Set card on row 3. Pattern selection lever forward. Card feed switch on ☉. Pattern switch on ■. Knit 1 row. \*Both operation dials on SLIP. Knit 4 rows. Both operation dials on PLAIN. Knit 1 row. Rep from \* 15 times more. Keeping pattern correct cast off 8(8-8-9-9) sts at beg of next 8 rows, then 7(8-7-8-9) sts at beg of following 4 rows. Cast off remaining 47(49-51-55-57) sts.

## Belt

Cast on 27 sts by hand. Tension 2 numbers tighter than main. 000. Knit straight in plain knitting to 492(514-536-558-580) rows or required length. Cast off.

## Front Edgings

With right side of work facing pick up and place on machine 43(47-49-49-53) sts evenly along right front opening. Tension 2 numbers tighter than main. Knit 9 rows. Knit a few rows with waste yarn. Remove work from machine, turn so that wrong side is facing. Replace stitches on machine and remove waste yarn. Main tension. Knit 1 row. Carriage at left. Lock card on row 3. Pattern selection lever forward. Card feed switch on ☉. Pattern switch on ■. Knit 1 row. \*Both operation dials on SLIP. Knit 4 rows. Both operation dials on PLAIN. Knit 1 row. Rep from \* twice more. Cast off.

Work Left Front Edging in same way.

## To Finish

Read pressing instructions. Join shoulder, side and sleeve seams. Insert sleeves. Turn up hems to inside and slip stitch in place. Fold front edgings in half to outside and sew neatly in place. Sew ends of edging down at division of front opening. Turn short ends of collar to inside for about 0.5 cm [¼ inch] and slip stitch in place. Turn hem to inside and slip stitch in place. Fold belt in half lengthways and join. seams. Press seams.

## Pressing Instructions

**Wool:** Press work on wrong side using a hot iron and a damp cloth.

**Synthetics:** Press lightly on wrong side using a cool iron and dry cloth, unless label states that yarn should not be pressed.

\*A Trademark of THE SINGER COMPANY

The Singer Co., (U.K.) Ltd., Consumer Division, 255 High St., Guildford, Surrey  
PRINTED IN ENGLAND



# SINGER\*

1002



**TUNIC** SIZES 75cms–100cms (30"–40")

# SINGER\* TUNIC

**Materials:** 4 ply. Approximately 375(425-450-500-525-575) g. Toggle.

**Measurements:** To fit bust sizes 75(80-85-90-95-100) cms [30(32-34-36-38-40) ins]. Length to shoulder 62(63-63.5-65-65.5-66) cms [24½(24¾-25-25½-25¾-26) ins].

**Main Tension:** 30 sts and 40 rows = 10 cms [4 ins] square measured over plain knitting. Try T7.

**Abbreviations:** Alt = alternate; beg = beginning; cms = centimetres; dec = decrease; inc = increase; ins = inches; rep = repeat; st = stitch; sts = stitches; 000 = return row counter to 000.

## Body Back and Front Alike

Cast on 120(128-134-142-150-158) sts by hand. Tension 1 number tighter than main. Knit 10 rows.

000. Main tension. Knit 10 rows. Dec 1 st at each end of next and every following 6th row 11 times in all. 98(106-112-120-128-136) sts remain. Knit straight to 80 rows. Inc 1 st at each end of next and every following 12th row 7 times in all. 112(120-126-134-142-150) sts. Knit straight to 162 rows. This will give a length to underarm of 39.5 cms [16 ins]. Cast off loosely.

## Yoke (Knitted sideways)

### Left Back

#### Sleeve

Cast on 76(78-80-82-84-86) sts by hand from left to right. Tension 1 number tighter than main. Knit 10 rows.

000. Tension 1 number looser than main. Knit 5 rows. Insert card No 16 on row 1. Needle selection lever forward. Card feed switch on ●. Pattern switch on ■. Knit 1 row. \*Both operation dials on SLIP. Knit 4 rows. Both operation dials on PLAIN. Knit 1 row. Both operation dials on SLIP. Knit 4 rows. Both operation dials on PLAIN. Knit 6 rows\*. Repeating from \* to \* knit straight to 92(92-94-94-96-96) rows.

### Shape Underarm

Keeping stripe pattern correct cast off 11 sts at beg of next row. 65(67-69-71-73-75) sts remain. Knit straight to 133(137-137-149-149-155) rows.

### Shape Neck

Dec 1 st (using the 2-stitch transfer tool) at left (neck edge) on next and every alt row 5(5-5-6-5-5) times, then every 4th row 3 times. 57(59-61-62-65-67) sts remain. Knit straight to 168(175-183-190-190-198) rows. Cast off loosely.

## Right Back

Knit as given for Left Back but reversing shaping by reading right for left and left for right throughout.

## Left Front

### Sleeve

Cast on 76(78-80-82-84-86) sts by hand from right to left. Tension 1 number tighter than main. Knit 10 rows.

000. Tension 1 number looser than main. Knit 5 rows. Insert card No 16 on row 1. Needle selection lever forward. Card feed switch on ●. Pattern switch on ■. Knit 1 row. \*Both operation dials on SLIP. Knit 4 rows. Both operation dials on PLAIN. Knit 1 row. Both operation dials on SLIP. Knit 4 rows. Both operation dials on PLAIN. Knit 6 rows\*. Repeating from \* to \* knit straight to 92(92-94-94-96-96) rows.

### Shape Underarm

Keeping stripe pattern correct cast off 11 sts at beg of next row. 65(67-69-71-73-75) sts remain. Knit straight to 133(137-137-149-149-155) rows.

### Shape Neck

Cast off 19(19-21-21-23-23) sts at beg of next row. Knit 1 row. Dec 1 st at neck edge on next 6 rows, then every alt row 7 times. 33(35-35-37-37-39) sts remain. Knit straight to 168(175-183-190-190-198) rows. Tension 1 number tighter than main. Knit 6 rows in plain knitting. Cast off loosely.

## Right Front

Knit as given for Left Front but reversing shapings by reading left for right and right for left throughout.

## Finishing and Edging

Read pressing instructions. Join centre back and shoulder seams of yoke. Fold hems at front edges of yoke to inside and slip stitch in place.

### Neckband:

With wrong side of work facing pick up and place on machine 132(136-144-148-156-160) sts evenly around neck. Main tension. Knit 6 rows. Tension 1 number tighter than main. Knit 6 rows. Cast off loosely.

Join side seams of body to form a tube. Join underarm seams of yoke. Insert body tube. Fold hems at lower edge, sleeves and neckband to inside and slip stitch in place. Knit a cord over 3 needles 6 cms [2½ ins] long. Press seams. Sew toggle and cord in place.

## Pressing Instructions

**Wool:** Press lightly on wrong side using a hot iron and a damp cloth.

**Synthetics:** Press lightly on wrong side using a cool iron and a dry cloth, unless label states that yarn should not be pressed.

\*A Trademark of THE SINGER COMPANY

The Singer Co., (U.K.) Ltd., Consumer Division, 255 High St., Guildford, Surrey  
PRINTED IN ENGLAND



# SINGER\*

1003



**TWIN SET** SIZES 75cms–95cms (30"–38")



# SINGER\* TWIN SET

**Materials:** 4 Ply. **Cardigan:** Approximately 250(250-275-275-275) g in colour A, 100 g each in colours B and C.

**Suntop:** 125(125-150-150-175) g in colour A, 25(25-25-50-50) g in colour B.

**Measurements:** To fit bust sizes 75(80-85-90-95) cms [30(32-34-36-38) ins].

**Cardigan:** Finished measurement 78(84-88-94-98) cms [31(33-35-37-39) ins]. Length to shoulder 54(55-56-57-58) cms [21½(21¾-22-22½-22¾) ins]. Sleeve seam 14 cms [5½ ins].

## Tension:

**Plain knitting tension:** 30 sts and 40 rows = 10 cms [4 ins] square measured over plain knitting. Try T7.

**Main tension:** 30 sts and 34 rows = 10 cms [4 ins] square measured over 2-colour pattern using card No 12, worked throughout with left-hand operation dial on PLAIN and right hand dial on 2-COLOUR. Try T9.

**Pattern Stitch:** Work through card No 12, with colour A in thread mouth 1 throughout, as follows:- \*tension 2 numbers tighter than main, both operation dials on TUCK, knit rows 1-8 of card. Main tension, left-hand operation dial on PLAIN and right-hand dial on 2-COLOUR, colour B in thread mouth 2, knit next 14 rows of card. Remove colour B, tension 2 numbers tighter than main, both operation dials on TUCK, knit next 8 rows. Main tension, left hand dial on PLAIN and right hand dial on 2-COLOUR, colour C in thread mouth 2, knit next 14 rows. Rep from \* for pattern.

**Abbreviations:** Alt = alternate; beg = beginning; cms = centimetres; dec = decrease; inc = increase; ins = inches; rep = repeat; st = stitch; sts = stitches; 000 = return row counter to 000.

## Cardigan

### Back

Using colour A cast on 117(125-133-141-149) sts by hand having the extra st to left of centre. ★ Tension 1 number tighter than plain knitting tension. Knit 5 rows. Insert card No 12 and set to row 1. Pattern switch■. Card feed switch⊖. Needle selection lever forward. T10. Knit 1 row. (This is foldline for hem and pre-set row for pattern.) Card feed switch●.★★

000. Working pattern stitch as given above knit straight to 140 rows.★★★

### Shape Armholes

000. Keeping pattern correct cast off 4(4-4-5-5) sts at beg of next 2 rows. Dec 1 st at each end of next 7 rows, then on every alt row 3(4-5-5-6) times. 89(95-101-107-113) sts remain. Knit straight to 64(68-72-76-80) rows.

### Shape Shoulders and Back Neck

Cast off 7(8-8-9-9) sts at beg of next 2 rows. Using an odd length of matching yarn cast off the centre 19(21-23-25-27) sts. Make a note of the row number now showing on card. Push needles at side opposite carriage to F position. Returning levers on II. Work on remaining sts first.

Cast off 7(8-8-9-9) sts at beg of next row and 4 sts at beg of next row. Rep the last 2 rows once. Cast off remaining 6(5-7-6-8) sts.

Carriage at left. Using the 3 st transfer tool

return needles in F position to B position. Right hand operation dial on SLIP. Return card to one number less than pattern row previously noted, and take the carriage across. Re-thread yarn. Keeping pattern correct complete second side to match first reversing shaping.

### Right Front

Using colour A cast on 53(57-61-65-69) sts by hand, having 38 sts to left of centre and 15(19-23-27-31) sts to right. Knit as given for Back from ★ to ★★★.

### Shape Armhole and Neck

000. Cast off 4(4-4-5-5) sts at beg of next row. Knit 1 row. Dec 1 st at neck edge of next and every following 4th row and at the same time dec 1 st at armhole edge of next 7 rows, then on every alt row 3(4-5-5-6) times. Keeping armhole edge straight continue to dec at neck edge as before until 27(29-31-33-35) sts remain. Knit straight to 64(68-72-76-80) rows.

### Shape Shoulder

Cast off 7(8-8-9-9) sts at beg of next and every alt row until 6(5-7-6-8) sts remain. Knit 1 row. Cast off.

### Left Front

Knit to match Right Front reversing shaping and casting on with 16(20-24-28-32) sts to left of centre and 37 sts to right.

### Sleeves

Using colour A cast on 73(77-81-85-89) sts by hand having the extra st to left of centre. Knit as given for Back from ★ to ★★.

000. Working pattern stitch as given above knit 10 rows. Inc 1 st at each end of next and every following 14th row 3 times in all. 79(83-87-91-95) sts. Knit straight to 52 rows.

### Shape Top

Cast off 4(4-4-5-5) sts at beg of next 2 rows. Dec 1 st at each end of next 5(7-7-7-7) rows, then on every following 3rd row 10(11-12-13-13) times. 41(39-41-41-45) sts remain. Dec 1 st at each end of next 5(5-5-5-7) rows. Cast off 3 sts at beg of next 6 rows. Cast off.

### Finishing and Front Bands

Read pressing instructions.

**Back Neckband:** With wrong side of work facing pick up and place on machine 31(33-35-37-39) sts along back neck edge. ★ Insert card No 12 and set to row 1. Pattern switch■. Card feed switch⊖. Needle selection lever forward. Tension 2 numbers tighter than main. Both operation dials on PLAIN. Using colour A knit 1 row. Card feed switch●. Both operation dials on TUCK. Knit the first 8 rows of pattern card. Card feed switch⊖. Needle selection lever back. Working in plain knitting knit 1 row on T10 for foldline, then with tension 1 number tighter than plain knitting knit 5 rows. Knit 1 loose row and chain cast off ★.

**Front Bands:** With wrong side of work facing pick up 147(151-155-157-161) sts evenly along one front edge from foldline of hem to top of shoulder. Knit as given for Back Neckband from ★ to ★.

Knit other band to match.

Join shoulder, side and sleeve seams. Insert sleeves. Fold hems and bands to inside and slip stitch in place. Press seams.

## Suntop

### Back

Using waste yarn cast on 93(97-105-113-121) sts and knit a few rows ending with carriage at left. Change to colour A. Tension 2 numbers tighter than plain knitting. Knit 6 rows. Make a picot edge by transferring every alt st to adjacent needle leaving the empty needles in B position. Knit 6 rows. Plain knitting tension. Make a hem and knit the row.

000. Knit 5 rows. Dec 1 st at each end of next and every following 6th row 6 times in all. 81(85-93-101-109) sts remain. Knit straight to 50 rows. Inc 1 st at each end of next and every following 12th row 6 times in all. 93(97-105-113-121) sts. Knit straight to 120 rows ★. Cast off loosely.

### Front

Knit as given for Back to ★.

### Shape Armholes and Front Neck

000. Transfer centre st to a safety pin and return empty needle to A position. Push needles at side opposite carriage to F position. Returning levers on II. Work on remaining sts first.

Cast off 2 sts at beg of next row. Knit 1 row. Dec 1 st (using the 2-stitch transfer tool) at each end of next and every alt row 21(22-24-26-28) times in all. 2 sts remain. Cast off.

Returning levers on I. Re-thread the yarn and complete second side to match first reversing shaping.

### Finishing and Edgings

Read pressing instructions.

**Front Neck Edging:** With wrong side of front facing pick up and place on machine 33(35-37-39-41) sts evenly along right front neck edge making sure that the first st is picked up from safety pin at point of V. Using colour B and plain knitting tension knit 1 row. Tension 1 number tighter, knit 1 row. Dec 1 st at left on next 5 rows. Knit 1 loose row for foldline. Change to tighter tension as before and inc 1 st at left on next 5 rows. Cast off loosely.

Knit the left front neck edge to match reversing shaping and picking up through same st at point of V.

**Armhole and Back Edging:** Using colour B cast on 12 sts. Plain knitting tension. Knit until band fits from back neck, down armhole, across back and up armhole to back neck when band is slightly stretched. Cast off.

Join side seams. Join front neckband at V, turn to wrong side and slip stitch in place. Fold edging in half lengthways and sew thus forming a tube. Sew in position stretching slightly. Join ends at back neck. Press seams.

### Pressing Instructions

**Wool:** Press work on wrong side using a hot iron and a damp cloth.

**Synthetics:** Press lightly on wrong side using a cool iron and a dry cloth, unless label states that yarn should not be pressed.

\*A Trademark of THE SINGER COMPANY

The Singer Co., (U.K.) Ltd., Consumer Division, 255 High St., Guildford, Surrey  
PRINTED IN ENGLAND



# SINGER\*

1004

Specially designed for the Singer Memo-Matic\* Machine



**CARDIGAN** SIZES 90cms-110 cms (36"-44").

---

# SINGER\* CARDIGAN

**Materials:** 4 Ply. Approximately 400(425-450-450-475) g colour A, 50(50-50-75-75) g colour B, 25(25-50-50) g colour C. Open-ended zip fastener to fit front.

**Measurements:** To fit chest sizes 90(95-100-105-110) cms [36(38-40-42-44) ins]. Finished measurement 95.5(102-106-112.5-115) cms [38(40-42-44-46) ins]. Length to shoulder 63(64-66-67-68) cms [25¼(25½-26½-26¾-27¼) ins]. Sleeve seam 46(47-47-48-48) cms [18(18½-18½-19-19) ins].

**Main Tension:** 30 sts and 40 rows = 10 cms [4 ins] square measured over plain knitting. Try T7.

**Abbreviations:** Alt=alternate; beg = beginning; cms = centimetres; dec = decrease; inc = increase; ins = inches; rep = repeat; st = stitch; sts = stitches. 000 = return row counter to 000.

**Note:** When taking needles back to A position at the start of a mock rib hem, do not take the last needle back even if this means that the last group of needles will have one too many. This will ensure that you keep the correct number of sts after the hem.

**Pattern Stitch:** Punch card No.51 on page 30 of the pattern book supplied with your machine. Work colour changes as follows:- with colour A in threadmouth A throughout, and changing colours in threadmouth B only, knit 13 rows in colour B, 8 rows in C, 1 row in A only, 5 rows in B, 1 row in A only, 3 rows in C, 1 row in A only, 5 rows in B, 1 row in A only, 8 rows in C, 13 rows in B.

## Back

Bring 143(153-159-169-173) needles to B position. ★ Arrange needles for 2x1 mock rib. Using waste yarn cast on and knit a few rows. Change to colour A. Tension 3 numbers tighter than main. 000. Knit 47 rows. Bring empty needles to B position. Make a hem filling the empty needles and knit the row.★★  
000. Main tension. Knit straight to 92 rows. ★★★ Insert card. Pattern switch

on ■. Needle selection lever forward. Card feed switch on ●. Knit 1 row. Left-hand dial on PLAIN, right-hand dial on 2-COLOUR and card feed switch on ●. 000. Tension 1 number looser than main ★★★ knit the 59 rows of card, following the colour changes given above. Reset right-hand operation dial on PLAIN.★★★★

## Shape Armholes

000. Working in colour A only cast off 6 sts at beg of next 2 rows. Dec 1 st at each end of next 7(9-9-11-11) rows, then every alt row 6 times. 105(111-117-123-127) sts remain. Knit straight to 80(84-92-96-100) rows.

## Shape Shoulders and Back Neck

Cast off 6(6-6-7-7) sts at beg of next 2 rows. Using a length of matching yarn cast off the centre 23(27-31-33-37) sts. Push needles at side opposite carriage to F position. Returning levers on II. Work on remaining sts first.

Cast off 6(6-6-7-7) sts at beg of next row and 4 sts at beg of next row. Rep the last 2 rows twice more. Cast off remaining 5(6-7-5-5) sts.

Returning levers on I rethread yarn and knit the row. Complete second side to match first reversing shapings.

## Right Front

Bring 71(76-79-84-86) needles to B position having 36 needles to left of centre and 35(40-43-48-50) needles to right. Knit as given for Back from ★ to ★★★.

## Shape Armhole

000. Working in colour A only cast off 6 sts at beg of next row. Knit 1 row. Dec 1 st at armhole edge on next 7(9-9-11-11) rows, then every alt row 6 times. 52(55-58-61-63) sts remain. Knit straight to 39(43-51-55-59) rows.

## Shape Neck

Cast off 10(11-13-14-16) sts at beg of next row. Dec 1 st at neck edge on next 7 rows, then every alt row until 29(30-31-33-33) sts remain. Knit straight to 80(84-92-96-100) rows.

## Shape Shoulder

Cast off 6(6-6-7-7) sts at beg of next and every alt row until 5(6-7-5-5) sts remain. Knit 1 row. Cast off.

## Left Front

Knit to match Right Front reversing shapings and casting on with 34(39-42-47-49) needles to left of centre and 37 needles to right.

## Sleeves

Bring 63(67-71-75-79) needles to B position. Knit as given for Back from ★ to ★★. 000. Main tension. Knit 8 rows. Inc 1 st at each end of next and every following 6th row 24(24-25-26-27) times in all, at the same time inserting card after row 104(108-108-112-112) and following instructions given for Back from ★★★ to ★★★ to commence fairisle pattern. 111(115-121-127-133) sts. 147(147-153-159-165) rows worked. Knit straight to 164(168-168-172-172) rows. Reset right-hand operation dial on PLAIN.

## Shape Top

Working in colour A only cast off 6 sts at beg of next 2 rows. Dec 1 st at each end of next 5(5-7-7-9) rows, then every alt row 13(14-15-16-17) times. Dec 1 st at each end of next 16(18-19-21-22) rows. Cast off loosely.

## Finishing and Neckband

Read Pressing Instructions. Join shoulder seams.

**Neckband:** Bring 143(149-155-161-169) needles to B position. Arrange needles for 2x1 mock rib. Using waste yarn cast on and knit a few rows. Change to colour A. Tension 3 numbers tighter than main knit 24 rows. Bring empty needles to B position. Make a hem filling the empty needles, but do not knit the row.

With wrong side of work facing pick up and place on machine 10(11-12-14-16) sts from right front neck, 38 sts up slope, 12 sts down back slope, 23(27-31-33-37) sts across back neck, 12 sts up back slope, 38 sts down front slope and 10(11-12-14-16) across left front neck. Knit 1 row at loosest tension and chain cast off.

Join side and sleeve seams. Insert sleeves. Insert zip. Press seams.

## Pressing Instructions

**Wool:** Press work on wrong side using a hot iron and a damp cloth.

**Synthetics:** Press lightly on wrong side using a cool iron and dry cloth unless label states that yarn should not be pressed.

\*A Trademark of THE SINGER COMPANY

The Singer Co., (U.K.) Ltd., Consumer Division, 255 High St., Guildford, Surrey  
PRINTED IN ENGLAND



# SINGER\*

1005

Specially designed for the Singer Memo-Matic\* Machine



**OVERDRESS** SIZES 80 cms-100 cms (32"-40").



# SINGER\* OVERDRESS

**Materials:** 4 Ply. Approximately 775(825-875-925-975) g. 15 cms [6 inch] zip. Leather belt.

**Measurements:** To fit bust sizes 80(85-90-95-100) cms [32(34-36-38-40) ins]. Length to shoulder 103(104-105-106-107) cms [41(41½-42-42½-43) ins]. Sleeve seam 20 cms [8 ins].

**Main Tension:** 27 sts and 54 rows=10 cms [4 ins] square measured over tuck pattern. Try T7.

**Plain Knitting Tension:** 30 sts and 40 rows=10 cms [4 ins] square. Try T7.

**Abbreviations:** Alt=alternate; beg=beginning; cms=centimetres; dec=decrease; inc=increase; ins=inches; rep=repeat; st=stitch; sts=stitches. 000=return row counter to 000.

**Note:** Purl side of fabric is right side.

## Skirt (Worked in 4 panels)

Cast on 117(121-125-129-133) sts by hand. ★ Main tension. Knit 11 rows. Insert card No. 16 on row 1. Pattern switch on ■. Card feed switch on ☉. Needle selection lever forward. T10. Knit 1 row for foldline.

000. Tension 3 numbers tighter than main. Left-hand operation dial on TUCK and right-hand dial on PLAIN. Keeping card feed switch on ☉ knit 23 rows.

Remove card No. 16 and insert punched card (see diagram) on row 1. Pattern switch on ■. Card feed switch on ☉. Needle selection lever forward. Both operation dials on PLAIN. Knit 1 row. Card feed switch on ●. Both operation dials on TUCK ★.

000. Main tension. Knit 2 rows. Dec 1 st at each end of next and every following 10th row 25(21-21-17-17) times in all ★★, then on every following 8th row 12(17-17-22-22) times. 43(45-49-51-55) sts remain. Knit 3 rows. 342 rows on row counter. Cast off loosely.

Knit another 2 Panels the same.

## 4th Panel

Knit as given for other Panels to ★★. Knit 7 rows straight. Dec 1 st at each end of next and every following 8th row 7(12-12-17-17) times in all. 53(55-59-61-65) sts remain. Knit 3 rows straight.

## Divide for Zip Opening

Transfer centre stitch to adjacent needle and return empty needle to A position. Push needles at side opposite carriage to F position. Place returning levers on II. Make a note of the pattern row number now showing on the card. Work on remaining 26(27-29-30-32) sts first.

Knit 4 rows straight. Dec 1 st at beg of next and every following 8th row 5 times in all. 21(22-24-25-27) sts remain. Knit 3 rows straight. 342 rows on row counter. Cast off loosely.

Return needles in F position to B position by

hand. Set both operation dials on SLIP. Return the pattern card to one number less than the pattern row previously noted and take the carriage across to other side. Re-thread yarn. Both operation dials on TUCK. Complete second side to match first reversing shaping.

## Bodice Back

Cast on 85(89-97-101-109) sts by hand. Main tension. Knit 1 row. Insert punched card on row 1. Pattern switch on ■. Card feed switch on ☉. Needle selection lever forward. Knit 1 row. Card feed switch on ●. Both operation dials on TUCK.

000. Knit 6 rows. Inc 1 st at each end of next and every following 6th row 15(16-16-17-17) times in all. 115(121-129-135-143) sts. Knit straight to 102(104-106-108-108) rows.

## Shape Armholes

000. Cast off 4(4-4-5-5) sts at beg of next 2 rows. Dec 1 st at each end of next 5(5-7-7-7) rows, then on every alt row 4(5-5-5-7) times. 89(93-97-101-105) sts remain ★★. Knit straight to 78(80-84-88-92) rows.

## Shape Back Neck

★★★ Using a length of matching yarn cast off the centre 49(51-55-57-59) sts. Push needles at side opposite carriage to F position. Place returning levers on II. Make a note of the pattern row number now showing on the card and number on row counter. Work on remaining sts first.

Knit straight to 100(102-106-110-114) rows.

## Shape Shoulder

Cast off 5(6-6-6-6) sts at beg of next and every alt row 3 times in all. Knit 1 row. Cast off remaining 5(3-3-4-5) sts.

Return needles in F position to B position as given on 4th Panel of Skirt. Reset row counter on number noted at neck cast off. Complete second side to match first reversing shaping.

## Front

Knit as given for Back to ★★. Knit straight to 20(20-22-24-26) rows. Complete as given for Back from ★★ to end.

## Sleeves

Cast on 99(105-111-117-121) sts by hand. Work as given for Skirt from ★ to ★.

000. Main tension. Knit 4 rows. Dec 1 st at each end of next and every following 16th row 6 times in all. 87(93-99-105-109) sts remain. Knit straight to 92 rows.

## Shape Top

000. Cast off 4(4-4-5-5) sts at beg of next 2 rows. Dec 1 st at each end of next 3(5-5-7-7) rows, then on every following 3rd row 12(12-10-10-8) times. 49(51-61-61-69) sts remain. Knit 1 row. Dec 1 st at each end of next and every alt row 11(11-14-14-17) times in all. Cast off 4(4-5-5-5) sts at beg of next 4 rows. Cast off loosely.

## Finishing and Neckband

Read Pressing Instructions.

**Neckband:** With wrong side of Bodice Front facing, pick up and place on machine 54(56-61-63-65) sts evenly along front neck edge making sure that the end sts are picked up at corners. Plain knitting tension. Knit 2 rows. Using the 3-stitch transfer tool dec 1 st at each end of next 9 rows. Knit 1 loose row for foldline. Tension 1 number tighter than plain knitting tension. Inc 1 st at each end of next 9 rows. Knit 1 row. Knit 1 row at loosest tension and chain cast off.

Knit Back Neckband the same.

Join shoulder seams.

With wrong side of work facing pick up and place on machine 61(62-63-64-65) sts evenly along one side of neck edge picking up end sts through same st as back and front neckbands. Knit as given for front neckband.

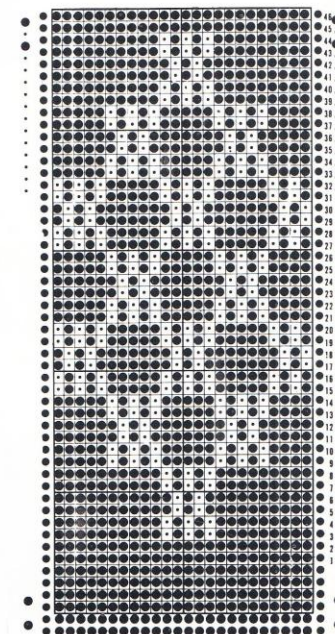
Knit the other side the same.

Join mitred corners of neckband. Fold band in half to inside and slip stitch in place. Join side seams of bodice leaving 7.5 cms [3 ins] open at lower end of left side. Join the 4 skirt panels together. Sew skirt to bodice placing the bodice seams centrally over skirt panels at either side and matching side openings. Join sleeve seams. Insert sleeves. Fold hems at lower edge and sleeve edges to inside and slip stitch in place. Insert zip. Press seams.

## Pressing Instructions

**Wool:** Press work on wrong side using a hot iron and a damp cloth.

**Synthetics:** Press lightly on wrong side using a cool iron and dry cloth, unless label states that yarn should not be pressed.



\*A Trademark of THE SINGER COMPANY

The Singer Co., (U.K.) Ltd., Consumer Division, 255 High St., Guildford, Surrey  
PRINTED IN ENGLAND



# SINGER\*

1006

Specially designed for the Singer Memo-Matic\* Machine



**WRAP-OVER JACKET** SIZES 75 cms-100 cms (30"-40").

# SINGER\* WRAP-OVER JACKET

**Materials:** 4 Ply. Approximately 575(650-725) g in colour A, 275(300-325) g in colour B.

**Measurements:** To fit bust sizes 75/80(85/90-95/100) cms [30/32(34/36-38/40) ins]. Finished measurement 84(94-104) cms [33½(37½-41½) ins]. Length to top of shoulder 70(72-75) cms [28(29-30) ins]. Sleeve seam 46(48-48) cms [18½(19-19) ins].

**Main Tension:** 24 sts and 46 rows=10 cms [4 ins] square measured over weaving pattern using Card No. 16. Try T7.

**Plain Knitting Tension:** 30 sts and 40 rows=10 cms [4 ins] square. Try T7.

**Note:** Weaving pattern is worked using 1 strand of colour A as the knitting yarn and 2 strands of colour B as the weaving yarn.

**Abbreviations:** Alt=alternate; beg=beginning; cms=centimetres; dec=decrease; inc=increase; ins=inches; rep=repeat; st=stitch; sts=stitches; 000=return row counter to 000.

## Back

Using colour A cast on 110(122-134) sts by hand. ★ Tension 2 numbers looser than main. Knit 11 rows. Insert card No. 16 on row 1. Pattern switch on ■. Needle selection lever forward. Card feed switch on ●. T10. Knit 1 row.

000. Card feed switch on ●. Keep both operation dials on PLAIN ★. Main tension. Working in pattern and always taking yarn under first needle in F position to avoid making a hole, push 36(40-44) needles at side opposite carriage to F position on next 2 rows. Bring 9(10-11) needles at side opposite carriage back to B position on next 8 rows. Knit straight to 16 rows.

Dec 1 st at each end of next and every following 7th row 15 times in all. 80(92-104) sts remain. Knit straight to 132 rows. Inc 1 st at each end of next and every following 8th row 10 times in all. 100(112-124) sts. Knit straight to 216 rows.

## Shape Armholes

000. Cast off 9(10-11) sts at beg of next 2 rows. Knit 6 rows straight. Inc 1 st at each end of next and every following 8th row 9(10-11) times in all. 100(112-124) sts. Knit straight to 78(88-96) rows.

## Shape Shoulders and Back Neck

Cast off 2 sts at beg of next 16(14-12) rows, then 3 sts at beg of next 2(6-10) rows. 62 (66-70) sts remain.

Using a length of matching yarn cast off the centre 14(18-22) sts. Push needles at side opposite carriage to F position. Place returning levers

on II. Make a note of the pattern row number now showing on the card. Work on remaining sts first.

Cast off 3 sts at beg of next 8 rows.

Return needles in F position to B position by hand. Carriage at neck edge. Both operation dials on SLIP. Return pattern card to one number less than the row previously noted and take the carriage across to the other side. Set both operation dials on PLAIN. Re-thread yarn. Working in weaving pattern cast off 3 sts at beg of next 8 rows.

## Left Front

Using colour A cast on 73(79-85) sts by hand from right to left. Knit as given for Back from ★ to ★. Main tension. Working in pattern knit 1 row. Push 36(40-44) needles at side opposite carriage to F position on next row. Knit 1 row. Bring 9(10-11) needles back to B position at end of next and every alt row 4 times. Knit straight to 16 rows.

Dec 1 st at right (side edge) on next and every following 7th row 15 times in all, at the same time making opening for Pocket after row 99 as follows:- thread a length of contrast yarn through the 6th to 37th(6th to 39th-6th to 41st) sts inclusive counting from side edge and remove them from the machine, then using a length of colour A cast on by hand over the empty needles. 58(64-70) sts remain. Knit straight to 132 rows.

## Shape Neck

Dec 1 st at front edge on next and every following 6th row 7 times in all, then every following 4th row 11 times, at the same time inc 1 st at side edge on next and every following 8th row 10 times. 50(56-62) sts. Knit 3 rows straight thus ending at side edge.

## Shape Armhole

000. Cast off 9(10-11) sts at beg and dec 1 st at end of next row. \*Knit 3 rows. Dec 1 st at front edge of next row. Knit 3 rows. Inc 1 st at armhole edge and dec 1 st at front edge of next row\*. Rep from \* to \* 8(9-10) times more. 31(35-39) sts. Knit 5(7-7) rows straight thus ending with carriage at armhole edge. 78(88-96) rows on row counter.

## Shape Shoulder

Cast off 2 sts at beg of next and every alt row 8(7-6) times in all. Knit 1 row. Cast off 3 sts at beg of next and every alt row 4(6-8) times. Knit 1 row. Cast off.

## Right Front

Knit to match Left Front reversing shapings by reading right for left and left for right throughout.

## Pockets

With right side of one front facing pick up and place on machine the 39(42-44) sts along cast on sts at top of pocket opening. Using colour A and plain knitting tension knit 72 rows. Cast off loosely.

With right side facing pick up and place on machine the 28(30-32) sts from lower edge of opening. Carriage at left. Insert card No. 16 on row 1. Pattern switch on ■. Needle selection lever forward. Card feed switch on ●. Both operation dials on PLAIN. Main tension. Knit 1 row. Card feed switch on ●. Knit 6 rows in weaving pattern. Remove card. Needle selection lever back. T10. Knit 1 row. Tension 2 numbers looser than plain knitting tension. Knit 6 rows. Cast off loosely.

Knit other Pocket the same.

## Sleeves

Using colour A cast on 84(94-104) sts by hand. Knit as given for Back from ★ to ★. Main tension. Working in weaving pattern knit straight to 212(220-220) rows. This will give a sleeve seam length of 46(48-48) cms [18½(19-19) ins]. Tie a marker at each end of last row to mark end of sleeve seam. Knit 18(20-22) rows straight. Cast off loosely.

## Front Band

Using colour A cast on 30 sts by hand. Plain knitting tension. Knit straight until band fits up one front, across back neck and down other front. Cast off loosely.

## Belt

Knit as given for Front Band but knitting to 550 rows, or required length.

## To Finish

Read Pressing Instructions. Join shoulder and side seams. Join sleeve seams to markers. Insert sleeves. Turn up hems to inside and slip stitch in place. Slip stitch hems at top of pockets in place. Sew sides of pocket tops and pocket linings in place. With the purl side of front band as right side, sew one edge of band in place, fold in half to inside and slip stitch in place. With purl side of belt as right side, fold in half lengthways and join seams. Press seams.

## Pressing Instructions

**Wool:** Press work on wrong side using a hot iron and damp cloth.

**Synthetics:** Press lightly on wrong side using a cool iron and a dry cloth, unless label states that yarn should not be pressed.

\*A Trademark of THE SINGER COMPANY

The Singer Co., (U.K.) Ltd., Consumer Division, 255 High St., Guildford, Surrey  
PRINTED IN ENGLAND



# SINGER\*

1007

Specially designed for the Singer Memo-Matic\* Machine



**CHILD'S DRESS** SIZES 50 cms-60 cms (20"-24").

# SINGER\* CHILD'S DRESS

**Materials:** 4 Ply. Approximately 275(300-325) g. 2 buttons. 2.5 mm crochet hook.

**Measurements:** To fit chest sizes 50(55-60) cms [20(22-24) ins]. Finished measurement 56(61-65) cms [22(24-25½) ins]. Length to shoulder 42(48-54) cms [16½(19-21¼) ins]. Sleeve seam 8(8-9) cms [3(3-3½) ins].

**Main Tension:** 33 sts and 66 rows=10 cms [4 ins] square measured over slip stitch pattern. Try T8.

**Abbreviations:** Alt=alternate; beg=beginning; cms=centimetres; dec=decrease; inc=increase; ins=inches; rep=repeat; st=stitch; sts=stitches; 000=return row counter to 000.

## Dress (Worked in 4 panels)

### Centre Back Panel

Cast on 69(73-77) sts by hand from left to right. Tension 2 numbers tighter than main. Knit 9 rows. Insert card. Pattern switch on ■. Needle selection lever forward. Card feed switch on ☉. Knit 1 row. 000. Both operation dials on SLIP and card feed switch on ●. Main tension. Knit 12 rows. Dec 1 st at each end of next and every following 16th(18th-22nd) row 11 times in all. 47(51-55) sts remain. Knit straight to 204(238-270) rows. This will give a length to armholes of 31(36-41) cms [12¼(14¼-16¼) ins]. Tie a piece of contrast yarn at each end of last row to mark end of side seams. ★

### Bodice

000. Knit straight to 76(84-90) rows.

### Shape Shoulders and Back Neck

Using a length of matching yarn cast off the centre 23(27-29) sts. Push needles at side opposite carriage to F position. Place returning levers on II. Note the pattern row number showing on the card. Work on remaining sts first.

Cast off 5(5-6) sts at beg of next row and 3 sts at beg of following row. Cast off remaining 4 sts.

Return needles in F position to B position by hand. Both operation dials on SLIP. Return the pattern card to one number less than the row previously noted and take the carriage across to the other side. Re-thread yarn. Complete second side to match first reversing shaping.

### Centre Front Panel

Work as given for Centre Back Panel to ★. Carriage at right.

### Bodice

Push 19(21-23) needles at side opposite carriage to F position. Place returning levers on II. Note number on row counter and pattern row number showing on card. Work on remaining sts first.

★★ 000. Knit straight to 24(26-26) rows. Inc 1 st at front edge (inner edge) on next and every following 6th row 9(10-11) times in all. 37(40-43) sts. Knit straight to 76(84-90) rows.

### Shape Shoulder

Cast off 5(5-6) sts at beg and inc 1 st at end of next row. Knit 1 row. Cast off 4 sts at beg of next row. Cast off remaining 29(32-34) sts.

Return needles in F position to B position by hand, then bring next 9 needles at right to B position. From front of work pick up the first 9 sts at division of front from other side and place on empty needles (thus lapping the Right Front over the Left). Both operation dials on SLIP. Return pattern card to one number less than the pattern row noted and take the carriage across. Re-thread yarn and reset row counter to row previously noted.

Complete to match first side reversing shaping from ★★ to end at the same time making buttonholes after rows 6 and 18 by knitting the 4th, 5th and 6th sts counted from right through with waste yarn.

### Left and Right Side Panels (Work 2 the same)

Work as given for Centre Back Panel to ★.

### Shape Armholes

Using a length of matching yarn cast off the centre 7 sts. Push needles at side opposite carriage to F position. Place returning levers on II. Note number on row counter and pattern row number showing on card. Work on remaining sts first.

000. Dec 1 st at armhole edge on next 3 rows, then on every alt row 4(6-6) times. 13(13-15) sts remain. Knit straight to 72 (80-86) rows.

### Shape Shoulders

Cast off 8(8-9) sts at beg of next row. Knit 1 row. Cast off remaining 5(5-6) sts.

Return needles in F position to B position by hand. Both operation dials on SLIP. Return the pattern card to one number less than the row previously noted and take the carriage across to the other side. Re-thread yarn and return row counter to row previously noted. Complete second side to match first reversing shaping.

### Sleeves

Cast on 65(69-73) sts by hand. Tension 2 numbers tighter than main. Knit 13(13-15) rows for cuffs. Insert card. Pattern switch on ■. Needle selection lever forward. Card feed switch on ☉. Knit 1 row. 000. Both operation dials on SLIP

and card feed switch on ●. Main tension. Knit 13(13-15) rows.

Inc 1 st at each end of next and every following 12th(12th-14th) row 3 times in all. 71(75-79) sts. Knit straight to 52(52-60) rows. This will give a sleeve seam length of 8(8-9) cms [3(3-3½) ins] excluding cuff.

### Shape Top

Cast off 4 sts at beg of next 2 rows. Knit 1 row. Dec 1 st at each end of next and every alt row 3(4-4) times in all, then on every following 3rd row 5(7-9) times, then on every alt row 6(5-5) times. Cast off 4 sts at beg of next 4 rows. Cast off.

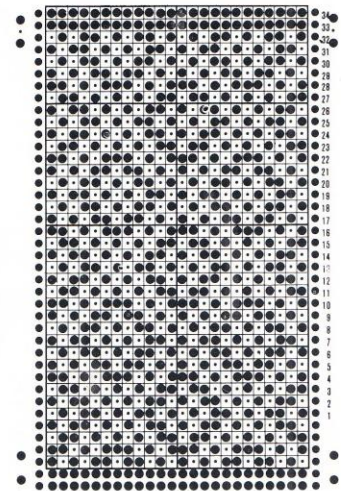
### Finishing and Edging

Read Pressing Instructions. Join panels together. Join shoulder and sleeve seams. Insert sleeves. Turn up hem at lower edge to inside and slip stitch in place. Finish buttonholes. Using crochet hook and with right side of work facing work 1 row of double crochet round front and neck edge, then round bottom of sleeves. Turn back revers and catch down. Turn up cuffs and catch down in place. Press seams. Sew on buttons.

### Pressing Instructions

**Wool:** Press work on wrong side using a hot iron and a damp cloth.

**Synthetics:** Press lightly on wrong side using a cool iron and a dry cloth, unless label states that yarn should not be pressed.



\*A Trademark of THE SINGER COMPANY

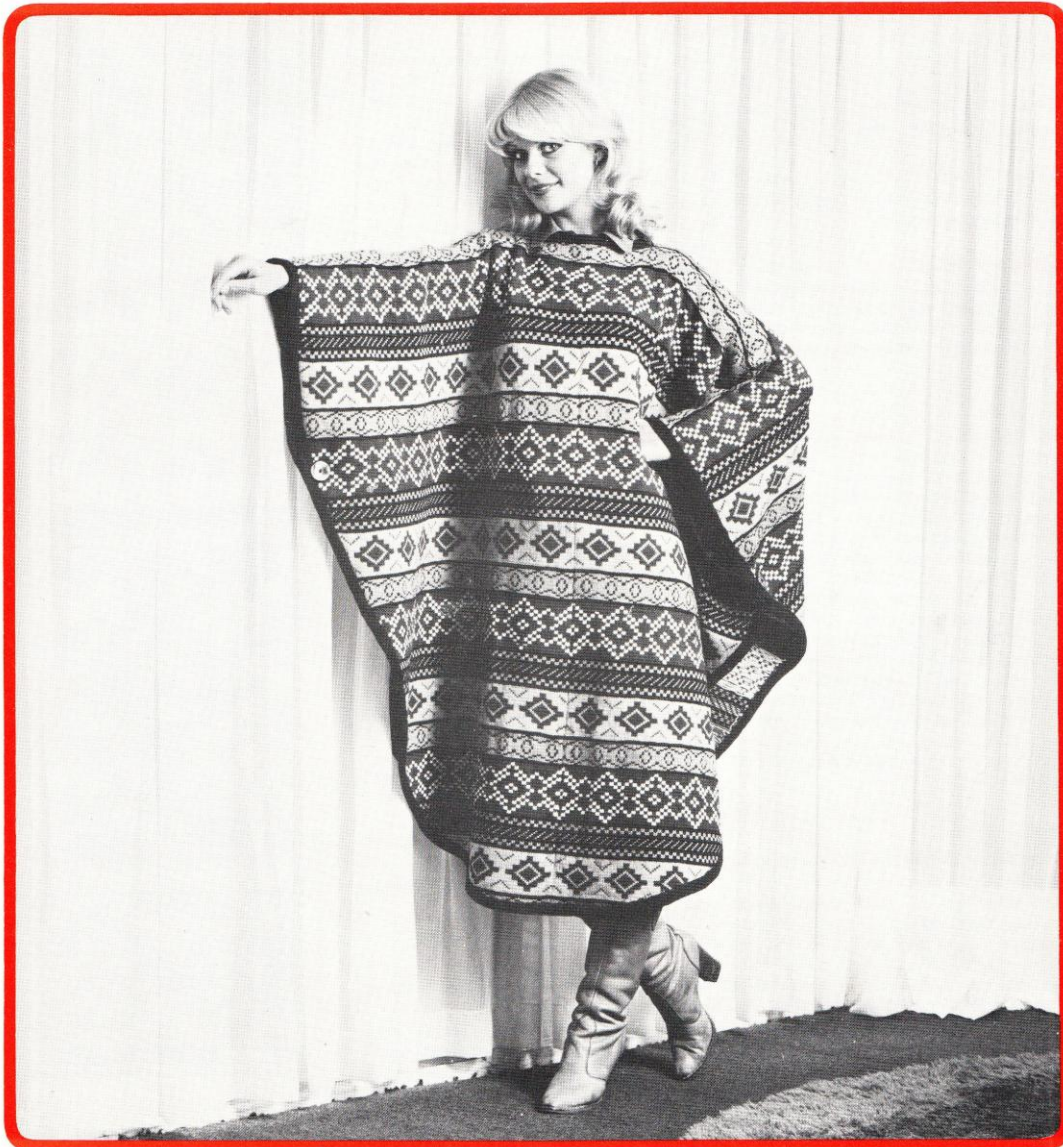
The Singer Co., (U.K.) Ltd., Consumer Division, 255 High St., Guildford, Surrey  
PRINTED IN ENGLAND



# SINGER\*

1008

Specially designed for the Singer Memo-Matic\* Machine



**PONCHO** — ONE SIZE ONLY

# SINGER\* PONCHO

**Materials:** 4 ply. Approximately 475g colour A, 275g colour B, 200g colour C, 500g colour D, 250g colour E. 4 buttons.

**Measurements:** Finished back length 109 cms [43½ ins].

**Main Tension:** 30 sts and 35 rows=10 cms [4 ins] square measured over Fairisle pattern. Try T9.

**Abbreviations:** Alt=alternate; beg=beginning; cms=centimetres; dec=decrease; inc=increase; ins=inches; rep=repeat; st=stitch; sts=stitches; T=tension; 000=return row counter to 000.

**Colour Changes:** With colour A in thread mouth A and colour B in thread mouth B, knit 14 rows. Knit 2 rows in A only. With C in thread mouth A and D in thread mouth B, knit 30 rows. Knit 2 rows with A in thread mouth A. Keeping A in thread mouth A and with B in thread mouth B knit 4 rows. Knit 2 rows in A only. With A in thread mouth A and E in thread mouth B, knit 5 rows. Knit 2 rows in A only. With A in thread mouth A and B in thread mouth B, knit 4 rows. Knit 2 rows in A only. Knit 2 rows with E in thread mouth A only. Keeping E in thread mouth A and with D in thread mouth B, knit 21 rows. Knit 2 rows in E only. Knit 2 rows with A in thread mouth A only. Repeat these 94 rows.

Using colour A cast on 198 sts by hand from left to right.

000. Main tension. Knit 1 row. Insert punched card and set to row 1. Pattern switch ■. Card feed switch ●. Needle selection lever forward. Knit 1 row. Card feed switch ●. Left-hand operation dial on **PLAIN**, right-hand dial on **2-COLOUR**.

Following colour changes knit straight to 82 rows. Dec 1 st at right on next and every following 10th row 3 times in all, then on

every following 4th row 9 times. 186 sts remain. 139 rows on row counter. Carriage at left.

Knit 2 rows. Dec 1 st at right on next and every following 3rd row 50 times in all. 136 sts remain. Knit 1 row. 290 rows on row counter. Carriage at right.

\*Dec 1 st at right on next 2 rows. Knit 1 row \*. Rep from \* to \* 19 times more. 96 sts remain. 350 rows on row counter. Carriage at right.

Cast off 4 sts at beg of next and every alt row 15 times in all. 36 sts remain. Knit 1 row. 380 rows on row counter. T10. Knit 1 row and chain cast off.

Knit another piece the same.

Knit 2 more pieces to match reversing the shaping by reading right for left and left for right.

## Finishing and Edging

Read Pressing Instructions.

Join long seams at centre front and back. Join shoulder seams leaving approximately 25 cms [10 ins] for neck opening.

**Edging:** Using colour A cast on 13 sts by hand with extra st to left of centre. Insert punched card No. 11 from your set of standard cards and set on row 1. Pattern switch on ■. Card feed switch on ●. Needle selection lever forward. Knit 1 row. Transfer centre stitch to adjacent needle, return empty needle to A position. Tension 3 numbers tighter than main. Left-hand operation dial on **SLIP**, right-hand dial on **PLAIN**, knit until edging fits around outer edge of Poncho (approximately 585 cms [234 ins]). Bring empty needle to B position. T10. Knit 1 row and chain cast off.

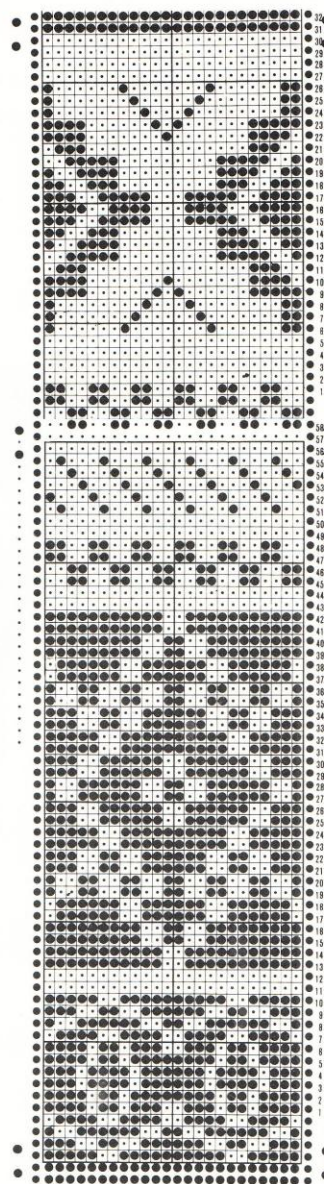
Knit another piece to fit around neck opening (approximately 50 cms [20 ins]).

Sew edging around outer edge of Poncho and neck opening. Press seams.

## Pressing Instructions

**Wool:** Press work on wrong side using a hot iron and damp cloth.

**Synthetics:** Press lightly on wrong side using a cool iron and dry cloth, unless label states that yarn should not be pressed.



\*A Trademark of THE SINGER COMPANY



# SINGER\*

1009

Specially designed for the Singer Memo-Matic\* Machine



**EVENING DRESS** — sizes 80 cms-100 cms (32"-40").

# SINGER\* EVENING DRESS

**Materials:** 4 Plys. 1075(1125-1175-1200-1250) g in colour A. Silverknit 3 56g cones each in colours B and C. 45(45-45-50-50) cm [18(18-18-20-20) inch] zip. Silverknit yarn is available from Silverknit, Edwalton, Nottingham, NG12 4DF.

**Measurements:** To fit bust sizes 80(85-90-95-100) cms [32(34-36-38-40) ins]. Length to shoulder 148(148-149-150-151) cms [59(59-59½-60-60½) ins].

## Tension

**Main Tension:** 30 sts and 40 rows = 10 cms [4 ins] square measured over plain knitting. Try T7.

**Fairisle Tension:** 30 sts and 34 rows = 10 cms [4 ins] square measured over Fairisle pattern. Try T9.

**Abbreviations:** Al=alternate; beg=beginning; cms=centimetres; dec=decrease; inc=increase; ins=inches; rep=repeat; st=stitch; sts=stitches; T=tension; 000=return row counter to 000.

## Skirt

### First Panel

Using colour A cast on 159(165-171-177-183) sts by hand. ★ Tension 1 number tighter than main. Knit 9 rows. Insert punched card and set to row 1. Pattern switch ■. Card feed switch ●. Needle selection lever forward. T10. Knit 1 row. (This is foldline for hem and pre-set row for pattern). Card feed switch ●. Left hand operation dial on plain, right hand dial on 2-colour. ★ 000. Fairisle tension. Working in pattern knit 8 rows. Dec 1 st at each end of next and every following 6th row 6(10-18-20-20) times in all. 147(145-135-137-143) sts remain.

**1st, 2nd and 3rd sizes only:** Knit 7 rows straight. Dec 1 st at each end of next and every following 8th row 10(7-1) times. Knit 7 rows. 126 rows on row counter. Break off contrast colours, remove punched card and set machine for plain knitting.

Continue in colour A only and main tension.

**4th and 5th sizes only:** Knit 3 rows straight. 126 rows on row counter. Break off contrast colours, remove punched card and set machine for plain knitting.

Continuing in colour A only and main tension knit 2 rows. Dec 1 st at each end of next and every following 6th row 2(10) times in all. Knit 7 rows. ★★

**All sizes:** Dec 1 st at each end of next and every following 8th row 36(36-36-34-28) times in all. 55(59-61-65-67) sts remain. Knit straight to 436 rows. T10. Knit 1 row and chain cast off. Knit 2 more panels the same.

### Fourth Panel

Knit as given for First Panel to ★★.

**All sizes:** Dec 1 st at each end of next and every following 8th row 34(34-34-30-25) times in all. 59(63-65-73-73) sts remain. Knit 1(3-5-5-1) rows straight.

### Divide for Zip Opening

Transfer centre st to adjacent needle and push empty needle to A position. Push needles at side opposite carriage to F position. Returning levers on II. Work on remaining sts first. Knit 6(4-2-2-6) rows straight. Dec 1 st at side edge of next and every following 8th row 2(2-2-4-3) times in all. Knit straight to 436 rows. 27(29-30-32-33) sts remain. T10. Knit 1 row and chain cast off. Returning levers on I. Re-thread yarn and complete second side to match first reversing shaping.

## Bodice and Sleeves

(Knitted sideways)

### Right Back

Using colour A cast on 77(79-83-85-87) sts by hand from left to right. Work as given for Skirt Panel from ★ to ★.

000. Fairisle tension. Working in pattern knit straight to 102(98-94-90-88) rows. Carriage at right.

### Shape Bodice

Inc 1 st at beg of next and every alt row 5(5-6-6-6) times in all, then on same edge on every row 5 times. 87(89-94-96-98) sts. Carriage at right. Cast on 4(4-3-3-3) sts at beg of next and every alt row 3 times in all. 99(101-103-105-107) sts. Knit straight to 155(153-153-151) rows. Carriage at left (neck edge). ★★★

### Shape Back Neck

Dec 1 st at neck edge on next 3 rows, then on every alt row 3 times. Knit straight to 182 rows. T10. Knit 1 row and chain cast off.

### Left Back

Knit as given for Right Back reversing shaping by reading left for right and right for left.

### Front

Knit as given for Right Back to ★★★.

### Shape Front Neck

Cast off 42(43-45-47-48) sts at beg of next row. Knit straight to 209(211-211-213-213) rows. Carriage at neck edge. Cast on 42(43-45-47-48) sts at beg of next row. Knit straight to 242(246-248-252-254) rows. Carriage at right.

### Shape Bodice

Cast off 4(4-3-3-3) sts at beg of next and every alt row 3 times in all. Dec 1 st at right on next 6 rows, then on every alt row 4(4-5-5-5) times. 77(79-83-85-87) sts remain. Knit straight to 363 rows.

Break off contrast colours, remove punched card and set machine for plain knitting. Using colour A only knit 1 row at T10 for foldline. Tension 1 number tighter than main. Knit 9 rows. T10. Knit 1 row and chain cast off.

## Finishing and Edging

Read Pressing Instructions. Join top sleeve seams to neck.

**Neck Edging:** Bring 67(69-72-75-77) needles to B position. With wrong side of work facing pick up and place on machine 25(26-27-28-29) sts evenly across left back neck to shoulder and 42(43-45-47-48) sts down left side of front neck, making sure that last st is picked up at corner.

Main tension. Using colour A knit 1 row. Tension 1 number tighter than main. Knit 5 rows decreasing 1 st at right (using a 2-stitch transfer tool) on every row. T10. Knit 1 row for foldline. Tension 2 numbers tighter than main. Knit 5 rows increasing 1 st at right on every row. T10. Knit 1 row and chain cast off.

Knit other side to match reversing shaping.

With wrong side of work facing pick up and place on machine 47(49-51-53-55) sts across front neck picking up corner sts through same sts as side edging.

Main tension. Using colour A knit 1 row. Tension 1 number tighter than main. Knit 5 rows decreasing 1 st at each end (using a 2-stitch transfer tool) on every row. T10. Knit 1 row for foldline. Tension 2 numbers tighter than main. Knit 5 rows increasing 1 st at each end on every row. T10. Knit 1 row and chain cast off.

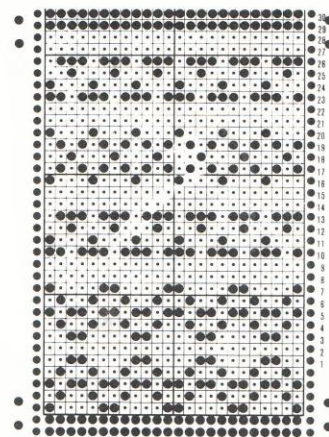
Join side and sleeve seams. Join seams of skirt. Sew Skirt firmly to Bodice. Sew mitres neatly at corners of neck edging. Fold neck edging in half to inside and slip stitch in place. Turn up hems at lower edge and sleeves to inside and slip stitch in place.

Insert zip. Press seams.

## Pressing Instructions

**Wool:** Press work on wrong side using a hot iron and a damp cloth.

**Synthetics:** Press lightly on wrong side using a cool iron and a dry cloth, unless label states that yarn should not be pressed.



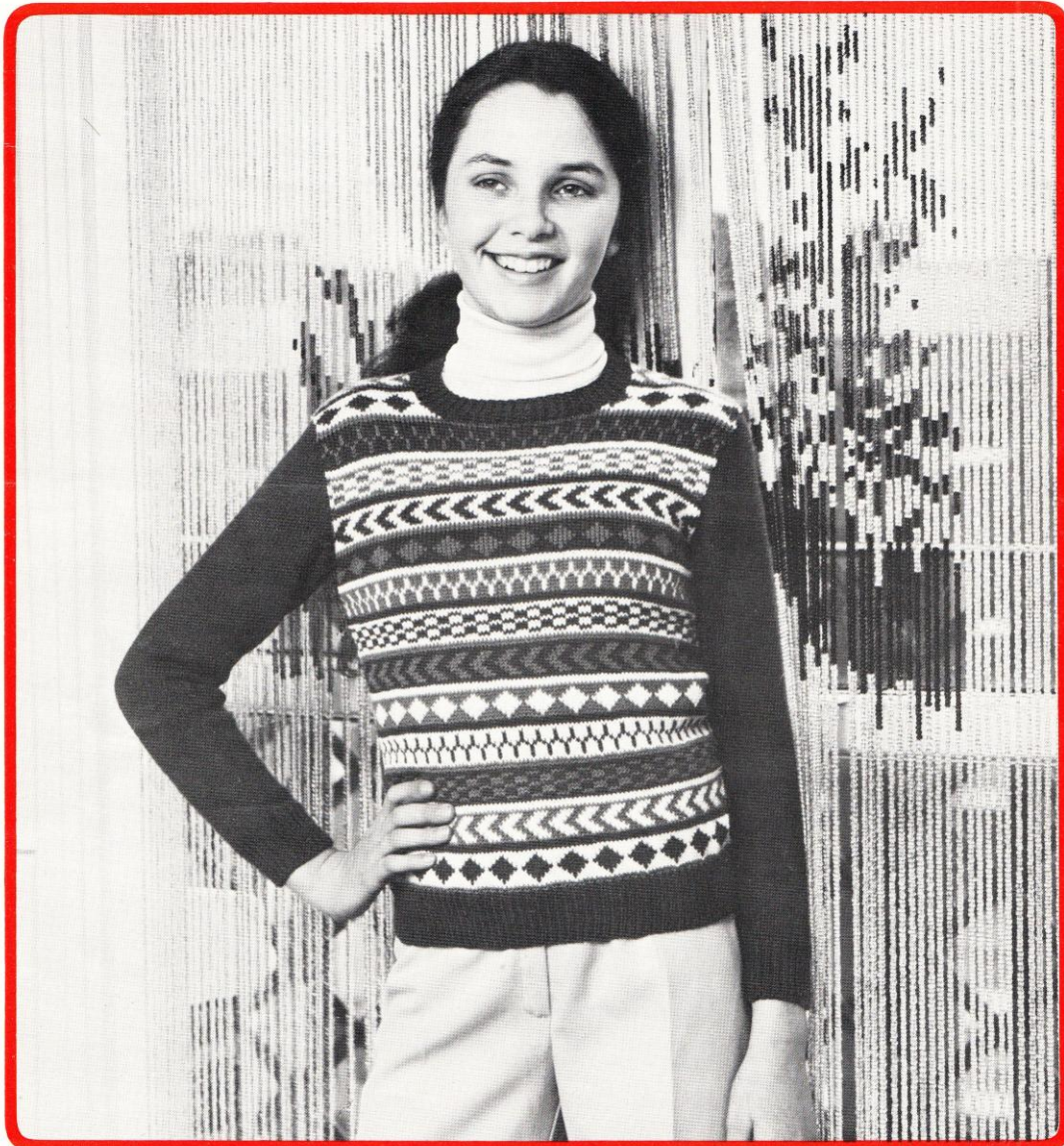
\*A Trademark of THE SINGER COMPANY



# SINGER\*

1011

Specially designed for the Singer Memo-Matic\* Machine



**SWEATER** — sizes 60 cms-80 cms (24"-32").



# SINGER\* SWEATER

**Materials:** 4 Ply. Approximately 225(250-300-325-375) g colour A, 75(75-100-100-100) g each in colours B and C. Medium sized crochet hook and 3 buttons if required.

**Measurements:** To fit chest sizes 60(65-70-75-80) cms [24(26-28-30-32) ins]. Finished measurement 65(70-75-80-85) cms [26(28-30-32-34) ins]. Length to shoulder 38(42-46-50-54) cms [15¼(16¾-18½-20-21½) ins]. Sleeve seam 27(30-34-38-42) cms [10¾(12-13½-15¼-16¾) ins].

## Tension:

**Main Tension:** 30 sts and 40 rows=10 cms [4 ins] square measured over plain knitting. Try T7.

**Fairisle Tension:** 30 sts and 37 rows=10 cms [4 ins] square measured over Fairisle pattern. Try T9.

**Abbreviations:** Alt=alternate; beg=beginning; cms=centimetres; dec=decrease; inc=increase; ins=inches; rep=repeat; st=stitch; sts=stitches; T=tension; 000=return row counter to 000.

**Colour changes:** \*With colour C in thread mouth A and colour A in thread mouth B, knit 7 rows. Knit 1 row in C only, 2 rows in A only and 1 row in B only. Keeping B in thread mouth A and with C in thread mouth B, knit 7 rows. Knit 1 row in B only, 2 rows in C only and 1 row in A only. Keeping A in thread mouth A and with B in thread mouth B, knit 7 rows. Knit 1 row in A only, 2 rows in B only and 1 row in C. Rep from \* throughout.

## Back

Bring 97(105-113-121-127) needles to B position.

### \*Machines without Ribbing Attachment

Arrange needles for 2x1 mock rib. Cast on with waste yarn and knit a few rows. Tension 3 numbers tighter than main. Using colour A knit 31(31-39-39-39) rows. Bring empty needles to B position. Make a hem filling the empty needles and knit the row.

### Machines with Ribbing Attachment

Arrange needles for 1x1 rib. Cast on using colour A. Tension 3 numbers tighter than main. Knit 16(16-20-20-20) rows. Transfer sts for plain knitting. ★

### All Machines

000. Main tension. Knit straight to 84(96-104-116-128) rows. This will give a length to armholes of 25(28-31-34-37) cms [10(11¼-12½-13½-14¾) ins].

### Shape Armholes

000. Cast off 3(3-4-4-4) sts at beg of next 2 rows. Dec 1 st at each end of next 3(5-5-7-7) rows, then every alt row 4(4-4-4-5) times. 77(81-87-91-95) sts remain. Knit straight to 52(56-60-64-68) rows.

### Shape Shoulders and Back Neck

Cast off 6(6-7-7-7) sts at beg of next 2 rows. Using a length of matching yarn cast off the centre 19(21-23-25-27) sts. Push needles at side opposite carriage to F position. Work on remaining sts first. Returning levers on II.

\*A Trademark of THE SINGER COMPANY

Cast off 6(6-7-7-7) sts at beg of next row and 3 sts at beg of next row. Rep the last 2 rows once more. Cast off remaining 5(6-5-6-7) sts.

Returning levers on I. Rethread yarn and complete second side to match first reversing shaping.

## Front

Bring 97(105-113-121-127) needles to B position. Knit as given for Back from ★ to ★.

### All Machines

000. Fairisle tension. Knit 2 rows in colour B. Insert punched card and set to row 1. Pattern switch on ■. Card feed switch on ●. Needle selection lever forward. Knit 1 row with colour C. Card feed switch on ●. Left hand operation dial on PLAIN, right hand operation dial on 2-COLOUR. Working colour changes as given above, knit straight to 78(88-96-108-118) rows.

### Shape Armholes

000. Cast off 3(3-4-4-4) sts at beg of next 2 rows. Dec 1 st at each end of next 3(5-5-7-7) rows, then every alt row 4(4-4-4-5) times. 77(81-87-91-95) sts remain. Knit straight to 34(36-38-40-40) rows.

### Shape Neck

Using a length of matching yarn cast off the centre 23(25-25-27-27) sts. Push needles at side opposite carriage to F position. Returning levers on II. Make a note of the pattern row number now showing on the card and number on row counter. Work on remaining sts first.

Dec 1 st at neck edge on next 3 rows, then every alt row 1(1-2-2-3) times. 23(24-26-27-28) sts remain. Knit straight to 48(52-56-60-62) rows.

### Shape Shoulder

Cast off 6(6-7-7-7) sts at beg of next and every alt row until 5(6-5-6-7) sts remain. Knit 1 row. Cast off.

Return the needles in F position to B position using a transfer tool. Return the pattern card to 1 number less than the pattern row noted, set both operation dials on SLIP and take the carriage across. Reset the operation dials for the pattern and rethread the yarn. Reset row counter on number previously noted. Complete second side to match first reversing shaping.

## Sleeves

Bring 51(53-55-57-59) needles to B position. Knit as given for Back from ★ to ★.

### All Machines

000. Main tension. Knit 6 rows. Inc 1 st at each end of next and every following 7th(7th-8th-8th-9th) row 11(12-13-14-15) times in all. 73(77-81-85-89) sts. Knit straight to 92(104-116-132-148) rows. This will give a sleeve seam length of 27(30-34-38-42) cms [10¾(12-13½-15¼-16¾) ins].

### Shape Top

Cast off 3(3-4-4-4) sts at beg of next 2 rows. Dec 1 st at each end of next 7 rows, then every alt row 6(8-9-11-13) times in all, 41 sts remain. Dec 1 st at each end of next 7 rows. Cast off 5 sts at beg of next 2 rows. Cast off.

## Finishing and Neckband

Read Pressing Instructions.

## Back Neckband

Bring 33(35-37-39-41) needles to B position.

### \*Machines without Ribbing Attachment:

Arrange needles for 2x1 mock rib. Cast on with waste yarn and knit a few rows. Tension 3 numbers tighter than main. Using colour A knit 16(16-20-20-20) rows. Bring empty needles to B position. Make a hem but do not knit the row.

**Machines with Ribbing Attachment:** Arrange needles for 1x1 rib. Cast on using colour A. Tension 3 numbers tighter than main. Knit 8(8-10-10-10) rows. Transfer sts for plain knitting.★

**All Machines:** With wrong side of back facing, pick up and place on needles already in B position 33(35-37-39-41) sts evenly across back neck. T10. Knit 1 row and chain cast off.

## Front Neckband

Bring 57(63-65-71-75) needles to B position. Knit as given for back neckband from ★ to ★.

**All Machines:** With wrong side of front facing, pick up and place on needles already in B position 17(19-20-22-24) sts evenly down left front neck slope, 23(25-25-27-27) sts across centre front and 17(19-20-22-24) sts up front neck slope. T10. Knit 1 row and chain cast off.

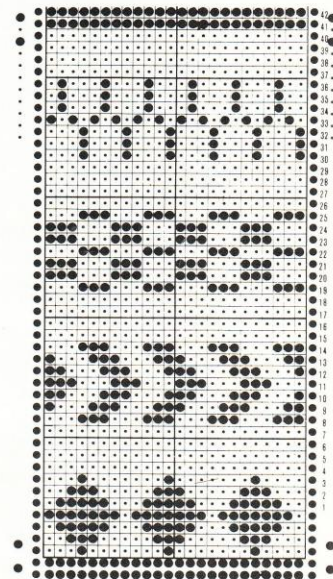
Join side, shoulder and sleeve seams. Insert sleeves. Press seams.

**Note:** If neck opening is required work as follows:- leave 4 cms [1½ ins] of right shoulder seam open. Work 1 row of double crochet around opening, working through double thickness of neckband where necessary, then work a second row making 3 buttonloops evenly spaced on one side, by working 2 chain instead of 1 dc. Press seams. Sew on buttons.

## Pressing Instructions

**Wool:** Press work on wrong side using a hot iron and a damp cloth.

**Synthetics:** Press lightly on wrong side using a cool iron and a dry cloth, unless label states that yarn should not be pressed.

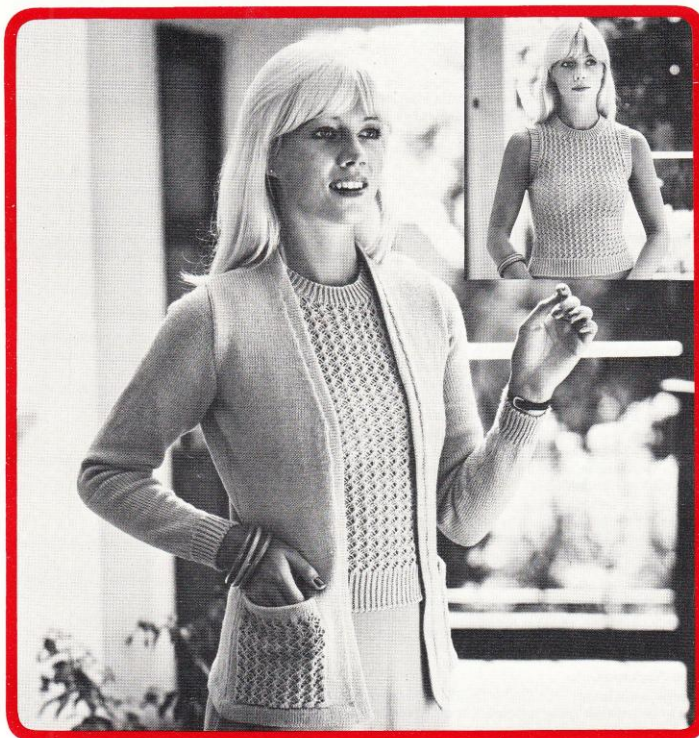




# SINGER\*

1013

Specially designed for the Singer Memo-Matic\* Machine



## TWIN SET—SIZES 85 cms-110 cms (34"-44").

**Materials:** 4 ply. **Cardigan:** Approximately 475(500-525-550-575-600) g. **Lacy Jumper:** Approximately 200(225-225-250-275-275) g.

**Measurements:** To fit bust sizes 85(90-95-100-105-110) cms [34(36-38-40-42-44) ins]. **Cardigan:** Length to shoulder 59(60-61-62-63-64) cms [23½(24-24½-24¾-25¼-25½) ins]. Sleeve seam 44 cms [17½ ins]. **Jumper:** Length to shoulder 50(51-52-53-54-55) cms [20(20½-21-21¼-21½-22) ins].

### Tension

**Main tension:** 30 sts and 40 rows=10 cms [4 ins] square measured over plain knitting. Try T7.

**Lace pattern tension:** 24 sts and 39 rows=10 cms [4 ins] square measured over lace pattern. Try T7.

**Abbreviations:** Alt=alternate; beg=beginning; cms=centimetres; dec=decrease; inc=increase; ins=inches; rep=repeat; st=stitch; sts=stitches; 000=return row counter to 000; T=tension.

### Cardigan

#### Back

Cast on 127(135-141-149-157-165) sts by hand. Tension 1 number tighter than main. Knit 9 rows. Knit 1 row at loosest tension for foldline. 000. Main tension. Knit 10 rows. Dec 1 st at each end on next and every following 8th row 9 times in all. 109(117-123-131-139-147) sts remain. Knit straight to 90 rows. Inc 1 st at each end of next and every following 8th row 9 times in all. 127(135-141-149-157-165) sts. Knit

straight to 164 rows. This will give a length to armholes of 41 cms [16½ ins].

#### Shape Armholes

000. Cast off 4 sts at beg of next 2 rows. Dec 1 st at each end of next 7(5-5-7-5-7) rows, then on every alt row 3(6-6-5-8-7) times. 99(105-111-117-123-129) sts remain. Knit straight to 72(76-80-84-88-92) rows.

#### Shape Shoulders and Back Neck

Cast off 5(6-6-7-7-8) sts at beg of next 2 rows. Push 58(61-65-68-72-75) needles at side opposite carriage to F position. Returning levers on II. Work on remaining sts first.

Cast off 5(6-6-7-7-8) sts at beg of next row then 3 sts at beg of next row. Rep the last 2 rows twice more. Cast off remaining 7(5-7-5-7-5) sts.

Leaving 27(29-31-33-35-37) needles at centre in F position return remaining 31(32-34-35-37-38) needles to B position using a transfer tool. Rethread yarn and complete second side to match first reversing shaping.

#### Back Neckband

Return remaining 27(29-31-33-35-37) needles to B position using a transfer tool. Bring 10 needles at either side to B position. Pick up 10 sts up back neck slope to shoulder at either side and place on machine. ★ Tension 1 number tighter than main. Knit 8 rows. Knit 1 row at loosest tension for foldline. Tension 2 numbers tighter than main. Knit 8 rows. Knit 1 row at loosest tension and chain cast off. ★

#### Right Front

Cast on 57(61-64-68-72-76) sts by hand. Tension 1 number tighter than main. Knit 9 rows. Knit 1 row at loosest tension for foldline.

000. Main tension. Knit 10 rows. Dec 1 st at right on next and every following 8th row 9 times in all. 48(52-55-59-63-67) sts remain. Knit straight to 90 rows. Inc 1 st at right side on next and every following 8th row 9 times in all. 57(61-64-68-72-76) sts. Knit 1 row. 156 rows on row counter.

#### Shape Neck

Dec 1 st at left (neck edge) on next and following 4th row. Knit 3 rows.

#### Shape Armhole

000. Cast off 4 sts at beg and dec 1 st at neck edge of next row. Knit 1 row. Dec 1 st at armhole edge on next 2 rows. Continuing to dec at neck edge on next and every following 4th row as before at the same time dec 1 st at armhole edge on next 5(3-3-5-3-5) rows, then on every alt row 3(6-6-5-8-7) times. Keeping armhole edge straight continue to dec at neck edge as before until 34(36-38-40-42-44) sts remain, then on every following 6th row 7 times. 27(29-31-33-35-37) sts remain. Knit straight to 72(76-80-84-88-92) rows.

#### Shape Shoulder

Cast off 5(6-6-7-7-8) sts at beg of next and every alt row until 7(5-7-5-7-5) sts remain. Knit 1 row. Cast off.

#### Left Front

Knit to match Right Front reversing shapings.



# SINGER\*

## Sleeves

Bring 63(65-67-69-71-73) needles to B position.

### Machines without Ribbing Attachment

Arrange needles for 2×1 mock rib. Cast on with waste yarn and knit a few rows. Tension 3 numbers tighter than main. Knit 31 rows. Bring empty needles to B position. Make a hem filling the empty needles and knit the row.

### Machines with Ribbing Attachment

Arrange needles for 1×1 rib. Cast on with main yarn. Tension 3 numbers tighter than main. Knit 16 rows. Transfer sts for plain knitting.

### All Machines

000. Main tension. Knit 4 rows. Inc 1 st at each end on next and every following 10th(9th-8th-7th-7th-7th) row 15(16-18-19-20-21) times in all. 93(97-103-107-111-115) sts. Knit straight to 160 rows. This will give a sleeve seam length of 44 cms [17½ ins].

### Shape Top

Cast off 4 sts at beg of next 2 rows. Dec 1 st at each end of next 5(5-5-5-7-7) rows then every alt row 17(19-20-20-20-20) times in all. 41(44-45-49-53) sts remain. Dec 1 st at each end of next 5(5-5-7-7-9) rows. Cast off 4 sts at beg of next 4 rows. Cast off.

## Pockets (Knit 2)

**Note:** If either of the 2 end needles at each side of work are selected, return these to B position before operating lace carriage, thus keeping 2 sts at either side in plain knitting.

Cast on 36 sts by hand. Tension 2 numbers looser than main. Knit 1 row. Insert punched card and set to row 1. Pattern switch ■. Card feed switch ☉. Needle selection lever forward. Knit 1 row. Card feed switch ●.

000. Lace tension. Working in lace pattern knit straight to 52 rows. Card feed switch ☉. Needle selection lever back. Tension 2 numbers looser than main. Working in plain knitting knit 6 rows. Knit 1 row at loosest tension for foldline. Tension 2 numbers looser than main. Knit 5 rows. Knit 1 row at loosest tension and chain cast off.

## Finishing and Front Bands

Read pressing instructions.

**Front Edging:** Bring 181(184-187-190-193-196) needles to B position. With wrong side of left front facing, pick up and place on machine 72(75-78-81-84-87) sts from top of shoulder to start of neck shaping, and then 105 sts from start of neck shaping to foldline of hem. Knit as given for Back Neckband from ★ to ★. Knit edging on Right Front to match.

Join shoulder, side and sleeve seams. Insert sleeves. Fold hems at lower edge and pocket tops to inside and slip st in place. Fold bands in half to inside and slip st in place. Sew pockets in place. Press seams.

## Jumper

**Note:** Return end needles to B position if selected for pattern.

### Back

Bring 96(102-108-114-120-126) needles to B position.

\*A Trademark of THE SINGER COMPANY

### Machines without Ribbing Attachment

Arrange needles for 2×1 mock rib. Cast on with waste yarn and knit a few rows. Tension 2 numbers tighter than main. Using main yarn knit 40 rows. Bring empty needles to B position. Make a hem filling the empty needles and knit the row.

### Machines with Ribbing Attachment

Arrange needles for 1×1 rib. Cast on using main yarn. Tension 2 numbers tighter than main. Knit 21 rows. Transfer sts for plain knitting.

### All Machines

Insert punched card and set to row 1. Pattern switch ■. Card feed switch ☉. Needle selection lever forward. Lace tension. Knit 1 row. Card feed switch ●. Carriage at right.

000. Working in lace pattern knit 2 rows. Dec 1 st at each end on next and every following 4th row 6 times in all. 84(90-96-102-108-114) sts remain. Knit straight to 36 rows. Inc 1 st at each end on next and every following 8th row 8 times in all. 100(106-112-118-124-130) sts. Knit straight to 98 rows. This will give a length to armholes of 30 cms [12 ins].

### Shape Armholes

000. Keeping pattern correct cast off 4 sts at beg of next 2 rows. Dec 1 st at each end of next 7 rows, then on every alt row 3(4-4-5-6-6) times. 72(76-82-86-90-96) sts remain. ★ Knit straight to 76(80-84-88-92-96) rows.

### Shape Back Neck and Shoulders

Make a note of the row number now showing on the card. Push 46(49-53-56-59-63) needles at side opposite carriage to F position. Returning levers on II. Work on remaining sts first.

Knit 1 row. ★★ Cast off 3 sts at beg of next row and 6(6-7-7-8-8) sts at beg of next row. Rep the last 2 rows once more, then work first row again. Cast off remaining 5(6-6-7-6-8) sts.

Carriage at left. Leaving 20(22-24-26-28-30) needles at centre in F position return remaining 26(27-29-30-31-33) needles to B position using a transfer tool. Right hand operation dial on SLIP. Return card to one number less than pattern row previously noted and take the carriage across. Rethread yarn. Reset operation dial on PLAIN. Keeping pattern correct knit 2 rows. Complete as given for first side from ★★ to end.

### Back Neckband

Return remaining 20(22-24-26-28-30) needles to B position using a transfer tool. Bring 10 needles at either side to B position. Pick up 10 sts up back neck slope to shoulder at either side and place on machine. ★★★ Main tension. Working in plain knitting knit 1 row.

### Machines without Ribbing Attachment

Transfer sts for 2×1 mock rib. Tension 2 numbers tighter than main. Knit 20 rows. Knit 1 row at loosest tension and chain cast off.

### Machines with Ribbing Attachment

Transfer sts for 1×1 rib. Tension 3 numbers tighter than main. Knit 10 rows. Knit 1 row at loosest tension and chain cast off. ★★★

## Front

Knit as given for Back to ★. Knit straight to 54(56-58-60-62-64) rows.

### Shape Neck

Push 47(49-53-55-58-61) needles at side opposite carriage to F position. Returning levers on II. Make a note of the pattern row number now showing on the card and number on row counter. Work on remaining sts first.

Dec 1 st at neck edge on next 5 rows, then on every alt row 3(4-4-5-5-6) times. 17(18-20-21-22-24) sts remain. Knit straight to 78(82-86-90-94-98) rows.

### Shape Shoulder

Cast off 6(6-7-7-8-8) sts at beg of next and following alt row. Knit 1 row. Cast off remaining 5(6-6-7-6-8) sts.

Carriage at left. Leaving 22(22-24-24-26-26) needles at centre in F position return remaining 25(27-29-31-32-35) needles to B position using a transfer tool. Right hand operation dial on SLIP. Return card to one number less than pattern row previously noted and take the carriage across. Rethread yarn. Reset operation dial on PLAIN. Reset row counter on row noted. Complete second side to match first reversing shaping.

### Front Neckband

Return remaining 22(22-24-24-26-26) needles to B position using a transfer tool. Bring 24(26-28-30-32-34) needles at either side to B position. Pick up 24(26-28-30-32-34) sts up front neck slope to shoulder at either side and place on machine. Knit as given for Back Neckband from ★★★ to ★★★.

## Finishing and Armbands

Read pressing instructions. Join shoulder seams.

**Armhole Edging:** With wrong side of work facing pick up and place on machine 120(126-132-138-144-150) sts evenly along one armhole edge. Knit as given for Back Neckband from ★★★ to ★★★.

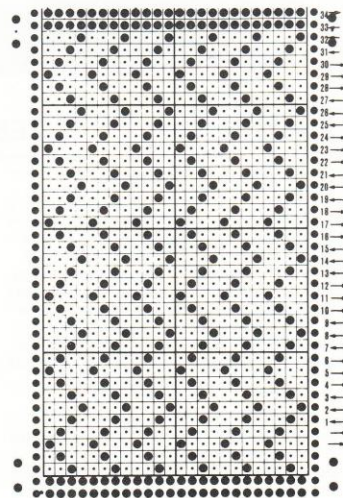
Work other armband to match.

Join side seams. Fold mock rib bands in half to inside and slip st in place. Press seams.

## Pressing Instructions

**Wool:** Press work on wrong side using a hot iron and a damp cloth.

**Synthetics:** Press lightly on wrong side using a cool iron and a dry cloth, unless label states that yarn should not be pressed.

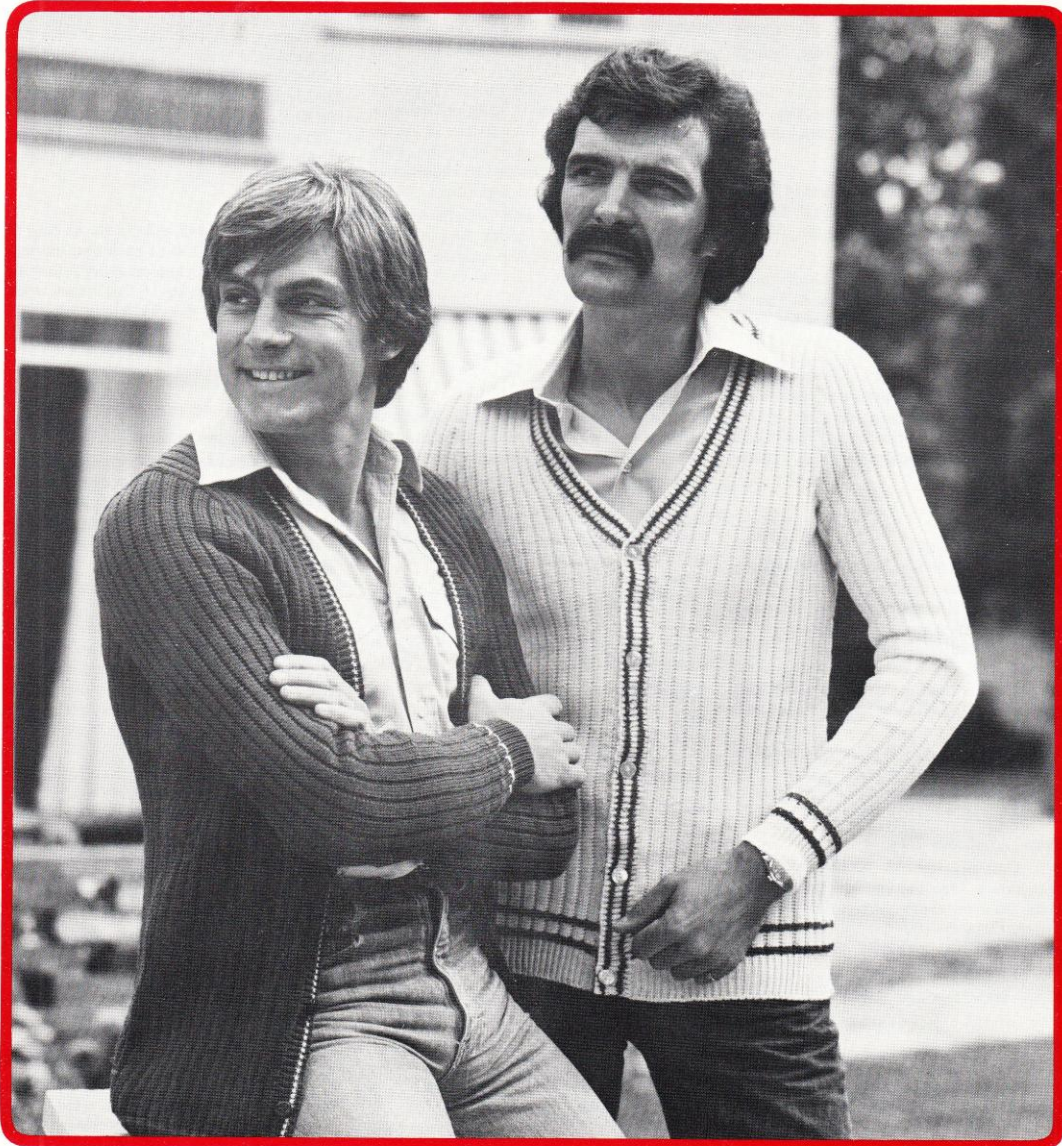




# SINGER\*

1014

Specially designed for the Singer Memo-Matic\* Machine with Ribbing Attachment



**CARDIGAN** — SIZES 90cms-115 cms (36"-46").

---



# SINGER\* CARDIGAN

**Materials:** 4 ply. Approximately 575(600-650-675-700-750) g colour A, 50 g each in colours B and C. 5 buttons.

**Measurements:** To fit chest sizes 90(95-100-105-110-115) cms [36(38-40-42-44-46) ins]. Finished measurement 94(98-103-108-114-118) cms [37½(39¼-41¼-43¼-45½-47¼) ins]. Length to shoulder 64(67-70-71-72-73) cms [25½(26¾-28-28½-28¾-29¼) ins]. Sleeve seam 46(46-47-47-48-48) cms [18½(18½-18¾-18¾-19¼-19¼) ins].

## Tension

**Pattern tension:** 53 rows=10 cms [4 ins] in length measured over rib pattern. Try T6 on main machine and T8 on ribbing attachment.

**Rib tension:** For welts, set both main machine and ribbing attachment to 3 numbers tighter than pattern tension for main machine.

**Abbreviations:** Alt=alternate; beg=beginning; cms=centimetres; dec=decrease; inc=increase; ins=inches; rep=repeat; st=stitch; sts=stitches; 000=return row counter to 000; T=tension.

## Back

Using colour A cast on 127(131-139-147-155-159) sts for 1×1 rib making sure that the needle at each end is on main machine. ★ Rib tension. Knit 22 rows. Starting at left transfer the first and every alt st on ribbing attachment to main machine. Sts are now arranged for 3×1 rib pattern. Set right hand auxiliary cam knob on ribbing attachment on Δ and tuck knob on Δ for pattern.

000. Pattern tension. Knit 4 rows in colour B, 8 rows in A and 4 rows in C ★. Continuing in A only knit straight to 206(218-228-228-228-228) rows.

### Shape Armholes

000. Cast off 4(4-5-4-5-5) sts at beg of next 2 rows. Dec 1 st at each end on next 7 rows, then on every alt row 7(7-7-9-9-9) times. 91(95-101-107-113-117) sts remain. Knit straight to 106(112-116-122-128-132) rows.

### Shape Shoulders and Back Neck

Cast off 5(5-5-5-6-6) sts at beg of next 2 rows.

Push 54(57-62-66-70-73) needles at side opposite carriage to F position. Work on remaining 27(28-29-31-31-32) sts first. Returning levers on II on main machine and on ● on ribbing attachment.

Cast off 5(5-5-5-6-6) sts at beg of next row

and 3 sts at beg of next row. Rep the last 2 rows twice more. Cast off remaining 3(4-5-7-4-5) sts.

Leaving 27(29-33-35-39-41) needles at centre in F position return remaining 27(28-29-31-31-32) needles to B position using a transfer tool. Complete this side to match first reversing shaping.

### Back Neckband

Return remaining 27(29-33-35-39-41) needles at centre to B position using a transfer tool. Bring 10 needles at either side to B position on main machine. Pick up 10 sts up back neck slope to shoulder at either side and place on machine.

★★ Using colour A and pattern tension knit 1 row. Transfer sts for 1×1 rib. Set machine for plain rib. Rib tension. Knit 2 rows in A, 2 rows in C, 4 rows in A, 2 rows in B and 2 rows in A. Knit 1 row at loosest tension. Transfer sts for plain knitting and chain cast off. ★★

## Right Front

Using colour A cast on 59(61-65-69-73-75) sts for 1×1 rib, ending with carriage at right and making sure that the end needle at right is on main machine. Rib tension. Knit 22 rows. Starting at right transfer the first and every alt st on ribbing attachment to main machine. Set right hand auxiliary cam knob on ribbing attachment on Δ and tuck knob on Δ for pattern.

000. Pattern tension. Knit 4 rows in colour B, 8 rows in A and 4 rows in C. Continuing in A only knit straight to 192(204-214-214-214-214) rows. Carriage at right.

### Shape Neck

Dec 1 st at left (neck edge) on next and every following 4th row 4 times in all. Knit 1 row. Carriage at right. 206(218-228-228-228-228) rows on row counter.

### Shape Armhole

000. Cast off 4(4-5-4-5-5) sts at beg of next row. Knit 1 row. Dec 1 st at neck edge on next and every following 4th row and at the same time dec 1 st at armhole edge on next 7 rows, then on every alt row 7(7-7-9-9-9) times. 31(33-36-38-41-43) sts remain. Knit 7(7-5-5-5-5) rows. Keeping armhole edge straight dec 1 st at neck edge on next and every following 8th(8th-6th-6th-6th-6th) row 8(9-11-11-13-14) times in all. 23(24-25-27-28-29) sts remain. Knit straight to 106(112-116-122-128-132) rows.

### Shape Shoulder

Cast off 5(5-5-5-6-6) sts at beg of next and every alt row until 3(4-5-7-4-5) sts remain. Knit 1 row. Cast off.

## Left Front

Knit to match Right Front reversing shaping by reading right for left and left for right.

## Sleeves

Using colour A cast on 59(63-67-67-71-71) sts for 1×1 rib making sure that the needle at each end is on main machine. Knit as given for Back from ★ to ★.

Continuing in A only inc 1 st at each end on next and every following 13th(12th-12th-10th-10th-8th) row 15(16-16-19-20-23) times in all. 89(95-99-105-111-117) sts. Knit straight to 218(218-222-222-228-228) rows. This will give a sleeve seam length of 46(46-47-47-48-48) cms [18½(18½-18¾-18¾-19¼-19¼) ins].

### Shape Top

000. Cast off 4(4-5-4-5-5) sts at beg of next 2 rows. Dec 1 st at each end on next 5(7-7-7-9-9) rows, then on every following 4th row 15(15-15-16-16-16) times, then on next 7(7-8-9-9-9) rows. 27(29-29-33-37-39) sts remain. Cast off 3(3-3-3-4-4) sts at beg of next 4 rows. Cast off.

## Finishing and Front Bands

Read pressing instructions.

**Front Neck Band:** With wrong side of right front facing pick up and place on machine 99(103-107-109-111-115) sts along neck edge from start of neck shaping to top of shoulder. Work as given for Back Neckband from ★★ to ★★.

Work neckband on Left Front in the same way.

**Button Band:** With wrong side of right front facing pick up and place on machine 151(157-165-165-165-165) sts along front edge to start of neck shaping, picking up last st through same st as neckband. Work as given for Back Neckband from ★★ to ★★.

**Buttonhole Band:** Knit as given for Button Band at the same time making buttonholes after the 6th row of rib as follows:- using contrast yarn knit through by hand the 6th, 7th and 8th sts counted from lower edge, \*miss 31(33-35-35-35-35) sts and knit next 3 sts through by hand; rep from \* 3 times more.

Join shoulder, side and sleeve seams and ends of bands. Insert sleeves. Finish buttonholes. Press seams. Sew on buttons.

## Pressing Instructions

**Wool:** Press work on wrong side using a hot iron and a damp cloth.

**Synthetics:** Press lightly on wrong side using a cool iron and a dry cloth unless label states that yarn should not be pressed.

\*A Trademark of THE SINGER COMPANY

The Singer Co., (U.K.) Ltd., Consumer Division, 255 High St., Guildford, Surrey  
PRINTED IN ENGLAND



# SINGER\*

1015

Specially designed for the Singer Memo-Matic\* Machine



**Materials:** 4 Ply. Approximately **Dungarees:** 225(250-275) g colour A, 25 g each in colours B and C. **Sweater:** 75(100-100) g colour A, 50(75-75) g each in colours B and C. **Socks:** 50 g colour A, small amount in each of colours B and C.

13 cm [5 in] zip for dungarees. 3 buttons and medium size crochet hook for sweater.

**Measurements:** To fit chest sizes 45(50-55) cms [18(20-22) ins]. **Dungarees:** Length to shoulder 48(56-64) cms [19 $\frac{1}{4}$ (22 $\frac{1}{2}$ -25 $\frac{1}{2}$ ) ins]. Inside leg length 18(23-28) cms [7 $\frac{1}{4}$ (9 $\frac{1}{4}$ -11 $\frac{1}{4}$ ) ins]. **Sweater:** Finished measurement at chest 50(55-60) cms [20(22-24) ins]. Length to shoulder 24(27-29) cms [9 $\frac{1}{2}$ (10 $\frac{3}{4}$ -11 $\frac{1}{2}$ ) ins]. Sleeve seam 13(16-19) cms [5 $\frac{1}{4}$ (6 $\frac{1}{2}$ -7 $\frac{1}{2}$ ) ins]. **Socks:** To fit foot length 10(11-12) cms [4(4 $\frac{1}{2}$ -4 $\frac{3}{4}$ ) ins].

**Main Tension:** 30 sts and 40 rows=10 cms [4 ins] square measured over plain knitting. Try T7.

**Abbreviations:** Alt=alternate; beg=beginning; cms=centimetres; ch=chain; dec=decrease; dc=double crochet; inc=increase; ins=inches; rep=repeat; st=stitch; sts=stitches; T=tension; 000=return row counter to 000.

## Dungarees

### Left Half

Using colour A cast on 95(103-111) sts by hand. Tension 1 number tighter than main. Knit 9 rows. Knit 1 row at loosest tension for foldline. 000. Main tension. Knit 72(92-112) rows.

### Shape Crutch

000. Cast off 3 sts at beg (front edge) of next row and 5 sts at beg of next row. Dec 1 st at each end of next 3 rows, then at back edge only on next row. Dec 1 st at each end on next and every alt row 3 times in all. 74(82-90) sts remain. Knit straight to 14(20-26) rows. Cast off 3 sts at beg of next row for zip opening. Knit straight to 64(70-76) rows.

### Shape Front Neck

Dec 1 st at front edge on next and every alt row 6 times in all. Knit 1 row. Carriage at front edge.

### Divide for Back and Front

Push 41(45-49) needles at side opposite carriage to F position. Work on remaining sts first for Front. Returning levers on II.

000. Knit 1 row. Cast off 4 sts at beg (armhole edge) of next row. Dec 1 st at armhole edge on next 2 rows. Dec 1 st at neck edge on next and every following 6th row at the same time dec 1 st at armhole edge on next 3(5-5) rows, then on every alt row 2(2-4) times. Keeping armhole edge straight continue to dec at neck edge as before until 8(9-10) sts remain. Knit straight to 44(50-56) rows. Cast off.

**PLAYSUIT** — SIZES 45 cms-55 cms (18"-22").



# SINGER\*

## Back

000. Carriage at front edge. Returning levers on **I**. Cast off next 8 sts for armhole and knit the row. Knit 1 row. Cast off 4 sts at armhole edge on next row. Dec 1 st at armhole edge on next 5(7-7) rows then on every alt row 2(2-4) times. 22(24-26) sts remain. Knit straight to 31(37-43) rows. Carriage at back edge.

## Shape Back Neck

Cast off 9(10-11) sts at beg (neck edge) of next row. Dec 1 st at neck edge on next 3 rows, then on every alt row twice. 8(9-10) sts remain. Knit straight to 44(50-56) rows. Cast off.

## Right Half

Work to match Left Half reversing all shaping.

## Finishing and Edging

Read Pressing Instructions.

**Armhole Edging:** With wrong side of work facing pick up and place on machine 74(83-92) sts evenly around one armhole edge. ★ Main tension. Using colour A knit 1 row. Knit 2 rows in B and 2 rows in C. Knit 1 row at loosest tension for foldline. Tension 1 number tighter than main. Knit 4 rows in C. Knit 1 row at loosest tension and chain cast off. ★

Work edging around other armhole in the same way.

**Front Edgings:** With wrong side of work facing pick up and place on machine 36 sts evenly along right side of zip opening to start of neck shaping. Main tension. Using colour A knit 1 row. Knit 2 rows in B and 2 rows in C. Knit 1 row at loosest tension and chain cast off. Work edging along left side of zip opening in the same way.

With wrong side of work facing pick up and place on machine 45(50-55) sts along right front neck edge. Knit as given for armhole edging from ★ to ★.

Work edging along left front neck edge in the same way.

**Back Edging:** Join back seam. With wrong side of work facing pick up and place on machine 34(36-38) sts evenly around back neck edge. Work as given for armhole edging from ★ to ★. Join shoulder seams. Sew edgings in place. Fold neck and armhole edgings in half to inside and slip st in place. Join inside leg seams and front seam from crutch to start of zip opening. Sew in zip. Fold hems at lower edge to inside and slip st in place. Press seams and edgings.

## Sweater

### Back

Bring 73(81-89) needles to B position.

★ Arrange needles for 2×1 mock rib. Using waste yarn cast on and knit a few rows. Change to colour A. Tension 3 numbers tighter than main. Knit 25 rows. Bring empty needles to B position. Make a hem filling the empty needles and knit the row. ★

000. Main tension. Working in stripes of 2 rows of B, 2 rows of C and 2 rows of A throughout, knit 46(52-58) rows. This will give a length to armholes of 15(16-18) cms [5¾(6½-7) ins].

## Shape Armholes

000. Cast off 4 sts at beg of next 2 rows. Dec 1 st at each end of next 5(5-7) rows then on every alt row 3(5-5) times. 49(53-57) sts remain ★★. Knit straight to 16(22-26) rows.

## Divide for Back Neck Opening

Transfer centre st to adjacent needle and return empty needle to A position. Push needles at side opposite carriage to F position. Work on remaining sts first. Returning levers on **II**. Knit straight to 36(42-46) rows.

## Shape Shoulder

Cast off 4 sts at beg of next and following alt row. Knit 1 row. Cast off 4(5-6) sts at beg of next row.

## Back Neckband

Transfer sts for 2×1 mock rib. Tension 3 numbers tighter than main. Using colour A knit 16 rows. Bring empty needles to B position. T10. Knit 1 row and chain cast off.

Returning levers on **I**. Rethread yarn and complete second side to match first reversing shaping.

## Front

Knit as given for Back to ★★. Knit straight to 26(30-32) rows.

## Shape Neck

Push 31(33-35) needles at side opposite carriage to F position. Work on remaining sts first. Returning levers on **II**.

Dec 1 st at neck edge on next 3 rows, then on every alt row 3(4-5) times. 12(13-14) sts remain. Knit 1 row.

## Shape Shoulder

Cast off 4 sts at beg of next and following alt row. Knit 1 row. Cast off. Carriage at right. Returning levers on **I**. Knit 1 row thus bringing needles in F position back to B position. Push 13 needles at side opposite carriage to F position. Returning levers on **II**.

Rethread yarn and complete second side to match first reversing shaping.

Knit a few rows with waste yarn on remaining 13 sts and remove work from machine.

## Sleeves

Bring 43(45-47) needles to B position. Knit as given for Back from ★ to ★.

000. Main tension. Working in stripes of 2 rows in B, 2 rows in C and 2 rows in A throughout, knit 4 rows. Inc 1 st at each end of next and every following 6th(7th-7th) row 6(7-8) times in all. 55(59-63) sts. Knit straight to 40(52-64) rows. This will give a sleeve seam length of 13(16-19) cms [5¼(6½-7½) ins].

## Shape Top

Cast off 4 sts at beg of next 2 rows. Dec 1 st at each end of next 3 rows, then on every alt row

6(8-11) times. 29(29-27) sts remain. Dec 1 st at each end on next 3(5-7) rows. Cast off 4(4-3) sts at beg of next 2 rows. Cast off.

## Finishing and Neckband

### Front Neckband

Bring 37(41-45) needles to B position. With wrong side of work facing pick up and place on machine 12(14-16) sts down front neck slope, replace 13 sts from waste yarn across front neck and pick up 12(14-16) sts up slope. Main tension. Using colour A knit 1 row. Knit as given for Back Neckband.

Read Pressing Instructions. Join side, shoulder and sleeve seams. Insert sleeves. Fold neckband in half to inside and slip st in place. Using a medium size crochet hook and colour A and working through double thickness of neckband, work 2 rows of firm dc around back neck opening making 3 loops evenly spaced on one side on second row by working 3 ch in place of 2 dc. Press seams. Sew on buttons.

## Socks

Using waste yarn cast on 46(46-50) sts and knit a few rows ending with carriage at right. Change to colour A and tension 2 numbers tighter than main. Knit 6 rows. Knit 1 row at loosest tension for foldline. Tension 1 number tighter than main. Knit 6 rows. Make a hem and knit the row.

000. Main tension. Knit 2 rows. Dec 1 st at each end on next and every following 10th(12th-14th) row 3 times in all. 40(40-44) sts remain. Knit straight to 28(34-40) rows.

## Divide for Foot

Slip 10(10-11) sts at side opposite carriage onto a length of yarn on next 2 rows. 20(20-22) sts remain. Working in stripes of 2 rows in B, 2 rows in C and 2 rows in A knit 18(22-24) rows straight. Note the colour of last stripe worked.

## Shape Toe

★ Returning levers on **II**. Working in colour A only and always taking yarn under first needle in F position to avoid making a hole, push 1 needle at side opposite carriage to F position on next 10 rows and return 1 needle to B position on next 10 rows ★. Working stripes in reverse order and starting with the colour noted before toe, knit 18(22-24) rows for sole.

## Shape Heel

Knit as given for toe from ★ to ★. Slip sts onto a length of yarn.

## To Finish

With right sides of work facing graft the 20(20-22) sts at back of heel to the 2 sets of 10(10-11) sts placing the edges of work to the centre.

Read Pressing Instructions. Join foot and back seams. Press seams.

## Pressing Instructions

**Wool:** Press work on wrong side using a hot iron and a damp cloth.

**Synthetics:** Press lightly on wrong side using a cool iron and a dry cloth unless label states that yarn should not be pressed.

\*A Trademark of THE SINGER COMPANY

The Singer Co., (U.K.) Ltd., Consumer Division, 255 High St., Guildford, Surrey  
PRINTED IN ENGLAND