

INDEX

TUCK KNITTING

*A* P. 4 - 20

TUCK SLIP STITCHES

*B* P. 21 - 31

KNIT-IN

*C* P. 32 - 42

WEAVING

*D* P. 43 - 54

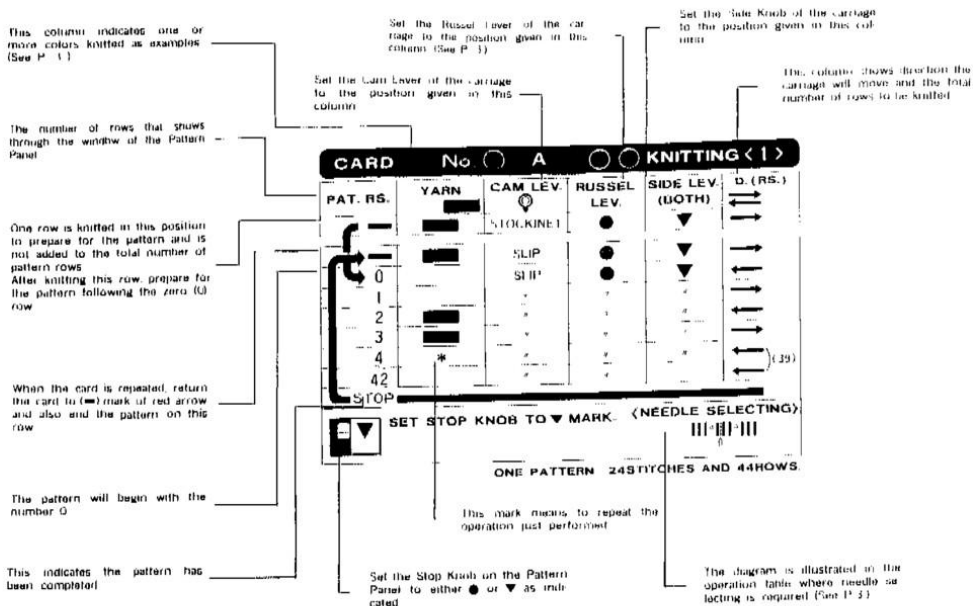
LACE KNITTING

*E* P. 55 - 61

TWO THREAD KNITTING

*F* P. 62 - 64

## HOW TO USE OPERATION TABLE:



### \* YARN

In the column, YARN, the following abbreviations are used:

- Main** Indicates the yarn passed through the Yarn Feeder (Refer to Fig. 1)
- 2nd** Indicates any yarn of contrasting color for Two Thread knitting, Knit-In (Fair Isle) knitting and Weaving
- For Two thread knitting** Indicates the yarn threaded through the Adding Yarn leader (Fig. 2)
- For Knit-In (Fair Isle)** The secondary yarn is placed at the Yarn Holder on the Arm. In this case, Attach Auxiliary Arms into the Auxiliary Arm Slots marked "KNIT-IN" on both right and left side
- For Weaving** Indicates the threading yarn placed on Yarn Holder for Weaving. Attach Auxiliary Arms at the Auxiliary Arm Slots marked "WEAVING" provided both right and left (Fig. 3)

### \* RUSSEL LEVER

- The Russel lever has two positions:
- Center** Indicated by Blue eyes. When Russel Lever is set at this position, the needles in B and C position will knit, while the needles in D position will not knit.
- Right** Indicated by Red eyes. The Russel Lever is set to this position in order to knit the needles placed in D position.

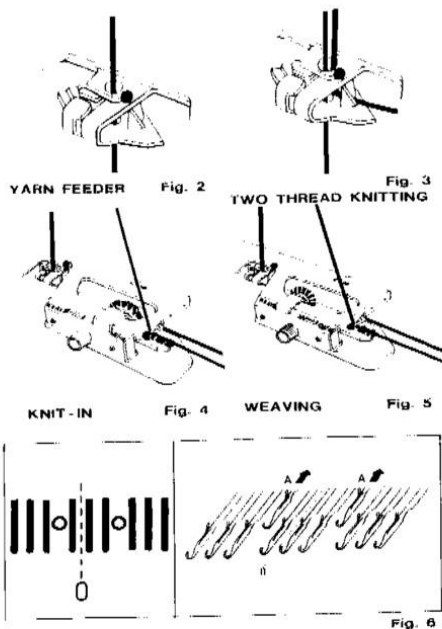
### \* FEEDING DIAL

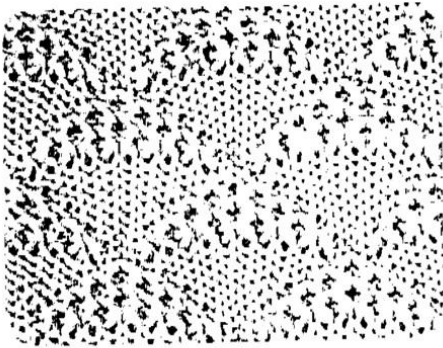
Use this dial when setting the Punch Card to the Pattern Panel, either in forward or reverse direction.

### \* NEEDLE SELECTING

Needle selecting starts at the center of 0 on the needle bed. Transfer the stitch at the 0 position next to the latch needles, as shown in the figure. The latch needles which are not in use are to be pushed back to A position. You may place needles which are not in use to A position to begin with. However, you must be careful not to mistake the locations of latch needles to be tested.

(See Fig. 6. The right half is the actual needle setting for the left symbol.)



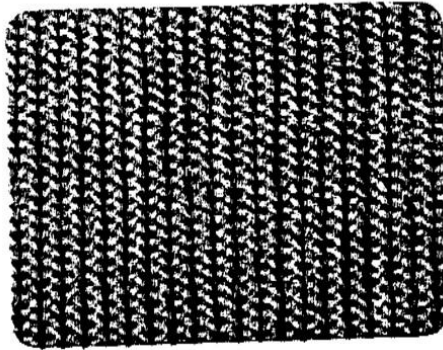


**CARD No. 12-A TUCK KNITTING <1>**

PAT. RS	YARN	CAM LEV. C	RUSSEL LEV	SIDE LEV (BOTH)	D (RS)
0		STOCKINET		▼	→
1		STOCKINET		▼	→
2		TUCK		▼	→
3		TUCK		▼	→
4		STOCKINET		▼	→
58		*		▼	→
STOP					

SET STOP KNOB TO ▼ MARK

ONE PATTERN 12 STITCHES AND 20 ROWS



**CARD No. 1-A TUCK KNITTING <2>**

PAT. RS	YARN	CAM LEV. C	RUSSEL LEV	SIDE LEV (BOTH)	D (RS)
0		STOCKINET		▼	→
1		STOCKINET		▼	→
2		TUCK		▼	→
3		TUCK		▼	→
4		STOCKINET		▼	→
58		*		▼	→
STOP					

SET STOP KNOB TO ▼ MARK

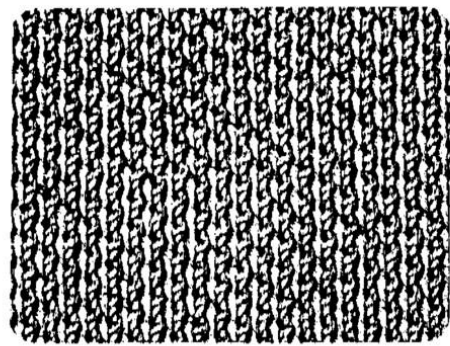
ONE PATTERN 2 STITCHES AND 20 ROWS

**CARD No. 7 A TUCK KNITTING <3>**

PAT. RS	YARN	CAM LEV. C	RUSSEL LEV	SIDE LEV (BOTH)	D (RS)
0		STOCKINET	●	▼	→
1		STOCKINET	●	▼	→
2		TUCK	●	▼	→
3		STOCKINET	●	▼	→
4		*	●	▼	→
58				▼	→
STOP					

SET STOP KNOB TO ▼ MARK  
Repeat the above procedure

ONE PATTERN 2 STITCHES AND 4 ROWS

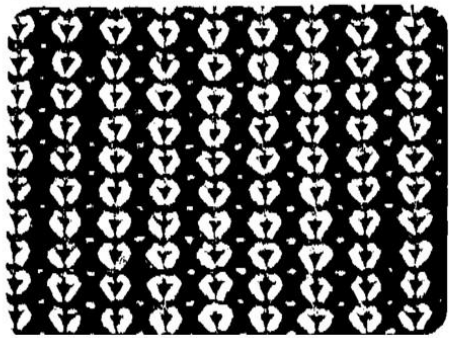


**CARD No. 7 A TUCK KNITTING <4>**

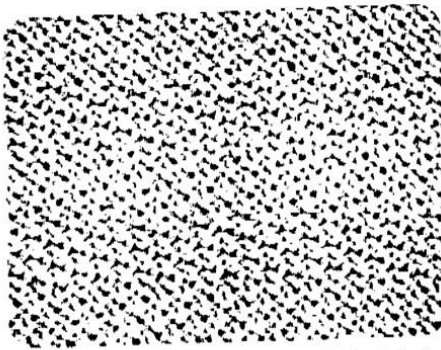
PAT. RS	YARN	CAM LEV. C	RUSSEL LEV	SIDE LEV (BOTH)	D (RS)
0		STOCKINET	●	▼	→
1		TUCK	●	▼	→
2		TUCK	●	▼	→
3		STOCKINET	●	▼	→
4		*	●	▼	→
58				▼	→
STOP					

SET STOP KNOB TO ▼ MARK.  
to change color of every third row

ONE PATTERN 1 STITCHES AND 4 ROWS





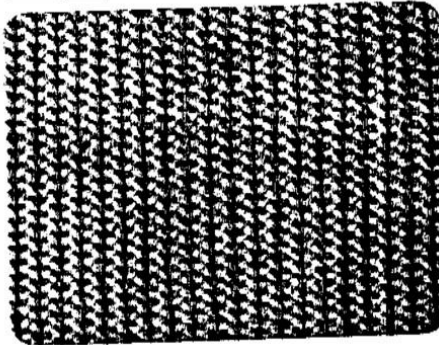


**CARD No. 8-A TUCK KNITTING <5>**

PAT. RS.	YARN	CAM LEV.	RUSSEL LEV.	SIDE LEV. (BOTH)	D. (RS.)
0	STOCKINET	●	●	▼	→
1	TUCK	●	●	▼	→
2	TUCK	●	●	▼	→
3					←
4					←
5					←
6					←
7					←
8					←
9					←
10					←
11					←
12					←
13					←
14					←
15					←
16					←
17					←
18					←
19					←
20					←
21					←
22					←
23					←
24					←
25					←
26					←
27					←
28					←
29					←
30					←
31					←
32					←
33					←
34					←
35					←
36					←
37					←
38					←
39					←
40					←
41					←
42					←
43					←
44					←
45					←
46					←
47					←
48					←
49					←
50					←
51					←
52					←
53					←
54					←
55					←
56					←
57					←
58					←
59					←
60					←
61					←
62					←
63					←
64					←
65					←
66					←
67					←
68					←
69					←
70					←
71					←
72					←
73					←
74					←
75					←
76					←
77					←
78					←
79					←
80					←
81					←
82					←
83					←
84					←
85					←
86					←
87					←
88					←
89					←
90					←
91					←
92					←
93					←
94					←
95					←
96					←
97					←
98					←
99					←
100					←

SET STOP KNOB TO ▼ MARK

ONE PATTERN 15 STITCHES AND 10 ROWS



**CARD No. 7-A TUCK KNITTING <8>**

PAT. RS.	YARN	CAM LEV.	RUSSEL LEV.	SIDE LEV. (BOTH)	D. (RS.)
0	STOCKINET	●	●	▼	→
1	TUCK	●	●	▼	→
2	TUCK	●	●	▼	→
3					←
4					←
5					←
6					←
7					←
8					←
9					←
10					←
11					←
12					←
13					←
14					←
15					←
16					←
17					←
18					←
19					←
20					←
21					←
22					←
23					←
24					←
25					←
26					←
27					←
28					←
29					←
30					←
31					←
32					←
33					←
34					←
35					←
36					←
37					←
38					←
39					←
40					←
41					←
42					←
43					←
44					←
45					←
46					←
47					←
48					←
49					←
50					←
51					←
52					←
53					←
54					←
55					←
56					←
57					←
58					←
59					←
60					←
61					←
62					←
63					←
64					←
65					←
66					←
67					←
68					←
69					←
70					←
71					←
72					←
73					←
74					←
75					←
76					←
77					←
78					←
79					←
80					←
81					←
82					←
83					←
84					←
85					←
86					←
87					←
88					←
89					←
90					←
91					←
92					←
93					←
94					←
95					←
96					←
97					←
98					←
99					←
100					←

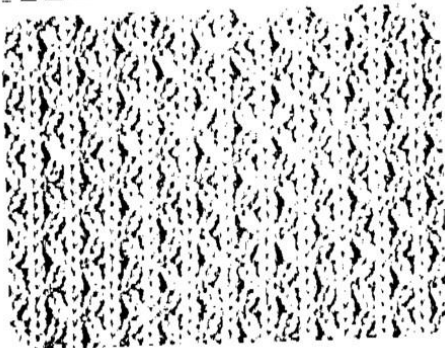
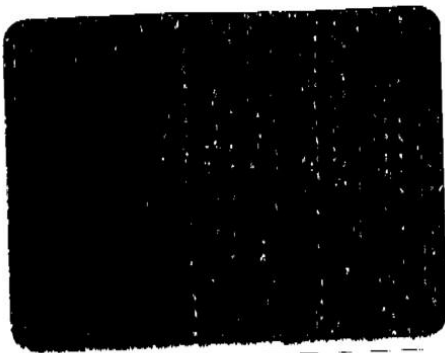
SET STOP KNOB TO ▼ MARK

ONE PATTERN 25 STITCHES AND 4 ROWS

**CARD No. 18 A TUCK KNITTING <7>**

PAT. RS.	YARN	CAM LEV.	RUSSEL LEV.	SIDE LEV. (BOTH)	D. (RS.)
0	STOCKINET	●	●	▼	→
1	TUCK	●	●	▼	→
2	TUCK	●	●	▼	→
3					←
4					←
5					←
6					←
7					←
8					←
9					←
10					←
11					←
12					←
13					←
14					←
15					←
16					←
17					←
18					←
19					←
20					←
21					←
22					←
23					←
24					←
25					←
26					←
27					←
28					←
29					←
30					←
31					←
32					←
33					←
34					←
35					←
36					←
37					←
38					←
39					←
40					←
41					←
42					←
43					←
44					←
45					←
46					←
47					←
48					←
49					←
50					←
51					←
52					←
53					←
54					←
55					←
56					←
57					←
58					←
59					←
60					←
61					←
62					←
63					←
64					←
65					←
66					←
67					←
68					←
69					←
70					





CARD		No. 5-A		TUCK KNITTING <9>		
PAT. RS	YARN	CAM LEV	RUSSEL LEV	SIDE LEV (BOTH)	D (RS)	
 58 STOP	 58 STOP	 LOCK RING				
		 TUCK				
		 TUCK				

SET STOP KNOB TO ▼ MARK

ONE PATTERN 45 STITCHES AND 2 ROWS

CARD		No. 3-A		TUCK KNITTING <10>		
PAT. RS	YARN	CAM LEV	RUSSEL LEV	SIDE LEV (BOTH)	D (RS)	
 54 STOP	 54 STOP	 LOCK RING				
		 TUCK				
		 TUCK				

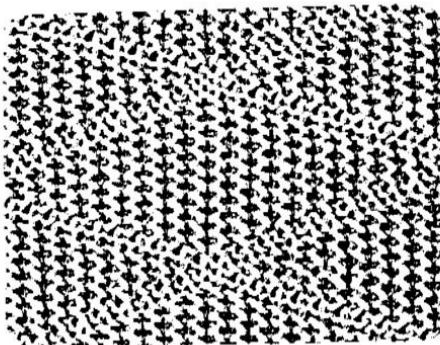
SET STOP KNOB TO ▼ MARK

ONE PATTERN 45 STITCHES AND 2 ROWS

CARD		No. 19 A		TUCK KNITTING <11>		
PAT. RS	YARN	CAM LEV	RUSSEL LEV	SIDE LEV (BOTH)	D (RS)	
 46 STOP	 46 STOP	 LOCK RING				
		 TUCK				
		 TUCK				

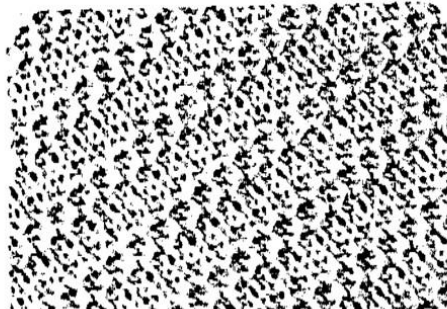
SET STOP KNOB TO ▼ MARK

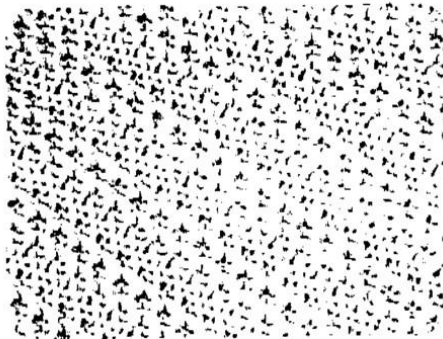
ONE PATTERN 24 STITCHES AND 24 ROWS



CARD		No. 9 A		TUCK KNITTING <12>		
PAT. RS	YARN	CAM LEV	RUSSEL LEV	SIDE LEV (BOTH)	D (RS)	
 58 STOP	 58 STOP	 LOCK RING				
		 TUCK				
		 TUCK				

SET STOP KNOB TO ▼ MARK



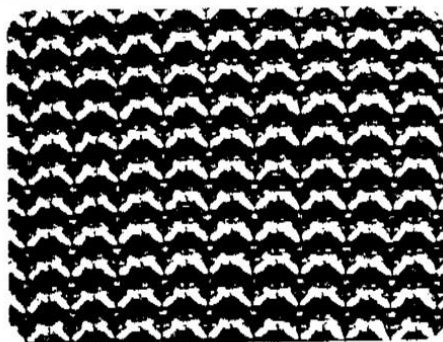


**CARD No. 9-8 TUCK KNITTING <13>**

PAT. RS	YARN	CAM LEV	RUSSEL LEV	SIDE LEV (BOTH)	D (RS)
0		DOWN KIN I	○	▼	→
1		DOWN KIN I	○	▼	→
2		TUCK	○	▼	→
3		TUCK	○	▼	→
4		TUCK	○	▼	→
58					→
STOP					→

SET STOP KNOB TO ▼ MARK

ONE PATTERN 6 STITCHES AND 4 ROWS



**CARD No. 1-A TUCK KNITTING <14>**

PAT. RS	YARN	CAM LEV	RUSSEL LEV	SIDE LEV (BOTH)	D (RS)
0		DOWN KIN I	○	▼	→
1		DOWN KIN I	○	▼	→
2		TUCK	○	▼	→
3		TUCK	○	▼	→
4		TUCK	○	▼	→
58					→
STOP					→

SET STOP KNOB TO ▼ MARK

ONE PATTERN 2 STITCHES AND 4 ROWS

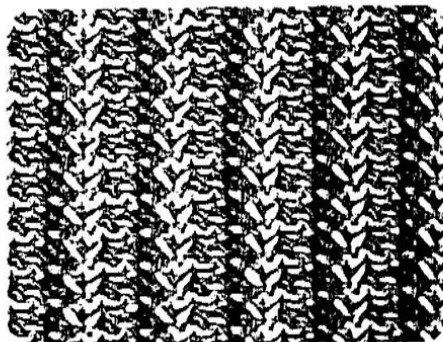
10

**CARD No. 4 A TUCK KNITTING <15>**

PAT. RS	YARN	CAM LEV	RUSSEL LEV	SIDE LEV (BOTH)	D (RS)
0		DOWN KIN I	○	▼	→
1		TUCK	○	▼	→
2		TUCK	○	▼	→
3		TUCK	○	▼	→
4	*	TUCK	○	▼	→
58					→
STOP					→

SET STOP KNOB TO ▼ MARK.  
\* Change color at every third row.

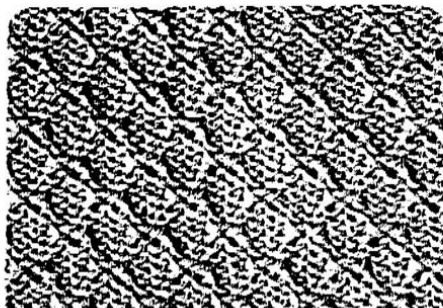
ONE PATTERN 4 STITCHES AND 4 ROWS

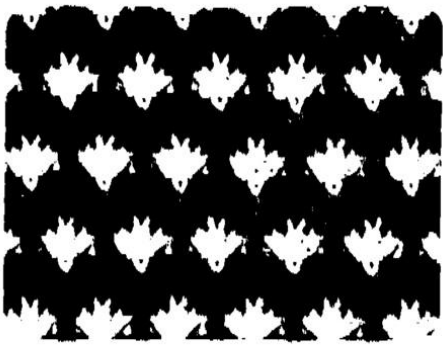


**CARD No. 3 A TUCK KNITTING <16>**

PAT. RS	YARN	CAM LEV	RUSSEL LEV	SIDE LEV (BOTH)	D (RS)
0		DOWN KIN I	○	▼	→
1		DOWN KIN I	○	▼	→
2		TUCK	○	▼	→
3		DOWN KIN I	○	▼	→
4	*	DOWN KIN I	○	▼	→
54					→
STOP					→

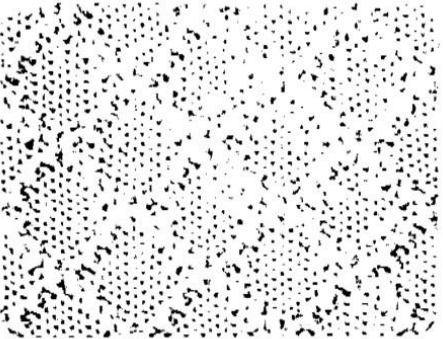
SET STOP KNOB TO ▼ MARK  
\* Repeat the above procedure





CARD		No. 3 - A		TUCK KNITTING <17>		
PAT. RS.	YARN	CAM LEV.	RUSSEL LEV.	SIDE LEV. (BOTH)	D. (RS.)	
0	■	● STOCKINET	●	▼	→	
3	■	● TUCK	●	▼	→	
4	■	● TUCK	●	▼	→	
7	■	●	●	▼	→	
8	■	●	●	▼	→	
11	■	●	●	▼	→	
12	■	●	●	▼	→	
54	■	●	●	▼	→	
STOP						

SET STOP KNOB TO ▼ MARK. ONE PATTERN 4 STITCHES AND 24 ROWS

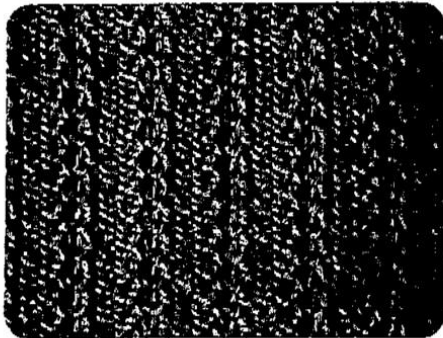


CARD		No. 10 - A		TUCK KNITTING <18>		
PAT. RS.	YARN	CAM LEV.	RUSSEL LEV.	SIDE LEV. (BOTH)	D. (RS.)	
0	■	● STOCKINET	●	▼	→	
7	■	● TUCK	●	▼	→	
46	■	●	●	▼	→	
STOP						

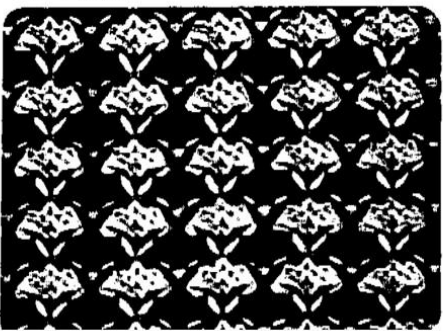
SET STOP KNOB TO ▼ MARK. ONE PATTERN 8 STITCHES AND 16 ROWS

CARD		No. 3 - A		TUCK KNITTING <19>		
PAT. RS.	YARN	CAM LEV.	RUSSEL LEV.	SIDE LEV. (BOTH)	D. (RS.)	
0	■	● STOCKINET	●	▼	→	
0	■	● TUCK	●	▼	→	
1	■	● STOCKINET	●	▼	→	
2	■	●	●	▼	→	

SET STOP KNOB TO ● MARK. Repeat the above procedure. ONE PATTERN 4 STITCHES AND 3 ROWS

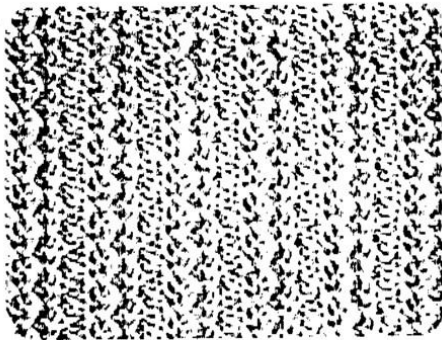


CARD		No. 3 - A		TUCK KNITTING <20>		
PAT. RS.	YARN	CAM LEV.	RUSSEL LEV.	SIDE LEV. (BOTH)	D. (RS.)	
0	■	● STOCKINET	●	▼	→	
3	■	● TUCK	●	▼	→	
4	■	● TUCK	●	▼	→	
7	■	●	●	▼	→	
8	■	●	●	▼	→	
54	■	●	●	▼	→	
STOP						





Cloud  
Curly  
pattern



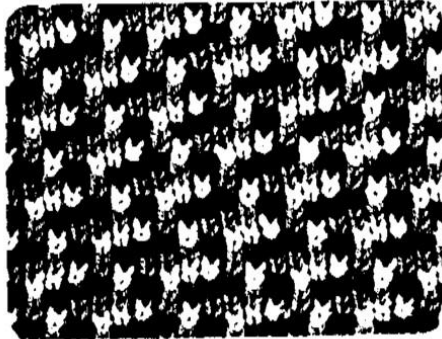
**CARD No. 4-A TUCK KNITTING <21>**

PAT RS	YARN	CAM LEV STOP KINI I	RUSSEL LEV	SIDE LEV (BOTH)	D. (RS.)
0		●	●	▼	→
1		●	●	▼	→
2		●	●	▼	→
3		●	●	▼	→
4		●	●	▼	→
58		●	●	▼	→
STOP					→



SET STOP KNOB TO ▼ MARK

ONE PATTERN 4 STITCHES AND 4 ROWS



**CARD No. 9-A TUCK KNITTING <22>**

PAT RS	YARN	CAM LEV STOP KINI I	RUSSEL LEV	SIDE LEV (BOTH)	D. (RS.)
0		●	●	▼	→
1		●	●	▼	→
2		●	●	▼	→
3		●	●	▼	→
4		●	●	▼	→
5		●	●	▼	→
6		●	●	▼	→
58		●	●	▼	→
STOP					→

SET STOP KNOB TO ▼ MARK

ONE PATTERN 6 STITCHES AND 12 ROWS

**CARD No. 12 A TUCK KNITTING <23>**

PAT RS	YARN	CAM LEV STOP KINI I	RUSSEL LEV	SIDE LEV (BOTH)	D. (RS.)
0		●	●	▼	→
1		●	●	▼	→
2		●	●	▼	→
3		●	●	▼	→
4		●	●	▼	→
58		●	●	▼	→
STOP					→



SET STOP KNOB TO ▼ MARK

Change color at every third row

ONE PATTERN 12 STITCHES AND 20 ROWS

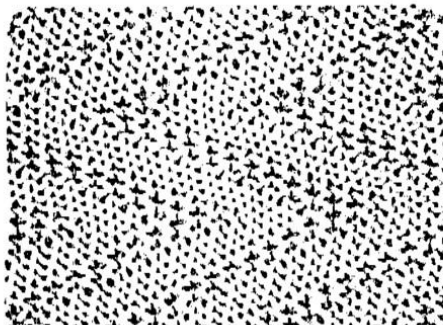


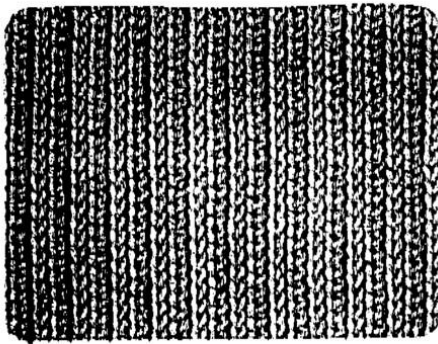
**CARD No. 11 A TUCK KNITTING <24>**

PAT RS	YARN	CAM LEV STOP KINI I	RUSSEL LEV	SIDE LEV (BOTH)	D. (RS.)
0		●	●	▼	→
1		●	●	▼	→
46		●	●	▼	→
STOP					→



SET STOP KNOB TO ▼ MARK





**CARD No. 1 - A TUCK KNITTING <25>**

PAT RS	YARN	CAM LEV	RUSSEL LEV	SIDE LEV (BOTH)	D (RS)
0	█	○	○	▼	→
0	█	○	○	▼	←

SET STOP KNOB TO ● MARK  
 Repeat the above procedure

ONE PATTERN 25 STITCHES AND 2 ROWS



**CARD No. 6 - 1 - A TUCK KNITTING <26>**

PAT RS	YARN	CAM LEV	RUSSEL LEV	SIDE LEV (BOTH)	D (RS)
0	█	○	○	▼	→
7	█	○	○	▼	→
8	█	○	○	▼	←
46	█	○	○	▼	←

SET STOP KNOB TO ▼ MARK  
 Exchange color of every other row in the center of width  
 (1) and (2)

ONE PATTERN 46 STITCHES AND 12 ROWS

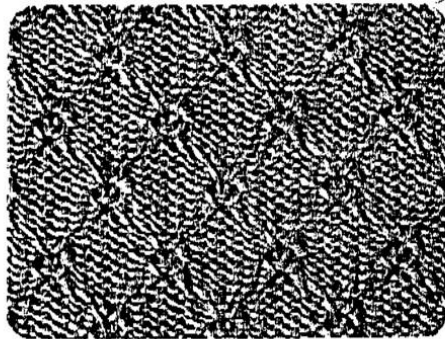
16

**CARD No. 6 1 A TUCK KNITTING <27>**

PAT RS	YARN	CAM LEV	RUSSEL LEV	SIDE LEV (BOTH)	D (RS)
0	█	○	○	▼	→
46	█	○	○	▼	←

SET STOP KNOB TO ▼ MARK.

ONE PATTERN 46 STITCHES AND 16 ROWS

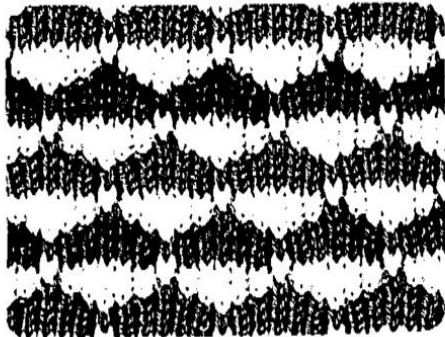


**CARD No. 6 1 A TUCK KNITTING <28>**

PAT RS	YARN	CAM LEV	RUSSEL LEV	SIDE LEV (BOTH)	D (RS)
0	█	○	○	▼	→
3	█	○	○	▼	→
4	█	○	○	▼	←
46	█	○	○	▼	←

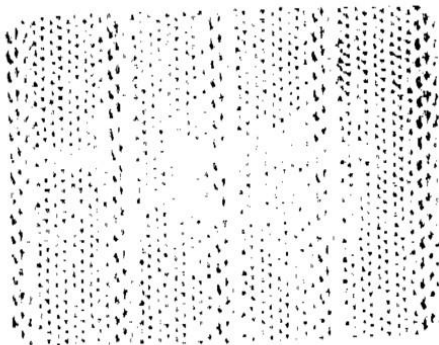
SET STOP KNOB TO ▼ MARK  
 Exchange color of every other row in the center of width  
 WHITE, BROWN and WHITE

ONE PATTERN 46 STITCHES AND 16 ROWS



17

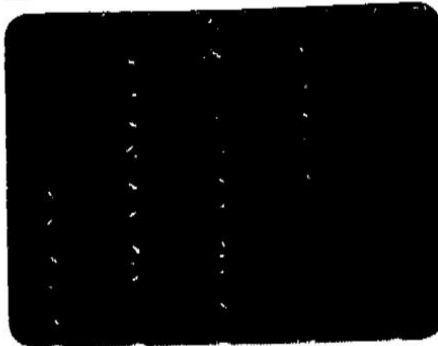


**CARD No. 6-1-A TUCK KNITTING (29)**

PAT RS	YARN	CAM LEV	RUSSEL LEV	SIDE LEV (BOTH)	D (RS)
0		LOCKING I	●	▼	→
0		TUCK	●	▼	→
		LOCKING I			→

SET STOP KNOB TO ● MARK  
Repeat the above procedure

ONE PATTERN 6 STITCHES AND 2 ROW

**CARD No. 3-A TUCK KNITTING (30)**

PAT RS	YARN	CAM LEV	RUSSEL LEV	SIDE LEV (BOTH)	D (RS)
0		LOCKING I	●	▼	→
54		TUCK	●	▼	→
STOP		TUCK	●	▼	→

SET STOP KNOB TO ▼ MARK (NEEDLE SELECTING)  
III III III

ONE PATTERN 4 STITCHES AND 4 ROW

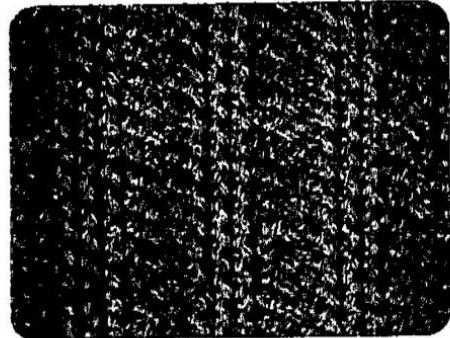
28

**CARD No. 7 A TUCK KNITTING (31)**

PAT RS	YARN	CAM LEV	RUSSEL LEV	SIDE LEV (BOTH)	D (RS)
0		LOCKING I	●	▼	→
58		TUCK	●	▼	→
STOP		TUCK	●	▼	→

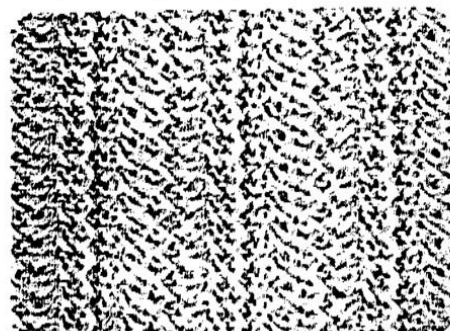
SET STOP KNOB TO ▼ MARK (NEEDLE SELECTING)  
III III III

ONE PATTERN 6 STITCHES AND 4 ROWS

**CARD No. 4-A TUCK KNITTING (32)**

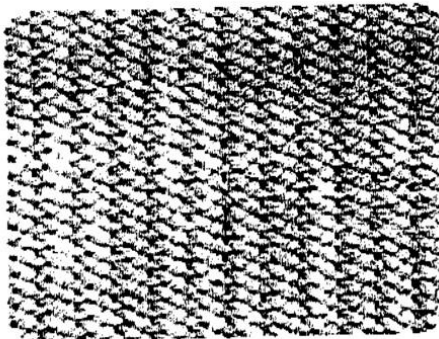
PAT RS	YARN	CAM LEV	RUSSEL LEV	SIDE LEV (BOTH)	D (RS)
0		LOCKING I	●	▼	→
58		TUCK	●	▼	→
STOP		TUCK	●	▼	→

SET STOP KNOB TO ▼ MARK (NEEDLE SELECTING)  
III II III II



29



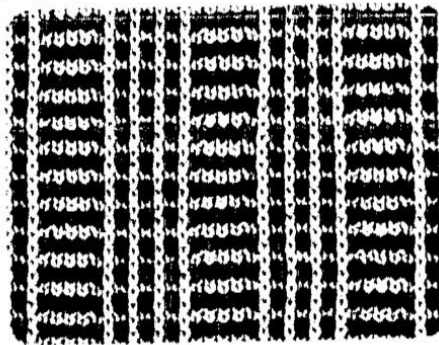


**CARD No. 5-A TUCK-KNITTING (33)**

PAT. RS.	YARN	CAM LEV.	RUSSET LEV.	SIDE LEV. (BOTH)	D. (RS.)
 0 1 2 3 4 42 STOP		 STOCKINET	2		
		 SLIP	3		
		 SLIP	3		
		 SLIP	3		
		 SLIP	3		
		 SLIP	3		
		 SLIP	3		

SET STOP KNOB TO ▼ MARK.
 
 NEEDLE SELECTION

ONE PATTERN 4 STITCHES AND 7 ROWS



**CARD No. 12-A TUCK-KNITTING (34)**

PAT. RS.	YARN	CAM LEV.	RUSSET LEV.	SIDE LEV. (BOTH)	D. (RS.)
 0 1 2 3 4 42 STOP		 STOCKINET	2		
		 SLIP	3		
		 SLIP	3		
		 SLIP	3		

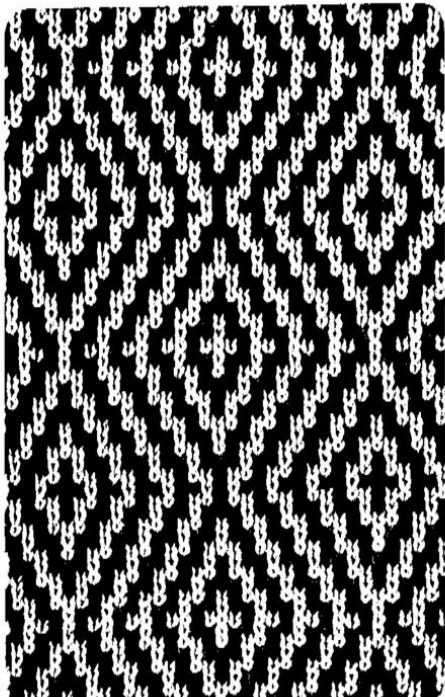
SET STOP KNOB TO ● MARK.  
 (1) Change color at every third row.  
 (2) Repeat the above procedure.

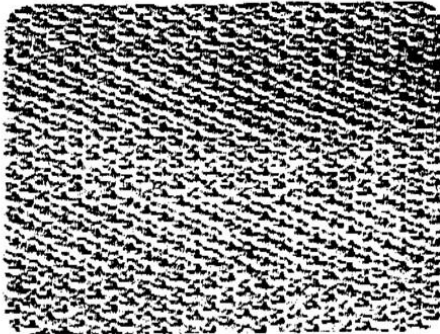
ONE PATTERN 12 STITCHES AND 4 ROWS

**CARD No. 18-A TUCK SLIP STITCHES (1)**

PAT. RS.	YARN	CAM LEV.	RUSSET LEV.	SIDE LEV. (BOTH)	D. (RS.)
 0 1 2 3 4 42 STOP		 STOCKINET	2		
		 SLIP	3		
		 SLIP	3		
		 SLIP	3		
		 SLIP	3		
		 SLIP	3		
		 SLIP	3		

SET STOP KNOB TO ▼ MARK.  
 (1) Change color at every third row.



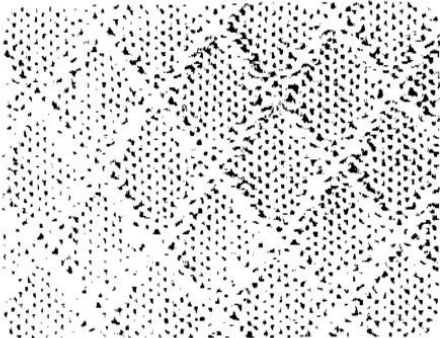


**CARD No. 8-A TUCK SLIP STITCHES<2**

PAT HS	YARN	CAM LEV	RUSSEL LEV	SIDE LEV (BOTH)	D (RS)
0	—	STOCKINET	0	▼	→
1	—	—	2	▼	→
2	—	—	2	▼	→
3	—	—	2	▼	→
4	—	—	2	▼	→
58	—	—	—	—	→
STOP					

SET STOP KNOB TO ▼ MARK

ONE PATTERN 1 STITCHES AND 4 ROW



**CARD No. 10-A TUCK SLIP STITCHES<3**

PAT HS	YARN	CAM LEV	RUSSEL LEV	SIDE LEV (BOTH)	D (RS)
0	—	STOCKINET	0	▼	→
1	—	—	2	▼	→
2	—	—	2	▼	→
3	—	—	2	▼	→
46	—	—	—	—	→
STOP					

SET STOP KNOB TO ▼ MARK

ONE PATTERN 3 STITCHES AND 16 ROW

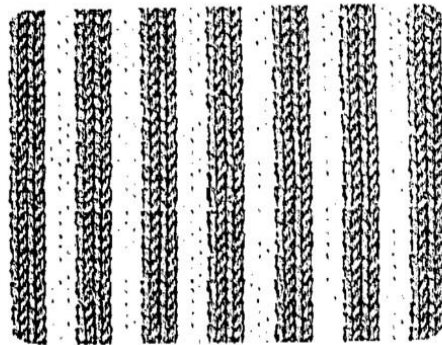
22

**CARD No. 2 A TUCK SLIP STITCHES<4>**

PAT HS	YARN	CAM LEV	RUSSEL LEV	SIDE LEV (BOTH)	D (RS)
0	—	STOCKINET	0	▼	→
1	—	—	0	▼	→
2	—	—	0	▼	→
3	—	—	0	▼	→
4	*	—	0	▼	→
58	—	—	—	—	→
STOP					

SET STOP KNOB TO ▼ MARK  
\* Change color at every third row

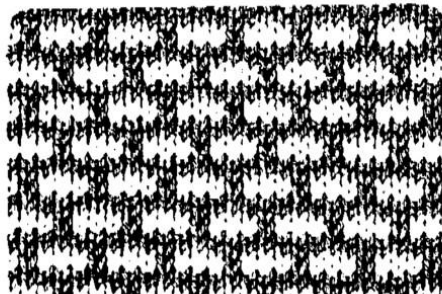
ONE PATTERN 4 STITCHES AND 4 ROWS



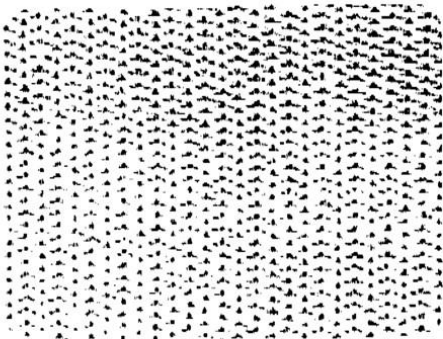
**CARD No. 3 A TUCK SLIP STITCHES<5>**

PAT HS	YARN	CAM LEV	RUSSEL LEV	SIDE LEV (BOTH)	D (RS)
0	—	STOCKINET	0	▼	→
1	—	—	0	▼	→
2	—	STOCKINET	0	▼	→
3	—	—	0	▼	→
4	—	—	0	▼	→
54	—	—	—	—	→
STOP					

SET STOP KNOB TO ▼ MARK





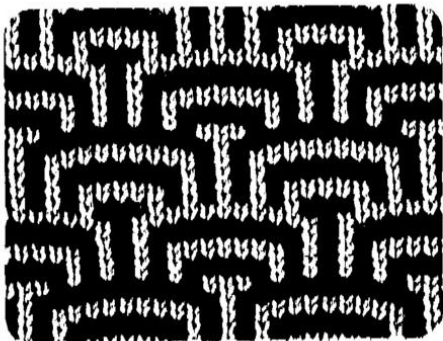


**CARD No. 1-A TUCK SLIP STITCHES(6)**

PAT. RS	YARN	CAM LEV	RUSSEL LEV	SIDE LEV. (BOTH)	D. (RS)
0		STOCKINET	0	0	→
1		0	0	▼	→
2		0	0	▼	→
3		0	0	▼	→
4		0	0	▼	→
58		0	0	▼	→
STOP					→

SET STOP KNOB TO ▼ MARK

ONE PATTERN 25 STITCHES AND 2 ROW



**CARD No. 12-A TUCK SLIP STITCHES(7)**

PAT. RS	YARN	CAM LEV	RUSSEL LEV	SIDE LEV. (BOTH)	D. (RS)
0		STOCKINET	0	0	→
1		0	0	▼	→
2		0	0	▼	→
3		0	0	▼	→
4		0	0	▼	→
58		0	0	▼	→
STOP					→

SET STOP KNOB TO ▼ MARK

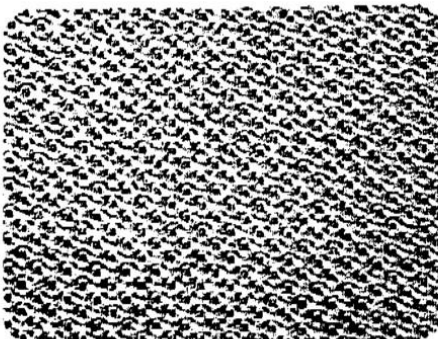
ONE PATTERN 12 STITCHES AND 20 ROW

**CARD No. 7 A TUCK SLIP STITCHES(8)**

PAT. RS	YARN	CAM LEV	RUSSEL LEV	SIDE LEV. (BOTH)	D. (RS)
0		STOCKINET	0	0	→
1		0	0	▼	→
2		0	0	▼	→
3		0	0	▼	→
4		0	0	▼	→
58		0	0	▼	→
STOP					→

SET STOP KNOB TO ▼ MARK

ONE PATTERN 25 STITCHES AND 4 ROWS

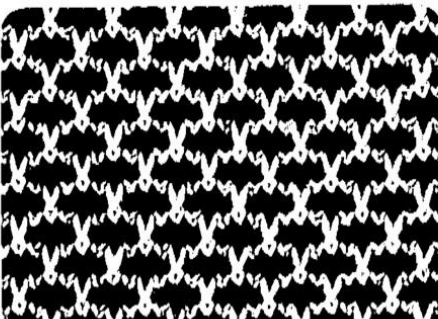


**CARD No. 3 A TUCK SLIP STITCHES(9)**

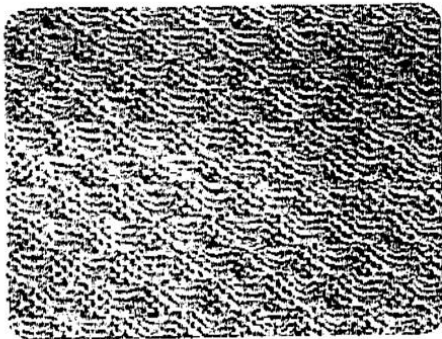
PAT. RS	YARN	CAM LEV	RUSSEL LEV	SIDE LEV. (BOTH)	D. (RS)
0		STOCKINET	0	0	→
1		0	0	▼	→
2		0	0	▼	→
3		0	0	▼	→
4		0	0	▼	→
54		0	0	▼	→
STOP					→

SET STOP KNOB TO ▼ MARK

ONE PATTERN 12 STITCHES AND 20 ROW





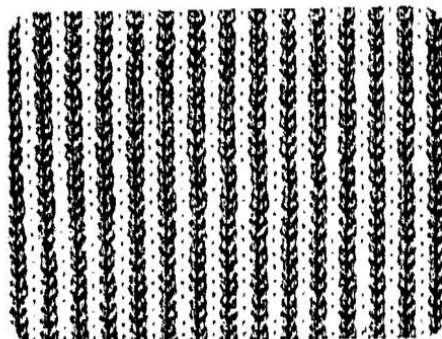


**CARD No. 3 - A TUCK SLIP STITCHES < 1 0**

PAT RS.	YARN	CAM LEV.	RUSSEL LEV.	SIDE LEV. (BOTH)	D (RS.)
0	LOCK KNI	LOCK KNI	0	▼	→
1	SLIP	SLIP	0	▼	→
2	SLIP	SLIP	0	▼	→
3	SLIP	SLIP	0	▼	→
4	SLIP	SLIP	0	▼	→
5	SLIP	SLIP	0	▼	→
54					→
STOP					→

SET STOP KNOB TO ▼ MARK

ONE PATTERN 4 STITCHES AND 1 ROW



**CARD No. 7 - A TUCK SLIP STITCHES < 1 1**

PAT RS.	YARN	CAM LEV.	RUSSEL LEV.	SIDE LEV. (BOTH)	D (RS.)
0	LOCK KNI	LOCK KNI	0	▼	→
1	SLIP	SLIP	0	▼	→
2	SLIP	SLIP	0	▼	→
3	SLIP	SLIP	0	▼	→
4	SLIP	SLIP	0	▼	→
5	SLIP	SLIP	0	▼	→
58					→
STOP					→

SET STOP KNOB TO ▼ MARK

ONE PATTERN 2 STITCHES AND 1 ROW

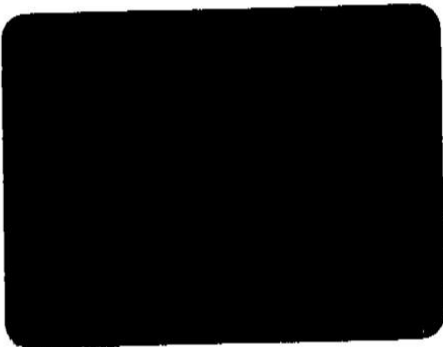
26

**CARD No. 11 - A TUCK SLIP STITCHES < 1 2**

PAT RS.	YARN	CAM LEV.	RUSSEL LEV.	SIDE LEV. (BOTH)	D (RS.)
0	LOCK KNI	LOCK KNI	0	▼	→
1	SLIP	SLIP	0	▼	→
2	SLIP	SLIP	0	▼	→
3	SLIP	SLIP	0	▼	→
4	SLIP	SLIP	0	▼	→
46					→
STOP					→

SET STOP KNOB TO ▼ MARK

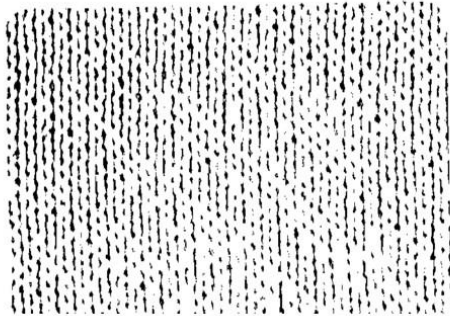
ONE PATTERN 11 STITCHES AND 24 ROWS

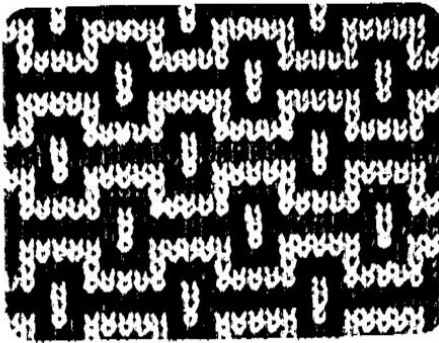


**CARD No. 9 - A TUCK SLIP STITCHES < 1 3**

PAT RS.	YARN	CAM LEV.	RUSSEL LEV.	SIDE LEV. (BOTH)	D (RS.)
0	LOCK KNI	LOCK KNI	0	▼	→
1	SLIP	SLIP	0	▼	→
2	SLIP	SLIP	0	▼	→
3	SLIP	SLIP	0	▼	→
4	SLIP	SLIP	0	▼	→
58					→
STOP					→

SET STOP KNOB TO ▼ MARK



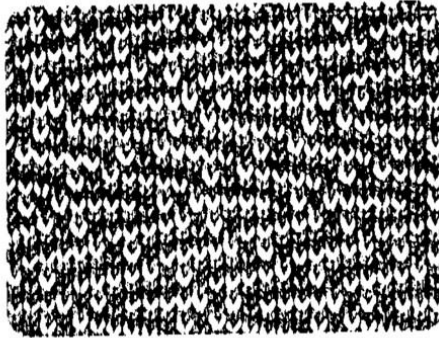


**CARD No. 10—A TUCK SLIP STITCHES<14>**

PAT RS.	YARN	CAM LEV	RUSSEL LEV	SIDE LEV (BOTH)	D (RS)
		DOUBLE	9	▼	→
0		III		▼	→
1		III		▼	→
2					→
3					→
4					→
40					→

SET STOP KNOB TO ▼ MARK  
 11 Rows - 1, 3, 5, 7, 9, 11, 13, 15, 17, 19, 21, 23, 25, 27, 29, 31, 33, 35, 37, 39, 41, 43, 45, 47, 49

ONE PATTERN 14 STITCHES AND 10 ROW



**CARD No. 11—A TUCK SLIP STITCHES<15>**

PAT RS.	YARN	CAM LEV	RUSSEL LEV	SIDE LEV (BOTH)	D (RS)
		DOUBLE	9	▼	→
0		III		▼	→
1		III		▼	→
2					→
3					→
4					→
40					→

SET STOP KNOB TO ▼ MARK  
 11 Rows - 1, 3, 5, 7, 9, 11, 13, 15, 17, 19, 21, 23, 25, 27, 29, 31, 33, 35, 37, 39, 41, 43, 45, 47, 49

ONE PATTERN 15 STITCHES AND 21 ROW

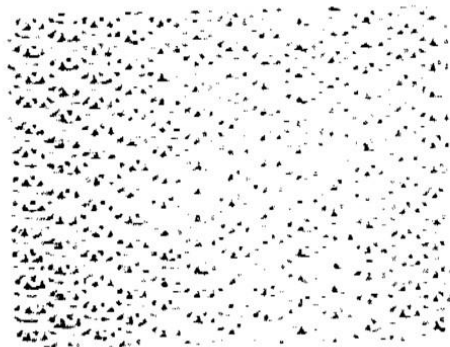
25

**CARD No 2 A TUCK SLIP STITCHES<16>**

PAT RS.	YARN	CAM LEV	RUSSEL LEV	SIDE LEV (BOTH)	D (RS)
		STOCKINET	●	▼	→
0		SLIP	●	▼	→
7		SLIP	●	▼	→
58					→

SET STOP KNOB TO ▼ MARK

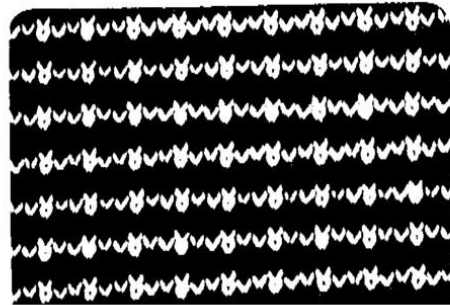
ONE PATTERN 16 STITCHES AND 40 ROWS



**CARD No 8 A TUCK SLIP STITCHES<17>**

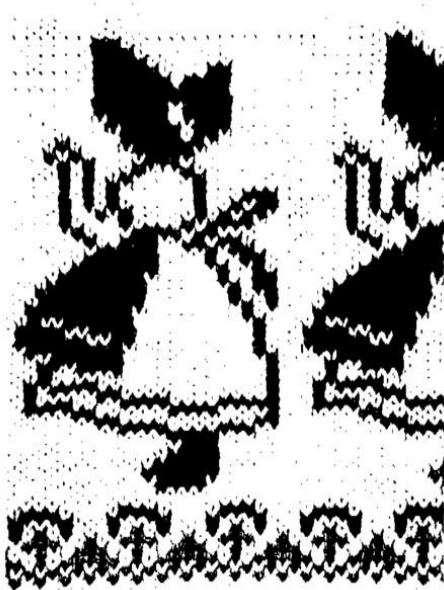
PAT RS.	YARN	CAM LEV	RUSSEL LEV	SIDE LEV (BOTH)	D (RS)
		STOCKINET	●	▼	→
0		SLIP	●	▼	→
1		SLIP	●	▼	→
2					→
3					→
4					→
5					→
6					→
1					→
40					→

1st change color at every third row









CARD No. 20 - A					KNIT-IN<1>	
PAT. RS	YARN 2nd MAIN	CAM LEV EDIT (E)	RUSSEL LEV	SIDE LEV (BOTH)	D (RS)	
0	■	KNIT IN	●	●	→	
4	■		●	●	→	
5	■		●	●	→	
7	■		●	●	→	
8	■		●	●	→	
9	■		●	●	→	
10	■		●	●	→	
59	■		●	●	→	
60	■	END KNIT			→	

SET STOP KNOB TO ▼ MARK.  
 \* set stop knob to ● mark and knit 1 row  
 (CAM) row is cleared

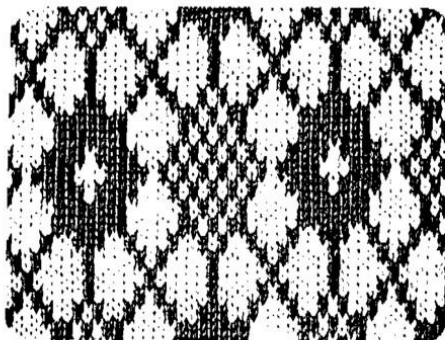
ONE PATTERN 24 STITCHES AND 60 ROWS

32

CARD No. 15 A					KNIT-IN<2>	
PAT. RS	YARN 2nd MAIN	CAM LEV EDIT (E)	RUSSEL LEV	SIDE LEV (BOTH)	D (RS)	
0	■	KNIT IN	●	●	→	
46	■	KNIT IN	●	●	→	
STOP	■		●	●	→	

SET STOP KNOB TO ▼ MARK.

ONE PATTERN 24 STITCHES AND 46 ROWS



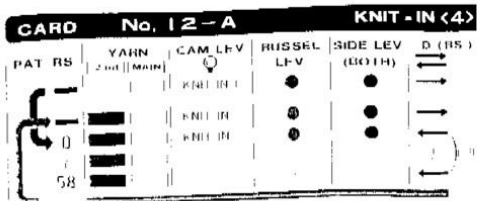
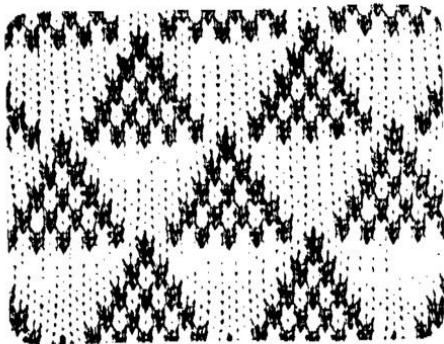
CARD No. 16 A					KNIT-IN<3>	
PAT. RS	YARN 2nd MAIN	CAM LEV EDIT (E)	RUSSEL LEV	SIDE LEV (BOTH)	D (RS)	
0	■	KNIT IN	●	●	→	
58	■	KNIT IN	●	●	→	
STOP	■	KNIT IN	●	●	→	

SET STOP KNOB TO ▼ MARK.

ONE PATTERN 24 STITCHES AND 30 ROWS

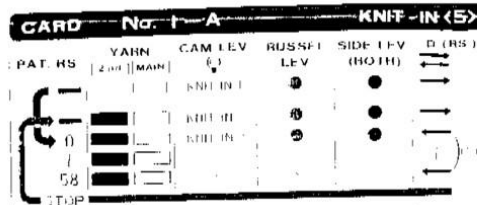
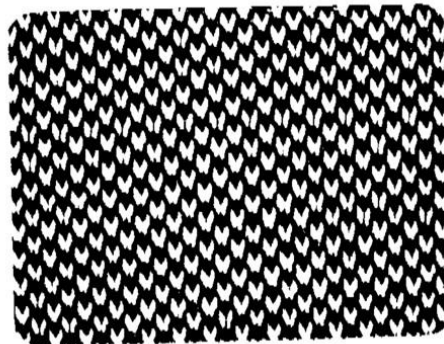


33



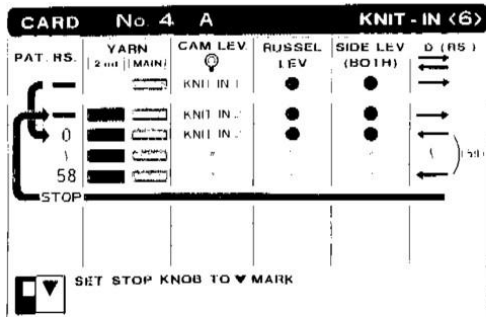
SET STOP KNOB TO ▼ MARK

ONE PATTERN 12 STITCHES AND 20 ROW



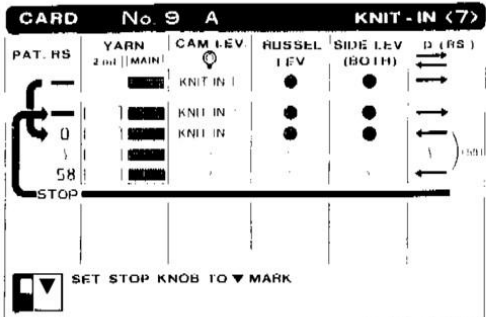
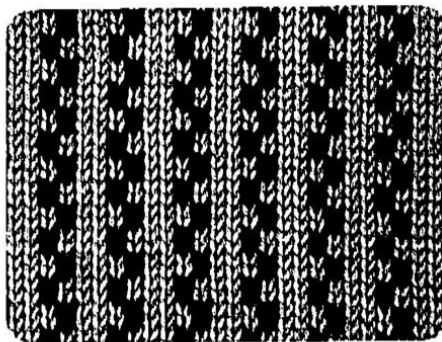
SET STOP KNOB TO ▼ MARK

ONE PATTERN 25 STITCHES AND 2 ROW



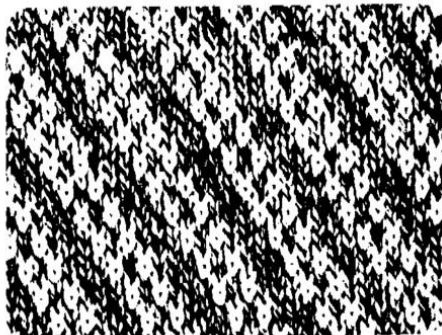
SET STOP KNOB TO ▼ MARK

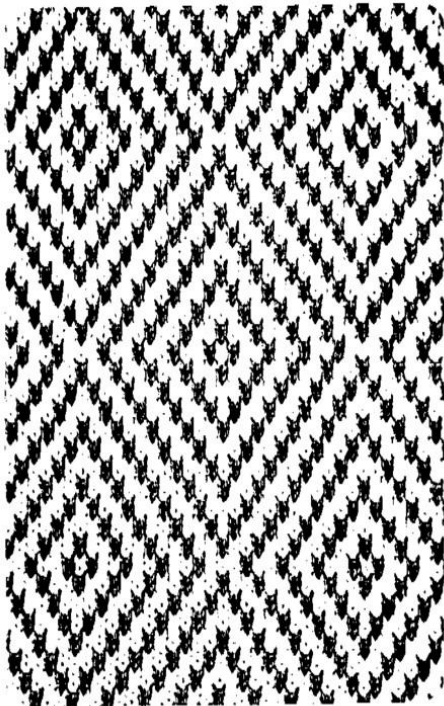
ONE PATTERN 4 STITCHES AND 4 ROWS



SET STOP KNOB TO ▼ MARK

ONE PATTERN 4 STITCHES AND 12 ROWS





**CARD No. 18-A KNIT-IN <8>**

PAT RS	YARN [2nd] [MAIN]	CAM LEV [ ]	RUSSEI LEV	SIDE LEV (BOTH)	D (RS)
1		●			→
2		●			→
3		●			→
4		●			→
5		●			→
6		●			→
7		●			→
8		●			→
9		●			→
10		●			→
11		●			→
12		●			→
13		●			→
14		●			→
15		●			→
16		●			→
17		●			→
18		●			→
19		●			→
20		●			→
21		●			→
22		●			→
23		●			→
24		●			→
25		●			→
26		●			→
27		●			→
28		●			→
29		●			→
30		●			→
31		●			→
32		●			→
33		●			→
34		●			→
35		●			→
36		●			→
37		●			→
38		●			→
39		●			→
40		●			→
41		●			→
42		●			→
43		●			→
44		●			→
45		●			→
46		●			→
47		●			→
48		●			→
49		●			→
50		●			→

STOP

SET STOP KNOB TO ▼ MARK

ONE PATTERN 245 STITCHES AND 48 ROWS

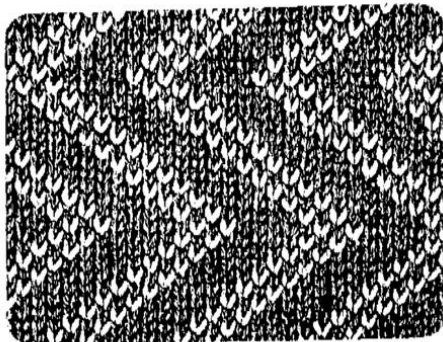
**CARD No. 11-A KNIT-IN <9>**

PAT RS	YARN [2nd] [MAIN]	CAM LEV [ ]	RUSSEI LEV	SIDE LEV (BOTH)	D (RS)
1		●			→
2		●			→
3		●			→
4		●			→
5		●			→
6		●			→
7		●			→
8		●			→
9		●			→
10		●			→
11		●			→
12		●			→
13		●			→
14		●			→
15		●			→
16		●			→
17		●			→
18		●			→
19		●			→
20		●			→
21		●			→
22		●			→
23		●			→
24		●			→
25		●			→
26		●			→
27		●			→
28		●			→
29		●			→
30		●			→
31		●			→
32		●			→
33		●			→
34		●			→
35		●			→
36		●			→
37		●			→
38		●			→
39		●			→
40		●			→
41		●			→
42		●			→
43		●			→
44		●			→
45		●			→
46		●			→
47		●			→
48		●			→
49		●			→
50		●			→

STOP

SET STOP KNOB TO ▼ MARK

ONE PATTERN 18 STITCHES AND 21 ROWS

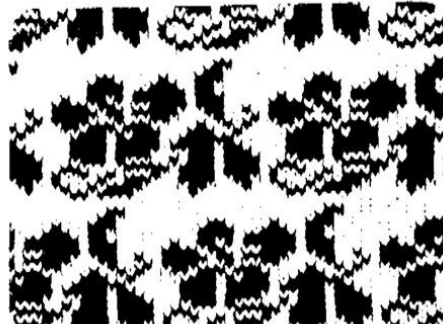


**CARD No. 17-A KNIT-IN <10>**

PAT RS	YARN [2nd] [MAIN]	CAM LEV [ ]	RUSSEI LEV	SIDE LEV (BOTH)	D (RS)
1		●			→
2		●			→
3		●			→
4		●			→
5		●			→
6		●			→
7		●			→
8		●			→
9		●			→
10		●			→
11		●			→
12		●			→
13		●			→
14		●			→
15		●			→
16		●			→
17		●			→
18		●			→
19		●			→
20		●			→
21		●			→
22		●			→
23		●			→
24		●			→
25		●			→
26		●			→
27		●			→
28		●			→
29		●			→
30		●			→
31		●			→
32		●			→
33		●			→
34		●			→
35		●			→
36		●			→
37		●			→
38		●			→
39		●			→
40		●			→
41		●			→
42		●			→
43		●			→
44		●			→
45		●			→
46		●			→
47		●			→
48		●			→
49		●			→
50		●			→

STOP

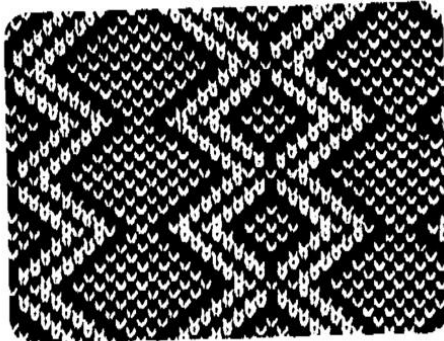
SET STOP KNOB TO ▼ MARK











**CARD No. 14-A KNIT-IN <19>**

PAT. RS.	YARN	CAM LEV.	RUSSEL LEV.	SIDE LEV. (BOTH)	D. (RS.)
0	2nd MAIN	KNIT IN 1	●	●	→ (1)
58	MAIN	KNIT IN 1	●	●	→ (2)
STOP	MAIN	KNIT IN 1	●	●	→ (3) (59)



SET STOP KNOB TO ▼ MARK.

ONE PATTERN 24 STITCHES AND 12 ROWS



**CARD No. 17-A KNIT-IN <20>**

PAT. RS.	YARN	CAM LEV.	RUSSEL LEV.	SIDE LEV. (BOTH)	D. (RS.)
0	2nd MAIN	STOCKINET	●	●	→ (1)
0	MAIN	KNIT IN 1	●	●	→ (2)
19	MAIN	KNIT IN 1	●	●	→ (3) (20)
20	MAIN	STOCKINET	●	●	→ (4)

- (1) SET STOP KNOB TO ● MARK
  - (2) SET STOP KNOB TO ▼ MARK
  - (3) SET STOP KNOB TO ● MARK
- Two rows STOCKINET should be knit in dark brown as shown in picture

ONE PATTERN 24 STITCHES AND 24 ROWS

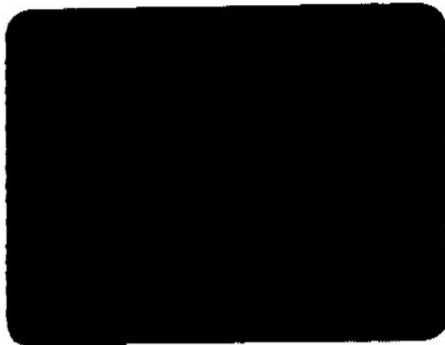
**CARD No. 14 A WEAVING <1>**

PAT. RS.	YARN	CAM LEV.	RUSSEL LEV.	SIDE LEV. (BOTH)	D. (RS.)
0	2nd MAIN	STOCKINET	●	▼	→ (1)
58	MAIN	STOCKINET	●	▼	→ (2)
STOP	MAIN	STOCKINET	●	▼	→ (3) (59)



SET STOP KNOB TO ▼ MARK.

ONE PATTERN 24 STITCHES AND 12 ROWS

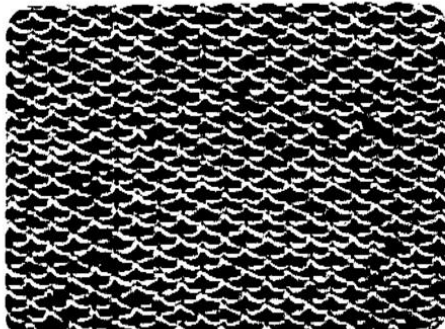


**CARD No. 1 A WEAVING <2>**

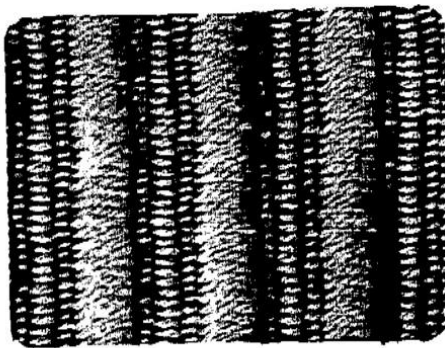
PAT. RS.	YARN	CAM LEV.	RUSSEL LEV.	SIDE LEV. (BOTH)	D. (RS.)
0	2nd MAIN	STOCKINET	●	▼	→ (1)
58	MAIN	STOCKINET	●	▼	→ (2)
STOP	MAIN	STOCKINET	●	▼	→ (3) (59)



SET STOP KNOB TO ▼ MARK.



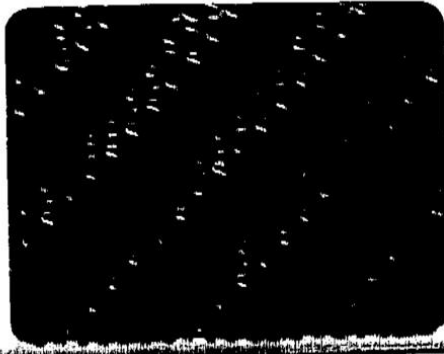




CARD No. 9 A		WEAVING <3>			
PAT. RS.	YARN	CAM LEV.	RUSSEL LEV.	SIDE LEV. (BOTH)	D. (RS.)
0	2 ml   MAIN	STOCKINET	●	▼	↔
0	STOCKINET	●	●	▼	↔

SET STOP KNOB TO ● MARK.

ONE PATTERN - 65 STITCHES AND 1 ROWS



CARD No. 9 - A		WEAVING <4>			
PAT. RS.	YARN	CAM LEV.	RUSSEL LEV.	SIDE LEV. (BOTH)	D. (RS.)
0	2 ml   MAIN	STOCKINET	●	▼	↔
58	STOCKINET	●	●	▼	↔ (59)
STOP	STOCKINET	●	●	▼	↔

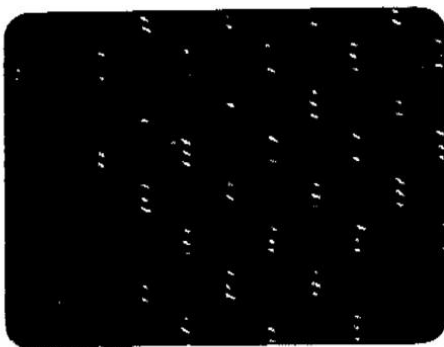
SET STOP KNOB TO ▼ MARK.

ONE PATTERN - 6 STITCHES AND 12 ROWS

CARD No. 3 A		WEAVING <5>			
PAT. RS.	YARN	CAM LEV.	RUSSEL LEV.	SIDE LEV. (BOTH)	D. (RS.)
0	2 ml   MAIN	STOCKINET	●	▼	↔
54	STOCKINET	●	●	▼	↔ (55)
STOP	STOCKINET	●	●	▼	↔

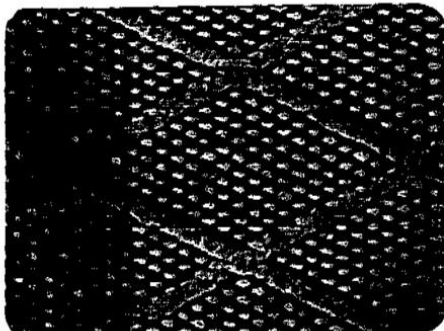
SET STOP KNOB TO ▼ MARK.

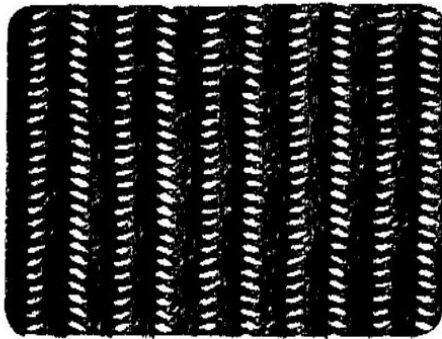
ONE PATTERN - 4 STITCHES AND 8 ROWS



CARD No. 19 A		WEAVING <6>			
PAT. RS.	YARN	CAM LEV.	RUSSEL LEV.	SIDE LEV. (BOTH)	D. (RS.)
0	2 ml   MAIN	STOCKINET	●	▼	↔
46	STOCKINET	●	●	▼	↔ (47)
STOP	STOCKINET	●	●	▼	↔

SET STOP KNOB TO ▼ MARK.





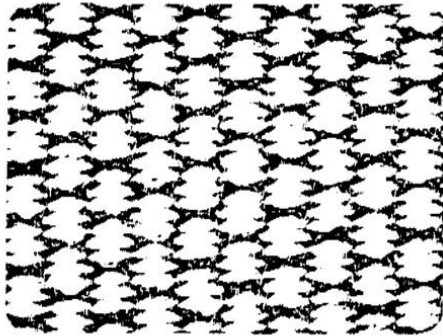
**CARD No. 2-A WEAVING <7>**

PAT. RS	YARN 2nd   MAIN	CAM LEV ⬆	RUSSEL LEV	SIDE LEV (BOTH)	D (RS)
0		⬆	●	▼	↔
0	STOP	⬆	●	▼	↔



SET STOP KNOB TO ● MARK

ONE PATTERN 4 STITCHES AND 1 ROW



**CARD No. 2-A WEAVING <8>**

PAT. RS	YARN 2nd   MAIN	CAM LEV ⬆	RUSSEL LEV	SIDE LEV (BOTH)	D (RS)
0		⬆	●	▼	↔
0	STOP	⬆	●	▼	↔
58	STOP	⬆	●	▼	↔



SET STOP KNOB TO ▼ MARK

ONE PATTERN 4 STITCHES AND 4 ROWS

46

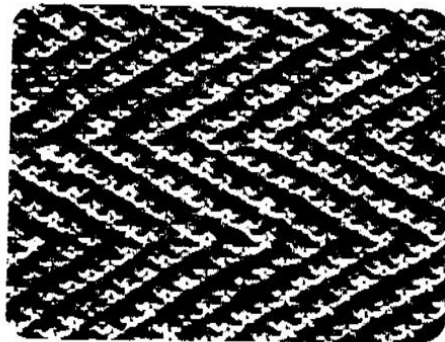
**CARD No. 8 A WEAVING <9>**

PAT. RS	YARN 2nd   MAIN	CAM LEV ⬆	RUSSEL LEV	SIDE LEV (BOTH)	D (RS)
0		⬆	●	▼	↔
52	STOP	⬆	●	▼	↔



SET STOP KNOB TO ▼ MARK.

ONE PATTERN 3 STITCHES AND 18 ROWS



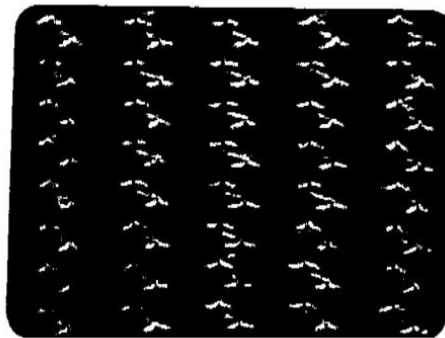
**CARD No. 4 A WEAVING <10>**

PAT. RS	YARN 2nd   MAIN	CAM LEV ⬆	RUSSEL LEV	SIDE LEV (BOTH)	D (RS)
0		⬆	●	▼	↔
58	STOP	⬆	●	▼	↔

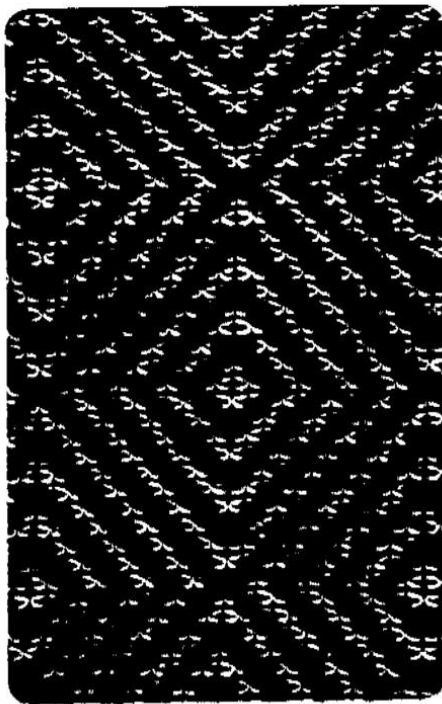


SET STOP KNOB TO ▼ MARK.

ONE PATTERN 4 STITCHES AND 4 ROWS



47



2.5

CARD No. 18 - A		WEAVING <1-1>			
PAT. RS.	YARN 2nd MAIN	CAM LEV. STOCKINET	RUSSEL LEV	SIDE LEV (BOTH)	D (RS)
0	█	●	●	▼	→
1	█	●	●	▼	→
2	█	●	●	▼	→
3	█	●	●	▼	→
STOP					←

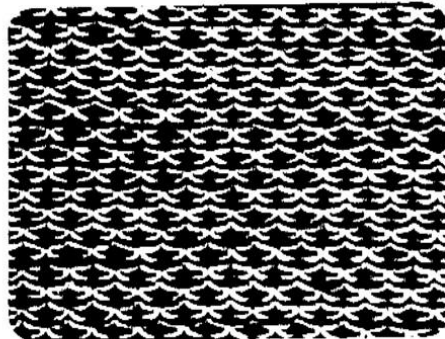
SET STOP KNOB TO ▼ MARK

ONE PATTERN: 24 STITCHES AND 44 ROWS

CARD No. 7 - A		WEAVING <12>			
PAT. RS.	YARN 2nd MAIN	CAM LEV. STOCKINET	RUSSEL LEV	SIDE LEV (BOTH)	D (RS)
0	█	●	●	▼	→
1	█	●	●	▼	→
2	█	●	●	▼	→
3	█	●	●	▼	→
58	█	●	●	▼	→
STOP					←

SET STOP KNOB TO ▼ MARK

ONE PATTERN: 2 STITCHES AND 4 ROWS



Circle for garment

CARD No. 1 - A		WEAVING <13>			
PAT. RS.	YARN 2nd MAIN	CAM LEV. STOCKINET	RUSSEL LEV	SIDE LEV (BOTH)	D (RS)
0	█	●	●	▼	→
0	█	●	●	▼	→
1	█	●	●	▼	→
STOP					←

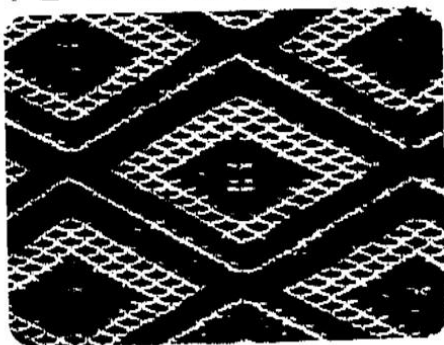
SET STOP KNOB TO ● MARK.

ONE PATTERN: 2 STITCHES AND 1 ROWS



2.9





50

**CARD No. 5-A WEAVING <14>**

PAT. RS	YARN 2nd    MAIN	CAM LEV ⊕	RUSSEL LEV	SIDE LEV (BOTH)	D (RS)
0		⊕	●	▼	↔
1		⊕	●	▼	↔
58		⊕	●	▼	↔
STOP					

SET STOP KNOB TO ▼ MARK

ONE PATTERN 4 STITCHES AND 2 ROW

**CARD No. 16-A WEAVING <15>**

PAT. RS	YARN 2nd    MAIN	CAM LEV ⊕	RUSSEL LEV	SIDE LEV (BOTH)	D (RS)
0		⊕	●	▼	↔
1		⊕	●	▼	↔
58		⊕	●	▼	↔
STOP					

SET STOP KNOB TO ▼ MARK

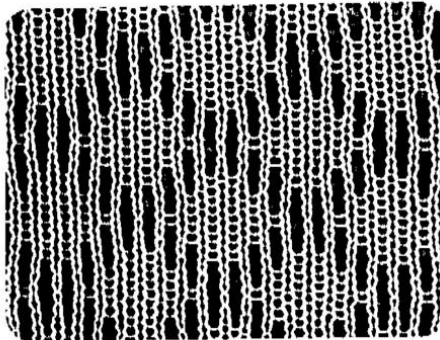
ONE PATTERN 24 STITCHES AND 30 ROW

**CARD No. 10 A WEAVING <16>**

PAT. RS	YARN 2nd    MAIN	CAM LEV ⊕	RUSSEL LEV	SIDE LEV (BOTH)	D (RS)
0		⊕	●	▼	↔
1		⊕	●	▼	↔
46		⊕	●	▼	↔
STOP					

SET STOP KNOB TO ▼ MARK

ONE PATTERN 8 STITCHES AND 6 ROWS

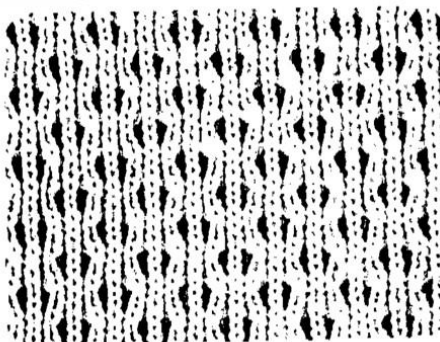


**CARD No. 3 A WEAVING <17>**

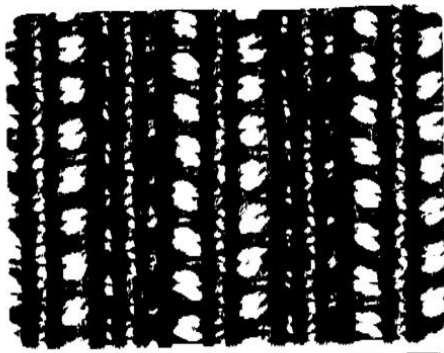
PAT. RS	YARN 2nd    MAIN	CAM LEV ⊕	RUSSEL LEV	SIDE LEV (BOTH)	D (RS)
0		⊕	●	▼	↔
1		⊕	●	▼	↔
2		⊕	●	▼	↔
3		⊕	●	▼	↔
4		⊕	●	▼	↔
58		⊕	●	▼	↔
STOP					

SET STOP KNOB TO ▼ MARK  
\* (1) - (1) Repeat the above procedure

ONE PATTERN 4 STITCHES AND 8 ROWS



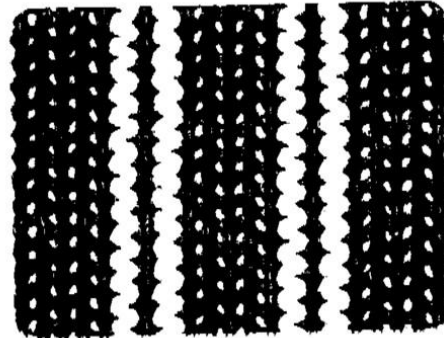
51



**CARD No. 4-A WEAVING <18>**

PAT. RS.	YARN (2nd   MAIN)	CAM LEV. STOCKIN1	RUSSEL LEV.	SIDE LEV. (BOTH)	D. (RS)
1	█	●	●	▼	→
0	█	●	●	▼	→
58	█	●	●	▼	→
STOP	█	●	●	▼	→

SET STOP KNOB TO ▼ MARK      NEEDLE SELECTING  
 IIII I IIII I IIII I  
 ONE PATTERN 8 STITCHES AND 4 ROWS



**CARD No. 5-A WEAVING <19>**

PAT. RS.	YARN (2nd   MAIN)	CAM LEV. STOCKIN1	RUSSEL LEV.	SIDE LEV. (BOTH)	D. (RS)
1	█	●	●	▼	→
0	█	●	●	▼	→
58	█	●	●	▼	→
STOP	█	●	●	▼	→

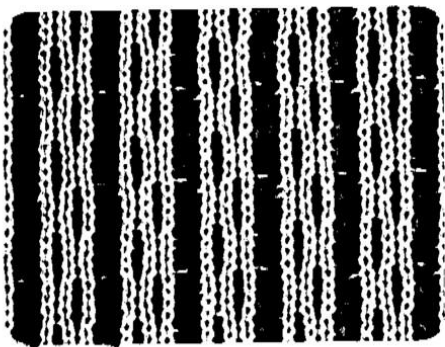
SET STOP KNOB TO ▼ MARK      NEEDLE SELECTING  
 IIII I IIII I IIII I IIII I  
 ONE PATTERN 8 STITCHES AND 2 ROWS



**CARD No. 3 A WEAVING <20>**

PAT. RS.	YARN (2nd   MAIN)	CAM LEV. STOCKIN1	RUSSEL LEV.	SIDE LEV. (BOTH)	D. (RS)
1	█	●	●	▼	→
0	█	●	●	▼	→
54	█	●	●	▼	→
STOP	█	●	●	▼	→

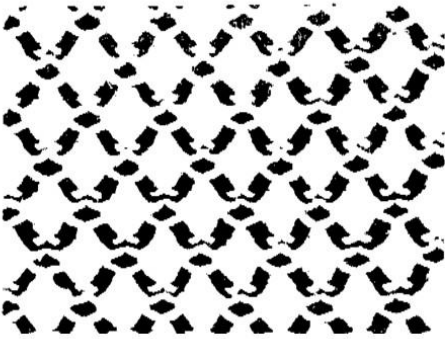
SET STOP KNOB TO ▼ MARK      NEEDLE SELECTING  
 IIII I IIII I IIII I  
 ONE PATTERN 4 STITCHES AND 8 ROWS



**CARD No. 3 A WEAVING <21>**

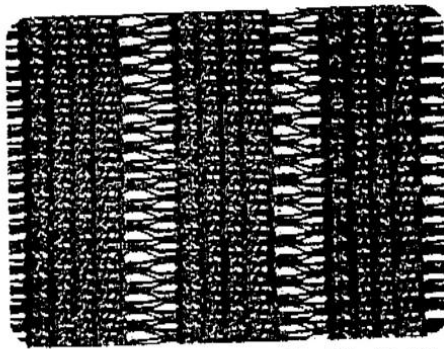
PAT. RS.	YARN (2nd   MAIN)	CAM LEV. STOCKIN1	RUSSEL LEV.	SIDE LEV. (BOTH)	D. (RS)
1	█	●	●	▼	→
0	█	●	●	▼	→
1	█	●	●	▼	→
2	█	●	●	▼	→
3	█	●	●	▼	→
4	█	●	●	▼	→
54	█	●	●	▼	→
STOP	█	●	●	▼	→

SET STOP KNOB TO ▼ MARK      NEEDLE SELECTING  
 IIII I IIII I IIII I IIII I  
 ONE PATTERN 4 STITCHES AND 8 ROWS



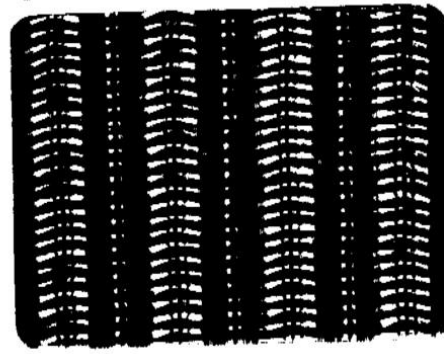






CARD		No. 7-A				LACE KNITTING (3)	
PAT RS	YARN	CAM LEV	RUSSEL LEV	SIDE LEV (BOTH)	D (RS)		
1	Stockinette	STOCKINET	●	▼	→	→	
0	Stockinette	HICK	●	▼	→	→	
58	Stockinette	HICK	●	▼	→	→	

SET STOP KNOB TO ▼ MARK (NEEDLE SELECTING) III III III  
 ONE PATTERN 7 STITCHES AND 3 ROW

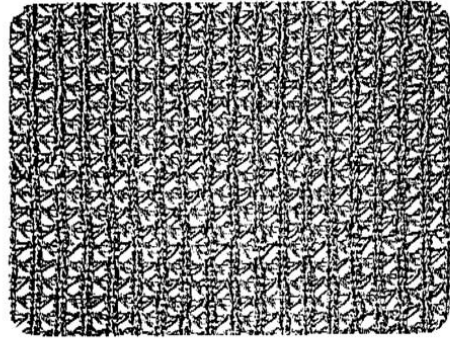


CARD		No. 8-A				LACE KNITTING (4)	
PAT RS	YARN	CAM LEV	RUSSEL LEV	SIDE LEV (BOTH)	D (RS)		
1	Stockinette	STOCKINET	●	▼	→	→	
1	Stockinette	HICK	●	▼	→	→	
1	Stockinette	STOCKINET	●	▼	→	→	
1	Stockinette	HICK	●	▼	→	→	

SET STOP KNOB TO ● MARK (NEEDLE SELECTING) III III III  
 ONE PATTERN 8 STITCHES AND 3 ROW

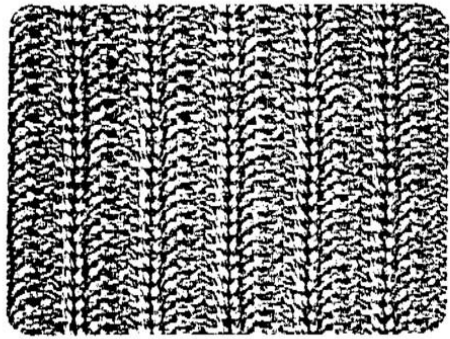
CARD		No. 3 A				LACE KNITTING (5)	
PAT RS	YARN	CAM LEV	RUSSEL LEV	SIDE LEV (BOTH)	D (RS)		
1	Stockinette	STOCKINET	●	▼	→	→	
0	Stockinette	HICK	●	▼	→	→	
1	Stockinette	STOCKINET	●	▼	→	→	
2	Stockinette	HICK	●	▼	→	→	
3	Stockinette	STOCKINET	●	▼	→	→	
4	Stockinette	Repeat the above procedure		▼	→	→	
54	Stockinette	STOCKINET	●	▼	→	→	

SET STOP KNOB TO ▼ MARK (NEEDLE SELECTING) III III III  
 ONE PATTERN 45 STITCHES AND 8 ROWS



CARD		No. 1 A				LACE KNITTING (6)	
PAT RS	YARN	CAM LEV	RUSSEL LEV	SIDE LEV (BOTH)	D (RS)		
1	Stockinette	STOCKINET	●	▼	→	→	
0	Stockinette	HICK	●	▼	→	→	
58	Stockinette	HICK	●	▼	→	→	

SET STOP KNOB TO ▼ MARK (NEEDLE SELECTING) III III III  
 ONE PATTERN 45 STITCHES AND 2 ROWS

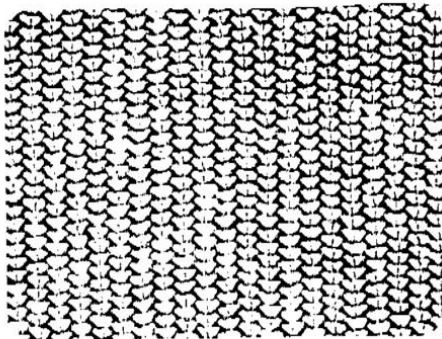










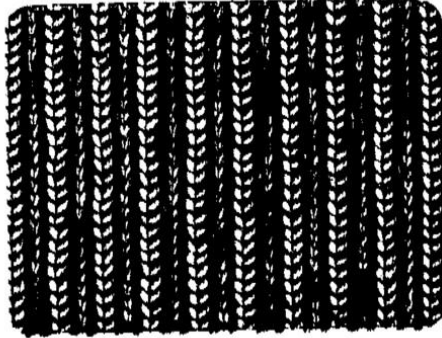


**CARD No. 1 - A TWO THREAD KNITTING <1>**

PAT RS	YARN MAIN	CAM LEV	RUSSEL LEV	SIDE LEV	D (RS)
0	2nd MAIN	TOE LINE 1	0	▼	→
0	2nd	TOE	0	▼	→
58	2nd	TOE	0	▼	→
STOP					←

SET STOP KNOB TO ▼ MARK

ONE PATTERN 2 STITCHES AND 2 ROWS



**CARD No. 1 - A TWO THREAD KNITTING <2>**

PAT RS	YARN MAIN	CAM LEV	RUSSEL LEV	SIDE LEV	D (RS)
0	2nd MAIN	TOE LINE 1	0	▼	→
0	2nd	TOE LINE 1	0	▼	→
58	2nd	TOE LINE 1	0	▼	→
STOP					←

SET STOP KNOB TO ● MARK  
- Repeat the above procedure

ONE PATTERN 2 STITCHES AND 2 ROWS



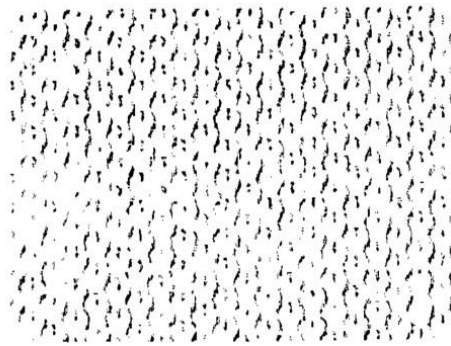
62

**CARD No. 7 A TWO THREAD KNITTING <3>**

PAT RS	YARN MAIN	CAM LEV	RUSSEL LEV	SIDE LEV	D (RS)
0	2nd MAIN	STOCKIN 1	●	▼	→
0	2nd	STOCKIN 1	●	▼	→
58	2nd	TOE	●	▼	→
STOP		*	*	*	←

SET STOP KNOB TO ▼ MARK  
- Repeat the above procedure

ONE PATTERN 2 STITCHES AND 4 ROWS

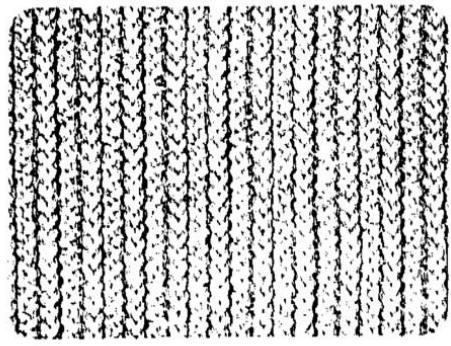


**CARD No. 5 A TWO THREAD KNITTING <4>**

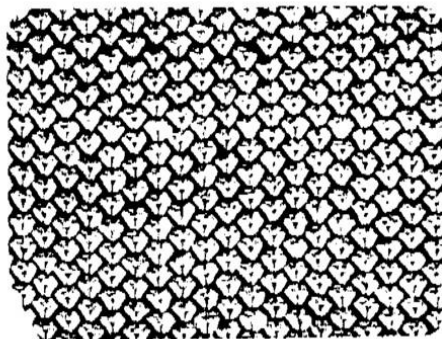
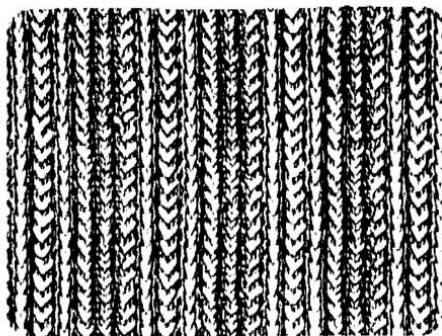
PAT RS	YARN MAIN	CAM LEV	RUSSEL LEV	SIDE LEV	D (RS)
0	2nd MAIN	STOCKIN 1	●	▼	→
0	2nd	TOE	●	▼	→
58	2nd	TOE	●	▼	→
STOP					←

SET STOP KNOB TO ▼ MARK

ONE PATTERN 4 STITCHES AND 2 ROWS



63



### CARD No. 9—A TWO THREAD KNITTING (5)

PAT. RS.	YARN (2nd) MAIN	CAM LEV. (DOWN)	RUSSET LEV.	SIDE LEV. (BOTH)	D. (RS.)
1)	Wool	DOWN	5	▼	→
2)	Wool	UP	5	▼	→
3)	Wool	DOWN	5	▼	→

SET STOP KNOB TO ● MARK  
Repeat the above 1 to 3 times

ONE PATTERN, 6 STITCHES AND 2 ROW

### CARD No. 7—A TWO THREAD KNITTING (6)

PAT. RS.	YARN (2nd) MAIN	CAM LEV. (DOWN)	RUSSET LEV.	SIDE LEV. (BOTH)	D. (RS.)
1)	Wool	DOWN	5	▼	→
2)	Wool	UP	5	▼	→
3)	Wool	DOWN	5	▼	→
4)	Wool	UP	5	▼	→
5)	Wool	DOWN	5	▼	→
6)	Wool	UP	5	▼	→

SET STOP KNOB TO ▼ MARK

ONE PATTERN, 6 STITCHES AND 4 ROW

## SERIES OF PUNCHED CARDS FOR SALE SEPARATELY

To give you a broader selection of punched cards to choose from there has been thirteen series placed on sale. Each series contains ten punched cards.

Series are classified into those of solid pattern, colored pattern, etc., respectively representing the series. Besides these representative patterns, each series includes other types of knitting too.

- Series No. 21 Solid pattern.
- Series No. 22 Colored patterns.
- Series No. 23 Lace knitting.
- Series No. 24 Knit in, large patterns.
- Series No. 25 Knit in, large patterns.
- Series No. 26 Knit in, large patterns.
- Series No. 27 Knit in, small patterns.
- Series No. 28 Weaving, large pattern.
- Series No. 29 Weaving, small pattern.
- Series No. 30 Knit in, special patterns.
- Series No. 31 Knit in, special patterns.

