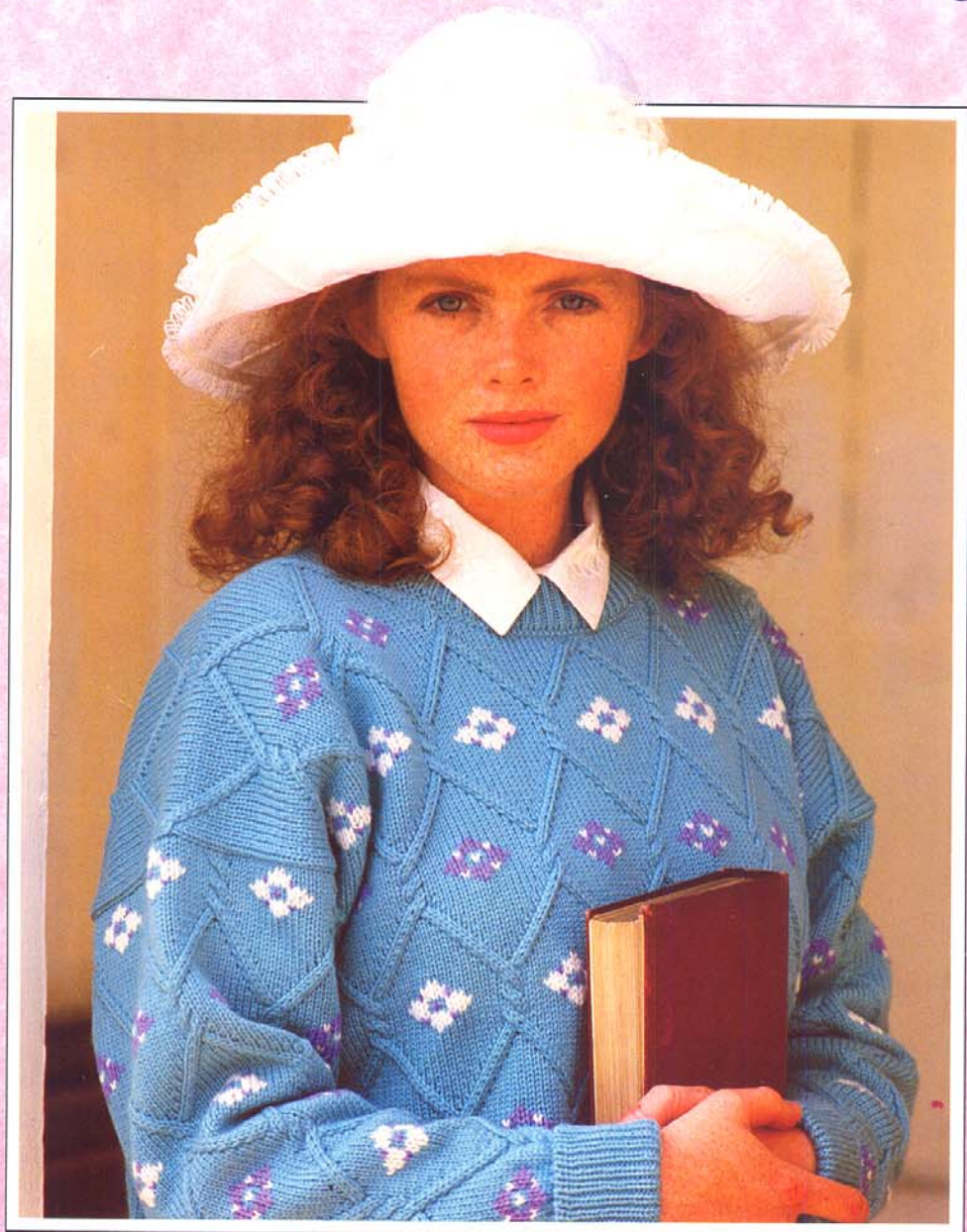


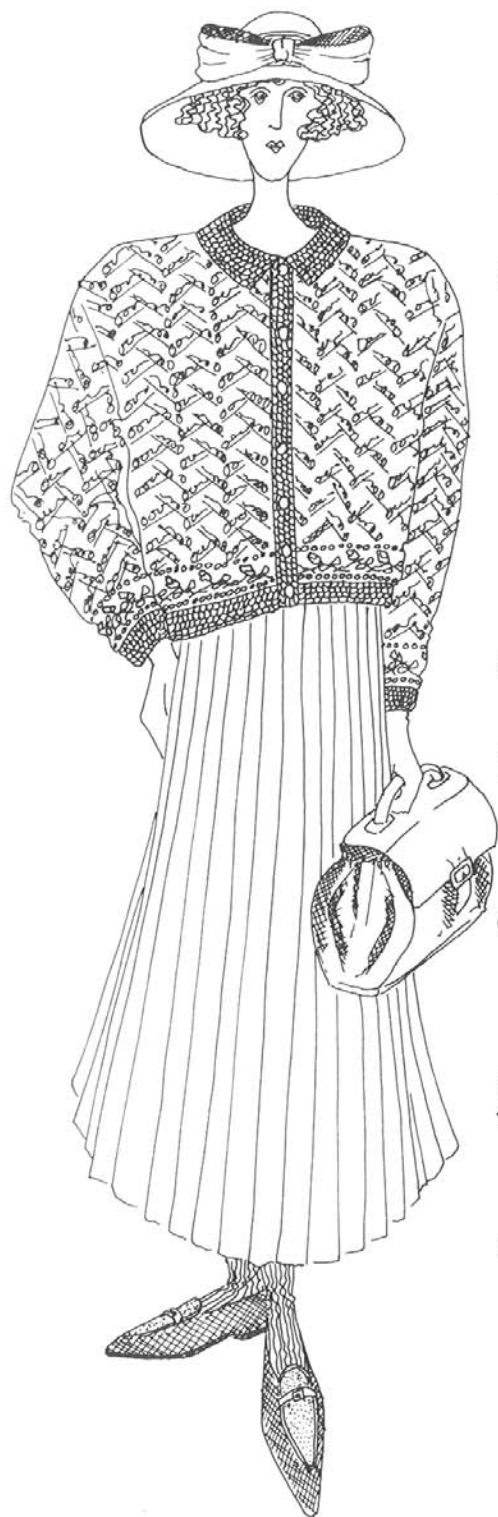
OPTION 4



... the power to choose

KNITMASTER
~~~~~

# OPTION 4



Option 4, the revolutionary new knitting machine from Knitmaster, offers you the power to choose.

## THE POWER TO CHOOSE

Choose which thickness of yarn you want to knit — you have 4 options.

1. 4ply
2. Double Knitting
3. Aran
4. Chunky

The Option 4 can knit them all, including your favourite fancy yarns — 4ply, slubs, bouclés and gimps; brushed, textured and fancy DK's; mohairs, cottons, silks, acrylics and wools.

## THE POWER TO CHOOSE

Choose which stitch you want to knit — you have 4 options.

1. Tuck Stitch
2. Slip Stitch
3. Plating
4. Stocking Stitch

Using the Option 4's Semi-automatic patterning system, you can knit all of these plus their variations — Multi-coloured Tuck Stitch, Fair Isle (using the traditional Slip Stitch method), Cord Knitting, Partial Knitting and Plated Tuck Stitch. And with a little more handwork, you can also knit Ribs, Lace, Garter Stitch, Cables, Moss Stitch and Mock English Rib.

## THE POWER TO CHOOSE

Choose who you knit for — you have 4 options.

1. Men
2. Women
3. Children
4. Babies

The Option 4 has 150 specially designed needles which will allow you to knit from very tiny baby sizes right up to chunky men's sizes.

## THE POWER TO CHOOSE

Choose which of the 18 beautiful designs included in this book you're going to knit first. We know the choice will be difficult but we also know you'll knit many of these designs time and time again for yourself, your family and friends.

... *the power to choose*

# OPTION 4

## CONTENTS

|                    |           |                                            |    |
|--------------------|-----------|--------------------------------------------|----|
|                    | <b>1</b>  | Lady's Tuck and Cable Sweater              | 6  |
|                    | <b>2</b>  | Mohair Intarsia Jacket                     | 8  |
|                    | <b>3</b>  | Lady's Aran Style Sweater                  | 10 |
|                    | <b>4</b>  | Man's Aran Style Sweater                   | 10 |
|                    | <b>5</b>  | Child's Aran Style Sweater                 | 12 |
|                    | <b>6</b>  | Pink Sweater with Sailor Collar            | 16 |
| <b>EDITOR</b>      | <b>7</b>  | Emerald Mohair Jacket                      | 17 |
| Laraine McCarthy   | <b>8</b>  | Child's Raglan V-neck Sweater and Cardigan | 19 |
|                    | <b>9</b>  | Lady's V-neck Raglan Cardigan              | 21 |
| <b>DESIGN</b>      | <b>10</b> | Man's Raglan Crew Neck Sweater             | 22 |
| Sarah Pooley       | <b>11</b> | Man's Navy Crew Neck Sweater               | 26 |
|                    | <b>12</b> | Lady's Intarsia Crew Neck Sweater          | 26 |
| <b>PATTERNS</b>    | <b>13</b> | Baby's Leggings and Sweater                | 29 |
| Debbie Clarkson    | <b>14</b> | Baby's All-in-One Suit                     | 32 |
|                    | <b>15</b> | Lady's Purple Sweater                      | 35 |
| <b>KNITTING</b>    | <b>16</b> | Peach Lace and Garter Stitch Sweater       | 37 |
| Samantha Lamb      | <b>17</b> | Lady's Lace and Floral Cardigan            | 38 |
| Janette Wilkins    | <b>18</b> | Lady's Diamond Cable Sweater               | 42 |
| <b>PHOTOGRAPHY</b> |           |                                            |    |
| Liz McAulay        |           | <b>Techniques</b>                          | 25 |
|                    |           | <b>Abbreviations</b>                       | 20 |

Although every reasonable care has been taken to ensure that the instructions and designs in this pattern book are correct, Modern Knitting Ltd. cannot accept responsibility for any errors which may have occurred in spite of such precautions. All rights reserved. Reproduction in whole or part without written permission is strictly prohibited.

A Modern Knitting Publication © 1989  
Modern Knitting is a Registered Trademark  
Printed by E E Owens & Co Ltd.  
Printed in the U.K.

1





2

# 1 LADY'S TUCK AND CABLE SWEATER



This beautifully textured sweater combines several of the stitch techniques available to you and your Option 4. The whole sweater has been knitted using the plating technique which has then been combined with a variety of tuck stitch formations to create the interesting textured patterns on the sleeves and body, and with cables and ribs for the cuffs, welts and collar.

## BACK

Push 52 (57) (62) Ns at left and right of centre 0 to B pos. 104 (114) (124) Ns altog. Using waste yarn, cast on. Push Ns to D pos. Using 2 ends of col 1, cast on by hand ('e' wrap). Push Ns to C pos. RC 000. MT. Continue in Pattern C. Knit 66 rows. Using waste yarn, knit several rows and release from machine. Push 57 (62) (67) Ns at left and right of centre 0 to B pos. 114 (124) (134) Ns altog. Carr at right. Turn welt and replace sts from below waste yarn onto Ns increasing evenly (see additional notes). RC 000. MT. Continue in Pattern B, knit 86 rows. Continue in Pattern A, knit 14 (18) (22) rows. RC 100 (104) (108). Carr at right.

## Shape Armholes

Cast off 2 sts at beg of the next 4 rows. Dec 1 st at both ends of the next and ev foll alt row 3 (4) (5) times in all, knit 1 row. Dec 1 st at both ends of the next and ev foll 3rd row 11 times in all. 78 (86) (94) sts\*. Knit to Row 184 (188) (192). Carr at right.

## Shape Back Neck

Note pos in pattern. Using a length of col 1, cast off centre 30 sts. Hold Ns at left.

## Knit Right Part as Follows:-

Knit 1 row. Cast of 2 sts at beg of the next row, knit 1 row. Cast off 2 sts at beg of the next row. RC 188 (192) (196). Carr at right.

## Shape Shoulder

Cast off 6 (7) (9) sts at beg of the next row, 2 sts at beg of the next row, 6 (7)

For Knitmaster Option 4 Machines.

## Sizes:

To fit 81-86 (91-96) (101-106) cms/32-34 (36-38) (40-42) inch bust.

## Materials:

Knitmaster Kone 4ply  
Col 1 (Aran) — 550 (600) (650) grms

## Tensions:

Pattern A (main body) — Plating and Tuck Stitch — 21.5 sts and 37 rows to 10 cms. TD at approx. 3 (MT)

Pattern B (border) — Plating and Tuck Stitch — 50 rows to 10 cms. TD at approx. MT.

Pattern C (welts) — Cable and Rib — 37 rows to 10 cms. TD at approx. MT.

## Pattern Note:

Pattern A. Col 1 in feeder 1 and

plating feeder. Continue in tuck stitch pattern following chart.

Pattern B. Col 1 in feeder 1 and plating feeder. Continue in tuck stitch pattern following chart.

Pattern C. Col 1 in feeder 1 and plating feeder. Continue in cable and rib pattern following chart. i.e. Knit 4 rows. Drop sts either side of cable 4 rows down (tie a piece of waste yarn through the dropped sts to stop them running into the 'e' wrap). Leave empty Ns in B pos. Work cables. Knit 4 rows. Drop same sts 4 rows down remembering to leave empty Ns in B pos. Continue to end. Pick up sts previously dropped and pick up as for ribbing. Drop remaining sts shown on chart and pick up as for ribbing.

(9) sts at beg of the next row, dec 1 st at beg of the next row. Cast off rem 5 (7) (7) sts. Take carr to left. Using a transfer tool, bring Ns back to B pos. Keeping pattern correct, knit left part as for right part.

## FRONT

Knit as for Back to\*. Knit to Row 154 (158) (162). Carr at right.

## Shape Neck

Note pos in pattern. Using a length of col 1, cast off centre 26 sts. Hold Ns at left.

## Knit Right Part as Follows:-

Knit 1 row. Cast off 2 sts at beg of the next and foll alt row, knit 1 row. Dec 1 st at neck edge on the next and ev foll 3rd row 5 times in all, knit to Row 188 (192) (196). Carr at right.

## Shape Shoulder

Cast off 6 (7) (9) sts at beg of the next and foll alt row, knit 1 row. Cast off rem 5 (7) (7) sts. Carr at left. Using a transfer tool, bring Ns back to B pos. Keeping pattern correct, knit left part as for right part.

## SLEEVES

Push 26 Ns at left and right of centre 0 to B pos. 52 Ns altog. Using waste yarn, cast on. Push Ns to D pos. Using 2 ends of col 1, cast on by hand ('e' wrap). Push Ns to C pos. RC 000. MT. Continue in Pattern C. Knit 44 rows. Using waste yarn, knit several rows and release from machine. Turn work and replace onto Ns. RC 000. MT. Continue in Pattern B for 86 rows then continue in Pattern A to end, AT THE SAME TIME knit 2 rows. Inc 1 st at both ends of the next and ev foll 5th row 28 times in all. 108 sts. Knit to Row 154 (158) (162).

## Shape Top

Cast off 2 sts at beg of the next 12 rows. Dec 1 st at both ends of the next and ev foll alt row 5 times in all, knit 1 row. Cast

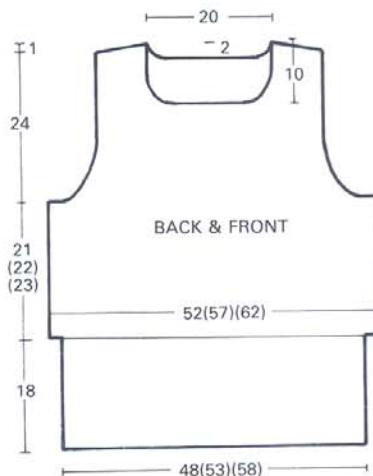
off 2 sts at beg of the next 14 rows, 3 sts at beg of the next 6 rows and 4 sts at beg of the next 4 rows. Cast off rem 12 sts.

## NECKBAND

Push 130 Ns to B pos. Using waste yarn, cast on. Push Ns to D pos. Using 2 ends of col 1, cast on by hand ('e' wrap). Push Ns to C pos. RC 000. MT. Continue in Pattern C. Knit 60 rows. Knit 1 row stockinet. Cast off with waste yarn.

## TO MAKE UP

Pin out to size and steam carefully. Join shoulder seams. Set in sleeves. Join side and sleeve seams. Backstitch neckband into pos and join centre back neck seam. Fold in half and catch down on the inside. Give final light steam.



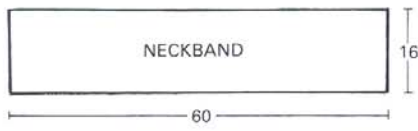
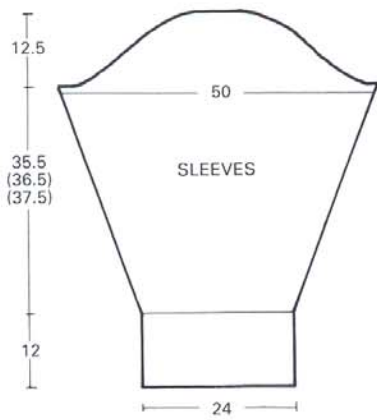


CHART A

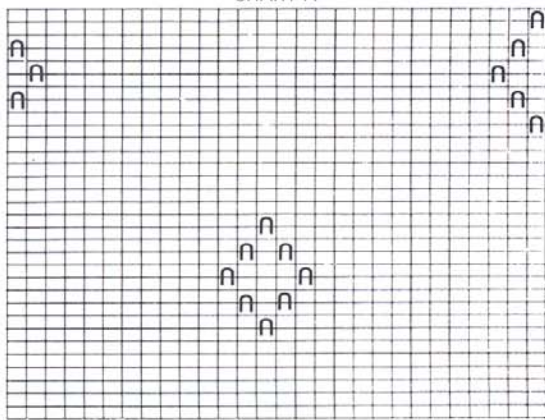
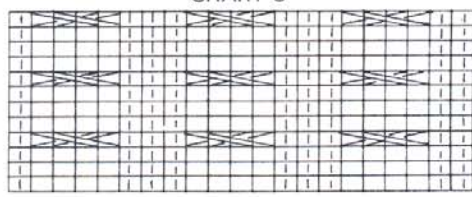
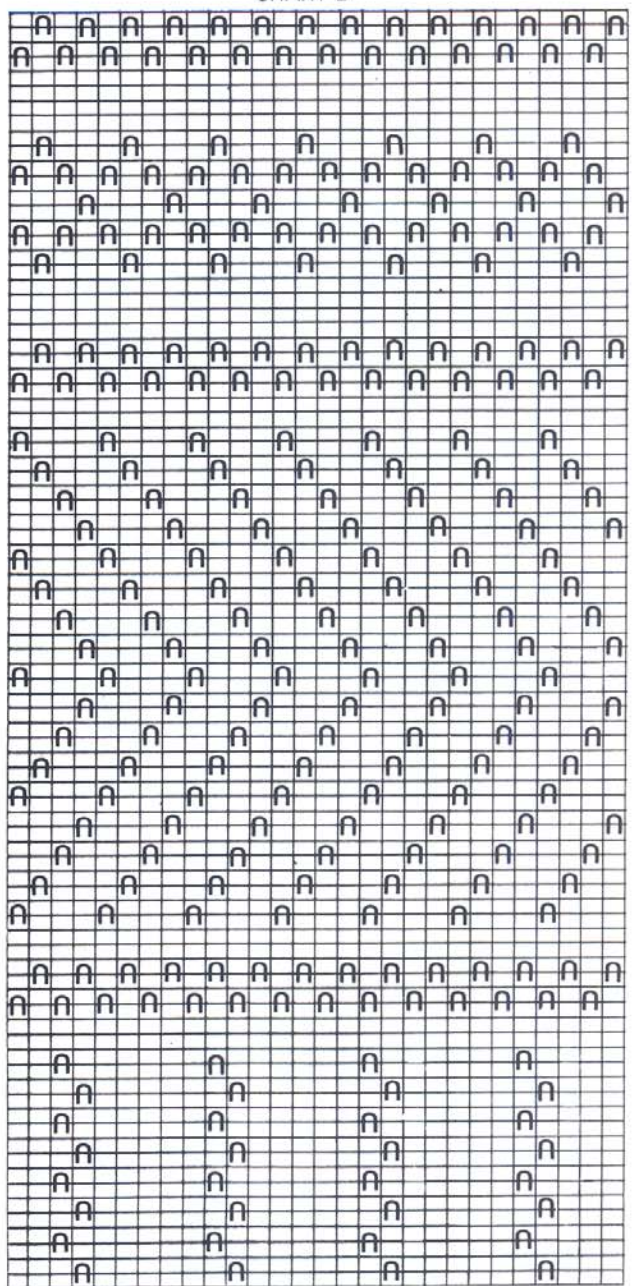


CHART C



\* Push Ns shown to D pos.  
Set russell levers to I, knit 2 rows. Push Ns back to C pos.  
\* Rept throughout

CHART B



= cross 2 sts at right over 2 sts at left

= drop st and reform as for ribbing

## 2 MOHAIR INTARSIA JACKET



An invaluable extra for your Option 4 is the AG10 Intarsia Carriage. With it you can knit the popular stitch intarsia. Intarsia is a method of introducing as many different colours into your knitting as you like to create a whole variety of colourful designs. If you don't have an Intarsia Carriage yet, knit this jacket plain or with a striped border.

### BACK

Push 42 (48) Ns at left and right of centre 0 to B pos. 84 (96) Ns altog. Using col 1, cast on as given in additional notes for Knit 1 Purl 1 Rib. RC 000. MT-1, knit 16 rows. Drop the 3rd and ev foll alt st and pick up as for Knit 1 Purl 1 Rib. RC 000 MT. Continue in Intarsia Border Pattern, knit 48 rows. Continue in col 1, knit 12 (16) rows. RC 60 (64). Mark both ends with waste yarn. Knit 56 rows. RC 116 (120). Carr at right.

### Shape Back Neck

Using a length of col 1, cast off centre 22 sts. Hold Ns at left.

### Knit Right Part as Follows:—

Knit 1 row. Cast off 2 sts at beg of the next row, knit 1 row. Dec 1 st at beg of the next row. Cast off rem 28 (34) sts. Take carr to left. Bring Ns back to B pos. Knit left part as for right part.

### LEFT FRONT

Push 42 (48) Ns at left of centre 0 to B pos. Using col 1, cast on as given in additional notes for Knit 1 Purl 1 Rib. RC 000. MT-1, knit 16 rows. Drop the 3rd and ev foll alt st and pick up as for Knit 1 Purl 1 Rib. RC 000. MT. Continue in Intarsia Border Pattern, knit 48 rows. Continue in col 1, knit 12 (16) rows. (Knit 1 row extra for Right Front only). RC 60 (64). Mark left edge with waste yarn. Knit 42 rows. RC 102 (106). Carr at right. Shape Neck

Cast off 8 sts at beg of the next row, knit 1 row. Cast off 2 sts at beg of the next

For Knitmaster Option 4 Machine with AG10 Intarsia Carriage.

### Sizes:

To fit 86-91-96 (101-106-112) cms/34-36-38 (40-42-44) inch bust.

### Materials:

Patons Fashion Mohair

Col 1 (Corsair 2804) — 6(7) x 50g balls

Col 2 (Pink 2789) — 1 x 50g ball

Col 3 (Paris Pink 2808) — 2 x 50g balls

Col 4 (Deep Veridian 2806) — 2 x 50g balls  
8 buttons.

### Tensions:

Stockinet — 15 sts and 23 rows to 10 cms. TD at approx. 4 (MT)

Knit 1 Purl 1 Rib — 19 rows to 10 cms. TD at approx. MT-1.

### Pattern Note:

Intarsia Border — follow chart.

and foll alt row, knit 1 row. Dec 1 st at neck edge on the next and foll 3rd row, knit 8 rows. Cast off rem 28 (34) sts.

### RIGHT FRONT

Knit as for Left but note alteration in number of rows worked and read right for left and vice versa.

### SLEEVES

Push 18 Ns at left and right of centre 0 to B pos. 36 Ns altog. Using col 1, cast on as given in additional notes for Knit 1 Purl 1 Rib. RC 000. MT-1, knit 16 rows. Drop the 3rd and ev foll alt st and pick up as for Knit 1 Purl 1 Rib. RC 000. MT. Continue in Intarsia Border Pattern for 48 rows then continue in col 1, AT THE SAME TIME knit 2 rows. Inc 1 st at both ends of the next and ev foll 4th row 12 times in all, knit 3 rows. Inc 1 st at both ends of the next and ev foll 5th row 9 times in all. 78 sts. Knit to Row 92 (96). Mark centre with waste yarn. Cast off.

### BUTTONHOLE BAND

Push 84 (86) Ns to B pos. Using col 1, cast on as given in additional notes for Knit 1 Purl 1 Rib. RC 000. MT-1, knit 4 rows. Drop the 3rd and ev foll alt st and pick up as for Knit 1 Purl 1 Rib. Make 8 evenly spaced buttonholes over 1 N. Knit 4 rows. Drop the 3rd and ev foll alt st and pick up as for Knit 1 Purl 1 Rib. Knit 1 row MT. Cast off with waste yarn.

### BUTTON BAND

Knit as for Buttonhole Band but omit buttonholes.

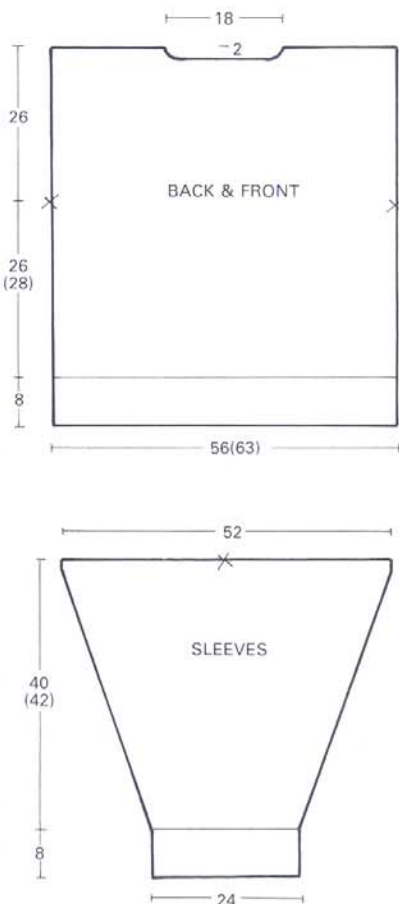
### NECKBAND

Push 78 Ns to B pos. Using col 1, cast on as given in additional notes for Knit 1 Purl 1 Rib. RC 000. MT-1, knit 12 rows. Drop the 3rd and ev foll alt st and pick up as for Knit 1 Purl 1 Rib. Knit 1 row MT. Cast off with waste yarn.

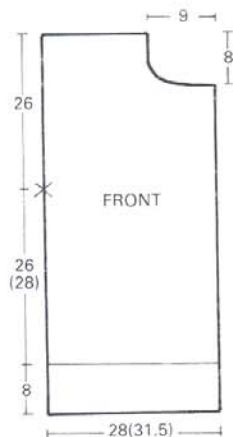
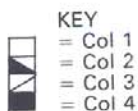
### TO MAKE UP

Pin out to size and steam carefully. Join

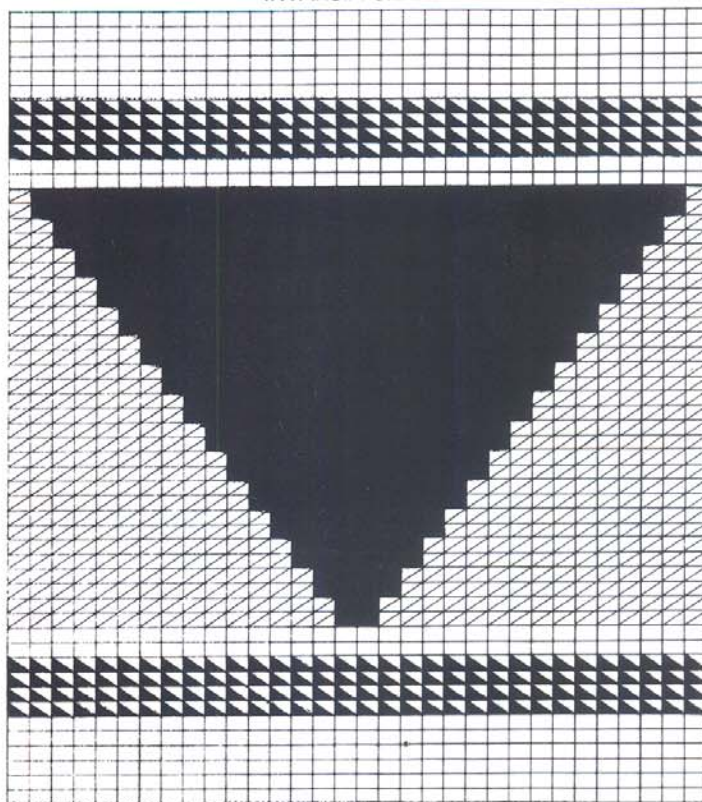
shoulder seams. Set in sleeves between marked points. Join side and sleeve seams. Backstitch neckband into pos, fold in half and catch down on the inside. Backstitch front bands into pos. Sew on buttons to correspond with buttonholes.







INTARSIA CHART



CENTRE 0

## KNIT BEAUTIFUL INTARSIA KNITS ON YOUR OPTION 4

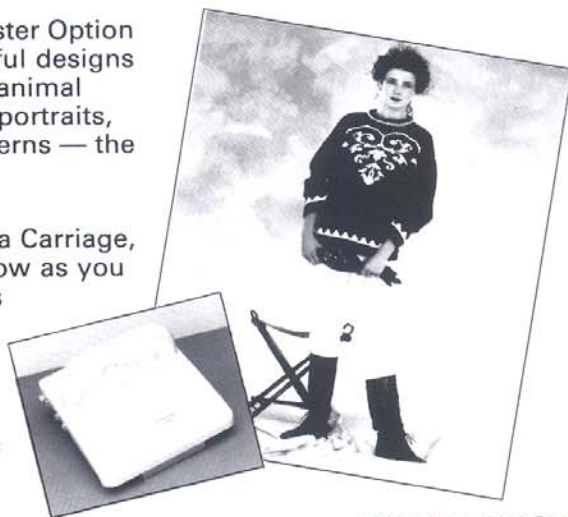
Add an Intarsia Carriage to your Knitmaster Option 4 and you can knit big, bold and beautiful designs right across your knitwear. Knit cuddly animal sweaters, motifs, lettering, landscapes, portraits, geometric patterns, cartoons, floral patterns — the list is endless!

When you knit with a Knitmaster Intarsia Carriage, you can have as many colours in one row as you like and you won't even have any floats at the back.

Just think what beautiful designs you can produce!

Buy Knitmaster's AG10 Intarsia Carriage to use with your Option 4.

Knitmaster's AG10 Intarsia Carriage is available from your local Knitmaster Stockist. Ask him for a free demonstration today.



**KNITMASTER**  


# 3 & 4 LADY'S & MAN'S ARAN STYLE SWEATER



For Knitmaster Option 4 Machines.

#### Sizes:

To fit 81-86 (91-96) (101-106) (112-117) cms/32-34 (36-38) (40-42) (44-46) inch bust/chest.

#### Materials:

Knitmaster Kone 4ply  
Col 1 (Aran) — 600 (640) (700) (760) grms

#### Tensions:

Cable & Plating Pattern — 27.5 cms

and 29 rows to 10 cms. TD at approx. 4 (MT)

Tuck Stitch & Plating Pattern — 18 sts and 53 rows to 10 cms. TD at approx. MT+1

Knit 1 Purl 1 Plating rib — 22 sts and 33 rows to 10 cms. TD at approx. MT-1.

#### Pattern Note:

Cable Pattern — follow chart. Col 1 in feeder 1 and plating feeder.

Tuck Stitch — follow chart. Col 1 in feeder 1 and plating feeder.

Aran sweaters are always a popular family item and you may be amazed to see how well you can imitate this handknitting style on your Option 4. A variety of different cables have been used as well as ribbed stitches and tuck stitch. The plating technique turns the machine knitting 4ply yarn into the ideal weight for Aran style sweaters.

#### CENTRE BACK PANEL

Push 41 Ns at left and 42 Ns at right of centre O to B pos. 83 Ns altog. Using waste yarn cast on and knit several rows ending with carr at right. RC 000. MT. With col 1 in feeder 1 and plating feeder. Continue in cable pattern, knit 1 row. Drop sts shown on chart 1 row down and tie with a piece of waste yarn to stop sts running\*. Continue in cable pattern knit to Row 140 (144) (150) (156).

#### CENTRE FRONT PANEL

Knit as for Back to\*. Continue in cable pattern knit to Row 134 (138) (144) (150). Shape Neck

Note pos in pattern and remember to drop and reform sts as on chart. Using a length of col 1, cast off 13 sts at left and 14 sts at right of centre O. Hold Ns at left.

#### Knit Right Part as Follows:—

Knit 1 row. Cast off 4 sts at beg of the next row, knit 1 row. Cast off 3 sts at beg of the next and foll alt row. Cast off rem 18 sts. Take carr to left. Bring Ns back to B pos. Keeping pattern correct, knit left part as for right part.

#### SIDE PANELS (Knit 4)

Push 19 (23) (27) (33) Ns at right of centre O to B pos. Using waste yarn cast on and knit several rows ending with carr at right. RC 000. MT+1. With col 1 in feeder 1 and plating feeder. Continue in tuck stitch pattern, knit 148 (160) (170) (180) rows. Mark right edge on 2 pieces

and left edge on 2 pieces with waste yarn. Knit 106 rows. RC 254 (266) (276) (286). Cast off.

#### CENTRE SLEEVE PANEL

(Knit 2 pieces, 1 in reverse)

Push 17 Ns at left and 18 Ns at right of centre O to B pos. 35 Ns altog. Using waste yarn, cast on and knit several rows ending with carr at left. RC 000. MT. With col 1 in feeder 1 and plating feeder. Continue in cable pattern, knit 1 row. Drop sts shown on chart, 1 row down and tie with a piece of waste yarn to stop sts running. Continue in cable pattern, knit to Row 127 (127) (133) (139). Mark both ends with waste yarn. Knit to Row 176 (184) (196) (210). Carr at left.

#### Shape Neck

Cast off 17 sts at beg of the next row, knit 1 row. Dec 1 st at beg of the next and ev foll alt row 6 times in all, knit 13 rows. Cast off rem 12 sts. Knit second piece as for first piece but reverse the shapings by reading right for left.

#### SIDE SLEEVE PANELS

(Knit 4 pieces, 2 in reverse)

Push 11 Ns at right of centre O to B pos. Using waste yarn cast on and knit several rows ending with carr at right. RC 000. MT+1. With col 1 in feeder 1 and plating feeder continue in tuck stitch pattern, knit 2 rows. Inc 1 st at right edge on the next and ev foll 9th (9th) (10th) (10th) row 25 times in all. 36 sts. Knit to Row 234 (234) (244) (254). Cast off.

#### TO MAKE UP

Pin out to size and steam carefully.

#### WELTS

Join side panels to either side of back panel. Push 121 (129) (137) (149) Ns to B pos. With col 1 in feeder 1 and plating

feeder, cast on as given in additional notes for Knit 1 Purl 1 Rib. RC 000. MT-1, knit 27 rows. Drop the 3rd and ev foll alt st and pick up as for Knit 1 Purl 1 rib. With wrong side of back facing, pick up sts from below waste yarn and place onto Ns in B pos. MT+5, knit 1 row. Cast off. Rept for front.

#### CUFFS

Sew centre sleeve panels to back, joining centre back seam and matching markers on centre sleeve panels to top corners on back. Join front to centre sleeve panel and match markers on centre sleeve panels to top corners on front. Join sleeve panels. Push 57 Ns to B pos. With col 1 in feeder 1 and plating feeder, cast on as given in additional notes for Knit 1 Purl 1 Rib. RC 000. MT-1, knit 20 rows. Drop the 3rd and ev foll alt st and pick up as for Knit 1 Purl 1 Rib. With wrong side of sleeve facing, pick up sts from below waste yarn and place onto Ns. MT+5, knit 1 row. Cast off.

#### NECKBAND

Push 115 Ns to B pos. With col 1 in feeder 1 and plating feeder, cast on as given in additional notes for Knit 1 Purl 1 Rib. RC 000. MT-1, knit 26 rows. Drop the 3rd and ev foll alt st and pick up as for Knit 1 Purl 1 Rib. Knit 1 row MT+1. Cast off with waste yarn.

#### TO COMPLETE MAKE UP

Join side and sleeve seams. Backstitch neckband into pos and join centre back neck seam. Fold in half and catch down on the inside. Give final light steam.

Continued on page 13.



3

4

5

# 5 CHILD'S ARAN STYLE SWEATER



Aran sweaters are always a popular family item and you may be amazed to see how well you can imitate this handknitting style on your Option 4. A variety of different cables have been used as well as ribbed stitches and tuck stitch. The plating technique turns the machine knitting 4ply yarn into the ideal weight for Aran style sweaters.

## CENTRE BACK AND FRONT PANEL

Push 41 Ns at left and 42 Ns at right of centre O to B pos. 83 Ns altog. Using waste yarn cast on and knit several rows ending with carr at right. RC 000. MT. With col 1 in feeder 1 and plating feeder. Continue in cable pattern, knit 1 row. Drop sts shown on chart 1 row down and tie with a piece of waste yarn to stop sts running. Continue in cable pattern, knit to Row 98 (107) (116) (125). Mark the 9th st at left and the 10th st at right of centre O with waste yarn on front only. Cast off.

## SIDE PANELS (Knit 4)

Push 5 (7) (9) (11) Ns at right of centre O to B pos. Using waste yarn cast on and knit several rows ending with carr at right. RC 000. MT+1. With col 1 in feeder 1 and plating feeder. Continue in tuck stitch pattern, knit 118 (128) (138) (148) rows. Mark right edge on two pieces and left edge on two pieces with waste yarn. Knit 64 (69) (74) (79) rows. RC 182 (197) (212) (227). Cast off.

## CENTRE SLEEVE PANEL

(Knit 2 pieces, 1 in reverse)  
Push 17 Ns at left and 18 Ns at right of centre O to B pos. 35 Ns altog. Using waste yarn, cast on and knit several rows ending with carr at right. RC 000. MT. With col 1 in feeder 1 and plating feeder. Continue in cable pattern, knit 1 row. Drop sts shown on chart, 1 row down and tie with a piece of waste yarn to stop sts running. Continue in cable

For Knitmaster Option 4 Machines.

## Sizes:

To fit 61 (66) (71) (76) cms/24 (26) (28) (30) inch chest.

## Materials:

Knitmaster Kone 4ply  
Col 1 (Aran) — 330 (350) (380) (420) grms

## Tensions:

Cable & Plating Pattern — 27.5 sts and 29 rows to 10 cms. TD at approx. 4 (MT)

Tuck Stitch & Plating Pattern — 18 sts and 53 rows to 10 cms. TD at approx. MT+1

Knit 1 Purl 1 Plating rib — 22 sts and 33 rows to 10 cms. TD at approx. MT-1

## Pattern Note:

Cable Pattern — follow chart from pattern 3 & 4. Col 1 in feeder 1 and plating feeder.

Tuck Stitch — follow chart from pattern 3 & 4. Col 1 in feeder 1 and plating feeder.

pattern. Knit to row 69 (81) (87) (98). Mark both ends with waste yarn. Knit to Row 102 (116) (126) (140). Carr at right.

## Shape Neck

Note pos in pattern. Hold Ns at left. Knit right part as follows:— Dec 1 st at left edge on the next and ev foll alt row 3 times in all, knit 15 rows. Cast off rem 15 sts. Take carr to left. Bring Ns back to B pos.

Knit Left Part as Follows:—

Knit 1 row. Cast off 8 sts at beg of the next row, knit 1 row. Cast off 2 sts at beg of the next and ev foll alt row 3 times in all, knit 1 row. Dec 1 st at beg of the next and foll alt row. Fasten off rem st.

Knit second sleeve panel as for first panel but reverse the shapings by reading left for right and vice versa.

## SIDE SLEEVE PANELS

(Knit 4 pieces, 2 in reverse)

Push 6 Ns at right of centre O to B pos. Using waste yarn cast on and knit several rows ending with carr at right. RC 000. MT+1. With col 1 in feeder 1 and plating feeder. Continue in tuck stitch pattern, knit 2 rows.

1st & 2nd Sizes Only

Inc 1 st at right edge on the next and ev foll 8th row 16 (18) times in all.

3rd & 4th Sizes Only

Inc 1 st at right edge on the next and ev foll 8th row (9) (7) times in all, knit 7 rows. Inc 1 st at right edge on the next and ev foll 9th row (10) (14) times in all. All sizes

22 (24) (25) (27) sts. Knit to Row 128 (148) (160) (180). Cast off.

## TO MAKE UP

Pin out pieces to size and steam carefully.

## WELTS

Join side panels to either side of back panel. Push 93 (97) (101) (105) Ns to B pos. With col 1 in feeder 1 and plating feeder, cast on as given in additional notes for Knit 1 Purl 1 Rib. RC 000. MT-1.

Knit 20 rows. Drop the 3rd and ev foll alt st and pick up as for knit 1 Purl 1 Rib. With wrong side of back facing, pick up sts from below waste yarn and place onto Ns in B pos. MT+5, knit 1 row. Cast off. Rept for front.

## CUFFS

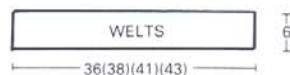
Sew centre sleeve panels to back, joining centre back seam and matching markers on centre sleeve panels to top corners on back. Join front to centre sleeve panel to neck marker and match markers on centre sleeve panels to top corners on front. Join seams in panels. Push 47 Ns to B pos. With col 1 in feeder 1 and plating feeder, cast on as given in additional notes for Knit 1 Purl 1 Rib. RC 000. MT-1, knit 20 rows. Drop the 3rd and ev foll alt st and pick up as for Knit 1 Purl 1 Rib. With wrong side of sleeve facing, pick up sts from below waste yarn and place onto Ns. MT+5, knit 1 row. Cast off.

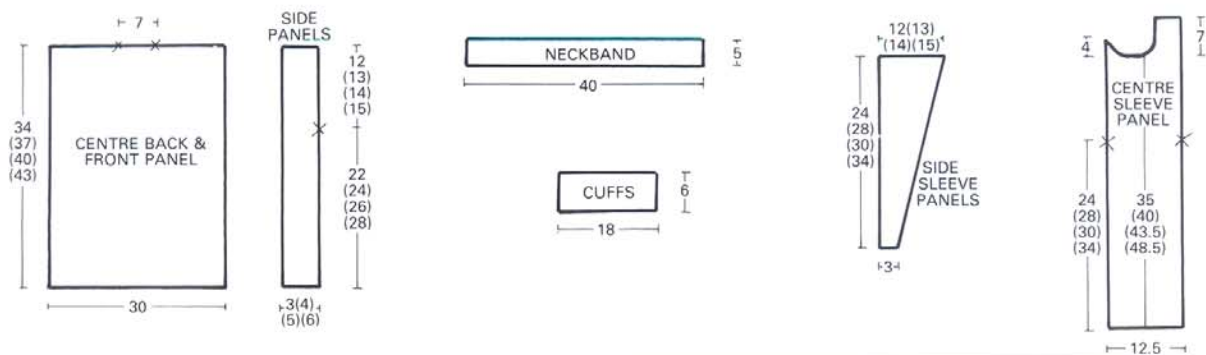
## NECKBAND

Push 89 Ns to B pos. With col 1 in feeder 1 and plating feeder, cast on as given in additional notes for Knit 1 Purl 1 Rib. RC 000. MT-1, knit 16 rows. Drop the 3rd and ev foll alt st and pick up as for Knit 1 Purl 1 Rib. MT+1, knit 1 row. Cast off with waste yarn.

## TO COMPLETE MAKE UP

Join side and sleeve seams. Backstitch neckband into pos and join centre back neck seam. Fold in half and catch down on the inside. Give final light steam.

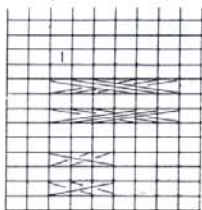




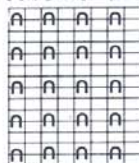
### PATTERNS 3 & 4

Continued from page 10.

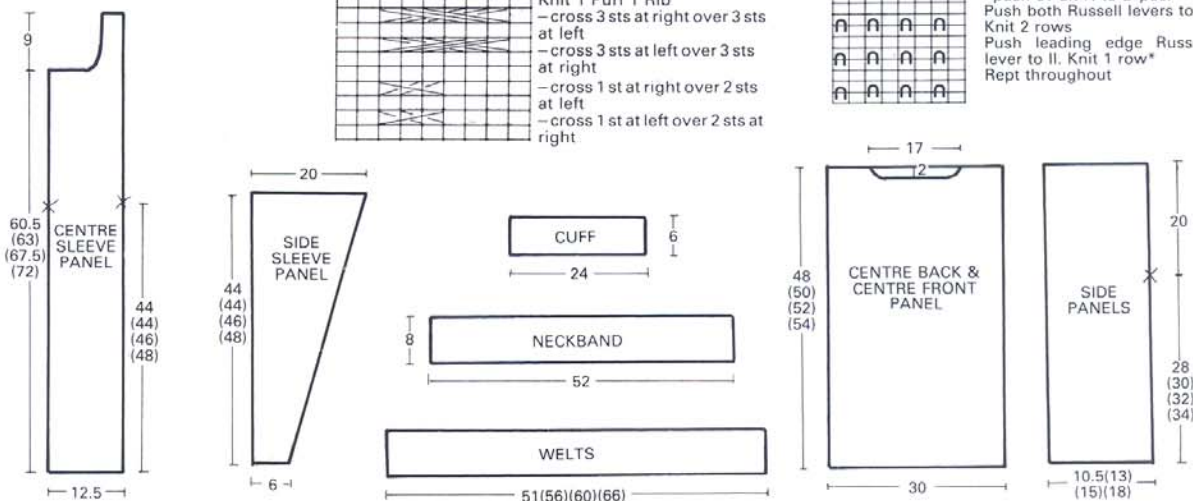
(Key for Cable Chart)



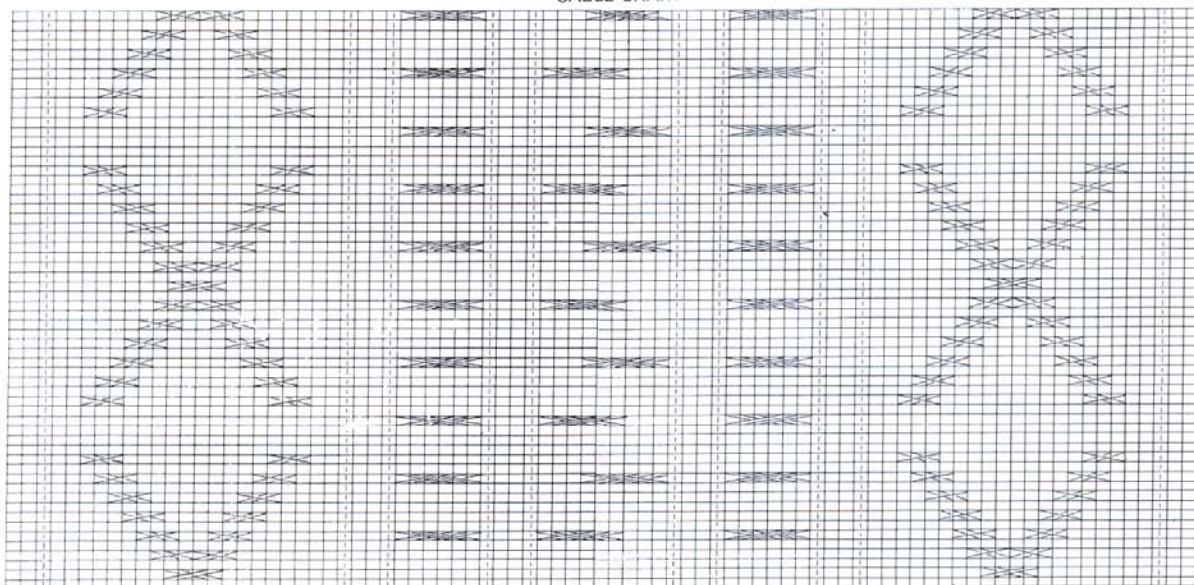
TUCK STITCH CHART



\*push ev alt N to D pos. Push both Russell levers to I.



### CABLE CHART



sleeve cable panel

6



7



# 6 PINK SWEATER WITH SAILOR COLLAR



An attractive sailor style collar with its garter stitch edging gives this classic sweater a new, fashionable look. To knit a classic v-neck version, simply knit ribbed bands to go around the neck edge instead of the sailor collar. To knit a nautical version, knit the sleeves and body in navy and white stripes and the collar in white.

## BACK

Push 67 (73) Ns at left and right of centre O to B pos. 134 (146) Ns altog. Cast on as given in additional notes for Knit 1 Purl 1 Rib. RC 000. MT-1, knit 24 rows. Drop the 3rd and ev foll alt st and pick up as for Knit 1 Purl 1 Rib. RC 000. MT. Knit 96 (100) rows. Carr at right. Shape Armholes

Cast off 4 sts at beg of the next 2 rows and 2 sts at beg of the next 4 rows. Dec 1 st at both ends of the next and ev foll alt row 3 (4) times in all, knit 3 rows\*. Dec 1 st at both ends of the next and ev foll 4th row 10 times in all. 92 (102) sts. Knit 53 (57) rows. RC 200 (210). Carr at right.

## Shape Back Neck

Using a length of col 1, cast off centre 30 sts. Hold Ns at left.

## Knit Right Part as Follows:-

Knit 1 row. Cast off 3 sts at beg of the next and foll alt row. RC 204 (214). Carr at right.

## Shape Shoulder

Cast off 8 (10) sts at beg of the next row, 2 sts at beg of the next row, 8 (10) sts at beg of the next row, knit 1 row. Cast off rem 7 (8) sts. Take carr to left. Bring Ns back to B pos. Knit left part as for right part.

## FRONT

Knit as for Back to\*.

Dec 1 st at both ends of the next and ev foll 4th row 4 (5) times in all, knit 1 row. RC 124 (134). Carr at right.

## Shape Neck

For Knitmaster Option 4 Machines.

## Sizes:

To fit 86-91 (96-101) cms/34-36 (38-40) inch bust.

## Materials:

Patons Diploma 4ply  
Col 1 (Pink — 4755) — 420 (470) grms

## Tensions:

Stockinet — 25.5 sts and 42 rows to 10 cms. TD at approx. 2 (MT)  
Knit 1 Purl 1 Rib — 40 rows to 10 cms. TD at approx. MT-1

## Pattern Note:

Stockinet.  
Border of Collar — Garter Stitch.

Hold Ns at left.

Knit Right Part as Follows:-

Dec 1 st at neck edge on the next and ev foll 3rd row 8 (7) times in all, AT THE SAME TIME knit 2 rows. Dec 1 st at armhole edge on the next and ev foll 4th row 6 (5) times in all. Knit 1 (2) rows. Dec 1 st at neck edge on the next and ev foll 3rd row 3 (4) times in all, knit 3 rows. Dec 1 st at neck edge on the next and ev foll 4th row 12 times in all, knit 1 row RC 204 (214). Carr at right.

## Shape Shoulder

Cast off 8 (10) sts at beg of the next and foll alt row, knit 1 row. Cast off rem 7 (8) sts. Take carr to left. Bring Ns back to B pos. Knit left part as for right part.

## SLEEVES

Push 31 Ns at left and right of centre O to B pos. 62 Ns altog. Cast on as given in additional notes for Knit 1 Purl 1 Rib. RC 000. MT-1, knit 24 rows. Drop the 3rd and ev foll alt st and pick up as for Knit 1 Purl 1 Rib. RC 000. MT. Knit 1 row. Inc 1 st at both ends of the next and ev foll 4th row 36 (38) times in all. 134 (138) sts. Knit to Row 156 (160).

## Shape Top

Cast off 4 sts at beg of the next 2 rows, 3 sts at beg of the next 4 rows and 2 sts at beg of the next 4 rows.

## 2nd Size Only

Dec 1 st at both ends of the next and ev foll alt row 3 times in all, knit 2 rows.

## Both Sizes

Dec 1 st at both ends of the next and ev foll 3rd row 8 (9) times in all, knit 2 rows.

## 1st Size Only

Dec 1 st at both ends of the next and ev foll alt row 3 times in all, knit 1 row.

## 2nd Size Only

Dec 1 st at both ends of the next row, knit 1 row.

## Both Sizes

Cast off 2 sts at beg of the next 12 (6) rows, 3 sts at beg of the next 4 (8) rows, 4 sts at beg of the next 2 rows and 5 sts at beg of the next 4 rows, knit 1 row. RC 219 (227). Cast off rem 20 sts.

## COLLAR

Push 56 Ns at left and right of centre O to B pos. 112 Ns altog. Using waste yarn cast on and knit several rows ending with carr at right. Push Ns to D pos. Using col 1, cast on by hand. Push Ns to C pos. RC 000. MT. Knit 1 row. Continue in garter stitch (see additional notes), knit 17 rows. Continue in garter stitch over 10 Ns at each edge, knit 68 rows. Carr at right.

## Shape Neck

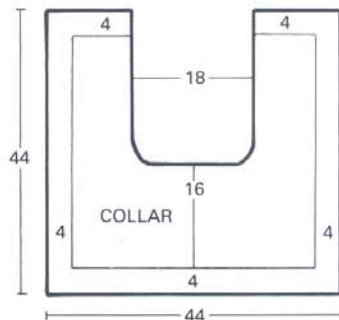
Using a length of col 1, cast off centre 36 sts. Hold Ns at left.

## Knit Right Part as Follows:-

Continue in garter stitch over 10 Ns at right edge, knit 1 row. Dec 1 st at left edge on the next and ev foll alt row 5 times in all, knit 72 rows. Continue in garter stitch, knit 17 rows. RC 185. Cast off rem 33 sts. Take carr to right. Bring Ns back to B pos. Knit left part as for right part but read right for left and vice versa.

## TO MAKE UP

Pin out to size and steam carefully. Join shoulder seams. With right side of collar and wrong side of main pieces tog, backstitch collar into pos. Turn to right side. Set in sleeves. Join side and sleeve seams. Give final light steam.



Continued on page 24.



# 7 EMERALD MOHAIR JACKET



Your Option 4 knits mohair beautifully so you can now knit a whole range of luxurious designs in a fraction of the time it would have taken you to hand knit them. When you've finished knitting each piece, you should brush it with a teazle or stiff brush to get the full benefit of this luxurious yarn.

## BACK

Push 45 (49) (53) Ns at left and right of centre O to B pos. 90 (98) (106) Ns altog. Cast on as given in additional notes for Knit 1 Purl 1 Rib. RC 000. MT-4, knit 7 rows. Drop the 3rd and ev foll alt st and pick up as for Knit 1 Purl 1 Rib. RC 000. MT. Knit 62 (64) (66) rows. Carr at right. Shape Raglan Armholes

Cast off 3 sts at beg of the next 2 rows. 1st & 2nd Sizes Only

\*Dec 1 st at both ends of the next and foll alt row\*. Rept the last 3 rows from \*to\* 10 (16) more times.

## 1st Size Only

Knit 1 row. Dec 1 st at both ends of the next and ev foll alt row 8 times in all.

## 3rd Size Only

\*Dec 1 st at both ends of the next 2 rows, knit 1 row. Dec 1 st at both ends of the next row\*. Rept the last 4 rows from \*to\* 7 more times. \*Dec 1 st at both ends of the next and foll alt row\*. Rept the last 3 rows from \*to\* 6 more times. All Sizes

24 sts. Knit 1 row. Dec 1 st at both ends of the next and ev foll alt row 3 times in all. 18 sts. Knit 1 row. RC 120 (124) (128). Cast off.

## LEFT FRONT

Push 39 (43) (47) Ns to B pos. Cast on as given in additional notes for Knit 1 Purl 1 Rib. RC 000. MT-4, knit 7 rows. Drop the 3rd and ev foll alt st and pick up as for Knit 1 Purl 1 Rib. RC 000. MT. Knit 62 (64) (66) rows. (knit 1 row extra for Right Front only). Carr at left.

## Shape Raglan Armhole

Cast off 3 sts at beg of the next row, knit 1 row,

For Knitmaster Option 4 Machines.

## Sizes:

To fit 81-86 (91-96) (101-106) cms/32-34 (36-38) (40-42) inch bust.

## Materials:

Yorkshire Mohair Mills Kaleidoscope Collection Gold Award Mohair Col 1 (Emerald — shade 2225) — 490 (540) (590) grms. 8 buttons.

## Tensions:

Stockinet — 16 sts and 22 rows to 10 cms. TD at approx. 7 (MT) Knit 1 Purl 1 Rib — 22 rows to 10 cms. TD at approx. MT-4

## Pattern Note:

Stockinet.

## 1st and 2nd Sizes Only

\*Dec 1 st at raglan edge of the next and foll alt row\*. Rept the last 3 rows from \*to\* 4 (5) more times.

## 1st Size Only

Dec 1 st at raglan edge of the next row.

## 3rd Size Only

\*Dec 1 st at raglan edge of the next 2 rows, knit 1 row. Dec 1 st at raglan edge of the next row\*. Rept the last 4 rows from \*to\* 4 more times.

## All Sizes

25 (28) (29) sts. Carr at left.

## Shape Front Edge

Dec 1 st at right edge of the next and ev foll 8th row 5 times in all. AT THE SAME TIME,

## 1st Size Only

Knit 1 row. Dec 1 st at raglan edge of the next row. \*Dec 1 st at raglan edge of the next and foll alt row\*. Rept the last 3 rows from \*to\* 4 more times. Knit 1 row. Dec 1 st at raglan edge of the next and ev foll alt row 8 times in all.

## 2nd Size Only

\*Dec 1 st at raglan edge of the next and foll alt row\*. Rept the last 3 rows from \*to\* 10 more times.

## 3rd Size Only

\*Dec 1 st at raglan edge of the next 2 rows, knit 1 row. Dec 1 st at raglan edge of the next row\*. Rept the last 4 rows from \*to\* 2 more times. \*Dec 1 st at raglan edge of the next and foll alt row\*. Rept the last 3 rows from \*to\* 6 more times.

## All Sizes

Fasten of rem st.

## RIGHT FRONT

Knit as for Left Front but note alteration in number of rows worked and read right for left and vice versa.

## RIGHT SLEEVE

Push 19 Ns at left and right of centre O to B pos. 38 Ns altog. Cast on as given in additional notes for Knit 1 Purl 1 Rib. RC 000. MT-4, knit 22 rows. Drop the 3rd and ev foll alt st and pick up as for Knit 1 Purl 1 Rib. RC 000. MT. Knit 2 rows. Inc 1

st at both ends of the next and ev foll 3rd row 26 (28) (29) times in all. 90 (94) (96) sts. Knit to Row 86 (88) (90). (Knit 1 row extra for Left Sleeve only). Carr at right.

## Shape Raglan Top

Cast off 3 sts at beg of the next 2 rows.

\*Dec 1 st at both ends of the next 2 rows, knit 1 row. Dec 1 st at both ends of the next row\*. Rept the last 4 rows from \*to\* 9 (9) (10) more times. Dec 1 st at both ends of the next 4 (6) (4) rows. Knit 1 row. 16 sts. Cast off 8 sts at beg and dec 1 st at end of the next row, knit 1 row. Cast off 2 sts at beg and dec 1 st at end of the next row, knit 1 row. Dec 1 st at both ends of the next row, knit 1 row. Dec 1 st at raglan edge of the next row. Fasten off rem st.

## LEFT SLEEVE

Knit as for Right Sleeve but note alteration in number of rows worked and read left for right.

## BUTTONHOLE BAND

Push 64 (68) (71) Ns to B pos. Cast on as given in additional notes for Knit 1 Purl 1 Rib. RC 000. MT-4, knit 4 rows. Drop the 3rd and ev foll alt st and pick up as for Knit 1 purl 1 rib. Make 4 evenly spaced buttonholes over 1 N. Knit 14 rows. Drop the 3rd and ev foll alt st and pick up as for Knit 1 Purl 1 Rib. Make buttonholes over same Ns as before. Knit 4 rows. Drop the 3rd and ev foll alt st and pick up as for Knit 1 Purl 1 Rib. Knit 1 row MT. Cast off with waste yarn.

## BUTTON BAND

Knit as for buttonhole Band but omit buttonholes.

## COLLAR

Push 96 Ns to B pos. Cast on as given in additional notes for Knit 1 Purl 1 Rib. RC 000. MT-4, knit 22 rows. Drop the 3rd and ev foll alt st and pick up as for Knit 1 Purl 1 Rib. Knit 1 row MT. Cast off with waste yarn.

Continued on page 24.

10

9

8



additional notes for Knit 1 Purl 1 Rib. RC 000. MT-2, knit 22 rows. Drop the 3rd and ev foll alt st and pick up as for Knit 1 Purl 1 Rib. RC 000. MT. Knit 54 (64) (74) (84) rows. Knit 1 row extra for Left Front only. Carr at right.

#### Shape Front Edge

Dec 1 st at left edge on the next and ev foll 4th row 4 (3) (2) times in all, knit 3 (3) (1) (1) rows.

#### Shape Raglan Armhole

Dec 1 st at left edge on the next (next) (3rd) (3rd) and ev foll 4th row 10 (11) (11) (12) times in all, AT THE SAME TIME cast off 5 sts at beg of the next row, knit 1 row.

#### 1st & 2nd Sizes Only

\*Dec 1 st at raglan edge of the next and ev foll alt row 3 times in all\*. Rept the

last 5 rows from \*to\* 5 (7) more times. 3rd & 4th Sizes Only

\*Dec 1 st at raglan edge of the next and foll alt row\*. Rept the last 3 rows from \*to\* (11) (13) more times.

#### All Sizes

Dec 1 st at raglan edge of the next and ev foll alt row 5 (2) (5) (4) times in all, knit 1 row. Fasten off rem st.

#### LEFT FRONT

Knit as for Right Front but note alteration in number of rows worked and read left for right and vice versa.

#### BUTTONHOLE BAND

Push 118 (125) (132) (140) Ns to B pos. Cast on as given in additional notes for Knit 1 Purl 1 Rib. RC 000. MT-2, knit 5

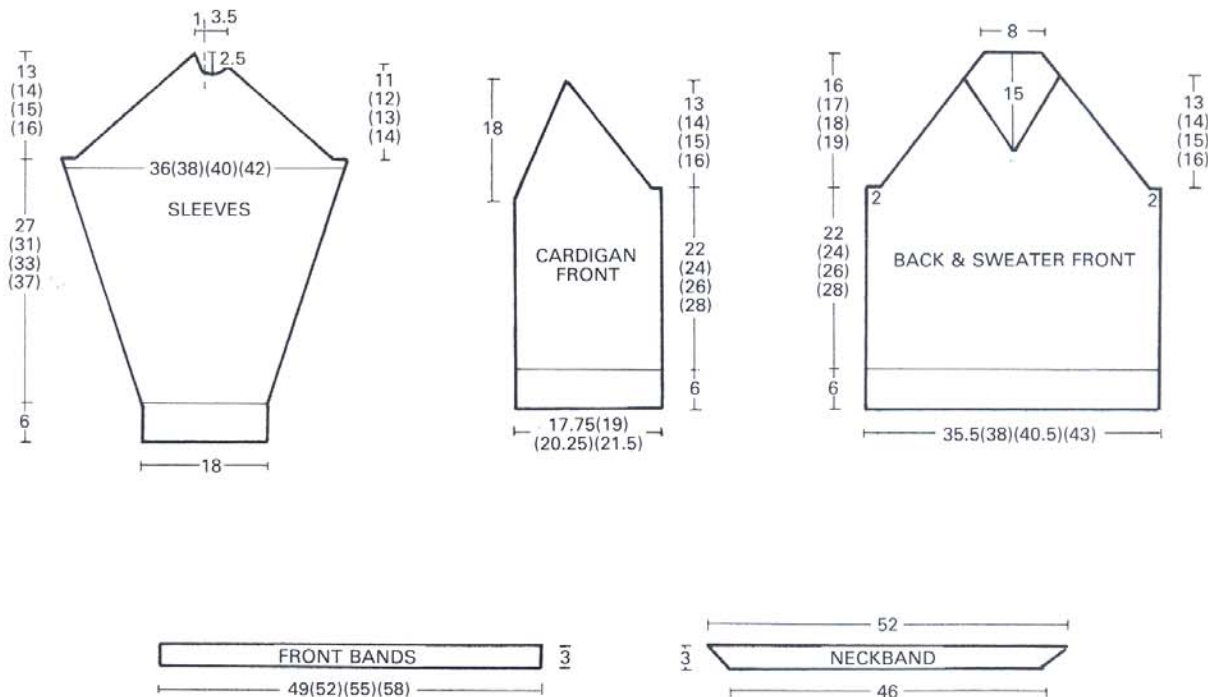
rows. Drop the 3rd and ev foll alt st and pick up as for Knit 1 Purl 1 Rib. Make 5 evenly spaced buttonholes over 1 N on 55 (62) (69) (77) sts at right. Knit 6 rows. Drop the 3rd and ev foll alt st and pick up as for Knit 1 Purl 1 Rib. MT. Knit 1 row. Cast off with waste yarn.

#### BUTTON BAND

Knit as for Buttonhole Band but omit buttonholes.

#### TO MAKE UP

Pin out to size and steam carefully. Join raglan, side and sleeve seams. Back-stitch bands into pos and join centre back seam. Sew on buttons to correspond with buttonholes. Give final light steam.



## ABBREVIATIONS

|        |                    |      |                        |     |                          |
|--------|--------------------|------|------------------------|-----|--------------------------|
| Alt    | — Alternate        | Inc  | — Increase             | RC  | — Row Counter            |
| Altog  | — Altogether       | MT   | — Main Tension         | St  | — Stitch                 |
| Approx | — Approximately    | N    | — Needle               | Sts | — Stitches               |
| Beg    | — Beginning        | Ns   | — Needles              | TD  | — Tension Dial           |
| Carr   | — Carriage         | NWP  | — Non Working Position | Tog | — Together               |
| Cm(s)  | — Centimetre(s)    | Patt | — Pattern              | UWP | — Upper Working Position |
| Dec    | — Decrease         | Pos  | — Position             | WP  | — Working Position       |
| Ev     | — Every            | Rept | — Repeat               |     |                          |
| Foll   | — Following        | Rem  | — Remaining            |     |                          |
| HP     | — Holding Position |      |                        |     |                          |

# 8 CHILD'S RAGLAN V-NECK SWEATER AND CARDIGAN



This collection of classic Double Knitting sweaters and cardigans should prove to be good, basic patterns which you'll want to use time and time again, knit them in any colour you like and perhaps ring the changes by striping the ribs as we have on the little girl's neckband. You can also knit these designs striped all over if you like.

## BACK

Push 43 (46) (49) (52) Ns at left and right of centre O to B pos. 86 (92) (98) (104) Ns altog. Cast on as given in additional notes for Knit 1 Purl 1 Rib. RC 000. MT-2, knit 22 rows. Drop the 3rd and ev foll alt st and pick up as for Knit 1 Purl 1 Rib. RC 000. MT. Knit 70 (76) (84) (90) rows. Carr at right.

## Shape Raglan Armholes

Cast off 5 sts at beg of the next 2 rows\*\*.

## 1st & 2nd Sizes Only

\*Dec 1 st at both ends of the next and ev foll alt row 3 times in all\*. Rept the last 5 rows from \*to\* 5 (7) more times.

## 3rd & 4th Sizes Only

\*Dec 1 st at both ends of the next and foll alt row\*. Rept the last 3 rows from \*to\* (11) (13) more times.

## All Sizes

Dec 1 st at both ends of the next and ev foll alt row 10 (7) (10) (9) times in all. 20 sts. Knit 1 row. RC 122 (132) (142) (152). Cast off.

## LEFT SLEEVE

Push 22 Ns at left and right of centre O to B pos. 44 Ns altog. Cast on as given in additional notes for Knit 1 Purl 1 Rib. RC 000. MT-2, knit 22 rows. Drop the 3rd and ev foll alt st and pick up as for Knit 1 Purl 1 Rib. RC 000. MT. Knit 2 rows. Inc 1 st at both ends of the next and ev foll 4th row 21 (24) (26) (29) times in all. 86 (92) (96) (102) sts. Knit to Row 86 (100)

For Knitmaster Option 4 Machines.

## Sizes:

To fit 61 (66) (71) (76) cms/24 (26) (28) (30) inch chest.

## Materials:

Patons DK Pure New Wool.  
Sweater  
Col 1 (Indigo 7305) — 330 (350) (380) (410) grms  
Col 2 (Red 7316) — small amount  
Col 3 (Royale 7314) — small amount  
Cardigan  
Col 1 — 340 (360) (390) (420) grms  
5 buttons

## Tensions:

Stockinet — 24 sts and 32 rows to 10 cms. TD at approx. 3 (MT)  
Knit 1 Purl 1 Rib — 38 rows to 10 cms. TD at approx. MT-2.

## Pattern Note:

Stockinet.  
Use 3 prong transfer tool for raglan shapings.

(106) (118). Knit 1 row extra for Right Sleeve only. Carr at right.

## Shape Raglan Top

Cast off 5 sts at beg of the next 2 rows.

Dec 1 st at both ends of the next and ev foll alt row 5 (4) (6) (7) times in all, knit 1 row. Dec 1 st at both ends of the next 22 (26) (26) (28) rows. 22 sts. Carr at right.

## Shape Neck Edge

Hold Ns at left.

## Knit Right Part as Follows:-

Dec 1 st at raglan edge of the next row. Cast off 5 sts at beg and dec 1 st at raglan edge of the next row. Cast off rem 4 sts. Take carr to left.

Bring Ns back to B pos.

## Knit Left Part as Follows:-

Dec 1 st at raglan edge of the next 2 rows. Dec 1 st at both ends of the next row. Rept the last 3 rows once more. Dec 1 st at raglan edge of the next 2 rows. Fasten off rem st.

## RIGHT SLEEVE

Knit as for Left Sleeve but note alteration in number of rows worked and read left for right and vice versa.

## SWEATER

### FRONT

Knit as for Back to \*\*.

### 1st Size Only

Dec 1 st at both ends of the next row, knit 1 row.

### 2nd Size Only

Dec 1 st at both ends of the next and ev foll alt row 3 times in all. Dec 1 st at both ends of the next row.

### 3rd & 4th Sizes Only

\*Dec 1 st at both ends of the next and foll alt row\*. Rept the last 3 rows from \*to\* (1) (3) more times.

### 3rd Size Only

Dec 1 st at both ends of the next row, knit 1 row.

### All Sizes

74 (74) (78) (78) sts. Carr at right.

## Shape Neck

Hold Ns at left.

Knit Right Part as Follows:-

Dec 1 st at neck edge on the next and ev foll 3rd row 13 times in all, AT THE SAME TIME,

## 1st & 2nd Sizes Only

Knit 0 (1) row. Dec 1 st at raglan edge of the next and foll alt row. \*Dec 1 st at raglan edge of the next and ev foll alt row 3 times in all\*. Rept the last 5 rows from \*to\* 4 (5) more times.

## 3rd Size Only

Dec 1 st at raglan edge of the next row.

## 3rd & 4th Sizes Only

\*Dec 1 st at raglan edge of the next and foll alt row\*. Rept the last 3 rows from \*to\* (8) (9) more times.

## All Sizes

Dec 1 st at raglan edge of the next and ev foll alt row 5 (2) (5) (4) times in all, knit 1 row. Cast of rem 2 sts. Take carr to left. Bring Ns back to B pos. Knit left part as for right part.

## NECKBAND

Push 111 Ns to B pos. Cast on as given in additional notes for Knit 1 Purl 1 Rib. RC 000. MT-2, knit 1 row. Drop the 3rd and ev foll alt st and pick up as for Knit 1 Purl 1 Rib. Keeping rib correct throughout, inc 1 st at both ends of the next 2 rows. Using col 2, knit 1 row. Inc 1 st at both ends of the next row. Using col 1, knit 1 row. Inc 1 st at both ends of the next row. Using col 3, knit 1 row. Inc 1 st at both ends of the next row. Using col 1, inc 1 st at both ends of the next 2 rows. 125 sts. MT. Knit 1 row. Cast off with waste yarn.

## TO MAKE UP

Pin out to size and steam carefully. Join raglan, side and sleeve seams. Back-stitch neckband into pos and join centre front seam. Give final light steam.

## CARDIGAN

### RIGHT FRONT

Push 43 (46) (49) (52) Ns at right of centre O to B pos. Cast on as given in

# 9 LADY'S V-NECK RAGLAN CARDIGAN



This collection of classic Double Knitting sweaters and cardigans should prove to be good, basic patterns which you'll want to use time and time again, knit them in any colour you like and perhaps ring the changes by striping the ribs as we have on the little girl's neckband. You can also knit these designs striped all over if you like.

## BACK

Push 63 (69) (75) Ns at left and right of centre O to B pos. 126 (138) (150) Ns altog. Cast on as given in additional notes for Knit 1 Purl 1 Rib. RC 000. MT-2, knit 22 rows. Drop the 3rd and ev foll alt st and pick up as for Knit 1 Purl 1 Rib. RC 000. MT. Knit 96 (94) (90) rows. Carr at right.

## Shape Raglan Armholes

Cast off 5 sts at beg of the next 2 rows.

### 1st Size Only

\*Dec 1 st at both ends of the next and ev foll alt row 3 times in all\*. Rept the last 5 rows from \*to\* 10 more times.

### 2nd Size Only

\*Dec 1 st at both ends of the next and foll alt row\*. Rept the last 3 rows from \*to\* 20 more times.

### 3rd Size Only

Dec 1 st at both ends of the next 6 rows.

\*Dec 1 st at both ends of the next and foll alt row\*. Rept the last 3 rows from \*to\* 22 more times.

### All Sizes

Knit 1 row. Dec 1 st at both ends of the next and ev foll alt row 10 (7) (3) times in all. 30 sts. Knit 1 row. RC 174. Cast off.

## RIGHT FRONT

Push 63 (69) (75) Ns at right of centre O to B pos. Cast on as given in additional notes for Knit 1 Purl 1 Rib. RC 000. MT-2, knit 22 rows. Drop the 3rd and ev foll alt st and pick up as for Knit 1 Purl 1 Rib. RC 000. MT. Knit 71 rows. Knit 1 row extra for left Front only. Carr at left.

## Shape Front Edge

For Knitmaster Option 4 Machines.

## Sizes:

To fit 81-86 (91-96) (101-106) cms/32-34 (36-38) (40-42) inch bust.

## Materials:

Patons DK Pure New Wool  
Col 1 (Royale 7314) — 600 (650) (700) grms.  
5 buttons

## Tensions:

Stockinet — 24 sts and 32 rows to 10 cms. TD at approx. 3 (MT)  
Knit 1 Purl 1 Rib — 38 rows to 10 cms. TD at approx. MT-2

## Pattern Note:

Stockinet.  
Use 3 prong transfer tool for raglan shapings.

Dec 1 st at left edge on the next and ev foll 6th row 5 (4) (4) times in all, knit 0 (4) (0) rows.

## Shape Raglan Armhole

Dec 1 st at left edge on the 6th (2nd) (6th) and ev foll 6th row 11 (12) (12) times in all, AT THE SAME TIME cast off 5 sts at beg of the next row, knit 1 row.

### 1st Size Only

\*Dec 1 st at raglan edge on the next and ev foll alt row 3 times in all\*. Rept the last 5 rows from \*to\* 10 more times.

### 2nd Size Only

\*Dec 1 st at raglan edge on the next and foll alt row\*. Rept the last 3 rows from \*to\* 20 more times.

### 1st & 2nd Sizes Only

Knit 1 row. Dec 1 st at raglan edge on the next and ev foll alt row 7 (4) times in all.

### 3rd Size Only

Dec 1 st at raglan edge on the next 6 rows. \*Dec 1 st at raglan edge on the next and foll alt row\*. Rept the last 3 rows from \*to\* 22 more times.

### All Sizes

Fasten off rem 2 sts.

## LEFT FRONT

Knit as for Right Front but note alteration in number of rows worked and read left for right and vice versa.

## RIGHT SLEEVE

Push 29 Ns at left and right of centre O to B pos. 58 Ns altog. Cast on as given in additional notes for Knit 1 Purl 1 Rib. RC 000. MT-2, knit 30 rows. Drop the 3rd and ev foll alt st and pick up as for Knit 1 Purl 1 Rib. RC 000. MT. Knit 3 rows. Inc 1 st at both ends of the next and ev foll 4th row 32 (24) (16) times in all, knit 3 (2) (2) rows. Inc 1 st at both ends of the next and ev foll 4th (3rd) (3rd) row 2 (12) (22) times in all. 126 (130) (134) sts. Knit to Row 138 (134) (132). Knit 1 row extra for Left Sleeve only. Carr at right.

## Shape Raglan Top

Cast off 5 sts at beg of the next 2 rows.

### 1st Size Only

\*Dec 1 st at both ends of the next 2 rows, knit 1 row. Dec 1 st at both ends of the next 2 rows\*. Rept the last 5 rows from \*to\* 10 more times. Dec 1 st at both ends of the next 2 rows, knit 1 row. Dec 1 st at both ends of the next row.

### 2nd Size Only

\*Dec 1 st at both ends of the next and foll alt row\*. Rept the last 3 rows from \*to\* 4 more times. \*\*Dec 1 st at both ends of the next 2 rows, knit 1 row. Dec 1 st at both ends of the next row\*\*. Rept the last 4 rows from \*\*to\*\* 12 more times.

### 3rd Size Only

\*Dec 1 st at both ends of the next and foll alt row\*. Rept the last 3 rows from \*to\* 23 more times. Dec 1 st at both ends of the next 3 rows.

### All Sizes

22 sts. Carr at left.

## Shape Neck Edge

Cast off 11 sts at beg and dec 1 st at raglan edge of the next row. Dec 1 st at raglan edge of the next row. Cast off 3 sts at beg and dec 1 st at raglan edge of the next row. Cast off 2 sts at beg and dec 1 st at raglan edge of the next row. Dec 1 st at raglan edge of the next row, knit 1 row. Fasten off rem st.

## LEFT SLEEVE

Knit as for Right Sleeve but note alteration in number of rows worked and read left for right and vice versa.

## BACK NECKBAND

Push 48 Ns to B pos. Cast on as given in additional notes for Knit 1 Purl 1 Rib. RC 000. MT-2, knit 15 rows. Drop the 3rd and ev foll alt st and pick up as for Knit 1 Purl 1 Rib. MT, knit 1 row. Cast off with waste yarn.

## BUTTONHOLE BAND

Push 149 Ns to B pos. Cast on as given in additional notes for Knit 1 Purl 1 Rib.

Continued on page 23.

# 10 MAN'S RAGLAN CREW NECK SWEATER



For Knitmaster Option 4 Machines.

#### Sizes:

To fit 91-96 (101-106) (112) cms/36-38 (40-42) (44) inch chest.

#### Materials:

Patons DK Pure New Wool.  
Col 1 (Red 7316) — 600 (650) (700) grms.

#### Tensions:

Stockinet — 24 sts and 32 rows to 10 cms. TD at approx. 3 (MT).  
Knit 1 Purl 1 Rib — 38 rows to 10 cms. TD at approx. MT-2.

#### Pattern Note:

Stockinet.  
Use 3 prong transfer tool for raglan shaping.

This collection of classic Double Knitting sweaters and cardigans should prove to be good, basic patterns which you'll want to use time and time again, knit them in any colour you like and perhaps ring the changes by striping the ribs as we have on the little girl's neckband. You can also knit these designs striped all over if you like.

#### BACK

Push 65 (71) (75) Ns at left and right of centre O to B pos. 130 (142) (150) Ns altog. Cast on as given in additional notes for Knit 1 Purl 1 Rib. RC 000. MT-2, knit 22 rows. Drop the 3rd and ev foll alt st and pick up as for Knit 1 Purl 1 Rib. RC 000. MT. Knit 106 (108) (112) rows. Carr at right.

Shape Raglan Armholes

Cast off 5 sts at beg of the next 2 rows.  
1st & 2nd Sizes Only

Dec 1 st at both ends of the next and ev foll alt row 30 (12) times in all, knit 1 row.

All Sizes\*\*

\*Dec 1 st at both ends of the next 2 rows, knit 1 row\*. Rept the last 3 rows from \*to\* 6 (18) (26) more times. Dec 1 st at both ends of the next row. 30 sts. RC 190 (192) (196). Cast off.

#### FRONT

Knit as for Back to \*\*.

1st Size Only

Dec 1 st at both ends of the next 2 rows.

2nd & 3rd Sizes Only

\*Dec 1 st at both ends of the next 2 rows, knit 1 row\*. Rept the last 3 rows from \*to\* 11 (19) more times. Dec 1 st at both ends of the next 2 rows.

All Sizes

56 sts. Carr at right.

Shape Neck

Using a length of col 1, cast off centre 22 sts. Hold Ns at left.

Knit Right Part as Follows:-

Dec 1 st at neck edge on the next row.

Dec 1 st at both ends of the next 2 rows. Rept the last 3 rows twice more. Dec 1 st at neck edge on the next row. Fasten off rem st. Take carr to left. Bring Ns back to B pos. Knit left part as for right part.

#### LEFT SLEEVE

Push 29 Ns at left and right of centre O to B pos. 58 Ns altog. Cast on as given in additional notes for Knit 1 Purl 1 Rib. RC 000. MT-2, knit 30 rows. Drop the 3rd and ev foll alt st and pick up as for Knit 1 Purl 1 Rib. RC 000. MT. Knit 2 rows. Inc 1 st at both ends of the next and ev foll 4th row 22 times in all, knit 2 rows. Inc 1 st at both ends of the next and ev foll 3rd row 16 times in all. 134 sts. Knit to Row 138. Knit 1 row extra for Right Sleeve only. Carr at right.

Shape Raglan Top

Cast off 5 sts at beg of the next 2 rows. Dec 1 st at both ends of the next 2 (8) (10) rows. \*Dec 1 st at both ends of the next 8 (3) (2) rows, knit 1 row. Rept the last 9 (4) (3) rows from \*to\* 5 (13) (19) more times. 24 sts. Carr at right.

Shape Neck Edge

Cast off 6 sts at beg and dec 1 st at raglan edge of the next row. Dec 1 st at

raglan edge of the next row. Cast off 6 sts at beg of the next row. Dec 1 st at raglan edge of the next row. Cast off 2 sts at beg and dec 1 st at raglan edge of the next row, knit 1 row. Cast off 2 sts at beg and dec 1 st at raglan edge of the next row. Dec 1 st at raglan edge of the next row. Dec 1 st at beg of the next row, knit 1 row. Fasten off rem st.

#### RIGHT SLEEVE

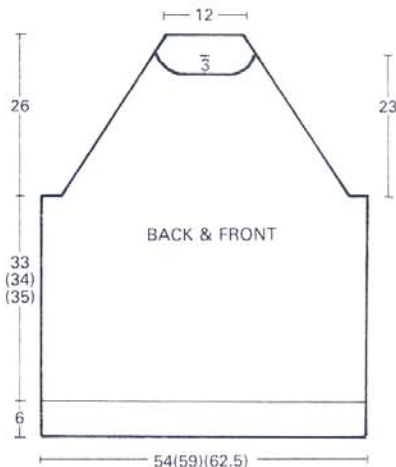
Knit as for Left Sleeve but note alteration in number of rows worked and read left for right and vice versa.

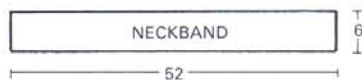
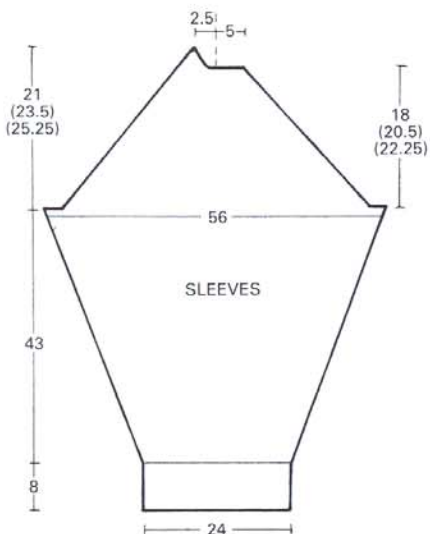
#### NECKBAND

Push 125 Ns to B pos. Cast on as given in additional notes for Knit 1 Purl 1 Rib. RC 000. MT-2, knit 22 rows. Drop the 3rd and ev foll alt st and pick up as for Knit 1 Purl 1 Rib. MT, knit 1 row. Cast off with waste yarn.

#### TO MAKE UP

Pin out to size and steam carefully. Join raglan, side and sleeve seams. Back-stitch neckband into pos and join centre back neck seam. Fold in half to inside and catch down. Give final light steam.





### PATTERN 9

Continued from page 21.

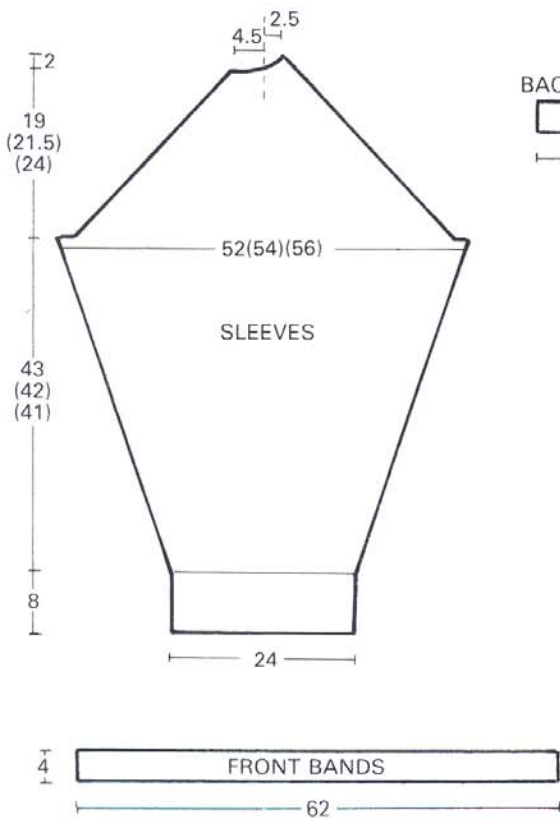
RC 000. MT-2, knit 7 rows. Drop the 3rd and ev foll alt st and pick up as for Knit 1 Purl 1 Rib. Make 5 evenly spaced buttonholes over 1 N on 67 sts at right. Knit 8 rows. Drop the 3rd and ev foll alt st and pick up as for Knit 1 Purl 1 Rib. MT, knit 1 row. Cast off with waste yarn.

### BUTTON BAND

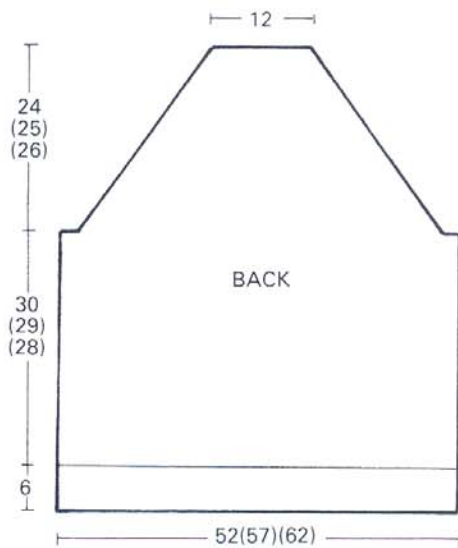
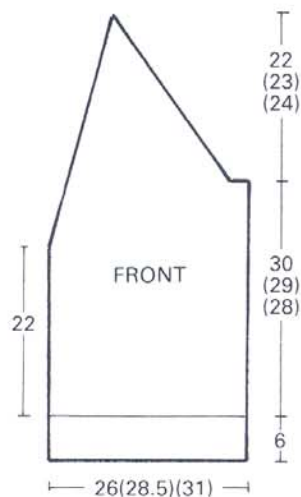
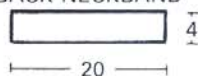
Knit as for Buttonhole Band but omit buttonholes.

### TO MAKE UP

Pin out to size and steam carefully. Join raglan, side and sleeve seams. Backstitch back neckband and front bands into pos and join seams. Sew on buttons to correspond with buttonholes. Give final light steam.

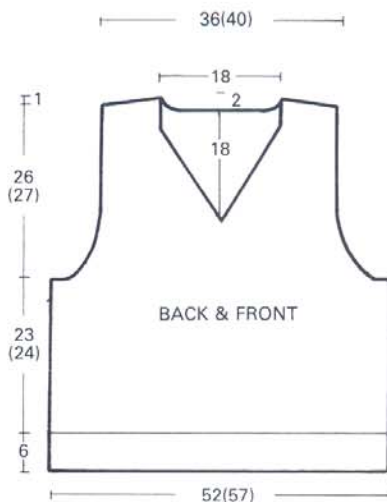
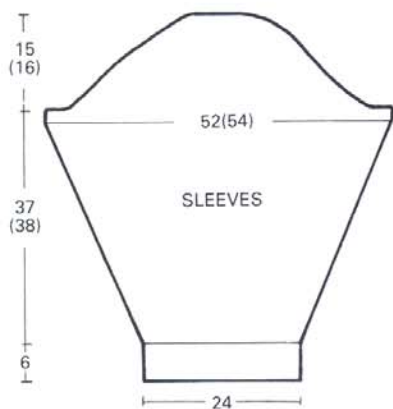


### BACK NECKBAND



**PATTERN 6**

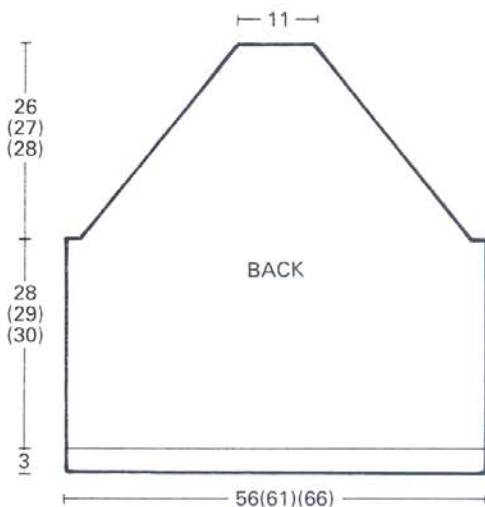
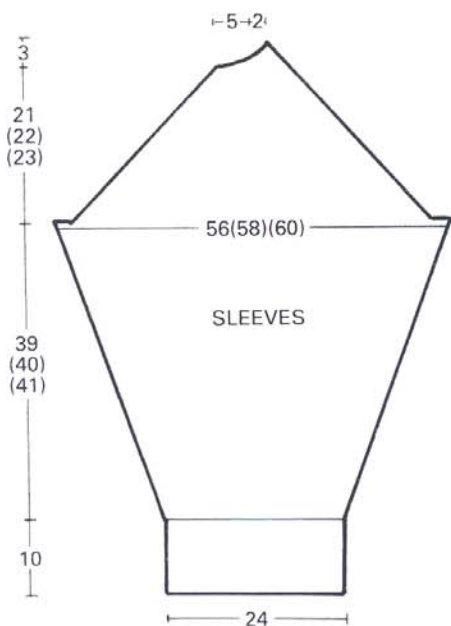
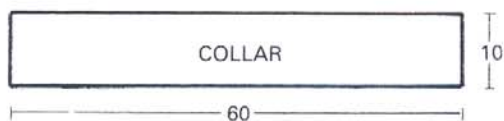
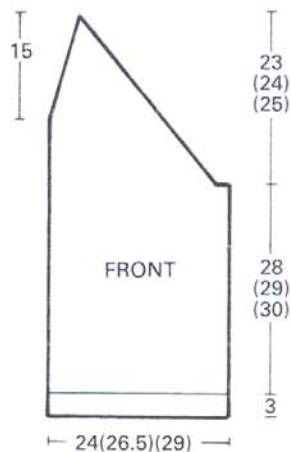
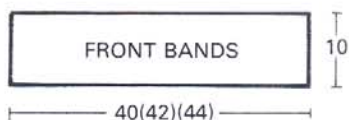
Continued from page 16.

**PATTERN 7**

Continued from page 17.

**TO MAKE UP**

Pin out to size and steam carefully. Join raglan, side and sleeve seams. Backstitch front bands into pos. Backstitch collar into pos. Sew on buttons to corresponding with buttonholes. Give final light steam.





# TECHNIQUES

## Knit 1 Purl 1 Rib

Push required number of needles to Working Position.

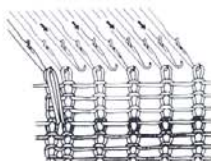
Push the 3rd and every following alternate needle back to Non Working Position.

Cast on and knit several rows with waste yarn.

Set Tension Dial to number given in pattern for Knit 1 Purl 1 Rib. Using Main Yarn, knit 4 rows.

Insert transfer tool into the end loop of the first row of main knitting.

Lift that loop and put into the end needle. Bring the alternate needles forward to Working Position.



Knit the number of rows stated in the pattern.

Drop the 3rd and every following alternate stitch back to the waste yarn.

Using the latch tool, reform the dropped stitches in the following way.

Insert the latch tool under the loop of the first row of main knitting. Ignoring the next 3 bars, catch the yarn of the 5th row in the hook of the latch tool.

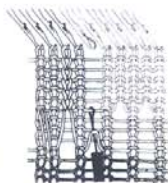
Pull the tool towards you until the first loop slips over the hook to form a new stitch.

Continue reforming stitches in this way until all the bars above have been knitted.

Replace the stitch onto the needle.

Repeat this procedure on alternate stitches until the rib is complete.

Missing 3 bars at the bottom each time gives this rib a nice firm edge.



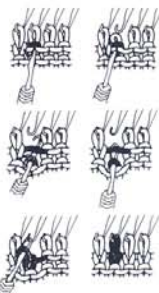
## Garter Stitch

Put the latch tool into the stitch below the one on the needle.

Drop the stitch by bringing the needle out to holding position then back to working position.

Catch the bar of the dropped stitch in the hook of the latch tool, pull through the stitch below and replace on the needle.

Repeat all along the row.



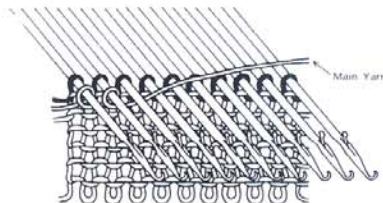
## Moss Stitch

Follow the instructions for Garter stitch but, instead of reforming the stitches all along the row, reform every alternate stitch. Variations of Garter Stitch and Moss Stitch are usually shown in the form of a chart which indicates which stitches should be reformd.

## Casting on by hand using the 'e' wrap method

Cast on automatically and knit at least 10 rows with waste yarn. Knit 1 row with a ravel card or a smooth contrast yarn. Push needles to HP. Starting at the left and using the main yarn, wind around each needle, wrapping in an anticlockwise direction. Thread the yarn through the yarn feeder.

Set Russel levers to II and continue for required length. Pull out the ravel cord. You now have a closed edge cast on.



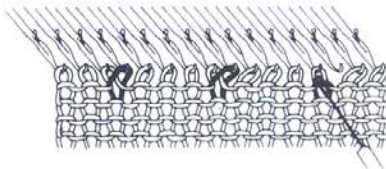
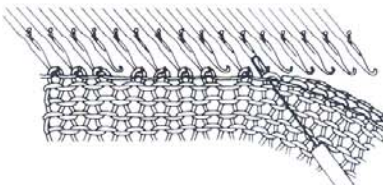
## Chain Stitch



## Increasing evenly across a row

1. Push up additional needles required for increase to WP and place the stitches of the last row of main knitting onto the needles in WP omitting a needle at appropriate intervals. Remove waste knitting.

2. Pick up the stitches of the previous row, next to the empty needle, and place them onto the empty needles.



# 11 & 12 NAVY CREW NECK SWEATER



These two sweaters illustrate beautifully how you can quite easily make a knitting pattern look completely different each time you knit it. For the lady's version we've introduced an intarsia flower pattern but you could also knit it plain or even introduce a completely different intarsia pattern. The striped ribs on the man's sweater show yet another simple variation.

## MANS VERSION

### BACK

Push 39 (43) (47) (51) Ns at left and right of centre O to B pos. 78 (86) (94) (102) Ns altog. Using col 1, cast on as given in additional notes for Knit 1 Purl 1 Rib. RC 000. MT-4. Continue in stripes of 1 row col 2, 1 row col 1, knit 15 rows. Drop the 3rd and ev foll alt st and pick up as for Knit 1 Purl 1 Rib. RC 000. MT. Continue in col 1, knit 59 (63) (71) (75) rows. Mark both ends with waste yarn\*. Knit 53 rows. RC 112 (116) (124) (128). Carr at left.

### Shape Back Neck

Using a length of col 1, cast off centre 14 sts. Hold Ns at right.

### Knit Left Part as Follows:-

Knit 1 row. Cast off 3 sts at beg of the next row, knit 1 row. Cast off 2 sts at beg of the next row. Cast off rem 27 (31) (35) (39) sts. Take carr to right. Bring Ns back to B pos. Knit right part as for left part.

### FRONT

Knit as for Back to \*. Knit 39 rows. RC 98 (102) (110) (114). Carr at left.

### Shape Neck

Using a length of col 1, cast off centre 12 sts. Hold Ns at right.

### Knit Left Part as Follows:-

Knit 1 row. Cast off 2 sts at beg of the next row, knit 1 row. Dec 1 st at neck edge on the next and ev foll alt row 4 times in all, knit 8 rows. Cast off rem 27 (31) (35) (39) sts. Take carr to right. Bring Ns back to B pos. Knit right part as for left part.

For Knitmaster Option 4 Machines.

### Sizes:

To fit 81-86 (91-96) (101-106) (112-117) cms/32-34 (36-38) (40-42) (44-46) inch bust/chest.

### Materials:

Knitmaster Kone Chunky  
Mans Version  
Col 1 (Midnight) — 580 (600) (620) (650) grms  
Col 2 (Aran) — small amount  
Lady's Version  
Col 1 (Midnight) — 530 (550) (570)

(600) grms  
Col 2 (Aran) — 50 grms  
Col 3 (Inca) — small amount

### Tensions:

Stockinet and Intarsia — 15 sts and 22 rows to 10 cms. TD at approx. 8 (MT) Knit 1 Purl 1 Rib — 25 rows to 10 cms. TD at approx. MT-4.

### Pattern Note:

Man's Version — Stockinet.  
Lady's Version — Intarsia — follow chart.

## SLEEVES

Push 18 Ns at left and right of centre O to B pos. 36 Ns altog. Using col 1, cast on as given in additional notes for Knit 1 Purl 1 Rib. RC 000. MT-4. Continue in stripes of 1 row col 2, 1 row col 1, knit 23 rows. RC 000. MT. Continue in col 1, knit 2 rows. Inc 1 st at both ends of the next and ev foll 4th row 21 times in all. 78 sts. Knit to Row 88 (90) (90) (92). Mark centre with waste yarn. Cast off.

## NECKBAND

Push 78 Ns to B pos. Using col 1, cast on as given in additional notes for Knit 1 Purl 1 Rib. RC 000. MT-4. Continue in stripes of 1 row col 2, 1 row col 1, knit 20 rows. Drop the 3rd and ev foll alt st and pick up as for Knit 1 Purl 1 Rib. Knit 1 row MT. Cast off with waste yarn.

## TO MAKE UP

Pin out to size and steam carefully. Join shoulder seams. Set in sleeves between marked points. Join side and sleeve seams. Backstitch neckband into pos and join centre back neck seam. Fold in half and catch down on the inside. Give final light steam.

## LADY'S VERSION

Knit as for Man's Version but knit welts, cuffs and neckband in col 1 only and work intarsia daisy's over the following sts and Rows:-

### Back & Front

RC 004 — work daisy over Ns 16 to 34 at right of centre O.

RC 030 — work daisy over Ns 16 to 34 at left of centre O.

RC 056 — work daisy over Ns 1 to 19 at right of centre O.

RC 082 — work daisy over Ns 23 to 41 at left of centre O.

### First Sleeve

RC 004 — work daisy over Ns 1 to 19 at right of centre O.

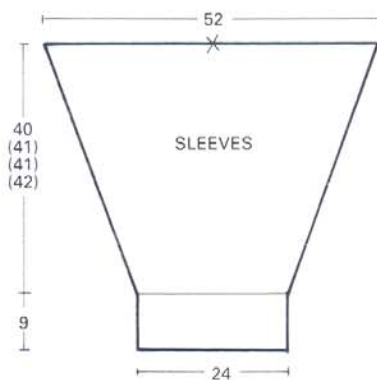
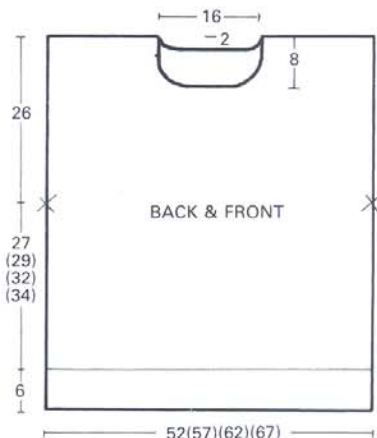
RC 030 — work daisy over Ns 7 to 25 at left of centre O.

RC 056 — work daisy over 9 Ns at left

and 10 Ns at right of centre O.

### Second Sleeve

Knit as for First Sleeve but in reverse.



Continued on page 28.

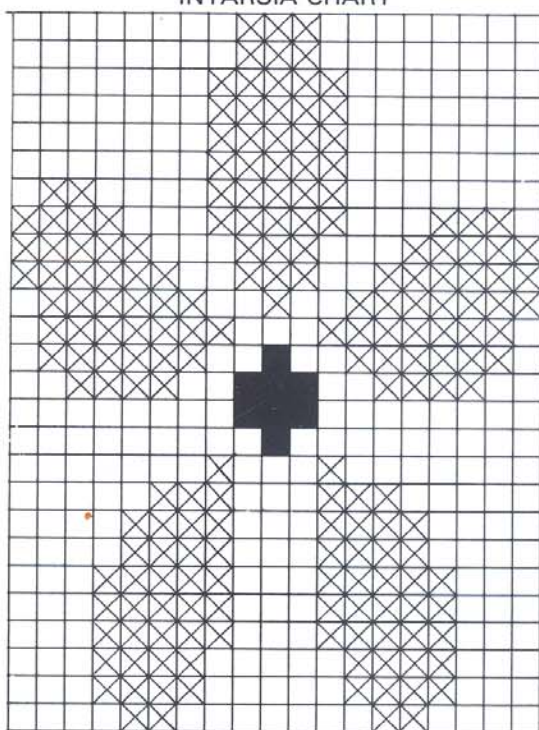
12



11



INTARSIA CHART



Key  
X Aran  
■ Inca

## MAKE YOUR OWN PATTERNS

**Knitmaster's Pattern Pack** – the new unique pattern system.

This amazing pattern system, which is set to revolutionise machine knitting patterns, consists of a set of pattern sheets, 14 knitting scales, and a step-by-step guide on how to use it. You don't have to follow somebody else's written pattern. You don't have to try to convert a hand knitting pattern. So – how does it work?

Step 1 — Knit our old friend the tension square (don't forget — this is the key to a perfectly fitting garment).

Step 2 — Choose the garment shape you want to knit from the six basic patterns provided.

Step 3 — Using the knitting scales indicated by the stitch and row measurement on the tension square, see at a glance how many stitches to cast-on, and how many rows to knit to make the shape you choose.

This wonderful pattern pack guides you through knitting basic styles, helps you alter shapes to suit individual measurements, and gives tips on how to make your own completely original garment shapes.

What could be simpler? Use *your* choice of yarn, *your* choice of tension, *your* choice of stitch pattern — and knit any shape you like.

The Knitmaster Pattern Pack can be used with any knitting machine, and any piece of knitting measuring up to 50 rows to 10 cms., which covers most chunky, standard and fine gauge knitting.

Start by using the patterns provided, and in no time at all you can be creating your own exclusive, made to measure knitwear.

This amazing new concept in garment shaping is available now at your local Knitmaster stockist.

# 13 BABY'S LEGGINGS AND SWEATER



This pattern will provide you with a variety of different baby outfits if you simply use different colours. If you like traditional baby clothes, then knit with traditional baby colours. If you prefer brighter baby clothes then use richer colours or primary colours. Also, ring the changes by using different stripes in different places or perhaps no stripes at all.

## LEGGINGS (2 pieces)

Push 29 (30) (32) Ns at left and right of centre O to B pos. 58 (60) (64) Ns altog. Using waste yarn, cast on and knit several rows ending with carr at right. RC 000. MT. With col 1 in feeder 1 and plating feeder, knit 2 rows. With col 2 in feeder 1 and plating feeder, knit 4 rows. With col 1 in feeder 1 and plating feeder, knit 36 (42) (51) rows. RC 42 (48) (57). Mark both ends with waste yarn. Dec 1 st at both ends of the next and ev foll alt row 3 times in all. 52 (54) (58) sts. Knit to Row 84 (93) (105). RC 000. MT-1. Knit 12 rows. Drop ev alt st 12 rows down and pick up as for Knit 1 Purl 1 Rib. Cast off.

## LEGGING CUFFS (knit 2)

Push 42 (46) (50) Ns to B pos. With col 1 in feeder 1 and plating feeder, cast on as given in additional notes for Knit 1 Purl 1 Rib. RC 000. MT-1, knit 12 rows. Drop the 3rd and ev foll alt st and pick up as for Knit 1 Purl 1 Rib. With wrong side of Leggings facing, pick up sts from below waste yarn and place onto Ns gathering evenly. MT+2, knit 1 row. Cast off.

## SWEATER

### BACK

Push 27 (28) (30) Ns at left and right of centre O to B pos. 54 (56) (60) Ns altog. With col 1 in feeder 1 and plating feeder, cast on as given in additional notes for Knit 1 Purl 1 Rib. RC 000. MT-1, knit 6 rows. Drop the 3rd and ev foll alt

For Knitmaster Option 4 Machines.

### Sizes:

To fit 0 (3) (6) months.

### Materials:

Knitmaster Kone 4ply  
Col 1 (Midnight) — 100 (130) (160) grms  
Col 2 (White) — 60 (80) (100) grms  
3 buttons; elastic for waist.

### Tensions:

Stockinet Plating — 21 sts and 30 rows to 10 cms. TD at approx. 4 (MT)  
Knit 1 Purl 1 Rib (plating) — 30 rows to 10 cms. TD at approx. MT-1.

### Pattern Note:

Stockinet Plating.  
Sleeves — With col 2 in feeder 1 and plating feeder knit 2 rows, with col 1 in feeder 1 and plating feeder, knit 2 rows. Rept throughout.

st and pick up as for Knit 1 Purl 1 Rib. RC 000. MT. With Col 2 in feeder 1 and plating feeder, knit 2 rows. With col 1 in feeder 1 and plating feeder, knit 4 rows. With col 2 in feeder 1 and plating feeder, knit 28 (30) (36) rows. RC 34 (36) (42). Mark both ends with waste yarn\*. Knit 27 (31) (33) rows. Carr at left.

### Shape Back Neck

Using a length of col 2, cast off centre 16 sts. Hold Ns at right.

### Knit Left Part as Follows:-

Dec 1 st at neck edge on the next 3 rows. Cast off rem 16 (17) (19) sts. Take carr to right. Bring Ns back to B pos. Knit right part as for left part.

### FRONT

Knit as for Back to \*. Knit 15 (19) (21) rows. RC 49 (55) (63). Carr at left.

### Shape Neck

Using a length of col 2, cast off centre 10 sts. Hold Ns at right.

### Knit Left Part as Follows:-

Knit 1 row. Cast off 3 sts at beg of the next row, knit 1 row. Cast off 2 sts at beg of the next row, knit 1 row. Dec 1 st at beg of the next row, knit 9 rows. Cast off rem 16 (17) (19) sts. Take carr to right. Bring Ns back to B pos.

### Knit Right Part as Follows:-

Knit 1 row. Cast off 3 sts at beg of the next row, knit 1 row. Cast off 2 sts at beg of the next row, knit 1 row. Dec 1 st at beg of the next row, knit 4 rows. Cast off rem 16 (17) (19) sts.

### SLEEVES

Push 17 (18) (19) Ns at left and right of centre O to B pos. 34 (36) (38) Ns altog. With col 1 in feeder 1 and plating feeder, cast on as given in additional notes for Knit 1 Purl 1 Rib. RC 000. MT-1, knit 6 rows. Drop the 3rd and ev foll alt st and pick up as for Knit 1 Purl 1 Rib. RC 000. MT. Continue in stripes given in pattern note, knit 2 rows. Inc 1 st at both ends of the next and ev foll 6th (7th) (7th) row 4 (5) (6) times in all. 42 (46) (50) sts. Knit to Row 27 (36) (42). Mark

centre with waste yarn. Cast off.

### NECKBAND

Push 72 Ns to B pos. With col 1 in feeder 1 and plating feeder, cast on as given in additional notes for Knit 1 Purl 1 Rib. RC 000. MT-1, knit 6 rows. Drop the 3rd and ev foll alt st and pick up as for Knit 1 Purl 1 Rib. MT, knit 1 row. Cast off with waste yarn.

### BUTTONHOLE BAND

Push 16 (17) (19) Ns to B pos. With col 1 in feeder 1 and plating feeder, cast on as given in additional notes for Knit 1 Purl 1 Rib. RC 000. MT-1, knit 3 rows. Drop the 3rd and ev foll alt st and pick up as for Knit 1 Purl 1 Rib. Make 3 buttonholes over 1 N. Knit 2 rows. Drop the 3rd and ev foll alt st and pick up as for Knit 1 Purl 1 Rib. MT, knit 1 row. Cast off with waste yarn.

### BUTTON BAND

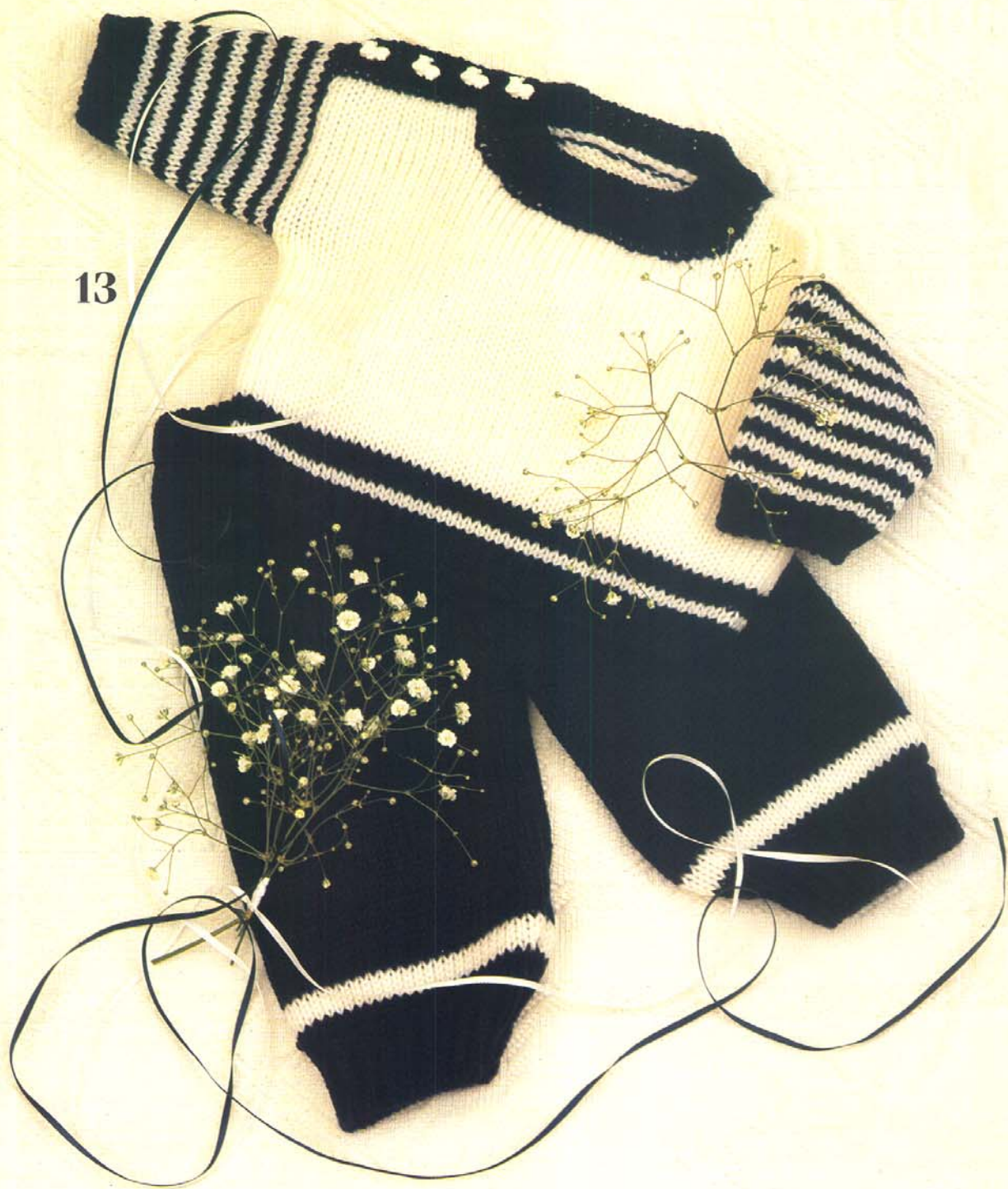
Knit as for Buttonhole Band but omit buttonholes.

### TO MAKE UP

Pin out to size and steam carefully. Join left shoulder seam. Backstitch buttonhole band to right back shoulder and button band to right front shoulder. Backstitch neckband into pos including along edges of bands. Lap buttonhole band over button band and join edge. Set in sleeves between marked points. Join side and sleeve seams. Sew on buttons to correspond with buttonholes. Join leg seams to marked points. Join back and front crotch seams. Fold waistband in half to inside and catch down into pos leaving a small opening to insert elastic. Insert elastic, join ends and close opening. Give final light steam.

Continued on page 33.

13



14



# 14 BABY'S ALL-IN-ONE SUIT



This little all-in-one suit uses two different combinations of stripes. The legs are striped with 2 rows of each colour while the top has 4 rows of each colour. However, you could knit the stripes the same all over or maybe knit broader stripes of 6 or 8 rows. Consider using the purl side as the right side too.

## BACK BODICE

Push 25 (26) (29) Ns at left and right of centre O to B pos. 50 (52) (58) Ns altog. Using waste yarn, cast on ending with carr at right. RC 000. MT. Continue in stripe sequence given in pattern note, knit 8 (14) (14) rows.

## Shape Armholes

Cast off 3 sts at beg of the next 2 rows and 2 sts at beg of the next 8 rows. 28 (30) (36) sts. Knit 18 (20) (24) rows. RC 36 (44) (48). Carr at right.

## Shape Shoulders

Cast off 3 (3) (4) sts at beg of the next 2 rows and 2 (2) (3) sts at beg of the next 2 rows. Cast off rem 18 (20) (22) sts.

## RIGHT FRONT BODICE

Push 25 (26) (29) Ns at right of centre O to B pos. Using waste yarn, cast on ending with carr at right (left on Left Front). RC 000. MT. Continue in stripe sequence given in pattern note, knit 8 (14) (14) rows. Carr at right.

## Shape Armhole

Cast off 3 sts at beg of the next row, knit 1 row. Cast off 2 sts at beg of the next and ev foll alt row 4 times in all, knit 3 (5) (9) rows. RC 20 (28) (32). Carr at right.

## Shape Neck

Dec 1 st at neck edge on the next and ev foll alt row 8 times in all. Dec 0 (0) (1) st at neck edge of the next row. RC 36 (44) (48). Carr at right.

## Shape Shoulder

Cast off 3 (3) (4) sts at beg and dec 1 st at neck edge on the next row, dec 0 (1) (1) st at neck edge on the next row. Cast off rem 2 (2) (3) sts.

For Knitmaster Option 4 Machines.

## Sizes:

To fit 0 (3) (6) months.

## Materials:

Patons Supersoft D.K.

Col 1 (Lupin 2282) — 100 (120) (140) grms

Col 2 (White 2284) — 70 (85) (100) grms

11 (14) (15) buttons.

## Tensions:

Stockinet Stripes — 22 sts and 34 rows to 10 cms. TD at approx. 3 (MT)  
Knit 1 Purl 1 Rib — 38 rows to 10 cms. TD at approx. MT-1.

## Pattern Note:

Stockinet Stripes.

Stripe sequence for legs — 2 rows col 2, 2 rows col 1. Rept throughout. Stripe sequence for top and sleeves — 4 rows col 1, 4 rows col 2. Rept throughout.

## LEFT FRONT BODICE

Knit as for Right Front but in reverse.

## LEGGINGS (knit 2 pieces)

Push Ns 8 to 29 at right of centre O to B pos. 22 Ns altog. Using col 1, cast on as given in additional notes for Knit 1 Purl 1 Rib. RC 000. MT-1, knit 8 rows. Drop the 3rd and ev foll alt st and pick up as for Knit 1 Purl 1 Rib. RC 000. MT. Continue in stripe sequence given in pattern note inc 1 st at left edge on the 6th (7th) (8th) and ev foll 6th (7th) (8th) row 7 times in all, AT THE SAME TIME inc 1 st at right edge on the 11th (11th) (9th) and ev foll 11th (11th) (9th) row 3 (4) (6) times in all. 32 (33) (35) sts. Knit to Row 44 (51) (61). Note pos in colour sequence\*. Using waste yarn, knit several rows and release from machine. Push Ns 8 to 29 at left of centre O to B pos. 22 Ns altog. Knit as given for first piece to \* but read right for left and vice versa. Push 32 (33) (35) Ns at right of centre O to B pos. Pick up sts from below waste yarn on first piece and replace onto Ns in B pos. 64 (66) (70) sts. RC 000. Keeping stripe sequence correct, knit 54 (57) (65) rows. Cast off with waste yarn.

## SLEEVES

Push 13 (15) (18) Ns at left and right of centre O to B pos. 26 (30) (36) Ns altog. Using col 1, cast on as given in additional notes for Knit 1 Purl 1 Rib. RC 000. MT-1, knit 8 rows. Drop the 3rd and ev foll alt st and pick up as for Knit 1 Purl 1 Rib. RC 000. MT. Continue in stripe sequence given in pattern note, knit 2 rows. Inc 1 st at both ends of the next and ev foll 4th (7th) (10th) row 7 (6) (5) times in all. 40 (42) (46) sts. Knit to Row 32 (42) (48). Carr at right.

## Shape Top

Cast off 3 sts at beg of the next 2 rows and 2 sts at beg of the next 2 rows.

## 1st Size Only

Dec 1 st at both ends of the next and ev foll alt row 5 times in all, knit 1 row. Cast

off 2 sts at beg of the next 4 rows and 3 sts at beg of the next 2 rows.

## 2nd Size Only

Dec 1 st at both ends of the next row, knit 1 row. Dec 1 st at both ends of the next and ev foll 3rd row 3 times in all, knit 1 row. Dec 1 st at both ends of the next and foll alt row, knit 1 row. Cast off 2 sts at beg of the next 4 rows and 3 sts at beg of the next 2 rows.

## 3rd Size Only

Dec 1 st at both ends of the next and ev foll 3rd row 5 times in all, knit 1 row. Dec 1 st at both ends of the next and foll alt row, knit 1 row. Cast off 2 sts at beg of the next 2 rows and 3 sts at beg of the next 4 rows.

## All Sizes

RC 52 (66) (76). Cast off rem 6 sts.

## FRONT BAND

Push 75 (84) (88) Ns to B pos. Using col 1, cast on as given in additional notes for Knit 1 Purl 1 Rib. RC 000. MT-1, knit 4 rows. Drop the 3rd and ev foll alt st and pick up as for Knit 1 Purl 1 Rib. Counting from the left edge, make buttonholes over Ns as follows:-

## 1st Size Only

Ns 4, 8 and 12.

## 2nd Size Only

Ns 4, 8, 12 and 16.

## 3rd Size Only

Ns 4, 8, 12, 16 and 20.

## All Sizes

Knit 4 rows. Drop the 3rd and ev foll alt st and pick up as for Knit 1 Purl 1 Rib. Knit 1 row stockinet MT. Cast off with waste yarn.

## LEG BANDS

Push 74 (84) (88) Ns to B pos. Using col 1, cast on as given in additional notes for Knit 1 Purl 1 Rib. RC 000. MT-1, knit 4 rows. Drop the 3rd and ev foll alt st and pick up as for Knit 1 Purl 1 Rib. Make 8 (10) (10) evenly spaced buttonholes over 1 N. Knit 4 rows. Drop the 3rd and ev foll alt st and pick up as for Knit 1 Purl 1 Rib. Knit 1 row stockinet MT. Cast off

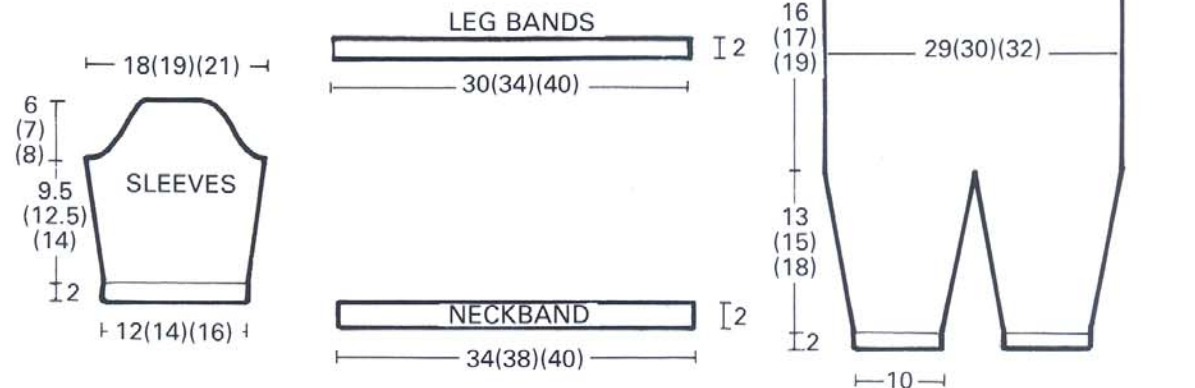


with waste yarn. Knit another band but omit buttonholes.

**TO MAKE UP**

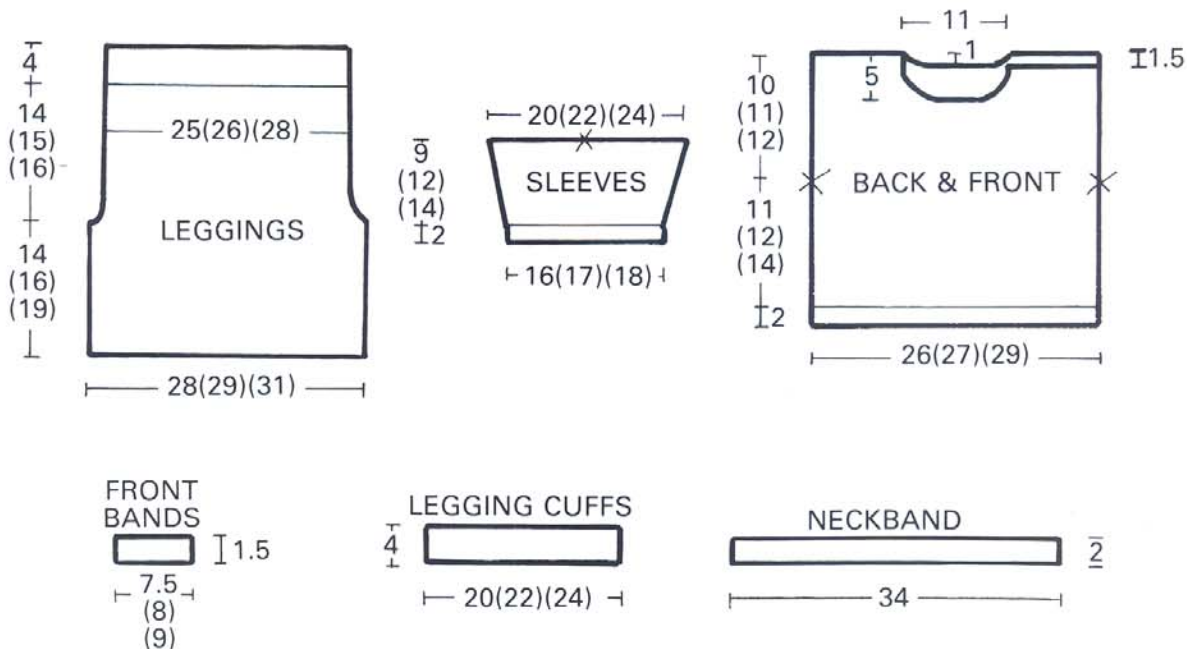
Pin out to size and steam carefully. Join shoulder seams. Backstitch front band into pos. Push 50 (52) (58) Ns to B pos. With right side of Back Bodice facing, pick up sts from below waste yarn and place onto Ns in B pos. With wrong side of leggings facing, pick up sts from below waste yarn and place onto Ns in B pos gathering evenly. MT+4, knit 1 row. Cast off. Push 54 (56) (62) Ns to B

pos. With right side of Right and Left Front Bodice pieces facing, and overlapping front bands pick up sts from below waste yarn and place onto Ns in B pos. With wrong side of leggings facing, pick up sts from below waste yarn and place onto Ns in B pos gathering evenly. MT+4, knit 1 row. Cast off. Set in sleeves. Join side and sleeve seams. Backstitch leg bands with buttonholes to front leggings and leg bands without buttonholes to back leggings. Sew on buttons to correspond. Give final light steam.



**PATTERN 13**

Continued from page 29.



15



# 15 LADY'S PURPLE SWEATER



A simple decoration of embroidered chain stitch around the neckline of this sweater adds interest to a basically plain sweater. Embroidery on knitwear is effective and fashionable so you might like to consider adding all sorts of embroidered motifs and decoration to other plain designs to give them a new lease of life.

## BACK

Push 47 (52) (57) Ns at left and right of centre O to B pos. 94 (104) (114) Ns altog. With col 2 in feeder 1 and plating feeder, cast on as given in additional notes for Knit 1 Purl 1 Rib. RC 000. MT-1, knit 8 rows. Drop the 3rd and ev foll alt st and pick up as for Knit 1 Purl 1 Rib. RC 000. MT. With col 1 in feeder 1 and plating feeder, knit 2 rows. Inc 1 st at both ends of the next and ev foll 12th (12th (13th) row 6 times in all. 106 (116) (126) sts. Knit to Row 66 (68) (74). Carr at right.

## Shape Armholes

Cast off 2 sts at beg of the next 4 rows. Dec 1 st at both ends of the next and ev foll alt row 3 (5) (7) times in all, knit 1 row. Dec 1 st at both ends of the next and ev foll 3rd row 4 (3) (3) times in all, knit 2 rows. Dec 1 st at both ends of the next and ev foll 4th row 4 (4) (3) times in all. 76 (84) (92) sts\*. Knit 33 (36) (38) rows. RC 134 (140) (148). Carr at right.

## Shape Back Neck

Using a length of col 1, cast off centre 30 sts. Hold Ns at left.

## Knit Right Part as Follows:-

Knit 1 row. Cast off 3 sts at beg of the next row, knit 1 row. Cast off 2 sts at beg of the next and foll alt row. RC 140 (146) (154). Carr at right.

## Shape Shoulder

Cast off 5 (7) (8) sts at beg of the next row, dec 1 st beg of the next row. Cast off 5 (7)(8) sts at beg of the next row, knit 1 row. Cast off rem 5 (5) (7) sts. Take carr to left. Bring Ns back to B pos. Knit left part as for right part.

For Knitmaster Option 4 Machines.

## Sizes:

To fit 81-86 (91-96) (101-106) cms/32-34 (36-38) (40-42) inch bust.

## Materials:

Knitmaster Kone 4ply  
Col 1 (Bluebell) — 330 (380)(430) grms  
Col 2 (Black) — 30 (40)(45) grms

## Tensions:

Stockinet Plating — 21 sts and 30 rows to 10 cms. TD at approx. 4 (MT).  
Knit 1 Purl 1 Rib (plating) — 30 rows to 10 cms. TD at approx. MT-1.

## Pattern Note:

Stockinet Plating — Col 1 in feeder 1 and plating feeder.

## FRONT

Knit as for Back to \*. Knit 19 (22) (24) rows. RC 120 (126) (134). Carr at right.

## Shape Neck

Using a length of col 1, cast off centre 20 sts. Hold Ns at left.

## Knit Right Part as Follows:-

Knit 1 row. Cast off 3 sts at beg of the next and foll alt row, knit 1 row. Cast off 2 sts at beg of the next and foll alt row, knit 1 row. Dec 1 st at neck edge on the next and ev foll 3rd row 3 times in all, knit 4 rows. RC 140 (146) (154). Carr at right.

## Shape Shoulder

Cast off 5 (7) (8) sts at beg of the next and foll alt row, knit 1 row. Cast off rem 5 (5) (7) sts. Take carr to left. Bring Ns back to B pos. Knit left part as for right part.

## SLEEVES

Push 25 Ns at left and right of centre O to B pos. 50 Ns altog. With col 2 in feeder 1 and plating feeder, cast on as given in additional notes for Knit 1 Purl 1 Rib. RC 000. MT-1, knit 6 rows. Drop the 3rd and ev foll alt st and pick up as for Knit 1 Purl 1 Rib. RC 000. MT. With col 1 in feeder 1 and plating feeder, knit 2 rows. Inc 1 st at both ends of the next and ev foll 4th row 17 (22) (27) times in all, knit 3 rows. Inc 1 st at both ends of

the next and ev foll 5th row 9 (6) (3) times in all. 102 (106) (110) sts. Knit to Row 116 (120) (124).

## Shape Top

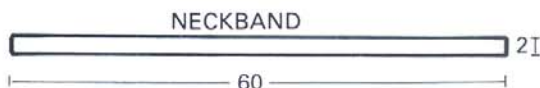
Cast off 3 sts at beg of the next 4 (4) (6) rows and 2 sts at beg of the next 8 (12) (10) rows. Dec 1 st at both ends of the next and ev foll alt row 6 (6) (9) times in all, knit 1 row. Cast off 2 sts at beg of the next 14 (12) (6) rows, 3 sts at beg of the next 6 rows and 4 sts at beg of the next 2 (2) (4) rows. RC 162 (168) (174). Cast off rem 8 sts.

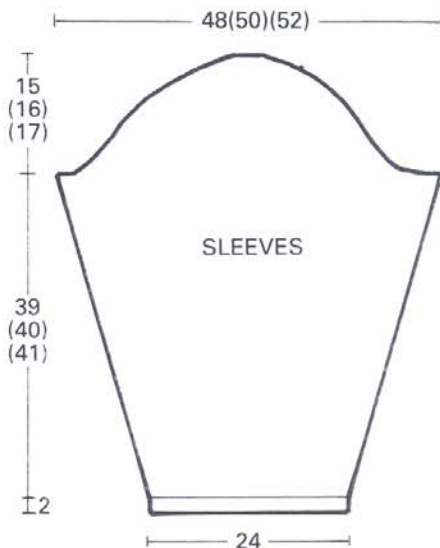
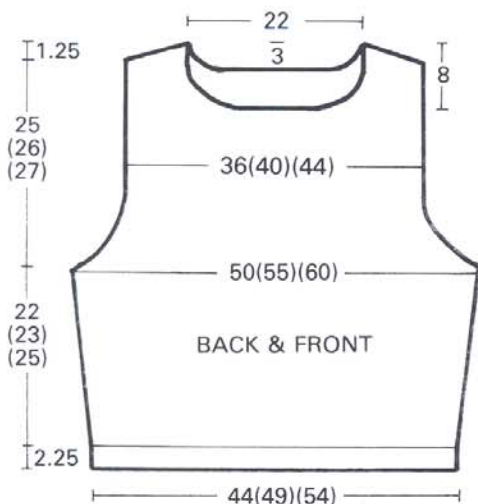
## NECKBAND

Push 126 Ns to B pos. With col 2 in feeder 1 and plating feeder, cast on as given in additional notes for Knit 1 Purl 1 Rib. RC 000. MT-1, knit 6 rows. Drop the 3rd and ev foll alt st and pick up as for Knit 1 Purl 1 Rib. MT, knit 1 row. Cast off with waste yarn.

## TO MAKE UP

Pin out to size and steam carefully. Join shoulder seams. Set in sleeves. Join side and sleeve seams. Backstitch neckband into pos and join centre back neck seam. Using 2 ends of col 2 and chain stitch, embroider around neckedge as shown in photograph. Give final light steam.





## MORE PATTERNS FOR YOU TO KNIT ON YOUR OPTION 4

Before the arrival of Knitmaster's revolutionary new Option 4 Knitting machine, we had Standard Gauge machines and Chunky machines. But now, with Knitmaster's Option 4, you can knit the whole range of 4ply, Double Knitting, Aran, Mohair and Chunky Yarns — all with one machine.

There are two beautiful Chunky pattern Books available (originally designed for 9mm Chunky machines) which Option 4 users can now also use to knit the glorious selection of Chunky designs contained in these two books. The only minor alteration you will need to make to the patterns to knit them on your Option 4 is to set your Tension Dial to approximately 2 numbers higher than stated in the pattern. How versatile Option 4 is!

### THE CHUNKY BOOK

15\* Sweater & Cardigan patterns for women

12\* Sweater & Cardigan patterns for men

Sizes 32"-46" bust/chest

All in Knitmaster's superb new Chunky yarn

\* 2 women's patterns and 1 man's pattern are not suitable for Option 4 Knitting Machines.



### THE KIDDIES' CHUNKY BOOK

A collection of 30 Chunky patterns for children. Includes classic cardigans and sweaters as well as fashion knits for boys and girls.

Sizes 24"-30" chest

All patterns suitable for Option 4 Knitting machines.



AVAILABLE FROM YOUR KNITMASTER STOCKIST NOW.

# 16 PEACH LACE AND GARTER STITCH SWEATER



A variety of Option 4 stitch techniques have been combined to create this beautiful sweater. We've used a simple lace pattern to form vertical stripes of open work while garter stitch creates squares of texture and 'empty' squares. We've filled the empty squares afterwards with swiss darning them with pretty flower motif.

## BACK

Push 54 (59) (65) Ns at left and right of centre O to B pos. 108 (118) (130) Ns altog. Using waste yarn, cast on ending with carr at right. Push Ns to D pos. Using col 1, cast on by hand. Push Ns to C pos. RC 000. MT-1, knit 1 row. Continue in Moss Stitch following chart, knit 18 rows. MT, knit 1 row stockinet. Using waste yarn, knit several rows and release from machine. Push 58 (63) (69) Ns at left and right of centre O to B pos. 116 (126) (138) Ns altog. With carr at right, pick up sts from below waste yarn and place onto Ns increasing evenly (see additional notes). RC 000. MT. Continue in lace and garter stitch pattern following chart. Knit 82 (88) (96) rows. Mark both ends with waste yarn\*. Knit 82 rows. RC 164 (170) (178). Carr at right.

## Shape Back Neck

Note pos in pattern. Using a length of col 1, cast off centre 38 sts. Hold Ns at left.

## Knit Right Part as Follows:-

Knit 1 row. Cast off 3 sts at beg of the next row, knit 1 row. Cast off 2 sts at beg of the next and foll alt row. Cast off rem 32 (37) (43) sts. Take carr to left. Bring Ns back to B pos. Keeping pattern correct, knit left part as for right part.

## FRONT

Knit as for Back to \*. Knit 60 rows. RC 142 (148) (156). Carr at right.

## Shape Neck

Note pos in pattern. Using a length of

For Knitmaster Option 4 Machines.

## Sizes:

To fit 81-86 (91-96) (101-106) cms/32-34 (36-38) (40-42) inch bust.

## Materials:

Patons Supersoft D.K.  
Col 1 (Iced Apricot 2298) — 450 (500) (550) grms  
Col 2 (Willow 2299) — 50 grms  
Col 3 (Shrimp 2304) — 50 grms

## Tensions:

Pattern — 21.5 sts and 34 rows to 10 cms. TD at approx. 3 (MT).  
Moss Stitch — 47 rows to 10 cms. TD at approx. MT-1.

## Pattern Note:

Lace and Garter Stitch — see chart.  
Moss Stitch — see chart.

col 1, cast off centre 24 sts. Hold Ns at left.

## Knit Right Part as Follows:-

Knit 1 row. Cast off 3 sts at beg of the next row, knit 1 row. Cast off 2 sts at beg of the next and foll alt row, knit 1 row. Dec 1 st at beg of the next row, knit 1 row. Dec 1 st at neck edge on the next and ev foll 3rd row 6 times in all, knit 3 rows. Cast off rem 32 (37) (43) sts. Take carr to left. Bring Ns back to B pos. Keeping pattern correct, knit left part as for right part.

## SLEEVES

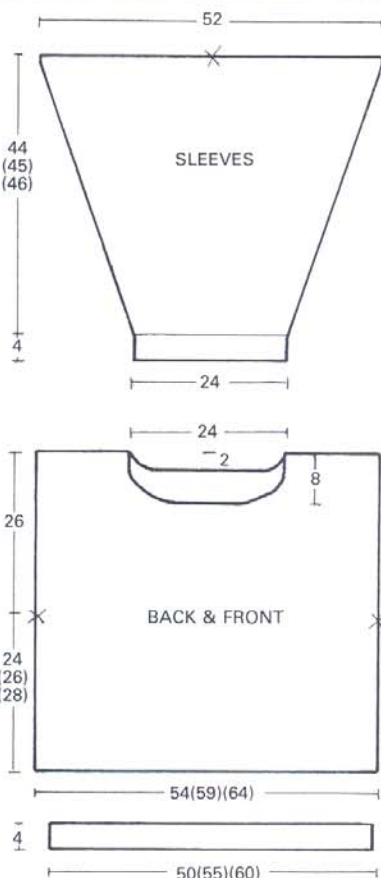
Push 26 Ns at left and right of centre O to B pos. 52 Ns altog. Using waste yarn, cast on ending with carr at right. Push Ns to D pos. Using col 1, cast on by hand. Push Ns to C pos. RC 000. MT-1, knit 1 row. Continue in Moss Stitch following chart, knit 18 rows. RC 000. MT. Continue in lace and garter stitch pattern following chart. Knit 2 rows. Inc 1 st at both ends of the next and ev foll 5th row 30 times in all. 112 sts. Knit to Row 150 (154) (156). Mark centre with waste yarn. Cast off.

## NECKBAND

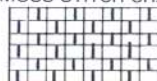
Push 134 Ns to B pos. Using waste yarn, cast on. Push Ns to D pos. Using col 1, cast on by hand. Push Ns to C pos. MT-1, knit 1 row. Continue in Moss Stitch following chart, knit 9 rows. MT, knit 1 row stockinet. Cast off with waste yarn.

## TO MAKE UP

Pin out to size and steam carefully. Join shoulder seams. Set in sleeves between marked points. Join side and sleeve seams. Backstitch neckband into pos and join centre back neck seam. Swiss darn flowers following chart. Give final light steam.



## MOSS STITCH CHART



□ = drop st and reform as for ribbing

Continued on page 39.

# 17 LADY'S LACE AND FLORAL CARDIGAN



For Knitmaster Option 4 Machines.

## Sizes:

To fit 81-86 (91-96) (101-106) cms/32-34 (36-38) (40-42) inch bust.

## Materials:

Patons Supersoft DK Cotton.  
Col 1 (Straw 2303) — 500 (550) (600) grms  
Col 2 (Willow 2299) — small amount  
Col 3 (Iced Apricot 2298) — small amount  
8 buttons; 106 cms of 3.5 cm wide ribbon

## Tensions:

Lace Pattern — 21.5 sts and 33 rows to 10 cms. TD at approx. 3 (MT)  
Stockinet — 35 rows to 10 cms. TD at approx. MT  
Moss Stitch — 47 rows to 10 cms. TD at approx. MT-1

## Pattern Note:

Hand Transfer Lace — follow chart.  
Moss Stitch — follow chart.

This cardigan features a technique known as Fashion Lace whereas pattern 16 uses Transfer Lace to create the holes. Transfer Lace is formed by transferring one stitch to it's adjacent needle while Fashion Lace is formed by transferring several stitches to their adjacent needles. Try knitting a sample of each of these lace patterns to familiarise yourself with the differences.

## BACK

Push 104 (114) (124) Ns to B pos. Using waste yarn, cast on and knit several rows ending with carr at right. Push Ns to D pos. Using col 1, cast on by hand. Push Ns to C pos. RC 000. MT-1, knit 1 row. Continue in Moss Stitch following chart, knit 24 rows. Knit 1 row stockinet MT. Cast off with waste yarn. Push 56 (61) (67) Ns at left and right of centre O to B pos 112 (122) (134) Ns altog. With carr at right, pick up sts from below waste yarn and place onto Ns in B pos increasing evenly (see additional notes). RC 000. MT. Knit 2 rows stockinet. Transfer ev alt st to its adjacent N, leaving empty Ns in B pos, knit 20 rows. Transfer ev alt st to its adjacent N, leaving empty Ns in B pos, knit 2 rows. Continue in lace pattern following chart, knit 76 rows. RC 100. Mark both ends with waste yarn. Knit 82 rows. RC 182. Carr at right.

## Shape Back Neck

Note pos in pattern. Using a length of col 1, cast off centre 30 sts. Hold Ns at left.

## Knit Right Part as Follows:-

Knit 1 row. Cast off 2 sts at beg of the next and foll alt row. Cast off rem 37 (42) (48) sts. Take carr to left. Bring Ns back to B pos. Keeping pattern correct, knit left part as for right part.

## RIGHT FRONT

Push 52 (57) (62) Ns to B pos. Using waste yarn, cast on and knit several rows ending with carr at right. Push Ns

to D pos. Using col 1, cast on by hand. Push Ns to C pos. RC 000. MT-1, knit 1 row. Continue in Moss Stitch following chart, knit 24 rows. Knit 1 row stockinet MT. Cast off with waste yarn. Push 56 (61) (67) Ns at right of centre O to B pos. With carr at right, pick up sts from below waste yarn and place onto Ns increasing evenly. RC 000. MT. Knit 2 rows stockinet. Transfer ev alt st to its adjacent N, leave empty Ns in B pos, knit 20 rows. Transfer ev alt st to its adjacent N, leave empty Ns in B pos, knit 2 rows. Continue in lace pattern following chart, knit 76 rows. RC 100. Mark right edge with waste yarn. Knit 59 rows. RC 159. Carr at left.

## Shape Neck

Cast off 13 sts at beg of the next row, knit 1 row. Cast off 2 sts at beg of the next row, knit 1 row. Dec 1 st at neck edge on the next row, knit 1 row. Dec 1 st at neck edge on the next and ev foll 4th row 3 times in all, knit 12 rows. Cast off rem 37 (42) (48) sts.

## LEFT FRONT

Knit as for Right Front but in reverse.

## SLEEVES

Push 26 Ns at left and right of centre O to B pos. 52 Ns altog. Using waste yarn, cast on and knit several rows ending with carr at right. Push Ns to D pos. Using col 1, cast on by hand. Push Ns to C pos. RC 000. MT-1, knit 1 row. Continue in Moss Stitch following chart, knit 24 rows. RC 000. MT. Knit 2 rows stockinet. Transfer ev alt st onto its adjacent N, leave empty Ns in B pos, knit 3 rows. Inc 1 st at both ends of the next and ev foll 5th row 4 times in all, knit 1 row. Transfer ev alt st onto its adjacent N, leave empty Ns in B pos, knit 2 rows. Continue in lace pattern following chart, knit 1 row. Inc 1 st at both ends of the next and ev foll 5th row 22 times in all, knit 3 rows. Inc 1 st at both ends of the next and ev foll 4th row 4 times in all. 112 sts. Knit to Row 148

(152) (156). Mark centre with waste yarn. Cast off.

## COLLAR

Push 130 Ns to B pos. Using waste yarn, cast on and knit several rows ending with carr at right. Push Ns to D pos. Using col 1, cast on by hand. Push Ns to C pos. RC 000. MT-1, knit 1 row. Continue in Moss Stitch following chart, knit 47 rows. Knit 1 row stockinet MT. Cast off with waste yarn.

## BUTTONHOLE BAND

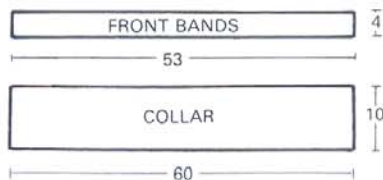
Push 114 Ns to B pos. Using waste yarn, cast on and knit several rows ending with carr at right. Push Ns to D pos. Using col 1, cast on by hand. Push Ns to C pos. RC 000. MT-1, knit 1 row. Continue in Moss Stitch following chart, knit 9 rows. Make 8 evenly spaced buttonholes over 2 Ns. Knit 9 rows. Knit 1 row stockinet MT. Cast off with waste yarn.

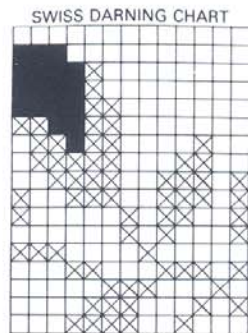
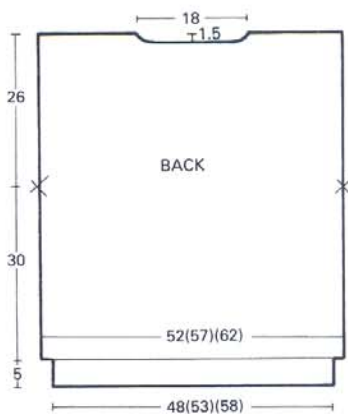
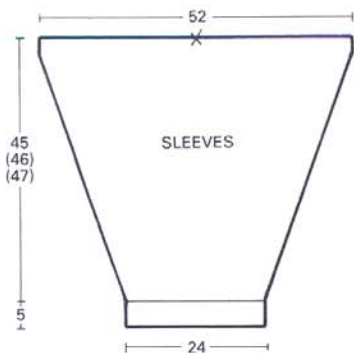
## BUTTON BAND

Knit as for buttonhole band but omit buttonholes.

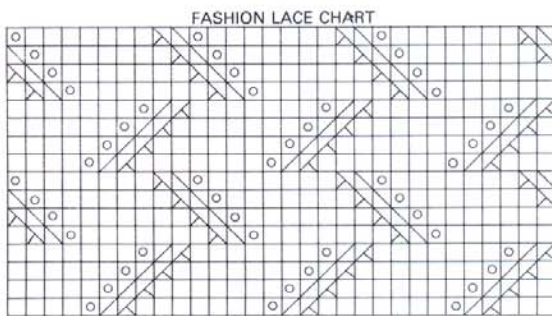
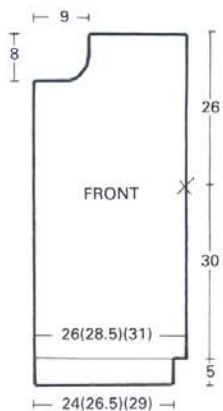
## TO MAKE UP

Pin out to size and steam carefully. Join shoulder seams. Set in sleeves between marked points. Join side and sleeve seams. Backstitch front bands into pos. Backstitch collar into pos to centre of front bands. Finish buttonholes and sew on buttons to correspond. Sew ribbon inside button band and between buttonholes on inside of buttonhole band to stabilize bands. Swiss Darn border following chart. Give final light steam.





⊗ - col 2  
■ - col 3



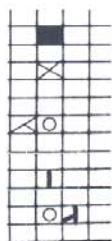
⊗ ⊗ - use 3 prong transfer tool transfer sts to the left and leave empty N in WP



□ = drop st and reform as for ribbing

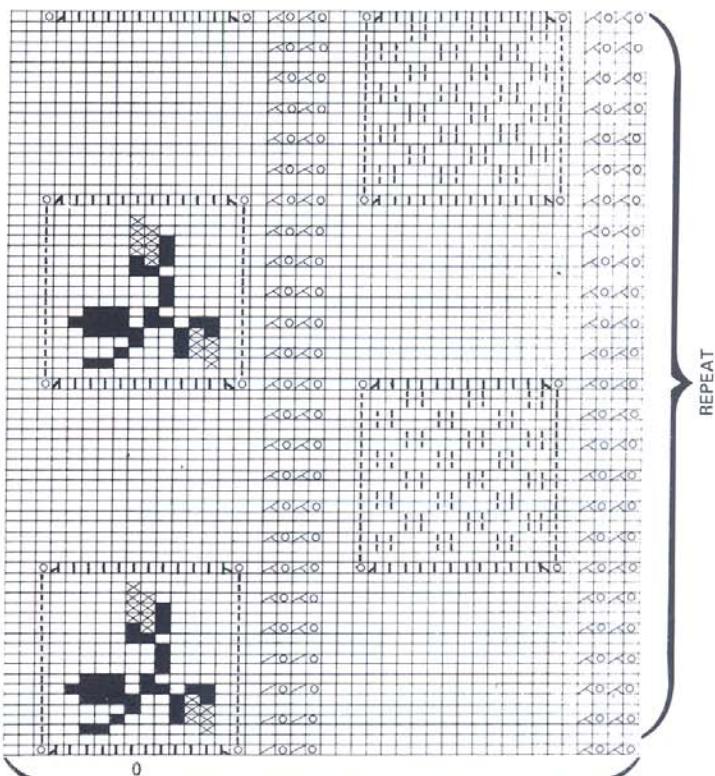
**PATTERN 16**

Continued from page 37.



- Swiss darn in col 2
- Swiss darn in col 3
- Transfer st to the left & leave empty N in B pos
- Drop st & reform as for knit 1 purl 1 rib
- Drop st first and reform as for knit 1 purl 1 rib, then transfer st to adjos N and leave empty N in B pos

**LACE & GARTER ST CHART**



REPEAT

REPEAT

16



17





18



# 18 LADY'S DIAMOND CABLE SWEATER



For Knitmaster Option 4 Machines.

#### Sizes:

One size to fit up to 106 cms/42 inch bust.

#### Materials:

Patons Diploma D.K.  
Col 1 (Aqua — 6765) — 750 grms  
Col 2 (Viola — 6762) — 50 grms  
Col 3 (Cream — 6750) — 50 grms

#### Tensions:

Pattern — 24 sts and 36 rows to 10 cms. TD at approx. 3 (MT).  
Knit 1 Purl 1 Rib — 35 rows to 10 cms. TD at approx. MT-1.

#### Pattern Note:

Cable Pattern — follow chart  
Swiss Darning — follow chart.

There are lots of different effects you can create on your Option 4 using the cable technique and this delightful sweater shows how several small cables can be combined to produce a larger textured pattern. We've filled the diamonds created by the cable pattern with flowers which we swiss darned after we'd completed the knitting.

#### BACK

Push 73 Ns at left and right of centre O to B pos. 146 Ns altog. Cast on as given in additional notes for Knit 1 Purl 1 Rib. RC 000. MT-1, knit 14 rows. Drop the 3rd and ev foll alt st and pick up as for Knit 1 Purl 1 Rib. RC 000. MT. Continue in cable pattern, knit 144 rows. Mark both ends with waste yarn\*. Knit 86 rows. RC 230. Carr at right.

#### Shape Back Neck

Using a length of col 1, cast off centre 28 sts. Hold Ns at left.

#### Knit Right Part as Follows:-

Knit 1 row. Cast off 3 sts at beg of the next row, knit 1 row. Cast off 2 sts at beg of the next and foll alt row, knit 1 row. Dec 1 st at neck edge on the next row. Cast off rem 51 sts. Take carr to left. Bring Ns back to B pos. Knit left part as for right part.

#### FRONT

Knit as for Back to \*. Knit 66 rows. RC 210. Carr at right.

#### Shape Neck

Using a length of col 1, cast off centre 24 sts. Hold Ns at left.

#### Knit Right Part as Follows:-

Knit 1 row. Cast off 2 sts at beg of the next and foll alt row, knit 1 row. Dec 1 st at neck edge on the next and ev foll alt row 6 times in all, knit 12 rows. Cast off rem 51 sts. Take carr to left. Bring Ns back to B pos. Knit left part as for right part.

#### SLEEVES

Push 29 Ns at left and right of centre O

to B pos. 58 Ns altog. Cast on as given in additional notes for Knit 1 Purl 1 Rib. RC 000. MT-1, knit 42 rows. Drop the 3rd and ev foll alt st and pick up as for Knit 1 Purl 1 Rib. RC 000. MT. Continue in cable pattern, knit 2 rows. Inc 1 st at both ends of the next and ev foll 4th row 33 times in all. 124 sts. Knit to Row 144. Mark centre with waste yarn. Cast off.

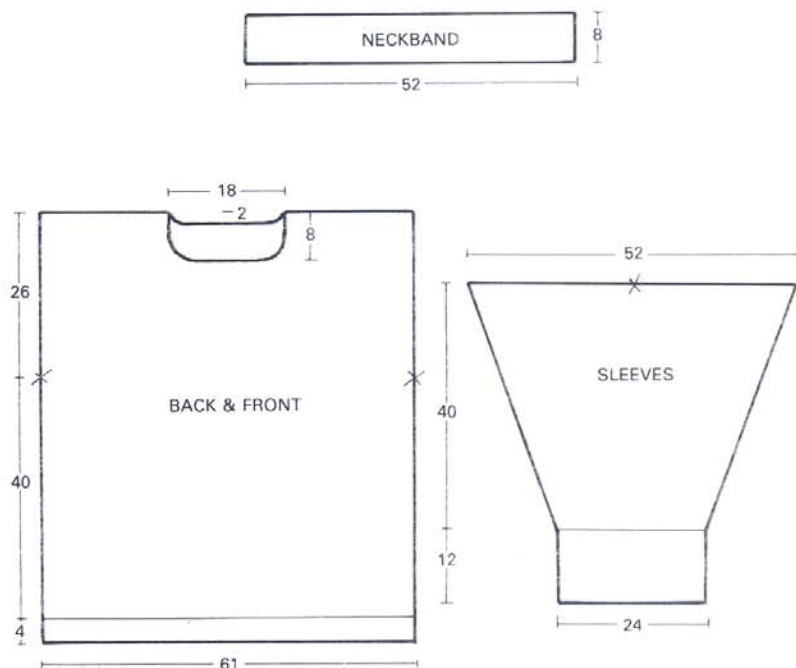
#### NECKBAND

Push 124 Ns to B pos. Cast on as given in additional notes for Knit 1 Purl 1 Rib. RC 000. MT-1, knit 28 rows. Drop the 3rd and ev foll alt st and pick up as for Knit 1

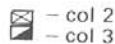
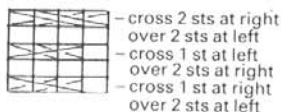
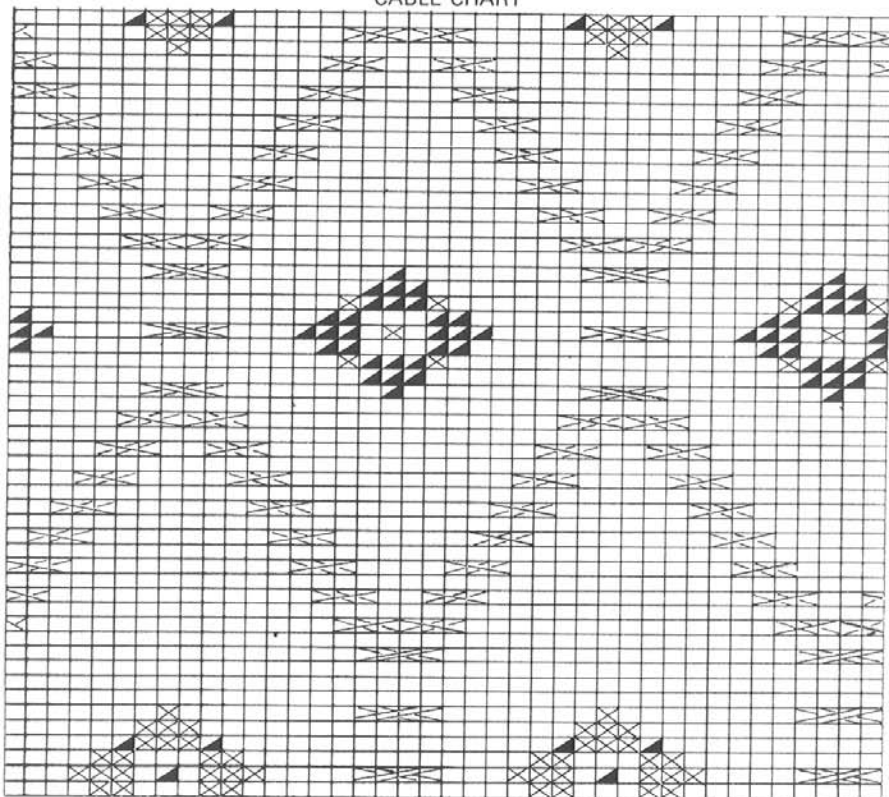
Purl 1 Rib. Knit 1 row MT. Cast off with waste yarn.

#### TO MAKE UP

Pin out to size and steam carefully. Join shoulder seams. Set in sleeves between marked points. Join side and sleeve seams reversing half of cuff seam. Fold cuffs to the outside. Backstitch neckband into pos and join centre back neck seam. Fold in half and catch down on the inside. Following chart swiss darn flowers in centre of diamonds reversing colours on alternate rows. Give final light steam.



CABLE CHART



# KNITMASTER <sup>creative</sup> KONE

*Quality Yarns for today's machine knitter*

4 ply acrylic/wool · Aneto 4 ply  
 Bouclé · Blackjack · Aneto 2 ply  
 2 ply Brushed Acrylic  
 Brushed Chunky · Chunky · Aran



SEE THEM TODAY AT  
 YOUR KNITMASTER KONE  
 STOCKIST



For Stockist information, please write to: Knitmaster Ltd.,  
 39-45 Cowleaze Road, Kingston-Upon-Thames, Surrey KT2 6DT.

# ZIPPY PLUS

ONLY  
£399

## A LUXURY MACHINE AT AN ECONOMY PRICE

A wonderful addition to the superb range of Knitmaster machines is Zippy Plus. Zippy Plus is a top specification Knitmaster machine with all the quality features you'd expect from a Knitmaster, including Knitmaster's single-action lace carriage (worth £152). But while stocks last you can have this luxury machine and lace carriage at an economy price.

### NEW ZIPPY PLUS

#### A top specification Knitmaster

Zippy Plus is a top specification, standard gauge machine. Its carriage has the full Knitmaster masterglide action, including masterglide bearings.

It also has a 24 stitch punchcard system which transfers the pattern through the unique Knitmaster memory drums on the carriage, directly to the needles (no noisy timing belt with this machine).

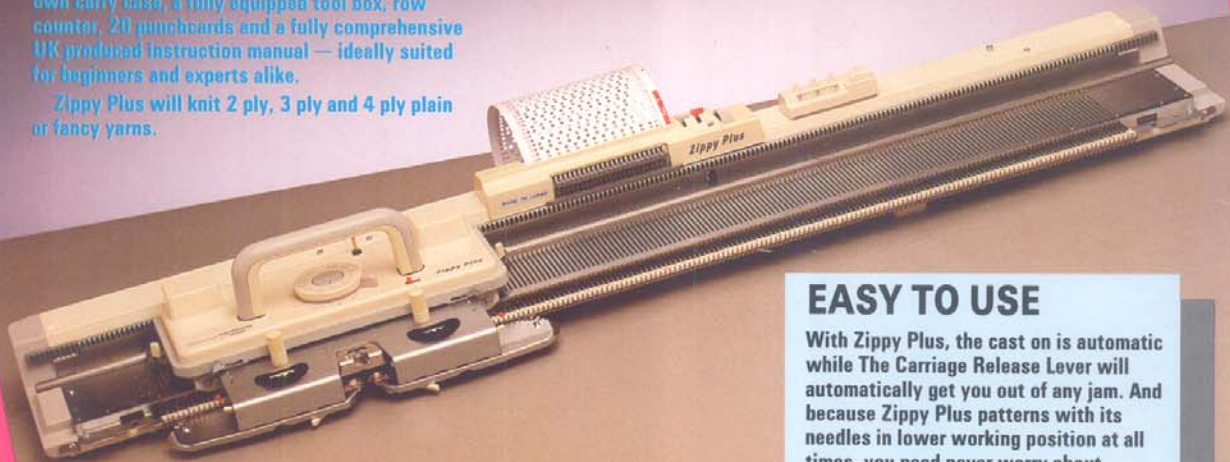
Zippy Plus has 200 needles and comes with its own carry case, a fully equipped tool box, row counter, 20 punchcards and a fully comprehensive UK produced instruction manual — ideally suited for beginners and experts alike.

Zippy Plus will knit 2 ply, 3 ply and 4 ply plain or fancy yarns.

#### ZIPPY PLUS ACCESSORIES

The following Knitmaster accessories are suitable for use with Zippy Plus

- SRP50, SRP60 and SRP60N Ribbers
- KR7 Knittrader
- LC2 Lace Carriage
- AB20 Intarsia Carriage
- AW1 Automatic Weaving Arm
- YC-5 Single & Double Bed Colour Changer
- Rib Transfer Carriage
- SC3 Automatic Linker



#### LACE CARRIAGE

With Knitmaster's famous single-action Lace Carriage, you can knit

- Stocking Stitch
- True Lace
- Fashion Lace
- Single Motif Lace

#### EASY TO USE

With Zippy Plus, the cast on is automatic while The Carriage Release Lever will automatically get you out of any jam. And because Zippy Plus patterns with its needles in lower working position at all times, you need never worry about damaging exposed needles or getting caught up in them yourself.

The one touch stitch selector will produce, fully automatically, the following stitches

- Stocking Stitch
- Tuck Stitch
- Slip Stitch
- Fair Isle
- Punch Lace
- Tuck Lace
- Weaving
- Automatic Single Motif

The wonderful new Knitmaster Zippy Plus punchcard knitting machine is on view at your Knitmaster stockist now. Make sure you ask your stockist for a demonstration now while stocks last of this superb value knitting machine complete with lace carriage.