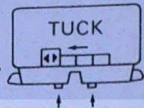


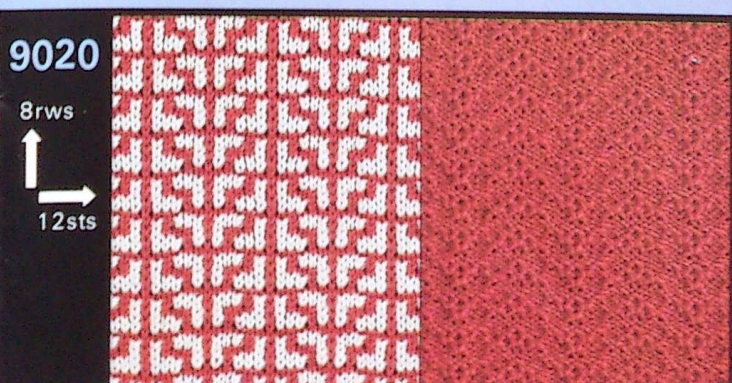
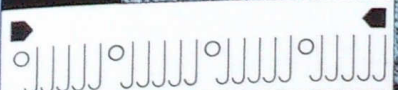
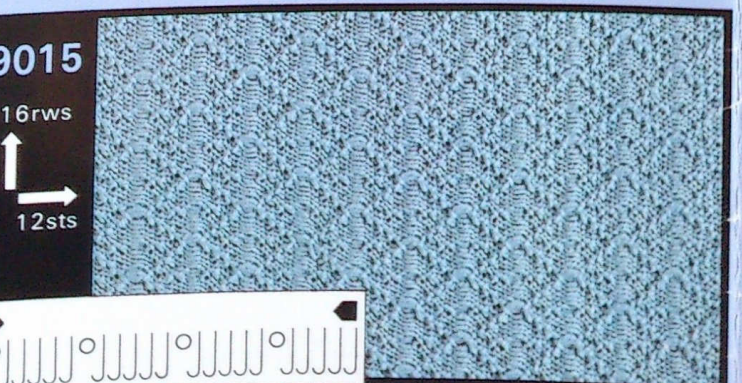
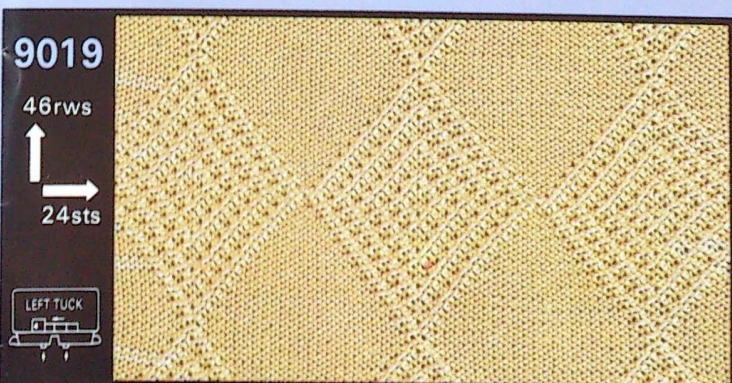
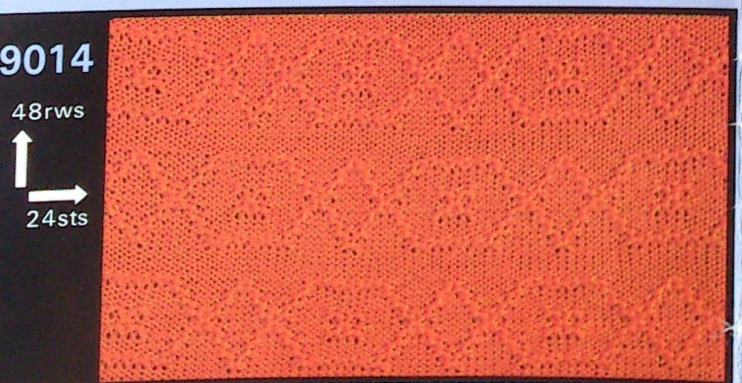
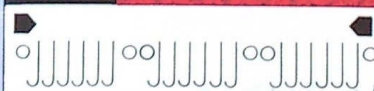
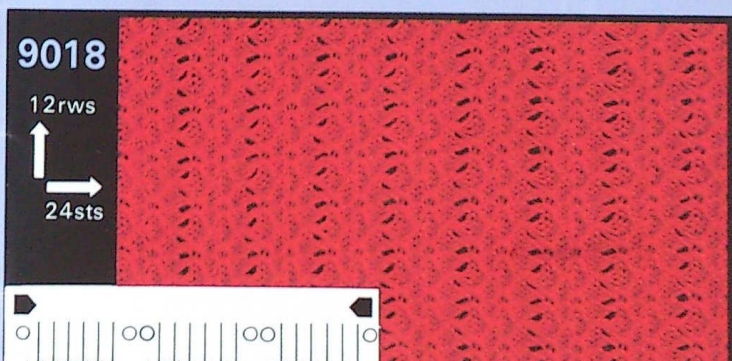
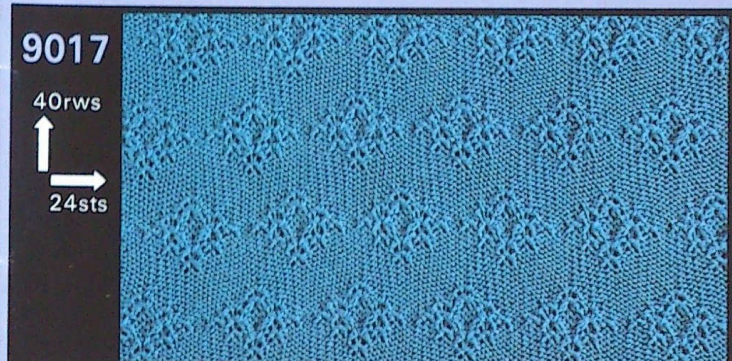
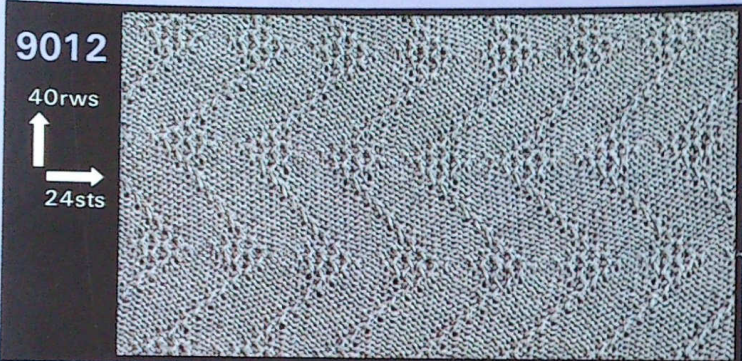
SET No.9011 (9011~9020)

9011~9018,9020.....



TOYOTA

knitting machines

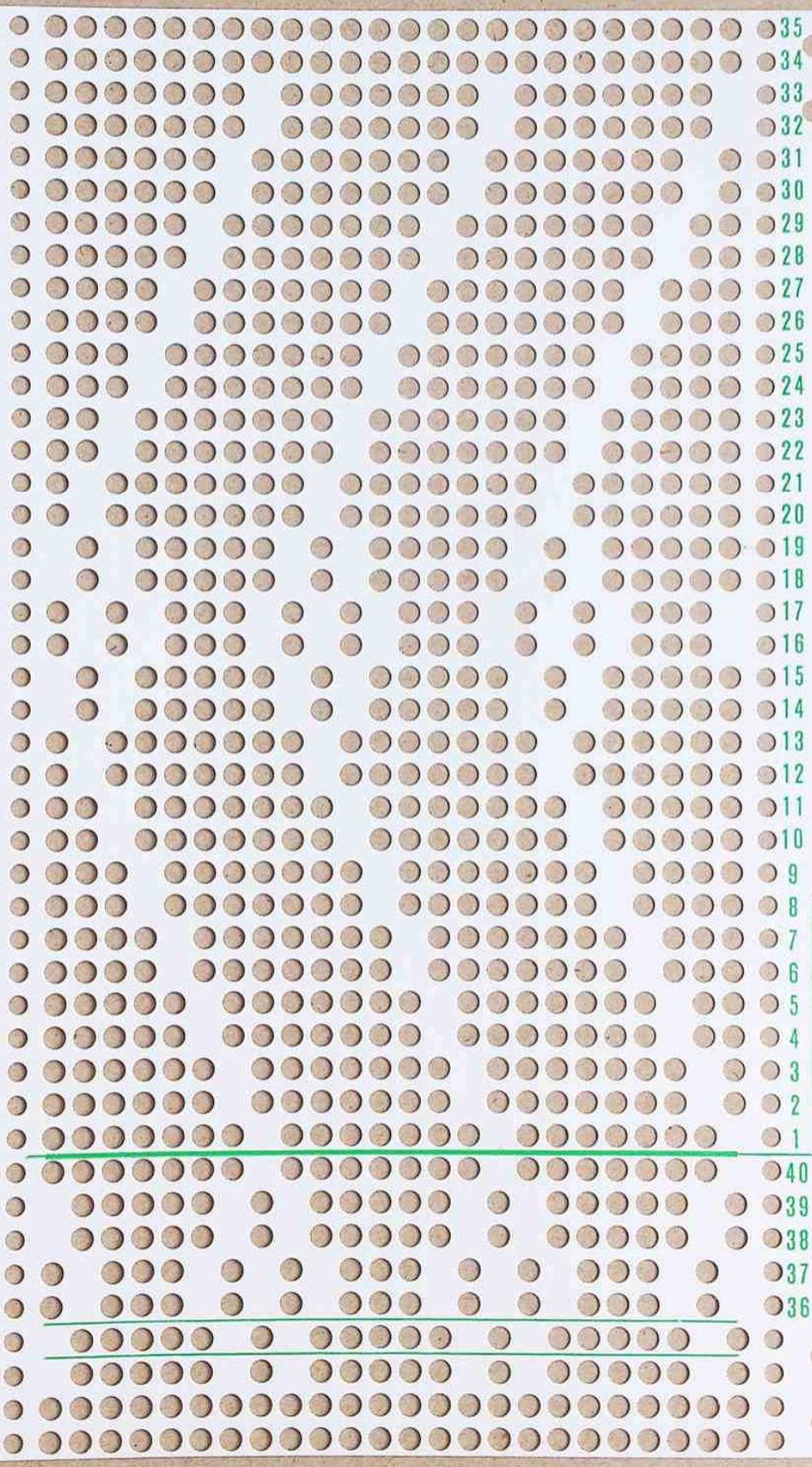


5040, 9015, 9018.....Make open stitches by transferring stitches on green lines on P/C onto adjacent needles and bring them to A pos.

51
50
49
48
47
46
45
44
43
42
41
40
39
38
37
36
35
34
33
32
31
30
29
28
27
26
25
24
23
22
21
20
19
18
17
16
15
14
13
12
11
10
9
8
7
6
5
4
3
2
1

No. 901 I

56
55
54
53
52



35
34
33
32
31
30
29
28
27
26
25
24
23
22
21
20
19
18
17
16
15
14
13
12
11
10
9
8
7
6
5
4
3
2
1

40
39
38
37
36

39
38
37
36
35
34
33
32
31
30
29
28
27
26
25
24
23
22
21
20
19
18
17
16
15
14
13
12
11
10
9
8
7
6
5
4
3
2
1

No. 9013

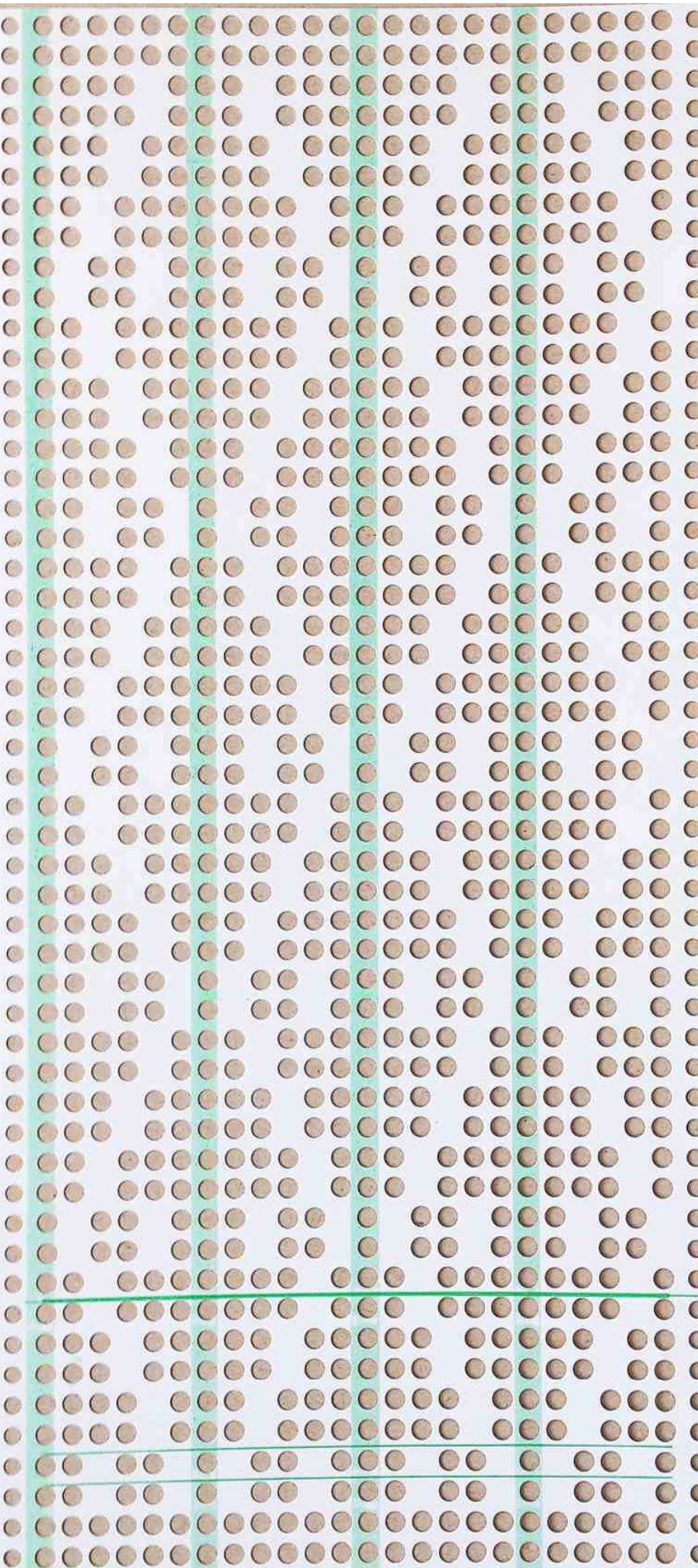
44
43
42
41
40

43
42
41
40
39
38
37
36
35
34
33
32
31
30
29
28
27
26
25
24
23
22
21
20
19
18
17
16
15
14
13
12
11
10
9
8
7
6
5
4
3
2
1

No. 9014

48
47
46
45
44

43
42
41
40
39
38
37
36
35
34
33
32
31
30
29
28
27
26
25
24
23
22
21
20
19
18
17
16
15
14
13
12
11
10
9
8
7
6
5
4
3
2
1
48
47
46
45
44



52
51
50
49
48
47
46
45
44
43
42
41
40
39
38
37
36
35
34
33
32
31
30
29
28
27
26
25
24
23
22
21
20
19
18
17
16
15
14
13
12
11
10
9
8
7
6
5
4
3
2
1

No. 9016

57
56
55
54
53

35
34
33
32
31
30
29
28
27
26
25
24
23
22
21
20
19
18
17
16
15
14
13
12
11
10
9
8
7
6
5
4
3
2
1

No. 9017

40
39
38
37
36

- 43
- 42
- 41
- 40
- 39
- 38
- 37
- 36
- 35
- 34
- 33
- 32
- 31
- 30
- 29
- 28
- 27
- 26
- 25
- 24
- 23
- 22
- 21
- 20
- 19
- 18
- 17
- 16
- 15
- 14
- 13
- 12
- 11
- 10
- 9
- 8
- 7
- 6
- 5
- 4
- 3
- 2
- 1
- 48
- 47
- 46
- 45
- 44

The image shows a vertical strip of perforated paper with a grid of circular holes. The strip is divided into two main sections by a horizontal green line. The top section contains 48 rows of holes, numbered 1 to 48 on the right side. The bottom section contains 5 rows of holes, numbered 44 to 48 on the right side. There are three vertical green lines that create four columns of holes. The first column has 12 holes per row, the second has 12, the third has 12, and the fourth has 12. The holes are arranged in a regular grid pattern.

41
40
39
38
37
36
35
34
33
32
31
30
29
28
27
26
25
24
23
22
21
20
19
18
17
16
15
14
13
12
11
10
9
8
7
6
5
4
3
2
1

No. 9019

46
45
44
43
42

51
50
49
48
47
46
45
44
43
42
41
40
39
38
37
36
35
34
33
32
31
30
29
28
27
26
25
24
23
22
21
20
19
18
17
16
15
14
13
12
11
10
9
8
7
6
5
4
3
2
1
56
55
54
53
52

No. 9020