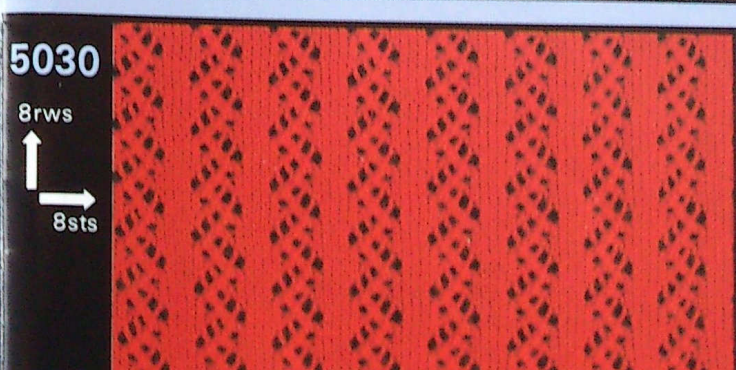
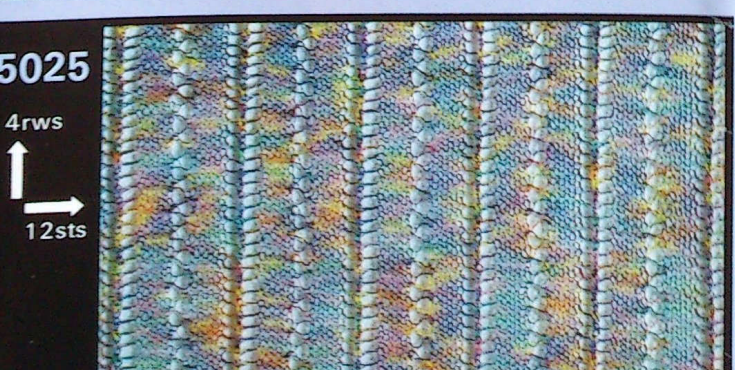
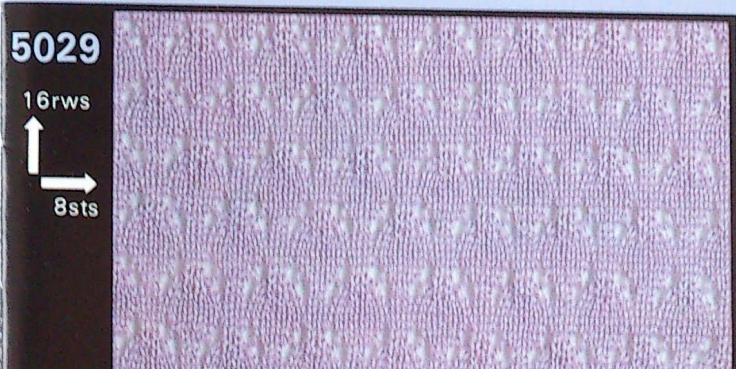
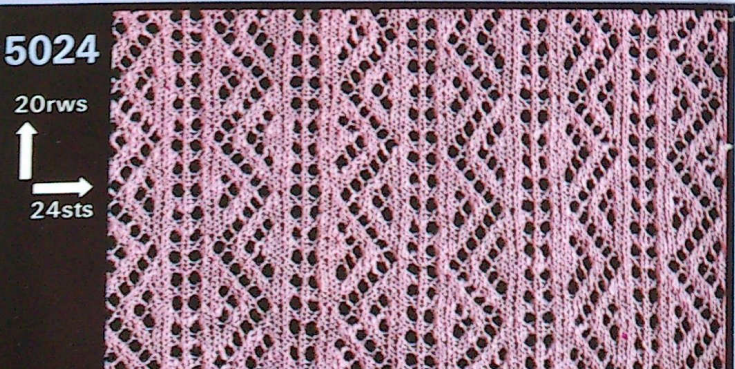
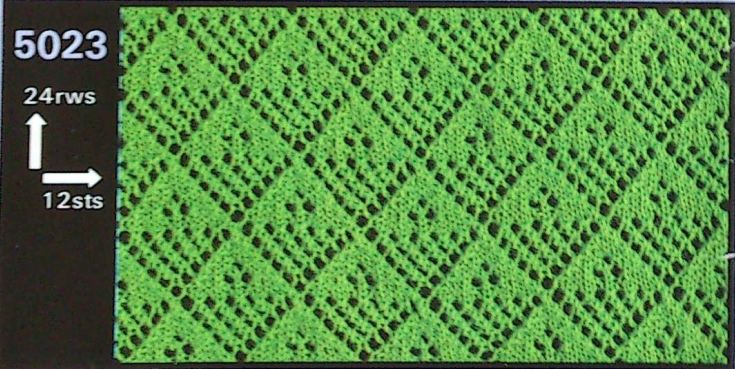
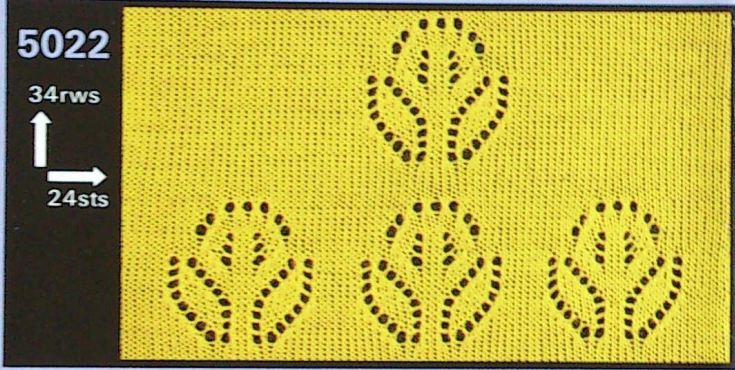
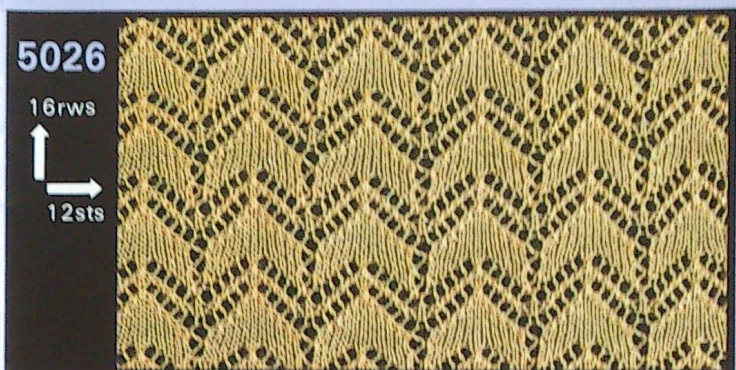
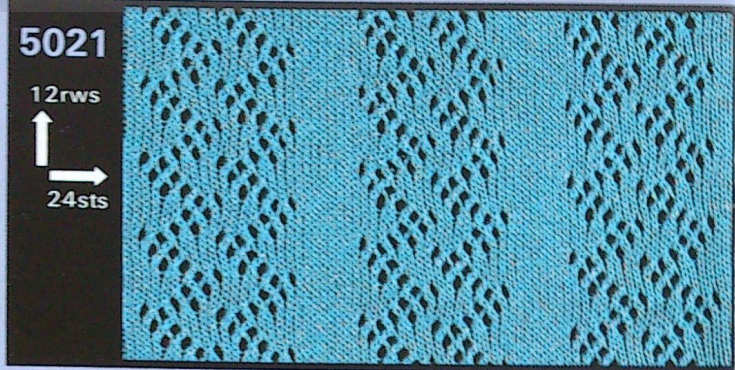
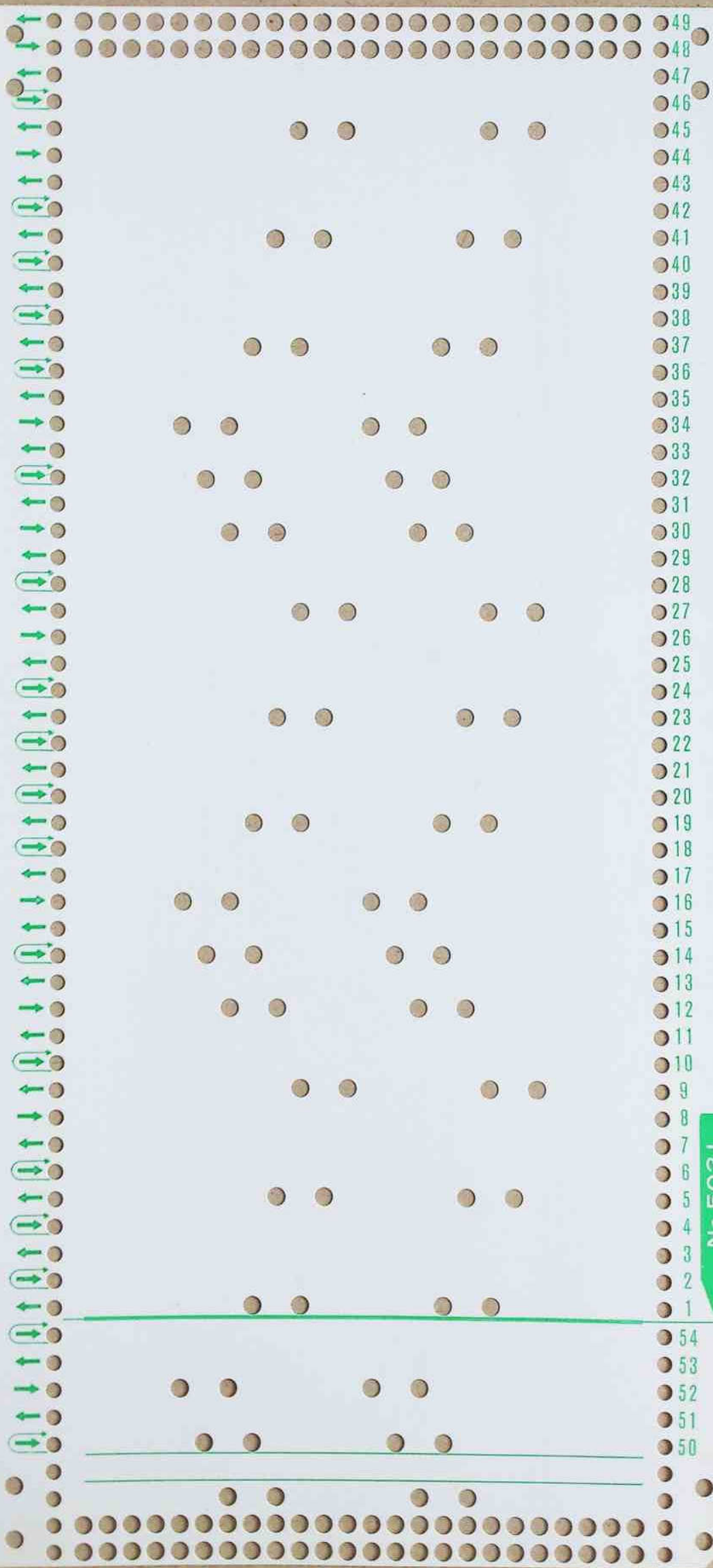


SET No. 5021  
(5021~5030)

**TOYOTA**  
knitting machines





No. 5021

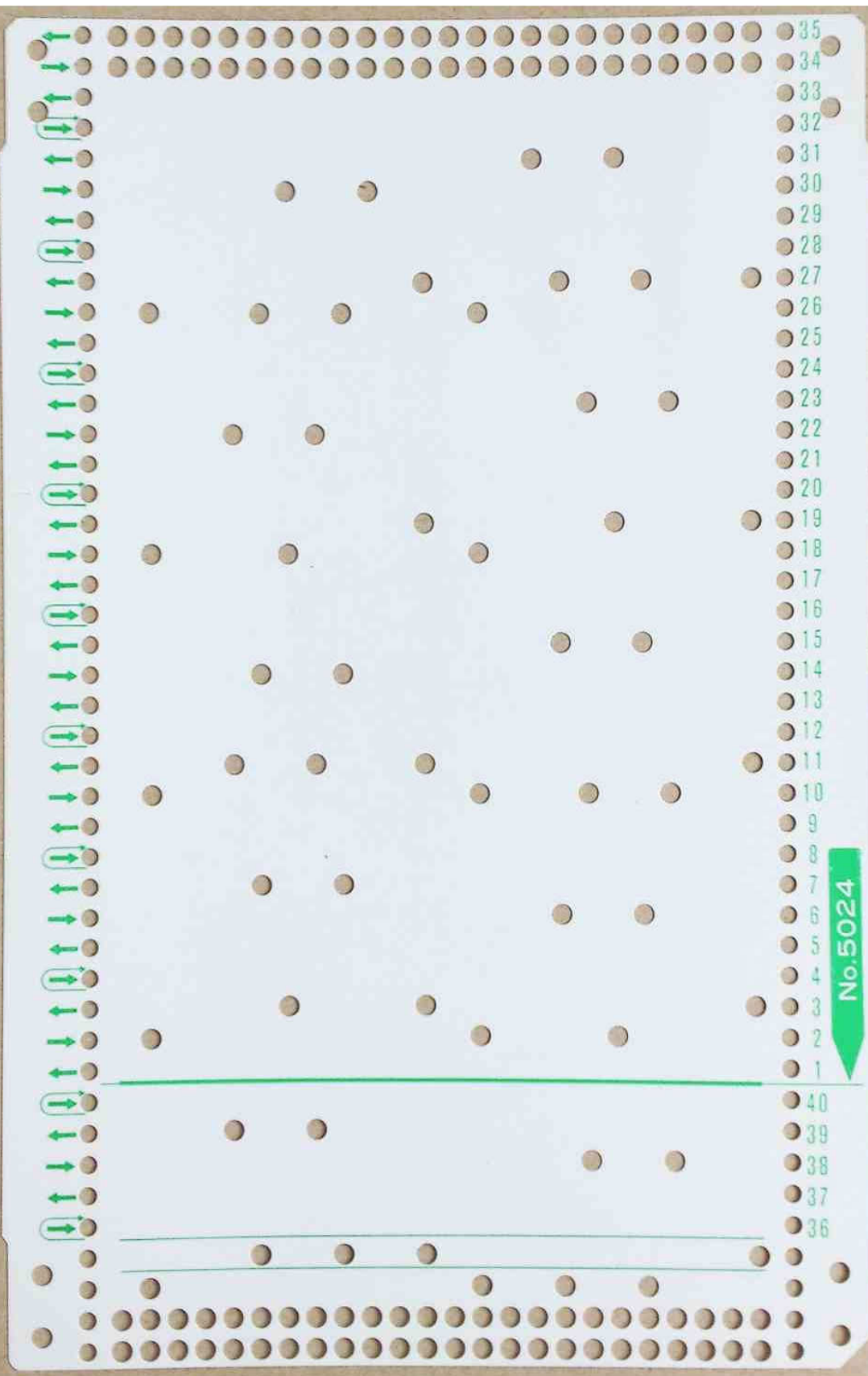
No. 5022

- 51
- 50
- 49
- 48
- 47
- 46
- 45
- 44
- 43
- 42
- 41
- 40
- 39
- 38
- 37
- 36
- 35
- 34
- 33
- 32
- 31
- 30
- 29
- 28
- 27
- 26
- 25
- 24
- 23
- 22
- 21
- 20
- 19
- 18
- 17
- 16
- 15
- 14
- 13
- 12
- 11
- 10
- 9
- 8
- 7
- 6
- 5
- 4
- 3
- 2
- 1

- 10
- 9
- 8
- 7
- 6
- 5
- 4
- 3
- 2
- 1

- 56
- 55
- 54
- 53
- 52

This is a dot grid paper with 39 columns and 44 rows. The rows are numbered 1 through 44 on the right side. The columns are numbered 1 through 39 on the top side. The grid contains scattered dots and green arrows indicating directions. A green horizontal line is drawn across row 1. A green vertical line is drawn at column 1. A green arrow points downwards from the top right corner.

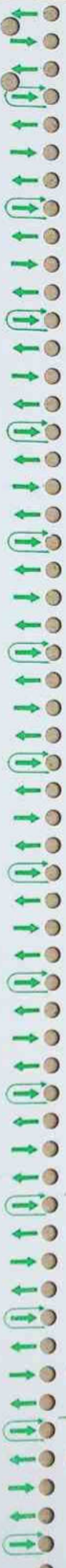


No. 5024

- 35
- 34
- 33
- 32
- 31
- 30
- 29
- 28
- 27
- 26
- 25
- 24
- 23
- 22
- 21
- 20
- 19
- 18
- 17
- 16
- 15
- 14
- 13
- 12
- 11
- 10
- 9
- 8
- 7
- 6
- 5
- 4
- 3
- 2
- 1
- 40
- 39
- 38
- 37
- 36

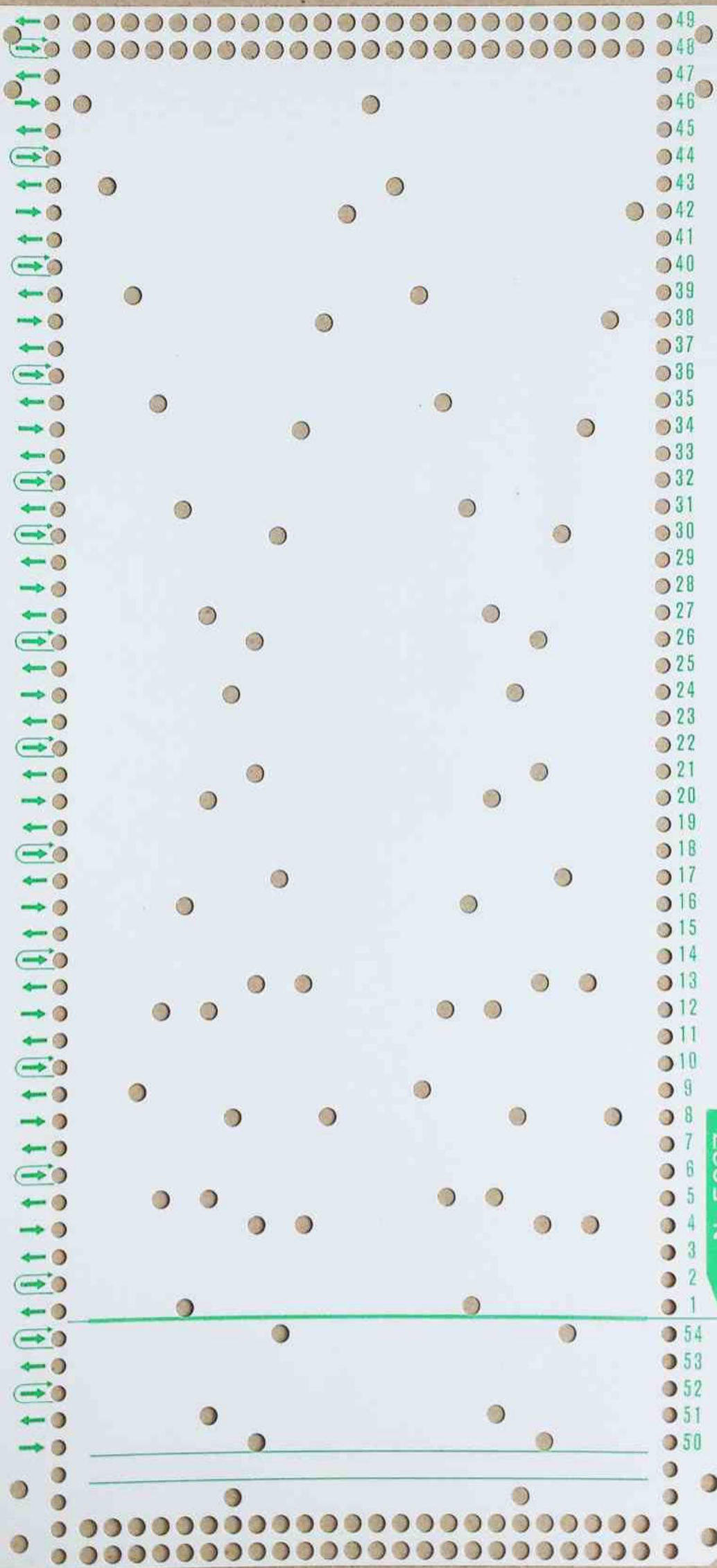
No. 5025

- 51
- 50
- 49
- 48
- 47
- 46
- 45
- 44
- 43
- 42
- 41
- 40
- 39
- 38
- 37
- 36
- 35
- 34
- 33
- 32
- 31
- 30
- 29
- 28
- 27
- 26
- 25
- 24
- 23
- 22
- 21
- 20
- 19
- 18
- 17
- 16
- 15
- 14
- 13
- 12
- 11
- 10
- 9
- 8
- 7
- 6
- 5
- 4
- 3
- 2
- 1
- 56
- 55
- 54
- 53
- 52



- 55
- 54
- 53
- 52
- 51
- 50
- 49
- 48
- 47
- 46
- 45
- 44
- 43
- 42
- 41
- 40
- 39
- 38
- 37
- 36
- 35
- 34
- 33
- 32
- 31
- 30
- 29
- 28
- 27
- 26
- 25
- 24
- 23
- 22
- 21
- 20
- 19
- 18
- 17
- 16
- 15
- 14
- 13
- 12
- 11
- 10
- 9
- 8
- 7
- 6
- 5
- 4
- 3
- 2
- 1
- 60
- 59
- 58
- 57
- 56

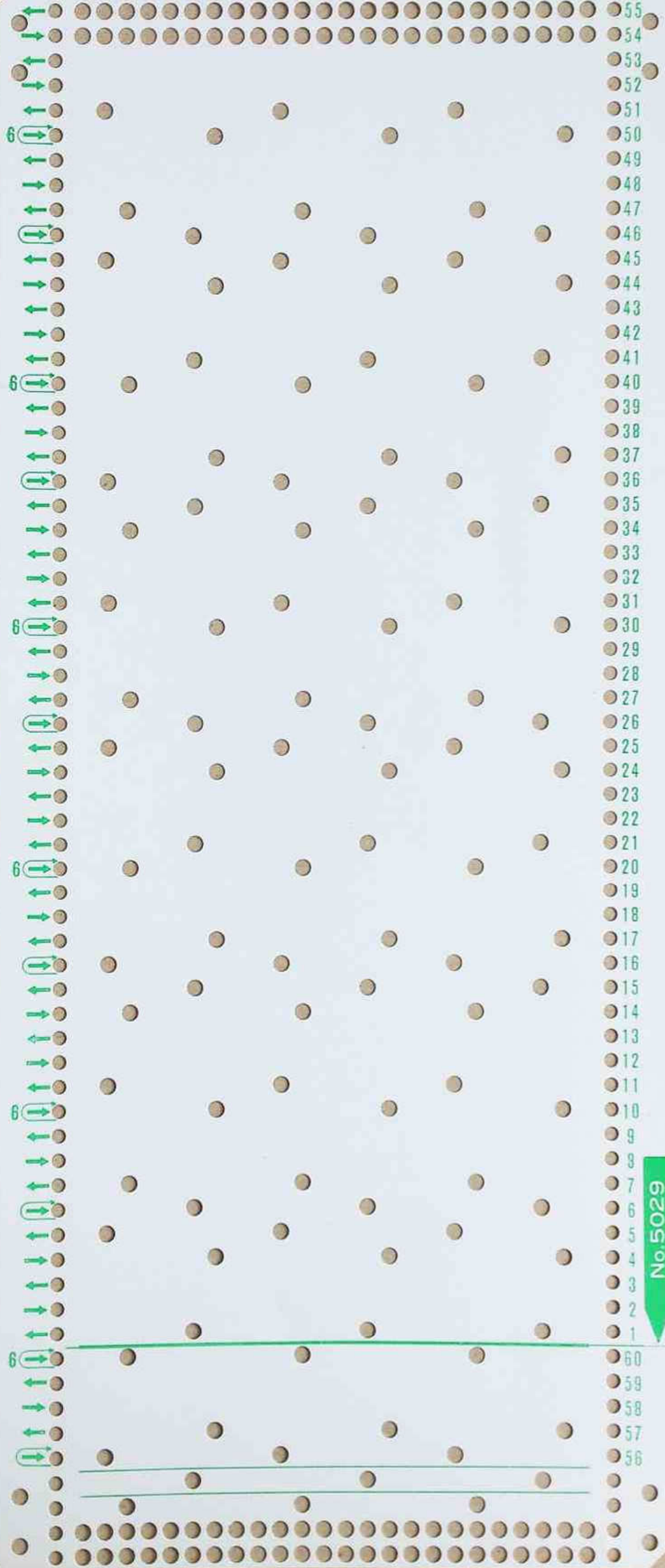
55  
54  
53  
52  
51  
50  
49  
48  
47  
46  
45  
44  
43  
42  
41  
40  
39  
38  
37  
36  
35  
34  
33  
32  
31  
30  
29  
28  
27  
26  
25  
24  
23  
22  
21  
20  
19  
18  
17  
16  
15  
14  
13  
12  
11  
10  
9  
8  
7  
6  
5  
4  
3  
2  
1  
60  
59  
58  
57  
56



No. 5027



This is a dot grid page with 48 rows, numbered 1 to 48 on the right side. The grid is perforated on the left and right edges. Green arrows on the left side of each row indicate the writing direction: rows 1, 2, 3, 4, 5, 6, 7, 8, 9, 10, 11, 12, 13, 14, 15, 16, 17, 18, 19, 20, 21, 22, 23, 24, 25, 26, 27, 28, 29, 30, 31, 32, 33, 34, 35, 36, 37, 38, 39, 40, 41, 42, 43, 44, 45, 46, 47, and 48. A green horizontal line is drawn across the grid between rows 1 and 44. The grid is perforated on the left and right sides.



No. 5029

The image shows a dot grid with a central grid of dots. On the left side, there is a vertical margin with arrows pointing right. The grid is numbered 1 to 48 on the right side. A green line is drawn across the grid at row 12, and two blue lines are drawn at rows 44 and 45.

- 43
- 42
- 41
- 40
- 39
- 38
- 37
- 36
- 35
- 34
- 33
- 32
- 31
- 30
- 29
- 28
- 27
- 26
- 25
- 24
- 23
- 22
- 21
- 20
- 19
- 18
- 17
- 16
- 15
- 14
- 13
- 12
- 11
- 10
- 9
- 8
- 7
- 6
- 5
- 4
- 3
- 2
- 1
- 48
- 47
- 46
- 45
- 44