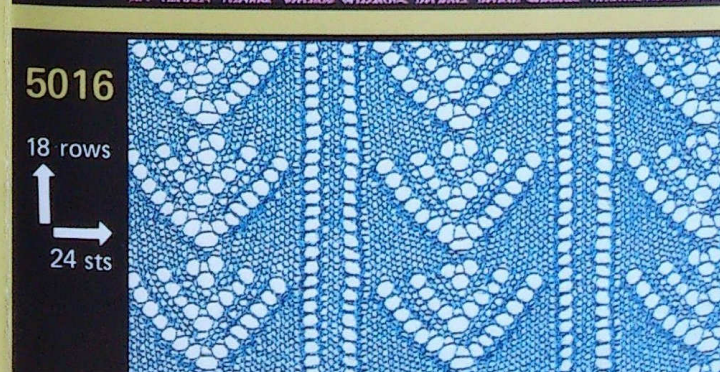
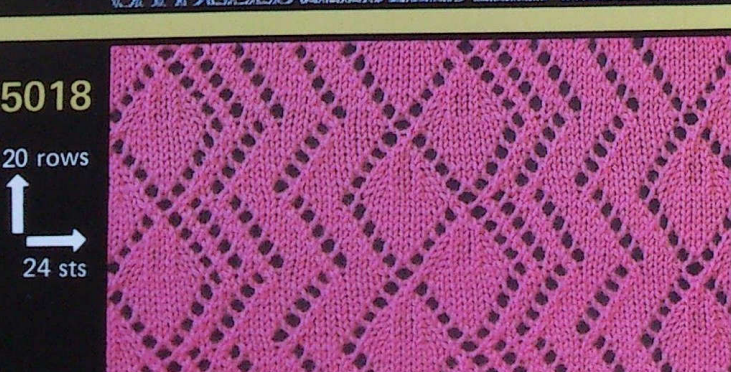
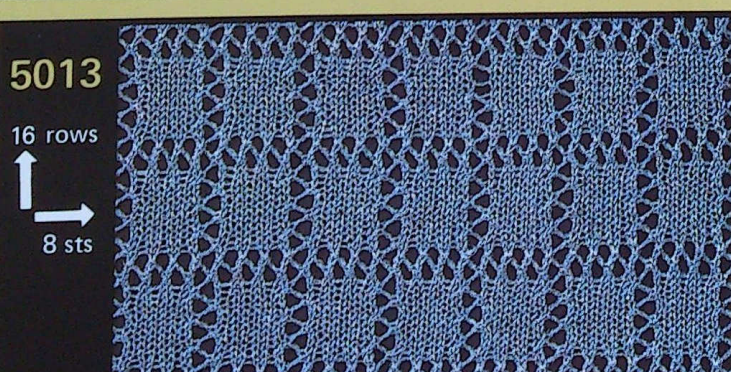
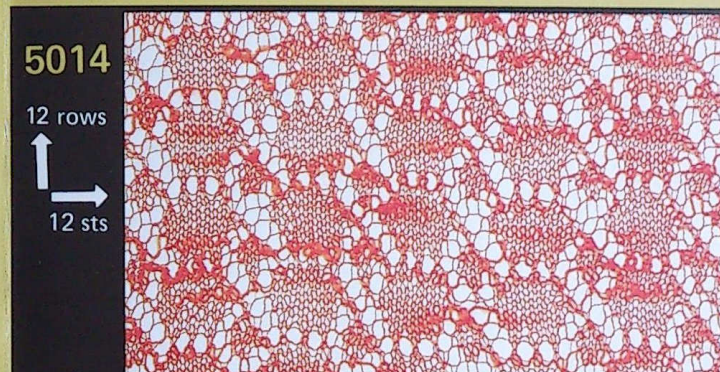
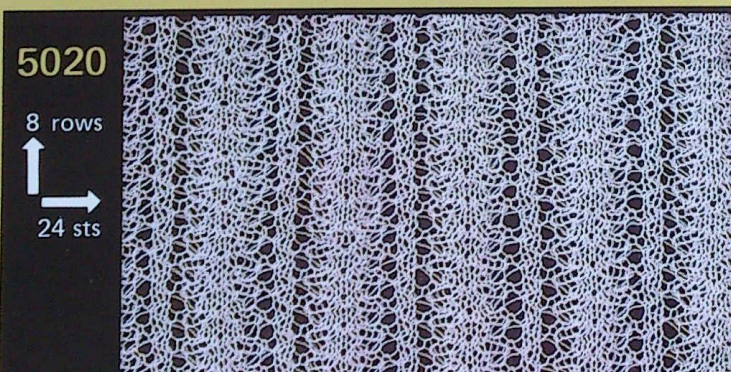
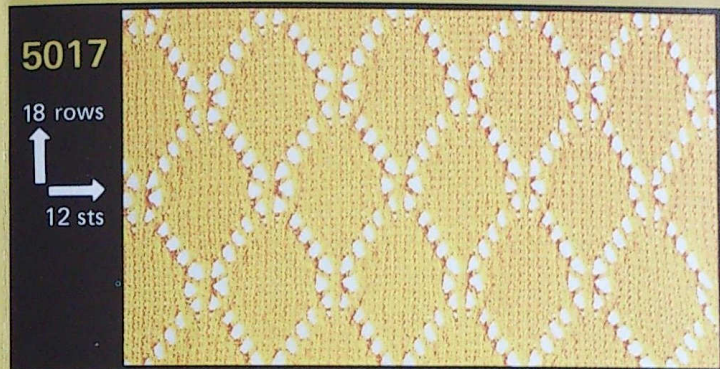
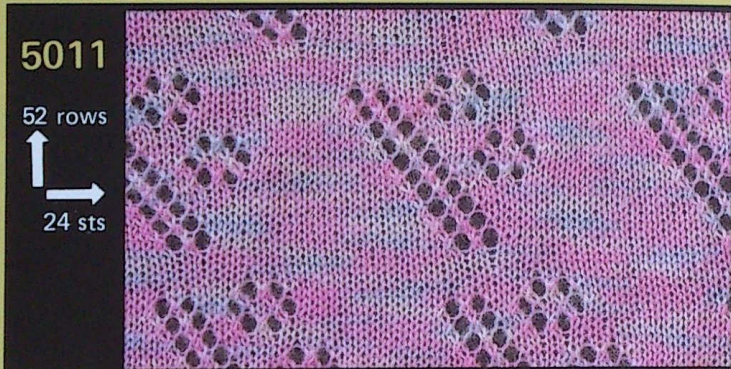
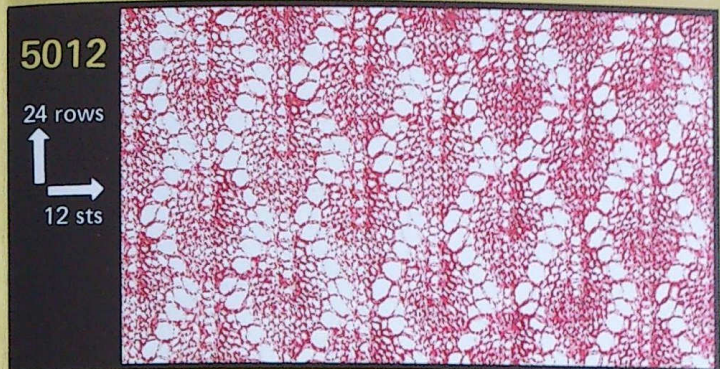
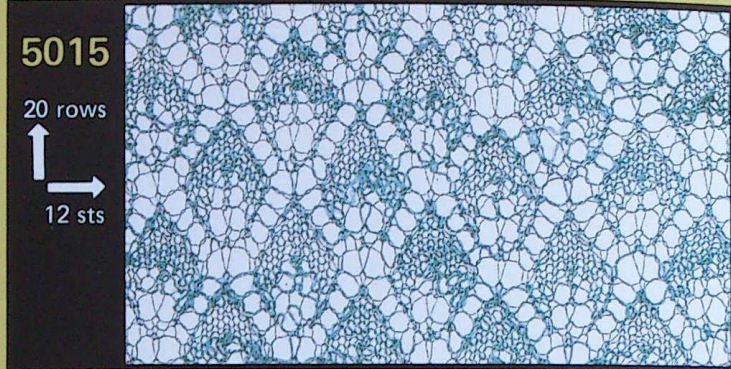




AISIN SEIKI CO., LTD.

TOYOTA

SET No. 5011 (5011~5020)



- 39
- 38
- 37
- 36
- 35
- 34
- 33
- 32
- 31
- 30
- 29
- 28
- 27
- 26
- 25
- 24
- 23
- 22
- 21
- 20
- 19
- 18
- 17
- 16
- 15
- 14
- 13
- 12
- 11
- 10
- 9
- 8
- 7
- 6
- 5
- 4
- 3
- 2
- 1
- 44
- 43
- 42
- 41
- 40

6

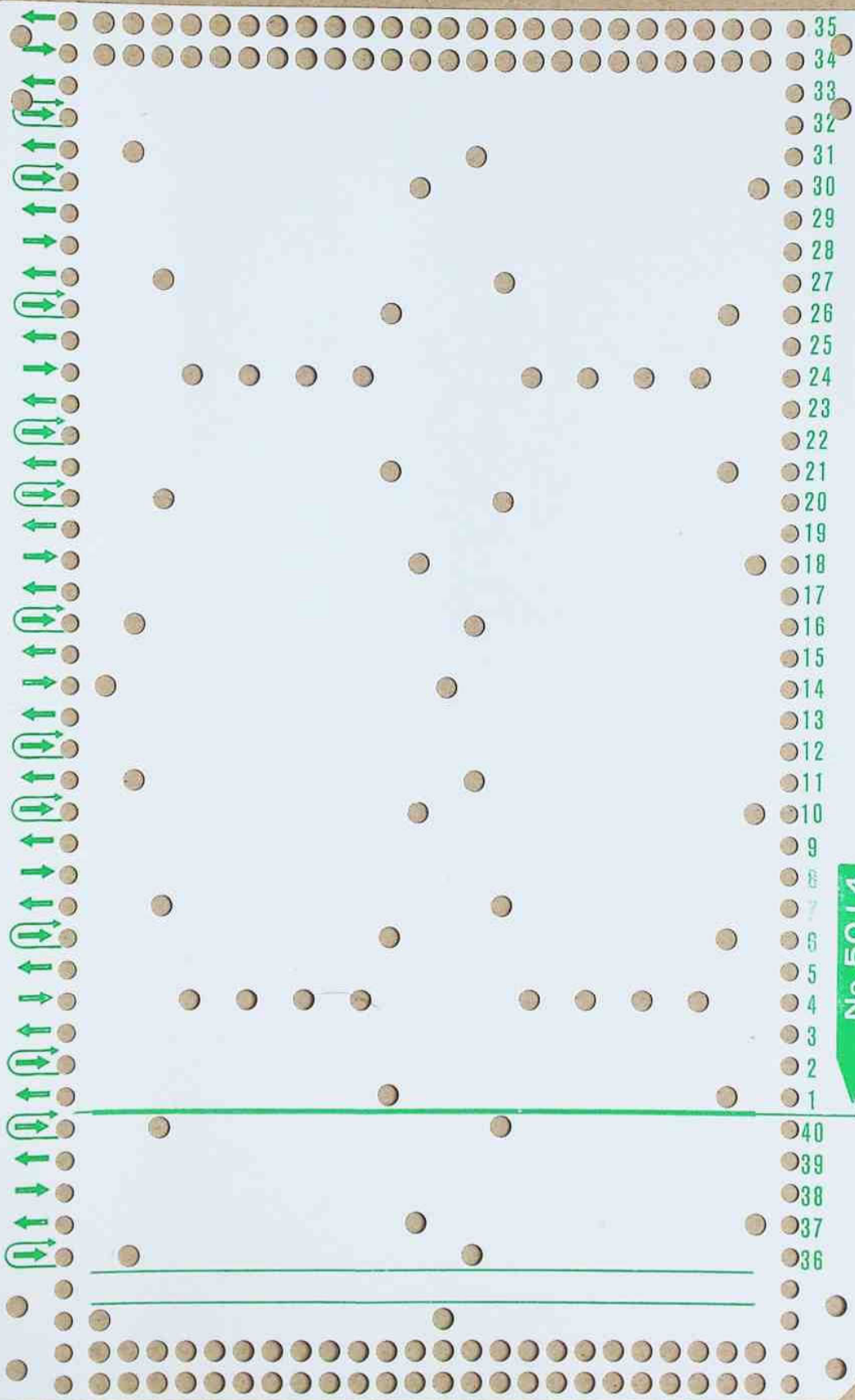
- 51
- 50
- 49
- 48
- 47
- 46
- 45
- 44
- 43
- 42
- 41
- 40
- 39
- 38
- 37
- 36
- 35
- 34
- 33
- 32
- 31
- 30
- 29
- 28
- 27
- 26
- 25
- 24
- 23
- 22
- 21
- 20
- 19
- 18
- 17
- 16
- 15
- 14
- 13
- 12
- 11
- 10
- 9
- 8
- 7
- 6
- 5
- 4
- 3
- 2
- 1
- 56
- 55
- 54
- 53
- 52

Green arrows and circular icons on the left margin, alternating between right-pointing arrows and circular icons containing a right-pointing arrow and a downward-pointing arrow.

Main grid area with a pattern of small brown dots and horizontal green lines.

43
42
41
40
39
38
37
36
35
34
33
32
31
30
29
28
27
26
25
24
23
22
21
20
19
18
17
16
15
14
13
12
11
10
9
8
7
6
5
4
3
2
1
48
47
46
45
44

No. 5013



This image shows a dot grid with 52 numbered rows. The grid is composed of small brown dots arranged in a regular pattern. On the left side, there are green arrows pointing left and right, indicating the direction of the grid lines. The rows are numbered from 1 to 52, with the numbers 1 through 10 and 21 through 30 appearing on the right side of the grid. The grid is divided into sections by horizontal green lines. The top section is rows 1-10, the middle section is rows 11-30, and the bottom section is rows 31-52. The grid is used for writing and drawing.

47
46
45
44
43
42
41
40
39
38
37
36
35
34
33
32
31
30
29
28
27
26
25
24
23
22
21
20
19
18
17
16
15
14
13
12
11
10
9
8
7
6
5
4
3
2
1
52
51
50
49
48

This page features a dot grid layout. The central area is a grid of dots. A left margin contains a series of arrows pointing left and right, alternating in pairs. The right side of the page is numbered from 1 to 48. A green arrow on the right side points to the number 7. Two horizontal lines are drawn across the page: one at row 1 and another at row 44.

- 43
- 42
- 41
- 40
- 39
- 38
- 37
- 36
- 35
- 34
- 33
- 32
- 31
- 30
- 29
- 28
- 27
- 26
- 25
- 24
- 23
- 22
- 21
- 20
- 19
- 18
- 17
- 16
- 15
- 14
- 13
- 12
- 11
- 10
- 9
- 8
- 7
- 6
- 5
- 4
- 3
- 2
- 1
- 48
- 47
- 46
- 45
- 44

A 50-row dot grid with green arrows on the left and right sides. The grid is used for writing or drawing. The left side has arrows pointing up and down, and the right side has arrows pointing left and right. The grid is numbered 1 to 50 on the right side.

- 45
- 44
- 43
- 42
- 41
- 40
- 39
- 38
- 37
- 36
- 35
- 34
- 33
- 32
- 31
- 30
- 29
- 28
- 27
- 26
- 25
- 24
- 23
- 22
- 21
- 20
- 19
- 18
- 17
- 16
- 15
- 14
- 13
- 12
- 11
- 10
- 9
- 8
- 7
- 6
- 5
- 4
- 3
- 2
- 1
- 50
- 49
- 48
- 47
- 46

This is a dot grid page with 42 rows. The left margin contains green arrows indicating the direction of the lines: right-pointing arrows for horizontal lines and double-headed vertical arrows for vertical lines. The right margin contains numbers 1 through 42, corresponding to each row. The grid is divided into sections by horizontal lines: one line between rows 1 and 2, one between rows 2 and 3, one between rows 12 and 13, one between rows 22 and 23, one between rows 32 and 33, and one between rows 38 and 39. The top and bottom edges of the page are also perforated.

37
36
35
34
33
32
31
30
29
28
27
26
25
24
23
22
21
20
19
18
17
16
15
14
13
12
11
10
9
8
7
6
5
4
3
2
1
42
41
40
39
38

No. 5020

This image shows a dot grid page with 40 rows, numbered 1 to 40 on the right side. The grid consists of small brown dots arranged in a regular pattern. On the left side, there are green arrows pointing left and right, alternating by row. On the right side, there are green arrows pointing left and right, also alternating by row. There are three horizontal green lines drawn across the grid, one at row 1, one at row 10, and one at row 36. The page is numbered 'No. 5020' on the right side.

- 35
- 34
- 33
- 32
- 31
- 30
- 29
- 28
- 27
- 26
- 25
- 24
- 23
- 22
- 21
- 20
- 19
- 18
- 17
- 16
- 15
- 14
- 13
- 12
- 11
- 10
- 9
- 8
- 7
- 6
- 5
- 4
- 3
- 2
- 1
- 40
- 39
- 38
- 37
- 36