

INTERNATIONAL  
KNITWEAR  
COLLECTION

# EMPISAL

BOOK AU24



## CONTENTS

PAGE 1	MAN'S PATTERNED JUMPER	AU24-1
PAGE 2	LADY'S JUMPER	AU24-2
PAGE 4	LADY'S LACE TRIMMED VEST	AU24-3
PAGE 5	LADY/MAN SPORTS JUMPER	AU24-4
PAGE 8	LADY'S SLEEVELESS JUMPER	AU24-5
PAGE 8	GIRL'S JUMPER	AU24-6
PAGE 9	LADY'S JUMPER SUIT	AU24-7
PAGE 13	GIRL/BOY JUMPER	AU24-8
PAGE 16	GIRL'S LACY JUMPER	AU24-9
PAGE 17	GIRL/BOY FAIR ISLE JUMPER	AU24-10
PAGE 19	MAN'S CABLE TRIM JUMPER	AU24-11
PAGE 20	GIRL'S SUN FROCK	AU24-12

Any of the above patterns that are knitted in  
PATONS Gem can also be worked in PATONS  
Patonyle 4 Ply.



# EMPISAL

## INTERNATIONAL KNITWEAR COLLECTION

EMPISAL are pleased to present their International Fashion co-ordinator's selection of the following machine knitted garments.

\*AN EMPISAL PUBLICATION: WORLD COPYRIGHT BY EMPISAL INTERNATIONAL

### MAN'S PATTERNED JUMPER

Pattern No. AU24-1



**MEASUREMENTS:** To fit 36(38-40-42)in, 91[97-102-107]cm chest. Approx meas 36(38-40-42)in, 91[97-102-107]cm. Length 25½(25¾-26-26¼)in, 65[65-66-67]cm. Sleeve seam 4(4-4-4)in, 10[10-10-10]cm.

**MATERIALS:** 7(8-8-8) 50g balls PATONS Gem or 15(15-16-16) 25g balls PATONS Patonyle.

**TENSION:** T6=13½sts and 28 rows to 2ins (5cm) measured over patt. (Please check).

**PATTERN:** \*Reverse switch on — Tuck buttons in.

1. (Press buttons 1, 2, set lever, knit 1 row) twice.
  2. (Buttons 3, 8, set, knit 1 row) twice.
  3. (Buttons 4, 7, set, knit 1 row) twice.
  4. (Buttons 5, 6, set, knit 1 row) twice.
  5. (Buttons 4, 7, set, knit 1 row) twice.
  6. (Buttons 3, 8, set, knit 1 row) twice.
  7. (Buttons 1, 2, set, knit 1 row) twice.
  8. Release tuck buttons and knit 2 rows. Tuck buttons in.
  9. (Buttons 1, 3, 5, 7, set, knit 1 row) twice.
  10. (Buttons 2, 4, 6, 8, set, knit 1 row) twice.
  11. (Buttons 1, 3, 5, 7, set, knit 1 row) twice.
  12. Release tuck buttons and knit 2 rows. \*
- Repeat from \* to \*.

**BACK:** T0. Cast on 121(129-137-145)sts for 1 x 1 rib, 60(60-68-68) L of 0, 61(69-69-77)sts R of 0. T3, rib 13 rows, inc 1 st on R side of machine in last row. Transfer sts to main bed. T6 R/C on 0. Work 212 rows in patt. **SHAPE ARMHOLES:** R/C on 0. Cast off 3(4-5-6)sts beg next 2 rows. Dec 1 st ea end next row and every foll alt row 2(3-4-5) times. 110(114-118-122)sts. Work 87 rows. R/C reads 94(96-98-100). **SHAPE NECK:** Knit 89(92-95-98)sts at opp end to carr off manually on to waste yarn, push needles into A pos. Work 10 rows. **SHAPE SHOULDER:** Cast off 10(11-11-12)sts beg next row. Work 1 row. Cast off. Bring sts on waste yarn back



into B pos. Knit centre 68(70-72-74)sts off on waste yarn. Knit rem sts to correspond with other side. Bring centre 68(70-72-74)sts on waste yarn back into B pos. Remove waste yarn and arrange sts for 1 x 1 rib inc at right side of machine. T3, rib 10 rows. Cast off.

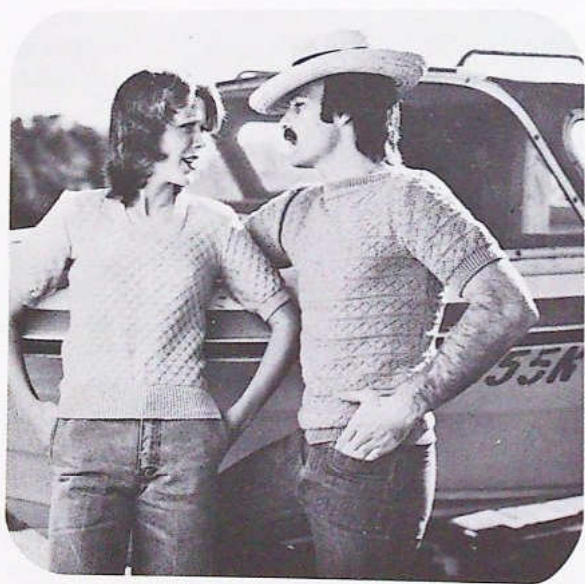
**FRONT:** Work as given for Back.

**SLEEVES:** T0. Cast on 97(105-105-113)sts for 1 x 1 rib. T3, rib 13 rows. Transfer sts to main bed. Inc 1st at right of machine. T6 R/C on 0. Work 44 rows. **SHAPE TOP:** R/C on 0 cast off 2(2-3-3)sts beg next 2 rows. Dec 1st ea end next and every foll alt row 31(28-32-28) times. 30(44-42-50)sts then every row 0(7-1-9) times. A only — Work 1 row. All sizes — Cast off rem 30(30-32-32)sts.

**TO MAKE UP:** DO NOT PRESS. Join shoulder, side and sleeve seams. Sew in sleeves, catch side of rib at neck to body of garment.

## LADY'S JUMPER

Pattern No. AU24-2



**MEASUREMENTS:** To fit 32(34-36-38-40)in, 81[86-91-97-102]cm bust. Actual meas 32(34-36-38-40)in, 81[86-91-97-102]cm. Length 22¾(23-23¼-23½-23¾)in, 58[58-59-60-60]cm. Sleeve seam 4½(4½-4½-4½-4½)in, 11[11-11-11-11]cm.

**MATERIALS:** 11(12-12-13-13) 25g balls PATONS Azalea.

**TENSION:** T5=15½sts to 2ins (5cm) in width and 20 rows to 1-1/8ins (3.2cm) in depth, over patt. (Please check).

**PATTERN:** Reverse switch on — Tuck buttons in S/D on 1.

- \* 1. (Press button 5, set lever, knit 1 row) twice.
- 2. (Buttons 4 and 6, set, knit 1 row) twice.
- 3. (Buttons 3, 5 and 7, set, knit 1 row) twice.
- 4. (Buttons 2, 4, 6 and 8, set, knit 1 row) twice.

Release tuck buttons and knit 2 rows \*.

Tuck buttons in S/D on 5, rep from \* to \*.

Repeat.

**BACK:** T0. Cast on 121(129-137-145-153)sts for 1 x 1 rib. 64(64-72-72-80)sts L of 0 57(65-65-73-73)sts R of 0. T2 rib 36 rows. Transfer sts to main bed. T5 R/C on 0. Work 204 rows in patt. **SHAPE ARM-HOLES:** R/C on 0. Cast off 6(7-8-9-10)sts beg next 2 rows. Dec 1 st ea end of next row and every alt row 5(6-7-9-10) times. 97(101-103-107-111)sts. \*\* Work in patt until R/C reads 112(116-120-124-128). **SHAPE SHOULDERS:** Cast off 10(11-11-11-12)sts beg next 4 rows, then 10(10-11-12-11)sts beg foll 2 rows. Take rem 37(37-39-39-41)sts off machine on waste yarn.

**FRONT:** Work as given for Back to \*\*. Work 1 row R/C 16. **SHAPE NECK:** Knit 61(63-65-66-68)sts at opp end to carr manually on to waste yarn and put in A pos. Dec at neck edge in every alt row 6(6-7-7-8) times. 30(32-33-34-35)sts. Work in patt until R/C reads 112(116-120-124-128). **SHAPE SHOULDER:** Cast off 10(11-11-11-12)sts beg next row and foll alt row. Work 1 row. Cast off. Bring sts on waste yarn back into B pos. Knit centre 25sts off on waste yarn. Work other side to correspond.

**SLEEVES:** T0. Cast on 97(97-105-105-113)sts for 1 x 1 rib. 48(48-56-56-56)sts L of 0. 49(49-49-49-57)sts R of 0. T2 rib 14 rows. Transfer sts to main bed. T5 work 72 rows in patt. **SHAPE TOP:** R/C on 0. Cast off 3(3-4-4-5)sts beg next 2 rows. Dec 1 st ea end of next row and every 4th row 5(6-4-6-4) times, then every alt row 27(26-31-28-33) times. Work 1 row. R/C reads 78(82-82-84-86). Cast off rem 25(25-25-27-27)sts.

**BACK NECK BAND:** Remove sts from waste yarn, arrange for 1 x 1 rib. T2 work 14 rows in rib. Cast off.

**FRONT NECK BAND:** Wrong side facing, knit up 157(159-161-163-165)sts evenly around neck, including sts from waste yarn. T5 knit 1 row. Arrange sts for 1 x 1 rib. T2 rib 14 rows. Cast off.

**TO MAKE UP:** DO NOT PRESS. Sew up shoulder, side and sleeve seams. Sew in sleeves.



Pattern AU24-3

See Page 4





## LACE TRIMMED VEST

Pattern No. AU24-3



**MEASUREMENTS:** To fit 32(34-36-38)in, 81[86-91-97] cm bust. Approx Meas 28(30-32-34)in, 71[76-81-86] cm. Length 23½(23¾-24-24½)in, 60[60-61-62] cm.

**MATERIALS:** 5(6-6-7) 25g balls PATONS Azalea.

**TENSION:** T5=14sts to 2ins (5cm) in width and 24½ rows to 2ins (5cm) in depth, measured over eyelet patt. (Please check).

**EYELET PATTERN:** Slide Dial on 1. Reverse switch on +.

1. Press button 4, set lever, move LC from L to R, knit 2 rows.
  2. Button 4, set, LC from R to L, knit 2 rows.
- Repeat.

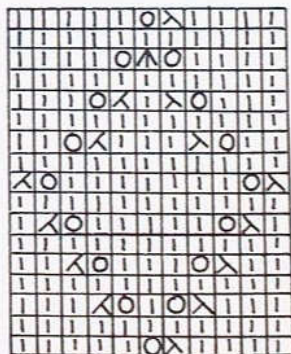
### DIAMOND PATTERN:

1. Press button 5, set lever, move LC from L to R.
  2. Button 3, set, LC from R to L, knit 2 rows.
  3. Button 6, set, LC from L to R.
  4. Button 2, set, LC from R to L, knit 2 rows.
  5. Button 1, set, LC from L to R.
  6. Button 7, set, LC from R to L, knit 2 rows.
  7. Button 2, set, LC from L to R.
  8. Button 6, set, LC from R to L, knit 2 rows.
  9. Button 3, set, LC from L to R.
  10. Button 5, set, LC from R to L, knit 2 rows.
- Repeat once for Diamond Pattern.

**BACK:** Cast on 81(89-97-105)sts in waste yarn 37(45-45-53)sts L of 0 44(44-52-52)sts R of 0. \*\*

Knit 3 rows in waste yarn and 1 row main yarn. T4, knit 12 rows. T6, knit 1 row. T5, knit 12 rows. Close hem on T6. R/C on 0. T5 work 90 rows in eyelet patt, then diamond patt (20 rows). Work 50 rows eyelet patt \*\*. Knit 23 rows st st. T6, knit 1 row. T4, knit 3 rows. Take off machine on 4 rows waste yarn.

**FRONT:** Cast on 113(121-129-137)sts in waste yarn, 53(53-61-61)sts L of 0. 60(68-68-76)sts R of 0. Work as given for Back from \*\* to \*\*. Knit 20 rows st st. **SHAPE BRA:** Knit 56(60-64-68)sts at opp end of carr manually on to waste yarn and push into A pos. Knit 2 rows. \* Transfer 3rd and 4th sts from ea end on to 5th needle, then transfer 1st and 2nd sts on to 2nd and 3rd needles, leave 4th needles in B pos. Knit 2 rows \*. Rep from \* to \* 12(14-16-18) times. 31sts. still dec in this manner work diamond patt from chart in centre of work. Continue dec as before twice more. 9sts. Transfer 3rd and 4th sts from ea end on to centre needle then transfer 1st and 2nd sts on to 2nd and 3rd needles, leave 4th needles in B pos and centre needle in E pos. Knit 2 rows. Transfer 2nd and 4th sts from right on to 3rd needle, then 2nd st from left on to 3rd needle. Transfer 1st sts to 2nd needles, leave centre needle in B pos. Knit 2 rows. Transfer 2nd st from ea end on to centre needle, then 1st sts on to 2nd needles. Knit 2 rows. K3 tog. Fasten off. Bring sts on waste yarn back into B pos inc in centre. Knit rem sts to correspond with other side.



**FRONT NECKBAND:** Wrong side facing, knit up 40 (42-44-46)sts from centre of bra to centre front. T5, knit 3 rows, inc at centre of bra and dec at centre front in every row. T6, knit 1 row. T4, knit 3 rows dec at centre of bra and inc at centre front in every row. Take off machine on 4 rows waste yarn. Work other side to correspond.



**ARMBAND:** Wrong side facing, knit up 40(42-44-46) sts from side to centre of bra, inc at side seam. T5, knit 3 rows inc at centre of bra in every row. T6, knit 1 row. T4, knit 3 rows dec at centre of bra in every row. Take off machine on 4 rows waste yarn. Work other side to correspond.

**STRAPS:** (Make 2) T5, cast on 3sts for selvedge edge. Knit 1 row. Right part button in work 170 rows. Cast off.

**TO MAKE UP:** DO NOT PRESS. Join side seams. Fold band in half at row worked on T6, and slip st in position removing waste yarn. Join mitred corners. Sew straps in pos.

## LADY/MAN SPORTS JUMPER

Pattern No. AU24-4



**MEASUREMENTS:** To fit 32(34-36-38-40-42)in, 81[86-91-97-102-107]cm bust/chest. Actual meas 32(34-36-38-40-42)in, 81[86-91-97-102-107]cm. Length 22(22½-22½-23¼-23½-23¾)in, 56[57-57-59-60-60]cm. Sleeve seam 3(3¼-3½-5-5-5)in, 7.5[8-9-13-13-13]cm.

**MATERIALS:** 6(7-7-8-8-9) 50g balls PATONS Gem, 12(13-14-15-16-17) 25g balls PATONS Patonyle.

**TENSION:** T6.1=12sts to 2ins (5cm) in width and 28 rows to 2ins (5cm) in depth, meas over patt. (Please check).

**PATTERN:** Tuck buttons in.

1. (Press buttons 1, 3, 5 and 7, set lever, knit 1 row) twice.
  2. Release tuck buttons, knit 2 rows. Tuck buttons in.
  3. (Buttons 2, 4, 6 and 8, set, knit 1 row) twice.
  4. Release Tuck buttons, knit 2 rows.
- Repeat.

**BACK:** T0. Cast on 97(103-109-115-121-127)sts for 1 x 1 rib. T3 rib 28 rows. Transfer sts to main bed. T6.1 R/C on 0. Work 160 rows in patt. \*\* SHAPE RAGLAN: R/C on 0. Cast off 2(2-2-3-3-3)sts beg next 2 rows. Dec 1 st ea end next row and every 6th row 12(7-4-7-4-1) time/s. 67(83-95-93-105-117)sts, then in every foll 4th row 14(22-27-24-29-34) times. 39(39-41-45-47-49)sts. Work 1 row. R/C reads 132(134-136-142-144-146). Take off machine on waste yarn.

**FRONT:** Work as given for Back to \*\*. SHAPE RAGLAN: R/C on 0. Cast off 2(2-2-3-3-3)sts beg next 2 rows. Dec 1 st ea end of next row and every 6th row 2(2-2-2-2-1) time/s. F only – then every 4th row twice. Work 5(5-5-5-5-3) rows in patt. **DIVIDE FOR NECK:** Knit 43(46-49-51-54-56)sts at opp end to carr manually on to waste yarn and push into A pos. Place centre st on to adjacent needle. Dec 1 st at armhole edge in next row and every 6th row 9(4-1-4-1-0) time/s, then every foll 4th row 14(22-27-24-29-31) times. AT SAME TIME dec 1 st at neck edge in 7th(7th-7th-5th-5th-5th) row and every foll 6th (6th-6th-4th-4th-4th) row 16(16-17-2-5-8) times D, E and F only – then every foll 6th row (17-15-13) times. (2 sts) Work 1 row R/C reads 132(134-136-142-144-146). K2 tog. Fasten off. Bring sts on waste yarn back to B pos R/C 20 and work other side to correspond.

**SLEEVES:** T0. Cast on 77(79-83-93-95-99)sts for 1 x 1 rib. T3 rib 18 rows. Transfer sts to main bed. T6.1 R/C on 0. Work 26(28-30-54-54-54) rows in patt. SHAPE RAGLAN: R/C on 0. Cast off 2(2-2-3-3-3)sts beg next 2 rows. Dec 1 st ea end of next row and every foll 4th row 31(32-32-32-32-32) times. 9(9-15-21-23-27)sts. C, D, E and F only – then in every alt row (2-5-6-7) times. 9(9-9-11-11-13)sts. Work 5(3-1-1-1-1) row/s. R/C reads 132(134-136-142-144-146). Take off machine on waste yarn.

**COLLAR:** T0. Cast on 189(189-189-199-199-199) sts for 1 x 1 rib. T3, rib 36 rows. Cast off 10sts beg next 10(10-10-12-12-12) rows. Cast off.

**NECKBAND:** Join raglan seams. Wrong side facing, pick up 103(107-111-115-119-123)sts from centre front to centre back (incl sts from waste yarn) inc 1st ea end for seam. T6.1, knit 1 row. Arrange sts for 1 x 1 rib. T3 rib 10 rows, dec 1 st at centre front in every row. Cast off. Work other side to correspond.

**TO MAKE UP:** DO NOT PRESS. Sew up side, sleeve and neckband seams. Sew collar to base of neckband.



Pattern AU24-4

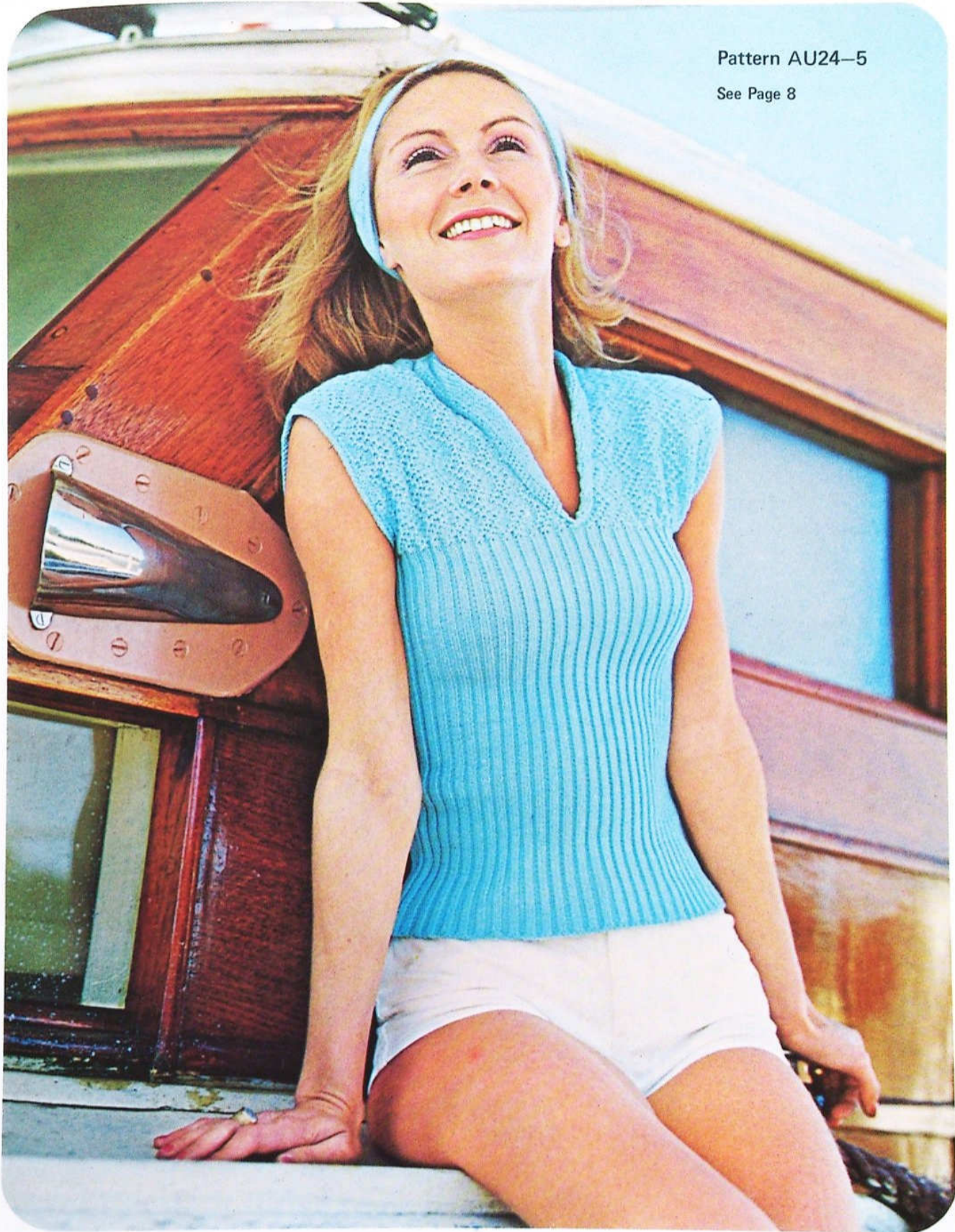
See Page 5





Pattern AU24-5

See Page 8





## LADY'S SLEEVELESS JUMPER

Pattern No. AU24-5



**MEASUREMENTS:** To fit 32(34-36-38-40)in, 81 [86-91-97-102] cm bust. Actual meas 31(33-35-37-39)in, 79[84-89-94-99] cm. Length 22(22¼-22½-22¾-23)in, 56[57-57-58-58] cm.

**MATERIALS:** 4(5-5-5-5) 50g balls, PATONS Gem, 8(9-9-10-10) 25g balls, PATONS Patonyle. 3.00 (No. 10-11) Crochet Hook.

**TENSION:** T6=15sts to 2ins (5cm) in width and 19 rows to 2ins (5cm) in depth, measured over st st. (Please check).

**PATTERN:** Reverse switch on - Tuck buttons in.

1. (S/D on 1. Press buttons 1 and 4, set, lever, knit 1 row) twice.
2. (S/D on 2. Buttons 1 and 4, set, knit 1 row) twice.
3. (S/D on 3. Buttons 1 and 4, set, knit 1 row) twice.
4. (S/D on 4. Buttons 1 and 4, set, knit 1 row) twice.
5. (S/D on 5. Buttons 1 and 4, set, knit 1 row) twice.
6. (S/D on 4. Buttons 1 and 4, set, knit 1 row) twice.
7. (S/D on 3. Buttons 1 and 4, set, knit 1 row) twice.
8. (S/D on 2. Buttons 1 and 4, set, knit 1 row) twice.

Repeat.

**BACK:** T0. Cast on 126(134-142-150-158)sts for

2 x 2 rib. T3 rib 155 rows. Transfer sts to main bed. T6, working in patt. **SHAPE ARMHOLES:** Cast off 4sts beg next 2 rows. \*\* Dec 1 st ea end next row and every foll alt row 3 times. Work 71(73-75-77-79) rows in patt. R/C reads 80(82-84-86-88). **SHAPE SHOULDERS:** Cast off 5(6-6-7-7)sts beg next 12(12-14-10-16) rows, then 6(5-7-6-0)sts beg foll 4(4-2-6-0) rows. R/C reads 96(98-100-102-104). Cast off rem 26(26-28-28-30)sts.

**FRONT:** Work as given for Back to \*\*. **DIVIDE FOR NECK:** Knit 59(63-67-71-75)sts at opp end to carr manually on to waste yarn and push into A pos. Dec 1 st at armhole edge in next row and every alt row 3 times. 55(59-63-67-71)sts. Work 71(73-75-77-79) rows in patt. R/C reads 80(82-84-86-88). **SHAPE SHOULDERS:** Cast off 5(6-6-7-7)sts at beg next row and every alt row 5(5-6-4-7) times, then 6(5-7-6-0)sts beg foll alt rows 2(2-1-3-0) time/s. Work 1 row. Cast off. Bring sts on waste yarn back to B pos and complete to correspond with other side.

**TO MAKE UP:** DO NOT PRESS. Join shoulder and side seams. Using hook work 2 rounds dc evenly around neck and armhole edges. Fasten off. Fold flaps at neck to right side and catch in position if desired.

## GIRL'S JUMPER

Pattern No. AU24-6





**MEASUREMENTS:** To fit 24(26-28)in, 61[66-71]cm, underarm. Actual meas 25(27-29)in, 63[69-74]cm. Length 13¼(14¼-16¼)in, 34[37-41]cm. Sleeve seam 2½(2½-2¾)in, 5.5[6.5-7]cm.

**MATERIALS:** 3(3-4) 50g balls Patons Gem, 5(6-7) 25g balls Patons Patonyle.

**TENSION:** T6.2=15sts to 2ins (5cm) in width and 19 rows to 2ins (5cm) in depth, measured over st st. (Please check).

### SLEEVE PATTERN.

1. Press button 3, set lever, move LC from L to R, knit 2 rows.
2. Buttons 2 and 4, set, move LC from L to R, knit 2 rows.
3. Button 3, set, move LC from L to R, knit 4 rows.
4. Button 7, set, move LC from R to L, knit 2 rows.
5. Button 6 and 8, set, move LC from R to L, knit 2 rows.
6. Button 7, set, move LC from R to L, knit 4 rows.

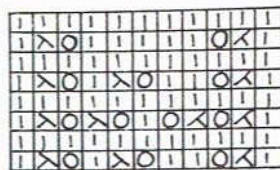
Repeat.

**BACK:** T0. Cast on 95(103-111)sts for 1 x 1 rib. T3. R/C on 0 rib 20 rows. Transfer sts to main bed, T6.2. R/C on 0. Knit until R/C reads 44(54-64) placing pattern in centre as shown on graph. **SHAPE ARM-HOLES:** R/C on 0. Cast off 42(46-50)sts at beg of next 2 rows. \*\* Knit on centre pattern panel until R/C reads 58(62-66). Take off machine on waste yarn.

**FRONT:** Work as given for Back to \*\*. Knit on centre pattern panel until R/C reads 16(20-26). Take off machine on waste yarn.

**LEFT SLEEVE:** T0. Cast on 53(59-65)sts for 1 x 1 rib. T3 rib 10 rows. Take off machine on 4 rows waste knitting. Select 63(69-75) needles 31(34-37) L of 0. 32(35-38) R of 0. Replace work inc 10sts across work and removing waste yarn. R/C on 0. T5.2 work in pattern, inc 1 st ea end next row and every alt row 3 times. Work 1 row. Cast on 2sts beg next row 4(6-8) times. 79(89-99)sts. Tie a coloured thread at ea end. Work 32(34-36) rows. **DIVIDE FOR BACK AND FRONT:** Knit 40(45-50)sts at opp end to carr manually on to waste yarn. Push into A pos. Work 28(28-30) rows. Cast off. Bring sts back to B pos. Knit centre 16(18-19)sts manually on to waste yarn and leave. Work 2 rows. Dec at neck edge in next row and every alt row 12(12-13) times. Work 1 row. 11(14-17)sts. Cast off.

**RIGHT SLEEVE:** Work to correspond with Left Sleeve reversing all shapings.



↑  
CENTRE ST.

**NECKBAND:** Join sleeves (from coloured threads) to front and back, leaving Left back seam open. Wrong side facing, pick up 147(155-163)sts evenly around neck (incl sts from waste yarn). T6.2, knit 1 row. Arrange sts for 1 x 1 rib. T3, rib 10 rows. Cast off.

**TO MAKE UP:** Press work lightly. Join left back seam, side and sleeve seams. Press seams.

## LADY'S JUMPER SUIT

Pattern No. AU24-7



**MEASUREMENTS:** To fit 32(34-36-38)in, 81[86-91-97]cm bust. Actual meas 32(34-36-38)in, 81[86-91-97]cm. Hips 34(36-38-40)in, 86[91-97-102]cm. Jumper Length 22¼(23-23¼-23½)in, 58[59-59-60]cm. Skirt Length 23¼(24-24¼-25¼)in, 60[61-63-64]cm. Sleeve seam, long, 17(17-17-17)in, 43[43-43-43]cm, short 5½(5½-5½-5½)in, 14[14-14-14]cm.

**MATERIALS:** JUMPER — Long Sleeves, 15(16-17-18) 25g balls, Short Sleeves, 13(14-15-16) 25g balls PATONS Bluebell. Long Sleeves, 4(4-5-5) 100g balls,

*Continued on Page 12.*



Pattern AU24-6

See Page 8





Pattern AU24-7

See Page 9





Short Sleeves. 4(4-4-4) 100g balls PATONS 5 Ply Harmony. Insert (if desired), small quantity 25g balls PATONS Bluebell or small quantity 100g balls PATONS 5 Ply Harmony. SKIRT — 14(15-16-17) 25g balls PATONS Bluebell, 4(4-4-5) 100g balls PATONS 5 Ply Harmony. 3.50 (No. 9) Crochet Hook. 9in (23cm) "Lightning" Zipper (Gold Pack). Length round elastic for skirt. Hem facing.

**TENSION:** 13½sts to 2ins (5cm) over st st. Suggested tension 8.1. Please check.

#### **PATTERN No. 1**

1. S/D on 8. Press button 4, set lever, move LC from R to L. Knit 2 rows.
2. S/D on 7, set, move LC from R to L. Knit 2 rows.
3. S/D on 6, set, move LC from R to L. Knit 2 rows.
4. S/D on 5, set, move LC from R to L. Knit 2 rows.
5. S/D on 4, set, move LC from R to L. Knit 2 rows.
6. S/D on 3, set, move LC from R to L. Knit 2 rows.
7. S/D on 2, set, move LC from R to L. Knit 2 rows.
8. S/D on 1, set, move LC from R to L. Knit 2 rows.

Repeat.

#### **PATTERN No. 2**

1. S/D on 1. Press button 7, set lever, move LC from L to R. Knit 2 rows.
2. S/D on 2, set, move LC from L to R. Knit 2 rows.
3. S/D on 3, set, move LC from L to R. Knit 2 rows.
4. S/D on 4, set, move LC from L to R. Knit 2 rows.
5. S/D on 5, set, move LC from L to R. Knit 2 rows.
6. S/D on 6, set, move LC from L to R. Knit 2 rows.
7. S/D on 7, set, move LC from L to R. Knit 2 rows.
8. S/D on 8, set, move LC from L to R. Knit 2 rows.

Repeat.

**BACK:** T0. Cast on 106(114-122-130)sts for 2 x 2 rib. T5, work 54 rows rib, dec at end of last row. Transfer sts to main bed. T8.1 R/C 0. Knit 96 rows. **SHAPE ARMHOLES:** R/C 0. Cast off 6(7-8-9)sts at beg next 2 rows. \*\* Dec 1 st ea end of next row and every alt row 5(6-7-8) times. 81(85-89-93)sts. Knit 57 rows. R/C reads 70(72-74-76). **SHAPE SHOULDERS:** Cast off 8(9-9-10)sts at beg of next 4 rows, then 9(9-10-10)sts at beg of foll 2 rows. Cast off rem

31(31-33-33)sts.

**FRONT:** Work as given for Back to \*\*. **SHAPE NECK:** Knit 47(50-53-56)sts at opp end to carr manually on to waste yarn and push into A pos. Commence Pattern No. 1. Patt 1 row on rem sts, dec at armhole edge only. Dec at armhole edge in alt rows 5(6-7-8) times, AT SAME TIME dec at neck edge in 2nd row and foll 4th rows 14(14-15-13) times. 25(27-28-30)sts. Work 9(11-9-11) rows. R/C reads 70(72-74-76). **SHAPE SHOULDER:** Cast off 8(9-9-10)sts at beg of next row and foll alt row. Work 1 row. Cast off. Undo waste yarn and return needles into B pos, transfer centre st to adjacent needle and working in Pattern No. 2. work other side to correspond.

**LONG SLEEVES:** T0. Cast on 54(54-58-58)sts for 2 x 2 rib. T5, work 28 rows rib, dec at end of last row. Transfer sts to main bed. R/C 0. T8.1 work in st st inc at ea end of 5th row and foll 6th rows 4(12-12-18) times, then in foll 8th rows 10(4-4-0) times. 83(87-91-95)sts. Work 25(25-25-21) rows. R/C reads 134. **SHAPE TOP:** \*\*\* R/C on 0. Cast off 4sts at beg of next 2 rows. Dec 1 st ea end of next row and alt rows 21 times, then in every row 9(11-13-15) times. Cast off rem 13 sts. \*\*\*

**SHORT SLEEVES:** T0. Cast on 82(86-90-96)sts for 2 x 2 rib. T5 work 28 rows rib inc at end of last row. Transfer sts to main bed. T8.1 R/C 0. Work 28 rows st st. **SHAPE TOP:** As given for Long Sleeves from \*\*\* to \*\*\*.

**COLLAR:** Using back-stitch join shoulders. Cast on 6 sts for selvedge edge. T8.1 knit 1 row. Next row — Inc in first st, transfer 3rd st from opposite end to carr on to 4th needle, leaving 3rd needle in B pos. Work 2 rows working an eyelet hole at end of 2nd row. Inc at end of next row. Work 2 rows working an eyelet hole at end of 1st row. Rep last 6 rows until there are 29 (29-30-30)sts. Knit 0(0-1-1) row/s. Cam on 2(KH600, 610, 680) or III(KH91). Bring 6 needles at opp end to carr in E pos, knit 1 row. Catch yarn around end needle in E pos. Knit 1 row working eyelet hole (as before). Cam on 3(KH600, 610, 680) or I(KH91) knit 2 rows working eyelet hole (as before). Rep last 4 rows 19(20-21-22) times. Keeping patt correct dec at shaped edge in next row and foll 3rd rows until 6sts remain. Work 3 rows. Cast off.

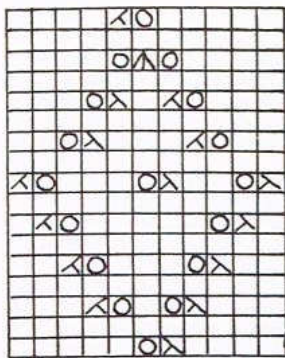
**INSERT:** Cast on 25sts for selvedge edge. T5, K2 rows. Press buttons 1, 3, 5 and 7, set lever, move LC from L to R. K2 rows. K36 rows dec at ea end of next row and every 4th row 8 times. AT SAME TIME commencing diamond patt on centre of work in 3rd row. Cast off.

**MAKE UP:** With a slightly damp cloth and warm



## GIRL/BOY JUMPER

Pattern No. AU24-8



iron, press lightly. Join side and sleeve seams. Sew in sleeves. Sew collar in pos as illustrated. Press seams. Using hook, work edging around collar and insert as folls — 1st row — 1ch, \* 1dc in eyelet hole, 3ch, 1dc in first of these ch, rep from \* to end. Fasten off. Sew insert in pos if desired.

**SKIRT:** (Make 6 pieces). T0. Cast on 29(31-35-37)sts for 1 x 1 rib. T5, work 10 rows rib, A and B only — inc at end of last row. Transfer sts to main bed. T8.1. Work in st st inc at ea end of 5th row and foll 10th rows 4 times, then every foll 8th row until there are 74(76-79-81)sts. Work 33(37-41-45) rows. Cast off.

**MAKE UP:** With a slightly damp cloth and warm iron, press lightly. Join seams leaving 9ins (23cm) opening for zip in left side seam. Sew in zip. Sew on hem facing. Thread elastic around waist on 1st, 5th and 9th rows. Press seams.



**MEASUREMENTS:** To fit 24(26-28)in, 61[66-71] cm underarm. Actual meas 25(27-29)in, 63[69-74] cm. Length 13(15-17)in, 33[38-43] cm. Sleeve seam, long, 10(12-13½)in, 25[30-35] cm, short 2¼(2½-2¾)in, 5.5[6.5-7] cm.

**MATERIALS:** Long Sleeves, 4(4-5) 50g balls PATONS Gem, 8(8-9) 25g balls PATONS Patonyle. Short Sleeves, 3(3-4) 50g balls PATONS Gem, 5(6-7) 25g balls PATONS Patonyle.

**TENSION:** T6.2=15sts to 2ins (5cm) in width, and 19 rows to 2ins (5cm) in depth, measured over st st. (Please check).

**PATTERN:** \* Counting from right-hand side of machine. On 2nd and every following 3rd group of 4sts work cables by crossing 2sts at right over 2sts at left. Knit 6 rows. Repeat. NOTE: Needles in A pos are counted as sts.

**BACK:** Carr on right. T6.2, cast on 41(51-61)sts with selvedge edge. Knit 1 row. Counting from right hand side of machine transfer every 5th st to adjacent needle and push into A pos. Work 1(3-5) row/s. Commence patt and SHAPE ARMHOLES: Inc at left hand side of machine in next row and every alt row 4 times. 46(57-67)sts. Cast on 28(33-38)sts and work 1 row. 74(89-104)sts. Counting from right side of machine, transfer every 5th st from previous 5th st on to adjacent needle and push into A pos. Work 94(100-106) rows. Bring 6(7-8) A pos needles at left hand side of machine back into B pos and knit 1 row. Cast

*Continued on Page 16.*



Pattern AU24-8

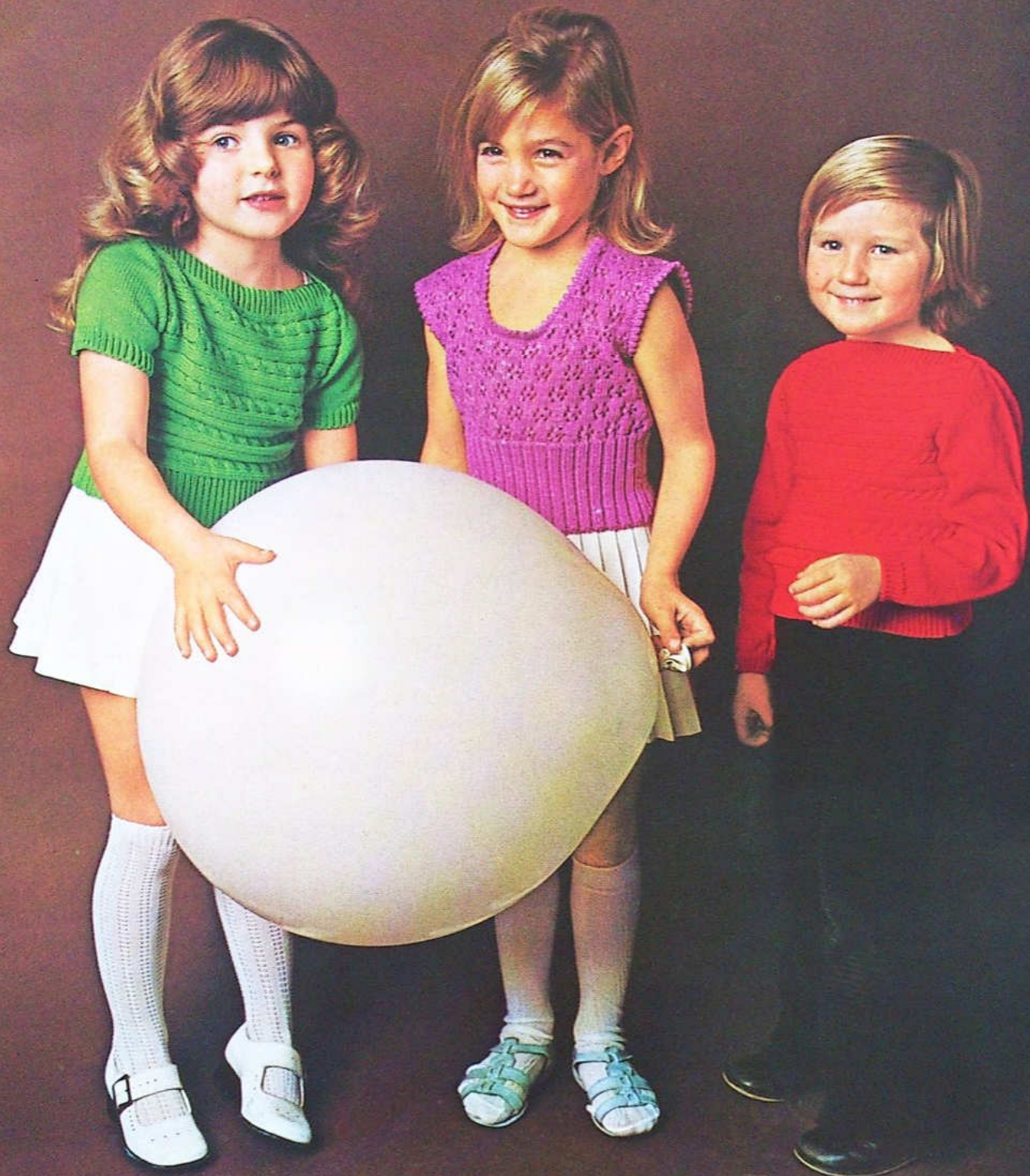
See Page 13

Pattern AU24-9

See Page 16

Pattern AU24-8

See Page 13





Pattern AU24-10

See Page 17





off 28(33-38)sts at left-hand side of machine. Work 2 rows. Dec at left-hand side of machine in next row and every alt row 4 times. Work 1(3-5) row/s. Bring rem A pos needles back to B pos and knit 1 row. Cast off.

**FRONT:** Work as given for Back.

**BACK NECK BAND:** Wrong side facing, pick up 77(81-85)sts evenly along top edge of work. T6.2, knit 1 row. Arrange sts for 1 x 1 rib. T3 rib 10 rows. Cast off.

**FRONT NECK BAND:** Work as given for Back Neck Band.

**SHORT SLEEVES:** T0, cast on 73(79-85)sts for 1 x 1 rib. T3, rib 8 rows. Transfer sts to main bed. T6.2, work 12(14-16) rows st st. **SHAPE TOP: \*\*** R/C on 0. Cast off 3sts beg next 2 rows. Dec 1st ea end next row and every alt row 4(7-8) times. 57(57-61)sts then in every row 21(21-23) times. R/C reads 32(38-42). Cast off rem 15sts. \*\*

**LONG SLEEVES:** T0 cast on 47(51-55)sts for 1 x 1 rib. T3 rib 8 rows. Transfer sts to main bed. R/C 0. T6.2, work 4 rows st st. Inc 1st ea end next row and every foll 6th row 12(9-5) times. 73(71-67)sts. B and C only — then every foll 8th row (4-9) times. 73(79-85)sts. Work 11(15-15) rows. R/C reads 88(106-122). **SHAPE TOP:** Work as given for Short Sleeves from \*\* to \*\*.

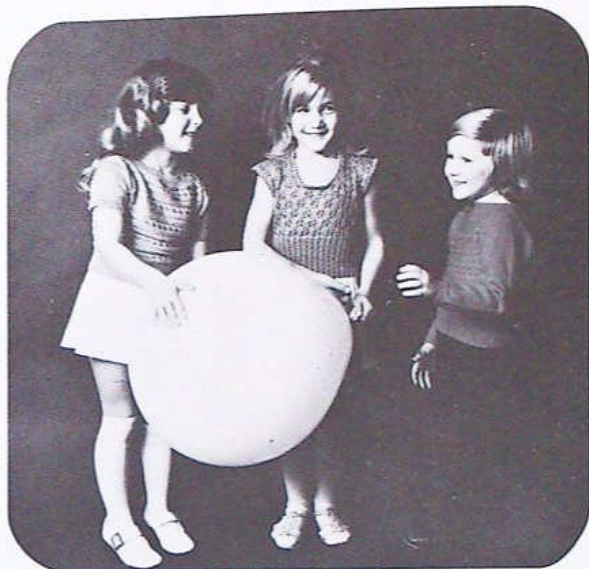
**BACK LOWER BAND:** Wrong side facing, pick up 95(103-116)sts evenly along lower edge. T6.2, knit 1 row. Arrange sts for 1 x 1 rib. T3, rib 24 rows. Cast off.

**FRONT LOWER BAND:** Work as given for Back Lower Band.

**TO MAKE UP:** DO NOT PRESS. Join side and sleeve seams. Join shoulder seams at armhole edge for 1in (2.5cm) overlapping rib. Sew in sleeves placing seams to side seams.

## GIRL'S LACY JUMPER

Pattern No. AU24-9



**MEASUREMENTS:** To fit 23½(26-28½-31)in, 60[66-72-79] cm underarm. Actual meas 24½(27-29½-32)in, 62[69-75-81] cm. Length 14(15¼-17-19½)in, 36[39-43-50] cm.

**MATERIALS:** 3(4-4-5) 50g balls PATONS Crystal.

**TENSION:** T7=13sts and 21 rows to 2ins (5cm) over patt. (Please check).

### PATTERN:

1. Press button 3, set lever, move LC from L to R.
2. Button 5, set, LC from R to L. Knit 2 rows.
3. Buttons 4 and 6, set, LC from L to R.
4. Button 2, set, LC from R to L. Knit 2 rows.
5. Button 3, set, LC from L to R.
6. Button 5, set, LC from R to L. Knit 4 rows.
7. Button 7, set, LC from L to R.
8. Button 1, set, LC from R to L. Knit 2 rows.
9. Buttons 2 and 8, set, LC from L to R.
10. Button 6, set, LC from R to L. Knit 2 rows.
11. Button 7, set, LC from L to R.
12. Button 1, set, LC from R to L. Knit 4 rows. Repeat.

**BACK:** T0. Cast on 82(90-98-106)sts in 2 x 2 rib. 37(45-45-53)sts L of 0. 45(45-53-53)sts R of 0. R/C on 0. T5, rib 40 rows, inc 1 st at left of machine in last row. Transfer sts to main bed. T7 knit 1 row. R/C on 0. Work until R/C reads 30(40-50-66). **SHAPE ARMHOLES:** R/C on 0. Cast off 5sts beg next 2 rows. Dec 1 st ea end next row and foll alt rows 3(4-5-6) times. 65(71-77-83)sts. \*\* Work 7 rows. Inc 1 st ea



end next row and foll 5th(6th-6th-8th) rows 6 times. 79(85-91-97)sts. Work 3(3-7-1) row/s. R/C reads 50 (58-64-72). SHAPE SHOULDERS: Cast off 6(7-7-8) sts beg next 4 rows, then 7(7-8-8)sts beg foll 4 rows. Take rem 27(29-31-33)sts off machine on waste yarn.

**FRONT:** Work as given for Back to \*\*. Work 1 row. SHAPE NECK: Knit 39(43-46-50)sts at opp end to carr manually on to waste yarn and push into A pos. Work 1 row. Dec at neck edge in every alt row 7(7-8-8) times, whilst at the same time inc at armhole in 6th row and every foll 5th(6th-6th-8th) row 6 times. Work 3(3-7-1) row/s. 26(28-30-32)sts. R/C reads 50(58-64-72). SHAPE SHOULDER: Cast off 6(7-7-8) sts beg next row and foll alt row, then 7(7-8-8)sts beg of foll alt row. Work 1 row. Cast off rem 7(7-8-8) sts. Bring rem sts back to B pos. Knit centre 13(15-15-17)sts off manually on to waste yarn and work rem sts to correspond with other side.

**NECKBAND:** Sew up left shoulder seam. With wrong side facing pick up 96(100-104-108)sts evenly around neck edge. R/C on 0. T7, knit 4 rows. Press buttons 1, 3, 5 and 7 set lever, move LC from L to R. Knit row. Knit 4 rows. Take off machine on 4 rows waste knitting.

**ARMHOLE BANDS:** Sew up right shoulder seam. With wrong side facing pick up 78(88-98-108)sts evenly around armhole edge and work as given for neckband.

**TO MAKE UP:** DO NOT PRESS. Sew up side seams. Fold neckband and armhole bands in half on to wrong side and stitch in position (undoing waste knitting and catching sts).

## GIRL/BOY FAIR ISLE JUMPER

Pattern No. AU24-10



**MEASUREMENTS:** To fit 24(26-28)in, 61 [66-71] cm underarm. Actual meas 25(27-29)in, 63 [69-74] cm. Length 13 $\frac{3}{4}$ (15 $\frac{1}{4}$ -16 $\frac{1}{4}$ )in, 35 [39-43] cm. Sleeve seam, long, 10(12-13 $\frac{3}{4}$ )in, 25 [30-37] cm, short, 2 $\frac{1}{4}$ (2 $\frac{1}{2}$ -2 $\frac{3}{4}$ ) in, 5 [6.5-7] cm.

**MATERIALS:** Long Sleeves, 5(6-7) 25g balls MC, 1(1-2) 25g balls CC PATONS Azalea. Short Sleeves, 4(5-6) 25g balls MC, 1(1-2) 25g balls CC PATONS Azalea.

**TENSION:** T5=16sts and 24 rows to 2ins (5cm) over st. (Please check).

**PATTERN:** Set machine for Fair-Isle.

1. (S/D on 1, press buttons 1, 2, 5 and 6, set lever, knit 1 row fair-isle) twice.
2. (S/D on 3, set, knit 1 row fair-isle) twice.
3. (S/D on 1, set, knit 1 row fair-isle) twice. Knit 4 rows MC.
4. S/D on 1, set, knit 1 row fair-isle.
5. S/D on 2, set, knit 1 row fair-isle.
6. S/D on 3, set, knit 1 row fair-isle.
7. S/D on 4, set, knit 1 row fair-isle.
8. S/D on 5, set, knit 1 row fair-isle.
9. S/D on 4, set, knit 1 row fair-isle.
10. S/D on 3, set, knit 1 row fair-isle.
11. S/D on 2, set, knit 1 row fair-isle.
12. S/D on 1, set, knit 1 row fair-isle. Knit 4 rows MC. Repeat.

**BACK:** T0. Using CC cast on 111(119-127)sts in



Pattern AU24-11

See Page 19

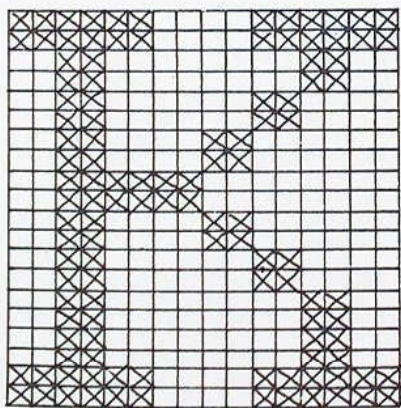




1 x 1 rib, odd st to right of 0. R/C on 0. T2 rib 2 rows CC, 16 rows MC, inc 1 st at right of machine in last row. Transfer sts to main bed. R/C on 0. T6 knit 4 rows MC, setting machine for fair-isle in last row. Work 65(65-88) rows in patt. T5 work 9(17-4) rows. st st. **SHAPE ARMHOLES:** R/C 0. Cast off 2sts beg next 2 rows. \*\* Dec 1st ea end next row and foll alt rows 30(33-36) times. 46(48-50)sts then every row 5 times. R/C reads 68(74-80). Take rem 36(38-40)sts off machine on waste yarn.

**FRONT:** Work as given for Back to \*\*. **SHAPE NECK:** Knit 54(58-62)sts at opp end to carr manually on to waste yarn and push into A pos. Dec at armhole edge in next row and every alt row 30(33-36) times, then every row 5 times, **WHILST AT SAME TIME** dec at neck edge in 3rd row and every foll 4th row 15 (16-17) times. (2sts). K2 tog. Fasten off. Bring sts back to B pos and complete to correspond with other side.

**LONG SLEEVES:** T0. Using CC cast on 51(55-59)sts in 1 x 1 rib. R/C on 0. T2 rib 2 rows CC, 10 rows MC inc at end of last row. Transfer sts to main bed. R/C on 0. T5 knit 4 rows. Inc 1st ea end next row and foll 6th rows 10(8-1) time/s. 74(68-64)sts then every 8th row 2(8-12) times. 80(84-88)sts. Knit until R/C reads 104(128-144). **SHAPE RAGLAN:** \*\* Cast off 2sts beg next 2 rows. Dec 1st ea end next row and every 4th row 0(1-2) time/s, then every alt row 32(33-34) times. (10sts). K1 row. Take rem 10sts off machine on waste yarn. \*\*



**SHORT SLEEVES:** T0. Using CC cast on 73(77-81)sts in 1 x 1 rib. Work 12 rows in rib and stripes as given for Long Sleeves inc at end of last row. R/C on 0. T5 knit 2 rows. Inc 1st ea end next row and foll 4th rows twice. Knit 1(3-5) row/s. 80(84-88)sts. **SHAPE TOP:** As given from \*\* to \*\* for Long Sleeves.

**COLLAR:** T0. Using CC cast on 153(159-165)sts in 1 x 1 rib. R/C on 0. T2 rib 2 rows CC, 22 rows MC.

Cast off 10sts beg next 10 rows. Cast off rem 53(59-65)sts.

**NECKBAND:** Sew sleeves to front and back. With wrong side facing using MC pick up 83(89-95)sts from centre back to centre front. T5 using MC, knit 1 row, inc 1st ea end for seam. Arrange sts for 1 x 1 rib. R/C on 0. T2 rib 6 rows MC, 2 rows CC, dec at centre front in every alt row. Cast off loosely.

**TO MAKE UP:** Press work lightly. Sew up side and sleeve seams. Sew in sleeves, stitch collar in position to inside edge of neck. Press seams. Using knitting st and CC embroider initial on front if desired.

## MAN'S CABLE TRIM JUMPER

Pattern No. AU24-11



**MEASUREMENTS:** To fit 36(38-40-42)in, 91[97-102-107]cm chest. Actual Meas 36(38-40-42)in, 91[97-102-107]cm. Sleeve seam, long, 19(19-19-19)in, 48[48-48-48]cm, short, 4(4-4-4)in, 10[10-10-10]cm. Length 25½(25¾-26-26¼)in, 65[65-66-67]cm.

**MATERIALS:** Long Sleeves, 15(15-16-16) 25g balls, Short Sleeves, 12(13-13-14) 25g balls PATONS Azalea.

**TENSION:** T5=17sts and 24 rows to 2ins (5cm) over patt and 16sts and 24 rows to 2ins (5cm) over st st. (Please check).



**BACK:** T0. Cast on 145(153-161-169)sts for 1 x 1 rib, odd st on R of 0. T2 rib 24 rows. Dec 1st on R side of machine in last row. Transfer sts to main bed. T5 R/C on 0. Work 200 rows in st st. **SHAPE ARMHOLES:** R/C on 0. Cast off 7(8-9-10)sts beg next 2 rows. Dec 1st ea end of next row and every alt row 6(7-8-9) times. 116(120-124-126)sts. Work 83 rows in st st. R/C reads 98(100-102-104). **SHAPE SHOULDERS:** Cast off 13(13-14-14)sts beg next 4 rows, then 12(13-13-14)sts beg foll 2 rows. 40(42-42-44)sts. Take off machine on waste yarn.

**FRONT:** T0. Cast on 153(161-169-177)sts for 1 x 1 rib, odd st on R of 0. T2 rib 24 rows. Dec 1st on R side of machine in last row. Transfer sts to main bed. T5. R/C 0. \*\* Work 16 rows st st. Counting from the right leave 2(3-4-2)sts untouched, \* cable next 4sts by crossing 2sts at left over 2sts at right, leave next 2 sts untouched, rep from \* across, leaving last 2(3-4-2)sts untouched. (Work 6 rows st st, then rep cables) twice. \*\* Rep from \*\* to \*\* for patt. Work 172 rows in patt. R/C reads 200. **SHAPE ARMHOLES:** R/C on 0. Cast off 7(8-9-10)sts beg next 2 rows. Dec 1 st ea end of next row and every alt row 6(7-8-9) times. 124(128-132-136)sts. Work 39(39-37-37) rows in patt. **SHAPE NECK:** Knit 72(75-77-80)sts at opp end to carr manually on to waste yarn. Push needles into A pos. Knit 1 row. Dec 1st at neck edge in every alt row 13 times. 39(40-42-43)sts. Work 17(17-19-19) rows. R/C reads 98(100-102-104). **SHAPE SHOULDERS:** Cast off 13(13-14-14)sts beg next row and foll alt row. Work 1 row. Cast off rem sts. Bring sts on waste yarn back into B pos. Knit centre 20(22-22-24)sts off on waste yarn. Knit rem sts to correspond with other side reversing shapings.

**SHORT SLEEVES:** T0. Cast on 117(121-125-129)sts for 1 x 1 rib. T2 rib 18 rows. Dec 1 st at right of machine in last row. Transfer sts to main bed. T5 R/C on 0. Work 4 rows st st. Inc 1 st ea end next row and every foll 4th row 4 times. 126(130-134-138)sts. Work 7 rows st st. R/C reads 28. **SHAPE TOP:** R/C on 0. \*\* Cast off 3(4-4-5)sts beg next 2 rows. Dec 1st ea end next row and every alt row 25(24-25-24) times — 68(72-72-76)sts, then every row 21(23-23-25) times. 26(26-28-28)sts. R/C reads 74(74-76-76). Cast off. \*\*.

**LONG SLEEVES:** T0. Cast on 77(79-81-83)sts for 1 x 1 rib. T2, rib 18 rows. Dec 1 st at right of machine in last row. Transfer sts to main bed. T5 R/C on 0. Work 4 rows st st. Inc 1 st ea end next row and every foll 6th row 4(8-12-16) times — 86(96-104-114)sts, then every foll 8th row 20(17-14-11) times. 126(130-134-138)sts. Knit until R/C reads 216. **SHAPE TOP:** As given for Short Sleeves from \*\* to \*\*.

**NECKBAND:** Sew up right shoulder seam. Wrong side

facing pick up 127(131-133-139)sts (incl sts from waste yarn) evenly around neck. T5, knit 1 row. Arrange sts for 1 x 1 rib. T2 rib 36 rows. Cast off.

**MAKE UP:** Press lightly. Join side, shoulder, neckband and sleeve seams. Sew in sleeves placing seams to side seams. Fold neckband in half to wrong side and sl st in pos. Press seams.

## GIRL'S SUN FROCK

Pattern No. AU24-12



**MEASUREMENTS:** To fit 22(24-26)in, 56[61-66]cm underarm. Actual meas 21½(24-26½)in, 55[61-67]cm. Length 16(18-20)in, 41[46-51]cm.

**MATERIALS:** 5(5-6) 50g balls PATONS Crystal.

**TENSION:** T7=12sts to 2ins (5cm) in width and 21 rows to 2ins (5cm) in depth, measured over bodice patt. (Please check).



### PATTERN No. 1.

1. S/D on 1, press button 8, set lever, move LC from L to R, knit 2 rows.
2. S/D on 2, set, move LC from L to R, knit 2 rows.
3. S/D on 3, set, move LC from L to R, knit 2 rows.
4. S/D on 4, set, move LC from L to R, knit 2 rows.
5. S/D on 5, set, move LC from L to R, knit 2 rows.
6. S/D on 6, set, move LC from L to R, knit 2 rows.
7. S/D on 7, set, move LC from L to R, knit 2 rows.
8. S/D on 8, set, move LC from L to R, knit 2 rows.

Repeat.

### PATTERN No. 2

1. S/D on 8, press button 8, set lever, move LC from R to L. Knit 2 rows.
2. S/D on 7, set, LC from R to L, knit 2 rows.
3. S/D on 6, set, LC from R to L, knit 2 rows.
4. S/D on 5, set, LC from R to L, knit 2 rows.
5. S/D on 4, set, LC from R to L, knit 2 rows.
6. S/D on 3, set, LC from R to L, knit 2 rows.
7. S/D on 2, set, LC from R to L, knit 2 rows.
8. S/D on 1, set, LC from R to L, knit 2 rows.

Repeat.

### BODICE PATTERN

1. Press button 3, set lever, move LC from L to R.
2. Button 5, set, LC from R to L.
3. Button 2, set, LC from L to R.
4. Button 6, set, LC from R to L. knit 2 rows.
5. Button 3, set, LC from L to R.
6. Button 5, set, LC from R to L, knit 2 rows.
7. Button 7, set, LC from L to R.
8. Button 1, set, LC from R to L.
9. Button 6, set, LC from L to R.
10. Button 2, set, LC from R to L, knit 2 rows.
11. Button 7, set, LC from L to R.
12. Button 1, set, LC from R to L, knit 2 rows.

Repeat.

### SKIRT (In four pieces).

**RIGHT SIDE FRONT:** Cast on 21(29-37)sts for selvedge edge. 7(15-23)sts R of 0 14sts L of 0. T7, cast on 8sts beg next 4 rows. 53(61-69)sts. R/C on 0. T7, work 10 rows pattern 1. Cont in patt 1, dec 1 st ea end next row and every foll 16th(18th-20th) row 5 times. Work 11(15-17) rows in patt 1. R/C reads 102(116-128). Cast off.

**LEFT SIDE BACK:** Work as given for Right Side Front.

**LEFT SIDE FRONT:** Cast on 21(29-37)sts for selvedge edge. 4(12-20)sts R of 0 17sts L of 0. T7, cast on 8sts beg next 4 rows. 53(61-69)sts. R/C on 0. T7, work 10 rows pattern 2. Working in patt 2 complete as given for Right Side Front.

**RIGHT SIDE BACK:** Work as given for Left Side Front.

**BODICE:** (Worked in one piece) Cast on 131(139-155)sts for selvedge edge 66(74-82)sts R of 0 65(65-73)sts L of 0. T7, knit 2 rows. Press buttons 1, 3, 5 and 7, set lever, move LC from R to L, knit 2 rows. Work 24 rows in bodice pattern. **SHAPE BACK AND ARMHOLES:** Cast off 39(40-45)sts beg next 2 rows. 53(59-65)sts. Dec 1 st ea end next row and every alt row 1(2-2) time/s. Work 1 row. **SHAPE NECK:** Knit 39(43-47)sts at opp end to carr manually on to waste yarn. Push into A pos. Dec at armhole edge in next row and every alt row 4(4-5) times. **AT SAME TIME** dec at neck edge in 3rd row and every alt row 2(2-3) times. (2sts). Work 1 row. R/C reads 44(46-48). K2 tog. Fasten off. Bring sts on waste yarn back to B pos. Cast off centre 29(33-35)sts. R/C 34(36-36) work other side to correspond.

**LOWER EDGE:** (4 pieces) Wrong side facing, pick up 53(61-69)sts evenly along lower edge of 1st section. T6 knit 4 rows. Press buttons 1, 3, 5 and 7, set lever, move LC from R to L. T5 knit 4 rows. Cast off. Repeat for each piece.

**BACK BAND:** Join centre back seam. T4, cast on 8 sts with selvedge edge on left-hand side of machine. Knit 2 rows. \* Carr on right dec 1 st at left hand side of machine and inc 1 st at right hand side of machine. Knit 2 rows \*\*. Rep from \* to \*\* until band is length required to fit from point of each front and across back. Cast off.

**FRONT BAND AND STRAPS:** Work as given for Back band to \*\*. Rep from \* to \*\* until work measures 30ins (76cm) from commencement. Cast off.

**TO MAKE UP:** DO NOT PRESS. Join skirt seams and sew to bodice. Sew bands in pos placing inc edge of bands to right side. Cross straps at back and sew ends in pos. Fold hem in half at row of holes and sl st in pos.



INTERNATIONAL  
KNITWEAR  
COLLECTION

# EMPISAL

BOOK AU24

