

INTERNATIONAL  
KNITWEAR  
COLLECTION

# EMPISAL

BOOK AU18





## CONTENTS

Page 9	Fair Isle Sleeveless Top	AU18-1
Page 10	Flared Sleeve Top	AU18-2
Page 11	Houndstooth Waistcoat	AU18-3
Page 12	Full Length (Red) Skirt	AU18-4
Page 13	Fair Isle Trim Sweater	AU18-5
Page 14	Lady's Fair Isle Ski Sweater	AU18-6
Page 15	Ski or Beanie Cap	AU18-7
Page 16	His & Hers Alphabet Tops	AU18-8
Page 17	His & Hers Sweaters	AU18-9
Page 18	Child's Raglan Cardigan	AU18-10
Page 19	Lady's Ski Sweater with Round or Polo Neck	AU18-11
Page 20	Man's Ski Sweater with Round or Polo Neck	AU18-12



Pattern No. AU18-1  
See Page 9





Pattern No. AU18-2  
See Page 10







Pattern No. AU18-3  
See Page 11



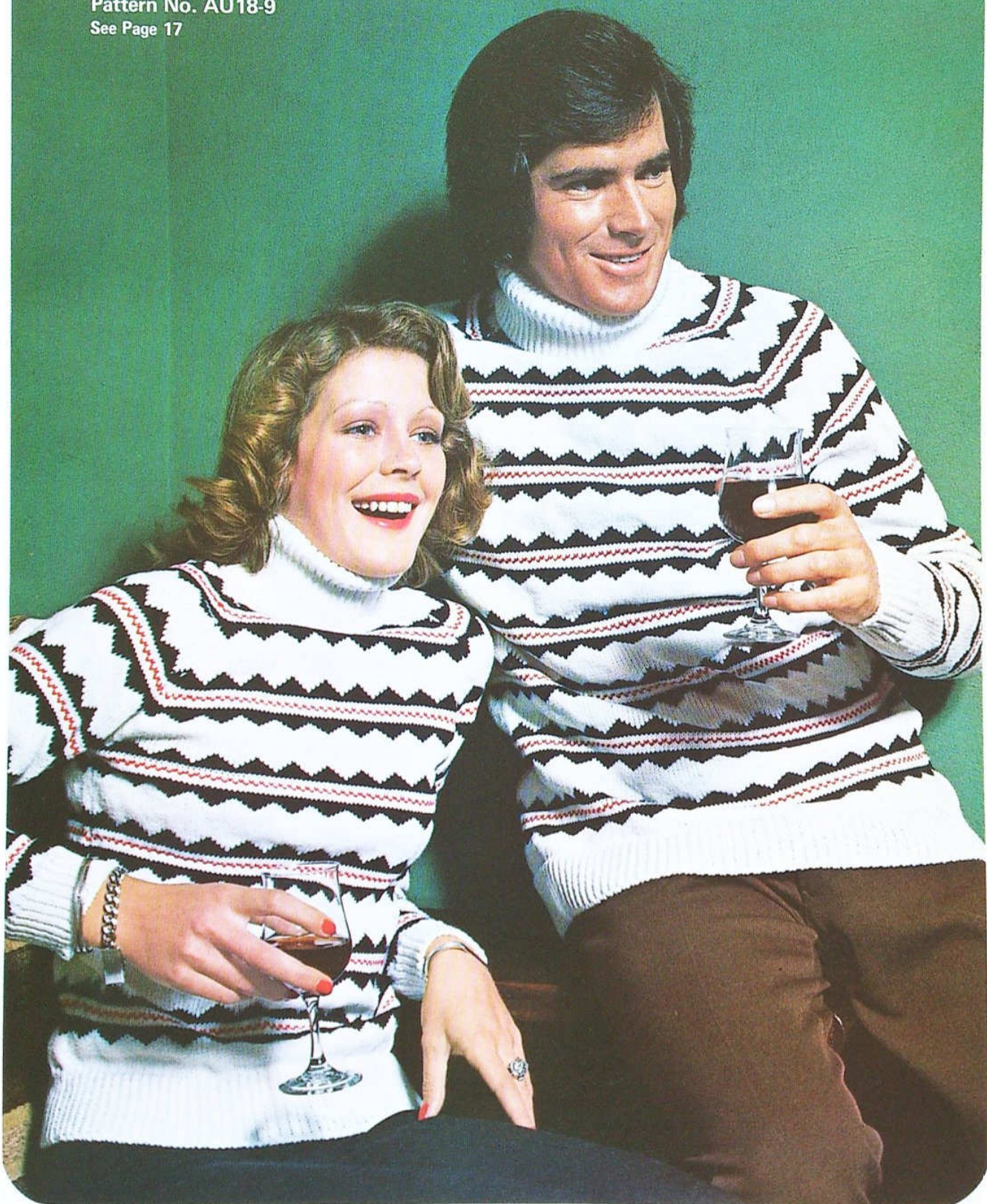


Pattern No. AU18-5  
See Page 13

Pattern No. AU18-4  
See Page 12



Pattern No. AU18-9  
See Page 17



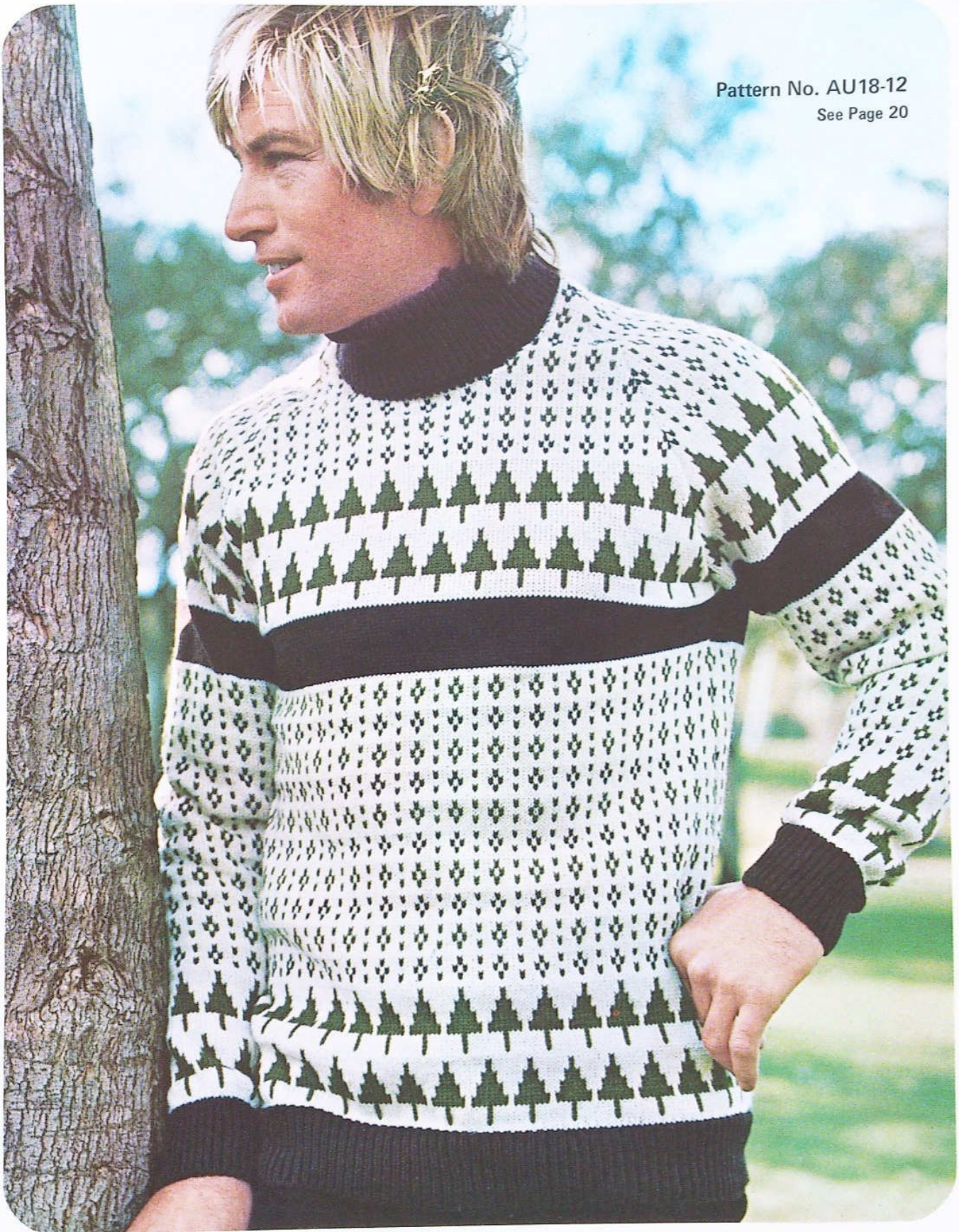


Pattern No. AU18-11  
See Page 19





Pattern No. AU18-12  
See Page 20





Pattern No. AU18-10  
See Page 18





# EMPISAL

## INTERNATIONAL KNITWEAR COLLECTION

EMPISAL are pleased to present their International Fashion co-ordinator's selection of FOURTEEN exciting machine knitted garments for the whole family.

\*AN EMPISAL PUBLICATION: WORLD COPYRIGHT BY EMPISAL INTERNATIONAL

### FAIR ISLE SLEEVELESS TOP:

Pattern No. AU18-1



**MEASUREMENTS:** To fit size 32(34-36)in. bust. Actual meas. 33(35-37)ins. Length 24½ ins.

**MATERIALS:** Sirdar Double Crepe Main Color (MC) 8(9-10)balls. 1st Contrast (C1) 4(5-5)balls; 2nd Contrast (C2) 4(4-5) balls.

**TENSION:** T10=14 sts. and 18 rows to 2 ins.

**PATTERN:** NOTE: Set lever before ea. pattern row.  
**STEPS 1.2:** Press button 5 with C1 knit 2 rows.  
**STEPS 3.4.:** Buttons 456 with C1 knit 2 rows.  
**STEPS 5.6.:** Buttons 3.4.5.6.7. Knit 2 rows C1.  
**STEPS 7.8.:** Buttons 2.3.4.5.6.7. with C1 knit 2 rows. Beg. with Steps 7.8. and using C2 throughout work back through steps ending with Step 1.

**BACK:** With MC cast on for 1 x 1 rib 123(131-139)sts. Rib 13 rows. Carr on left. Transfer sts. to main bed. R/C on 0. T10 knit in patt. dec. 1 st. at ea. end of the 11th and foll 10th rows until 115(123-131) sts. rem. Cont. straight in patt. until R/C reads 144 or length required. **SHAPE ARMHOLES:** Cast off 8 sts. at the beg. of the next 2 rows. Dec. 1 st. ea. end next 4 rows, then on every alt. row 8(10-12) times. 75(79-83)sts. \*\* Cont. straight until R/C reads 64



rows. **SHAPE NECK:** Working on 23(24-25)sts. nearest the carr, knit off manually the rem. sts. with waste yarn and push back into A pos. Keeping continuity of patt, dec. 1 st. at neck edge on the next 6 rows. Work 2 rows straight. **SHAPE SHOULDER:** Cast off 8 st. at the beg. of the next row, knit 1 row and cast off rem. sts. Take off the centre 29(31-33) sts. on waste yarn for neck. Work on rem. sts. to correspond with other side reversing all shapings.

**FRONT:** Work as Back to \*\*. **SHAPE NECK:** Work on 27(28-29)sts. nearest the carr. Take off the centre 21(23-25)sts. for Neck and knit rem. sts. off on waste yarn manually and push into A pos. Keeping continuity of patt, dec. 1 st. at neck edge of the next 6 rows, then on the next 4 alt. rows. Cont. straight until armhole measures same as back. **SHAPE SHOULDER:** As for Back. Knit other side to correspond reversing all shapings.

**TO COMPLETE:** Press on wrong side with warm iron and damp cloth. Join right shoulder seam. Pick up 47 sts. down side neck, 21(23-25) sts. from waste yarn, 47 sts. up other side neck, 8 sts. down side back neck, 29(31-33)sts. across back neck from waste, and 8 sts. up other side. Knit 1 row and transfer for 1 x 1 rib. Rib 8 rows and cast off in rib. Join rem. shoulder seam.

**ARMHOLE BANDS:** Pick up approx. 138 sts. and knit as neck band.

## FLARED SLEEVE TOP:

Pattern No. AU18-2



**MEASUREMENTS:** To fit 30(33)in. bust. Actual meas. 32(35)ins. Length 19½(20) in. Sleeve seam 5¾ ins.

**MATERIALS:** Sirdar Double Crepe Dark (D) 6(7) balls; Light (L) 6(7) balls.

**TENSION:** T9.2=6 sts. and 8 rows to 1 in.

**PATTERN:** (7-rows). Set lever before ea. row of patt. Using L for Fair Isle. **STEP 1:** Press buttons 1.7. Work 1 row; **STEP 2:** Buttons 2.6. work 1 row; **STEP 3:** buttons 3.5. work 1 row; **STEP 4:** Button 4, work 1 row. Rep. Steps 3.2.1. in that order.

**BACK:** With D cast on for 1 x 1 rib 97(105)sts. T4 rib 40 rows. Transfer sts. to main bed. R/C on 0. T9.2. \*1st & 2nd rows: work in L st.st. 3rd & 9th rows incl: Work in Fair Isle. 10th & 11th rows: as 1st and 2nd rows. 12th & 13th rows: Work in D st.st.\* Break off D. Cont. in L to 64 rows. R/C on 0.\*\* **SHAPE ARMHOLES:** Cast off 18 sts. beg. of the next 2 rows. Cont. straight to 64 rows. **SHAPE SHOULDERS:** Cast off 6 sts. at the beg. of the next 2 rows, then 6(7) sts. at beg. of the foll 2 rows. Take off on waste yarn.

**FRONT:** Knit as Back to \*\*. **SHAPE ARMHOLES:** Cast off 18 sts. at beg. next 2 rows. Cont. straight to 24 rows. **SHAPE NECK:** Using waste yarn take off the centre 37(41)sts. Cont. on one side only and work

# EMPISAL



further 40 rows. **SHAPE SHOULDER:** Cast off 6 sts. at the beg. next row. Work 1 row. Cast off rem. sts. Knit other side to correspond.

**SLEEVES:** T7.2 cast on 113(121)sts with an open edge in D. St.st. 14 rows. Place marker ea. end to indicate hemline. T9.2 R/C on 0. Dec. 1 st. ea. end every 4th row until 89(97)sts. Knit 3 rows. Place marker ea. end to mark armhole. Work from \* to \* of patt. once, then 1st 11 rows once more. Break off D. Cont. in L. Cast off 12 sts. beg. next 4 rows. Cast off rem. sts. loosely.

**NECKBAND:** Join right shoulder seam. Pick up 36 sts. up side neck and sts. from waste across back neck. Knit 1 row and transfer sts. for 1 x 1 rib. Rib 8 rows dec. 1 st. at front neck edge every alt. row. Cast off in rib. **LEFT SIDE NECK:** Pick up 37 sts. down side neck and work as right side. **FRONT NECK:** Pick up sts. from front neck waste and work as Side Neck but dec. 1 st. ea. end of every alt. row.

**TO MAKE UP:** Using flat st. for rib and fine back st. for rest, join left shoulder and side seams and sleeve seams to 2nd markers. Fit sleeve tops to armholes and sew in place. Neatly join neckband. Turn sleeve hems to inside at markers and slip st. in place. Press lightly on wrong side using warm iron and a damp cloth.

## HOUNDSTOOTH WAISTCOAT:

Pattern No. AU18-3



**MEASUREMENTS:** To fit 32(34-36)in. bust. Actual meas. 33(35-37)ins. Length 20(20¾-21½)ins.

**MATERIALS:** 5(5-6)balls Sirdar Fontein Crepe Black (MC); 4(5-5)balls White (C1); 1-ball tan (C2). 6 Buttons.

**TENSION:** T8=8 sts. and 9 rows to 1 in. over Fair Isle.

**PATTERN:** As per chart.

**BACK:** Cast on with MC for 1 x 1 rib 132(140-148)sts. On T4 rib 27 rows. Transfer sts. to main bed. T8 R/C on 0. Work in patt. until R/C reads 90(94-98) rows R/C on 0. **SHAPE ARMHOLE:** Cast off 8(9-10)sts. at the beg. of the next 2 rows, then 4sts. at the beg. of the next 2 rows. Dec. 1 st. ea. end of the row on every alt. row until 94(98-102)sts. rem.\*\* Cont. in patt. without shaping until R/C reads 72(78-84). **SHAPE SHOULDER:** Cast off 7 sts. at the beg. of the next 4 rows. Transfer rem. 66(70-74)sts. for Neck for 1 x 1 rib. With MC and T4 rib 8 rows. T10/8 rib 1 row. Transfer sts. to main bed and cast off with a latchet tool.

18		o	o		o	o	o		o
17			o				o		
16		o				o			
15		o	o	o		o	o	o	
14		o	o	o	o	o	o	o	o
13		o	o	o	o	o	o	o	o
12		o	o	o	o	o	o	o	o
11		o	o	o	o	o	o	o	o
10		o	o	o	o	o	o	o	o
9		o	o	o	o	o	o	o	o
8		o	o	o	o	x	o	o	o
7		o	o	o	x	x	x	o	o
6		o	o	x	x	x	x	x	o
5			x	x	x	x	x	x	x
4		x			x	x	x		
3		x			x	x	x		
2						x			
1							x		
		1	2	3	4	5	6	7	8

MC Black  
 x C2 Tan  
 o C1 White

**LEFT FRONT:** With MC cast on for 1 x 1 rib 62(66-70) sts. Work same as back until R/C reads 90(94-98) rows. R/C on 0. **SHAPE ARMHOLE AND NECK:** On right edge cast off 16(17-18)sts. Knit 1 row; on left edge cast off 8 sts. Knit 1 row. Dec. 1 st on right edge every row 6 times, then on every alt. row 9 times **AND AT THE SAME TIME** on left edge cast off 4



sts. once then dec. 1 st. every alt. row 5(8-11) times. 14 sts. rem. Knit in patt. until R/C reads 72(78-84) rows. SHAPE SHOULDERS: Cast off at armhole edge 7 sts. every alt. row twice. Work right Front to correspond.

**FRONT NECK BAND:** Wrong side facing. Pick up 86(88-90)sts. along neck edge using MC. On T6 knit 1 row. Transfer for 1 x 1 rib. T4 rib 8 rows. T10/8 knit 1 row transfer sts. to main bed and cast off with latchet tool. Work other side to correspond.

**ARMHOLE BANDS:** Join shoulder seams. With wrong side facing pick up 160(164-168)sts. around armhole. Knit 1 row. Transfer for 1 x 1 rib and work as for Front Neck Band.

**FRONT BAND:** With MC cast on for 1 x 1 rib 13 sts. Rib 128 rows on T4 and cast off.

**BUTTONHOLE BAND:** Cast on as for Front Band. Rib 4 rows and make a buttonhole transferring 1 st. in centre of rib on main bed to ribber and 1 st. from ribber to main bed, leaving empty needles in Working pos. Make a buttonhole on every 24th row to row 124. Rib 4 rows and cast off.

**TO MAKE UP:** Join side seams. Sew button band to left front and buttonhole band to right front. Sew on buttons. Press lightly on wrong side with a warm iron and a damp cloth.

## RED SKIRT:

Pattern No. AU18-4



**MATERIALS:** Lincoln or Cleckheaton 8 ply 27 (28-30-31)balls. Waist length  $\frac{3}{4}$ in. elastic.

**MEASUREMENTS:** To fit 33(35-37-39)in. hips. (84-89-94-99)cm. Length 35 $\frac{3}{4}$ ins. 91cm. (all sizes).

**TENSION:** T10=6sts. and 8 $\frac{3}{4}$  rows Lincoln Bri Nylon. 7 $\frac{3}{4}$  rows Cleckheaton to 1 in.

**PATTERN:** \*Counter out of action, knit 4 rows, pick up sts. from last counted row and put onto corresponding needles (as when closing a hem) then counter in action and knit 1 row.\* This is referred to as a Tuck.

**BACK & FRONT (Alike):** Cast on 91(97-103-109)sts. for 1 x 1 rib. Rib 8 rows. Transfer sts. to main bed. R/C on 0. T10 cont. in st.st. inc. 1 st. at ea. end of every 4th row 6 times, AT THE SAME TIME when work meas. 2 $\frac{3}{4}$ ins. from Rib, make 1st TUCK. Cont. in st.st. inc. 1 st. ea. end of the next row and the foll 4th row, then every 6th row 5 times; every 8th row 5 times and every 10th row 4 times 135(141-147-153) sts. AT THE SAME TIME make TUCKS at 6 $\frac{3}{4}$ , 9 $\frac{3}{4}$ , 13 $\frac{3}{4}$ , 18, 22 $\frac{3}{4}$ , and 28ins. Knit to 35ins. or length desired. Knit 1 row manually, then knit 10 rows. Take off on waste yarn.

**TO MAKE UP:** Join side seams, turn hem. to wrong side and slip st. in pos. Attach elastic behind ribbing at waist using a herringbone casing.

# EMPISAL



# WHITE SWEATER WITH FAIR ISLE TRIM:

Pattern No. AU18-5



**MATERIALS:** Lincoln or Cleckheaton 8 ply 15(16-17-18)balls White (MC) 1-ball Red (CC).

**MEASUREMENTS:** To fit 32(34-36-38)in. bust. 81(86-91-96)cm. Length 21¼(21½-21¾-22)ins. Sleeve seam 4 ins.

**TENSION:** T10=6sts. and 8¼rows Lincoln Bri-nylon, 7¾ rows Cleckheaton to 1 in.

**PATTERN:** As per chart.

**BACK:** \*\*Using MC cast on for 1 x 1 rib 101(107-113-119)sts. Rib 16 rows. Transfer to main bed. T 10 Cont. in st.st. R/C on 0. Knit 16 rows and make a TUCK as per instructions in Skirt patt. Cont. in st.st. for 15 more rows, then knit 20 rows in Fair Isle patt. Cont. in st.st. until work meas. 12¼ins. from the beg. Place marker at ea. end of last row. SHAPE RAGLANS: Dec. 1 st. at ea. end of the next row (3 sts. in) knit 3 rows straight. Rep. these 4 rows 7(5-4-2)times more, then dec. 1 st. ea. end of alt. rows until\*\* 45(45-47-47)sts. rem. Place markers at ea. end of last row. SHAPE SHOULDERS: Cast off 8 sts. at the beg. of the next 2 rows. Leave rem. 29(29-31-31)sts. on waste yarn.

**FRONT:** Work as back from \*\* to \*\* to 63(63-65-65) sts. rem. SHAPE NECK: Cams on 111 (KH91) on 2 (KH600-610)Work on 1st 23sts. only, pushing rem. furthest from carr. into E pos. Dec. 1 st. at neck edge every alt. row 6 times AT THE SAME TIME cont. dec.

at raglan edge as before until 8 sts. rem. Place marker at armhole edge of last row. Cast off 8 sts. Put the centre 17(17-19-19)sts. onto waste yarn. Work other side to correspond reversing all shapings.

**SLEEVES:** With MC cast on for 1 x 1 rib 61(63-65-67) sts. Rib 6 rows. Transfer sts. to main bed inc. evenly to 68(70-72-74)sts. R/C on 0. T10. Cont. in st.st. Knit 8 rows then make Tuck as in Back. Knit 7 rows st.st. then work 1st. 7 rows of Fair Isle patt. then cont. in st.st. until work meas. 4 ins. from beg. Place markers at ea. end of last row. Dec. 1 st. ea. end of the next row (as in back) knit 3 rows. Rep. these 4 rows 8 times, more, then 1st 2 rows only until 14 sts. rem. Place markers ea. end of last row. Work 8 rows on these 14 sts. and take off on waste yarn.

**NECK BAND:** Join raglan seams and shoulder sections matching marked rows, except left back seam. Wrong side facing and with MC pick up 14 sts. left sleeve, 16 sts. left side neck, centre front sts., 16 sts. right side neck, 14 sts. right sleeve and the back neck sts. Knit 1 row and transfer for 1 x 1 rib. Rib 5 rows tighten tension 2 points rib 4 rows. Cast off loosely in rib by hand.

**TO MAKE UP:** Press with warm iron and damp cloth. Join rem. raglan seam and neckband. Join side and sleeve seams.

10			x	x	x	x		
9		x	x	x	x	x		
8			x	x	x			
7	x			x				x
6		x					x	
5			x		x			
4				x				
3			x		x			
2		x					x	
1	x			x				x
	1	2	3	4	5	6	7	8



# LADY'S FAIR ISLE SWEATER:

Pattern No. AU18-6



**MATERIALS:** 13(14-15)25gr. balls Lincoln Bri-Nylon, Cleckheaton (pure wool) or St Mark 8 ply; 2(2-2)25gr. balls 1st Contrast (C1); 2(3-3)25gr. balls 2nd Contrast (C2); 8(8-9)25gr. balls 3rd Contrast (C3).

**MEASUREMENTS:** To fit 32(34-36)in. bust. Length 24(25-26)ins. Sleeve seam 19½(20-20½)ins.

**TENSION:** T10=13½sts. and 14 rows to 2ins. over patt.

**PATTERN:** As per chart.

**FRONT & BACK (Alike):** With C3 cast on in 1 x 1 rib 114(122-130)sts. T5 rib 16 rows. Transfer sts. to main bed. R/C on 0. Set machine for Fair Isle. T10. Knit rows 1 to 21 incl. of patt. as per chart. Then rep. row 18 to 21 until work measures 15½(16-16½)ins. ending with 3 rows in MC. Commence Yoke Patt. and work rows 1 to 56 incl. as per chart. Cont. in C3 cast off 31(33-35)sts. at the beg. of next 2 rows. Knit 1 row manually on rem. 52(56-60)sts. for turning row. Cont. in C3 inc 1 st. at ea. end of the next 7 rows. Cast off loosely.

**SLEEVES:** Using C3 cast on 65(67-69)sts. in 1 x 1 rib. Rib 16 rows on T5. Transfer sts. to main bed. R/C on 0. T10 knit rows 1 to 21 incl. as for beg. of Back, then rep. rows 18 to 21 inc. and working into patt. 1 st. at ea. end of the next and every foll 5th(5th-4th) row until 89(97-105)sts. Cont. in patt. without

shaping until side edge measures 15(15½-16)ins. ending with 3 rows in MC. Now work row 29 to 56 incl. from yoke patt. Work 1 row in C3 and cast off loosely.

**TO MAKE UP:** Press ea. piece lightly.

Join shoulders. Turn in neck facing to wrong side and slip st. into pos. Sew in sleeves matching centres to shoulders. Join side and sleeve seams. Press all seams.

	x	x	x	x	x	x	x	x	
55	x	x	x	x	x	x	x	x	
	x	x	x	x	x	x	x	x	
53	x	x	x	x	o	x	x	x	
	x	x	x	o		o	x	x	
51	x	x	o				o	x	
	x	o						o	
49	o								
47	o		o		o		o		
	o	o	o	o	o	o	o	o	
45		x		x		x		x	
		x		x		x		x	
43	o	o	o	o	o	o	o	o	
	o	o	o	o	x	o	o	o	
41	o	o	o	x	x	x	o	o	
	o	o	o	x	o	x	o	o	
39	o	x	x	o	o	o	x	x	
	o	x	x	o	o	o	x	x	
37	o	o	o	x	o	x	o	o	
	o	o	o	x	x	x	o	o	
35	o	o	o	o	x	o	o	o	
	x	x	x	x	x	x	x	x	
33				x	x	x			
				x	x	x	x	x	
31				x	x	x			
				x	x	x	x	x	
29	x								
27		x		x		x		x	
		x		x		x		x	
25	o	o	o	o	o	o	o	o	
23			o	o	o	o		o	
				o	o	o			
21			o		o		o		
				o	o	o			
19			o	o	o	o		o	
17	x	x	x	x	x	x	x	x	
		x	x					x	x
15			x					x	
				x				x	
13				x	x	x	x	x	

YOKE PATTERN

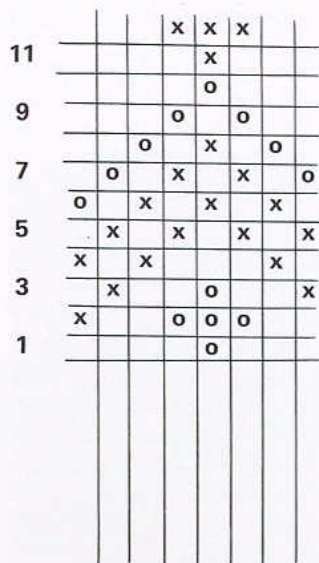


# SKI OR BEANIE CAP

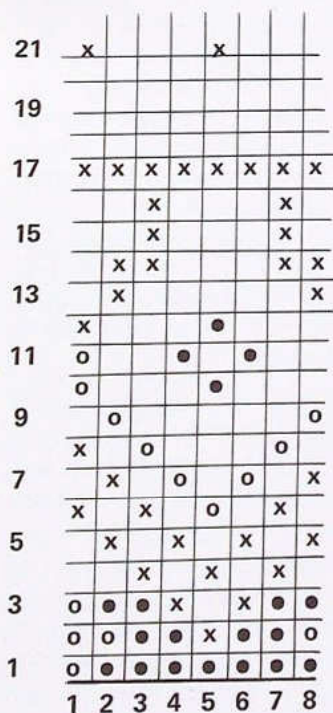
Pattern No. AU18-7



**CAP:** Cast on in 1 x 1 rib 111(131-151)sts. and rib 10 rows. Transfer sts. to main bed. T10 knit 2 rows. Commence Fair Isle knitting rows 1-17 incl, then rows 18-21 incl. for depth required. (Approx. 64 rows). Sew up and make Pom Pom for top.



Repeat rows 18-21 to Armhole.



- MC White
- C1 Black
- o C2 Red
- x C3 Blue.

# EMPISAL



## HIS & HERS—TOPS:

### Pattern No. AU18-8



**MATERIALS:** 6(7-8-8-9-9)balls Villawool 5 ply Superknit Main Color (MC). 2(2-2-2-2-3) balls 1st Contrast (C1). 1(1-1-2-2-2)balls 2nd Contrast (C2). 1-ball ea. size 3rd Contrast (C3); 1-ball ea. size 4th Contrast (C4).

**MEASUREMENTS:** To fit 32(34-36-38-40-42)ins. 81(86-91-96-101-106)cm. Actual meas. 33(35-37-39-41-43)ins. Length 19(20-20-22-23-24)ins. 48(51-51-56-58-61)cm.

**TENSION:** T8=7sts. and 9½ rows to 1 in.

**PATTERN:** Knit 4 rows C2, 2 rows MC. Set machine for Fair Isle for "C". "Set" lever before ea. patt. row. C1 used for Alphabet. Step 1: Press buttons 3.4.5.6. Knit 1 row. Step 2: Press buttons 2.3.4.5.6.7. Knit 1 row. Step 3: Press buttons 2.3.6.7.8. Knit 1 row. Step 4 & 5: Press buttons 2.3.7.8. Knit 1 row. Step 6 & 7. Press buttons 7.8. Knit 1 row. Beg. with Step 7, work back through the steps ending with step 1 (14 rows). Knit 2 rows MC, 4 rows C3, 2 rows MC. Change to Fair Isle for "B". Step 1: Buttons 3.4.5.6.7.8. Knit 1 row. Step 2: Buttons 2.3.4.5.6.7.8. Knit 1 row. Step 3.4. & 5: Buttons 2.3.7.8. Knit 1 row. Step 6: Buttons 2.3.4.7.8. Knit 1 row. Step 7: Buttons 4.5.6.7.8. Knit 1 row. Beg. with step 7 work back through the steps ending with step 1. (14 rows).

Knit 2 rows MC, 4 rows C4, 2 rows MC. Change to fair isle for "A". Steps 1.2.3.4. Buttons 2.3.7.8. Knit 1 row. Steps 5.6: Buttons 2.3.4.5.6.7.8. Knit 1 row. Steps 7.8.9.10: Buttons 3.4.6.7. Knit 1 row. Steps 11: Buttons 4.6. Knit 1 row. Step 12: Buttons 4.5.6. Knit 1 row. Steps 13.14: Buttons 5. Knit 1 row (14 rows). Knit 2 rows MC, then cont. in patt. of stripes throughout as foll: 4 rows ea. of C2, MC, C3, MC, C4, MC.

**BACK:** Cast on for 1x1 rib 118(126-132-140-146-154) sts. On T4.1 rib 25 rows. Transfer sts. to main bed. R/C on 0. T8 commence patt. and knit 78(86-86-96-100-106) rows. R/C on 0. SHAPE ARMHOLE: Cast off 7 sts. at the beg. of the next 2 rows. Dec. 1 st. ea. end of every row 6(7-8-7-7-8) times, then 1 st. at ea. end of every alt. row 7(8-9-7-8-9) times. 78(82-84-98-102-106)sts. Cont. in patt. until R/C reads 78(82-84-90-96-100) rows. SHAPE SHOULDER: Cast off 5(6-6-7-7-7)sts. at the beg. of the next 4(4-4-6-6-6) rows, then 6(5-5-0-0-0)sts. at the beg. of the next 2 rows. Transfer rem. sts. 46(48-50-56-60-64) sts. for 1 x 1 rib. With MC and T4.1 knit 10 rows. T7/6 knit 1 row transfer sts. to main bed and latchet tool cast off.

**FRONT:** Knit same as back to armholes. SHAPE ARMHOLE AND NECK: Take off the centre 26(28-30-36-40-44)sts. on to waste yarn. Cams on 111 (KH91) on 2 (KH600-610) Push sts. opp. to carr. into E pos. Work on rem. sts. At armhole edge cast off 7 sts. at the beg. of the next row; dec. 1 st. at same edge every row 6(7-8-7-7-8) times, then 1 st. every alt. row 7(8-9-7-8-9) times AND AT THE SAME TIME SHAPE NECK: Dec. 1 st. at neck edge every row 4 times, then every alt. row 6 times (all sizes). Work even until R/C reads 78(82-84-90-96-100) rows. SHAPE SHOULDER: At armhole edge cast off 5(6-6-7-7-7) sts. at the beg. of the next 2(2-2-3-3-3)alt. rows, then 6(5-5-0-0-0)sts. at the beg. of the next alt. row. Work other side to correspond reversing all shapings.

**FRONT NECK BAND:** Wrong side facing, pick up 145 (155-165-180-190-200)sts. With MC knit 1 row. Transfer for 1 x 1 rib. T4.1 rib 10 rows. T7/6 Knit 1 row and transfer sts. to main bed. Latchet tool cast off.

**ARMHOLE BANDS:** Join shoulders. Wrong side facing pick up 130(138-146-152-158-164)sts. With MC knit 1 row. Transfer sts. for 1 x 1 rib. T4.1 rib 10 rows. T7/6 knit 1 row and transfer sts. to main bed and latchet tool cast off.

**TO MAKE UP:** Join side seams. Steam press on wrong side.



## HIS & HERS SWEATERS:

Pattern No. AU18-9



**MATERIALS:** Sirdar Gold Seal Courtelle 6 ply, 10(11-12-14-15-16)balls Main color (MC); 4(5-5-6-6-7) 1st Contrast (C1); 1 ball ea. size 2nd Contrast (C2).

**MEASUREMENTS:** To fit 32(34-36-38-40-42)ins. Actual meas. 34(36-38-40-42-44)ins. 86(91-96-101-106-112)cm. Length 24(24½-24½-28-28-28)ins. Sleeve Length 17(17-17-19-19-19)ins.

**TENSION:** T10=6½sts. and 8½ rows to 1 in.

**PATTERN:** (NOTE-Set lever before ea. patt. row). Reverse switch on minus. Step 1: Knit 10 rows in main color. Step 2: Press button 8 with C1 for Fair Isle Knit 1 row. Step 3: Press buttons 1.7.8. with C1 for Fair Isle Knit 1 row. Step 4: Press 1.2.6.7.8. with C1 for Fair Isle Knit 1 row. Step 5: Press 1.2.3.5.6.7.8. With C1 Fair Isle Knit 1 row. Step 6: Knit 2 rows in st.st. with C1. Step 7: Knit 2 rows with MC in st.st. Step 8: Reverse Switch on plus, Buttons 1.3.5.7. with C2 for Fair Isle knit 1 row. Step 9: Reverse Switch on minus for rem. of patt. Buttons 1.3.5.7. with C2 for Fair Isle knit 1 row. Step 10: Knit 2 rows with MC in st.st. Step 11: Knit 2 rows with C1 in st.st. Step 12: Press buttons 1.2.3.5.6.7.8. with C1 for Fair Isle K1 row. Step 13: Press buttons 1.2.6.7.8. with C1 for Fair Isle Knit 1 row. Step 14: Press buttons 1.7.8. with C1 for Fair Isle Knit 1 row. Step 15: Press button 8. with C1 for Fair Isle knit 1 row.

**BACK:** Cast on with MC 111(117-123-131-137-143)sts. for 1 x 1 rib. T8/7 rib 22 rows R/C on 0. Transfer sts. to main bed and inc. 1 st. at edge. On T10 commence patt. and knit 106(106-108-128-128-128) rows. R/C on 0. SHAPE ARMHOLES: Cast off 4 sts. at the beg. of the next 2 rows. Dec. 1 st. ea. end of the next 4th row and every foll 4th row 2(0-0-8-6-4) times, then dec. 2 sts. every 4th row until R/C reads 80(82-84-102-102-102) rows. Cast off rem. 30(32-34-40-42-44)sts for back neck.

**FRONT:** Work same as Back to row 66(68-70-88-88-88) of Armhole Shaping. SHAPE NECK: Cast off the centre 14(16-18-20-20-20)sts. Knit off sts. at opp. end to carr manually with waste yarn and push needles back to A pos. Work on rem. sts. cont. to dec. at armhole as before. Dec. 1st. at neck edge every row 4 times, then every 2nd row 2(2-2-4-5-6) times. When armhole meas. same as Back K2 tog. and fasten off. Work other side to correspond.

**SLEEVES:** PATT FOR SLEEVES: Comm Fair Isle immediately after rib for 1st 3 sizes. Knit 18 rows with MC before comm. Fair Isle for last 3 sizes. Cast on with MC for 1 x 1 rib 56(56-56-62-62-62)sts. T8/7 Rib 18 rows. R/C on 0. Transfer sts. to main bed. T10. Work in patt. inc. 1 st. ea. end of the row every 8th(8th-6th-6th-6th-5th) rows 13(14-15-18-20-21) times — 82(84-86-98-102-104)sts. Work even until R/C reads 124(124-126-136-136-136). R/C on 0. SHAPE RAGLANS: Cast off 4 sts. at the beg. of the next 2 rows. Dec. 1 st. ea. end of the row on the 4th and every foll 4th row 7(8-9-13-12-12) times altog, then dec. 2 sts. at ea. end of the row every 4th row until R/C reads 80(82-84-102-102-102) rows. Cast off rem. 12(12-16-16-18-20)sts.

**NECK BAND:** Cast on with MC for 1 x 1 rib 112 (116-120-132-136-140)sts. T8/7 rib 20 rows. T6/5 rib 20 rows. T8/7 knit 20 rows. Take off on waste yarn.

**TO MAKE UP:** Join raglan seams leaving 3 ins on left back shoulder. Sew open sts. of neck band to neck edge using a back st. Set Zip into left back opening. Join sleeve and side seams. DO NOT PRESS.



## CHILD'S RAGLAN CARDIGAN:

Pattern No. AU18-10



**MEASUREMENTS:** To fit 26(28-30)ins. 66(71-76)cm. Actual meas. 28(30-32)ins. 71(76-81)cm. Length-16(17¼-20)ins. 41(45-51)cm. Sleeve seam 12½(14-15½)ins. 32(36-40)cm.

**MATERIALS:** Sirdar Fontein Crepe 4 ply. 9(10-10) balls Main Color (MC); 1-ball ea. Contrast (C1) (C2) (C3) (C4). No.10 Crochet hook. Cardigan Zipper.

**TENSION:** T6.1=7½sts. and 10 rows to 1 in.

**BACK:** Cast on with waste yarn 108(116-122)sts. Knit a few rows. On T4.1 with MC. Knit 12 rows. T5.1 knit 12 rows. T8 close hem. R/C on 10. T6.1 cont. to 92(102-122)rows. SHAPE RAGLANS: Cast off 6 sts. at the beg. of the next 2 rows. Dec. 1 st. ea. end of the next and every foll alt. row until 38(40-42) sts. rem. Work 1 row. Take off centre 18(20-22) sts. on waste yarn. Push needles at opp. end to carr. into E pos. Cams on 111 (KH91) on 2 (KH600-610). Cont. on rem. sts. Dec 1 st. ea. end next and every foll alt. row 3 times and 2 sts. rem. Knit 2 tog. Fasten off. Cams on Knit. Knit other side to correspond reversing shapings.

**LEFT FRONT:** Cast on with waste yarn 54(58-61)sts. Work hem as back, ending at front edge. R/C on 10. T6.1. Cast on 4 sts. at the beg. of the next row 58(62-65)sts. Cont. to 92(102-122) rows ending at side edge. SHAPE RAGLAN: Cast off 6 sts. at the beg. of the next row, then dec. 1 st. side edge every alt. row

until 37(38-39)sts. rem. ending at front edge. SHAPE NECK: Cont. to shape raglan as before AND AT THE SAME TIME cast off 12 sts. at beg. next row. Dec. 1 st at neck edge on next 3 rows, then at same edge every alt. row 2(3-4) times. Cont. to shape raglan only until 2 sts. rem. Work 2 tog. Fasten off.

**RIGHT FRONT:** Work as left front, reversing shapings and knitting 13 rows on T5.1 to end at front edge.

**SLEEVES:** Cast on with waste yarn 48(50-52)sts. Knit a few rows. With MC and T4.1 work 12 rows. On T5.1 work 2 rows ea. in Contrast colors as foll. C1, C2, C3, C4, C2, MC. R/C on 10. T6.1 Cont. in MC inc. 1 st. ea. end 7th and every foll 5th(6th-6th) row until 82(88-92)sts. Cont. straight to 124(138-154) rows or req. no. SHAPE RAGLANS: As Back until 4 sts. rem. Take work off on waste yarn.

**POCKET:** On T6.1 using C1 Cast on 26 sts. with a selvedge edge and work in patt. stripes as sleeve. R/C on 12. Cont. in MC to 40 rows. Cast off.

**NECKBAND:** Press pieces lightly on wrong side using warm iron and damp cloth. Join raglan seams. Turn 4 sts. on ea. front edge to inside and slip st. in place. With wrong side facing and MC pick up 8 sts. from ea. front neck 25(27-29)sts. up ea. side, sts. from top sleeves, 8 sts. down ea. side back neck and sts. across back neck. (109-115-121)sts. Transfer for 1 x 1 rib. On T0.1 work 3 rows rib of ea. color in foll order: MC, C2, C4, C3, C2, then 2 rows of C1. Cast off loosely in rib with C1.

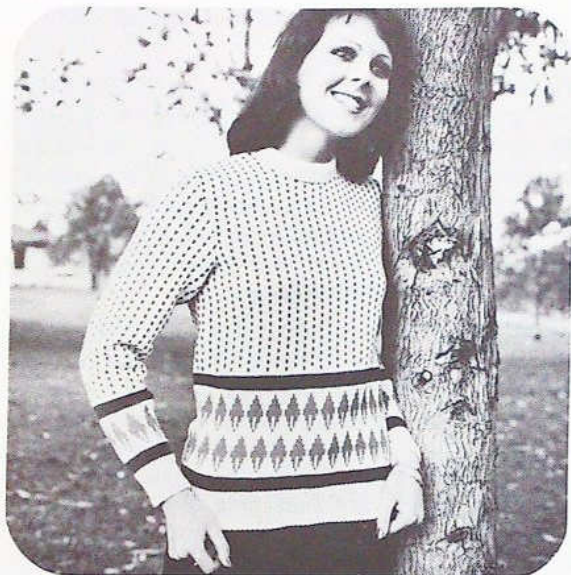
**TO MAKE UP:** Using fine back st. join side and sleeve seams. Sew in sleeves. Catch tog. raw edges hems at front edges. Work 1 row DC around front opening and sew in zipper. Work 1 row DC around pocket with C1 for striped section and MC for rem. Sew pocket in pos. on left front. Press lightly on wrong side.

# EMPISAL



## LADY'S SKI SWEATER WITH ROUND OR POLO NECK:

Pattern No. AU18-11



**MEASUREMENTS:** To fit size 32(34-36)in. bust. Actual meas. 34(36-38)ins. Length 24(24¼-24½)ins. Sleeve seam 17½(17½-17½)ins.

**MATERIALS:** Villawool Super 5 15(16-17)balls 25gr. Main Color (MC). 6(7-7)balls 1st Contrast (C1); 2(3-3)balls 2nd Contrast (C2). NOTE (Allow 1 extra ball MC for Polo Neckband.)

**TENSION:** T8=15sts and 18½rows to 2ins. over Fair Isle. Rib T4.

**BACK:** With MC cast on 127(135-143)sts. for 1 x 1 rib. Rib 22 rows. Transfer sts. to main bed. T7.2 R/C on 0. Knit 8 rows C1, then 2 rows MC. T8 work 44 rows in Fair Isle 1 (F1) as foll: Reverse switch on minus. Set lever before ea. patt. row. \*Slide dial on 1 and using C2 for Fair Isle. STEPS 1-2. Press button 1 Knit 1 row. STEPS 3.4.5.: Buttons 2.8. Knit 1 row. STEPS 6.7.8: Buttons 2.3.7.8. Knit 1 row. STEPS 9.10.11.12: Buttons 1.2.3.4.6.7.8. Knit 1 row. STEPS 13.14.15: Buttons 1.2.3.7.8. Knit 1 row. STEPS 16.17.18. Buttons 1.2.8. Knit 1 row. STEPS 19.20 As step 1. Knit 2 rows MC st.st.\* Slide dial on 5 and rep. from \* to \* once. T7.2 knit 8 rows C1, then 2 rows MC. T8 cont. in F2 as foll: with C1 for Fair Isle and Slide Dial on 1. STEPS 1.2: Press button 1 and knit 1 row. STEPS 3.4: Button 5, knit 1 row. Cont. in F2 throughout to row 120 or required number.

R/C on 0. **SHAPE ARMHOLES:** Cast off 8 sts. at the beg. of the next 2 rows. Dec. 1 st. at ea. end of the next 4 rows, then every alt. row 4(6-8) times. 95(99-103)sts. Inc. 1 st. ea. end of every foll 8th row until 109(113-117)sts. Work straight to 72(74-78) rows. **SHAPE SHOULDERS:** Cast off 9 sts. at the beg. of the next 6 rows, then 9(10-11) sts. beg. foll. 2 rows. Cast off rem. sts. 37(39-41)sts.

**FRONT:** Work as back until 54(54-56) rows are worked in armhole shaping. **SHAPE NECK:** Take off the centre 19 sts. on waste yarn. Cont. on sts. nearest carr. only. Cont. armhole shaping as before AND AT THE SAME TIME dec. 1 st. at neck edge on the next 4 rows, then at same edge foll 5(6-7) alt. rows. Cont. straight on this edge until R/C reads 72(74-78), ending at side edge. **SHAPE SHOULDER:** Cast off 9 sts. beg. next and 2 foll alt. rows. Work 1 row. Cast off rem. sts. Knit other side to correspond, reversing all shapings.

**SLEEVES:** With MC cast on 59(61-65)sts. for 1 x 1 rib. Rib 22 rows. Transfer sts. to main bed. R/C on 0. T8. Working in patt. sequence as for back BUT WORKING ONLY 22 ROWS IN F1 INSTEAD OF 44 rows, inc 1 st. ea. end of every 5th row until 103(109-115)sts. Cont. straight to 136 rows or required no. **SHAPE TOP:** Cast off 8sts. at the beg. of the next 2 rows. Dec. 1 st. ea. end every row until 27(29-31)sts. rem. Cast off.

**ROUND NECKBAND:** Cast on 113(115-119)sts. for 1 x 1 rib. Work 25 rows. Cast off loosely.

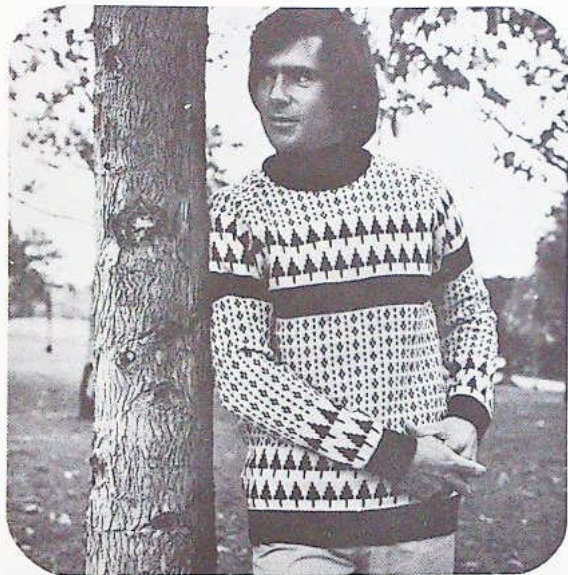
**POLO NECKBAND:** Cast on as for round neckband. Rib 22 rows. T3.2 rib 18 rows; T3.1 rib 22 rows. Cast off loosely.

**TO MAKE UP:** Press pieces on wrong side using warm iron and damp cloth. Join shoulders; sew in sleeves; join side and sleeve seams. Join ends of neckband, set cast-off edge to neck edge right sides tog. and sew neatly in pos. For round neckband, turn in half to inside and sl.st. loosely in place. Turn polo neck to outside.



## MAN'S SKI SWEATER WITH ROUND OR POLO NECK:

Pattern No. AU18-12



**MEASUREMENTS:** To fit size 38(40-42)ins. Actual meas. 40(42-44)ins. Length 27½(28-28½)ins. Sleeve seam 19(19-19)ins.

**MATERIALS:** Villawool Super 5, 16(17-18)balls Main Color (MC); 8(9-9)balls 1st Contrast (C1); 6(7-7)balls 2nd Contrast (C2). NOTE: Allow 2 extra balls C1 for Polo Neckband.

**TENSION:** T8=15sts. and 18½rows to 2 ins. over Fair Isle patt. Rib tension T4.

**PATTERN:** Fair Isle patt. 1 (F1): \*C2 for Fair Isle. Slide dial on 1. Steps 1-5 incl. Button 1, set, Knit 1 row. STEPS 6-8 incl. Buttons 1.2.3.4.6.7.8. Knit 1 row. STEPS 9-11 incl. Buttons 1.2.3.7.8. set and knit 1 row. STEPS 12-14 incl. Buttons 1.2.8. set knit 1 row. STEPS: 15-17 As Step 1. With MC knit 2 rows st.st. Slide dial on 5 and rep. from \* once. Fair Isle patt. 2 (F2). Slide dial on 1. \*\*C1 for Fair Isle. STEPS 1-2: Buttons 1.5. Knit 1 row. STEPS 3-4: buttons 4.6. Knit 1 row. STEPS 5.6: As step 1. Using C2 for Fair Isle rep. from \*\* once.

**BACK:** With C1 cast on in 1 x 1 rib 149(157-165)sts. Rib 24 rows. R/C on 0. Transfer sts. to Main Bed. With MC T8 knit 2 rows, converting for Fair Isle on 2nd row. NOTE: Set lever before ea. patt. row. Work in Fair Isle Patt. (F1) and (F2). Cont. in F2 to

row 120 (all sizes). T7.2 with C1 knit 18 rows st.st. R/C on 0. T8. SHAPE RAGLANS: With MC cast off 2(3-4)sts. at the beg. of the next 2 rows. Change to F1 patt. dec. 1 st. ea. end of the next and every foll. alt. row. When R/C reads 40 change to F2 patt. and cont. raglan shapings until 43(45-47)sts. rem. Work 1 row. Take off on waste yarn.

**FRONT:** Work as Back until 64(68-72) rows are worked in Raglans. SHAPE NECK: Take off the centre 21(21-23)sts. on waste yarn. Working on sts. nearest carr. cont. raglan shaping as before AND AT THE SAME TIME dec. 1 st. at neck edge on the next 4 rows, then at same edge on foll 5(6-6) alt. rows. When 2 sts. rem. K2 tog. and fasten off. Knit other side to correspond reversing shapings.

**SLEEVES:** With C1 cast on in 1 x 1 rib 69(73-77)sts. On T3.1 work rib as for Back. Transfer sts. to Main Bed. With MC T8 R/C on 0. Knit 2 rows converting for Fair Isle on 2nd row. Cont. in Fair Isle exactly as for Back, inc. 1 st. at ea. end of 5th and every foll. 5th row to 119(125-131)sts. Work straight to 136 rows. T7.2 change to C1 and knit 18 rows. R/C on 0. T8 SHAPE RAGLANS: Keeping continuity of patt. as for Back, shape raglans as for Back until 19 sts. rem. Dec. 1 st. ea. end every row until 7 sts. rem. Work 1 row. Take off on waste yarn.

**ROUND NECKBAND:** Press pieces on wrong side using warm iron and damp cloth. Cast on 149(151-155)sts. for 1 x 1 rib. T3.1 rib 25 rows. Take off on waste yarn.

**POLO NECKBAND:** Cast on as for Round Neck. T4 work 24 rows; T3.2 rib 20 rows; T3.1 rib 20 rows. Take off on waste yarn.

**TO MAKE UP:** Join raglans, side and sleeve seams, then neckband. Fit open edge neckband to neck edge and back st. in place, right sides tog. For round neck, fold neckband in half to inside and sl.st. in pos. Fold Polo Neckband to outside.

---

# EMPISAL

---



INTERNATIONAL  
KNITWEAR  
COLLECTION

# EMPISAL

BOOK AU18

