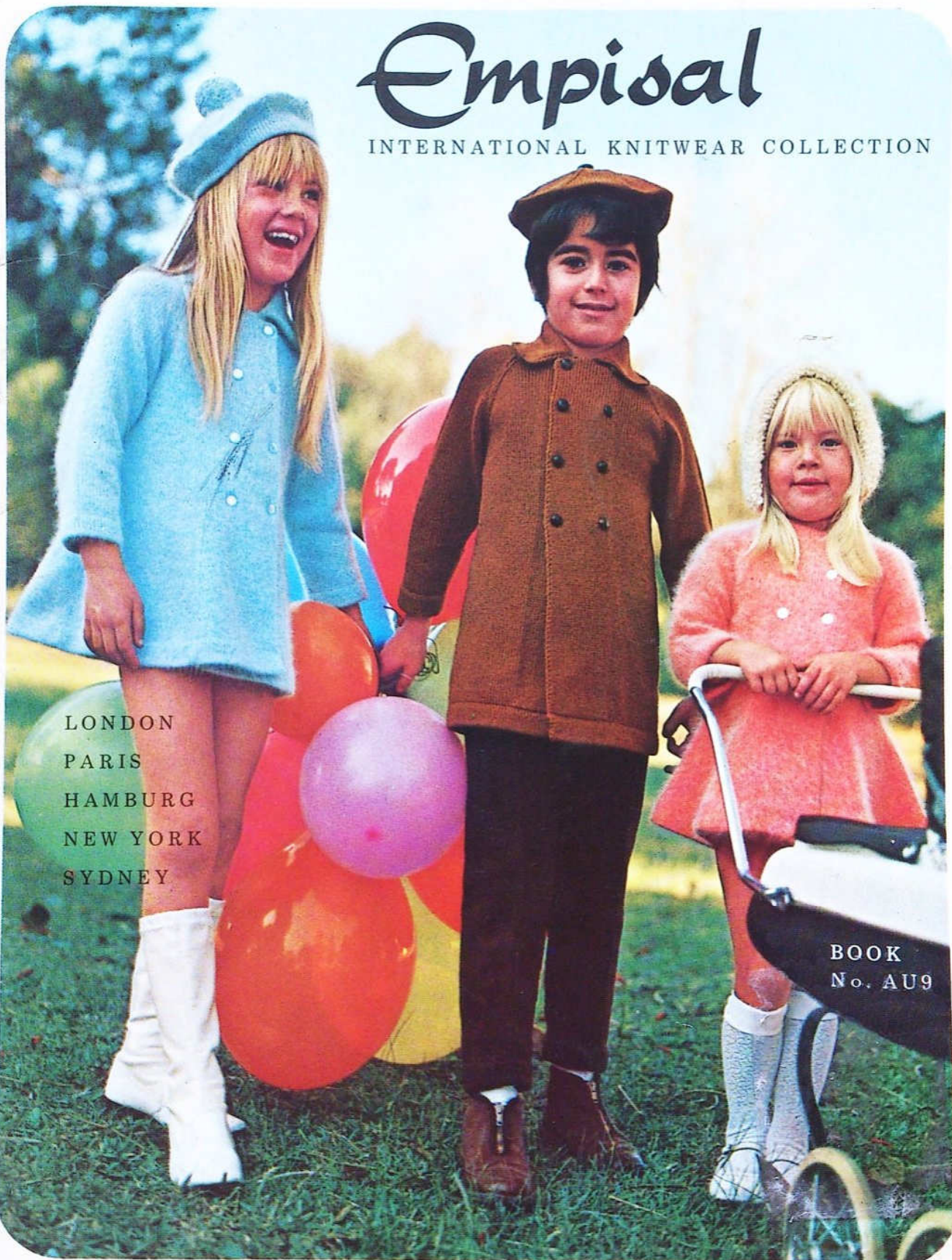


Empisal

INTERNATIONAL KNITWEAR COLLECTION



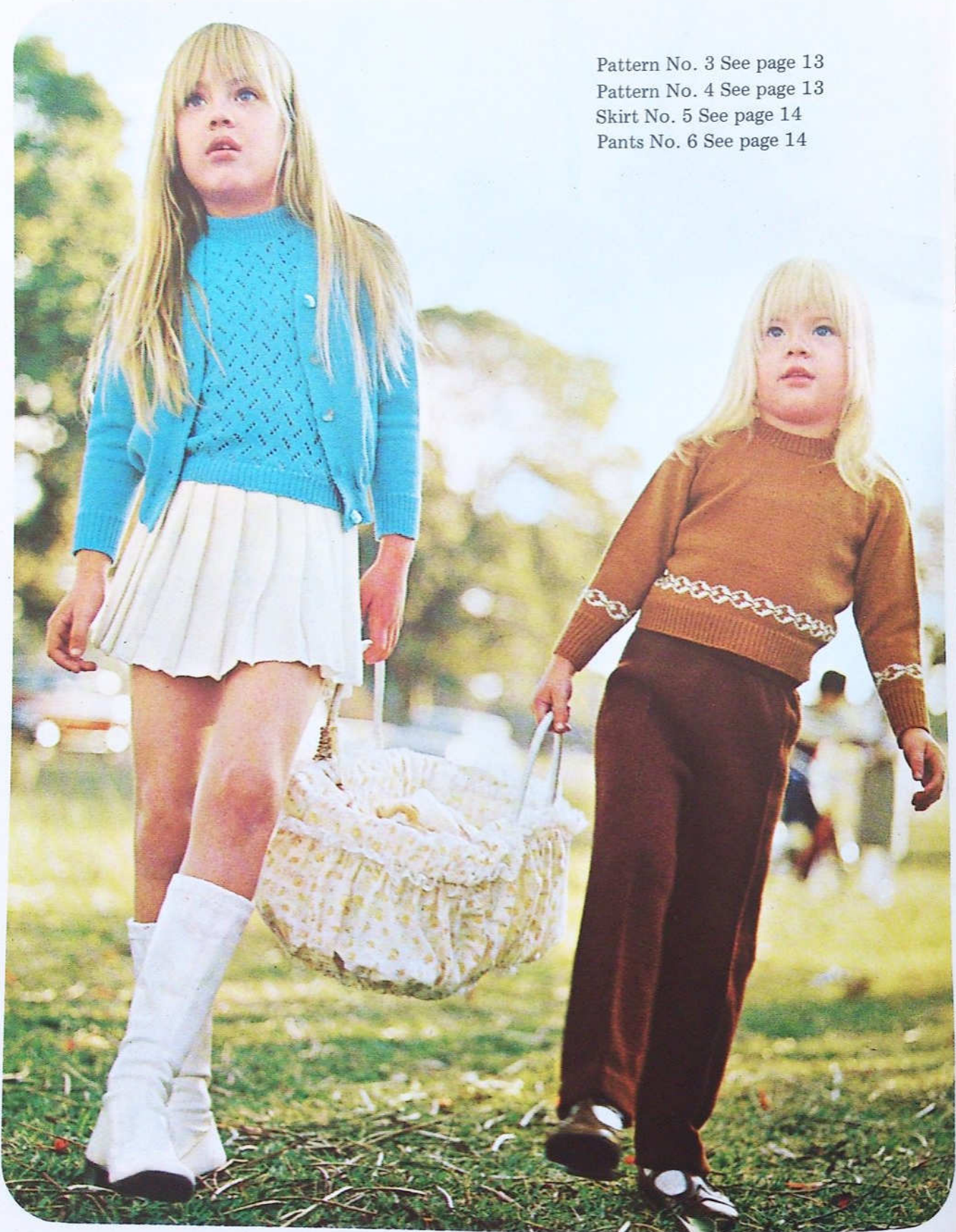
LONDON
PARIS
HAMBURG
NEW YORK
SYDNEY

BOOK
No. AU9

Pattern No. 1 See page 12
Pattern No. 2 See page 12
Pants No. 6 See page 14

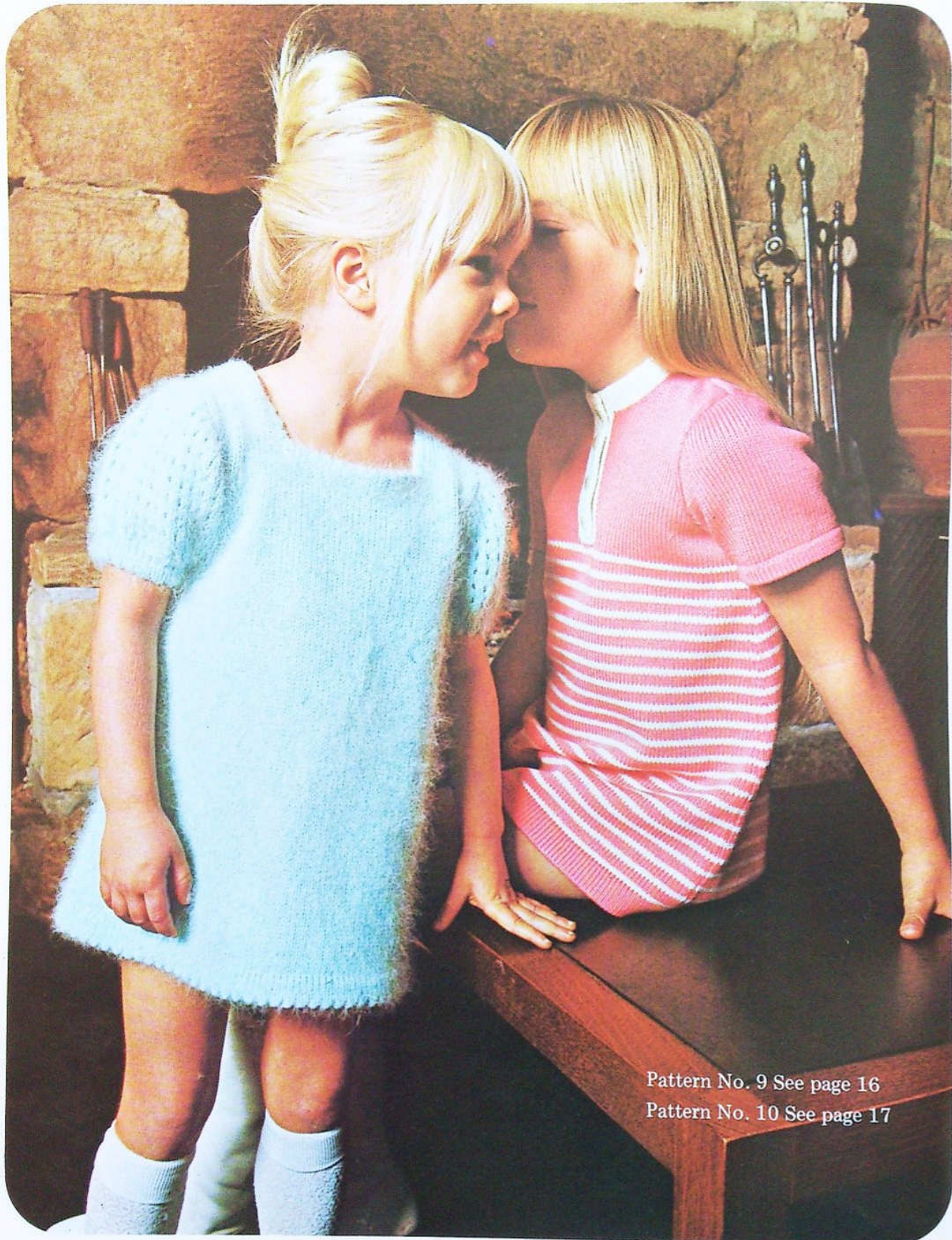


Pattern No. 3 See page 13
Pattern No. 4 See page 13
Skirt No. 5 See page 14
Pants No. 6 See page 14





Pattern No. 7 See page 15
Pattern No. 8 See page 16
Pattern No. 3 See page 13
Beret No. 18 See page 22



Pattern No. 9 See page 16

Pattern No. 10 See page 17

Pattern No. 11 See page 18
Pants No. 6 See page 14

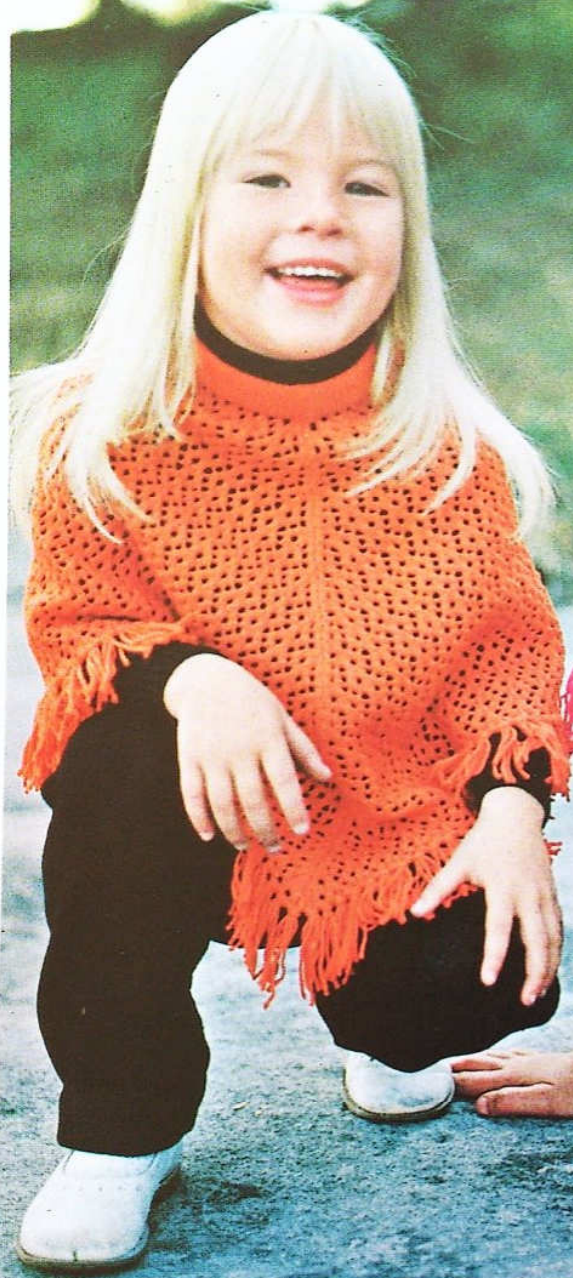


Pattern No. 12 See page 10



Pattern No. 13 See page 19
Pattern No. 14 See page 19
Pants No. 6 See page 14





Pattern No. 15 See page 20
Pattern No. 16 See page 20
Sweater No. 3 See page 13
Pants No. 6 See page 14

Empisal

INTERNATIONAL KNITWEAR COLLECTION

LONDON

PARIS

HAMBURG

NEW YORK

SYDNEY

COAT, BERET & DRESSING GOWN

Pattern No. AU9-Cover



MATERIALS: COAT—16(18-20-22) balls Patons Totem 8 buttons. BERET— 2(2-2-3) balls Patons Totem. 1 large button. GOWN— 22(24-27-30) balls Patons Totem. 8 buttons.

MEASUREMENTS: To fit 22(24-26-28) in. chest. COAT—Length from shoulders 19(21-23-25) ins. GOWN—Length 25(28½-32-35½) ins.

Sleeve length 9(11-13-14) ins. BERET— 15(16-17-18) ins. at lower edge.

TENSION: T10 = 6 sts and 8½ rows to 1 in.

COAT.

BACK: Cast on 90(96-102-108) sts in waste yarn. On T10 knit 3 rows in waste yarn and 1 row in main. On T8 knit 9 rows; T10 knit 1 row; T8 knit 10 rows. T10 knit 1 row and close hem. R/C on 0. *Knit 14(16-18-20) rows and dec 1 st at ea end.* Rep from * to * 4 more times. R/C on 70(80-90-100). ***R/C on 0. Knit to row 30(32-36-38) and **SHAPE RAGLAN ARM-HOLES:** R/C on 0. Cast off 3 sts at the beg of the next 2 rows. Dec 1 st at ea end of the next and on alt rows until 20(22-24-26) sts rem. Knit 1 row and take work off machine on waste yarn. ***.

LEFT FRONT: Cast on 56(59-62-65) sts in waste yarn. *Knit hem as for back. R/C on 0. Carriage on the right. Cast on 20 sts with selvedge edge for front right facing. Knit 2 rows. Put left H.C.L. on 111 and right one on 1. Push the 21st st to "E" pos on alt rows to make turning row of facing.* Knit to row 70(80-90-100) dec 1 st on the left on the 14th(16th-18th-20th) row as in BACK*** For boy work 1st lot of buttonholes (for girl buttonholes in right front) R/C on 0. Transfer the 3rd & 4th, 17th & 18th sts ea side of Marking needle, to adjoining needles. Knit 2 rows to close buttonholes. Knit 20(22-24-26) more rows and make 2nd buttonholes. Knit to row 31(33-37-39) and shape armhole (left) R/C on 0. Shaping armhole as in back, make 3rd set of buttonholes at row 13(15-15-17) and 4th set on row 35(39-41-45). After closing last set of buttonholes. knit 2 rows and **SHAPE NECK:** Cast off 31(32-33-34) sts at neck edge. Still shaping armhole, dec 1 st at neck edge on the next foll 3 rows, then dec 1 st on alt rows 4 more times. When 3 sts rem, knit 1 row and fasten off.***

RIGHT FRONT: Knit as for LEFT FRONT reversing all shapings.

SLEEVES: Cast on 47(49-51-53) sts in waste yarn. Make hem as for BACK. R/C on 0. Knit 2 rows and inc 1 st at ea end. Rep inc on every foll 8th row 8(9-7-9) more times, then on every foll 10th row 0(0-3-2) more times. Knit to row 68(82-98-104) and **SHAPE ARMHOLES:** R/C on 0. Shape armholes as for BACK until 7 sts rem. Knit 2 rows and take work off machine on waste yarn.

TO MAKE UP: Press all parts lightly. Fold front facings on turning row and catch down loosely with split yarn. Match buttonholes and finish off. Sew in sleeves. Sew up side and sleeve seams. Sew on buttons.

COLLAR: Right side facing, pick up 17(17-18-18) sts on ea front, 10 sts back from marking row, 5 sts of ea sleeve and 18(20-22-24) sts of Back. Add 1 st at ea end 64(66-70-72) sts. Knit 3 rows and inc 1 st at ea end. Rep inc. on every foll 4th row 5 more times. Knit to row 29 then dec 1 st at ea end. Rep dec in foll row. Knit 1 more row. R/C on 0. Inc 1 st at ea end. Knit 4 rows and dec 1 st at ea end. Rep dec on every foll 4th row 5 more times. Knit to row 29. Cast off. Fold collar in half and sew up. Press.

BERET: (For Boy in Totem; Girl in Patons L'Amour). On T10 cast on 101 (110-119-128) sts in waste yarn. Knit 3 rows in waste and 1 row in main yarn. On T7.2 knit 5 rows. On T10 knit 1 row. On T8.2 knit 5 rows. On T10 knit 1 row and close hem. **DO NOT BREAK YARN.** Take off machine on waste yarn. Starting at edge, pick up from waste 12(13-14-15) sts and put back onto machine. *Inc 1 st at inner edge (for sewing up). Knit 1 row and inc 1 st at right edge (move 2 sts out and inc on 3rd st). Rep inc on right edge on alt rows 5 more times. Knit 8 rows then dec 1 st on right edge (3rd st onto 2nd st). Rep dec on alt rows until 3 sts rem. Knit 1 row and fasten off.*

Continue to knit sections of 11(12-13-14) sts rep from * to * for ea section.

MAKE UP: Press ea section lightly, sew up. Finish with button or Pompom on top.

DRESSING GOWN

Pattern No. AU9-12



BACK: Cast on 69(78-87-96) sts in waste. Make hem as for Back of Coat. R/C on 0. Knit to row 16 then dec 1 st ea end. Rep dec on every foll 8th row 13(16-19-22) more times. Knit 2 rows and take work off machine on waste yarn. Make one more piece the same. Put both pieces back onto machine—2 sts on ea needle where pieces meet (for sewing up). R/C on 0. Rep from *** to

*** for back of coat No. AU9-Cover).

LEFT FRONT: Cast on 65(71-77-83) sts in waste yarn. Rep from * to * in left front of coat. Right edge—mark turning row of facing. Left edge dec 1 st on the 16th row and on every foll 8th row 13(16-19-22) more times. Knit 2 rows. R/C on 0. Rep from *** to *** in left front of coat.

RIGHT FRONT: Work as left front reversing all shapings.

SLEEVE, COLLAR & MAKE UP: Work same as Coat.

Empisal

INTERNATIONAL KNITWEAR COLLECTION

LONDON PARIS HAMBURG NEW YORK SYDNEY

GIRL'S COAT & HOOD

Pattern No. AU9-Cover



MATERIALS: 21(23-25) balls of Patons L'Amour. Hood—3(3-3) balls Patons L'Amour. 1 ball Contrast for Hood. 8 buttons. **BERET:** 3(3-3) balls Patons L'Amour (patt as No. AU9-cover).

MEASUREMENTS: To fit 22(24-26)in. chest. Length from shoulders 18(20-22) ins. Sleeve length 9(11-13) ins.

TENSION: T10 = 6 sts and 8 rows to 1 in.

NOTE: Extra length to garments is added before shaping commences.

BACK: (3 panels) *On T10 cast on 47(51-55) sts in waste yarn. Knit 3 rows in waste and 1 row in M. yarn. On T8 knit 10 rows; T10 knit 1 row; T8 knit 11 rows; T10 knit 1 row and close hem. R/C on 0. Knit 2 rows, then dec 1 st at ea. end. Rep dec on every foll 6th row 9(10-11) more times. Knit 2 rows. R/C on 58(64-70). Take work off machine on waste yarn.* Make 2 more panels. Put the panels back onto the machine putting 2 sts on end needles where panels meet 77(83-89) sts. R/C on 0. Knit to row 42(48-54) and **SHAPE RAGLAN ARMHOLES:** R/C on 0. Cast off 3 sts at the beg of the next 2 rows. Dec 1 st at ea end of the next and on every foll alt row until 21(23-25) sts rem. Knit 1 row and cast off.

RIGHT FRONT: Make one panel as for BACK and take off machine on waste yarn. Cast on 35(37-39) sts in waste yarn. Make hem as for BACK. R/C on 0. Knit 1 row. Carriage on the left. With selvedge edge cast on 20 sts on the left edge for Front Facing. Knit 1 row. Carriage on the right. Left H.C.L. on 111, right one on 1. Pull the 21st st from left edge into "E" pos; rep this on every alt row to make turning row of facing **AT THE SAME TIME** dec 1 st at right edge on next row and every foll 6th row 9(10-11) more times. Knit to row 58(64-70). R/C on 0. Put panel on waste back onto the machine on the right side, 2 sts on ea needle where parts meet. 70(73-76) sts. Make 1st lot of Buttonholes—**Transfer the 3rd & 4th — 17th & 18th sts ea side of Marking needle to adjacent needles. Knit 2 rows to close buttonholes.** Knit to row 25(28-31) and rep from ** to **. Knit to row 42(48-54) and **SHAPE ARMHOLE:** R/C on 0. Cast off 3 sts at armhole edge. Shaping armhole as for BACK, rep from ** to ** on row 8 (all sizes), again on row 33(36-39). At row 37(41-43) **SHAPE NECK:** Cast off 33 sts at neck edge. Still shaping armhole as in Back dec 1 st at neck edge on every foll 3rd(4th-5th) row. Then 1 st on alt rows 3 more times. When 3 sts rem, fasten off.

LEFT FRONT: Work same as **RIGHT FRONT** but reverse all shapings and omit buttonhole.

SLEEVES: On T10 cast on 51(53-55) sts in waste yarn. Knit 3 rows of waste and 1 row of M. Yarn. On T8 knit 8 rows; On T10 knit 1 row; T8 knit 9 rows. T10 knit 1 row and close hem. R/C on 0. Inc 1 st at ea end of every foll 10th row 6(7-8) times. Knit to row 68(86-100) and **SHAPE ARMHOLES:** R/C on 0. Shape armholes as for BACK until 7 sts rem. Knit 1 row and cast off.

TO MAKE UP: Press all parts lightly. Turn in front facing on marked row and catch down, matching buttonholes in right front. Sew in sleeves. Sew up side and sleeve seams. Sew on buttons.

COLLAR: Right side facing, pick up 16(17-18) sts on ea front—9 sts in from marking st—pick up 5 sts in ea sleeve and 19(21-23) sts of Back. Inc 1 st at ea end for sewing up. 63(67-71) sts. R/C on 0. Knit 3 rows and inc 1 st at ea end. Rep inc on every foll 4th row 5 more times. Knit to row 27(29-31) and dec 1 st ea end. Rep dec in foll row. Knit 1 row. R/C 0. Inc 1 st at ea end. Knit 3(5-7) rows and dec 1 st at ea end. Rep dec on every foll 4th row 5 more times. Knit to row 28(30-32) and cast off. Fold collar and catch down. Press.

HOOD: Bring forward 38(41-44) needles. Push every 3rd needle into "A" pos. On T4 with selvedge edge cast on the needles in "B" pos and knit 18 rows. Bring empty needles from "A" back to "B" pos. On T10 knit 2 rows and take work off machine on waste yarn. Put work back onto machine inc evenly to 50(53-56) sts. R/C on 0. Knit to row 144(156-168) and take off machine on waste yarn. Bring forward 38(41-44) needles and push back every 3rd needle into "A" pos. Put work back onto needles in "B" pos dec where necessary. On T4 knit 18 rows and cast off loosely.

HOOD FACING: On T10 with selvedge edge cast on 8 sts. Knit 2 rows and make looped sts by bringing needles from "B" to "D" pos, holding a smooth pencil under the needles and using extra yarn wind same around ea needle and pencil. Knit 2 rows. Knit required length in this manner and cast off.

TO MAKE UP: Press lightly. Fold hood in half and sew up seams. Sew hood facing to edge around face. Attach hood to coat.

SHIRT:

Pattern No. AU9-1



MATERIALS: 4(5-6-8) balls Patons Gem Knitting Cotton M.C. 1 ball Patons Gem Knitting Cotton C.C. 3 buttons.

MEASUREMENTS: To fit 22(24-26-28) in. chest. Length 14(15-16-17) ins. Sleeve 1½ ins.

TENSION: T6.2 = 15 sts and 19 rows to 2 ins.

BACK: Using M.C. cast on 92 (100-108-116) sts in 1 x 1 rib. Rib *4 rows M.C. 2 rows of C.C.* rep from * to * twice. Cont in st st and M.C. for 66(72-74-78) rows. **SHAPE RAGLAN:** Cast off 3 sts at the beg of the next 2 rows, dec 1 st at ea end of every row 11 times, then on ea alt row until dec to 24 (26-28-30) sts. Cast off.

FRONT: Work as Back to armhole. Cast off the centre 8 sts. H.C.Ls on 111. Push 42(46-50-54) sts furthest from carr to "E" pos. Knit on rem sts, cast off 3 sts. Dec 1 st at armhole edge on the next 11 rows, then on ea alt row to 20(23-26-29) sts.

SHAPE NECK: Cast off 3 sts at neck edge once, then 1 st on every 3rd row 4(5-6-7) times and **AT THE SAME TIME** cont armhole shaping until 1 st rem. Fasten off. H.C.Ls on 1. Knit other side to correspond.

SLEEVES: Using M.C. cast on 62(66-70-74) sts. Rep from * to * of back twice, inc 10 sts evenly in the last rib row. R/C on 0. Knit in M.C. for 8 rows and **SHAPE TOP:** Cast off 3 sts at the beg of the next 2 rows, then dec 1 st at ea end of the next 7(5-3-1) rows, then on every alt row until 8 sts rem. Cast off.

FRONT BAND: Cast on 17 sts in M.C. and knit 1 row. H.C.L. nearest the knitting on 111, other one on 1. Push centre needle to "E" pos on every alt row. Knit 28(30-34-36) rows and cast off.

BUTTONHOLE BAND: Knit as button band making double buttonholes on the 6th(8th-10th-8th) row from the beg and on ea foll 10th(10th-10th-12th) row twice, by casting off the 3rd, 4th and 5th sts from ea side edge, or using waste yarn.

COLLAR: Using M.C. cast on 109(117-125-135) sts and knit in rib as for Back from * to * 3 times then cont in rib in M.C. casting off 10 sts at the beg of the next 6 rows. Cast off loosely in rib.

TO MAKE UP: Press with a warm iron and a damp cloth. Sew in sleeves. Fold bands on turning row and sew in pos for boy or girl. Finish off buttonholes. Sew

on collar with cast off edge to neck edge, beg and ending in centre of front bands. Join side and sleeve seams. Sew on buttons.

GIRL'S COTTON TOP:

Pattern No. AU9-2

MATERIALS: 4(5-6-7) balls Patons Gem Cotton M.C. 2 balls Patons Gem Cotton C.C.

MEASUREMENTS: To fit 22(24-26-28) in. chest. Length 14½(16-17½-19) ins.

TENSION: T6.2 = 15 sts and 19 rows to 2 ins.

BACK: Cast on 102(110-118-126) sts on waste yarn. Knit 3 rows of waste and 1 row of main yarn. On T5.2 knit 20 rows. On T6.2 close hem. R/C on 0. Knit dec 1 st at ea end of every 10th(12-14-16th) row to 90(98-106-114) sts. Knit to row 80(90-98-106) and **SHAPE ARMHOLES:** R/C on 0. Cast off 3(4-5-6) sts at the beg of the next 2 rows, then dec 1 st at ea end of the next and every alt row to 70(76-82-88) sts. Knit to row 38(42-49-57) and **SHAPE NECK AND SHOULDERS:** Cast off the centre 20 sts. H.C.Ls on 111. Push sts furthest from carr to "E" pos. Work on rem sts. Cast off on alt row at neck edge 2(2-2-3) sts once; 2 sts once; 1(2-2-2) sts once and 1(1-2-2) sts once. Next row: Cast off at armhole edge 6(7-8-9) sts once; 6(7-7-8) sts once; 7(7-8-8) sts once. H.C.Ls on 1. Work other side to correspond.

FRONT: Work as Back to row 28(32-39-47) of armhole. **SHAPE NECK:** Cast off the centre 14 sts. H.C.Ls on 111. Cast off on alt row on Neck Edge 3 sts once; 2(2-2-3) sts once; 2 sts once; 1(2-2-2) sts once and 1(1-2-2) sts once. Knit to row 46(50-57-65) and shape shoulder as in Back. H.C.Ls on 1. Work other side to correspond.

POCKETS: (make 2) Cast on 21(23-25-27) sts on waste yarn. Knit 4 rows. Join in main yarn and knit 6 rows on T6; 6 rows on T6.2 and close hem. *Knit 2 rows C.C., 6 rows M.C.* Rep from * to * twice more, then dec 1 st at ea end of every row. Knit 2 rows C.C., 4 rows M.C. Cast off in M.C.

BIAS EDGING: Using C.C. and selvedge edge cast on 8 sts. Knit 1 row. Then cont in st st inc 1 st at the beg and dec 1 st at the end of every alt row for length required for neck edge. Make similar edging for armholes casting on 6 sts only.

TO MAKE UP: Join shoulder and side seams. Sew on pockets. Sew edging to neck and armholes joining dec edge to right side, fold in half and stitch inc edge to inside. Press.

SWEATER & CARDIGAN, PLAIN, LACE OR FAIR ISLE TRIM:

Pattern No. AU9-3 & 4



MATERIALS: SWEATER: 4(4-5-5) balls Patons Azalea. 4" zipper. CARDIGAN: 5(5-6-6) balls Patons Azalea. 5 buttons.

MEASUREMENTS: To fit 22 (24-26-28) in Chest. Sweater length — 12½ (14-15½-17) ins. Sleeve length 1½(2-2½-2½) Cardigan—Length 13½(15-16½-18) ins. Sleeve length 9(11-12½-14) ins.

TENSION: T5 = 8 sts and 12¼ rows to 1 in.

PATTERN: FAIR ISLE: 9 rows of Fair Isle Patt No. E.K.D. 195 Page 46 of Pattern Supplement Book, above basque.

LACE PATTERN: *Press button 1. Slide dial on 1, set lever, pass lace carr from L to R knit 2 rows. Dial on 2, set lever, lace carr from L to R knit 2 rows. Dial on 3, set lever, lace carr L to R knit 2 rows. Dial on 7, set lever, lace carr R. L knit 2 rows. Dial on 6, set lever, lace carr R to L knit 2 rows. Dial on 5, set lever, lace carr from R to L knit 2 rows.*

SWEATER: (Fancy or plain).

FRONT: Cast on 96(104-112-120) sts in 1 x 1 rib. Rib for 1¼ ins. Transfer sts to main bed. R/C on 0. Knit 74(86-98-110) rows. **SHAPE ARMHOLES:** Cast off 5 sts at the beg of the next 2 rows. Dec 1 st at ea end of the next and foll alt rows to 56(60-64-68) sts. **SHAPE NECK:** Cast off 14 centre sts. H.C.Ls on 111. Push sts furthest from carriage to "E" position and work on rem sts. Cont raglan dec as before AND AT THE SAME TIME dec 1 st at neck edge on alt rows 4(5-6-7) times, then on every foll 4th row 3 times. Then dec at raglan only until 1 st rem. Fasten off. H.C.Ls on 1 and knit other side to correspond.

BACK: Work as Front omitting neck shaping and dec raglan armhole until 30(32-34-36) sts rem. Cast off.

SLEEVES: Cast on 63(67-71-75) sts. Knit ¾ in of rib, inc 6 sts evenly on last row 69(73-77-81) sts. Transfer sts to main bed. Knit inc 1 st at ea end of every 3rd row to 73(77-81-85) sts. Cont straight until row 8(14-20-20) from cuff. **SHAPE TOP:** Cast off 5 sts at the beg of the next 2 rows. Dec 1 st ea end of the next row, then on every foll 4th row 1(2-3-4) times, then on every alt row until 9 sts rem. Cast off.

NECK BAND: Join raglan seams except left back seam. Pick up 99(107-115-123) sts around neck edge. Work ¾ in rib and cast off loosely.

POLO NECK: As neck band but knit 4 in rib.

TO MAKE UP: Sew zipper in left band raglan seam, join rem of seam. Join side and sleeve seams. Press.

POLO NECK: Fold over half then put in Zipper.

NOTE: Lace pattern may be rep for whole garment, but not Fair Isle as it will alter the tension.

CARDIGAN:

BACK: Cast on 100(108-116-124) sts in 1 x 1 rib. Work in rib for 1½ in. Transfer sts to main bed. R/C on 0. Knit to 80(92-104-116). **SHAPE ARMHOLES:** Cast off 5 sts at the beg of the next 2 rows. Dec 1 st at ea end of the next and foll alt row to 30(32-34-36) sts. Cast off.

LEFT FRONT: Cast on 47(51-55-57) sts. Work 1½ ins in rib. R/C on 0. Knit same length as Back to armhole, ending at armhole edge. **SHAPE ARMHOLE:** Front slope—Cast off 5 sts at the beg of row, dec 1 st at front edge (inside the 2 edge sts) Cont. armhole shaping on alt rows AT THE SAME TIME dec 1 st every 5th(5th-5th-6th) row at front edge 11(12-13-12) times more. After neck shaping is complete cont armhole shaping only until 1 st rem and fasten off.

RIGHT FRONT: Work as for left front reversing all shapings.

SLEEVES: Cast on 49(53-57-61) sts. Work 2 ins 1 x 1 rib. R/C on 0. Knit inc 1 st at ea end of the 3rd row and every foll 6th row to 77(81-85-89) sts. Knit to row 90(108-126-144). **SHAPE TOP:** Cast off 5 sts at the beg of the next 2 rows. Dec 1 st at ea end of the 4th row 1(2-3-4) times, then on every alt row until 9 sts rem. Cast off.

FRONT BAND: Cast on 15 sts in 1 x 1 rib for length required making buttonholes in 7th row and ea foll. 20th(22nd-26th-26th) row 4 times, then cont straight. Make buttonholes over the centre 5 sts.

TO MAKE UP: Press with warm iron and a damp cloth. Join raglan seams. Join side and sleeve seams. Join band to Cardigan edge, sewing buttonhole side to suit boy or girl. Sew on buttons.

PLEATED SKIRT:

Pattern No. AU9-5

MATERIALS: 5-balls Patons Azalea. Elastic for waist.

MEASUREMENTS: Waist 22 ins. Length 10 ins.

TENSION: T5 = 8 sts and 12¼ rows to 1 in.

NOTE: For larger or small sizes add or omit 24 sts for every pleat (approx. 1 in). Making sure you have 12 sts on the right of a needle in "A" pos and 5 sts on the left of a needle in "A" pos. (this makes the seam under the pleat).

MAKE 3 PIECES: Bring forward 170 needles. Arrange slide dial so that when button 8 is pressed, it brings up the 5th needle from the right. Set lever. Put every 3rd "8" needle from the right into "A" pos. (this forms the under fold of pleat). *Set lever and put 1st and every alt rem "8" needle into "B" pos, then starting from the 2nd "8" needle and every alt one into "E" pos. (this forms top fold of pleat). Carr. on the right. Left H.C.L. on 111, right one on 1. Knit 2 rows.* Rep from * to * until 122 rows or length required. Cast off in waste yarn. Make 2 more pieces. Sew up two seams.

WAIST BAND: Arrange sts on machine as follows—Pick up sts from **right to left to marking st at top fold of pleat, then from left to right to st marking underfold of pleat** rep from ** to ** till all sts are on machine. There will be 3 sts on all needles except ea 8th needle which will have only 2 sts. On T4 knit 9 rows. T5.2 knit 1 row. T4 knit 9 rows and cast off.

TO MAKE UP: Sew up rem seam. Stitch waist band. Work 1 row of D.C. around bottom. Tack pleats in place and Press. Insert elastic.

PANTS & SHORTS:

Pattern No. AU9-6



TOTEM PANTS:

MATERIALS: 9(12-13) balls Patons Totem. Elastic for waist.

MEASUREMENTS: Waist— 22 (24-26). Length from hips approx 21(25-28) in or length desired.

TENSION: T10 = 6 sts and 8½ rows to 1 in.

LEFT LEG: Cast on 72(78-84) sts in waste yarn. On T10 knit

3 rows in waste and 1 row in main yarn. On T8 knit 9 rows. T10 knit 1 row; T8 knit 10 rows. T10 knit 1 row and close hem. Carriage on the right. Left H.C.L. on 11, right one on 111. *R/C on 0. Bring all sts to "E" pos (Push 12(13-14) sts closest to Carr to "D" pos and knit 2 rows). Rep work in bracket 5 more times*. Carr on the right, R/C on 12, left H.C.L. on 111, right one on 1**. Pull 19th(21st-23rd) st furthest from carriage to "E" pos now and on every alt row to mark front folding seam. Knit to row 50(52-54) then inc 1 st at ea end. Rep inc on alt rows 7 more times. Rep inc on the foll 2(4-6) rows. R/C on 0. Knit 4 rows and dec 1 st at ea end. Rep dec on foll 4th rows 4 more times; on every foll 8th row 1(14-7) times; every foll 12th row 6 times. Knit to row 110(140-162). On T8 knit 10 rows (lower hem) and cast off.

RIGHT LEG: Same as Left Leg to closing of hem. Carr on the left. Left H.C.L. on 111, right one on 11. Rep from * to * of left leg. R/C on 12. Carr on the left. Left H.C.L. on 111, right one on 1. Rep from ** to end of left leg.

BLUEBELL PANTS:



MATERIALS: 7(9-12-14) balls Patons Bluebell Crepe. Elastic for waist.

MEASUREMENTS: Waist 22(24-26-28) ins. Length from waist 21(25-28½-32) ins.

TENSION: T8 = 7 sts and 9½ rows to 1 in.

LEFT LEG: Cast on 85(92-99-106) sts in waste yarn. On T8 knit 3 rows of waste and 1 row of main yarn. On T8 knit 22 rows; T8 knit 1 row and close hem. Carr on the right, left H.C.L. on 11, right one on 111. *R/C on 0. Push all sts to "E" pos (push 12(13-12-13) sts nearest to carr to "D" pos and knit 2 rows). Rep work in bracket 5(5-6-6) more times. H.C.L. on 1 R/C on 12(12-14-14)*. Knit 2 rows. Carr on the right. **Left H.C.L. on 111, right one on 1. Push the 25th(26th-28th-30th) st furthest from carr to "E" pos now and on every alt row to mark front folding seam. Knit to row 68(74-82-88) and inc 1 st at ea end. Rep inc on alt rows 1(3-3-3) more times. Knit 2 rows and then inc 2 sts at the beg of the next 6(6-8-10) rows. CROTCH: R/C on 0. Still making fold line, dec 1 st at ea end of every foll 6th row 5 times; every foll 10th row 10 times; every foll 12th row 0(2-4-6) more times. Knit to row 136(166-192-220) or length required. On T10 knit 1 row; T6 knit 12 rows (hem) and cast off.

RIGHT LEG: Knit same as left leg to closing of hem. Carr. on the left. Left H.C.L. on 111, right one on 11. Rep from * to * of left leg. Knit 2 rows. Carr on the left. Rep from ** to the end.

GEM PANTS & SHORTS:



MATERIALS: Long Pants 7(9-12-14) balls Patons Gem Cotton. Shorts: 5(6-6-7) balls Patons Gem Cotton. Elastic for waist.

MEASUREMENTS: To fit 22(24-26-28) ins. Long Pants length from hips 21(25-28½-32) ins. Shorts-length from hips 12(13-14-15) ins.

TENSION: T6.2 = 7½ sts and 9½ rows to 1 in.

PANTS:

LEFT LEG: Cast on 91(98-104-112) sts in waste yarn. On T6.2 knit 3 rows of waste and 1 row of Gem. On T4.2 knit 24 rows. On T6.2 knit 1 row and close hem. Carr on the right *H.C.Ls on 11. R/C on 0. Push all sts to "E" pos. (Push 13(14-13-14) sts closest to carr. to "D" pos and knit 2 rows). Rep work in bracket until all sts are in "B" pos. R/C on 14(14-16-16). Inc 1 st at ea end for the two large sizes ONLY. Knit to row 66(72-80-88) then inc 1 st at ea end. Rep inc on alt rows 2(4-4-4) more times. Knit 2 rows then inc 2 sts at the beg of the next 6(6-8-8) rows. Knit 2 rows. CROTCH: R/C on 0. Dec 1 st at ea end of every foll 6th row 10 times; every foll 10th row 6(9-11-13) times. Knit to row 132(160-186-212) or length desired. On T4.2 knit 12 rows for inside hem and cast off.

RIGHT LEG: Knit same as Left Leg to closing of hem. Carr. on the left. Rep from * to end of left leg.

SHORTS:

LEFT & RIGHT LEG: Work the same as for Long Pants to Crotch. CROTCH: R/C on 0. Dec 1 st at ea end of every foll 4th row 5 times. R/C on 20. On T4.2 knit 24 rows for hem and cast off.

TO MAKE UP: Press lightly. Sew up leg seams; join parts, leaving hole for elastic at waist. Turn leg hems inside and catch down. SHORTS: fold leg hem in half and catch down.

PINAFORE DRESS:

Pattern No. AU9-7



MATERIALS: 6(6-7-7) balls Patons Patonyle. 11 buttons.

MEASUREMENTS: To fit 22 (24-26-28) in chest. Length from shoulder: 18(19-20-21) ins.

TENSION: T6.1 = 7½ sts and 10½ rows to 1 in.

BACK: Cast on 131(139-146-154) sts in waste yarn. On T6.1 knit 3 rows in waste and 1 row

in main yarn. On T4.2 knit 12 rows. On T5 knit 12 rows. T6.1 knit 1 row and close hem. R/C on 0. Knit to row 6(8-10-12) then dec 1 st at ea end. Rep dec on every foll 7th row 14 more times. Knit to row 114 (120-126-134) and SHAPE ARMHOLES: Carr on the right. R/C on 0. Cast off 10 sts at the beg of the row and 4 sts at the beg of the next row. Dec 1 st at ea end of the foll 4 rows. Rep dec on alt rows 4(5-6-7) more times. Knit to row 52(56-60-64) and SHAPE NECK AND SHOULDERS: Carr on the right. H.C.Ls on 111. Push 44(48-51-55) sts furthest from carr to "E" pos. Knit 1 row. *Cast off 3 sts at neck edge and push 3(3-4-4) sts at armhole edge to "E" pos. Knit 2 rows. Carr at neck edge. Rep from * 3 more times. **Push 15(17-19-21) sts of shoulder to "E" pos. Knit 6 rows and cast off. H.C.Ls on 1. Cast off 17(19-20-22) centre sts. Knit 2 rows. Carr at neck edge. Rep from * to ** and cast off.

FRONT: Knit hem as for Back. R/C on 0. Knit to row 4(2-0-0) and make 1st buttonhole. On left edge transfer 6th & 7th sts to adjacent needles. Shaping both edges as for Back, make other buttonholes on the foll 13th(14th-15th-16th) rows 8 more times. Knit to row 114(120-126-134) and SHAPE ARMHOLES: Carr on the right. R/C on 0. Cast off 6 sts at the beg of row and 12 sts at the beg of the next row. Dec 1 st ea end of foll 4 rows and 1 st on alt rows 3(4-5-6) times. Knit to row 24(28-32-36) and SHAPE NECK: Carr on the right. H.C.Ls on 111. Push 41(45-48-52) sts furthest from carr to "E" pos. Knit 1 row. *Cast off 3 sts at neck and knit 2 rows. Cast off 2 sts at neck edge twice more. Inc 1 st at armhole edge. Dec 1 st at neck edge on alt rows 7 more times.* Knit to row 52(56-60-64) and SHAPE SHOULDER: Cast off 3(3-4-4) sts at armhole edge 4 times. Cast off rem sts. R/C on 24(28-32-36) Cast off 13(15-16-18) centre sts. Knit 2 rows. Rep from * to *. Knit to row 52(56-60-64) carr at neck edge, H.C.Ls on 111. Push 3(3-4-4) sts at armhole edge to "E" pos and knit 2 rows 4 times altog. H.C.Ls on 1. Knit 1 row and make 2 buttonholes over the 5th & 6th (5th & 6th - 6th & 7th - 6th & 7th) needles ea end. Knit 6 rows and cast off.

POCKET: On T6 cast on 26(28-30-32) sts in waste yarn. Knit 3 rows in waste and 1 row in main yarn. On T5.1 knit 4 rows and make a buttonhole over the 2 centre sts. Knit 12 more rows and make another buttonhole. Knit 6 rows and close hem. On T6.1 knit 27 rows and cast off.

TO MAKE UP: Press lightly. Sew up right shoulder and right side seam. Sew pocket into pos. Sew on all buttons to correspond with buttonholes. Work 1 row of D.C. around neck and armholes. Press seams.

SLEEVELESS PULLOVER

Pattern No. AU9-8



MATERIALS: 5(5-6-6-7) balls Patons Patonyle. Small quantity C.C. Yarn.

MEASUREMENTS: To fit 22 (24-26-28-30) in chest. Length from shoulder 16(17-18-19-20) ins.

TENSION: T6.1 = 7½ sts and 11 rows to 1 in over st st.

BACK: Cast on 91(99-107-115-123) sts in 1 x 1 rib. Knit 16 rows in Rib. Transfer sts to Main bed. R/C on 0. On T6.1 inc 1 st only (all sizes). Knit to row 98(104-112-118-124) and **SHAPE ARMHOLES:** R/C on 0. Cast off 6(6-6-7-7) sts at the beg of the next 2 rows. Dec 1 st at ea end on the foll 4 rows. Rep dec on alt rows 2(3-4-4-5) times. Rep dec on foll 4th rows twice. Knit to row 64(68-72-76-80) and **SHAPE SHOULDERS:** Cast off 5(5-6-6-7) sts at the beg of the next 4 rows. Cast off 5(6-6-7-7) sts at the beg of the next 4 rows. Cast off 24(26-28-30-32) neck sts.

FRONT: Work as for BACK to row 98(104-112-118-124). H.C.Ls on 111. Push half the sts furthest from carr to "E" pos. **SHAPE ARMHOLE & NECK:** R/C on 0. Cast off 6(6-6-7-7) sts at armhole edge and dec 1 st at neck edge. Shape armhole as in Back and **AT THE SAME TIME** shape neck by dec 1 st at neck edge on every foll 4th row 3(4-5-6-7) times, then on every foll 6th row until 20(22-24-26-28) sts rem. Knit to row 64(68-72-76-80) and **SHAPE SHOULDER:** Cast off 5(5-6-6-7) sts at armhole edge twice, then 5(6-6-7-7) sts twice more.

NECK BAND: Cast on 161(167-173-179-185) sts in 1 x 1 rib. Knit 1 row, then dec 1 st at ea end. Rep dec in the next foll 3 rows. Knit 2 rows in C.C. yarn dec 1 st at ea end in both rows. Join in Main yarn and

rep dec in the foll 4 rows. Knit 1 row. On T5 knit 1 row. On 1st tension knit 1 row then inc 1 st at ea end in the foll 8 rows. Knit 2 more rows and cast off loosely.

ARMHOLE BANDS: Cast on 121(127-133-139-145) sts in 1 x 1 rib. Knit 10 rows. T5 knit 1 row (turning row). On 1st tension knit 10 rows and cast off loosely.

TO MAKE UP: Press lightly. Sew up shoulders and sides. Pin bands in place and sew up with cast-on edge on right side. Fold in half and catch down inside. Match "V" point in neckband.

PARTY FROCK:

Pattern No. AU9-9



MATERIALS: 12(14-16) balls of Patons L'Amour.

MEASUREMENTS: To fit 22 (24-26) in chest. Length from shoulder 18(20-22) ins. Sleeve seam 2 ins.

TENSION: T10 = 6 sts and 8 rows to 1 in.

PATTERN: (Sleeve only). Press buttons 1.3.5.7. *Knit 4 rows, set lever pass Lacemaker across.* Rep from * to * for patt.

BACK: Cast on 98(106-114) sts in waste yarn. On T10 knit 3 rows of waste and 1 row of main yarn. On T8 knit 6 rows. T10 knit 1 row. Press buttons 1.3.5.7, set lever, pass Lacemaker across, knit 1 row. On T8 knit 7 rows. On T10 knit 1 row and close hem. R/C on 0. Knit in st st dec 1 st at ea end of every foll 8th row 12(13-14) times altog. Knit to row 108(120-132) and **SHAPE ARMHOLES:** R/C on 0. Cast off 5(6-7) sts at the beg of the next 2 rows. Dec 1 st at ea end in ea of the foll 3 rows and 1 st on alt rows 4 times. Knit to row 30(34-38) and **SHAPE NECK:** *H.C.Ls on 111. Push 36(40-44) sts furthest from carr to "E" pos. Knit to row 40(44-48) and **SHAPE SHOULDERS:** Cast off 4 sts at armhole once, then cast off 5 sts twice.** R/C 30(34-38). ***Carr on armhole edge. Push 14 sts closest to carr to "B" pos and finish as for other shoulder. Push centre sts to "B" pos. Press buttons 1.3.5.7 set lever, pass Lacemaker across, knit 5 rows and cast off.

FRONT: Knit same as for Back to row 18(22-26) of Armhole Shaping, then **SHAPE NECK:** Rep from * to **. R/C 18(22-26). Rep from *** to end.

SLEEVES: Cast on 40(44-48) sts in waste yarn. On T10 knit 3 rows of waste and 1 row of main. On T8 knit 4 rows. T10 knit 1 row. Make picot edge. Knit 1 more row. On T8 knit 5 rows. T10 knit 1 row and close hem. Take work off machine on waste yarn. Put back onto machine putting 1 st on every 2nd needle, leaving empty needle in "B" pos. 79(87-95) needles. R/C on 0. Knit in patt to row 10 and **SHAPE ARMHOLES.** R/C on 0. Keeping continuity of patt cast off 4(5-6) sts at the beg of the next 2 rows. Dec 1 st at ea end of every foll 3rd row until R/C reads 18(21-24) then dec 1 st at ea end on ea of the foll 13(14-15) rows and cast off.

TO MAKE UP: Press lightly. Sew up shoulders. Pick up 23 sts along ea side of neck, adding 1 st at ea end. Knit 3 rows, make a picot edge. Knit 1 row and cast off. Turn in facing of picot edges and catch down. Sew up side and sleeve seams.

STRIPED DRESS

Pattern No. AU9-10



MATERIALS: 6(7-8-9) balls Patons Bluebell Crepe. M.C. 3 balls Patons Bluebell Crepe. C.C. 4 buttons.

MEASUREMENTS: To fit 22 (24-26-28) in chest. Length from Shoulder 18(20-22-24) ins or length required. Sleeve length 2 ins.

TENSION: T8 = 7 sts and 9½ rows to 1 in.

PATTERN: 2 rows C.C. and 4 rows M.C.

BACK: Cast on 114(121-130-139) sts in waste yarn. On T8 knit 3 rows in waste and 1 row in main. On T6 knit 24 rows. On T8 knit 1 row and close hem. R/C on 0. Knit in patt dec 1 st at ea end on every foll 7th(8th-8th-8th) row until 86(93-100-107) sts rem. Knit to row 118(130-142-154) then cont in M.C. only to row 124(140-156-170) and **SHAPE ARMHOLES:** R/C on 0. Cast off 4(5-6-7) sts at the beg of the next 2 rows. Dec 1 st at ea end in ea of the foll 3 rows and 1 st at ea end on alt rows 3 more times. Knit to row 46(50-54-58) and **SHAPE SHOULDERS:** Cast off 7(8-8-9) sts at the beg of the next 4 rows. Cast off 7(7-9-9) sts at the beg of the next 2 rows. Cast off rem 24(25-26-27) neck sts.

FRONT: Work the same as for Back to row 118(130-142-154) or 2 rows after last C.C. stripe, then divide for **NECK OPENING:** With odd length of M.C. cast off 4(5-6-7) centre sts. H.C.Ls on 111 carr on the right, push sts furthest from carriage to "E" pos. *Knit to row 124(140-156-170) and **SHAPE ARM-HOLE:** R/C on 0. Cast off 6(7-8-9) sts at armhole edge, then dec 1 st on ea of the foll 3 rows and 1 st on alt rows 3 more times. Knit to row 29(33-37-41) and **SHAPE NECK:** Cast off 3 sts at neck edge. Inc 1 st at armhole edge. Dec 1 st at neck edge on ea of the foll 3 rows and 1 st on alt rows twice. Inc 1 st at armhole edge again. Dec 1 st at neck edge on alt rows twice more. Knit to row 46(50-54-58) and **SHAPE SHOULDER:** Cast off 7(8-8-9) sts at armhole edge twice. Cast off rem sts. R/C on 118(130-142-154) H.C.Ls on 1. Join yarn at armhole edge and rep from *

SHORT SLEEVES: Cast on 60(64-68-72) sts in waste yarn. On T8 knit 3 rows in waste and 1 row in main yarn. On T6 knit 12 rows and close hem. R/C on 0. On T8 knit inc 1 st at ea end on every foll 3rd row 1(2-3-3) times. Knit to row 12 and **SHAPE ARM-HOLE:** R/C on 0. Cast off 4(5-6-6) sts at the beg of the next 2 rows. Knit 2 rows and dec 1 st at ea end. Rep dec on alt rows until 24 sts rem. Rep dec on ea of the foll 4 rows and cast off.

LEFT BAND: With selvedge edge cast on 13(15-17-17) sts in C.C. Carr on the right. Left H.C.L. on 111, right one on 1. Bring centre st out to "E" pos on every alt row to mark turning row of band. On T8 knit to row 45(53-61-67) and cast off.

RIGHT BAND: Work same as Left Band to row 6 and make 1st buttonhole over the 3rd & 4th sts ea side of marking needle. Rep buttonhole on every foll 12th (15th-18th-20th) row 3 times more. After closing last buttonhole, knit 1 row and cast off.

NECK BAND: Sew up shoulders. Wrong side facing pick up 63(65-67-69) sts along neck opening. On T8 knit 4 rows; On T7 knit 4 rows; T6 knit 4 rows; T7 knit 4 rows; T8 knit 3 rows and cast off.

TO MAKE UP: Press all parts lightly. Fold neckband in half and catch down. Sew bands in place. Sew in sleeves. Sew up side and sleeve seams. Press seams. Sew on buttons.

FANCY CARDIGAN

Pattern No. AU9-11



MATERIALS: 8(10-12-14) balls of Patons Bluebell Crepe. 7 buttons. PANTS as per patt AU9-6.

MEASUREMENTS: To fit 22 (24-26-28) in chest. Cardigan length from shoulder 15(17-19-21) ins. Sleeve length 9(11-13-14½) ins.

ABBREV. M.B. Main bed; A.B. Ribber.

TENSION: T8 = 7 sts and 9½ rows to 1 in over st st or patt.

PATTERN: On front of cardigan only. Counting from neck edge arrange sts as follows: Put 8(9-10-12) sts on to M.B. 6 sts on to A.B. and 4 sts (ref to as "Centrefour" sts) on M.B. 6 sts on A.B. All other sts on M.B. Pitch lever on H. on A.B. On T.8 knit 4 rows. *On M.B. move the 2 right "Centrefour" sts 1 st to the right and the left 2 "Centrefour" sts 1 st to the left, leaving 2 needles empty in centre of patt on M.B. On A.B. move 1 st from ea end under "Centrefour" space in to fill space under "Centrefour". NOTE—Sts never change beds, are only moved to the left or right. Knit 2 rows*. Rep from * to * until there are 12 "Centrefour" needles empty on M.B., then rep patt by moving sts in the same order back until the 4 "Centrefour" sts are back tog on M.B. Knit 2 rows (4 rows altog when 4 Cent sts are tog.) 16 sts and 26 rows in 1 patt.

BACK: Cast on 91(97-105-111) sts in 1 x 1 rib. Knit 10 rows of rib. Transfer sts to M.B. R/C on 0. T8 knit to row 90(104-120-134) and SHAPE ARMHOLES: R/C 0. Cast off 4(4-5-5) sts at the beg of the next 2 rows. Dec 1 st at ea end of the foll 2 rows. Dec 1 st at ea end on alt rows 5 more times. Knit to row 48(52-56-60) and SHAPE SHOULDERS: Cast off 7(8-8-9) sts at the beg of the next 4 rows. Cast off 8(8-10-10) sts at the beg of the next 2 rows. Take off machine on waste yarn 25(27-29-31) neck sts.

LEFT FRONT: Cast on 43(45-49-53) sts in 1 x 1 rib. Knit rib as for Back. R/C on 0. **NECK EDGE ON RIGHT SIDE:** Arrange sts for patt and knit to row 90(104-120-134) and SHAPE ARMHOLE on the left: R/C on 0. Keeping continuity of patt cast off 4(4-5-5) sts at the beg of row at armhole edge. Dec 1 st at armhole edge on the foll 2 rows and 1 st on alt rows 5 times. Knit to row 35(39-43-47) and SHAPE NECK: Cast off 4(4-5-5) sts at Neck edge at the beg of row. Dec 1 st at neck edge on ea of the foll 3(3-3-4) rows and 1 st on alt rows 3(3-3-4) more times. At row 48 (52-56-60) SHAPE SHOULDER: Cast off 7(8-8-9) sts at armhole edge twice. Cast off rem sts.

RIGHT FRONT: Knit same as Left Front reversing all shapings (Neck edge on left side).

SLEEVES: Cast on 47(51-55-59) sts in 1 x 1 rib. Knit rib as for Back. R/C on 0. On T8 knit inc 1 st at ea end on every foll 6th row 8(7-5-4) times, then on every foll 8th row 3(4-2-4) times. On every foll 12th row 0(1-5-5) times. Knit to row 80(98-116-128) and SHAPE ARMHOLES: R/C on 0. Cast off 4(4-5-5) sts at the beg of the next 2 rows. Dec 1 st at ea end of the next and on alt rows until R/C reads 25(29-33-37) then cast off 2 sts at the beg of the next 4 rows and 3 sts at the beg of the next foll 4 rows. Cast off rem. sts.

LEFT BAND: Cast on 13 sts in 1 x 1 rib. Knit 135 (153-171-189) rows of rib and take off on waste yarn.

RIGHT BAND: Cast on as Left Band and knit 6 rows and make 1st buttonhole by trans the 2 centre sts to adjacent needles, leaving empty needles in B pos. *Knit 22(25-28-31) rows and make another buttonhole.* Rep from * to * 4 more times. Knit 19(22-25-28) more rows and take off on waste yarn.

TO MAKE UP: Press lightly. Sew bands in place. Sew up shoulders, sew in sleeves. Sew up side and sleeve seams.

NECK BAND: Wrong side facing pick up 81(85-89-91) sts along neck opening. Arrange sts for 1 x 1 rib, watching continuity of rib in bands. Knit 4 rows and make 1 more buttonhole. Knit 14 rows and make another buttonhole. Knit 4 rows and cast off. Fold neckband in half, matching buttonhole and catch down. Press seams.

Pants Pattern AU9-6.

Empisal

INTERNATIONAL KNITWEAR COLLECTION
LONDON PARIS HAMBURG NEW YORK SYDNEY

STRIPED SWEATER WITH V OR ROUND NECK:

Pattern No. AU9-13



MATERIALS: 5(5-6-7) balls Patons Totem Navy (N), 3(3-4-5) balls Patons Totem White (W) 2 balls Patons Totem Red (R) 4 in Zipper.

MEASUREMENTS: To fit 22 (24-26-28) in. chest. Length 12½ (14-15½-17) ins. Sleeve length 9(11-12½-14) ins.

TENSION: T10 = 6 sts and 8 rows to 1 in.

BACK: Cast on in N 69(75-81-87) sts in 1 x 1 rib. Knit in rib for 1½ ins. R/C on 0. Cont in st st making a color sequence thus—**2 rows R; 2 rows N; 2 R; 2 N; 2 R; 8(10-12-14)N, 2 R; 2 N; 2 R; 6(8-10-12)N; 2 R; 6(8-10-12)W; 2 N; 6(8-10-12)W; 2N.** 48(56-64-72) rows. **SHAPE RAGLAN:** Cont in striped patt thus—2 W; 2 N; 8(10-12-12)W; 2 N; 2 W; 2 N; 2 W; 2 N; 8(8-10-12)W; 2 R; 8(10-10-12)N. Cast off 3 sts at the beg of the next 2 rows. Dec 1 st at ea end of the next and foll alt rows to 23(25-27-29) sts. Cast off.

FRONT — V NECK: Work as for Back to armhole shaping. Keeping continuity of stripes as Back, **SHAPE RAGLAN & NECK:** H.C.Ls on 111. Push 34(37-40-43) sts furthest from carr to "E" pos. Knit on rem sts. Cast off 3 sts at the beg of the next row and dec 1 st at centre front. Cont raglan shaping as for Back. **AT THE SAME TIME** dec 1 st at neck edge on every 4th row 8(9-10-11) times more, then cont raglan until 2 sts rem. K 2 tog. and fasten off. H.C.Ls on 1 and knit other side to correspond reversing shapings.

FRONT — CREWE NECK: Work as for Back until 37(39-41-45) sts rem in Raglan shaping. Cast off the centre 11(13-15-15) sts. Push 13(13-13-15) sts furthest from carr to "E" pos. H.C.Ls on 111. Work on rem sts. Cast off at neck edge on every alt row 2 sts once and 1 st 2(2-2-3) times **AT THE SAME TIME** cont Raglan shaping until 1 st rem. Fasten off. H.C.Ls on 1. Knit other side to correspond.

SLEEVES: Using N cast on 32(34-36-40) sts in 1 x 1 rib. Knit in rib for 2(2-2½-3) ins. R/C on 0. Knit in st st inc 1 st at ea end of the next and every foll 5th (5th-6th-6th) rows to 50(54-60-64) sts **AT THE SAME TIME** knit 8(16-16-16) rows in N then rep from ** to ** for striped patt as Back ending on same color row as in back at armholes. **SHAPE ARMHOLES:** Cont in striped patt as Back raglan and shape as back until 4(4-6-6) sts rem. Cast off.

TO MAKE UP: Press warm iron and damp cloth. Join raglan seams except left back seam.

V NECK BAND: Using N pick up 44(48-54-58) sts across sleeve and to centre front, pick up centre st, then the same number on the other side and 25(25-27-27) sts across back. 114(122-136-146) sts. Knit in 1 x 1 Rib for 6 rows dec 1 st ea side of centre st every row, then 6 rows inc 1 st ea side of centre st every row. Cast off loosely in rib.

CREWE NECK BAND: Using N pick up and knit 64(70-80-84) sts evenly around neck edge; knit in 1 x 1 rib for 12 rows. Cast off loosely in rib.

TO MAKE UP: Fold neckband in half to wrong side and stitch in pos. Sew in zipper into left back seam. Join rem of seam. Join side and sleeve seams.

SWEATER & CAP WITH FAIR ISLE TRIM:

Pattern No. AU9-14



MATERIALS: 10(11-12-13)balls Patons Totem, M.C. 2 balls Patons Totem Contrast Color. (C.C.) 4" Zipper.

MEASUREMENTS: To fit 22 (24-26-28) in chest. Length 12½ (14-15½-17) ins. Sleeve length 9(11-12½-14) ins. CAP to fit 17-18 in. head.

TENSION: 6 sts and 8 rows to 1 in on T10.

BACK: Cast on 68(74-80-86) sts in 1 x 1 rib in M.C. Knit in rib for 1½ ins. R/C on 0. Knit in st st for 32(40-48-60) rows then work 12 rows of Fair Isle thus—*2 sts M.C. 2 sts C.C. for 2 rows then alternate the colours for the next 2 rows,* & knit 8 rows of M.C. **SHAPE ARMHOLES:** R/C on 0. Cast off 2 sts at the beg of the next 2 rows, then dec 1 st at ea end of the next and every foll alt row to 56(62-68-74) sts then knit 9(13-17-21) rows straight. **DIVIDE FOR BACK OPENING:** H.C.Ls on 111. Push 28(31-34-37) sts furthest from carriage to "E" pos. Knit 18 rows on rem sts and **SHAPE SHOULDERS:** Cast off at Armhole edge on the next and alt rows 5(7-7-8) sts once; 6(6-7-8) sts once and 6(6-7-7) sts once. Cast off rem 11(12-13-14) sts. H.C.Ls on 1, knit other side to correspond.

FRONT: Knit as Back until 20(24-28-32) rows have been knitted of Armhole. **SHAPE NECK:** Cast off the centre 10(12-14-16) sts. H.C.Ls on 111. Push 23(25-27-29) sts furthest from carriage into "E" pos. Work on rem sts. Cast off at neck edge 2 sts once, then 1 st on every alt row 4 times. Cont straight to row 36(40-44-48) of armholes. **SHAPE SHOULDER** as Back. H.C.Ls on 1. Knit other side to correspond reversing shapings.

SLEEVES: Using M.C. cast on 32(34-36-40) sts in 1 x 1 rib. Knit in rib for 1½ ins. R/C on 0. Knit in st st inc 1 st at ea end of the 3rd and every foll 4th (5th-5th-6th) row to 50(54-60-64) sts. Knit straight to row 40(56-68-80) then knit 12 rows Fair Isle as for Back, then 8 rows M.C. **SHAPE TOP:** Cast off 2 sts at the beg of the next 2 rows, dec 1 st at ea end of the next and foll alt rows to 32(34-36-38) sts, then on every row to 10 sts. Cast off.

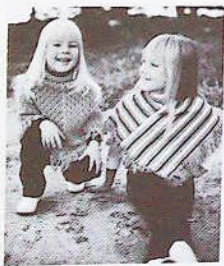
NECK BAND: Join Shoulder seams. With M.C. pick up 64(70-80-84) sts evenly around neck edge. Knit 1 in of 1 x 1 rib. Cast off loosely.

TO MAKE UP: Press with warm iron and a damp cloth. Sew in zipper in back opening. Sew in sleeves. Join side and sleeve seams.

CAP: Using M.C. cast on 116 sts. Knit ¾ in 1 x 1 rib. Cont in st st and knit 8 rows, then work 12 rows of fair isle as for sweater. Cont in M.C. for 32 rows. Take work off machine and put onto No. 8 knitting needles. Next row: K 2 tog (k 3 tog) to end. Next row: (P 2 tog) to last st Pl. Break yarn thread through rem sts draw up and fasten off. Join back seam. Trim top with pom pom or tassel.

LACE PONCHO:

Pattern No. AU9-15



MATERIALS: 7(8) balls Patons Bluebell Crepe. 4" Lightning Zipper.

MEASUREMENTS: To fit 20 to 22 and 24 to 26 in chest. Length from shoulder 10¼(13) ins.

TENSION: T8 = 6 sts and 11 rows to 1 in of patt.

PATTERN: *Press buttons 1.3. 5.7 set lever, pass Lacemaker

from left to right and knit 2 rows. Press buttons 2.6 set lever, pass L.M. from R to L and knit 2 rows. Press buttons 1.3.5.7 set lever, pass L.M. from R to L and knit 2 rows. Press button 2.6 set lever, pass L.M. from L to R and knit 2 rows.*

With selvedge edge cast on 154(190) sts from left to right. T8 knit 2 rows. Carriage on the right. R/C on 0. Knit in pattern dec 1 st at ea end on alt rows until 44(54) sts rem. (110-138) rows. On T6 knit 20 rows of st st without shaping, for neckline. Cast off loosely. Make one more piece.

TO MAKE UP: Press lightly. Put in zip and join seams.

FRINGE: Cut a piece of cardboard 3 ins. wide, wind yarn around and cut along one edge. Take 3 strands of yarn and attach as fringe. Rep around poncho.

STRIPED PONCHO:

Pattern No. AU9-16

MATERIALS: 1(1-1-1) balls Patons Bluebell Crepe Black; 1(2-2-2) balls Patons Bluebell Crepe White; 2(2-3-3) balls Patons Bluebell Crepe Blue; 2(2-2-2) balls Patons Bluebell Crepe Pink; 1(1-2-2) balls Patons Bluebell Crepe for Fringe.

MEASUREMENTS: To fit 22(24-26-28) in chest.

TENSION: T8 = 7 sts and 9½ rows to 1 in.

PATTERN: *Knit 6 rows blue; 2 rows black; 6 rows blue; 4 rows white; 6 rows pink; 2 rows black; 6 rows pink and 4 rows of white.*

MAKE 2 PIECES THE SAME: 16(18-20-22) ins long and 8(9-10-11) ins wide. Cast on with a selvedge edge 112(126-140-154) sts from left to right in blue. Knit 2 rows and make fringe holes. Transfer every 3rd st to adjoining needles but leave empty needles in "B" pos. R/C on 0. Joining in yarn on the right, knit in stripe patt making fringe holes on right edge as follows—transfer the 3rd st onto the 4th st on every foll 4th row (empty needles left in "B" pos. R/C on 80(90-100-110) carriage on the right, cast off half the sts nearest the carriage. Take rem sts off on waste yarn. Knit another piece the same.

NECK: Wrong side facing, put both pieces on waste back onto machine. On T6 knit 6 rows; T5 knit 8 rows; T6 knit 5 rows; T10 knit 1 row and cast off with a latched tool.

TO MAKE UP: Press lightly. Join and sew seams.

FRINGE: Cut a piece of cardboard 3" wide, wind yarn around and cut along one edge. Take 4 strands of yarn and attach as fringe. Rep around poncho.

FAIR ISLE TWIN SET:

Pattern No. AU9-17



MATERIALS: PULLOVER (Long Sleeves) 5(6-7-9) balls Patons Bluebell Crepe M.C.; 1(1-2-2) balls Patons Bluebell Crepe 1st C.; 1(2-2-2) balls Patons Bluebell Crepe 2nd C. (Short Sleeves) 4(5-6-7) balls Patons Bluebell Crepe M.C. Contrast as above.

CARDIGAN (Long Sleeves) 7(8-10-12) balls Patons Bluebell Crepe M.C. 1(1-2-2) extra C. for Patt. 5 buttons.

MEASUREMENTS: To fit 22(24-26-28) in chest. Length from shoulder 13(15-17-19) ins. Long sleeve length 9(11-13-14½) ins. Short sleeve length 3 ins.

TENSION: T8 = 7 sts and 9½ rows to 1 in.

PATTERN: Carr on the right. Knit 2 rows in 1st C.C. knit 2 rows in 2nd C. Knit 4 rows Fair Isle as per chart.

4	X	X	X	●	X	X	X	●
3	X	X	X	●	X	X	X	●
2	X	X	X	●	X	X	X	●
1	X	X	X	●	X	X	X	●
	1	2	3	4	5	6	7	8

X M.C. ● 2nd C.

Knit 2 rows in 2nd C; 2 rows in 1st C. Knit 14 rows in M.C.

PULLOVER:

BACK: Cast on 89(95-103-109) sts in 1 x 1 rib in M.C. Knit 20 rows in rib. Transfer sts to Main bed. R/C on 0. On T8 knit 7 rows. Knit in patt (or plain) to row 54(68-84-98) and SHAPE RAGLAN ARMHOLES. R/C on 0. Keeping continuity of patt (or plain) cast off 3(3-4-4) sts at the beg of the next 2 rows. Dec 2 sts at ea end (4th & 3rd sts on to the 2nd st) of the next and every foll 4th row until 27(29-31-33) sts rem. Knit 2 more rows and take work off machine on waste yarn.

FRONT: Knit to row 41(45-49-53) of armhole shaping same as in Back, then Shape Neck: Take off on waste yarn 27(29-31-33) sts furthest from carr. *Still shaping armhole as for Back, dec 1 st at neck edge on the foll 2 rows, then dec 1 st at neck edge on alt rows 3 more times. When 2 sts rem fasten off. R/C on 41 (45-49-51) leave 13(15-17-19) centre sts on waste;

put rem sts back onto the machine. Keeping continuity of patt knit from * to end.

LONG SLEEVES: Cast on 45(47-49-51) sts in 1 x 1 rib. Knit rib as for Back. R/C on 0. Knit 3(7-7-1) rows of M.C. then start patt (or knit plain) inc 1 st at ea end of every 6th row 12(10-10-10) times. Then inc 1 st at ea end of every foll 8th row 0(3-5-6) more times 69(73-79-83) sts. Knit to row 76(94-110-118) and SHAPE ARMHOLES: R/C on 0. Shape armholes as for back until 7 sts rem. Knit 2 rows and take off machine on waste yarn.

SHORT SLEEVES: Cast on 55(59-63-67) sts in 1 x 1 rib in M.C. Knit 10 rows rib and transfer sts to main bed. R/C on 0. Inc 1 st at ea end. Knit 1(13-1-13) rows of M.C. and start patt (or plain) and AT THE SAME TIME inc 1 st at ea end of every foll 3rd row 6 more times 69(73-77-81) sts. Knit to row 22(22-26-26) and SHAPE ARMHOLES: R/C on 0. Cast off 3 sts (all sizes) at the beg of the next 2 rows. Keeping continuity of patt (or plain) dec 2 sts at ea end of the next and foll 4th rows as for Back until 7 sts rem. Knit 2 rows and take off machine on waste yarn.

TO MAKE UP: Press all parts lightly. Sew in sleeves leaving one back seam open. Sew up side and sleeve seams.

NECKBAND: Wrong side facing, pick up 81(85-89-93) sts along neck opening and arrange for 1 x 1 rib. Knit 22 rows of rib. On T10 knit 1 row. Cast off loosely.

CARDIGAN:

BACK: Cast on 91(97-105-111) sts in 1 x 1 rib in M.C. *Knit rib as for Back of Pullover. R/C on 0. On T8 knit 7 rows of M.C. then knit one set of patt (or plain). Knit to row 58(72-88-102)* and SHAPE RAGLAN ARMHOLES: R/C on 0. Cast off 3(3-4-4) sts at the beg of the next 2 rows. Dec 2 sts at ea end of the next and foll 4th rows until 29(31-33-35) sts rem. Knit 2 rows and cast off.

LEFT FRONT: Cast on 43(47-51-53) sts in 1 x 1 rib. Knit as for Back Cardigan from * to * and SHAPE ARMHOLE & NECK: R/C on 0. Shape armhole as for Back dec 1 st at neck edge on every foll 4th row 5(9-10-8) times, then on every foll 6th row 4(2-2-4) more times. When 3 sts rem knit 1 row and fasten off.

RIGHT FRONT: As Left Front reversing all shapings.

SLEEVES: Cast on 47(49-51-53) sts in 1 x 1 rib. Knit rib as for Back. R/C on 0. On T8 knit 7 rows M.C. then 1 set of patt, inc 1 st at ea end of every foll 6th row 12(10-10-10) times, then on every foll 8th row 0(3-5-6) more times. Knit to row 76(94-110-118) and SHAPE ARMHOLES: R/C on 0. Shape armholes as for back until 9 sts rem. Knit 2 rows and cast off.

BAND: Cast on 11 sts in 1 x 1 rib. Knit 8 rows of rib and make 1st buttonhole. Transfer 2 centre sts to adjacent needles. *Knit 16(18-20-22) rows and make another buttonhole.* Rep from * to * 3 more times then knit length of band required.

COLLAR: Cast on 105(111-117-123) sts in 1 x 1 rib. Knit 34 rows of rib and cast off.

TO MAKE UP: Press all parts lightly. Sew in sleeves. Sew up side and sleeve seams. Sew band in place (buttonholes on the right for girls and left for boys) Pin centre of collar to centre back and stitch on under band. Press seams. Sew on buttons.

FLARED SKIRT & BERET

Pattern No. AU9-18

MATERIALS: SKIRT—5(6-7) balls Patons Bluebell Crepe. Elastic for waist. BERET— 2 balls Bluebell Crepe.

MEASUREMENTS: Waist— 22(24-26) ins. Length 9(11-12) ins. BERET — 19(20) ins.

TENSION: T8 = 7 sts and 9½ rows to 1 in.

SKIRT: On T8 cast on 69(83-90) sts in waste yarn. Knit 3 rows in waste and 1 row in Main yarn. *R/C on 0. H.C.Ls on 111. Push 7 sts furthest from carriage into "E" pos and knit 2 rows. **Pushing 7 more sts to "E" pos ea time rep from * to ** 6(8-9) more times. H.C.Ls on 1 knit 20(22-24) rows. *** 34(40-44) rows. R/C on 0. Rep from * to *** 11(10-10) more times. Take work off machine on waste yarn.

WAISTBAND: Wrong side facing pick up 154(168-182) sts along narrow end. On T7 knit 14 rows and cast off.

TO MAKE UP: Press lightly. Join seam by grafting sts from waste. Fold waist band in half and sew up. Insert elastic. Fold 10 sts in for hem and catch down.

BERET: Cast on 40(47) sts in waste yarn. On T8 knit 3 rows of waste and 1 row of main yarn. Carr on the right. *H.C.Ls on 111. Bring 2 needles at left edge into "E" pos and knit 1 row (put yarn under 1st inner needle in "E" pos to avoid making a hole). Bring 1 needle at right edge to "E" pos and knit 1 row.* Rep

from * to * until there are 5 needles in "E" pos on the right side. Carr on the left, right H.C.L. on 1, knit 1 row across. H.C.Ls 111 knit bringing 2 more sts to "E" pos on the left until there are 20 sts in "E" pos. Carr on the right. H.C.Ls on 1 knit 2 rows.** Rep from * to ** 10(11) more times. Take work off machine on waste yarn.

BAND: Cast on 7 sts on waste yarn. On T6 knit 3 rows in waste and 1 row in main yarn. Push in left "Part" button and knit 19(20) ins. or length required.

TO MAKE UP: Join seam by grafting sts from waste. Sew band to lower edge. Insert elastic if required. Make Pom Pom for top.

ZIPPERED CARDIGAN & CAP

Pattern No. AU9-19



MATERIALS: 8(9-10-11) balls Patons Totem M.C.; 3 balls Patons Totem C.C.; Open end lightning zipper 14(16-18-20) ins., 2 buttons and elastic for Cap.

MEASUREMENTS: To fit 22 (24-26-28) in chest. Length from shoulder 13(15-17-19) ins. Sleeve length 9(11-13-14½) ins. CAP— to fit 19 in head.

TENSION: T8 = 7 sts and 9½ rows to 1 in.

BACK: Cast on 92(98-106-112) sts in waste yarn. *On T8 knit 3 rows in waste and 1 row in C.C. On T6 knit 16(18-30-32) rows in C.C. Close hem on T8 using main yarn.* R/C on 0. Knit to row 62(76-92-106) and SHAPE RAGLAN ARMHOLES: R/C on 0. Cast off 3(3-4-4) sts at the beg of the next 2 rows. Knit 2 rows and dec 1 st at ea end (3rd st onto the 2nd). Rep dec on alt rows until 26(28-30-32) sts rem. Knit 1 row and take work off machine on waste yarn.

LEFT FRONT: Cast on 41(44-47-50) sts in waste yarn. Knit from * to * in BACK. R/C on 0. Knit to row 62(76-92-106) and shape armhole on left edge. R/C on 0. Cast off 3(3-4-4) sts at the beg of the row. Knit 3 rows and dec 1 st at armhole edge as in BACK. Rep dec on alt rows until R/C reads 47(51-55-59) then SHAPE NECK: still shaping armhole as in BACK, dec 1 st at neck edge on the foll 3 rows dec 1 st at neck edge on alt rows 2(3-3-4) more times, 3 sts rem. Knit 1 row and fasten off.

RIGHT FRONT: Knit as left front reversing all shapings.

SLEEVES: Bring forward 51(53-55-57) needles. Push back to "A" pos every 3rd needle. On T8 knit 4 rows in waste yarn and 1 row in M.C. On T4.1 knit 36 rows. Bring loops of 1st row up—big loop over 2 sts and small loop onto empty needle. R/C on 0. On T8 knit inc 1 st at ea end on every foll 6th row 10 times, then on every foll 10th row 1(2-4-5) more times. Knit to row 80(98-114-122) then **SHAPE ARMHOLES:** R/C on 0. Shape armhole as in Back until 7 sts rem. Knit 1 row and take work off machine on waste yarn. **NECK BAND:** Wrong side facing pick up 13 sts along left front neck opening and stretch them over 19 needles putting every 3rd needle into "A" pos. Collect sts from waste of sleeve, back and other sleeve and put onto machine leaving every 3rd needle empty. Pick up sts of right front the same as left one 91(95-99-103) needles. On T4 knit 38 rows. On T10 knit 1 row and cast off with a latchet tool.

FRONT BANDS: On T7.1 cast on 17(19-21-23) sts in waste yarn. Knit 3 rows in waste yarn. R/C on 0. Left H.C.L. on 111, right one on 1. Pull centre st to "E" pos on every alt row to mark turning row. With C.C. knit 136(155-176-195) rows and take work off machine on waste yarn. Fold band on turning row and sew up top and lower edge by grafting sts. Knit 1 more the same.

TO MAKE UP: Press all parts lightly. Fold bands and stitch turning row edge to garment front. Insert zipper in open edges of bands and catch down. Sew in sleeves. Sew up side and sleeve seams. Press seams.

CAP: Cast on 38 sts in waste yarn. On T8 knit 3 rows in waste and 1 row in M.C. On T6 knit 18 rows and close hem on T8. Carriage on the right. With selvedge edge cast on 9 sts at right edge. H.C.Ls on 11. R/C on 0. Push 24 sts furthest from carriage to "E" pos. Push new cast on sts to "D" pos and knit 2 rows. Bring 12

more sts to "D" pos and knit 2 rows (twice). Left H.C.L. on 111, right one on 1. Bring 10th needle on every alt row to "E" pos to mark turning row of front hem. Leaving right edge straight inc 1 st on the left on the 16th row. Rep inc on every foll 6th row 3 more times. Knit to row 51 then dec 1 st on the left. Rep dec on alt rows twice then on every row twice. Dec 3 sts at the beg of the next row. Leaving M.C. yarn on the right, take carriage over to the left. With C.C. cast on 56 sts on the left, with a selvedge edge. R/C on 0. Knit (all sts) 13 rows in C.C. Carriage on the right, knit 4 rows in M.C. then push 48 sts furthest from carriage to "E" pos. H.C.Ls on 11. Knit 2 rows. Watching marking st when carriage is on the right, push it to "D" pos. Bring 12 sts to "B" pos and knit 2 rows (4 times altog). Knit 2 rows then push 12 sts furthest from carr to "E" pos and knit 2 rows (4 times altog). H.C.Ls left on 111, right on 1. Knit 4 rows in M.C. Knit 13 rows in C.C. With C.C. cast off 56 sts on the left. Take carr over to the right. R/C on 0. Join in M.C. cast on 3 sts on the left at the beg of the next row then inc 1 st on the foll 2 rows. Inc 1 st on alt rows twice. Knit to row 26 and dec 1 st on the left. Rep dec on every foll 6th row 3 more times. Knit to row 54. H.C.Ls on 11. Push 12 left end sts to "E" pos and knit 2 rows (twice). Cast off 10 sts at right end. On T6 knit 18 rows and cast off.

CHIN STRAP: With selvedge edge cast on 17 sts. Knit 24 rows and transfer 4th & 5th sts ea end to adjacent needles. Knit 2 rows and close buttonhole. Transfer centre st to adjacent needle. H.C.Ls on 111. Push half the sts furthest from carr to "E" pos. Dec 1 st ea end on alt rows 3 times and fasten off. Finish other sts the same.

TO MAKE UP: Press lightly. Turn in ½" at end of back section for lower hem. Sew back section to sides. Fold front hem on turning row and catch down. Sew chin strap to cap. Sew button either side. Insert elastic at lower edge. Press.

Empisal

INTERNATIONAL KNITWEAR COLLECTION
LONDON PARIS HAMBURG NEW YORK SYDNEY

Empisal

*An Empisal Publication: World Copyright by Empisal International

Photography by IAN MORGAN
Produced by IMIN PRODUCTIONS.

Empisal

Pattern Book AU9



Pattern No. 17 See page 21
Pattern No. 19 See page 22
Skirt No. 18 See page 22
Pants No. 6 See page 14