

INTERNATIONAL  
KNITWEAR  
COLLECTION

**EMPISAL**

**BOOK AU22**



## CONTENTS

Page 9	Patterned Jumper — Polo Neck	AU22-1
Page 10	Ribbed Polo Neck Sweater	AU22-2
Page 11	Fair Isle Cardigan	AU22-3
Page 12	Cardigan with Collar	AU22-4
Page 13	Lace Trim Jumper	AU22-5
Page 14	Jacket with Woven Trim	AU22-6
Page 15	Lace Jumper	AU22-7
Page 16	Lace Vest	AU22-8
Page 17	Fair Isle Sweater	AU22-9
Page 18	Twin Set	AU22-10
Page 19	Three Piece Suit	AU22-11
Page 21	Jumper — Stripe Trim	AU22-12

PATTERN AU22-2

See Page 10

PATTERN AU22-3

See Page 11



PATTERN No. AU22-4  
See Page 12



PATTERN No. AU22-5  
See Page 13



PATTERN No. AU22-6

See Page 14



PATTERN No. AU22-7

See Page 15

PATTERN No. AU22-8

See Page 16



PATTERN No. AU22-9

See Page 17





PATTERN No. AU22-10

See Page 18



PATTERN No. AU22-11

See Page 19



# EMPISAL

## INTERNATIONAL KNITWEAR COLLECTION

Empisal are pleased to present their International Fashion Co-ordinators' selection of ladies machine knitted garments featuring a wide size range.

\*AN EMPISAL PUBLICATION: WORLD COPYRIGHT BY EMPISAL INTERNATIONAL

### LADY'S JUMPER

Pattern No. AU22-1



**MATERIALS:** 5 ply Harmony 100g balls 4(5-5-6-6) balls Main Colour (MC), 2(2-3-3-4) balls Contrast Colour (CC). Bluebell 25g balls 16(18-20-22-24) balls Main Colour (MC), 7(8-10-12-14) balls Contrast Colour (CC).

**MEASUREMENTS:** To fit bust 32(34-36-38-40)ins, 81[86-91-97-102] cm. Measures 32(34-36-38-40)ins, 81[86-91-97-102] cm. Length 25(25¼-25½-25¾-26) 63[64-65-65-66] cm. Sleeve seam 17(17-17-17-17)ins, 43[43-43-43-43] cm.

**TENSION:** 15 sts and 33 rows to 2 ins (5 cm) over patt. (Please check).

**PATTERN:** Carr on R.

1. Cam on 2. [KH 600-610-680L] on III [KH 91]. Slide dial on 1. Press buttons 1, 2, 5 and 6. (Set lever. Using MC knit 1 row) 3 times.
2. Cam on 3 [KH 600-610-680L] on I (KH 91). Slide dial on 1. Knit 1 row.
3. Cam on 4 [KH 600-610-680L] on III on L and I on R [KH 91]. Slide dial on 3. Press buttons 1, 2, 5 and 6. Set lever. Using CC knit 2 rows.

Repeat.

**BACK:** T.0 cast on with MC 123(131-139-147-155) sts for 1 x 1 rib odd st on R of 0. T.4 rib 31 rows. Dec 1 st on L side of machine in last row. Transfer sts to main bed. T.7 R/C on 0. Work 210 rows in patt. **SHAPE ARMHOLES:** Cast off 4(4-4-4-4)sts beg next 2 rows. Dec 1 st ea end of next row and every foll alt row 8(12-16-20-24) times, \*\* then in every foll 4th row 32(31-30-29-28) times. Take rem 32(34-34-36-36) sts off on waste yarn.

**FRONT:** Work as for Back to \*\*. Dec 1 st ea end next row and every foll 4th row 20(18-16-14-12) times 56(60-64-68-72)sts. Knit 1 row. **SHAPE NECK:** Knit 33(35-37-40-42)sts at opp end to carr manually on to waste yarn. Push needles into A pos. Work 2 rows. Dec 1 st ea end next row. Dec 1 st at armhole edge in every foll 4th row 11(12-13-14-15) times. **AT THE SAME TIME** dec 1 st at neck edge in every 4th row from previous dec 3(5-5-4-4) times, then in every foll 6th row 5(4-5-7-7) times. 2 sts. Work 2 tog. Fasten off. Bring sts on waste yarn back into B pos. Knit centre 10(10-10-12-12)sts off on waste yarn. Knit rem sts to correspond with other side reversing shapings.

**SLEEVES:** T.0 cast on with MC 65(67-69-71-73)sts T.4 rib 31 rows. Inc 1 st at right of machine in last row. Transfer sts to main bed. R/C 0. Work 4 rows in patt. Inc 1 st ea end next row and every foll 24th (22nd-20th-18th-16th) row 7(9-10-11-12) times. 82 (86-90-94-98). Knit until R/C reads 234. **SHAPE TOP:** Cast off 4(4-4-4-4)sts beg next 2 rows dec 1 st ea end next row and every foll 6th row 8(6-4-2-0) time/s. 56(64-72-80-90)sts then in every foll 4th row 24(28-32-36-40) times. R/C reads 147(151-155-159-163). Knit 1 row. Take rem 8 sts off on waste yarn.

**POLO COLLAR:** Sew up raglans leaving Left back seam open. Wrong side facing pick up 123(125-127-129-131)sts (including sts from waste yarn) evenly around neck. Using MC T.7 knit 1 row. Arrange sts for 1 x 1 rib inc 1 st ea end for seam. T.4 rib 37 rows. Cast off.

**TO MAKE UP:** Press lightly. Join side and sleeve seams. Sew up L raglan and polo collar seam reversing seam of polo collar where T.7 started. Press seams.

## LADY'S RIBBED JUMPER

Pattern No. AU22-2



**MATERIALS:** 5 ply Harmony 100g balls 6(6-7-7) balls. Bluebell 25g balls 23(24-25-26) balls.

**MEASUREMENTS:** To fit 32(34-36-38)ins bust, 81 [86-91-97] cm. Measures 32(34-36-38)ins, 81[86-91-97] cm. Length 24(24½-24½-24½)ins, 61[62-62-63] cm. Sleeve seam 19(19-19-19)ins, 48[48-48-48] cm.

**TENSION:** T.8=14 sts to 2 ins (5 cm) in width and 19 rows to 2 ins (5 cm) in depth measured over st st. (Please check)

**BACK:** T.0 cast on 130(138-146-154)sts for 2 x 2 rib. T.5 R/C 0 rib 34 rows. T.7 rib 82 rows (R/C reads 116). **SHAPE ARMHOLE:** Cast off 5(5-5-6)sts beg next 2 rows. Dec 1 st ea end next row. **32, 34 and 36 only** — dec 1 st ea end of every 4th row 6(3-2) times. \*\*All Sizes — dec 1 st ea end every foll alt row 36(43-46-52) times. 34(34-38-38)sts. Take rem sts off on waste yarn.

**FRONT:** Work as for Back to \*\*. All sizes — dec 1 st ea end every alt row 20(27-29-34) times. 66(66-72-72)sts. **SHAPE NECK:** Push 39(40-43-43)sts at opp end to carr into E pos. Cam on (KH 91) III (KH 600-610-680L) on 2. Dec at armhole edge in next row and every foll alt row 15(15-16-16) times at the same time dec at neck edge in next row and every foll alt row 2 (2-6-3) times, then in every foll 4th row 5(5-4-6) times. (2 sts). Knit 2 tog. Fasten off. Return centre 14 sts to working pos and take off on waste yarn. Return rem sts to working pos and work to correspond with other side.

**SLEEVES:** T.1 cast on 62(62-66-66)sts for 2 x 2 rib. T.5 rib 34 rows. T.7 work 4 rows inc 1 st ea end next

row and every foll 10th(8th-8th-8th) row 13(15-15-16) times. 90(94-98-100)sts. Work 5(15-15-7) rows. R/C reads 174. **SHAPE TOP:** Cast off 5(5-5-6)sts beg next 2 rows. Dec 1 st ea end next row and every foll 4th row 14(13-12-13) times. 50(56-62-60)sts then in every alt row 20(23-26-27) times. Take rem 10 sts off on waste yarn.

**POLO COLLAR:** Sew up raglan sleeves leaving L back seam open. Pick up 120(120-128-128)sts evenly around neck (including sts from waste yarn) and 26(26-28-28)sts along each side of neck. T.7 knit 1 row. Arrange sts for 2 x 2 rib inc 1 st ea end for seam. T.5 rib 33 rows. T.7 rib 50 rows. Cast off.

**TO MAKE UP:** Join side and sleeve seams reversing seam for cuff 2 ins (5 cm) on sleeve. Sew up L raglan and polo collar seam reversing seam of polo collar where T.7 started. Press seams.

## LADY'S CARDIGAN

Pattern No. AU22-3



**MATERIALS:** 5 ply Harmony 100g balls 4(4-4-5) balls Main Colour (MC), 2(2-3-3-3) balls Contrast Colour (CC). Bluebell 25g balls 14(15-16-17-18) balls Main Colour (MC), and 7(8-9-9-10) balls Contrast Colour (CC).  
7 Buttons.

**MEASUREMENTS:** To fit 32(34-36-38-40)ins bust, 81[86-91-97-102] cm. Measures 32(34-36-38-40)ins, 81[86-91-97-102] cm. Length 25¼(25½-25¾-26-26¼) ins, 64[65-65-66-67] cm. Sleeve seam 17(17-17-17-17) ins, 43[43-43-43-43] cm.

**TENSION:** T.9=15 sts and 17 rows to 2 ins (5 cm) over patt. (Please check).

**PATTERN:** Set for Fair Isle. Reverse Switch Minus.

1. (Press buttons 4 and 5. Set lever. Using MC knit 1 row Fair Isle) twice.
2. (Buttons 2, 3, 6 and 7. Set. Using MC knit 1 row Fair Isle) twice.
3. (Buttons 1, 2, 7 and 8. Set. Using MC knit 1 row Fair Isle) twice.
4. (Buttons 2, 3, 6 and 7. Set. Using MC knit 1 row Fair Isle) twice.
5. (Buttons 4 and 5. Set. Using MC knit 1 row Fair Isle) twice.

Repeat.

**BACK:** T.0 cast on with MC 123(131-139-147-155)sts for 1 x 1 rib 61(61-69-69-77)sts on L, 62(70-70-78-78)sts on R. T.4 rib 46 rows, dec 1 st at R of machine in last row. Transfer sts to main bed. T.8 knit 1 row setting machine for Fair Isle. R/C on 0 T.9 work in patt until R/C reads 94. **SHAPE ARMHOLES:** R/C 0 cast off 8(9-10-11-12)sts beg next 2 rows. Dec 1 st ea end next row and every foll alt row 6(8-10-12-14) times. 92(94-96-98-100)sts. Work in patt until R/C reads 64(66-68-70-72). **SHAPE SHOULDERS:** Cast off 10(10-10-11-11)sts beg next 4 rows then 10(11-11-10-10)sts beg next 2 rows. Cast off rem 32(32-34-34-36)sts.

**POCKET FACING (Make 2):** T.8 R/C on 0. Using MC cast on with a selvedge edge 37 sts. Knit 32 rows. Take off on waste yarn.

**RIGHT FRONT:** T.0 cast on with MC 63(67-71-75-79)sts for 1 x 1 rib, 25(29-33-37-41)sts on L of 0, 38 on R of 0. T.4 rib 46 rows dec 1 st at R of machine in last row. Transfer sts to main bed. T.8 knit 1 row setting machine for Fair Isle. R/C on 0 T.9 work 30 rows patt. Knit 13th(15th-17th-19th-21st) to 49th (51st-53rd-55th-57th)sts manually on to waste yarn. Place pocket facing sts on to empty needles, removing waste yarn. Work in patt until R/C reads 92. **SHAPE FRONT SLOPE:** R/C on 0 dec 1 st at end of next row and every foll 4th row 4 times. 57(61-65-69-73)sts. Knit 1 row. **SHAPE ARMHOLE:** Cast off 8(9-10-11-12)sts beg next row. Knit 1 row. Dec 1 st at armhole edge in next and every foll alt row 6(8-10-12-14) times **AT THE SAME TIME** dec 1 st at front edge in every 4th row from previous dec 5(6-8-7-9) times then

in every foll 6th row 7(6-5-6-5) times. 30(31-31-32-32)sts. Work 1(5-5-5-5) row/s. R/C reads 82(82-84-86-88). **SHAPE SHOULDER:** Cast off 10(10-10-11-11) sts beg next row and foll alt row. Work 1 row. Cast off rem 10(11-11-10-10)sts.

**LEFT FRONT:** T.0 cast on 63(67-71-75-79)sts for 1 x 1 rib, 38 sts on L of 0, 25(29-33-37-41)sts on R of 0. T.4 rib 46 rows, dec 1 st on L of machine in last row. Work to correspond with Right Front.

**SLEEVES:** T.0 cast on with MC 63(65-67-69-71)sts for 1 x 1 rib (odd st on R). T.4 rib 36 rows, inc 1 st at L of machine in last row. Transfer sts to main bed. T.8 knit 1 row setting machine for Fair Isle. T.9 work 4 rows in patt. Inc 1 st ea end next row then in every foll 6th row 7 times. 80(82-84-85-88)sts then in every 8th row 7 times. 94(96-98-100-102)sts. Cont until R/C reads 120. **SHAPE TOP:** Cast off 5 sts beg next 2 rows. Dec 1 st ea end next row and every foll alt row 17(18-19-20-21) times, 48 sts, then in every row 15 times, 18 sts. Cast off.

**POCKET TOPS:** Select 37 sts and replace pocket top sts removing waste yarn. T.8 knit 1 row MC. Arrange for 1 x 1 rib. T.4 rib 18 rows. Cast off.

**FRONT BAND:** Sew up shoulder seams. T.0 cast on with MC 15 sts for 1 x 1 rib inc at end cast on so that there are 2 sts at ea end on main bed. T.4 rib 3 rows. \*\* Make a buttonhole by transferring 8th and 9th sts to adjacent needles. Leave empty needles in B pos. Rib 18 rows. \*\*\* Rep from \*\* to \*\*\* 5 times. Work without further buttonholes until band is length required to fit up fronts and across back neck of cardigan. Cast off.

**TO MAKE UP:** Press lightly. Sew up side and sleeve seams. Sew in sleeves. Sew front band in position. Sew down pocket linings and edges of pocket tops. Sew on buttons. Press seams.

## LADY'S CARDIGAN

Pattern No. AU22-4



**MATERIALS:** 5 ply Harmony 100g balls 5(6-6-6) balls, or Bluebell 25g balls 20(21-22-23) balls.  
6 Buttons.

**MEASUREMENTS:** To fit 32(34-36-38)ins bust, 81 [86-91-97] cm. Measures 34(36-38-40)ins, 86[91-97-102] cm. Length (approx.) 27(27½-27½-27½)ins, 69 [69-70-70] cm. Sleeve seam 17(17-17-17)ins, 43[43-43-43] cm.

**TENSION:** 13½ sts to 2 ins (5 cm) over st st. Suggested tension T.8.1 for patt and T.5 for rib.

### PATTERN:

1. Push button 5. Set lever. Move LC from L to R. Knit 2 rows.
2. Buttons 4 and 6. Set. Move LC from L to R. Knit 2 rows.
3. Button 5. Set. Move LC from L to R. Knit 8 rows.
4. Button 1. Set. Move LC from R to L. Knit 2 row.
5. Buttons 2 and 8. Set. Move LC from R to L. Knit 2 rows.
6. Button 1. Set. Move LC from R to L. Knit 8 rows.

Repeat.

**BACK:** Cast on 113(121-129-137)sts for 1 x 1 rib. 52 (60-60-68)sts to left of 0, 61(61-69-69)sts to right of 0.\*\* T.5 work 12 rows in rib. Transfer sts to main bed. T.8.1 work 4 rows st st, then 70 rows patt, inc in

last row. Transfer sts for 2 x 2 rib. T.5 work 30 rows rib, dec in last row. Transfer sts to main bed. T.8.1 work 4 rows st st, then 48 rows patt.\*\* SHAPE RAGLANS: Cast off 3 sts at beg of next 2 rows. Dec at each end of next row and alt rows 31(38-41-40) times 43(37-39-49)sts. 2 smaller sizes only: Dec in foll 3rd rows 6(2) times. Work 1 row. Cast off. 2 larger sizes only: Dec in every row (3-7) times. Cast off.

**LEFT FRONT:** Cast on 57(61-65-69)sts for 1 x 1 rib, 28(32-28-32)sts to left of 0, 29(29-37-37)sts to right of 0. Work as given from \*\* to \*\* for Back. SHAPE RAGLANS AND FRONT SLOPE: Cast off 3 sts at beg and dec at end of next row. Dec at armhole edge in alt rows 32(39-42-51) times, AT THE SAME TIME dec at front edge in foll 6th rows 10 (13-14-13) times 11(5-5-11)sts. 2 smaller sizes only: Dec at armhole edge in foll 3rd rows 6(2) times, AT THE SAME TIME dec at front edge in 6th row/s from previous dec 3(1) time/s. Work 1 row. Work 2 tog. Fasten off. 2 larger sizes only: Dec at armhole edge in every row (4-8) times, AT THE SAME TIME dec at front edge in 5th row from previous dec (0-2) times. Fasten off.

**RIGHT FRONT:** Work to correspond with Left Front, beg with 28(28-36-36)sts to left of 0, 29(33-29-33)sts to right of 0.

**SLEEVES:** Cast on 55(57-59-61)sts for 1 x 1 rib, (odd st on right). T.5 work 12 rows in rib. Transfer sts to main bed. T.8.1 work 4 rows st st. Work in patt, inc at ea end of next row and foll 8th rows 13(14-15-16) times, 83(87-91-95)sts. Work 39(31-23-15) rows. SHAPE RAGLANS: Cast off 3 sts at beg of next 2 rows. Dec at each end of next row and foll 4th rows 6(5-4-3) times, then in alt rows 28(31-34-37) times. 7 sts. Work 1 row. Cast off.

**FRONT BAND:** Cast on 13 sts for 1 x 1 rib inc at end of cast on so that there are 2 sts at each end on main bed. T.5 work 78 rows in rib.\*\* Transfer centre st on main bed and st to right of centre on ribber on to adjacent needles, leave empty needles in working pos. Knit 14 rows.\*\* Rep from \*\* to \*\* 5 times. Cont in rib until R/C reads 540(544-548-552). Cast off.

**COLLAR:** Cast on 198 sts for 2 x 2 rib. T.5 work 48 rows. Cast off 16 sts at beg of next 8 rows. Cast off rem sts.

**TO MAKE UP:** With a slightly damp cloth and warm iron, press lightly. Using back-stitch, join raglan, side and sleeve seams. Sew on front band and buttons. Oversew collar to front band seam as shown in photograph, easing around back of neck.

## LADY'S JUMPER PATTERN No. AU22-5



**MATERIALS:** 5 ply Harmony 100g balls 4(4-5-5-5) balls. Bluebell 25g balls 15(16-17-18-19).

**MEASUREMENTS:** To fit 32(34-36-38-40)ins bust, 81[86-91-97-102]cm. Measures 32(34-36-38-40) ins, 81[86-91-97-102] cm. Sleeve seam 17(17-17-17-17) ins, 43[43-43-43-43] cm. Length 25¼(25½-25¾-26-26¼)ins, 64[65-65-66-67] cm.

**TENSION:** T.8=14 sts to 2 ins (5 cm) and 19 rows to 2 ins (5 cm) over st st. (Please check)

**BACK:** T.0 cast on 113(119-127-135-141)sts for 1 x 1 rib. T.4 rib 26 rows. Transfer sts to main bed. \*\* R/C 0 T.8 knit 142 rows. SHAPE ARMHOLES: R/C 0 Cast off 8(8-8-10-10)sts beg next 2 rows. Dec 1 st each end next row and every foll alt row 5(6-8-8-9) times. 85(89-93-97-101)sts. Knit until R/C reads 70(72-74-76-78). SHAPE SHOULDERS: Cast off 9(10-10-11-11)sts beg next 4 rows, then 10(10-11-11-12)sts beg next 2 rows. Knit rem 29(29-31-31-33) sts off on waste yarn.

**FRONT:** Work as for Back to \*\*. R/C 0 work front as follows - Push 39th(42nd-45th-49th-51st) needles from ea end into A pos placing sts on to adjacent needles. T.8 Knit 142 rows working centre patt panel as shown in graph. SHAPE ARMHOLES: R/C 0 Cast off 8(8-8-10-10)sts beg next 2 rows. Dec 1 st ea end next row and every foll alt row 5(6-8-8-9) times. 85(89-93-97-101)sts. Work 29(27-23-23-21) rows. SHAPE NECK: Knit 50(52-54-56-58)sts at opp end to carr manually on to waste yarn. Push needles into

## LADY'S JACKET

### PATTERN No. AU22-6 (See page 5)

A pos. Dec 1 st at neck edge in next and every foll alt row twice, then in every foll 4th row 4(4-5-5-6) times. Knit until R/C reads 70(72-74-76-78). SHAPE SHOULDER: Cast off 9(10-10-11-11)sts beg next row and foll alt row. Work 1 row. Cast off rem 10(10-11-11-12)sts. Bring rem sts back to B pos. Knit centre 15 sts manually on to waste yarn. R/C 42. Work to correspond with other side.

**SLEEVES:** T.0 Cast on 59(61-61-63-63)sts for 1 x 1 rib. T.4 rib 26 rows. Transfer sts to main bed. R/C 0 T.8 knit 4 rows. Inc 1 st each end next row and every foll 10th(10th-8th-6th-6th) row 2(8-8-5-12) times, then at ea end every 12th (12th-10th-8th-8th) row 7 (2-4-8-3) times. 79(83-87-91-95)sts. Knit until R/C reads 130. SHAPE TOP: R/C 0 Cast off 4(4-4-5-5) sts beg next 2 rows. Dec 1 st ea end next row and every foll alt row 19(19-19-20-20) times. 31(35-39-39-43)sts, then at ea end every row 7(9-11-13-13) times. Cast off rem 17 sts.

**NECKBAND:** Sew up right shoulder seam. Wrong side facing. Pick up 111(115-119-123-127)sts around neck (inc sts from waste yarn). T.8 Knit 1 row. Arrange sts for 1 x 1 rib. T.4 rib 14 rows. Cast off.

**TO MAKE UP:** Press lightly. Sew up left shoulder and neckband seam. Sew up side and sleeve seams. Sew in sleeves. Press seams.

**MATERIALS:** 5 ply Harmony 100g balls 6(6-6-6-7-7) balls Main Colour (MC) and Totem 25g balls 1(1-1-1-1) ball Contrast Colour (CC). Bluebell 25g balls 21 (22-23-24-25-26) balls Main Colour (MC) and Totem 25g balls 1(1-1-1-1) balls Contrast Colour (CC).

**MEASUREMENTS:** To fit 32(34-36-38-40-42)ins bust, 81[86-91-97-102-107]cm. Measures 33(35-37-39-41-43)ins, 84[89-94-99-104-109]cm. Length 22½ (23-23¼-23½-23¾-24)ins, 58[58-59-60-60-61]cm. Sleeve seam 17(17-17-17-17)ins, 43[43-43-43-43]cm.

**TENSION:** T.8=14 sts and 19 rows to 2 ins (5 cm) over st st. (Please check).

**PATTERN:** \*T.6 knit 4 rows.

Set machine for Weaving slide dial on 1.

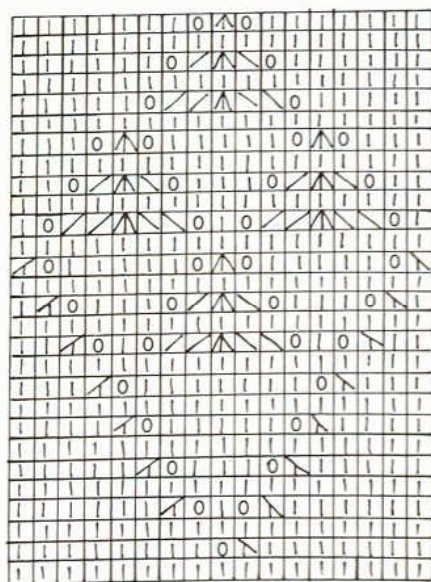
1. (Press buttons 1, 3, 5. Set lever. Knit 1 row) twice.
2. (Buttons 3 and 7. Set. Knit 1 row) 4 times.
3. (Buttons 1, 3 and 5. Set. Knit 1 row) twice. Knit 4 rows MC.\*

**BACK:** Using MC, cast on with a selvedge edge 115 (121-129-135-143-149)sts. R/C on 0 T.8 knit until R/C reads 130. SHAPE ARMHOLES: Cast off 6(6-7-8-10-11)sts beg next 2 rows. Dec 1 st ea end next row and every alt row 5(6-7-8-9-10) times. 91(95-99-101-103-105)sts. Knit until R/C reads 74(76-78-80-82-84). SHAPE SHOULDERS: Cast off 10(11-11-11-11-12) sts beg next 4 rows, then 10(10-11-12-12-11)sts beg foll 2 rows. Cast off rem 31(31-33-33-35-35)sts.

**RIGHT FRONT:** Using MC, cast on with a selvedge edge 57(60-64-67-71-74)sts. R/C on 0 T.8 knit until R/C reads 130. SHAPE ARMHOLES: Cast off 6(6-7-8-10-11)sts beg next row. Dec 1 st at armhole edge in every foll alt row 6(7-8-9-10-11) times. Knit 36(36-34-34-32-32) rows. SHAPE NECK: Cast off 8 sts beg next row. Dec 1 st at neck edge in next row and every foll alt row 6(6-7-7-8-8) times. 30(32-33-34-34-35)sts. Knit until R/C reads 74(76-78-80-82-84). SHAPE SHOULDER: Cast off 10(11-11-11-11-12)sts beg next row and foll alt row. Knit 1 row. Cast off rem 10(10-11-12-12-11)sts.

**LEFT FRONT:** Work to correspond with Right Front.

**SLEEVES:** Using MC cast on with a selvedge edge 59 (61-63-65-67-69)sts. R/C on 0 T.8 knit 4 rows. Inc 1 st ea end next row and every foll 6th row 11(10-13-15-15-15) times, then every 8th row 5(6-4-3-3-3) times. 93(95-99-103-105-107)sts. Knit until R/C reads 138. SHAPE TOP: Cast off 3(3-4-5-5-5)sts at beg next 2



↑  
CENTRE STITCH



rows. Dec 1 st ea end next row and every alt row 15 (16-17-18-19-20) times, then in every row 21 times. Cast off rem 13 sts.

**LOWER BAND—Left Half:** Using MC cast on with a selvedge edge 121(137-145-153-161-169-177)sts. 66 (74-74-82-82-90)sts to left of 0, 71(71-79-79-87-87) sts to right of 0. R/C on 0 T.6 knit 16 rows inc at left side of neckband in every alt row 8 times. T.8 knit 1 row. T.6 work 16 rows in patt dec at end of every alt row 8 times. Cast off.

**RIGHT HALF:** Work to correspond with Left Half working shaping at opp end of work.

**FRONT BAND (Make 2):** Using MC cast on with a selvedge edge 153 sts, 74 sts to left of 0, 79 sts to right of 0. \*\*R/C on 0 T.6 knit 16 rows inc at ea end ov every alt row 8 times. T.8 knit 1 row. T.6 work 16 rows in patt dec at ea end of every alt row 8 times. Cast off. \*\*

**NECKBAND:** Using MC cast on with a selvedge edge 105(105-105-113-113-113)sts, 50 sts to left of 0, 55 (55-55-63-63-63)sts to right of 0. Work as given from \*\* to \*\* for Front Bands.

**LOWER SLEEVE BAND (Make 2):** Using MC cast on with a selvedge edge 57(57-65-65-73-73)sts 26(26-34-34-42-42)sts to L of 0, 31 sts to R of 0. Work as given from \*\* to \*\* for Front Bands omitting shaping.

**TO MAKE UP:** Press work lightly. Sew up side, shoulder and sleeve seams. Sew in sleeves. Join lower bands in centre and sew cast-off edge in position, fold in half and slip-stitch cast on edge to seam. Sew front bands and neckbands in position in same manner, joining mitred corners. Sew sleeve bands in position as for lower band. Press seams.

## LADY'S JUMPER PATTERN No. AU22-7



**MATERIALS:** 5 ply Harmony 100g balls 3(3-3) balls. Bluebell 25g balls 10(11-12) balls.

**MEASUREMENTS:** To fit 32(34-36)ins bust, 81[86-91] cm. Measures 32(34-36)ins, 81[86-91] cm. Length 20(20½-21½)ins, 51[51-52] cm. Sleeve seam 4(4-4)ins, 10[10-10] cm.

**TENSION:** T.7=12½ sts to 2 ins (5 cm) and 19 rows to 2 ins (5 cm) over patt. (Please check).

**PATTERN:** Carr on R.

1. Press button 5. Set lever. Move LC from L to R. Knit 2 rows.
2. Press button 6. Set. Move LC from L to R.
3. Press button 4. Set. Move LC from R to L. Knit 2 rows.
4. Press button 7. Set. Move LC from L to R.
5. Press button 3. Set. Move LC from R to L. Knit 2 rows.
6. Press buttons 5 and 8. Set. Move LC from L to R.
7. Press button 2. Set. Move LC from R to L. Knit 2 rows.
8. Press button 1. Set. Move LC from L to R. Knit 6 rows.

Repeat.

**BACK:** T.0 cast on 101(109-117)sts for 1 x 1 rib. 50 (58-58)sts to L of 0, 51(51-59)sts to R of 0. T.4 rib 31 rows. Transfer sts to main bed. R/C 0 T.7 work 98 rows in patt. **SHAPE ARMHOLES:** R/C 0 cast off 5(6-7)sts beg next 2 rows. 89(97-103)sts. Dec 1 st ea

end next row and every foll alt row 4(6-7) times. 81 (83-87)sts.\*\* Work in patt until R/C reads 66(70-72). **SHAPE SHOULDERS:** Cast off 9 sts beg next 4 rows. Take off rem 45(47-51)sts on waste yarn.

**FRONT:** Work as for Back to \*\*. Knit 1 row. **SHAPE NECK:** Knit manually on to waste yarn 53(54-57)sts at opp end to carr. Push needles into A pos. Dec 1 st at neck edge in next row and every foll alt row twice, then in every 4th row 7(8-10) times. 18 sts. Knit until R/C reads 66(70-72). **SHAPE SHOULDER:** Cast off 9 sts beg next row. Work 1 row. Cast off. Bring rem sts back to B pos. Knit centre 25(25-27)sts off manually on to waste yarn. R/C reads 12(14-16). Knit on rem sts to correspond with other side.

**SLEEVES:** T.0 cast on 71(77-83)sts for 1 x 1 rib. T.4 rib 16 rows. Take work off machine on waste yarn. Select 101(109-117) needles on main bed, 50(58-58) to L of 0, 51(51-59) to R of 0. Replace work inc 30 (32-34)sts evenly across. R/C 0 T.7 knit 1 row then work 28 rows in patt. **SHAPE TOP:** Cast off 4 sts beg next 2 rows. Dec 1 st ea end next row and every foll alt row 19 times 53(61-69)sts then in every row 9(11-13) times. Cast off rem 35(39-43)sts.

**NECKBAND:** Sew up right shoulder seam. With wrong side facing pick up 163(165-171)sts evenly around neck including sts from waste yarn. T.6 knit 1 row. Arrange sts for 1 x 1 rib. T.4 rib 16 rows. Cast off.

**TO MAKE UP:** Press lightly. Sew up left shoulder and neckband seam. Sew up side and sleeve seams. Sew in sleeves gathering fullness at top. Press seams.

## LADY'S VEST

### PATTERN No. AU22-8

**MATERIALS:** 5 ply Harmony 100g balls 3(3-3-4) balls, or Bluebell 25g balls 11(12-12-13) balls.

**MEASUREMENTS:** To fit 32(34½-37-39½)ins bust, 81 [88-94-100] cm. Measures 32(34½-37-39½)ins, 81 [88-94-100] cm. Length 20(20¼-20½-20¾)ins, 51 [51-52-53] cm.

**TENSION:** T.7=13 sts to 2 ins (5 cm) and 18½ rows to 2 ins (5 cm) over patt. (Please check).

**PATTERN:** Carr on Right. Reverse Knob +.

1. Press button 3. Set lever. Move LC from L to R.
2. Button 5. Set. Move LC from R to L.
3. Button 2. Set. Move LC from L to R.
4. Button 6. Set. Move LC from R to L.
5. Button 1. Set. Move LC from L to R.
6. Button 7. Set. Move LC from R to L.

Knit 4 rows.

Repeat.



**BACK:** T.0 cast on 105(113-121-129)sts for 1 x 1 rib. 53(53-61-61)sts to L of 0, 52(60-60-68)sts to R of 0. T.4 rib 39 rows. Transfer sts to main bed.\*\* R/C 0 T.7 work 70 rows in patt. **SHAPE ARMHOLES:** R/C 0 cast off 8(8-10-10)sts beg next 2 rows. Dec 1 st ea end next row and every foll alt row 7(9-9-11) times. 73(77-81-85)sts. Work in patt until R/C reads 86(88-90-92). **SHAPE SHOULDERS:** Cast off 6(6-7-7)sts beg next 4 rows, then 6(7-6-7)sts beg next 2 rows. Cast off rem 37(39-41-43)sts.

**FRONT:** Work as for Back to \*\*. R/C 0 T.7 work 52 rows in patt. **SHAPE NECK:** Knit 52(56-60-64)sts at opp end to carr manually on to waste yarn. Push needles into A pos. Move centre st on to adjacent needle. R/C 0 dec 1 st at neck edge in every 4th row 4 times. 48(52-56-60)sts. **SHAPE ARMHOLE:** Cast off 8(8-10-10)sts beg next row. Dec 1 st at armhole edge in every alt row 8(10-10-12) times, AT THE SAME TIME dec 1 st at neck edge in every 4th row from prev dec 7(9-11-13) times then in every foll 6th row 7(6-5-4) times. Knit until R/C reads 104(106-108-110). **SHAPE SHOULDER:** Cast off 6(6-7-7)sts beg next row and foll alt row. Work 1 row. Cast off 6(7-6-7)sts. Bring rem sts back to B pos and work to correspond with other side.

**NECKBAND:** T.0 cast on 111(115-119-123)sts for 1 x 1 rib. T.4 rib 18 rows, dec 1 st at centre front in every row. Cast off. Work other side to correspond.

**ARMHOLE BANDS:** T.0 cast on 159(163-167-171) sts for 1 x 1 rib. T.4 rib 10 rows. Cast off.

**TO MAKE UP:** Press lightly. Sew up side and shoulder seams. Join neckband at centre front and centre back. Join armhole bands. Sew on neckband and armhole bands. Press seams.

## LADY'S JUMPER

Pattern No. AU22-9



**MATERIALS:** 5 ply Harmony 100g balls 4(4-5-5) balls Main Colour (MC), 1(1-2-2) balls Contrast Colour (CC). Bluebell 25g balls 15(16-17-18) balls Main Colour (MC) 3,(4-5-5) balls Contrast Colour (CC).

**MEASUREMENTS:** To fit 32(34-36-38)ins bust, 81 [86-91-97] cm. Measures 33(35-37-39)ins, 84[89-94-99] cm. Length 23(23½-23½-23¾)ins, 58[59-60-60] cm. Sleeve seam 17(17-17-17)ins, 43[43-43-43] cm.

**TENSION:** T.8=14 sts and 19 rows to 2 ins (5 cm) measured over stocking stitch. (Please check).

**PATTERN:** Set knitter for Fair Isle. Carr on R; Reverse Knob on Minus.

1. Press buttons 2, 3, 4, 5. Slide dial on 1. Set lever. Knit 1 row.
  2. Slide dial on 2. Set. Knit 1 row.
  3. Dial on 3. Set. Knit 1 row.
  4. Dial on 4. Set. Knit 1 row.
  5. Dial on 5. Set. Knit 1 row.
  6. Dial on 6. Set. Knit 1 row.
  7. Dial on 2. Set. Knit 1 row.
  8. Dial on 1. Set. Knit 1 row.
  9. Dial on 8. Set. Knit 1 row.
  10. Dial on 7. Set. Knit 1 row.
  11. Dial on 6. Set. Knit 1 row.
  12. Dial on 5. Set. Knit 1 row.
- Repeat.

**BACK:** T.0 cast on with MC 129(133-137-141)sts for 1 x 1 rib. T.4 rib 96 rows. Transfer sts to main bed.

T.8 knit 1 row setting machine for Fair Isle.\*\* R/C 0 T.9 patt 50 rows. SHAPE ARMHOLES: R/C 0 cast off 8(8-9-10)sts beg next 2 rows. Dec 1 st ea end next row and every foll alt row 7 times. 97(101-103-105)sts. Knit 47(49-51-53) rows. R/C reads 64(66-68-70). SHAPE SHOULDERS: Cast off 8(8-8-9)sts beg next 2 rows then 8(9-9-9)sts beg foll 2 rows. Cast off rem 65(67-69-69)sts.

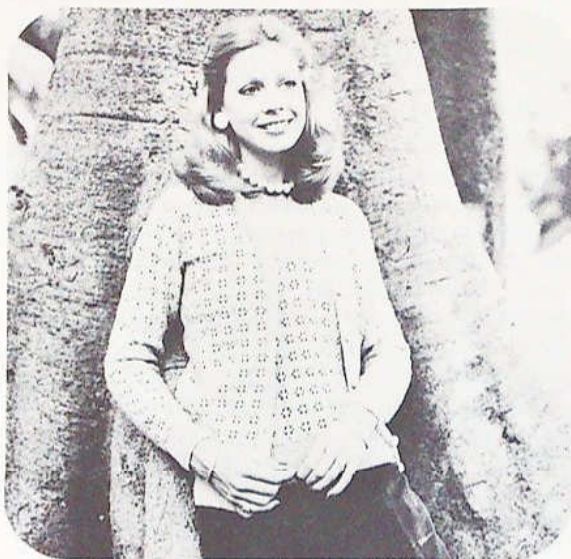
**FRONT:** Work as for Back to \*\*. R/C 0 T.9 patt 32 rows. SHAPE NECK: Transfer centre st on to adjacent needle. Knit off manually with waste yarn all sts from centre at opp end to carr and push needles into A pos. R/C 0. Dec at centre front in 3rd row and every alt row 7 times. 56(58-60-62)sts. Work 1 row. SHAPE ARMHOLE: Cast off 8(8-9-10)sts at armhole edge and dec at neck edge in next row. Dec at armhole edge in every alt row 8 times AT THE SAME TIME dec 1 st at neck edge in every alt row from previous dec 17(18-19-18) times then in every 4th row 6(6-6-7) times. 16(17-17-18)sts. Work 5 rows. SHAPE SHOULDER: Cast off 8(8-8-9)sts beg next row. Work 1 row. Cast off rem 8(9-9-9)sts. Bring rem sts back into B pos. Work to correspond with other side.

**SLEEVES:** T.0. Cast on with MC 57(59-63-65)sts for 1 x 1 rib. R/C 0. T.4 rib 36 rows. Transfer sts to main bed. T.8 R/C 0. Knit 4 rows in st st. Inc 1 st at ea end next row and every foll 8th row 8 times. 75(77-81-83) sts then in every foll 10th row 5 times. 85(87-91-93) sts. Knit until R/C reads 134. SHAPE TOP: Cast off 4(4-4-5)sts beg next 2 rows. Dec 1 st ea end next row and every foll alt row 19(20-20-22) times. 37(37-41-37)sts, then in every row 7(7-9-7) times. Cast off rem 23 sts.

**NECKBAND:** Sew up shoulder seams. Wrong side facing commencing at centre back pick up 113(117-121-125)sts evenly across back neck and down R side of neck. Using MC T.8 knit 1 row. Arrange sts for 1 x 1 rib. T.4 rib 24 rows, dec 1 st at centre front in every row. Cast off. Work other side to correspond.

**TO MAKE UP:** Press lightly. Join side and sleeve seams. Sew in sleeves. Join centre back and centre front neckband seams. Press all seams.

**LADY'S TWIN SET**  
**PATTERN No. AU22-10**



**MATERIALS** 5 ply Harmony 100g balls 3(3-3-4) balls for Vest 5(5-6-6) balls for Cardigan. Bluebell 25g balls 11(12-12-13) balls for Vest and 19(20-21-22) balls for Cardigan.  
 7 Buttons for Cardigan.

**MEASUREMENTS:** To fit 32(34½-37-39½)ins bust, 81[88-94-100]cm. VEST—measures 32(34½-37-39½)ins, 81[88-94-100]cm. Length 21(21¼-21½-21¾)ins, 53[54-55-55]cm. CARDIGAN—measures 34½(37-39½-42)ins, 88[94-100-107]cm. Length 24(24¼-24½-24¾)ins, 61[62-62-63]cm. Sleeve seam 17(17-17-17)ins, 43[43-43-43]cm.

**TENSION:** T.7=13½ sts and 23 rows to 2 ins (5 cm) over patt. (Please check).

**PATTERN:** Carr on R. Cams on 2 (KH 600-610-680L). Both on III (KH 91) (Hold).

1. Press button 5. Set lever. Knit 2 rows.
2. Cam on 3 (KH 600-610-680L) on I (KH 91) (Knit). Knit 1 row.
3. Cam on Hold. Press button 5. Set. Knit 2 rows.
4. Cam on Knit. Knit 1 row.
5. Press button 4. Move LC from L to R.
6. Button 6. Set. Move LC from R to L. Knit 2 rows.
7. Button 7. Set. Move LC from L to R.
8. Button 3. Set. Move LC from R to L. Knit 2 rows.
9. Button 4. Set. Move LC from L to R.

10. Button 6. Set. Move LC from R to L. Knit 2 rows.

Repeat.

NOTE:—Purl side of patt is right side.

**VEST. BACK:** T.0 cast on 107(115-123-131)sts for 1 x 1 rib. 53(53-61-61)sts to L of 0, 54(62-62-70)sts to R of 0. T.4 rib 31 rows. Transfer sts to main bed.\*\* T.7 R/C 0 work 132 rows in patt. **SHAPE ARMHOLES:** R/C 0 cast off 6(9-9-12)sts beg next 2 rows. Dec 1 st ea end next row and every foll alt row 6(6-9-9) times. 81(83-85-87)sts. Work in patt until R/C reads 96(100-102-106). **SHAPE SHOULDERS:** Cast off 10 sts beg next 4 rows. Cast off rem 41(43-45-47) sts.

**FRONT:** Work as given for Back to \*\*. Work 122 rows in patt. **SHAPE NECK:** Knit 61(65-69-73)sts at opp end to carr manually on to waste yarn. Push needles into A pos. Dec 1 st at neck edge in 7th row. Work 3 rows. **SHAPE ARMHOLE:** R/C 0 cast off 6(9-9-12)sts beg next row. Dec 1 st at armhole edge in every alt row 7(7-10-10) times **AT THE SAME TIME** dec 1 st at neck edge in every 6th row from previous dec 3(3-4-4) times, then in every 8th row 9(10-10-11) times (20 sts.) Work until R/C reads 96(100-102-106). **SHAPE SHOULDERS:** Cast off 10 sts beg next row. Work 1 row. Cast off rem 10 sts. Bring sts on waste yarn back into working position. Cast off centre 15 sts and work to correspond with other side.

**NECKBAND:** T.0 cast on 181(187-193-199)sts for 1 x 1 rib. T.4 rib 24 rows. Cast off.

**ARMBANDS:** Sew up shoulder seams. With wrong side facing, pick up 155(167-171-183)sts. T.7 kniy 1 row. Arrange sts for 1 x 1 rib. T.4 rib 12 rows. Cast off.

**TO MAKE UP:** Press lightly. Sew up side seams and armbands. Sew on neckband crossing right side over left. Press seams.

**CARDIGAN. BACK:** T.0 cast on 115(123-131-139)sts for 1 x 1 rib, 53(61-61-69)sts to L of 0, 62(62-70-70)sts to R of 0. T.4 rib 31 rows. Transfer sts to main bed. T.7 work 144 rows in patt. **SHAPE ARMHOLES:** Cast off 4 sts beg next 2 rows. Dec 1 st ea end next row and every foll 4th row 16(15-13-12) times. 73(83-95-105)sts, then in every alt row 20(24-29-33) times, 33(35-37-39)sts. Patt 1 row. R/C reads 108(112-114-118). Cast off.

**LEFT FRONT:** T.0 cast on 59(63-67-70)sts for 1 x 1 rib 29(33-37-41)sts to L of 0, 30 sts to R of 0. T.4 rib 31 rows. Transfer sts to main bed. T.7 R/C 0 work 144 rows in patt. **SHAPE ARMHOLE AND FRONT:**

## LADY'S TWINSET AND SKIRT PATTERN No. AU22-11



R/C 0 cast off 4 sts beg next row. Work 1 row. Dec 1 st beg next row and every foll 4th row 16(15-13-12) times then in every alt row 20(24-29-33) times AT THE SAME TIME dec 1 st at neck edge in next row and every foll 6th row 12(14-16-18) times, then in every foll 8th row 3(2-1-0) time/s. 2 sts. Patt 1 row. R/C reads 108(112-114-118). Work 2 tog. Fasten off.

**RIGHT FRONT:** T.0 cast on 59(63-67-70)sts for 1 x 1 rib, 29 sts to L of 0, 30(34-38-42)sts to R of 0. Work to correspond with Left Front.

**SLEEVES:** T.0 cast on 59(61-63-65)sts for 1 x 1 rib, odd st on R. T.4 rib 25 rows. Transfer sts to main bed. T.7 work 4 rows patt. Inc 1 st ea end next row and every foll 10th(10th-10th-9th) row 15(16-16-17) times. 91(95-97-101)sts. Work in patt until R/C reads 168. **SHAPE TOP:** R/C 0 cast off 4 sts beg next 2 rows. Dec 1 st ea end next row and every foll 4th row 15 times. 51(55-57-61)sts then in every alt row 22(24-25-27) times. Work 1 row. R/C reads 108(112-114-118). Cast off rem 7 sts.

**FRONT BAND:** Sew up raglans. T.0 cast on 13 sts for 1 x 1 rib, inc 1 st each end after cast on so that there are 2 sts on main bed ea end of row. T.4 rib 4 rows. Make buttonhole by moving 7th and 8th sts on to adjacent needles, leave empty needles in working pos. Make a buttonhole in every foll 22nd row 6 times. R/C reads 136. Cont without buttonholes until band is length required to fit (slightly stretched) around fronts and across back and sleeves of cardigan. Cast off.

**TO MAKE UP:** Press lightly. Sew up sleeve and side seams. Sew on Front Band. Sew on Buttons. Press seams.

**MATERIALS:** JUMPER—5 ply Harmony 100g balls 3(3-4-4-4-4) balls. Bluebell 25g balls 11(12-13-14-15-16) balls. CARDIGAN—5 ply Harmony 100g balls 4(5-5-5-5-6) balls. Bluebell 25g balls 16(17-18-19-20-21) balls. SKIRT—5 ply Harmony 100g balls 3(3-4-4-4-5) balls. Bluebell 25g balls 11(12-13-14-15-16) balls. 11 Buttons for Cardigan. Round elastic for Skirt.

**MEASUREMENTS:** Fits bust 32(34½-37-39½-42-44½)ins, 81[88-94-100-107-113]cm. JUMPER measures 32½(35-37½-40-42½-45)ins, 83[89-95-102-108-114]cm. Length 21½(21½-21¾-22-22¼-22½)ins, 54[55-55-56-57-57]cm. Sleeve seam 6(6-6-6-6)ins, 15[15-15-15-15-15]cm. CARDIGAN measures 33½(36-38½-41-43½-46)ins, 85[91-98-104-110-117]cm. Length 23(23¼-23½-23¾-24-24¼)ins, 58[59-60-60-61-62]cm. Sleeve seam 17(17-17-17-17)ins, 43[43-43-43-43]cm. SKIRT—Waist (adjustable with elastic) 24(26-28-30-32-34)ins, 61[66-71-76-81-86]cm. Hips 34(36-38-40-42-44)ins, 86[91-96-101-106-111]cm. Length 23(23-23-23-23-23)ins, 58[58-58-58-58-58]cm. Lower edge 48(50-52-54-56-58)ins, 122[127-132-137-142-147]cm.

**TENSION:** T.8=14 sts and 19 rows to 2 ins (5 cm) over st st. T.7=8 sts and 12 rows (1 patt)=1¼ ins (3.2 cm) over patt. (Please check).

**PATTERN:** Carr on Right.

1. Press button 5. Set lever. Move LC from L to R.
2. Button 3. Set. Move LC from R to L. Knit 2 rows.

3. Button 6. Set. Move LC from L to R.
4. Button 2. Set. Move LC from R to L. Knit 2 rows.
5. Button 7. Set. Move LC from L to R.
6. Button 1. Set. Move LC from R to L. Knit 2 rows.
7. Button 7. Set. Move LC from L to R.
8. Button 1. Set. Move LC from R to L. Knit 2 rows.
9. Button 7. Set. Move LC from L to R.
10. Button 1. Set. Move LC from R to L. Knit 2 rows.
11. Buttons 1 and 5. Set. Move LC from L to R.
12. Buttons 3 and 7. Set. Move LC from R to L. Knit 2 rows.

Repeat.

**JUMPER: BACK:** T.0 cast on 105(113-121-129-137-145)sts for 1 x 1 rib. 53(53-61-61-69-69)sts to L of O, 52(60-60-68-68-76)sts to R of O. T.4 rib 26 rows. Transfer sts to main bed. T.7 R/C 0 knit 1 row. Work 113 rows in patt. **SHAPE ARMHOLES:** R/C 0 cast off 8(8-8-10-10-10)sts beg next 2 rows. Dec 1 st ea end next row and every alt row 6(8-10-10-12-14) times. 75(79-83-87-91-95)sts. \*\* Knit until R/C reads 76(78-80-82-84-86). **SHAPE SHOULDERS:** Cast off 8(8-8-9-9-9)sts beg next 4 rows then 7(8-9-8-9-10)sts beg next 2 rows. Take off rem 29(31-33-35-37-39)sts on waste yarn.

**FRONT:** Work as for Back to \*\*. Work 29(27-23-25-21-19) rows in patt. **SHAPE R SIDE OF NECK:** Knit 44(46-48-51-53-55)sts at opp end to carr manually on to waste yarn, push needles into A pos. Dec 1 st at neck edge in next row and every foll alt row 2(3-3-4-5-7) times then in every 4th row 5(5-6-5-5-4) times. 23(24-25-26-27-28)sts. Work 7(5-3-5-5-5) rows. **SHAPE SHOULDER:** Cast off 8(8-8-9-9-9)sts beg next row and foll alt row. Work 1 row. Cast off. Bring rem sts back into working pos. Knit centre 13(13-13-15-15-15)sts off on waste yarn. Work L side of neck to correspond with R side.

**SLEEVES:** T.0 cast on 69(73-77-79-83-87)sts for 1 x 1 rib (odd st on L). T.4 rib 26 rows. Transfer sts to main bed. T.7 R/C 0 knit 1 row. Work 4 rows in patt. Inc 1 st ea end next row and every foll 8th row 3(3-3-4-4-4) times. Work 9(9-9-1-1-1) row/s in patt. **SHAPE TOP:** Cast off 4(4-4-5-5-5)sts beg next 2 rows. Dec 1 st ea end next row and every foll alt row 26(27-28-29-31-33) times. Work 1 row. Cast off rem 15(17-17-19-19-19)sts.

**NECKBAND:** Sew up shoulder seam. Wrong side facing pick up 89(91-93-95-97-99)sts evenly around neck (including sts from waste yarn). T.7 knit 1 row.

Arrange sts for 1 x 1 rib. T.4 rib 18 rows. Cast off loosely.

**TO MAKE UP:** Press lightly. Sew up L shoulder seam and neckband. Sew up side and sleeve seams. Sew in sleeves. Press seams.

**CARDIGAN. BACK:** T.0 cast on 113(123-129-137-145-153)sts for 1 x 1 rib. 53(61-61-69-69-77)sts on L of 0 60(60-68-68-76-76)sts on R of 0. T.4 rib 26 rows. Transfer sts to main bed. T.8 knit 1 row. R/C 0. T.7 work 12 rows patt. T.8 work 12 rows st st. Rep from \* to \* until R/C reads 132. \*\* **SHAPE ARMHOLES:** Keeping patt correct cast off 6(6-6-8-8-8)sts beg next 2 rows. Dec 1 st ea end next row and every foll alt row 6(8-10-10-12-14) times. 87(91-95-99-103-107)sts. Knit until R/C reads 78(80-82-84-86-88). **SHAPE SHOULDERS:** Cast off 10(10-11-11-11-12)sts beg next 4 rows then 10(11-10-11-12-11)sts beg next 2 rows. Take rem 27(29-31-33-35-37)sts off machine on waste yarn.

**RIGHT FRONT:** T.0 cast on 57(61-65-69-73-77)sts for 1 x 1 rib 29(35-37-33-37-41)sts on L of 0 28(28-28-36-36-36)sts on R of 0. Work as for Back to \*\*. **SHAPE ARMHOLE:** Cast off 6(6-6-8-8-8)sts beg next row. Dec 1 st at armhole edge in every alt row 7(9-11-11-13-15) times. 44(46-48-50-52-54)sts. Work 42(38-32-32-30-28) rows. **SHAPE NECK:** Cast off 5(5-5-6-6-6)sts beg next row. Dec 1 st at neck edge in next row and every alt row 8(9-10-10-11-12) times. 30(31-32-33-34-35)sts. Work 3(3-5-5-5-3) rows. **SHAPE SHOULDER:** Cast off 10(10-11-11-11-12)sts beg next row and foll alt row. Work 1 row. Cast off rem 10(11-10-11-12-11)sts.

**LEFT FRONT:** T.0 cast on 57(61-65-69-73-77)sts for 1 x 1 rib. 29(29-29-37-37-37)sts to L of 0, 28(32-36-32-36-40)sts to R of 0. Work as for Right Front reversing all shapings.

**SLEEVES:** T.0 cast on 61(63-65-67-69-71)sts for 1 x 1 rib. T.4 rib 26 rows. R/C 0 T.8 work 4 rows. Inc 1 st ea end next row and every foll 8th(8th-7th-7th-6th-6th) row 14(15-16-17-18-19) times. 91(95-99-103-107-111)sts. Knit until R/C reads 132. **SHAPE TOP:** R/C 0 cast off 4(4-4-5-5-5)sts beg next 2 rows. Dec 1 st ea end next row and every foll alt row 21(21-21-30-30-30) times, then ea end every row 11(13-15-15-17-19) times. Cast off rem 17 sts.

**NECKBAND:** Sew up shoulder seams. Wrong side facing pick up 71(73-77-79-85-87)sts evenly around neck. T.7 knit 1 row. Arrange sts for 1 x 1 rib. T.4 rib 14 rows. Cast off.

**RIGHT FRONT BAND:** T.0 cast on 13 sts for 1 x 1

rib. Inc 1 st ea end of cast on so that there are 2 sts ea end of row on main bed. T.4 rib 3 rows. \*\* Make a 2 st buttonhole in next row. (Make a buttonhole by moving 7th and 8th sts on to adjacent needles.) Leave empty needles in B pos, rib 21 rows. \*\*\* Rep. from \*\* to \*\*\* 8 times, then buttonhole once. Rib 4 rows. R/C reads 188. Cast off.

**LEFT FRONT BAND:** Work as for Right Front Band omitting buttonholes.

**TO MAKE UP:** Press lightly. Sew up side and sleeve seams. Sew in sleeves. Sew on front bands. Press seams. Sew on buttons.

**SKIRT (Make 4 pieces).** T.0 cast on 49(53-57-61-67-71)sts for 1 x 1 rib. T.4 rib 14 rows. Transfer sts to main bed. R/C 0 T.8 knit 12 rows. Inc 1 st ea end next row and every foll 10th row 5 times. 61(65-69-75-79-83)sts, then in every foll 14th row 8 times. 77(81-85-91-95-99)sts. Knit 24 rows. T.9 knit 1 row. T.6 knit 14 rows.

**TO MAKE UP:** Press lightly. Sew up seams. Turn up 14 rows for hem and stitch in place. Thread round elastic through waist band, drawing in band to waist measurement. Press seams.

## LADY'S JUMPER in 4 size. PATTERN No. AU22-12



**MATERIALS:** 5 ply Harmony 100g balls 4(5-5-5) balls Main Colour (MC). Small quantity (approx. ¼ ball) for 1st Colour Contrast (CC1), and 2nd Colour Contrast (CC2). Bluebell 25g balls 16(17-18-19) balls Main Colour (MC), 1(1-1-1) balls 1st Colour Contrast (CC1), and 1(1-1-1) balls 2nd Colour Contrast (CC2).

**MEASUREMENTS:** To fit 32(34-36-38)ins, bust 81 [86-91-97] cm. Measures 32(34-36-38)ins, 81 [86-91-97] cm. Length 21½(22-22½-22½)ins, 55 [56-56-57] cm. Sleeve seam 19(19-19-19)ins, 48 [48-48-48] cm.

**TENSION:** T.8=14 sts and 19 rows to 2 ins (5 cm) over st st. (Please check).

**BACK:** (Commencing at lower edge of right sleeve). Cast on 47(49-51-53)sts in waste yarn. Knit several rows waste ending with carr on left. R/C on 0 T.8 using MC knit 8 rows. Knit until R/C reads 142. **SHAPE SLEEVES:** Inc 1 st at end of next row and foll alt rows 9 times. 71(73-75-77)sts. Cast on 67 sts beg next row. 138(140-142-144)sts. \*\* Knit 151(159-171-179) rows. \*\*\* Cast off 67 sts beg next row. Dec 1 st at end of next row and foll alt rows 9 times. 61 (63-65-67)sts. Knit 14 rows. Dec 1 st ea end next row and foll 20th row 6 times. 47(49-51-53)sts. Knit 7 rows. R/C reads 474(482-494-502). Take sts off machine on waste yarn.

**FRONT:** (Commencing at lower edge of left sleeve). Work as given for Back to \*\*. Knit 46(50-56-60) rows. R/C reads 208(212-218-222). **SHAPE NECK:** Cast off 4 sts beg next row and foll alt row 14 times. Knit 1 row. Cast on 4 sts beg next row and foll alt row 14 times. R/C reads 267(271-277-281). Knit 46(50-56-60) rows. Work as given for Back from \*\*\* to end.

**CUFFS:** Sew up shoulder and top sleeve seams. Select 57(57-59-59) needles. Return lower edge of sleeve to machine, dec evenly across row. T.8 knit 1 row CC1. Transfer sts for 1 x 1 rib. R/C on 0. T.4 knit 5 rows CC1, 6 rows MC, 6 rows CC2. Cast off loosely.

**NECKBAND:** With wrong side facing pick up 103 sts evenly along neck edge from centre front to centre back, add 1 st ea end for seams. T.8 knit 1 row CC1. Transfer sts for 1 x 1 rib. R/C on 0. T.4 rib 5 rows CC1, 6 rows MC, 6 rows CC2, dec 1 st at front edge of every row. Cast off loosely. Work other side to correspond.

**LOWER FRONT BAND:** With wrong side facing pick up 111(119-127-135)sts along lower edge. T.8 knit 1 row CC1. Transfer sts for 1 x 1 rib. R/C on 0. T.4 rib 5 rows CC1, 6 rows MC, 6 rows CC2. Cast off loosely.

**LOWER BACK BAND:** Work as lower Front Band.

**TO MAKE UP:** Press work lightly. Sew up side and sleeve seams. Join neckband seams. Press seams.

INTERNATIONAL  
KNITWEAR  
COLLECTION

**EMPISAL**

**BOOK AU22**

