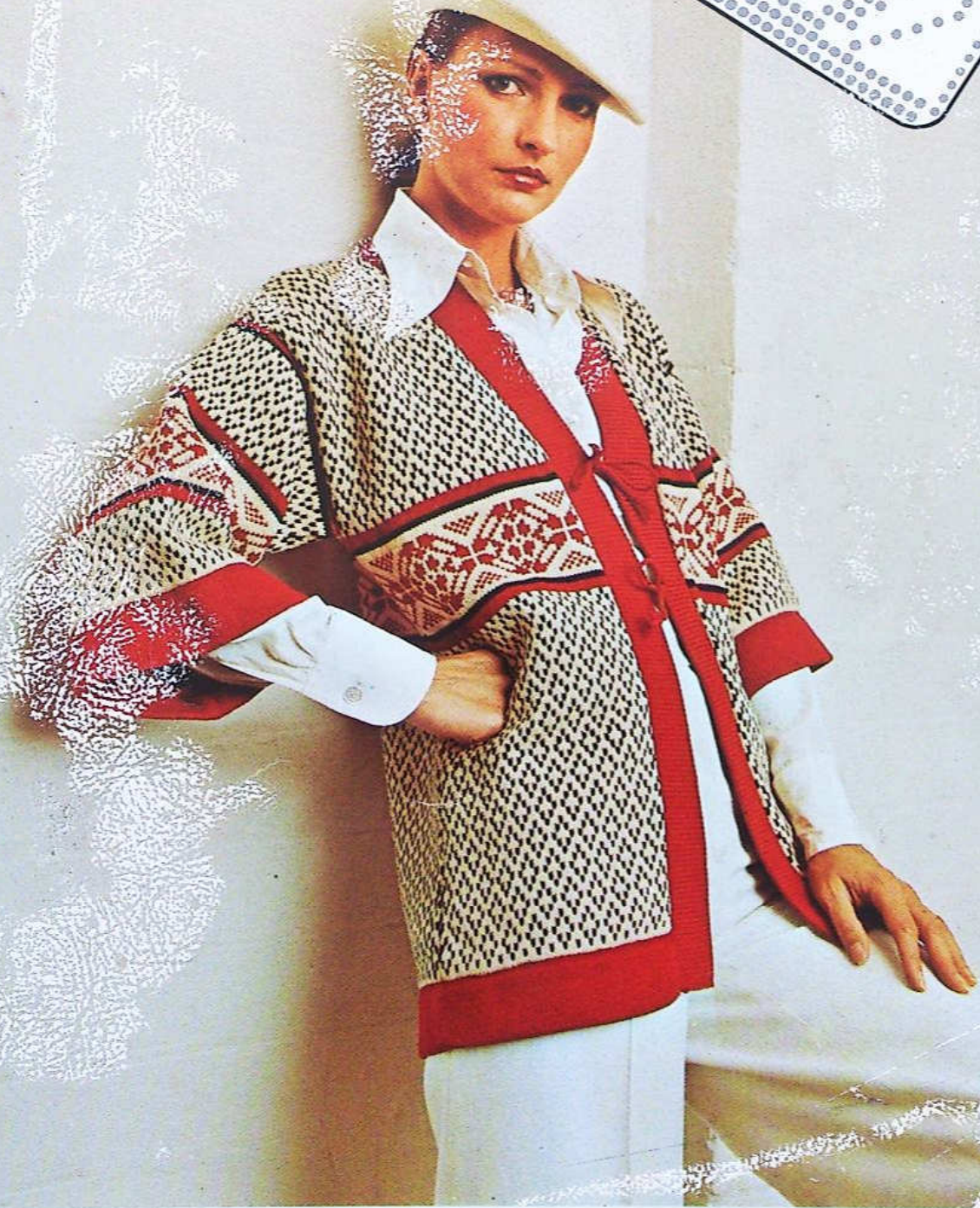


EMPISAL

AUTUMN KNITWEAR

BOOK AUF 5



LADY'S JACKET

AUP6 - 1



	A	B	C	D
MATERIALS:				
PATONS BLUEBELL	13	14	15	16
M.C. 25g balls or 200g balls	2	2	2	2
C.C.1 25g balls or 200g balls	7	7	8	8
C.C.2 25g balls or 200g balls	7	7	8	8
	1	1	1	1

MEASUREMENTS:

Fits Bust	cm	80	85	90	95
	ins.	31½	33½	35½	37½
Measures	cm	86	91	96	101
	ins.	33¾	35¾	37¾	39¾
Length	cm	64	64	65	65
	ins.	25	25	25½	25½
Sleeve Seam	cm	27	All Sizes		
	ins.	10½	All Sizes		

PATTERN: Patt. 1. Card No. 5 Fair Isle.

Patt. 2. Card No. 225. Steps No. 25 to 47 incl.

TENSION: T 10 = 30 sts and 37 rows to 10 cm (approx. 4 ins.) over Patt. 1 and T 9.1 = 26½ sts and 39 rows to 10 cm (approx. 4 ins.) over st st. PLEASE CHECK.

JACKET.

Back. Carr on R. Using M.C. T 10, cast on 131 (139

–147–155) sts for selvedge edge.** Set card for patt. 1. R/C 0. Using C.C.1 in Feeder A; and M.C. in Feeder B work until R/C reads 98. STOP CARD. T 9.1. Knit 4 rows C.C.2, Knit 2 rows C.C.1 Knit 2 rows M.C., setting card for patt. 2 in last row. T 10. Using C.C.2 in Feeder 2 work patt. 2. T 9.1. Knit 3 rows M.C. Knit 2 rows. C.C.1, knit 4 rows C.C.2.** setting card for patt. 1 in last row. R/C 0. Work in patt. 1 until R/C reads 82 (82 – 86 – 86) SHAPE SHOULDERS. Cast off 10 (11 – 12 – 13) sts at beg of next 6 rows, then 11 (12 – 12 – 13) sts at beg of foll 2 rows. Cast off rem 49 (49 – 51 – 51) sts.

Right Front. Carr on R. using M.C. T 10. Cast on 61 (65 – 69 – 73) sts for selvedge edge 41 (43 – 45 – 49) sts to L of 0, 20 (22 – 24 – 26) sts to R of 0. Work as for Back from** to **. SHAPE FRONT. R/C 0. Dec. at R of Machine in next and foll 4th rows 20 (20 – 21 – 21) times in all – 41 (45 – 48 – 52) sts. Work until R/C reads 82 (82 – 86 – 86). SHAPE SHOULDER. Cast off 10 (11 – 12 – 13) sts at beg of next and foll alt rows 3 times in all. Work 1 row. Cast off rem 11 (12 – 12 – 13) sts.

Left Front. Carr on R. Using M.C. T 10. Cast on 61 (65 – 69 – 73) sts for selvedge edge 19 (21 – 23 – 25) sts to L of 0 42 (44 – 46 – 48) sts to R of 0. Complete to correspond with R Front, working shapings at R of machine.

Sleeves. Carr on R. Using M.C. T 10. Cast on 133 (133 – 139 – 139) sts for selvedge edge. Set card for patt. 1. R/C 0. Using M.C. in Feeder 1 and C.C.1 in Feeder 2, work in patt. 1 until R/C reads 24. STOP CARD. T 9.1, knit 4 rows C.C.2. Knit 2 rows C.C.1. Knit 2 rows M.C., setting card for patt. 2 in last row. T 10. Work patt. 2, using M.C. in Feeder 1 and C.C.2 in Feeder 2. STOP CARD. T 9.1. Knit 3 rows M.C., Knit 2 rows C.C.1. Knit 4 rows C.C.2, setting card for patt. 1 in last row. T 10. Using M.C. and C.C.1, work 30 rows patt. 1. T 9.1. Knit 2 rows C.C.1. Knit 4 rows C.C.2. R/C reads 100. Cast off.

Front Bands. (2). Cast on 191(191 – 196 – 196) sts in waste yarn. T 8.1. Knit 6 rows. R/C 0. Using C.C.2, Knit 20 rows. T 10, Knit 1 row. T 9.1, Knit 20 rows. T 10 Close hem. T 9.1 Knit 1 row. Cast off.

Lower Back Band (1). Cast on 116 (123 – 130 – 137) sts in waste yarn and work as for Front Bands.

Lower Front Bands (2). Cast on 54 (57 – 61 – 65) sts in waste yarn and work as for Front Bands.

Sleeve Bands (2). Cast on 118 (118 – 123 – 123) sts in waste yarn and work as for Front Bands.

TO MAKE UP: Press lightly. Join shoulder and Front Band seams. Sew in sleeves. Sew cast off edges of Lower Back, Front and Sleeve Bands to Jacket. Join side and Sleeve seams. Sew on Front Band. Make 4

twisted cords, using 4 strands of C.C.2. 54 cm (21¼ ins.) long for each cord. Tie a knot in one end of each cord and fray ends. Loop other end of cords

through Front Bands of Jacket to form ties. Press seams.

MAN'S VEST AUP6 - 2



	A	B	C	D	E	F
MATERIALS:						
PATONS PATONYLE						
M.C. 25g balls	9	10	11	12	13	14
or 200g balls	2	2	2	2	2	2
C.C. 25g balls	2	2	2	2	2	2

MEASUREMENTS:		A	B	C	D	E	F
Fits Chest	cm	85	90	95	100	105	110
	ins.	33½	35½	37½	39¼	41¼	43¼
Measures	cm	89	94	99	104	105	114
	ins.	35	37	39	41	43	45
Length	cm	58	65	65	66	66	67
	ins.	22¾	25½	25½	26	26	26½

PATTERN: Card No. 102 FAIR ISLE. VOL. 1.

TENSION: T 7.1 = 29 sts and 39 rows to 10 cm (approx. 4 ins.) over st st. PLEASE CHECK.

VEST:

Back. T 0. Using M.C. Cast on 131 (139 - 145 - 153 - 159 - 167) sts for 1 x 1 rib. T 3. Rib 28 rows. Transfer sts to Main Bed.** R/C 0. T 7.1. Knit until

R/C reads 114 (132 - 132 - 132 - 132 - 132). **SHAPE ARMHOLES.** R/C 0. Cast off 11 (12 - 13 - 14 - 15 - 16) sts at beg of next 2 rows. Dec at ea end of next and foll alt rows 11 (12 - 13 - 14 - 15 - 16) times in all - 87 (91 - 93 - 97 - 99 - 103) sts. Knit until R/C reads 90 (98 - 98 - 102 - 106). **SHAPE SHOULDERS.** Cast off 8 (8 - 9 - 9 - 9 - 9) sts at beg of next 4 rows, then 8 (9 - 8 - 9 - 9 - 10) sts at beg of foll 2 rows. Take rem 39 (41 - 41 - 43 - 45 - 47) sts off on waste yarn.

Front. Work as for Back to **. Take work off on waste yarn.

Right Front Panel. Bring 26 (28 - 31 - 33 - 35 - 38) needles into "B" pos. Wrong side facing replace 25 (27 - 30 - 32 - 34 - 37) sts at R end of work on these needles, inc at L of machine. Carr on R. R/C 0. T 7.1. Knit until R/C reads 114 (132 - 132 - 132 - 132 - 132). **SHAPE ARMHOLE.** R/C 0. Cast off 11 (12 - 13 - 14 - 15 - 16) sts at beg of next row. Dec at armhole edge in alt rows 11 (12 - 13 - 14 - 15 - 16) times - 4 (4 - 5 - 5 - 5 - 6) sts. Knit until R/C reads 90 (98 - 98 - 102 - 102 - 106). Cast off.

Right Fair Isle Panel. Bring 21 sts at centre of machine into "B" pos. 10 sts to L of 0, 11 sts to R of 0. Replace next 19 sts of front onto these needles, inc at ea end. Using M.C. in Feeder A. SET CARD. T 7.1. R/C 0. Work until R/C reads 178 (200 - 200 - 204 - 204 - 208). **SHAPE SHOULDER.** Cast off 6 (6 - 6 - 6 - 6 - 5) sts at beg of next row. Work 1 row. Cast off 8 (8 - 9 - 9 - 9 - 9) sts at beg of next row. Work 1 row. Cast off rem 7 (7 - 6 - 6 - 6 - 7) sts.

CENTRE PANEL:

Bring 45 (49 - 49 - 53 - 57) needles into "B" pos. Replace next 43 (47 - 47 - 51 - 53 - 55) sts on these needles, inc at ea end. R/C 0. T 8.1. Knit until R/C reads 114 (132 - 132 - 132 - 132 - 132).

DIVIDE FOR NECK: R/C 0. Knit 23 (25 - 25 - 27 - 28 - 29) sts at opp end to carr manually onto waste yarn. Push needles into "A" pos. Dec at neck edge in 5th and foll 4th rows 13 (12 - 12 - 13 - 16 - 17) times in all - 9 (12 - 12 - 13 - 11 - 11) sts, then in foll 6th rows 6 (8 - 8 - 8 - 6 - 6) times - 3 (4 - 4 - 5 - 5 - 5) sts. Knit until R/C reads 94 (102 - 102 - 106 - 106 - 110). Cast off. Bring rem needles back into "B" pos. Join in yarn and work

other side to correspond, working a dec at centre front in 1st row.

Left Fair Isle Panel. Work to correspond with R Fair Isle Panel.

Left Side Panel. Work to correspond with R side panel, working shapings at opp end of machine.

Right Side Neckband. Join front panels. Join R shoulder seam. Wrong side facing. Pick up 109 (117 - 117 - 123 - 125 - 129) sts from waste yarn and evenly along R side of neck. T 7.1. Using M.C. Knit 1 row. Transfer sts for 1x1 rib. T 3. Rib 16 rows dec at centre front in next and foll alt rows 8 times in all. Cast off loosely.

Left Side Neckband. Pick up 71 (77 - 77 - 81 - 81 - 83) sts evenly along L side of neck and work to correspond with R side neckband.

Armhole Bands (2). Join L shoulder seam. Wrong side facing pick up 159 (173 - 175 - 183 - 193) sts evenly around armhole edge. T 7.1. Using M.C. Knit 1 row. Transfer sts for 1 x 1 rib. T 3. Rib 16 rows. Cast off loosely.

TO MAKE UP: Press lightly. Join side seams. Press seams.

LADY'S KANGA POUCH JUMPER

AUP6 - 3



TENSION: T 9.1 = 26½ sts and 39 rows to 10 cm (approx. 4 ins.) over st st and T 7.1 = 32 sts and 37 rows (slightly stretched) to 10 cm (approx. 4 ins.) over rib (PLEASE CHECK).

JUMPER:

Lower Front and Back (Alike). Cast on 113 (120 - 127 - 134) sts in waste yarn. Knit 6 rows.

Using main yarn T 8.1 knit 16 rows. T 10 knit 1 row. T 9.1 knit 16 rows. T 10 close hem. Remove waste yarn. T 9.1 R/C 0. Knit until R/C reads 134. Cast off.

Left Yoke and Sleeve. T 0 Cast on 142 (142 - 150 - 150) sts for a 2 x 2 rib. R/C 0, T 7.1. Rib 148 rows. Tie a coloured thread at ea end of last row. Work until R/C reads 214 (218 - 222 - 226). **SHAPE NECK.** Knit 72 (72 - 76 - 76) sts at opp end to carr manually onto waste yarn, push needles into "A" pos. Work until R/C reads 226 (230 - 236 - 240). Cast off. Bring rem. needles back into B pos. Join in yarn and cast off centre 16 sts. Work 1 row. Dec at neck edge in every row 6 (6 - 8 - 8) times - 50 (50 - 52 - 52) sts. Cast off.

Right Yoke and Sleeve. Work to correspond with Left Yoke and Sleeve, reversing all shapings.

Collar. T 0. Cast on 162 (162 - 166 - 166) sts for 2 x 2 rib. T 7.1. Rib 36 rows. Cast off 8 sts at beg of next 10 rows - 82 (82 - 86 - 86) sts. Cast off.

Front Bands (2). T 0. Cast on 21 sts for 1 x 1 rib, inc. at ea end of Main Bed after selvedge - 23 sts. T 5. Rib 96 rows. Cast off.

Pocket. T 0. Cast on 82 sts for 2 x 2 rib. T 7.1. Rib 90 rows. Cast off.

To Make Up. Press lightly. Join centre back seam of yoke. Sew on collar and front bands, reversing front band seam on collar. Join lower front and back bodice to yoke between coloured threads. Join side and sleeve seams, reversing seam for 16 cm (6¼ ins.) for cuff. Sew on pocket as illustrated. Press seams.

	A	B	C	D
MATERIALS:				
PATONS BLUEBELL	22	24	26	28
25g balls or				
200g balls	3	3	4	4

MEASUREMENTS:

Fits Bust	cm	80	85	90	95
	ins.	31½	33½	35½	37½
Measures	cm	84	89	94	99
	ins.	33	35	37	39
Length	cm	60	60	61	61
	ins.	23½	23½	24	24
Sleeve Seam (incl. cuff)	cm	40	All Sizes		
	ins.	15¾	All Sizes		

Patterns AUP6-2 and AUP6-3



GIRL'S STRAWBERRY DRESS

AUP6 - 4



	A	B	C	D
MATERIALS:				
PATONS PATONYLE				
M.C. 25g balls	6	7	8	9
or 200g balls	1	1	2	2
C.C.1 25g balls	4	4	5	5
or 200g balls	1	1	1	1
C.C.2 25g balls	1	1	1	1
4 small buttons.				

MEASUREMENTS:

Fits Chest	cm	55	60	65	70
	ins.	21 $\frac{3}{4}$	23 $\frac{1}{2}$	25 $\frac{1}{2}$	27 $\frac{1}{2}$
Measures	cm	59	64	69	74
	ins.	23 $\frac{3}{4}$	25	27	29
Length	cm	47	53.5	58	65
	ins.	18 $\frac{1}{2}$	21	22 $\frac{3}{4}$	25 $\frac{1}{2}$
Sleeve Seam	cm	23	28	33	38
	ins.	9	11	13	15

PATTERN 1: Using M.C. Knit 8 rows.

Using C.C.1. Knit 2 rows.

PATTERN 2: Card No. 221. FAIR ISLE VOL. 8.

Using C.C.2 in Feeder B. Work steps 1 to 12 incl.
Using M.C. in Feeder B. Work steps 13 to 16 incl.
STOP CARD.

TENSION: T 7.1 = 29 sts and 39 rows to 10 cm
(approx. 4 ins.) over st st. PLEASE CHECK.

DRESS:

Back. Carr on R. T 7.1. Cast on 127 (139 - 151 - 163) sts in waste yarn. Knit 6 rows. T 6.1. Using M.C. Knit 8 rows. Using C.C.1. Knit 2 rows. T 8.1. Using C.C.1. Knit 1 row. R/C 0. T 7.1. Using C.C.1. Knit 2 rows. Using M.C. Knit 8 rows. T 8.1. Using C.C.1. Close hem. Remove waste yarn. T 7.1. Using C.C.1. Knit 1 row. Work in patt 1 until R/C reads 130 (150 - 160 - 180). Take work off on waste yarn. Bring 85 (93 - 101 - 109) needles into "B" pos (odd st on L). Wrong side facing, replace sts from waste yarn, dec evenly across row. Carr on R. T 7.1. R/C 0. Using C.C.1. ** Knit 4 rows, setting card for patt 2 in last row. Work until R/C reads 12. SHAPE ARMHOLES. R/C 0. Cast off 4 (5 - 5 - 6) sts at beg of next 2 rows. Dec at ea end of next and foll alt rows 3 times in all. Knit 1 row. STOP CARD. Using C.C.1. Dec at ea end of next and foll alt rows 2 (2 - 3 - 3) times in all - 67 (73 - 79 - 85) sts. Knit until R/C reads 42 (48 - 56 - 64). SHAPE SHOULDERS. Cast off 7 (8 - 9 - 9) sts at beg of next 4 rows, then 7 (7 - 8 - 10) sts at beg of foll 2 rows. Take rem 25 (27 - 27 - 29) sts off on waste yarn.

Front. Work as for Back to **. Knit 2 rows. Knit 43 (47 - 51 - 55) sts at opp end to carr manually onto waste yarn. Push needles into "A" pos. Knit 2 rows, setting card for patt 2 in last row. Work until R/C reads 12. SHAPE ARMHOLE. R/C 0. Cast off 4 (5 - 5 - 6) sts. at beg of next row. Dec at armhole edge in alt rows 3 times. Work 1 row. STOP CARD. Dec at armhole edge in next and foll alt row/s 2 (2 - 3 - 3) times in all - 33 (36 - 39 - 42) sts. Knit until R/C reads 23 (27 - 35 - 41). SHAPE NECK. Cast off 6 sts at beg of next row. Dec at neck edge in next and foll alt rows 6 (7 - 7 - 8) times in all. Work until R/C reads 42 (48 - 56 - 64). SHAPE SHOULDER. Cast off 7 (8 - 9 - 9) sts at beg of next row and foll alt row. Work 1 row. Cast off rem 7 (7 - 8 - 10) sts. Bring rem needles back into "B" pos. Join in yarn. and work other side to correspond, working a dec at centre front in 1st row.

SLEEVES: T 7.1. Cast on 67 (73 - 79 - 85) sts in waste yarn. (Odd st on L.) Knit 5 rows. T 6.1. Using C.C.1. Knit 4 rows. T 8.1, knit 1 row. Transfer 1 st ea side of centre st onto adj needle, leaving empty needles in "B" pos. R/C 0. T 7.1. Knit 4 rows. T 8.1. Close hem. T 7.1. Knit 6 rows, setting card for patt 2 in last row. Work patt 2. Using C.C.1. Knit 6 rows. Work in patt 1 until R/C reads 90 (110 - 130 - 150). SHAPE TOP. R/C 0. Cast off 3 sts at beg of next 2 rows. Dec at ea end of next and foll alt rows 9 (10 - 13 - 16) times in all - 43 (47 - 47 - 47) sts; then in

every row 11 (13 - 13 - 13) times. R/C reads 30 (34 - 40 - 46). Cast off rem 21 sts.

NECKBAND. Join shoulder seams. Wrong side facing pick up 65 (71 - 77 - 85) sts evenly around neck (incl. sts from waste yarn). T 7.1. Using C.C.1. Knit 6 rows. T 8.1. Knit 1 row. T 6.1. Knit 6 rows. Cast off. Fold neckband in half and stitch in pos.

Right Front Band. Wrong side facing pick up 31 (39 - 44 - 48) sts evenly along right side of front yoke. Counting from R of machine take 4th and 5th and foll 7th and 8th (9th & 10th - 10th & 11th - 11th & 12th) sts off needles. Leave empty needles in "B"

pos. T 7.1. Using C.C.1. Knit 6 rows, working a small buttonhole (P.55 Inst. Manual) in 1st row. T 8.1. Knit 1 row. T 6.1. Knit 6 rows. Cast off.

Left Front Band. Work as for Right Front Band omitting buttonholes.

TO MAKE UP: Press lightly. Join side and sleeve seams. Sew in sleeves. Fold Front Bands in half and stitch in pos, leaving buttonholes free. Sew on buttons. Press seams. Using 3 strands of yarn 120cm (47¼ ins.) long for each cord, make a twisted cord and thread through lower edge of sleeve. Tie ends in a bow.

GIRL'S ROSEBUD JUMPER

AUP6 - 5



A B C D

MATERIALS:

PATONS PATONYLE
PATONISED

25g balls	6	7	8	9
or 200g balls	1	1	1	2
3 small buttons				

Embroidery Thread for rosebuds
3.00 (No. 10 - 11) Crochet Hook.

MEASUREMENTS:

Fits Underarm	cm	55	60	65	70
	ins.	21¾	23½	25½	27¾
Measures	cm	59	64	69	74
	ins.	23¾	25	27	29
Length	cm	33	37	41	45
	ins.	13	14½	16	17¾
Sleeve Seam	cm	21	26	31	35
	ins.	8¼	10¼	12¼	13¾

PATTERN: Card No. 433. Vol. 10. LACE.

TENSION: T 7.1 = 29 sts and 39 rows to 10 cm (approx. 4 ins.) over st st. PLEASE CHECK.

JUMPER:

Back. T 0. Cast on 87 (95 - 103 - 111) sts for 1 x 1 rib. Odd st on L. T 3. Rib 21 rows. Transfer sts to Main Bed. ** T 7.1. R/C 0. Knit until R/C reads 72 (82 - 90 - 98). SHAPE ARMHOLES. R/C 0. Cast off 5 (5 - 6 - 6) sts at beg of next 2 rows. Dec at ea end of next and foll alt rows 5 (6 - 6 - 7) times in all - 67 (73 - 79 - 85) sts. Knit until R/C reads 42 (48 - 56 - 64). SHAPE SHOULDERS. Cast off 7 (8 - 9 - 9) sts at beg of next 4 rows, then 7 (7 - 8 - 10) sts at beg of foll 2 rows. Take rem 25 (27 - 27 - 29) sts off on waste yarn.

Front. Work as for Back to **. T 7.1. R/C 0. Knit until R/C reads 52 (62 - 70 - 78). SET CARD. T 5.1. Work in patt until R/C reads 72 (82 - 90 - 98). SHAPE ARMHOLES. R/C 0. Cast off 5 (5 - 6 - 6) sts at beg of next 2 rows. Dec at ea end of next and foll alt rows 5 (6 - 6 - 7) times in all - 67 (73 - 79 - 85) sts. Work until R/C reads 23 (27 - 35 - 41). Note Card row No. SHAPE NECK. Knit 40 (43 - 46 - 49) sts at opp end to carr manually on to waste yarn. Push needles into "A" pos. Work 2 rows. Dec at neck edge in next and foll alt rows 6 (7 - 7 - 8) times in all - 21 (23 - 26 - 28) sts. Work until R/C reads 43 (49 - 57 - 65). SHAPE SHOULDER. Cast off 7 (8 - 9 - 9) sts at beg of next row and foll alt row. Work 1 row. Cast off rem 7 (7 - 8 - 10) sts. Bring rem needles back into "B" pos. Take centre 13 sts off on waste yarn. Join in yarn and work other side to correspond.

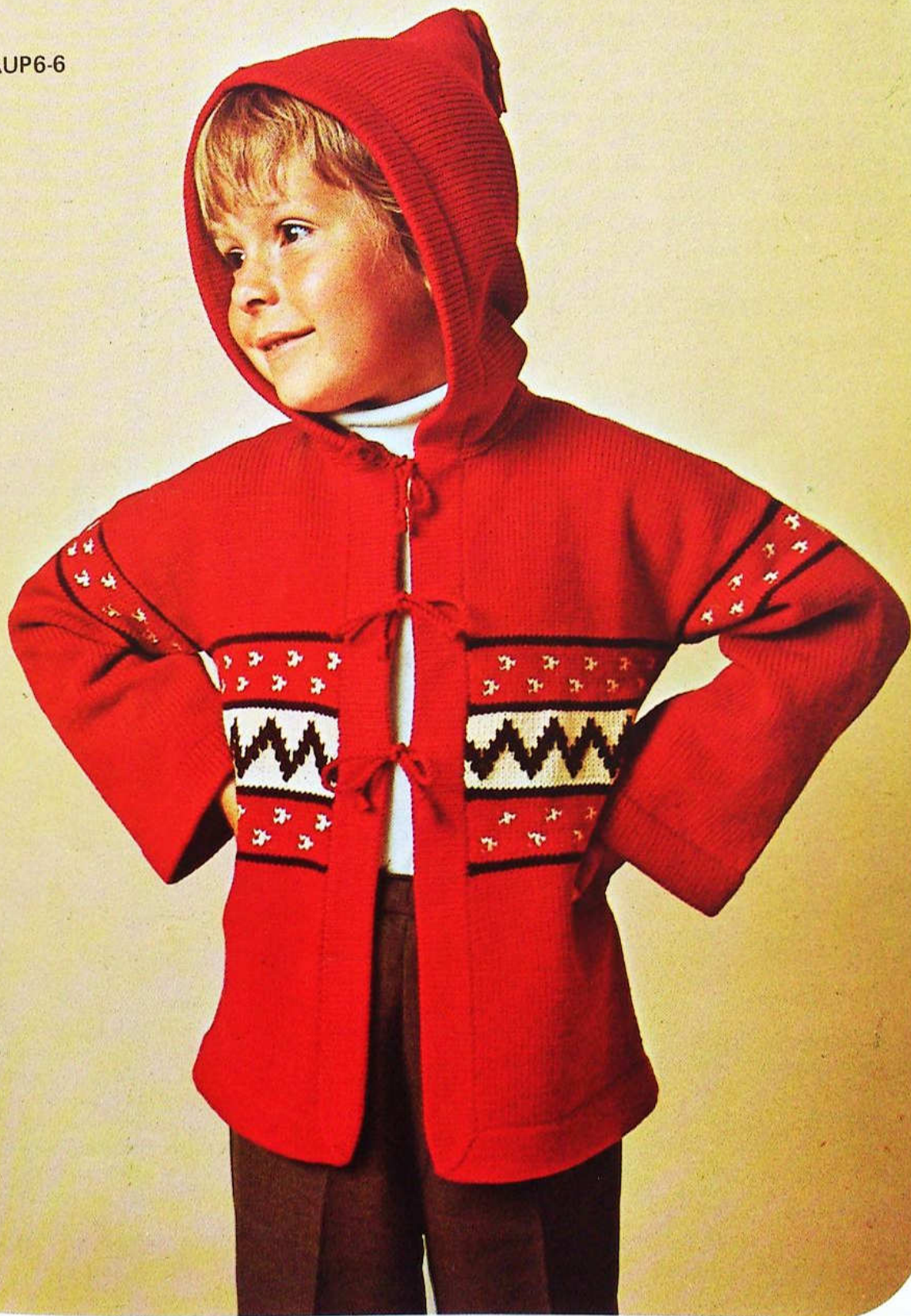
SLEEVES:

T 0. Cast on 45 (47 - 49 - 51) sts for 1 x 1 rib. T 3 rib 20 rows. Transfer sts to Main Bed. R/C 0. T 7.1.

Patterns AUP6-4 and AUP6-5



Pattern AUP6-6



Knit 4 rows. Inc at ea end of next and foll 4th (6th - 6th - 6th) rows 12 (14 - 16 - 18) times in all - 69 (75 - 81 - 87) sts. Knit until R/C reads 62 (82 - 100 - 116). SHAPE TOP R/C 0. Cast off 3 sts at beg of next 2 rows. Dec at ea end of next and foll alt rows 6 (7 - 10 - 13) times in all - 51 (55 - 55 - 55) sts, then in every row 17 (19 - 19 - 19) times. R/C reads 30 (34 - 40 - 46). Cast off rem 17 sts.

NECKBAND:

Join R shoulder seam. Wrong side facing pick up 73

(77 - 79 - 83) sts evenly around neck (incl sts from waste yarn). T 7.1. Knit 1 row. Transfer sts for 1 x 1 rib. T 3. Rib 10 rows. Cast off loosely.

TO MAKE UP:

Join L shoulder seam for .5 cm (¼ in). Join side and sleeve seams. Sew in sleeves. Work 2 rows dc around L shoulder opening, working 3 buttonholes on front edge in 2nd row. Fasten off. Sew on buttons. Work rosebuds in ea diamond if desired. Press seams.

BOY/GIRL ETHNIC JACKET

AUP6 - 6



MATERIALS:

PATONS BLUEBELL

M.C. 25g balls

or 200g balls

C.C.1 25g balls

C.C.2 25g balls

A B C D E

10 12 14 16 18

2 2 2 2 3

1 1 1 2 2

2 2 2 2 2

MEASUREMENTS:

Fits Underarm		cm	55	60	65	70	75
	ins.		21¼	23½	25½	27½	29½
Measures:		cm	61	66	71	76	81
	ins.		24	26	28	30	32
Length		cm	37	41	45	49	54
	ins.		14½	16	17¾	19¼	21¼
Sleeve Seam		cm	21	26	31	35	39
	ins.		8¼	10¼	12¼	13¾	15¼

PATTERN: Card No. 212 FAIR ISLE. VOL. 7. Steps No. 27 to 34 incl.

TENSION: T 9.1 = 26½ sts and 39 rows to 10 cm (approx. 4 ins.) over st st. PLEASE CHECK.

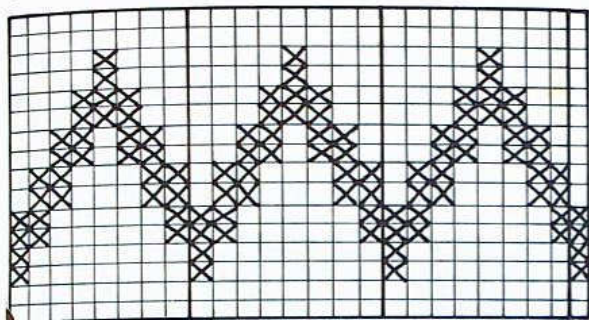
JACKET.

Back. Carr on R. T 9.1. Cast on 84 (90 - 96 - 104 - 110) sts in waste yarn. Knit 6 rows. Using M.C. T 8.1. Knit 12 rows, T 10. Knit 1 row. T 9.1. Knit 12 rows. * T 10. Close hem. Remove waste yarn. R/C 0. T 9.1. Knit until R/C reads 40 (50 - 58 - 66 - 76). * Using C.C.2. Knit 2 rows. Using M.C. Knit 2 rows. Set Card in last row. T 10. Using C.C.1 in Feeder B work patt. T 9.1. Using M.C. Knit 2 rows. Using C.C.2. Knit 2 rows. * Using C.C.1. Knit 16 rows. Rep from * to *.

*** Tie a coloured thread at ea end of last row. R/C reads 88 (98 - 106 - 114 - 124). SHAPE ARM-HOLES. R/C 0. Using M.C. Knit 4 rows. Inc at ea end of next and foll 6th rows 7 (8 - 9 - 10 - 11) times in all - 98 (106 - 114 - 124 - 132) sts. Knit 1 (1 - 1 - 3 - 3) row/s. R/C reads 42 (48 - 54 - 62 - 68). SHAPE SHOULDERS: Cast off 7 (8 - 7 - 8 - 8) sts at beg of next 6 (8 - 8 - 12 - 6) rows. A, B, C and E only - then 8 (9 - 8 - 9) sts at beg of foll 4 (2 - 4 - 6) rows. Cast off rem 24 (24 - 26 - 28 - 30) sts.

Right Front. T 9.1. Cast on 39 (42 - 45 - 49 - 52) sts in waste yarn 18 (21 - 24 - 27 - 30) sts to R of 0, 21 sts to L of 0. Knit 6 rows. T 8.1. Knit 12 rows, inc at L of machine in alt rows 6 times. T 10. Knit 1 row. T 9.1. Knit 12 rows, dec at L of machine in next and foll alt rows 6 times in all. Work as for Back from ** to ***. R/C reads 88 (98 - 106 - 114 - 124). Tie a coloured thread at R of machine in last row. R/C 0. Using M.C. inc at R of machine in 5th and foll 6th rows 5 (6 - 7 - 8 - 9) times in all - 44 (48 - 52 - 57 - 61) sts. SHAPE NECK. Cast off 3 (3 - 4 - 5 - 6) sts at beg of next row. Inc at R of machine in 6th rows from prev inc twice AT THE SAME TIME

dec at neck edge in next and foll alt rows 6 times in all - 37 (41 - 44 - 48 - 51) sts. Knit 1 (1 - 1 - 3 - 3) row/s. R/C reads 42 (48 - 54 - 62 - 68).
SHAPE SHOULDER. Cast off 7 (8 - 7 - 8 - 8) sts at beg of next and foll alt rows 3 (4 - 4 - 5 - 3) times in all, A, C and E only - then 8 (8 - 9) sts at beg of foll alt rows 1 (1 - 2) time/s. Work 1 row. Cast off rem 8 (9 - 8 - 8 - 9) sts.



Left Front. Work to correspond with R Front, reading L for R and R for L.

SLEEVES: T 9.1. Carr on R. Cast on 63 (71 - 81 - 91 - 103) sts in waste yarn. Knit 6 rows. Using M.C. T 8.1. Knit 12 rows. T 10. Knit 1 row. T 9.1. Knit 12 rows. T 10. Close hem. Remove waste yarn. R/C 0. T 9.1. Knit until R/C reads 52 (72 - 90 - 106 - 122). Work from * to * as for Back. Using M.C. Knit

3 rows. R/C reads 71 (91 - 109 - 125 - 131). Cast off.

Front Bands (2). Wrong side facing, pick up 86 (100 - 110 - 122 - 134) sts evenly along Front edge. T 9.1. Knit 12 rows, inc at lower edge in alt rows 6 times. 92 (106 - 116 - 128 - 140) sts. T 10. Knit 1 row. T 8.1. Knit 12 rows, dec at lower edge in next and foll alt rows 6 times in all. Cast off rem 86 (100 - 110 - 122 - 134) sts.

Hood. T 9.1. Carr on R. Cast on 150 (154 - 158 - 162 - 166) sts in waste yarn. Knit 6 rows. T 8.1. Using M.C. Knit 12 rows. T 10. Knit 1 row. T 9.1. Knit 12 rows. T 10. Close hem. R/C 0. T 9.1. Knit until R/C reads 56 (58 - 60 - 62 - 64). Cast off 8 sts at beg of next 14 rows. Cast off rem 38 (42 - 46 - 50 - 54) sts.

TO MAKE UP: Press lightly. Join shoulder, side and sleeve seams. Sew in sleeves. Fold front bands in half and stitch in pos. Join mitred corners. Join back seam of hood and attach to neck edge of jacket. Using 3 strands of yarn 40 cm (15 3/4 ins.) long for each cord make 6 twisted cords and attach 8 cm (3 1/4 ins.) apart in corresponding pos down each front edge of jacket. Make a tassel by winding a length of yarn around a piece of cardboard 8 cm (3 1/4 ins.) wide 35 times. Cut along one edge. Fold in half and tie at top. Attach to hood as illustrated. Using C.C.2 work zig zag patt as shown in graph on C.C.1 stripe. Press seams.

LADY'S TABARD

AUP6 - 7



MATERIALS:	A	B	C	D
PATONS PATONYLE				
M.C. 25g balls	6	7	8	9
or 200g balls	1	1	1	2
C.C. 25g balls	4	4	4	4
or 200g balls	1	1	1	1

MEASUREMENTS:

Fits Bust	cm	80	85	90	95
	ins.	31 1/2	33 1/2	35 1/2	37 1/2
Measures	cm	87	92	97	102
	ins.	34 1/4	36 1/4	38 3/4	40 1/4
Length	cm	62	All Sizes		
	ins.	24 1/2	All Sizes		

PATTERN: Card No. 440 + plain. Vol 10.

TENSION: T 7.1 = 29 sts and 39 rows to 10 cm (approx. 4 ins.) over st st. T 6.1 = 25 1/2 sts and 44 rows to 10 cm (approx. 4 ins.) over patt. PLEASE CHECK.

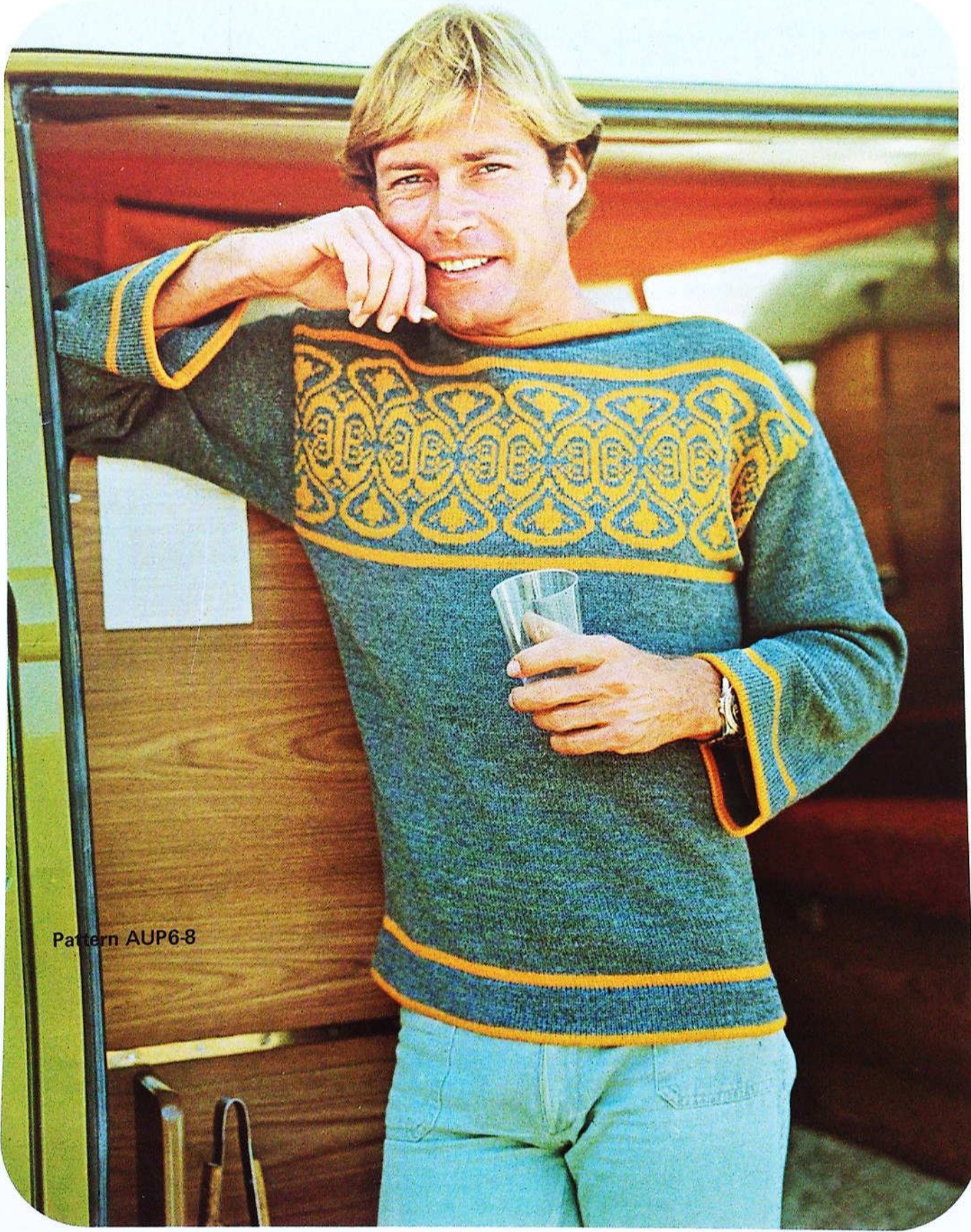
TABARD:

Back. T 6.1. Using M.C. Cast on 93 (99 - 105 - 111) sts for selvedge edge. Knit 3 rows. R/C 0. Set Punch Card. **Work in patt. until R/C reads 256. **SHAPE SHOULDERS.** Cast off 7 (8 - 9 - 10) sts. at beg of next 6 rows. Cast off rem 51 sts.

Front. Work as for Back to **. Work in patt. until R/C reads 148. **SHAPE NECK.** Knit 47 (50 - 53 - 56) sts at opp. end to carr. manually onto waste yarn. Push needles into "A" pos. R/C 0. Dec at neck edge in 5th and foll 4th rows 25 times in all. 21 (24 - 27 - 30) sts. Work until R/C reads 108. **SHAPE SHOULDER.** Cast off 7 (8 - 9 - 10) sts at beg of

Pattern AUP6-7





Pattern AUP6-8

next row and foll alt row. Work 1 row. Cast off rem 7 (8 - 9 - 10) sts. Bring rem. sts. back into "B" pos. Join in yarn and work other side to correspond, working a dec at centre front in 1st row.

Lower Bands (2). T 6.1. Cast on 107 (114 - 121 - 128) sts in waste yarn. Knit 6 rows. Using C.C. Knit 16 rows, inc at ea end of alt rows 8 times - 123 (130 - 137 - 144) sts. T 8.1. Knit 1 row. T 7.1. Knit 16 rows, dec at ea end of next and foll alt rows 8 times in all - 107 (114 - 121 - 128) sts. T 8.1. Close hem. T 7.1. Knit 1 row. Cast off.

Right Front and Left Back Side Bands. T 6.1. Cast on 170 sts in waste yarn. Knit 6 rows. Using C.C. Knit 16 rows, inc at L of machine in alt rows 8 times - 178 sts. T 8.1. Knit 1 row. T 7.1. Knit 16 rows, dec at L of machine in next and foll alt rows 8 times in all - 170 sts. T 8.1. Close hem. T 7.1. Knit 1 row. Cast off.

Left Front and Right Back Side Bands. Work to correspond with other side bands, working shaping at

opp end of machine.

Left Neckband. T 6.1. Cast on 102 sts in waste yarn. Knit 6 rows. R/C 0. Using C.C. Knit 16 rows, dec at R of Machine in alt rows 8 times - 94 sts. T 8.1. Knit 1 row. T 7.1. Knit 16 rows, inc at R of machine in next and foll alt rows 8 times in all - 102 sts. T 8.1. Close hem. T 7.1. Knit 1 row. Cast off.

Right Neckband. Work to correspond with Left Neckband, working shapings at opp end of machine.

BELT:

Using M.C. T 5.1. Cast on 5 sts for selvedge edge. Depress R part button. R/C 0. Knit 560 rows. Cast off. Tie a knot at ea end.

TO MAKE UP: Press lightly. Join shoulder, back neckband and side band seams. Sew all bands in pos. Join mitred corners. Leaving an opening 19cm (7½ ins.) deep for armholes, join side seams for 30 cm (11¼ ins.)

MAN'S JUMPER

AUP6 - 8



MATERIALS:

PATONS PATONYLE
PATONISED

	A	B	C	D	E
M.C. 25g balls or 200g balls	15	16	17	18	19
C.C. 25g balls or 200g balls	3	3	4	4	5
	1	1	1	1	1

MEASUREMENTS:

Fits Chest	cm	90	95	100	105	110
	ins.	35½	37½	39¼	41¼	43¼
Measures	cm	94	99	104	109	114
	ins.	37	39	41	43	45
Length	cm	65	65	66	66	67
	ins.	25½	25½	26	26	26½
Sleeve Seam	cm	48				All Sizes
	ins.	19				All Sizes

PATTERN: Card No. 203 FAIR ISLE. VOL. 2. Work steps No. 1 to 60 incl.

TENSION: T 7.1 = 29 sts and 39 rows to 10 cm (approx. 4 ins.) over st st. PLEASE CHECK.

JUMPER:

Back and Front (Alike). Carr on R. T 7.1. Cast on 126 (134 - 142 - 148 - 156) sts in waste yarn. ** Knit 6 rows. Using M.C. T 6.1. Knit 16 rows. Using C.C. Knit 4 rows. T 8.1. Knit 1 row. R/C 0. T 7.1. Knit 4 rows. Using M.C. Knit 16 rows. T 8.1. Using C.C. Close hem. Remove waste yarn. T 7.1. Knit 3 rows. Using M.C. Knit until R/C reads 34. ** Inc at ea end of next and foll 20th rows 6 times in all - 138 (146 - 154 - 160 - 168) sts. Knit until R/C reads 156. Using C.C. Knit 4 rows. Using M.C. Knit 4 rows, setting card in last row. Tie a coloured thread at ea end of last row. R/C 0. T 8.1. Work patt. STOP CARD. T 7.1. Using M.C. Knit 4 rows. Using C.C. Knit 4 rows. Using M.C. Knit until R/C reads 81 (81

– 85 – 85 – 89). Cam on HOLD. *** Bring 11 (12 – 13 – 14 – 15) needles at opp end to carr into E pos. Knit 1 row. Wind yarn around 1st inner E pos needle. *** Rep from *** to *** 5 times. (Push all E pos needles at opp end to carr into D pos, K1 row) twice. Cam on N. Using C.C. Knit 4 rows. T 8.1. Knit 1 row, casting off 33 (36 – 39 – 42 – 45) sts at beg of row. T 6.1. Knit 6 rows, casting off 33 (36 – 39 – 42 – 45) sts at beg of 1st row. Cast off rem sts.

SLEEVES:

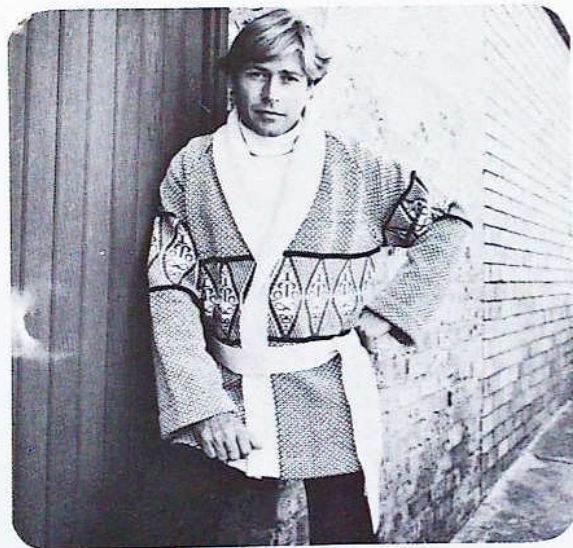
Carr on R. T 7.1. Cast on 95 (96 – 97 – 98 – 99) sts

in waste yarn. Work from ** to ** as for Back. Inc at ea end of next and foll 14th (13th – 12th – 11th – 10th) rows 10 (11 – 12 – 13 – 14) times in all – 115 (118 – 121 – 124 – 127) sts. Knit until R/C reads 186. SHAPE TOP. Cast off 6 sts at beg of next 16 rows. Cast off rem sts.

TO MAKE UP: Press lightly. Join shoulder and sleeve seams. Join side seams to coloured threads. Sew in sleeves. Turn in neck facing and stitch in pos. Press seams.

YOUTHS' & MAN'S JACKET

AUP6 - 9



Length	cm	64	68	74	74	75	75
	ins.	25	26½	29	29	29½	29½
Sleeve Seam	cm	42	46	48	48	48	48
	ins.	16½	18	19	19	19	19

PATTERN 1: Card No. 3. FAIR ISLE.

PATTERN 2: Card No. 206. FAIR ISLE. VOL. 2. Work 62 rows.

TENSION: T 10 = 31 sts and 35 rows to 10 cm over patt. 1. PLEASE CHECK.

JACKET:

Back. Carr on R. T 10. Using M.C. Cast on 144 (152 – 160 – 168 – 176 – 184) sts for selvedge edge. ** SET CARD for patt. 1. Using C.C.1. in Feeder B. R/C 0. Work in patt. 1 until R/C reads 96 (102 – 116 – 116 – 116 – 116). STOP CARD. Using C.C.1. T 9.1. Knit 4 rows, setting card for patt. 2 in last row. Using C.C.2. in Feeder B. T 9.2. Work patt. 2. STOP CARD. Break off C.C.2. T 9.1. Using C.C.1. Knit 4 rows, setting card for patt. 1 in last row. Using M.C. in Feeder A and C.C.1. in Feeder B. T 10. Work 1 row patt. 1. R/C reads 166 (172 – 186 – 186 – 186 – 186). *** SHAPE RAGLANS. R/C 0. Cast off 4 sts at beg of next 2 rows. Dec at ea end of next and foll alt rows 34 (39 – 42 – 39 – 40 – 37) times in all – 68 (66 – 68 – 82 – 88 – 102) sts, then in every row 15 (13 – 13 – 19 – 21 – 27) times. R/C reads 84 (92 – 98 – 98 – 102 – 102). Cast off rem 38 (40 – 42 – 44 – 46 – 48) sts.

Left Front. Carr on R. T 10. Using M.C. Cast on 84 (88 – 92 – 96 – 100 – 104) sts for selvedge edge – 13 sts to R of 0, 71 (75 – 79 – 83 – 87 – 91) sts to L of 0. Work as for Back from ** to ***. SHAPE RAGLAN AND FRONT SLOPE. R/C 0. Cast off 4 sts at beg and dec at end of next row. Dec at armhole edge in foll alt rows 34 (39 – 42 – 39 – 40 – 37) times, then in every row 15 (13 – 13 – 19 – 21 –

	A	B	C	D	E	F
MATERIALS:						
PATONS BLUEBELL						
M.C. 25g balls	26	28	30	32	34	36
or 200g balls	4	4	4	4	5	5
C.C.1. 25g balls	7	8	10	12	14	16
or 200g balls	1	1	2	2	2	2
C.C.2. 25g balls	3	4	5	5	6	7
or 200g balls	1	1	1	1	1	1

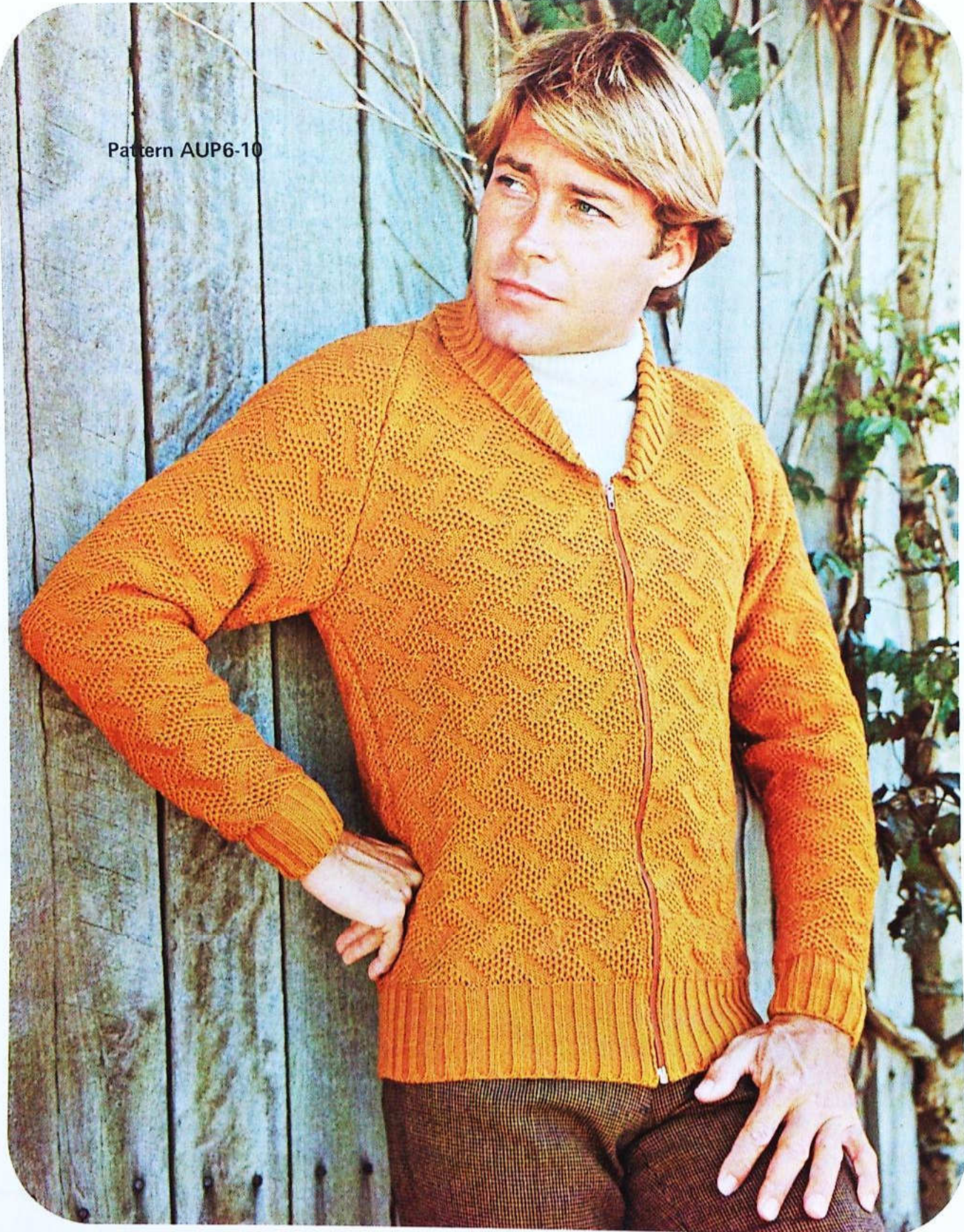
MEASUREMENTS:

Fits Chest	cm	80	85	90	95	100	105
	ins.	31½	33½	35½	37½	39½	41½
Measures	cm	92	97	102	107	112	117
	ins.	36½	38½	40½	42	44	46

A man with light brown hair is smiling and looking to his right. He is wearing a white turtleneck sweater under a cardigan. The cardigan has a grey and white geometric pattern on the upper half and a red and white geometric pattern on the lower half. A white belt is tied around his waist. He is leaning against a dark wooden wall with a stone pillar on the left.

Pattern AUP6-9

Pattern AUP6-10



27) times, AT THE SAME TIME dec at front edge in foll 3rd rows 27 (29 - 30 - 31 - 32 - 33) times - 3 (2 - 2 - 2 - 2 - 2) sts. Work 3 (2 - 2 - 2 - 2 - 2) tog. Fasten off.

Left Front. Work to correspond with R. Front reversing all shapings and reading L for R.

Sleeves. Carr on R. T 10. Using M.C. Cast on 106 (108 - 112 - 114 - 116 - 118) sts for selvedge edge. T 10. Set Card for patt. 1. Using C.C.1. in Feeder B. R/C 0. Work 44 rows. Inc at ea end of next and foll 12th rows 5 (6 - 7 - 7 - 7 - 7) times in all - 116 (120 - 126 - 128 - 130 - 132) sts. Work until R/C reads 100 (112 - 118 - 118 - 118 - 118). T 9.1. Using C.C.1. Knit 4 rows, setting card for patt. 2 in last row. Using C.C.2 in Feeder B. T 9.2. Work patt. 2, AT THE SAME TIME inc at ea end of foll 12th rows from prev inc 5 (4 - 3 - 4 - 4 - 5) times. 126 (128 - 132 - 136 - 138 - 142) sts. R/C reads 166 (178 - 184 - 184 - 184 - 184). STOP CARD. T 9.1. Using C.C.1. Knit 4 rows, setting card for patt. 1 in last row. T 10. Work 1 row patt. 1. SHAPE RAGLAN. R/C 0. Cast off 4 sts at beg of next 2 rows. Dec at ea end of next and foll alt rows 29 (36 - 40 - 38 - 41 - 39) times in all - 60 (48 - 44 - 52 - 48 - 56) sts, then in every row 25 (19 -

17 - 21 - 19 - 23) times. R/C reads 84 (92 - 98 - 98 - 102 - 102). Cast off rem 10 sts.

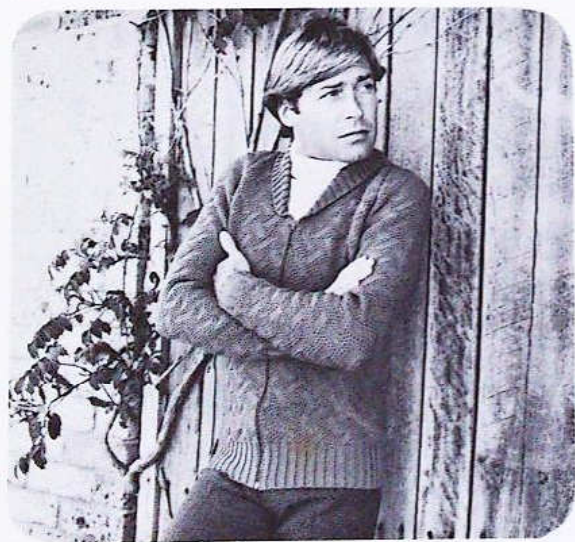
Front Band and Collar. T 0. Using M.C. Cast on 61 sts for 1 x 1 rib, inc at ea end of Main Bed after selvedge - 63 sts. T 5. Rib 160 (168 - 184 - 184 - 184 - 184) rows. Inc at ea end of next and foll alt rows 40 (42 - 44 - 44 - 45 - 45) times in all - 143 (147 - 151 - 151 - 153 - 153) sts. ** Bring 12 needles (6 on Main Bed, 6 on Rib Bed) at opp end to carr into E pos. Work steps A to E for partial knitting of rib. (P.40 Ribber Manual). Cam on N. Knit 1 row. ** Rep from ** to ** 37 (39 - 41 - 43 - 45 - 47) times. Dec at ea end of foll alt rows 40 (42 - 44 - 44 - 45 - 45) times - 63 sts. R/C 0. Rib 160 (168 - 184 - 184 - 184 - 184) rows. Cast off.

Belt. T 0. Using M.C. Cast on 29 sts for 1 x 1 rib, inc at ea end of Main Bed after selvedge. 31 sts T 5. Rib 600 rows. Cast off.

TO MAKE UP: Press lightly. Join raglan, side and sleeve seams. Sew one edge of front band and collar to jacket. Fold in half and stitch other side to cover seam. Turn under 5 cm (2 ins.) on lower edge of jacket and sleeves for hem. Work 2 belt loops at waist. Press seams.

MAN'S ZIPPER JACKET

AUP6 - 10



40 (45-45-45-45-45) cm 16 (18-18-18-18-18) ins., open end zipper.

MEASUREMENTS:

	cm	85	90	95	100	105	110
Fits Chest	ins.	33½	35½	37½	39¼	41¼	43¾
Measures	cm	89	94	99	104	109	114
	ins.	35	37	39	41	43	45
Length	cm	58	65	65	66	66	67
	ins.	22¾	25½	25½	26	26	26¾
Sleeve Seam	cm	48				All Sizes	
	ins.	19				All Sizes	

PATTERN: Card No. 108 (TUCK) VOL. 1.

TENSION: T 9.1 = 22½ sts and 54 rows to 10 cm over patt. PLEASE CHECK.

JACKET:

Back. T 0. Cast on 102 (106 - 114 - 118 - 122 - 130) sts for 2 x 2 rib. T 5. Rib 34 rows, B and E only - inc at ea end of last row. ALL SIZES. Transfer sts to Main Bed. T 9.1. Set Card. R/C 0. Work until R/C reads 150 (178 - 178 - 178 - 178 - 178). SHAPE RAGLANS. R/C 0. Cast off 3 sts at beg of next 2 rows. Dec at ea end of next and foll 4th rows 26 (29

MATERIALS:

PATONS BLUEBELL

	A	B	C	D	E	F
25g balls	19	21	23	25	27	29
or 200g balls	3	3	3	4	4	4

– 26 – 28 – 25 – 25) times in all – 44 (44 – 56 – 56 – 68 – 74) sts, then in foll alt rows 8 (7 – 13 – 12 – 18 – 20) times. Work 1 row. R/C reads 120 (130 – 130 – 136 – 136 – 140). Cast off rem 28 (30 – 30 – 32 – 32 – 34) sts.

Left Front. T 0. Cast on 50 (54 – 58 – 58 – 62 – 66) sts to R of 0 for 2x2 rib. T 5. Rib 34 rows, A (C, D and F) only – inc (dec – inc – dec) at R of machine in last row. ALL SIZES. Transfer sts to Main Bed. T 9.1. SET CARD. R/C 0. Work until R/C reads 150 (178 – 178 – 178 – 178 – 178). SHAPE RAGLAN AND FRONT SLOPE. R/C 0. Cast off 3 sts at beg of next row. Work 1 row. Dec at armhole edge in next and foll 4th rows 26 (29 – 26 – 28 – 25 – 25) times in all, then in foll alt rows 8 (7 – 13 – 12 – 18 – 20) times AT THE SAME TIME dec at front edge in 23rd and foll 8th rows 12 (13 – 13 – 14 – 14 – 15) times in all. 2 sts. Work 2 tog. Fasten off.

Right Front. Work to correspond with L Front, reversing all shapings and reading L for R.

Sleeves. T 0. Cast on 50 (50 – 50 – 54 – 54 – 54)

sts for 2 x 2 rib. T 5. Rib 26 rows – B, C and F only – inc at ea end of last row. ALL SIZES. Transfer sts to Main Bed. T 9.1. SET CARD. R/C 0. Work 10 rows Inc at ea end of next and foll 10th rows 19 (19 – 20 – 20 – 21 – 21) times in all – 88 (90 – 92 – 94 – 96 – 98) sts. Work until R/C reads 220. SHAPE RAGLAN. R/C 0. Cast off 3 sts at beg of next 2 rows. Dec at ea end of next and foll 4th rows 23 (27 – 26 – 28 – 27 – 28) times in all – 36 (30 – 34 – 32 – 36 – 36) sts, then in foll alt rows 14 (11 – 13 – 12 – 14 – 14) times. Work 1 row. R/C reads 120 (130 – 130 – 136 – 136 – 140). Cast off rem 8 sts.

Collar. T 2. Cast on 170 (182 – 182 – 190 – 190 – 198) sts for 2 x 2 rib. T 5. Rib 2 rows. Cast off 2 sts at beg of next 72 (76 – 76 – 80 – 80 – 80) rows. Cast off.

TO MAKE UP: Press lightly. Join raglan, side and sleeve seams. Join shaped edge of collar to jacket. Sew in zipper. Press seams.

LADY'S THREE PIECE SUIT

AUP6 - 11



MATERIALS:

JUMPER:

PATONS AZALEA

25g balls

	A	B	C	D
9	9	10	11	12

JACKET:

PATONS BLUEBELL

25g balls	19	20	21	22
or 200g balls	3	3	3	3

SKIRT:

PATONS BLUEBELL

25g balls	19	21	23	25
or 200g balls	3	3	3	4

3.00 (No. 10 – 11) Crochet Hook; 3 small buttons for Jumper; round elastic for waist of Skirt.


MEASUREMENTS:

JUMPER:

Fits Bust	cm	85	90	95	100
	ins.	33½	35½	37½	39¾
Measures	cm	85	90	95	100
	ins.	33½	35½	37½	39¾
Length	cm	53	54	54	55
	ins.	20¾	21¼	21¼	21¾
Sleeve Seam	cm	10			All Sizes
	ins.	4			All Sizes

CARDIGAN:

Fits Bust	cm	85	90	95	100
	ins.	33½	35½	37½	39¾
Measures	cm	89	94	99	104
	ins.	35	37	39	41
Length	cm	55	56	56	57
	ins.	21¼	22	22	22½

A woman with reddish-brown hair is modeling a fashion ensemble. She wears a vibrant green, long-sleeved, open-front cardigan with a ribbed texture. Underneath, she has a white top with a delicate lace pattern. Her skirt is also green, matching the cardigan, and features a ribbed texture with a subtle pleated or flared design. She is standing against a light-colored, textured wall, with her right hand on her hip and her left hand raised to her hair. The overall aesthetic is classic and elegant.

Pattern AUP6-11

Sleeve Seam	cm	43	All Sizes		
	ins.	17	All Sizes		

SKIRT:

Fits Waist	cm	65	70	75	80
	ins.	25½	27½	29½	31½
Length	cm	68	68	68	68
	ins.	26¾	All Sizes		

PATTERN: Card No. 424 A — Lace Vol. 9

TENSION: Azalea. T 4.1 = 30 sts and 54 rows to 10 cm (approx. 4 ins.) over patt.

Bluebell. T 9.1 = 26½ sts. and 39 rows to 10 cm (approx. 4 ins.) over st st and T 8.1 = 26½ sts and 39 rows to 10 cm (approx. 4 ins.) over lace. PLEASE CHECK.

JUMPER:

Back. T 5.1. Carr on R. Cast on 129 (137 — 145 — 153) sts in waste yarn. Odd st on L. Knit 5 rows. T 4.1. Using Main Yarn. Knit 20 rows. Transfer every 2nd st to adj needle. Leave empty needles in B pos. T 5.1. Knit 21 rows. T 6.1. Close hem. Remove waste yarn. SET CARD. R/C 0. T 4.1. Work until R/C reads 164.

Shape Armholes. R/C 0. Cast off 8 (9 — 11 — 12) sts at beg of next 2 rows. Dec at ea end of next and foll alt rows 8 (9 — 10 — 11) times in all. 97 (101 — 103 — 107) sts. ** Work until R/C reads 104 (108 — 108 — 114).

Shape Shoulders. Cast off 10 (11 — 11 — 11) sts at beg of next 4 rows, then 11 (10 — 11 — 12) sts at beg of next 2 rows. Take rem 35 (37 — 37 — 39) sts off on waste yarn.

Front. Work as for Back to **. Work until R/C reads 68 (70 — 70 — 74).

Shape Neck. Knit 56 (58 — 59 — 61) sts at opp end to carr manually on to waste yarn. Push needles into "A" pos. Work 2 rows. Dec at neck edge in next and all alt rows 10 (11 — 11 — 12) times in all — 31 (32 — 33 — 34) sts. Work until R/C reads 104 (108 — 108 — 114).

Shape Shoulder. Cast off 10 (11 — 11 — 11) sts at beg of next row and foll alt row. Work 1 row. Cast off rem 11 (10 — 11 — 12) sts. Bring rem needles back into B pos. Take centre 15 sts off on waste yarn. Join in yarn and work other side to correspond.

Sleeves. T 5.1. Cast on 97 (103 — 107 — 113) sts in waste yarn. Odd st on L. Knit 5 rows. Using Main Yarn T 4.1. Knit 14 rows. Transfer every 2nd st to adj needle. Leave empty needles in B pos. T 5.1. Knit 15 rows. T 6.1. Close hem. Remove waste yarn. SET CARD. R/C 0. T 4.1. Work until R/C reads 40. **SHAPE TOP.** R/C 0. Cast off 4 (4 — 6 — 6) sts at beg

of next 2 rows. Dec at ea end of next and foll alt rows 31 (34 — 34 — 37) times in all. Work 1 row. R/C reads 64 (70 — 70 — 76). Cast off rem 27 sts. **NECKBAND.** Join R shoulder seam. Wrong side facing, pick up 103 (107 — 109 — 113) sts evenly around neck (incl sts from waste yarn). T 5.1. Knit 14 rows. Transfer every 2nd st to adj needle. Leave empty needles in "B" pos. T 4.1. Knit 15 rows. Cast off loosely.

TO MAKE UP: Press lightly. Join L shoulder seam for .5 cm (¼ in). Join side and sleeve seams. Sew in sleeves. Fold neckband in half and stitch in pos. Work 2 rows dc evenly along shoulder opening, working 3 buttonholes along front edge in 2nd row. Sew on buttons. Press seams.

JACKET:

Back. T 8.1. Cast on 115 (121 — 127 — 135) sts in waste yarn. Odd st on L. ** Knit 5 rows. Using Main Yarn T 8.1. Knit 16 rows. Transfer every 2nd st to adj needle. Leave empty needles in B pos. T 9.1. Knit 17 rows. T 10 Close hem. *** R/C 0. SET CARD. T 8.1. Work until R/C reads 120. **** Shape armholes. R/C 0. Cast off 8 (8 — 9 — 10) sts at beg of next 2 rows. Dec at ea end of next and foll alt rows 7 (8 — 9 — 10) times in all — 85 (89 — 91 — 95) sts. Work until R/C reads 78 (82 — 82 — 86).

Shape Shoulders. Cast off 9 (9 — 10 — 10) sts at beg of next 4 rows, then 9 (10 — 9 — 10) sts at beg of next 2 rows. Cast off rem 31 (33 — 33 — 35) sts.

Right Front. T 8.1. Cast on 57 (60 — 63 — 67) sts in waste yarn. 33 (36 — 39 — 43) sts to R of 0, 24 sts to L of 0. Work as for Back from ** to ****

Shape Armhole and Front Slope. R/C 0. Cast off 8 (8 — 9 — 10) sts at beg and dec at end of next row. Dec at armhole edge in foll alt rows 7 (8 — 9 — 10) times AT THE SAME TIME dec at front edge in foll 4th rows 6 (7 — 7 — 8) times — 35 (36 — 37 — 38) sts, then in foll 6th rows 8 times — 27 (28 — 29 — 30) sts. Work until R/C reads 78 (82 — 82 — 86).

Shape Shoulder. Cast off 9 (9 — 10 — 10) sts at beg of next row and foll alt row. Work 1 row. Cast off rem 9 (10 — 9 — 10) sts.

Left Front. T 8.1. Cast on 57 (60 — 63 — 67) sts in waste yarn — 34 (37 — 40 — 44) sts to L of 0, 23 sts to R of 0. Complete to correspond with R. Front, reversing all shapings.

Sleeves. T 8.1. Cast on 53 (55 — 57 — 59) sts in waste yarn. Work as for Back from ** to ***. R/C 0. T 9.1. Knit 4 rows. Inc at ea end of next and foll 6th (6th — 5th — 5th) rows 19 (21 — 22 — 23) times in all. 91 (97 — 101 — 105) sts. Knit until R/C reads 148.

Shape Top. R/C 0. Cast off 4 (4 - 5 - 5) sts at beg of next 2 rows. Dec at ea end of next and foll alt rows 26 (25 - 24 - 24) times in all - 31 (39 - 43 - 47) sts, then in every row 3 (7 - 9 - 11) times. R/C reads 56 (58 - 58 - 60). Cast off rem 25 sts.

Front Band. Cast on 18 sts on both beds for circular knitting (P.27 Ribber Manual). T 9.1. R/C 0. Knit 860 (880 - 880 - 900) rows. Cast off.

TO MAKE UP: Press lightly. Join shoulder, side and sleeve seams. Sew in sleeves. Sew on front band. Press seams.

SKIRT (6 pieces). T 0. Cast on 29 (31 - 35 - 37) sts for 1 x 1 rib. T 4. Rib 10 rows - A and B only inc at end of last row. Transfer sts to Main Bed. R/C 0. T 9.1. Knit 4 rows. Inc at ea end of next and foll 10th rows 25 times in all - 80 (82 - 85 - 87) sts. Knit until R/C reads 254. Cast off.

TO MAKE UP: Press lightly. Join gores. Thread elastic through rib at waist. Work 2 rows dc evenly around lower edge. Press seams.

BOY/GIRL MONKEY SUIT

AUP6 - 12



	A	B	C
MATERIALS:			
JUMPER:			
PATONS BLUEBELL			
Dark 25g balls	4	5	6
or 200g balls	1	1	1
Light 25g balls	2	2	2
3 small buttons.			
3.50 (No. 9) Crochet Hook.			

	A	B	C
PANTS:			
PATONS BLUEBELL			
Light 25g balls	9	11	13
or 200g balls	2	2	2
Dark 25g balls	1	1	1
2 buttons.			

MEASUREMENTS:

JUMPER:

Fits Underarm	cm	55	60	65
	ins.	21¾	23½	25
Measures	cm	57	62	67
	ins.	22½	24½	26½
Length	cm	33	37	41
	ins.	13	14½	16
Sleeve Seam	cm	21	26	31
	ins.	8¼	10¼	12¼

JUMPSUIT:

Inside Leg	cm	33	44	51
	ins.	13	17¼	20

PATTERN 1:

1. Knit 2 rows Light.
2. Knit 6 rows Dark.

PATTERN 2: Card No. 220 SINGLE MOTIF. VOL. 7

TENSION: T 9.1 = 26½ sts and 39 rows to 10 cm over st st. PLEASE CHECK.

JUMPER:

Back. T 0. Using M.C. Cast on 79 (85 - 93) sts for 1 x 1 rib. T 4. Rib 16 (18 - 20) rows. Transfer sts to Main Bed. R/C 0. T 9.1. Work in patt. 1 until R/C reads 66 (74 - 82). **SHAPE RAGLAN.** R/C 0. Cast off 2 sts at beg of next 2 rows. A and B only Dec at ea end of next 3 rows. Work 1 row. **ALL SIZES**** Dec at ea end of next and foll alt rows 4 (7 - 13) times in all - 61 (61 - 63) sts. Knit 1 row. Knit 31 (31 - 32) sts at opp end to carr manually on to waste yarn. Push needles into "A" pos. Dec at armhole edge in next and foll alt rows 18 times in all. Work 1 row. R/C reads 50 (56 - 64). Take rem 12 (12 - 13) sts off on waste yarn. Bring rem needles back into "B" pos. Join in yarn and work other side to correspond, working a dec at centre back in 1st row.

Front. Work as for Back to **. Dec at ea end of next and foll alt rows 12 (15 - 20) times in all - 45 (45 - 49) sts. R/C reads 29 (35 - 41). **SHAPE NECK.** Knit 28 (28 - 30) sts at opp end to carr manually on to waste yarn. Push needles into A pos. Knit 1 row. Dec at armhole edge in next and foll alt rows 10 (10, 11) times in all **AT THE SAME TIME** dec at neck edge in 3rd and foll alt rows 5 (5 - 6) times in all - 2 sts. Work 2 tog. Fasten off. Take centre 11 sts off on waste yarn. Bring rem sts back into "B" pos. Join in yarn and work other side to correspond.

Sleeves. T 0. Using M.C. Cast on 41 (43 - 45) sts for 1 x 1 rib. T 4. Rib 16 (18 - 20) rows. Transfer sts to Main Bed. T 9.1. R/C 0. Work 4 rows in patt. 1. Inc at ea end of next row. Cont working in patt. 1, inc at ea end of foll 6th (7th - 8th) rows 9 (10 - 11) times. 61 (65 - 69) sts. Work until R/C reads 66 (82 - 98). **SHAPE TOP.** R/C 0. Cast off 2 sts at beg of next 2 rows. A only - Dec at ea end of next 3 rows. Work 1 row. C only. Dec at ea end of next row and foll 4th rows twice. Work 1 row. **ALL SIZES.** Dec at ea end of next and foll alt rows 22 (27 - 26) times in all. Work 1 row. R/C reads 50 (56 - 64). Take rem 7 sts off on waste yarn.

Neckband. Join raglan seams. Wrong side facing, pick up 79 (79 - 83) sts evenly around neck (incl sts from waste yarn). T 9.1. Using M.C. Knit 1 row. Transfer sts for 1 x 1 rib. T 4. Rib 9 rows. Cast off loosely.

TO MAKE UP: Press lightly. Join side and sleeve seams. Using M.C. work 2 rows dc evenly around back opening, working 3 buttonholes evenly along right side of opening in 2nd row. Sew on buttons. Press seams.

JUMPSUIT:

Legs (2). T 9.1. Cast on 94 (102 - 110) sts in waste yarn. Knit 6 rows. T 8.1. Using M.C. Knit 12 rows. Using C.C. Knit 4 rows. T 10. Knit 1 row. ** T 9.1. Using C.C. Knit 4 rows. Using M.C. Knit 4 rows. ** Rep from ** to **. Using C.C. T 10. Close hem. T 9.1. Knit 3 rows, R/C 0. T 9.1. Using M.C. Knit until R/C reads 110 (152 - 180). **SHAPE CROTCH.** Cast off 4 sts at beg of next 2 rows. Dec at ea end of next and foll alt rows 3 times in all - 80 (88 - 96) sts. Knit 1 row. Take work off on waste yarn.

Body. Wrong side facing Carr on R replace legs on machine, dec at centre of work - 159 (175 - 191) sts. R/C 0. T 9.1. Using M.C. Dec at ea end of foll 10th rows 5 (6 - 7) times. 149 (163 - 177) sts. Knit until R/C reads 57 (67 - 83). **SET CARD** for patt. 2. Work until R/C reads 88 (94 - 106). **SHAPE TOP.** R/C 0. Cast off 38 (41, 44) sts at beg of next 2 rows. Dec at ea end of every row 7 (9 - 11) times, foll alt rows 5 (6 - 7) times, then in foll 4th rows 4 times. **STOP CARD.** 41 (43 - 45) sts. Knit 3 rows. R/C reads 38 (42 - 46). Transfer sts for 1 x 1 rib. T 4. Rib 10 rows. Cast off.

Bands (2). T 0. Cast on 13 sts for 1 x 1 rib. Inc at ea end of Main Bed after selvedge - 15 sts. T 4. Rib 22 (24 - 26) rows. Make a buttonhole by transferring 7th and 8th sts to adj needles. Leave empty needles in B pos. Rib until R/C reads 200 (220 - 240). Cast off.

TO MAKE UP: Press lightly. Join leg and crotch seams. Join cast on edges of bands at centre back and attach across back and around armholes to top of bib, leaving extra for shoulder straps. Sew on buttons. Press seams.

EMPISAL

Empisal are pleased to present their International Fashion Co-ordinator's selection of PATONS machine knitted garments for Autumn.

*AN EMPISAL PUBLICATION: WORLD COPYRIGHT BY EMPISAL INTERNATIONAL

EMPISAL

AUTUMN KNITWEAR

BOOK AUP 6

