

Jones

Pattern booklet No.3

Price 25p.



Poncho

Materials:

8 oz. Robin Vogue Double Knitting.

3 oz. contrasting colours A, B and C Robin Vogue 4 ply for motifs.

Tension: 6 sts. & 9 rows=1"

Double knitting, cast on 133 sts. T10. K8½" (80 rows). Cast off 17 sts. very loosely in centre with spare wool. Put opposite side from cam box into E pos. and HCL's on II. Decrease 1 st. every alternate row at neck edge until 4 decreases have been worked. K 26 rows. Then increase 1 st. every alternate row at neck edge until 4 increases have been worked. Repeat for opposite side reversing shapings. Cast on 17 sts. in centre with spare wool. Put HCL's to I. Row counter 000. K a further 8½" (80 rows). Cast off loosely.

Neck Band

Cast on 80 sts. T10. K 1¼" (10 rows). Hang up cast on sts. and cast off loosely both sets of sts.

Motifs

4 ply in contrasting shades A, B and C (Robin Vogue 4 ply). *1st Row.* Cast on 50 sts. in A. T5. K one row. *2nd Row.* T5.1. Put 2nd needle from left of needle bed and then every foll. 8th needle to E pos. HCL's to III. K 1 row. *3rd Row.* Change to B colour. T5. Working with 7 sts. in between needles at E pos. transfer 3rd and 5th sts. to 4th needle. Put empty needles to A pos. K 1 row. *4th Row.* Push back empty needles to working position. T5. K 1 row. *5th Row.* T5. K 1 row. *6th Row.* Change to C. T4.2. K 1 row. *7th Row.* T4.2. HCL's to I. Working on 7 sts. in between E pos. needles transfer 2nd st. to 3rd needle and 6th st. to 5th needle. Empty needles to A pos. K 1 row. *8th Row.* T4.1. Find position of needles which were previously in E pos. and working on 7 sts. in between bring back empty needles to working pos. Transfer 1st and 3rd sts. to 2nd needle, 5th and 7th sts. to 6th needle. Put empty needles to A pos. K 1 row. *9th Row.* T5.1. Put back empty needles to working pos. K 1 row. With latch tool, working from side opposite to cam box, pick up the sts. on to the latch tool letting the wool which has just looped over the needle (every alternate needle) drop. Catch the free yarn with the eye of the latch tool and pull it through the stitches on the latch tool to pull them together. Break off wool. K 14 of these motifs.

To Make Up

Press poncho and neckband lightly on wrong side. Join neckband edge to edge then to neck of poncho from the front first—front to front. Double neckband over and catch to poncho neck edge at the back. Fringe the edge of the poncho thickly; each separate fringe consisting of a length of six strands of double knitting wool doubled over, each strand 6" long.

Trim the fringe to a depth of 2". Sew up the motifs edge to edge. Press lightly on the wrong side. Sew 12 of these motifs around the edge of the poncho, arranging them all equal distances from each other, and one inch in from the edge of the knitted portion of the poncho. (1 in each corner—4 aside.)

Beret

Materials:

2 oz. Robin Vogue Double Knitting.

3 contrast shades A, B and C Robin Vogue 4 ply for motifs.

The beret is knitted in five separate pieces. Double knitting, cast on 20 sts. T7. K 1" (10 rows). Rib these rows using the latch tool method for ribbing with a k2, p2 rib.

N.B. To ensure even matching of the rib welt when sewing the five segments together, start ribbing on the 2nd st. in from the left on 3 of the segments, and on the 4th st. in from the left on the other two segments.

T10. Increase 1 st. either end of next and every alternate row until there are 34 sts. (Use fully fashioned method of increasing, i.e., move 2 end sts. either end out leaving 3rd needle empty. Transfer purl of previous row to empty needle.) K 10 rows straight. Then fully fashion decrease either end of next and every 3rd row for 5 decreases. Work 2 rows. Fully fashion decrease either end of next and every following alt. row until 1 st. remains. (Fully fashioned decreasing: move 3rd st. to 4th needle, 2nd st. to 3rd needle, 1st st. to 2nd needle. Empty needle to A either end of row.) Fasten off.

To Make Up

Press each piece lightly from back omitting ribbing. Sew the pieces together carefully matching the ribbed sections.

Trimming: Motifs on end of plait of wool. Take two of the motifs already sewn and put them together back to back. Oversew the edges together to make a double motif. Take 6 lengths of double knitting wool about 34-36" long. Thread each of these through the same point as near to the edge of the double motif as possible. Double them to form a collection of 12 strands. Divide these 12 strands equally 3 ways and braid to the desired length. The braid is inserted through the centre of the beret and secured from the inside. Where it emerges on the right side the braid is knotted loosely once and the knot secured with a few holding stitches. The braid can be of any length according to personal preference but a length of roughly 9" is suggested.



Tights

Materials:

6 oz. Robin Vogue 4 ply.

$\frac{3}{4}$ yd. $\frac{3}{4}$ " elastic.

Tension: 7 sts. & 10 rows=1"

(Knitted in 2 separate legs—left and right)

Cast on 80 sts. T7, K 8 rows, T9, K 1 row. T7, K 9 rows. Hang up cast on sts. to form hem. Reset row counter to 000.

Shape Back

Put both HCL's to III. On right side for right leg and left side for left leg, push 8 needles forward at a time on each alternate row until there are 48 needles in E pos. (pass wool under inside needle in E pos. each time needles are moved to E). HCL's to I. K 14 rows (26 rows on RC). Inc. 1 st. at each end of next and every foll. 10th row until there are 88 sts. (56 rows.) K 7 rows. Inc. 1 st. at each end of the next 3 rows. K 4 rows (72 rows).

Shape Leg

Decrease 1 st. at each end of next row. Set row counter to 0. Continue to decrease 1 st. each end of next and every foll. alternate row until 70 sts. remain. Then decrease every 8th row until 42 sts. remain. Work straight until row counter registers 160. Carriage on right. (For left leg carriage on left.)

Shape Foot

HCL's to II. For left leg: push 21 sts. on right to E position. (For right leg push 21 sts. on left to E position), work 36 rows. Decrease 1 st. on each end of next and every following alternate row until 7 sts. remain. Cast off.

Shape Heel

Return to remaining 21 sts. Put HCL's back to I and K across. Return HCL's to III. Push 1 needle into E pos. opposite end to carriage on every row, taking the yarn under inside needle in E position, until 5 needles at each end are in E position. Return 1 needle opposite carriage to B position on every row, again taking yarn under inside needle in E position. When all needles are back to B put HCL's back to I. Work 36 rows and decrease and cast off for toe as before.

To Make Up

Press both legs lightly from the wrong side. Sew up foot and leg seams. Sew both legs together round centre. Turn down hem at top for elastic insertion. Using $\frac{3}{4}$ " elastic make a band of elastic that just very slightly gathers in the tights at the top.

Roll Neck Jumper

Materials:

5 oz. Robin Vogue 4 ply.

Measurements:

24" Chest.

Tension: $6\frac{1}{2}$ sts. & 9 rows=1"

Back

Cast on 86 sts. T6. K 2" (16 rows) increasing 1 st. at end of last row by putting an extra needle into working position. 87 sts. Rib these 2" using latch tool method starting 2nd st. from left in a K2 P2 rib. T8. K $8\frac{1}{2}$ " (72 rows) in stocking st., ending with a purl row. (Carriage on Right.)

Shape Raglan Armholes

Cast off 4 sts. at beg. on next 2 rows. Fully fashion decrease 1 st. at both ends of next and every alternate row until 35 sts. remain, work 1 row. (Carriage on Right) (118 rows).

Shape Neck

Put the first 27 sts. from the left to E pos. Put HCL's to II. On set of 8 needles nearest carriage (right hand side) start decreasing 1 st. at neck edge for next 3 rows at same time fully fashion decreasing at armhole edge as before, until 1 st. remains. Work 1 row. Fasten off. Leaving middle 19 needles at E pos. repeat as above for the end 8 sts. on the left of the work. Put HCL's back to I and then put rem. 19 sts. onto waste wool of a contrasting colour.

Front

Work as for back until 41 sts. remain at raglan shaping, work 1 row.

Shape Neck

Put first 29 sts. (starting from left) to E pos. Put HCL's to II. Working on 12 sts. rem. on the right, decrease 1 st. at neck edge on next and every alternate row until 4 decreases have been worked at neck edge, at the same time continuing fully fashion decreasing at armhole edge as before, until 1 st. remains. Work 1 row. Fasten off. Repeat above for the first 12 sts. from the left, leaving middle 17 sts. at E pos. Put HCL's back to I, and put rem. 17 sts. onto contrast colour waste wool.

Sleeves

Cast on 52 sts. T5. K2" (16 rows) ribbing by latch tool method in a K2, P2 rib. T8. Proceed in stocking st. inc. 1 st. at both ends of 11th and then every 9th row until there are 68 sts. K $10\frac{1}{2}$ " (86 rows), finishing at end of P. row (adjust length if required at this point).

Shape Top

Cast off 4 sts. at beg. of next 2 rows. Then fully

fashion decrease 1 st. at both ends of next and every alternate row until 8 sts. remain. Work 1 row. Cast off. 140 rows. Press all 4 pieces lightly on the wrong side and join raglan seams together except for 1 back shoulder seam.

Roll Neck

Pick up 80 sts. round neck with the knitting right side towards you on the machine. T6. K4½" (40 rows) rib with the latch tool in K2, P2 rib. Cast off loosely. Join up all seams.

Boy's Jumper

with raglan sleeves and laying-in pattern.

Measurements

Chest 22" (24")

Length at C-B 13" (14½")

Sleeve seam 8" (10")

Requirements

7 oz. Robin Vogue 4 ply wool

1 oz. Robin Vogue 4 ply wool for contrast pattern

1 5" zipper.

Back

Cast on 80 (86) sts. T5. Work 12 rows, increasing once at end of last row in 24" size only. Rib in every 4th st. using latch tool. Put weaving apparatus to T. Press needle selector buttons 1, 3, and 5. Start with slide dial on I. Set lever. Start laying in pattern in contrast colour, moving slide dial one number up at the beginning of each row, until 6 is reached, then continue knitting moving slide dial back on each row until I is reached. Repeat once so that two zig-zag patterns will have been worked. (21 rows) K. several rows of waste knitting, then remove work from the needles, turn it round and hook it back on to the needles. Undo waste rows. RC.000. Change to T7 return weaving apparatus to N, cancel selector buttons. Continue knitting without shaping until work measures 7½" (84 rows) (8¾") (96 rows) from beginning.

Shape Armholes

Cast off 4 sts. at beginning of next 2 rows, then decrease 1 st. at both ends of next and every alternate row until 24 (27) sts. remain. Work 1 row. (121 rows). Cast off.

Front

Work as back until 38 (41) sts. remain at raglan shaping, work 1 row.

Shape Neck

With carriage on right side, put HCL's on position II. Place the first 12 needles to position E. Cast off centre 14 (17) sts. with latch tool. Decrease 1 st. at neck edge of the next and every alternate row until 4 decreases have been worked. AT THE SAME TIME continue decreasing 1 st. at the armhole edge on every alternate row as before until 1 st. remains. Fasten off. Bring other 12 needles back to knitting position B and repeat to match other side.

Sleeves

Cast on 50 (52) sts., T5. Work 12 rows then rib using the latch tool in every 4th st. Change to T7. Put weaving apparatus to T, press needle selector buttons 1, 3 and 5, and start laying in pattern in contrast colour, with slide dial at 1 for 1st row. Continue with laying in pattern as for back until two zigzag patterns have been worked. Knit several rows of waste knitting, remove work from needles, turn round, and hook back onto needles. Undo waste. Change weaving apparatus back to N, cancel selector buttons. Change to T7. RC 000. Continue knitting increasing 1 st. at both ends of the next and every following 8th (9th) row until there are 64 (68) sts. on the needles. Continue without shaping until work measures 8 (10) inches from beginning 50 (64) rows.

Shape Raglan

Cast off 4 sts. at the beginning of next 2 rows then decrease 1 st. at both ends of next and every alternate row until 8 sts. remain. Work one row. Cast off.

Making Up

Press all pieces, apart from ribbing. Join side and sleeve seams and then join raglan seams, leaving back left seam open for zip.

Neck Band

With RS of work facing you hook 79 (85) sts. back onto the needles for the neckband. T5. K 10 rows last row at T10. Rib every 4th st. with latch tool. Cast off loosely (if the neckline has been cast off tightly it may be necessary to knit the first row by moving the sts. behind the latches and putting the wool in front by hand, then pulling the needle back to allow the first stitch to drop off). Join back left side of raglan seam leaving 5" open for zip. Insert zip.

Boy's Zip-up Jacket

Measurements

Chest 22" (24")

Length from top of shoulder 12½" (14½")

Sleeve seam 8½" (10½")

Requirements

7 (8) oz. Robin Vogue double knitting wool.

2 oz. Robin Vogue double knitting wool in contrast colour.

10" (14") open ended zipper.

Back

T9. Cast on 69 (75) sts. K 10 rows in main colour, then rib using latch tool in every 4th st. Change to T10. Put weaving apparatus to T. Press needle selector buttons 1, 3 and 5, slide dial on I to start. Work 7 (8) inches of knitting using colour B to lay in pattern as diagram. End with carriage on RS. 66 (74) rows.

Shape Armholes

Continue with laying in pattern. Cast off 4 sts. at the beginning of the next two rows. Decrease 1 st. at both ends of next and every alternate row 16 (22) times. Decrease 1 st. at both ends of next 6 (4) rows. Cast off remaining 17 (19) sts.

Left Front

T9. Cast on 35 (37) sts. Work 10 rows, increasing 1 st. at end of last row size 24" chest only. Then rib in every 4th st. using latch tool. Change to T10. Put weaving apparatus to T. Press needle selector buttons 1, 3 and 5, slide dial on I to start. Knit using laying in pattern with contrast colour as for back until work measures the same as the back to armhole, ending with carriage on right.

Shape Armhole

Cast off 4 sts. at the beginning of row, K 1 row. Decrease 1 st. at the beginning of the next and every alt. row until 20 (19) sts. remain.

Neck

Cast off 6 (5) sts. K 1 row. 2nd row. Decrease 1 st. at both ends of row. 3rd row. Dec. 1 st. at beginning of row. Repeat 2nd and 3rd rows twice (5 sts.) Then dec. 1 st. on every alt. row for next 3 rows. K last 2 sts. together and fasten off.

Right Front

As for left front, but increasing and decreasing on opp. side.

Sleeves

T9. Cast on 35 (39) sts. K 10 rows in main colour decreasing 1 st. at end of last row. 34 (38) sts. RC 000. Change to T10. Put weaving apparatus to T. Press needle selector buttons 1, 3 and 5, start with



Boy's Trousers

With Laying-in pattern at hem. 2 and 4 years.

Measurements

Front Seam 9" (9½")

Leg Seam 11" (13")

Tension: 7 sts. & 9 rows=1"

Requirements

6 oz. Robin Vogue 4 ply wool.

1 oz. Robin Vogue 4 ply wool in contrast colour.

¾ yard ¾" wide elastic.

Left and Right Side (Make one side reading Right for Left and vice versa)

Cast on 84 (90) sts. T7. Work 20 rows for hem. Work laying-in pattern for 2 chevrons as shown on jumper. Knit several rows of waste knitting, then remove work from the machine, turn it round and hook it back onto the needles. Undo waste rows. RC 000. Continue knitting until work measures 11 (13) inches from cast on edge 99 (117) rows. Cast on 2 sts. at beginning of the next two rows (88) (94) sts. Decrease 1 st. at each end of the 10th (5th) and every following 13th row until work measures 8 (8½) inches from 2 cast on sts. [72 (76) rows], ending with carriage on RS.

Shape Back

With HCL's on III leave 23 sts. at RH end of work in position B, and all the others at left of these in position E (passing wool under inside needle in E position each time before knitting back). K 2 rows. Bring forward next 6 sts. into position E (leaving 17 sts. in working position). K 2 rows. Bring forward the next 6 sts. into position E, leaving 11 sts. in B. K 2 rows. Bring forward the next 6 sts. into position E, leaving 5 sts. in B. K 2 rows, ending with carriage at RH Side. Now put HCL's back to I. K 1 row. Decrease 2 sts. at both ends of next row. Work 9 rows straight, then 1 row at T9 (to make hemline) then another 9 rows at T7. Cast off loosely.

Making Up

Block out all pieces by pinning round shape, press lightly with damp cloth. Join front and back seams and inside leg seams. Turn up hems on trouser bottoms. Turn over waistband insert 20 (22) inches of elastic.

slide dial on I. K 4 rows using laying in pattern with contrast colour. Continue knitting with laying in pattern increasing once at each end of the next and every following 4th (6th) row until there are 50 (54) sts. on the needles (32 rows). Continue without shaping until work measures 8½" (10½") from beginning ending with carriage on RS. 70 (86) rows. **Shape for Top.** Cast off 4 sts. at the beginning of the next 2 rows.

24" chest only

1st row. Decrease 1 st. at each end of row. K 3 rows. Repeat from 1st row once.

22" and 24" chest

Decrease 1 st. at each end of every alternate row until 8 sts. remain. K 1 row. Cast off 5 sts. at the beginning of next row. K 1 row. Cast off 1 st. on next row. K 1 row. K last 2 sts. tog. Fasten off. For other sleeve repeat pattern exactly, increasing or decreasing on opposite side.

Making Up

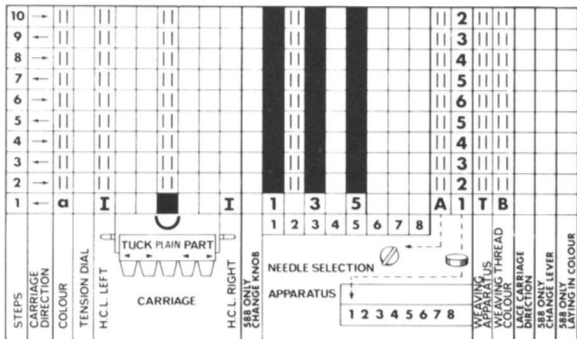
Press each piece on wrong side with damp cloth. Sew up side and sleeve seams. Join raglan seams.

Collar

With wrong side of work facing you hook 93 (99) sts. back onto the needles. T9. K 9 rows in main colour. K 10th row at T10. Rib using latch tool in every 4th st. Cast off very loosely.

Front Band

Hook on 60 sts. for each side. T9. K 9 rows. K 10th row at T10. Rib in every 4th st, cast off loosely. Turn band in half and attach zipper.



Girl's Jumper

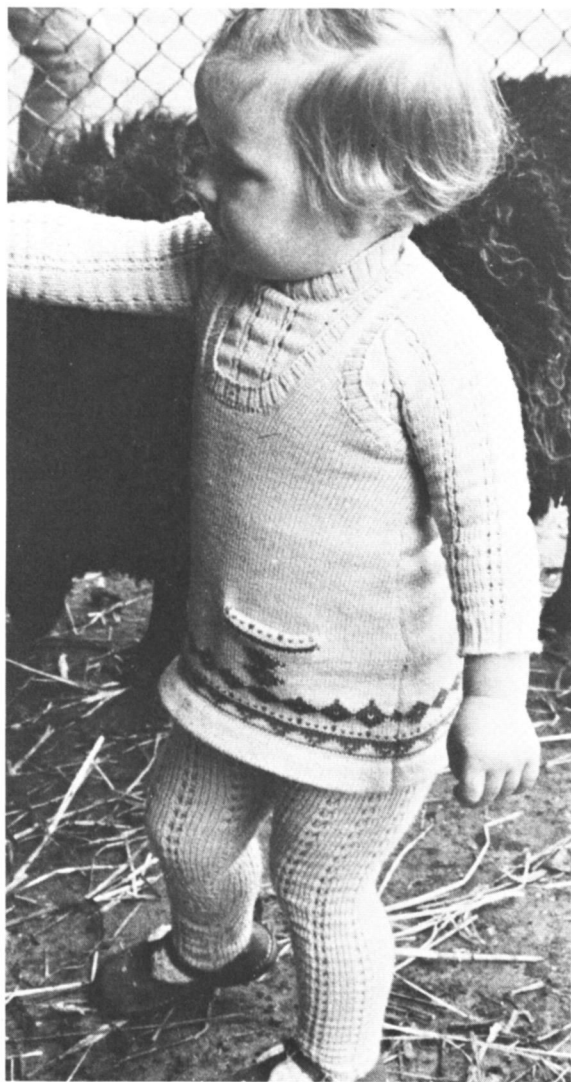
With Rib Pattern Age 2-3 years

Measurements

Chest 22"
Length at C.B. 13"
Sleeve Seam 8"

Materials:

5 oz. Robin Tricel Nylon Perle
5" Nylon Zip



Back

Cast on 80 sts. T5. Work 12 rows then rib every 4th st. using latch tool. Change to T7. RC 000. Follow rib pattern as in diagram, knitting without shaping until work measures 8" from commencement. (84 rows).

Shape Armholes

Cast on 4 sts. at beginning of next two rows, then decrease 1 st. at both ends of next and every alternate row until 24 sts. remain. Work 1 row. Cast off. (When decreases come to a pattern stitch, bring needles forward to knitting position on either side of it to make a neat edge at raglan shaping.)

Front

Work as back until 38 sts. remain at raglan shaping. Work 1 row.

Shape Neck

With carriage on RS put the HCL's on position II. Place the first 12 needles to position E. Cast off centre 14 sts. with latch tool. Decrease 1 st. at neck edge of the next and every alternate row until 4 decreases have been worked. AT THE SAME TIME continue decreasing 1 st. at the armhole edge on every alternate row as before until 1 st. remains. Fasten off. Bring other 12 needles back into knitting position B and repeat to match other side.

Sleeves

Cast on 50 sts. T5. Work 12 rows then rib in every 4th st. using latch tool. Change to T7 and rib pattern as for back. Increase 1 st. at both ends of next and every following 8th row until there are 64 sts. Continue without shaping until work measures 8" from beginning.

Shape Raglan

Cast off 4 sts. at beginning of next two rows then decrease 1 st. at both ends of next and every alternate row until 8 sts. remain. Work 1 row. Cast off.

Making Up

Press all pieces, pinned out to shape, with damp cloth, apart from ribbing. Join side and sleeve seams, then join raglan seams, leaving back left raglan seam open for zip.

Neck Band

With wrong side of work facing you hook 79 sts. back onto the needles for the neckband. T5. K 10 rows, last row at T10. Rib every 4th st. with latch tool. Cast off loosely. Join back left side of raglan seam leaving 5" open for zip. Insert zip.

Girls Tights

With Rib pattern Age 2-3 years

Materials:

5 oz. Robin Tricel Nylon Perle
22" of 3/4" wide elastic.

Left and Right Legs

Cast on 80 sts. T7. K 9 rows. Change to T9. K 1 row. Change to T7. K 8 rows. Hook up hem.

Shape Back

Put both HCL's on III. Push 8 needles forward at a time on each alternate row (right side for right leg, left side for left leg), until there are 48 sts. in the E position. Then follow rib pattern as for jumper. K 14 rows. Increase 1 st. at end of next and every following 10th row until there are 88 sts. Increase 1 st. at each end of the next 3 rows. K 4 rows.

Shape Leg

Continuing rib pattern, decrease 1 st. at each end of next row. Set row counter to 000. Continue to decrease 1 st. at each end of next and every following alternate row until 70 sts. remain. Decrease on every 8th row until 42 sts. remain. Work straight until row counter registers 160 rows with carriage on RS.

Foot

Put HCL's to II. Push 21 sts. on left onto a spare needle (reversed on left leg). Work 36 rows, continuing with rib pattern. Decrease 1 st. on each end on alternate rows until 7 sts. remain. Cast off.

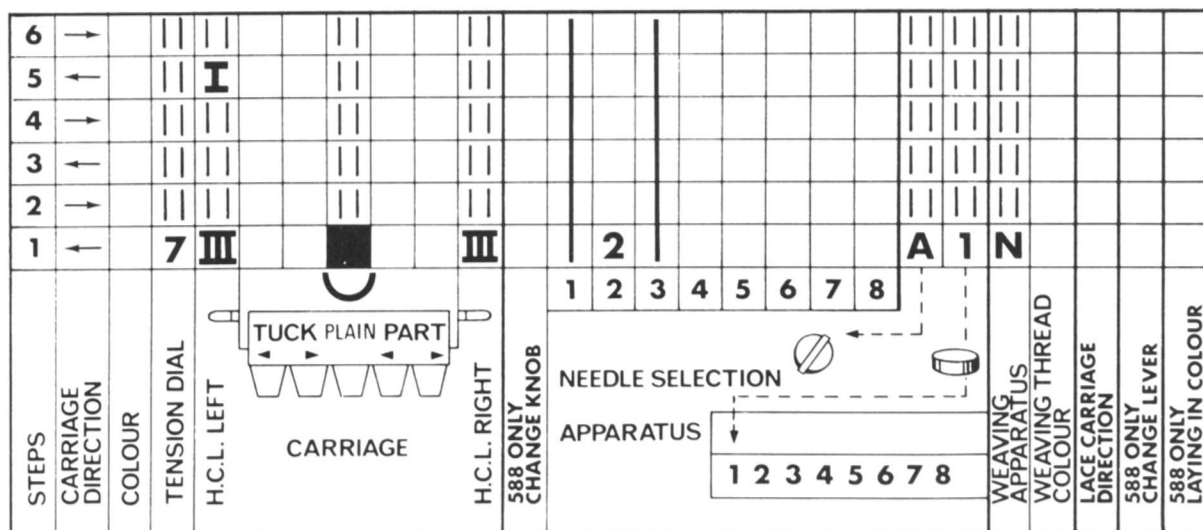
The needles that would be selected by buttons 1 and 3 must be put in 'A' position and the stitch placed on the adjacent needle.

To Shape Heel

Replace 21 sts. onto machine. HCL's on II. (Do not continue with rib pattern.) Push 1 needle into E position at opposite end to carriage on every row taking the yarn under the inside needle at E, until 5 needles at each end are in E position. Return 1 needle opposite carriage to B position on every row, again taking yarn under inside needle in E position. When all needles are back to B position, put HCL's on I. Work 36 rows and decrease for toe as before.

Making Up

Press both pieces, pinned out to shape, with a damp cloth. Join front and back seams and inside leg seams. Insert elastic.





Girl's Pinafore Dress

With Fair Isle Pattern Age 2 years

Measurements:

Chest 22"

Length to C.B. 16"

Tension: 7 sts. 10 rows=1" when pressed.

Materials:

5 oz. Robin Tricel Nylon Perle for main colour.

1 oz. each of 3 different colours in Tricel Nylon Perle for pattern.

Back

Cast on 100 sts. T7. K 2 inches and pick up for hem. Work 2 rows. K 21 rows following Fair Isle pattern

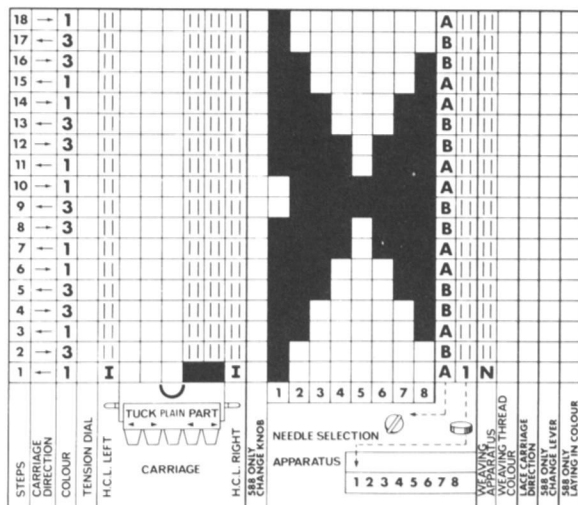
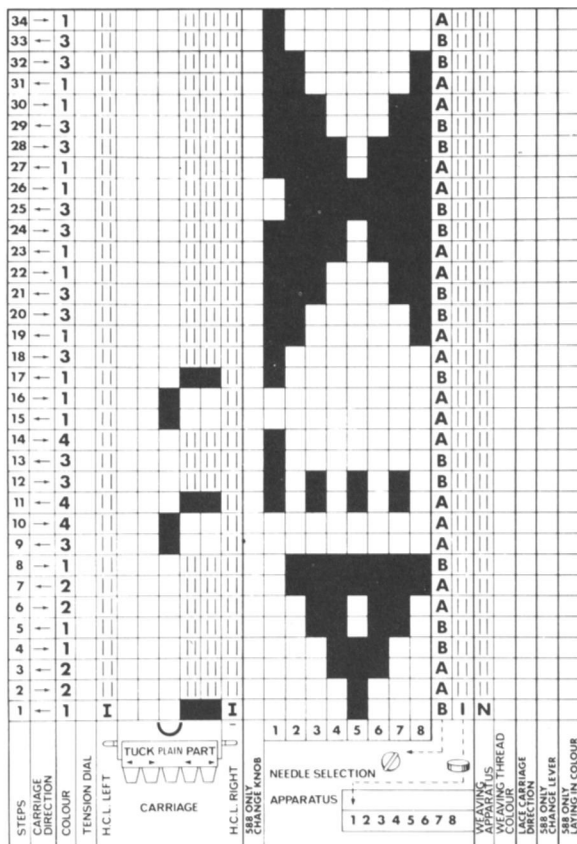
as shown in diagram. Reset RC to 000. Decrease 1 st. on every 4th row until 80 sts. remain. Continue straight until back measures 11" from beginning. (110 rows).

Armholes

Cast off 4 sts. at beginning of next 2 rows, then decrease 2 sts. at both ends until 44 sts. remain. (105 rows). Dec. 1 st. at both ends of next row. Continue without shaping until back measures 16". (160 rows).

Shoulders

Cast off 30 sts. at beginning of next 4 rows. Cast off remaining sts.



College Gold Trousers

Front

Cast on 100 sts. T7. K 2 inches and pick up for hem. Work 2 rows. Follow Fair Isle pattern as for back. Continue knitting, decreasing 1 st. on every 4th row, and working an individual diamond motif up the centre of the pocket by pulling the needles forward and knitting them by hand on each row as shown in the diagram, immediately over the fourth diamond from the left side of work. Work a second diamond above the one just completed ending with carriage at right side of machine.

Pocket

Bring forward to position E all the needles on the left of the pocket (pocket should be 21 sts. wide). Lower both HCL's to II. K 1 row and bring forward to position E all the needles on the right of the pocket. K 1 row again. The carriage is now on RS. K 1 row in colour 3, then 1 row in colour 4. Bring forward alternate needles by pressing 1, 3, 5 and 7, press in both part buttons and pressing set lever and knit with colour 3, move reverse lever to B. Set lever and knit with colour 4. Next row bring forward every 6th needle (by hand) and knit with colour 4, then bring forward other needles and knit with colour 3. Change to main colour, press plain button and K 60 rows, pulling the knitting down slightly. Finish with carriage on RS. Push the needles on the left back to position B, taking care not to let the stitches fall over the latches. K 1 row and put HCL's to position I. Continue as for back to armhole.

Shape Armhole and Neck

Cast off 4 sts. Cast off centre 10 sts. with spare wool. K 1 row. (1) Cast off 1 st. at neck edge and 2 sts. at armhole edge. K 1 row. (2) Cast off 2 sts. at armhole edge, K 1 row. Repeat (1) and (2) 3 times. Keeping neck edge straight, continue decreasing 2 sts. at armhole edge until 6 sts. remain. Work straight until front matches back at armhole edge. Shape shoulder by casting off 3 sts. on alternate rows. Reverse instructions for other side and knit to match.

Neck

With wrong side of work facing you hook front neck edge onto machine (98 sts.) and K 8 rows at T5. Rib in every 3rd st. with latch tool. Cast off very loosely except round the curve where it should be tighter to keep its shape. Hook back neck edge onto machine (30 sts.) and rib as for front.

To Complete

Press pieces flat, pinned into shape. Join shoulder seams. Join pocket seams and catch top edge of pocket neatly at sides to keep its shape.

Armholes

With wrong side of work facing you hook 100 sts. onto machine. K 8 rows at T5. Rib in every 3rd st. Repeat for other armhole. Join side seams.

Materials:

10 oz. Robin Vogue Double Knitting Wool.
 $\frac{3}{4}$ yd. $\frac{3}{4}$ " elastic.

Measurements:

Hips 28"
Crutch 9 $\frac{1}{4}$ "
Outside leg 26"
Inside leg 16 $\frac{3}{4}$ "

Tension: 9 rows & 5 $\frac{1}{2}$ sts. = 1" on T10.

With carriage at RH side of machine, and starting from 9th needle past centre O on RH side, cast on 34 sts. and work 18 rows. Turn up for hem. Reset row counter to 000 and K 104 rows straight. Now K 6 rows increasing 1 st. at LH end of 6th row and inc. 1 st. on every 4th row after until 8 incs. have been worked and there are 42 sts. (138 rows). Put these sts. into position E and HCL's on II. For the left leg, cast on 34 sts. starting from the 9th st. on the LH side of the central O needle and work to match the right leg, working increases to right hand side of work instead of left hand side and ending with carriage at LH side of machine. Put HCL's to 1 and work across. Reset row counter to 000 and work 84 rows. Change to T7 and work 22 rows. Cast off loosely. Make a second piece the same.

To Make Up

Pin out and press. Join seams. Turn down hem at waist, leaving space to thread the elastic through, then closing space when elastic is threaded in. Give a final press.



Long Ribbed Jumper

Materials:

8 oz. Robin Vogue 4 ply.

6 small buttons.

Measurements:

Chest 24"

Length from hem to centre back neck 18"

Sleeve Seam 10"

Tension: $7\frac{1}{2}$ sts. and $11\frac{1}{2}$ rows = 1" T4.

Note. When working shapings at armhole, shoulder and neck, the empty needle counts as a stitch though it is not knitted.

Back

T6. *Cast on 102 sts. and K 1 row. Now transfer the 2nd and every following 7th st. onto the next needle, putting the now empty needle in position A. Work 18 rows. Turn up to form hem. Reset row counter to 000 and K another 11 rows. Change to T5 and continue knitting for 12" (126 rows on counter).

Shape Armhole

Cast off 6 sts. at beg. of next 2 rows. Dec. 1 st. at each end of next 6 alt. rows (78 sts. remain)*. Cont. without shaping until armhole measures 6" (190 rows).

Shape Shoulder

Cast off 10 sts. at beg. of next 4 rows. 38 sts. remain. Cast off.

Front

Same as back from * to *. Cont. without shaping until armhole measures 4" (172 rows, carr. on RH side). Put 32 sts. at LH end of machine in position E. With a spare piece of the same wool cast off the centre 14 sts. loosely, then with HCL's on II work as follows. K 1 row. Cast off 1 st. on every alt. row at neck edge until 13 decreases have been made. K $\frac{1}{2}$ " (for facing on shoulder edge). Now knit a further 14 rows, ending at armhole edge. Cast off 10 sts. at beg. of next and alt. row. Return HCL's to position I and knit second side to correspond with first side.

Sleeves (Worked in stocking stitch)

T4. Cast on 44 sts. K 18 rows and turn up hem. Reset row counter to 000. Increase 1 st. at each end of the next 3 rows, K 5 rows inc., 1 st. at each end of next and then every following 8th row until 78 sts. (114 rows). Cont. until sleeve measures 10" (118 rows). Cast off 6 sts. at beg. of next 2 rows. Dec. 1 st. at each end of every alt. row until 22 sts. are left. Cast off. Work second sleeve the same.

Neck Facings

Turn back the $\frac{1}{2}$ " to wrong side on front shoulder edges, and sew neatly in place. Then with wrong side

of work facing you, pick up and hang on the machine 64 sts. around the neck (on the front) starting from where the shoulder facings end. T7, and K plain for 16 rows. Cast off very loosely. For back neck facing, pick up the sts. across the neck (with the wrong side of work facing you) and work as for the front facing.

To Make Up

Pin out and press front, back and sleeves, taking care that the facings lie neatly turned at neck edge. Neatly catch down the front and back facings. Join side seams, then lap the front shoulders $\frac{1}{2}$ " over back shoulders (so that no gap will show when fastened) and st. the lapped edge on the armhole edge only. Sew three buttons on each back shoulder evenly spaced. Now using the hook supplied with the machine, make three crochet loops on front shoulder edges for fastening. Set in sleeves and give a final press.

Jones

-the knitting machine people

Jones Sewing Machine Co. Ltd.,
Britannia House, 964 High Road
Finchley, London N12.