

9/12.95 /

The Sweater Book

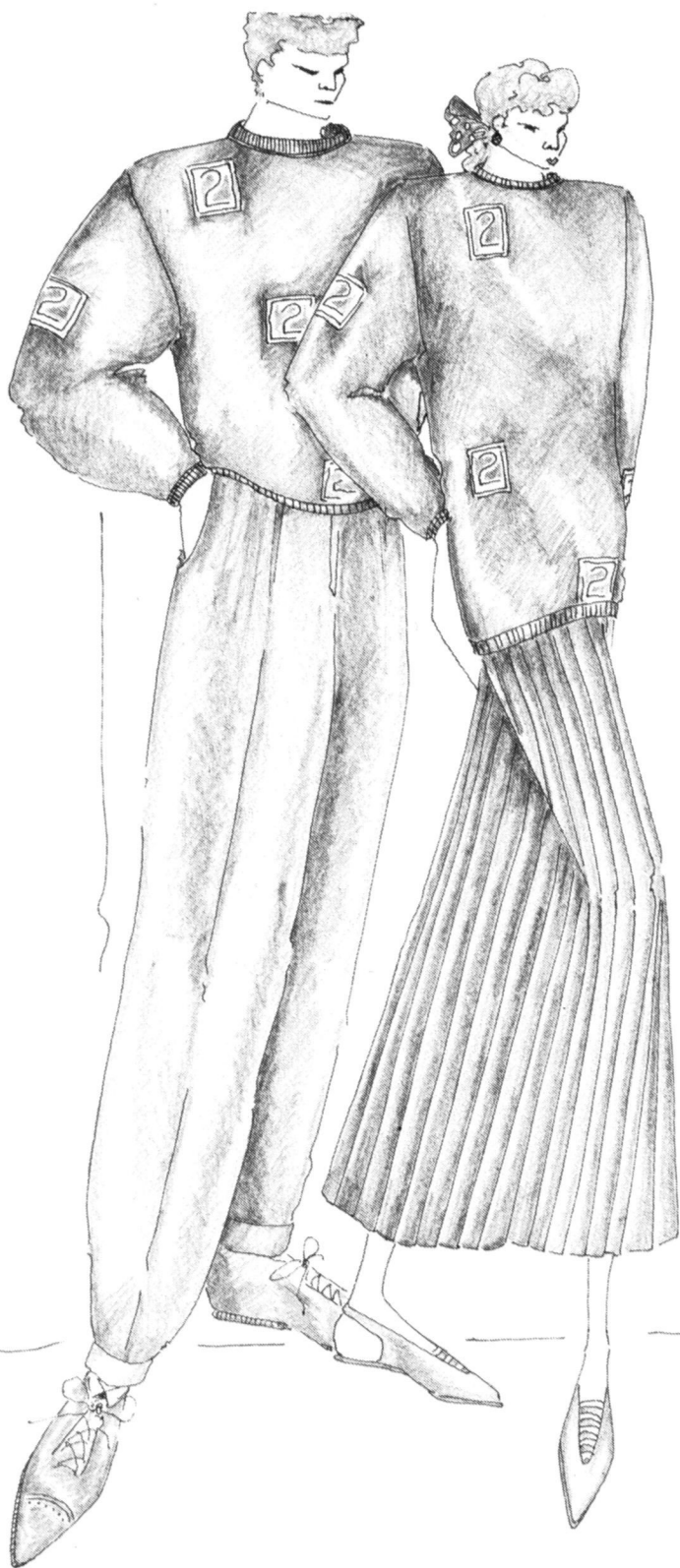
KNITMASTER

creative **KONE**
BLACKJACK · 4 PLY · ANETO

The Sweater Book

The boundaries between men's and women's fashion are becoming less and less defined — women are wearing men's sweaters to achieve the generous fit which is so stylish while even the most conservative of men is not afraid to wear 'feminine' colours or 'interesting' stitch patterns.

The Sweater Book capitalises on this merging of men's and women's tastes, providing you with a superb collection of exclusive sweater designs for both men and women. Included in The Sweater Book you will not only find lovely designs to knit for you and your man, but also lots of new punchard patterns which can be used time and time again, guidelines to help you make easy adaptations to the designs and some useful hints and tips to help you make even more use of the patterns. The beautiful Knitmaster yarns we have used to knit this exclusive collection of sweaters, will not only ensure knitwear of the highest quality, but will also allow you to knit many of the designs for Summer as well as Winter. Knitmaster Aneto 4ply and Blackjack are both exceptionally versatile yarns which are ideal for Summer and Winter alike. Simply choose your colours to suit the season and you'll have sweaters for any time of year.



The Sweater BOOK

EDITOR

Laraine McCarthy

DESIGN

Sarah Large
Betty Barndon —
Triffic Design Co.

PATTERNS

Debbie Clarkson

PHOTOGRAPHY

Peter Smith —
Scaioni Studios

STYLIST

Katherine Dixon —
Creative Workforce

ACCESSORIES

Ashtons
The Hat Shop
Hyper Hyper
iXiR — menswear
Dorin Frankfurt
Nigel Cabourn
Jeffrey Rogers
Hilary Botham

Although every reasonable care has been taken to ensure that the instructions and designs in this pattern book are correct. Modern Knitting Ltd. cannot accept responsibility for any errors which may have occurred in spite of such precautions. All rights reserved. Reproduction in whole or part without written permission is strictly prohibited.

A Modern Knitting Publication © 1987
Modern Knitting is a Registered Trademark
Printed by E E Owens & Co. Ltd.

CONTENTS

1A	Lady's Bird Sweater	6
1B	Man's Bird Sweater	7
2	Cricket Sweater	8
3	No.2 Single Motif Sweater	10
4	Sweater with Fair Isle Neckline	12
5	Sweater with Herringbone Detail	16
6A	Lady's Plaid Sweater	19
6B	Man's Plaid Sweater	20
7	Nautical Sweater	26
8	Leopard Sweater	28
9	Rib Raglan Sweater	32
10A	Lady's Slip Stitch Cardigan	35
10B	Man's 3 Colour Slip Stitch Sweater	36
11	Lady's Cable and Rib Sweater	38
12	Intarsia Sweaters	39
	Additional Notes & Information	9
	Abbreviations	13
	How to make a Knitradar pattern	23
	Easy Adaptations	24
	Index	43

SUITABLE FOR PUNCHCARD MACHINES

The designs in The Sweater Book are suitable for use with all Knitmaster Standard Gauge Punchcard Machines — model nos. 321, 323, 324, 326, 328, 329, 360, 260, 600, 700 & Zippy De Luxe.

ELECTRONIC AND FINE GAUGE OWNERS

Owners of Knitmaster Electronic and Fine Gauge machines should refer to the notes on page 9.

SIZES

Most of the designs in The Sweater Book are suitable for both men and women. Refer to the notes on page 9 for information about men's and women's sizes.

1A

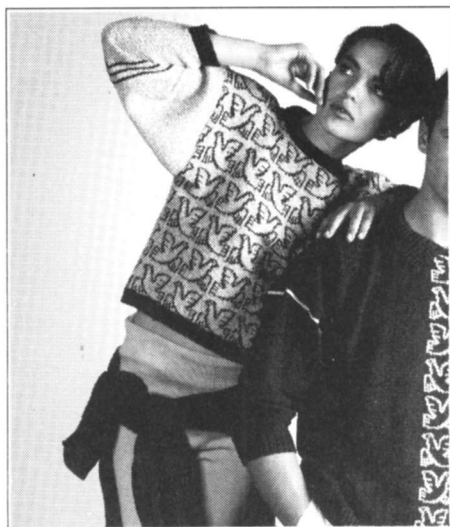
1B



2



1A LADY'S BIRD SWEATER



This fashionable boxy top will look great teamed with trousers, jeans, leggings or a skirt — straight or full. In fact, box shaped sweaters lend themselves to almost any style. If you like designing your own punchcards, why not choose a boldly printed skirt and make a punchcard to match the print. Since this sweater has a plain back and sleeves, the contrast between patterned and plain, and knitted and woven could be really quite effective.

BACK

Push 93(100) Ns at left and right of centre O to WP. 186 (200) Ns altog. Push corresponding Ns on ribber to WP. Arrange Ns for 2 × 1 rib. Using col 2, cast on. RC 000. MT-4, knit 15 rows. Transfer sts to knitter*. RC 000. MT. Using col 1, knit 104 (128) rows. Mark both ends with waste yarn. Knit to Row 206 (238).

Shape Back Neck

Using a length of col 1, cast off centre 60 sts. Hold Ns at left.

Knit Right Part as Follows:-

Knit 1 row. Cast off 5 sts beg next and foll alt row. Cast off rem 53 (60) sts. Take carr to left., Bring Ns back to WP. Knit left part as for right part.

FRONT

Knit as for Back to*. Insert special card into machine and lock on row 1. Take carr across twice without knitting. RC 000. MT. Release card. Set carr for Fair Isle. Continue in pattern given in note, knit 90 (112) rows. Mark both ends with waste yarn. Knit to Row 166 (194).

Shape Neck

Note row number showing on pattern panel. Using a length of col 1, cast off centre 46 sts. Hold Ns at left.

Knit Right Part as follows:-

Knit 1 row. Cast off 3 sts beg next and ev foll alt row 4 times in all, knit 1 row. Cast off 2 sts beg next and foll alt row,

For Knitmaster Standard Gauge Punchcard Machines with Ribbing Attachment.

Sizes:

To fit 81-86 (91-96) cms/32-34 (36-38) inch bust.

Materials:

Col 1 — 300 (350) grms Knitmaster Blackjack. Colour shown — Cloud Blue

Col 2 — 100 (150) grms Knitmaster Aneto 4ply. Colour shown — Midnight

Tensions:

Stockinet (col 1) — 33 sts and 41 rows to 10 cms. TD at approx. 6

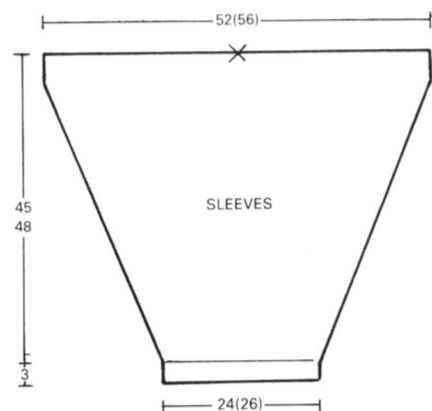
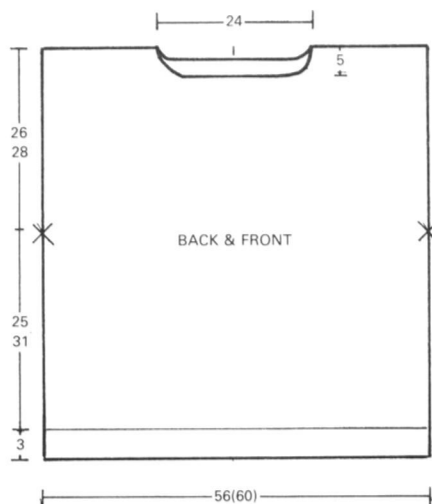
Fair Isle — 33 sts and 36 rows to 10 cms. TD at approx. MT

2 × 1 Rib (col 2) — 53 rows to 10 cms. TD's at approx. MT-4

Pattern Note:

Fair Isle — Special Card — see mans bird sweater. *Col 1 in feeder, Col 2 in feeder 2, knit 24 rows. Col 1 only, knit 4 rows*. Rept from *to* throughout.

knit 1 row. Dec 1 st beg next row. Knit to Row 184 (212). Cast off rem 53 (60) sts. Carr at right. Set card to number previously noted and lock. Take carr to left. Bring Ns back to WP. Release card. Knit left part as for right part.



SLEEVES

Push 40 (43) Ns at left and right of centre O to WP. 80 (86) Ns altog. Push corresponding Ns on ribber to WP. Arrange Ns for 2 × 1 rib. Using col 2, cast on. RC 000. MT-4, knit 15 rows. Transfer sts to knitter. RC 000. MT. Using col 1, inc 1 st both ends next and ev foll 4th row 46 (50) times in all, AT THE SAME TIME knit rows 78, 79, 84, 85, 90, 91 in col 2. 172 (186) sts. Knit to Row 184 (198) (adjust length at this stage if desired). Mark centre with waste yarn. Cast off.

NECKBAND

Arrange 194 Ns for 2 × 1 rib. Using col 2, cast on. RC 000. MT-4, knit 27 rows. Transfer sts to knitter. Knit 1 row MT. Cast off with waste yarn.



TO MAKE UP

Pin out to size and steam carefully. Join shoulder seams. Set in sleeves between marked points. Join side and sleeve seams. Backstitch neckband into pos and join centre back seam. Fold in half and catch down on the inside. Give final light steam.

ALL MEASUREMENTS ARE IN CENTIMETRES

1B MAN'S BIRD SWEATER



Our man's sweater with its single motif bird design is probably the most versatile of all the men's patterns in this book. You can knit it completely plain if you like or substitute your own choice of single motif design. And, because Aneto yarn is the perfect weight and texture for both Summer and Winter knitwear, you can knit it for either season. Simply choose from the lighter, brighter colours for Summer and the deeper, richer shades for Winter.

BACK

Push 84 (92) (100) Ns at left and right of centre O to WP. 168 (184) (200) Ns altog. Push corresponding Ns on ribber to WP. Arrange Ns for 2 × 1 rib. Using col 1, cast on. RC 000. MT-4, knit 27 rows. Transfer sts to knitter*. RC 000. MT. Knit 140 rows. (Adjust length at this stage if desired). Mark both ends with waste yarn. Knit to Row 252.

Shape Back Neck

Using a length of col 1, cast off centre 38 sts. Hold Ns at left. Knit Right Part as follows:-

Knit 1 row. cast off 3 sts beg next and ev foll alt row 3 times in all. Cast off rem 56 (64) (72) sts. Take carr to left. Bring Ns back to WP. Knit left part as for right part.

FRONT

Knit as for Back to*. Insert special card into machine and lock on row 1. Take carr across twice without knitting. RC 000. MT. Release card. Set machine to knit motif over centre 24 sts. Set carr for Fair Isle. Continue in pattern given in pattern note, knit 140 rows. (Adjust length as on Back). Mark both ends with waste yarn. Knit to Row 224. Continue in stockinet col 1. Knit to Row 230.

Shape Neck

Using a length of col 1, cast off centre 30 sts. Hold Ns at left.

For Knitmaster Standard Gauge Punchcard Machines with Ribbing Attachment.

Sizes:

To fit 91-96 (101-106) (112-117) cms/
36-38 (40-42) (44-46) inch chest.

Materials:

Col 1 — 400 (420) (450) grms Knitmaster Aneto 4ply. Colour shown — Midnight

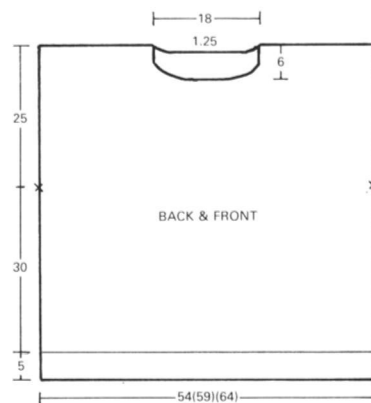
Col 2 — 20 grms Knitmaster Black-jack. Colour shown — White

Tensions:

Stockinet (col 1) — 31 sts and 47 rows to 10 cms. TD at approx. 6
2 × 1 Rib (col 1) — 53 rows to 10 cms. TD's at approx. MT-4

Pattern Note:

Single Motif Fair Isle — special card.
Col 1 in feeder 1, Col 2 in feeder 2, knit 24 rows. Col 1 only, Knit 4 rows. Rept from *to* throughout.

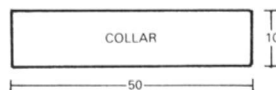


Knit Right Part as Follows:-

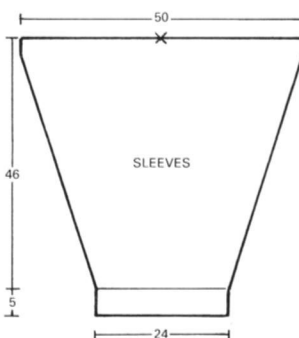
Knit 1 row. Cast off 3 sts beg next row, knit 1 row. Cast off 2 sts beg next and foll alt row, knit 1 row. Dec 1 st at neck edge on the next and ev foll 3rd row 6 times in all. Knit to Row 258. Cast off rem 56 (64) (72) sts. Take carr to left. Bring Ns back to WP. Knit left part as for right part.

SLEEVES

Push 37 Ns at left and right of centre O to WP. 74 Ns altog. Push corresponding Ns on ribber to WP. Arrange Ns for 2 × 1 rib. Using col 1, cast on. RC 000. MT-4, knit 27 rows. Transfer sts to knitter. RC 000. MT. Knit 2 rows. Inc 1 st both ends



ALL MEASUREMENTS ARE IN CENTIMETRES



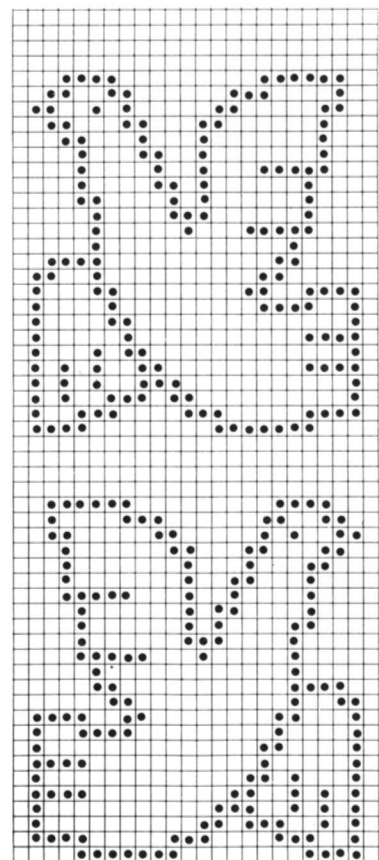
of the next and ev foll 5th row 41 times in all. 156 sts. Knit to Row 206. (Adjust length at this stage if desired). Knit 2 rows col 2, 8 rows col 1. RC 216. Mark centre with waste yarn. Cast off.

COLLAR

Arrange 155 Ns for 2 × 1 rib. Using col 1, cast on. RC 000. MT-4, knit 53 rows. Transfer sts to knitter. Knit 1 row MT. Cast off with waste yarn.

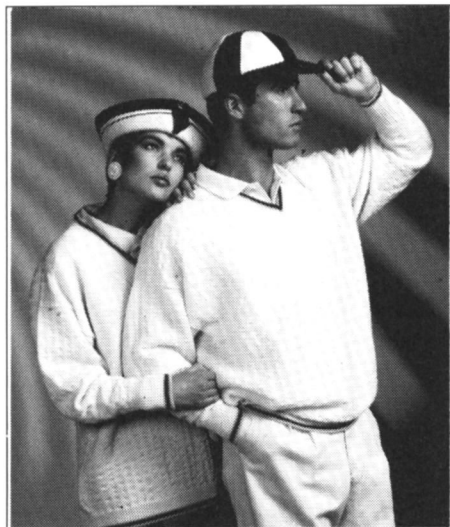
TO MAKE UP

Pin out to size and steam carefully. Join shoulder seams. Set in sleeves between marked points. Join side and sleeve seams. Backstitch collar into pos.



SPECIAL CARD

2 CRICKET SWEATER



For Knitmaster Standard Gauge Punchcard Machines with Ribbing Attachment.

Sizes:

Ladies — To fit 81-86 (91-96) (101-106) cms/32-34 (36-38) (40-42) inch bust.

Mens — To fit 91-96 (101-106) (112-117) cms/36-38 (40-42) (44-46) inch chest.

Materials:

Knitmaster Kone 4ply
Col 1 (Aran) — 450 (500) (550) grms
Col 2 (Inca) — small amount
Col 3 (Midnight) — small amount

Tensions:

Pattern — 31 sts and 60 rows to 10 cms. TD at approx. 7
1 × 1 Rib — 60 rows to 10 cms. TD's at approx. MT-5

Pattern Note:

Slip Stitch — Special Card.

The slip stitch pattern used for these 'cricket' sweaters gives an interesting seer-sucker effect. If you don't intend knitting this sweater yet, punch the card and knit a sample piece of fabric for your files. An interesting fabric like this one could be the source of inspiration for some of your own designs at some point in the future.

BACK

Push 84 (92) (100) Ns at left and right of centre O to WP. 168 (184) (200) Ns altog. Push corresponding Ns on ribber to WP. Arrange Ns for 1 × 1 rib. Using col 2, cast on. RC 000. MT-5, knit 2 rows. Knit 4 rows col 3, 2 rows col 2, 27 rows col 1. Transfer sts to knitter. Insert card into machine and lock on row 1. Take carr across twice without knitting. RC 000. MT. Release card. Set carr for slip stitch. Knit to Row 240 (252) (264). (Adjust length at this stage if desired). Mark both ends with waste yarn*. Knit to Row 414 (426) (438).

Shape Back Neck

Note row number showing on pattern panel. Using a length of col 1, cast off centre 50 sts. Hold Ns at left.

Knit Right Part as Follows:-

Knit 1 row. Cast off 2 sts beg next and ev foll alt row 3 times in all. Cast off rem 53 (61) (69) sts. Carr at right. Set card to row number previously noted and lock. Take carr to left. Bring Ns back to WP. Release card. Knit left part as for right part. Remove card.

FRONT

Knit as for Back to*. Knit to Row 264 (276) (288).

Shape Neck

Not row number showing on pattern panel. Hold Ns at left.

Knit Right Part as Follows:-

Dec 1 st at neck edge on the next and ev foll 5th row 31 times in all. Knit to Row

420 (432) (444). Cast off rem 53 (61) (69) sts. Carr at right. Set card to number previously noted and lock. Take carr to left. Bring Ns back to WP. Release card. Knit left part as for right part. Remove card.

SLEEVES

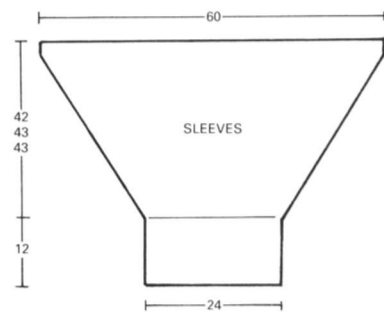
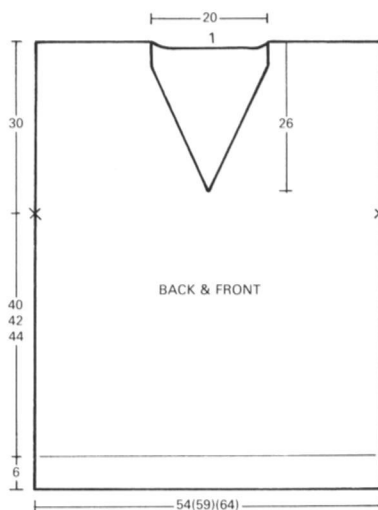
Push 37 Ns at left and right of centre O to WP. 74 Ns altog. Push corresponding Ns on ribber to WP. Arrange Ns for 1 × 1 rib. Using col 2, cast on. RC 000. MT-5, knit 2 rows. Knit 4 rows col 3, 2 rows col 2, 63 rows col 1. Transfer sts to knitter. Insert card into machine and lock on row 1. Take carr across twice without knitting. RC 000. MT. Release card. Set carr for slip stitch. Knit 5 rows. Inc 1 st both ends of next and ev foll 4th row 56 times in all. 186 sts. Knit to Row 252 (258) (258) (adjust length at this stage is desired). Mark centre with waste yarn. Cast off. Remove card.

NECKBAND (2 pieces, 1 in reverse)

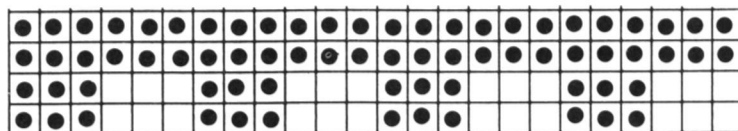
Arrange 124 Ns for 1 × 1 rib. Using col 1, cast on. RC 000. MT-5. Dec 1 st beg next and ev foll alt row 13 times in all, knit 1 row. Continue in the following colour sequence and inc 1 st beg next and ev foll alt row 13 times in all: 2 rows col 2, 4 rows col 3, 2 rows col 2, 20 rows col 1. Transfer sts to knitter. Knit 1 row MT. Cast off with waste yarn.

TO MAKE UP

Pin out to size and steam carefully. Join shoulder seams. Set in sleeves between marked points. Join side and sleeve seams. Backstitch neckband into pos. Join centre back and centre front seam. Fold in half onto the inside and slip stitch into pos. Give final light steam.



ALL MEASUREMENTS ARE IN CENTIMETRES



SPECIAL CARD REPEAT 8 MORE TIMES

ADJUSTING THE LENGTH

The pattern sizes given are based on standard measurements, but you may want to add to or reduce the length of the body and the sleeves. The makeup diagram gives the measurements of the garment so you can check the lengths and decide if you need to make any alterations.

To adjust the length you will have to calculate how many rows you must add or subtract. eg. To add 2cms to the length.

if 10cms = 44 rows

1cm = 4.4 rows

Therefore 2cms = 8.8 rows = 8 rows

Always take the rows to the nearest even number. An odd number will mean your carriage will be on the opposite side to that stated in the pattern. Also remember to make the same adjustment to the front of the garment as you make to the back.

You should decide on adjustments before starting to knit. That way, if you want to shorten the length, you won't have to undo rows that you have already knitted.

When you have completed your adjustments, you must reset the row counter to show the same rows as stated at that point in the pattern. If you don't do this, the row readings will not be the same as those given throughout the rest of the pattern.

SIZES

Many of the designs in The Sweater Book are suitable for both men and women and quote sizes for both.

If you look at pattern 2 on the facing page, you will see that the sizes for ladies are quoted to fit a 32-34 (36-38) (40-42) inch bust while the men's are to fit 36-38 (40-42) (44-46) inch chest.

If you now look at the knitting instructions, you will see there is only information for three sizes, not four or more

as you might expect.

This is because we have made the ladies size 32-34 to exactly the same measurements as the man's size 36-38, the ladies' size 36-38 the same as the man's 40-42 and so on. The reason for this is that women's fashion requires more ease than men's fashion — one of the reasons why so many women are buying men's sweaters these days.

Therefore, to knit one of the unisex sweaters for a woman,

NOTE FOR ELECTRONIC OWNERS

Although all of the patterns in The Sweater Book have been written for owners of Knitmaster Standard Gauge punchcard machines, those of you who own Knitmaster Electronic machines can also knit from these patterns.

Place the N1 cam between needles 12 and 13 at the right of centre O. This will give you the same pattern placing as punchcard machines. If you need to move the N1 cam at any stage to another position on the machine, move it in blocks of 24 needles to keep the same pattern position.

To use the punchcard charts, simply fill a square on your design card where a hole is marked on the punchcard chart, and leave the squares on your design card blank where there are no holes marked on the punchcard chart. When knitting slip stitch or tuck stitch from the punchcard chart, set button 1 with left light lit instead of the right light as you would do normally when knitting slip stitch and tuck stitch.

Set the pattern width indicator to 24.

With these few guidelines you can use any standard gauge punchcard pattern on your Knitmaster electronic machine.

NOTE FOR FINE GAUGE OWNERS

Although all the patterns in The Sweater Book have been written for Knitmaster Standard Gauge punchcard machines, those of you who own Knitmaster Fine Gauge machines can also knit from these patterns.

To achieve the same tensions as stated in the patterns, you should knit with the Tension Dial set approximately two numbers higher than suggested in the pattern.

You can adjust the punchcards for pattern nos. 2 and 4, simply by repeating the chart for the other six squares which appear on your Fine Gauge punchcards.

Pattern nos. 7, 9 and 11 either don't require a punchcard or use one which is available in your basic set of punchcards.

For pattern nos. 3 and 8, add extra blank squares at either side of the motifs, while pattern nos. 1a, 1b, 5, 6a and 6b can be knitted simply by substituting the punchcard design for a Fine Gauge punchcard of your own choice.

KNITTING TIP

You will find that most patterns state the need for a ribbing attachment at the beginning of the pattern. However, if you look at the designs, you will find that very often the ribbing attachment is necessary only for knitting welts, cuffs, bands etc. In these cases, if you don't have a ribber you should either knit a mock rib or use the latch tool method for making your ribs.

choose the size from those quoted for Ladies and knit from the pattern, referring to the appropriate stitch and row instructions in the usual way.

To knit one of the unisex sweaters for a man, choose the size from those quoted for men and knit from the pattern, referring to the appropriate stitch and row instructions in the usual way.

3 'NO 2' SINGLE MOTIF SWEATER



For Knitmaster Standard Gauge Punchcard Machines with Ribbing Attachment.

Sizes:

Ladies — To fit 81-86 (91-96) (101-106) cms/32-34 (36-38) (40-42) inch bust.

Mens — To fit 91-96 (101-106) (112-117) cms/36-38 (40-42) (44-46) inch chest.

Materials:

Knitmaster Aneto 4ply
Col 1 — 400 (450) (500) grms. Col shown Redpepper & Black.
Col 2 — 60 grms. Col shown Cream.

Tensions:

Stockinet (col 1) — 31 sts and 47 rows to 10 cms. TD at approx. 5
1 × 1 Rib (col 1) — 47 rows to 10 cms. TD's at approx. MT-5

Pattern Note:

Single Motif — Special Card. *Release card. Set carr for Fair Isle. With Col 1 in feeder 1 and Col 2 in feeder 2, knit 27 rows. Return card to Row 1 and lock*.

This classic style sweater has been brought bang into fashion simply by introducing the single number 2. If you'd like to give this 'designer-look' to some of your favourite plain patterns, simply punch the card and introduce a few random single motifs as you knit. It might also be fun to use this motif for children's knitwear too!

BACK

Push 84 (92) (100) Ns at left and right of centre O to WP. 168 (184) (200) Ns altog. Push corresponding Ns on ribber to WP. Arrange Ns for 1 × 1 rib. Using col 1, cast on. RC 000. MT-5, knit 19 rows. Transfer sts to knitter. Insert special card into machine and lock on row 1. RC 000. MT. Knit 14 (24) (34) rows. Set machine to knit single motif over Ns 37-60 at left of centre O. Work as given in pattern note from *to*. Continue in stockinet col 1. Knit to Row 112 (122) (132). Set machine to knit single motif over Ns 37-60 at right of centre O. Work as given in pattern note from *to*. Continue in stockinet col 1. Knit to Row 188 (196) (206). (Adjust length at this stage if desired).

Shape Armholes

Cast off 15 sts beg next 2 rows. 138 (154) (170) sts. Knit to Row 220 (230) (240). Set machine to knit single motif over Ns 13-36 at left of centre O. Work as given in pattern note from *to*. Continue in stockinet col 1**. Knit to Row 324 (332) (342).

Shape Shoulders

Cast off 8 (10) (12) sts beg next 2 rows.

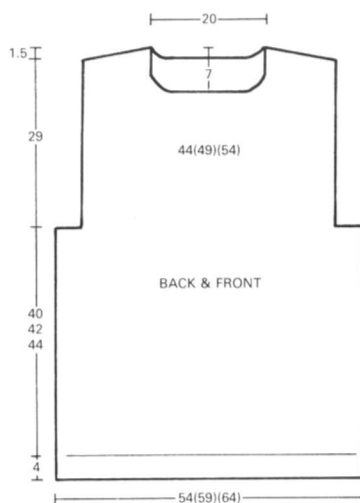
Shape Back Neck

Using a length of col 1, cast off centre 50 sts. Hold Ns at left.

Knit Right Part as Follows:-

Cast off 8 (10) (12) sts beg next row, 2 sts beg next row, 8 (10) (12) sts beg next row, 2 sts beg next row, 8 (10) (12) sts beg next row, 2 sts beg next row. Cast

off rem 6 sts. Take carr to left. Bring Ns back to WP. Knit left part as for right part.



FRONT

Knit as for Back to**. Knit to Row 294 (302) (312).

Shape Neck

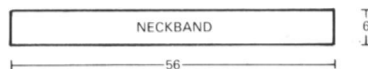
Using a length of col 1, cast off centre 40 sts. Hold Ns at left.

Knit Right Part as Follows:-

Knit 1 row. Cast off 3 sts beg next row, knit 1 row. Cast off 2 sts beg next and foll alt row, knit 1 row. Dec 1 st at neck edge on next and ev foll 3rd row 4 times in all. Knit to Row 324 (332) (342).

Shape Shoulder

Cast off 8 (10) (12) sts beg next and ev foll alt row 4 times in all, knit 1 row. Cast off rem 6 sts. Take carr to left. Bring Ns back to WP. Knit left part as for right part.

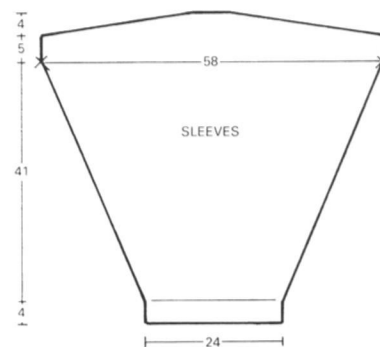


RIGHT SLEEVE

Push 37 Ns at left and right of centre O to WP. 74 Ns altog. Push corresponding Ns on ribber to WP. Arrange Ns for 1 × 1 rib. Using col 1, cast on. RC 000. MT-5, knit 4 rows. Using col 2, knit 2 rows. Using col 1, knit 13 rows. Transfer sts to knitter. RC 000. MT. Knit 3 rows. Inc 1 st both ends of next and ev foll 3rd row 27 times in all, knit 2 rows. Inc 1 st both ends of next and ev foll 4th row 19 times in all, knit 3 rows. Set machine to knit single motif over centre 24 sts. Work as given in pattern note from *to*, AT THE SAME TIME inc 1 st both ends of next and ev foll 4th row 7 times in all, knit 2 rows. Continue in stockinet col 1, knit 1 row. Inc 1 st both ends of the next row. 182 sts. Knit to Row 192. (Adjust the length at this stage if desired). Mark both ends with waste yarn. Knit to Row 216.

Shape Top

Set carr for partial knitting. Always taking yarn round first inside N in HP, push 9 Ns at opposite end to carr to HP on the next 18 rows. 20 Ns rem in WP. Push Ns at opposite end to carr from HP to UWP on the next 2 rows. Cast off.



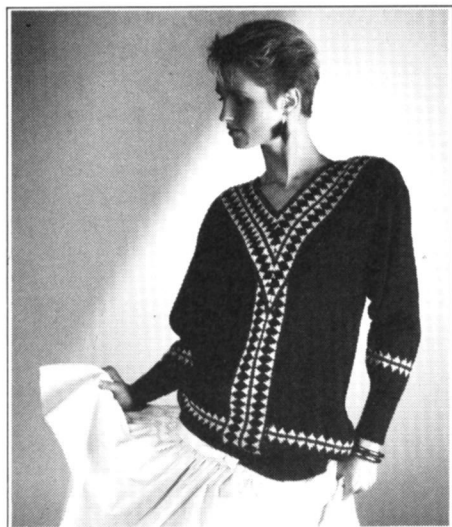
ALL MEASUREMENTS ARE IN CENTIMETRES

Continued on p.22

3



4 SWEATER WITH FAIR ISLE NECKLINE



For Knitmaster Standard Gauge Punchcard Machines with Ribbing Attachment.

Sizes:

To fit 81-86 (91-96) cms/32-34 (36-38) inch bust.

Materials:

Col 1 — (Navy) — 400 (450) grms (Knitmaster Kone 4ply)

Col 2 — (Candy Floss) — 50 (60) grms (Knitmaster Blackjack)

Col 3 — (Bright Pink) — 50 (60) grms (Knitmaster Blackjack)

Tensions:

Stockinet (col 1) — 32 sts and 44 rows to 10 cms. TD at approx. 6

Fair Isle — 33 sts and 45 rows to 10 cms. TD at approx. MT

1 × 1 Rib (col 1) — 45 rows to 10 cms. TD's at approx. MT-5

Pattern Note:

Fair Isle — Special Card.

Back, Front, Sleeve Border — Col 1 in feeder 1, Col 2 in feeder 2, knit 6 rows. Col 3 only, knit 4 rows. Col 1 in feeder 1, Col 2 in feeder 2, knit 6 rows.

Front and Neck Inserts

Col 3 only, knit 4 rows. Col 1 in feeder 1, Col 2 in feeder 2, knit 6 rows. Col 1 only, knit 4 rows. Col 1 in feeder 1, Col 2 in feeder 2, knit 6 rows. Col 3 only, knit 4 rows. Col 1 in feeder 1, Col 2 in feeder 2, knit 6 rows. Col 1 only, knit 4 rows. Col 1 in feeder 1, Col 2 in feeder 2, knit 6 rows. Col 3 only, knit 4 rows.

The unusual neckline of this sweater creates a stunning effect. The Fair Isle pattern lends itself beautifully to different combinations of colour, so why not try out a few different ones. White and Grey Blackjack with Porcelain Kone 4ply will give a beautifully understated look while Chestnut and Apricot Blackjack with Brown Kone 4ply will create a rich autumnal colour combination. See how many more you can come up with.

BACK

Push 83 (92) Ns at left and right of centre O to WP. 166 (184) Ns altog. Push corresponding Ns on ribber to WP. Arrange Ns for 1 × 1 rib. Using col 1, cast on. RC 000. MT-5, knit 23 rows. Transfer sts to knitter*. Insert card into machine and lock on row 15. RC 000. MT. Knit 18 rows. Release card. Set carr for Fair Isle. Continue in pattern given in pattern note, knit 16 rows. Remove card. Set carr for stockinet. Continue in col 1. Knit to Row 180 (198). Mark both ends with waste yarn. Knit to Row 300 (318).

Shape Back Neck

Using a length of col 1, cast off centre 48 sts. Hold Ns at left.

Knit Right Part as Follows:-

Knit 1 row. Cast off 3 sts beg next row, knit 1 row. Cast off 2 sts beg next row. Cast off rem 54 (63) sts. Take carr to left. Bring Ns back to WP. Knit left part as for right part.

FRONT

Knit as for Back to*. Insert card into machine and lock on row 15. Using a length of col 1, cast off centre 32 sts. Hold Ns at left.

Knit Right Part as Follows:-

RC 000. MT. Knit 18 rows. Release card. Set carr for Fair Isle. Continue in pattern given in pattern note, knit 16 rows. Return card to Row 15 and lock. Set carr

for stockinet. Continue in col 1. Knit to Row 170 (188).

Shape Front Edge

Dec 1 st at front edge on the next and ev foll 3rd row 4 times in all. RC 180 (198). Mark right edge with waste yarn. Knit 2 rows. Dec 1 st at front edge on the next and ev foll 3rd row 41 times in all. Knit to Row 304 (322). Cast off rem 22 (31) sts. Take carr to left. Bring Ns back to WP. Knit left part as for right part but read left for right. Remove card.

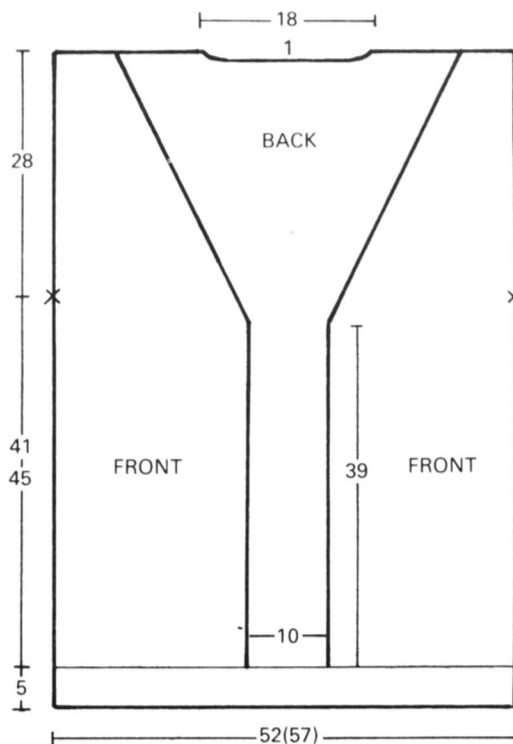
SLEEVES

Push 39 Ns at left and right of centre O to WP. 78 Ns altog. Push corresponding Ns on ribber to WP. Arrange Ns for 1 × 1 rib. Using col 1, cast on. RC 000. MT-5, knit 55 rows. Transfer sts to knitter. Insert card into machine and lock on row 15. RC 000. MT. Knit 3 rows. Inc 1 st both ends of next and ev foll 3rd row 5 times in all, knit 2 rows. Release card.

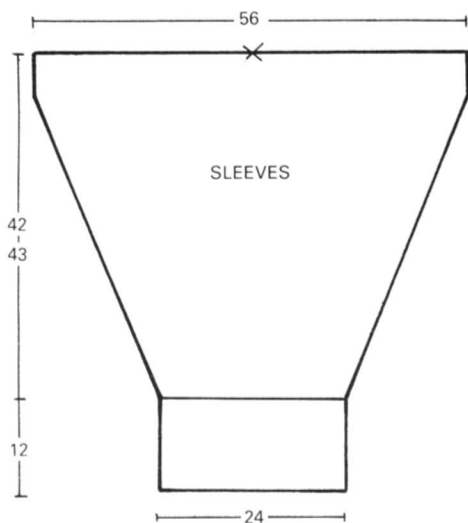
Set carr for Fair Isle. Continue in pattern given in pattern note then continue in stockinet col 1, AT THE SAME TIME inc 1 st both ends of next and ev foll 3rd row 19 times in all, knit 2 rows. Inc 1 st both ends of next and ev foll 4th row 27 times in all. 180 sts. Knit to Row 184 (188). Mark centre with waste yarn. Cast off.

FRONT INSERT

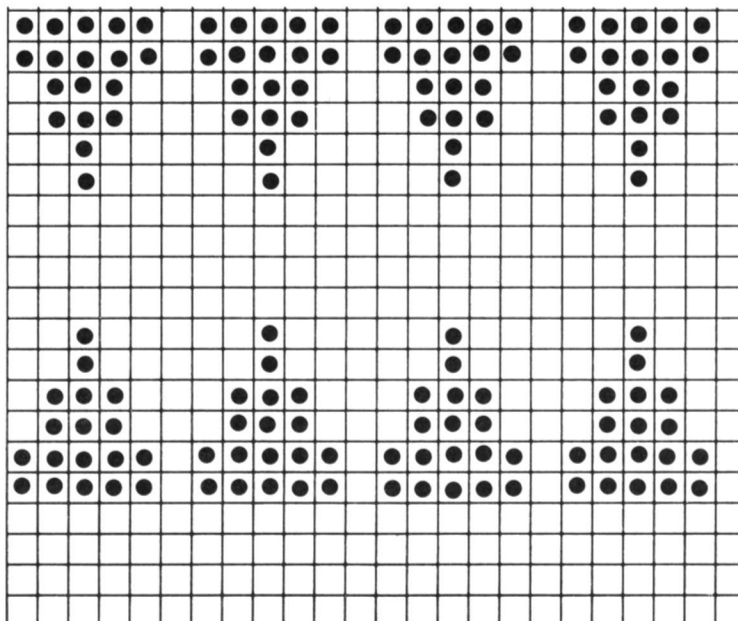
Lock card on row 1. Push 64 (72) Ns at left and right of centre O to WP. 128 (144) Ns altog. Using waste yarn cast on. Push Ns to HP. Using col 3, cast on by hand. Push Ns to UWP. RC 000. MT. Release card. Set carr for Fair Isle. Continue in pattern given in pattern note. Cast off 3 sts beg next and ev foll alt row 11 times in all, knit 1 row. Cast on 3 sts beg next and ev foll alt row 11 times in all. MT+4, knit 1 row. Cast off with a latch tool.



ALL MEASUREMENTS ARE IN CENTIMETRES

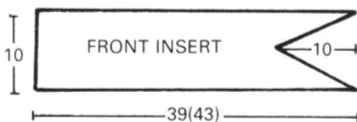


SPECIAL CARD REPEAT ONCE MORE



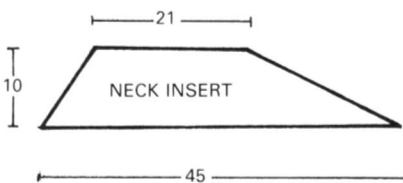
NECK INSERTS (knit 2, 1 in reverse)

Lock card on row 1. Push 76 Ns at left and 73 Ns at right of centre O to WP. 149 Ns altog. Using waste yarn cast on. Push Ns to HP. Using col 3, cast on by hand. Push Ns to UWP. RC 000. MT. Release card. Set carr for Fair Isle. Continue in pattern given in pattern note, knit 2 rows. At left edge dec 1 st on the next and ev foll 3rd row 14 times in all, AT THE SAME TIME cast off 3 sts beg next and ev foll alt row 21 times in all. MT+4, knit 1 row. Cast off rem 72 sts with a latch tool.



TO MAKE UP

Pin out to size and steam carefully. Sew front insert into pos. Sew neck inserts into pos. Join shoulder seams. Set in sleeves between marked points. Join side and sleeve seams sewing half of cuff seam in reverse. Fold cuff in half onto the outside. Using col 1, work 3 rows of double crochet around back neck. Using col 3, work 2 rows of double crochet around front neck edges. Give final light steam.

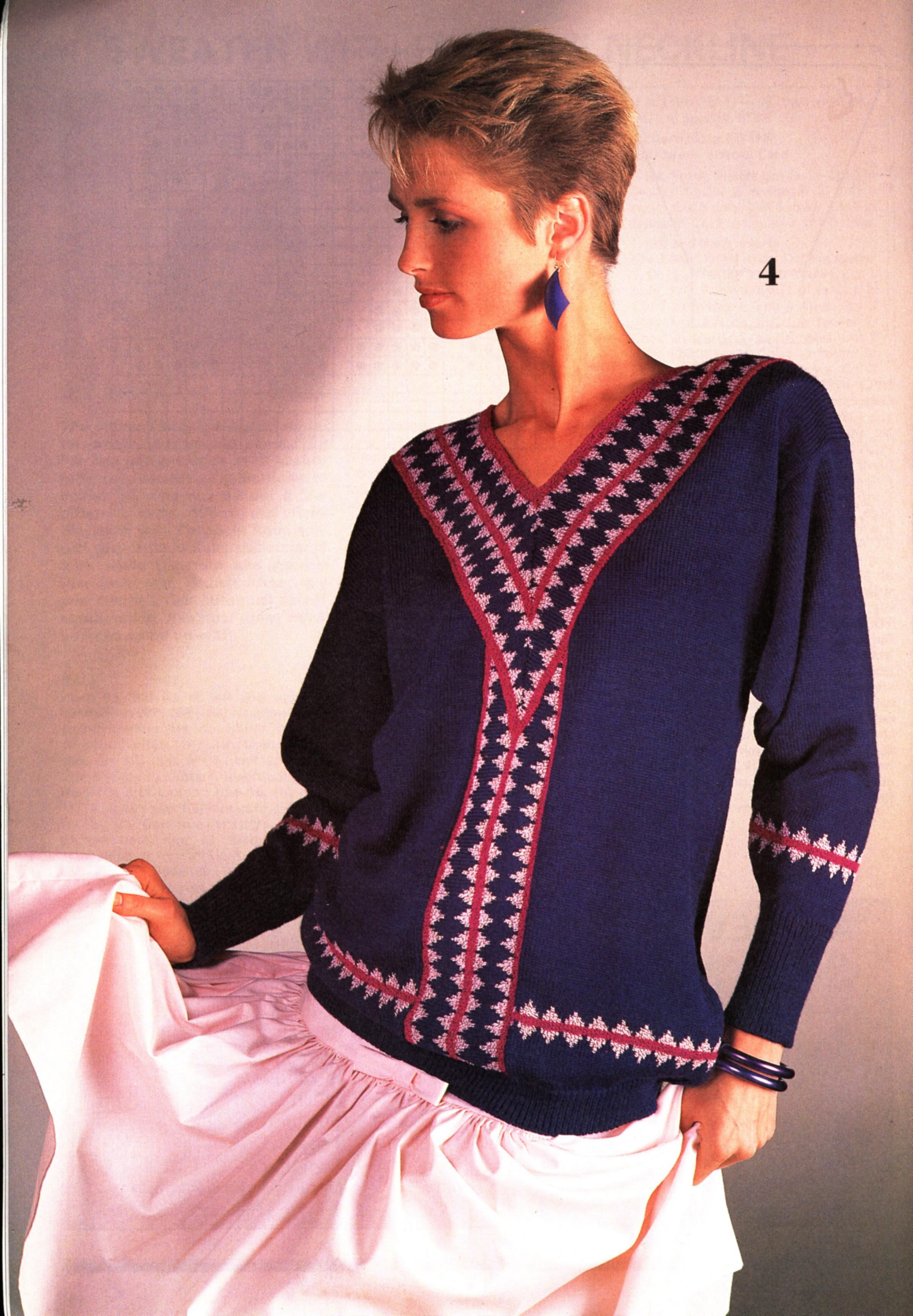


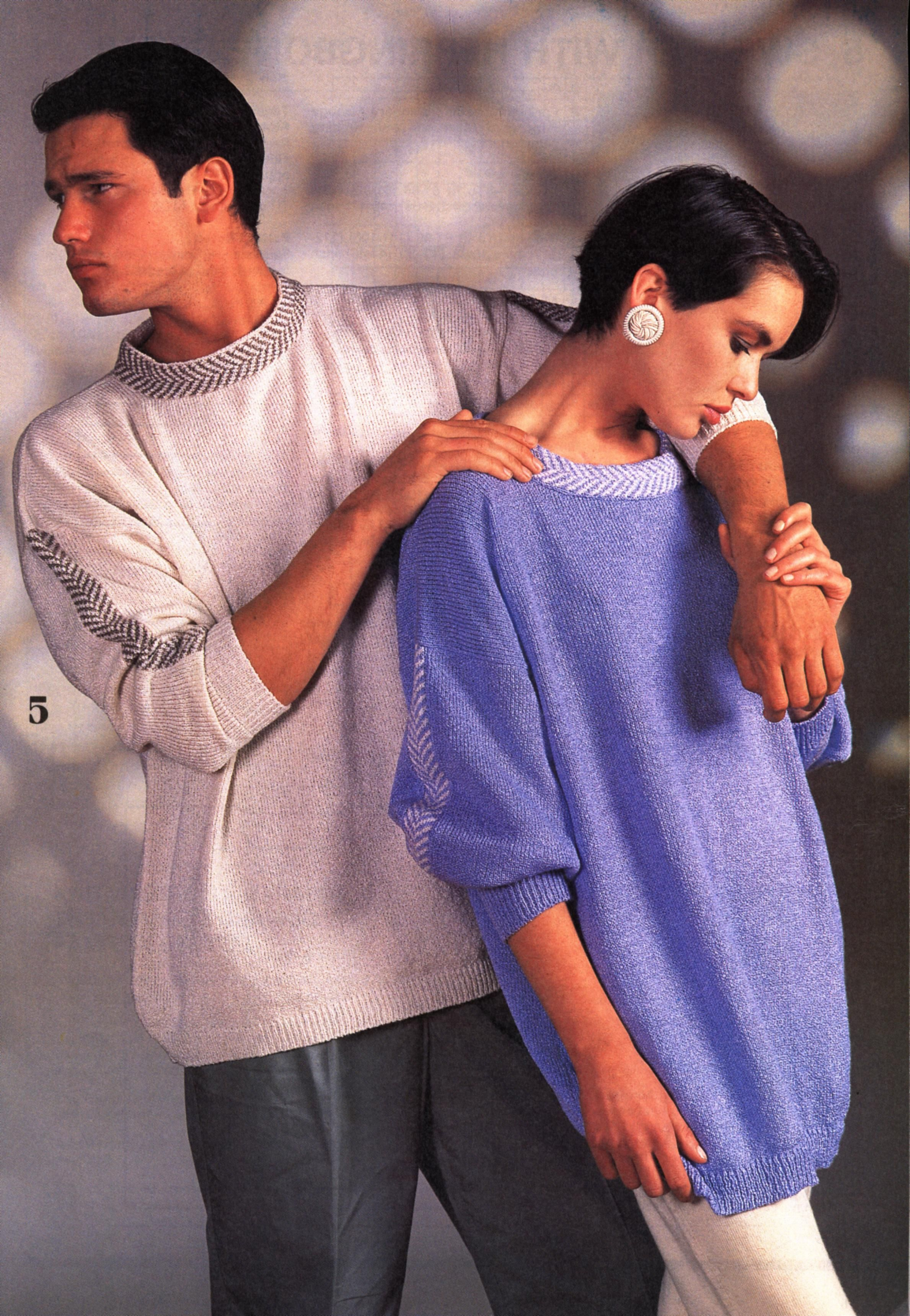
ABBREVIATIONS

Alt — Alternate
 Altog — Altogether
 Approx — Approximately
 Beg — Beginning
 Carr — Carriage
 Cm(s) — Centimetre(s)
 Dec — Decrease
 Ev — Every
 Foll — Following
 Inc — Increase
 MT — Main Tension
 N — Needle

Ns — Needles
 NWP — Non Working Position
 Patt — Pattern
 Pos — Position
 Rept — Repeat
 Rem — Remaining
 RC — Row Counter
 St — Stitch
 Sts — Stitches
 TD — Tension Dial
 Tog — Together
 UWP — Upper Working Position
 WP — Working Position

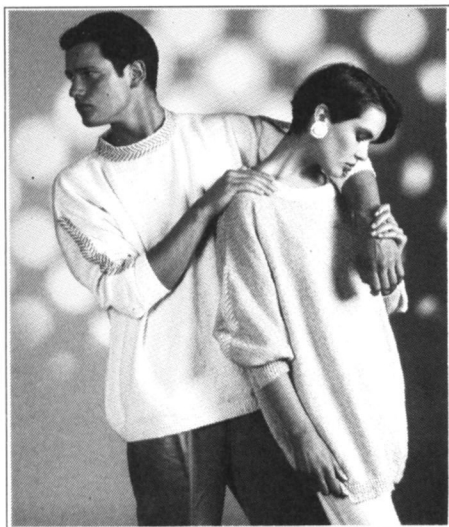
4





5

5 SWEATER WITH HERRINGBONE DETAIL



For Knitmaster Standard Gauge Punchcard Machines with Ribbing Attachment.

Sizes:

Ladies — To fit 81-86 (91-96) (101-106) cms/32-34 (36-38) (40-42) inch bust.

Mens — To fit 91-96 (101-106) (112-117) cms/36-38 (40-42) (44-46) inch chest.

Materials:

Knitmaster Aneto 4ply
Col 1 — 450 (465) (480) grms — Colours show Clematis & Cream
Col 2 — small amount — Colours shown Cream & Hessian

Tensions:

Stockinet (col 1) — 31 sts and 47 rows to 10 cms. TD at approx. 6
Fair Isle — 42 rows to 10 cms. TD at approx. MT
1 × 1 Rib (col 1) — 50 rows to 10 cms. TD's at approx. MT-5

Pattern Note:

Fair Isle — Special Card. Col 1 in feeder 1, Col 2 in feeder 2.

If the man in your life finds the neckline on this sweater a little too 'modern' you can easily knit it with a normal rib neckline. However, if you knit this sweater in navy blue, replacing the Fair Isle pattern with cables, you'll find it becomes a more classic Guernsey style of sweater!

BACK

Push 84 (92) (100) Ns at left and right of centre O to WP. 168 (184) (200) Ns altog. Push corresponding Ns on ribber to WP. Arrange Ns for 1 × 1 rib. Using col 1, cast on. RC 000. MT-5, knit 21 rows. Transfer sts to knitter. RC 000. MT. Knit 178 (188) (198) rows. (Adjust length at this stage if required). Mark both ends with waste yarn*. Knit to Row 312 (322) (332).

Shape Back Neck

Using a length of col 1, cast off centre 50 sts. Hold Ns at left.

Knit Right Part as Follows:-

Knit 1 row. Cast off 2 sts beg next and ev foll alt row 3 times in all. Cast off rem 53 (61) (69) sts. Take carr to left. Bring Ns back to WP. Knit left part as for right part.

FRONT

Knit as for Back to*. Knit to Row 280 (290) (300).

Shape Neck

Using a length of col 1, cast off centre 38 sts. Hold Ns at left.

Knit Right Part as Follows:-

Knit 1 row. Cast off 3 sts beg next row, knit 1 row. Cast off 2 sts beg next and ev foll alt row 3 times in all, knit 1 row. Dec 1 st at neck edge on the next and ev foll 4th row 3 times in all. Knit to Row 318 (328) (338). Cast off rem 53 (61) (69) sts. Take carr to left. Bring Ns back to WP. Knit left part as for right part.

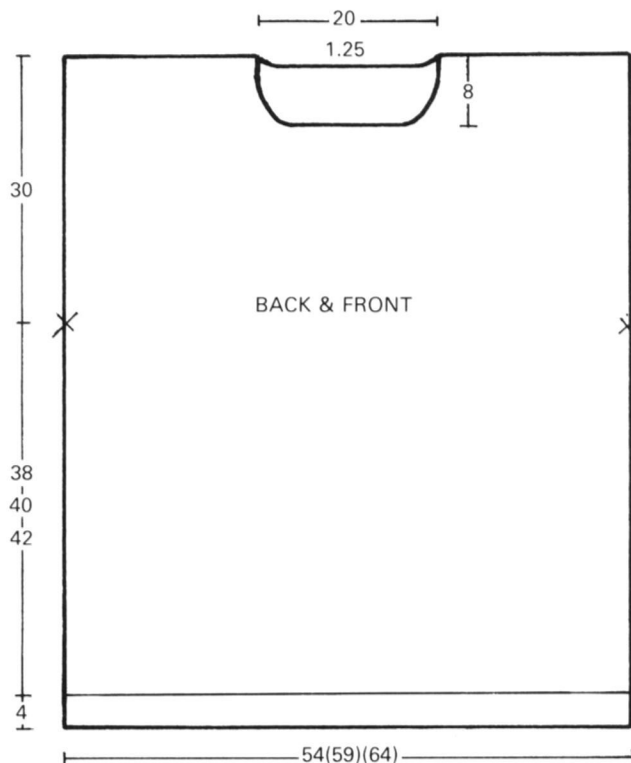
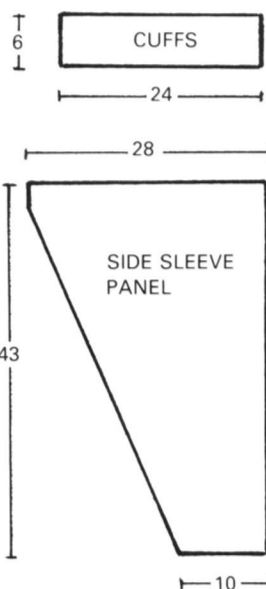
SIDE SLEEVE PANELS (knit 4-2 in reverse)

Using waste yarn cast on 31 sts. RC 000. MT. Using col 1, knit 5 rows. Inc 1 st at right edge on the next and ev foll 3rd row 40 times in all, knit 3 rows. Inc 1 st at right edge on the next and ev foll 4th row 16 times in all. 87 sts. Knit to Row 202. Cast off.

CENTRE SLEEVE PANELS (knit 2)

Insert special card into machine and lock on row 1. Push 8 Ns at left and right of centre O to WP. 16 Ns altog. Using waste yarn cast on. RC 000. MT. Release card. Set carr for Fair Isle. With col 1 in feeder 1 and col 2 in feeder 2, knit 182 rows. Cast off. Remove card.

ALL MEASUREMENTS ARE IN CENTIMETRES



CUFFS

Pin out sleeve pieces and steam carefully. Join centre panel between 2 side panels. Rept for second sleeve. Arrange 75 Ns for 1 × 1 rib. Using col 1, cast on. RC 000. MT-5, knit 31 rows. Transfer sts to knitter. With purl side facing, pick up sts from below waste yarn and place onto Ns gathering extra 3 sts evenly. MT+2, knit 1 row. Cast off.

NECKBAND

Insert card into machine and lock on row 1. Push 8 Ns at right and 18 Ns at left of centre O to WP. 26 Ns altog. Using waste yarn cast on. Push Ns to HP. Using col 1, cast on by hand. Push Ns to UWP. MT. Knit 1 row. RC 000. Release card. Set carr for Fair Isle. With col 1 in feeder 1 and col 2 in feeder 2, knit 245 rows. Cast off.

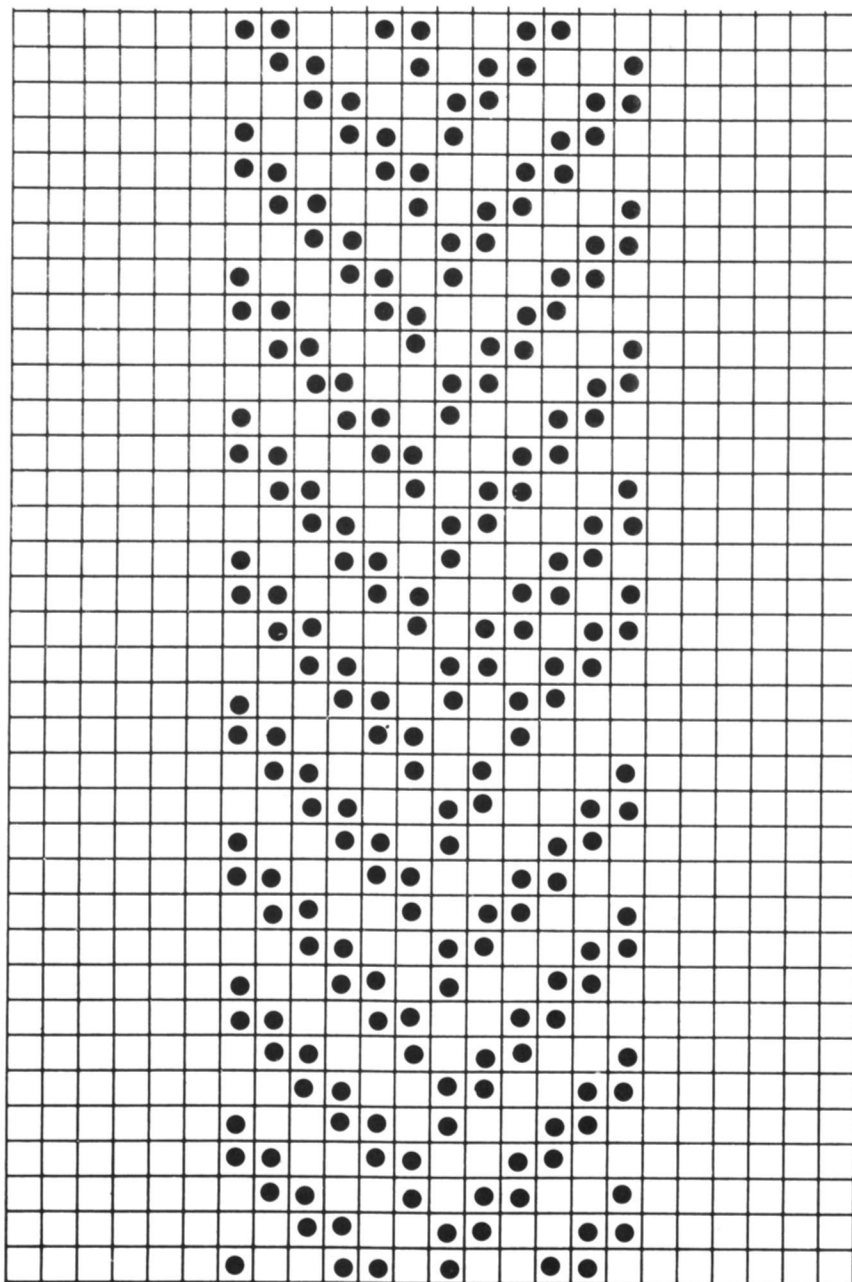
TO MAKE UP

Pin out to size and steam carefully. Join shoulder seams. Set in sleeves between marked points. Join side and sleeve seams. With right side of Fair Isle edge of neckband to right side of neck edge, backstitch neckband into pos. Join seam at centre back. Fold in half and catch down on the inside. Give final light steam.

Kone Stockist

If you encounter any problems in obtaining Knitmaster Kone yarns please write for stockist information to Knitmaster Ltd., 39-45 Cowleaze Rd., Kingston-upon-Thames, Surrey KT2 6DT.

SPECIAL CARD



KNITMASTER'S KNITRADAR — THE ULTIMATE GRAPHIC PATTERN SYSTEM.

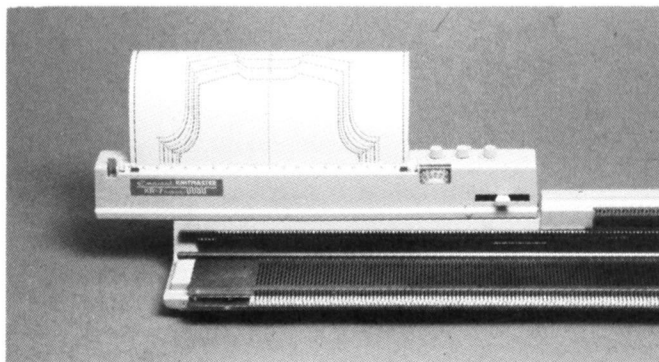
Add Knitmaster's knitradar to your machine — and make sure every garment you knit is a perfect fit.

Knitmaster's knitradar works from a diagram pattern — similar to a dressmaking pattern — which shows you exactly how many stitches to cast on, and where and when to increase and decrease.

You choose the yarn — the stitch pattern — the garment shape — and the knitradar does the rest.

Add the knitradar to any gauge of Knitmaster machine.

Ask your local Knitmaster stockist for a free demonstration today.



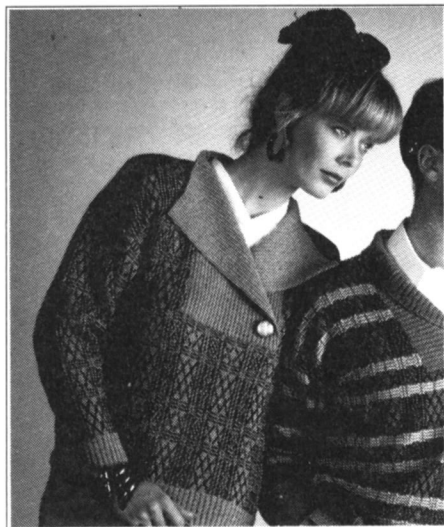
KNITMASTER

6A

6B



6A LADY'S PLAID SWEATER



If you'd like the ribs on this sweater to pull in, in the traditional way, rather than lie flat, creating the fashionable 'box' shaped sweater, use knitting elastic when knitting the cuffs and bottom welt. Knitting elastic is fine enough to use along with your main yarn and is ideal for using with the many fashion yarns which don't have their own natural elasticity.

BACK

Push 90 (98) Ns at left and right of centre O to WP. 180 (196) Ns altog. Push corresponding Ns on ribber to WP. Arrange Ns for 2 × 1 rib. Using col 1, cast on. RC 000. MT-4, knit 43 rows. Transfer sts to knitter. Insert card into machine and lock on row 1. Take carr across twice without knitting. RC 000. MT. Release card. Set carr for Fair Isle. Continue in pattern given in pattern note, knit 96 (108) rows. (Adjust length at this stage if desired). Mark both ends with waste yarn*. Knit to Row 182 (194). Shape Back Neck

Note row number showing on pattern panel and pos in colour sequence. Using a length of col 1, cast off centre 40 sts. Hold Ns at left.

Knit Right Part as Follows:-

Knit 1 row. Cast off 3 sts beg next and foll alt row. Cast off rem 64 (72) sts. Carr at right. Set card to row previously noted and lock. Take carr to left. Release card. Bring Ns back to WP. Keeping pattern correct, knit left part as for right part. Remove card.

For Knitmaster Standard Gauge Punchcard Machines with Ribbing Attachment.

Sizes:

To fit 86-91 (96-101) cms/34-36 (38-40) inch bust.

Materials:

Col 1 (Hessian) — 300 (350) grms Knitmaster Blackjack
Col 2 (Black) — 100 (150) grms Knitmaster Kone 4ply
Col 3 (Fashion Flip) — 50 (70) grms Knitmaster Kone 4ply
1 large button

Tensions:

Fair Isle — 33 sts and 32 rows to 10 cms. TD at approx. 6

2 × 1 Rib. (col 1) — 54 rows to 10 cms. TD's at approx. MT-4

Pattern Note:

Fair Isle — Special Card — See mans plaid sweater.

Col 1 in feeder 1, Col 2 in feeder 2, knit 22 rows. Col 1 in feeder 1, Col 3 in feeder 2, knit 7 rows. Col 1 in feeder 1, Col 2 in feeder 2, knit 10 rows. Col 1 in feeder 1, Col 3 in feeder 2, knit 7 rows. Rept from *to* throughout.

FRONT

Knit as for Back to*.

Shape Neck

Note row number showing on pattern panel and pos in colour sequence. Using a length of col 1, cast off centre 52 sts. Hold Ns at left.

Knit Right Part as Follows:-

Knit to Row 186 (198). Cast off rem 64 (72) sts. Carr at right. Set card to row previously noted and lock. Take carr to left. Release card. Bring Ns back to WP. Keeping pattern correct, knit left part as for right part. Remove card.

BACK NECKBAND

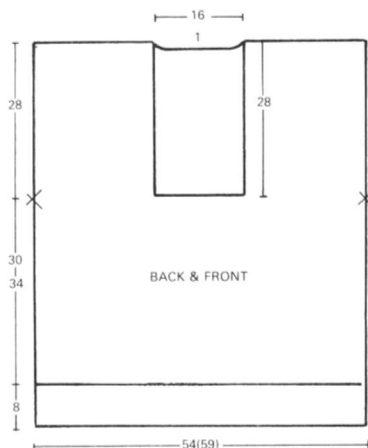
Arrange 53 Ns for 2 × 1 rib. Using col 1, cast on. RC 000. MT-4, knit 17 rows. Transfer sts to knitter. Knit 1 row MT. Cast off.

COLLAR (2 pieces)

Arrange 53 Ns for 2 × 1 rib. Using col 1, cast on. RC 000. MT-4, knit 167 rows. Transfer sts to knitter. Knit 1 row MT. Cast off.

TO MAKE UP

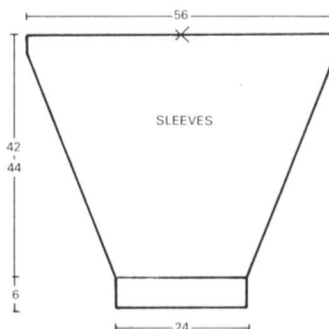
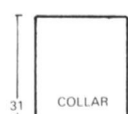
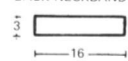
Pin out to size and steam carefully. Join shoulder seams. Set in sleeves between marked points. Join side and sleeve seams. Sew back neckband into pos. Sew front collar pieces into pos including along edge of back neckband. Lap right front over left front and neaten lower edge. Sew on button. Give final light steam.



SLEEVES

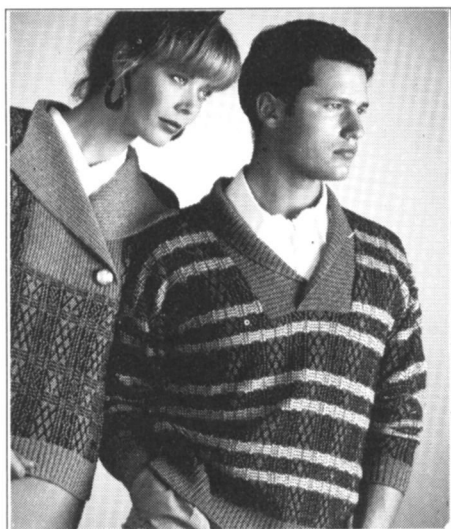
Push 40 Ns at left and right of centre O to WP. 80 Ns altog. Push corresponding Ns on ribber to WP. Arrange Ns for 2 × 1 rib. Using col 1, cast on. RC 000. MT-4, knit 33 rows. Transfer sts to knitter. Insert card into machine and lock on row 1. Take carr across twice without knitting. RC 000. MT. Release card. Set carr for Fair Isle. Continue in pattern given in pattern note, knit 1 row. Inc 1 st both ends next and ev foll alt row 31 times in all, knit 1 row. Inc 1 st both ends and ev foll 3rd row 22 times in all. 186 sts. Knit to Row 134 (142). (Adjust length at this stage if desired). Mark centre with waste yarn. Cast off. Remove card.

BACK NECKBAND



ALL MEASUREMENTS ARE IN CENTIMETRES

6B MAN'S PLAID SWEATER



For Knitmaster Standard Gauge Punchcard Machines with Ribbing Attachment.

Sizes:

To fit 96-101 (106-112) cms/38-40 (42-44) inch chest.

Materials:

Col 1 (Grey) — 400 (450) grms Knitmaster Blackjack
 Col 2 (Fashion Flip) — 100 (150) grms Knitmaster Kone 4ply
 Col 3 (Oatmeal) — 50 (70) grms Knitmaster Kone 4ply

Tensions:

Fair Isle — 33 sts and 32 rows to 10 cms. TD at approx. 6
 2 × 1 Rib. (col 1) — 54 rows to 10 cms. TD's at approx. MT-4

Pattern Note:

Fair Isle — Special Card.
 Col 1 in feeder 1, Col 2 in feeder 2, knit 22 rows. Col 1 in feeder 1, Col 3 in feeder 2, knit 7 rows. Col 1 in feeder 1, Col 2 in feeder 2, knit 10 rows. Col 1 in feeder 1, Col 3 in feeder 2, knit 7 rows. Rept from *to* throughout.

Shawl collared sweaters are not easy to find these days, so if they're popular in your household, draw a Knitradar pattern of this one using the measurements given on the diagrams. Once you have the knitradar pattern, you can knit this style as often as you like using any stitch pattern you like since you will no longer have to get the same tension reading as we have. If you haven't used Knitradar yet, you should seriously consider it. With it, you and your machine will have complete freedom!

FRONT

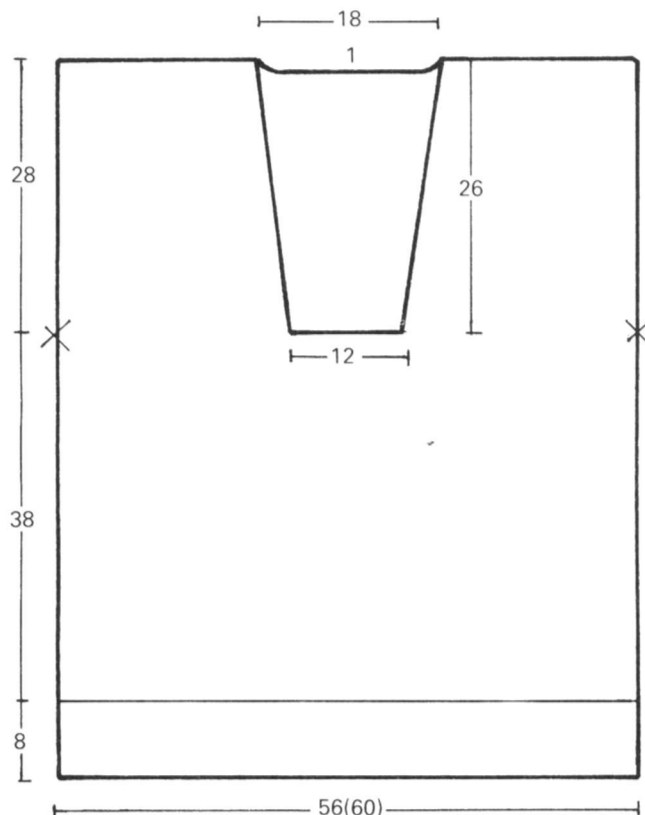
Knit as for Back to*. Knit to Row 128. Shape Neck
 Note row number showing on pattern panel and pos in colour sequence. Using a length of col 1, cast off centre 40 sts. Hold Ns at left.
 Knit Right Part as Follows:-
 Knit 8 rows. Dec 1 st at neck edge on the next and ev foll 8th row 10 times in all. Knit to Row 212. Cast off rem 63 (70) sts. Carr at right. Set card to row previously noted and lock. Take carr to left. Release card. Bring Ns back to WP. Keeping pattern correct, knit left part as for right part. Remove card.

SLEEVES

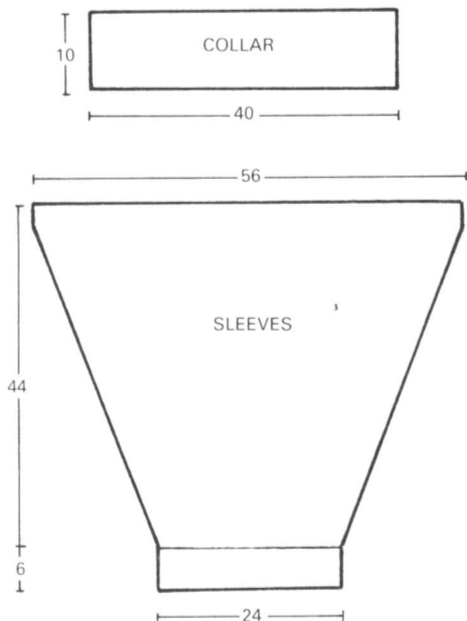
Push 40 Ns at left and right of centre O to WP. 80 Ns altog. Push corresponding Ns on ribber to WP. Arrange Ns for 2 × 1 rib. Using col 1, cast on. RC 000. MT-4, knit 33 rows. Transfer sts to knitter. Insert card into machine and lock on row 1. Take carr across twice without knitting. RC 000. MT. Release card. Set carr for Fair Isle. Continue in pattern given in pattern note, knit 1 row. Inc 1 st both ends next and ev foll alt row 23 times in all, knit 1 row. Inc 1 st both ends next and ev foll 3rd row 30 times in all. 186 sts. Knit to Row 142. (Adjust length at this stage if desired). Mark centre with waste yarn. Cast off. Remove card.

BACK

Push 93 (100) Ns at left and right of centre O to WP. 186 (200) Ns altog. Push corresponding Ns on ribber to WP. Arrange Ns for 2 × 1 rib. Using col 1, cast on. RC 000. MT-4, knit 43 rows. Transfer sts to knitter. Insert card into machine and lock on row 1. Take carr across twice without knitting. RC 000. MT. Release card. Set carr for Fair Isle. Continue in pattern given in pattern note, knit 122 rows. (Adjust length at this stage if desired). Mark both ends with waste yarn*. Knit to Row 208 (194). Shape Back Neck
 Note row number showing on pattern panel and pos in colour sequence. Using a length of col 1, cast off centre 48 sts. Hold Ns at left.
 Knit Right Part as Follows:-
 Knit 1 row. Cast off 3 sts beg next and foll alt row. Cast off rem 63 (70) sts. Carr at right. Set card to row previously noted and lock. Take carr to left. Release card. Bring Ns back to WP. Keeping pattern correct, knit left part as for right part. Remove card.



ALL MEASUREMENTS ARE IN CENTIMETRES

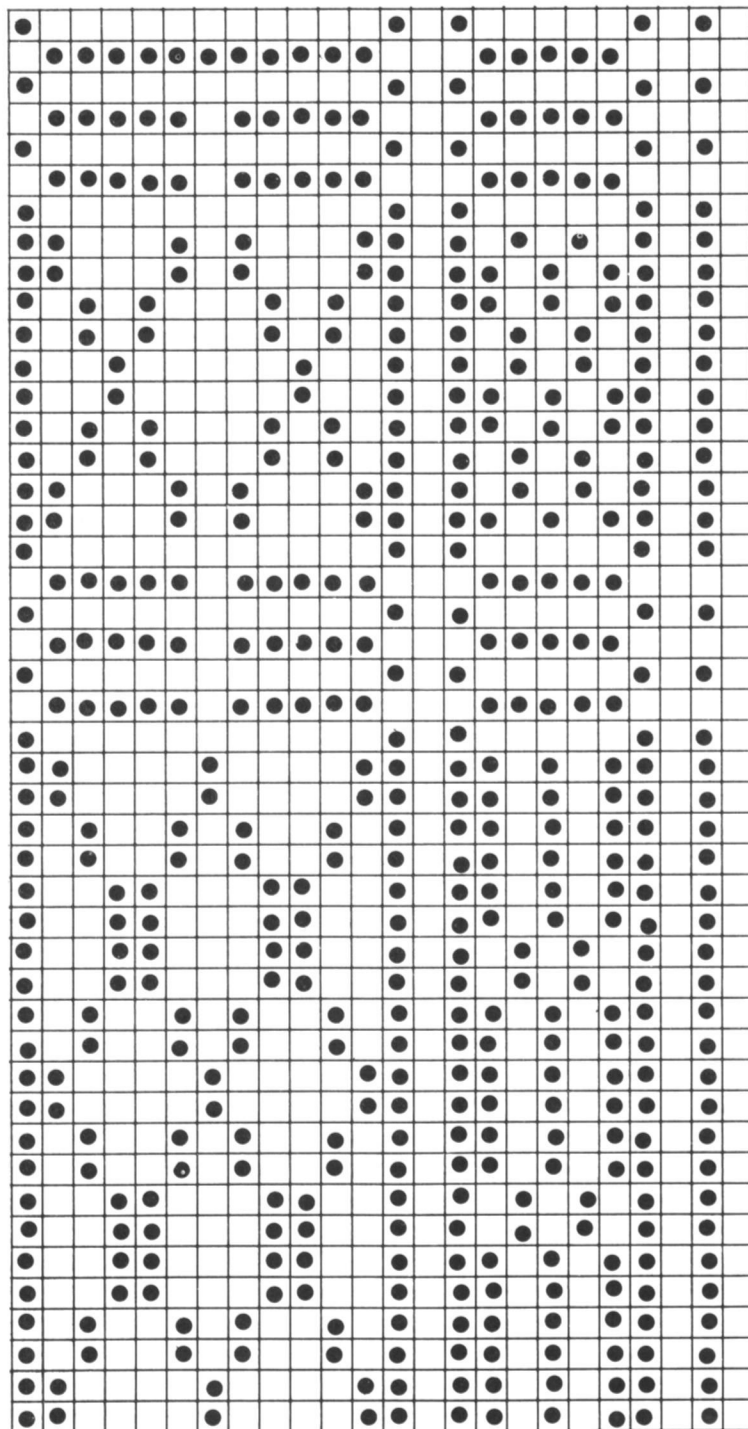


COLLAR (2 pieces)

Arrange 134 Ns for 2 x 1 rib. Using col 1, cast on. RC 000. MT-4, knit 54 rows. Transfer sts to knitter. Knit 1 row MT. Cast off.

TO MAKE UP

Pin out to size and steam carefully. Join shoulder seams. Set in sleeves between marked points. Join side and sleeve seams. Sew collar pieces into pos, lapping left front over right front and neaten lower edge. Join centre back seam. Give final light steam.



TAKE THE CREASES OUT OF COTTON — AND THE 'IRE' OUT OF IRONING



KNITMASTER'S STEAMPRESS IS THE NEW WAY TO IRON — SAVE TIME, ENERGY, AND THOSE ACHING BACKS AND LEGS. AVAILABLE FROM YOUR LOCAL KNITMASTER STOCKIST



Would you like to join a Knitting Club

If you'd like to join a knitting club, but don't know where your local club is, write for details to Jean Wiseman, Knitting Club Liaison Officer, Knitmaster Ltd., 39-45 Cowleaze Rd, Kingston-upon-Thames, Surrey KT2 6DT.

Please enclose a stamped, addressed envelope.

LEFT SLEEVE

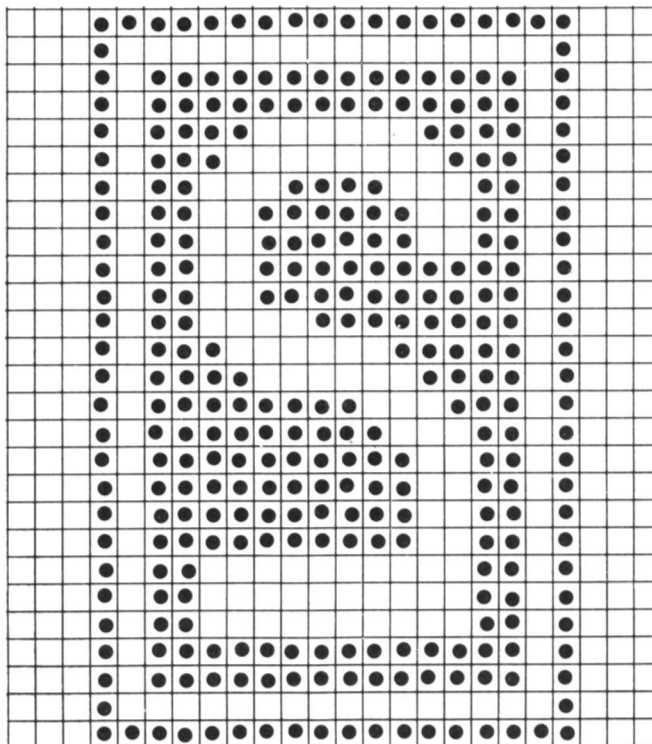
Knit as for Right Sleeve but knit single motif over centre 24 sts when RC shows 28.

NECKBAND

Arrange 174 Ns for 1 x 1 rib. Using col 1, cast on. RC 000. MT-5; knit 24 rows. Using col 2, knit 2 rows. Using col 1, knit 2 rows. Transfer sts to knitter. MT, knit 1 row. Cast off with waste yarn.

TO MAKE UP

Pin out to size and steam carefully. Join shoulder seams. Set in sleeves, sewing rows above marker to cast off sts at armhole. Join side and sleeve seams. Backstitch neckband into pos and join seam at centre back. Fold in half onto the inside and slip stitch into pos. Give final light steam.



KNITMASTER PATTERNS FOR KNITMASTER YARNS

2 more pattern books for Knitmaster Machine Knitters using the yarns from the superb Knitmaster Kone range of yarns.

Family Fashion Classics

All the classic basic 4 ply patterns you have ever wanted in one book.

22 patterns in family sizes (22"-50")

Plus

'Learn-while-you-knit' hints and tips.

The Baby Collection

36 Machine Knit patterns for the under fives.

The most comprehensive range of baby's and toddlers designs you've ever seen.



Family Fashion Classics and the Baby Collection are available from your Knitmaster stockist now.

How to make a Knitradar pattern using the diagrams

Equipment you will need

To make a Knitradar pattern you will find it useful to have the following pieces of equipment: a Triangular Half Scale, a Freeline Drawer and a Knitradar Tracing Roll. These are all available from your Knitmaster stockist.

How to use your Triangular Half Scale

Look at your Triangular Half Scale, you will notice that one side is marked in inches and the other side in centimetres. All the pattern diagrams show the measurements in centimetres so you must use the centimetre side for drawing your Knitradar patterns. However, if you still like to think in inches, you can turn your Half Scale over after you have drawn the pattern and see what the measurements are in inches.

You will also notice that the measurements on your Triangular Half Scale are shown in two different ways. The longest edge is marked full scale while the 2 shorter edges are marked half scale. Use the 2 shorter edges to draw your Knitradar pattern and it will automatically be drawn to half scale – suitable for use with your Knitradar. As you will see there are no calculations to make for half scale patterns – the Triangular Half Scale does all the work for you. However, there is a remarkable benefit to half scale patterns – you don't need the huge working surface required to draw full scale patterns.

To make the Knitradar pattern

Cut a suitable length of paper from the tracing roll – you will need to leave approx. 20 cms blank at the bottom of the paper before starting your pattern. This blank piece is necessary to allow the tracing paper to be fed into your Knitradar.

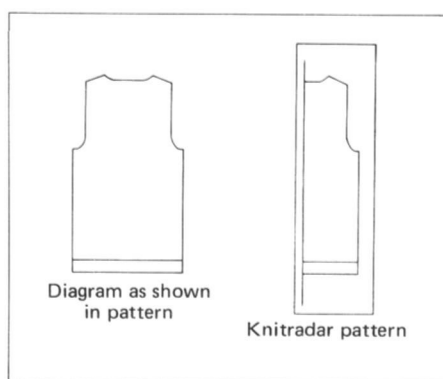
KR7 Owners

Using the longest edge of your Triangular Half Scale, draw a line 16½ cms in from and parallel to the left edge of your length of tracing roll. This line represents centre "O" on your machine.

KR6 Owners

Using the longest edge of your Triangular Half Scale, draw a line ¼" in from and parallel to the left edge of your length of tracing roll. This line represents centre "O" on your machine.

The pattern diagrams are drawn in full but you should only draw half the shape onto your Knitradar paper, (unless the diagram is already a half shape, such as a cardigan front). See example 1.



Example 1

KR6 and KR7 Owners

The centimetre measurements are given on the diagrams. Using the 2 shorter centimetre edges of your Triangular Half Scale, draw the measurements onto your length of tracing roll. KR6 owners, remember, when you are drawing half the shape, some of your width measurements must be halved eg, chest and neck widths. All length measurements remain the same as do width measurements such as the shoulder.

Use the Freeline Drawer to draw the curves on your pattern. You will find it a great help for necklines, armholes and sleeveheads.

Some Exceptions to the rule

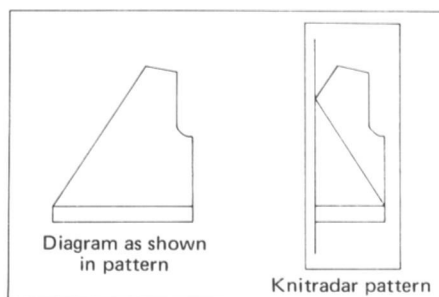
Occasionally, the method given for drawing Knitradar patterns from the diagrams will differ. This will happen in the case of shapes which are not symmetrical and they will fall into two categories.

The first affects only KR6 owners and will involve shapes which will fit easily

onto the width of the tracing paper, such as a trouser leg. In this case, the line which represents centre "O" on your machine should be drawn in the centre of your paper instead of at the left hand edge in the same way as the KR7 owners do.

Use your Knitradar rulers which have the "O" in the centre when knitting this type of pattern.

The second method for drawing shapes which are not symmetrical is used when the shape does not fit easily onto the width of the tracing paper. This will rarely happen to KR7 owners. In this case the line which represents centre "O" remains at the left hand edge. Draw half the shape onto the paper first, then draw the other half onto the same piece of paper but reversing the direction – as if you had folded the shape in half. See example 2.



Example 2

When knitting, you must shape each edge of your knitting differently, according to the lines on your Knitradar pattern. The shape will be easier to follow if you draw one half in a different colour.

A word for those who don't use Knitradar

If you haven't used your Knitradar yet, why not listen to the Knitmaster Knitradar Tuition Cassette. It will talk you step by step through knitting a garment using the Knitradar. You'll soon get the hang of it and wonder how you ever managed without Knitradar. The Knitradar allows you the freedom to choose your own yarn and stitch patterns and to make any alterations to the design you might fancy. Ask any of your friends who use Knitradar and they'll tell you how much you're missing by not using it.

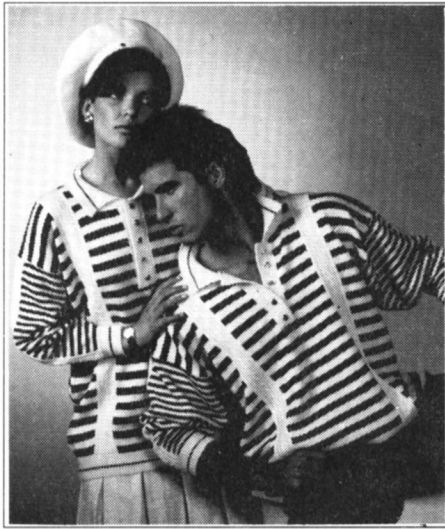
EASY ADAPTATIONS

There are lots of ways you can adapt and use our sweater patterns, even if you're quite new to machine knitting. Experiment with and choose your own colour combinations, try different necklines and collars, make the sweaters shorter or turn them into dresses by making them longer, use the punchcard patterns for other designs and so the list goes on. Below you'll find some suggestions, but don't be afraid of experimenting with your own ideas.

Lady's Bird Sweater	For a more standard sweater length, add 4 cms to the length plus another 2 cms to the rib. This longer style will make the larger size suitable for sizes 40" and 42" bust too.
Man's Bird Sweater	Substitute the collar for a classic rib neckband. Shorten the sleeve by approx 5 cms to make this design suitable for ladies too.
Cricket Sweater	Knit the stripes in different colours to either match his club colours or to co-ordinate with your accessories.
No.2 Single Motif Sweater	Introduce your own choice of single motif to ring the changes. Knit this sweater plain or with any combination of stripes you fancy. Knit a much longer version to create an elegant sweater dress.
Sweater with Fair Isle Neckline	Use the hem and sleeve border pattern to brighten up any plain sweater.
Sweater with Herringbone Detail	Create a punchcard which can be used as an all-over herringbone pattern simply by punching our herringbone design twice (side by side) onto the punchcard.
Lady's Plaid Sweater	Experiment with different colour combinations to create different effects. You can see how different our man's and lady's versions look just by using different colours. Try knitting the colours in a different order, too, since this will also affect the look of this Fair Isle pattern.

Man's Plaid Sweater	Make this sweater suitable for ladies too by shortening the sleeves by approx 5 cms.
Nautical Sweater	Use our cable strip idea to introduce texture to other designs — between the sleeve and armhole, as a pocket trim, for a neckband, around the hem and cuffs. If you're using it as an edging, add the same number of needles again but don't cable them. These extra stitches can be folded back to form a hem.
Leopard Sweater	Use the leopard punchcard for children's designs. Replace the leopard design with alternative patterns — flowers, geometric shapes, stripes or even a name.
Rib Raglan Sweater	Knit a longer version of this sweater to create a beautiful dress.
Lady's Slip Stitch Cardigan	To make this design suitable for a man, add approx 5 cms to the sleeves and make the buttonholes on the opposite side.
Man's 3 Colour Slip Stitch Sweater	Shorten the sleeves by approx 5cms to make this design suitable for ladies too.
Lady's Cable and Rib Sweater	To transform this sweater into a jacket, knit the centre panel twice, folding each panel in half to form a large cable border for each of the front edges.
Intarsia Sweaters	Knit the man's version in pale colours for a classic golfing sweater. Make your own intarsia design by drawing geometric shapes onto squared paper in the same way as we have.

7 NAUTICAL SWEATER



These sweaters use a nice design idea which you may like to remember for future reference. You will notice that the stripes on the sleeves are narrower than the stripes on the body and this provides an interesting contrast. You can easily use this idea on any plain design if you'd like to create your own 'designer' sweater.

BACK

Push 84 (93) Ns at left and right of centre O to WP. 168 (186) Ns altog. Push corresponding Ns on ribber to WP. Arrange Ns for 1 × 1 rib. Using col 1, cast on. RC 000. MT-5, knit 10 rows. Using col 2, knit 2 rows. Using col 1, knit 17 rows. Transfer sts to knitter. RC 000. MT. Continue in stripe sequence, knit 174 (192) rows. Mark both ends with waste yarn. Knit to Row 304 (322).

Shape Back Neck

Note pos in colour sequence. Using a length of appropriate col, cast off centre 36 sts. Hold Ns at left.

Knit Right Part as Follows:-

Knit 1 row. Cast off 3 sts beg next row, knit 1 row. Cast off 2 sts beg next and ev foll alt row 3 times in all. Cast off rem 57 (66) sts. Take carr to left. Bring Ns back to WP. Keeping colour sequence correct, knit left part as for right part. Pin out to size and steam carefully.

CENTRE FRONT PANEL

Push 33 Ns at left and right of centre O to WP. 66 Ns altog. Using waste yarn cast on ending with carr at right. RC 000. MT. Continue in stripe sequence. Knit 184 (202) rows.

Divide for Front Opening

Note pos in colour sequence. Using a length of appropriate col, cast off centre 12 sts. Hold Ns at left.

Knit Right Part as Follows:-

Knit 91 rows. Carr at left.

For Knitmaster Standard Gauge Machines with Ribbing Attachment.

Sizes:

Ladies — To fit 86-91 (96-101) cms/ 34-36 (38-40) inch bust.

Mens — To fit 96-101 (106-112) cms/ 38-40 (42-44) inch chest.

Materials:

Col 1 (Aran) — 220 (275) grms (Knitmaster Kone 4ply)

Col 2 (Midnight) — 150 (200) grms (Knitmaster Aneto 4ply)

5 buttons.

Tensions:

Stripes — 30 sts and 46 rows to 10 cms. TD at approx. 6

Cable (over 20 sts) — 41 rows to 10 cms. TD at approx. MT

1 × 1 Rib (col 1) — 47 rows to 10 cms. TD's at approx. MT-5

Pattern Note:

Stripe Sequence — Back & Front — 8 rows col 2, 8 rows col 1. Rept throughout

Sleeves — 4 rows col 2, 4 rows col 1. Rept throughout.

Cable Strip — *Knit 8 rows. Drop the 3rd st each side of centre O and leave empty Ns in WP. Using 2 two pronged transfer tools cross 2 sts at right behind 2 sts at left*. Rept from *to* throughout. At top of cable strip, pick up 3rd st each side of centre O and pick up as for ribbing. Drop the 6th st each side of centre O and pick up as for ribbing.

Shape Neck

Cast off 9 sts beg next row, knit 1 row.

Cast off 3 sts beg next row, knit 1 row.

Cast off 2 sts beg next and foll alt row,

knit 1 row. Dec 1 st at neck edge on the

next and ev foll 3rd row 5 times in all.

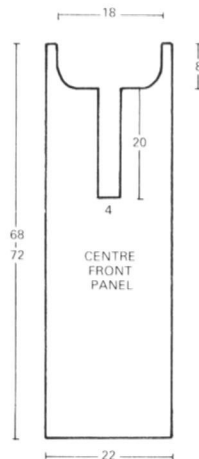
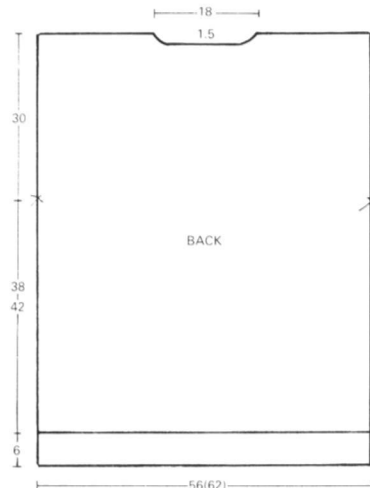
Knit to Row 312 (330). Cast of rem 6 sts.

Take carr to left. Bring Ns back to WP.

Keeping colour sequence correct, knit

left part as for right part but read right

for left.



FRONT CABLE STRIPS (2)

Push 10 Ns at left and right of centre O to WP. 20 Ns altog. Using waste yarn cast on. RC 000. MT. Using col 1. Work in cable pattern given in pattern note for 278 (294) rows. Cast off.

FRONT SIDE PANELS (2)

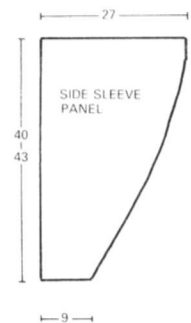
Push 33 (42) Ns to WP. Using waste yarn cast on. RC 000. MT. Continue in stripe sequence, knit 174 (192) rows. Mark right edge (left edge on second piece) with waste yarn. Knit to Row 312 (330). Cast off.

FRONT WELT

Pin out to size and steam carefully. Join cable strip to either side of centre panel. Join side panels to cable strips. Arrange 168 (186) Ns for 1 × 1 rib. Using col 1, cast on. RC 000. MT-5, knit 10 rows. Using col 2, knit 2 rows. Using col 1, knit 17 rows. Transfer sts to knitter. With purl side of front facing, pick up sts from below waste yarn and place onto Ns gathering extra 4 sts evenly. MT+2, knit 1 row. Cast off.

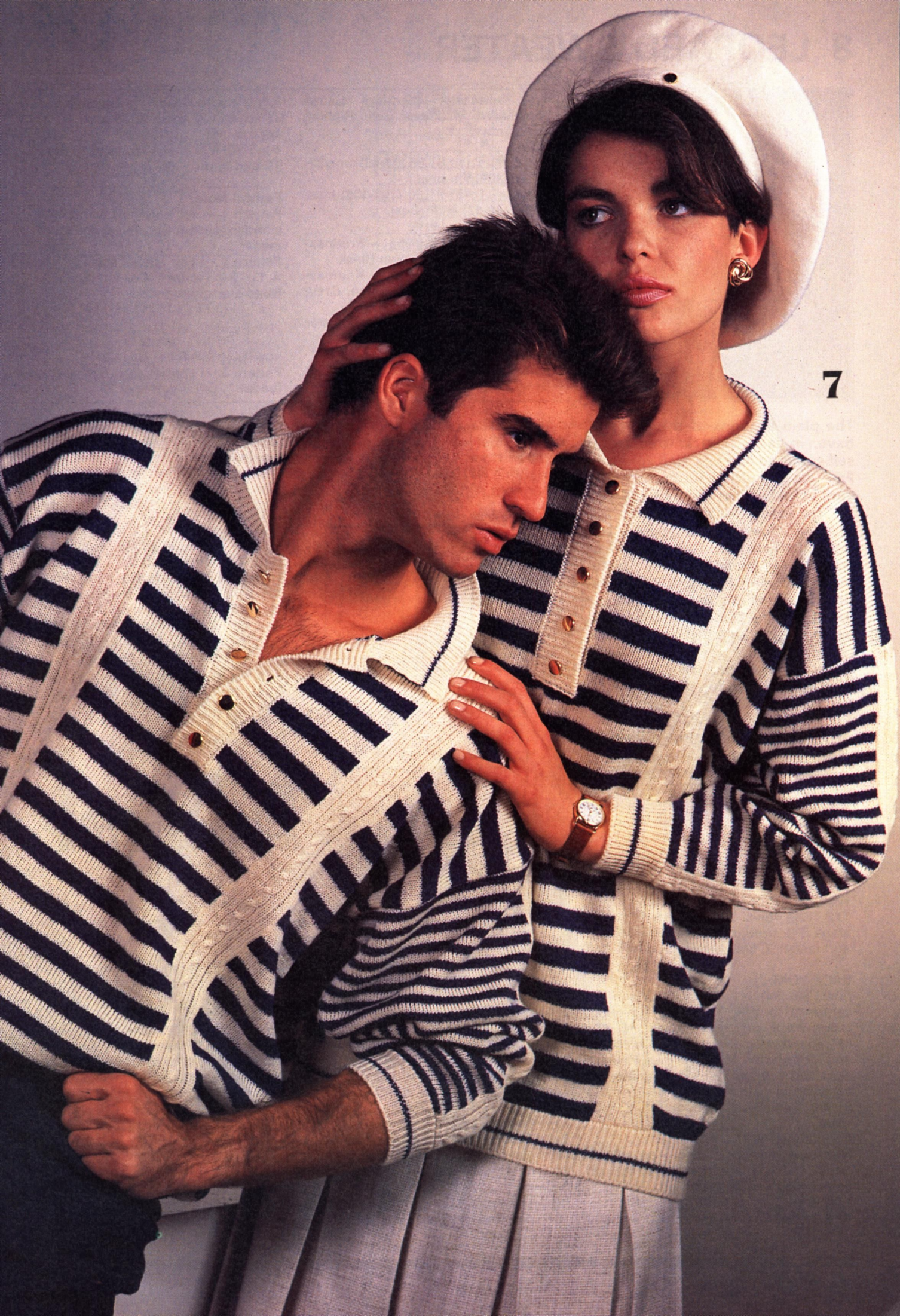
CENTRE SLEEVE PANEL (2)

Push 10 Ns at left and right of centre O to WP. 20 Ns altog. Using waste yarn cast on. RC 000. MT. Using col 1. Work in cable pattern given in pattern note for 164 (176) rows. Cast off.

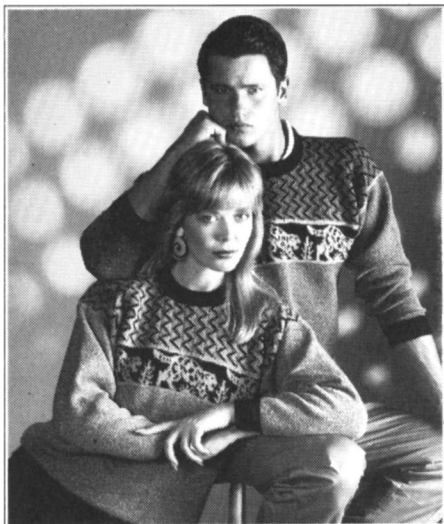


ALL MEASUREMENTS ARE IN CENTIMETRES

Continued on page 33



8 LEOPARD SWEATER



For Knitmaster Standard Gauge Punchcard Machines with Ribbing Attachment.

Sizes:

Ladies — To fit 81-86 (91-96) cms/32-34 (36-38) inch bust.

Mens — To fit 91-96 (101-106) cms/36-38 (40-42) inch chest.

Materials:

Col 1 — 100 (100) grms — Knitmaster Kone 4ply. Col shown Black.

Col 2 — 300 (350) grms — Knitmaster Blackjack. Colours shown, Grey, Butterfly.

Col 3 — 50 (50) grms — Knitmaster Blackjack. Colour shown, Inca.

Tensions:

Self-Coloured Fair Isle — 31 sts and 34 rows to 10 cms. TD at approx. 7

Fair Isle with Needle Arrangement — 31 sts and 37 rows to 10 cms. TD at approx. MT

1 × 1 Rib (col 1) — 42 rows to 10 cms. TD's at approx. MT-5

Pattern Note:

Pattern 1 — self coloured Fair Isle — standard card 1. Col 2 in feeder 1 and feeder 2.

Pattern 2 — Fair Isle — special card A. Col 2 in feeder 1, Col 1 in feeder 2. Needle arrangement

x | | | | | | | | x | | | | | | | | x | | | | | | | |
o
centre

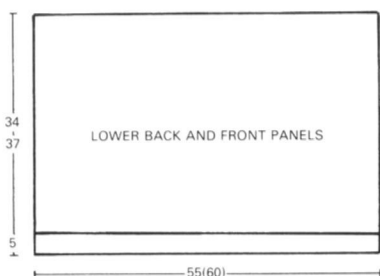
x = Ns in NWP | = Ns in WP

Pattern 3 — special card B. Col 1 in feeder 1, Col 3 in feeder 2.

The plain sections of this sweater have, in fact, been knitted using self coloured Fair Isle. Self coloured Fair Isle is knitted with the same yarn in feeder 2 as there is in feeder 1. The result of this is that the knitting looks like stockinet but feels like Fair Isle. This method of creating a plain fabric is useful when a design has both plain sections and Fair Isle sections in it, as we have here, but can also be used when you'd like a thicker or firmer fabric, perhaps for a skirt or a jacket. Remember this fabric, it may come in useful.

fall alt row. Cast off rem 61 (69) sts. Carr at right. Set card to row previously noted and lock. Take carr to left. Release card. Bring Ns back to WP. Knit left part as for right part. Remove card.

carr to left. Release card. Bring Ns back to WP. Knit left part as for right part. Remove card.

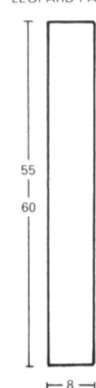


ALL MEASUREMENTS ARE IN CENTIMETRES

LEOPARD PANEL (2)

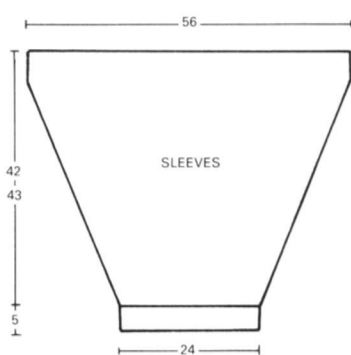
Insert special card B into machine and lock on row 1. Push 26 Ns at left and right of centre O to WP. 52 Ns altog. Using col 1, cast on by hand. RC 000. MT. Knit 18 (28) rows. Release card. Set carr for Fair Isle. With col 1 in feeder 1 and col 3 in feeder 2, knit 180 rows. Continue in stockinet, knit 18 (28) rows col 1. Cast off.

LEOPARD PANEL



LOWER BACK & FRONT PANEL (2)

Push 86 (94) Ns at left and right of centre O to WP. 172 (188) Ns altog. Push corresponding Ns on ribber to WP. Arrange Ns for 1 × 1 rib. Using col 1, cast on. RC 000. MT-5, knit 21 rows. Transfer sts to knitter. Insert card 1 into machine and lock on row 1. Take carr across twice without knitting. RC 000. MT. Release card. Set carr for Fair Isle. With col 2 in feeder 1 and feeder 2, knit 112 (122) rows. (Adjust length at this stage if desired). With col 3 in feeder 1 and feeder 2, knit 4 rows. Cast off.



SLEEVES

Push 37 Ns at left and right of centre O to WP. 74 Ns altog. Push corresponding Ns on ribber to WP. Arrange Ns for 1 × 1 rib. Using col 1, cast on. RC 000. MT-5, knit 21 rows. Transfer sts to knitter. Insert card 1 into machine and lock on row 1. Take carr across twice without knitting. RC 000. MT. Release card. Set carr for Fair Isle. With col 2 in feeder 1 and feeder 2, knit 2 rows. Inc 1 st both ends of next and ev foll alt row 14 times in all, knit 1 row. Inc 1 st both ends of next and ev foll 3rd row 36 times in all. 174 sts. Knit to Row 139 (142). (Adjust length at this stage if desired). Continue in col 3, knit 4 rows. Mark centre with waste yarn. Cast off.

BACK YOKE

Push 86 (94) Ns at left and right of centre O to WP. 172 (188) Ns altog. Using col 3, cast on by hand. RC 000. MT. Insert special card A into machine and lock on row 1. Knit 4 rows. Release card. Set carr for Fair Isle. Transfer sts as given in pattern note. With col 2 in feeder 1 and col 1 in feeder 2*. Knit 66 rows.

Shape Back Neck

Note row number showing on pattern panel. Using a length of col 2, cast off centre 38 sts. Hold Ns at left.

Knit Right Part as Follows:-

Knit 1 row. Cast off 3 sts beg next and

FRONT YOKE

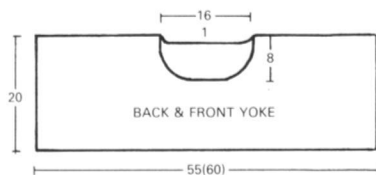
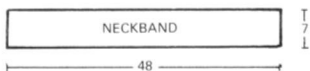
Knit as for Back to*. Knit 40 rows.

Shape Neck

Not row number showing on pattern panel. Using a length of col 2, cast off centre 24 sts. Hold Ns at left.

Knit Right Part as Follows:-

Knit 1 row. Cast off 3 sts beg next and foll alt row, knit 1 row. Cast off 2 sts beg next and foll alt row, knit 1 row. Dec 1 st at neck edge on next and ev foll alt row 3 times in all. Knit to Row 74. Cast off rem 61 (69) sts. Carr at right. Set card to row previously noted and lock. Take



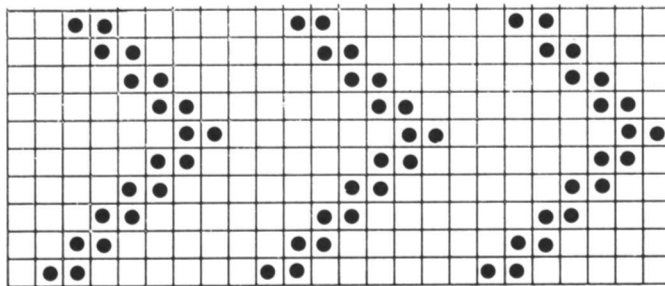
NECKBAND

Arrange 149 for 1 × 1 rib. Using col 1, cast on. RC 000. MT-5, knit 30 rows. Transfer sts to knitter. Knit 1 row MT. Cast off with waste yarn.

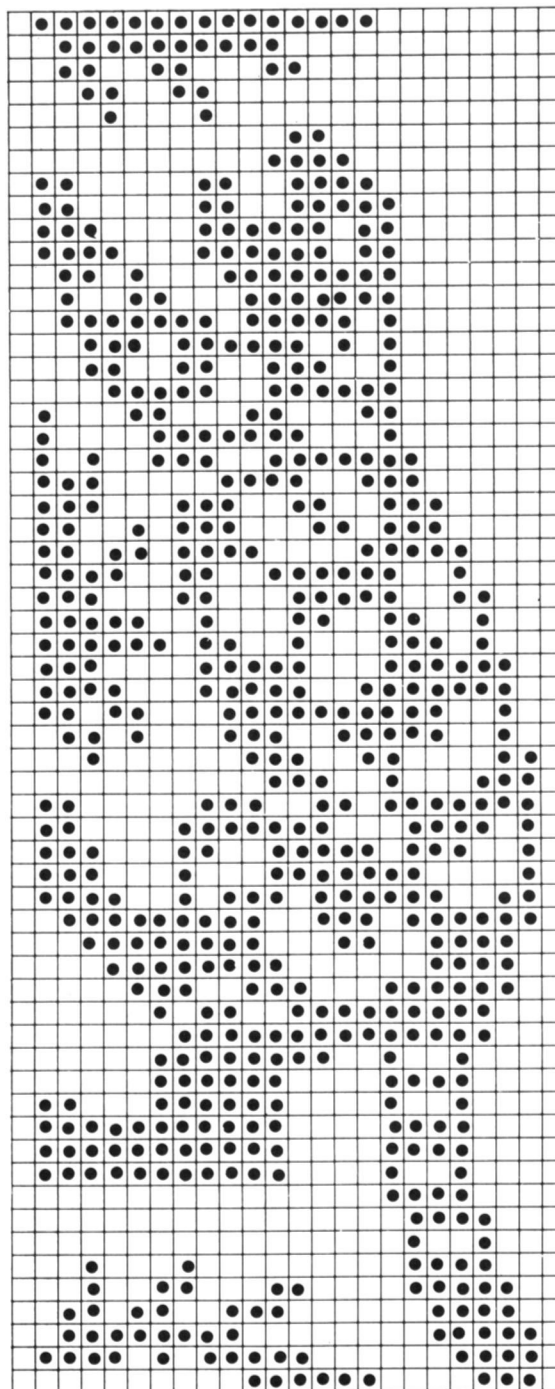
TO MAKE UP

Pin out to size and steam carefully. Join leopard panel between yoke and lower back panel. Rept for front. Join shoulder seams. Set in sleeves. Join side and sleeve seams. Backstitch neckband into pos. Join seam at centre back. Fold in half onto the inside and slip stitch into pos. Give final light steam.

PATTERN 2 - SPECIAL CARD A REPEAT 3 MORE TIMES



PATTERN 3 - SPECIAL CARD B



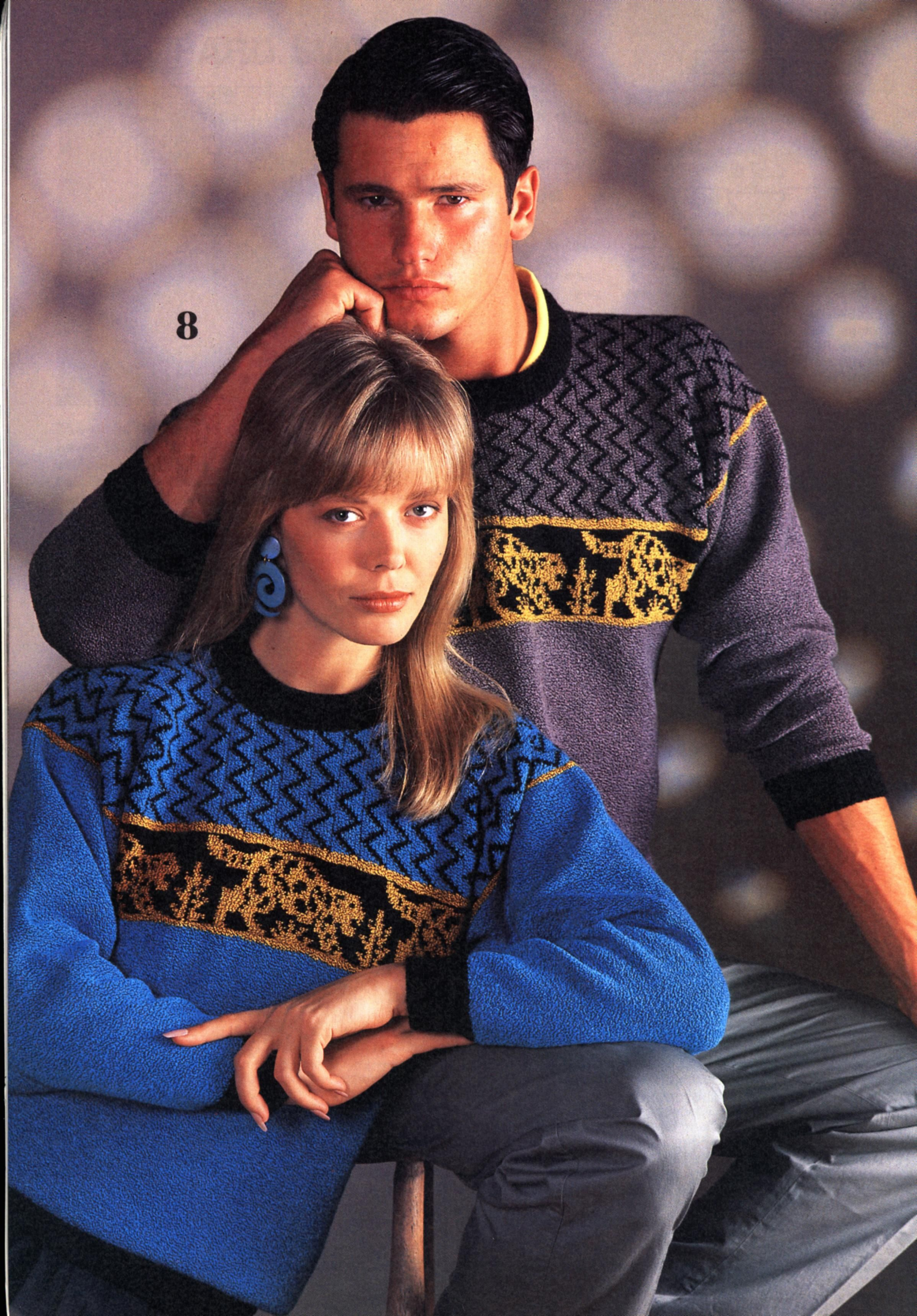
Modern Machine Knitting

Every month there's a wonderful machine knitting magazine which is filled with beautiful designs for you to knit, design features to inspire you, hints and tips to increase your knowledge of machine knitting plus lots of other knitting machine news and information you'll love to read.

Modern Machine Knitting is available every month from you Knitmaster stockist, or write for subscription details to:-

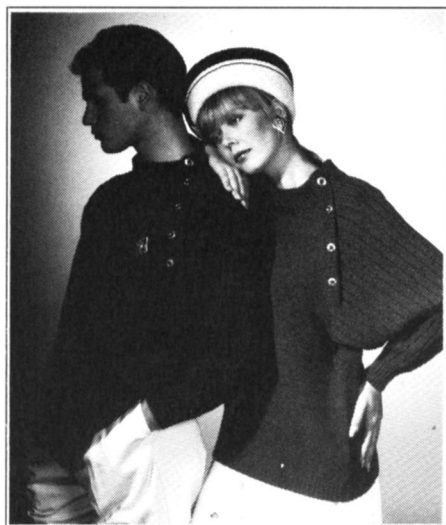
Modern Knitting Ltd.,
P O Box 175,
Kingston-upon-Thames,
Surrey KT2 6HA.

8





9 RIB RAGLAN SWEATER



For Knitmaster Standard Gauge Punchcard Machines with Ribbing Attachment.

Sizes:

Ladies — To fit 86-91 (96-101) cms/
34-36 (38-40) inch bust.
Mens — To fit 91-96 (101-106) cms/
36-38 (40-42) inch chest.

Materials:

Knitmaster Aneto 4ply
Col 1 — 470 (570) grms
Colours shown. Ladies — Hibiscus.
Mens — Midnight
4 (5) buttons.

Tensions:

Self-Coloured Fair Isle — 33 sts and 37 rows to 10 cms. TD at approx 6.
Rib Pattern — 29 sts and 41 rows to 10 cms. TD's at approx. MT on knitter and MT-1 on ribber.
2 x 1 Rib — 54 rows to 10 cms. TD's at approx. MT-4

Pattern Note:

Self-Coloured Fair Isle — Standard Card 1. Col 1 in feeder 1 and feeder 2.
Rib Pattern — Needle Arrangement

```

| | | | | x | x | | | | | x | x | | | | | x | x
          o
          centre
I = Ns in WP  x = Ns in NWP
    
```

These elegant sweaters use a simple technique to give them that extra designer touch. The button band had been knitted separately and simply sewn over the raglan seam. This means you can easily use this technique to add the designer touch to any raglan sweater. However, it also means you can easily leave this feature off if you prefer to knit a more classic raglan sweater.

BACK

Push 90 (98) Ns at left and right of centre O to WP. 180 (196) Ns altog. Push corresponding Ns on ribber to WP. Arrange Ns for 2 x 1 rib. Using col 1, cast on. RC 000. MT-4, knit 21 rows. Transfer sts to knitter. Insert card into machine and lock on row 1. Take carr across twice without knitting. RC 000. MT. Release card. Set carr for Fair Isle. With col 1 in feeder 1 and feeder 2, knit 128 (136) rows. (Adjust length at this stage if desired).

Shape Raglan Armholes

Cast off 8 (10) sts beg next 2 rows. Cast off 2 sts beg next 4 (8) rows*. Dec 1 st both ends next and ev foll alt row 51 (45) times in all, knit 1 row. Cast off 2 sts beg next 4 (12) rows. RC 240 (248). Cast off rem 46 sts. Remove card.

FRONT

Knit as for Back to*. Dec 1 st both ends next and ev foll alt row 38 (36) times in all, knit 1 row. RC 210 (218).

Shape Neck

Note row number showing on pattern panel. Using length of col 1, cast off centre 32 sts. Hold Ns at left.

Knit Right Part as Follows:-

Dec 1 st beg next row. Cast off 3 sts beg next row. Rept the last 2 rows twice more. Dec 1 st beg next row. Cast off 2 (3) sts beg next row. Rept the last 2 rows twice more. Dec 1 st beg next 2

rows. Fasten off rem 1 (2) sts. Carr at right. Set card to row previously noted and lock. Take carr to left. Release card. Bring Ns back to WP. Knit left part as for right part. Remove card.

SLEEVES (knit 1 in reverse)

Push 35 Ns at left and right of centre O to WP. 70 Ns altog. Push corresponding Ns on ribber to WP. Arrange Ns for 2 x 1 rib. Using col 1, cast on. RC 000. MT-4, knit 33 rows. Transfer sts to needle arrangement given in pattern note. RC 000. MT on knitter and MT-1 on ribber. Keeping needle arrangement correct, knit 2 rows. Inc 1 st both ends next and ev foll 3rd row 53 times in all. 176 sts.

Knit to Row 164 (168). (Adjust length at this stage if desired).

Shape Raglan Top

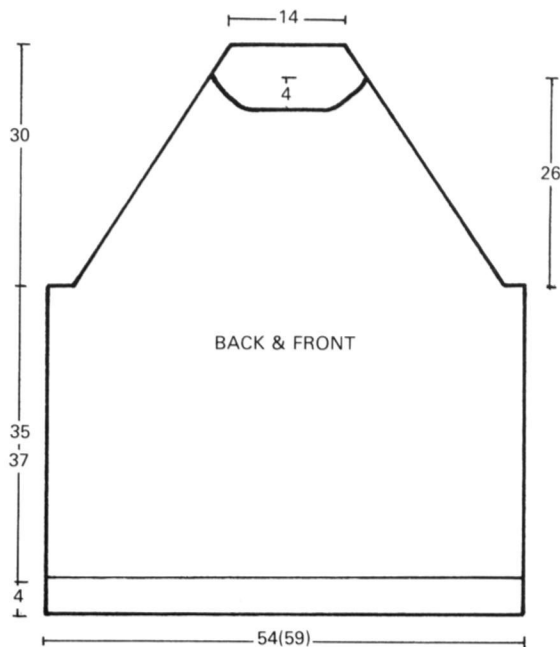
Cast off 8 (10) sts beg next 2 rows. *Cast off 2 sts beg next 6 rows. Dec 1 st beg of next 2 (4) rows*. Rept from *to* 8 (6) more times. Cast off 2 sts beg next 4 rows.

2nd Size Only

Dec 1 st both ends of next and ev foll alt row 5 times in all, knit 1 row.

All Sizes

26 sts. RC 242 (254). Carr at right. Cast off 5 sts beg next row, 2 sts beg next row, 4 sts beg next row, 2 sts beg next row, 3 sts beg next row, 2 sts beg next 2 rows, dec 1 st beg next 5 rows. Fasten off rem st.



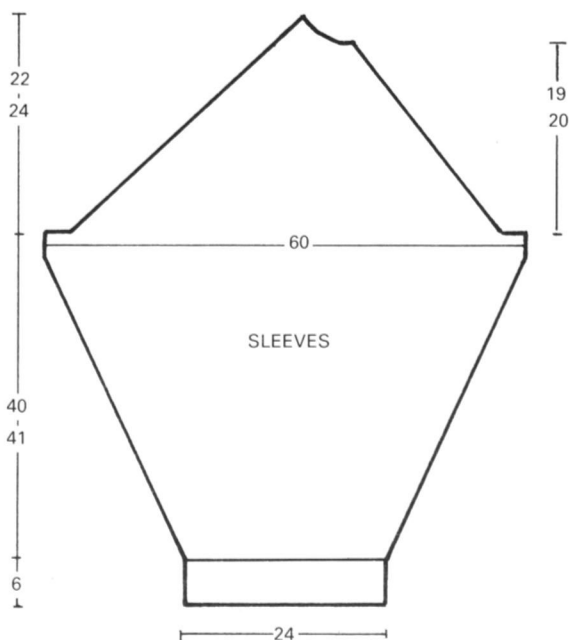
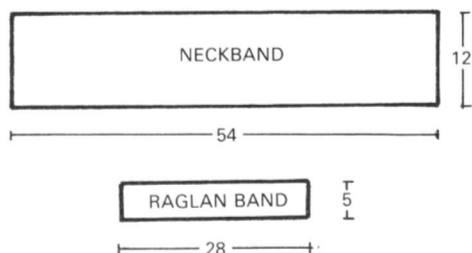
ALL MEASUREMENTS ARE IN CENTIMETRES

NECKBAND

Arrange 180 sts for 2 × 1 rib. Using col 1, cast on. RC 000. MT-4, knit 65 rows. Transfer sts to knitter. Knit 1 row MT. Cast off with waste yarn.

RAGLAN BAND

Arrange 80 Ns for 2 × 1 rib. Using col 1, cast on. RC 000. MT-4, knit 27 rows. Transfer sts to knitter. Knit 1 row MT. Cast off with waste yarn.



TO MAKE UP

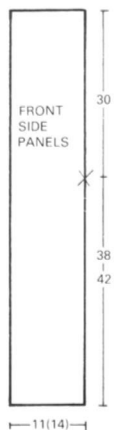
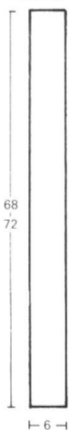
Pin out to size and steam carefully. Join raglan, side and sleeve seams. Backstitch neckband into pos and join seam. Fold in half and catch down on the inside. Backstitch raglan band to top of left front raglan (including neckband). Fold in half and catch down on the inside. Sew buttons onto raglan band. Give final light steam.

Continued from page 26

CENTRE SLEEVE PANEL



FRONT CABLE STRIPS



SIDE SLEEVE PANELS (knit 4, 2 in reverse)

Push 27 Ns to WP. Using waste yarn cast on. RC 000. MT. Continue in stripe sequence. Knit 2 rows. Inc 1 st at right edge on the next and ev foll alt row 15 times in all, knit 1 row. Inc 1 st at right edge on the next and ev foll 3rd row 16 times in all, knit 2 rows. Inc 1 st at right edge on the next and ev foll 4th row 23 times in all. 81 sts. Knit to Row 184 (198). Cast off.

CUFFS

Pin out to size and steam carefully. Join side sleeve panels either side of cable strip. Arrange 72 Ns for 1 × 1 rib. Using col 1, cast on. RC 000. MT-5, knit 10 rows. Using col 2, knit 2 rows. Using col 1, knit 16 rows. Transfer sts to knitter. With purl side facing, pick up sts from below waste yarn and place onto Ns gathering extra 2 sts evenly. MT+2, knit 1 row. Cast off. Rept for second sleeve.

COLLAR

Arrange 160 Ns for 1 × 1 rib. Using col 1, cast on. RC 000. MT-5, knit 10 rows. Using col 2, knit 2 rows. Using col 1, knit 34 rows. Transfer sts to knitter. Knit 1 row MT. Cast off with waste yarn.

BUTTON BAND

Arrange 60 Ns for 1 × 1 rib. Using col 1, cast on. RC 000. MT-5, knit 20 rows. Transfer sts to knitter. Knit 1 row MT. Cast off with waste yarn.

BUTTONHOLE BAND

Knit as for Button Band but on Row 10 make 5 evenly spaced buttonholes over 2 Ns.

TO MAKE UP

Join shoulder seams. Set in sleeves between marked points. Join side and sleeve seams. Backstitch front bands into pos, lapping buttonhole band over button band. Neaten lower edge. Finish buttonholes and sew on buttons to correspond. Backstitch collar into pos, sewing collar to centre of each front band. Give final light steam.

10B

10A



10A LADY'S SLIP STITCH CARDIGAN



For Knitmaster Standard Gauge Punchcard Machines with Ribbing Attachment and YC-6 Colour Changer.

Sizes:

To fit 96-101 (106-112) cms/38-40 (42-44) inch chest.

Materials:

Col 1 (Serpentine) — 125 (150) grms — Knitmaster Blackjack
 Col 2 (Hessian) — 125 (150) grms — Knitmaster Blackjack
 Col 3 (Navy Blue) — 150 (175) grms — Knitmaster Kone 4ply
 6 Buttons

Tensions:

Slip Stitch — 31 sts and 63 rows to 10 cms. TD at approx. 8
 1 × 1 Rib — 47 rows to 10 cms. TD's at approx. MT-7

Pattern Note:

Slip Stitch — Special Card — see mans Slip Stitch Sweater. *Knit 2 rows col 1, 2 rows col 2, 2 rows col 3*. Rept from *to* throughout.

We know this book is called *The Sweater Book* but we thought we'd throw in a cardigan just for good luck. If you use Knitradar you can make a Knitradar pattern for this cardigan by referring to the measurements on our diagrams. You should find the Knitradar pattern for this cardigan most useful since it is a good classic shape which can be used over and over again.

BACK

Push 87 (95) Ns at left and right of centre O to WP. 174 (190) Ns altog. Push corresponding Ns on ribber to WP. Arrange Ns for 1 × 1 rib. Using col 3, cast on. RC 000. MT-7, knit 29 rows. Transfer sts to knitter. Insert card into machine and lock on row 1. Take carr across twice without knitting. RC 000. MT. Release card. Set carr for slip stitch. Knit 1 row. Continue in pattern given in pattern note, knit to Row 264 (276). (Adjust length at this stage if desired).

Shape Armholes

Cast of 15 sts beg next 2 rows. 144 (160) sts. Knit to Row 452 (464).

Shape Shoulders

Cast off 7 (8) sts beg next 4 rows and 6 (8) sts beg next 2 rows.

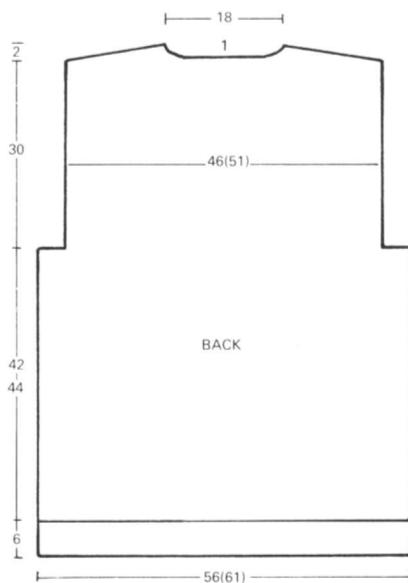
Shape Back Neck

Note row number showing on pattern panel and pos in colour sequence. Using a length of col 1, cast off centre 38 sts. Hold Ns at left.

Knit Right Part as Follows:-

Cast off 6 (7) sts beg next row, 3 sts beg next row, 6 (7) sts beg next row, 3 sts beg next row, 6 (7) sts beg next row, 3 sts beg next row. Cast off rem 6 (7) sts. Carr at left. Set card to row number previously noted and lock. Take carr to right. Release card. Bring Ns back to WP. Keeping pattern correct knit 1 row, knit left part as for right part. Remove card.

ALL MEASUREMENTS ARE IN CENTIMETRES



RIGHT FRONT

Push 87 (95) Ns at right of centre O to WP. Push corresponding Ns on ribber to WP. Arrange Ns for 1 × 1 rib. Using col 3, cast on. RC 000. MT-7, knit 29 rows. Transfer sts to knitter. Insert card into machine and lock on row 1. Take carr across twice without knitting. RC 000. MT. Release card. Set carr for slip stitch. Knit 1 row. Continue in pattern given in pattern note. Knit to Row 264 (276). Carr at right. (Adjust length as on Back).

Shape Armhole

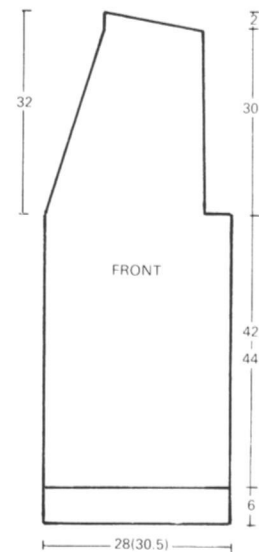
Cast off 15 sts beg next row, knit 1 row.

Shape Front Edge

Dec 1 st at neck edge on the next and ev foll 6th row 28 times in all. Knit to Row 452 (464).

Shape Shoulder

Cast off 7 (8) sts beg next and foll alt row, knit 1 row. Cast off 6 (8) sts beg next row, knit 1 row. Cast off 6 (7) sts beg next and ev foll alt row 3 times in all, knit 1 row. Cast off rem 6 (7) sts. Remove card.



LEFT FRONT

Knit as for Right Front but in reverse.

SLEEVES

Push 37 Ns at left and right of centre O to WP. 74 Ns altog. Push corresponding Ns on ribber to WP. Arrange Ns for 1 × 1 rib. Using col 3, cast on. RC 000. MT-7, knit 29 rows. Transfer sts to knitter. Insert card into machine and lock on row 1. Take carr across twice without knitting. RC 000. MT. Release card. Set carr for slip stitch. Knit 1 row. Continue in pattern given in pattern note. Knit 2 rows. Inc 1 st both ends next and ev foll 4th row 43 times in all, knit 2 rows. Inc 1 st both ends next and ev foll 5th row 13 times in all. 186 sts. Knit to Row 252. Mark both ends with waste yarn. Knit to Row 284. (Adjust length at this stage if desired).

Shape Top

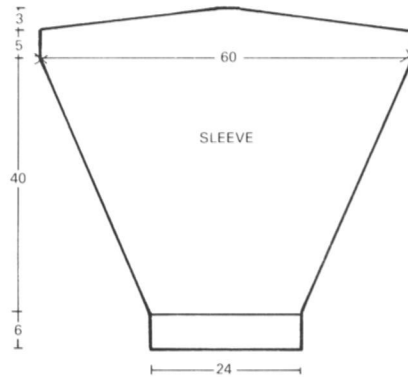
Cast off 9 sts beg next 18 rows and 8 sts beg next 2 rows. Mark centre with waste yarn. Cast off rem 8 sts.

FRONT BAND AND NECKBAND

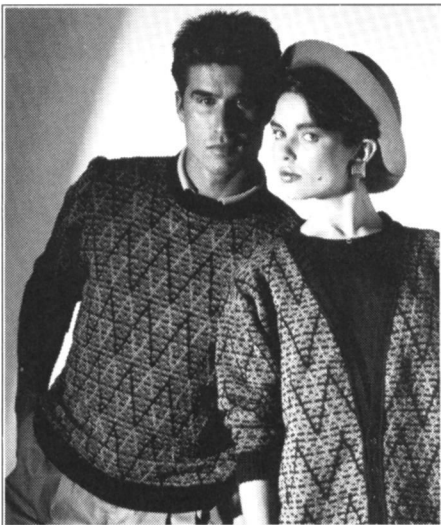
Arrange 18 Ns for 1 × 1 rib. Using col 3, cast on. Transfer 2 sts at right edge from ribber to knitter. RC 000. MT-7, knit 5 rows. Make a buttonhole over centre 2 Ns. *Knit 20 rows. Make a buttonhole over centre 2 Ns*. Rept from *to* 4 more times. Continue to knit until band measures 180 cms. Cast off.

TO MAKE UP

Pin out to size and steam carefully. Join shoulder seams. Set in sleeves, sewing rows above marker to cast off sts at armhole. Join side and sleeve seams. Backstitch band into pos under the 4 knitter sts at right edge of band. Allow the 4 sts roll. Finish buttonholes and sew on buttons to correspond. Give final light steam.



10B MAN'S 3 COLOUR SLIP STITCH SWEATER



For Knitmaster Standard Gauge Punchcard Machines with Ribbing Attachment and YC-6 Colour Changer.

Sizes:

To fit 96-101 (106-112) cms/38-40 (42-44) inch chest.

Materials:

Col 1 (Serpentine) — 125 (150) grms — Knitmaster Blackjack
Col 2 (Hessian) — 125 (150) grms — Knitmaster Blackjack
Col 3 (Navy Blue) — 150 (175) grms — Knitmaster Kone 4ply

Tensions:

Slip Stitch — 31 sts and 63 rows to 10 cms. TD at approx. 8
1 × 1 Rib — 47 rows to 10 cms. TD's at approx. MT-7

Pattern Note:

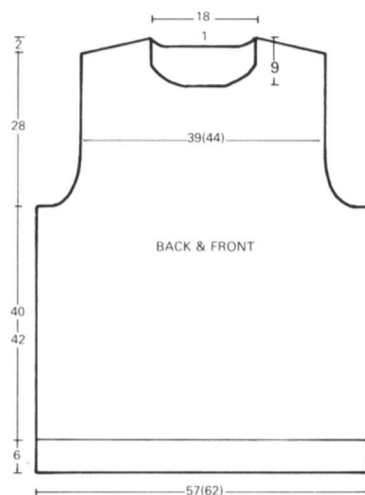
Slip Stitch — Special Card. *Knit 2 rows col 1, 2 rows col 2, 2 rows col 3*. Rept from *to* throughout.

Slip stitch has been used to knit this sweater and, because of the cleverly designed punchcard, a pattern has been created which has 3 colours in one row. If you have the YC 6 colour changer (which can be used for single bed colour changing as well as double bed) you will find it will speed up your knitting considerably since this unusual pattern involves changing colour every 2 rows.

BACK

Push 89 (97) Ns at left and right of centre O to WP. 178 (194) Ns altog. Push corresponding Ns on ribber to WP. Arrange Ns for 1 × 1 rib. Using col 3, cast on. RC 000. MT-7, knit 29 rows. Transfer sts to knitter. Insert card into machine and lock on row 1. Take carr across twice without knitting. RC 000. MT. Release card. Set carr for slip stitch. Knit 1 row. Continue in pattern given in pattern note, knit to Row 252 (264). (Adjust length at this stage if desired).

ALL MEASUREMENTS ARE IN CENTIMETRES



Shape Armholes

Cast of 3 sts beg next 2 rows, 2 sts beg next 6 rows. Dec 1 st both ends next and ev foll alt row 3 times in all, knit 1 row. Dec 1 st both ends next and ev foll 3rd row 4 times in all, knit 2 rows. Dec 1 st both ends next and ev foll 4th row 6

times in all, knit 3 rows. Dec 1 st both ends next and ev foll 5th row 6 (7) times in all. 122 (136) sts*. Knit to Row 428 (440).

Shape Shoulders

Cast off 5 (6) sts beg next 6 rows.

Shape Back Neck

Note row number showing on pattern panel and pos in colour sequence. Using a length of col 1, cast off centre 44 sts. Hold Ns at left.

Knit Right Part as Follows:-

Cast off 5 (6) sts beg next row, 2 sts beg next row, 5 (6) sts beg next row, 2 sts beg next row, 4 (5) sts beg next row, 2 sts beg next row. Cast off rem 4 (5) sts. Carr at left. Set card to row number previously noted and lock. Take carr to right. Release card. Bring Ns back to WP. Keeping pattern correct knit 1 row, knit left part as for right part. Remove card.

FRONT

Knit as for Back to*. Knit to Row 384 (396).

Shape Neck

Note row number showing on pattern

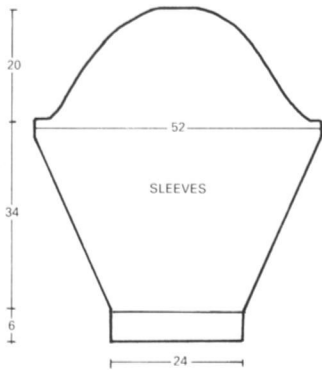
panel and pos in colour sequence. Using a length of col 1, cast off centre 24 sts. Hold Ns at left.

Knit Right Part as Follows:-

Knit 1 row. Cast off 3 sts beg next and foll alt row, knit 1 row. Cast off 2 sts beg next row, knit 1 row. Dec 1 st at neck edge on next and foll alt row, knit 1 row. Dec 1 st at neck edge on next and ev foll 3rd row 6 times in all. Knit to Row 428 (440).

Shape Shoulder

Cast off 5 (6) sts beg next and ev foll alt row 5 times in all, knit 1 row. Cast off 4 (5) sts beg next row, knit 1 row. Cast off rem 4 (5) sts. Carr at left. Set card to row previously noted and lock. Take carr to right. Release card. Bring Ns back to WP. Keeping pattern correct knit 1 row, knit left part as for right part. Remove card.



SLEEVES

Push 37 Ns at left and right of centre O to WP. 74 Ns altog. Push corresponding Ns on ribber to WP. Arrange Ns for 1 x 1 rib. Using col 3, cast on. RC 000. MT-7, knit 29 rows. Transfer sts to knitter. Insert card into machine and lock on row 1. Take carr across twice without knitting. RC 000. MT. Release card. Set carr for slip stitch. Knit 1 row. Continue in pattern given in pattern note. Knit 5 rows. Inc 1 st both ends next and ev foll 4th row 44 times in all. 162 sts. Knit to Row 214. (Adjust length at this stage if desired).

Shape Top

Cast off 3 sts beg next 2 rows, 2 sts beg next 6 rows. Dec 1 st both ends next and ev foll alt row 6 times in all, knit 1 row. Dec 1 st both ends next and ev foll 5th row 15 times in all, knit 3 rows. Dec 1 st both ends next and ev foll alt row 5 times in all, knit 1 row. Cast off 2 sts beg next 6 rows, 3 sts beg next 6 rows, 4 sts beg next 6 rows and 5 sts beg next 4 rows. Cast of rem 18 sts.

NECKBAND

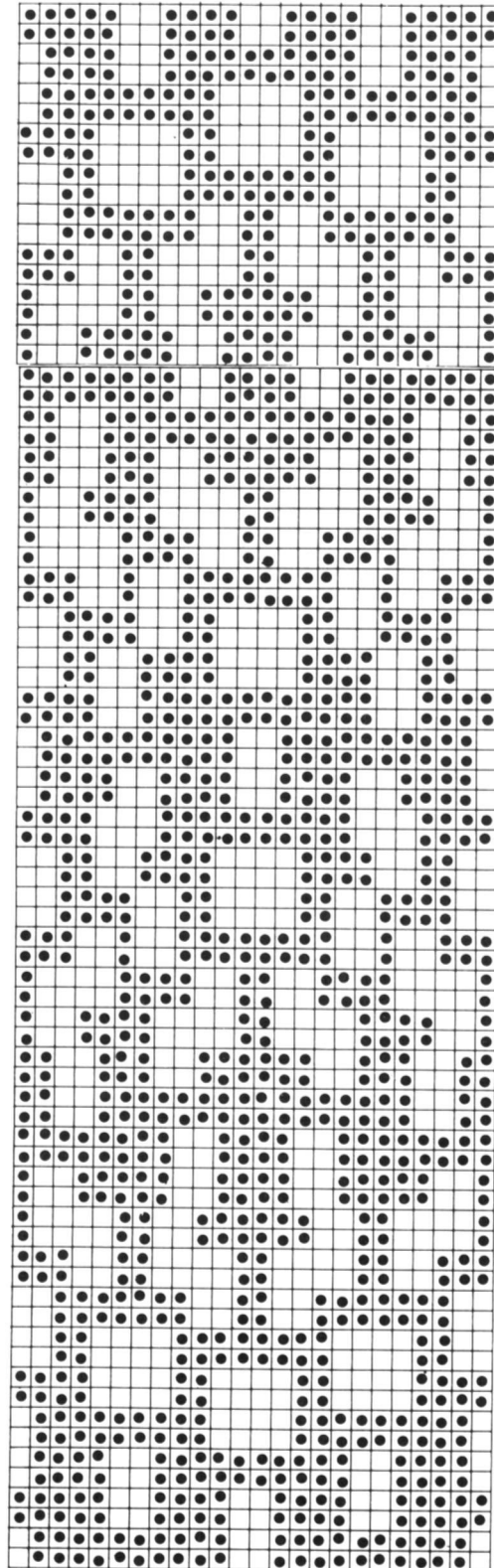
Arrange 163 Ns for 1 x 1 rib. Using col 1, cast on. RC 000. MT-7, knit 38 rows. Transfer sts to knitter. Knit 1 row MT. Cast off with waste yarn.



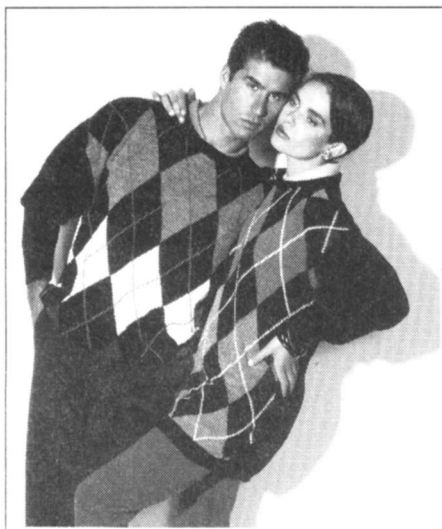
TO MAKE UP

Pin out to size and steam carefully. Join shoulder seams. Set in sleeves. Join side and sleeve seams. Backstitch neckband into pos and join centre back seam. Fold in half and catch down on the inside. Give final light steam.

SPECIAL CARD



12 INTARSIA SWEATERS



When we knitted these two sweaters we Swiss Darned the fine diagonal lines on after completing the knitting. However, if you prefer, you can knit them as part of the intarsia pattern — the stitches are marked on the intarsia chart. The choice is entirely yours and depends whether you prefer to do the fiddly work at the knitting stage or at the make up stage. Alternatively you could leave them out altogether if you think they might try your patience.

BACK

Arrange 168 (184) (200) Ns for 2 × 1 rib. Using col 1, cast on. RC 000. MT-5, knit 21 rows. Transfer sts to knitter. RC 000. MT. Knit to Row 190. Mark both ends with waste yarn. Knit to Row 314.

Shape Back Neck

Using a length of col 1, cast off centre 40 sts. Hold Ns at left.

Knit Right Part as Follows:-

Knit 1 row. Cast off 4 sts beg next and foll alt row. Cast off rem 56 (64) (72) sts. Take carr to left. Bring Ns back to WP. Knit left part as for right part.

FRONT

Ladies Version

Push 81 (89) (97) Ns at left and right of centre O to WP. 162 (178) (194) Ns altog. Push corresponding Ns on ribber to WP. Arrange Ns for 2 × 1 rib. Using col 1, cast on. RC 000. MT-5, knit 21 rows. Transfer sts to knitter. RC 000. MT. Continue in intarsia pattern, knit 158 rows. Mark both ends with waste yarn. Knit to Row 240.

Shape Neck

Note pos in pattern. Using a length of col 1, cast off centre 28 sts. Hold Ns at left.

Knit Right Part as Follows:-

Knit 1 row. Cast off 3 sts beg next and foll alt row, knit 1 row. Cast off 2 sts beg

For Knitmaster Standard Gauge Machines with Intarsia Carriage and Ribbing Attachment.

Sizes:

Ladies — To fit 81-86 (91-96) (101-106) cms/32-34 (36-38) (40-42) inch bust.

Mens — To fit 91-96 (101-106) (112-117) cms/36-38 (40-42) (44-46) inch chest.

Materials:

Ladies Version

Col 1 (Black) — 300 (325) (350) grms Knitmaster Kone 4ply

Col 2 (Pink) — 50 (75) (75) grms Knitmaster Blackjack

Col 3 (Serpentine) — 50 (75) (75) grms Knitmaster Blackjack

Col 4 (Bluebell) — 50 (75) (75) grms Knitmaster Kone 4ply

Col 5 (Saffron) — small amount Knitmaster Kone 4ply

Mens Version

Col 1 (Black) — 300 (325) (325) grms Knitmaster Kone 4ply

Col 2 (Hibiscus) — 50 (75) (75) grms Knitmaster Aneto 4ply

Col 3 (Cream) — 50 (75) (75) grms Knitmaster Aneto 4ply

Col 4 (Grey) — 50 (75) (75) grms Knitmaster Kone 4ply

Col 5 (Bluebell) — small amount Knitmaster Kone 4ply

Tensions:

Stockinet (col 1) — 31 sts and 43 rows to 10 cms. TD at approx. 6

Ladies Intarsia — 30 sts and 36 rows to 10 cms. TD at approx. MT

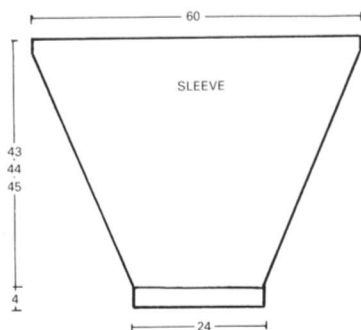
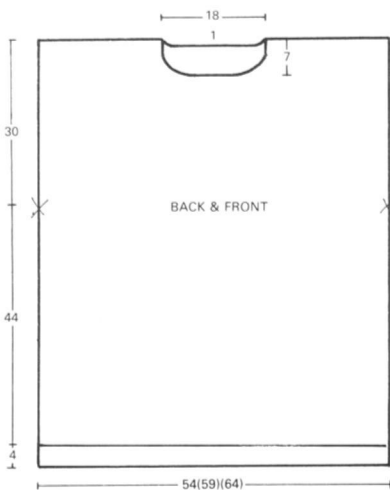
Mens Intarsia — 31 sts and 35 rows to 10 cms. TD at approx. MT

2 × 1 Rib (col 1) — 54 rows to 10 cms. TD's at approx. MT-5

Pattern Note:

Intarsia — Follow Charts

next and foll alt row, knit 1 row. Dec 1 st at neck edge on the next and ev foll 4th row 3 times in all. Knit to Row 266. Cast off rem 54 (62) (70) sts. Take carr to left. Bring Ns back to UWP. Keeping pattern correct, knit left part as for right part.



Mens Version

Push 84 (92) (100) Ns at left and right of centre O to WP. 168 (184) (200) Ns altog. Push corresponding Ns on ribber to WP. Arrange Ns for 2 × 1 rib. Using col 1, cast on. RC 000. MT-5, knit 21 rows. Transfer sts to knitter. RC 000. MT. Continue in intarsia pattern, knit 154 rows. Mark both ends with waste yarn. Knit to Row 234.

Shape Neck

Note pos in pattern. Using a length of col 1, cast off centre 28 sts. Hold Ns at left.

Knit Right Part as Follows:-

Knit 1 row, Cast off 3 sts beg next and foll alt row, knit 1 row. Cast off 2 sts beg next and ev foll alt row 3 times in all, knit 1 row. Dec 1 st at neck edge on the next and foll 4th row. Knit to Row 258. Cast off rem 56 (64) (72) sts. Take carr to left. Bring Ns back to UWP. Keeping pattern correct, knit left part as for right part.

SLEEVES

Arrange 74 Ns for 2 × 1 rib. Using col 1, cast on. RC 000. MT-5, knit 21 rows. Transfer sts to knitter. RC 000. MT. Knit 5 rows. Inc 1st both ends next and ev foll 3rd row 56 times in all. 186 sts. Knit to Row 184 (188) (192). (Adjust length at this stage if desired). Mark centre with waste yarn. Cast off.

NECKBAND

Arrange 163 Ns for 2 × 1 rib. Using col 1, cast on. RC 000. MT-5, knit 27 rows. Transfer sts to knitter. Knit 1 row MT. Cast off with waste yarn.

ALL MEASUREMENTS ARE IN CENTIMETRES

Continued on page 42.



11

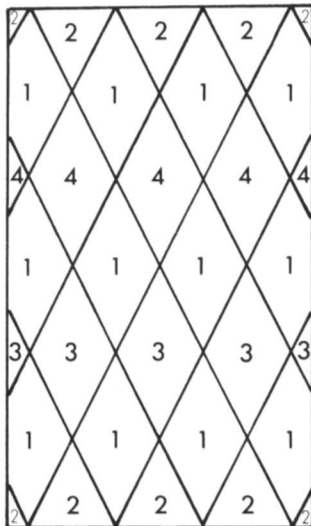




12

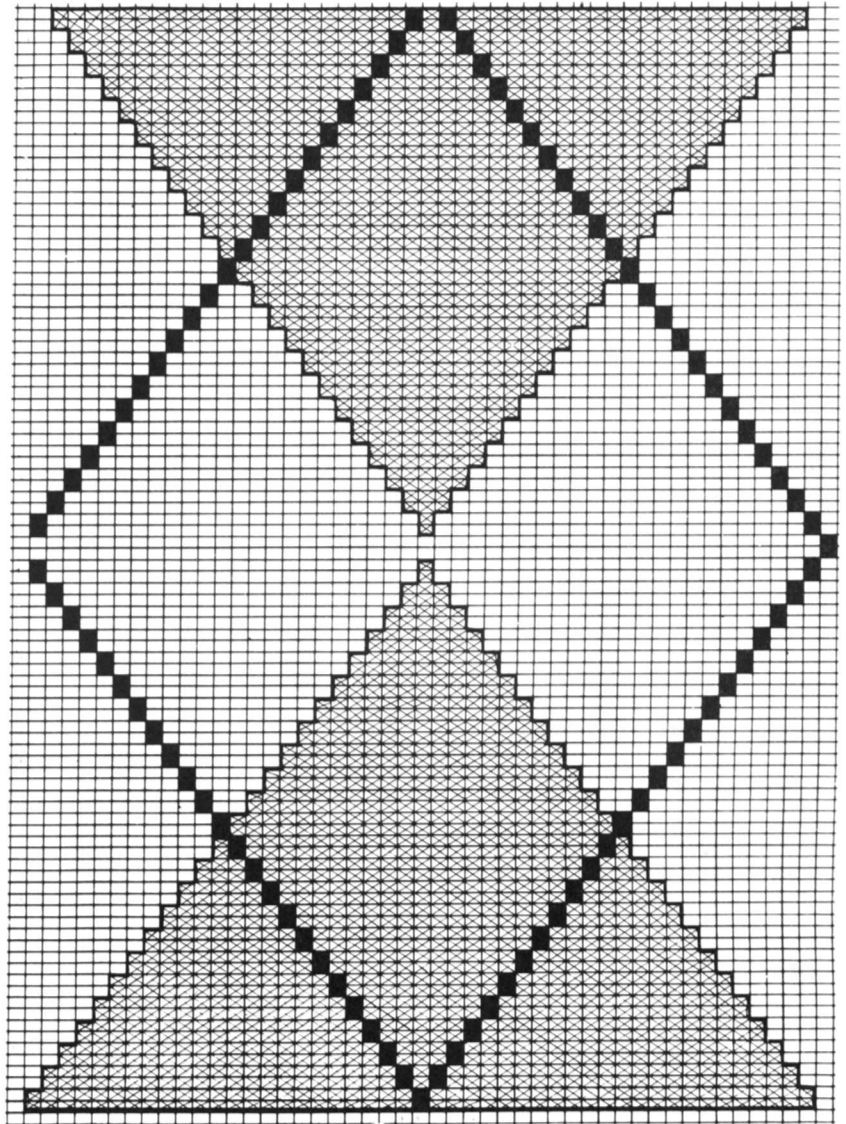
TO MAKE UP

Pin out to size and steam carefully. Join shoulder seams. Set in sleeves between marked points. Join side and sleeve seams. Backstitch neckband into pos and join centre back seam. Fold in half and catch down on the inside. Give final light steam.

CHART B



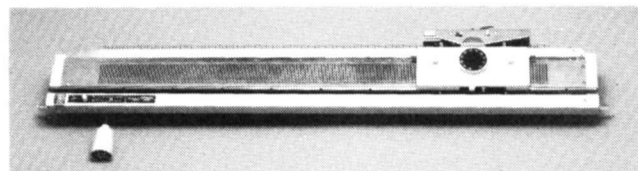
-  = COL 1
-  = COLS 2, 3 & 4 (SEE CHART B)
-  = COL 5 OR SWISS DARN AFTER KNITTING



FROM

KNITMASTER —

**SRP-60N
RIBBER**



Knitmaster's newest ribber — the SRP-60N — will fit all standard gauge Knitmaster punchcard machines from the 321 onwards, and all Knitmaster standard gauge electronic machines.

Even owners of older models of machines can give their knitwear a whole new look, with some of the designer look patterns which can be knitted on Knitmaster's SRP-60N.

- Choose
- * Pile knitting for a looped, towelling effect.
 - * Drive lace for large and small stitches in the same row.
 - * Fisherman's rib for those ever popular, cosy sweaters.
 - * Plating rib for one of the most fashionable rib stitches around.
 - * Punch pin tuck for lovely ripple patterns.
 - * Punch tuck rib for textured, honeycomb effects.
 - * Pick rib for that Italian designer look.

Use the ribber and YC-6 colour changer for double face Jacquard, double face tuck, and double face slip.

The easy-to-attach ribber fits quickly and neatly onto your machine, and more than doubles the choice of stitch patterns you can knit.

AVAILABLE FROM YOUR
LOCAL KNITMASTER
STOCKIST NOW



INDEX

MEN

	Item	Chest Size	Knitmaster Yarn	Stitch Pattern	Page no.
1B	Man's Bird Sweater	36"-46"	Aneto 4ply & Blackjack	Single Motif Fair Isle	7
2	Cricket Sweater	36"-46"	Kone 4ply	Slip Stitch	8
3	No.2 Single Motif Sweater	36"-46"	Aneto 4ply	Single Motif Fair Isle	10
5	Sweater with Herringbone Detail	36"46"	Aneto 4ply	Stockinet & Fair Isle	16
6B	Man's Plaid Sweater	38"-44"	Blackjack & Kone 4ply	Fair Isle	20
7	Nautical Sweater	38"-44"	Kone 4ply & Aneto	Stockinet & Cables	26
8	Leopard Sweater	36"-42"	Kone 4ply & Blackjack	Fair Isle	28
9	Rib Raglan Sweater	36"-42"	Aneto 4ply	Fair Isle & Ribs	32
10B	3 Colour Slip Stitch Sweater	38"-44"	Blackjack & Kone 4ply	Slip Stitch	36
12	Intarsia Sweater	36"-46"	Kone 4ply & Aneto 4ply	Intarsia	39

LADIES

	Item	Bust Size	Knitmaster Yarn	Stitch Pattern	Page no.
1A	Lady's Bird Sweater	32"-38"	Blackjack & Aneto 4ply	Fair Isle	6
2	Cricket Sweater	32"-42"	Kone 4ply	Slip Stitch	8
3	No.2 Single Motif Sweater	32"-42"	Aneto 4ply	Single Motif Fair Isle	10
4	Sweater with Fair Isle Neckline	32"-38"	Kone 4ply & Blackjack	Stockinet & Fair Isle	12
5	Sweater with Herringbone Detail	32"-42"	Aneto 4ply	Stockinet & Fair Isle	16
6A	Lady's Plaid Sweater	34"-40"	Blackjack & Kone 4ply	Fair Isle	19
7	Nautical Sweater	34"-40"	Kone 4ply & Aneto 4ply	Stockinet & Cables	26
8	Leopard Sweater	32"-38"	Kone 4 ply & Blackjack	Fair Isle	28
9	Rib Raglan Sweater	34"-40"	Aneto 4ply	Fair Isle & Ribs	32
10A	Lady's Slip Stitch Cardigan	34"-40"	Blackjack & Kone 4ply	Slip Stitch	35
11	Lady's Cable & Rib Sweater	34"-38"	Kone 4ply	Cables & Rib	38
12	Intarsia Sweater	32"-42"	Kone 4ply & Blackjack	Intarsia	39



KNITMASTER ^{creative} KONE

2 ply brushed acrylic · Brushed chunky · 4 ply acrylic/wool · Aran

Designer yarn in today's fashion colours



Aneto 2 ply
Blackjack

Aneto 4 ply
Bouclé



**KNITMASTER
KONE YARN**

AVAILABLE FROM YOUR
LOCAL KNITMASTER STOCKIST

KNITMASTER