

PARTS CATALOGUE

CONTROL BOX UNIT

FOR

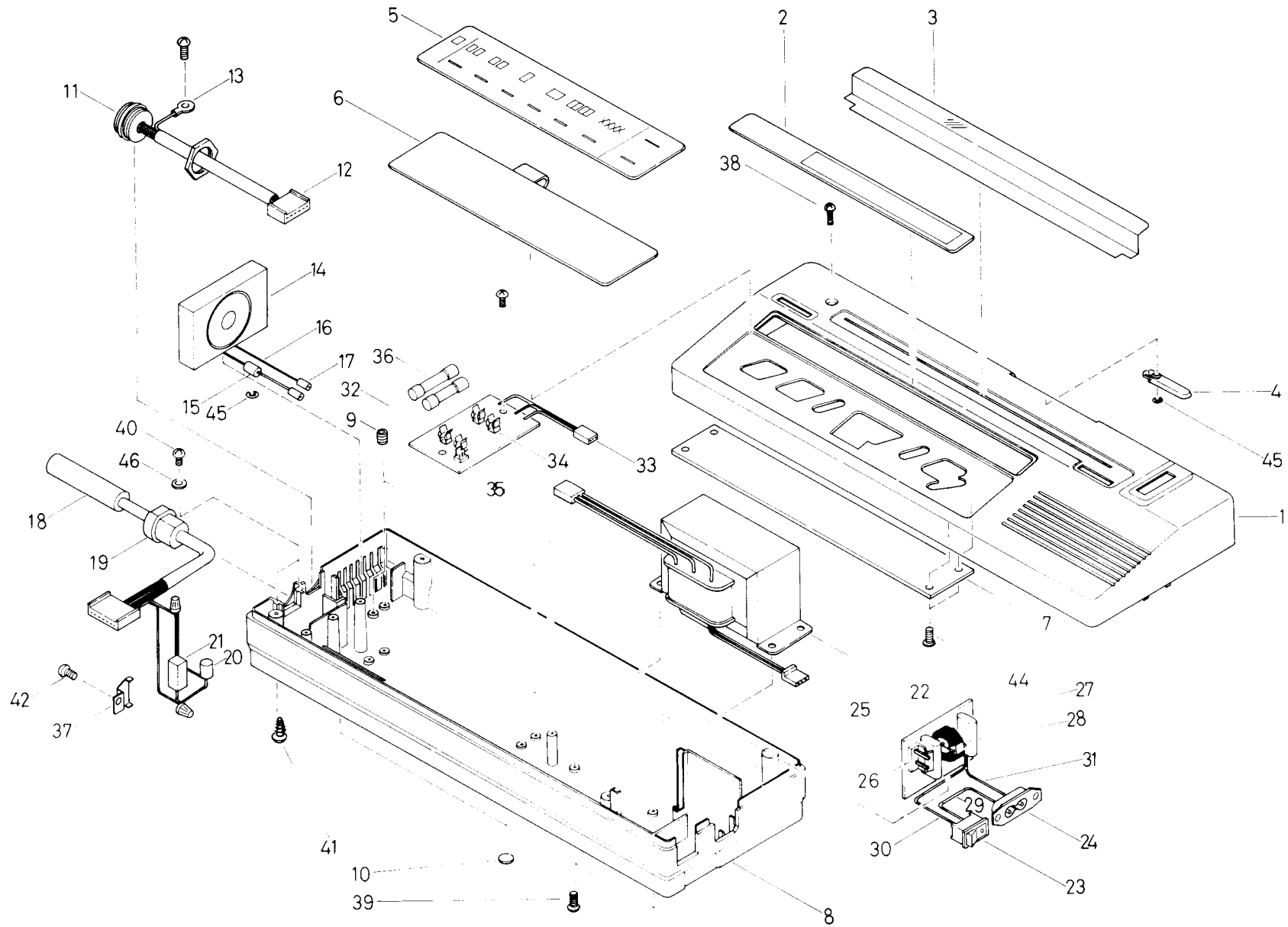
ELECTRONIC KNITTERS

EC-1

CONTENTS

CASE AND COVER GROUP	1 ~ 2
CR GROUP	3 ~ 4
SCAN FRAME GROUP	5 ~ 6
REGULATOR BOARD GROUP	7 ~ 8
CPU BOARD GROUP	9 ~ 10
ACCESSORY GROUP	11 ~ 12

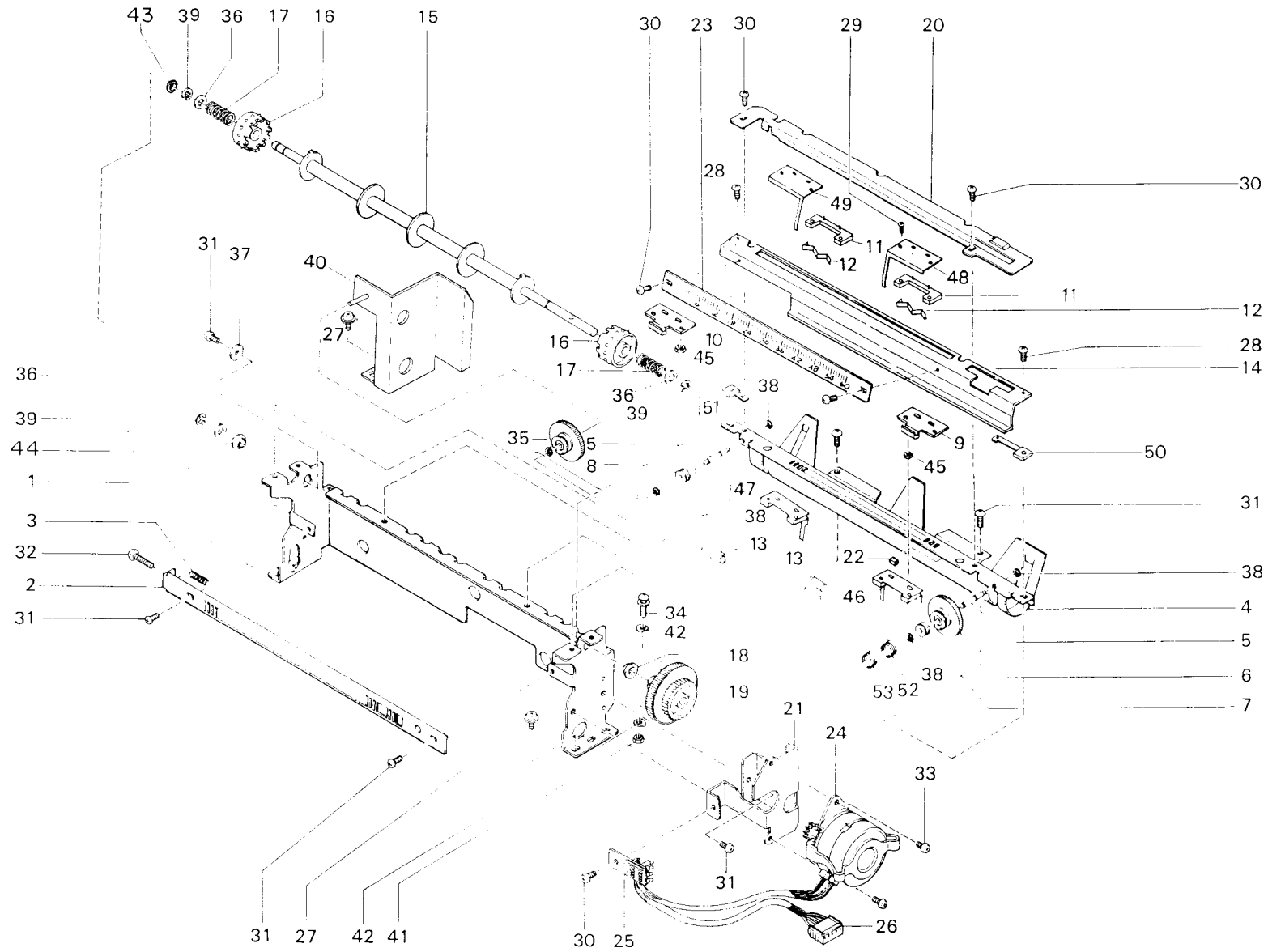
CASE AND COVER GROUP



Ref. No.	Parts No.	Q'ty	Description	Unit Price
1	12461547	1	Upper Cover	
2	12461554	1	Panel Plate	
3	12450953	1	Card Cover	
4	12450961	1	CR Card Guide	
5	12462222	1	Membrane Control Panel	
6	12454740	1	Membrane Switch Unit	
7	12454666	1	CPU Board Unit	
8	12461570	1	Bottom Cover	
9	12461604	6	Insert Nut M3	
0	12461588	2	Foot Rubber	
	12461703	1	IF Connector Unit (No. 11 ~ 13)	
1	12451514	1	PE-1 Socket (incl. Nut)	
2	12461711	1	IF Connector Harness	
3	12461727	1	IF Connector Cord	
	12461737	1	Fan Unit (No. 14 ~ 17)	
4	12461745	1	Fan	
5	12461752	1	Resistor 1W100Ω	
6	12461760	1	Fan Cord A	
7	12462297	2	Connector SMF-01T-1.0	
	12461844	1	Round Cable Unit (No. 18 ~ 21)	
8	12461851	1	Extended Cord	
9	12461869	1	Cord Bush	
0	09750613	1	Resistor 5W10Ω	
1	12403614	1	Capacitor 100μ 10V	
2	12461877	1	Transformer Unit	
	12462305	1	Power Unit (No. 23 ~ 31)	
3	12451050	1	Power Switch	
4	12461893	1	Inlet PA118	
5	12462198	1	Filter Board	

Ref. No.	Parts No.	Q'ty	Description	Unit Price
26	12461927	1	Connector 5277-02A	
27	12461935	2	Capacitor 0.1μ F250V	
28	12461943	1	Coil SC-02-101	
29	12461950	1	Power Cord A	
30	12461968	1	Power Cord B	
31	12461976	1	Power Cord C	
	12461984	1	Fuse Board Unit	
32	12462206	1	Fuse Board	
33	12462032	1	Fuse Harness	
34	12462024	4	Fuse Holder	
35	12462008	1	Connector 5045-03 ARE	
36	12462016	2	Fuse 250V 3.2A	
37	03530615	1	Resistor Support Plate	
38	05220611	1	Binding Head Screw 3 × 8	
39	12462313	4	SPW Pan Head Screw 3 × 8	
40	05024807	2	Binding Head Tapping Screw 2, 2.6 × 8	
41	04576922	4	Binding Head Tapping Screw 2, 3 × 16	
42	04990206	1	Binding Head STT Screw 3 × 4	
43	02142453	1	Binding Head STT Screw 3 × 6	
44	07816986	4	Flat Head Tapping Screw 2, 3 × 10	
45	02221000	2	CS Snap Ring 3	
46	02152007	2	Plain Washer 2.7 × 10 × 1.2	
○	12451530	9	Thermal Shrinkage Tube φ2 × 10	
○	12461786	2	Thermal Shrinkage Tube φ2 × 15	
○	12451563	2	Thermal Shrinkage Tube φ3 × 20	
○	12452074	4	Thermal Shrinkage Tube φ4 × 15	
○	08380610	2	Thermal Shrinkage Tube φ1 × 16	
○	08390619	2	Thermal Shrinkage Tube φ1 × 22	

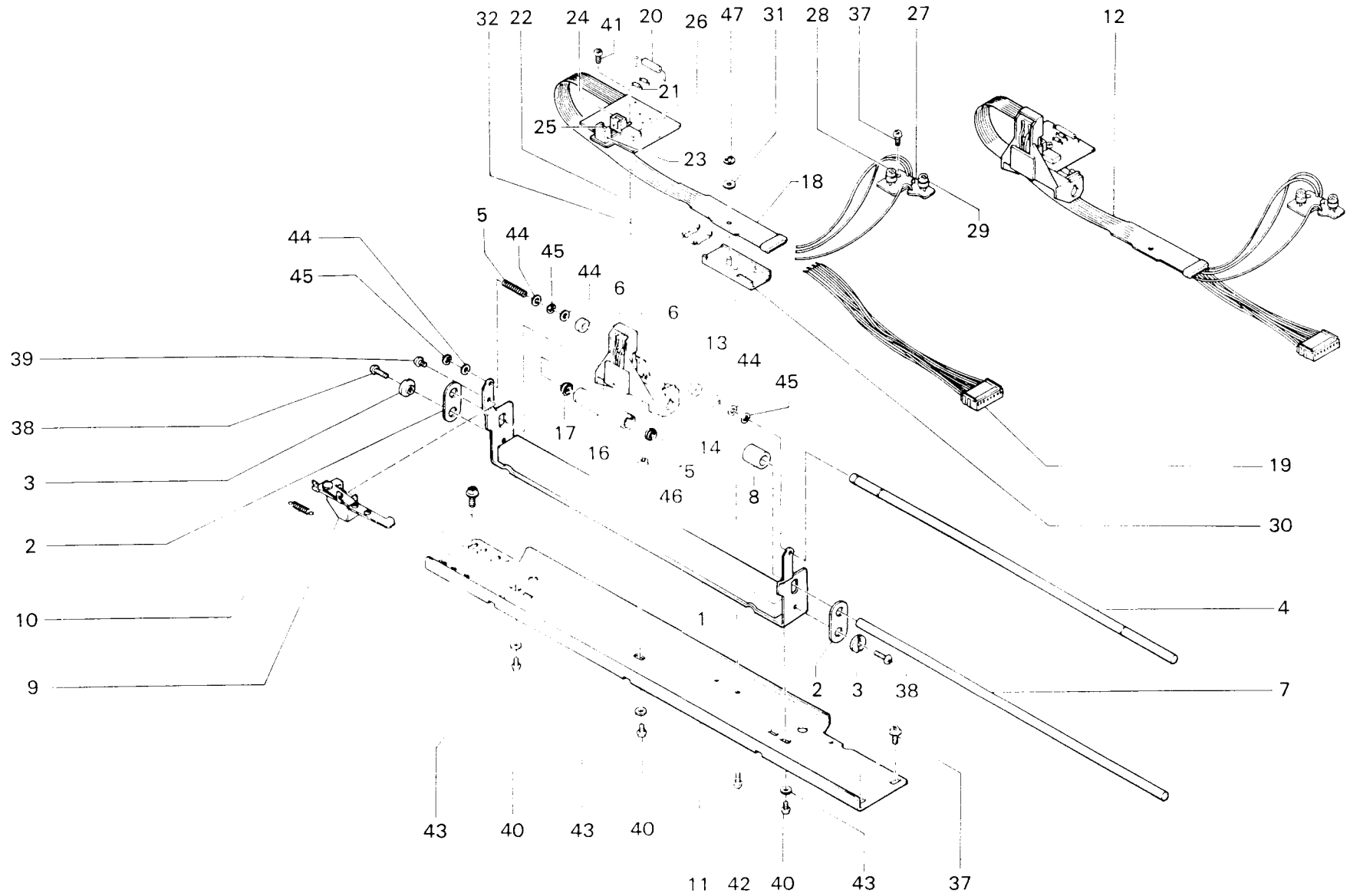
CR GROUP



Ref. No.	Parts No.	Q'ty	Description	Unit Price
	12461265	1	CR Unit	
	03035235	1	CR Box	
	03235231	1	CR Clock Plate	
	03240611	1	CR Clock Plate Spring	
	03055233	1	Card Holder	
	12461299	2	Indicator Dial Shaft A	
	12461505	1	Indicator Dial A	
	12461315	1	Indicator Collar A	
	12461323	1	Indicator Collar B	
	12461331	1	Indicator Holder (R)	
	12461349	1	Indicator Holder (L)	
	12461372	2	Stopper Spring Holder	
	12461695	2	Stopper Spring	
	12462040	2	Indicator Cord Collar	
	12461406	1	Indicator Guide	
	03200615	1	Card Drum	
	03215233	2	Sprocket Wheel	
	03150612	2	Sprocket Spring	
	03180619	1	Bush	
	12401873	1	Feeding Dial (Card Dial)	
	03510617	1	CR Paper Guide	
	03255239	1	Motor Stand	
	03760618	1	Sensor Cleaner	
	12450722	1	CR Indicator	
	12461828	1	Pulse Motor Unit (No. 24 ~ 26)	
	12404026	1	Pulse Motor	
	12462172	1	PM Board Unit (w/Resistor and Diode)	
	12461836	1	5P Connector Unit	

Ref. No.	Parts No.	Q'ty	Description	Unit Price
27	12425393	4	Collar Head Screw 3 × 4	
28	96000138	2	Binding Head Screw 2.6 × 8	
29	12461687	4	Binding Head Screw 2 × 5	
30	06214001	5	Binding Head Screw 2.6 × 4	
31	05212006	7	Binding Head Screw 3 × 5	
32	04741005	1	Binding Head Screw 3 × 14	
33	04782561	2	Binding Head Screw 3 × 4	
34	03790615	1	PW Binding Head Screw 3 × 14	
35	12461513	1	Indicator Dial B	
36	07411200	3	Plain Washer 6.2 × 10 × 0.5	
37	03605235	1	Plain Washer 3.2 × 13 × 1	
38	03910619	4	E Snap Ring 2	
39	08672115	3	E Snap Ring 4	
40	12461489	1	Indicator Dial B Bracket	
41	48309009	1	Hexagonal Nut 3, 3	
42	03930617	2	Shaft Lock Washer 3	
43	03025251	1	CR Shaft Lock Collar	
44	03035250	1	Reference Bush	
45	03090362	4	Hexagonal Nut 2, 2	
46	12461356	1	Mirror (R)	
47	12461364	1	Mirror (L)	
48	12461380	1	CR Pointer (R)	
49	12461398	1	CR Pointer (L)	
50	12461414	1	Pointer Guide Spacer (R)	
51	12461422	1	Pointer Guide Spacer (L)	
52	12461430	1	Indicator Code (R)	
53	12461448	1	Indicator Code (L)	

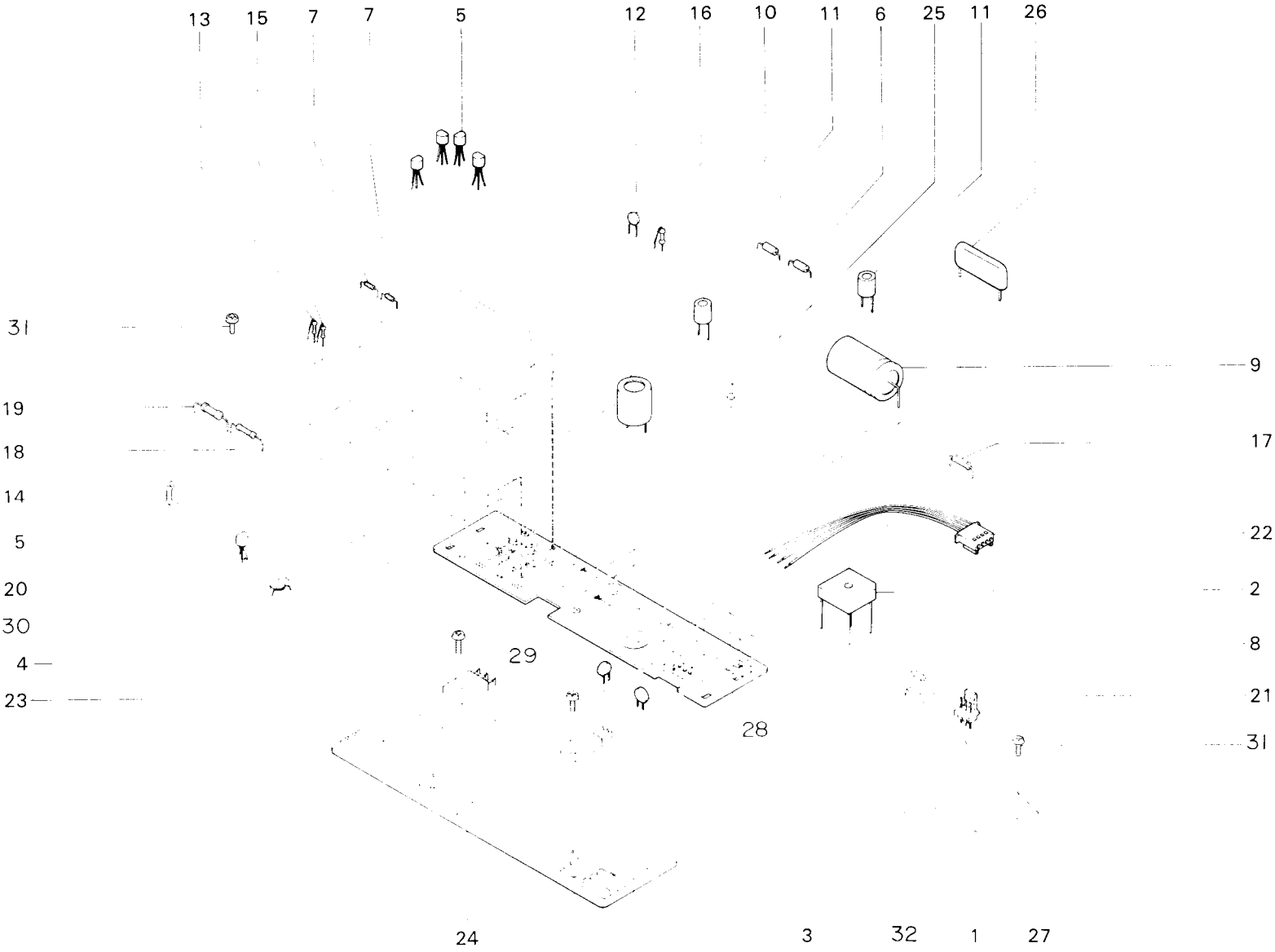
SCAN FRAME GROUP



Ref. No.	Parts No.	Qty	Description	Unit Price
1	03835238	1	Scan Frame Unit No.2 (w/Scan Magnet)	
2	03320611	2	Scan Controlling Plate	
3	03330610	2	Scan Controlling Collar	
4	03355237	1	Scan Guide	
5	03365236	1	Scan Guide Spring	
6	03375235	2	Scan Guide Buffer	
7	03340619	1	Scan Shaft	
8	03620614	1	Scan Shaft Collar	
9	03385234	1	Sensor Stopper	
0	03430618	1	Sensor Stopper Spring	
1	03555232	1	CR Base	
2	12461794	1	CR Sensor Unit (No. 14 ~ 29, 32, 41, 46)	
3	03955234	conditional	Sensor Adjusting Washer	
4	03845237	1	CR Sensor	
5	03470614	1	Sensor Cover	
6	03490612	1	Scan Solenoid	
7	03500618	2	Scan Solenoid Collar	
8	03525235	1	Flexible Cord	
9	12461810	1	SP Connector Unit	
0	09430612	1	Electrolytic Capacitor 16V 10 μ F	
1	12403952	2	Diode DS442	
2	09680612	1	Resistor 1/4L 120 Ω J	
3	03825239	1	Sensor Holder	
4	09940610	1	LED LN55	
5	09950619	1	Photo-transistor PN150	

Ref. No.	Parts No.	Qty	Description	Unit Price
26	03635232	1	CR Sensor Magnet	
27	03725231	1	VR Board Unit (incl. No. 28 ~ 29 w/Capacitor and Leads)	
28	09675232	1	Potentiometer 0.3W 30K Ω	
29	09935230	1	Potentiometer 0.3W 5k Ω	
30	03585239	1	Flexible Cord Clamp	
31	07211204	1	OP Snap	
32	08400616	1	Resistor 1/4WL91 J	
33				
34				
35				
36				
37	08030611	1	Collar Head Screw 3 \times 5	
	03195294	4	Collar Head Screw 3 \times 5	
38	01332006	2	Binding Head Screw 3 \times 6	
39	05212006	1	Binding Head Screw 3 \times 5	
40	04782561	3	Binding Head Screw 3 \times 4	
41	03540614	1	Binding Head Screw 3 \times 6	
42	05180617	1	Binding Head Tapping Screw 2, 2.6 \times 6	
43	08571200	3	Plain Washer 3.2 \times 6 \times 0.5	
44	03595238	4	Plain Washer 5.2 \times 8.5 \times 0.5	
45	08662116	3	E Snap Ring 3	
46	03940616	1	Hexagonal Nut 3, 3	
47	02930618	1	CS Snap Ring 2.4	
O	09880618	6	Cable Tie Wrap	

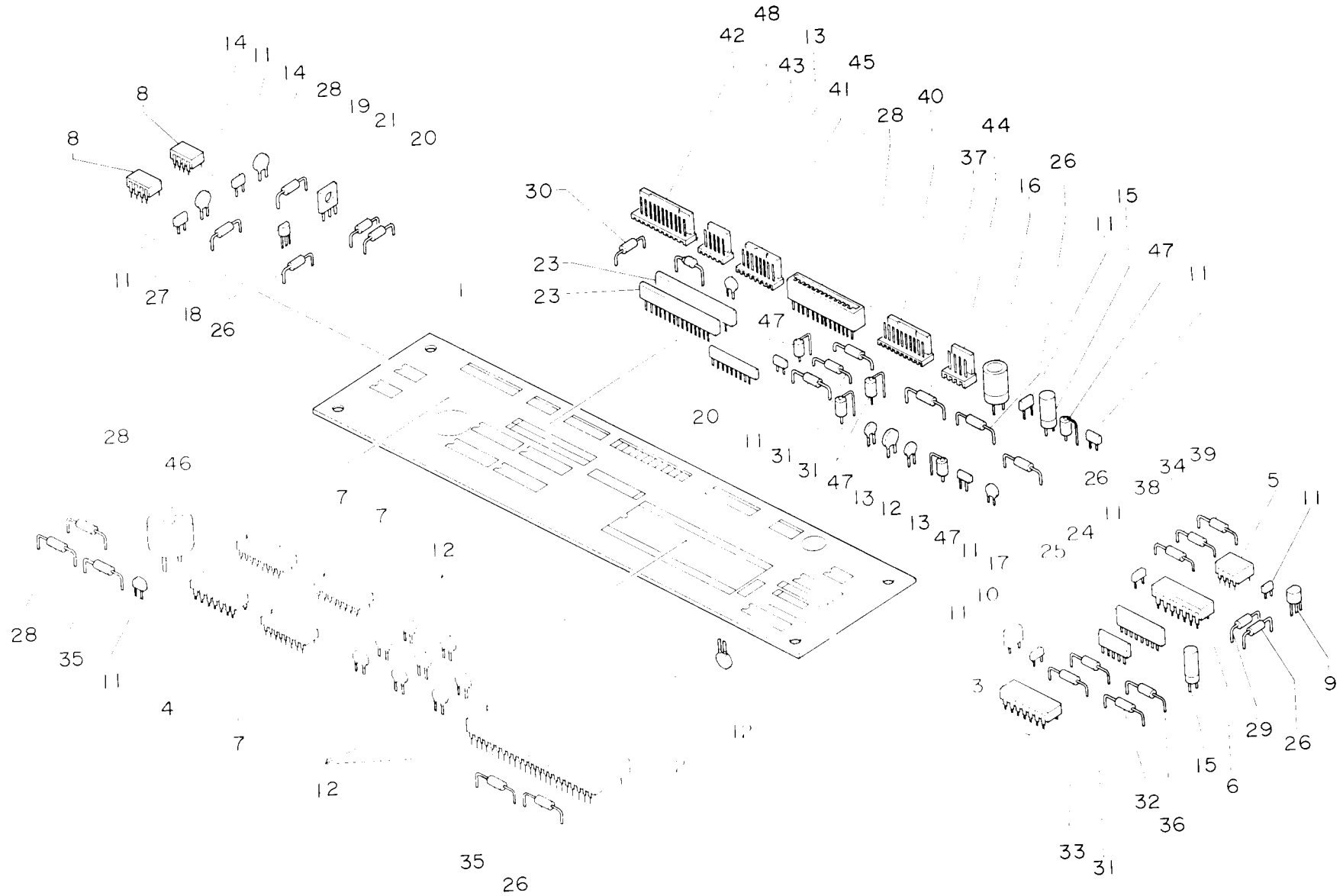
REGULATOR BOARD GROUP



Ref. No.	Parts No.	Q'ty	Description	Unit Price
	12462156	1	Regulator Board Unit (No.1 ~ 30, 32)	
	12452082	1	Regulator Board	
	12403929	1	Rectifier Stack CBA60C	
	12403937	1	5V Regulator AN7805F	
	09040619	1	Transistor 2SD1288	
	12403424	5	Transistor 2SC3330	
	12403945	2	Diode DSF10TB	
	12403952	2	Diode DS442	
	12403960	1	Zener Diode GZB10B	
	09390618	1	Electrolytic Capacitor 35V 2200 μ F	
	09400615	1	Electrolytic Capacitor 16V 1000 μ F	
	09410614	2	Electrolytic Capacitor 16V 470 μ F	
	09470618	1	Ceramic Capacitor 50V 0.01 μ F	
	09560616	1	Resistor 1/4P 51K Ω J	
	09580614	1	Resistor 1/4P 30K Ω J	
	09610619	1	Resistor 1/4 3K Ω J	
	09590613	1	Resistor 1/4 10K Ω J	
	09060625	1	Resistor 1/2L 82 Ω J	
	19540616	1	Resistor 2L 750 Ω J	
	09550617	1	Resistor 2L 0.39 Ω J	
	09310616	1	Potentiometer 0.1L 10K Ω	
	12404190	1	3P Connector (Male)	
	12462164	1	4PB Cord Unit	
	09770611	1	Insulation Sheet S34	
	01270610	1	Heat Sink	

Ref. No.	Parts No.	Q'ty	Description	Unit Price
25	09030628	2	Test Point	
26	09050626	1	Film Capacitor 630V 0.22 μ F	
27	09040627	1	Resistor 1/4 100K Ω J	
28	12457347	1	Film Capacitor 0.1 μ F	
29	18046946	1	Ceramic Capacitor 25V 0.1 μ F	
30	03083201	1	Binding Head Screw 3 × 10	
31	03991007	2	SPW Pan Head Screw 3 × 12	
32	05220611	1	Binding Head Screw 3 × 8	

CPU BOARD GROUP



f. No.	Parts No.	Q'ty	Description	Unit Price
	12454666	1	CPU Board Unit (No. 1 ~ 48)	
	12451225	1	CPU Board	
	12451738	1	LSI μ PD78C11	
	12451902	1	IC 74HC14	
	12451910	1	IC 74HC04	
	12451928	1	IC μ PC358C	
	09120619	1	IC μ PC339C	
	12451936	3	IC μ PA2004C	
	12451944	2	IC M751701P	
	12451951	1	IC PST518B	
	12451969	1	Oscillator	
	12451977	10	Capacitor 0.1 μ 50V	
	12456216	10	Capacitor 0.1 μ 25V	
	12456224	3	Capacitor 4700PF 50V	
	12451985	2	Capacitor 0.01 μ 25V	
	33103268	2	Capacitor 10 μ DC16V	
	12452009	1	Capacitor 100 μ DC16V	
	12452017	1	Capacitor 1000PF 50V	
	12403424	1	Transistor 2SC3330	
	09035296	1	Transistor 2SD986	
	12403440	1	Diode GMA01	
	07706948	1	Diode 1S 158.8	
	12451746	1	Resistor Array	
	12451753	2	Resistor Array	
	09350612	1	Resistor Array	

Ref. No.	Parts No.	Q'ty	Description	Unit Price
25	09360611	1	Resistor Array	
26	05086921	5	Resistor 1/4W 10K Ω	
27	09710617	1	Resistor 1/4W 30K Ω	
28	09510611	4	Resistor 1/4W 1K Ω	
29	04096921	1	Resistor 1/4W 47 Ω	
30	12451803	1	Resistor 1/4W 51 Ω	
31	09500612	3	Resistor 1/4W 2K Ω	
32	09980616	1	Resistor 1/4W 5.6K Ω	
33	09970617	1	Resistor 1/4W 3.3K Ω	
34	12451845	1	Resistor 1/4W 820 Ω	
35	12451852	2	Resistor 1/4W 47K Ω	
36	09990615	1	Resistor 1/4W 4.3K Ω	
37	08360612	1	Resistor 1/4W 330 Ω	
38	12451886	1	Fixed Metal Film Resistor 1/4W 2.8K Ω	
39	12451894	1	Fixed Metal Film Resistor 1/4W 1K Ω	
40	12403705	1	Connector 5233 10A	
41	12403689	1	Connector 5233 0.8A	
42	12452025	1	Connector 5233 11A	
43	12403671	1	Connector 5233 0.5A	
44	12403713	1	Connector 5045 0.4A	
45	12452033	1	Connector HLEM22S1	
46	12417127	1	Buzzer SDC 1610M1-01	
47	97957500	5	Ferrite Beads ZBF 253S-01	
48	12403754	1	Inductor 220 μ -H	
O	01040419	4	Binding Head Tapping Screw 2, 3 \times 8	

ACCESSORY GROUP

Ref. No.	Parts No.	Q'ty	Description	Unit Price
○	07390628	1	Design Pencil (1 star)	
○	12462099	1	Operation Manual	
○	12461679	1	Accessory Pattern Card Set	
○	12462214	1	Power Supply Cord	
○	12461638	1	Styrofoam Packing (A)	
○	12461646	1	Styrofoam Packing (B)	