
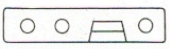
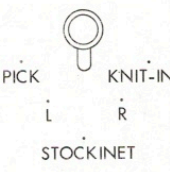
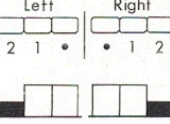
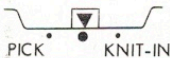
 INSTRUCTIONS for using PATTERN CARDS 3

<p>NEEDLE ARRANGEMENT</p> 	<p>Needles to be pushed all the way back into inoperative position are shown by circles O . O indicates the center of the needle bed. I indicates a working needle.</p>
<p>ORDER</p>	<p>This is order of procedure or order of each step to follow but is not each row of knitting.</p>
<p>PATTERN PANEL</p> 	<p>Each of the three columns indicates dial position of the corresponding dial. Refer to pattern panel section of your instruction manual.</p>
<p>CAM LEV.</p> 	<p>Cam Lever has following positions: - STOCKINET (working) for plain knitting. PICK (with pattern lever or PICK) for picked stitches. R (right) Off position when carriage comes from left to right. L (left) Off position when carriage comes from right to left. KNIT-IN (with pattern lever of KNIT-IN) for knit-in color patterns.</p>
<p>PUSH BUTTONS</p> <p>Left Right</p> 	<p>Button to be pushed down is illustrated by lowered black button. Innermost buttons of right and left set are release buttons. Push this button and lowered button of that set will be released. Push button 1 or 2 and the other button will be automatically released when in lowered position.</p>
<p>PATTERN LEV.</p> 	<p>Pattern Lever is located at the center rear of carriage. It has three positions. PICK, KNIT-IN and CENTRAL or NEUTRAL ● Position.</p>





Silver

Lace  
Patterns  
and  
Bulki  
Knitting

SILVER PATTERN CARDS 3

SERIES

<p>SIDE LEV.</p> <p>Left Right</p> 	<p>There are two side levers, right and left. Position of each side lever is illustrated by ▼ "selecting" and ● "non-selecting". For continuous plain knitting, both side levers can be set at ● for quieter knitting.</p>
<p>DIRECTION AND ROWS</p> 	<p>Each arrow indicates one stroke (one passage over working needles) of carriage and the direction of the stroke. Number of arrows indicates number of strokes within one procedure. If there are five arrows in one procedure, go across with carriage five times in the direction indicated without changing carriage setting and dials.</p>

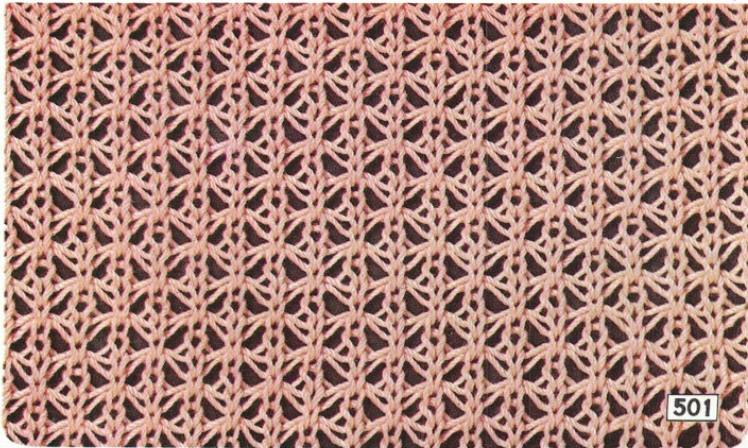
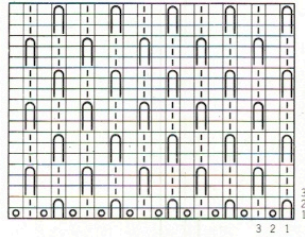


ORDER	PATTERN PANEL			CAM LEV.	PUSH BUTTONS		PATTERN LEV.	SIDE LEV.	DIRECTION AND ROWS
	0	1	2		2 1 *	* 1 2			
1	0	●	2	Pick			Pick		→
2	"	"	"	Stocki-net	"	"	"	"	→
3	2	"	"	Pick	"	"	"	"	→
4	"	"	"	Stocki-net	"	"	"	"	→
5									
6									
7									
8									
9									
10									

**NEEDLE ARRANGEMENT**

|○|○|○|○|○|

3 Sts. & 3 Rows per Unit pattern.



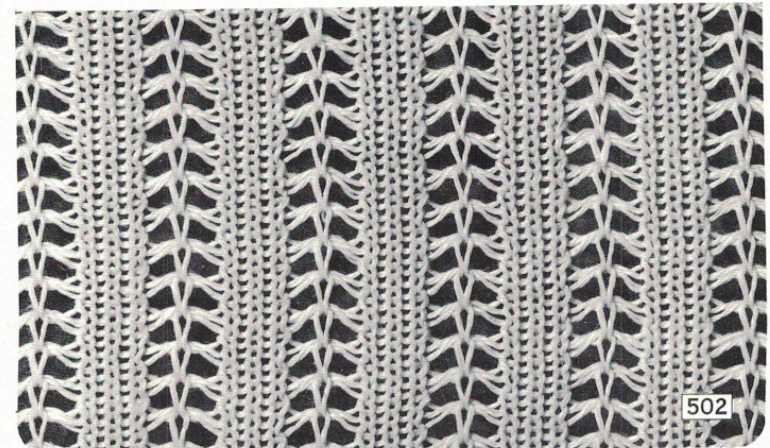
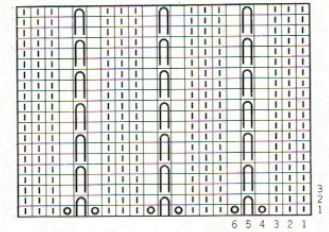
501

ORDER	PATTERN PANEL			CAM LEV.	PUSH BUTTONS		PATTERN LEV.	SIDE LEV.	DIRECTION AND ROWS
	0	6	●		2 1 *	* 1 2			
1	0	6	●	Stocki-net			●		→
2	"	"	"	"			"	"	→
3	"	"	"	"		"	"	"	→
4	"	"	"	"	"		"	"	→
5									
6									
7									
8									
9									
10									

**NEEDLE ARRANGEMENT**

|||○|○|

6 Sts. & 3 Rows per Unit pattern.



502

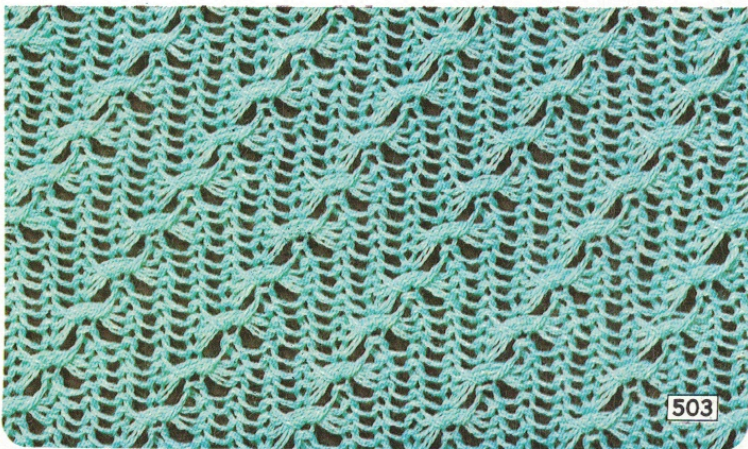
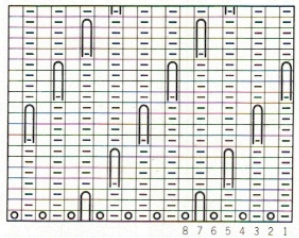


ORDER	PATTERN PANEL			CAM LEV.	PUSH BUTTONS		PATTERN LEV.	SIDE LEV.	DIRECTION AND ROWS
	0	0	0		2 1	1 2			
1	4		8	2	Pick				→
2	"	"	"	"	Stocki-net	"	"	"	→
3	2		"	"	Pick	"	"	"	→
4	"	"	"	"	Stocki-net	"	"	"	→
5	0		"	"	Pick	"	"	"	→
6	"	"	"	"	Stocki-net	"	"	"	→
7	2		"	"	Pick	"	"	"	→
8	"	"	"	"	Stocki-net	"	"	"	→
9									
10									

**NEEDLE ARRANGEMENT**



8 Sts. & 4 Rows per Unit pattern.



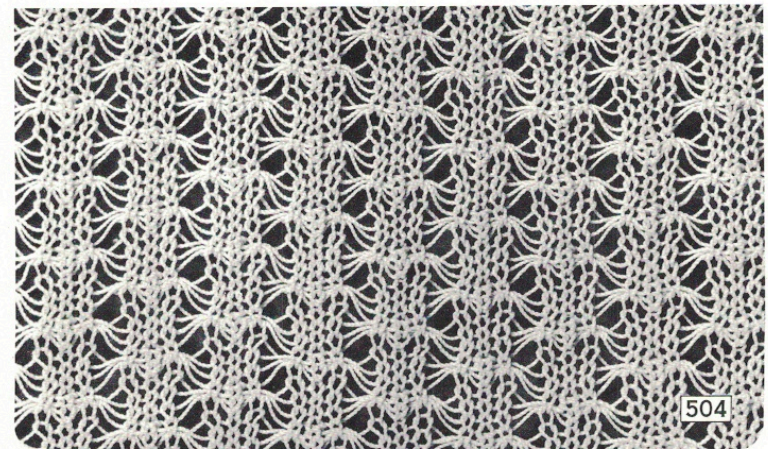
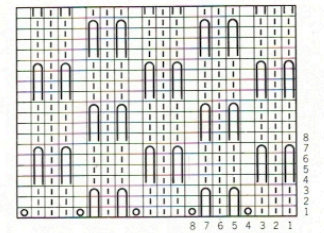
503

ORDER	PATTERN PANEL			CAM LEV.	PUSH BUTTONS		PATTERN LEV.	SIDE LEV.	DIRECTION AND ROWS
	0	0	0		2 1	1 2			
1	1	8	1	Pick					→
2	"	"	"	"	Stocki-net	"	"	"	→
3	3		"	"	Pick	"	"	"	→
4	"	"	"	"	Stocki-net	"	"	"	→
5									
6									
7									
8									
9									
10									

**NEEDLE ARRANGEMENT**



8 Sts. & 8 Rows per Unit pattern.



504

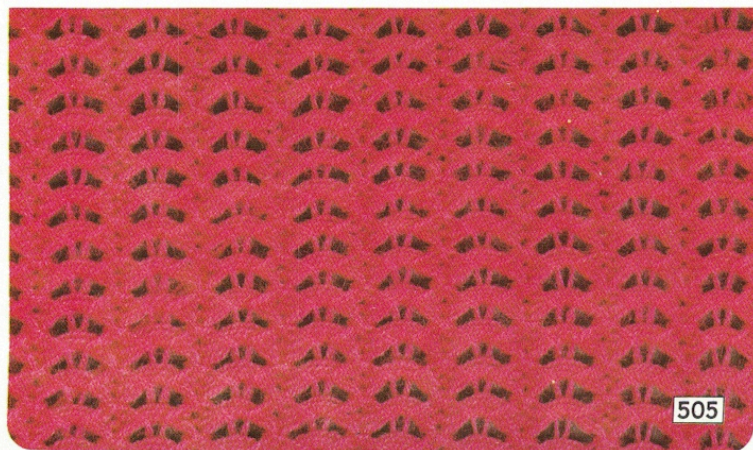
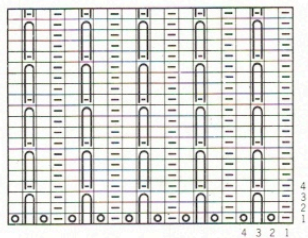


ORDER	PATTERN PANEL			CAM LEV.	PUSH BUTTONS		PATTERN LEV.	SIDE LEV.	DIRECTION AND ROWS
	0	●	2		2 1	1 2			
1	0	●	2	Pick			Pick	▼ ▼	
2	"	"	"	Stocki-net	"	"	"	" "	
3									
4									
5									
6									
7									
8									
9									
10									

**NEEDLE ARRANGEMENT**



4 Sts. & 4 Rows per Unit pattern.



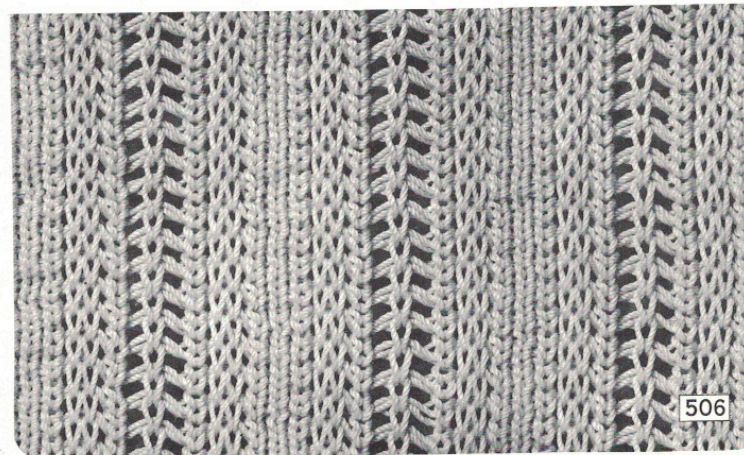
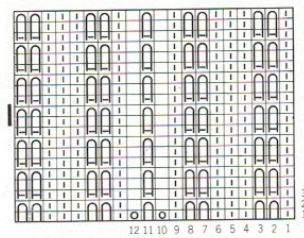
505

ORDER	PATTERN PANEL			CAM LEV.	PUSH BUTTONS		PATTERN LEV.	SIDE LEV.	DIRECTION AND ROWS
	0	5	4		2 1	1 2			
1	0	5	4	Stocki-net			●	▼ ▼	
2	"	"	"	"		"	"	" "	
3	"	"	"	"		"	"	" "	
4	"	"	"	"	"		"	" "	
5									
6									
7									
8									
9									
10									

**NEEDLE ARRANGEMENT**



12 Sts. & 3 Rows per Unit pattern.



506

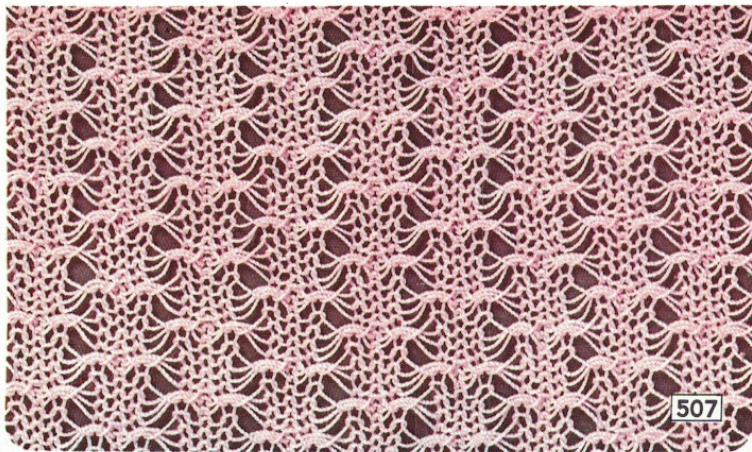
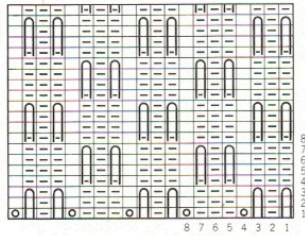


ORDER	PATTERN PANEL		CAM LEV.	PUSH BUTTONS		PATTERN LEV.	SIDE LEV.	DIRECTION AND ROWS
	○	○	○	2 1	1 2	▽	▽ ↓	
1	1	8	1	Pick		Pick	▽ ↓	→
2	"	"	"	Stocki-net	"	"	"	→
3	3	"	"	Pick	"	"	"	→
4	"	"	"	Stocki-net	"	"	"	→
5								
6								
7								
8								
9								
10								

**NEEDLE ARRANGEMENT**



8 Sts. & 8 Rows per Unit pattern.



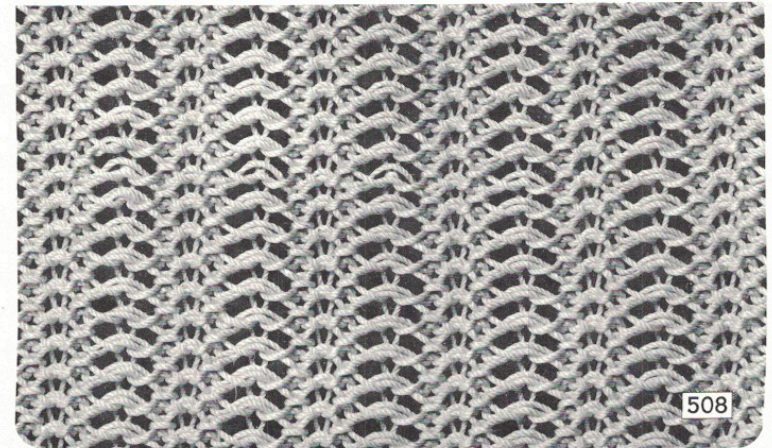
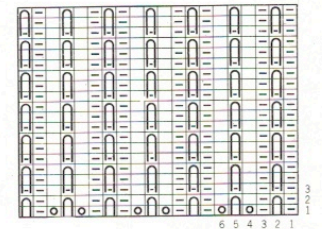
507

ORDER	PATTERN PANEL		CAM LEV.	PUSH BUTTONS		PATTERN LEV.	SIDE LEV.	DIRECTION AND ROWS
	○	○	○	2 1	1 2	▽	▽ ↓	
1	1	7	●	Stocki-net		●	▽ ↓	→
2	"	"	"	"	"	"	"	→
3	"	"	"	"	"	"	"	→
4	"	"	"	"	"	"	"	→
5								
6								
7								
8								
9								
10								

**NEEDLE ARRANGEMENT**



6 Sts. & 3 Rows per Unit pattern.



508

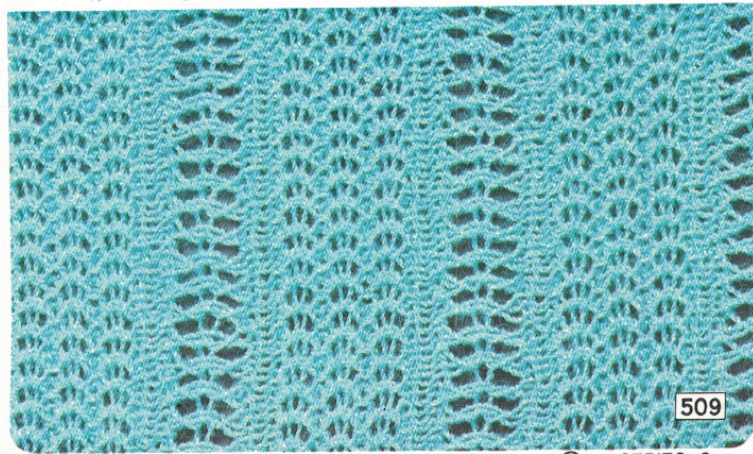
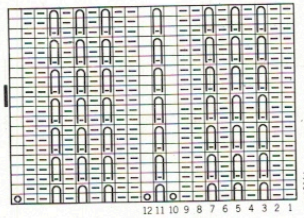


ORDER	PATTERN PANEL			CAM LEV.	PUSH BUTTONS		PATTERN LEV.	SIDE LEV.	DIRECTION AND ROWS
	0	6	4		2 1	1 2			
1	0	6	4	Stocki-net					
2	"	"	"	"		"	"	"	
3	"	"	"	"		"	"	"	
4	"	"	"	"	"		"	"	
5									
6									
7									
8									
9									
10									

**NEEDLE ARRANGEMENT**



12 Sts. & 3 Rows per Unit pattern.



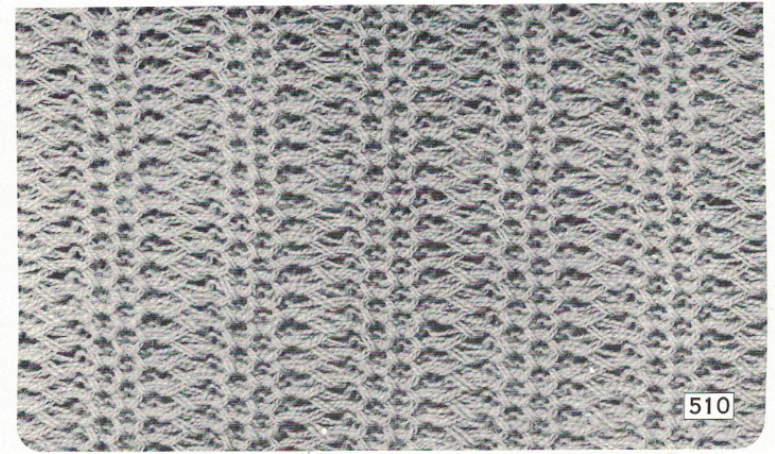
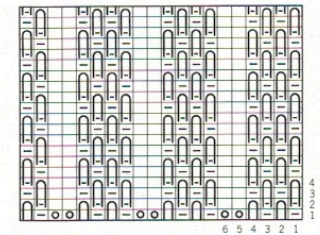
509

ORDER	PATTERN PANEL			CAM LEV.	PUSH BUTTONS		PATTERN LEV.	SIDE LEV.	DIRECTION AND ROWS
	0	6	4		2 1	1 2			
1	0	6	4	Pick					
2	1	"	"	"	"	"	"	"	
3									
4									
5									
6									
7									
8									
9									
10									

**NEEDLE ARRANGEMENT**



6 Sts. & 4 Rows per Unit pattern.



510

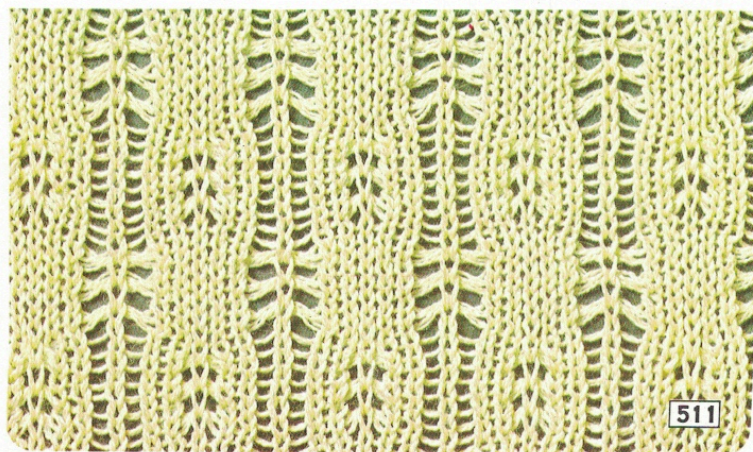
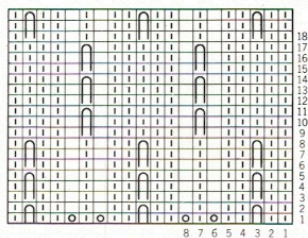


ORDER	PATTERN PANEL			CAM LEV.	PUSH BUTTONS		PATTERN LEV.	SIDE LEV.	DIRECTION AND ROWS
	0	0	0		2 1	1 2			
1	I	8	3	Pick			Pick	▼ ▼	← →
2	"	"	"	Stockinet	"	"	"	"	← →
3	"	"	"	Pick	"	"	"	"	← →
4	"	"	"	Stockinet	"	"	"	"	← →
5	"	"	"	Pick	"	"	"	"	← →
6	"	"	"	Stockinet	"	"	"	"	← →
7	I	3	"	Pick	"	"	"	"	← →
8	"	"	"	Stockinet	"	"	"	"	← →
9	"	"	"	Pick	"	"	"	"	← →
10	"	"	"	Stockinet	"	"	"	"	← →
11	"	"	"	Pick	"	"	"	"	← →
12	"	"	"	Stockinet	"	"	"	"	← →

**NEEDLE ARRANGEMENT**



8 Sts. & 18 Rows per Unit pattern.



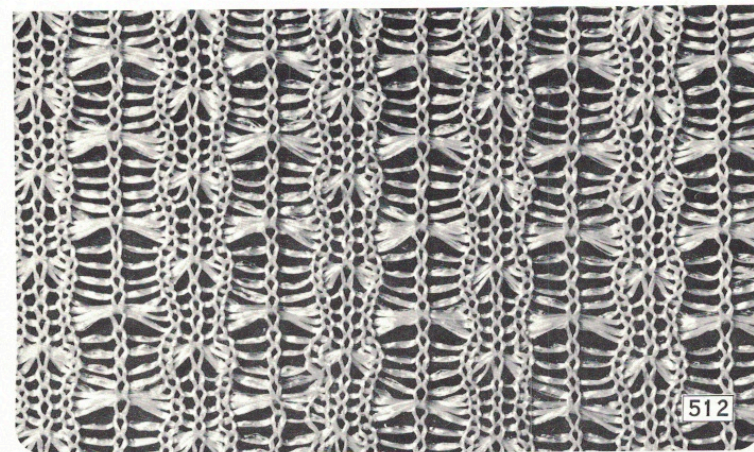
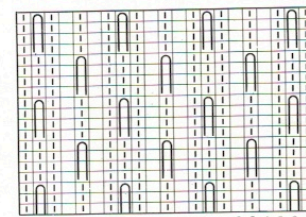
511

ORDER	PATTERN PANEL			CAM LEV.	PUSH BUTTONS		PATTERN LEV.	SIDE LEV.	DIRECTION AND ROWS
	0	0	0		2 1	1 2			
1	0	6	●	Stockinet			●	▼ ▼	← →
2	"	"	"	"	"	"	"	"	← →
3	I	3	"	"	"	"	"	"	← →
4	"	"	"	"	"	"	"	"	← →
5									
6									
7									
8									
9									
10									

**NEEDLE ARRANGEMENT**



6 Sts. & 8 Rows per Unit pattern.



512



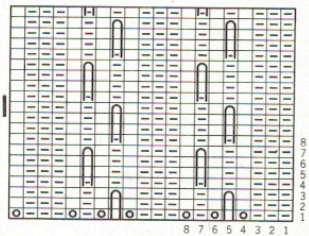
ORDER	PATTERN PANEL			CAM LEV.	PUSH BUTTONS		PATTERN LEV.	SIDE LEV.	DIRECTION AND ROWS
1	0	8	2	Pick			Pick		
2	"	"	"	Stocki-net	"	"	"	"	
3	2	"	"	Pick	"	"	"	"	
4	"	"	"	Stocki-net	"	"	"	"	
5									
6									
7									
8									
9									
10									

**NEEDLE ARRANGEMENT**



0

8 Sts. & 8 Rows per Unit pattern.



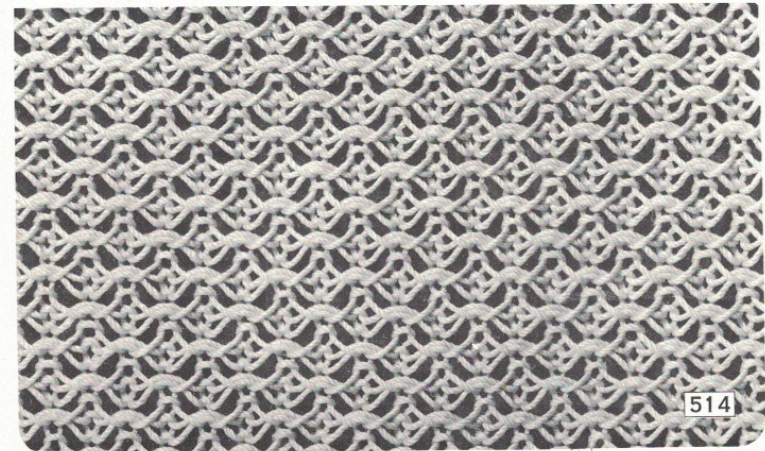
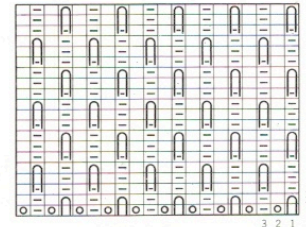
513

ORDER	PATTERN PANEL			CAM LEV.	PUSH BUTTONS		PATTERN LEV.	SIDE LEV.	DIRECTION AND ROWS
1	0	●	2	Pick			Pick		
2	"	"	"	Stocki-net	"	"	"	"	
3	2	"	"	Pick	"	"	"	"	
4	"	"	"	Stocki-net	"	"	"	"	
5									
6									
7									
8									
9									
10									

**NEEDLE ARRANGEMENT**



3 Sts. & 3 Rows per Unit pattern.



514

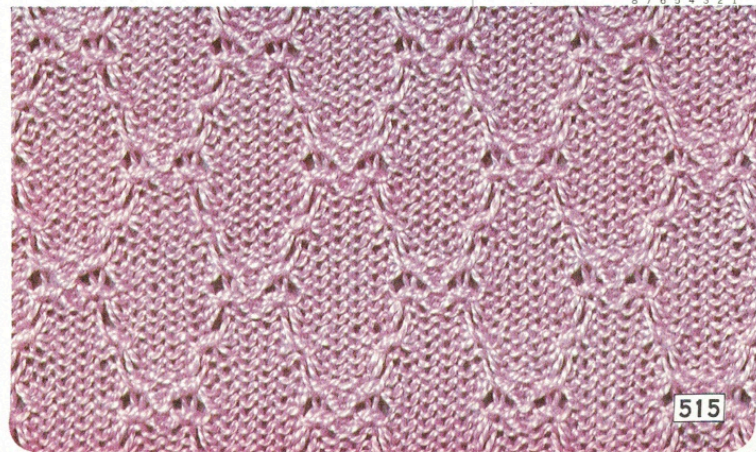
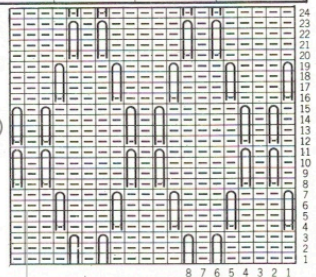


ORDER	PATTERN PANEL			CAM LEV.	PUSH BUTTONS		PATTERN LEV.	SIDE LEV.	DIRECTION AND ROWS
	O	O	O		2 1	1 2			
1	1	8	1	Pick			Pick	▼ ▼	→
2	"	"	"	Stockinet			"	"	→
3	0	●	3	Pick			"	"	→
4	"	"	"	Stockinet			"	"	→
5	3	8	1	Pick			"	"	→
6	"	"	"	Stockinet			"	"	→
7	"	"	"	Pick			"	"	→
8	"	"	"	Stockinet			"	"	→
9	0	●	3	Pick			"	"	→
10	"	"	"	Stockinet			"	"	→
11	1	8	1	Pick			"	"	→
12	"	"	"	Stockinet			"	"	→

**NEEDLE ARRANGEMENT**



8 Sts. & 24 Rows per Unit pattern.



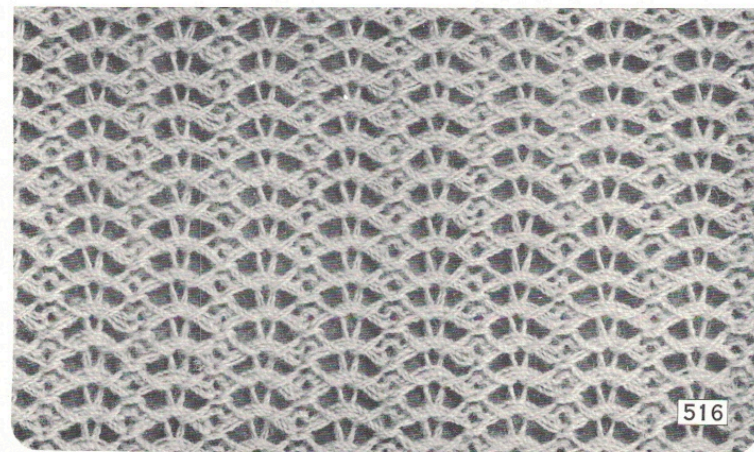
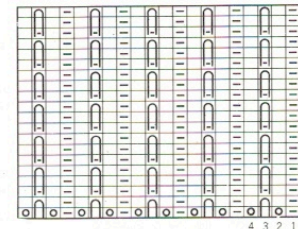
515

ORDER	PATTERN PANEL			CAM LEV.	PUSH BUTTONS		PATTERN LEV.	SIDE LEV.	DIRECTION AND ROWS
	O	O	O		2 1	1 2			
1	0	●	2	Pick			Pick	▼ ▼	→
2	"	"	"	Stockinet			"	"	→
3	"	"	"	Pick			"	"	→
4	"	"	"	Stockinet			"	"	→
5									
6									
7									
8									
9									
10									

**NEEDLE ARRANGEMENT**



4 Sts. & 3 Rows per Unit pattern.



516

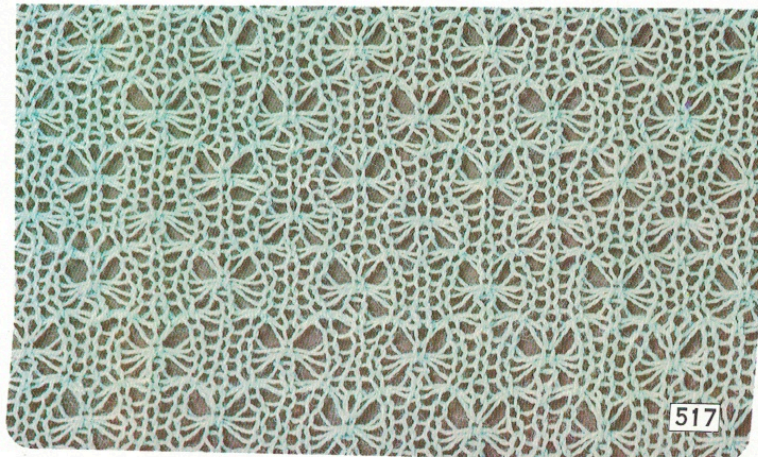
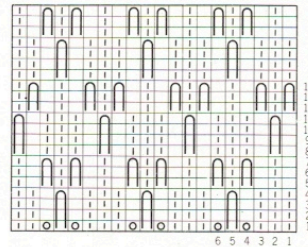


ORDER	PATTERN PANEL		CAM LEV.	PUSH BUTTONS		PATTERN LEV.	SIDE LEV.	DIRECTION AND ROWS
1	Needle Arrangement ①							
2	0	5	●	Stockinet		Pick	▼ ▼	← →
3	"	"	"	"	"	"	"	← →
4	Needle Arrangement ②							
5	3	"		Pick		"	"	← →
6	"	"	"	Stockinet		"	"	← →
7	"	"	●	"		"	"	← →
8	"	"	"	"		"	"	← →
9	Needle Arrangement ①							
10	0	"		Pick		"	"	← →
11	"	"	"	Stockinet		"	"	← →

**NEEDLE ARRANGEMENT**



6 Sts. & 4 Rows per Unit pattern.

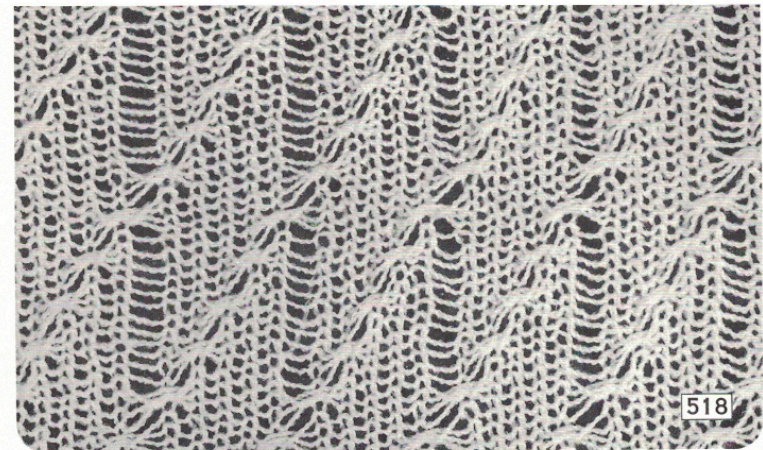
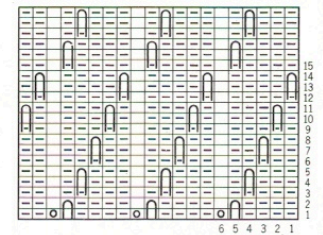


ORDER	PATTERN PANEL		CAM LEV.	PUSH BUTTONS		PATTERN LEV.	SIDE LEV.	DIRECTION AND ROWS
1	3	5	●	Stockinet			▼ ▼	← →
2	"	"	"	"		"	"	← →
3	2	"	"	"		"	"	← →
4	"	"	"	"		"	"	← →
5	1	"	"	"		"	"	← →
6	"	"	"	"		"	"	← →
7	0	"	"	"		"	"	← →
8	"	"	"	"		"	"	← →
9	"	"	"	"		"	"	← →
10	"	"	"	"		"	"	← →
11	Back to Order No. 1, reversing the direction of carriage.							

**NEEDLE ARRANGEMENT**



6 Sts. & 15 Rows per Unit pattern.



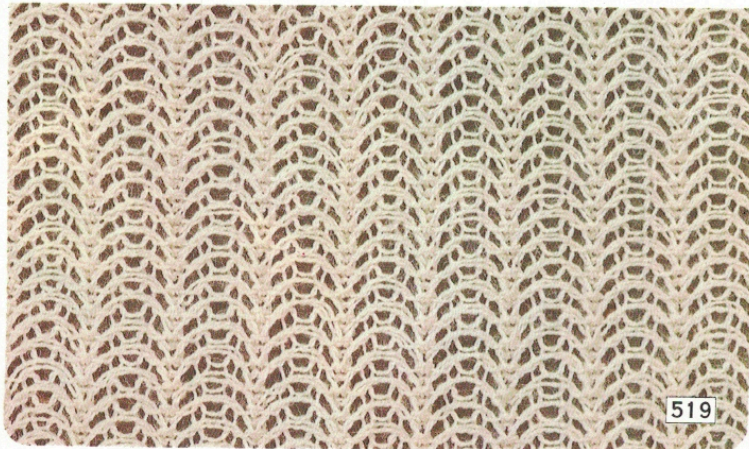
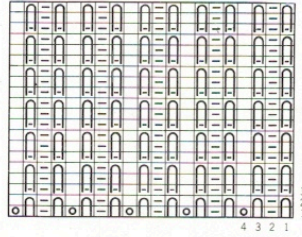


ORDER	PATTERN PANEL			CAM LEV.	PUSH BUTTONS		PATTERN LEV	SIDE LEV.	DIRECTION AND ROWS
	○	○	○		2	1			
1	○	●		Stocki-net			●	▼ ▼	↔
2	"	"	"	"		"	"	"	←
3	"	"	"	"		"	"	"	↔
4	"	"	"	"	"		"	"	→
5									
6									
7									
8									
9									
10									

**NEEDLE ARRANGEMENT**



4 Sts. & 3 Rows per Unit pattern.



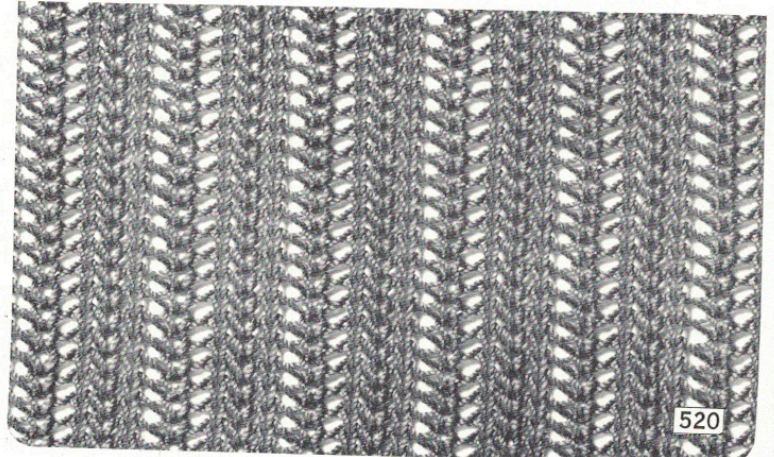
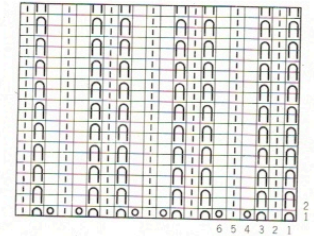
519

ORDER	PATTERN PANEL			CAM LEV.	PUSH BUTTONS		PATTERN LEV	SIDE LEV.	DIRECTION AND ROWS
	○	○	○		2	1			
1	○	5		L			Pick	▼ ▼	↔
2									
3									
4									
5									
6									
7									
8									
9									
10									

**NEEDLE ARRANGEMENT**



6 Sts. & 2 Rows per Unit pattern.



520

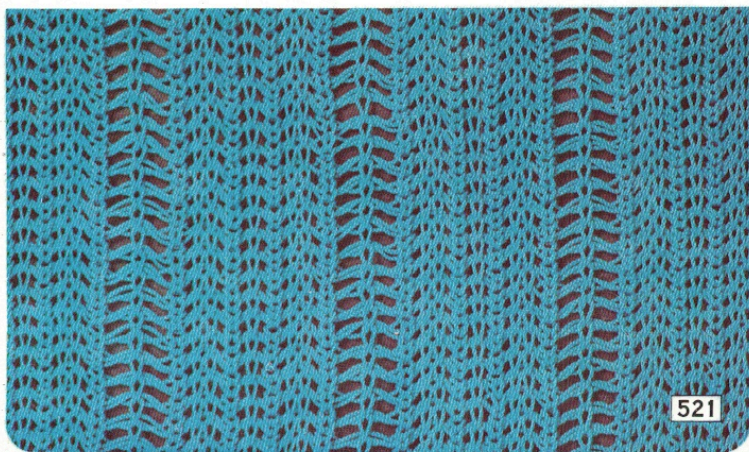
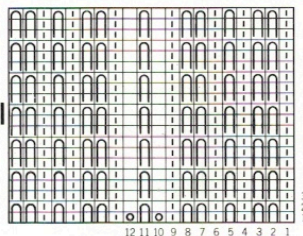


ORDER	PATTERN PANEL			CAM LEV.	PUSH BUTTONS		PATTERN LEV.	SIDE LEV.	DIRECTION AND ROWS
	0	7	4		2 1	1 2			
1	0	7	4	Stocki-net					
2	"	"	"	"		"	"	"	
3	"	"	"	"		"	"	"	
4	"	"	"	"	"		"	"	
5									
6									
7									
8									
9									
10									

NEEDLE ARRANGEMENT



12 Sts. & 3 Rows per Unit pattern.



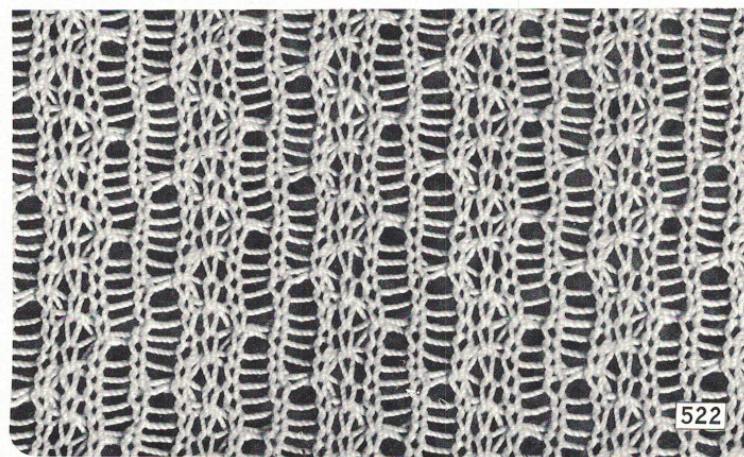
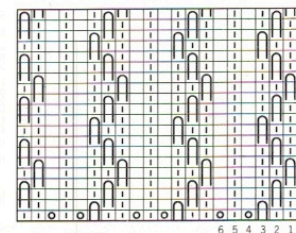
521

ORDER	PATTERN PANEL			CAM LEV.	PUSH BUTTONS		PATTERN LEV.	SIDE LEV.	DIRECTION AND ROWS
	0	6	0		2 1	1 2			
1	0	6	0	Stocki-net					
2	"	"	"	"		"	"	"	
3	1	"	"	"		"	"	"	
4	"	"	"	"		"	"	"	
5	2	"	"	"		"	"	"	
6	"	"	"	"		"	"	"	
7	1	"	"	"		"	"	"	
8	"	"	"	"		"	"	"	
9									
10									

NEEDLE ARRANGEMENT



6 Sts. & 8 Rows per Unit pattern.



522

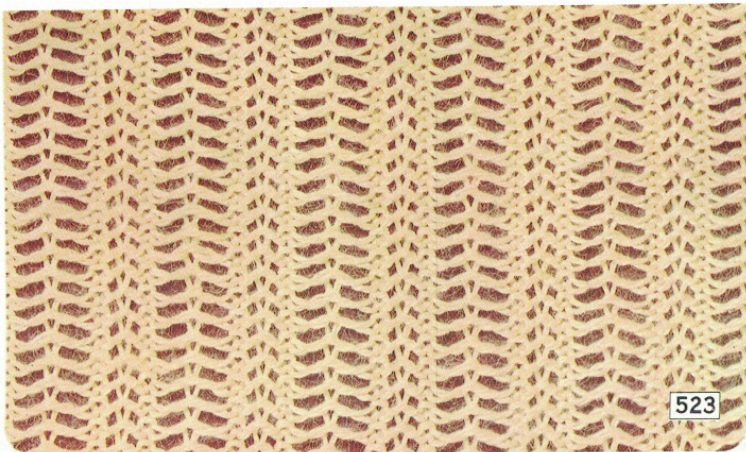
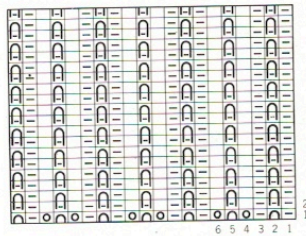


ORDER	PATTERN PANEL			CAM LEV.	PUSH BUTTONS	PATTERN LEV.	SIDE LEV.	DIRECTION AND ROWS
1	0	7	●	Stocki-net				
2								
3								
4								
5								
6								
7								
8								
9								
10								

NEEDLE ARRANGEMENT



6 Sts. & 2 Rows per Unit pattern.



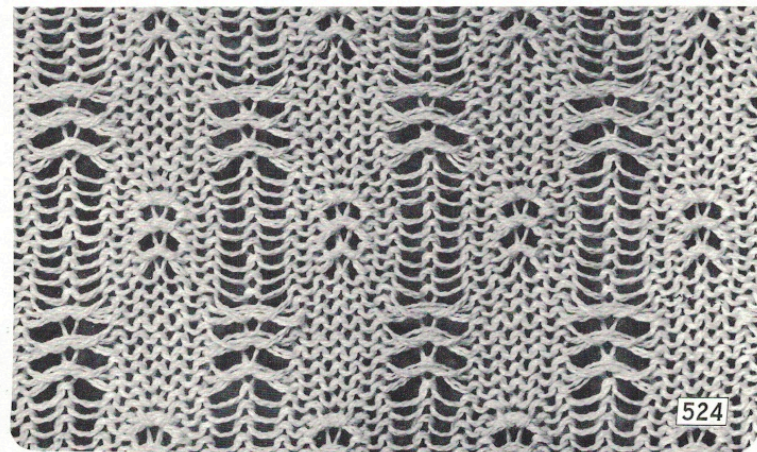
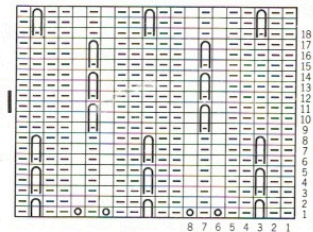
523

ORDER	PATTERN PANEL			CAM LEV.	PUSH BUTTONS	PATTERN LEV.	SIDE LEV.	DIRECTION AND ROWS
1	1	8	3	Pick				
2	"	"	"	Stockinet	"	"	"	
3	"	"	"	Pick	"	"	"	
4	"	"	"	Stockinet	"	"	"	
5	"	"	"	Pick	"	"	"	
6	"	"	"	Stockinet	"	"	"	
7	3	"	"	Pick	"	"	"	
8	"	"	"	Stockinet	"	"	"	
9	"	"	"	Pick	"	"	"	
10	"	"	"	Stockinet	"	"	"	
11	"	"	"	Pick	"	"	"	
12	"	"	"	Stockinet	"	"	"	

NEEDLE ARRANGEMENT



8 Sts. & 18 Rows per Unit pattern.



524

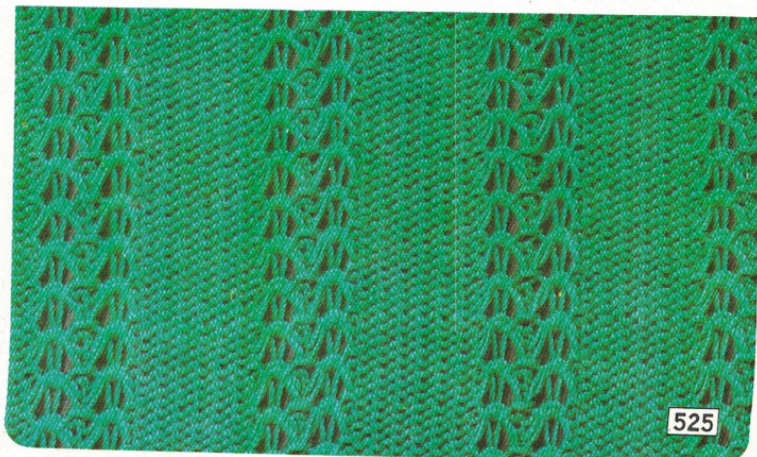
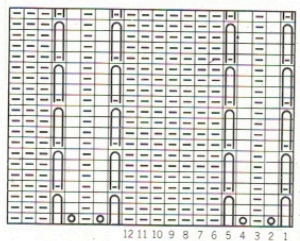


ORDER	PATTERN PANEL			CAM LEV.	PUSH BUTTONS		PATTERN LEV.	SIDE LEV.	DIRECTION AND ROWS
	0	2	3		2 1	1 2			
1	2	7	3	Pick			Pick	▼ ▼	
2	"	"	"	Stocki-net	"	"	"	" "	
3									
4									
5									
6									
7									
8									
9									
10									

**NEEDLE ARRANGEMENT**



12 Sts. & 4 Rows per Unit pattern.



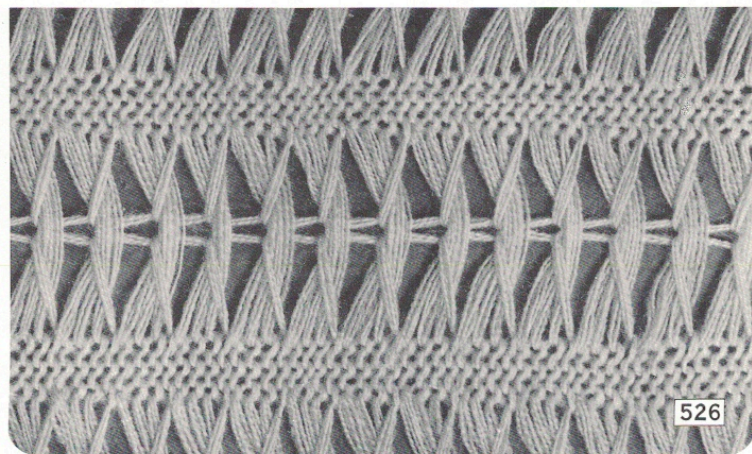
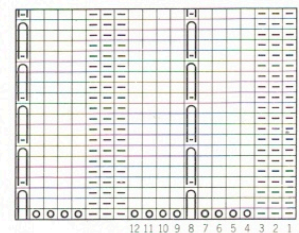
525

ORDER	PATTERN PANEL			CAM LEV.	PUSH BUTTONS		PATTERN LEV.	SIDE LEV.	DIRECTION AND ROWS
	0	2	3		2 1	1 2			
1	0	●	3	Pick			Pick	▼ ▼	
2	"	"	"	Stocki-net	"	"	"	" "	
3									
4									
5									
6									
7									
8									
9									
10									

**NEEDLE ARRANGEMENT**



12 Sts. & 4 Rows per Unit pattern.



526

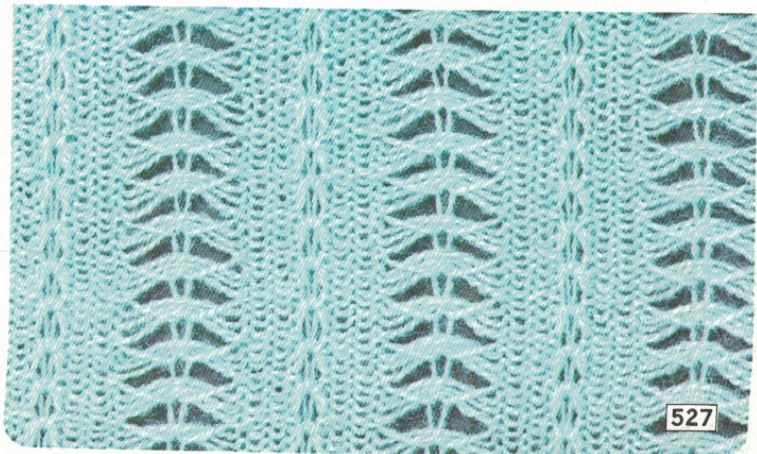
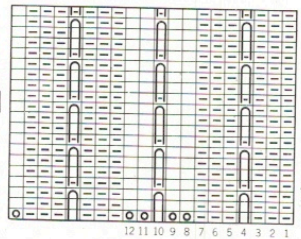


ORDER	PATTERN PANEL		CAM LEV.	PUSH BUTTONS		PATTERN LEV.	SIDE LEV.	DIRECTION AND ROWS	
1	0	6	●	Stocki-net			●		
2	"	"	"	"	"	"	"	"	
3									
4									
5									
6									
7									
8									
9									
10									

**NEEDLE ARRANGEMENT**



12 Sts. & 4 Rows per Unit pattern.



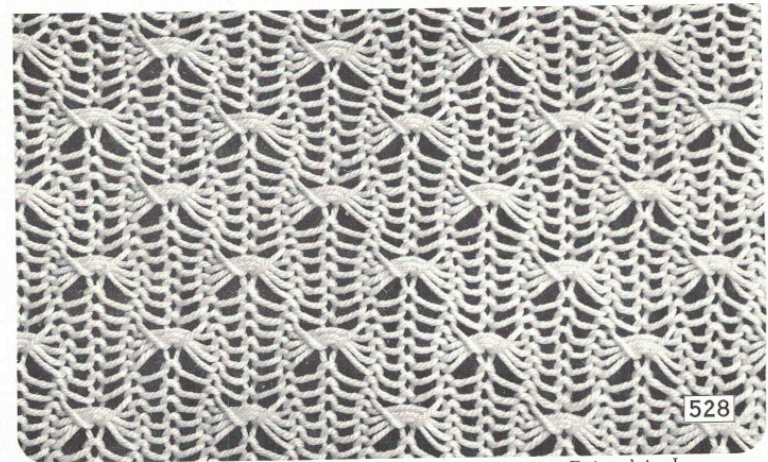
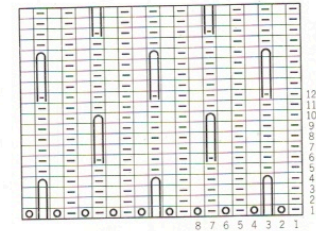
527

ORDER	PATTERN PANEL		CAM LEV.	PUSH BUTTONS		PATTERN LEV.	SIDE LEV.	DIRECTION AND ROWS	
1	2	8	2	Pick			Pick		
2	"	"	"	Stocki-net	"	"	"	"	
3	2	"	"	Pick	"	"	"	"	
4	"	"	"	Stocki-net	"	"	"	"	
5									
6									
7									
8									
9									
10									

**NEEDLE ARRANGEMENT**



8 Sts. & 12 Rows per Unit pattern.



528

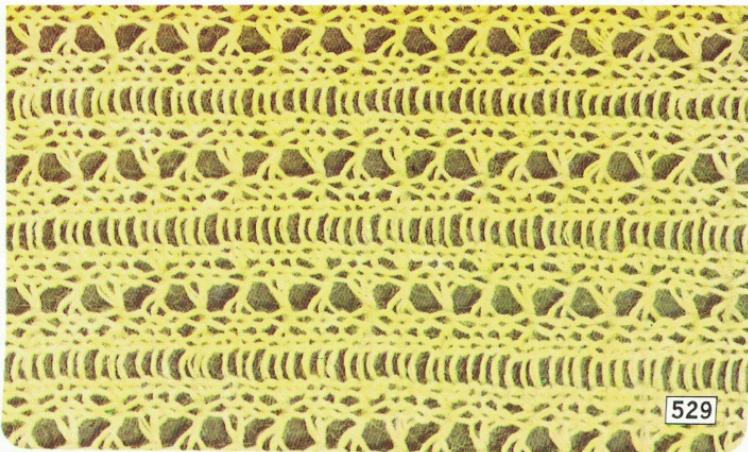
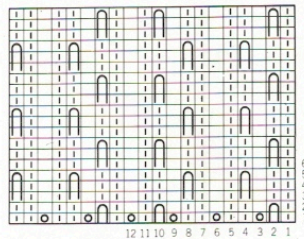


ORDER	PATTERN PANEL			CAM LEV.	PUSH BUTTONS		PATTERN LEV.	SIDE LEV.	DIRECTION AND ROWS
	0	1	2		1	2			
1	0	●	3	Pick			Pick		
2	"	"	"	Stocki-net	"	"	"	"	
3	2		"	Pick	"	"	"	"	
4	"	"	"	Stocki-net	"	"	"	"	
5									
6									
7									
8									
9									
10									

**NEEDLE ARRANGEMENT**



Note: This pattern is used sideways.  
12 Sts. & 6 Rows per Unit pattern.



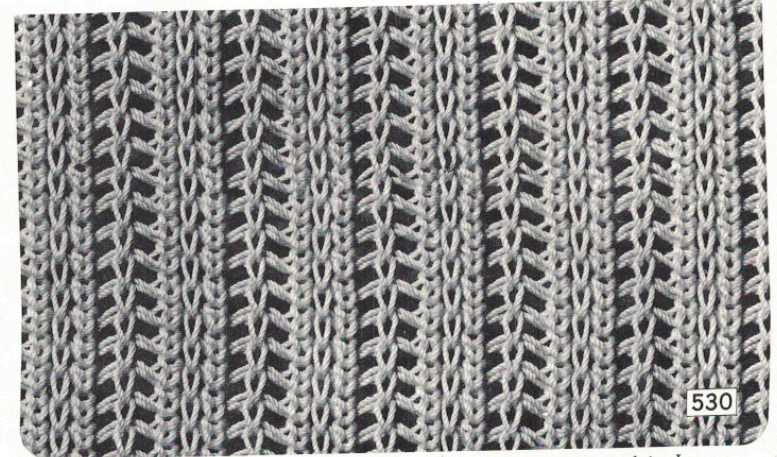
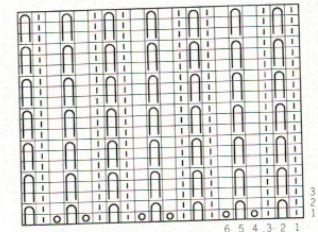
529

ORDER	PATTERN PANEL			CAM LEV.	PUSH BUTTONS		PATTERN LEV.	SIDE LEV.	DIRECTION AND ROWS
	0	1	2		1	2			
1		7	●	Stocki-net			●		
2	"	"	"	"	"	"	"	"	
3	"	"	"	"	"	"	"	"	
4	"	"	"	"	"	"	"	"	
5									
6									
7									
8									
9									
10									

**NEEDLE ARRANGEMENT**



6 Sts. & 3 Rows per Unit pattern.



530



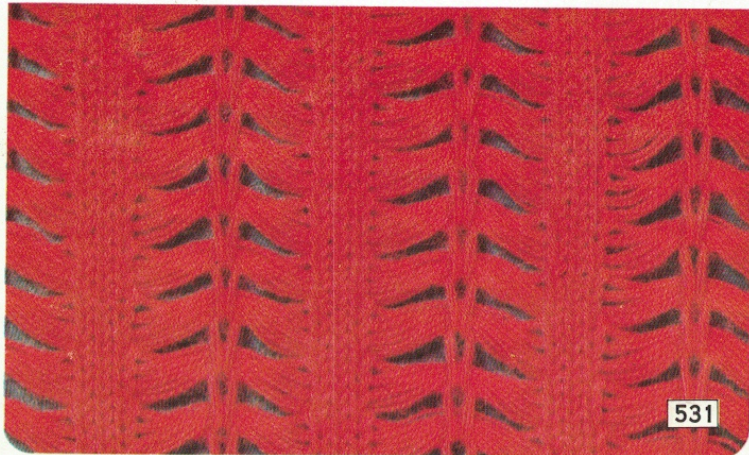
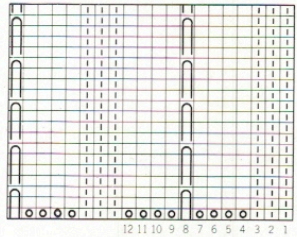
ORDER	PATTERN PANEL	CAM LEV.	PUSH BUTTONS	PATTERN LEV.	SIDE LEV.	DIRECTION AND ROWS
1	○ ● ○	Pick	2 1	Pick	▽ ▽	→
2	" "	Stocki-net	" "	" "	" "	→
3						
4						
5						
6						
7						
8						
9						
10						

*Off white Afghan*

**NEEDLE ARRANGEMENT**



12 Sts. & 4 Rows per Unit pattern.



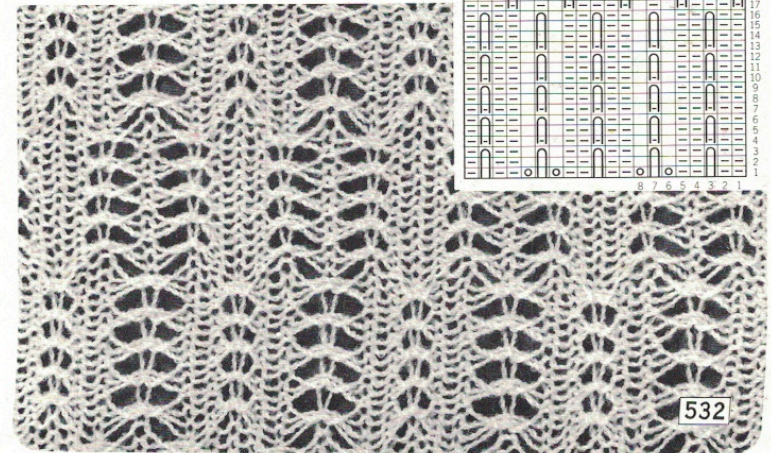
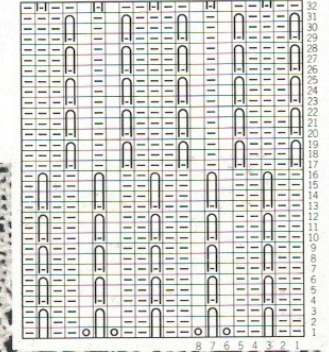
531

ORDER	PATTERN PANEL	CAM LEV.	PUSH BUTTONS	PATTERN LEV.	SIDE LEV.	DIRECTION AND ROWS
1	○ ● ○	Stockinet	2 1	●	▽ ▽	→
2	" "	" "	" "	" "	" "	→
3	" "	" "	" "	" "	" "	→
4	" "	" "	" "	" "	" "	→
5	" "	" "	" "	" "	" "	→
6	" "	" "	" "	" "	" "	→
7	" "	" "	" "	" "	" "	→
8	" "	" "	" "	" "	" "	→
9	" "	" "	" "	" "	" "	→
10	" "	" "	" "	" "	" "	→
11	" "	" "	" "	" "	" "	→
12	" "	" "	" "	" "	" "	→
13	" "	" "	" "	" "	" "	→
14	" "	" "	" "	" "	" "	→
15	" "	" "	" "	" "	" "	→
16	" "	" "	" "	" "	" "	→
17	" "	" "	" "	" "	" "	→
18	" "	" "	" "	" "	" "	→
19	" "	" "	" "	" "	" "	→
20	" "	" "	" "	" "	" "	→

**NEEDLE ARRANGEMENT**



8 Sts. & 32 Rows per Unit pattern.



532

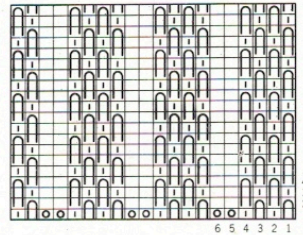


ORDER	PATTERN PANEL			CAM LEV.	PUSH BUTTONS		PATTERN LEV.	SIDE LEV.	DIRECTION AND ROWS
	0	1	2		2 1	1 2			
1	0	●	1	Pick			Pick		
2	1	"	"	"	"	"	"	"	
3									
4									
5									
6									
7									
8									
9									
10									

**NEEDLE ARRANGEMENT**



6 Sts. & 4 Rows per Unit pattern.



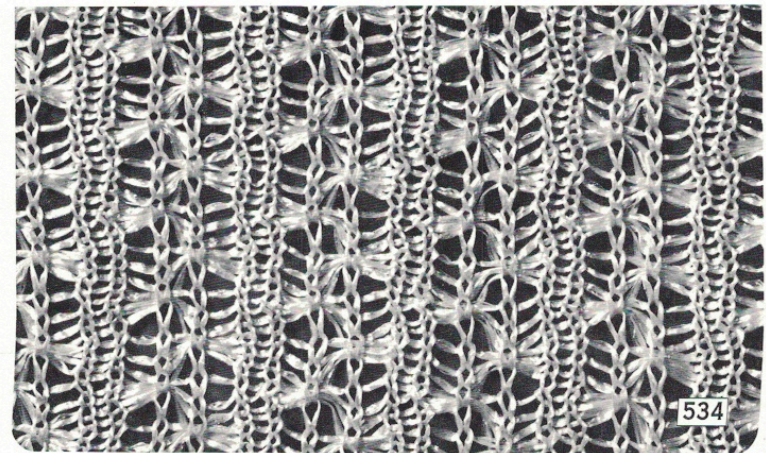
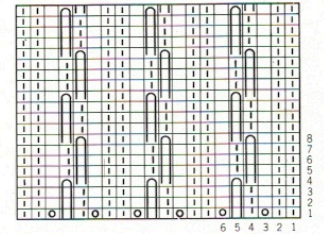
533

ORDER	PATTERN PANEL			CAM LEV.	PUSH BUTTONS		PATTERN LEV.	SIDE LEV.	DIRECTION AND ROWS
	0	5	●		2 1	1 2			
1	0	5	●	Stocki-net					
2	"	"	"	"		"	"	"	
3	1	"	"	"		"	"	"	
4	"	"	"	"		"	"	"	
5									
6									
7									
8									
9									
10									

**NEEDLE ARRANGEMENT**



6 Sts. & 8 Rows per Unit pattern.



534

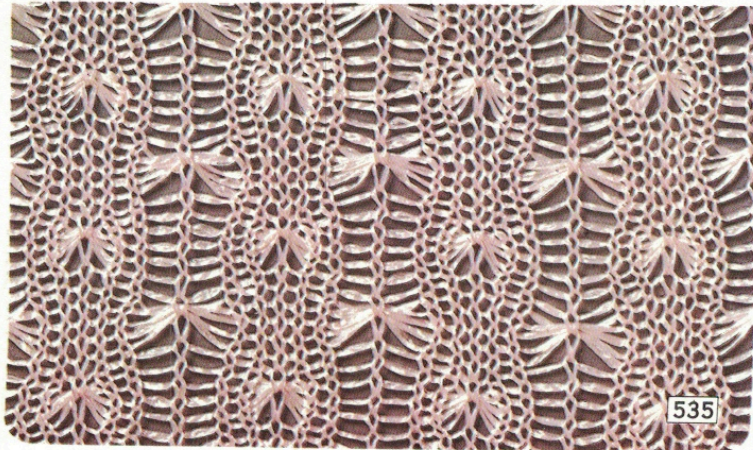
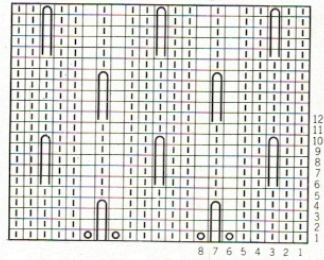


ORDER	PATTERN PANEL			CAM LEV.	PUSH BUTTONS		PATTERN LEV.	SIDE LEV.	DIRECTION AND ROWS
1	2	8	3	Pick			Pick	▼ ▼	→
2	"	"	"	Stocki-net	"	"	"	" "	→
3	2	"	"	Pick	"	"	"	" "	→
4	"	"	"	Stocki-net	"	"	"	" "	→
5									
6									
7									
8									
9									
10									

**NEEDLE ARRANGEMENT**



8 Sts. & 12 Rows per Unit pattern.



535

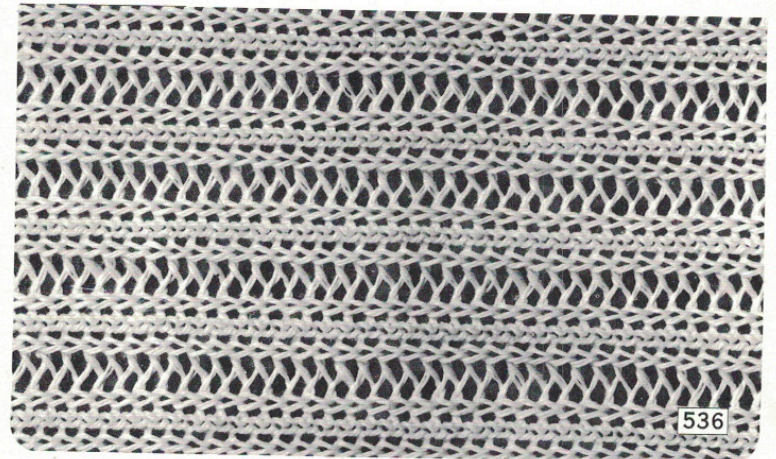
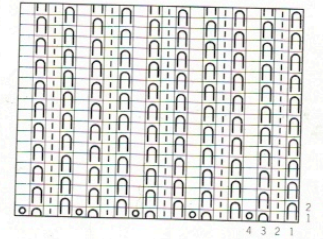
SERIES 3

ORDER	PATTERN PANEL			CAM LEV.	PUSH BUTTONS		PATTERN LEV.	SIDE LEV.	DIRECTION AND ROWS
1	1	3	Pick			Pick	▼ ▼	←	
2	"	"	"	"	"	"	" "	→	
3									
4									
5									
6									
7									
8									
9									
10									

**NEEDLE ARRANGEMENT**



4 Sts. & 2 Rows per Unit pattern.



536

Printed in Japan

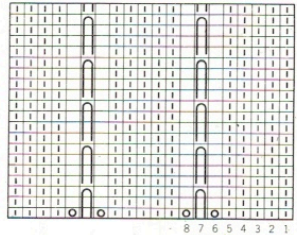


ORDER	PATTERN PANEL			CAM LEV.	PUSH BUTTONS		PATTERN LEV.	SIDE LEV.	DIRECTION AND ROWS
	0	8	2		2 1 *	1 1 2			
1	0	8	2	Pick			Pick		
2	"	"	"	Stocki-net	"	"	"	"	
3									
4									
5									
6									
7									
8									
9									
10									

**NEEDLE ARRANGEMENT**



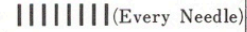
8 Sts. & 4 Rows per Unit pattern.



537

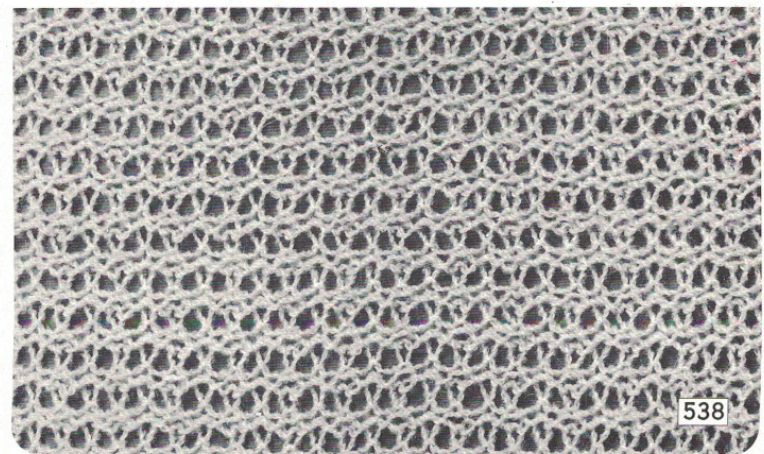
ORDER	PATTERN PANEL			CAM LEV.	PUSH BUTTONS		PATTERN LEV.	SIDE LEV.	DIRECTION AND ROWS
	0	8	2		2 1 *	1 1 2			
1	0	●	I	L			Pick		
2	"	"	"	Stocki-net	"	"	"	"	
3	"	"	"	R	"	"	"	"	
4	"	"	"	Stocki-net	"	"	"	"	
5									
6									
7									
8									
9									
10									

**NEEDLE ARRANGEMENT**



Note: In Order Nos. 2 and 4 set the tension dial five graduations higher than in Nos. 1 and 3.

2 Sts. & 3 Rows per Unit pattern.



538

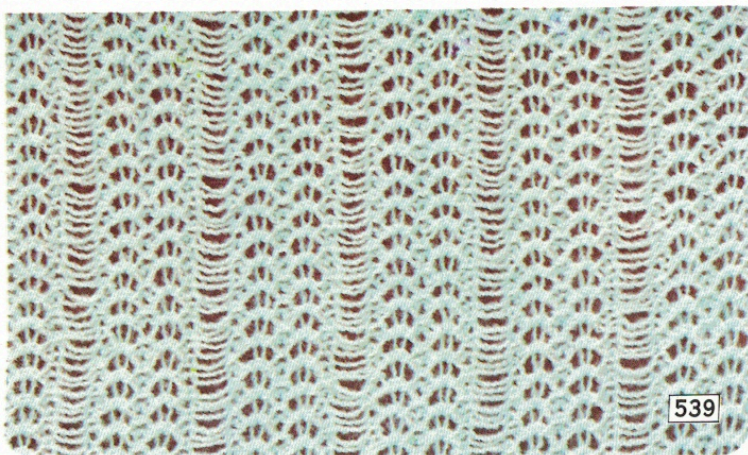
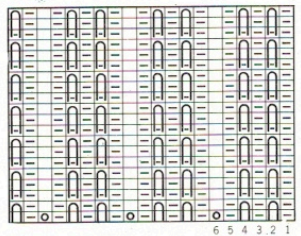


ORDER	PATTERN PANEL			CAM LEV.	PUSH BUTTONS		PATTERN LEV.	SIDE LEV.	DIRECTION AND ROWS
	0	1	2		1	2			
1	0	●	1	Pick			Pick		
2	"	"	"	Stocki-net	"	"	"	"	
3	Repeat Order No. 1 & No. 2, reversing the direction of carriage.								
4									
5									
6									
7									
8									
9									
10									

**NEEDLE ARRANGEMENT**



6 Sts. & 3 Rows per Unit pattern.



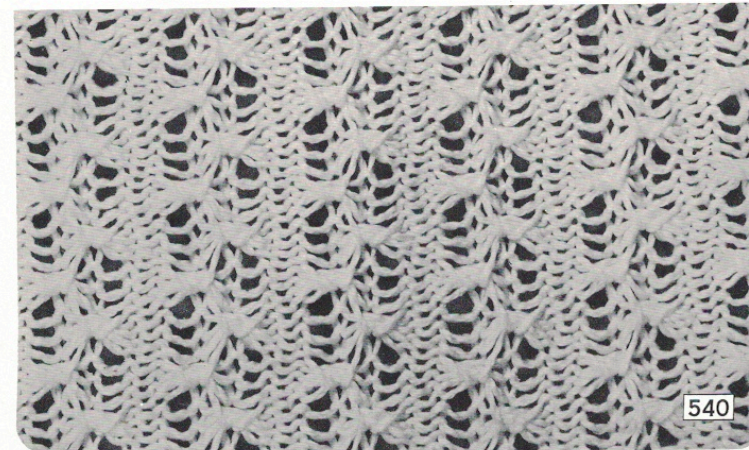
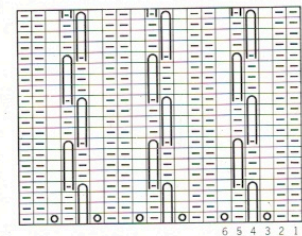
539

ORDER	PATTERN PANEL			CAM LEV.	PUSH BUTTONS		PATTERN LEV.	SIDE LEV.	DIRECTION AND ROWS
	0	5	●		1	2			
1	0	5	●	Stocki-net					
2	"	"	"	"	"	"	"	"	
3		"	"	"	"	"	"	"	
4	"	"	"	"	"	"	"	"	
5									
6									
7									
8									
9									
10									

**NEEDLE ARRANGEMENT**



6 Sts. & 8 Rows per Unit pattern.



540

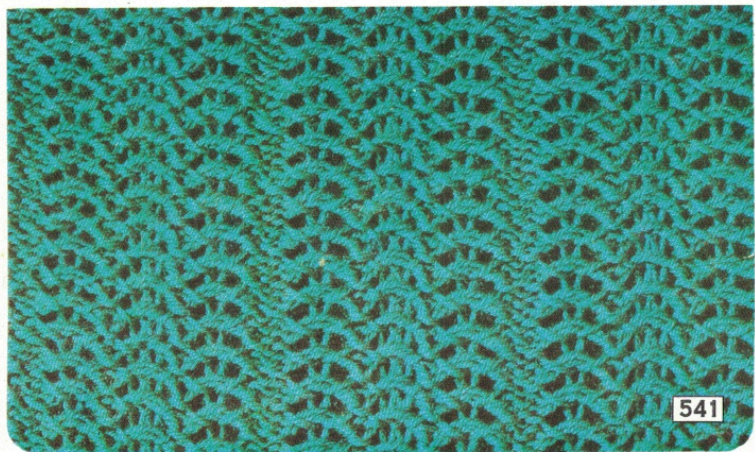
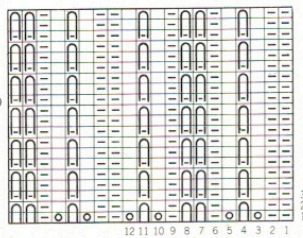


ORDER	PATTERN PANEL		CAM LEV.	PUSH BUTTONS		PATTERN LEV.	SIDE LEV.	DIRECTION AND ROWS
1	1	2	Stocki-net	2 1	1 2	●	▼ ▼	→ →
2	"	"	"	"	"	"	"	← ←
3	"	"	"	"	"	"	"	→ →
4	"	"	"	"	"	"	"	→ →
5								
6								
7								
8								
9								
10								

**NEEDLE ARRANGEMENT**



12 Sts. & 3 Rows per Unit pattern.



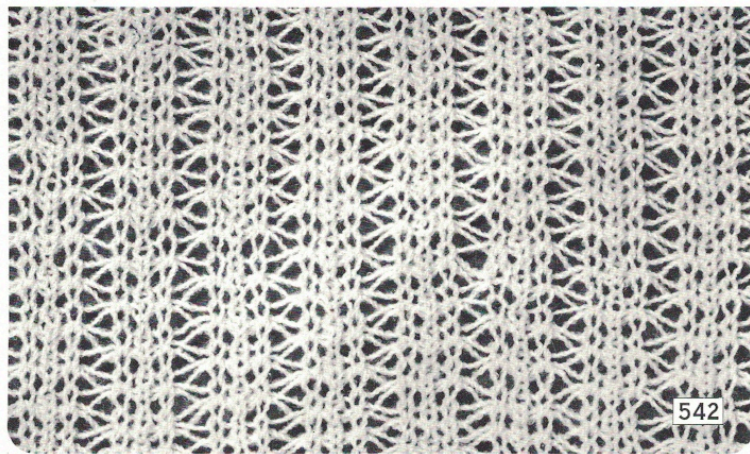
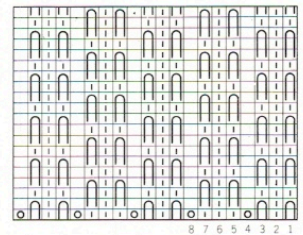
541

ORDER	PATTERN PANEL		CAM LEV.	PUSH BUTTONS		PATTERN LEV.	SIDE LEV.	DIRECTION AND ROWS	
1	0	8	I	Pick	2 1	1 2	Pick	▼ ▼	→ →
2	4	"	"	"	"	"	"	"	→ →
3									
4									
5									
6									
7									
8									
9									
10									

**NEEDLE ARRANGEMENT**



8 Sts. & 4 Rows per Unit pattern.



542

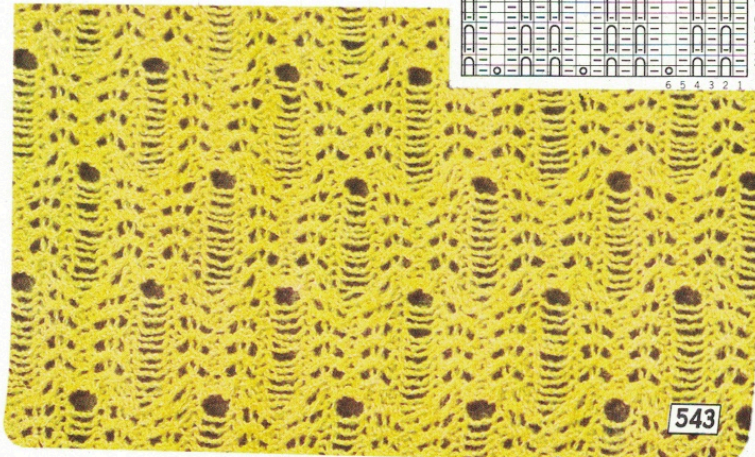


ORDER	PATTERN PANEL			CAM LEV.	PUSH BUTTONS		PATTERN LEV.	SIDE LEV.	DIRECTION AND ROWS
	0	5	1		2 1	1 2			
1	0	5	1	Pick	■	■	Pick	▼ ▼	← →
2	"	"	"	Stocki-net	"	"	"	"	← →
3	"	"	"	Pick	"	"	"	"	← →
4	"	"	"	Stocki-net	"	"	"	"	← →
5	"	"	"	Pick	"	"	"	"	← →
6	"	"	"	Stocki-net	"	"	"	"	← →
7	"	"	"	Pick	"	"	"	"	← →
8	"	"	"	Stocki-net	"	"	"	"	← →
9	"	"	"	Pick	"	"	"	"	← →
10	"	"	"	Stocki-net	"	"	"	"	← →
11	Put two loose strands on the needle. Stagger layed off needle as shown in the diagram. Set the shift dial to 3. Repeat Order Nos. 1-11 reversing the direction of carriage.								

**NEEDLE ARRANGEMENT**



6 Sts. & 30 Rows per Unit pattern.



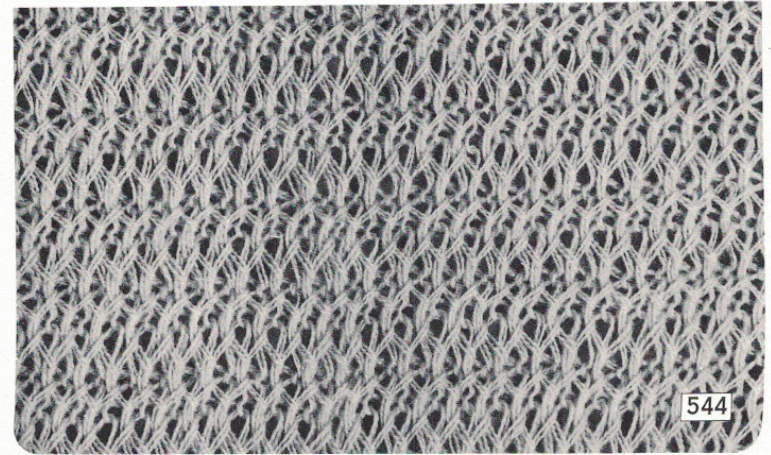
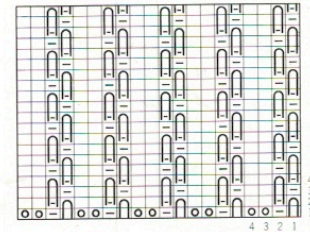
543

ORDER	PATTERN PANEL			CAM LEV.	PUSH BUTTONS		PATTERN LEV.	SIDE LEV.	DIRECTION AND ROWS
	0	5	1		2 1	1 2			
1	0	●	1	Pick	■	■	Pick	▼ ▼	← →
2	1	"	"	"	"	"	"	"	← →
3									
4									
5									
6									
7									
8									
9									
10									

**NEEDLE ARRANGEMENT**



4 Sts. & 4 Rows per Unit pattern.



544





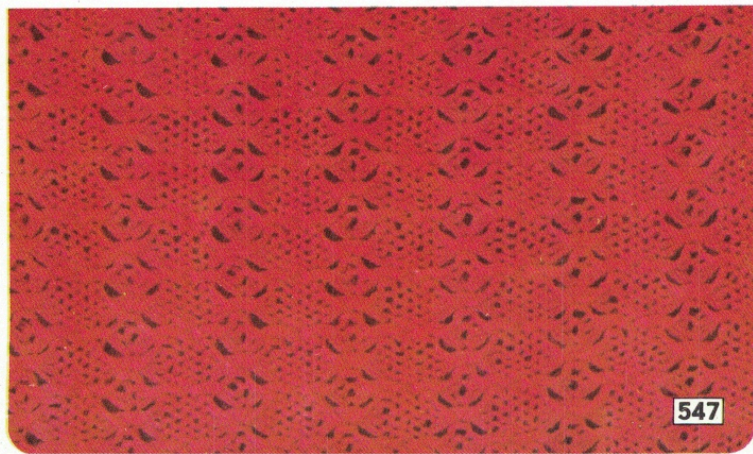
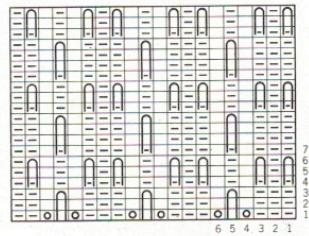


ORDER	PATTERN PANEL			CAM LEV.	PUSH BUTTONS		PATTERN LEV.	SIDE LEV.	DIRECTION AND ROWS
	0	5	●		2 1	1 2			
1	0	5	●	Stocki-net			Pick		
2	"	"	"	"	"	"	"	"	
3	"	"		Pick		"	"	"	
4	"	"	"	Stocki-net	"	"	"	"	
5	"	"	●	"	"		"	"	
6	"	"	"	"		"	"	"	
7	"	"		Pick	"		"	"	
8	"	"	"	Stocki-net	"	"	"	"	
9									
10									

**NEEDLE ARRANGEMENT**



6 Sts. & 7 Rows per Unit pattern.



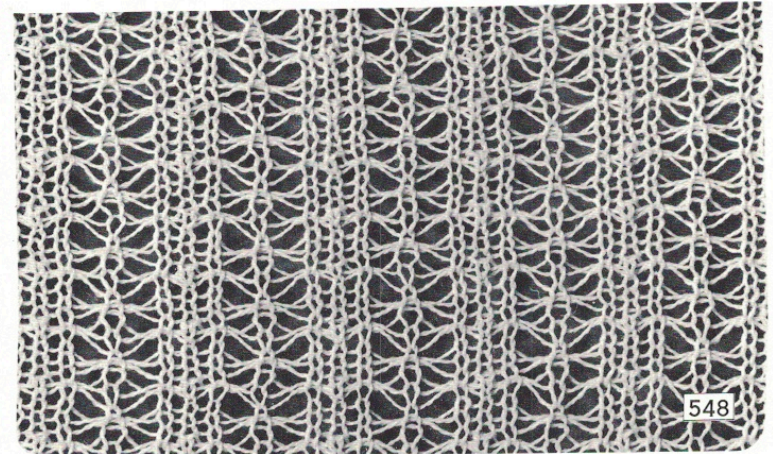
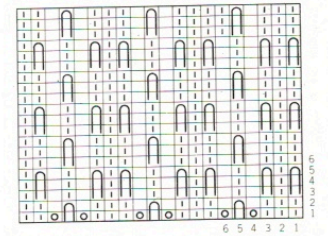
547

ORDER	PATTERN PANEL			CAM LEV.	PUSH BUTTONS		PATTERN LEV.	SIDE LEV.	DIRECTION AND ROWS
	0	6	●		2 1	1 2			
1	0	6	●	Stocki-net			Pick		
2	"	"	"	"	"	"	"	"	
3	"	7	"	Pick	"	"	"	"	
4	"	"	"	Stocki-net	"	"	"	"	
5									
6									
7									
8									
9									
10									

**NEEDLE ARRANGEMENT**



6 Sts. & 6 Rows per Unit pattern.



548

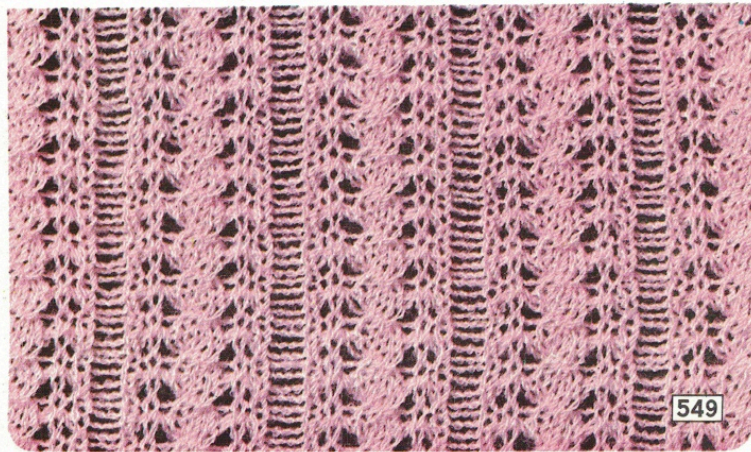
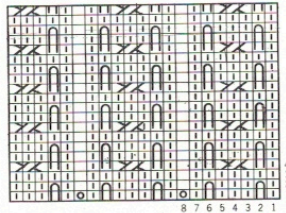


ORDER	PATTERN PANEL			CAM LEV.	PUSH BUTTONS		PATTERN LEV.	SIDE LEV.	DIRECTION AND ROWS
1	0	●	3	Pick			Pick		
2	"	"	"	Stocki-net	"	"	"	"	
3	Cross two sts. with one as shown in the diagram.								
4									
5									
6									
7									
8									
9									
10									

**NEEDLE ARRANGEMENT**



8 Sts. & 4 Rows per Unit pattern.



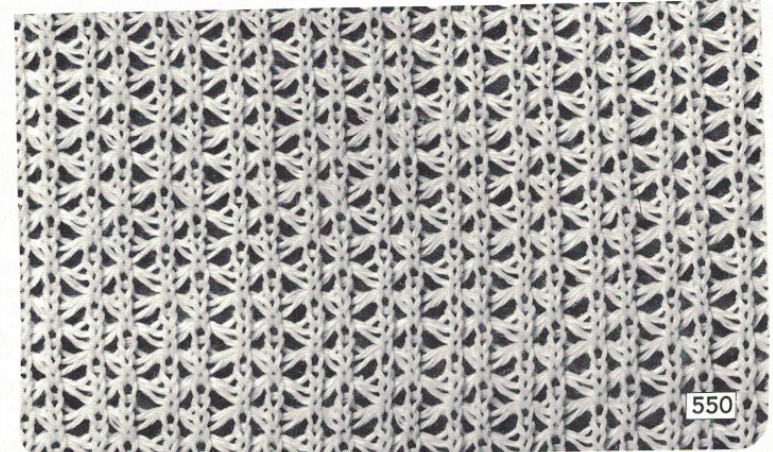
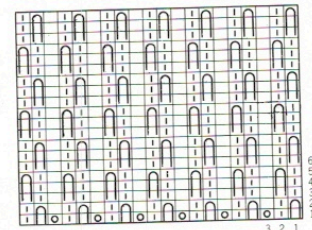
549

ORDER	PATTERN PANEL			CAM LEV.	PUSH BUTTONS		PATTERN LEV.	SIDE LEV.	DIRECTION AND ROWS
1	0	7	●	Stocki-net			●		
2	"	"	"	"		"	"	"	
3	1	"	"	"		"	"	"	
4	"	"	"	"	"		"	"	
5									
6									
7									
8									
9									
10									

**NEEDLE ARRANGEMENT**



3 Sts. & 6 Rows per Unit pattern.



550

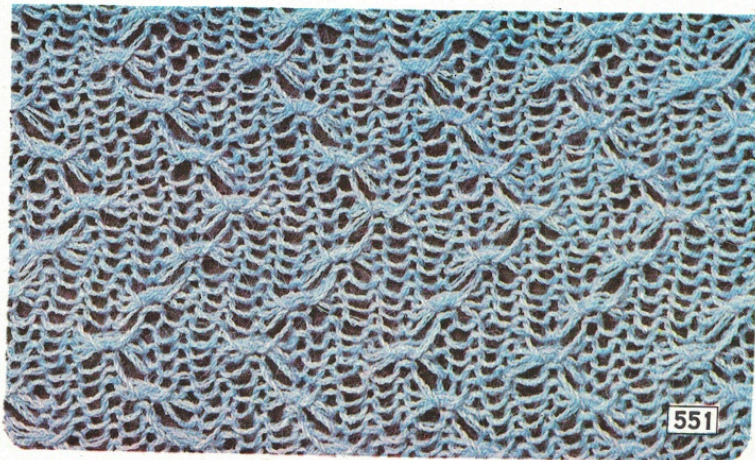
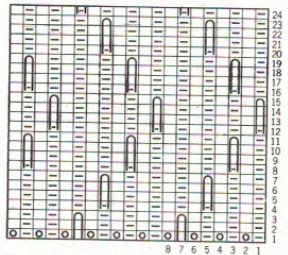


ORDER	PATTERN PANEL			CAM LEV.	PUSH BUTTONS		PATTERN LEV.	SIDE LEV.	DIRECTION AND ROWS
1	4	8	2	Pick	2 1	1 2	Pick	▼ ▼	→ →
2	"	"	"	Stockinet	"	"	"	"	→ →
3	2	"	"	Pick	"	"	"	"	→ →
4	"	"	"	Stockinet	"	"	"	"	→ →
5	0	"	"	Pick	"	"	"	"	→ →
6	"	"	"	Stockinet	"	"	"	"	→ →
7	2	"	"	Pick	"	"	"	"	→ →
8	"	"	"	Stockinet	"	"	"	"	→ →
9	0	"	"	Pick	"	"	"	"	→ →
10	"	"	"	Stockinet	"	"	"	"	→ →
11	2	"	"	Pick	"	"	"	"	→ →
12	"	"	"	Stockinet	"	"	"	"	→ →

**NEEDLE ARRANGEMENT**



8 Sts. & 24 Rows per Unit pattern.



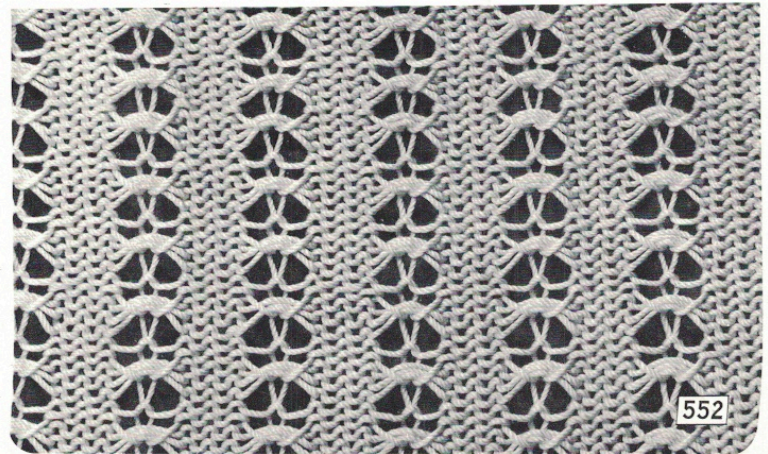
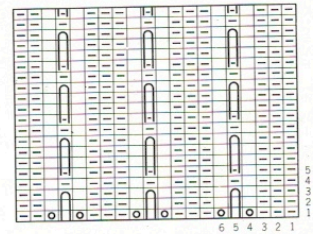
551

ORDER	PATTERN PANEL			CAM LEV.	PUSH BUTTONS		PATTERN LEV.	SIDE LEV.	DIRECTION AND ROWS
1	0	5	●	Stockinet	2 1	1 2	●	▼ ▼	→ →
2	"	"	"	"	"	"	"	"	→ →
3	"	"	"	"	"	"	"	"	→ →
4	"	"	"	"	"	"	"	"	→ →
5									
6									
7									
8									
9									
10									

**NEEDLE ARRANGEMENT**



6 Sts. & 5 Rows per Unit pattern.



552

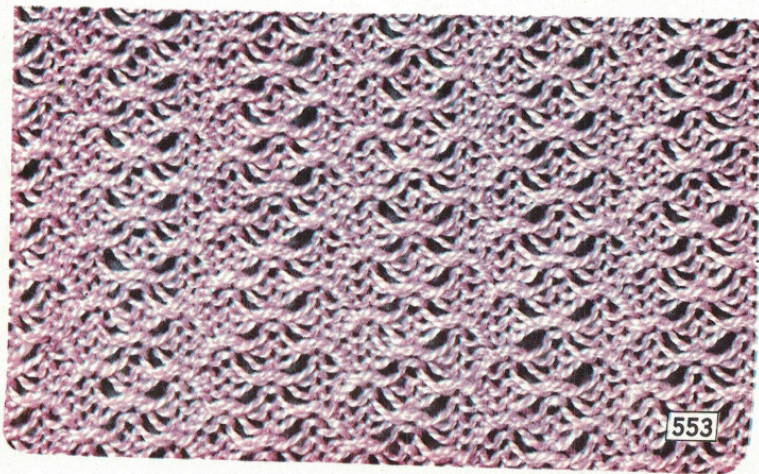
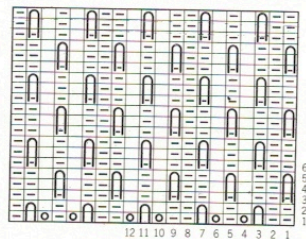


ORDER	PATTERN PANEL		CAM LEV.	PUSH BUTTONS	PATTERN LEV.	SIDE LEV.	DIRECTION AND ROWS	
	○	○						
1	0	●	3	Pick		Pick		
2	"	"	"	Stocki-net	"	"	"	
3	2	"	"	Pick	"	"	"	
4	"	"	"	Stocki-net	"	"	"	
5								
6								
7								
8								
9								
10								

**NEEDLE ARRANGEMENT**



12 Sts. & 6 Rows per Unit pattern.



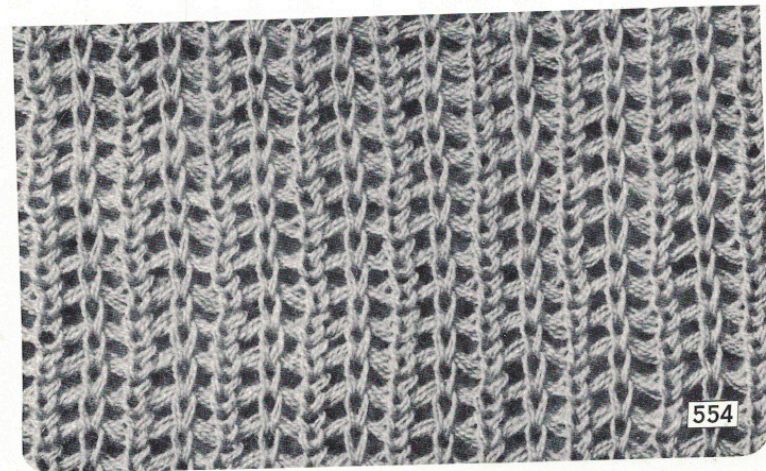
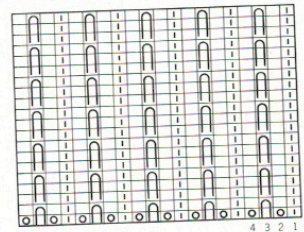
553

ORDER	PATTERN PANEL		CAM LEV.	PUSH BUTTONS	PATTERN LEV.	SIDE LEV.	DIRECTION AND ROWS	
	○	○						
1	0	●	2	Pick		Pick		
2	"	"	"	Stocki-net	"	"	"	
3	"	"	"	Pick	"	"	"	
4	"	"	"	Stocki-net	"	"	"	
5								
6								
7								
8								
9								
10								

**NEEDLE ARRANGEMENT**



4 Sts. & 3 Rows per Unit pattern.



554

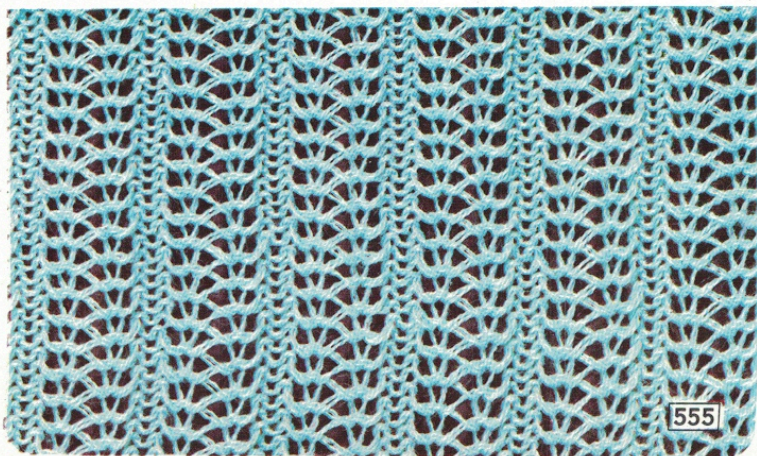
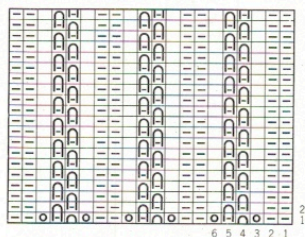


ORDER	PATTERN PANEL			CAM LEV.	PUSH BUTTONS		PATTERN LEV.	SIDE LEV.	DIRECTION AND ROWS
	0	5	●		2 1	1 2			
1	0	5	●	Stocki-net				▼ ▼	←
2	1	"	"	"			"	" "	→
3									
4									
5									
6									
7									
8									
9									
10									

**NEEDLE ARRANGEMENT**



6 Sts. & 2 Rows per Unit pattern.

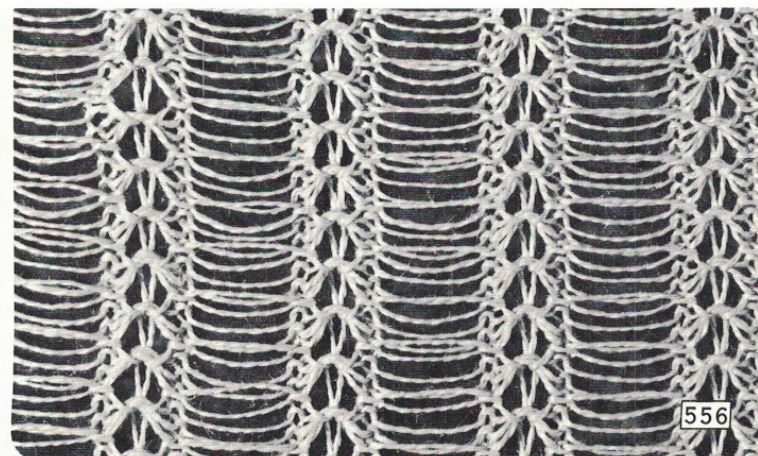
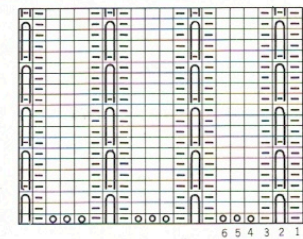


ORDER	PATTERN PANEL			CAM LEV.	PUSH BUTTONS		PATTERN LEV.	SIDE LEV.	DIRECTION AND ROWS
	0	5	●		2 1	1 2			
1	0	●	1	Pick				▼ ▼	←
2	"	"	"	Stocki-net			"	" "	→
3									
4									
5									
6									
7									
8									
9									
10									

**NEEDLE ARRANGEMENT**



6 Sts. & 4 Rows per Unit pattern.



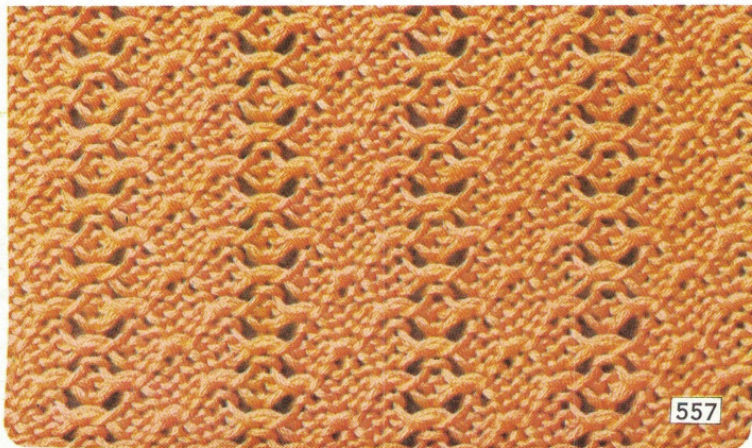
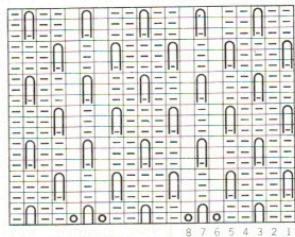


ORDER	PATTERN PANEL			CAM LEV.	PUSH BUTTONS		PATTERN LEV.	SIDE LEV.	DIRECTION AND ROWS
	○	○	○	⬆	2 1	1 2	1 2 1	⬇ ⬆	↔
1	I	●	3	Pick	■	■	Pick	⬇ ⬆	↔
2	"	"	"	Stocki-net	"	"	"	"	←
3	I	"	"	Pick	"	"	"	"	↔
4	"	"	"	Stocki-net	"	"	"	"	→
5									
6									
7									
8									
9									
10									

**NEEDLE ARRANGEMENT**



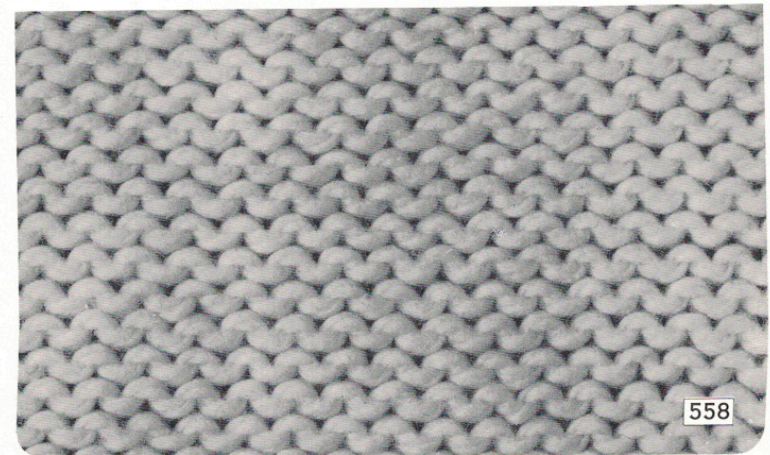
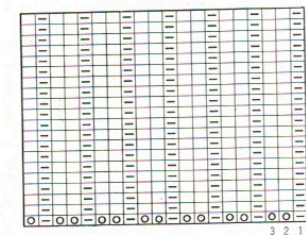
8 Sts. & 6 Rows per Unit pattern.



557

ORDER	PATTERN PANEL			CAM LEV.	PUSH BUTTONS		PATTERN LEV.	SIDE LEV.	DIRECTION AND ROWS
	○	○	○	⬆	2 1	1 2	1 2 1	⬇ ⬆	↔
1	○	●	●	Stocki-net	■	■	Knit-it	● ●	↔
2									
3									
4									
5									
6									
7									
8									
9									
10									

**NEEDLE ARRANGEMENT**



558





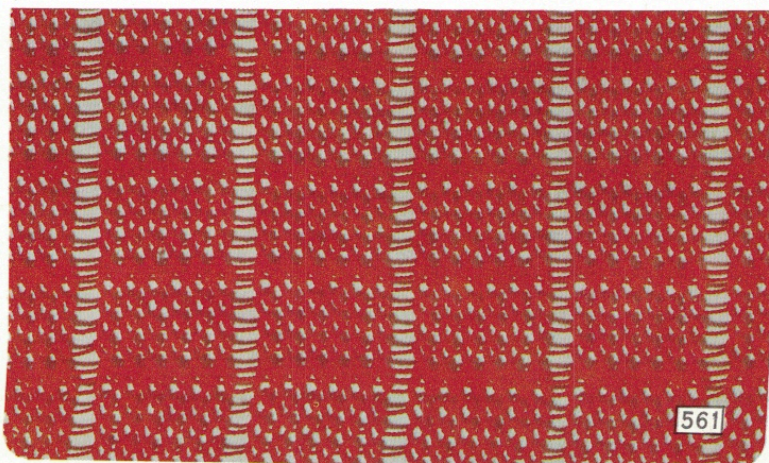
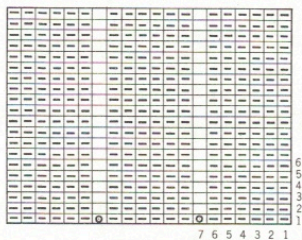


ORDER	PATTERN PANEL	CAM LEV.	PUSH BUTTONS	PATTERN LEV.	SIDE LEV.	DIRECTION AND ROWS
1	Set stitch dial at 9.					
2	○ ● ●	Stocki-net			● ● ●	
3	Set stitch dial at 3.					
4	○ ● ●	Stocki-net			● ● ●	
5						
6						
7						
8						
9						
10						

**NEEDLE ARRANGEMENT**



7 Sts. & 6 Rows per Unit pattern.



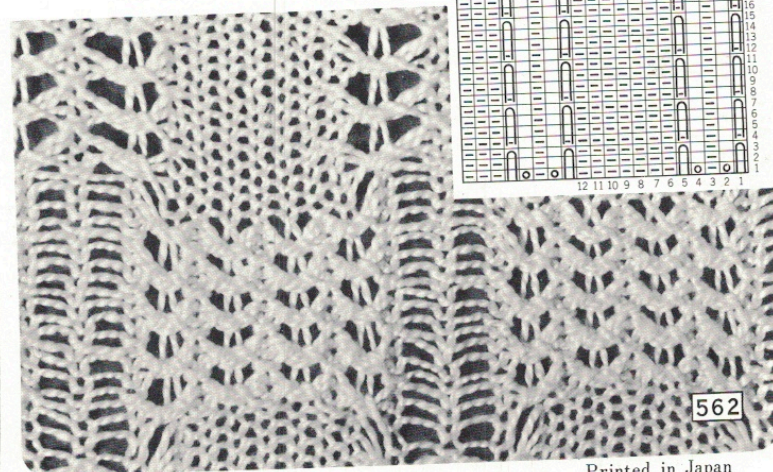
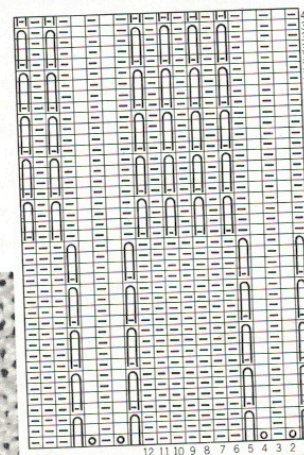
561

ORDER	PATTERN PANEL	CAM LEV.	PUSH BUTTONS	PATTERN LEV.	SIDE LEV.	DIRECTION AND ROWS
1	2 7 3	Pick			Pick	
2	" " "	Stocki-net	"	"	" "	
3	Repeat No. 1 and 2 five times. (Total of 20 rows).					
4	2 ●	Stocki-net			Pick	
5	" " "	"	"	"	" "	
6	Repeat No. 4 and 5 five times. (Total of 20 rows).					
7						
8						
9						
10						

**NEEDLE ARRANGEMENT**



12 Sts. & 40 Rows per Unit pattern.



562

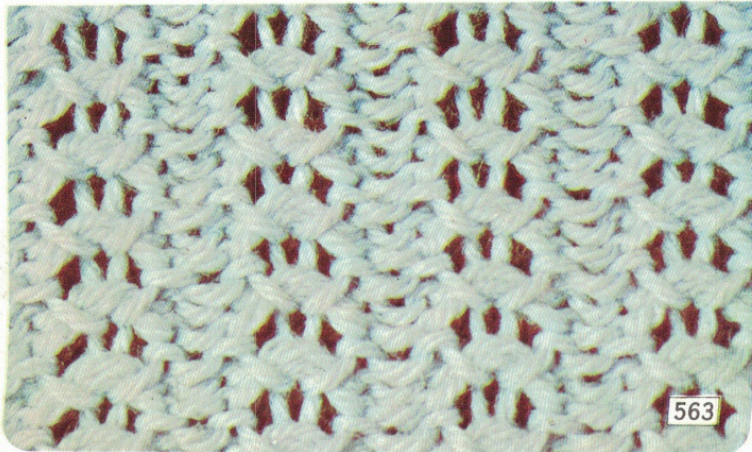
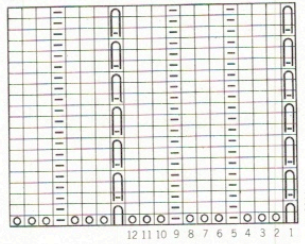


ORDER	PATTERN PANEL			CAM LEV.	PUSH BUTTONS		PATTERN LEV.	SIDE LEV.	DIRECTION AND ROWS
	○	○	○		2 1	1 2			
1	1	7	4	Stocki-net			●	▼ ▼	↔
2	"	"	"	"		"	"	" "	←
3	"	"	"	"		"	"	" "	↔
4	"	"	"	"	"		"	" "	→
5									
6									
7									
8									
9									
10									

**NEEDLE ARRANGEMENT**



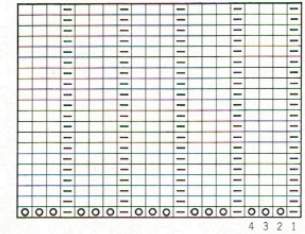
12 Sts. & 3 Rows per Unit pattern.



563

ORDER	PATTERN PANEL			CAM LEV.	PUSH BUTTONS		PATTERN LEV.	SIDE LEV.	DIRECTION AND ROWS
	○	○	○		2 1	1 2			
1	0	●	●	Stocki-net			Knit-in	● ●	↔
2									
3									
4									
5									
6									
7									
8									
9									
10									

**NEEDLE ARRANGEMENT**



564