

MACHINE KNITTING CHIC

No. 6 · £ 1.75

^a**Sabrina**
PUBLICATION

**FASHIONS DESIGNS
FOR KNITTING MACHINES**

**Models in
beautiful
colours**

**Up-to-date
patterns and
yarns together**

TO KNIT NOW
THE NEW FASHIONS

With full instructions and telephone helpline

ISSN 1015-7948



9 771015 794000

Contents

Dear readers,
Knittingmachine Chic is always top fashion. Always bearing this in mind, we again suggest dreamy models, exquisite colour schemes and delightful details. Whether you are in a hurry or have plenty of patience, we have something for everyone. If you have any questions, our Readerservice is available to help you. Now choose your pattern. The Editor wishes you success and hopes you will have pleasure in knitting.



Sizechart Page -- Yarn information Page --
 Abbreviations Page --



A mixture of yarns in elegant harmony



Fascinating



Special designs in new yarns



Top-chic
 Fantastic Intarsia
 Delicate Lace



If you have any queries about any of the patterns in this issue, please write to:
**MACHINE KNITTING CHIC
 READERS' SERVICE**
 7 Laurels Avenue
 Bangor-On-Dee
 Wrexham, CLWYD, LL13 0BB
 For urgent enquiries you can telephone Monday to Friday from 6 pm to 9 pm.
 Tel: (0978) 780 354

This magazine is published by **BPV Medweth & Co.**, Gewerbezone Eichli 29, CH-6370 Stans.

Publishing Directors: H. + E. Medweth.
Editorial: Christl Haegele. **Design:** Ch. Haegele and C. Grube. **Desk editor:** M. Leibinger. **Distribution:** BPV Medweth & Co., Gewerbezone Eichli 29, CH-6370 Stans. Distributed in Great Britain by: MMC, Magazine Marketing Company, Waltrix House, Oak Lane, Leatherhead, Surrey. Printed in West Germany by OZ-Druck- und Verlags-GmbH Rheinfelden. Copyright 1990 by BPV Medweth & Co., CH-6370 Stans.

All models are under unlimited copyright protection ©. Commercial copying prohibited. Publishers and editors assume no liability for the unrequested contribution of photos, designs and manuscripts.



Design Gilla Wilmes

Silk and Angora – soft and tempting

Model 1 Size 34/36" (38/40")

Model 2 Size 32-38"

*On the left soft pink, knitted with Angora and Lurex for an impressive design.
On the right white as background for a colourful flamingo.
Well placed colours and shapes give that something
extra to sweaters and stamp them with your own
personality.*

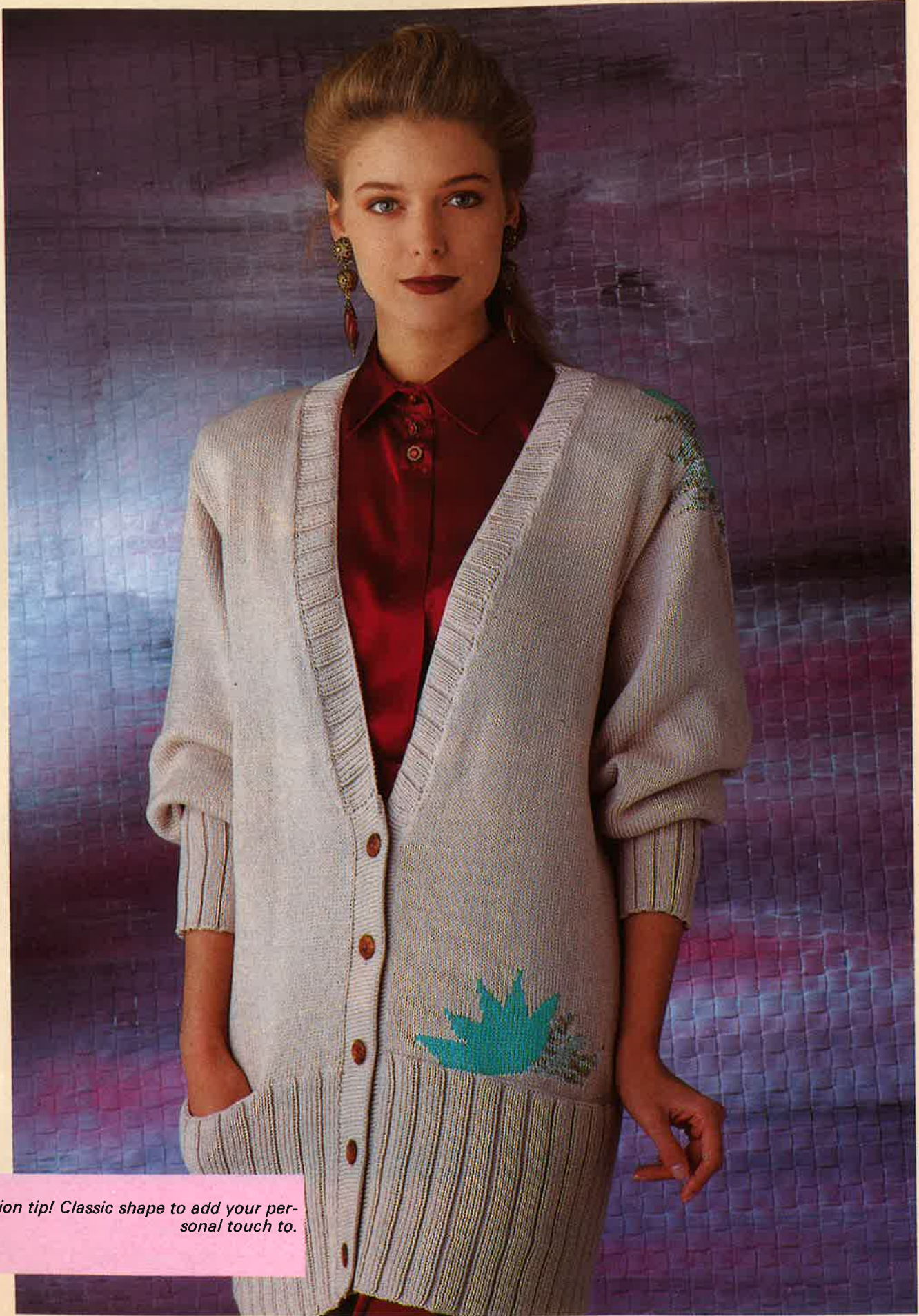
Soft



Design Gerri Damerow

Model 3 Size 32/34" (36/38")

colours with impact



Fashion tip! Classic shape to add your personal touch to.



A big surprise! Large birdmotifs for a special jacket.

Model 4 Size 32-36"



Model 5 Size 34/36" (42/44")

The warm olive tones cannot be faulted in this lace sweater. It can look sporty or elegant.

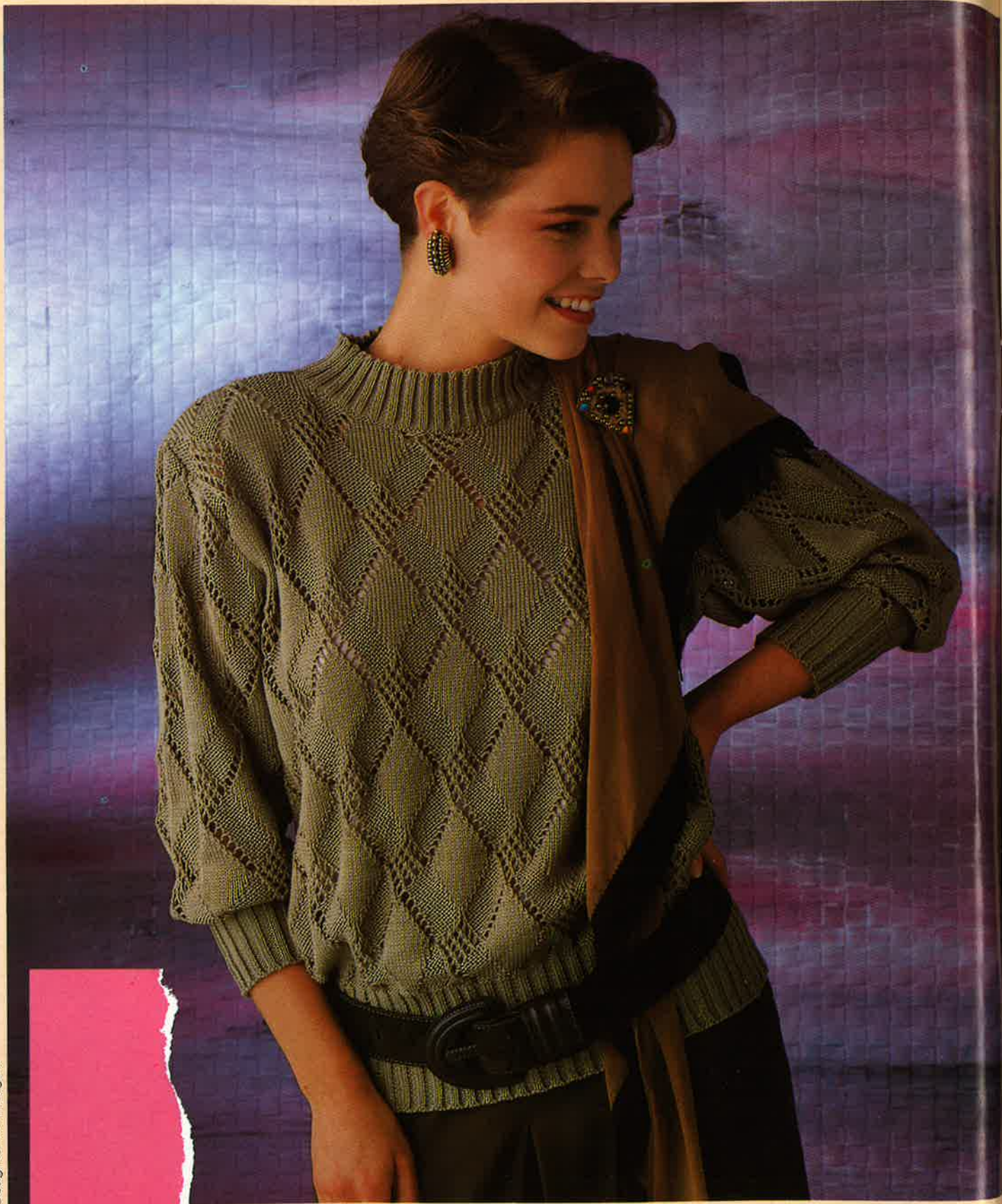
A design from your knittingmachine looking like hand-knitting.



*An impression of
spring, brought to
life in this sweater.
You will feel good in
this and be noticed.*

Model 6 Size 34/36"

Design Gilla Wilmes



Design Christl Haegele

Model 7 Size 32-36"

Attractive Opposi

On the p

The recipe consists of expensive yarn

Design: Suzanne Köhler-Ingelmann



Model 8 Size 34/36"

On the left an attractive transferstitch sweater for patient knitters, that will look good in any colour. Whether sporty or elegant is up to you.

On the right an exclusive model full of luxury. Harmonising lines, fine colours and generous appliqué.



Model 9 Size 34/36" (38/40")

A large bow forms the focal point. Softly draped sleeves and a fancy neckline provide the finish. Try this basic

design with your own variations.



Design Gerli Damerow

*Cheerful little bows
in blending colours
look smart. A sweater
you will always
wear.*

Model 10 Size 34/36" (38/40")

Design Gertr Damerow

Model 11 Size 34" (38")

Clarity and noble Eleg

on a sweater that has everything: fancy yarn sequ

Design Suzanne Köhler-Ingeimann



Model 12 Size 32/34" (36/38")

egance

On the left colourful flowers provide for good humour. Knitted in Intarsia or swiss-darn the flowers after knitting.

On the right silk leaves are stitched sequins and beads. A design to fall in love with.



Model 13 Size 34-38"

Symphony in knitting. Colour, material and shape in a topical composition.

Instructions

On the following pages you will find all the knitting instructions with charts, patterns and information under the appropriate model number.

MODEL 1 SWEATER WITH FLOWER YOKE

Size: to fit bust 34/36" [38/40"]

MACHINES: We used a Knitmaster 560 with ribber, but also suitable for other electronic standard gauge machines. The sweater can also be knitted using intarsia for the design.

MATERIAL: KKK "Club" (100% cotton, 156m/50g) approx. 600 (650)g in Blackberry C31

BOUTON D'OR "Angora" (70% Angora, 30% wool, 120m/25g) 50g white C 050 1.80m Ribbon yarn "Serpentine" by Anny Blatt or similar in silver, 50 small white beads and 80 dk. pink medium beads. 10 silk flowers different sizes in matching colour.

TENSION: 1/1 rib at TD 3/3. plain knitting at TD 8. 32-33 st and 39 R = 10cm.

YOKE PATTERN: Program machine as in chart 2 and knit as fairisle. Black squares = Angora, white squares = cotton. If you are using a mylar sheet, copy half the design and knit as mirror-image. The yoke can also be knitted in intarsia, following chart 1.

FRONT: With cotton cast on 170[182] st and knit 60 R in rib. Transfer all st to MB and set RC to 000. At each side, incr 1 st every 20th row 5 times = 180[192] st. At RC 114, shape armholes by casting off on alt rows at both sides 2 st 9 times = 144[156] st. At the same time, start the yoke pattern on RC 116. At RC 180, start neckshaping: push the centre 20[26] N in HP and all needles opposite the carriage. On one side only, push into HP on alt rows, 4 st twice, 3 st once, 2 st twice and 1 st 6 times. Knit straight to RC 208 and cast off the rem. 41[44] st. Repeat for other side. 62[68] st in WP. Incr 2 st at each side and knit 1 R with Angora. Change to cotton and knit 7 R. Cast off loosely. Pick up the st from the row in Angora and pick up 2 extra st at each side. Knit 14 R with Angora and cast off.

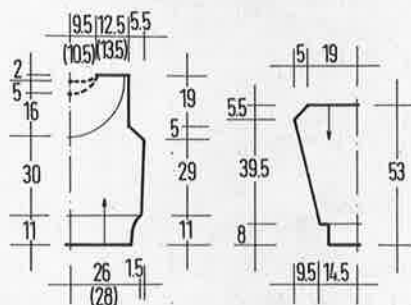
BACK: Knit as for front, starting the neckshaping on RC 200. Push into HP the centre 18[24] st and all st opposite the carriage. On next and foll alt row, push into HP 6 st. twice and 5 st twice,

repeat for other side. Knit the bands as for the front, but without the increases.

SLEEVES: Knitted from top to bottom. Cast on with cotton 124 st. Set RC 000 and continue in stocking stitch. On the 3rd row incr 2 st at each side. On the foll alt rows, incr alternately 2 st and 1 st at each side until you have 156 st at RC 22. Re-set RC to 000. Decr at each side on every 5th row 1 st 30 times = 96 st. Continue on these st to RC 154. Reduce st to

76 [2 st on every 4th needle] and transfer st for rib. Knit 40 R rib and cast off.

MAKING-UP: Close shoulderseams. Steam lightly from the wrong side. Sew on the silk flowers as in the picture. Larger beads are sewn in the centre of the flowers. Wrap the ribbon yarn around the necktrim, leaving approx 3cm between stitches. Sew small beads between. Set in sleeves. Close side and sleeve seams.



1/2 front and back

1/2 sleeve

Continued next page

ABBREVIATIONS:

st(s) = stitch or stitches
R = row or rows
alt = alternate
C = colour
COL = carriage on left
COR = carriage on right
cont. = continue
dec. = decrease

inc. = increase
foll. = following
HP = holding (D or E) position
WP = working position
UWP = upper working position
NWP = non-working position
RC = row counter
TD = tension dial setting

000 = set Rc to 000
rem = remaining
rep = repeat(ing)
trans. = transfer(ring)
N = needle(s)
MT = maintension
RT = ribber tension
MB = mainbed

RB = ribber bed
st st = stocking stitch
ff = fully fashioned
dc = double crotchet
m = metre
cm = centimetre

Figures on the patterns are in cm.

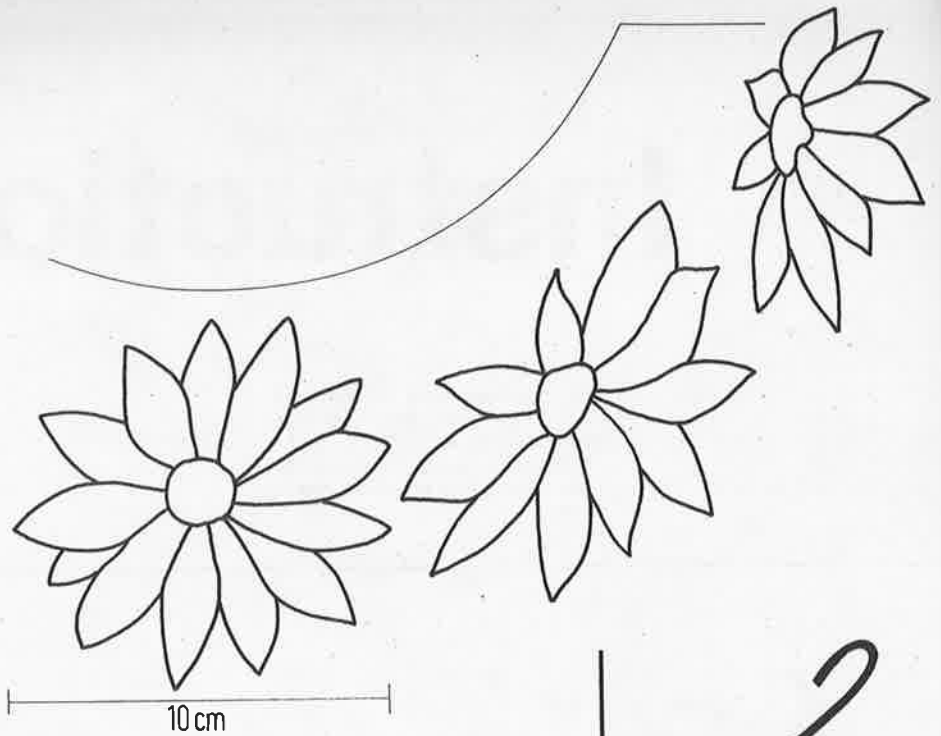


Chart 1 for intarsia knitting

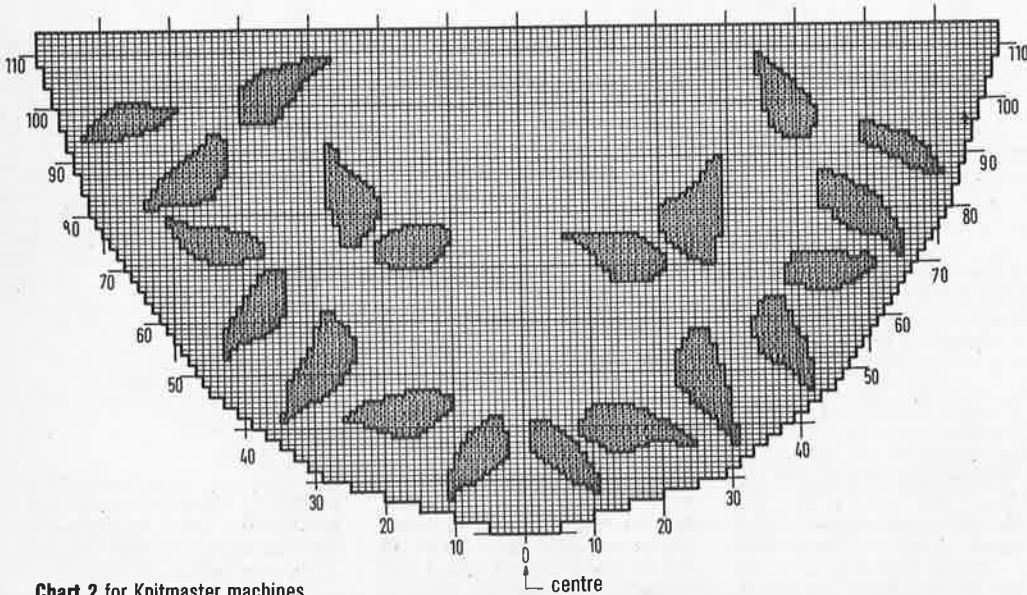
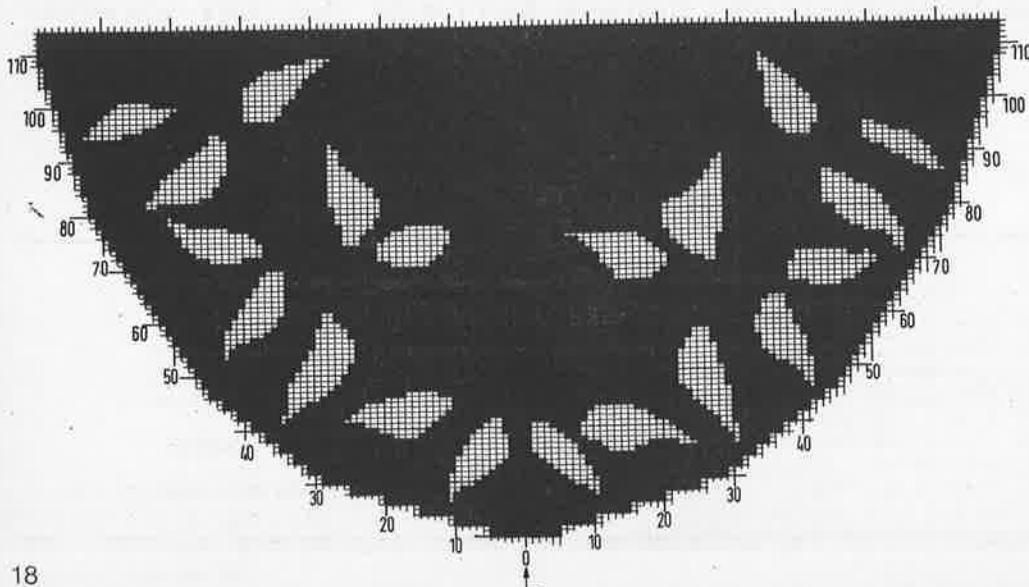


Chart 2 for Knitmaster machines



2

MODEL PINK FISHERMAN'S RIB SWEATER

SIZE: To fit bust 32-38"

MACHINES: Knitted on Brother Standard gauge machine for mainpart and Brother Chunky for Cable Panels. If you do not have a chunky machine, cable panels can be knitted by hand.

MATERIAL: WSM "Lambs" (65% Lambswool, 35% Polyacryl 160m/50g) approx 600g pink C 7 and "Angora Viva" (95% Angora, 5% Lambswool 25m/10g) 160g pink C 31. Accentyarn "Metallic-Irisé" (67% Polyester, 33% Polyamid 1500m/20g) 1 reel pink C 10 from Austermann.

1 crotchet hook No 4.

The yarn is available in kitform from WOLLSTUDIO Jutta Hinrichs, Wormser Str. 5, 6550 Bad Kreuznach, Tel.: (0671) 42625.

TENSION: Fisherman's rib in Lambs 24 st and 52 R = 10 cm. TD. approx 8/8. Cablepanel in Angora + Accentyarn 50 st = 16cm and 26 R = 10cm. TD approx 2/2 on chunky machine. 1/1 ribs on standard gauge machine in Lambs with TD approx 4/4.

CABLE PANEL: Knitted in Angora and accent yarn. Cast on 50 st with waste yarn. Arrange needles as follows: starting from one side, * 2 st. on RB, 6 st on MB for cable. Repeat from * 5 times. Last 2 N on RB. Set RC 000 and cable on R 5 over 1st, 3rd and 5th group of 6 st. On R 10, cable 2nd, 4th and 6th group. Always make the cable in the same direction.

ARROWS in diagram denote direction of knitting.

BACK: With Lambs cast on 145 st and knit 40 R in rib. Set RC 000 and continue in Fisherman's rib. At RC 100, mark both sides with waste yarn for armhole. Cast off all st at RC 210.

FRONT: Knit as for back.

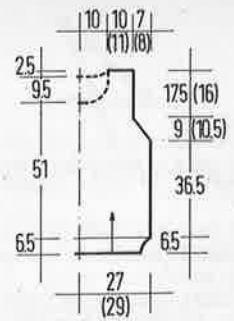
SLEEVES: for the 1st part, cast on 51 st and knit in Fisherman's rib. At left edge, decr 1 st. every 5th R 36 times = 15 st. At RC 200 take off on waste yarn. Knit a second piece, decr on right side.
CABLE PANEL: Start as described above and knit 150 R. Divide work in centre and work 55 R on each piece separately. Join the two pieces again and knit to RC 355. Release on waste yarn.
CUFFS: Cast on 59 st with Lambs and knit 40 R rib. Transfer all st to MB. Hang

the st from cable panel in centre and the other 15 st on each side, decr evenly across the row. Knit 1 R and cast off.
MAKING-UP: Sew cable panels between the sleeves and along the top of the back and front. Set in the sleeves between the markers. Close side and sleeve seams. Crotchet around the neckline with Angora 1 R double crotchet and 1 R crabstitch.

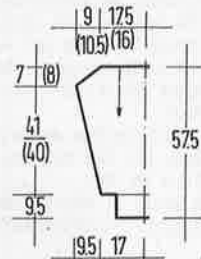
2nd side. Return st to WP and arrange for 2/2 rib with ribber in position. Insert comb and knit 14 R. Knit the last row at a looser tension and cast off with the latch tool.
FRONT: Knit as for the back but with the Flamingo and a lower neckline. For the neck, push into HP at RC 174, the centre 26 st and the st opposite the carriage. Knit 1st side as follows: on alt rows push into HP at neckedge 3 st twice, 2 st twice and 1 st 3 times. Knit on rem 27(29) st to RC 214 and cast off. repeat for 2nd side. Knit the necktrim as on back, picking up an additional 18 st at each side of neck.

SLEEVES: Knitted from top to bottom. With white cotton, cast on 92(84) st and knit in st st. Incr 1 st at each side on next 24(28) R = 140 st. Set RC to 000. Now decr 2 st fully fashioned at each side on every 10th row 13 times. Push empty needles in NWP. At RC 140(136), hang the rem. 88 st onto 70 N (every 4th N will have 2 st). Arrange for 2/2 rib and knit 38 R. Knit the last row on a loose tension and cast off with the latch tool.

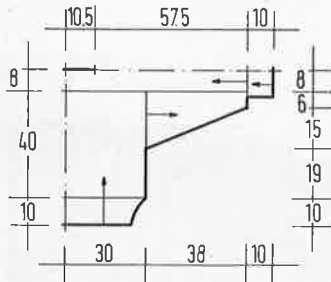
MAKING-UP: Steam the pieces from the wrong side, avoiding the ribs. Close shoulder seams and neckband. Set in sleeves and close rem. seams.



1/2 front and back



1/2 sleeve



1/2 front and back with 1/2 sleeve

Explanations:

- 1 = white cotton
- 2 = yellow silk
- 3 = shaded Lurex
- 4 = yellow Angora
- 5 = mint silk
- 6 = turquoise Angora
- 7 = salmon silk
- 8 = salmon Angora
- ☐ = swiss darn

1 square = 1 st and 1 row

3

MODEL SWEATER WITH FLAMINGO

SIZE: To fit bust 32/34" [36/38"]. The instructions for the larger size are in brackets. One figure only applies to both sizes.

MACHINES: Suitable for standard gauge machines with ribber and intarsia carriage. We used a Brother machine.

MATERIAL: Approx 600(650)g white Cotton Yarn (80% cotton, 20% Polyacryl 10m/50g) from HAMBURGER WOLL-FABRIK.

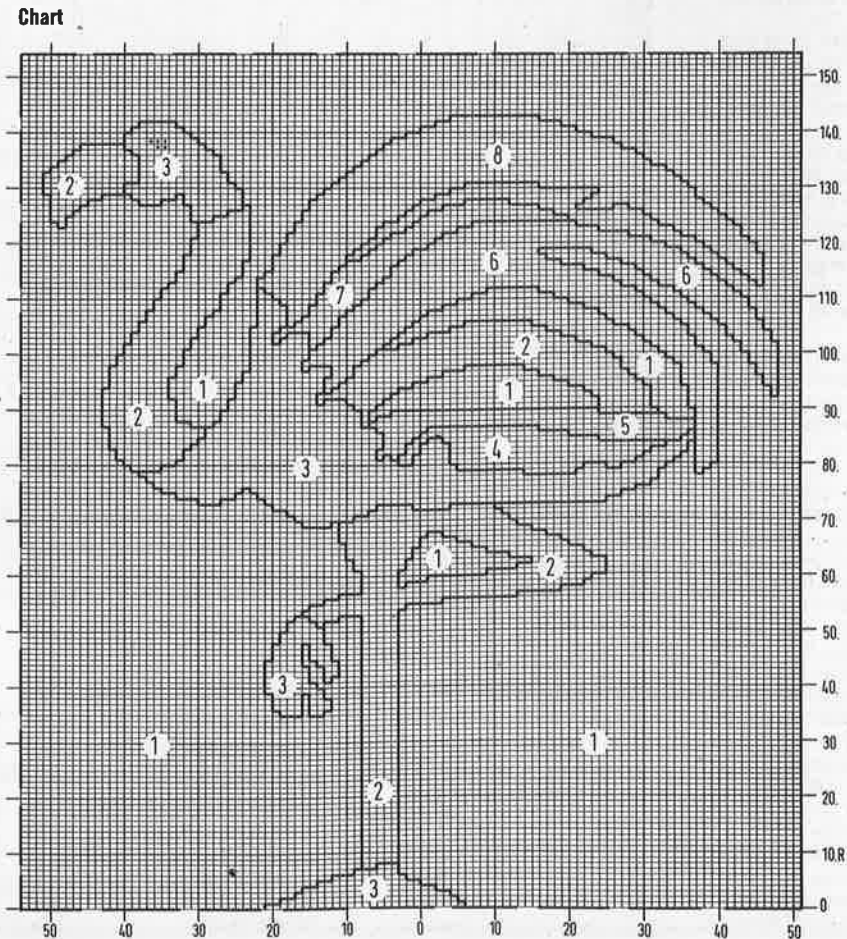
You will also need small amounts of silk in yellow, mint and salmon. Shaded Lurex yarn, Angora in yellow, turquoise and salmon. A thread of black for the eyes and a multi-transfer tool. Should your silk or Angora be very fine, use it double!

TENSION: 26 st and 34 R = 10cm. TD approx 9**.

2/2 ribs knitted at TD 3/3. **INTARSIA** knitted at TD 9**. Cross threads when changing colours. Watch the numbering at the bottom of the chart!

ARROWS on diagrams denote direction of knitting.

BACK: Cast on in white cotton 142(152) st and knit 30 R rib. Transfer all st to MB and knit in st st to RC 124. Decrease for armhole: using the multi-transfer tool, move 6 st in by 3. Push empty N into NWP. repeat the decrease every 6 R 5(6) times = 18(21) st decr at each side. continue straight to RC 206. Shape neck: push 34 st in centre and all st opposite to carriage into HP. Knit 1st side by pushing into HP on alt rows 3 st 3 times. Cast off rem 27(29) st at RC 214. repeat for



4

MODEL JACKET WITH PARROTS

SIZE: To fit bust 32-36"

MACHINES: Suitable for all standard gauge machines.

MATERIAL: Approx 750g Cotton (80% cotton, 20% Polyacryl 150m/50g) in beige from HAMBURGER WOLFFABRIK.

You will also need small amounts of cotton in yellow, dk. yellow, lt. blue, pink, lt. red, red, wine red, black, dk. blue and turquoise. Shiny yarn in salmon, brown, white and green shaded. Yellow Angora. Silk in cream, wine red, pink and mint.

5 buttons diameter 2cm and a multi-transfer tool. Use the trimming yarn double, if it is too thin.

TENSION: 26-27 st and 32 rows = 10cm. TD approx 9** over st and intarsia.

INTARSIA: Knit, following the charts 1-3. Cross the threads when changing colours and take note of the stitch numbers at the bottom of the charts.

RIBS: Set ribber to H-pitch. Push into WP needles 75-0-75 on both beds. Knit zig-zag row, hang comb and weights. Knit 2 circular rows. Set for knitting with TD on 5 on MB and 3 on RB. On Brother machines set slidelever to 1. Re-hang st as foll.: centre 2 st from MB to RB. Leave 4 st at each side and re-hang the foll 2 st at each side on to RB. Continue to the end. You will now have 100 st on MB and 150 st on RB. Set RC to 000 and continue to knit.

BACK: With beige cast on 250 st as given above and knit 74 R in rib. Transfer all st to MB = 152 st. Set RC 000 and continue to knit the parrots foll chart 1. Extend the pattern at the left side by continuing the branch in colour 6. At RC 110, shape the armholes with the multi-transfer tool: decr. 3 st at each side by moving 3 st in by 3, pushing empty needles in NWP. Repeat 5 times = 18 st decr. Knit straight as shown in pattern till the neckshaping. Shape the neck by putting the relevant needles in HP. Cast off at shoulder.

Push RB in position and bring 56 needles facing the MB needles to WP. Transfer st for rib as at bottom of garment. Fill empty N with cross-bar from row below. Knit 14 R rib, knitting last row at loose tension. Cast off with latch tool.

RIGHT FRONT: Cast on with waste yarn 40 st for pocketbag. Knit 84 R in beige cotton and remove on waste yarn. Put aside. Cast on from 35-0-34 on both beds and knit as described for back welt over 46 st on MB and 69 st on RB for 74 R. Transfer all st to MB = 69 st. Set RC 000 and insert pocketbag. With right side facing, pick up st from one edge of pocket on to the 9th to the 48th st of the welt. Remove waste yarn. Knit the two sets of st together and cast off. Pick up the st from the second edge and place on the empty needles. Purl side is now facing. remove waste yarn, set RC to 000 and continue in beige.

At RC 64 decr at left edge for V-neck 1 st fully fashioned on next row. Then decr 1 st on foll 10th R and 1 st on foll 8th R. Now decr 1 st every 6th row 17 times. 21

st decreased. At RC 110, shape armhole as on back and at RC 200 cast off rem. 30 st.

LEFT FRONT: Knit as for right front, reversing shapings and knitting the motif from chart 2 above the welt and from chart 3 from RC 170.

RIGHT SLEEVE: Knitted from top to bottom. Cast on in beige 104 st and knit in st st. Increase 1 st at each side on every row till 150 st. RC 24. Set RC to 000. Decrease 2 st at each side on every 8th row 12 times. At RC 100 reduce 102 st to 84 by hanging 2 st on every 5th needle. Push RB in position at P-pitch and arrange st for 2 st on RB and 4 st on MB. Reduce TD slightly and knit 50 R rib. Cast off with latch tool.

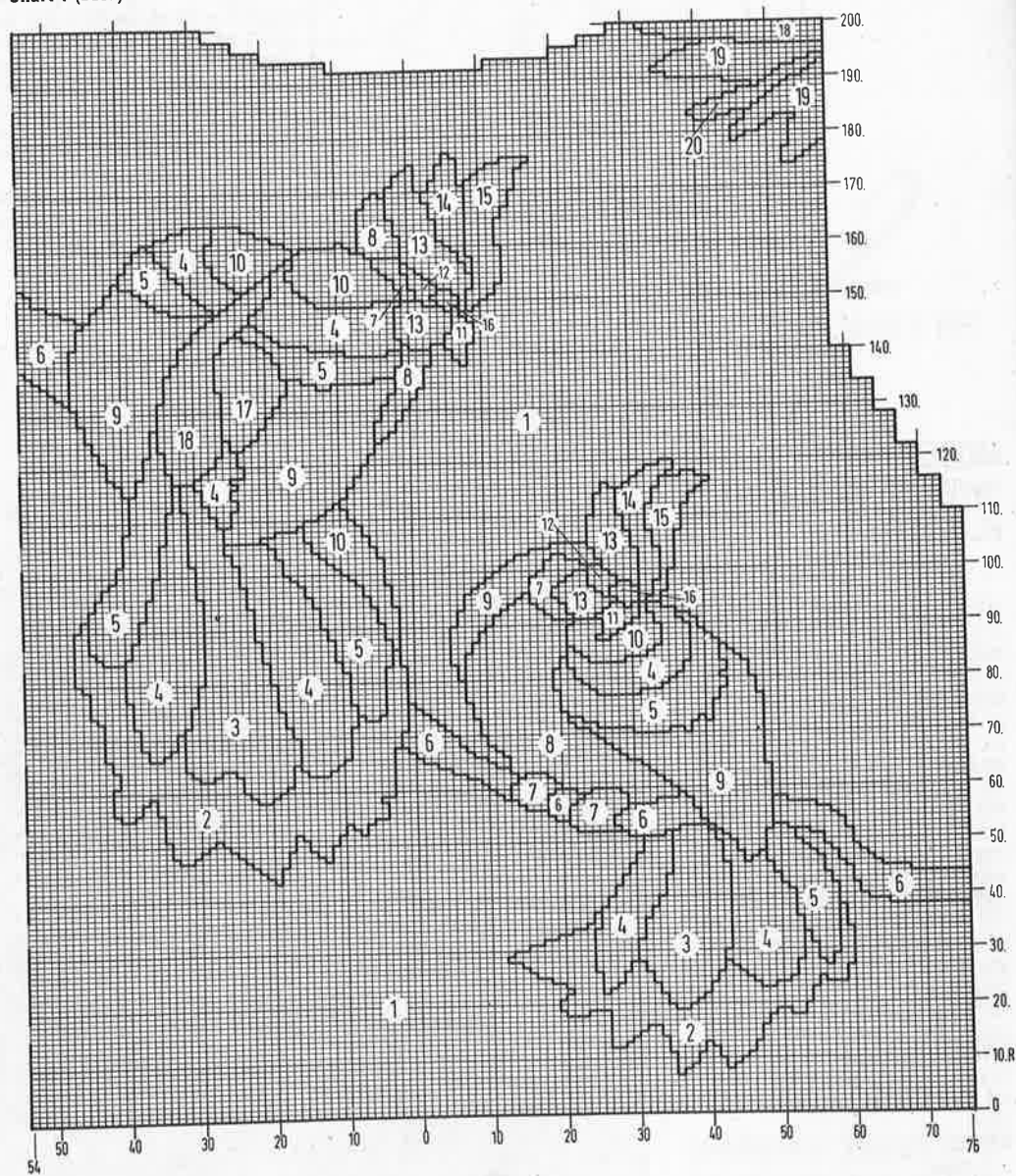
LEFT SLEEVE: Knit as for right sleeve, adding the motif from chart 2 at the beginning.

RIB BANDS: For the V-neck edges cast on 51-0-51 st on both beds and knit as described for ribs for 14 R.

BUTTON AND BUTTONHOLE BANDS: Knitted in st st over 110 N. Knit 24 R and make a hem, before casting off. On second band make 5 buttonholes on rows 8 and 16 each over 4 N with 18 st in between.

MAKING-UP: Steam all pieces lightly, omitting the welts. Sew bands to front. Close shoulder seams. Set in sleeves and close rem. seams. Attach buttons.

Chart 1 (back)



1 square = 1 st and 1 row

Explanations:

- | | |
|-----------------------|------------------------------|
| 1 = beige cotton | 11 = dk. yellow cotton |
| 2 = salmon shiny yarn | 12 = white shiny yarn |
| 3 = yellow Angora | 13 = lt. red cotton |
| 4 = cream silk | 14 = red cotton |
| 5 = yellow cotton | 15 = dr. red cotton |
| 6 = brown shiny yarn | 16 = dk. blue cotton |
| 7 = lt. blue cotton | 17 = turquoise cotton |
| 8 = pink cotton | 18 = green-shaded shiny yarn |
| 9 = dk. red silk | 19 = mint silk |
| 10 = pink silk | |

Chart 2 (left front + left upper sleeve)

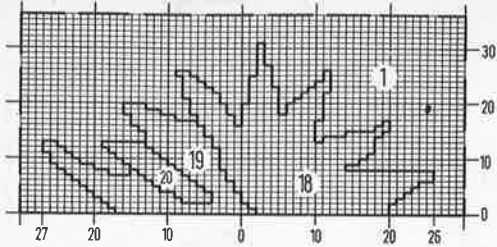
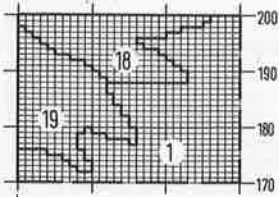
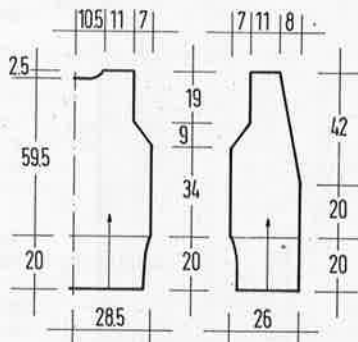


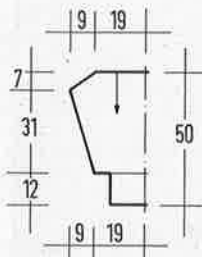
Chart 3 (left front)



left edge of work



1/2 back right front



1/2 sleeve

MODEL 5 LACE SWEATER

SIZE: To fit bust 34/36" [42/44"]
Instructions for the larger size in brackets. One figure only applies to both sizes.

MACHINES: Knitted on a Brother Machine with lace carriage. Garter carriage used for ribs.

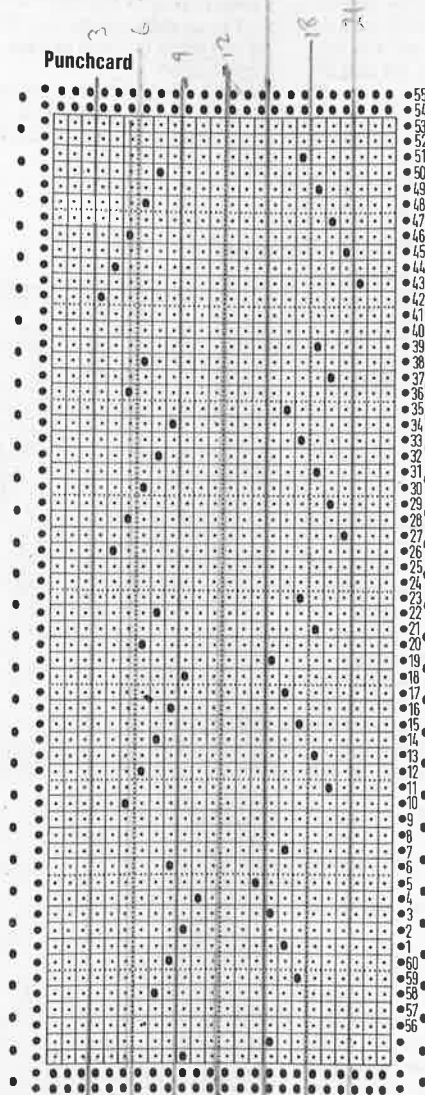
MATERIAL: HÜBNER "Cup" (65% Duno-va=Polyacryl, 35% cotton 210m/50g) approx. 350[400]g in olive C 35.

TENSION: 26 st and 31 rows = 10cm. TD approx 9 over lace pattern. Ribs knitted with Garter carriage in 2/2 rib. TD approx 5.

LACE PATTERN: Punch card or transfer pattern to mylar sheet before starting or program machine over 24 st and 60 rows. Knit 4 R lace carriage, 2 R st st, 12 R lace carriage, 2 R st st, 16 R lace, 2 R st st, 16 R lace, 2 R st st, 12 R lace and 2 R st st. repeat from beginning.

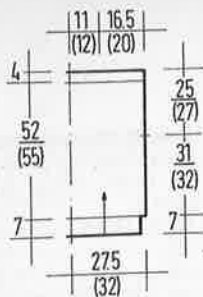
ARROWS on pattern denote direction of knitting.

cont. next page

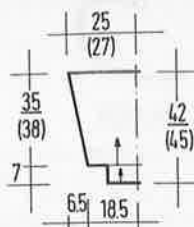


TIP! Entering patterns in Brother KH 930 and 940:

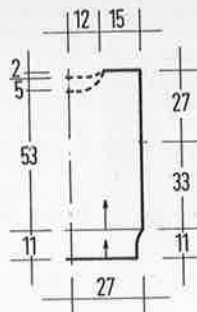
To make it easier to count the black squares on the charts, have the charts enlarged and re-draw the grid with a coloured pencil.



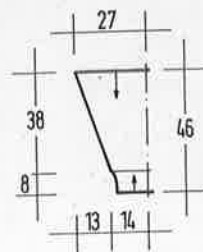
1/2 front and back



1/2 sleeve



1/2 front and back



1/2 sleeve

BACK: Cast on 122 [142] st with Garter carriage and knit 30 R rib. Increase st evenly to 146 [170]. Set RC 000 and continue in lace pattern to RC 96 [100]. Mark both sides with waste yarn for armhole. Continue to RC 160 [170] in lace. Change to 2/2 rib and knit 16 R. Knit last row on loose tension and cast off with latch tool.

FRONT: Knit as for back.

SLEEVES: Cast on with waste yarn 96 st and knit several rows. Change to "Cup" and knit 2 R st st. Set RC 000 and conti-

nue in lace pattern. Increase 1 st at both sides on every 6th [5 th] row 17 [23] times. 130 [142] st. At RC 110 [120] cast off.

CUFFS: Cast on 54 [58] st and knit 30 R rib. Pick up st from waste yarn on sleeves and put on the same needles. Knit 1 R and cast off.

MAKING-UP: Close shoulders, leaving 22 [24]cm in the centre open. Set in sleeves between markings. Close rem. seams.

Repeat for other side, reversing the shapings. Knit neckband as on back.

SLEEVES: Cast on 110 st with waste yarn and knit several rows. Continue with white cotton and decr. 1 st at both sides on every 4th row 27 times. 56 st. At RC 144, cast off with waste yarn.

CUFFS: With white cotton cast on 54 st and knit 26 R in 1/1 rib. Take off on waste yarn.

BACK AND FRONT WELTS: With white cotton, cast on 110 st in every-needle rib and at lowest tension, knit 36 rows. Cast off on waste yarn.

MAKING-UP: Steam pieces lightly, avoiding the ribs. Graft welts to garment, removing waste yarn as you go. Sew on rhinestones and beads. Close shoulder and neckband seams. Turn neckband to inside and catch down. Set in sleeves. Close rem. seams.

MODEL WHITE SWEATER WITH SPRING MOTIFS

SIZE: To fit bust 34/36".

Can only be knitted larger on machines with more than 110 needles.

MACHINES: Knitted on Knitmaster Chunky with Intarsia carriage and ribber. Suitable for all chunky machines.

MATERIAL: KKK "Clip" (100% cotton, 166m/100g). Approx 800g white C 4. Small amounts in violet, lt. and dk. olive, yellow and gold as well as brown and some Lurex yarn. Rhinestones for the eyes of the butterfly, dragonfly and chicken. Small gold beads for the butterfly.

TENSION: 20-21 st and 30 R = 10cm. TD approx 1 over st st.

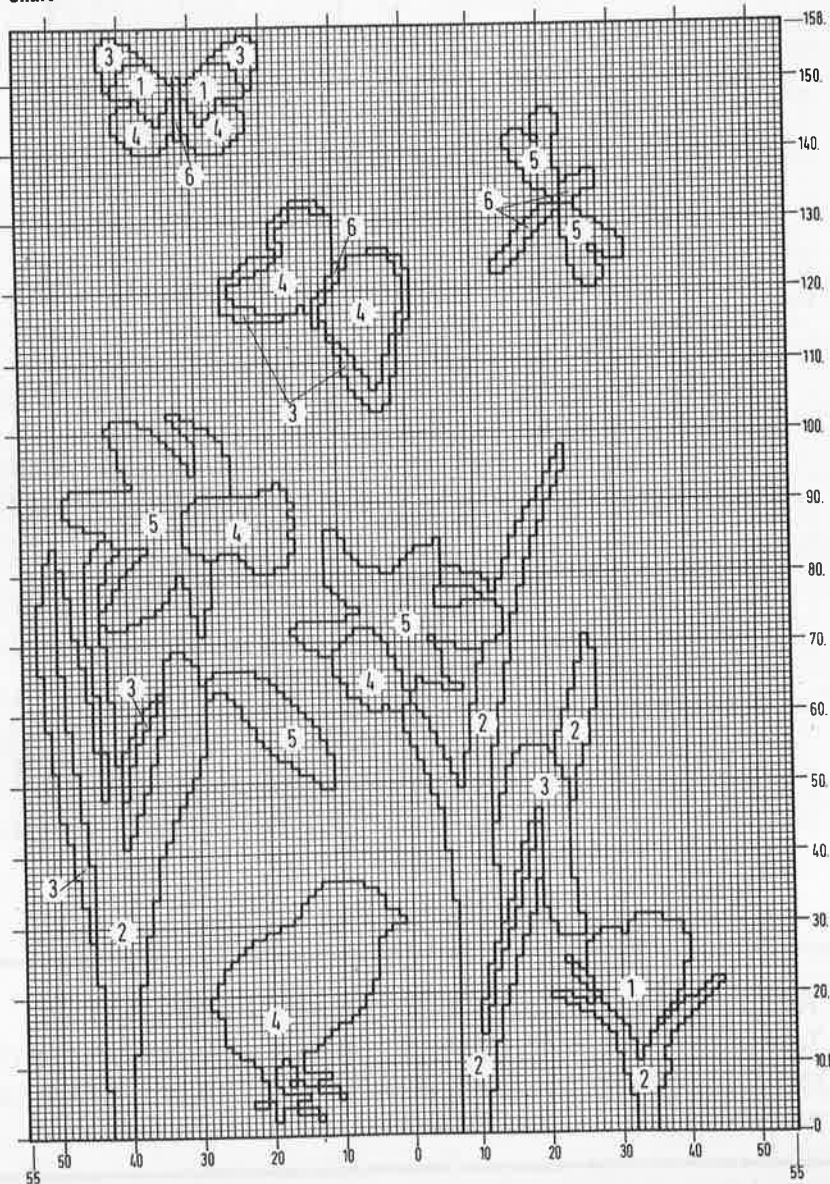
RIBS: Knitted as every-needle rib at TD 0.

ARROWS on pattern denote direction of knitting.

BACK: Whit waste yarn cast on 110 st and knit several rows. Set RC to 000 and with white cotton, knit to RC 100. Mark both edges with yarn for armhole. Knit to RC 174 and shape neck with short-rowing. Push 38 st in centre and all st at side opposite carriage to HP. Knit 1st side by pushing into HP on alt. rows 3 st twice. At RC 180, cast off rem. 30 st for shoulder. Knit 2nd side to match. **Neckband:** Push RB in position and transfer alt. st down for 1/1 rib. Hang comb and weights. Set TD at 0 and knit 16 R. Cast off loosely.

FRONT: Knit as for back, but include the design according to the chart. Start neckshaping at RC 158 by pushing the centre 12 st and all st at side opposite to carriage to HP. Shape 1st side by pushing to HP at neckedge on alt. rows 3 st twice, 2 st 5 times and 1 st 3 times. Cast off rem. 30 shoulder stitches at RC 180.

Chart



Explanations:

- = white cotton
- 1 = violet
- 2 = dk. olive
- 3 = lt. olive
- 4 = golden yellow
- 5 = yellow
- 6 = brown

Inside areas '5' you may like to add Lurex yarn. The outline of the flowers may be embroidered.

MODEL 7

OLIVE SWEATER WITH DIAMOND RIBS AND LACE

SIZE: To fit bust 32-36"

MACHINES: Suitable for all standard gage machines with ribber. No punch-card required.

MATERIAL: STEINBACH "Nizza" (100% cotton, 140m/50g). Approx 550g olive C cotton, 140m/50g). Approx 550g olive C 42.

DIAMOND RIBS/LACE PATTERN: Knitted on both beds at TD 9-10. The chart shows the arrangement of both beds. After transferring stitches, knit 2 rows. Arrange needles over centre 24 st first and repeat from there in both directions. Never have needles on MB and RB facing each other. If you wish to knit a larger size, increase st by 24 to keep pattern correct at side edges.

TENSION: 25 st and 32-33 rows = 10cm. TD 9-10.

ARROWS on pattern denote direction of knitting.

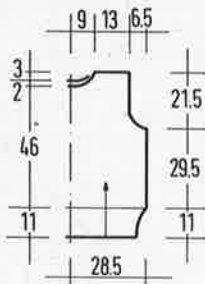
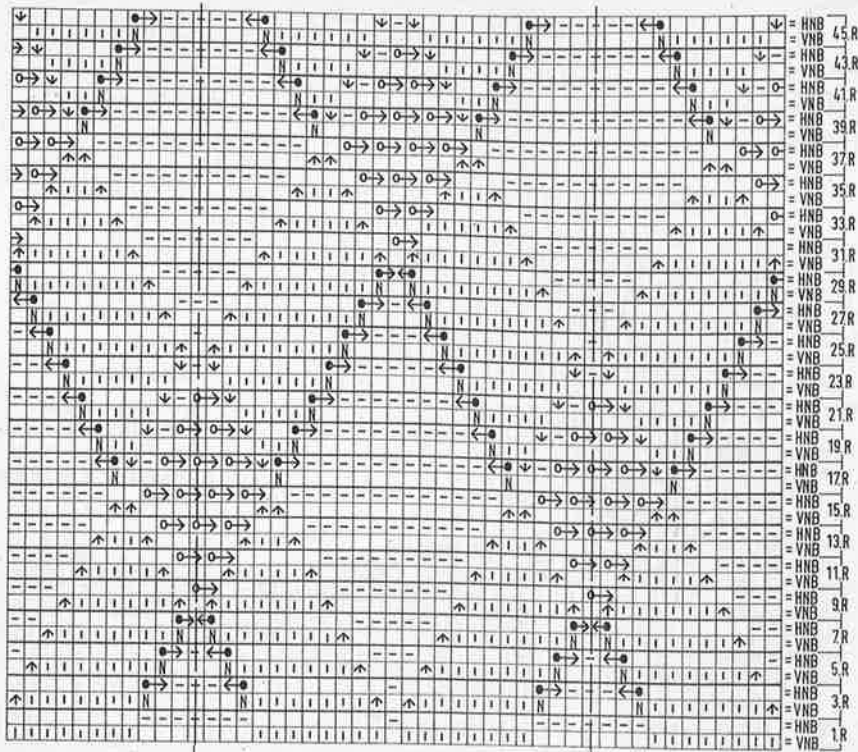
BACK: Cast on 144 st and knit 52 R in 2/2 rib. Set RC to 000 and continue in pattern. At RC 96, cast off at both sides 4 st once and then on alt. rows 2 st 6 times. 112 st. Knit straight to RC 156. Shape neck by casting off the centre 26 st and knitting each side separately. At neckline cast off on alt. rows 5 st once, 3 st once and 2 st once. At RC 166 cast off rem. 33 st for shoulder. Repeat for other side, reversing the shapings.

FRONT: Knit as for back, but start neck-shapings on RC 150. Cast off centre 14 st and knit each side separately. At neckline cast off on alt. rows 5 st once, 4 st once, 3 st once, 2 st once and 1 st twice. Cast off rem. 33 st at RC 166. Repeat for other side reversing shapings.

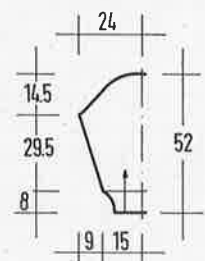
SLEEVES: Cast on 74 st for rib and knit 36 rows. Continue in pattern and increase 1 st at both sides on every 4th row 23 times. 120 st. At RC 96, decrease for top at each side 4 st. Decrease at both sides on alt. rows 2 st 6 times, *1 st once and 2 st once. Repeat from * 5 times. Decr. 1 st at each side once. Cast off 5 st at each side on alt. rows 3 times. Cast off the rem. 20 st at RC 144.

NECKBAND: Cast on 150 st in 2/2 rib and knit 24 rows. Transfer all st to MB and release on waste yarn.

MAKING-UP: Close shoulder seams. Sew on neckband with backstitch through last row in olive. Close side and sleeve seams. Set in sleeves.



1/2 front and back



1/2 sleeve

Explanations:

- = 1 st on RB
- = 1 st on MB
- ↕ = transfer 1 st from RB to MB and push empty N in NWP
3transfer 1 st from MB to RB
- ↓
- ↔ = transfer st in direction of arrow to next N. Empty N in WP (circle) The st will be formed on next row.
- ↔ = as above in other direction
- ↔ = transfer 1 st in direction of arrow, leaving empty N in NWP. On RB push 1 N in WP, stitch will form on foll row.
- ↔ = as above in opposite direction
- = push 1 N to WP
Empty squares are needles in NWP which do not knit.

When substituting yarn, please use yarn with similar meterage!

MODEL 8

APRICOT SWEATER WITH SILK FLOWER

SIZE: To fit bust 34/36". Larger sizes can only be knitted on machines with more than 114 needles.

MACHINES: Suitable for chunky machines with intarsia carriage and ribber. We used a Brother KH 260.

MATERIAL: PHILDAR yarns:
 "Cotton d'Egypte" (100% cotton, 85m/50g) **550g apricot C 64** and **250g pink C 84**.
 "Phil d'Angora" (70% Angora, 30% lambswool, 33m/10g) **100g pink C 84**.
 "Dolcina" (50% acrylic, 35% Polyamid, 15% pure wool, 177m/50g) **50g in each salmon C 75, vanilla C 98 and green C 18**.
 "Phil Metallic" (62% Polyester, 38% Polyamid, 1000m/10g) **10g in gold C 70**.
 You will also need gold beads and one silk appliqué. Crotchet hook No 3.5.

TENSION: 20-21 st and 28 rows = 10cm. TD approx. 5* 2/2 rib knitted at TD. 0.

INTARSIA knitted at TD. 5* following charts 1 and 2. Use a separate ball of yarn for each area and cross the yarns when changing colours. Read all increases and decreases from the charts. Start all pieces with waste yarn and knit ribs afterwards.

ARROWS denote direction of knitting.

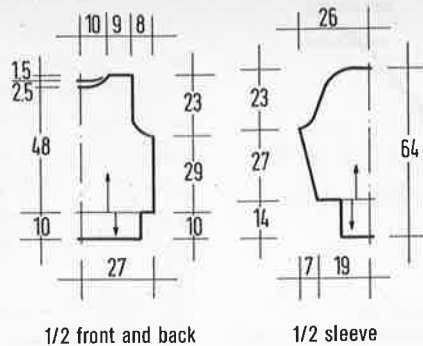
FRONT: Cast on 110 st and knit following the chart, using the lower neckshaping.

BACK: Knit as for back with the shallower neckline.

SLEEVES: Cast on 80 st and knit following chart 2, mirroring around the centre.

CUFFS AND WELTS: Return stitches from waste yarn onto the needles, decr. evenly across the row. For the cuffs, reduce st to 48 and knit 40 R. For back and front, reduce st to 80 and knit 30 R in rib.

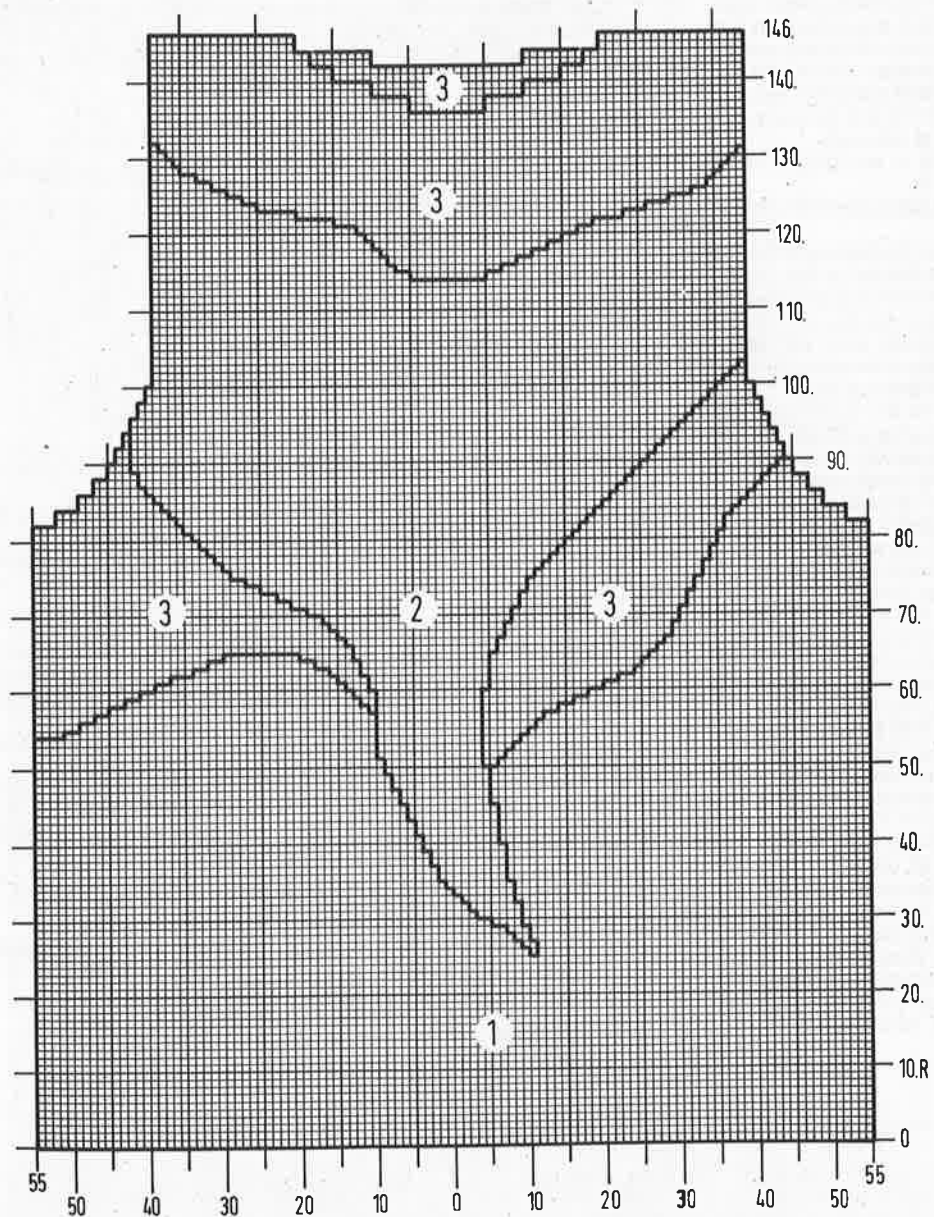
MAKING-UP: Sew on the silk motif. Crotchet grape like clusters in Dolcina vanilla; make 3 chains. In the first chain, make 3 half trebles, leaving the last loop of each on the hook. Yarn around hook and pull through all loops. Attach bobble to garment. Embroider leaves in satin stitch with Dolcina green. See picture and drawing on following page. Sew on beads. Embroider sleeves as required. Close all seams and set in sleeves, gathering the top to fit. Crotchet around neckline with 1 row double crotchet and 1 row crabstitch.



Explanations:

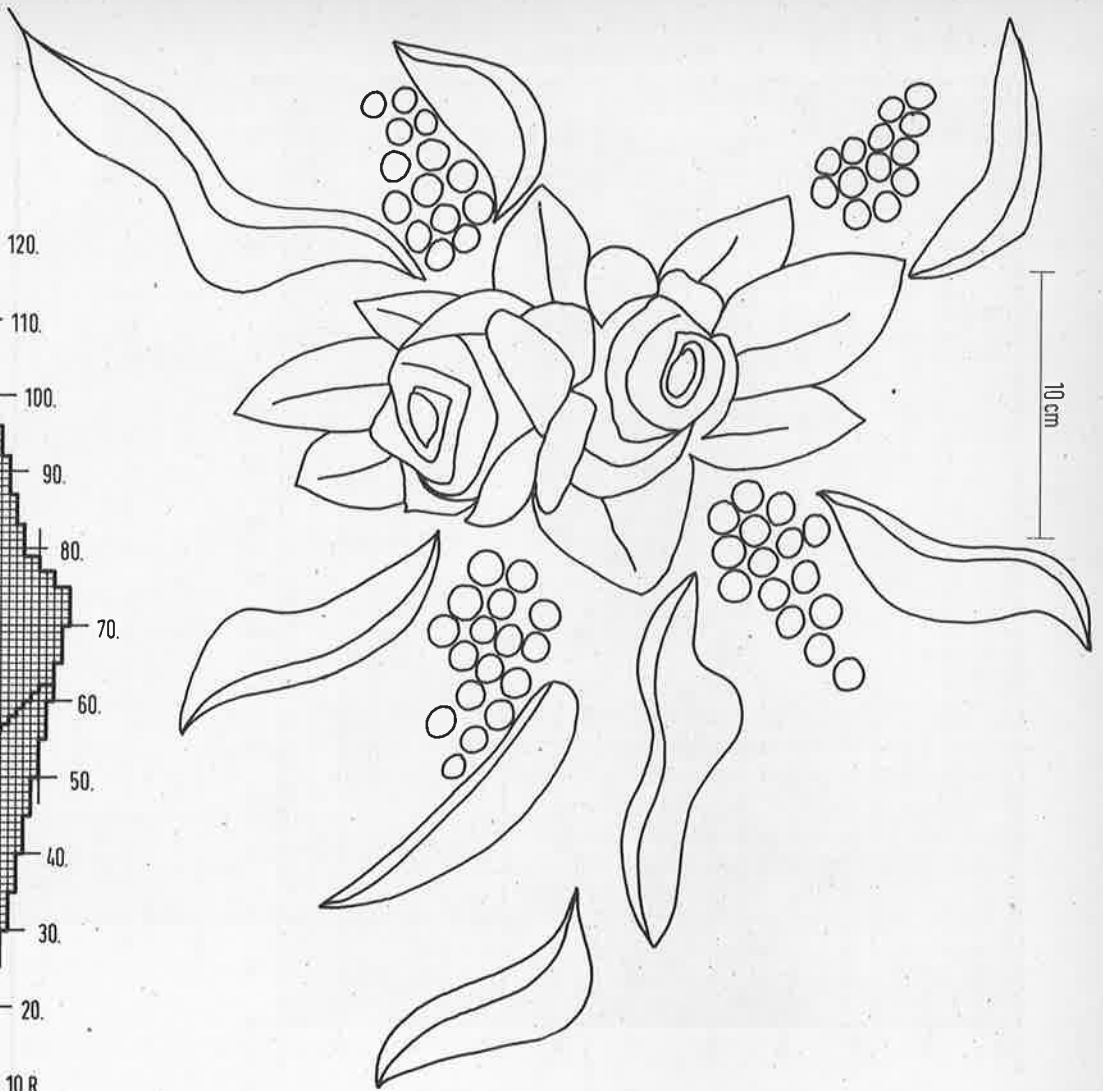
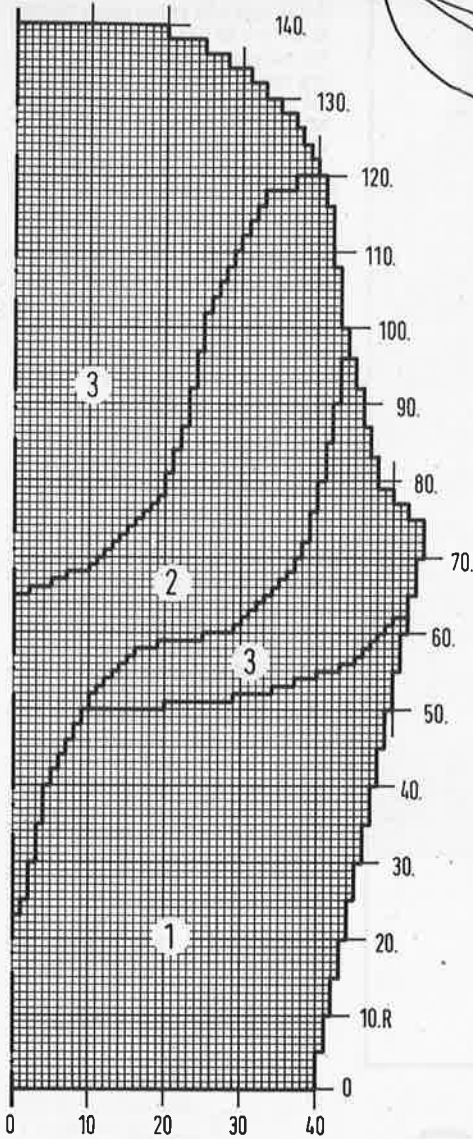
- 1 = Cotton apricot
- 2 = Cotton pink + metallic
- 3 = Angora
- 1 square = 1st and 1 row

Chart 1



When substituting yarn, please use yarn with similar meterage!

Chart 2



MODEL 9 GREEN SWEATER WITH LARGE BOW

SIZES: To fit bust 34/36" [38/40"]
Instructions for the larger size are in
brackets, one figure only applies to both
sizes.

MACHINES: Suitable for all standard
gauge machines with intarsia carriage
and ribber.

MATERIAL: Approx 750[800]g green
cotton yarn (80% cotton, 20% acrylic,
150m/50g) from HAMBURGER WOLL-
FABRIK. You will also need small
amounts of yellow silk, beige shiny yarn
and yellow Angora. Multi-transfer tool.
Should your trimming yarn be too thin,
use it double!

TENSION: 27 st and 35 R = 10cm over
intarsia at TD 9*. Ribs: 2 knit, 1 purl at TD
3/3. 1 knit, 1 purl at TD 3/3.

ARROWS on pattern denote direction of
knitting.

BACK: Cast on in green cotton, 198 st on
both beds and knit 70 R: 2 knit, 1 purl rib.
Transfer all st to MB and after knitting
several rows in waste yarn, release from
machine. Replace on MB, decreasing
evenly to 158[168] st. Set RC to 000 and
knit in st st to RC 170. With multitransfer
tool, dec. 3 st fully fashioned at both
sides on next and every foll. 6th row 7
times. 21 st decr. Continue in st st to RC

252 and shape the neckline. Push centre
34[38] st and all st on side opposite
to carriage into HP. Knit 1st side by push-
ing into HP at neckedge on all rows 3 st
twice and 2 st twice. cast off rem. 31[34]
st at RC 264. Repeat for other side of
neck, reversing shapings.

NECKBAND: Knitted over st in HP. Set
TD to 6 and starting with carriage at
right, knit 5 R st st. Set carriage to HOLD
and pull every 5th needle to HP. Knit 4
rows. Release HOLD and set TD to 9 or
10 and knit 1 R. Cast off with latchtool.

FRONT: Knit as for back, and start the
Intarsia when RC agrees with row num-
bers on chart. Neckshaping starts at RC
234. Push centre 30[34] st and all st at
side opposite to carriage into HP and
knit 1st side. At neckedge push into HP
on alt. rows, 4 st once, 3 st once 2 st
once and 1 st 3 times. Knit straight to RC
264 and cast off. Repeat for 2nd side,
reversing shapings. Knit the neckband
as on the back, but pick up additional 21
stitches from the side of the neckline.

RIGHT SLEEVE: The cuff is knitted after-
wards. Cast on with waste yarn 86 st and
knit several rows. Change to green cot-
ton and set RC 000. On the 5th and every
foll. 5th row, incr. 1 st at each end 22
times = 130 st. At RC 116, decr. as given
for back armhole 3 st 7 times. 88 st. Knit
straight to RC 186 and cast off.

LEFT SLEEVE: Knit as for right sleeve,
knitting in the small bow after RC 34.

CUFFS: With green cotton cast on 72 st
and knit 40 R in 1/1 rib. Transfer all st to
MB and hang st from waste yarn at lower
sleeve, putting 2 st on every 5th needle.
Knit 1 R and cast off.

MAKING-UP: Steam all pieces lightly,
omitting the ribs. Close all seams. Set in
the sleeves matching the decreases.
Pleat the top of the sleeve to fit.

Chart 1 (front)

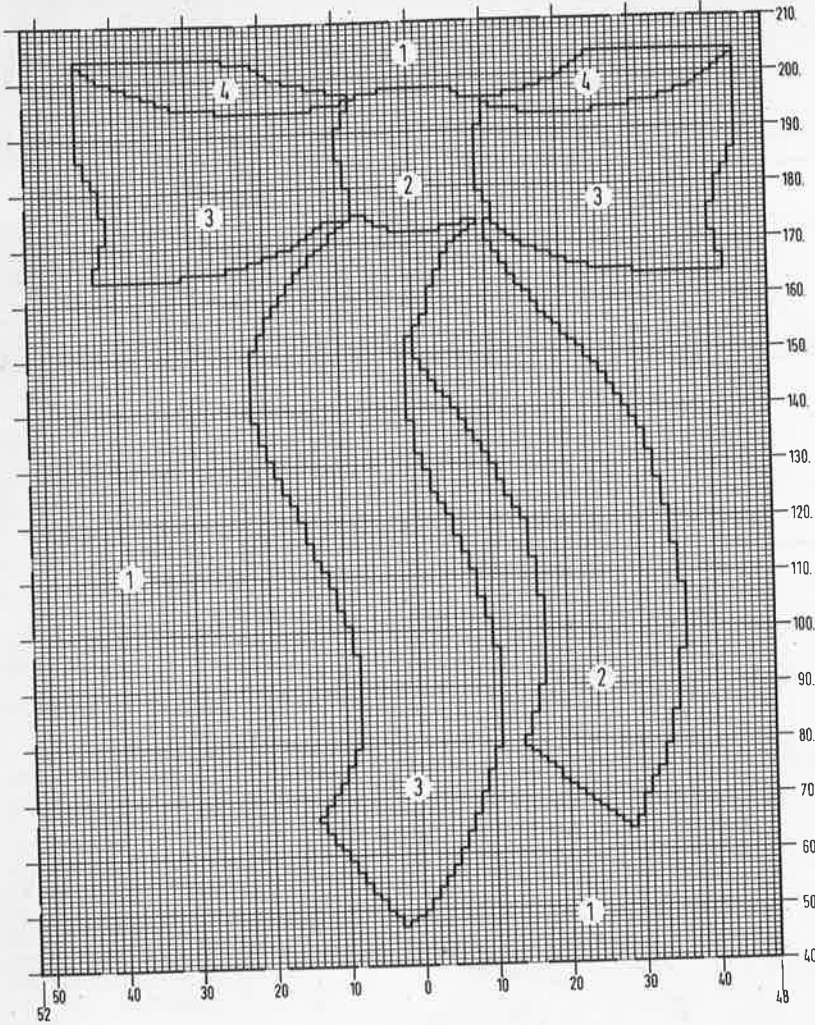
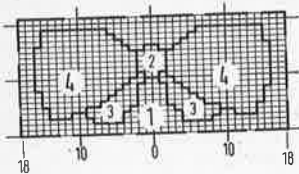
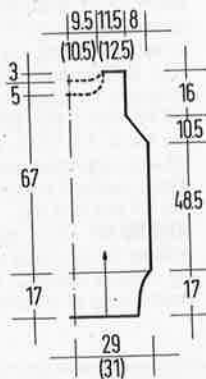


Chart 2 (left sleeve)

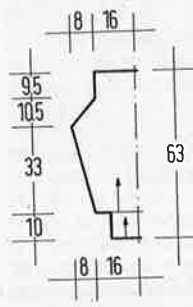


Explanations:

- 1 = green cotton
- 2 = yellow silk
- 3 = beige shiny yarn
- 4 = yellow Angora
- 1 square = 1 st and 1 row



1/2 front and back



1/2 sleeve

MODEL 10

YELLOW SWEATER WITH BOWS

SIZE: To fit bust 34/36" [38/40"]
Instructions for the larger size are in brackets, one figure only applies to both sizes.

MACHINES: Suitable for all standard gauge machines with ribber and intarsia carriage.

MATERIAL: Approx. 600[650]g yellow cotton (80% cotton, 20% Polyacryl, 150m/50g) from HAMBURGER WOLL-FABRIK. You will also need small amounts of golden yellow and beige shiny yarn, white Angora white cotton and gold Lurex. Multi-transfer tool. If the trimming yarn is too thin, use it double!

TENSION: 27 st and 35 rows = 10cm. TD approx 9". Ribs knitted as 2/2 at TD 3/3.

ATTENTION! Chart 1 is written for the smaller size. please watch for the additional 10 st of the larger size.

ARROWS on the patterns denote direction of knitting.

BACK: Cast on in yellow cotton 158[168] st and knit 40 R in rib. Transfer all st to MB and continue in st st. You could knit one bow on RC 60 as for the front. At RC 114 start armhole shaping. Decrease 3 st with multi-transfer tool fully fashioned at both sides on next and foll. 6th row 7 times. 21 st decr. at each edge. Continue in st st. to RC 198. Shape neck. Push centre 34[38] st and all st at opposite side to carriage into HP. At neckedge, push into HP on alt. rows 3 st twice and 2 st twice. Cast off rem 31[34] st at RC 210. Repeat for 2nd side, reversing shapings.

Return needles to WP and arrange for rib. Knit 20 rows over these 54[58] st and cast off.

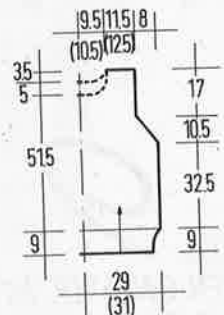
FRONT: Knit as for back, but using the chart to knit the bows. Knit to RC 60 in yellow cotton. Knit neckshaping as shown in chart from RC 180 using HP as before. Knit the neckband over the 54[58] st, picking up additional 18 st at each side from neckline.

LEFT SLEEVE: Cuffs are knitted separately. Cast on with waste yarn 102 st and knit several rows. Change to yellow cotton and cont. in st st. At the same time, incr. 1 st at each end on next and every foll. 6th row 17 times. 136 st. At RC 105, decr. st as given for the back to 94 st. At RC 175 cast off.

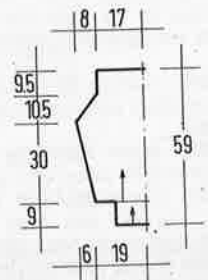
RIGHT SLEEVE: Knit as for left sleeve. At RC 32, follow chart 2 for intarsia.

CUFFS: With yellow cotton, cast on 72 st and knit 40 R in rib. Transfer all st to MB. Re-hang st from waste yarn at bottom of sleeves, distributing 7 st over 5 needles. Knit 1 R and cast off.

MAKING-UP: Lightly steam all pieces, avoiding the ribs. Close all seams. Set in sleeves, matching the decreases. Pleat the top to fit.



1/2 front and back



1/2 sleeve

Chart 1 (front)

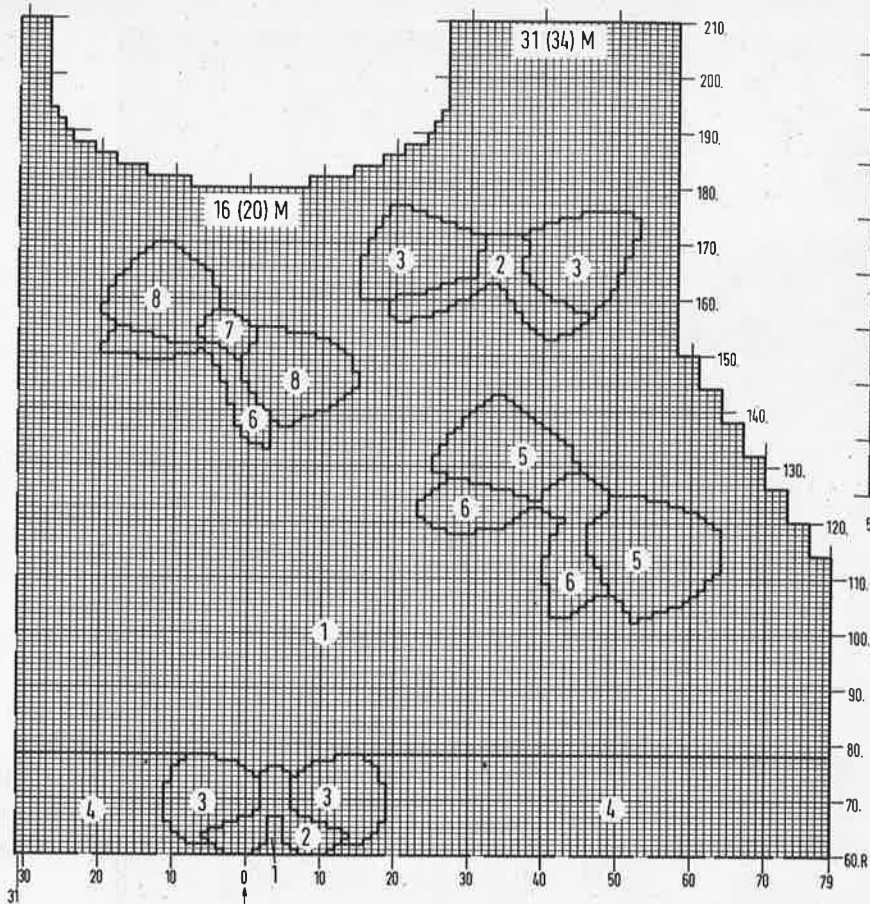
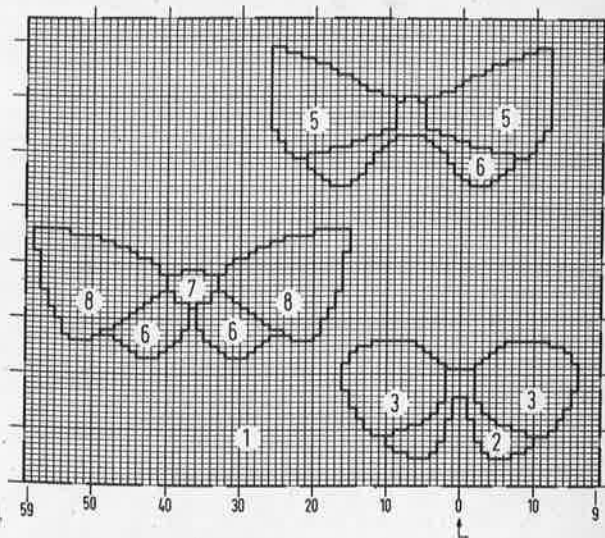


Chart 2 (right sleeve)



Explanations:

- 1 = background yellow cotton
- 2 = golden yellow shiny yarn
- 3 = white Angora
- 4 = pale yellow silk
- 5 = white cotton
- 6 = beige shiny yarn
- 7 = gold Lurex
- 8 = salmon silk
- 1 square = 1 st and 1 row

Tips for embroidering on knitted garments

Transfer the outlines and keypoints of the pattern to the garment with the help of sewingthreads.

1. For two matching pieces, lay them right sides together and use pins to keep the outer edges even.

2. Transfer the pattern from the chart on to transparent paper. Lay on to the garment and if necessary cut the paper so it lies flat.

3. With a double thread stitch through the lines with loose stitches, leaving 5–8 cm threads.

4. Remove pins and pull the pieces apart. Cut the threads.

5. Use a single thread to outline the design.

6. Embroider the larger motifs first and then the smaller ones.

When substituting yarn, please use yarn with similar meterage!

11

MODEL WHITE SWEATER WITH POPPIES

SIZE: To fit bust 34"[36"]. The instructions for the larger size are in brackets; one figure only applies to both sizes.

MACHINES: Suitable for all standard gauge machines with ribber and intarsia carriage.

MATERIAL: Approx. 700[750]g white cotton (80% cotton, 20% Polyacryl, 150m/50g) from HAMBURGER WOLL-FABRIK. You will also need small amounts of cotton in petrol, lt. green, dk. red, dk. pink and yellow. Silk in copper and dk. pink. Angora in salmon and dk. pink. Multi-transfer tool. If you are using finer yarns for the intarsia, double up to achieve the thickness of the background yarn.

TENSION: 27 st and 33 R = 10cm. TD approx 9". Ribs: 2 knit, 1 purl rib. TD approx 3/3. 1 knit, 1 purl rib. TD approx 3/3.

INTARSIA: Knitted at TD 9" following the chart. Use a separate ball of yarn for every area and cross the yarn when changing colour.

ARROWS on pattern denote direction of knitting.

BACK: Cast on with white cotton 190[194] st and knit 54 R in 2 knit, 1 purl rib. Transfer all st to MB and knit several rows with waste yarn. Release from machine and re-hang, decr evenly to 152[162] st. Set RC to 000 and continue in st st. At RC 170 decr for armhole as follows: set multi-transfer tool with 6 prongs out and 1 back. Use this setting to decr 3 st at each side fully-fashioned. Return empty needles to NWP. Decr in this way 7 times at each edge = 21 st decr. Continue straight to RC 242 and shape the neck by pushing the centre 34 st and all st opposite carriage to HP. Knit 1st side by pushing to HP on alt. rows at neckedge 3 [4] st 3 times. Cast off rem. 29 [31] st at RC 250. Return all but centre 34 st to WP and knit 2nd sid, reversing the shapings.

NECKBAND: Set TD to 6. COR. Knit 5 R. Set machine to HOLD. Push every 5th N into HP and knit 4 R. Release HOLD and knit 1 R at TD 9-10. Cast off with latch-tool.

FRONT: Knit as for back, reading the design from the chart, and starting neckline at RC 216. Push into HP 30 [32] st in centre and all st opposite carriage. Knit 1st side by pushing into HP on alt. rows at neckedge 4 st once, 3 st once, 2 st once (twice) and 1 st twice. Knit straight to RC 250 and cast off. Return all but centre 30[32] st to WP and knit as before, reversing the shapings.

NECKBAND: Return st from HP to WP, and pick up at each side 20 extra st from side of neck. Knit as on back.

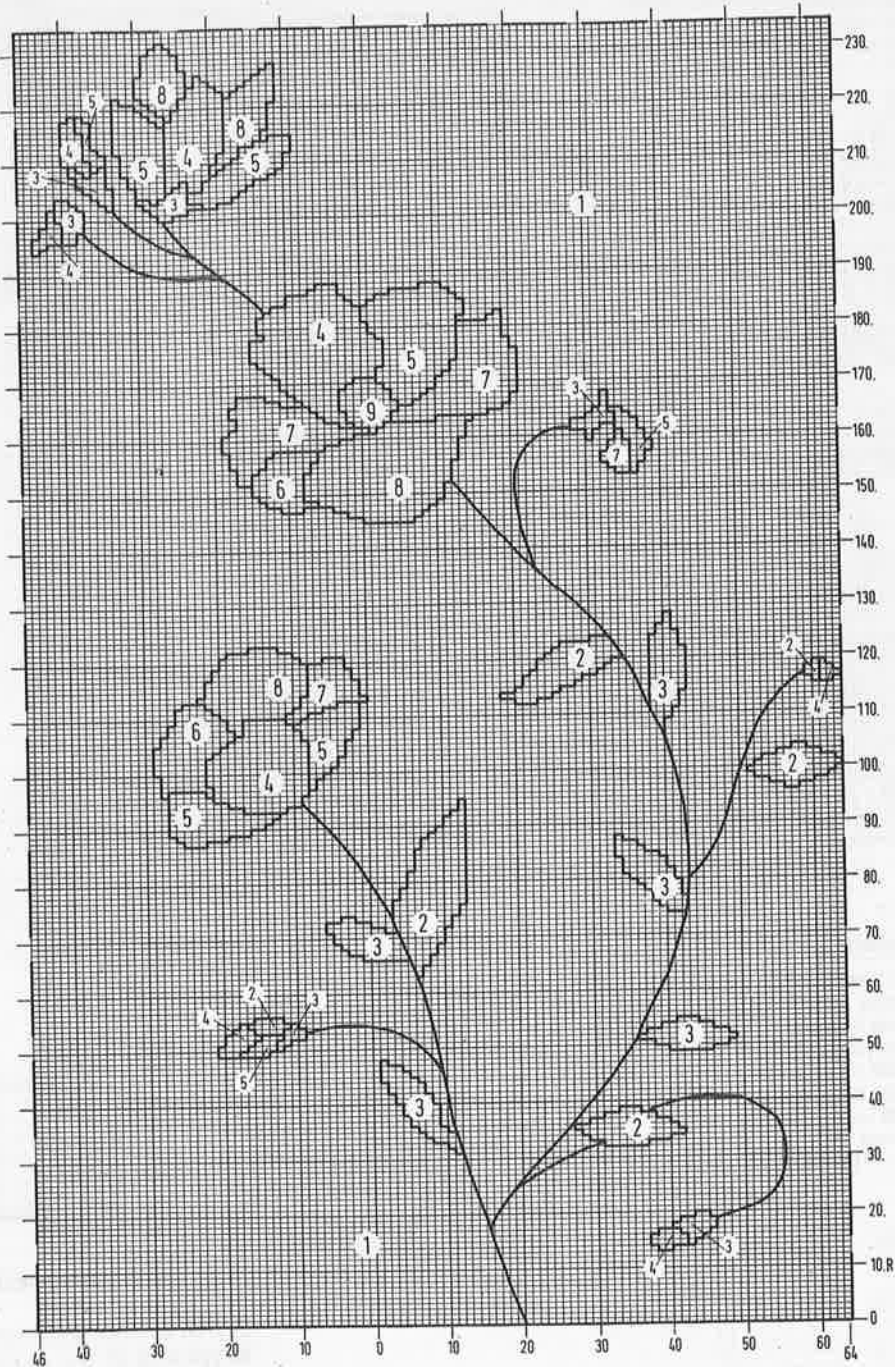
LEFT SLEEVE: Cuff is knitted separately. With waste yarn cast on 110 st and knit several rows. Change to mainyarn and knit to RC 90. Shape armhole as on back = 68 st. Knit straight to RC 165 and cast off.

RIGHT SLEEVE: Knit as for left sleeve, but include the left flower from chart with 4 leaves. Watch the st numbers at base of chart.

CUFFS: Cast on in white cotton 72 st and knit 38 R 1/1 rib. transfer all st to MB and re-hang st from lower sleeve, hanging 2 st on every 2nd needle. Knit 1 R and cast off.

MAKING-UP: Embroider front and right sleeve. Lightly steam all pieces. Close all seams. Set in sleeves, matching the decr. Pleat the top to fit.

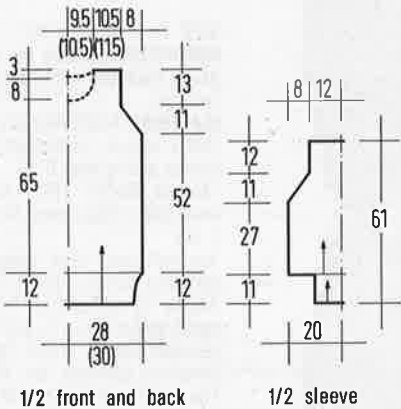
Chart



Explanations:

- 1 = white cotton
- 2 = petrol cotton
- 3 = pale green cotton
- 4 = dk. red cotton
- 5 = copper silk
- 6 = dk. pink cotton
- 7 = dk. pink silk
- 8 = salmon Angora
- 9 = yellow cotton
- = stemstitch in petrol cotton

Embroider the outline of the flowers with Angora in dk. pink 1 square = 1 st and 1 row



1/2 front and back

1/2 sleeve

12

MODEL SALMON SWEATER WITH LEAVES

SIZE: To fit bust 32/34" [36/38"] The instructions for the larger size are in brackets; one figure only applies to both sizes.

MACHINES: Suitable for chunky machines with ribber and intarsia carriage. We used a Brother KH 260.

MATERIAL: AUSTERMANN "Piano" (100% mercerised cotton, 85m/50g) approx 500[550]g salmon C 19 and 50g white C 1.

"Goldregen" (58% viscose, 37% Polyacryl, 5% met. Polyester, 75m/50g) approx 100g salmon C 41.

"Angora Wolle" (70% Angora, 30% wool, 100m/20g) approx 40g white C 402.

"Sputnik Lamé" (100% polyester, 70m/20g) 20g white C 1. You will also need satin remnants in salmon and white, stuffing for the leaves, silver sequin strip and beads. Crochet hook N. 4.5. The yarn is available as a kit from WOLLSTUDIO Jutta Hinrichs, Wormser Str. 5, 6550 Bad Kreuznach, Tel.: (0671)42625.

TENSION: 20 st and 27 R = 10cm. TD at approx 5". 2 knit, 2 purl ribs at TD 0.

INTARSIA worked from chart, using separate balls of yarn for each colour. Read all incr. and decr. from the chart. Increasing several st is best done at side of carriage using E-wrap. Knit 2nd sleeve in reverse without colour areas.

ARROWS denote direction of knitting.

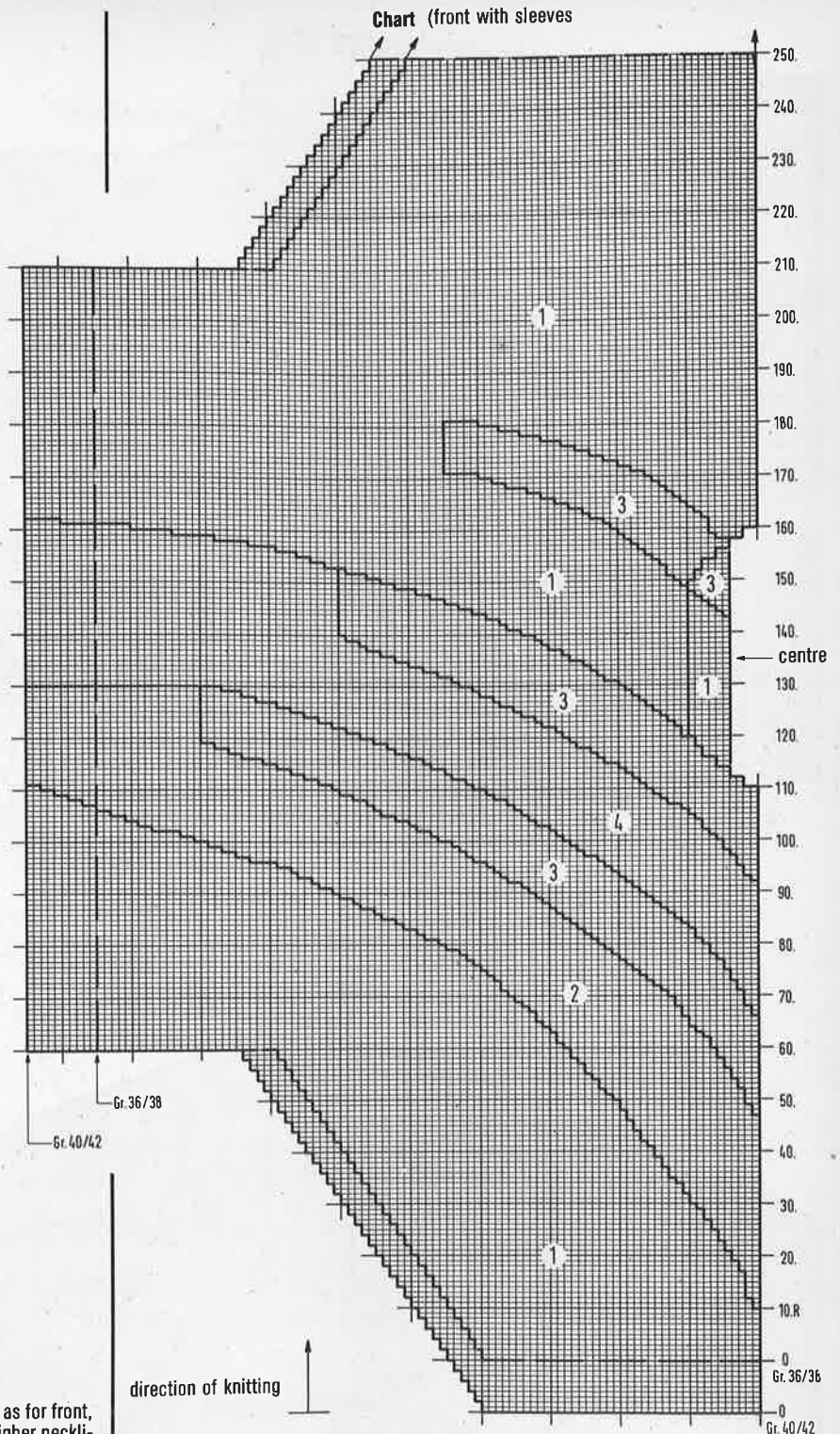
FRONT WITH SLEEVES: Cast on with waste yarn 40 st and knit several rows. Set RC to 000 and continue in pattern. For size 36/38" knit to RC 10 and reset RC to 000 for additional length. Follow instructions for deeper neckline. At end of 2nd sleeve, remove work on waste yarn.

BACK WITH SLEEVES: Knit as for front, reversing work and using higher neckline.

CUFFS: Pick up st from waste yarn on sleeves and re-hang the st on 48 N. Knit 1 R. Transfer st for 2/2 rib and insert comb. Knit 30 R and cast off.

WELTS: With wrong side facing, pick up 82 st from lower edge. Work as for cuffs and knit 42 R before casting off.

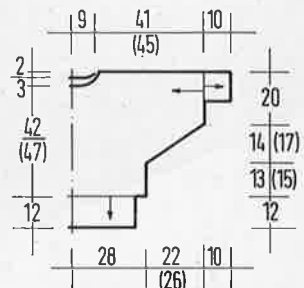
APPLIQUÉ: From satin fabric cut leaves approx 10 x 6cm and sew on and stuff as in picture. Surround with sequin ribbon. Embroider the edges of the intarsia areas with Sputnik. Sew on beads. If necessary crotchet around neckline with 2 R double crotchet. Close side and sleeve seams.



Explanations:

- 1 = Piano salmon
- 2 = Goldregen salmon
- 3 = Angora white
- 4 = Piano white

1 square = 1 st and 1 row



1/2 front and back with 1/2 sleeve

MODEL SWEATER WITH BIRD MOTIF

SIZE: To fit bust 34-38".

MACHINES: Suitable for all standard gauge machines with ribber and intarsia carriage.

MATERIAL: AUSTERMANN "Mirabelle" (100% cotton, mercerised, 142m/50g) approx 600 g mint C 33.

"Angora Wolle" (70% Angora, 30% wool, 100m/20g) approx 40g rosewood C 471.

You will also need sequin fabric in matching colour, strip sequins, beige Angora for embroidery, fabric in rosewood, gold ribbon. The Bird Motif can be obtained from W. Krath, Talstr. 1, 5489 Harscheid (Schuld), Tel.: (02695) 1098. The yarn is available as a kit from WOLL-STUDIO Jutta Hinrichs, Wormser Str. 5, 6550 Bad Kreuznach, Tel.: (0671) 42625.

TENSION: 29 st and 35 R = 10cm. TD approx 9.

ARROWS in pattern denote direction of knitting.

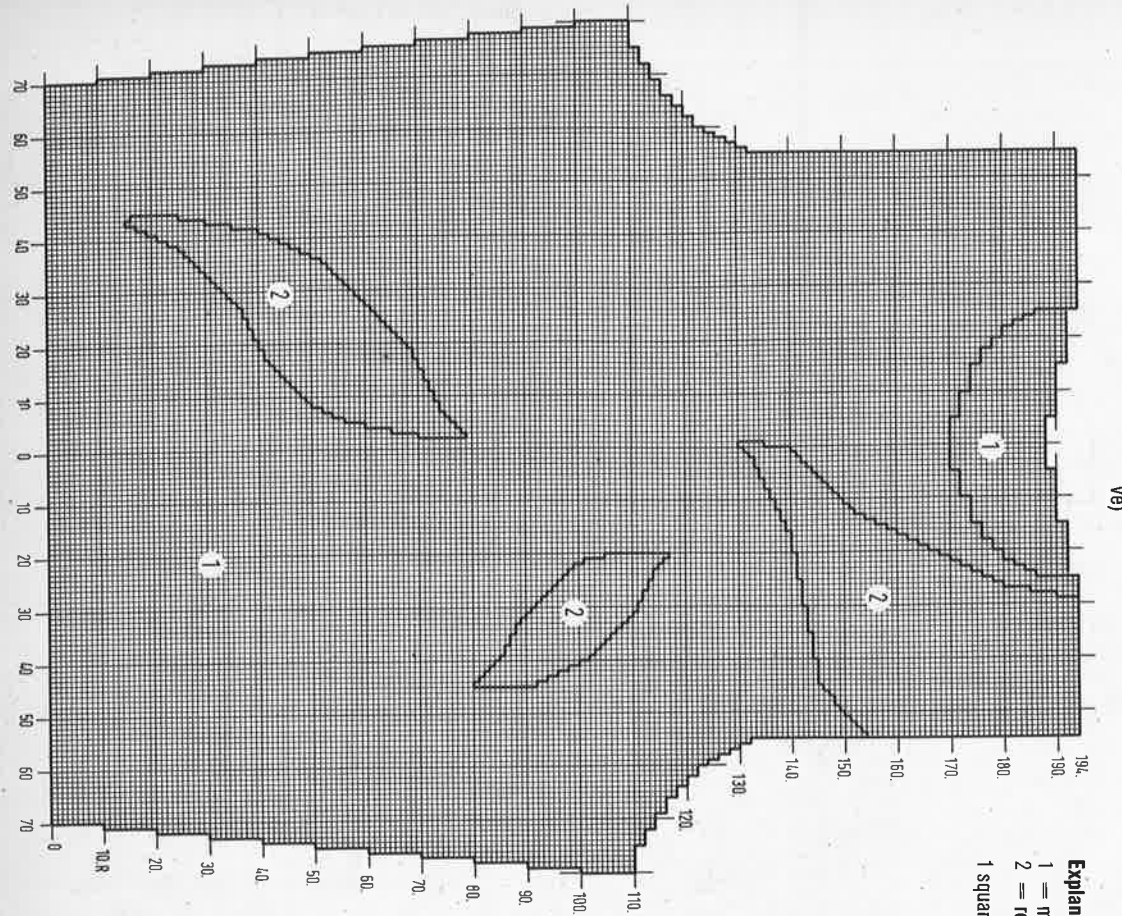
FRONT: With Mirabelle cast on 140 st and knit 40 R in 1/1 rib at TD 3. Transfer all st to MB and follow chart 1. read all incr. and decr. from chart. Knit neckline with HP shaping, but cast off shoulder stitches. Knit neckband over N in HP, picking up additional 12 st at each side. Arrange needles for rib and knit 30 R with Mirabelle. Cast off loosely.

BACK: Knit as the front but include only the upper intarsia area and knit the higher neckline. Knit neckband as on front, picking up 2 st at each side.

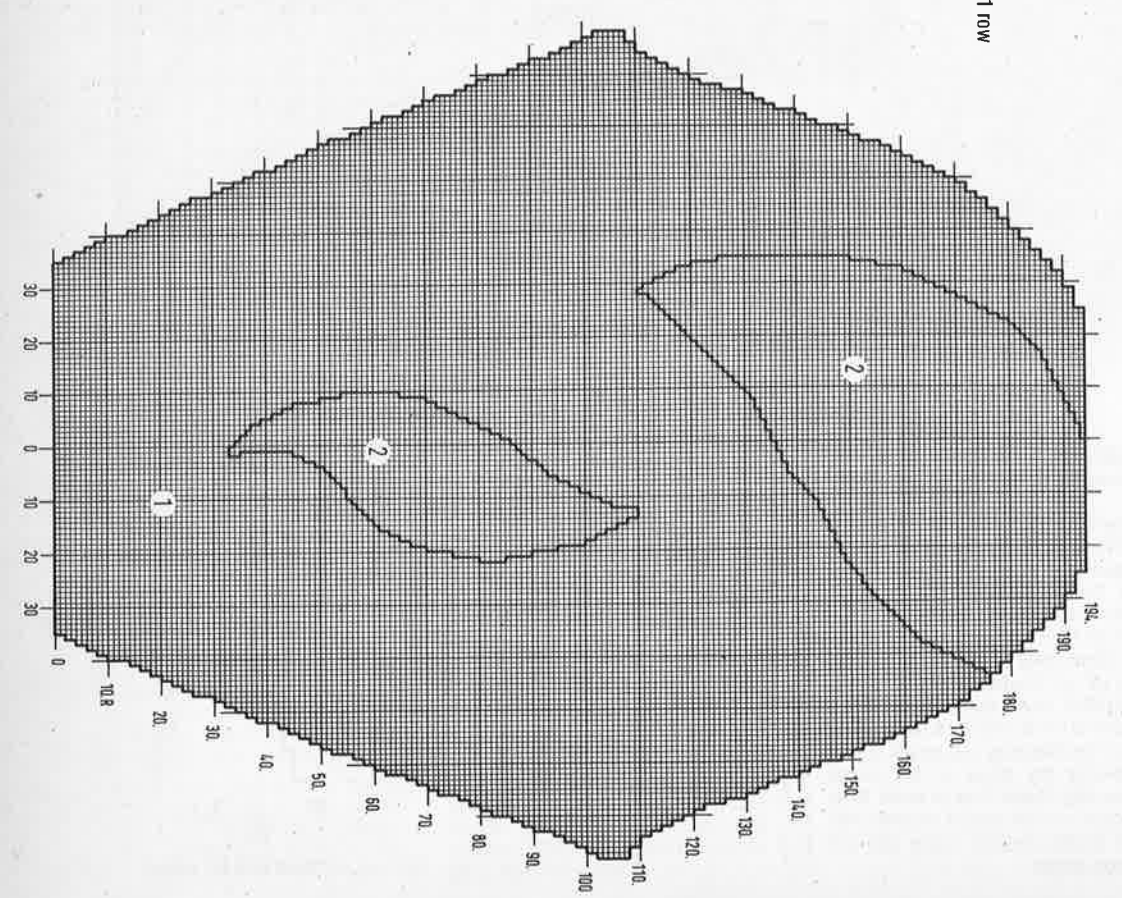
RIGHT SLEEVE: Cast on in Mirabelle 70 st and knit 50 R rib at TD 3/3. Transfer all st to MB and knit, following chart 2. Knit all incr. and decr. as shown on chart.

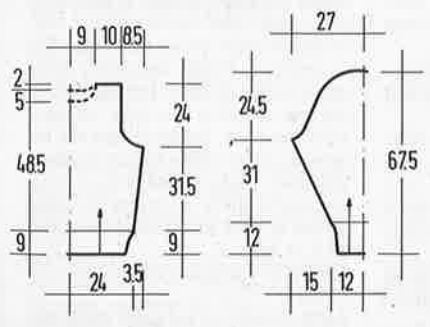
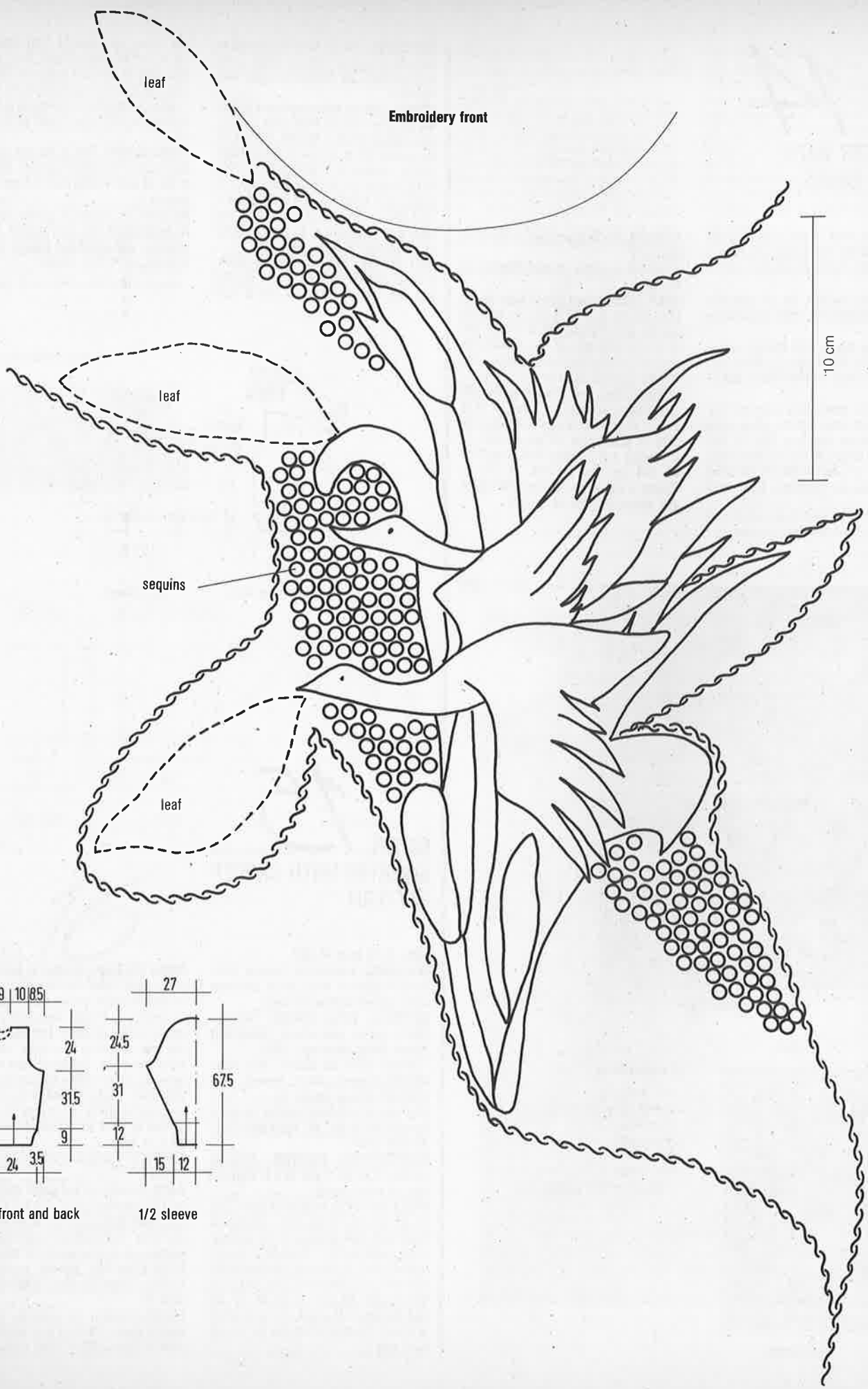
LEFT SLEEVE: Knit as for right sleeve without intarsia.

MAKING-UP: Close shoulder and side seams. Turn neckband to inside and slipstitch in place. Sew motif on front. Cut leaves from fabric approx 11 x 6cm and stitch to front, back and right sleeve. Sew on sequin fabric and sequins. Set in sleeves and close side and sleeve seams.



Explanations:
 1 = mint
 2 = rosewood
 1 square = 1 st and 1 row





1/2 front and back

1/2 sleeve

MODEL 14

SWEATER WITH TEDDY-BEARS

SIZE: To fit bust 34/36" [38/40"] the instructions for the larger size are in brackets; one figure only applies to both sizes.

MACHINES: Suitable for all standard gauge machines with ribber and intarsia carriage.

MATERIAL: Approx 500 [550]g cotton (80% cotton, 20% Polyacryl, 150m/50g) in salmon from HAMBURGER WOLL-FABRIK.

You will also need small amounts in lt. and medium grey cotton, olive shiny yarn, green for the bow and red and black. One large eye for the large teddy and a pair of small eyes for the small teddy. These are obtainable from craft-shops.

TENSION: 27-28 st and 35 R = 10cm. TD approx 9".

ARROWS on patten denote direction of knitting.

BACK: With salmon cotton cast on 144 [154] st and knit 40 R 2/2 rib with TD approx 3/3. Transfer all st to MB and cont. in st st to RC 110. Shape armholes by decr 3 st fully-fashioned at both sides of next and foll. 6th row 6 [7] times = 18[21] st decr. Knit straight to RC 186 and shape neckline: push centre 34 st and all st opposit carriage to HP. Knit 1st side by pushing to HP on alt rows at neckedge 3 st 3 times. Knit straight to RC 194 and cast off rem. 28 [30] st. Return to WP all except the centre 34 st and shape 2nd side in reverse.

NECKBAND: Return needles from HP to WP and arrage for 2/2 rib. Insert comb and knit 12 R rib. Cast off loosely with latchtool.

FRONT: Cast on as for back and knit to RC 20. Start intarsia from chart 1. Neckline shaping starts at RC 162. Push to HP the centre 30 st and all st on opposite side to carriage. Knit 1st side by pushing to HP at neck on alt. rows 3 st once, 2 st 3 times and 1 st twice. Knit to RC 194 and cast off rem. 28 [30] st. Repeat for 2nd side. Knit neckband as on back, picking up additional 20 st on each side.

LEFT SLEEVE: Knitted from top down. E-wrap cast on 86 [78] st. Set RC 000 and knit, incr. 1 st at each end of next

and every foll. row 24 [28] times = 134 st. Set RC 000 and knit, decr. 1 st at each side on next and every foll. 5th row with the 3-prong transfer tool 25 times = 84 st. At RC 132 [134] reduce st to 72. Arrange for 2/2 rib and knit 44 R. Cast off.

RIGHT SLEEVE: Knit as for left sleeve, placing the little bear in centre, starting at RC 42 and reading chart 2 from top to bottom.

MAKING-UP: Steam all pieces carefully, avoiding the ribs. Sew on eyes. Close shoulder and neckband seams. Set in sleeves, close rem. seams.

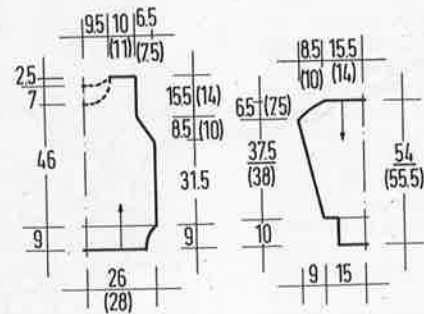


Chart 1

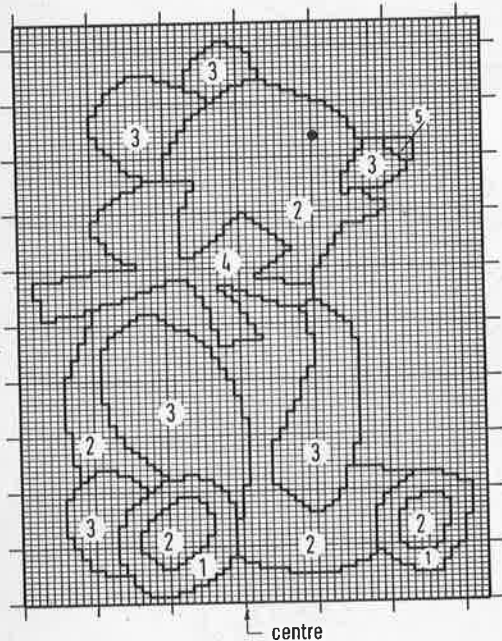
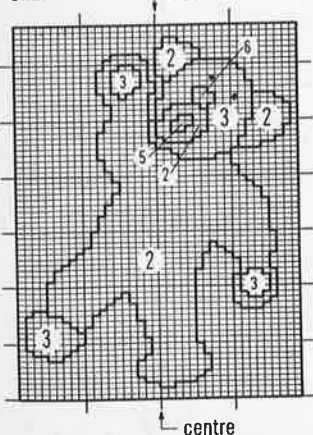


Chart 2



Explanations:

- 1 = midgrey
- 2 = lt. grey
- 3 = olive
- 4 = green
- 5 = red
- 6 = black
- 1 square = 1 st and 1 row

MODEL 15

SWEATER WITH CABLE PATTERN

SIZE: To fit bust 34-38".

MACHINES: Suitable for Brother electronic machines with garter carriage. cable pattern knitted by hand.

MATERIAL: WOLL SERVICE "Firenze" (100% cotton, mercerised, 125m/50g) approx 700g messing C 5057. "Fedora" (70% Kid Mohair, 30% acryl, 46m/20g) approx 40g lt. brown. A longer circular needle No. 4.

Available as a kit from Christel Haegele, Burg-Windeck-Str. 4b, 7580 Bühl, Tel.: (07223) 21474.

GARTERSTITCH PATTERN: Program machine over 34 st and 30 R or copy design on mylar sheet.

CABLE PATTERN: Knitted by hand: Cast on 60 st with waste yarn. Change to main yarn and arrange st as follows: edge stitch, 3 purl, * 8 st knit, 3 st purl. repeat from * to the end, finishing with 1 endstitch. On following rows knit st as they appear. On rows 11, 21, 31, 37, 43 and 49 cable 4 st over 4 st in each group of 8 knit stitches. After row 49, repeat from row 2.

CABLE PATTERN: Knitted on both beds of machine: Cable only over 6 st on MB. To make it easier, on row before the cable, set RB to H-pitch and push 1 extra needle in each group of 3 into work. Knit the row and drop the extra stitches. Twist the cable, the spare yarn will be taken up. Return RB to original position.

TENSION: 26-27 st and 31 R = 10cm over garter stitch. TD approx 10. Cable pattern by hand not stretched: 44 st and 30 R = 10cm.

ARROWS in pattern denote direction of knitting.

BACK: Consists of one garter stitch piece. Cast on with waste yarn 143 st, placing them from O 88 to G 55. As the machine automatically centres the pattern, it is necessary to move the knitting for the correct positioning. Continue in garter stitch to RC 150 and cast off.

FRONT: Consists of 3 pieces. For the centre piece, cast on with waste yarn from O 53 to G 20 = 73 st. Continue in

garter stitch to **RC 132**. Cast off for neckshaping the centre 31 st and knit each side separately. Cast off at neckline on alt. rows 3 st once, 2 st twice and 1 st 4 times. Cast off rem. 10 st at **RC 150**. Reverse the shapings for the 2nd side.

Knit each **side panel** over 60 st by hand for 48cm. Cat off. Sew all pieces together.

SLEEVES: As for side panels, cast on 104 st with waste yarn and continue in cable pattern by hand. Increase 1 st at each side after row 16 of cable pattern, alternatingly on every 2nd and 4th row 38 times = 180 st. At row 134 = 45cm length cast off.

ATTENTION! The sleeve depends on not being stretched until stitched into position, when it can be stretched by 10-12cm.

MAKING-UP: Knit all ribs with garter carriage. Program pattern 534 and knit at TD 8. Knit cuffs over 52 st and 38 rows. Pick up st from bottom of sleeve and decr evenly across the row. Knit 1 R and cast off. Knit welts over 110 st and 50 R. Finish as above. Close shoulder seams. Set in sleeves, stretching them. Close rem. seams. For the neck trim, knit 2 strips with Fedora over 14 st and 170 R at TD 10. Twist the strips and stitch into neckline.

take off the stitches with waste yarn. Knit the 2nd piece in the same way, using chart 2.

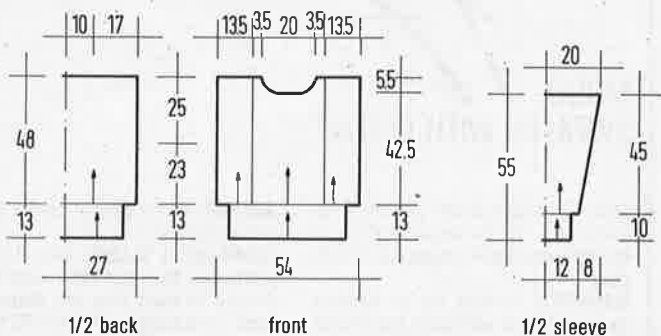
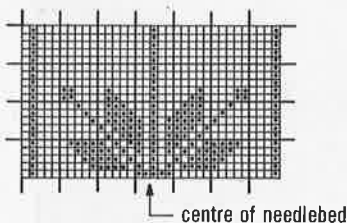
SLEEVES: Knitted sideways. With lt. yellow Hawaii, cast on 3 st. Continue in st st, incr at right edge on alt rows 3 st 15 times and 4 st 7 [8] times. **76[80]** st. Continue straight to **RC 80**. Knit a square in intarsia in Mango over needles 16 to 36 for 32 rows. Meanwhile at **RC 96** you have reached the centre of the sleeve. From here reverse the pattern and decr when appropriate. Knit 2nd sleeve the same.

MAKING-UP: Sew pieces together from the right side with mattress stitch. Stitch pleats according to chart. Knit welts by picking up st from waste yarn, reducing the number to 78[82] st. Arrange st for 2/2 rib and knit with Hawaii at lowest possible setting for 20 rows. cast off. Knit cuffs over 38[42] st each for 20 rows. Sew on sleeves with mattress stitch. Weave satin ribbon into a square and stitch into place. See picture.

For crotchet appliqué cast on 14 chains with Tropical and follow the diagram. Increase according to the area to be covered and allow for the neckline. Weave satin ribbon through the open work. For the epaulettes crotchet two oblongs approx 4 x 9cm in double crotchet. Make 1 row of crabstitch in copper all around and make a bobble towards one edge. Crotchet 1 row crabstitch around neckline. Close all seams and sew on rhinestones.

cont next page

Garterstitch pattern



Measurements are taken before stretching

MODEL 16

YELLOW SWEATER WITH CROCHET APPLIQUÉ

SIZE: To fit bust 32/34" [36/38"] The instructions for the larger size are in brackets; one figure only applies to both sizes.

MACHINES: Suitable for chunky machines with ribber and intarsia carriage. We used a Brother KH 260.

MATERIAL: AUSTERMANN "Hawaii" (100% cotton, mercerised, 100m/50g) **600g [650g]** in lt. yellow and **50 g** in sunshine yellow.

"Tropical" (100% Viscose, 100m/50g) **100g** in copper. "Mango" (100% mercerised cotton, 100m/50g) **50g** each in yellow and copper.

You will also need 4m each of satin ribbon in gold and brown. 4 rhinestones and a crotchet hook No 4 1/2-5.

Available as a kit from WOLLSTUDIO Jutta Hinrichs, Wormser Str. 5, 6550 Bad Kreuznach, Tel.: (0671)42625.

TENSION: 20-21 st and 31 R = 10cm. TD approx 1.

ARROWS in patterns denote direction of knitting.

FRONT: Knitted in two pieces. The seam in the centre front is mostly covered by the appliqué. Cast on on MB with waste yarn 70 [74] st and knit several rows. Change to main yarn and set RC to 000. Follow the diagram on chart 1 and read the incr. and decr. from the chart. At **RC 170**, you reach the shoulder line. Continue knitting for the back, reversing the pattern. Increase the st for the back neck by E-wrapping. After the last row,

Explanations:

- 1 = Hawaii lt. yellow
- 2 = Mango golden yellow
- 3 = Mango copper
- 4 = Hawaii sun yellow
- B = weave ribbon and sew on
- ... = edge of crotchet part

Chart 1 (1/2 front with start of back)

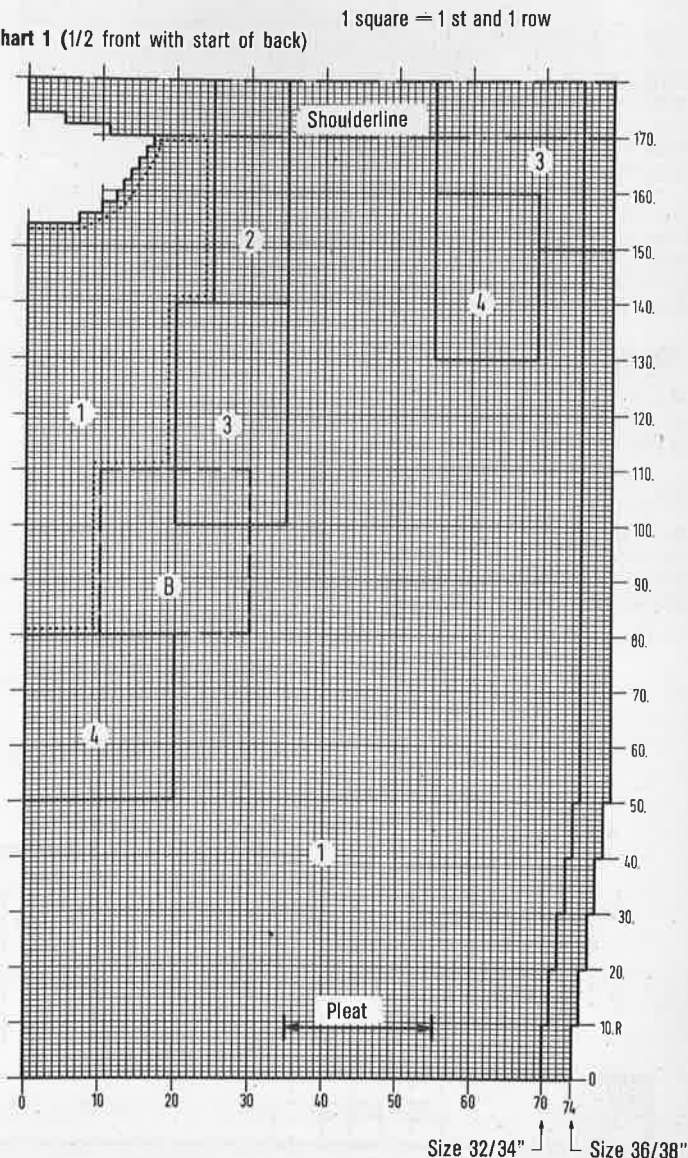
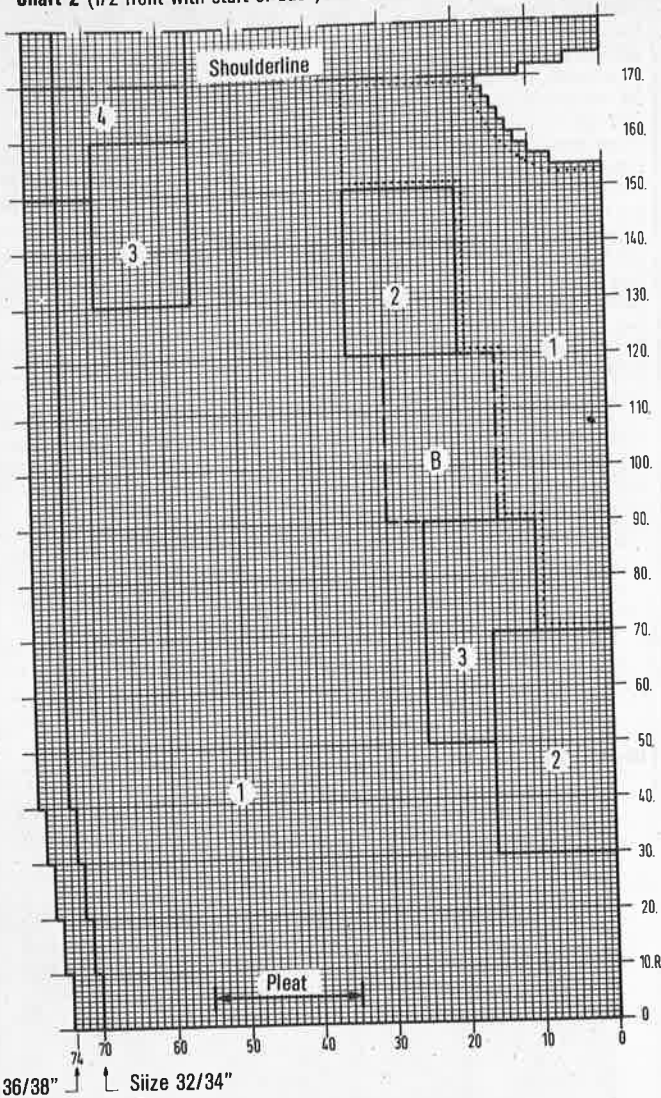
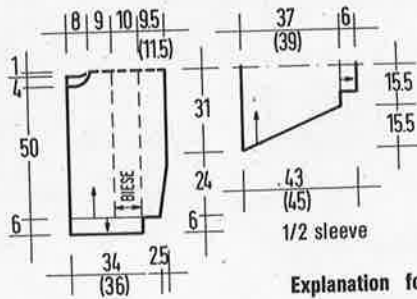


Chart 2 (1/2 front with start of back)



Size 36/38" ↑ Size 32/34"

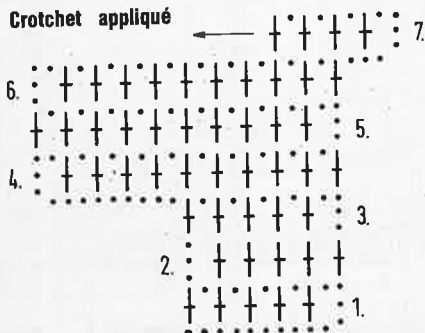


1/2 back and front

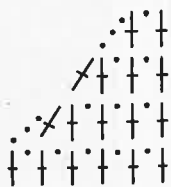
Explanation for crotchet:

- ◻ = 1 chain
- † = 1 double crotchet

Crotchet appliqué



Crotchet neckline



ATTENTION!

Please read the whole pattern before starting to knit!

17

MODEL SWEATER WITH GUITAR

SIZE: To fit bust 32/34" [36/38"]. The instructions for the larger size are in brackets; one figure only applies to both sizes.

MACHINES: Suitable for all standard gauge machines with ribber and intarsia carriage.

MATERIAL: AUSTERMANN "Musical" (100% egyptian mercerised cotton, 125m/50g) approx 600[650]g in dk. grey, 100g in lt. green and 50g in yellow. Lurex yarn "Sucette" (100% Polyester, 135m/20g) 20g in gold. Crotchet hook No. 3.5.

TENSION: 26-27 st and 34 R = 10cm. TD approx 10.

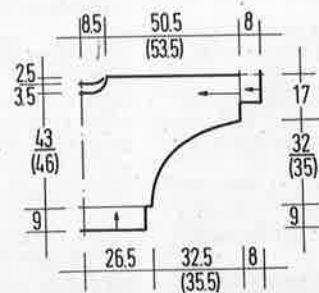
INTARSIA: Knitted from chart, using separate balls of yarn for each area. Cross threads when changing colours. Read all incr and decr from chart. The strings of the guitar are embroidered after knitting.

ARROWS on the pattern denote direction of knitting.

FRONT WITH SLEEVE: Cast on with waste yarn 46 st and knit several rows. Change to main yarn and follow the chart. For the larger size knit to RC 10 and return to 000 to allow for the extra length. Use the lower neckline. Remove from the machine onto waste yarn.

BACK: Knit as above in reserve in dk. grey only, using the shallower neckline.

MAKING-UP: Close upper shoulder seams. Crotchet 1 row of double crotchet and 1 row crabstitch around the neckline in dk. grey. Knit the ribs for welts and cuffs in dk. grey. For the welts use 150 st and knit 46 R at TD 4 in 1/1 rib, for the cuffs use 74 st and knit 40 R in 1/1 rib at TD 4. Close rem. seams.



1/2 front and back with 1/2 sleeve

MODEL SWEATER WITH SAXOPHONE

SIZE: To fit bust 34/36" [38/40"] The instructions for the larger size are in brackets; one figure only applies to both sizes.

MACHINES: Suitable for all standard gauge machines with ribber and intarsia carriage.

MATERIAL: AUSTERMANN "Nizza" (100% cotton, 117m/50g) approx 650(700)g dk. blue C 4, 50g each in pink, lt. green and lt. blue "Sucette" (100% Polyester, 135m/20g) approx 20g gold. Crotchet hook No. 3.5-4.

Available as a kit from WOLLSTUDIO Jutta Hinrichs, Wormser Str. 5, 6550 Bad Kreuznach, Tel.: (0671) 42625

TENSION: 26 st and 32 R = 10cm. TD approx 10**

INTARSIA: Knitted according to the chart, using separate balls of yarn for each area. Cross the threads when changing colours. Smaller areas can be swiss-darned.

ARROWS on the pattern denote direction of knitting.

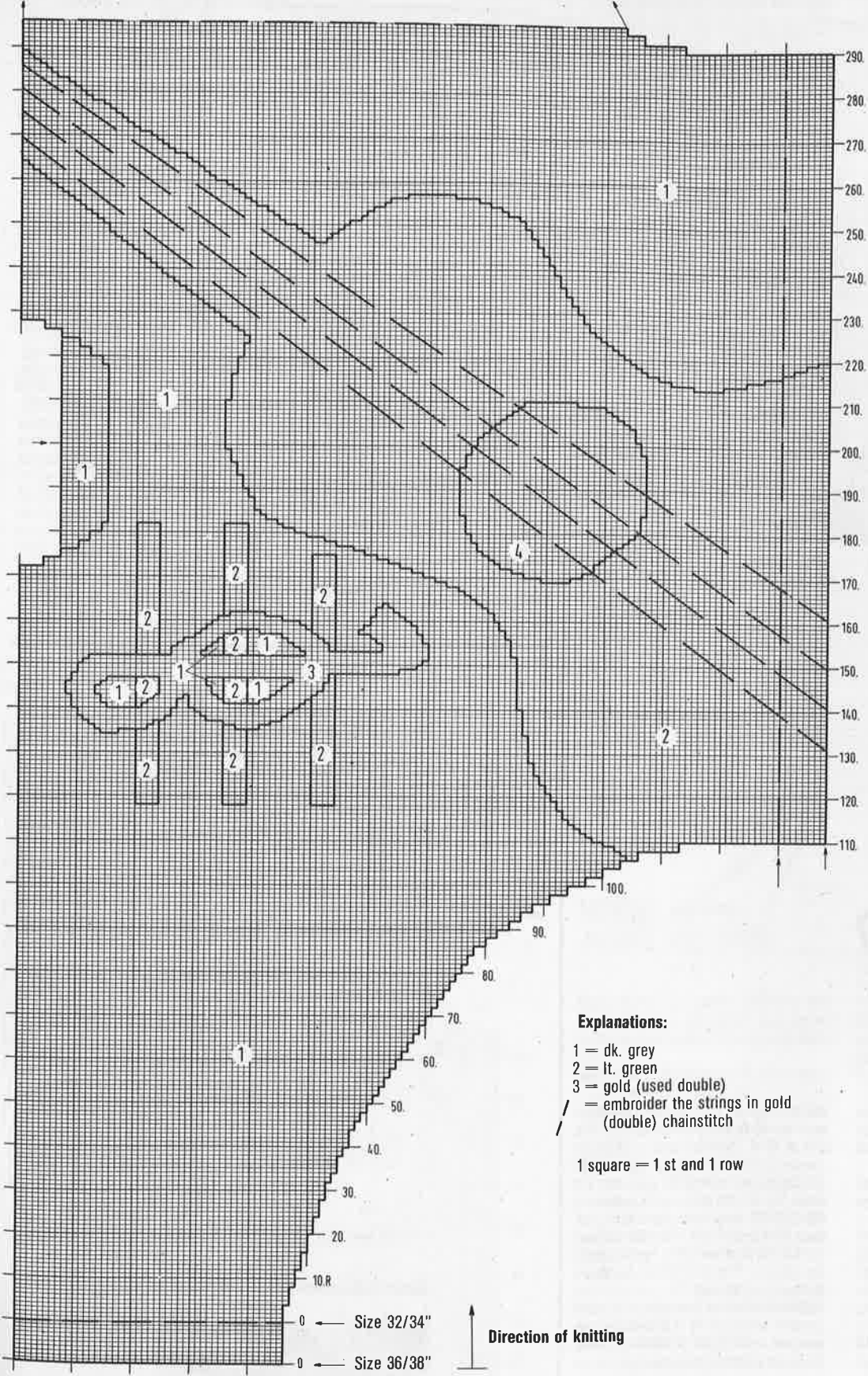
BACK: In dk. blue cast on 140[150] st and knit 40 R 2/2 rib at TD 6 on both beds. Transfer all st to MB and cont. in st st. At RC 86[78] mark both edges with waste yarn for armholes. Knit straight to RC 170 and cast off.

FRONT: Knit as for back to RC 50. Now follow the chart for smaller size, add 5 st at each side for large size. Knit neck shaping as shown on chart. After the last, row cast off the rem. 40 [45] st for the shoulder.

SLEEVES: Cast on in dk. blue 70 st and knit 40 R in 2/2 rib at TD 6 on both beds. Transfer all st to MB. Set RC to 000. Incr 1 st at each side on next and every foll. 4th row 30[32] times = 140[150] st. Cast off at RC 122[130].

MAKING-UP: Finish the front with embroidery and steam lightly from the wrong side. Close shoulder seams and sew on the sleeves. Close side and sleeve seams. Crotchet around the neck in dk. blue 1 R each in double crotchet and crabstitch.

Cont next page



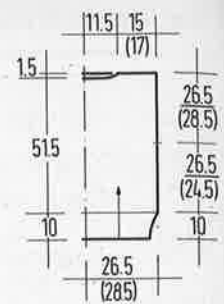
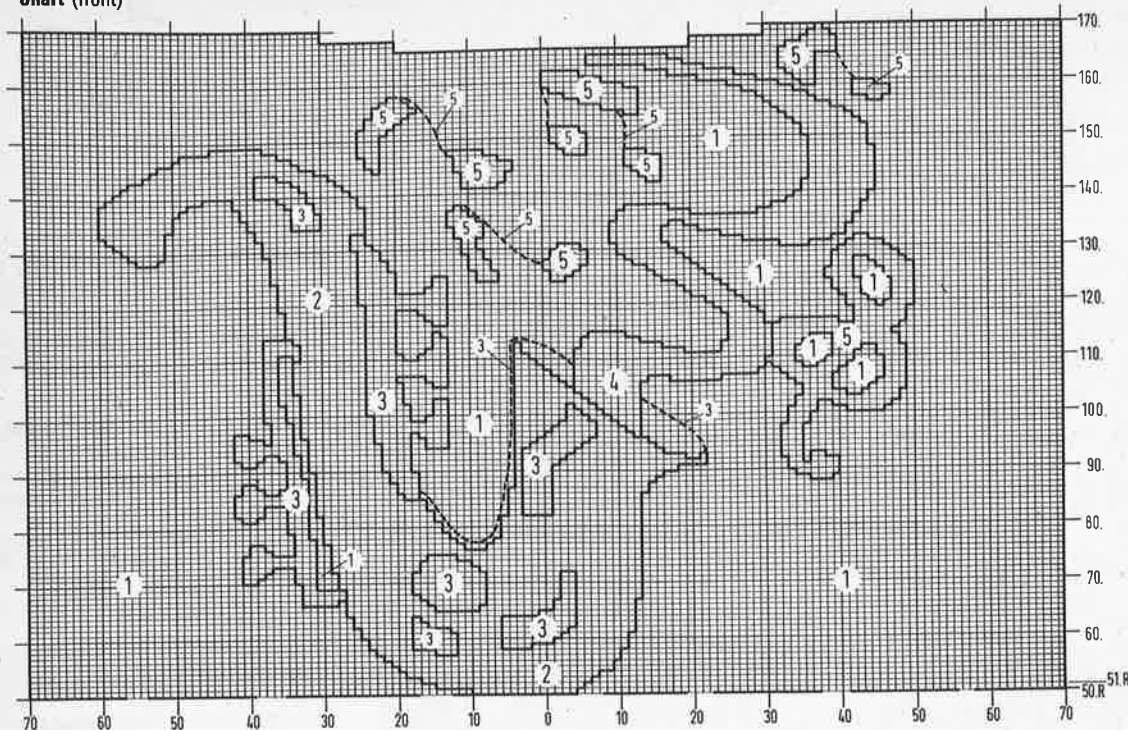
Explanations:

- 1 = dk. grey
- 2 = lt. green
- 3 = gold (used double)
- / = embroider the strings in gold (double) chainstitch

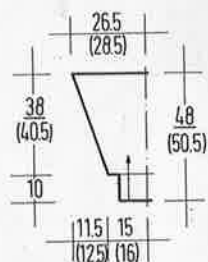
1 square = 1 st and 1 row

When substituting yarn, please use yarn with similar meterage!

Chart (front)



1/2 front and back



1/2 sleeve

Explanations:

- 1 = dk. blue
- 2 = pink
- 3 = gold
- 4 = lt. blue
- 5 = lt. green
- = stemstitch

1 square = 1 st and 1 row

MODEL 19

TURQUOISE GARTER-STITCH SWEATER

SIZE: To fit bust 34/36" [38/40"] The instructions for the larger size are in brackets; one figure only applies to both sizes.

MACHINES: Suitable for Brother electronic machines with garter carriage. We used a Brother KH 930.

MATERIAL: WOLL SERVICE "Cable 30" (100% cotton, mercerised, 140m/50g) approx 500(550)g in turquoise C 156. Available as a kit from Christl Haegele, Burg-Windeck-Str. 4b, 7580 Bühl, Tel.: (07223) 21474.

TENSION: 25 st and 32 R = 10cm. TD Garter carriage approx 10**.

GARTERSTITCH PATTERN: Program the machine with pattern over 32 st and 18 R or mark mylar sheet before starting work.

ARROWS on pattern denote direction of knitting.

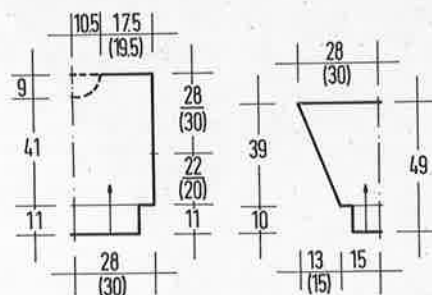
BACK: Cast on with E-wrap 100[110] st and knit 44 R with pattern No. 532 (1/1 rib) at TD 8. Remove from machine on waste yarn and replace, incr. st to 140[15] evenly across the row. Knit 1 R plain. Set RC 000 and cont. in pattern to RC 70[64]. Mark both sides with contrast for the armhole. t RC 162 cast off the 44 [49] st at each side for the shoulder. On rem. 52 st knit 26 R for neckband and cast off loosely.

FRONT: Knit as for back to RC 132. Shape neck: Knit back 34 st in centre on nylon cord and also all st opposite carriage. Make a note of bow number! Put on nylon cord at neck edge on next and every foll. alt. row 3 st once, 2 st once and 1 st 4 times. Knit straight to RC 162 and cast off.

Reset pattern to noted row number and knit other side to match.

Return all N from NWP to WP and pick up additional 12 st at each side of neck shaping. Knit the neckband as on back. **SLEEVES:** Cast on 52 st by E-wrap and knit 38 R rib as on back. Incr st evenly to 76 and cont in garter stitch pattern. Incr 1 st at each side on next and every foll 4th [3rd] row 30 [37] times. For larger size incr 1 st at each end on foll alt rows twice = 140 [150] st. Knit to RC 126 and cast off.

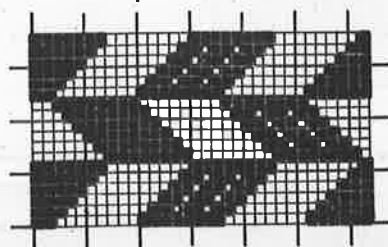
MAKING-UP: Close shoulder and neckband seams. Turn band to inside and slip stitch in position. Set in sleeves. Close remaining seams.



1/2 front and back

1/2 sleeve

Garterstitch pattern



MODEL 20

YELLOW SWEATER

SIZE: To fit bust 34/36" [38/49"] The instructions for the larger size are in brackets; one figure only applies to both sizes.

Knitted on standard gauge machine.
MATERIAL: STEINBACH "Cotton Visco" (81% cotton, 10% viscose, 140m/50g) 550 [600]g in yellow C 6.

Available as a kit from STEINBACH WOLLE, Grünastr. 5, 8390 Passau, Tel.: (060851) 59964.

TENSION: 26 st and 32-33 R = 10cm. TD approx 10. Ribs: Knitted as 2/2 rib. TD approx 5/5.

ARROWS on pattern denote direction of knitting.

PATTERN: Knitted on both beds by transferring st as shown in diagram. Mirror-image pattern around centre 0.

BACK: Cast on 144 [154] st and knit 42 R rib. Transfer all st. to MB and continue in st st. At **RC 95**, decr. 3 st at both sides. Then decr. on alt. rows at each side 2 st 5 [6] times = 118 [124] st. Knit straight to **RC 166 [172]**. Cast off 29 [32] st at beg of next 2 R for the shoulders. Knit several rows with waste yarn on rem. st and release from machine.

Explanations:

1 = MB knit stitch

2 = RB purl stitch



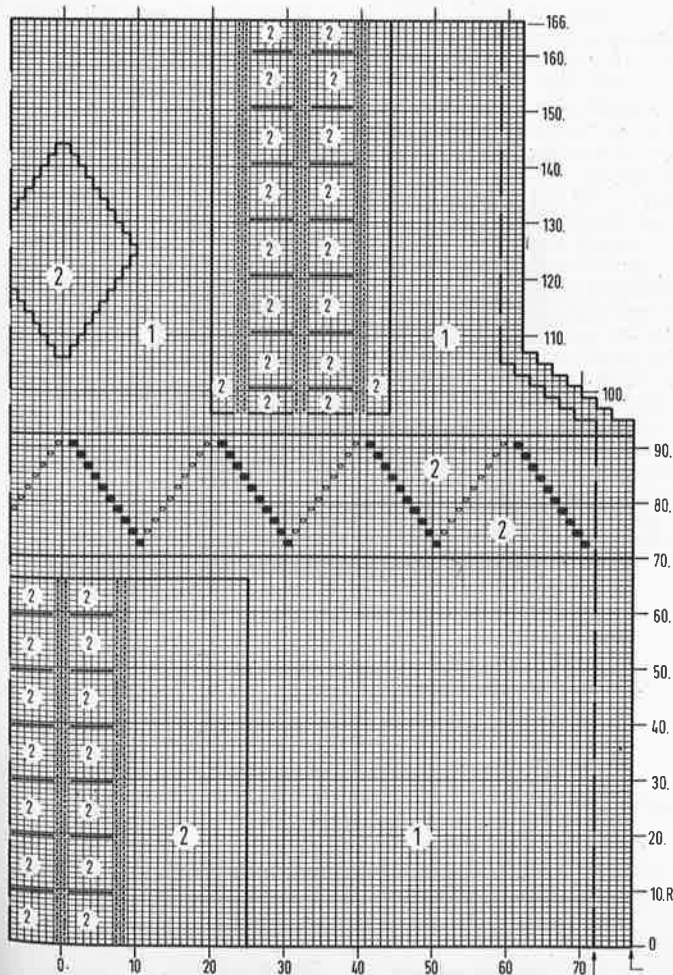
= with 2 3-prong tools cable 3 st over 3 st.

■ = transfer 1 st to the left, empty needle in WP

□ = transfer 1 st to the right, empty needle in WP

1 square = 1 st and 1 row

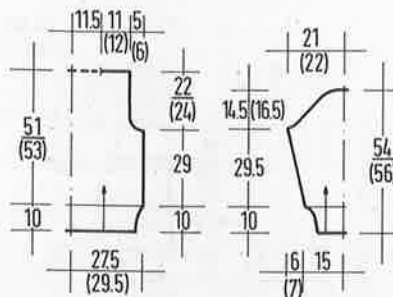
Chart (front)



FRONT: Knit the rib as for the back. Re-hang st as shown in the chart and follow the design instructions for the shapings. For the larger size knit a further 6 R after the end of the chart. At **RC 166 [172]** cast off 29 [32] st for each shoulder and release the rem. 60 st on waste yarn.
SLEEVES: Cast on 80 st for the rib and knit 42 R. Transfer all st to MB and cont in st st. Set RC 000 and incr 1 st at each end of next and every foll 6th [5th] row 15 [18] times. At the same time, when **RC** shows 80, re-hang st for a diamond as in the centre front. At **RC 96**, cast off for

armhole at each side, 4 st once. Then decr on alt rows 2 st 5 times, * 1 st once and 2 st once *. Repeat from * to * 5 [6] times. Now decr. 2 [3] st once, 3 [2] st once and 4 st twice. At **RC 144 [150]** cast off the rem. 20 st.

MAKING-UP: Close one shoulder seam. pick up 120 st from waste yarn of neckline and put onto needles, purl side facing. Knit 22 R and cast off loosely. Close other shoulder seam and neckband seam. Turn band to inside and slip stitch in position. Close side and sleeve seams. Set in sleeves.



1/2 front and back

1/2 sleeve

MODEL 21

JACKET AND SKIRT

SIZE: To fit bust 34/36" [38/40"] The instructions for the larger size are in brackets; one figure only applies to both sizes.

MACHINES: Suitable for Brother electronic machines with garter carriage. Punchcard machines can adapt the stitch pattern to suit. We used a Brother KH 930.

MATERIAL: WOLL SERVICE "Glamour" (55% cotton, 45% viscose, 145m/50g) in blue C 324.

For the jacket you will need 550 [600]g and 6 buttons. For the skirt you will need 300 [350]g and 3cm wide elastic to fit waist.

Available as a kit from Christl Haegele, Burg-Windeck-Str. 4b, 7580 Bühl, Tel.: (07223) 21474.

GARTER STITCH PATTERN: Program machine with pattern over 20 st and 28 R or mark the mylar sheet.

TENSION: Garter stitch 26-27 st and 36 R = 10cm. TD 9. Stockingstitch 30 st and 37 R = 10cm. TD approx 8.

ARROWS on pattern denote direction of knitting.

JACKET

BACK: Cast on 108 [118] st E-wrap and knit 50 R rib, using pattern 534 from Stitch World. Increase st evenly by 42 = 150 [160] st. Knit 1 R plain. Set RC 000 and continue in garter stitch. At **RC 68 [62]** mark both sides for armhole. Knit to **RC 170**. Cast off 48 [53] st at beg of next 2 R for shoulders.

Knit neckband on rem 54 st with garter carriage. Using pattern No 537 from row 2, knit 4 R. Change to rib pattern and knit 14 R. Cast off with latch tool.

RIGHT FRONT: E-wrap cast on 54 [58] st and knit 50 R rib. Incr 21 [22] st evenly across the row = 75 [80] st. Program machine or move the work, so that the left edge ends on a complete pattern as in the diagram. Knit 1 R, change to garter stitch and knit to **RC 68 [62]**. Mark right edge for armhole. At **RC 62**, shape front slope by decreasing 1 st at left edge on next and every foll 4th row 26 times. Knit straight to **RC 170** and cast off the rem 48 [53] st.

RIGHT FRONT: Knit as for left front, reversing the shapings and making sure, the pattern is complete at right edge.

cont on next page

SLEEVES: Cast on 52 [54] st with E-wrap and knit 38 R rib. Increase 32 st evenly across the row = 84 [86] st. Knit 1 R. Set RC 000 and continue in garter stitch starting on row 8 [1]. At the same time, incr 1 st at each side on next and every foll 4th row 33 times and then on alt rows 0 [4] times = 150 [160] st. At RC 134 [142] cast off.

BUTTON AND BUTTONHOLE BAND: Pick up 174 st from right front edge with right side facing. Knit 4 R from pattern 537. Change to rib pattern and knit 7 rows. Make 6 buttonholes along the straight edge over 2-3 st each. Knit 7 Rd and cast off. Repeat for left front, omitting the buttonholes.

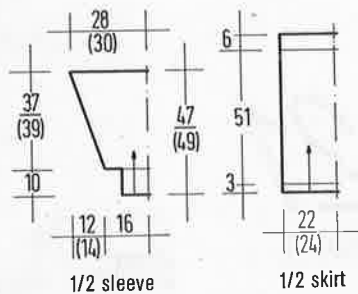
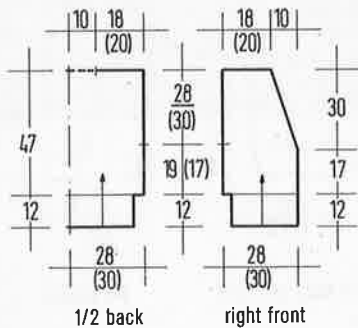
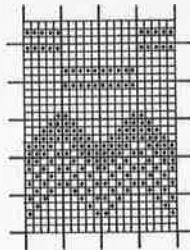
MAKING-UP: Close shoulder and front-band seams, set sleeves between markers. Close side and sleeve seams. Finish buttonholes and sew on buttons.

SKIRT: For back/front, cast on 134 [146] st by E-wrap and knit 12 R rib for lower edge. Change to normal carriage and

knit st st to RC 190. With garter carriage knit 26 R rib and cast off.

Knit a second piece to match. Close the side seam. Turn in the rib band and slip stitch in position. Insert elastic. Skirt will stretch by 8-10cm.

Garterstitch pattern



MODEL 22

NATURAL WHITE SWEATER WITH LACE/CABLE PATTERN

SIZE: To fit bust 32-36"

MACHINES: Knitted on Brother electronic machines with garter carriage or ribber for welts and lace carriage. Can be knitted on standard gauge machines by transferring st by hand. Instructions are for all machines.

MATERIAL: JUNGHANS "Merino Soft" (Pure wool, machine washable, 140m/50g) approx 600g in natural white C 213-669.

Available as a kit from JUNGHANS WOLLE, Auf der Hüls 205, 5100 Aachen, Tel.: (0241) 162061.

CABLE/LACE PATTERN FOR BROTHER ELECTRONICS: Program machine with pattern over 60 st and 80 R or mark mylar sheet. Knit pattern with 2 R lace carriage and 2 R knit alternately. Cables are knitted on rows 10, 20, 30 etc over 6 st in centre of straight lace sections. Do not cable in diamond shapes.

CABLE/LACE FOR KNITMASTER ELECTRONICS: Transfer pattern to mylar sheet and knit with lace carriage set to "L". Mark mylar sheet for quick return. Set N 1 cam in centre and other came at edge of knitting. Button 1 - left light on. Button 2 - right light on. Start at right edge, reading the pattern by knitting 2 R plain. Read cable section in description for Brother machines.

CABLE/LACE PATTERN BY HAND: Read from chart - black squares denote holes. For this transfer the st to the next needle and leave empty needles in WP. Knit 2 R. Transfer st at left of pattern strip to the left and st at right to the right. Repeat from row 1-80 in height. Cable as described for Brother machines.

TENSION: 27-28 st and 36 R = 10cm. TD 9. Ribs knitted with garter carriage pattern 532 at TD

BACK: Cast on on MB 160 st and knit several rows with waste yarn. Set RC 000 and knit 2 R plain. Continue in cable/lace pattern to RC 70. Mark both edges. Knit to RC 160. Change to garter carriage and knit 18 R rib. Knit last row loosely and cast off with latch tool.

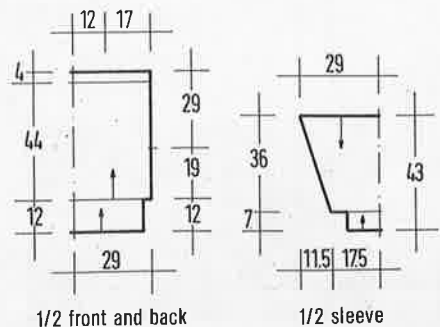
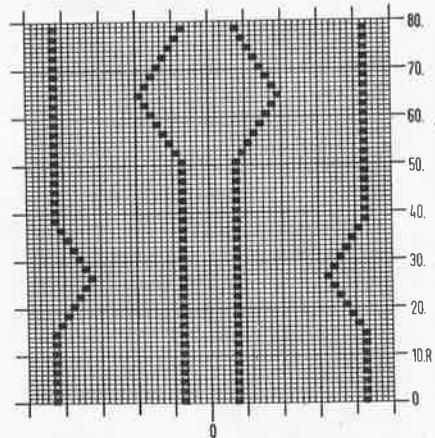
FRONT: Knit as for back.

SLEEVES: Knitted from top downwards. Close shoulder seams, leaving 24cm in centre for neck open. Pick up side edge wrong side out and pick up 160 st between markers. Set RC 000. Knit 2 R plain. Change to lace/cable pattern. Increase 1 st at each side on next and every foll 4th row 32 times, fully-fashioned. 96 st. At RC 130, knit with waste yarn and release from machine.

RIBS: For welts, cast on 120 st and knit 46 R rib. Pick up st from waste yarn and place on same needles. Knit 1 row and cast off. for cuffs, work the same, but over 50 st, knitting 28 R.

FINISHING: Close alle seams. Wet sweater thoroughly, wrap in towel and spin-dry for 30 seconds. Lay sweater flat to dry.

Lace/cable pattern



23

MODEL SALMON COLOURED SWEATER WITH LACE

SIZE: To fit bust 32/34". Sweater can only be knitted larger on machines with more than 114 needles.

MACHINES: Suitable for chunky machines with 9 mm gauge with ribber. We used a Brother KH 260.

MATERIAL: AUSTERMANN YARNS: "Bikini" (70% cotton, 30% viscose, 100m/50g) approx 600g salmon.

"Angora Wolle" (70% Angora, 30% wool, 100m/20g) approx 60g in salmon and 20g in white.

"California" (54% cotton, 27% Polyester, 15% Polyamid, 4% Polyacryl, 115m/50g) 50g in white.

"Tropical" Tape yarn (100% viscose, 100m/50g) approx 50g white.

You will also need white lace fabric with flower design, sequin fabric, 4m satin-ribbon in salmon, various beads and sequins. Crotchet hook No 5.

Available as a kit from WOLLSTUDIO Jutta Hinrichs, Wormser Str. 5, 6550 Bad Kreuznach, Tel.: (0671) 42625.

TENSION: 21 st and 31 R = 10cm. Stockingstitch in Bikini at TD 1. Angora 2 strands at TD 0.

ARROWS on pattern denote direction of knitting.

BACK: With waste yarn cast on 110 st and knit several rows. Change to Bikini and set RC 000. Knit straight to RC 162 and shape neck. Cast off centre 10 st and knit each side separately. Cast off on neckedge on alt. rows, 5 st once, 4 st once and 3 st once. At RC 170, change to Angora salmon used double and knit 40 R. Pick up loops from 1st row in salmon and hang on needles to form pleat. Knit 1 R and cast off.

FRONT: Cast on and knit as for back. At RC 158, shape neck by casting off centre 16 st. Knit each side separately by casting off at neckedge on alt rows 4 st once, 2 st once and 1 st 3 times. Cast off rem 38 st at RC 170. No pleat!

SLEEVES: Knitted sideways. Cast on with waste yarn 50 st and knit several rows. Set RC 000 and change to Bikini. Knit to RC 50, and shape slope: cast off at left edge on alt rows 4 st 10 times and 3 st 10 times. At RC 90 all st have been cast off. Turn the work purl side out and pick up the loops from the waste yarn.

Remove waste yarn. Change to Angora salmon used double and knit 40 R. Pick up loops from 1st row in Angora and hang on the needles to form a pleat. Reset RC 000 and change to Bikini. Knit 50 R and repeat the decreases as on 1st section, this time from the right. Knit a second sleeve to match.

WELTS: Pick up st from lower edge and hang on needles, reducing the number to 78. Push up RB and arrange needles for 2/2 rib. At lowest possible tension, knit 18 R rib with bikini and 5 R with Angora salmon used double. Cast off.

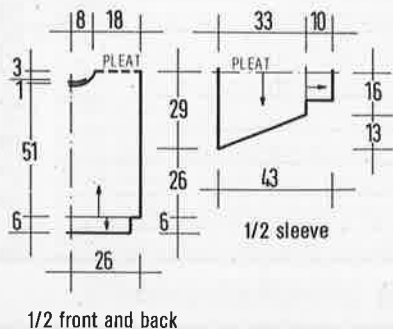
CUFFS: With purl side facing, pick up lower edge of sleeve on 38 st. Arrange for 2/2 rib as above and knit 30 R with Bikini and 5 R with Angora salmon used double. Cast off.

NECKBAND: With Angora salmon used double, cast on 46 st by E-wrap and knit 40 R. Pick up loops from 1st row onto same needles, knit 1 R and cast off. Knit a second piece to match.

MAKING-UP: Close shoulder seams. Join sleeves to body, using mattress stitch from right side. Join pleats, so that shoulder seam is at centre of pleat. Stitch in neckband between pleats, so that a collar appears. Pin on all appliques t judge the full effect.

APPLIQUES: With white Angora single strand cast on 40 st and knit 40 R at TD 0. Cast off. Sew on front at centre, gathering slightly. Sew on the satin ribbon criss-cross and sew on beads. Cast on with Tropical 30 st and knit at TD 1. Every 6 rows, cable 2 x 2st, leaving 4 st between each cable. Alternate the cables.

At RC 20, decr 1 st at each side on every row until all st have been cast off. This part is stitched above the Angora piece point upwards. Above this sew on the sequin fabric and some beads. Either side of the sequins, sew on the following pieces: With Angora as above, cast on 20 st at TD 0. Right from the start, incr at right edge on alt rows 1 st 10 times, 30 st. after 20 rows, decrease at left edge on alt rows. 1 st 5 times and then on every row 1 st until all stitches have been cast off. Pleat the satin ribbon and stitch around the outside edge. For the last 2 pieces cast on with Tropical 30 st at TD 1 and knit as for the cabled piece above. After 20 rows, cast off at both sides 1 st on every row until all st have been cast off. Crotchet chains from Angora salmon and weave through the cables. Cut the lace fabric to shape and sew around the appliques. Embroider the pleats with tape yarn, making French Knots.



1/2 front and back

24

MODEL WHITE SWEATER IN FASHION LACE

SIZE: To fit bust 32" [38/40"] The instructions for the larger size are in brackets; one figure only applies to both sizes.

MACHINES: Knitted on Brother electronic machine with ribber.

MATERIAL: WOLL SERVICE "Pedica" (75% wool, 25% Grilon, 220m/50g) approx 450 [500]g in white.

Available as a kit from Christl Haegele, Burg-Windeck-Str. 4b, 7580 Bühl, Tel.: (07223) 21474.

TENSION: 29 st and 40 R = 10cm. TD approx 7 over lace pattern.

LACE PATTERN: Select pattern No 177 from Stitch World. One repeat is over 22 st and 14 R. Move lace carriage 10 times and knit 2 R.

ARROWS on patterns denote direction of knitting.

BACK: Cast on 128 [150] st for 1/1 rib and knit 46 rows at TD 2/2. Transfer all st to MB and increase st to 156 [178]. Set RC 000 and starting with 2 R st st, continue in lace pattern to RC 104. Mark both edges with contrast yarn. Continue in pattern to RC 212. On next 2 R, cast off 48 [59] st at the beginning. Knit several rows contrast over rem st and release from machine.

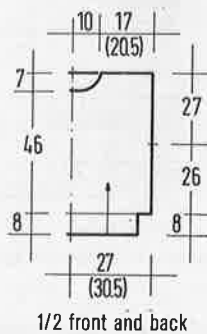
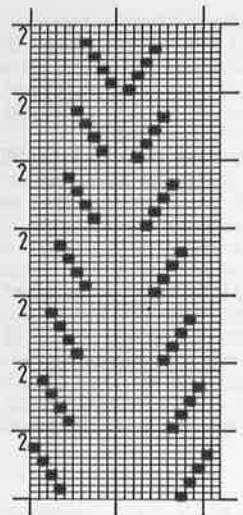
FRONT: Knit as for back to RC 184. Cast off centre 10 st and knit each side separately. Push needles not required to NWP, using the nylon cord. Note pattern row number. Cast off at neckedge on alt rows 5 st once, 3 st twice, 2 st 5 times and 1 st 4 times. At RC 212 cast off rem 48 [59] st for shoulder. Reset pattern and knit second side, reversing the shapings.

SLEEVES: Cast on for the rib 54 st and knit 40 R. Transfer all st to MB, increasing evenly across the row to 86 st. Set RC 000 and knit 2 R. Continue in pattern, incr 1 at each side on 10th and every foll 4th row 34 times = 156 st. At RC 156 cast off.

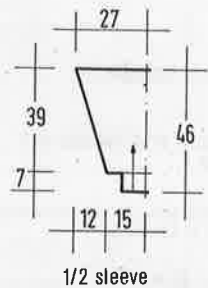
TURTLE NECK: Close one shoulder seam. Pick up the st from waste yarn on back and front neck with right side facing and place them on approx 86 needles. Push ribber in position and transfer st for 1/1 rib. Knit 48 rows and transfer all st to MB. Knit several rows in contrast yarn and release from machine.

MAKING-UP: Close second shoulder and neckband. Turn collar to outside and sew in backstitch through last row in main yarn. Remove waste yarn. Set in sleeves between markers. Close side and sleeve seams.

177



1/2 front and back



1/2 sleeve

MODEL 25

WHITE SWEATER WITH SHAWL COLLAR

SIZE: To fit bust 34-38". This sweater cannot be knitted larger on the usual 200 needle machines.

MACHINES: Knitted on a Brother machine with ribber, suitable for all standard gauge machines with ribber.

MATERIAL: TUTTO "Dschubba" (100% fine Merino-Lambswool superwash, 250m/50g) approx 550g in white. Available as a kit from Christl Haegele, Burg-Windeck-Str. 4b, 7580 Bühl, Tel.: (07223) 21474.

TENSION: 34 st and 45 R = 10cm. TD approx 5/5.

DIAMOND/CABLE PATTERN: Knitted on both beds. Ribber on full pitch. The chart shows the arrangement of both beds. Continue the needle arrangement to the left and right from the centre. Repeat rows 1 to 64 as required. Follow diagram 1 for the front and diagram 2 for the sleeves. Further information included in each part of pattern.

ARROWS on pattern denote direction of knitting.

BACK: Cast on 200 st and arrange for 1/1 rib. Knit 52 R rib at lowest possible TD setting. Transfer all st to MB and knit in st st on TD 5 single-bed. At RC 126 mark both edges with contrast for armhole. Knit to RC 244 and cast off.

FRONT: Knit welt as for back. Set RC 000 and arrange needles as follows: Centre 52 st arranged as shown on chart. On each side have 3 st on MB, 20 st on RB, 6 st on MB, 20 st on RB and 3 st on MB. Remaining st on RB. The last group of 3 st on MB will not be cabled. Now follow diagram and chart, working from centre out in both directions. At RC 126 mark both edges with contrast yarn for armholes. At RC 144 (row 16 of chart) divide the work in centre for V-neck. Push needles left in HP. Continue to

Explanations for knitting chart

☐ = 1 st on RB

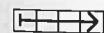
☐ = 1 st on MB



= cable 3 x 3 st in direction shown



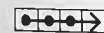
= transfer 1 st to the left by 3 st. Empty N in NWP



= as above but to the right

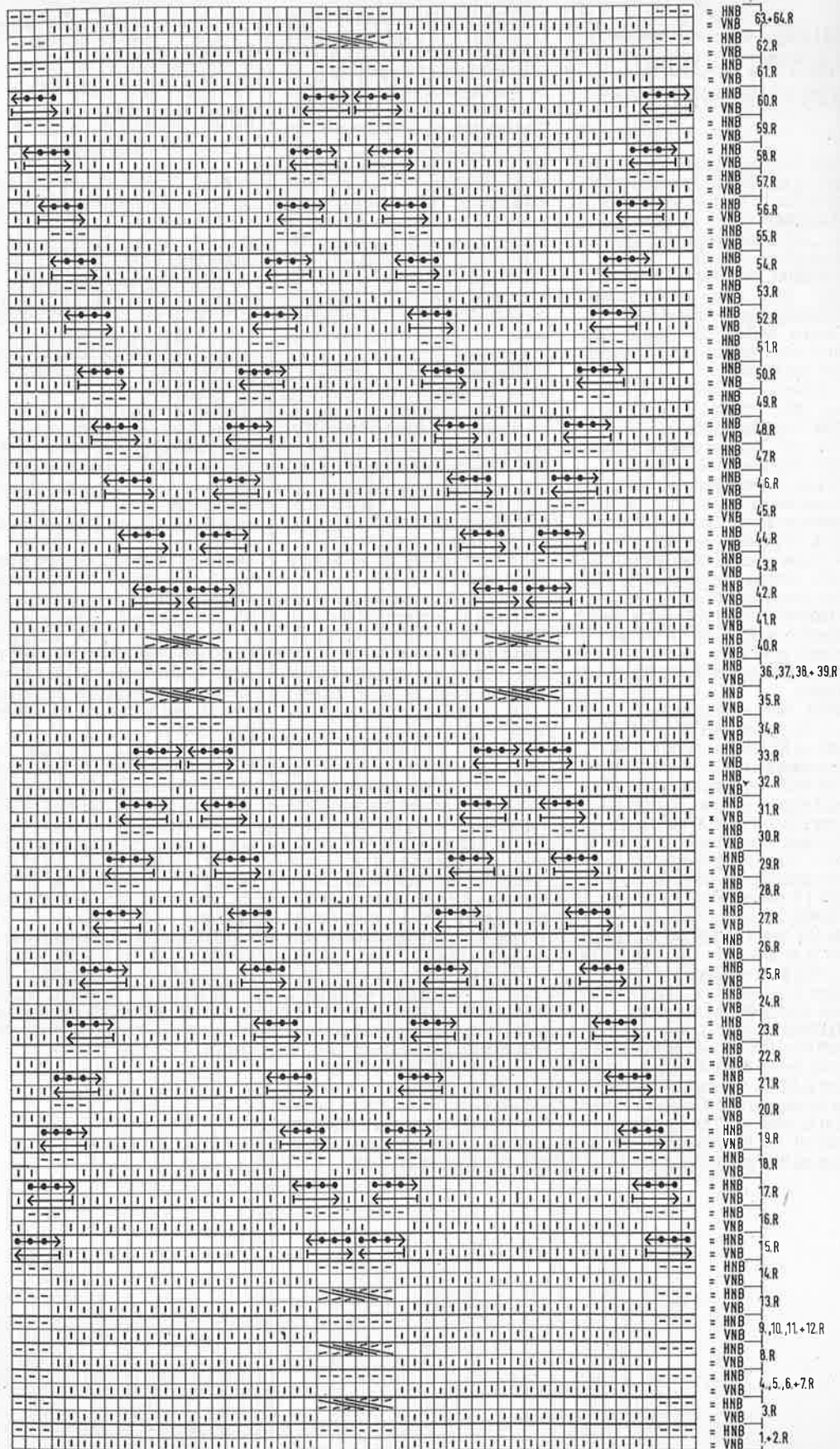


= transfer these 3 st to the left by 1. Empty N in NWP



= as above but to the right

Empty squares = N in NWP



transfer the 3 st to the right of centre as before, as they form a good edge. Keep 1 st at left of them on MB as edge stitch. Decrease 1 st at neckedge on alternate rows, by moving 4 st in by 1. At the same time, move the opposing st on RB to MB, otherwise the needles will clash. When the diamond pattern has finished, continue with the shaping at neck, leaving all other st on RB. At **RC 244** cast off rem 50 st. Return needles at left to WP and knit second side to match.

SLEEVES: Cast on 106 st in 1/1 rib and knit 44 R. Set RC 000 and arrange needles as follows: the centre 6 st on MB for

cable, rem st on RB. Cable over these 6 st to row 13, then repeat rows 9-13 until 7 cables have been worked. Continue from row 14 of the chart and follow diagram 2. **At the same time**, increase 1 st at each side on every 5th row 36 times = 178 st. After knitting the diamond shapes, continue to cable the centre 6 st to **RC 184**. Cast off.

COLLAR: Knitted on both beds in half-fisherman's rib. Cast on 60 st and knit at TD 2/2 624 rows. Cast off.

MAKING-UP: Close shoulder seams and set in collar. Sew in sleeves between markers. Close side and sleeve seams.

26

MODEL DIAMOND PATTERN SWEATER

SIZE: To fit bust 36-40"

MACHINES: Suitable for all standard gauge machines with ribber and intarsia carriage.

MATERIAL: JUNGHANS "Silka" (80% Polyacryl, 20% natural silk, 330m/100g) approx **550g lt. blue C 283 069.**

"Angora" (70% Angora, 30% lambs-wool, 97m/20g) **20g** in each **anthracite, grey and white.**

Available as a kit from JUNGHANS WOLLE, Auf der Hüls 205, 5100 Aachen, Tel.: (0241) 162061.

TENSION: 28 st and 35 rows = 10cm. TD approx 10

DIAMONDS knitted in intarsia at TD 10. Use a separate ball of yarn for each area and cross the threads when changing colours.

ARROWS on pattern denote direction of knitting.

FRONT: Cast on 168 st in 1/1 rib and knit 42 R at TD 3/3. Transfer all st to MB and set RC 000. Follow chart for knitting the pattern and decreasing the armholes. Neck shaping as shown for lower neckline. After the last row, cast off rem 35 shoulder stitches.

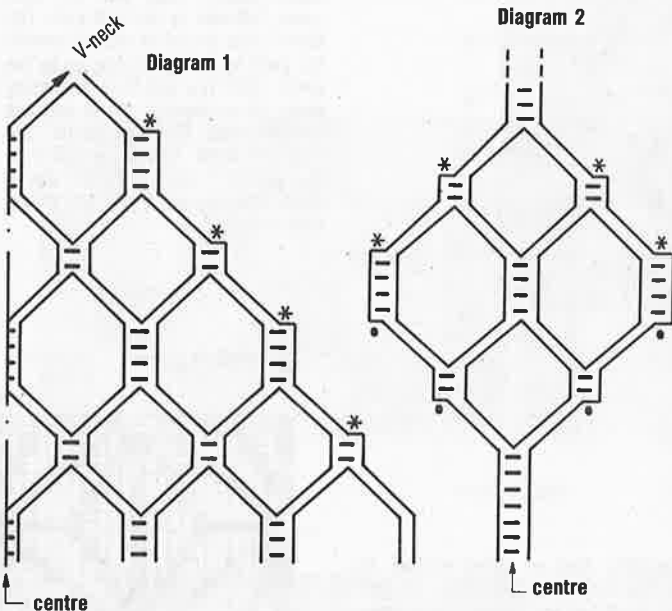
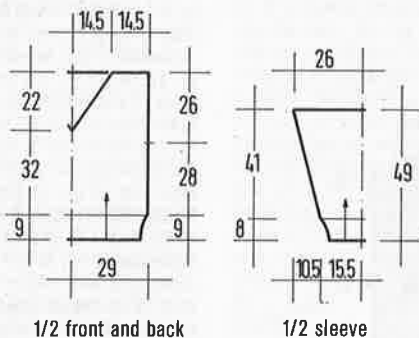
BACK: Knit as for front, but use lt. blue only and shape neck with higher neckline.

SLEEVES: Cuff is knitted separately. Cast on with waste yarn 100 st and knit several rows. Set RC 000 and continue in lt. blue. At the same time, increase 1 st at each side on next and every foll 4th row 25 times = 150 st. Shape top of sleeve from **RC 106:** At each side cast off on alt rows 6 st once, 4 st twice, 3 st once, 2 st twice 1 st 29 times and 3 st twice. cast off rem 38 stitches.

CUFFS: With lt. blue, cast on 71 st and knit 30 rows in 1/1 rib, transfer all st to MB and pick up sleeves stitches from waste yarn, hanging 7 st over 5 needles. Knit 1 R and cast off.

NECKBAND: Cast on 140 st in lt. blue and knit 12 rows in 1/1 rib. Knit several rows waste yarn and release from machine.

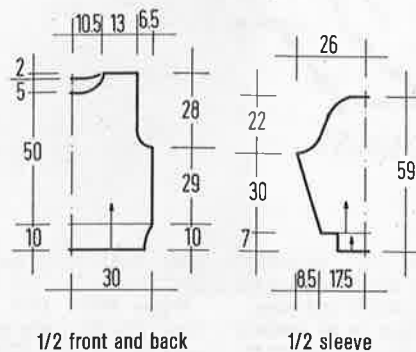
MAKING-UP: Embroider the front as shown in picture. Close shoulder seams. Attach neckband. Close rem seams. Set in sleeves, putting 3 pleats in the top.



Explanation to diagram 1 and 2:

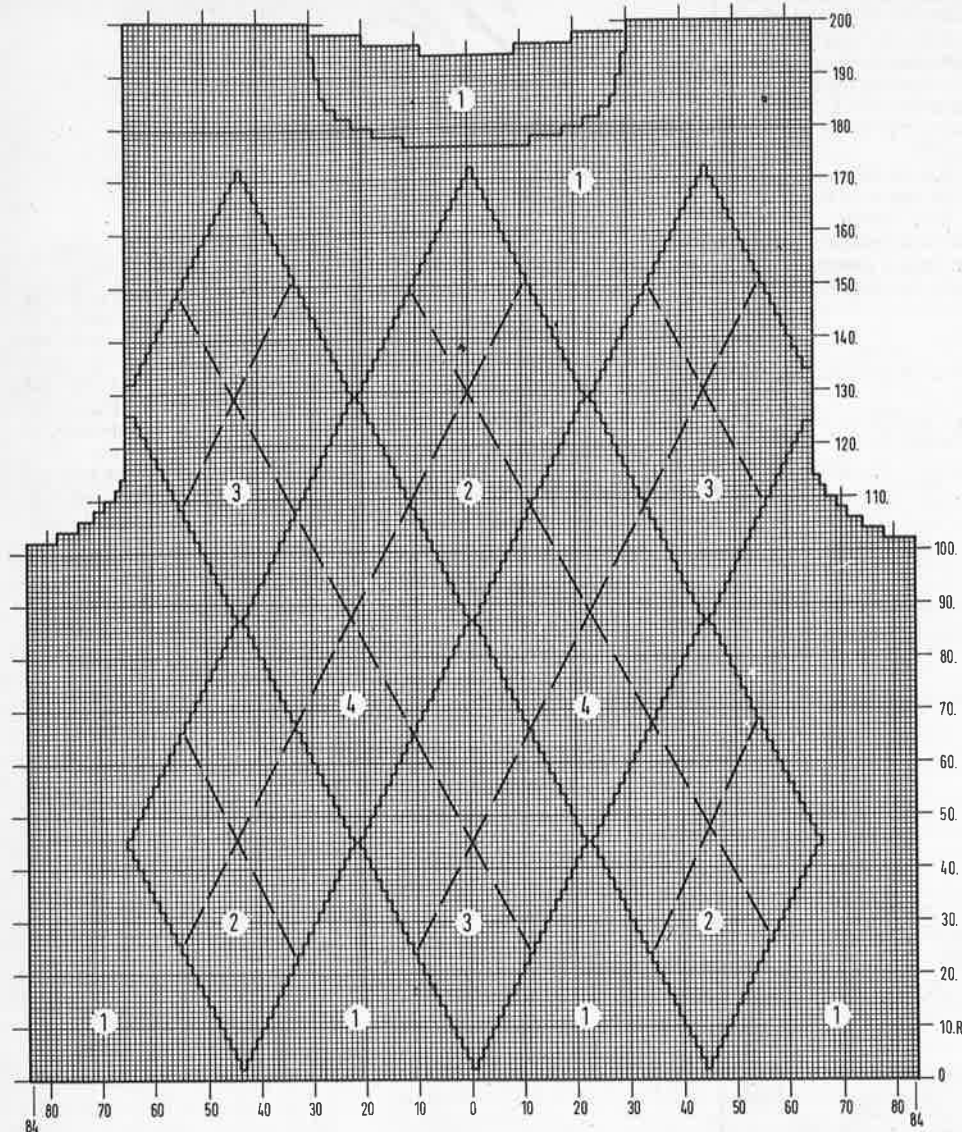
- * = transfer 3 st to RB
- = transfer 3 st to MB
- = cable as explained below

cont next page



When substituting yarn, please use yarn with similar meterage!

Chart (front and back)



Explanations:

- 1 = lt. blue
- 2 = white
- 3 = grey
- 4 = anthracite
- = chainstitch with Anthracite double

27

MODEL
RED-BLACK WAIST-
COAT

SIZE: To fit bust 32" [36"] The instructions for the larger size are in brackets; one figure only applies to both sizes.

MACHINES: Suitable for all standard gauge machines. We used a Brother KH 930 with garter carriage. Also possible with ribber or garterbar.

MATERIAL: AUSTERMANN "Carlton" (50% Merino wool, 50% Polyacryl, 150m/50g) approx 200 [250]g in red C 3. "Mandy S" (75% wool, 25% Poly-

amid, 210m/50g) approx 100g in black and "Angora Wolle" (70% Angora, 30% wool, 100m/20g) 80g black. Available as a kit from WOLLSTUDIO Jutta Hinrichs, Wormser Str. 5, 6550 Bad Kreuznach, Tel.: (0671) 42625.

FAIRISLE PATTERN: Program pattern 16 from Stitch World or punch card from given chart. With red in feeder A and Angora in feeder B, set TD as high as

possible. Cast on given number of stitches by E-wrap from left to right. Knit 1 R. Push carriage outside of turn-make on left, set to KC 1 and knit 1 R in red to the right. Set for fairisle and thread up the black.

BANDS: These consist of 12 R st st, 1 R garterstitch and 12 R st st. For the garter stitch either transfer all st to RB and knit 1 R. Transfer all st back to MB and knit 12 R before taking off on waste yarn. Or use the garter carriage for 1 R, programming pattern 537 on row 2. Alternately you can turn the work with the garterbar.

TENSION: 29 st and 33 R = 10cm. TD 10**.

ARROWS on pattern denote direction of knitting.

BACK: With red cast on 128 [140] st and set RC 000. Continue in fairisle pattern. Decr 1 st at each side on next and following alt row 9 times to RC 20. Now increase 1 st at each side on next and every foll. 6th row 9 times = 128 [140] st.

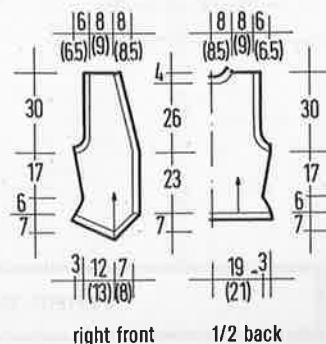
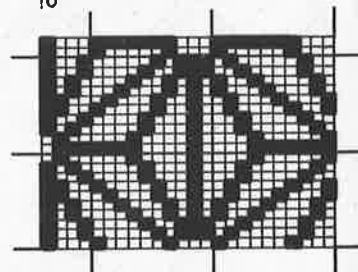
At RC 76 shape armholes: cast off at each side on alt rows 4 [5] st once, 3 st once, 2 st twice and 1 st 6 [7] times. 94 [102] st. Knit straight to RC 162 and shape neck: cast off the centre 26 [30] st and knit each side separately. At neck edge, cast off on alt rows 4 st once, 2 st once 2 st once and 1 st once. Repeat for other side. Cast off rem 24 [26] st at RC 176.

LEFT FRONT: Push into WP needles from o 50 [56] to G 14. These are the needles that will be used. To knit the point, count from the right 16 [18] needles and return to NWP. The foll 3 [2] needles remain and all rem needles are returned to NWP. Cast on over the 3 [2] needles and start increases immediately: at left edge E-wrap 5 st and at right edge E-wrap 2 st on alt rows until all described 64 [70] needles are in WP. At RC 22, re-set RC 000 and knit, shaping the side and armhole as on back. At the same time, at RC 76 shape the right edge for the V-neck by casting off 1 [2] st and then 1 st on every 4th row 22 [23] times. Cast off rem 24 [26] st at RC 176.

RIGHT FRONT: Knitted over needles 0 60 [66] to G 4. Push back 16 [18] N at left, leave next 3 [2] in WP and return remainder to NWP. Now knit as for left front, reversing all shapings.

MAKING-UP: Steam all pieces from the wrong side and let rest for 24 hrs. Knit all bands as described, stretching the edges slightly. Start with the front bands, followed by the back neck. The lower edges should be shaped towards the point by first increasing up to the garter stitch row and then decreasing again. Close shoulder seams and knit armhole bands. Sew side seams. Join seams in bands. Turn to the right side and backstitch through the last row in black. Remove waste yarn and give a final press.

16 Fairisle pattern



MODEL 28

RED GARTER STITCH SWEATER

SIZE: To fit bust 32-36"

MACHINES: Suitable only for Brother electronic machines with larger memories and ribber and garter carriage.

MATERIAL: TUTTO "Dschubba" (100% Merino-Lambswool superwash, 250m/50g) approx 500g in red C 13. Available as a kit from Christl Haegele, Burg-Windeck-Str. 4b, 7580 Bühl, Tel.: (07223) 21474.

GARTER STITCH PATTERN: Program machine by entering the design from left to right and mirror-imaging it. Alternately copy the design on to mylar sheets and knit as A and B Motif. Cables are worked over the 6 indicated stitches on 5th row and every foll. 10th row. Please cable in the same direction at all times. To facilitate the knitting of the cable stitches, use an extra thread of Dschubba and knit those 6 st by hand before continuing to knit. Carry the thread upwards to the next cable.

TENSION: 34-35 st and 47 R = 10cm measured as average over all patterns. TD. approx 5.

ARROWS on patterns denote direction of knitting.

BACK: Cast on 200 st for 1/1 rib and knit 50 R at lowest possible setting of TD. Use the ribber for this. Transfer all st to MB and set RC 000. Continue in garter stitch to RC 260. Cast off centre 70 st for neck. The rem 65 st at each side are released on waste yarn.

FRONT: Cast on and knit as for back to RC 228. Cast off the centre 20 st and knit each side separately. Cast off at neckedge on alt rows 6 st once, 4 st once, 3 st once, 2 st once and 1 st 10 times. At RC 260 release the rem 65 st on shoulder on waste yarn. Knit second side to match.

SLEEVES: Cast on 88 st for 1/1 rib and knit 40 R at lowest TD setting. Transfer all st to MB and incr 28 st evenly across

the row = 116 st. Set RC 000 and continue in garter stitch pattern. Increase 1 st at each end on next and every foll 4th row 37 times and then on every 2nd row 5 times = 200 st. At RC 160 cast off all stitches.

MAKING-UP: Close one shoulder seam by handing the st from waste yarn on one shoulder, right side facing, on the machine. Pick up the st from the second piece, wrong side facing, on the same

needles. Knit 1 R and cast off. Close other shoulder the same.

COLLAR: Cast on 180 st as 1/1 rib and knit 36 R. Transfer all st to MB and knit 1 R st. Cast off loosely.

Close side seam on collar. Sew collar with mattress stitch into neckline, cast-off edge at neck. Turn collar to inside and slip stitch in position.

Sew sleeves to body, matching the squares. Close side and sleeve seams.

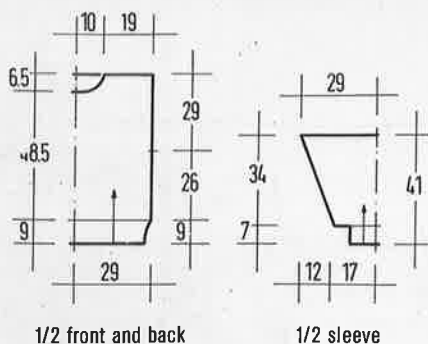


Chart 1 (front and back)

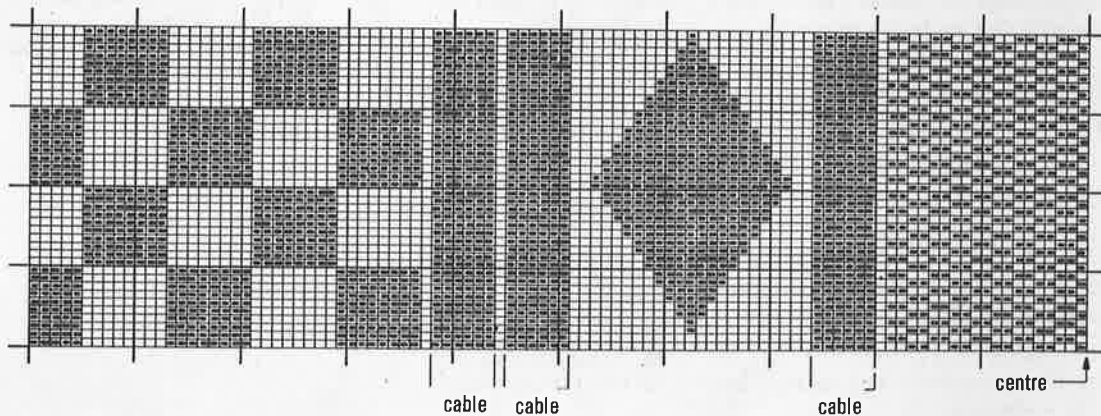
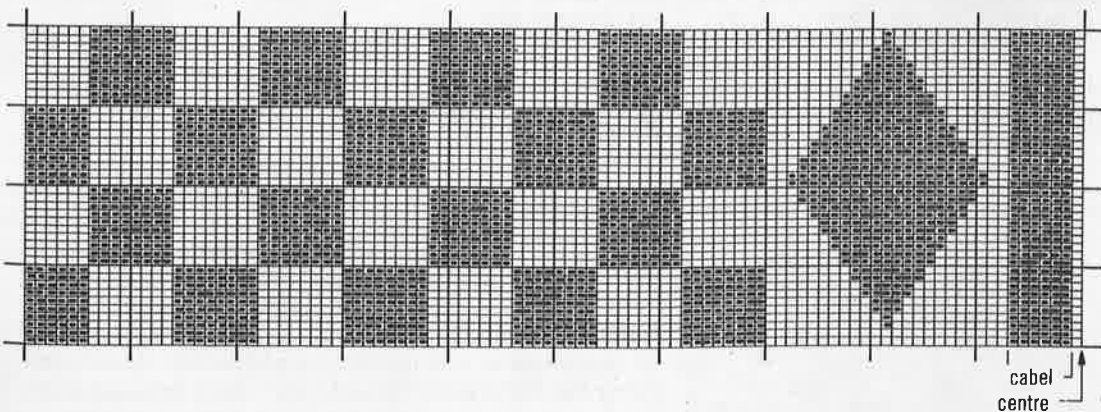
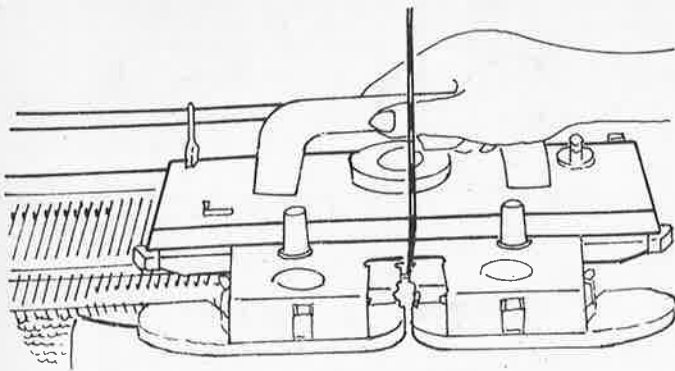


Chart 2 (sleeve)



When substituting yarn, please use yarn with similar meterage!



Knitting the ribs separately

What to do, when the rib cannot be stretched enough to increase the stitches to the required number.

Knit the ribs separately:

1. Start the piece with wasteyarn (in our example the sleeve). Knit rows and change to mainyarn. Knit as given in pattern. Cast off and remove from machine.
2. Cast on the required number of stitches for the rib and knit the correct number of rows. Transfer all stitches to MB. Drop the ribber to its lowest position and cover.
3. With wrong side facing, pick up the stitches from the first row after the wasteyarn at the bottom of the sleeve and put them on the needles. However, you must first work out how many stitches to decrease.
4. In our example the rib has 60 st and the start of the sleeve has 90 st. we must therefore decrease 30 st. $90 \div 60 = 1,5$ st. This is obviously not feasible, so assume 3 st will hang on 2 needles. This means that every 2nd needle of the rib will hold 2 st.
5. If you are righthanded, start on the left side and pick up the stitches, pulling the needles right out to HP.
6. Remove the waste yarn, but set the machine to knit the needles from HP back to WP.
7. Knit 1 row at MT and cast off.

Ladies sizes				
Size	Bust cm Bust ins	Waist cm Waist ins	Hips cm Hips ins	
8	82 32½	62 24½	88	34½
10	84 33	64 25½	90	35½
12	88 34½	68 26¾	94	37
14	92 36¼	72 28¼	98	38½
16	96 37¾	77 30¼	102	40¼
18	100 39½	82 32½	106	41¾
20	104 41	87 34¾	110	43¼

Yarn manufacturers and Importers:

Phildar
Smallwares Ltd.
Kewbridge House
Kewbridge
Brentford
Middlesex FF8 0EJ
Tel.: 01 847 5641

Austermann
Bouton d'Or
Hamburger Wollfabrik
Hübner Wolle
Junghans Wolle
KKK
Tutto
Steinbach Wolle
Woll-Service
WSM

If you cannot obtain the yarn of your choice in your country, please write stating number of issue and pattern number to.

Wollstudio Jutta Hinrichs
Wormser Str. 5
D-6550 Bad Kreuznach
Tel.: 0671/42625

or

Rösch's Wollversand
Mauernstr. 18
D-3100 Celle
Tel.: 05141/29048

PASSAP (PFAFF)

ELNA AUSTRALIA (Pty.) Ltd.
43 Herbert Street
P.O. Box 369

AUS - 2064 Artarmon, N.S.W.

BOGOD MACHINE CO. LTD.
50-52, Great Sutton Street

GB - London EC. 1.
Tel. 0044 12531198

PFAFF (BRITAIN) LTD.
PFAFF House
East Street

GB - LEEDS LS9 8EH
Tel. 0044 532450645

HUSQVARNA WHITE
Sewing Machine Co.
1470 Birchmount Road

CDN - SCARBOROUGH, Ont. M1P2G1
Tel. 001 416 7594486

PASSAP Distributors
P.O. Box 6819
Wellesley Street

NZ - Auckland
Tel. 00649 7950

ELNA SEWING MACHINE CENTERS
(PTY.) LTD.
P.O. Box 652

ZA - 2000 JOHANNESBURG
Tel. 002711 7891976

NATIONAL SEWING CENTERS (PFAFF)
44 Loveday Street
P.O. Box 4937

ZA - 2001 JOHANNESBURG
Tel. 002711 836 4681/3

PASSAP MACHINES WEST INC.
271 West 2950 South

USA - 84115 SALT LAKE CITY/UTAH
Tel. 001 801 485 2777

BROTHER - Vertretung

JONES SEWING MACHINES Ltd.
Manchester Office
Shepley Street
Manchester M 34 - 5JD
Tel. 330 0111

EMPISAL - Vertretung

KNITMASTER
39-45 Cowleaze Road,
Kingston-upon-Thames,
Surrey KT2 6DT
Tel. 01 546 2444

Do not forget the tension swatch

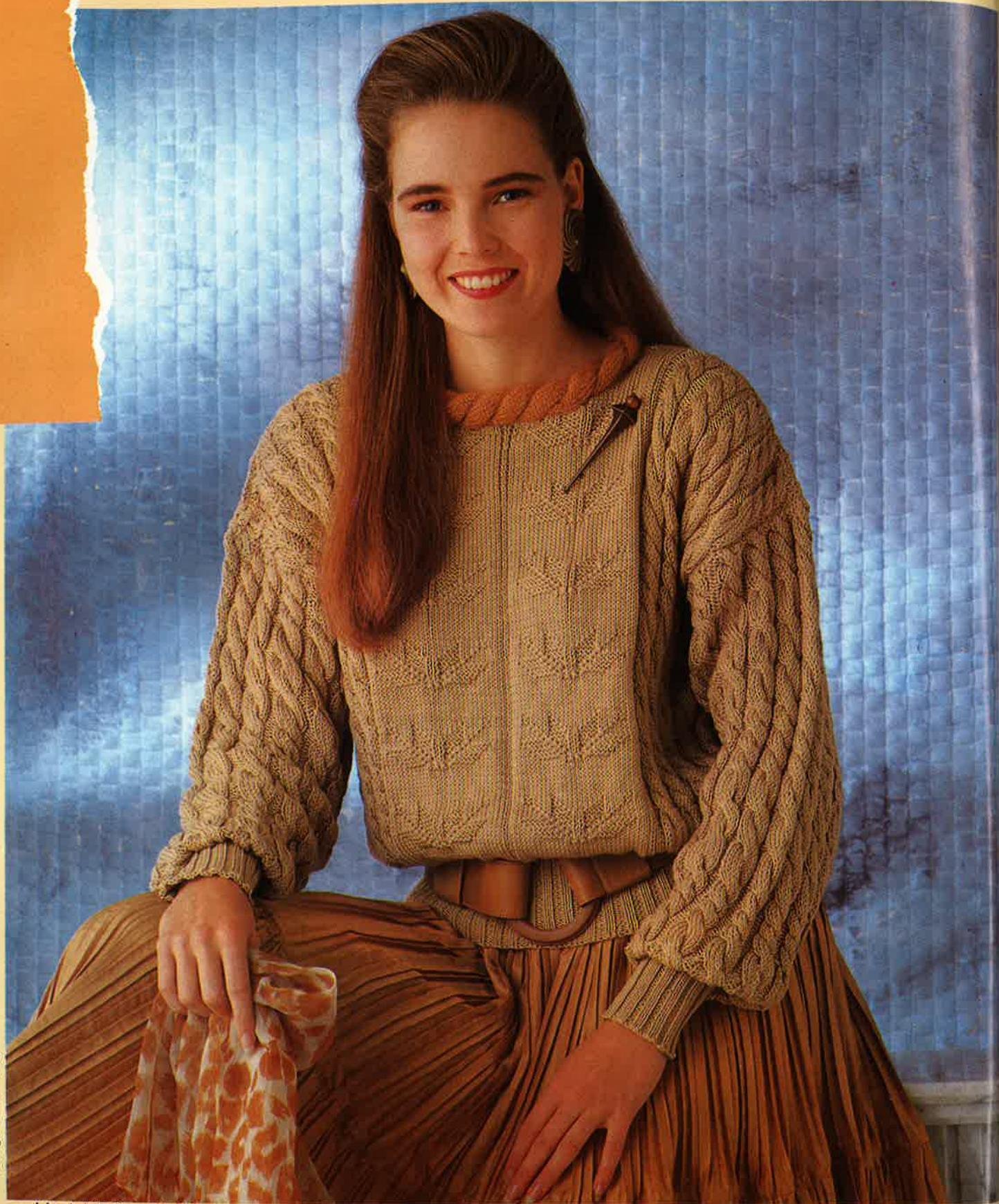
To make sure, your garments are a good fit, you must check that the number of stitches and rows in 10 cm. agree with those given. Cast on at least 60 sts. in the appropriate pattern and knit 10 R. Knit 1 R. contrast yarn. Knit 30 rows and mark stitch 21 on each side of centre ϕ with contrast yarn. Knit off the machine, pull lengthwise and let the swatch rest. Using the Knitmaster "Green Ruler" lay it between the marked stitches and read off the number of stitches per 10 cm. Repeat for the number of rows. If the figures don't agree, either alter the tension dial setting or work out the number of stitches required, using the measurements given.



Design Geri Damerow

Model 14 Size 34/36" (38/40")

Sweet and cheeky teddies soon find enthusiastic fans.



Design Christl Hoeggele

Model 15 Size 34-38"

Geometric Variations

the right, ribbons give additional



Design: Andrea Baumgartner

Model 16 Size 32/34" (36/38")

riations

On the left an example in knit and purl stitches with impressive cables. The soft beige is very flattering. On tonal impact. Broad pleats improve the design.

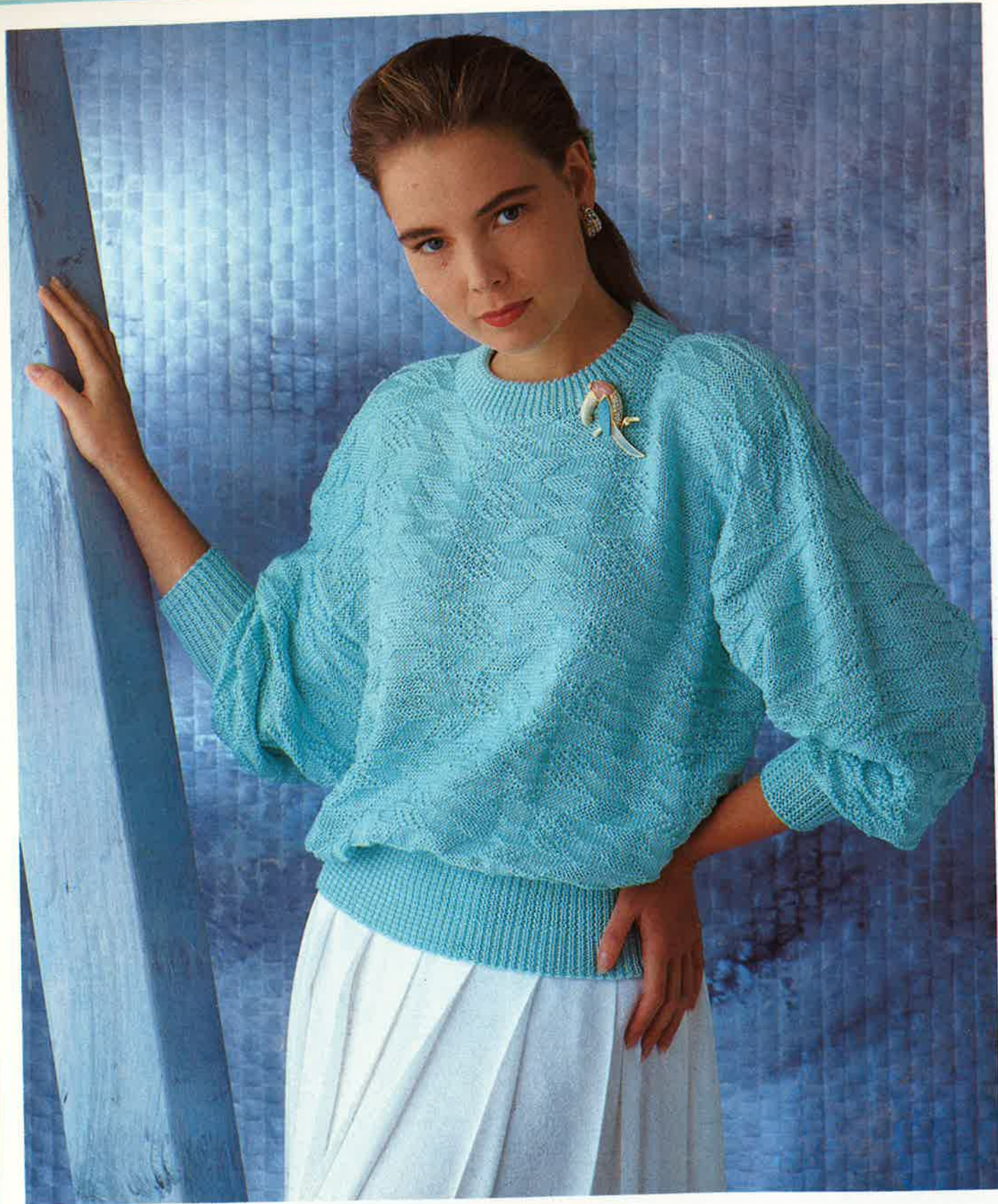


New notes are sounding in the knitting world. Shiny cotton is mixed with Lurex yarn.



*Here the saxophone dominates.
Dancing "Notes" bring good
humour into the picture.*

Model 18 Size 34/36" (38/40")



Model 19 Size 34/36" (38/40")

*Delicate turquoise
in knit-purl pattern
provides topical
flair. An elegant
sweater that always
looks right. Even*

*beginners can
achieve this.*



Design Christl Haegle

*Sporty and feminine
at the same time –
achieved with cab-
les and lace. Yellow
in this case, but
equally nice in
strong colours.*

Model 20 Size 34/36" (38/40")

Design Christi Hoeggele

Model 21 Size 34/36" (38/40")

Formality triumph

Soft wool, cabled and with a small lacepat



Design Christl Hoeggele

Model 22 Size 32-36"

phs

On the left interpreted as a 2-piece. Deep V-neck and crunchy texture are the ingredients of classic chic.

On the right attractive sweater in natural white.

Pattern, set off with a simple rib. Knitted pleasure for the whole year.



A lot of creative fun with shiny and fluffy yarns and decorative lace – these are the secrets of this design.



Fashionlace never loses its impact and fits in everywhere.

Model 24 Size 32" (38/40")



Model 25 Size 34-38"

Diamonds of a different sort are the basis of this model. Shiny background yarn mixes well with angora. Contrast is intro-

duced by embroidery.



Design Christl Haegeler

A design for special occasions. The large shawl collar adds to the attraction of the unusual cable pattern.

Model 26 Size 36-40"

Design Anita Krinowsky

Model 27 Size 32" (36")

On the left a waistcoat in fairisle, wearable on many occasions and last but not least, on the right a selfpatterned sweater.

Fiery red

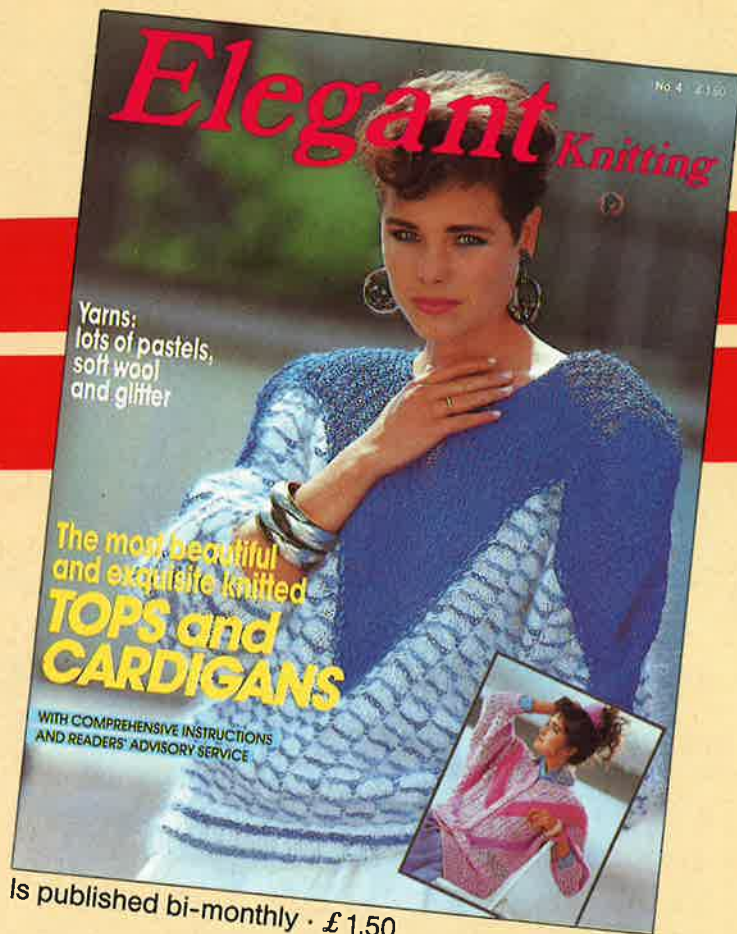


Design: Christl Haegele

Model 22 Size 32-36"

lets you be seen

On sale at all
newsagents!



Is published bi-monthly · £1.50



Is published monthly · 95 p



Is published bi-monthly · 95 p