

MACHINE KNITTING CHIC

No. 7 · £ 1.75

a Sabrina
PUBLICATION

**FASHION DESIGNS
FOR KNITTING MACHINES**

**FASHION
EXTRAS
CAUSE A
SENSATION**



IMAGINATIVE AND STYLISH

**NEW
SWEATERS**

with full instructions and telephone helpline

ISSN 1015-7948



9 771015 794000

Contents

Dear readers,
top designers have done their best. The result is a magazine with models that will make your heart beat faster. Wonderful designs, be-



witching colour and material mixes form the basis for something special, in which you will impress. Your own ideas can be imposed by a change of colour or by the addition or subtraction of detail to make the sweater your very own.

Best wishes
Your Editor

Christl Haefele



Elegant pastels



Romantic knitted daydreams



Sizechart page 48
Manufacturers and
importers page 48
Abbreviations page 17



If you have any queries about any of the patterns in this issue, please write to:

READERS' SERVICE
7 Laurels Avenue
Bangor-On-Dee
Wrexham, CLWYD, LL13 0BB

For urgent enquiries you can telephone Monday to Friday from 6 pm to 9 pm.
Tel: (0978) 780 354

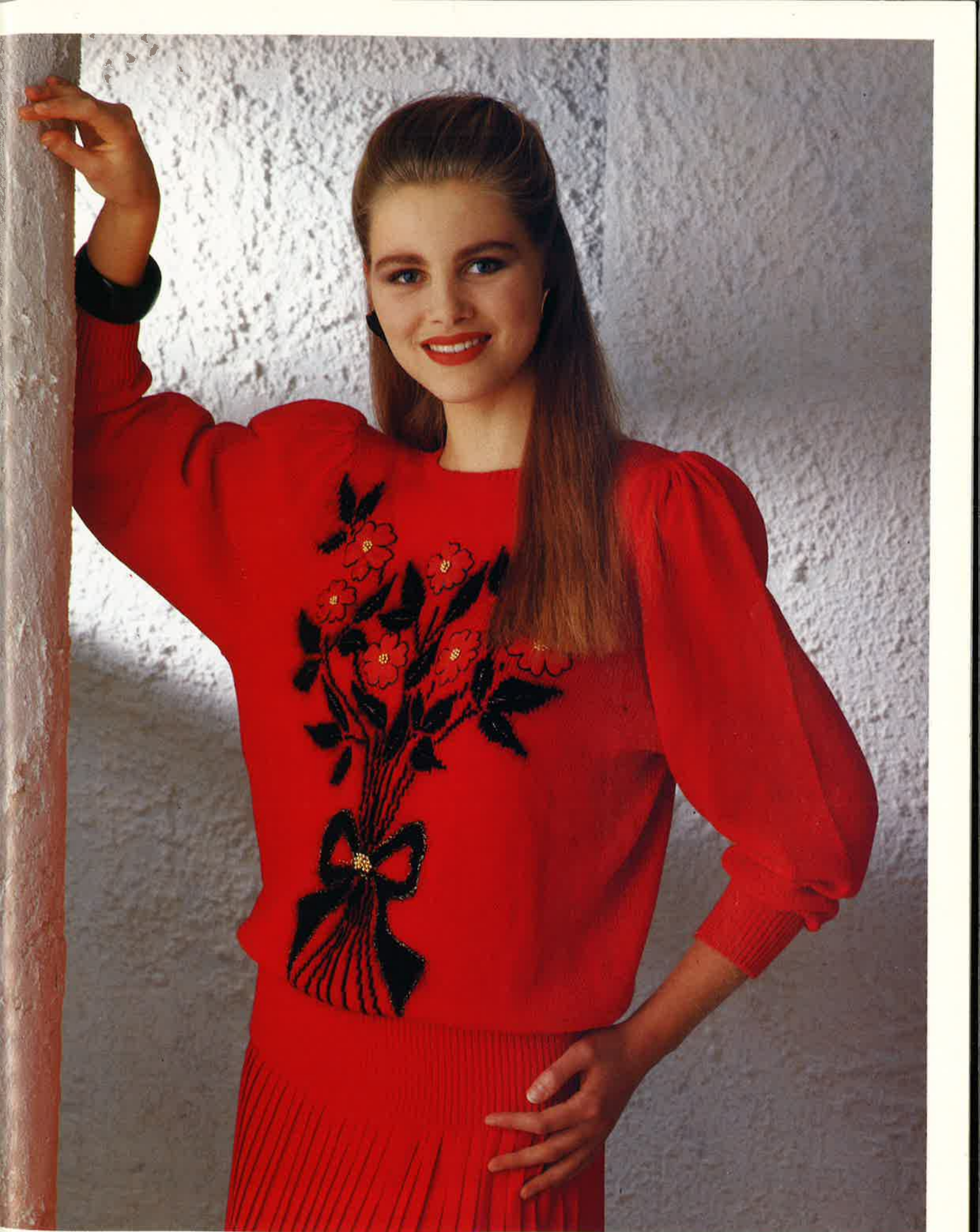
This magazine is published by **BPV Medweth & Co.**, Gewerbezone Eichli 29, CH-6370 Stans.

Publishing Directors: H. + E. Medweth.
Editorial: Christl Haefele. **Design:** Ch. Haefele and C. Grube. **Desk editor:** M. Leiblinger. **Distribution:** BPV Medweth & Co., Gewerbezone Eichli 29, CH-6370 Stans. Distributed in Great Britain by: MMC, Magazine Marketing Company, Octagon House, White Hart Meadows, Ripley, Woking, Surrey GU23 6HR. Tel. 0483 - 211222. Printed in West Germany by OZ-Druck- und Verlags-GmbH Rheinfelden. Copyright 1990 by BPV Medweth & Co., CH-6370 Stans.

All models are under unlimited copyright protection ©. Commercial copying prohibited. Publishers and editors assume no liability for the unrequested contribution of photos, designs and manuscripts.



Fascinating suggestions



You will always impress with this generous flower arrangement

Model 1 Size 10/12 (16/18) 3



Model 2 Size 12/14 (16/18)

A strawhat from Florence was the inspiration of
On the right, brilliant white is the background to set off the motifs.
Intarsia models with subdued colours for top



the left, the inexhaustible colours and shapes of nature.

Model 3 Size 12/14

fashion and classical variations.



6 Model 4 Size 10/12 (14/16)



On the left shiny cotton and viscose forms the basis for a welter of flowers. Some embroidery, velvety flowers and many beads together with a new colour combination are charming. On the right a luxurious sweater suitable for evening wear.

Model 5 Size 10/12

Flower designs - natural and abstract

Gold makes a come-back. These models are not only suitable for festive occasions, but will look equally good with casual wear.

Try other contrast yarns instead of gold, the result will surprise you.



Modeli 6 + 7 Size 12/14 (16/18)

The new darlings of fashion



Model 8 Size 12/14 (16/18) 9



Model 9 Size 12/14

Fashion conscious expression
On the left, an elegant creation
On the right, folklor



Model 10 Size 10 (14)

patterns and yarns mixed.
shades of turquoise.
style subtly translated.



Model 11 Size 10-14

Two for romantics. Shiny cotton and frothy lace form the basis for a sweater with the nostalgic touch.



Model 12 + 13 - Sizes 10-14 and 86 (98) cm.

Even little girls like something special and like to look like Mummy. Who could resist these wishes?



Model 14 Size 10/12



Two sweaters for ladies who like extravagance. Subtle, harmonising colours make our designs very appealing and wearable. Try changing the colours! Whether harmonising or contrasting, the result will be charming. Have the courage to be different!

Model 15 Size 12/14

These flattering sweaters are always in fashion



MACHINE KNITTING CHIC

INSTRUCTIONS

On the following pages you will find the instructions for all the illustrated models, together with patterns and charts.

Model 1

Red sweater with flowers

Size: 12/14 (16/18).

Machines: Suitable for electronic machines with more than 60 st pattern-width.

Material: WOLL SERVICE "Glamour" (55% cotton, 45% viscose, 145 m/50 g) approx. 650 (700) g red C 321. AUSTERMANN "Angora Wolle" (70% Angora, 30% wool, 100 m/20 g) 20 g black C 400. You will also need 7 black/red velvet flowers, some black/gold lurex for the embroidery, 20 small and 70 medium gold beads.

Available as a kit from WOLLSTUDIO Jutta Hinrichs, Wormser Str. 5, 6550 Bad Kreuznach, Tel.: (0671) 42625. Fax (0671) 45204. Send Eurocheque for £ 50.00 (£ 52.50) for yarn only. Appliqué, beads etc. £ 22.00.

Flowers: Knitted as single motif at TD 9. The 10 R marked with a dot at the right-hand edge of the chart, should each be knitted twice. The floats on the reverse side will be held by the embroidery and the sewing on of the flowers.

To facilitate the programming of Brother KH 930/940, have the chart enlarged, so that 60 squares measure 14 cm.

Tension: 30 st. and 36 R. = 10 cm. TD approx. 9. 1 x 1 rib knitted at TD 3.5-4. **Arrows** on pattern denote direction of knitting.

Back: Cast on 170 (182) st. in 1 x 1 rib and knit 60 R. Transfer all st. to MB and set RC 000. At TD 9, knit straight to RC 100 and shape armhole. Decr. at each side on alt. rows 4 st. once, 3 st. once (twice), 2 st. 4 times, 1 st. 12 times. Then decr. 1 st. at each side on every 4th row 8 times. 100 (106) st. Knit straight to RC 182 and shape neckline. Push the centre 24 st. and all st. at side opposite to carriage to HP. Knit on rem. st. and push to HP on alt. rows 7 st. 3 times. At RC 190 cast off rem. 17 (20) st. Repeat for other side.

Arrange the 66 st. in HP for 1 x 1 rib and knit 8 rows. Cast off.

Front: Knit as for the back, but knit in the flowers after R 2. When the pattern has finished, continue in red to RC 172. Shape neckline by pushing into HP the centre 20 st. and all st. at side opposite to carriage. Knit first side by pushing to HP on alt. rows at neckline, 4 st. 3

times, 3 st. twice, 2 st. twice and 1 st. once. Repeat for second side.

Arrange the needles in HP for 1 x 1 rib, knit 8 rows and cast off.

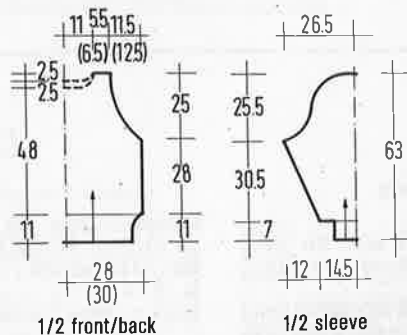
Sleeves: Cast on 84 st in 1 x 1 rib and knit 40 rows. Transfer all st. to MB and continue in stockingstitch. Set RC 000. Incr. 1 st. at each side on every 3rd row 36 times = 160 st. At RC 110, shape sleeve top by casting off at each side on alt. rows 4 st. once, 3 st. once, 1 st. 10 times and then in every 8th row 1 st. 6 times. At

RC 184 = 110 st. Cast off on alt. rows at each side 2 st. 3 times, 3 st. 3 times, 4 st. twice and 5 st. once. At RC 202, cast off the rem. stitches.

Finishing: Embroider the leaf centre with stemstitch in Lurex. Embroider around the bow in the same way, perhaps using the Lurex double. Sew on the velvet flowers and beads as shown in picture.

Close all seams and set in the sleeves, gathering the top to fit.

continued next page



Abbreviations:

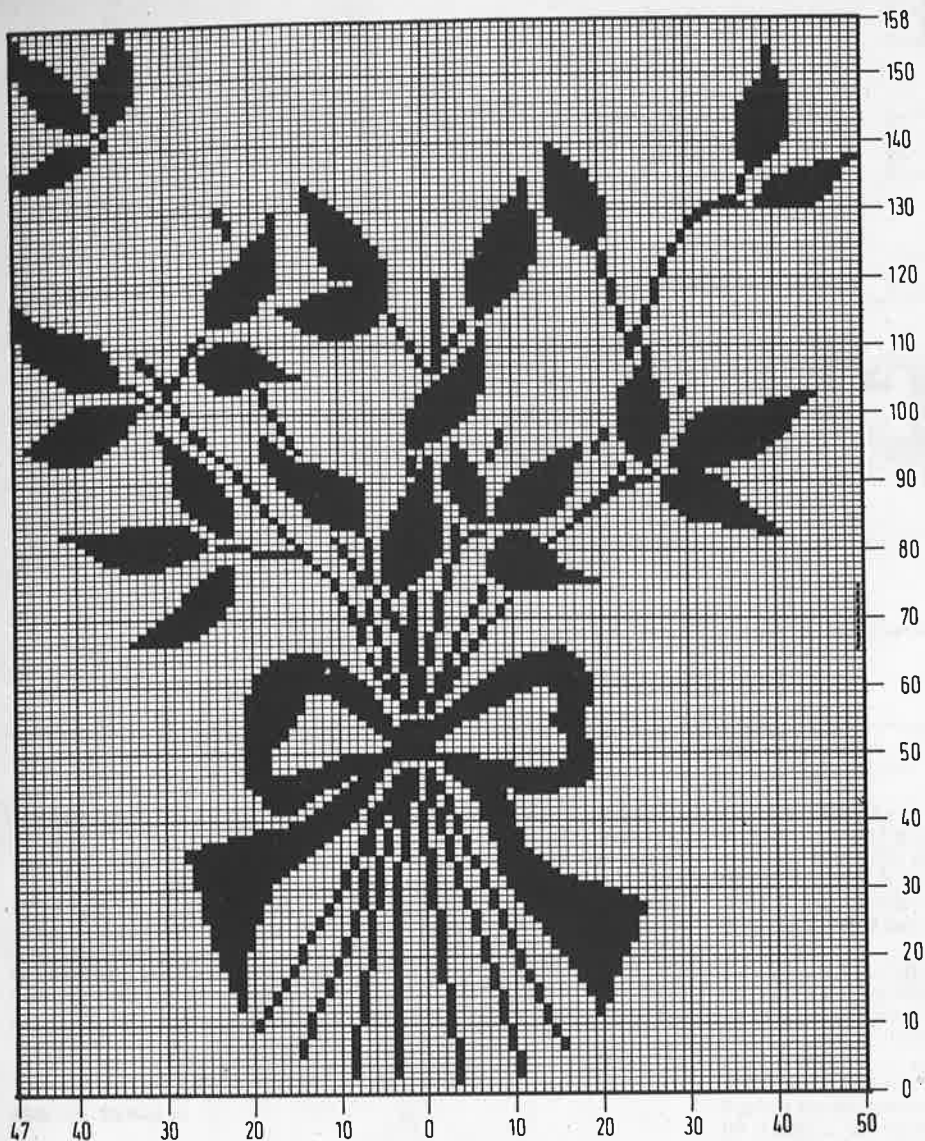
st. (s) = stitch (es)
R = row (s)
alt. = alternate
C = colour
COL = carriage on left
COR = carriage on right
cont. = continue
decr. = decrease
incr. = increase

rep. = repeat (ing)
N = needle (s)
RT = rib tension
MB = main bed
st.st. = stocking stitch
m. = metre
foil. = following
HP = holding position
WP = working position

NWP = non-working position
UWP = upper working position
RC = row counter
TD = tension dial
000 = set RC. to 000
rem. = remaining
trans. = transfer (ing)
MT = main tension
dc. = double crotchet

RB = ribber bed
ff. = fully-fashioned
cm. = centimetre

Numbers on patterns denote measurements in centimetres.



Model 2

Sweater with hats

Size: 12/14 (16/18).

Instructions for the larger size are in brackets, one figure only applies to both sizes.

Machines: Suitable for standard gauge machines with ribber and intarsia facility.

Material: HAMBURGER WOLLFABRIC approx. 650 (700) g white cotton (80% cotton, 20% acrylic, 150 m/50 g). You will also need small amounts of cotton in yellow and pale yellow. Shiny yarn in lt. and dk. olive, pink, brown, yellow and pale yellow, salmon and pale salmon. 1 multi-transfer tool.

The yarn is available in kitform from STRICKSTUDIO Gerti Damerow, Barenfelder Str. 169, 2000 Hamburg 50. Tel.: (040) 3903171.

Prices on application from the above address.

Tension: 28-29 st. and 34 rows = 10 cm. TD approx. 9** over stocking stitch.

Ribs are knitted with 2 st. on MB and 1 st. on RB at TD 3.

Intarsia: Knitted following charts 1 and 2. The yarns must be crossed when changing colours. Please watch the needle arrangement at lower edge of chart.

Arrows on pattern denote direction of knitting.

Back: In white cotton cast on 156 (168) st. and knit 30 rows in rib as given above. Transfer all st. to MB and continue in stocking stitch. Set RC 000 and knit to RC 134. Shape armholes: Set multitransfer tool so that 6 prongs are forward. Decr. 3 st. by moving 6 st. in by 3. Return empty needles to NWP. Decr. in this way 3 st. at each side every 6th row 7 times = 114 (126) st. Knit straight

to RC 218. **Shape neckline:** Push centre 42 (48) st. into HP, as well as all st. opposite carriage. Knit on rem st., pushing 2 st. to HP 3 times at neckedge on alt. rows. At RC 226, cast off rem. 30 (33) st. Repeat for other side.

Neckband: Arrange needles in HP for rib as above and knit 12 rows. Cast off.

Front: Cast on and knit as for back, but start intarsia from R 1 following chart 1. At RC 198, **shape neckline** by pushing into HP the centre 38 (44) st. and all st. at opposite to carriage. Continue shaping by pushing into HP at neckedge on alt. rows 2 st. 3 times and 2 st. twice. Knit straight to RC 226 and cast off the rem 30 (33) st. Repeat for other side.

Neckband: Pick up 17 st. from the straight edge at each side of neck. Arrange these and the st. from HP for rib as above and knit 12 rows. Cast off.

Right sleeve: Cast on with waste yarn 94 st. and knit several rows. Change to main yarn and set RC 000. Incr. 1 st. at each side on every 4th row 25 times = 144 st. At RC 110, shape sleeve top: decr. 3 st. at each side 7 times as described for the back = 102 st. Knit straight to RC 182 and cast off.

Left sleeve: Knit as for right sleeve, but include the intarsia following chart 2 after RC 46.

Cuffs: Cast on 72 st. in rib as given above and knit 40 rows. Transfer all st to MB. Hang the stitches from lower sleeve edge onto the same needles, decr. evenly across the row. Knit 1 row and cast off.

Finishing: Press all pieces from the wrong side, omitting the welts. Close all seams. Set in sleeves, matching the decreases. Pleat the top of the sleeve to fit.

Key to chart:

- 1 = white cotton
- 2 = lt. olive
- 3 = dk. olive
- 4 = yellow cotton
- 5 = pale yellow cotton
- 6 = pink
- 7 = brown
- dots = yellow french knots
- 8 = salmon
- 9 = yellow
- 10 = pale yellow
- 11 = pale salmon
- 1 square = 1 row and 1 stitch

Chart 1 (front)

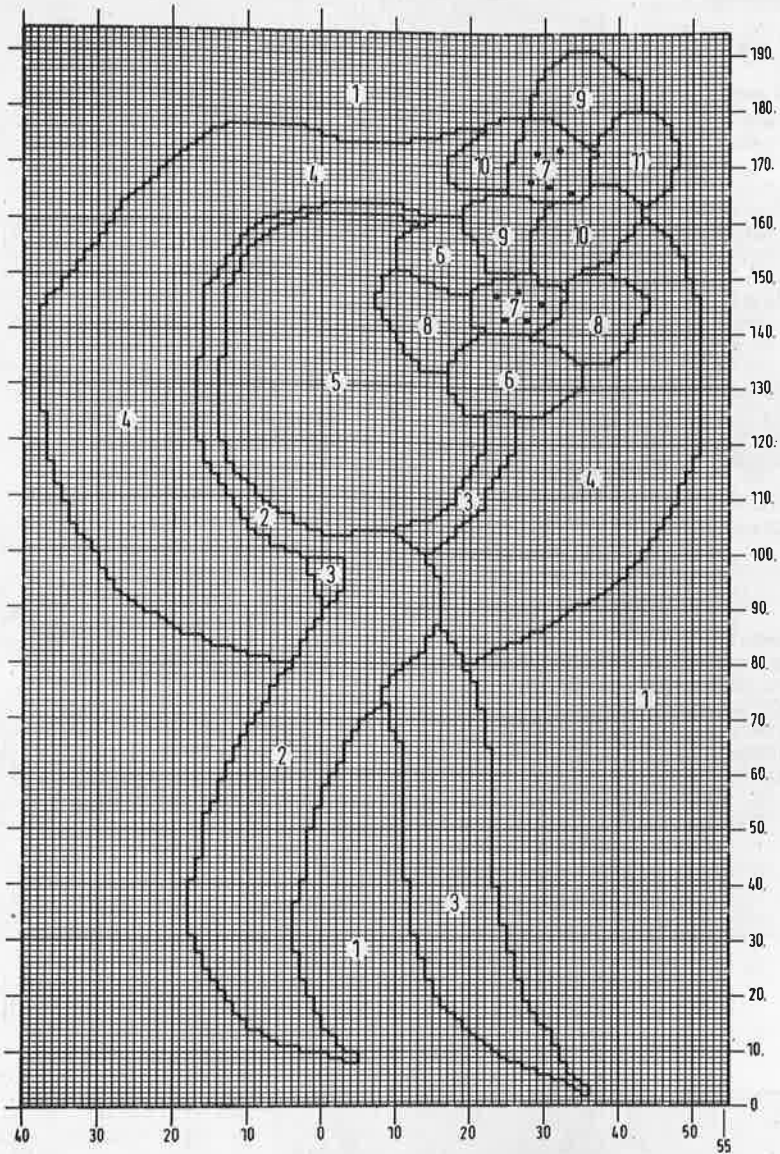
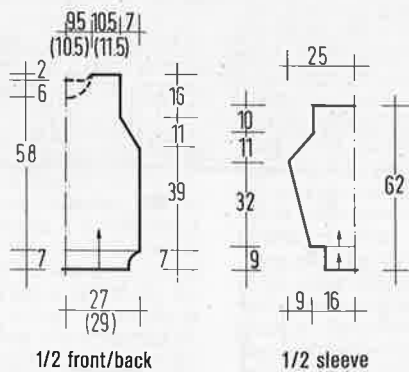
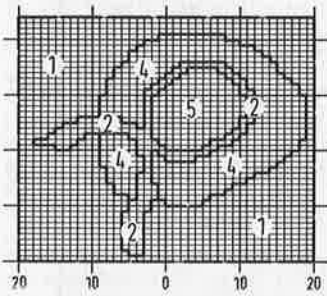


Chart 2 (left sleeve)



Model 3

White sweater with flowers

Size: 12/14. Sweater can only be knitted larger on machines with more than 110 needles.

Machines: Suitable for chunky machines with ribber and intarsia carriage or facility.

Material: KKK "Clip" (100% cotton, 166 m/100 g) approx. 800 g white C 4. Small amounts of shiny yarn in lt. and dk. olive, ochre and yellow. Cotton in yellow. Angora in yellow. 200 small beads in yellow. Gold fabric paint or a small amount of gold thread to knit in for area "6".

Tension: 20-21 st and 30 rows = 10 cm. TD. approx. 1". Ribs are knitted in every-

needle rib on lowest possible TD setting.

Intarsia: Knitted at TD 1" following the chart. Please cross the yarns when changing colours.

Arrows on pattern denote direction of knitting.

Back: Cast on with waste yarn 110 st. and knit several rows. Set RC 000 and change to main yarn. Knit to RC 100 and mark both side edges with contrast yarn for armhole. At RC 174, **shape neckline**. Push centre 38 st. to HP and all st. opposite carriage. Push into HP at neck-

continued next page

When substituting yarns, please use yarns with similar meterage.

edge on alt. rows 3 st. twice. At RC 180, cast off the rem. 30 st. Repeat for other side. Push RB into position and transfer alt. needles for 1 x 1 rib. Set TD as low as possible and knit 16 rows. Cast off loosely.

Front: Cast on and knit as for back, including the intarsia flowers when RC shows 22. Start neckline shaping on RC 158 by pushing into HP the centre 12 st. and all st at opposite to carriage. Knit first side by pushing into HP at neckedge on alt. rows 3 st. twice, 2 st. 5 times and 1 st. 3 times. Cast off rem. 30 st. at RC 180. Repeat for second side. **Neckband:** Transfer alt. st. from MB to RB and knit 16 rows rib as on back. Cast off loosely.

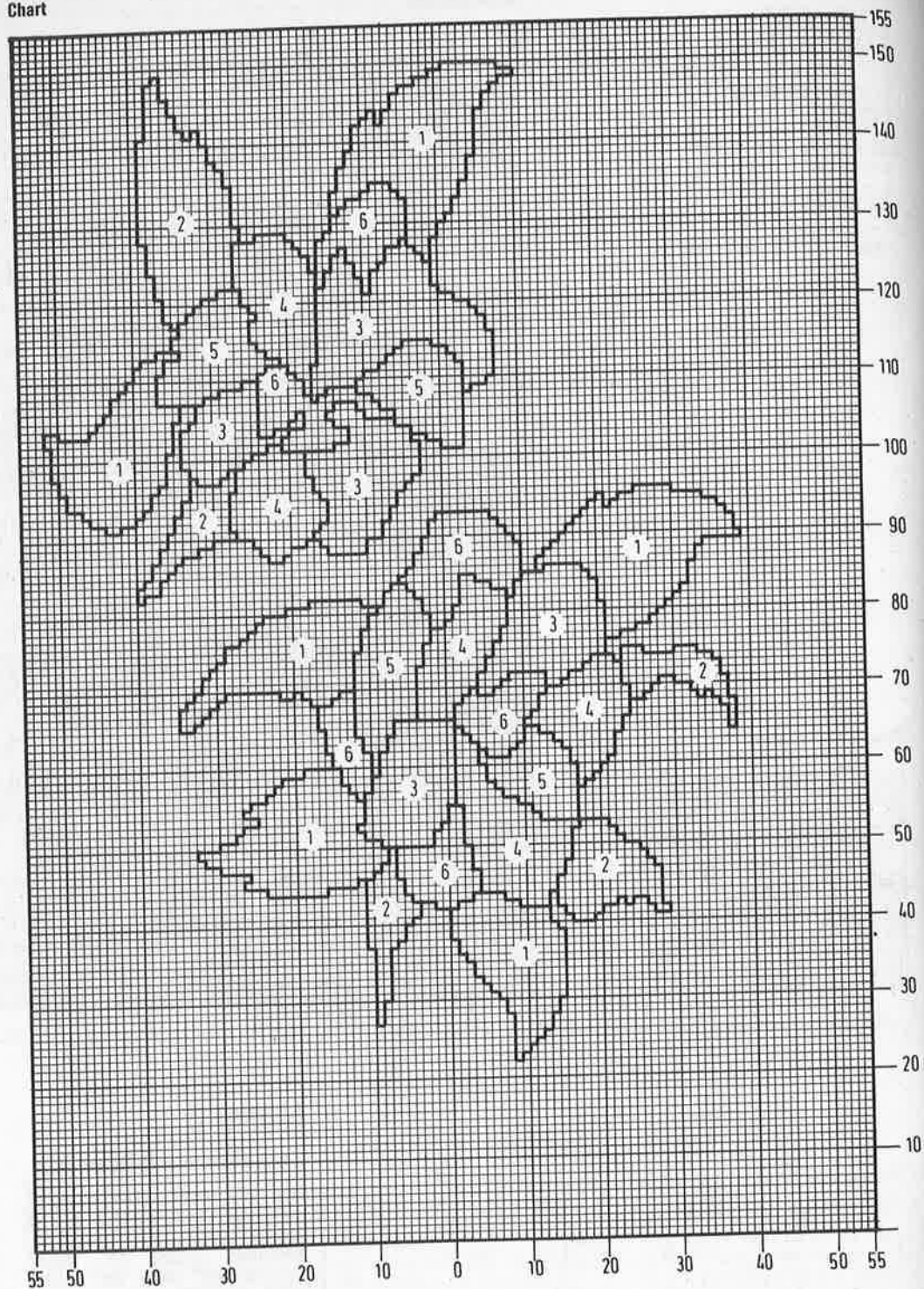
Sleeves: Knitted from top downwards. Cast on by hand 110 st. Set RC 000 and knit in white cotton, decreasing 1 st. at each side on every 4th row fully-fashioned 27 times = 56 st. Knit several rows with contrast yarn and release from machine.

Cuffs: With cotton, cast on 54 st. in full-needle rib. Knit 26 rows and release onto contrast yarn.

Welts: Cast on 110 st in full-needle rib and knit 36 rows. Release onto contrast yarn.

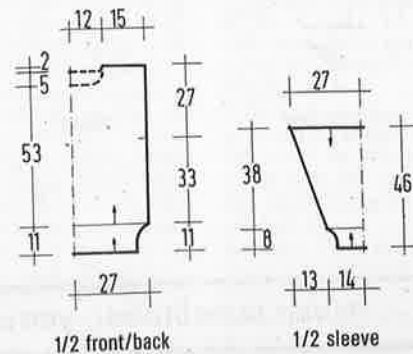
Finishing: Steam all pieces from wrong side, omitting the welts. Grafts welts to garment pieces. Remove contrast yarn. Sew on beads. Embroider the leaf veins with stemstitch. Apply fabric paint. Close shoulder and neckband seams. Fold neckband in half to inside and slipstitch into position. Set in sleeves between markers. Close side and sleeve seams.

Chart



Key to chart

- = white cotton
 - 1 = dk. olive, shiny
 - 2 = lt. olive, shiny
 - 3 = ochre
 - 4 = yellow Angora
 - 5 = yellow cotton
 - 6 = yellow shiny
- 1 square = 1 R and 1 st.



Model 4

Cornyellow sweater with cherry blossom

Size: 10/12 (14/16). Instructions for the larger size are in brackets, one figure only applies to both sizes.

Machines: Suitable only for electronic machines with more than 60 st. pattern facility. Ribber required for welts.

Material: WOLL-SERVICE "Glamour" (55% cotton, 45% viscose, 145 m/50 g) approx. 500 (600) g corn yellow C. 323. AUSTERMANN "Angora Wolle" (70% Angora, 30% wool, 100 m/20 g) approx. 40 g black C 400.

You will also need 50 small and 50 medium sized velvet flowers in black, 100 medium beads in anthracite and 50 small beads in gold. For the embroidery Lurex in black/gold, silk or viscose yarn in yellow.

The yarn only is available as a Kit from WOLLSTUDIO Jutta Hinrichs, Wormser Str. 5, 6550 Bad Kreuznach. Tel.: (0671) 42625 or Fax (0671) 45204. The cost is £52.50 (£55.00) by Eurocheque.

Tension: 30 st. and 36 rows = 10 cm. TD approx. 9. **1 x 1 rib** at TD approx. 3.5-4. It is advisable to have the charts enlarged before copying them onto mylar sheets or programming Brother KH 940.

Fairisle pattern: Knitted as "single motif" at TD 9. The floats on the reverse side will be caught when the flowers and beads are sewn on.

Chart 1: Front, starting pattern on RC 45, centralising the design.

Chart 2: Left sleeve, starting pattern on RC 51. Set pattern from left 7 - 0 - right 45.

Chart 3: Right sleeve: Pattern starts at RC 71. Set pattern from left 45 - 0 - right 15.

All patterns will appear on the knit side as shown on the chart. There will be several rows of plain knitting after the patterns.

Arrows on the diagrams denote direction of knitting.

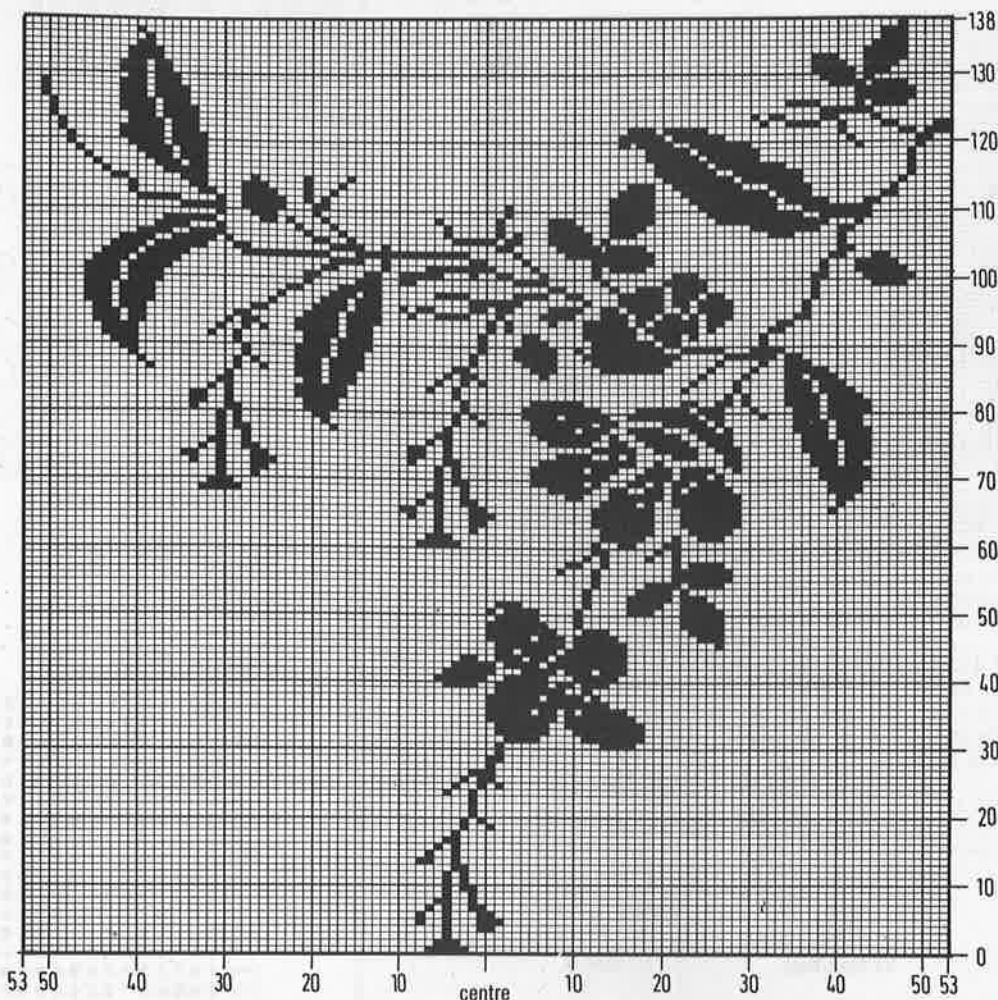
Back: In yellow cast on 160 (172) st. and knit 60 rows in 1 x 1 rib. Transfer all st. to MB. Set RC 000 and continue in stocking stitch. Increase 1 st. at each side on every 18th row 5 times = 170 (182) st. At RC 100 shape armholes: Cast off at each side on alt. rows 7 (10) st once, 3 st. once, 2 st. 3 times and 1 st. 17 times = 104 (110) st.

Continue straight to RC 184 and **shape neckline:** Push centre 28 st. to HP, as well as all st. at opposite side to carriage. Knit first side by pushing to HP on alt rows at neckedge, 6 st. twice and 5 st. once. At RC 192, cast off the rem. 21 (24) st. Return relevant st. at second side to WP and knit as for first side. For the **neckband,** arrange the needles in HP for 1 x 1 rib, knit 12 rows and cast off.

Front: Knit as for back, but include the fairisle design as given above. Shape the **neckline** when RC shown 166. Push the centre 20 st. and all st. at opposite side to carriage to HP. Shape first side by pushing to HP at neckedge on alt. rows 4 st. twice, 2 st. twice and 1 st. 9 times.

Cast off rem. shoulder stitches at same height as back. Return needles in HP to WP and knit neckband as on back.

Chart 1 (front)

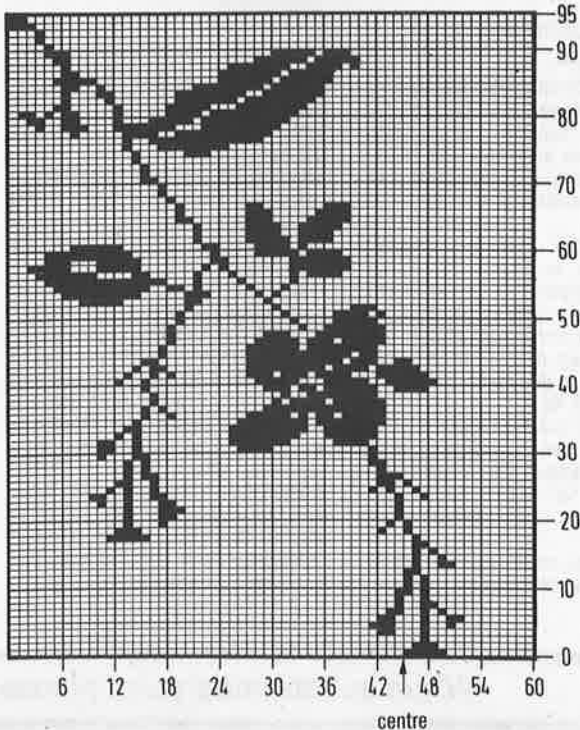


Sleeves: Cast on with wasteyarn 160 st. and knit several rows. Set RC 000 and change to main yarn. Knit the fairisle design as described above, at the same time increase 1 st. at each side on every 6th row 10 times = 180 st. At RC 72, shape sleeve top, by casting off at each side on alt. rows 8 st. once, 2 st. twice and 1 st. 38 times = 80 st. Knit to RC 155 and cast off rem. stitches.

Cuffs: Cast on 76 stitches in 1 x 1 rib and knit 40 rows. Transfer all stitches to MB. Re-hang stitches from lower edge of sleeve (19 st. on 9 needles). Bring all needles forward (makes it easier to knit off) and knit 1 row. Cast off. Turn cuff in half to inside and slipstitch in position.

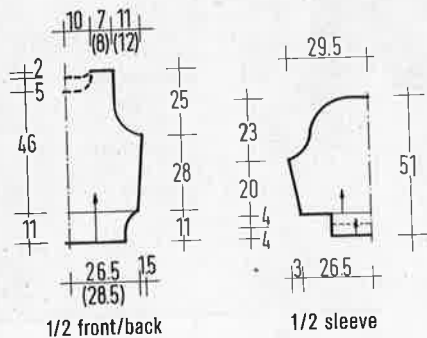
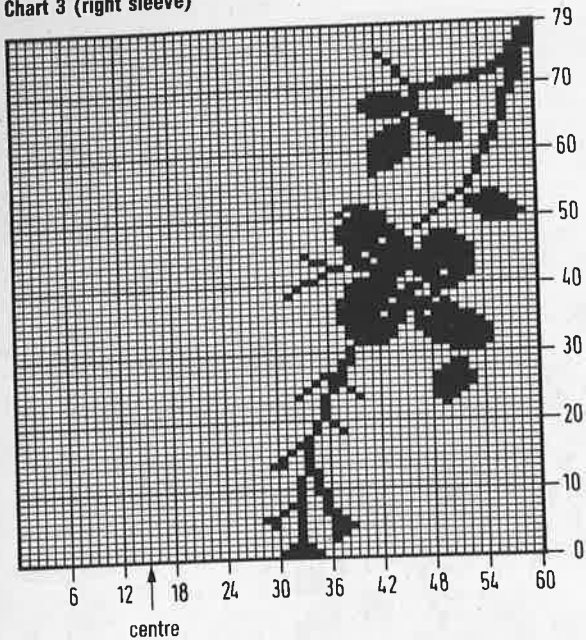
Finishing: Emphasise the centre of the leaves with satin stitch. Embroider two of the stems with Lurex yarn. Sew on flowers and beads as in picture. Close all seams and set in sleeves, pleating the sleeve top to fit. Swiss-darn the tendrils that don't quite reach the side seams, in black.

Chart 2 (left sleeve)



continued next page

Chart 3 (right sleeve)



Model 5

White tuckstitch sweater with grey appliqué

Size: 10/12. Can only be knitted larger on machines with more than 114 needles.

Machines: Suitable for chunky machines with punchcard and ribber. Machines without punchcards can select the needles for the pattern by hand.

Material: WOLL SERVICE "Scaletta" (100% cotton, mercerised, 90 m/50 g) approx. 750 g white C 10. A small amount of cotton yarn in grey. For the appliqué you will need remnants in satin in lt. and dk. grey, grey Angora, sequin strip, beads and long thin beads, wadding. A crotchet hook No. 4.

This yarn can be obtained for £ 43.50 in Eurocheque from WOLLSTUDIO Jutta Hinrichs, Wormser Str. 5, 6550 Bad Kreuznach. Tel.: (06 71) 42625. The pack does not contain fabric for the appliqué.

Tension: 21 st. and 37 rows = 10 cm. TD approx. 0 over tuckstitch.

Ribs are knitted 2 x 2 rib, H-position on lowest possible TD setting.

Arrows on diagrams denote direction of knitting.

Back: Cast on with waste yarn 110 stitches and knit several rows. Set RC to 000 and change to main yarn. Continue in tuckstitch pattern to RC 100 and shape armholes, by casting off 6 st. at beg. of next 2 rows. Decrease 1 st. at each side every 6th row 14 times = 70 stitches. Decrease 1 st. at each side every 6th row. At RC 192, shape backneck by casting off the centre 10 st. Knit each side separately: cast off at neckedge on alt. rows 4 st once and 3 st twice. At RC 200 cast off rem. 20 st. for the shoulder. Repeat for the second side.

Front: Knit as for back to RC 182. Shape neck by casting off the centre 10 stitches. Shape neckline by casting off at neckedge on alt. rows 3 st. once, 2 st. twice and 1 st. 3 times.

Sleeves: Cast on with waste yarn 72 stitches and knit several rows. Set RC to 000 and change to main yarn. Continue in tuckstitch, increasing 1 st. at each side on every 6th row 19 times. Knit straight to RC 130.

Shape sleeve top: Cast off on alt. rows at each side 2 st. 20 times. At RC 170, cast off the rem 30 st.

Front/Back welts: Cast on 102 stitches in grey and knit the circular and 1 rib row in grey. Change to white and knit to 20 rows. Knit several rows in contrast yarn and release from machine.

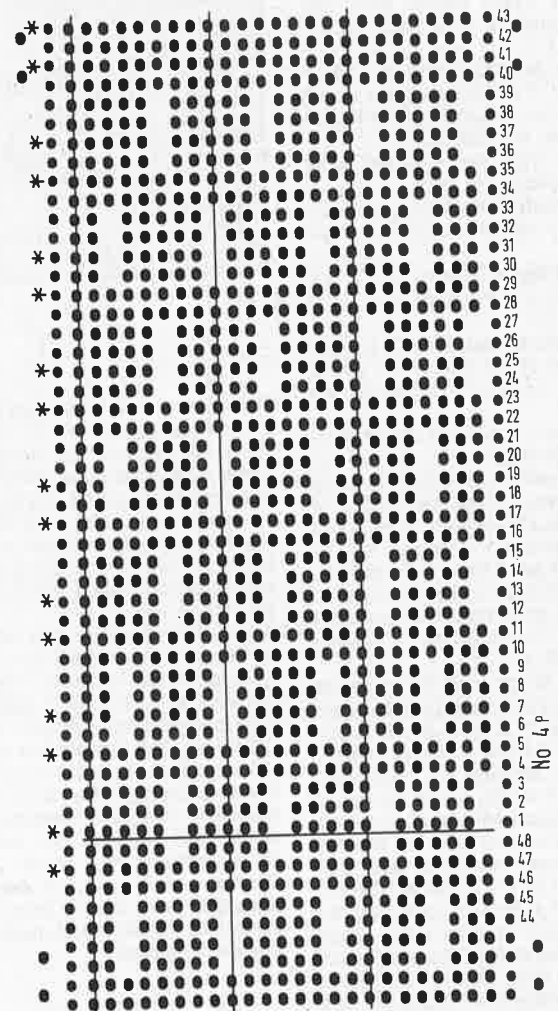
Cuffs: Push 38 needles to WP and arrange for rib pattern. Knit as given for welts for 30 rows.

Attach all welts and cuffs by grafting and remove waste yarn.

Appliqué: On a standard gauge machine or by hand, cast on in Angora 10 st. and knit 200 rows. Cast off. Sew the strip puri side uppermost as shown in picture, so that the edges curl. Sew on the small beads as in a chain. Cut the leaves from the pattern together with a seam allowance. Sew to garment over some wadding. Surround the leaves with sequin strip or a crotchet chain. For the motif, cut a strip of 6 cm width and gather it. Sew on, as shown.

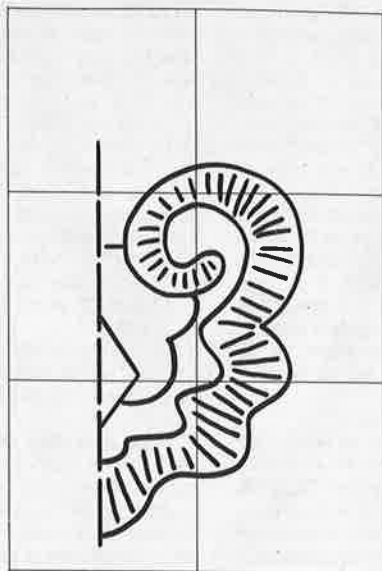
Finishing: Close all seams and set in sleeves, pleating the sleeve top to fit. Crotchet around neckline 1 row double crotchet and 1 row crabstitch.

Punchcard/Brother



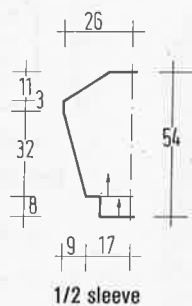
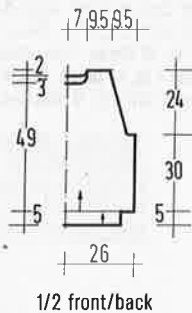
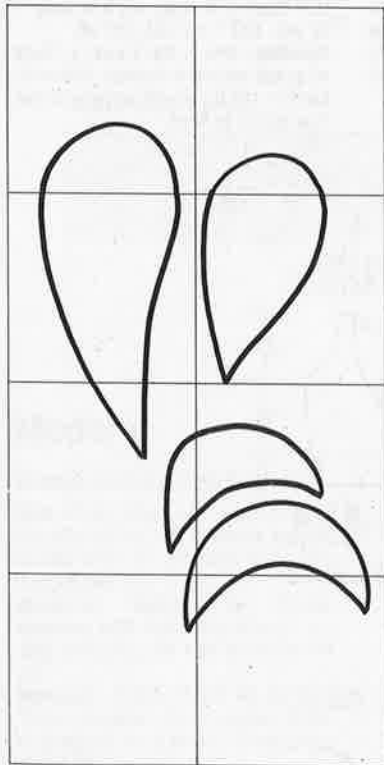
When substituting yarn, please use yarn with similar meterage!

Diagram for appliqué



1 square = 10 x 10 cm

Pattern for leaves



Model 6

Black sweater with golden hearts

Instructions are as for Model 7 - Salmon sweater with golden hearts.

Model 7

Salmon sweater with golden hearts

Size: 12/14 (16/18). The instructions for the larger size are in brackets, one figure only applies to both sizes.

Machines: Suitable for electronic machines with ribber. Can also be knitted on other standard gauge machines, using intarsia for the pattern.

Material: HAMBURGER WOLLFABRIK 550 (600) g cotton in salmon (80% cotton, 20% acrylic, 150 m/50 g) and approx. 40 g golden Lurex yarn (100% polyester, 135 m/20 g). Multi-transfer tool.

Available in kitform from STRICKSTUDIO Gerti Damerow, Barenfelder Str. 168, 2000 Hamburg 50. Tel.: (040) 3903171. Price on application.

Tension: 29 st. and 36 rows = 10 cm. TD approx. 9.

Heart motif: Copy the design on to the mylar sheet or enter into the memory. Program the machine to mirror-image the design. It is possible to use the smaller design only, knit for the front with double width and height switches active. If you wish to use intarsia, it may be necessary to lower the given tension. **Arrows** on pattern shapes denote direction of knitting.

Back: With salmon cast on 158 (168) st. in 2 x 2 rib and knit 50 rows. Transfer all st. to MB and set RC to 000. Continue in stocking stitch to RC 96. Shape **armholes:** Set multi-transfer tool with 6 prongs out. Take 6 st. at each side and move them in by 3 fully-fashioned. Push the 3 empty needles to NWP. Repeat every 6 rows, until 21 st. at each side have been decreased. Knit straight to RC 182 and **shape neckline.** Push the centre 44 (48) st. to HP as well as all needles on side opposite to carriage. Working on first side, push into HP at neckedge on alt. rows 2 st. 3 times. Cast off rem. 30 (33) st. for shoulder at RC 190. Repeat for other side.

Neckband: Arrange the needles in HP for 2 x 2 rib. 56 (60) st., knit 16 rows and cast off.

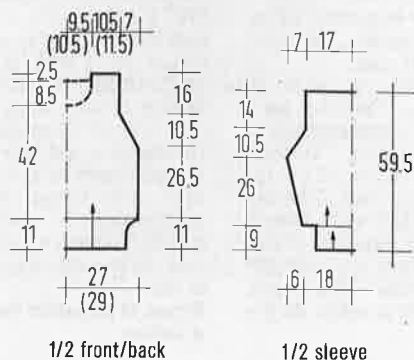
Front: Knit as given for back, starting the motif on RC 42. When RC shows 150, shape neck. Push to HP the centre 28 (32) st. and all stitches at side opposite to carriage. Knitting the first side, push to HP at neckedge on alt. rows 2 st. 5 times and 1 st. 4 times. Knit straight to RC 190 and cast off the rem. 30 (33) st. for the shoulder. Repeat for other side. For the **neckband**, pick up 20 st. at each side from the straight edge, 96 (100) st. Arrange for 2 x 2 rib and knit as for back-neck.

Sleeves: With waste yarn cast on 104 stitches and knit several rows. Set RC to 000 and change to main yarn. Knit in stocking stitch, incr. at both edges every 5th row 18 times = 140 st. At the same time, when RC shows 92, knit-in the smaller motif from chart 2. At RC 94, shape the sleeve top, decr. as given for armhole on back. 98 stitches. Knit straight to RC 182 and cast off rem. stitches.

Cuffs: Cast on with salmon 74 st. in 2 x 2 rib and knit 40 rows. Transfer all st. to MB. Hang the stitches from lower sleeve edge on to the same needles, decr. evenly across the row. Knit 1 row and cast off.

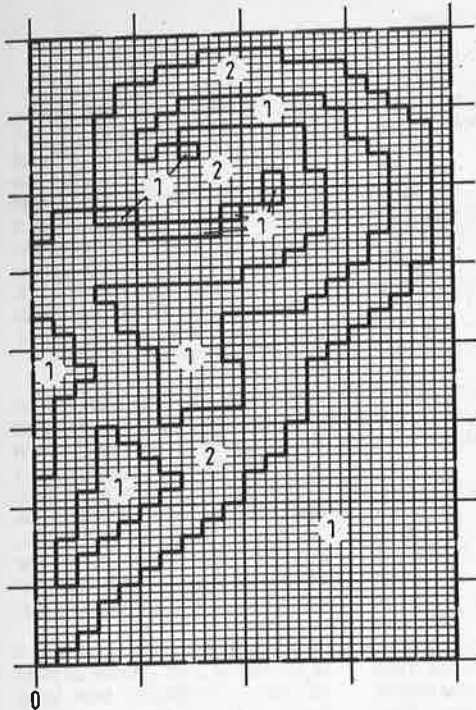
Finishing: Steam all pieces from the wrong side, omitting the welts. Set in sleeves, matching the decreases carefully. Pleat top of sleeve to fit. Close all seams.

continued next page



When substituting yarns, please use yarns with similar meterage.

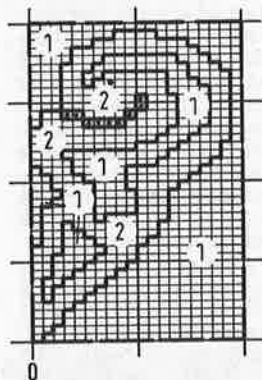
Chart 1 (front)



Key:

- 1 = salmon cotton
- 2 = gold Lurex
- 1 square = 1 R and 1 st.

Chart 2 (sleeve)



Model 8

White sweater with V-insert

Size: 12/14 (16/18). Instructions for the larger size are in brackets, one figure only applies to both sizes.

Machines: Suitable for electronic machines with ribber. The pattern could also be knitted in intarsia technique.

Material: WOLL-SERVICE "Glamour" (55% cotton, 45% viscose, 145 m/50 g) approx. 500 (550) g white C 301 and Lurex yarn "Lamé Soft" (60% artificial silk, 40% polyester, metallised, 160 m/20 g) approx. 40 g in gold. AUSTERMANN "Angora Wolle" (70% Angora, 30% wool, 100 m/20 g) approx. 100 g in white.

The yarn is available as a kit from WOLL-STUDIO Jutta Hinrichs, Wormser Str. 5, 6550 Bad Kreuznach by sending a Eurocheque for £74.00 (£76.50). Tel.: (06 71) 426 25. Fax: (06 71) 452 04.

Tension: Stocking stitch 30 st. and 36 rows = 10 cm. TD approx. 9.

Fairisle: 30 st. and 41 rows = 10 cm. The gold motif is knitted as "single motif" in the V-insert. There are only short floats on the reverse. The V-insert is knitted separately and sewn in. The chart can be enlarged to make it easier to read.

Arrows on the pattern denote direction of knitting.

Back: Cast on with "Glamour" 160 (172) st. and knit 60 rows 1 x 1 rib. Transfer all st. to MB and set RC to 000. Continue in stocking stitch. Increase 1 st. at each side on the 18th and every foll. 18th row, 5 times 170 (182) st. At RC 70, separate the work and knit each side separately. Decrease at inner edge 1 st. on alt. rows 20 times. Decr. 1 st. at inner edge on every 3rd row 10 times, 1 st. every 4th row 5 times and 1 st. every 6th row 3 times. **AT SAME TIME**, when RC shows 100, shape armhole: At outer edge, decr. on alt. rows 4 st. once, 3 st. once (twice), 2 st. 4 times, 1 st. 12 times. Then decr. 1 st. on every 4th row 8 times. 12 (15) st. remain. Cast these off for shoulder at RC 190. Repeat on other side.

Front: Knitted as for back.

Sleeves: Arrange 88 st. for 1 x 1 rib. Cast on and knit the circular rows with Lurex. Knit 4 rows rib with Angora. Change to "Glamour" and knit to RC 40. Transfer all stitches to MB and continue in stocking stitch. Incr. 1 st. at each side on next and every foll. 3rd row 36 times = 160 st. **AT THE SAME TIME**, when RC shows 70, divide the work and knit each side separately. The decreases at inner edge are worked as on back. At RC 110, shape sleeve top: at outer edge decr. on alt. rows 5 st. once, 3 st. once, 2 st. twice and 1 st. 10 times. Then decr. on every 3rd row 1 st. 14 times. When RC shows 180, cast off rem. 6 stitches.

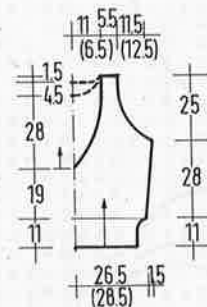
V-insert front: With Angora cast on 4 st. Set RC to 000 and continue in stocking stitch. Increase at both sides in the same sequence as the decreases on the back: 38 stitches over 108 rows at each side. After these increases the side edges are kept straight. **AT THE SAME TIME**, when RC shows 20, knit in the motif from chart 1. At RC 114, **shape neckline:** push centre 20 st. to HP and all st. on opposite side to carriage. Knit one side by pushing to HP at inner edge on alt. rows 4 st. twice, 3 st. once, 2 st. 3 times and 1 st. 6 times. Cast off the rem. 7 st. when RC shows 140. Repeat for other side.

Return needles to WP and arrange for 1 x 1 rib. Knit 10 rows Angora, 4 rows Lurex, 11 rows Angora and 1 row Lurex. Cast off.

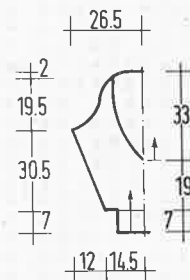
V-insert, back: Knit as for the front, adding the 15 rows from chart 2 at the top. Start the neck shaping on RC 134, by pushing into HP the centre 42 stitches. Decrease at neckedge 6 st. on alt. rows twice. Cast off rem. st. at RC 140. Repeat for other side. Knit neckband as on front.

V-insert, sleeves: Knit as given above till RC shows 122, but without the neckshaping. Shape sleeve top by casting off at each side on alt. rows 2 st. 3 times, 3 st. 3 times, 4 st. twice and 5 st. once = RC 140. Knit 1 row and cast off.

Finishing: Sew in the V-inserts. Close all seams and set in sleeves. Fold neckband in half to outside and sew down. Sew motifs to band.



1/2 front/back



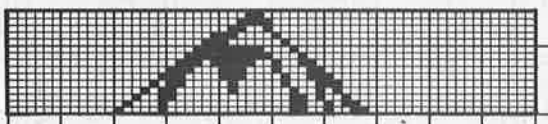
1/2 sleeve

When substituting yarn, please use yarn with similar meterage!

Chart 1 (all pieces)



Chart 2 (top of back)



silver, diamond shaped. Approx. 27 silver beads. Crotchet hook No. 3.5.

Tension: 20-21 st. and 28 rows = 10 cm. TD approx. 4. over stocking stitch. 2 x 2 rib knitted at TD 0.

Intarsia: Knitted at TD 5. Use a separate ball of yarn for each area of colour and cross the yarns when changing colours. Increases and decreases can be read from the chart. Please note! The chart contains the patterns for back, front and sleeves. In order that the patterns match up, the back and front have additional 10 rows at the bottom. Take care all latches are open when knitting the lace pattern.

Arrows on pattern denote direction of knitting.

All parts are started with waste yarn and the ribs added later.

Front: Cast on 108 stitches and follow the chart, knitting the lower neckline.

Back: Cast on 108 stitches and knit from chart, using the higher neckline.

Sleeves: Cast on 74 stitches and knit following the chart.

Back and front welts: Re-hang stitches from lower edge onto 80 needles, decreasing evenly across the row. Knit 32 rows and cast off.

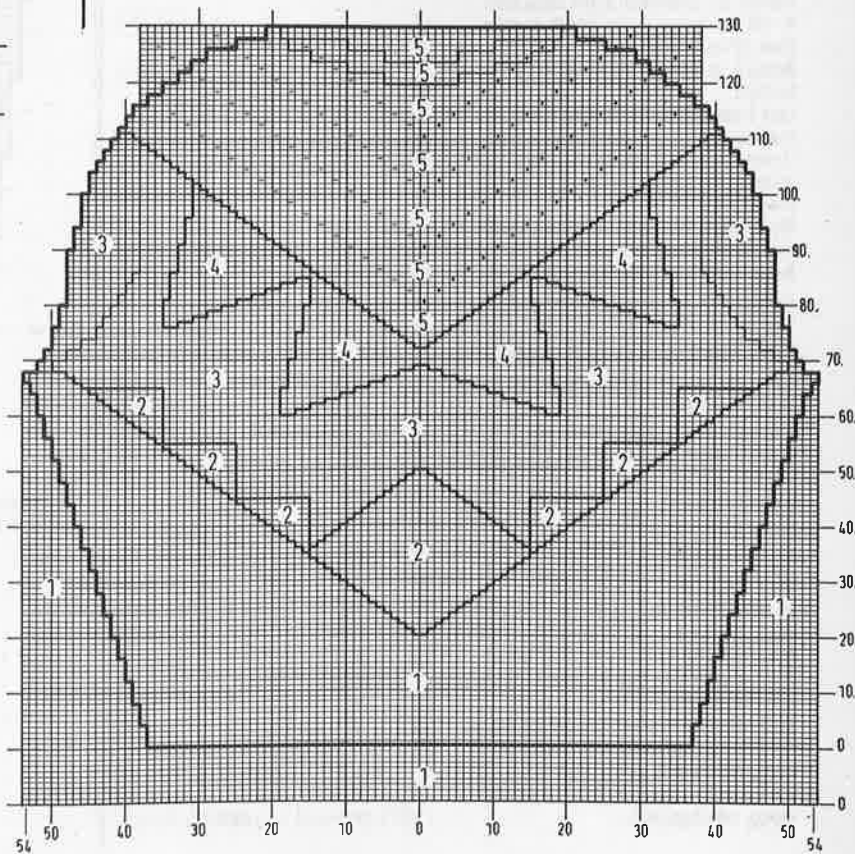
Cuffs: Re-hang stitches from lower edge of sleeves on to 42 needles, decreasing evenly across the row. Knit 36 rows and cast off. Sew the beads on the lace yoke. Sew all seams and set in sleeves. Sew the ric-rac braid at lower edge of pattern and silver braid at upper edge of pattern. Sew on appliques. Crotchet around neckline with Angora 1 row double crotchet and 1 row crabstitch.

Key:

- 1 = coton d'egypte C 21
- 2 = Mogador
- 3 = coton d'egypte C 68
- 4 = Spirales
- 5 = Phil'Angora 70

- = transfer 1 st. to the right. Leave empty N in WP and knit 2 rows
- = Transfer 1 st. to the left. Leave empty N in WP and knit 2 rows.
- 1 square = 1 R and 1 st.

Chart (front/back, sleeves)



Model 9

Intarsia sweater with lace yoke

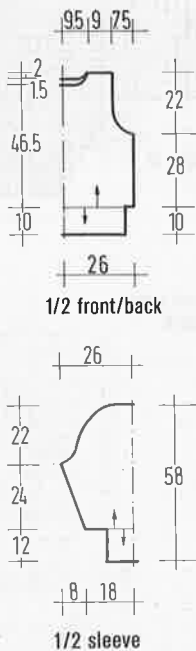
Size: 12/14. Knitted over a maximum of 108 stitches and can therefore only be knitted larger on machines with more than 110 needles.

Machines: Suitable for chunky machines with ribber and intarsia carriage or facility. We used a Brother KH 230.

Materials: Phildar Yarns as follows: "Coton d'egypte" (100% cotton, 85 m/50 g) approx. 450 g green C 21 and 200 g mint C 68.

"Spirales" (100% viscose, 105 m/50 g) approx. 100 g turquoise C 58. "Mogador" (82% viscose, 12% acrylic, 6% polyester, 86 m/50 g) approx. 100 g white/silver C 05.

"Phil Angora" (70% Angora, 30% wool, 33 m/10 g) approx. 90 g green. C 96. 2.40 m silver ric-rac braid, 8 mm wide. 2 m braid, 15 mm wide. 3 appliques in



When substituting yarns, please use yarns with similar meterage.

Model 10

Tuckstitch jacket in folklore style

Size: 10 (14). The instructions for the larger size are in brackets, one figure only applies to both sizes.

Machines: Suitable for chunky machines with intarsia carriage or facility. No ribber needed. We used a Brother KH 260.

Materials: Approx. 750 (800) g in small amounts of cotton and Angora in shades of green and turquoise.

"AUSTERMANN" Jeansyarn "Bikini" (70% cotton, 30% viscose, 100 m/50 g) in blue C 15.

You will also need knitting needles No. 3.5; crochet hook No. 3.5; sequins; fabric for the appliqué and beads; 6 buttons.

Tension: 21 st. and 35 rows = 10 cm. TD approx. 0 over tuckstitch.

Tuckstitch: Set carriage for HP. Bring every 10th needle to HP and knit 4 rows. Release HOLD and knit 4 rows. Bring the 5th and every foll. 10th needle to HP and knit 4 rows. Release HOLD and knit 4 rows. These 16 rows form the pattern and are repeated throughout.

Intarsia: Following the chart, knit the sections either plain or in tuckstitch. For smaller areas in tuckstitch, select every 6th needle to HP, else the pattern will not show sufficiently. When knitting intarsia and tuckstitch at the same time, it will be necessary to return needles from HP to Intarsia position by hand.

Arrows on pattern denote direction of knitting.

Left front: Knitted following the chart, reading the incr. and decr. as shown. Increases of several stitches must be done at the same side as the carriage by e-wrapping.

Right front: Knit as for left front, reversing all shapings etc.

Back: Knitted as both fronts, but as one piece. For the neckshaping, cast off at RC 170 the centre 10 st. Knit each side separately. Cast off at neck edge on alt. rows 5 st. once, 4 st. once and 3 st. once. Remaining shoulder stitches are cast off at RC 180.

Sleeves: Cast on with waste yarn 76 st. and knit several rows. Set RC to 000 and change to blue yarn. Knit in tuckstitch pattern only (no intarsia), incr. 1 st. at each side on every 6th row 17 times. 110 stitches. When RC shows 110, shape sleeve top by casting off 3 stitches at each side. Decr. at both sides on alt. rows 2 st. twice, 1 st. 3 times and then on every 4th row 1 st. till 86 st. remain. knit straight to RC 164 and cast off on alt. rows at each side 3 st. 3 times. Cast off rem. 68 stitches.

Cuffs: Pick up stitches from waste yarn, decr. to 44 (50) stitches.

Knit by hand 1 st. row: Edge stitch, *1 purl, 4 knit*, repeat from * to * till last stitch, which is purl.

2nd and all even rows: Knit stitches as they appear.

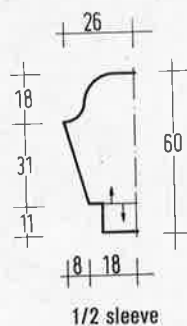
3rd row: as 1st row.

On rows No. 5, 11, 17, 23 and 29, cable the 4 knit stitches by laying the first 2 st. on a cable needle to the front of the work, knit the next 2 st. and then knit the 2 st. from cable needle. Cast off all stitches after knitting 34 rows.

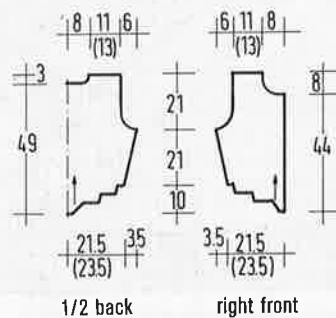
Finishing: Embroider the sleeve top as shown in picture. Sew on appliqué leaves. Sew on beads and sequins on fronts and back. Close shoulder and side seams. Crotchet around the outside edge of jacket in double crotchet, making 3 dc. on corners and decr. on inside corners. On right front make 6 evenly spaced buttonholes on middle row of crotchet. Finish with 1 row of crabstitch.

Around neckedge, work bobbles: work 5 to 7 trebles into the same stitch, always leaving the last loop on the hook. Wrap the yarn around the hook and draw through all the loops on the hook.

Set in the sleeves, gathering the top to fit. If required, crotchet a thick chain and sew on as shown. Sew on buttons.



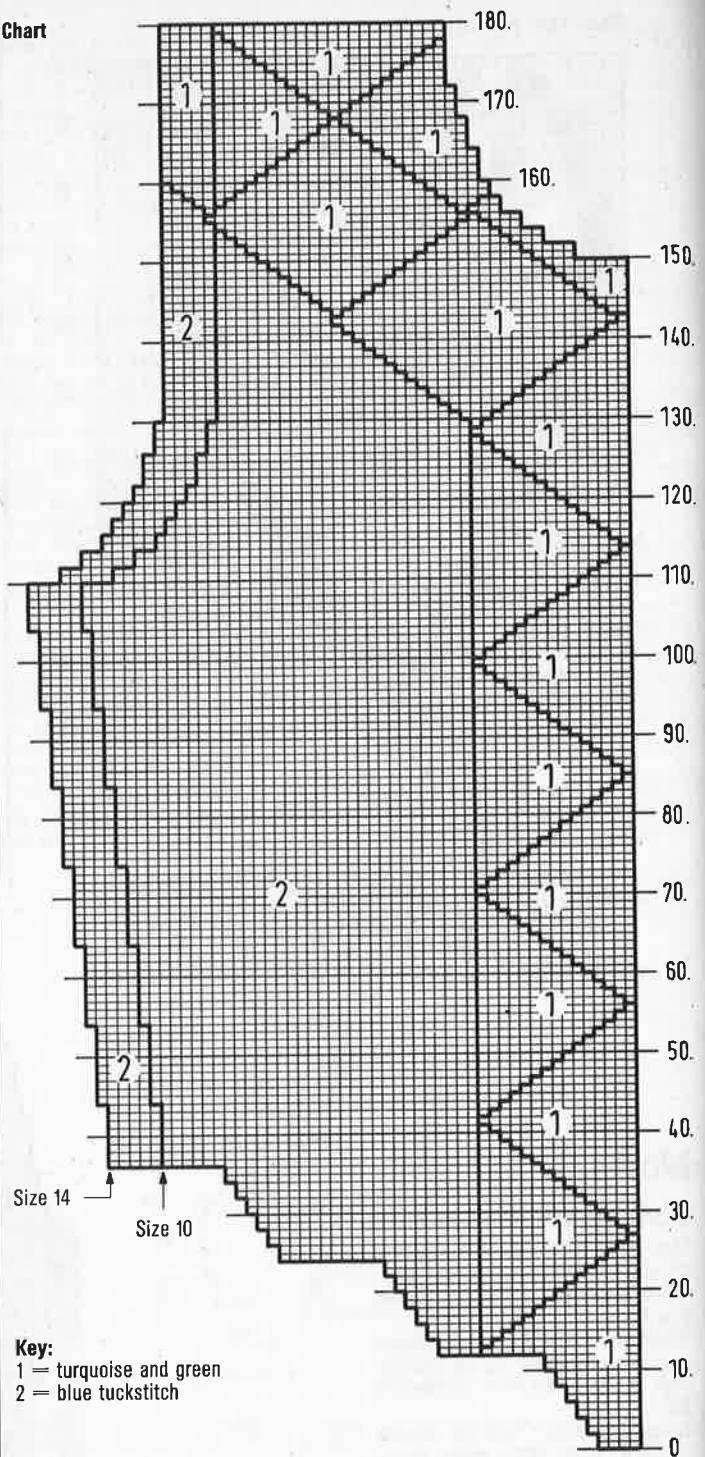
1/2 sleeve



1/2 back

right front

Chart



Size 14

Size 10

Key:

- 1 = turquoise and green
- 2 = blue tuckstitch

When substituting yarn, please use yarn with similar meterage!

Model 11

Salmon sweater with cable/bobble welt

Size: 10-14. Can only be knitted larger on machines with more than 114 needles.

Machines: Suitable for chunky machines. We used a Brother KH 260. The ribs can be knitted on the ribber or by hand. We give instructions for both.

Material: MODE-LAINE "Farsa" Cotton (60% mercerised cotton, 40% viscose, 90 m/50 g) approx. 850 g in salmon C 920.

Crochet hook No. 3.5 for the bobbles. Knitting needles No. 3.5, if knitting welts by hand. 60 white beads. Remnants of net and flowered lace. Small amount of Angora in matching colour.

Tension: 22-23 st. and 29 rows = 10 cm. TD approx. 0 with close-knit bar in position.

Ribs knitted on both beds: TD 10/8, H-position. Working from the chart, repeat the 14 pattern stitches across the width with 1 extra stitch at each end on RB. The pattern chart shows alt. rows only: the needle arrangement stays the same for two rows.

Ribs knitted by hand: Follow the relevant chart. The number of stitches is divisible by 14 plus 1 extra stitch at each end. The chart only shows uneven numbered rows, the stitches on even numbered rows are knitted as they appear.

Bobbles: Crocheted as follows and sewn on afterwards. Make 1 chain, pulling the loop out to 2 cm length. Put yarn around hook, put hook through chain and pull a loop through and leave on crochet hook. Repeat 3 or 4 times, then

put yarn around hook and pull through all loops on needle. Close with 1 chain. Cut yarn and tie a knot.

Back: With waste yarn cast on 114 st. and knit several rows. Set RC to 000 and change to main yarn. Continue in stocking stitch to RC 70.

Knit a **pleat:** disconnect RC and knit 28 rows. Pick up the loops from row 1 of pleat and place on same needles. Connect RC and knit to RC 76. Shape **armholes:** decr. fully-fashioned 1 st. at each side on alt. rows 37 times = 40 stitches remain. Cast off at RC 152.

Front: Work as for back to RC 144. Shape **neckline:** Cast off the centre 14 st. and knit each side separately. Cast off at neckedge on alt. rows 4 st. once, 3 st. once and 2 st. once. Cast off rem. 4 st. at RC 152.

Sleeves: With waste yarn cast on 72 stitches and knit several rows. Set RC to 000 and change to main yarn. Continue in stocking stitch, incr. 1 st. at each side every 4th row 17 times = 106 st. When

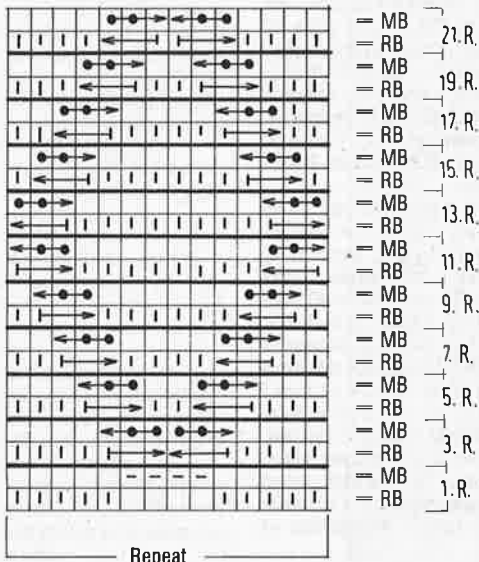
RC shows 70, knit a pleat as described for back. When RC shows 76, start shaping raglan as described for back to RC 152. Cast off rem. 32 st.

Welts: When knitting on the machine, replace stitches on 100 needles, decr. evenly across the row. Knit 1 row plain before arranging the needles for the pattern as shown in diagram. Knit 22 rows and cast off. When knitting by hand, pick up the stitches and knit 1 row, decr. to 100 stitches. Knit 22 rows as in diagram and cast off.

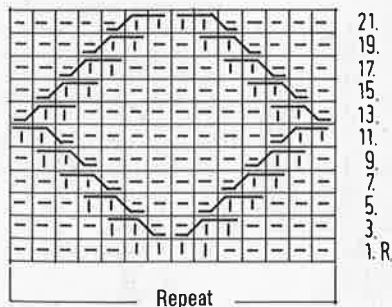
Cuffs: Pick up the stitches from lower edge of sleeve on to 40 needles on MB only. Knit 40 rows stocking stitch and cast off.

Finishing: Close raglan seams first and then the side and sleeve seams. Cut the lace to shape and sew on. The appliqués are knitted according to your own taste. They are either strips of plain knitting, sewn on in lengths or whorls. They could also be cords or squares sewn on at random. Sew on beads where most effective.

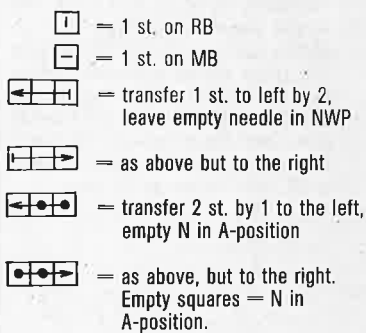
Key to double bed knitting



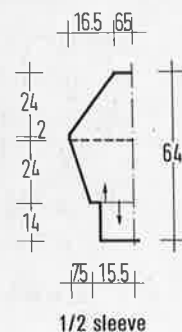
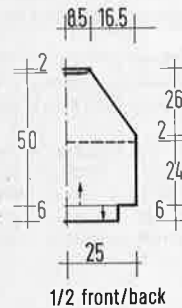
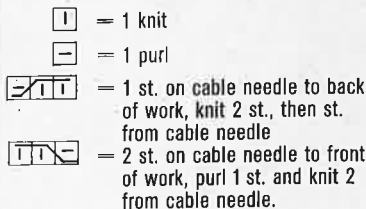
Key to handknitting



Key/double bed



Key/handknitting:



Model 12

Lightblue sweater with crotchet roses

Size: 10-14. This sweater can only be knitted larger on machines with more than 110 or 114 needles.

Machines: Suitable for chunky machines. We used a Knitmaster 155.

Material: MODE-LAINE "Farsa" (60% mercerised cotton, 40% viscose, 90 m/50 g) approx. 650 g lt. blue C 905. Crochet hook No. 3 1/2 or 4.

continued next page

When substituting yarns, please use yarns with similar meterage.

For the embroidery you will need small amounts of lt. blue and white Angora, 50 small and 50 medium beads in white, 160 cm white lace, 12 cm wide and 50 cm lace 8 cm wide.

Tension: 22-23 stitches and 29 rows = 10 cm. Stocking stitch at TD approx. 0 with close-knit bar in position.

Arrows on pattern denote direction of knitting.

Back: Start by knitting 3 points: E-wrap cast on 4 st. Knit 1 row and continue in stocking stitch, incr. 1 st. at beg. of next 32 rows. 36 stitches at RC 34. Re-hang all 3 points on 108 needles and set RC to 000. Continue in stocking stitch to RC 76. Shape armholes: Decr. at each side on alt. rows 4 st. once, 3 st. once, 2 st. twice and 1 st. 7 times = 72 st. Knit straight to RC 154 and shape the neckline: Cast off the centre 20 st. and knit each side separately. Cast off at neck-edge on alt. rows 3 st. twice, 2 st. once and 1 st. twice. Cast off the rem. 17 st. at RC 162. Repeat for other side.

Front: Knit as for back, but start neck-shaping when RC shows 150. Cast off the centre 18 st. and knit each side separately. Decr. at neck-edge on alt. rows 3 st. twice, 2 st. once and 1 st. twice.

Sleeves: Knit one point as described on back and hang on the centre 36 needles. E-wrap cast on at each side 27 stitches = 90 st.

Set RC 000 and continue in stocking stitch, incr. 1 st. at each side on every 6th row 7 times = 104 st. When RC shows 44, shape sleeve top: Cast off at each side on alt. rows 4 st. once, 3 st.

once, 2 st. 3 times. Decr. 1 st. at each side on every 4th row 11 times. Decr. 1 st. at each side on alt. rows 7 times and 2 st. 3 times. When RC shows 118 cast off rem. 30 stitches.

Crotchet Flowers: Make 5 chains and close to a ring. Make 1 treble into first chain, 2 chains, 1 treble into next chain etc to the end. Close the ring with a slip-stitch into start. 2nd row: 1 dc, 2 trebles and 1 dc into each of the 2 chains. Do not close the ring but continue in a spiral. 3rd row: 2 chains, 1 dc around next treble, 6 times altogether. 4th row: Around the 2 chains of the previous row make 1 dc, 2 half trebles and 1 dc. 5th row: As 4th row, but working only half the number of shells, so that the flower appears to close. Cut the thread and pull through to the back. When sewing on, sew 1 large bead into the centre of each flower.

Finishing: Close shoulder and sleeve seams. Crotchet along all edges (excluding sleeve top) with 1 row dc and 1 row crabstitch. Increase around the corners of the points! Crotchet 20 flowers. Sew on 12 approx. 4 cm below the front neck. Sew the lace below the flowers, taking it just over the shoulders. Sew on beads at random. For the embroidery follow the chart below. The smaller flowers are in lazydaisy stitch and the larger ones in satin stitch. Close side seams and set in sleeves. Turn up the point on lower edge of sleeve and sew down with 1 flower and a scrap of lace. Sew 1 flower between the points on back and front. Embroider some small white flowers on the back.

Model 13

Girls sweater

Size: To fit chest 64 (68) cm. The instructions for the larger size are in brackets, one figure only applies to both sizes.

Machines: Suitable for chunky machines. We used a Knitmaster 155.

Material: MODE-LAINE "Farsa" (60% mercerised cotton, 40% viscose, 90 m/50 g) approx. 200 (250) g in grey C 919. Knitting needles No. 3½ for the welts. Crotchet hook No. 3½.

150 cm lace, 8 cm wide. 20 g white Angora, small amount white cotton for the embroidery; 30 white beads, 60 small grey beads, 2 buttons.

Tension: 22-23 stitches and 29 rows = 10 cm. TD approx. 0 with closeknit bar.

Ribs are knitted by hand as k1, p1, rib.

Back: With waste yarn cast on 74 (78) st. and knit several rows. Set RC to 000 and continue in grey and stocking stitch. When RC shows 42 (50), cast off at each side on alt rows 2 st. once and 1 st. 3 times = 64 (68) st. Knit straight to RC 76 (86) and shape neckline: cast off the centre 24 (26) stitches and knit each side separately. Decr. at neck-edge on alt. rows 3 st. once and 1 st. once. Cast off the rem. 16 (17) stitches when RC shows 82 (92). Repeat for other side.

Front: Knit as for the back to RC 70 (80). Shape neckline: cast off the centre 16 (18) st. and knit each side separately. Cast off at neck-edge on alt. rows 3 st. once, 2 st. once and 1 st. 3 times. Repeat for other side.

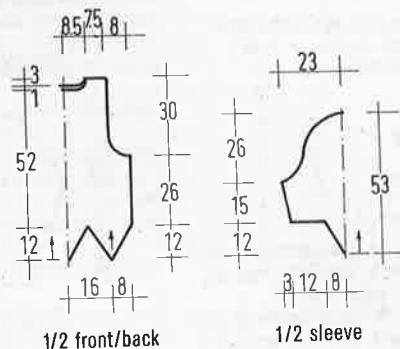
Sleeves: With waste yarn cast on 46 (50) st. and knit several rows. Set RC 000 and continue in grey. Incr. 1 st. at each side on every 4th (5th) row 9 times = 64 (68) st. When RC shows 40 (48), shape sleeve top. Cast off at each side on alt. rows, 5 st. once, 2 st. once and 1 st. 5 times. Decr. 1 st. at each side every 4th row 2 (3) times. Decr. on alt. rows 1 st. 4 times, 4 st. once and 5 (6) st. once. Cast off the rem. 10 stitches on next row.

Finishing: Pick up st from lower edges, decr. the number by 7 on back and on front. Knit welts approx. 3½ cm wide. For sleeves reduce the number of

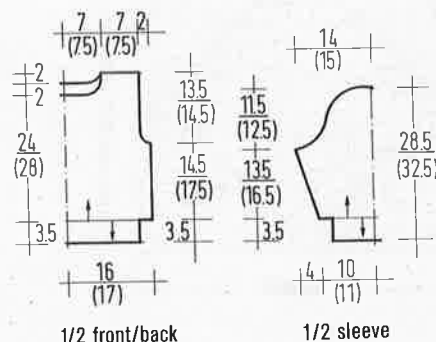
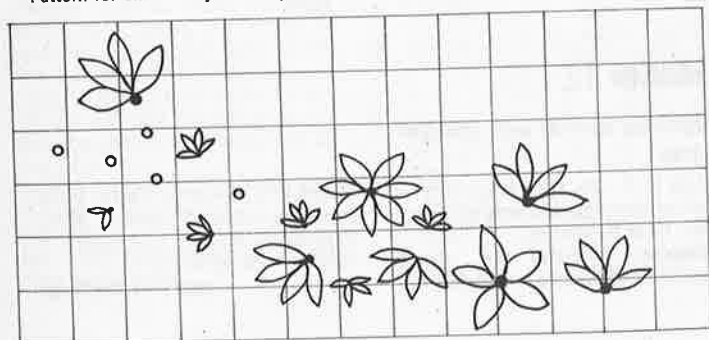
stitches by 4 or 5 and knit 3½ cm k1, p1 rib.

Close right shoulder seam and approx. 1½ cm of left shoulder. At right back shoulder, crotchet buttonholes. Crotchet 1 row dc and 1 row crabstitch around the armholes. Close remaining seams and set in sleeves, gathering the top to fit.

Appliqués: Knit cords from Angora on standard gauge machine or by hand. Sew on the lace in pleats around the neck. Sew on buttons. Sew a cord over the lace at neck. Sew on beads. Sew second cord in loops around sweater. Embroider in lazy-daisy stitch, sewing a small bead in centre.



Pattern for embroidery each square = 2 x 2 cm



When substituting yarn, please use yarn with similar meterage!

Model 14

White sweater with yellow Angora intarsia

Size: 10/12. Can only be knitted larger on machines with more than 114 needles.

Machines: Suitable for chunky machines with ribber and intarsia carriage or facility. We used a Brother KH 260.

Material: WOLL SERVICE "Scaletta" (100% mercerised cotton, 90 m/50 g) 300 g white C 10.

"Angora" (70% Angora, 20% lambs-wool, 10% polyamid, 90 m/20 g) approx. 60 g in yellow C 311.

350 g cotton flammé yarn in white. Small amount viscose ribbon in white and brown.

Appliqué: Remnants of satin or fabric in yellow, polyester wadding, sequin strip, narrow ribbon to sew around the Angora areas, various beads and sequins.

Tension: 21 stitches and 34 rows = 10 cm over stripe pattern TD 0.

Stripe pattern: 20 rows cotton flammé, 10 rows Scaletta and 2 rows white viscose ribbon yarn.

Tuck stitch pattern: Use card 2 from basic set at TD setting 0. Over tuckstitch pattern 42 rows = 10 cm. Because of this, the tuck stitch area is knitted separately and sewn in. So that you can follow the diagram, knit every 4th row twice. This will produce the right length. All pieces are started on waste yarn and the welts and cuffs added later.

Back: Cast on 114 st. with waste yarn. Change to main yarn and follow diagram, 1, using the upper neckline.

Front: Cast on 114 stitches and follow diagram 1, using the lower neckline.

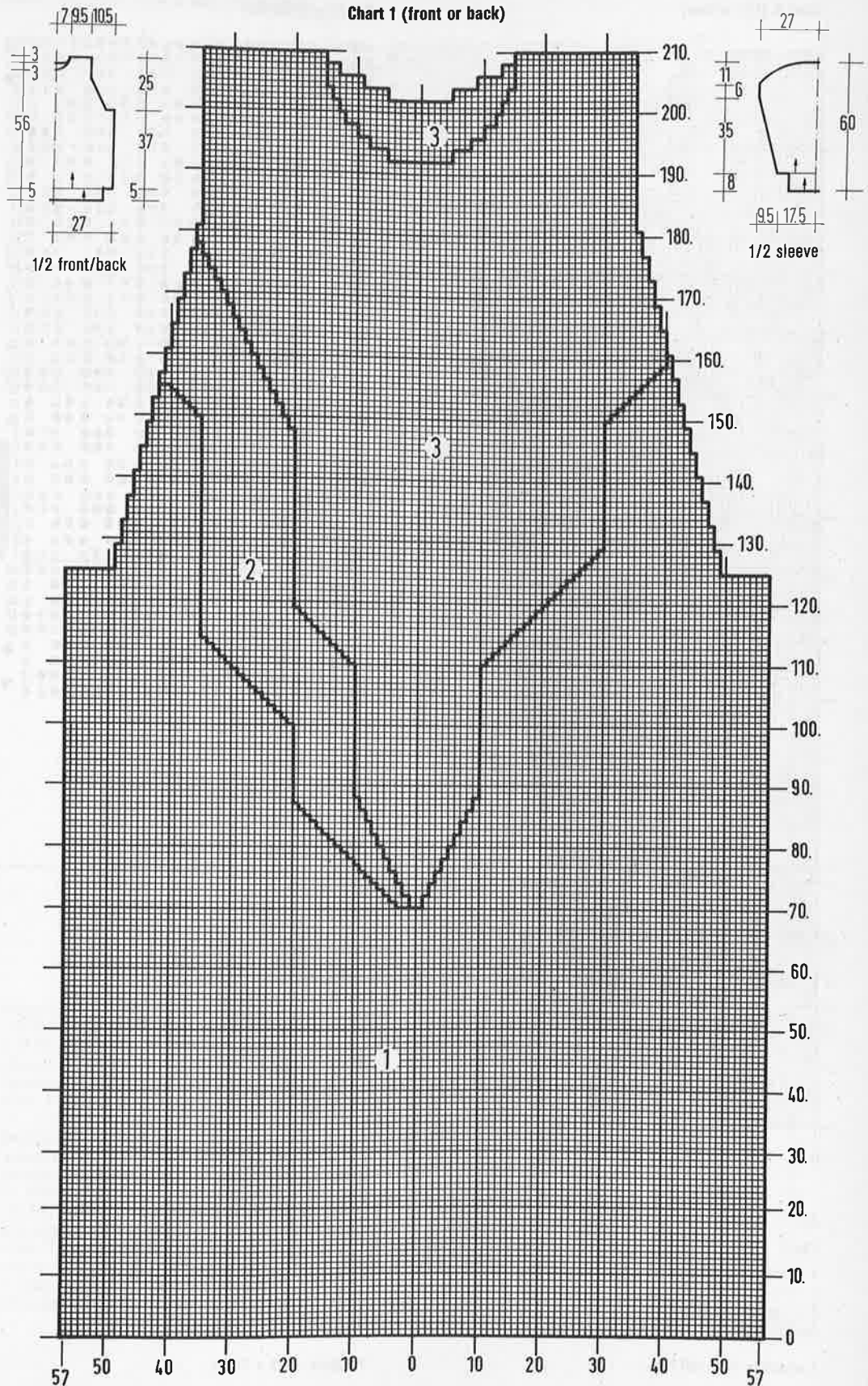
Sleeves: Cast on 74 stitches and knit, following diagram 2. For the second sleeve, omit the Angora area, knitting it instead plain.

WELTS: For back and front, knit 20 rows in 2 x 1 rib (k2, p2 rib on half-pitch), using 102 stitches. Cast on with brown and knit circular rows and 2 rows rib in brown. Continue in Scaletta.

Cuffs: Knit as above, using 38 stitches and knitting 30 rows. Take the ribs off on waste yarn, and graft to body, removing waste as you work.

Finishing: Enlarge pattern to correct size. Cut flower shapes from pattern with seam allowance from double fabric. Sew from wrong side and turn. Sew again. Stuff lightly. Stitch leaf veins. Fold flowers and attach to sweater, closing open edge with brown fabric or leather. Make leaves in same way. Sew on beads, crochet chain etc. at random. Close all seams and set in sleeves, pleating the top. Crochet around neck 1 row dc and 1 row crab stitch.

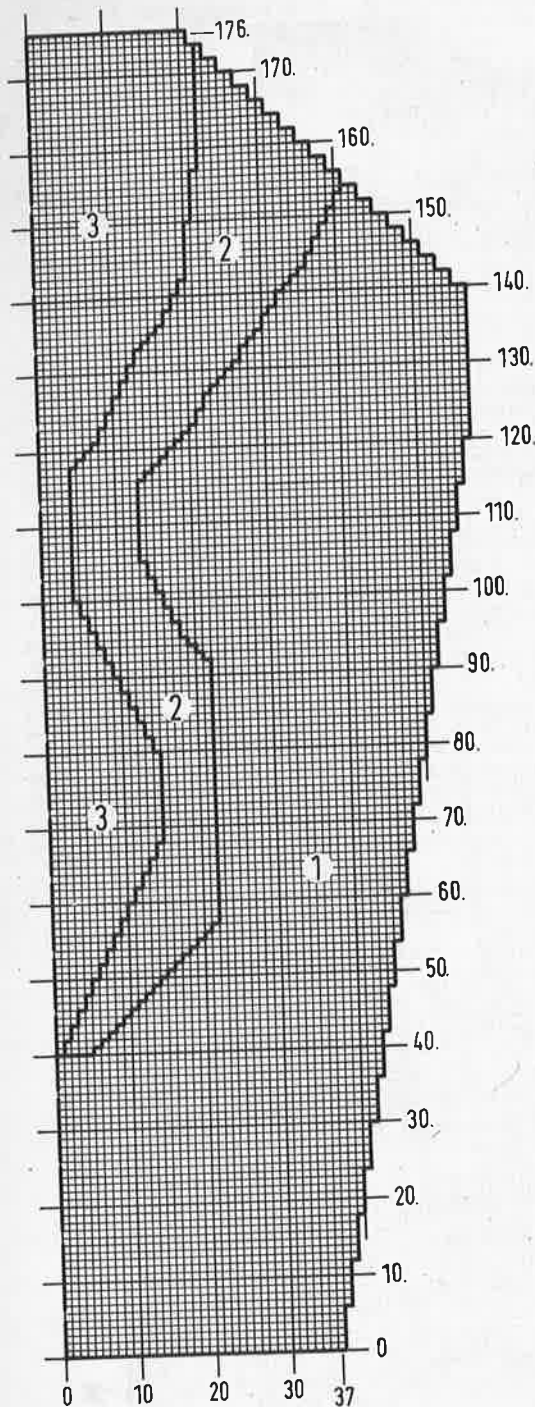
Chart 1 (front or back)



Key:
 1 = stripes
 2 = Angora
 3 = tuckstitch, Scaletta
 Knitted separately and sewn in.

continued next page

Chart 2 (1/2 sleeve)

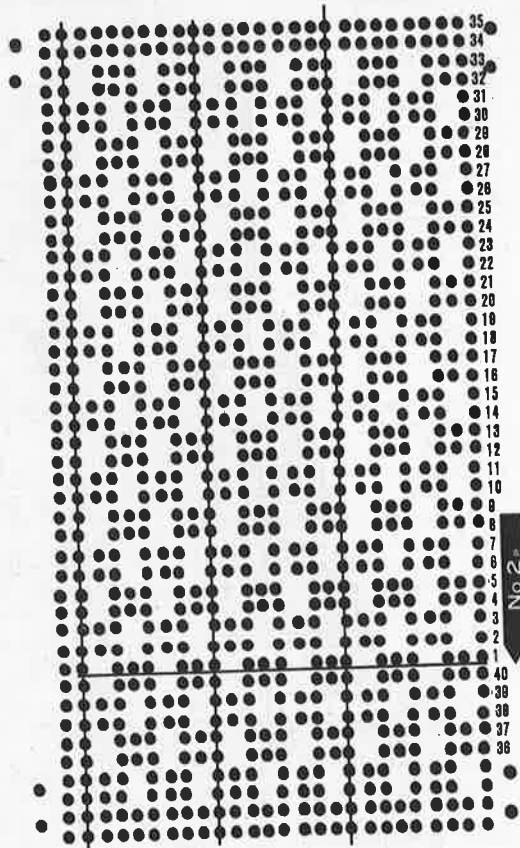


Key:

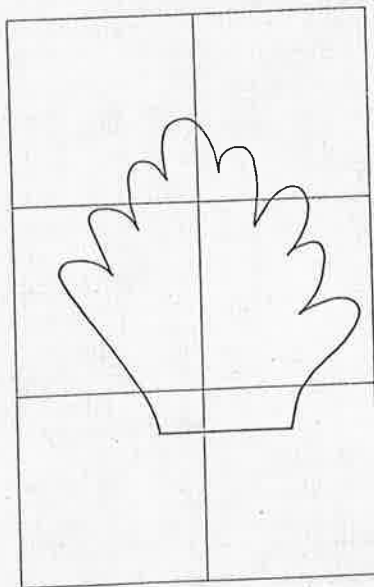
- 1 = stripes
 - 2 = Angora
 - 3 = tuckstitch, Scaletta
- Knitted separately and sewn in.

1 square = 1 st. and 1 R.

Punchcard/Brother



Fabric flower



1 square = 10 x 10 cm

Model 15

Pleat sweater in yellow/white/gold

Sizes: 12/14. The sweater can be made longer from cuff to cuff, but can only be made longer to the waist by a few stitches.

Machines: Suitable for chunky machines with ribber and intarsia carriage. We used a Brother KH 230.

Materials: Yarn from Phildaras follows; "Coton d'egypte" (100% cotton, 85 m/50 g) approx. 350 g yellow and 200 g white.

"Spirales" (100% viscose, 105 m/50 g) approx. 150 g gold. C 42.

"Phil Angora" (70% Angora, 30% wool, 33 m/10 g) 50 g white and 20 g yellow.

"Gadged Lamé" (100% polyester, 47 m/10 g) 60 g in white C 43.

2.50 m gold sequin strip, 21 gold beads, 6 drop beads and 1 appliqué.

Tension: 20-21 stitches and 28 rows = 10 cm. TD approx. 4.

Ribs: 2 x 2 rib knitted at TD setting 0.

Pleats: Switch off RC. Take "Spirales" out of yarn feeder and thread up Angora. Knit 10 rows. Pick up loops from 1st row of Angora and place on the needles. Switch on RC and replace "Spirales" in yarn feeder. The pleat appears on the right side of the work.

Intarsia: Knitted following the chart. The work is started and finished on waste yarn and the welts added afterwards.

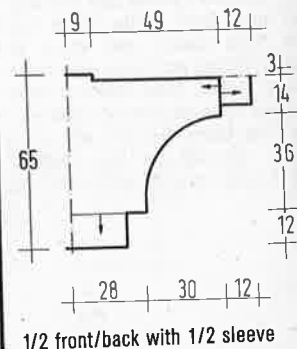
Increases and decreases can be read from the chart. The sweater is knitted in stocking stitch TD 4 to RC 100 and then in Intarsia at TD 5.

When RC shows 20, 40 and 60, knit in one pleat in white Angora. From RC 164 read the chart from top to bottom and decrease instead of increase.

Arrows in pattern denote direction of knitting.

Back and sleeves: Cast on 30 stitches and knit, following diagram.

Front and sleeves: Knit as given above. If you wish to lengthen the sleeves, knit additional 12 rows during the first 60 rows. This will give extra 4 cm in length. To avoid confusion, switch off the row counter when knitting the extra rows.

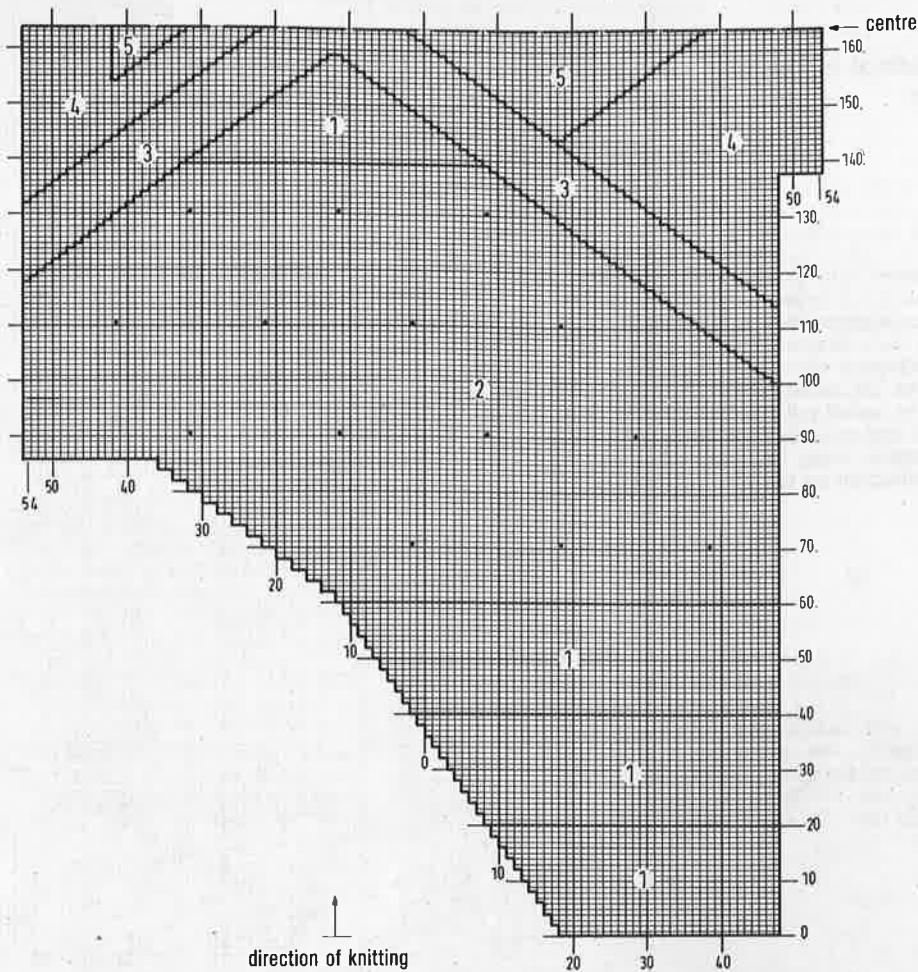


1/2 front/back with 1/2 sleeve

When substituting yarns, please use yarns with similar meterage.

Finishing: Close upper shoulder and sleeve seams. Turn the increased stitches at neckline to the inside as a facing. Hang the stitches from lower sleeve edges on to 40 needles, dec. evenly across the row. Knit 1 row plain in white cotton. Transfer stitches for rib and knit 32 rows. Cast off. Pick up 78 stitches from lower edge of sweater and knit as given above. Sew on the beads in area 4, the appliqué in area 5 and the sequin strip along area 3. Sew drop beads along the sequin strip. Close remaining seams.

Chart 1 (1/2 front or back with 1/2 sleeve)



Key:

- 1 = Spirales
- 2 = Coton d'egypte yellow
- 3 = Gagged Lamé (double)
- 4 = Coton d'egypte white
- 5 = Angora yellow
- = transfer 1 st. to right, leave empty N in WP.

Model 16

Cream sweater with lace

Size: 10/12 (14/16). The instructions for the larger size are in brackets, one figure only applies to both sizes.

Machines: Suitable for chunky machines with ribber. We used a Brother KH 260.

Material: AUSTERMANN "Venezia" (50% cotton, 50% viscose, 85 m/50 g) approx. 700 (750) g in cream.

"Royal Anjou Angora" (100% Angora, 66 m/20 g) approx. 60 g cream. Crotchet hook No. 4 1/2.

A piece of lace, satin, golden sequin strip, satin ribbon, drop beads and beads in gold, wadding.

The yarn without the appliqué is available as a kit from Wollstudio Jutta Hinrichs, Wormser Str. 5, 6550 Bad

Kreuznach. Tel.: (0671) 42625. Fax.: (0671) 45204. The cost of the kit is £ 74.00 (£76.50) to be sent by Eurocheque.

Tension: 19 stitches and 24 rows = 10 cm. TD approx. 6. **Ribs** knitted as 2 x 2 rib, TD approx. 0.

Intarsia: Knitted at TD 7. The chart represents the complete pattern for the smaller size. For the larger size increase by additional 10 st. at row 60 = 110 stitches. Rows 70-75 and rows 185-190 should be repeated, to achieve the extra width. To avoid confusion and to agree with the row numbers at the right edge of chart, disconnect the row counter for these extra rows.

Arrows on pattern denote direction of knitting.

The sweater is knitted from cuff to cuff. All pieces are started and finished with waste yarn.

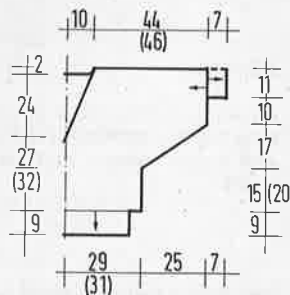
Front with sleeves: Cast on 40 stitches and knit according to the chart. Knit the V-neck shaping.

Back with sleeves: Knit as for front with shallow neckline.

Finishing: Close upper shoulder and sleeve seams. Knit **ribs** in Venezia, casting on 80 (84) st for the back and front and knitting 30 rows. **Cuffs** are knitted over 44 (48) stitches and 24 rows. Crotchet around the neckline with 1 row dc. and 1 row crabstitch. Sew on the lace so that the V-neck is covered. Sew satin ribbon around front neck. Cut leaf shapes from fabric approx. 15-18 cm wide and 7-8 cm long. Sew on the sweater over the wadding. Sew sequin

strip around the leaves. Surround the whole appliqué with a cord knitted in Angora. Sew on beads and drop beads. Close remaining seams.

continued next page



1/2 front and back with sleeve

Note! When substituting yarn, use one with similar meterage.

Care of knitted or crotchet garments:

Washing:

Turn the garment on to the wrong side and wash in cold or lukewarm water with a special wool shampoo. Never leave to soak or use too much detergent. Avoid rubbing or wringing to eliminate felting. The exception are cotton garments, which may be washed in the washing-machine on wool cycle. Only use the washing-machine when the manufacturers instructions say so.

*

Rinsing:

Immediately after washing, rinse until the water remains clear. Adding softener improves woollen garments. Take care! Some yarns will stretch when softeners are used. Try your tension swatch first.

*

Drying:

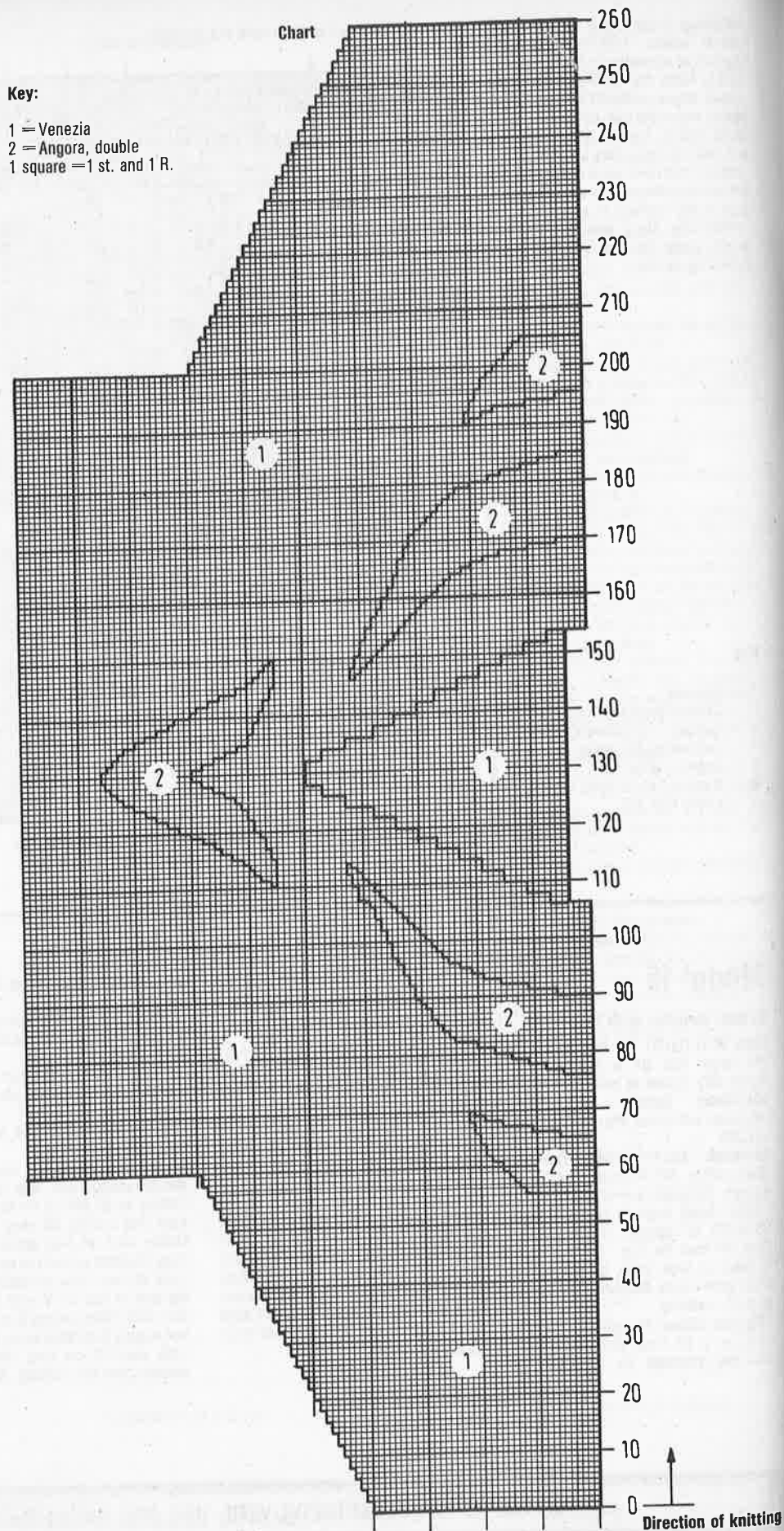
Roll the garments in towels to remove excess moisture. Lay flat on towels to dry. Never hang knitteds on coathangers to dry.

*

Storing:

Garments should be folded and stored away from light and heat. Never expose wool to direct sunlight, as it will turn patchy.

If you have to start a new ball of yarn in the middle of a row, untwist the yarn slightly and twist the new end into the old, before knitting the two together.



Model 17

Red jacket with clown

Size: 10/12 (14/16). The instruction for the larger size are in brackets, one figure only applies to both sizes.

Machines: Suitable for standard gauge machines with intarsia carriage or facility. No ribber required.

Material: HAMBURGER WOLLFABRIK cotton yarn (80% cotton, 20% Polyacril, 150 m/50 g) approx. 650 (700) g in red. Small amounts in cotton in blue, navy, royal, salmon, rust, green, yellow and ochre. Shiny yarn in white, red, dk. red, turquoise, pink and black. Lurex yarn in gold. 2 star-shaped buttons in gold. 90 cm cord in gold. 6 gold buttons. A multi-transfer tool. The yarn is available as a kit from STRICKSTUDIO Gerti Damerow, Barenfelder Str. 168, 2000 Hamburg 50. Tel.: (040) 3903171. Prices on request.

Tension: 27 stitches and 33 rows = 10 cm. TD approx. 10.

Intarsia: Knitted at TD setting 10, following charts 1 and 2. Please cross yarns when changing colours to avoid holes.

Arrows on patterns denote direction of knitting.

Back: Cast on 156 (170) stitches with E-wrap in red cotton. Set TD at 9 and knit 24 rows. Pick up loops from cast-on row and put on needles to form a hem. Set RC to 000 and TD to 10. Knit to RC 26 and start intarsia from chart 2. When RC shows 170 (162), start armhole shaping. Set multitransfer tool with 6 prongs out. Move 6 stitches at each end in by 3 = 3 st. decreased. Repeat the decreases every 6th row, until 21 st. at each side have been decreased. Knit straight to RC 250. Shape neckline: set carriage to HOLD. Push the centre 46 (52) needles and all stitches on opposite side to carriage to HP. Knit 2 rows and push 2 more st. to HP at neckedge. Repeat twice more. Cast off the remaining 28 (32) st. when RC shows 258. Repeat for other side. Knit the **neckband** over the stitches in HP. Set TD to 9 and knit 24 rows plain. Cast off loosely.

Left front: In red cotton, cast on 72 (79) stitches and knit hem as on back. Set RC to 000 and TD to 10. Knit to RC 94 and knit the small clown according to chart 1. When RC shows 170 (162), shape armhole as described for back = 51 (58) stitches. When RC shows 231 with carriage at left, shape **neckline**. Set carriage to HOLD. At right edge, push to HP on alt. rows 10 st. once, 9 st. once, 2 (5) st. once and 1 st. twice. Knit straight to RC 258 and cast off rem. 28 (32) shoulder stitches.

Knit **neckband** over needles in HP. Pick up additional 18 st. from straight edge = 41 (44) stitches and knit as for back.

Right front: Knit as for left front, omitting the clown. The neckline starts at RC 230 with carriage at right.

Sleeves: With red cotton, cast on 70 (76) stitches and knit the hem as for the back. Change to TD setting 10 and set RC to 000.

Increase 1 st. at each side on every 5th row 22 times = 114 (120) st. When RC shows 116, shape sleeve top as on back - 3 st. at each side 7 times. Then decr. 3 st. at each side every 4th row 6 times and then every 2nd row 4 times. When RC shows 188, cast off rem. 12 (18) stitches.

Pockets: Knit two. Cast on with red cotton 42 stitches and knit the hem as on back. Knit 46 rows stocking stitch and cast off. Sew the pockets on to the front with mattress stitch, placing them 10 cm above the hem and 4 cm from the side edge.

Key:

- 1 = red cotton
- 2 = blue cotton
- 3 = salmon cotton
- 4 = white shiny
- 5 = red shiny
- 6 = rust cotton
- 7 = green cotton
- 8 = gold Lurex
- 9 = dk. blue cotton
- 10 = turquoise cotton
- 11 = yellow cotton
- 12 = pink shiny
- 13 = dk. red shiny
- 14 = royal cotton
- 15 = ochre cotton

Emphasise mouth of small clown with red and eyes with black. Swiss-darn eyes on large clown in black and inner edge white. On bow, embroider dots in Lurex. Sew on star buttons as indicated.

continued next page

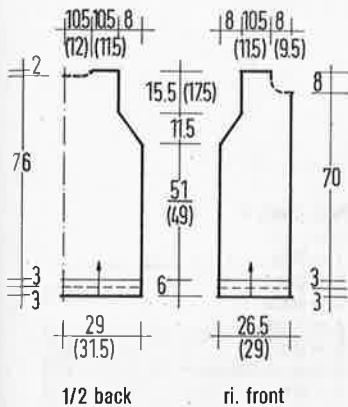


Chart 1 (left front)

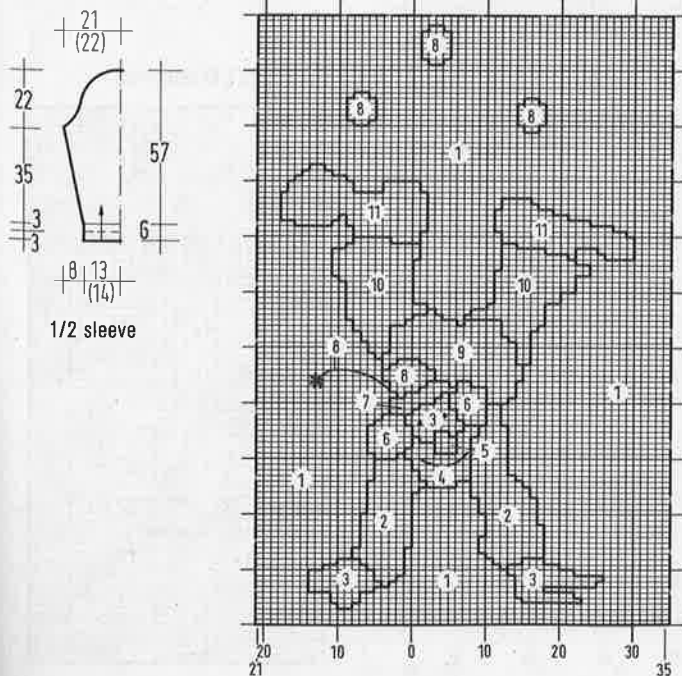
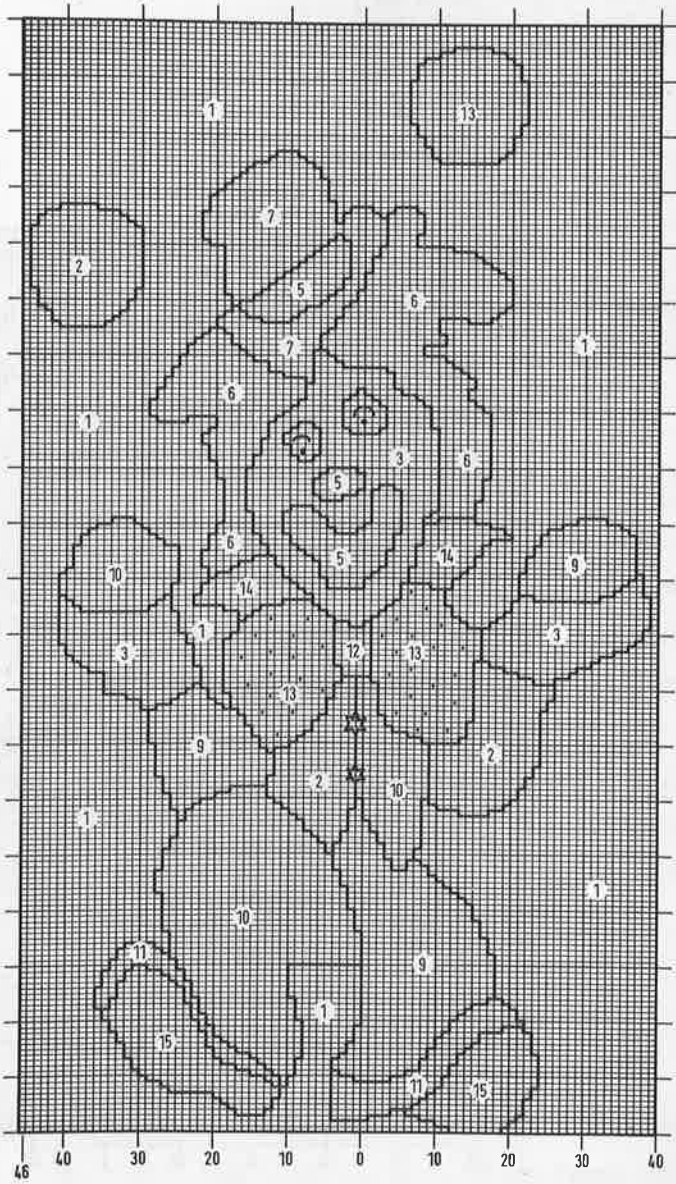


Chart 2 (Back)



Finishing: Press pieces gently from the wrong side. Close shoulder seams. Turn neckband to inside and slip stitch into place.

Button band: Pick up 200 stitches along one front edge with wrong side facing out. Knit 24 rows stocking stitch at TD 9. Cast off.

Buttonhole band: Pick up stitches as above and knit to RC 6. Make buttonholes over 5 needles each at distances of 18 stitches. Knit to RC 18 and repeat buttonholes. Knit to RC 24 and cast off. Turn bands to the inside and slipstitch into place. Finish the buttonholes. Sew on buttons. Close remaining seams and set in sleeves. Sew the gold cord on the back as shown in picture.

Model 18

Sweater "Paris"

Size: 12/14. Sweater can only be knitted larger on machines with more than 114 needles.

Machines: Suitable for chunky machines with intarsia carriage. Ribs can be knitted on standard gauge machine or on thin knitting needles.

Materials: This garment is knitted from small amounts of left-overs. We used yarns with a meterage of 100-120 m/ 50 g. Crotchet hook No. 4.

Tension: 21 stitches and 26 rows = 10 cm. TD approx. 2. In this case, the tension swatch is very important, as the yarn is not specified.

Chart 1: This represents the whole front. Cast on with E-wrap, so that the rib can be stitches on later.

Chart 2: This shows 1/2 of the Eiffel Tower. It is embroidered by swiss-darning after knitting. One dot represents one stitch. Start so that the top finishes just below the neckline.

Chart 3: The letters are also swiss-darned. The small "Paris" is used on the sleeves. You could also include words like "Eiffel Tower" and "Seine".

Arrows on pattern denote the direction of knitting.

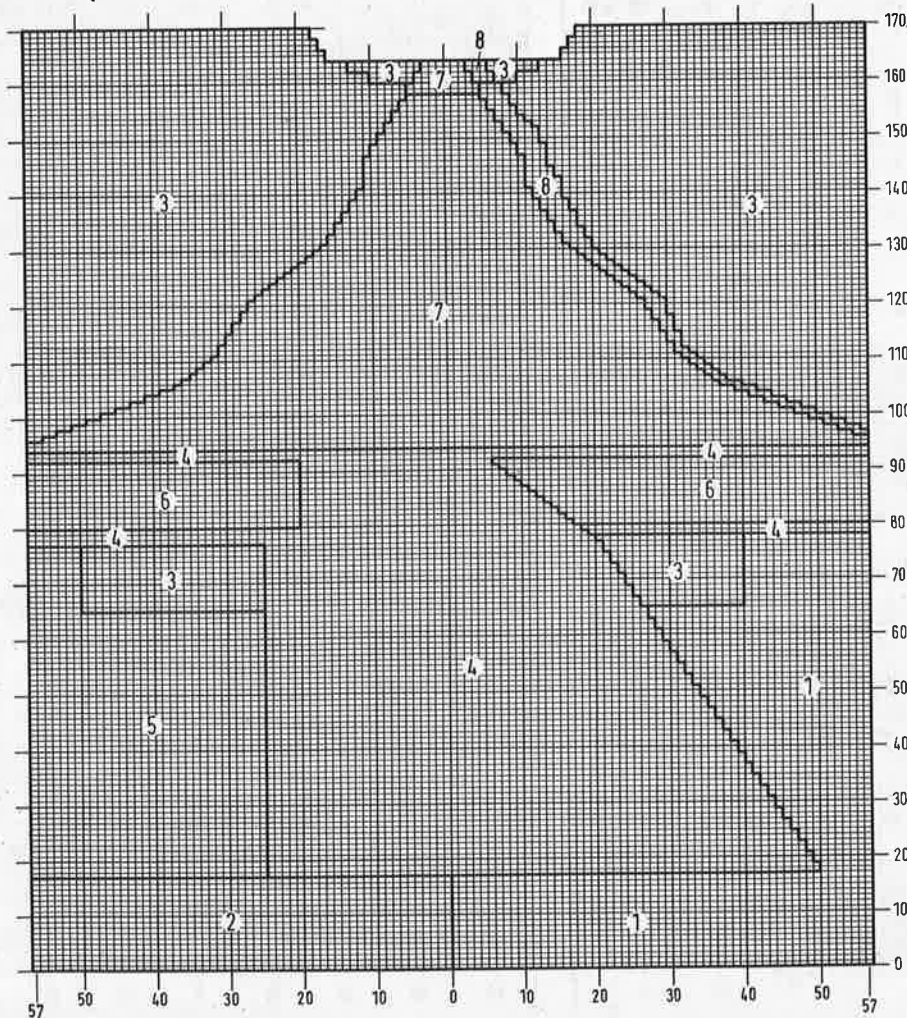
Front: Knit according to the chart 1. Use the lower neckline.

Back: Knit as for front with the higher neckline.

Sleeves: Knitted in white. Working from the tension swatch, we used 62 stitches for the cast-on. Knitting in stocking stitch, incr. 1 st. at each side every 4th row 26 times = 114 stitches. When RC shows 110, cast off loosely.

Finishing: Knit ribs as preferred and sew or graft to main parts. Embroider the designs. Close shoulder seams and attach the sleeves. Close side and sleeve seams. Crotchet around the neck with 1 row dc. and 1 row crab stitch.

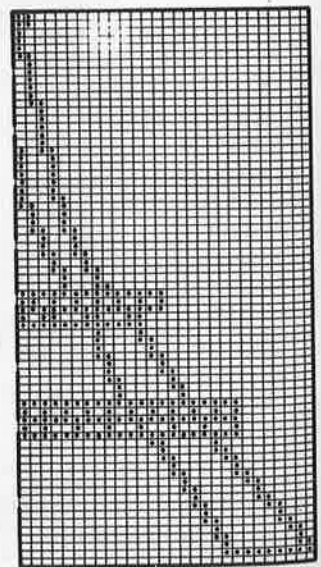
Chart 1 (front and back)

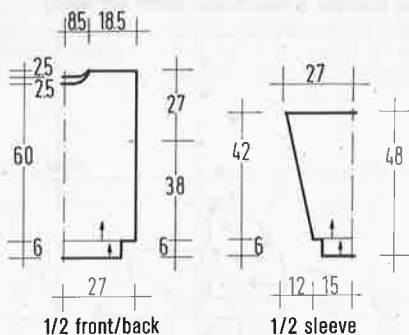
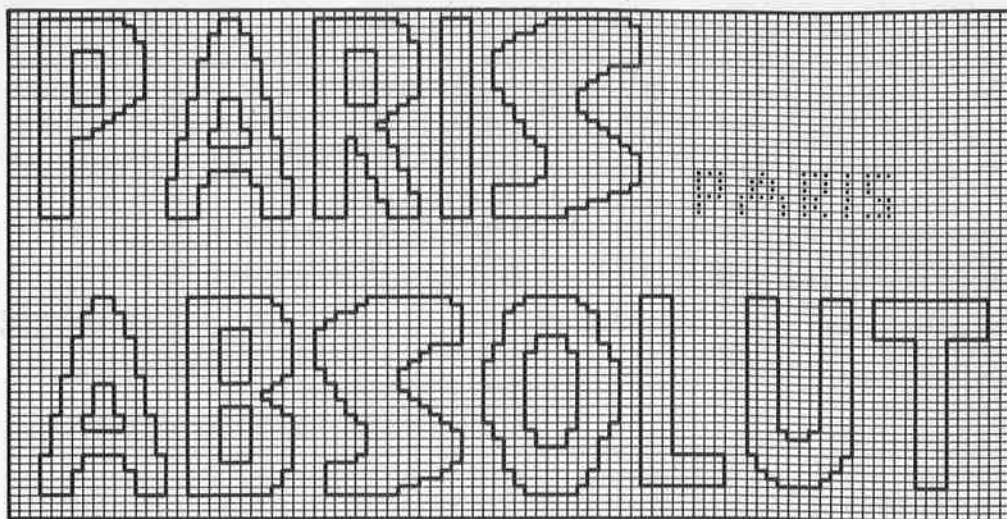


Key, chart 1:

- 1 = blue
- 2 = green
- 3 = white
- 4 = beige
- 5 = grey
- 6 = green, Angora
- 7 = ochre
- 8 = lt. yellow, swiss-darned
- 1 square = 1 st. and 1 R.

Chart 2 (1/2 Eiffeltower)





Model 19

Sweater "Penny Lane"

Size: 12-16 (18-22) The instructions for the larger size are in brackets. One figure only applies to both sizes.

Machines: Suitable for standard gauge machines with ribber and intarsia carriage. We used a Knitmaster 580.

Material: AUSTERMANN "Mirabelle" (100% mercerised cotton, 142 m/50 g). Approx. 600 (650) g in white, 50 g each in black, pink, red, lilac, midblue, gold and royal.

The yarn is available as a kit from WOLL-STUDIO Jutta Hinrichs, Wormser Str. 5, 6550 Bad Kreuznach, Tel.: (06 71) 426 25 or Fax (06 71) 452 04. Please send a Eurocheque for £ 39.00 (£ 40.50).

Tension: 28 stitches and 39 rows = 10 cm. TD approx. 9.

Ribs are knitted as 1 x 1 rib at TD approx. 5.

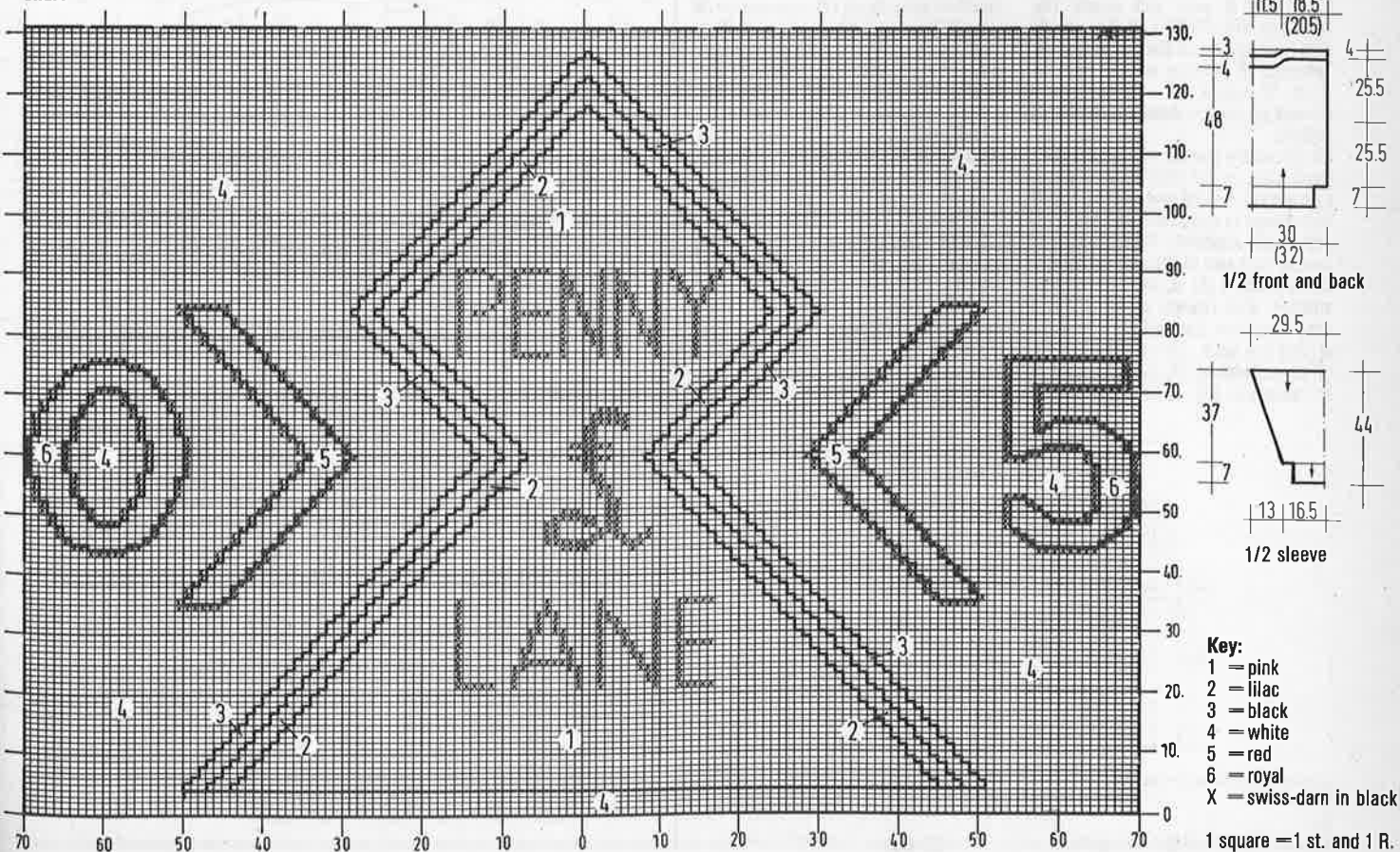
Intarsia: Knitted following the given chart. The centre part only is shown and the knitting extends a further 15 (20) stitches in white at each side. Knitting with separate balls for each colour, the yarns must be crossed at the back, when changing colours. The smaller areas of colour can also be swiss-darned.

Colour sequence for stripes: 4 rows black, 2 rows gold, 32 rows mid blue, 2 rows gold and 4 rows black = 44 rows.

Arrows on patterns denote direction of knitting.

continued next page

Chart



Back: Cast on in white 146 (156) and knit 34 rows 1 x 1 rib. Transfer all stitches to mainbed, increasing evenly to 170 (180) stitches. Set RC to 000 and continue in stocking stitch to RC 100. Mark each side with contrast yarn for armhole. Knit straight to RC 200. Transfer stitches for 1 x 1 rib and knit 20 rows. Cast off.

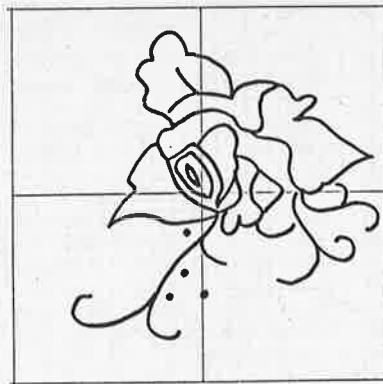
Front: Cast on and knit rib as on back. Transfer stitches and increase as on back. Knit 131 rows from chart, 44 rows as given for stripe pattern and 13 rows in white = RC 188. Shape neckline by pushing into HP the centre 34 st. and all stitches at side opposite to carriage. Knit 2 rows on rem. needles, pushing a further 3 st. into HP at neckedge. Repeat 4 times = 53 (58) st. remain in WP. Push these also into HP. Return 68 (73)

stitches at other end into WP and knit as for first side. Release HOLD and knit 1 row over all needles. Arrange needles for 1 x 1 rib and knit 20 rows and cast off.

Sleeves: Close shoulder seams. Pick up 166 stitches between markers on body and put on needles wrong side facing you. Set RC to 000. Knit 52 rows white, 44 rows stripe sequence and 50 rows white. **AT THE SAME TIME**, decrease 1 st. fully-fashioned at each side on every 4th row 36 times. When RC shows 146, decrease stitches to 70 (2 st. on every 3rd needle). Knit 1 row and then arrange for 1 x 1 rib. Knit 34 rows and cast off.

Finishing: Embroider where necessary. Embroider £ signs on the stripes, leaving 20 stitches in between. Close all seams.

Pattern for appliqué & embroidery (right sleeve)



Model 20

Sweater with roses

Sizes: 12/14 (16/18). The instructions for the larger size are in brackets. One figure only applies to both sizes.

Machines: Suitable for all standard gauge machines. The cabled ribs are knitted by hand.

Material: MODE-LAINE "Morosa" (100% wool, superwash, 166 m/50 g) approx. 550 (600) g in off-white. Knitting needles No. 3, crotchet hook No. 3.

For the embroidery small amounts of Angora in lilac, salmon and pink. Small amounts of viscose or bibbon yarn, Lurex yarn in gold, pink beads. The appliqués from MODE-LAINE are available from address in back of magazine.

Tension: 28 stitches and 37 rows = 10 cm. TD approx. 8.

Arrows on pattern denote direction of knitting.

All pieces are started with waste yarn. **Back:** Cast on 152 (162) st. with waste yarn and knit several rows. Set RC to 000 and change to main yarn. Knit to RC 118 and shape armholes. Cast off on alt. rows at each side 10 (11) stitches once, 6 st. once and 4 (5) st. once = 112 (118) stitches. Knit straight to RC 210 and shape neckline. Cast off the centre 36 st. and knit each side separately. Cast off at neckedge on alt. rows 4 st. once, 2 st. twice and 1 st. twice. Cast off the

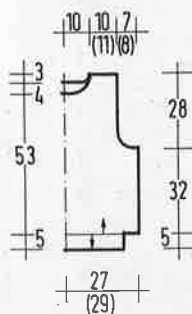
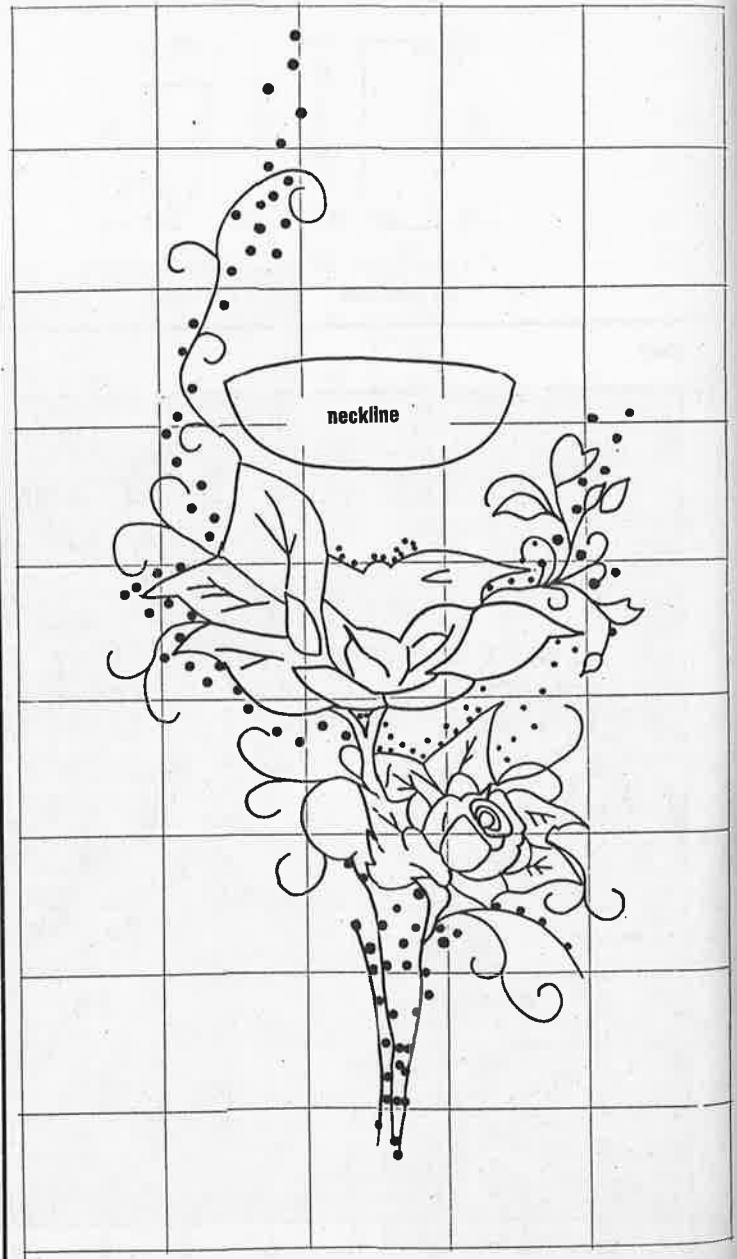
rem. 28 (31) st. for shoulder at RC 222. Knit other side to match.

Front: Knit as for back to RC 196. Shape neckline. Cast off the centre 28 st. and knit each side separately. Cast off at neckedge on alt. rows, 4 st. once, 3 st. once, 2 st. once and 1 st. 5 times. Cast off rem. 28 (31) st. when RC shows 222. Repeat for other side.

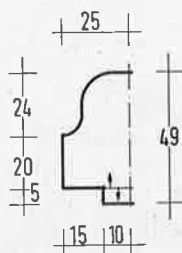
Sleeves: Cast on with waste yarn 140 st. Knit several rows, change to main yarn and set RC to 000. Knit straight to RC 74 and shape sleeve top. On alt. rows, cast off at each side 10 st. once, 6 st. once and 5 st. once. Decr. 1 st. at each side on every 10th row 4 times. Decr. 1 st. at each side on every 5th row 5 times. Decr. 1 st. at each side on alt. rows 5 times, 2 st. 3 times and 4 st. once. Cast off the rem. 50 st. on next row.

Finishing: Close one shoulder seam. Pick up 130 st. from neckline on to knitting needles and knit the neckband: edge st., *1 purl, 6 knit*, repeat from * to * till last stitch-edge stitch. 2nd row and all even-numbered rows: Knit st. as they appear. 3rd, 13th rows: edge stitch, *purl 1, cable next 6 st. by putting 3 st. on cable needle, knitting next 3 st. and knitting st. from cable needle*. Repeat from * to * till last st., edge stitch. 5th, 7th, 9th and 11th row: knit as first row. Knit in pattern to row 19 and cast off.

Pattern for appliqué & embroidery (front and back) each square = 10 x 10 cm.



1/2 front and back



1/2 sleeve

Close other shoulder and neckband seam. Crotchet around armhole edges with 1 row crabstitch. Pick up 122 (130) stitches from lower edge of back and front and knit 26 rows in cable pattern as given for neckband. Pick up 74 st. from lower edge of sleeve and knit 26 rows in cable pattern. Sew on appliqué and embroider as shown on chart. If the chart is enlarged,

it will be possible to use it as a guide for marking out the design direct. The upper rose is swiss-darned with veins in gold stemstitch. The small bobbles are french knots and the smaller leaves are in satin stitch. Sew on beads at random. Close side seams and set in sleeves, so that the crotchet edge is on the outside. Gather sleeve top to fit.

For back and front welts knit 26 rows cable pattern. For cuffs knit 36 rows cable pattern.

Back: Cast on 170 st. with waste yarn and knit several rows. Set RC to 000 and change to main yarn. Knit straight to RC 126 and shape armholes. Cast off 9 st. at the beg. of next 2 rows. RC 128. Cable needles 3 to 8 at each side with 2-3 prong tools. Knit straight to RC 222, cabling the 6 st. at each side every 10th row, always in the same direction. Cast off all stitches at RC 222.

Right front: Cast on with waste yarn 85 st. Knit several rows and change to main yarn. Set RC to 000. Knit to RC 126 and cast off 9 stitches at beg. of next row. Start cable band at RC 128 as on back. When RC shows 204, shape neckline. Cast off at left edge 14 st. once. Cast off on alt. rows at left edge 4 st. once, 3 st. once, 2 st. twice and 1 st. 3 times. Cast off rem. 48 st. when RC shows 222.

Left front: Knit as for right front, reversing shapings.

Sleeves: Cast on 112 st. and knit as for back. Incr. 1 st. at each side on every 8th row 17 times = 146 stitches. When RC shows 152, cast off all stitches.

Neckband: Cast on 34 st. on knitting needles and knit in cable pattern as described for approx. 42 cm. Cast off.

Finishing: Sew on the Appliqués as shown. Embroider as you like in chain, satin and stemstitch. Use french knots. Sew on beads.

Pick up stitches and knit welts and cuffs as described above. For back and front combined use 274 stitches. For cuffs use 74 stitches.

Sew the neckband to the neckline. Fold in half and slipstitch in place. Crotchet 1 row of crabstitch around armholes. Set in sleeves. Close rem. seams. Crotchet in chainstitch either side of cable panels on sleeves and neckband. Crotchet several rows of double crotchet along front edges, making buttonholes on right side. Finish with 1 row of crabstitch. Sew on buttons.

Model 21

Jacket with silk flowers

Size: 12-16.

Machines: Suitable for standard gauge machines. Ribs are knitted by hand.

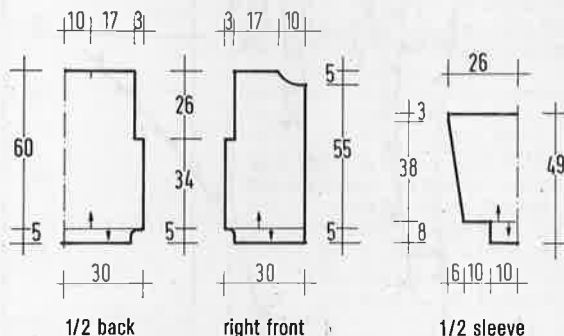
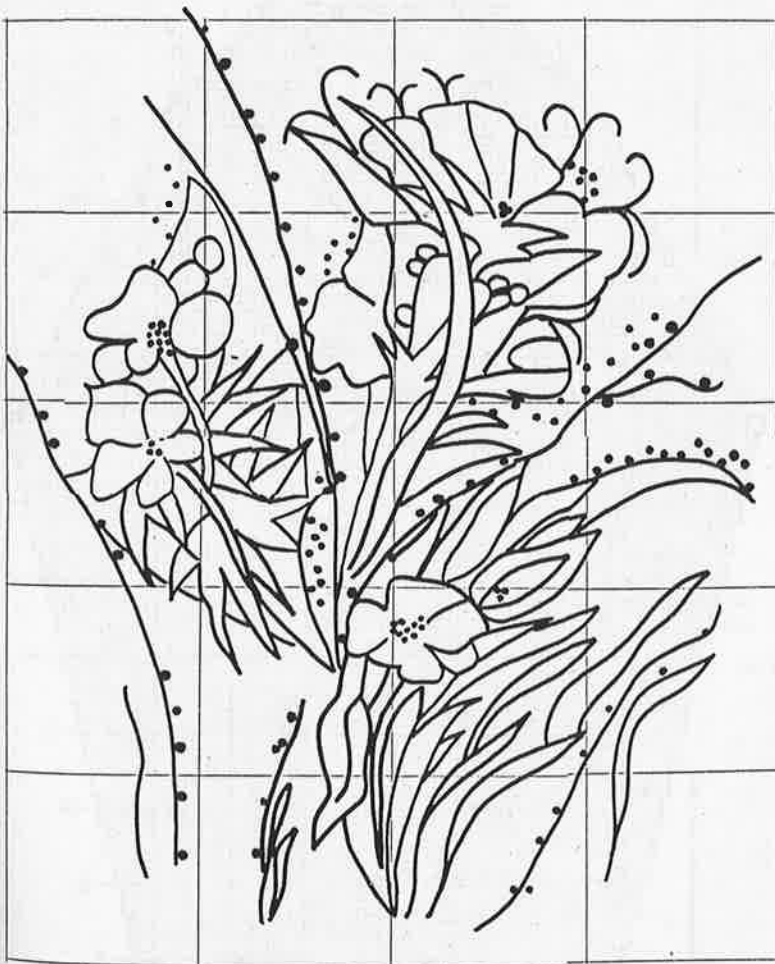
Materials: MODE-LAINE "Morosa" (100% wool, 166 m/50 g) approx. 700 g off-white. For the embroidery small amounts of yarn in salmon, pink, various shades of green and brown, Lurex yarn, pink beads. Flower appliqué. 9 buttons. Knitting needle No. 3. Crotchet hook No. 3.

Tension: 28 stitches and 37 rows = 10 cm. TD approx. 8.

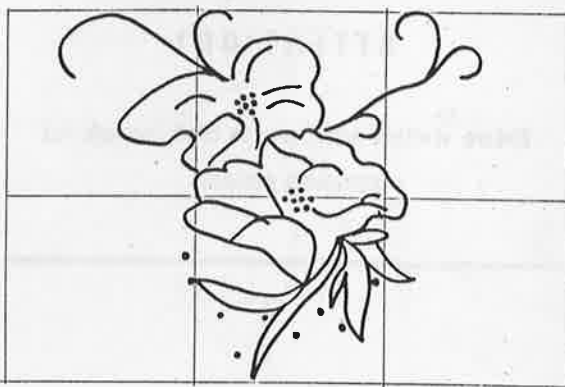
Ribs: Knitted by hand. Pick up st. as given in pattern and knit. 1st row: edge stitch, *purl 1, knit 6*, edge stitch. Repeat from * to *. 2nd and all even-numbered rows: knit st. as they appear. 3rd and every foll. 10th row: edge stitch, *purl 1, put next 3 st. on cable needle, knit next 3 st., knit 3 st. from cable needle*, edge stitch. Repeat from * to *.

pattern for embroidery on back

each square = 10 x 10 cm.

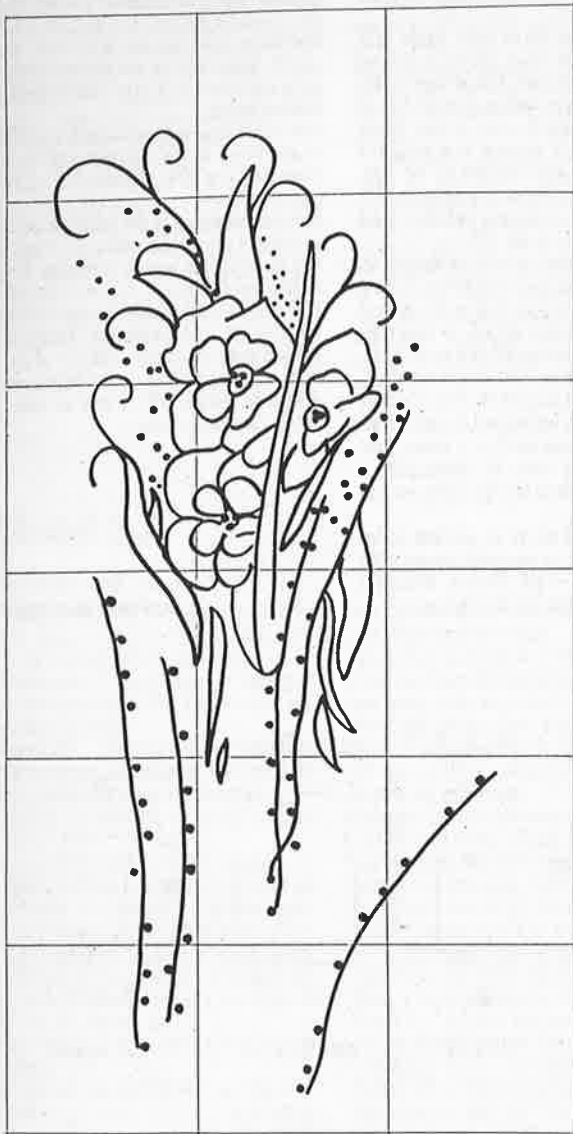


pattern for embroidery right sleeve



Note! When substituting yarn, use one with similar meterage.

pattern for embroidery left front



ATTENTION!

Before starting work, please read through the complete pattern!

Model 22

Beige sweater with white appliqué

Size: 10/12. Can only be knitted larger on machines with more than 114 needles.

Machines: Suitable for chunky machines with ribber and intarsia carriage. We used a Brother KH 260.

Materials: Yarns from AUSTERMANN Casa C "Aparto" (100% cotton, 75 m/50 g) approx. 800 g beige.

"Angora Wolle" (70% Angora, 30% wool, 100 m/20 g) approx. 40 g white.

"Sucette" (100% polyester, 135 m/20 g) approx. 20 g gold.

For the appliqué gold sequin strip, white satin ribbon, white sequin-fabric, white satin, wadding, drop beads.

The material is available as a kit from WOLLSTUDIO Jutta Hinrichs, Wormser Str. 5, 6550 Bad Kreuznach, Tel.: (06 71) 42625. Fax: (06 71) 45204 against a Eurocheque for £72.00. Price incl. appliqué.

Tension: 20 st. and 27 rows = 10 cm. TD approx. 5.

Ribs: 2 x 2 rib at TD approx. 0

Intarsia: Knitted at TD approx. 6, following charts 1 and 2. Increases and decreases can be read from the charts.

Arrows on patterns denote direction of knitting.

Front: Cast on with waste yarn and knit following chart 1. When RC shows 138, cast off 18 stitches at each side. Knit 10 rows on rem. stitches for neck facing and cast off.

Back: Knit as for front.

Right sleeve: Cast on in waste yarn and follow chart 2 for shaping.

Left sleeve: Knit as for right sleeve, omitting the intarsia.

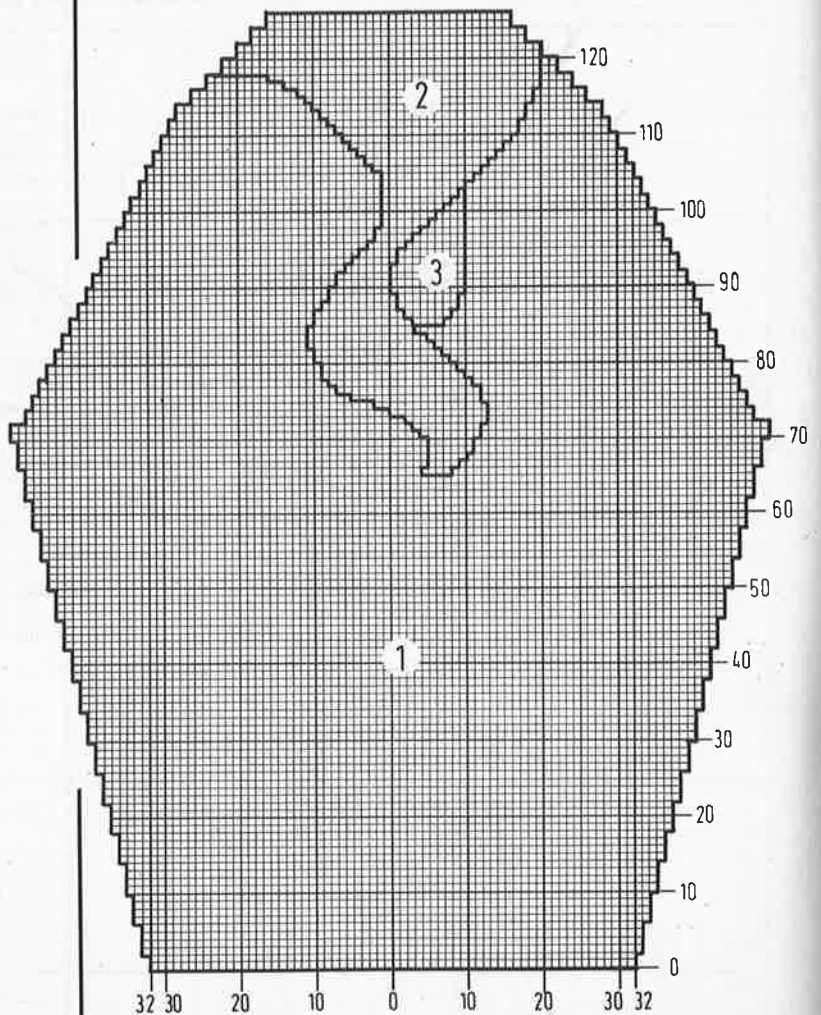
Ribs: Knit back and front welts over 80 stitches and 36 rows.

Knit cuffs over 44 stitches and 36 rows.

Appliqué: Cut leaf shapes from fabric. Sew over the wadding, matching the shape to the lines of intarsia. Pleat the satin ribbon before sewing. Sew on sequin strip and fabric as shown.

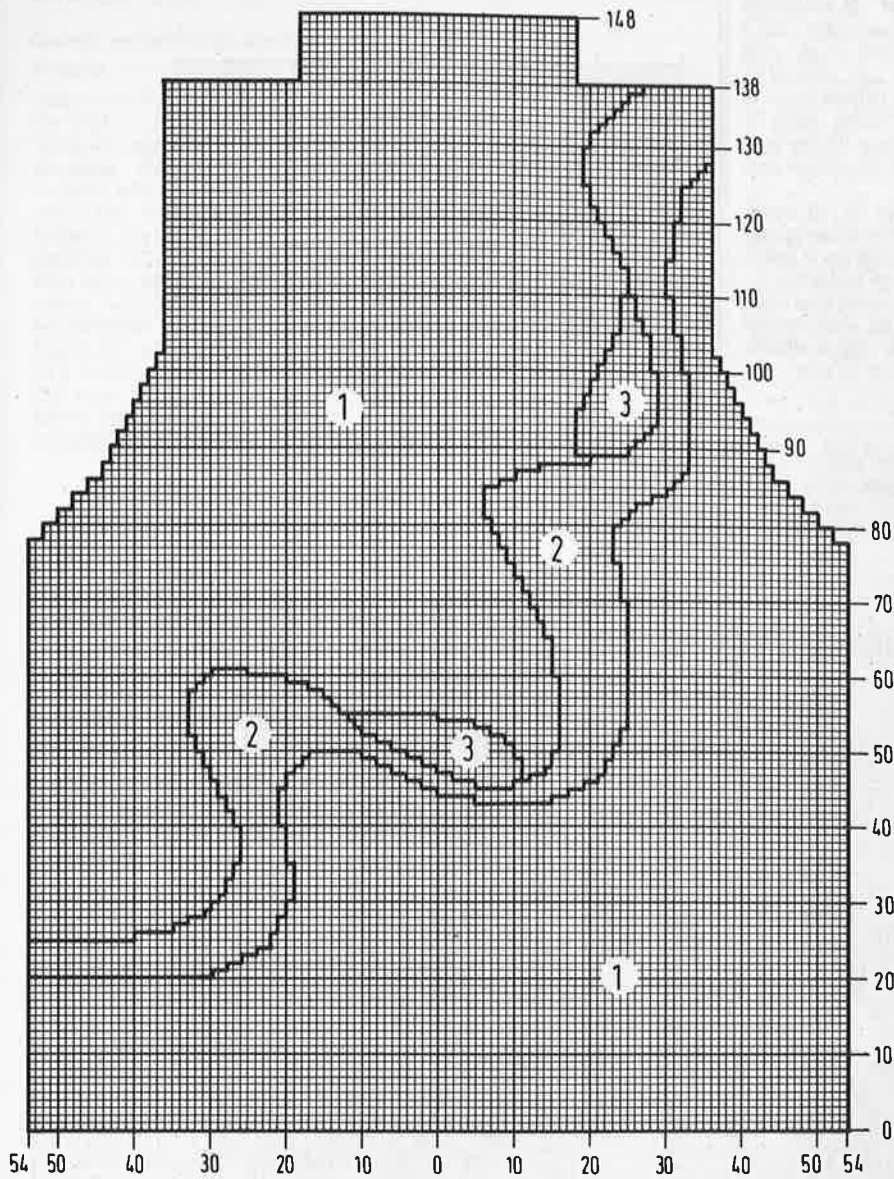
Close all seams and set in sleeves. Turn neck facing to the inside and slipstitch into position.

Chart 2 (right sleeve)



Note! When substituting yarn, use one with similar meterage.

Chart 1 (front or back)



Model 23

Sweater with wild ducks

Size: 10/12 (14/16). The instructions for the larger size are in brackets. One figure only applies to both sizes.

Machines: Suitable for standard gauge machines with ribber and intarsia carriage. We used a Brother KH 940.

Material: HAMBURGER WOLFFABRIK approx. 600 (650) g cotton yarn (80% cotton, 20% polyacryl, 150 m/50 g).

Small amounts of cotton in lt. and dk. olive, lt. green, ochre, yellow and black. Shiny yarn in lt. and dk. olive, dk. red, mint and bottle green. Angora in white, ochre and bottle green.

1 small and 1 large glass eye. Multi-transfer tool.

This yarn is available as a kit from STRICKSTUDIO Gerti Damerow, Barenfelder Sr. 168, 2000 Hamburg 50. Tel.: (040) 3903171. Prices on application.

Tension: 29 st. and 37 rows = 10 cm. TD approx. 9.

Ribs: 2 x 2 rib knitted at TD approx. 3.

Intarsia: Knitted following the charts 1 and 2. Take care to cross the yarns when changing colours.

Arrows on patterns denote direction of knitting.

Back: Cast on 150 (162) stitches and knit 32 rows in rib. Transfer all stitches to MB. and continue in stocking stitch. Set RC to 000 and knit 160 (156) rows. Using the multi-transfer tool, move 3 st. at each side in by 3. Push empty needles into NWP. Repeat the decreases every 6th row, until 18 st. have been decreased at each side. Knit straight to RC. 242 and shape neck. Set machine to HOLD and push centre 36 (42) and all stitches on opposite side to carriage to HP. Knit on rem. stitches, pushing to HP at neck edge on alt. rows 2 st. 3 times. Cast off rem. 33 (36) st. at RC 250. Repeat for other side.

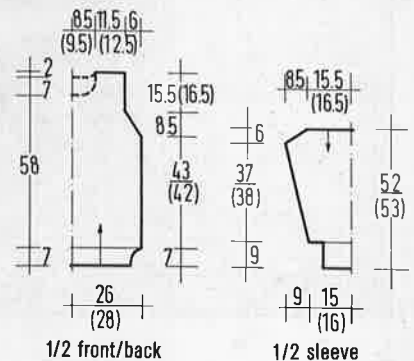
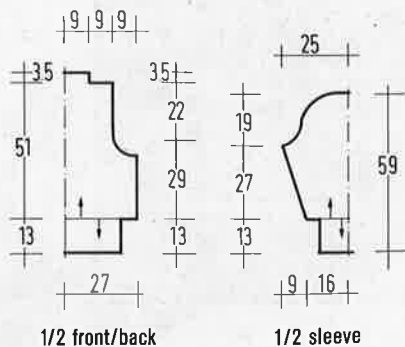
Return all needles from HP to WP and arrange for rib. Knit 10 rows and cast off.

continued next page

Key:

- 1 = Aparto
- 2 = Angora double
- 3 = Sucette treble

1 square = 1 st. and 1 R.

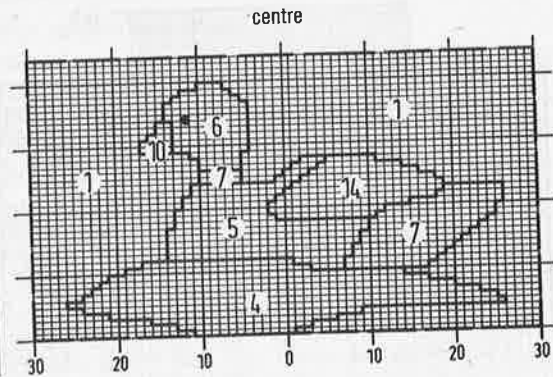


Note! When substituting yarn, use one with similar meterage.

Front: Cast on and knit as for back, starting the intarsia from chart 1 on RC. 50. After knitting the intarsia, continue in stocking stitch to RC 216 and shape neck. Set carriage to HOLD and push the centre 32 (38) to HP as well as all stitches at side opposite to carriage. Knit on rem. stitches, pushing into HP at neck edge on alt. rows 2 st. 3 times and 1 st. twice. Knit straight to RC 250 and cast off the rem. 33 (36) stitches. Repeat for other side.
Return all needles from HP to WP. Pick up 22 st. from each straight side of neck. Arrange needles for 2 x 2 rib and knit 10 rows. Cast off.
Left sleeve: Knitted from top to bottom. Cast on with E-wrap 92 (98) st. Knit 1

row. * Increase at each end on the next 4 rows 1 stitch and incr. 2 st. at each side on the next row. * Repeat from * to * 3 times. 22 rows knitted = 142 (148) stitches. Set RC 000. Decr. on every 5th row 1 st. at each side fully-fashioned 26 times = 90 (96) stitches. When RC shows 138 (142), reduce stitches to 70 (74) and arrange for rib. Knit 40 rows and cast off.
Right sleeve: Knit as for left sleeve. When RC shows 80, knit following chart 2, reading the chart from top to bottom and placing the design centrally.
Finishing: Steam all pieces from wrong side, omitting the ribs. Sew shoulder and neckband seams. Set in sleeves. Close rem. seams. Sew on eyes.

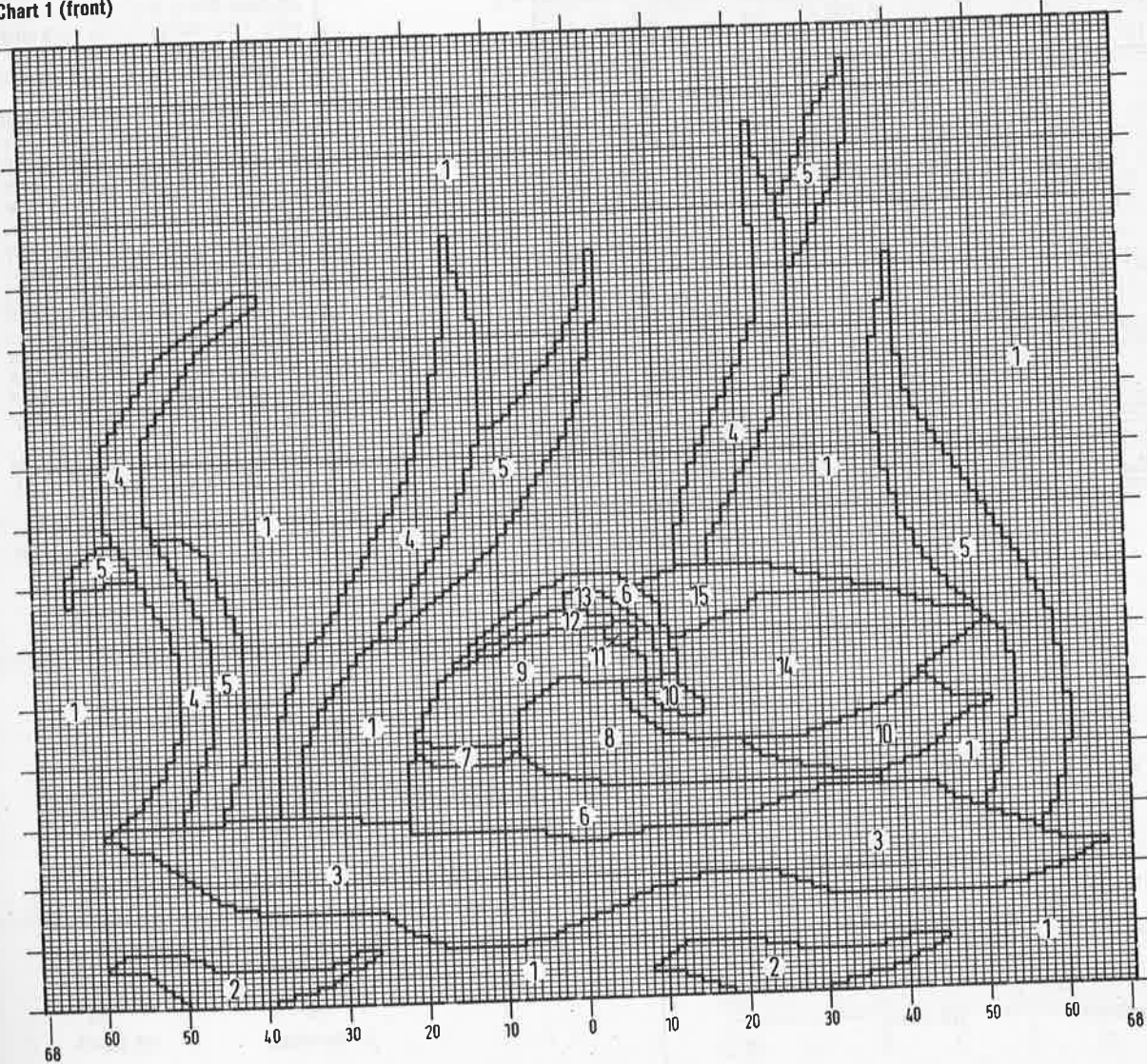
Chart 2 (right sleeve)



Key:

- | | | | |
|----------------------|---------------------|----------------------|---------------------------|
| 1 = salmon cotton | 5 = lt. olive shiny | 9 = ochre cotton | 13 = mint shiny |
| 2 = dk. olive cotton | 6 = dk. red shiny | 10 = yellow cotton | 14 = bottlegreen shiny |
| 3 = lt. olive cotton | 7 = white Angora | 11 = black cotton | 15 = bottlegreen Angora |
| 4 = lt. green cotton | 8 = ochre Angora | 12 = dk. olive shiny | 1 square = 1 st. and 1 R. |

Chart 1 (front)



Note! When substituting yarn, use one with similar meterage.

Model 24

Salmon sweater with black flowers

Sizes: 12/14 (16/18). The instructions for the larger size are in brackets. One figure only applies to all sizes.

Machines: Suitable for electronic machines with ribber. We used a Knitmaster 580. The flowers could also be knitted in intarsia.

Material: WOLL-SERVICE "Glamour" (55% cotton, 45% viscose, 145 m/50 g) approx. 700 (750) g in salmon. C 347. AUSTERMANN "Angora Wolle" (70% Angora, 30% wool, 100 m/20 g) approx. 40 g in black. C 400.

200 small and 80 medium beads in salmon. Small amounts of Lurex in gold and shiny yarn in salmon.

This yarn is available against payment by Eurocheque of £ 63.00 (£ 65.50) from WOLLSTUDIO Jutta Hinrichs, Wormser Str. 5, 6550 Bad Kreuznach. Tel.: (0671) 42625 or Fax (0671) 45204.

Tension: 30 st. and 36 rows = 10 cm. TD approx. 9.

Ribs: Knitted as 1 x 1 rib at TD approx. 3 1/2-4.

Flower pattern: Knitted as a "single motif" over needles 46-0-14. The floats on the back will be caught by the embroidery. Have the charts enlarged to make it easier to program the machine or to mark the mylar sheet.

Arrows on pattern denote direction of knitting.

Chart 1 (front)

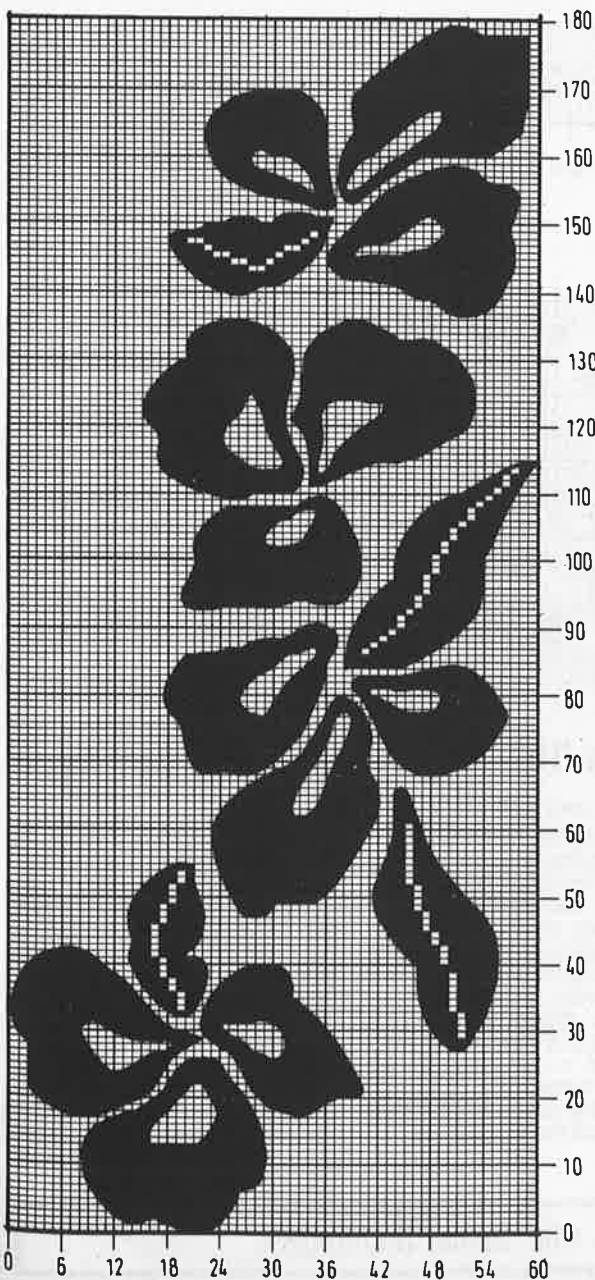
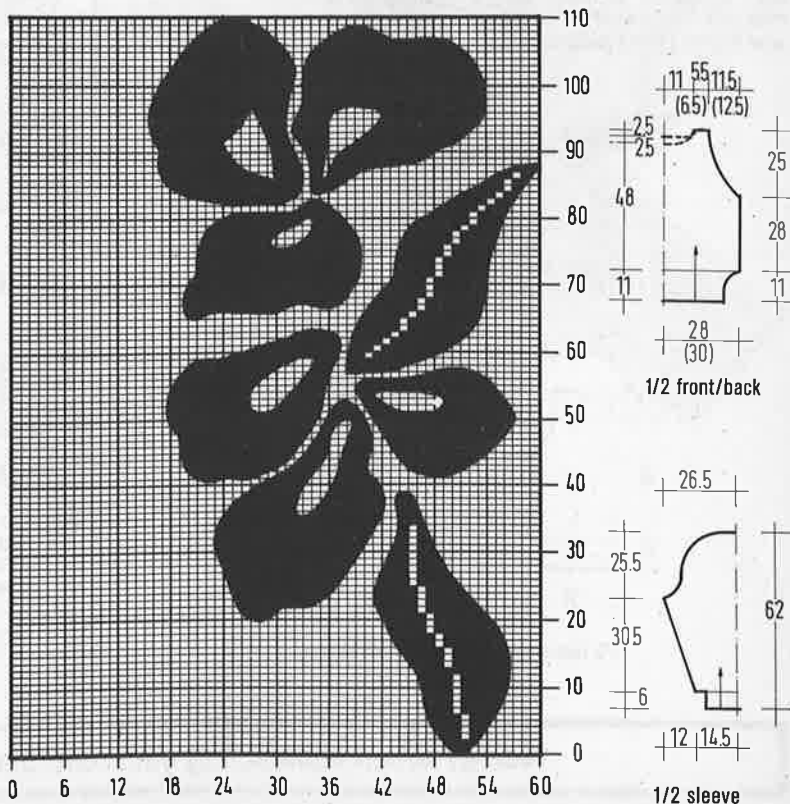


Chart 2 (left sleeve)



Back: Cast on for rib 170 (182) stitches and knit 60 rows. Transfer all stitches to MB and continue in stocking stitch. Set RC to 000 and knit to RC 100. Shape armholes by casting off at each end on alt. rows 4 st. once, 3 st. once (twice), 2 st. 4 times and 1 st. 12 times. Decr. 1 st. at each side on every 4th row 8 times = 100 (106) stitches. Knit straight to RC 182 and shape neck. Set carriage to HOLD and push centre 24 st. to HP as well as all stitches on side opposite to carriage. Knit on rem. needles, pushing into HP at neck edge on alt. rows 7 st. 3 times. Cast off rem. 17 (20) st. at RC 190. Repeat for other side.

Return needles from HP to WP and arrange for rib. Knit 12 rows and cast off.

Front: Knit as for back, starting the flower pattern on RC 4. Set pattern over needles 46-0-14 at left, so that the flowers lean to the left, seen from the back. Shape neck when RC shows 172 by setting carriage to HOLD. Push to HP the centre 20 stitches and all stitches at side opposite to carriage. On rem. needles knit 2 rows and push to HP at neckline on alt. rows 4 st. 3 times, 3 st. twice, 2 st. twice and 1 st. once. Knit to RC 190 and cast off. Repeat for other side.

Return needles from HP to WP and arrange for rib. Knit 12 rows and cast off.

Right sleeve: Cast on 84 st. for the rib and knit 36 rows. Transfer all stitches to the MB and increase to 88 stitches. Set RC to 000. Knit in stocking stitch, incr. 1 st. at each side every 3rd row 36 times = 160 stitches. When RC shows 110, shape sleeve top. Cast off at each side on alt. rows 4 st. once, 3 st. once, 2 st. once and 1 st. 10 times. Now decr. 1 st. at each side every 8th row 6 times. When RC shows 184 = 110 stitches. Knit with short-rows by putting into HP at each side 2 st. 3 times, 3 st. 3 times, 4 st. twice and 5 st. once. At RC 202, knit 1 row over all needles and cast off.

Left sleeve: Knit as for right sleeve, starting the flower design at RC 80. This will extend to RC 190, after which continue in plain knitting. The design is knitted over the centre stitches.

Finishing: Embroider the flower centres with satin stitch. The small beads are sewn around the embroidery, the large beads are sewn on the flowers. See picture. Close all seams and set in sleeves.

Model 25

Sweater with bows

Size: 16-22.

Machines: Suitable for electronic standard gauge machines with ribber. We used a Brother KH 940.

Material: HAMBURGER WOLLFABRIK 600 g off-white cotton (80% cotton, 20% polyacryl, 150 m/50 g). Small amounts of silky yarn in brown, lt. salmon and red. Gold Lurex yarn. Multi-transfer tool.

The yarn is available as a kit from STRICKSTUDIO Gerti Damerow, Barenfelder Str. 168, 2000 Hamburg 50, Tel.: (040) 3903171. Price on application to the above address.

Tension: 26-27 st. and 33 rows = 10 cm over stocking stitch. TD approx. 10.

Fairisle: 30 st. and 33 rows = 10 cm over fairisle from chart 3.

Ribs: 2 x 2 rib at TD setting approx. 3.

Chart 1: Mirror-image the design and knit as "single motif" over needles 4 to 75 at left. Use lt. salmon as colour 2.

Chart 2: Repeat the 18 stitch pattern across the work, but work the 12 row height only once.

Chart 3: Repeat the design of 40 stitches and 40 rows continuously. Change colour in feeder 2 for each row of bows in foll. sequence: * brown, lt. salmon, red and gold. Repeat from * once more.

Arrows on patterns denote direction of knitting.

Back: Cast on for rib 166 stitches and knit 50 rows rib. Transfer all stitches to MB and set RC to 000. Continue in stocking stitch to RC 98.

Shape armholes: Set multi-transfer tool to transfer 6 stitches. With this setting move 3 stitches in by 3 at each side of knitting. Push empty needles to NWP. Repeat the decreases every 6 rows, until 21 stitches at each side have been decreased. Knit straight to RC 170

and shape neck. Set carriage for HOLD and push to HP centre 50 st. and all stitches at side opposite to carriage. Knit on rem. needles, pushing to HP at neckedge on alt. rows 1 st. 7 times. Cast off rem. 30 stitches at RC 186. Repeat for other side.

Knit neckband: Return all stitches from HP to WP. Program chart 2 and knit 12 rows in pattern. Arrange needles for rib and knit 16 rows rib. Cast off.

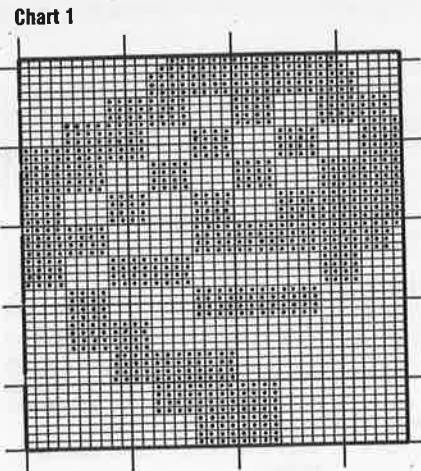
Front: Cast on and knit as for back. Knit the large bow from chart 1 from row 18. Start neckline shaping when RC shows 152. Set carriage to HOLD. Push centre 50 st. and all needles at side opposite to carriage to HP. Knit on rem. stitches, pushing into HP at neckedge on alt. rows 1 st. 7 times. Knit straight to RC 186 and cast off. Repeat for other side.

Neckband: Return needles from HP to WP. Pick up additional 20 st. at each straight side of neck = 104 st. Knit the band as for back.

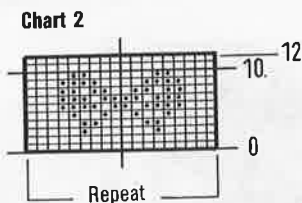
Sleeves: The cuff is knitted separately. Cast on with waste yarn 92 st. and knit several rows. Set RC 000 and continue, using chart 3. At the same time, incr. 1 st. at each side on every 4th row 24 times = 140 st. When RC shows 98, shape the armholes as given for back = 98 st. Knit straight to RC 178 and cast off.

Cuffs: Cast on 74 stitches and knit 40 rows rib. Transfer all stitches to MB. Pick up stitches from lower sleeve edge and hang on needles, putting 2 st. on every 4th needle. Knit 1 row and cast off.

Finishing: Steam all pieces gently from the wrong side, omitting the ribs. Close all seams. Set in the sleeves, taking care to match the decreases. Pleat the sleeve top to fit.

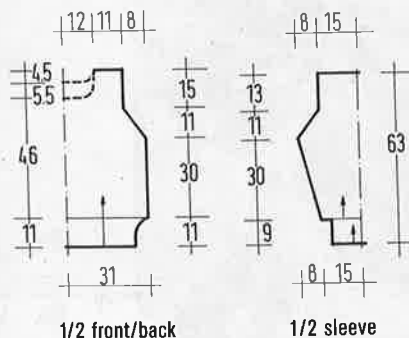
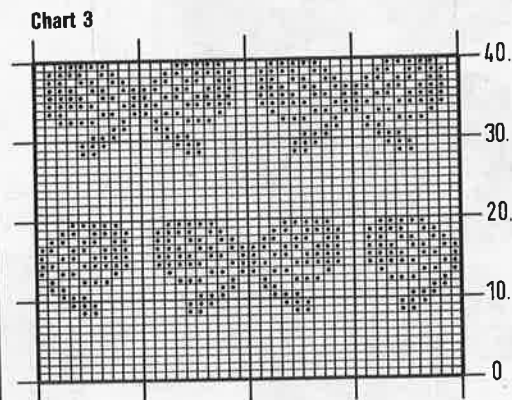


centre



Key:

- = background white
 - = second colour
- 1 square = 1 st. and 1 R.



1/2 front/back

1/2 sleeve

Model 26

White sweater with hearts

Size: 12/14 (16/18). The instructions for the larger size are in brackets, one figure only applies to both sizes.

Machines: Suitable for electronic machines with more than 60 st. pattern facility. Could also be knitted using intarsia method. Ribber is used for ribs.

Material: WOLL SERVICE "Glamour" (55% cotton, 45% viscose, 145 m/50 g) approx. 700 (750) g in white. 50 g cotton or textured yarn in apricot for the pattern. 4 buttons. Small amounts of Lurex of shiny yarn for the embroidery. Crotchet hook No. 3.

Tension: 29 st. and 43 rows = 10 cm. TD approx. 8.

Ribs: 1 x 1 rib. TD approx. 3.

Fairisle design: It is advisable to have the chart enlarged before marking the mylar sheets or programming the machine.

Arrows on pattern denote direction of knitting.

Back with sleeves: Cast on 42 st. in rib and knit 30 rows. Transfer all stitches to MB. Place the stitches so that at left or right side further 98 (104) stitches can be increased. Continue in white and

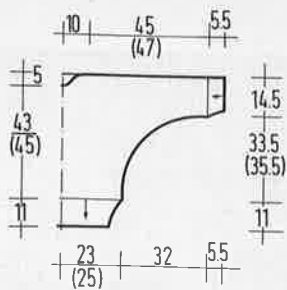
Note! When substituting yarn, use one with similar meterage.

stocking stitch, increasing at left edge on alt. rows 58 times 1 stitch, 2 st. 3 times, 3 st. twice, 4 st. twice, 6 st. twice and 1 st. 8 (14) times = 140 (146) stitches after RC. 136. Knit straight to RC 334 (354). Decrease in reverse sequence to the increases till 42 st. remain = RC 470 (490). Knit 30 rows rib and cast off.

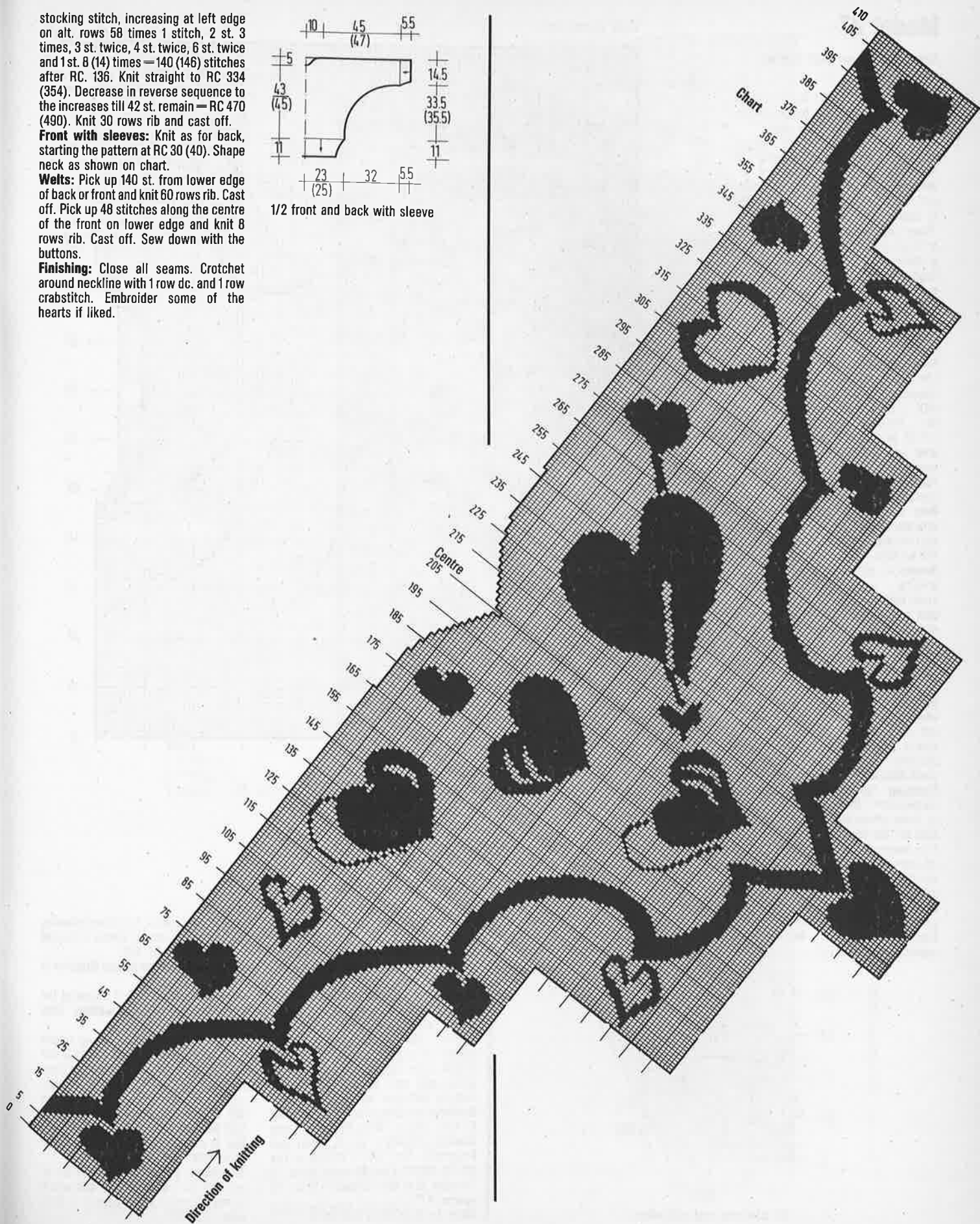
Front with sleeves: Knit as for back, starting the pattern at RC 30 (40). Shape neck as shown on chart.

Welts: Pick up 140 st. from lower edge of back or front and knit 60 rows rib. Cast off. Pick up 48 stitches along the centre of the front on lower edge and knit 8 rows rib. Cast off. Sew down with the buttons.

Finishing: Close all seams. Crotchet around neckline with 1 row dc. and 1 row crabstitch. Embroider some of the hearts if liked.



1/2 front and back with sleeve



Model 27

Salmon sweater with fabric appliqué

Size: 10/12 (14/16). The instruction for the larger size are in brackets. One figure only applies to both sizes.

Machines: Suitable for all chunky machines with ribber and intarsia carriage. We used a Brother KH 260.

Material: AUSTERMANN yarns: "Venezia" (50% cotton, 50% viscose, 85 m/50 g) approx. 750 (800) g salmon C 14. "Royal Anjou Angora" (100% Angora, 66 m/20 g) approx. 60 g white C 212 and 20 g yellow C 204. "Angora Wolle" (70% Angora, 30% wool, 100 m/20 g) 20 g each in yellow/green C 452 and pink C 441.

For the appliqué sequin fabric in pastel colours, white leather, white sequin strip, white satin ribbon and 12 white beads. Wadding. Crochet hook No. 4. The yarn is available against a Eurocheque for £107.00 (£109.50) from WOLLSTUDIO Jutta Hinrichs, Wormser Str. 5, 6550 Bad Kreuznach. Tel.: (0671) 42625 or Fax (0671) 45204. The kit does not include the material for the appliqué.

Tension: 20 st. and 27 rows = 10 cm. TD approx. 5 over stocking stitch.

Ribs: 2 x 2 rib at TD approx. 0.

Intarsia: Knitted at TD approx. 6, following the chart. Follow the drawn lines for the neckline.

Arrows on pattern denote direction of knitting.

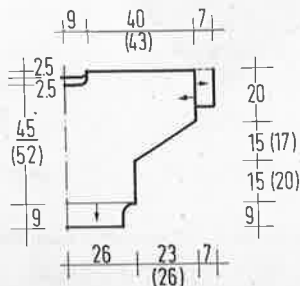
Front with sleeves: Cast on with waste yarn at right edge of needle bed 40 st and knit several rows. Change to main yarn and set RC to 000. At left edge increase on alt. rows 1 st. 30 (34) times. E-wrap cast-on at left edge 30 (40) stitches = 100 (114) stitches. Set RC to 000. Knit the centre part as shown on chart. When RC shows 140, cast off at left edge 30 (40) st. and knit other sleeve, decreasing instead of increasing. Take off on waste yarn.

Back with sleeves: Knit as for front.

Finishing: Close upper shoulder and sleeve seams. **Knit ribs:** pick up 44 (48) st. lower sleeve edge and knit 24 rows. Cast off. **For welts,** pick up 80 (84) st. from lower edge of back or front and knit 30 rows rib. Cast off. Crochet around neckline with 1 row dc. and 1 row crab-stitch.

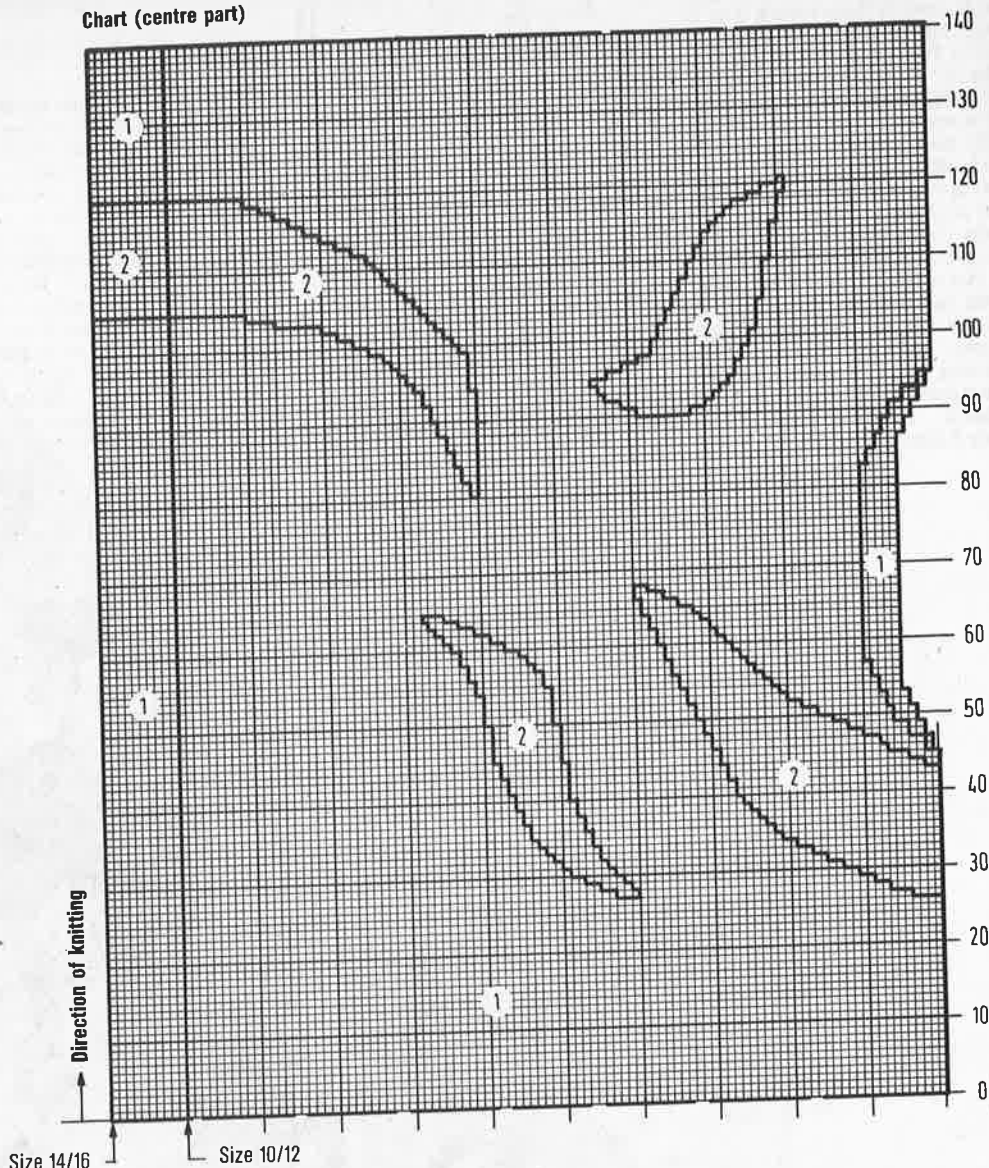
Appliqué: Cut fabric as required and sew on over wadding. Embroider the flowers and sew on beads. Close remaining seams.

Key:
1 = Venezia
2 = Angora, white
1 square = 1 st. and 1 R.



1/2 front and back with sleeve.

Chart (centre part)



Model 28

White jacket with pink appliqué

Size: 10-14. Jacket can only be knitted larger on machines with more than 114 needles.

Machines: Suitable for chunky machines with ribber and intarsia carriage. We used a Brother KH 260.

Material: AUSTERMANN "Piano" (100% mercerised cotton, 85 m/50 g) approx. 800 g white C 1 and "Royal Anjou Angora" (100% Angora, 66 m/20 g) approx. 60 g pink C 205.

7 satin roses, sequin fabric and strip in white, pink satin and ribbon, 8 white buttons. Imitation leather.

Available as a kit against Eurocheque for £74.00 from WOLLSTUDIO Jutta Hinrichs, Wormser Str. 5, 6550 Bad Kreuznach. Tel.: (0671) 42625 or Fax (0671) 45207. Price includes roses.

Tension: 19 st. and 26 rows = 10 cm. TD approx. 4**

Ribs: 2 x 2 rib at TD approx. 3.

Intarsia: TD approx. 5. Knitted following the chart. The second sleeve is knitted in reverse from RC 270.

Arrows on patterns denote direction of knitting.

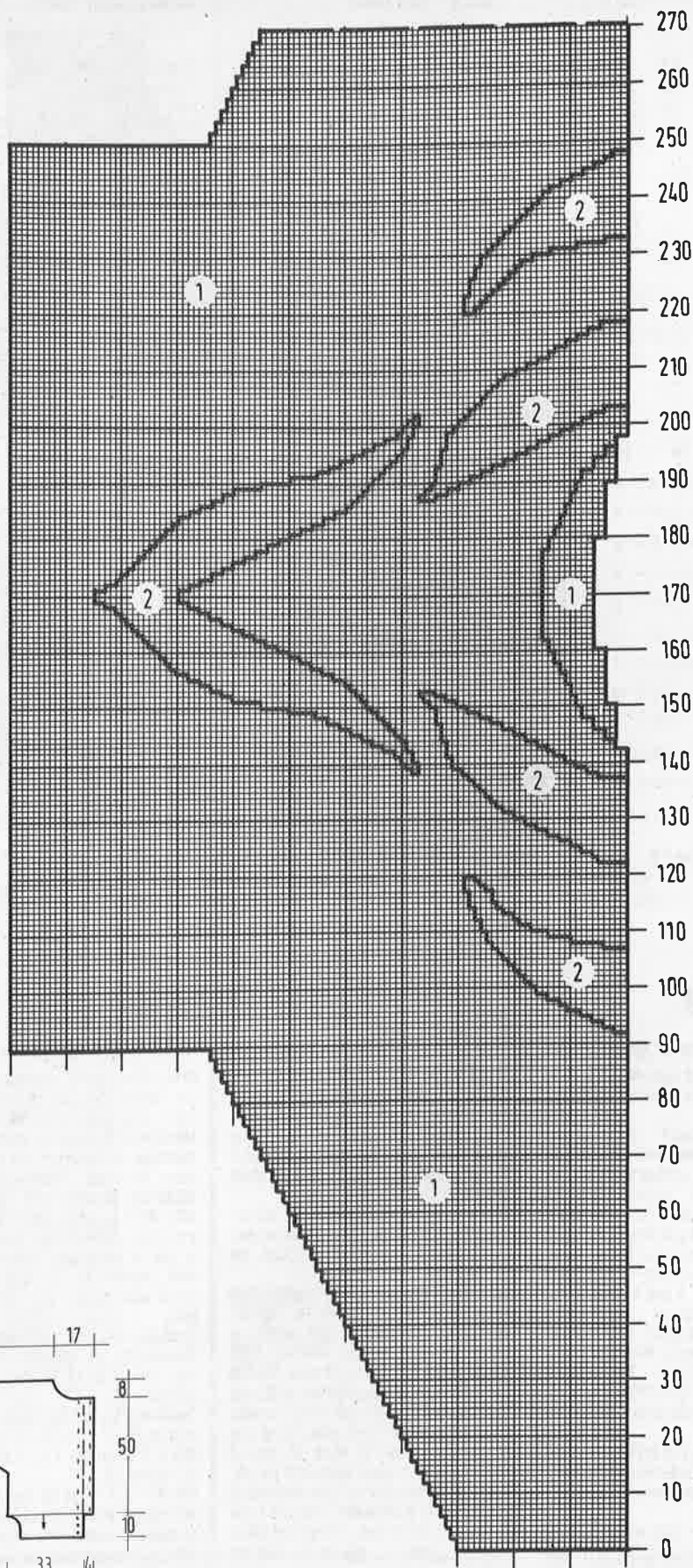
Back with sleeves: Knit following the chart, using the higher neckline. Start and finish with waste yarn.

Right front: Knit from chart up to row 170, omitting the large pink area in the centre and shaping the lower neckline. Knit 15 rows in white, making 5 evenly spaced buttonholes on rows 170 and 180. Cast off all stitches on RC 185.

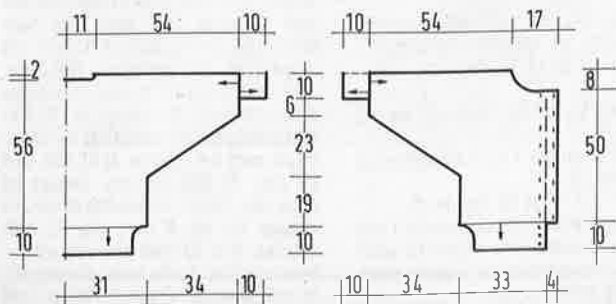
Left front: Cast on by E-wrap 95 st. and knit 10 rows. Working from row 165 of chart, knit as for back.

Neckband: Cast on with white 82 st. and knit 20 rows, making a buttonhole on rows 5 and 15 at left edge, 4 st. from edge. Cast off.

Finishing: Close upper shoulder and sleeve seam. Pick up for the ribs 88 st. for the back and knit 36 rows. Cast off. For the sleeves pick up 44 st. and knit 36 rows. Cast off. For frontwelts, pick up 44 st. and knit 36 rows. On right front welt, make a buttonhole on rows 4, 16 and 28 approx. 3 st. from the edge. Turn in the front edges by 10 rows and slipstitch into position. Finish the buttonholes on the right edge. Sew on neckband and fold in half to inside. Slipstitch down. Before closing the side seams, stitch on the appliqué as shown in picture. Cut leaves from imitation leather and stitch on together with the roses. Sew on buttons.



Key:
 1 = Piano
 2 = Angora
 1 square = 1 st. and 1 R.



1/2 back with sleeve

Right front with 1/2 sleeve

Direction of knitting ↑

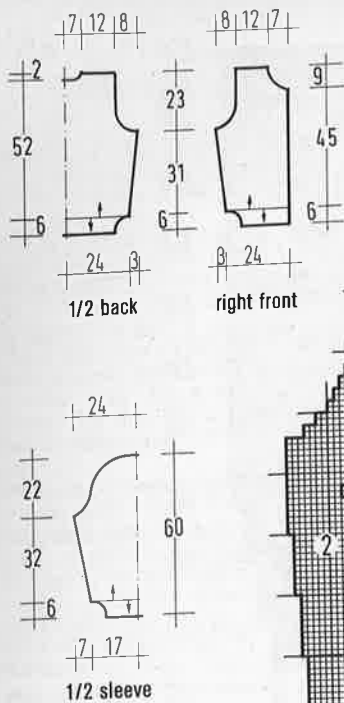
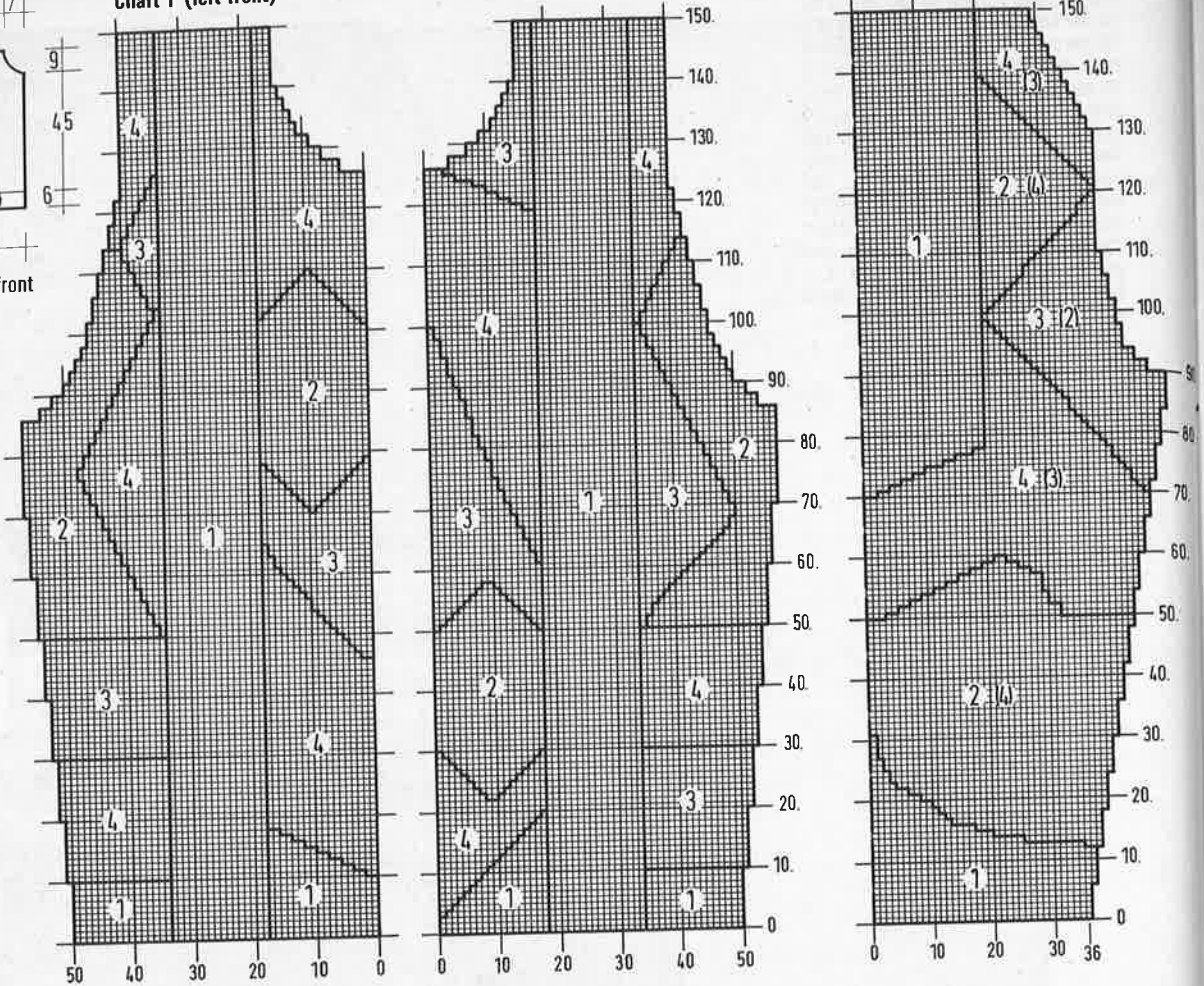


Chart 1 (left front)

Chart 2 (right front)

Chart 3 (1/2 sleeve)



Key:
 1 = black
 2 = white
 3 = dk. grey
 4 = lt. grey
 1 square = 1 st. and 1 R.

Model 29

Jacket in shades of grey

Size: 10/12. Jacket can only be knitted larger on machines with more than 114 needles.

Machines: Suitable for chunky machines with ribber and intarsia carriage. We used a Brother KH 260.

Material: SCHEWE "Lucido" (34% kid-mohair, 33% Mohair, 33% wool, 90 m/50 g) approx. 250 g in black, 200 g lt. grey, 100 g dk. grey and 100 g white. Various yarns for the embroidery. Crotchet hook No. 5 and 8 buttons.

The yarn is available as a kit against a Eurocheque for £52.00 from WOLL-STUDIO Jutta Hinrichs, Wormser Str. 5, 6550 Bad Kreuznach. Tel.: (06 71) 426 25 or Fax (06 71) 452 04.

Tension: 21 st. and 28 rows = 10 cm. TD approx. 2.

Ribs: Knitted as 1x1 rib at TD 0 or knitted by hand with knitting-needles No. 4.

Arrows on patterns denote direction of knitting.

Left front: Cast on with waste yarn 50 st. and knit several rows. Set RC to 000 and continue in intarsia, following chart 1. Increases and decreases can be read from the chart.

Right front: Knit as from chart 2.

Back: Join charts 1 and 2 to knit the back. At RC 144, shape the neck. Cast off the centre 12 st. Knit first side by casting off at neckedge on alt. rows 5 st. once, 3 st. once and 1 st. once. Repeat for other side.

Sleeves: Knit from chart 3, mirroring the design around the centre. Use colours shown in brackets on second side.

Finishing: Crotchet thick chains from grey yarn and stitch on in curves. Embroider if desired. Knit **welts** in black, picking up the stitches from waste yarn and knitting 20 rows. For the **cuffs**, decrease the stitches to 35 and knit 20 rows. Close shoulder seams. Crotchet around neck and along the front edges several rows of double crotchet. When edge measures 1.5 cm, make 8 buttonholes on right side with 3 chains. After 3 cm width, crotchet 1 row crabstitch. Close rem. seams and set in sleeves, gathering top to fit. Sew on buttons.

Model 30

Dress with court jester

Size: 12/14 (16/18). The instructions for the larger size are in brackets, one figure only applies to both sizes.

Machines: Suitable for standard gauge machines with ribber and intarsia carriage. We used a Brother KH 940.

Material: HAMBURGER WOLFFABRIK 800 (850) g cotton (80% cotton, 20% polyacryl, 150 m/50 g). Small amounts of silk or shiny yarn in lilac, lt. green, pink, yellow, dk. red and salmon. 12 small gold balls. 1 bell. Multi-transfer tool.

Available as a kit from Gerti Damerow, Barenfelder Str. 168, 2000 Hamburg 50, Tel.: (040) 3903171. Price on application.

Tension: 28 st. and 37 rows = 10 cm. TD approx. 9.

Rib A: 2 st. on MB, 1 st. on RB knitted at TD approx. 3.

Rib B: 2 x 2 rib at TD approx. 3.

Intarsia: Knitted following charts 1 and 2, using separate balls of yarn for each colour. Take care to cross yarns when changing colours.

Arrows on patterns denote direction of knitting.

Back: Cast on 200 stitches in black and knit 60 rows rib A. Knit several rows of waste yarn and remove from machine. Re-hang the rib on 160 (172) needles on MB, doubling up on every 4th (6th) stitch. Set RC to 000 and continue in stocking stitch. When RC shows 12, change to intarsia and knit the figure from chart 2 on left side of back. When RC shows 194, shape armholes with multi-transfer tool using 6 prongs. Move 6 st. at each side in by 3 and push empty needles into NWP. Repeat every 6th row until 21 st. at each side have been decreased. Knit straight to RC 280 and shape neck. Set carriage to HOLD and push centre 40 (46) st. and all stitches at side opposite to carriage to HP. Knit first side by putting into HP at neckedge on alt. rows 2 st. 3 times. At RC 288, cast off rem. 33 (36) stitches. Repeat for other side. Return all needles to WP and arrange for **rib B** over the 52 (58) stitches. Knit 20 rows and cast off.

Front: Knitted as for back, starting the intarsia when RC shows 11. Follow chart 1. When RC shows 256, shape neck. Set carriage to HOLD and push centre 36

(42) stitches and all stitches at side opposite to carriage to HP. Knit first side by putting into HP at neckedge on alt. rows 2 st. 3 times and 1 st. twice. Knit straight to RC 288 and cast off. Repeat for other side. For the **neckband**, return needles from HP to WP and pick up 23 st. along straight edge at each side = 98 (104) st. Arrange needles for **rib B** and knit 20 rows. Cast off.

Sleeves: Cast on with contrast yarn 88 stitches and knit several rows. Set RC to 000 and change to main yarn. Increase 1 st. at each side every 4th row 27 times = 42 stitches. When RC shows 112,

shape armholes by decreasing as described for back = 100 stitches. Knit straight to RC 208 and cast off.

Cuffs: With RB in position, arrange 72 needles for 2 x 2 rib. Cast on and knit 40 rows in rib. Transfer all stitches to MB. Re-hang stitches from lower edge of sleeve, doubling up on every 5th needle. Knit 1 row and cast off.

Finishing: Steam all pieces gently from wrong side, omitting ribs. Close all seams and set in sleeves, matching the decreases at armholes. Pleat the top of the sleeve to fit. Sew on balls and bell.

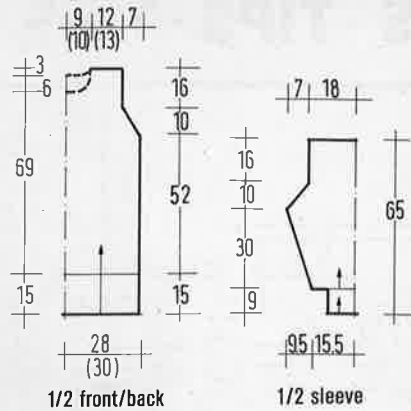


Chart 1 (front)

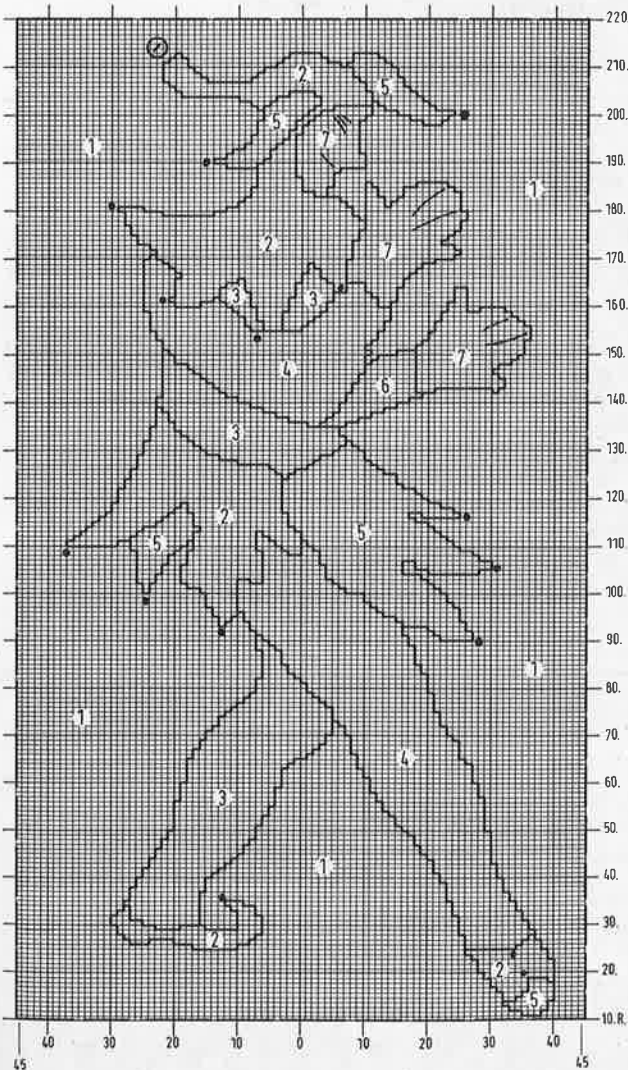
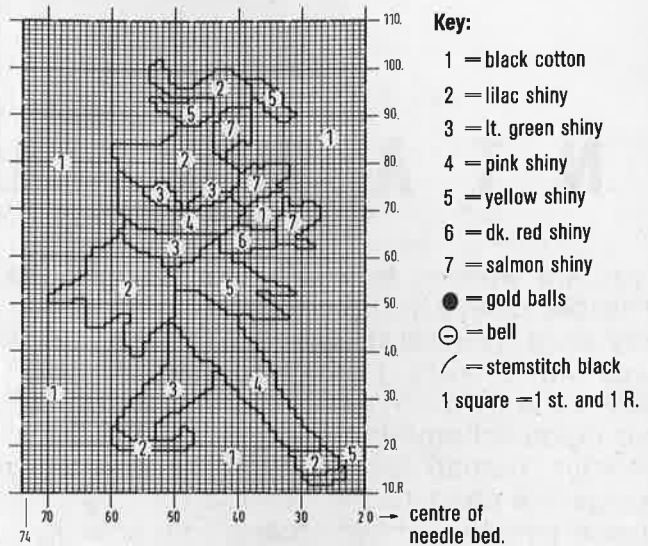


Chart 2 (back)



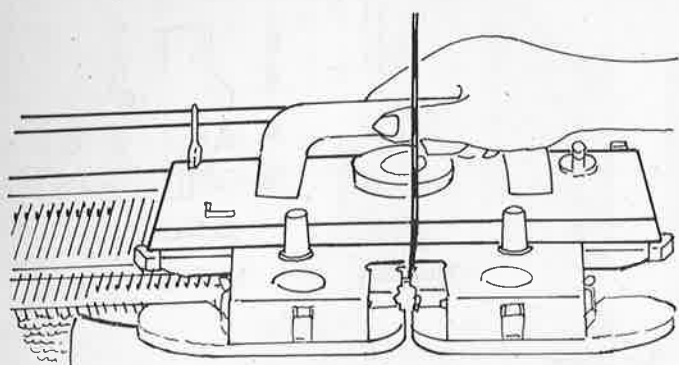
Model 31 and 32

Red or black sweater with court jester

Sizes and instructions as given in model 30 (dress). Reduce the length by approx. 12 cm and knit all ribs as 2 x 2 rib.

When substituting yarns, please use yarns with similar meterage.

TIPS · TIPS · TIPS · TIPS



I N T A R S I A

If you are working from the given charts, it is advisable to have the charts enlarged in a photocopy shop. You will then be able to colour the areas with crayons. This will not take long and make the work much easier. You will also see, if your colourscheme looks good. If you want to use your charting device, it may be possible to enlarge the chart to the size required by your tension swatch. For instance, if your tension is 26 stitches to 10 cm, then the enlarged chart should also measure 10 cm over 26 squares on the chart. For reasons of space, the charts in the magazine are small, 26 squares only measure 2.5 cm. When the chart has been enlarged to the correct size, lay it behind the plastic sheet of the Knitleader or copy it on the Knitradar sheet.

You will have noticed that there can be a considerable difference between tensions when knitting with the intarsia carriage or the knitting carriage. One will usually be looser than the other. For various reasons it is therefore necessary, to knit a tension swatch for each technique, so that both look good when used in the same garment.

A useful addition to intarsia knitting is a Yarn-brake. This will control the yarns and stop the twisting. It will also provide even tension to all yarns.

Yarn manufacturers and importers

Phildar UK Ltd.
2 Peary Street
Rochdale Road
Manchester M60 4BW
Tel.: 061 834 3371

All other yarns are available from
WOLLSTUDIO JUTTA HINRICHS
Wormser Str. 5
D-6550 Bad Kreuznach
W.-Germany, Tel.: 06 71/4 26 25

Schewe
Europa Yarns Ltd.
Jowler Mill
Jowler, Luddenden
Halifax
W.-Yorks. HX2 6BT

Knittingmachine Manufacturers:

Jones/Brother
Jones Sewing Machines Ltd.
Shepley Street
Manchester M34 5JD
Tel.: 3300111

Phildar UK Ltd.
2 Peary Street
Rochdale Road
Manchester M60 4BW
Tel.: (061) 834 3371

Knitmaster
39-45 Cowleaze Road
Kingston-upon-Thames
Surrey KT2 2DT
Tel.: (081) 546 2444

Singer SDL Ltd.
Graftonway
Westham Industrial Estate
Basingstoke
Hampshire

Do not forget the tension swatch



To make sure, your garments are a good fit, you must check that the number of stitches and rows in 10 cm agree with those given. Cast on at least 60 sts. in the appropriate pattern and knit 10 R.

Knit 1 R. contrast yarn. Knit 30 rows and mark stitch 21 on each side of centre Ø with contrast yarn. Knit a further 30 rows. Knit 1 row contrast yarn. Knit 10 rows pattern. Take off the machine, pull lengthwise and let the swatch rest. Using the Knitmaster "Green Ruler" lay it between the marked stitches and read off the number of stitches per 10 cm. Repeat for the number of rows. If the figures don't agree, either alter the tension dial setting or work out the number of stitches required, using the measurements given.

Ladies sizes	Size German	Size British	Bust		Waist		Hips	
			cm	ins	cm	ins	cm	ins
	34	8	82	32½	62	24½	88	34½
	36	10	84	33	64	25½	90	35½
	38	12	88	34½	68	26¾	94	37
	40	14	92	36¼	72	28¼	98	38½
	42	16	96	37¾	77	30¼	102	40¼
	44	18	100	39½	82	32½	106	41¾
	46	20	104	41	87	34¾	110	43¼



**Cheerful clowns make a simple jacket interesting,
but would look equally good without.**

Model 17 Size 10/12 (14/16) 49



Here a sweater that will use yarn remnants and will therefore be unique.

Model 18 . Size 12/14

Greetings from London and Paris! Two fun designs that will
Better knit both.



Model 19 Size 12-16 (18-22)

make the choice difficult.



52 Model 20 Size 12/14 (16/18)

Elegance radiates from these two models. The difference lies in the position of the colour accents. Whether jacket or sweater, both show individuality and make the work worthwhile.



Focus on appliqué and embroidery.

Model 21 Size 12-16

On the left a generously adorned sweater. Whatever the colour, it will be the star of any wardrobe. On the right, nature in the shape of a wild duck draws the eye. These are fashions, that cannot be overlooked.



Model 22 Size 10/12



Model 23 Size 10/12 (14/16)



Model 24 Size 12/14 (16/18)

These two will be your companion for the whole day.
On the left, deep salmon with black
On the right, large and small bows decorate the beige background



Model 25 Size 16-22

Whether city or office, the choice is yours.
and a few beads.
Understatement well interpreted.



Model 26 Size 12/14 (16/18)



Model 27 Size 10/12 (14/16)

A model for your own ideas. With variations of the appliqué in material or colour, you will create something entirely new.

On the right, pastels radiate splendour.



Model 28 Size 10-14

To remain up-to-date, jackets are essential.
On the left, pink roses and sequins
On the right, folklore trends have influenced



Model 29 Size 10/12

They add to an outfit in many ways.
set off brilliant white.
the design, taken further with the embroidery.





Left on a dress and right on a sweater. A wonderful idea for knitting, which you can vary according to your taste. As soon as other colours are introduced, a new dimension emerges.



Model 31 + 32 Size 12/14 (16/18)

The court jester is here.

On sale at all
newsagents!

Elegant Knitting No. 6 - £1.50



Exclusive and innovative
STYLISH TOPS
in pure, cool cotton

With comprehensive instructions
and readers' advisory service

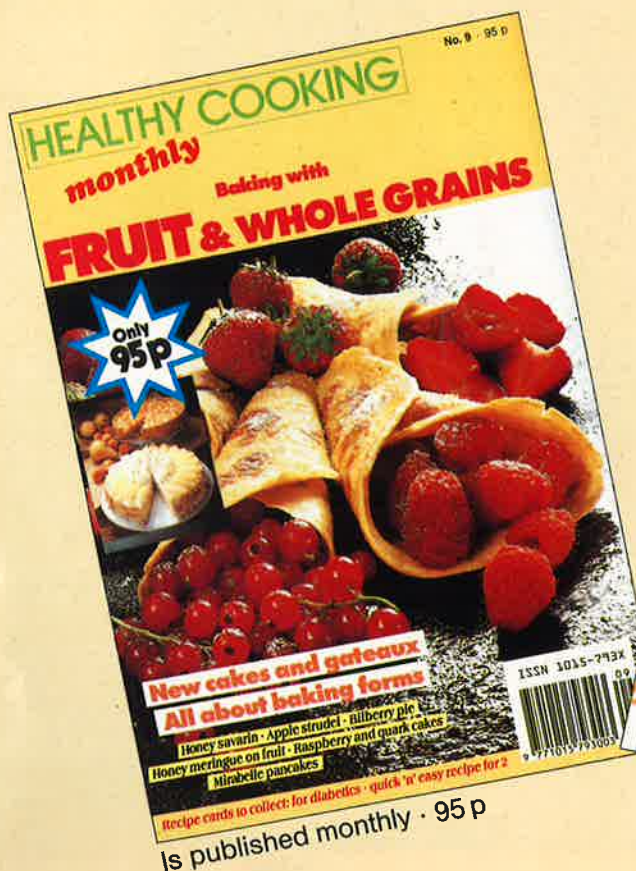
ISSN 1016-1341

Is published bi-monthly · £1.50

HEALTHY COOKING
monthly No. 9 - 95 p

Baking with
FRUIT & WHOLE GRAINS

Only 95p



New cakes and gateaux
All about baking forms

Honey savarin · Apple strudel · Raspberry pie
Honey meringue on fruit · Raspberry and quark cakes
Mirabelle pancakes

Recipe cards to collect: for diabetics · quick 'n' easy recipe for 2

ISSN 1015-293X

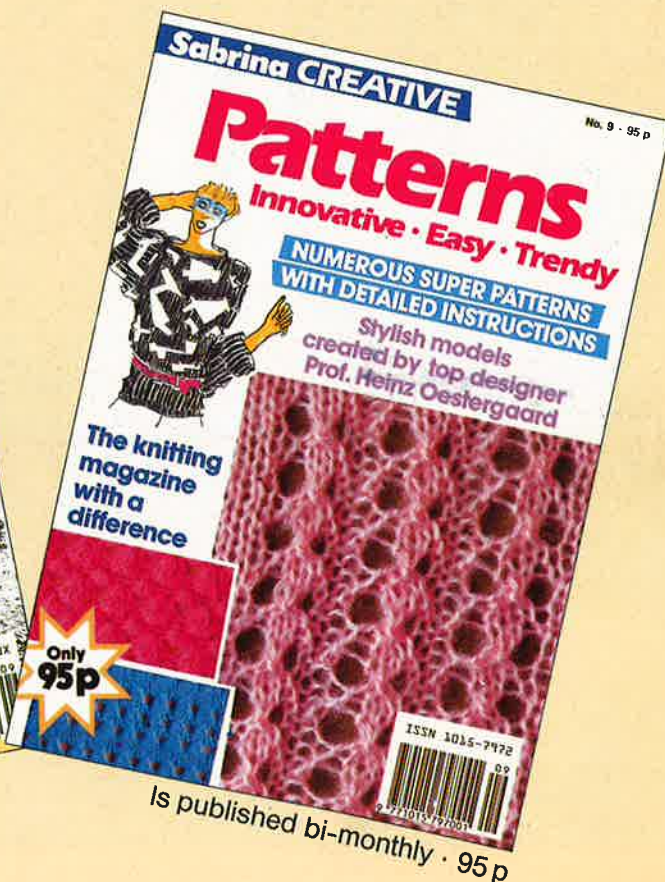
Is published monthly · 95 p

Sabrina CREATIVE No. 9 - 95 p

Patterns
Innovative · Easy · Trendy

NUMEROUS SUPER PATTERNS
WITH DETAILED INSTRUCTIONS

Stylish models
created by top designer
Prof. Heinz Oestergaard



The knitting
magazine
with a
difference

Only 95p

ISSN 1015-2972

Is published bi-monthly · 95 p