

MACHINE KNITTING CHIC

No. 3



^a**Sabrina**
PUBLICATION

**FASHIONS DESIGNS
FOR KNITTING MACHINES**

NEW



**CREATIVE IDEAS
FOR BEGINNERS AND
EXPERIENCED KNITTERS**

**ATTRACTIVE PATTERNS
AND YARNS
LATEST TRENDS TO KNIT**

SUPER COLOUR VARIATIONS

SUPER MODELS

SIMPLE INSTRUCTIONS · READER SERVICE

Contents

E. & N. Kantor
452 Old Country Road
Melville, New York 11747

Dear readers,

we would like to introduce to you our new magazine with models for all types of knitting machine. The rapidly increasing number of readers, as well as your response, convince us, that our selection of patterns suits all tastes. In this book we again offer a wide variety of designs to suit all occasions. Beginners as well as advanced knitters will find the sweater of their dreams. The instructions are easily followed and can be used on various machines. Very quickly – that is the advantage of machine knitting – will you be able to show yourself in the sweater of your choice and feel proud, because MACHINE KNITTING CHIC means up-to-date fashion

Your Editor

Christl Haefele

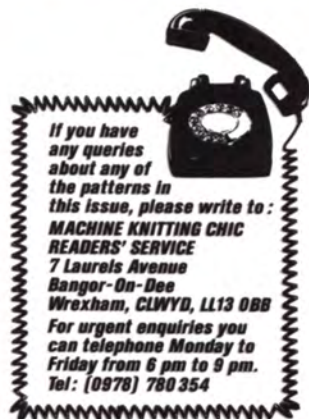


Colours and knitting patte

Wonderful sweaters that impress



In extraordinary variety



If you have any queries about any of the patterns in this issue, please write to:
MACHINE KNITTING CHIC READERS' SERVICE
7 Laurels Avenue
Bangor-On-Dee
Wrexham, CLWYD, LL13 0BB
For urgent enquiries you can telephone Monday to Friday from 6 pm to 9 pm.
Tel: (0978) 780 354

Knitting Machine Chic is published by **BPV Medweth & Co.**, Gewerbezone Eichli 29, CH-6370 Stans.

Publishing Directors: H. + E. Medweth.
Editorial: Christl Haefele. **Design:** Ch. Haefele and C. Grube. **Desk editor:** M. Leibinger. **Distribution:** BPV Medweth & Co., Gewerbezone Eichli 29, CH-6370 Stans. Distributed in Great Britain by: MMC, Magazine Marketing Company, Waltrix House, Oak Lane, Leatherhead, Surrey. Printed in West Germany by OZ-Druck- und Verlags-GmbH Rheinfelden. Copyright 1989 by BPV Medweth & Co., CH-6370 Stans.

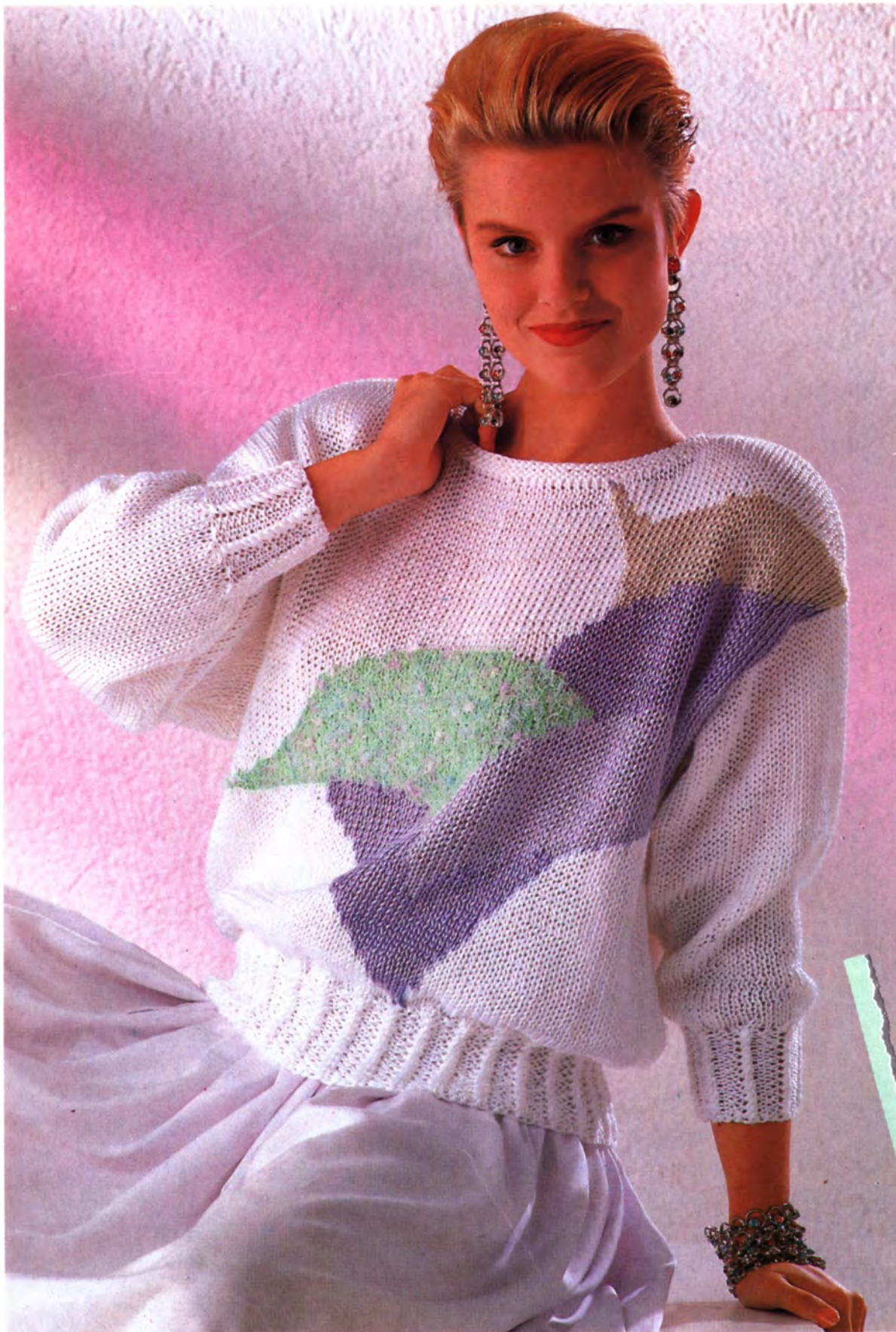
All models are under unlimited copyright protection ©. Commercial copying prohibited. Publishers and editors assume no liability for the unrequested contribution of photos, designs and manuscripts.





Model 1: size 36-40

NATURAL DESIGNS, SENSIBLE AND EXPRESSIVE



Pastel coloured intarsia in various yarns give this sweater its special charm. It is suitable even for beginners.

More patience and experience is required for the sweater on the right. It is knitted in cotton and embroidered with bugle beads. The result is beautiful and fashionable.

Model 2: size 36/38 (40/42)

SOFT COLOURS SET OFF ELEGANT LINES



AND PRESENT THEMSELVES EMBROIDERED

Model 3: size 40/42 (44/46)



Model 4: size 36-40

Jacqueline, on the left, wears a sweater in silk and angora. Strong colours are shown to their full advantage in this simple design. (left picture)

As much style is shown in the model on the right, which appeals to Jeanette. The colour scheme of the two sweaters could of course be exchanged.



Model 5: size 36-40

**BRILLIANT COLOURS IN
SIMPLE SHAPES, SWEATERS
WITH INDIVIDUALITY**



Model 6: size 36/38 (40/42)

DESIGNED FOR SPECIAL OCCASIONS



ELEGANT AND BEAUTIFUL

Model 7: size 36-40



Model 8: size 36-40

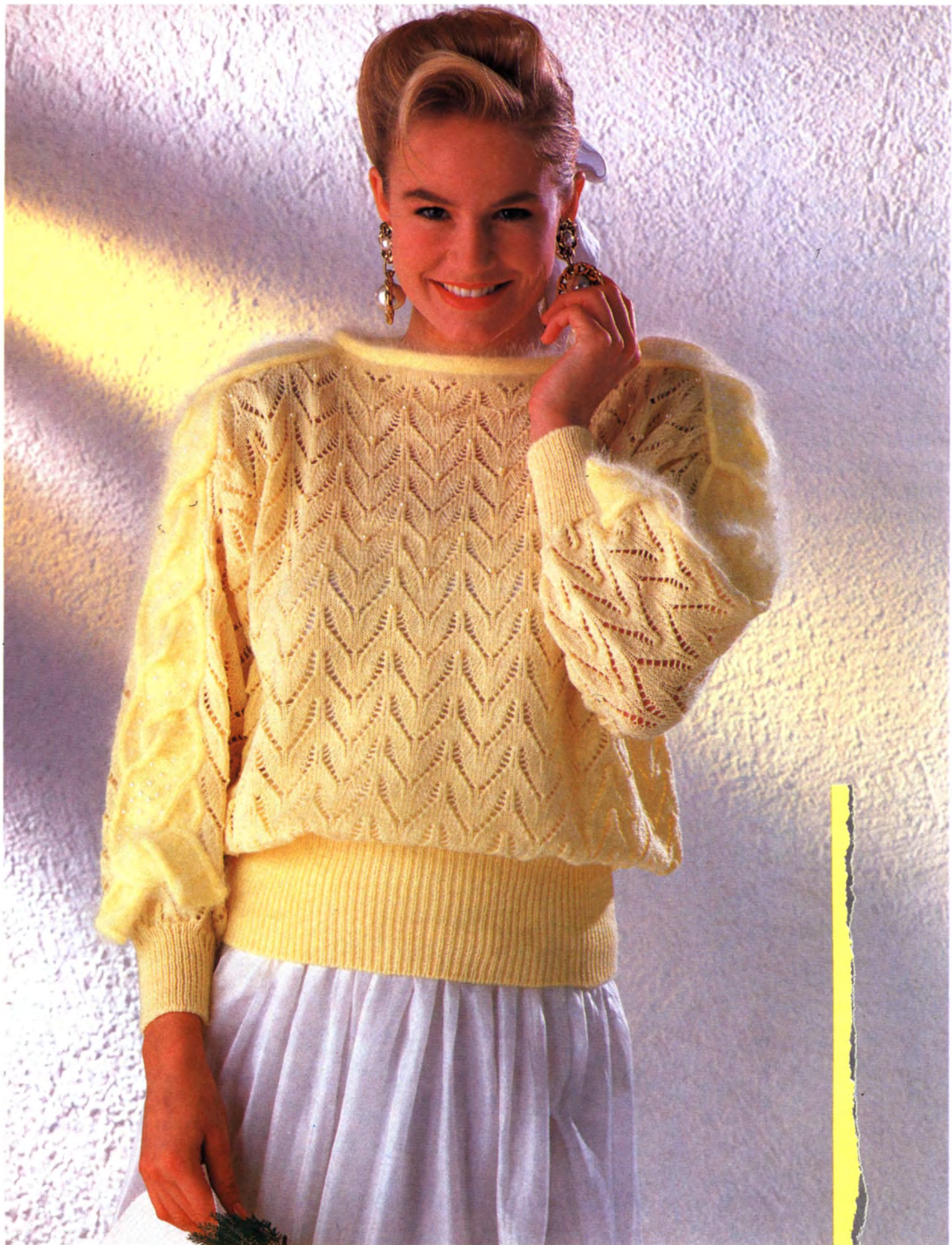
Love of detail and your own creativity will give you great pleasure, when making this sweater. (left picture)

Bright yellows in fashionable yarn mixtures will allow beginners and improvers to reach their goal quickly. (right picture)



Model 9: size 36/38 (40/42)

**A CHOICE OF CONTRASTS,
FLORAL APPLIQUÉ OR INTARSIA**



Model 10: size 40/42/ (44/46)

12

TRANSFER LACE IN PALE YELLOW O



SPARKLING FOR EVENING

Model 11: size 36/38 (40/42)



White satin appliqué-flowers look good on different background colours. Melissa chose peach to compliment her brown hair.
(left picture)

An extravagant sweater with stunning detail and colour scheme. If you prefer a simpler version, omit the embroidery, as the twisted neckband provides plenty of interest.
(right picture)

Model 12: size 38/40 (42/44)



Model 13: size 36/38

TO CLEAR GEOMETRIC SHAPES



Instructions

MACHINE KNITTING CHIC

The patterns for the designs in this magazine are on the following pages under the relevant numbers, together with all punchcards or mylar sheets, and all information required.

MODEL 1 BUTTERFLY SWEATER

Size: 32/36"

Machines: Suitable only for electronic machines with mirror image facility. We used a Knitmaster 580 with ribber.

Yarns: JENNIFER LEE "Malve" 600 grms. pink C. 202. DILTHEY "Lulu" 25 grms. each in white 3801, rose 3813, pink 42.

You will also need a strip of sequins in pink and white.

Tension: 30 sts. and 34 R. = 10 cm. T.D. 9, K1, P1 rib T.D. 4/4.

Cabled ribs: After casting on in K1, P1, rib, knit the circular rows. Starting from centre, arrange needles as follows:

Centre 4 sts. on M.B., next 2 sts. on R.B., next 4 sts. on M.B. next 2 sts. on R.B. Leave remaining sts. in normal rib setting.

On every 8th row, cable the 3 groups of 4 sts. on the mainbed.

Cabled yoke: Starting on R.C. 140 cable the centre 18 sts. with two single transfer tools left over right. Knit 2 R. and cable the alt. sts. this time right over left. Knit 2 R. Repeat the cabling, increasing the cables by two on each side every two rows. See diagram.

Purl stitch pattern on sleeves: With carriage on right, follow the diagram and reverse groups of stitches to purl. Starting with 12 sts. in centre, drop the stitches and re-knit them with the latch-tool. On the sleeve follow the diagram, but on the back continue to extend the patterning at both sides.

Butterfly: Transfer pattern to mylar sheet and knit as single motif, using a strand of yarn to neaten the edges. Use the yarn-separators! Change the contrast colours as follows:

row 1-48 rose,
row 49-60 pink,
row 61-112 white.

Program Knitmaster 580:

Switch 1 = left light on. Switch 2 = right light on. Switch 5 = C. Pattern over needles 54-0-53. Needle 1 cam in centre.

Program Knitmaster 550, 560:

Switch 1 = left light on. Switch 2 right light on. Switch 5 = light on. Pattern over 54-0-54. Needle 1 cam in centre.

Back: In main yarn, cast on 156 sts. and knit 36 R. K1, P1 rib. Transfer all sts. to mainbed, increasing to 168 sts. evenly across the row. Continue in stocking stitch and "purl row pattern" as shown above. At R.C. 98 cast off for armhole shaping at each side 12 sts. once and then at both sides on every row 1 st. until

120 sts. remain. Knit straight to R.C. 166 and shape neck: Cast off 32 sts. in centre and knit each side separately. Cast off at neckedge. 1 st. on every row until 34 sts. remain. Knit to R.C. 178 and cast off.

Front: Knit as for back, programming the butterfly to knit from R.C. 20. Start armhole shaping as on back, but cast off 14 sts. at beginning and then as for back. At R.C. 140 start the "cable yoke". At R.C. 150 start the neck shaping. Cast off the centre 30 sts. and knit each side separately, keeping the yoke pattern correct.

Shape the neckline by casting off 1 st. on every row until 34 st. remain. Cast these off at R.C. 178.

Sleeves: Start with waste yarn and cast on 90 sts. Knit several rows and then change to main

Continued next page

Attention! Using a different brand of wool, please choose one with a similar mt (meterage).

Abbreviations

alt. = alternate(ly), beg. = begin(ning), C. = colour, COL. = carriage on left, COR. = carriage on right, decr. = decrease, H. P. = holding position, incr. = increase, M. B. = main bed, M. T. = main tension, M. Y. = main yarn, N. W. P. = non-working position, 000. = set row counter on 000, R. = row(s), R. B. = ribber bed, R. C. = row counter, R. T. = rib tension, st./sts. = stitch(es), T. D. = tension dial, W. P. = working position, W. Y. = waste yarn, Ø = centre of needle bed.

Figures alongside the line charts are in centimetres (cm).

yarn. Increase 1 st. at each side on every 3rd row 35 times until you have 160 sts. At the same time, follow the diagram for the "purl row pattern". At R.C. 120 shape the sleeve top: Cast off at right side 12 sts. and at left side 8 sts. Now decrease 1 st. at each end on next 8 R. = 124 sts. Decrease 1 st. at each end on alternate rows to R.C. 180 and then again on every row to R.C. 184. Cast off remaining sts. Knit second sleeve reversing the shapings.

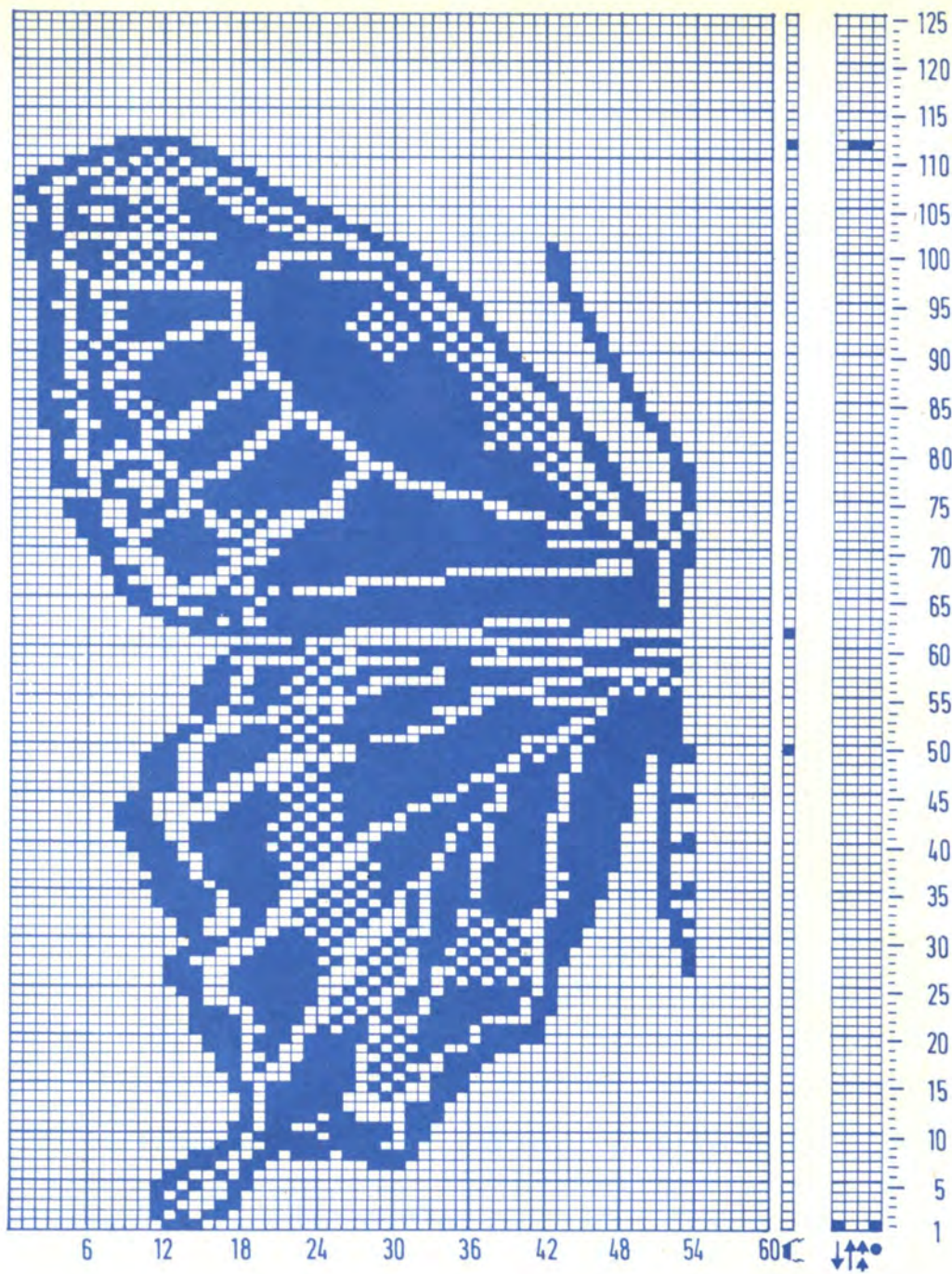
Cuffs: Cast on 60 sts. and knit 54 R. in "cabled rib". Take off on waste yarn and re-hang, reversing work. Pick up sts. from waste yarn at sleeve and re-hang, purl side facing you, decreasing evenly across the row. Knit 1 R. and cast off.

Collar: Knit 2 cords in each contrast colour over 4 sts. and 360 R. Slipstitch together 1 white, 1 pink and 1 rose cord and one section of 1 rose, 1 pink and 1 white. Twist the two sections together and stitch into the neckline.

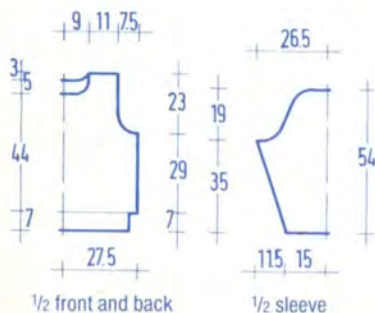
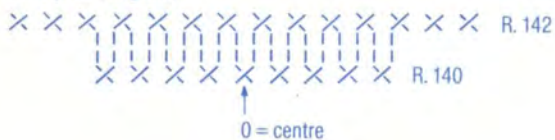
Making up: Neaten the inside of the single motif by cutting and tying the long floats. Sew on the sequins and catch down more floats as necessary. Embroider additional colours into the motif. Close all seams. Set in the sleeves, pleating the sleeve top.

Explanations:

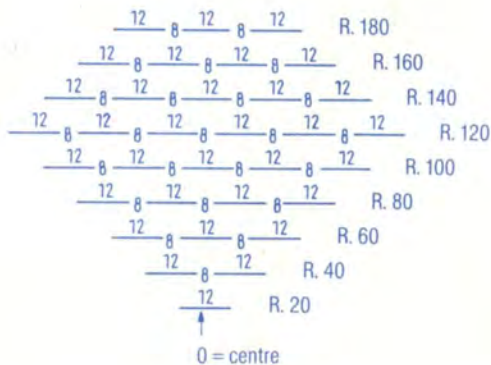
- × = cable 2 sts. with single transfer tool
- | = purl stitch



cable yoke (diagram)



purl row pattern (sleeve)



MODEL 2

WHITE SWEATER WITH PASTEL INTARSIA

Size: To fit bust 32/34" (36/38"). Instructions for size 36/38" in brackets, one number applies to all sizes.

Machines: Chunky machines 7 or 9 mm. gauge. We used a Phildar "Big Phil". Intarsia carriage.

Yarn: Phildar "Canelis" 700 grms. (750 grms.) White, 50 grms. green 072, light blue 041, lilac 037, "Jaldic" 50 grms. green 066.

Cabled ribs: Knitted by hand. 1st. row: 1 purl, 2 knit, crossing the 2 stitches by knitting the second stitch first. Repeat to end of row. 2nd row: 2 purl. 1 knit to end. Repeat for length of rib.

Tension: 16/17 sts. and 20 R. = 10 cm. T.D. approx. 9. The yarn is used double throughout.

Back: With waste yarn, cast on 90 (96) sts. and knit several rows. Change to M.Y. and M.T. and knit 110 R. in White. Cast off at beginning of next 2. R. 27 (30) sts. for shoulders. Take off rem. 36 sts. with wasteyarn.

Front: Start as for back, then set for intarsia and follow the chart. Shape for the neckline also following the chart. After the last row cast off the rem. 27 (30) sts.

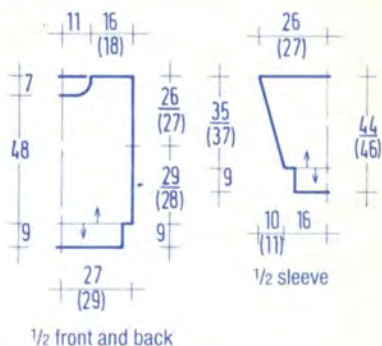
Sleeves: Cast on with waste yarn 54 sts. and knit several rows. Change to M.Y. and M.T. Incr. 1 st. at each end of 4th row and every following 4th row, 17 (18) times = 88 (90) sts. Knit to R.C. 70 (74) and cast off.

Neck trim: Close one shoulder seam. Pick up 88 sts. around neck on to a knitting needle and knit 5 rows garter stitch. Cast off.

Finishing: Close second shoulder seam. **Welts:** Pick up 70 (74) sts. from wasteyarn and knit 9 cm. in "Cabled rib". **Sleeve ribs:** Pick up 34 (38) sts. from waste yarn and knit as for welts. Set in sleeves and close side seams.

Explanations:

- 1 = white
- 2 = lilac
- 3 = light blue
- 4 = green 066
- 5 = green 072
- = 1 st. or 1 R.



MODEL 3

LILAC SWEATER IN RELIEF PATTERN

Size: To fit bust 36/38" (40/42"). Instructions for the larger size in brackets, one figure only applies to both sizes.

Machines: Suitable for all standard gauge machines with ribber. We used a Knitmaster 700.

Yarn: BERGER & VOIGT "Luxorina" 700 (750) grms. lilac C. 1535. You will also need long beads in white and copper and a small amount of white angora for the embroidery.

Cable pattern: Cast on the required number of needles as K1, P1 rib and knit the three circular rows. Transfer the sts. for the pattern as follows: Centre 6 sts. on M.B., 3 sts. on ribber 6 sts. on M.B. 3 sts. on ribber etc. Knit 2 R. T.D. 5/5, knit 2 R. T.D. 8/8 and then continue with T.D. 9/9. At the same time, cross the sts. on the M.B. on every 6th row. To make it easier, try the following; on the last row before the cable move the ribber to H-position and push an additional needle into work on the ribber. Knit the row and release the extra stitch. Return ribber to

P-position. The extra yarn will be taken up and make the cable easier to twist.

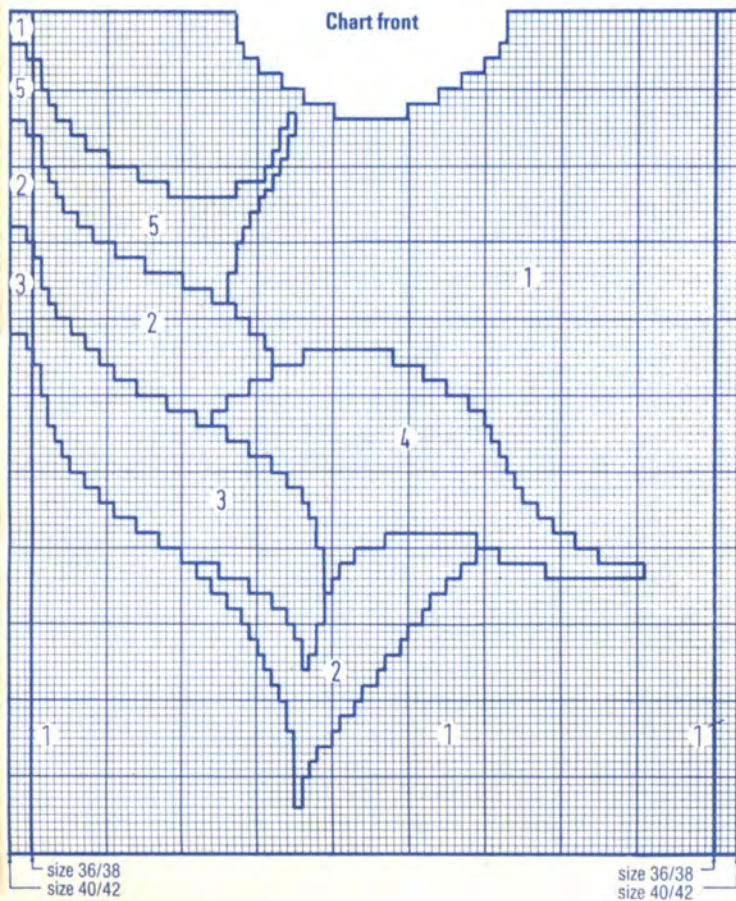
Relief Pattern: Knitted on both beds at T.D. 9/9 following the pattern chart. The dark areas represent the purl sts. knitted on the M.B. and the light areas represent the knit sts. knitted on the ribber. Numbers at lower edge of chart = number of sts. Repeat the design from the centre arrow in mirror image. Watch out! During knitting you will be looking at the reverse side. Before starting to knit, try the different parts:



1. Cable crosses: Cross 2 groups of 6 sts. using 2 3-prong transfer tools. The horizontal lines in the chart show the crossing-position. The cable should look like this: In between there will be 1 purl stitch.

2. Point of area "15". Always move the 2nd needle from the outside to the next needle inside. then move the 2 outer needles along. You will now have 2 empty needles. Before returning them to N.W.P. push up 1 needle on the ribber and put on it a loop from the previous st. At the end of the

Continued next page



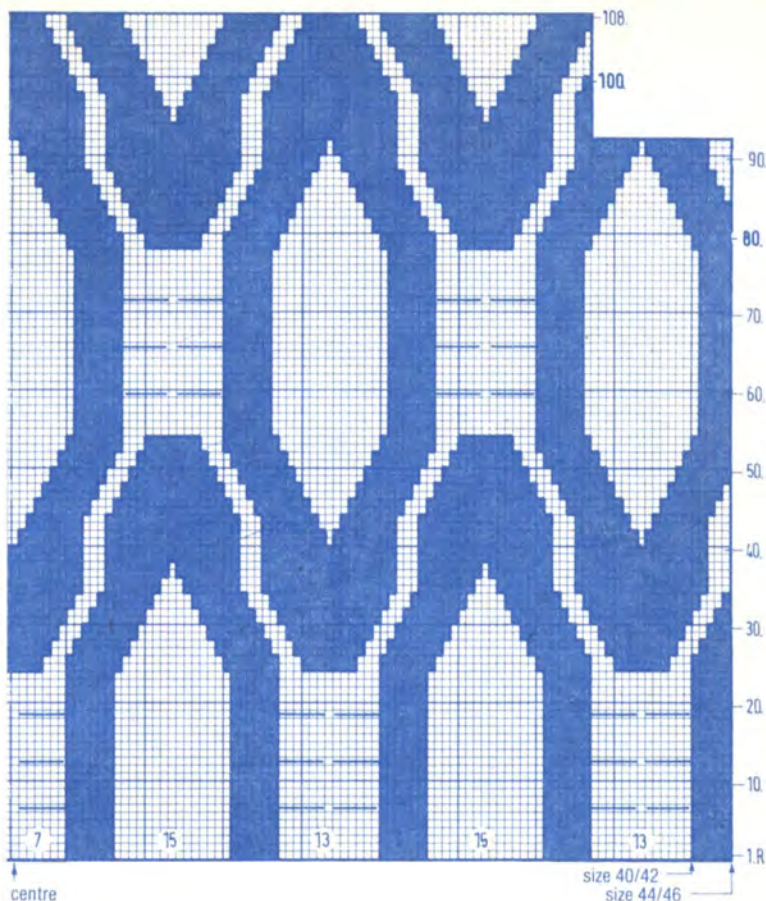
point, there will be 3 sts. left. Move the 2 outer sts. on to the centre one. Bring 2 needles to work on the ribber and knit 2 R. Move remaining st. to the ribber.

3. 3 purl sts. running diagonally: After R.C. 24 of pattern chart, move the 7 centre sts. of area 7 and 13 on to the ribber. Knit 2 R. Now transfer the remaining 3 sts. on the M.B. in the correct direction. Increase 1 st. on ribber opposite empty needle on M.B., return empty needles on M.B. to N.W.P. Now there are still 2 needles opposite one another; move stitch from ribber to M.B.

4. Start of point as in row 40 of chart. First transfer the sts. from ribber to M.B. and knit 2 R. Move 1 st. on each side from ribber to M.B. and knit 2 R. So that this point looks like the top of the first point, increase as follows: Move the 2 outer sts. to the neighbouring needle and pick up a loop from below to fill the empty needle. There are now still 2 sts. opposite each other: Transfer the sts. to the M.B. and put the empty needles into N.W.P. We have now explained all the procedures and you should be able to knit the sweater. The pattern is repeated after row 108 of chart.

Tension: 30/31 sts. and 34/35 R. = 10 cm. (back and front), 29 sts. and 34 R. = 10 cm. (sleeves).

1/2 front



Front: Cast on 174 (183) sts. in rib and knit 30 R. in cable pattern. Transfer sts. according to chart, decreasing 1 st. for 1st size only. Continue as shown on chart to R.C. 92. Cast off 13 (18) sts. at each side for armhole = 147 sts. remain. Continue to R.C. 136.

Decrease 1 st. in centre and continue to knit each side separately. Decrease 1 st. at neck on every row until 43 sts. remain at R.C. 166. Knit straight to R.C. 180 and cast off.

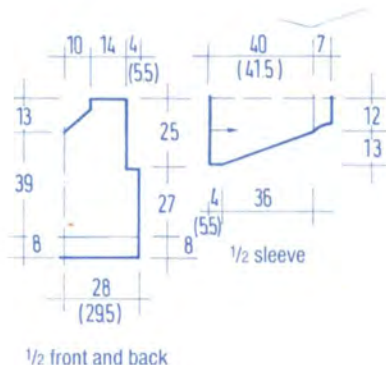
Back: Knit as for front.

Sleeves: Close shoulder seams. Pick up 146 sts. from armhole edge and put on to M.B. Push ribber into position and transfer sts. for cable: 13 sts. in centre for cable on to M.B. 3 sts. on to ribber, remaining sts. on M.B. The cable is worked as on back and front. After 14 (18) R. start decreasing 1 st. at each edge every 3rd row 37 times. = 72 sts. Please watch the directions of cabling! At R.C. 136 (142) transfer sts. on either side of the cable for the cabled rib. After 26 R.

reduce T.D. by 2 full numbers every 2 R. At R.C. 30, cast off with the latch tool.

Neckband: Knit 2. Cast on 92 sts. on M.B. and ribber at T.D. 4/4 and knit 2 R. Set the machine to knit "circular" and push the empty needles into work. Knit 1 R. each at T.D. 5, 7 and 9. Cast off the sts. on M.B. and release sts. from ribber onto waste yarn.

Making up: Sew the neckband into the neckline. Close all seams. Embroider the diamond shapes with beads and white angora as in picture.



Attention! Using a different brand of wool, please choose one with a similar mt (meterage).

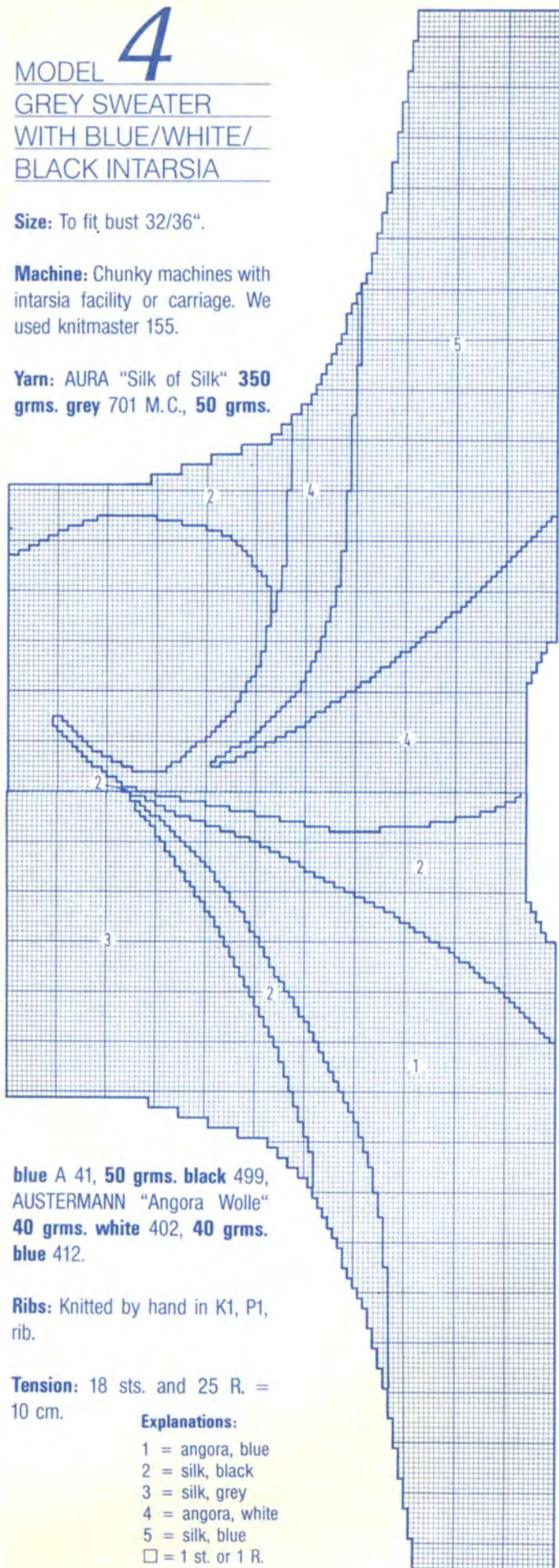
MODEL 4

GREY SWEATER WITH BLUE/WHITE/BLACK INTARSIA

Size: To fit bust 32/36".

Machine: Chunky machines with intarsia facility or carriage. We used knitmaster 155.

Yarn: AURA "Silk of Silk" 350 grms. grey 701 M.C., 50 grms.



blue A 41, 50 grms. black 499, AUSTERMANN "Angora Wolle" 40 grms. white 402, 40 grms. blue 412.

Ribs: Knitted by hand in K1, P1, rib.

Tension: 18 sts. and 25 R. = 10 cm.

Explanations:

- 1 = angora, blue
- 2 = silk, black
- 3 = silk, grey
- 4 = angora, white
- 5 = silk, blue
- = 1 st. or 1 R.

The sweater is knitted sideways from cuff to cuff. To shorten, increase to 100 sts. only instead of 110 sts.

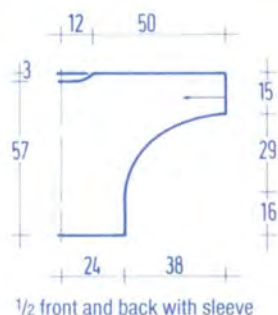
Front: Cast on 28 sts. at right side of needle bed in blue angora and follow the intarsia chart, introducing colours as shown. Incr. sts. fully fashioned or e-wrap when increasing several stitches. After R.C. 310 take off remaining 28 sts. on waste yarn.

Back: Cast on, knit and shape as front, but use grey only and omit neck shaping.

Welts: Pick up 122 sts. along lower edge of back/front and knit 9 cm rib. Close shoulder and

upper sleeve seams. For cuffs, pick up 56 sts. and knit 7 cm. in rib. Close side and sleeve seams.

Neck trim: Using knitting needles, cast on 190 sts. in grey and knit 2.5 cm in K1, P1 rib. Knit 1 row purl and cast off loosely. Attach to neck edge so that purl sts. form the inner edge.



MODEL 5

INTARSIA SWEATER IN BLACK/PINK

Size: To fit bust 32/36".

Machine: Chunky machines with intarsia facility or carriage. We used Knitmaster 150.

Yarn: BERGER & VOIGT "Luxor" 550 grms. black 336, "Luxorina" 100 grms. black 1336, DILTHEY "Helena" 150 grms. pink 2805, "Highlight" 60 grms. silver/black, SCHACHENMAYR "Pierrot" 100 grms. grey/black.

You will also need black and silver beads.

Tension: Back and front: 20 sts. and 31 rows = 10 cm. Sleeves: 20 sts. and 28 row = 10 cm.

Ribs: K1, P1, rib knitted by hand.

Front: Cast on 110 sts. with waste yarn and knit several rows. Change to intarsia and follow chart 1 for colour changes and shaping for back neck. Cast off rem. sts. on shoulders.

Back: Knit as for front, but omit neck shaping.

Right sleeve: Cast on 69 sts. and knit as shown on chart 2. Cast off all sts. after the last row.

Left sleeve: Cast on 69 sts. and work, following chart 3. Cast off.

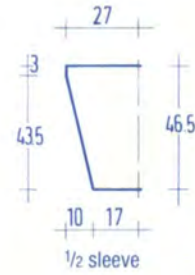
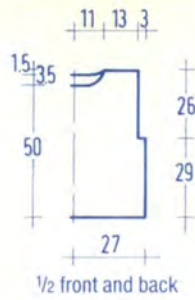
Neck trim: Knit a strip in "Luxor" over 7 sts. for 130 rows. Knit a second strip in "Helena".

Diagonal strips: E-wrap cast on 29 sts. in pink and knit 6 R. Take off on waste yarn. With 3 strands "Highlight", e-wrap cast on 38 sts. and knit 6 R. Take off on waste yarn. Knit another piece the same.

Welts: Knitted by hand. Use "Luxorina" for 84 sts. and 2 strands "Highlight" for 52 sts.

and knit 40 R. rib, twisting the yarns when changing over.

Cuffs: Pick up 60 sts. from sleeve edges, decr. as necessary. Knit 40 R. rib in "Luxorina". Attach diagonal strips along the diagonal lines as in photo. Close all seams. Twist the 2 strips for the neck trim and attach to neckline. Stitch on beads.



Explanations chart 1-3:

- 1 = Luxor
- 2 = Highlight (3 stranded)
- 3 = Helena
- 4 = Pierrot
- = 1 st. or 1 R.

Chart 1 (front and back)

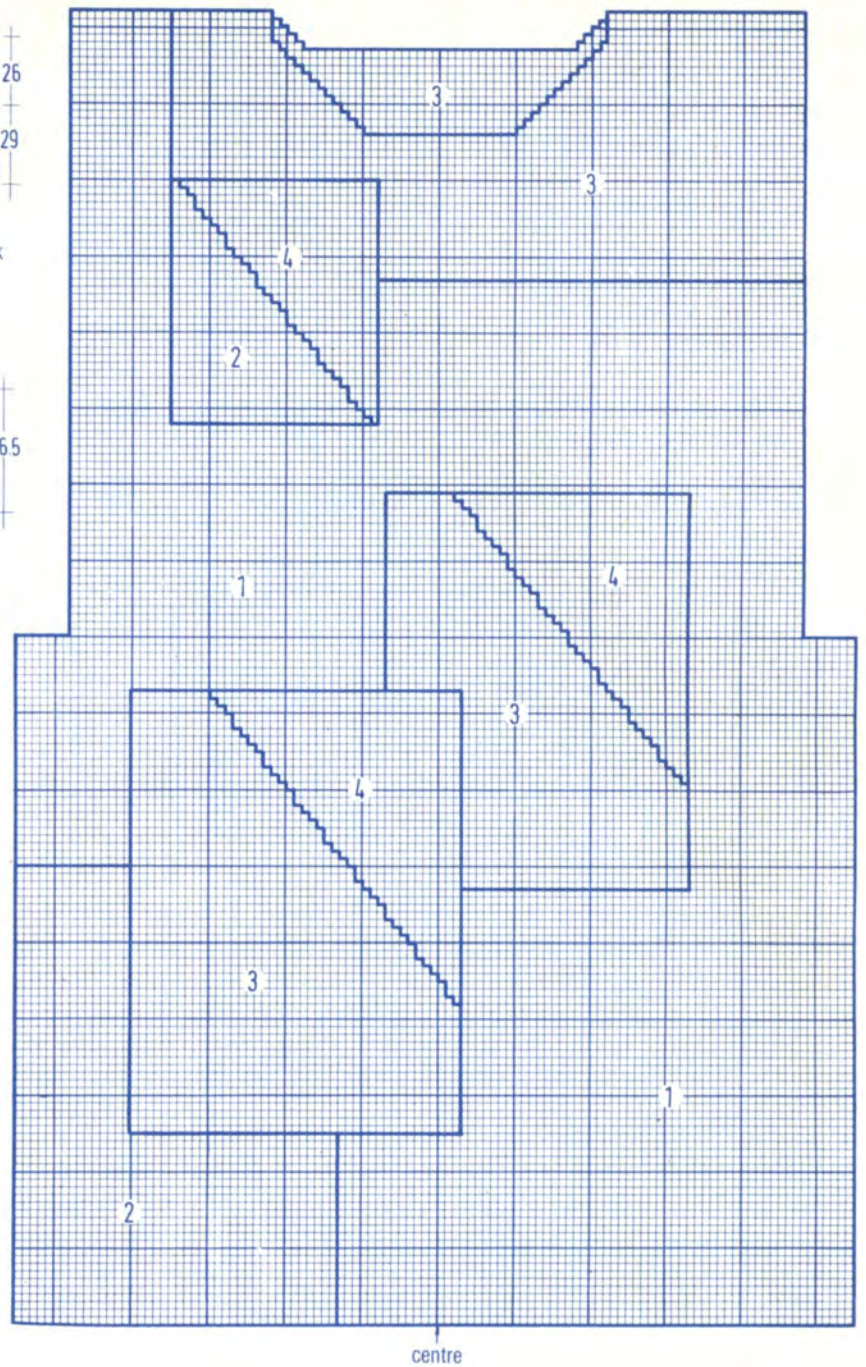


Chart 3 (left sleeve)

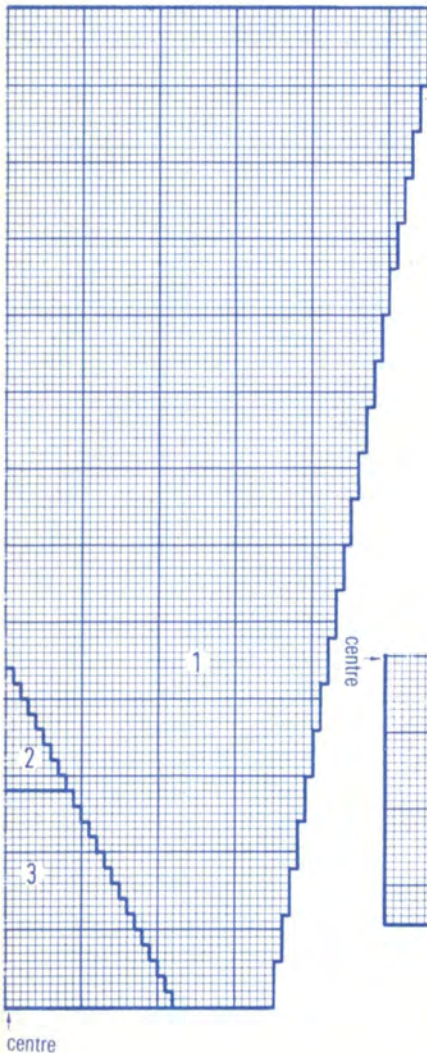


Chart 2 (right sleeve)



MODEL 6

WHITE INTARSIA SWEATER WITH APPLIQUÉ

Size: To fit bust 32/34" (36/38"). Instructions for the larger size in brackets. One number only, refers to both sizes.

Machines: Suitable for all stand-gauge machines with intarsia

facility or carriage and ribber. We used a Brother KH 910.

Yarn: AUSTERMANN "Seidenglanz" **300 (350) grms. white** 9, "Citadelle" **250 grms. white** 9513, "Sedaline" **200 grms. white** 402, "Angora Wolle" **20 grms. white** 402, a small amount fancy yarn "Chi-Chi", a small piece white silk.

Appliqué: A small amount of satin and wadding. Organdy flowers and beads. A crochet hook No. 3, a knitting needle No. 6.

Tension: Front 27 sts. and 32 R. = 10 cm.
Back 27 sts. and 33 R. = 10 cm.

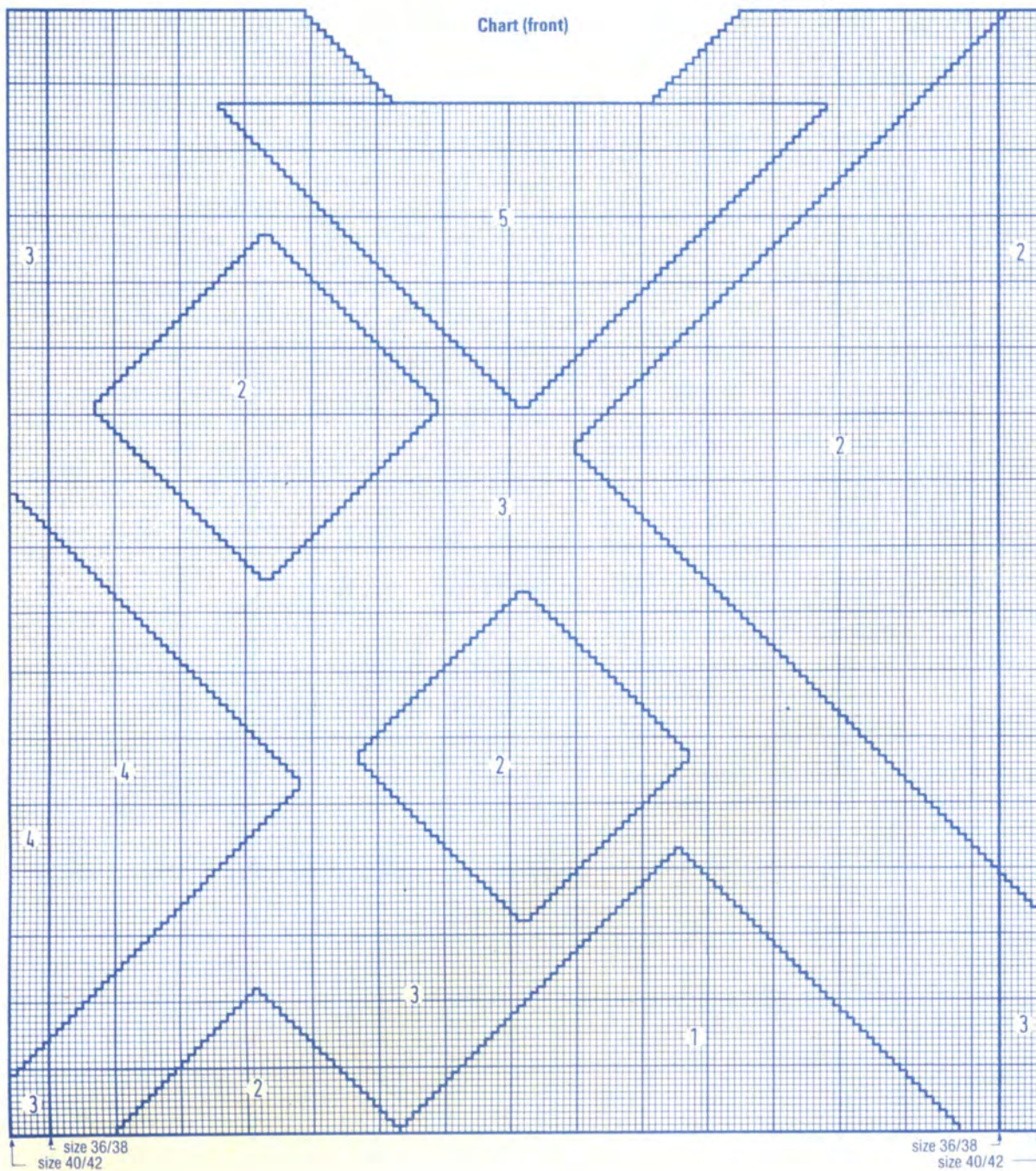
Sleeves 28 sts. and 36 R. = 10 cm.

Front: With ribber in position and using "Seidenglanz", cast on 130 (142) sts. as K2, P2 rib. Knit 44 R. Transfer all sts. to M.B. Knit several rows waste yarn and release

from machine. On M.B. only push 144 (156) needles to W.P. and replace sts. from waste yarn, incr. evenly across the row. R.C. 000. Using the intarsia carriage, follow the chart for the intarsia and shaping of neckline. Cast off remaining sts. at shoulder.

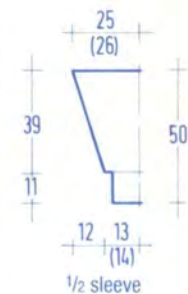
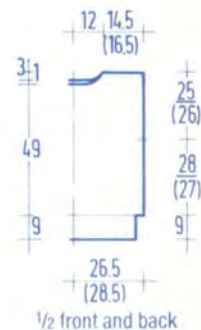
Back: Cast on and knit welt as for front. Incr. as for front. Change to "Sedaline" and knit 164 R. Shape back neck: Cast off centre 50 sts. Shape each side separately: decr. 1 st. at neck edge on next 8 R. Knit

Continued next page



Explanations:

- 1 = silk
- 2 = angorawool
- 3 = Seidenglanz
- 4 = Sedaline
- 5 = Citadelle
- = 1 st. or 1 R.



to R.C. 176 and cast off rem. 39 (45) sts.

Sleeves: With ribber in position, cast on 62 (66) sts. and knit 50 R. K2, P2 rib. using "Seidenglanz". Transfer to M.B. and release on to waste yarn. Replace onto M.B. needles, incr. evenly to 74 (80) sts. R.C. 000. Using "Citadelle", knit 140 R., incr. 1 st. at each end of next and every following 4th row 33 times and every 2nd row twice. 144 (150) sts. Cast off.

Finishing: Close shoulder seams. Embroider in chain stitch around

the diamonds on the front. Use "Citadelle" single stranded and "Angora" double. Appliqué a triangle on the left sleeve. For the right sleeve, knit a diamond in "Chi-Chi" by casting on 3 sts. Incr. 1 st. at each end every other row to 39 sts., then decr. in reverse order. Stitch in position. Crotchet around neckline 1 R. double crotchet in Angora and 1 R. crab stitch in Citadelle. Apply pearls and organdy flowers. Set in sleeves. Close side and sleeve seams.

are reduced to 120. Knit straight to R.C. 144. Cast off at neckedge on every row 1 st. 15 times. Knit to R.C. 172 and cast off remaining sts.

Back: Knit as for front, reversing the colours and omitting the lace transfer pattern. Shape neck on R.C. 164 by casting off 40 sts. in centre and knitting each side separately. Cast off at neck edge on every row alternately 1 and 2 sts. till 30 sts. remain. Knit to same length as front and cast off.

Sleeves: Knit one sleeve in Lulu black and one in white, following the chart. The chart represents 1/2 of the sleeve and after R.C. 64 the points are finished separately. Knit sleeves on T.D. 10.

seam and neckband. Pick up 70 sts. around armhole edge and put on to needles, purl side facing you. With Lulu in either black or white, knit 1 R. Set carriage to H.P. and push 10 sts. at end opposite to carriage to H.P. Knit 1 R. and repeat until 20 sts. at each end are in H.P. Return to W.P. over the next 4 R. Pick up sts. from 1st row, knit 1 R. and cast off.

Making up: Steam all parts lightly. Close side and sleeve seams. With Lulu crotchet around the points of the sleeves with 3 R. d.c. and 1 R. crabstitch, putting 3 sts. into the points. Gather the sleeve tops and set in. Stitch on the beads between the holes sew on the flowers.

MODEL 7

BLACK/WHITE INTARSIA SWEATER WITH FLOWERS

Size: To fit bust 32/36".

Machine: All standard gauge machines with ribber and intarsia carriage. We used a Knitmaster 700.

Yarn: BERGER & VOIGT "Luxorina" 300 grms. black, 150 grms. white, DILTHEY "Lulu" 50 grms. black, 50 grms. white.

You will also need a crotchet hook No. 3. This pattern can also be knitted using the "short row" intarsia technique.

Cabled welt: With ribber in position, cast on in 1x1 rib. After the circular rows, transfer the stitches as per diagram. Knit 6 R. * Cross sts. on M.B. as shown, paying attention to the direction of the crosses. Knit 8 R.* Repeat from * to * to required length.

Transfer lace: Within intarsia area using a single transfer tool, move 1 st. to the left, leaving the empty

needle in W.P. For ease of work, arrange as follows: On R.C. 10, move sts. 10, 20, 30, 40, etc. on both sides of centre 0 to the left. At R.C. 20 move sts. 5, 15, 25, 35, etc. either side of centre 0 to the right. Repeat these two transfer rows alternately on R.C. 30, 40, 50, etc.

Tension:

Back and front: 28 sts. and 34 R. = 10 cm.

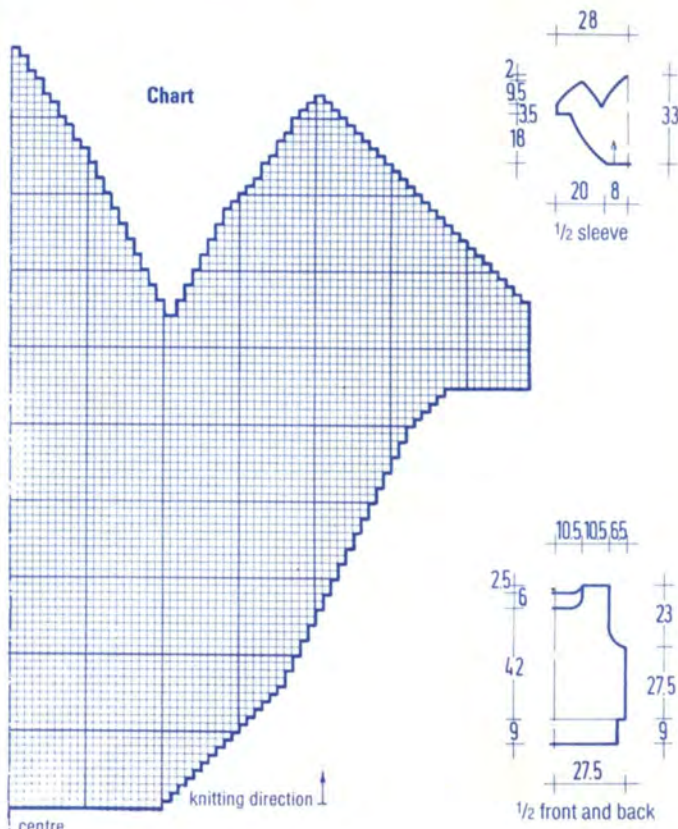
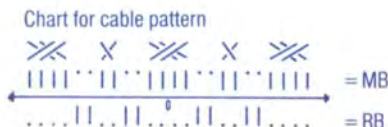
Sleeves: 24 sts. and 30 R. = 10 cm T.D. 9.

Front: With Luxorina in black, cast on 152 sts. and knit 44 R. in cabled rib. Transfer all sts. to M.B. increasing to 156 sts. Change to T.D. 9 and knit 4 R. Start Intarsia/Lace transfer pattern: Knit 155 sts. in black and 1 st. in white for 5th row. Row 6 and 7: Counting from right, knit 154 sts. in black and 2 sts. in white. Row 8: 153 sts. in black and 3 sts. in white. Continue in this way, knitting 1 and 2 rows alternately on each setting. At R.C. 94, start armhole shaping: Cast off at each end 10 sts. once, then on each side 1 st. on every row until sts.

Neckband: Close one shoulder seam. Pick up sts. from neckline (124 sts). and hang on to machine, purl side facing you. With Lulu in black, knit 14 R. straight. Cast off loosely. Pick up in the same place again and knit a further 14 R. in Lulu white. Cast off loosely. Close second shoulder

Explanations:

- = needle in N.W.P.
- | = needle in W.P.
- X = cable 2 sts. with single transfer tool
- ⋈ = cable 4 sts. with double transfer tool
- o = centre of needle bed



8

MODEL
LILAC COTTON
SWEATER WITH
EMBROIDERY

Size: To fit bust 32/36".

Machine: Chunky machines with ribber and intarsia carriage. We used a Brother K.H. 260.

Yarn: WOLLSERVICE "Scaletta" **550 grms. lilac** C. 286, **50 grms. lt. blue** C. 863, **50 grms. grey** C. 259, "Angora" 40 grms. lt. blue C. 335,

Appliqué and embroidery: Small amounts of yarn in black, blue and red. A small piece of beaded fabric, satin and wadding.

Tension: 19 sts. and 29 R. = 10 cm.

Ribs: Knitted at T.D. 0 in K2, P2 rib. Ribber in H-position.

Front: Starting at right side of needle bed, cast on 40 sts. in lilac and follow the chart for the increases and the intarsia. After R.C. 260, reverse the chart and read the decreases in the opposite direction.

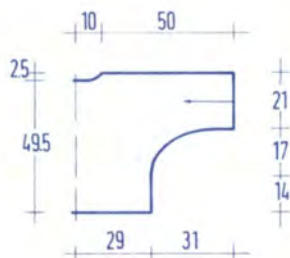
Back: Knit as for front, omitting the blue intarsia, leaving grey and lilac only.

Cuffs: Cast on 38 sts. and knit 20 R. Transfer sts. to M.B. Rehang sts. from sleeve edge, decr. evenly. Knit 1 R. and cast off.

Welt: Cast on 102 sts. and knit 20 R. Transfer sts. to M.B. Pick up sts. from waist edge on to the same needles and knit 1 R. Cast off.

Leaves: In "Angora" cast on 4 sts. T.D. 0. Knit 2 R. Incr. 1 sts. at each end of next and every following alt. row 6 times, and then every 4th row 6 times. Knit 30 R. straight. Decrease 1 st. every 4th row at each end 6 times and then every alt. row 6 times. Knit the smaller leaf by incr. less and knitting only 20 R. straight.

Finishing: Close shoulder and sleeve seams. Before closing the side seams, attach the leaves and do the embroidery. Mark out shapes with sewing cotton before stitching. Then close remaining seams.



1/2 front and back with sleeve

Continued next page

9

MODEL
WHITE SWEATER
WITH YELLOW/
GREEN INTARSIA

Size: 32/34" (36/38").

Instructions for larger size in brackets. One figure only applies to both sizes.

Yarn: PHILDAR "Canelis" **650 (700) grms. white** C. 010, **50 grms. green** C. 002, **50 grms. yellow** C. 054, "Jaldic" **50 grms. yellow/green** C. 94. One circular knitting needle No. 4.

Tension: 16-17 sts. and 20 R. = 10 cm. T.D. 9.

Ribs: Knitted by hand as follows: 1st row: P1, cable the next 2 sts. repeat across the row. 2nd row: Knit as sts. appear: K1, P2.

Machines: Chunky machines with intarsia carriage. We used a "Big Phil".

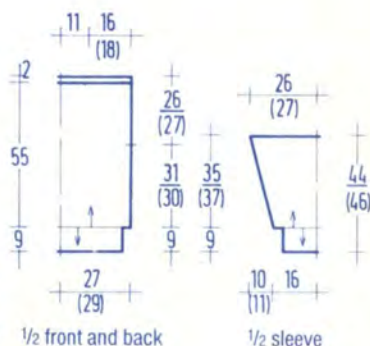
All yarns are use double.

Back: Cast on in waste yarn 90 (96) sts. Knit several rows. Change to main yarn and main tension, R.C. 000. In white knit 110 R. straight. Knit several rows in waste yarn and release from machine.

Front: Start as for back, then change to intarsia carriage and follow pattern chart. Take off on waste yarn.

Sleeves: With waste yarn cast on 54 sts. Knit several rows. Change to white, R.C. 000. Knit 4 R. Increase 1 st. at each end at the beginning of next row and every following 4th row 17 (18) times. 88 (90) sts. Knit to R.C. 70 (74) and cast off.

Neck edge: Replace sts. from waste yarn, knit side facing you, and knit 4 rows. Knit 1 loose row and latch tool cast off. Repeat for second side. Join shoulder seams, leaving 22 cm. open in the middle for the neck. Join sleeves to body; close side and sleeve seams.



1/2 front and back

1/2 sleeve

Continued next page

SUBSCRIPTIONS are available through:

World Wide Subscription Service Ltd.

Rosehill
TICEHURST
East Sussex
TN5 7AJ

Telephone: 05 80 / 20 06 57

Chart for front of model 9

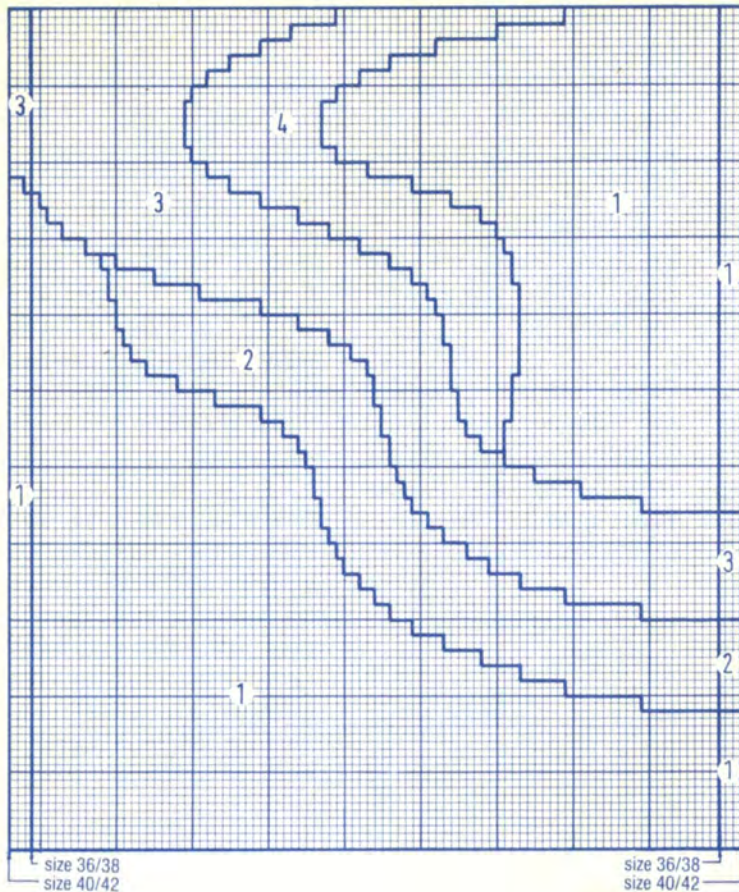
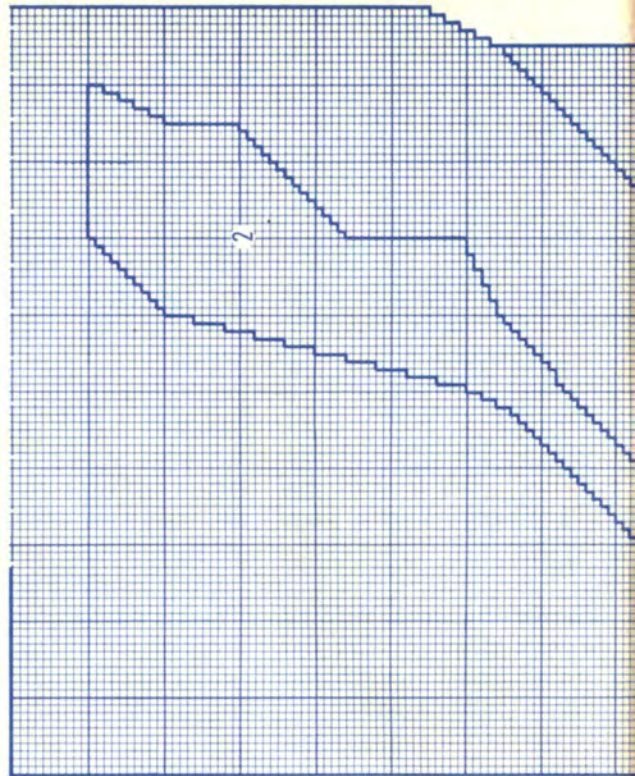


Chart 8



Explanations:

- 1 = white
- 2 = green
- 3 = yellow
- 4 = green-yellow
- = 1 st. or 1 R.

MODEL 10

LACE SWEATER IN YELLOW

Size: 36/38" (40/42"). The instructions for the larger size are in brackets. One figure only, applies to both sizes.

Machines: Electronic machines only with ribber. We used a Brother KH 940.

Pattern: No. 182 from "Stitch World". For KH 910, mark the mylar sheet according to the chart (500 grms.).

Yarn: AUSTERMANN "Mandy S" 450 (500) grms. yellow C. 163, "Angora Wollé" 60 grms. yellow. Yellow beads.

Tension: Lace pattern T.D. 7, 25 sts. and 46 R. = 10 cm. Angora is knitted at T.D. 10.

Back: With ribber in position, cast on with "Mandy S" 130 (142) sts. in K1, P1 rib. Knit 60 R. Transfer sts. to main bed and increase evenly across the row to 145 (158) sts. M.T., knit 2 R. Start lace pattern and knit to R.C. 224. Put the centre 61 (62) sts. on to waste yarn and cast off the sts. on either side for the shoulders.

Front: Knit as for back.

Sleeves: Cast on 68 sts. in K1, P1 rib and knit 40 R. Transfer sts. to main bed and knit several rows waste yarn. Remove from machine. Replace, purl side fac-

ing you. increasing sts. to 90 evenly across the row. R.C. 000, knit 2 R. Start lace pattern and increase 1 st. at each of next and every following 6th row 27 times. 144 sts. Knit straight to R.C. 166 and cast off.

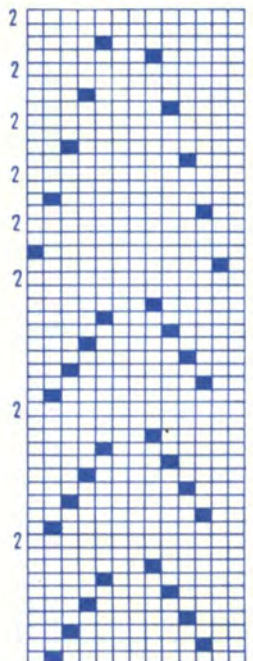
Angora Appliqué: With Angora knit 2 strips over 12 sts., one to be 210 R, long, the other 230 R.

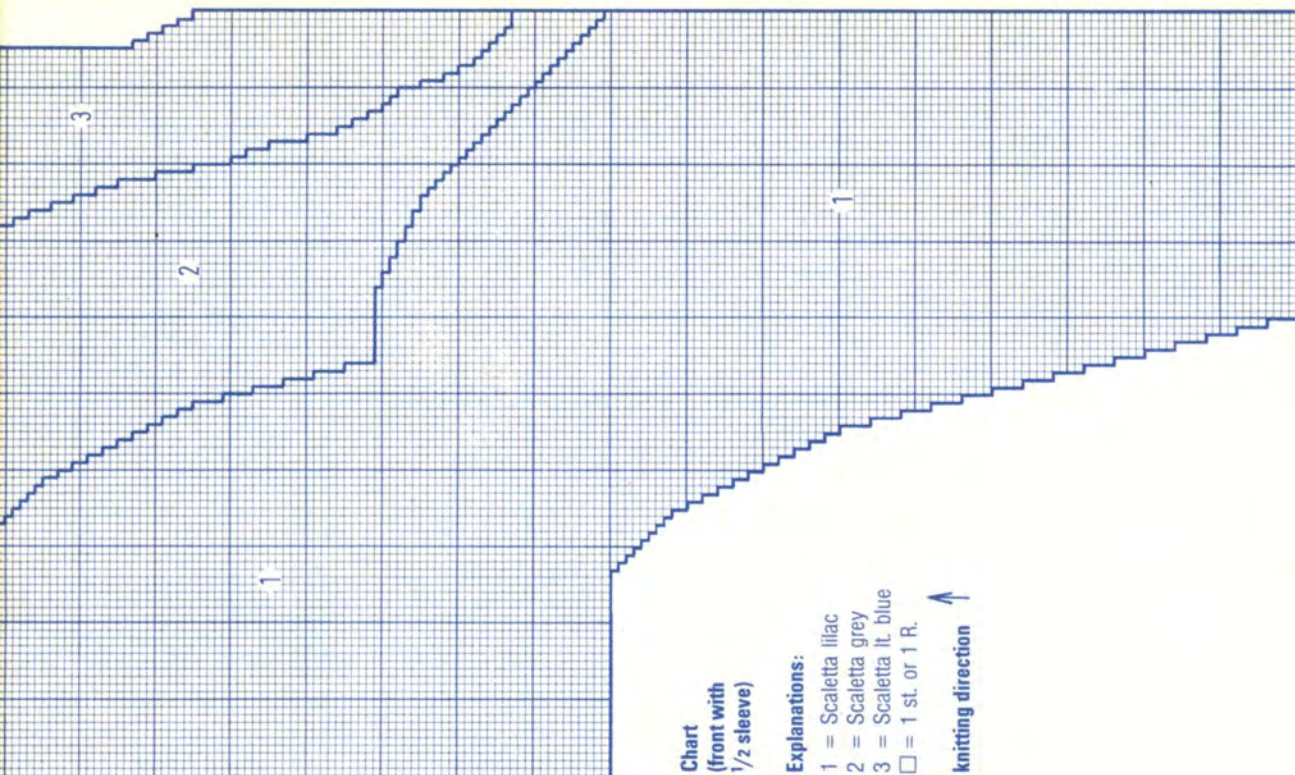
Neck band: Re-hang the neck sts. from the waste yarn on to the machine, knit side facing you. 122 (124) sts. With Angora, knit 17 R. and latch tool cast off.

Finishing: Close both shoulder seams and the remaining edge of neck trim. Join sleeves to body. The Angora strips are twisted and attached along the shoulder seams and down the sleeves. Pearl beads are sewn on at ran-

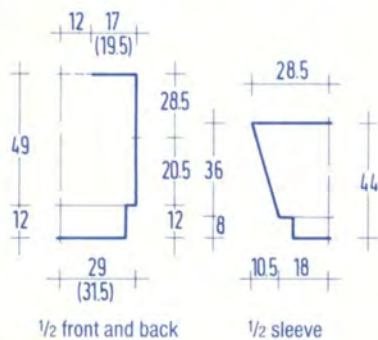
dom. Close side and sleeve seams.

Lace pattern 182





Attention! Using a different brand of wool, please choose one with a similar mt (meterage).



pattern No. 33 for upper part of front. Owners of Brother Punch-card machines will be able to punch cards for this design. The fairisle design is 24 sts. wide; the lace pattern is No. 412 and 413 from Punch cards Vol. 6.

Yarn: SCHEWE "Diamanti" **350 (400) grms. white** C. 2620, **350 grms. black** C. 2600, "Bijou" **50 grms. black/gold** C. 6436, "Angora" **20 grms. black** C. 5650. You will also need 1 beaded motif and black satin ribbon.

Tension: 30 sts. and 44 R. = 10 cm. over lace pattern. K1, P1 rib at T.D. 3. Lace pattern T.D. 6. Fairisle pattern T.D. 10.

Back: With ribber in position, cast on 130 (142) sts. and knit 60 R. in rib. Transfer to M.B. and release on to waste. Rehang on to M.B. increasing evenly to 146 (158) sts. R.C. 000. Using White, knit 8 R.

Start lace pattern 107. Incr. on row 10, 20, 30, 40, 50 and 60 1 st. at each side. 158 (170) sts. After the 17th repeat of the lace pattern, discontinue the lace and knit plain to R.C. 230. Cast off.

Front: Start as for back and knit as for back to R.C. 125. Knit 1 R. in Diamanti. Knit several rows waste and release from machine. Replace stitches on to machine, knit side facing you. R.C. 125. Set machine for fairisle and with Diamanti Black in feeder 1 and Bijou in feeder 2, knit straight to R.C. 210. Cast off.

Sleeves: Cast on 58 sts. with Diamanti Black and knit 40 R. K1, P1 rib. Release on to waste yarn and replace on to main bed, increasing sts. to 72. R.C. 000. knit 2 R. and start lace pattern No. 106. Increase 1 st. at each end on R.C. 10, 20, 30, 40. (10, 15, 20,

Continued next page

MODEL 11

BLACK/WHITE/GOLD EVENING SWEATER

Size: To fit bust 32/34" (36/38"). The instructions for the larger size are in brackets; one figure only applies to both sizes.

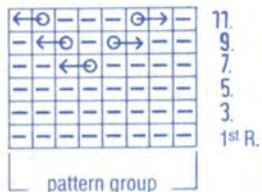
Machines: Electronic machines with ribber and lace carriage. We used a Brother KH 940. Owners of KH 910 must mark out a mylar sheet. Owners of KH 940, 950, 950i use "Stitch World Pattern No 107 for back and front, pattern No. 106 for the sleeves and fairisle

25, 30, 35, 40). Then incr. 1 st. at each end of every 3rd row 41 (44) times. At R.C. 152 knit 8 R. plain for right sleeve, for left sleeve continue in lace. At R.C. 160 cast off all 154 (160) sts.

Finishing: Knit 2 strips Angora in different widths approx. 56–58 cm. long. Close shoulder seams,

leaving 22–24 cm. open for the neck. Turn neck edges to inside and slip stitch into position, Join sleeves to body, Close side and sleeve seams. Attach Angora strips, ribbon and beaded motif as shown in picture. It may be necessary to line the upper part of the front (knitted in Bijou).

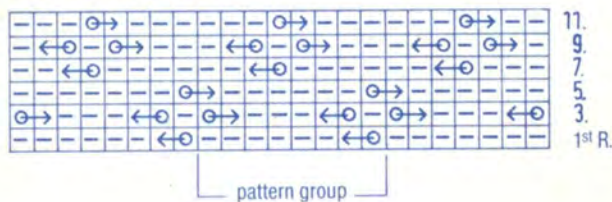
Lace pattern A (diagram)



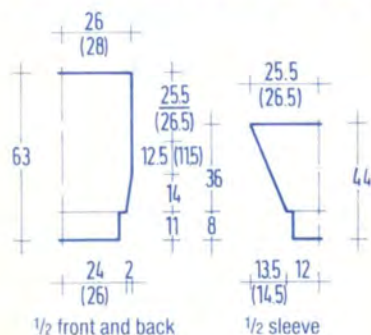
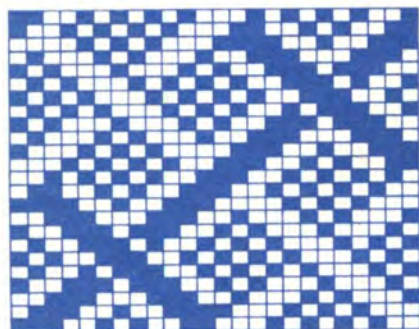
Explanations to charts A and B:

- = purl stitch
- = transfer st. with transfer tool to the right
- = transfer st. with transfer tool to the left

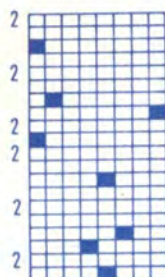
Lace pattern B (diagram)



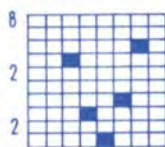
Fairisle pattern 33



Lace pattern 106



Lace pattern 107



MODEL 12

PEACH SWEATER WITH LACE YOKE

Size: To fit bust 34/36" (38/40"). Instructions for larger size in brackets. One set only applies to both sizes.

Machines: Suitable for standard gauge machines with ribber. We used a Brother KH 940.

Yarn: AUSTERMANN 400 (450) grms. "Pharao" Peach C. 86, 20 grms. "Angora wolle" Peach C. 458, 50 grms. "Venezia" White C. 1.

You will also need satin remnants and wadding, 250 cm. strip of sequins, large sequins and small beads. A crotchet hook No. 5.

Pattern: Brother KH 940/950/950i please use "Stitch World Pattern No. 103. Brother KH 910 users please copy the design on to a mylar sheet. Brother KH 890/891 users please use card No. 17M from basic set.

Tension:

Stocking stitch 32 sts. and 41 R. = 10 cm.
Lace pattern 24 sts. and 45 R. = 10 cm. T.D. 6.

Back: Cast on with "Pharao" 154 (166) sts. and knit 16 R in K1, P1, rib. Transfer all sts. to mainbed and set R.C. 000. Knit straight to R.C. 46. Decrease 1 st. at each end on next and every following row 7 times (140 (152) sts.). Knit straight to R.C. 108. Increase 1 st. at each end of next and every following 10th row 6 times. 152 (164) sts. Knit straight to R.C. 166. Change to "Angora Wolle" and T.D. 10. Knit 12 R. Pick up the loops from the first row knitted in Angora and place on to the needles. Knit 1 R. and cast off.

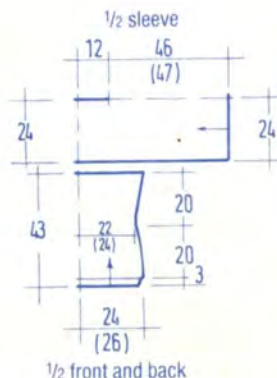
Front: Knit as for back, omitting the "Angora" tuck.

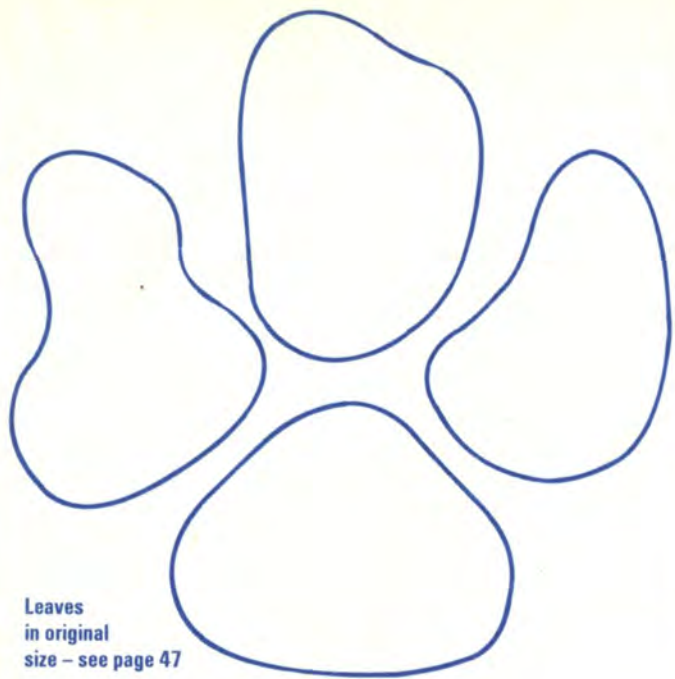
Sleeve and yoke: Cast on in "Pharao" 114 sts. and knit 2 R. R.C. 000 Set machine for lace knitting. Knit to R.C. 208 (212). Make a note of the pattern row number, before dividing your work for the neck. Knit 57 sts. at left to N.W.P. with nylon cord. Work on remaining sts. to R.C. 312 (316). Return needles on right to W.P., putting needles on left into N.W.P. Knit right hand sts. in lace to R.C. 312 (316). Continue over all stitches to R.C. 520 (528). Cast off.

Cuffs: Cast on 62 sts. with "Pharao" in K1, P1 rib and knit 40 R. Rehang sts. from bottom of sleeves, decreasing evenly. Knit 1 row and cast off.

Appliqué: Cut out flower petals according to the pattern. Stuff with the wadding and sew together with zig-zag stitch. Crotchet chains from 3 strands of "Venezia".

Sew together the parts of the sweater. Stitch on the flowers and sequins. Fill the flower centres with embroidery in "Angora".





Leaves
in original
size - see page 47

the fabric will be the right side, darn the ends in on the knit side. Cast off each section separately.

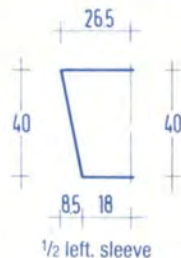
Back: Knit as for front, but run the intarsia stripes from left to right.

Left sleeve: Cast on as for back 76 sts. in Lafayette and knit in stripes as follows: 16 R Lafayette, 16 R. Filigrana, 16 R. Cotone d'oro. Repeat, ending with Lafayette. At the same time, increase 1 st. at each end on every 6th row 18 times. 112 sts. Knit to R.C. 112 and cast off.

Right sleeve: Cast on, stripes and increases as for left sleeve.

However, after R.C. 10 the work is divided in the centre as follows: Push all sts. to left of centre 0 into H.P. and knit right side first. Keeping stripes and increases correct, decrease 1 st. every 4th R. 24 times on the lefthand edge. At R.C. 112 cast off remaining 32 sts. Return needles on left from H.P. to

Continued next page



MODEL 13

INTARSIA SWEATER IN BEIGE/BROWN

Size: To fit bust 32/34".

Machines: Chunky machines with ribber and intarsia facility or carriage. We used Brother KH 260. Larger sizes can only be knitted on machines with more than 114 needles.

Yarns: SCHEWE "Coton d'oro" 350 grms. beige C. 6724, "Filigrana de Luxe" 200 grms. beige/gold C. 6573, "Lafayette" 200 grms. beige C. 5315, "Citadelle" 50 grms. goldbrown C. 9549, 50 grms. dk.brown C. 9561.

You will also need a small amount of black angora and a crotchet hook No. 4.

Tension: 21 sts. and 28 R. = 10 cm. T.D. 1**.

Front: With waste yarn, cast on 110 sts. and knit several rows. Change to intarsia carriage work in the three yarns quoted according to the chart. As the purl side of

Explanations:

- 1 = Cotone d'oro
- 2 = Lafayette
- 3 = Filigrana de Luxe
- = 1 st. or 1 R.

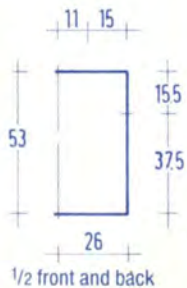
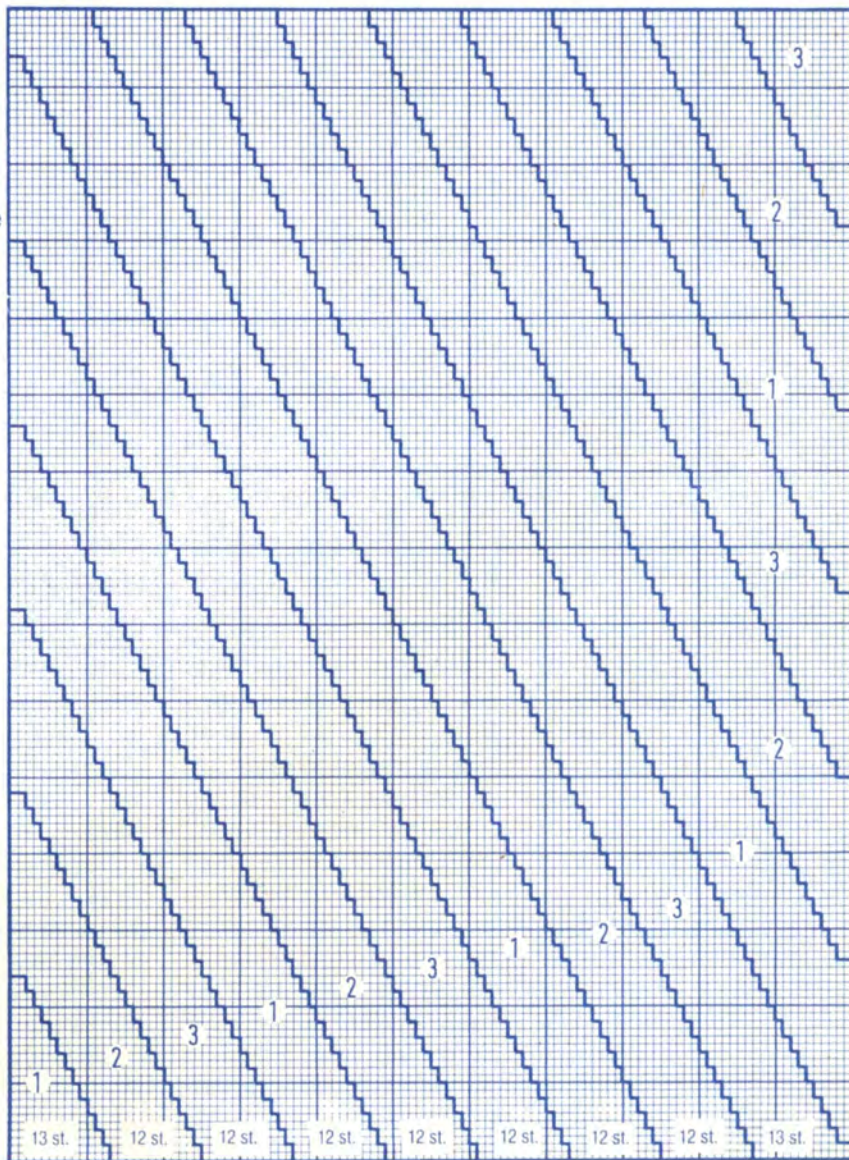


Chart (front)



W.P. and knit as for right side, reversing shaping.

Yoke and sleeve insert: With "Cotone d'oro" cast on 30 sts. in K2, P2 rib and knit 160 R. T.D. 0. Knit a second strip. Take both pieces off with waste yarn. Replace both pieces on machine, decr. 1 st. on each at inner edge. 58 sts. R.C. 000 continue in K2, P2 rib. Decrease 1 st. at each edge every 4th row 28 times. Cast off rem. 2 sts.

Triangles: With "Citadelle", cast on 20 sts. Knit 3 R. Decrease 1st at each edge on next and every following alternate row, until all sts. have been decreased. Knit 3 triangles in gold and 3 in dk.brown.

MODEL **14**

SKIRT, SWEATER AND TOP

Size: To fit bust 32/36".

Machines: Suitable for all standard gauge machines with ribber. We used a Knitmaster 700.

Yarns: DILTHEY "Highlight".
Sweater: 220 grms. gold C. 632, 20 grms. copper C. 499, 20 grms. brown C. 230.
Top: 140 grms. black C. 2031, 20 grms. copper C. 499.
Skirt: 40 grms. gold C. 632, 80 grms. copper C. 499, 80 grms. brown C. 230, 80 grms. blue C. 641, 80 grms. black/gold C. 624, 40 grms. black C. 2013. You will also need 2 buttons and a crotchet hook No. 2,5 for the sweater; 40 grms. bugle beads for the top and 2 cm. wide elastic for the skirt. 15 cm. Vilene for the cuffs.

Tension: 32 sts. and 42 R. = 10 x 10 cm. T.D. 8. K1, P1 rib knitted at T.D. 1/1.

Welts: Re-hang sts. from waste yarn onto 78 needles and transfer for K2, P2 rib. Knit 20 R. and latch tool cast-off.

Cuffs: Knit as for welts over 36 sts. and 16 R.

Finishing: Stitch in the ribbed yoke, starting with the insert in the right sleeve. Twist the yoke before attaching to back and front. Close shoulder seams, leaving 22 cm. open for the neck. Sew in sleeves. Stitch on triangles, make chainstitch embroidery in Citadelle. For the bobbles, make several chains into the same stitch, keeping the loops on the crotchet hook and then crotchet them off together. Close side and sleeve seams.

Sweater: Yoke and sleeves knitted sideways from cuff to cuff. Cast on over needles 32 ϕ 13 and knit several rows in wasteyarn. Change to gold yarn and knit in stocking stitch to R.C. 34. increasing at left edge 1 st. in R.C. 20 and then every 4th row until at R.C. 92 you have an additional 19 sts.

At R.C. 34 push all needles to H.P. and cast on in wasteyarn over needles 14 to 32 at right. Knit as for left side to R.C. 34 push needles at left to W.P. and continue over all sts., increasing as before. At R.C. 92 you should have 102 sts. Now increase 1 st. at the beginning of every row, until at R.C. 158 you have 168 sts. Increase 1 st. at each end of every row until you have 188 sts. at R.C. 168. Knit straight to R.C. 244. Divide work for neck opening, by pushing into H.P. all needles to left of centre ϕ . Work on right side for the back of the sweater: cast off 2 sts. at left edge of remaining sts., then decrease 1 st. at left edge on alternate rows

to R.C. 254 = 88 sts. Knit straight to R.C. 284 = centre back. Knit 30 R. and shape second side as above, reading increases for decreases to R.C. 324. Put all needles at right to H.P. and return needles at left to W.P. These sts. will be the front of the sweater. The decreases will be at the right edge. Return R.C. to 244. Decrease as follows: R.C. 246 = 1 st., R.C. 247 = 3 sts., R.C. 248 = 1 st., R.C. 249 = 3 sts., R.C. 250 = 1 st. = 79 sts. remain.

Now decrease at right edge on alternate rows 1 st. to R.C. 258 = 75 sts. Then decrease 1 st. on every 3rd row 3 times. R.C. 267 = 72 sts. Knit to R.C. 284 = centre front. From here reverse shapings by reading increases for decreases to R.C. 324. Now continue over all sts., decreasing instead of increasing to shape sleeve and separating work for the last 34 rows as at the beginning. Take off sts. on wasteyarn.

Front: Cast on 180 sts. in K1, P1 rib in gold and knit 42 R. Transfer all sts. to M.B. and knit 90 R. in stocking stitch. With purl side facing you, replace sts. from front yoke on to the same needles. Push all needles to H.P. to facilitate the knitting off the double sts. on the first row. Knit 10 R. and cast off evenly with the latch tool. These 10 R. will roll to the right side of the work.

Back: Knit exactly as the front.

Cuffs: Knit 2 at T.D. 7. Cast on 64 sts. and knit 10 stripes of 8 R. each in copper, gold and brown; knit 1 R. at T.D. 8 and cast off. Cut Vilene to shape as in diagram. Fold cuff in half and press the crease to 26 cm. and the open edge to 20 cm. in length. Iron the Vilene to the knit side and close the narrow side edges. This can be done very neatly by hanging the edge back on the machine and knitting 1 R. before casting off. Crotchet around the edges of the slit and attach the cuffs to the bottom of the sleeve. Crotchet a loop and sew on a button.

Necktrim: Knit cords over 5 sts. and 740 R. in gold, brown and copper. Make a plait from the cords, leaving 20-25 cms. at each end open. Stitch the plait to the neckline and the ends as shown in the picture. Close all seams and set in the sleeves.

Top

Tension: 39 sts. and 41 R. = 10 cm. T.D. 6, K1, P1 rib T.D. 1/1.

Back: In black cast on 180 sts. in K1, P1 rib and knit 44 R. Transfer all sts. to M.B. and at M.T. knit 120 R. Shape armholes by casting off 20 sts. at each side on next 2 R. Then cast off on same side as carriage 2 sts. and at opposite side 1 st. Knit 1 R. and repeat cast off. Repeat altogether till 102 sts. remain. Cast off.

Front: Knit as back but start neckshaping on R.C. 120. Cast off the centre 40 sts. and knit each half separately. Cast off at neckedge on alternate rows 7 sts. 4 times. Cast off remaining sts.

Making up: Sew beads on to the front as shown in picture. Close side seams. Turn a small hem to the outside around the armhole and gather slightly with shirring elastic. Knit 2 cords in copper and black over 4-5 needles and 75-80 cms. long. Twist 2 together and sew to neckline, gathering it slightly.

Skirt:

Stocking stitch T.D. 8: 21 sts. and 45 R. = 10 cm., when pressed.

Colour sequence: 58 R. in each gold, * copper, brown, blue, black/gold, black, black/gold, blue, brown, copper and gold. Repeat from * 3 times, but on last repeat knit only 9 stripes instead of 10, thus ending on copper instead of gold.

The skirt is knitted sideways, using H.P. shaping and reverse H.P. shaping.

With waste yarn, cast on 170 sts. from left 90 to right 80. Knit several rows, knit in the nylon cord.

Change to M.Y. and put carriage at left side. R.C. 000. Start with gold and knit 9 rows. Carriage at right, shape the skirt by pushing into H.P. 30 sts. once, 10 sts. 6 times and 5 sts. 14 times. The needles are put into H.P. on every second row and the yarn is put around the last needle in H.P. to avoid a hole. After the above shapings, you will have 160 sts. in H.P. and R.C. 51. On the following 6 rows, put 1 st. into H.P. on every row, leaving 4 sts. in W.P. Release H.P. lever and knit 1 row over all sts. Carriage at left. Change colour to the next and knit 1 row to the right. Set carriage for H.P. and push 166 needles back to H.P. Knit 2 rows over the remaining

4 sts. Push needles back into W.P. in reverse order: i. e. 1 st 6 times, 5 sts. 14 times, etc. These 116 rows are repeated changing colours as given above. After the end of the stripe sequence, take the sts. off on waste yarn. Graft the open sts. together and remove the waste yarn.

Waistband: Knitted in 2 sections of approx. 120 sts. each. Pick up the waist edge of the skirt on to 120 needles and with black, knit 15 rows at T.D. 6. Knit 1 loose row and 15 rows at T.D. 6. Cast off. Turn band to inside and slipstitch into position. Steam press the skirt, pulling the points into position.

stocking stitch, following the chart for increases and omitting neckshaping. Cast off remaining shoulder stitches.

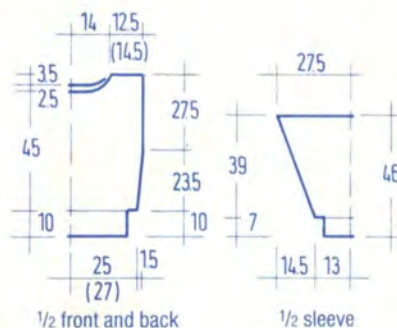
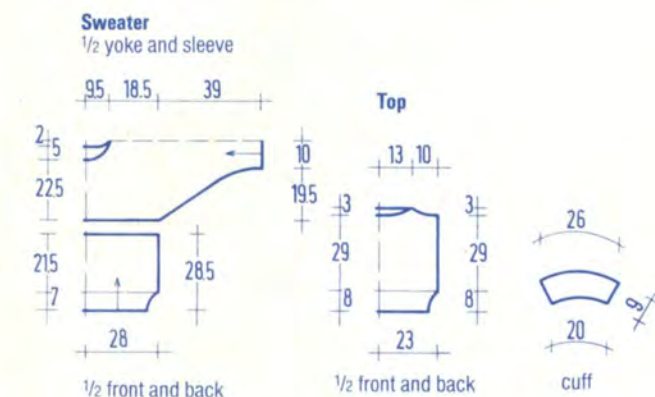
Front: Cast on and knit as for back, but use intarsia carriage for the pattern according to the chart.

Sleeves: In blue, cast on 70 sts. in rib and knit 40 R. transfer to main bed and increase evenly to 88 sts. Change to M.T. 6. Increase at both edges as follows: * Every 4th row 1st 3 times, every 2nd row

once *. Repeat from * to * 11 times. 184 sts. At R.C. 176 cast off.

Finishing: Embroider the front with knitting ribbon in chain stitch following the photo. sew on beads and sequins. For the **neckband**, cast on 198 sts. in blue and knit 24 R. in K1, P1 rib. Transfer all sts. to M.B. and knit 1 R. Re-hang sts. from neck edge on to the same needles, knit 1 R. and cast off. Sew in sleeves and close side and sleeve seams.

Continued next page



MODEL 15

BLUE SWEATER WITH ABSTRACT MOTIFS

Size: To fit bust 34/36" (38/40"). Figures in brackets refer to larger size, one figure only applies to both sizes.

Machines: Suitable for all standard gauge machines with ribber and intarsia carriage.

Yarns: AURA "Eight Two" 500 (550) grms. blue C. 404. Small amounts in red, yellow, white and black. Small amount

black knitting ribbon, sequins and beads.

Tension: K1, P1 rib, T.D. 2.

Stocking stitch T.D. 6 33 sts. and 45 R. = 10 cm.

Back: In blue, cast on 150 (164) sts. in K1, P1 rib and knit 60 R. Transfer sts. to M.B., incr. evenly across the row to 164 (178) sts. Change to T.D. 6 and knit in

MODEL 16

YELLOW GARTERCARRIAGE POLO SHIRT

Size: To fit bust 34/36" (38/40"). Figures for larger size in brackets; one figure only applies to both sizes.

Machines: Brother KH 910/940/950/950i with Garter carriage. Owners of punchcard machines can substitute a similar design.

Yarn: AUSTERMANN "Seidenglanz" 850 (900) grms. yellow C. 17, 5 yellow buttons, 2 cm. ø.

Tension: K1, P1 rib on garter carriage T.D. 4, Garter stitch T.D. 7 ** 28/29 sts. and 41 R. = 10 cm.

Patterns: Mark your mylar sheet according to the charts for pattern 1, 2, 3 and 4.

Back: Cast on 160 (172) sts. and knit 22 R. rib. (Stitch World Pattern No. 532). Change to M.T. and knit in the following sequence: 16 R. Z1. 48 R. Z2. 16 R. Z1. 50 R. Z3. 16 R. Z1. Remainder in Stitch World Pattern No. 535. Knit to R.C. 250. Shape back neck: Cast off centre 44 sts. Knit each side of neck separately by casting off at neck edge on alternate rows 1 st. 3 times. Cast off remaining 55 (61) sts. after R.C. 258. Repeat for other side, reversing shapings.

Front: Knit as for back to R.C. 146. Separate for opening by casting off centre 8 sts. Knit back stitches on one side with nylon cord. On

Continued next page

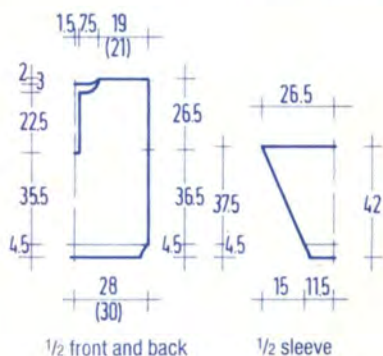
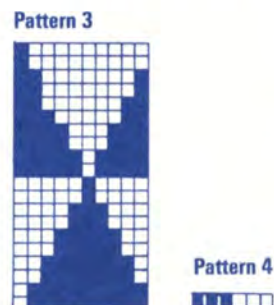
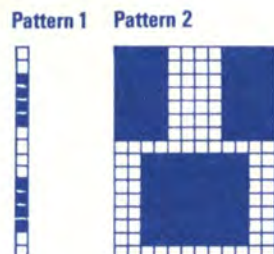
other side, knit to R.C. 238. Shape neck: Cast off at neck edge 11 sts. once, 3 sts. twice, 2 sts once and 1 st. twice. Knit straight to R.C. 258 and cast off rem. 55 (61) sts. Return stitches from nylon cord to W.P. and knit, shaping in reverse.

Sleeves: Cast on 66 sts. and knit 22 R. rib as for back. R.C. 000 knit 104 R. Z2 and 50 R. Z1, at the same time shaping by increasing 1 st. every 4th row at each end 20 times and every 3rd row 23 times. Knit to R.C. 154 and cast off.

Button band and buttonhole band: Cast on 62 sts. and knit 12 R. rib. Cast off. On buttonhole band, make buttonholes over 2 or 3 sts. at regular distances to suit your buttons. Attach to edges of front opening.

Collar: Cast on 130 sts. and knit 40 rows rib. Cast off loosely.

Finishing: Close shoulder seams. Sew collar into position. Sew in sleeves and close side and sleeve seams. Sew on buttons.



MODEL 17

SWEATER WITH LARGE PANSY IN INTARSIA

Size: To fit bust 38/40" (42/44").

Machines: Suitable for all standard gauge machines with ribber and intarsia carriage. We used a Knitmaster 700.

Yarns: BERGER & VOIGT "Luxorina" 700 (750) grms. white C. 1335, 50 grms. pale lilac C. 1535, 50 grms. dk. lilac

C. 1312, "DILTHEY" "Lulu" 50 grms. pale lilac C. 3816, 50 grms. dk. lilac C. 3817.

A small amount yellow angora. A multiple transfer tool will be useful for the transfer lace pattern on the sleeves.

Tension: Back and front: 28 sts. and 34 R. = 10 cm. Sleeves: 26 sts. and 34 R. = 10 cm. Knitted at T.D. 9.

Cabled ribs: After casting on and knitting the circular rows, transfer sts. according to the diagram.

Cable the sts. on M.B. only every 8 rows.

Lace transfer pattern: Use the multiple transfer tool. Leaving 1 st. in W.P. move 2 sts. on either side out by 1 needle. Leave empty needles in W.P. and knit 2 rows. Again leaving the centre needle, move 3 sts. out by 1 on each side. Knit 2 rows. On the following rows, move out 4, 5, 6, and 7 sts., each time leaving the empty needles in W.P. and knitting 2 rows.

Arrangement of lace pattern: R.C. 78 1 pattern in centre of work.

R.C. 92 2 patterns on either side with 39 sts. in between.

R.C. 106 3 patterns: one in centre, one each side at 39 sts. distance.

R.C. 120 2 patterns as for row 92.

R.C. 134 3 patterns as for row 106.

R.C. 148 2 patterns as for row 92.

R.C. 162 1 pattern in centre.

Front: Cast on in white 166 (178) sts. and knit 48 R. in cabled rib. Transfer stitches to M.B. and continue in stocking stitch to R.C. 36. Change to intarsia and follow the chart for colour and shape of pansy. At the same time, at R.C. 96 start armhole shaping: Cast off at each end 12 sts. once and 1 st. 11 (13) times. 120 (128) sts. remain at R.C. 109 (111). Knit straight to R.C. 150 and start neck shaping by casting off 20 sts. in centre. Knit each side on its own. Shape neck by casting off on alternate rows 2 sts. 5 times, and 1 st. 8 times. After R.C. 180 cast off rem. 32 (36) sts. Repeat for second side, reversing shapings.

Back: Cast on and knit welt as for front; Change to stocking stitch and knit straight to R.C. 96. Shape armhole by casting off at each side 8 sts. once and 1 st.

15 (17) times. R.C. 113 (115) = 120 (128) sts. At R.C. 170 cast off centre 40 sts. and knit each side separately. Cast off at neck edge 1 st. 8 times. Knit straight to R.C. 180 and cast off rem. 32 (36) sts.

Sleeves: Cast on with waste yarn 101 sts. and knit several rows. Change to white and stocking stitch, increasing fully fashioned every 3rd row 32 times to 165 sts.

At the same time, start the lace transfer on R.C. 78. Shape sleeve top from R.C. 110 by casting off at right side 12 sts. and at left side 8 sts. Cast off on alternate rows 1 st. at each to R.C. 169 and then on every row to R.C. 174. Cast off remaining sts. Knit second sleeve, reversing shapings.

Cuffs: Cast on 62 sts. with ribber in position and knit 48 R. in cabled rib. Transfer sts. to M.B. and take off on waste. Replace sts. on M.B., reversing work. Re-hang stitches from sleeves, decreasing evenly, knit 1 R. and cast off.

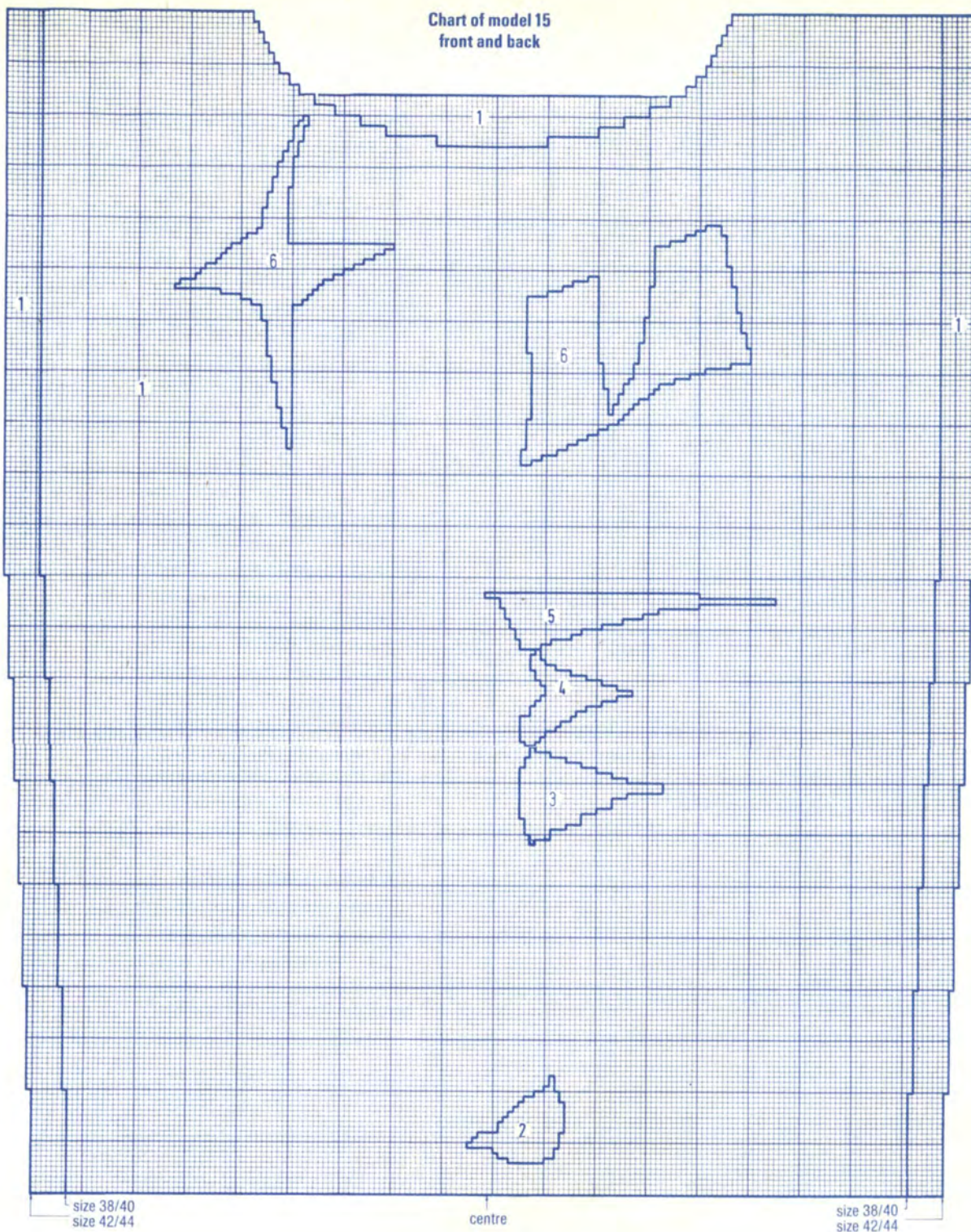
Neck band: Close one shoulder seam. Pick up 140 sts. from neck edge on to M.B. Knit 6 R. decreasing tension from 9 to 4 by one whole number for each row. Knit 1 loose row. Knit 6 rows, increasing tension by one whole number for each row to 9. Knit off on waste yarn. Close second shoulder seam. Fold neck band to outside and stitch down through last row of main yarn.

Shoulder flaps: With seam at centre ϕ , pick up 25 sts. at each side of armhole edge. With lilac, knit 2 R. over 50 sts. Set carriage for H.P. and push 10 needles to H.P. opposite to carriage. Knit across and repeat until 10 sts. remain in W.P. in centre. Return 10 needles to W.P. at opposite side to carriage until all needles are back in work. Pick up loops from 1st row knitted in lilac and hang on to the same needles. Pick up a further 15 sts. at each end of work. 80 sts. Repeat above short row shaping and after picking up the loops, cast off.

Explanation:

- 1 = blue
- 2 = white
- 3 = green
- 4 = red
- 5 = yellow
- 6 = black
- = 1 st. or 1 R.

**Chart of model 15
front and back**



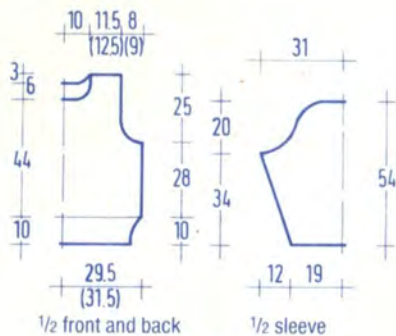
Swiss darn centre of flower with yellow. Close side and sleeve seams. Set in sleeves, gathering the top of the sleeve to fit.

diagram (cabled ribs)

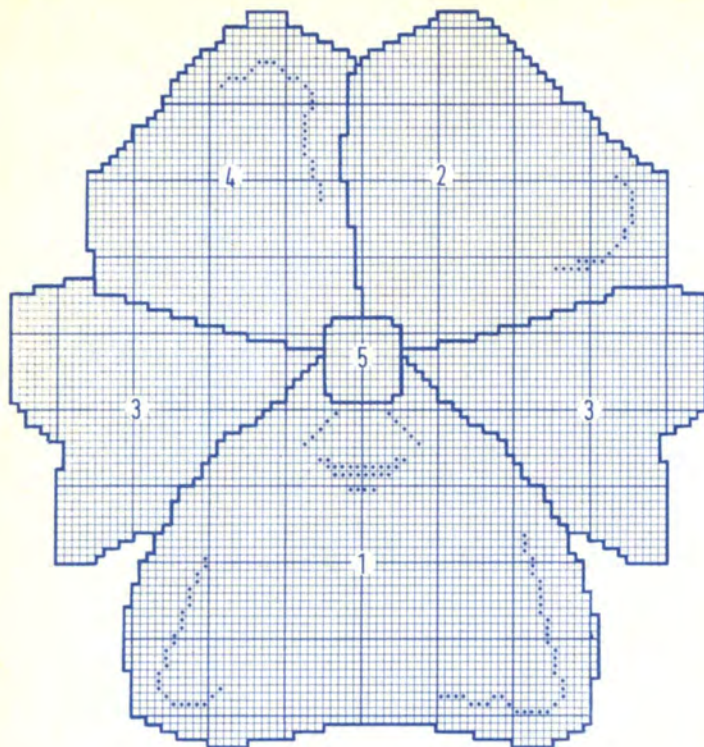


Explanations:

- = N.W.P.
- | = W.P.
- ∩∩ = cable
- Ø = centre Ø



**Continued
next page**



Explanations:

- 1 = angora dark
- 2 = angora light
- 3 = Luxorina light
- 4 = Luxorina dark
- 5 = yellow
- = 1 st. or 1 R.
- = swiss darn in yellow

MODEL 18

LILAC SWEATER IN GARTER STITCH

Size: To fit bust 34/36" (38/40").

Machines: Suitable for all standard gauge machines with garter carriage.

Yarns: AUSTERMANN "Florida" 750 (800) grms. lilac C. 13

Tension: 27/28 sts. and 39 R. = 10 cm. T.D. 10.

Patterns: K1, P1 rib. Stitch World Pattern No. 532.

Z 1 = Stitch World Pattern No. 547.

Z 2 and Z 3 = Please mark your mylar sheet according to the chart.

Punchcard machines: K1, P1 rib = use Card 1 locked on one row. Z 1,

Z 2 and Z 3 = please punch cards, repeating pattern across the row and at least 36 rows high.

Back: Cast on 160 (170) sts. and knit 30 R. rib. Change to M. T. Knit 96 R. pattern 1, 36 R. pattern 2 and the remainder in pattern 3. At the same time, at R. C. 196 knit the center 52 sts. back on the nylon cord. Knit each side separately to R. C. 204 and cast off the remaining 54 (59) sts. Return the stitches held on the nylon cord to W.P. and pick up additional 6 sts. at each side from straight edge. Change to K1, P1 rib and knit 10 rows. Cast off with latch tool.

Front: Knit as for back, but start neck shaping at R. C. 186. Knit back the centre 38 sts. on the nylon cord. Shape the neck edge by knitting back 3 sts. once, 2 sts. once and 1 st. twice. Knit straight to R. C. 204 and cast off remaining 54 (59) sts. Return the stitches held on the nylon cord to W.P. and pick up an additional 9 sts. from the straight edge of the neck. Knit 10 R. K1, P1 rib and cast off, using the latch tool.

Sleeves: Cast on 70 sts. and knit 30 R. K1, P1 rib. Change to M.T. and knit in pattern of 96 R. pattern 1, 38 R. pattern 2. **At the same time**, increase at each end of every 4th row 1 st. 17 times and

then every 3rd row 21 times. At R. C. 134 cast off all sts.

Finishing: Close shoulder and neck band seams. Sew in the sleeves and close side and sleeve seams.

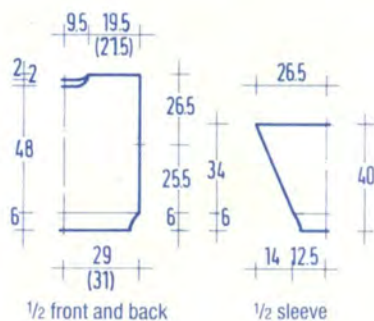
Pattern 1



Pattern 2



Pattern 3



Attention! Using a different brand of wool, please choose one with a similar mt (meterage).

MODEL 19

FAIRISLE SWEATER

Size: To fit bust 36/38" (40/42"). Figures in brackets refer to second size; one figure only refers to both sizes.

Machines: All electronic machines with ribber. We used a Brother KH 940.

Yarns: AUSTERMANN "Favorit Cablé" **450 (500) grms. white** C. 420, "Sri Lanka" **150 grms. lilac** C. 20, 50 grms. rose pink C. 18.

Tension: 28 sts. and 36 R. = 10 cm. T.D. 8 over fairisle pattern.

Pattern: Mark the mylar sheet, or program machine, starting with pattern 1 and leaving 10 plain rows before marking pattern 2. Program 10 plain rows at the end of pattern 2.

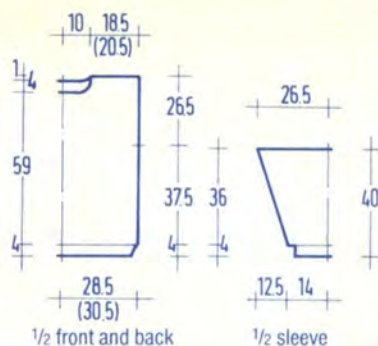
Back: Cast on in white 160 (172) sts. and knit 20 R. K1, P1 rib. Transfer all stitches to M.B. knit 4 rows, programming the machine on the last row. Change to fairisle setting and knit 226 R. in pattern. Cast off the centre 52 sts. and knit each side separately. Shape neck by casting off 1 st. at neckedge on next and following alternate row. Knit to R.C. 232 and cast off remaining 52 (58) sts. Repeat for other side.

Front: Cast on and knit as for back to R.C. 212. Start neck shap-ing: Cast off centre 32 sts. Push one set of sts. to H.P. and continue to knit on one side only. Cast off on alternate rows at neck edge, 3 sts. twice, 2 sts. twice and 1 st. twice. At R.C. 232 cast off remaining 52 (58) sts. Repeat for second side, reversing shapings.

Sleeves: Cast on and knit 70 sts. in K1, P1 rib for 20 R. Transfer to M.B. and increase 10 sts. evenly along the row. Change to pattern tension and fairisle, knit to R.C. 130. **At the same time**, increase 1 st. at each end on every 4th row 21 times and every 3rd row 14 times = 150 sts. Cast off.

Neck band: Knitted in white with rose pink edging. Cast on in white 136 sts. and knit 14 R. K1, P1 rib. Transfer all stitches to M.B. Change to pink and stockingstitch and knit 12 R. Cast off with latch-tool.

Finishing: Sew shoulder seams. Join neck band into a circle and stitch to neckline, so that the rose pink rolls over on the outside. Set in the sleeves and close side and sleeve seams.



MODEL 20

SWEATER WITH FLOWERS

Size: To fit bust 34/36" (38/40"). Figures in brackets refer to second size; one figure only applies to both sizes.

Machines: Suitable for all stand-ard gauge machines with ribber. We used a Knitmaster 700.

Yarns: BERGER & VOIGT "Luxor-ina" **700 (750) grms. white** C. 1335, **50 grms. lt. lilac** C. 1312, **50 grms. dk. lilac** C. 1313, **50 grms. green** C. 1530.

A small amount of yellow. A multiple transfer tool.

Tension: 27 sts. and 33 R. = 10 cm. T.D. 9! K1, P1 rib T.D. 4/4. Punch card or mark mylar sheet before starting to knit.

Single motif fairisle on sleeves is worked over the centre sts. changing colours as follows: Background white, contrast R.C. 1 to 8 dk. lilac, R.C. 9 to 14 lt. lilac, R.C. 15 to 22 dk. lilac, R.C. 23 to 28 lt. lilac, R.C. 29 to 36 dk. lilac, R.C. 37 to 42 lt. lilac.

Neckband in fairisle: Use only rows 1 to 14 of pattern, but as all-over fairisle. Change background colours as follows: 3 rows white,

2 rows green, 2 rows white, 2 rows yellow, 2 rows white, 2 rows green, 1 row white. At the same time, change the contrast colours as follows: 8 rows dk.lilac and 6 rows lt. lilac.

Lace motif for body of sweater: The pattern is arranged around a central stitch. By transferring sts. to either side on the 5 following rows 5 holes are formed on each side. Proceed as follows: Leaving 1 st. in the centre, move 2 sts. outwards by 1, leaving the empty needle in W.P. Knit 1 R. Move 3 sts. outwards by 1, leaving empty needle in W.P. Knit 1 R. Repeat with 4, 5 and 6 sts.

Arrange the lace motifs as follows:

R.C. 20 1 motif in centre.
R.C. 40 2 motifs either side of the centre 39 sts.
R.C. 60 3 motifs: 1 in centre and 1 at each side at 39 sts. distance. Continue to arrange motifs in similar fashion.

Back: With white cast on 156 (166) sts. in K1, P1 rib and knit 40 rows. Transfer all sts. to M.B. for stocking stitch. Continue in white and start lace pattern after

Pattern 1



Pattern 2



Continued next page

R. C. 20. Knit to R. C. 92 and start armhole shaping. Decrease at both sides 8 sts. once, 1 st 10 (12) times = 120 sts (126 sts) at R. C. 104 (106).

At R. C. 156 shape neck by casting off the centre 40 sts. Knit each side separately, casting off at neckedge 10 times 1 st. 30 (33) sts. remain. Knit to R. C. 172 and cast off. Repeat for second side, reversing shapings.

Front: Knit as for back to R. C. 130. Cast off centre 20 sts. and knit each side separately, casting off on alternate rows 2 sts. 5 times and 1 st. 5 times. Then every 3rd row 1 st. 5 times. Knit to R. C. 172 and cast off. Repeat for other side.

Sleeves: With waste yarn cast on 100 sts. and knit several rows. Change to white and increase 1 st. at each end fully fashioned every 4th row 20 times and 1 st. every 3rd row 10 times = 160 sts. At R. C. 110 start single motif. At R. C. 112 start shaping for sleeve top by casting off 9 sts. at each side. Then decrease 1 st. at each end on alternate rows to R. C. 172.

Cuffs: With white cast on 66 sts. in K1, P1 rib and knit 44 R. at T. D. 4*4*. Transfer to M. B. and rehang open sts. from bottom of sleeve, decreasing evenly. Knit 1 R. and cast off.

Neck trim: With waste yarn, cast on 194 sts., and knit several rows. Change to white and knit 3 R. Now

follow instructions as given at beg. of pattern. Knit 5 R. in white, 1 loose row, and a further 22 R. in white. Pick up loops from 1st row in white and place on needles, pick up sts. from neckline and knit 1 R. Cast off.

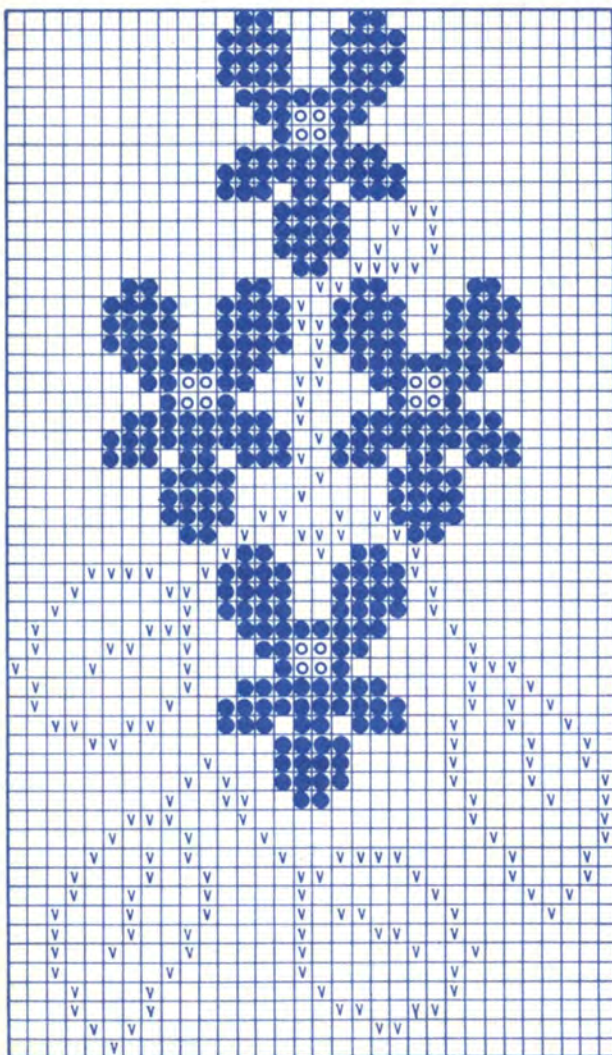
Close rem. shoulder seam. Embroider on sleeves according to chart for Swiss Darning, reversing the design for the second sleeve. Twist 2 cords, one in green, one in dk.lilac and knot the

ends. Close side and sleeve seams. Gather the sleeve tops and set in including the cors in the seam.

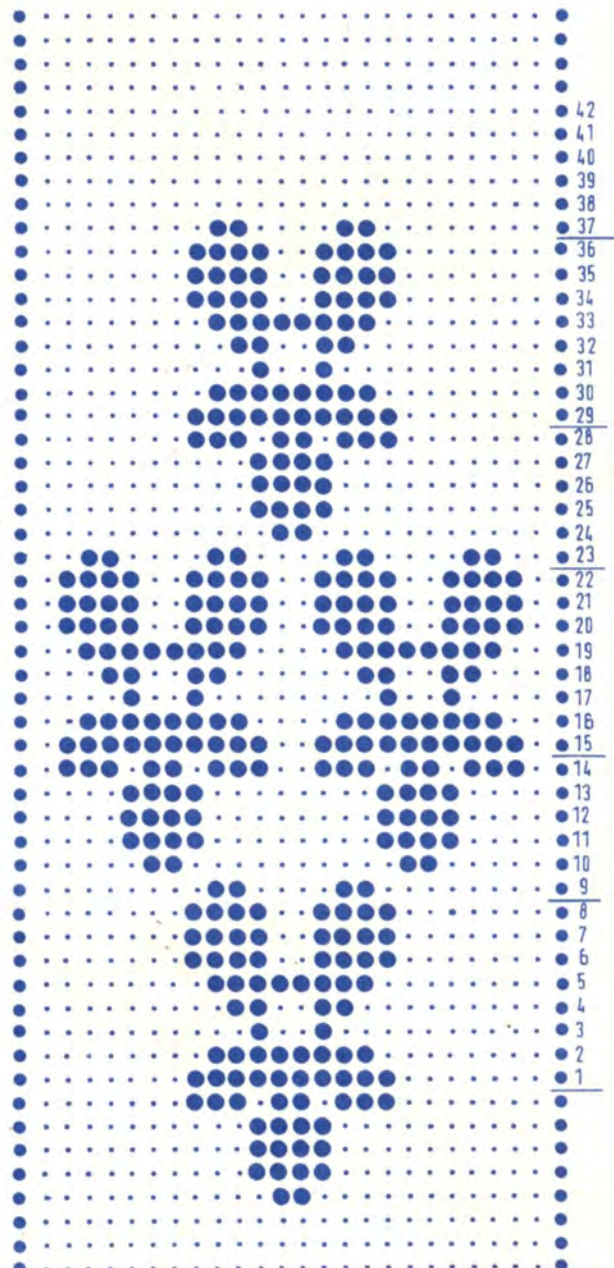
Explanations:

- = background white
- = holes as in punchcard 1
- ∇ = swiss darn in green
- = swiss darn in yellow

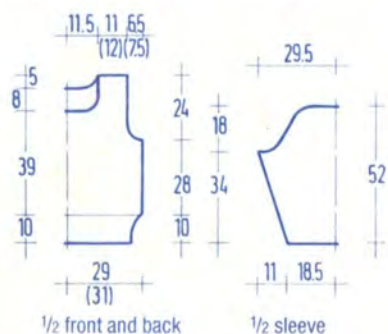
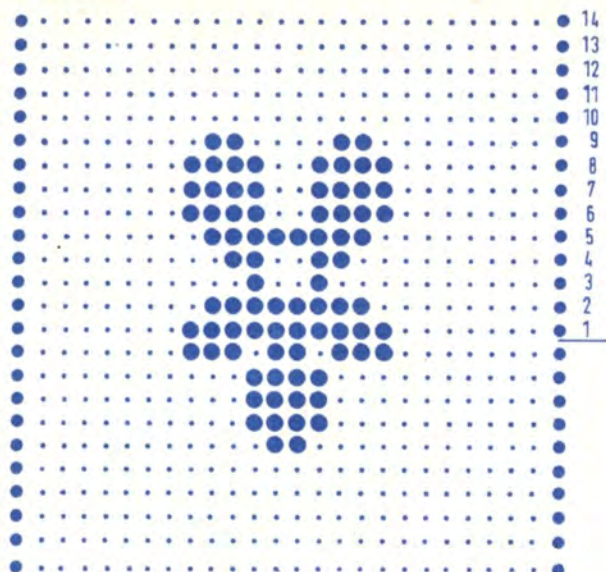
Chart for swiss darning



Swiss darning



Swiss darning



MODEL 21

SIDEWAYS KNITTED SWEATER WITH CROCHET FLOWERS

Size: 32/34" (46/38").

The instructions for the second size are in brackets; one set of figures only applies to both sizes.

Machines: Suitable for all standard gauge machines with ribber. We used a Brother KH 910.

Yarns: SCHEWE "Splendore" 550 (600) grms. white C. 2214, 50 grms. each in white, violet, lilac and purple in "Citadelle". You will also need sequins in assorted sizes and colours; a similar number of small beads and 4 square beads for flower centres. A crochet hook No. 5.

Tension: 27 sts. and 32 R. = 10 cm. T.D. 10.

Back: Cast on at right edge of needle bed 42 sts. Knitting in stocking stitch, increase at left edge 1 st. every 3rd row 34 times. R.C. 102 = 76 sts. Now increase at left edge on every second row 7 sts. 9 times. R.C. 120 = 139 sts. Knit straight to R.C. 144 (150). Shape back neck by casting off at right edge 1 st. and then every 5th row 1 st. 7 times. R.C. 179 (185) = 131 sts. Knit straight to R.C. 195 (201). This is the centre of the sweater. To knit the second half, shape by reading decrease for increase and vice versa. Cast off remaining 42 sts.

Front: Knit as for back to R.C. 144 (150). Now shape V-neck by casting off 1 st. every row 51 times. Centre of sweater: knit

second half, reversing shapings. Close shoulder seams.

Cuffs: Cast on in Splendore 58 sts. and knit 40 R. in K2, P2 rib. Transfer all sts. to M.B. and join to sleeves.

Welts: Cast on 130 sts. in K2, P2 rib and knit 50 R. Transfer to M.B. and attach to waist edge of sweater.

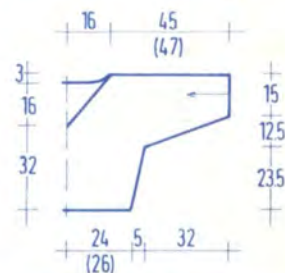
Neck band: Cast on 12 sts. in F.N.R. at T.D. 5 and knit a strip approx. 75 cm. long. Cast off. Stitch neck band into neckline, crossing beginning and end at centre front. Close underarm seams.

Crochet flowers: Using "Citadelle" double make 8 chains and close into a ring. 1st row: 3 chains and 15 treble crochet into the ring and close up into the last chain. 2nd row: 1 chain * 1 d.c. into the

next stitch, 5 chains, miss 1 stitch, 1 d.c. Repeat from * 7 times. Close with 1 slipstitch 3rd row: 1 chain. 1 d.c. 5 trebles 1 d.c. into each group of chains of previous row. Close with 1 chain.

Leaves: With "Citadelle" used double, crochet 10 chains. Along each side, crochet 1 chain, 1 d.c. and 7 trebles. Turn the corner with 3 d.c.

Chain: Crochet in 5 strands "Citadelle" to length required. Sew on flowers, leaves etc. as in picture. Close remaining seams.



1/2 front and back with 1/2 sleeve

MODEL 22

YELLOW CABLE SWEATER WITH FRINGES

Size: To fit bust 36/38" (40/42"). Instructions for second size in brackets, one figure only applies to both sizes.

Machines: Suitable for all standard gauge machines with ribber. We used a Knitmaster 700.

Yarn: BERGER & VOIGT "Luxorina" 800 grms. (850 grms.) yellow C. 1424, JENNIFER LEE "Sommer la Luna" 50 grms. yellow with white fringes.

Tension: Back and front: 31 sts. and 34 R. = 10 cm. Sleeves: 28 sts. and 34 R. = 10 cm.

Cable pattern: Working on main bed and ribber, cast on as for K1, P1 rib and after knitting the circular rows, transfer the sts. as

shown in the diagram, working from the centre outwards to the left and right. Cable the large "Tulip" cable every 15 R. and the smaller cable (over 5 sts.) every 5 R. Knit the cables at T.D. 5/5 on the ribs and at T.D. 9/9 on the body part.

Tip: To make it easier to turn the large cable, try the following: before knitting the last row before cabling, set the ribber to H. and push 4 needles opposite the cable needles to W.P. Knit 1 R. Release the loops from the ribber needles and return ribber to P-position. The additional yarn will make the cable sts. easier to twist.

Front: Cast on 168 (180) sts. as K1, P1 rib and after the circular rows, arrange as follows: 31 sts. in the centre as shown in diagram and the remainder as K1, P1 rib. Knit 38 R. Transfer sts. to M.B.

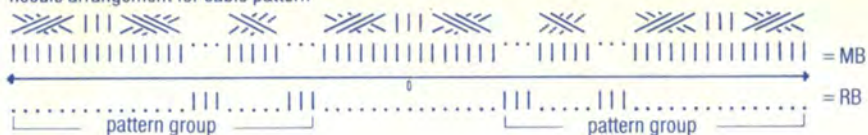
Continued next page

increasing to 180 (192) sts. Leave the centre 31 sts. in their previous position and arrange a further 47 sts. in pattern on each side. The remaining needles knit on the M.B. Knit in cable pattern to R.C. 96 and cast off at each side 13 (16) sts. for the armhole. Decrease 1 st. at each end of next and every following row 7 (10) times = 140 sts. At R.C. 120 the sts. from the central "Tulip" are transferred to the M.B. At R.C. 130 transfer the sts. from the large cable on either side are moved and at R.C. 140 the last large cable is transferred. In between at R.C. 125, 135 140 and 150 groups of 3 sts. at the side of the cables are transferred. At R.C. 150 all sts. will be on the M.B. At R.C. 162, divide for the neck shaping: cast off the centre 36 sts. and knit each side separately, casting off 3 sts. once and then 1 st. on every row 13 times. 36 sts. remain. Knit to R.C. 182 and take sts. on to a knitting needle. Knit 6 R. with the fringed yarn and cast off.

Back: Knit as for back, but shape the neckline after R.C. 182 by casting off 60 sts. in centre. Now cast off 1 st. at neck on next 4 R. Knit second side to match.

Sleeves: Cast on with waste yarn on main bed and ribber 100 sts. and arrange needles as follows: Centre 37 sts. as in diagram, the remainder on mainbed. Knit as in cable pattern, increasing at each

needle arrangement for cable pattern



Explanations:

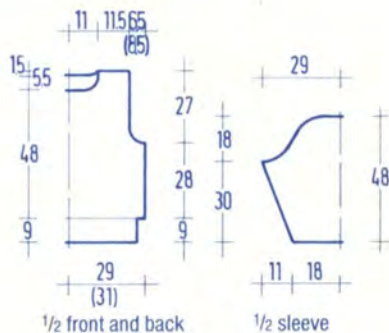
- l = needle in W.P.
- = needle in N.W.P.
- = cable over 5 sts. with a 3-and a 2-prong transfer tool
- = cable over 6 sts. with two 3-prong transfer tools
- = cable over 6 sts. with two 3-prong transfer tools
- o = centre of needle bed

side 1 st. on every 3rd row 32 times = 164 sts. Knit to R.C. 101 and start shaping sleeve top: Cast off 10 sts. at the beginning of next 2 R. and then 1 st. at each side on alternate rows to

R.C. 156. Take sts. on to knitting needle and continue in fringed yarn decreasing as before to R.C. 159. Now decrease 1 st. at each end on every row to R.C. 164 and cast off.

Sleeve ribs: Cast on 66 sts. in K1, P1 rib and knit 40 R. Transfer all sts. to M.B. and with purl side facing you, pick up sts. from bottom of sleeve, decreasing evenly. Knit 1 R. and cast off.

Making up: Close all seams and set in the sleeves, gathering the sleeve tops. Crotchet 2 R. d.c. around neckline with fringed yarn and 1 R. of crabstitch with "Luxorina".



MODEL 23

ROSE SWEATER WITH APPLIQUÉ LEAVES

Size: 34/36" (38/40"). Instructions for the larger size are in brackets; one figure only applies to both sizes.

Machines: Suitable for all standard gauge machines. We used a Brother KH 910 with ribber. Owners of punchcard machines should substitute a similar punchcard pattern.

Yarns: WSM "Vico" 400 (450) grms. Rose C. 9575, "Angora nova" 120 (140) grms. White C. 1, 80 (100) grms. Rose C. 44.

Tension: 31 sts. and 36 R. over fairisle = 10 cm. T.D. 10, K1, P1 rib at T.D. 2.

Back: With "Vico" cast on 164 (176) sts. and knit 50 R. rib. Transfer all sts. to M.B. and set machine for fairisle. With "Vico" in feeder 1 and Angora rose in feeder 2, knit in pattern 1. On rows 15, 30, 45, 60, 75 and 90 increase 1 st. at each end of row. 176 (188) sts. At R.C. 186 cast off all sts.

Front: Knit as for back to R.C. 98 and change to pattern 2, using Angora white in feeder 2. At R.C. 176 start shaping neck, by casting off 50 sts. in centre. Discontinue fairisle pattern. Before further shaping at neckedge, disengage R.C. and in white, knit a tuck on either side: Knit 10 R. white, pick

up loops from first row in white. Knit 8 R. in "Vico" and shape neck by decreasing 2 sts. at neckedge once and 1 st. 3 times. 58 (64) sts. remain. Change to white and knit another tuck as before. Pick up the loops, knit 1 R. and cast off.

Sleeves: With "Vico" cast on 66 (70) sts. and knit 40 R. in K1, P1 rib. Transfer sts. to M.B. and increase evenly to 92 (96) sts. With "Vico" in feeder 1 and Angora white in feeder 2, knit in fairisle pattern 2. Increase on every 4th row 26 (27) times at each end and then every 3rd row 15 times. 174 (180) sts. At R.C. 152 (158) knit a tuck in white as before and cast off. You might like to mirror image the fairisle design on the second sleeve by reversing the punchcard or using the appropriate switch on electronic machines.

To make up: Close shoulder seams. Crotchet around the neck 1 row of d.c. in rose and 1 row in white.

Appliqué: Cut out leaves in white satin from the drawing and pad with wadding. Stems are embroidered in stemstitch, using viscose yarn. The circles are made of crotchet chains with 1 row of d.c. Set in the sleeves and close side and sleeve seams.

Attention! Using a different brand of wool, please choose one with a similar mt (meterage).

24

MODEL INTARSIA SWEATER IN SHADES OF BLUE

Size: 34/38" bust. This sweater can only be knitted in one size

Machines: Chunky machines with ribber and intarsia carriage. We used a Knitmaster 155.

Yarns: Various yarns from AUSTERMANN: **250 grms. blue C. 16** Clarinetta, **200 grms. grey/blue C. 35** Musical, **100 grms. blue/black C. 3** Almeria, **50 grms. silver C. 13** Monte Carlo, **50 grms. lt. blue C. 16** Pure Silk, **50 grms. blue C. 9** Nanette, **50 grms. blue C. 23** Silky, **40 grms. white C. 212** Royal Anjou Angora.

You will also need sequins in a strip and perhaps large sequins, 3 each in white and silver, as well as some beads.

Tension: 19 sts. and 26 R. = 10 cm. T.D. 0**.

Back: With waste yarn, cast on 110 sts. and knit several rows. Change to intarsia carriage and follow the chart for colour changes. Cast off after R.C. 140.

Front: Knit as for back, but shape neck as shown on chart.

Welts (knit 2): Use "Musical" double and cast on 94 sts. Knit 30 R. K1, P1 rib at tightest tension

possible with close-knit bar in position. Transfer all sts. to M.B. and with purl side facing you, pick up sts. from bottom of front (or back) and hang on to the same needles. Knit 1 R. and cast off.

Right sleeve: Knitted on M.B. at T.D. 0**. Cast on in Clarinetta 62 sts. and knit to R.C. 88. Rows 89 to 100 are knitted in Almeria. **At the same time**, increase 1 st. at each end every 4th row 24 times, using the fully fashioned method.

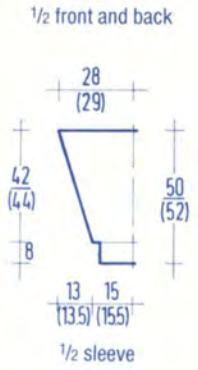
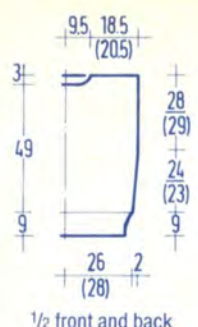
Left sleeve: Knit as for right sleeve, but use Clarinetta for rows 1 to 72 and Almeria for rows 73 to 100.

Cuffs: Knit as for welts, using 60 sts. and knitting 30 R. Attach to sleeves as in welts.

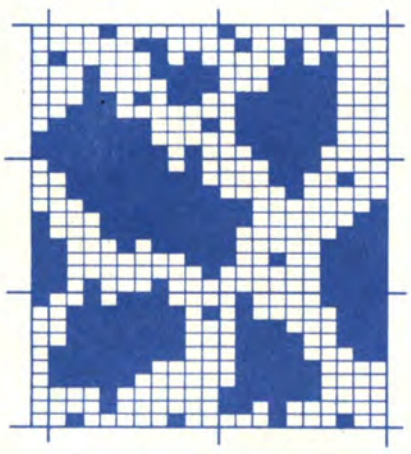
Neckband: E-wrap cast on 90 sts. and knit 22 R. straight, using 1 strand Angora and sequins threaded onto cotton.

Making up: Close shoulder seams. Sew on the neckband so that it rolls to the outside. Sew on sleeves between markers. Close side and sleeve seams. Stitch on sequins and beads as in the picture or to your own design.

Continued next page



Pattern 1



Pattern 2

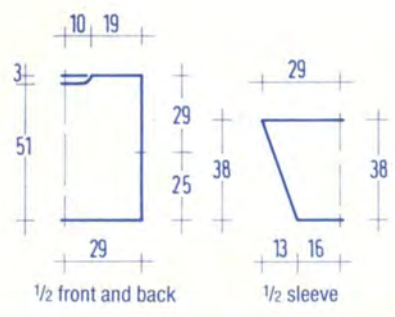
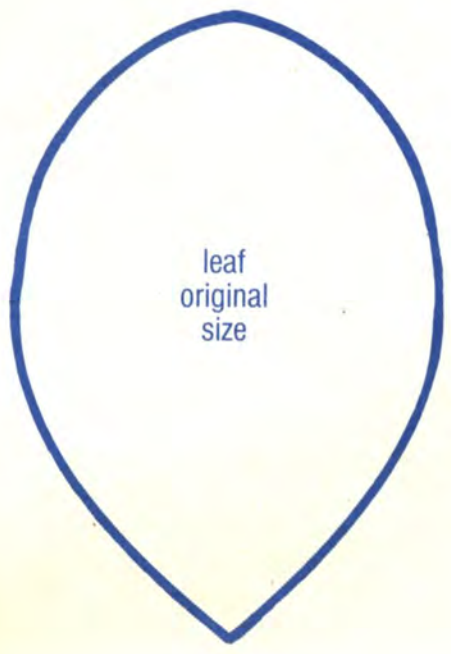
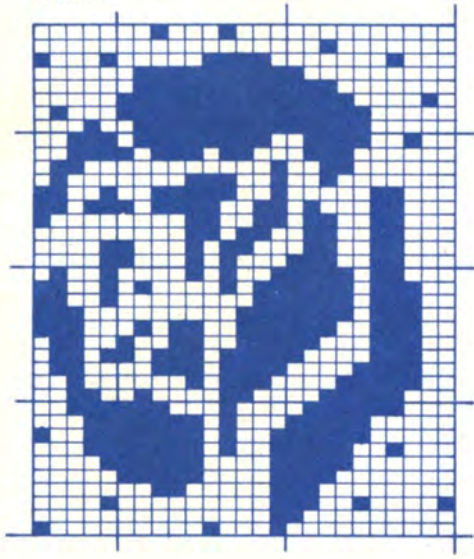
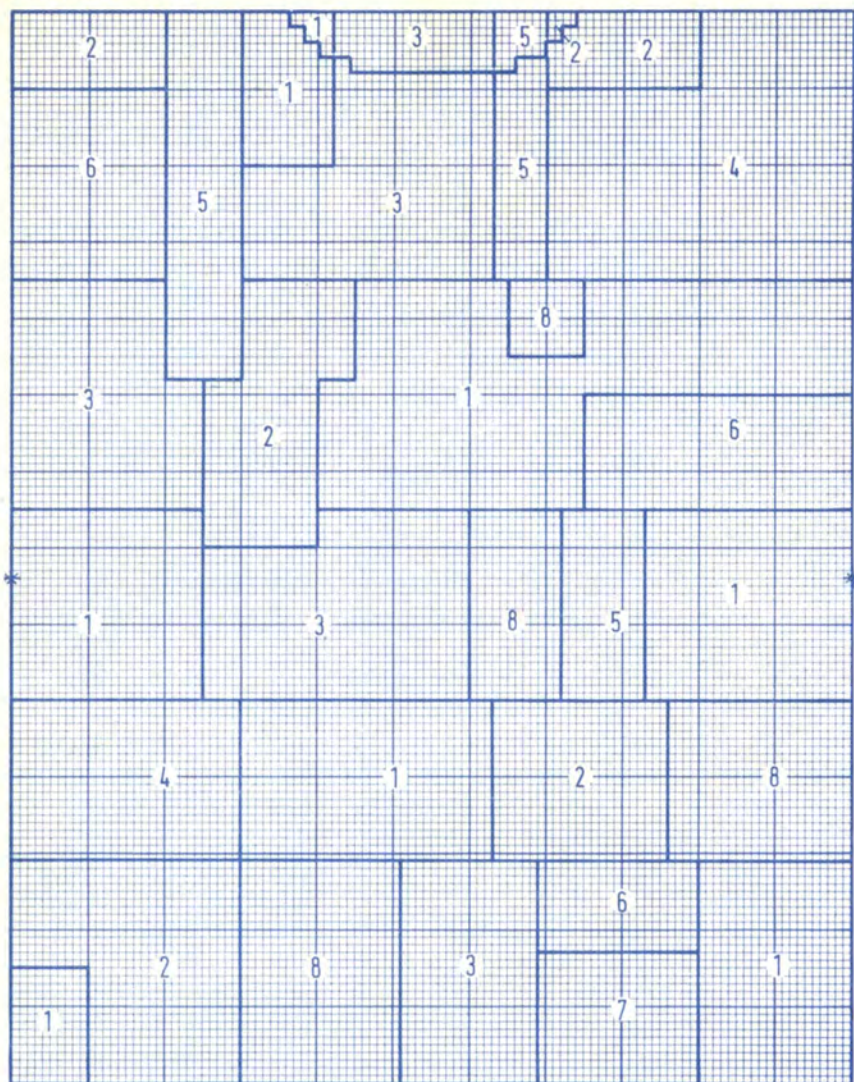


Chart (front and back)



Explanations:

- 1 = Clarinetta
- 2 = Almeria
- 3 = Pure Silk
- 4 = Nanette
- 5 = Angora + Sequinned yarn
- 6 = Musical
- 7 = Monte Carlo
- 8 = Silky
- = 1 st. or 1 R.
- * = mark for start of armhole

MODEL 25

PINK SWEATER WITH BIRDCAGE

Size: To fit bust 32/34" (36/38"). Figures in brackets refer to second size; on figure only applies to both sizes.

Machines: Suitable for all standard gauge machines with ribber and intarsia carriage. We used a Knitmaster 700.

Yarns: DILTHEY "Lulu" **200 (250) grms. lt. pink** C. 3812, **100 grms. dk. pink** C. 3813, **25 grms. white** C. 3801, STAHL'SCHE Wolle "New York" **150 grms. pink** C. 457.

114 (118) sts. remain. **At the same time**, at R.C. 98 start the cable yoke by cabling the centre 6 sts. At R.C. 106 cable the centre 6 plus 6 sts. more on either side, with 6 sts. in between. R.C. 114 cable as before plus a further cable again 6 sts. away. Continue in this way, twisting the cables every 8th row. At R.C. 156 (162) separate your work for the back neck by casting off 44 sts. in centre. Shape the neck by casting off on alternate rows 1 st. 3 times and 1 st. on every row 4 times. At R.C. 164 (172) cast off remaining 28 (30) sts.

Front: Knit as for back to R.C. 18. Change to intarsia carriage and follow the given chart. Please pay special attention to the positioning of the motif and the cables. At R.C. 140 (146) cast off the centre 40 sts. and knit each side separately, casting off at neck side on alternate rows 3 sts. once, 1 st. once and every row 1 st. 5 times. At R.C. 164 (172) cast off remaining sts.

Sleeves: With waste yarn cast on 94 sts. on M.B. and knit several rows. Continue in Angora lt. pink following chart 2 for shaping and intarsia, as well as positions of cables. R.C. 155, cast off remaining sts. Knit second sleeve as above, but reversing shapings, particularly at sleevehead.

Tension: 26 sts. and 33 R. = 10 cm. T.D. 9**. Cabled ribs knitted at T.D. 7/7.

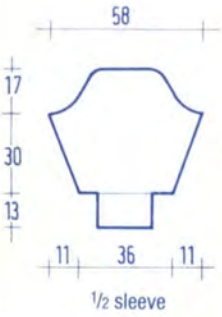
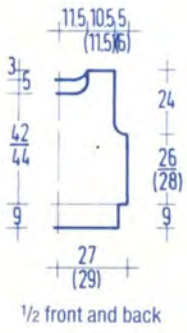
Back: With "New York" cast on 136 (144) sts. in K1, P1 rib. After knitting the circular rows, transfer sts. from the centre outwards according to the diagram. Knit 40 R. rib, cabling the sts. on the M.B., after the 4th and every following 8th row. Transfer all sts. to M.B., incr. to 140 (150) sts. R.C. 000, change to Angora in lt. pink and stocking stitch. Knit to R.C. 86 (92) and start armhole shaping by casting off at each end on alternate rows 5 (6) sts. once, 3 (4) sts. once, 2 (3) sts. once and 1 st. once. Then decrease 1 st. at each end on alternate rows till

Cuffs: In "New York" cast on 66 sts. and knit 56 R. in cable rib as given for back. Transfer all sts. to M.B. Pick up sts. from bottom of sleeves, decreasing evenly. Knit 1 R. and cast off.

Neck trim: Knit 2 strips over 8 sts. approx. 70 cm. long: one each in Angora lt. pink and white.

Making up: Close shoulder seams. Twist the two strips and stitch into the neckline. Outline the birdcage with chainstitch in contrast yarn. Attach sequin motif as shown in picture. Close side seams and sleeve seams. Gather top of sleeves before setting in.

Chart 2 (sleeve)

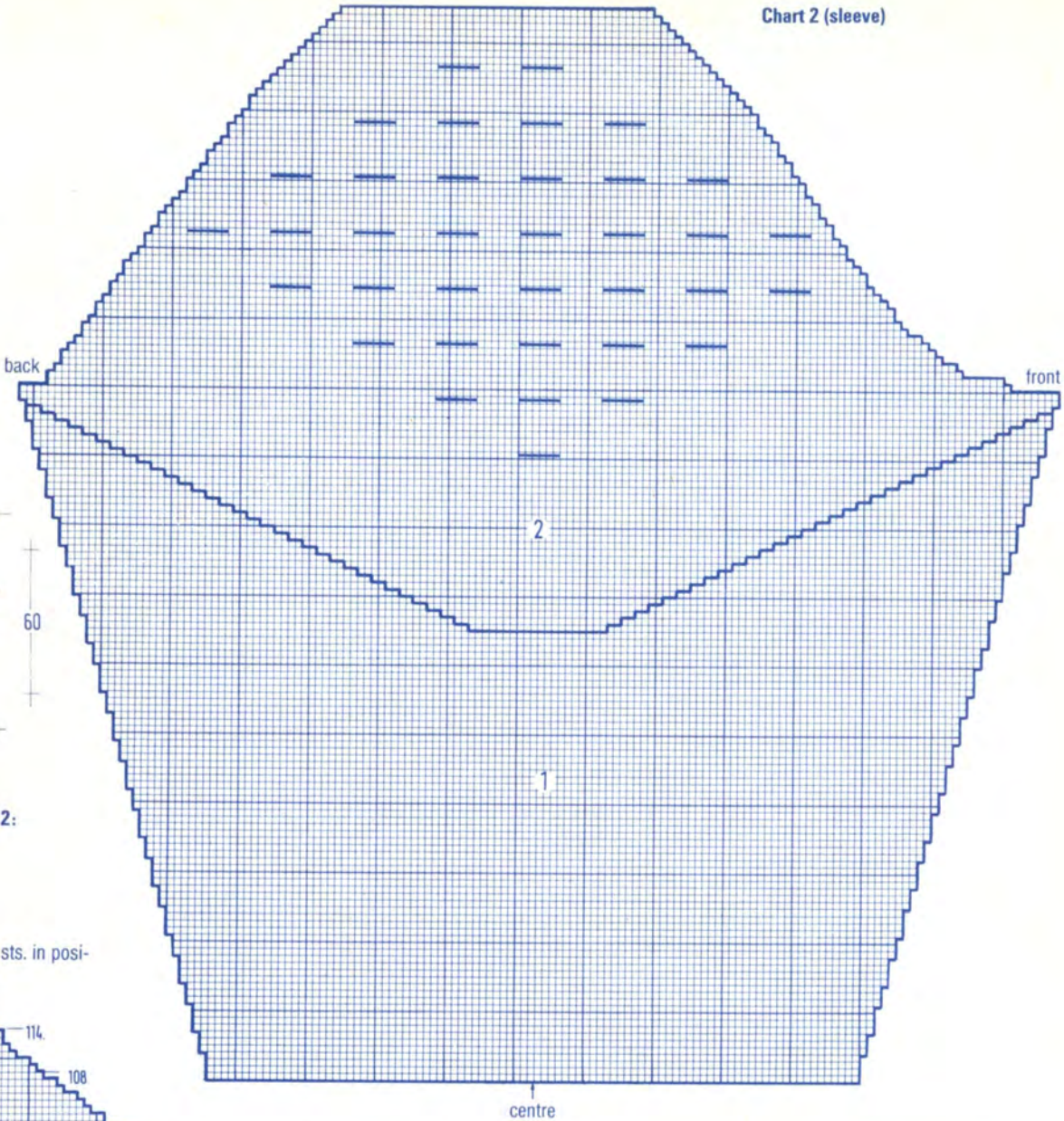
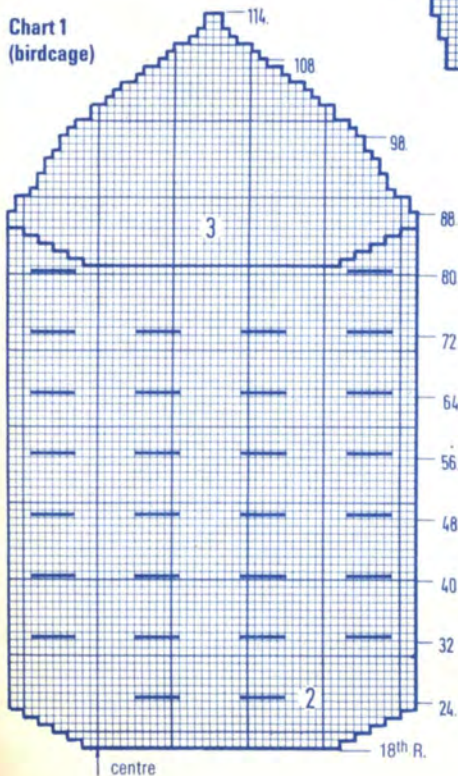


Explanations chart 1 and 2:

- 1 = light pink
- 2 = dark pink
- 3 = white
- = 1 st. or 1 R.

= cable over 6 sts. in positions shown

Chart 1 (birdcage)



Diagram



Explanations:

- = NWP
- | = WP
- = cable
- 0 = centre Ø

MODEL **26**
SIDEWAYS KNITTED
SWEATER WITH
TUCKS AND LACE
APPLIQUÉ

Size: To fit bust 34/38".

Machines: Suitable for all standard gauge machines with ribber and intarsia carriage.

Yarns: WSM "Vico" 1 cone each in white C. 9551, lt. lilac C. 615, dk. lilac C. 9558, lt. green

Continued next page

C. 9554, **mint green** C. 9185, WSM "Angora Nova" **40 grms. lt. lilac** C. 57, **20 grms. dk. lilac** C. 33, **20 grms. mint green** C. 11, **20 grms. white** C. 1.

You will also need 20 grms. silver lurex by ANNY BLATT. 50 cm. lace edging, remnants of ribbon in white and grey, silver beads.

Tension: 29 sts. and 37 R. = 10 cm. T.D. 7, K1, P1 rib T.D. 1.

Tucks: At the beginning of each tuck, disconnect the R.C. Knit in the colours as given below 10 R. pick up loops from 1st row of tuck and hang into the needles. Reconnect R.C. The tuck will appear on the knit side.

Colour changes: Knit the plain knitting with "Vico" and the tucks with "Angora" in the following sequence:
41 R. lt. lilac 1 tuck lt. lilac, 41 R. lt. green 1 tuck mint green, 41 R. lt.

lilac 1 tuck lt. lilac, 41 R. mint green 1 tuck mint green, 60 R. lt. lilac 1 tuck lt. lilac, 60 R. mint green 1 tuck mint green.

This last tuck is the centre back. From here, read the colours in reverse order, starting with 60 R. mint green to R.C. 568. not counting the rows knitted for the tucks. The sweater is knitted from sleeve edge to sleeve edge in two parts.

Back: With contrast yarn cast on 45 sts. at left of needle bed. Knit several rows. Change to main yarn and follow the colour sequences given above. Shape on the right hand side by increasing every 4th row 1 st. 39 times = 84 sts. After the 4th tuck (R.C. 164) cast on at right edge 66 sts. by E-wrap = 150 sts. After the 8th broad stripe (R.C. 404) cast off 66 sts. at right edge. Then decrease 1 st. every 4th row 39 times. Take off the remaining 45 sts. with waste yarn.

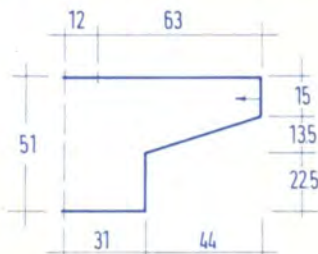
Front: Knit as for back, but cast on at right side of needle bed. Increase at left hand side as for back. After the 4th tuck, change the colour sequence as follows: Knit 50 R. dk. lilac. Knit next tuck with 14 instead of 10 R. in white and then 117 R. in intarsia as shown in the chart. Knit 23 R. Angora in lt. lilac and 50 R. Vico in lt. lilac. After the next tuck, cast off 66 sts. at left and knit the sleeve as before.

Welts: Cast on in Vico white 144 sts. and knit 70 R. K1, P1 rib. Transfer all sts. to M.B. With purl side facing you, pick up the lower edge of back (or front) and hang on needles. Knit 1 R. and cast off. Repeat for other part.

Cuffs: close upper sleeve seams. Cast on in lt. green Vico 68 sts. in K1, P1 rib and knit 40 R. Transfer all sts. to M.B. and with purl side facing you, pick up the open sts.

from sleeve edges. Decrease sts. where necessary. Knit 1 R. and cast off.

Finishing: Apply the lace in flower shapes. Knit two leaf shapes in Lurex and dk. lilac Angora. Gather them slightly before stitching on. Sew on the ribbon and the beads. Close the side and sleeve seams.

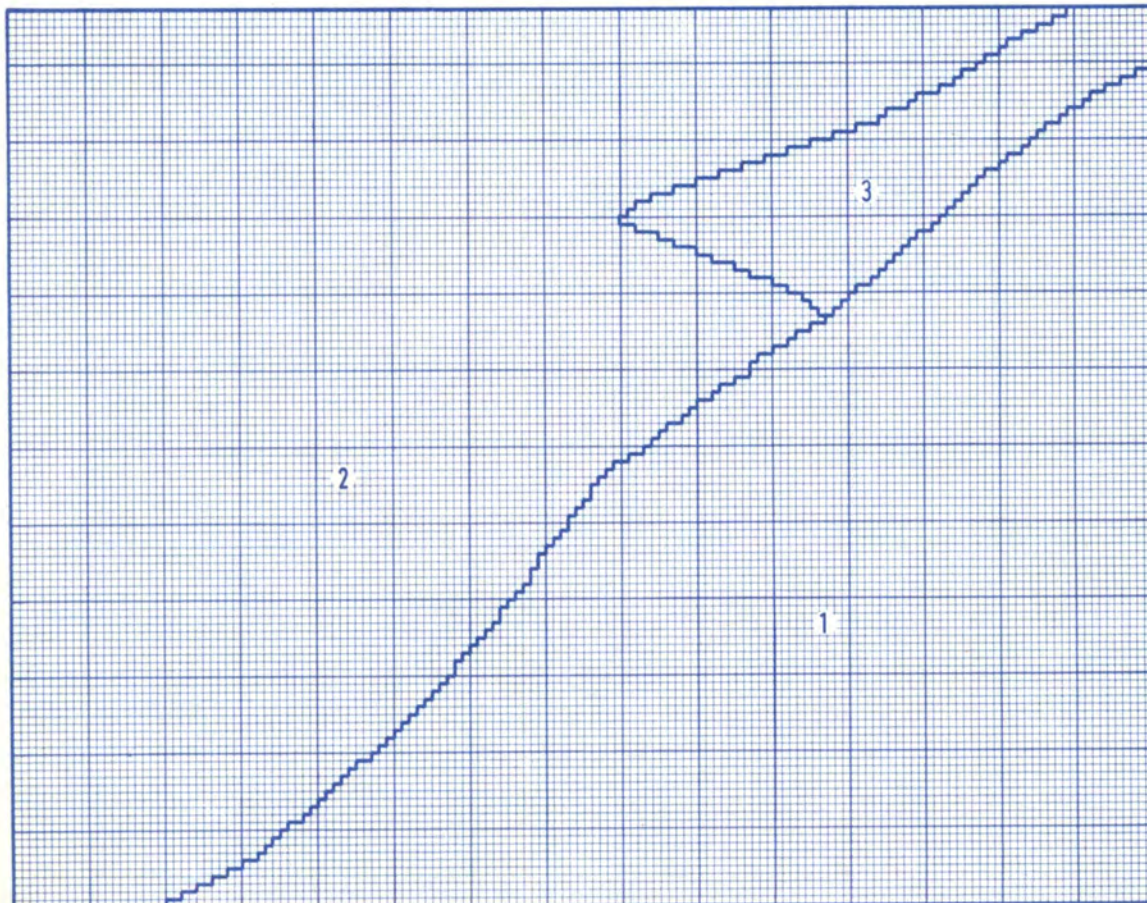


1/2 back and front with sleeve

Explanations:

- 1 = mintgreen Vico
- 2 = dark lilac Vico
- 3 = white angora
- = 1 st. or 1 R.

Chart front



MODEL 27

CHUNKY SWEATER IN GREEN AND WHITE

Size: To fit bust 32/36". Larger sizes can only be knitted on chunky machines with more than 114 needles.

Machines: Suitable for 7 or 9 mm chunky machines with intarsia carriage. We used a Brother KH 260.

Yarns: SCHEWE "Cotone d'oro" green C. 6704 **250 grms.**, "Miami Irisé" **200 grms. lt. green** C. 6805, "Organza" **200 grms. lt. green** C. 6856, "Citadelle" **100 grms. white** C. 9513, "Angora" **40 grms. lt. green** C. 5323.

You will also need 6 metres white double sided satin ribbon, 150 bugle beads and 300 small beads. A knitting and a crochet needle No. 4.

Tension: Intarsia = 20 sts. and 31 R. = 10 cm. T.D. 2. This sweater consists of various pattern areas, which are described below:

1) Area 3 in diagram: At beginning of section, transfer alternate sts. to their neighbours and leave empty needles in N.W.P. Return them to W.P. at end of pattern and change to next yarn.

2) Stripes: 6 R. Cotone d'oro and 2 R. Miami Irisé alternating.

3) Area 6 on chart: At beginning of section, take 20 sts on to waste yarn and push needles into N.W.P. At end of section, cast on these 20 sts. by E-wrap with the following yarn. These 20 sts. are taken on to knitting needles and knitted by hand as follows: Knit side facing you, knit 1 R. purl.

2nd row: Lift one st. * purl 3 sts. together, make 3 sts. out of next st. (1 K, 1 P, 1 K) *. Repeat from * to *.

3rd row: Purl.

4th row: Lift one st. * make 3 sts. out of next st. (1 K, 1 P, 1 K) knit next 3 sts. together purlwise *. Repeat from * to *.

Repeat these 4 R. until the knitting is long enough to fill the area 6.

Pattern sequence for sleeves: 20 R. Cotone d'oro, 14 R. Organza,

6 R. as 1) above, 22 R. stripes, 6 R. as 1) above, * 4 R. Miami Irisé, 2 R. Angora double *. Repeat from * to *.

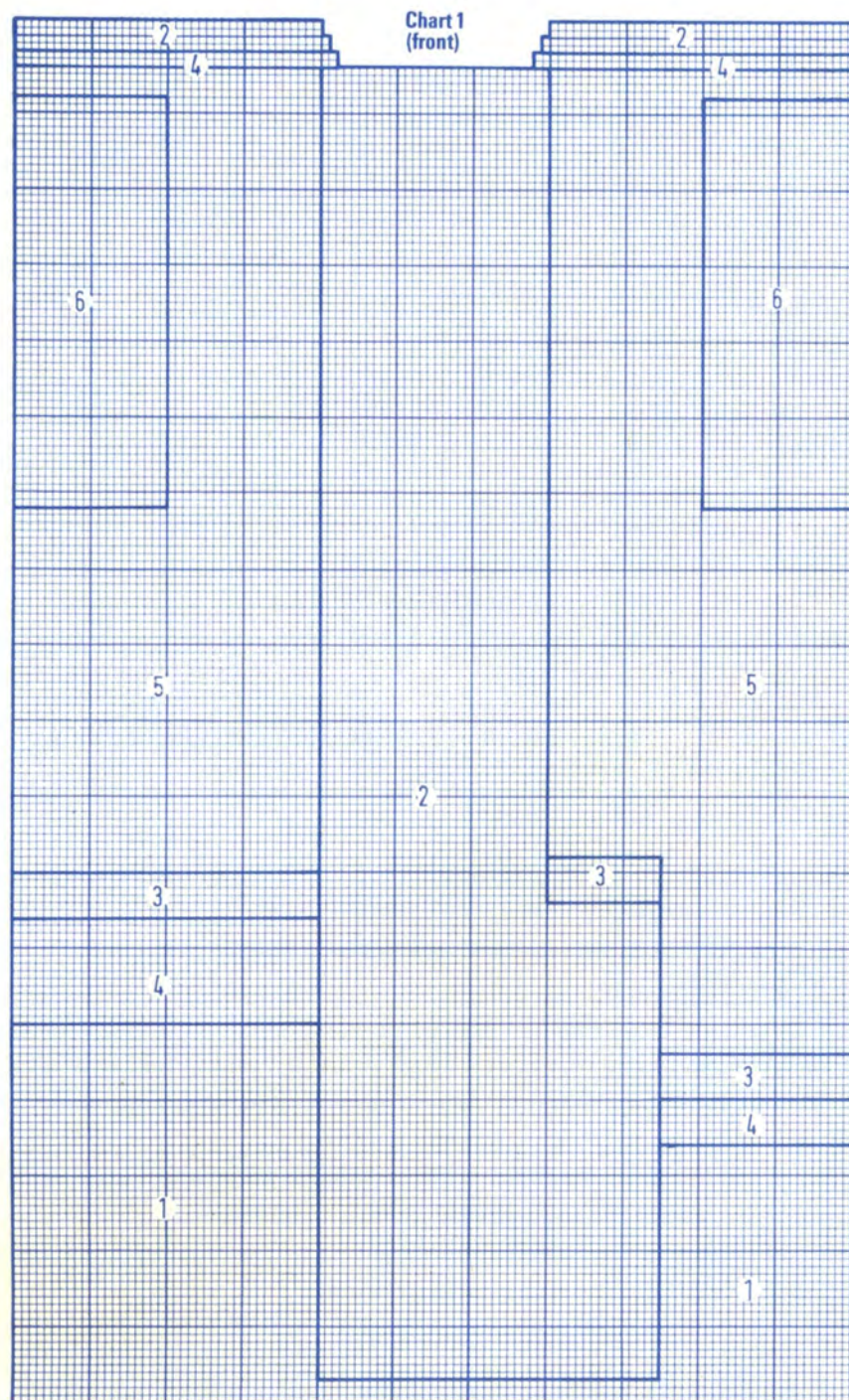
Front: Cast on 110 sts. and knit from the chart, following the shaping of the neck as indicated, Cast off remaining 40 sts. on each shoulder.

Back: Knit as front, but use chart 2.

Sleeves: Cast on 40 sts. with Cotone d'oro after a waste yarn cast on. Knit 110 R., increasing at both sides every 6th row 1 st. 17 times. Cast off.

Front and back welts: Push into W.P. 68 sts. on M.B. Rehang open sts. from back or front (purl side facing you), decreasing evenly. Knit 24 R. in stripe pattern,

Continued next page

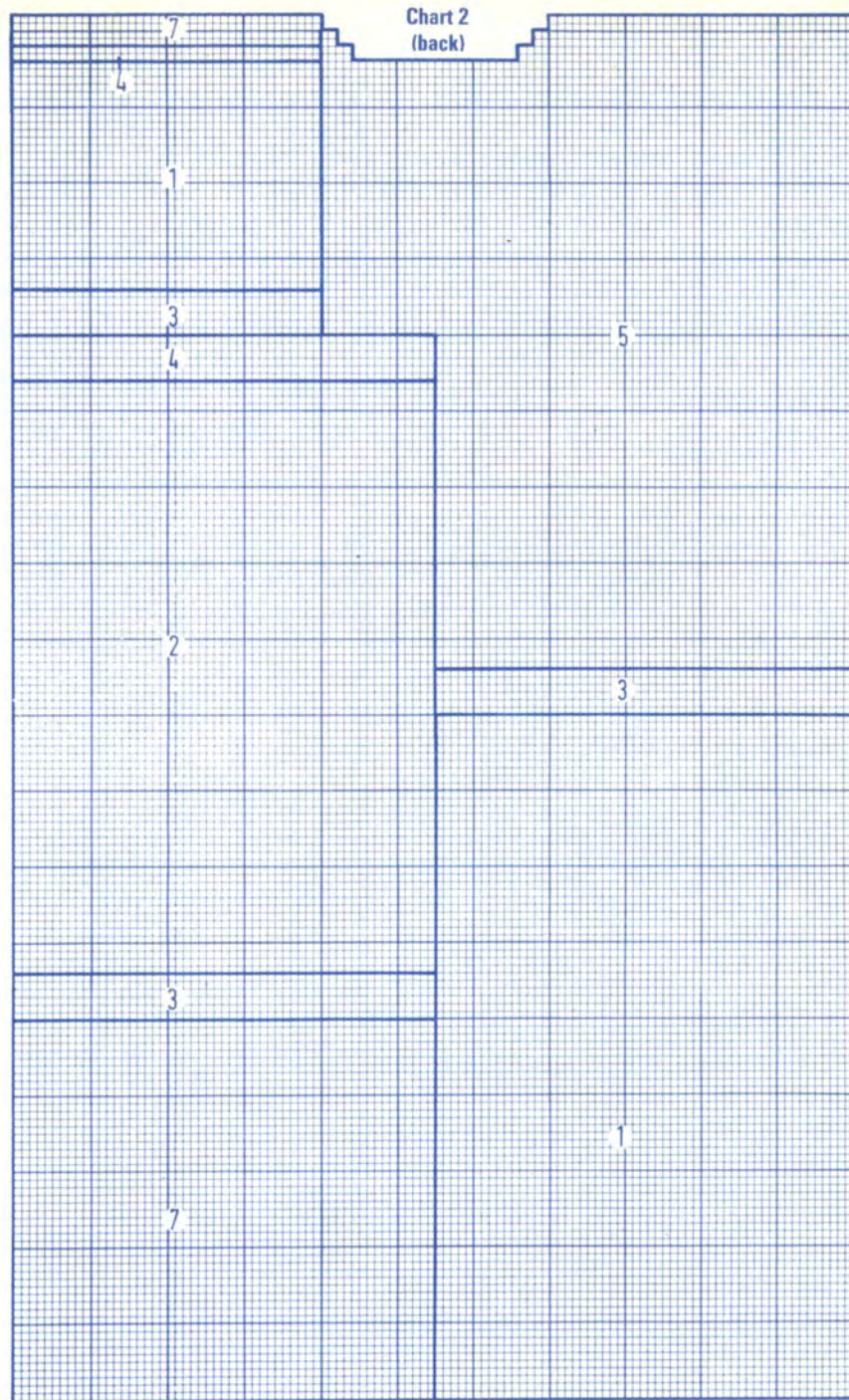
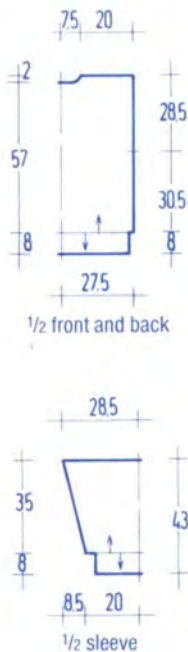


Explanations chart 1 and 2:

- 1 = Organza
- 2 = Miami Irisé
- 3 = see 1)
- 4 = angora (double)
- 5 = stripes
- 6 = see 3)
- 7 = Cotone d'Oro
- = 1 st. or 1 R.

starting with 2 R. Miami. Cast off. Pick up sleeve edges on to 30 sts. and knit as above.

Finishing: On the stripe pattern, embroider the white stitches on the 6 R. Cotone d'oro as in Swiss Darning. Sew on the satin ribbon as shown in the picture. Each bugle bead has a bead at each end. Chain stitch around the two lower areas on front. Join shoulder seams, attach sleeves. Close side and sleeve seams. Crotchet around all edges with 1 R. d. c. and 1 R. crab stitch in white.



MODEL 28

JACKET, TOP AND SKIRT

Size: To fit bust 32/36".

Machines: Suitable for all standard gauge machines with ribber. We used a Knitmaster 700.

Yarns: DILTHEY "Lulu" and "Highlight".

Jacket: 325 grms. Lulu black C. 3822, 20 grms. Highlight silver C. 631, 20 grms. Highlight red C. 2016, 20 grms. Highlight black/silver C. 633.

Top: 140 grms. Highlight silver C. 631, 20 grms. Highlight red C. 2016.

Skirt: 40 grms. Highlight silver C. 631, 80 grms. Highlight black/silver C. 633, 80 grms. Highlight

red C. 2016, 80 grms. Highlight black/gold C. 634, 80 grms. Highlight black/multi C. 2018, 40 grms. Highlight black C. 2013. You will also need some elastic 2 cm. wide.

Top: To knit, see model 14 exchanging colours.

SKirt: To knit, see model 14. Use the colour sequence as given

below: 58 R. silver, * black/silver, red black/gold, black/multi, black, black/multi, black/gold, red, black/silver, silver. Repeat from * 3 times, finishing the last repeat with 9 stripes instead of 10, therefore finishing on black/silver.

Jacket: Knitted in stocking stitch at T.D. 10 **. 25 sts. and 30 R. = 10 cm. The coloured pleats are knitted in "Highlight" used double.

MODEL 29

Back: With waste yarn cast on 136 sts. and knit several rows. Change to main yarn and knit to R.C. 84. Shape armhole by casting off 7 sts. at the beginning of next 2 R. Then decrease 1 st. at each end of every row until 110 sts. remain. Knit straight to R.C. 140. Knit the first pleat: Knit 10 R. in "Highlight" black/silver. Pick up the loops of first row of contrast and hang on to same needles. Return R.C. to 140 and knit 8 R. Knit second pleat as before in red. Return R.C. to 148. Knit 6 R. Cast off 36 sts. in centre of work. Knit right side first. Knit to centre, decrease 2 sts. Knit 1 R. Change to „Highlight“ silver and knit third pleat as before. Return R.C. to 156 and continue in main yarn, casting off 2 sts. when carriage is at centre and 1 st. when it is on the outside edge. Continue like this until sts. are reduced to 30. At R.C. 162 cast off.

Right front: Cast on 70 sts. to right of centre \emptyset in waste yarn and knit several rows. Change to main yarn and knit as for back to start of armhole shaping. Cast off 10 sts. at right edge and then 1 st. on every row until sts. are reduced to 55. For the neckshaping cast off 17 sts. at R.C. 130, then decrease 1 st. on every row until 30 sts. remain. Cast off at R.C. 162. Don't forget the pleats: 1st in silver, 2nd in red, 3rd in black/silver.

Left front: Knit as for right front, but cast on 70 sts. to the left of centre \emptyset . At R.C. 120 make a slit over needles 20 to 28, counting from the right as follows: With a separate piece of yarn, cast off the sts. and cast on again over the empty needles by E-wrapping them. Continue to knit over all sts.

Sleeves: With waste yarn cast on 52 sts. and knit several rows. Change to main yarn and increase 1 st. at each end every 4th row 5 times. Now increase 1 st. at each end every 2nd and 3rd row alternately until you have 144 sts. At R.C. 126, shape sleeve top: At right edge, cast off 12 sts. and at left edge cast off 7 sts. Now decrease 1 st. at each end on alternate rows 30 times: 65 sts. remain. Cast off these sts. at R.C. 186. Knit the second sleeve to match, reversing shapings.

Handkerchief: Using the remnants of the yarn, cast on 60 sts. by hand, using "Highlight" single stranded. Change to intarsia and knit 2 rows in red. Introduce black/silver at right side and silver at left, moving the colours in by 1 set every 2nd row until 2 sts. remain in red. Now increase the number of red sts. in the same way, until you have 60 red sts. left. Cast off.

Finishing: Pin out all pieces to size, according to the diagram. Using plenty of steam, press carefully. Leave to dry before moving. Close shoulder seams. Pick up sts. from lower edge and hang on to the needle, right side facing you. With main yarn, knit 5 rows at T.D. 9. Transfer alternate sts. to the next needle, leaving empty needles in W.P. At T.D. 10 knit 5 rows. Release on to waste yarn. To achieve neat corners at front, decrease 1 st. on alternate rows up to the picot edge and then increase again. Repeat the picot edge for all edges.

Close side and sleeve seams. Set in the sleeves, pleating the sleeve top to fit. Fasten the handkerchief into the slit on the left front.

For further instructions, please refer to model 14.

SKIRT

Stocking stitch: T.D. 8. 21 sts. and 45 R. = 10 cms. after damp pressing.

Colour sequence: 58 R. each in gold, * copper, brown, blue, black/gold, black, black/gold, blue, brown, copper and gold. Repeat from * 3 times. On the last repeat knit only 9 instead of 10 stripes and end on copper instead of gold.

Knitting: The skirt is knitted sideways with H.P. and reverse H.P. shaping, so you must set your machine not to knit sts. back from H.P. Cast on with W.Y. over 170 needles from left 90 to right 80. Knit several rows, finishing with carriage at left. Colourchanges will be on the left edge, which is also the waist edge. In this way, the ends can be hidden in the waistband. Set R.C. at 000 and start with gold. Knit 9 R. Carriage at right. Start shaping from the left by pushing into H.P. 30 sts. once, 10 sts. 6 times and 5 sts. 14 times

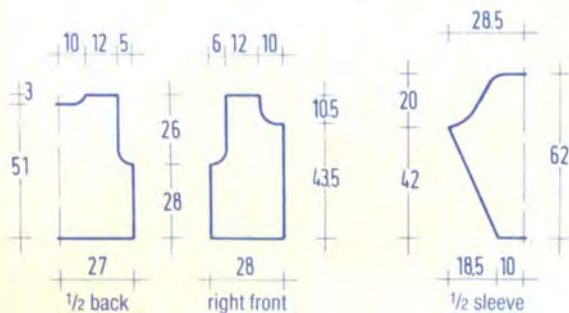
when the carriage is at the right side and knitting 2 R. in between.

Take care! Avoid holes by taking the yarn around the last needle in H.P. whenever the carriage is at the left side. You will now have 160 sts. in H.P. = 51 R. On the following 6 R. put 1 more needle into H.P. and then the remaining 4 sts. R.C. 57, carriage at right. Release Holding cam lever and knit 1 R. to the left. Change to the next colour and knit 1 R. to the right. Re-set machine for H.P. and push all needles except 4 at right to H.P. Knit 2 R. Now return needles to W.P. in reverse order until all sts. are back in work, knitting 2 R. in between. These 116 R. are repeated throughout. At the end of the colour sequence, knit several rows in W.Y. and release from machine. Join the skirt by grafting the first and last rows in M.Y. together.

Waistband: Knitted in two pieces. From half the skirt waist, pick up 120 sts. on to the machine. In black at T.D. 6 knit 15 R. Knit 1 R. at T.D. 10 and then a further 15 R. at T.D. 6. Cast off loosely. Join ends of waistband and turn to the inside. Slipstich into position, enclosing the elastic. Damp press the skirt.

Tips for free hand-embroidery on knitted garments:

Draw the design on to thin paper and position it on the garment. If you wish the same design on two pieces on knitting, lay them together with right sides inside and put the pattern on top. Use a thread of cotton in a contrast colour and sew through the drawn lines, leaving small loops. Remove pins and pull the two sections apart. Cut the threads, leaving the "trailers" in position. Use these outlines to embroider the mainpart and fill in the details last.



MODEL 30

CLOSE FITTING SWEATER AND BOLERO

Size: To fit bust 32/34" (36/38"). Instructions for second size are in brackets; and figure only applies to both sizes.

Machines: Suitable for all standard gauge machines with ribber. We used a Brother KH 910.

Yarns: Sweater **600 (650) grms.** SCHEWE "Citadelle" red C. 9565, Bolero **400 (450) grms.** SCHEWE "Ottocapi Gatto" red. C. 2547, **20 grms. red** Lurex yarn "Feu d'amour" C. 2853.

Sweater:

Tension: 29 sts. and 34 R. = 10 cm. T.D. 10.

Back: Cast on 132 (144) sts. in K1, P1 rib and knit 14 R. Transfer sts. to M.B. and continue in stocking stitch. Decrease 1 st. at each end on R.C. 40, 46, 52, 58, 64, 70, 76 and 82 = 116 (128) sts. Now increase 1 st. at each end on R.C. 88, 94 100, 106, 112, 118, 124, 130, 136, 142 and 148 = 138 (150) sts. At R.C. 156 shape armholes: At each end cast off 2 sts. twice and on every row 1 st. 7 (9) times. = 116 (124) sts. At R.C. 210 (214) take off centre 54 sts. on to waste yarn. Knit straight over the remaining 31 (35) sts. and cast off at R.C. 225 (228).

Front: Knit as for back to R.C. 170 (174). Shape neck by taking off centre 54 sts. onto waste yarn. Knit on the remaining sts. to R.C. 225 (228) and cost off.

Sleeves: Cast on 58 (62) sts. in K1, P1 rib and knit 14 R. Transfer all sts. to M.B. and continue in stocking stitch. Increase 1 st. at each end every 5th row 25 (23) times and every 3rd row 0 (3) times = 108 (114) sts. At R.C. 128 start shaping the sleeve top:

Cast off at each side, 6 sts. once, then every 2nd row 2 sts. 4 times, 1 st. 8 (10) times, 2 sts. 5 times and 2 sts. 3 times. At R.C. 170 (174) cast off remaining 26 (28) sts.

Making up: Close shoulder seams. With a circular knitting needle No. 3 pick up 214 sts. around the neckline. Knit in K1, P1 rib, decreasing 2 sts. in each corner on every row. Knit 3 cm. and cast off in rib.

Close side and sleeve seams. Set in the sleeves. Give a light steam-press.

Bolero:

As well as the yarn quoted above, you will need narrow lace and quantities of red beads and sequins. Two circular knitting needles No. 2.5 80 cm. long for the edging.

Tension: 30/31 sts. and 41 R. = 10 cm. T.D. 7.

Back: Cast on in waste yarn 140 (152) sts. and knit several rows. Change to main yarn and knit 72 R. Decrease for armhole as follows: at each edge cast off 3 (4) sts. once, then 2 sts. once 1 st. 4 (6) times and then 1 st. every 4th row 3 times, = 116 (122) sts. Knit straight to R.C. 144 (148) and start neckshaping. Remove centre 38 sts. on to waste yarn and knit each side separately. Cast off 32 (35) sts. remain. Cast these off at R.C. 152 (156).

Right front: Cast on with waste yarn 49 (55) sts. Knit several rows. Change to main yarn. From R.C. 3, increase at left edge, 2 sts. twice, 1 st. 4 times. On every 4th row 1 st. 4 times and on every 6th row 1 st. 3 times. = 64 (70) sts. Knit to R.C. 72. Shape armhole as

on back. At R.C. 84 start to shape V-neck on left side by decreasing 1 st. on every 3rd row 20 times. 32 (35) sts. remain. Knit to R.C. 152 (156) and cast off.

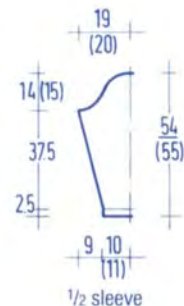
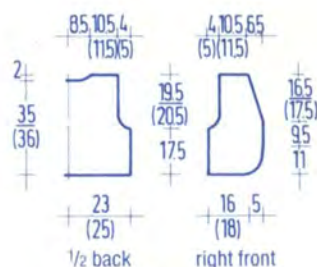
Sleeves: With ribber in position, cast on 60 (68) sts. and knit 16 R. K1, P1 rib at T.D. 4. Transfer all sts. to M.B. and set for stocking stitch. Knit to R.C. 154, increasing at each side 1 st. every 10th row 5 times, on the following 8th row once and on every 6th row 4 times. Increase now on every 4th 15 times. And then on alternate rows 4 times. At R.C. 154 shape the sleeve top by casting off on each side 6 sts. once. Cast off on alternate rows 2 sts. 3 times, 1 st. 18 (20) times, 2 sts. 5 times, 3 sts.

once and 4 sts. once. Castoff the remaining 24 (28) sts. at R.C. 212 (216).

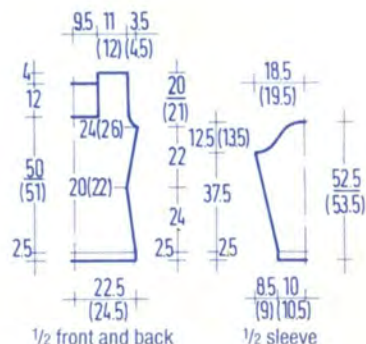
Left front: Knit as for right front, reversing shapings.

Finishing: Close shoulder and side seams. For the edging, use the circular knitting needles and pick up the sts. all around, stretching to pick up extra sts. on the curves at the front. It is important to have sufficient sts. to let the ribbing lie flat. Knit 2.5 cm in K1, P1 rib and cat off. Close sleeve seams and set in the sleeves. Sew on the lace to your own design. Embroider with a remnant of Citadelle left over from sweater and stitch on beads and sequins.

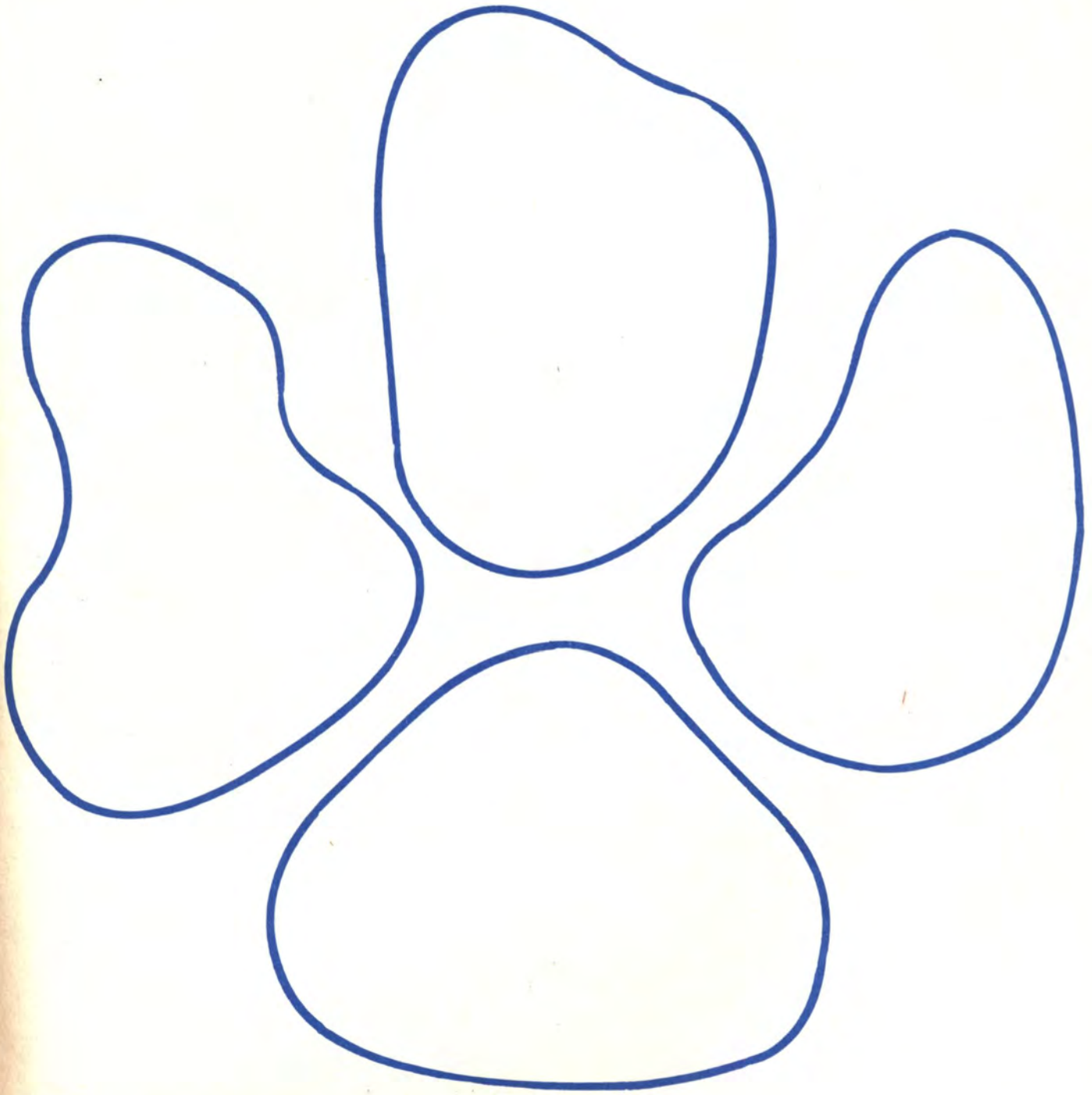
Bolero



Sweater



Model 12
(Full size diagram of leaves
from page 29)



Attention! Using a different brand of wool, please choose one with a similar mt (meterage).

Care for your knitwear:

Washing:

Turn the garment inside out and wash in lukewarm or cool water with a special wool-shampoo. Don't soak the garment or use too much detergent. Avoid rubbing and brushing. Don't put garments into the washingmachine unless the manufacturer's instructions say so.

*

Rinsing:

Immediately after washing, rinse well until the water remains clear. Try fabric softener only on a small sample before using it on a garment. Some yarns may stretch after the use of softeners.

*

Drying:

After washing, roll the garment into towels and squeeze out excess moisture. Leave to dry on a towel. Never hang a knitted or crotched garment on a hanger.

*

Look after your sweaters:

Fold carefully and store away from bright light. Never expose them to bright sunlight.

Please don't start a new thread in the middle of a row. Always start at the beginning of a row and darn the ends in neatly.

Yarn manufacturers and importers

If you have problems obtaining the stated yarn locally, please enquire at the importers and manufacturers stated below:

Anny Blatt:
c/o Ries Wools of Holborn
242-243 High Holborn
London WC1 7 D Z

**Aura, Austermann,
Berger & Voigt, Dilthey,
Stahl'sche Wolle, Woll-Service, WSM,
Jennifer Lee:**

Wollstudio Jutta Hinrichs

Phildar UK Ltd.:
Westgate Industrial Estate
4 Gambrel Road,
Northampton NN 5 5 NF

Schewe:
Europa Yarns Ltd.
Mrs. Mitchell
Towler Hill, Luddenden, Halifax
W. Yorks, HX 2 6 TB
Tel. (04 22) 88 35 94

If any yarn is unobtainable in your country, you can order it by giving the number of the magazine and pattern and writing to

**Wollstudio Jutta Hinrichs, Wormser Str. 5
D-6550 Bad Kreuznach, Tel. (06 71) 4 26 25**

The following sweaters are available in kit form from

**Wollstudio Jutta Hinrichs, Wormser Str. 5
D-6550 Bad Kreuznach, Tel. (06 71) 4 26 25**

Garments number 2, 4, 6, 8, 9, 10, 12, 13, 15, 16, 18, 19, 21, 23, 26 and 30.

The following sweaters are available in kit form from

**Maschenstudio GmbH, Claudia Grube, Steintorstr. 8,
D-3000 Hannover 1, Tel. (05 11) 32 08 35**

Garments number 1, 3, 5, 7, 14, 17, 20, 22, 25, 28 and 29.

Machine manufacturers

Passap (Pfaff)
ELNA AUSTRALIA (Pty.) Ltd.
43 Herbert Street
P. O. Box 369
AUS - 2064 Artarmon, N.S.W.

Bogod Machien CO. Ltd.
50-52 Great Sutton Street
GB - London EC. 1.
Tel. 00 44 12 53 11 98

Pfaff (Britain) Ltd.
Pfaff House
East Street
GB - Leeds LS9 8EH
Tel. 00 44 5 32 45 06 45

Husqvarna White
Sewing Machine Co.
1470 Birchmount Road
CDN - Scarborough, Ont. M1P2G1
Tel. 001 416 7 59 44 86

Passap Distributors
P. O. Box 6819
Wellesley Street
NZ - Auckland
Tel. 0 06 49 444 79 50

Elna Sewing Machine Centres (PTY) Ltd.
P. O. Box 652
ZA - 2000 Johannesburg
Tel. 00 27 11 789 19 76

National Sewing Centres (Pfaff)
44 Loveday Street
P. O. Box 4937
ZA - 2001 Johannesburg
Tel. 00 27 11 836 46 81/3

Passap Machines West Inc.
271 West 2950 South
USA-84115 Salt Lake City/Utah
Tel. 001 801 485 27 77

**Brother
Jones Sewing Machines Ltd.**
Manchester Office
Shepley Street
Manchester M 34 5JD
Tel. 330 01 11

Empisal - Knitmaster
39-45 Cowleaze Road,
Kingston-upon-Thames,
Surrey KT 2 6 DT
Tel. 01 546 24 44

Please don't forget to check your tension!



To make sure your sweaters are a good fit, knit a swatch to check the numbers of stitches and rows against our given figures. Cast on at least 70 sts. and knit 10 R. Knit 1 R. in contrast yarn. Knit 30 R. at M. T. in the stitch pattern you have chosen. Mark stitch 21 at each side of centre Ø. Knit a further 30 R. of stitch pattern. Knit 1 R. of contrast and 10 more rows of pattern. Take off the machine and pull lengthways. Let the swatch rest for several hours. Use the Knitmaster „Green ruler“ and measure between the marked sts. and the marked rows. If you are unfamiliar with the „Green ruler“, ask in your local knitting machine shop. They will surely explain its use to you.

Ladies sizes

Size	34	36	38	40	42	44	46
Bust	82	84	88	92	96	100	104
Waist	62	64	68	72	77	82	87
Hips	88	90	94	98	102	106	110



Model 15: size 38/40 (42/44)

ART IN SILK – MIRÓ WAS THE INSPIRATION 49



Nathalie, on the left, wears a garter stitch sweater. A classic shape with modern styling, it will look good in any colour.

Pansies flower throughout the year, here as a single motif together with a simple transfer stitch pattern on the sleeves and cabled ribs. (right picture).

Model 16: size 38/40 (42/44)



R A LARGE LILAC FLOWER

Model 17: size 42/44 (46/48)



Model 18: size 38/40 (42/44)



Lilac and purple are back in fashion. Lilac on its own looks best with simple patterns and classic shapes, making it very versatile. (left picture)

Contrasting colour combinations need a quiet background. Allow your imagination to supply your own colour schemes; it just requires courage.

Model 19: size 40/42 (44/46)

**GARTER STITCH LOOKS BEST
IN STRONG COLOURS – BORDER PATTERNS
PREFER A LIGHT BACKGROUND**



Model 20: size 38/40 (42/44)

A special cotton sweater with a flower design, to which swiss darning adds a special touch. (left picture)

Shiny viscose with crochet flowers and leaves give your sweater that "something extra". Should you prefer matt yarn, look for the same length per weight.



Model 21: size 36/38 (40/42)

**A HINT OF COUNTRY –
TWO SUGGESTIONS FOR ONE THEME**



Fringes and cables – a new idea that turns sporty patterns into models with feminine appeal. (left picture)

Cotton/viscose and angora are used for this romantic rose sweater. Appliqué-leaves and sequins add the elegant touch. (right picture)

Model 22: size 40/42 (44/46)

FEMININE APPEAL THROUGH INTERESTING YARN AND PATTERN COMBINATIONS



Model 23: size 38/40 (42/44)



Model 24: size 38-42



MANY OCCASIONS

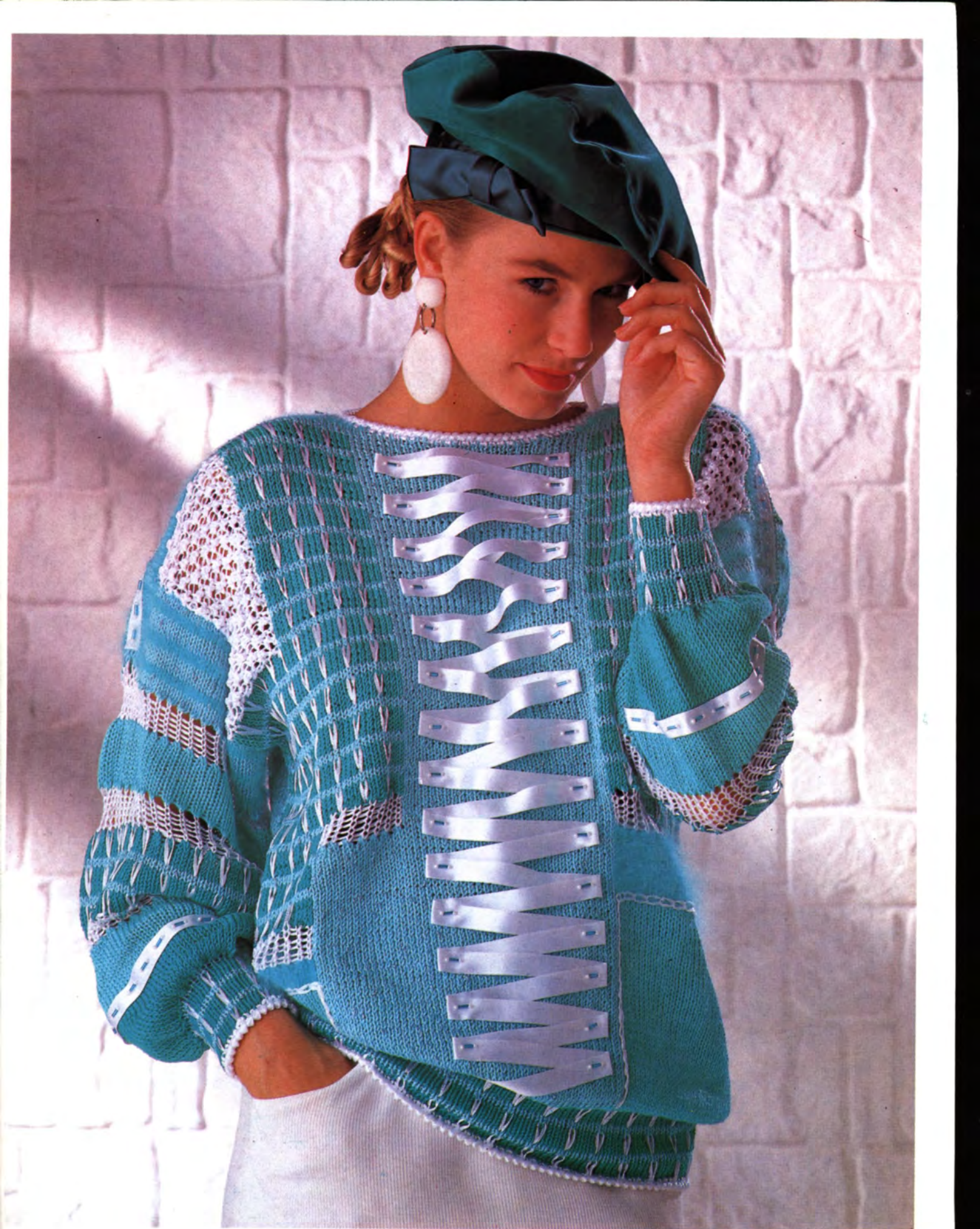
Model 25: size 36/38 (40/42)



Carefully selected colours and materials form the basis for these extravagant garments. Whether you like soft lines or straight, the result will be something out of the ordinary.

Model 26: size 38-42

SUGGESTIONS FOR THE DISCERNING KNITTER



Model 27: size 36-40

THE LATEST TREND IN TOP FASHION KNITWEAR

New
every
month!
On
sale
at all newsagents'



Sabrina