

225

# stitchin' time

No36

60p



# contents

Girl's Hooded Sweater	3-4
Unisex Sweaters	4-6
Winter Pram Suit	6-8
Boy's Fairisle Sweater	8-10
One Size Bed Jacket	10-11
Cot Blanket	11
Ladies Hooded Jacket	12-13
Basic Garments Feature	15-22
Man's Lumber Jacket	23-24
Long/Short Lacy Dresses	24-27
Ladies Zip-up Jacket	28-29
Shoulder Bags	30-31
Baby's Sleeping Bag	32-33
Sweater with Polo Insert	33-35

## broadly speaking

Well here we are with Christmas almost upon us and the bleaker weather already drastically altering our attire. In keeping with this mood we have featured a whole range of winter woollies including an exciting, colourful, ladies coat with hood and an extremely attractive winter pram suit for baby. Both these designs are fairly straight forward, the main design of the garments being achieved through the wool used.

This really is part of a whole new subject — experimenting with textured yarns, combinations of wools and generally experimenting with the machine to produce new and unusual effects. Many readers seem very shy about experimenting or straying from the basic knitting operation. Yet today's knitting machines are so versatile that we believe that this creative side of knitting is by far the most rewarding and can really open up exciting new fields of knitting experience. So be brave, try out new techniques, new yarns and let us hear about your discoveries. There are many many readers who will be interested.

From the more creative side we return to the more basic garments with the whole of our centre section devoted to a range of basic garments. We have published these patterns in response to literally hundreds and hundreds of requests for simple garments that a beginner can easily tackle, but remember even the most basic pattern can be made more interesting with the use of motifs, fairisle borders, lace panels etc. and we have suggested a few designs for you to try.

Correspondence from clubs continues to trickle into our offices and this can only be to the benefit of all readers wishing to join local knitting clubs. So please keep those letters flowing and perhaps now we have awakened the scribes in our midst, if there are any tips, advice or letters of general interest to readers then please let's be hearing from you. Club details are published on page 27.

We take this opportunity of wishing you all a very happy Christmas and happy knitting in '77.

N.B. CHARTS SUBMITTED BY DESIGNERS VARY DEPENDING ON WHICH MACHINE THE DESIGNER HAS USED. MOST PATTERNS USING EIGHT BUTTONS CAN BE DONE ON EITHER THE 588 OR THE 585. THE DIFFERENCES ARE

588	585
REVERSE LEVER+	REVERSE DIAL A
REVERSE LEVER-	REVERSE DIAL B

**SUBSCRIPTION RATES FOR U.S.A. AND CANADIAN MEMBERS \$7.00.**

# girls hooded sweater

## Materials

Wendy 4 ply wool 12 (13,15,17) balls. 2 buttons.

## Measurements

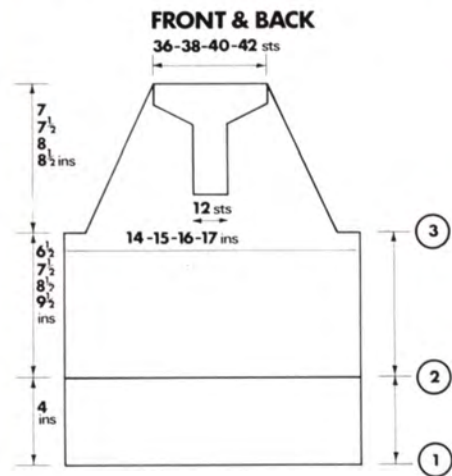
To fit 26 (28,30,32) inch bust 66 (71,76,81) cms.

Sleeve seam 12 (13½,15,16½) ins. 30½ (34½,38,42) cms.

Back length 17½ (19,20½,22) ins. 44.5 (48.5,52.56) cms.

## Tensions

7½ sts x 10½ row = 1 inch. 15 cms x 21 row = 5 cms. T.D. approx 7.



## BACK

**Step 1. Ribbers.** Cast on 102 (110,118,126) sts. for 2 x 2 rib. T1/1. Knit 3 rows tub. T3/3 knit 53 rows. Trans. all nds to main bed. 000.

**S/bed M/c. C.O.B.H.** 102 (110, 118, 126) sts. for 2 x 1 rib. T.5. Knit 48 rows. T8. K. 1 row. T5. Knit 48 rows. Turn hem K 1 row 000.

**Step 2. T7.** Inc. 1 st at both ends of next row. Knit 68 (78,90,100) rows. Cast off 5 sts. at beg. of next 2 rows. 000.

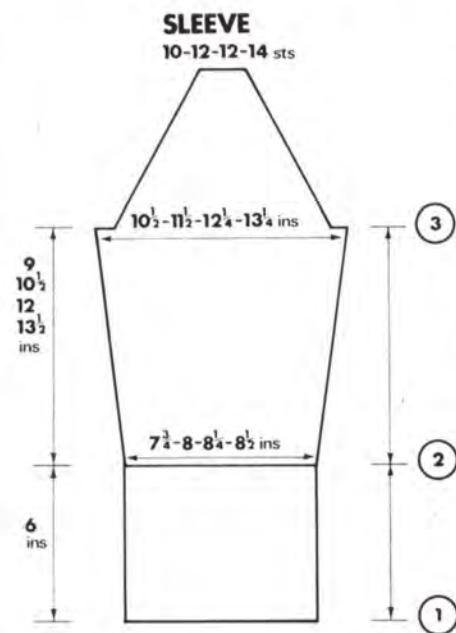


# unisex sweaters

**Step 3.** Dec 1 st. at both ends of every 3rd row 14 times. Dec 1 st at both ends of every alt. row 15 (18,21,24) times to row 72 (78,84,90). Cast off rem. 36 (38,40,42) sts.

## FRONT

Knit as for back to row 24 (28,32,36) of Step 3. Cast off centre 12 sts. Working on right half only place sts. to left on waste yarn or st.st. holder. Continue shaping as for back on right edge only to row 57 (61,65,69). Still shaping right edge as back at the same time shape neck as follows. Cast off 6 sts. at beg of next row (neck edge). Dec 1 st at neck edge every row two times, then every alt. row 4 (5,6,7) times. Replace sts. from left half and rept. reversing all shaping.



## SLEEVE

**Step 1. Ribbers.** Cast on 58 (68, 62, 62) sts. for 2 x 2 rib. T1/1. Knit 3 row rub. T3/3 knit 72 rows. Trans. all nds to main bed. 000.

**S/bed. m/cs** C.O.B.H. 58 (58,62,62) sts. for 2 x 1 rib. T5. Knit 66 rows. T7. K 1 row, T5. Knit 66 rows. Turn hem. K 1 row. 000.

**Step 2 Inc.** 1 st at both ends on 2nd and 4th sizes 58 (60,62,64) sts. Inc. 1 st at both end of every 9

(8,8,7)th row 10 (13,15,18) times to 78 (86,92,100) sts. Knit to row 94 (110,126,142). Cast off 5 sts. at beg of next two rows.

**Step 3.** Knit as for Step 3 of back to 10 (12,12,14) sts. Cast off.

## FRONT BANDS

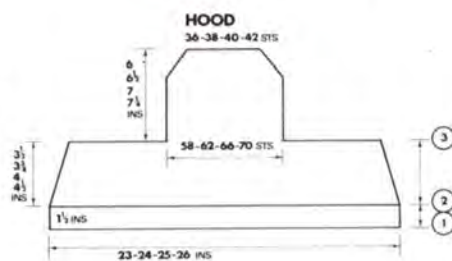
C.O.B.H. 26 sts. T6. K 18 rows. T8. K 1 row. T6. K 18 rows. Turn hem. With right side of work facing m/c place left front edge to these sts. starting 1st in from each end. Cast off loosely.

## BUTTONHOLE BAND

Knit as for button band making buttonholes on rows 9 and 9 over 4 (5,6,7) and 17 (18,19,20)th needles counting from right edge. With right side of work facing m/c place right front edge to these sts. Starting 1st in from each end. Cast off loosely.

## TO MAKE UP

Press all pieces. Join raglan seams.



## HOOD

**Step 1.** C.O.B.H. 172 (180, 188, 196) sts. T6. K 18 rows. T8. K 1 row. T6. Knit 18 rows. Turn hem. T7. K 1 row. 000.

**Step 2.** Dec 1 st at both ends of every 9 (9,10,10)th row 4 times. Knit to row 38 (40,42,44). Cast off 53 (55,57,59) sts. at beg of next 2 rows. 000.

**Step 3.** Knit 20 rows. Dec. 1 sts. at both ends of every 4th row 11 (12,13,14) times. Knit to row 64 (68, 72,76). Cast of rem. 36 (38,40,42) sts. Press hood. Join back seams.

Attach hood to neck opening. Join rem. seam, sew on buttons. Give final press.

## MANS OR LADIES STRIPED DROPSLEEVE SWEATERS WITH OPTIONAL POUCH AND POLO NECK

### Materials

Hayfields Gaylon D.K. 25g balls 22 (24,26,28,30) balls Col A. 4 (5,5,6,6) balls Col B.

### Measurements

To fit 34 (36,38,40,42) in. chest 86.5 (91.5,96.5,102,107) cms. Sleeve seam 17 (17 1/2, 18, 18 1/2, 19) ins. 43 (44.5, 45.5, 47, 48.5) cms. Length from shoulder 25 1/2 (26 1/2, 27 1/2, 28 1/2, 29 1/2) ins. 65 (67.5, 70, 72.5, 75) cms.

### Notes

Stripe sequence

\* 12 rows Col A.

2 rows Col B.

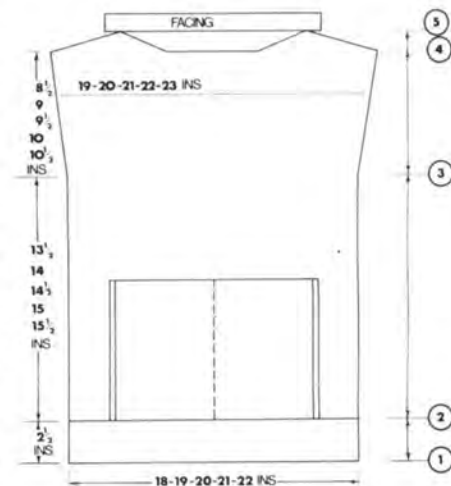
4 rows Col A.

2 rows Col B. rept from \*

## BACK

**Step 1.** With waste yarn cast on 117 (123, 131, 137,143) sts. Place every 4th needle into N.W.P. knit a few rows waste. In col A T.8 knit 60 rows rib. Turn hem. remove waste yarn.

**Step 2.** T10. Start stripe sequence (see notes) knit to row 126 (130,136,140,146). Mark ends sts. waste yarn.



**Step 3.** Inc. st. at both ends of next and every following 20 (21,22,24,25) rows 4 times. K to row 206 (216,226,236,246).

**Step 4.** Cast off 9 (11,13,14,16) sts at beg of next 2 rows. Cast off 4 sts at beg. of next 8 rows. 000 75 (77,81,85,87) sts.

**Step 5.** Cast on 6 sts at beg of next 2 rows. K.10 rows cast off loosely.

**FRONT (without pouch)**

Knit as for back to end of step 3.

**Step 4.** Thread up centre 45 (47, 51, 55,57) sts and place on waste yarn work on one side only. Shape shoulder as for back at the same time push 3 sts at neck edge into H.P. 5 times. Rept. for other side of neck.

**Step 5.** Ret. sts from centre front

to needles T9 cast on 6 sts at beg. of next 2 rows. Knit 10 rows. Cast off loosely.

**FRONT (with pouch)**

**Pouch** With waste yarn cast on 79 (85,91,97,103) sts knit a few rows waste. With M.wl T.10 k.82 rows of stripe sequence. Knit a few rows with waste yarn. Remove from m/c. **Pouch edges** In col B cast on 69 sts



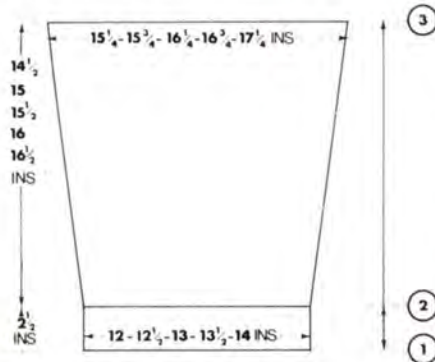
# winter pram suit

for 3 x 1 rib. T8 K.16 rows. Turn hem. With right side of work facing m/c place one edge to these sts. cast off loosely. Rept. for other edge.

**Front Knit** as for back to end of step 2.

**Step 3.** K.1 row. With purl side of work facing m/c place loops from first row of main yarn from bottom of pouch onto centre 79 (85,91,97,103) sts. Remove waste yarn from bottom of pouch knit as for back to row 82. Mark centre sts. with waste yarn. With plain side of work facing m/c place sts from top of pouch onto centre 79 (85,91,97,103) nds remove waste yarn. Knit as back to end of step 3.

**Step 4.** as for front without pouch.



## SLEEVES

**Step 1.** cast on 77 (81,85,87,91) sts knit as for step 1 of back.

**Step 2.** Knit in stripe sequence. Inc. 1 st at both ends of every 10 (10,12,12,12) rows, 11 times to 99 (103,107,109,113) sts. K. to row 138 (142,148,154,158).

**Step 3.** Cast off 6 sts at beg of next 2 rows. Cast off rem. sts.

## TO MAKE UP

Press all pieces. Join shoulder seams. Set in sleeves between marked sts. Join side and sleeve seams. Fold neck facing inside and sew down. Sew Pocket down centre stitch.

## POLO NECK

Cast on 114 (118,122,126,130) sts knit as for step 1 of back. T10. Knit 24 rows. Cast off loosely. Join seam, press and sew into position. Give final press.

## Measurements

To fit 18 (20 22 ins.) 46 (51 56 cms.) chest.

Inside leg 7 (7 1/2 8 ins.) 18 (19 20 1/2 cms.). Sleeve seam 5 (6 7 ins.) 12 (15 18 cms.).

## Materials

Robin Bambino Freckles D.K. crepe. Jacket 9 (10 11) balls. Leggings 6 (6 7) balls. Hat and mitts. 3 balls all sizes. 1 ball contrast yarn. 6 small buttons.

## Tensions

6 st x 10 row = 1 inch over st.st. T.D. approx. 10.

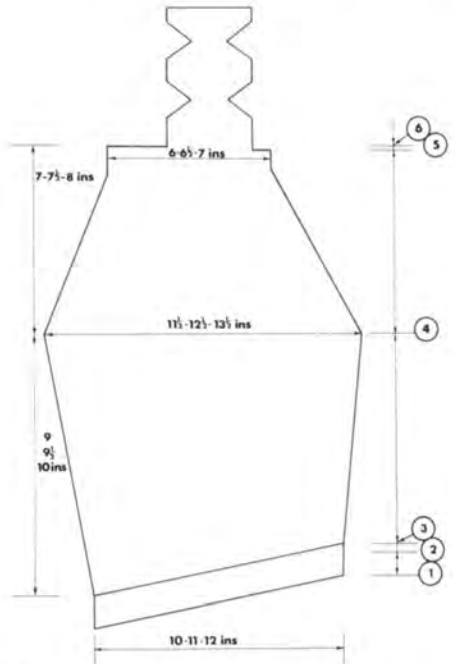
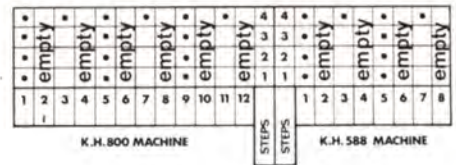
12 sts. x 20 rows = 5 cms. over st. st. T.D. approx 10.

7 1/2 sts. x 14 1/2 rows = 1 inch over patt. from graphs T.D. approx 9.

14 1/2 sts. x 29 rows = 5 cms. over patt. from graph. T.D. approx 9.

## Note

The pattern is knitted on every alt. needle, the extra needle should be to the right of the m/c. When the number of sts. are quoted over pattern count the sts. not the needles, in N.W.P.



## LEGGINGS

**Step 1** In waste yarn cast on 60 (66 72) sts. on alt. needles for mock rib. Knit a few rows waste. Change to main yarn T8 knit 18 rows. Turn hem. Knit 1 row. 000.

**Step 2** H.P. Push 6 (7 8) needles into H.P. at the end of the next 8 alt. rows. ret. all needles to knit pos. C.O.R. 000.

**Step 3** Inc. 1 st. at both ends of every 10 (11 12)th row 5 times 70 (76 82) sts. Knit to row 64 (68 72). Mark end sts. with a thread 000.

**Step 4** Dec. 1 st. at both ends every alt. row 4 (4 5) times then every 4th row 13 (14 15) times 36 (40 42) sts. Make row of holes on row 60 (64 68) by trans. every 3rd st. to right. Knit to row 64 (68 72).

**Step 5** Thread up 6 sts. on left edge and remove from m/c. K1 row. Thread up 12 (14 15) sts. on right edge and remove from m/c. K.1 row. 000.

**Step 6** Knit 14 (18 22) rows on remaining 18 (20 21) sts. H.P. Push 1 st. into H.P. at the end of the next 12 rows. Return 1 st. to K. pos. at the end of the next 12 rows. Knit 14 (18 22)



rows. Push 2 sts. into H.P. at the end of the next 6 rows. Ret. 2 sts. to knit pos. at the end of the next 6 rows. Knit 2 rows place on waste yarn.

Knit another half to match reversing all shaping by knitting 1 row at the beg. of step 2.

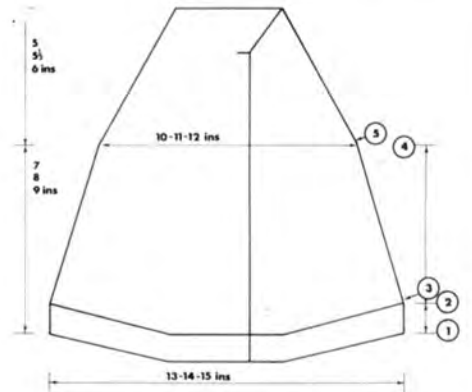
#### TO MAKE UP

Press pieces. Graft sts. from back heel to sts. threaded up at step 5. Join front and back seams to markers. Join leg seams. Insert elastic if required.

#### Cords (knit 2)

In contrast yarn.

C.O.B.H. 3 sts. T2 Depress rt. tuck button Knit 14 ins. (35½ cms.). Thread through holes at ankle.



#### JACKET BACK

**Step 1** C.O.B.H. 93 (101 109) sts. T8 knit 8 rows. T10 knit 1 row. T8 knit 8 rows. Turn hem. Trans. every alt. st. to right push empty needles into A pos. T.10. Knit 1 row setting m/c for pattern. C.O.R. 000 T9.

**Step 2** Depress both tuck buttons. H.P. Push 3 sts. into H.P. at the end of the next 10 (12 14) rows. ret. all sts. to B. pos. C.O.R. 000.

**Step 3** Dec. 1 st. at both ends of every 20 (22 24) row to 37 (41 45) sts. knit to row 102 (116 130).

**Step 4** Cast off 1 st. at beg. of next 2 rows. 000.

**Step 5** Dec. 1 st. at both ends of every 6th row 12 (13 14) times. Knit to row 76 (82 88). Cast off rem. 11 (13 15) sts.

#### FRONT

**Step 1** C.O.B.H. 45 (49 53) sts. T8 Inc. 1 st. at right edge on next 4 alt. rows. T.10. Knit 1 row T8 dec. 1 st. at right edge on next 4 alt. rows. Turn hem. Trans. every alt. sts. to right. Push empty needles into A pos. T.10 knit 1 row setting m/c for pattern C.O.R. 000 T9.

**Step 2** Depress both tuck buttons. H.P. Push 3 sts. into H.P. at the end of

the next 5 (6 7) alt. rows. ret. all sts. to B. pos.

**Step 3** Dec. 1st. at left edge every 20 (22 24)th row to 18 (20 22). Knit to row 102 (116 130).

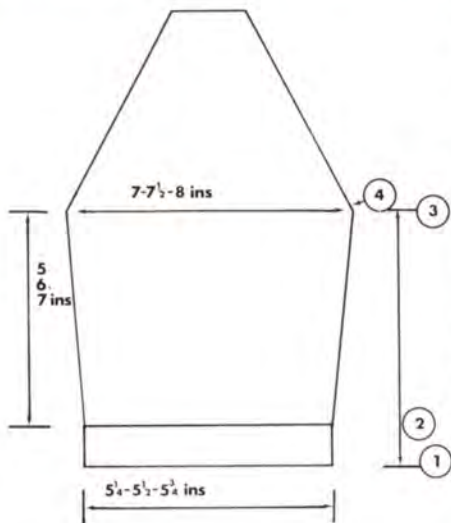
**Step 4** Knit 1 row. Cast off 1 st. at beg. of next row 000.

**Step 5** Dec. 1 st. at armhole edge every 6th row to row 54 (58 66). Cont. shaping armhole edge as before at the same time dec. 1 st. at neck edge every 4th (4th 3rd) row 5 (6 7) times.

Knit other half to match reversing all shaping by knitting 1 row at beg. of step 2.

**Front Bands:** C.O.B.H. 73 (81 91) sts. T8 inc. 1 st. at left edge every alt. row 4 times. T10 k.1 row T8 dec. 1 st. at left edge every alt. row 4 times. Turn hem. With right side of work facing m/c place left front edge onto these sts. and cast off loosely.

Rept. for right front shaping on right edge only.



## SLEEVES

**Step 1** C.O.B.H. 37 (41 45) sts. T8 knit 9 rows. Trans. every alt. st. to right, push empty needles back into A pos. T10 knit 1 row setting m/c for pattern. T9.

**Step 2** Depress both tuck buttons. Inc. 1 st. at both ends of every 22 (24 28th) row 3 times, knit to row 72 (88 102).

**Step 3** Cast off 1 st. at beg. of next 2 rows. 000.

**Step 4** Knit 6 (4 2) rows. Dec 1 st. at both ends of every 7th row 10 (11 12) times to 5 sts. Knit to row 76 (82 88). Cast off loosely.

**Collar:** C.O.B.H. 69 (77 85) sts. T8 inc. 1 st. at beg. of next 8 rows. T10 knit 1 row. T8 dec. 1 st. at beg. of next 8 rows. Turn hem. Trans. every alt. st.

to right, push empty needles into A pos. T10 knit 1 row setting m/c for pattern T9. C.O.R. 000. Depress both tuck buttons knit 40 rows. Cast off loosely. Collar fronts. C.O.B.H. 20 sts. T8 inc. 1 st. at left edge on every alt. row 4 times T10 knit 1 row T8 dec. 1 st. at left edge every alt. row 4 times turn hem. With right side of collar facing m/c place from edge onto these sts. cast off loosely. Rept. for other front shaping on right edge only.

## TO MAKE UP

Press all pieces. Join raglan seams, sew on collar. Join side and sleeve seams and mitre corners. Turn up facing for sleeve.

**Piping** In contrast yarn C.O.B.H. 3 sts. T2. Depress right tuck button. Knit 48 (52 57) ins. 122 (132 145) cms. Sew piping all around edge where the hems are turned. Collar Piping. Knit piping for 15 (16 17) ins. 38 (41 43) cm. Sew round edge of collar, inside hem.

**Frogs make 3** Knit piping 3 1/2 ins. (8cm). Join ends. Join in the centre. Sew on one edge of front band. Sew on buttons to correspond with frogs.

## HAT

C.O.B.H. 97 (105 113) sts. T8 knit 8 rows T10 knit 1 row T8 knit 8 rows. Turn hem trans. every alt. needle to right T10 knit 1 row setting m/c for pattern. 000 T9.

Depress both tuck buttons. Knit 76 (80 84) rows. Release tuck buttons, discontinue pattern K.1. row. Place sts on waste yarn. Replace sts. onto bed. 1 st. onto first needle \* 2 sts. onto next needle 1 st. onto next needle rept. from \* Knit 4 rows. Place sts. onto waste yarn. Replace sts. onto bed sts. onto each needle, Knit 2 rows. Thread yarn through remaining sts. and pull tight. Join back seam. **Piping** Knit piping as on jacket. for 13 1/2 (14 1/2 15 1/2) ins (34 (36 39) cms) sew piping round hat just above hem line. Make 2 pom poms for top.

## MITTENS

C.O.B.H. 37 (41 45) sts. Knit as for hem of hat. In patt. knit 32 (36 44) rows, release tuck buttons, discontinue pattern. Knit 1 row. Place sts. on waste yarn. Replace sts. on m/c 1 st onto first needle \* 2 sts onto next needle 1 st onto next needle rept. from \* knit 2 rows. Thread yarn through loops of rem. sts. pull tight and secure. Join seam. **Cord Ties.** Knit 2 knit cord 12 ins. long. 30 cms. Thread cords through holes just above hemline. Give final press to all garments.

# boy's fairisle sweater

## Materials

Listers Lavender 4 ply. 6 (7,8,9) 25g balls in A. 5 (5,6,6) 25g balls in B. 2 (2,2,3) 25g balls in C.

## Measurements

To fit chest sizes 61 (66,71,76) cm. (24,26,28,30 ins).

Finished measurement 63 (68,73,78) cms. (25,27,29,31 ins).

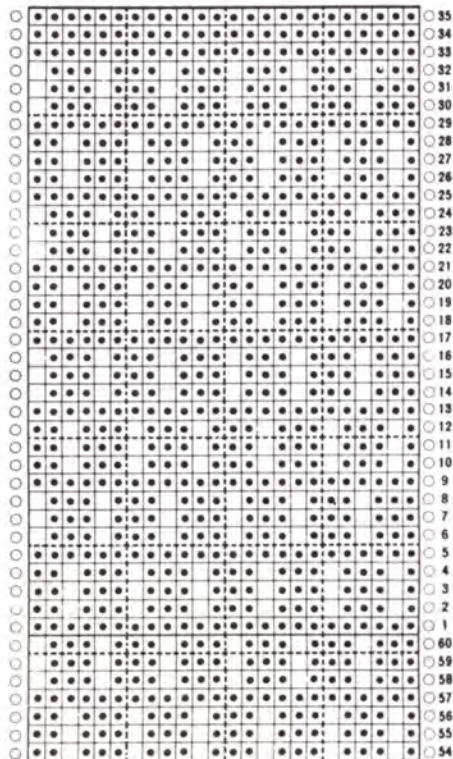
Sleeve seam 28 (33,35,41) cm. (11,13,14,16 ins).

## Tension

27 sts and 76 rows = 10 cm (4 ins) square over pattern on T7.

## Colour changes

Knit 4 rows in A, 6 rows in B, 4 rows in C, 6 rows in B. Rep these 20 rows.





0	0	0	0	0	0	0	0	0	0	0	0	0	0	8	8	0	0	0	0	0	0	0	0	0
0	0	0	0	0	0	0	0	0	0	0	7	7	0	0	0	0	0	0	0	0	0	0	0	0
0	0	0	0	0	0	0	0	0	0	0	6	6	0	0	0	0	0	0	0	0	0	0	0	0
0	0	0	0	0	0	0	0	0	0	5	5	0	0	0	0	0	0	0	0	0	0	0	0	0
0	0	0	0	0	0	0	0	0	0	4	4	0	0	0	0	0	0	0	0	0	0	0	0	0
0	0	0	0	0	0	0	0	0	0	3	3	0	0	0	0	0	0	0	0	0	0	0	0	0
0	0	0	0	0	0	0	0	0	0	2	2	0	0	0	0	0	0	0	0	0	0	0	0	0
0	0	0	0	0	0	0	0	0	0	1	1	0	0	0	0	0	0	0	0	0	0	0	0	0
1	2	3	4	5	6	7	8	9	10	11	12	1	2	3	4	5	6	7	8					

K.H. 800 MACHINE                      STEPS                      STEPS                      K.H. 588 MACHINE

□ = st st      ■ = N in tuck position

4	Knit 1 row					
3	Knit 3 rows					■
2	Knit 1 row					
1	Knit 3 rows			■		

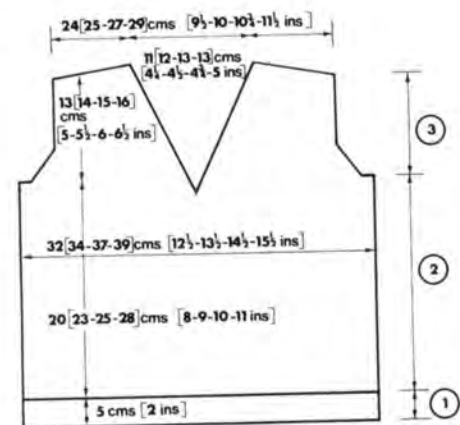
4 st repeat

### BACK

**Step 1. Ribbers:** With B cast on 85 (91,99,105) sts for 1x1 rib. + T4/4. K. 20 rows. Trans. sts to M.B. +

**Single Bed M/cs:** With waste yarn cast on 85 (91,99,105) sts as 2x1 rib. + K a few rows T5. With B K 20 rows. T8 K. 1. row T5. K 20 rows. Make hem K. 1. row +

**Step 2. T7.** Set M/C for tuck



pattern. Following colour changes K to 150 (170,190,210) rows.

**Step 3. Shape armholes:** Cast off 3 sts at beg of next 2 rows. Dec 1 st at each end of next and alt. rows 5 (6,7,8) times, then every 4th row 2 (2,3,3) times. 65 (69,73,77) sts K. to 94 (104,114,124) rows.

**Shape Shoulder and Back Neck** Cast off 3 sts at beg of next 2 rows. Push 35 (38,41,44) N's at end opposite to carriage to E pos. Cast

off 3 sts at beg. and dec 1 st at end (neck edge) on next row. Dec 1 st at neck edge on next row. Rep. last 2 rows until 4 (5,3,4) sts remain. Cast off.

Return N's to B pos. by hand. Rejoin yarn to neck edge, cast off 11 (13,15,17) sts beg next row. K to match first side.

### FRONT

K as Back to end of Step 2.

**Step 3. Dec centre st to right.** Push N's at left to E pos. Dec 1 st at neck edge on every foll 6th row at the same time cast off 3 sts at beg next row. K1 row. Dec 1 st beg of next and alt row and 5 (6,7,8) times, then every 4th row 2 (2,3,3) times.

Continue neck decs only to 26 (28,30,32) sts, then every foll 8th row to 19 (20,21,22) sts. K to 94 (104,114,124) rows.

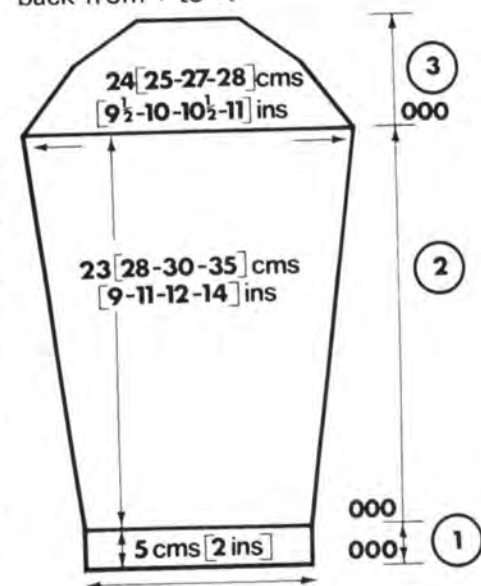
**Shape Shoulders** Cast off 3 sts at beg next and alt rows until 4 (5,3,4) sts remain.

K 1 row. Cast off.

Return N's at left to B pos by hand. Rejoin yarn to neck edge and K 1 row. K to match first side.

### SLÉEVES

**Step 1. Ribbers:** With A cast on 41 (43,45,47) sts for 1x1 rib. K as back from + to +.



# one size bed jacket

**Single bed M/cs:** With waste yarn cast on 41 (43,45,47) sts as 2x1 rib. With A, K as back from + to +.

**Step 2. T7.** Set M/C for tuck pattern. Working in A only K 14 rows. Inc 1 st at each end of next and every foll 12th (14,14,16) row 12 (13,14,15) times. 65 (69,73,77) sts. K to 170 (210,230,270) rows.

**Step 3.** Cast off 3 sts at beg next 2 rows. Dec 1 st at each end next and every alt rows 3 times, then every 4th row 8 (11,14,17) times, then every alt row 7 (6,5,4) times. Dec 1 st at each end next 4 rows. Cast off.

## TO MAKE UP:

Press all pieces.

**Back Neckband: Ribbers:** In B cast on 31 (33,35,37) sts for 1x1 rib. T2/2. K 3 rows circular. T4/4. K 20 rows. Trans N's to M.B. With right side of work facing M/c place back neck to 31 (33,35,37) sts. Cast off in B.

**Single Bed M/Cs:** with waste yarn cast on 31 (33,35,37) sts as 2x1 rib. K a few rows. T5. With B, K 20 rows. Make hem with right side of work facing M/c place back neck to 31 (33,35,37) sts. Cast off in B.

**Half Front Neckband: Ribbers** In B cast on 50 (54,58,62) sts for 1x1 rib, keeping 3 end sts at left on M/c. T2/2. K 3 rows circular. T4/4. K 2 rows. Always keeping 3 sts on M/c, dec 1 st at left (moving end sts 1 needle in) on next 7 rows. K 2 rows Inc 1 st at left on next 7 rows. Trans N's to M.B.

**Single Bed M/cs:** With waste yarn cast on 50 (54,58,62) sts as 2x1 rib keeping 3 end sts at left in B pos. K a few rows. T5. With B, dec 1 st at left (using 3 st tool) on every alt row 4 times. K 2 rows. Inc 1 st at left on every alt row 4 times. K 2 rows. Make hem. With right side of work facing M/c, place right side of front neck to 50 (54,58,62) sts. Cast off in B.

Join side, shoulder and sleeve seams. Sew in sleeves. Sew mitre at front. Press all seams.



## Materials.

12 x 25g balls. Yarn: Lister Lavenda 3 ply knitting.

## Tension.

7½ sts. and 10½ rows to 1 inch on T4. 820 Machine P'ttern Card No. 21A. 800 machine, T4. Lace pattern No. 219.

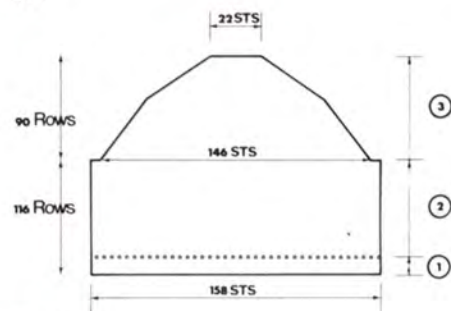
Basic Piece. Back and sleeves. Knit 3.

**Step 1.** In W.W1. cast on by machine 158 sts. Knit several rows. Change to main yarn. Knit 6 Rows. Make row of holes. Transfer every other st. to next needle. Knit to 12 rows. Make double edge.

**Step 2.** 000 Knit 30 rows. Make row of holes. (As hem) Knit 2 rows. 32 Rows. Start lace pattern. Knit to 116 Rows.

**Step 3.** 000 Shape Armhole. Cast off 6 sts at beg. next 2 Rows. Dec 1 st each

end of every other row to 52 Rows. Dec 1 st each end of every row to 90 Rows. 22 sts. Knit to 94 rows. Cast off.

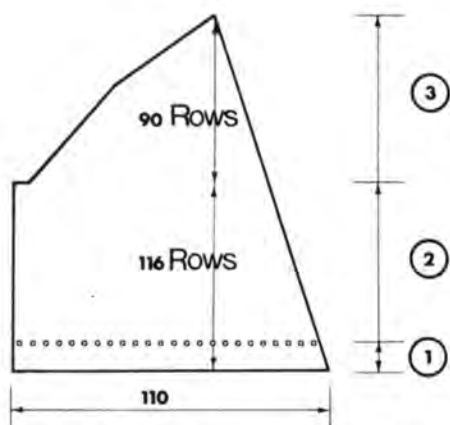


## FRONT.

Knit 2, Left and Right.

**Step 1.** In W.W1. Cast on 110 sts. Knit several rows. Change to main yarn. Knit 6 Rows. Make row of holes. Knit to 12 rows. Make double edge.

# cot blanket



**Step 2.** 000 Knit 30 rows. Make row of holes. Knit 2 rows. 32 Rows. Start lace pattern. On 1 side dec 1 st every 4 rows. This will be the neck edge, continue decreasing to 116 rows.

**Step 3.** 000 Shape armhole. Cast off 6 sts. on Armhole edge. 2 Rows. Continue neck decreasing. Dec 1 st. on armhole side every other row to 52 Rows. Dec 1 st on same side every row to 90 Rows. Knit to 94 rows. Cast off any remaining sts.

Reverse shaping for other side.

## NECK FRILL.

**Step 1.** In W.W1. Cast on by machine 24 sts. Knit several rows. Change to main yarn. Knit 6 rows. Make row of holes. Knit to 12 rows. Make double edge. Begin picking up right front edge of jacket at row 6, on left edge of knitting. (When finished frill folds back, right side of knitting is showing)  
\* Knit 10 Rows. Hold 3 sts. every other row from left edge. Count only full rows. Repeat from star to end. At 36 rows make row of holes to match those on front and around waist. Continue knitting 10 rows and holding, picking up right front edge, then across the top of the right sleeve head, across back neck, across left sleeve head and down left front. At waist make row of holes again. Continue for 36 full rows. Knit 6 rows, make row of holes, knit 6 rows, make double edge as right side. Cast off.

## TO MAKE UP

Press all pieces.

**Step 1.** Stitch up shoulder seams as raglan sleeve.

**Step 2.** Stitch up side and sleeve seams.

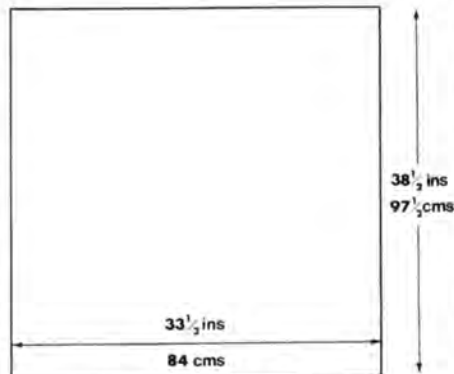
**Step 3.** On 5 Ns Knit tubes for waist draw string and sleeve drawstrings. For waist approx. 40" long. 2, each 18" long for Sleeves. Thread draw strings through, folding back neck frill so that it is held to fronts so that for last 11 holes on each front the Draw string goes through the front and the frill.

## Materials

1 Cone Argyll Ferntex. 4 yds blanket binding.

## Measurements

33½ ins x 38½ ins (84 cm x 97½ cm).



**Tensions** 5½ sts x 11¼ rows = 1 inch

11 sts x 22½ rows = 5 cm.

This garment is knitted in full needle tucked rib. and can only be done with a ribbing attachment.

820 patt. card No. 359 from book 800 patt. card No. 483 from book 588 patt. card No. 41 from book

Cast on for full needle rib 165 needles on main bed. Tension 2/2. K.4 rows tub. Tension 4/4. Set m/c for pattern. K.1 row. Depress both tuck buttons. Knit 410 rows. Cast off.

## TO MAKE UP

Sew binding around edge either by machine or by hand. Press gently.



## Materials

18 (19,21,23) balls Lee Target  
POODLE

## Measurements

To fit 32 (34,36,38) in bust. 81  
(86,91,96.5) cm.

Sleeve seam 16½ (17, 17½, 18) ins  
42 (43,44.5, 45.5) cms

Length from shoulder 31 (31½, 32,  
32½) ins. 75.5 (80,81,82.5) cms.

## Tensions

6½ nds x 10 rows = 1 inch

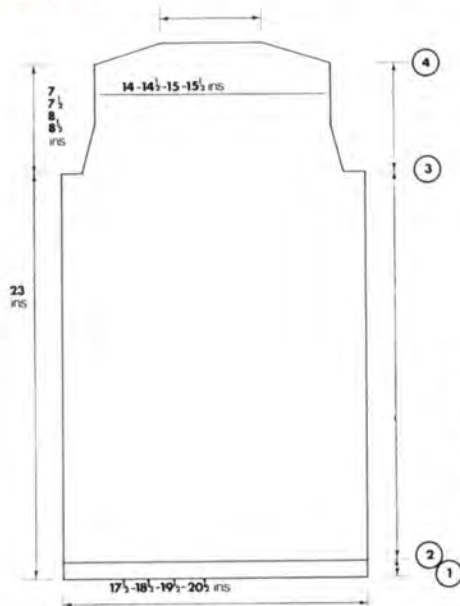
13 nds x 20 rows = 1 inch

T.D. approx. 10

## PATTERNS NOTE

This garment is knitted on alt. needles, when shaping the number to cast on, cast off, dec. or inc. refers to the needles **not** to the sts. at times you will have the 2 end needles in W.P., when shaping the sleeve seam, place alt. inc. needle into N.W.P. as required.

As this yarn is difficult to cast off with, we suggest you use a toning yarn on cast off edges this will not show when the garment is sewn together.



## BACK

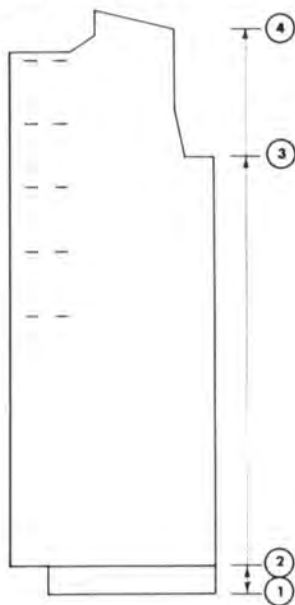
**Step 1.** C.O.B.H. 113 (119,125, 133) sts. Please every alt. needle in N.W.P. T.8. K.20 rows. 000

**Step 2.** T.10. K.230 rows. Cast off 4 (4,6,6) sts. at beg of next 2 rows. 000

# ladies hooded jacket

**Step 3.** Dec. 1 st. at both ends every alt row 4 times. Dec. 1 st at both ends every 3rd row 2 (4,4,6) times. 93 (95,97,101) sts. K.2 rows 70 (76,80,86).

**Step 4.** Cast off 6 sts at beg of next 6 rows. Cast off 6 (6,7,8) sts at beg of next 2 rows. Cast off rem. 45 (47,47,49) sts. (See notes).



## FRONT (left)

**Step 1.** C.O.B.H. 63 (67,69,73) sts. K as for Step 1 of back.

**Step 2.** T.10 K.1 row. Cast on 12 sts at beg of next two. K.2 rows 230. Cast off 4 (4,6,6) sts. at beg. of next row. K.1 row. 000

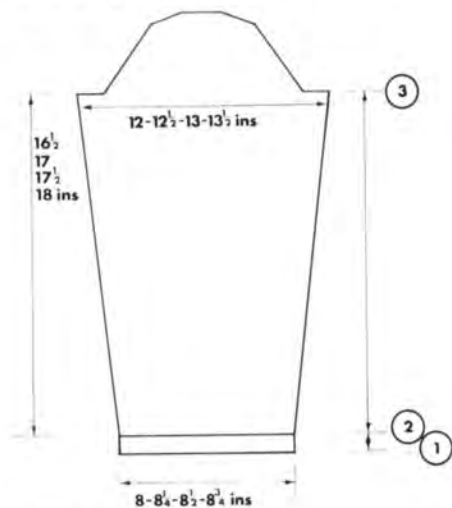
**Step 3.** Dec. 1 st at right edge (armhole edge) every alt row, 4 times. Dec. 1 st. at right edge every 3rd row 2 (4,4,6) times. K.2 rows 43 (49,53,59). Cast off 26 sts at beg of next row. K.1 row. Cast off 4 sts at beg of next row. Dec. 1 st at left edge (neck edge) 11 (13,12,13) times. To 24 (24,25,26)

sts. K to row 70 (76,80,86).

**Step 4.** Cast off 6 sts at beg of next 3 alt. rows. Cast off 6 (6,7,8) sts at beg of next row.

## Front (right)

Knit as for left front making buttonholes on rows 112 (118,122,128) and every foll. 40th row 5 times over 5,6,7,8/17,18,19,20th needs and reversing all shaping.

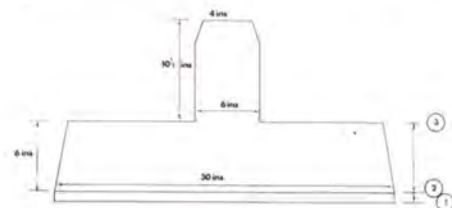


## SLEEVE

**Step 1.** C.O.B.H. 55 (57,59,61) sts. K. as for Step 1 of back.

**Step 2.** T.10. inc. 1 st. at both ends of every 12th row 13 (13,14,14) times to 81 (83,87,89) sts. K to row 164 (170,174,180) Cast off 4 (4,6,6) sts at beg of next 2 rows. 000

**Step 3.** Dec. 1 st at both ends of every alt. row 8 (7,6,5) times. Dec. 1 st at both ends of every 3rd row 8 (9,10,11) times. Cast off 2 sts at beg of next 10 rows. Cast off rem. sts.



## HOOD

**Step 1.** C.O.B.H. 199 sts. K as for Step 1 of back.

**Step 2.** T.10. Dec. 1 st at both ends every 10th row 5 times, K to row

60. Cast off 75 sts. at beg of next 2 rows. 000

**Step 3.** K.70 rows. Dec. 1 st. at both ends of every 5th row 6 times. K to row 108. Cast off rem. sts.

#### **BELT**

C.O.B.H. 23 sts. Place every alt.

needle in N.W.P. T.10. K approx to 60 ins. Cast off. See notes.

#### **TO MAKE UP**

Press all pieces lightly. Join shoulder seams and side seams. Set in sleeves. Turn up hem around bottom. Fold front facing in and

sew into position lining-up button-holes. Turn up cuffs. Fold facing of hood, in and sew into position. Attach hood to neck edge. Fold belt in half length-ways. Finish off ends. Crochet two belt carriers. Sew into position. Sew on buttons.



# musical money savers!

Introducing the very latest CAROUSEL radio cassette recorders recently launched onto the UK market and now offered to UK subscribers at savings that will really bring music to your ears.

Classical, popular, rock — whatever your own musical pleasure you'll be proud to own one of these super CAROUSEL radio cassette recorders that offer you musically, the best of both worlds — a selection of radio bands, the facility for playing pre-recorded cassette tapes, or even your own dulcet tones, all faithfully reproduced through these exciting, go anywhere, musical companions.

Music's still the world's greatest entertainer and the quality of these CAROUSEL units will ensure you really enjoy your music — wherever you are!

So be sure to take advantage of this offer NOW, TODAY because savings like these will soon deplete our stocks. All the prices quoted are inclusive of VAT and all orders must be accompanied by the correct cash amount.



**MODEL R2000  
AM/FM RADIO CASSETTE  
RECORDER**

### AM/FM Radio

Built-in radio receives broadcasts on MW, and FM bands, covering a wide range of radio stations at home and overseas. Push-buttons provide

speedy band selection and the built-in telescopic aerial gives clear FM reception.

### Condenser Microphone

The sensitive built-in condenser microphone ensures easy and accurate recordings. There is also the facility for using an external microphone.

### Automatic Tape Shut-Off

In playback and record mode only, when the end of a tape is reached all tape functions shut-off automatically.

### Automatic Recording Level

The unit has an automatic recording level control so no manual adjustment of recording levels is necessary.

### Sliding Controls

The unit uses sliding treble/bass and volume controls for smooth adjustment.

### Recording Level Meter

The level meter indicates recording level from the built-in radio or an outside source and also the power level of the batteries.

### Battery/Mains Operation

**RRP £52.95**

**OFFER PRICE £34.95**

**SAVE £18.00**



**MODEL R3000  
3 BAND RADIO CASSETTE  
RECORDER**

### 3 Wave Band Radio

Built-in radio receives broadcasts on MW, FM and LW bands bringing a wide range of radio stations to your fingertips. Push-buttons provide instant wave band selection and the built-in telescopic aerial gives clear FM reception.

### Condenser Microphone

The sensitive built-in condenser microphone ensures easy and accurate recordings. There is also the facility for using an external microphone.

### Automatic Tape Shut-Off

In playback and record mode only, when the end of a tape is reached tape functions shut-off automatically.

### Automatic & Manual Recording

The unit has an automatic recording level control circuit which can be switched off to allow manual adjustment of recording levels.

### Automatic Frequency Control

Operation of the AFC switch lessens drift and provides for better FM reception.

### Sliding Controls

The unit uses sliding treble/bass and volume controls for smooth adjustment.

### Sleep Switch

Set the sleep switch and you can fall asleep listening to your favourite station with the knowledge the set will turn itself off!

### Recording Level Meter

The level meter indicates recording level from the built-in radio or outside source and also the power level of the batteries.

### Integrated Circuitry

The use of integrated circuits in the amplifier eliminates the need for an output transformer and provides better frequency response, lower distortion, and compactness.

### Battery/Mains Operation

**RRP £67.95**

**OFFER PRICE £44.95**

**SAVE £23.00**

We think you'll agree these really are attractive offers but please order quickly whilst stocks are available. All the prices quoted include VAT and are made on the basis of cash-with-order and are only available to members on the UK mainland.

To avoid you having to cut your magazine more than is necessary we have not included a coupon but leave it to you to order the machine you require enclosing a cheque/P.O. for the correct amount made payable to The Jones Sewing Machine Co. Ltd. Be sure to *print* your name and address clearly to assist our despatch department.

Send your order and money to the following address:

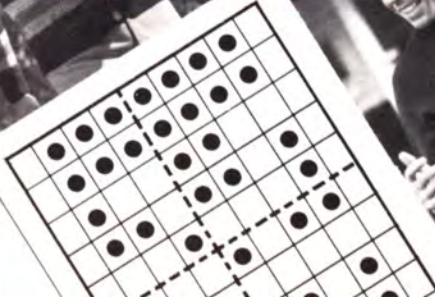
CAROUSEL OFFER  
STITCHIN' TIME  
JONES SEWING MACHINE CO.  
LTD.,  
Britannia House, 964 High Road,  
Finchley, London, N12 9SF.



Jones  
Jones  
Jones  
Jones



# BASIC Patterns



This section contains a basic set of patterns from a 20 inch chest to a 42 inch chest, it can be varied in many ways by adding lace, fair isle, motifs, or cables, and by using different kinds of raglan shaping these variations are all interchangeable.

## TENSIONS

These patterns are all for 4 ply wool with a tension of 7½ sts x 9½ rows to 1 inch. T.D. approx. 7, this is only a guide please check your tension carefully as it will vary with different M/cs and different types of yarn these garments were made with Argyll Olympic 4 ply wool and Lister Lavenda 4 ply.

## MATERIALS AND MEASUREMENTS

Chest to fit	20	22	24	26	28	30
Back length	13½	15	16½	18	19½	20½
Sleeve seam long	9	10½	11½	12½	14	15½
Sleeve seam short	3¾	3½	3¾	4	4¼	4½
No of grams	175	200	225	250	300	350

Chest to fit	32	34	36	38	40	42
Back length	24	25¼	26½	27¼	28¾	30
Sleeve seam long	18	18½	19½	20	20½	21
Sleeve seam short	4¾	5	5¼	5½	5¾	6
No of grams	350	400	425	475	525	575

## NOTE

On ladies short sleeve jumpers knit approx. 20 less on the back and front than stated in the pattern.

## WELTS (RIBBING)

**Ribbers** T5/5. Knit No. of rows as stated in pattern transfer to main bed 000.

**Single-Bed M/cs.** T.4. Using alt. needles only knit double the No. of rows stated in the pattern turn hem. 000.

## VARIATIONS

### RAGLAN SHAPING

**Shell Shaping** (as shown on mans cable sweater)

\* Knit 6 rows, dec. 3 sts, each end by transferring the 2, 3, 4 sts. onto the 5th needle and move the end st. 3 needles in, push empty needles into N.W.P. \* Report. from \* to \*.

**Fully Fashioned** (as shown on ladies lace cardigan)

\* Knit 2 rows, using the 3 pronged trans. tool move the 3 end sts. in 1 needle result 2 sts. on the 3rd needle push empty needle into N.W.P. \* Rept. from \* to \*.

### FAIR ISLE

Use tension 1 size larger than M.T. over fair isle pattern only. Fair isle Yolk chart "D" start pattern after 12 rows of raglan shaping. Fair isle Band chart "A" of "F" start pattern after 12 rows. 820 M/cs.

Chart "A" is card No. 7 from the basic set that came with your M/c.

## LACE

**Lace band on ladies cardigan** 820 Chart "B" 1 rpt. 800 patt. 188 from book 2 rept. 588 patt. 859 from book 2 rept. Start patt. after 4 rows.

**Lace band on ladies top.** 820 Chart "C" 1 rept. 800 patt. 725 from book 2 rept. 588 patt. 857 from book 2 rept. Start pattern after 18 rows.

**Lace insert.** 820 Chart "E". 800 patt. 179 from book. 588 patt. 691 from book. Start patt. after 10 rows of raglan shaping. Method Knit pattern over centre 25 sts. only starting with the centre pattern and inc. 1 patt. each side every 6 rows to 25 sts.

## MOTIFS

Charts have been given for the 820 m/c for 800 and 588 m/c follow these charts selecting needles manually. Flower Pot, start after 12 rows, reverse pattern for 1 front. Chart H. Rocket, Start pattern after 30 rows. Chart G. Bird, Start pattern after 16 rows. Chart J.

## CABLES

Cables look more effective when they are well separated, this can be achieved by stripping or laddering the 1st stitch both sides of every cable all the way down to the start of the st.st. and picking it up again with a latch hook on the purl side, twist cables every 10 rows, the cable setting used here is as follows:

O = centre bed, x = stripped or laddered stitch, X = normal sts,  $\bar{c}$  = Cable twisted stitches.

## PICOT EDGE

With Rib.T. knit no. of rows stated in pattern T7 knit 1 row trans. every alt. st. to right. Knit 1 row Rib.T. knit no. of rows stated in pattern, turn hem. 000.

## GARMENTS FOR CHILDREN

To fit	20	22	24	26	28	30 in chest
<b>BACK</b>						
Cast on	85	93	99	107	115	121 sts.
Knit 22 rows rib. 000						
Knit	58	66	80	90	100	110 rows
Cast off	2	2	3	3	3	4 sts.
at beg. of next 2 row 000						
<b>Shape Raglan</b>						
Dec. 1 st. at both ends every alt. row until	27	29	33	35	37	41 sts. rem.
Put sts. on waste yarn						
<b>SLEEVES (long)</b>						
Cast on	47	49	51	53	55	57 sts.





Knit until R/C reads 22 24 26 28 30 34  
 Cast off  
 at beg. of next 2 rows 2 2 3 3 3 4 sts  
 000.

Shape Raglan as for long sleeve to 11 sts.

To fit 20 22 24 26 28 30 in. chest  
**FRONT FOR ROUND NECK SWEATER**

Knit as for back  
 until 45 47 51 53 61 65 sts. rem.

Thread up centre 15 17 21 23 21 25 sts.

Work on right half only,  
 cont. to dec. at armhole edge  
 as before at the same time dec.

1st. at neck edge every 3rd row 6 6 6 6 8 8 times

Work opp. side to match  
 rev. all shaping.

**FRONT FOR "V" NECK SWEATER**

Knit as for back to start of  
 raglan shaping. Dec. centre  
 st. to right. Working on  
 right side only shape raglan  
 as for back at the same time  
 dec. 1 st. at neck edge

every	4	4	3	3	4	3rd row
	11	12	4	2	18	8 times
then every	5	5	4	4	0	4th row
	2	4	12	15	0	12 times

Work opp. side to match  
 reversing all shaping.

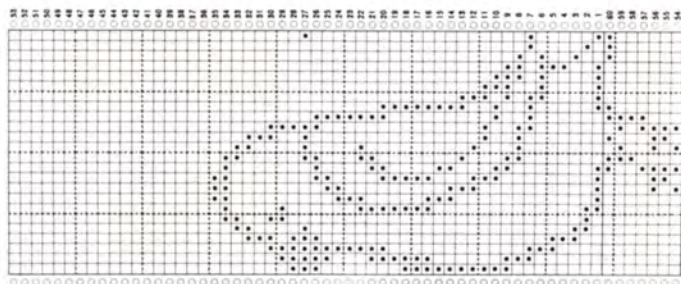
**NECK BAND FOR ROUND NECK SWEATER**

Cast on 94 98 106 110 120 128 sts

Knit 12 rows rib

For Polo neck Knit 50 50 50 56 56 56 Rows

Place onto neck edge evenly and cast off loosely.



Knit 22 rows rib. 000  
 Inc. 1 st. at both ends  
 every 6 6 6 6 6 7th row  
 until there are 69 75 77 83 89 91 sts.  
 Knit until R/C reads 72 84 96 108 120 134 rows  
 adj. length here.

Cast off 2 2 3 3 3 4 sts

at beg of next 2 rows 000.

Shape raglan as for back  
 until 11 sts remain.

Thread up on waste yarn.

**SLEEVES (short)**

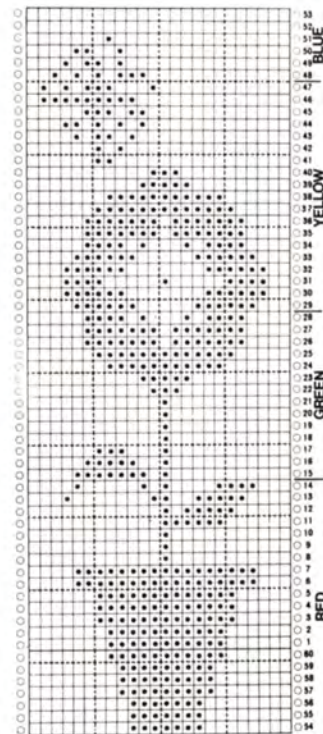
Cast on 55 61 63 67 73 75

Knit 12 rows rib. 000

Inc. 1 st. at both ends

of every 3 3 3 3 3 4

until there are 69 75 77 83 89 91



### NECK BAND FOR "V" NECK SWEATER

#### Ribbers

Cast on 107 117 121 131 141 145

Knit 12 rows at the same time inc. 1 st. at both ends of every alt. row.

Place onto neck edge evenly cast off loosely. Join mitre.

#### Single-Bed M/cs.

Cast on 119 129 133 143 153 157 sts

Knit 12 rows at the same time dec. 1 st. at both ends of every alt. row. Then knit 12 rows at the same time inc. 1 st at both ends of every alt. row.

Place onto neck edge evenly, cast off loosely, join mitre.

### FRONT FOR ROUND NECK CARDIGAN

Cast on 41 45 47 51 55 57 sts

Knit 22 rows rib. 000

Knit 58 66 80 90 100 110 rows

Cast off 2 2 3 3 3 4 sts

at beg. of next row

K.1 row 000.

Shape raglan as for back on right side only

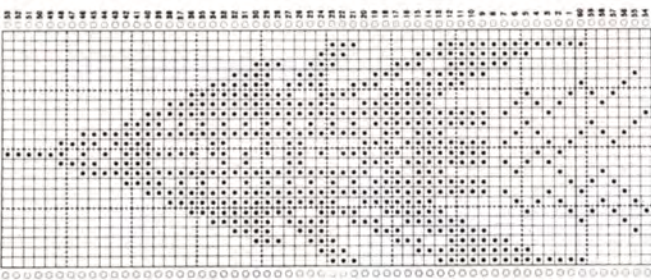
until 21 22 23 24 28 29 sts rem

Cast off at neck edge 6 7 8 9 8 9 sts

Cont. shaping raglan edge at the same time dec. 1 st. at neck edge every 3rd row

6 6 6 6 8 8 times

Work other half to match rev. all shaping.



### FRONT FOR "V" NECK CARDIGAN

Knit as for round neck

cardigan to beg. of raglan shaping. 000 Shape raglan as for back on right side only at the same time dec. 1 st at neck edge every 5th row

6 8 4 6 8 4 times

then every 4th row 6 5 10 9 8 13 times

Work other half to match rev. all shaping.

### NECKBAND FOR ROUND NECK CARDIGAN

Cast on 85 89 95 99 107 113 sts

Knit 12 rows rib.

Place onto neck edge evenly cast off loosely.

#### Front Band

Ribbers Buttonhole Band

Cast on 101 111 121 131 141 149

Knit 6 rows make 7

buttonholes evenly spaced.

Knit 6 rows. Place front band evenly onto a front, cast off loosely.

#### Buttonband

Knit as for buttonhole band omitting buttonholes.

#### Single-Bed M/cs.

Knit as for ribbers making buttonholes on row 6 and 18.

### BAND FOR "V" NECK CARDIGAN

#### Ribbers

Cast on 15 sts. for full needle rib. T5/5. Sl. 1. Make

5 buttonholes every 17 19 22 24 27 28 rows

over centre 3 needles

starting after 4 rows

Knit until R/C reads 288 314 342 370 400 410

approx.

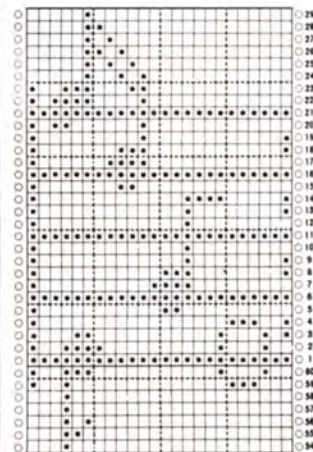
#### Single-Bed M/cs.

Cast on 16 sts. T5. knit

as for ribbers making

buttonholes over 3,4,5

and 12,13,14 needles.



Grid for K.H. 800 MACHINE with columns labeled 1-12 and rows labeled 1-12. Includes a legend for 'SELLS' and 'K.H. 800 MACHINE'.

GARMENTS FOR WOMEN OR MEN

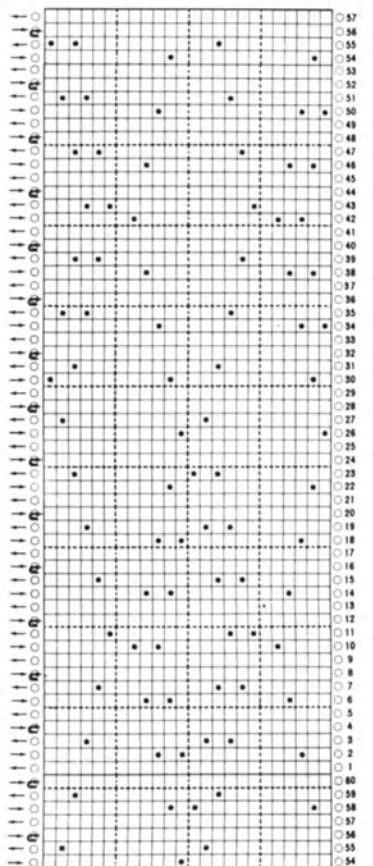
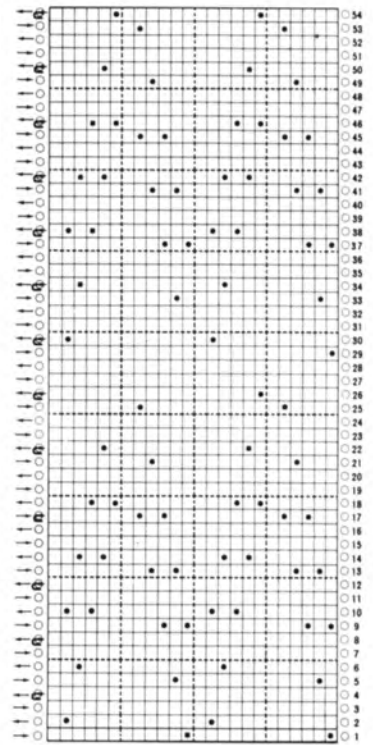


Grid for K.H. 800 MACHINE with columns labeled 1-12 and rows labeled 1-12. Includes a legend for 'SELLS' and 'K.H. 800 MACHINE'.



Grid for K.H. 800 MACHINE with columns labeled 1-12 and rows labeled 1-12. Includes a legend for 'CHANGE TO CONTRAST COLOUR', 'SELLS', and 'K.H. 800 MACHINE'.

Grid for K.H. 800 MACHINE with columns labeled 1-12 and rows labeled 1-12. Includes a legend for 'CHANGE TO CONTRAST COLOUR', 'SELLS', and 'K.H. 800 MACHINE'.



To fit 32 34 36 38 40 42 in. chest

**BACK**

Cast on 129 135 141 149 157 165 Sts.

Knit 28 rows rib. 000

Knit 130 136 140 142 150 156 rows

Cast off 4 4 4 4 5 5 sts

at beg. of next 2 rows. 000

**Shape Raglan**

Dec. 1 st. at both ends

every alt. row until 43 43 43 45 45 47 sts rem.

Put sts. on waste yarn.

**SLEEVES (long)**

Cast on 59 63 65 67 69 71 sts

Knit 28 rows rib. 000

Inc. 1 st. at both ends

every 7 7 7 6 6 6th rws

until there are 97 103 109 117 123 129 sts

Knit until R/c reads 154 158 166 172 176 180 rows

adj. length here.

Cast off 4 4 4 4 5 5 sts

at beg. of next 2 rows 000

Shape Raglan as for back

until 13 sts. remain,

Thread up on waste yarn.

**SLEEVE (short)**

Cast on 81 85 89 93 97 101 sts.

Knit 14 rows rib. 000

Inc. 1 st. at both ends

of every 4 4 3 3 3 3 rows

until there are 97 103 109 117 123 129 sts

Knit until R/C reads 36 38 40 42 44 48 rows

Cast off 4 4 4 4 5 5 sts

at beg. of next 2 rows 000

Shape raglan as for long

sleeve to 13 sts.

To fit 32 34 36 38 40 42 in. chest

**FRONT FOR ROUND NECK SWEATER**

Knit as for back

until 67 67 67 69 69 71 sts. rem.

Thread up centre 27 27 27 29 29 31 sts.

Work on right half only

cont. to dec. at armhole

edge as before at the same

time dec. 1 st. at neck edge

every 3rd row 8 times.

Work opp. side to match

reversing all shaping.

**FRONT FOR "V" NECK SWEATER**

Knit as for back to start

of raglan shaping. Dec.

centre st. to right.

Working on right side only

shape raglan as for back at

the same time dec. 1 st. at

neck edge every 3 4 4 4 4 4th row

6 12 15 14 8 7 times

then every 4 0 5 5 5 5th row

15 0 6 8 14 16 times

Work opp. side to match

rev. all shaping.

**NECKBAND FOR ROUND NECK SWEATER**

Cast on 137 137 137 141 141 145 sts

Knit 14 rows rib.

For Polo Neck

Knit 66 66 66 70 70 70 rows rib.

Place onto neck edge evenly and cast off loosely.

**NECKBAND FOR "V" NECK SWEATER**

32 34 36 38 only

**Ribbers**

Cast on 159 167 175 185

Knit 14 rows at the same

time inc. 1 st. at both ends

of every alt. row.

Cast on

97 103 sts

Knit as for smaller sizes shaping on right edge only, place from centre

"V" to centre back evenly, rep. reversing shaping. Place onto neck edge

evenly, cast off loosely, join mitre.

**Single-Bed M/cs.**

To fit 32 34 36 38 40 42

Cast on 173 181 189 199

Knit 14 rows at the

same time dec. 1 st. at

both ends of every alt.

row. Then knit 14 rows

at the same time inc. 1 st.

at both ends of every alt.

row.

Cast on

104 109 sts

Knit as for smaller sizes shaping on right side only, place from centre "V"

to centre back evenly. rept. reversing all shaping. Place onto neck edge

evenly, cast off loosely, join mitre.

**FRONT FOR ROUND NECK CARDIGAN**

Cast on 61 65 67 71 75 79 sts

Knit 28 rows rib. 000

130 136 140 142 150 156 rows

Cast off 4 4 4 4 5 5 sts

at beg. of next row 000

Shape raglan as for back

on right side only until 30 31 30 31 31 32 sts rem.

Cast of at neck edge 10 11 10 11 11 12 sts

Cont. shaping raglan edge

at the same time dec. 1 st.

at neck edge every 3rd

row 8 times

Work other half to match

rev. all shaping.

**FRONT FOR "V" NECK CARDIGAN**

Knit as for round neck cardigan

to beg. of raglan shaping 000

Shape raglan as for back

on right side only, at the

same time dec. 1 st. at neck

edge every 4 4 5 5 5 5th row

12 11 18 18 12 12 times

then every 5 5 0 6 6 6th row

6 8 0 1 7 8 times.

Work other half to match

reversing all shaping.

**NECKBAND FOR ROUND NECK CARDIGAN**

Cast on 127 127 127 131 131 135 sts

Knit 14 rows. rib.

Place onto neck edge

evenly, cast off loosely.

**Front Band Ribbers: Button Band**

Cast on 163 171 175 183 191 199 sts

Knit 7 rows make 8 buttonholes evenly spaced, knit 7 rows. Place band evenly onto a front, cast off loosely.

**Button band**

Knit as for buttonhole band omitting buttonholes.

**Single-Bed M/cs. (Buttonhole Band)**

Cast on 163 171 175 183 191 199 sts

Knit as for ribbers making buttonholes on row 7 and 21.

Button band, as buttonhole band omitting buttonholes.

**BAND FOR "V" NECK CARDIGAN**

**Ribbers**

Cast on 17 sts. for full needle rib. T.5/5. Sl.1

Make 7 buttonholes every 20 21 22 23 24 25 rows over centre 4 N.s starting after 4 rows

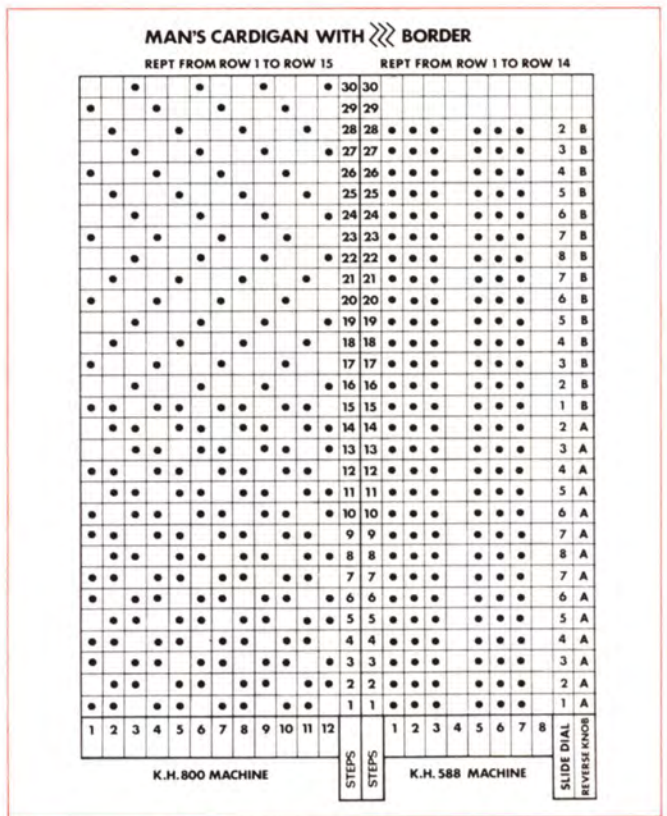
Knit until R/C reads approx.

516 532 540 556 572 588 rows

**Single-Bed M/cs**

Cast on 18 sts. T5. knit as for ribbers making buttonholes over

4,5,6 and 13,14,15 needles.



**Jones** Jones Sewing Machine Co. Ltd., Shepley Street, Guide Bridge, Audenshaw, Manchester M34 5JD

# men's lumber jacket

## Measurements

To fit 101.5 (106.5 112 117) cms. chest  
40 (42 44 46) inch chest.

Sleeve seam 48 (49 50.5 51.5) cms.

Centre back length 70 (71 72½ 73½) cms.

## Materials

4 (4 4 5) cones **Fantina** 4 ply. (100 gms. or 3½ oz. each cone), by 3 **Suisses**. This year is normally available from large wool stores if unavailable may be obtained from **Filature de l'Espierres**, Saffron Way, Leicester LE2 6UP approx. price 80p per cone.

24 (24 26 26) inch zip.

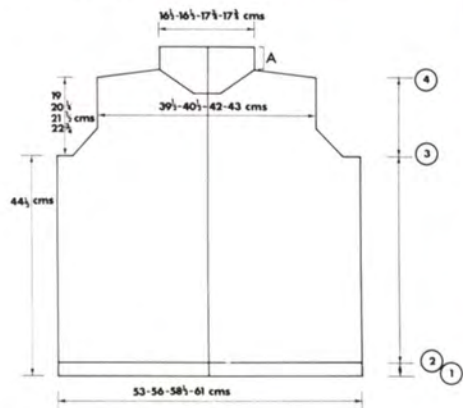
## Tensions

14 sts. × 19 rows = 5 cms. on sts.st.  
T.D. approx. 820 = 8 800 = 7.1 588 =

10½ sts. × 32 rows = 5 cms. over patt.  
820 = T.D. approx 9 card No 2 from basic set.

800 = T.D. approx from graph

588 = T.D. approx from graph



## BACK

**Step 1 Ribbers** Cast on 111 (117 121 127) sts. for 1/1 rib. T1 knit 2 rows Tub. T4/4 knit 30 rows. Trans all needles to main bed, set m/c for patt. T9 knit 1 row. 000

## S/bed M/cs

With waste yarn cast on 111 (117 121 127) sts. on alt. needles. Knit a few row waste, with main yarn T5 knit 59



rows. Turn hem set m/c for patt T9 knit 1 row. 000

**Step 2** Knit 240 rows in tuck st. patt. Cast off 7 sts. at beg of next 2 rows. 000.

**Step 3** Dec. 1 st at both ends of every 5th row 7 (9 10 12) times. 83 (85 87 89) sts. Knit to row 120 (128 136 144).

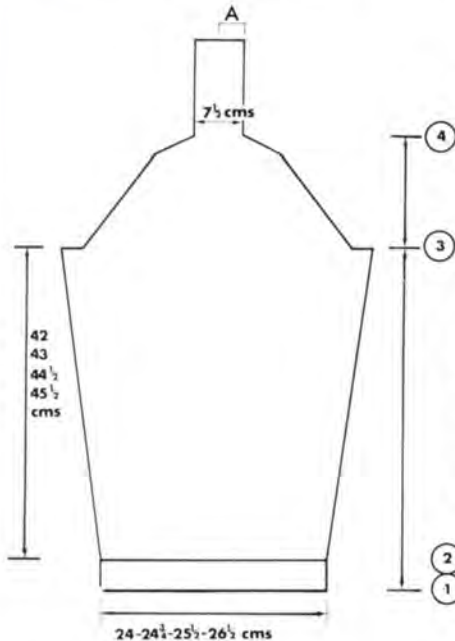
**Step 4** Cast off 3 sts. at beg. of next 16 (14 14 12) rows then 0 (4 4 4) sts. at beg of next 0 (2 2 4) rows. 35 (35 37 37) sts. Knit 24 rows. Thread up sts. onto waste yarn.

## FRONT

**Step 1** Cast on 55 (57 59 61) sts. knit as for back.

**Step 2** Knit 240 rows in tuck st. patt. Cast off 7 sts. at beg. of next row knit 1 row.

**Step 3** Knit as for back shaping on right edge only to row 112 (120 128 136) 113 (121 129 137) cast off 7 sts. at beg of next row. cont. shaping as for back on right edge only at the same time dec. 1 st. at neck edge every alt. row 10 (9 10 9) times. Knit left front to match reversing all shaping.



## SLEEVE

**Step 1 Ribbers** Cast on 67 (69 71 73) sts. for x1 rib T1/1 knit 2 rows tub. T4/4 knit 60 rows. Trans. all needles to main bed. T8 knit 1 row. 000.

**S/bed/M/cs** With waste yarn cast on 67 (69 71 73) sts. on alt. needles knit a few rows waste. With main yarn T5 knit 59 rows. Turn hem. T8 knit 1 row 000.

**Step 2** Inc. 1st. at both ends of every 7th row 21 (21 22 23) times knit to row 156 (162 166 170) adj. length here. Cast off 9 sts. at beg of next 2 rows.

**Step 3** Dec. 1 st. at both ends of every alt. row 8 (7 7 9) times then every 3rd row 12 (14 16 16) times. Cast off 3 sts. at beg of next 4 rows. Then cast off 4 sts. at beg. of next 4 rows. (23 sts.) 000.

**Step 4** Knit 44 (46 46 48) rows. Cast off loosely.

## FRONT BANDS

C.O.B.H. 122 (125 128 131) sts. T7 knit 3 rows T9 knit 1 row T7 knit 3 rows. Turn hem. With right side of work facing m/c. Place one front edge evenly onto these sts. cast of loosely. Rept. for other front edge.

## TO MAKE UP

Join edges of strap sleeves to top of fronts and back, sew half of cast off edge on top of sleeve to edge of back extension A to A (see chart). Join rem. of set in sleeve. Do not press.

## COLLAR

**Ribbers** Cast on for 1 x 1 rib 179 (179 183 183) sts. T1/1 knit 2 rows tub. T4/4 knit 46 rows. Trans. all needles to main bed.

**S/bed/M/cs** With waste yarn cast on 179 (179 183 183) sts. on alt. needles knit a few rows waste. With main yarn T5 knit 92 rows. Turn hem. With right side of work facing m/cs place neck edge onto these sts. 73 (73 77 77) sts. to back neck and 53 sts. down each side and front neck. Cast off loosely. Join rem. seams sew in zip.

# long-short lacy dresses

## Materials

Argyll Tricel/nylon 4 ply.  
Long 22 (24,26,28) balls Col. A.  
Short 13 (15,17,19) balls Col. A.  
1 ball Col. B. 5 buttons. Length of petersham, hook and eye.

## Measurements

To fit 24 (26,28,30) inch chest 61 (66,71,76) cms.  
Sleeve seam 8 1/2 (9 1/2, 10 1/2, 11 1/2) ins. 21.5 (24,26.5,29) cms.  
Skirt length long 26 (28 1/2, 31 1/2, 34 1/2) ins. 66 (71,78.5,87.5) cms.  
Skirt length short 13 1/2 (15,16,17 1/2) ins. 34.5 (38,40.5,44.5) cms.  
Bodice length 9 1/2 (10 1/2, 11 1/2, 12 1/2) ins. 24 (24.5,28,30.5) cms.

## Tensions

st.st. 8 st x 11 1/2 rows = 1 inch T.D. approx 6.  
Lace patt. 8 st x 10 1/2 rows = 1 inch T.D. approx 8.

## Patterns

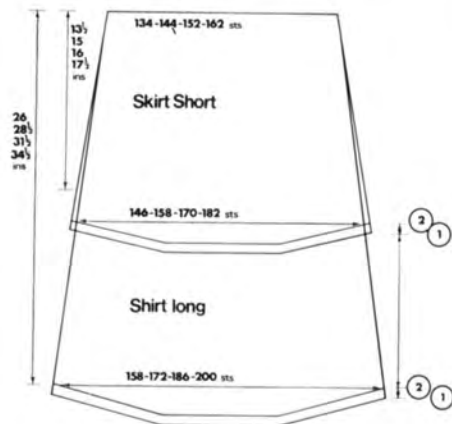
Long dress 820 patt no. 157 from book  
Long dress 800 patt no. 181 from book  
Long dress 588 patt no. 716 from book  
Short dress 820 patt no. 534 from book  
Short dress 800 patt no. 200 from book  
Short dress 588 patt no. 779 from book

## SKIRT LONG - FRONT

**Step 1.** C.O.B.H. in Col. A 158 (172,186,200) sts T8 knit 6 rows. Col B. k 3 rows, trans. every alt. st. to right for picot edge, K 2 rows. Col. A knit 6 knows. Turn hem k 1 row. Start lace pattern. Push 10 sts in H.P. at the end of the next 10 rows. (Note sts. in H.P. will have to be placed on waste yarn to enable lacer to work). Ret. all sts. to m/c C.O.R. 000.

			O	O		O	O	O	O	O	4	4		O	O	O	O										
			O	O		O	O	O	O	O	O	3	3		O	O	O	O									
			O	O	O	O	O	O	O	O	2	2	O	O	O	O											
			O	O	O	O	O	O	O	O	1	1	O	O	O	O											
<b>TUCK</b> ←			1	2	3	4	5	6	7	8	9	10	11	12			1	2	3	4	5	6	7	8			<b>TUCK</b> →
<b>K.H. 800 MACHINE</b>													<b>STEPS</b>		<b>K.H. 588 MACHINE</b>												





**Step 2.** Cont. in lace pattern. Dec. 1 st. at both ends of every 22 (21,19,18)th row 12 (14,17,19) times knit to row 266 (296,326,356) place rem. 134 (144,152,162) sts. on waste yarn.  
**BACK**

Knit as for front to row 236 (266,296,326) make back opening, by working on sts. to right of centre 0, placing sts. to left on waste yarn. **Make note of patt row and shape on right edge only.** Ret. sts. from left to m/c knit to match rev. all shaping.

#### SKIRT SHORT FRONT

**Step 1.** C.O.B.H. 146 (158,170,182) sts. Knit as for step 1 of long skirt.

**Step 2.** Cont. in lace patt. dec 1 st at both ends of every 22 (21,18,17)th row 6 (7,9,10) times. Knit to row 136 (150,162,176). Place rem. 134 (144,152,162) sts. on waste yarn.

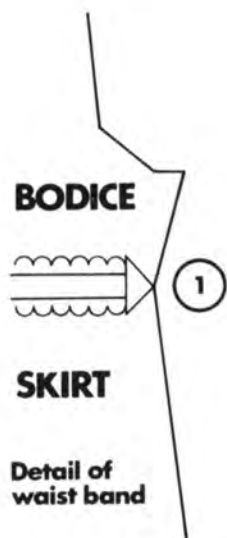
#### BACK

Knit as for front to row 106 (120,132,146). Make back opening by working on sts. to right of centre 0 placing sts. to left on waste yarn. **Make note of patt row and shape on right edge only.** Ret. sts. from left to m/c knit to match rev. all shaping.

**Press skirt pieces.**

#### BODICE FRONT

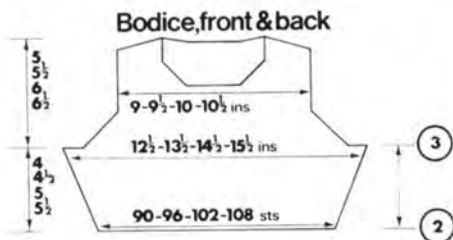
**Step 1.** Replace sts. from front skirt to 90 (96,102,108) sts. gathering evenly. T6. k 4 rows, mark end sts. with waste yarn. K 6 rows. Change to Col. B. k 3 rows, trans. every alt.



st. to right for picot edge, k 2 rows. Col. A. knit 12 rows. Col. B. knit 3 rows. Trans. every alt sts. to right, k 2 rows. Col. A. knit 4 rows. Turn hem by picking up sts. from 4th row (marked row). 000.

**Step 2.** Inc. 1 st at both ends of every 8 (8,7,7)th row 5 (6,7,8) times. Knit to row 46 (52,58,64). Cast off 4 sts at beg of next 2 rows. 000.

**Step 3.** Dec. 1 st at both ends of every row 4 times. Dec 1 st at both ends of every alt. row 6 (8,10,12) times 72 (76,80,84) sts. Knit to row 32 (38,42,48). Cast off centre 16 (16,18,18) sts. Cont. on right side only placing sts. to left in H.P. Dec 1 st at neck edge every row 6 times, then every alt. row 5 (6,6,6) times. Knit to row 58 (64,70,76). Cast off 6 sts at beg of the next 2 alt rows, cast off rem. 5 (6,7,8) sts. Ret. sts. from left to m/c knit to match reversing all shaping.



### BODICE BACK

**Step 1.** With right side of work facing m/c place sts. from right half of skirt to 45 (48,51,54) and

gathering evenly knit as for step 1 of front bodice.

**Step 2.** K 1 row C.O.L. Cast on 12 sts at beg of next row. Inc. 1 st at right edge (side seam) every 8 (8,7,7)th row 5 (6,7,8) times knit to row 46 (52,58,64). Cast off 4

sts. at beg of next row k 1 row. 000

**Step 3.** Dec 1 st at right edge every row 4 times. Dec 1 st at right edge every alt row 6 (8,10,12) times. Knit to row 57 (63,69,75). Cast off 12 sts. at beg of next row. Cast off 6 sts. at beg of next row, cast off 12 sts. at beg of next row. Cast off

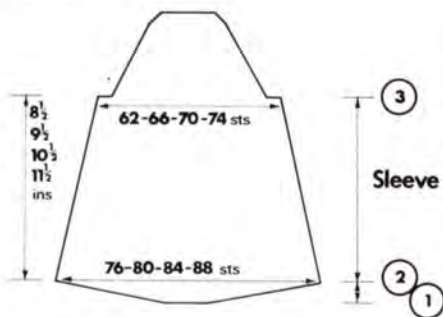
6 sts. at beg of next row, cast off 7 (8,9,9) sts at beg of next row, cast off rem. 5 (6,7,8) sts. Knit other half of back bodice to match reversing all shaping and making buttonholes on the 8th and every following 24 (27,30,33)rd rows. (5 buttonholes) over the 3,4,5 and 12,13,14 nds counting from right edge.

### NECK BAND

Press bodice and join shoulders. In Col. A C.O.B.H. 102 (106,112,114) sts. T5 knit 6 rows. Col. B. knit 3 rows. trans every alt.



sts to right k 2 rows Col. A. knit 6 rows. Turn hem. With right side of work facing m/c place neck edge to these sts. folding 8 sts. from each side of back opening in. Cast off loosely.



## SLEEVES

**Step 1.** With waste yarn cast on 76 (80,84,88) sts, knit a few rows with waste yarn. Change to Col. A T8. Start lace pattern at the same time. Push 7 sts into H.P. at the end of the next 10 rows (see note on Skirt) ret. all sts. to K pos. 000.

**Step 2.** Continue in lace pattern. Dec 1 st at both ends of every 12 (14,15,17)th row 7 times to 62 (66,70,74) sts. Knit to row 90 (100,110,120). Cast off 4 sts at beg of next 2 rows.

**Step 3.** Dec 1 st at both ends of every row 2 times. Dec 1 st at both ends of every alt. row 17 (19,21,24) times. Cast off 2 sts at beg on next 4 rows. Cast off rem. sts. Press sleeve.

## CUFF

In Col. A C.O.B.H. 39 (41,43,45) sts. T5 knit 6 rows. Col. B. K 3 rows. Trans. every alt. st. to right. K 2 rows. Col. A. knit 6 rows. Turn hem. With right side of work facing m/c place sts. from bottom of cuff evenly onto these sts. Cast off loosely.

## TO MAKE UP

Sew back facing into position (8 sts turned in) finish off buttonholes. Thread petersham through waist band. Finish off ends. Crochet down back opening of skirt. Sew in sleeves. Join rem. seams, sew on buttons. Sew hook and eye at back of waist band. Give final press.

# focus on knitting

Our last focus on knitting was extremely enthusiastically received and we have had many calls from readers and clubs alike thanking us for the information contained in the article. To keep the pot boiling we have published here details of more club meetings and naturally will welcome letters from clubs not yet mentioned in these columns.

## RAMSGATE

Mrs Enid Mooney, 13 Ellington Road, Ramsgate, Kent. Tel: 0843 583713

Ramsgate now boasts its own knitting club run by Mrs Enid Mooney at Willson Hall fortnightly on a Tuesday evening. Mrs Mooney is a very experienced knitter and able to give good advice on new machines and accessories, give demonstrations and group teach-ins for beginners, middle and advanced knitters. Club members are also able to purchase spare parts, wool, patterns etc. and of course swap their knitting tips.

## NORBURY

Mrs. K Hobbs, 1 Cranbrook Road, Thornton Heath, Surrey. Tel: 653 7860

Mrs H Ratcliffe, 15 Norbury Cross, Norbury, London, SW16. Tel 764 4020

In October two South London knitting clubs merged to pool their resources and form an extremely active club with a membership of some 70 knitters. The clubs meet on the 1st Thursday of every month at 7.30 at the Norbury Methodist Church, London Road, Norbury and will naturally be known as the Norbury Knitting Club. Religion bears no part in the proceedings but members attending religiously are charged just £2 for annual membership and 25p a visit which includes coffee and a raffle. It is intended that this should be a club in the true sense of the

word because apart from demonstrations and tuition for both novices and experienced knitters there will be fashion shows of members garments and various trips and outings organised for club members. Wool and spare parts are also made available courtesy of two local knitting traders, Mrs Janice Newton and Mrs Marion Nelson. New members will be especially welcome.

## PERTH

Mrs M H Rourke, 58 Rose Crescent, Perth, Scotland. Tel: Perth 27599

Another thriving club run by Mrs Rourke. Membership has increased dramatically and the club now meets once a month at the Lovat House Hotel on the last Tuesday of the winter months at 7.30 pm. Speakers and experienced knitters regularly attend, plus lively fashion shows etc. In all a marvellous programme to be carried through until May '77.

## EVENING CLASSES

Because of the considerable increase in machine knitting popularity, many adult education authorities now run evening classes so it is well worth your while contacting your local Education Office to see if they run similar lessons. Even if they do not at present run lessons, if enough people enquire they may well include knitting in their future curriculum. This happened in Cwmbran, South Wales, where they have now extended their activities to two evenings a week plus an afternoon session. The organiser, Mrs Hudson, can be contacted by telephoning Cwmbran 63639. At Morpeth, Northumberland the course proved so popular that eventually lessons had to be divided to cope with the response. The contact at Morpeth is a Mr Wallace, telephone Morpeth 55415.

## KEEP ON COMMUNICATING —

the post is beginning to get busy with hints, tips and advice as well as details of various clubs so keep those pens active.

Happy knitting.

# ladies zip-up jacket

## Materials

Wendy Double Knit  
Col. A. 8 (8,8,8) balls.  
Col. B. (tweedy) 18 (20,22,24)  
balls. 20 (22,22,24) inch double  
ended zip.

## Measurements

To fit 32 (34,36,38) inch bust. 81  
(86,91,97) cms bust.  
Length from back neck 22½  
(23½, 25, 26½) ins. 57  
(59.5,63.5,66) cms.  
Sleeve seam 16½ (17,17½,18) ins.  
42 (43,44.5,45.5) cms.

## Tensions

5½ sts x 14 rows = 1 inch. T.D.  
approx 10 Y.F. - 11 st x 28 rows =  
5 cms.

820 patt card No. 1 from basic set.  
800 & 588 from chart.

Depress both tuck buttons.

			o	o	o	o	o	o	o	o	o	o	2
		o	o	o	o	o	o	o	o	o	o	o	1
←TUCK→	1	2	3	4	5	6	7	8	9	10	11	12	STEPS
K.H. 800 MACHINE													

2		o		o		o		o					
1	o		o		o		o		o				
STEPS	1	2	3	4	5	6	7	8					←TUCK→
K.H. 588 MACHINE													

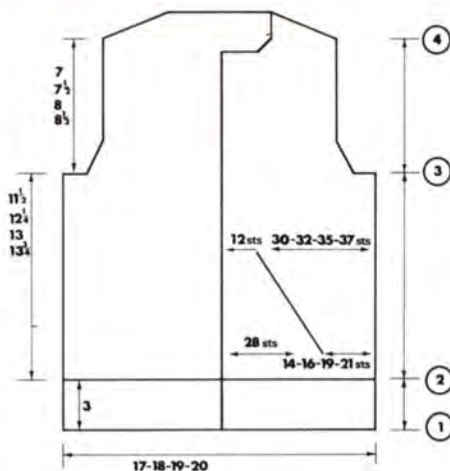
**BACK** In Col A.

**Step 1.** C.O.B.H. 92 (97,102,107)  
sts. for 4x1 rib. T10. Knit 53 rows.  
Turn hem. Inc 1 st at both ends.  
Sect M/c for patt. K 1 row. C.O.R.  
000.

**Step 2.** Change to Col B. Knit 162  
(172,182,192) rows. Cast off 3  
(3,4,4) sts. at beg of next 2 rows.

**Step 3.** Dec 1 st. at both ends of  
every 4th row 5 (6,6,7) times 78  
(81,84,87) sts. Knit to row 98  
(106,112,120).

**Step 4.** Cast off 3 sts at beg. of next  
12 (10,8,6) rows. Cast off 4 sts at



beg of next 2 (4,6,8) rows. Cast off  
rem 34 (35,36,37) sts.

## FRONT

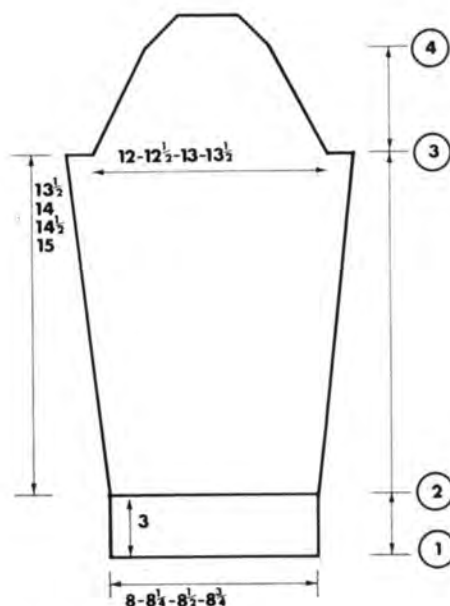
**Step 1.** In Col A. C.O.B.H. 42  
(44,47,49) sts. Knit as for Step 1 of  
back.

**Step 2.** Change to Col B. Knit 29  
rows. (Make note of patt row).  
Working on 28 sts to left only place  
14 (16,19,21) sts. on right on waste  
yarn, or stitch holder. Dec 1 st. at  
right edge next and every foll 5th  
row 16 times. Knit to row 106.  
Place sts. on waste yarn or stitch  
holder. Ret 14 (16,19,21) sts. from  
right to M/c. Ret row counter to 29  
and reset pattern. Cast on 26 sts. to  
left. Knit to row 105. Cast off 10  
sts. at beg of next row. (R.C. 106).  
Replace 12 sts. from waste yarn to  
12 needles on left. Knit across all  
sts. to row 162 (172,182,192). Cast  
off 3 (3,4,4) sts. beg. of next row.  
K 1 row. 000.

**Step 3.** Shape right edge as for back  
34 (35,37,38) sts. Knit to row 71  
(79,85,93). Cast off 5 (5,6,6) sts. at  
beg. of next row. Shape neck. Dec  
1 st. at neck edge every alt. row 2  
times, then every 4th row 5 times.  
Knit to row 98 (106,112,120).

**Step 4.** Cast off 3 sts. at beg of next  
and every alt. row 6 (5,4,3) times  
then 4 sts. 1 (2,3,4) times.

Knit other front to match reversing  
all shaping.



## SLEEVES

**Step 1.** In Col A. C.O.B.H. 42  
(42,47,47) sts. Knit as for Step 1 of  
back.

**Step 2.** Change to Col B. Inc. 1 st.  
at both ends of every 14th row 12  
(13,13,14) times to 66 (68,73,75)  
sts. Knit to row 190 (196,204,210)  
cast off 3 (3,4,4) sts. at beg. of next  
2 rows. 000.

**Step 3.** Dec. 1 st. at both ends of  
every 4th row 15 (16,17,18) times,  
then dec. 1 st at both ends of every  
alt row 2 times.

**Step 4.** Cast off 3 sts. at beg. of  
next 6 rows. Cast off rem. sts.

## TO MAKE UP

Press all pieces. Join shoulder  
seams.

## FRONT BAND

In Col A. C.O.B.H. 112  
(119,124,134) sts. for 4 x 1 rib.  
T10. Knit 16 row. Turn hem with  
right side of work facing M/c place  
front edge to these sts. Cast off  
loosely. Rept. for other front.

## COLLAR

In Col A. C.O.B.H. 106  
(111,116,121) sts. for 4 x 1 rib.  
T10. Knit 2 rows. H.P. Push 8  
(9,10,11) sts. into H.P. at the end  
of the next 2 rows. Then push 5 sts  
into H.P. at the end of the next 10  
rows. Ret. all needles to K position

\* Knit 76 rows. Report from \* to \*  
Knit 2 rows. Turn hem. With right  
side of work facing M/c, place neck  
edge onto these sts. starting 1 st. in  
from each end. Cast off loosely.

#### POCKET BANDS

In Col A. C.O.B.H. 34 sts. for 4 x 1  
rib. T10. Knit 16 rows. Turn hem,  
with right side of work facing M/c  
place pocket edge onto these sts.

starting 1 st. in from each end. Cast  
off loosely. Secure ends of pocket  
bands. Join edges of collar. Set in  
sleeves. Join rem. seams. Insert zip.  
Give final press.



# shoulder bags

## Materials

Lister 2 Spun Trical/Nylon.  
Smooth string or crochet cotton.

## FAIRISLE BAG

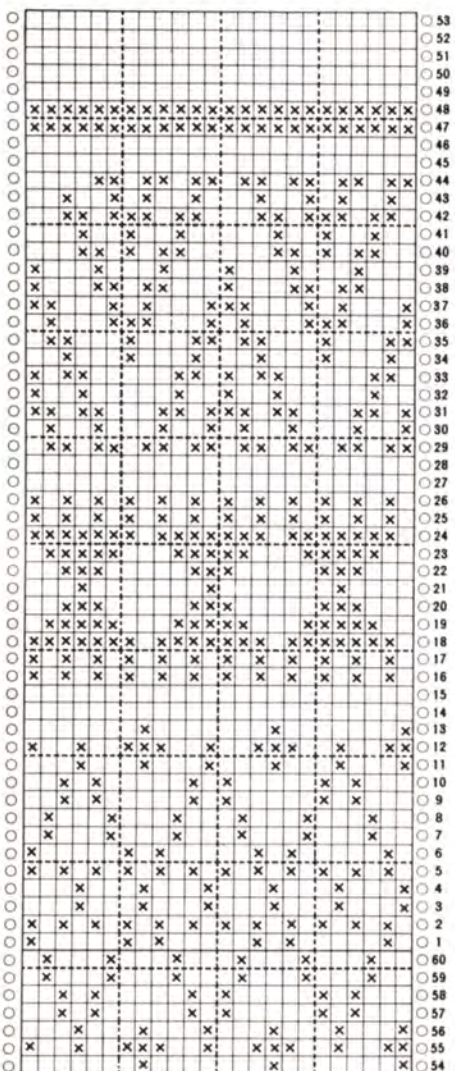
3 Balls 4 ply Col. A., 2 Balls 4 ply Col. B (random).

Measures 9½ inches wide 9½ inches deep.

Tension 8½ sts x 11 rows = 1 inch.  
All patterns from charts.

## FAIRISLE BAG

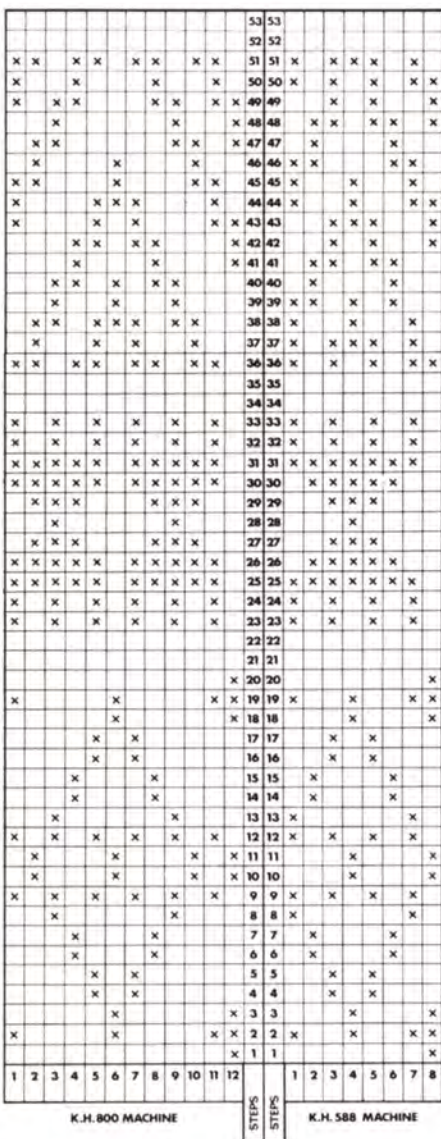
In Col. A. C.O.B.H. 81 sts. T7. Knit



9 rows. Set m/c for patt. T8. Knit 212 rows. T7. Knit 10 rows. Cast off.

**Lining (If Required).** Cut piece of fabric 9½ inches x 21 inches. Sew to bag all around edge. Fold bag in half. Turn in 1 inch at the tops. Sew down. Press.

**Cord** Using 1 strand of Col. A. and 1 strand of Col. B. C.O.B.H. 4 sts. Depress right part button; T8. Knit approx 80 inches. Thread string through centre of cord. Sew cord around edge. Join ends.



## WOVEN BAG

5 Balls 4 ply, 1 Ball Chunky Col. A., 1 Ball Chunky Col. B.  
26½ inches of iron-on tape 3" wide.

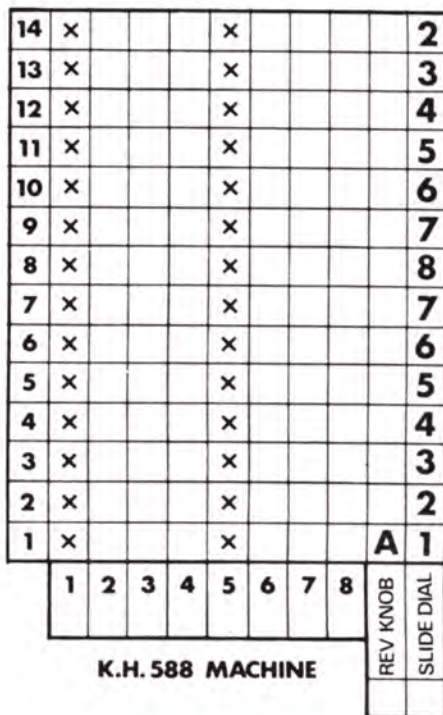
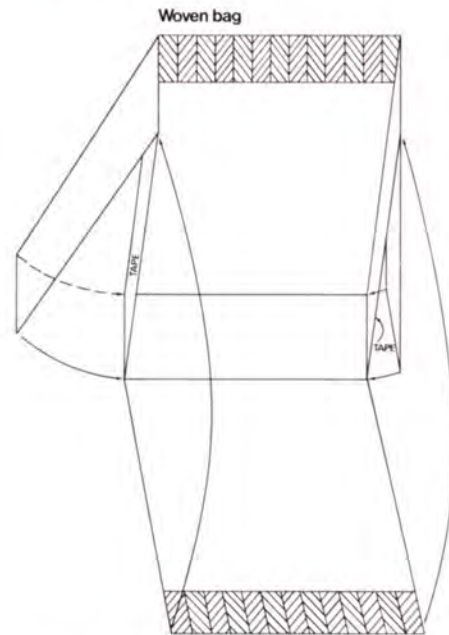
Measures 8½ inches wide 9 inches deep.

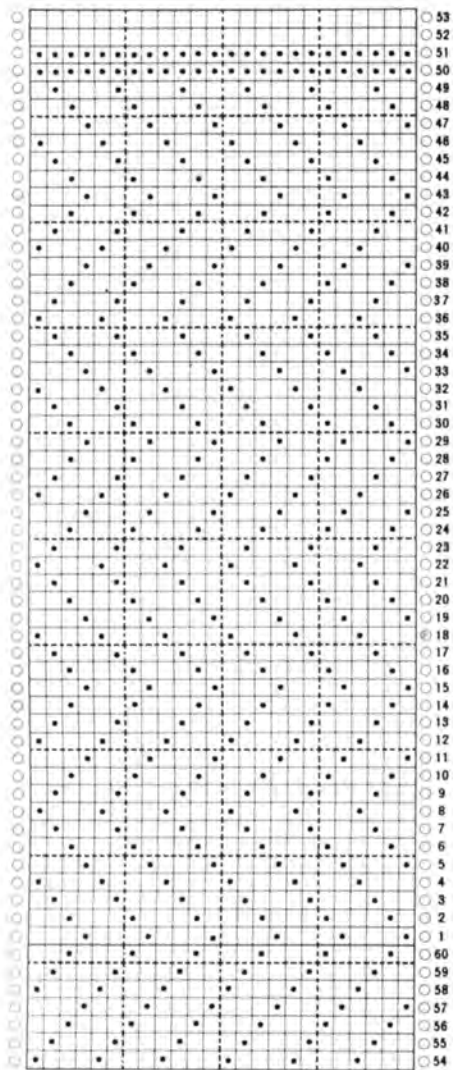
Tension weaving 6¾ sts x 12 rows = 1 inch T.D. approx 6 st.st.  
8 sts x 12 rows = 1 inch T.D. approx 5.

820 patt from chart.

800 patt no. 314 from book.

588 patt from chart.





### WOVEN BAG

In 4 ply C.O.B.H. 162 sts. Mark centre 20 sts. with waste yarn. T6. K 1 row. Set m/c for weaving. 000. \* Knit 7 rows weaving with Col. A. Knit 7 rows weaving with Col. B. \* Rept. from \* to \*. Knit to row 105. Mark centre 20 sts. with waste yarn. Cast off loosely.

**Sides** In 4 ply C.O.B.H. 26 sts. T6 Knit 216 rows. Mark end sts. with waste yarn. 000. Knit 102 rows. Mark end sts. with waste yarn. 000. Knit 216 rows. Cast off.

Press all pieces. Iron on tape, 8½ inches in the centre between the marked sts. and 9 inches either side. Fold rem 9 inches of knitting either

side down over exposed tape to marked rows. Sew centre 8½ inches across centre of bag between marked sts. to form base. Join sides. Turn down hems of 1½ inches at tops.

**Straps** \* In 4 ply C.O.B.H. 4 sts. T5. depress right part button. Knit 23 inches. Rept from \* to \* 5 times more. Thread string through centre of each cord. Using 3 cords plait handle. Rept. for other handle. Attach handles firmly.

### TUCK STITCH BAG

5 Balls 4 ply, 1 Ball Chunky in contrast colour.

Measures 10 inches wide 11½ inches deep.

Tension 6½ sts x 14½ rows = 1 inch. T.D. approx 9.

820 patt No. 597 from book.

800 patt from chart.

588 patt No. 445 from book.

### TUCK STITCH BAG

In 4 ply C.O.B.H. 71 sts. Set m/c for Tuck Stitch. T9. Knit 384 rows.

Cast off loosely.

**Lining (If Required).** Cut a piece of fabric 10 ins x 26 ins. Sew to bag all around the edge. Fold bag in half. Turn in 1½ inches at the tops. Sew down. Press.

**Cord** In chunky C.O.B.H. 3 sts. on alt needles. T8. depress right part button. Knit approx. 80 inches. Thread string through centre of cord. Sew cord around edge of bag. Join ends.

		x	x	x	x	x	x	x	x	x	x	x	12
		x	x	x	x	x	x	x	x	x	x	x	11
		x	x	x	x	x	x	x	x	x	x	x	10
		x	x	x	x	x	x	x	x	x	x	x	9
		x	x	x	x	x	x	x	x	x	x	x	8
		x	x	x	x	x	x	x	x	x	x	x	7
		x	x	x	x	x	x	x	x	x	x	x	6
		x	x	x	x	x	x	x	x	x	x	x	5
		x	x	x	x	x	x	x	x	x	x	x	4
		x	x	x	x	x	x	x	x	x	x	x	3
		x	x	x	x	x	x	x	x	x	x	x	2
		x	x	x	x	x	x	x	x	x	x	x	1
		1	2	3	4	5	6	7	8	9	10	11	12
		K.H. 800 MACHINE											
		STEPS											



# baby's sleeping bag

## Materials

11 20g balls Lister Super soft Courelle double knitting. 12 inch nylon zip. No. 8 crochet hook.

## Measurements

Chest 20 inch  
Sleeve seam 5½ ins.

## Tension

5 sts x 10 rows = 1 inch over patt. from chart (depress left. tuck buttons). T.D. approx 9.

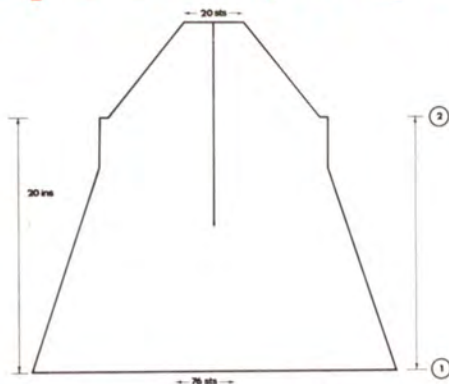
## BACK

**Step 1.** C.O.B.H. 76 sts T10, Knit 8 rows set m/c for pattern. Dec 1 st at both ends of next and every foll. 12 rows 13 times (50 sts). Work without shaping to row 200.

**Step 2.** Cast off 3 sts at beg. of next 2 rows. Dec 1 st at both ends of every 3rd row 12 times (20 sts). Knit 4 rows in st.st. Place on waste yarn.

## FRONT

Knit as for back to row 50 of step 1. Place sts. to left of centre 0 on waste yarn (make a note of the



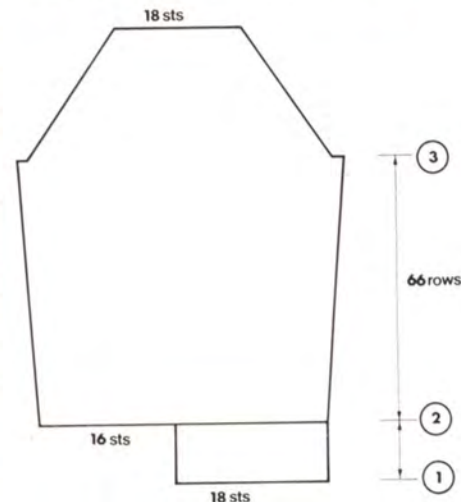
pattern row), cont. to knit as for the back shaping on right edge only until 15 sts. remain. C.O.L. Continue shaping on right edge as for back at the same time cast off 4 sts. at beg of next row (neck edge) and then dec. 1 st at neck edge every 3rd row 3 times, cont. to shape reglan until at sts. are worked off. Ret. sts. from left to m/c and work as for right half reversing all shaping.

## SLEEVES

**Step 1.** (mitt) C.O.B.H. 18 sts T9,

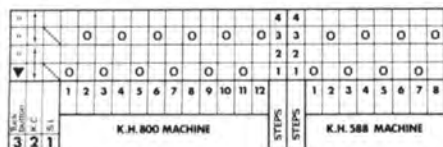
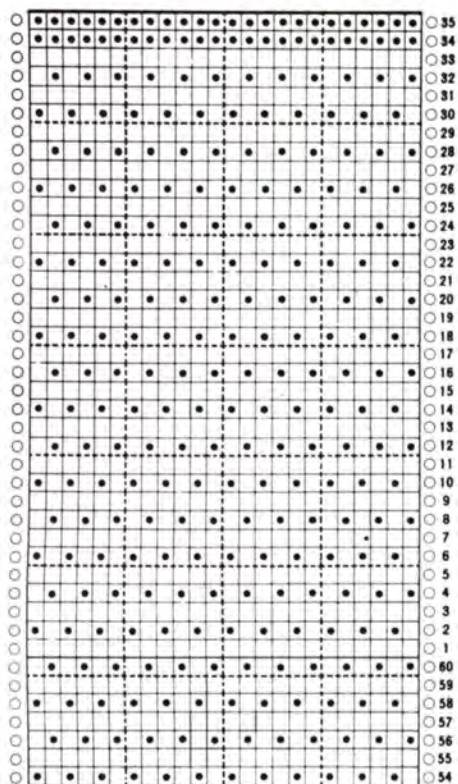
knit 1 row set m/c for patt. knit 30 rows. Put on waste yarn.

**Step 2.** With wrong side of work facing m/c replace sts. from mitt onto 18 st to the left of the centre 0 cast on 16 sts. to the right of centre 0. Set m/c for patt. 000. Knit 20 rows in patt. then inc. 1 st at each end of every 10th row 4 times (42 sts.). Cont. to row 66.

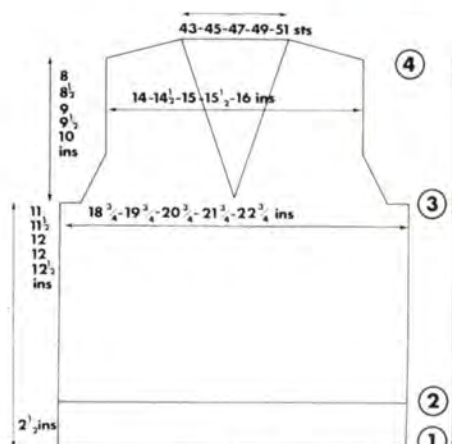
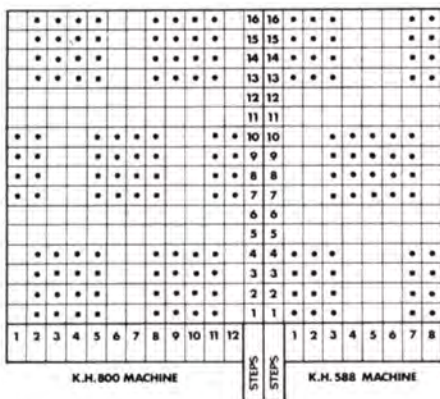
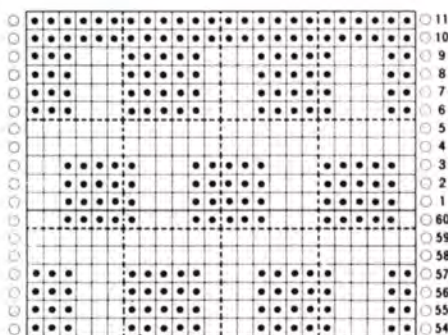




# man's sweater with separate polo insert



Sleeping bag with hand covers



Cast on for 1x1 mock rib 135(143 151 157 165) sts. T5 K26 rows Turn hem. 000 C.O.R.

**Step 2.** T8 K46 (52 56 58 62) rows Col B k 2 rows Col A K6 rows Col B K 2 rows Col A k 3 rows set m/c for patt. K16 rows from chart. K4 rows Col A K2 rows Col B K6 rows col A K2 rows col B. in col A k to row 110(116 120 122 126). Cast off 7(8 9 9 10) sts at beg. of next two rows.000.

**Step 3.** Dec. 1 st at both ends of every alt. row 6(7 8 9 10) times. Dec. 1st at both ends of every 3rd row 4 times 101(105 109 113 117) sts. K to row 80(80/86 90 96 100).

**Step 4.** Cast of 5 sts. at beg of next 2(0 0 0 0) rows. Cast off 6 sts at beg. of next 8(10 8 6 4) rows. Cast off 7 sts. at beg. of next 0(0 2 4 6) rows. Place rem 43(45 47 49 51) sts on waste yarn.

## FRONT

Knit as for back to end of step 2. **Step 3.** Dec. centre sts to right. Working on right side only continue as for back shaping on right edge only at the same time shape neck edge as follows dec. 1 st at neck edge every 3rd row 4(2 2 0 0) times dec. 1 st at neck edge every 4th row 17(20 21 24 25) times. to 29 (30 31

**Step 3.** Cast off 3 sts at beg of next 2 rows. Dec. 1 st at both ends of every 4th row to 18 sts. Knit 4 rows in st.st. place on waste yarn. **Note.** For second sleeve replace mitt to right of centre 0 and cast on 16 sts to left of centre 0.

## TO MAKE UP

Press all pieces. Join reglan seams. **HOOD**

With right side of work facing m/c place sts from neck to 66 needles. T8 knit 3 rows st.st. Set m/c for patt. T9 knit 76 rows. Cast off.

## BASE

C.O.B.H. 66 sts T9 knit 1 row. Inc. 1 st at beg of next 8 rows to 74 sts. Knit 10 rows, dec 1 st. at beg. of next 8 rows. Knit 1 row. Cast off.

## TO MAKE UP

Fold cast off edge in half and join neatly. Work a row of double crochet all around zip opening, and hood edge. Sew in zip. Sew in base.

## Materials

Wendy Courtellon 4 ply  
15 (17 19 20 21) balls Col A  
1 ball Col B  
Insert 1(2 2 2 2) balls Col B

## Measurements

To fit 36(38 40 42 44) inch chest  
91 (97 102 107 112) cms  
Back length 21½(22½ 23½ 24 25)  
inches (53.5 (57 59.5 61 63.5) cms  
Sleeve seam 18 (18¼ 18½ 18¾ 19)  
inches (45.5 (56 47 48 48.5) cms

## Tensions

7¼ st x 10 rows = 1 inch  
14½ sts x 20 rows = 5 cms.  
T.D. approx 8 over st. st.  
Fair isle patt. from chart T.D.1  
point looser.

## BACK

**Ribbers.** TO/O Cast on 135(143 151 157 165) sts. for 1x1 rib K3 rows tub. T3/3 k 30 rows trans sts. to main bed. 000 C.O.R. S/bed m/c.

# abbreviations

This list of abbreviations can be cut out and glued to a piece of thick card or board. It can then be moved to whichever part of a pattern you are working on to save you constantly referring to the beginning.

M.B.	main bed
st.st.	stocking stitch
sts.	stitches
beg.	beginning
dec.	decrease
inc.	increase
alt.	alternate
trans.	transfer
opp.	opposite
carr.	carriage
S.D.	side dial
W. Wl.	waste wool
M. Wl.	main wool
M1c(s).	machine(s)
pos.	position
000	set counter at 000
fol.	following
T.	tension
K.	knit
M.D.E.	make double edge
Ns.	needles
COL(R)	carriage on left (right)
patt.	pattern
rem.	remaining
H.P.	holding cam lever(s) on holding position
H.P.+	holding cam lever(s) on holding position and always take yarn around inside needle in E position
C.O.B.H.	cast on by hand
on(s).	inch(es)
oz(s).	ounce(s)
tub.	tubular
p.b.	part button
f.f.	fully fashioned
Ev.	every
Lt.	left
Rt.	right
Rs.	rows
jacq.	jacquard
C/O	cast off

Although most of the patterns are adapted to both machines, occasionally a designer who does not know the conversion, writes patterns merely for either the model 800 or the earlier models. If this occurs, please check with the chart below to find the correct settings for your H.C.L.'s.

800 H.C.L. 3 = I for all others  
 800 H.C.L. 1 = II for all others  
 800 H.C.L. 2 = III for all others

# postal course

**The Jones HOME KNITTING POSTAL TUITION COURSE for 585, 588 & 800 machines**

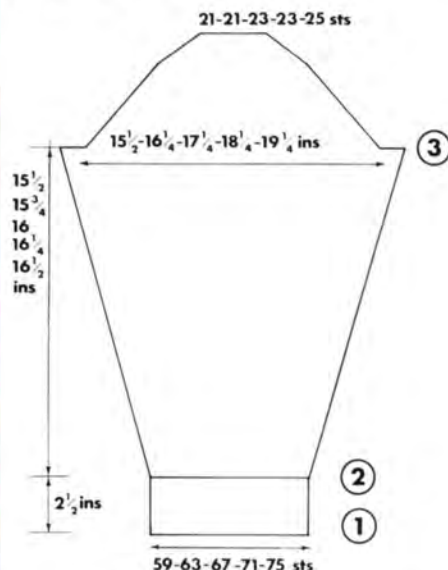
is so easy to follow and the complete answer to all shortcomings encountered in the tuition of knitting machines. There are twelve easy to follow lessons, leading you step by step from basic knitting right through to knitwear design. You will be able to learn to knit at your own pace with nobody looking over your shoulder or hurrying you on to the next step. You can take out the machine and pick up the course exactly when you feel like it and all in the comfort of your own home. Should you require help you can write and ask the experts who are always there. Later you may wish to refresh your memory on certain points and of course the lessons are always there for you to refer to.

**£12.50**  
**Postal Tuition courses for the KNITLEADER & RIBBER**  
**are also available at £1.50 each**



32 33) sts. K to row 80(86 90 96 100) Mark neck edge with waste yarn.

**Step 4.** Cast off 5 sts at beg. of next and every alt. row 1(0 0 0 0) Cast off 6 sts at beg. of next and every alt. row 4(5 4 3 2) times. Cast off 7 sts at beg. of next and every alt row 0(1 2 3) times. Ret. sts from left half and knit as right half reversing all shaping.



## SLEEVES

**Step 1.** Cast on 59(63 67 71 75) sts knit as for step 1 of back.

**Step 2.** T8 Inc. 1 st at both ends of every 5th row 26(28 30 31 32) times to 111(117 125 135 139) sts. K to row 156(158 160 164 166). Cast off 7(8 9 9 10) sts at beg. of next two rows. 000.

**Step 3.** Dec. 1st at both ends every alt. row 23(24 25 26 27) times. Cast off 3 sts at beg. of next 10(8 8 0 0) rows. Cast off 4 sts at beg of next 0(2 4 10 10) rows. Cast off rem. 21(21 23 23 25) sts.

## TO MAKE UP

Press all pieces. Join shoulder seams. Neck band.

Ribbers. Cast on by hand 65(73 79 87 93) sts for 1x1 rib T O/O K3 rows tub T 3/3 inc 1 st at left edge every alt. row 5 times. Trans sts. to main bed.\* With right side of work facing m/c and starting 1 st in from each end place right neck edge to these



sts. Cast off loosely. Rept for left edge increasing at right edge instead of left edge.

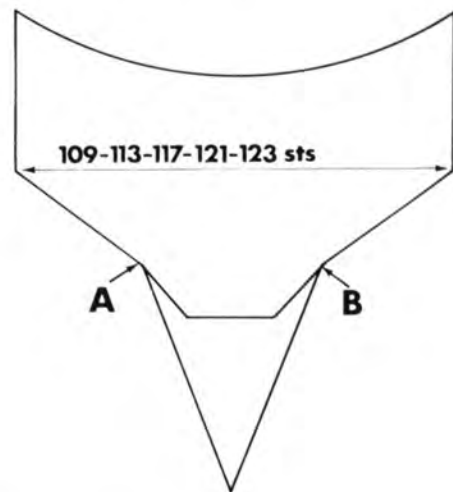
S/bed. m/c. Cast on 71(79 85 92 99) sts for 1x1 mock rib. T5 dec 1st at left edge every alt. row 5 times (R.C.10) T8 k1 row T5 inc 1st at left edge every alt. row 5 times. Turn hem. Rept. from \* for ribbers.

Back neck band.

Ribbers. Cast on 45(47 49 51 53) sts for 1x1 rib. TO/O k3 rows tub. T3/3 K10 rows. Trans sts to main bed. \*With right side of work facing m/c starting 1st in from each end place sts. from back neck to these nds. Cast off loosely.

S/bed m/cs. Cast on 45(47 49 51 53)

sts for 1x1 mock rib. T5 K10 rows T8 k1 row. T5 k10 rows. Turn hem knit as for ribbers from \*. Join rem. seams.



### INCERT

In Col C C.O.B.H. 3 sts. T8 inc. 1st at both end every 3rd row 4(2 2 0 0) times. Inc. 1st at both ends every 4th row 17(20 21 24 25) times. **AT THE SAME TIME** K to row 64 (70 74 80 84) Place centre 21(23 25 27 29) sts on waste yarn and continue shaping on right edge only. Dec 1st at neck edge every row 6 times. Dec 1st at neck edge every alt. row 5 times. To row 80(86 90 96 100) and all sts worked off. Ret. sts from left half and shape as for right half reversing all shaping.

### Polo collar

Ribbers. Cast on 109(113 117 121 123) sts for 1x1 rib. TO/O k3 rows tub. T3/3 k50 rows. trans. sts to main bed. \*With right side of work facing m/c place neck edge of incert to centre 53(55 57 59 61) sts cast off loosely overall sts.

s/bed/m/c. Cast on 109(113 117 121 125)sts for 1x1 mock rib T6 k44 rows turn hem. Knit as for ribbers from\*. Join back seam of collar. Sew incert into position placing points A of inset to market on neck edge. Sew along cast off edge of "V" neck making sure the seam of the collar is at the centre back. Give final press.

# PATTERNS

from Jones the knitting machine people

Here's the new style pattern service from Jones - superb collections of garments in attractive booklet form, each booklet containing a series of garments for one section of your family.

BOOK 1. ribbed garments 2. general family garments  
3. toddlers garments 4. garments for children  
5. ladies garments 6. garments for men 7. garments from 'Home Sewing and Knitting'

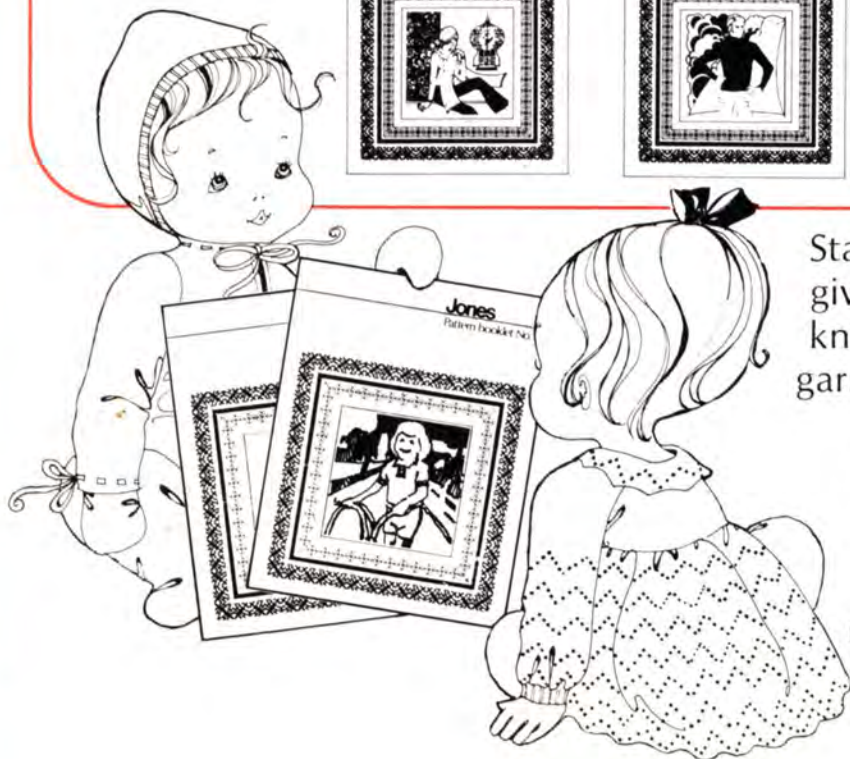
BOOKLETS 1-8 25p

**AND NOW  
2 NEW BOOKLETS**

BOOK 9  
Classic baby garments

BOOK 10  
Toddlers garments

BOOKLETS 9-10  
30p



Start collecting the set now - they'll give you many hours of enjoyable knitting and a whole new range of garments for the family!

They are obtainable from your local Jones stockist or direct from

Pattern Book Dept.,  
Jones Sewing Machine  
Co. Ltd., Shepley Street,  
Guide Bridge, Audenshaw,  
Manchester M34 5JD.



*all around your home*