



*Elise Kantor* 225



# stitchin' time

No 43  
60p

jones + brother





## Contents

### Editorial:

Jones + Brother,  
J & B House,  
869, High Road,  
Finchley,  
London N12 8QW.

### Subscription administration:

Shepley Street,  
Guide Bridge,  
Audenshaw,  
Manchester M34 5JD.

Focus on Knitting	3 - 4
Lady's Blouson Dress	5 - 6
Man's Fairisle Front Chunky Oversweater	6 - 8
Striped Mohair Jackets	9 - 10
Man's Embossed Fairisle Sweater	10 - 11
Lady's Wingsleeve Cardigan	12 - 13
Skip Stitch Top in Double Knitting	14 - 15
Christmas Toys	16 - 17
Lady's Tuck Stitch Cardigan	18 - 20
Unisex Top	20 - 21
Girl's V-neck sweater	22 - 23
Youth's Tuck Stitch Sweater	24 - 25
Lady's Batwing Top in Woven Lace	26 - 27
Chunky Fairisle Sweater	27
Woman's Lace Drawstring Sweater	28 - 29
Lady's V-neck sweater - Add-To-Set	30 - 31
Teenage Suit	32 - 33
Helpful Hints from Sue Fagan	34 - 35

## Broadly Speaking

For this issue our designers have knitted up some garments especially with Christmas in mind. We have featured toys for the children, including a new idea of a wigwam on page 17, and some lovely dresses, suits and tops to wear over the festive season.

On page 30 you will see that we have continued our Add-To-Set with a fairisle fronted V-neck sweater and there will be a polo-necked jumper featured in the next issue.

One of our new designers has designed a chunky cardigan in Jaeger Match Maker Superwash Doubleknit yarn. This garment will be of special interest to some of you - it is a tuck stitch pattern but it is knitted on alternate needles which makes a much looser finish.

Sue Fagan has written several short articles which are aimed at the beginner and intermediate knitter. In subsequent issues she will be producing garments and accessories using these different techniques.

Next year we will be introducing to *Stitchin Time* two new series, one on home furnishings and one on a different style of knitting.

Have a very Happy Christmas.



# FOCUS ON KNITTING



We have some information on two new knitting clubs this month, one in Cumbria and one in Middlesex.

Firstly, the Cum-Knitting Circle hold their meetings at the Victory Hall Supper Room, Broughton twice a month – on Mondays at 2pm and Thursdays at 7pm. We don't have many clubs in the Cumbria area on our register, so if you are interested in this one, the person to contact is Mrs. J.M. Benson, Homelands, The Square, Broughton-in-Furness, Cumbria LA20 6LB.

Secondly, the Hayes and Hillingdon Knitting club meets at the British Legion Club in the Uxbridge Road at

Hillingdon. The meetings are every 4th Tuesday in the month. They have a permanent demonstrator and in 4 months they have acquired 25 members. The person to contact for more information is Mrs. Carter 573 7581 or Mrs. Sarjeant 573 6182. At this club you will be able to buy yarn at special prices and there is also a sale of work stall for members' garments.

Pingouin and Hayfield have introduced new ranges of patterns recently which we have featured here. Pingouin feature their Mohair, Cythere, Caline and La Houle yarns in a series of six patterns for women. Hayfields patterns are for all the family using their

machine knit yarn. If you are interested in obtaining any of these patterns they are available from your local stockist now. The Hayfields patterns are also available from us at a cost of 15p a pattern.

News has reached us this month about Mailyarns Ltd in Leicester. They have an extensive range of coned yarn at reasonable prices (see advertisement on page 14). **Goscote/Super-marl** is a 4 ply 100% acrylic which is available in 32 solid/marl shades with particular emphasis on school colours and machine washability. Their **Bancot** range is a 2 ply and 4 ply 100% cotton coned yarn and Mailyarns is





one of the few companies who supply cotton on cone suitable for machine knitting. Their latest yarn is **Shetlandia**, which is a Shetland style 3 ply 100% pure new wool. This wool-marked quality is supplied on 400g cones in a range of top fashion shades. Other ranges include Fine ply—100% acrylic and Aran knitting—100% pure new wool. Machine weaving yarns are also available. This company has special discount terms for machine knitting clubs and other bulk buyers but they would like you to state which one applies to you when writing. Free samples (quote product interest) are available on receipt of SAE from: Mailyarns Ltd (JI), 38 High Street, Syston, Leicester.

Finally, we have an interesting idea from designer Bernard Makinson, who had a problem when it came to compromising with his wife with regard to extending their dining room into a larger lounge. The dining room—traditional home of the Jones Knitting Machine, needed housing in a manner that would be aesthetically pleasing, and could be easily put into use, otherwise it was no deal in proceeding with the alterations. So, when designing the special rosewood wall fitting, critical care was taken to give the Jones machine easy access: Cupboard space above, providing storage for 'Stitchin' Time' magazine and wool storage etc.



# Ladies Blouson Dress

## Measurements

To fit bust 81 cm (32"), 86 cm (34"), 91 cm (36"), 97 cm (38").

## Materials

Jupiter. Approx 2 cones beige and 1 cone brown.

## Tension

*Always check tension before commencing*

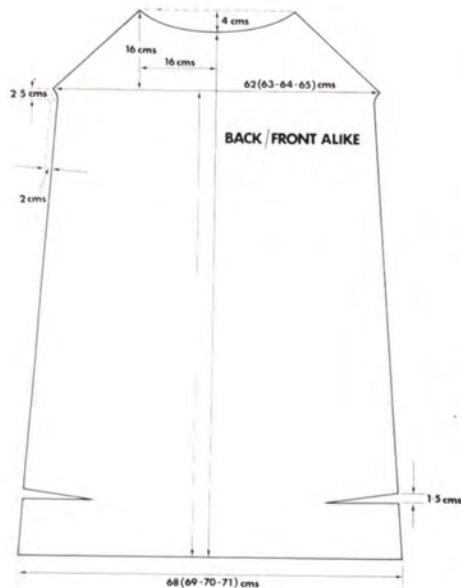
T Square as per Instruction book:

T4 60 sts = 25.5 cm, 60 rs = 8.5 cm.

*Success depends on working to correct tension.*

## Notes

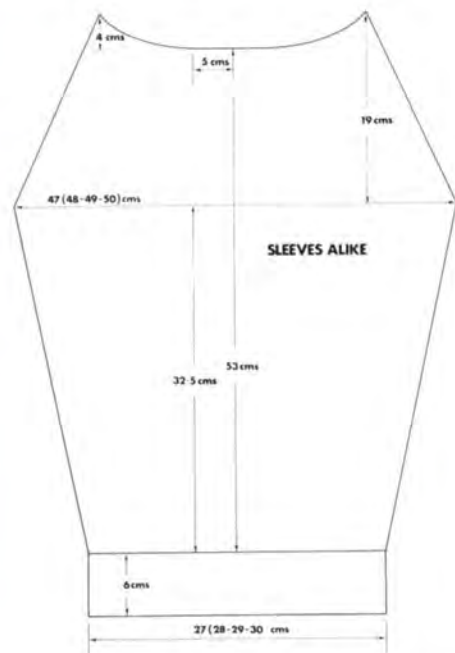
Tuck Stitch card No 1 D.





## FRONT AND BACK ALIKE

Insert card and lock on R 1. With WY cast on 157 (160, 163, 166) sts. K a few rs, change to main yarn, colour brown. T4, K 20 rs. Make hem and K the r. Carr on left, set m/c for tuck. Carr to right, release card. \* Change to beige wool and K 6 rs, change to brown and K 6 rs. \* Rep 4 times more. Carr to right, pull last 30 Ns on left into HP. Carr to left, pull last 30 Ns on right into HP, K 2 rs. \* Carr to right, bring 5 Ns nearest centre m/c into WP. Carr to left, bring 5 Ns nearest centre m/c into WP. \* Rep until all Ns are in WP. Working in beige only, K 618 rs increasing 1 st at each end of every 66th r. \* K 2 rs inc 1 st at beg of next 2 rs. \* Rep twice more. *For neck shaping:* dec 2 sts at each end of every 6th r, K until RC reads 710. Carr to right, put centre 20 sts into HP + all sts to left. Cont dec'g 1 st at each end of every 6th r, *as well as* K 2 rs, put 5 sts on left into HP. \* K 6 rs, put 5 sts on left into HP. \* Rep until all Ns are in HP. Break yarn. Carr on left of m/c, rep neck shaping instructions in reverse. When all Ns are in HP, K 1 r and cast off.



## SLEEVES BOTH ALIKE

Insert card and lock on R1. With WY cast on 63 (66, 69, 72) sts. K a few rs, change to main yarn, colour brown. T3, K 80 rs. Make hem and K the r, T4. Carr to left, set m/c for Tuck. Carr to right, release card. \* Change to beige wool and K 6 rs, change to brown wool and K 6 rs. \* Rep 4 times more. *At same time as* inc'g 1 st at each end of

every 10th row until there are 107 (110, 113, 116) sts. K until RC reads 230. 000, dec 1 st at each end of every 5th row until 59 (62, 65, 68) sts rem, RC 120. *For neck shaping* pull all Ns left of 10 on RHS of m/c into HP. *At same time as* dec 1 st at each end of every 5th row. \* K 2 rows, put 2 sts at centre into HP. \* Rep 4 times more. \* K 2 rs, put 1 st at centre into HP. \* Rep until all Ns are in HP. Break yarn. Carr on left of m/c, rep neck shaping instructions in reverse. When all Ns are in HP, K 1 r and cast off.

## NECKBAND

Cast on 172 (180, 188, 196) sts in WY. K a few rs. Change to main yarn, brown colour, T3. Work in stripes of 6

rs, brown and 6 rs beige. Work the first 20 rs T3, next 20 rs T2. Next 22 rs T2 and last rs T3. Turn up hem and K the row. Change to WY and K a few rs. Release from m/c. Press into a circle — this is best done if a thread is put through the hem and drawn up then the outer edge pinned out. Press well, then undo WY and put back onto m/c. Knit up along neck edge of sleeves 34 (36, 38, 40) sts. Knit up along neck edge of front/back 52 (54, 56, 58) sts. Working from left place a sleeve, then a F/B, sleeve and F/B onto m/c. Cast off.

Press all parts. Join all seams and press them out. Make a cord for belt the required length. Make belt loops onto side seams of dress.

# Man's Fairisle Fronted Chunky Over Sweater

## Measurements

To fit 38 (40, 42, 44) in chest.

## Materials

18 (21, 23, 26) 25gm balls Hayfields Superblend Double Knit in Main (M). 8 (9, 10, 11) 25gm balls Hayfields Superblend Double Knit in Contrast (C).

## Machines

To suit KH820/KH830 machines or any machine if patt substituted, pro-

vided correct tension is achieved.

## Tensions

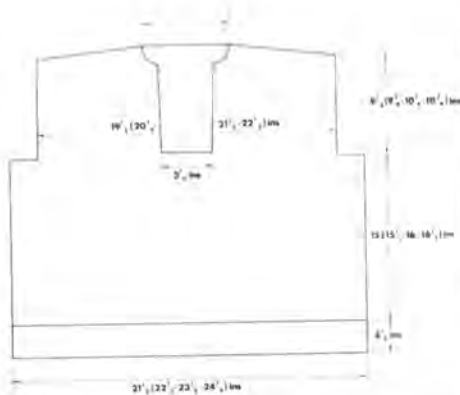
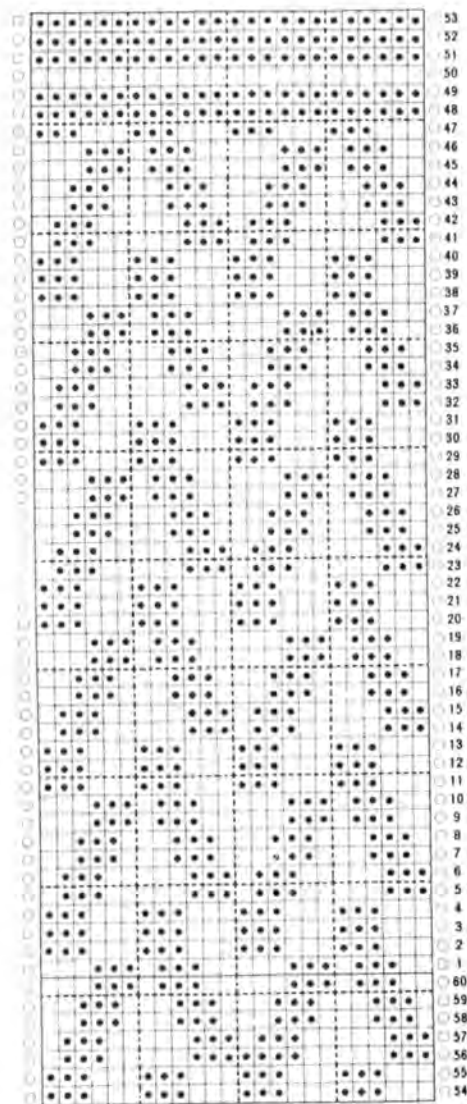
24 sts and 32 rows to 4 ins (10 cms) over plain knitting with TD approx 10. 27 sts and 32 rows to 4 ins (10 cms) over fairisle pattern with TD approx 10.

## Notes

Punch card from Diagram shown. Fairisle on front and back body only, with M in feeder 1 and C in feeder 2.

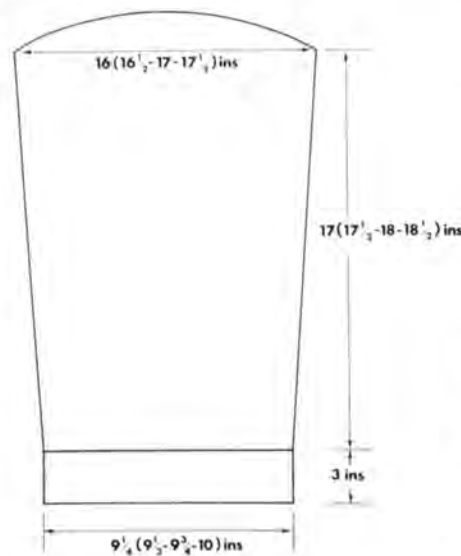






**Step 2:** Cast off 22 sts at centre. Knit LHS back to 'rest' and continue to knit RHS as follows (noting patt row showing on card). Knit 1 row and dec 1 st at neck edge on next and every foll 10th row 5 times in all. Knit to RC 173 (179, 189, 191). Cast off 3 (4, 4, 5) sts at the beg of the next row, knit 1 row. Dec 1 st at neck edge on next and every foll alt row 1 (2, 2, 2) times in all — 46 (48, 51, 53) sts.

**Step 3:** Knit to RC 190 (198, 206, 214) and cast off 12 (12, 13, 14) sts at the beg of the next row, knit 1 row. Cast off 12 (12, 13, 13) sts at the beg of the next row, knit 1 row. Cast off 11 (12, 13, 13) sts at the beg of the next and foll alt row. Turn RC back to 122 (126, 130, 134), reset patt card, take carr to left of work, push all Ns back into WP and knit LHS to match RHS.



**SLEEVES**

**Step 1:** Cast on in M (and knit in M only throughout), 55 (55, 59, 59) sts. TD at MT-2, knit to RC 40 and turn hem. Dec 1 (inc 1, dec 1, inc 1) sts — 54 (56, 58, 60) sts.

**BACK**

**Step 1:** Using M, cast on in 3 x 1 rib, 143 (151, 159, 163) sts. TD at MT-2, knit 46 rows and turn hem. Inc 1 (dec 1, dec 1, inc 1) sts — 144 (150, 158, 164) sts.

**Step 2:** TD at MT, RC 000. Start and work in fairisle patt throughout. Knit to RC 120 (124, 128, 132). Cast off 6 sts at the beg of the next 2 rows — 132 (138, 146, 152) sts.\* Knit to RC 190 (198, 206, 214).

**Step 3:** Cast off 12 (12, 13, 14) sts at the beg of the next 2 rows. Cast off 12 (12, 13, 13) sts at the beg of the next 2 rows. Cast off 11 (12, 13, 13) sts at the beg. of the next 4 rows. Cast off remaining 40 (42, 44, 46) sts.

**FRONT**

**Step 1:** Knit as Back to \*.

**Step 2:** RC 000 TD at MT, knit 6 rows and inc 1 st at both sides of next and every foll 6th row 21 (21, 22, 22) times in all — 96 (98, 102, 104) sts. Knit to RC 136 (140, 144, 148).

**Step 3:** Push 8 Ns at opp side to carr into HP on next 10 rows. Push all Ns at opp side to Carr back into WP on next 2 rows. Knit 2 rows and cast off.

**COLLAR**

Join one shoulder seam. With right side facing, pick up 22 (25, 28, 31) sts from front and 40 (42, 44, 46) sts from back, then 22 (25, 28, 31) sts from front. TD at MT. Using M, knit 4 rows straight. Inc 1 st f.f. at both sides of next and every foll 6th row, 5 times in all, knit 2 rows, RC 32. Change to C and knit 20 rows, pick up every 3rd st from 1st C row knitted and cast off all sts together LOOSELY.

**Front edging:**

(Knitted in C throughout) With right side of body facing, pick up 41 (43, 45, 47) sts from left edge and 33 sts from one edge of collar. TD at MT-1, knit 45 rows. Put 41 (43, 45, 47) sts picked up from front edge into HP, pick up every 3rd st from 1st row picked up on collar and cast off all collar edge sts together LOOSELY. Push all Ns back into WP and knit off with waste yarn. Repeat as above with right-hand edge, but only knit 44 rows.

**TO MAKE UP**

Set in sleeves. Finish front edging by turning band in half onto right side of neck slit and backstitching through the loops of the last row knitted in the main colour. Sew side and sleeve seam. Make knitted cord in C, long enough to thread through bottom hem and tie as shown. Give light final press.

*Holmfirth Wools*

- FREE SHADE CARD containing 34 RANGES, including Wools on Cone.
- OVER 450 SHADES, including 96 on Cone for machine knitters.
- DESPATCHED BY RETURN.
- FREE KNITTING & CROCHET CATALOGUE containing over 150 patterns, NEEDLES, BUTTONS, KNITTING BAGS. Send stamp to cover postage.
- DISCOUNTS AND SPECIAL OFFERS AVAILABLE THROUGH MEMBERSHIP OF OUR KNITTING CIRCLE.
- FREE POSTAGE ON LARGE ORDERS.
- SPECIAL OFFERS, Extra Fine Acrylic (2/24' 31 3 & 4 ply Shetland Wool, Double Knittings).

Fill in this coupon for full details.

*Holmfirth Wools* Dept 63 Shipley, Yorkshire B018 2BS or Ring (0274) 56943

Please indicate interest with a ✓ Machine Knitting  Hand Knitting

Name \_\_\_\_\_

Address \_\_\_\_\_



# STRIPED MOHAIR JACKETS



## Measurements

To fit chest 22", 24".  
Sleeve seam 10", 11½".  
Total length 17", 18½".

## Materials

Patons Kismet 2 balls col 1, 1 ball each  
cols 2 and 3, 5 buttons.

## Stripe sequence

1st size: 8 rs col 1, 8 rs col 2, 8 rs col 3.  
2nd size: 14 rs col 1, 2 rs col 3, 14 rs col  
2, 2 rs col 3.  
2nd size: purl side is used as right side.

## BACK

Using waste yarn cast on 96 (106) sts.  
K a few rows in waste yarn COR. TD 8.  
Change to main yarn.

**1st size:** work in stripe sequence,  
starting with col 2, to row 40. Now  
work 6 rs col 1, 4 rs col 2, 6 rs col 1.  
Continue in stripe sequence to row 96.

**2nd size:** work in stripe sequence  
starting with col 2.

**Both sizes:** change to waste yarn, K a  
few rs waste. Strip from machine.

## FRONTS

**Step 1:** Using waste yarn cast on 96  
(106) sts. K a few rows waste. Change  
to main yarn. TD 8. Work in stripe se-  
quence, starting with col 2 to row 32  
(38). Cast off 4 sts at beg of next row.

**Step 2:** Dec 1 st at neck edge on next  
and every foll row 6 times 86 (96) sts.  
Work straight to row 40 (48). Knit a  
few rs in waste yarn. Strip off  
machine. Work other front the same,  
reversing shapings.

## SLEEVES

**Step 1:** Join shoulder seams.

**Step 2:** Pick up 35 (38) sts on each  
side of shoulder seam, 70 (76) sts.  
Commencing with col 1 (3) TD 8 work  
in stripe sequence, decreasing as fol-  
lows: Work 8 (10) rs, dec 1 st at each  
end of next and every foll 8th (9th)  
row, to 64 (73) rs.

**Step 3:** Work 8 (9) rs to 72 (82) rs.

## CUFF

**1st size:** Col 1, TD 6. Work 10 rs TD 6,  
1 loose row, 10 rs TD 6. Lift up loops  
from 1st row of hem, cast off.

**2nd size:** Work a few rs waste. Strip  
off machine. Turn work, replace sts  
onto empty Ns. Work hem as for  
boys'.



## WELT

**Step 1:** Graft side seams, remove waste yarn.

**Step 2:** Using col 1 COBH 124 (138) sts. TD 6, work 14 rs, 1 loose row, 14 rs TD 6. Knit a few rows waste yarn. Strip off machine.

## MAKING UP

Gathering hem of jacket, sew cast-on edge of welt to inside jacket. Fold welt in half to outside and backstitch through the loops. Remove waste yarn. Join sleeve seams.

## BUTTONHOLE BAND

### 1st size

**Step 1:** With rt side of work facing machine pick up 86 sts along front and 10 sts from hem. Remove waste yarn. TD 6. Knit 8 rs in col 1.

**Step 2:** Counting from left edge make buttonholes over foll Ns: 4-7, 26-29, 47-50, 69-72, 90-93.

### 2nd size

**Step 1:** With knit side facing machine, pick up 96 sts from front and 10 sts from hem. Remove waste yarn. TD 6. Knit 8 rs col 1.

**Step 2:** Counting from left edge make buttonholes over foll Ns: 4-7, 28-31, 52-55, 76-79, 99-102.

### Both sizes

**Step 3:** Knit 6 rs TD 6, 1 loose row, K 6 rs TD 6.

**Step 4:** Make another set of buttonholes over same Ns as before. Knit 8 rs.

**1st size:** Pick up loops to form hem. Cast sts off loosely.

**2nd size:** Change to waste yarn. Work a few rs waste. Strip off machine.

## BUTTONBAND

Work as for buttonhole band, omitting buttonholes.

## COLLAR

**2nd size:** Fold front bands in half to outside and backstitch through loops of last row. Knitted in col 1. Unravel waste yarn. Stitch ends of bands.

**Both sizes:** Push up 52 (58) needles around neck edge. *Not including button band.* Knit 6 rs TD 6, inc 1 st at each end of next and every foll 4th row to row 18. Work 4 rs straight. Work 1 loose row. Knit 4 rs TD 6. Now dec 1 st at each end of next and every foll 4th row to row 45, work 4 rs straight. Change to waste yarn. Knit a few rs waste. Strip off machine.

Fold collar in half to inside and back stitch through loops of last row knitted in col 1, removing waste yarn. Join sleeve seams. Sew on buttons.

# Man's Embossed Fairisle Sweater

## Measurements

To fit 34 (36, 38, 40) in chest.

## Materials

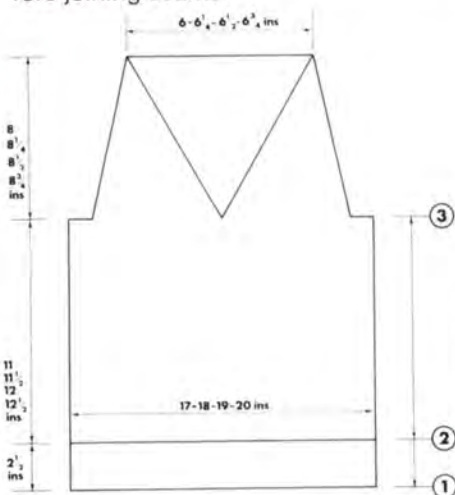
Silverknit Perle 2 cones (Col A), Silverknit Saturn 2 cones (Col B).

## Tension

8 sts x 9½ rows = 1 inch TD 6. Card No 14 from basic set.

## Notes

This rather slippery yarn needs to be knitted a little slower than normal, an extra weight will also be useful. Check edges and repair any dropped sts before joining seams.



## BACK

**Step 1:** Ribbers: cast on 136 (144, 152, 160) sts in 1x1 rib, K 3 rs tub. K 30 rs T ½ Col B. Transfer to main bed. S/bed m/cs: cast on 136 (144, 152, 160) sts in 1x1 mock rib, K 60 rs T2 in Col B, MDE.

**Step 2:** RC 000, knit in fairisle to row 100 (105, 110, 115) TD 6. Cast off 7 (8, 9, 10) sts at beg of next 2 rows.

**Step 3:** RC 000, dec 1 st at each end of every alternate row until 44 (46, 48, 50) sts remain for back neck. Cast off.

## FRONT

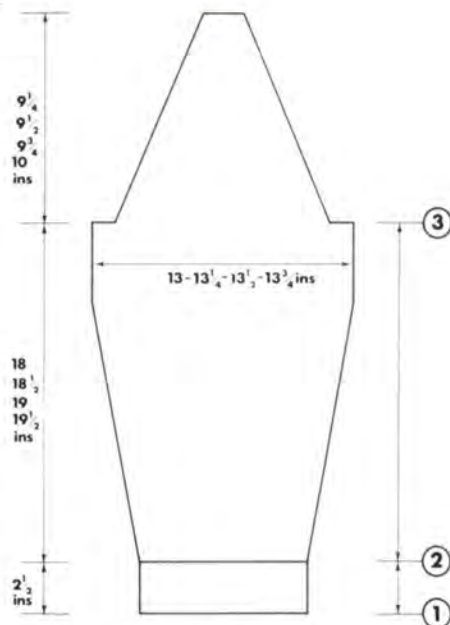
**Step 1:** As back.

**Step 2:** As back.

**Step 3:** RC 000, divide for neck. Dec 1 st at arm edge every alternate row and at the same time dec 1 st at neck every 4th row. Continue in sequence until all sts are c/o.

## SLEEVES

**Step 1:** Ribbers: cast on 64 (66, 68, 70) sts. Knit as step 1 back. S/bed



m/cs: cast on 64 (66, 68, 70) sts. Knit as step 1 back.

**Step 2:** RC 000, knit in fairisle TD 6 increasing 1 st each end of every 5th row to row 129 (134, 139, 144), continue straight to row 153 (158, 163, 168). Cast off 7 (8, 9, 10) sts beg next 2 rows.

**Step 3:** RC 000, dec 1 st each end every alternate row until 14 (16, 18, 20) sts remain. Cast off.

## NECKBANDS

**Step 1:** Front and sleeve. (Knit 2 reversing mitre shapings.) Ribbers: cast on 70 (72, 74, 76) sts in 1x1 rib, K 3 rs tub. TD 1/2 K 12 rs increasing 1 st at right end every alternate row. Transfer to main bed. With rt side facing m/c attach front neck and sleeve to facing. Cast off.

**Step 2:** Back neck. Cast on 44 (46, 48, 50) sts in 1x1 rib, K 3 rs tub. TD 1/2 K 12 rs. Transfer to main bed. Attach back as above.

S/bed m/cs: Front and sleeve. Knit 2 reversing mitre shapings. Cast on 76 (78, 80, 82) sts in 1x1 mock rib TD 2. K 12 rs decreasing 1 st at right every alternate row. K 12 rs increasing 1 st at right every alternate row. MDE. With rt side facing m/c attach front neck and sleeve. Cast off.

Back. Cast on 44 (46, 48, 50) sts in 1x1 mock rib. K 24 rs TD 2, MDE. Attach back as above.









# LADIES WING SLEEVE CARDIGAN with V openings back and front

## Ribber pattern

### Measurements

To fit 34-36" bust. Sleeve length from neck 27". Note: if preferred, sleeve can be shortened by omitting last pattern band (23 rows). Sleeve will then measure 24".

### Materials

Holmfirth 4 ply wool and nylon, 1 cone + 50g Col A, 50g Col B & C, 75g Col D. This yarn is available from Holmfirth Ltd, Briggate, Windhill, Shipley, Yorks.

5 buttons also required.

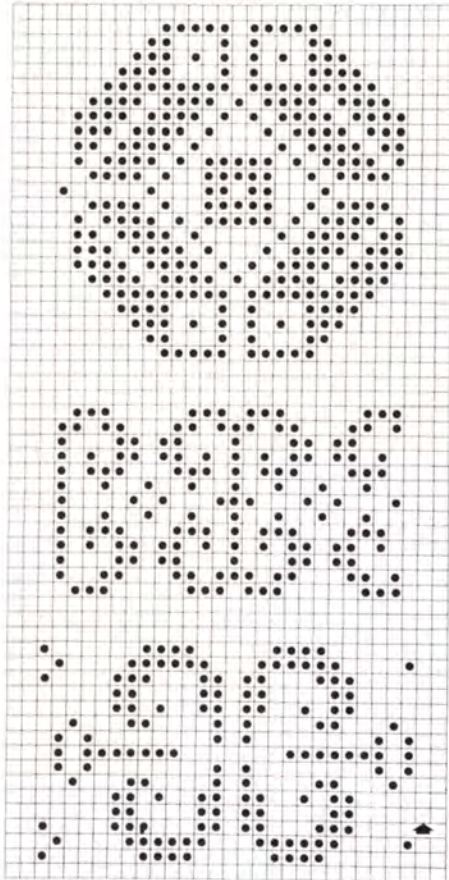
### Tension

8½ sts x 9 rows = 1" TD 7.

### Machines

820 or 830 with ribber attachment. Card — see inset.

LADIES WING TOP CARDIGAN S.FAGAN

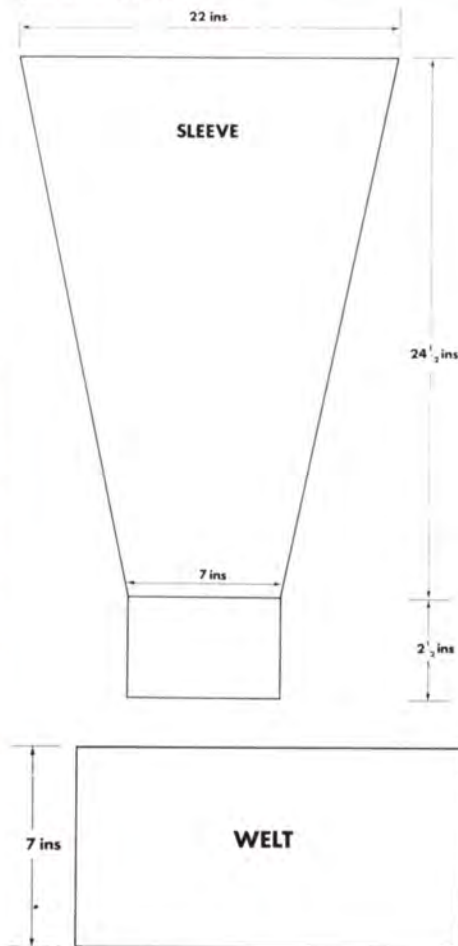


## SLEEVES

**Step 1:** Cast on 64 sts in 1x1 rib, K 3 rows tub. K 30 rows, T ¾, Col A.

Transfer to main bed. Set m/c for pattern, RC 000.

**Step 2:** Knit in fairisle, working first pattern band in Col B, second in Col C, third in Col D, as follows: inc 1 st each end of every 4th row to row 243, c/o. Join sleeve seam as far as last three pattern bands.



## BODICE BACK

Cast on 140 sts in 1x1 rib, K 3 rows tub. K 80 rows T ¾, Col A, transfer to main bed. Thread up centre 26 sts and remove these sts from m/c. Attach sleeves along the last three pattern bands (ie 60 rows) to both back bodice sections with rt side facing m/c.

## BODICE FRONTS

**Knit 2**  
Cast on 56 sts in 1x1 rib, K 3 rows tub. K 80 rows T ¾, Col A. Transfer to main bed. Attach sleeves as for back.

## BANDS

Set RC 000. Cast on 13 sts in 1x1 rib, K 3 rows, tub T ¾, K 5 rows. \*Make buttonhole, K 15 rows. Repeat from \* making 5 buttonholes in all. K to row 260, cast off. Knit another band without buttonholes.

## TO MAKE UP

Join side seams of bodice. Attach bands to bodice fronts and along sleeve tops. Graft end of bands to the centre stitches which were threaded up on bodice back. Sew on buttons.

## Measurements

To fit 34 (36, 38, 40)" hips, 24 (25, 26, 27)" waist, 24½" length, not incl crochet trim. To reduce length omit 9 Ns per inch.

## Materials

Holmfirth 4 ply wool/nylon, 2 cones from Holmfirth Ltd, Briggate, Windhill, Shipley, Yorks.

## Tension

9 sts & 10 rows = 1 inch.

Abbrev: dc = double crochet.

For all machines

## SKIRT

Using waste yarn cast on 200 sts, K a few rs, COR, K 10 (12, 10, 12) rows. Push 20 Ns at left to E pos on next and every alt row with HP + 9 times in all, COR. Push back 20 Ns at rt to D pos on next and every alt row with HP + 9 times in all. K 19 (21, 19, 21) rows without shaping. Repeat above sequence making 13 (13, 14, 14) darts in all BUT after the last dart knit only 10 (12, 10, 12) rows without shaping. Knit a few rs waste yarn. Remove from m/c.

## WAIST BAND

With rt side facing m/c pick up 175 (182, 189, 196) sts along top edge of skirt. TD 5 K 10 rs, TD 8 K 1 row, TD 5 K 10 rs. K several rows waste yarn.

## TO MAKE UP

Graft back seam. Turn down waistband and catch down loosely. Work 2 rs dc around lower edge. To make scallops work \*6 treble crochet sts into 1st dc, miss 2 dc sts, one slip st into next dc, miss 2 dc sts. Repeat from \* all around lower edge.



# SKIP STITCH TOP IN DOUBLE KNITTING

## Measurements

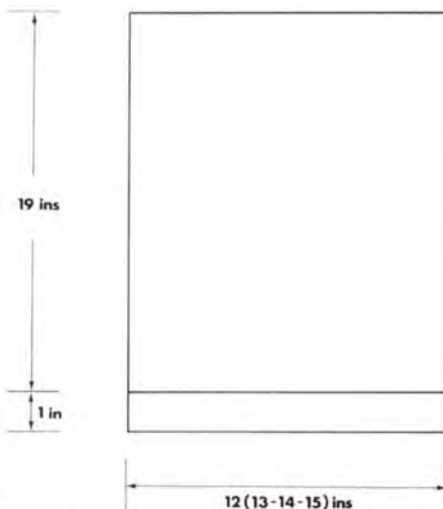
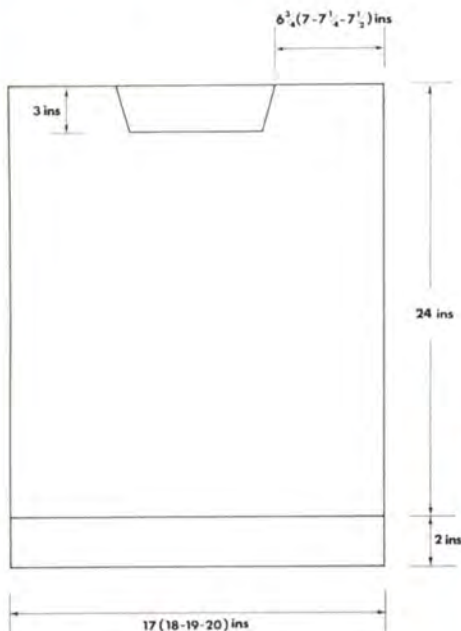
To fit 32 (34, 36, 38) in chest.

## Materials

600g Phildar Pronostic 229.

## Tension

TD 10, 7 sts x 10 rs = 1", measure on wrong side. Card No 1 basic set.



**Step 2:** As back to row 330, divide for neck. Bring centre 32 (34, 36, 38) sts, and others at opposite side to carriage to HP. Dec 1 st at neck on 1st and 12th

row of skip stitch stripes, to row 375. Knit few rs WY. Knit other front neck to match. Knit off the centre 32 (34, 36, 38) sts in waste yarn. Collar: RC 000, cast on 126 (130, 134, 138) sts, K 3 rs st.st. Continue in sequence to row 120, K 3 rs st.st. With wrong side of garment facing m/c, attach front and the centre 44 (46, 48, 50) sts of back to collar. Cast off loosely. Turn collar to fold and hem down.

## SLEEVES

**Step 1:** Cast on 100 (108, 116, 124) sts in 1x1 mock rib, T7 K 24 rs MDE.

**Step 2:** Knit in sequence to row 285, T 10, K a few rs WY (or if preferred cast off loosely).

## TO MAKE UP

Graft shoulder seams and sleeve to bodice seam. Join other seams. Iron with a cloth on wrong side.

## BACK

**Step 1:** Cast on 136 (144, 152, 160) sts in 1x1 mock rib, K 48 rs T7 MDE.

**Step 2:** RC 000 T 10, knit in a sequence of 12 rs skip st, 3 rs st.st. to row 375. Knit few rs waste yarn.

## FRONT

**Step 1:** As back.

Make it with **MAILYARNS**...you'll notice the difference!

You'll be agreeably surprised to learn that our machine knitting yarns cost no more than ordinary yarns . . . . . and are also supplied POST FREE.

**'GOSCOTE'-'SUPERMARL'** (4 ply)  
100% Acrylic on 340/250g cones. Available in 32 Solid & Marl shades incl. most school colours.

**'BANCOT'** (2 ply & 4 ply)  
100% Cotton on 200g cones. A delightful colour range in this mercerised quality.

**FINE PLY** (2 30s)  
100% Acrylic on 250g cones. In a range of popular colours.

**ALL OUR YARNS ARE SPUN SPECIFICALLY FOR MACHINE KNITTING & ARE FULLY REPEATABLE**

**'SHETLANDIA'** (3 ply)  
Shetland style 100% Pure New Wool on 400g cones. A quality-plus yarn in a range of top fashion shades.

100% Pure New Wool **ARAN** (Natural) on 250g appx. hanks. Superb knitting/Weaving yarn.

**WE ALSO STOCK:**  
Machine Weaving Yarns, Labels, Invisible Thread, etc.

Send S.A.E. for FREE samples (quote product interest) to: MAILYARNS LTD, (Dept J1) 38, High Street, Syston, Leicester.

Discounts are available please ask for details (please advise if club organiser or self bulk user)





# Christmas Toys



## DOUBLEDOLLS

Designed to use up cone oddments.

### Materials

50g flesh colour 4 ply, 1 ball Mohair in hair colour plus leftover yarns in 4 ply for clothes. Kapok.

### Tension

8 sts x 9 rs = 1" approx TD 7.

### DRESS

**Step 1:** Cast on 200 Ns in 1x1 formation. Bring forward empty Ns making 200 sts. K 3 rows TD about 7. Set m/c for patt, using a favourite card (the picture shows cards 3 & 4 from basic set of 820-830 m/c).

**Step 2:** RC 000. Knit 95 rows fairisle, knit 5 rows st.st. Knit 1 row T10, knit 5 rows T7, change card & colours.

**Step 3:** RC 000. Knit 95 rows fairisle. Knit 3 rows st.st. Transfer every alt N. Knit one row MDE placing sts onto Ns already carrying a stitch. Cast off.

### APRONS (Knit 2)

**Step 1:** Cast on 50 sts. Knit 8 rows MDE.

**Step 2:** Knit 4 rows Col A, 2 rows Col B, 2 rows Col C, 2 rows Col D.

**Step 3:** Knit 60 rows in fairisle in a small scale pattern. Photograph shows a 2 x 2 check. Knit 2 rows st.st. Cast off.

### ARMS (Knit 4)

**Step 1:** COBH in flesh colour 20 sts. Knit 6 rows st.st. T7. Inc 2 sts beg next 2 rows. Knit 12 more rows.

**Step 2:** Change to sleeve colour, K 40 rows, c/o loosely.

### BODY (Knit one)

**Step 1:** COBH in flesh colour 90 sts. K 2 rows.

**Step 2:** Shape ends. Set HP. Bring 1 N at opp end to carr to E pos on each row until there are 8 Ns each end in E pos. Push back 1 N at opp end to carr to D pos on each row, which is nearest centre of doll's body. Continue until all needles are in working pos. Knit 30 rows without shaping.

**Step 3:** Repeat step 2. C/o.

### DRESS BODICE (Knit one)

Same colour as sleeves.

COBH 60 sts. Knit 30 rows st.st. C/o. Trim long sides with scrap of lace or crochet trim.

### HAIR (Knit 2) mohair

Bring forward centre 2 sts on m/c and 30th st either side of centre. COBH over these sts, the strands forming the hair. Knit 40 rows, using weights for ease. C/o.

### TO MAKE UP

**Step 1:** Join seams of arms, fill with kapok.

**Step 2:** Join seam on body leaving an opening for stuffing (3") in centre part. Divide the body in 3 sections and run a gathering thread in flesh colour around for neck (gather thread after

stuffing). Decorate faces with embroidered features — or use commercially made eyes). Stuff body, complete seam, pull gathering thread and secure end.

**Step 3:** Sew dress bodice round centre of body. Join dress seam and sew on around centre of bodice, gathering top to fit. Sew on aprons.

**Step 4:** Sew hair to head along centre sts. Join hair in bunches and trim mohair to neaten ends.

## SPOTTY BEETLE

### Materials

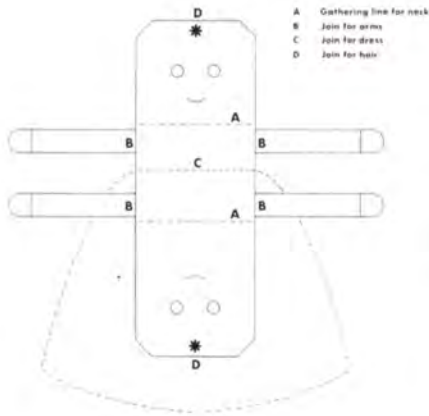
Small oddment in Col A & B in 4 ply, 2 eyes, kapok.

### Machine

All m/cs capable of skip stitch







### Tension

9 sts x 10 rs approx 1" TD 9.

### Pattern

1x1 check (Card No 1 basic set 820-830 m/c).

**Step 1:** Using waste yarn cast on 60 sts. Knit a few rs RC 000.

**Step 2:** Knit one row Col A setting m/c for patt. Depress both part buttons. Knit 20 rs, c/o one st each end every alt row to row 050.

**Step 3:** In Col B, inc 1 st each end every alt row to row 080. Knit 10 rs without shaping. C/o 1 st each end every alt row to row 120.

**Step 4:** In Col A, inc 1 st each end every alt row to row 150. Knit without shaping to row 170. MDE. Cast off. Remove waste yarn.

### SPOTS

Knit 6 Col B knitted in st.st. TD 5. COBH 4 sts, inc 1 st each end every alt row until there are 8 sts. Knit 1 row. Dec 1 st each end every alt row until 4 sts remain. Cast off.

Sew spots to back and sew eyes onto body. Cut a piece of card in base shape. Insert card into body. Join one opening, gathering top to base. Stuff well above card. Join remaining seam.

## WIGWAM

In Four Colours



### Materials

4 cones Argyll Ferntex 4 ply + 25 g extra Col A, 8 seven foot garden poles, piece string for poles, 2 metre length curtain weight cut into seven.

### Machine

All machines with 200 Ns capable of fairisle.

### Tension

8 sts x 9 rows = 1" TD 7.

### Pattern

Photograph shows Card No 8 from 820/830 set. Any favourite pattern may be substituted.

### Sections

Knit seven (each taking about 40 minutes).

**Step 1:** In Col A cast on 2 sts by hand, RC 000. Inc 1 st each end every 5th row to row 149. Knit row 150 setting m/c for patt.

**Step 2:** RC 000. Knit in fairisle with Col B in front feeder to row 166, continuing to increase every 5th row.

**Step 3:** RC 000. Knit in stripe sequence of 10 rows Col A, 10 rows Col B, 10 rows Col C, 10 rows Col D, continuing to increase every 5th row. Knit to row 178. Knit 2 rows TD 10, cast off.

### TIES

Make 12 cords over 3 Ns TD 4 about 8" long and one card about 16" long, tie long cord to top of one section.

### TO MAKE UP

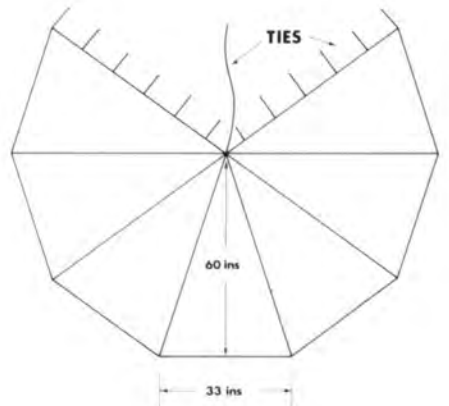
Join 6 seams, preferably on a sewing machine. Turn lower stripe up for

hem, inserting lengths of curtain weight, leaving  $\frac{1}{2}$ " either side of seams not hemmed for inserting poles into little 'pockets'. Using the latch tool insert the ties to the open seams and tie each one.

### TO PITCH TENT

Take 8 poles. Tie loosely about 9" from top. Splay poles and drape wigwam over poles. Insert poles into pockets. Tie cords on open edges to two poles.

When poles are correctly splayed, secure long tie on top of tent to top of poles.







# LADIES TUCK STITCH CARDIGAN

## Measurements

To fit bust 81 cm (32"), 86 cm (34"), 91 cm (36"), 97 cm (38").

## Materials

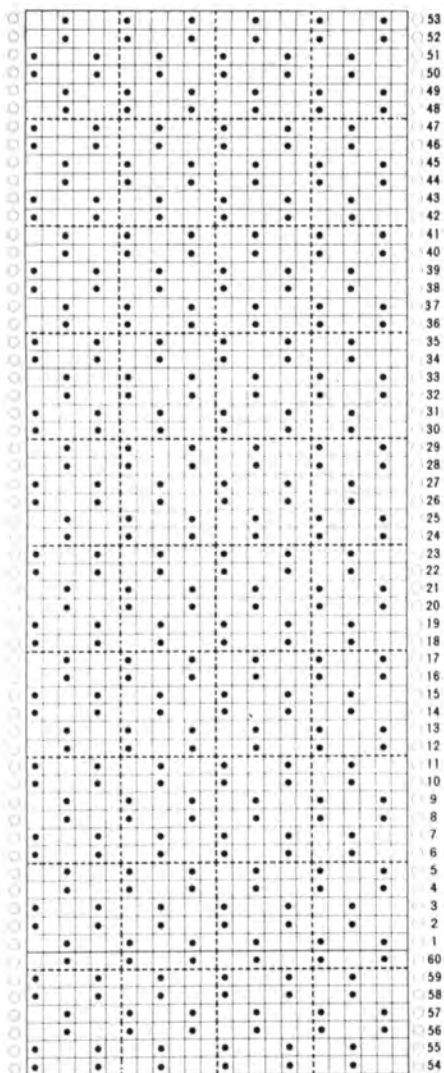
Jaeger Match Maker Superwash double knitting wool, 12 (13, 13, 14) balls.

## Tension

Always check tension before commencing

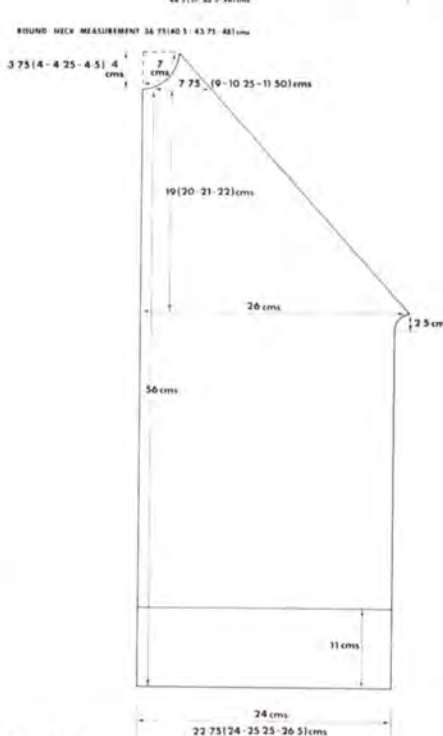
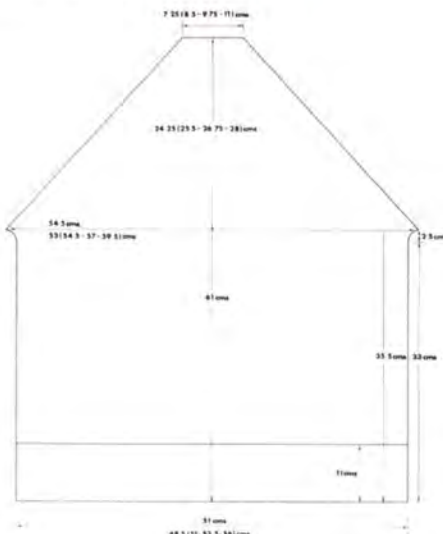
Working on every other needle (EON) make tension square 30 sts x 60 rs in tuck. T10. 20 sts (EON) = 14.6 cm. 60 rs = 12 cm.

Success depends on working to correct tension



## Notes

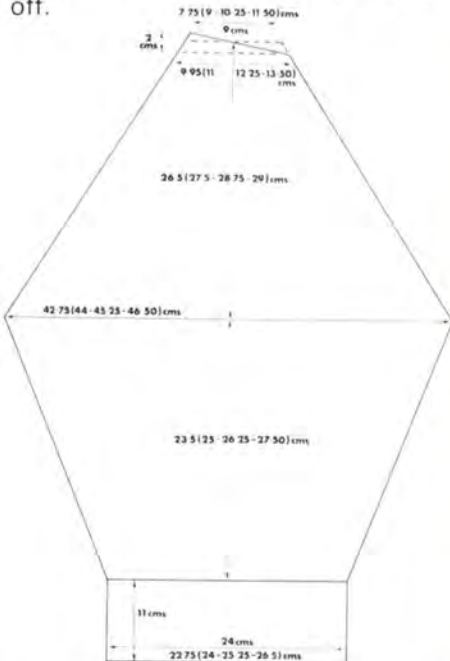
Tuck stitch card — diagram given. Work on every other needle (EON) except where otherwise stated. 6 buttons  $\frac{3}{4}$ ".



## BACK

Insert card and lock on R1. With WY cast on 66 (69, 72, 75) sts EON. K a few rs. Change to main wool. T9 K 70 rs. Make hem and K the R. T10, carr

on left, set m/c for tuck. Carr to right, release card. K 124 rs. \*Inc 1 st at beg of next 2 rs. K 10 rs. \* Rep 000. Dec 1 st at each end of every 4th row until there are 10 (11, 12, 13 sts rem. Cast off.



## SLEEVES

Insert card and lock on R1. With WY cast on 30 (32, 34, 36) sts EON. K a few rs. T9, change to main wool, K 70 rs. Make hem and K the R. T10, carr to left, set m/c for tuck. Carr to right, release card. Inc 1 st at beg of every foll 8th and 9th (9th and 10th, 9th and 10th, 9th and 10th) r until there are 58 (60, 62, 64) sts. K until RC reads 120 (128, 132, 136), 000. Dec 2 sts at each end of every foll 11th (11th, 11th, 12th) row until there are 10 (12, 14, 16) sts. K until RC reads 132 (136, 140, 144). For neck shaping: carr to right. (Cast off 2 sts at beg of next r, K 1 row), rep until there are 0 (0, 2, 4) sts rem. Cast on other sleeve, work neck shaping in reverse.

## FRONT

**Pocket bag:** Cast on by hand 32 sts EON. T10, K 40 rs, trans every 2nd st, change to WY and K a few rs, release from m/c, rep. Insert card and lock on R1. With WY cast on 30 (32, 34, 36) sts EON, K a few rows. Change to



# UNISEX TOP

main wool, T9, K 70 rs. Make hem and K the row. T10, carr on left, set m/c for tuck, carr to right, release card. K 50 rs, carr to right with WY, K centre 16 sts by hand, do a few rs, release from m/c. Take pocket bag, with right side facing, undo WY and place the sts onto the 16 Ns. Pull Ns into pattern pos to correspond with adjacent Ns. K 74 rs, RC 124.

At left side only inc 1 st at beg of next r and foll 10th r, K 20 rs, 000. K 8 (9, 9, 10) rs. Dec 2 sts at sleeve edge (left) on every foll 8th (9th, 9th, 10th) r until RC reads 96, (100, 106, 110). Cont sleeve edge decreasing, AT SAME TIME as neck shaping. Carr to right, c/o 2 sts at beg of next r, K 1 r, carr to right \*c/o 1 st at beg of next r, K 1 r.\* Repeat until all sts are c/o.

Front right side: reverse all shaping.

**Pocket band:** With WY cast on 16 sts EON, K a few rs. Change to main wool, T9, K 20 rs, make hem. Undo WY from pocket on front and place the 16 sts onto the band on m/c. Cast off.

## COLLAR

Join shoulder seams and knit up 60 (66, 72, 78) sts along neck edge. With WY cast on 60 (66, 72, 78) sts. Knit a few rs. Change to main wool, T9, K 100 rs, make hem. Place the sts along neck edge onto the hem on m/c. Cast off.

## FRONT BANDS

Knit up 94 (96, 98, 100) sts along CF from bottom of hem to the end of the collar, both sides put onto st holders.

**Left side:** In WY cast on 94 (96, 98, 100) sts. K a few rs. T9 change to main yarn and K 20 rs, make hem. With right side of work facing, place sts from holder onto the hem on m/c. Cast off.

**Right side:** With WY cast on 94 (96, 98, 100) sts. K a few rs. T9 change to main yarn and K 5 rs, carr on left. To make buttonholes trans the foll to the Ns on left - 5th, 18th, 31st, 44th, 57th, 70th. Leave the empty Ns in K pos. K 1 r. The yarn lies loosely over the empty Ns. Bring these Ns into HP and then back to KP leaving the loose thread in front of the sinker pins. Take the single trans tool and place it behind the loop and twist the tool in clockwise direction, so that the loop is caught around the tool, place onto N. Repeat for all buttonholes. K 9 rs. Repeat buttonhole rs. K until RC reads 20, turn up hem. With right side of work facing (collar to right) place sts from front onto the hem on m/c.

PRESS all pieces and join rem seams.

## Measurements

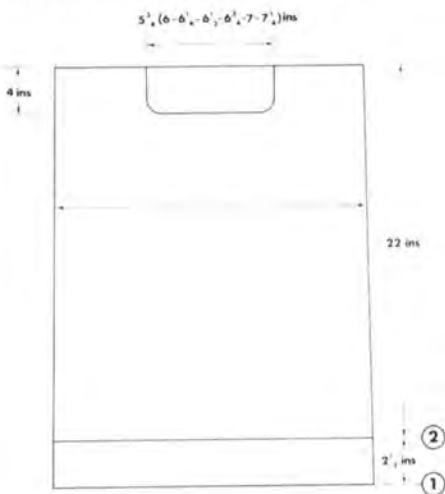
To fit 32 (34, 36, 38, 40, 42, 44) in chest/bust.

## Materials

4 ply wool/nylon by Holmfirth, Brig-gate, Shipley, Yorks., 1 cone + 50g Col A, 75g Col B, 50g Col C, D, E, F, 25g Col G.

## Tension

8 sts x 10 rs = 1" TD 7. Card No. 1 basic set.



## BACK

**Step 1:** Ribbers: Cast on 142 (150, 158, 166, 174, 182, 190) sts in 1x1 rib, K 3 rs tub Col A K 30 rs T 3/4 transfer. S/bed m/cs: Cast on 142 (150, 158, 166, 174, 182, 190) sts in 1x1 (or 3x1 if preferred), K 60 rs T4 MDE T7.

**Step 2:** RC 000. Card locked K 30 rs fairisle col B. Card released K 10 rs col C. Card locked K 30 rs col D. Card released K 10 rs Col E. Card locked K 30 rs col F. Card released K 10 rs col G. Card locked K 30 rs col E. Card released K 10 rs col D\*. Card locked K 30 rs col C. Card released K 10 rs col B. RC 200. Mark with WY the 24th (25, 26, 27, 28, 29, 30)th st either side of centre to indicate neck opening. Set m/c for st.st. K several rows WY (or cast off loosely if you prefer).

## FRONT

**Step 1:** As back.

**Step 2:** As front to \* ie the 10 rs of col D. Divide for neck RC 160. Bring into HP 40 (42, 44, 46, 48, 50, 52) centre sts and those remaining at opposite end from carriage. Continue in pattern sequence with col C, dec 1 st at neck every alternate row 4 times. Continue straight in sequence to row 200, K several rows WY. Complete other side of front to match. K the centre 40 (42, 44, 46, 48, 50, 52) sts off onto WY.

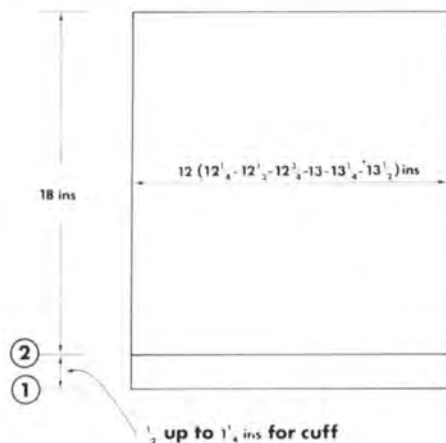
## SLEEVES

**Step 1:** Using col A cast on 110 (112, 114, 116, 118, 120, 122) sts, K 12 (14, 16, 18, 20, 22, 24) rs T6 MDE.

**Step 2:** K as back to \* ie the 10 rs of col D. Set m/c for st.st. K several rows WY (cast off loosely if you prefer).

## NECK

Ribbers: Cast on 152 (156, 160, 164, 168, 172, 176) sts in 1x1 rib, K 3 rs tub. K 10 rs starting on T 2/3 increasing regularly to 3/4. Transfer to main bed. Attach front and back above waste yarn, cast off loosely. S/bed m/cs: Cast on 152 (156, 160, 164, 168, 172, 176) sts in 1x1 (or 3x1) rib, K 20 rs T4 MDE. Attach\* front and back above waste yarn, cast off loosely.











# GIRLS V-NECK SWEATER



## Materials

Sirdar Superwash 4 ply 13 (14, 15) 25 gm balls, col. A.

Twilleys Goldfingering 1 x 25 gm. ball, col. B.

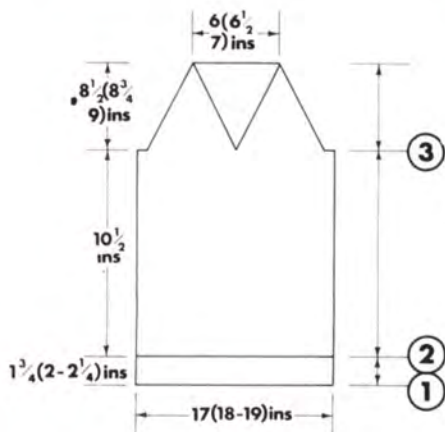
1 Sachet Sequins.

## Measurements

32 (34, 36) in. bust. Length, see diagram.

## Tension

T.D. approx. 9.



## BACK

**Step 1 - Ribbers:** Cast on 120 (126, 132) sts. for 1 x 1 rib. Knit 3 Rs. tub. K. 20 (24, 28) Rs. T3/4. Transfer sts. to main bed. S/bed m/cs. cast on 120 (126, 132) sts. for 1 x 1 mock rib. K. 20 (24, 28) Rs. T6, K. 1 R. T7. K. 20 (24, 28) Rs. T6.

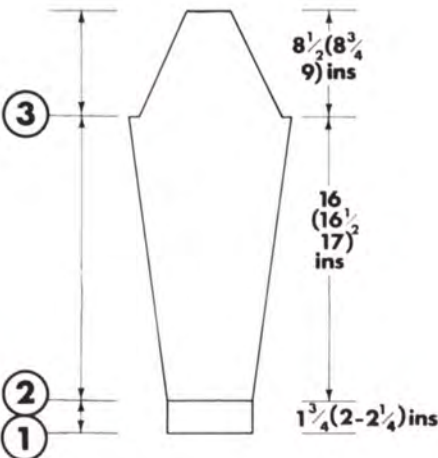
**Step 2.** R.C.000. TD 9. K. 20 Rs. col. A, 2 Rs. col. B. to R. 098.

**Step 3.** Cast off 6 (6, 6) sts. each end of R. 098. Contd. in stripes. R.C.000\*. K. 2 Rs. Dec. 1st. each end of R. Knit 3 Rs. dec. 1 st. each end of R. Repeat from \* to R. 054. Dec. 1st. each end of every alt. R. to R. 076 (078, 080). K. a few Rs. waste yarn.

## FRONT

**Step 1 and 2** as Step 1 and 2 for back.

**Step 3.** Cast off 6 (6, 6) sts. each end of R. 98. Divide for neck. R.C.000\*\* K. 2 Rs. dec. 1st. at armhole edge. K. 3 Rs. dec. 1st. at each edge. Repeat from \*\* to R. 054. Dec. 1st. each end of every alt. R. to R. 076 (078, 080).



## SLEEVES

**Step 1.** Cast on 52 (54, 56). Make welt as step 1 of back.

**Step 2.** R.C.000\*\*\*K. 5 Rs. inc. 1 st. each end next row. Repeat from \*\*\* to R. 120 (124, 128). Continue straight to R. 142.

**Step 3.** Cast off 6 (6, 6) each end of R. 142. Continue as for Step 3 of back.

## NECKBAND

**Ribbers:** Cast on 46 (48, 50) sts. for back neck in col. B. for 1 x 1 rib. K. 3 Rs. tub., K. 2 Rs. T3/4, K. 8 Rs. col. A. Transfer to main bed. Attach back with right side of working m/c. Cast off.

## FRONT AND SLEEVE

Cast on 72 (76, 80) sts. for 1 x 1 rib. K. as back band. Attach front and sleeve with right side of working m/c. Cast off. K. another front facing to match.

**S/bed m/cs. Back:** Using col. A. cast on 46 (48, 50) for 1 x 1 rib. K. 8 Rs. T6, K. 4 Rs. col. B, K. 8 Rs. col. A. M.D.E. With right side of work facing m/c attach back, cast off.

## FRONT AND SLEEVE (Knit 2)

Cast on 72 (76, 80) sts. for 1 x 1 mock rib. K. as for back band. Attach front and sleeve with right side of work facing m/c. Cast off.

## TO MAKE UP

Join seams and decorate with sequins.



# YOUTHS TUCK STITCH SWEATER

## Materials

1 (1, 1, 2) cones of Silverknit Jupiter (=2 ply) from Silverknit, Edwalton, Nottingham NG12 4DF.  
16 (17, 18, 20) in. zip.

## Measurements

To fit 26 (28, 30, 32) in. chest.  
Total length: 18½, 20 21½, 23 ins.  
Sleeve seam: 12, 13, 14½, 16 ins.

**Note:** Extra yarn is required for pockets on size 30 in.

## Tensions

6 sts. × 22 rows = 1 in. over tuck stitch patt. T.D. approx. 3.

## Patterns

588 440 from book.  
800 445 from book.  
830/820 Card No. 2 from basic set.

## BACK

**Step 1.** Cast on with waste yarn 84 (90, 96, 102) sts. K. a few Rs. waste. Change to main yarn, T2 K. 33 Rs. Turn hem, set m/c for tuck stitch patt. T3, K. 1 R. C.O.R. 000.

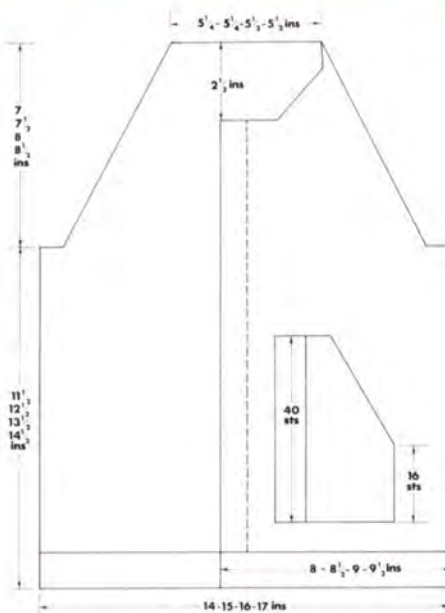
**Step 2.** K. 230 (252, 276, 296) Rs. Cast off 4 (5, 6, 7) sts. at beg. of next 2 Rs. 000.

**Step 3.** Dec. 1 st. at both ends of every 7th R. 16 (20, 20, 24) times. Then every 6th R. 7 (4, 6, 3) times. To R. 154 (164, 176, 186). Place rem. 30 (32, 32, 34) sts. on waste yarn.

## FRONT

**Step 1.** Cast on 48 (51, 54, 57) sts. K. as for Step 1 of Back.

**Step 2.** K. 230 (252, 276, 296) Rs., cast off 4 (5, 6, 7) sts. at beg. of next R. K. 1 R. C.O.R. 000.



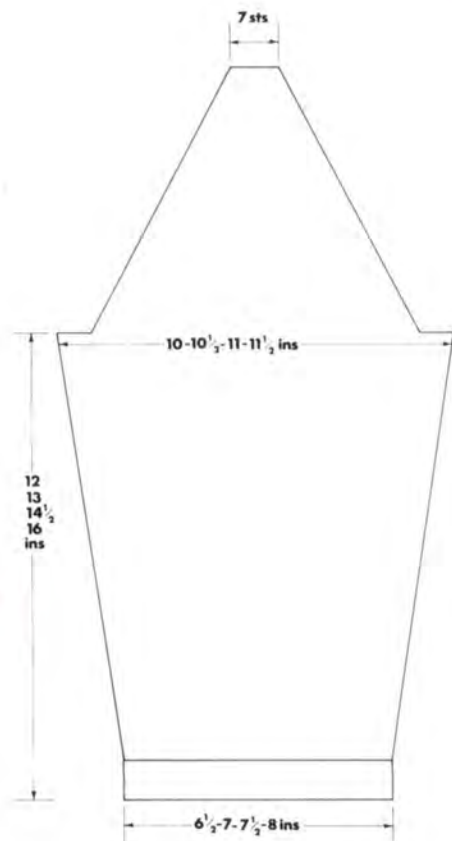
**Step 3.** Shape as for Step 3 of back to R. 99 (109, 121, 121), cast off 12 sts. at beg. of next R. Cont. shaping on right edge as for back at the same time dec. 1 st. at neck edge every 4th R. 7 (8, 8, 9) times.

K. to R. 154 (164, 176, 186). Work other front to match reversing all shaping.

## SLEEVE

**Step 1.** Cast on 39 (43, 45, 49) sts. K. as for Step 1 of Back.

**Step 2.** Inc. 1 st. at both ends every 23 (25, 24, 26)th R. to 61 (65, 71, 75) sts. K. to R. 264 (286, 318, 352). Cast off 4 (5, 6, 7) sts. at beg. of next 2 Rs. 000.



**Step 3.** Shape as for Step 3 of Back to 7 sts. Place sts. on waste yarn. Press all pieces gently, join raglan seams.

## COLLAR

Cast on 101 (105, 108, 114) sts. T2 H.P. Push 10 sts. into H.P. at the end of the next 2 Rs. Push 3 needles into H.P. at the end of the next 16 Rs. Return all needles to W.P. on the next 2 Rs. 000. Inc. 1 st. at both ends every 4th R. 12 times, K. to R. 50. Dec. 1 st. at both ends every 4th R. 12 times, K. to R. 100. Push 10 needles into H.P. at the end of the next 2 Rs. Push 3 needles into H.P. at the ends of the next 16 Rs. Return all needles to W.P. on the next 2 Rs. Turn hem. With right side of work facing m/c place collar to neck edge 6 sts. in from each front edge. Cast off.

## TO MAKE UP

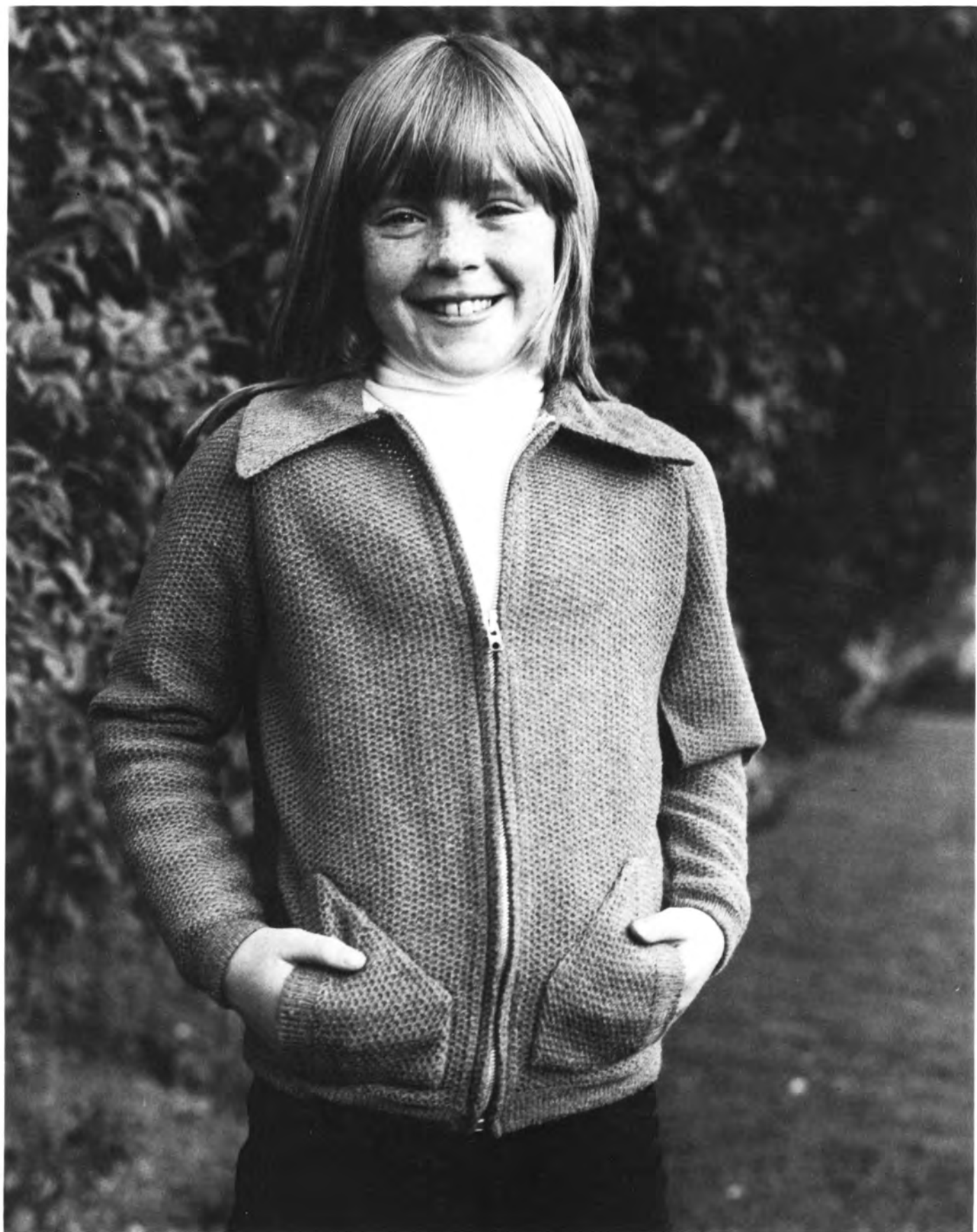
Join side and sleeve seams. Sew down front facing 6 sts. in. Join edges of collar.

## POCKETS

Cast on 40 sts. K. as for Step 1 of Back.

**Step 2.** K. 10 Rs. Dec. 1 st. at left edge every alt. R. 24 times, K. to R. 60. Cast off. Make another pocket to match reversing shaping. Sew pockets into position. Sew in zip.







# LADIES BATWING TOP IN WOVEN LACE

## Measurements

To fit 32-35 (36-40)" bust fairly loosely.

## Materials

Pingouin Mademoiselle 4 ply, 8 x 50g balls. Pingouin Pescadon Imprime, 4 x 40g balls.

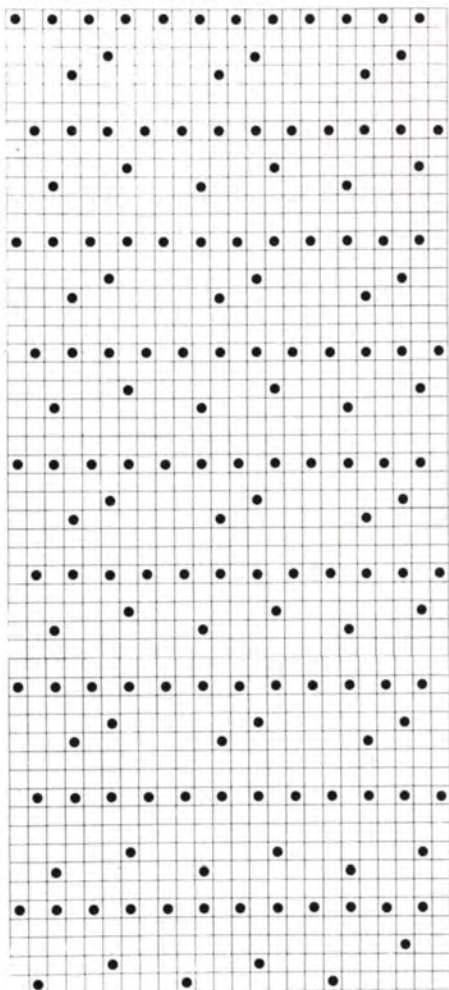
## Tension

25 sts (or 3 patterns) x 40 rs = 4" over woven lace TD 8.

## Notes

The length of bodice in relation to sleeve width is critical; to lengthen or shorten, do so over welts. M/c is set to KC. Knit with lace carriage until every alternate N is brought forward, then weave two rows. Don't be surprised by the rows which set no needles, they allow the m/c carriages to travel in the correct direction. See inset for card.

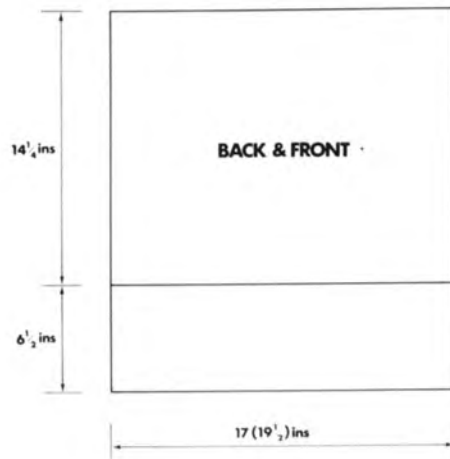
## WOVEN LACE BATWING S.FAGAN



## BACK AND FRONT ALIKE

**Step 1:** Ribbers: Cast on 106 (120) sts in 1x1 rib, K 3 rows tub. K 70 rows T $\frac{3}{4}$ . Transfer to main bed. S/bed m/cs: Cast on 106 (120) sts in 1x1 mock rib, K 140 rows T3 MDE.

**Step 2:** RC 000 COR T8. Set m/c to KC. Set row 1 with lace carriage (it will be a plain row). Release card and proceed as in notes. Knit 140 rs, cast off.

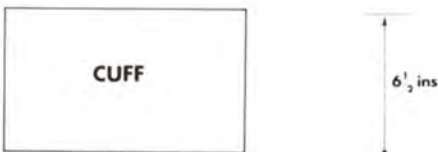






## SLEEVES

**Step 1:** Using waste yarn cast on 186 sts over alternate Ns. K 1 row main yarn, bring forward empty Ns, K 2 rows T8, K 150 rows woven lace. Cast off very loosely.



## CUFFS

Ribbers: Cast on 60 (66) sts in 1x1 rib,

K 3 rows tub, K 70 rows T $\frac{1}{2}$ . Transfer to main bed. Attach sleeve above waste yarn. S/bed m/cs: Cast on 60 (66) sts in 1x1 mock rib, K 140 rows T3 MDE. Attach sleeve above waste yarn.

## TO MAKE UP

Join welt seams and sleeve seams. Join sleeves to bodice sides. Join shoulder seams. Work a row of double crochet into neck opening. Work a second row of double crochet missing every 4th st to tighten opening.

# CHUNKY FAIRISLE SWEATER

## Materials

Jamieson & Smith (SWB) Ltd., 90 North Road, Lerwick, Shetland Isles, ZE1 0PQ.

Jumper weight (2-ply), 5 x 2 oz hanks Main Colour, 2 x 2 oz hanks Colour 1, 1 x 2 oz hanks Colour 2.

## Measurements

To Fit 30 (32, 34, 36, 38) in 75 (80, 85, 90, 95) cm.

## Tension

T.8. Over Pattern, Tension Square 40 sts. x 60 rows = 16 cm x 14 cm. or 6 sts. = 1 in and 10 Rs = 1 in.

## Pattern throughout

K 4 Rs Main Colour, K 2 Rs Colour 1, K 4 Rs Main Colour, Pick up from last R of Colour 1 Ev. 3rd st. and place on Ev 3rd N. K 2 Rs Colour 1, K 2 Rs Main Colour, K 2 Rs Colour 2, K 2 Rs Main Colour, Pick up from last row of Main Colour Ev. 3rd st. and place on Ev. 3rd N. K 2rs Main Colour. K 2rs Colour 1. K 2rs Main Colour. K 2rs Colour 2. Pick up from last R of colour 1 Ev. 3rd st and place on Ev. 3rd N. These 26 Rs form Pattern.

## BACK

T.7 C.O. 97 (103, 111, 115, 121) Rib 2 x 1, 80 Rs, Change to st. st. 000 T.8. Knit until Row Counter Reads 150 or length required (make note to match patt. from raglan shaping).

C/O 4 (5, 4, 5, 5) sts. at beg. of next 2 Rs. Dec. 2 sts. at each end of Ev. foll. 6th R until 29 (27, 31, 33, 33) K 2 Rs C/O.

## Front

As back until raglan shaping. Dec. 2 sts. at each end of Ev. foll. 6th R until 53 (51, 61, 63, 63) remain. C/O centre 15 (15, 17, 17, 17, 17) dec 1 st. Ev 2nd R at neck edge, 7 (6, 7, 8, 8) times (at same time as raglan shaping).

## Sleeves both alike

T7 C.O. 51 (55, 57, 59, 61) sts. rib 2 x 1 40 Rs turn up hem. T.8 change to st. st. 000.

Inc 1 st. at each end of Ev. foll. 8th R until inc.'d to 73 (83, 89, 95, 95).

K until Row Counter reads 176 (or required length, patt. must match back and front from raglan shaping onwards).

C/O 4 (5, 4, 5, 5) at beg of next 2 Rs. Dec. 2 sts. at each end of Ev foll 6th R until 11 (13, 15, 19, 13) K 2 Rs C/O.

## Collar

Press all pieces. Join raglan seams except one. Pick up sts. along neck edge and put on m/c T.7 make 2 x 1 rib, K 160 Rs, pick up first R and C/O. Join all other seams and collar.





# WOMAN'S LACE DRAWSTRING SWEATER





## Measurements

To Fit 32 (34, 36, 38, 40) in.

## Materials

1 (1, 1, 2, 2) Cones Hayfields Machine Knit — available from your local stockist, or by mail order from Stagport Ltd., PO Box 24, Slough, Berks, SL1 2 NW (Send 15p for samples and order form).

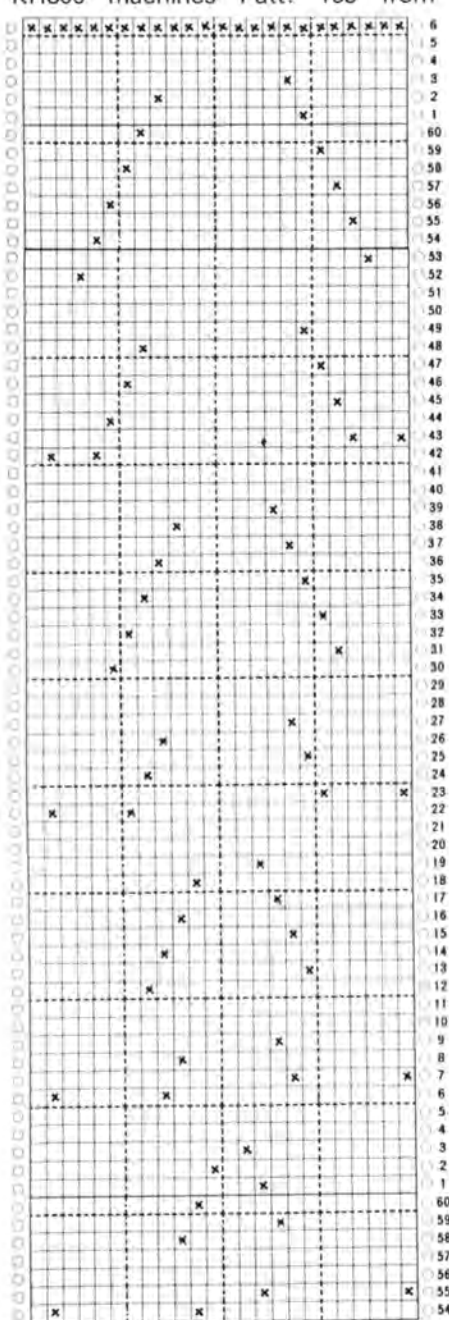
## Tension

31 sts. & 40 rows to 4 in (10 cms) measured over lace patt. with T.D. approx. 5.

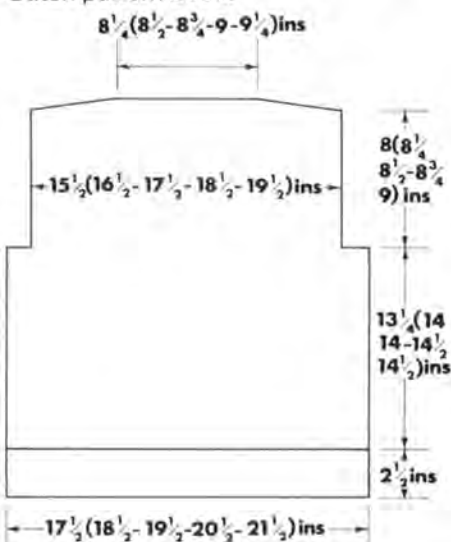
## Pattern

KH820 & 830 machines work from diagram to make new punch card.

KH800 machines Patt. 169 from



Stitch pattern book.  
KH 588 machines Patt. 000 from  
Stitch pattern book.



## BACK

**Step 1.** C.O.B.H. 136 (142, 150, 158, 166) sts. T.D. at M.T.-1, knit 40 rows and make picot by transferring every 4th sts. onto adj. Ns., leaving empty Ns. in work. Knit to R.C. 50 and turn hem.

**Step 2.** R.C.000. T.D. at M.T., Knit 2 rows and start lace patt. Knit straight to R.C. 134 (140, 140, 146, 146,) and cast off 8 sts. at the beg. of the next 2 rows — 120 (126, 134, 142, 150) sts.

**Step 3.** Knit to R.C. 214 (222, 226, 232, 236) and cast off 6 (6, 7, 8, 8) sts. at the beg. of the next 2 rows. Cast off 6 (6, 7, 7, 8) sts. at the beg. of the next 4 rows. Cast off 5 (6, 6, 7, 8) sts. at the beg. of the next 2 rows. Cast off 5 (6, 6, 7, 7) sts. at the beg. of the next 2 rows. Cast off remaining 64 (66, 68, 70, 72) sts.

## FRONT

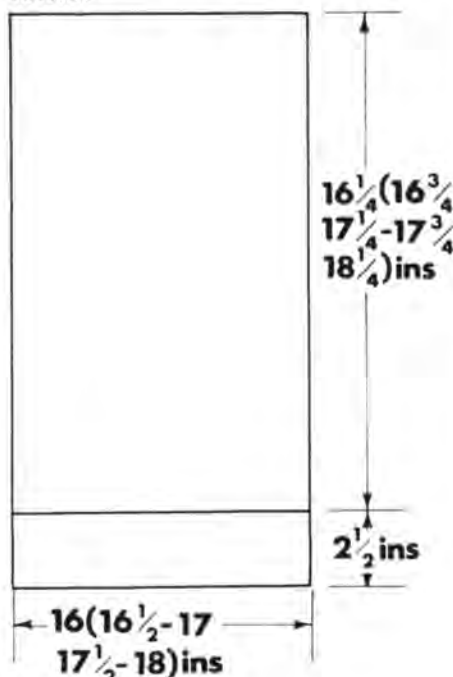
Knit as Step 1 & 2 for Back.

**Step 3.** Knit to R.C. 184 (192, 196, 202, 206). Cast off 24 (26, 28, 28) sts. at centre and knit all sts. to left of cast off back to rest using waste yarn or cord. Note patt. row. Knit R.H.S. as folls: Knit 1 row, cast off 2 (2, 3, 3, 3) sts. at the beg. of the next and every foll. alt. row 5 (5, 1, 1, 2) times in all. Knit 1 row. Cast off 0 (0, 2, 2, 2) sts. at the beg. of the 0 (0, next, next, next) and every foll. alt. row 0 (0, 4, 4, 3) times in all. Knit 1 row and dec. 1 sts. at neck edge on next and every foll. alt. row 10 times in all — 28 (30, 33, 36, 39) sts. remain.

**Step 4.** Knit to R.C. 214 (222, 226, 232, 236). Cast off 6 (6, 7, 8, 8) sts. at the beg. of the next row, knit 1 row. Cast off 6 (6, 7, 7, 8) sts. at the beg.

of the next and foll. alt. row, knit 1 row. Cast off 5 (6, 6, 7, 8) sts. at the beg. of the next row, knit 1 row. Cast off rem. 5 (6, 6, 7, 7) sts.

Take Carr. to left of work, put sts. back into W.P., return patt. to row noted and knit L.H.S. to match R.H.S.



## SLEEVES

**Step 1.** Cast on 124 (128, 132, 136, 140) sts. and knit hem as in Step 1 for Back.

**Step 2.** R.C. 000. T.D. at M.T., knit 2 rows, then start lace patt. and knit to R.C. 162 (166, 172, 176, 182). Cast off.

## NECKBAND

Push 164 (168, 172, 178, 182) sts. into W.P. With right side of work facing, after joining 1 shoulder, replace sts. onto machine as folls:— 100 (102, 104, 108, 110) from Front and 64 (66, 68, 70, 72) sts. from Back. With T.D. at M.T.-1, knit 14 rows, T.D. at M.T.-2 knit 8 rows, T.D. at M.T.-1 knit 14 rows, T.D. at M.T., knit 2 rows. Strip from machine with waste yarn (ie, knit a few rows with waste and strip off).

## TO MAKE UP

Fold neckband in half onto right side of work and finish by backstitching through last loops knitted in the main colour. Sew 2nd shoulder seam. Set in sleeves between cast off points. Sew side and sleeve seams. Thread baby ribbon through picot holes on bottom and sleeve hems, draw up and tie as required. Give light press with a warm iron and dry cloth.

# Ladies V Neck Sweater

with Fairisle Front for add to Set





## Measurements

To fit 34 (36, 38) in. bust.  
Total length 23½ (24, 24½) ins.  
Sleeve seam 17 ins.

## Materials

1 Cone Hayfields Machine Knit Col A.  
Oddment (approx 25 gms each) Col B  
& Col C.

## Tensions

8 sts x 13 rows = 1 in. over st.st. T.D.  
approx 4.  
8.5 sts x 10.5 rows = 1 in. over fairisle  
T.D. approx 5.

## Patterns

From charts

## Notes

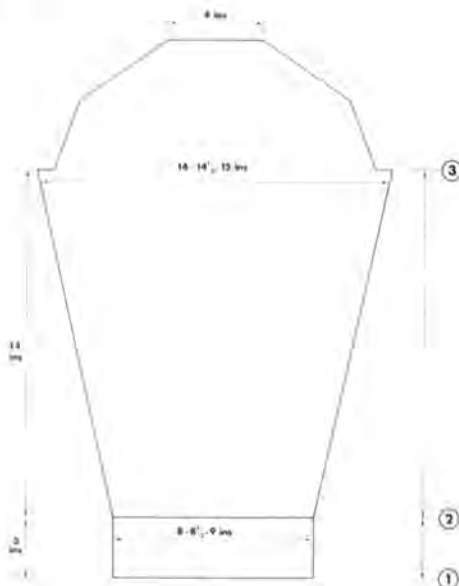
Pattern sequence

\*K2 rows col A, K2 rows col B, K2  
rows col A setting m/c for fairisle. Col  
A in main feed, change yarn in second

feed as follows: \*\*2 rows B, 2 rows C,  
2 rows B. Rept from \* to \*\*. Using patt  
2 10 rows col B, 9 rows col C, 8 rows  
col B, 6 rows col C, 6 rows col B.  
Cease fairisle, K 1 row col A\*\*\*. Rept  
from \* to \*\*\*.

**Step 3:** Dec 1 st at armhole edge  
every alt row 7 (9, 11) times. K to row  
78 (84, 90).

**Step 4:** Cast off 8 sts at beg of next 4  
alt rows. Cast off rem 4 (6, 8) sts. Rept  
from \* for right side, re-setting pat-  
tern.



## BACK

**Step 1:** Ribbers. Cast on for 1 x 1 rib  
133 (141, 149) sts. TO/O k 3 rows tub.  
T3/3 k 30 rows. Trans to main bed.  
000. S/bed. C.O.B.H. 133 (141/149)  
sts. T 2. K 58 rows, turn hem. 000.

**Step 2:** T 4, Inc. 1 st at both ends  
every 30 rows 4 times to 141 (149, 157)  
sts. K to row 168. Cast off 4 sts at beg  
of next 2 rows. 000.

**Step 3:** Dec 1 st at both ends every  
3rd row 6 (8, 10) times to 121 (125,  
129) sts. K to row 98 (104, 110).

**Step 4:** Cast off 6 sts at beg of next 10  
rows. Cast off 4 (6, 8) sts at beg of  
next 2 rows. Place rem 53 sts onto  
waste yarn.

## SLEEVES

**Step 1:** Cast on 65 (69, 73) sts. Knit as  
for step 1 of back.

**Step 2:** T 4 Inc 1 st at both ends every  
7th row 24 times to 113 (117, 121) sts.  
K to row 182. Cast off 4 sts at beg of  
next 2 rows. 000.

**Step 3:** Dec 1 st at both ends every  
3rd row 10 (11, 12) times. K to row 30  
(34, 36). Dec 1 st at both ends every alt  
row 5 (6, 9) times. Dec 1 st every row  
10 (10, 8) times. Cast off 2 sts at beg of  
next 12 rows. Cast off rem 31 sts.

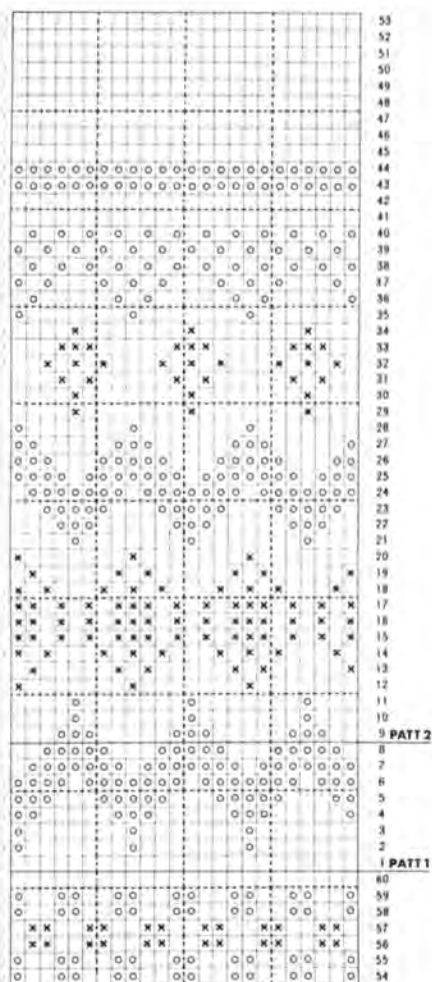
## NECKBAND

Ribbers. Cast off for 1 x 1 rib 81 (85,  
89) sts. K 15 rows, trans to main bed.  
S/bed C.O.B.H. for 1 x 1 rib 81 (85,  
89) sts. T 2. K 26 rows, turn hem. With  
right side of work facing m/c, place  
sts from one neck edge on to band.  
Cast off loosely. Rept for other front  
neck.

**Back neck:** Cast on 53 sts, knit as for  
front band. With right side of work  
facing m/c, place back neck to these  
sts. Cast off loosely.

## TO MAKE UP

Press all pieces. Join shoulder seams  
inc band edges. Join centre front neck  
forming a 'V', folding back surplus to  
give added firmness. Sew in sleeves.  
Join side and sleeve seams.



## FRONT

**Step 1:** Cast on 141 (149, 159) sts,  
work as for step 1 of back. 000.

**Step 2:** T 5 Knit patt from charts (see  
notes) at the same time inc 1 st at both  
ends every 30 rows 4 times to 149  
(157, 167) sts. K to row 120. Split for  
neck: dec centre st, place st to left of  
centre 'O' in hold position, continue  
on right side only. \*Dec 1 st at neck  
edge every 3rd row 14 (8, 2) times then  
every 4th row 13 (19, 25) times. At the  
same time K to row 136, cast off 4 (4,  
5) sts at beg of next 2 rows. 000.



# TEENAGE SUIT

## Measurements

To fit 32-38" bust, 34-40" hip.

## Materials

Skirt: 14 (16, 19, 22) balls Poppletons Pageant 4 ply in main colour M.

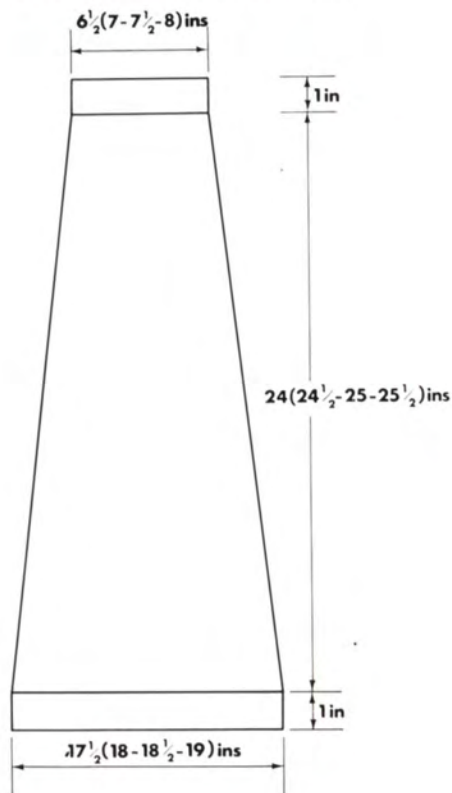
Top: 6 (7, 8, 9) balls Poppletons Pageant 4 ply in M and 4 (5, 5, 6) balls Poppletons Pageant 4 ply in contrast C.

## Machines

Most suitable for KH820/830 machines, or any machine if suitable fairisle pattern chosen for top and tension swatches are correct.

## Tensions

30 sts and 38 rows to 4 ins (10 cms) measured over plain knitting. 30 sts and 35 rows to 4 ins (10 cms) measured over fairisle pattern — Card 1 for KH820 and KH830 machines.



## SKIRT (4 panels alike)

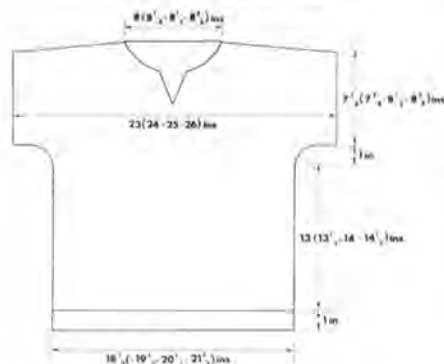
**Step 1:** Cast on 132 (136, 140, 144) sts in M. TD at MT-1, knit 20 rows and turn hem.



**Step 2:** TD at MT, RC 000. Knit 6 (8, 10, 12) rows straight (adjust length here if req). Stop RC counting and put 10 (10, 12, 12) sts at opp side to carr into HP on next 8 rows, preventing hole by putting yarn under the first needle and over the rest in HP. Push all needles at opp side to carr back into WP on next 2 rows.

**Step 3:** Start RC counting again. Knit 2 rows and dec 1 st f.f. at both sides of next and every foll 5th row 42 times in all - 48 (52, 56, 60) sts remain. Knit straight to RC 228 (232, 238, 242). (Length can be adjusted here if nec.)

**Step 4:** Mark next row, by knitting a piece of contrast coloured sewing machine cotton in with main yarn and then remove it. TD at MT-1, knit to RC 248 (252, 258, 262) and pick up every 3rd st from marked row below. Cast off all sts together LOOSELY.



#### TOP BACK

**Step 1:** Cast on using M, in 2 x 1 rib, 137 (146, 155, 161) sts. TD at MT-1, knit 40 rows and turn hem, inc 1 (-, dec 1, inc 1) st - 138 (146, 154, 162) sts.

**Step 2:** TD at MT, RC 000, start fairisle patt and work in patt throughout, with M in feeder 1 and C in feeder 2. Knit to RC 86 (90, 94, 98). Cast off 4 sts at the beg of the next 2 rows. 130 (138, 146, 154) sts remain.\*

**Step 3:** Knit to RC 150 (156, 162, 168). Cast off 11 (12, 13, 14) sts at the beg of the next 2 rows. Cast off 11 (12, 13, 13) sts at beg of next 2 rows. Cast off 11 (12, 12, 13) sts at the beg of the next 2 rows. Cast off 11 (11, 12, 13) sts at the beg of the next 2 rows. Cast off remaining 42 (44, 46, 48) sts.

#### FRONT

**Step 1:** Knit as Back to\* (end of step 2).

**Step 2:** Cast off 18 sts at centre. Knit LHS back to 'rest' with nylon cord, note patt row showing on card and knit RHS as folls: Knit straight to RC 125 (131, 137, 143). Cast off 4 sts at the beg of the next row, knit 1 row.

Cast off 2 sts at the beg of the next row, knit 1 row. Cast off 2 (2, 3, 3) sts at the beg of the next row, knit 1 row. Dec 1 st at neck edge on next and every foll alt row 4 (5, 5, 6) times in all. 44 (47, 50, 53) sts remain.

**Step 3:** Knit to RC 150 (156, 162, 168). Cast off 11 (12, 13, 14) sts at the beg of the next row, knit 1 row. Cast off 11 (12, 13, 13) sts at the beg of the next row, knit 1 row. Cast off 11 (12, 12, 13) sts at the beg of the next row, knit 1 row. Cast off remaining 11 (11, 12, 13) sts. Take carr back to LHS, turn RC back to 88 (92, 96, 100) and reset patt. Push all needles from 'rest' back into WP and knit LHS to match RHS.

#### FRONT SLIT EDGING (2 edges alike)

With wrong side of work facing, pick up 9 sts from slit (half of sts cast off). Using M, TD at MT-1, knit 1 row. Cast on 9 sts (missing 1 needle between sts already in work and those to be cast on) and knit 28 rows straight. Cast off. Repeat with 2nd side edging.

#### NECKBAND (2 pieces)

Join shoulder seams. With wrong side of work facing and carr at left of machine, pick up from centre Back neck to shoulders 21 (22, 23, 24) sts,

from shoulders incl edge facing, 40 (42, 44, 46) sts. Using M, TD at MT, knit 1 row. TD at MT-1 knit 6 rows. TD at MT-2 knit 8 rows. TD at MT-1 knit 6 rows. TD at MT, knit 2 rows and strip off machine with waste yarn. Repeat for 2nd half of neckband, starting with carr at RHS.

#### ARMHOLE EDGINGS

With right side of work facing, pick up 100 (104, 108, 112) sts from right around armhole. Using M throughout, TD at MT-1 knit 8 rows, TD at MT-2, knit 8 rows, TD at MT-1 knit 8 rows. Strip off machine with waste yarn.

#### TO MAKE UP

Turn neckband in half onto right side and backstitch through loops of last row knitted in M and strip off waste yarn. Turn armhole bands in half and repeat as neckband. Turn front edging bands in half onto wrong side, along 'missing stitch' line and slip stitch to inside. Join side seams and press. Make knitted cord long enough to thread through waistband and tie as shown. Make 2nd cord long enough to thread through and gather neck and tie as shown.

# Holmfirth Wools



- \* FREE SHADE CARD containing 34 RANGES, including Wools on Cone.
- \* OVER 450 SHADES, including 96 on Cone for machine knitters.
- \* DESPATCHED BY RETURN
- \* FREE KNITTING & CROCHET CATALOGUE containing over 180 patterns. NEEDLES, BUTTONS, KNITTING BAGS. Send stamp to cover postage.
- \* DISCOUNTS AND SPECIAL OFFERS AVAILABLE THROUGH MEMBERSHIP OF OUR KNITTING CIRCLE.
- \* FREE POSTAGE ON LARGE ORDERS.
- \* SPECIAL OFFERS, Extra Fine Acrylic (2/24's) 3 & 4 ply Shetland Wool, Double Knittings.



Fill in this coupon for full details.

*Holmfirth Wools* Dept. 63 Shipley, Yorkshire.  
BD18 2BS or Ring (0274) 56943

Please Indicate Interest with a ✓ Machine Knitting  Hand Knitting

Name \_\_\_\_\_

Address \_\_\_\_\_



# HELPFUL HINTS FROM SUE FAGAN

This series of articles is aimed at beginners and intermediate knitters; more experienced knitters will probably feel like writing to me: When I first bought a machine I selected a very shiny rayon yarn to knit my mother a black evening top. Everything went wrong — I'd picked skip stitch which didn't suit the yarn, and when she tried it on the sleeves were too tight. Unfortunately, I couldn't rewind it, the yarn was too slippery. Next I attempted an all-over cable stitch cardigan which took hours to make, which I promptly ruined on the ironing board — it was acrylic. I began to wonder what I'd get second hand for the machine, after all I was seven months pregnant and would need a pram soon. Eventually, however, I was rescued by Kathryn Hobbs' evening classes and can now knit. After doing a lot of teaching myself, I found that many people found getting started as bad as I did, and so this series will try to lay out a plan of work, starting with ideas for easy knitting leading to more complicated themes later. I am designing some cushion covers based on these articles, but other simple things to make would be ties, place mats, scarves and so on. If you are not used to handling machinery, don't be nervous of it. Read the instruction books' advice about cleaning, oiling and changing needles which are easily replaced. I advise you to get a reading lamp on a flexible stem which you can shine onto the needlebed when turning hems or casting off, otherwise one is often working in a shadow. A low stool is also useful for when turning hems to save bending over your work.

## STOCKING STITCH DESIGN

I have found that it is a good idea to make your first garment in stocking stitch. It is the easiest to put right if anything goes wrong and leaves you free to concentrate on decreasing, casting off and so on. Your machine is

designed to allow you to correct mistakes — don't think you always have to start again — the instruction book covers unravelling. When knitting in stocking stitch, the machine knitting yarn can be made to do the work for you — a random dye or a bouclé yarn will make an interesting fabric, or you can use more than one strand of fine yarn to make your own colour combination. Interesting texture can be made by knitting stripes of different yarn types — a few rows of shiny yarn, then a few bouclé rows, then a few matt rows. To knit thicker yarn in stocking stitch every alternate needle is used and the tension swatch and garment given a good stretch afterwards. Stocking stitch lends itself very well to fully fashioned shapings, which look very professional. Learn from the beginning how to do mattress stitch and grafting for sewing up your work, it is easy to do and as you work with the right side facing you allows you to match patterns very accurately. If you are knitting the whole garment in one colour only, mark the end stitches every 50 rows to make matching the seams easier, particularly on dark colours. Read the manufacturer's advice about pressing your yarn. Generally wool benefits from a damp press, synthetics from a light iron under a dry cloth. Often inserting a ruler into the hems of acrylic garments is sufficient.

## DEVELOPING STOCKING STITCH

You will see patterns where the garment is knitted sideways and shaped. If you put the cam on the carriage to H for holding position, any needles brought forward will not knit. Read through your instruction book or a typical pattern for this. It is also possible to do a pull up stitch pattern using the holding cam. It is quite useful for narrow decorative panels or scalloped hems. To knit a hem, work a small hem of about 6 rows, then bring forward every 10th needle, put the cam on hold and knit 4-6 rows. Release the cam and proceed plain. The scallops will need pulling into shape later. To knit decorative panels experiment on your tension swatches using the needle pushers supplied with the machine, four rows knitted in holding position generally being the maximum. These pull up panels can be decorated with embroidery, beads or sequins as they form a regular grid on which to work.

When you are used to handling the transfer tool it is easy to knit pleats,

frills and pin tucks which are simply a matter of making extra hems as you proceed, the number of rows knitted before turning the hem being the difference between a tuck and a pleat. Pin tucks need not be turned up all along the machine, a few stitches at one side being sufficient on some designs.

Cable stitches are another type of manual pattern, where groups of stitches are transferred with the tools by crossing over two or three stitches at a time. If a needle is left out of action in A position either side of the cable group this makes it easier to stretch over the stitches. Fairly thick yarn or double thicknesses work best as they minimise the ladder left by the empty needle.

## TRIMS

There are a wide range of trims available in haberdashers or lampshade making counters. They are quite easy to apply as the regularity of machine knitting shows straight lines in both directions. If you are going to apply a trim horizontally, add a strand of contrasting cotton into the yarn feeder on the row you will later cover. This will provide a good guideline for tacking on the trim. Lace can be applied to emphasize a yoke, pocket or collar, or it can be inserted between the button band and garment front. Eyelet holes can be made with the transfer tool for threading ribbons through. There are a number of knitted braids which are easily worked on the machine — I will be showing some on a cushion cover.

## DESIGNING WITH COLOUR

The vast range of colours now available means that you can apply a little thought to achieve a colour co-ordinated collection of knitwear, so I will try to explain some basic principles. Draw a circle as if it were a clock face. Write red in the 12 o'clock position, yellow on the 4, blue on the 8. These are the three primary or most important colours. Now write orange on the 2, green on the 6, purple on the 10. These are the three secondary colours made by mixing two of the primaries. Draw a line from the red to the green, from the yellow to the purple and from the blue to the orange. These connections show the best contrasts between colours. Let us consider the red/green combination. The most obvious, bright red and bright green, is very common in children's wear, but imagine the whole range of reds from maroon to rust, salmon to palest pink,



and the whole range of greens from bottle to olive, sea green to pastel green. You still have within these two ranges colours which contrast very well. Another way of selecting a range of colours is to choose by hue, for instance all pastel colours plus white or all dark colours plus black.

Some colours work best if you have more than just two in the garment. You will find that neutral colours like grey and beige will help to link other ones together in an overall design. Save coloured photographs which you like from magazines to take with you when buying yarn, or look at manufactured fabrics for another good source of inspiration. You may find that you have to use different makes of yarn to get your preferred colour scheme. I've often mixed wools with acrylics and have had no problems. In general wash your work as if it were wool, dry flat and iron as if it were acrylic.

### **PUNCH CARD KNITTING**

If you examine the front part of your machine you will see that the bed is marked in bands of 24 stitches. As these bands indicate complete patterns, it is worth casting on your garment to make the side seams coincide with these markings. Either take the end needles to the end of the mark or halfway along it, whichever is nearest the number of stitches a pattern tells you to cast on. I also add one extra stitch each side for joining the seam. If you are working from a card with a large scale pattern, you will have better results if you cut out as much shaping as possible, so that the pattern will match at the seams.

### **FAIRISLE**

Though it may look complicated, fairisle is only stocking stitch knitted with two colours in a row. It does not add any texture to distort the fabric, which tuck and skip stitch are designed to do, and consequently fits in well with areas of stocking stitch. This means that you can knit fairisle bands at the bottom of garments, useful if you are not yet familiar with resetting the card for necklines on sweaters. Because the threads at the back on fairisle make the knitting feel firmer, any following stocking stitch should be knitted at a slightly tighter tension.

It is not necessary to use two similar yarns for fairisle. Good effects can be achieved using one silky yarn with a bouclé. If the silky yarn is darker than the bouclé it will seem to recede and

give an embossed look to the knitting. Two bouclé yarns can also be knitted as long as they are not too thick.

You can also knit fairisle with cotton in the front feeder to make a type of lace. The loops of cotton at the back can be remedied by choosing cards which do not have large areas of adjacent holes or unpunched areas. Otherwise this type of lace will need lining. When using a cotton, knit a little slower and wind the cotton twice over the yarn break which should be set tightly.

It is possible to leave the card locked in fairisle to knit vertical stripes, or you can alter the pattern by locking and releasing the cards as you progress. Fairisle can be quilted and piped on the sewing machine by using a terylene wadding and then lining. To avoid the garment slipping, use a fine jersey lining rather than a satin one. In any case a knitted type of lining will have more affinity with the garment than a woven one, as they both have a similar 'give' to them.

### **TUCK STITCH**

This is principally for using fine yarn. The knitting is gathered as you progress, making a thicker feeling fabric than you would expect from the yarn. If you use a card where the pattern changes only every third row, you can knit coloured tuck patterns by changing the yarn every third row. Straight pattern shapes work best in tuck stitch, otherwise rather strange seams can spoil the work.

Tuck lace is made by leaving some of the needles out of action. They do not need to be in the same formation right across the work if you wish to make garments with panelled patterns on. Try out some of the cards one night with lots of different needle formations. More than one needle can be left out of action in a group. This also allows you to use thicker yarn. If again you select a card where the pattern changes only every third row, you can depress one tuck and one part button or simply one tuck button.

Another way of achieving panelled effects is to knit the garment sideways and change cards as you go. This is most easily done in tuck, skip or weaving where the right side is usually facing you so that you can judge when a pattern section is completed.

### **SKIP STITCH**

This works best with a thicker yarn or a very smooth one. The yarn is passed in front of the patterning needles to give a low relief. By selecting cards

which change every third row you can change yarn also every third row to knit a type of fairisle with no loops at the back. If you like subtle effects you can use a shiny yarn and a matt yarn which could be in the same colour. Skip stitch tends to pull in the work so avoid full needle hems as they will tend to stick out. Skip lace can also be knitted with some needles out of action, but this needs a special card.

### **WEAVING**

This enables you to knit with much thicker yarns. The woven thread is held against the work by the patterning needles and not actually knitted, therefore the thick yarn does not damage the latches. Weaving combines well with tuck stitch, which adds some bulk to the knitting between woven bands. To knit with very thick yarn you may prefer to weave a row then knit 2 rows of stocking stitch before picking up the weaving thread again. Reversible weaving is done with needles out of action again across the work so that the thread shows on both sides. If your background thread is quite fine, a double thickness will look better for the welt. Woven lace is made using the lace carriage, which transfers stitches to make holes and arranges the needles over which you weave. The weaving yarn should ideally be a fine bouclé so that the loops work their way through the holes of the lace to give a pleasing appearance on the right side.

### **LACE**

Lace worked with the transfer carriage is a little slower to knit but gives beautiful results. Care must be taken to push back end needles if they are brought forward, as there is no adjacent needle to accept the transferred stitch. On some of the more simple designs it is possible to cast on so that an end needle never comes forward. This means working the lace carriage to and fro over the centre pattern group only to see if any stitch is never brought forward throughout the card, then casting on with that needle in the pattern group used as the end stitch further along the needle bed. When the card tells you to use the knit carriage you are able to knit more than two rows. If you wish you can insert cables, pull up stitch or, if you punch special cards, bands of fairisle at this point before proceeding with the lace carriage. In the last case the machine must be set to K.C. so that both carriages set the punch card in action.



# STOCKISTS LIST — KNITTING MACHINES

## BEDS

Bedford Sewing Machines, 13 Lime Street, Bedford.  
Knit 'N' Sew, 20 Market Square, Leighton Buzzard.

## BERKS

Knitting Machine Centre, 54 London Street, Reading.  
Boswood & Hendry, 3 West Street, Reading.  
Stagport, 48 Wellington Street, Slough.

## BUCKS

Boswood & Hendry, 239 High Street, Slough.

## CHESHIRE

Knit & Sew, Unit 13, Tontine Market, St. Helens.  
Wollengers, 91 Oldham Street, Manchester.  
Woolsave, Woodchurch Road, Birkenhead.  
Northern Sewing Machines, 102 Princess Street, Stockport.  
Wollengers, 19 Paddock Road, Chester.  
Owen, Owen Ltd., Eastgate, Chester

## CORNWALL

The Fabric Centre, 30 Fore Street, Chase Water, Truro.  
Roseland Sewing Machines, 1 West End, Redruth.

## CUMBRIA

Knitting & Sewing Centre, Vulcans Lane, Workington.  
Sewknit, 25 Globe Lane, Carlisle.

## DERBYSHIRE

Sew-knit, 202 Burton Road, Derby.  
Hal Ainsworth, 13-15 Beetwell Street, Chesterfield.

## DEVON

Plymouth Knitting Machine Specialists, 6 Beaumont Street, Plymouth.  
North Devon Sewing Machines, 68 Clovelly Road, Bideford.  
The Wool Pack, 22 Anstis Street, Plymouth.  
Joyce Wools, 19 Highweek Street, Newton Abbot.  
Barnstaple Sewing Machines, Holland Street, Barnstaple.  
Bideford Knitting Centre, Grenville Street, Bideford.

## DORSET

Metropolitan Sewing Machines, 321 Ashley Road, Parkstone, Poole.

## DURHAM

Marjories Wool Shop, 22 Moor Lane, Harton Village, South Shields.

## ESSEX

Modern Knitting Machines, 14a Baddow Road, Chelmsford.  
Franklin & Sons, 58 Head Street, Colchester.  
Letsalknit, 682 Green Lanes, Ilford.  
Machine Knits, 55-57 Hamlet Court Road, Westcliffe-on-Sea.  
Rayleigh Knit-in, 54 Eastwood Road, Rayleigh.

## GLOUCESTERSHIRE

Cotswold Sewing Machines, Lansdown Road, Stroud.

## HAMPSHIRE

The Knitting Basket, 38 Pylewell Road, Hythe, Southampton.  
Sewing Machines Supplies, 131-133 Fratton Road, Portsmouth.  
Metropolitan Sewing Machines, 130 Commercial Road, Bournemouth.  
Needlecraft, 6 Hippodrome House, Aldershot.  
Trendy Trims, 5 High Street, Ryde, Isle of Wight.  
Ryde Wool Shop, 14 High Street, Ryde.  
Woolco Limited, The Hampshire Centre, Castle Lane, Bournemouth.

## HEREFORDSHIRE

Sewing Centre, 13 Commercial Road, Hereford.

## HERTFORDSHIRE

Woolco Limited, Hatfield.

## KENT

Weaver Knits, 276 Main Road, Sutton at Home, Nr. Dartford.  
Knitting Machine People, 36 Windsor Avenue, Cliftonville.  
Maidstone Sewing & Knitting Centre, 65 Upper Stone Street, Maidstone.  
Canterbury Sewing Centre, 26 St. Peter Street, Canterbury.  
The Wool House, 62 High Street, Rochester.

## LANCASHIRE

T & M Grundy, 292 Manchester Street, Oldham.  
R & T Sewing Machines, 269 Accrington Road, Blackburn.  
Ann's Wools, 4 Inglewhite Road, Longridge.  
Owen, Owen Limited, Clayton Square, Liverpool.  
Lewis's Limited, Ranelagh Street, Liverpool.  
Woolco Limited, The Arndale Centre, Middleton.  
Lewis's Limited, Market Street, Manchester.  
Dalby & Jones, 73 Church Street, Preston.

## LEICESTERSHIRE

Sew-knit, 282 Humberstone Road, Leicester.  
Woolco Limited, Leicester Road, Oadby Frith, Leicester.  
Lewis's Limited, Humberstone Gate, Leicester.

## LINCOLNSHIRE

Knitting Machine Centre, 276 Ashby High Street, Scunthorpe.  
The Wool Shop, Red Lion Street, Spalding.  
Co-op Limited, Silver Street, Lincoln.  
Tudor Wool Shop, 4 Eastgate, Louth, Lincs.

## LONDON

The Wool Shop, 95 Broadway Market, Tooting, SW17.  
Lindaville, Wood Green Shopping City, 120 High Road, Wood Green, N22.  
Wimbledon Sewing Machines, 216 Merton High Street, SW19.  
The Wool Shop, 103 High Road, Chiswick, W4.  
Chingford Knitting Machine Centre, 30 Kings Head Hill, E4.  
Selfridges, Oxford Street, W1.  
Quicknit, 344 Barking Road, Plaistow, E13.  
London Co-op Limited, 78-102 The Broadway, Stratford, E15.  
Sewcraft Sewing Machines, 150 King Street, Hammersmith, W6.  
Cricklewood Sewing Machines, 166 Cricklewood Lane, NW2.  
Fenwicks Limited, Brent Cross Shopping Centre, NW4.

## MIDDLESEX

Stitches, 20 Filebrook Avenue, Enfield.

## NORFOLK

Central Norfolk Knitting Machine Co, 16 Church Street, East Dereham.  
Sew-Knit Centre, 20 St. Benedicts Street, Norwich.

## NORTHUMBERLAND

John Farnon Limited, Non Street & Newgate Street, Newcastle.

## NOTTINGHAM

Jessops Stores, Victoria Centre, Nottingham, NG1 5QP.  
Sew-Knit, 14 Trinity Walk, Trinity Square.  
Hucknall Sewing Centre, 43a Watnall Road, Hucknall.

## NORTHAMPTONSHIRE

Bedford Sewing Machines, 36 St. Giles Street, Greater Peterborough Co-op Soc., Park Road, Peterborough.

## ORKNEY

Dudley Kynock, 31 Buttquay Crescent, Kirkwall.

## OXFORDSHIRE

Sewing Machine & Fabric Centre, 86 London Road, Headington.

## SUFFOLK

Franklin & Sons, 14-16 Crown Street, Ipswich.

## SUSSEX

Shoreham Knitting Machines, 26 Brunswick Road, Shoreham By Sea.  
Sewing Machine Supplies, 65 London Road, Bognor Regis.  
Knitters Corner, The Broadwalk, Crawley.

## SURREY

Wimbledon Sewing Machines, 1 Friary Street, Guildford.  
Sew-Fashions, 14 The Broadway, Woking.  
Superknit, 7 Thornton Road, Thornton Heath.  
Corner Wool Shop, 15 Corner House Park, Epsom Road, Ewell.  
Bentalls Limited, Kingston upon Thames.  
Wimbledon Sewing Machines, 1 West Street, Dorking.

## STAFFORDSHIRE

Domestic Sewing Services, 18 Walsall Road, Cannock.  
Lewis's Limited, Hanley, Stoke on Trent.

## SOMERSET

B & L Bontoft Ltd., 37 St. Johns Street, Bridgewater.  
Denner's Limited, High Street, Yeovil.  
Bredons Sewing Machines, 3 Eastgate Street, Taunton.

## SHROPSHIRE

K.N.S. 204 Whitchurch Road, Shrewsbury.  
Knitting & Sewing Centre, 64 Upper Road, Meole Brace, Shrewsbury.

## TYNE & WEAR

Woolco, Killingworth.  
Woolco, The Washington Centre, Washington.

## WARWICKSHIRE

Lewis's Limited, 32 Bull Street, Birmingham.  
Co-op Limited, 27-38 High Street, Birmingham.  
Wingfield Sewing Machines, 38 Birmingham Road, Birmingham.  
Owen, Owen Limited, Broadgate, Coventry.  
Bonnie's Wools, 1273 Bristol Road South, Northfield, Birmingham.  
Fabric Gallery, 15 Drury Lane, Solihull.  
Sew-knit, 120-122 Corporation Street, Birmingham.

## WILTSHIRE

Cotswolds Sewing Machines, Regent Street, Swindon.  
Sarum Sewing Centre, 25 Catherine Street, Salisbury.

## YORKSHIRE

Lennox Sewing Machines, 2 Red Lion Yard, Rotherham.  
Co-op Limited, Albion Street, Leeds.  
Penny Oak Mills, Falcon Oak, Bartle Lane, Bradford.  
Sewing & Knitting Centre, 193 Burtonstone Lane, York.  
Sewing & Knitting Centre, 168 Lower Briggate, Leeds.  
Co-op Limited, Jamieson Street, Hull.  
The Woolly Jumper, 653 Queens Road, Sheffield.  
Lewis's Limited, The Headrow, Leeds.  
Sewing Supply Co., 4 Market Road, Doncaster.  
Maynells, 180 Linthorpe Road, Middlesbrough.  
Woolco Limited, New Town Centre, Stockton on Tees, Thornaby.

## WALES

Needlecraft, 29 Pendre, Cardigan, Dyfed.  
North Wales Home Knitting, Rhyf Road, Denbigh.  
The Steptey Wool Shop, Market Arcade, Llanelli, Dyfed.  
Margarets Wool Shop, 17 Penalta Road, Hengoed, Mid Glam.  
Victoria Davies 'Siop Newydd' Llanegryn, Towy, Gwynedd.  
Paul Britten Sewing Machines, 70 Dunraven Street, Tonypany.  
Wollengers, Lord Street, Wrexham.  
David Evans Limited, Princess Street, Swansea.  
Nantiago Homecraft, 33 Frogmore Street, Abergavenny, Gwent.

## SCOTLAND

Knitting Machine Centre, 374/376 Argyle Street, Glasgow.  
Banff Sewing & Knitting, 15 Boyndie Street, Banff.  
J & A Machine Wools, 159 Main Street, Bonhills, Dunbartonshire.  
T. Baird Ltd., Princess Street, East Kilbride.  
T. Baird, 1 Duke Street, Hamilton.  
Bairds Limited, 54-60 Merry Street, Motherwell.  
Bairds Limited, 86-94 Main Street, Wishaw.  
Arnotts Limited, 2-8 Marischal Street, Peterhead.  
Arnotts Limited, Riverside, Irvine.  
Arnotts Limited, 11 Gauze Street, Paisley.  
Arnotts Limited, High Street, Dingwall.  
Arnotts Limited, 121-123 High Street, Elgin.  
Arnotts Limited, Banff.  
Fairbuys, 38 Kinneddar Street, Lossiemouth, Morayshire.  
Bairds, High Street, Falkirk.  
Arnotts Limited, 15 North Bridge, Edinburgh.  
Arnotts Limited, Argyle Street, Glasgow.  
Arnotts Limited, Barnston Street, Stirling.  
Arnotts Limited, Hamilton Way, Greenock.  
Arnotts Limited, 7-12 Union Street, Inverness.  
Arnotts Limited, Aberdeen.  
Bonnybrae Knitwear Designs, Golspie, Sutherland.  
Arnotts Limited, 22-30 Alloway Street, Ayr.  
Northern Sewing Machines, 5 Urquhart Road, Aberdeen.  
Huntley Sewing Machines, Old Post Office, Boghead, Cairnie, Aberdeen.  
Arnotts Limited, 80 High Street, Dundee.  
Martins Machine Centre, 8/10 Main Street, Dundee.  
Machine Knitting Wool, 104 Quarry Street, Hamilton, Lanarks.  
Inverness Sewing and Knitting Centre, 4 Hill Place, Inverness.  
Dumfries Sewing and Knitting Machines, 1a St. Marys Street, Dumfries.

## NORTHERN IRELAND

Needlecraft, 34 Longstone Street, Lisburn, Co. Antrim.