

# stitchin' time

No 46 60p

*Cotton Lounger*





## Contents

### Editorial:

Jones + Brother,  
J&B House,  
869 High Road,  
Finchley,  
London N12 8QW.

### Subscription administration:

Shepley Street,  
Guide Bridge,  
Audenshaw,  
Manchester M34 5JD.

LADIES' LACE SWEATER	3
BABY GOWN AND HAT	4
TEENAGER'S ZIPPER JACKET	6
LACE TWO-PIECE	8
LADIES' WAISTCOAT AND SWEATER	10
UNISEX SWEATER	11
LADIES' COTTON LOUNGER	13
HANDKERCHIEF POINT HEM EVENING DRESS	14
MEN'S V-NECK RAGLAN SWEATER	16
LADIES' TWO COLOUR TUCK STITCH SUIT	18
MEN'S FAIRISLE JACKET AND SWEATER	21
WALL HANGING AND CUSHION	22
LADIES' V-NECK SWEATER AND CARDIGAN	24
LACY FAIRISLE SUIT	26
WOVEN JACKET AND CIRCULAR SKIRT	28
FOCUS ON KNITTING	30
LADIES' FAIRISLE CLASSIC SUIT	32
LADIES' TOP IN TUCK RIB	34

## Broadly Speaking

Now that Christmas is over and the children are back at school – or going for the first time – we can all admit to having just a little time to ourselves. If you have spent the holiday spoiling the family, spoil yourself! What about a super mohair sweater? (cover) Or if you were lucky enough to find a colour changer in your stocking you'll whizz through the two colour tuck stitch suit. Maybe you like just putting your feet up, but looking elegant at the same time, try the lounge on page 13.

Should the next event on your calendar be a ski-ing holiday, knit your man a sweater with just the right flavour (page 16). Or turning your attention toward the spring see the classic fairisle suit for a really smart look.

For anyone starting out for the first time we have included a simple polo-necked sweater in 6 sizes which will be a welcome addition to any wardrobe.

### ABBREVIATIONS

cont. = continue; st. st. = stocking stitch; C.O.L. = carriage on left; C.O.R. = carriage on right; C.O.B.H. = cast on by hand; M. = main yarn, main colour; Con. Col. = contrast colour; patt. = pattern; T. = tension; R.C. = row counter; trans. = transfer; beg. = beginning; M.B. = main bed; Ns. = needles; W.Wl. = waste wool; pos. = position; dec. = decrease; foll. = following; sts. = stitches; rem. = remaining; H.P. = holding position; H.P. + = holding cam lever(s) on holding position and always take yarn around inside needle in E position; W.P. = working position; N.W.P. = non working position; inc. = increase; alt. = alternate; opp. = opposite; M/C = machine; jacq. = Jacquard.

# Ladies' lace sweater

## Machines

KH830, KH840 (ribbing attachment).

## Materials

LISTER/LEE TARGET Conifer Wool/  
Nylon: Shade 2505 (wine) M – 1½ cones  
Shade 2518 (brown) Con. Col. – ½ cone

## Measurements

To fit bust: 81cm (32"), 86cm (34"),  
91cm (36"), 97cm (38").  
Sleeve seam: 50cm (20")

## TENSION

*ALWAYS CHECK TENSION BEFORE COMMENCING.*

13 sts. and 21 rows = 5cm (2") over  
lace patt. (approx. T.7).

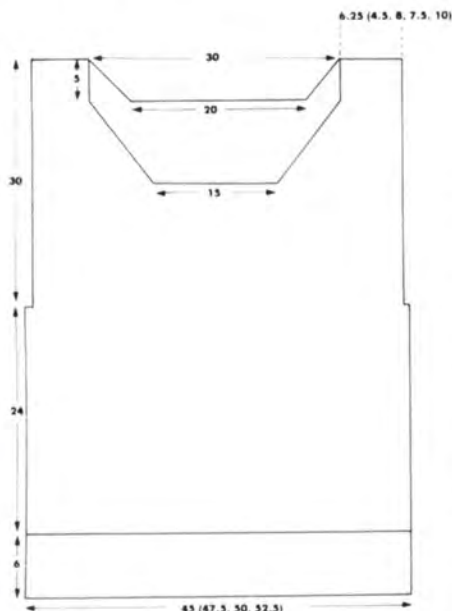
*SUCCESS DEPENDS ON WORKING TO CORRECT TENSION.*

## NOTES:

All welts are knitted using a ribbing attachment. Lace card: Jones + Brother 21D (840 basic pack).

## Patt. throughout

Working in lace \*Knit 14 rows M., knit 2 rows Con. Col.\* Rep.



## BACK

Insert card and lock on row 1. Using ribbing attachment arrange Ns. as for 1x1 rib. T.4/4. Cast on 118 (124, 130, 136) sts. Knit to 24 rows. Trans. all sts. to M.B.

T.7. Release card and work in patt. Knit to 100 rows or required length.

## Armhole shaping

Cast off 4 sts. at beg. of next 2 rows. R.C.000. \*\*\*  
Knit to 102 rows.

## Neck shaping

Cast off centre 60 sts. Put left side of work onto W.WI. or knitting pin, release from machine. (Note card pos.)  
Working on right side only, knit 2 rows. Dec. 1 st. at neck edge on next and every foll. 2nd row until 19 (22, 25, 28)

sts. rem.

Knit to 126 rows. Cast off.  
Place sts. on W.WI. onto their Ns. Knit other side to match, reversing shaping.

## FRONT

As back to \*\*\*.  
Knit to 64 rows.

## Neck shaping

Cast off centre 40 sts. Put left side of work onto W.WI. and release from machine.

Working on right side only, knit 2 rows. Dec. 1 st. at neck edge on next and every foll. 2nd row until 19 (22, 25, 28) sts. rem.

Knit to 126 rows. Cast off.  
Place sts. on W.WI. back onto machine. Knit second side to match, reversing shaping.



### SLEEVES

Insert card and lock on row 1. With W.Wl. cast on 90 sts. Knit a few rows. R.C.000. Change to Con. Col. T.7. Knit 2 rows.

Release card and work in patt. Inc. 1 st. at each end of next and every foll. 6th row until 156 sts. rem.

Knit to 176 rows ending with 2 rows Con. Col. R.C.000.

Trans. sts. to ribbing attachment. Arrange Ns. for 1x1 rib. T.6/6. Knit 16 rows. Cast off.

### CUFFS

Using ribbing attachment arrange Ns. as for 1x1 rib. Cast on 70 sts. T.4/4. Knit to 30 rows. Transfer all Ns. to back bed. With wrong side of work facing,

place first row of Con. Col. on sleeve onto Ns. distributing them evenly. Cast off.

### NECKBAND

Join shoulder seam. Using ribbing attachment arrange Ns. as for 1x1 rib. Cast on 200 sts. T.1/1. Knit 6 rows. T.2/2. Knit 10 rows. T.3/3. Knit 10 rows.

Transfer all sts. to M.B. Pick up 200 sts. along neck edge. Place picked up sts. onto Ns. Cast off.

### MAKE UP

Press all pieces according to instructions on cone label. Join second shoulder seam. Set in sleeves. Join underarm and side seam in one. Press seams lightly. ■

# Baby gown and hat

### Machines

800, 588, 710, 830, 840.

### Materials

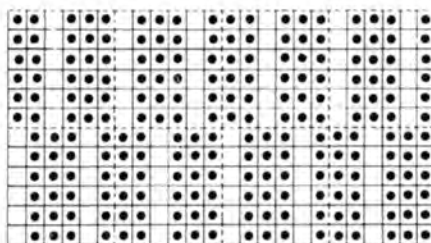
ROBIN Bambino 3 ply Courtele/Nylon x 10 balls.

6 metres  $\frac{1}{4}$ " ribbon, 2 fasteners.

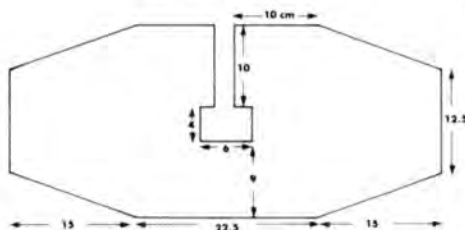
### Measurements

To fit baby size 3 months.

Length to back neck 57.5cm (23").



### DRESS BODICE



### BODICE (One piece)

Insert card and lock on row 1. Using M. C.O.B.H. 59 sts. T.6. Release card and work in tuck patt. Cast on 2 sts. at beg. of every row until there are 139 sts.

Knit to 74 rows. R.C.000.

Cast off centre 21 sts. Place left side of work into H.P. and work on right side only. (Note card pos.) R.C.000.

Knit to 32 rows. C.O.L. Cast on 8 sts. at beg. of next row. R.C.000.

Knit to 42 rows. Cast off 2 sts. at beg. of next and every foll. 2nd row until 27 sts. rem. Cast off.

Knit second side to match, reversing shapings.

### NECKBAND

Using W.Wl. cast on 59 sts. Knit a few rows. Change to M. T.3. Knit 10 rows. T.5. Knit 1 row. Trans. every 3rd st. to N. on right, leaving empty Ns. in W.P. Knit to 22 rows. Turn up hem. \*

With wrong side of work facing pick up 59 sts. along neck edge. Place picked up sts. onto Ns. Cast off loosely.

### TENSION

*ALWAYS CHECK TENSION BEFORE COMMENCING.*

17 sts. and 27 rows = 5cm (2") over st. st. (approx. T.4).

13 sts. and 42 rows = 5cm (2") over tuck st. (approx. T.6).

*SUCCESS DEPENDS ON WORKING TO CORRECT TENSION.*

### NOTES:

See diagram for card. Holes for ribbon: trans. every 4th and 6th st. (working in sets of 6 sts.). On first row trans. st. to left, next row trans. st. to right.

### Back opening trim

Using 35 sts. work as for neckband to \*. With wrong side of work facing, pick up 35 sts. along back opening. Place picked up sts. onto Ns. Cast off.

### Cuffs

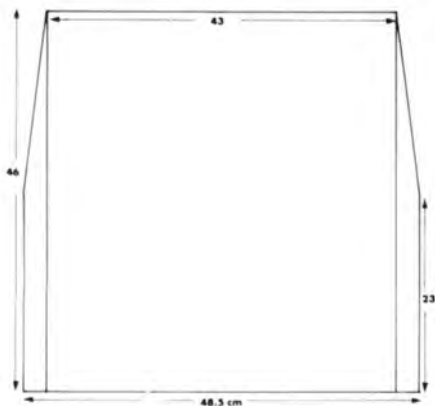
Work as back opening trim.

### SKIRT — Back

With W.Wl. cast on 147 sts. Knit a few rows. R.C.000.

Change to M. T.3. Knit 20 rows. T.5. Knit 1 row. Trans. every 3rd st. to N. on right, leaving empty Ns. in W.P. T.3. Knit to 42 rows. Turn up hem. R.C.000. T.4. Cont. in st. st. working row of holes for ribbon on rows 4, 25, 46, 67. (See notes.)

Knit to 248 rows. Cast off.



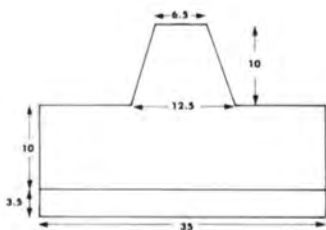
### SKIRT — Front

With W.Wl. cast on 147 sts. Knit a few rows. R.C.000.

Change to M. T.3. Knit 20 rows. T.5. Knit 1 row. Trans. every 3rd st. to N. on right, leaving empty Ns. in W.P. T.3. Knit to 42 rows. Turn up hem. R.C.000. T.4. Cont. in st. st. working row of holes for ribbon on rows 4, 25, 46, 67. (See notes).

Knit to 104 rows. Dec. 1 st. at each end of next and every foll. 16th row 9 times in all. Knit to 248 rows. Cast off.

### HAT



### HAT

Insert card and lock on row 1. With W.Wl. cast on 91 sts. Knit a few rows. R.C.000. Change to M. T.3. Knit 20 rows. T.5. Knit 1 row. Trans. every 3rd st. to N. on right leaving empty Ns. in W.P. T.3. Knit to 32 rows. Make row of holes (see notes), knit to 42 rows. Turn up hem. R.C.000.

T.6. Release card and cont. in tuck patt. Knit to 84 rows. Cast off 29 sts. at beg. of next 2 rows. R.C.000.

Dec. 1 st. at each end of next and every foll. 12th row until 17 sts. rem. Knit to 84 rows. Cast off.

### MAKE UP

Press all pieces according to instructions on yarn label. Attach skirt front to front bodice. Overlap back opening trim and attach skirt back to back bodice. Join sleeve seams and side skirt seams in one. Attach fasteners to close back opening.

Hat—join back seams. Work a row of crochet around neck edge. Press all seams lightly. Thread ribbons where appropriate. ■

# Teenager's zipper jacket



## Materials

2 cones Saturn (Silverknit). 50g 4 ply acrylic for welt. Open end zip 24 (26, 28, 30)".

## Measurements

To fit 28 (30, 32, 34)" chest/bust.

## Tension

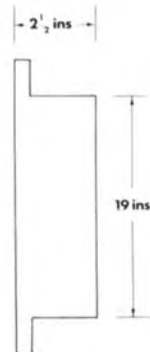
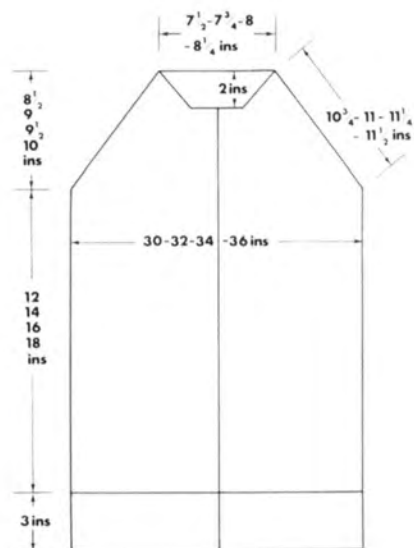
8 sts x 11 rs = 1", TD 5.

## Machine

820-830 with single bed colour changer. Card 5D basic set (830) machine.

## Note

2 rs Col 1, 2 rs Col 2. Collar Card 1D. Work inc. and dec. sts with COR.



COLLAR

## BACK

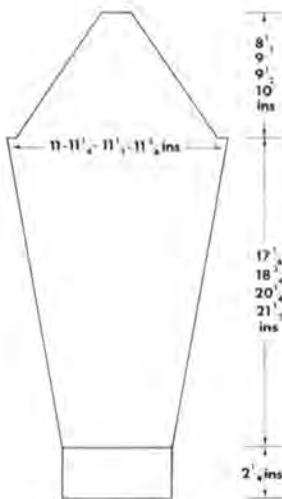
K welt in acrylic 4 ply.

1) **Ribbers:** Cast on 128 (136, 144, 152) sts in 1 x 1 rib. K 2 rs tub. K 36 rs T $\frac{3}{4}$ . Slide lever 2. Trans to main bed.

1) **Single bed machine:** Cast on 128 (136, 144, 152) sts in 1 x 1 mock rib. K 70 rs, T3, MDE. RC000.

2) COL. With card locked on row 1, K 1 row in main wool. Set KC knob, K 1 row. Depress both part buttons. Release card. Change to contrast colour. K to row 256 (278, 300, 322). C/O 7 (7, 8, 8) sts beg. next 2 rs.

3) RC000. Dec. 1 st each end every 5th row. K to row 150 (155, 160, 165). K 1 row st st. K a few rs in waste wool. Strip off machine.



## FRONTS

K 2 reversing shaping.

1) **Ribbers** and **Single bed machine:** Cast on 64 (68, 72, 76) sts, K as for step 1 of back.

2) As back to row 256 (278, 300, 322). C/O 7 (7, 8, 8) sts at arm edge.

3) RC000. Dec. 1 st at arm edge every 5th row to row 110 (115, 120, 125). C/O 18 (18, 18, 18) at neck edge. Dec. 1 st at each end every 5th row until RC shows 150 (155, 160, 165). C/O 2 rem sts.

## SLEEVES

K welt in acrylic 4 ply.

1) **Ribbers:** Cast on 28 (30, 32, 34) sts in 1 x 1 rib, K 2 rs tub. K 26 rs T $\frac{3}{4}$ . Trans to main bed.

1) **Single bed machine:** Cast on 28 (30, 32, 34) sts in 1 x 1 mock rib. K 50 rs, T3, MDE.

2) RC000. Proceed as step 2 for back but inc. 1 st each end every 15th row to row 270 (285, 300, 315), continue straight to row 300 (315, 330, 345). C/O 7 (7, 8, 8) sts begin. next 2 rs.

3) RC000. Decrease 1 st each end every 5th row to 150 (155, 160, 165). K 1 row st st. K a few rs in waste wool. Strip off machine.

## BAND

1) Using waste wool, cast on 128 (134, 140, 146). K a few rs. K 1 row with nylon cord. Insert card 1D and leave locked on row 1.

2) In bouclé K 8 rs, T5. Bring 10 Ns opposite carr. to 'E' position, HP, next 2 rs K 1 row to set pattern.

3) Depress machine button leaving card locked. Insert second bouclé yarn into feeder 2. K 70 rs fairisle, T6. Set machine for st st. K 1 row st st. Push back Ns from 'E' position to opposite carriage next 2 rs. K 8 rs. MDE without knitting across. Carefully remove nylon cord. Attach back centrally with right side facing above waste wool, attach sleeves either side of back above waste wool. Attach fronts next to sleeves leaving 1" at centre front not attached (thus enabling zip to be enclosed at top). K across at T10. C/O.

## TO MAKE UP

Join all seams and collar edges. Insert zip. ■

# wollengers

## sewing and knitting centres

For Jones+Brother  
knitting machines  
and accessories  
and sewing  
machines too!

**NOW ALL  
AVAILABLE  
MAIL ORDER!!**

Quality mail order coned  
yarns available too.

4ply acrylic yarn at only  
£1.85 per 12oz. (336g) cones.

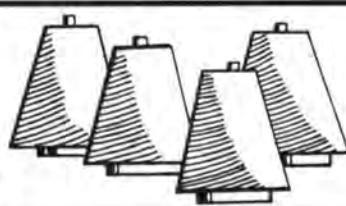
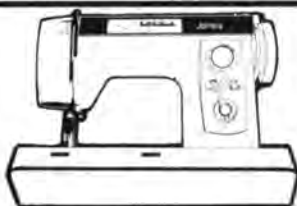
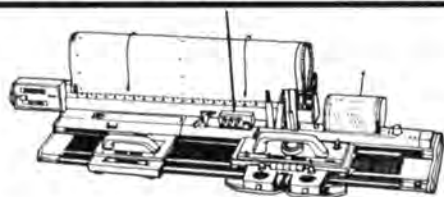
Other qualities available  
in mixed lots. Knitting clubs  
specially catered for.

**SEND NOW FOR  
SHADE CARD  
enclosing 40p & SAE to:-**

Mail Order Dept., Wollengers  
Sewing & Knitting Centres,  
91, Oldham Street, Piccadilly,  
Manchester 061-834-7331.

other branches at:  
19, Paddock Row, Chester.  
Tel. Chester 45868

4, Lord Street, Wrexham.  
Tel. Wrexham 3700





Lace  
two-piece



## Machines

KH830, KH840.

## Materials

PATONS Kismet 14 x 50gm balls.

## Measurements

To fit bust: 81cm (32"), 86cm (34"), 91cm (36"), 97cm (38").

## TENSION

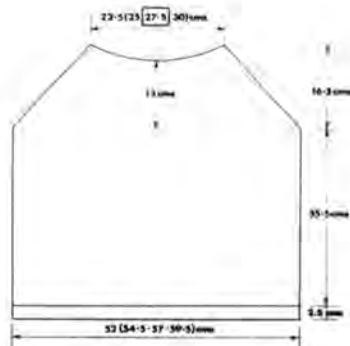
*ALWAYS CHECK TENSION BEFORE COMMENCING.*

12 sts. and 21 rows = 5cm (2") over lace patt.

*SUCCESS DEPENDS ON WORKING TO CORRECT TENSION.*

## NOTES:

Card used from Jones "Big and Bold" pack, punch card set Vol. 5. Card No. 408.



## SWEATER

### FRONT and BACK alike

Insert card and lock on row 1. With W.Wl. cast on 140 (143, 146, 149) sts. as 2x1 mock rib. Knit a few rows. Change to M.Wl. T.7. Knit 10 rows. Turn up hem and knit the row. Knit 1 row. R.C.000. T.8. Release card and work in lace. Knit 144 rows or to required length. R.C.000.

Cast off 2 sts. at beg. of next 2 rows. Dec. 2 sts. at each end of next and every foll. 3rd row. Knit to 46 rows. Cont. dec's. AT THE SAME TIME cast off centre 21 (24, 27, 30) sts. Put left side onto holder or W.Wl. and cont. on right side only.

Cont. raglan dec's. AT THE SAME TIME cast off 3 sts. at neck edge on next and every foll. 2nd row 7 times in all. Work raglan and neck shaping together until 3 sts. rem. Cast off. Place rem. sts. onto their Ns. Knit other side to match, reversing shapings.

## SLEEVES

Insert card and lock on row 1. With W.Wl. cast on 62 (65, 68, 71) sts. as 2x1 mock rib. Knit a few rows. Change to M.Wl. T.5. Knit 40 rows. Turn up hem and knit the row. Carr. to right. R.C.000. T.8. Release card and work in lace.



Inc. 1 st. at each end of next and every foll. 5th row until 107 (110, 113, 116) sts. rem. Knit to 120 rows or required length.

Cast off 2 sts. at beg. of next 2 rows. Dec. 2 sts. at each end of next and every foll. 2nd row until 52 (55, 58, 61) sts. rem. Cast off centre 20 (23, 26, 29) sts. Put left side of work onto holder or W.Wl. and release from machine. Work on right side only.

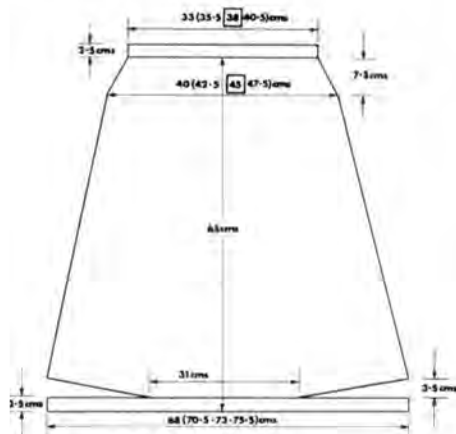
Cast off 2 sts. at neck edge every 2nd row AT SAME TIME cont. raglan dec's. Work until 3 sts. rem. Cast off. Place rem. sts. onto their Ns. Knit to match other side, reversing shapings.

## SKIRT

Insert card and lock on row 1. With W.Wl. cast on 158 (164, 170, 176) sts. as 2x1 mock rib. Knit a few rows. Change to M.Wl. T.7. Knit 20 rows. Turn up hem. Knit 2 rows. C.O.R. trans. 42 sts. on left to spare needle, holder or W.Wl. and release from machine. C.O.L. trans. 42 sts. on right to spare needle, holder or W.Wl. and release from machine. Release card and work in lace. \*C.O.L. trans. 7 sts. on right from spare needle or W.Wl. (nearest centre) to their Ns. C.O.R. trans. 7 sts. on left from spare needle or W.Wl. to their Ns.\* Rep. from \* to \* until all sts. are on their Ns.

Dec. 1 st. at each end of next and every foll. 6th row until 92 (98, 104, 110) sts. rem. Knit to 220 rows.

Dec. 1 st. at each end of next and every foll. 3rd row until 78 (82, 88, 94) sts. rem. Knit 2 rows. Change to W.Wl. Knit a few rows and release from machine.



## Waistband

With W.Wl. cast on 78 (82, 88, 94) sts. as 2x1 mock rib. Knit a few rows. Change to M.Wl. T.7. Knit 20 rows. Turn up hem. Place last row of M.Wl. on skirt onto Ns. Cast off. Knit second side of skirt to match.

## YOKE

With W.Wl. cast on 190 sts. Knit a few rows. Change to M.Wl. T.7. Knit 10 rows. T.6. Knit 10 rows. T.5. Knit 15 rows. Trans. every 5th st. starting from N. 10 on right and left of O. Make a row of holes. Knit 5 rows. T.6. Knit 10 rows. T.7. Knit 10 rows. Turn up hem and cast off.

Make a cord over 4 Ns. approx. 1 metre in length.

## MAKE UP

Press all pieces except the yoke. Mattress st. the cuffs, hems and yoke. Join raglan seams. Join underarm and side seams in one. Join skirt side seams. Press yoke into a circle and mattress st. opening. Run a gathering thread along neckline and attach to yoke. Thread skirt waistband with 2.5cm (1") elastic and hem of sweater with 1.25cm (1/2") elastic. Join elastic securely and mattress st. openings. Thread yoke holes with cord and tie at centre front. Press seams lightly. ■

# Ladies' waistcoat and sweater



## Materials

Argyll Sportsday 1 cone of base colour,  $\frac{1}{2}$  cone weaving colour.

## Measurements

To fit chest: 91, 96, 101, 107 cm (36, 38, 40, 42 ins.).

## Tension

*Always check tension before commencing.*

T3 40 sts = 14.5 cm. 60 rows = 12 cm (over woven pattern).

*Success depends on working to correct tension*

## Notes

Weaving card from KH840 basic pack No. 13D. 7 x 1.5 cm ( $\frac{3}{4}$ " ) buttons.

## WAISTCOAT

### BACK

With W.wl. cast on 126 (129, 132, 135) sts as 2 x 1 mock rib. K a few rows. Change to M.wl. (blue). T3 K 70 rows. Turn up hem. Change to 2nd Col (white). K 1 row. Set machine for weaving. Carr. to right. Release card (brushes down). RC000.

K to 124 rows. RC000.

C/O 7 sts at beg. of next 2 rows.

K to 124 rows. RC000.

### Neck shaping

C/O centre 30 sts. Make note of position of card. Put left side into HP and work on right side only.

K 2 rows. Carr. to left. Dec. 2 sts at beg. of next and every foll. 2nd row. Work to 12 rows.

### Shoulder shaping

Carr. to right C/O 4 sts at beg. of next and every foll. 2nd row.

Work these two shapings tog. until 4 sts rem. C/O.

Bring rem. Ns into WP, set card to noted position. K to match first side, reversing shaping.

## FRONT

### Pockets

T3 COBH 44 sts. K 40 rows. Change to W.wl. K a few rows. Release from machine. Rep.

### Front

Insert card and lock on row 1. With W.wl. cast on 66 (70, 76, 82) sts as 2 x 1 mock rib. K a few rows. Change to M.wl. (blue). K 70 rows. Turn up hem. Change to Col 2 (white). K 1 row. Set m/c for weaving. Carr. to right release card (brushes down).

K to 50 rows. Lock card. Lock RC.

Leave centre 45 Ns in WP. Push rem. Ns to HP. Change to W.wl. K a few

rows. Release centre of work from machine. Push all Ns into WP. Place last row of M.wl. of pocket onto empty Ns.

Depress both part buttons. Carr. to left. Set dial to KC. Move carr. to right. Release card and cont. in weaving patt. K to 124 rows. RC000.

C/O 7 sts at beg. of next row. K to 110 rows. Carr. to left.

### Neck shaping

C/O 15 sts at beg. of next row. K 1 row. Dec. 1 st at beg. of next and every foll. 2nd row. Work to 26 rows.

### Shoulder shaping

Carr. to right C/O 4 sts at beg. of next and every foll. 2nd row. Work these two shapings together until 4 sts rem. C/O.

Knit second side to match reversing all shapings.

## POCKET BAND

With W.wl. cast on 45 sts as 2 x 1 mock rib. K a few rows. Change to M.wl. T3 K 30 rows. Turn up hem. Undo W.wl. on front and place sts onto Ns. C/O.

*Press all pieces*

*Join shoulder seams*

## ARMHOLE EDGE

With W.wl. cast on 131 sts as 2 x 1 mock rib. K a few rows. Change to M.wl. T4 K 34 rows. Turn up hem. Pick up corresponding sts along armhole edge (along straight piece only). Place onto Ns. C/O.

## BUTTON BAND

With W.wl. cast on 131 sts as 2 x 1 mock rib. K a few rows. Change to M.wl. T4 K 34 rows. Turn up hem. Pick up sts from neck edge to hem. Place onto Ns. C/O.

## BUTTONHOLE BAND

K to match button band making 6 buttonholes over 2 sts on 8th and 24th row.

## NECKBAND

Hold neckline of garment against machine bed from centre front to centre front. With W.wl. cast on corresponding number of sts as 2 x 1 mock rib. K a few rows. Change to M.wl. T4. Make buttonhole over 2 sts on 8th and 24th row to centre over buttonhole band. K to 34th row. Turn up hem. Place picked up sts on Ns. C/O.

*Press all pieces*

Mattress st hems. Attach pocket bag. Sew down edges of pocket band. ■

# Unisex sweater



## Materials

Argyll Sportsday approx. 1 cone.

## Measurements

To fit chest or bust: 81, 86, 91, 97, 103, 108 cm (32, 34, 36, 38, 40, 42 ins.).

## Tension

*Always check tension before commencing.*

T7 40 sts = 15 cm. 60 rows = 15.5 cm.

*Success depends on working to correct tension*

## BACK

With W.wl. cast on 106 (113, 119, 126, 132, 139) sts as 2 x 1 mock rib. K a few rows. Change to M.wl. T5 K 60 rows. T7 turn up hem and K the row. K 1 row. RC000.

K 120 rows (32 cm) or required length.

## Armhole shaping

C/O 3 sts at beg. of next 2 rows. RC000.

K 0 (0, 0, 4, 2, 0) rows.

Dec. 1 st at each end of next and every foll. 5th (4th, 3rd, 2nd, 2nd, 2nd) row, 5 (7, 8, 10, 12, 14) times in all. \*\*\*

K to 54 (56, 58, 60, 62, 64) rows.

### Neck shaping

C/O centre 25 sts.

Put left side into HP working on right side only.

### Shoulder shaping

C/O 6 (7, 9, 0, 8, 9) sts at beg. of next row.

Dec. 1 st at beg. of next and every foll.

2nd row *at same time as* C/O 5 (5, 5, 6,

6, 6) sts at beg. of next and every foll.

2nd row. Work these two shapings tog.

until 2 sts rem. C/O.

### FRONT

As back to \*\*\*.

K to 68 (70, 72, 74, 76, 78) rows.

RC000.

### Neck shaping

C/O centre 17 sts.

Put left side into HP. Work on right side only.

K 3 rows. C/O 2 sts at (neck edge) beg.

of next and every foll. 2nd row, 5 times.

K to row 14.

C/O 5 (5, 5, 6, 6, 6) sts at beg. of next

and every foll. 2nd row until 6 (7, 9, 0,

8, 9) sts rem. K 1 row. C/O.

Knit other side to match reversing shapings.

### SLEEVES (Both alike)

With W.wl. cast on 50 (52, 54, 56, 58,

60) sts as 2 x 1 mock rib. K a few rows.

Change to M.wl. T5 K 60 rows. Turn up

hem. T7 K 2 rows. RC000.

Inc. 1 st at each end of next and every

foll. 7th row until 92 (94, 96, 98, 100,

102) sts rem. K to 150 (150, 154, 154,

158, 158) rows or required length.

RC000.

### Sleeve head shaping

C/O 3 sts at beg. of next 2 rows. K 4

rows. Dec. 1 st at each end of next and

every foll. 2nd row until 46 (48, 50, 52,

54, 56) sts rem. K to 48 rows.

Dec. 2 sts at beg. of next 14 rows. K 1

row. C/O.

*Press all pieces*

*Join one shoulder seam*

### POLO NECKBAND

With W.wl. cast on 120 (120, 122, 122,

124, 124) sts as 2 x 1 mock rib. Change

to M.wl. T6 K 120 rows. Turn up hem.

With wrong side of work facing pick up

corresponding number of sts along

neck edge. Place onto Ns. C/O.

Press neckband. Mattress st cuffs and

hem and neckband. Join all seams and

press lightly. ■



# Ladies' cotton lounger



**Machines**  
KH830, KH840.

**Materials**  
MAILYARNS LTD., 38 High Street,  
Syston, Leicester LE7 8GP.  
Bancot 4 ply cotton: Yellow - 2 cones;  
Green - ½ cone; Pink - ½ cone; Beige  
- ½ cone.

**Measurements**  
One size only fits: 81cm (32") - 97cm  
(38").

Length from back neck to hem: 140cm  
(56")

**TENSION**  
*ALWAYS CHECK TENSION BEFORE  
COMMENCING.*  
14 sts. and 28 rows = 5cm (2") over  
patt. (approx. T.3).  
*SUCCESS DEPENDS ON WORKING  
TO CORRECT TENSION.*

## NOTES:

Jones + Brother card 403.

## Patt. throughout

\*\*\* T.3.

Change to pink, knit 4 rows.  
Change to green, knit 4 rows  
Change to beige, knit 4 rows  
Change to yellow, release card and  
work in lace 12 rows  
Change to beige, knit 4 rows.  
Change to green, knit 4 rows.  
Change to pink, knit 4 rows.  
Change to yellow, work in lace 12 rows.  
\*\*\*

Rep. from \*\*\* to \*\*\* throughout.

## BACK AND FRONT ALIKE

With W.Wl. cast on 200 sts. Knit a few  
rows. Change to M.Wl. - pink. T.3.  
Knit 30 rows. Turn up hem. R.C.000.  
Cont. in patt. Knit to 530 rows. R.C.000.

## Armhole shaping

Cast off 4 sts. at beg. of next 2 rows.  
Knit to 120 rows.

## Neck shaping

Cast off centre 70 sts. Put left side of  
work onto W.Wl. and release from  
machine. Work on right side only.  
Dec. 1 st. at neck edge on next and  
every foll. 2nd row until 46 sts. rem.  
Knit to 144 rows.  
Change to W.Wl. knit a few rows and  
release from machine.  
Return sts. on W.Wl. to Ns. Knit  
second side to match, reversing  
shaping.

## NECKBAND

Graft shoulder seam. With W.Wl. cast  
on 200 sts. as 2x1 mock rib. Knit a few  
rows. Change to M.Wl. pink. T.2. Knit  
16 rows. Turn up hem. Pick up 200 sts.  
along neck edge, place picked up sts.  
onto Ns. Cast off.  
Graft shoulder seam.

## ARMHOLE EDGE

With W.Wl. cast on 145 sts. as 2x1  
mock rib. Knit a few rows. Change to  
M.Wl. pink. T.2. Knit 16 rows. Turn up  
hem. Pick up 145 sts. along armhole  
edge, place picked up sts. on Ns. Cast  
off. Work second armhole edge to  
match.

## MAKE UP

Press all pieces according to instruc-  
tions given with yarn. Mattress st.  
hems, neck edge, armhole edges. Join  
side seams. Press seams lightly. ■

# Handkerchief point hem evening dress



**Machines**  
KH830, KH840.

**Materials**  
SIRDAR Prelude 750 gms.  
TWILLEY'S Goldfingering (110 yd balls)  
x 5.  
1 x 25cm (10") zipper.

**Measurements**  
To fit bust: 81cm (32"), 86cm (34"),  
91cm (36"), 97cm (38").

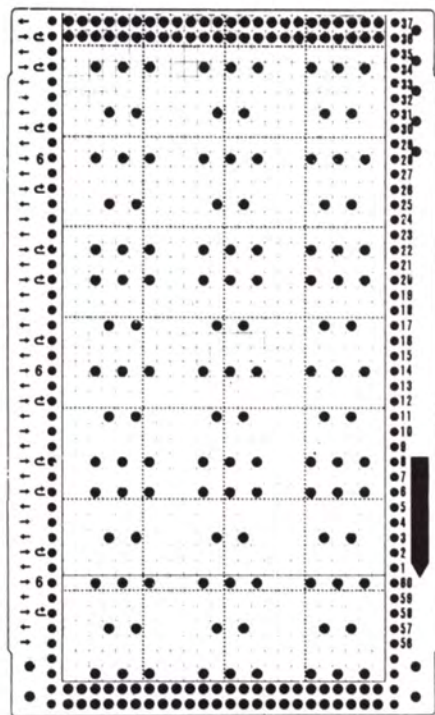
**TENSION**  
*ALWAYS CHECK TENSION BEFORE  
COMMENCING.*

12 sts. and 21 rows = 5cm (2") over  
lace patt.

14 sts. and 21 rows = 5cm (2") over  
st. st.

*SUCCESS DEPENDS ON WORKING  
TO CORRECT TENSION.*

**NOTES:**  
For card see diagram. Where 6 rows are  
knitted in st. st. (marked on card) knit 2  
rows. M.WI. 2 rows Goldfingering and  
2 rows M.WI.



### SKIRT—2 panels alike

With W.Wl. cast on 195 sts. Knit a few rows. Change to M.Wl. T.6. Knit 2 rows. Inc. 1 st. at beg. of next row and every foll, 2nd row 5 times in all. Dec. 1 st. at right on next and every foll. 2nd row 5 times in all. Knit 2 rows. Turn up hem, T.7. Knit 2 rows. R.C.000.

Change to Goldfingering and knit 2 rows. Change to M.Wl. knit 2 rows. Release card and cont. in patt.

### Waist shaping

Knit to 285 (283, 281, 279) rows. R.C.000. C.O.L. Cast off 8 (9, 10, 11) sts. at beg. of next row. Knit 1 row. Dec. 2 sts. at left on next and every foll. 3rd row 9 times in all. Knit to 30 (34, 38, 42) rows. R.C.000.

Inc. 2 sts. at left on next and every foll. 3rd row 9 times in all. C.O.L. Cast on 8 (9, 10, 11) sts. at beg. of next row. R.C.000.

Knit to 286 (284, 282, 280) rows. (Finish with 2 rows Goldfingering.)

### Hem

Inc. 1 st. at beg. of next and every foll. 2nd row 5 times in all. Dec. 1 st. at right on next and every foll. 2nd row 5 times in all. Pick up first row of hem and cast off.

### HEMS—2 alike

With W.Wl. cast on 195 sts. Knit a few rows. Change to M.Wl. T.6. Knit 2 rows. Inc. 1 st. at beg. of next row and every foll, 2nd row 5 times in all.

Dec. 1 st. at right on next and every foll, 2nd row 5 times in all. Turn up hem.

Take side hem of skirt. Mark centre point. Pick up 195 sts. along one half of this edge making sure that shaping on hem matches at corners. Place picked up sts. onto Ns. and cast off.

Three more hems need to be worked in this manner, two of which have the shaping on the left.

### BODICE—2 sides alike

C.O.B.H. 103 (110, 117, 124) sts. Knit 2 rows.

Dec. 1 st. at beg. of next and every foll. 3rd row. Work to 21 rows. C.O.L. Cast off 43 (50, 57, 64) sts. at beg. of next row. C.O.R.

Dec. 1 st. at left every 3rd row. AT THE SAME TIME cont. dec's at right. Work these two shapings together until 3 sts. rem. Cast off.

Knit other side to match, reversing shapings.

### STRAPS

Hold bodice piece at centre back and at bra point. Hold against machine. Cast on corresponding number of sts. on W.Wl. Knit a few rows. Change to Goldfingering T.6. and knit 10 rows. Turn up hem. Pick up sts. to match strap along edge from centre back to bra point. Place picked up sts. onto Ns. Cast off.


Work other side to match.

### SHOULDER STRAPS

Cast on in W.Wl. 112 sts. Knit a few rows. Change to Goldfingering T.6. and knit 10 rows. Pick up 70 sts. from bra point to centre front. Place picked up sts. onto Ns. Cast off.

### MAKE UP

Press all pieces according to instructions on yarn bands. Join one seam on skirt. Mark centre front point (seam). Overlap bodice pieces at centre point and easing under bust joint skirt to bodice. Join centre back seam leaving 25cm (10") opening. Insert zipper. Attach shoulder straps. Press all seams lightly. ■

Make it with  MAILYARNS...you'll notice the difference!

You'll be agreeably surprised to learn that our machine knitting yarns cost no more than ordinary yarns . . . . and are also supplied POST FREE.

#### 'Goscote' (4 Ply)

100% Acrylic on 340g cones. Available in 32 colours including most school shades. A revelation in Quality and Economy

#### 'BANCOT' (2 ply & 4 ply)

100% Cotton on 200g cones. A delightful colour range in this mercerised quality.

#### FINE PLY (2 30s)

100% Acrylic on 250g cones. In a range of popular colours.

**ALL OUR YARNS ARE SPUN SPECIFICALLY FOR MACHINE KNITTING & ARE FULLY REPEATABLE**

#### 'SHETLANDIA' (4 ply)

100% Pure New Wool on 200g cones. A quality-plus yarn in a fabulous range of authentic Shetland style mixture shades.

#### 'FYNWUL' Botany 2ply

100% Pure New Wool on 200g cones. The ultimate top fashion yarn in a superb colour range.

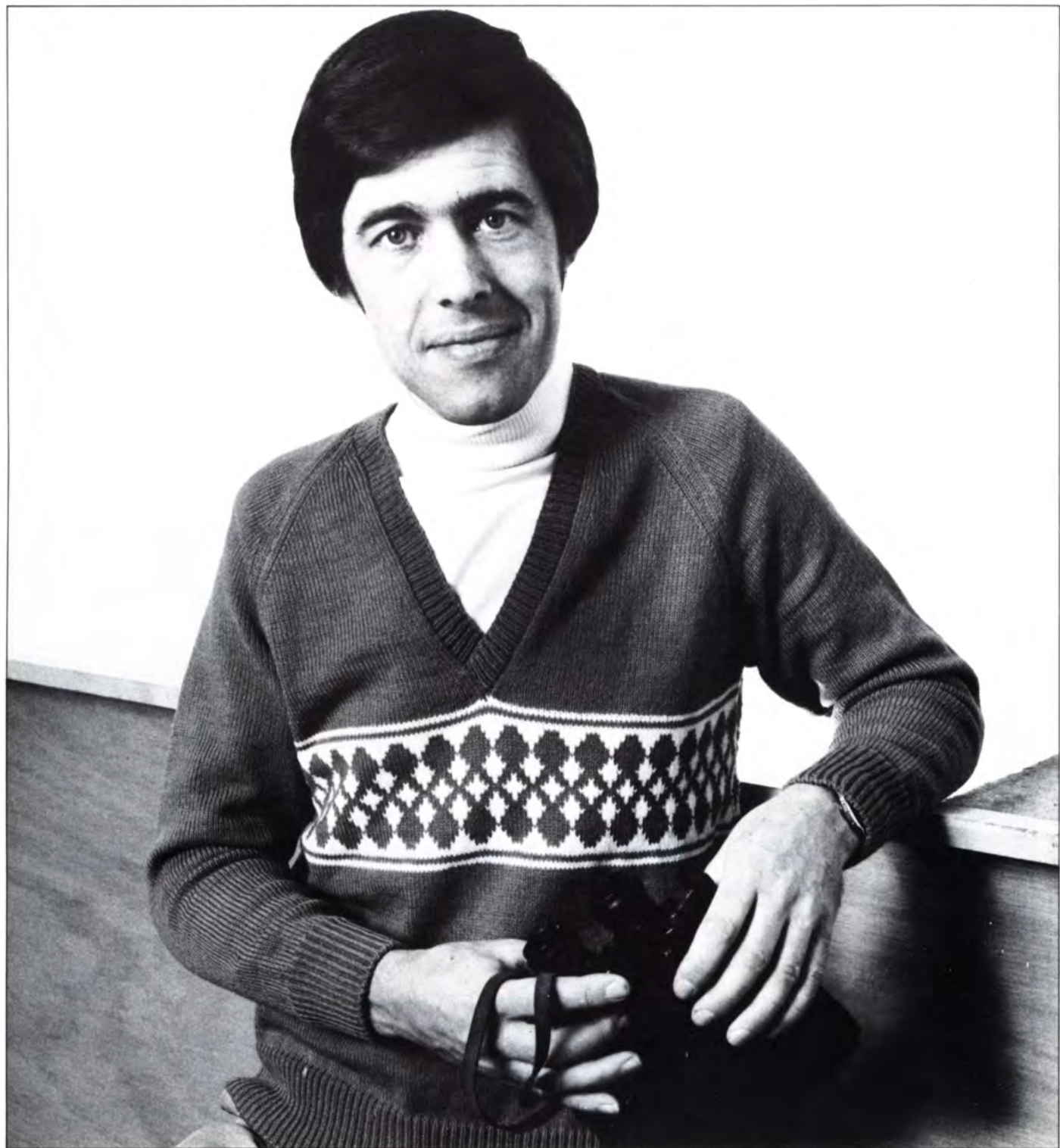
#### WE ALSO STOCK:

100% Pure New Wool ARAN Machine Weaving Yarns, Labels, Invisible Thread, etc.

Send S.A.E. for FREE samples (quote product interest) to:  
MAILYARNS LTD, (Dept J2) 38, High Street, Syston, Leicester.

Discounts are available on bulk orders please ask for details (Offers apply to U.K. only)

# Men's v-neck raglan sweater





Suitable for beginners

### Materials

16 (17, 18, 20, 21) balls main (M) and 2 (2, 3, 3, 4) balls contrast (C) – Poppletons Pageant 4 ply.

### Measurements

38 (40, 42, 44, 46) ins.

### Tension

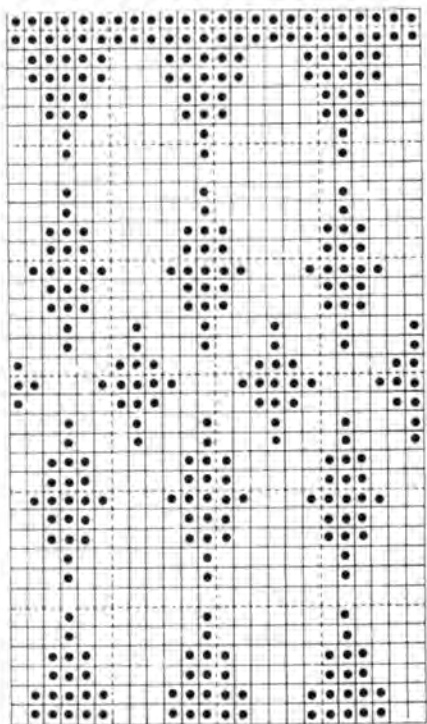
30 sts and 41 rows to 4 ins with TD approx. 6 – measured over plain knitting.

### Machines

Pattern diag. given most suitable for KH820 (830, 840) machines, but can be knitted on other machines if fairisle trim omitted or substituted for alternative pattern, provided correct tension is achieved.

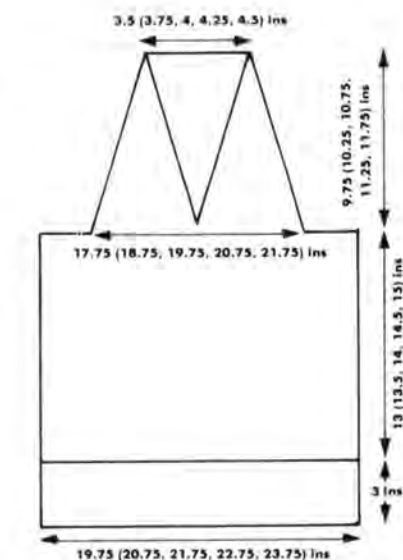
### Pattern notes

Punch card from diag. shown and work in fairisle as given in pattern.



### BACK

**Ribbers:** Cast on in M, in 1 x 1 rib 147 (155, 161, 169, 177) sts. TD at MT-2/MT-2, knit 35 rows and transfer sts to main bed. Inc. 1 st – 148 (156, 162, 170, 180) sts.



**Single bed machines:** Cast on using M, in 1 x 1 rib 147 (155, 161, 169, 177) sts. TD at MT-2, knit 50 rows and turn hem. Inc. 1 st – 148 (156, 162, 170, 178) sts.

**All machines:** RC000. TD at MT. Knit to RC 84 (88, 94, 98, 104). Knit 2 rows C, 2 rows M, 1 row C – set carr. to select for fairisle on next row and knit that row in C. With M in feeder 1 and C in feeder 2, knit completely through fairisle band once. (Note: there will be 2 rows where the contrast doesn't knit giving you full length loops across the back of the work. When garment is finished, cut these and weave them up the sides of the work for neatness.) Then set for plain knitting and using C knit 2 rows, with M knit 2 rows, then with C knit 2 rows. Change to M and continue in M throughout. Knit to RC 134 (138, 144, 148, 154)\*.

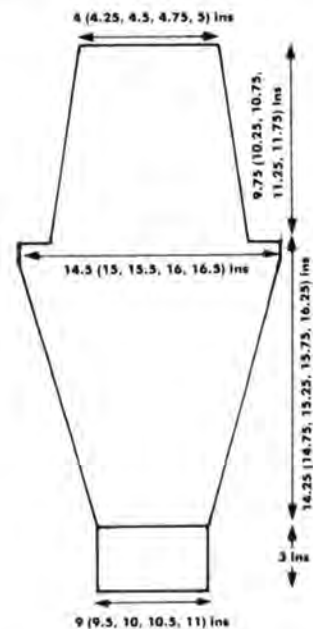
### Shape armholes

Cast off 4 sts at the beg. of the next 2 rows. Cast off 3 (4, 3, 3, 3) sts at the beg. of the next 2 rows – 134 (140, 148, 156, 164) sts. Dec. 1 st f.f. at both sides of next and every foll. alt. row 46 (50, 51, 54, 55) times in all, knit 1 row. Dec. 1 st f.f. at both sides of next and every foll. row 8 (6, 8, 8, 10) times in all. Cast off remaining 26 (28, 30, 32, 34) sts.

### FRONT

Knit as for back to \*

Push all sts to left of centre 'O' into HP and continue to knit RHS as follows: Cast off 4 sts at the beg. of the next row. Dec. 1 st at neck edge on next and every foll. 7th row 13 (14, 15, 16, 17) times in all and at the same time knit 1 row. Cast off 3 (4, 3, 3, 3) sts at the beg. of the next row, knit 1 row. Dec. 1 st at armhole edge on next and every foll. alt. row 46 (50, 51, 54, 55) times in all, knit 1 row. Dec. 1 st at armhole edge f.f. on next and every foll. row 8 (6, 8, 8, 10) times in all. When all sts decreased, take carr. back to LHS, reset RC to 134 (138, 144, 148, 154) and knit LHS to match RHS.



### SLEEVES

**Ribbers:** Cast on in M, in 1 x 1 rib 67 (71, 75, 77, 81) sts. TD at MT-2/MT-2, knit 33 rows and transfer sts to main bed. Inc. 1 st – 68 (72, 76, 78, 82) sts.

**Single bed machines:** Cast on in M in 1 x 1 rib 67 (71, 75, 77, 81) sts. TD at MT-2 knit 48 rows and turn hem. Inc. 1 st – 68 (72, 76, 78, 82) sts. RC000 TD at MT, knit 4 rows. Inc. 1 st at both sides of next and every foll. 7th row 20 (20, 20, 21, 21) times in all – 108 (112, 116, 120, 124) sts. Knit to RC 146 (152, 156, 162, 166).

### Shape sleeve head

Cast off 4 sts at the beg. of the next 2 rows. Knit 2 (2, 2, 3, 3) rows. Dec. 1 st f.f. at both sides of next and every foll. 3rd row 30 (34, 36, 36, 36) times in all. Knit 1 (1, 1, 0, 0) rows. Dec. 1 st at both sides of next and every foll. alt. row 5 (2, 1, 0, 0) times in all. Cast off remaining 30 (32, 34, 36, 38) sts.

## NECKBAND

(Join raglan seams except 1 between 1 Front and sleeve)

1st part: Push 150 (156, 167, 176, 185) Ns into WP and replace sts from neck as follows: — With carr. at LHS, replace from centre front to sleeve 70 (72, 75, 78, 81) sts from top of sleeve 28 (30, 32, 34, 36) sts from back neck 24 (26, 28, 30, 32) sts from top of 2nd sleeve 28 (30, 32, 34, 36) sts. TD at MT, knit 1

row. *All pieces with wrong side facing.*

**Ribbers:** Transfer for 1 x 1 rib (remember to add weights evenly across work). TD at MT-1/MT-1, knit 10 rows. Transfer sts to main bed and cast off rib configuration not too tightly.

**Single bed machines:** Transfer to 1 x 1 rib TD at MT-2, knit 16 rows, push empty needles into work and with TD at MT, knit 2 rows. Pick up every 3rd st from 1st row picked up and cast off all sts together *loosely*.

2nd part: With wrong side of work facing, replace 2nd neck piece onto 70 (72, 75, 78, 81) sts and complete as for 1st part of neckband.

## TO MAKE UP

Sew last raglan seam. Join neckband neatly. Sew sleeve and side seams, neatening in threads from fairisle as mentioned in pattern. Give final light press. ■



# Ladies' two colour tuck stitch suit



## Machines

KH830, KH840, with ribbing attachment.

## Materials

SILVERKNIT Dakota — 1½ cones M., 1½ cones Con. Col.

## Measurements

To fit bust: 81cm (32"), 86cm (34"), 91cm (36"), 97cm (38").  
Sleeve seam: 38cm (15"),  
Skirt length: 68cm (27").

## TENSION

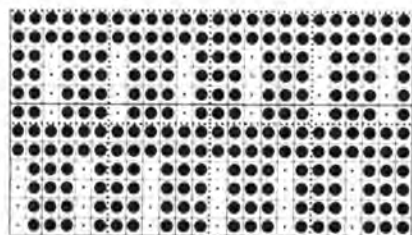
ALWAYS CHECK TENSION BEFORE COMMENCING.

13 sts. and 31 rows = 5cm (2") over tuck patt. (approx. T.5).

SUCCESS DEPENDS ON WORKING TO CORRECT TENSION.

## NOTES:

Plain knit side is right side. All welts are knitted using a ribbing attachment. Using 2 ends of yarn, T.2/2. Arrange Ns. as for 1x1 rib. Patt. — for card see diagram. \*Knit 4 rows M. and 2 rows Con. Col.\* Rep. from \* to \* throughout.



## SKIRT

### FRONT and BACK alike

Insert card and lock on row 1. Using ribbing attachment and 2 ends of Con. Col. cast on 200 sts. as 1x1 rib. T.5. Knit 10 rows. Trans. sts. to M.B. R.C.000.

Release card and work in patt. Knit to 432 rows. (Finish with 2 rows Con. Col.) Lock card. Change to W.WI., knit a few rows and release work from machine.

### Waistband

With W.WI. cast on 83 (89, 95, 101) sts. as 2x1 mock rib. Knit a few rows. Change to Con. Col. T.2. Knit 30 rows. Turn up hem. Place last row of skirt front onto Ns. distributing sts. evenly. Cast off. Knit other side to match.

## SWEATER

### BACK

Insert card and lock on row 1. Using ribbing attachment and 2 ends of Con. Col. cast on 108 (114, 120, 126) sts. as for 1x1 rib. T.2/2. Knit 30 rows. R.C.000.

Trans. all sts. to M.B. T.5. Release card and work in patt. Knit to 160 rows or required length. R.C.000.

### Armhole shaping

Cast off 4 sts. at beg. of next 2 rows. Dec. 1 st. at each end of next and every foll. 4th row until 88 (94, 100, 106) sts. rem. \*\*\*

Knit to 118 (120, 122, 124) rows.

### Neck and shoulder shaping

Cast off centre 28 sts. Put left side into H.P., work on right side only. (Note card pos.) \*Cast off 5 (6, 7, 8) sts. at beg. of next row. Dec. 2 sts. at beg. of next row.\* Rep. from \* to \* twice. Cast off.

Knit other side to match, reversing shapings.



### FRONT

As back to \*\*\*.

Divide work in half and put left side onto H.P. (Note card pos.)

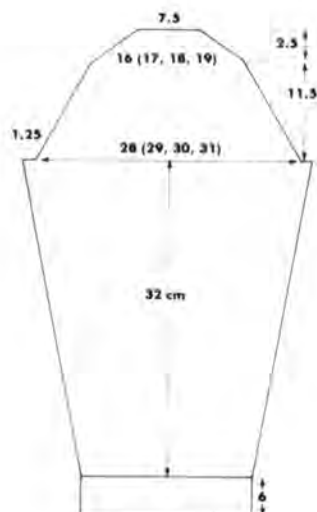
### Neck shaping

Knit 2 rows. Dec. 1 st. at neck edge on next and every foll. 3rd row until 22 (25, 28, 31) sts. rem. Knit to 118 (120, 122, 124) rows.

### Shoulder shaping

\*Cast off 5 (6, 7, 8) sts. at beg. of next row. Knit 1 row.\* Rep. from \* to \* 3 times more. Cast off.

Knit other side to match, reversing shapings.



## SLEEVES

Insert card and lock on row 1. Using ribbing attachment and 2 ends of Con. Col. cast on 65 (68, 71, 74) sts. as 1x1 rib. T.2/2. Knit 30 rows. R.C.000. Trans. all sts. to M.B. T.5. Release card and work in patt. Inc. 1 st. at each end of next and every foll. 30th row until there are 76 (79, 81, 84) sts.

Knit to 200 rows or required length. Cast off 4 sts. at beg. of next 2 rows. R.C.000. Dec. 1 st. at each end of next and every foll. 4th row until 41 (44, 47, 50) sts. rem. Knit to 72 rows.

Dec. 1 st. at each end of next and every foll. 2nd row 8 times in all. Cast off.

## COLLAR

Using ribbing attachment and 2 ends of Con. Col. cast on 161 sts. as 1x1 rib. T.2/2. Knit 18 rows. Dec. 1 st. at each end of every row. Work to 68 rows. Cast off.

## MAKE UP

It is suggested that garment pieces should not be pressed before make up. Join side seams on skirt. Mattress st. waistband opening. Thread with 2.5cm (1") elastic cut to waist measurement. Join elastic securely. Mattress st. second waistband opening. Join shoulder seams. Set in sleeves. Join underarm and side seams in one. Attach collar. Press seams lightly if needed. ■



# Men's fairisle jacket and sweater



## Materials

ARGYLL Sportsday. Sweater:  $\frac{3}{4}$  cone Camel and  $\frac{1}{4}$  cone White.  
Jacket: 1 cone Camel and  $\frac{1}{4}$  cone White.

## Measurements

To fit chest: 90cm (36"), 95cm (38"), 100cm (40"), 105cm (42").  
Sleeve length: 42.5cm (17 $\frac{1}{2}$ ").

## Tension

*Always check tension before commencing.*

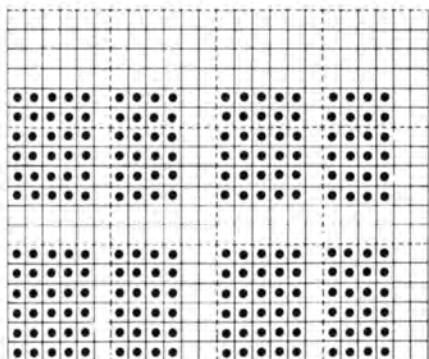
12 sts and 20 rows = 5cm (2") over st.st. (Approx. T7).

14 sts and 19 rows = 5cm (2") over fairisle (Approx. T7).

*Success depends on working to correct tension.*

## Notes

See diagram for card. All welts are knitted using ribbing attachment, arrange needles as for 2 x 2 rib.



## SWEATER

### BACK

Using ribbing attachment cast on in M.wl. 110 (116, 122, 128) sts as for 2 x 2 rib. T5/5 knit 30 rows. RC000. Transfer sts to back bed. T7 knit to 130 rows.

### Armhole shaping

Cast off 3 sts at beg. of next 2 rows. RC000. Dec. 1 st at each end of next and every foll. 3rd row until 86 (90, 94, 98) sts rem. Knit to 96 rows.

### Neck shaping

Cast off centre 36 sts, put left side of work into HP. Working on right side only, \*dec. 2 sts at left, cast off 4 (5, 5, 6) sts at beg. of next row. Knit 1 row\*. Rep. twice more. Cast off. Knit other side to match reversing shaping.

## FRONT

Insert card and lock on row 1. Using ribbing attachment cast on in M.wl. 130 (137, 144, 151) sts as 2 x 2 rib. T5/5 knit 30 rows. T7 release card and work in fairisle. Knit to 120 rows. RC000.

### Armhole shaping

Cast off 3 sts at beg. of next 2 rows. Dec. 1 st at each end of next and every foll. 3rd row until 102 (109, 116, 123) sts rem. Knit to 64 rows.

### Neck shaping

Cast off centre 20 (19, 20, 19) sts, put left side of work into HP, work on right side only. (Note card position.) Knit 1 row. Dec. 2 sts at neck edge. Knit 2 rows. Cast off 3 sts at beg. of next and every foll. 2nd row 6 times in all. Knit to 86 rows.

### Shoulder shaping

\*Cast off 5 (6, 7, 8) sts at beg. of next row. Knit 1 row\*. Rep. twice more. Cast off. Knit other side to match reversing shapings.

## SLEEVES

Using ribbing attachment cast on in M.wl. 46 (50, 54, 58) sts as 2 x 2 rib. T5/5 knit 26 rows. RC000. Transfer all sts to back bed. T7 inc. 1 st at each end of next and every foll. 7th row until there are 84 (88, 92, 96) sts rem. Knit to 150 rows or required length.

Cast off 3 sts at beg. of next 2 rows. RC000. Dec. 1 st at each end of next and every foll. 3rd row until 42 (46, 50, 54) sts rem. Knit to 54 rows. Cast off 2 sts at beg. of next 12 (14, 16, 18) rows. Cast off.

## NECKBAND

Join shoulder seam. With wrong side of work facing pick up 140 sts along neck edge. Place picked up sts onto Ns. T10 knit 1 row. Transfer sts for 2 x 2 rib. T5/5 knit 16 rows. Cast off.

## MAKE UP

Press all pieces according to instructions on cone label. Mattress st hems and cuffs and neckband. Join shoulder seam. Set in sleeves. Join underarm and side seams in one. Press seams lightly.



## JACKET

### BACK

Insert card and lock on row 1. Using ribbing attachment cast on 138 (144, 150, 156) sts as 2 x 2 rib. T4/4 knit 30 rows. RC000. Transfer sts to back bed. T7 release card and work in fairisle. Knit to 120 rows. RC000.

### Armhole shaping

Cast off 4 sts at beg. of next 2 rows. Knit 2 rows. Dec. 1 st at each end of next and every foll. 2nd row until 106 (112, 118, 124) sts rem. Knit to 90 rows.

### Neck and shoulder shaping

Cast off centre 30 sts. Put left side of work into HP (note card position). Working on right side only, \*cast off 8 sts at beg. of next row. Dec. 2 sts at beg. of next row\*. Rep. twice more. Cast off. Knit second side to match reversing shaping.

### FRONT

#### Pocket bags

Using M.wl. cast on 34 sts by hand. T7 knit 30 rows. Change to W.wl. Knit a few rows and release from machine. Insert card and lock on row 1. Using M.wl. and ribbing attachment cast on 65 (68, 71, 74) sts as 2 x 2 rib. T4/4 knit 30 rows. RC000. Release card and work in fairisle. Knit to 30 rows. Put centre 34 sts onto W.wl. and release from machine. Place last row of M.wl. of pocket onto Ns. Knit to 120 rows. RC000.

#### Armhole and neck shaping

Cast off 4 sts at beg. of next row, knit 3 rows. Dec. 1 st at beg. of next and every foll. 2nd row 12 times in all, *at the same time* dec. 1 st at left on next and every

foll. 5th row. Work these two shapings together as stated and then cont. shaping at left only. Work until 32 (35, 38, 41) sts rem. Knit to 90 rows. \*Cast off 8 sts at beg. of next row. Knit 1 row\*. Rep. twice more. Cast off. Knit second side to match reversing shapings.

### SLEEVES

Insert card and lock on row 1. Using ribbing attachment cast on 60 (63, 66, 69) sts as 2 x 2 rib. T4/4 knit 30 rows. RC000. Transfer all sts to back bed. T7 release card and work in fairisle. \*Inc. 1 st at beg. of next 2 rows. Knit 5 rows\*. Rep. until 98 (101, 104, 107) sts rem. Knit to 140 rows or required length. RC000. Cast off 4 sts at beg. of next 2 rows. Knit 2 rows. Dec. 1 st at each end of next and every foll. 3rd row until 50 (53, 56, 59) sts rem. Knit to 64 rows. Cast off 1 st at beg. of next 14 rows. Cast off.

### BUTTON BAND AND COLLAR

Join shoulder seams. Using ribbing attachment cast on in M.wl. 200 sts as 2 x 2 rib. T4/4 knit 16 rows. Carr. to

right put 112 Ns at left into HP. \*Knit 2 rows, put 2 Ns at right into HP\*. Rep. until 156 Ns are in HP. Knit 3 rows. Transfer all sts to back bed. Pick up 200 sts along front opening from hem to centre back neck. Place picked up sts onto Ns. Cast off. Mark button positions on button band for 5 buttons the last one at beg. of neck shaping.

### BUTTONHOLE BAND AND COLLAR

As button band, reversing shaping *at the same time* make buttonholes to match markers over 2 sts on row 8.

### POCKET BAND

Using ribbing attachment cast on in M.wl. 34 sts as 2 x 2 rib. Knit 16 rows. With right side of work facing, place sts on W.wl. onto Ns. Cast off.

### MAKE UP

Press all pieces according to instructions on cone label. Attach pocket bags and pocket band. Join centre back collar. Set in sleeves. Join underarm and side seam in one. Press seams lightly. ■

## Wall hanging and cushion cover



## Wall hanging

### Machines

Any machine.

### Materials

HAYFIELD Machine Knit –

oddment (brown).

HAYFIELD Beaulon D.K. –

Grenada (light pink) 2 x 25gm balls,

Antigua (mid pink) 3 x 25gm balls,

Tobago (dark pink) 3 x 25gm balls.

### Measurements

52cm (20½") wide

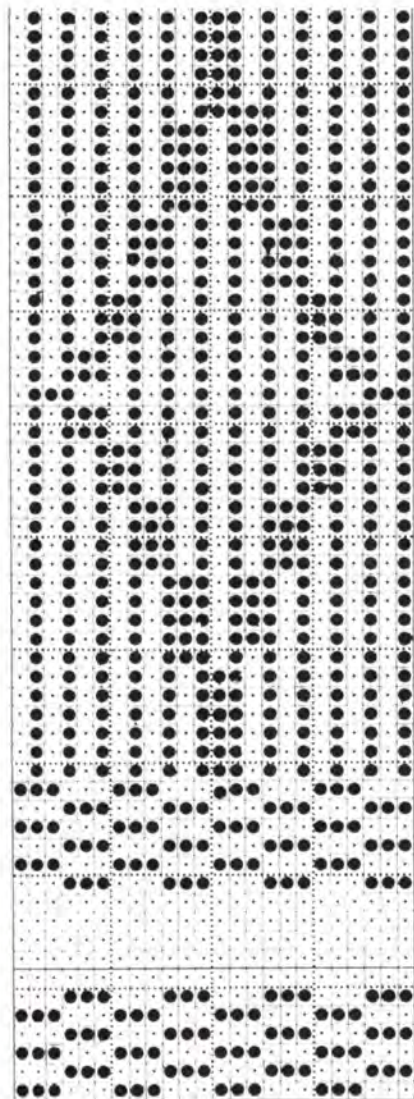
finished

95cm (38") long

measurements

### NOTES:

See diagram for card.



### FRINGES

Make 2 in each colour.

C.O.B.H. over Ns. 20, 22 and 24 on both sides of "0" on main bed. Leave all other Ns. in N.W.P. taking yarn across empty Ns.

T.10. Knit 180 rows. Cast off.

### MAIN PART

Insert card and lock on row 1. C.O.B.H. in Machine Knit yarn 180 sts. T.6. Knit 4 rows.

### Attach fringes

Tobago (dark pink) fringe: Pick up 180 sts. along fringe edges. Place picked up sts. onto Ns.

Knit 4 rows. Attach second fringe – Antigua (mid pink) – in same way.

Knit 4 rows. Attach third fringe – Grenada (light pink) – in same way.

Knit 6 rows. R.C.000.

Release card. Using winding method (see diagram on p.29) work in alternate rows of Grenada (light pink), Antigua (mid pink) and Tobago (dark pink). Knit to 17 rows in this way. R.C.000.

\*Using Tobago (dark pink) cont. in weaving. Knit to 41 rows. R.C.000.\*

Using winding method work in alternate rows of the three colours as previously described. Knit to 17 rows. R.C.000.

Using Grenada (light pink) cont. in weaving. Knit to 41 rows. R.C.000.

Using winding method work in alternate rows of the three colours as previously described. Knit to 17 rows. R.C.000.

Rep. from \* to \*.

Knit 6 rows.

Attach Grenada (light pink) fringe. Knit 4 rows.

Attach Antigua (mid pink) fringe. Knit 4 rows.

Attach Tobago (dark pink) fringe. Knit 4 rows. Cast off.

### TABS

#### Make 10 alike

With W.WI. cast on 28 sts. Knit a few rows. Change to Machine Knit yarn. T.5. Knit 4 rows. Dec. 1 st. at each end of next and every foll. 2nd row until 10 sts. rem.

Knit 2 rows. Inc. 1 st. at beg. of next and every foll. row until there are 28 sts. Knit 4 rows. Turn up hem. Knit 2 rows. Change to waste yarn, knit a few rows and release from machine.

Place last row of Machine Knit yarn of 5 tabs onto machine. Pick up 140 sts. along top of main part and place picked up sts. onto Ns. Cast off. Rep. for other end.

### TASSELS

Cut a number of pieces of yarn to 32cm. Thread through tabs and using a separate piece of yarn wind around the top of the tassel and secure firmly.

Make 5 tassels: 2 x Grenada (light pink), 2 x Antigua (mid pink), and 1 x Tobago (dark pink).

Place the Tobago (dark pink) tassel in centre tab, the Antigua (mid pink) each side and the Grenada (light pink) each side of them.

Press wall hanging lightly.

Cut a piece of wood to thread through tabs at top. Make a cord and use this to tie to each end of wood to hang.

### WINDING METHOD

Pull Ns. selected into H.P. to wind yarn around. Wind yarn around Ns. three times. It doesn't matter which side carriage is on, follow colour pattern without breaking yarn. See diagrams, page 29.

## Cushion cover

### Materials

HAYFIELD Machine Knit – oddment.

HAYFIELD Beaulon D.K. –

Grenada (light pink) 4 x 25gm balls,

Antigua (mid pink) 4 x 25gm balls,

Tobago (dark pink) 4 x 25gm balls.

### Measurements

40cm (16") x 40cm (16") – finished measurements

### FRINGES

#### Make 10 in each colour, use Bealon D.K.

C.O.B.H. over Ns. 20, 22 and 24 on both sides of "0" on main bed. Leave all other Ns. in N.W.P. taking yarn across empty Ns.

T.10. Knit 100 rows. Cast off.

### MAIN PART

Using Machine Knit yarn cast on 110 sts. by hand.

T.6. Knit 10 rows.

### Attach fringes

\*Pick up 100 sts. along fringe edge. Place picked up sts. onto centre 100 Ns. Knit 10 rows.\* Rep., rotating colours.

Knit to 310 rows. Cast off.

### MAKE UP

Press lightly on wrong side of work. Join edges on three sides leaving 25cm (10") opening on one side. Insert 25cm (10") zip. ■

# Ladies' v-neck sweater and cardigan

## Machines

Any machine with ribbing attachment.

## Materials

HAYFIELD Gossamer —

Cardigan:

12 (12, 13, 14) x 25gm balls M.

8 (8, 9, 9) x 25gm balls Con. Col.

Sweater:

12 (12, 13, 14) x 25gm balls M.

8 (8, 9, 9) x 25gm balls Con. Col.

6 x 1.25cm (½") buttons for cardigan only.

## Measurements

To fit bust: 81cm (32"), 86cm (34"), 91cm (36"), 97cm (38").

Sleeve length: 44cm (17½").

## TENSION

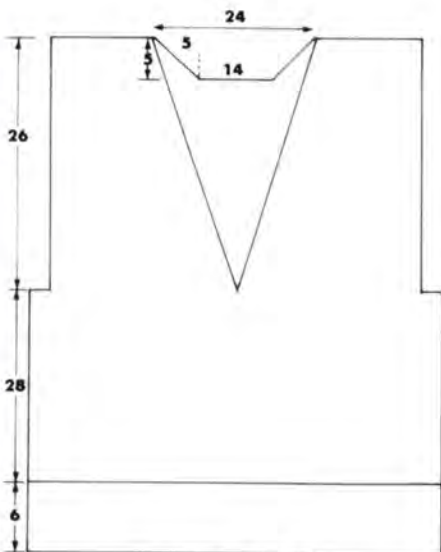
ALWAYS CHECK TENSION BEFORE COMMENCING.

16 sts. and 15 rows = 5cm (2") worked on every other needle (E.O.N.). Count N.W.P. Ns. as sts. throughout.

SUCCESS DEPENDS ON WORKING TO CORRECT TENSION.

## NOTES:

All welts are knitted using a ribbing attachment. Arrange Ns. as for 1x1 rib. T.6/6. Patt. — stripes of 10 rows each Col.



45 (47.5, 50, 52.5)

## BACK—V-Neck & Cardigan

Using M. and ribbing attachment, cast on 145 (153, 161, 169) sts. as 1x1 rib. T.7/7. Knit to 18 rows. R.C.000.

Trans. all sts. to M.B. leaving E.O.N. in N.W.P. Change to Con. Col.

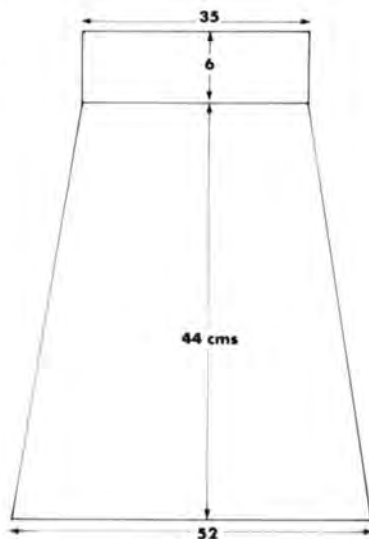
T.10. working in stripes throughout. Knit to 80 rows or required length. R.C.000.\*\*\*

## Armhole shaping

Cast off 4 sts. at beg. of next 2 rows. Knit to 66 rows.

## Neck shaping

Cast off centre 45 sts. Put left side of work into H.P. Work on right side only. Knit 1 row. Dec. 2 sts. at neck edge on next and every foll. 2nd row until 35 (39, 43, 47) sts. rem. Knit to 88 rows (finish with 12 rows same Col.). Cast off. Knit other side to match, reversing shaping.



## SLEEVES—V-Neck & Cardigan

Using M. and ribbing attachment, cast on 113 sts. as 1x1 rib. T.6/6. Knit to 18 rows. R.C.000.

Trans. all sts. to M.B. leaving E.O.N. in N.W.P. Change to Con. Col.

T.10. working in stripes. \*Inc. 2 sts. at beg. of next 2 rows. Knit 8 rows. \* Rep. from \* to \* until there are 167 sts. Knit to 140 rows. Cast off.

## FRONT—V-Neck Sweater

As back to \*\*\*.

Cast off 4 sts. at beg. of next 2 rows. Divide work in half. Place left side into H.P., work on right side only. Knit 1 row. Dec. 1 st. at neck edge on next and every foll. 2nd row until 35 (39, 43, 47) sts. rem.

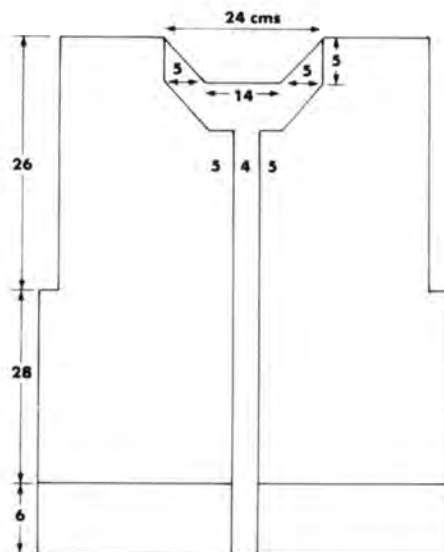
Knit to 82 rows (finish with 12 rows same Col.). Cast off.

Knit other side to match, reversing shapings.

## NECKBAND

Join shoulder seams. Using M. and ribbing attachment, cast on 121 sts. as 1x1 rib. T.6/6. Knit 15 rows. Trans. all sts. to M.B. Pick up 121 sts. from centre back to centre front. With right side of work facing place picked up sts. onto Ns. Cast off.

Knit other side to match.



## FRONT—Cardigan

Using M. and ribbing attachment, cast on 66 (70, 74, 78) sts. as 1x1 rib. T.6/6. Knit 18 rows. R.C.000.

Trans. all sts. to M.B. leaving E.O.N. in N.W.P. T.10. working in stripes throughout. Knit to 80 rows. R.C.000.

## Armhole shaping

Cast off 4 sts. at beg. of next row. Knit to 51 rows.





### Neck shaping

Carr. to left, cast off 16 sts. at beg. of next row. Knit 1 row. Dec. 2 sts. at beg. of next and every foll. 2nd row until 35 (39, 43, 47) sts. rem.

Knit to 82 rows (finish with 12 rows same Col.).

Knit other side to match, reversing shaping.

### Neckband

Join shoulder seams. Using M. and ribbing attachment, cast on 151 sts.

T.6/6. Arrange Ns. as for 1x1 rib. Knit 16 rows. R.C.000.

Trans. all sts. to M.B. Pick up 151 sts. along neck edge, place picked up sts. onto Ns. Cast off.

### Buttonband

Using M. and ribbing attachment, cast on 137 sts. as 1x1 rib. T.6/6. Knit 15 rows. Pick up 137 sts. along left side front open edge. Place picked up sts. onto Ns. Cast off.

Mark button position for 6 buttons.

### Buttonhole band

Knit to match buttonband, making 6 buttonholes over 1 st. on row 7.

### MAKE UP

Press all pieces. Using a stiff brush 'fluff up' the surface on plain side of garment piece. Set in sleeves. Join underarm and side seam in one. Join centre back and attach centre front neckband on sweater. Press all seams lightly. ■

# Lacy fairisle suit



## Materials

Mallyarns Limited, 38 High Street, Syston, Leicester. 2 cones Goscote 4 ply (1 for jacket only). 1 cone glitter thread silver or gold. 1 small spool invisible thread, 4 buttons.

## Measurements

To fit 32 (34, 36, 38)" bust. Skirt 34 (36, 38, 40)" hip.

## Tension

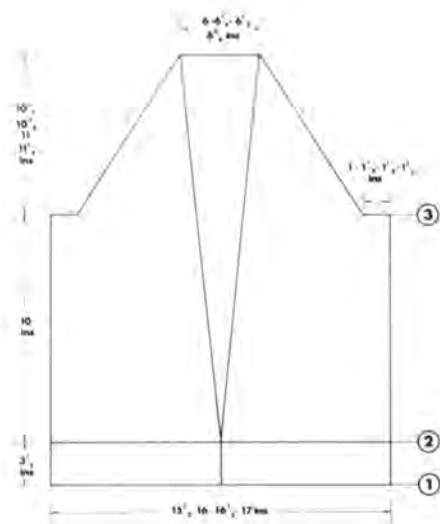
8 sts x 10 rs = 1" in fairisle, T5; 6½ sts x 12 rs = 1" st st, T5.

## Machine

820-830-840 Card No. 4D basic set from 830 machine.

## Note

For a good edge push end Ns back to 'B' position.



## BACK

1) **Ribbers:** Knit with 4 ply and glitter thread. Cast on 124 (128, 132, 136) sts tub. K 40 rs T½. Slide lever 2. Transfer to main bed. Insert nylon thread in back feeder. Set KC knob. K 1 row to set pattern.

1) **Single bed machine:** Knit with 4 ply and glitter thread. Cast on 124 (128, 132, 136) for 1 x 1 mock rib. K 80 rs T3, MDE. Insert nylon thread in back feeder. Set KC knob. K 1 row to set pattern.

2) RC000. Knit in fairisle with nylon and glitter yarns in front feeder, T5. K 100 rs. C/O 9 (10, 11, 12) sts beg. next 2 rs.  
3) RC000. Decrease 1 stitch each end every 3rd row to 096 (099, 102, 105). K 1 row st st (release m/c button). C/O.

## RIGHT FRONT

1) **Ribbers:** Cast on 62 (64, 66, 68) 1 x 1 rib. K 3 rs tub. K 5 rs T½. \*Make buttonhole on left side, i.e. transfer 2nd from left from main bed to second N from left on ribber bed; and transfer 3rd N from left on ribber bed to third N on main bed. Leave empty Ns in 'B' position. K 10 rs. Repeat from \* to make 4 buttonholes. K 5 rs. Transfer to main bed. Insert invisible thread and set pattern as for back.

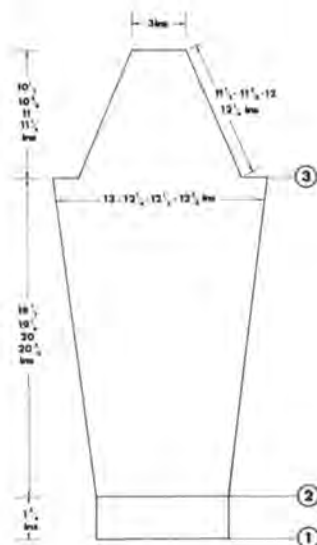
1) **Single bed machine:** Cast on 62 (64, 66, 68) sts in 1 x 1 mock rib. K 5 rs T3\*. Make buttonhole over 3rd and 4th Ns from left. K 10 rs. Repeat from \*\* to make 8 buttonholes. K 5 rs MDE. Insert invisible thread 2nd set pattern as for back.

2) RC000. T5. Decrease 1 st at buttonhole edge now and every 10th row to 100. C/O 9 (10, 11, 12) at arm edge.

3) RC000. Continue to decrease every 10th row at neck edge and one stitch every third row at arm edge to 096 (099, 102, 105). C/O.

## LEFT FRONT

As right front, reversing shaping and omitting buttonholes.



## SLEEVES

1) **Ribbers:** Cast on 54 (56, 58, 60) in 1 x 1 rib. K 3 rs tub. K 20 rs T½. Transfer to main bed. Insert nylon thread and set pattern as for back.

1) **Single bed machine.** Cast on 54 (56, 58, 60) in 1 x 1 mock rib. K 40 rs T3, MDE. Insert nylon thread and set pattern as for back.

2) RC000. Inc. 1 st each end every 7th row to row 163 (170, 177, 184). C/O 9 (10, 11, 12) beg. next 2 rs.

3) RC000. Decrease 1 st each end every 3rd row to 096 (099, 102, 105). K 1 row st st. C/O.

Shell edging in 4 ply and glitter yarn. Cast on 5 sts over 9 needles. \*\*\*K 2 rs. Bring to 'E' position x marked needles HP.

K 4 rs. Push back Ns slightly, repeat from \*\*\* to knit 106 (108, 110, 112) shells.

## SKIRT

### Measurements

To fit hips 34 (36, 38, 40)". Waist 24 (25, 26, 27)". Length: 24" + 2" waistband. Length may be reduced by 18 sts per inch.

## NOTES

This skirt with slight bias flair is designed to be slim fitting. If preferred add extra rows onto straight sections, e.g. 46 rs instead of 40.

## TENSION

8 sts x 13 rs = 1" TD 5 after pressing.

1) Using waste wool cast on 200 sts. K a few rs. COR. T5, in Col A K 20 (22, 24, 26) rs.

2) \*Bring to 'E' position 10 Ns opp. carr. HP + every alternate row until 10 Ns remain. Release holding cam. K 1 row to return all needles to 'B' position. K 1 row to return carr. to hem edge. K 40 (42, 44, 46) rs. Repeat step 2 until you have shaped the 8th dart. K 20 (22, 24, 26) rs. K a few rs in waste wool and strip off machine.

## WAISTBAND

With right side facing machine, pick up 167 (174, 181, 188) sts. T5 K 60 rs waste wool.

## TO MAKE UP

Graft waistband, then back seam loosely above waste wool. Join the waistband seam. Press with cool iron over cloth on both sides. ■

# Woven jacket and circular skirt

**Machines**  
KH830, KH840.

**Materials**  
ARGYLL Sportsday: approx. 1½ cones.  
Small amounts of 2 Con. Cols., preferably in D.K.  
1 x 14" open end zipper.



## Measurements

To fit bust: 81cm (32"), 86cm (34"), 91cm (36"), 97cm (38").

## TENSION

**ALWAYS CHECK TENSION BEFORE COMMENCING.**

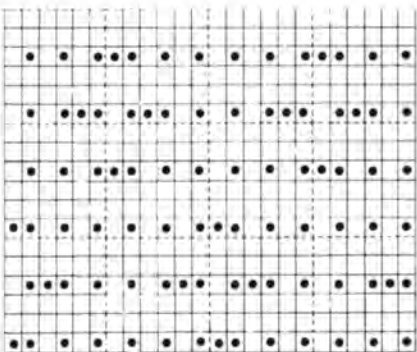
Jacket: 12 sts. and 17 rows = 5cm (2") over woven patt. (approx. T.10).

Skirt: 12 sts. and 18 rows = 5cm (2") over st. st. (approx. T.9).

**SUCCESS DEPENDS ON WORKING TO CORRECT TENSION.**

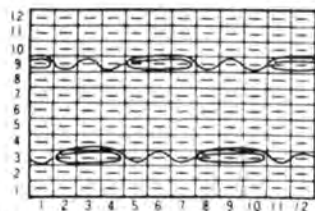
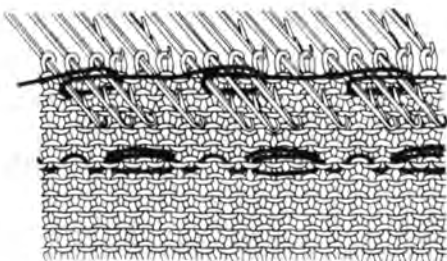
## NOTES:

See diagram for card and method.



## WINDING METHOD

Pull Ns. selected into H.P. to wind yarn around. Wind yarn around Ns. three times. It doesn't matter which side carriage is on, follow colour pattern without breaking yarn.



## JACKET

### BACK

Work in patt. throughout. Insert card and lock on row 1. With W.Wl. cast on 117 (123, 129, 135) sts. as 2x1 mock rib. Knit a few rows. Change to M. T.8. Knit 60 rows. Turn up hem. R.C.000.

Release card and work in patt. Inc. 1 st. at each end of 5th row and every foll. 5th row until there are 145 (151, 157, 163) sts.

Knit to 80 rows. R.C.000.

Cast off 3 sts. at beg. of next 2 rows.

\*Knit 4 rows. Dec. 2 sts. at each end of next row. Knit 4 rows. Dec. 3 sts. at each end of next row. \* Rep. until 17 (23, 29, 35) sts. rem. Cast off.

## POCKET

(Pos. important to match patt.) Insert card and lock on row 1. With W.Wl. cast on 42 sts. Last st. on right should be on N. '1' on right. Knit a few rows. Change to M. T.10. R.C.000.

Release card and work in patt. Knit 1 row. Cast off 1 st. at left on next and every foll. 2nd row until 28 sts. rem. R.C.000. Knit 30 rows. Change to W.Wl. Knit a few rows and release from machine.

Knit 2nd pocket to match, reversing shapings and position on machine.

## FRONT

Insert card and lock on row 1. With W.Wl. cast on 57 (60, 63, 66) sts., last st. on right being on N. '1' on right. Knit a few rows. Change to M. T.8. Knit 60 rows. Turn up hem. R.C.000.

T.10. Knit 1 row. Place first row of M.Wl. on pocket onto Ns. starting from right. (WRONG SIDE FACING AND CENTRE FRONT TO N. '1'.)

Inc. 1 st. on left on 5th and every foll. 5th row until there are 75 sts. Knit to 60 rows.

Place last row of M. on pocket onto Ns. starting from right. Cont. incs., knit to 80 rows. R.C.000.

## Raglan shapings

C.O.L. Cast off 3 sts. at beg. of next row. \*Knit 4 rows. Dec. 2 sts. at left. Knit 4 rows. Dec. 3 sts. at left.\* Rep. from \* to \*. Knit to 35 rows.

## Neck shapings

Dec. 1 st. at right on next and every foll. 6th row 11 (11, 12, 12) times in all. Work until 3 sts. rem. Cast off.

Knit second side to match, reversing shapings.

## SLEEVES

Insert card and lock on row 1. With W.Wl. cast on 69 (72, 75, 78) sts. as 2x1 mock rib. Knit a few rows. Change to M.Wl. T.8. Knit 60 rows. Turn up hem. R.C.000.

T.10. Release card and work in patt. Inc. 1 st. at each end of next and every foll. 3rd row until there are 125 (128, 131, 134) sts. Knit to 90 rows. R.C.000.

## Raglan shapings

Cast off 3 sts. at beg. of next 2 rows. Dec. 1 st. at each end of next and every

foll. 2nd row until 20 (23, 26, 29) sts. rem. C.O.R. Cont. decs. at left. AT THE SAME TIME cast off 4 sts. at beg. of next and every foll. 2nd row 5 times in all. Cast off.

Knit second sleeve to match, reversing shapings.

## COLLAR

With W.Wl. cast on 120 (125, 130, 135) sts. as 2x1 mock rib. Knit a few rows. Change to M. T.8. Knit 2 rows. \*C.O.R., place 2 Ns. on left into H.P. C.O.L., put 2 Ns. on right into H.P. Knit 2 rows.\* Rep. from \* to \* until centre 60 (65, 70, 75) sts. rem. in W.P. Knit 2 rows.

\*C.O.R., place 2 Ns. on left into W.P. C.O.L., place 2 Ns. on right into W.P. Knit 2 rows.\* Rep. until all Ns. are in W.P. Knit 2 rows. Turn up hem and cast off.

## SKIRT

With W.Wl. cast on 170 sts. (Skirt is knitted sideways so adjust length here.) Knit a few rows. Change to M. T.9. Knit 11 rows. Carr. to left. Put all Ns. but 10 on left into H.P.

\*Knit 2 rows. Put 10 Ns. at left into W.P.\* Rep. from \* to \* until all Ns. are in W.P. Knit 11 rows.\* Rep. until waist (on right) measures required length + 5cm.

Change to W.Wl. Knit a few rows. Release from machine.

Hold waist of skirt against M.B. and cast on corresponding number of sts. in W.Wl. as 2x1 mock rib. Knit a few rows. Change to M. T.8. Knit 20 rows. Turn up hem.

Pick up corresponding number of sts. along waist of skirt and place picked up sts. onto Ns. Cast off.

## POCKET BANDS

Hold pocket opening against machine. Cast on in W.Wl. corresponding number of sts. as 2x1 mock rib. T.8. Knit 20 rows. Turn up hem. Pick up same number of sts. along pocket opening and place picked up sts. onto Ns. Cast off.

## MAKE UP

Press all pieces according to instructions on cone band. Mattress st. hem and cuffs on jacket. Join raglan seams. Join side and underarm seam in one. Attach collar. Insert zipper. Attach ends of pocket bands.

Graft skirt seam and thread waistband with 2.5cm (1") elastic. Mattress st. waistband openings. Press all seams lightly. ■

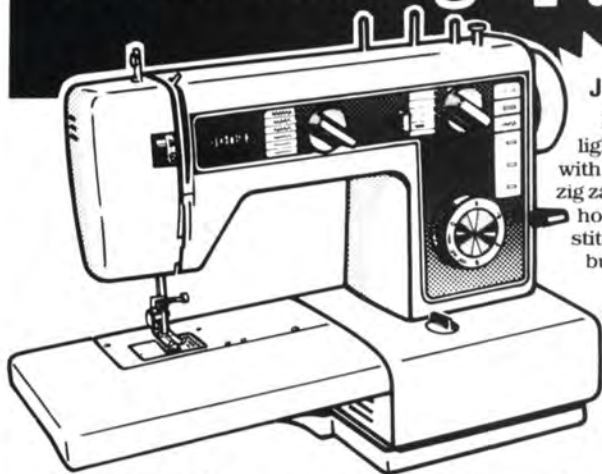


# Focus on knitting

Many of our knitters enquire about patterns for the knitting machine. Well now we have a Brother pattern booklet direct from Japan. The booklet contains 15 patterns for fashion knits for men, women and children. If you are interested in obtaining the patterns please write to our Manchester office enclosing £1.00.

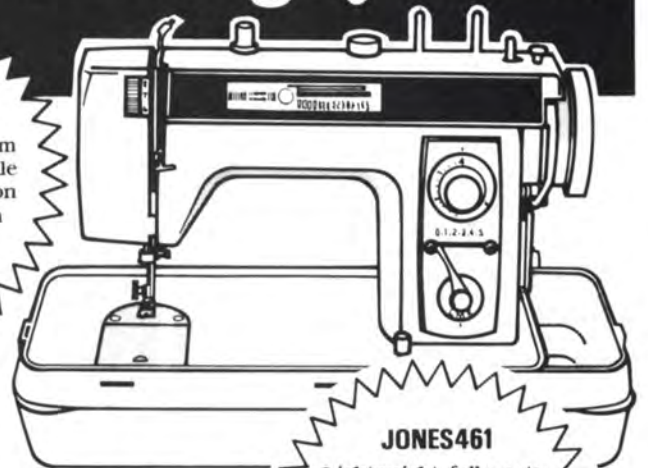
**JONES + BROTHER,**  
SHEPLEY STREET,  
GUIDE BRIDGE, AUDENSHAW,  
MANCHESTER M34 5JD.

## Still making up your knitting by hand?



### JONES VX 540

Fully automatic lightweight free-arm with 3-position needle zig zag. Built-in button holer, triple stretch stitch, blind stitch, built-in motor.



### JONES461

Lightweight, fully-automatic zig zag, twin needle facility, built-in button holer, 10 utility/embroidery stitches including elastic, stretch, blind hem and blind stretch.

Making up can take as long as knitting the garment itself.

Jones are offering two machines with stretch stitch facilities ideal for knitted fabrics, both more than willing to take the job off your hands.

**jb jones + brother**

J+B House, 869 High Road, Finchley, London N12 8QW

Domestic and Industrial Sewing Machines · Knitting Machines ·  
Typewriters · Calculators · Microwave Ovens · Cassette Tape Recorders ·  
Clock Radios and Radio Recorders.

## EVENING JACKET



### USE YOUR KNITLEADER!

No following patterns here! Take one Simplicity pattern No. 8445 (E.S.P.), trace off onto Knitleader chart, add approx. 14 balls of Soirée from 3 Suisses, 2 buttons, 1 pair shoulder pads, 1 yard Vilene, and the result is a stunning evening jacket. Team it with the little evening top using another 2 balls of contrast coloured yarn.

### Evening Top

Cast on 108 sts. full needle rib. T.4/4. Knit 130 rows. Cast off loosely. Join seam leaving 11.25cm (4½") opening at cast off edge. Cords – 2 alike. C.O.B.H. 3 sts. T.3. Depress right Part Button. Knit to 75cm (30"). Sew cords to top openings, tie in standard halter neck or together then around neck.



EVENING TOP

We all know how important it is for correct tensions and I recently came across the following poem that really enforces the need for a tension square:-

I made a sort of jumper,  
but it didn't come out right,  
the waistband was all baggy,  
but the neckband was too tight.

I sort of guessed the stitches  
and just to make it fair  
I estimated all the rows,  
didn't do a tension square.

I sort of judged the sleeve length,  
then the shoulder to the welt,  
it came out rather long there,  
Still, I'll quickly knit a belt.

So I sort of told my husband  
that I made it just for him,  
but he is short and fattish,  
and the jumper long and thin.

Still there is a sort of moral,  
to this cautionary rhyme,  
it is – always do a tension square  
it will save a stitch in time.

We publish this with thanks to our Dublin counterparts, who I am sure would not mind us repeating part of their July newsletter.



### A Resource Book for Machine Knitters

contains hints and tips for machine knitters, sections on basic techniques, double bed and ribber knitting, the Charting Device, Cut & Sew, Drafting Design, Fibre Art, Fashion, a history of the knitting machine and nearly 70 original stitch and punchcard patterns, 140 pages well illustrated with black and white photographs and diagrams.

Kathleen would like to draw the attention of J + B readers to the history in her book. The Brother machine has a special place as it takes up where the old hand frame left off in the field of fully fashioned lace knitting.

The book is available direct from Kathleen Kinder, Valley View, Station Road, Giggleswick, Settle, North Yorks, NBD24 0AB at £4.95 + 60p p.&p. or £4.80 from most dealers and from branches of John Lewis or W. H. Smith – the latter being so impressed with the book they have taken it into 'basic stock'.





# Ladies' fairisle classic suit

## Machines

KH830, KH840.

## Materials

HAYFIELD Machine Knit:  
 $\frac{3}{4}$  cone M.,  $\frac{1}{4}$  cone Con. Col.

## Measurements

To fit bust: 81cm (32"), 86cm (34"),  
91cm (36"), 97cm (38").

## TENSION

*ALWAYS CHECK TENSION BEFORE COMMENCING.*

16 sts. and 19 rows = 5cm (2") over fairisle patt. (approx. T.6).

*SUCCESS DEPENDS ON WORKING TO CORRECT TENSION.*

## NOTES:

Unless otherwise stated all welts can be knitted using a ribbing attachment. T.4/4. Cast on as 1x1 rib and knit half the number of rows stated.

Card: Jones + Brother basic pack KH840 6D.

## SKIRT — 4 panels alike

Insert card and lock on row 1. With W.Wl. cast on 115 (118, 121, 124) sts. as 2x1 mock rib. Knit a few rows. Change to M. T.5. Knit 20 rows. Turn up hem. R.C.000.

T.6. Release card and work in fairisle. Knit 1 row. Carr. to left, place 25 (26, 28, 29) Ns. at right into H.P. Knit 1 row. Carr. to right, place 25 (26, 28, 29) Ns. at left into H.P. \*Carr. to left return 8 Ns. at right to W.P. Carr. to right, return 8 Ns. at left to W.P.\* (Working from centre) Rep. from \* to \*. Carr. to left, return all rem. Ns. at right to W.P. Carr. to right, return all rem. Ns. at left to W.P. R.C.000.

Dec. 1 st. at each end of next and every foll. 8th row until 57 (60, 63, 66) sts. rem.

Knit to 250 rows. Change to W.Wl. Knit a few rows and release from machine.

## Waistband — 2 alike

With W.Wl. cast on 113 (119, 125, 131) sts. as 2x1 mock rib. Knit a few rows. Change to M. T.5. Knit 20 rows. Turn up hem. Place last row of main yarn on

two skirt panels onto Ns. Place first st. of second panel onto same N. as last st. of first panel. Cast off.

## CARDIGAN

### BACK

Insert card and lock on row 1. With W.Wl. cast on 132 (140, 148, 156) sts. as 2x1 mock rib. Knit a few rows. Change to M. T.4. Knit 24 rows. Turn up hem. R.C.000.

T.6. Release card and work in fairisle. Knit to 22 rows. Dec. 1 st. at each end of next and every foll. 3rd row until 112 (120, 128, 136) sts. rem. Knit to 52 rows.

\*Inc. 1 st. at beg. of next 2 rows. Knit 5 rows. \* Rep. from \* to \* until 132 (140, 148, 156) sts. rem. Knit to 134 rows. R.C.000.

### Armhole shaping

Cast off 4 sts. at beg. of next 2 rows. Dec. 1 st. at each end of next and every foll. 3rd row until 108 (116, 124, 132) sts. rem. Knit to 72 (74, 76, 78) rows.

### Neck and shoulder shaping

Cast off centre 34 sts. Put left side of work into H.P. Working on right side only, dec. 2 sts. at neck edge on next and every foll. row 4 times in all. AT THE SAME TIME \*cast off 12 sts. at beg. of next row, knit 1 row.\* Rep. from \* to \*. Cast off. Knit other side to match, reversing shaping.

### FRONT — Left

Insert card and lock on row 1. With W.Wl. cast on 38 (42, 46, 48) sts. as 2x1 mock rib. Knit a few rows. Change to M. T.4. Knit 24 rows. Turn up hem. R.C.000.

T.6. Release card and work in fairisle. Inc. 2 sts. at right side at beg. of next and every foll. 2nd row until there are 62 (66, 70, 74) sts. AT THE SAME TIME knit to 22 rows. Dec. 1 st. at left on next and every foll. 3rd row until 51 (55, 59, 63) sts. rem. Knit to 52 rows.

Inc. 1 st. at left on next and every foll. 7th row until there are 62 (66, 70, 74) sts. Knit to 134 rows. R.C.000.

### Armhole and neckline shaping

Knit 1 row. Cast off 4 sts. at beg. of next row. Dec. 1 st. at left on next and every foll. 3rd row 8 times in all. AT THE SAME TIME, dec. 2 sts. at right on next and every foll. 5th row until 29 (33, 36, 41) sts. rem. Knit to 72 (74, 76, 78) rows.

### Shoulder shaping

\*Cast off 12 sts. at beg. of next row. Knit 1 row. \* Rep. from \* to \*. Cast off. Knit other side to match, reversing shapings.

## SLEEVES

Insert card and lock on row 1. With W.Wl., cast on 76 (80, 84, 88) sts, as 2x1 mock rib. Knit a few rows. Change to M. T.4.

Knit 44 rows. Turn up hem. R.C.000. T.6. Release card and work in fairisle. \*Inc. 1 st. at beg. of next 2 rows. Knit 14 rows.\* Rep. from \* to \* until there are 90 (94, 98, 102) sts.

Knit to 120 rows or to required length. R.C.000.

Cast off 4 sts. at beg. of next 2 rows. Dec. 2 sts. at each end of next and every foll. 5th row until 57 (61, 66, 69) sts. rem. Knit to 44 rows.

Dec. 3 sts. at beg. of next 2 rows. Cast off 3 sts. at beg. of next 8 rows. Cast off.

### Neck and buttonband

With W.Wl. cast on 189 sts. as 2x1 mock rib. Knit a few rows. Change to M. T.4. Knit 24 rows. Turn up hem. Pick up 189 sts. from centre back to bottom of hem. Place picked up sts. onto Ns. Cast off.

Mark 5 button positions between hem shaping and neck shaping on row 18.

### Join shoulder seams

#### Buttonhole band

Knit buttonhole band to match, making buttonholes to match markers over 2 sts. on rows 6 and 18.

#### Belt

Using ribbing attachment cast on 13 sts. as 1x1 rib. T.3/3. Knit until belt measures required length. Cast off.

## MAKE UP

Press all pieces according to instructions on cone label.

Set in sleeves. Join underarm and side seam in one. Mattress st. all hems and bands. Join skirt seams. Thread waistband with 2.5cm (1") elastic cut to waist measurement. Mattress st. waistband openings.

Press all seams lightly. ■

# Ladies' top in tuck rib

(using ribber attachment)

## LADIES TOP IN TUCK RIB

(Ribber Pattern)

### Materials

1 cone Dakota from Silverknit, Edwalton, Nottingham.

### Measurements

To fit bust 34 (36)"

### Tension

Width: One complete chevron = 2" unstretched.

Length: One complete chevron (from top of pattern to top of next chevron) = 1 $\frac{3}{4}$ ". TD 2/2 slide lever 2 for welt, 1 for pattern.

### Machine

820 - 830 with ribber attachment card No. 8D basic set.



## FRONT AND BACK ALIKE

1) Bring forward 92 (108) Ns on each bed for full needle rib. K 3 rows tub. K 30 rows T 2/2. Slide lever on 2, K 1 row to set pattern with KC knob. RC000.

2) Set slide lever on 1, engage both tuck buttons, knit 184 (208) rows, T 2/2. Cancel KC knob and tuck buttons.

3) Push back Ns on main bed to 'B' position. K 10 rows full needle rib, slide lever on 2. Transfer sts to main bed. C/O loosely. Join 4" of shoulder seams.

4) Arm edging. Bring forward 92 (108) Ns each bed for full needle rib, K 3 rs tub. K 10 rs T 2/2. Slide lever on 2. Transfer to main bed. With right side of work facing machine attach upper 7 (8)" of side seams to trim. C/O. Join side seams and seam of armhole trim. ■

**NEW LOOK**

# Stitchin' time

From February 1980, we are producing a new look "Stitchin' Time", designed to really help you get the best out of your machine. Regular features will include—

## **PATTERNS**

A full selection of knitting patterns—from the classics to sportswear and up-to-the-minute fashions—all illustrated by full colour photographs.

## **BEGINNERS' PAGE**

Kathryn Hobbs—already known to many for lending a helping hand to distressed beginners—takes you step by step through all the stages, and shows you alternative ways of achieving the same result.

## **CREATIVE KNITTING**

Judith Hunter will explain different knitting techniques to help you to put new ideas into practice and enhance your knitwear.

## **FOCUS ON KNITTING**

Club news, current events, success stories (and failures!). Club organisers, keep writing, we love to hear from you.

## **KNITLEADER**

At last! A regular feature giving a pattern for the knitleader.

## **HOME FURNISHINGS**

Our regular feature on new ideas around the house continues.

**STITCHIN' TIME magazine will be published six times during 1980. To receive your copies, complete and return the subscription form NOW!**



Please enter my name and address on your list of subscribers and send me STITCHIN' TIME throughout 1980.

I enclose cheque/postal order\* for £5.40 (\$18.00) (\*delete as appropriate)

NAME \_\_\_\_\_

*(Block capitals throughout please!)*

ADDRESS \_\_\_\_\_  
\_\_\_\_\_  
\_\_\_\_\_

To: Stitchin' Time Subscription Department, Jones Sewing Machine Co Ltd, Shepley Street, Guide Bridge, Audenshaw, Manchester M34 5JD, England.

# STOCKISTS LIST—KNITTING MACHINES

## AVON

Sew-Knit (Birmingham) Ltd., Carrefour Hypermarket, Higham Lane, Patchway, Bristol.  
Sew & Save, 125 Gloucester Road, Bishopston, Bristol.

## BEDFORD

Bedford Sewing Machines, 13 Lime Street, Bedford.  
Theobalds Sewing Machines, Manchester Street, Luton, Beds.  
Knit'N' Sew, 20 Market Square, Leighton Buzzard, Beds.

## BERKS

Boswood & Hendry, Sewmaster, 3 West Street, Reading, Berks.  
Carol Chambers, Stagport, 48 Wellington Street, Slough, Berks.  
Boswood & Hendry Ltd., Sewmaster, 239 High Street, Slough, Berks.

## CHESHIRE

Northern Sewing Machines, 102 Princess Street, Stockport.  
Wollengers, 19 Paddock Row, Chester.

## CLEVELAND

Maynells, 180 Linthorpe Road, Middlesbrough.

## CORNWALL

Palma Lapham, 30 Fore Street, Chase Water, Truro, Cornwall.

## CUMBRIA

Knitting & Sewing Centre, Vulcans Lane, Workington, Cumberland.  
Bo-Peep, Castlegate, Penrith, Cumbria.

## DERBYSHIRE

Sew-Knit, 202 Burton Road, Derby.  
Hal Ainsworth, 13-15 Beetwell Street, Chesterfield, Derbys.

## DEVON

Barnstaple S/Ms, Holland Street, Barnstaple.  
North Devon S/Ms, 68 Clovelly Road, Bideford, Devon.  
The Wool Pack, 22 Anstis Street, Plymouth Devon.  
Bideford K/M Centre, Grenville Street, Bideford.  
Maurens, 11 Old Mill Road, Chelston, Torquay, Devon.

## DORSET

Metropolitan Sewing Machines, 130 Commercial Road, Bournemouth.  
Metropolitan Sewing Machines, 321 Ashley Road, Parkstone, Poole, Dorset.

## ESSEX

Mrs. Nelson, Machine Knits, 55-57 Hamlet Court Road, Westcliffe on Sea.  
Franklin & Sons, 58 Head Street, Colchester, Essex.  
Letsalknit, 138 North Street, Romford.  
Mr. R. Hughes, Letsalknit, 682 Green Lanes, Ilford.  
Modern Knitting Machines, 14A Baddow Road, Chelmsford, Essex.

## GLOUCESTERSHIRE

Cotswold Sewing Machines, Lansdown Road, Stroud, Glos.

## HANTS

Needlecraft, 6 Hippodrome House, Aldershot, Hants.  
Mr. Welsh, Sewing Machine Supplies, 131-133 Fratton Road, Portsmouth.  
F.M. Caws, 9 High Street, Eastleigh, Hants.  
Mrs. A. Walker, The Knitting Basket, 38 Pylewell Road, Hythe, Southampton.  
Sewmaster, Wote Street, Basingstoke, Hants.  
Vectis Sewing Machines, 67 Pyle Street, Ryde, I.O.W.  
Trendy Trims, 5 High Street, Ryde, I.O.W.

## HEREFORDSHIRE

Sewing Centre, 13 Commercial Road, Hereford.

## HERTFORDSHIRE

Sew Fine, 1 Clarendon Road, Watford, Herts.  
Knit Sew, 34 Chaucer Way, Hoddesdon, Herts.

## HUMBERSIDE

Knitting Machine Centre, 276 Ashby High Street, Scunthorpe, Sth. Humberside.

## ISLE OF MAN

Joan's Wools & Crafts, Unit 21, Onchan Shopping Centre, Isle of Man.

## KENT

The Wool Centre, J.R. Jennings (Wools) Ltd., 5 Bell Parade, West Wickham.  
Knitcraft (Canterbury), 14 Dover Street, Canterbury.  
The Wool House, 62 High Street, Rochester, Kent.  
Maidstone Sewing & Knitting Centre, 65 Upper Stone Street, Maidstone.  
Knitting Machine People, 36 Windsor Avenue, Cliftonville, Margate.  
Weaver Knits, 276 Main Road, Sutton at Home, Nr. Dartford.

## LANCASHIRE

W. M. Hobkirks & Sons Ltd., 121/130 Darwen Street, Blackburn, Lancs.  
R & T Sewing Machines, 269 Accrington Road, Blackburn, Lancs.  
Voe Knit, Wood Street, Ashton-under-Lyne.  
Homecraft, 62 Abingdon Street, Blackpool.  
W. M. Hobkirks & Sons Ltd., 12 Kierby Walk, Burnley.  
W. M. Hobkirks & Sons Ltd., 31 Blackburn Road, Accrington.  
W. M. Hobkirks & Sons Ltd., 35 Salford, Blackburn.  
W. M. Hobkirks & Sons Ltd., 20 Fishergate Walk, St. George's Shopping Centre, Preston.  
Dalby & Jones, 73 Church Street, Preston, Lancs.

## LEICESTERSHIRE

Home Knitting Machines, 6 Bardon Road, Coalville, Leicester.  
Sew Knit (Birmingham) Ltd., 6 Hannam Court, Charles Street, Leicester.

## LINCOLNSHIRE

The Wool Shop, Red Lion Street, Spalding, Lincs.  
Tudor Wool Shop, 4 Eastgate, Louth, Lincs.

## LONDON

Lindaville, Wood Green Shopping City, 120 High Road, Wood Green, London N.22.  
Quicknit, 344 Barking Road, Plaistow, London E.13.  
The Wool House, 103 High Road, Chiswick, London W.4.  
Mrs. J. Newton, The Wool Shop, 95 Broadway Market, Tooting, London S.W.17.  
Cricklewood Sewing Machines, 166 Cricklewood Lane, London N.W.2.  
Wimbledon Sewing Machines, 216 Merton High Street, London S.W.19.  
Sewcraft Sewing Machines, 150/150A King Street, Hammersmith, London W.6.

## MERSEYSIDE

Roy Aitken, 11-13 High Street, Wavertree, Liverpool.  
Knit & Sew, Unit 73, Tontime Market, St. Helens.

## MIDDLESEX

Stitches, 20 Fillebrook Avenue, Enfield.

## NORFOLK

Central Norfolk K/M Co., 16 Church Street, East Dereham, Norfolk.  
East Anglian Sewing Machines, 13 Magdalen Street, Norwich.  
Susan's New Wool Shop, 55 High Street, Downham Market, Norfolk.

## NORTHAMPTONSHIRE

Bedford Sewing Machines, 36 St. Giles Street, Northampton.

## NORTHERN IRELAND

Sewing Machine Centre, 26 Bridge Street, Lisburn, Co. Antrim.

## NOTTINGHAMSHIRE

Sew-Knit, 14 Trinity Walk, Trinity Square, Nottingham.  
Hucknall Sewing Centre, 43A Watnall Road, Hucknall, Notts.

## ORKNEY

Dudley Kynoch, 31 Buttquay Crescent, Kirkwall, Orkney.

## OXFORDSHIRE

Sewing Machine & Fabric Centre, 86 London Road, Headington, Oxford.

## SALOP

K. N. S., 204 Whitchurch Road, Shrewsbury, Shropshire.  
Knitting & Sewing Centre, 64 Upper Road, Meole Brace, Shrewsbury.

## STAFFS

Domestic Sewing Services, 18 Walsall Road, Cannock, Staffs.

## SUFFOLK

Franklin & Sons, 14-16 Crown Street, Ipswich, Suffolk.

## SURREY

Superknit, 1-2 Brigstock Parade, Thornton Heath, Surrey.  
Wimbledon Sewing Machines, 1 Friary Street, Guildford, Surrey.  
Sewcraft, Kingston upon Thames, Surrey.

## SUSSEX

Shoreham Knitting Machines, 26 Brunswick Road, Shoreham by Sea, W. Sussex.  
Knitters Corner, 20 The Broadwalk, Crawley, Sussex.  
Sewing Machine Supplies, 65 London Road, Bognor Regis, Sussex.  
Woolscope, The Butter Market, North Street, Chichester, W. Sussex.

## TYNE & WEAR

The Knit Inn, 104 Westgate Road, Newcastle upon Tyne.

## W. MIDLANDS

Bonnies Wools, 1273 Bristol Road South, Northfield, Birmingham, W. Midlands.  
Bull Ring Sewing Centre, 53/54 Indoor Mkt., Bull Ring Centre, Birmingham.  
Sew-Knit Ltd., 120-122 Corporation Street, Birmingham 10, W. Midlands.

## WILTSHIRE

Sarum Sewing Centre, 25 Catherine Street, Salisbury, Wilts.  
Knitcraft, 26A Warminster Road, Westbury, Wilts.  
Cotswold Sewing Machines, c/o McIlroys Ltd., Regent Street, Swindon.

## YORKSHIRE

The Woolly Jumper, 653 Queens Road, Sheffield, South Yorkshire.  
Discount Sewing Machines, 15A Sheffield Road, Barnsley, South Yorkshire.  
Sewing Supply Co., 4 Market Road, Doncaster, South Yorkshire.  
Lennox Sewing Machines, 2 Red Lion Yard, Rotherham, South Yorkshire.  
The Local Shop, 60 King Edward Drive, Bilton, Harrogate.  
Scarborough Yarns, 35 Dean Street, Scarborough, North Yorkshire.  
Buttons & Bows, 1 Main Street, East Ayton, Scarborough, North Yorkshire.  
Leeds Sewing & Knitting Centre, 168 Lower Briggate, Leeds, West Yorkshire.  
The Falcon Wool Shop, 118 Sunbridge Road, Bradford, West Yorkshire.  
"Knitwell", 6 Saxon Place, Dodsworth Avenue, York.

## WALES

Mrs. Rosemary Dennis, 11 Heol Gwili, Penyrhoel, Gorseinon, Swansea.  
"Plumes", 79 Kingsway, Swansea.  
Sewing & Knitting Machine Discount Centres, "Glenydd", Rhyll Road, Denbigh.  
Sewing & Knitting Machine Discount Centres, 45 Market Street, Abergale, Clwyd.  
Sewing & Knitting Machine Discount Centres, 15 Queens Supermarket, High Street, Rhyll, Clwyd.  
Needlecraft, 29 Pendre, Cardigan, Dyfed.  
Nantiago Homecraft, 33 Frogmore Street, Abergavenny, Gwent.  
Newport Sewing Centre, 56 Clarendon Place, Newport, Gwent.  
Miss M. Weaver, Margaret's Wool Shop, 17 Penaltia Road, Hengoed, Mid Glam.  
Mrs. G. Brown, 41 Bishops Walk, Llandaff, Cardiff, South Glamorgan.  
Cones of Cardiff, 11 Castle Street, Cardiff, South Glamorgan.

## SCOTLAND

Pemberton's Sewing Machine Centre, 21-25 Friar Street, Stirling.  
Dumfries Sewing & Knitting Machines, 1A St. Mary's Street, Dumfries.  
Aitchison Knitwear, 7 Lade Brae, Dalgety Bay, P.O. Box 6, Dunfermline.  
Trudor Wools, Park Hill Wynd, Leven, Fife.  
Northern Sewing Machines, 5 Urquhart Road, Aberdeen, Grampian.  
Fairbuys, 38 Kinneddar Street, Lossiemouth, Morayshire, Grampian.  
Banff Sewing & Knitting, 15 Boyndie Street, Banff, Grampian.  
Mrs. Green, Bonnybrae Knitwear Designs, Golspie Tower, Golspie, Sutherland.  
Inverness Sewing & Knitting Centre, 4 Hill Place, Inverness, Highlands.  
Neva Mackintosh, 29 Cannon Gate, Edinburgh, Midlothian, Scotland.  
Morningside Knitting Centre, 9 Corniston Road, Edinburgh.  
Castlecliff Workshops, 25 Johnston Terrace, Edinburgh.  
Sew-Knit Ltd., 13 West Nile Street, Glasgow.  
Knitting Machine Centre, 374/376 Argyle Street, Glasgow, Strathclyde.  
J & A Machine Wools, 155-157 Main Street, Bonhills, Dunbartonshire.  
Eileen Muddie, Star Brae Studio, Knitting Machine Centre, Star Brae, Oban.  
Machine Knitting & Wool, 104 Quarry Street, Hamilton, Lanarks, Strathclyde.  
Martins Machine Centre, 8/10 Main Street, Dundee, Tayside.