

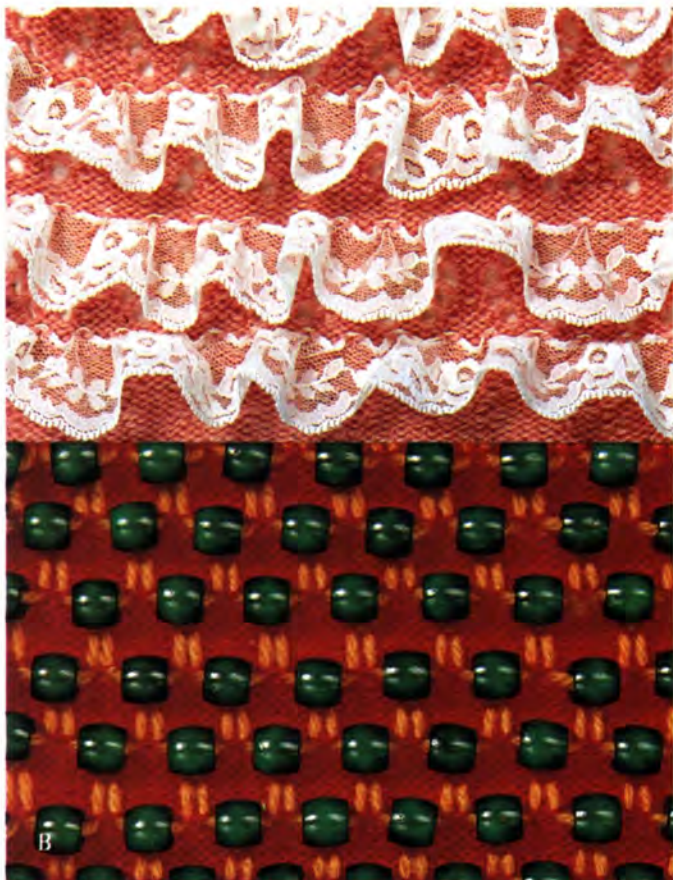
# *Stitchin' time*

SEPTEMBER/OCTOBER 1981

90p







# In this issue

<b>CREATIVE KNITTING — Decorate your knitwear ...</b>	<b>9</b>
Fairisle Sweater and Waistcoat .....	13
Lady's Crew Neck Sweater .....	14
Toddler's Mix and Match .....	15
Sweater with Grape Motif .....	17
Child's Multi Stripe Tunic .....	18
<b>KNITTING CLUBS by Rosa Postance .....</b>	<b>19</b>
Tuck Stitch Cardigan with Stocking Stitch insert .....	20
Lady's Button up Cardigan with Pearls .....	21
Intarsia African Mask Sweater .....	24
Children's School Sweaters .....	24
Hat and Scarf .....	26
Lurex Evening Sweater .....	26
Zebra Sweater .....	27
Baby Cardigan and Dress .....	29
Little Girl's Dress .....	30
His and Her's Tuck Stitch Sweaters .....	31

## Broadly Speaking

Now the summer holidays are over and the children are back to school we can all start knitting again. If you haven't knitted your children's school things yet, we have a super set of sweaters in Argyll's Termo Warm 4-ply. The Knitting Clubs will all be starting off their "New Term" soon, so if you want to join a club and don't know who to get in touch with, write to Rosa Postance (See page 18) who will always help find a club nearby should the club in your area not be mentioned this issue. If, on the other hand, you organise a club and haven't written to Rosa, please do, new members will know where to find you. Of all the Intarsia sweaters we have featured in *Stitchin' Time*, the African Mask Sweater (see page 23) is so easy. The yarn is the secret — called Sirius from Hayfield, comes in a 50 gm ball and is a boucle type of yarn so if a little tell-tale hole forms at the edge of a block of colour it is filled up by the bobbles on the yarn! If you haven't yet made an attempt to knit an intarsia sweater now's your chance. Speaking of chances, another for those readers who attended the Bournemouth Convention. Those of you who didn't attend last May, we have included the lovely sweater and long waistcoat in Argyll Ferndale 4-ply which was in the fashion show.

### Editorial:

Jones + Brother  
 Studio 2  
 3 Bedford Chambers  
 Covent Garden  
 London WC2

**Editor:** Susan Nutbeam

### Subscription administration:

Shepley Street  
 Guide Bridge  
 Audenshaw  
 Manchester M34 5JD















# Creative Knitting

## DECORATING YOUR KNITTING

Once we have mastered all the techniques on the machine and can produce well knitted, well finished garments we can concentrate more on the design aspect and maybe decorate our knitwear by various different methods, either at the time of knitting (see sample A — Lace and sample B — Beads) or after the knitting has been done (see sample C — Tassels and D — Beads). All kinds of things can be used to enhance your knitwear, a trip round any sewing department will make your mind boggle with ideas.

### SAMPLE A — Lace

Lace bought by the metre can be used as a trim at the time of knitting. When choosing the lace be sure that it is washable and that the content of the lace trim compliments that of the yarn. To produce sample A we first knitted a few rows in st. st. then released the card (we used card 416 from our range of predesigned cards) and worked in lace to row 16 on the card. Knit 4 rows st. st. Take the lace trim and hook onto the first N. at right hand side using single transfer tool, hold lace in left hand and push tool through lace at top — just under the finished edge — in front of the 5th N. from right edge and hook onto the 4th N. from right. Count 4 Ns. along, hold lace in front of that N., push transfer tool through lace trim level with 4th N. along and place onto previous N. (3rd N. along) work along the bed in this way, hooking the lace trim to every 3rd N. In this way there will be enough ease to allow the carriage to pass easily over the knitting. Knit 2 rows. Cont. in lace to row 32 on card. Knit 4 rows and work another row of lace trim. Continue in lace to row 48 on card. Knit 4 rows st. st. work row of lace trim. Knit 2 rows. Do not worry about the lace gathering as when the knitting is taken off the machine it will spring back and automatically gather the lace trim. Sketch A shows a design where this technique is most effective.

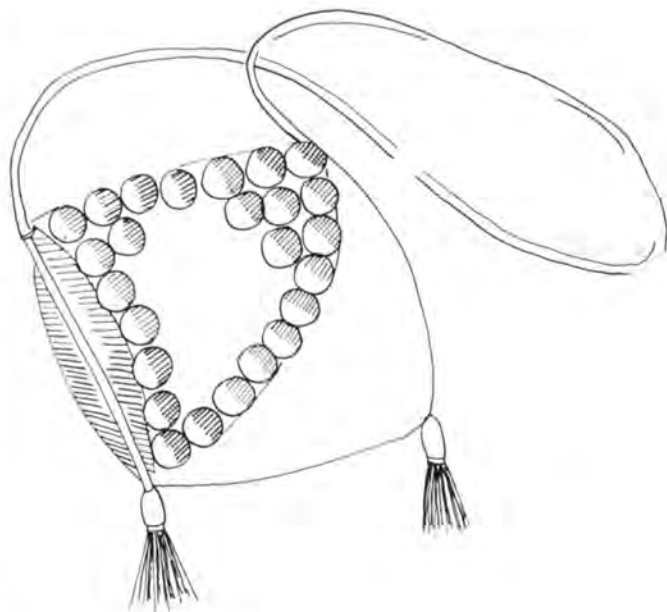
### SAMPLE B — Beads

The stitch sample B shows beads which are actually attached at the time of knitting. The beads are quite large with a good size hole through them. Using a D.K. wool the beads are threaded by using the latchet tool — pushing the tool through the hole in the bead and pulling the yarn through. Thread up as many beads as you can bear to do at one time as this does save time at the knitting machine. Insert card B and lock on row 1. Knit a few rows st. st. ending with C.O.L. Set Carr. to K.C. knit 1 row. Release card.\*\* Taking the "string" of beads and working from left to right, lay the yarn across the Ns. placing one bead between the needles. Drape the yarn so that each bead hangs away from the selected Ns. Should there not be enough room at the end of the knitting to place a bead between the Ns. do not try to force it but simply take the yarn to the edge of the work without the bead. Set weaving brushes to W.T. Knit 1 row taking Carr. across bed making sure that each bead is pushed under the sinker place. Knit 4 rows. Using the single transfer tool, pick up the woven "loop" — the part of the weaving yarn which has been caught in the knitting — and place it onto the N. directly above. Knit 3 rows.\*\* To produce sample B rep. from \*\* to \*\*



SKETCH A

The lace trim is used in rows between the decrease rows which gives the yoke its shape.



SKETCH B

Beads are used to enhance this evening bag, a tassel is used to finish off the cord handle.

The beads used here were wood; however, the beads can be as glamorous as you like. The fabric produced is not suitable as an all over fabric for a garment but smaller beads can be used to decorate the hem or yoke of a garment. Bags of different kinds can look very well using this type of beaded fabric, either day or evening bags (see sketches B and C). Beads can also be incorporated into the knitting of wall hangings.

#### SKETCH C

Sample B is ideal for this bag which is a simple square. The wooden handles can be bought at any craft shop, the bag can be used for shopping — lined with canvas, or a beach bag — lined with plastic.



#### SAMPLE C — Tassels

Tassels can be used in various ways to decorate your knitwear. The best way to attach them is by making 2 holes — using Lace Carr. and threading the tassel through. The tassel when pulled tight does not alter the tension or pull the knitting. If you want the tassels to be at regular intervals across the knitting it is a good idea to punch out a card to make the holes and then there is no mistake as to where the tassel should be. To produce sample C insert card C and lock on row 1. Knit a few rows in st. st. \*\* C.O.R. Knit 1 row. Set Carr. to K.C. Knit 1 row, Ns. are selected across bed. (If end Ns. are selected return them to W.P.) Using Lace Carr. set to N. work 2 Lace Carr. movements i.e. Move Lace Carr. from left to right and from right to left. Using Knit Carr. knit 2 rows. Return end Ns. if selected. Work 2 Lace Carr. movements. Using Knit Carr. knit 2 rows. Set Carr. to M.C. knit 10 rows. Release M.C. button. \*\* Repeat from \*\* to \*\* To make the tassel, take a book which has a width approx. twice the length of the required finished tassel — larger not smaller and approx. 2.5 cm (1") thick — wind the yarn round the book at an even tension. Cut the yarn in a straight line at the side of the book. Take the yarn and fold in half and cut again. Take 4 ends of yarn. Lay out knitted piece with right side facing, top furthest away. Push the latchet tool into lower hole through to back of knitting and out through the top hole. Open latchet and fold the yarn in half catching the centre with the latchet, pull the yarn through both holes approx. half-way down yarn pieces, open out at centre so that all 4 ends are together and a large loop is formed. Push ends through loop and pull tightly. Trim ends. Tassels can be incorporated into an all over pattern for a garment as long as they are not too big or they can be used as a feature on their own. Again types of yarn set the pace for design, lurex, silk and fancy yarns for evening wear and wools, acrylics etc. for day wear. (see sketches D and E).

#### SKETCH D

Lady's short end row designed sweater trimmed with tassels to exaggerate the diagonal.



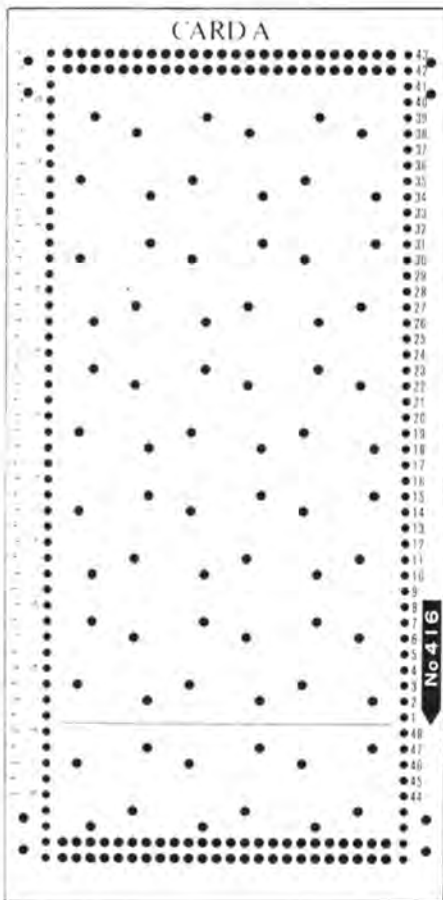
#### SAMPLE D — Beads

Beads can be sewn on after the garment has been completed. All kinds of buttons and beads can be used here. The beads can become part of an overall pattern or used to highlight a particular area of the pattern, or indeed become the pattern themselves (see page 8 for an example of beads sewn on to form the pattern). Sample D shows a lace pattern decorated with drop beads. (Card 407). Our Creative Knitting garment this issue (see inside front cover) gives an example of beads sewn on after the knitting to enhance the smocking (see sketch F).

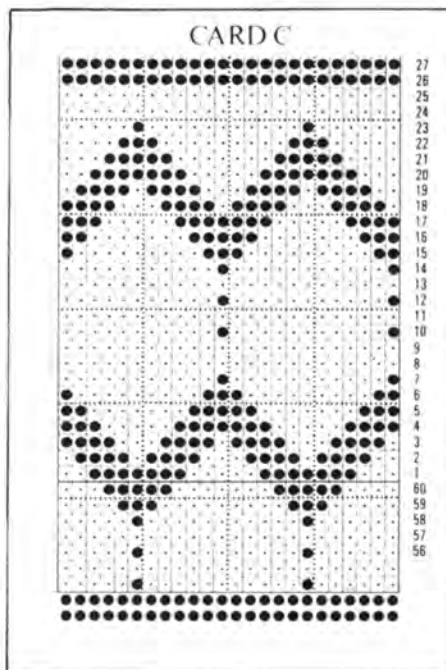
#### SKETCH E

A simple pull-on hat decorated with beads makes a super 1920s style evening hat.

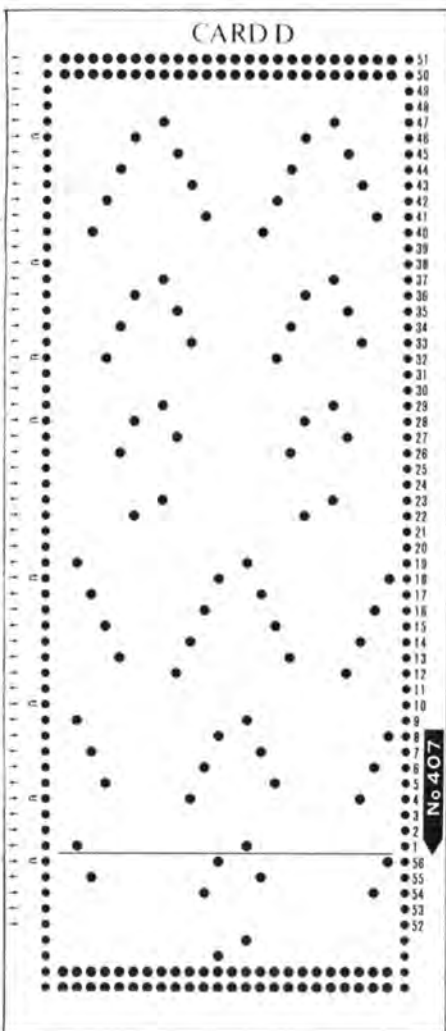
CARD A



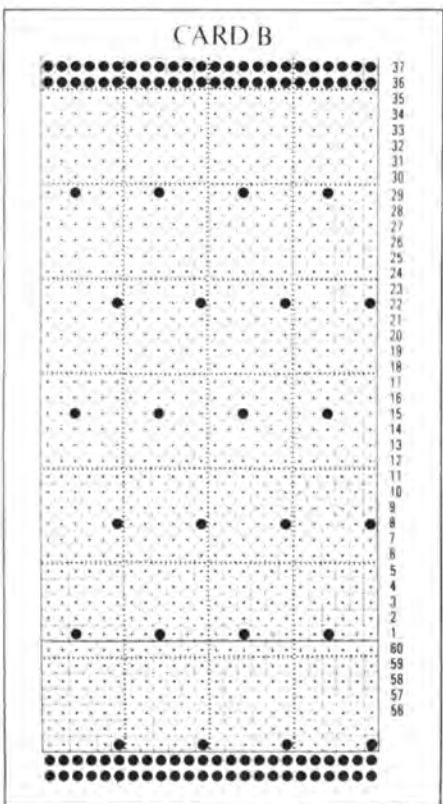
CARD C



CARD D



CARD B



# Smocked Sweater

(See inside front cover)

## Machines

Any M/C with ribber.

## Materials

HAYFIELD Grampian 4 ply:— 9 (9, 10, 10) × 50 gm. balls. Embroidery pearls. (Approx. 375).

## MEASUREMENTS

To fit bust: 81 cm (32"), 86 cm (34"), 91 cm (36"), 96 cm (38").

Length to top of shoulder: 60 cm (23½"), 60 cm (23½"), 61 cm (24"), 61 cm (24½"). Sleeve seam 44 cm (17½") all sizes.

## TENSION

Always check tension before commencing. 4 × 1 rib 27 sts. and 40 rows = 10 cm (4") before smocking. (Approx. T. 7/4.) Success depends on working to correct tension.

## NOTES

For easier knitting always keep end st. on M.B. and adjust as necessary. Figures given are for M.B. only, those on ribber being decreased or increased as they occur.

## NEEDLE SETTING

M.B. 11111111111111111111111111111111 T.7.

R.A. 1...1...1...1...1...1...1 T.4.



## BACK

Cast on 142 (150, 158, 166) sts. as alt. 1 × 1 rib. Having end st. at right on M.B. T. 3/3 knit 20 rows. Push empty Ns. on M.B. to W.P. to make 142 (150, 158, 166) sts. on M.B. Trans. every alt. ribber st. to M.B. Put ribber to H.T. 7/4 rack 1 st. to left and knit 1 row, rack 1 st. to right and knit 1 row. T. 7/4. R.C.000\*. Knit to 130 rows. R.C.000. (See instruction book for racking).

## Shape Armholes

Cast off 5 (5, 6, 6) sts. at beg. of next 2 rows. Dec. 1 st. at each end of next 7 rows, then every alt. row 5 (6, 6, 7) times. 108 (114, 120, 126) sts. rem. \*\*. Knit to 76 (78, 80, 82) rows.

## Shape Shoulders

Cast off 6 (6, 7, 7) sts. at beg. of next 8 rows and 6 (8, 6, 8) sts. on next 2 rows. Cast off rem. 48 (50, 52, 54) sts.

## FRONT

Knit as back to \*\* knit to 46 (48, 50, 52) rows.

## Shape Neck

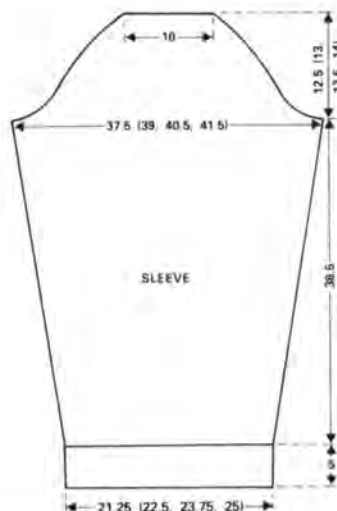
Cast off centre 20 (22, 24, 26) sts. and push Ns. at left to H.P. Work on rem. sts. Dec. 1 st. at neck edge on next 8 rows then every alt. row 6 times, 30 (32, 34, 36) sts. rem. Knit to 76 (78, 80, 82) rows.

## Shape Shoulder

Cast off as Back. Carr. at left. Rejoin yarn to armhole edge and knit to match right side.

## SLEEVES

Cast on 70 (74, 78, 82) Ns. as alt. 1 × 1 rib, having end st. at right on M.B. Knit as Back to \* Knit 6 rows. Inc. 1 st. at each end of next



and every foll. 10th row 11 times in all, then every foll. 8th row 5 times. 102 (106, 110, 114) sts. Knit to 156 rows, or to desired length.

## Shape Top

Cast off 5 (5, 6, 6) sts. at beg. of next 2 rows. Dec. 1 st. at each end of next 7 rows, then every alt. row 15 (15, 16, 16) times in all. Dec. 1 st. each end of next 10 (12, 12, 14) rows. Cast off rem. 28 sts.

## NECKBAND

Join right shoulder seam. Cast on 139 (143, 147, 151) sts. as 1 × 1 rib. T. 3/3 knit 22 rows. With wrong side of work facing pick up sts. evenly round neck and place on Ns. Knit 1 loose row and cast off.

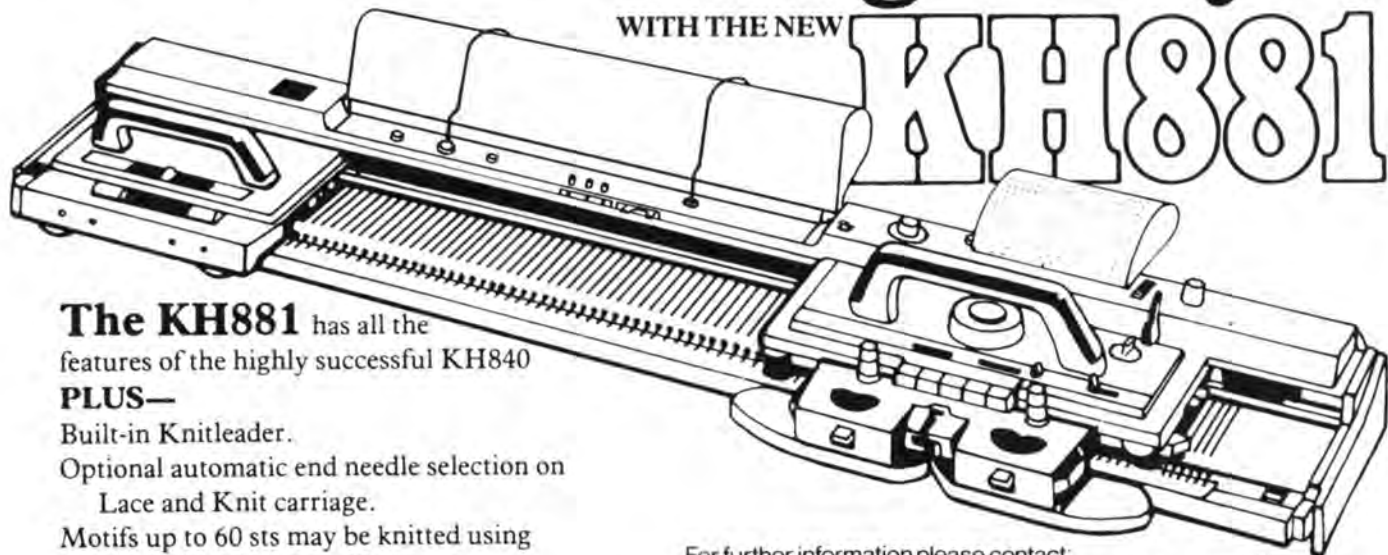
## MAKE UP

Press to instructions on ball band. Smock back and front as shown, approx. 2.5 cm (1") between each row of smocking, sewing on one pearl at the same time. (We used pearls on front and sleeves only). Smock the 5 centre ribs only on sleeves. Sew shoulder seam. Sew in sleeves, the side and sleeve seams. Turn neckband to inside and sew in place. Press seams lightly.

# We have our designs on you

WITH THE NEW

# KH881



**The KH881** has all the features of the highly successful KH840

### PLUS—

Built-in Knitleader.

Optional automatic end needle selection on Lace and Knit carriage.

Motifs up to 60 sts may be knitted using adjustable single motif cams.

Special L-point cams enable knitter to block out sections of lace pattern.

For further information please contact:

**Jones + Brother, Shepley Street, Guide Bridge, Audenshaw, Manchester M34 5JD.**

**jo jones + brother**

Domestic and Industrial Sewing Machines,  
and Typewriters.

# Fairisle Sweater and Long Waistcoat

(See front  
Cover)

## Machines

KH820, KH830, KH840, KH881 and KH910.

## Materials

ARGYLL Ferndale 4-ply.

**Sweater:** 230 (250, 270, 290, 310) gms in Cream. 60 (70, 80, 90, 100) gms in Black. 35 (40, 45, 50, 55) gms in Rust.

**Waistcoat:** 165 (180, 195, 210, 225) gms in Cream. 30 (40, 50, 60, 70) gms in Black. 75 (90, 110, 115, 130) gms in Rust.

## MEASUREMENTS

**Sweater:** To fit bust sizes: 81 cm (32"), 86 cm (34"), 91 cm (36"), 96 cm (38"), 102 cm (40"). Length: 61 cm (24"), 61 cm (24"), 62 cm (24½"), 63 cm (24½"), 63 cm (24½"). Sleeve seam: 44.5 cm (17½").

**Waistcoat:** To fit bust sizes: 81 cm (32"), 86 cm (34"), 91 cm (36"), 96 cm (38"), 102 cm (40"). Length to back neck: 76 cm (30").

## TENSION

Always check tension before commencing.  
Fairisle—30 sts. and 35 rows = 10 cm (4").  
(Approx. T.9. Card 2.)

St.st.—29 sts. and 40 rows = 10 cm (4").  
Approx. T.8.

Success depends on working to correct tension.

## NOTE

Welts may be knitted as 2×1 mock rib, working twice as many rows as stated.

## SWEATER

### COLOUR SEQUENCE. Card 2.

Cream in feeder 1. Contrast Cols. in feeder 2 as follows:

- Rows 1 - 6, Black.
- Rows 7 - 9, Black in feeder 1.
- Rows 10 - 15, Cream in feeder 1.  
Black in feeder 2.
- Rows 16 - 19, Cream only.
- Rows 20 - 53, Rust in feeder 2.
- Rows 54 - 57, Cream only.
- Rows 58 - 72, As rows 1 - 15.

## BACK

Insert card 1 and lock on row 1.

With Cream, cast on 125 (133, 141, 149, 157) sts. as 1×1 rib. T.5/5. Knit 32 rows. Trans. to st.st. R.C.000. T.8. Knit 6 rows in st.st.

Set for patt. Foll. card 1, knit to 86 rows. Remove card and insert card 2. T.9. Knit 72 rows of card 2. 158 rows. T.8. Knit 6 rows in st.st. Insert card 1 and knit to 198 (200, 202, 204, 206) rows. Cast off loosely.

## FRONT

Knit as given for Back to 158 rows. T.8. Cont. knitting as given for Back, AT THE SAME TIME, knit to 162 (164, 166, 168, 170) rows.

## Shape Neck

Cast off centre 25 (27, 29, 31, 33) sts. and push sts. at left to H.P. Work on rem. sts. Knit one row. Dec. one st. at neck edge on next 6 rows and every foll. alt. row 7 times. 37 (40, 43, 46, 49) sts. rem. Knit to 198 (200, 202, 204, 206) rows. Cast off loosely. Return sts. at left to W.P. Rejoin yarn at neck edge and complete to correspond with first side, reversing shapings.

## SLEEVES

Using W.Wl., cast on 79 (83, 87, 91, 95) sts. Knit a few rows, ending with C.O.R. Change to Cream. R.C.000. T.8. Insert card 1. Knit 6 rows in st.st. Foll. card 1, knit to 10 rows. Inc. one st. at each end of next and every foll. 8th row 15 times in all, AT THE SAME TIME, knit to 94 rows. Remove card and insert card 2. T.9. Foll. card and cont. incs. as before. 109 (113, 117, 121, 125) sts. Knit to 140 rows. Cast off loosely.

With Cream cast on 61 (65, 69, 77) sts. as 1×1 rib. T.5/5. Knit 32 rows. Trans. sts. to st.st. With wrong side of sleeve facing replace sts. of sleeve on to Ns. Dec. 18 sts. evenly along the row. Knit 1 loose row and cast off.

## CUFFS

With Cream, cast on 69 (73, 77, 81, 85) sts. as 1×1 rib. T.5/5. Knit 32 rows. Trans. sts. to M.B. Pick up 69 (73, 77, 81, 85) sts. from lower edge of sleeve and place on to Ns. dec. 10 sts. evenly across row. T.10. Knit one row. Cast off.

## NECKBAND

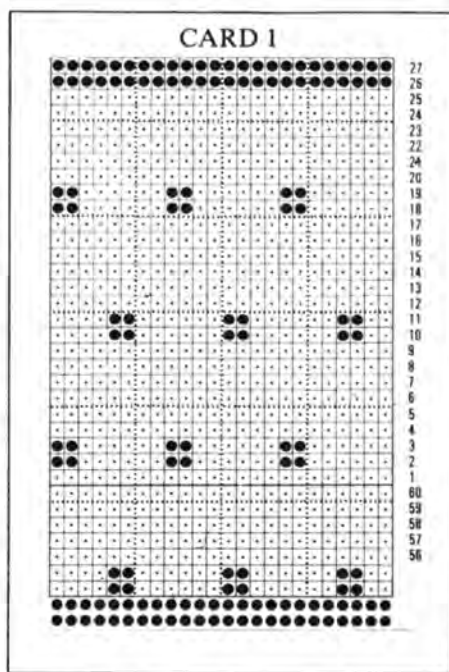
With Cream, cast on 141 (147, 153, 159, 165) sts. as 1×1 rib. T.5/5. Knit 32 rows. T.8/8. Knit one row. Trans. to st.st. and chain cast off.

## TO MAKE UP

Press pieces as instructions given on ball band. Sew right shoulder seam. Sew cast off edge of neckband to neck edge. Join left shoulder seam, turn neckband to inside and sew in place. Sew sleeves to armholes, then sew side and sleeve seams. Press seams.

## WAISTCOAT BACK

Insert card 2 and lock on row 1. With Cream, cast on 133 (139, 147, 155, 161) sts. as 1×1 rib. \*T.5/5. Knit 16 rows. Trans. to st.st. R.C.000. T.9. Knit 4 rows. Set for Fairisle and knit rows 1 - 72 of card. Cream only. T.8.\* Knit to 146 rows.



## Shape Armholes

R.C.000. With Black, cast off 10 sts. at beg. of next 2 rows. 113 (119, 127, 135, 141) sts. rem. Knit 2 rows. With Rust, knit 4 rows. Insert card 3 and set for Fairisle. T.9. With Black in feeder 2, knit 44 rows. T.8. Knit 4 rows Rust and 4 rows Black. Cream only. Knit to 80 rows. Insert card 2. With Rust in feeder 2, knit rows 1 - 15. Remove card 2 and insert card 1. With Black in feeder 2, knit to 114 rows.

## Shape Shoulders

Cast off 3 (3, 3, 4, 4) sts. at beg. of next 12 (12, 12, 14, 10) rows, 4 (4, 5, 5, 5) sts. at beg. of next 6 (6, 6, 4, 8) rows and 5 (7, 7, 5, 5) sts. at beg. of next 2 rows. Cast off rem. 43 (45, 47, 49, 51) sts.

## POCKET LININGS

With Cream, C.O.B.H. 39 sts. T.8. Knit 50 rows. Slip sts. on to W.Wl. and remove from M/C.

## RIGHT FRONT

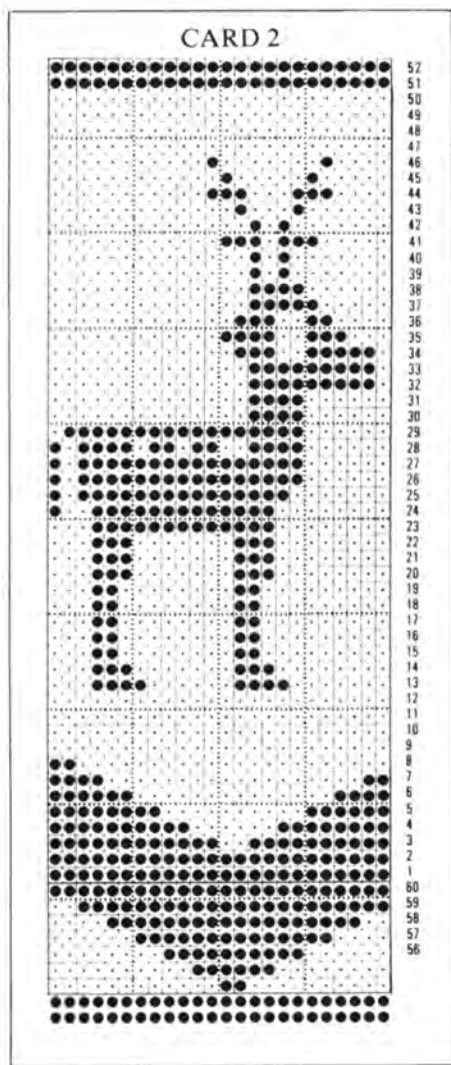
With Cream, cast on 61 (64, 68, 72, 74) sts. as 1×1 rib. Knit as Back from \* to \*. Knit to 82 rows. Slip centre 39 sts. on to W.Wl. and remove from M/C. Replace pocket sts. on to empty Ns. Cont. to 146 rows.

## Shape Front Neck and Armholes

R.C.000. Foll. Fairisle as Back, cast off 10 sts. at beg. of row and dec. one st. at left. Knit 5 rows. Dec. one st. at neck edge on next and every foll. 6th row 4 (8, 12, 16, 16) times in all. 46 (45, 45, 45, 47) sts. Then every foll. 8th row 11 (8, 5, 2, 2) times. 35 (37, 40, 43, 45) sts. rem. Knit one row. R.C.114.

## Shape Shoulder

As given for Back.



#### LEFT FRONT

Work to correspond with Right Front, reversing cards and shapings.

#### ARMBANDS

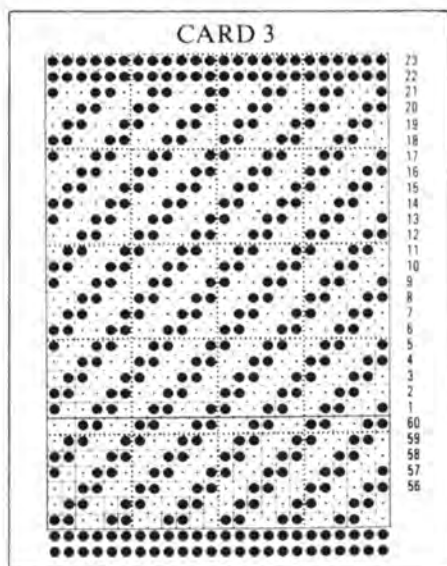
Join shoulder seams. With Rust, cast on 177 sts. as 1 × 1 rib. T.5/5. Knit 15 rows. Trans. to st.st. With wrong side facing, pick up and place on Ns. 177 sts. round armhole. Knit one loose row and cast off.

#### FRONT BAND

With Rust, cast on 17 sts. as 1 × 1 rib. T.5/5. Knit until long enough to fit up Fronts and across back neck. Cast off.

#### POCKET TOPS

With Rust, cast on 41 sts. as 1 × 1 rib. T.5/5. Knit 15 rows. Trans. to st.st. With wrong side facing, replace sts. from front on to Ns., leaving one st. at each side free. Knit one loose row and cast off.



#### TO MAKE UP

Press pieces as instructions given on ball band. Sew pocket linings neatly into pos. and edges of pocket tops. Sew edges of armbands to cast off sts., then sew side seams. Slip st. edges of armbands together for length required. Sew front band neatly into pos. Press seams.

## Fairisle Crew Neck Sweater

(See page 4)

#### Machines

KH820, KH830, KH840, KH881, KH910.

#### Materials

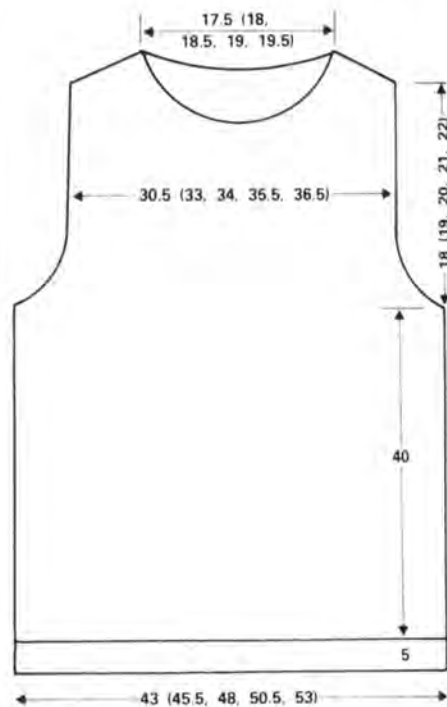
ROBIN Aurora,  
6 balls in Main Shade (M).  
1 ball in Con. Col. A.  
2 balls in Con. Col. B.  
1 ball in Con. Col. C.

#### MEASUREMENTS

To fit bust or chest: 81 cm (32"), 86 cm (34"), 91 cm (36"), 97 cm (38"), 102 cm (40").  
Length to top of shoulder: 63 cm (24½"), 64 cm (25¼"), 65 cm (25½"), 66 cm (26"), 67 cm (26½").  
Sleeve seam: 45 cm (17¼").

#### TENSION

Always check tension before commencing.  
33 sts. and 40 rows = 10 cm (4") over Fairisle.  
Success depends on working to correct tension.



#### NOTES

Unless otherwise stated, all welts can be knitted using a ribbing attachment. T.3. Knit half the amount of rows given.

#### FAIRISLE PATTERN

With M. in Feeder 1 and A. in Feeder 2, knit 2 rows. Using M. only, knit 2 rows.  
With M. in Feeder 1 and B. in Feeder 2, knit 12 rows. Using M. only, knit 2 rows.  
With M. in Feeder 1 and C. in Feeder 2, knit 2 rows. Using M. only, knit 2 rows.  
With M. in Feeder 1 and A. in Feeder 2, knit 4 rows. Using M. only, knit 2 rows.  
With M. in Feeder 1 and B. in Feeder 2, knit 6 rows. Using M. only, knit 2 rows.  
With M. in Feeder 1 and C. in Feeder 2, knit 6 rows. Using M. only, knit 2 rows.  
With M. in Feeder 1 and A. in Feeder 2, knit 6 rows. Using M. only, knit 2 rows.  
With M. in Feeder 1 and B. in Feeder 2, knit 4 rows. Using M. only, knit 2 rows.

#### BACK

Insert card and lock on first row. Using W.W.L., cast on 141 (149, 157, 165, 173) sts. as 2 × 1 mock rib. Knit a few rows, ending with C.O.R.  
R.C.000. T.3. Using M, knit 24 rows. T.10. Knit one row. T.3. Knit 24 rows. Make a hem and knit the row.  
C.O.R. T.6. R.C.000. Release card and work in Fairisle as given for 160 rows.

#### Shape Armholes

C.O.R. R.C.000. Cast off 5 sts. at beg. of next 2 rows, 3 sts. at beg. of next 2 rows and 2 sts. at beg. of foll. 2 rows. Dec. one st. at each end of next 5 rows, then every alt. row 6

(6, 8, 9, 11) times in all. 99 (107, 111, 117, 121) sts. \*\*

Work straight to 72 (76, 80, 84, 88) rows.

### Shape Shoulders and Neck

Using a spare length of M, cast off centre 33 (35, 37, 39, 41) sts. Push sts. at left to H.P. C.O.R. Working on sts. at right, cast off 4 (4, 5, 5, 5) sts. at beg. (armhole edge) of next row, 3 sts. at beg. (neck edge) of next row; 4 (5, 5, 5, 5) sts. at beg. of next row; 3 sts. at beg. of next row; 4 (5, 5, 5, 6) sts. at beg. of next row and 3 sts. at beg. of next row. Cast off rem. 5 (5, 5, 6, 6) sts. Return sts. at left to W.P. and complete to correspond with first side, reversing all shaping.

### FRONT

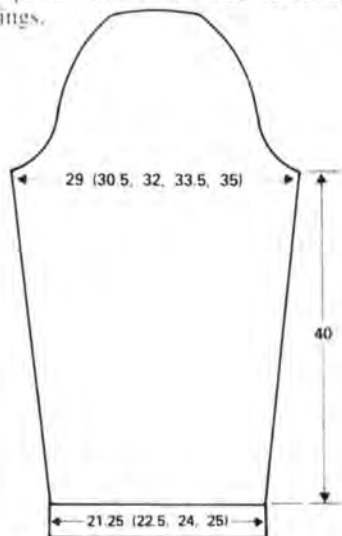
Work as given for Back to \*\*. Work straight to 52 (54, 56, 58, 60) rows.

### Shape Neck

Using a spare length of M, cast off centre 23 (25, 27, 29, 31) sts. Push sts. at left to H.P. and work on sts. at right. C.O.R. Dec. one st. at neck edge on next 10 (10, 8, 8, 6) rows, then every alt. row until 21 (24, 25, 27, 28) sts. rem. Work straight to 72 (76, 80, 84, 88) rows.

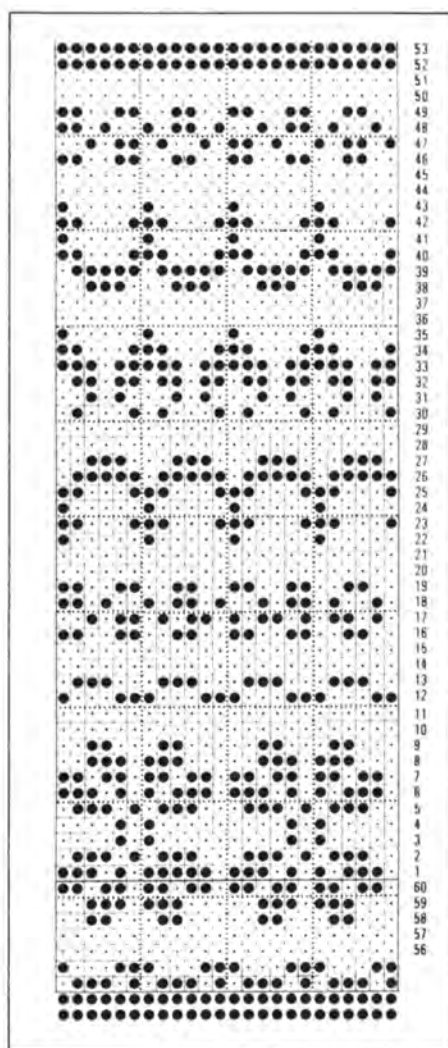
### Shape Shoulder

C.O.R. Cast off 4 (4, 5, 5, 5) sts. at beg. of next row, 4 (5, 5, 5, 5) sts. at beg. of next alt. row, 4 (5, 5, 5, 5) sts. at beg. of foll. alt. row, 4 (5, 5, 6, 6) sts. at beg. of next alt. row and rem. 5 (5, 5, 6, 6) sts. on foll. alt. row. Return sts. at left to W.P. and complete to correspond with first side, reversing all shapings.



### SLEEVES

Insert punchcard and lock on first row. Using W.W.L., cast on 67 (71, 75, 79, 85) sts. and work rib as given for Back. C.O.R. T.6. R.C.000. Release card and work in Fairisle, inc. one st. at each end of every 10th row 15 times in all. 97 (101, 105, 109, 115) sts. Work straight to 160 rows.



### Shape Top

C.O.R. Cast off 5 sts. at beg. of next 2 rows and 3 sts. at beg. of foll. 2 rows. Dec. one st. at each end of next and every foll. alt. row, 20 (21, 22, 23, 24) times in all. Cast off 5 (5, 5, 5, 6) sts. at beg. of next 2 rows and 6 sts. at beg. of foll. 2 rows. Cast off rem. 19 (21, 23, 25, 27) sts.

### NECKBAND

Sew up right shoulder seam. Using W.W.L., cast on 111 (119, 127, 135, 143) sts. as 2 x 1 mock rib. Knit a few rows, ending with C.O.R. T.4. Using M, knit 12 rows. T.10. Knit one row. T.4. Knit 12 rows. Make a hem and knit the row. With wrong side facing, pick up and place on Ns. 111 (119, 127, 135, 143) sts. evenly around neck. T.10. Knit one row. Cast off.

### TO MAKE UP

Sew up left shoulder and neckband seam. Sew up side and sleeve seams. Set in sleeves. Press as instructions given on ball band.

# Toddler's Mix and Match

(See page 5)

### Machines

See NOTE.

### Materials

"MILL HOUSE". Available by mail order from: Woolscope, The Buttermarket, North Street, Chichester, West Sussex PO19 1LQ or call into Woolscope at the above address.

**Fairisle skirt:** Navy 30 (40, 50) gms. Cream 70 (80, 90) gms. Red & Blue 20 (20, 20) gms. each.

**Pleated skirt:** Navy 165 (180, 195) gms. White 20 (20, 20) gms.

**Waistcoat:** Cream 30 (40, 50) gms. Navy 40 (50, 60) gms.

**Sweater:** Cream 95 (110, 125) gms. Brown 105 (120, 135) gms.

Elastic. 2 Hooks & Eyes. 1 Button.

### MEASUREMENTS

To fit chest sizes: 51 cm (20"), 56 cm (22"), 61 cm (24").

**Skirts:** Length: 25 cm (10"), 30 cm (12"), 35 cm (14").

**Waistcoat:** Length: 27 cm (10½"), 29 cm (11½"), 32 cm (12½").

**Sweater:** Length: 30 cm (12"), 34 cm (13½"), 38 cm (15").

Sleeve seam: 18 cm (7"), 22 cm (8½"), 25 cm (10").

### TENSION

Always check tension before commencing. St.st. 30 sts. and 44 rows = 10 cm (4"). (Approx T.5.)

**Fairisle** 31 sts. and 38 rows = 10 cm (4"). (Approx. T.6.)

**Tuck st.** 22 sts. and 96 rows = 10 cm (4"). (Approx. T.5.) Card 2D from KH830 set. Success depends on working to correct tension.

### NOTE

M/Cs without KHC perforations should be punched in reverse order.

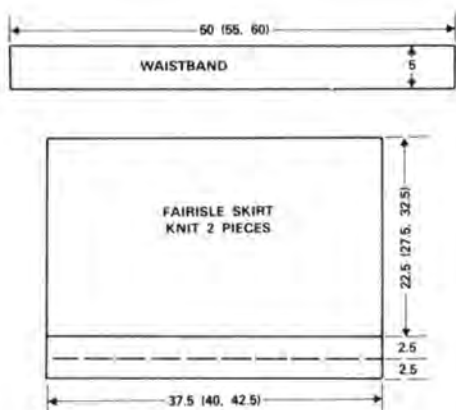
**KH588 and 710:** Any patt. which gives the same tension can be used.

### FAIRISLE SKIRT

#### Colour Sequence — Card A

Navy in feeder A. Con. Cols. as follows:

- Rows 1 - 2 Navy only
- Rows 3 - 4 Cream
- Rows 5 - 8 Navy only
- Rows 9 - 14 Red
- Rows 15 - 18 Navy only
- Rows 19 - 22 Blue



Change to Cream in feeder A.

Rows 23 - 24 Cream only

Rows 25 - 30 Navy

Rows 31 - 44 Red

Rows 45 - 50 Navy

Rows 51 - 54 Cream only

Rows 55 - 58 Blue

Rows 59 - 60 Cream only

#### KNIT 2 PIECES

Insert card 1. With W.Wl. cast on 117 (125, 133) sts. as 1 x 1 mock rib. knit several rows. C.O.R. Change to Navy. T.4. Knit 7 rows. Push empty Ns. to W.P. and knit 16 rows. Make a hem and knit the row. R.C.000. T.6. Set for colour changer. Foll. card, knit the 60 rows of card, knit 6 rows in cream. Insert card 2. Foll. card, knit to 86 (104, 124) rows. Slip sts. onto W.Wl. and remove from M/C.

#### WAISTBAND

With W.Wl. cast on 148 (164, 180) sts. Knit several rows. C.O.R. Change to Cream, T.4. Knit 27 rows. Make a hem and knit the row. With wrong side of skirt pieces facing, replace sts. on Ns., dec. 43 sts. on each piece. T.10. Knit 1 row and cast off.

#### MAKE UP

Press pieces to yarn instructions. Sew side seams, leaving one inner waistband seam open. Insert elastic, join ends, and close seams. Press seams.

#### WAISTCOAT

##### BACK

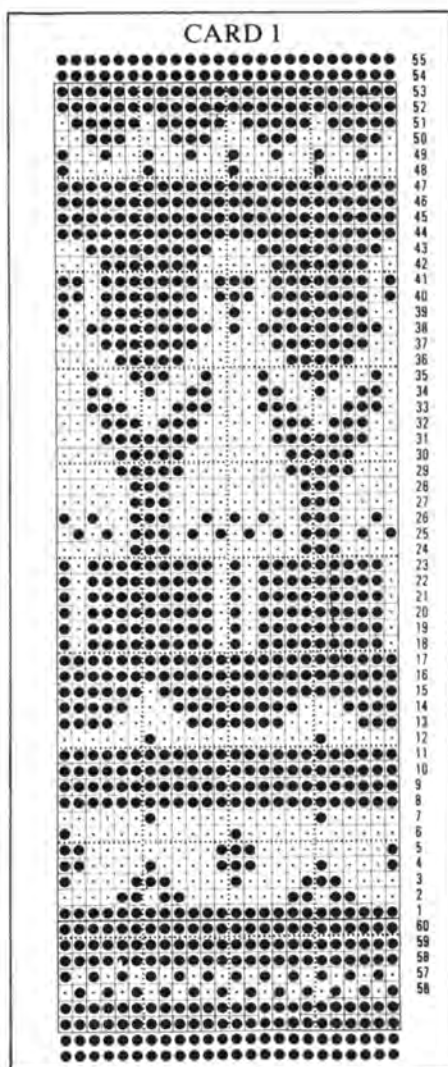
Insert card 2. With W.Wl. cast on 83 (91, 97) sts. \*Knit several rows. C.O.R. Change to Navy. T.4. Knit 24 rows. Make a hem and knit the row. R.C.000. T.5. Knit 3 rows. C.O.R. Foll. colour changer card, knit to 50 (56, 60) rows. R.C.000.\*

##### Shape Armholes

Cast off 7 sts. at beg. of next 2 rows. 69 (77, 83) sts. rem. Knit to 44 (50, 54) rows.

##### Shape Shoulders

Cast off 4 (5, 5) sts. at beg. of next 8 rows and 4 (3, 5) sts. on next 2 rows. Put rem. 29 (31, 33) sts. onto W.Wl. and remove from M/C.



##### RIGHT FRONT

With W.Wl. cast on 37 (41, 44) sts. Knit as Back from \* to \*. Cast off 7 sts. at beg. of next row, 30 (34, 37) sts. rem. Knit to 23 (27, 29) rows.

##### Shape Neck

Cast off 3 (4, 5) sts. at beg. of next row. Knit 1 row. Dec. 1 st. at neck edge on next and every foll. alt. row 4 times in all, then every foll. 4th row 3 times. 20 (23, 25) sts. rem. Knit to 44 (50, 54) rows.

##### Shape Shoulder

As Back.

#### LEFT FRONT

Knit as Right Front, reversing shapings.

#### FRONT BANDS

With W.Wl. cast on 57 (62, 67) sts. \*Knit several rows. C.O.R. Change to Navy. T.4. Knit 23 rows. Make a hem and knit the row.\* With wrong side of Left Front facing, pick up and place on Ns. 57 (62, 67) sts. along front edge. T.10. Knit 1 row and cast off. knit other side to match.

#### NECKBAND

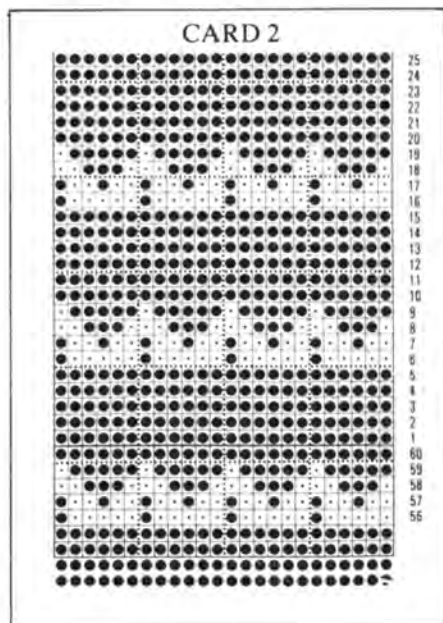
Sew shoulder seams. With W.Wl. cast on 93 (99, 105) sts. Knit as Front Bands from \* to \*. With wrong side facing, pick up and place on Ns. 32 (34, 36) sts. along front edge, 29 (31, 33) sts. along back neck and 32 (34, 36) sts. along front edge. T.10. Knit 1 row and cast off.

#### ARMBANDS

With W.Wl. cast on 56 (63, 70) sts. Knit as Front Bands from \* to \*. With wrong side of work facing, pick up and place on Ns. 56 (63, 70) sts. round armhole edge. T.10. Knit 1 row and cast off.

#### MAKE UP

Press pieces to yarn instructions. Sew edges of armbands to cast off sts. Sew side seams. Make a cord of 4 sts. long enough to thread through neckband and tie in front. Attach toggle at each end. Press seams.

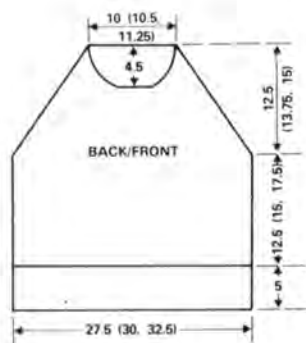


#### SWEATER

##### BACK

With Cream cast on 83 (91, 99) sts. as 1 x 1 rib. T.3/3. Knit 22 rows. Trans. to st.st. R.C.000. T.5. Knit to 54 (66, 78) rows, or desired length. R.C.000.





### Shape Raglan Armholes

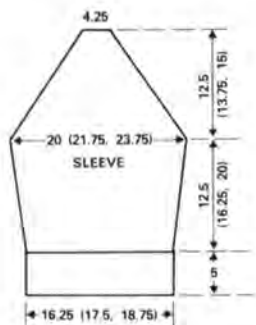
Cast off 2 (3, 3) sts. at beg. of next 2 rows. knit 1 row. \* With 3-st. tool, dec. 1 st. at each end of next and every foll. 3rd row 6 times in all, then every alt. row 18 (20, 23) times. 31 (33, 35) sts. rem. Knit 1 row. Cast off loosely.

### FRONT

Knit as Back to \*. Dec. 1 st. at each end of next and every foll. 3rd row 6 times in all, then every alt. row until 51 (55, 59) sts. rem. knit 1 row.

### Shape Neck

Cast off centre 17 sts. and push Ns. at left to H.P. Knit on rem. sts. Dec. 1 st. at each end of next and alt. rows 3 (4, 5) times. Knit 1 row. Cont. raglan shaping, AT THE SAME TIME dec. 1 st. at neck edge on next and foll. 4th row 3 times in all. 4 sts. rem. Knit 1 row. Dec. 1 st. at neck edge only on next and alt. rows. 2 sts. rem. Fasten off. C.O.L. Rejoin yarn to raglan and knit to match right side.



### SLEEVES

Cast on 49 (53, 57) sts. as 1 x 1 rib. T.3/3. Knit 22 rows. Trans. to st.st. R.C.000. T.5. Knit 8 rows. Inc. 1 st. at each end of next and every foll. 8th (9th, 10th) row 6 (7, 8) times. 61 (67, 73) sts. Knit to 56 (72, 88) rows or desired length. R.C.000.

### Shape Raglan Top

Cast off 2, (3, 3) sts. at beg. of next 2 rows. Knit 1 row. With 3-st. tool dec. 1 st. at each end of next and every foll. 3rd row 10 times in all, then every alt. row 12 (14, 17) times. 13 sts. rem. Knit 1 row. Cast off loosely.

### POLO COLLAR

Cast on 115 (121, 127) sts. as 1 x 1 rib. T.3/3. Knit 28 (36, 44) rows. T.8/8. Knit 1 row. Trans. to st.st. Cast off chain method.

### MAKE UP

Press to yarn instructions. Join raglan seams, leaving left back open. Sew cast off edge of collar to neck. Sew rem. seam and collar. Sew side and sleeve seams. Press seams.

# Sweater with Grape Motif

(See page 6)

### Machines

KH820, KH830, KH840, KH881, KH910.

### Materials

SIRDAR Majestic 4-ply.  
8 (9, 9) balls In Ivory (M).  
1 (1, 1) ball in Eucalyptus (2nd C.).  
SIRDAR Terry Look.  
1 (1, 1) ball in Pink (1st C.).

### MEASUREMENTS

To fit bust: 86 cm (34"), 91 cm (36"), 96 cm (38").

### TENSION

Always check tension before commencing.  
15 sts. and 21 rows = 5 cm (2") over st.st.  
(Approx. T.7.)  
Success depends on working to correct tension.

### NOTES

For card see diagram.

### WELTS

Using Ribber attachment.  
Use T.5/4 and arrange Ns. for 1 x 1 rib (see instruction book).

### BACK WELT

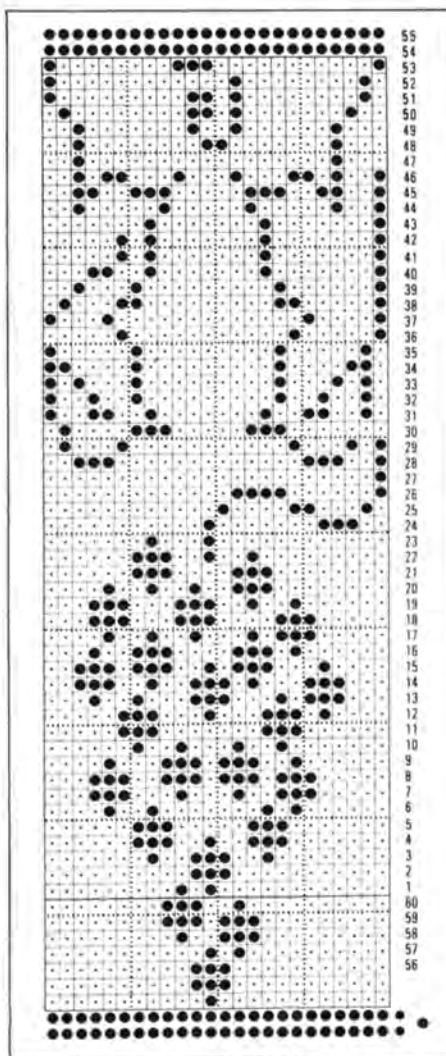
Cast on 144 (152, 160) sts. and knit 30 rows M. Change to W.Wl. Knit several rows and release from M/C.

### FRONT WELT

Work exactly as given for Back Welt.

### SLEEVE WELTS (Both alike)

Cast on 60 (64, 68) sts. and knit 30 rows M. Change to W.Wl. Knit several rows and release from M/C.



### COLLAR

In 2 pieces, each piece as follows:  
T.5/6 Cast on 60 sts. and knit 20 rows M.  
Change to T.4/5. Knit 20 rows. Change to W.Wl. Knit several rows and release from M/C.

### BACK

Insert card and lock on row 1.  
C.O.L. T.7. Push 144 (152, 160) Ns. to W.P. and slip sts. from last row of M. of back welt on to Ns. Unravel W.Wl. and knit 1 row M. R.C.000. C.O.R. Knit 130 (142, 154) rows M.  
R.C.000. \*Release card and set M/C for Fairisle. Keeping M. in feeder 1, thread 1st C. in feeder 2. Knit 29 rows. Change feeder 2 to 2nd C. and knit 31 rows. R.C.60. \* Lock card, set M/C for st.st. Knit 2 rows. R.C.62. Cast off.

### FRONT

Work as given for Back up to R.C.38 of armhole.

### Shape Neck

Note card row number.  
Cast off centre 20 sts. Push 62 (66, 70) sts. at

left to H.P. and work on 62 (66, 70) sts. at right. Cont. in patt. AT THE SAME TIME, dec. one st. at neck edge on every row until 14 sts. have been dec. R.C.14. Knit 8 more rows in patt. Set M/C for st.st. and knit 2 rows. Cast off rem. 48 (52, 56) sts. Return rem. 62 (66, 70) sts. to W.P. Reset card and complete to correspond with first side, reversing shapings.

## SLEEVES

Insert card and lock on row 1. C.O.L. T.7. Push 60 (64, 68) Ns. to W.P. Slip sts. from last row of M. of sleeve welt on to Ns. Unravel W.Wl. and knit 1 row M. R.C.000. C.O.R. With M/C set for st.st., knit to R.C.104 (110, 116), AT THE SAME TIME, inc. one st. at each end of every 4th row. Release card and set M/C for Fairisle and work as for Back from \* to \*, AT THE SAME TIME, cont. to inc. one st. at each end of every 4th row to R.C.140, 130 (134, 138) sts. Knit 24 (30, 36) more rows. Lock card and set M/C for st.st. Knit 2 rows. Cast off.

## NECKBAND

Right and Left alike. Join shoulder seams. C.O.L. T.7. Push 60 Ns. to W.P. and slip sts. from last row of M. of collar welt on to Ns. Unravel W.Wl. and knit one row M. With wrong side of work facing, pick up 60 sts. evenly from centre back neck to centre front. T.10. Knit one row and cast off.

## TO MAKE UP

Join top edges of sleeve to armhole edges. Join side and sleeve seams. Join collar seam up centre back neck and join front neck opening with a few sts. for reinforcement. Press as instructions given on ball band.

# Child's Multi Stripe Tunic

(See page 7)

## Machines

Any M/C.

## Materials

COPLEY's Sonata 4-ply: M. 2 (2, 2, 3) 20 gm balls. 2 (2, 2, 2) 20 gm balls in each of 6 more colours.

## MEASUREMENTS

To fit chest: 61 cm (24"), 66 cm (26"), 71 cm (28"), 76 cm (30"). Length to top shoulder: 46 cm (18"), 49 cm (19½"), 53 cm (21"), 57 cm (22½"). Sleeve seam: 6 cm (2½"), 7 cm (2¾"), 7 cm (3"), 8 cm (3½").

## TENSION

Always check tension before commencing. St.st. — 28 sts. and 42 rows = 10 cm (4"). Approx. T.7.

Success depends on working to correct tension.

## BACK

With W.Wl. cast on 112 (120, 126, 134) sts. Knit several rows. C.O.R. Change to M. T.5. Knit 21 rows. Make a hem and knit the row. Change to Col. 1. R.C.000. T.7. Knitting 30 rows in each colour, knit 6 rows. Dec. 1 st. at each end of next and every foll. 11 (12, 13, 15)th row 11 times in all. 90 (98, 104, 112) sts. rem. Knit to 126 (140, 152, 166) rows. R.C.000.

## Shape Armholes

Cast off 2 (3, 3, 4) sts. at beg. of next 2 rows. Dec. 1 st. at each end of next 3 (3, 5, 5) rows, then alt. rows 3 (4, 3, 4) times. 74 (78, 82, 86) sts. rem\*. Knit to 48 (50, 52, 54) rows.

## Shape Shoulders and Back Neck

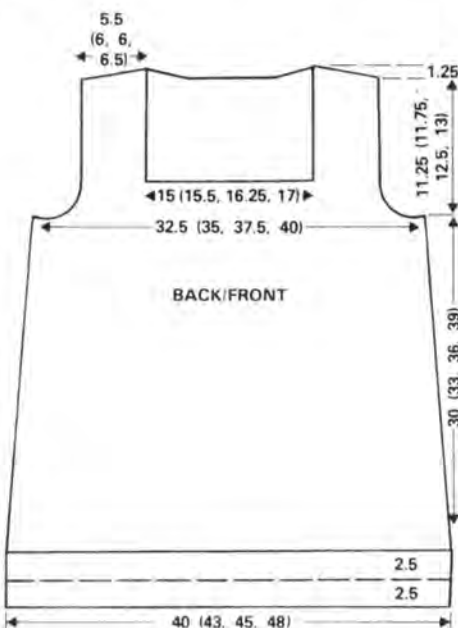
Cast off centre 34 (36, 38, 40) sts. and push Ns. at left to H.P. Work on rem. 20 (21, 22, 23) sts. Cast off 5 (5, 6, 6) sts. at beg. of next and alt. row AT THE SAME TIME, dec. 1 st. at neck edge on next 4 rows. 6 (7, 6, 7) sts. rem. Cast off. C.O.L. Rejoin yarn and knit to match right side.

## FRONT

Knit as Back to \*. Knit to 16 rows.

## Shape Neck

Cast off centre 42 (44, 46, 48) sts. and push Ns. at left to H.P. Work on rem. 16 (17, 18, 19) sts. Knit to 48 (50, 52, 54) rows.



## Shape Shoulder

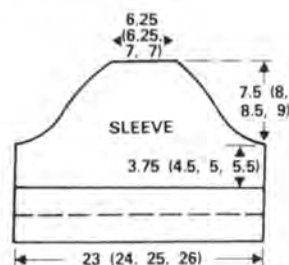
Cast off 5 (5, 6, 6) sts. at beg. of next and alt. row. Work one row. Cast off rem. 6 (7, 6, 7) sts. C.O.L. Rejoin yarn and knit to match right side.

## SLEEVES

With W.Wl. cast on 64 (68, 70, 74) sts. Knit several rows C.O.R. Change to M. T.5. Knit 21 rows. Make a hem and knit the row. R.C.000. T.7. Knit to 16 (18, 22, 24) rows.

## Shape Top

Cast off 2 (3, 3, 4) sts. at beg. of next 2 rows. Dec. 1 st. at each end of next 5 rows, then every alt. row 8 (9, 11, 12) times. Dec. 1 st. at each end of next 8 (8, 6, 6) rows. Cast off rem. 18 (18, 20, 20) sts.



## POCKETS

With W.Wl. cast on 25 sts. Knit several rows. C.O.R. Change to M. T.5. Knit 15 rows. Make a hem and knit the row. R.C.000. T.7. Knit 34 rows. Dec. 1 st. at each end of next 6 rows. Cast off rem. 13 sts.

## BACK NECKBAND

With purl side facing, pick up and place on Ns. 42 (44, 46, 48) sts. along back neck. T.5. Knit 22 rows. Cast off loosely.

## SIDE FRONT NECK

With wrong side of front facing pick up and place on Ns. 24 (25, 27, 28) sts. along side edge to top of shoulder. T.5. Knit 2 rows. Dec. 1 st. at front corner on next and alt. rows 5 times in all. Knit 2 rows. Inc. 1 st. at same side on next and alt. rows 5 times in all. Knit 1 row. Cast off loosely. Knit other side to match.

## CENTRE FRONT

Pick up and place on Ns. 42 (44, 46, 48) sts. along front edge. Knit as side edge, shaping at both ends.

## TO MAKE UP

Press pieces to yarn instructions. Sew shoulder seams. Sew in sleeves, then side and sleeve seams. Sew pockets in position. Join mitred corners of neckband, turn to inside and sew in place.

# Knitting Clubs

by Rosa Postance

We have lots of lovely news this time from over 20 Clubs, so without further ado I'll fill you in on their latest activities.

I know there is quite a lot of support for machine knitting in the Tyne & Wear area and Mrs. Edwina Bewley of 54 Caroline Street, Newcastle NE4 7TX runs a small Club with about 10 members who meet every Tuesday evening 7.30—9.30. She says they are all very keen to learn and look forward to meetings each week and any new members will be sure of a nice friendly welcome.

Mrs. E. Young (tel. 29149) also has a small group on Tuesdays at 2 p.m. and Thursdays at 7 p.m. meeting at The Knit Inn, 104 Westgate Road, Newcastle if this is more convenient for you.

The Wyre Club from Poulton, Nr. Blackpool (see March/April) has quite a lot to offer members, for apart from a book and magazine library, they now have a punchcard service and own their own 840 which members can use both at meetings and in between times to try out more fully. September is "chat" evening for discussing problems, October is Founder Night with hot pot supper followed by apple pie and cream (sounds nice!) and in November they have a speaker from the Lancaster & Morecambe Club talking about knit weave. Their Hon. Sec. is Marian McCulloch (tel. Blackpool 700077) if you are interested in taking part.

I had a very nice letter from Mrs. B. Taylor of Bury, Lancs. She says although illness forced her to give up her Club, her daughter; Mrs. Doreen Sanderson, teaches machine knitting at Whitefield Centre & Club on Monday afternoons and Thursday evenings, and at the Ramsbottom Evening Centre on Tuesday evenings. Quite a number of her ex-Club members go to these classes and they have a J+B agency which is helpful as she says there isn't a shop in Bury. Mrs. Taylor very kindly adds they are always open to 'phone calls if anyone has a problem, and can be reached on 061-764-3706 and have also given some private lessons.

Knitters in Chesterfield may already have seen mention of Mike Bacon and Betty Newton in their local paper, for they have opened a shop at 88 Derby Road and will even let people use their machines to make their own garments! They have now also begun a Club at the shop on alternate Saturday mornings, so it must be worth a visit and they sound very nice people. Tel. No. is 32067 if you want to give them a ring.

Southfields Drive Community Centre, Southfields Drive, Leicester is the meeting place on the 1st Monday of the month at 7.30 p.m. for the Leicester Home Knitting Machine Club. Their organiser, Mrs. Ann Kilbourne says they have 20 members, some of whom have been coming for 8 years, and have punchcard and pattern libraries. Her tel. no. is Leicester 834314 for more details.

I must confess to a little smile when I read Miss Jean Muir's letter which began "After much thought (and not so painful as we anticipated) my friend and I have started a knitting club. We have called it the Kirkley Knitters Club." She goes on to say that for their first meeting "we thought we might manage 15 but 27 turned up — thought they were never stopping coming through the door!" They meet each week in the evening at a local school, but as I have no further details, you might care to write direct to Miss Jean Muir, 178 Kirkley Run, Lowestoft, Suffolk NR33 0NN.

Moving now to Kent, Mrs. Gladys Everett has just begun a Club at her home in Walderslade (tel. Medway 62137) and they meet from 2 p.m. onwards on the 1st Monday of the month. Mrs. Everett has done lots of demonstrations on Jones machines and teaches for Kent County Council and will have more classes this September.

I mentioned in the May/June issue that Valerie Gasson of Epsom was starting a Club, and am pleased to say she tells me it got off to a flying start and they have 23 members. Calling themselves "Knits Machine Knitting Club" meetings are held on the 1st Wednesday of the month from 10.30 a.m. to 12.30 p.m. and 7.30—9.30 p.m. and in this way they hope to cater for mums with young children, ladies working all day etc. If you would like to join, it's best to ring Valerie first on 01-393 2286 as they may be changing their meeting place soon.

Mrs. Anne Corrigan of 90 Bois Hall Road, Addlestone, Weybridge, Surrey KT15 2JN has started a fortnightly Club as from Tuesday 16th June at 7.30—9.30 p.m. Anne says she wants to do something on the machine each time and not have just a "chatter" club and is looking out for a secondhand Jones machine with Knitleader to use for demonstrations. Can anyone help? She has lots of plans for visits and would like to hold a fashion show in the winter in aid of buying a Guide Dog for the Blind. Do contact Anne if you can give her your support.

I have only had a brief note from June McGregor, the Hon. Sec. of the Camberley Club, but suggest you ring her on Camberley 65793 to find out more.

Readers may be interested in the following sent to me by Joan Lafferty of Horsham. "A new member of Horsham Club, Caroline Van de Boer, brought her spinning wheel to the May meeting and showed members how the wool is dealt with from the sheep to the sweater, as it were. Caroline is a Dutch lady; she and her husband farm near Horsham, so she was able to bring samples of wool from her own sheep. She bought her Jones machine in Holland and brought it to England with her. The instruction book is certainly different — the text is in Dutch and French!" Joan is again taking Adult Education Classes in Horsham in September and for further details of these and private tuition, please ring Horsham 60085.

New members are always welcome at the Chichester Club who meet on the 1st Tuesday of the month at 7 p.m. in the Fernleigh Centre, North Street, Chichester. This Club has over 60 members and circulates a regular newsletter giving not only knitting news, but also details of machines owned, so that members can easily make contact with each other. In addition to regular meetings, they hold tuition evenings for members and guests and have had a variety of speakers on a wide range of topics. Mrs. Heather Swanson, their Secretary, is the person to contact on Chichester 776500 for details.

The Winchester Club are planning their first fashion show on 22nd October. Mrs. Oliver, their Chairman, says they decided to hold their first effort in a modest way in familiar surroundings just for members and friends, then if all goes well and they have gained confidence and experience, will aim to reach a wider public next time. Dot Withers their organiser can be reached on Winchester 881064.

Even though Eleanor Grant (tel. 0425-54095) says Fordingbridge is a small town, the "Avonway" Club which was started about 2 years ago, has 22 members, a great number of whom are Jones owners. All are very enthusiastic and they meet on the 2nd Thursday of the month (Sept. - June) at 7 p.m. in the Community Hall called Avonway in Fordingbridge, Hants.

Meeting monthly in the home of their organiser, Mrs. Joan Mytton, "The Fairway", 7 De Moulham Road, Swanage, Dorset, the Swanage Club have not been going for very long, but are most enthusiastic. How about getting in touch with them if you live in that area?

Moving now to the West Country, I wonder if there is an experienced knitter/tutor who is willing to help a group in Hemyock, Devon? Around 16 ladies meet on the 1st Wednesday of the month from 10.30 a.m. to 12 noon in the village hall and as many have young children, the hall can also act as a creche so avoiding baby-sitting problems. However, their organiser, Mrs. Heather Fisher, says they are rather the blind leading the blind as none of them is an expert knitter, but nevertheless by pooling ideas they have all gained some benefit and the group is steadily increasing in size since it began in April. I am sure they would be really pleased to hear from anyone who could help them out and Heather's 'phone No. is Hemyock 260.

Similarly, the Teign Knitting Club has recently been started by Mrs. Diane Heale (tel. Chudleigh 852678 after 4.30 p.m. and weekends) and meets in a local hall in Chudleigh Knighton, Devon once a month on Mondays from 7.30-9.30 p.m. After only 2 meetings they already have 35 members with varying degrees of proficiency and if you ring Diane she will give you more details.

Mrs. Iris Cox of Callington, Cornwall reports that the Delaware Club has closed, but she has started the Caradon Craftknits Club at the Rainbow Café, Lux Street, Liskeard fortnightly at 7.15 p.m. from Monday 27 July. Her tel. no. is Stoke Climsland 595.

Going now to Wales, Mr. A.E. Thompson holds a Club which has just changed its meeting-place due to increased membership, to the

Coffee Lounge of Companies Registration Office, Companies House, Crown Way, Maindy, Cardiff. The Club offers yarns, books etc., and hopes to hold a fashion show in the autumn. If you would like to join in, please contact Mr. Thompson at 15 Merches Gardens, Grangetown, Cardiff CF1 7RF.

Does anyone know of a club or classes within reach of Bermondsey where Mrs. Sukla can learn to use her new 840? If so, please ring her on 01-237 0610 after 7 p.m. or 01-633 4865 during the day. This lady has one or two friends with machines also, but due to lack of space cannot run a club herself but would dearly like to get going on her knitting.

## Dates for your Diary

Evening class on machine knitting begins on Wed. 23rd September at Broad Lane, Bramley, Leeds. Progressive course beginning with basics and working up to more advanced techniques. (Possibly only open to Leeds Ratepayers — please check.)

One day machine knitting course for beginners at Ilkley College on 7th October (10 am-3 pm). Fee approx. £5 for day including lunch, and is open to anyone. If initial course is successful, it is hoped to hold more, progressing through all aspects of machine knitting at regular intervals. Details from Ilkley College Adult Education Dept., Ilkley College, Wells Road, Ilkley, W. Yorks (Tel: Ilkley 609010).

## Speakers List

Denise Musk is willing to speak to groups not too far away. Her telephone No. is Bradford 587068 if you wish to contact her.

That's it for this time and I look forward to hearing from you all, and do really enjoy reading your letters. Just to remind you, Finchley office has now closed, so if you write to me direct at home for the time being, hopefully, this will ensure none of your letters go astray. My address is Acorn Cottage, 110 Hartfield Road, Wimbledon, London SW19 3TG.

# Tuck Stitch Cardigan — St.st. Insert

(See page 8)

**Machines**  
All M/C's.

**Materials**  
COPLEY's Climax 4-ply: 16 (17, 18, 19) 20 gm. balls. Braid for embroidery. 9 buttons.

### MEASUREMENTS

To fit bust 81 cm (32"), 86 cm (34"), 91 cm (36"), 96 cm (38").  
Length to top of shoulder: 66 cm (24").  
Sleeve seam: 44 cm (17½"), all sizes.

### TENSION

Always check tension before commencing.  
Tuck st. 26 sts. and 58 rows = 10 cm (4").

(Approx. T.7.)  
St.st. 29 sts. and 40 rows = 10 cm (4").  
(Approx. T.7.)  
Success depends on working to correct tension.

### BACK

Insert card. Cast on 113 (119, 125, 131) sts. as 1 × 1 rib. T.3/3. Knit 16 rows. Trans. to st.st. R.C.000. T.7. Set for tuck st.\* Knit to 210 (206, 202, 198) rows. R.C.000.

### Shape Armhole

Cast off 4 (4, 5, 5) sts. at beg. of next 2 rows. Dec. 1 st. at each end of next and every alt. rows 5 (6, 6, 7) times in all, then every foll. 4th row 3 times. 89 (93, 97, 101) sts. rem. Knit straight to 102 (106, 108, 112) rows.

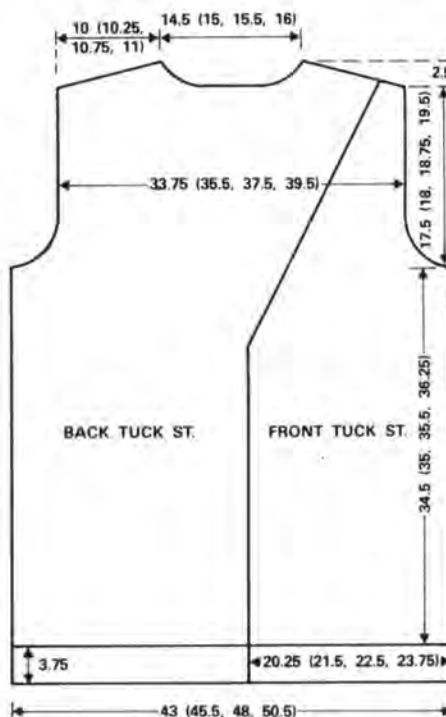
### Shape Shoulder and Back Neck

Cast off 6 (7, 8, 9) sts. at beg. of next 2 rows. Cast off centre 23 (25, 27, 29) sts. and push Ns. at left to H.P. Knit on rem. sts. Cast off 4 sts. at beg. of next and every alt. row. AT THE SAME TIME, dec. 1 st. at neck edge on next 7 rows. 4 sts. rem. Knit 1 row and cast off. Rejoin yarn to inner neck sts. and knit to match right side, reversing shapings.

### LEFT FRONT

Reset card. Cast on 53 (56, 59, 62) sts. as

1 × 1 rib. Knit as Back to \*. Knit to 172 (168, 164, 160) rows.



### Front Shaping

Dec. 1 st. at left on next and every 4th row 10 times in all. 43 (46, 49, 52) sts. rem. Knit 1 row. 210 (206, 202, 198) rows. R.C.000. Mark left side with W.Wl.

### Shape Armhole

Cast off 4 (4, 5, 5) sts. at beg of next row. Knit 1 row. Cont. neck decs. as before AT THE SAME TIME, dec. 1 st. at armhole edge on next and alt. rows 5 (6, 6, 7) times in all, then every 4th row 3 times. Keeping armhole straight cont. neck decs. until 6 (7, 8, 9) sts. rem. Knit to 102 (106, 108, 112) rows. Cast off.

### RIGHT FRONT

Knit as Left Front, reversing shapings.

### SLEEVES

Reset card. Cast on 55 (59, 61, 65) sts. as 1x1 rib. T.3/3. Knit 16 rows. Trans. to st.st. R.C.000. T.7. Set for tuck st. Knit 8 rows. Inc. 1 st. at each end of next and every foll. 16th row 14 times in all. 83 (87, 89, 93) sts. Knit to 232 rows, or desired length. R.C.000.

### Shape Top

Cast off 4 (4, 5, 5) sts. at beg of next 2 rows. Dec. 1 st. at each end of next and foll. alt. rows 3 times in all, then every 4th row 9 times. Knit 1 row. Dec. 1 st. at each end of next and alt. rows 10 (10, 12, 12) times then on next 4 (6, 4, 6) rows. Cast off rem. 23 sts.



### ST.ST. INSERT

### RIGHT FRONT

C.O.R. C.O.B.H. 3 sts. R.C.000. T.7. Knit 2 rows. Inc. 1 st. at right on next and alt. rows 13 times in all. Knit 1 row. Mark right side with W.Wl. Cont. incs. as before to 34 (35, 34, 35) sts. then on every foll. 3rd row, AT THE SAME TIME, knit to 65 (67, 71, 73) rows. C.O.L.

### Shape Neck

Cast off 5 sts. at beg of next row. Knit 1 row. Dec. 1 st. at neck edge on next 4 (5, 6, 7) rows, then every alt. row 8 times. Cont. side incs. Knit to 98 (100, 104, 106) rows. 28 sts. rem.

### Shape Shoulder

Cast off 6 sts. at beg. of next and alt. rows until 4 sts. rem. Knit 1 row and cast off.

### LEFT FRONT

Knit as Right Front, reversing shapings.

### TO MAKE UP

Press to yarn instructions. Sew inserts to front, matching W.Wl. markers. Sew shoulder seams. Sew in sleeves, then side and sleeve seams.

### BUTTON BAND

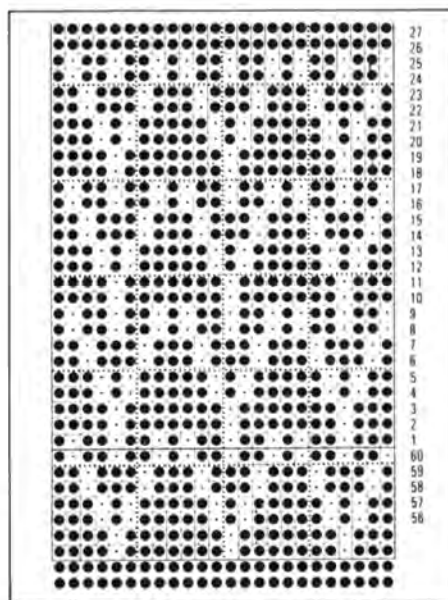
Cast on 139 sts. as 1x1 rib. T.3/3. Knit 10 rows. Trans. to st.st. With wrong side of left front facing, pick up and place on Ns. 139 sts. evenly along front to neck shaping. Knit 1 loose row and cast off.

### BUTTONHOLE BAND

Mark pos. on Button Band for 8 buttons (the 9th to come in neckband) over 2 sts. on row 6.

### NECKBAND

Cast on 119 (121, 123, 125) sts. as 1x1 rib, T.3/3. Knit 5 rows. Make buttonhole on left over Ns. 4 and 5. Knit 5 rows. Trans. to st.st. With wrong side facing, pick up and place on Ns. 119 (121, 123, 125) sts. evenly round neck. Knit 1 loose row and cast off. Press all seams. Sew on buttons. Sew on braid as shown.



# Lady's Button-up Cardigan with Pearls

Machines  
All M/C's

(See page 8)

### Materials

8 (8, 9, 9) balls ROBIN Aurora 4 ply.  
8 Buttons.

### MEASUREMENTS

To fit bust: 81 cm (32"), 86 cm (34"), 91 cm (36"), 97 cm (38"), 102 cm (40").

Length to top of shoulder: 60 cm (23 1/2"), 61 cm (24"), 62 cm (24 1/2"), 63 cm (23 1/2"), 64 cm (25 1/2").

Sleeve seam: 46 cm (18").

### TENSION

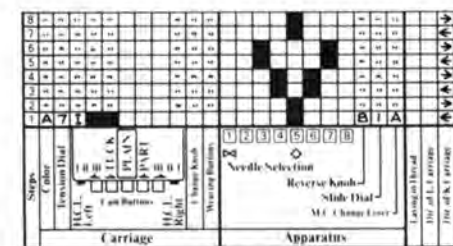
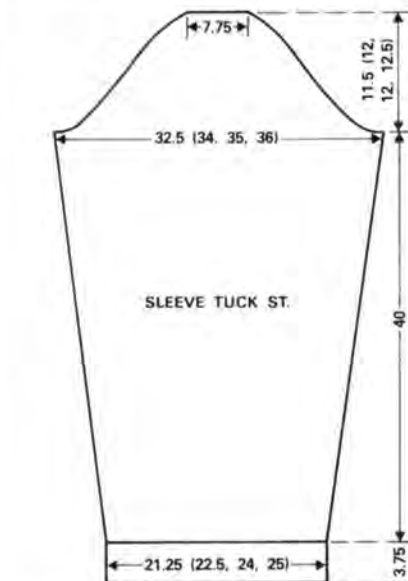
Always check tension before commencing.  
30 sts. and 43 rows = 10 cm (4") over st.st.  
Success depends on working to correct tension.

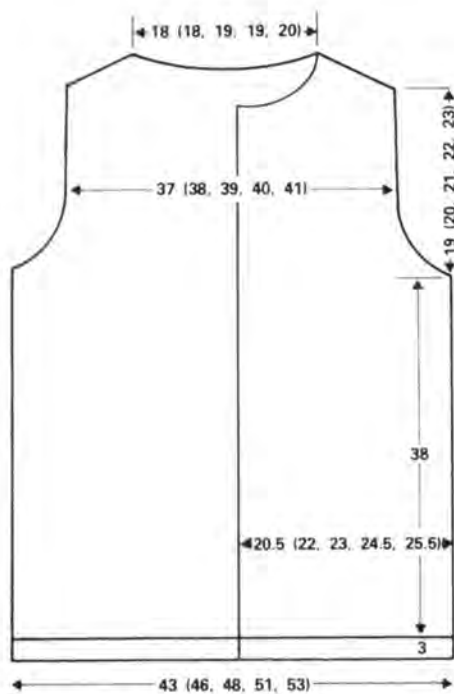
### NOTES

Unless otherwise stated, all wels can be knitted using a ribbing attachment. T.4. Knit half the amount of rows given.

### BACK

Using W.Wl., cast on 129 (137, 143, 151, 159) sts. as 2x1 mock rib. Knit a few rows, ending with C.O.R. R.C.000. T.3. Using M. Knit 20 rows. T.10. Knit one row. T.3. Knit 20 rows. Make a hem and knit the row. C.O.R. T.6. R.C.000. Knit 164 rows.





#### Shape Armholes

C.O.R. R.C.000. Cast off 3 sts. at beg. of next 2 rows and 2 sts. at beg. of foll. 2 rows. Dec. one st. at each end of next 3 (5, 7, 8, 9) rows, then at each end of next 1 (1, 1, 3, 4) alt. rows. 111 (115, 117, 119, 123) sts. Work straight to 82 (86, 90, 94, 98) rows.

#### Shape Shoulders and Back Neck

C.O.R. Using a spare length of yarn, cast off centre 33 (33, 35, 35, 37) sts. Push the 39 (41, 41, 42, 43) sts. at left to H.P. and work on the 39 (41, 41, 42, 43) sts. at right. Cast off 4 (5, 5, 5, 5) sts. at beg. (armhole edge) of next row, 5 sts. at beg. of foll. 2 alt. rows, 5 (5, 5, 5, 6) sts. at beg. of next alt. row, 5 (5, 5, 6, 6) sts. at beg. of foll. alt. row and 5 (6, 6, 6, 6) sts. at beg. of next alt. row, AT THE SAME TIME, knit one row. Cast off 2 sts. at neck edge on next and every foll. alt. row 5 times in all. Return sts. at left to W.P. and complete to correspond with first side, reversing all shapings.

#### RIGHT FRONT

Using W.Wl., cast on 61 (65, 67, 71, 75) sts. as 2 x 1 mock rib and work welt as given for Back.

T.6. R.C.000. Knit 164 rows in st.st.

#### Shape Armhole

C.O.R. R.C.000. Cast off 3 sts. at beg. of next row. Work one row. Cast off 2 sts. at beg. of next row. Work one row. Dec. one st. at armhole edge on next 3 (5, 7, 8, 9) rows, then on next 1 (1, 1, 3, 4) alt. rows. 52 (54, 54, 55, 57) sts. Knit straight to 51 (55, 59, 63, 67) rows.

#### Shape Neck

C.O.L. Cast off 10 sts. at beg. of next row. Knit one row. Dec. one st. at neck edge on next 6 rows, then every alt. row 7 (7, 7, 7, 8) times. 29 (31, 31, 32, 33) sts. Work straight to 82 (86, 90, 94, 98) rows.

#### Shape Shoulder

C.O.R. Cast off 4 (5, 5, 5, 5) sts. at beg. of next row, 5 sts. at beg. of foll. 2 alt. rows, 5 (5, 5, 5, 6) sts. at beg. of next alt. row, 5 (5, 5, 6, 6) sts. at beg. of next alt. row and rem. 5 (6, 6, 6, 6) sts. at beg. of next alt. row.

#### LEFT FRONT

Work to correspond with Right Front, reversing all shapings.

#### SLEEVES

Using W.Wl., cast on 57 (59, 63, 65, 69) sts. as 2 x 1 mock rib and knit welt as given for Back.

C.O.R. T.6. R.C.000. Work in st.st., inc. one st. at each end of every 8 (8, 6, 6, 6) th row 21 (23, 24, 26, 27) times in all. 99 (105, 111, 117, 123) sts. Work to R.C.180.

#### Shape Top

Cast off 3 sts. at beg. of next 2 rows and 2 sts. at beg. of foll. 4 (6, 8, 10, 12) rows. Dec. one st. at each end of next and every foll. alt. row 21 (22, 23, 23, 24) times in all. Cast off 3 sts. at beg. of next 6 rows. Cast off rem. 25 (25, 25, 27, 27) sts.

#### NECKBAND

Sew shoulder seams. Using W.Wl., cast on 113 (113, 115, 115, 117) sts. Knit a few rows, ending with C.O.R. T.5. Using main yarn knit 12 rows. T.10. Knit one row. T.5. Knit 12 rows. Make a hem and knit the row. With wrong side facing, pick up 113 (113, 115,

115, 117) sts. evenly around neck edge and place on to Ns. T.10. Knit one row. Cast off.

#### BUTTON BAND

Using W.Wl., cast on 165 (169, 173, 177, 181) sts. Knit a few rows, ending with C.O.R. T.5. Using M., knit 12 rows. T.10. Knit one row. T.5. Knit 12 rows. With wrong side of Left Front facing, pick up 165 (169, 173, 177, 181) sts. evenly down front edge and place on Ns. T.10. Knit one row. Cast off.

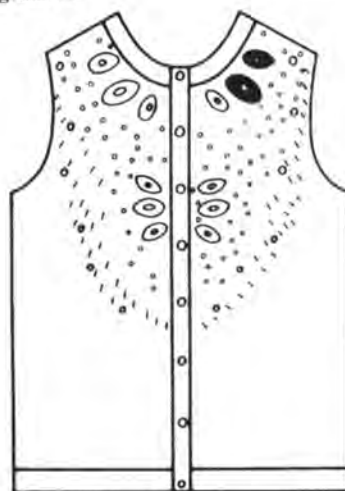
#### BUTTONHOLE BAND

First mark pos. for 8 buttons on button band. The first 1.5 cm above lower edge and the 8th 1.5 cm below neck edge. Work as given for Button Band, working buttonholes after working 6th and 19th rows.

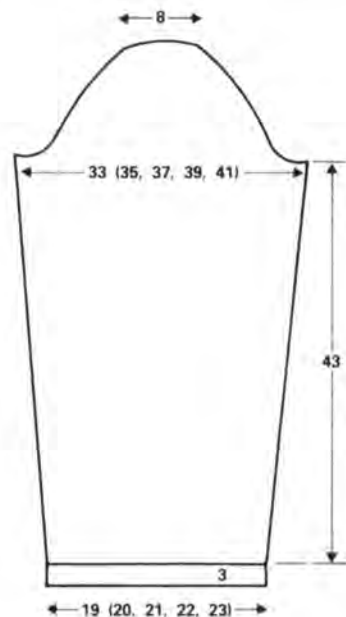
#### TO MAKE UP

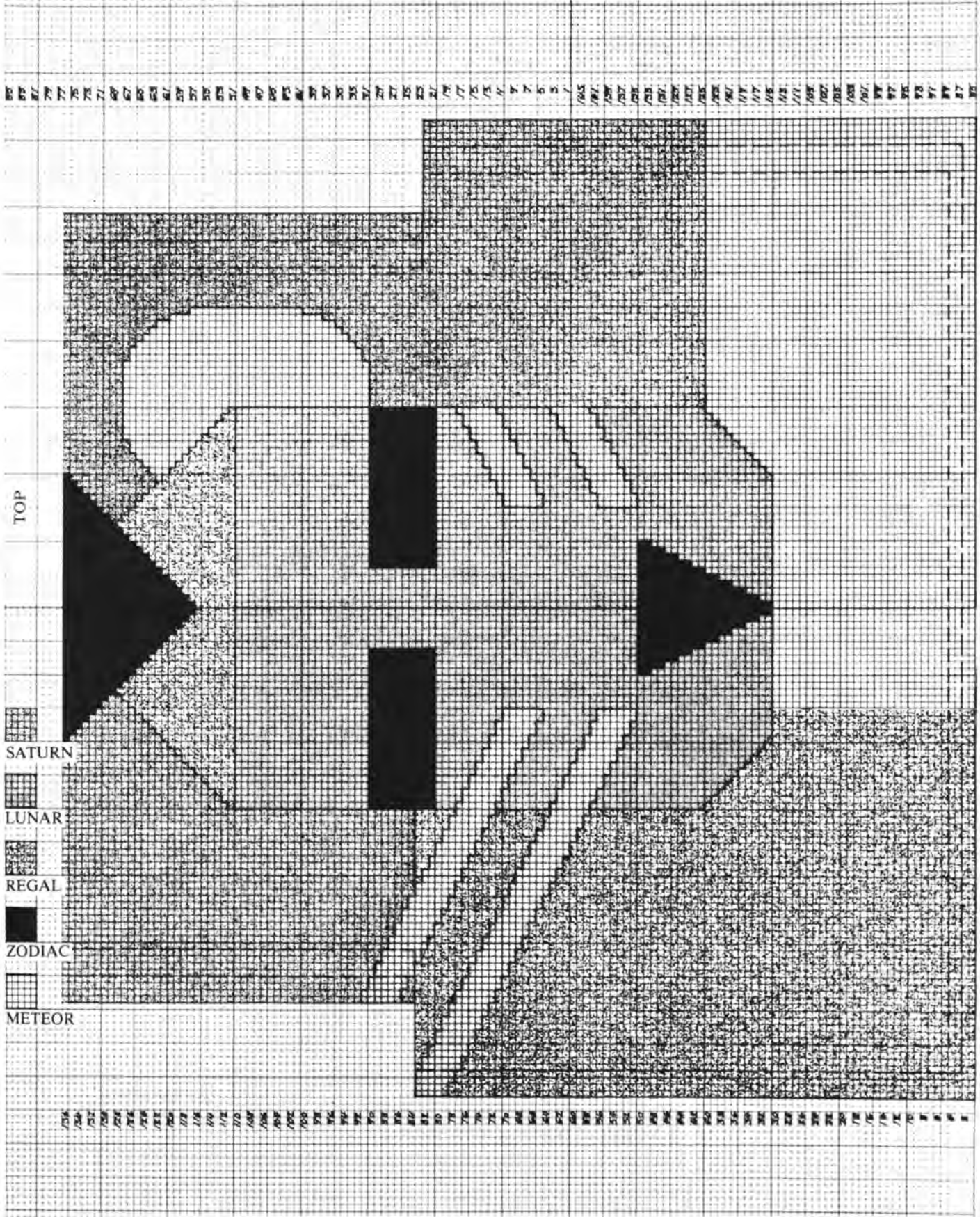
Sew up side and sleeve seams. Set in sleeves. Neaten edges of front borders. Sew on buttons to correspond with buttonholes. Press as instructions given on ball band.

#### Diagram A

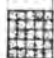
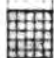


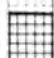


Using tacking thread mark out design foll. diagram and then attach pearl beads. (We used beads from Ells and Farrier Ltd., 5 Princes Street, London W1R 8PH.)





TOP

-  SATURN
-  LUNAR
-  REGAL
-  ZODIAC
-  METEOR

1 2 3 4 5 6 7 8 9 10 11 12 13 14 15 16 17 18 19 20 21 22 23 24 25 26 27 28 29 30 31

# African Mask Sweater

(See page 33)

## Machines

KH588, KH710, KH820, KH830, KH840, KH881, KH910. (For KH588 and KH710 lay in yarns as per instruction book, for KH820 and KH830 knit in sections pulling Ns. to H.P. and setting Carr. so that Ns. knit back, Carr. setting: push both Part Buttons; KH840, KH881 and KH910 use intarsia feed.)

## Materials

HAYFIELD Sirius D.K.  
8 (8, 9) 50 gm balls in Col. 1 (Saturn – rust)  
1 (1, 1) 50 gm ball in Col. 2 (Regal – blue)  
1 (1, 1) 50 gm ball in Col. 3 (Meteor – red)  
1 (1, 1) 50 gm ball in Col. 4 (Lunar – cream)  
1 (1, 1) 50 gm ball in Col. 5 (Zodiac – black).

## MEASUREMENTS

To fit bust (loosely): 81 cm (32"), 86 cm (34"), 91 cm (36").  
Length to shoulder: 62 cm (24½"), 63 cm (25"), 64 cm (25½").  
Sleeve seam: 44.5 cm (17½"), 46 cm (18"), 47.5 cm (18½").

## TENSION

Always check tension before commencing.  
24 sts. and 40 rows = 10 cm (4") over st.st.  
(Approx. T.9.)  
Success depends on working to correct tension.

## NOTE

All welts may be knitted without a ribbing attachment. Arrange Ns. as for 2 × 1 mock rib, cast on with W.WI. and knit twice the amount of rows stated at T.6. Turn up and make a hem.

## BACK

Using Col. 1 cast on 109 (117, 125) sts. as 1 × 1 true rib. T.6/5. R.C.000. Knit 24 rows. Change to W.WI. and knit a few rows. Remove from M/C. Replace sts. for st.st., inc. 21 sts. evenly across the row. 130 (138, 146) sts.\* T.9. R.C.000. Cont. in Col. 1 and knit to R.C.144.

## Shape Armholes

R.C.000. Cast off 14 sts. at beg. of next 2 rows. 102 (110, 118) sts. Knit straight to R.C.80 (84, 88). C.O.R.

## Neck Edge

Trans. sts. for 1 × 1 true rib. T.6/5. R.C.000. Knit 10 rows. Cast off.

## FRONT

Knit as given for back to\* T.9. R.C.000. Knit in Col. 1 to R.C.40. Begin Intarsia foll. chart and working shapings as Back. When Intarsia is complete, cont. in Col. 1 only and complete as Back.

## RIGHT SLEEVE

With Col. 1, cast on 51 (55, 59) sts. as 1 × 1 true rib. T.6/5 R.C.000. Knit 24 rows. Change to W.WI., knit a few rows and remove from M/C.  
Replace sts. for st.st., inc. 19 sts. evenly across the row. 70 (74, 78) sts. T.9. R.C.000. Cont. in Col. 1, inc. 1 st. at each end of 10th and every foll. 5th row 27 times in all. 124 (128, 132) sts. AT THE SAME TIME at R.C.20 knit triangular motif as follows: Work triangle shape as for "mouth" on main chart (20 sts. × 20 rows) at centre of sleeve, using Col. 2. R.C.40.  
When shaping is complete, knit straight to R.C.156 (160, 164). C.O.R. Mark each end of next row with a thread and knit a further 22 rows. Cast off.

## LEFT SLEEVE

Knit as given for right sleeve, knitting motif commencing at R.C.100 using Col. 3 at centre.

## TO MAKE UP

Overlap front neck edge over back neck edge and sew in pos. (10 rows overlap) and join top edges of sleeves to armhole edges, with 22 rows above markers joining cast off sts. of armhole shaping. Join side and sleeve seams. Press as instructions given on ball band.

# Classic Cardigans and Sweaters

(See pages 34 and 35)

## Machines

All M/C's.

## Materials

ARGYLL Thermo Warm 4-ply.  
Cardigans: 185 (200, 215, 230, 245) gms. Oddments of Con. Col. if required. 5 Buttons for V-Neck and 7 Buttons for round neck.

Sweater: 180 (195, 210, 225, 240) gms.

## MEASUREMENTS

To fit chest: 76 cm (30"), 81 cm (32"), 86 cm (34"), 91 cm (36"), 96 cm (38").  
Length: 49 cm (19½"), 54 cm (21½"), 58 cm (23"), 61 cm (24"), 63 cm (25").  
Sleeve seam: 39 cm (15½"), 42 cm (16½"), 44 cm (17½"), 44 cm (17½").

## TENSION

Always check tension before commencing.  
St.st. 31 sts. and 39 rows = 10 cm (4").  
Approx. T.7.  
Success depends on working to correct tension.

## NOTE

Unless otherwise stated welts may be knitted using 2 × 1 mock rib and working twice the number of rows given. Stripes on welts may be inserted if desired. Work motif of your choice on pocket.

## V-NECK CARDIGAN

### BACK

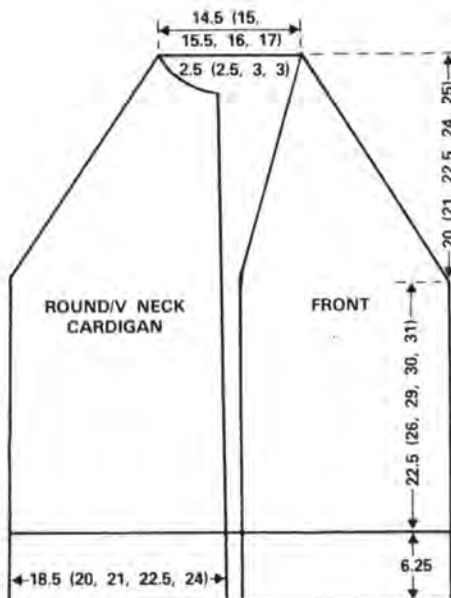
Cast on 125 (133, 141, 149, 157) sts. as 1 × 1 rib. T.3/3. Knit 24 rows. Trans. to st.st. R.C.000. T.7. Knit to 88 (102, 112, 118, 122) rows. R.C.000\*.

### Shape Raglan Armholes

Cast off 4 (4, 4, 5, 5) sts. at beg. of next 2 rows. Using 3-st. tool dec. 1 st. at each end of next and every foll. 3rd row 9 times in all, then every alt. row 23 (24, 27, 29, 32) times. Dec. 1 st. at each end of next 4 (6, 6, 6, 6) rows. Slip sts. on to W.WI. for Round Neck Cardigan. Cast off sts. for V-Neck Cardigan.

### RIGHT FRONT

Cast on 58 (62, 66, 70, 74) sts. as 1 × 1 rib. Knit as Back to\*.





### Shape Raglan Armhole and Front Neck

Cast off 4 (4, 4, 5, 5) sts. at beg. of next row. Knit 1 row. Working raglan shaping as given for Back, AT THE SAME TIME, using 2-st. tool dec. 1 st. at neck edge on next and every foll. 4th row 13 (15, 15, 17, 17) times in all, then every 6th row 3 (2, 3, 2, 3) times. 8 (10, 10, 11, 11) sts. rem. Cont. raglan decs. until 6 (8, 8, 8, 8) sts. rem. Dec. 1 st. on every row until 4 sts. rem. Dec. 1 st. at neck edge only on next 2 rows. Cast off.

### LEFT FRONT

As Right Front, reversing shapings.

### SLEEVES

Cast on 63 (65, 67, 69, 71) sts. as 1 × 1 rib. T.4/4. Knit 24 rows. Trans. to st.st. R.C.000. T.7. Knit 6 rows. Inc. 1 st. at each end of next and every foll. 7th (8th, 7th, 7th, 6th) row 6 (12, 10, 15, 17) times in all, then every foll. 8th row 9 (4, 8, 4, 4) times. 93 (97, 103, 107, 113) sts. Knit to 126 (136, 146, 146) rows, or length required. R.C.000.

### Shape Raglan Top

Cast off 4 (4, 4, 5, 5) sts. at beg. of next 2 rows. Using 3-st. tool dec. 1 st. at each end of next and every foll. 3rd row 7 times in all, then every alt. row until 15 sts. rem. Slip sts. onto W.Wl. for Round Neck Cardigan. Cast off sts. for V-Neck Cardigan.

### POCKETS (Optional)

C.O.B.H. 30 sts. T.7. Knit 30 rows or rows required, working motif of your choice. Knit 6 rows in st.st. Cast off.

### FRONT BAND

Mark pos. on one front for 5 buttons. Cast on 15 sts. as 1 × 1 rib. T.3/3. Knit, making buttonholes over centre 2 sts. to match markers. Cont. straight until band fits along fronts, sleeve tops and back neck. Cast off.

### TO MAKE UP

Join raglan seams, then sew side and sleeve seams. Sew front band in pos. Sew on Pocket. Press seams. Sew on buttons.

## ROUND NECK CARDIGAN

### BACK AND SLEEVES

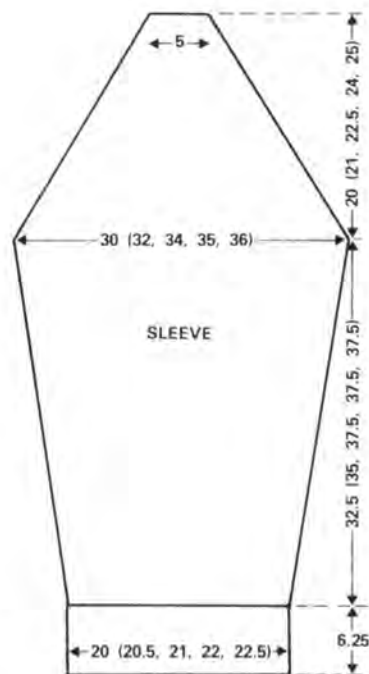
As V-Neck Cardigan. Work stripes on welts if desired.

### RIGHT FRONT

Knit as V-Neck Cardigan to \*.

### Shape Raglan Armhole

Cast off 4 (4, 4, 5, 5) sts. at beg. of next row. Knit 1 row. With 3-sts. tool dec. 1 st. at raglan edge on next and every foll. 3rd row 9 times in all, then every alt. row until 31 (34, 36, 38, 40) sts. rem. C.O.L.



### Shape Neck

Cast off 6 (7, 7, 8, 8) sts. at beg. of next row \*\*. Cont. raglan decs. AT THE SAME TIME, dec. 1 st. at neck edge on next 7 rows, then every alt. row until 8 (10, 10, 11, 11) sts. rem. Cont. raglan decs. only until 6 (8, 8, 8, 8) sts. rem. Dec. 1 st. on every row until 4 sts. rem. Dec. 1 st. at neck edge only on next 2 rows. Cast off.

### LEFT FRONT

As Right Front, reversing shapings.

### NECKBAND

Mock rib. Knit same number of rows as given.

Cast on 121 (127, 133, 139, 145) sts. as 1 × 1 rib T.3/3. Knit 20 rows. Trans. to st.st. With wrong side facing pick up 23 (25, 27, 29, 31) sts. up each front and place sts. from sleeves and back on to Ns. T.10. Knit 1 row and cast off.

### BUTTON BAND

Fold neckband to inside and sew in place. With W.Wl. cast on 121 (127, 133, 139, 145) sts. Knit several rows C.O.R. Change to M. T.6. Knit 25 rows. Make a hem and knit the row. With wrong side of one front facing pick up sts. evenly along front to top of neckband. T.10. Knit 1 row and cast off.

### BUTTONHOLE BAND

Mark pos. on button band for 7 buttons. Knit as Button Band making buttonholes to match markers, over 4 sts. on rows 6 and 20.

### TO MAKE UP

Join raglan seams, then sew side and sleeve seams. Press seams. Neaten buttonholes and sew on buttons.

## V-NECK SWEATER

### BACK AND SLEEVES

As V-Neck Cardigan, but putting rem. sts. on to W.Wl. and release from M/C.

### FRONT

As Back of V-Neck Cardigan to \*.

### Shape Raglan Armhole and Divide for Neck

Cast off 4 (4, 4, 5, 5) sts. at beg. of next 2 rows. Trans. centre st. to adjacent N. and push N. to N.W.P. Push Ns. at left to H.P. Knit on rem. sts. Working raglan shaping as Back, AT THE SAME TIME, with 2-st. tool dec. 1 st. at neck edge on every foll. 3rd row 14 (16, 14, 16, 14) times in all, then every 4th row 6 (5, 8, 7, 10) times. 8 (10, 10, 11, 11) sts. rem. Cont. raglan decs. only until 6 (8, 8, 8, 8) sts. rem. Dec. 1 st. on every row until 4 sts. rem. Dec. 1 st. at neck edge only on next 2 rows. Cast off. C.O.L. Knit to match right side.

### BACK NECKBAND

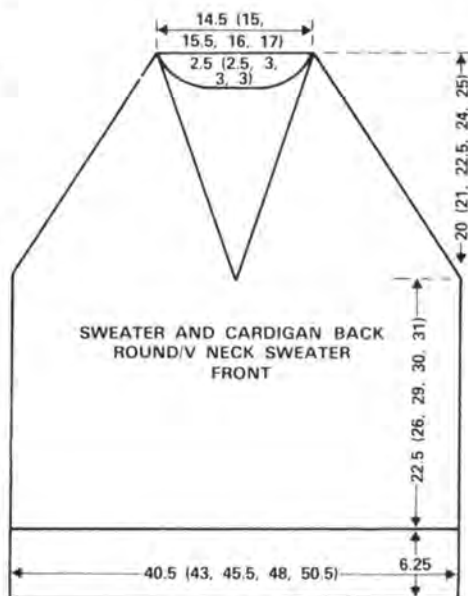
Cast on 45 (47, 49, 51, 53) sts. as 1 × 1 rib. T.3/3. Knit 12 rows. Trans. to st.st. With wrong side of back facing, replace sts. on Ns. T.10. Knit 1 row and cast off.

### FRONT NECKBAND

Cast on 71 (74, 78, 81, 85) sts. as 1 × 1 rib. T.3/3. Knit 12 rows. Trans. to st.st. With wrong side of front facing, pick up and place on Ns. 56 (59, 63, 66, 70) sts. from one side of neck and 15 sts. from 1 sleeve. T.10. Knit 1 row and cast off. Knit other side to match.

### TO MAKE UP

Join raglan sleeves, then sew side and sleeve seams. Fold left front band over right at Vee and catch down. Press seams.



## ROUND NECK SWEATER

### BACK AND SLEEVES

As V-Neck Cardigan putting rem. sts. on to W.WI, and release from M/C.

### FRONT

As Back of V-Neck Cardigan to \*.

### Shape Raglan Armholes

Cast off 4 (4, 4, 5, 5) sts. at beg. of next 2 rows. Using 3-st. tool dec, 1 st. at each end of next and every foll. 3rd row 9 times in all, then every alt. row 14 (15, 17, 18, 20) times. 71 (77, 81, 85, 89) sts. rem.

### Shape Neck

Cast off centre 21 (23, 23, 25, 25) sts. and push Ns. at left to H.P. Knit on rem. sts. Knit as Right Front of Round Neck Cardigan from \*\* to end. C.O.L. Knit to match right side, reversing shapings.

### NECKBAND

Mock rib. Knit same number of rows as given.

Cast on 129 (135, 141, 147, 153) sts. T.3/3. Knit 20 rows. Trans. to st.st. With wrong side of work facing, replace on Ns. sts. of one sleeve, pick up 54 (58, 62, 66, 70) sts. round front neck, sts. of 2nd sleeve and back neck. T.10. Knit 1 row and cast off.

### TO MAKE UP

Join raglan seams, then sew side and sleeve seams. Turn neckband to inside and sew in place. Press seams.

## Hat and Scarf

(See pages 34 and 35)

### Machines

Any M/C.

### Materials

ARGYLL Thermo Warm 4-ply.

**Hat:** M- 50 (60, 70, 80, 90) gms. Oddment of Con. Col.

**Scarf:** M- 120 gms. Oddment of Con. Col.

### TENSION

Always check tension before commencing. 31 sts. and 39 rows = 10 cm (4"). Approx. T.7.

Success depends on working to correct tension.

### NOTE

Work stripes on rib as given in Cardigan if required.

### HAT

Cast on 139 (147, 155, 155, 155) sts. as 1x1 rib. T.2/2. Knit 46 rows. Trans. to st.st. R.C.000. T.7. Knit 64 (64, 68, 68, 68) rows. Trans. alt. sts. to adjacent Ns. all along row. T.4. Knit 1 row. Slips sts. on to knitting needle. K2 tog. all along row. Break length of yarn and pull thread through loops.

### TO MAKE UP

Pull thread tightly and fasten securely, then sew seam. Make pom-pom and sew to top. Press seams. Turn rib over 3 times to outside.

### SCARF

Work a band of stripes at each end, or knit plain as desired. C.O.B.H. 108 sts. R.C.000. T.7. Knit 488 rows (Approx. 127 cm (50")). Cast off.

### TO MAKE UP

Join long seam and both ends. Make a fringe of 10 cm (4") long and attach to each end. Trim fringe.

## Lurex Evening Sweater

(See page 36)

### Machines

All M/C's.

### Materials

Gold Lurex. 2-ply, approx. 400 (410, 420, 430) gms.

### MEASUREMENTS

To fit bust: 81 cm (32"), 86 cm (34"), 91 cm (36"), 96 cm (38").

Length: 53.5 cm (21"), 56 cm (22"), 58.5 cm (23"), 61 cm (24").

Sleeve seam: 44 cm (17 1/2"), 44.5 cm (17 1/4"), 45 cm (17 1/2"), 45.5 cm (18").

### TENSION

Always check tension before commencing. 36 sts. and 63 rows = 10 cm (4") over Tuck Stitch. (Approx. T.5.)

Success depends on working to correct tension.

### NOTES

For punchcard M/Cs. punch card as diagram. For other models, foll. chart. Instructions are given for M/Cs. with ribbing attachment, but mock rib may be substituted.

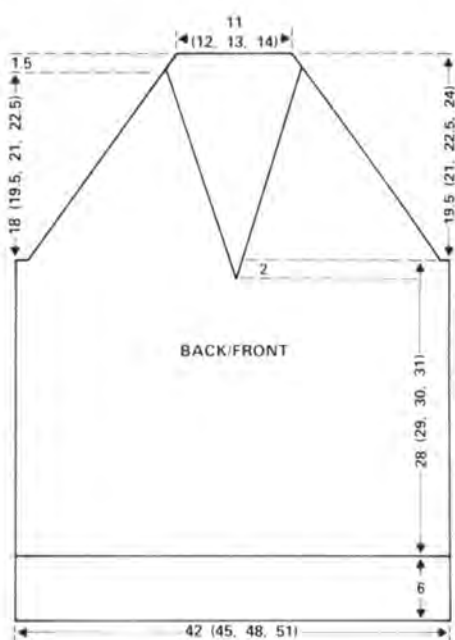
### NEEDLE ARRANGEMENT



Stitches in N.W.P. are not counted when shaping.

### BACK

Insert card into M/C and lock on row 1. Cast on 151 (161, 171, 181) sts. for 1x1 rib. R.C.000. T.1/1. Rib 30 rows. Trans. sts. to M.B. Trans. every 4th st. to adjacent N. as



per diagram, leaving empty Ns. in N.W.P. 113 (121, 129, 137) Ns. in W.P. R.C.000. T.5. Release card and work in Tuck St. to R.C. 178 (184, 190, 196).

### Shape Raglan

R.C.000. Cast of 3 sts. at beg. of next 2 rows. Knit 2 rows. Dec. one st. at each end of next and every foll. 4th row 4 (7, 10, 13) times, then every foll. 3rd row 35 (34, 34, 33) times. Knit straight to R.C. 124 (134, 144, 154). Cast off rem. 29 (33, 35, 39) sts.

### FRONT

Work as given for Back to R.C. 166 (172, 178, 184). C.O.R.

### Shape Front Neck

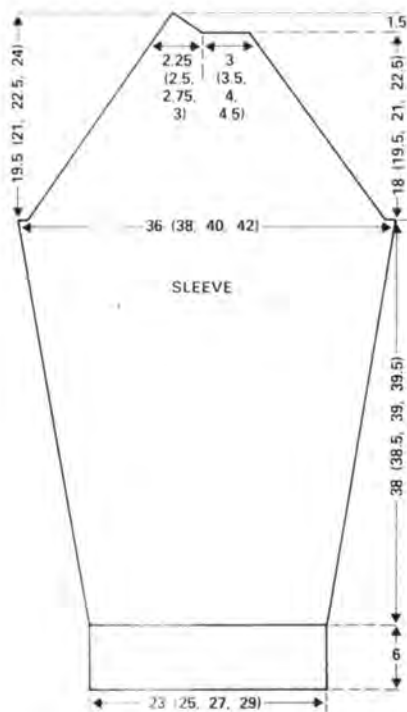
Using W.WI., knit a few rows over the 56 (60, 64, 68) sts. at left. Release from M/C and work on the 57 (61, 65, 69) sts. at right. Dec. one st. at neck edge. Knit 10 (8, 8, 8) rows. Dec. one st. at neck edge on next and every foll. 10 (8, 8, 8.)th row 12 (14, 15, 17) times, AT THE SAME TIME, when R.C. reads 178 (184, 190, 196).

### Shape Raglan

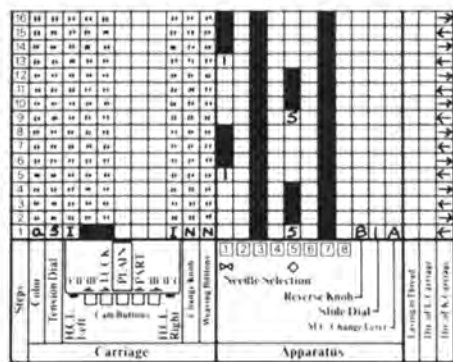
R.C.000. C.O.R. Cast of 3 sts. at beg. of next row. Dec. one st. at beg. of every foll. alt. row 5 (1, 0, 0) times, then every foll. 3rd row 34 (40, 44, 44) times, then every foll. 4th row 0 (0, 0, 2) times. Work straight to R.C. 114 (124, 134, 144). Fasten off. Replace sts. from other half of neck back on to M/C, re-set card and complete as given for first half, reversing all shapings.

### RIGHT SLEEVE

Re-set card and lock on row 1. Cast on 83 (89, 91, 97) sts. for 1x1 rib. R.C.000. T.1/1. Rib 30 rows. Trans. sts. to M.B. Trans. sts. as per diagram, 63 (67, 69, 73) sts. in W.P.



R.C.000 1  $\times$  1 release card and work in Tuck pat. to R.C. 14. Inc. one st. at each end of next and every foll. 14th row 16 times in all. 95 (99, 101, 105) sts. Work straight to R.C. 240 (244, 248, 252).



### Shape Raglan

R.C.000. Cast off 3 sts. at beg. of next 2 rows. Knit 2 rows. Dec. one st. at each end of next and every foll. 4th row 16 (16, 19, 20) times, then every foll. 3rd row 16 (19, 18, 20) times. Work straight to R.C.114 (124, 134, 144). Cast off 15 (13, 12, 10) sts. at beg. of next row. Work one row. Dec. one st. at each end of next and foll. alt. rows 3 times in all. Knit R.C.124 (134, 144, 154). Fasten off. Work Left Sleeve to correspond, reversing shapings.

### TO MAKE UP

Join raglan seams. Join side and sleeve seams. Work 2 rows of double crochet and one row of Shells evenly around neck edge.

# Zebra Sweater

(See page 37)

### Machines

KH588, KH710, KH820, KH830, KH840, KH881, KH910. (For KH588 and KH710 lay in yarns as per instruction book, for KH820 and KH830 knit in sections pulling Ns. to H.P. and setting Carr. so that Ns. knit back, Carr. setting: push both Part Buttons; KH840, KH881 and KH910 use intarsia feed.)

### Materials

HAYFIELD Machine Knit:  
1 cone each of Black and White.

### MEASUREMENTS

To fit bust (loosely): 81 cm (32"), 86 cm (34"), 91 cm (36"), 96 cm (38").  
Length to shoulder: 62 cm (24½"), 62 cm (24½"), 65 cm (25½"), 65 cm (25½").  
Sleeve seam: 46 cm (18") all sizes.

### TENSION

Always check tension before commencing.  
36 sts. and 50 rows = 10 cm (4") measured over st.st. (Approx. T.4.)  
Success depends on working to correct tension.

### NOTE

All welts may be knitted without a ribbing attachment. Arrange Ns. for 2  $\times$  1 mock rib, knit twice the amount of rows stated at T.2., turn up and make a hem, except for the neckband.

### BACK

Using White, cast on 119 (129, 139, 149) sts. as 1  $\times$  1 true rib. T.2/2 R.C.000. Knit 30 rows. Trans. sts. for st.st. Change to W.Wl. Knit a few rows and remove from M/C. Replace sts. for st.st., inc. 41 sts. evenly across the row. 160 (170, 180, 190) sts. C.O.R. T.4. R.C.000. \*\* \*Change to Black, knit 10 rows. Change to White, knit 10 rows. \* Repeat from \* to \* to R.C.180. C.O.R.

### Shape Armholes

R.C.000. Keeping continuity of stripes, cast off 10 sts. at beg. of next 2 rows. Knit in stripes to R.C. 100 (100, 112, 112).

### Shape Shoulders

Still keeping continuity of stripes, cast off 11 (12, 13, 14) sts. at beg. of next 6 rows. Cast off 10 (11, 12, 13) sts. at beg. of next 2 rows. Using W.Wl., knit a few rows across rem. 54 (56, 58, 60) sts. and remove from M/C.

### FRONT

Knit as given for Back to \*\*. With Black knit 30 rows. Working in Intarsia from chart, work within outline of required size as indicated. Work to 180 rows.

### Shape Armhole

Cont. with chart, cast off 10 sts. at beg. of next 2 rows. When Intarsia is completed, cont. in White only. Knit to 72 (72, 76, 76) rows.

### Shape Neck

Push 91 (97, 103, 109) Ns. at left to H.P. and work on rem. 49 (53, 57, 61) sts. Knit 1 row. With 2 st. trans. tool, dec. 1 st. at neck edge on next 6 rows. 43 (47, 51, 55) sts. rem. Knit to 100 (100, 112, 112) rows.

### Shape Shoulder

Cast off 11 (12, 13, 14) sts. at beg. of next and alt. rows until 10 (11, 12, 13) sts. rem. Knit 1 row and cast off. With W.Wl. knit across 42 (44, 46, 48) centre sts. and remove from M/C. Rejoin yarn at left and knit to match right side reversing shapings.

### SLEEVES

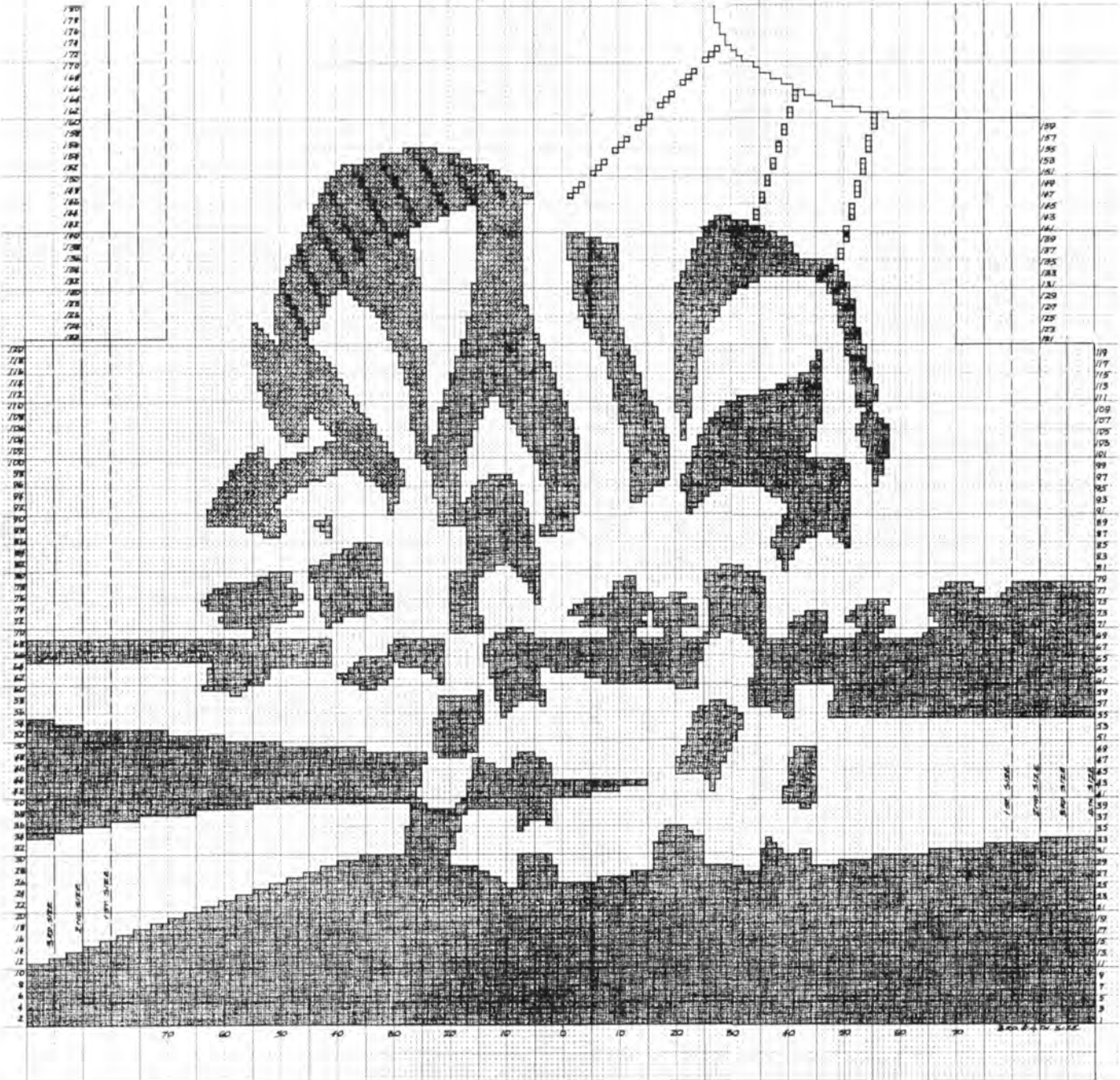
With White cast on 72 (76, 80, 84) sts. as 1  $\times$  1 true rib. T.2/2 R.C.000. Knit 30 rows. Remove from M/C. Replace sts. on Ns. inc. 14 sts. evenly along the row. 86 (90, 94, 98) sts. T.4. R.C.000. Cont. in stripes as Back, knit 6 rows. Inc. 1 st. at each end of next and every foll. 6th row 32 times in all. 150 (154, 158, 162) sts. Knit to 200 rows. Mark each end with W.Wl. and knit a further 12 rows. Cast off loosely.

BLACK

WHITE

EMBROIDER  
IN WHITE

EMBROIDER  
IN BLACK



## NECKBAND

Join one shoulder seam. With right side of work facing, pick up 142 (146, 162, 166) sts. along neckline, place picked up sts. on to Ns. T.10. Knit 1 row. Trans. sts. as for 1 x 1 true rib. T.2/2. Knit 40 rows. Trans. sts. for st.st. T.4. Knit 3 rows. Change to W.Wl., knit a few rows and release from M/C.

## TO MAKE UP

Join shoulder and collar seams. Join top edges of sleeves to armhole edges with rows above markers joining cast off sts. at armhole shapings. Join side and sleeve seams. Fold neckband in half to right side, undo W.Wl. and back stitch last row of M. through loops to main garment. Press according to instructions on yarn label.

# Baby's Magyar Cardigan in Two Colour Tuck Stitch

(See page 38)

## Machines

All M/Cs Colour changer useful.

## Materials

WENDY Peter Pan 3-ply. 2 (2, 3) 20 gm. balls White. 2 (2, 3) 20 gm. balls Peach. Ribbon.

## MEASUREMENTS

To fit chest sizes: 46 cm (18"), 51 cm (20"), 56 cm (22").

Length to back neck: 24 cm (9 1/2"), 27 cm (10 1/2"), 29 cm (11 1/2").

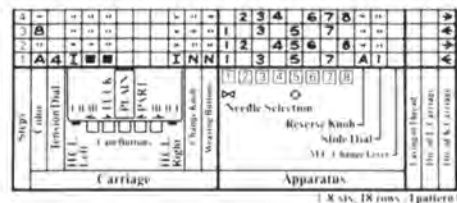
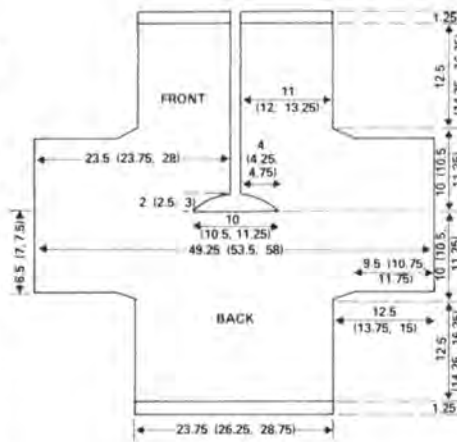
Sleeve seam: 13 cm (5"), 14 cm (5 1/2"), 15 cm (6").

## TENSION

Always check tension before commencing. Tuck St. 27 sts. and 86 rows = 10 cm (4"). (Approx. T.4.) Card 3D from K.H. 830 set. Success depends on working to correct tension.

## BEGIN AT BACK

Insert card. With W.Wl. cast on 65 (71, 77) sts. Knit several rows. C.O.R. \* Change to Peach. T.4. Knit 3 rows. Push every 4th N. to H.P. and knit 5 rows. Push Ns. to W.P. and knit 3 rows. Make a hem and knit the row\*. R.C.000. T.4. Set for tuck st. Knitting 2 rows in White and 2 rows in Peach, knit to 108 (124, 140) rows.



## Shape Sleeves

Inc. 1 st. at each end of next and foll. 4th rows 8 times in all. Knit 1 row. Cast on 26 (29, 32) sts. at beg. of next 2 rows. (For the first 2 rows knit the cast on sts. in st. st.). 133 (145, 157) sts. Knit to 194 (216, 238) rows. R.C.000.

## Shape Neck and Right Front

Cast off centre 27 (29, 31) sts. and push Ns. at left to H.P. Knit on rem. 53 (58, 63) sts. Knit 3 rows. Inc. 1 st. at left (neck edge) on next and every foll. 4th rows 3 (4, 5) times in all, then every foll. alt. rows 3 times. Knit 1 row. Cast on 5 sts. at neck edge at beg. of next row. 64 (70, 76) sts. Knit to 56 (62, 68) rows. C.O.R.

## Shape Sleeve

Cast off 26 (29, 32) sts. at beg. of next row. Knit 1 row. Dec. 1 st. at beg. of next and foll. 4th rows 8 times in all. 30 (33, 36) sts. rem. Knit to 194 (216, 238) rows. Remove from M/C reverse work and replace on Ns. Change to Peach. Knit 3 rows. Beg. at left push every 4th N. to H.P. and knit 5 rows. Push Ns. to W.P. and knit 3 rows. Cast off loosely.

## LEFT FRONT

Reset Ns. for tuck st. Rejoin yarn to neck edge and knit to match Right Front.

## CUFFS

With W.Wl. cast on 32 (36, 40) sts. Knit several rows, C.O.R. Knit as Back from \* to \*. With knit side of sleeve facing, pick up 32 (36, 40) sts. along sleeve edge and place on Ns. T.10. Knit 1 row and chain cast off.

## TO MAKE UP

Sew side and sleeve seams. Turn front hems to inside and sew in place. Using Peach, work 3 rows of double crochet round all outer edges then 1 row of crab st. Sew ribbon to front neck. Press seams.

# Baby's Tuck Stitch Dress

(See page 38)

## Machines

All M/Cs Colour changer useful.

## Materials

WENDY Peter Pan 3-ply White 3 (3, 4) x 20 gm. balls. Peach 2 (2, 3) x 20 gm. balls. 3 buttons.

## MEASUREMENTS

To fit chest: 46 cm (18"), 51 cm (20"), 56 cm (22").

Length to back neck: 30 cm (12"), 34 cm (13 1/2"), 38 cm (15").

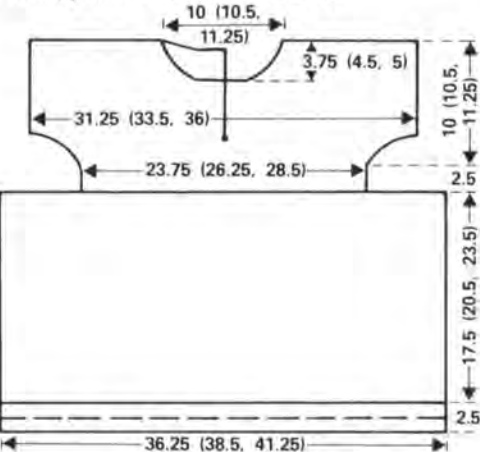
Sleeve seam: 5 cm (2").

## TENSION

Always check tension before commencing. Tuck St. 27 sts. and 86 rows = 10 cm (4") (Approx. T.4.) Card 3D from KH830 Set. Success depends on working to correct tension.

## BACK

Insert card. With W.Wl. cast on 97 (105, 113) sts. Knit several rows. C.O.R. \* Change to Peach. T.4. Knit 3 rows. Push every 4th N. to H.P. and knit 5 rows. Push Ns. to W.P. and knit 3 rows. Make a hem and knit the row \* R.C.000. T.4. Set for tuck st. \*\* Knit 10 rows White, 2 rows Peach. Rep. from \*\* to 154 (178, 202) rows. C.O.R. knit 1 row in st. st. Knit with W.Wl. and remove from M/C. Push 65 (71, 77) Ns. to W.P. Replace sts. onto Ns. Dec. 32 (34, 36) sts. along row. Knit 1 row st. st. C.O.R. Reset for tuck st. T.4. Working 2 rows in Peach and 2 rows in White, knit to 10 rows. R.C.000.



### Shape Sleeves

Inc. 1 st. at each end of next and every foll. 4th row 5 times in all, then every alt. rows 5 times 85 (91, 97) sts. Knit 1 row C.O.R. \*\*\*.

### Divide for Opening

Trans. centre st. to adjacent N. and push Ns. at left to H.P. Work on rem. sts. Knit to 77 (83, 89) rows.

### Shape Neck

Cast off 10 (11, 12) sts. at beg. of next row. Knit 1 row. Dec. 1 st. at neck edge on next and alt. rows 3 times. Knit 2 rows. Cast off rem. 29 (31, 33) sts. Rejoin yarn to centre sts. and knit to match right side, reversing shapings.

### FRONT

Knit as Back to \*\*\*. Knit to 54 rows.

### Shape Neck

Cast off centre 13 sts. and push Ns. at left to H.P. Work on rem. sts. Knit 2 rows. Dec. 1 st. at neck edge on next and every alt. rows 4 times in all, then every 4th row 3 (4, 5) times. 29 (31, 33) sts. rem. Knit to 86 (92, 98) rows. Cast off loosely. Rejoin yarn to neck edge and knit to match right side, reversing shapings.

### SLEEVE EDGING

Join shoulder seams. With W.Wl. cast on 34 (38, 42) sts. Knit several rows. Knit as Back from \* to \*. With knit side of work facing, pick up 34 (38, 42) sts. evenly along sleeve edge and place on Ns. T.10. Knit 1 row and cast off.

### MAKE UP

Sew side and sleeve seams. With crochet hook and Peach work 3 rows double crochet round neck and back opening, and 1 row of crab st. making 3 loops on one side on last row. Sew on buttons. Press seams.

# Child's Dress — Coloured Squares

(See page 39)

### Machines

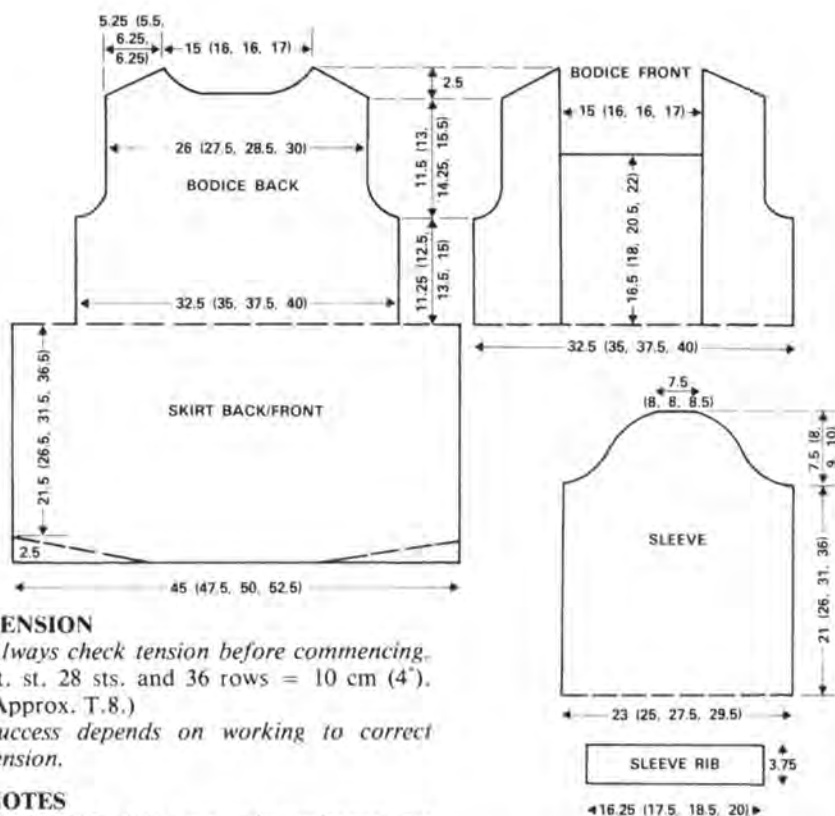
Any M/C. KH588, 710. Lay colours in by hand.

### Materials

ROBIN Aurora 4-ply: M — 4 (4, 4, 5) 50 gm. balls. 1 ball in each of 5 Con. Cols.

### MEASUREMENTS

To fit chest: 61 cm (24"), 66 cm (26"), 71 cm (28"), 76 cm (30").  
Length to top of shoulder: 56 cm (22"), 63 cm (25"), 71 cm (28"), 79 cm (31").  
Sleeve seam: 25 cm (10"), 30 cm (12"), 35 cm (14"), 41 cm (16").



### TENSION

Always check tension before commencing. St. st. 28 sts. and 36 rows = 10 cm (4"). (Approx. T.8.)  
Success depends on working to correct tension.

### NOTES

Single M/Cs. 2 × 1 mock rib can be used for rib and side fronts.

### SKIRT

#### BACK AND FRONT ALIKE

With M, C.O.B.H. 127 (133, 141, 147) sts. T.8 R.C.000. Knit 2 rows.

#### Curve Hem

Push 40 Ns. opposite to carr. to H.P. on next 2 rows. Push 10 Ns. back to U.W.P. on next 8 rows. R.C.12. Knit 2 rows. Dec. 1 st. at each end of next and every 7 (9, 10, 12)th row 11 times in all. 105 (111, 119, 125) sts. rem. Knit to 90 (108, 126, 144) rows or desired length (less 5 cm (2") for coloured hem). Knit with W.Wl. and release from M/C.

#### BACK BODICE

Push 90 (97, 105, 110) Ns. to W.P. C.O.L. With wrong side of work facing replace sts. of one skirt onto Ns. dec. 15 (14, 14, 15) sts. evenly along the row. With M. knit 1 row. R.C.000 T.8.\* Knit 40 (44, 50, 54) rows. R.C.000.

#### Shape Armholes

Cast off 4 (4, 5, 5) sts. at beg. of next 2 rows. Dec. 1 st. at each end of next 3 (3, 5, 5) rows, then every alt. row 2 (3, 2, 3) times. 72 (77, 81, 84) sts. rem. Knit to 42 (46, 52, 56) rows.

#### Shape Shoulders and Back Neck

Cast off 4 sts. at beg. of next 2 rows. Cast off centre 34 (37, 37, 40) sts. and push Ns. at left to H.P. Knit on rem. sts. Cast off 4 sts. at armhole edge on next and alt. rows, AT THE SAME TIME, dec. 1 st. at neck edge on next

4 rows. Cast off rem. 3 (4, 6, 6) sts. C.O.L. Rejoin yarn and knit to match right side.

### FRONT

Knit as Back to \*. Knit with W.Wl. and release from M/C.

#### Centre Panel

Push 42 (45, 45, 48) Ns. to W.P. With wrong side of front facing pick up centre 42 (45, 45, 48) sts. and place on Ns. Inc. 1 st. at each side. 44 (47, 47, 50) sts.

**Square Sequence** — 1st and 3rd squares. 15 (16, 16, 17) sts. Centre square 14 (15, 15, 16) sts. Knit 12 (13, 15, 16) rows for each square. 1st Squares. Pink/White/Pink.

2nd Squares. White/Maize/White.

3rd Squares. Almond/White/Almond.

4th Squares. White/Rose/White.

5th Squares. Lemon/White/Lemon.

60 (65, 75, 80) rows knitted in all. Knit with W.Wl. and release from M/C.

#### Side Panel

Push 24 (26, 30, 31) Ns. to W.P. With wrong side of front facing, pick up 24 (26, 30, 31) sts. on right of centre and place on Ns. Inc. 1 st. at left side. 25 (27, 31, 32) sts. Beg. at left trans. the 4th and every foll. 3rd st. to ribber (2 × 1) rib. T.5/5. R.C.000. Knit 40 (44, 50, 54) rows. R.C.000.

#### Shape Armhole

Cast off 4 (4, 5, 5) sts. at beg. of next row. Knit 1 row. Dec. 1 st. at right on next 3 (3, 5,

5) rows, then alt. rows 2 (3, 2, 3) times. 16 (17, 19, 19) sts. rem. Knit to 42 (46, 52, 56) rows, marking left side with W.Wl. on row 20 (21, 25, 26).

### Shape Shoulder

Cast off 4 sts. at beg. of next and alt. rows until 4 (5, 7, 7) sts. rem. Knit 1 row and cast off. C.O.L. Replace rem. sts. onto Ns. and knit to match right side.

### SLEEVES

With W.Wl. cast on 65 (71, 77, 83) sts. Knit several rows. C.O.R. Change to M. R.C.000. T.8. Knit to 76 (94, 112, 130) rows, or desired length. R.C.000.

### Shape Top

Cast off 4 (4,5,5) sts. at beg. of next 2 rows. Dec. 1 st. each end of next 5 rows, then alt. rows 7 (7, 9, 9) times. Dec. 1 st. each end of next 6 (8, 8, 10) rows. Cast off rem. 21 (23, 23, 25) sts.

### BACK NECKBAND

With wrong side of Back facing, pick up and place on Ns. 42 (45, 45, 48) sts. T.8. With M. knit 1 row. Trans. to 1 x 1 rib. T.4/4. Knit 9 rows. T.8/8. Knit 1 row. Trans. to st. st. and chain cast off.

### SIDE FRONT NECK

With wrong side of front facing, pick up and place on Ns. 21 (23, 25, 27) sts. along side edge from marker to top of shoulder. T.8. With M, knit 1 row. Trans. to 1 x 1 rib. T.4/4. Knit 2 rows. Dec. 1 st. at front corner on next and alt. rows 4 times in all. T.8/8. Knit 1 row. Trans. to st. st. and cast off. Knit other side to match.

### CENTRE FRONT

With wrong side of front facing, pick up and place on Ns. 42 (45, 45, 48) sts. from centre panel (dec. 1 st. at each side) Knit as side front edge, dec. at both ends.

### CUFFS

With M, cast on 45 (49, 53, 57) sts. as 1 x 1 rib. T.4/4. Knit 14 rows. Trans. to st. st. With wrong side of sleeve facing, pick up and place on Ns. sts. from base of sleeve, dec. 20 (22, 24, 26) sts. evenly along the row. Knit 1 loose row and cast off.

### STRIPED HEM

With M, cast on 30 sts. T.8. Knitting in stripes of 8 rows in each colour with white dividing each colour, knit for approx. 320 (336, 352, 368) rows. Cast off.

### MAKE UP

Press to instructions on ball band. Sew centre panel to side panels, then join mitred corners of rib. With sewing needle and yarn work 1 row of chain st. along mitre seam. Sew shoulder seams. Sew in sleeves, then side and sleeve seams. Sew on striped hem to lower edge, and rejoin ends. Fold in half to wrong side and sew in place. Press seams.

# His and Hers Tuck Stitch Sweaters

(See back Cover)

## Round Neck and Front Opening

### Machines

All M/Cs.

### Materials

ROBIN Reward 4 ply: 12 (13, 14, 16, 17, 20, 22) x 20 gm. balls. 3 Buttons.

## MEASUREMENTS

To fit bust/chest sizes: 81 cm (32"), 86 cm (34"), 91 cm (36"), 96 cm (38"), 102 cm (40"), 107 cm (42"), 112 cm (44"), 117 cm (46").

Length to top of shoulder: 63 cm (25"), 63 cm (25"), 65 cm (25½"), 65 cm (25½"), 67 cm (26½"), 67 cm (26½"), 67 cm (26½"), 67 cm (26½").

Sleeve seam: 44 cm (17½"), 44 cm (17½"), 44 cm (17½"), 46 cm (18"), 46 cm (18"), 47 cm (18½"), 47 cm (18½"), 48 cm (19").

### TENSION

Always check tension before commencing. Tuck St. 31 sts. and 45 rows = 10 cm (4") (Approx. T.7.)

Success depends on working to correct tension.

### NOTE

Always leave 2 end Ns. in W.P. Ns. in N.W.P. are included whenever shaping occurs. Unless otherwise stated 2 x 1 mock rib may be used by knitting twice the number of rows given.

## ROUND NECK SWEATER

Needle setting:

11111.1.1111111111.1.11111

1 = N. in W.P. = N. in N.W.P.

### BACK

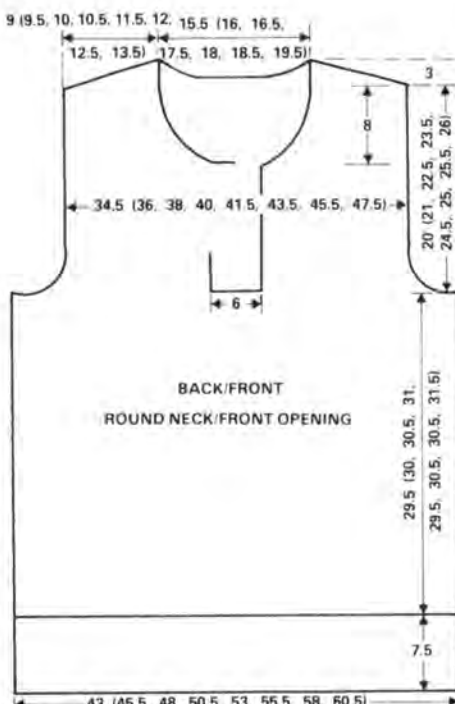
Insert card 1. Cast on 132 (140, 148, 156, 164, 172, 180, 188) sts. as 2 x 2 rib. T. 4/4. Knit 32 rows. Trans. to st. st. Inc. 1 st. at left. Set for tuck st. R.C.000. T.7. Knit to 142 (138, 138, 144, 140, 138, 134, 132) rows. R.C.000.\*

### Shape Armholes

Cast off 4 (4,4,5,5,5,6,6) sts. at beg. of next 2 rows. Dec. 1 st. at each end of next 7 rows, then every alt. rows 3 (4, 5, 5, 6, 7, 7, 8) times. 105 (111, 117, 123, 129, 135, 141, 147) sts. rem.\*\* Knit to 90 (96, 102, 106, 110, 112, 116, 118) rows.

### Shape Shoulder and Back Neck

Cast off 4 (4, 4, 5, 5, 5, 6, 6) sts. at beg. of next 4 rows. Cast off centre 35 (37, 39, 41, 43,



45, 47, 49) sts. Push Ns. at left to H.P. and knit on rem. sts. Cont. shoulder shapings, AT THE SAME TIME knit 1 row. Dec. 1 st. at neck edge on next 7 rows. Cast off rem. 4 (6, 8, 4, 6, 8, 4, 6) sts. Rejoin yarn at neck edge and knit to match right side.

### FRONT

Knit as Back to \*\* Knit to 54 (60, 66, 70, 74, 76, 80, 82) rows.

### Shape Neck

Cast off centre 21 (23, 25, 27, 29, 31, 33, 35) sts. Push Ns. at left to H.P. and knit on rem. sts. Knit 1 row. Dec. 1 st. at neck edge on next 6 rows, then every alt. row 8 times. 28 (30, 32, 34, 36, 38, 40, 42) sts. rem. Knit straight to 90 (96, 102, 106, 110, 112, 116, 118) rows.

### Shape Shoulder as Back

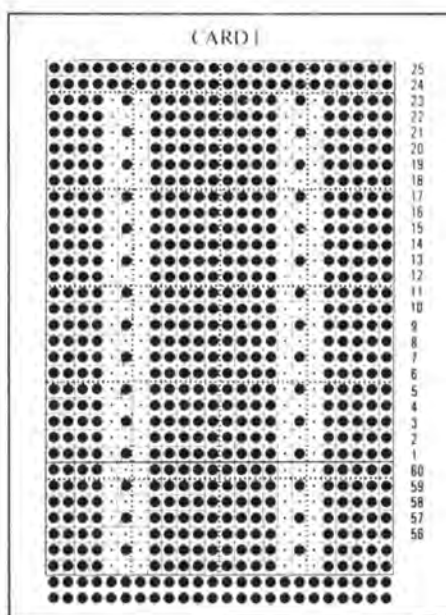
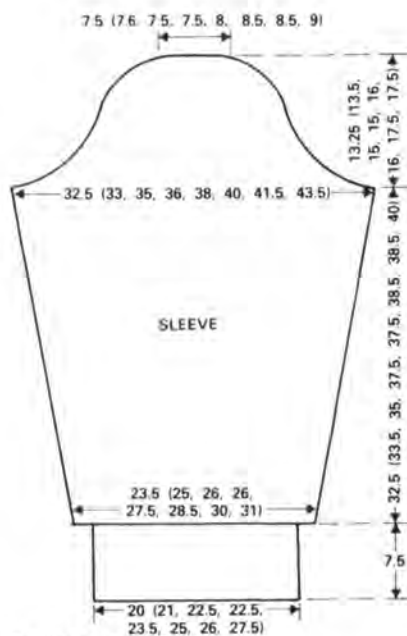
Rejoin yarn to neck edge and knit to match right side.

### SLEEVES

Reset card. Cast on 60 (64, 68, 68, 72, 76, 80, 84) sts. as 2 x 2 rib. T. 4/4. Knit 31 rows. Remove sts. from Ns. Push 73 (77, 81, 81, 85, 89, 93, 97) Ns. to W.P. Replace sts. onto Ns. inc. 13 sts. evenly along the row. Knit 1 row. Set for tuck. R.C.000. T.7. Knit 6 rows. Inc. 1 st. at each end of next and every foll. 10 (10, 10, 10, 9, 9, 8, 8)th row 14 (14, 14, 16, 17, 18, 19, 20) times in all. 101 (105, 109, 113, 119, 125, 131, 137) sts. Knit to 146 (152, 158, 168, 168, 174, 174, 180) rows, or desired length. R.C.000.

### Shape Top

Cast off 4 (4, 4, 5, 5, 5, 6, 6) sts. at beg. of next 2 rows. Dec. 1 st. at each end of next 5 rows, then every alt. row 22 (24, 26, 27, 27, 27, 27) times. Dec. 1 st. at each end of next 8 (8, 8, 8, 10, 12, 14, 16) rows. Cast off rem. 23 (23, 23, 23, 25, 27, 27, 29) sts.



### Shape Shoulder as Back

Reset Ns. for tuck. Rejoin yarn to front edge and knit to match right side, reversing shapings.

### BUTTON BAND

Cast on 42 (46, 50, 54, 58, 60, 64, 66) sts. as 2 × 2 rib T.4/4. Knit 21 rows. Trans. to st. st. and chain cast off.

### BUTTONHOLE BAND

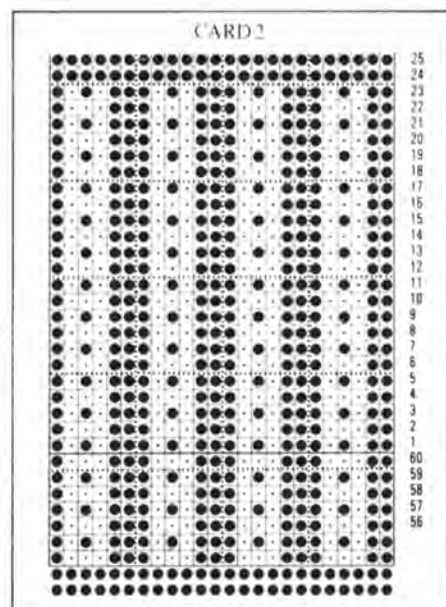
Knit as Buttonband, making 3 buttonholes over 2 Ns. on row 12.

### NECKBAND

Knit as given for Round Neck Sweater.

### MAKE UP

Press to instructions on ball band. Sew shoulder seams. Sew in sleeves, then sew side and sleeve seams. Join straight ends of collar. Sew to neck. Sew on buttons. Press seams.



### NECKBAND

Knit 2 pieces. Cast on 80 (82, 84, 86, 88, 90, 92, 94) sts. as 2 × 2 rib. T 4/4. Knit 1 row. Dec. at right side on next 5 rows. Cast off 3 sts. at beg. of next and alt. rows 4 times and 4 sts. 3 times. 59 (61, 63, 65, 67, 69, 71, 73) sts. rem. T. 8/8 Knit 1 row. Transfer to st. st. and chain cast off. Knit 2nd piece casting on at opposite end of M/C.

### MAKE UP

Press pieces to instructions on ball band. Sew shoulder seams. Sew in sleeves, then sew side and sleeve seams. Join straight ends of neckband. Sew to neck, overlapping at front for 6 cm (2½") as shown. Press seams.

### SWEATER WITH FRONT OPENING

Card 2 Needle setting.

I.I.I.I.I.I.I.I.I.I.I.I.I.I

1 = N. in W.P. ∙ = N. in N.W.P.

### BACK AND SLEEVES

Foll. instructions for Round Neck Sweater.

### FRONT

Knit as back to \*

### Shape Armholes and Front Neck

Cast off 4 (4, 4, 5, 5, 5, 6, 6) sts. at beg. of next 2 rows. Cast off centre 19 sts. and push Ns. at left to H.P. Knit on rem. sts. Dec. 1 st. at armhole edge on next 7 rows, then every alt. row 3 (4, 5, 5, 6, 7, 7, 8) times. 43 (46, 49, 52, 55, 58, 61, 64) sts. rem. Knit to 54 (58, 62, 64, 66, 68, 70, 72) rows.

### Shape Neck

Dec. 1 st. at neck edge on next 5 (5, 5, 5, 5, 7, 7, 9) rows, then every alt. row 6 (7, 8, 9, 10, 9, 10, 9) times and every 4th row 4 times. 28 (30, 32, 34, 36, 38, 40, 42) sts. rem. Knit to 90 (96, 102, 106, 110, 112, 116, 118) rows.

## Abbreviations

alt. = alternate; beg. = begin(ning); carr. = carriage; cm = centimetres; C.O.B.H. = cast on by hand; C.O.L. = carriage on left; Col. = colour; Con. Col = contrast colour; cont. = continue, continuing; C.O.R. = carriage on right; dec. = decrease, decreasing; foll. = following; gm. = grammes; H.P. = holding or E position; in. = inches; inc. = increase, increasing; K = knit; M = main colour; M.B. = main bed; M/C = machine; M.T. = main tension; M. = main yarn; N(s). = needle(s); N.W.P. = non-working or A position; patt. = pattern; pos. = position; R.C. = row counter; R.C.000 = reset row counter to zero; rem. = remain(ing); rep. = repeat(ing); R.T. = ribber tension; st(s). = stitch(es); st. st. = stocking stitch; T. = tension; trans. = transfer(ing); U.W.P. = upper working or D position; W.P. = working or B position; W.Wl. = waste wool.

NOTE: All measurements on diagrams are in centimetres.









City College of Mass., Lowell  
**Handbook of Social Knowledge**  
Fundamentals of Education  
and Learning Theory









