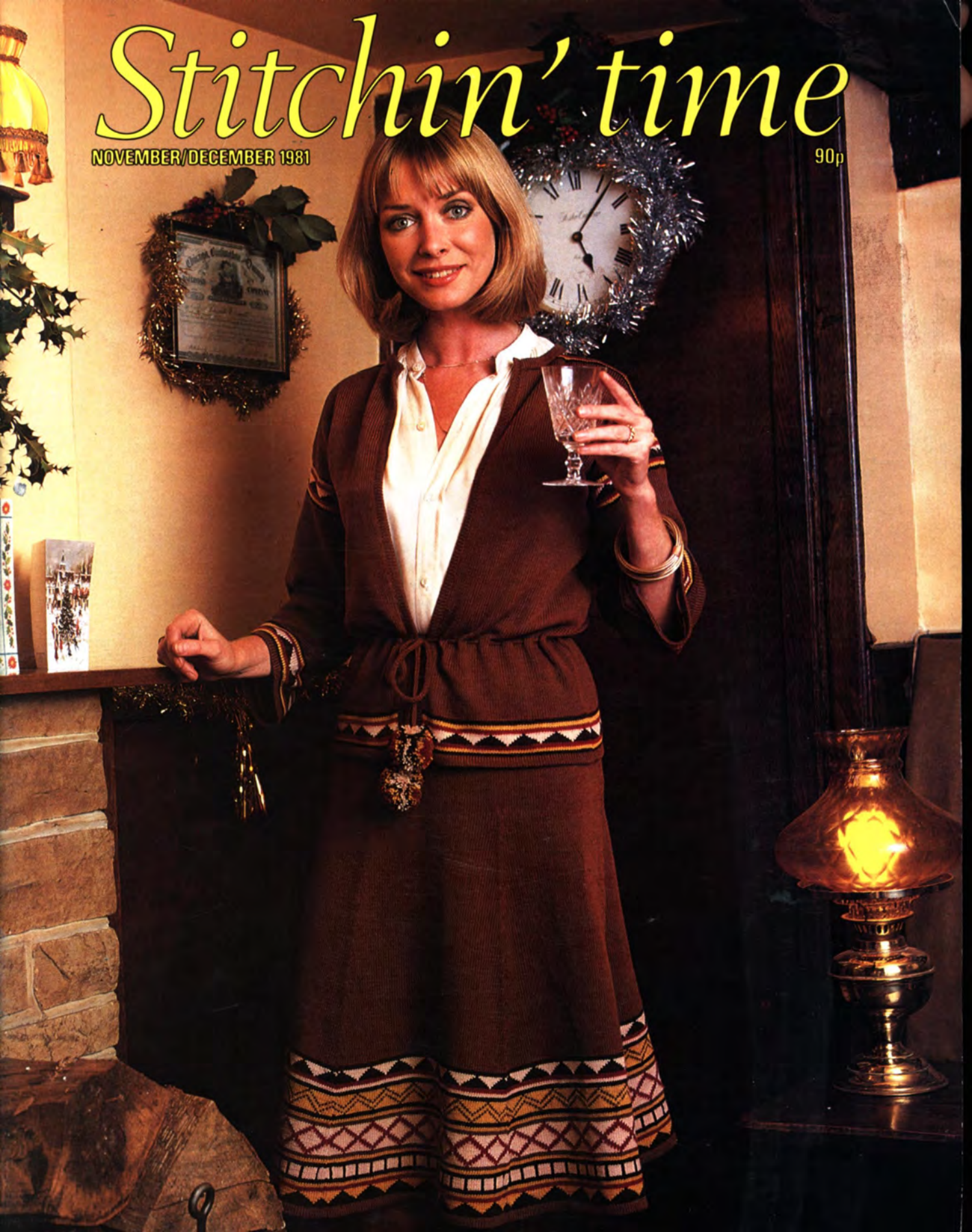
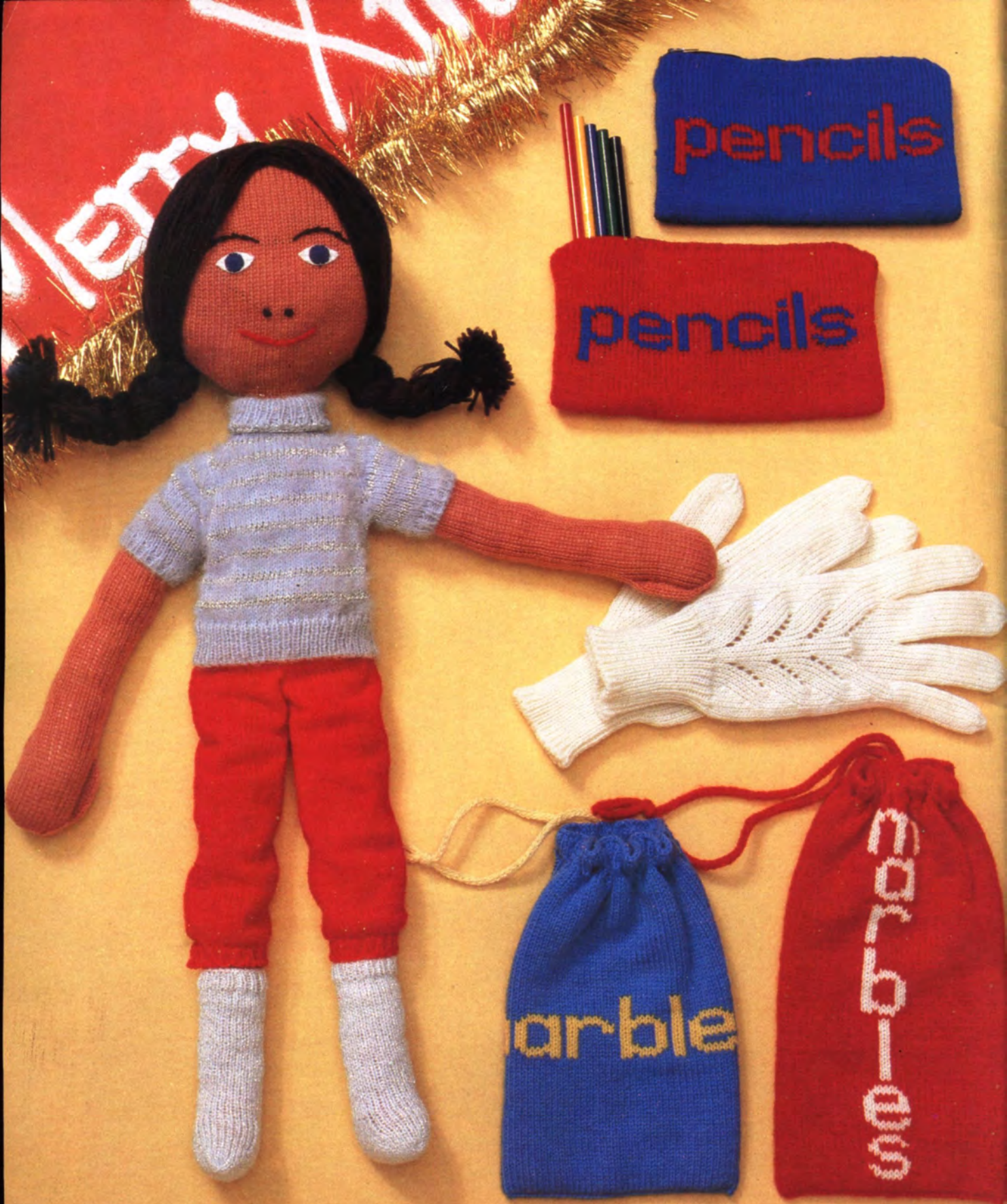


Stitchin' time

NOVEMBER/DECEMBER 1981

90p





In this issue

Ethnic Skirt and Jacket	9
Young Designers Sweaters	10
CLUB NEWS from Rosa Postance	13
Fáirisle Dress	14
Cowboy Sweater	15
Baby Sleeping Bag	17
Girls Poncho, Skirt and Hat	18
Little girl's Dress with Motif	19
Ladies Bird Sweater	20
Teens Sweater-Dress	22
Tunic Top	23
Doll, pencil cases, marble bags and gloves	25-26
Men's and Ladies' Shetland Sweaters	27-31
Striped Sweater-Dress	31

Broadly Speaking

Cosy places to hold a photographic session are hard to come by and so I should like to say a big thankyou to John and Angela Kamm who so kindly allowed us to use their lovely country pub — the Star, in Standon, Herts., if you find yourself in that neck of the woods, I strongly recommend a visit.

Earlier this year the Young Observer section of the Sunday Observer Magazine ran a knitting design competition in conjunction with Jones + Brother and Lister/Lee. I went along to help with the judging and was astounded by the high standard of workmanship and design. The entries were for hand knitting, however I thought it would be interesting to take two of the best designs and translate them into machine knitting, the results are on the following two pages. Stephanie Moon of Bushey Grove Road,

Watford and Richard Hooper of Marsham Way, Gerrards Cross who bravely modelled their sweaters are to be congratulated for their excellent sense of design, I would personally like to thank them for their speedy cooperation in sending the charts and samples. Perhaps in the future these two names will pop up in the design world!

When chatting to one of our designers some time ago we decided to have for this issue a doll that we could dress up in different outfits, the patterns to be given in issues next year. I must say that I was really expecting a frills and lace doll, but no that was not to be, and after getting over the shock and now having grown quite fond of our tomboy doll we are only left with one problem. We cannot think of a name for our doll and wondered if readers would like to put their thinking caps on and christen her. The reader who comes up with the best name will win a Transfer Carriage, send your ideas to me at Covent Garden — results next issue.

The rest of the items with Miss Nameless show a great way of using up oddments of wool for stocking fillers, they don't take much time to make and the bags are very popular with children.

All the Staff at Jones + Brother wish you all a very happy Christmas and hope that you have enjoyed this year of Stitchin' Time as much as we have.

Subscription administration:

Shepley Street
Guide Bridge
Audenshaw
Manchester M34 5JD

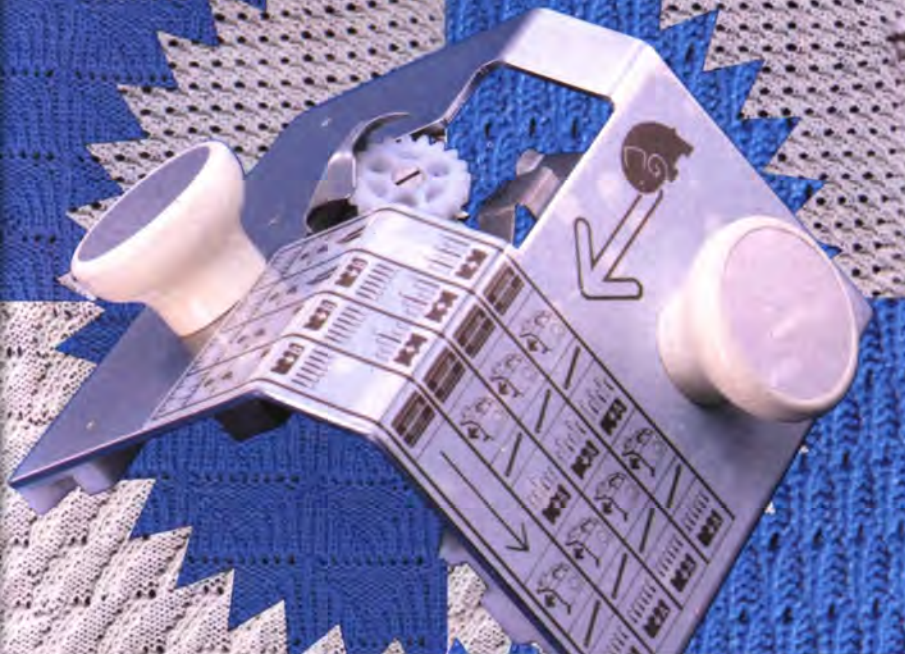
Editorial:

Jones + Brother
Studio 2
3 Bedford Chambers
Covent Garden
London WC2



Editor: Susan Nutbeam

Transfer to Jb jones + brother



The latest addition to the Brother range of accessories —

THE TRANSFER CARRIAGE

- * This neat attachment transfers stitches from the ribbing attachment to the main bed.
- * Will transfer a 1 x 1 rib to the main bed in one movement.
- * Many different stitch designs which would take hours by hand can be knitted in a fraction of the time!

Jb jones + brother

Domestic and Industrial Sewing Machines,
Knitting Machines, Typewriters.











Ethnic Skirt and Jacket

(See front cover)

Machines

KH820, KH830, KH840, KH881, KH910.

Materials

SIRDAR Wash ' Wear 4-ply.

Skirt — Nut Brown: 12 (13, 14) 20 gm balls.

Dark Chocolate: 2 (2, 3) 20 gm balls.

Mellow Gold: 2 (2, 3) 20 gm balls. Medoc: 1

(1, 2) 20 gm balls. Beige: 2 (3, 3) 20 gm balls.

Elastic.

Jacket — Nut Brown: 13 (14, 15) 20 gm balls.

Dark chocolate: 2 (2, 3) 20 gm balls. Mellow

Gold: 1 (1, 2) 20 gm balls. Medoc: 1 (2, 2) 20

gm balls. Beige: 1 (2, 2) 20 gm balls.

Measurements

To Fit Bust: 86 cm (34"), 91 cm (36"), 96 cm (38").

Skirt Length: 71 cm (28"), 72 cm (28½"), 74 cm (29").

Jacket Length: 62 cm (24½"), 65 cm (25½"), 67 cm (26½").

Sleeve Seam: 43 cm (17").

TENSION

Always check tension before commencing.

32 sts. and 42 rows = 10 cm (4") over Fairisle.

Approx. T.7.

Success depends on working to correct tension.

NOTES

When knitting the border pattern on skirt panels, do not re-lock punch card when knitting sections in st. st. Allow card to roll through, switching from Fairisle to st. st. on carriage when appropriate.

SKIRT

Knit 6 panels.

PATTERN SEQUENCE

Rows 1-2 Dark Chocolate st. st.

Rows 3-8 Gold in A and Dark Chocolate in B.

Rows 9-10 Medoc st. st.

Rows 11-12 Gold st. st.

Rows 13-14 Dark Chocolate st. st.

Rows 15-20 Beige in A and Dark Chocolate in B.

Rows 21-22 Dark Chocolate.

Rows 23-24 Gold.

Rows 25-26 Nut Brown.

Rows 27-40 Beige in A and Medoc in B.

Rows 41-42 Nut Brown.

Rows 43-44 Gold.

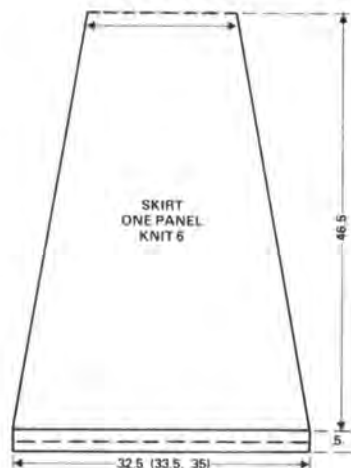
Rows 45-46 Dark Chocolate.

Rows 47-56 Gold in A and Nut Brown in B.

Rows 57-58 Dark Chocolate.

Rows 59-60 Gold.

Rows 61-62 Medoc.



Rows 63-68 Beige in A and Dark Chocolate in B.

Rows 69-70 Dark Chocolate.

Insert card C.O.R. With Nut Brown

C.O.B.H. 104 (108, 112) sts. T.5. Knit 6

rows. T.7. Knit 1 row. T.5. Knit 7 rows.

Make a hem. R.C.000. T.7. Foll. patt.

sequence knit 14 rows. Dec. 1 st. at each end

of next and every foll. 7th row to 70 rows.

Cont. in Nut Brown only and cont. decs. as

before to R.C.196. 52 (56, 60) sts. rem. Knit

with W.Wl. and release from M/C. Push 156

(168, 180) Ns. to W.P. Replace sts. of 3 skirt

panels onto Ns. R.C.000. T.7. Cont. in Nut

Brown, knit 2 rows. Dec. 1 st. each end of

next and every foll. 7th row 11 times in all.

134 (146, 158) sts. rem. Knit to 79 (83, 89)

rows. T.10. Knit 1 row. T.5. Knit 17 rows.

Turn up hem along loose row. T.10. Knit 1

row and cast off.

Replace other 3 panels onto M/C and knit to

match first piece.

MAKE UP

Join all panel seams, then side seams, leaving

one inner waist hem seam open. Thread

elastic through hem and join. Close seam.

Press to instructions on ball band.

JACKET

PATTERN SEQUENCE

Rows 1-2 Dark Chocolate,

Rows 3-4 Gold.

Rows 5-6 Medoc.

Rows 7-12 Dark Chocolate in A and Gold in

B.

Rows 13-14 Medoc.

Rows 15-16 Gold.

Rows 17-18 Dark Chocolate.

BACK

Insert card. C.O.R. With Nut Brown

C.O.B.H. 142 (150, 158) sts. T.5. Knit 6

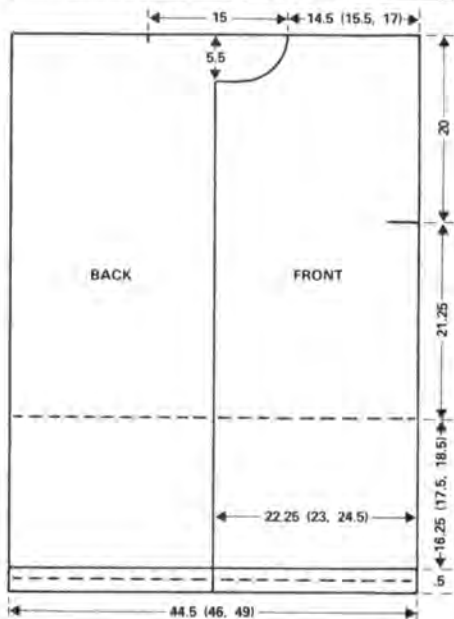
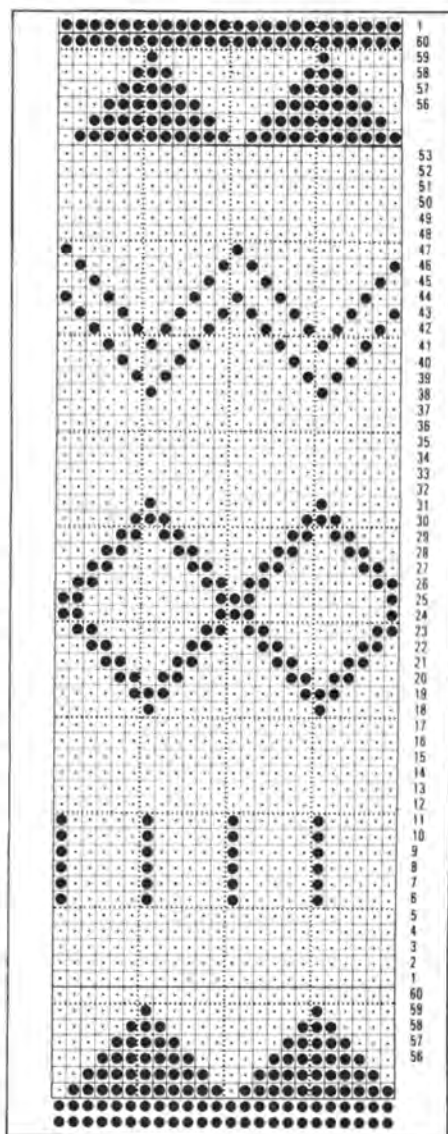
rows. T.7. Knit 1 row. T.5. Knit 7 rows.

Make a hem. R.C.000. T.7. Knit 18 rows of

border patt. Cont. in Nut Brown only to

R.C. 68 (74, 78). Trans. every foll. 4th st. to

adjacent N. and leave Ns. in W.P. (for



drawstring). R.C.000. Knit to 90 rows. Mark each side with W.W1 *. Cont. to R.C.156. Rep. 18 rows of border patt. R.C.174. Cast off loosely.

RIGHT FRONT

Reset card. C.O.R. With Nut Brown C.O.B.H. 71 (75, 79) sts. Knit as Back to * Knit to 59 rows. C.O.L.

Shape Neck

Cast off 10 sts. at beg. of next row. Dec. 1 st. at neck edge on next 14 rows, AT THE SAME TIME, begin patt. border on row 66. R.C.84. Cast off loosely.

LEFT FRONT

Knit as Right Front, reversing shapings.

SLEEVES

Reset card. C.O.R. With Nut Brown cast on 100 sts. T.5. Knit 6 rows. T.7. Knit 1 row. T.5. Knit 7 rows. Turn up hem. R.C.000. T.7. Knit 18 rows of border patt. then cont. in Nut Brown only, AT THE SAME TIME, inc. 1 st. at each end of every foll. 11th row 14 times in all. 128 sts. Knit to R.C.156. Knit the 18 rows of patt. border. R.C.174. Cast off loosely.



NECK BAND

Join shoulder seams. With Nut Brown C.O.B.H. 120 sts. T.5. Knit 14 rows. Turn up hem and knit the row. With wrong side of work facing, pick up sts. evenly round neck and place on Ns. T.10. Knit 1 row and cast off.

FRONT BANDS

With Nut Brown C.O.B.H. 140 (144, 148) sts. Knit as Neckband and make hem. With wrong side of front facing, pick up sts. along front edge to top of neckband. T.10. Knit 1 row and cast off.

DRAWSTRING

With Nut Brown C.O.B.H. 4 sts. T.6. Knit until length required (about 1 metre) and cast off.

MAKE UP

Press to instructions on ball band. Sew sleeves to armholes between markers. Sew side and sleeve seams. Press seams. Thread drawstring through holes at waist and attach a pom pom to each end.

Intarsia Sweaters

Machines

KH588 & KH710 (See Instruction Book) KH840, KH881 & KH910 use intarsia feed (See Instruction Book). KH820 and KH830 use hand selection method.

Materials

Moss Green Sweater — Bird on Branch Motif (See page 5)

LISTER/LEE Motoravia 4-ply 12 (12, 14, 15) balls in M. — Moss Green 2346, 1 ball in each shade of: Bottle Green 1812, Rust 1856, Orchid Pink 3101, Black 1660, Primrose 413, Cognac 384, Blue Mist 385.

Black Sweater —

Red and Gold Bird Motif (See page 4)

LISTER/LEE Motoravia 4-ply 12 (13, 14, 15) balls in M. — Black 1660, 1 ball in each shade of Bottle Green 1812, Moss Green 2346, Bright Royal 2789, Light Damson 414, Pillar Box Red 2754, 1 ball of Twilleys Goldfingering in Gold.

Measurements

To fit Bust: 81 cm (32"), 86 cm (34"), 91 cm (36"), 96 cm (38").

Length: 64 cm (25"), 64 cm (25"), 65 cm (25½"), 65 cm (25½").

Sleeve Seam: 43 cm (17").

TENSION

Always check tension before commencing.

30 sts. and 40 rows = 10 cm (4") measured over st. st. (Approx. T.7.)

Success depends on working to correct tension.

BASIC PATTERN

BACK

Cast on 134 (142, 146, 152) sts. as 2 x 2 rib. R.C.000. T.2. Rib 40 rows.

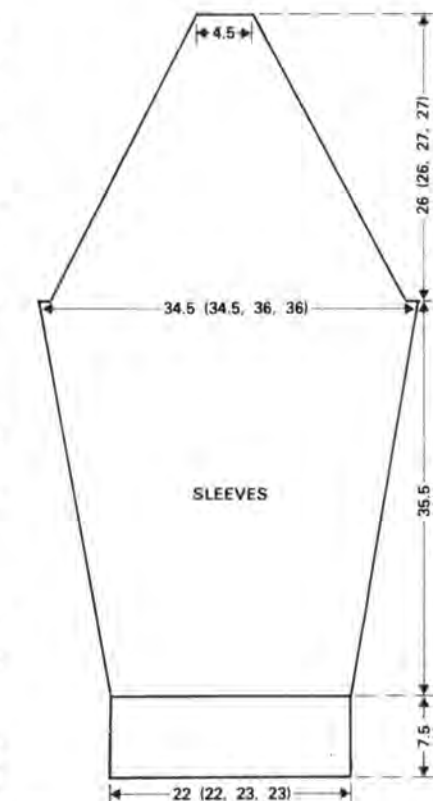
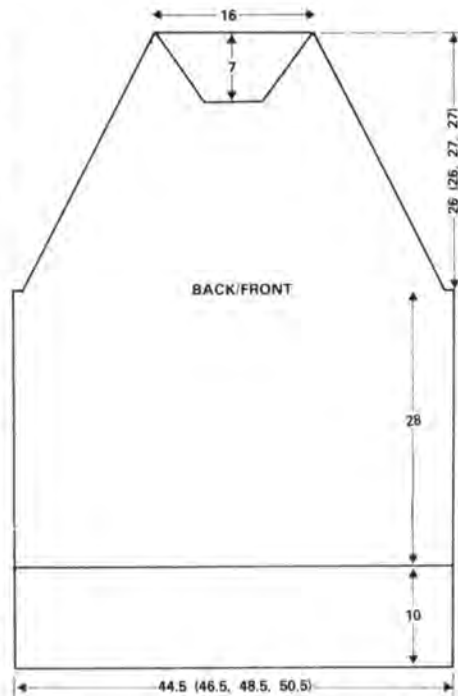
Transfer sts. to M.B. R.C.000. T.7. Knit 112 rows.

Shape Raglan

R.C.000. Cast off 5 sts. at beg. of next 2 rows. Knit 6 rows. Dec. 2 sts. at each end of next and every foll. 8th row 6 (4, 4, 2) times, then every foll. 4th row until 48 sts. rem. Knit to R.C.104 (104, 108, 108). Using W.W1., knit a few rows and release from M/C.

FRONT

Work as given for Back to R.C.76 (76, 80, 80) above raglan shapings. Cont. to shape raglan as given for Back, WHILST AT THE SAME TIME,



Shape Neck

Using W.W1., knit a few rows across the centre 18 (22, 26, 30) sts. and release from M/C. Push the sts. at left to H.P. C.O.R. Work on sts. at right. Dec. one st. at neck edge on every alt. row until 2 sts. rem. Fasten off, Return sts. at left to H.P. and work to correspond with first side.

SLEEVES

Cast on 66 (66, 70, 70) sts. as 2 x 2 rib. R.C.000. T.2. Rib 30 rows. Trans sts. to M.B. T.7. Knit 2 rows. R.C.000. Inc. one st. at each end of next and every foll. 8th row until there are 100 (100, 104, 104) sts. Work straight to R.C.140.

Shape Raglan

R.C.000. Cast off 5 sts. at beg. of next 2

rows. Knit 6 rows. Dec. 2 sts. at each end of next and every foll. 8th row 6 times in all, then every 4th row until 14 sts. rem. Knit to R.C.104 (104, 108, 108). Using W.Wl., knit a few rows and release from M/C.

NECKBAND

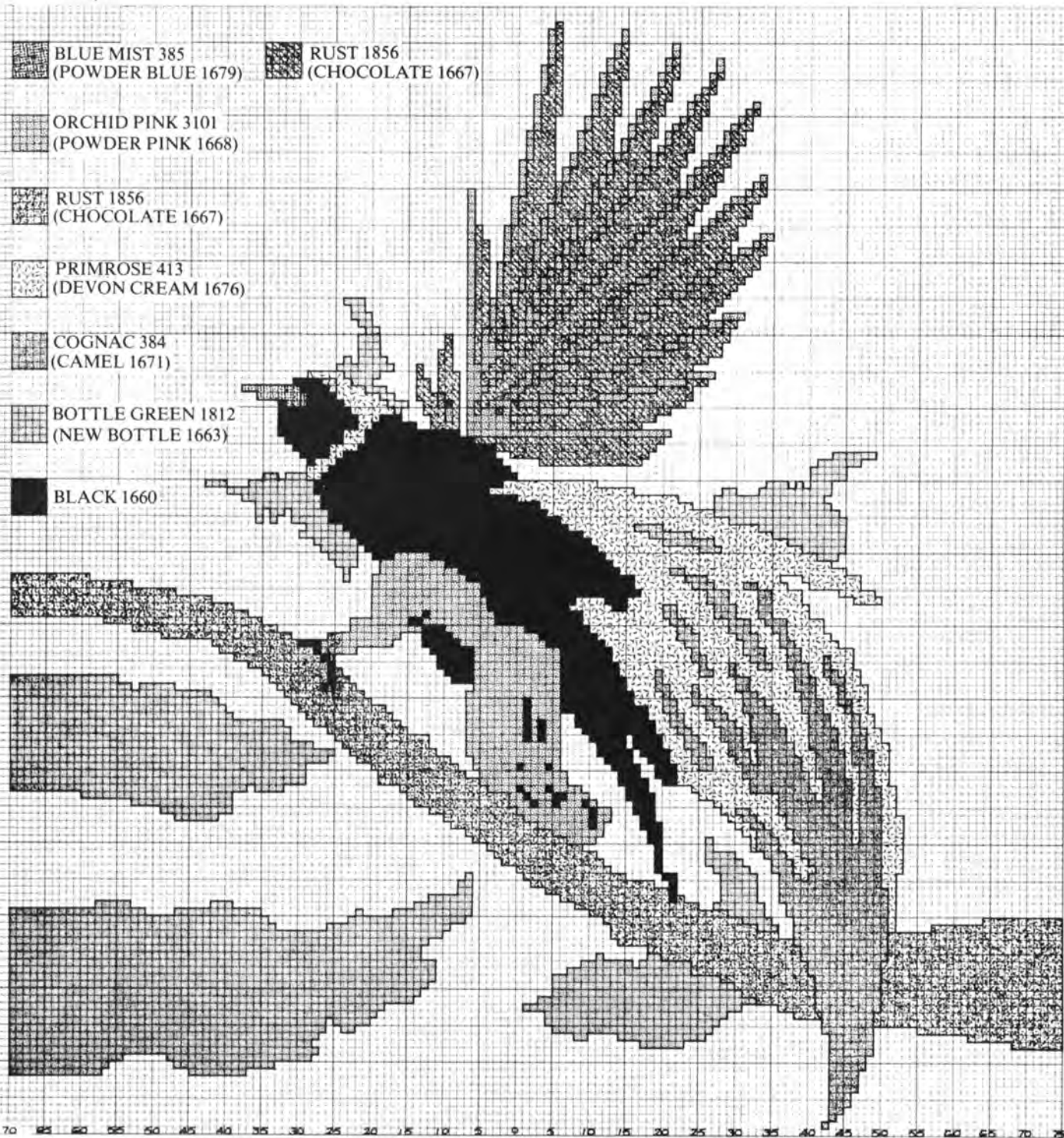
Sew up raglan seams, leaving left back raglan open.

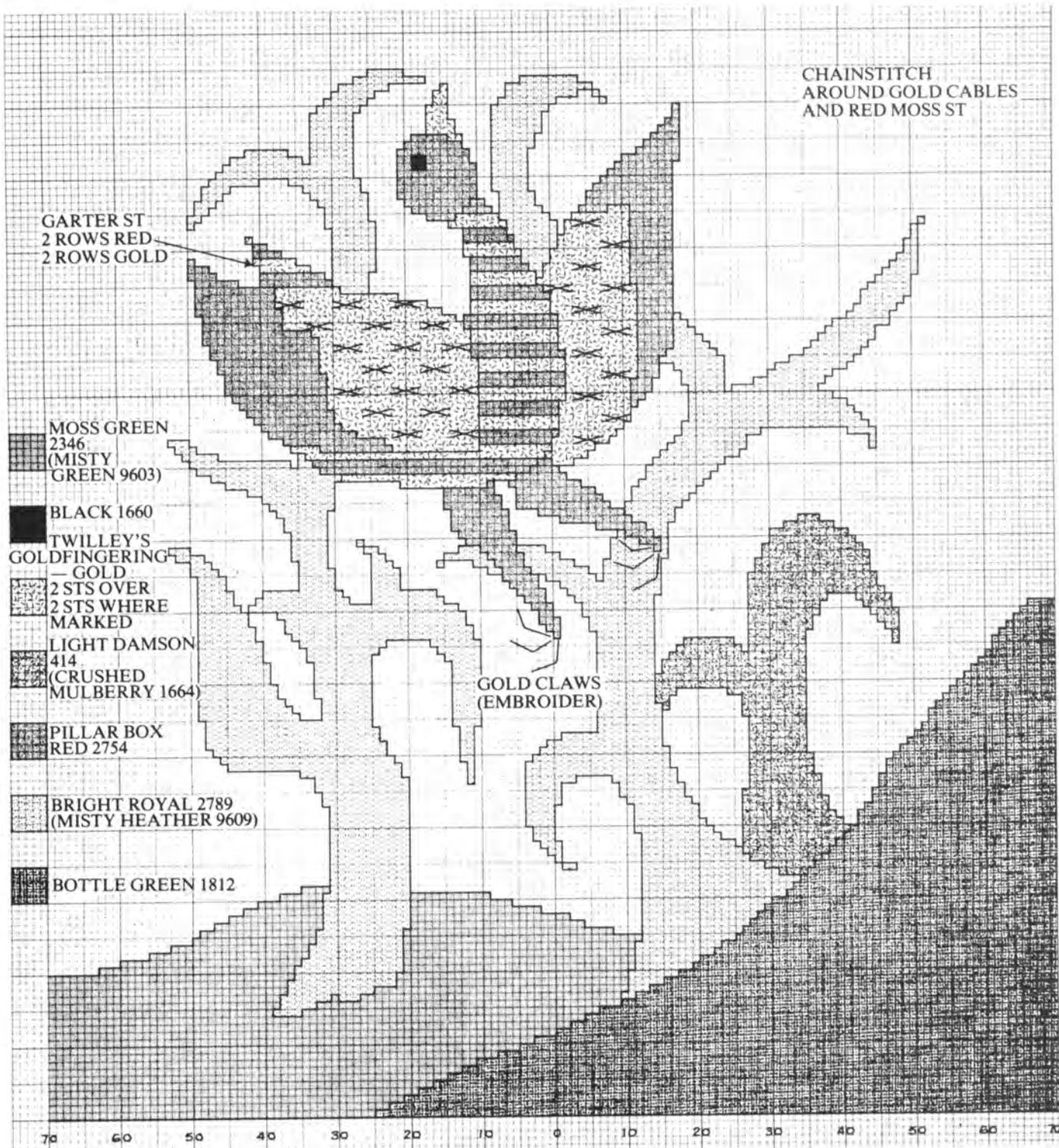
With wrong side facing, replace 142 (146,

150, 154) sts. back on to M/C. T.7. Knit one row. Trans. sts. for 2 x 2 rib. T.2. R.C.000. Rib 30 rows. Using W.Wl., knit a few rows and release from M/C.

TO MAKE UP

Join left raglan and neckband seam. Join side and sleeve seams. Fold neckband in half to right side and backstitch through last row knitted in Main Col. Press as instructions given on ball band.





RAGLAN SHAPING NOTE

Using the 2 x 3 transfer tool, trans. sts. 4 and 5 on to Ns. 6 and 7, move end 3 sts. over 2 Ns.

MOSS GREEN SWEATER — BIRD ON BRANCH

Back and Sleeves are plain green st. st. Instructions are given for M/Cs with ribbing

attachment but mock rib may be used. 2 x 1 would be most suitable, making sure that the tension is fairly tight.

FOR FRONT. Follow chart after 11 rows of st. st.

BLACK SWEATER — RED AND GOLD BIRD

Back and Sleeves are plain st. st. in Black.

Instructions are given for M/Cs with ribbing attachments, but mock rib may be used. 2 x 1 would be most suitable, making sure that the tension is fairly tight.

FOR FRONT. Cast on in bottle green and work 2 x 2 rib and 2 rows of st. st. in green, then follow chart. The 'eye' and the 'claws' are embroidered afterwards. The whole of the patt. could be knitted in st. st.

Club News

by Rosa Postance

Hello again, and let's start our news this time in Wales, where Mr. Thompson tells me the Club is settling in well at their new meeting place in Cardiff (see Sept/Oct). Incidentally, I now have a daytime office number for Mr. Thompson which is Cardiff 388588 extn. 2507 between 9 a.m. and 4 p.m. if you wish to contact him about joining his Club. Also in Wales, in Dyfed, is the Tivy Machine Knitters Group which meets on the last Monday in the month in Cilgerran Village Hall at 7.30 p.m. Annual membership is £2 with a 30p meeting charge which includes refreshments. Hilda Williams reports they are new and small, but have an enthusiastic nucleus of J & B owners. Meetings are informal and although they are a "do it yourself" group, Hilda says "it seems to work reasonably well, and at least the machines get used and not put away in despair". She gave several telephone numbers if anyone is interested in joining them and they are Aberporth (0239) 810671, Cardigan (0239) 612494 or Cardigan (0239) 614267.

At the time of writing, Mrs. J. J. Cooper of 41 Marion Road, Hanham, Bristol says she and her friends are in the process of forming a new club at Kingswood. They want to make the venture as interesting as possible and would like to contact any clubs who might be willing to exchange visits.

Some of you may remember that at the beginning of this year I told you that Mrs. Jean Tomlinson has started a club at Minehead, Somerset. I am pleased to tell you that she says their first year has been quite successful and they are getting bigger all the time. Jean has moved since I last gave her address and now lives at Westholme, 62 Tower Hill, Williton, Taunton, Somerset, and says she hated packing her machine away to move, and it wasn't long before it was set up again in her new home. Their meetings are still held in the Minehead Barbarians Rugby Football Club on the 1st Wednesday of the month, and Jean says they are having membership cards printed to write down subscriptions, magazines borrowed etc., an idea which might help other clubs too. They have had some speakers, but would welcome others if anyone is interested in giving them a talk or demonstration.

Mrs. A. Lawrence of Esher, Surrey (tel: 01-398 6119) wrote to tell me about her club which meets in the Esher Methodist Hall, Wolsey Road, Esher from 8-10 p.m. on the 1st Monday every month. There are approximately 50 members who are given a varied programme on the basis of help one another, with guest speakers occasionally, and a supply of yarns and library. Mrs. Lawrence would also like to hear from anyone willing to speak to her Club.

If you live in Gillingham, Kent, you may be interested to know that Mrs. Anne Wells of 17 Bedford Avenue, Rainham, Gillingham, Kent ME8 7EP (tel: Medway 368984) is thinking of starting up a club with some of her friends, and would like to hear from anyone who would like to join them. Anne, who has a KH910 would also like a PENPAL either in this country or abroad, so if you would care to write to her or join her club, please contact Anne Wells direct.

The Hoddesdon Club has now been meeting for just over a year every other Wednesday at 7.30 p.m. Their Hon. Sec. Mrs. K. M. Denman says new members are always welcome, so if you are interested she can be reached at 213 Ware Road, Hoddesdon, Herts. EN11 9AF (tel: 62532).

The Tudor Knitters at Waltham Cross is "under new management"

as Mrs. J. Ingram's friend, who was the previous organiser, has asked her to take over. Mrs. Ingram is anxious to make the club as interesting as possible, and as I don't have details of the meeting place or times, anyone wishing to become a member should contact her at 3 Mervyn Close, Goffs Oak, Waltham Cross, Herts. EN75RR.

Moving further north now, I received a letter from Allan Ashford of Bonnies Wools, Birmingham. Due to the busy lives he and his wife Bonnie lead, they have had to give up their club in Birmingham. However, they still run and assist with clubs at Romford at 7.30 p.m. every 3rd Thursday of the month at Wykenham Hall, Market Place; at Cardiff every 2nd Tuesday of the month at 7.30 p.m. in Llandaff Memorial Hall, Llandaff; and at North Harrow, Middx at Mrs. Janes' home at 6 Kingsway Crescent one Friday a month. Allan says knitters are always welcome at their shop at 1273 Bristol Road South, Northfields, Birmingham (tel: 021-475 1691) either for a chat or advice, or if your club would like an outing, they can accommodate up to 60 people.

Shirley Warwick has been asked to organise a group of six clubs called the S.K. Knitting Clubs. These will operate in Birmingham, Coventry, Leicester, Stoke, Wolverhampton, Derby and Nottingham. Membership is £5 a year and there is a meeting fee. However, they say there will be special discounts on goods, planned programmes of tuition, regular Gala evenings and get-togethers etc. Numbers will be limited, so for your application form and full details write to Shirley Warwick, S.K. Knitting Clubs, 131/3 Corporation Street, Birmingham B4 6QB.

At Leicester, Elaine Lester has written to me about her club which meets once a week on Friday evenings at a local centre. Anyone is welcome to join whether experienced or a beginner and for more information please contact Elaine, who is their Secretary/Treasurer, at 80 Hopefield Road, Leicester LE3 2BL or telephone Leicester 826244.

Due to unforeseen circumstances, the Quick Knitters Club of Worcester had to cancel their fashion show to raise money for Stoke Mandeville Hospital. However, Mrs. W. Gillian Davies, their Secretary, says they sent a donation from club funds and remarks that she was personally very disappointed at the cancellation. Once again, she also asks for speakers, so if you can help in this respect, or want to join this club, please ring her on Worcester 820645.

Can anyone help Mrs. S. Talbot of 16 Shaw Gardens, Highfields, Stafford? This lady has had her KH710 since December 1980, but has been unable to learn to use it so far, and would dearly like someone to teach her or to find a local club she could join. I don't know of one nearby, but if you can assist, please contact me or Mrs. Talbot direct.

There is a successful Club in Walsall called the Knitwell Machine Knitters Club, which is run by Mrs. Edna Wilkes (tel: Walsall 642509). They meet on the 1st and 3rd Thursday of the month at the Methodist Church Hall, Bescot Road, Pleck, Walsall, afternoons 2-4 p.m., evenings 7-9 p.m. I am told some of the members make a round trip of 24-28 miles to attend meetings and in addition to running the Club, Mrs. Wilkes, who registered as a J & B tutor some 2 years ago, can offer private tuition and a 6 week course for 2 people consisting of six 2 hour lessons. It is hoped to arrange a display of work by Club members in the near future.

Last time I told you about Denise Musk, who is willing to speak to clubs in the Bradford area. She also says "you ask for news of Knitting Clubs, well here's one with a difference" and the club to which she refers is the West Yorkshire Branch of the Knitting & Crochet Guild. Denise is herself a machine knitter (those of you who have Kathleen Kinder's Resource Books may remember the picture of her "Lowry" style scarves) and she says all hand and machine knitters are invited to the Club as well as crocheters, hand spinners, weavers and dyers, and although there is a predominance of machine knitters, they have talks on all aspects of the crafts, including design, finish and yarn which apply to all the textile crafts. They feel that mixing the crafts has advantages not immediately obvious, and I agree with this, and am myself a member of the Guild. For details of the West Yorkshire Branch please write to Denise Musk, 42 Fernbank Drive, Baildon, Shipley BD17 5HY. Membership of the Knitting & Crochet Guild itself costs £5 a year and there is a quarterly magazine free to members. Apart from the W. Yorks group, there are several other branches, with the hope of more to come. For information on the Guild itself, i.e. membership, details of meetings etc., please contact Mrs. Karren Hodgson, Secretary, 6 Crooklands View, Clifton, Penrith, Cumbria CA10 2QE.

It might also interest you to know that I have received a letter from Mrs. Joy Samson of Otago, New Zealand, who says she loves knitting, especially in competitions, and buys all the books she can lay her hands on. She belongs to six local clubs and is Secretary of the Otago Area of the New Zealand Machine Knitters Society Inc. which has a membership of about 2,500. This Society organises an annual Festival which alternates between the North and South Islands, and draws machine knitters from all over New Zealand. This Festival lasts for about 6 days, and this year Mrs. Samson won the top cup for the most points, and as she has gone about as far as she can go in New Zealand wonders if she can enter any competitions in the U.K.

As many of you may already know, Kathleen Kinder was invited to speak at this Festival this summer, and from what she tells me had a marvellous time, and the experience was very rewarding. Kathleen took lots of slides at the Festival, which she is willing to show to knitters, and if you are interested in seeing these, please contact Kathleen Kinder on 07292-2809 (not on Wednesday).

Mrs. Aldyth Tomlinson wrote to me to say that she runs a small club from her home at 131 Preston New Road, Blackpool FY3 9NG and demonstrates on a 588. She has several members with Jones machines, so if you live near Blackpool and would like to join, do contact Mrs. Tomlinson.

Also in Lancashire, Angela M. Lord wrote from Rochdale to tell me about her club which meets the first Monday of the month from

7-9 p.m. at Ewe-Knit, 6 St. Mary's Gate, Rochdale. If you require more information, please ring her on Rochdale 521966, and she would also like to hear from any other clubs in Lancashire.

This letter rather amused me. Mrs. Irene Laws says her husband starting off by chauffeuring her back and forth to her knitting club, but now he is very much part of running the club, having his own punchcard service and also designing charts for hand selected fairisle! Irene says the Shilmore Club has been operating now for 4 years and would like to welcome more members to their happy, enthusiastic group, which meets every Wednesday from 6.30-9.00 p.m. They use the hall belonging to the disabled and elderly residents of Lynholm Grove, Forest Hall, Newcastle upon Tyne, and each Christmas they hold a party for these residents to say "thank you" for the use of their hall, and this year it will be on the 16th December. The club members are having a night out on the 9th December and are going to a dinner dance, so it sounds as though they really do enjoy themselves. Should you feel like joining them, please telephone Mrs. Laws on Gosforth 850742 or Mrs. Jackson on Newcastle 662654.

Mrs. Ida Reay of 78 Dame Dorothy Crescent, Monkwearmouth, Sunderland, Tyne & Wear SR6 0EX would like a *PEN FRIEND*. She is the new owner of a KH710, and would like to write to someone as she doesn't know of a local Club.

Writing from Ayr in Scotland, Dorothy Blakley says they started their Club on the 28th April, and already have 50 members on their books. Their meetings are held fortnightly at the Prestwick Community Centre from 7-9 p.m., and hope when funds permit, they will be able to get their own machines for demonstration and have visiting speakers. For more information please telephone Dorothy on Ayr 61616, Elsbeth on Prestwick 77997 or Nessie on Kilmarnock 35854.

As I read through Club letters the message comes across loud and clear that there is a desperate need for speakers, and I'm afraid my list isn't growing very fast either. I know some clubs are afraid they will lose members unless they can hold their interest, and it is difficult to arrange something different each time, especially if members aren't too keen to participate themselves. A fresh face and voice can make all the difference, so please help if you can, and write to me if you are willing to speak or know of someone who would do so.

As Christmas will soon be upon us, I would like to end my news this time by wishing everyone the compliments of the season, and hope you all have a most enjoyable Christmas. Do keep your letters coming in, and I look forward to being with you again in the New Year. My address again is Acorn Cottage, 110 Hartfield Road, Wimbledon, London SW19 3TG.

Fairisle Dress

Machines

KH820, KH830,
KH840, KH881, KH910.

Materials

HAYFIELD Sirius
400 gms Jupiter 35005 (Col. 1)
350 gms Mercury 35004 (Col. 2)
200 gms Comet 35012 (Col. 3)

Measurements

To fit bust: 86 cm (34"), 91 cm (36"), 97 cm (38").

TENSION

Always check tension before commencing.
14 sts. and 18 rows = 5 cm (2") over fairisle
(Approx. T.8).

Success depends on working to correct tension.

NOTES

With Col. 1 in Feeder A throughout, alternate Cols. 2 and 3 in stripes of 10 rows foll. card.

DRESS BACK

Insert card and lock on row 1. Using W.W1. cast on 148 (154, 162) sts. Knit a few rows ending with C.O.R. Change to M. Col. 2.

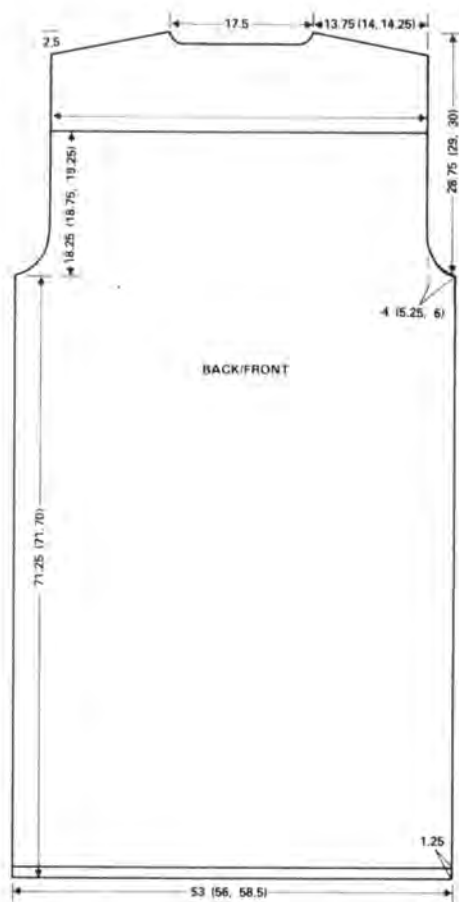
T.7. Knit 4 rows. T.9. Knit 1 row. T.7. Knit 4 rows. Turn up hem and knit the row. Release card and work in fairisle (see notes) knit to 254 (252, 250) rows. R.C.000.

Armhole shaping

Cast off 7 (8, 9) sts. at beg. of next 2 rows. Dec. 1 st. at each end of next and every foll. 3rd row until 128 (130, 132) sts. rem. Knit to 358 rows.

Neck and shoulder shaping

Cast off centre 48 sts. Place left side of work into H.P. and work on right side only. (40 (41, 42) sts.) Note card position. + Cast off 8 sts. at beg. of next row. Cast off 1 st. at beg.



of next row + Rep. from + to + + Cast off 8 sts. at beg. of next row. Knit 1 row. + + Rep. from + + to + + Cast off rem. 8 (9, 10) sts. Returns Ns. at left side to W.P. Reset card and knit to match left side reversing shapings.

FRONT

Knit as back to 320 rows. Cast off.

SLEEVE

Insert card and lock on row 1. Using W.W1. cast on 70 (74, 76) sts. as 2 x 1 mock rib. Knit a few rows ending with C.O.R. Change to M. Col. 2. T.6. Knit 30 rows. Turn up hem. T.8. Release card and work in fairisle (see notes). Inc. 1 st. at each end of next and every foll. 4th row until there are 148 (150, 152) sts. Knit to 156 rows.

Shape Top

Cast off 7 (8, 9) sts. at beg. of next 2 rows. Dec. 1 st. at each end of next and every foll. 3rd row until 130 sts. rem. Knit to 170 rows. Lock card and set M/C for st. st. Change to Col. 2 Knit 2 rows. R.C. 172.

YOKE

C.O.R. Cast off 35 sts. at beg. of next row. Cast off 65 sts. at beg. of next row. 30 sts. rem. Work 50 rows on these sts. inc. 1 st. at left on every 10th row. Cast off. Knit second sleeve to match reversing shaping for yoke.

YOKE LINING

Using M. Col. 2. C.O.B.H. 30 sts. R.C.000. T.8. Knit 50 rows inc. 1 st. at left every 10th row. Cast off.

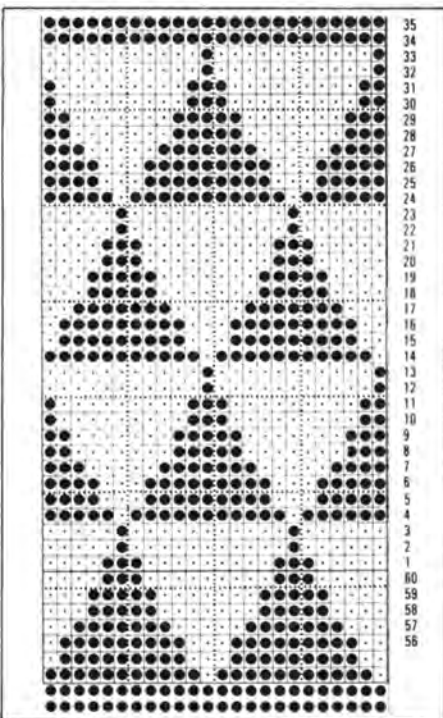
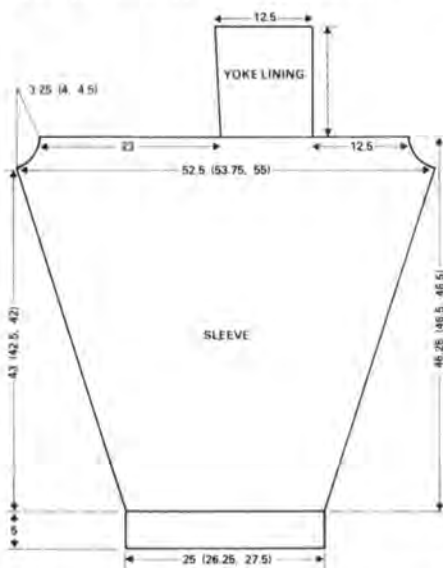
Knit a second yoke lining to match reversing shaping.

COLLAR

Using W.W1. cast on 158 sts. as 2 x 1 mock rib. Knit a few rows ending with C.O.R. Change to M. Col. 2. T.5. Knit 120 rows. Turn up hem. Bring all Ns. to W.P. T.8. Knit 5 rows. Change to W.W1. knit a few rows and release from M/C.

BELT

Using M. Col. 2. C.O.B.H. 30 sts. T.8. R.C.000. Knit 500 rows and cast off.



MAKE UP

Pin out and steam all pieces. Join shoulder seams and yoke to front bodice. Join sleeve head to armhole shaping. Sew yoke lining to the inside of yoke. Back stitch neck rib to neck. Join cuffs through to underarm and bodice side seams. Give garment a final press excluding all ribs.

Cowboy Intarsia Sweater

(See page 6)

Machines

KH588 and KH710 (See Instruction Book) KH840, KH881 and KH910 use intarsia feed (See Instruction Book) KH820 and KH830 use hand selection method.

Materials

PATONS Beehive 4-ply
6 (6, 7, 7) balls in Main Shade (M).
Small quantity in each of 10 different shades.

NOTES

Follow Basic Instructions. Back, Sleeves and Neckband are worked in M.

FRONT

Commence Intarsia from Chart on R.C.54.

Measurements

To fit Chest or Bust: 81 cm (32"), 86 cm (34"), 91 cm (36"), 96 cm (38").

TENSION

Always check tension before commencing.
29 sts. and 37 rows = 10 cm (4") over st. st. (Approx. T.8.)

Success depends on working to correct tension.

NOTES

Instructions are given for M/Cs with ribbing attachment, but mock rib may be used. Arrange Ns. for 2 x 1 mock rib and knit twice the number of rows given.

Ragland shapings — 'Dec. 3 sts. at each end'

— Using multi-transfer tool (7 x 1), move end 7 sts. over 3 Ns. — Using 2 x 3 transfer tool, transfer sts. 5, 6 and 7 on to Ns. 8, 9 and 10, move end 4 sts. over 3 Ns.

BACK

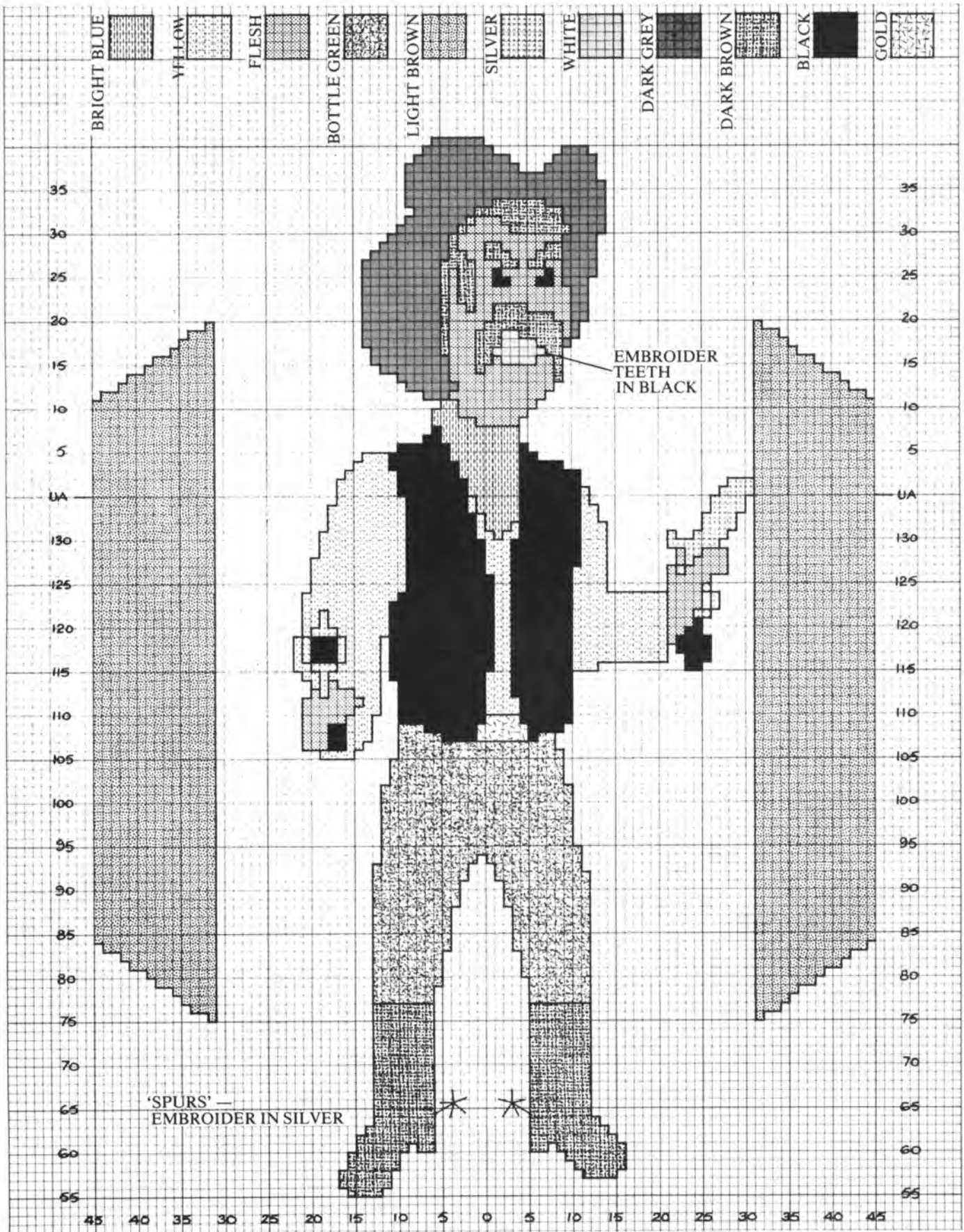
Using M, cast on 129 (137, 145, 153) sts. as 1 x 1 rib.

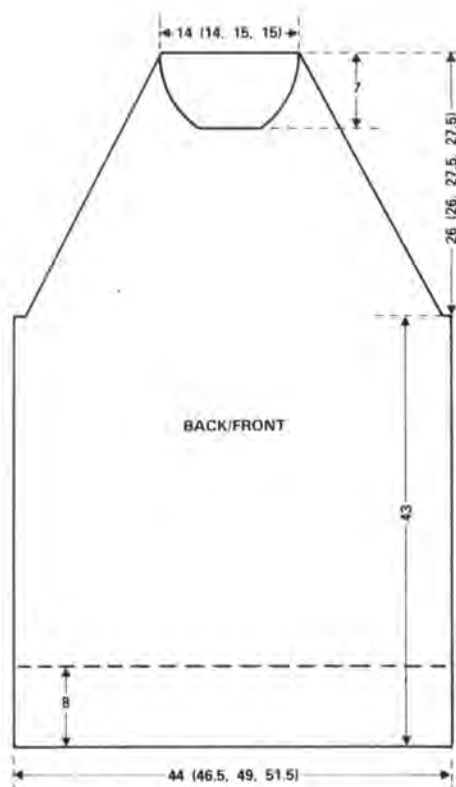
* R.C.000. T.1/1. Work 30 rows in rib. Trans. sts. to M.B.

R.C.000. T.8. * Work in st. st. to R.C.134. C.O.R.

Shape raglans

R.C.000. Cast off 4 (5, 5, 6) sts. at beg. of next 2 rows. Knit 10 (10, 10, 4) rows. Dec. 3 sts. at each end of next and every foll. 12th





row once (0, 0, 0), then every 6th row until 43 (43, 45, 45) sts. rem. R.C.90 (90, 96, 96). Knit 6 rows. Using W.Wl., knit a few rows and release from M/C.

FRONT

Work as given for Back to R.C.72 (72, 78, 78) of raglan shapings. Cont. to shape raglans as given for Back, AT THE SAME TIME.

Shape neck

Using W.Wl., knit a few rows across the centre 19 (19, 21, 21) sts. and release from M/C. C.O.R. Push the sts. at left to H.P. and work on the sts. at right. Dec. one st. at neck edge on every row 3 times in all, then on every alt. row 7 times in all. Fasten off. Return the sts. at left to W.P. and complete to correspond with first side, reversing all shapings.

SLEEVES

Cast on 65 (65, 69, 69) sts. as 1 x 1 rib. Work as given for Back from * to *. Knit 2 rows. Inc. one st. at each end of next and every foll. 8th row until there are 97 (97, 101, 101) sts. Knit straight to R.C.134.

Shape raglans

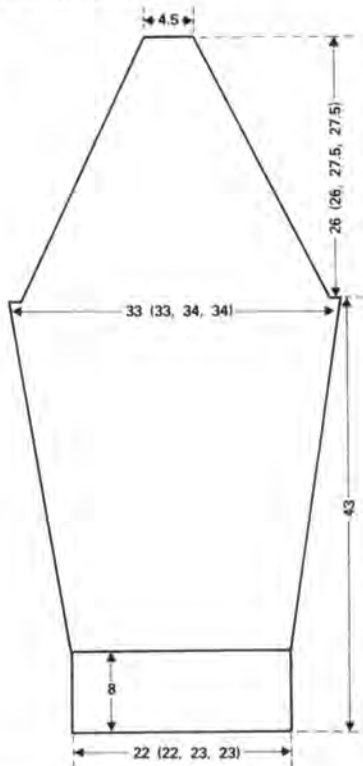
C.O.R. R.C.000. Cast off 4 (5, 5, 6) sts. at beg. of next 2 rows. Knit 10 rows. Dec. 3 sts. at each end of next and every foll. 12th row 2 (3, 3, 4) times, then every foll. 6th row until 11 (15, 13, 17) sts. rem. R.C.90 (90, 96, 96). Knit 6 rows. Using W.Wl., knit a few rows and release from M/C.

NECKBAND

Join raglan seams, leaving left back raglan open. With wrong side facing, replace 137 (145, 145, 153) sts. evenly back on to M/C. T.8. Knit one row. Trans. sts. for 1 x 1 rib. T.1/1. R.C.000. Work 30 rows in rib. Using W.Wl., knit a few rows and release from M/C.

MAKE UP

Join left back raglan and neckband seam. Join side and sleeve seams. Fold neckband in half on to right side and backstitch through last row knitted in M. Press as instructions given on ball band.



Sleeping Bag

(See page 8)

Single bed stretch terry fitted sheet available at all Mothercare stores at £5.35.

Machines

KH820, KH830, KH840, KH881, KH910.

Materials

ROBIN Aurora 4-ply.

White: 4 x 50 gm balls. Blue, Pink, and Mink: 1 ball in each colour.

MEASUREMENTS

Width at underarm: 61 cm (24"), 66 cm (26").

Length to back neck: 56 cm (22"), 61 cm (24").

Sleeve seam: 15 cm (6"), 16 cm (6½").

Zip: Approx. 51 cm (20").

TENSION

Always check tension before commencing. Fairisle — 30 sts. and 38 rows = 10 cm (4"). (Approx. T.7.)

Success depends on working to correct tension.

NOTES

Card 1 is knitted in double length knitting. Check with instruction book for pre setting of double length patt.

PATT. SEQUENCE

Card 1. (double length quoted).

White always in Feeder A.

Rows 1-12 Blue in B.

Rows 13-20 White only.

Rows 21-32 Pink in B.

Rows 33-36 White only.

Rows 37-68 Mink in B.

Rows 69-72 White only.

Rows 73-84 Pink in B.

Rows 85-92 White only.

Rows 93-104 Blue in B.

Remove Card 1. Knit 4 rows. Insert Card 2 and pre set.

* Rows 109-110 Blue in B.

Rows 111-114 Pink in B.

Rows 115-116 White only. Rep. from *.

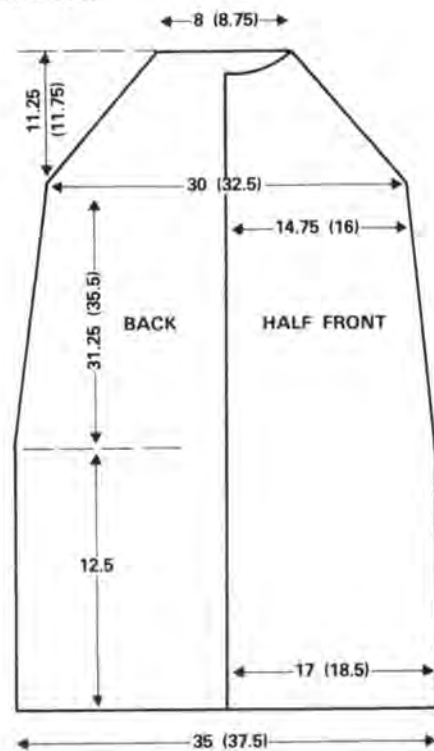
BACK

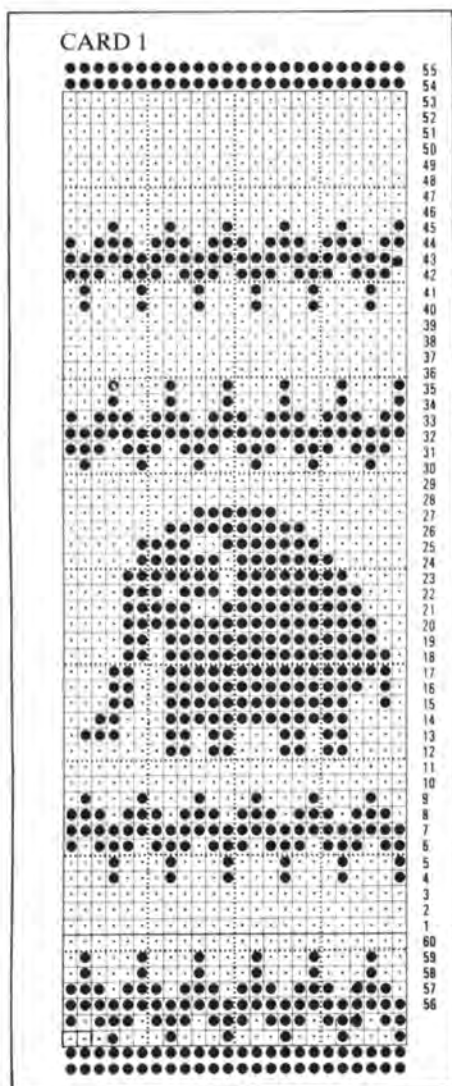
Insert Card 1. With White C.O.B.H. 107 (115) sts. T.7. Knit 4 rows (see Notes).

Set for Patt. R.C.000. Foll. patt. AT THE SAME TIME, knit 16 rows.

Dec. 1 st. each end of next and every foll. 24 (26)th row 7 times in all.

93 (101) sts. rem. Knit to 172 (186) rows. R.C.000.





Shape Armholes

Cast off 4 sts. at beg. of next 2 rows. Cont. straight to 38 (42) rows. Cast off loosely.

RIGHT FRONT

With White C.O.B.H. 53 (57) sts. having 13 Ns. to left of centre and 40 (44) Ns. to right. Foll. patt. as Back, AT THE SAME TIME, knit 16 rows. Dec. 1 st. at right side on next and every foll. 24 (26)th row 7 times in all. 46 (50) sts. rem. Knit to 172 (186) rows. R.C.000.

Shape Armhole

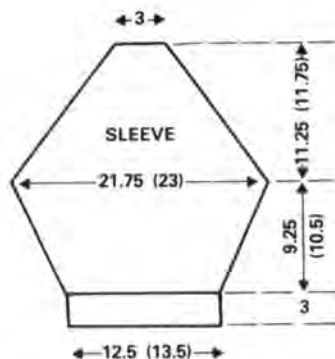
Cast off 4 sts. at beg. of next row. Knit to 25 (27) rows.

Shape Neck

Cast off 5 (6) sts. at beg. of next row. Dec. 1 st. at neck edge on next 7 rows. 30 (33) sts. rem. Knit to 38 (42) rows. Cast off.

LEFT FRONT

Knit as Right Front, reversing shapings and N setting.

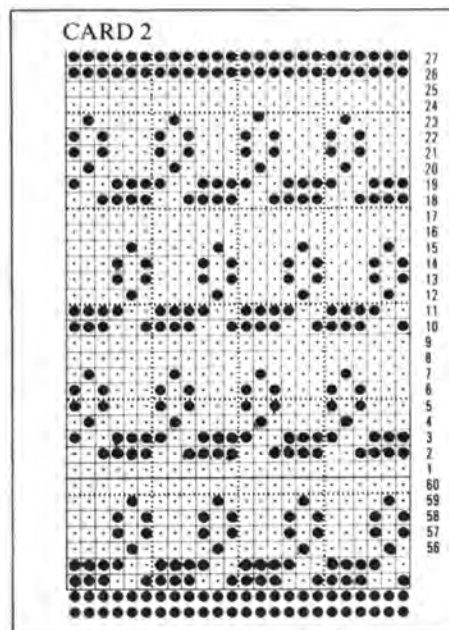
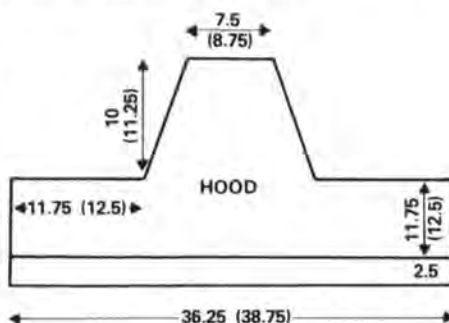


SLEEVES

Insert Card 2. With White cast on 45 (49) sts. as 1 x 1 rib. T.3/3. Knit 10 rows. Trans. to st. st. R.C.000. T.7. Knit 2 rows. Set for Fairisle. Foll. card knit 2 rows. Inc. 1 st. at each end of next and every foll. 6th row 8 (9) times in all. 61 (67) sts. Knit to 48 (52) rows. Mark ends with W.Wl. Knit a further 6 (7) rows. Cast off.

HOOD

Reset Card 2. With White cast on 109 (117) sts. as 1 x 1 rib. T.3/3. Knit 10 rows. Trans. to st. st. R.C.000. T.7. Knit 2 rows. Set for Fairisle. Knit to 36 (38) rows.



Shape Crown

R.C.000 Cast off 35 (37) sts. at beg. of next 2 rows. Knit 4 (6) rows. Dec. 1 st. at each end of next and every foll. 4th row 8 times in all. 23 (27) sts. rem. Knit to 50 (56) rows. Cast off.

MAKE UP

Press pieces to ball band instructions. Join shoulder seams. Sew sleeves to armholes, then side and sleeve seams. With White work 2 rows of double crochet along fronts. Insert zip and join remainder of seam, then join base of garment. Join back seams of hood then sew to neck, easing in slightly. Press seams.

Child's Poncho, Skirt, and Hat

(See page 33)

Machines

KH820, KH830, KH840, KH881, KH910.

Materials

LISTER-LEE Thermo-knit 4-ply.
6 40 gm balls in Col. 1 (Pink Haze).
4 40 gm balls in Col. 2 (White).
1 40 gm ball in Col. 3 (Blue Haze).
Elastic to fit waist.
Small crochet hook.

Measurements

PONCHO — in one size to fit up to 76 cm (30") Chest.
SKIRT — to fit waist up to 51 cm (20") — adjustable by elastic.
Length: 30.5 cm (12"), 33 cm (13"), 35.5 cm (14").

TENSION

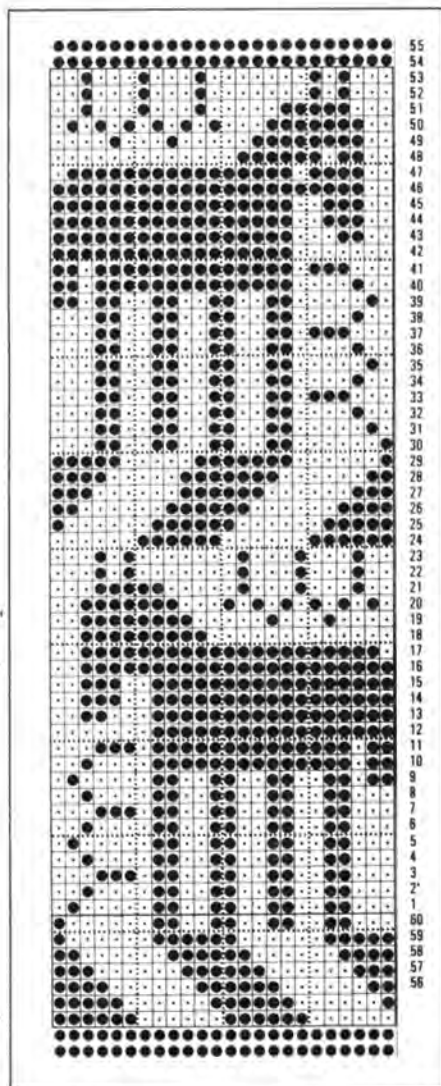
Always check tension before commencing.
30 sts. and 42 rows = 10 cm (4") measured over st. st. (Approx. T.6.)
Success depends on working to correct tension.

NOTE

All welts may be knitted using a ribbing attachment. Use T.4/4 and knit half the number of rows stated, arranging Ns. for 1 x 1 true rib.

SKIRT — Two pieces alike

Insert card and lock on row 1.
With W.Wl., cast on 122 (146, 170) sts. as 2 x 1 mock rib. ** Knit a few rows, ending with C.O.R. T.4. R.C.000. Using Col. 1, knit 10 rows. T.10. Knit one row. T.4. Knit 10 rows. Make a hem and knit the row.
R.C.000. T.6. Knit 2 rows, setting Ns. for



Fair Isle on last row.

T.7. Release card and set M/C for Fair Isle. * With Col. 2 in main feeder and Col. 3 in contrast feeder, knit 6 rows.

With Col. 2 in main feeder and Col. 1 in contrast feeder, knit 24 rows. *

With Col. 2 in main feeder and Col. 3 in contrast feeder, knit 6 rows.

T.6. Change to st. st. and Col. 1. ** Knit to R.C. 110 (120, 130).

Mark next row with thread. T.5. R.C.000. Knit 10 rows. T.10. Knit one row. T.5.

Knit 10 rows. Make a hem, picking up loops of row marked with thread. T.10. Knit 2 rows and cast off.

PONCHO — Make four pieces

Insert card and lock on row 1.

With W.Wl., cast on 200 sts. as 2 x 1 mock rib.

Knit a few rows, ending with C.O.R. T.4. R.C.000. Change to Col. 1 and knit 10 rows.

T.10. Knit one row. T.4. Knit 10 rows. Make a hem and knit the row. R.C.000. T.6. Knit 2 rows, setting Ns. for Fair Isle on last row.

T.7. Release card and set M/C for Fair Isle. Knit in patt. as given for Skirt, repeating from * to * throughout, AND AT THE SAME TIME, dec. one st. at each end of next and every foll. alt. row 78 times. 44 sts. rem. R.C. 158. (ends with 6 rows in Cols. 2 and 3).

Trans. Ns. for 2 x 1 mock rib. T.4. R.C.000. Change to Col. 1 and knit 50 rows.

T.10. Knit one row. T.4. Knit 50 rows. Make a hem picking up loops of 1st row in Col. 1 and knit the row. T.10. Knit 2 rows and cast off.

MAKE UP

SKIRT

Join side seams, leaving opening in waistband, insert elastic to fit waist and close opening.

PONCHO

Join the 4 pieces together to make a large square with polo neck at centre. Cut 18 cm (7") lengths of rem. yarn and pull through outer edge with crochet hook to make fringe. Press as instructions given on ball band.

HAT

Insert card and lock on row 1. With W.Wl., cast on 122 sts. as 2 x 1 mock rib. Knit as given for Skirt from ** to **. Knit to R.C.50. Cast off. Join side seam and gather top edge tightly, trim with a large tassel.

Child's Flower Motif Dress

(See page 34)

KH588 and KH710 (see instruction book), KH840, KH881 and KH910 use intersia feed (see instruction book), KH820, KH830 use hand selection method — see abbreviations.

Machines

Any M/Cs. KH588, 710, lay colours in by hand.

Materials

ROBIN Aurora 4-ply: M - 4 (4, 5, 5) 50 gm balls. 1 ball in Con. Col. 1. Oddments of cols. 2 and 3.

MEASUREMENTS

To fit chest: 61 cm (24"), 66 cm (26"), 71 cm (28"), 76 cm (30").

Length to top of shoulder: 56 cm (22"), 63 cm (25"), 71 cm (28"), 79 cm (31").

Sleeve seam: 25 cm (10"), 30 cm (12"), 35 cm (14"), 41 cm (16").

TENSION

Always check tension before commencing. St. st. 28 sts. and 36 rows = 10 cm (4"). (Approx. T.8.)

Success depends on working to correct tension.

NOTES

Single Bed M/C 2 x 1 mock rib can be used for rib and side fronts.

SKIRT

Back and Front Alike

With W.Wl. cast on 127 (133, 141, 147) sts. Knit several rows. C.O.R. Change to M. T.6. Knit 9 rows. Make holes on alt. Ns. and leave Ns. in W.P. Knit 10 rows. Make a hem and knit the row. R.C.000. T.8*.

Curve Hem

Push 40 Ns. opposite to carr. to H.P. on next 2 rows. Push 10 Ns. back to U.W.P. on next 8 rows. R.C.10. Knit 2 rows. Dec. 1 st. at each end of next and every foll. 7 (9, 11, 13)th row 11 times in all. 105 (111, 119, 125) sts. Knit to 97 (115, 133, 151) rows or desired length. Knit with W.Wl. and release from M/C.

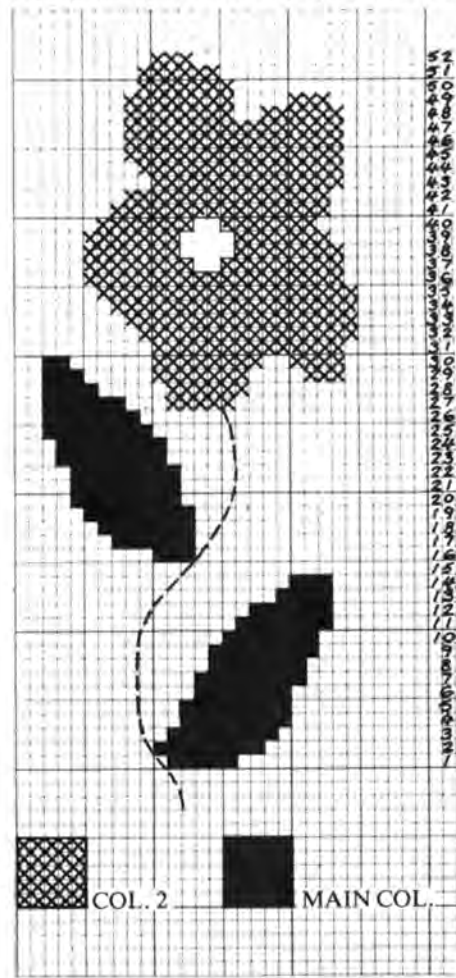
BODICE

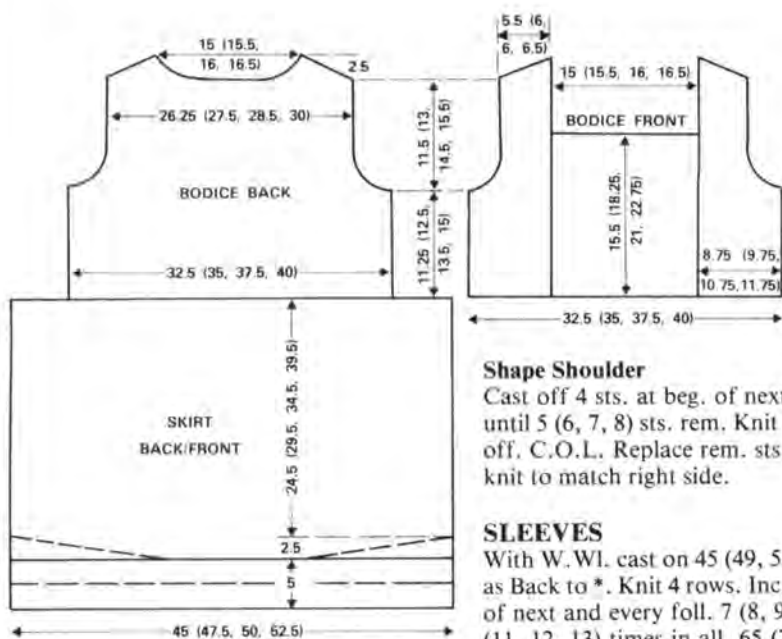
Back

Push 91 (97, 105, 111) Ns. to W.P. C.O.L. With wrong side of work facing replace sts. of one skirt onto Ns. dec. 14 sts. evenly along the row. With M. knit 1 row. R.C.000. T.8**. Knit 40 (44, 50, 54) rows. R.C.000.

Shape Armholes

Cast off 4 (4, 5, 5) sts. at beg. of next 2 rows. Dec. 1 st. at each end of next 3 (3, 5, 5) rows, then every alt. rows 2 (3, 2, 3) times. 73 (77, 81, 85) sts. rem. Knit to 42 (46, 52, 56) rows.





Shape Shoulder

Cast off 4 sts. at beg. of next and alt. rows until 5 (6, 7, 8) sts. rem. Knit 1 row and cast off. C.O.L. Replace rem. sts. onto Ns. and knit to match right side.

SLEEVES

With W.Wl. cast on 45 (49, 53, 57) sts. Knit as Back to *. Knit 4 rows. Inc. 1 st. each end of next and every foll. 7 (8, 9, 10)th row 10 (11, 12, 13) times in all, 65 (71, 77, 83) sts. Knit to 82 (100, 118, 136) rows or desired length R.C.000.

Shape Top

Cast off 4 (4, 5, 5) sts. at beg. of next 2 rows. Dec. 1 st. at each end of next 5 rows, then every alt. rows 7 (7, 9, 9) times. Dec. 1 st. at each end of next 6 (8, 8, 10) rows. Cast off rem. 21 (23, 23, 25) sts.

NECKBAND

Back

With wrong side of Back facing, pick up and place on Ns., 41 (43, 45, 47) sts. T.8. with M. knit 1 row, Trans. to 1 x 1 rib. T.4/4. Knit 9 rows. T.8/8. Knit 1 row, Trans. to st. st. and chain cast off.

Side Front Neck

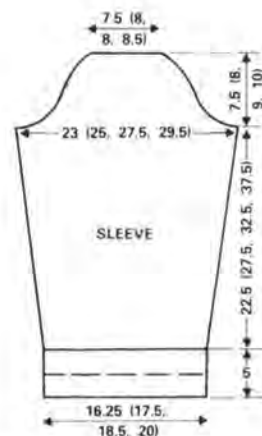
With wrong side of front facing pick up and place on Ns. 21 (23, 24, 26) sts. along side edge from marker to top of shoulder. T.8. With M knit 1 row. Trans. to 1 x 1 rib. T.4/4. Knit 2 rows. Dec. 1 st. at front corner on next and alt. rows 4 times in all. T.8/8. Knit 1 row. Trans. to st. st. and chain cast off. Knit other side to match.

CENTRE FRONT

With wrong side of work facing pick up and place on Ns. 41 (43, 45, 47) sts. from centre panel, (dec. 1 st. at each side). Knit as side front edge, dec. at *both* ends.

MAKE UP

Press to instructions on ball band. Sew centre panel to side panels, then join mitred corners of rib. With sewing needle and yarn work 1 row of chain st. along mitre seam. Sew shoulder seams. Sew sleeves to armholes, then side and sleeve seams. Press seams. With Con. Co. 3 embroider stem of rose as shown.



Bird Sweater

(See page 35)

Machines

KH588 and KH710 (See Instruction Book) KH840, KH881 and KH910 use intarsia feed (See Instruction Book) KH820 and KH830 use hand selection method.

Materials

HAYFIELD Grampian 4-ply.
5 (5, 6, 6) 50 gm balls in Col. 1 (Red).
2 (2, 2, 2) 50 gm balls in Col. 2. (Cream).
1 (1, 1, 1) 50 gm ball in Col. 3. (Tan).

MEASUREMENTS

To fit Bust (loosely): 81 cm (32"), 86 cm (34"), 91 cm (36"), 96 cm (38").
Length to shoulder: 62 cm (24 1/2"), 62 cm (24 1/2"), 65 cm (25 1/2"), 65 cm (25 1/2").
Sleeve Seam: 43 cm (17"), 44.5 cm (17 1/2"), 47 cm (18"), 48.5 cm (18 1/2").

TENSION

Always check tension before commencing.
32 sts. and 44 rows = 10 cm (4") measured over st. st. (Approx. T.6.)
Success depends on working to correct tension.

NOTES

All welts may be knitted using a ribbing attachment. Use T.4/4 and knit half the number of rows stated, arranging Ns. for 2 x 2 rib.

BACK

Using W.Wl., cast on 114 (122, 130, 138) sts. as 2 x 1 mock rib. Knit a few rows ending with C.O.R. R.T. R.C.000. Change to Col. 1 and knit 30 rows. T.10. Knit one row. R.T. Knit 30 rows. Make a hem and knit the row. Using W.Wl., knit a few rows and release from M/C. Replace sts. on to M/C, inc. 30 sts. evenly across row. 144 (152, 160, 168) sts. * M.T. R.C.000. Change to Col. 1 and knit to R.C.148 (148, 152, 152). C.O.R.

Shape Shoulder and Back Neck

Cast off 4 sts. at beg. of next 2 rows. Cast off centre 33 (35, 37, 39) sts. and push Ns. at left to H.P. Knit on rem. sts. Cast off 4 sts. at armhole edge on next and alt. rows, AT THE SAME TIME, dec. 1 st. at neck edge on next 4 rows. Cast off rem. 4 (5, 6, 7) sts. C.O.L. Rejoin yarn to armhole edge and knit to match right side.

FRONT

Knit as Back to **. Knit with W.Wl. and release from M/C.

Centre Panel

Push 41 (43, 45, 47) Ns. to W.P. With wrong side of skirt facing pick up centre 41 (43, 45, 47) sts. and place on Ns. Inc. 1 st. each side. 43 (45, 47, 49) sts. With Con. Col. 1 knit 6 (8, 14, 16) rows. Foll. chart knit the 52 rows of flower motif on centre 24 sts. Cont. in Con. Col. 1 only and knit 4 (8, 12, 16) rows. Knit with W.Wl. and release from M/C.

Side Panel

Push 25 (27, 30, 32) Ns. to W.P. With wrong side of front facing pick up 25 (27, 30, 32) sts. on right of centre and place on Ns. Inc. 1 st. at left side 26 (28, 31, 33) sts. Beg. at left trans. the 4th and every foll. 3rd st. to ribber. (2 x 1) rib. T.5/5. R.C.000. Knit 40 (44, 50, 54) rows. R.C.000.

Shape Armholes

Cast off 4 (4, 5, 5) sts. at beg. of next row. Knit 1 row. Dec. 1 st. at right on next 3 (3, 5, 5) rows, then alt. rows 2 (3, 2, 3) times. 17 (18, 19, 20) sts. rem. Knit to 42 (46, 52, 56) rows, marking left side with W.Wl. on row 20 (22, 26, 28).

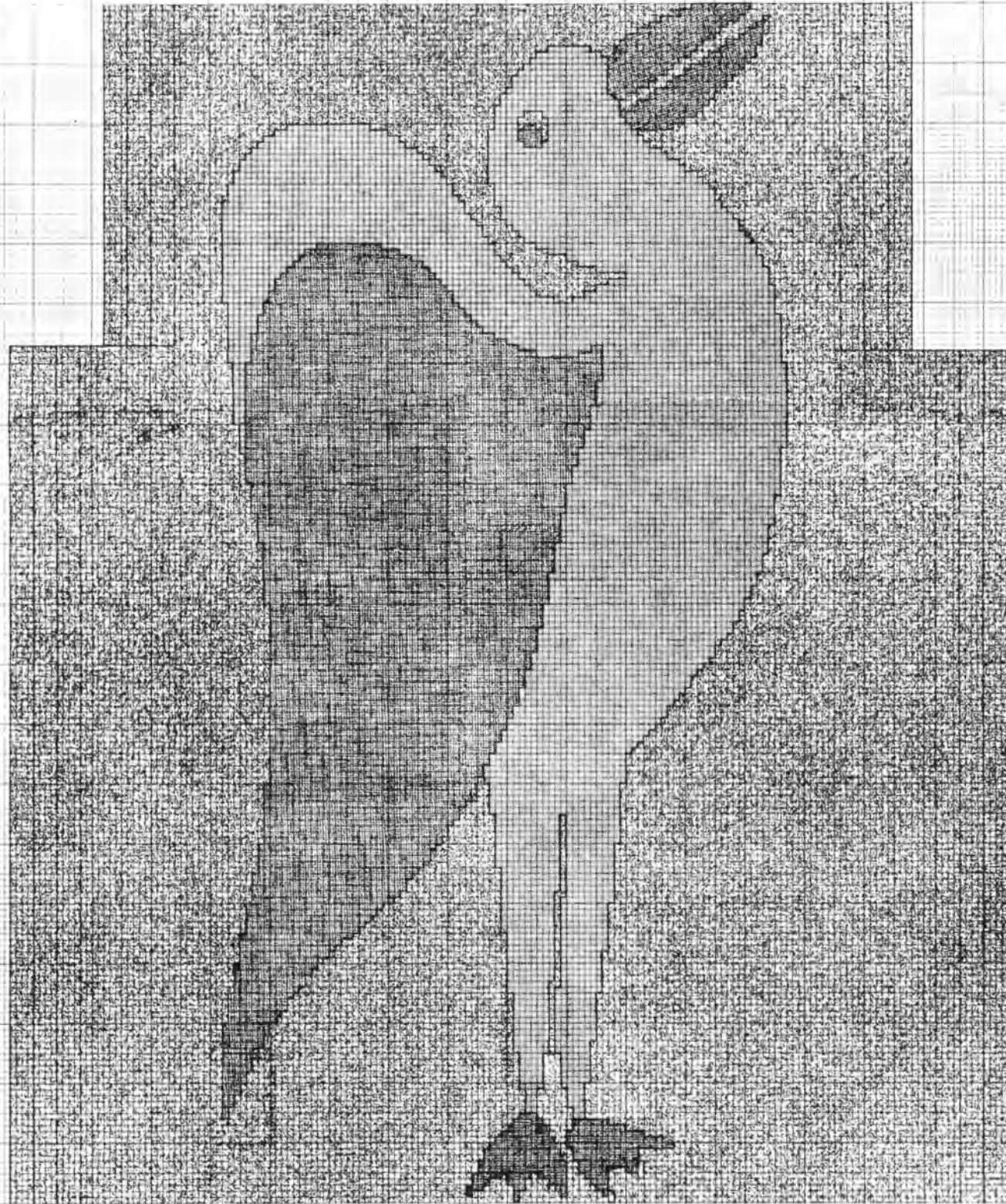
RED

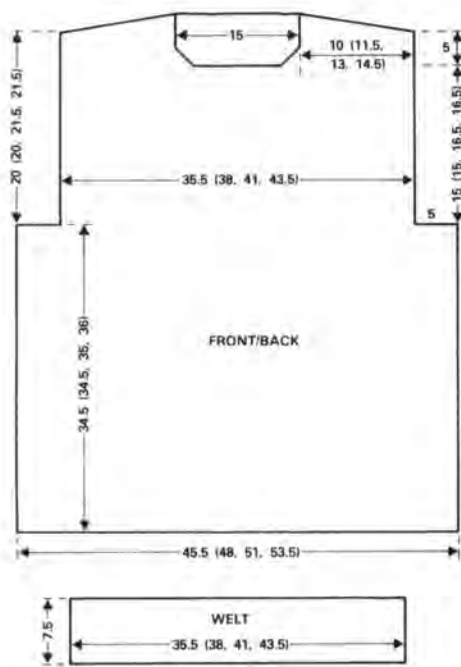
TAN

CREAM

200
198
196
194
192
190
188
186
184
182
180
178
176
174
172
170
168
166
164
162
160
158
156
154
152
150
148
146
144
142
140
138
136
134
132
130
128
126
124
122
120
118
116
114
112
110
108
106
104
102
100
98
96
94
92
90
88
86
84
82
80
78
76
74
72
70
68
66
64
62
60
58
56
54
52
50
48
46
44
42
40
38
36
34
32
30
28
26
24
22
20
18
16
14
12
10
8
6
4
2

100
101
102
103
104
105
106
107
108
109
110
111
112
113
114
115
116
117
118
119
120
121
122
123
124
125
126
127
128
129
130
131
132
133
134
135
136
137
138
139
140
141
142
143
144
145
146
147
148
149
150
151
152
153
154
155
156
157
158
159
160
161
162
163
164
165
166
167
168
169
170
171
172
173
174
175
176
177
178
179
180
181
182
183
184
185
186
187
188
189
190
191
192
193
194
195
196
197
198
199
200





Shape Armholes

R.C.000. Cast off 16 sts. at beg. of next 2 rows. 112 (120, 128, 136) sts. Knit to R.C.88 (88, 92, 92). C.O.R.

Shape Shoulders

Cast off 12 (13, 14, 15) sts. at beg. of next 4 rows. Cast off 11 (12, 13, 14) sts. at beg. of foll. 2 rows. Using W.Wl., knit a few rows over rem. 42 (44, 46, 48) sts. and remove from M/C.

FRONT

Knit as given for Back as far as*.

M.T. R.C.000. Change to Col. 2. Knit 6 (6, 10, 10) rows.

R.C.000. Knit in intarsia, reading from chart, commencing row 1 of Chart and casting off 16 sts. at beg. of rows 143/144 of chart as shown, working within outline of chosen sizes. Work to Row 200 of Chart. C.O.R. Change to Col. 2 and knit 6 (6, 10, 10) rows.

Shape Neck

C.O.R. Push 71 (76, 81, 86) sts. at left to H.P. Work on the 41 (44, 47, 50) sts. at right. R.C.000. Knit one row. With 2 st. transfer tool, dec. one st. at neck edge on every row 6 times. Knit to R.C.24. C.O.R.

Shape Shoulder

Cast off 12 (13, 14, 15) sts. at beg. of next and alt. row. Knit one row.

Cast off rem. 11 (12, 13, 14) sts.

Return 30 (32, 34, 36) sts. at centre to W.P. Using W.Wl., knit a few rows and release from M/C.

Return the rem. 41 (44, 47, 50) sts. at left to W.P. and complete to correspond with first side, reversing shapings.

NECKBAND

Join right shoulder seam. Using W.Wl., cast on 120 (124, 128, 132) sts. as 2 x 1 mock rib. Knit a few rows, ending with C.O.R.

R.T. R.C.000. Change to Col. 1 and knit 12 rows. T.10. Knit one row. R.T. Knit 12 rows. Make a hem and knit the row. With wrong side of work facing, pick up 42 (44, 46, 48) sts. from W.Wl. at back of neck; 24 sts. from left front neck shaping; 30 (32, 34, 36) sts. from W.Wl. at front of neck and 24 sts. from right front neck shaping. 120 (124, 128, 132) sts. T.10. Knit 2 rows and cast off.

SLEEVES

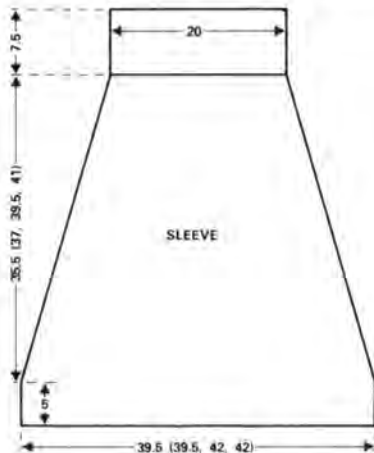
Join rem. shoulder seam. With wrong side of work facing, pick up 124 (124, 128, 128) sts. evenly from armhole edge (not including cast off sts. of armhole shaping). M.T. R.C.000. Change to Col. 1 and knit 20 rows. Mark each end of next row with a thread. R.C.000. Dec. one st. at each end of 6 (10, 14, 18)th and every foll. 6th row 25 times in all. 74 (74, 78, 78) sts. Knit to R.C.162 (166, 170, 174). Using W.Wl., knit a few rows and release from M/C.

CUFFS

Using W.Wl., cast on 62 (62, 64, 64) sts. as 2 x 1 mock rib. Knit a few rows, ending with C.O.R. R.T. R.C.000. Change to Col. 1 and knit 30 rows. T.10. Knit one row. R.T. Knit 30 rows. Make a hem and knit the row. With wrong side of Sleeve facing, pick up 62 (62, 64, 64) sts. evenly from lower edge, dec. 12 (12, 14, 14) sts. evenly across the row. T.10. Knit 2 rows. Cast off.

MAKE UP

Join neckband seam. Join side and sleeve seams, joining rows above marking threads on sleeves to cast off sts. of armhole shapings. Embroider line in Cream as shown on chart for front, using Swiss darning. Press as instructions given on ball band.



Two Tone Fairisle Dress

(See page 36)

Machines

All Machines. KH588, 710 — See Notes.

Materials

SIRDAR Majestic 4-ply wool.
Turquoise — 8 (8, 9, 9, 10) 50 gm balls.
Mauve — 6 (6, 7, 7, 8) 50 gm balls.
Soft leather belt.

MEASUREMENTS

To fit bust:— 71 cm (28"), 76 cm (30"), 81 cm (32"), 86 cm (34"), 91 cm (36").

Length to Shoulder:— 101 cm (40"), 104 cm (41"), 107 cm (42"), 107 cm (42½"), 108 cm (42½").

Sleeve Seam:— 43 cm (17"), 44 cm (17½"), 46 cm (18"), 46 cm (18"), 46 cm (18").

TENSION

Always check tension before commencing.

Fairisle. 29 sts. and 40 rows = 10 cm (4"), after steam pressing. (Approx. T.8.)

Success depends on working to correct tension.

NOTES

Use patt. of your choice with 12 rows of Fairisle and 12 rows st. st.

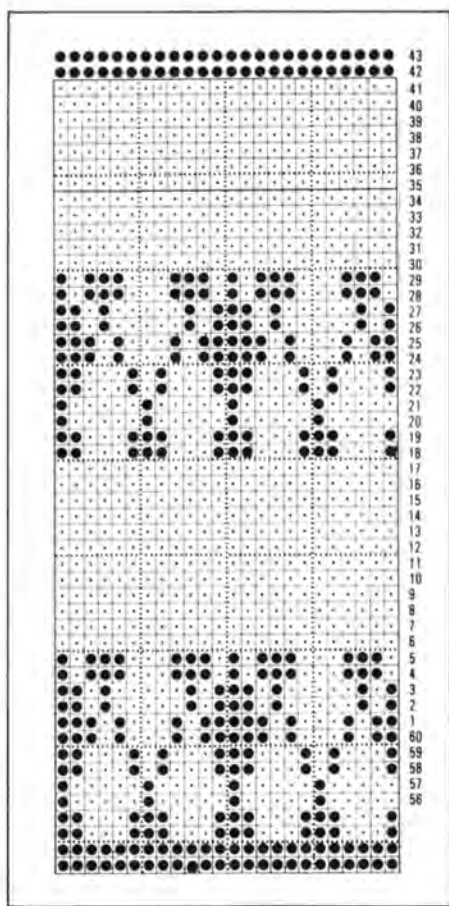
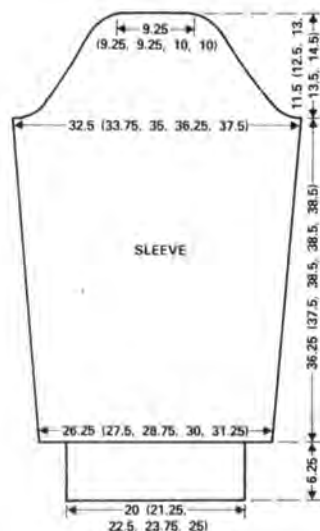
BACK

Right Part: Insert card. With W.Wl. cast on 79 (82, 86, 90, 93) sts. placing 37 Ns. to left of centre and 42 (45, 49, 53, 56) Ns. to right. * Knit several rows. C.O.R. Change to Turq. T.7. Knit 12 rows. R.C.000. Knit 11 rows. Make a hem and knit the row. C.O.R. T.8. Set for Fairisle*. With Turq. in A and Mauve in B, foll. card. AT THE SAME TIME, cast on 8 sts. at beg. of next row. 87 (90, 94, 98, 101) sts. Knit 3 rows. Dec. 1 st. at right side on next and every foll. 24th row, knit to 70 rows. Cast off 8 sts. at beg. of next row. Cont. decs. as before until 68 (71, 75, 79, 82) sts. rem. Knit straight to 334 (340, 350, 350, 350) rows or length desired to armholes. R.C.000.

Shape Armhole

C.O.R. Cast off 3 (3, 4, 4, 4) sts. at beg. of next row. Knit 1 row. Dec. 1 st. at right on next 3 rows, then every alt. rows 3 (4, 4, 5, 6) times. 59 (61, 64, 67, 69) sts. rem. ** Knit to 56 (58, 60, 64, 66) rows. Trans. sts. to 1 x 1 rib. T.4/4. Working in Turq. only, knit 14 rows. T.8/8. Trans. to st. st. and chain cast off.

Left Part: Reset card. Cast on 56 (59, 63, 67, 70) sts. placing 37 Ns. to right of centre and 19 (22, 26, 30, 33) Ns. to left. Knit as Right Part from * to *. With Mauve in A and Turq. in B, knit 1 row. Cast on 8 sts. at beg. of next row. Knit 3 rows. Dec. 1 st. at left on next and every foll. 24th row, knit to 71 rows.



Child's Tunic — Large Flowers

(See page 37)

Machines

KH840, 881, 910 — use intarsia feed.
KH710, 588 — lay in yarns. KH820, 830 —
pull Ns. to H.P. in required section, set carr.
so Ns. knit back.

Materials

Copley Sonata 4-ply: M. 9 (9, 10, 10) 20 gm.
balls. Odd amount in each of 4 Con. Cols.

MEASUREMENTS

To fit chest: 61 cm (24"), 66 cm (26"), 71 cm
(28"), 76 cm (30").

Length to top shoulder: 46 cm (18"), 49 cm
(19½"), 53 cm (21"), 57 cm (22½").

Sleeve seams: 6 cm (2½"), 7 cm (2¾"), 7 cm
(3"), 8 cm (3¼").

TENSION

Always check tension before commencing.
St. St. 28 sts. and 42 rows = 10 cm (4").
(Approx. T.7.)

*Success depends on working to correct
tension*

BACK

With W.Wl. cast on 113 (121, 127, 135) sts.
Knit several rows. C.O.R. Change to M. T.5.
Knit 8 rows. *Push centre N. and every 6th N
each side to H.P. Knit 4 rows. Push Ns. to
U.W.P. and knit 1 row. Rep. from * once
more. Knit 9 rows, 27 rows. Make a hem and
knit the row. R.C.000. T.7. Knit 6 rows.
Dec. 1 st. at each end of next and every 11
(12, 13, 15)th row 11 times in all. 91 (99, 105,
113) sts. rem. Knit to 126 (140, 152, 166)
rows. R.C.000.

Shape Armholes

Cast off 2 (3, 3, 4) sts. at beg. of next 2 rows.
Dec. 1 st. at each end of next 3 (3, 5, 5) rows,
then every alt. rows 3 (4, 3, 4) times. 75 (79,
83, 87) sts. rem.**, Knit to 48 (50, 52, 54)
rows.

Shape Shoulders and Back Neck

Cast off centre 35 (37, 39, 41) sts. and push
Ns. at left to H.P. Work on rem. 16 (17, 18,
19) sts. Cast off 5 (5, 6, 6) sts. at beg. of next
and alt. row, AT THE SAME TIME, dec. 1
st. at neck edge on next 4 rows. Cast off rem.
6 (7, 6, 7) sts. C.O.L. Rejoin yarn and knit to
match right side.

FRONT

Knit as Back to **. beg. large flower on row
56 (70, 82, 96) on centre sts. Cont. in M. after
flower is completed.

Cast off 8 sts. at beg. of next row. Cont.
decs. as before until 45 (48, 52, 56, 59) sts.
rem. Knit to 335 (341, 351, 351, 351) rows,
or length desired to armhole. R.C.000.

Shape Armhole

C.O.L. Cast off 3 (3, 4, 4, 4) sts. at beg. of
next row. Knit 1 row. Dec. 1 st. at left on next
3 rows, then every alt. rows 3 (4, 4, 5, 5)
times. 36 (38, 41, 44, 46) sts. rem. Knit as
Right Part from ** to end.

FRONT

Right Part: Knit as Back reversing shapings.
Left Part: Knit as Back reversing shapings.

SLEEVES

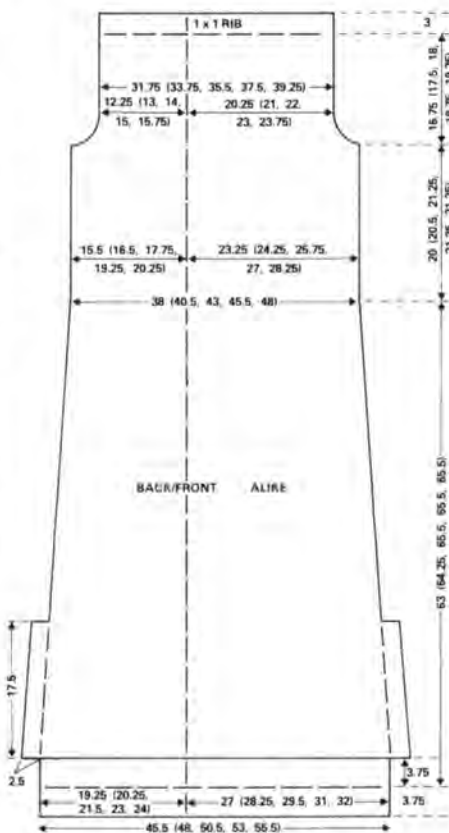
Reset card. With Turq. cast on 57 (61, 65, 69,
73) sts. as 1 x 1 rib. T.4/4. Knit 25 rows.
Remove work from M/C. Push 77 (81, 85,
89, 93) Ns. to W.P. Replace work inc. 20 sts.
evenly along the row. T.8. Knit 1 row.
R.C.000. Set for Fairisle. With Turq. in A
and Mauve in B knit 6 rows. Inc. 1 st. at each
end of next and every 18 (18, 20, 20, 20)th
row 8 times in all. 93 (97, 101, 105, 109) sts.
Knit to 146 (150, 156, 156, 156) rows.
R.C.000.

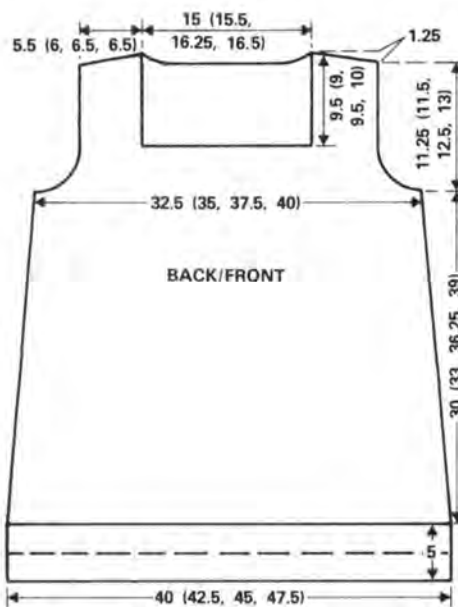
Shape Top

Cast off 3 (3, 4, 4, 4) sts. at beg. of next 2
rows. Dec. 1 st. at each end of next 5 rows,
then every alt. rows 13 (15, 16, 17, 19) times.
Dec. 1 st. at each end of next 12 rows. 27 (27,
27, 29) sts. rem. Cast off.

MAKE UP

Press pieces to instructions on ball band.
Join the 2 front pieces and the back pieces.
Sew neck ribs together from armhole edge
for approx. 10 cm (4"). Sew sleeves to
armholes. Sew sleeve seams, then side seams
to 8 cast off sts. Turn 8 sts. to inside and slip
st. in place. Press seams.





Shape Neck

Cast off centre 43 (45, 47, 49) sts. and push Ns. at left to H.P. Work on rem. 16 (17, 18, 19) sts. Knit to 48 (50, 52, 54) rows.

Shape Shoulder

As Back C.O.L. Rejoin yarn and knit to match right side.

SLEEVES

With W.Wl. cast on 65 (69, 71, 75) sts. Make scalloped hem as Back. R.C.000. T.7. Knit to 16 (18, 22, 24) rows. R.C.000.

Shape Top

Cast off 2 (3, 3, 4) sts. at beg. of next 2 rows. Begin small flower motif on centre sts. Dec. 1 st. at each end of next 5 rows, then every alt. rows 8 (9, 11, 12) times. Dec. 1 st. at each end of next 8 (8, 6, 6) rows. Cast off rem. 19 (19, 21, 21) sts.

POCKETS

With W.Wl. cast on 31 sts. Make scalloped hem as Back. R.C.000. T.7. Knit 6 rows. Knit small flower motif. Knit to 34 rows. Dec. 1 st. at each end of next 9 rows. Cast off rem. 13 sts.

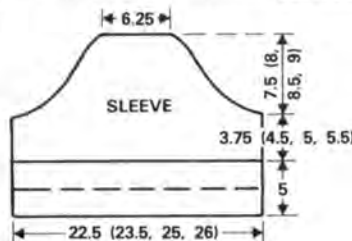
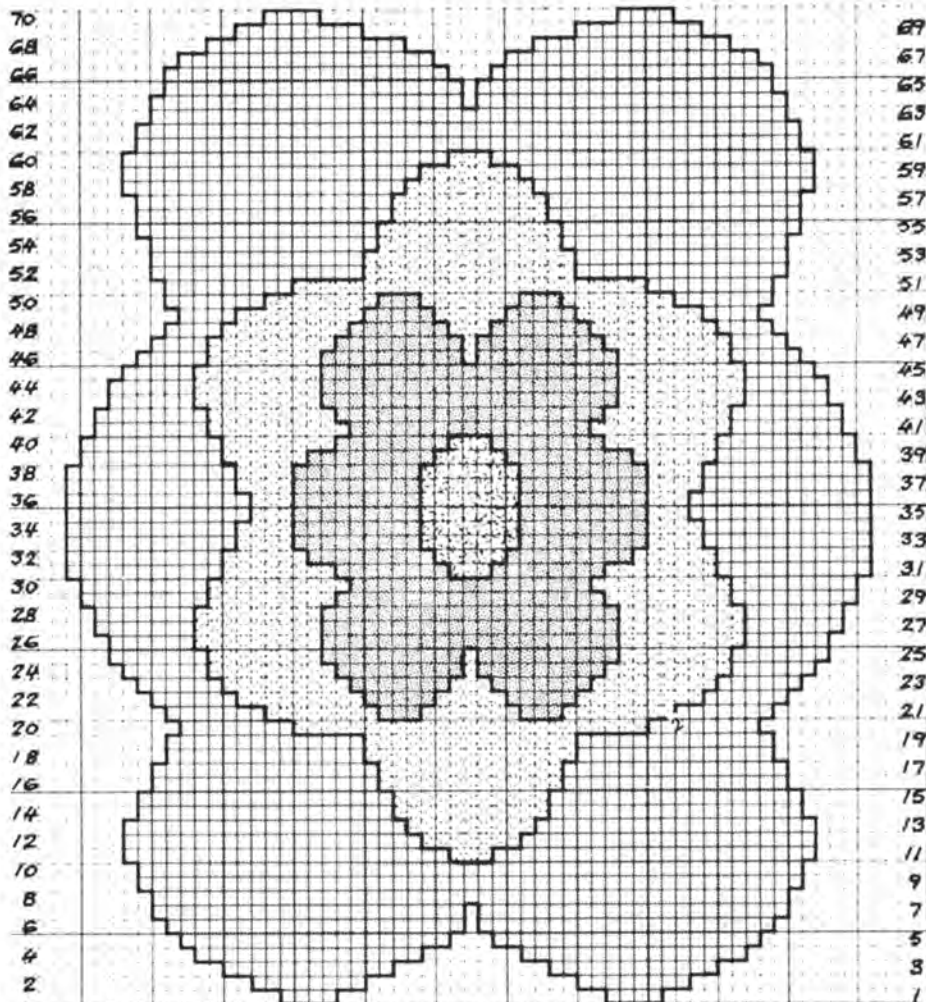
NECKBAND

Back

With purl side of Back facing pick up and place on Ns. 43 (45, 47, 49) sts. along back neck. Knit as Back hem, but cast off sts. instead of making hem.

SIDE FRONT

With wrong side of front facing pick up and place on Ns. 23 (24, 27, 28) sts. along side neck edge to top of shoulder. T.5. Knit 2 rows. Dec. 1 st. at front neck edge on next and alt. rows 3 times in all. Knit 1 row. Knit the 10 rows of scallop. Knit 1 row, then inc. 1 st. at same edge on next and alt. rows 3 times in all. Knit 2 rows. 27 rows. Cast off. Knit other side to match.

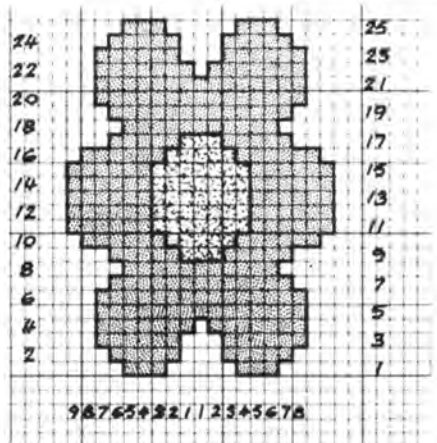


CENTRE FRONT NECK

Pick up centre 43 (45, 47, 49) sts. and place on Ns. Knit as side edge shaping at both ends.

TO MAKE UP

Press pieces to yarn instructions. Sew shoulder seams. Sew in sleeves, then sew side and sleeve seams. Sew pockets in position. Join corners of front neckband, turn neckband to inside and sew in place. Press seams.



JOIN THE DEMONSTRATION

Jones + Brother are looking for experienced machine knitters and dressmakers who would like to demonstrate our fabulous range of knitting and sewing machines at exhibitions, stores and conventions on a freelance basis. The ability to chat to the general public is a must, neat appearance is appreciated.

Please write to:-

**The Personnel Officer,
Jones + Brother,
Shepley Street,
Guide Bridge,
Audenshaw,
Manchester**

or telephone (061) 330 6531



a member of the Brother Industries Group

Lady's Shetland Sweater

(See page 38)

Machines

KH820, KH830, KH840, KH881, KH910.

Materials

300 (330, 360) gm 2/8s Oiled Shetland Wool in M.

Oddments in 4 Con. Col.

MEASUREMENTS

To fit Bust: 86 cm (34"), 91 cm (36"), 97 cm (38").

Length: 57.5 cm (22½"), 58.5 cm (23"), 59.5 cm (23½").

Sleeve seam: 42.5 cm (16½").

42.5 cm (16½").

TENSION

Always check tension before commencing.

13 sts. and 18 rows = 5 cm (2") over Fair Isle and st. st. (Washed).

Fair Isle approx. T.10. St. st. (Approx. T.8.)

Success depends on working to correct tension.

COLOUR SEQUENCE

M.C. in main feeder throughout.

Rows 1-5 Col. 1 contrast feeder.

Row 6 M.C.

Rows 7-9 Col. 2 contrast feeder.

Rows 10-16 Col. 3 contrast feeder.

Rows 17-27 Col. 4 contrast feeder.

Rows 28-34 Col. 3 contrast feeder.

Rows 35-37 Col. 2 contrast feeder.

Row 38 M.C.

Rows 39-43 Col. 1 contrast feeder.

BACK

Using M. cast on 122 (128, 134) sts. as 2 x 2 rib.

T.4/5. R.C.000. Knit 40 rows in rib., Trans. sts. to M.B.

Insert card. R.C.000. M.T. C.O.R. Knit one row in st. st. in M.

Set M/C for Fair Isle. T.10. Foll. colour changes as given. (43 rows).

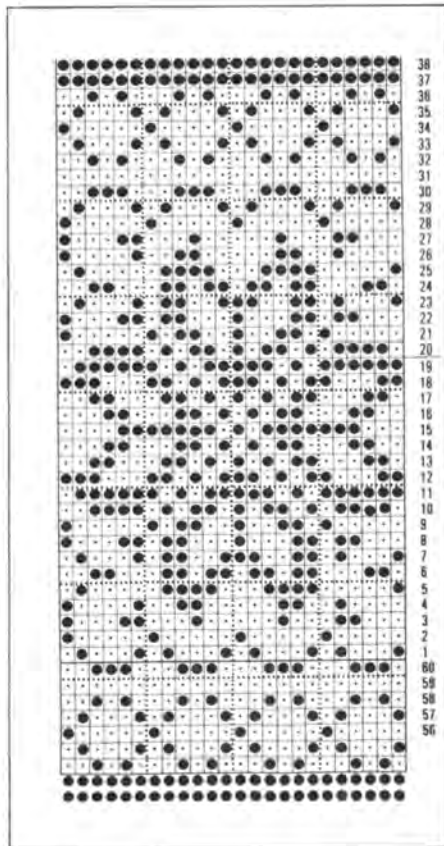
M.T. Set M/C for st. st. and knit to R.C.116.

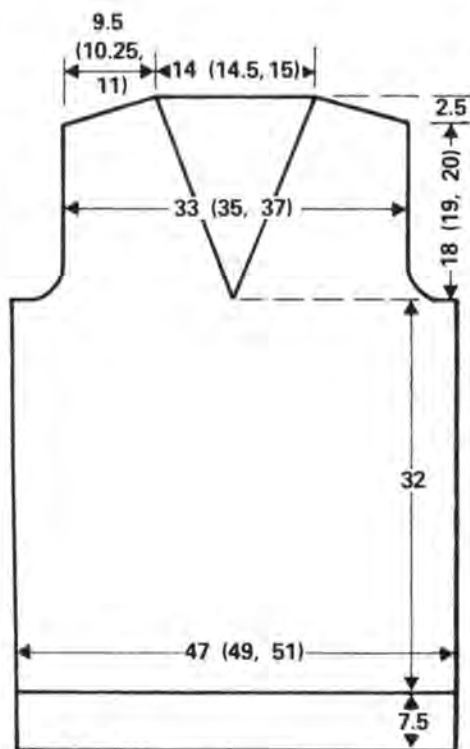
Shape Armholes

R.C.000. Cast off 5 (5, 6) sts. at beg. of next 2 rows, and 4 sts. at beg. of foll. 2 rows. Dec. one st. FF. at each end of next and foll. alt. rows 8 (9, 9) times in all. 88 (92, 96) sts. Knit straight to R.C.62 (68, 72).

Shape shoulders

C.O.R. Cast off 6 (6, 7) sts. at beg. of next 2 rows, 6 (7, 7) sts. at beg. of foll. 2 rows and 7





sts. at beg. of next 4 rows. Using W.Wl., knit a few rows over rem. 36 (38, 40) sts. and release from M/C.

FRONT

Work as given for Back as far as armhole shapings.

SHAPE ARMHOLES AND V NECK

C.O.R. Push 61 (64, 67) sts. left of centre to H.P. and work on the 61 (64, 67) sts. at right. *SHAPE ARMHOLE* as given for Back, and *AT THE SAME TIME*, dec. one st. FF. at neck edge on first and every foll. 4th row 18 (19, 20) times in all.

SHAPE SHOULDER as given for Back when R.C. reads 62 (68, 72).

Return the 61 (64, 67) Ns. at left to W.P. and complete to correspond with first side, reversing shapings.

SLEEVES

Reset card and lock on row 1.

Using M., cast on 60 (62, 64) sts. as 2 x 2 rib.

T.4/5. R.C.000. Knit 40 rows. Trans. sts. to M.B.

R.C.000. C.O.R. M.T. Knit one row in st. st. in M.

T.10. Release card and work in Fair Isle foll. colour changes as given, (43 rows). *AT THE SAME TIME*, inc. one st. at each end of every 8th row 11 (11, 12) times in all. At the end of the patt. band, work in M. in st. st. (T.8) and complete inc. 82 (84, 88) sts. Knit straight to R.C.124 or to required length.

Shape top

R.C.000. C.O.R. Cast off 4 (5, 5) sts. at beg. of next 2 rows. Cast off 2 (1, 1) sts. at beg. of

foll. 2 rows. Dec. one st. FF. at each end of next and every foll. alt. rows 14 (17, 19) times in all. Dec. one st. FF. at each end of next 14 (12, 12) rows. Cast off rem. 14 sts.

NECKBAND

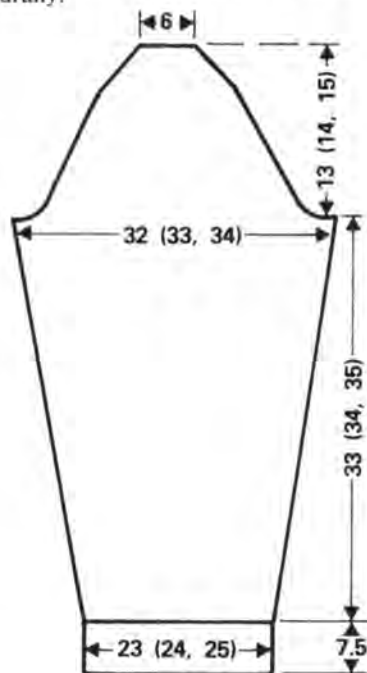
Join right shoulder seam. Cast on 54 sts. as 2 x 2 rib, using M. T.4/5. Knit 15 rows. Pick up 54 sts. evenly down left front (with wrong side facing) and place on to Ns. T.10. Knit one row. Cast off. Cast on 120 sts. and repeat for Back neck and Right side.

MAKE UP

Join left shoulder and neckband seam. Mitre joint at Front.

Set sleeves into armholes. Join side and sleeve seams.

Wash using soda or washing-up liquid and rinse with fabric conditioner. Lay out flat to dry, easing into shape. Pin and block to size using damp cloth and hot iron. Allow to cool naturally.



Man's Fair Isle Shetland Sweater

(See page 39)

Machines

KH820, KH830, KH840, KH881, KH910.

Materials

2/8s Oiled Shetland Wool.

120 gm Brown, 360 gm Brown and 50 gm Black.

MEASUREMENTS

To fit Chest: 102 cm (40"). Length: 66.5 cm (26"). Sleeve Seam: 49.5 cm (19½").

TENSION

Always check tension before commencing.
Fair Isle — 14½ sts. and 16 rows = 5 cm (2") when washed. (Approx. T.10.) st. st. — 13 sts. and 18 rows = 5 cm (2") when washed. (Approx. T.8.)

Success depends on working to correct tension.

COLOUR SEQUENCE

Work 2 rows Col. 1 between each patt. locking card first.

Natural — Col. 1.

Brown — Col. 2.

Black — Col. 3.

1st patt.

Row 1 Col. 2.

Rows 2-7 Col. 2 main feeder, Col. 1 contrast feeder.

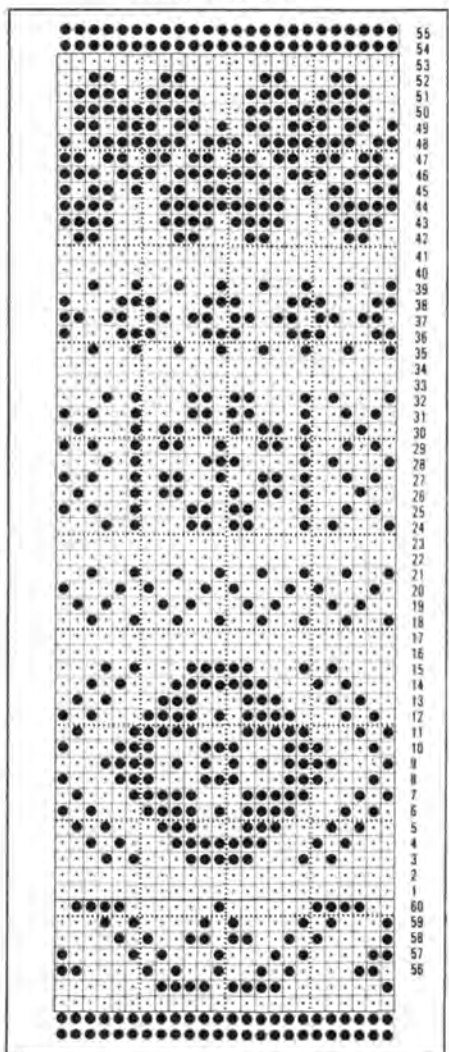
Row 8 Col. 2.

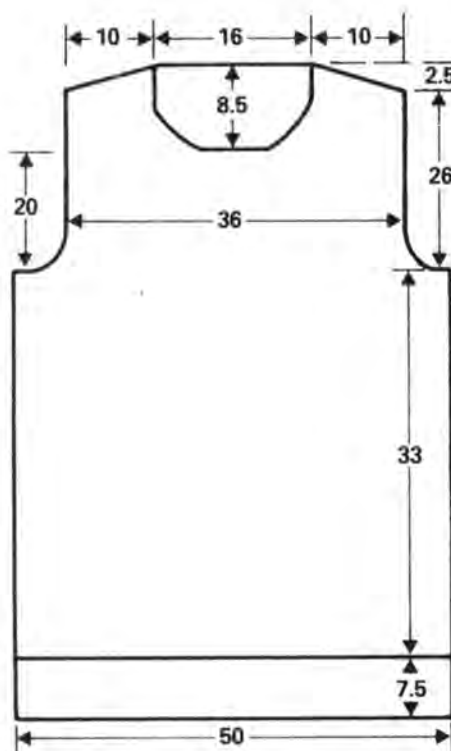
2nd patt.

Row 9 Col. 2.

Rows 10-15 Col. 2 main feeder, Col. 1 contrast feeder.

Row 16 Col. 3 main feeder, Col. 1 contrast feeder.





- Rows 17-22 Col. 2 main feeder, Col. 1 contrast feeder.
- Row 23 Col. 2.
- 3rd patt.**
- Row 24 Col. 2.
- Rows 25-28 Col. 2 main feeder, Col. 1 contrast feeder.
- Row 29 Col. 2.
- 4th patt.**
- Row 30 Col. 3.
- Rows 31-33 Col. 3 main feeder, Col. 1 contrast feeder.
- Rows 34-36 Col. 2 main feeder, Col. 1 contrast feeder.
- Rows 37-39 Col. 3 main feeder, Col. 1 contrast feeder.
- Row 40 Col. 3.
- 5th patt.**
- Row 41 Col. 2.
- rows 42-45 Col. 2 main feeder, Col. 1 contrast feeder.
- Row 46 Col. 2.
- 6th patt.**
- Row 47 Col. 3.
- Rows 48-50 Col. 3 main feeder, Col. 1 contrast feeder.
- Rows 51-55 Col. 2 main feeder, Col. 1 contrast feeder.
- Rows 56-59 Col. 3 main feeder, Col. 1 contrast feeder.
- Row 60 Col. 3.

BACK

With Col. 1, cast on 140 sts. as 2 x 2 rib. T.4/5. R.C.000. Knit 40 rows. Trans. sts. to M.B. R.C.000. T.8. Knit 120 rows in st. st.

Shape armholes

C.O.R. R.C.000. Cast off 5 sts. at beg. of next 4 rows. Dec. one st. FF. at each end of next and every foll. alt. row 10 times in all. 100 sts. rem. Knit straight to R.C.94.

Shape shoulders

C.O.R. Cast off 7 sts. at beg. of next 8 rows. Using W.Wl., knit a few rows over rem. 44 sts. and release from M/C.

FRONT

Insert card and lock on row 1.

With Col. 1, cast on 152 sts. and work rib as given for Back.

R.C.000. T.10. Trans. sts. to M.B. Set M/C for Fair Isle and foll. colour changes as shown. Release card and work in Fair Isle to R.C.106.

Shape armholes

C.O.R. R.C.000. Cast off 7 sts. at beg. of next 2 rows and 6 sts. at beg. of next 2 rows then dec. one st. FF. at each end of next and every foll. alt. row 11 times in all. 104 sts. rem. Knit straight to R.C.62.

Shape neck

C.O.R. Place centre 18 sts. on to W.Wl. Push 43 sts. at left to H.P. Work on the 43 sts. at right.

Patt. one row. Cast off 4 sts. at beg. (neck edge) of next row and 3 sts. at beg. of foll. alt. row. Patt. one row. Dec. one st. FF. at beg. of next and every foll. alt. row 6 times in all. 30 sts. rem. Work straight to R.C.84.

Shape shoulder

C.O.R. Cast off 7 sts. at beg. (armhole edge) of next and foll. alt. row and 8 sts. on next 2 alt. rows.

Return sts. at left to W.P. and complete to correspond with first side, reversing all shapings.

SLEEVES

Using Col. 1, cast on 70 sts. as 2 x 2 rib.

T.4/5. R.C.000. Knit 40 rows in rib. Trans. sts. to M.B.

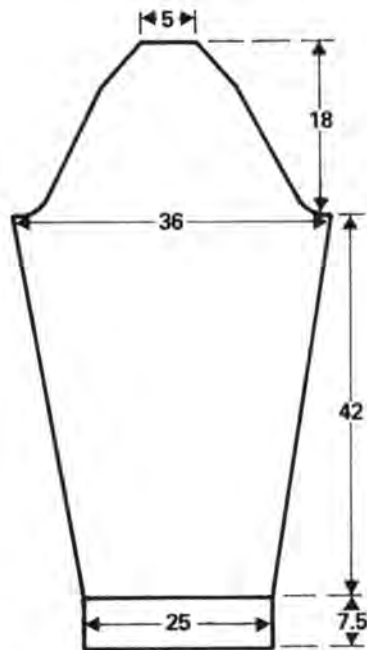
T.8. R.C.000. Work in st. st. to R.C.120, AT THE SAME TIME, inc. one st. FF. at each end of every 8th row 15 times in all. 100 sts. Knit straight to R.C.146 or length required.

Shape top

C.O.R. R.C.000. Cast off 5 sts. at beg. of next 2 rows, 3 sts. at beg. of next 2 rows, then dec. one st. FF. at each end of next and every alt. row 20 times in all. C.O.R. Dec. one st. FF. at each end of next 14 rows. Cast off rem. 16 sts.

NECKBAND

Join left shoulder seam. With right side facing, replace sts. on W.Wl., back on to M/C and pick up sts. down sides of front neck. (Approx. 120 sts.) Knit one row across all sts. T.10. Arrange as 2 x 2 rib and work 17 rows at T.4/5, and one row at T.10/8, 17 rows at T.4/5. Replace sts. onto M.B. and



knit 3 rows at MT. Using W.Wl., knit a few rows and release from M/C.

MAKE UP

Join right shoulder and neckband seam. Fold neckband to outside and back stitch through loops of last row in Col. 1. Sew sleeves into armholes, easing to fit as necessary. Join side and sleeve seams. Wash using soda or washing-up liquid and rinse with fabric conditioner. Lay out flat to dry, easing into shape. Pin and block to size using damp cloth and hot iron. Allow to cool naturally.

Gloves

(See inside front cover)

Machines

Any M/C.

Materials

Any 4 ply 1 (2, 2, 2, 2, 3, 3) x 25 gm balls.

MEASUREMENTS

To fit from 5 years up to average men's size.

NOTES

Instructions are given for M/Cs with ribbing attachment however mock rib may be used. Instructions are for plain st. st. gloves but any patt. may be incorporated on the back of the glove. For left glove work pattern on the right side of the bed and vice versa.

LEFT GLOVE

Using M. cast on 39 (45, 51, 55, 59, 63, 67) sts. as 1 x 1 rib. R.C.000. T.2/2 knit 30 rows. (Length may be adjusted here if necessary.) Trans. sts. to M.B. R.C.000. T.7. Knit 5 (5,

7, 7, 7, 7) rows. (For right glove knit 1 row less) + Move 18 (20, 23, 25, 27, 29, 31) sts. at both edges one N. outwards, pick up loops from row below and place onto empty Ns. Knit 2 (2, 3, 3, 3, 3) rows * Rep. from * to * 5 (5, 6, 6, 6, 7, 7) more times. (51 (57, 65, 69, 73, 83) sts.) Waste knit 18 (20, 23, 25, 27, 29, 31) sts. at both edges and release from M/C.

THUMB

C.O.R. join in M. on rem. 15 (17, 19, 19, 19, 21, 21) sts. Cast on 2 (2, 4, 4, 4, 4) sts. at right edge. Knit 16 (18, 20, 22, 24, 24, 24) rows.

Shape Top

Waste knit and remove from M/C. Replace sts. back onto Ns. placing 2 sts. onto every N. Remove W.Wl. knit 2 rows. Waste knit and remove from M/C. Replace sts. back onto Ns. placing 2 sts. onto every N. Remove W.Wl. Knit 1 row. Break off yarn. Thread end through all sts. draw up and fasten off. With C.O.R. and wrong side facing, replace both sets of sts. from W.Wl. back onto M/C leaving 3 (3, 4, 4, 4, 4, 4) empty Ns. between. Pick up 3 (3, 4, 4, 4, 4, 4) loops from cast on sts. at base of thumb and place onto empty Ns. Remove W.Wl. Join in M. knit 14 (16, 18, 20, 22, 24, 26) rows. Waste knit 14 (16, 19, 20, 22, 24, 25) sts. at both edges and remove from M/C.

1st FINGER

C.O.R. R.C.000. Join in M. Cast on 3 (3, 4, 4, 4, 4) sts. at right edge. Knit 16 (20, 24, 28, 30, 30, 32) rows. Shape top as thumb.

2nd FINGER

C.O.R. Wrong side facing. Slip 5 (6, 7, 7, 8, 9, 10) sts. from both sets of waste knitting back onto M/C leaving 3 empty Ns. between. Pick up 3 loops from cast on sts. at base of first finger and place onto empty Ns. DO NOT REMOVE W.WL. Cast on 3 sts. at right edge. Knit 20 (24, 28, 32, 34, 34, 36) rows. Shape top as thumb.

3rd FINGER

C.O.R. wrong side facing slip 5 (5, 6, 7, 7, 8, 8) sts. from both sets of waste knitting back onto M/C leaving 2 empty Ns. between. Pick up 2 loops from cast on sts. at base of 2nd finger and place onto empty Ns. DO NOT REMOVE W.WL. Cast on 2 sts. at right edge. Knit 18 (22, 26, 30, 32, 34) rows. Shape top as thumb.

4th FINGER

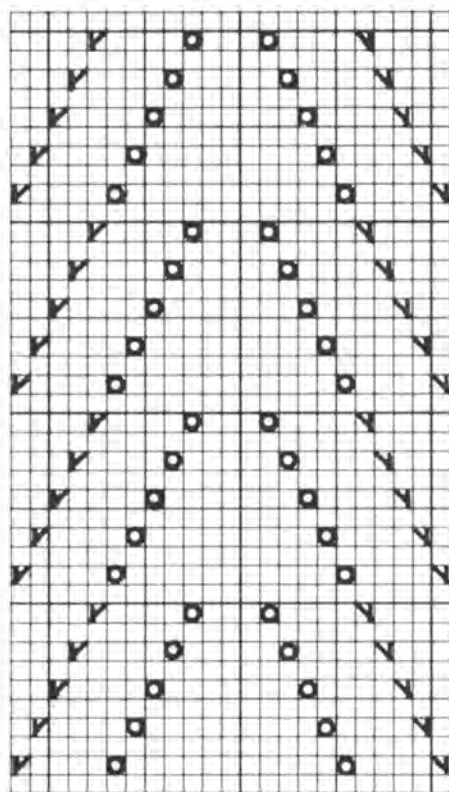
C.O.R. wrong side facing, slip rem. 4 (5, 6, 6, 7, 7, 7) sts. from both sets of waste knitting back onto M/C leaving 3 empty Ns. between. Pick up 3 loops from cast on sts. at base of 3rd finger and place onto empty Ns. Remove W.Wl. knit 12 (16, 20, 24, 26, 26, 28) rows. Shape top as thumb.

RIGHT GLOVE

As left glove but reversing the shapings by noting the number of rows worked after rib is completed and reading left for right and vice versa.

MAKE UP

Join thumb, finger and side seams.



Marble Bag

Marble Bag No. 1

Machines

Any M/C.

Materials

Any 4 ply yarn — 1 ball (approx. 25 gm) M. Small quantity of Con. Col.

BAG

C.O.B.H. 161 sts. R.C.000 T.7. knit 34 rows. Foll. chart and using hand selection method (M/C set to fairisle) work "marbles" on the right side of bed over Ns. 11 to 70 — R.C. 49. Knit to R.C. 82. Trans. every alt. st. to adjacent N. leaving empty Ns. in W.P. Knit 6 rows. Cast off.

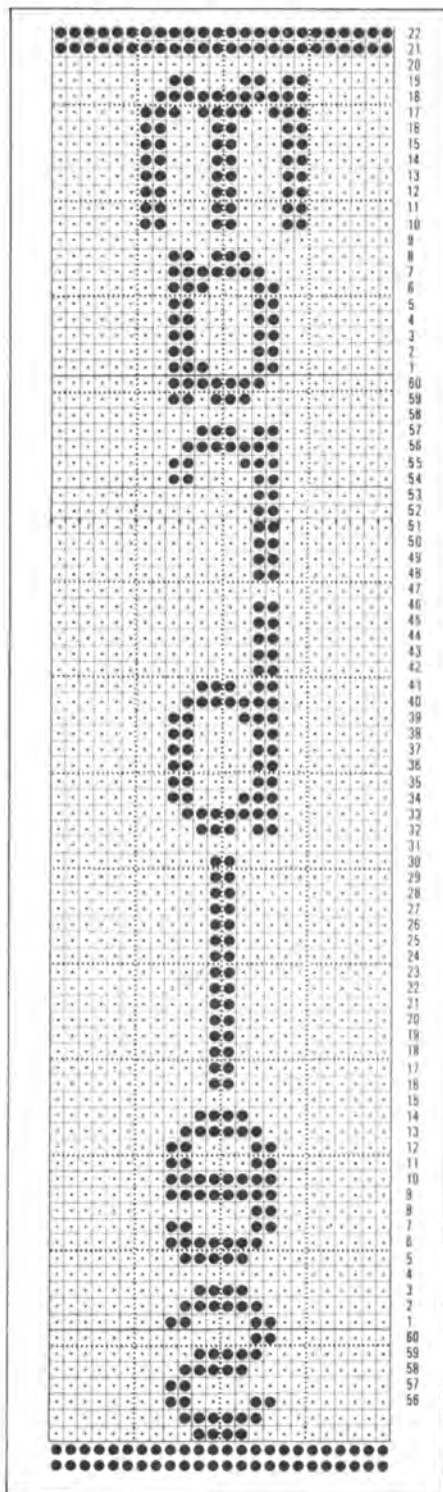
MAKE UP

Fold in half — lengthwise. Stitch side seam. Stitch top of Bag. Fold in half lengthwise — so seam is at back. Stitch seam. Join base of bag. Make a cord and thread through holes.

MARBLE BAG No. 2

C.O.B.H. 161 sts. R.C.000 T.7. Knit 4 rows. Foll. chart, starting with letter S — using hand selection method (M/C set for fairisle) work "marbles" on the right side of bed over Ns. 36-42. Knit 4 rows. Trans. every alt. st. to adjacent N. leaving empty Ns. in W.P. Knit 6 rows. Cast off.

COMPLETE AS BAG No. 1.



odobes feril

Amropret

WUWU

eliorer

esidrom

Pencil Case

Machines

Any M/C.

Materials

Any 4 ply yarn — 1 ball (approx. 25 gm) M. Small quantity of Con. Col. 1 x 18 cm zip.

CASE

Using W.Wl. cast on 60 sts. Knit a few rows. Change to M. R.C.000 T.7. Knit 59 rows. Foll. chart and using hand selection method (M/C set to fairisle) work "pencils" over next 20 rows. Break off Con. Col. Set M/C to st. st. and knit to R.C. 184. Pick up sts. from first row and place onto Ns. Remove W.Wl. T.10 knit 1 row. Cast off.

MAKE UP

Stitch side seams. Fold case in half and stitch side seams together. Sew in zip.

NOTES

Should name be required on opposite side of the pencil case, chart out name required UPSIDE DOWN noting that instructions are for 60 sts. only and must be inc. to length of name + space each side. Cast on as above, knit 13 rows then work "name", cont. as instructions given above.

Doll

Machines

Any M/C.

Materials

Any 4 ply 4 x 25 gm balls for body. Oddments for clothes, press studs, felt, stuffing, elastic, 1 x 50 gm ball of D.K. for hair.

MEASUREMENTS

Doll is approx. 61 cm (24") in height.

HEAD (2 pieces)

R.C.000 T.7. C.O.B.H. 12 sts. Knit 1 row. Inc. 1 st. at each end of next and every row 9 times in all. Knit 1 row. Inc. 1 st. at each end of next and alt. rows 5 times. Knit 2 rows. Inc. 1 st. at each end of next and every 3rd row 3 times (46 sts. rem) Knit to 46 rows. Dec. 1 st at each end of next and every 3rd row 3 times. Knit 2 rows. Dec. 1st. at each end of next and every alt. row 5 times. Knit 1 row. Dec. 1 st. at each end of next and every row 9 times. Knit 1 row. Cast off. Knit another piece to match. Join together leaving cast on edges open. Stuff firmly.

BODY (2 pieces)

R.C.000 T.7. C.O.B.H. 24 sts. Knit 22 rows. Dec. 1 st. at each end of next row. Knit 6

rows. Inc. 1 st. at each end of next and every 5th row 5 times (32 sts. rem.) Knit 6 rows. Cast off 7 sts. at beg. of next 2 rows. Dec. 1 st. at each end of next and alt. rows 3 times. Knit 4 rows. Dec. 1 st. at each end of next row. Knit 18 rows. Cast off. Knit another piece the same. Join together leaving cast on edges open. Stuff firmly and sew to head opening.

LEGS (2 pieces)

R.C.000. T.7. C.O.B.H. 38 sts. Knit 10 rows. Move 15 sts. at both edges inwards 1 N. Knit 1 row. Move 14 sts. at both edges inwards 1 N. Knit 1 row. Cont. in this way, moving 1 st. less until 26 sts. rem. Knit straight to 118 rows. Cast off. Knit another leg to match. Join foot and leg seam. Stuff firmly and attach to body.

ARMS (2 pieces)

R.C.000. T.7. C.O.B.H. 25 sts. Knit 70 rows * Inc. 4 sts. across row thus:- leaving centre N. move both sets of sts. outwards over 1 N. Pick up loop from previous row and place onto empty Ns. and inc. 1 st. at outer edge. Knit 2 rows * Rep. from * to * twice. Knit 10 rows. Rep. from * to * but Dec. instead of inc. 3 times. Cast off. Work another arm to match. Stitch arm and hand seam. Stuff firmly and attach to body.

HAIR

Cut yarn into 71 cm (28") lengths. With centre of yarn at centre of head arrange evenly over head from hairline to nape of neck, backstitching securely over centre for parting. Smooth down to ear level. Tie securely and attach to head. Plait ends tightly, tie and trim.

FEATURES

Cut oval sections for eyes in white felt, round sections for centres in blue. Sew blue to centre of white. Sew onto face. Embroider eyebrows and nose in brown, mouth in red.

KNICKERBOCKERS

Using W.Wl. cast on 44 sts. R.C.000 T.7. Knit 60 rows. Inc. 1 st. at each end of next and foll. 4th row. Knit 4 rows. R.C.000 cast off 2 sts. at beg. of next 2 rows. Dec. 1 st. at each end of next and alt. rows 3 times. Knit straight to R.C. 36. Cast off. Knit another leg to match.

Leg Band

Cast on 35 sts. for 1 x 1 rib. T.1.2 rib 6 rows. Trans. sts. to M.B. Cast off. Knit another band to match.

MAKE UP

Join front and back seams. Join leg seams. Turn down 1 cm at waist and catch down enclosing elastic. Gather leg slightly. Attach leg band to leg overlapping band approx. 1 cm having opening on outside. Sew on press stud.

MACHINE KNIT PATTERN BOOKS FROM BROTHER

The first Brother machine knitting pattern book which contains some 15 fashion knit patterns for men, women and children was so successful that we know you will welcome Brother Fashion Knits Volume 2 with the same enthusiasm. Both books are in full colour and cover a wide range of designs for all occasions, from sun dresses to jackets and evening dresses to pompom hats, all simple to make and simply stunning. Both books are the perfect investment for the machine knitter. (To be used in conjunction with a knitleader).



To obtain your copy, write to our Manchester office stating which of the Volumes you require, enclosing £1.00 per copy.

JONES + BROTHER
Shepley Street
Guide Bridge
Audenshaw
Manchester M34 5JD

STOCKINGS

Using W.Wl. cast on 46 sts. knit a few rows. Join in M. R.C.000 T.7. knit 10 rows. Move 18 sts. at both edges inwards 1 N. Knit 1 row. Move 17 sts. at both edges inwards 1 N. Knit 1 row. Cont. in this way moving 1 st. less until 32 sts. rem. Knit to R.C. 56. Trans. sts. for 1 x 1 rib. Rib 6 rows. Cast off. Knit another stocking to match. Graft foot section together. Join back seam.

SWEATER

STRIPES 4 rows M. 2 rows Con. Col.

FRONT

Using M. Cast on 47 sts. as 1 x 1 rib. T.1.2 rib 10 rows. Trans. sts. to M.B. R.C.000. T.7. working in stripes knit 26 rows. Cast off 3 sts. at beg. of next 2 rows. Dec. 1 st. at each end of next and alt. rows to 19 sts. Knit 2 rows. Join in W.Wl. knit a few rows and release from M/C.

BACK (2 pieces)

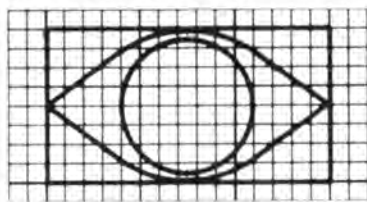
Cast on 23 sts. Knit as back, shaping raglan on one side only. Knit a second piece to match reversing shapings.

SLEEVES

Cast on 35 sts. for 1 x 1 rib. T.1.2 rib 4 rows. Trans. sts. to M.B. T.7. working in stripes knit 18 rows. Shape raglan as back.

NECKBAND

Join raglans. Join side and sleeve seams. Replace sts. from waste knitting back onto M/C. Arrange for 1 x 1 rib. T.1.2. rib 18 rows. Cast off. Work a row of crochet along back edges and cast off edge of neckband. Fold neckband in half to outside. Attach press studs to back opening.



Striped Dress

(See back cover)

Machines

All M/Cs.

Materials

EMU Superwash 4-ply wool. Black: 3 (4, 5, 6, 7) 25 gm balls. Dark Pink: 3 (4, 4, 5, 5) 25 gm balls. Light Pink: 3 (3, 4, 4, 5) 25 gm balls. Belt.

Measurements

To fit bust:— 71 cm (28"), 76 cm (30"), 81 cm (32"), 86 cm (34"), 91 cm (36").
Length to Neck:— 91 cm (36"), 94 cm (37"), 96 cm (38"), 99 cm (39"), 102 cm (40").
Sleeve seam:— (with cuff turned back) 42 cm (16½"), 43 cm (17"), 44 cm (17½"), 44 cm (17½").

TENSION

Always check tension before commencing. St. St. 28 sts. and 39 rows = 10 cm (4"). (Approx. T.7.)
Success depends on working to correct tension.

NOTES

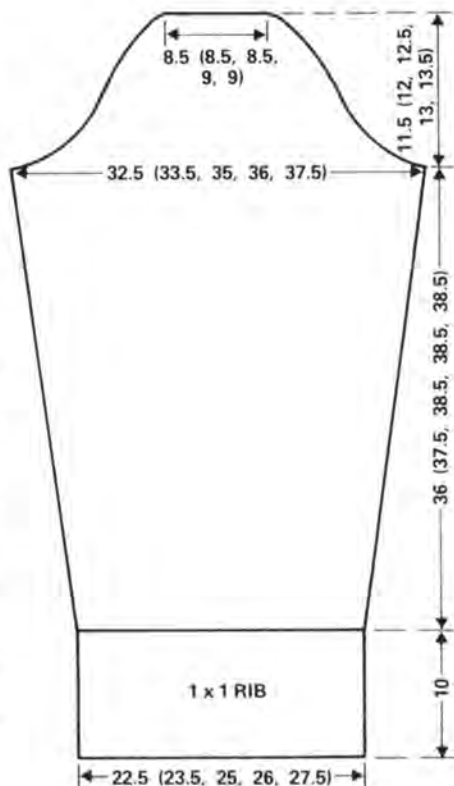
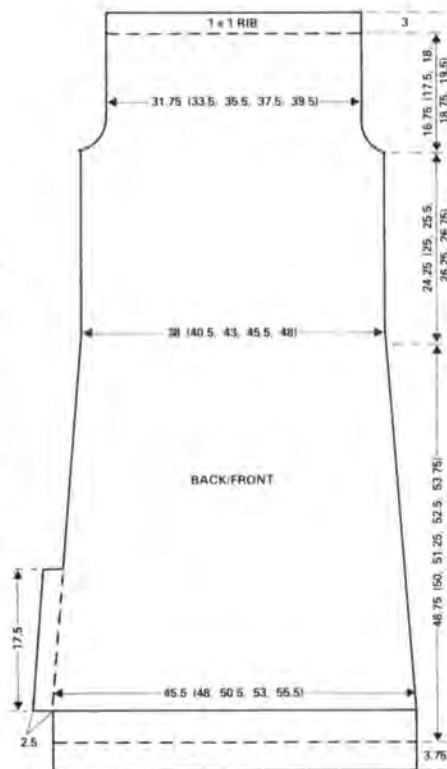
2 x 1 mock rib may be used. Cast on sts. and knit twice the number of rows given.

BACK

With W.Wl. cast on 128 (134, 142, 148, 156) sts. Knit several rows C.O.R. Change to Black. T.6. Knit 14 rows. R.C.000. T.7. Knit 14 rows. Make a hem and knit the row. C.O.L. Cast on 8 sts. at beg. of next row. R.C.16. Knit 2 rows. Dec. 1 st. at each end on next and every foll. 16 (16, 18, 18, 18)th row 11 times in all, AT THE SAME TIME, knit to 67 rows. Cast off 8 sts. at beg. of next row. Knit to 94 (102, 102, 108, 116) rows. Change to Dark Pink. Knit to 112 (120, 120, 126, 134) rows. Working in stripes of 4 rows of Light Pink and 4 rows Dark Pink knit to 190 (194, 200, 204, 210) rows. 106 (112, 120, 126, 134) sts. rem. Cont. in stripes to 268 (276, 284, 290, 298) rows. Change to Black and knit 10 rows. Change to Dark Pink and knit 6 rows. R.C. 284 (292, 300, 306, 314). R.C.000.

Shape Armholes

Cast off 3 (3, 4, 4, 5) sts. at beg. of next 2 rows. Dec. 1 st. at each end of next and alt. rows 5 (6, 6, 7, 7) times in all. 90 (94, 100, 104, 110) sts. rem. Knit to 54 (56, 58, 62, 64)



rows. Change to 1 x 1 rib. T.4/4. Knit 12 rows. T.8/8. Knit 1 row. Trans. to st. st. and chain cast off.

FRONT

Knit as Back, but casting on 8 sts. on the right.

SLEEVES

With Black cast on 63 (67, 71, 75, 79) sts. as 1 x 1 rib. T.4/4. Knit 38 rows. Trans. to st. st. R.C.000. T.7. Working in stripes as Back knit 6 rows. Inc. 1 st. at each end of next and every foll. 10th row 10 times in all, then every 8 (8, 10, 10, 10)th row 4 times, 91 (95, 99, 103, 107) sts. AT THE SAME TIME, change to Black after row 124 (128, 136, 136, 136) rows. Knit 10 rows. Change to Dark Pink and knit 6 rows, 140 (144, 152, 152, 152) rows.

Shape Top

Cast off 3 (3, 4, 4, 5) sts. at beg. of next 2 rows. Dec. 1 st. at each end of next 5 rows, then every alt. rows 13 (13, 14, 15, 16) times. Dec. 1 st each end of next 12 (14, 14, 14, 14) rows. Cast off rem. 25 (25, 25, 27, 27) sts.

MAKE UP

Press to instructions on ball band. Slip st. neck ribs together for approx. 7 cm (or width desired).

Sew side seams, the right side as far as 8 cast on sts. Turn cast on sts. to inside and slip st. in place. Sew sleeve seams, then sew to armholes. Press seams. Fold sleeve rib to outside as shown.

Abbreviations

alt. = alternate; beg. = begin(ning); carr. = carriage; cm = centimetres; C.O.B.H. = cast on by hand; C.O.L. = carriage on left; Col. = colour; Con.Col. = contrast colour; cont. = continue, continuing; C.O.R. = carriage on right; dec. = decrease, decreasing; foll. = following; gm. = grammes; H.P. holding or E position; in. = inches; inc. = increase, increasing; M. = main colour; M.B. = main bed; M/C = machine; M.T. = main tension; M. = main yarn; N(s). = needle(s); N.W.P. = non-working or A position; patt. = pattern; pos. = position; R.C. = row counter; R.C.000 = reset row counter to zero; rem. = remain (ing); rep. = repeat(ing); R.T. = ribber tension; st(s). = stitch(es); st. st. = stocking stitch; T. = tension; trans. = transfer(ing); U.W.P. = upper working or D position; W.P. = working or B position; W.Wl. = waste wool.

NOTE: All measurements on diagrams are in centimetres.

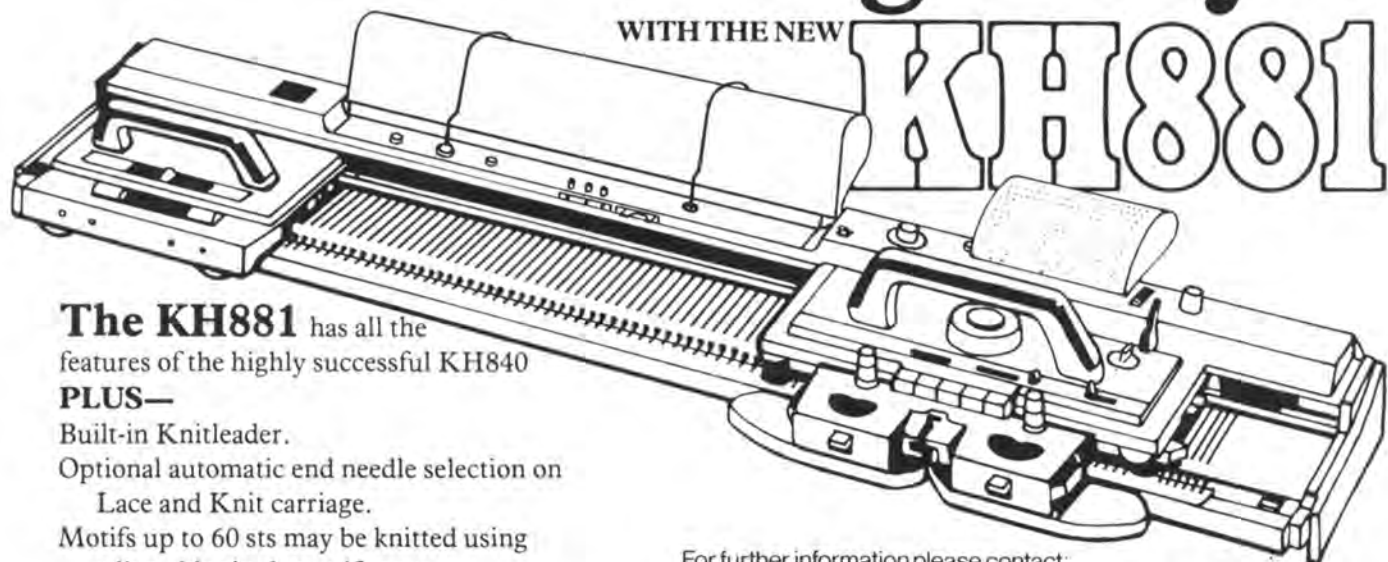
KH588 AND KH710 owners — select the stitch pattern of your choice, match the tension and foll. instructions for garment in the usual way.

KH820 AND KH830 owners — to make intarsia designs work as follows: C.O.R. depress both PART buttons. Set Carr. so that Ns. knit back if they are selected. Pull Ns. which are to be knitted in colour to H.P. Thread carr. with colour required. Knit across bed. The Ns. that were in H.P. will be knitted, the rest will not. C.O.R. select Ns. to be knitted in next colour (areas of colour must be continuous or a second ball is needed) repeat across the row. When all stitches are knitted on row take carr. to left side and work back in the same way across the row, working from left and crossing over the yarns at join in colours so as not to form a hole.

We have our designs on you

WITH THE NEW

KH881



The KH881 has all the features of the highly successful KH840

PLUS—

Built-in Knitleader.

Optional automatic end needle selection on Lace and Knit carriage.

Motifs up to 60 sts may be knitted using adjustable single motif cams.

Special L-point cams enable knitter to block out sections of lace pattern.

For further information please contact:

Jones + Brother, Shepley Street, Guide Bridge, Audenshaw, Manchester M34 5JD.

jo jones + brother

Domestic and Industrial Sewing Machines,
Knitting Machines, Typewriters.















