

PASSAP

\$250

Family Knitting No. 1



DESIGNS TO BE KNITTED ON

PASSAP DUOMATIC

- Woman's 3-ply Sweater
- Man's Ribbed Sweater
- Continental Sports Sweater
- Summer Hat
- Boy's & Girl's Jersey
- Matching Casual Coats
- V Necked Sweater for Her or Him
- Old-Fashioned Jumper
- Boy's & Girl's Cardigan
- Classic Cardigan for Her or Him

PASSAP[®]
DUOMATIC



INTRODUCTION

The patterns in this book have been designed as an easy-knit introduction to the PASSAP DUOMATIC.

With the exception of the Lady's Summer Coat, all the patterned fabrics are produced automatically on the machine. This means that anybody today can make these attractive garments once they have mastered the simple principles of using this exciting Home Knitting Machine.

Where many knitters fall down is in the finish of their garments. The tailored look that is the basis of the casual wear story when applied to knitted garments, is quite easy to obtain if due care and attention is paid to the step by step make-up methods outlined below.

Some people prefer to make up their machine-knitted garments on the sewing machine. There is nothing against this practice providing care is taken not to stretch the fabric when machining up the seams. Making up by hand is, on the whole, preferable to making up by the sewing machine method as this gives you a more complete control over the finish of your garment.

FINISHING YOUR GARMENT

1. Omitting K.1, P.1 rib, block and press each piece very lightly on the wrong side, using a warm iron and damp cloth.
2. Using a flat seam for K.1, P.1 rib portions and a back-stitch seam for remainder, join shoulder, side and sleeve seams and stitch sleeves in position for fully-fashioned designs.
3. For raglan designs, join side and sleeve seams, stitch in sleeves matching raglan shaping and where rows have been knitted at top of back, stitch these rows to one stitch less than cast-off stitches at the top of sleeves—thus if you have worked five rows you will stitch these rows to four stitches.
4. Where a garment has pockets and pocket tops, flat-stitch pockets on wrong side and edges of pocket tops on right side of work.
5. For cardigans and coats, flat-stitch front bands in position then attach buttons to correspond with buttonholes.
6. Stitch zip fasteners into front and back openings where necessary.
7. Press seams.
8. Any special details in make-up not covered by the above principles are printed at the end of the instruction for the garment.

ABBREVIATIONS

W.P., Working Position; N.W.P., Non Working Position; R.P., Rest Position; inc., increase; dec., decrease; st., stitch; rep., repeat; ins., inches.
K., Knit; P., Purl; K/K., Knit/Knit; beg., beginning; alt., alternate; patt., pattern; M.1. Make 1 by picking up the loop between the stitch placed on the last needle and the following stitch, twisting the loop and placing it on the next needle to form a stitch.

TENSION CHECKING

It is essential to check your tension before commencing the design. To do this set up enough needles in pattern for three inches. Thus, if there were ten stitches to the inch in the pattern, you would set up thirty needles. Now work sufficient number of rows for three inches. If, for instance, there are fourteen rows to the inch, then work forty-two rows. Cast off, very lightly press the piece on the wrong side using warm iron and damp cloth. Your square of fabric should now measure three inches.

Woman's 3-ply Sweater



WOMAN'S 3-PLY SWEATER

- MATERIALS:** 19 [20, 21] oz. PATONS BEE-HIVE Fingering 3-ply, Patonised, or PATONS NYLOX Knitting 3-ply, Patonised. You must use the P. & B. brands recommended above to be sure of a successful result.
- MEASUREMENTS:** To fit 34 [36, 38] inch bust. Length from shoulder to lower edge, 25½ [25½, 25½] ins. Sleeve seam, 18 ins. (adjustable).
- SIZES:** The figures in square brackets [] refer to the medium and large sizes respectively.
- ABBREVIATIONS:** See Page 3.
- TENSION:** 8½ sts. and 17½ rows to one square inch on No. 4.
- SPECIAL NOTE:** All needles quoted are total number in work. (Back and Front beds).

BACK

Set up 160 [168, 176] needles for K/K.
Set at tension 2½ and work 20 rows.

Change to tension No. 4 and proceed in honeycomb patt. as follows:—

Back bed—All needles in W.P. Always N.

Front bed—All needles in W.P. Pushers alternate.

1st row—A. X arrow.

2nd row—A. X O.

3rd row—A. X.

4th row—A. X.

These 4 rows form the patt.

Continue in patt. until work measures 17½ ins. from beg., finishing on 4th row of patt., **noting** that pushers must be pushed into N.W.P. when casting off and dec. **Shape armholes** by casting off 8 [8, 8] sts. at beg. of next 2 rows, then dec. 2 sts. at both ends of 3rd row following and every following 4th row until there are 124 [132, 140] needles in work.

Continue on these needles until work measures 7½ [7½, 8] ins. from beg. of armhole shaping.

Shape shoulders by casting off 14 [15, 16] sts. at beg. of next 6 rows.

Cast off.

FRONT

Work as Back to armhole shaping.

Transfer 100 [104, 108] sts. at opposite end to wool on to stitch-holder.

Next row—Cast off 8 [8, 8] sts. work to end.

Keeping neck edge straight dec. 2 sts. at armhole edge on 4th and every following 4th row until 42 [45, 48] sts. remain.

Continue on these sts. until work measures same as Back to shoulder shaping, finishing at armhole edge. **Shape shoulder** by casting off 14 [15, 16] sts. at beg. of next and every alt. row until all sts. are cast off.

Transfer 100 [104, 108] sts. from stitch-holder on to needle bed.

Cast off 40 sts. at neck edge and complete to match 1st half reversing shapings.

SLEEVES

Set up 96 needles for K/K.

Set at tension 2½ and work 40 rows.

Change to tension No. 4 and proceed in honeycomb patt. inc. 2 sts. at end of 19th and 20th, and every following 24th and 25th rows from previous inc., (**noting** that pushers will be pushed into W.P. and R.P. when inc.) until there are 128 [132, 136] needles in work.

Continue on these sts. until work measures 18 ins. from beg. (adjust length at this point).

Shape top by casting off 8 [8, 8] sts. at beg. of next 2 rows.

Dec. 2 sts. at both ends of 8th [10th, 12th] and every following 9th row until 92 [96, 100] needles remain in work, every alt. row until 48 [56, 64] sts. remain.

Cast off 6 sts. at beg. of next 6 rows.

Cast off.

FRONT INSET AND COLLAR

Set up 56 needles for K/K.

Set at tension 2½ and work for 25 [25½, 26] ins.

Cast off.

TO MAKE UP

Using a flat seam stitch Inset and Collar into position overlapping ends at front.

Man's Ribbed Sweater

- MATERIALS:** 27 [28, 29] oz. PATONS
PURPLE HEATHER Fingering
4-ply.
One 5 inch zip.
You must use the P & B. brand
recommended above to be sure
of a successful result.
- MEASUREMENTS:** To fit 40 [42, 44] inch chest.
Length, 26½ [26¾, 27] ins.
Sleeve seam, 18½ ins.
- SIZES:** The figures in square brackets
[] refer to the medium and large
sizes respectively.
- ABBREVIATIONS:** See Page 3.
- TENSION:** 10 sts. and 13 rows to one
square inch on No. 4½ measured
over rib patt.
- SPECIAL NOTE:** All needles quoted are total
number in work (Back and
Front beds).

BACK

Set at tension No. 3½.
Set up 206 [223, 236] needles for K/K.
Work in K/K rib for 2½ ins.
Set needles for patt. 11/A2.
Change to tension No. 4½ and proceed in patt. until
work measures 17 ins. from beg.
Shape armholes by casting off 6 [8, 10] sts. at beg. of
next 2 rows, noting that pushers must be pushed into
N.W.P. after casting off and dec., then dec. 2 sts. at
both ends of every 4th row until 166 [174, 182] needles
remain in work.
Continue on these sts. until work measures 9½ [9¾, 10]
ins. from beg. of armhole shaping.
Shape shoulders by casting off 12 sts. at beg. of next 8
rows, then 4 [6, 8] sts. at beg. of next 2 rows.
Cast off.

FRONT

Proceed as for Back until armhole shaping is completed
(166 [174, 182] needles in work.)
Proceed on first group of 83 [87, 91] needles until work
measures 5 ins. along inside edge, finishing at inside
edge.
Shape neck by casting off 15 [17, 19] sts. at beg. of next
row, then cast off 4 sts. at neck edge on every 4th row
until 52 [54, 56] needles remain in work.
Continue on these sts. until work measures same as
Back to shoulder shaping.
Shape shoulder by casting off 12 sts. at beg. of next and
every alt. row until 4 [6, 8] needles remain in work.
Work 1 row.
Cast off 4 [6, 8] sts.
Complete on second group of sts. to match reversing
shapings.

SLEEVES

Set up 94 needles for all sizes.
Set at tension No. 3.
Work in K/K for 2½ ins.
Set needles for patt. 11/A2.
Change tension to No. 4½ and proceed in patt., inc.
2 sts. at end of 8th and 9th row and every 8th row from
previous inc., noting that pushers must be pushed into
R.P. or W.P. as required, until there are 178 [182, 186]
needles in work.



Continue on these sts. until work measures 18½ ins.
from beg.
Shape top by casting off 6 [8, 10] sts. at beg. of next 2
rows, then dec. 2 sts. at both ends of every 4th row until
134 needles remain in work for all sizes.
Dec. 2 sts. at beg. of next 20 rows, 3 sts. at beg. of next
10 rows, 4 sts. at beg. of next 4 rows (48 needles in
work).
Cast off.

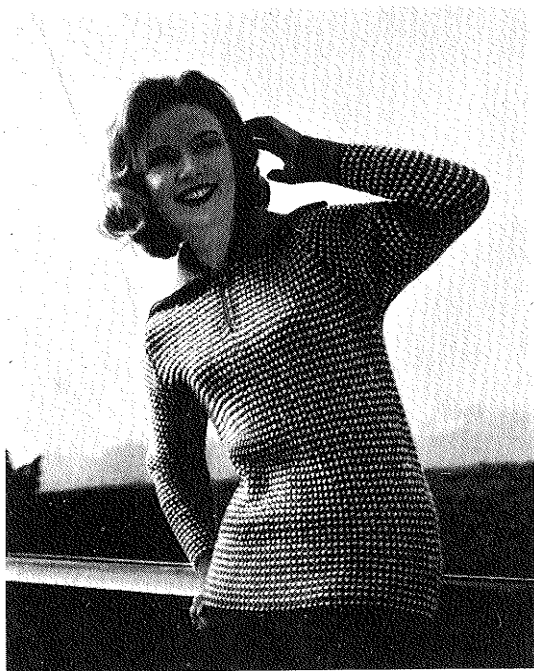
COLLAR

Set up 200 [208, 216] needles on back and front needle
bed for K/K.
Work at tension No. 5 for 1¼ ins., at tension No. 4 until
work measures 3 ins. from beg.; at tension No. 3 until
work measures 4½ ins. from beg.
Cast off loosely.

TO MAKE UP

Stitch Collar from edge of Left Front opening to edge
of Right Front opening, noting that K/K on finer
tension is stitched round neck.

Continental Sports Sweater



MATERIALS:

18 [19, 20] oz. PATONS BEEHIVE Fingering 4-ply.
3 [3, 4] hanks PATONS BIG BEN Knitting in Contrasting colour.
One 4 inch zip.

You must use the P. & B. brands recommended above to be sure of a successful result.

MEASUREMENTS:

To fit 34 [36, 38] inch bust (loosely).

Length, 24 [24½, 25] ins.

Sleeve seam, 18 ins.

SIZES:

The figures in square brackets [] refer to the medium and large sizes respectively.

ABBREVIATIONS:

See Page 3.

TENSION:

11½ sts. and 12 rows to one square inch on No. 4 (measured over patt.).

SPECIAL NOTE:

All needles quoted are total number in work (Back and Front beds).

BACK

Set up 226 [238, 250] needles for K/K.

Set tension at No. 3.

Using 4-ply, work in K/K rib for 1 inch.

Set up needle beds for patt. as follows:—Back, all needles in W.P., Front, 1 W.P., 1 N.W.P.

Change to tension No. 4.

Proceed in chunky rib patt. as follows:—

Rows 1 to 4, work all across.

On 5th row lay Big Ben across needle bed and work all across.

These 5 rows form the patt.

Continue in patt. until work measures 17 ins. from beg. Shape armholes by casting off 8 [8, 8] sts. at beg. of next 2 rows, then dec. 2 sts. at each end on 3rd and every following 4th row until 162 [174, 186] needles remain in work.

Continue on these sts. until work measures 8 [8½, 9] ins. from beg. of armhole shaping.

Shape shoulders by casting off 18 [20, 22] sts. at beg. of next 6 rows (54 needles in work).

Cast off.

FRONT

Work as Back until armhole shaping is reached.

Shape armhole as on Back until 18 rows have been worked.

Slip 97 [103, 109] sts. from needle bed at opposite end to wool on to length of wool, still dec. at armhole edge only as before, until 12 dec. have been completed (81 [87, 93] needles in work).

Continue until work measures 4 ins. along inside edge, finishing at inside edge.

Shape neck by casting off 13 [15, 17] sts. at beg. of next row, then dec. 2 sts. at neck edge on next and every alt. row until 54 [60, 66] needles remain in work.

Continue on these sts. until work measures same as Back to shoulder shaping.

Shape shoulders by casting off 18 [20, 22] sts. at beg. of next and every alt. row until all sts. are cast off.

Slip sts. from length of wool on to needles set up for patt.

Complete to match 1st half reversing shapings.

SLEEVES

Set up 94 [98, 102] needles for K/K.

Set at tension No. 2½.

Using 4-ply, work in K/K rib for 3 ins.

Set up for patt. as on Back.

Change to tension No. 4 and proceed in patt., inc. 2 sts. at beg. of 6th and 7th and every following 6th row from previous inc. until there are 182 [186, 190] needles in work.

Continue on these sts. until work measures 18 ins. from beg.

Shape top by casting off 8 [8, 8] sts. at beg. of next 2 rows, then dec. 2 sts. at both ends of every alt. row until 74 [78, 82] sts. remain.

Cast off 8 sts. at beg. of next 6 rows.

Cast off.

COLLAR

Set up 171 [175, 179] needles for K/K.

Set at tension No. 3.

Work in K/K rib for 2 ins.

Change to tension No. 4 and continue in K/K until work measures 4½ ins.

Change to tension No. 5 and continue in K/K until work measures 9½ ins.

Change to tension No. 4 and continue until work measures 12 ins. from beg.

Change to tension No. 3 and continue until work measures 14 ins. from beg. Cast off.

TO MAKE UP

Fold Collar at centre right sides inside, stitch along ends. Turn inside out and stitch into position round neck. Fold up ribbing at lower edge and flat-stitch to form hem.

Summer Coat

MATERIALS: 18 oz. PATONS BEEHIVE
Fingering 4-ply.
Four buttons.
You must use the P. & B. brand
recommended above to be sure
of a successful result.

MEASUREMENTS: To fit 34 inch bust.
Length, 22 ins.
Sleeve seam, 13 ins.

ABBREVIATIONS: See Page 3.

TENSION: 12½ sts. and 12 rows to one
square inch on No. 4 (measured
over patt.).

SPECIAL NOTE: All needles quoted are total
number in work (Back and
Front beds).

Patt. on Front bed only.

1st row—Slip st. from 6th needle on to 7th needle, 12th
on 13th, 18th on 19th, continue in this manner all across
the row pushing empty needles into N.W.P., work all
across.

2nd and alt. rows—Work all across.

3rd row—Slip st. from 5th needle on to 4th needle, 7th
on 8th, 11th on 10th, 13th on 14th, continue in this
manner all across the row, work all across.

5th row—Slip st. from 4th needle on to 3rd needle, 8th
on 9th, 10th on 9th, 14th on 15th, 16th on 15th, con-
tinue all across the row, work all across.

7th row—Push into W.P. needles 4, 8, 10, 14, 16, 20, 22,
continue in this manner all across the row, work all
across.

9th row—Push into W.P. needles 5, 7, 11, 13, 17, 19, 23,
continue in this manner all across the row, work all
across.

11th row—Push remaining needles in N.W.P. into W.P.
and work all across.

13th row—Slip st. from 3rd needle on to 4th needle, 9th
on 10th, 15th on 16th, 21st on 22nd, continue in this
manner all across the row, work all across.

15th row—Slip st. from 2nd needle on to 1st needle, 4th
on 5th, 8th on 7th, 10th on 11th, 14th on 13th, 16th on
17th, continue in this manner all across the row, work
all across.

17th row—Slip st. from 5th needle on to 6th needle,
7th on 6th, 11th on 12th, 13th on 12th, 17th on 18th,
19th on 18th, continue in this manner all across the
row, work all across.

19th row—Push into W.P. needles, 5, 7, 11, 13, 17,
19, 23, 25, continue in this manner all across the
row, work all across.

21st row—Push into W.P. needles, 2, 4, 8, 10, 14,
16, 20, 22, 26, continue in this manner all across the
row, work all across.

23rd row—Push remaining needles in N.W.P. into W.P.
and work all across.

24th row—Work all across.

These 24 rows form the patt.



Summer Coat—cont.

BACK

Set up 226 needles for K/K.

Set tension at No. 4.

Work circular and set for patt.

Work in patt. for 14 ins.

Shape armholes by casting off 12 sts. at beg. of next 2 rows.

Dec. 2 sts. every alt. row until 166 sts. remain.

Continue on these sts. until work measures $7\frac{1}{2}$ ins. from beg. of armhole shaping.

Shape shoulders by casting off 18 sts. at beg. of next 6 rows. Cast off.

LEFT FRONT

Set up 112 needles for K/K.

Set tension at No. 4.

Work circular and set for patt. as on Back commencing at right hand side of needle bed.

Work as Back to armhole shaping finishing on right hand side of needle bed.

Shape armhole by casting off 12 sts. at beg. of next row then dec. 2 sts. at armhole edge on 3rd and every following alt. row until 82 sts. remain in work.

Continue on these sts. until work measures $5\frac{1}{2}$ ins. from armhole shaping, finishing at Front edge.

Shape neck by casting off 12 sts., work to end.

Dec. 2 sts. at neck edge on every alt. row until 54 sts. remain.

Continue on these sts. until work matches Back, finishing at armhole edge.

Shape shoulder by casting off 18 sts. at beg. of next and every alt. row until all sts. are cast off.

RIGHT FRONT

Work as Left Front setting patt. from left side of needle bed and reversing all shapings.

SLEEVES

Set up 118 needles for K/K.

Set at tension No. 3.

Work for $2\frac{1}{2}$ ins.

Set up for patt. as on Back.

Change to tension No. 4 and continue in patt. increasing 2 sts. at end of 3rd, 4th and every following 6th row until there are 190 needles in work.

Continue on these sts. until work measures 13 ins. from beg.

Shape top by casting off 12 sts. at beg. of next 2 rows. Dec. 2 sts. at both ends of 3rd row and every following 3rd row until 134 needles remain in work, every alt. row until there are 62 needles in work.

Cast off 6 sts. at beg. of next 6 rows.

Cast off.

COLLAR

Set up 178 needles for K/K.

Set at tension No. 4 work 12 rows

Change to tension No. $3\frac{1}{2}$ work 12 rows.

Change to tension No. 3 work 6 rows.

Change to tension No. 2 work 12 rows.

Cast off loosely.

RIGHT FRONT BAND

Set up 13 needles for K/K.

Set at tension No. 3 and work for $14\frac{1}{2}$ ins. Mark buttonhole on centre 5 needles. Work 3 more buttonholes $1\frac{1}{2}$ ins. apart. Work $\frac{1}{4}$ in. after last buttonhole.

LEFT FRONT BAND

Work as Right Front Band omitting buttonholes.

TO MAKE UP

Using a flat seam stitch Front Bands and Collar into position placing ends of collar to centre of front bands.

IMPORTANT

CLEANING

To obtain the very best results from your wonderful Passap Duomatic, we strongly advise you to pay particular attention to the following points:—

(a) Whenever you finish a garment, and more frequently when your Passap Duomatic is in constant use, proceed as follows:—

- 1 Carefully remove both locks and turn them upside down.
- 2 With a soft dry cloth wipe off all surplus oil (or oil which has become black) from the underside of the locks and the needle beds.
- 3 With a dry brush remove remaining dust from both needle beds and the underside of the locks.
- 4 Polish inside rails of the needle beds with a cloth. Accumulations of oil and dust may cause stiffening of the lock movement.

(b) Occasionally, and should the machine appear to be unduly stiff in operation, additional cleaning should be carried out as follows:—

- 5 Remove needles and pushers and rinse clean in methylated spirit.
- 6 When dry, rub needles and pushers with a lightly oiled cloth.
- 7 Clean both needle beds with a brush slightly dampened in methylated spirit.
- 8 Reinsert needles and pushers.

Special Note

Never use petrol or any other similar liquid which might harm the plastic material.

The Six Size System



The designs on the following pages have all been worked out to be knitted over a wide range of sizes.

It is simple to follow the system used. The general instruction is contained in the left hand column, whilst the particular instruction for the size of garment which you wish to produce is to be found in the column headed by the size of garment that you are knitting.

Boy's or Girl's Jersey

MATERIALS:

5 [6, 7, 8, 9, 10] oz. PATONS PURPLE HEATHER Fingering 3-ply or
6 [7, 8, 9, 10, 11] oz. PATONS BEEHIVE Fingering 3-ply, Patonised, or PATONS NYLOX Knitting 3-ply, Patonised.
Two [two, three, three, three, three] buttons.
One press-stud.
You must use the P. & B. brands recommended above to be sure of a successful result.

SIZES:

The figures in square brackets [] refer to the 24, 26, 28, 30, and 32 inch sizes respectively.

ABBREVIATIONS:

See Page 3.

TENSION:

8 sts. and 14 rows to one square inch on No. 4.

SPECIAL NOTE:

All needles quoted are total number in work (Back and Front beds).

MEASUREMENTS: To fit 22 [24, 26, 28, 30, 32] inch chest.

Length at centre back, 13 [15, 16½, 18, 19, 20½] ins.
Sleeve seam, 9 [10½, 12½, 13½, 15, 17] ins.

TO MAKE UP

As instructions page 3 stitching ends of two Insets together, buttonholes on right side for Girl, left side for Boy, flat-stitching Inset in position, stitching Collar from centre of Right Front Band to centre of Left Front Band, attaching buttons and press-stud at neck.

BACK

	22"	24"	26"	28"	30"	32"
Push up needles	178	194	210	226	242	258
Set for K.1, P.1 rib (needles in work)	89	97	105	113	121	129
Set tension at No. 2½ and work in K.1, P.1 rib for ins.	1	1½	1½	1½	2	2½
Set needles for stocking stitch. Change to tension No. 4 and proceed in stocking stitch until work measures ins. from beg.	7½	9	10	11	11½	12½
Shape raglan armhole by casting off sts. at beg. of next 2 rows, then dec. 1 st. at both ends of every 4th row until needles, then every alt. row until needles remain in work.	1	1	1	2	3	4
Work 4 rows on these sts. Cast off.	69 27	77 29	85 31	89 33	93 35	95 37

FRONT

Work as Back until needles remain at raglan shaping, finishing with a dec. row.	71	79	91	95	97	103
Push needles at opposite end to wool into R.P.	41	45	51	53	54	57
Proceed on remaining needles as follows:—	30	34	40	42	43	46
Continue dec. as on Back at armhole edge until needles remain in work, finishing at inside edge.	16	20	22	23	25	27
Still dec. on every alt. row at armhole edge as before, shape neck by casting off	3	4	4	4	5	5
sts. at beg. of next row, then dec. 1 st. at neck edge on every alt. row until dec. in all have been worked at neck edge.	4	4	5	6	7	8
Continue dec. at armhole edge only as before until all sts. are worked off.						
Bring needles from R.P. to W.P.						
Rejoin wool at inside edge and cast off needles in work.	11 30	11 34	11 40	11 42	11 43	11 46
Complete to match first half reversing shapings.						

Boy's or Girl's Jersey—cont.

SLEEVES

	22"	24"	26"	28"	30"	32"
Push up needles. →	98	102	110	118	122	126
Set needles for K.1, P.1 rib needles in work. →	49	51	55	59	61	63
Set at tension No. 2½ and proceed in ribbing for ins. →	1½	2	2¼	2½	2¾	3
Set needles for stocking stitch. →	49	51	55	59	61	63
Change to tension No. 4 and proceed in stocking stitch, inc. 1 st. at end of 7th and 8th and every following row from previous inc. until there are needles in work. →	9th 69	9th 77	8th 87	8th 95	7th 105	7th 113
Continue on these sts. until work measures ins. from beg. →	9	10¾	12½	13½	15	17
Shape top by casting off sts. at beg. of next 2 rows, then dec. 1 st. at both ends of every 4th row until sts., every alt. row until sts. remain in work. →	1 53 3	1 63 3	1 75 5	2 81 5	3 89 7	4 95 7
Cast off.						

FRONT INSET

Push up needles. →	34	34	34	34	34	34
Set needles for K.1, P.1 rib needles in work. →	17	17	17	17	17	17
Set at tension No. 3. Work in ribbing for ins. →	2	2	3	3	4	4
Set up second band in same manner and work 4 rows in rib. →						
On next row mark buttonhole on centre needles. →	5	5	5	5	5	5
Continue in rib marking buttonholes ins. apart until buttonholes in all have been marked. →	1¼ 2	1¼ 2	1 3	1 3	1¼ 3	1¼ 3
Complete to match first piece.						

COLLAR

Push up needles. →	194	210	226	242	258	274
Set for K.1, P.1 rib needles in work. →	97	105	113	121	129	137
Set at tension No. 5 and proceed in rib until work measures ins. →	¾	¾	1	1	1¼	1¼
Change to tension No. 4 and continue until ins. from beg. →	1½	1½	2	2	2½	2½
Change to tension No. 3 and continue until work measures ins. from beg. →	2¼	2½	3	3¼	3¾	4
Cast off.						

Matching Casual Coats

MATERIALS:

23 [24, 25, 26, 27, 28] oz.
 PATONS BEEHIVE Fingering
 4-ply, Patonised, or PATONS
 NYLOX Knitting 4-ply,
 Patonised.
 Five large buttons.
 You must use the P. & B. brand
 recommended above to be sure
 of a successful result.

MEASUREMENTS:

To fit 34 [36, 38, 40, 42, 44]
 inch bust.
 Length, 25 [25, 25½, 25½, 25½,
 25½] ins.
 Sleeve seam, 18 ins. (adjustable).

SIZES:

The figures in square brackets
 [] refer to the 36, 38, 40, 42 and
 44 inch sizes respectively.

ABBREVIATIONS:

See Page 3.

TENSION:

8 sts. and 14½ rows to one
 square inch on No. 5 measured
 over patt.

SPECIAL NOTE:

All needles quoted are total
 number in work (Back and
 Front beds).

	BACK					
	34"	36"	38"	40"	42"	44"
Set up needles for K/K.	144	152	160	168	176	184
Set at tension No. 4 and work in K/K for 2 ins. Change to tension No. 5 Set needles for patt. 11 A1 and proceed in patt. until work measures 17½ ins. from beg.	8	10	10	10	12	12
Shape armholes by casting off sts. at beg. of next 2 rows, noting that pushers must be pushed into N.W.P. after casting off and dec.						
Proceed as follows:— 1st row—Dec. 2 sts. at both ends of row. 2nd to 6th row—Work all across.	112	116	120	124	128	132
Rep. these 6 rows until sts. remain.	7½	7½	7½	7½	8	8
Continue on these sts. until work measures ins. from beg. of armhole shaping.						
Shape shoulders as follows:— 1st and 2nd rows—Cast off work to end.	10	10	11	12	12	12
3rd to 6th rows—Cast off work to end.	10	10	11	12	12	12
7th and 8th rows—Cast off work to end.	10	12	11	10	12	14
There will now be Cast off.	32	32	32	32	32	32

	POCKET					
Set up needles for K/K. Set at tension No. 4 and work in K/K for 4½ ins. Slip sts. on a fine knitting needle and leave.	42	42	46	46	50	50

	RIGHT FRONT					
Set up needles for K/K. Proceed as on back until work measures 6½ ins. from beg.	70	74	78	82	86	90
Leaving needles at each end of needle bed slip re- maining needles on to a length of wool. Now slip sts. from top of pocket on to needles from which centre group of sts. have been removed.	14	16	16	18	18	20
Continue in patt. until work measures same as back to armhole shaping.	42	42	46	46	50	50



Matching Casual Coats—cont.

	34"	36"	38"	40"	42"	44"
Shape armhole and front slope by casting off 8 sts. at beg. of next row. →	8	10	10	10	12	12
Dec. 2 sts. at front edge on next row following and every following 14th row at the same time dec. 2 sts. at armhole edge on following alt. row and every following 6th row until 4 sets of dec. have been completed at armhole edge. →	4	4	5	6	6	7
Dec. 2 sts. at front edge on every 14th row as before until 40 needles remain in work. Continue in patt. on these needles until work measures same as back to shoulder shaping, finishing at armhole edge. →	40	42	44	46	48	50
Shape shoulder as follows:— 1st row—Cast off 10 sts., work to end. →	10	10	11	12	12	12
2nd, 4th and 6th rows—Work all across. →						
3rd and 5th rows—Cast off 10 sts., work to end. →	10	10	11	12	12	12
7th row—Cast off 10 sts. →	10	12	11	10	12	14

POCKET TOP

Set up 42 needles for K/K. →	42	42	46	46	50	50
Slip sts. from top of pocket on to these needles.						
Set at tension No. 4 and work in K/K for ½ inch.						
Cast off.						

POCKET, LEFT FRONT AND POCKET TOP

Work to match Right Front reversing all shapings.

SLEEVES

Set up 72 needles. →	72	72	76	76	80	80
Set at tension No. 3½ and work in K/K for 3 ins.						
Set for rib patt. as on Back.						
Change to tension No. 5 and proceed in patt., inc. 2 sts. at end of 11th and 12th and every following 18th row from previous inc. (noting that pushers must be pushed into W.P. or R.P. when inc.) until there are 112 needles in work. →	112	112	116	116	120	120
Continue in patt. until work measures 18 ins. from beg. (adjust sleeve length here).						
Shape top as follows:— 1st and 2nd rows—Cast off 8 sts., work to end. →	8	8	8	8	10	10
Dec. 2 sts. at both ends of next and every following 6th row until 52 sts. remain, cast off 6 sts. at beg. of next 6 rows. Cast off remaining sts. →	52	52	56	56	60	60

FRONT BAND

Set up 8 needles on Front and 8 needles on Back bed for K/K. →	8	8	8	8	8	8
Set at tension No. 3½ and work in K/K. for 1 inch. Mark centre 3 needles at back and 4 needles at front for buttonhole on next row.						
Continue marking buttonholes 4 ins. apart until 5 buttonholes in all have been marked.						
Continue without further buttonholes until work measures 54 ins. from beg. →	54	54	55	55	56	56
Cast off.						

V Necked Sweater for Her ^{or} him

MATERIALS: 13 [14, 15, 16, 17, 18] oz. PATONS PURPLE HEATHER Fingering 4-ply, or 12 [13, 14, 15, 16, 17] oz. PATONS NYLOX Knitting 4-ply, Patonised, or PATONS BEEHIVE Fingering 4-ply, Patonised. You must use the P. & B. brands recommended above to be sure of a successful result.

MEASUREMENTS: To fit, 32 [34, 36, 38, 40, 42] inch bust or chest. Length, 24 [24½, 24½, 24¾, 25, 25½] ins. Sleeve seam, 17½ ins. (adjustable).

SIZES: The figures in square brackets [] refer to the 34, 36, 38, 40 and 42 inch sizes respectively.

ABBREVIATIONS: See Page 3.

TENSION: 7½ sts. and 11 rows to one square inch on No. 5.

SPECIAL NOTE: All needles quoted are total number in work (Back and Front beds).

TO MAKE UP

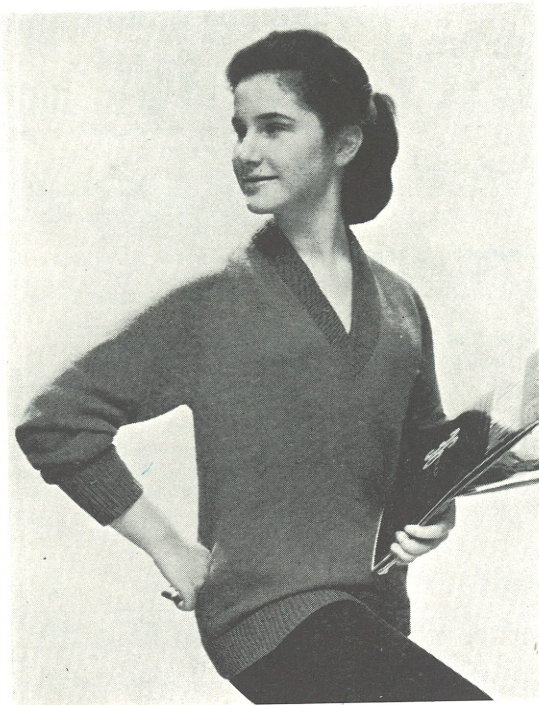
Fold Neckband at centre, lightly press, join mitred corners flat bottom edge of Neckband, taking care to maintain elasticity of rib. Stitch Neckband into position, point to mitre to centre V.

BACK

	32"	34"	36"	38"	40"	42"
Push up needles. →	254	270	286	302	318	334
Set for K.1, P.1 rib (needles in work). →	127	135	143	151	159	167
Set at tension No. 3½ and work in K.1, P.1 rib for 2 ins. Set sts. for stocking stitch. Change to tension No. 5 and proceed in stocking stitch until work measures 15 ins. from beg. for all sizes.						
Shape raglan armhole by casting off sts. at beg. of next 2 rows. →	2	3	4	5	6	7
Proceed as follows:— 1st row—Slip st. from 3rd needle at each end on to 4th needle; move 2 sts. at end one needle in, pushing empty needle at each end into N.W.P. Work all across. 2nd row—Work all across.						
Rep. these 2 rows until needles remain in work. Work 3 rows. Cast off. →	25	27	29	31	33	35

FRONT

Work as Back to armhole shaping.						
Slip needles at opposite end to wool on to stitch-holder, slipping inside st. of this group onto adjoining needle, there now being 2 groups of sts. →	64	68	72	76	80	84
Proceed on first group of sts. as follows:— Next row—Cast off Work to end. →	2	3	4	5	6	7
Next row—Work all across. Continue as follows:— **1st row—Slip st. from 3rd needle on to 4th needle at armhole edge; move 2 sts. on needle one needle up, work all across. 2nd row—Work all across.						
Continue dec. in this manner on next and every alt. row at the same time decreasing 1 st. at neck edge on 3rd row following and every following rows until dec. in all have been worked at neck edge. Continue dec. at armhole edge only on every alt. row as before, noting that when 4 sts. remain dec. are worked on 2 sts. at armhole edge until all sts. are worked off.** →	8th 11	7th 12	7th 13	7th 14	6th 15	6th 16



FRONT—cont.

Push up _____
 Bring needles in W.P.
 Rejoin wool at neck edge and work all across.
 Next row—Cast off _____
 Next row—Work all across.
 Work as 1st half from ** to **.

	32"	34"	36"	38"	40"	42"
	63	67	71	75	79	83
	2	3	4	5	6	7

SLEEVES

Push up _____
 Set for K.1, P.1 rib (needles in work) _____
 Set at tension No. 3½ Work in K.1, P.1 rib for 3 ins.
 Slip sts. on to knitting needle.
 Set up _____
 needles for stocking stitch, tension 5.
 Replace sts. on needles as follows:—
 Place 1st _____
 sts. on first _____
 needles (M.1 place next 5 sts. on next 5 needles)
 12 times, place remaining sts. on remaining
 needles.
 Change to tension 5 and proceed in stocking stitch
 inc. 1 st. at end of 7th and 8th row and every
 following _____
 row until there are _____
 needles in work. Continue on these sts. until
 work measures 17½ ins. from beg. (adjust length
 at this point).
 Shape top by casting off _____
 sts. at beg. of next 2 rows then rep. 1st and 2nd
 rows of raglan shaping as on Back until 7 sts.
 remain. Cast off.

	32"	34"	36"	38"	40"	42"
	122	126	130	134	138	142
	61	63	65	67	69	71
	73	75	77	79	81	83
	1	2	3	4	5	6
	1	2	3	4	5	6
	8th	7th	7th	6th	5th	5th
	109	115	121	127	133	139
	2	3	4	5	6	7

NECKBAND

Set up _____
 for K/K. Set at tension No. 4. Proceed in rib
 decreasing 2 sts. at both ends of 2nd and every
 alt. row for 16 rows.
 Inc. 2 sts. at end of every row for 16 rows.
 Cast off.

	32"	34"	36"	38"	40"	42"
	275	279	285	287	291	295

Classic Jumper

This jumper can be teamed up with the cardigan on Page 23 to form a Classic Twin Set.

MATERIALS: 10 [11, 12, 13, 14, 15] oz. PATONS PURPLE HEATHER Fingering 4-ply, or 9 [10, 11, 12, 13, 14] oz. PATONS NYLOX Knitting 4-ply, Patonised, or PATONS BEEHIVE Fingering 4-ply, Patonised. 5 inch zip fastener. You must use the P. & B. brands recommended above to be sure of a successful result.

SIZES: The figures in square brackets [] refer to the 34, 36, 38, 40 and 42 inch sizes respectively.

ABBREVIATIONS: See Page 3.

TENSION: 7½ sts. and 11 rows to one square inch on No. 5.

SPECIAL NOTE: All needles quoted are total number in work (Back and Front beds).

MEASUREMENTS: To fit 32 [34, 36, 38, 40, 42] inch bust. Length at centre back, 21½ [21¾, 22, 22¼, 22½, 22¾] ins. Sleeve seam, 5 ins.

TO MAKE UP

As instructions page 3, folding Neckband in centre, flat stitching to form Double Band, stitching in position round neck and stitching zip into back opening.

BACK

	32"	34"	36"	38"	40"	42"
Push up →	222	230	238	246	254	262
Set needles for K.1, P.1 rib. (needles in work) →	111	115	119	123	127	131
Set tension at 3½ and work in rib for 3½ ins. Slip sts. on knitting needle.						
Set up →	113	121	129	137	145	153
needles for stocking stitch.						
Replace sts. on needles as follows:—						
Place first →	37	10	10	3	4	3
sts. on first →	37	10	10	3	4	3
needles (M.1, place next →	37	19	11	9	7	6
sts. on next needles) →	1	5	9	13	17	21
times, M.1, place remaining sts. on remaining needles.						
Change to tension No. 5 and proceed in stocking stitch until work measures 13½ ins. from beg.						
Next 2 rows—Cast off →	2	3	4	5	6	7
sts. work to end.						
Proceed as follows:—						
1st row —Slip st. from 4th needle at each end on to 5th needle, move 3 end sts. one needle in, slip end needles into N.W.P.						
Work all across.						
2nd row —Work all across **.						
Rep. 1st and 2nd row until there are →	69	71	73	75	77	79
needles, then rep. 1st row.						
Divide for back opening as follows:—						
Slip →	34	35	36	37	38	39
sts. at opposite end to wool on to stitch-holder.						
Proceed on remaining group of →	33	34	35	36	37	38
needles as follows:—						
Continue dec. at armhole edge on next and every alt. row as before until →	11	12	13	14	15	16
needles remain in work.						
Work 4 rows. Cast off.						
Transfer sts. from stitch-holder on to →	34	35	36	37	38	39
needles.						
Slip st. from needle at inside edge on to adjoining needle, there now being →	33	34	35	36	37	38
needles in work. Complete to match 1st half reversing armhole shaping.						

Classic Jumper—cont.

FRONT

	32"	34"	36"	38"	40"	42"
Work as Back to **.						
Rep. 1st and 2nd row until sts. remain, then rep. 1st row.	57	59	61	63	65	67
Slip sts. at opposite end to wool on to stitch-holder.	32	34	36	38	40	42
Proceed on 23 needles in work dec. 1 st. at armhole edge on every alt. row as before at same time dec. 1 st. at neck edge on every alt. row until 6 dec. in all have been worked at neck edge and 9 needles remain in work.						
Continue dec. on every alt. row at armhole edge until all sts. are worked off noting that when 4 sts. remain. decreases are worked at armhole edge.						
Transfer sts. from stitch-holder on to needles.	32	34	36	38	40	42
Rejoin wool at neck edge. Cast off (23 needles remain in work).	9	11	13	15	17	19
Complete to match first half reversing shapings.						

SLEEVES

Push up needles.	162	166	170	174	178	182
Set needles for K.1, P.1 rib needles in work.	81	83	85	87	89	91
Set at tension No. 3½ and work in rib for 1 inch.						
Change to tension No. 5 and proceed in stocking stitch, inc. 1 st. at end of 3rd and 4th and every row from previous inc. until there are needles in work.	4th 97	4th 103	3rd 109	3rd 115	2nd 121	2nd 127
Continue on these needles until work measures 5 ins. from beg.						
Shape top by casting off sts. at beg. of next 2 rows, then rep. 1st and 2nd rows of raglan shaping as on Back until 5 sts. remain.	2	3	4	5	6	7
Cast off.						
Special note: If a long sleeved Jumper is required, work Sleeves as Cardigan Page 23.						

NECKBAND

Push up needles.	266	274	282	290	298	306
Set needles for K.1, P.1 rib needles in work.	133	137	141	145	149	153
Set at tension No. 3½ and work in ribbing for 1½ ins. Cast off.						

Boy's or Girl's Cardigan

These garments are illustrated on inside front cover

MATERIALS: 7 [8, 9, 10, 11, 12] oz. PATONS BEEHIVE Fingering 4-ply, Patonised.
PATONS NYLOX Knitting 4-ply Patonised, or 7 [8, 9, 10, 11, 12] oz. PATONS PURPLE HEATHER Fingering 4-ply.
Four [four, five, five, six, six] buttons. You must use the P. & B. brands recommended above to be sure of a successful result.

Length at centre back, 14 [15½, 17, 18½, 19¾, 21] ins.
Sleeve seam, 9 [10¾, 12½, 13½, 15, 17] ins.

SIZES:

The figures in square brackets [] refer to the 24, 26, 28, 30 and 32 inch sizes respectively.

ABBREVIATIONS:

See Page 3.

TENSION:

7½ sts. and 11 rows to one square inch on No. 5.

SPECIAL NOTE:

All needles quoted are total number in work (Back and Front beds).

MEASUREMENTS: To fit 22 [24, 26, 28, 30, 32] inch chest.

BACK

	22"	24"	26"	28"	30"	32"
Push up needles. →	166	182	198	214	230	246
Set for K.1, P.1 rib (needles in work) →	83	91	99	107	115	123
Set tension at 3½ and work ribbing for ins. →	1	1¼	1½	1¾	2	2½
Set needles for stocking stitch. Change to tension No. 5 and proceed in stocking stitch until work measures ins. from beg. →	8	9½	10½	11½	12	13
Shape raglan armholes by casting off sts. at beg. of next 2 rows, then dec. 1 st. at both ends of every alt. row until sts. remain. →	1	2	2	2	2	3
Work 4 rows on these sts. Cast off. →	17	21	23	25	27	29

POCKET

Set up needles for stocking stitch. →	19	19	23	23	27	27
Set at tension No. 5 and work in stocking stitch for ins. →	2½	2½	3	3	3½	3½
Slip sts. on length of wool.						

RIGHT FRONT

Push up needles. →	82	90	98	106	114	122
Set for K.1, P.1 rib (needles in work). →	41	45	49	53	57	61
Set at tension 3½ and work ribbing to match Back. Set needles for stocking stitch. Change to tension No. 5 and proceed in stocking stitch until work measures ins. from top of ribbing. →	2½	2½	3	3	3½	3½
Place Pocket by slipping centre sts. on length of wool there being sts. at each side of pocket sts. →	19	19	23	23	27	7
Slip pocket sts. from length of wool on to centre needles and continue in stocking stitch until work measures same as Back to armhole shaping. →	11	13	13	15	15	17
Next row—Cast off sts., work to last 2 sts., dec. on these 2 sts. →	1	2	2	2	2	3
Now dec. 1 st. at armhole edge on every alt. row, at the same time dec. 1 st. at front edge on every rows from previous dec. until dec. in all have been worked at front edge. →	8	7	7	7	7	7
Continue dec. at armhole edge only on every alt. row as before until all sts. are worked off. →	7	9	10	11	12	13

Boy's or Girl's Cardigan—cont.

POCKET TOP

	22"	24"	26"	28"	30"	32"
Push up needles.	38	38	46	46	54	54
Set for K.1, P.1 rib.	19	19	23	23	27	27
Replace sts. from top of pocket on to these needles.	$\frac{1}{2}$	$\frac{1}{2}$	$\frac{3}{4}$	$\frac{3}{4}$	1	1
Set at tension $3\frac{1}{2}$ and work in K.1, P.1 rib for ins. Cast off.						

POCKET, LEFT FRONT AND POCKET TOP

Work to match Right Front reversing all shapings.

SLEEVES

Push up needles.	94	98	106	110	118	122
Set for K.1, P.1 rib (needles in work).	47	49	53	55	59	61
Set at tension $3\frac{1}{2}$ and work in rib for ins.	2	2	$2\frac{1}{2}$	$2\frac{1}{2}$	3	3
Slip sts. on knitting needle.	57	61	65	69	73	75
Set up needles for stocking stitch.						
Replace sts. as follows:—						
Slip first	5	1	4	7	3	4
sts. on first	5	1	4	7	3	4
needles (M.1, place next	4	4	4	3	4	4
sts. on next)	4	4	4	3	4	4
needles.						
Do this	10	12	12	14	14	14
times, slip remaining sts. on remaining needles.						
Change to tension No. 5 and proceed in stocking stitch, inc. 1 st. at end of	7th & 8th	9th & 10th	9th & 10th	9th & 10th	9th & 10th	9th & 10th
then on every	8th	10th	10th	10th	10th	10th
row from previous inc. until there are	73	77	83	89	95	101
needles in work.						
Continue on these sts. until work measures	9	$10\frac{1}{2}$	$12\frac{1}{2}$	$13\frac{1}{2}$	15	17
ins. from beg.						
Shape top by casting off	1	2	2	2	2	3
sts. at beg. of next 2 rows, then dec. 1 st. at both ends of every alt. row until 7 sts. remain.						
Cast off.						

FRONT BAND

Push up needles.	22	22	26	26	30	30
Set for K.1, P.1 rib (needles in work).	11	11	13	13	15	15
Set at tension $3\frac{1}{2}$ and work in rib for $\frac{1}{2}$ inch.						
On next row mark buttonhole on centre 3 sts.						
Continue in rib marking buttonholes	$2\frac{1}{2}$	3	$2\frac{1}{2}$	$2\frac{3}{4}$	$2\frac{1}{4}$	$2\frac{1}{2}$
ins. apart until	4	4	5	5	6	6
buttonholes in all have been marked.						
Continue in rib until work measures	30	$34\frac{1}{4}$	$37\frac{1}{2}$	$40\frac{1}{2}$	$42\frac{3}{4}$	46
ins. from beg. Cast off						



Classic Cardigan for Her or Him

MATERIALS: 15 [16, 17, 18, 19, 20] oz. PATONS NYLOX Knitting 4-ply, Patonised, or PATONS BEEHIVE Fingering 4-ply, Patonised, or 16 [17, 18, 19, 20, 21] oz. PATONS PURPLE HEATHER Fingering 4-ply.

Seven buttons.

You must use the P. & B. brands recommended above to be sure of a successful result.

POCKET

Set up 31 needles for stocking stitch.
Set at tension No. 5.
Work in stocking stitch for 4 ins.
Slip sts. on to a length of wool.

BACK

Work as Back of V-Neck Sweater page 17.

SLEEVES

Work as Sleeves of V-Neck Sweater page 18.

MEASUREMENTS and TENSION:

As V-Neck Sweater Page 17.

ABBREVIATIONS: See Page 3.

RIGHT FRONT

	32"	34"	36"	38"	40"	42"
Push up needles. →	126	134	142	150	158	186
Set needles for K.1, P.1 rib needles in work. →	63	67	71	75	79	83
Set at tension No. 3½. Work in ribbing for 2 ins. Set up for stocking stitch. Change to tension No. 5 and proceed in stocking stitch until work measures 6 ins. from beg.						
Leaving needles at each end, slip 31 sts. from centre needles on to length of wool. →	16	18	20	22	24	26
Slip 31 sts. from Pocket on to these needles and continue in stocking stitch until work measures same as Back to armhole shaping, finishing at armhole edge.						
Next row—Cast off sts., work to end. →	2	3	4	5	6	7
Complete as V-Neck Sweater from ** to ** page 17.						

Classic Cardigan for Her or Him—cont.

POCKET TOP

	32"	34"	36"	38"	40"	42"
Push up needles. →	62	62	62	62	62	62
Set for K.1, P.1 rib needles in work. →	31	31	31	31	31	31

Place sts. from top of pocket on to these needles.
Set at tension No. 3½.
 Work in K.1, P.1 rib for 1 inch.
 Cast off.

POCKET, LEFT FRONT AND POCKET TOP

Work to match Right Front reversing all shapings.

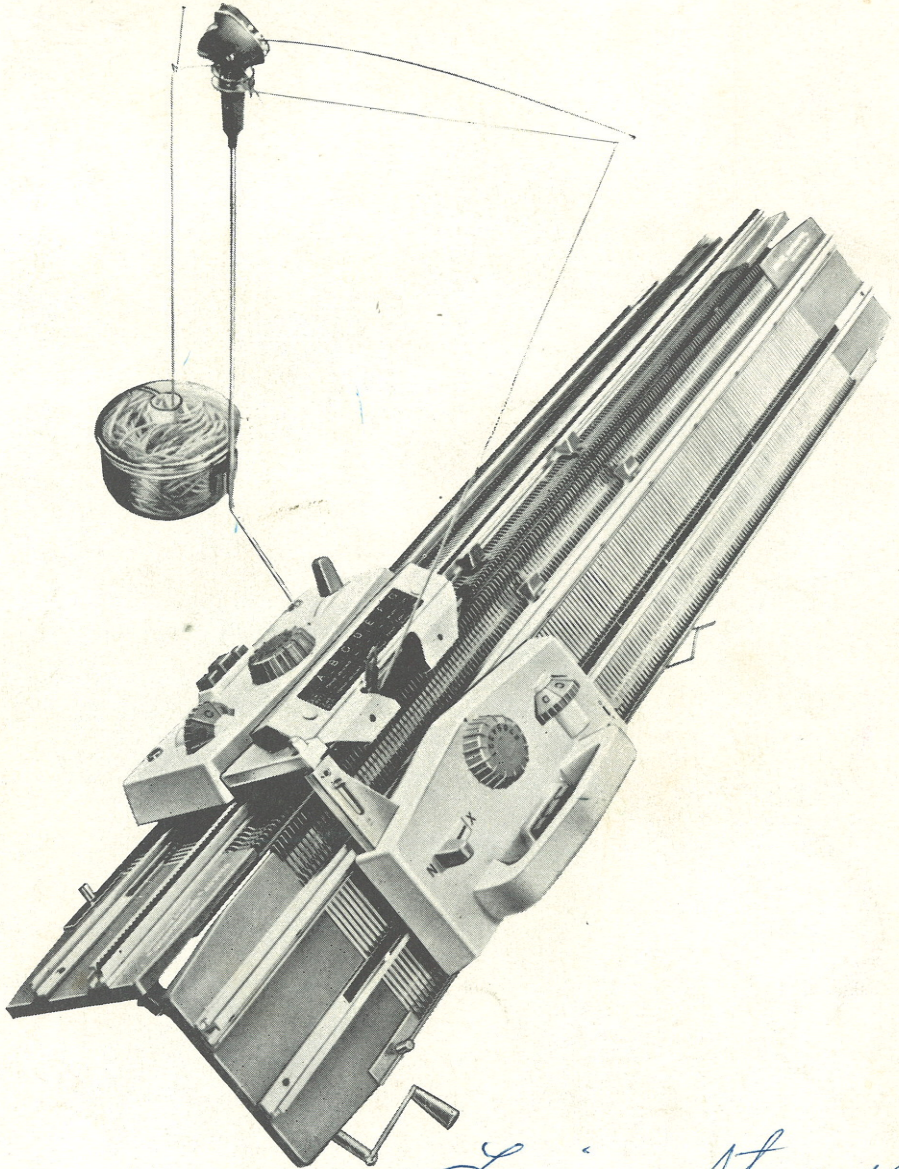
FRONT BAND

	32"	34"	36"	38"	40"	42"
Push up needles. →	32	32	32	32	32	32
Set needles for K.1, P.1 rib needles in work. →	16	16	16	16	16	16
Set at tension No. 3½. Work in rib for ½ inch. On next row mark centre 4 sts. for buttonhole. Continue in rib marking buttonholes 2¼ ins. apart until 7 buttonholes in all are marked. Continue in rib until work measures →	52	52½	53½	54½	55	55½
ins. from beg.						
Cast off.						



PASSAP[®]

DUOMATIC



Louise Stewart

A. C. WEBER & CO., INC.

216 N. CANAL ST. • CHICAGO 6, ILL. • Financial 6-0414

Printed in U.S.A.