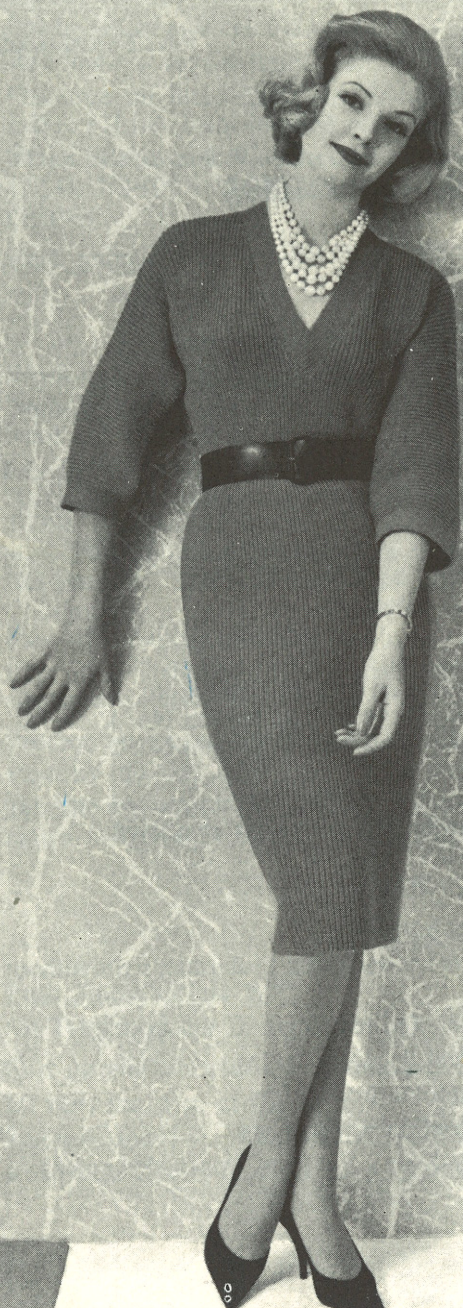


25¢

PASSAP®
DUOMATIC

1006





PATTERN 1006

MAGYAR DRESS

Materials: 32 [34, 36] oz. PATONS BEEHIVE Fingering 4-ply, Patonised.

Measurements: To fit 34 [36, 38] inch bust (loosely).
Length, 40½ [40¾, 41] ins. (adjustable).
Sleeve seam, 11½ ins.

Sizes: The figures in square brackets [] refer to the medium and large sizes respectively.

Abbreviations: W.P., Working Position; st., stitch; inc., increase; dec., decrease; beg., beginning; alt., alternate; ins., inches; rep., repeat.

Tension: 9½ sts. and 22 rows to an inch at tension No. 2.
9 sts. and 20 rows to an inch at tension No. 3.
8½ sts. and 16 rows to an inch at tension No. 4.
8 sts. and 14½ rows to an inch at tension No. 5.

Special Note: The number of needles or stitches quoted refers to the total number on **both beds combined**.

BACK.

Push 170 [178, 186] needles into W.P.

Set Tension at No. 5 and set for one sided Fisherman's rib without pushers.

Cast on and work for 9½ ins. (adjust length at this point).

Change Tension to No. 4 and work for 10 ins.

Change Tension to No. 3 and work for 7 ins.

Change Tension to No. 2 and work for 3 ins.

Change Tension to No. 3 and work for 2 ins. (Mark this point.)

1st and 2nd rows. Cast on 12 sts. and work to end.

3rd to 6th row. Work all across.

Rep. these 6 rows **6 times more**.

Continue on these 338 [346, 354] needles until work measures 9 [9¼, 9½] ins. from marked point.

Shape Sleeves and Shoulders by casting off 20 sts. at beg. of next 12 [12, 12] rows, 18 [20, 22] sts. at beg. of next 2 rows.

Cast off.

FRONT.

Work as Back to **marked point**.

Transfer 85 [89, 93] sts. at opposite end to wool on to a length of wool and proceed on **first** group of 85 [89, 93] sts. as follows:—

Slip 1 st. at inside edge (neck edge) on to next needle (84 [88, 92] sts.). Cast on 12 sts. on next and every 6th row until 7 sets of 12 sts. have been cast on, **at the same time** dec. 2 sts. at Front edge on next and every following 12th row until 15 [16, 17] dec. have been completed at neck edge. (138 [140, 142] sts.)

Continue on these sts. until work matches Back to Sleeve and Shoulder shaping, finishing at sleeve edge.

Cast off 20 sts. at beg. of next and every alt. row until 18 [20, 22] sts. remain. Cast off.

Proceed on second group of sts. as follows:—

Push 85 [89, 93] needles into W.P.

Transfer sts. from length of wool on to these needles and work to match first group reversing all shapings.

NECKBAND.

Push 2 needles into W.P.

Set Tension at No. 2.

Cast on and work in k/k as follows:—

1st row. Inc. 1 st. at beg of row.

2nd row. Inc. 1 st. at end of row.

Rep. these 2 rows until there are 22 needles in work.

Continue on these sts. until work measures 25 [$25\frac{3}{4}$, $26\frac{1}{2}$] ins. from beg., finishing at shaped edge.

1st row. Dec. 1 st. at beg. of row.

2nd row Dec. 1 st. at end of row.

Rep. these 2 rows until 2 sts. remain.

Cast off.

SLEEVE BAND. (work two.)

Push 22 needles into W.P.

Set Tension at No. 2.

Cast on and work in k/k for 12 [$12\frac{1}{2}$, $12\frac{3}{4}$] ins.

Cast off.

TO MAKE UP.

Back-stitch side and sleeve seams. Flat-stitch ends of Neckband to form mitre and stitch round neck. Flat-stitch ends of Sleeve Bands together and stitch round sleeve edges. Press seams lightly.

Laurie Stewart

(AUTHORIZED DEALER)

PRINTED IN U.S.A.