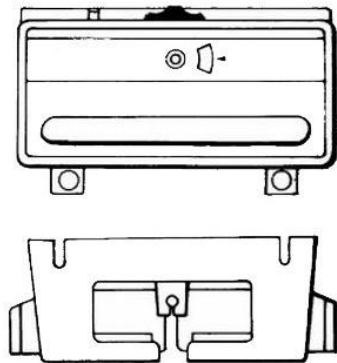


INTARSIA CARRIAGE AG-1

for exclusive use on Bulky Model 120

- ◆ No floating yarns on the back

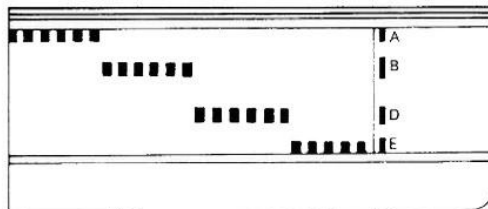


FUNCTIONS

- ◆ Set the Stitch Dial and Row Counter in the same manner as setting for the Bulky Knitter Carriage
- ◆ Attach the Sinker Plate Arm of the Bulky Knitting Carriage onto the Intarsia Carriage

- ◆ The positions of the needles and their functions are shown below.

When the Intarsia Carriage is in use - the needles align to "D" position

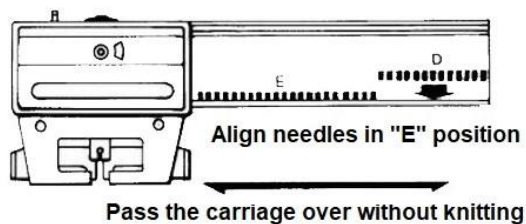


"A" Position : Inoperative

"B" Position : Needles knit plain stitches

"D" Position : Used in Intarsia - needles knit plain stitch and align in this position

"E" Position : For passing the carriage without knitting & used for partial knitting



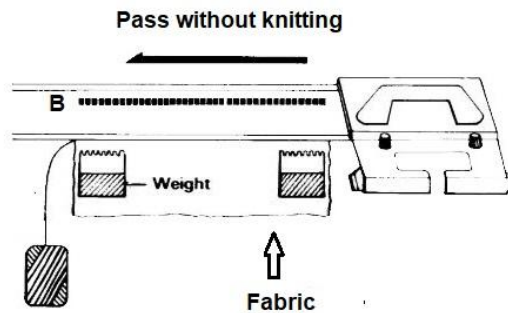
- ◆ To pass the Carriage across without knitting the needles in "D" position, re-align the needles into "E" position before moving the Carriage across.

PLAIN STITCH USING THE INTARSIA CARRIAGE

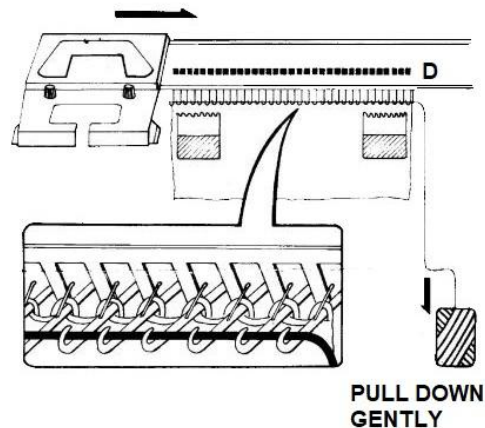
- ◆ Cast on the required number of needles with the Main Knitting Carriage.
- ◆ To use the Intarsia Carriage, remove the Knitting carriage from the needle bed and follow the steps below.

Do not thread up the Auto Tension Unit or the Yarn Feeder.

1. Set the Intarsia Carriage on the side opposite the yarn end. Pass the Carriage across needles in "B" position. Needles are pushed to "D" position.



2. Lay the yarn in the hook of the needles in "D" position and take up the slack on the yarn. Pass the Carriage across the bed. The yarn is knitted and needles aligned to "D" position.

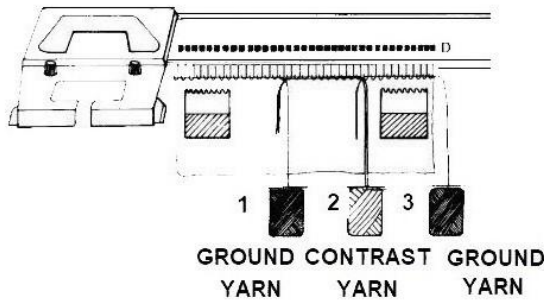
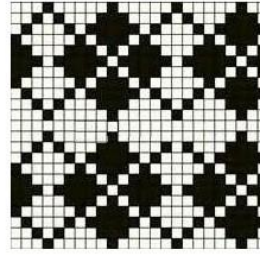
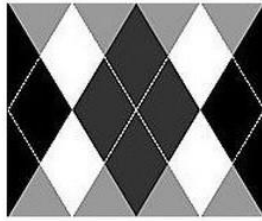


3. Repeat step 2 to continue.

IMPORTANT:

**MAKE SURE THE NEEDLE LATCHES
ARE OPEN BEFORE LAYING IN THE
YARN**

ARGYLE INTARSIA DESIGN

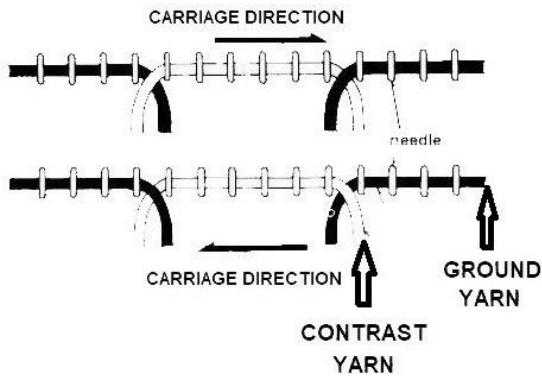


First Row

Divide the needles into sections and lay the yarns (1, 2, 3 etc.) in the hook of the needles in each section starting from the Carriage side.

Take up the yarn slack and pass the carriage over the needles.

◆ Ground yarn and Contrast yarn



Second Row

Continue to knit as in first row - laying yarn across the section of open needle hooks, always starting at the Carriage side.

IMPORTANT :

TO AVOID THE SEPARATION OF STITCHES AT THE EDGE OF THE DESIGN, CROSS THE YARNS AS SHOWN ABOVE.