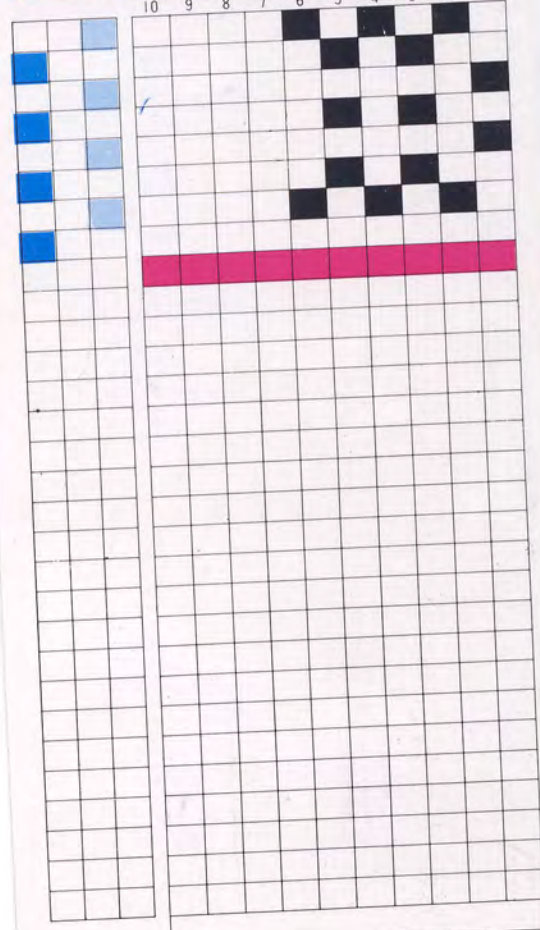
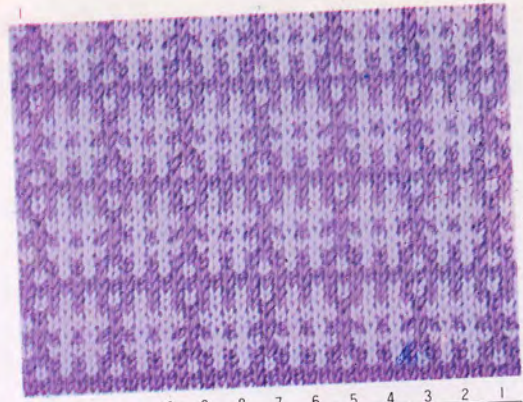


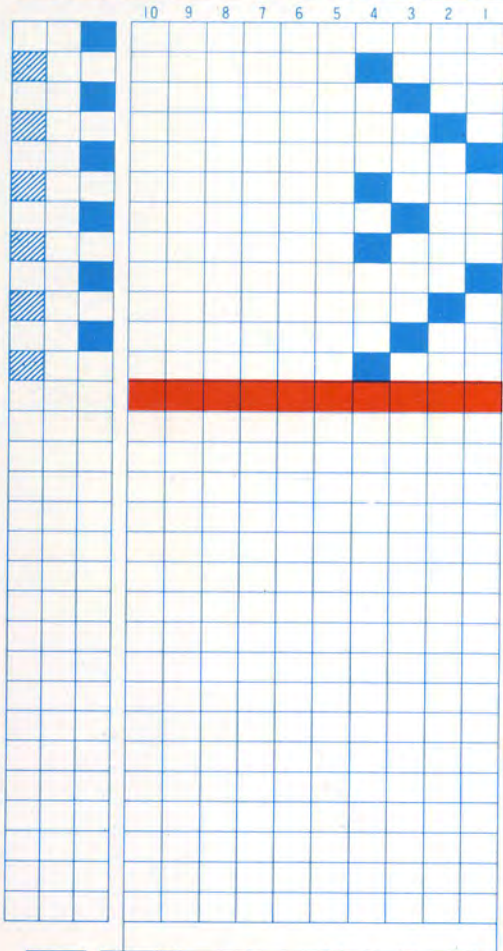
A C 7 7 7 2



A C 6 6 6 2

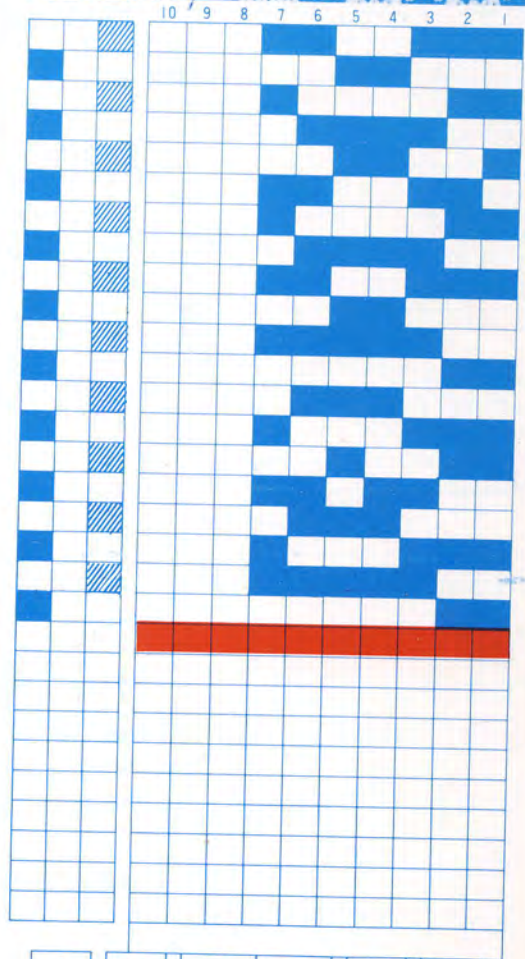
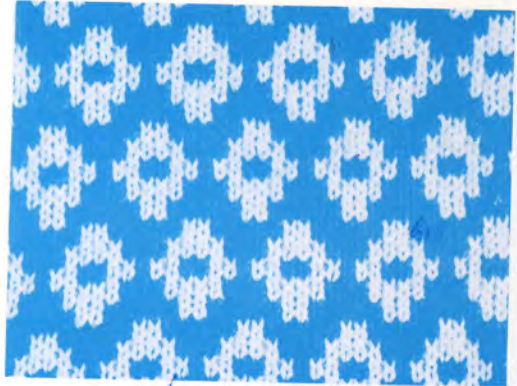


2



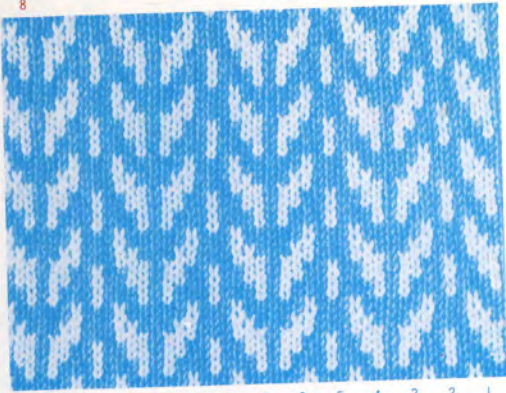
A	C	4	4	4	2
---	---	---	---	---	---

4

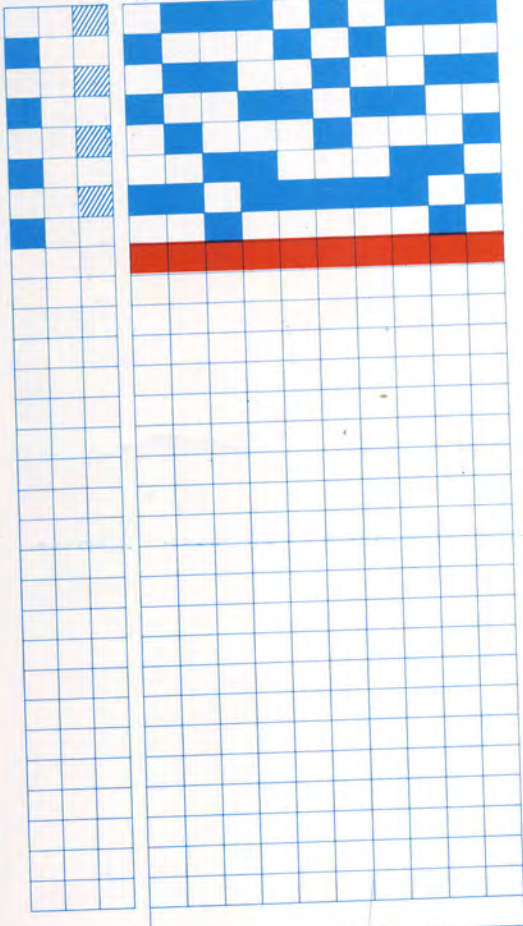


A	C	7	7	7	2
---	---	---	---	---	---

8



10 9 8 7 6 5 4 3 2 1

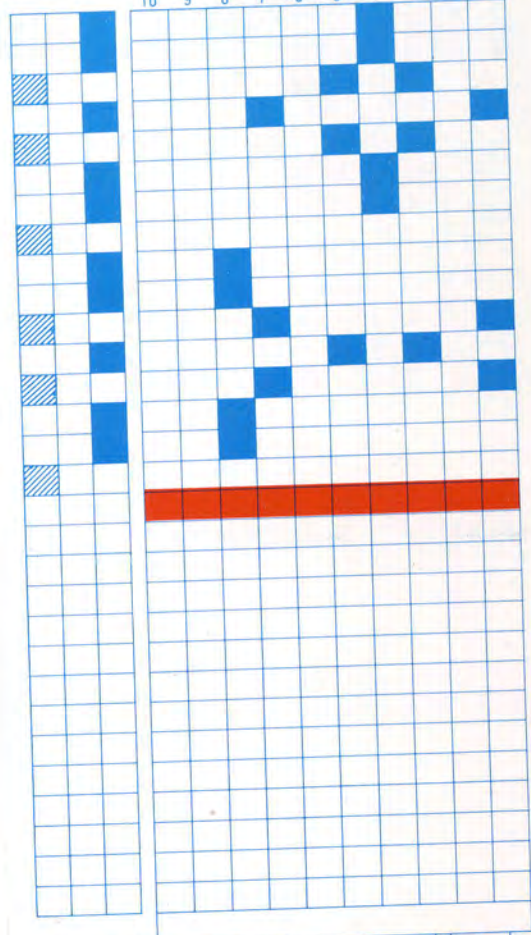


A	C	10	10	10	2
---	---	----	----	----	---

6



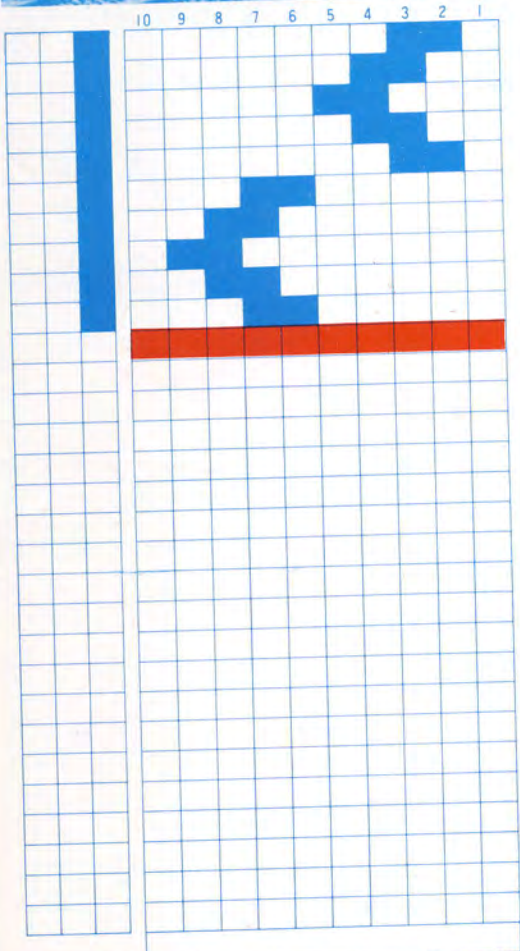
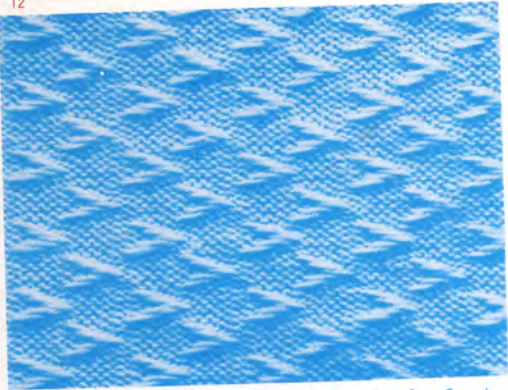
10 9 8 7 6 5 4 3 2 1



A	C	8	8	8	2
---	---	---	---	---	---

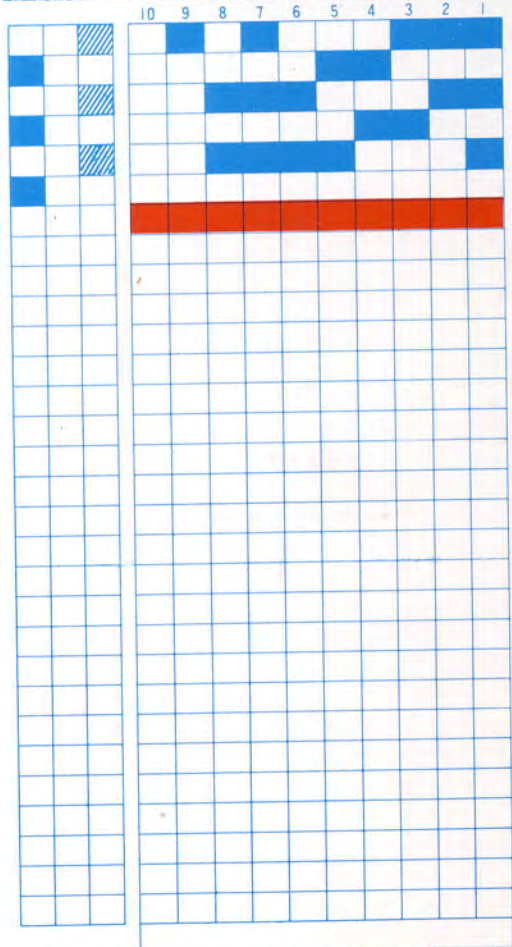
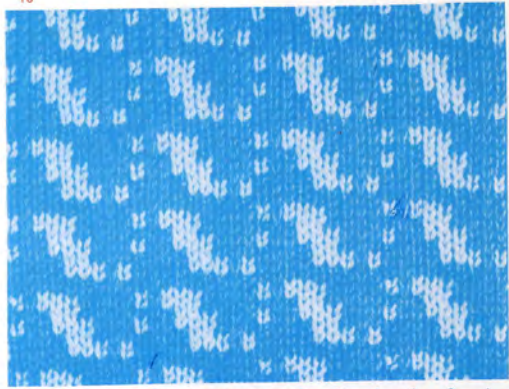


12



A	C	9	9	9	1
---	---	---	---	---	---

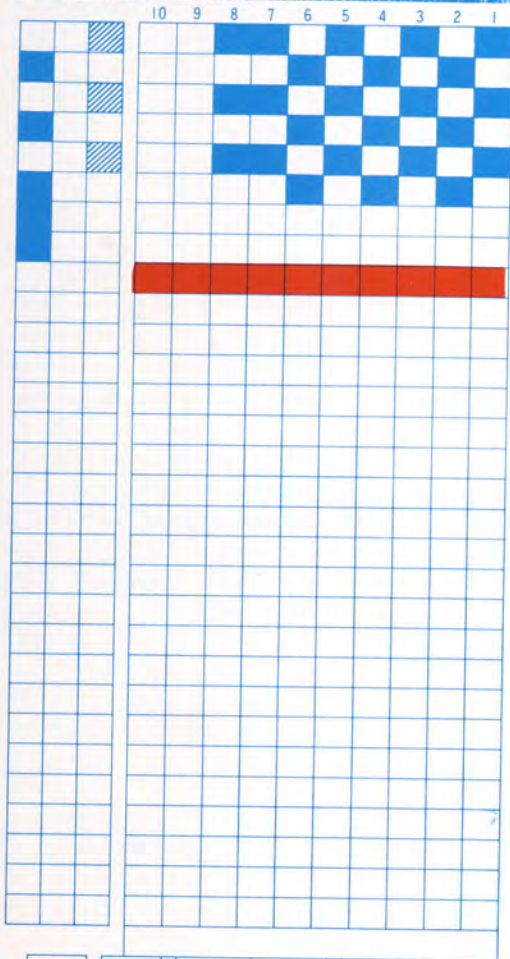
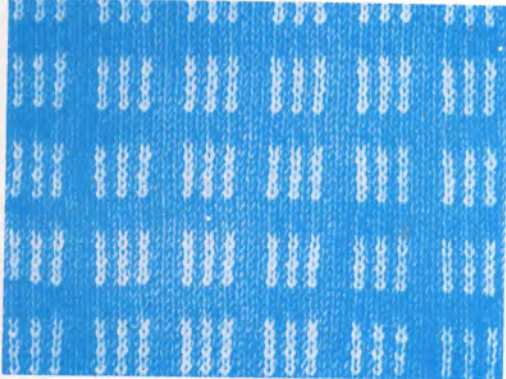
10



A	C	9	9	9	2
---	---	---	---	---	---

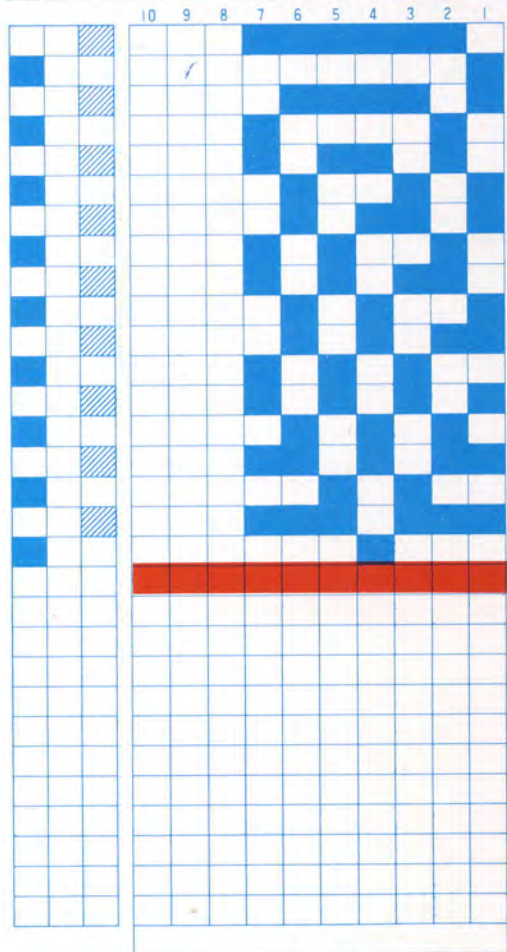


14



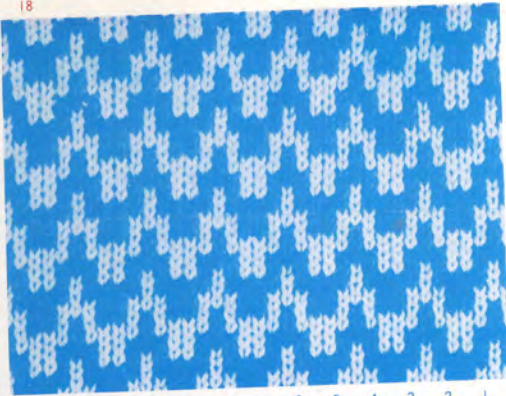
A	C	8	8	8	2
---	---	---	---	---	---

16

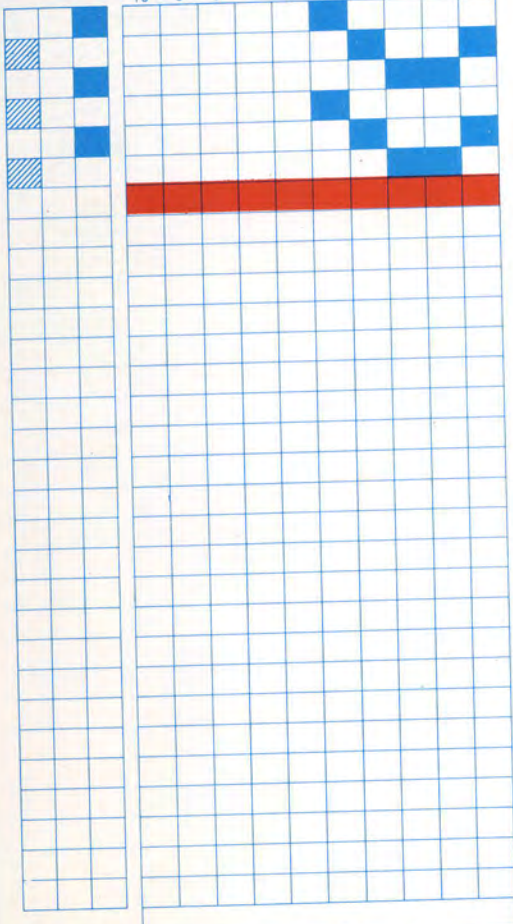


A	C	7	7	7	2
---	---	---	---	---	---

18

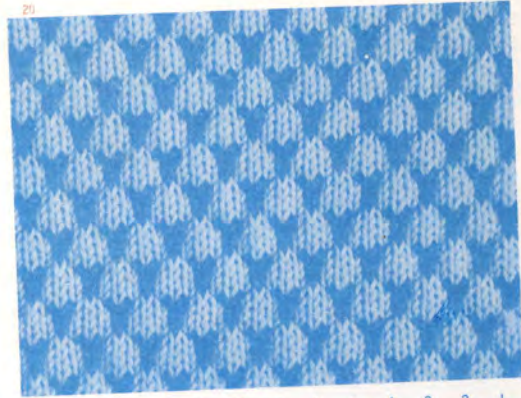


10 9 8 7 6 5 4 3 2 1

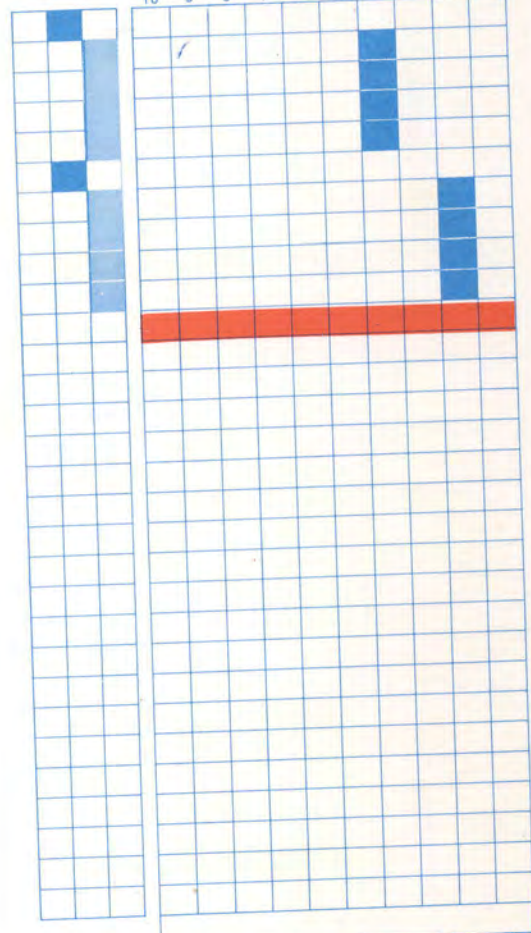


A	C	5	5	5	2
---	---	---	---	---	---

20



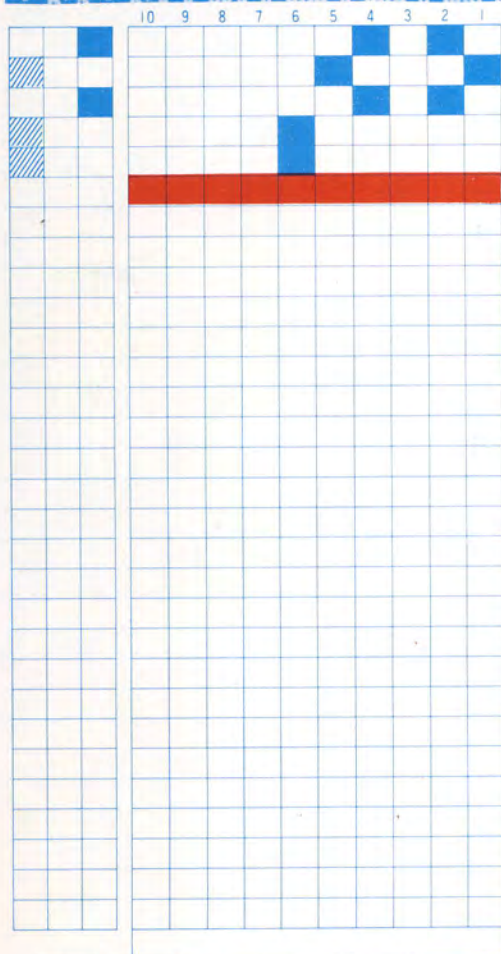
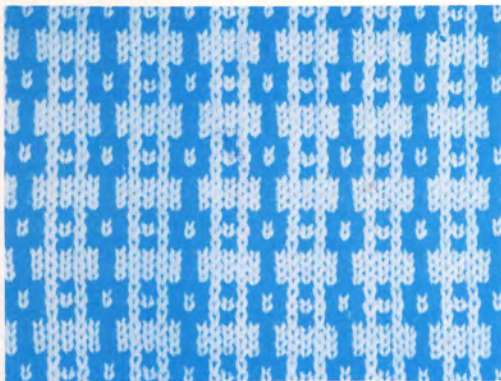
10 9 8 7 6 5 4 3 2 1



A	C	4	4	4	1
---	---	---	---	---	---

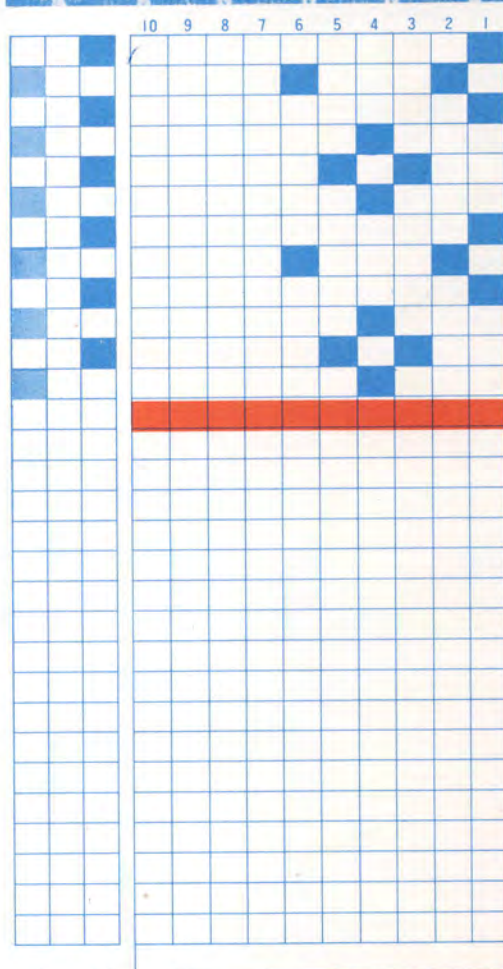


22



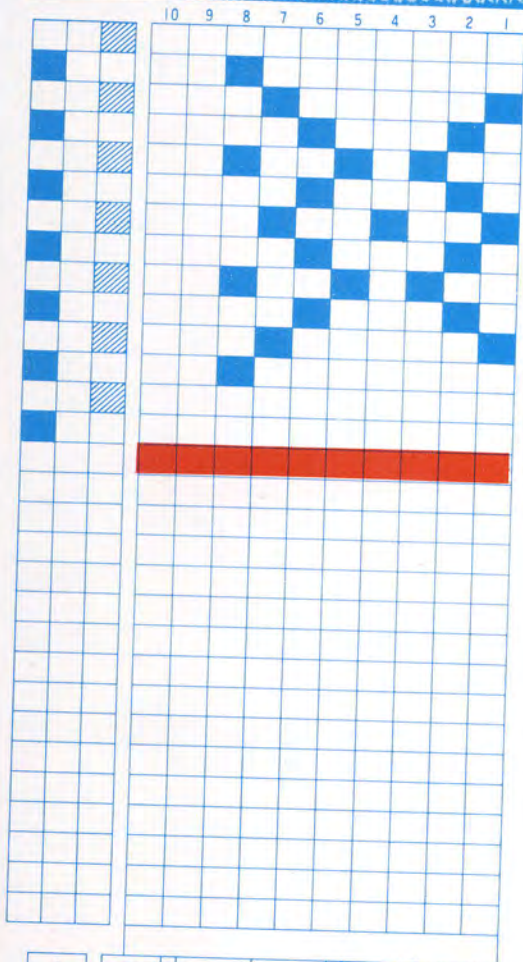
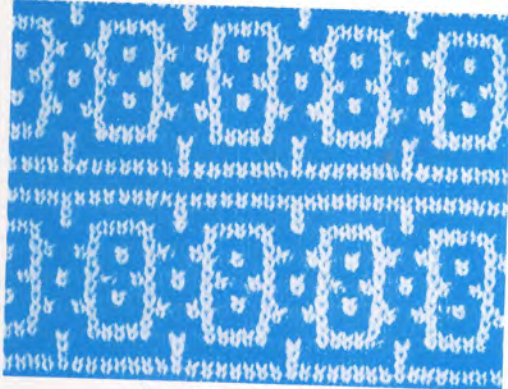
A	C	6	6	6	2
---	---	---	---	---	---

24



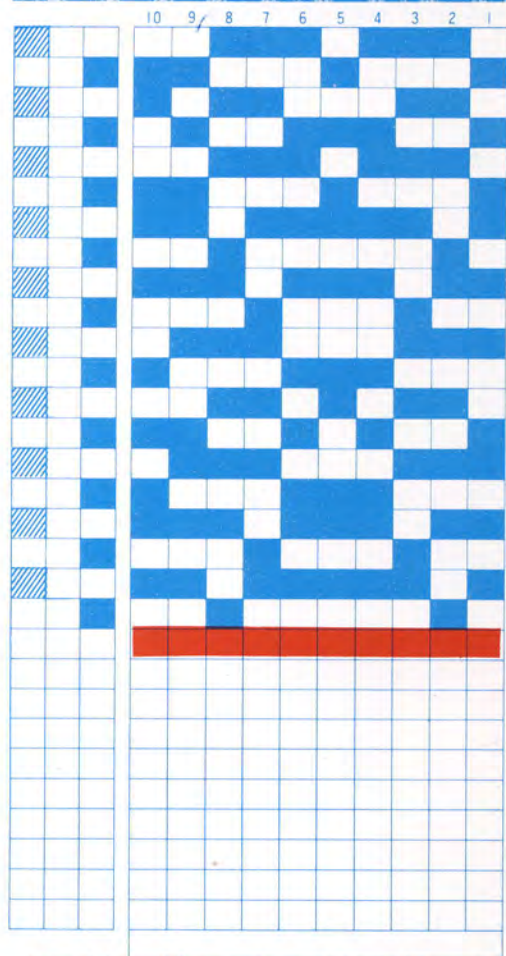
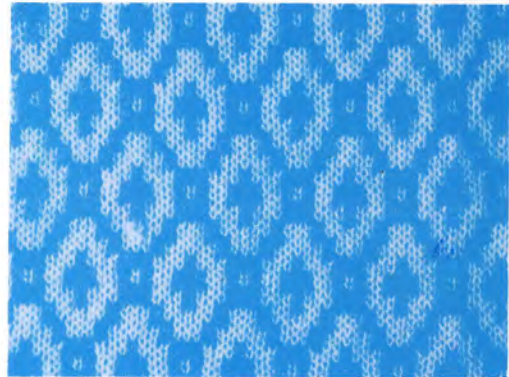
A	C	6	6	6	2
---	---	---	---	---	---

28



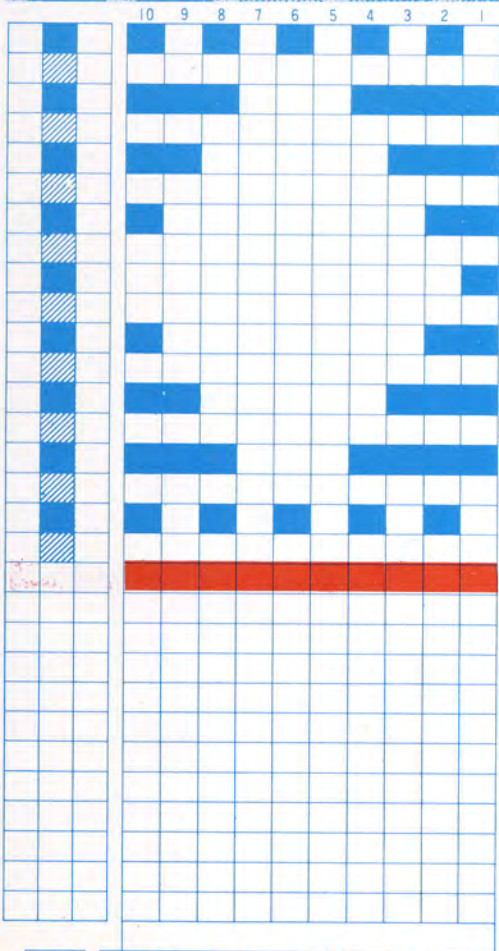
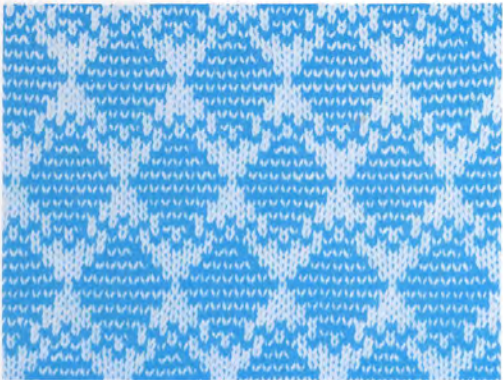
A	T	8	8	8	2
---	---	---	---	---	---

26

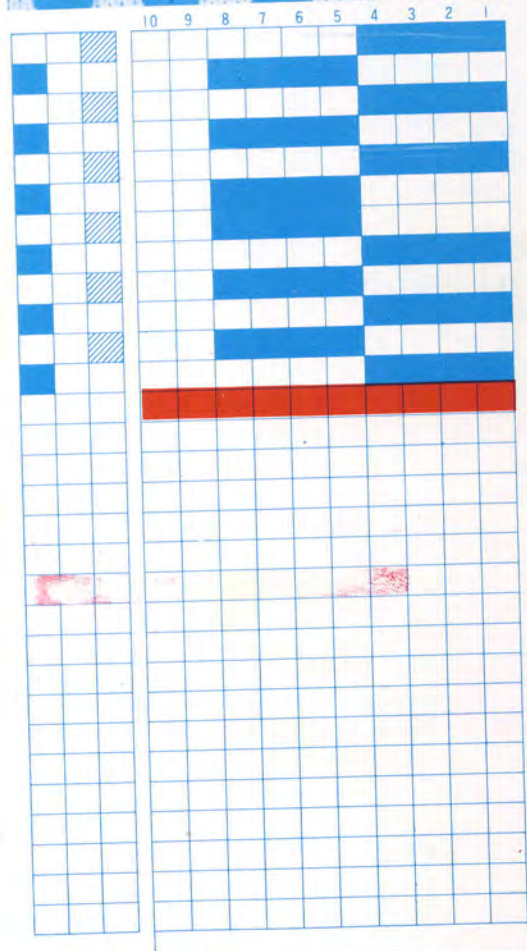
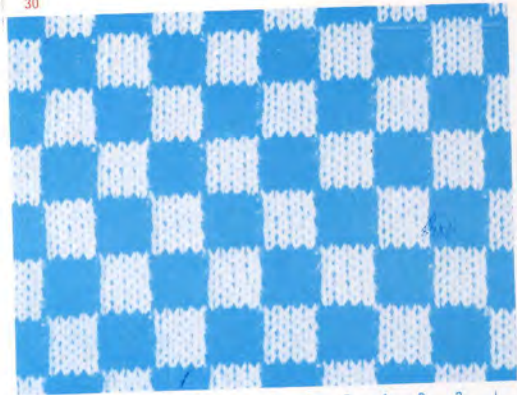


A	C	10	10	10	2
---	---	----	----	----	---



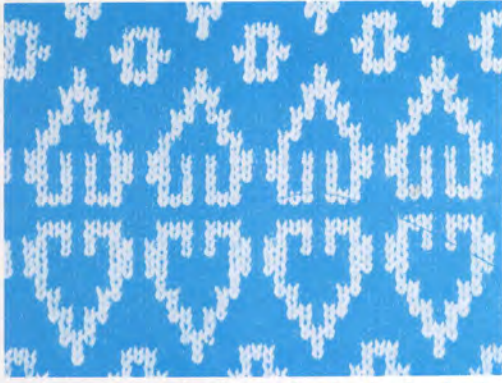


A	C	10	10	10	1
---	---	----	----	----	---

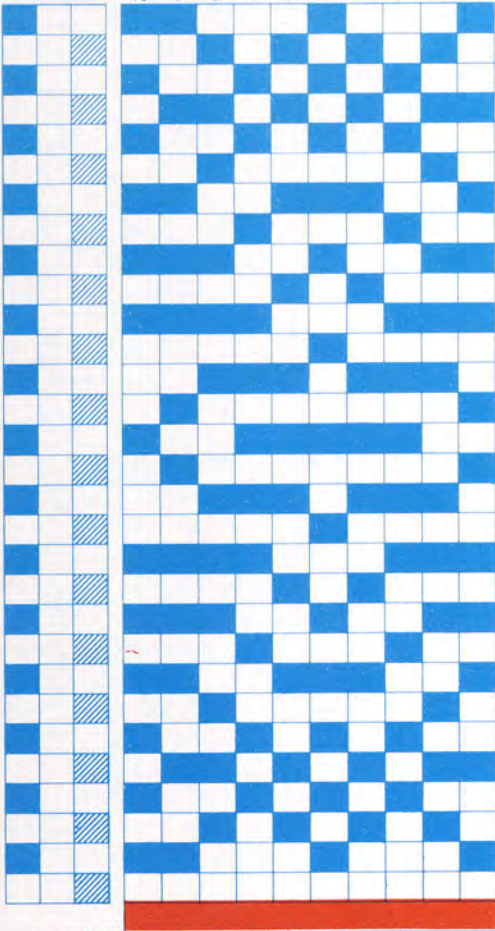


A	C	8	8	8	2
---	---	---	---	---	---

36



10 9 8 7 6 5 4 3 2 1

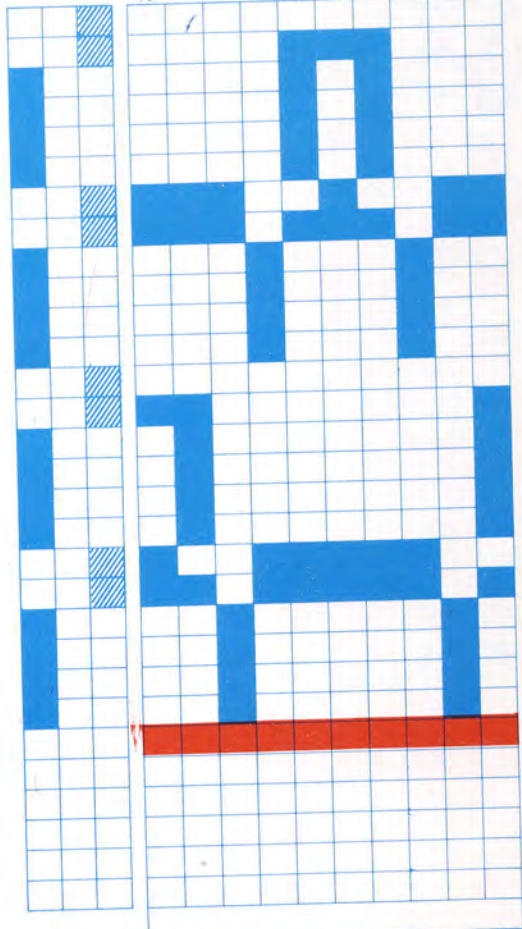


A C 10 10 10 2

34

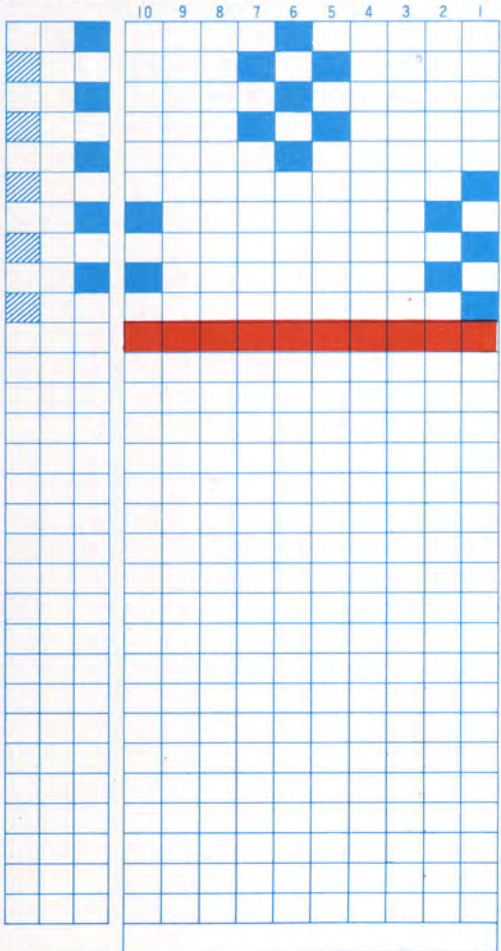
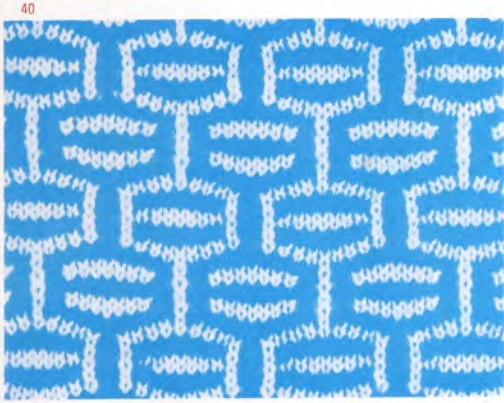


10 9 8 7 6 5 4 3 2 1

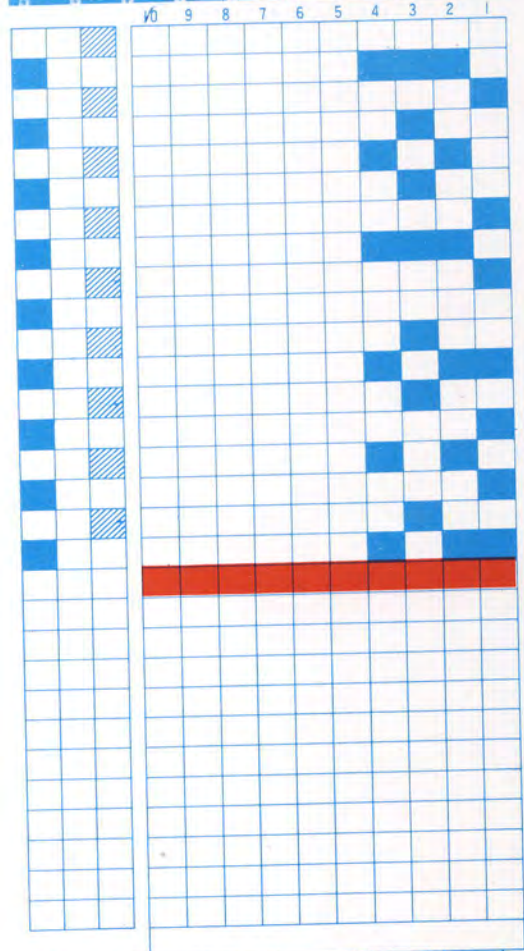
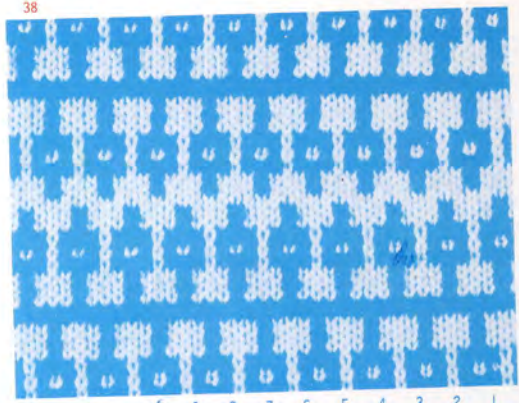


A C 10 10 10 1



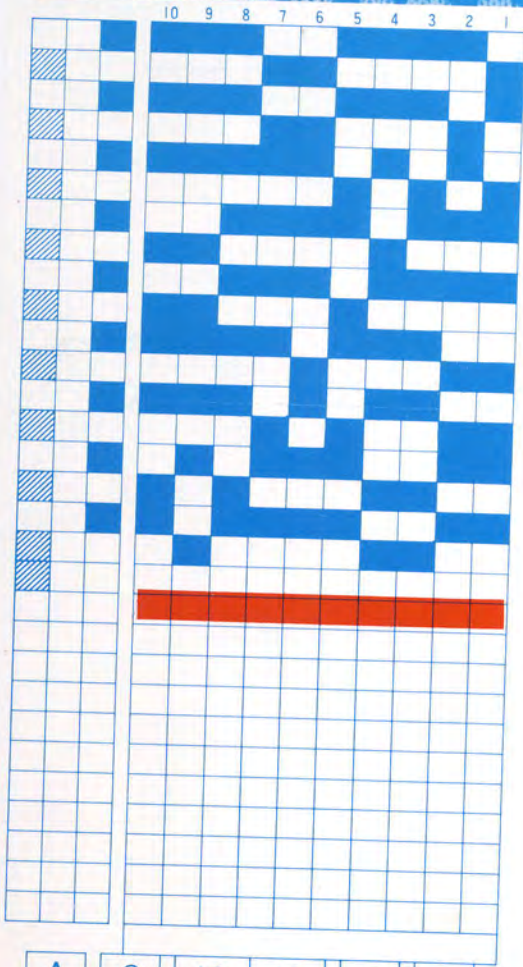
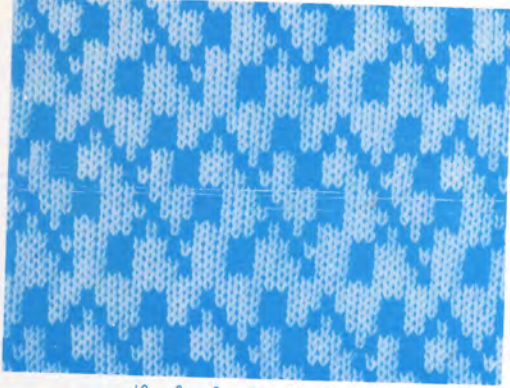


A T 10 10 10 2



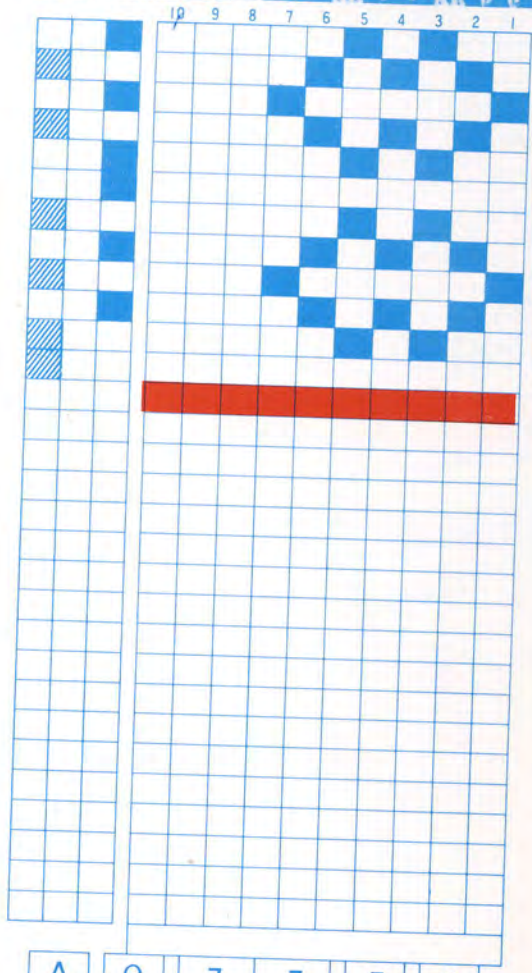
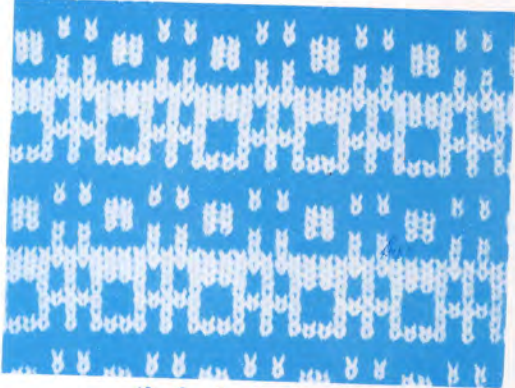
A C 4 4 4 2

44



A	C	10	10	10	2
---	---	----	----	----	---

42



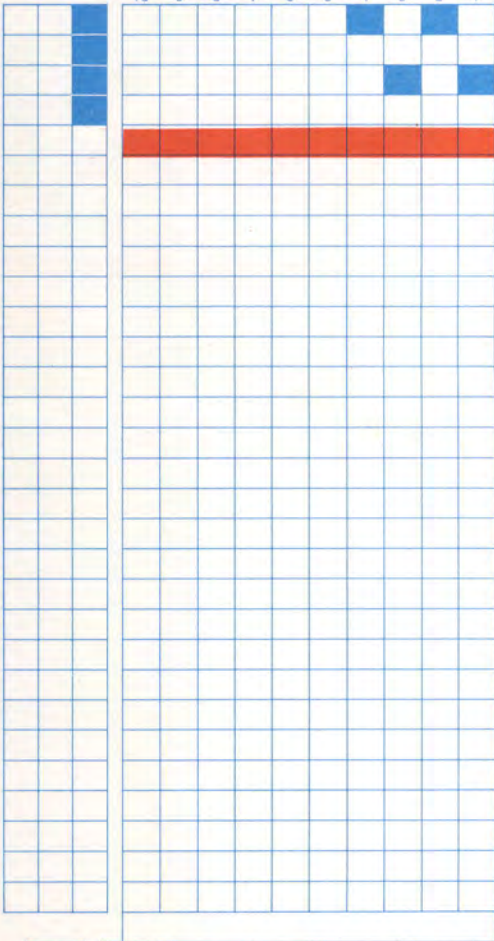
A	C	7	7	7	2
---	---	---	---	---	---



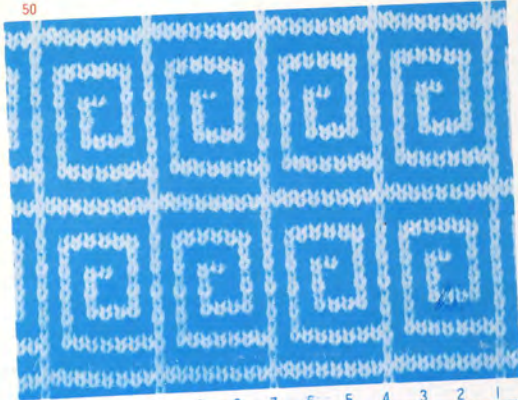




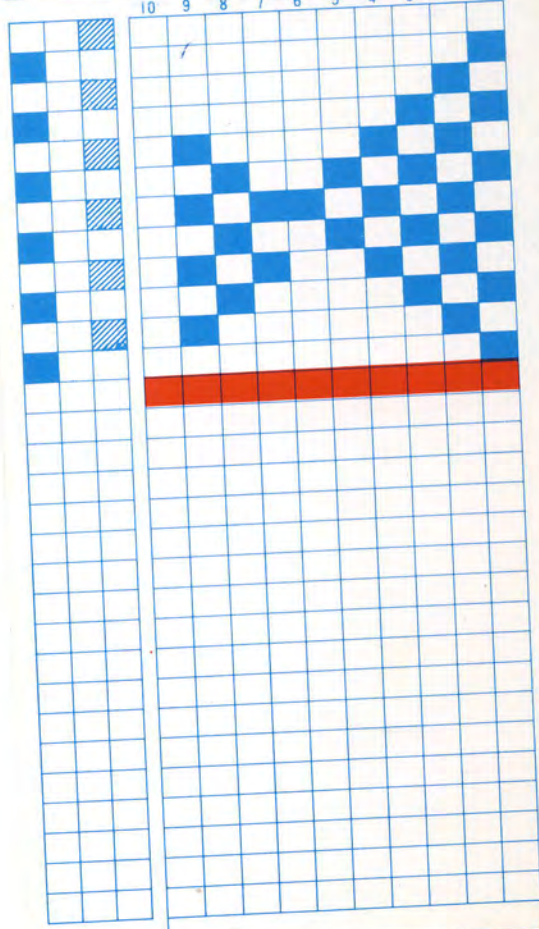
10 9 8 7 6 5 4 3 2 1



A T 4 4 4 I



10 9 8 7 6 5 4 3 2 1



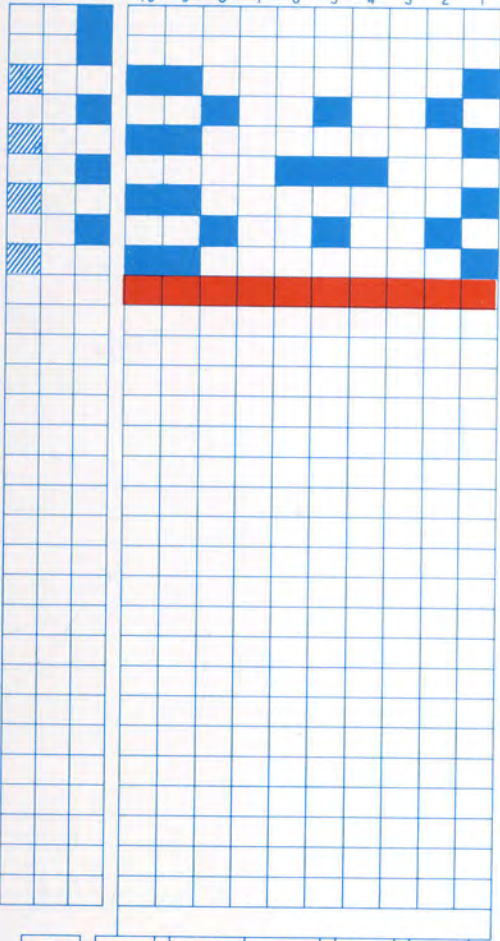
A C 9 9 9 2



54

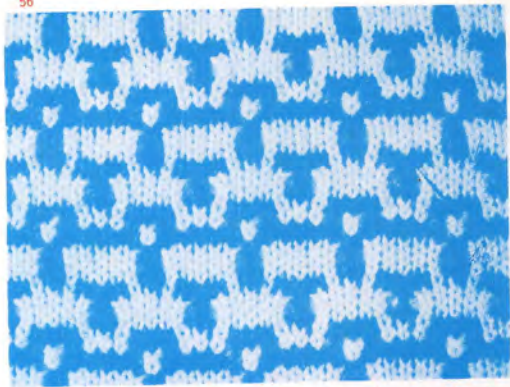


10 9 8 7 6 5 4 3 2 1

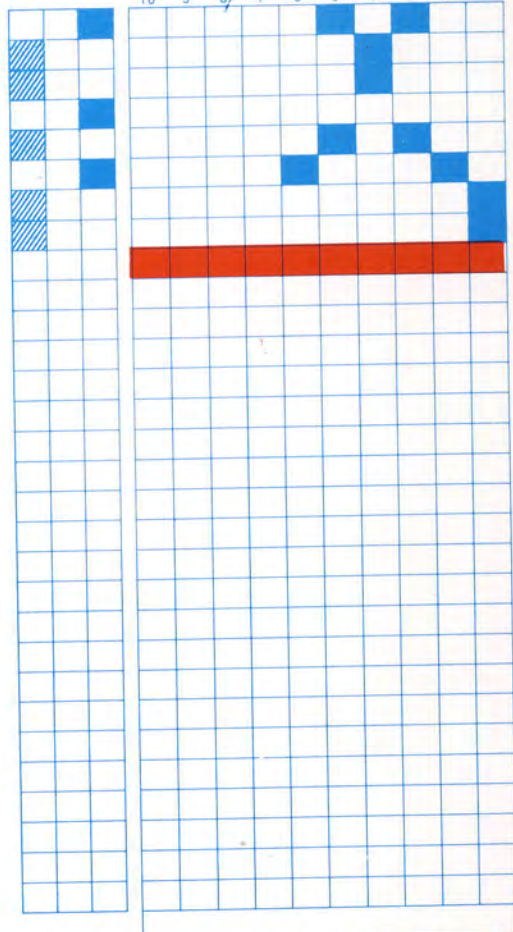


A C 10 10 10 2

56

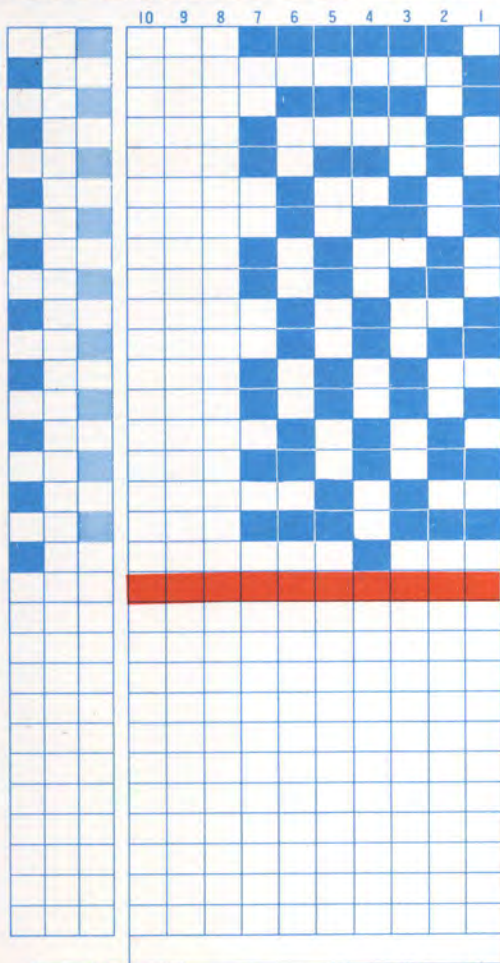


10 9 8 7 6 5 4 3 2 1



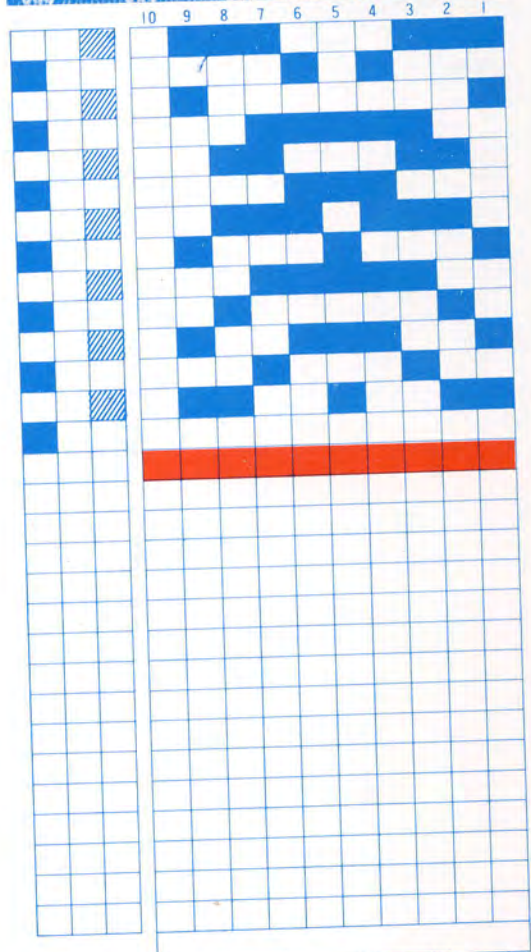
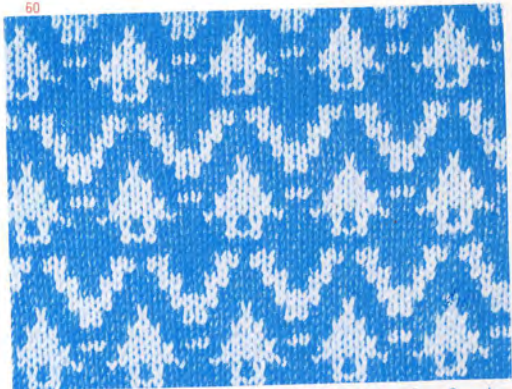
A T 6 6 6 2

58



A	C	7	7	7	2
---	---	---	---	---	---

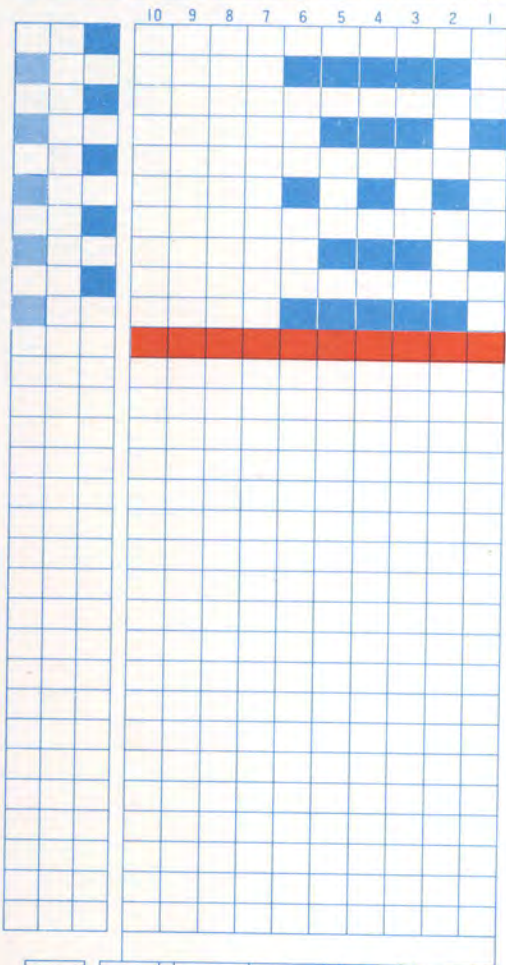
60



A	C	9	9	9	2
---	---	---	---	---	---

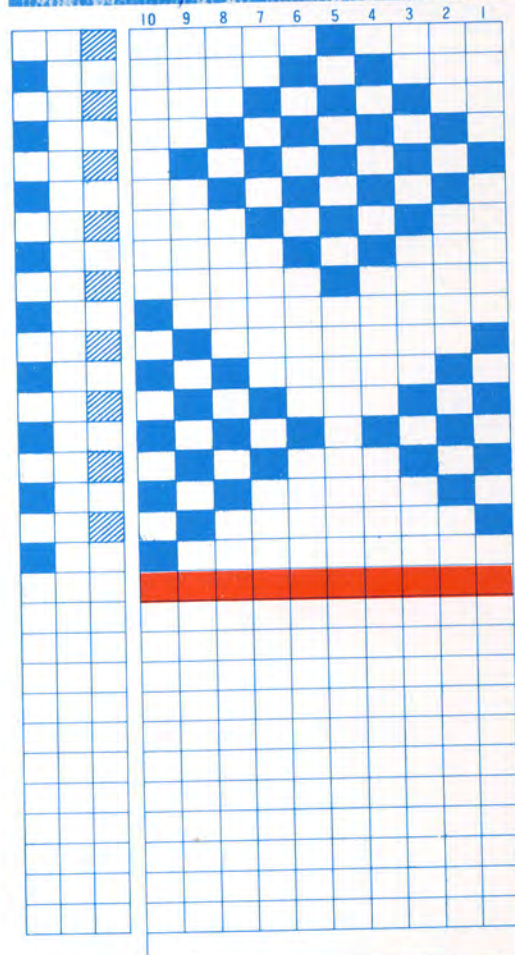
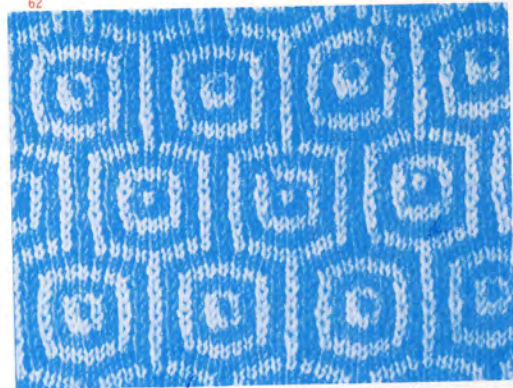


64



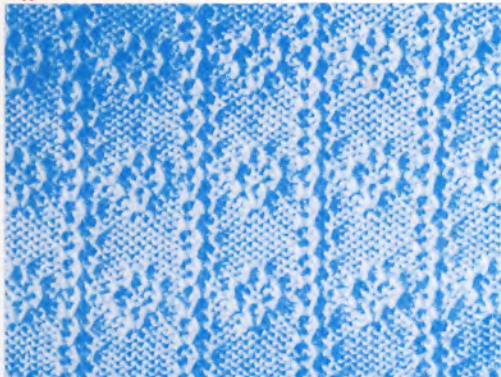
A	C	6	6	6	2
---	---	---	---	---	---

62

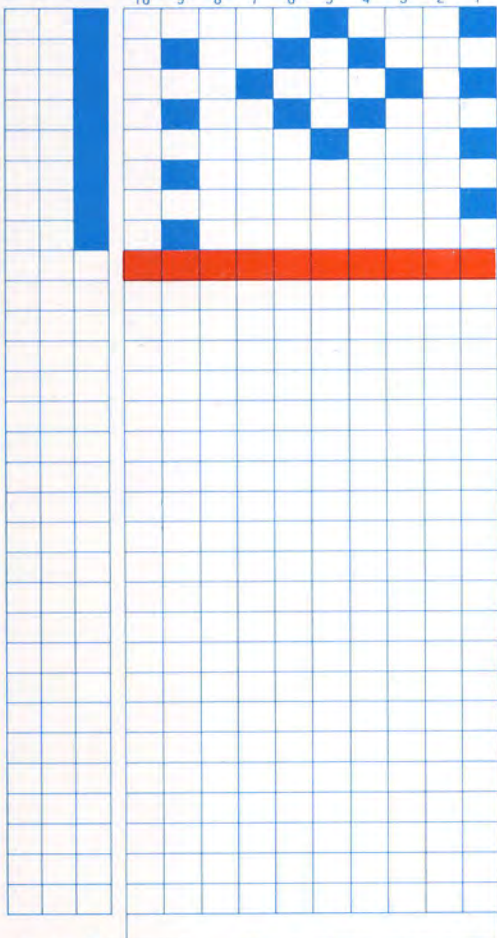


A	T	10	10	10	2
---	---	----	----	----	---

66



10 9 8 7 6 5 4 3 2 1

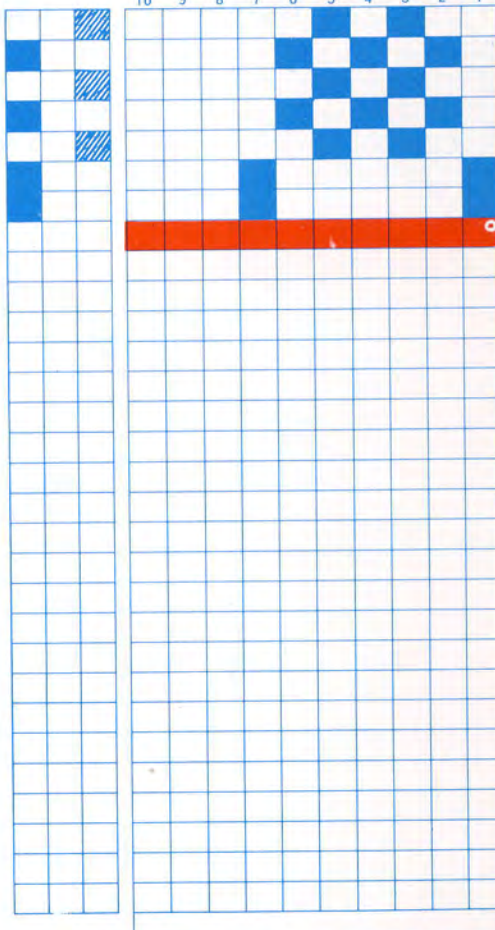


A T 9 9 9 2

68



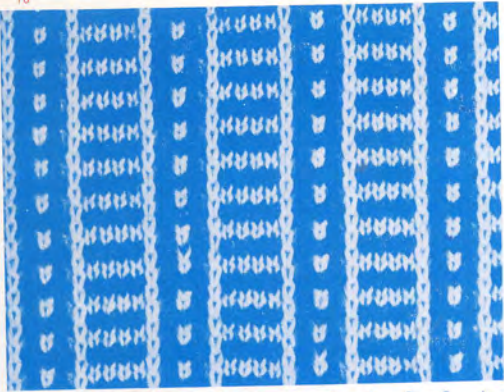
10 9 8 7 6 5 4 3 2 1



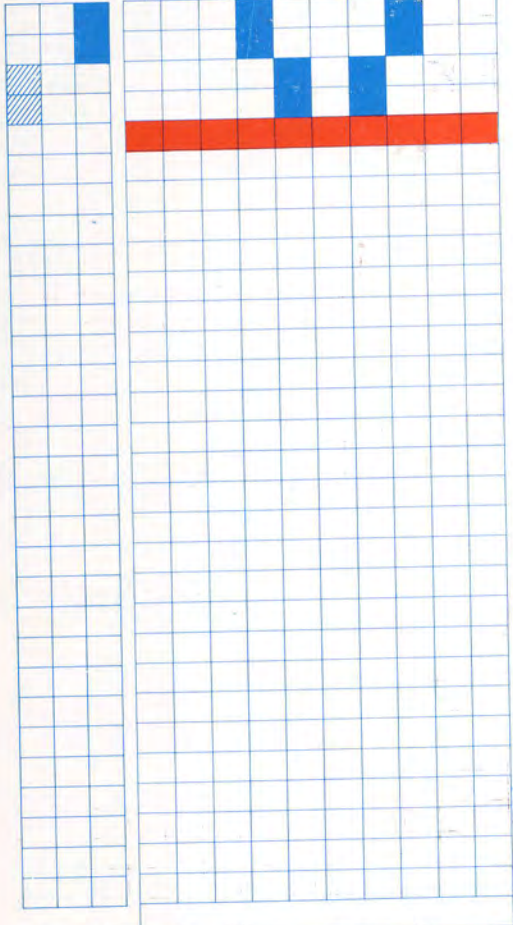
A C 7 7 7 2



70

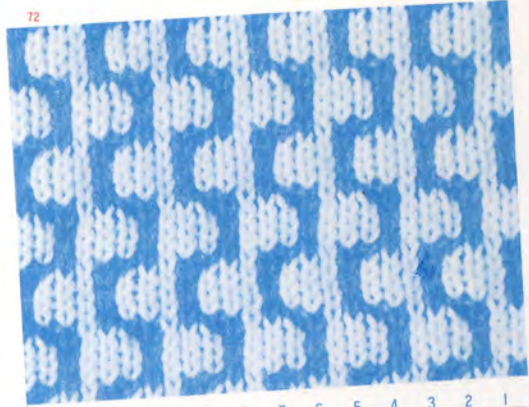


10 9 8 7 6 5 4 3 2 1

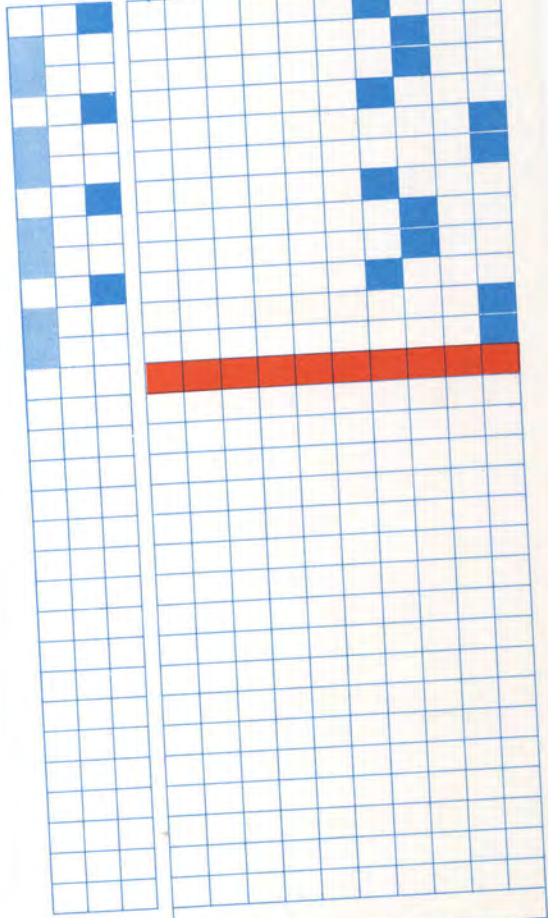


A T 9 9 9 1

72

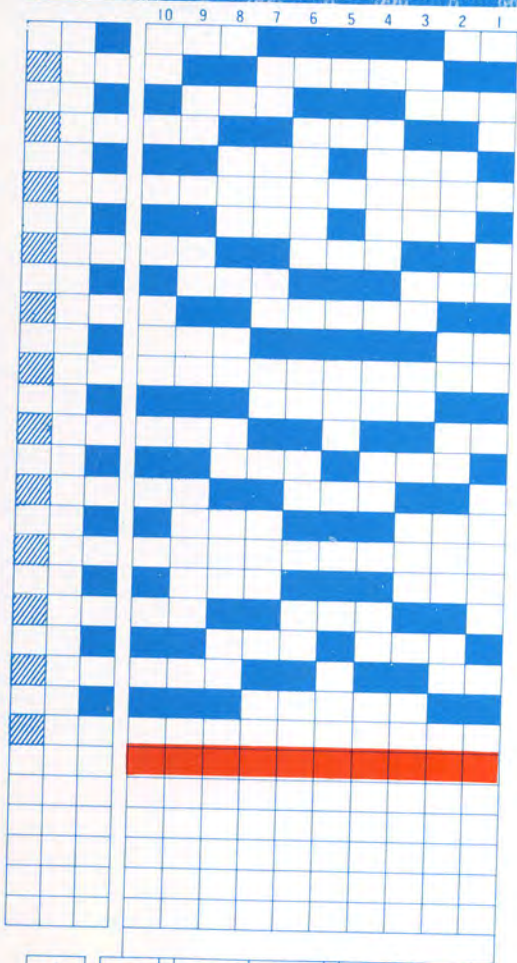
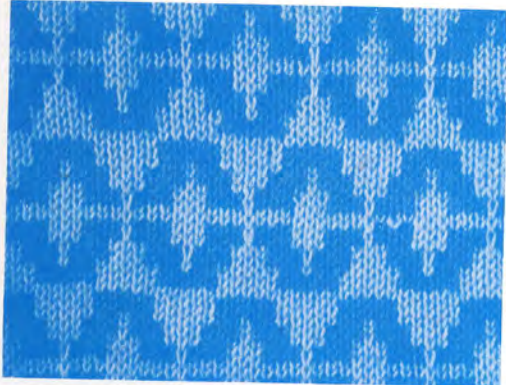


10 9 8 7 6 5 4 3 2 1



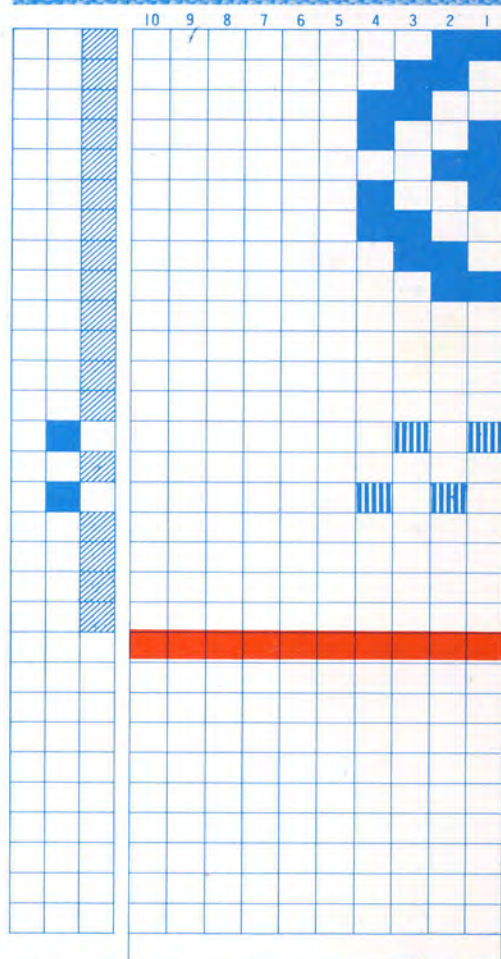
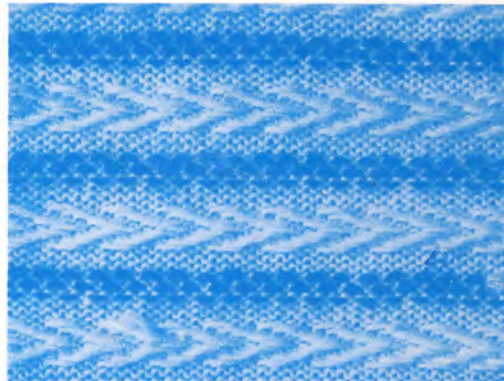
A C 4 4 4 2

74



A	C	10	10	10	2
---	---	----	----	----	---

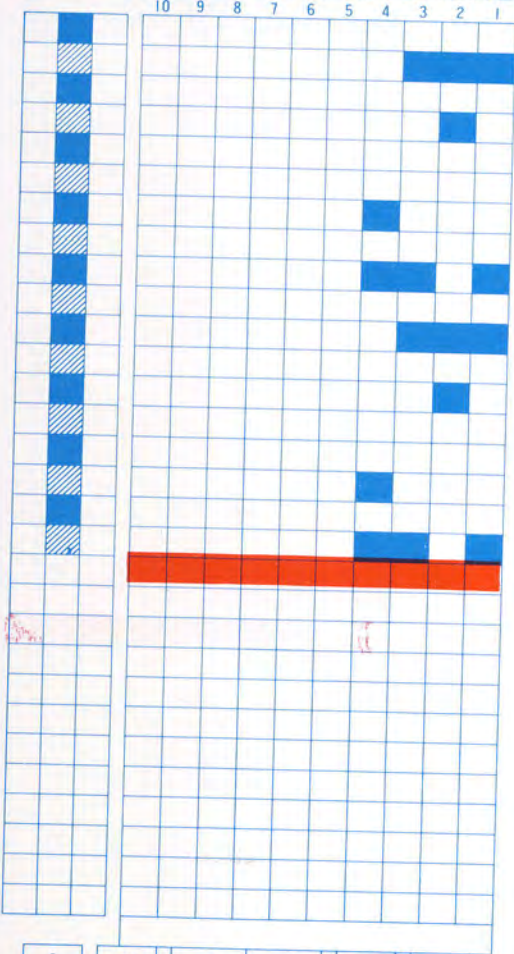
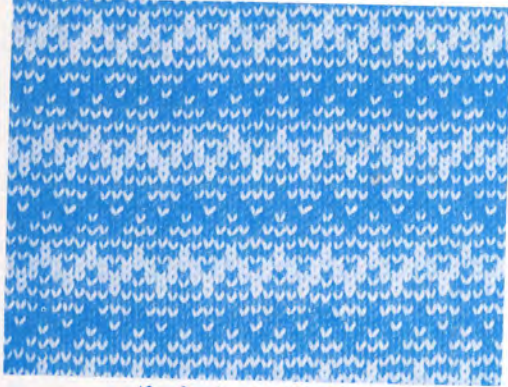
75



A	C	4	4	4	1
---	---	---	---	---	---

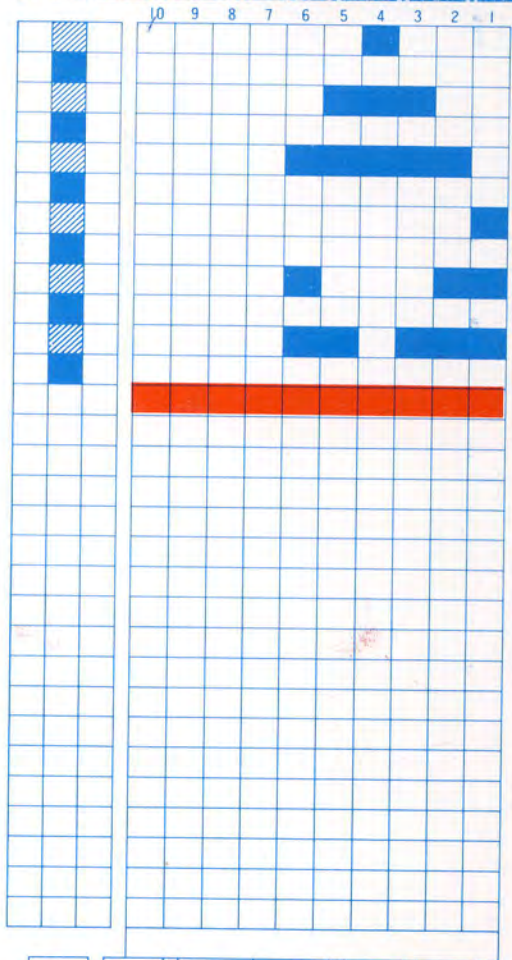


78



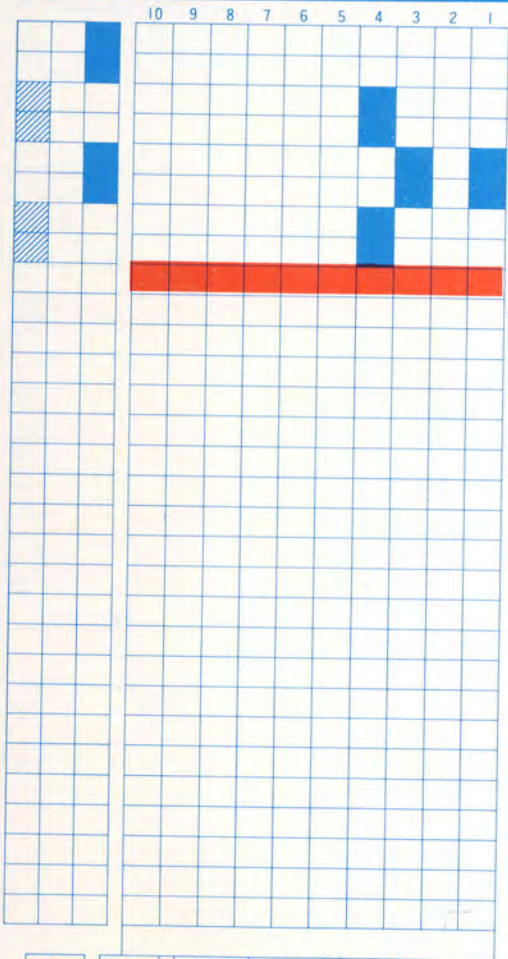
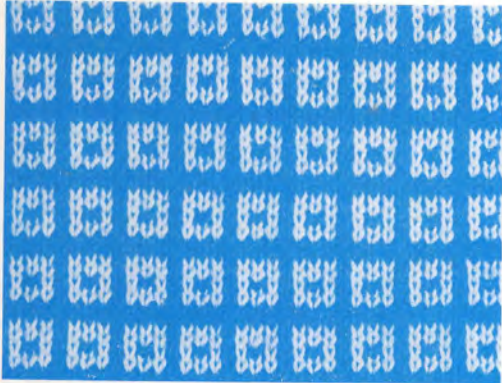
A	C	4	4	4	1
---	---	---	---	---	---

80



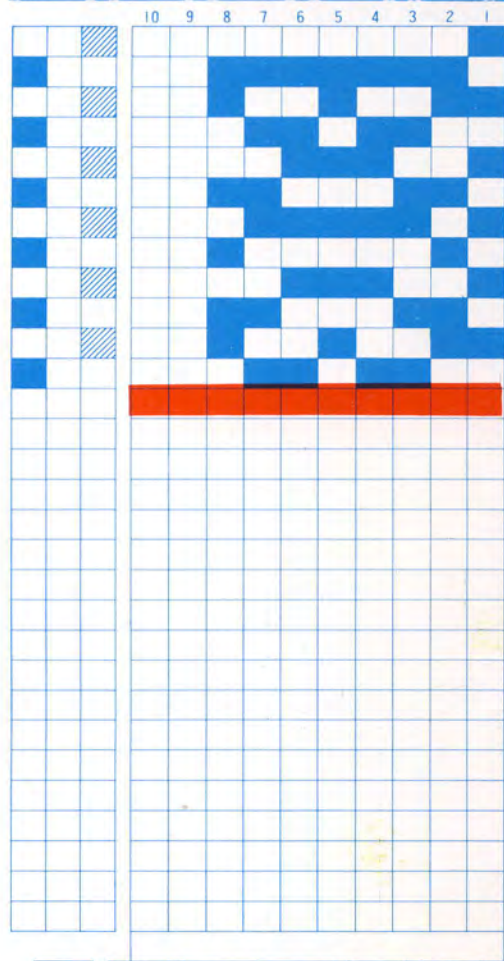
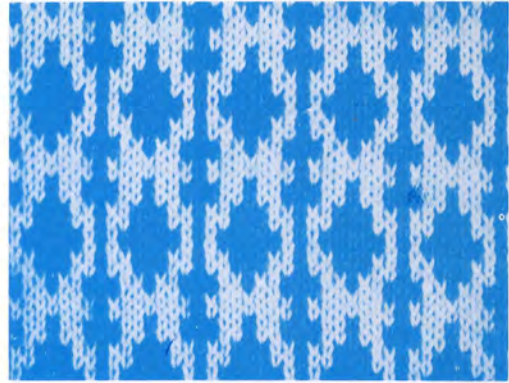
A	C	6	6	6	1
---	---	---	---	---	---

84



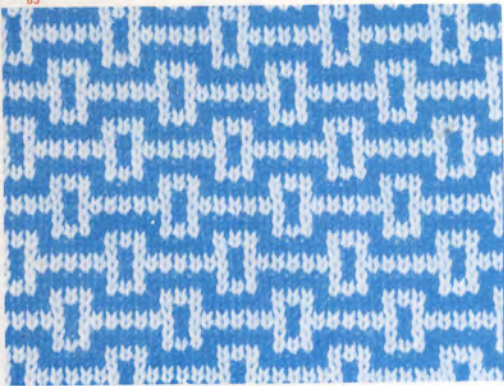
A	C	4	4	4	1
---	---	---	---	---	---

82

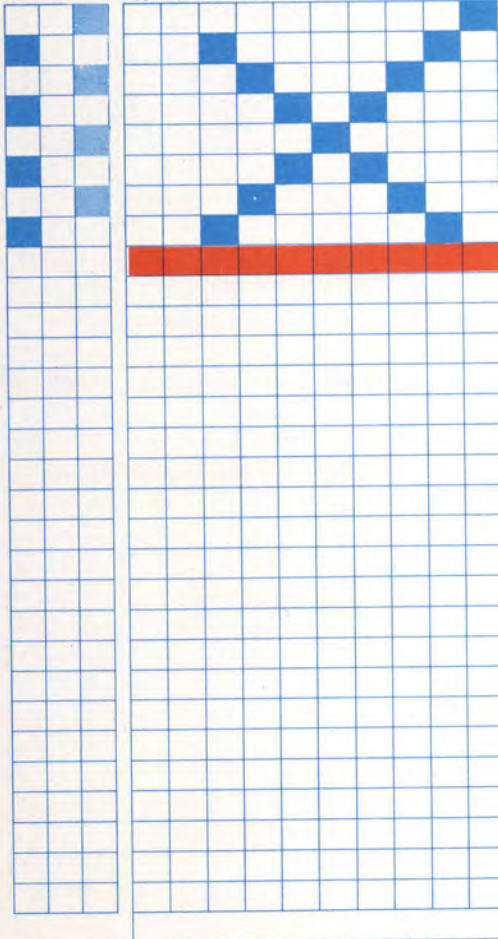


A	C	8	8	8	2
---	---	---	---	---	---





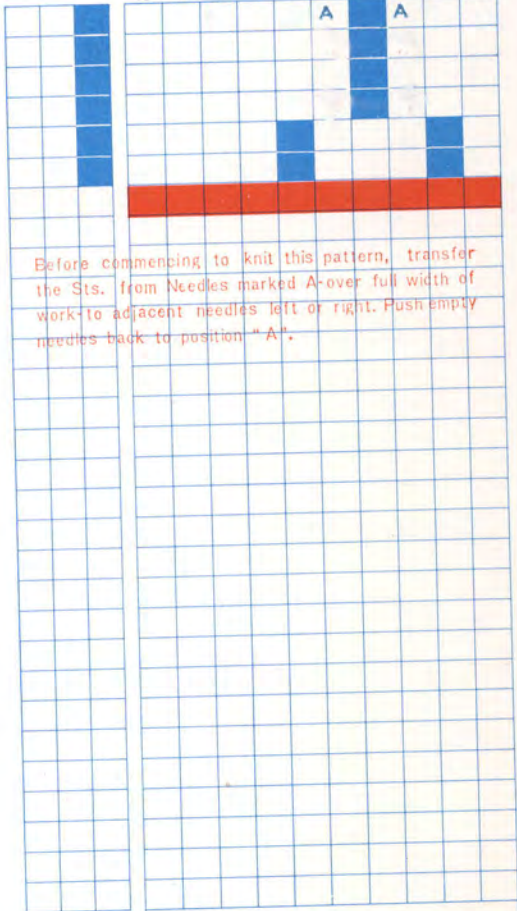
10 9 8 7 6 5 4 3 2 1



A C 8 8 8 2



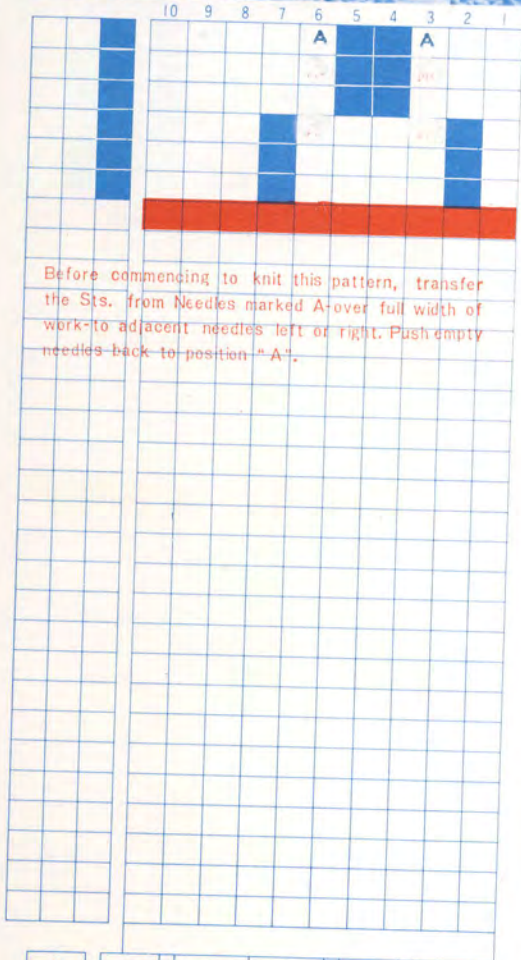
10 9 8 7 6 5 4 3 2 1



Before commencing to knit this pattern, transfer the Sts. from Needles marked A-over full width of work-to adjacent needles left or right. Push empty needles back to position "A".

A T 7 7 7 1

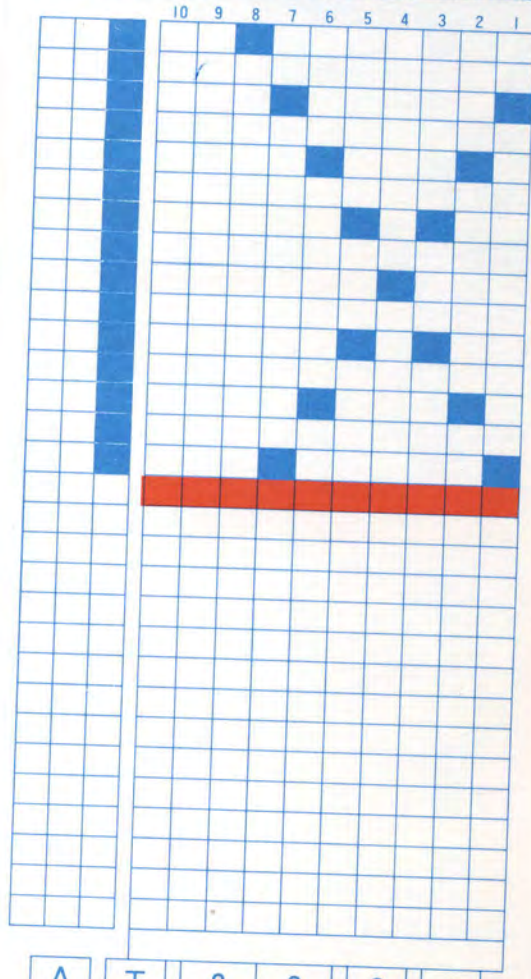
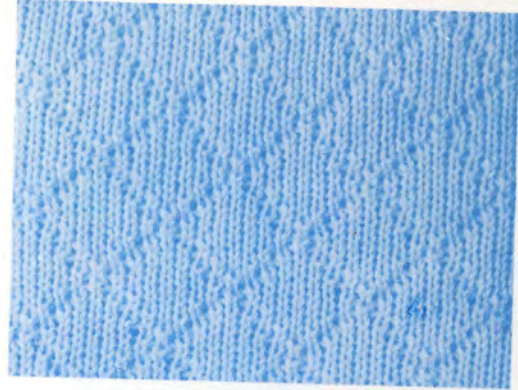
87



Before commencing to knit this pattern, transfer the Sts. from Needles marked A-over full width of work-to adjacent needles left or right. Push empty needles back to position "A".

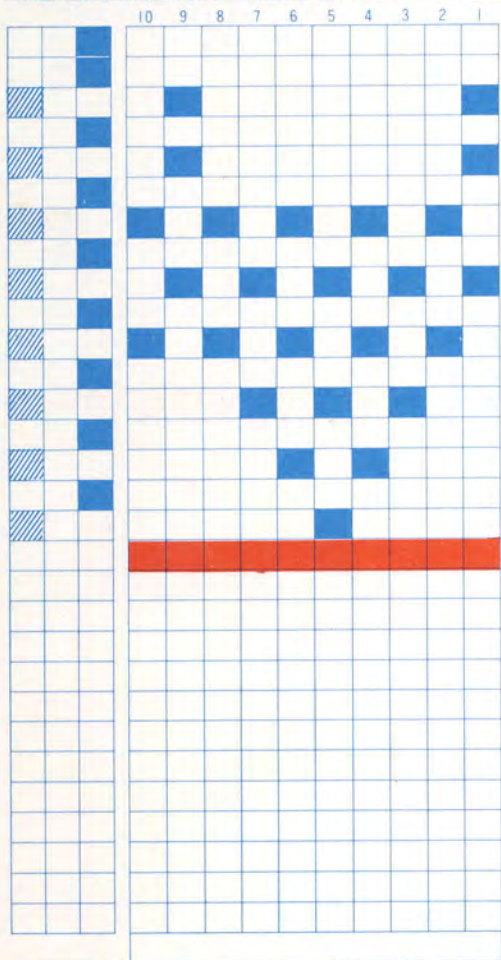
A T 8 8 8 I

86

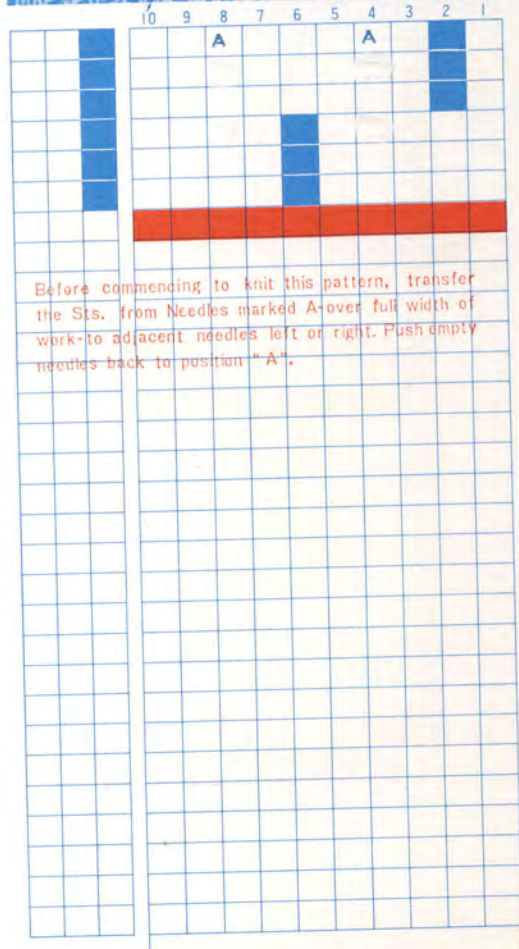
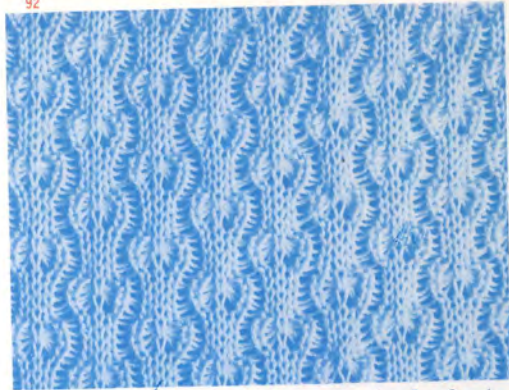


A T 8 8 8 I





A T 10 10 10 2



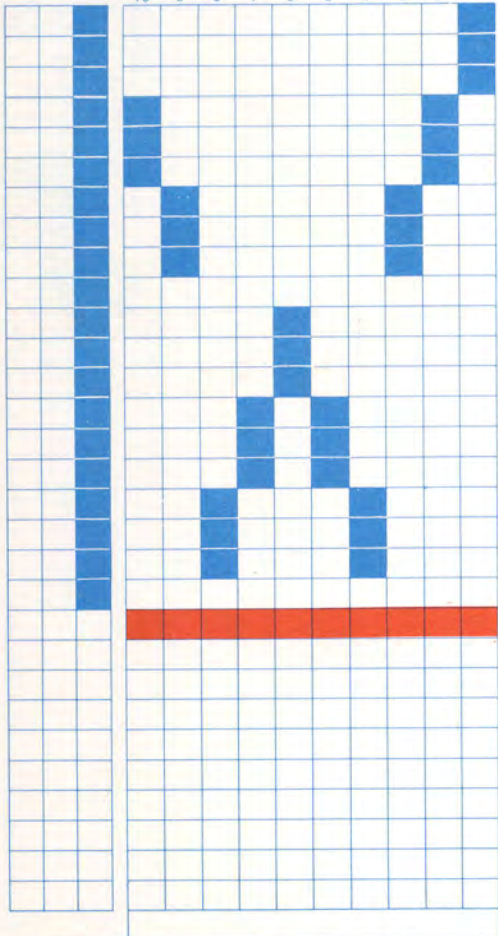
Before commencing to knit this pattern, transfer the Sts. from Needles marked A-over full width of work-to adjacent needles left or right. Push empty needles back to position "A".

A T 8 8 8 2

96



10 9 8 7 6 5 4 3 2 1

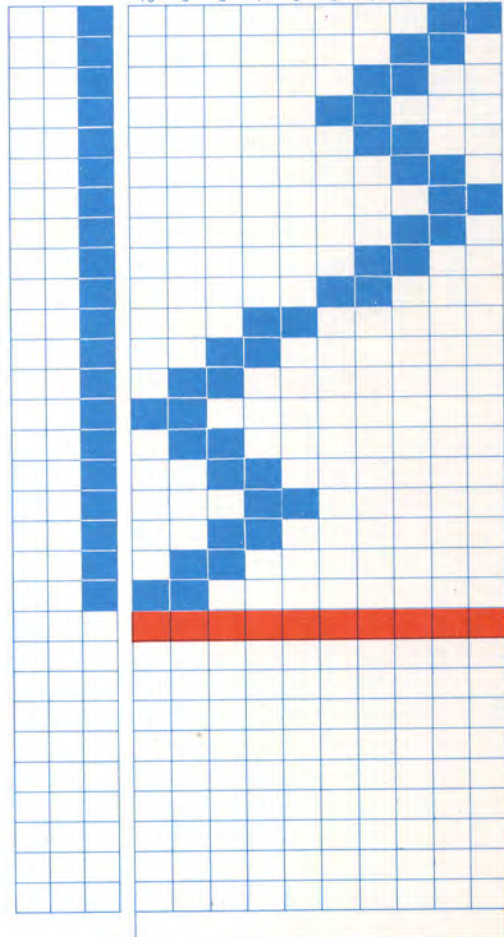


A T 10 10 10 I

94

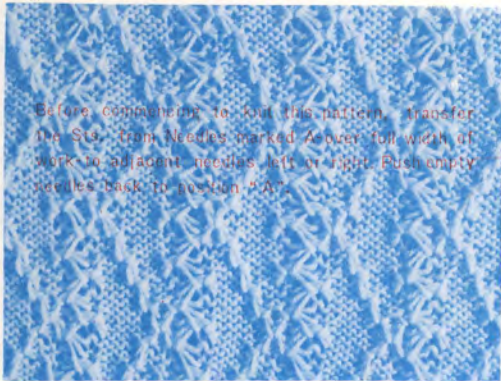


10 9 8 7 6 5 4 3 2 1

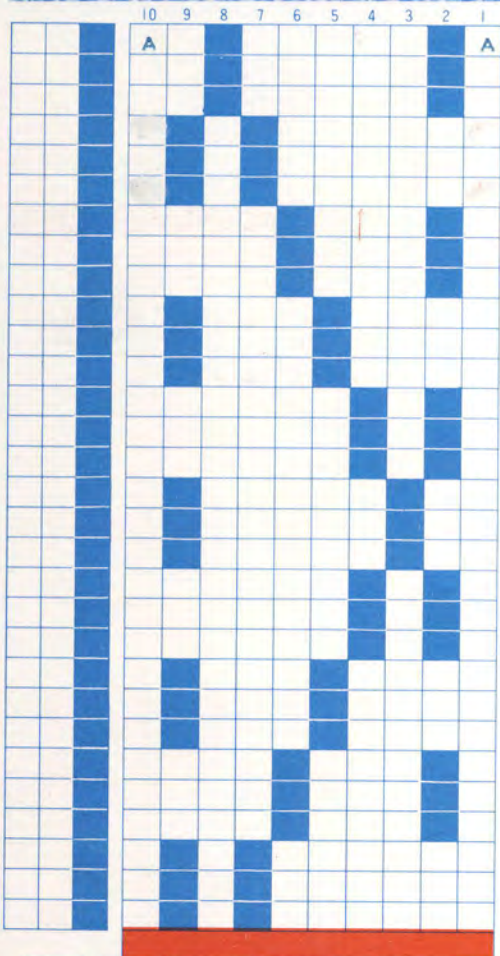


A C 10 10 10 I

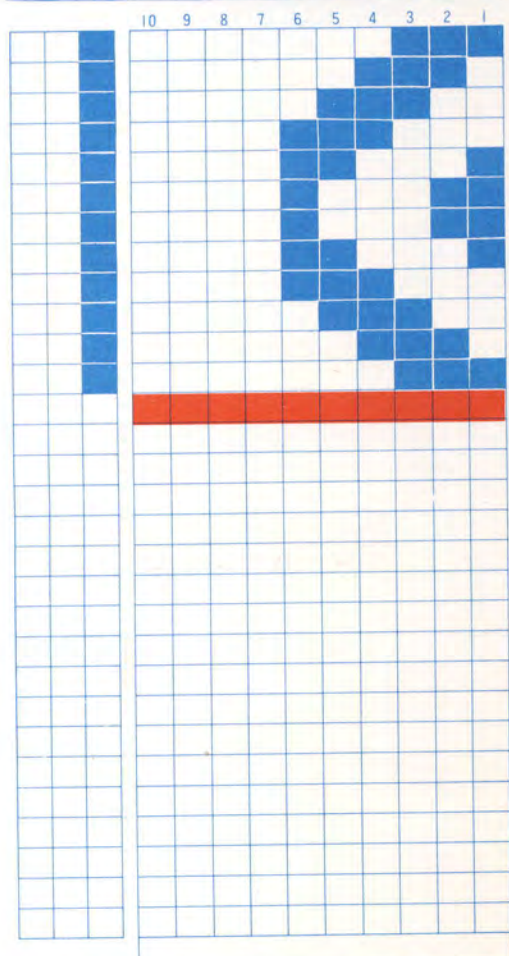
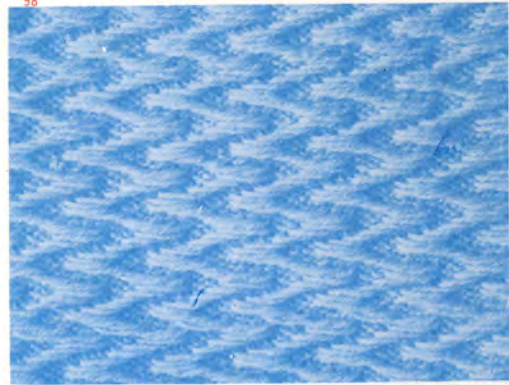




Before commencing to knit this pattern, transfer the Sts. from Needles marked A over full width of work to adjacent needles left or right. Push empty needles back to position "A".

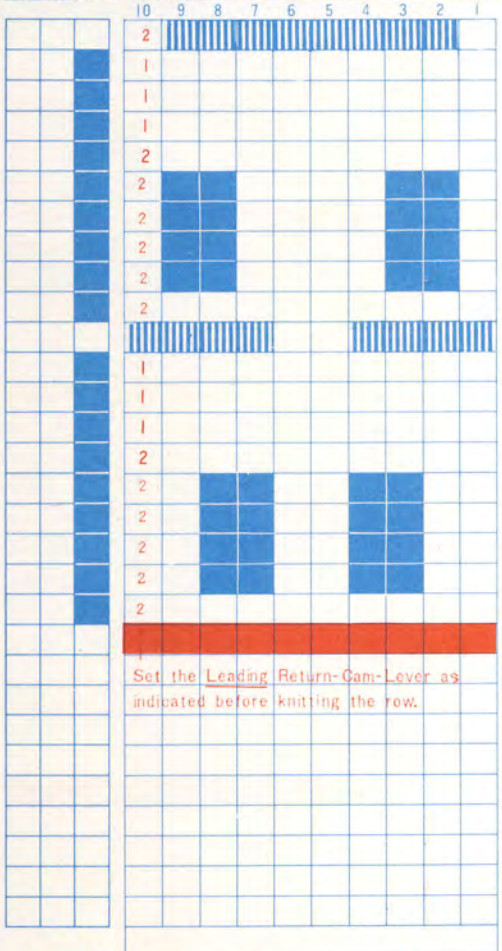
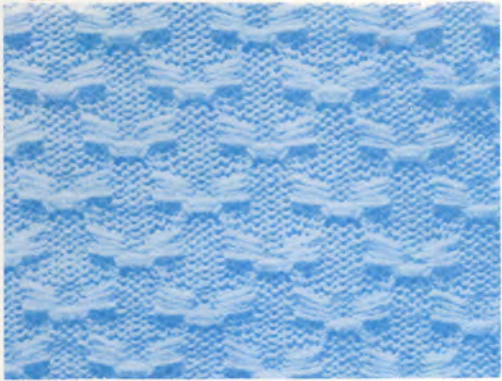


A T 10 10 10 1



A C 6 6 6 1

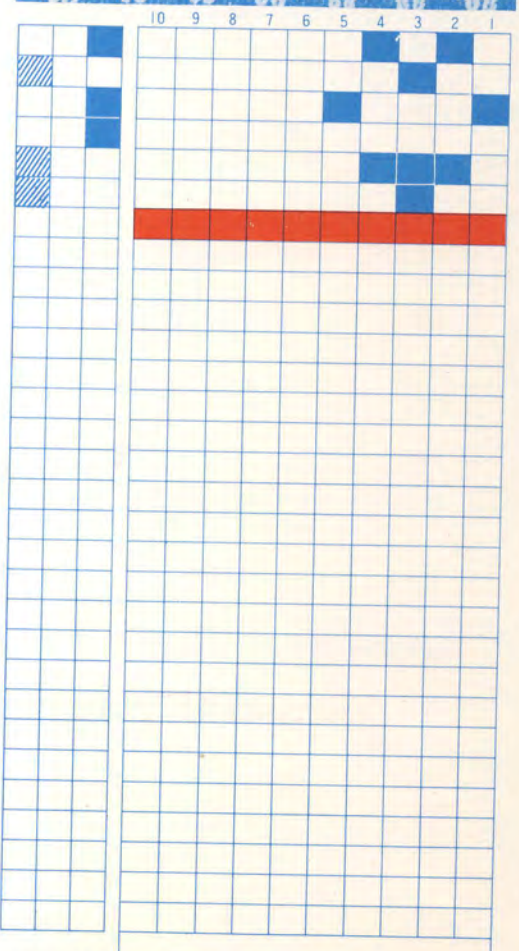
104



Set the Leading Return-Cam-Lever as indicated before knitting the row.

A C 10 10 10 1

102

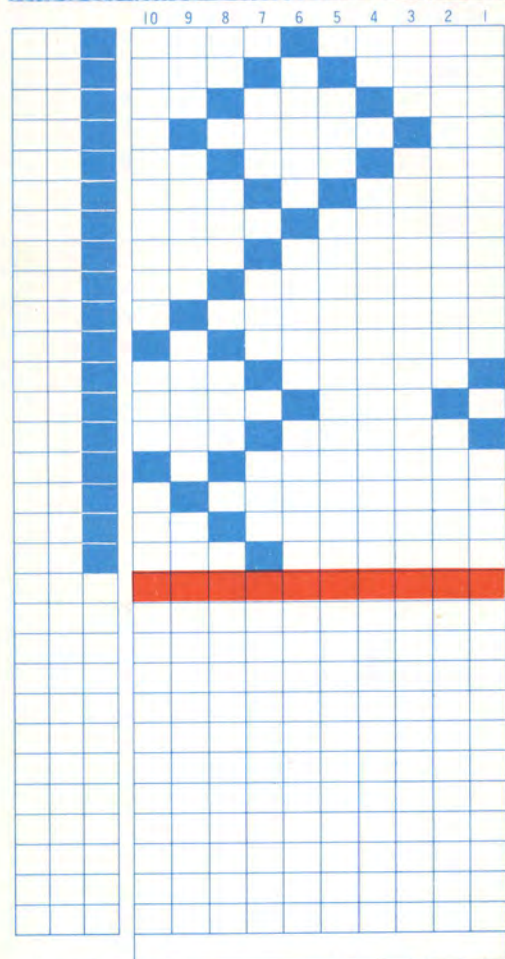
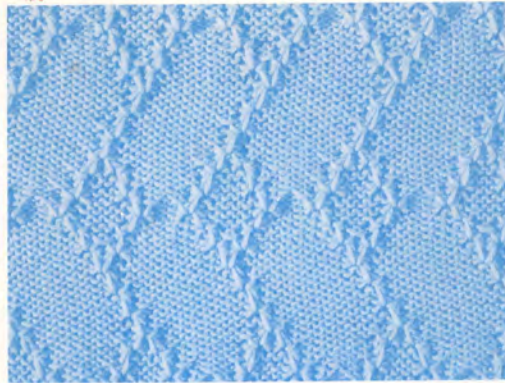


A C 5 5 5 2



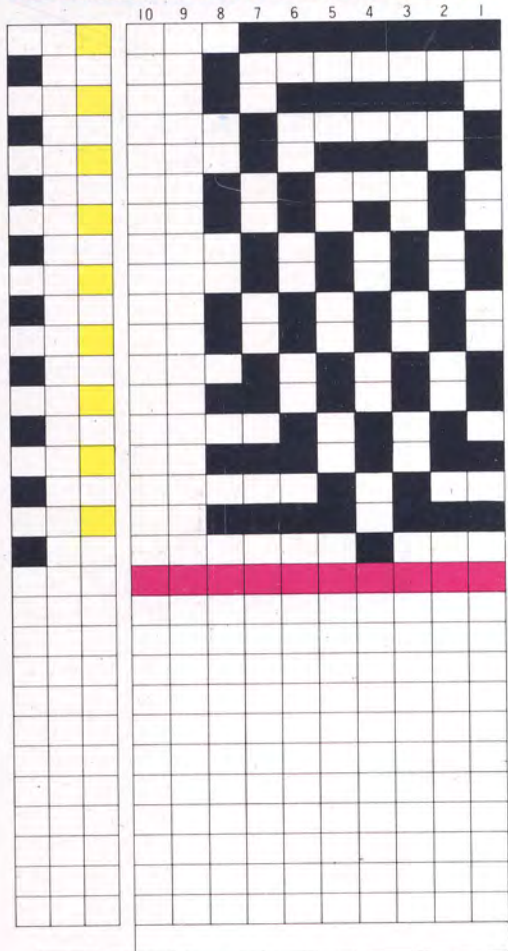


110

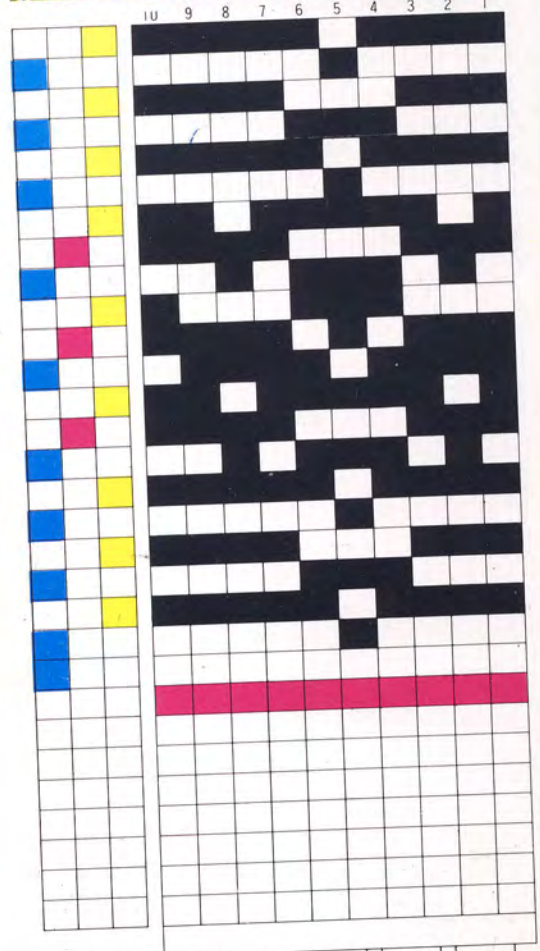


A	T	10	10	10	2
---	---	----	----	----	---

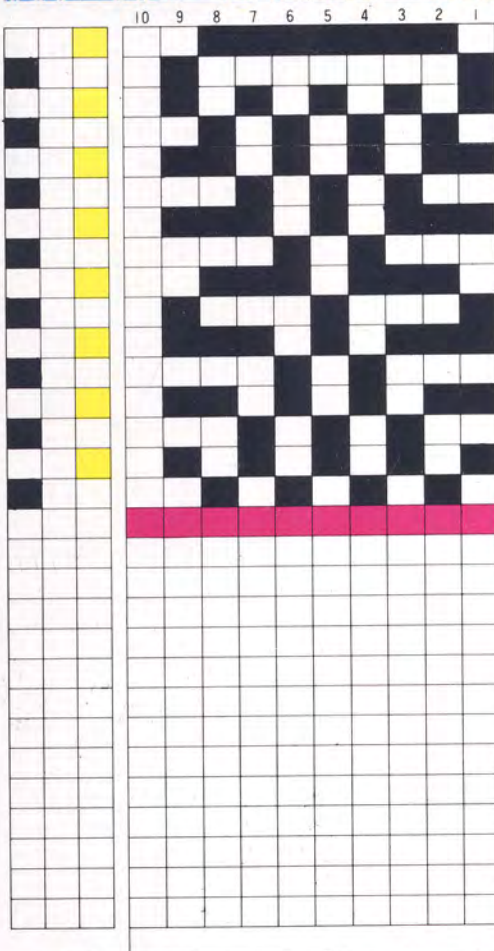




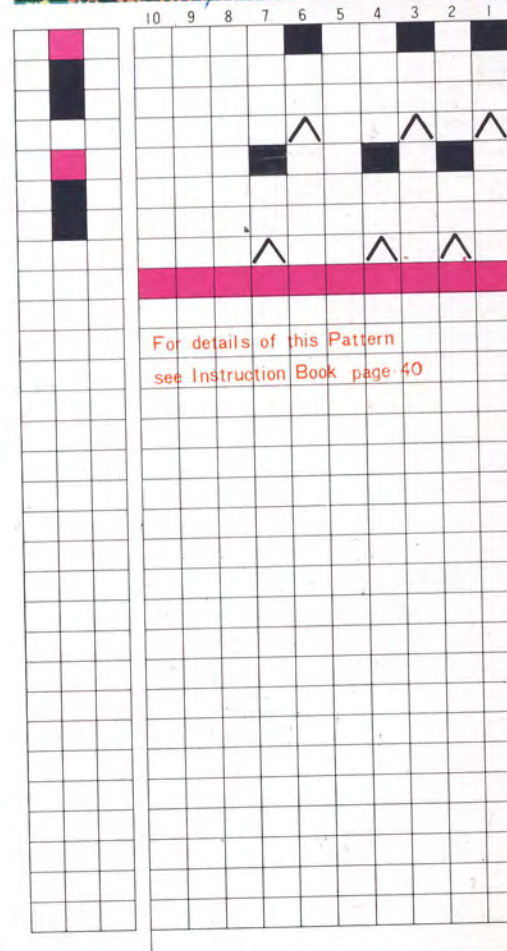
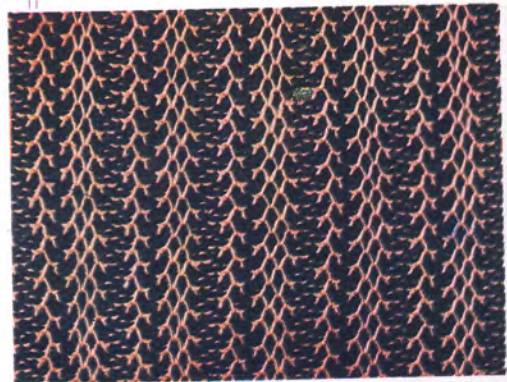
A C 8 8 8 2



A C 10 10 10 2



A C 9 9 9 2

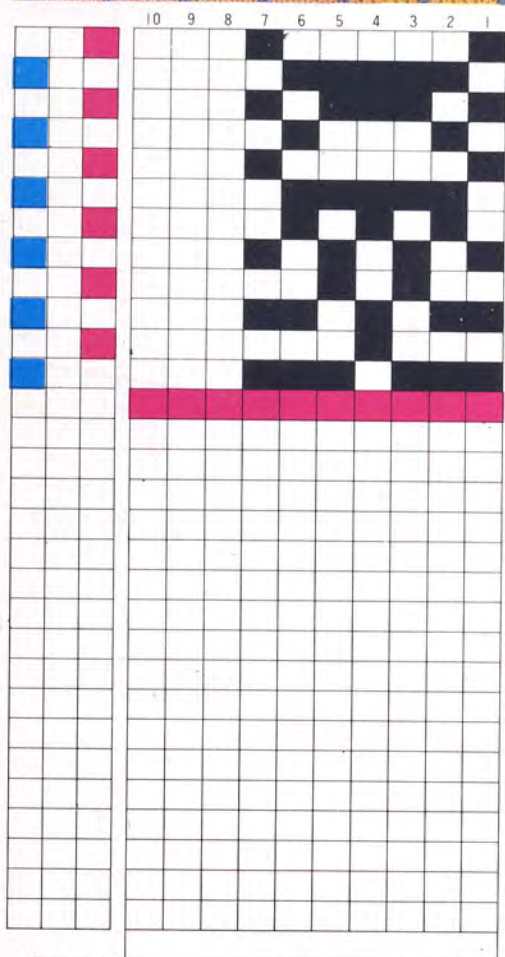


For details of this Pattern  
see Instruction Book page 40

A C 9 9 9 1

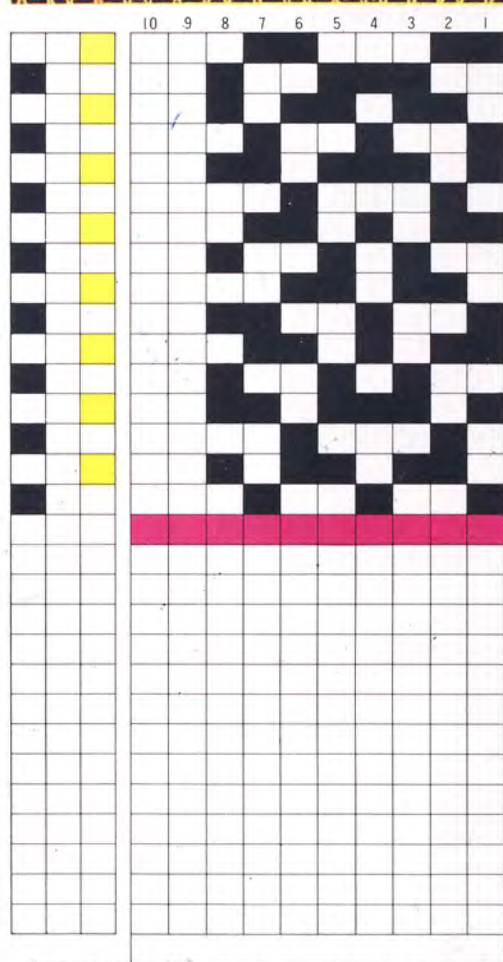


15



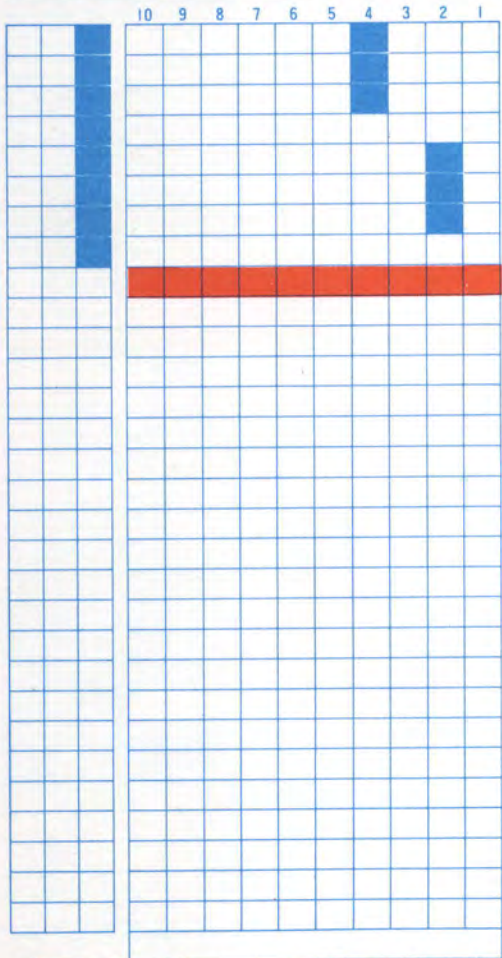
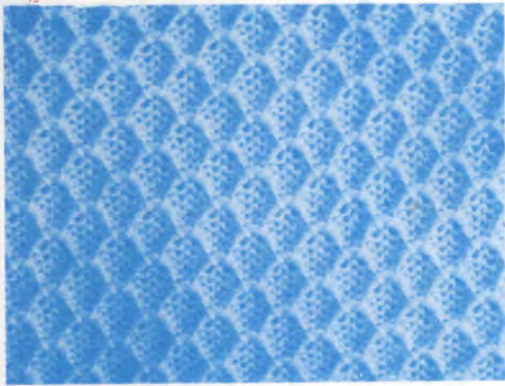
A	C	7	7	7	2
---	---	---	---	---	---

13



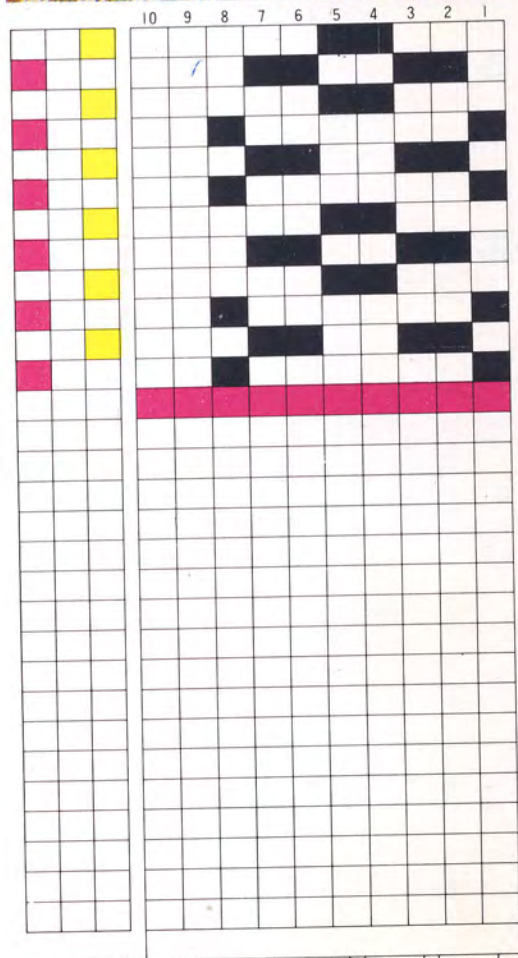
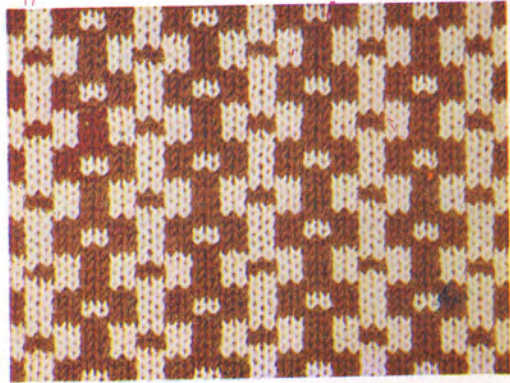
A	C	8	8	8	2
---	---	---	---	---	---

19



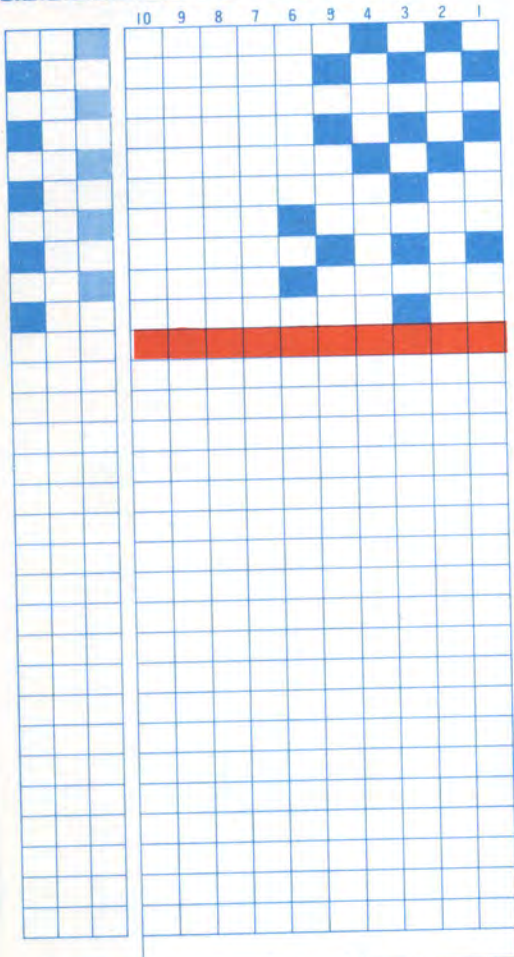
A T 4 4 4 I

17

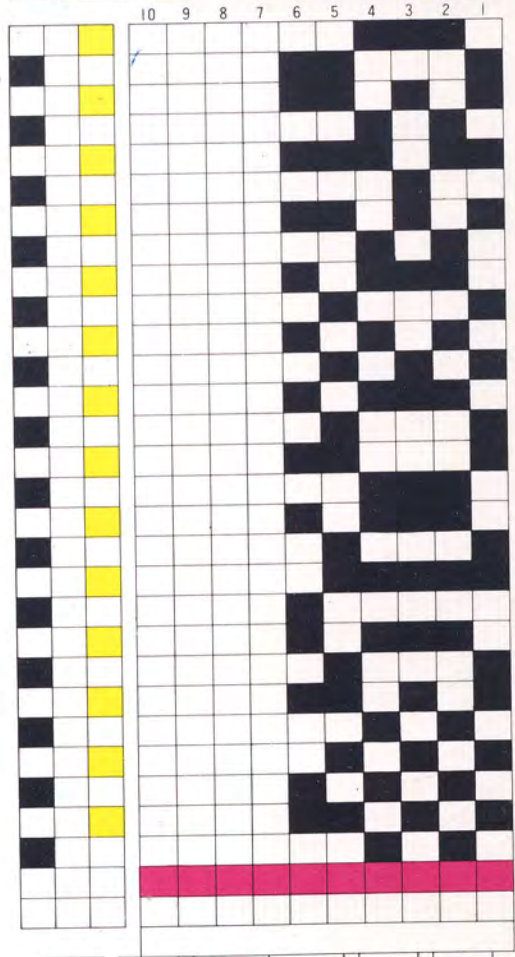


A C 8 8 8 2



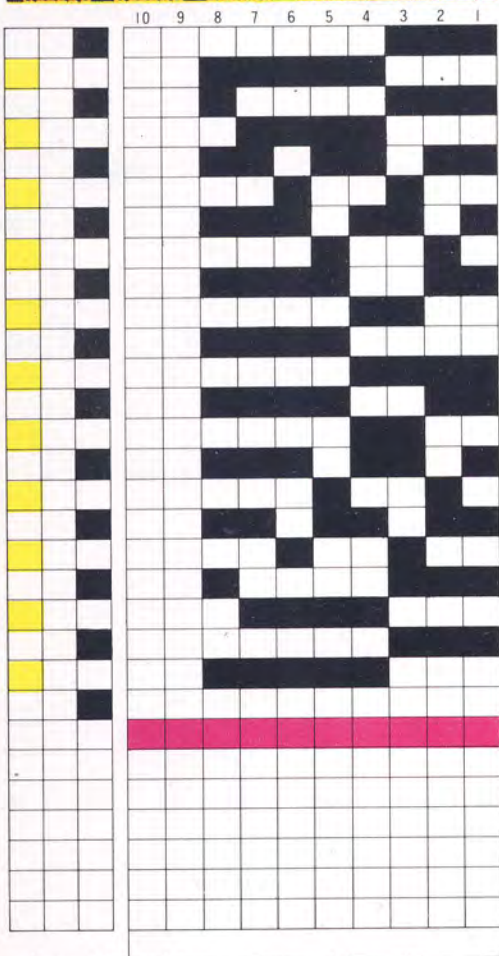
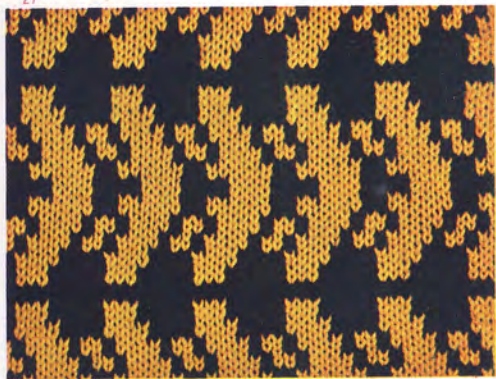


A C 6 6 6 2



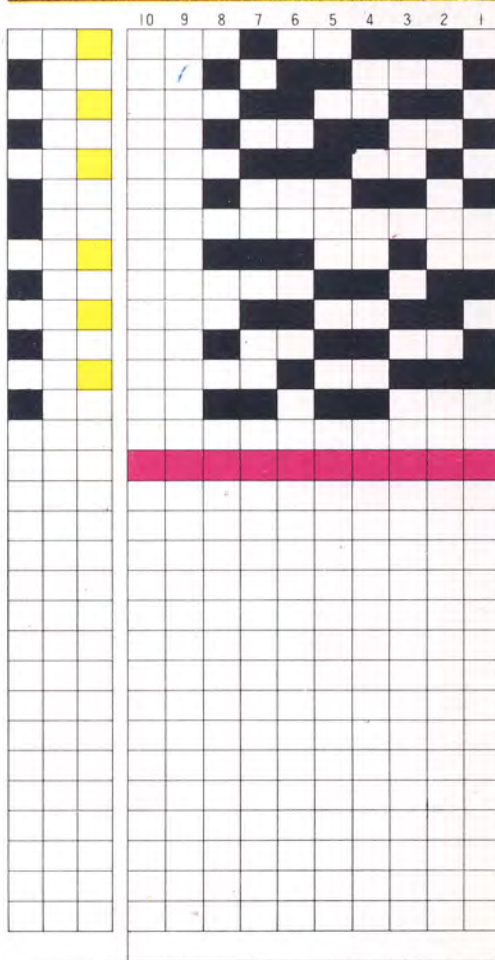
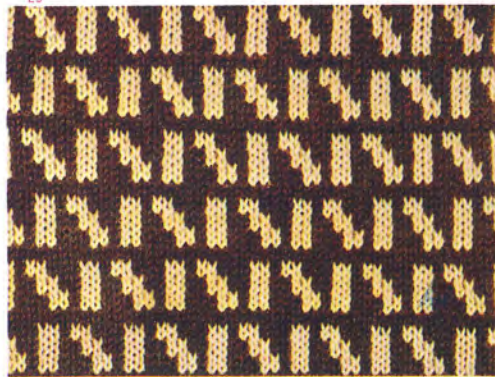
A C 6 6 6 2

27



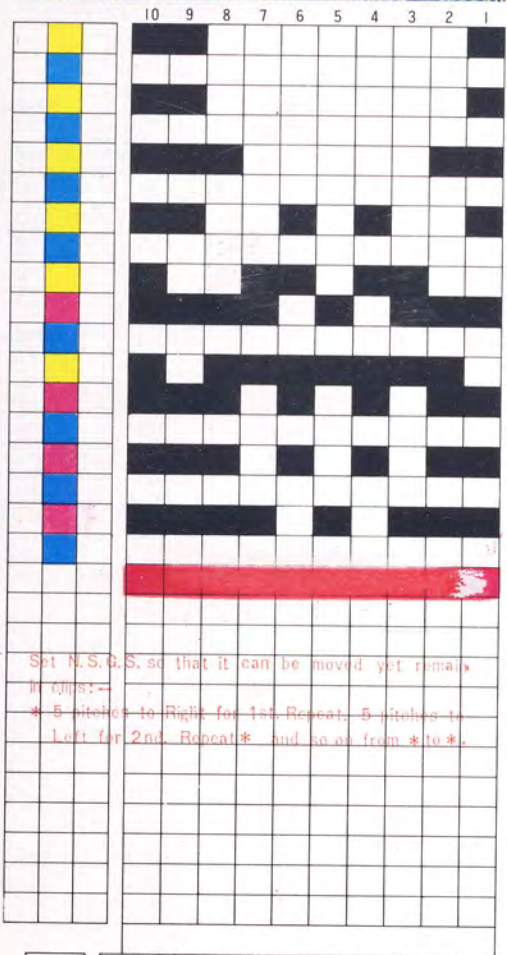
A C 8 8 8 2

25



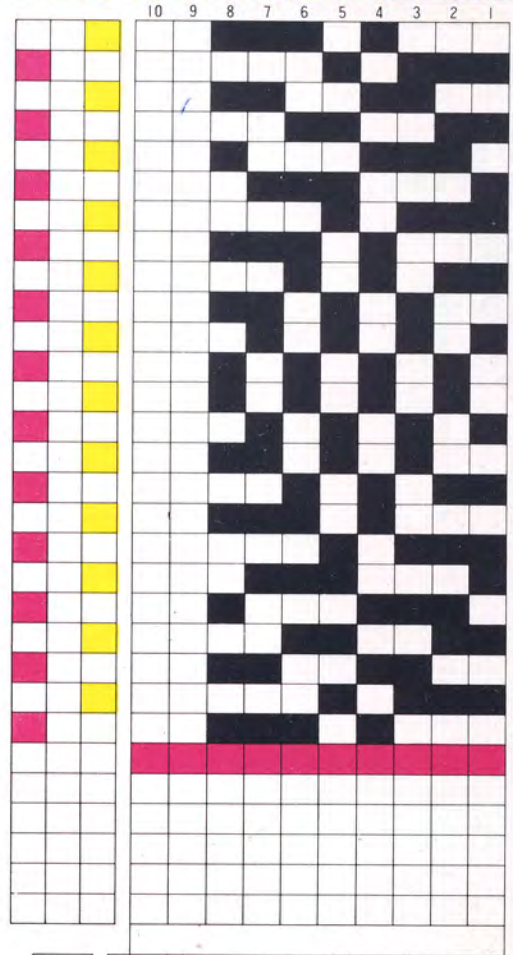
A C 8 8 8 2





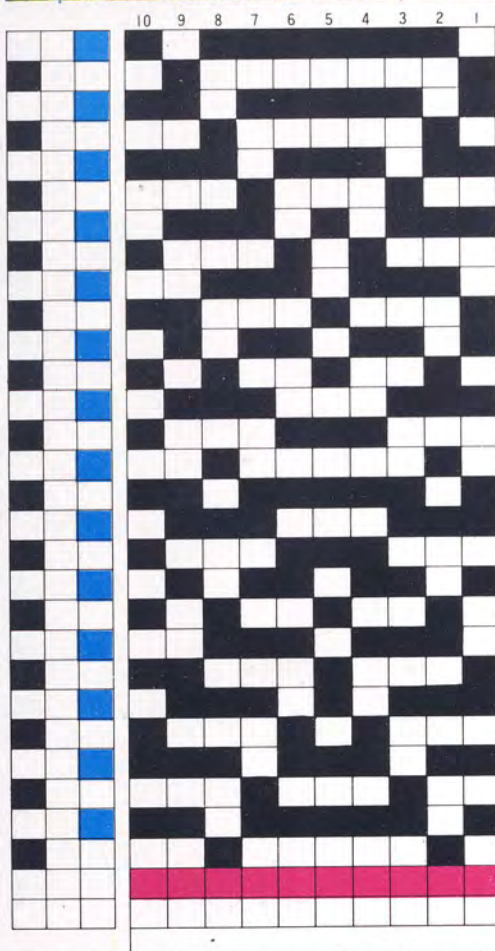
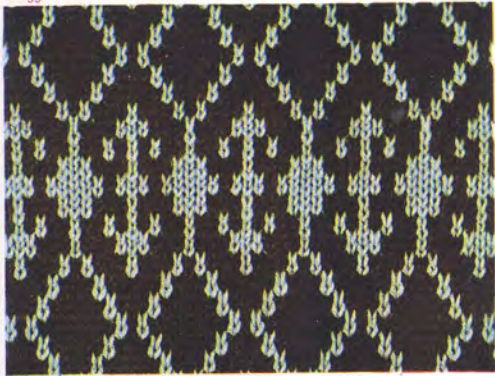
Set N.S.G.S. so that it can be moved yet remain  
 in place:—  
 \* 5 stitches to Right for 1st Repeat. 5 stitches to  
 Left for 2nd Repeat\* and so on from \* to \*.

A C 10 10 10 1



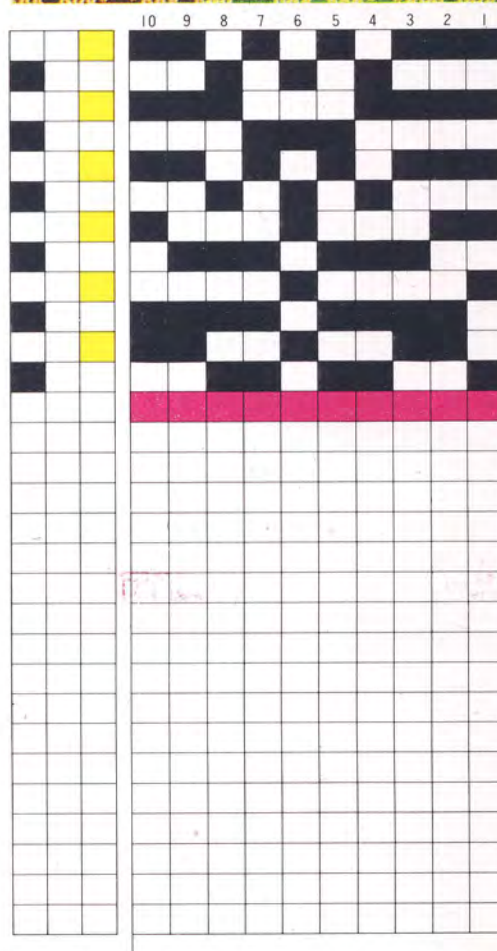
A C 8 8 8 2

35



A	C	10	10	10	2
---	---	----	----	----	---

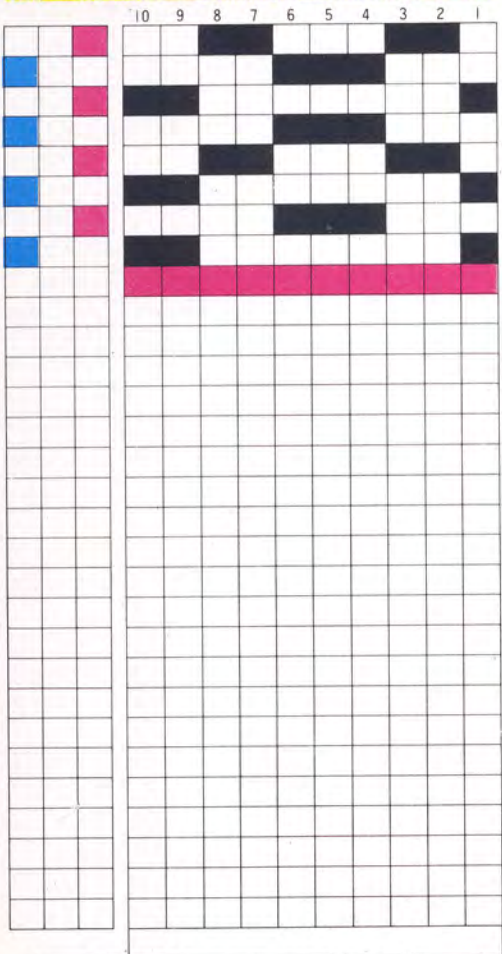
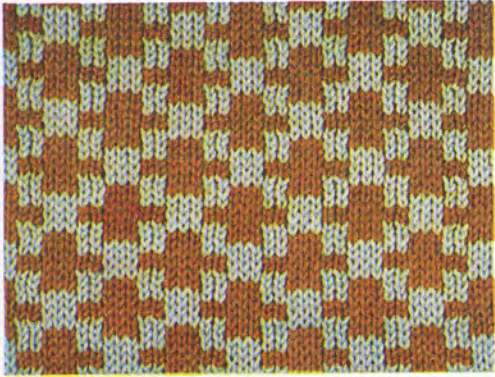
33



A	C	10	10	10	2
---	---	----	----	----	---

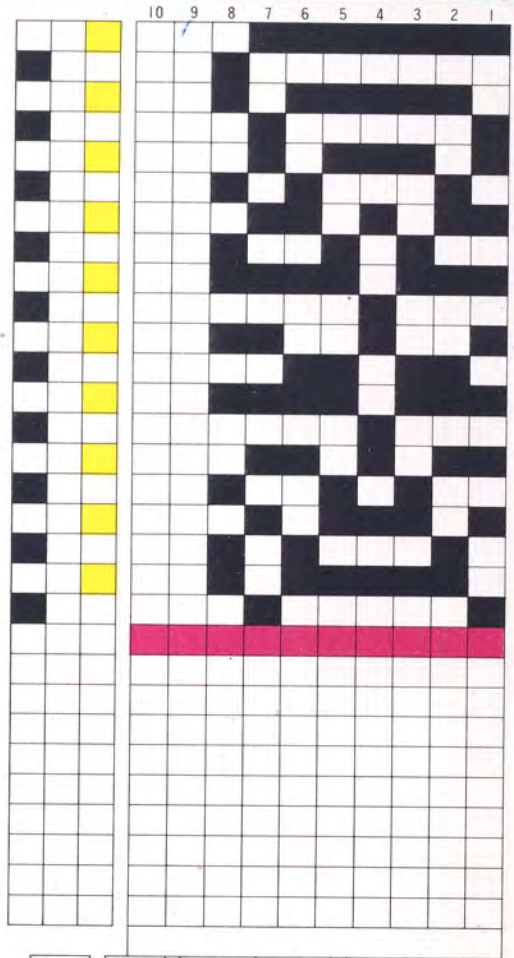


39



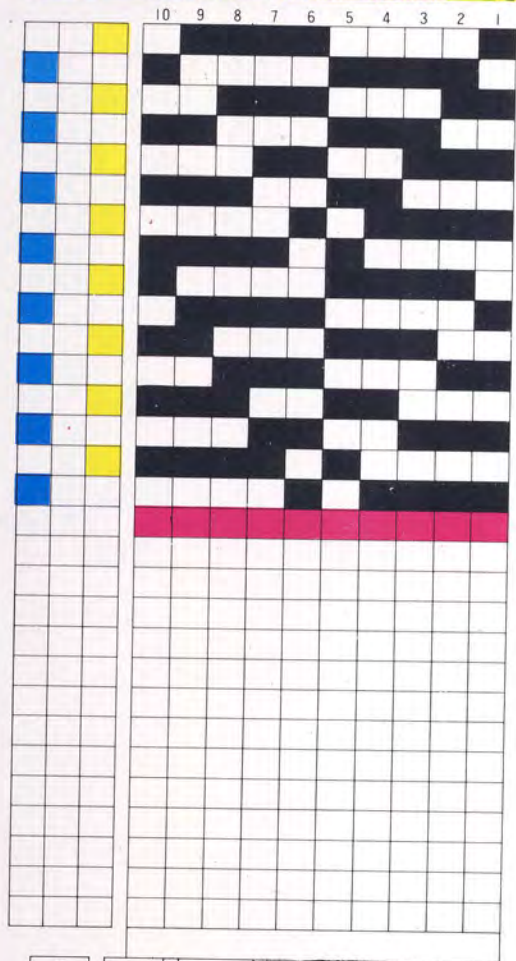
A	C	10	10	10	2
---	---	----	----	----	---

37



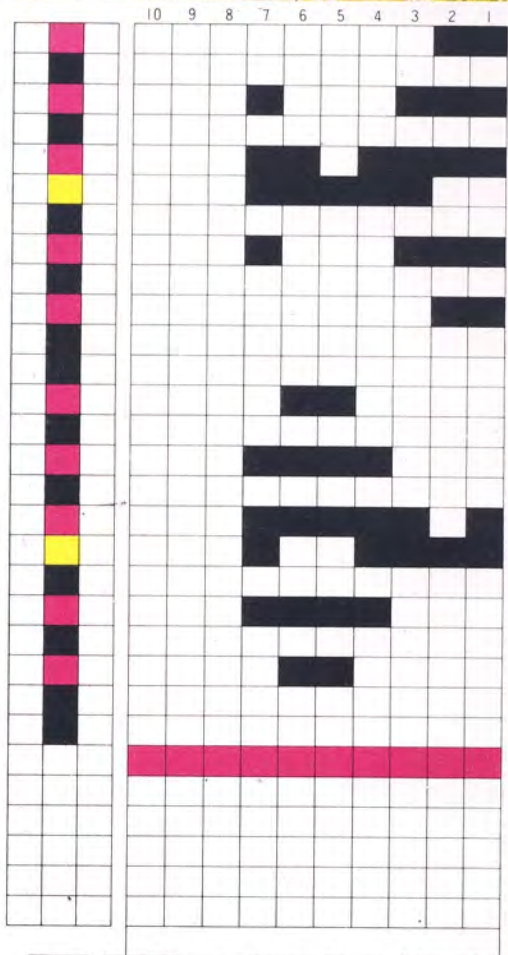
A	C	8	8	8	2
---	---	---	---	---	---

43



A C 10 10 10 2

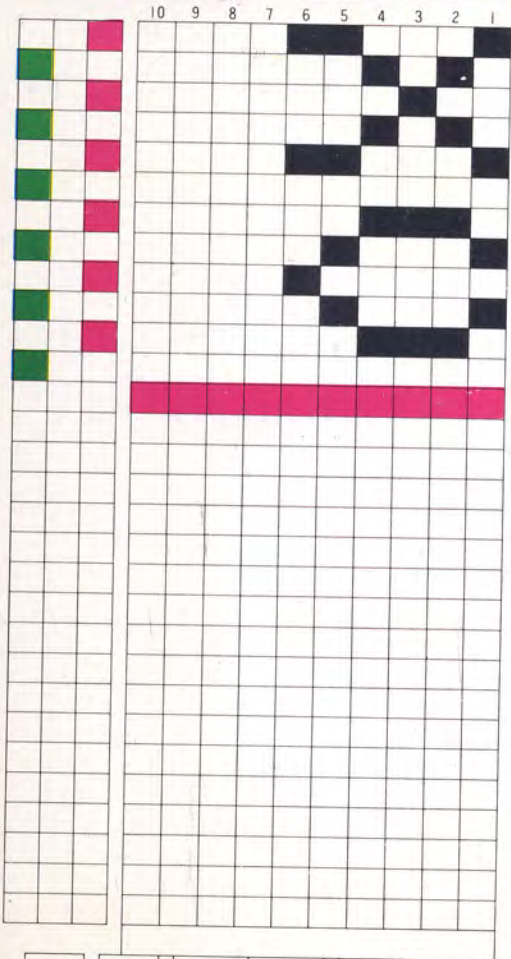
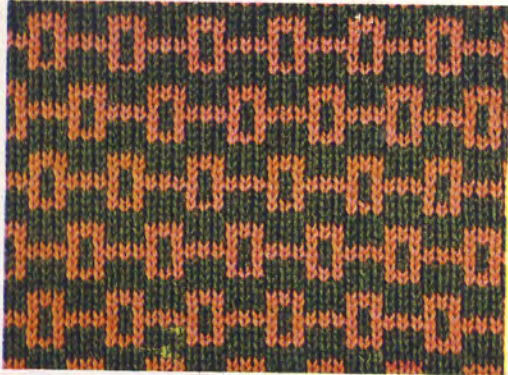
41



A C 7 7 7 1

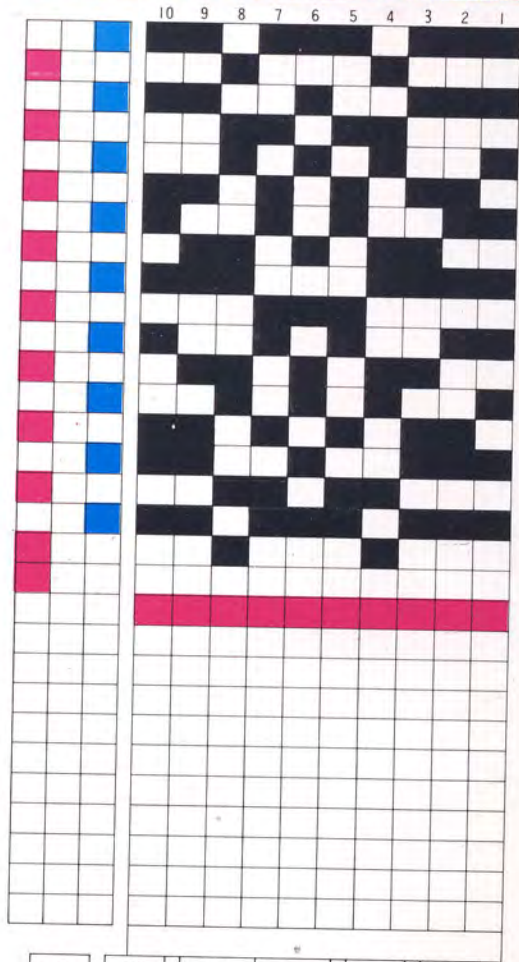
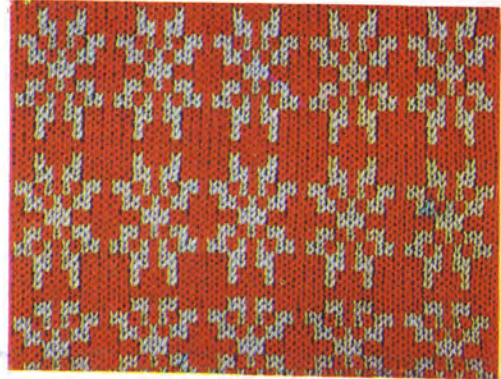


47



A	C	6	6	6	2
---	---	---	---	---	---

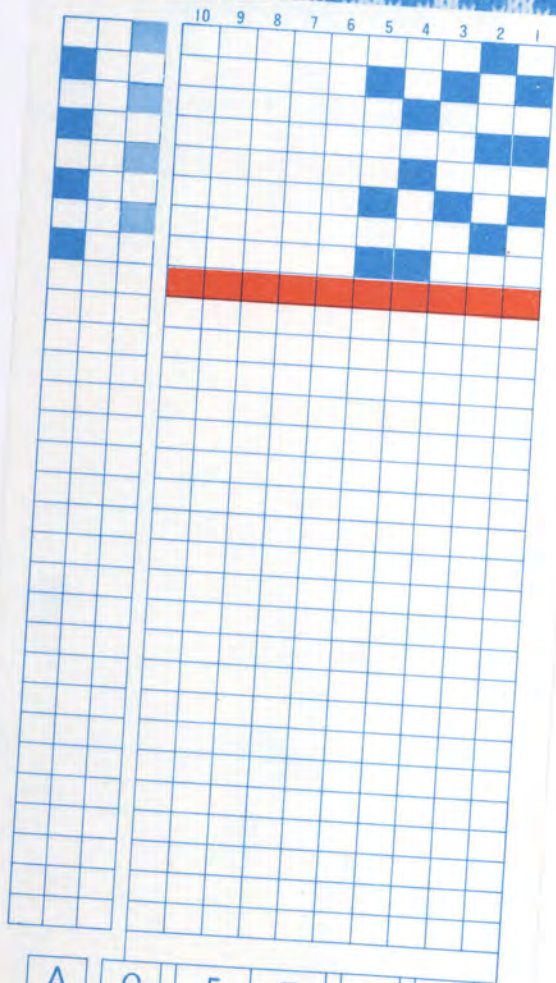
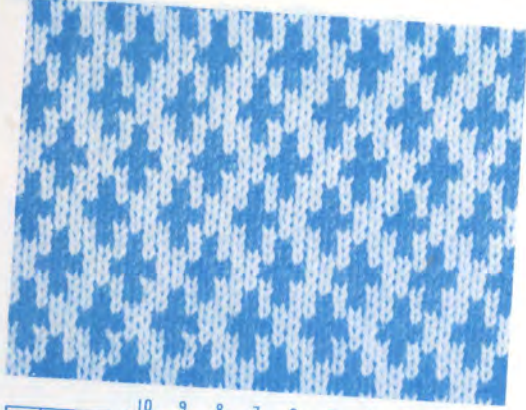
45



A	C	10	10	10	2
---	---	----	----	----	---

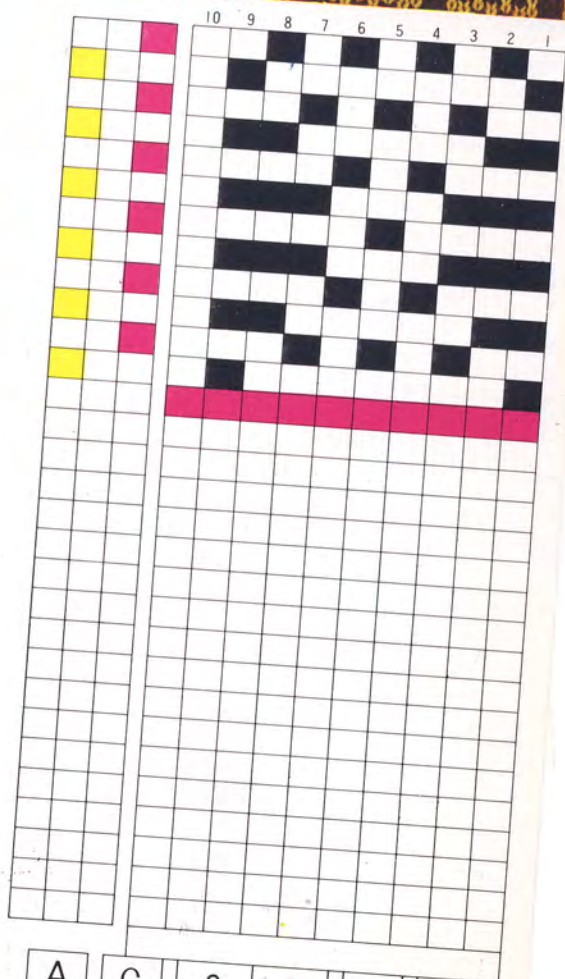


51



A	C	5	5	5	2
---	---	---	---	---	---

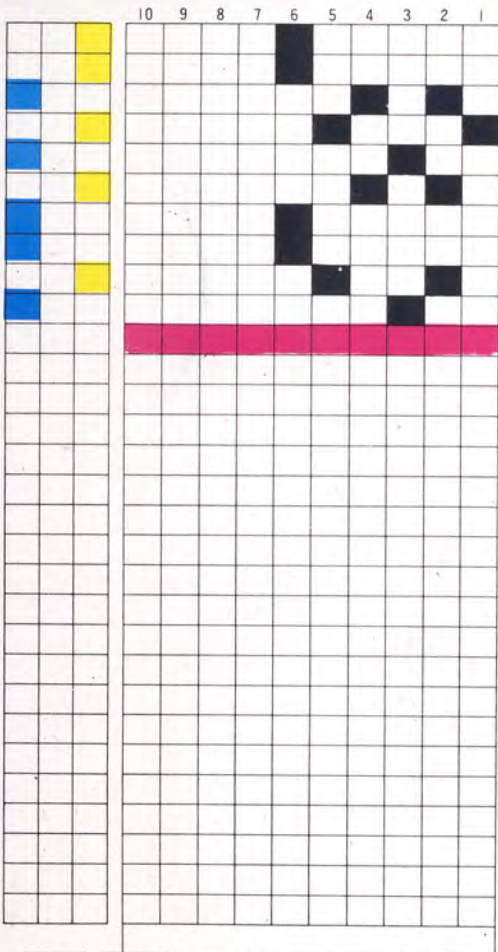
49



A	C	9	9	9	2
---	---	---	---	---	---

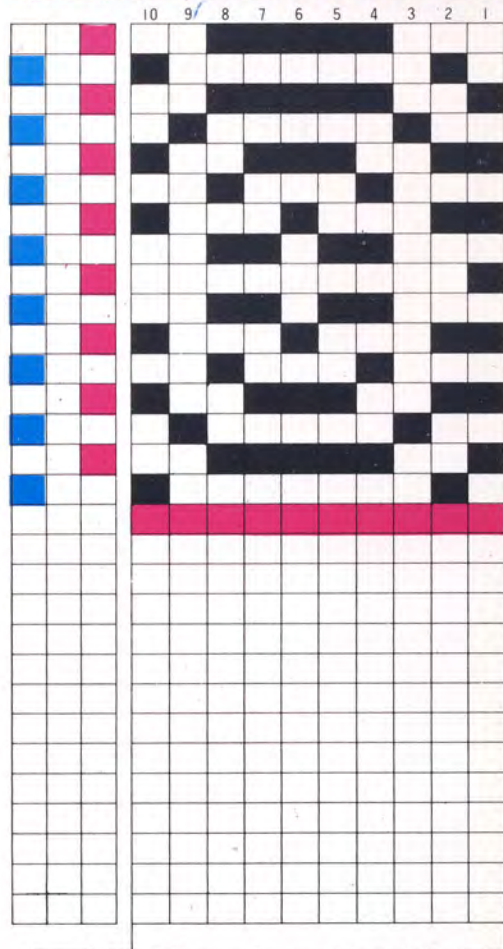
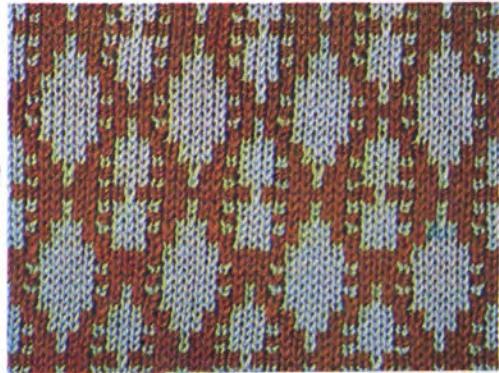


55



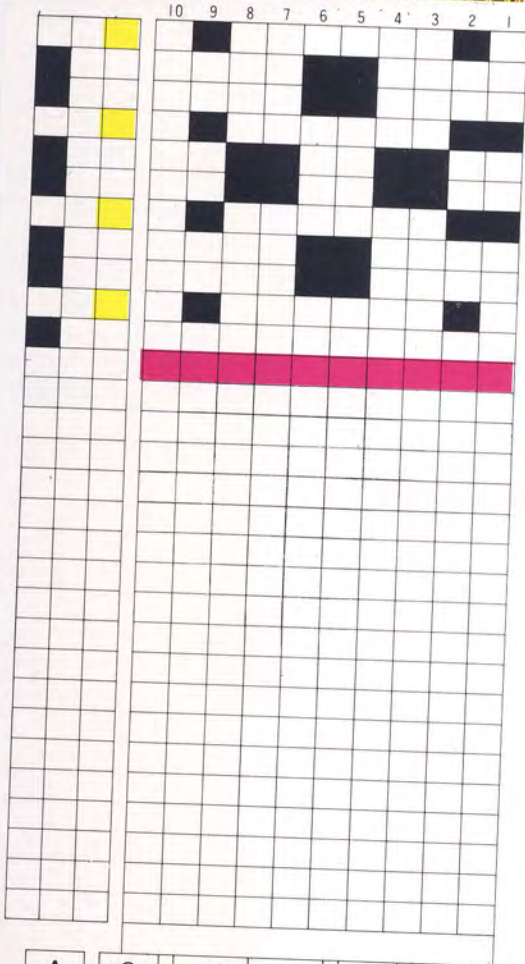
A T 6 6 6 2

53



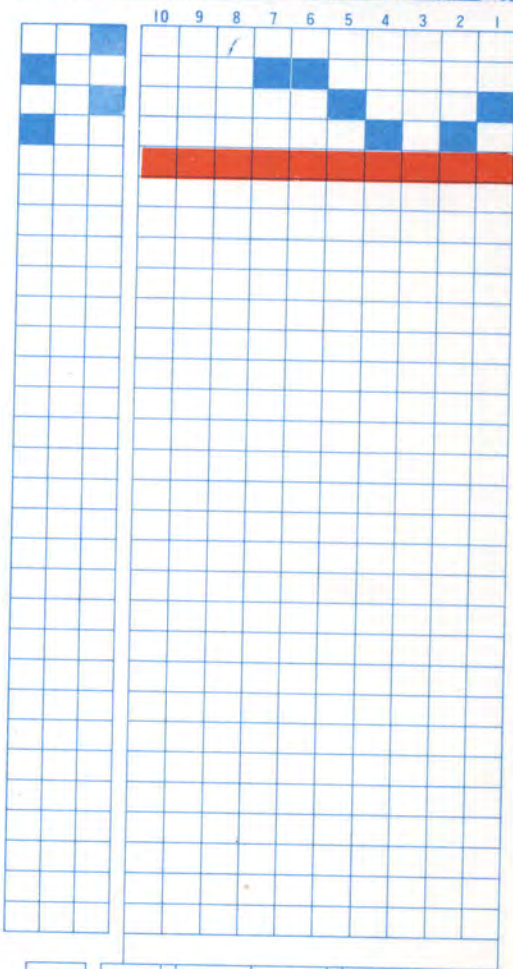
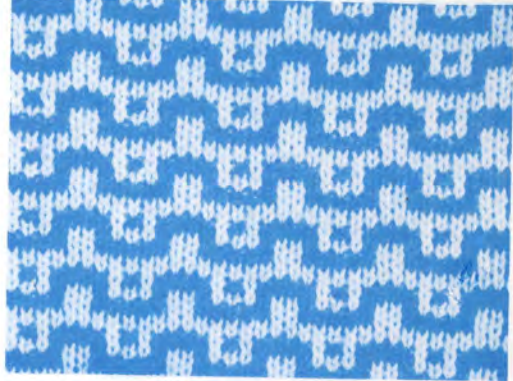
A C 10 10 10 2

59



A	C	9	9	9	1
---	---	---	---	---	---

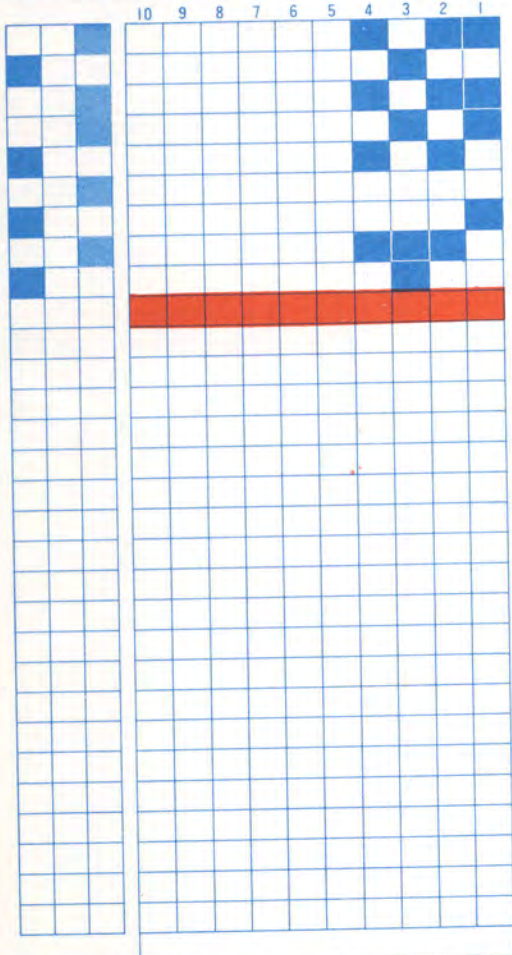
57



A	C	7	7	7	2
---	---	---	---	---	---

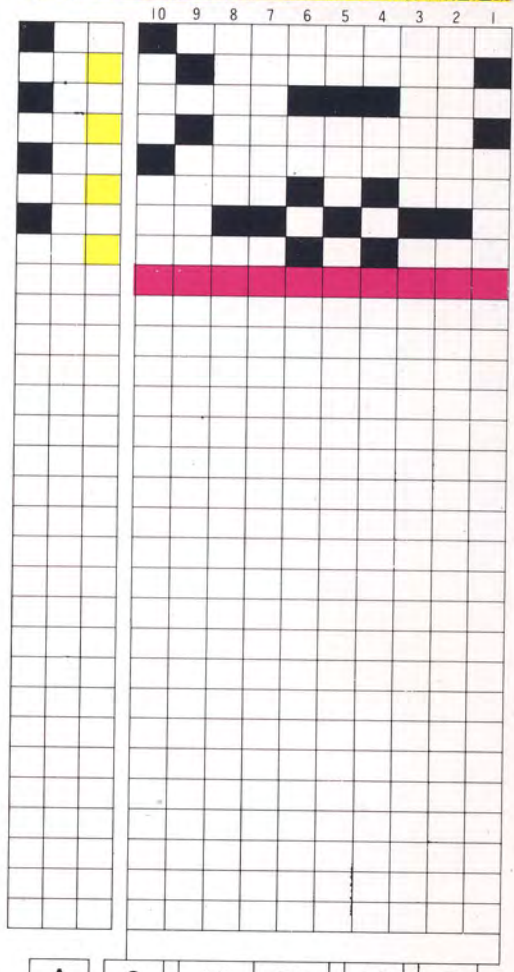
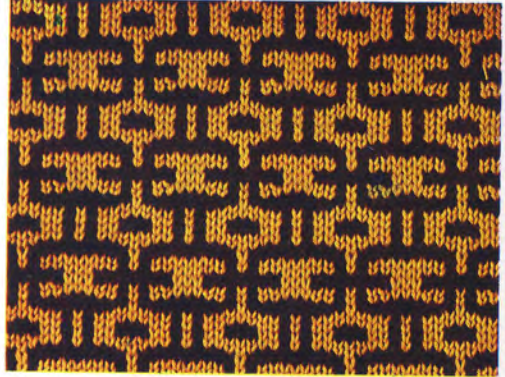


63

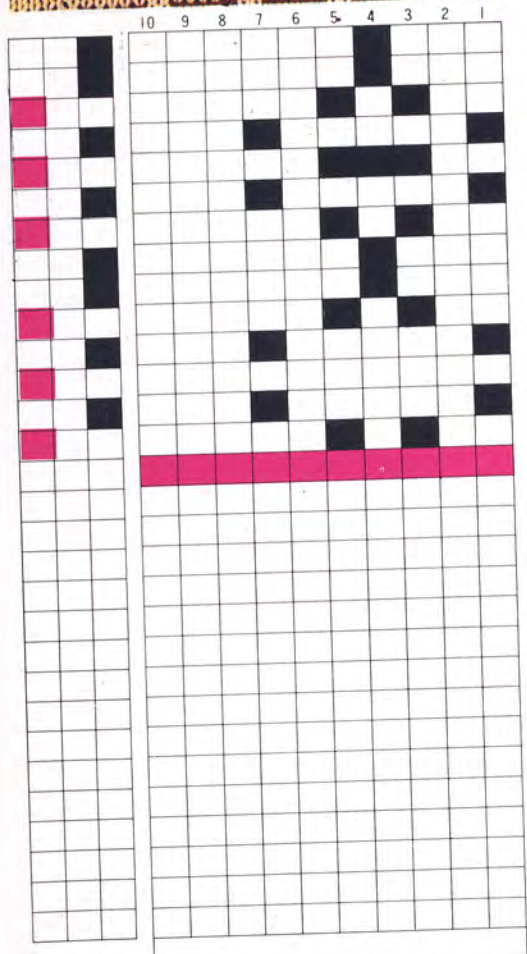
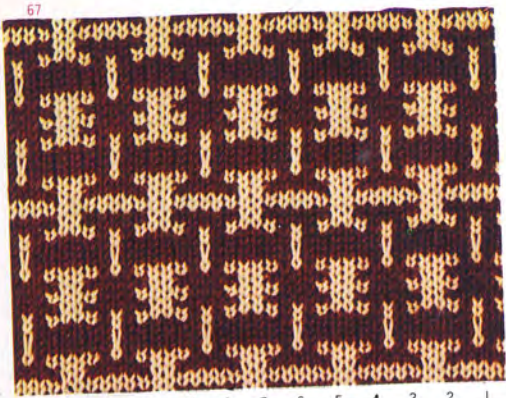


A	C	4	4	4	2
---	---	---	---	---	---

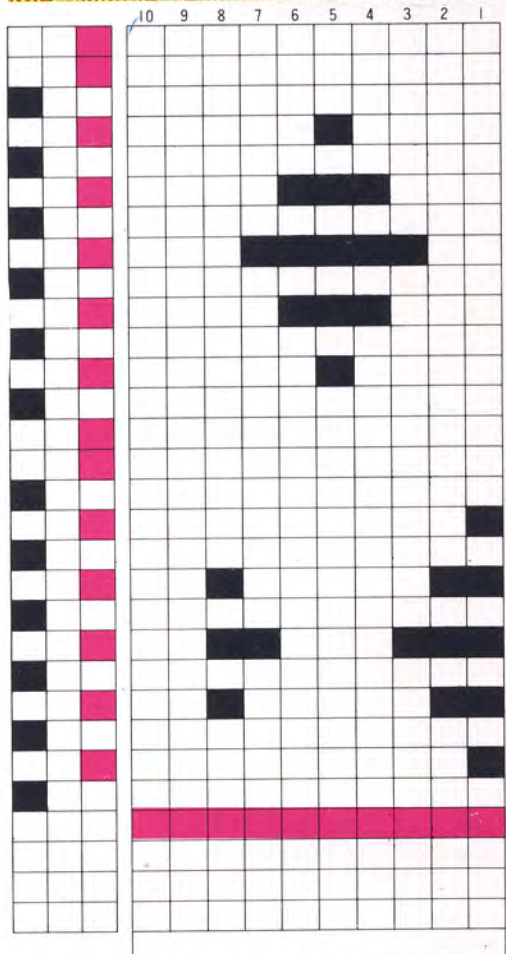
64



A	C	10	10	10	2
---	---	----	----	----	---



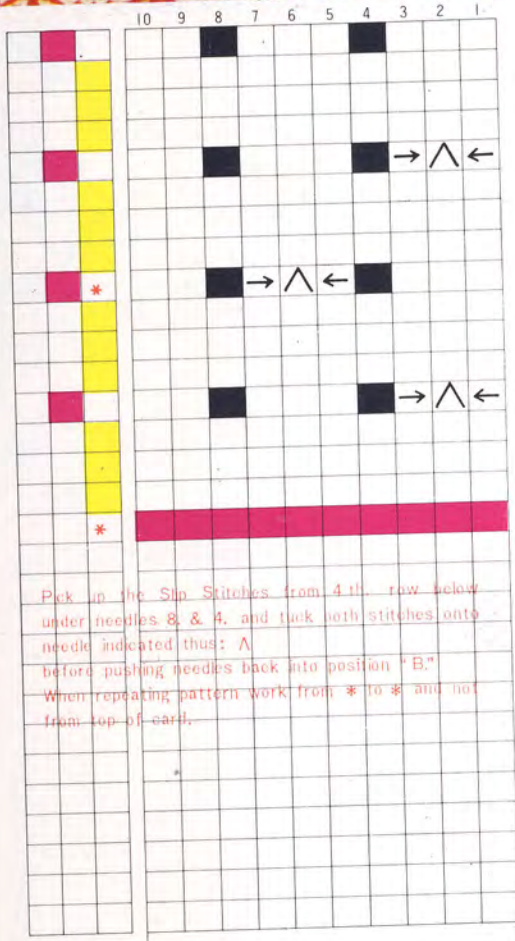
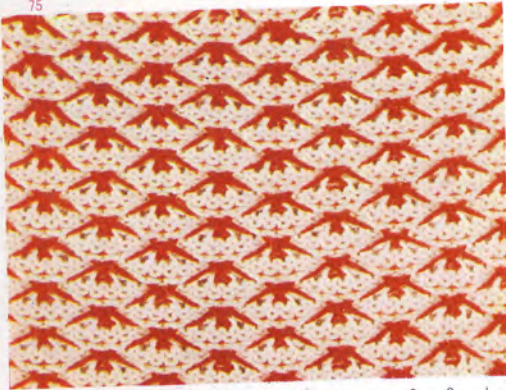
A C 7 7 7 2



A C 8 8 8 2

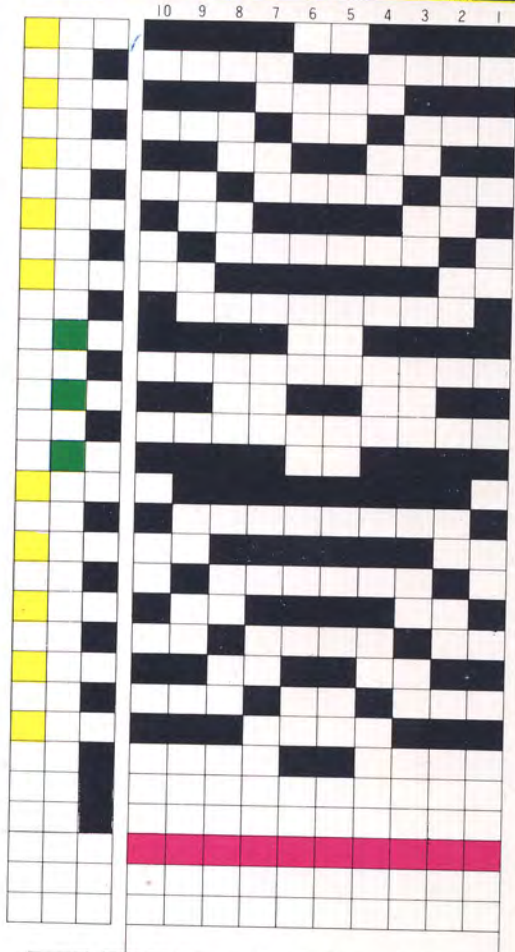
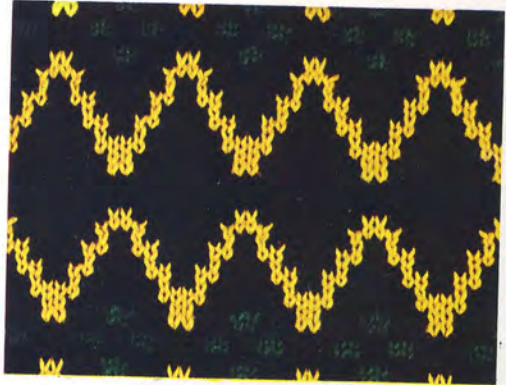






Pick up the Slip Stitches from 4th row below under needles 8 & 4, and tuck both stitches onto needle indicated thus:  $\wedge$  before pushing needles back into position "B."  
When repeating pattern work from \* to \* and not from top of card.

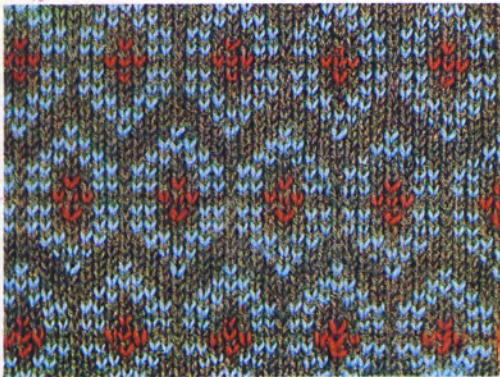
A C 8 8 8 1



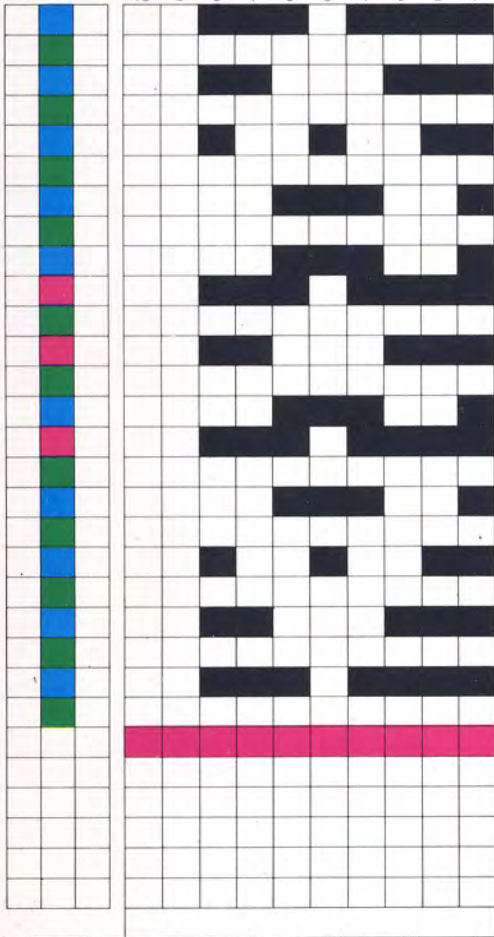
A C 10 10 10 2



79

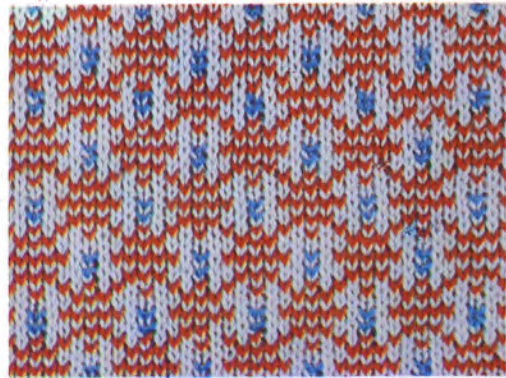


10 9 8 7 6 5 4 3 2 1

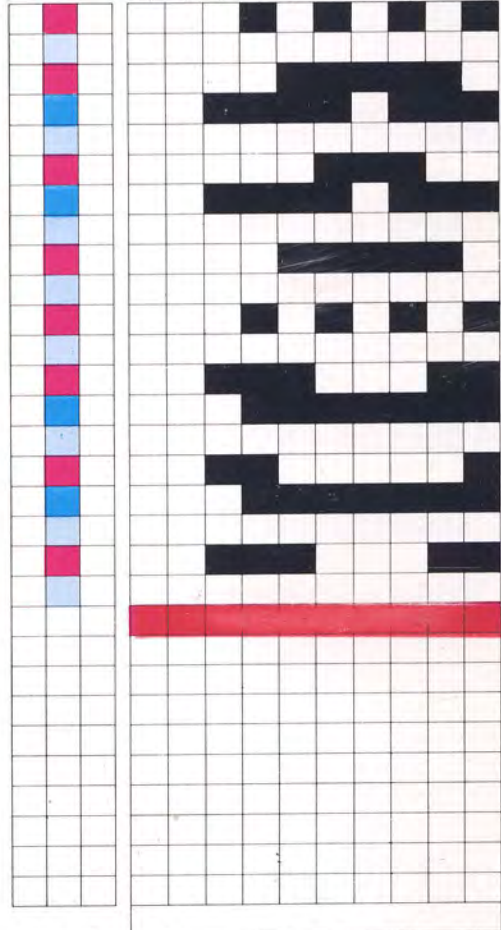


A C 8 8 8 I

77



10 9 8 7 6 5 4 3 2 1

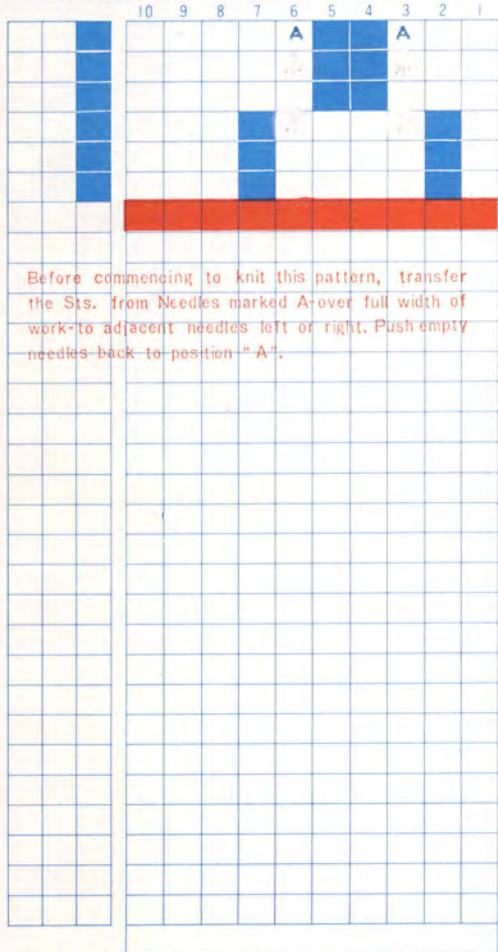


A C 8 8 8 I





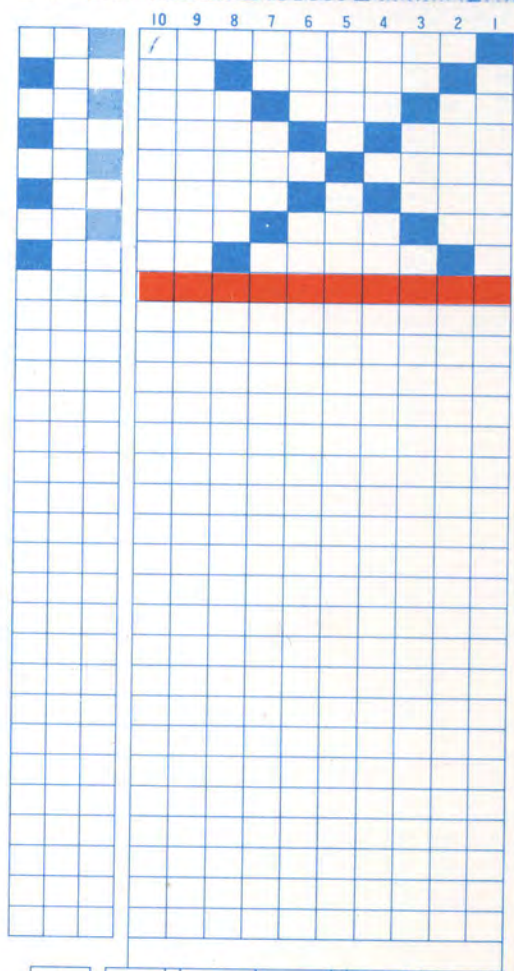
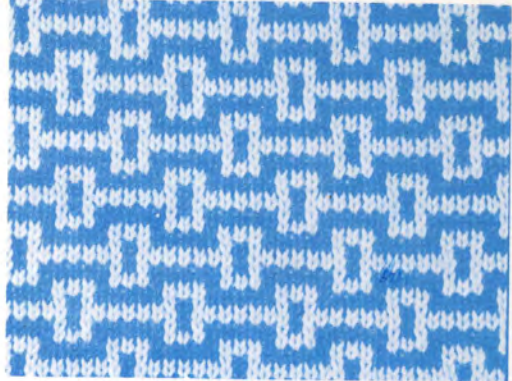
87



Before commencing to knit this pattern, transfer the Sts. from Needles marked A-over full width of work-to adjacent needles left or right. Push empty needles back to position "A".

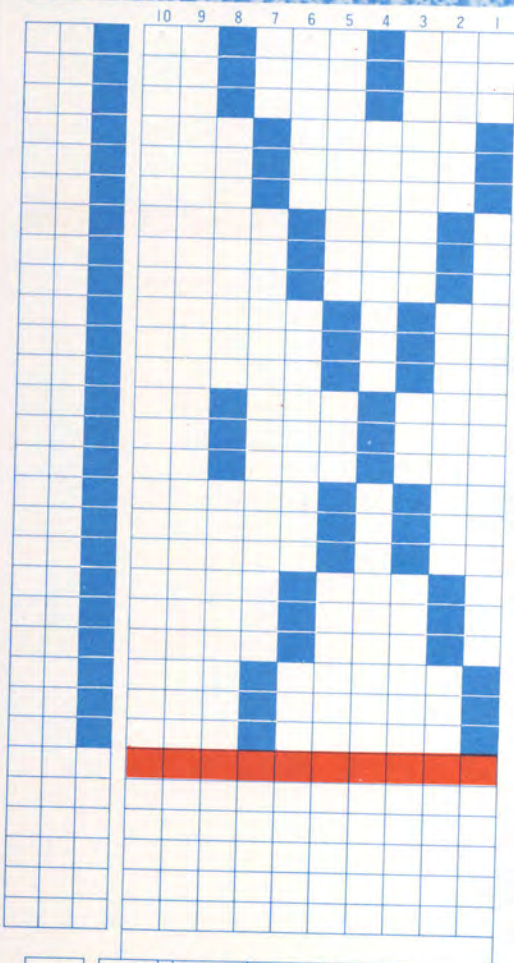
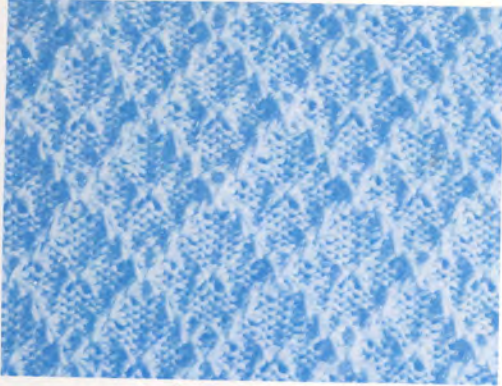
A T 8 8 8 1

85



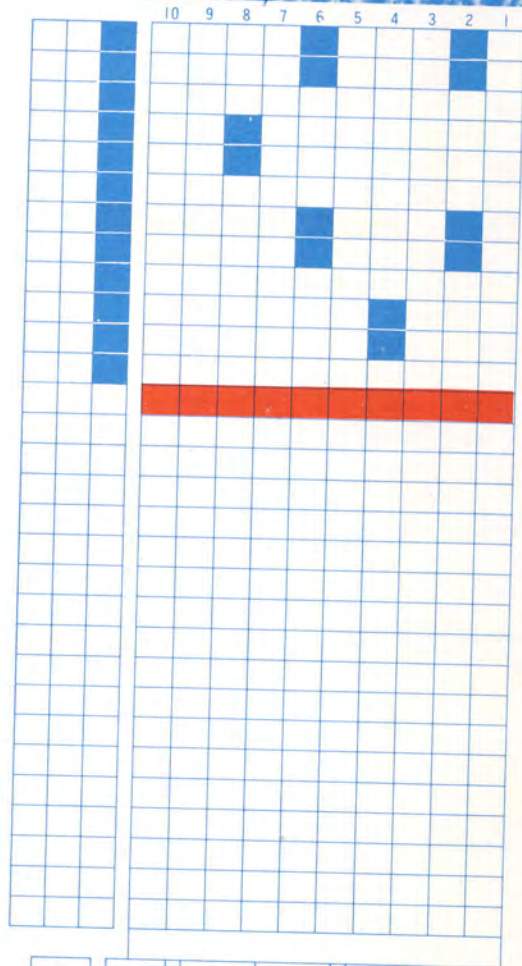
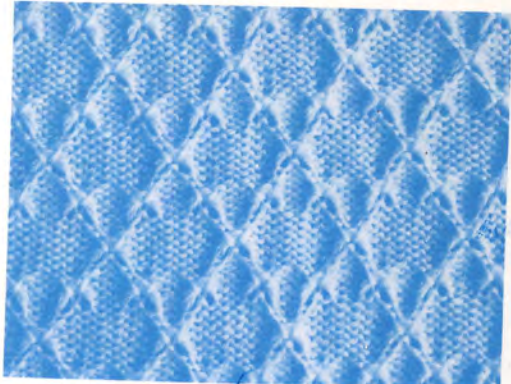
A C 8 8 8 2

91



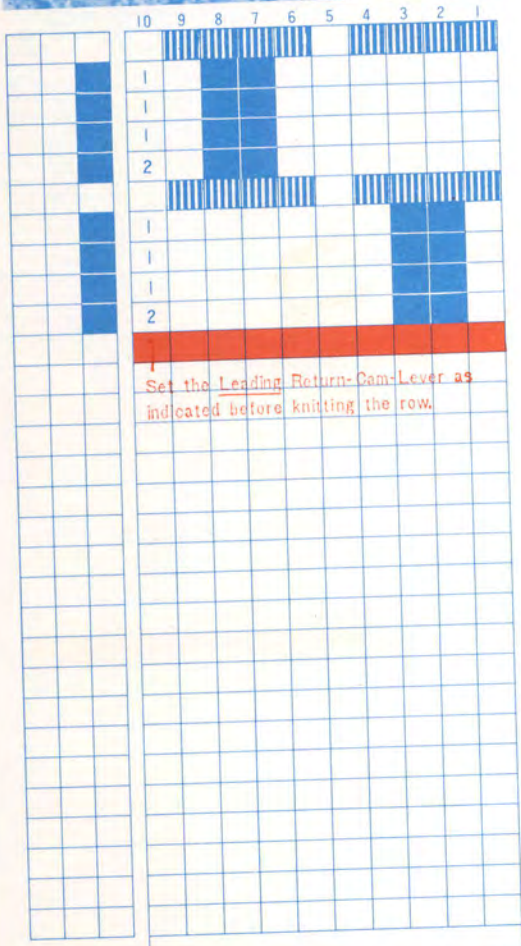
A	T	8	8	8	1
---	---	---	---	---	---

89



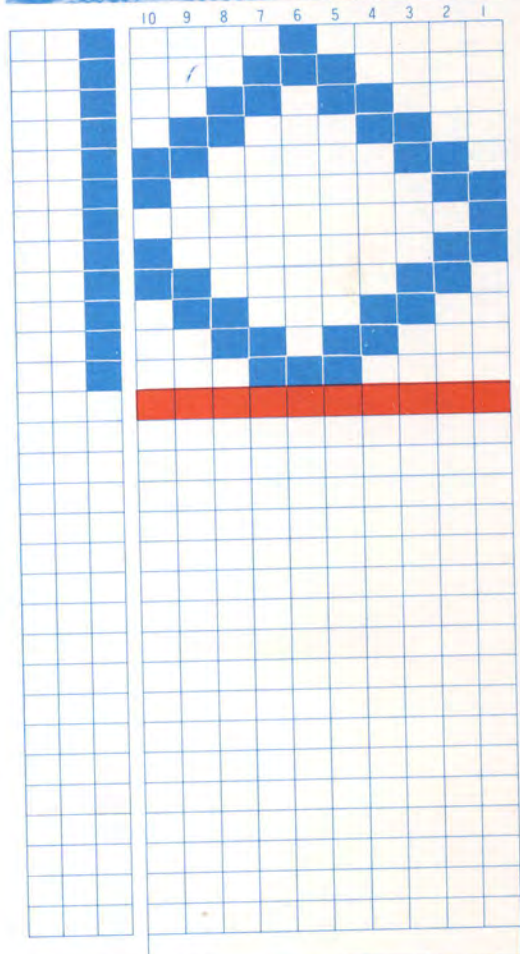
A	T	8	8	8	2
---	---	---	---	---	---





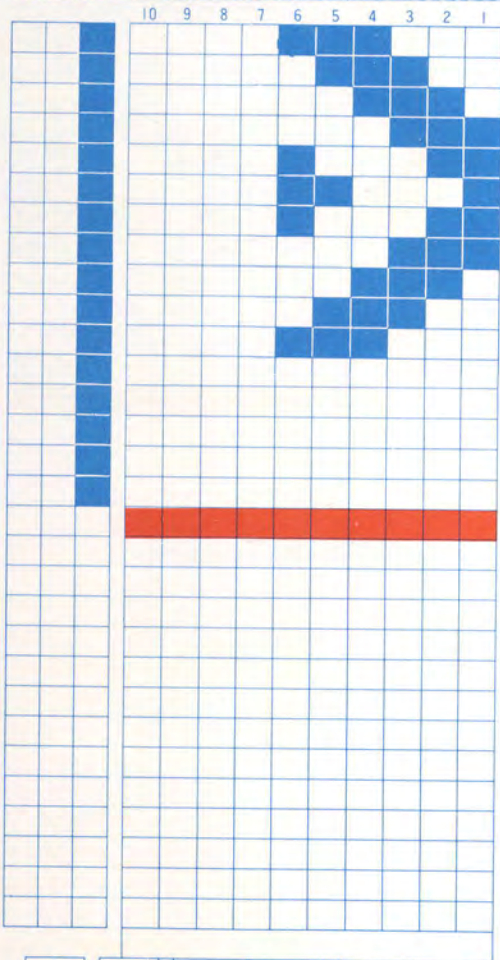
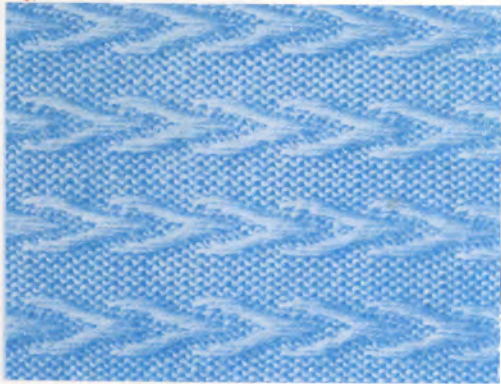
Set the Leading Return-Cam-Lever as indicated before knitting the row.

A C 10 10 10 1



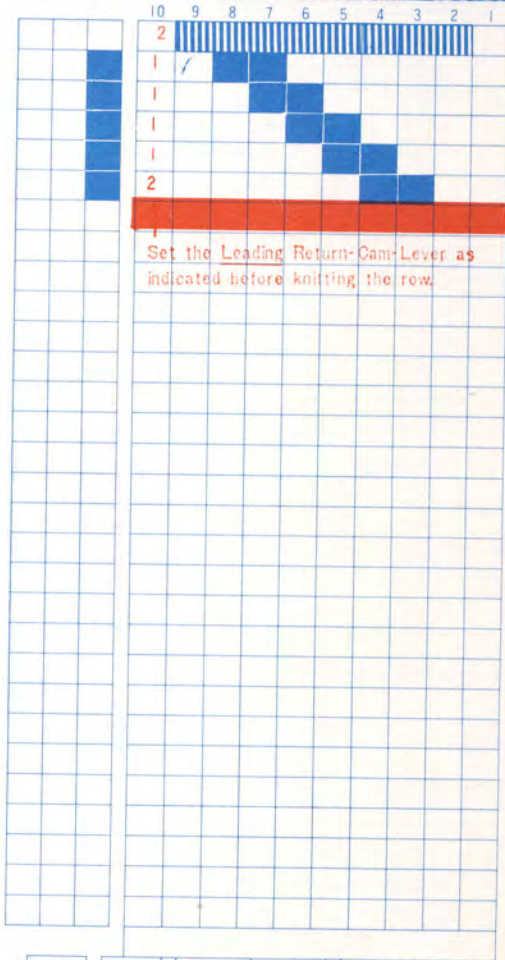
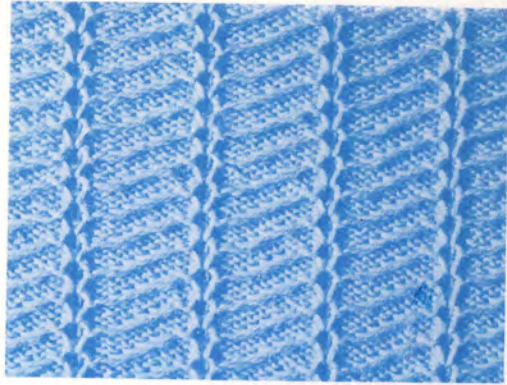
A C 10 10 10 1

97



A C 6 6 6 I

99

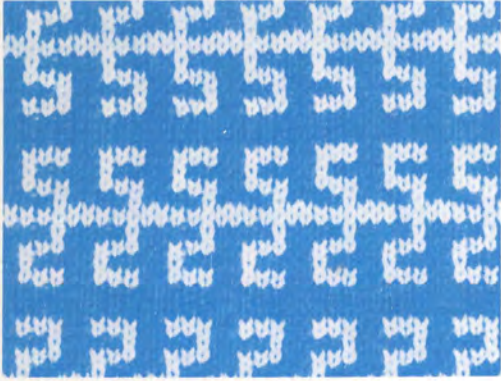


Set the Leading Return-Cam-Lever as indicated before knitting the row.

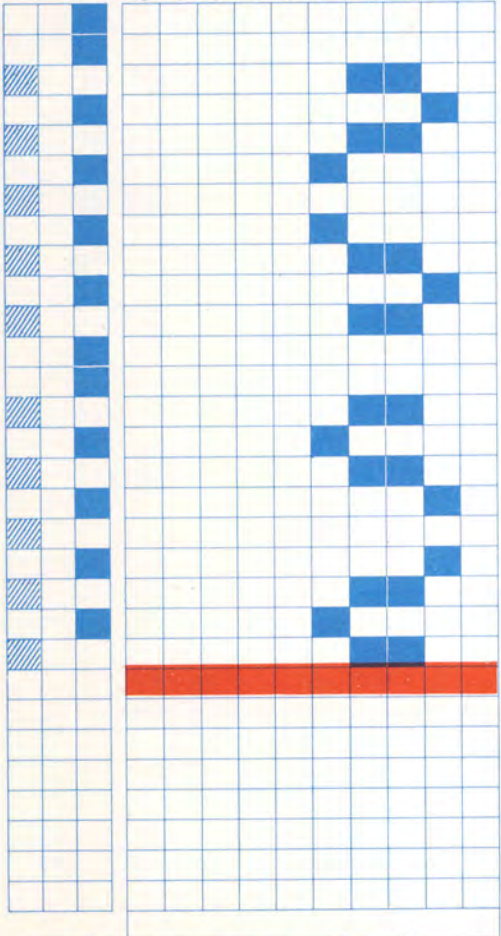
A C 9 9 9 I



101



10 9 8 7 6 5 4 3 2 1

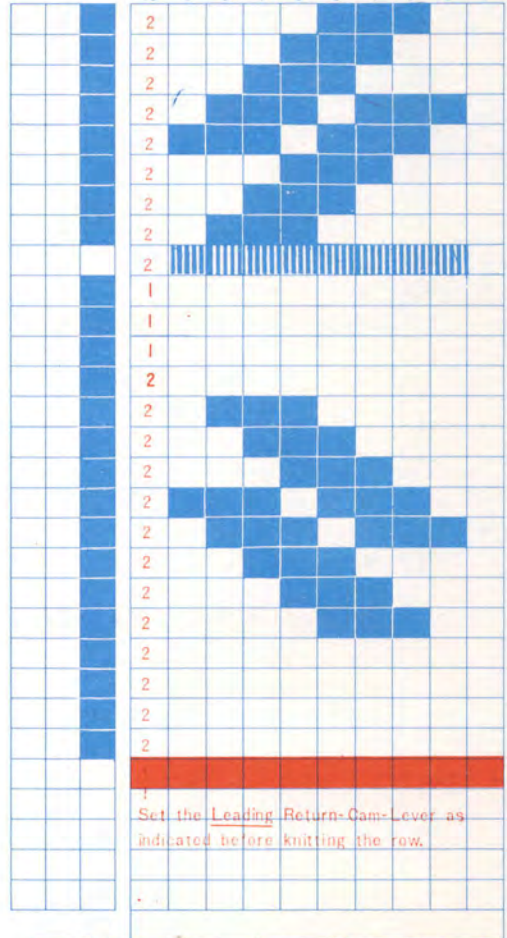


A C 5 5 5 2

103



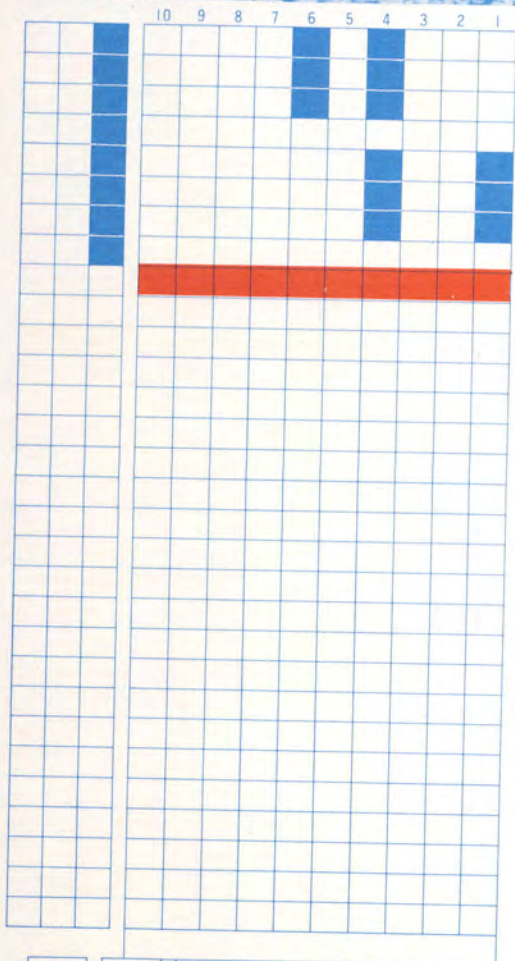
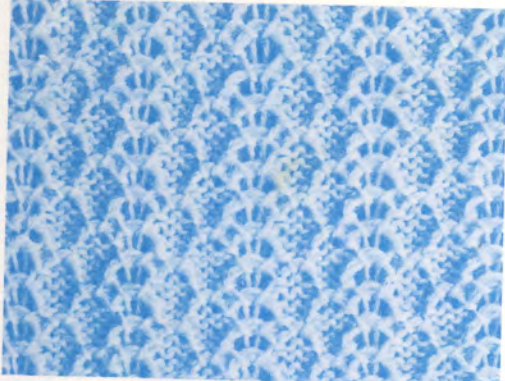
10 9 8 7 6 5 4 3 2 1



Set the Leading Return-Cam-Lever as indicated before knitting the row.

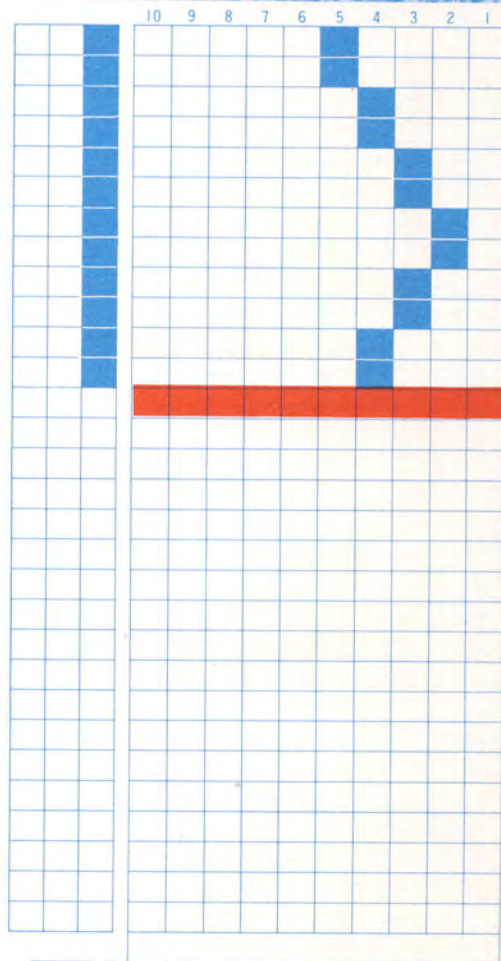
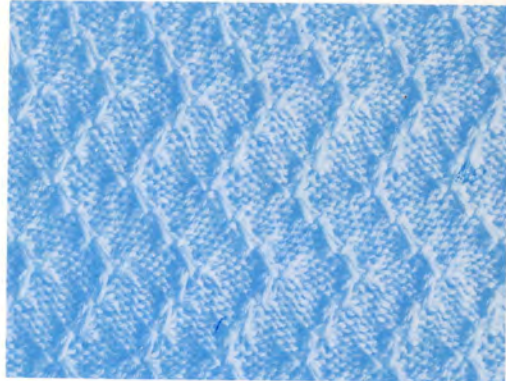
A C 9 9 9 1

107



A T 7 7 7 1

105



A T 5 5 5 2



