

SINGER KNITTING MACHINES

Dresses – Set-in Sleeves



Series 10

5 PLY

INDEX

Tensions	Page 3
Measurements	Page 3
Basic Measurements	Page 4
Decreasing	Page 4
Hems	Page 4
Ribbing	Page 5
Quantities	Page 5
Dress—Sizes 19-28	
Back	Page 7
Front V Neck	Page 8
Front Round Neck	Page 9
Front Polo Neck	Page 9
Long Sleeves	Page 10
Short Sleeves	Page 11
Neck Bands	Page 12 13
Dress—Sizes 30-40	
Back	Page 15 16
Front V Neck	Page 17
Front Round Neck	Page 18
Front Polo Neck	Page 18
Long Sleeves	Page 19
Short Sleeves	Page 20
Neckbands	Page 21 22
Completion of Garments	Page 23

SINGER SET-IN SLEEVE DRESSES USING PATONS 5 PLY CREPE

These set-in sleeve dresses have all been designed for Singer Knitting Machines. The designs for adults and children are A line dresses with round, polo or V necklines, all styles may have long or short sleeves.

This book has been designed for beginners, however, more advanced knitters may like to add their own variations with stripes or bands of fairisle.

To ensure the success of your knitting the first part of this book has been devoted to advice on tensions, measurements, hems, ribbing, decreasing and quantities of yarn required.

Tensions

These garments have been designed for Patons 5 ply crepe. In order to match the sizes shown in this book it is essential to produce the correct tension. The correct stocking stitch tension is:—

14½ stitches to 2 inches

21 rows to 2 inches

For all Singer machines we suggest Tension 7, however, as each machine varies, it is advisable to check your tension. Various colours and flecks also affect the tension.

To check tension: Knit a sample of 40 stitches on a tension one point below suggested number e.g. T 6.2, knit 30 rows, mark work, then T 7 knit 30 rows, mark work, then T 7.1 for 30 rows. Remove from machine and leave for 12 hours before measuring.

Measurements

We have used average measurements, however, individual requirements may need lengths altered. At the alteration point instructions have been marked "adjust here". For shorter lengths deduct 11 rows for each inch, for longer lengths add 11 rows for each inch.

If altering lengths, remember to alter all body pieces and both sleeves.

Basic Measurements

Sizes	19	21	23	24	26	28	30	32	34	36	38	40
Garment chest measures	21	23	25	26	28	30	32	34	36	38	40	42
Length from back neck to hem	16	18½	20½	22½	24½	26½	37	39	39	39½	40	40
To fit hip	19	22	24	26	28	30	32	34	36	38	40	42
Sleeve length—Long	6½	10	11	12	13	14	16	17	17	17	17	17
Short	2	2	2	2½	2½	2½	3	3	3	3	3	3

Decreasing

Decreasing should not be obvious. To decrease place last stitch onto the 2nd last stitch. Push end empty needle out of action.

Hems

1. Select the number of needles required.
2. Cast on, using scrap wool.
3. Knit 11 rows and break off wool.
4. Knit one row with ravel cord.
5. Set tension at one full number tighter than normal tension e.g. T 6.
6. Join in main yarn.
7. For these patterns knit 26 rows.
8. To form the hem, with the transfer tool pick up the stitches of the first row of main yarn above ravel cord and place onto the corresponding needles.
9. There are now 2 stitches on each needle except one at the end.
10. Loosen tension to one full number above normal tension e.g. T 8.
11. Knit one row.
12. Reset tension to normal, e.g T 7 and follow pattern instructions. After the piece has been completed pull out the ravel cord and the waste knitting will fall free.

Ribbing for Neck Bands

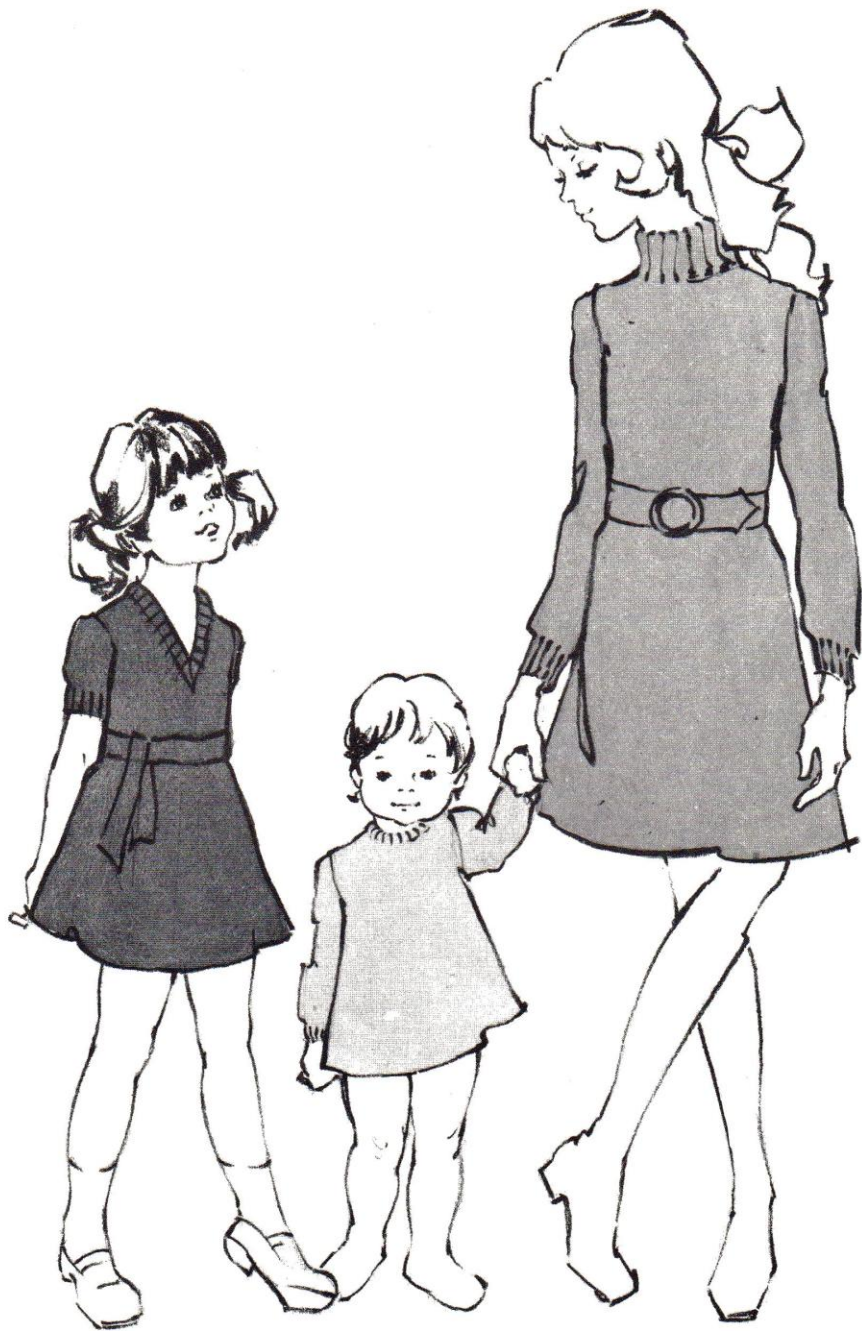
Using **Ribber attachment**, the instructions are for K1, P1 or single rib, the tension is usually 2 numbers tighter than the normal tension.

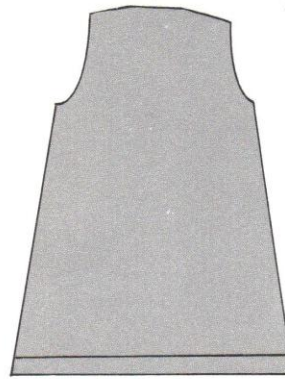
Using **Imitation Rib**, where every alternate needle is pushed out of action, instructions are given for this method, the tension is usually 2 numbers tighter than the normal tension.

Materials

The figures quoted are for 5 ply, one ounce balls. If alterations are made to lengths also alter quantities.

Sizes	19	21	23	24	26	28	30	32	34	36	38	40
Long sleeve dresses												
V Neck	11	12	13	14	15	17	24	25	28	29	31	32
Round Neck	11	12	13	14	15	17	24	25	28	29	31	32
Polo Neck	12	13	14	15	16	18	25	26	29	30	31	33
Short sleeve dresses												
V Neck	9	10	11	12	13	15	21	22	25	26	28	29
Round Neck	9	10	11	12	13	15	21	22	25	26	28	29





DRESS BACK—ALL STYLES

Sizes

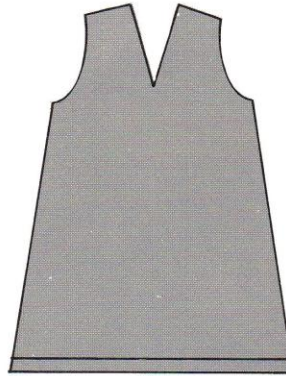
1. Select xxx needles.....
2. Follow steps 1 to 12 of hem instructions in front section.
3. Row counter 000.
4. Decrease 1 stitch each end every xxx rows 11 times. See "Note" below for altering lengths.
5. There are now xxx stitches
6. Knit straight to xxx rows above hem, if length not altered.
Shape armhole.
7. Row counter 000.
8. At beginning of next 2 rows cast off 4 stitches.
9. Decrease 1 stitch each end every row xxx times
10. Decrease 1 stitch each end every 2nd row xxx times
11. There are now xxx stitches
12. Knit straight to xxx rows
13. At beginning of next 4 rows cast off xxx stitches
14. At beginning of next 2 rows cast off xxx stitches.
15. Cast off loosely remaining xxx stitches

19	21	23	24	26	28
100	108	114	118	126	132

9	10	9	10	11	12
78	86	92	96	104	110
102	118	142	158	172	192

2	2	3	3	5	6
4	6	6	6	6	6
58	62	66	70	74	78
50	52	56	62	68	72
5	6	6	7	7	8
6	5	7	6	8	7
26	28	28	30	30	32

Note: To alter length, for every inch of length to be altered deduct or add 1 row to each of the 11 decreasing, step 4. e.g. if one inch shorter is required in size 19, decrease 1 stitch each end every 8 rows 11 times or if one inch longer is required decrease 1 stitch each end every 10 rows 11 times.

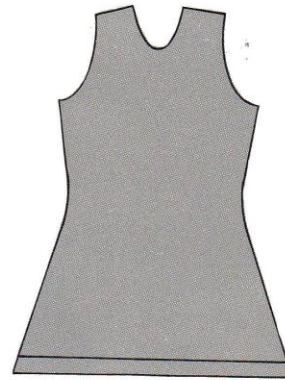


DRESS FRONT—V NECK

Sizes

1. Follow steps 1 to 8 of Dress Back.
2. Work on half the stitches nearest carriage placing other half out of action. xxx stitches
Shape armhole and neckline.
Note steps 3 to 5 are worked simultaneously.
3. At armhole edge decrease 1 stitch every row xxx times
4. At armhole edge decrease 1 stitch every 2nd row xxx times
5. At neck edge decrease 1 stitch every 3rd row xxx times
6. There are now xxx stitches
7. Knit straight to xxx rows
- Shape shoulder.
8. At beginning of every 2nd row at armhole edge, cast off xxx stitches 2 times
9. Knit 1 row and cast off remaining xxx stitches
10. Work on other half—steps 3 to 9—reversing shapings.

	19	21	23	24	26	28
	35	39	42	44	48	51
	2	2	3	3	5	6
	4	6	6	6	6	6
	13	14	14	15	15	16
	16	17	19	20	22	23
	50	52	56	62	68	72
	5	6	6	7	7	8
	6	5	7	6	8	7



DRESS FRONT—ROUND OR POLO NECK

Sizes

	19	21	23	24	26	28
1. Follow steps 1 to 11 of Dress Back.						
2. Knit straight to xxx rows.	34	34	38	40	46	48
3. Work on xxx stitches nearest carriage holding remainder..... Shape neck.	21	23	25	26	28	30
4. At neck edge decrease 1 stitch every 3 rows xxx times.	5	6	6	6	6	7
5. There are now xxx stitches	16	17	19	20	22	23
6. Knit straight to xxx rows. Shape shoulder.	50	52	56	62	68	72
7. At beginning of every 2nd row at armhole edge cast off xxx stitches 2 times	5	6	6	7	7	8
8. Knit 1 row cast off remaining xxx stitches	6	5	7	6	8	7
9. Cast off xxx stitches at centre	16	16	16	18	18	18
10. Work on other side steps 4 to 8, reversing shapings.						



SLEEVES—LONG

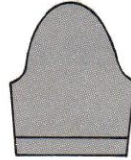
Sizes

1. Select xxx needles
2. Follow steps 1 to 12 of hem instructions.
3. Row counter 000.
4. Increase 1 stitch each end every xxx row
5. Increase xxx times altogether
6. There are now xxx stitches
7. Knit straight to xxx rows above hem. Adjust length here.
8. Row counter 000.
9. At beginning of next 2 rows cast off 4 stitches.
10. Decrease 1st each end every 2nd row xxx times
11. Decrease 1st each end every row xxx times
12. There are now xxx rows
13. Cast off remaining xxx stitches
Work another sleeve the same way.

19	21	23	24	26	28
40	42	44	48	52	54

5	7	8	8	8	8
9	10	11	12	13	14
58	62	66	72	78	82
58	94	104	114	124	136

6	6	6	6	6	8
14	16	18	20	22	22
28	30	32	34	36	40
10	10	10	12	14	14



SLEEVES—SHORT

Sizes

1. Select xxx needles.....
2. Follow steps 1 to 12 of hem instructions.
3. Row counter 000.
4. Increase 1 stitch each end every 2nd row xxx times
5. There are now xxx stitches
6. Knit straight to xxx rows above hem. Adjust length hem.
7. Follow steps 8 to 13 of long sleeve.

19	21	23	24	26	28
44	48	52	56	62	66

7	7	7	8	8	8
56	62	66	72	78	82
18	18	18	20	20	20

DRESS NECKBANDS— USING RIBBER ATTACHMENT

Sizes

19	21	23	24	26	28
----	----	----	----	----	----

ROUND NECK:

1. Cast on xxx stitches for K1, P1 rib
2. Rib for 30 rows.
3. Cast off loosely.

91	101	107	113	117	121
----	-----	-----	-----	-----	-----

Note: When attached, neckband is folded in half.

POLO NECK:

1. Commence as Step 1 of Round Neck.
2. Rib for 65 rows.
3. Cast off loosely.

V NECK:

1. Cast on xxx stitches for K1, P1 rib
2. Rib for 15 rows.
3. Cast off loosely.

135	141	149	163	171	179
-----	-----	-----	-----	-----	-----

Note: When attaching neckbands it is best to use cast on edge as the finished edge and attach cast off edge to the garment.

DRESS NECKBANDS— USING IMITATION RIB

Sizes

19	21	23	24	26	28
----	----	----	----	----	----

ROUND NECK:

1. Select xxx needles
2. Push every alternate needle out of action.
3. Using winding method cast on loosely.
4. Knit 30 rows.
5. Cast off loosely.

91	101	107	113	117	121
----	-----	-----	-----	-----	-----

Note: When attached, neckband is folded in half.

POLO NECK:

1. Follow steps 1 to 3 of Round Neck.
2. Knit for 65 rows.
3. Cast off loosely.

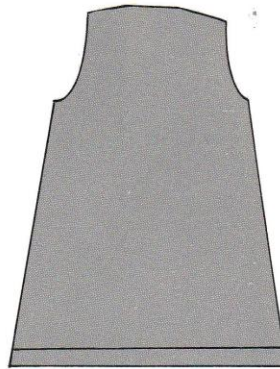
V NECK:

1. Select xxx needles
2. Push every alternate needle out of action.
3. Using winding method cast on loosely.
4. Knit 30 rows.
5. Cast off loosely.

135	141	149	163	171	179
-----	-----	-----	-----	-----	-----

Note: When attached, neckband is folded in half.





DRESS BACK—ALL STYLES

Sizes

1. Select xxx needles
2. Follow steps 1 to 12 of hem. Instructions in front section.
3. Row counter 000.
4. Decrease 1 stitch each end every 13th row 11 times. See note below for altering lengths.
5. There are now xxx stitches and 143 rows if length not altered
6. Decrease 1 stitch each end every xxx rows
7. Decrease xxx times altogether
8. There are now xxx stitches
9. Knit straight for xxx rows
10. Increase 1st each end of this and every following xxx rows
11. Increase xxx times altogether
12. There are now xxx stitches
13. Knit straight to xxx rows above hem if length not altered..... Shape armhole.

30	32	34	36	38	40
148	152	162	170	176	184

126	130	140	148	154	162
-----	-----	-----	-----	-----	-----

15	11	9	8	7	7
----	----	---	---	---	---

6	8	10	11	12	12
---	---	----	----	----	----

114	114	120	126	130	138
-----	-----	-----	-----	-----	-----

18	20	20	20	24	24
----	----	----	----	----	----

20	8	10	9	7	7
----	---	----	---	---	---

2	6	6	7	9	9
---	---	---	---	---	---

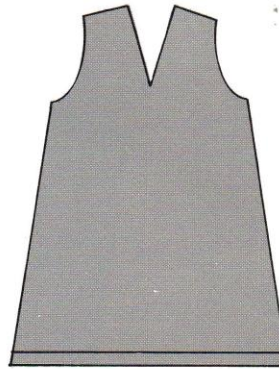
118	126	132	140	148	156
-----	-----	-----	-----	-----	-----

282	294	310	310	310	310
-----	-----	-----	-----	-----	-----

DRESS BACK—ALL STYLES CONTINUED

Sizes	30	32	34	36	38	40
14. Row counter 000.						
15. At beginning of next 2 rows, cast off xxx stitches	5	5	5	6	6	6
16. Decrease 1 stitch each end every row xxx times	5	4	4	4	5	5
17. Decrease 1 stitch each end every 2nd row xxx times	6	6	6	7	8	9
18. There are now xxx stitches	86	96	102	106	110	116
19. Knit straight to xxx rows	76	76	82	84	92	96
20. At beginning of next xxx rows cast off xxx stitches	6 7	4 8	6 8	8 7	8 7	6 7
21. At beginning of next xxx rows cast off xxx stitches	2 6	4 7	2 9	2 6	2 8	4 8
22. Cast off loosely remaining xxx stitches	32	36	36	38	38	42

Note: To alter length—for every inch of length to be altered, deduct or add 1 row to each of the 11 decreasings Step 4.
 e.g. if one inch shorter is required, decrease 1 stitch each end every 12th row 11 times or if one inch longer is required decrease 1 stitch each end every 14th row 11 times.



DRESS FRONT—V NECK

Sizes

1. Follow steps 1 to 15 of Dress Back.
2. Work on half the stitches nearest carriage placing other half out of action. xxx stitches
Note: Steps 3 to 5 are worked simultaneously.
3. At armhole edge decrease 1 stitch every row xxx times
4. At armhole edge decrease 1 stitch every 2nd row xxx times
5. At neck edge decrease 1 stitch every 4th row xxx times
6. There are now xxx stitches
7. Knit straight to xxx rows
 Shape shoulder.
8. At beginning of every 2nd row at armhole edge cast off xxx stitches xxx times
9. Then every 2nd row at armhole edge, cast off xxx stitches
 xxx times
10. Work on other half, steps 3 to 9, reversing shapings.

	30	32	34	36	38	40
	54	58	61	64	68	72
	5	4	4	4	5	5
	6	6	6	7	8	9
	16	18	18	19	19	21
	27	30	33	34	36	37
	76	76	82	84	92	96
	7 3	8 2	8 3	7 4	7 4	7 3
	6 1	7 2	9 1	6 1	8 1	8 2

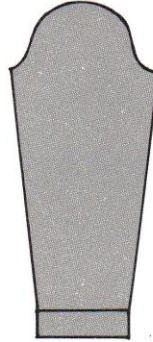


DRESS FRONT—ROUND OR POLO NECK

Sizes

1. Follow steps 1 to 18 of Dress Back.
2. Knit straight to xxx rows
3. Work on xxx stitches nearest carriage
—holding remainder
Shape neck.
4. At neck edge decrease 1 stitch every
3rd row xxx times
5. There are now xxx stitches
6. Knit straight to xxx rows
Shape shoulder.
7. At beginning of every 2nd row at
armhole edge cast off xxx stitches
xxx times
8. Then every 2nd row at armhole edge
cast off xxx stitches
xxx times
9. Cast off xxx stitches at centre
10. Work on other side steps 4 to 8
reversing shapings.

30	32	34	36	38	40
54	54	58	62	68	70
33	37	40	41	43	45
6	7	7	7	7	8
27	30	33	34	36	37
76	76	82	84	92	96
7 3	8 2	8 3	7 4	7 4	7 3
6 1	7 2	9 1	6 1	8 1	8 2
20	22	22	24	24	26



SLEEVES—LONG

Sizes

1. Select xxx needles
2. Follow steps 1 to 12 of hem instructions.
3. Row counter 000.
4. Decrease 1 stitch each end every xxx rows
5. Increase xxx times altogether
6. There are now xxx stitches
7. Knit straight to xxx rows above hem
Adjust length hem.
8. Row counter 000.
9. At beginning of next 2 rows cast off
xxx stitches
10. Decrease 1 stitch each end every 2nd
row xxx times
11. Decrease 1 stitch each end every row
xxx times
12. There are now xxx rows
13. Cast off remaining xxx stitches
Work on other sleeve the same way.

30	32	34	36	38	40
60	64	66	70	72	74

10	9	9	9	8	9
14	16	17	17	18	19
88	96	100	104	108	112
158	168	168	168	168	168

5	5	5	6	6	6
10	11	9	13	13	13
22	24	28	24	26	28
44	48	48	52	54	54
14	16	16	18	18	20

SLEEVES—SHORT



Sizes

1. Select xxx needles
2. Follow steps 1 to 12 of hem instructions.
3. Row counter 000.
4. Increase 1 stitch each end every 2nd row 9 times.
5. There are now xxx stitches
6. Knit straight to 24 rows above hem. Adjust length hem.
7. Follow steps 8 to 13 of long sleeve.

30	32	34	36	38	40
70	78	82	86	90	94

88	96	100	104	108	112
----	----	-----	-----	-----	-----

DRESS—NECKBANDS—USING RIBBER ATTACHMENT

ROUND NECK:

Sizes

	30	32	34	36	38	40
1. Cast on xxx stitches for K1, P1 rib	121	127	133	141	147	159

2. Rib for 30 rows.

3. Cast off loosely.

Note: When attached, neckband is folded in half.

POLO NECK:

1. Commence as step 1 of Round Neck.

2. Rib for 75 rows.

3. Cast off loosely.

V NECK:

Note: All sizes knitted in 2 pieces.
See back page for attaching.

1. Cast on xxx stitches for K1, P1 rib	113	117	123	131	139	147
Second piece xxx stitches.	81	81	87	93	101	105

2. Rib for 15 rows.

3. Cast off loosely.

Note: When attaching neckbands, it is best to use the cast on edge as the finished edge and attach the cast off edge to the garment.

DRESS—NECKBANDS—USING IMITATION RIB

ROUND NECK:

Sizes	<u>30</u>	<u>32</u>	<u>34</u>	<u>36</u>	<u>38</u>	<u>40</u>
1. Select xxx needles	121	127	133	141	147	159

2. Push alternate needles out of action.
3. Using winding method cast on loosely.
4. Knit for 30 rows.
5. Cast off loosely.

Note: When attached, neckband is folded in half.

POLO NECK:

1. Follow steps 1 to 3 of Round Neck.
2. Knit for 75 rows.
3. Cast off loosely.

V NECK:

Note: All sizes knitted in 2 pieces.
See back page for attaching.

1. Select xxx needles	<u>113</u>	<u>117</u>	<u>123</u>	<u>131</u>	<u>139</u>	<u>147</u>
Second piece xxx needles	81	81	87	93	101	105

2. Push every alternate needle out of action.
3. Using winding method, cast on loosely.
4. Knit 30 rows.
5. Cast off loosely.

COMPLETION OF GARMENTS

All Styles

1. Press all pieces lightly with a damp cloth.
2. Sew up the shoulder seams.
3. Sew the side and sleeve seams.
4. Sew in the sleeves matching shoulder seam to centre at sleeve cap, matching side and sleeve seams.

Note: The garment is eased to fit the sleeve.

Attaching Neckbands

Round Neck Dress

For both imitation rib and rib sew the neckband evenly around the neck—fold in half and slip stitch.

Polo Neck Dress

Imitation Rib: Attach as for round neck dress.

Rib: Sew cast off edge to the neckline.

V Neck Dress

Imitation Rib: Sew band around neck commencing at the V—with 2 pieces, the second commences at a back raglan seam, fold the band in half and slip stitch—make a mitred corner at the V.

Rib: Sew band around neck using the cast off edge commencing at the V—with 2 pieces, the second commences at a back raglan seam, mitre the ends at the V.

