



SINGER 261-4240  
\$ 200

**SINGER**

VOL. 110



## Cardigan with shawl collar and Tank Top

Finished Measurements size: cm.

### Cardigan

	A	B	C	D
Bust	96	100	104	108
Length	56	57.5	58.5	59.5

### Tank Top

	A	B	C	D
Bust	88	92	96	100
Length of strap	43	44	45	46

### Materials / others:

Medium type cotton thread.....460 – 550gs.

6 buttons (1.5cm in diameter)

Punch Cards: Card A and Card B (Punch as shown on page 1.)

### Tension gauge:

30 sts. by 45 rows over the swatch of Plain Lace (Card B) with Stitch Dial at ⑤.

33 sts. by 50 rows over the swatch of Stockinet with Stitch Dial at ⑤.

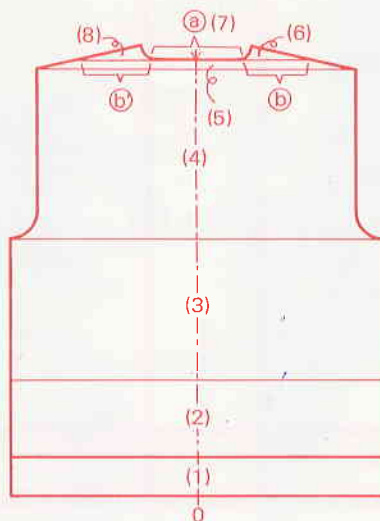
## CARDIGAN

### To knit

Knit the back, fronts, sleeves, front borders and collar, following the patterns given on pages 5 – 7 and instructions below.

(Set the Row Number and the Stitch Scale according to the tension gauge for Plain Lace.)

(Back)



- (1)– Arrange the needles for K1.P1. rib.
  - SD ①/①, work closed edge cast on.
  - SD ②/②, knit the required number of rows in K1.P1. rib ending with Carriage at left.
  - Transfer Ribber sts. onto Knitter Nds.
  - Remove weights and Cast-on Comb.
  - Lower the Ribber, cover the Ribber needle bed with hard paper or heavy cloth and bring out the fabric over front bed. (Optional Plastic Ribber Needle Bed Cover is available.)
  - Hang Comb Weight with Claw Weights evenly. (Edge Pins must be placed in pos.)
- (2)– Exchange the Carriage for Lace Carriage.
  - Set Card A and lock at CM 1.
  - Set the Lace Carriage as follows:
    - Cam Lever.....Λ
    - Side Levers.....●
  - SD ⑤, knit 1 row in Stockinet.
  - Row Counter to 000.
  - Release Card.
  - Referring to Operation Manual,

work Fashion Lace until R.C. 074 (all sizes).

- (3)– Exchange Card A for Card B and lock at CM 1.
  - Set the Carriage as follows:
    - Cam Lever.....Λ
    - Side Levers.....●
  - Remove yarn from Yarn Feeder.
  - Move the Carriage twice to memorize the pattern.
  - Carriage at right side.
  - Release Card.
  - Rethread the yarn, set the Carriage as follows:
    - Cam Lever.....Λ
    - Side Levers.....▼
    - Stitch Dial.....⑤
  - Knit up to beginning of armhole.
- (4)– Shape both armhole by decreasing sts. following contour line. (The Edge Pin must be replaced following decreasing.)
- (5)– At shoulder point, refer to Knitting Manual, work partial knitting by decreasing sts. to shape both shoulder up to back neck.
  - Put yarn mark at the centre of neck.
- (6)– Push up the needles in sections (a) and (b) to D pos., with Ravel Cord, knit them back to A pos. (non working pos.) by hand.
  - Mark the CM on the Card, replace left Edge Pin to the right neck edge in pos.
  - Knit section (b) shaping neckline by decreasing sts., continue partial knitting at the shoulder side.
  - Remove the section on waste knitting.
  - Return the Card to marked CM and lock it.
- (7)– Unravel the Ravel Cord on section (a)
  - Remove section (a) on waste knitting.
  - Carriage at the side to correspond with arrow mark on card.
- (8)– Return the Pattern Paper to knit section (b)



## To make up

- Block each piece to size and press with steam iron.
- Join both front borders to the front edges as instructed below.

\*Measure the sts. of the front border on pattern paper with the Stitch Scale for Stockinet st. gauge and arrange the number of needles to B pos.

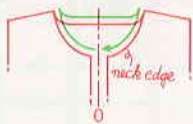
\*With right side of front edge facing, hang both end loops on each end Nds., fill Nds. with loops evenly along front edge.

\*With wrong side of the front border facing you, pick up the sts. on the last row of the main knitting and place them onto corresponding Nds. evenly.

\*Push up the needles to D pos., and knit 1 row with SD ⑧ from right to left.

\*Cast off the sts. using Automatic Linker or Tappet Tool.

- Join both shoulders on the machine.
- Measure the sts. of the neck edge on pattern paper with the Stitch Scale for Stockinet st. gauge.



- Join the collar to the neck edge in the same manner as done for front borders but hang collar facing right side.
- Join the side and sleeve seams.
- Set in sleeves.
- Sew 6 buttons on the left border.
- Give a final pressing.

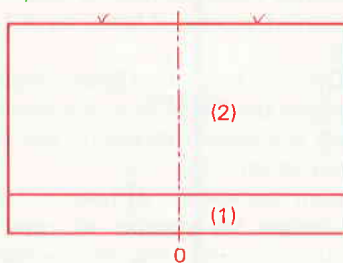
## TANK TOP

### To knit

Knit the back, front and borders following the patterns given on pages 5 – 7 and instructions below.

(Set the Row Number and the Stitch Scale according to the tension gauge for Plain Lace.)

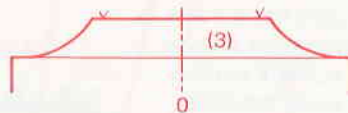
(Back)



- (1)– Work in the same manner as instructed in (1) for back of cardigan on page 2.
- (2)– Exchange the Carriage for Lace Carriage.
  - Set Card A and lock at CM 1.
  - Set the Lace Carriage as follows:  
Cam Lever.....△  
Side Levers.....●
  - SD ⑤, knit 1 row in Stockinet.
  - Release Card.
  - Referring to Operation Manual, work Fashion Lace without shaping.
  - Put yarn marks for straps.
  - Remove the fabric on waste knitting.

(Front)

- (1)–(2) – Work in the same manner as instructed in (1)–(2) for back.

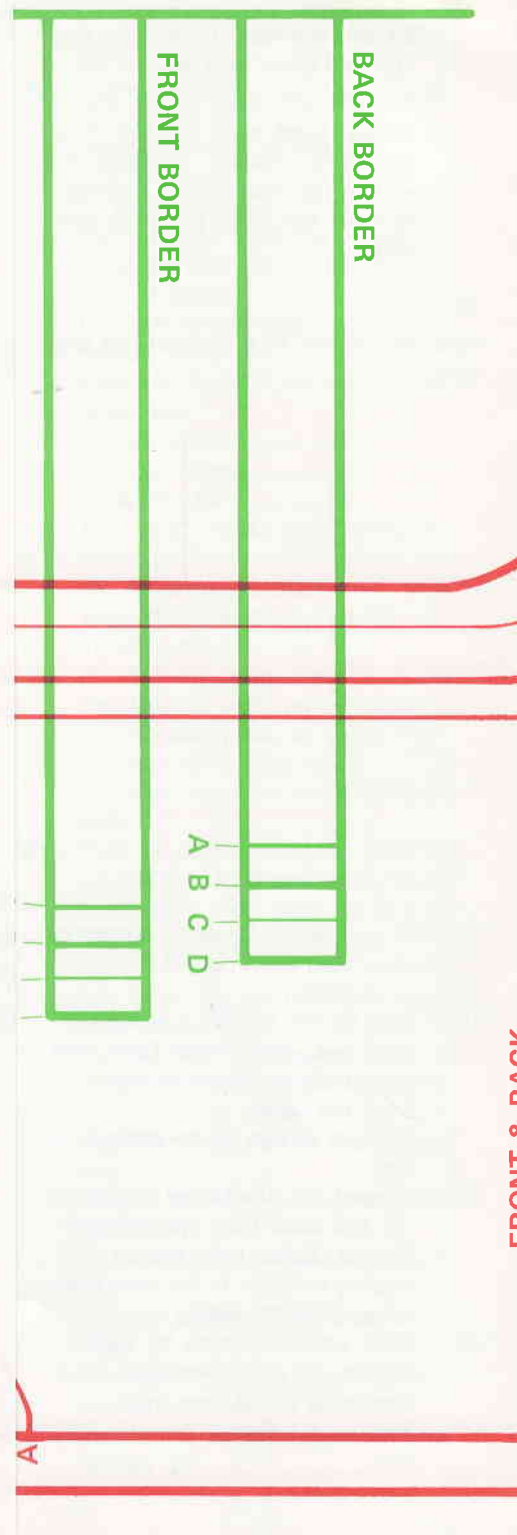


- (3)– Work partial knitting by decreasing sts. following contour line.
  - Put yarn marks.
  - Remove the fabric on waste knitting.

(Straps) – knit 2 pieces –

Use the Knitter side as right side.

- Set up the machine for K1.P1. rib.
- Following the instructions below, knit an extra tension swatch of K1.P1. rib and take tension gauge for straps.



\* Arrange likely number of Nds. for a width of approx. 2.5cm., for K1.P1. rib.

\* SD ②/②, knit about 20cm. long and remove the fabric from the machine.

\* Pull the swatch vertically, and press with steam iron.

\* Count the number of rows in 10cm.

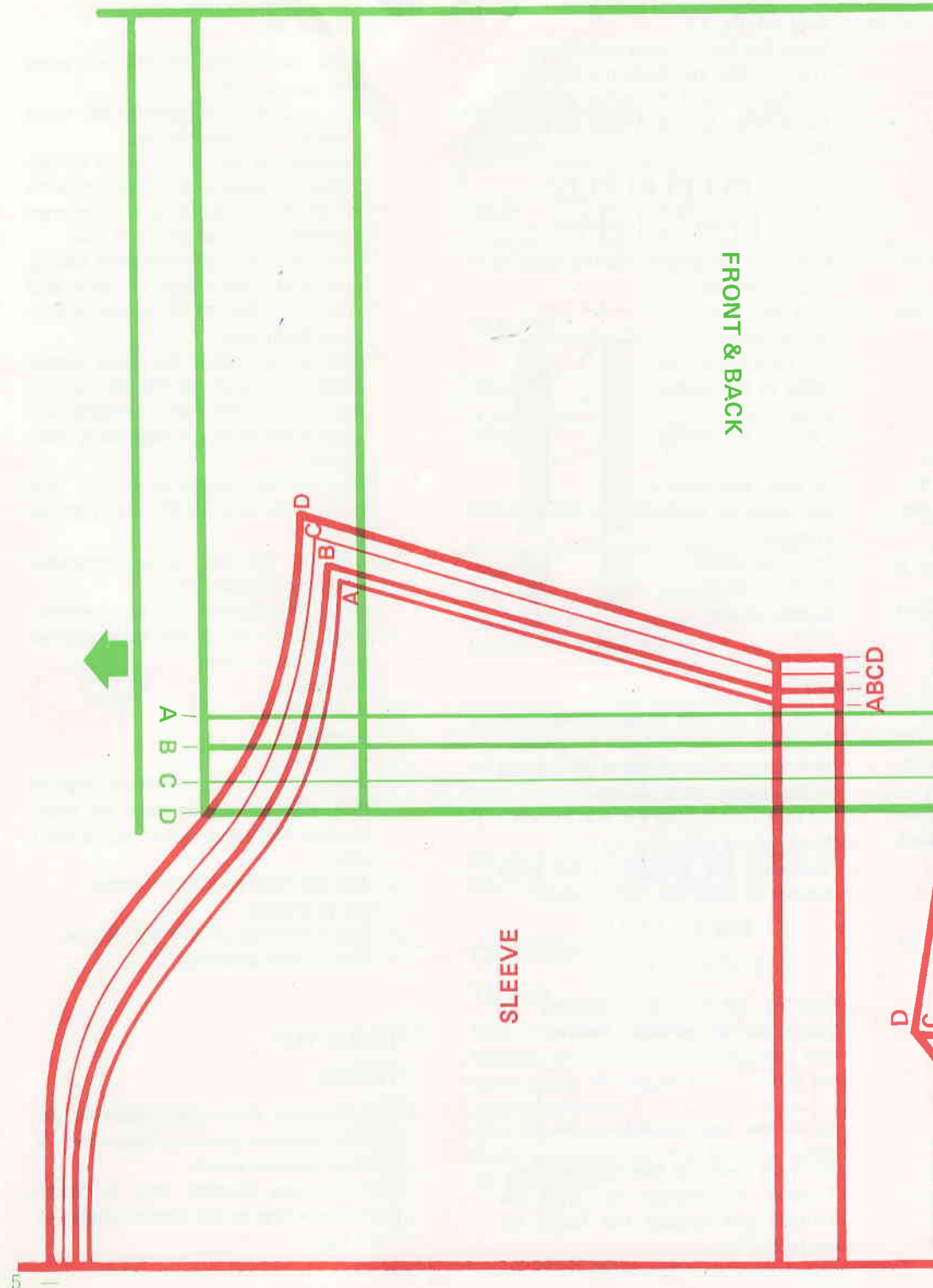
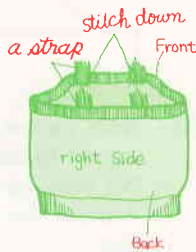
- Calculate the number of rows for your straps referring to "Length of strap" on page 2.
- Arrange the same number of Nds. as tension swatch for K1.P1. rib.
- Work closed edge cast on.
- Rearrange the Nds. transferring sts. in the same manner as front band.
- Knit required number of rows.
- Transfer the Ribber sts. onto the Knitter Nds. and remove the fabric on waste knitting.

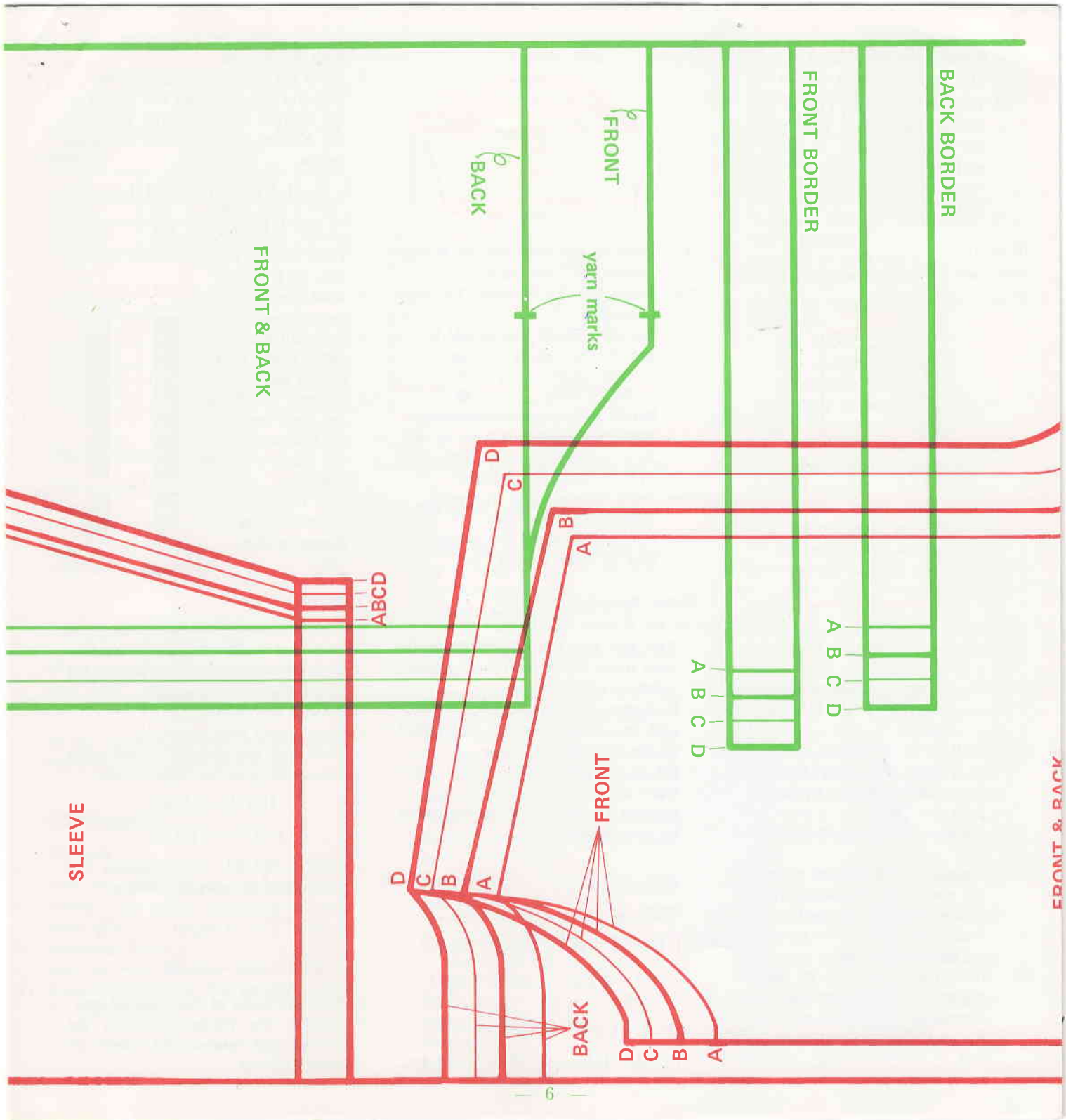
**(Borders)**

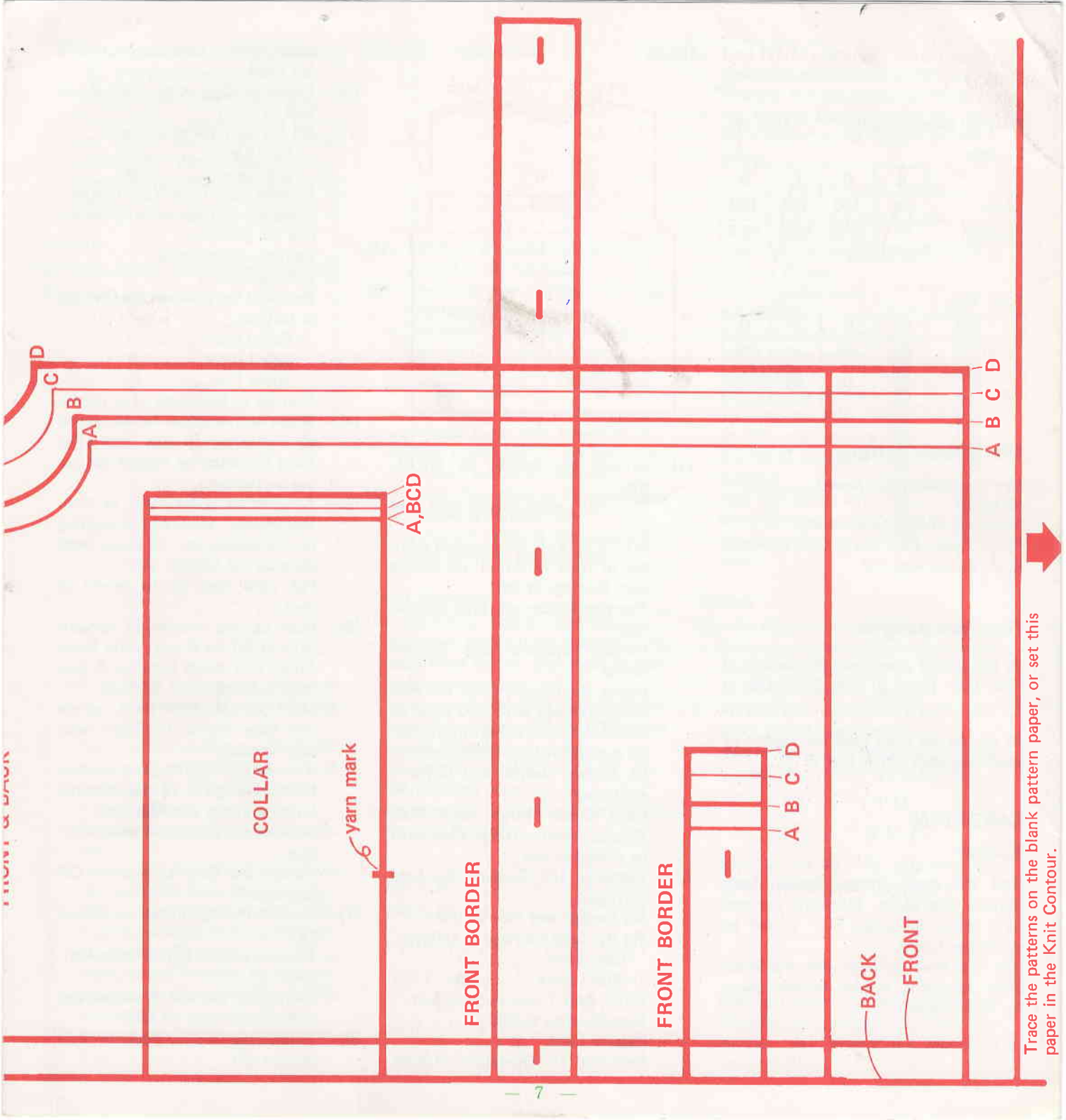
- Exchange the Stitch Scale for another with the number which is 20% added to the Stockinet st. gauge.
- Cast on the required number of sts. for K1.P1. rib, knit following the pattern paper.

**To make up**

- Block each piece to size and press with steam iron.
- Join the borders in the same manner as front borders along top edge of front and back.
- Join side seams.
- Finish the top of the straps.
- Stitch down the straps as shown.
- Give final pressing.







Trace the patterns on the blank pattern paper, or set this paper in the Knit Contour.