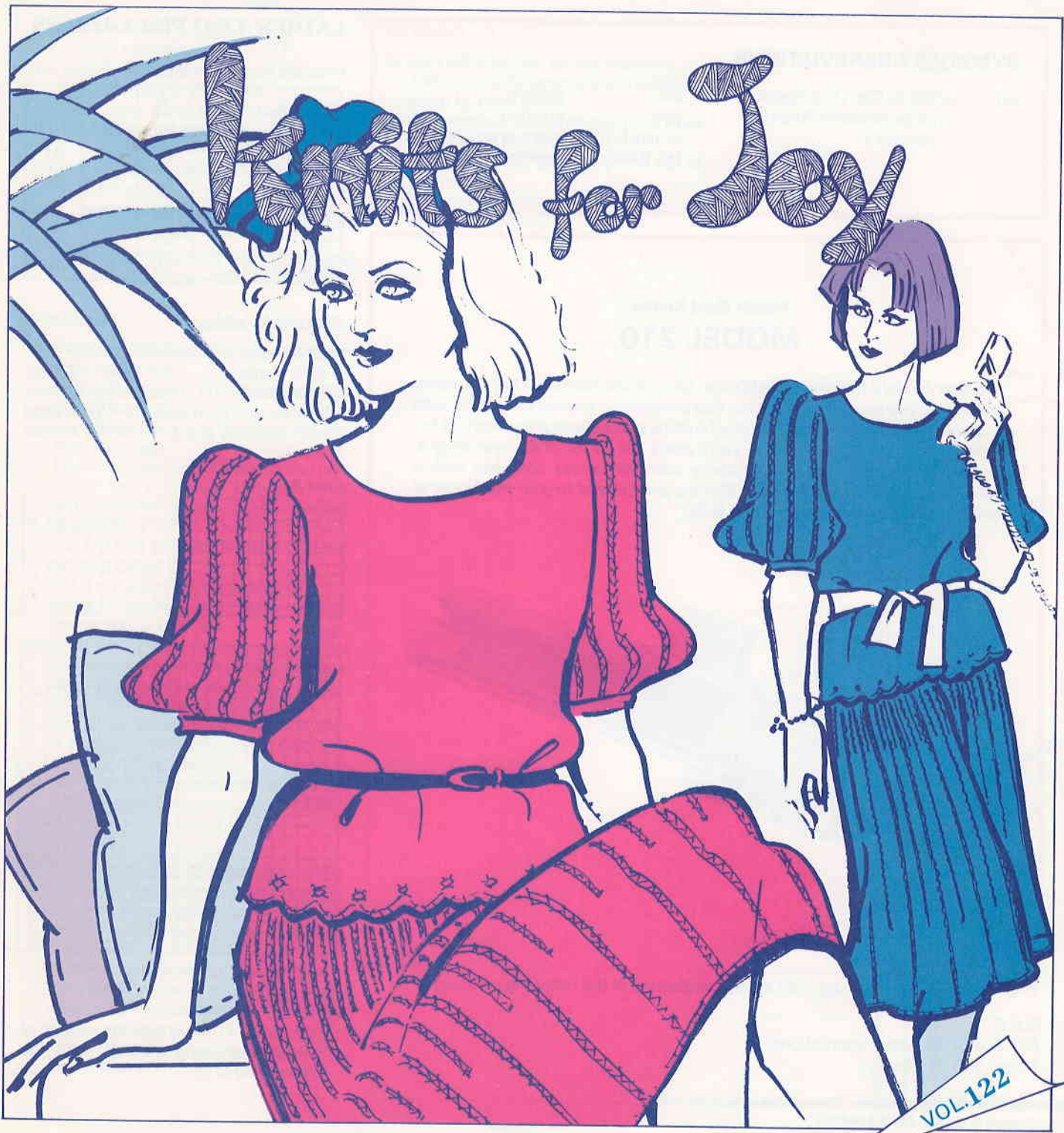


Wants for Joy

MODEL 510



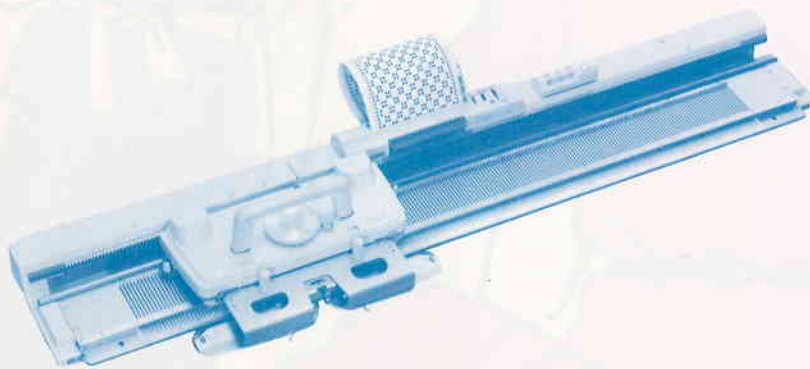
VOL. 122

SYMBOLS ABBREVIATIONS

SD	— Stitch Dial (The figure in circle indicates Stitch Dial number.)	sec.	— section
		pos.	— position
		st. (sts.)	— stitch or stitches
		Nd. (Nds.)	— needle or needles

Punch Card Knitter MODEL 210

The new Model 210 Punch Card Knitter takes all the hard work out of knitting and allows you to produce knitwear that combines a professional finish with that characteristic hand-made look all knitting enthusiasts are searching for. What's more, it's so easy to use, you'll really have a lot of fun operating it. Despite its attractive price, this sturdy machine comes complete with a number of sophisticated features that are guaranteed to give you hours of pleasure and improve your knitting skills.



Your letters to "Knits for Joy" are always welcomed at the following address:—

S.S.C.
P.O. Box 5095, Tokyo International
Tokyo, 100-31, Japan

© Silver Knitting Institute, Tokyo, Japan
Printed in Japan 87.7.3.5M(32)

LADIES' TWO PIECE-DRESS

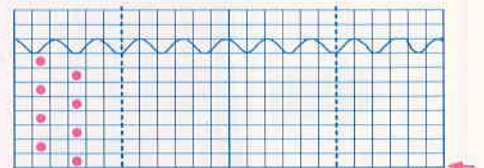
Finished measurements size: cm.

	A	B	C
Bust	96	100	104
Sleeve Length	29	30	31
Top length	54	55	56
Waist	60	66	72
Hip	86	92	98
Skirt length	68	70	74

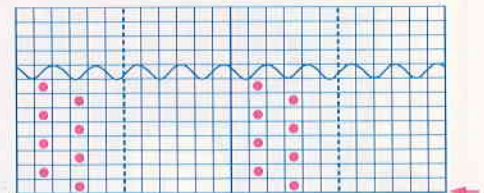
Materials/others:

Medium type of yarn (50% Cotton, 50% Acrylic) 500 ~ 600gs.
Waste yarn reasonable amount
Elastic band (2.5cm wide, 65~75cm long)
Punch Cards A, B & C (Punch as shown below.)

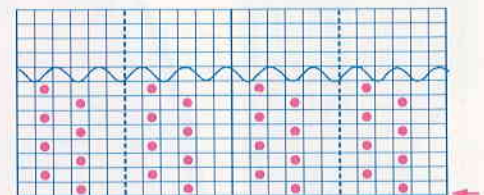
Card A



Card B



Card C



Tension Gauge:

④ 48 sts. by 41 rows over the swatch of Plain Lace using Card B, with the Stitch Dial at ③.

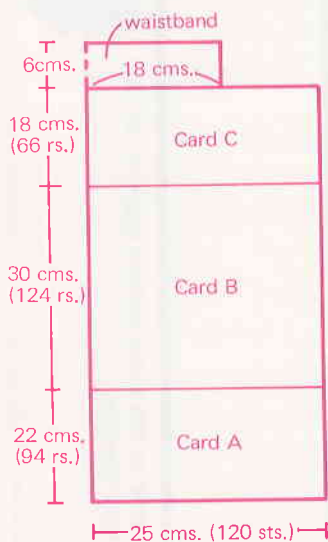
- Ⓑ 43 rows over the swatch of Plain Lace using Card A, with the Stitch Dial at ③. As for the stitch gauge, use the same gauge of the swatch using Card B.
- Ⓒ 37 rows over the swatch of Plain Lace using Card C, with the Stitch Dial at ③. As for the stitch gauge, use the same gauge of the swatch using Card B.
- Ⓓ 32 sts. by 52 rows over the swatch of Stockinet, with the Stitch Dial at ③.

SKIRT

This skirt is knitted by three different punch cards. Each punch card has the holes alternately perforated in two lines which give a pleat effect on the fabric. According to the difference of the number of this perforated lines of Card A, B and C, skirt will be shaped into flare.

To knit

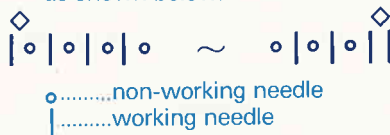
Purl side of the fabric is worn as the right side. Knit 4 pieces alike. The diagram below is for size B. Adjust the skirt length at the bottom section knitted with Card A.



If your Tension Gauge is different from the one above-mentioned, calculate the number of stitches and rows according to your Tension Gauge.

N.B. The number of rows for each section must be an even number.

- (1) — Set the Punch Card A and lock at CM 1.
— Push 120 nds. (5 patterns will be appeared on the fabric) plus 1 nd. each for seaming allowance on both sides to B position and push back every other nd. to A position as shown below:



- Cast on and knit 16~18rs. with waste yarn.
- (2) — Lace Carriage is on the right side of the Needle Bed and set each part as follows:
Cam Lever..... ^
Side Levers..... O
S.D..... ①
- (3) — With main yarn, knit 5 rows.
— Pick up the sinker loops on the first row of main knitting and place them onto the corresponding vacant nds.
— S.D. ③, knit 1 row.
- (4) — Release the Card and set Side Levers to v.
— Knit 94 rows in Plain Lace.
- (5) — Exchange Card A for Card B and lock at CM 1.
— Set Cam Lever to ^ and Side Levers to O and remove the yarn from Yarn Feeder.
— Move the Carriage twice to memorize the first row of Card B.
- (6) — Release the Card and set the Carriage as follows.
Cam Lever..... ^
Side Levers..... v
- Main yarn in Yarn Feeder, continue to knit 124 rows in Plain Lace.
- (7) — Exchange Card B for Card C and lock at CM 1.
— Set Cam Lever to ^ and Side Levers to O and remove the yarn from Yarn Feeder.
— Move the Carriage twice to memorize the first row of Card C.
- (8) — Release the Card and set the Carriage as follows.
Cam Lever..... ^
Side Levers..... v

- Main yarn in Yarn Feeder, continue to knit 66 rows in Plain Lace.
- (9) — Set both Side Levers to O and knit 2 rows in Stockinet.
- (10) — Knit several rows with waste yarn and remove the fabric from the machine.
- (11) — Knit another 3 pieces in the same way.
N.B. In case of size A, knit 3 pieces in 5 pattern width, and 1 piece in 4 pattern width.
In case of size C, knit 3 pieces in 5 pattern width, and 1 piece in 6 pattern width.

(Waistband)

- (1) — Block out each piece to size and steam the surface of the fabric without pressing.
— Join the centre seams of back and front by blind stitch respectively.
- (2) — Arrange 62 nds. for waistband to B position.
— With wrong side of front skirt facing, pick up the sts. from the last row and place two sts. together on each nd. in B position to have gathered except both end nds. (Fill both end nds. with single st. for seaming allowance.)
- (3) — S.D. ③, knit 24 rows in Stockinet with main yarn.
- (4) — Pick up the sinker loops on the first row of waistband and place them onto the corresponding nds.
- (5) — S.D. ⑧, knit 1 row and cast off the sts. with Automatic Linker or a Tappet Tool.
— Knit another waistband for back skirt in the same manner.

To make up

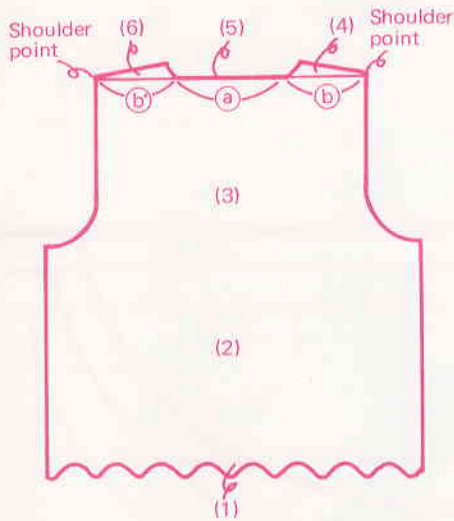
- Join side seams with blind stitch leaving an opening for elastic.
— Insert the elastic band through the waistband and join both ends together.
— Close the opening.
— Sew in yarn ends.
— Give a final steam.

TOP

To knit

Knit back, front and sleeves following patterns given on pages 4~5 and instructions below.

(Back)



— Set Pattern Paper for Back and lock at the starting line.

- (1) — Push the required number of needles to B pos. and push back every other needle to A pos.
 - Cast on and knit several rows with waste yarn.
 - Knit 1 row with Ravel Cord.
 - Set Stitch Dial 1 full number lower than the original Dial (2) and knit 4 rows with 2 strands of main yarn.
 - Push the Nds. to B pos. that were pushed back to A pos. when casting on.
 - Pick up the sinker loops on the first row of the main knitting and place them onto the corresponding Nds. in B pos.
 - Set back SD to the original number (3) and knit 1 row with 1 strand of main yarn.
 - Push every 10 Nds. to D pos.
 - Set the Russel Levers to I and knit 5 rows.

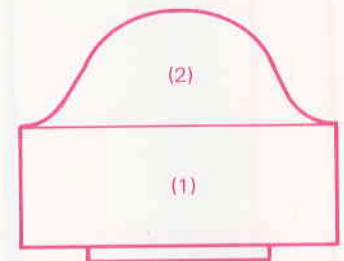
- Set the Russel Levers to II and knit 1 row.
 - Set the Russel Levers to I and push the same Nds. to D pos. that were pushed to D pos. in previous step and knit 3 rows.
- (2) — Reset Russel Levers to II and continue to knit in Stockinet.
 - (3) — Shape armholes on both sides following the contour line and knit up to the neckline.
 - (4) — If the Carriage is on the right side:—
 - Push the Nds. for sec. (b) and (a) to D pos.
 - Set both Russel Levers to I.
 - Knit up to shoulder point decreasing sts. to shape neckline.
 N.B. If the Carriage is on the right side at shoulder point, knit 1 more row.
 - Slope shoulder by partial knitting while shaping neckline by decreasing sts.
 - Remove the section (b) on waste knitting and push back the empty Nds. to A pos.
 - (5) — Push back the Nds. for sec. (a) to C pos. and remove the section on waste knitting.
 - Push back the empty Nds. to A pos.
 - (6) — Place the Carriage on the right side.
 - Push the Nds. for sec. (b) to C pos.
 - Work in the same manner as for (4) but reverse shapings.

(Front)



- (1)—(3) — Work in the same manner as for back.
- (4) — If the Carriage is on the right side:—
 - Remove the main yarn from Yarn Feeder.
 - Replace the Carriage on the left side.
 - Push the Nds. for sec. (a) and (b) to D pos.
 - Set both Russel Levers to I and knit several rows with waste yarn.
 - Remove the sec. (b) from the machine and push back the empty Nds. to A pos.
 - Remove the sec. (a) on waste knitting and push back the empty Nds. to A pos.
 - Replace the Carriage on the right side and thread the main yarn through Yarn Feeder.
 - Push back the Nds. for sec. (b) to C pos. and knit up to shoulder point, decreasing sts. to shape neckline.
 - Slope shoulder by partial knitting while decreasing sts. at neck edge.
 - Remove the section on waste knitting.
- (5) — Hook the sts. for sec. (b) onto the original Nds.
 - Work in the same manner as done for sec. (b) but reverse shapings.

(Sleeve) — both alike —



- Set the Pattern Paper for sleeve and lock at starting line.
 - Set the Punch Card B and lock at CM 1.
- (1) — Arrange required number of Nds. for the width of sleeve.
 - Knit several rows with waste yarn.
 - The Lace Carriage is on the left side of the Needle Bed and set each part as follows:—

Cam Lever..... \wedge
Side Levers..... \circ
S.D..... $\textcircled{3}$

- Knit 1 row in Stockinet.
- Release Card and Pattern Paper, and Side Levers to \blacktriangledown .
- Knit underarm without shaping.
- (2) — Knit sleeve cap decreasing sts. at both edges.
- N.B. Move the Edge Pins following decreased Nds.
- Put yarn mark at the center and cast off the sts. with Tappet Tool.

(Neckband)

- Block front & back to size and press with steam iron.
- Join the right shoulder on the machine.
- Exchange the Lace Carriage for the Main Carriage.
- Exchange the Stitch Scale for the one which has a number 10% less than the number of sts. of the tension gauge \textcircled{D} .
- Set the row number according to the tension gauge \textcircled{D} .
- Set the Pattern for neckband.
- Bring out the required number of Nds. for neckband to B pos.
- With wrong side facing you, pick up sts. evenly from neck edge and place them onto the Nds. in B pos.
- SD $\textcircled{3}$, knit straight in Stockinet.
- Pick up sinker loops from the first row of neckband and place them onto the corresponding Nds.
- SD $\textcircled{10}$, knit 1 row and cast off the sts with a Tappet Tool or Automatic Linker.

(Armbands)

- Block sleeves to size and steam the surface of the fabric without pressing.
- Set the Pattern for armband.
- Push the required number of Nds. to B pos.
- With wrong side facing, pick up the sts. from the first row of sleeve and place them onto the Nds. in B pos. gathering evenly to fit armband.
- Knit armband in the same manner as for neckband.

To make up

- Join left shoulder on the machine.
- Join both side seams and neckband seam by blind stitch.
- Join underarm seams and both ends of armband by blind stitch.
- Set in sleeves, gathering the top of sleeve cap.
- Sew in yarn ends.
- Give a final press.

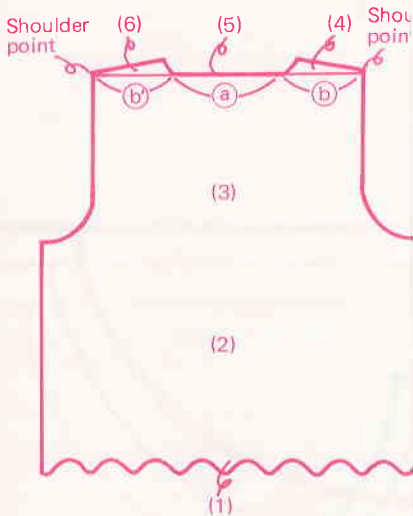


TOP

To knit

Knit back, front and sleeves follow patterns given on pages 4~5 and instructions below.

(Back)



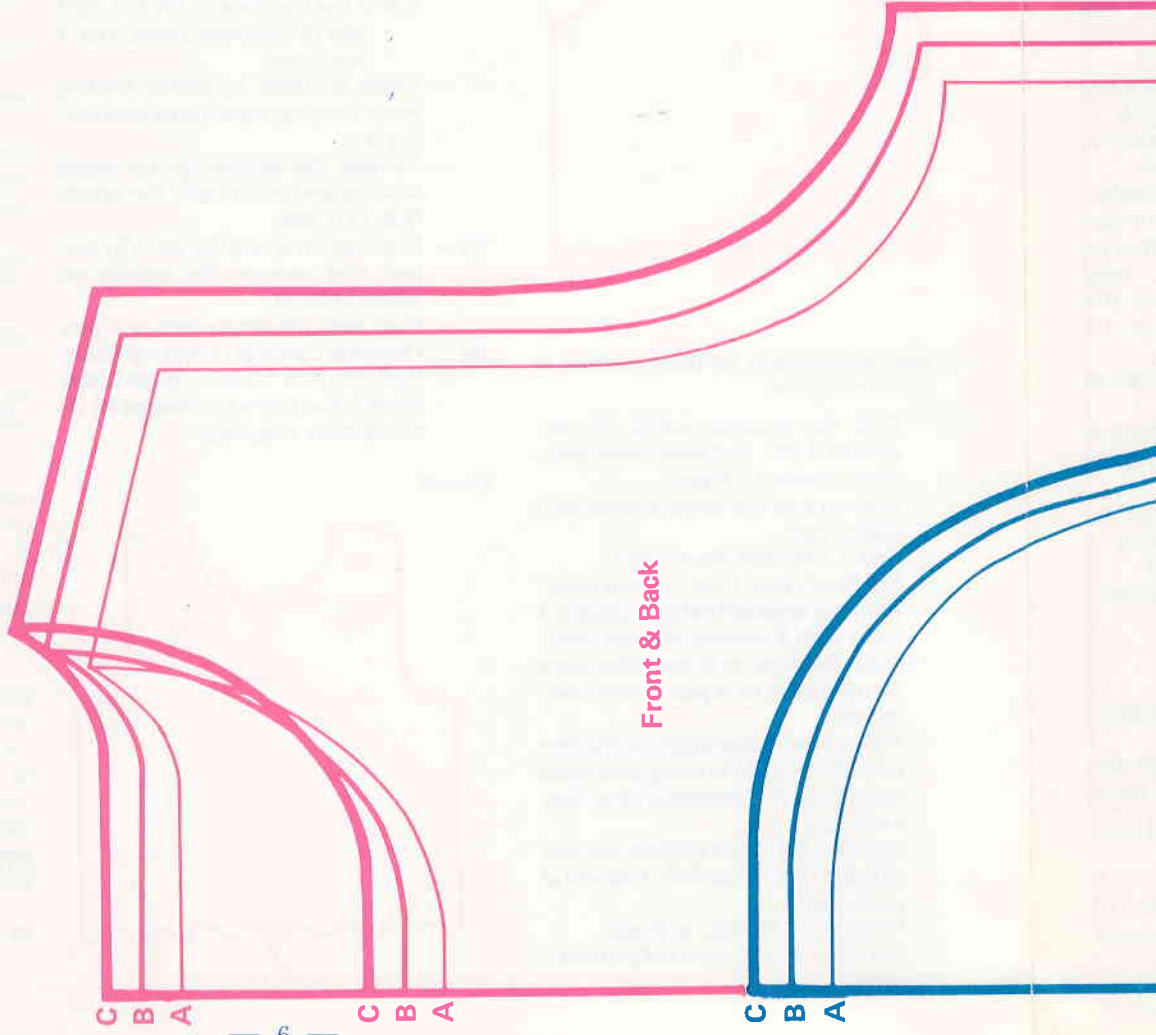
— Set Pattern Paper for Back and lock the starting line.

- (1) — Push the required number of needles to B pos. and push back every other needle to A pos.
 - Cast on and knit several rows with waste yarn.
 - Knit 1 row with Ravel Cord.
 - Set Stitch Dial 1 full number lower than the original Dial (2) and knit rows with 2 strands of main yarn
 - Push the Nds. to B pos. that we pushed back to A pos. when casting on.
 - Pick up the sinker loops on the first row of the main knitting and place them onto the corresponding Needle in B pos.
 - Set back SD to the original number (3) and knit 1 row with 1 strand main yarn.
 - Push every 10 Nds. to D pos.
 - Set the Russel Levers to I and knit rows.

Armband



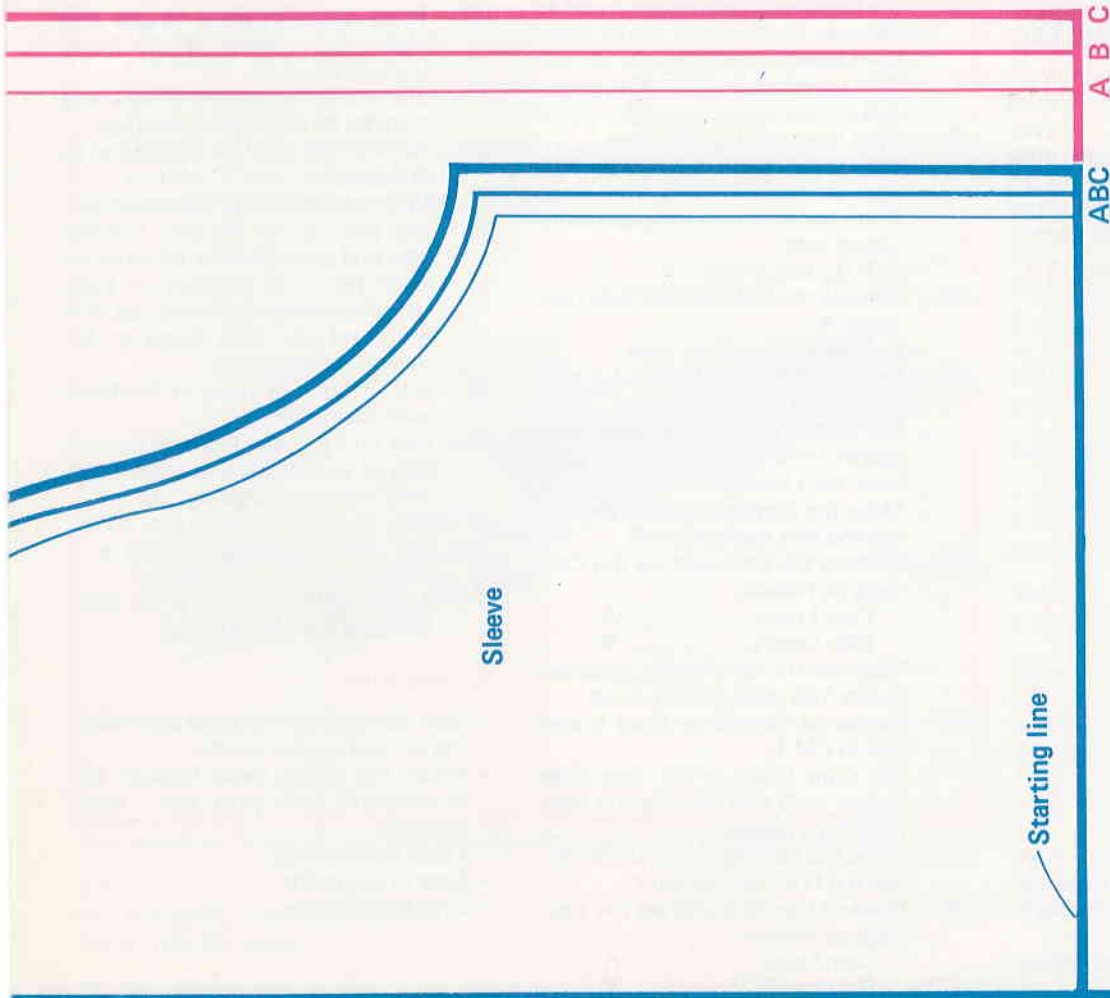
Neckband



C B A C B A

— 6 —

Front & Back



Trace the patterns on the blank pattern paper or set this paper in the Knit Contour.

