

**knitking**  
*magazine*

free

# Garter Carriage

COLLECTION

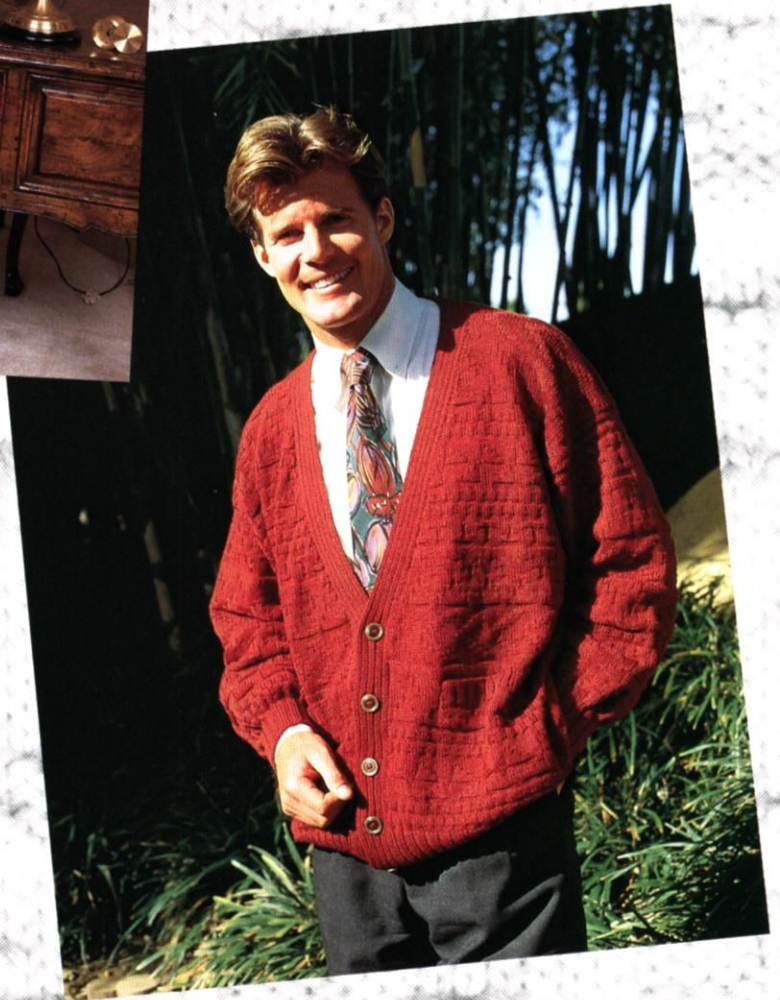
*Exclusive Textured  
Designs for the  
Whole Family*



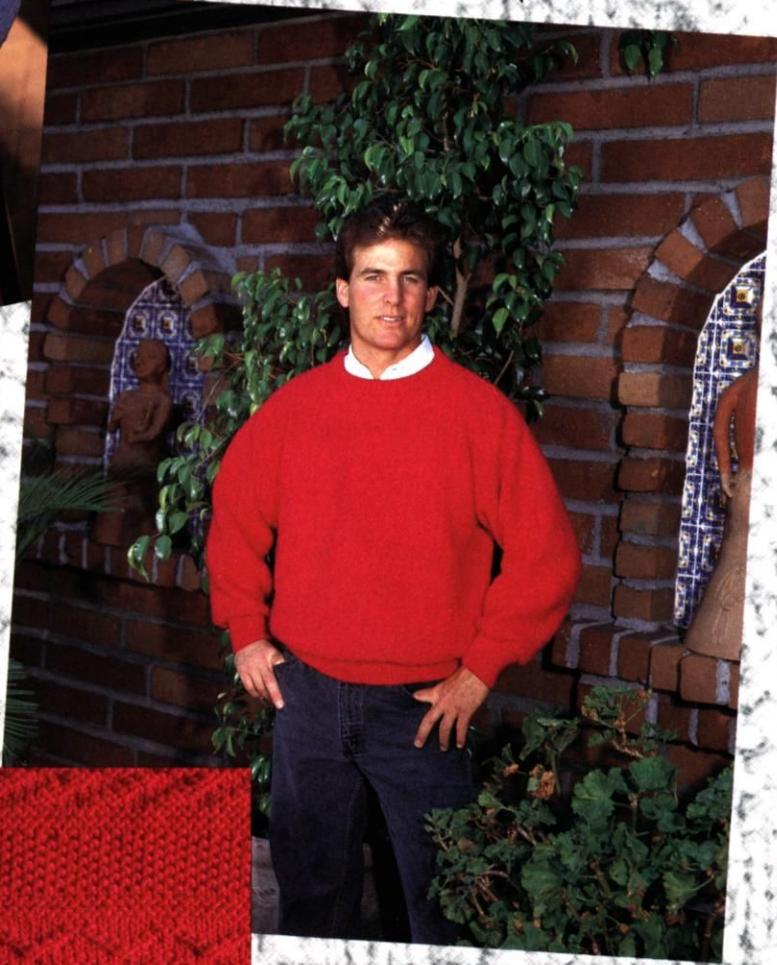














## The Sample Swatch

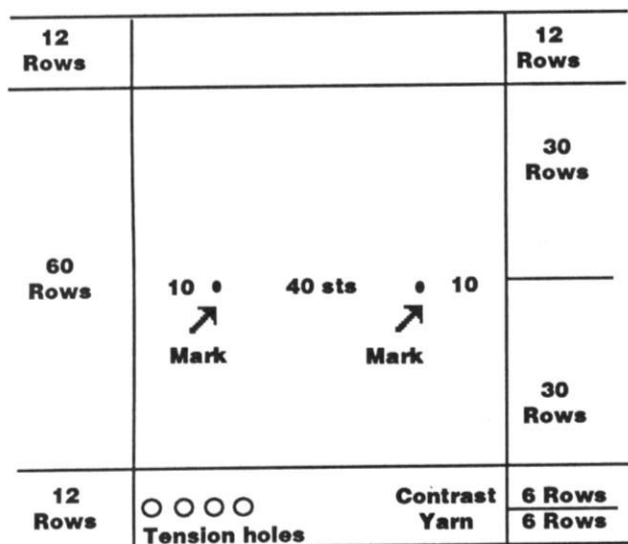
It is imperative that you knit a sample swatch for every garment. Although you may be using the identical yarn and machine model as the pattern suggest, many variable such as dye lot difference, speed of knitting and just machine to machine differences can all cause a variance in the gauge achieved. Knitking Magazine publishes the tension and gauge for each garment shown. We strongly urge you to knit a swatch representing three tensions - the recommended tension, and .1 or .2 higher and lower. These different tensions can be knitted in one piece with waste yarn separating the sections. This will eliminate unnecessary rethreading while allowing you to obtain the gauge published in the magazine.

To make a sample swatch on standard gauge machines cast on 60 stitches with waste yarn. Knit approximately 6 rows. \*Mark the tension number for your swatch by making holes. For example 4 eyelet holes for Tension 4, 6 eyelet holes for Tension 6. Knit 6 more rows.

Change to garment yarn and reset row counter to 0. Knit 30 rows (in Pattern stitch). With contrast yarn, mark the 10th stitch FROM EACH SIDE by hand. Knit 30 Rows. Change to waste yarn and knit 6 rows. Change tension up or down for second section and repeat from \*. Make third section with another tension. Remove on 12 Rows of waste yarn. Remove the sts. from the machine by pushing the Carriage across without yarn.

Pull and stretch the swatch both lengthwise and diagonally from corner to corner. Gently block the swatch. Treat the swatch as you would the finished garment before measuring the gauge. For example, if you plan to wash this garment and dry it in the dryer, you should do so, measuring before and after to see the difference.

Measure between the stitches marked and the beginning and ending rows for the inches/cms. knitted. Divide the total number of stitches/rows by the inches measured to calculate sts. and rows per inch.



## Table of Contents

1	V-ery Pretty	6
2	Zig-Zag Mania	8
3	Diamonds are Forever	9
4	Mens Cardigan	10
5	Suits Me Just Fine	12
6	Smart and Pretty Pullover	13
7	Textured Delight	14
8	V-ery Striking	15
9	Tri-Color Cardigan	18
10	Timeless Houglass Pullover	19
11	Suit Yourself	20
12	Faux Cable Pullover	22
13	Diagonally Dramatic	23
14	X-cellent Cable Pullover	25
15	Cardigan Set	29

## Abbreviations

<b>BO</b>	Bind Off
<b>BOLT</b>	Slip stitch Bind Off with Latch Tool
<b>C</b>	Color
<b>CC</b>	Contrast Color
<b>CO</b>	Cast On
<b>COR</b>	Carriage of Right
<b>COL</b>	Carriage of Left
<b>Decr</b>	Decrease
<b>EON</b>	Every Other Needle
<b>EOR</b>	Every Other Row
<b>EOS</b>	Every Other Stitch
<b>FF Decr</b>	Full-fashion decrease
<b>FF Incr</b>	Full-fashion increase
<b>GC</b>	Garner Carriage
<b>HP</b>	Holding position ("E" position)
<b>Incr</b>	Increase
<b>MB</b>	Main Bed
<b>MC</b>	Main Color
<b>Ndls</b>	Needles
<b>NWP</b>	Non-working position (out of work, "A")
<b>R(s)</b>	Row(s)
<b>RC</b>	Row Counter
<b>SHR</b>	Short Row
<b>St</b>	Stitch
<b>St. St.</b>	Stockinette Stitch
<b>T</b>	Tension
<b>WP</b>	Working Position ("B" position)
<b>WY</b>	Waste Yarn
<b>YM</b>	Yarn Marker



# I V-ery Pretty



**YARN:** Alpine - Pink  
Alpine available in 25 shades

**SIZES:**  
6/8 (10/12) [14/16]

**AMOUNT:**  
1-3/4 lb. (1-3/4 lb.) [2 lb]

**KIT PRICE:**  
\$48.50 (\$48.50) [\$55.00]

**TENSION:**  
Body: T 9.2  
Rib: T 6.2

**GAUGE:**  
Body: 6.82 Sts., 9.5 Rs = 1"  
Rib: 12 Rs = 1"

Make on Compuknit III/IV or V with Garter Carriage. Use variation key #2 on Compuknit III/IV for mirror image.

To set Mirror Image knitting on Compuknit V, follow steps below:

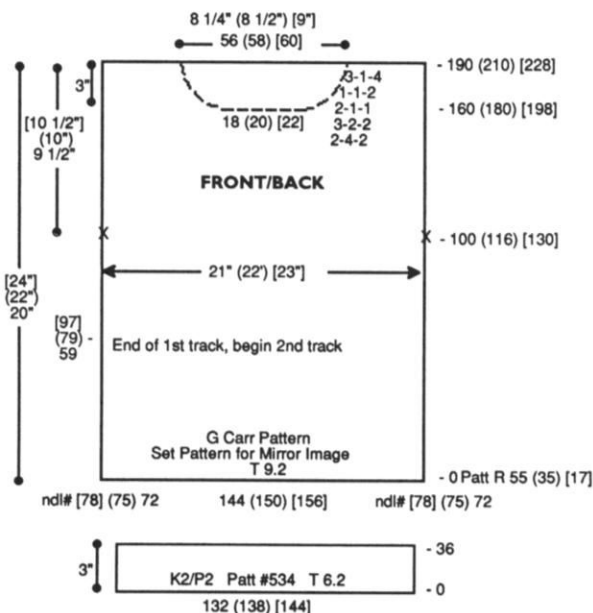
1. Power On
2. Selector II: Press "step"
3. Input pattern # then "step"
4. Select rows and stitches
5. Program Motif One and position (Y100-Y1)
6. Position Motif Two (G1-G100)
7. Motif Three - Enter "0"
8. Variation #1. All the # from 1 to 9 are flashing. Press Key #1 (on numeral keys) to turn off Motif 1. #2-9 are lit (data lamps). #1 is "off" (Motif 1). This will leave Motif Two reversed. Press Reverse Key (#1) again to be ready. Garment is worn on the knit side.

**Note:** Pattern for ribbing is #534 in the Compuknit III/IV/V Pattern Book.

**Special Pattern Note:** This pattern is designed from the top down. To adjust length for different sizes it is necessary to begin the garment at different pattern rows above the ribbing. The Row Counter will be set at 0- at the beginning of the body, but pattern will be advanced to appropriate row for size.

## BACK:

With WY CO 144 (150) [156] sts. After several rows, end with 1 row Ravel Cord to the left. With main yarn and K-Carriage, knit 1 row to the right at T 10. RC 0. T 9.2. Select Mirror Image. Track 1. Set Garter Carriage for body pattern and advance pattern to R 55 (35) [17]. Knit to R 59 (79) [97] (number displayed in the window of the Compuknit should be 114 for all sizes). Change to Track 2 and continue. At R 100 (116) [130] place a YM on each side for armhole. At R 190 (210) [228] mark center 56 (58) [60] sts. for neck opening. Knit 1 R manually at loose tension and BOLT.



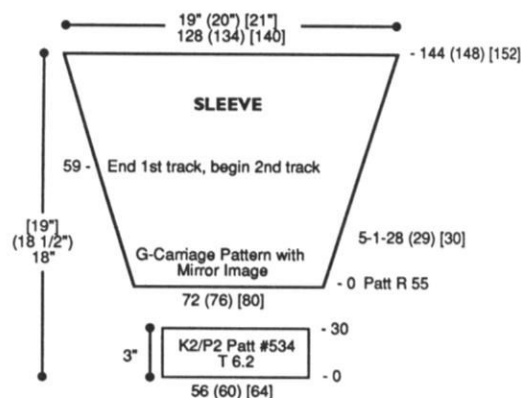
## FRONT:

Knit front same as back to R 160 (180) [198]. Shape neckline. Knit center 18 (20) [22] sts. to 'A' position on Ravel Cord and all sts. to the left. Note pattern row. \*On neckline edge decr. EOR 4 sts. 2x, every 3 Rs 2 sts. 2x, EOR 1 st. 1x, every R 1 st. 2x and every 3 Rs 1 st. 4x. At R 190 (210) [228] BO shoulder sts. Return the sts. to the left of center sts. to WP. Reset RC to R 160 (180) [198]. Reset pattern to correct row and shape left side from \*, reversing shaping. Return neckline sts. to WP. Knit 1 R manually at loose tension and BOLT.

## WAISTBAND:

With purl side facing rehang lower edge of front/back on 132 (138) [144] ndls, decr. evenly across. Knit 1 R with K-Carriage at T 10. RC 0. T 6.2. Set Garter Carriage for rib pattern and knit

36 rows, knitting last row at T 10+ and BOLT.



## SLEEVE:

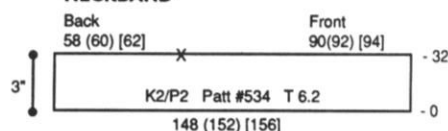
In order to match the sleeve pattern to the pattern of the body, begin the sleeve on the pattern row shown on chart.

With WY CO 72 (76) [80] sts. After several rows, end with 1 R Ravel Cord to the right. RC 0. T 9. Select Mirror Image. Track 1. Advance pattern to R 55. Shape sleeve by incr. on each side every 5 Rs 1 St. 28 (29) [30] x. At R 59 pattern row 114 is displayed in Compuknit window. Change to Track 2. Knit to R 144 (148) [152] and remove sts. on WY.

## SLEEVE CUFF:

CO 56 (60) [64] sts. RC 0. T 6.2. Set Garter Carriage for rib pattern and knit to R 30. With purl side facing rehang lower edge of sleeve on these ndls. decr. evenly across. Knit 1 R manually at loose tension and BOLT.

## NECKBAND



## NECKBAND:

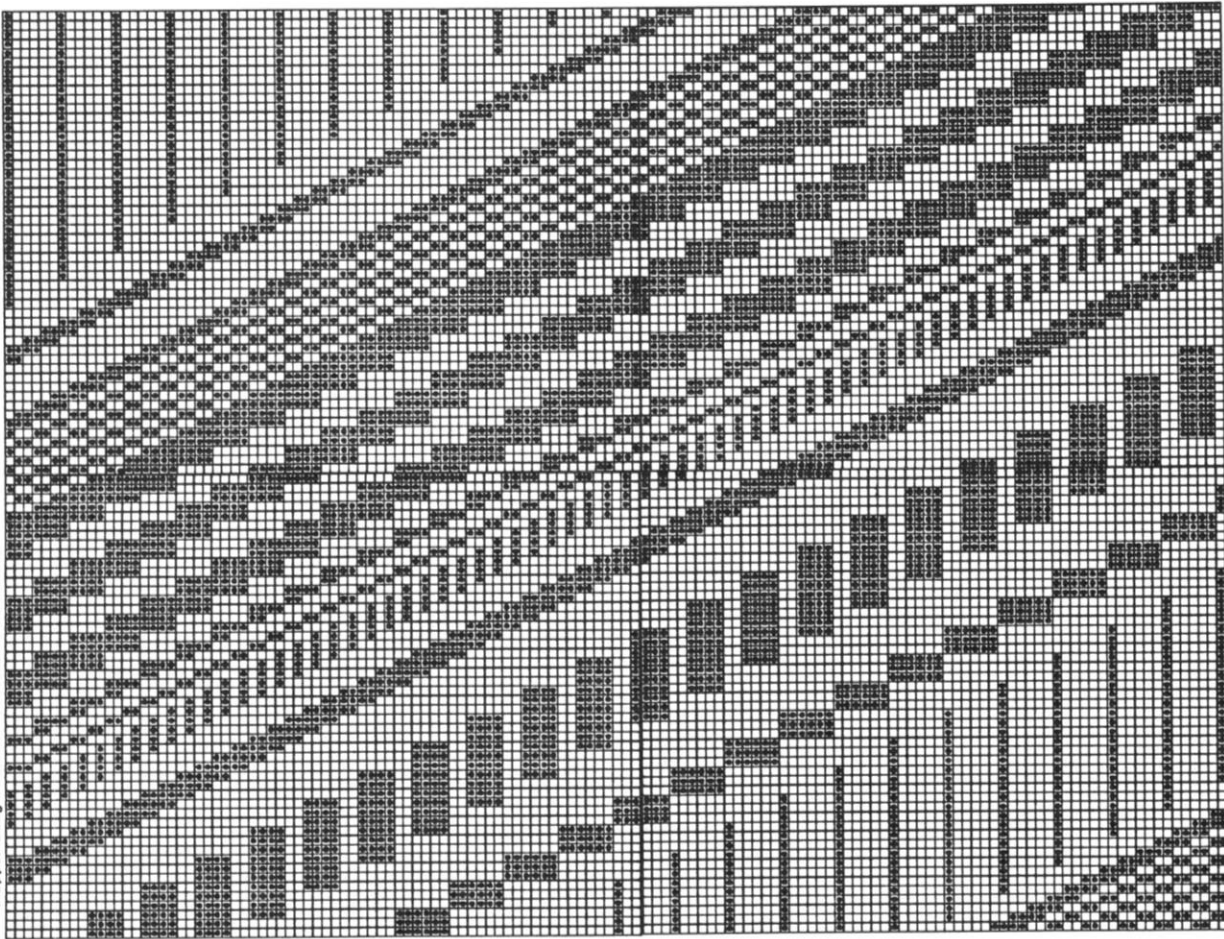
Close one shoulder. CO 148 (152) [156] sts. RC 0. T 6.2. Set Garter Carriage for rib pattern and knit to R 32. With purl side facing rehang neckline on these ndls. following chart. Knit 1 R manually at loose tension and BOLT.

## FINISHING:

Close remaining shoulder seam. Attach sleeves and close all remaining seams.

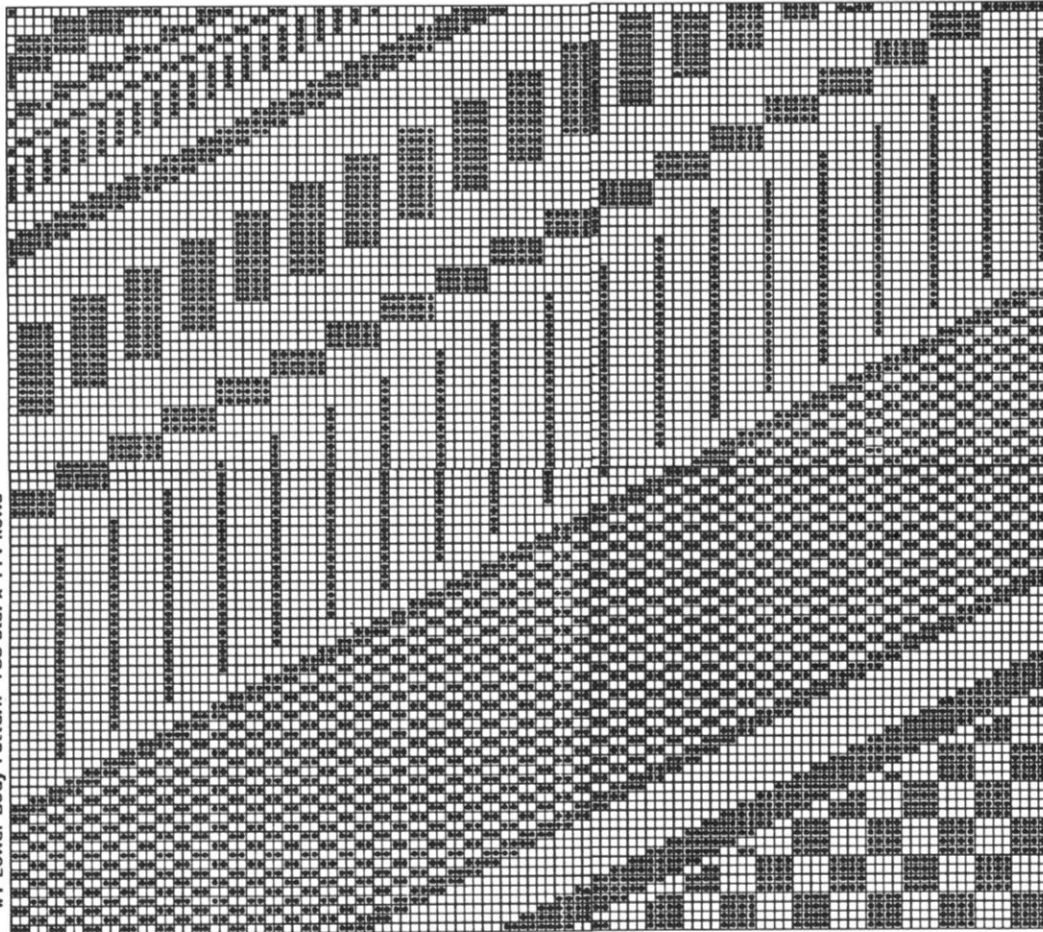


#1 Upper Body Pattern 100 Sts. x 134 Rows



Special Edition Disk: Track 2; Pat. 901

#1 Lower Body Pattern 100 Sts. x 114 Rows



Special Edition Disk: Track 1; Pattern 901



# 2 Zig-Zag Mania



**YARN:** Softon and Sewing Thread  
Softon available in 27 shades

**SIZES:**  
6/8 (10/12) [14/16] [18]

**AMOUNT:**

C1: Softon - White  
1 lb. {[(-1/2 lb.)}]  
C2: Thread White  
1200 yds per spool  
2 (2 ) {[3]} spools

**KIT PRICE:**

\$28.50 (\$39.00) [41.00]

**TENSION:**

Body: T 8  
Rib: T 4

**GAUGE:**

Body: 7.8 Sts., 9.3 Rs. = 1"

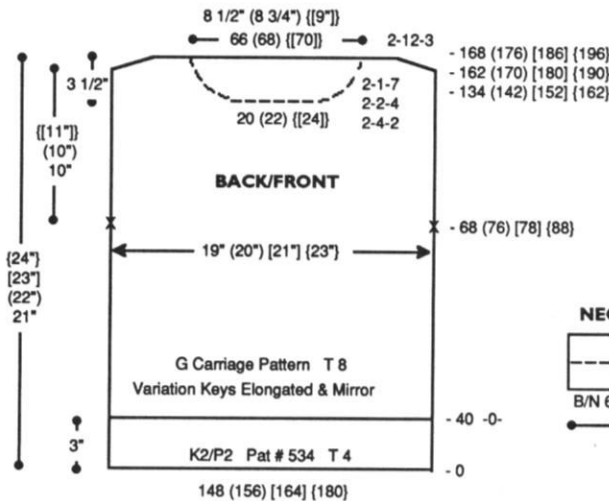
Make on Compuknit III/IV or V Machine with Garter Carriage.

**Pattern Note:**

Pattern for ribbing is #534 in the Compuknit III/IV/V Pattern Book. The body and sleeves are made using variation keys for Mirror Image and Elongation. (Comp V owners: See Pattern #1 for "how to" Mirror Image)

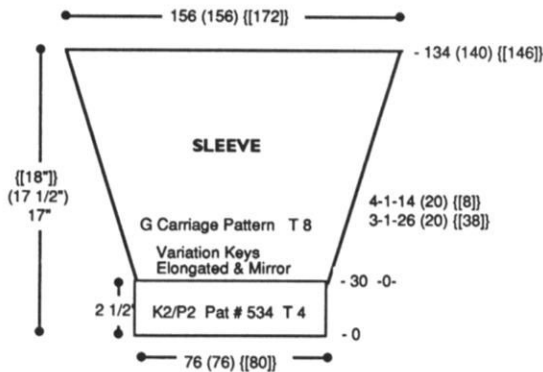
**BACK:**

With C 1 and C 2 CO 148 (156) [164] [180] sts. at T 5. RC 0. T 4. Set Garter Carriage for K2/P2 rib pattern and knit to R 40. RC 0. T 8. Set Garter Carriage for body pattern (elongate and mirror image). Knit to R 68 (76) [78] [88] and mark each side with YM for armhole. Continue in pattern to R 162 (170) [180] [190]. SHR shoulders EOR 12 Sts. 3x. At R 168 (176) [186] [196] mark center 66 (68) [70] sts. for neckline with YM and remove neckline and shoulder sts. on separate WY.



**FRONT:**

Knit front same as back to R 134 (142) [152] [162]. Shape neckline. Knit center 20 (22) [24] sts. manually to 'A' position on Ravel Cord and all sts. to the left. Note pattern row. \*On neckline edge decr. EOR 4 Sts. 2x, 2 Sts. 4x and 1 St. 7x. At R 162 (170) [180] [190] SHR shoulder EOR 12 Sts. 3x. At R 168 (176) [186] [196] remove shoulder sts. on WY. Reset RC to R 134 (142) [152] [162]. Return sts. to the left of center neckline sts. to WP. Reset pattern to correct row and shape left side from \*, reversing shapings. Return neckline sts. to WP and remove on WY.



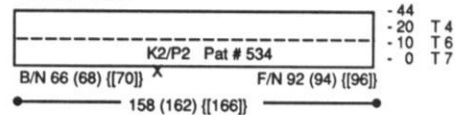
**SLEEVE:**

With C 1 and C 2, CO 76 (76) [80] sts. at T 5. RC 0. T 4. Set Garter Carriage for K2/P2 rib pattern and knit to R 30. RC 0. T 8. Set Garter Carriage for body pattern (elongate and mirror image). Shape sleeve by incr. on each side every 3 Rs. 1 St. 26 (20) [38] x and every 4 Rs. 1 St. 14 (20) [8] x. At R 134 (140) [146] BO around gate peps.

**NECKBAND:**

Close one shoulder first. With purl side facing rehang back/front neckline on 158 (162) [166] ndls. following chart. RC 0. T 7. Set Garter Carriage for K2/P2 rib pattern and knit to R 10. Change to T 6 and knit to R 20. Change to T 4 and knit to R 44, knitting last row at T 10 and BOLT.

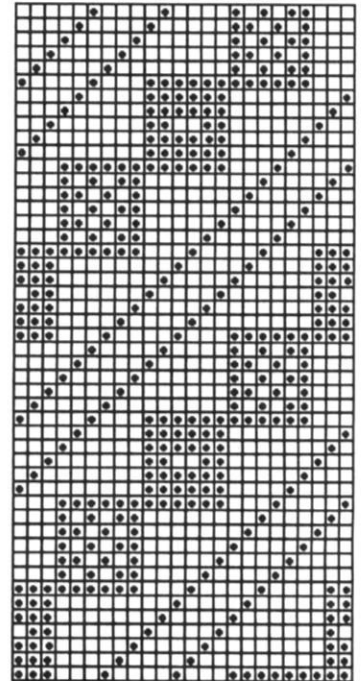
**NECKBAND**



**FINISHING:**

Close remaining shoulder and attach sleeves. Fold neckband to inside and whip stitch in place. Close all remaining seams.

**#2 Zig-Zag Mania Pattern  
24 Sts. x 48 Rows**



**Compuknit III/IV/V  
Elongate and Mirror Image Pattern  
Special Edition Disk: Tr 3; Pat. 901**



# 3 Diamonds Are Forever



**YARN:** Alpine-Jade  
Alpine available in 25 shades

**SIZES:** Small (Medium) [Large]  
**AMOUNT:** 2 lbs. all sizes  
**KIT PRICE:** \$55.00

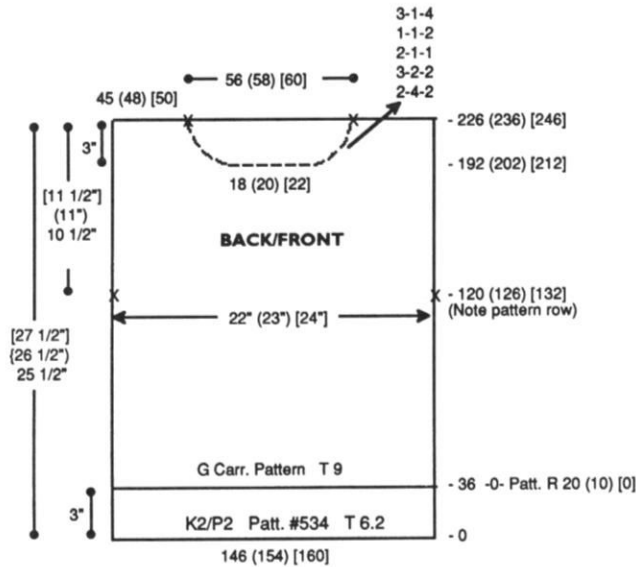
**TENSION:**  
Body: T 9  
Rib: T 6.2  
**GAUGE:**  
Body: 6.67 Sts., 10 Rs. = 1"  
Rib: 8.42 Sts., 11.8 Rs. = 1"

Make on Compuknit III/IV or V with Garter Carriage. Garment is worn on the purl side.

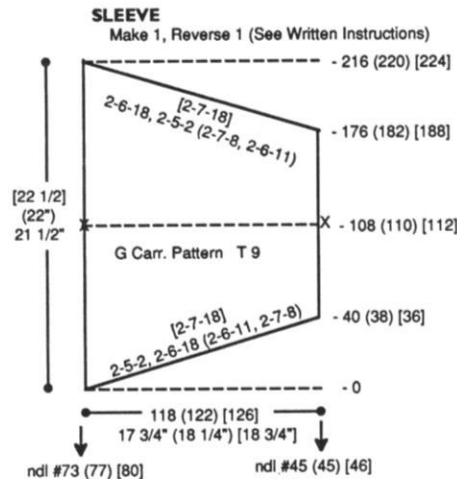
**Note:** Pattern for ribbing is #534 in the Compuknit III/IV/V Pattern Book.

**BACK:**  
With main yarn CO 146 (154) [160] sts. RC 0. T 6.2. Set Garter Carriage for rib pattern and knit to R 36. RC 0. T 9. Set Garter Carriage for body pattern. Advance pattern to R 20 (10) [0]. Knit to R 120 (126) [132] and place a YM on each side for sleeve. (Note pattern row in window of Compuknit for later use in starting sleeve.) At R 226 (236) [246] mark center 56 (58) [60] sts. for neck opening and BO.

**FRONT:**  
Knit front same as back to R 192 (202) [212]. Shape neckline. Knit center 18 (20) [22] sts. to 'A' position on Ravel Cord and all sts. to the left. Note pattern row. \*On neckline edge decr. EOR 4 Sts. 2x, every 3 Rs. 2 Sts. 2x EOR 1 St. 1x, every R 1 St. 2x and every 3 Rs. 1 St. 4x. At R 226 (236) [246] BO shoulder sts. Return the sts. to the left of the center sts. to WP. Reset RC to R 192 (202) [212]. Reset



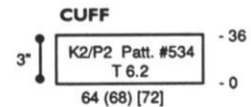
pattern to correct row and shape left side from \*, reversing shaping. Remove neckline sts. on WY.



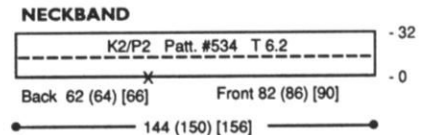
**SLEEVE:** Make 1, Reverse 1.  
*The sleeves are knit sideways. In order to match the sleeve pattern to the pattern of the body, it is important to begin the sleeve on the ndl. and pattern R you made note of from the garment body. To assure the pattern will match on both sides of the shoulder seam, in the center of the sleeve, the pattern is advanced 2 Rs. to compensate for the 2 Rs. of pattern which are incorporated into the shoulder seam.*

With WY and K-Carriage, CO 118 (122) [126] sts. starting with 73rd (77th) [80th] ndl. on left and end with 45th (45th) [46th] ndl. on right. After a minimum of three inches of WY, end with K-Carriage on the right. Knit 1 R with main yarn to the left. Manually knit 1 R to 'A' position on Ravel Cord.

Place Garter Carriage on left side. RC 0. T 9. Advance pattern to appropriate row. Begin working SHR by moving 5 (6) [7] sts. to 'B' position (removing Ravel Cord for these stitches only). Knit 2 Rs. Continue SHR by placing sts. back into 'B' position as follows: EOR 5 Sts 2x, 6 Sts. 18x (6 Sts. 11x, 7 Sts. 8x) [7 Sts 18x]. SHR will be complete at R 40 (38) [36]. Ravel Cord should be completely removed by this point. Continue in Garter Carriage pattern to R 108 (110) [112]. Place a YM on each side to mark center. At R 176 (182) [188] begin SHR shaping with Ravel Cord on right side as follows: EOR 6 Sts 18x and 5 Sts. 2x (EOR 7 Sts. 8x and 6 Sts. 11x) [7 Sts. 18x]. SHR is complete at R 216 (220) [224]. Remove sts. on WY. To reverse the second sleeve, begin on ndl. #73 (77) [80] on right and ndl. # 45 (45) [46] on left.



**CUFF:**  
CO 64 (68) [72] sts. RC 0. T 6.2. Set Garter Carriage for rib pattern and knit to R 36. With knit side facing rehang lower edge of sleeve on these ndls. decr. evenly across. Knit 1 R manually and BOLT.



**NECKBAND:**  
Close one shoulder. CO 144 (150) [156] sts. RC 0. T 6.2. Set Garter Carriage for rib pattern and knit to R 32. With knit side facing rehang back/front neckline on these ndls. following chart. Knit 1 R manually at loose tension and BOLT

**FINISHING:**  
Close remaining shoulder seam. Fold neckband to the inside and whip stitch in place. Attach sleeves. Close all remaining seams.



# 4 Mens Cardigan



**YARN:** Woolana - Cardinal  
Woolana available in 17 shades

**SIZES:**  
Small (Medium) [Large]

**AMOUNT:**  
2-1/2 lbs (2-1/2 lbs) [3 lbs]

**KIT PRICE:**  
\$75.00 (\$75.00) [\$90.00]

**TENSION:**  
Body: T 10  
Rib: T 8.1 or T 9.1

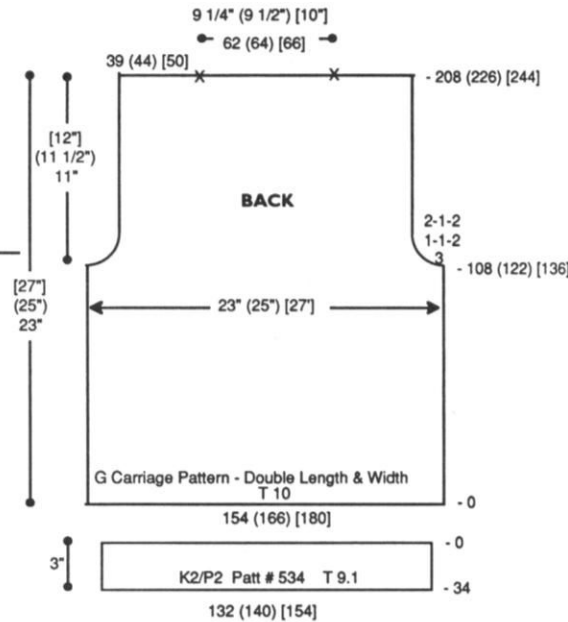
**GAUGE:**  
Body: 6.67 Sts., 9 Rs. = 1"

**NOTIONS:**  
4 (4) [5] - 7/8" Buttons

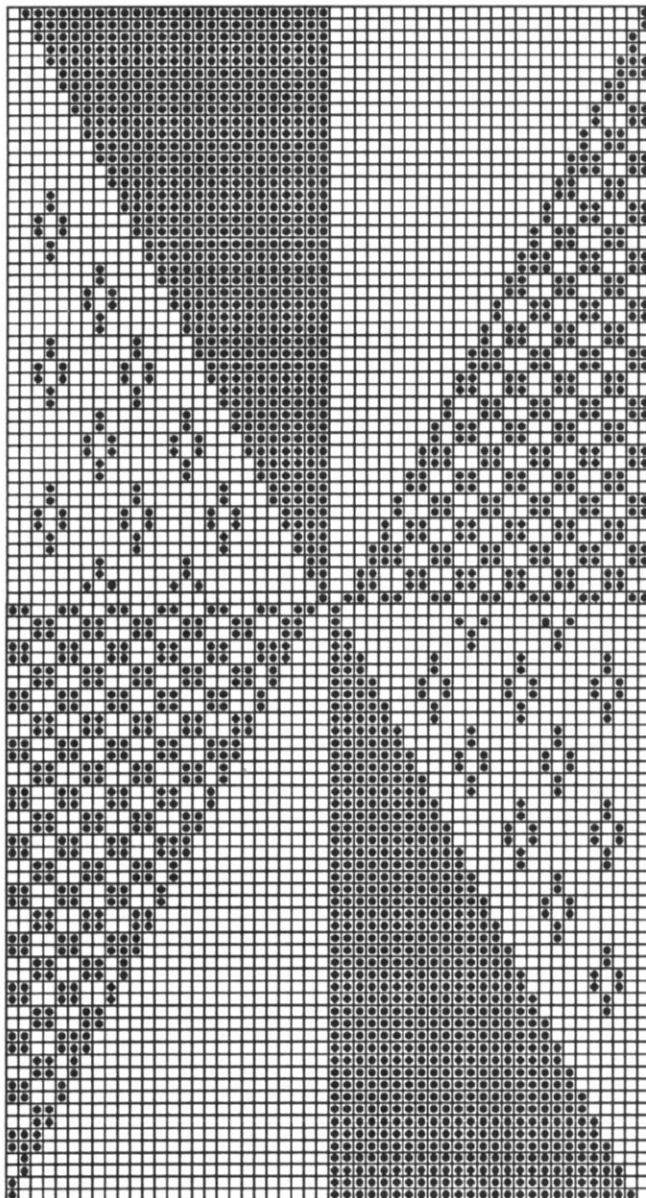
Make on Compuknit III, IV or V  
Machine with Garter Carriage.

**Pattern Note:**

Pattern for ribbing is #534 in the Compuknit III/IV/V Pattern Book. The body and sleeves are made using Double Width and Double Length Variation Keys. Reverse stitch pattern for one side of front and one sleeve.



#3 Diamonds are Forever 52 Sts. x 98 Rows



Special Edition Disk: Track 4; Pattern 901

**BACK:**

With WY CO 154 (166) [180] sts. After several rows end with 1 R Ravel Cord to the left. Change to main yarn. T 10. Knit 1 R in St. St. to the right. RC 0. Set Garter Carriage for body pattern (Variation Keys Double Length, Double Width). Knit to R 108 (122) [136] and shape armhole. On each side BO 3 sts., then decr. every R 1 St. 2x and EOR 1 St. 2x. At R 208 (226) [244] mark center 62 (64) [66] sts. for neck opening and remove neckline and shoulder sts. on separate WY.

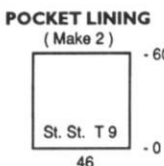
**BACK WAISTBAND:**

With purl side facing rehang lower edge of back on 132 (140) [154] ndls. decr. evenly across. Knit 1 row manually at a loose tension. RC 0. T 9.1. Set Garter Carriage for rib pattern and knit to R 34, knitting last row at T 10+ and BOLT.

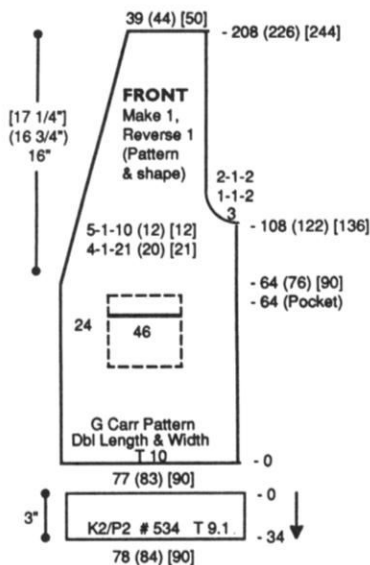
**POCKET LINING:** Make 2.

Must be made prior to Front.

'e' wrap CO 46 sts. RC 0. T 9. With K-Carriage knit in St. St. to R 60 and remove sts. on WY.

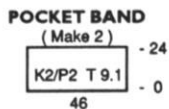






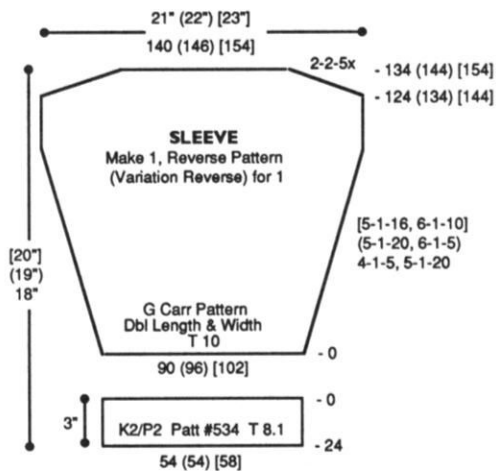
**FRONT:** Make 1, Reverse Stich Pattern and shape for 1. With WY CO 77 (83) [90] sts. After several rows, end with 1 row Ravel Cord to the left. Change to main yarn. Knit 1 R in St. St. at T 10. Set Garter Carriage for body pattern. Knit to R 64. Starting 24 sts. from left side, take next 46 sts. off on WY. With purl side facing, rehang top edge of pocket lining on these ndls. Continue to R 64 (76) [90] and shape neckline. On neckline edge use 2 prong transfer tool for full fashion decr. every 4 Rs. 1 St. 21 (20) [21] x and every 5 Rs. 1 St. 10(12)[12] x. AT THE SAME TIME at R 108 (122) [136] shape armhole. On right side BO 3 sts., then decr. every R 1 St. 2x and EOR 1 St. 2x. At R 208 (226) [244] remove shoulder sts. on WY.

**FRONT WAISTBAND:** With purl side facing rehang front on 78 (84) [90] ndls. RC 0. T 9.1. Set Garter Carriage for rib pattern and knit to R 34, knitting last row at T 10+ and BOLT.

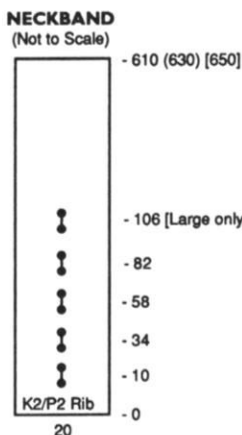


**POCKET BAND:** Make 2. With purl side facing pick up 46 sts. from pocket opening. RC 0. T 9.1 Set Garter Carriage for rib pattern and knit to R 24, knitting last row at T 10+ and BOLT.

**SLEEVE:** Make 1, Reverse Stitch Pattern for 1. With WY CO 90 (96) [102] sts. After several rows, end with 1 row Ravel Cord to the right. Change to main yarn. RC 0. T 10. Set Garter Carriage for body pattern. Shape sleeve by incr. on each side every 4 Rs. 1 St. 5x and every 5 Rs. 1 St. 20x (every 5 Rs. 1 St. 20x and every 6 Rs. 1 St. 5x) [every 5 Rs. 1 St. 16x and every 6 Rs. 1 St. 10x]. At R 124 (134) [144] shape sleeve cap. On each side SHR EOR 2 Sts. 5x. At R 134 (144) [154] BO loosely around gate pegs.



**SLEEVE CUFF:** With purl side facing rehang lower edge of sleeve on 54 (54) [58] ndls. decr. evenly across. RC 0. T 8.1. Set Garter Carriage for rib pattern and knit to R 24, knitting last row at T 10+ and BOLT.

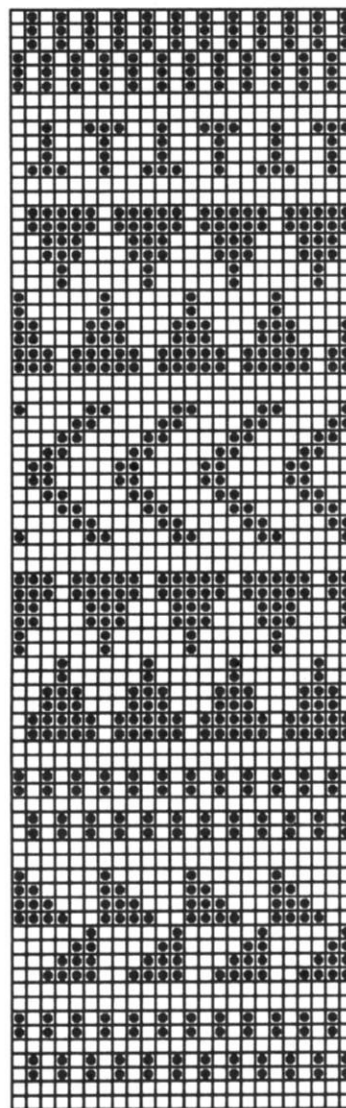


**NECKBAND:** CO 20 sts. for K2/P2 rib. RC 0. T 8.1. Knit to R 610 (630) [650] making buttonholes over 2 sts. with WY (see chart) at Rs. 10, 34, 58 and 82. Make a buttonhole at R 106 for large size only. Remove sts. on WY.

**Note:** If using Ribber instead of G Carriage use T 9.1/9.1 I.

**FINISHING:** Close shoulder seams and attach neckband. Attach sleeves and stitch pockets in place. Close all remaining seams.

**#4 Mens Cardigan  
24 Sts. x 78 Rows**



**Special Edition Disk:  
Track 5; Pattern 901**



# 5 Suits Me Just Fine



**YARN:** Sorbet -Khaki  
Sorbet available in 24 shades

**SIZES:**  
6/8 (10/12) [14] {16/18}

**AMOUNT:**  
3 lb. [(3 lb. )] {4 1/2 lbs. }

**KIT PRICE:**  
\$83.00 [(\$83.00)] {\$124.00}

**TENSION:**

Body: T 6.2

Rib: T 7

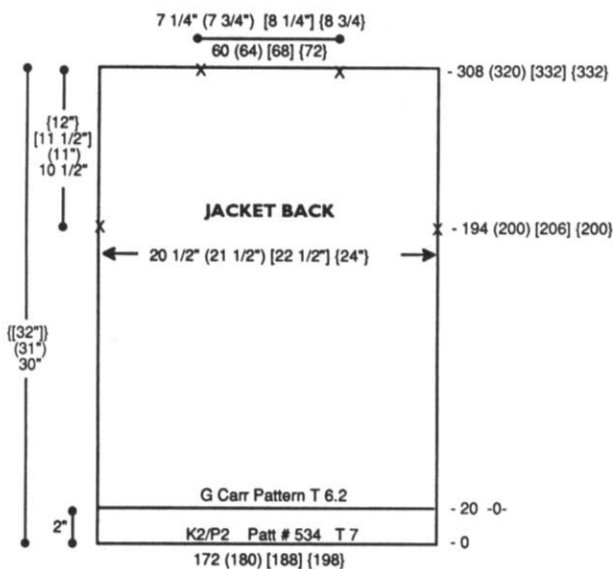
**GAUGE:**

Body: 8.27 Sts., 11.05 Rs. = 1"

**NOTIONS:** Shoulder pads and elastic for waist band.

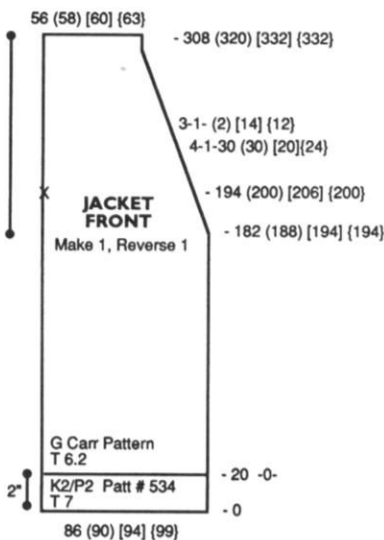
Make on Standard 24-Stitch Punch Card or Standard Electronic Machine with Garter Carriage.

**Note:** Pattern for ribbing is #534 in the CompuKnit III/IV/V Pattern Book.



## JACKET BACK:

With main yarn CO 172 (180) [188] {198} sts. RC 0. T 7. Set Garter Carriage for rib pattern and knit to R 20. RC 0. T 6.2. Set Garter Carriage for body pattern. At R 194 (200) [206] {200} place a YM on each side for armhole. At R 308 (320) [[332]] mark center 60 (64) [68] [72] sts. for neck opening and BO.



## JACKET FRONT:

Make 1, Reverse 1.

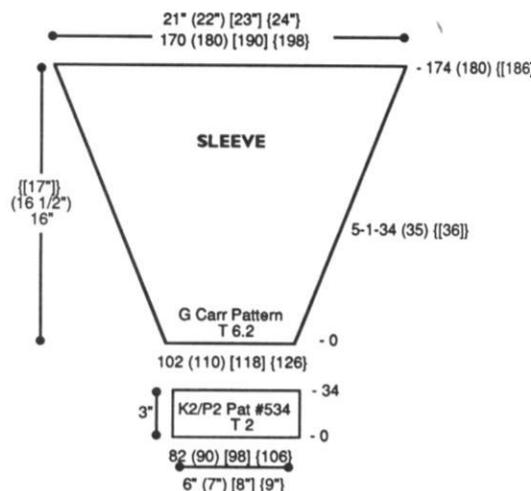
With main yarn CO 86 (90) [94] [99] sts.. RC 0. T 7. Set Garter Carriage for rib pattern and knit to R 20. RC 0. T 6.2. Set Garter Carriage for body pattern. At R 182 (188) [[194]] shape neckline. Decr. every 4 Rs. 1 St. 30 (30) [20] [24]x and every 3 Rs. 1 St. 0 (2) [14] [12]x. At R 194 ((200)) [206] place a YM on left side for armhole. Knit to R 308 (320) [[332]] and BO shoulder sts.

## SLEEVE:

With WY CO 102 (110) [118] {126} sts. After several rows end with 1 row Ravel Cord to the left. Knit 1 row with K-Carriage. RC 0. T 6.2. Set Garter Carriage for body pattern. Shape sleeve by incr. on each side every 5 Rs. 1 St. 34 (35) [36]x. At R 174 (180) [[186]] knit 1 row at T 10 and BOLT.

## SLEEVE CUFF:

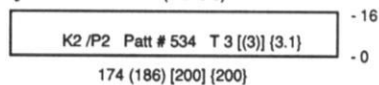
CO 82 (90) [98] [106] sts. RC 0. T 2. Set Garter Carriage for rib pattern and knit to R 34. With purl side facing rehang lower edge of sleeve on these ndls. decr. evenly across. Knit 1 row at T 10 and BOLT.



## JACKET BAND:

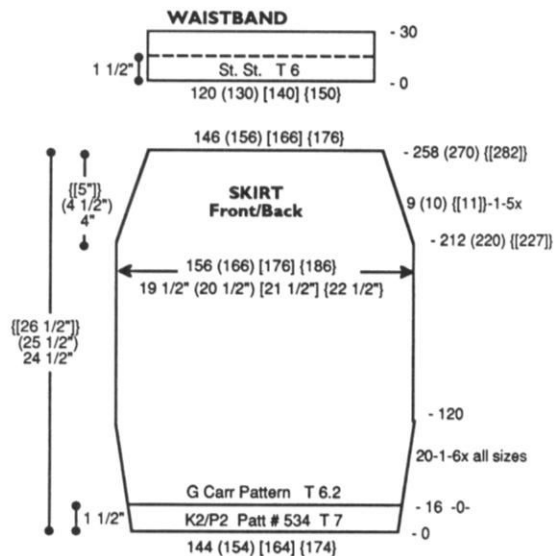
Make 3.  
Cast on 174 (186) [[200]] sts. RC 0. T 3 [(3)] {3.1}. Set Garter Carriage for rib pattern. Knit to R 16 and BO. Mark center of one piece for placement on back neckline.

## JACKET BAND (Make 3)



## SKIRT FRONT/BACK:

CO 144 (154) [164] {174} sts. RC 0. T 7. Set Garter Carriage for rib pattern and knit to R 16. RC 0. T 6.2. Set Garter Carriage for body pattern. Shape skirt by incr. on each side every 20 Rs. 1 St. 6x. At R 212 (220) [[227]] decr. on each side every 9 (10) [[11]] Rs. 1 St. 5x. At R 258 (270) [[282]] remove sts. on WY.



## WAISTBAND:

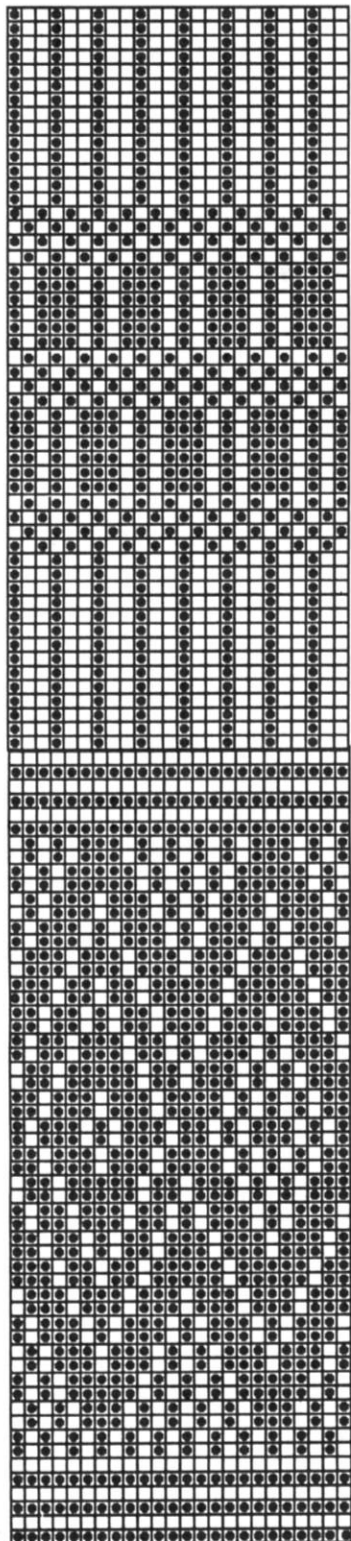
With purl side facing rehang upper edge of skirt front/back on 120 (130) [140] [150] ndls. decr. evenly across.



RC0. T6. Knit in St. St. to R30 Knit 1 row at T 10 and BOLT. Turn the band to the inside whip stitch in place.

**FINISHING:** Join the three bands together. Close shoulder seams. Attach bands to garment. Attach sleeves. Close all remaining seams.

**#5 Suits Me Just Fine**  
24 Sts. x 108 Rows



# 6 Smart & Pretty Pullover



**YARN:** Alpine - Wegewood  
Alpine available in 25 shades

**SIZES:**

6/8 (10/12) [14] {16/18}

**AMOUNT:**

1 3/4 (1 3/4) [2] {2 1/4} lb.

**KIT PRICE:**

\$49 (\$49) [\$56] {\$63}

**TENSION:**

Body: T 10

Rib Section: T 9

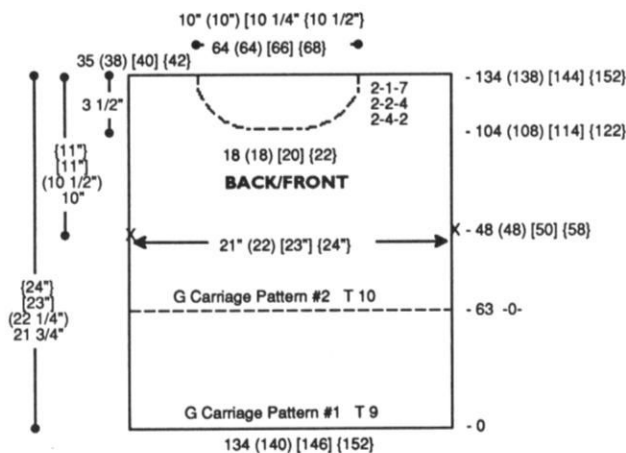
Collar: T 8.2

**GAUGE:**

Body: 6.45 Sts., 8.625 Rs = 1"

Rib Section: 10.08 Rs = 1"

Make on Standard Electronic Machine with Garter Carriage.

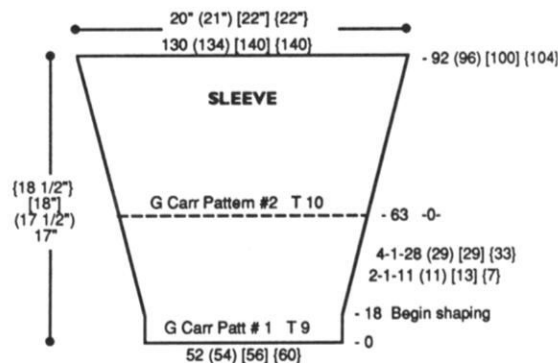


**BACK:**

With main yarn CO 134 (140) [146] [152] sts. RC0. T9. Pattern #1. Knit to R 63. RC0. T 10. Pattern #2. Knit to R 48 (48) [50] [58] and mark each side with a YM for armhole. Continue to R 134 (138) [144] [152]. Mark center 64 (64) [66] [68] sts. with a YM for neck opening. Remove shoulder and neckline sts. on separate WY.

**FRONT:**

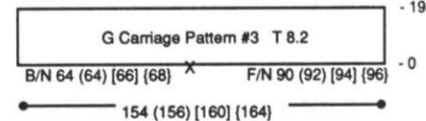
Knit front same as back to R 104 (108) [114] [122]. Shape neckline. Knit center 18 (18) [20] [22] sts. manually to 'A' position on Ravel Cord and all sts. to the left. Note pattern row. \*On neckline edge decr. EOR 4 Sts. 2 x, 2 Sts. 4x and 1 St. 7x. At R 134 (138) [144] [152] remove shoulder sts. on WY. Reset RC to R 104 (108) [114] [122]. Return sts. to the left of center neckline sts. to WP. Reset pattern to correct row and shape left side from \*, reversing shaping. Return neckline sts. to WP and remove on WY.



**SLEEVE:**

With main yarn CO 52 (54) [56] [60] sts. RC0. T9. Pattern #1. Knit to R 18. Begin shaping sleeve by incr. on each side every 2Rs 1 St. 11 (11) [13] [7] x and every 4 Rs 1 St. 28 (29) [29] [33] x. AT THE SAME TIME AT R 63 change to Pattern #2. RC0. T 10. Knit to R 92 (96) [100] [104] and remove sts. on WY.

**NECKBAND:**



**NECKBAND:**

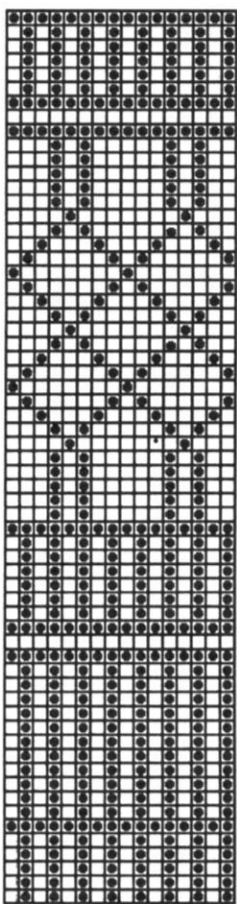
Close one shoulder seam. With main yarn CO 154 (156) [160] [164] sts. RC0. T 8.2. Pattern #3. Knit to R 19. With purl side facing rehang back/front neckline on these ndls. following chart for placement. Knit 1 row at T 10 and BOLT.

**FINISHING:**

Close remaining shoulder and attach sleeves. Close all remaining seams.

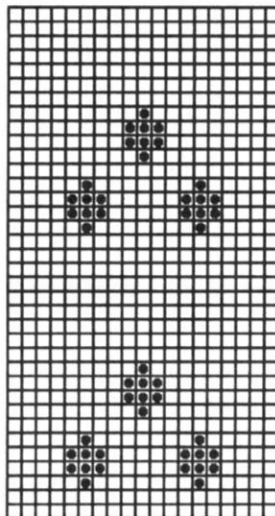


#6 - Rib Section  
Pattern #1 16 Sts. 63 Rows



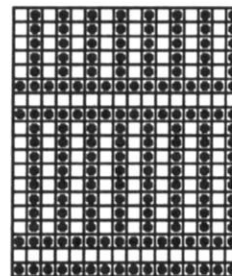
Special Edition Disk:  
Track 7; Pattern 901

#6 - Main Body  
Pattern #2 - 19 Sts. 36 Rows



Special Edition Disk:  
Track 7; Pattern 902

#6 - Neckband  
Pattern #3 - 16 Sts. 19 Rows



Special Edition Disk:  
Track 7; Pattern 903

## 7 Textured Delight



**YARN:** Alpine - Red  
Alpine available in 25 shades

**SIZES:**  
Small (Med.) [Lge.] {X-Lge.}

**AMOUNT:**  
2 (2) [2 1/4] {2-1/2} lbs.

**KIT PRICE:**  
\$55 (\$55) [\$62] {\$70}

**TENSION:**

Body: 9.2

Rib: 6.0

Collar: 6.1

**GAUGE:**

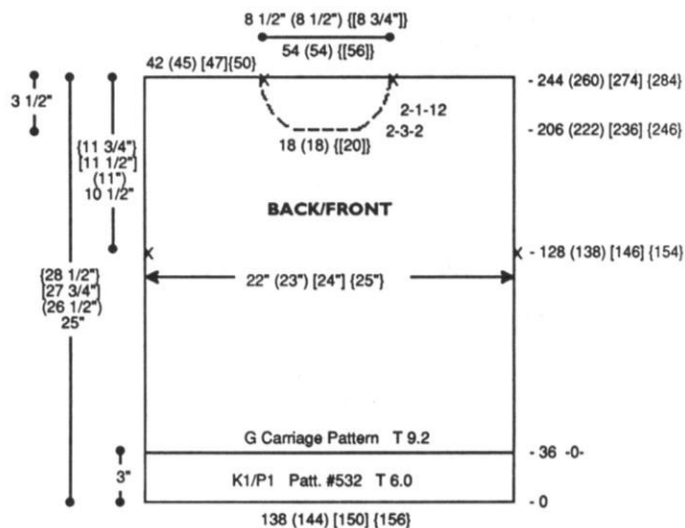
Body: 6.25 Sts.,  
11.12 Rs = 1"

Make on Standard 24-Stitch Punch Card or Standard Electronic Machine with Garter Carriage. Garment is worn on the knit side.

**Note:** Pattern for K1/P1 Ribbing is #532 in Compuknit III/IV/V Pattern Book.

**BACK:**

With main yarn CO 138 (144) [150] [156] sts. RC 0. T 6.0. Set Garter Carriage for rib pattern and knit to R 36. RC 0. T 9.2. Set Garter Carriage for body pattern. Knit to R 128 (138) [146] [154] and mark each side with YM for armhole. At R 244 (260)

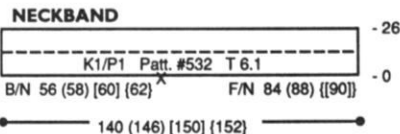


[274] [284] mark center 54 (54) [[56]] sts. for neckline and BO.

**FRONT:**

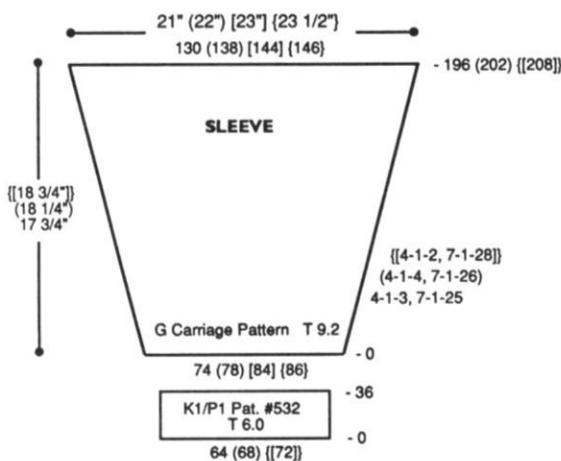
Knit front same as back to R 206 (222) [236] [246]. Shape neckline. Knit center 18 (18) [[20]] sts. manually to 'A' position on Ravel Cord and

all sts. to the left. *Note pattern row.*  
 \*On neckline edge decr. EOR 3 Sts.  
 2x and 1 St. 12x. At R 244 (260)  
 [274][284] BO shoulder sts. Reset  
 RC to R 206 (222) [236] [246]. Return  
 sts. to the left of center neckline sts.  
 to WP. Reset pattern to correct row  
 and shape left side from \*, reversing  
 shaping. Return neckline sts. to WP  
 and remove on WY.



**NECKBAND:**

Close one shoulder. With purl side facing rehang neckline on 140 (146) [150] [152] ndls. following chart. Knit 1 row with K-Carriage at T 10. RC 0. T 6.1. Set Garter Carriage for rib pattern and knit to R 26. Knit 1 R manually at a loose tension and BOLT.



**SLEEVE:**

With WY CO 74 (78) [84] [86] sts. After several rows end with 1 R Ravel Cord to the left. Change to main yarn and knit 1 R to the right with K-Carriage at T 10. RC 0. T 9.2. Set Garter Carriage for body pattern. Shape sleeve by incr. on each side every 4 Rs. 1 St. 3x and every 7 Rs. 1 St. 25x (every 4 Rs. 1 St. 4x and every 7 Rs. 1 St. 26x) [every 4 Rs. 1 St. 2x and every 7 Rs. 1 St. 28x]. At R 196 (202) [208] BO.

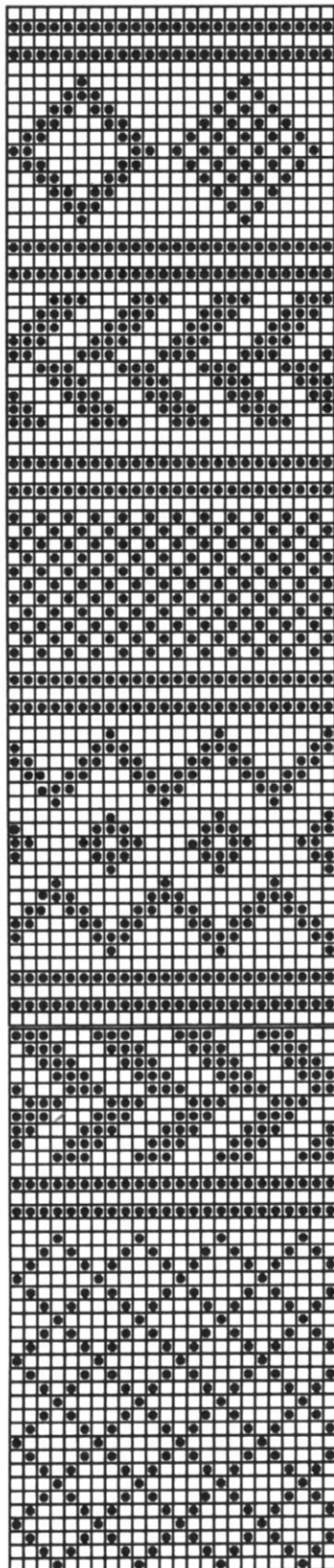
**CUFF:**

With main yarn CO 64 (68) [72] sts. RC 0. T 6.0. Set Garter Carriage for rib pattern and knit to R 36. With purl side facing rehang lower edge of sleeve on these ndls. decr. evenly across. Knit 1 R manually at a loose tension and BOLT.

**FINISHING:**

Close remaining shoulder. Fold neckband to inside and whip stitch in place. Attach sleeves and close all remaining seams.

**#7 Textured Delight**  
 24 Sts. x 114 Rows



**Special Edition Disk:**  
 Track 8; Pattern 901

**8 Very Striking**



**YARN:** Woolana - Periwinkle  
 Woolana available in 17 shades  
**SIZES:**  
 Small (Medium) [Large]  
**AMOUNT:** 2 lbs. all sizes  
**KIT PRICE:** \$60.00  
**TENSION:**  
 Body: T 7  
 Rib: T 2  
**GAUGE:**  
 Body: 7.34 Sts., 10.96 Rs. = 1"

Make on Compuknit III/IV or V with Garter Carriage.

**Pattern Note:**

Pattern for ribbing is #532 in the Compuknit III/IV/V Pattern Book. Use Upside Down variation key for half of sleeve. Use 2 strands of Woolana throughout.

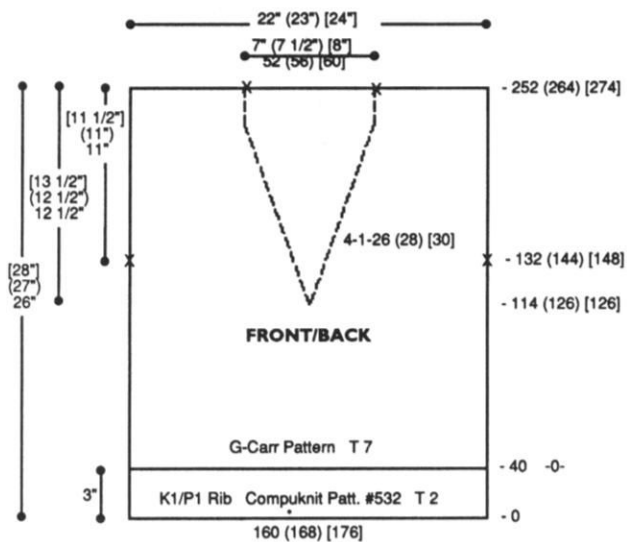
**BACK:**

CO 160 (168) [176] sts. at T 3. RC 0. T 2. Set Garter Carriage for rib pattern and knit to R 40. RC 0. T 7. Set Garter Carriage for body pattern. Knit to R 132 (144) [148] and mark each side with YM for armhole. (*Note pattern row in window for sleeve*). Continue in pattern to R 252 (264) [274]. Mark center 52 (56) [60] sts. for neck opening and remove neckline and shoulder sts. on separate WY.

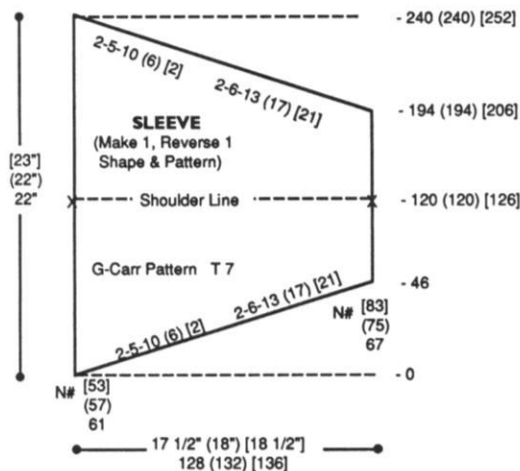
**FRONT:**

Knit front same as back to R 114 [(126)]. Shape neckline. Knit all sts. to the left of -0- manually to 'A' position on Ravel Cord. *Note pattern row.* \*On right side decr. every 4 Rs. 1 St. 26 (28) [30] x. AT THE SAME TIME at R 132 (144) [148] mark each side with YM for armhole. At R 252 (264) [274] remove shoulder sts. on WY. Reset RC to R 114 [(126)]. Return sts.





to the left of -0- to WP. Reset pattern to correct row. Shape left neckline same as right from \*. Remove shoulder sts. on WY.



### SLEEVE:

Make 1, Reverse 1.

The sleeves are knit sideways. In order to match the sleeve pattern to the pattern of the body, it is important to begin the sleeve on the Ndl. # and pattern R you made note of from garment body.

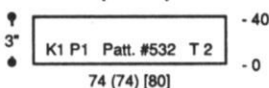
To assure the pattern will match on both sides of the shoulder seam, in the center of the sleeve, the pattern is advanced 2 Rs, to compensate for the 2 Rs of pattern which are in the shoulder seam.

With WY and K-carriage CO 128 (132) [136] sts. starting with ndl. # 61 (57) [53] on left and ndl. # 67 (75) [83] on right. After a minimum of three inches of WY, ending with K-carriage on right, knit 1 R at T 7 to the left. Knit 1 row manually to 'A' position on Ravel Cord. Change to Garter Carriage on left side. RC 0. T 7. Advance pattern to appropriate row. Work short rows from left to right placing sts. to 'B' position and removing Ravel Cord on these sts. as follows: EOR 5 Sts. 10 (6) [2] x and 6 Sts. 13 (17) [21] x. At R 46 Ravel Cord will be completely removed.

Continue in pattern to R 120 (120) [126]. Mark each side with YM for center. Activate upside down Variation Key. Continue to R 194 (194) [206] and begin SHR shaping with Ravel Cord on right side as follows: EOR 6 Sts. 13 (17) [21] x and 5 Sts. 10 (6) [2] x. SHR completed at R 240 (240) [252]. Remove sts. on WY.

To reverse the second sleeve, begin on Ndl. # 61 (57) [53] on right and # 67 (75) [83] on left.

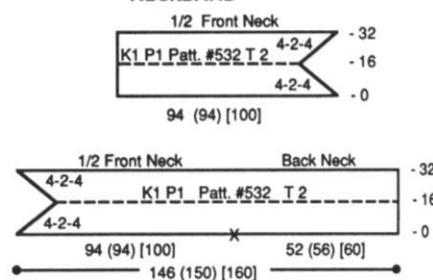
### CUFF (Make 2)



### CUFF:

CO 74 (74) [80] sts. at T 3. RC 0. T 2. Set Garter Carriage for rib pattern and knit to R 40. With purl side facing rehang lower edge of sleeve on these ndls. Knit 1 row loosely by hand and BOLT.

### NECKBAND



**NECKBAND:** Make in two pieces. Close one shoulder first.

### Back/1/2 Front:

CO 146 (150) [160] sts. at T 3 as shown on chart. RC 0. T 2. Set Garter Carriage for rib pattern. On left side decr. every 4 Rs. 2 Sts. 4x and then incr. every 4 Rs. 2 Sts. 4x. At R 32 rehang back neck opening and half of front neck on these ndls. Knit 1 row loosely by hand and BOLT.

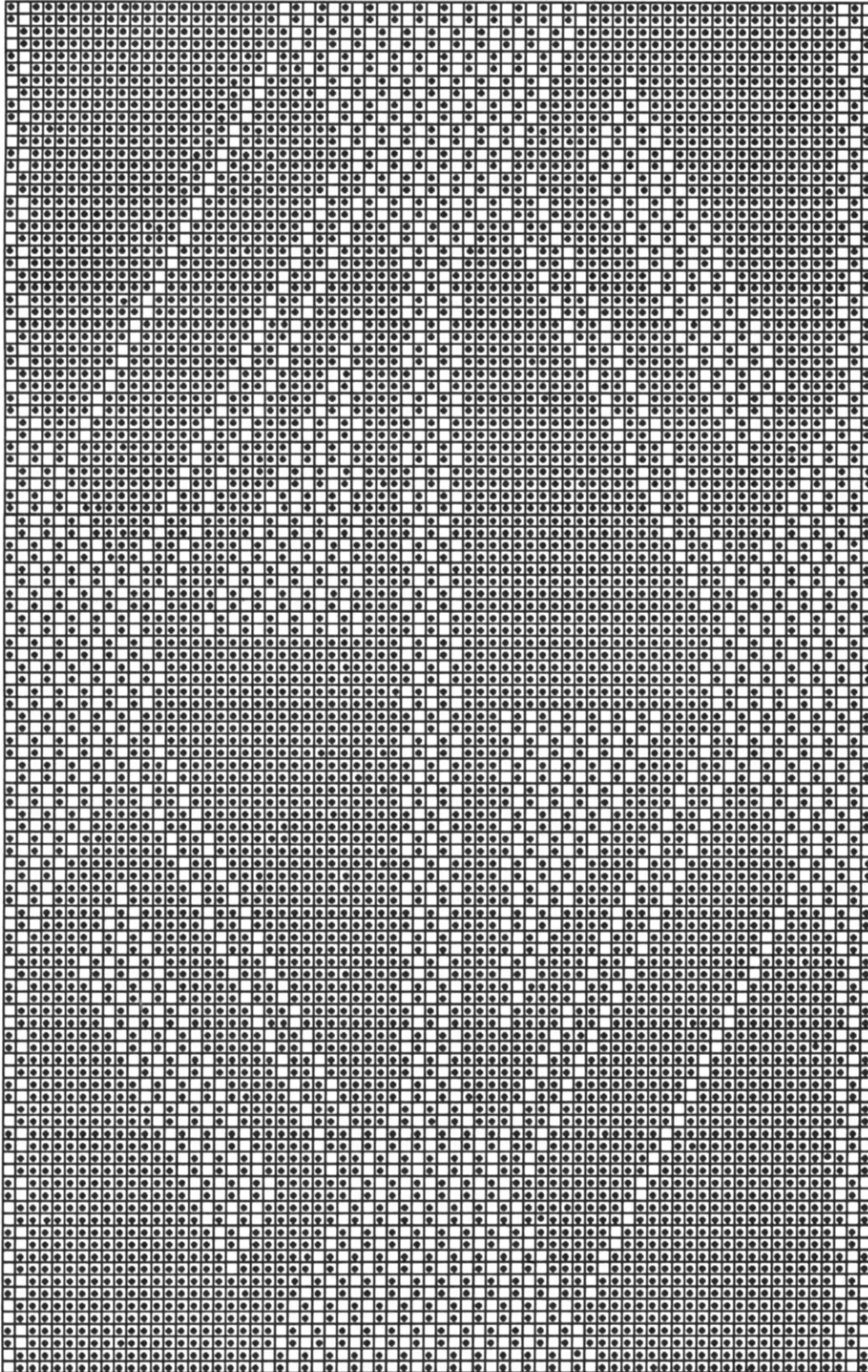
### 1/2 Front:

Knit same as Back/1/2 Front except CO 94 (94) [100] sts. and shape on the right side.

### FINISHING:

Close remaining shoulder. Fold neckband to inside and whip stitch in place. Attach sleeves. Close all remaining seams.

♣8 V-ery Striking 70 Sts. x 112 Rows



Special Edition Disk: Track 9; 901



# 9 Tri-Color Cardigan



## YARN:

Alpine  
Alpine available in 25 shades

## SIZES:

Small (Medium) [Large]

## AMOUNT:

C 1: Rust

1 lb 4 oz (1 lb 4 oz) [[1 lb 6 oz]]

C 2: Taupe - 1 cone all sizes  
approx. 14 oz.

C 3: Beige

6 oz. (6 oz.) [[7 oz.]]

## KIT PRICE:

\$62.50 (\$62.50) [[\\$71.00]]

## TENSION:

Body: T 9.1

Cuff and Waistband Rib: T 7.1

Front Band: T 8.1 (8.1) [[9.0]]

## GAUGE:

Body: 6.8 Sts., 8.75 Rs. = 1"

## NOTIONS:

4 - 1" Buttons

Make on Compuknit III/IV or V with Garter Carriage.

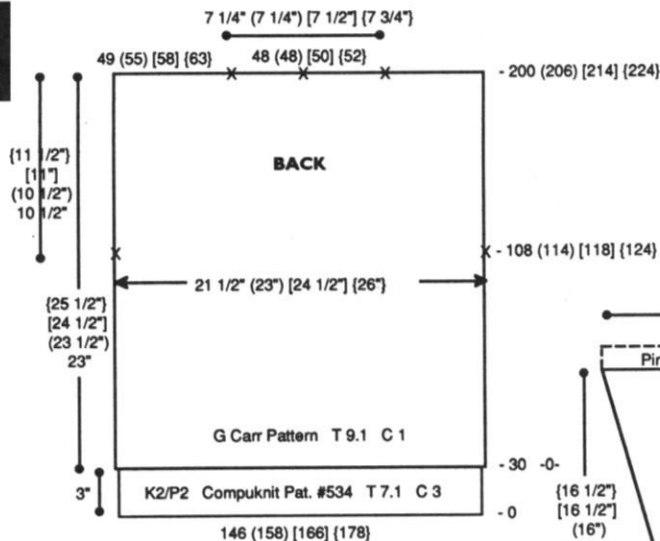
**Note:** Pattern for ribbing is #534 in the Compuknit III/IV/V Pattern Book.

## BACK:

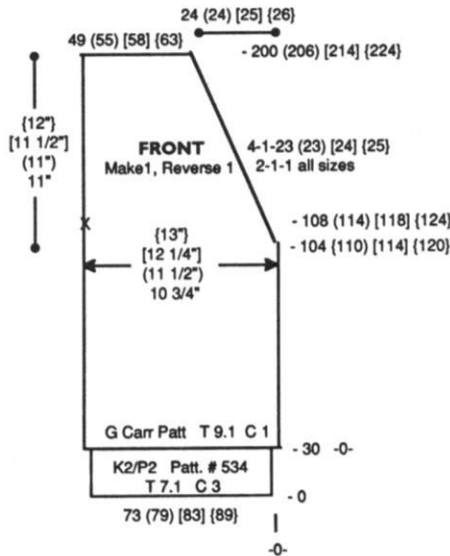
With C 3 CO 146 (158) [166] [178] sts. at T 7.1. RC 0. Set Garter Carriage for rib pattern and knit to R 30. Knit 1 row with K-Carriage at T 10. RC 0. T 9.1. C 1. Set Garter Carriage for body pattern. Knit to R 108 (114) [118] [124] and place a YM on each side for armhole. At R 200 (206) [214] [224] mark center 48 (48) [50] [52] sts. for neckline. Remove neckline and shoulder sts. on separate WY.

## FRONT:

Make 1, Reverse 1.  
Use Variation Key #1 (reverse) on Compuknit for Reverse Side.  
With C 3 CO 73 (79) [83] [89] sts. at T 7.1. RC 0. Set Garter Carriage for rib pattern and knit to R 30. Knit 1 row with K-Carriage at T 10. RC 0. T 9.1.



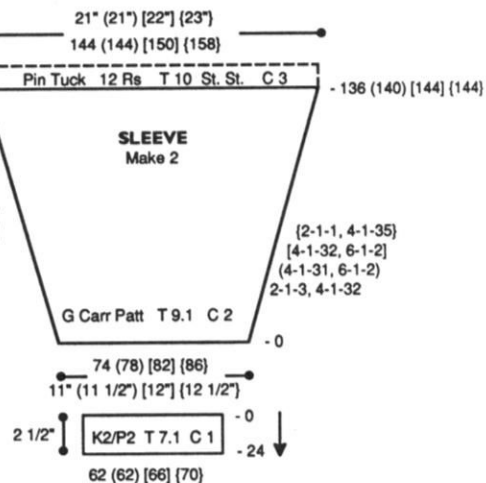
C 1. Set Garter Carriage for body pattern. Knit to R 104 (110) [114] [120]. Shape neckline. On neckline edge decr. EOR 1 St. 1x and every 4 Rs. 1 St. 23 (23) [24] [25] x. AT THE SAME TIME at R 108 (114) [118] [124] mark left side with YM for armhole. At R 200 (206) [214] [224] remove shoulder sts. on WY.



## SLEEVE:

With WY CO 74 (78) [82] [86] sts. After several rows end with 1 row Ravel Cord to the left. With C2 knit 1 row with K-Carriage at T 10. RC 0. T 9.1. Set Garter Carriage for body pattern. Shape sleeve by incr. on each side EOR 1 St. 3x and every 4

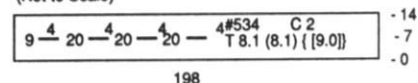
Rs. 1 St. 32x (every 4 Rs. 1 St. 31x and every 6 Rs. 1 St. 2x) [every 4 Rs. 1 St. 32x and every 6 Rs. 1 St. 2x] [EOR 1 St. 1x and every 4 Rs. 1 St. 35x]. At R 136 (140) [144] [144] knit Pin Tuck with K-Carriage. RC 0. T 10. C 3. St. St. Knit to R 12. Pick up first row of st. st. to form pin tuck. Knit 1 R and remove sts. on WY.



## CUFF:

Make 2.  
With purl sidé facing rehang lower edge of sleeve on 62 (62) [66] [70] ndls. C1. Knit 1 row with K-Carriage at T 10. RC 0. T 7.1. Set Garter Carriage for rib pattern. Knit to R 24, knitting last row at T 10+ and BOLT.

## BAND (Make 1 with buttonholes, 1 without) (Not to Scale)



## BAND:

(Make 1 with buttonholes, 1 without)  
With purl side facing rehang front and 1/2 of back neck on 198 ndls. C 2. Knit 1 row with K-Carriage at T 10. RC 0. T 8.1 (8.1) [[9.0]]. Set Garter Carriage for rib pattern. Knit to R 7 and make buttonholes over 4 sts. with WY following chart. Knit to R 14, knitting last row at T 10+ and BOLT.

## FINISHING:

Join shoulder seams. Attach front bands. Attach sleeves. Close all remaining seams.

# 10 Timeless Hourglass Pullover



**YARN:** Roma -Wedgewood  
Roma available in 21 shades

**SIZES:**  
Small (Medium) [Large]

**AMOUNT:**  
2 lb. (2 lb.) [2 lb.4 oz.]

**KIT PRICE:**  
\$38.00 (\$38.00) [\$43.50]

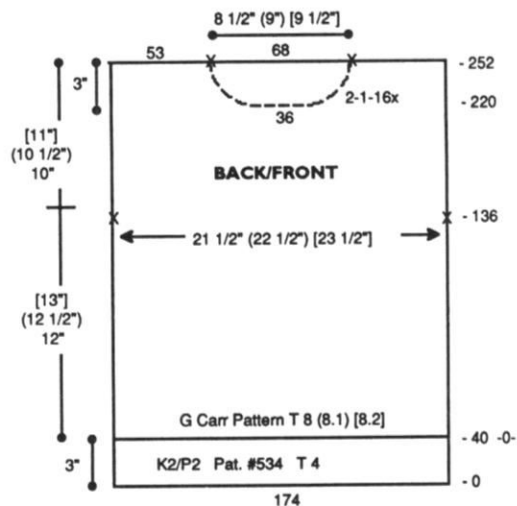
**TENSION:**  
Body: T 8 (8.1) [8.2]  
Rib: T 4

**GAUGE:**  
Body:  
8.09 Sts., 11.43 Rs. = 1"  
7.73 Sts., 11.0 Rs. = 1"  
7.37 Sts., 10.59 Rs. = 1"

Make on Compuknit III/IV or V with Garter Carriage.

**Note:** Pattern for ribbing is #534 in Compuknit III/IV/V Pattern Book. Use 2 strands of Roma throughout.

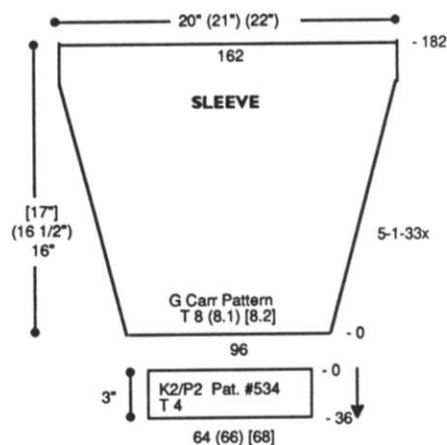
**BACK:**  
With main yarn CO 174 sts. RC 0. T 4.



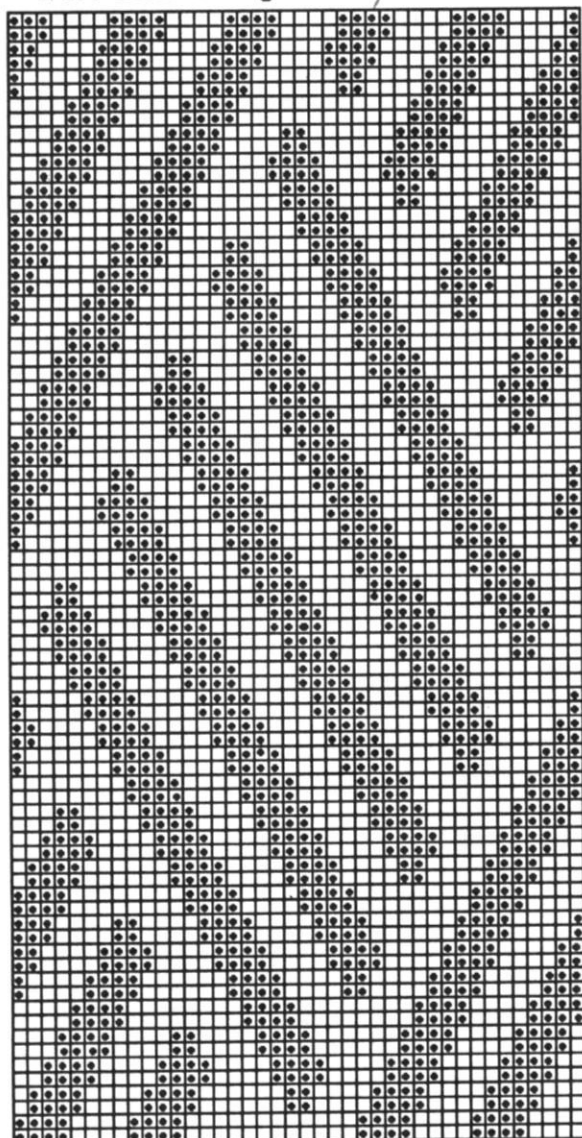
Set Garter Carriage for rib pattern and knit to R 40. RC 0. T 8 (8.1) [8.2]. Set Garter Carriage for body pattern. Knit to R 136 and mark each side with a YM for armhole. At R 252 mark center 68 sts. for neck opening. Remove neckline and shoulder sts. on separate WY.

**FRONT:**  
Knit front same as back to R 220. Shape neckline. Knit center 36 sts. to 'A' position on Ravel Cord and all sts. to the left. Note pattern row. \*On neckline edge decr. EOR 1 Sts. 16x. At R 252 remove shoulder sts. on WY. Reset RC to R 220. Reset pattern to correct row and shape left side from \* reversing shaping.

**SLEEVE:**  
With WY CO 96 sts. After several rows, end with 1 row Ravel Cord to the right. Change to main yarn. RC 0. T 8 (8.1) [8.2]. Set Garter Carriage for body pattern. Knit while shaping sleeve by incr. on each side every 5 Rs. 1 St. 33x. At R 182 remove sts. on WY.



## #9 Tri-Color Cardigan 40 Sts. x 80 Rows



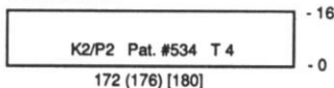
Special Edition Disk: Track 10; Pattern 901



### SLEEVE CUFF:

With purl side facing, rehang lower edge of sleeve on 64 (66) [68] ndls. decr. evenly across. Knit 1 row with K-Carriage. RC 0. T 4. Set Garter Carriage for rib pattern. Knit to R 36 knitting last row at T 10 and BOLT.

### NECKBAND



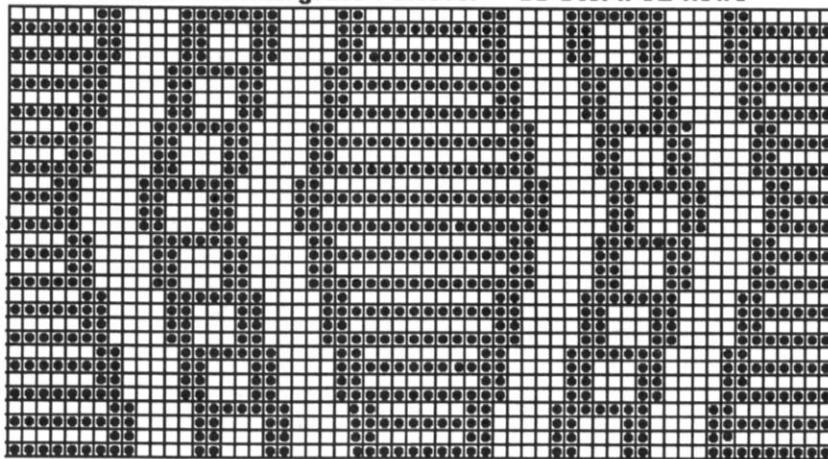
### NECKBAND:

Close one shoulder. CO 172 (176) [180] sts. RC 0. T 4. Set Garter Carriage for rib pattern and knit to R 16. With purl side facing, rehang back/front neckline on these ndls. Knit 1 row at T 10 with K-Carriage and BOLT.

### FINISHING:

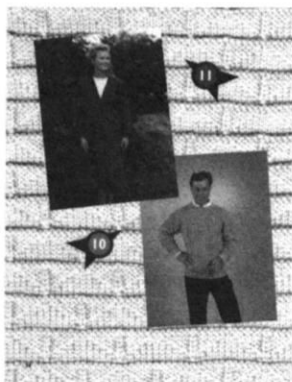
Close remaining shoulder. Attach sleeves. Close all remaining seams.

### \*10 Timeless Hourglass Pullover 58 Sts. x 32 Rows



Special Edition Disk: Track 11; Pattern 901

## II Suit Yourself



**YARN:** Venetia - Eggplant  
Venetia available in 37 shades

### SIZES:

6/8 (10/12) [14]

### AMOUNT:

2 lb. (2-1/2 lb) [3 lbs]

### KIT PRICE:

\$57.50 (\$72.00) [\$84.75]

### TENSION:

Body: T 5.2

Bands & Hem: T: 5

### GAUGE:

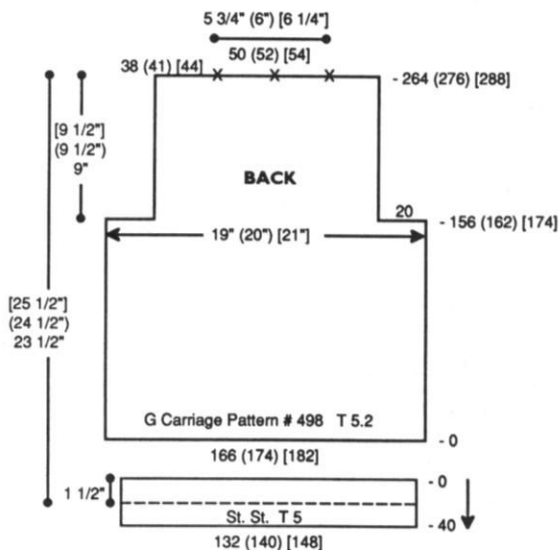
Body: 8.7 Sts., 12 Rs. = 1"

### NOTIONS:

5 - 1" Buttons

Make on Standard 24-Stitch Punch Card or Standard Electronic Machine with Garter Carriage.

**Pattern Note:** Body pattern is #498 in Compuknit III/IV/V Pattern Book.



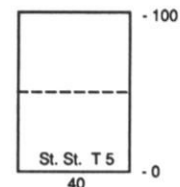
### JACKET BACK:

With WY CO 166 (174) [182] sts. After several rows end with 1 row Ravel Cord to the right. RC 0. T 5.2. Set Garter Carriage for body pattern. Knit to R 156 (162) [174]. BO 20 sts. at the beginning of the next 2 Rs. for arm-hole. Continue in pattern to R 264 (276) [288]. Mark center 50 (52) [54] sts. for neck opening and center with YM and remove all sts. on WY.

### BACK HEM:

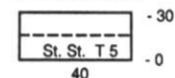
With purl side facing, rehang lower edge of back on 132 (140) [148] ndls. RC 0. T 5. St. St. Knit 40 Rs. Pick up sts. from first row to form double hem. Knit 1 R at T 10 and BOLT.

### POCKET LINING



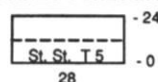
**POCKET LINING:** Make 2.  
With WY CO 40 sts. RC 0. T 5. St. St. Knit to R 100 and remove sts. on WY.

### POCKET BAND

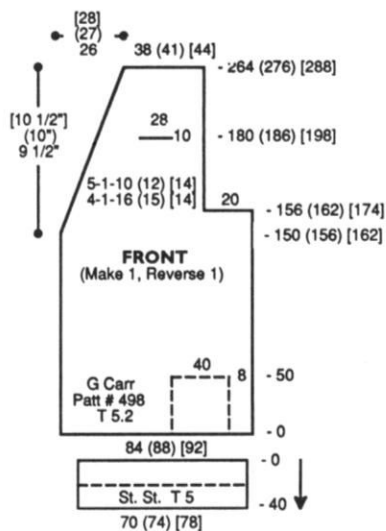


**POCKET BAND:** Make 2.  
With WY CO 40 sts. RC 0. T 5. St. St. Knit to R 30. Pick up sts. from first row to form double band. Knit 1 R and remove sts. on WY.

### FAKE POCKET BAND



**FAKE POCKET BAND:** Make 1.  
With WY CO 28 sts. RC 0. T 5. St. St. Knit to R 24. Pick up sts. from first row to form double band. Knit 1 R and remove sts. on WY.



**JACKET FRONT:**

Make 1, Reverse 1.  
 With WY CO 84 (88) [92] sts. After several rows end with 1 row Ravel Cord to the right. RC 0. T 5.2. Set Garter Carriage for body pattern. Knit to R 50. Leave 8 sts. from right side, remove the next 40 sts. on WY. With purl side of pocket lining facing rehang on these ndls. Continue in pattern to R 150 (156) [162]. Shape front neckline. On left side decr. every 4 Rs. 1 St. 16 (15) [14] x and every 5 Rs. 1 St. 10 (12) [14] x. AT THE SAME TIME at R 156 (162) [174] BO 20 sts. on the right side for armhole. Knit to R 180 (186) [198]. Leave 10 sts. from right edge and remove the next 28 sts. on WY. Rehang fake pocket band on these ndls. Rehang sts. that were removed on WY. With an extra piece of main yarn, hand knit these 28 sts. to leave 1 st. on each ndl. Continue in pattern to R 264 (276) [288] and remove sts. on WY.

**To complete pockets:**

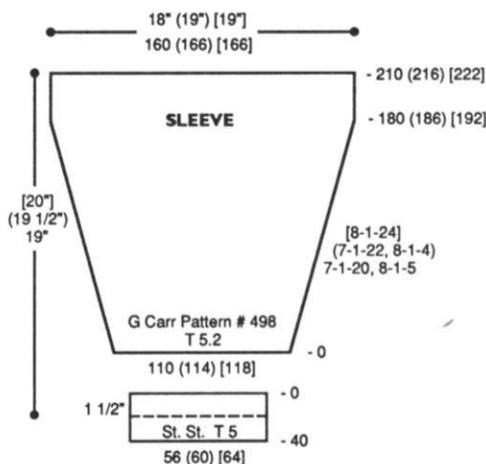
1. With purl side facing rehang pocket band on 40 ndls.
2. With purl side facing rehang garment 40st. opening on same ndls.
3. With knit side facing rehang remaining side of pocket lining on same ndls.
4. Knit 1 R at T 10 and BOLT.

**FRONT HEM:** Make 2

With purl side facing rehang lower edge of front on 70 (74) [78] ndls. RC 0. T 5. St. St. Knit to R 40. Pick up sts. from first row to form double hem. Knit 1 R at T 10 and BOLT.

**SLEEVE:**

With WY CO 110 (114) [118] sts. After several rows end with 1 row Ravel Cord to the right. RC 0. T 5.2. Set Garter Carriage for body pattern. Shape sleeve by incr. on each side every 7 Rs. 1 St. 20x and every 8 Rs. 1 St. 5x (every 7 Rs. 1 St. 22x and every 8 Rs. 1 St. 4x) [every 8 Rs. 1 St. 24x]. At R 210 (216) [222] knit 1 R at T 10 and BOLT.



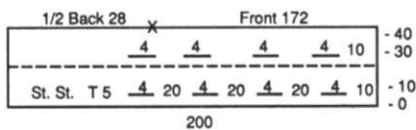
**SLEEVE BAND:**

With purl side facing rehang lower edge of sleeve on 56 (60) [64] ndls. RC 0. T 5. St. St. Knit to 40. Pick up sts. from first row to form double band. Knit 1 R at T 10 and BOLT.

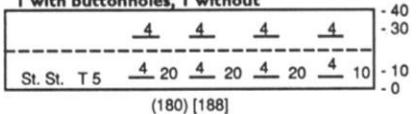
**BACK/FRONT NECKBAND:**

Make 1 w/buttonholes, 1 w/o.

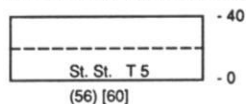
**BACK/FRONT BAND Size 6/8**  
 (Make 1 w/buttonholes, 1 w/o)



**FRONT BAND Size 10/12 and 14**  
 1 with buttonholes, 1 without



**BACK NECKBAND Size 10/12 and 14**



**Size 6/8:** With purl side facing rehang back/front on 200 ndls. as shown on Chart. RC 0. T 5. St. St. Knit to R 40 making buttonholes with WY over 4 sts. at R 10 and R 30 (see

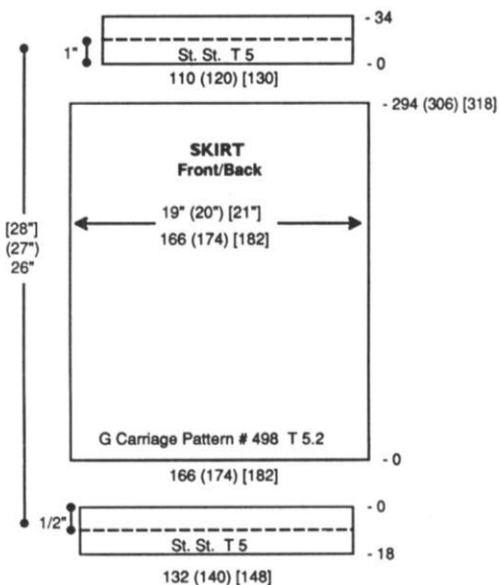
chart). Pick up sts. from first row to form double band. Knit 1 R at T 10 and BOLT.

**Size (10/12) [14]:**

**Back:** With purl side facing rehang back on (56) [60] ndls. decr. evenly across. RC 0. T 5. St. St. Knit to R 40. Pick up sts. from first row to form double band. Knit 1 R at T 10 and BOLT.

**Right Front:** With purl side facing rehang front on (180) [188] ndls. RC 0. T 5. St. St. Knit to R 40 making buttonholes with WY over 4 sts. at R 10 and R 30 (see chart). Pick up sts. from first row to form double band. Knit 1 R at T 10 and BOLT.

**Left Front:** Make the same as Right Front without buttonholes.



**SKIRT FRONT/BACK:**

With WY CO 166 (174) [182] sts. After several rows end with 1 row Ravel Cord to the right. RC 0. T 5.2. Set for Garter Carriage for body pattern. Knit to R 294 (306) [318] and remove sts. on WY.

**SKIRT HEM:**

With purl side facing rehang lower edge of skirt front/back on 132 (140) [148] ndls. RC 0. T 5. St. St. Knit to R 18. Pick up sts. from first row to form double hem. Knit 1 R at T 10 and BOLT.

**WAISTBAND:**

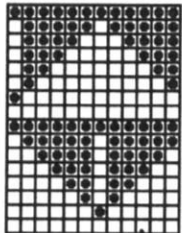
With purl side facing rehang upper edge of skirt front/back on 110 (120) [130] ndls. RC 0. T 5. St. St. Knit to R 34. Pick up sts. from first row to form double band. Knit 1 R at T 10 and BOLT.



**FINISHING:**

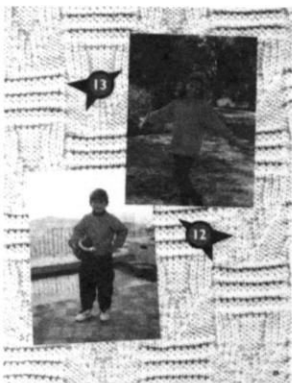
Close shoulder seams. Stitch pockets in place. Attach sleeves. Close all remaining seams.

**#11 Suit Yourself**  
**12 Sts. x 16 Rows**  
**Compuknit III/IV/V #498**



Disk: Tr 12; Pat 901

**12 Faux Cable Garter Carriage Pullover**



**YARN:** Alpine - Goldenrod  
*Alpine available in 25 shades*

**SIZES:** 6 (8) [10]

**AMOUNT:**

Goldenrod - 1 lb. all sizes

**KIT PRICE:** \$27.75

**TENSION:**

Body: T 10

Rib: T 6

**GAUGE:**

Body: 7.69 Sts., 9.71 Rs. = 1"

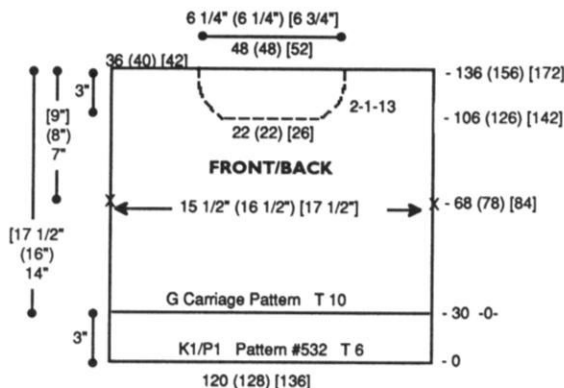
Make on Standard 24-Stitch Punch Card or Standard Electronic Machine with Garter Carriage.

**Pattern Note:** Pattern for K1/P1 Rib is #532 in Compuknit III/IV/V Pattern Book. Turn stitch pattern upside down for sleeves.

**BACK:**

With main yarn CO 120 (128) [136] sts. RC 0. T 6. Set Garter Carriage for rib pattern and knit to R 30. RC 0. T

10. Set for Garter Carriage for body pattern. Knit to R 68 (78) [84] and mark each side with YM for armhole. Continue in pattern to R 136 (156) [172]. Mark center 48 (48) [52] sts. for neck opening and BO around gate pegs.

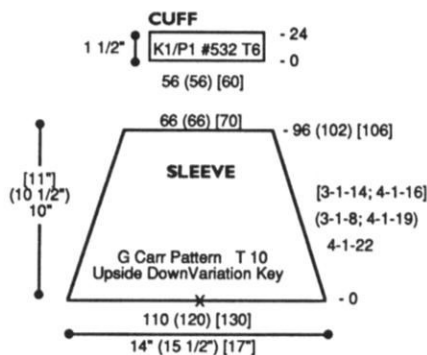


**FRONT:**

Knit front same as back up to R 106 (126) [142]. Shape neckline. Knit center 22 (22) [26] sts. manually to 'A' position on Ravel Cord and all sts. to the left. *Note pattern row.* \*On neckline edge decr. EOR 1 St. 13x for all sizes. At R 136 (156) [172] BO shoulder sts. Reset RC to R 106 (126) [142]. Return sts. to the left of center neckline sts. to WP. Reset pattern to correct row and shape left side from \*, reversing shaping. Remove neckline sts. on WY.

**SLEEVE:**

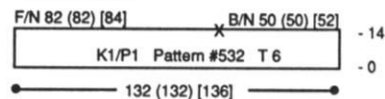
With main yarn CO 110 (120) [130] sts. Mark center with YM. RC 0. T 10. Set Garter Carriage for body pattern. Select Upside Down Variation Key. Shape sleeve by decr. every 4 Rs. 1 St. 22x (every 3 Rs. 1 St. 8x and every 4 Rs. 1 St. 19x) [every 3 Rs. 1 St. 14x and every 4 Rs. 1 St. 16x]. At R 96 (102) [106] remove sts. on WY.



**SLEEVE CUFF:**

With main yarn CO 56 (56) [60] sts. RC 0. T 6. Set Garter Carriage for rib pattern and knit to R 24. With purl side facing rehang lower edge of sleeve on these ndls. decr. evenly across. Knit 1 R manually at loose tension and BOLT.

**NECKBAND**



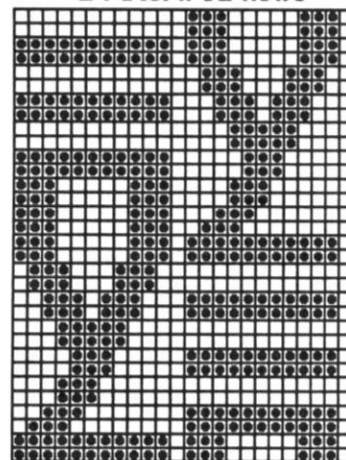
**NECKBAND:**

Close one shoulder first. With main yarn CO 132 (132) [136] sts. T 6. RC 0. Set Garter Carriage for rib pattern and knit to R 14. With purl side facing rehang neck opening on these ndls. following chart. Knit 1 R manually at a loose tension and BOLT.

**FINISHING:**

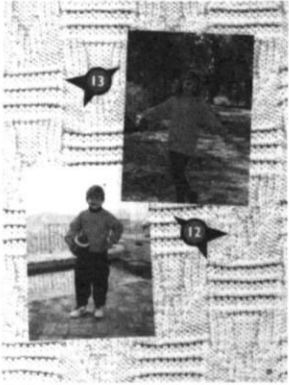
Close remaining shoulder. Attach sleeves and close all remaining seams.

**#12 Faux Cable Pullover**  
**24 Sts. x 32 Rows**



Special Edition Disk:  
 Track 13; Pattern 901

# 13 Diagonally Dramatic



**YARN:** Silkie  
Flourescent Pink  
Silkie available in 18 shades

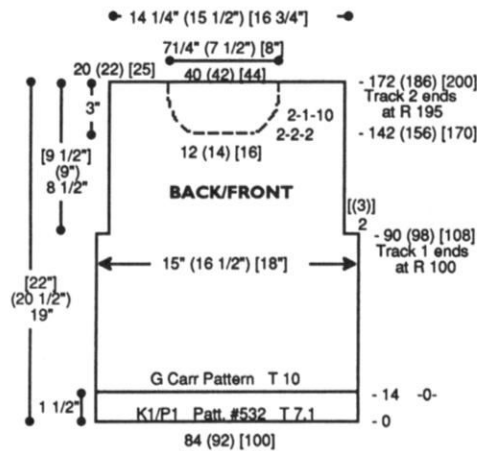
**SIZES:**  
6 (8) [10/12]  
**AMOUNT:** 2 lbs. all sizes  
**KIT PRICE:** \$25.50  
**TENSION:**  
Body: T 10  
Rib: T 7.1  
**GAUGE:**  
Body: 5.61 Sts., 9.79 Rs = 1"

Make on Compuknit III/IV or V with Garter Carriage. Garment is worn on the knit side.

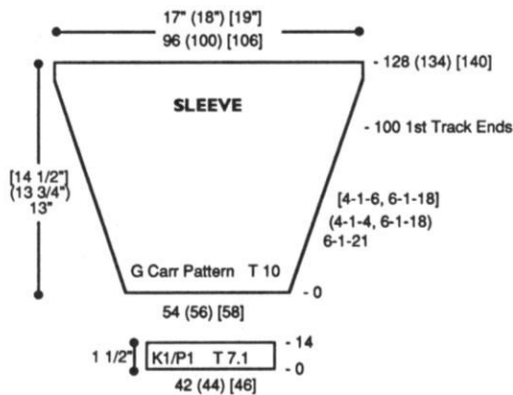
**Note:** All-over design is 130 Sts wide and 235 Rows in length. Pattern does not repeat. Pattern for ribbing is #532 in Compuknit III/IV/V Pattern Book. Use 2 strands of Silkie throughout. Pattern also knits beautifully in *Knitking's Alpine and Splendor* yarn.

**BACK:**  
With 2 strands of main yarn, CO 84 (92) [100] sts. RC 0. T 7.1. Set Garter Carriage for rib pattern and knit to R 14. RC 0. T 10. Track 1. Set Garter Carriage for body pattern. Knit to R 90 (98) [108] and BO 2 (3) [3] sts. on each side for armhole. At R 100 (all sizes) change to Track 2. Continue to R 172 (186) [200]. Mark cen-

ter 40 (42) [44] sts. for neck opening and BO around gate pegs. At R 195 change to Track 3 if additional length is required.

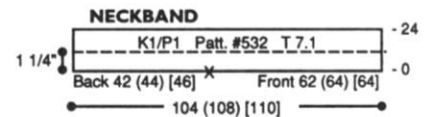


**FRONT:** Knit front same as back to R 142 (156) [170]. Shape neckline. Knit center 12 (14) [16] sts. manually to 'A' position on Ravel Cord and all sts. to the left. Note pattern row. \*On neckline edge BO EOR 2 Sts. 2 x, 1 St. 10 x. At R 172 (186) [200] BO shoulder sts. Reset RC to R 142 (156) [170]. Return sts. to the left of center neckline sts. to WP. Reset pattern to correct row on Track 2 and shape left side from \*, reversing shaping. Remove neckline sts. on WY. *Note: For larger size track three will be needed for completion of neckline.*



**SLEEVE:** With WY CO 54 (56) [58] sts. After several rows end with 1 R Ravel Cord to the left. Change to main yarn (2 strands). Knit 1 R to the right with K-Carriage at T 10. RC 0. T 10. Track 1. Set Garter Carriage for body pattern. Shape sleeve by incr. on each side every 6 Rs. 1 St. 21x (every 4 Rs. 1 St. 4 x, every 6 Rs 1 St. 18x) [every 4 Rs 1 St. 6 x, every 6 Rs 1 St. 18x]. At R 100 (all sizes) change to Track 2. At R 128 (134) [140] BO around gate pegs.

**SLEEVE CUFF:** With 2 strands of main yarn CO 42 (44) [46] sts. RC 0. T 7.1. Set Garter Carriage for rib pattern and knit to R 14. With purl side facing rehang lower edge of sleeve on these ndls, decr. evenly across. Knit 1 R manually at a loose tension and BOLT.



**NECKBAND:** Close one shoulder. CO 104 (108) [110] sts. RC 0. T 7.1. Set Garter Carriage for rib pattern and knit to R 24. With purl side facing rehang back/front neckline on these ndls. following chart. Knit 1 R manually at a loose tension and BOLT.

**FINISHING:**  
Close remaining shoulder. Fold neckband to inside and whip stitch in place. Attach sleeves and close all remaining seams.





#13 Diagonally Dramatic 130 Sts. x 235 rows

Tr 16



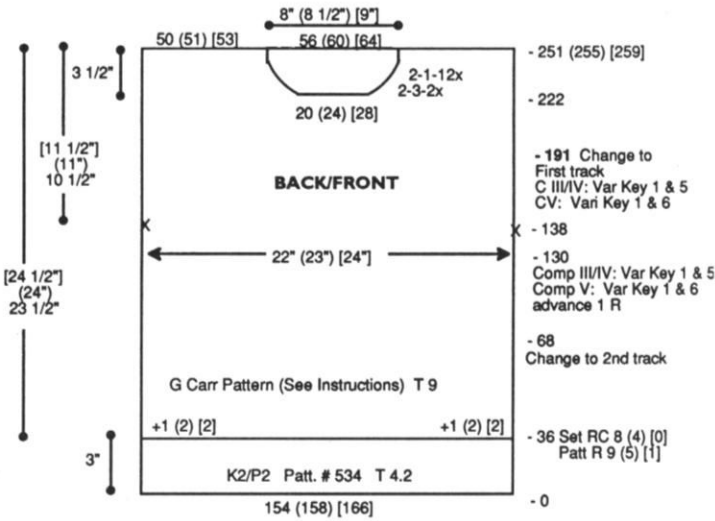
# 14 X-cellent Cable Pullover



**Pattern Note:**

This garment is designed from the center out. In order to adjust for sizes, pattern rows have been taken from both upper and lower portion of body and sleeves for centered effect. Once initial adjustment for size has been made on garment body, all cable crosses and track changes occur at the same pattern row and row counter number. Read instructions carefully before beginning. A suggested technique is to prepare a "cheat sheet" in advance listing every row where cable crosses, increases, etc. will be worked.

Helpful Hint for Garter Carriage Cables: Cut 2 long strands of main yarn for each cable section. After crossing cables as shown on chart you must knit 1 R manually over all 8 Sts in each cable section in order for the Garter Carriage to knit properly on the next row.



- YARN:** Venetia - Salmon  
Venetia available in 37 shades
- SIZES:**  
Small (Medium) [Large]
- AMOUNT:** 2 cones all sizes  
(Cones approx. 1-1/2 lb. each)
- KIT PRICE:** \$85.00
- TENSION:**  
Body: T 9  
Rib: T 4.2
- GAUGE:**  
Body: 7.06 Sts., 10.59 Rs. = 1"

Make on Compuknit III/IV or V with Garter Carriage. Garment is worn on the knit side.

**Note:** Pattern for ribbing is #534 in Compuknit III/IV Pattern Book. Use 2 strands of Venetia throughout.

**BACK:**

CO 154 (158) [166] sts. RC 0. T 4.2. Set Garter Carriage for rib pattern and knit to R36. RC 8(4)[0]. T9. Incr. 1 [(2)] sts. on each side. Set body pattern from first track of pullover. Advance pattern to R9(5)[1]. Knit 38 (42) 46 Rs.  
Note: When Garter Carriage completes this section, RC and Pattern Row number should be at 46 for all sizes.  
R 46: Make cable cross and knit 14 Rs.  
R 60: Make cable cross and knit 8 Rs. (RC and Pattern row number should be 68 for all sizes)



Change to second track. Set Garter Carriage to knit 28 rows.

R 96: Make cable crosses and knit 14 Rs.

R 110: Make cable crosses and knit 14 Rs.

R 124: Make cable crosses and knit 6 Rs. (RC 130, Pattern Row 62).

Reset pattern, and activate variation Reverse and Upside Down keys. Advance pattern 1 row to avoid repeating pattern row 62. Knit 6 Rs.

R 136: Make cable cross and knit 2 Rs.

R 138: Mark each side with YM for armhole. Knit 12 Rs.

R 150: Make Cable crosses and knit 14 Rs.

R 164: Make Cable cross and knit 27 Rs. (Note: RC should be at R 191, Pattern Row should be at 1 - completed track counted backwards).

Change back to first track of pattern and activate variation Reverse and Upside Down keys. (CIII/IV: 1 & 5; CV: 1 & 6) Knit 9 Rs.

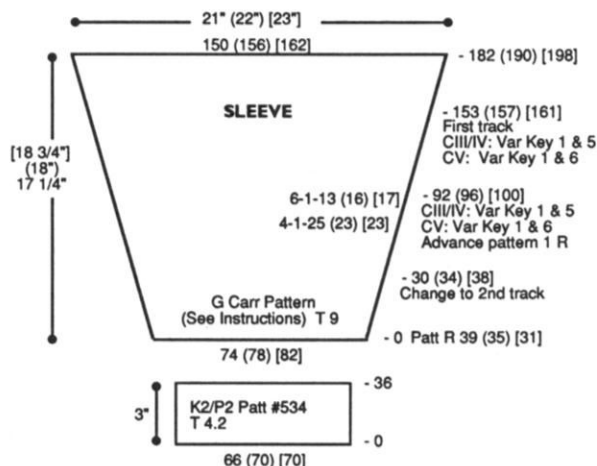
R 200: Make Cable cross and knit 14 Rs.

R 214: Make Cable cross and knit 37 (41) [45] Rs. RC should be at 251 (255) [259]. Mark center 56 (60) [64] sts. with YM for neck opening and BO around gate pegs.

**FRONT:** Knit front same as back to R 200. Make Cable cross and knit 14 Rs.

R 214: Make Cable cross and knit 8 Rs.

R 222: Knit center 20 (24) [28] sts. to 'A' position manually on Ravel Cord and all sts. to the left. Press "M" key to mark row in memory. Shape neckline. \*On neckline edge BO EOR 3 Sts. 2 x and decr. EOR 1 St. 12 x for all sizes. Continue in pattern to R 251 (255) [259] and BO shoulder sts. Return all sts. except center 20 (24) [28] to WP. Reset RC to R 222. Press "M" key to reset pattern to correct row. Shape left side from \*, reversing shapings. Remove neckline sts. on WY.



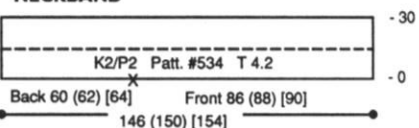
### SLEEVE:

With WY CO 74 (78) [82] sts. After several rows, end with 1 row Ravel Cord to the left. Change to main yarn. With K-Carriage knit 1 R to the right. RC 0. T 9. Set Garter Carriage for body pattern. Begin with lower sleeve track starting on pattern row 39 (35) [31]. Incr. on each side every 4 Rs 1 St. 25 (23) [23] x and every 6 Rs 1 St. 13 (16) [17] x, making cable crosses every 14 Rs. as shaping allows. At R 30 (34) [38] first track of sleeve is complete. (Row 68 of pattern should be flashing in Compuknit window). Change to 2nd sleeve track. Knit to R 92 (96) [100]. Reset pattern using Reverse and Upside Down variation keys. (CIII/IV: 1 & 5; CV: 1 & 6). Advance pattern 1 row to avoid repeating last row. Knit to R 153 (157) [161]. Change to first sleeve track, using Reverse and Upside Down variation keys. At R 182 (190) [198] BO around gate pegs.

### CUFF:

CO 66 (70) [70] sts. RC 0. T 4.2. Set Garter Carriage for rib pattern. Knit to R 36. With purl side facing rehang lower edge of sleeve on these ndls., decr. evenly across. Knit 1 R at T 10 and BO around gate pegs.

### NECKBAND



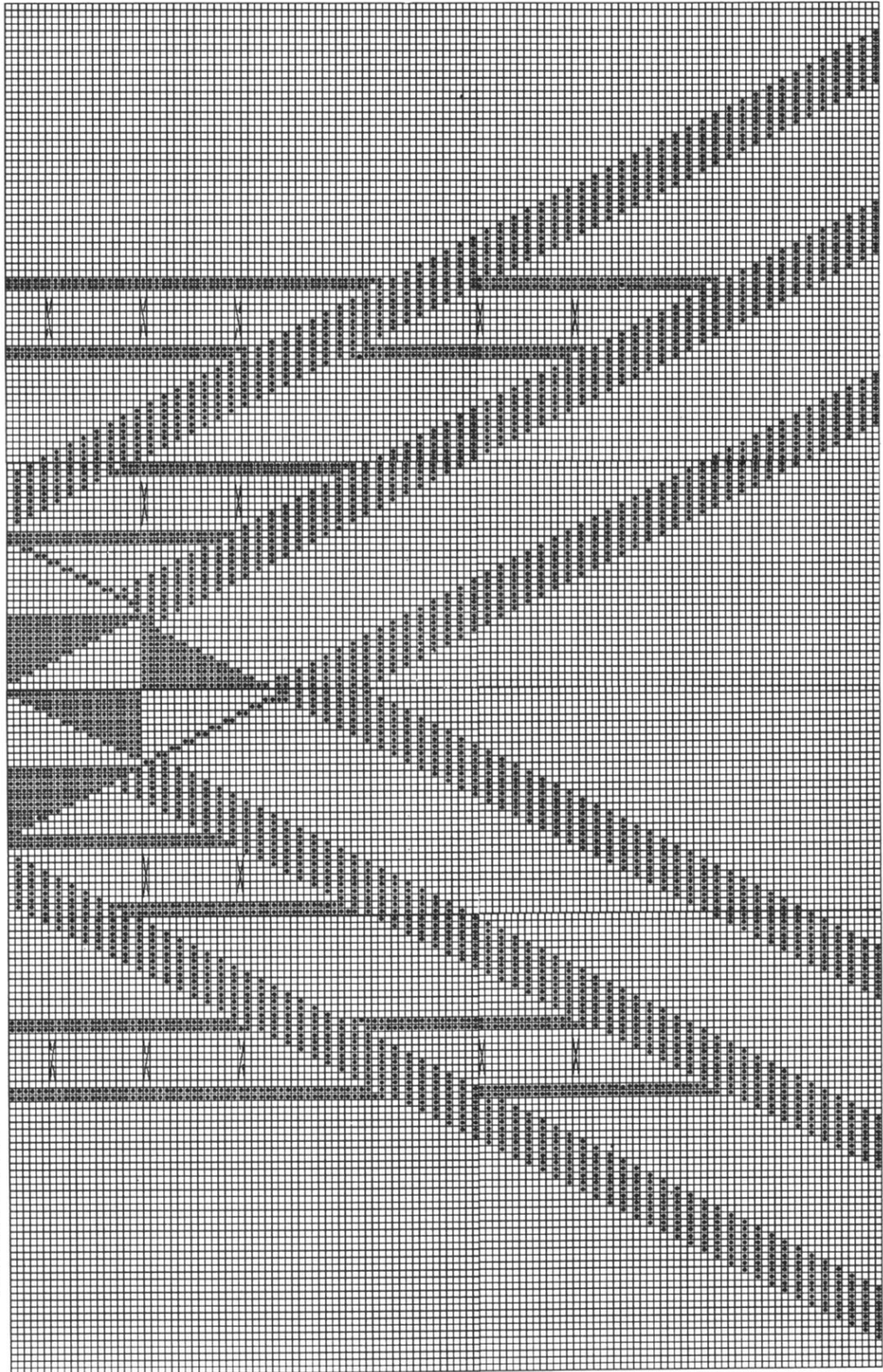
### NECKBAND:

Close one shoulder. CO 146 (150) [154] sts. RC 0. T 4.2. Set Garter Carriage for rib pattern. Knit to R 30. With purl side facing rehang front/back neckline on these ndls. as shown on chart. Knit 1 R manually at loose tension and BO around gate pegs.

### FINISHING:

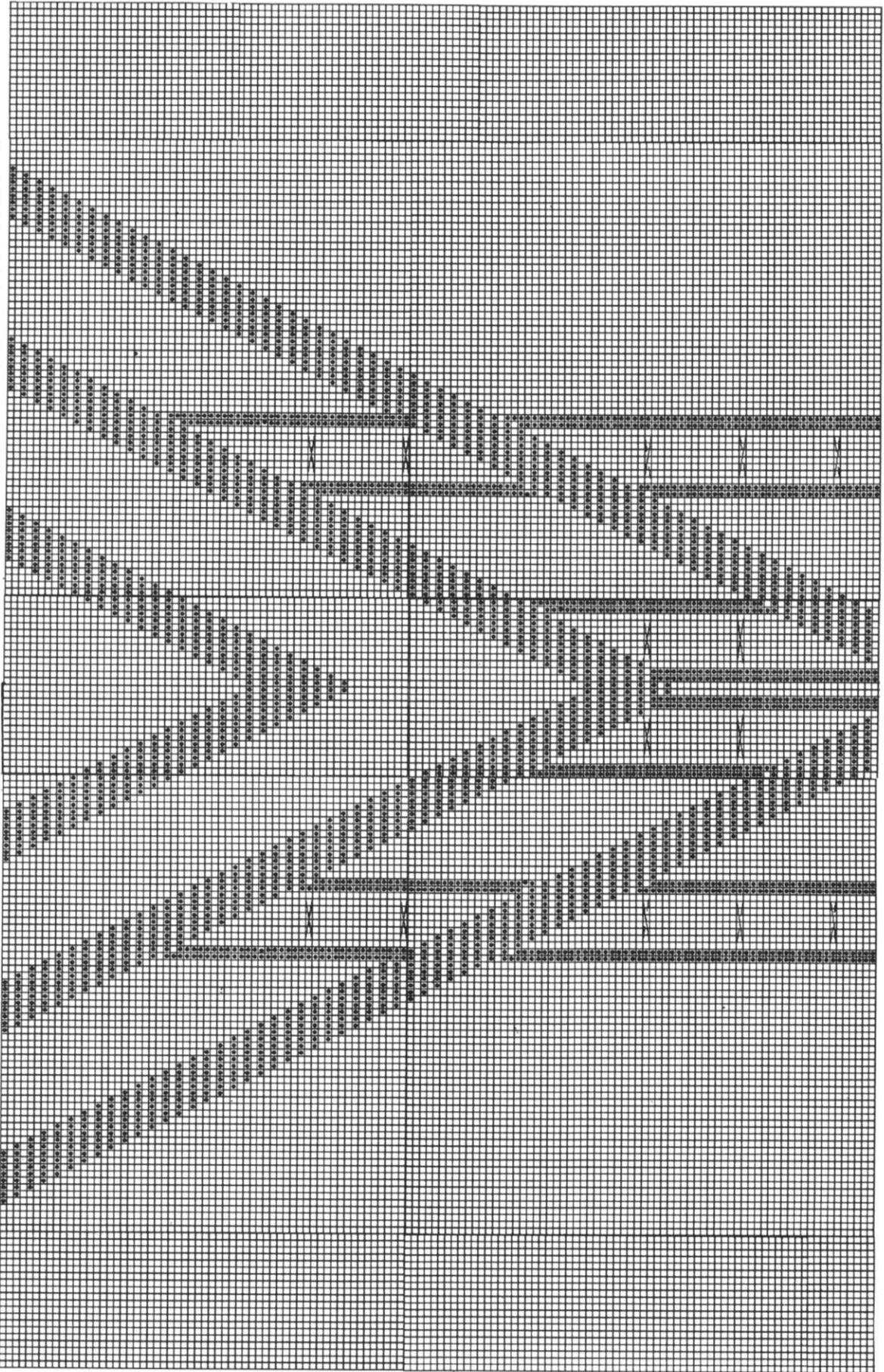
Close remaining shoulder seam. Fold neckband to inside and whip stitch into place. Attach sleeves and close all remaining seams.

#14 X-celient Cable Pullover — Front/Back 200 Sts. x 130 Rows



Special Edition Disk: Tracks 17 & 18; Pattern 901 on each





Row 31

Special Edition Disk: Tracks 19 & 20; Pattern 901 on each

# 15 Fairisle & Garter Carriage Cardigan Set



## YARN: Sorbet

Sorbet available in 24 shades

## SIZES:

6/8 (10/12) [14] [16]

## AMOUNT:

C 1: Turquoise - 2 lbs. all sizes

C 2: White - 4 oz. all sizes

## KIT PRICE: \$65.00

## TENSION:

Fairisle.: T 5

Garter Carriage: T 5

Hem Bands: T 4.2

## GAUGE:

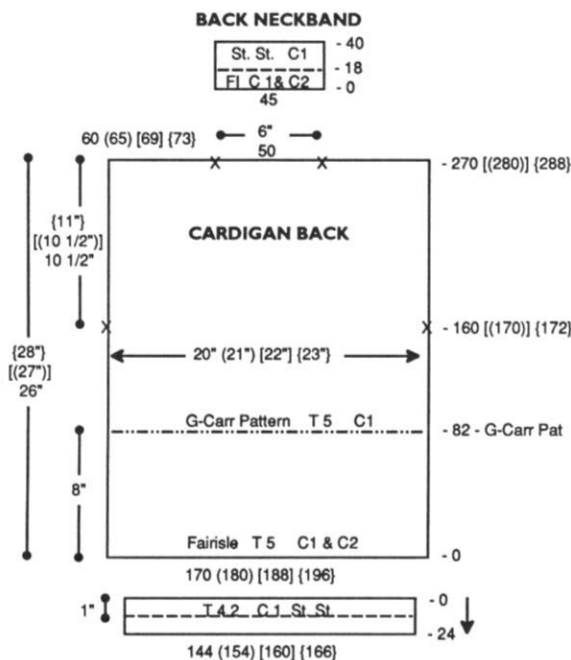
Fairisle: 8.97 Sts., 10 Rs = 1"

G-Carr: 8.52 Sts., 10.4 Rs. = 1"

Make on Standard 24-Stitch Punch Card or Standard Electronic Machine with Garter Carriage.

## CARDIGAN BACK:

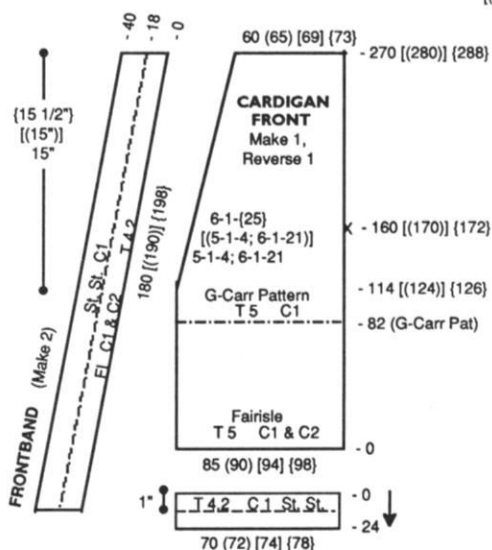
With WY CO 170 (180) [188] [196] sts. After several rows end with 1 row Ravel Cord to the right. Change to C 1. RC 0. T 5. St. St. Knit 2 Rs. Add C 2 in 'B' Feeder and knit in fairisle. At R 82 change to C1. Set Garter Carriage for pattern. Knit to R 160 [(170)] [172] and mark each side with YM for armhole. At R 270 [(280)] [288] mark center 50 sts. with YM for neck opening. Remove neckline and shoulder sts. on separate WY.



## CARDIGAN FRONT:

Make 1, Reverse 1.

With WY CO 85 (90) [94] [98] sts. After several rows, end with 1 row Ravel Cord to the right. Knit same as back to R 114 [(124)] [126]. Shape neckline. On neckline edge decr. every 5 Rs 1 St. 4x and every 6 Rs 1 St. 21x [(every 5 Rs 1 St. 4x and every 6 Rs 1 St. 21x)] [every 6 Rs 1 St. 25x]. AT THE SAME TIME at R 160 [(170)] [172] mark right side with YM for armhole. At R 270 [(280)] [288] remove shoulder sts. on WY.



## FRONT BAND COLOR CHART

Technique	# Rs	Color
St. St.	to end	C1
Fairisle	18 Rs	C1 & C2
St. St.	1 R	C1

## CARDIGAN HEM:

### Back:

With purl side facing rehang lower edge of back on 144 (154) [160] [166] ndls. decr. evenly across. RC 0. T 4.2. St. St. Knit to R 24. Pick up sts. from first row to form double hem. Knit 1 R at T 10 and BOLT.

### Front:

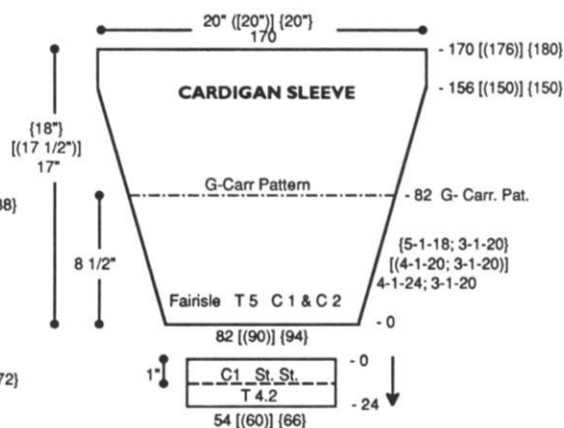
With purl side facing rehang lower edge of front on 70 (72) [74] [78] ndls. decr. evenly across. RC 0. T 4.2. St. St. Knit to R 24. Pick up sts. from first row to form double hem. Knit 1 R at T 10 and BOLT.

## BACK NECKBAND:

With purl side facing rehang back neck opening on 45 ndls. decr. evenly across. RC 0. T 4.2. C1. Knit 1 R from right to left to set pattern. Knit 18 Rs. in fairisle with C1 and C2. Change to C1. St. St. Knit to R 40. Pick up sts. from first row to form double band. Knit 1 R at T 10 and BOLT.

## FRONTBAND: Make 2

With purl side facing rehang front (including front hem) on 180 [(190)] [198] ndls. RC 0. T 4.2. C1. Knit 1 R from right to left to set pattern. Knit 18 Rs. in fairisle with C1 and C2. Change to C1. St. St. Knit to R 40. Pick up sts. from first row to form double band. Knit 1 R at T 10 and BOLT.



## SLEEVE:

With WY CO 82 [(90)] [94] sts. After several rows, end with 1 R Ravel Cord to the right. RC 0. T 5. C 1. St. St. Knit 2 Rs. Add C2 in 'B' Feeder and knit in fairisle while incr. on each side every 4 Rs 1 St. 24x and every 3 Rs 1 St. 20x [(every 4 Rs 1 St. 20x and every 3 Rs 1 St. 20x)] [every 5 Rs 1 St. 18x and every 3 Rs 1 St. 20x]. AT THE SAME TIME at R 82 set Garter Carriage for pattern and knit to R 170 [(176)] [180]. Remove sts. on WY.



**SLEEVE CUFF:**

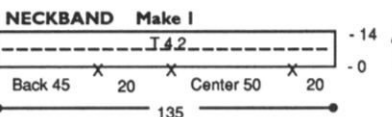
With purl side facing rehang lower edge of sleeve on 54 [(60)] {66} ndls. dec. evenly across. RC 0. T 4.2. C 1. St. St. Knit to R 24. Pick up sts. from first row to form double band. Knit 1 R at T 10 and BOLT.

**PULLOVER BACK:**

With WY CO 158 (166) [174] {184} sts. After several rows end with 1 row Ravel Cord to the right. RC 0. T 5. C 1. St. St. Knit 2 Rs. Add C 2 in 'B' Feeder and knit in fairisle to R 82. Set Garter Carriage for pattern and advance pattern 5 Rs (see drawing). At R 128 [(134)] {138} shape armhole. On each side BO 10 sts. Then dec. EOR 1 St. 5 x for all sizes. At R 212 [(222)] {232} mark center 60 sts. for neck opening and remove shoulder and neckline sts. on separate WY.

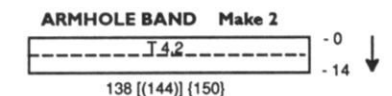
**PULLOVER HEM:**

With purl side facing, rehang front/back on 130 (137) [142] {150} ndls. dec. evenly across. RC 0. T 4.2. St. St. C 1. Knit to R 24. Pick up sts. from first row to form doubled hem. Knit 1 R at T 10 and BOLT.



**NECKBAND:**

Close one shoulder. With purl side facing rehang neck opening on 135 ndls. following chart. RC 0. T 4.2. Knit to R 14 following pullover band color chart. Pick up sts. from first row to form double band. Knit 1 R at T 10 and BOLT.



**PULLOVER BAND COLOR CHART**

Technique	# Rs	Color
St. St.	8 Rs	C1
Fairisle	4 Rs	C1 & C2
St. St.	2 Rs	C1

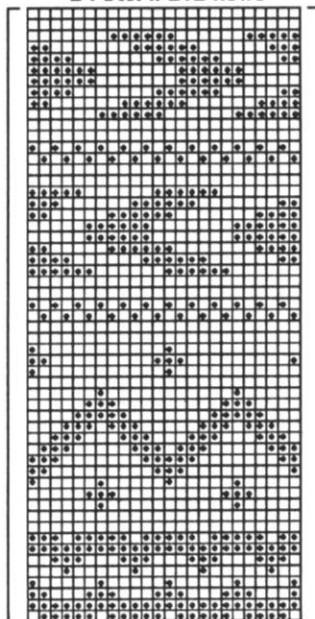
**ARMHOLE BAND:**

Close remaining shoulder seam. With purl side facing, rehang armhole opening on 138 [(144)] {150} ndls. RC 0. T 4.2. Knit to R 14 Rs. following pullover band color chart. Pick up sts. from first row to form double band. Knit 1 R at T 10 and BOLT.

**FINISHING:**

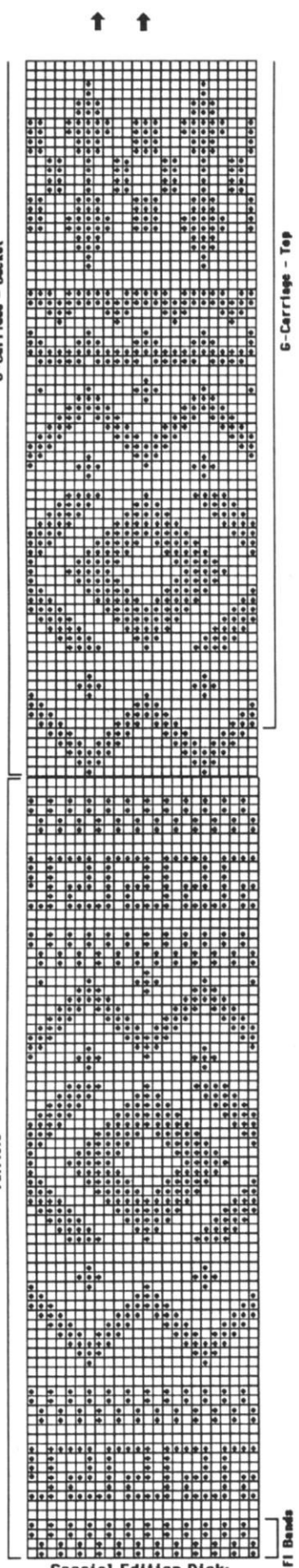
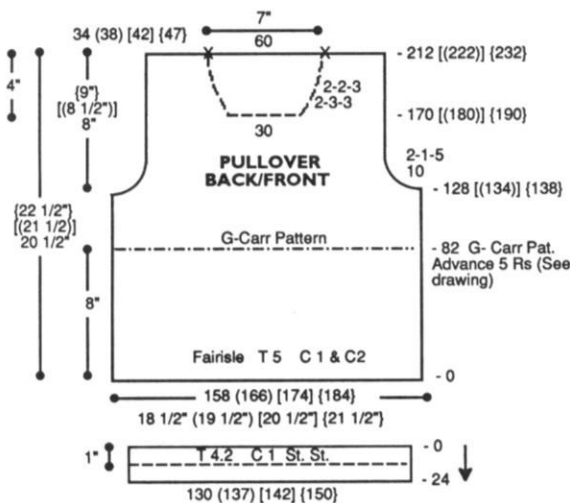
Close all remaining seams.

**\* 15 Cardigan Set  
24 Sts. x 212 Rows**



**PULLOVER FRONT:**

Knit front same as back to R 170 [(180)] {190}. Shape neckline. Knit center 30 sts. to 'A' position on Ravel Cord and all sts. to the left. Note pattern row. \*On neckline edge dec. EOR 3 sts. 3 x and EOR 2 sts. 3 x. At R 212 [(222)] {232} remove shoulder sts. on WY. Reset RC to R 170 [(180)] {190}. Reset pattern to correct row and shape left side from \*, reversing shaping. Remove neckline sts. on WY.



Special Edition Disk:  
Track 21; Pattern 901

# Knitknig Sizing Chart

## MENS

Size	34	36	38	40	42	44
Chest	34	36	38	40	42	44
Waist	30	32	34	36	38	40
Hip	35	37	39	41	43	45
Neck	15 1/2	16	16 1/2	17	17 1/2	17 1/2
Back Waist Length	18	18 1/2	19	19 1/2	20	21
Shoulder to Shoulder	15 1/2	16	16 1/2	17	17 1/2	18
Upper Arm Circumference	9 5/8	10 3/8	11 1/8	11 7/8	12 5/8	13 3/8
Armhole Depth	8	8 1/2	9	9 1/2	10	10 1/2
Sleeve Length	19	19 1/2	19 1/2	20	20	20 1/2
Under Arm						
Wrist	6 1/2	7	7	7	7 1/2	8
Hip Depth	8 3/8	8 1/2	8 5/8	8 3/4	8 3/4	9

These are actual body sizes. Proper ease allowance is necessary as determined by the style.

## CHILDREN

Size	12 mo	2 yr	4	6	8	10	12	14
Chest	19	21	23	25	27	28	30	32
Waist	19	20	21	22	23	24	25	26 1/2
Hip	20	22	24	26	28	30	32	34
Neck	9 1/4	10	10 3/4	11 1/2	12 1/8	12 5/8	13 1/8	13 5/8
Back Waist Length	7	8 1/2	9 1/2	10 1/2	12	12 3/4	13 1/2	14 1/4
Shoulder to Shoulder	7 1/2	8 1/2	9 1/2	10	11	11 1/2	12	12 1/4
Upper Arm Circumference	7	7 1/2	8	8 1/2	9	9 1/2	10	10 1/2
Armhole Depth	3 1/2	4	4 1/2	5 1/4	6	6 1/2	6 3/4	7
Sleeve Length	6	8 1/2	10	11 1/2	13	14 1/2	15 1/2	16 1/2
Under Arm								
Wrist	5	5 1/4	5 1/2	5 1/2	5 3/4	5 3/4	6	6
Hip Depth	5	5 1/4	5 1/2	5 1/2	5 3/4	6 1/4	6 3/4	7

These are actual body sizes. Proper ease allowance is necessary as determined by the style.

## WOMENS

Size	6	8	10	12	14	16	18	20	22
Bust	30 1/2	31 1/2	32 1/2	34	36	38	40	42	44
Waist	22	23	24	25 1/2	27	29	31	34	36
Hip	32 1/2	33 1/2	34 1/2	36	38	40	42	44	46
Neck	13 1/8	13 3/8	13 5/8	14	14 3/8	14 3/4	15 1/4	15 3/4	16 1/4
Back Waist Length	15 1/2	15 3/4	16	16 1/4	16 1/2	16 3/4	17	17 1/4	17 1/2
Shoulder to Shoulder	13 1/2	13 1/2	14	14 1/2	15	15 1/2	16	16 1/2	17
Upper Arm Circumference	9 3/4	9 3/4	10 1/4	10 1/4	11	11 1/2	12	13	13 1/2
Armhole Depth	7	7	7 1/2	7 1/2	7 1/2	8	8	8 1/4	8 1/4
Sleeve Length	16 1/2	16 1/2	17 1/2	17 1/2	17 1/2	18	18	18 1/2	18 1/2
Under Arm									
Wrist	6	6	6 1/4	6 1/4	6 1/2	6 1/2	6 1/2	7	7
Hip Depth	7 3/4	8	8 1/4	8 1/2	8 3/4	9	9 1/4	9 1/2	9 3/4

These are actual body sizes. Proper ease allowance is necessary as determined by the style.



The finest quality KNITKNIG yarns are used to create the beautiful fashions found in KNITKNIG Magazine. Photographic representations may not accurately reflect the true color of the yarn due to lighting and printing processes. Please refer to your Knitknig Yarn Color Book for actual colors. Kit prices are located with the instructions for each garment. Each yarn comes in a wide selection of colors. The different types of yarns have been selected to allow for blending, mixing, and contrasting—both color and texture.

Yarn Color Book is available through KNITKNIG or an authorized Knitknig dealer. Content and approximate yardage of each yarn is included in

	<i>Yds./Pound</i>		<i>Yds./Pound</i>		
Alpine	100% Wool	1600	Primo	100% Mercerized Cotton	2500
Angora	100% Rabbit Hair (10 gr. ball)	33 yds/ball	Rayon Nubs	100% Rayon Nub Filler Yarn	5500
Acrylite	2/12 Acrylic	2400	Roma	80% Acrilan/20% Antron	2600
Caprinae	78% Mohair/13% Wool/9% Nylon	980	Rubane	(50 gr ball) 100% Polyamid 1/8" ribbon	82/ball
Glace	100% Slinky Bright Rayon	2400	Silkie	2-Ply Orlon	2100
Glace Plus	100% Slinky Bright Rayon	1650	Softon	100% Soft Cotton	2000
Lumiyarn	Thin Metallic Yarn (50 gr. cone)	1200/cone	Sorbet	54% Cotton/46% Rayon	2200
Mini Pebble	100% Rayon Slub Filler Yarn	3350	Splendor	Hi-Bulk 3-Ply Acrylic	2200
Mirage	100% 4-Ply Worsted Acrylic	1000	Starlite	Acrylic w/Metallic Thread	2400
Night Music	Polyester Thread w/Metallic Twist	115/ball	Venetia	70% Wool/30% Rayon	2400
Panache	100% 3-ply Acrylic	2400	Woolana	100% 2/12 Merino Wool	3000
Pearlyte	100% Rayon Boucle	2200	Knit-in Elastic	79% Nylon/21% Elastic	430/spool
Pebble	Boucle Cotton/Acrylic/Rayon	700			

**Yarn Color Book: \$25.00 + Shipping and Handling**

Order your Knitknig kits in the color of your choice from Knitknig color cards. Kit and yarn prices subject to change without notice.



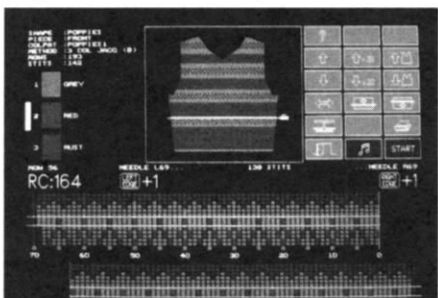
# Become A Great Fashion Designer With A Little Help From A Square.

DesignaKnit 5...the most popular computer-aided knitwear design program in the USA.

With DesignaKnit 5, machine knitters at every skill level can create beautiful garments with no previous design experience. DesignaKnit takes you through the entire design process one step at a time. You can work with a vast array of built in shapes and sizes and then modify them to fit your exact needs. With the Professional Version, you can even create original shapes.

By designing on the screen, you can develop your own stitch patterns from the most popular stitches and experiment with thousands of color combinations. You can even

import original or scanned graphics right into your design. When ready, you can print out scaled drawings, stitch patterns, knitting instructions, punchcard templates and more. With the Knit-From-Screen feature, you're even able to view your progress as you knit and monitor color and shaping changes. DesignaKnit also comes with Knitking's unmatched customer support, including a technical assistance hot-line, a tutorial and detailed manual. So take your designs to a new level, and order the square called DesignaKnit today.



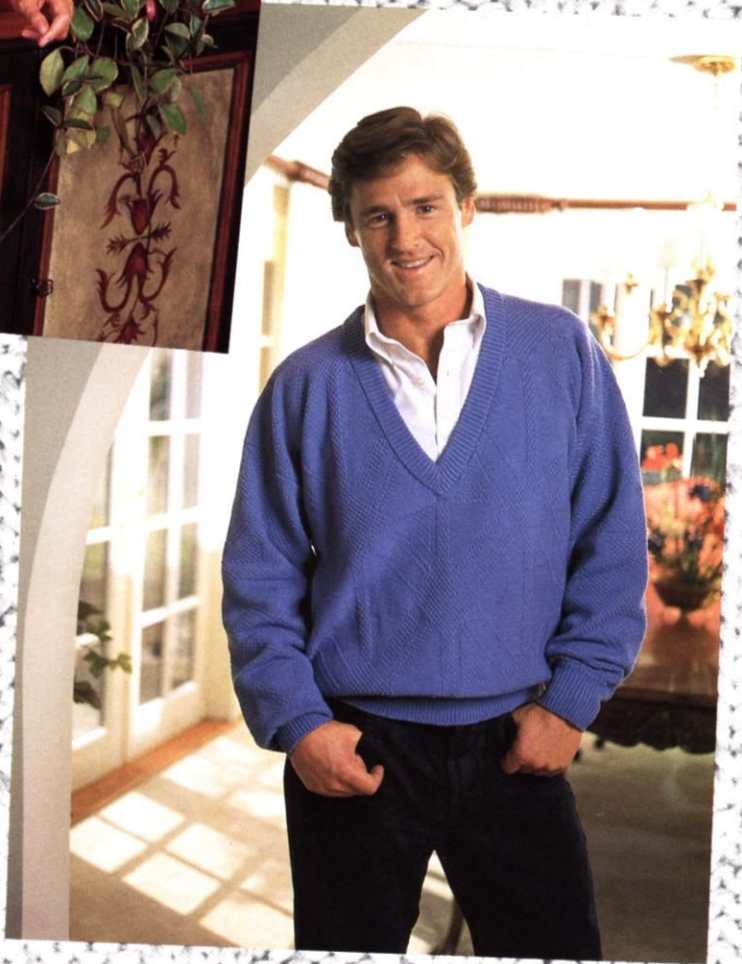
**PRICES START  
AS LOW AS \$259.95**



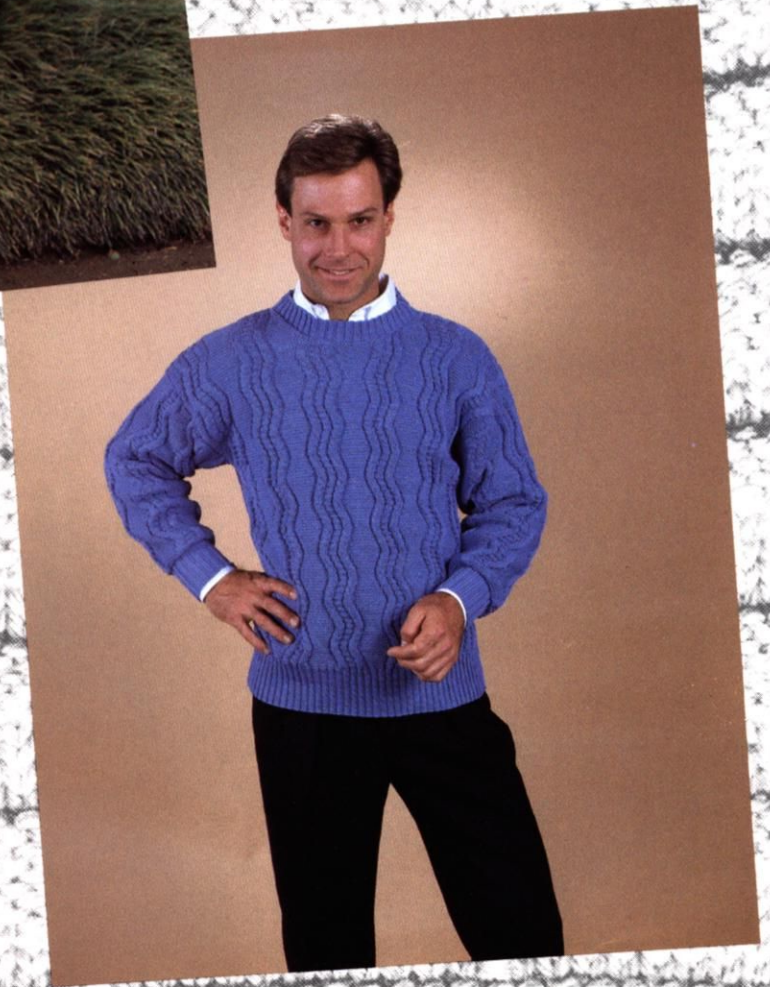
**LIMITED TIME OFFER: CALL 800-962-6446 TODAY AND GET A FREE DEMO DISK**

*DesignaKnit works with virtually all electronic and punchcard machines...Knitking, Singer, Brother, Studio, Passap (Cable links optional).*



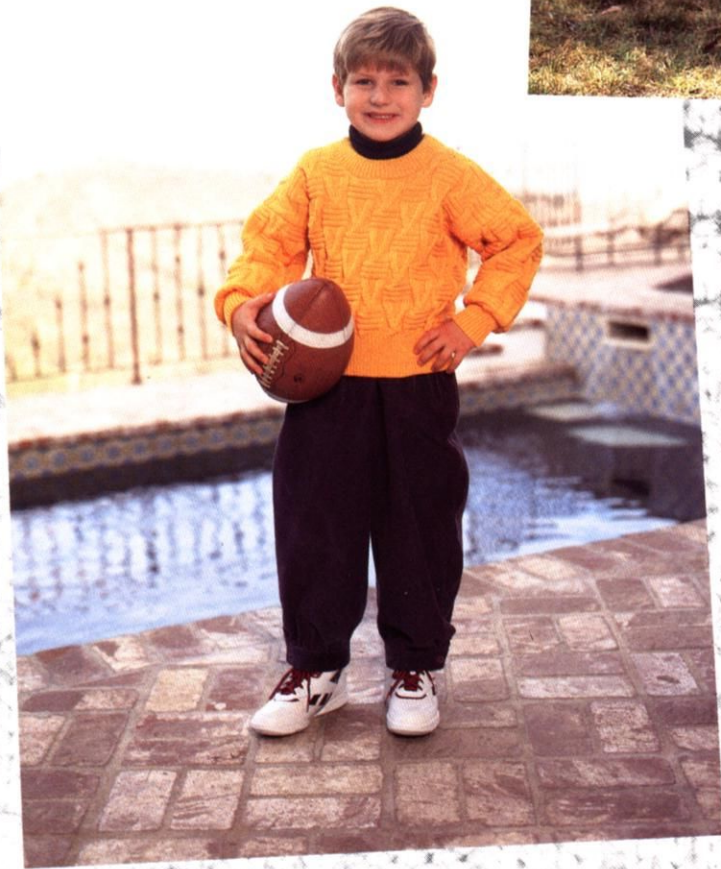
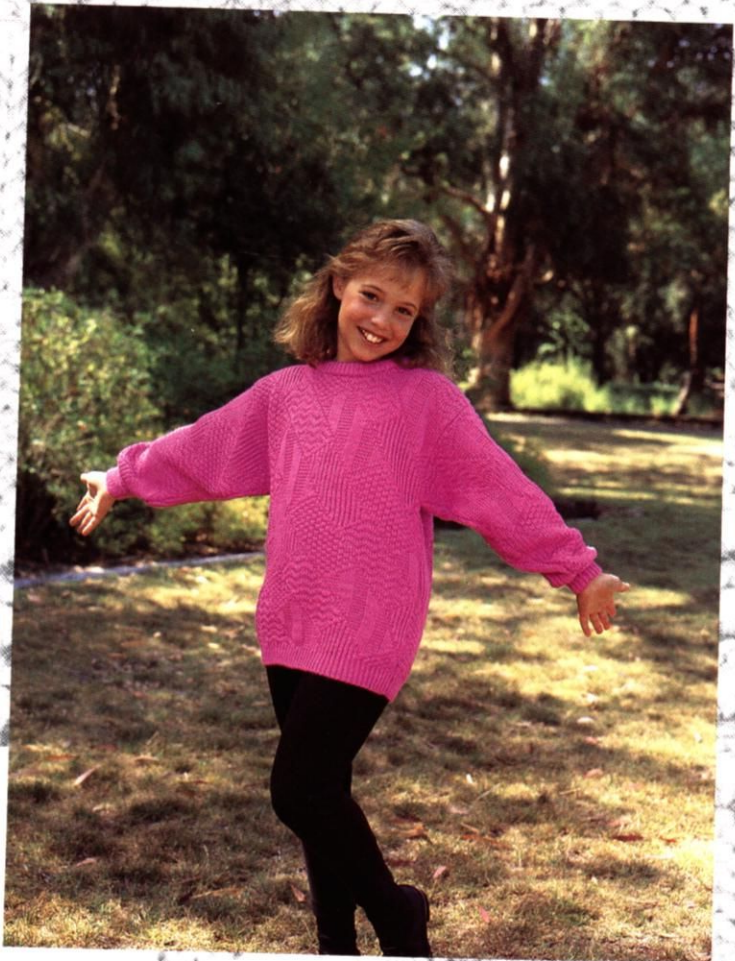








13



12



