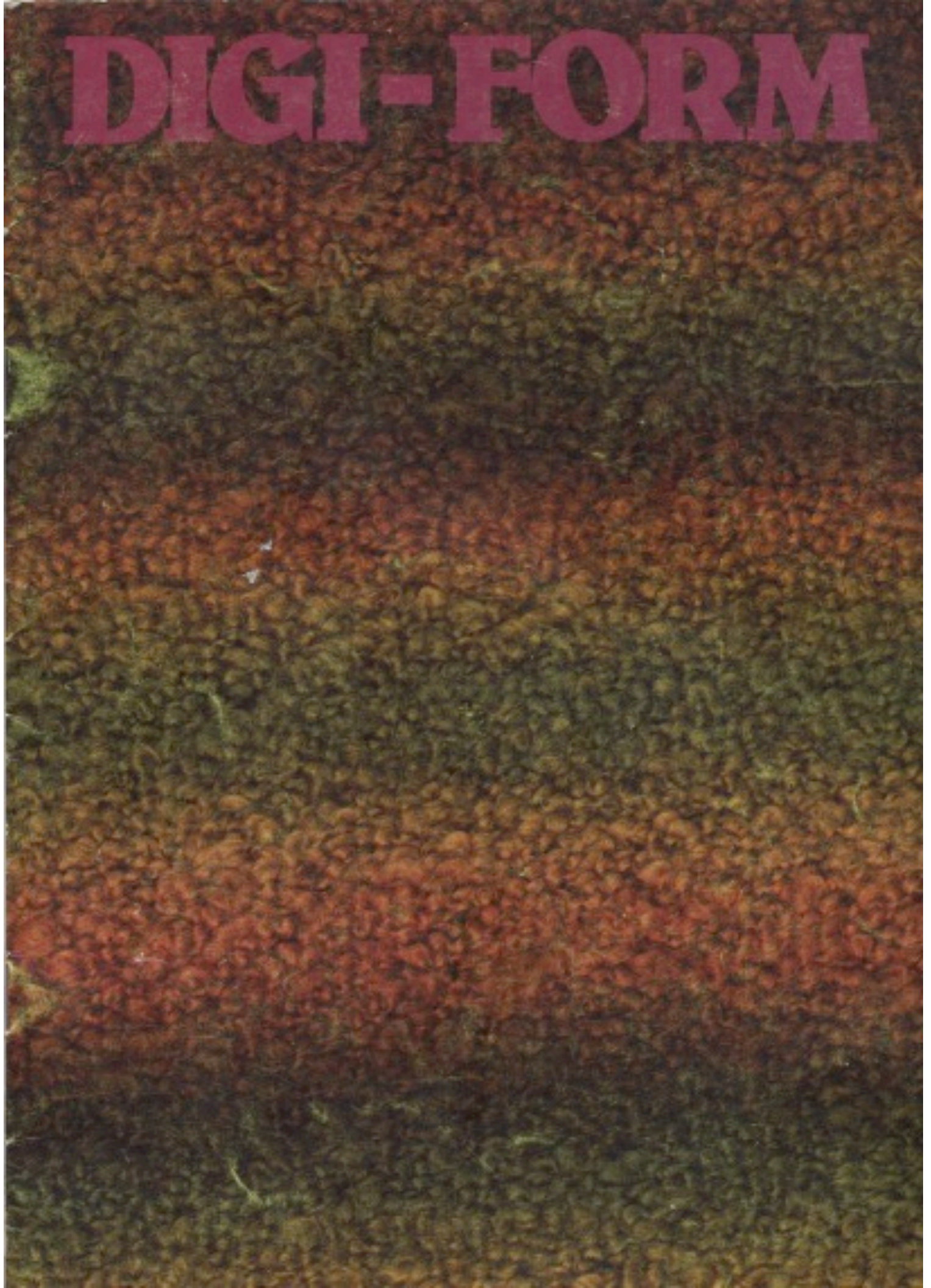


DIGI-FORM



**WAHLEN SIE...
CHOOSE...
ELIJA...
ESCELHA...
SCEGLIETE...
CHOISISSEZ...**

| | PAGES |
|--|----------|
|    | 2 |
|     | 3 |
|   | 4 |
|    | 5 |
|    | 6 |
|    | 7 |



**STRICKEN SIE...
KNIT...
TEJA...
TRICOTAR...
LAVORATE...
TRICOTEZ...**

PAGES

8



9



10



11

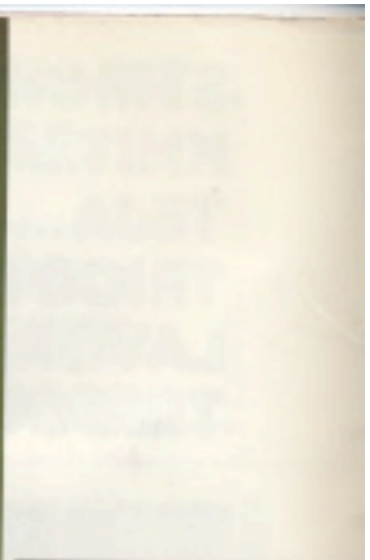


12



13





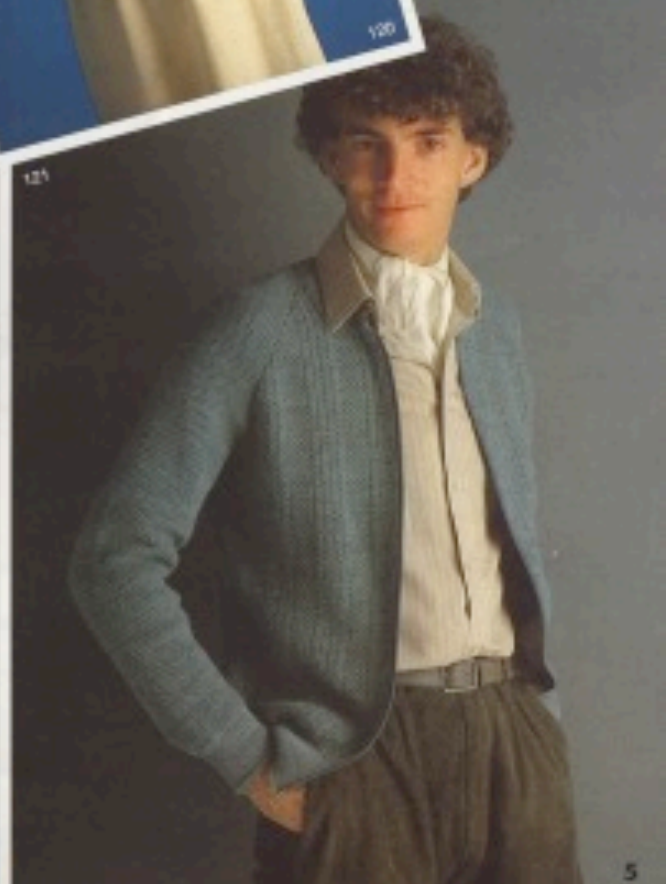


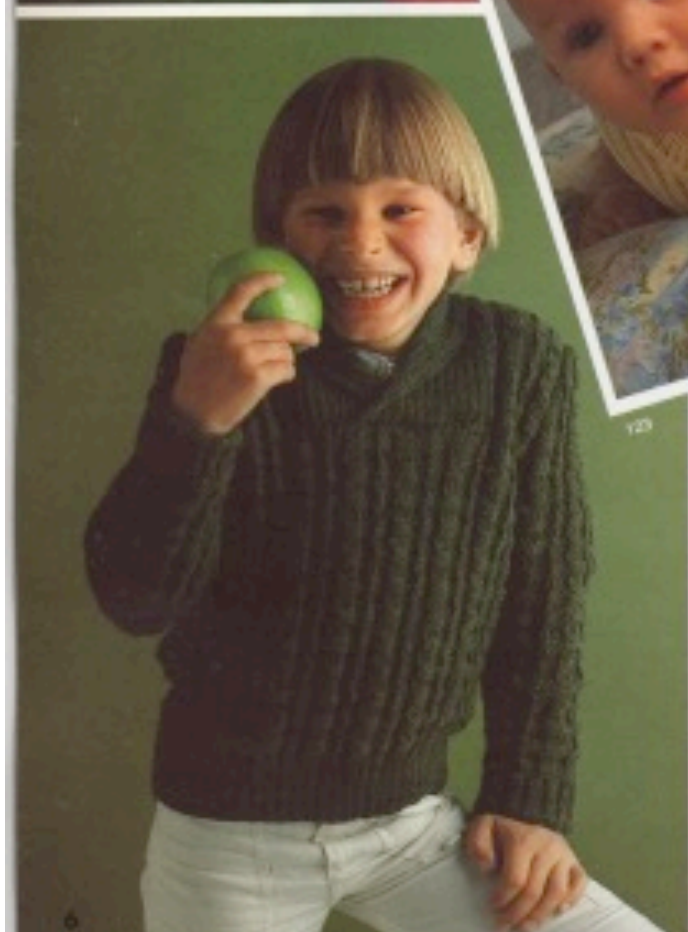
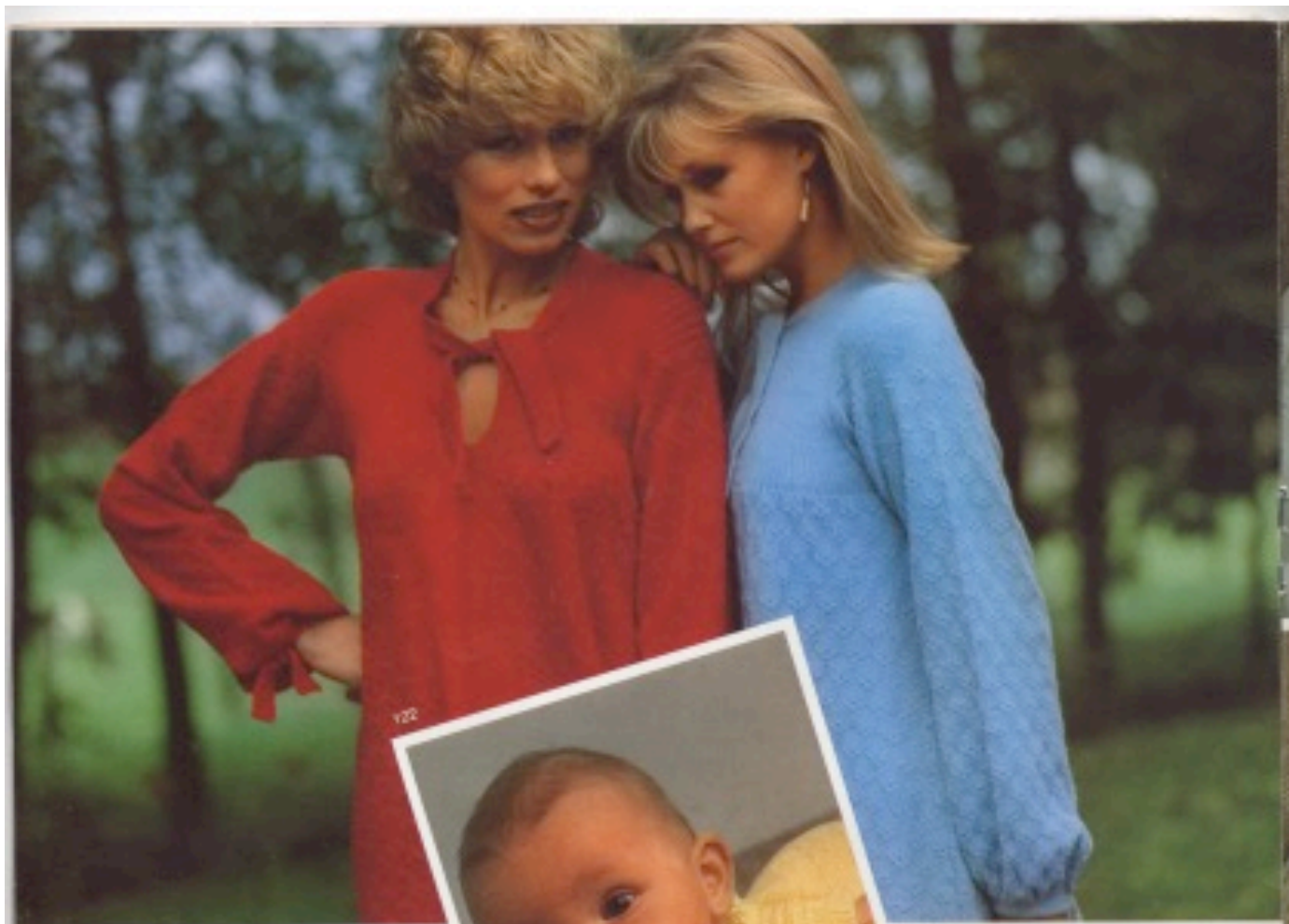


117



118



















142



143




13

MEN'S SWEATER Sizes : 48-52

2
110



Material : 600 - 700 grs yarn —  US 3 - 4
2 buttons UK 11 - 9

Pattern Stitches : 1/1 rib - Basket weave, plain stitches, purl stitches

| 48 | 52 |
|-----|-----|
| 116 | 116 |
| 154 | 154 |
| H | H |
| L | L |
| 130 | 144 |
| 3 | 3 |
| 3 | 3 |
| 166 | 166 |
| 130 | 144 |
| 3 | 3 |
| 3 | 3 |
| 38 | 39 |
| 72 | 74 |
| E | E |
| 70 | 70 |
| 176 | 176 |
| 7 | 7 |
| 6 | 7 |
| 191 | 191 |
| 137 | 139 |
| 28 | 30 |
| 101 | 101 |
| 168 | 168 |
| 7 | 7 |
| 33 | 35 |
| 188 | 188 |
| 159 | 163 |
| 0 | 0 |

| 48 | 52 |
|-----|-----|
| 116 | 116 |
| 154 | 154 |
| H | H |
| L | L |
| 130 | 144 |
| 3 | 3 |
| 3 | 3 |
| 38 | 38 |
| 130 | 144 |
| 3 | 3 |
| 3 | 3 |
| 38 | 39 |
| 72 | 74 |
| E | E |
| 229 | 229 |
| 168 | 168 |
| 7 | 7 |
| 33 | 35 |
| 188 | 188 |
| 159 | 163 |
| 69 | 69 |
| 185 | 185 |
| 131 | 133 |
| 185 | 185 |
| 129 | 129 |
| 161 | 161 |
| 0 | 0 |

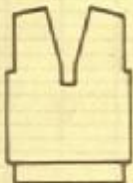
| 48 | 52 |
|-----|-----|
| 92 | 92 |
| 120 | 120 |
| H | H |
| L | L |
| 126 | 130 |
| 3 | 3 |
| 3 | 3 |
| 98 | 98 |
| 7 | 7 |
| 11 | 11 |
| 0 | 0 |

Edge band in rib
Back and Front

| 48 | 52 |
|-----|-----|
| 116 | 116 |
| 154 | 154 |
| H | H |
| L | L |
| 72 | 78 |
| 3 | 3 |
| 3 | 3 |
| 38 | 38 |
| 120 | 126 |
| 3 | 3 |
| 3 | 3 |
| 50 | 51 |
| 58 | 59 |
| E | E |
| 99 | 99 |
| 120 | 120 |
| 128 | 128 |
| 175 | 179 |
| 131 | 131 |
| C | C |
| 7 | 7 |
| 6 | 6 |
| 0 | 0 |

| 48 | 52 |
|-----|-----|
| 92 | 92 |
| 120 | 120 |
| H | H |
| L | L |
| 126 | 130 |
| 3 | 3 |
| 3 | 3 |
| 100 | 100 |
| 7 | 7 |
| 7 | 7 |
| 67 | 67 |
| 1 | 1 |
| 0 | 0 |

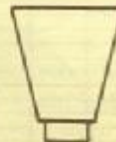
Neckbands



Front



Back



Sleeve

Back - Front - Sleeves :

- H = Length in mm of 40 rows in stocking stitch
- L = Width in mm of 40 stitches in stocking stitch
- C = Length in mm of 40 rows in 1/1 rib
- E = Total length in cm

Edge band in rib back and front - Neckbands :

- H = Length in mm of 40 rows in 1/1 rib
- L = Width in mm of 40 stitches in 1/1 rib

Back - Front :

- 1 = Open casting-on with an auxiliary yarn. Needle setting for basket weave with the chosen yarn
- 3 = Divide the knitting for neckline
- 4 = End of the neckline first side
- 5 = End of knitting and programme the edge band in rib

Sleeves :

- 1 = Open casting-on with an auxiliary yarn. Needle setting for basket weave with the chosen yarn
- 5 = End of the knitting
- 6 = Cast-off. Hang the beginning of the sleeve on the indicated number of needles and knit the edge band in rib

Edge band in rib back and front :

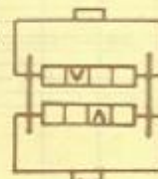
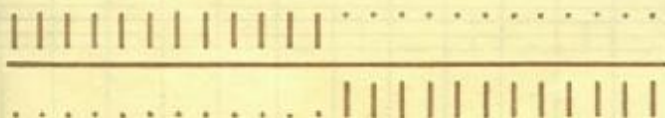
- 1 = Rehang the starting stitches on the indicated number of needles. Needle setting for 1/1 rib
- 5 = End of knitting

Neckbands :

- 1 = Casting-on in 1/1 rib
- 7 = Transfer stitches into stocking stitch, knit one row, then knit a few rows with an auxiliary yarn
- 5 = End of knitting

FANCY PATTERN STITCH

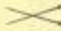
Basket weave : 12 plain stitches
12 purl stitches
Reverse stitches every 16th row



LADIE'S SWEATER

Sizes : 36 - 38 - 40 - 42

2
111

Material : 300 - 350 grs yarn —  US 1 - 4
UK 13 - 9

Pattern stitches : 1/1 rib - Stocking stitch - Double garter stitch



| 36 | 38 | 40 | 42 |
|-----|-----|-----|-----|
| 139 | 139 | 139 | 139 |
| 165 | 165 | 165 | 165 |
| H | H | H | H |
| L | L | L | L |
| 106 | 110 | 116 | 120 |
| 84 | 87 | 90 | 93 |
| 84 | 87 | 90 | 93 |
| 195 | 195 | 195 | 195 |
| C | C | C | C |
| 7 | 7 | 7 | 7 |
| 3 | 3 | 3 | 3 |
| 38 | 38 | 38 | 38 |
| 106 | 110 | 116 | 120 |
| 84 | 87 | 90 | 93 |
| D | D | D | D |
| 38 | 38 | 38 | 38 |
| 62 | 62 | 63 | 63 |
| E | E | E | E |
| 228 | 228 | 228 | 228 |
| 184 | 184 | 184 | 184 |
| 128 | 128 | 128 | 128 |
| 7 | 7 | 7 | 7 |
| 19 | 19 | 21 | 21 |
| 70 | 70 | 70 | 70 |
| 177 | 177 | 177 | 177 |
| 186 | 186 | 186 | 186 |
| 129 | 129 | 129 | 129 |
| 179 | 179 | 179 | 179 |
| 164 | 164 | 164 | 164 |
| 2 | 2 | 2 | 2 |
| 0 | 0 | 0 | 0 |

| 36 | 38 | 40 | 42 |
|-----|-----|-----|-----|
| 139 | 139 | 139 | 139 |
| 165 | 165 | 165 | 165 |
| H | H | H | H |
| L | L | L | L |
| 106 | 110 | 116 | 120 |
| 84 | 87 | 90 | 93 |
| 84 | 87 | 90 | 93 |
| 195 | 195 | 195 | 195 |
| C | C | C | C |
| 7 | 7 | 7 | 7 |
| 3 | 3 | 3 | 3 |
| 38 | 38 | 38 | 38 |
| 106 | 110 | 116 | 120 |
| 84 | 87 | 90 | 93 |
| D | D | D | D |
| 38 | 38 | 38 | 38 |
| 62 | 62 | 63 | 63 |
| E | E | E | E |
| 228 | 228 | 228 | 228 |
| 184 | 184 | 184 | 184 |
| 128 | 128 | 128 | 128 |
| 7 | 7 | 7 | 7 |
| 19 | 19 | 21 | 21 |
| 69 | 69 | 69 | 69 |
| 177 | 177 | 177 | 177 |
| 186 | 186 | 186 | 186 |
| 129 | 129 | 129 | 129 |
| 180 | 180 | 180 | 180 |
| 131 | 131 | 131 | 131 |
| 0 | 0 | 0 | 0 |

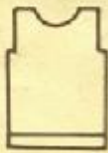
| 36 | 40 |
|-----|-----|
| 139 | 139 |
| 165 | 165 |
| H | H |
| L | L |
| 58 | 58 |
| 24 | 24 |
| 24 | 24 |
| 38 | 38 |
| 94 | 96 |
| 39 | 40 |
| F | F |
| 40 | 42 |
| 50 | 50 |
| E | E |
| 101 | 101 |
| 189 | 189 |
| 131 | 131 |
| 120 | 120 |
| 128 | 128 |
| 169 | 169 |
| 131 | 131 |
| C | C |
| 7 | 7 |
| 2 | 2 |
| 0 | 0 |

| 36 | 40 |
|-----|-----|
| 103 | 103 |
| 158 | 158 |
| H | H |
| L | L |
| 78 | 78 |
| 3 | 3 |
| 3 | 3 |
| 102 | 102 |
| 7 | 7 |
| 1 | 1 |
| 68 | 68 |
| 1 | 1 |
| 68 | 68 |
| 2 | 2 |
| 0 | 0 |

| 36 | 40 |
|-----|-----|
| 103 | 103 |
| 158 | 158 |
| H | H |
| L | L |
| 100 | 100 |
| 3 | 3 |
| 3 | 3 |
| 102 | 102 |
| 7 | 7 |
| 1 | 1 |
| 68 | 68 |
| 1 | 1 |
| 68 | 68 |
| 2 | 2 |
| 0 | 0 |

Neckband back

Neckband Front



Front



Back



Sleeve

Back - Front - Sleeves :

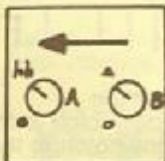
- H = Length in mm of 40 rows in fancy pattern stitch
- L = Width in mm of 40 stitches in fancy pattern stitch
- C = Length in mm of 40 rows in 1/1 rib
- D = Bust measurement in cm
- E = Total length in cm
- F = Repeat the number just above unless D is increased

Neckbands :

- H = Length in mm of 40 rows in 1/1 rib
- L = Width in mm of 40 stitches in 1/1 rib

FANCY PATTERN STITCH

Knit four rows in double garter stitch at regular intervals



Back - Front :

- 1 = Casting-on in 1/1 rib
- 2 = Transfer into fancy pattern stitch (stripes in double garter stitch)
- 3 = Divide the knitting for neckline
- 4 = End of the neckline first side
- 5 = End of knitting

Sleeves :

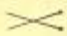
- 1 = Open casting-on with an auxillary yarn
- 5 = End of knitting
- 6 = Cast-off. Hang the beginning of the sleeve on the indicated number of needles and knit the edge band in rib.

Neckbands :

- 1 = Casting-on in 1/1 rib
- 7 = Circular knitting
- 5 = End of knitting
- 8 = Knit with an auxillary yarn

BOY'S SWEATER Sizes : 2, 3, 5, 7, 9, 11, 13, 15 years

2
112

Material : 200 to 300 grs yarn —  US 0.1
UK 14-13

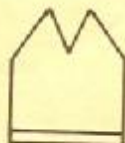
Pattern stitches : 1/1 rib - Racking pattern



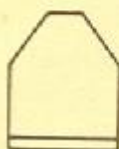
| 2a | 3a | 5a | 7a | 9a | 11a | 13a | 15a |
|-----|-----|-----|-----|-----|-----|-----|-----|
| 60 | 60 | 60 | 60 | 60 | 60 | 60 | 60 |
| 155 | 155 | 155 | 155 | 155 | 155 | 155 | 155 |
| H | H | H | H | H | H | H | H |
| L | L | L | L | L | L | L | L |
| 86 | 88 | 94 | 100 | 104 | 110 | 114 | 120 |
| 66 | 68 | 72 | 76 | 80 | 84 | 88 | 92 |
| 66 | 68 | 72 | 76 | 80 | 84 | 88 | 92 |
| 195 | 195 | 195 | 195 | 195 | 195 | 195 | 195 |
| C | C | C | C | C | C | C | C |
| 7 | 7 | 7 | 7 | 7 | 7 | 7 | 7 |
| 11 | 11 | 11 | 11 | 11 | 11 | 11 | 11 |
| 38 | 38 | 38 | 38 | 38 | 38 | 38 | 38 |
| 86 | 88 | 94 | 100 | 104 | 110 | 114 | 120 |
| 66 | 68 | 72 | 76 | 80 | 84 | 88 | 92 |
| 66 | 68 | 72 | 76 | 80 | 84 | 88 | 92 |
| 18 | 19 | 21 | 23 | 25 | 27 | 29 | 31 |
| 38 | 40 | 43 | 46 | 49 | 52 | 55 | 58 |
| E | E | E | E | E | E | E | E |
| 228 | 228 | 228 | 228 | 228 | 228 | 228 | 228 |
| 255 | 255 | 255 | 255 | 255 | 255 | 255 | 255 |
| 1 | 1 | 1 | 1 | 1 | 1 | 1 | 1 |
| 149 | 150 | 152 | 155 | 157 | 158 | 160 | 163 |
| 43 | 46 | 50 | 53 | 56 | 60 | 63 | 66 |
| 67 | 67 | 67 | 67 | 67 | 67 | 67 | 67 |
| 191 | 191 | 191 | 191 | 191 | 191 | 191 | 191 |
| 134 | 134 | 135 | 135 | 135 | 137 | 137 | 137 |
| 40 | 43 | 47 | 50 | 53 | 57 | 60 | 63 |
| 0 | 0 | 0 | 0 | 0 | 0 | 0 | 0 |

| 2a | 3a | 5a | 7a | 9a | 11a | 13a | 15a |
|-----|-----|-----|-----|-----|-----|-----|-----|
| 60 | 60 | 60 | 60 | 60 | 60 | 60 | 60 |
| 155 | 155 | 155 | 155 | 155 | 155 | 155 | 155 |
| H | H | H | H | H | H | H | H |
| L | L | L | L | L | L | L | L |
| 86 | 88 | 94 | 100 | 104 | 110 | 114 | 120 |
| 66 | 68 | 72 | 76 | 80 | 84 | 88 | 92 |
| 66 | 68 | 72 | 76 | 80 | 84 | 88 | 92 |
| 195 | 195 | 195 | 195 | 195 | 195 | 195 | 195 |
| C | C | C | C | C | C | C | C |
| 7 | 7 | 7 | 7 | 7 | 7 | 7 | 7 |
| 11 | 11 | 11 | 11 | 11 | 11 | 11 | 11 |
| 38 | 38 | 38 | 38 | 38 | 38 | 38 | 38 |
| 86 | 88 | 94 | 100 | 104 | 110 | 114 | 120 |
| 66 | 68 | 72 | 76 | 80 | 84 | 88 | 92 |
| 66 | 68 | 72 | 76 | 80 | 84 | 88 | 92 |
| 18 | 19 | 21 | 23 | 25 | 27 | 29 | 31 |
| 39 | 41 | 44 | 47 | 50 | 53 | 56 | 59 |
| E | E | E | E | E | E | E | E |
| 100 | 100 | 100 | 100 | 100 | 100 | 100 | 100 |
| 255 | 255 | 255 | 255 | 255 | 255 | 255 | 255 |
| 1 | 1 | 1 | 1 | 1 | 1 | 1 | 1 |
| 152 | 153 | 155 | 158 | 160 | 162 | 164 | 167 |
| 46 | 50 | 53 | 56 | 60 | 63 | 66 | 70 |
| 0 | 0 | 0 | 0 | 0 | 0 | 0 | 0 |

| 2a | 3a | 5a | 7a | 9a | 11a | 13a | 15a |
|-----|-----|-----|-----|-----|-----|-----|-----|
| 60 | 60 | 60 | 60 | 60 | 60 | 60 | 60 |
| 155 | 155 | 155 | 155 | 155 | 155 | 155 | 155 |
| H | H | H | H | H | H | H | H |
| L | L | L | L | L | L | L | L |
| 46 | 50 | 52 | 54 | 58 | 60 | 62 | 64 |
| 18 | 19 | 20 | 21 | 22 | 23 | 24 | 25 |
| 18 | 19 | 20 | 21 | 22 | 23 | 24 | 25 |
| 195 | 195 | 195 | 195 | 195 | 195 | 195 | 195 |
| C | C | C | C | C | C | C | C |
| 7 | 7 | 7 | 7 | 7 | 7 | 7 | 7 |
| 11 | 11 | 11 | 11 | 11 | 11 | 11 | 11 |
| 38 | 38 | 38 | 38 | 38 | 38 | 38 | 38 |
| 64 | 68 | 72 | 76 | 84 | 88 | 94 | 100 |
| 25 | 26 | 28 | 30 | 32 | 34 | 36 | 38 |
| 25 | 26 | 28 | 30 | 32 | 34 | 36 | 38 |
| 19 | 20 | 22 | 24 | 26 | 28 | 30 | 32 |
| 35 | 37 | 40 | 43 | 46 | 49 | 54 | 58 |
| E | E | E | E | E | E | E | E |
| 67 | 67 | 67 | 67 | 67 | 67 | 67 | 67 |
| 191 | 191 | 191 | 191 | 191 | 191 | 191 | 191 |
| 147 | 149 | 149 | 152 | 155 | 156 | 158 | 162 |
| 46 | 50 | 53 | 56 | 60 | 63 | 66 | 70 |
| 70 | 70 | 70 | 70 | 70 | 70 | 70 | 70 |
| 255 | 255 | 255 | 255 | 255 | 255 | 255 | 255 |
| 1 | 1 | 1 | 1 | 1 | 1 | 1 | 1 |
| 147 | 149 | 149 | 152 | 155 | 156 | 158 | 162 |
| 43 | 46 | 50 | 53 | 56 | 60 | 63 | 66 |
| 187 | 188 | 187 | 187 | 188 | 187 | 187 | 188 |
| 133 | 133 | 135 | 135 | 135 | 137 | 137 | 137 |
| 0 | 0 | 0 | 0 | 0 | 0 | 0 | 0 |



Front



Back



Sleeve

| 2 | 5-7 | 11-13 |
|-----|-----|-------|
| 3a | 9a | 15a |
| 85 | 85 | 85 |
| 93 | 93 | 93 |
| H | H | H |
| L | L | L |
| 130 | 136 | 140 |
| 3 | 3 | 3 |
| 3 | 3 | 3 |
| 100 | 100 | 100 |
| 7 | 7 | 7 |
| 1 | 1 | 1 |
| 67 | 67 | 67 |
| 2 | 2 | 2 |
| 0 | 0 | 0 |

Neckband

Back - Front - Sleeves :

H = Length in mm of 40 rows in racking pattern
L = Width in mm of 40 stitches in racking pattern
C = Length in mm of 40 rows in 1/1 rib
E = Total length in cm

Neckband :

H = Length in mm of 40 rows in 1/1 rib
L = Width in mm of 40 stitches in 1/1 rib

Back - Front - Sleeves :

- 1 = Casting-on in 1/1 rib
- 2 = Transfer to racking pattern
- 3 = Divide the knitting for neckline
- 4 = End of the neckline first side
- 5 = End of knitting
- 7 = Attach an auxiliary yarn to both edge stitches

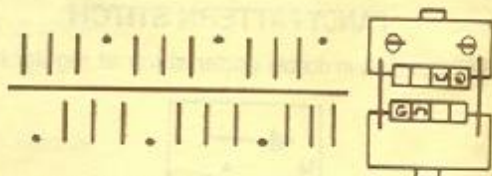
Reverse shaping to knit the second sleeve

Neckbands :

- 1 = Casting-on in 1/1 rib
- 5 = End of knitting
- 8 = Transfer into stocking stitch, knit two rows, attach an auxiliary yarn, go on knitting

FANCY PATTERN STITCH

Racking pattern : needle setting




Flow combs alternate
Racking lever : one notch to the right-hand side, knit four rows one notch to the left-hand side, knit four rows. Repeat these operations.

LADIES' DRESS Size : 40

3
113



Material : 600 grs yarn —  US 0.1
UK 14 - 13

Pattern stitches : Circular hem - Close rib - Tuck stitch

| |
|-----|
| 40 |
| 100 |
| 135 |
| H |
| L |
| 170 |
| 3 |
| 3 |
| 115 |
| 224 |
| 135 |
| 8 |
| 38 |
| 158 |
| 3 |
| 3 |
| 50 |
| 122 |
| E |
| 104 |
| 191 |
| 133 |
| 33 |
| 63 |
| 130 |
| 29 |
| 4 |
| 32 |
| 233 |
| 63 |
| 130 |
| 29 |
| 160 |
| 191 |
| 139 |
| 2 |
| 190 |
| 156 |
| 69 |
| 191 |
| 153 |
| 25 |
| 7 |
| 3 |
| 0 |

| |
|-----|
| 40 |
| 100 |
| 135 |
| H |
| L |
| 170 |
| 3 |
| 3 |
| 115 |
| 224 |
| 135 |
| 8 |
| 38 |
| 158 |
| 3 |
| 3 |
| 50 |
| 122 |
| E |
| 108 |
| 191 |
| 133 |
| 33 |
| 63 |
| 130 |
| 29 |
| 160 |
| 229 |
| 191 |
| 139 |
| 2 |
| 190 |
| 156 |
| 66 |
| 184 |
| 135 |
| 187 |
| 139 |
| 0 |

| |
|-----|
| 40 |
| 100 |
| 135 |
| H |
| L |
| 154 |
| 3 |
| 3 |
| 3 |
| 100 |
| 7 |
| 3 |
| 69 |
| 1 |
| 0 |

Neckband

| |
|-----|
| 40 |
| 100 |
| 3 |
| H |
| L |
| 3 |
| 10 |
| 3 |
| 3 |
| 99 |
| 7 |
| 127 |
| 144 |
| 38 |
| 10 |
| 3 |
| 3 |
| 75 |
| 150 |
| E |
| 0 |

Belt



Front



Back

Front - Back :

H = Length in mm of 40 rows in tuck stitch
L = Width in mm of 40 stitches in tuck stitch ⁶⁰ 160
E = Total length in cm 113

Neckband :

H = Length in mm of 40 rows in circular
L = Width in mm of 40 stitches in circular

Belt :

H = Length in mm of 40 rows in close rib
E = Total length in cm

Front - Back :

- 1 = Casting-on in circular
- 3 = Divide the knitting for neckline
- 4 = End of the neckline first side
- 5 = End of knitting
- 9 = Transfer into fancy pattern stitch

Neckband :

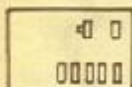
- 1 = Casting-on in circular
- 5 = End of knitting
- 7 = Knit with an auxillary yarn

Belt :

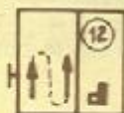
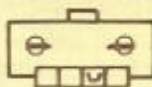
- 1 = Casting-on in close rib
- 5 = End of knitting

Without selection box : Move the needles corresponding to the white squares of the scheme into position 3. Take care to repeat twice each line of the scheme and always proceed from the bottom line to the top line. Needle return buttons in lower position.

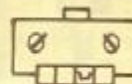
FANCY PATTERN STITCH



Card 1 - Design 7
Tuck stitches I



| |
|--------------------|
| 6x2 |
| 5x2 |
| 4x2 |
| 3x2 |
| 2x2 |
| 1x2 |
| 1 2 3 4 5 6 ... 12 |

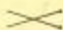


LADIES' SWEATER

Sizes : 36 - 38 - 42 - 46

3
114



Material : 250 - 300 grs yarn —  US 0.1
UK 14 - 13

Pattern Stitches - 1/1 rib - Tuck stitches

| 36 | 38 | 42 | 46 |
|-----|-----|-----|-----|
| 80 | 80 | 80 | 80 |
| 148 | 148 | 148 | 148 |
| H | H | H | H |
| L | L | L | L |
| 132 | 138 | 146 | 154 |
| 84 | 87 | 93 | 99 |
| 84 | 87 | 93 | 99 |
| 195 | 195 | 195 | 195 |
| C | C | C | C |
| 7 | 7 | 7 | 7 |
| 7 | 7 | 7 | 7 |
| 38 | 38 | 38 | 38 |
| 132 | 138 | 146 | 154 |
| 84 | 87 | 93 | 99 |
| D | D | D | D |
| 36 | 36 | 36 | 36 |
| 62 | 62 | 63 | 64 |
| E | E | E | E |
| 233 | 234 | 234 | 234 |
| 169 | 169 | 169 | 169 |
| 153 | 153 | 178 | 178 |
| 179 | 188 | 188 | 188 |
| 146 | 129 | 129 | 129 |
| 7 | 146 | 146 | 146 |
| 26 | 7 | 7 | 7 |
| 191 | 27 | 29 | 31 |
| 146 | 191 | 191 | 191 |
| 3 | 147 | 148 | 150 |
| 67 | 3 | 3 | 3 |
| 191 | 67 | 67 | 67 |
| 146 | 191 | 191 | 191 |
| 42 | 146 | 146 | 146 |
| 0 | 42 | 45 | 47 |
| 0 | 0 | 0 | 0 |



Front

| 36 | 38 | 42 | 46 |
|-----|-----|-----|-----|
| 80 | 80 | 80 | 80 |
| 148 | 148 | 148 | 148 |
| H | H | H | H |
| L | L | L | L |
| 118 | 122 | 130 | 138 |
| 84 | 87 | 93 | 99 |
| 84 | 87 | 93 | 99 |
| 195 | 195 | 195 | 195 |
| C | C | C | C |
| 7 | 7 | 7 | 7 |
| 7 | 7 | 7 | 7 |
| 38 | 38 | 38 | 38 |
| 118 | 122 | 130 | 138 |
| 84 | 87 | 93 | 99 |
| D | D | D | D |
| 36 | 36 | 36 | 36 |
| 61 | 61 | 62 | 63 |
| E | E | E | E |
| 232 | 232 | 232 | 233 |
| 153 | 153 | 153 | 153 |
| 162 | 162 | 179 | 188 |
| 146 | 155 | 164 | 129 |
| 7 | 7 | 7 | 164 |
| 28 | 27 | 27 | 7 |
| 191 | 191 | 191 | 29 |
| 146 | 147 | 148 | 191 |
| 3 | 3 | 3 | 150 |
| 72 | 72 | 72 | 3 |
| 185 | 185 | 185 | 72 |
| 129 | 129 | 129 | 185 |
| 186 | 186 | 186 | 129 |
| 129 | 129 | 129 | 186 |
| 188 | 188 | 188 | 129 |
| 129 | 129 | 129 | 188 |
| 137 | 137 | 137 | 129 |
| 3 | 3 | 3 | 137 |
| 0 | 0 | 0 | 3 |
| 0 | 0 | 0 | 0 |



Back

| 36 | 38 | 42 | 46 |
|-----|-----|-----|-----|
| 80 | 80 | 80 | 80 |
| 148 | 148 | 148 | 148 |
| H | H | H | H |
| L | L | L | L |
| 76 | 82 | 88 | 94 |
| 26 | 30 | 32 | 34 |
| 26 | 30 | 32 | 34 |
| 195 | 195 | 195 | 195 |
| C | C | C | C |
| 7 | 7 | 7 | 7 |
| 2 | 2 | 2 | 2 |
| 38 | 38 | 38 | 38 |
| 86 | 94 | 100 | 106 |
| 32 | 34 | 35 | 38 |
| F | F | F | F |
| 10 | 10 | 10 | 10 |
| 27 | 27 | 27 | 27 |
| E | E | E | E |
| 102 | 101 | 100 | 100 |
| 153 | 153 | 161 | 178 |
| 175 | 148 | 191 | 191 |
| 3 | 191 | 155 | 153 |
| 191 | 151 | 27 | 25 |
| 145 | 23 | 0 | 0 |
| 17 | 0 | | |
| 0 | | | |



Sleeves

| 36 | 38 | 42 | 46 |
|-----|-----|----|----|
| 88 | 88 | | |
| 136 | 136 | | |
| H | H | | |
| L | L | | |
| 164 | 172 | | |
| 3 | 3 | | |
| 3 | 3 | | |
| 101 | 101 | | |
| 6 | 6 | | |
| 69 | 69 | | |
| 1 | 1 | | |
| 69 | 69 | | |
| 2 | 2 | | |
| 0 | 0 | | |

Neckbands

Back - Front - Sleeves :

- 100* H = Length in mm of 40 rows in tuck stitch
- 130* L = Width in mm of 40 stitches in tuck stitch
- 95* C = Length in mm of 40 rows in 1/1 rib
- D = Bust measurement in cm
- E = Total length in cm
- F = Repeat the number just above unless D is increased

Neckband :

- 95* H = Length in mm of 40 rows in 1/1 rib
- 80* L = Width in mm of 40 stitches in 1/1 rib

Back - Front - Sleeves :

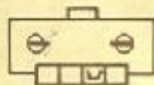
- 1 = Casting-on in 1/1 rib
- 2 = Transfer into stocking stitch
- 3 = Divide the knitting for neckline
- 4 = End of the neckline first side
- 5 = End of knitting

Neckband :

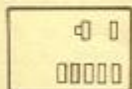
- 1 = Casting-on in 1/1 rib
- 7 = Knit in circular
- 8 = Knit with an auxiliary yarn
- 5 = End of knitting

Without selection box : Move the needles corresponding to the white squares of the scheme into position 3. Repeat the design from bottom to top and then from top to bottom. Needle return buttons in lower position.

FANCY PATTERN STITCH



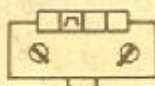
Tuck stitch



Tuck stitch 1
Card 2 - Design 3



Card 22



LADIES' SWEATER Sizes 36 - 38 - 42 - 46

3
115



Material : 250 to 350 grs yarn — US 0
UK 14

Pattern stitches : 1/1 rib - Slip stitch pattern

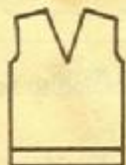
| 36 | 38 | 42 | 46 |
|-----|-----|------|-----|
| 100 | 100 | 100 | 100 |
| 135 | 135 | 135 | 135 |
| H | H | H 70 | H |
| L | L | L 70 | L |
| 134 | 142 | 150 | 158 |
| 84 | 87 | 93 | 99 |
| 84 | 87 | 93 | 99 |
| 195 | 195 | 195 | 195 |
| C | C | C 70 | C |
| 7 | 7 | 7 | 7 |
| 10 | 10 | 10 | 10 |
| 166 | 166 | 166 | 166 |
| 134 | 142 | 150 | 158 |
| 84 | 87 | 93 | 99 |
| D | D | D 70 | D |
| 37 | 37 | 37 | 37 |
| 58 | 58 | 59 | 60 |
| E | E | E 60 | E |
| 67 | 67 | 67 | 67 |
| 191 | 191 | 191 | 191 |
| 148 | 148 | 148 | 148 |
| 37 | 39 | 39 | 41 |
| 106 | 106 | 107 | 107 |
| 169 | 169 | 169 | 169 |
| 161 | 161 | 161 | 161 |
| 178 | 153 | 187 | 178 |
| 162 | 179 | 130 | 188 |
| 146 | 155 | 162 | 129 |
| 47 | 47 | 146 | 155 |
| 19 | 18 | 47 | 47 |
| 191 | 191 | 20 | 20 |
| 148 | 150 | 191 | 191 |
| 1 | 1 | 150 | 152 |
| 0 | 0 | 1 | 1 |
| | | 0 | 0 |

| 36 | 38 | 42 | 46 |
|-----|-----|-----|-----|
| 100 | 100 | 100 | 100 |
| 135 | 135 | 135 | 135 |
| H | H | H | H |
| L | L | L | L |
| 116 | 124 | 132 | 140 |
| 84 | 87 | 93 | 99 |
| 84 | 87 | 93 | 99 |
| 195 | 195 | 195 | 195 |
| C | C | C | C |
| 7 | 7 | 7 | 7 |
| 10 | 10 | 10 | 10 |
| 38 | 38 | 38 | 38 |
| 116 | 124 | 132 | 140 |
| 84 | 87 | 93 | 99 |
| D | D | D | D |
| 37 | 37 | 37 | 37 |
| 57 | 57 | 58 | 59 |
| E | E | E | E |
| 233 | 233 | 234 | 235 |
| 153 | 153 | 153 | 161 |
| 145 | 162 | 162 | 153 |
| 146 | 146 | 155 | 179 |
| 6 | 6 | 7 | 146 |
| 31 | 31 | 1 | 7 |
| 14 | 14 | 23 | 3 |
| 191 | 191 | 14 | 31 |
| 148 | 150 | 191 | 14 |
| 1 | 1 | 150 | 191 |
| 67 | 67 | 1 | 152 |
| 191 | 191 | 67 | 1 |
| 148 | 150 | 191 | 67 |
| 1 | 1 | 150 | 191 |
| 0 | 0 | 1 | 152 |
| | | 0 | 1 |
| | | | 0 |

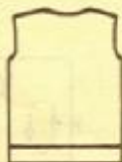
| 36 | 38 | 42 | 46 |
|-----|-----|------|-----|
| 100 | 100 | 100 | 100 |
| 135 | 135 | 135 | 135 |
| H | H | H 70 | H |
| L | L | L 70 | L |
| 66 | 72 | 76 | 84 |
| 22 | 24 | 26 | 28 |
| 22 | 24 | 26 | 28 |
| 195 | 195 | 195 | 195 |
| C | C | C 70 | C |
| 7 | 7 | 7 | 7 |
| 6 | 6 | 6 | 6 |
| 38 | 38 | 38 | 38 |
| 96 | 102 | 106 | 112 |
| 32 | 34 | 36 | 38 |
| F | F | F 70 | F |
| 38 | 38 | 38 | 38 |
| 58 | 58 | 58 | 58 |
| E | E | E 60 | E |
| 103 | 104 | 104 | 105 |
| 153 | 153 | 178 | 153 |
| 162 | 179 | 188 | 191 |
| 191 | 191 | 129 | 139 |
| 144 | 142 | 191 | 1 |
| 16 | 14 | 140 | 191 |
| 145 | 145 | 12 | 136 |
| 161 | 153 | 162 | 8 |
| 0 | 161 | 161 | 162 |
| | 0 | 0 | 161 |
| | | | 0 |

| 36 | 38 | 42 | 46 |
|-----|-----|----|----|
| 83 | 83 | | |
| 80 | 80 | | |
| H | H | | |
| L | L | | |
| 90 | 100 | | |
| 3 | 3 | | |
| 3 | 3 | | |
| 102 | 102 | | |
| 7 | 7 | | |
| 3 | 3 | | |
| 65 | 65 | | |
| 1 | 1 | | |
| 68 | 68 | | |
| 2 | 2 | | |
| 0 | 0 | | |

Neckband



Front

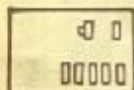


Back

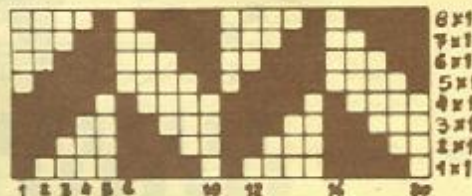
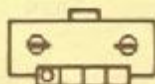


Sleeve

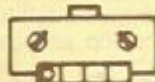
FANCY PATTERN STITCH



Slip stitch pattern II
Card 13 - Design 2



Without selection box : Move the needles corresponding to the white squares into position 3. Take care to repeat the design from bottom to top and then from top to bottom. Needle return buttons in lower position.



Back - Front - Sleeve :

- 70 H = Length in mm of 40 rows in slip stitch pattern
- 160 L = Width in mm of 40 stitches in slip stitch pattern
- 70 C = Length in mm of 40 rows in 1/1 rib
- 89 D = Bust measurement in cm
- 60 E = Total length in cm
- F = Repeat the number just above unless D is increased

Neckband :

- 70 H = Length in mm of 40 rows in 1/1 rib
- 60 L = Width in mm of 40 stitches in 1/1 rib

Back - Front - Sleeve :


- 1 = Casting-on in 1/1 rib
- 2 = Transfer into fancy pattern stitch
- 3 = Divide the knitting for neckline
- 4 = End of the neckline first side
- 5 = End of knitting

Neckband :

- 1 = Casting-on in 1/1 rib
- 5 = End of knitting
- 7 = Transfer from rib into stocking stitch
- 8 = Knit with an auxiliary yarn

MEN'S SWEATER Sizes : 15, 17 years - 44 - 48 - 52

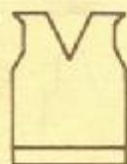
3
116

Material : 400 - 500 grs yarn —  US 1 - 4
UK 13 - 9

Pattern stitches : 2/2 industrial rib - Fair Isle



| 15a | 17a | 44 | 48 | 52 |
|-----|-----|-----|-----|-----|
| 84 | 84 | 84 | 84 | 100 |
| 129 | 129 | 129 | 129 | 133 |
| H | H | H | H | H |
| L | L | L | L | L |
| 142 | 150 | 162 | 174 | 180 |
| 86 | 90 | 96 | 104 | 112 |
| 86 | 90 | 96 | 104 | 112 |
| 195 | 195 | 195 | 195 | 195 |
| C | C | C | C | C |
| 7 | 7 | 7 | 7 | 7 |
| 14 | 14 | 14 | 14 | 14 |
| 38 | 38 | 38 | 38 | 38 |
| 142 | 150 | 162 | 176 | 180 |
| 86 | 90 | 96 | 104 | 112 |
| D | D | D | D | D |
| 35 | 35 | 35 | 35 | 37 |
| 65 | 66 | 67 | 67 | 70 |
| E | E | E | E | E |
| 232 | 232 | 232 | 232 | 231 |
| 191 | 191 | 191 | 191 | 191 |
| 141 | 143 | 145 | 145 | 147 |
| 13 | 15 | 17 | 11 | 16 |
| 7 | 7 | 7 | 7 | 6 |
| 8 | 8 | 6 | 5 | 47 |
| 47 | 47 | 47 | 39 | 9 |
| 8 | 8 | 11 | 13 | 4 |
| 3 | 3 | 3 | 5 | 67 |
| 67 | 67 | 67 | 67 | 191 |
| 191 | 191 | 191 | 191 | 151 |
| 147 | 147 | 150 | 152 | 40 |
| 44 | 45 | 49 | 39 | 0 |
| 0 | 0 | 0 | 0 | 0 |



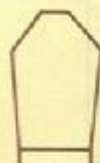
Front

| 15a | 17a | 44 | 48 | 52 |
|-----|-----|-----|-----|-----|
| 84 | 84 | 84 | 82 | 100 |
| 129 | 129 | 129 | 128 | 133 |
| H | H | H | H | H |
| L | L | L | L | L |
| 130 | 136 | 150 | 162 | 168 |
| 86 | 90 | 96 | 104 | 112 |
| 86 | 90 | 96 | 104 | 112 |
| 195 | 195 | 195 | 195 | 195 |
| C | C | C | C | C |
| 7 | 7 | 7 | 7 | 7 |
| 14 | 14 | 14 | 14 | 14 |
| 38 | 38 | 38 | 38 | 38 |
| 130 | 136 | 150 | 162 | 168 |
| 86 | 90 | 96 | 104 | 112 |
| D | D | D | D | D |
| 35 | 35 | 35 | 35 | 37 |
| 65 | 66 | 67 | 67 | 70 |
| E | E | E | E | E |
| 104 | 104 | 104 | 104 | 104 |
| 191 | 191 | 191 | 191 | 191 |
| 130 | 131 | 133 | 135 | 137 |
| 8 | 8 | 11 | 7 | 9 |
| 7 | 7 | 7 | 7 | 7 |
| 16 | 17 | 16 | 16 | 8 |
| 191 | 191 | 191 | 191 | 191 |
| 151 | 153 | 155 | 157 | 159 |
| 8 | 9 | 10 | 11 | 12 |
| 0 | 0 | 0 | 0 | 0 |



Back

| 15a | 17a | 44 | 48 | 52 |
|-----|-----|-----|-----|-----|
| 84 | 84 | 84 | 82 | 100 |
| 129 | 129 | 129 | 128 | 133 |
| H | H | H | H | H |
| L | L | L | L | L |
| 74 | 80 | 86 | 88 | 90 |
| 24 | 26 | 28 | 28 | 30 |
| 24 | 26 | 28 | 28 | 30 |
| 195 | 195 | 195 | 195 | 195 |
| C | C | C | C | C |
| 7 | 7 | 7 | 7 | 7 |
| 9 | 9 | 9 | 9 | 9 |
| 38 | 38 | 38 | 38 | 38 |
| 106 | 112 | 118 | 124 | 126 |
| 34 | 36 | 38 | 40 | 42 |
| F | F | F | F | F |
| 40 | 42 | 42 | 43 | 44 |
| 61 | 64 | 65 | 64 | 66 |
| E | E | E | E | E |
| 99 | 99 | 99 | 99 | 99 |
| 191 | 191 | 191 | 191 | 191 |
| 161 | 163 | 161 | 161 | 165 |
| 29 | 32 | 33 | 28 | 25 |
| 0 | 0 | 0 | 0 | 0 |

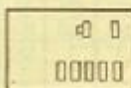


Sleeve

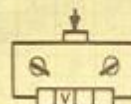
| 15a | 17a | 44 | 48 | 52 |
|-----|-----|-----|-----|----|
| 82 | 82 | 82 | 82 | |
| 128 | 128 | 128 | 128 | |
| H | H | H | H | |
| L | L | L | L | |
| 100 | 116 | 120 | 128 | |
| 3 | 3 | 3 | 3 | |
| 3 | 3 | 3 | 3 | |
| 102 | 102 | 102 | 102 | |
| 7 | 7 | 7 | 7 | |
| 3 | 3 | 3 | 3 | |
| 68 | 68 | 68 | 68 | |
| 1 | 1 | 1 | 1 | |
| 66 | 66 | 66 | 66 | |
| 2 | 2 | 2 | 2 | |
| 0 | 0 | 0 | 0 | |

Neckband

FANCY PATTERN STITCH



Front : Fair Isle III
Card 5 - Design 1



Back and sleeves : design without card A 10



Front : Fair Isle
Card 60 or according to scheme

Back and sleeves : Card 32

Important :
For the last size, the sample must not measure less than 133 mm for 40 stitches

Front - Back - Sleeves :

- H = Length in mm of 40 rows in Fair Isle
- L = Width in mm of 40 stitches in Fair Isle
- C = Length in mm of 40 rows in 2/2 industrial rib
- D = Chest measurement in cm
- E = Total length in cm
- F = Repeat the number just above unless D is increased

Neckband :

- H = Length in mm of 40 rows in 2/2 industrial rib
- L = Width in mm of 40 stitches in 2/2 industrial rib

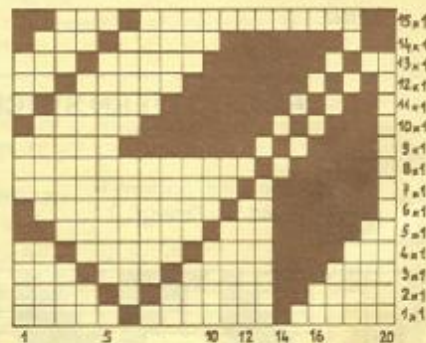
Front - Back - Sleeves :

- 1 = Casting-on in 2/2 industrial rib
- 2 = Transfer into Fair Isle
- 3 = Divide the knitting for neckline
- 4 = End of the neckline first side
- 5 = End of knitting

Neckband :

- 1 = Casting-on in 2/2 industrial rib
- 7 = Transfer from rib into circular
- 8 = Knit with an auxiliary yarn
- 5 = End of knitting

Front



Back - Sleeves



Without selection box :


FRONT : According to the scheme, move the needles corresponding to the black squares into position 2 and proceed from the right-hand side to the left-hand side, then from the left-hand side to the right-hand side, from bottom to top and then from top to bottom in order to get the design.

BACK AND SLEEVES : Always repeat the four lines of the scheme.

LADIES' SWEATER

Sizes : 36 - 38 - 42 - 46

4
117

Material : 350 - 450 grs yarn —  US 0.1
UK 14 - 13

Pattern stitches : 1/1 rib - Single sided Fisherman rib



| 36 | 38 | 42 | 46 |
|-----|-----|-----|-----|
| 87 | 87 | 87 | 87 |
| 133 | 133 | 133 | 133 |
| H | H | H | H |
| L | L | L | L |
| 134 | 142 | 150 | 158 |
| 84 | 87 | 93 | 99 |
| 84 | 87 | 93 | 99 |
| 55 | 55 | 55 | 55 |
| 95 | 95 | 95 | 95 |
| 134 | 142 | 150 | 158 |
| 84 | 87 | 93 | 99 |
| D | D | D | D |
| 30 | 30 | 30 | 30 |
| 61 | 61 | 62 | 63 |
| E | E | E | E |
| 227 | 227 | 227 | 227 |
| 191 | 191 | 191 | 191 |
| 167 | 171 | 175 | 179 |
| 47 | 47 | 48 | 52 |
| 70 | 70 | 70 | 70 |
| 169 | 169 | 169 | 169 |
| 189 | 189 | 189 | 189 |
| 131 | 131 | 131 | 131 |
| 182 | 182 | 182 | 182 |
| 7 | 7 | 7 | 7 |
| 1 | 1 | 1 | 2 |
| 0 | 0 | 0 | 0 |

| 36 | 38 | 42 | 46 |
|-----|-----|-----|-----|
| 87 | 87 | 87 | 87 |
| 133 | 133 | 133 | 133 |
| H | H | H | H |
| L | L | L | L |
| 134 | 142 | 150 | 158 |
| 84 | 87 | 93 | 99 |
| 84 | 87 | 93 | 99 |
| 55 | 55 | 55 | 55 |
| 96 | 96 | 96 | 96 |
| 134 | 142 | 150 | 158 |
| 84 | 87 | 93 | 99 |
| D | D | D | D |
| 30 | 30 | 30 | 30 |
| 61 | 61 | 62 | 63 |
| E | E | E | E |
| 99 | 99 | 99 | 99 |
| 191 | 191 | 191 | 191 |
| 169 | 173 | 177 | 181 |
| 51 | 51 | 52 | 56 |
| 0 | 0 | 0 | 0 |

| 36 | 38 | 42 | 46 |
|-----|-----|-----|-----|
| 87 | 87 | 87 | 87 |
| 133 | 133 | 133 | 133 |
| H | H | H | H |
| L | L | L | L |
| 74 | 74 | 78 | 82 |
| 24 | 24 | 26 | 28 |
| 24 | 24 | 26 | 28 |
| 38 | 38 | 38 | 38 |
| 110 | 118 | 126 | 134 |
| 36 | 38 | 41 | 44 |
| F | F | F | F |
| 39 | 39 | 39 | 39 |
| 63 | 63 | 64 | 65 |
| E | E | E | E |
| 67 | 67 | 67 | 67 |
| 191 | 191 | 191 | 191 |
| 168 | 172 | 176 | 180 |
| 51 | 51 | 52 | 56 |
| 88 | 88 | 88 | 88 |
| 64 | 64 | 64 | 64 |
| 191 | 191 | 191 | 191 |
| 168 | 172 | 176 | 180 |
| 47 | 47 | 48 | 52 |
| 188 | 188 | 188 | 188 |
| 137 | 137 | 137 | 137 |
| 0 | 0 | 0 | 0 |

| 36 | 38 | 42 | 46 |
|-----|-----|-----|-----|
| 87 | 87 | 87 | 87 |
| 133 | 133 | 133 | 133 |
| H | H | H | H |
| L | L | L | L |
| 66 | 66 | 72 | 76 |
| 3 | 3 | 3 | 3 |
| 3 | 3 | 3 | 3 |
| 98 | 98 | 98 | 98 |
| 7 | 7 | 7 | 7 |
| 7 | 7 | 7 | 7 |
| 0 | 0 | 0 | 0 |

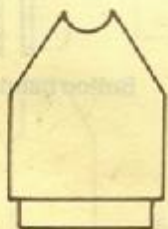
Edge band in Rib (Sleeves)

| 36 | 38 | 42 | 46 |
|-----|-----|-----|-----|
| 87 | 87 | 87 | 87 |
| 133 | 133 | 133 | 133 |
| H | H | H | H |
| L | L | L | L |
| 118 | 124 | 134 | 142 |
| 3 | 3 | 3 | 3 |
| 3 | 3 | 3 | 3 |
| 98 | 98 | 98 | 98 |
| 7 | 7 | 7 | 7 |
| 11 | 11 | 11 | 11 |
| 0 | 0 | 0 | 0 |

Edge band in rib Back and front

| |
|-----|
| 80 |
| 150 |
| 125 |
| 70 |
| 3 |
| 3 |
| 100 |
| 7 |
| 13 |
| 68 |
| 3 |
| 0 |

Neckband



Front



Back



Sleeve

SLEEVE : Reverse shapung to knit the second sleeve.

Back - Front - Sleeves :

- H = Length in mm of 40 rows in single sided Fisherman rib *50*
- L = Width in mm of 40 stitches in single sided Fisherman rib *110*
- D = Bust measurement in cm *95*
- E = Total length in cm
- F = Repeat the number just above unless D is increased

Edge band in rib - Neckband :

- H = Length in mm of 40 rows in 1/1 rib *75*
- L = Width in mm of 40 stitches in 1/1 rib *130*

Back - Front - Sleeves :

- 1 = Casting-on with an auxiliary yarn and settings for single sided Fisherman rib with the chosen yarn
- 3 = Divide the knitting for neckline
- 4 = End of the neckline first side
- 5 = Cast-off and programme the edge band in rib
- 7 = Attach an auxiliary yarn to indicate the armholes

Edge band in rib back, front, sleeves :

- 1 = Hang the beginning of the garment decreasing (X) stitches to reach the indicated number of stitches. Needle setting for 1/1 rib
- 5 = End of knitting


Neckband :

- 1 = Casting-on in 1/1 rib
- 5 = End of knitting
- 9 = Knit one row in stocking stitch, then with an auxiliary yarn

MEN'S JACKET

Sizes : 44 - 48 - 52

4
118

Material : 900 grs yarn —  US 3 - 4
6 buttons

Pattern stitches : 1/1 rib, double sided Fisherman rib - Close rib



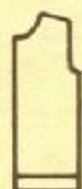
| 44 | 48 | 52 |
|-----|-----|-----|
| 118 | 118 | 118 |
| 430 | 430 | 430 |
| H | H | H |
| L | L | L |
| 64 | 66 | 68 |
| 96 | 104 | 112 |
| 96 | 104 | 112 |
| 195 | 195 | 195 |
| C | C | C |
| 7 | 7 | 7 |
| 3 | 3 | 3 |
| 38 | 38 | 38 |
| 64 | 66 | 68 |
| 96 | 104 | 112 |
| D | D | D |
| 45 | 45 | 45 |
| 77 | 78 | 79 |
| E | E | E |
| 233 | 233 | 234 |
| 161 | 161 | 161 |
| 178 | 178 | 178 |
| 179 | 179 | 188 |
| 155 | 154 | 129 |
| 7 | 7 | 146 |
| 22 | 22 | 7 |
| 191 | 191 | 25 |
| 154 | 153 | 191 |
| 1 | 1 | 157 |
| 70 | 70 | 1 |
| 161 | 161 | 70 |
| 153 | 153 | 161 |
| 162 | 162 | 153 |
| 137 | 137 | 162 |
| 7 | 7 | 137 |
| 1 | 1 | 7 |
| 0 | 0 | 1 |
| | | 0 |

| 44 | 48 | 52 |
|-----|-----|-----|
| 118 | 118 | 118 |
| 174 | 174 | 174 |
| H | H | H |
| L | L | L |
| 108 | 116 | 130 |
| 96 | 104 | 112 |
| 96 | 104 | 112 |
| 195 | 195 | 195 |
| C | C | C |
| 7 | 7 | 7 |
| 3 | 3 | 3 |
| 38 | 38 | 38 |
| 108 | 116 | 130 |
| 96 | 104 | 112 |
| D | D | D |
| 45 | 45 | 45 |
| 76 | 77 | 78 |
| E | E | E |
| 231 | 232 | 233 |
| 145 | 153 | 161 |
| 146 | 145 | 153 |
| 7 | 146 | 145 |
| 26 | 7 | 155 |
| 191 | 26 | 7 |
| 153 | 191 | 26 |
| 1 | 153 | 191 |
| 70 | 1 | 156 |
| 185 | 69 | 1 |
| 129 | 185 | 70 |
| 161 | 129 | 185 |
| 162 | 161 | 129 |
| 146 | 162 | 161 |
| 2 | 137 | 162 |
| 0 | 0 | 146 |
| | | 2 |
| | | 0 |

| 44 | 48 | 52 |
|-----|-----|-----|
| 118 | 118 | 118 |
| 174 | 174 | 174 |
| H | H | H |
| L | L | L |
| 64 | 70 | 74 |
| 28 | 30 | 32 |
| 28 | 30 | 32 |
| 195 | 195 | 195 |
| C | C | C |
| 7 | 7 | 7 |
| 3 | 3 | 3 |
| 38 | 38 | 38 |
| 100 | 104 | 110 |
| 43 | 45 | 47 |
| F | F | F |
| 46 | 46 | 46 |
| 61 | 61 | 61 |
| E | E | E |
| 101 | 101 | 101 |
| 161 | 161 | 161 |
| 191 | 191 | 191 |
| 155 | 153 | 160 |
| 9 | 9 | 9 |
| 161 | 161 | 161 |
| 0 | 0 | 0 |

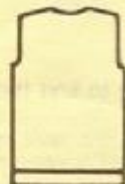
| |
|-----|
| 110 |
| 110 |
| H |
| L |
| 80 |
| 3 |
| 3 |
| 72 |
| 7 |
| 129 |
| 248 |
| 128 |
| 191 |
| 63 |
| 191 |
| 128 |
| 65 |
| 5 |
| 101 |
| 5 |
| 66 |
| 1 |
| 69 |
| 2 |
| 0 |

| |
|-----|
| 100 |
| 259 |
| H |
| 3 |
| 10 |
| 3 |
| 3 |
| 99 |
| 7 |
| 3 |
| 9 |
| 38 |
| 21 |
| 3 |
| 3 |
| 63 |
| 70 |
| E |
| 97 |
| 4 |
| 0 |



1/2 Front

Reverse shaping to knit the second front part



Back

Front - Back - Sleeves :

- H = Length in mm of 40 rows in double sided Fisherman rib
- L = Width in mm of 40 stitches in double sided Fisherman rib
- C = Length in mm of 40 rows in 1/1 rib
- D = Chest measurement in cm
- E = Total length in cm
- F = Repeat the number just above unless D is increased

Collar :

- H = Length in mm of 40 rows in 1/1 rib
- L = Width in mm of 40 stitches in 1/1 rib

Button bands :

- H = Length in mm of 40 rows in close rib
- E = Total length in cm



Sleeve



1/2 Collar



Button bands

Shaping is reserved for second part of collar
The sample for the collar must not measure less than 82 mm for 40 stitches

Front - Back - Sleeves :

- 1 = Casting-on in 1/1 rib
- 2 = Set carriages for double sided Fisherman rib
- 3 = Divide the knitting for neckline
- 4 = End of the neckline first side
- 5 = End of knitting

Collar : is knitted in two parts

- 1 = Casting-on in 1/1 rib
- 5 = End of knitting
- 6 = Sign — : at the side opposite to the carriage, move the indicated number of needles into holding position
- Sign + : At the side of the carriage, move the indicated number of needles into position 2
- 7 = Knit in circular
- 8 = Knit with an auxiliary yarn

Button bands :

- 1 = Casting-on in close rib
- + 1 = Location of a buttonhole
- 5 = End of knitting

LADIES' SET JACKET 1 model : Sizes 38 to 44

5
119



Material : 500 grs yarn — US 0.3 — UK 14 - 11
 400 grs yarn — US 1 - 3 — UK 13 - 11

Pattern stitches : 1/1 rib - Close rib - Stocking stitch - Fair Isle

| |
|----------|
| 118 |
| 396 |
| H |
| L |
| 110 |
| 3 |
| 3 |
| 3 |
| 101 |
| 7 |
| 27 |
| 248 |
| 128 |
| 165 |
| 38 |
| 66 |
| 3 |
| 3 |
| 30 |
| 75 |
| E |
| 228 |
| 184 |
| 136 |
| 7 |
| 36 |
| 67 |
| 191 |
| 171 |
| 31 |
| 0 |

| |
|----------|
| 118 |
| 140 |
| H |
| L |
| 158 |
| 3 |
| 3 |
| 3 |
| 38 |
| 158 |
| 3 |
| 3 |
| 50 |
| 75 |
| E |
| 100 |
| 184 |
| 136 |
| 7 |
| 36 |
| 0 |

| |
|----------|
| 118 |
| 140 |
| H |
| L |
| 82 |
| 3 |
| 3 |
| 3 |
| 38 |
| 146 |
| 3 |
| 3 |
| 48 |
| 53 |
| E |
| 98 |
| 7 |
| 2 |
| 0 |

| |
|----------|
| 118 |
| 140 |
| H |
| L |
| 44 |
| 3 |
| 3 |
| 3 |
| 100 |
| 7 |
| 18 |
| 69 |
| 1 |
| 0 |

Pocket Piece

| |
|----------|
| 100 |
| 3 |
| H |
| L |
| 3 |
| 8 |
| 3 |
| 3 |
| 3 |
| 38 |
| 8 |
| 3 |
| 3 |
| 106 |
| 106 |
| E |
| 7 |
| 0 |

Front edge bands

| |
|----------|
| 96 |
| 144 |
| H |
| L |
| 70 |
| 3 |
| 3 |
| 3 |
| 99 |
| 5 |
| 68 |
| 1 |
| 0 |

Wristbands

| |
|----------|
| 96 |
| 144 |
| H |
| L |
| 44 |
| 3 |
| 3 |
| 3 |
| 99 |
| 5 |
| 68 |
| 1 |
| 0 |

Pocket edge band

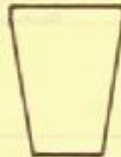
| |
|----------|
| 112 |
| 162 |
| H |
| L |
| 118 |
| 3 |
| 3 |
| 226 |
| 7 |
| 81 |
| 68 |
| 184 |
| 134 |
| 191 |
| 166 |
| 38 |
| 0 |

| |
|----------|
| 100 |
| 3 |
| H |
| L |
| 3 |
| 12 |
| 3 |
| 3 |
| 3 |
| 99 |
| 7 |
| 127 |
| 254 |
| 0 |

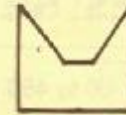
Belt



Back

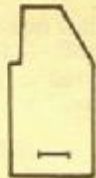


Sleeves



Collar

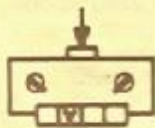
Working instructions : Knit the pocket pieces first in order to place them where stitches are decreased in the front parts.



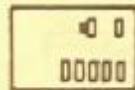
1/2 Front

Reverse shaping to knit the second front part.

FANCY PATTERN STITCH

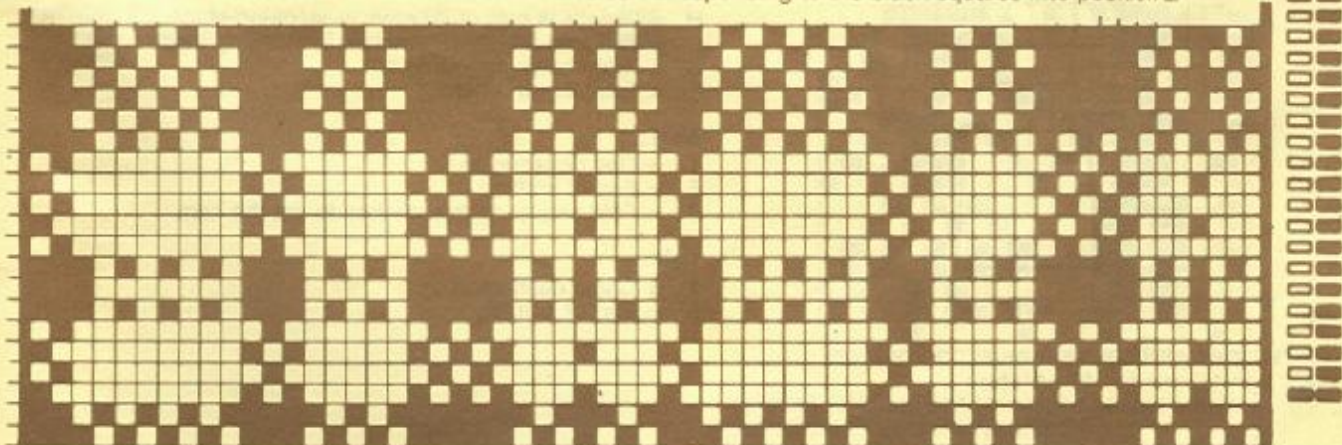


Fair Isle



Fair Isle III according to the scheme here-under

Without selection box : Move the needles corresponding to the black squares into position 2.



Back - Front - Sleeves :

H = Length in mm of 40 rows in Fair Isle
 L = Width in mm of 40 stitches in Fair Isle
 E = Total length in cm

Pocket piece :

H = Length in mm of 40 rows in stocking stitch
 L = Width in mm of 40 stitches in stocking stitch

Front edge bands, pocket edge bands, belt, wristband, collar :

H = Length in mm of 40 rows in close rib
 L = Width in mm of 40 stitches in close rib
 E = Total length in cm of front and collar sewn together

Back - Front - Sleeves :

1 = Chain casting-on
 5 = End of knitting
 6 = Pocket : put(X) stitches on an auxiliary yarn in the centre of the knitting and hang the pocket piece instead

Pocket piece :

1 = Chain casting-on
 5 = End of knitting
 7 = Knit with an auxiliary yarn

Collar :

1 = Casting-on in close rib
 3 = Divide the knitting in two parts
 4 = End of the first side
 5 = End of knitting

Belt and front part edge bands :

1 = Casting-on in close rib
 5 = End of knitting

Wristband and pocket edge band :

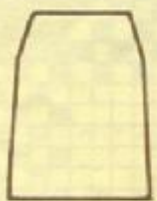
1 = Casting-on in close rib
 5 = End of knitting, knit a few rows with an auxiliary yarn
 7 = Knit in circular

| | |
|---|----------|
| LADIES' SET SKIRT Sizes : 38 · 40 · 42 · 44 | 5 119 |
| Material : 400 to 450 grs yarn — US 0 - 3 Elastic UK 14 - 11 | |
| Pattern stitches : Stocking stitch | |

| | 38 | 40 | 42 | 44 |
|-----|-----|-----|-----|-----|
| 88 | 88 | 88 | 88 | 88 |
| 132 | 132 | 132 | 132 | 132 |
| H | H | H | H | H |
| L | L | L | L | L |
| 168 | 174 | 180 | 180 | 180 |
| 3 | 3 | 3 | 3 | 3 |
| 3 | 3 | 3 | 3 | 3 |
| 98 | 98 | 98 | 98 | 98 |
| 7 | 7 | 7 | 7 | 7 |
| 7 | 7 | 7 | 7 | 7 |
| 55 | 55 | 55 | 55 | 55 |
| 128 | 128 | 128 | 128 | 128 |
| 144 | 150 | 156 | 164 | 164 |
| 92 | 95 | 98 | 101 | 101 |
| B | B | B | B | B |
| 52 | 52 | 52 | 52 | 52 |
| 78 | 78 | 78 | 78 | 78 |
| E | E | E | E | E |
| 99 | 99 | 99 | 99 | 99 |
| 191 | 191 | 191 | 191 | 191 |
| 133 | 133 | 133 | 133 | 133 |
| 39 | 39 | 39 | 39 | 39 |
| 0 | 0 | 0 | 0 | 0 |

| | 38 | 40 | 42 | 44 |
|-----|-----|-----|-----|-----|
| 88 | 88 | 88 | 88 | 88 |
| 132 | 132 | 132 | 132 | 132 |
| H | H | H | H | H |
| L | L | L | L | L |
| 16 | 16 | 16 | 16 | 16 |
| 3 | 3 | 3 | 3 | 3 |
| 3 | 3 | 3 | 3 | 3 |
| 98 | 98 | 98 | 98 | 98 |
| 7 | 7 | 7 | 7 | 7 |
| 118 | 121 | 123 | 126 | 126 |
| 0 | 0 | 0 | 0 | 0 |

Belt



Skirt

Skirt - Belt :

H = Length in mm of 40 rows in stocking stitch
 L = Width in mm of 40 stitches in stocking stitch
 B = Hips measurement in cm
 E = Total length in cm

Skirt :

1 = Open casting-on
 5 = End of knitting
 8 = Fold and hang the stitches to get the hem

Belt :

1 = Chain casting-on
 5 = End of knitting


The sample for half the skirt must not measure less than 132 mm for 40 stitches

GIRL'S DRESS

Sizes : 6, 9, 12, 18 months - 2, 4 years

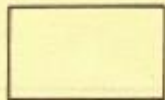
5
120



Material : 150 - 200 grs yarn —  US 0 - 1
50 grs yarn — UK 14 - 13

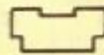
Pattern stitches : Stocking stitch - Fair Isle - Circular

| 6m | 9m | 12m | 18m | 2a | 4a |
|-----|-----|-----|-----|-----|-----|
| 96 | 96 | 96 | 96 | 96 | 96 |
| 130 | 130 | 130 | 3 | 3 | 3 |
| H | H | H | H | H | H |
| L | L | L | 3 | 3 | 3 |
| 142 | 148 | 154 | 180 | 180 | 180 |
| 3 | 3 | 3 | 3 | 3 | 3 |
| 3 | 3 | 3 | 3 | 3 | 3 |
| 38 | 38 | 38 | 38 | 38 | 38 |
| 142 | 148 | 154 | 180 | 180 | 180 |
| 3 | 3 | 3 | 3 | 3 | 3 |
| 3 | 3 | 3 | 3 | 3 | 3 |
| 52 | 56 | 60 | 72 | 78 | 90 |
| 3 | 3 | 3 | 3 | 3 | 3 |
| 3 | 3 | 3 | 3 | 3 | 3 |
| 0 | 0 | 0 | 0 | 0 | 0 |



Skirt

| 6m | 9m | 12m | 18m | 2a | 4a |
|-----|-----|-----|-----|-----|-----|
| 96 | 96 | 96 | 96 | 96 | 96 |
| 130 | 130 | 130 | 130 | 130 | 130 |
| H | H | H | H | H | H |
| L | L | L | L | L | L |
| 68 | 74 | 80 | 86 | 86 | 92 |
| 3 | 3 | 3 | 3 | 3 | 3 |
| 3 | 3 | 3 | 3 | 3 | 3 |
| 226 | 230 | 230 | 230 | 230 | 230 |
| 6 | 7 | 7 | 7 | 7 | 7 |
| 48 | 1 | 3 | 6 | 6 | 7 |
| 7 | 56 | 56 | 56 | 56 | 56 |
| 10 | 129 | 131 | 131 | 133 | 134 |
| 68 | 7 | 7 | 7 | 7 | 7 |
| 184 | 12 | 12 | 14 | 14 | 16 |
| 136 | 68 | 68 | 68 | 68 | 68 |
| 7 | 184 | 184 | 184 | 184 | 184 |
| 1 | 136 | 136 | 138 | 138 | 138 |
| 0 | 7 | 7 | 7 | 7 | 7 |
| | 1 | 3 | 3 | 3 | 4 |
| 0 | 0 | 0 | 0 | 0 | 0 |



Bodice front

| 6m | 9m | 12m | 18m | 2a | 4a |
|-----|-----|-----|-----|-----|-----|
| 96 | 96 | 96 | 96 | 96 | 96 |
| 130 | 130 | 130 | 130 | 130 | 130 |
| H | H | H | H | H | H |
| L | L | L | L | L | L |
| 68 | 74 | 80 | 86 | 86 | 92 |
| 3 | 3 | 3 | 3 | 3 | 3 |
| 3 | 3 | 3 | 3 | 3 | 3 |
| 226 | 230 | 230 | 230 | 230 | 230 |
| 6 | 7 | 7 | 7 | 7 | 7 |
| 48 | 1 | 3 | 6 | 6 | 7 |
| 7 | 56 | 56 | 56 | 56 | 56 |
| 10 | 129 | 131 | 131 | 133 | 134 |
| 67 | 7 | 7 | 7 | 7 | 7 |
| 184 | 12 | 12 | 14 | 14 | 16 |
| 136 | 67 | 67 | 67 | 67 | 67 |
| 4 | 184 | 184 | 184 | 184 | 184 |
| 0 | 136 | 136 | 138 | 138 | 138 |
| | 4 | 6 | 6 | 6 | 6 |
| 0 | 0 | 0 | 0 | 0 | 0 |



Bodice back

Begin with the skirt.

Skirt - Bodice back and front :

H = Length in mm of 40 rows in stocking stitch
L = Width in mm of 40 stitches in stocking stitch

Skirt :

- 1 = Casting-on in close rib with an auxiliary yarn and continue in circular with the chosen yarn
- 5 = End of knitting. Knit some rows with an auxiliary yarn. Programme the bodice back or front

Bodice back and front :

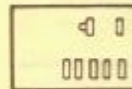
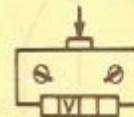
- 1 = Rehang half the skirt in order to obtain the indicated number of stitches. Knit in Fair Isle
- 3 = Divide the knitting for neckline
- 4 = End of the neckline first side
- 5 = End of knitting

Finishing :

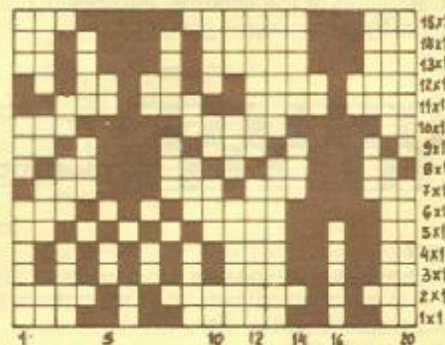
Remove the auxiliary yarn from the bottom of the skirt, fold the hem to get the required measurement and sew stitch by stitch.

FANCY PATTERN STITCH

Fair Isle



Fair Isle III
Card 13 - Design 1



Without selection box : move the needles corresponding to the black squares into position 2.

MEN'S JACKET

Sizes : 15, 17 years - 44 - 46

5
121



Material : 400 to 500 grs yarn —
1 jacket zip

US 0.1
UK 14.13

Pattern stitches : Circular hem - Fancy pattern stitch - Tuck stitches

| 15a | 17a | 44 | 46 |
|-----|-----|-----|-----|
| 66 | 66 | 66 | 66 |
| 437 | 437 | 437 | 437 |
| H | H | H | H |
| L | L | L | L |
| 56 | 60 | 62 | 66 |
| 85 | 90 | 96 | 104 |
| 86 | 90 | 96 | 104 |
| 100 | 100 | 100 | 100 |
| 7 | 7 | 7 | 7 |
| 28 | 28 | 28 | 28 |
| 65 | 65 | 65 | 65 |
| 128 | 128 | 128 | 128 |
| 38 | 38 | 38 | 38 |
| 56 | 60 | 62 | 66 |
| 86 | 90 | 96 | 104 |
| D | D | D | D |
| 34 | 34 | 35 | 35 |
| 67 | 67 | 69 | 69 |
| E | E | E | E |
| 228 | 228 | 228 | 228 |
| 255 | 255 | 255 | 255 |
| 2 | 2 | 2 | 2 |
| 162 | 162 | 164 | 168 |
| 73 | 73 | 76 | 76 |
| 70 | 71 | 71 | 71 |
| 161 | 169 | 169 | 169 |
| 153 | 161 | 161 | 161 |
| 162 | 153 | 153 | 153 |
| 146 | 145 | 145 | 145 |
| 7 | 146 | 146 | 146 |
| 11 | 7 | 7 | 7 |
| 0 | 11 | 13 | 13 |
| 0 | 0 | 0 | 0 |

| 15a | 17a | 44 | 46 |
|-----|-----|-----|-----|
| 66 | 66 | 66 | 66 |
| 181 | 181 | 181 | 181 |
| H | H | H | H |
| L | L | L | L |
| 102 | 108 | 112 | 118 |
| 86 | 90 | 96 | 104 |
| 86 | 90 | 96 | 104 |
| 100 | 100 | 100 | 100 |
| 7 | 7 | 7 | 7 |
| 26 | 26 | 26 | 26 |
| 65 | 65 | 65 | 65 |
| 128 | 128 | 128 | 128 |
| 38 | 38 | 38 | 38 |
| 102 | 108 | 112 | 118 |
| 86 | 90 | 96 | 104 |
| D | D | D | D |
| 34 | 34 | 35 | 35 |
| 67 | 67 | 69 | 69 |
| E | E | E | E |
| 100 | 100 | 100 | 100 |
| 255 | 255 | 255 | 255 |
| 2 | 2 | 2 | 2 |
| 158 | 158 | 160 | 163 |
| 73 | 73 | 76 | 76 |
| 0 | 0 | 0 | 0 |

| 15a | 17a | 44 | 46 |
|-----|-----|-----|-----|
| 61 | 61 | 61 | 61 |
| 160 | 160 | 160 | 160 |
| H | H | H | H |
| L | L | L | L |
| 62 | 68 | 68 | 68 |
| 25 | 27 | 27 | 27 |
| 25 | 27 | 27 | 27 |
| 133 | 133 | 133 | 133 |
| C | C | C | C |
| 7 | 7 | 7 | 7 |
| 33 | 33 | 33 | 33 |
| 65 | 65 | 65 | 65 |
| 128 | 128 | 128 | 128 |
| 38 | 38 | 38 | 38 |
| 94 | 94 | 96 | 102 |
| 38 | 38 | 39 | 41 |
| F | F | F | F |
| 48 | 48 | 48 | 48 |
| 81 | 81 | 82 | 82 |
| E | E | E | E |
| 100 | 100 | 100 | 100 |
| 255 | 255 | 255 | 255 |
| 2 | 2 | 2 | 2 |
| 158 | 158 | 160 | 162 |
| 83 | 83 | 86 | 86 |
| 0 | 0 | 0 | 0 |

| 15a | 44 |
|-----|-----|
| 62 | 62 |
| 160 | 160 |
| H | H |
| L | L |
| 110 | 120 |
| 3 | 3 |
| 3 | 3 |
| 100 | 100 |
| 7 | 7 |
| 7 | 7 |
| 69 | 69 |
| 1 | 1 |
| 0 | 0 |

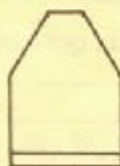
Back - Front - Sleeves :

- 1 = Casting-on in circular
- 3 = Divide the knitting for neckline
- 4 = End of the neckline first side
- 5 = End of knitting
- 6 = Transfer into fancy pattern stitch
- 8 = Attach an auxiliary yarn to indicate the armhole

Neckband :

- 1 = Casting-on in circular
- 5 = End of knitting
- 7 = Knit with an auxiliary yarn

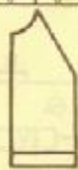
Neckband



Back



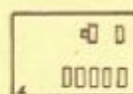
Sleeve



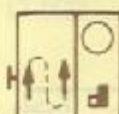
1/2 Front

Reverse shaping to knit the second front part.

Tuck stitches : for the sleeves

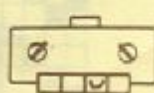


Pattern stitch without card A 6



Card 4

Without selection box : move the needles corresponding to the white squares of the scheme into position 3. Needle return buttons in lower position.



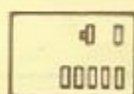
Back - Front :

- H = Length in mm of 40 rows in fancy pattern stitch
- L = Width in mm of 40 stitches in fancy pattern stitch
- D = Chest measurement in cm
- E = Total length in cm

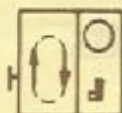
Neckband :

- H = Length in mm of 40 rows in circular
- L = Width in mm of 40 stitches in circular

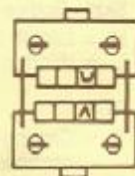
FANCY PATTERN STITCH : for back and front



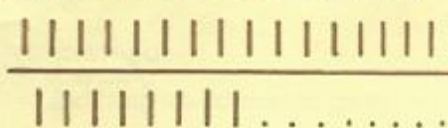
Pattern stitch without card A 6 + needle settings. Racking lever : 1 notch to the right-hand side. Knit 2 rows - racking lever : 1 notch to the left-hand side.



Card 96



Without selection box : needle settings as shown hereunder. Racking lever : 1 notch to the right-hand side. Move the needles corresponding to the white squares of the scheme into position 3. Knit one row. Move again the same needles into position 3. Knit one row. Racking lever : 1 notch to the left-hand side. Move the needles corresponding to the black squares of the scheme into position 3. Knit one row. Move again the same needles into position 3. Knit 1 row. Always repeat these four rows.



Sleeves :


- H = Length in mm of 40 rows in tuck stitches
- L = Width in mm of 40 stitches in tuck stitches
- E = Total length in cm
- F = Repeat the number just above unless D is increased
- C = Length in mm of 40 rows in stocking stitch

BOY'S SWEATER

Sizes : 5, 7, 9, 11, 13 years

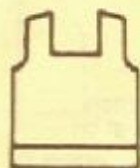
6
123



Material : 250 - 350 grs yarn —  US 3.4
UK 11.9

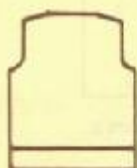
Pattern stitches : 2/2 industrial rib - Pattern stitch derived from double garter stitch

| 5a | 7a | 9a | 11a | 13a |
|-----|-----|-----|-----|-----|
| 48 | 48 | 48 | 48 | 48 |
| 198 | 198 | 198 | 198 | 198 |
| H | H | H | H | H |
| L | L | L | L | L |
| 68 | 72 | 76 | 80 | 84 |
| 68 | 72 | 76 | 80 | 84 |
| 68 | 72 | 76 | 80 | 84 |
| 195 | 195 | 195 | 195 | 195 |
| C | C | C | C | C |
| 7 | 7 | 7 | 7 | 7 |
| 19 | 19 | 19 | 19 | 19 |
| 38 | 38 | 38 | 38 | 38 |
| 68 | 72 | 76 | 80 | 84 |
| 68 | 72 | 76 | 80 | 84 |
| 68 | 72 | 76 | 80 | 84 |
| 20 | 22 | 24 | 26 | 28 |
| 41 | 44 | 47 | 50 | 53 |
| E | E | E | E | E |
| 232 | 232 | 232 | 232 | 232 |
| 153 | 161 | 163 | 153 | 153 |
| 162 | 162 | 162 | 162 | 162 |
| 137 | 137 | 137 | 137 | 137 |
| 7 | 7 | 7 | 7 | 7 |
| 43 | 48 | 52 | 56 | 59 |
| 191 | 191 | 191 | 191 | 191 |
| 134 | 135 | 137 | 138 | 140 |
| 1 | 1 | 1 | 1 | 1 |
| 68 | 68 | 68 | 68 | 68 |
| 184 | 184 | 184 | 184 | 184 |
| 134 | 135 | 135 | 136 | 136 |
| 7 | 7 | 7 | 7 | 7 |
| 43 | 48 | 52 | 56 | 59 |
| 0 | 0 | 0 | 0 | 0 |



Front

| 5a | 7a | 9a | 11a | 13a |
|-----|-----|-----|-----|-----|
| 48 | 48 | 48 | 48 | 48 |
| 198 | 198 | 198 | 198 | 198 |
| H | H | H | H | H |
| L | L | L | L | L |
| 68 | 72 | 76 | 80 | 84 |
| 68 | 72 | 76 | 80 | 84 |
| 68 | 72 | 76 | 80 | 84 |
| 195 | 195 | 195 | 195 | 195 |
| C | C | C | C | C |
| 7 | 7 | 7 | 7 | 7 |
| 19 | 19 | 19 | 19 | 19 |
| 38 | 38 | 38 | 38 | 38 |
| 68 | 72 | 76 | 80 | 84 |
| 68 | 72 | 76 | 80 | 84 |
| 68 | 72 | 76 | 80 | 84 |
| 20 | 22 | 24 | 26 | 28 |
| 41 | 44 | 47 | 50 | 53 |
| E | E | E | E | E |
| 104 | 104 | 104 | 104 | 104 |
| 153 | 153 | 153 | 153 | 153 |
| 162 | 162 | 162 | 162 | 162 |
| 137 | 137 | 137 | 137 | 137 |
| 7 | 7 | 7 | 7 | 7 |
| 43 | 48 | 52 | 56 | 59 |
| 191 | 191 | 191 | 191 | 191 |
| 134 | 135 | 137 | 138 | 140 |
| 1 | 1 | 1 | 1 | 1 |
| 0 | 0 | 0 | 0 | 0 |



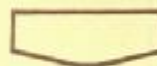
Back

| 5a | 7a | 9a | 11a | 13a |
|-----|-----|-----|-----|-----|
| 48 | 48 | 48 | 48 | 48 |
| 198 | 198 | 198 | 198 | 198 |
| H | H | H | H | H |
| L | L | L | L | L |
| 36 | 38 | 40 | 42 | 44 |
| 36 | 38 | 40 | 42 | 44 |
| 36 | 38 | 40 | 42 | 44 |
| 195 | 195 | 195 | 195 | 195 |
| C | C | C | C | C |
| 7 | 7 | 7 | 7 | 7 |
| 15 | 15 | 15 | 15 | 15 |
| 38 | 38 | 38 | 38 | 38 |
| 52 | 54 | 56 | 58 | 60 |
| 52 | 54 | 56 | 58 | 60 |
| 52 | 54 | 56 | 58 | 60 |
| 26 | 28 | 30 | 32 | 34 |
| 41 | 44 | 47 | 50 | 53 |
| E | E | E | E | E |
| 101 | 101 | 101 | 101 | 101 |
| 145 | 145 | 145 | 145 | 145 |
| 191 | 191 | 191 | 191 | 191 |
| 137 | 137 | 138 | 138 | 139 |
| 33 | 37 | 41 | 45 | 49 |
| 145 | 145 | 145 | 145 | 145 |
| 0 | 0 | 0 | 0 | 0 |



Sleeve

| 5a | 7a | 9a | 11a | 13a |
|-----|-----|-----|-----|-----|
| 115 | 115 | 115 | 115 | 115 |
| 426 | 426 | 426 | 426 | 426 |
| H | H | H | H | H |
| L | L | L | L | L |
| 26 | 28 | 28 | 30 | 30 |
| 3 | 3 | 3 | 3 | 3 |
| 3 | 3 | 3 | 3 | 3 |
| 103 | 103 | 103 | 103 | 103 |
| 63 | 63 | 63 | 63 | 63 |
| 131 | 131 | 131 | 131 | 131 |
| 33 | 36 | 41 | 43 | 46 |
| 191 | 191 | 191 | 191 | 191 |
| 131 | 131 | 131 | 131 | 131 |
| 30 | 35 | 38 | 40 | 43 |
| 3 | 3 | 3 | 3 | 3 |
| 0 | 0 | 0 | 0 | 0 |



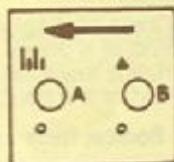
Collar

Reverse shaping to knit the second part of the collar

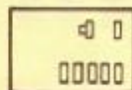
FANCY PATTERN STITCH

Pattern stitch derived from double garter stitch X

Card 10 - Design 3



Pattern stitch derived from double garter stitch X



For any type of selection, refer to the booklet for the double garter knit and lace carriage, pattern N° 3.

Back - Front - Sleeves :

- H = Length in mm of 40 rows in pattern stitch derived from double garter stitch
- L = Width in mm of 40 stitches in pattern stitch derived from double garter stitch
- C = Length in mm of 40 rows in 2/2 industrial rib
- E = Total length in cm

Collar :

- H = Length in mm of 40 rows in 2/2 industrial rib
- L = Width in mm of 40 stitches in 2/2 industrial rib

Back - Front - Sleeves :


- 1 = Casting-on in 2/2 industrial rib
- 2 = Transfer into fancy pattern stitch
- 3 = Divide the knitting for neckline
- 4 = End of the neckline first side
- 5 = End of knitting

Collar :

- 1 = Casting-on in 2/2 industrial rib
- 5 = End of knitting

BABY'S SET Size : 6 months

7
125

Material : 200 grs yarn —  US 0.1
4 buttons UK 14.13

Pattern stitches : 1/1 rib - Stocking stitch with stripes - Stocking stitch



| |
|-----|
| 6m |
| 92 |
| 128 |
| H |
| L |
| 80 |
| 3 |
| 3 |
| 195 |
| C |
| 7 |
| 3 |
| 100 |
| 7 |
| 35 |
| 65 |
| 129 |
| 130 |
| C |
| 4 |
| 0 |

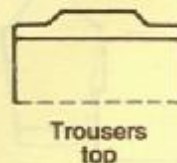
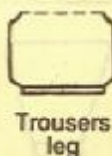
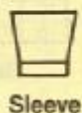
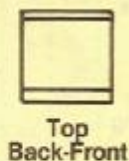
| |
|-----|
| 6m |
| 92 |
| 128 |
| H |
| L |
| 46 |
| 3 |
| 3 |
| 195 |
| C |
| 7 |
| 3 |
| 100 |
| 55 |
| 11 |
| 7 |
| 8 |
| 0 |

| |
|-----|
| 6m |
| 92 |
| 128 |
| H |
| L |
| 86 |
| 3 |
| 3 |
| 195 |
| C |
| 7 |
| 3 |
| 104 |
| 36 |
| 7 |
| 29 |
| 153 |
| 145 |
| 164 |
| 66 |
| 2 |
| 0 |

| |
|-----|
| 6m |
| 92 |
| 128 |
| H |
| L |
| 152 |
| 3 |
| 3 |
| 100 |
| 7 |
| 33 |
| 65 |
| 1 |
| 137 |
| C |
| 7 |
| 2 |
| 185 |
| 159 |
| 191 |
| 129 |
| 129 |
| 2 |
| 0 |

| |
|-----|
| 6m |
| 117 |
| 2 |
| H |
| 2 |
| 6 |
| 3 |
| 3 |
| 98 |
| 7 |
| 53 |
| 0 |

Straps



Top : Back - Front - Sleeves
Trousers : Legs - Top

H = Length in mm of 40 rows in stocking stitch
L = Width in mm of 40 stitches in stocking stitch
C = Length in mm of 40 rows in 1/1 rib

Straps :

H = Length in mm of 40 rows in rib according to needle setting shown hereunder.

Top : Back - Front - Sleeves :

- 1 = Casting-on in 1/1 rib
- 2 = Transfer from rib into stocking stitch
- 5 = End of knitting
- 7 = Transfer from stocking stitch into 1/1 rib

Trousers legs :

- 1 = Casting-on in 1/1 rib
- 2 = Transfer from rib into stocking stitch
- 5 = End of the first leg, knit the second one
- 8 = Knit with an auxiliary yarn

Trousers top :

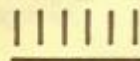
- 1 = Rehang both legs on the indicated number of needles
- 7 = Transfer into 1/1 rib
- 5 = End of knitting

Straps :

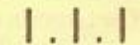
- 1 = Casting on according to needle setting
- 5 = End of knitting

Straps :

Cast-on 6 stitches on the back needle bed
Cast-on 3 stitches on the front needle bed



According to needle setting



Working instructions : Knit the trousers legs in stocking stitch with stripes. However, if you wish to knit the trousers with a pattern (fair isle, tuck stitches, slip stitches...) proceed as follows : before starting to knit, make the programme advance manually; take notice of the number of stitches indicated for casting-on and the increases to be made for the crotch. You will then be able to centre your garment on the knitting machine and centre the pattern in your work.

For instance : you have noted - Casting-on 35 stitches and increases 1 stitch, 2 stitches. You will therefore cast-on the first leg from the 4th needle to the 38th needle right of zero on the graduated scale of needles. When knitting the second leg, you will cast-on the same needles but left of zero on the graduated scale of needles. Revert to the starting point of your programme and knit.

PLAY SUIT Sizes : 6, 12, 18 months

7
126



Material : 150 grs yarn — US 0 - 1
7 buttons UK 14 - 13

Pattern stitches : 1/1 rib - 3/3 rib - Slip stitch pattern

| 6m | 12m | 18m |
|----------|----------|----------|
| 96 | 96 | 96 |
| 154 | 154 | 154 |
| C | C | C |
| L | L | L |
| 28 | 32 | 34 |
| 3 | 3 | 3 |
| 3 | 3 | 3 |
| 65 | 65 | 65 |
| 3 | 3 | 3 |
| 70 | 70 | 70 |
| 71 | 71 | 71 |
| 65 | 65 | 65 |
| 5 | 5 | 5 |
| 24 | 24 | 24 |
| 2 | 2 | 2 |
| 152 | 152 | 152 |
| 195 | 195 | 195 |
| H | H | H |
| 7 | 7 | 7 |
| 40 | 46 | 50 |
| 68 | 68 | 68 |
| 7 | 7 | 7 |
| 17 | 20 | 22 |
| 186 | 186 | 186 |
| 137 | 141 | 143 |
| 70 | 70 | 70 |
| 7 | 7 | 7 |
| 11 | 14 | 16 |
| 161 | 161 | 161 |
| 189 | 189 | 189 |
| 129 | 129 | 129 |
| 2 | 2 | 2 |
| 0 | 0 | 0 |

| 6m | 12m | 18m |
|----------|----------|----------|
| 96 | 96 | 96 |
| 154 | 154 | 154 |
| C | C | C |
| L | L | L |
| 28 | 32 | 34 |
| 3 | 3 | 3 |
| 3 | 3 | 3 |
| 70 | 70 | 70 |
| 6 | 6 | 6 |
| 6 | 6 | 6 |
| 24 | 24 | 24 |
| 120 | 120 | 120 |
| 128 | 128 | 128 |
| 149 | 153 | 155 |
| 67 | 67 | 67 |
| 71 | 71 | 71 |
| 65 | 65 | 65 |
| 5 | 5 | 5 |
| 65 | 65 | 65 |
| 2 | 2 | 2 |
| 70 | 70 | 70 |
| 6 | 6 | 6 |
| 70 | 70 | 70 |
| 65 | 65 | 65 |
| 24 | 24 | 24 |
| 65 | 65 | 65 |
| 195 | 195 | 195 |
| H | H | H |
| 7 | 7 | 7 |
| 43 | 49 | 53 |
| 228 | 228 | 228 |
| 7 | 7 | 7 |
| 17 | 20 | 22 |
| 186 | 186 | 186 |
| 137 | 141 | 143 |
| 68 | 68 | 68 |
| 169 | 169 | 169 |
| 186 | 187 | 187 |
| 128 | 131 | 131 |
| 1 | 1 | 1 |
| 0 | 0 | 0 |

| 6m | 12m | 18m |
|----------|----------|----------|
| 100 | 100 | 100 |
| 154 | 154 | 154 |
| H | H | H |
| L | L | L |
| 88 | 94 | 100 |
| 3 | 3 | 3 |
| 3 | 3 | 3 |
| 102 | 102 | 102 |
| 7 | 7 | 7 |
| 1 | 1 | 1 |
| 65 | 65 | 65 |
| 1 | 1 | 1 |
| 68 | 68 | 68 |
| 2 | 2 | 2 |
| 0 | 0 | 0 |

Armhole bands

| 6m | 12m | 18m |
|----------|----------|----------|
| 100 | 100 | 100 |
| 154 | 154 | 154 |
| H | H | H |
| L | L | L |
| 88 | 94 | 100 |
| 3 | 3 | 3 |
| 3 | 3 | 3 |
| 103 | 103 | 103 |
| 3 | 3 | 3 |
| 67 | 67 | 67 |
| 4 | 3 | 3 |
| 65 | 65 | 65 |
| 1 | 1 | 1 |
| 68 | 68 | 68 |
| 2 | 2 | 2 |
| 0 | 0 | 0 |

Button bands

| 6m | 12m | 18m |
|----------|----------|----------|
| 100 | 100 | 100 |
| 154 | 154 | 154 |
| H | H | H |
| L | L | L |
| 88 | 94 | 100 |
| 3 | 3 | 3 |
| 3 | 3 | 3 |
| 101 | 101 | 101 |
| 6 | 6 | 6 |
| 65 | 65 | 65 |
| 1 | 1 | 1 |
| 68 | 68 | 68 |
| 2 | 2 | 2 |
| 0 | 0 | 0 |

Neckband

Armhole bands - Button bands - Neckband :

- 1 = Casting-on in 1/1 rib
- 5 = End of knitting
- 7 = Knit in stocking stitch
- 8 = Knit with an auxiliary yarn
- 10 = Place 7 buttonholes

Working instructions : Before knitting the back make the programme advance manually. Take notice of the number of stitches indicated for casting-on and of the increases to be made for the crotch. There is no need to go further since these data will allow you to centre your garment on the knitting machine and centre the pattern in your work.

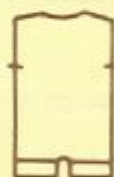
For instance : You have noted -Casting-on 35 stitches and increase 1 stitch and then 2 stitches. You will therefore cast-on the first leg on the right-hand side of the machine from the 4th needle to the 38th needle right of zero on the graduated scale of needles. When knitting the second leg, you will cast-on the same needles but left of zero on the graduated scale of needles. Revert to the starting point of your programme and knit.

Important : The yoke back and front can only be knitted in rib.



1/2 Front

Reverse shaping to knit the second front part.



Back

Back - Front :

- H = Length in mm of 40 rows in slip stitch pattern
- L = Width in mm of 40 stitches in slip stitch pattern
- C = Length in mm of 40 rows in 3/3 rib

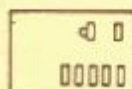
Armhole bands - Button bands - Neckband :

- H = Length in mm of 40 rows in 1/1 rib
- L = Width in mm of 40 stitches in 1/1 rib

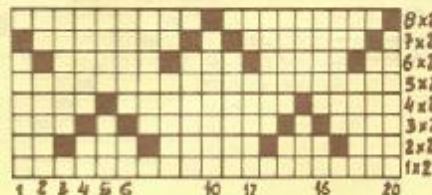
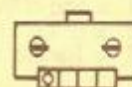
Back - Front :

- 1 = Casting-on in 3/3 rib
- 2 = Transfer into 3/3 rib
- 3 = Divide the knitting for neckline
- 4 = End of the neckline first side
- 5 = End of knitting
- 6 = Cast-on the second leg in 3/3 rib. Move the needles of the first leg into holding position
- 7 = Transfer from 3/3 rib into slip stitch pattern
- 8 = Knit over all the needles

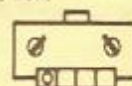
FANCY PATTERN STITCH



Slip stitch pattern II
Card 12 design 2
row repeat switch in lower position




Without selection box : Move the needles corresponding to the white squares into position 3. Take care to repeat each row twice and always proceed from the bottom line to the top line. Needle return buttons in lower position.



BABY'S SET PANTS and MATINEE COAT - Sizes : 3 months

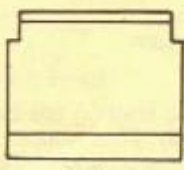
7 / 127



Material : 140 grs yarn —  US 3.4
UK 11.9

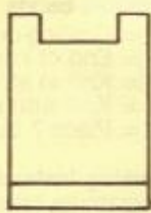
Pattern stitches : 1/1 rib - Double garter stitch

| |
|-----|
| 3m |
| 70 |
| 143 |
| H |
| L |
| 72 |
| 3 |
| 3 |
| 195 |
| C |
| 7 |
| 4 |
| 103 |
| 7 |
| 32 |
| 168 |
| 7 |
| 128 |
| 65 |
| 1 |
| 130 |
| C |
| 3 |
| 0 |



Pants

| |
|-----|
| 3m |
| 70 |
| 143 |
| H |
| L |
| 58 |
| 3 |
| 3 |
| 195 |
| C |
| 7 |
| 4 |
| 226 |
| 7 |
| 60 |
| 68 |
| 184 |
| 137 |
| 7 |
| 3 |
| 0 |



Front

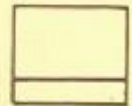
| |
|-----|
| 3m |
| 70 |
| 399 |
| H |
| L |
| 42 |
| 3 |
| 3 |
| 195 |
| C |
| 7 |
| 4 |
| 226 |
| 7 |
| 60 |
| 68 |
| 184 |
| 149 |
| 7 |
| 3 |
| 0 |



Back

Reverse shaping to knit the second part.

| |
|-----|
| 3m |
| 70 |
| 143 |
| H |
| L |
| 54 |
| 3 |
| 3 |
| 195 |
| C |
| 7 |
| 4 |
| 98 |
| 7 |
| 23 |
| 0 |



Sleeve

Pants - Back - Front - Sleeves :

- H = Length in mm of 40 rows in double garter stitch
- L = Width in mm of 40 stitches in double garter stitch
- C = Length in mm of 40 rows in 1/1 rib

Pants - Back - Front - Sleeves :

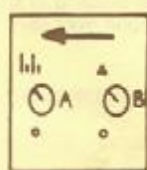
- 1 = Casting-on in 1/1 rib
- 2 = Transfer into double garter stitch
- 3 = Divide the knitting for neckline
- 4 = End of the neckline first side
- 5 = End of knitting
- 7 = Transfer into 1/1 rib

Working instructions : The pants are composed of two parts from the waist to the leg. The matinee coat is composed of :

- Two parts for the back
- One part for the front
- Two sleeves

FANCY PATTERN STITCH

Double garter stitch :




Double garter knit and lace carriage.

OVER-COAT Size : 6 months

7
127



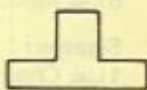
Material : 150 grs yarn — 

US 0.1
UK 14.13

Pattern stitches : Tuck stitch

| |
|-----|
| 6m |
| 56 |
| 129 |
| H |
| L |
| 86 |
| 3 |
| 3 |
| 102 |
| 7 |
| 58 |
| 56 |
| 165 |
| 7 |
| 17 |
| 70 |
| 7 |
| 8 |
| 56 |
| 139 |
| 7 |
| 91 |
| 75 |
| 248 |
| 1 |
| 147 |
| 7 |
| 40 |
| 184 |
| 165 |
| 7 |
| 57 |
| 65 |
| 2 |
| 70 |
| 7 |
| 40 |
| 184 |
| 165 |
| 7 |
| 58 |
| 70 |
| 7 |
| 8 |
| 56 |
| 139 |
| 7 |
| 90 |
| 0 |

| |
|-----|
| 6m |
| 56 |
| 129 |
| H |
| L |
| 124 |
| 3 |
| 3 |
| 102 |
| 7 |
| 22 |
| 184 |
| 166 |
| 7 |
| 44 |
| 0 |



Hood

Finishing :

Sew the hood to the over-coat. Crochet around the over-coat, the hood and the edge of the sleeves.

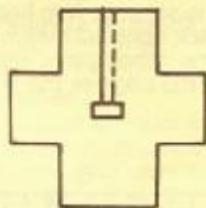
Over-coat - Hood :

H = Length in mm of 40 rows in tuck stitch
L = Width in mm of 40 stitches in tuck stitch

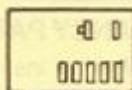
Over-coat - Hood :

- 1 = Chain casting-on
- 5 = End of knitting
- 7 = Decrease the indicated number of stitches in the middle of the work and move the needles left of zero into holding position.
- 8 = Knit the second side

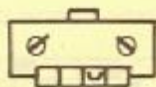
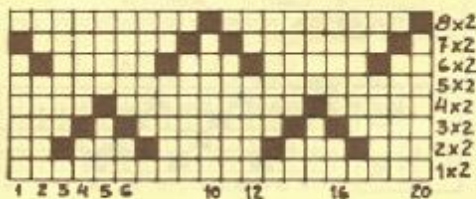
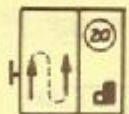
FANCY PATTERN STITCH



Over-coat



Tuck stitch 1
Card 12 - Design 2
Row repeat switch in lower position.



Without selection box : Move the needles corresponding to the white squares into position 3. Take care to repeat twice each row of the pattern and always proceed from the bottom line to the top line. Needle return buttons in lower position.

LADIE'S COAT - Size : 40

8
128



Material : 500 grs yarn for pattern — US 0.1 UK 14.13
 1000 grs yarn for the design US 7.8 UK 7.6
 5 buttons — Braid of yarn for seam

Pattern stitches : Weaving effect

| | | | |
|-----|-----|-----|-----|
| 40 | 40 | 40 | 40 |
| 91 | 91 | 91 | 91 |
| 390 | 390 | 134 | 134 |
| H | H | H | H |
| L | L | L | L |
| 132 | 152 | 74 | 74 |
| 3 | 3 | 3 | 3 |
| 3 | 3 | 3 | 3 |
| 38 | 38 | 73 | 66 |
| 76 | 52 | 3 | 7 |
| 3 | 3 | 248 | 21 |
| 3 | 3 | 3 | 191 |
| 54 | 65 | 165 | 185 |
| 115 | 115 | 63 | 105 |
| E | E | 165 | 75 |
| 110 | 229 | 17 | 3 |
| 2 | 56 | 7 | 248 |
| 248 | 137 | 100 | 3 |
| 128 | 191 | 71 | 165 |
| 183 | 217 | 7 | 63 |
| 183 | 102 | 21 | 165 |
| 17 | 70 | 191 | 17 |
| 56 | 185 | 185 | 7 |
| 137 | 131 | 95 | 100 |
| 191 | 186 | 189 | 189 |
| 135 | 129 | 131 | 131 |
| 7 | 165 | 0 | 0 |
| 120 | 1 | | |
| 1 | 0 | | |
| 183 | | | |
| 110 | | | |
| 7 | | | |
| 32 | | | |
| 255 | | | |
| 2 | | | |
| 153 | | | |
| 79 | | | |
| 63 | | | |
| 149 | | | |
| 4 | | | |
| 7 | | | |
| 39 | | | |
| 191 | | | |
| 147 | | | |
| 13 | | | |
| 0 | | | |

Back - Front - Sleeves :

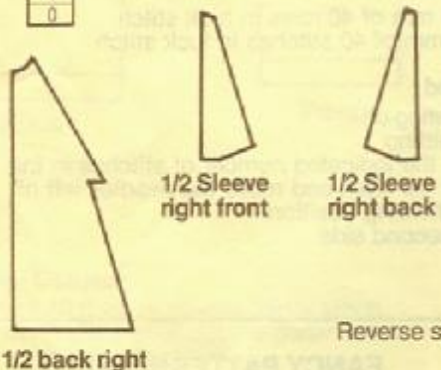
H = Length in mm of 40 rows in weaving effect
 L = Width in mm of 40 stitches in weaving effect
 E = Total length in cm

Back - Front :

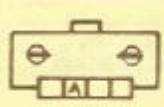
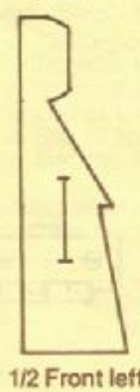
- 1 = Chain casting-on
- 5 = End of knitting
- 6 = Move the indicated number of needles into holding position at the side opposite to the carriage
- 7 = Move the needles which have just knitted into holding position and move the needles which were in holding position into working position
- 8 = Move all the needles into working position

Sleeves :

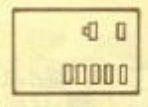
- 1 = Chain casting-on
- 5 = End of knitting
- 9 = Sign — : at the side opposite to the carriage, move the indicated number of needles into holding position
- Sign + : At the side of the carriage, move the indicated number of needles into position 2



Reverse shaping to knit the 1/2 back and 1/2 front and the 1/2 sleeve left.



Weaving effect

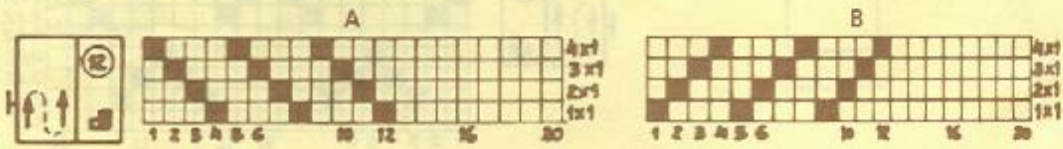


Weaving effect VIII
 Card 2 - Design 4
 + scheme at the bottom of the page

FANCY PATTERN STITCH

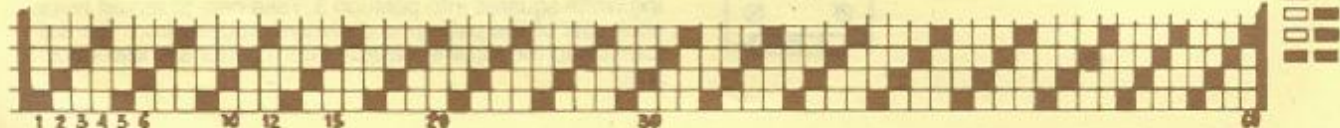
Working instructions

Use card 2, design 4 or the scheme A to knit the following parts : 1/2 front left, 1/2 back right, 1/2 sleeve right front, 1/2 sleeve left back. Knit the other parts using either the scheme at the bottom of the page or the scheme B



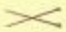
Without selection box :

Move the needles corresponding to the black squares of the scheme into position 2.



MEN'S SWEATER Sizes : 44 - 48 - 52

8
129

Material : 450 - 500 grs yarn —  US 3.4
UK 11.9

Pattern stitches : 1/1 rib - Stocking stitch - Cable stitch (6 stitches)



| 44 | 48 | 52 |
|-----|-----|-----|
| 77 | 77 | 77 |
| 129 | 129 | 129 |
| H | H | H |
| L | L | L |
| 150 | 162 | 176 |
| 96 | 104 | 112 |
| 96 | 104 | 112 |
| 195 | 195 | 195 |
| C | C | C |
| 7 | 7 | 7 |
| 20 | 20 | 20 |
| 38 | 38 | 38 |
| 150 | 162 | 176 |
| 96 | 104 | 112 |
| D | D | D |
| 35 | 36 | 37 |
| 71 | 73 | 75 |
| E | E | E |
| 228 | 228 | 228 |
| 255 | 255 | 255 |
| 1 | 1 | 1 |
| 172 | 175 | 182 |
| 59 | 65 | 68 |
| 70 | 71 | 71 |
| 177 | 185 | 185 |
| 153 | 134 | 134 |
| 179 | 153 | 153 |
| 182 | 179 | 179 |
| 7 | 155 | 155 |
| 3 | 7 | 7 |
| 0 | 6 | 6 |
| 0 | 0 | 0 |

| 44 | 48 | 52 |
|-----|-----|-----|
| 77 | 77 | 77 |
| 129 | 129 | 129 |
| H | H | H |
| L | L | L |
| 150 | 162 | 176 |
| 96 | 104 | 112 |
| 96 | 104 | 112 |
| 195 | 195 | 195 |
| C | C | C |
| 7 | 7 | 7 |
| 20 | 20 | 20 |
| 38 | 38 | 38 |
| 150 | 162 | 176 |
| 96 | 104 | 112 |
| D | D | D |
| 35 | 36 | 37 |
| 71 | 73 | 75 |
| E | E | E |
| 100 | 100 | 100 |
| 255 | 255 | 255 |
| 1 | 1 | 1 |
| 172 | 180 | 187 |
| 62 | 65 | 68 |
| 0 | 0 | 0 |

| 44 | 48 | 52 |
|-----|-----|-----|
| 77 | 77 | 77 |
| 129 | 129 | 129 |
| H | H | H |
| L | L | L |
| 82 | 88 | 94 |
| 26 | 28 | 30 |
| 26 | 28 | 30 |
| 195 | 195 | 195 |
| C | C | C |
| 7 | 7 | 7 |
| 20 | 20 | 20 |
| 38 | 38 | 38 |
| 126 | 126 | 132 |
| 40 | 40 | 42 |
| F | F | F |
| 34 | 35 | 36 |
| 70 | 72 | 74 |
| E | E | E |
| 69 | 69 | 69 |
| 191 | 191 | 191 |
| 175 | 177 | 180 |
| 60 | 59 | 62 |
| 187 | 190 | 190 |
| 135 | 135 | 135 |
| 68 | 68 | 68 |
| 255 | 255 | 255 |
| 1 | 1 | 1 |
| 177 | 177 | 180 |
| 62 | 65 | 68 |
| 0 | 0 | 0 |

| |
|-----|
| 112 |
| 80 |
| H |
| L |
| 130 |
| 3 |
| 3 |
| 102 |
| 7 |
| 25 |
| 65 |
| 2 |
| 69 |
| 3 |
| 0 |



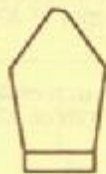
Collar



Front

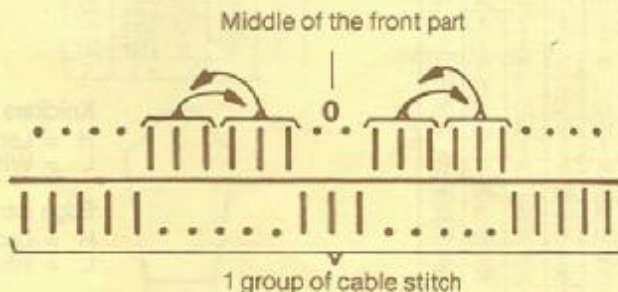


Back

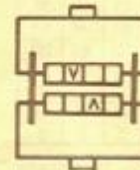


Sleeve

Reverse shaping to knit the second sleeve



Flow combs alternate
4



Important : the sample must not measure less than 129 mm for 40 stitches

Front - Back - Sleeves :

- H = Length in mm of 40 rows in stocking stitch
- L = Width in mm of 40 stitches in stocking stitch
- C = Length in mm of 40 rows in 1/1 rib
- D = Chest measurement in cm
- E = Total length in cm
- F = Repeat the number just above unless D is increased

Collar :

- H = Length in mm of 40 rows in 1/1 rib
- L = Width in mm of 40 stitches in 1/1 rib

Front - Back - Sleeves :


- 1 = Casting-on in 1/1 rib
- 2 = Transfer into stocking stitch
- 3 = Divide the knitting for neckline
- 4 = End of the neckline first side
- 5 = End of knitting
- 7 = Attach an auxiliary yarn to each edge stitch to indicate the armholes.

Collar :

- 1 = Casting-on in 1/1 rib
- 5 = End of knitting
- 8 = Knit in circular
- 9 = Knit with an auxiliary yarn

KNICKERS Sizes : 5, 7, 9, 11, 13 years

8 / 130

Material : 200 to 350 grs yarn —  US 0 - 3
2 buttons - Elastic

US 0 - 3
UK 14 - 11

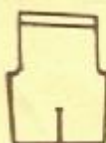
Pattern stitches : Stocking stitch - Circular hem



| 5a | 7a | 9a | 11a | 13a |
|-----|-----|-----|-----|-----|
| 100 | 100 | 100 | 100 | 100 |
| 152 | 152 | 152 | 152 | 152 |
| H | H | H | H | H |
| L | L | L | L | L |
| 48 | 50 | 52 | 56 | 58 |
| 3 | 3 | 3 | 3 | 3 |
| 3 | 3 | 3 | 3 | 3 |
| 68 | 68 | 68 | 68 | 68 |
| 7 | 7 | 7 | 7 | 7 |
| 21 | 21 | 21 | 21 | 21 |
| 39 | 39 | 39 | 39 | 39 |
| 21 | 21 | 21 | 21 | 21 |
| 70 | 70 | 70 | 70 | 70 |
| 39 | 39 | 39 | 39 | 39 |
| 21 | 21 | 21 | 21 | 21 |
| 120 | 120 | 120 | 120 | 120 |
| 129 | 129 | 129 | 129 | 129 |
| 173 | 173 | 173 | 173 | 173 |
| 6 | 6 | 6 | 6 | 6 |
| 55 | 55 | 55 | 55 | 55 |
| 128 | 128 | 128 | 128 | 128 |
| 116 | 120 | 126 | 132 | 138 |
| 3 | 3 | 3 | 3 | 3 |
| 3 | 3 | 3 | 3 | 3 |
| 14 | 21 | 28 | 34 | 40 |
| 3 | 3 | 3 | 3 | 3 |
| 3 | 3 | 3 | 3 | 3 |
| 76 | 76 | 76 | 76 | 76 |
| 177 | 177 | 177 | 177 | 177 |
| 153 | 153 | 153 | 153 | 153 |
| 172 | 155 | 146 | 146 | 146 |
| 7 | 7 | 7 | 7 | 7 |
| 20 | 22 | 25 | 29 | 33 |
| 248 | 248 | 248 | 248 | 248 |
| 128 | 128 | 128 | 128 | 128 |
| 181 | 185 | 189 | 193 | 197 |
| 60 | 60 | 60 | 60 | 60 |
| 181 | 185 | 189 | 193 | 197 |
| 7 | 7 | 7 | 7 | 7 |
| 3 | 3 | 3 | 3 | 3 |
| 89 | 89 | 89 | 89 | 89 |
| 161 | 161 | 161 | 161 | 161 |
| 153 | 153 | 153 | 153 | 153 |
| 172 | 172 | 163 | 163 | 163 |
| 7 | 7 | 7 | 7 | 7 |
| 34 | 36 | 40 | 44 | 48 |
| 0 | 0 | 0 | 0 | 0 |

| 5a | 7a | 9a | 11a | 13a |
|-----|-----|-----|-----|-----|
| 100 | 100 | 100 | 100 | 100 |
| 152 | 152 | 152 | 152 | 152 |
| H | H | H | H | H |
| L | L | L | L | L |
| 64 | 68 | 72 | 76 | 80 |
| 3 | 3 | 3 | 3 | 3 |
| 3 | 3 | 3 | 3 | 3 |
| 100 | 100 | 100 | 100 | 100 |
| 7 | 7 | 7 | 7 | 7 |
| 13 | 13 | 13 | 13 | 13 |
| 70 | 70 | 70 | 70 | 70 |
| 3 | 3 | 3 | 3 | 3 |
| 0 | 0 | 0 | 0 | 0 |

Edge band



Knicker

Knickers :

H = Length in mm of 40 rows in stocking stitch
L = Width in mm of 40 stitches in stocking stitch

Edge band :

H = Length in mm of 40 rows in circular
L = Width in mm of 40 stitches in circular

Knickers :

- 1 = Chain cast-on the first half of the leg
- 7 = Chain cast-on the second half of the leg, move the first one into holding position
- 8 = Knit over all the needles
- 6 = Sign — : at the side opposite to the carriage, move the indicated number of needles into holding position.
Sign + : At the side of the carriage, move the indicated number of needles into position 2
- 5 = End of knitting

Edge band :

- 1 = Casting-on in circular
- 5 = End of knitting
- 9 = Knit with an auxillary yarn

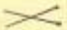
Working instructions and finishing :

For the first leg, cast-on the needles on the right-hand side of the knitting machine; the needles for the second part will be cast -on close to these needles on the left-hand side of the knitting machine. The work will be reversed for the second leg. Gather the bottom of the legs to make them correspond to the edge band measurement and sew the edge band. Make a bar and sew a button to close.

BOY'S JACKET Sizes : 5, 7, 9, 11, 13 years

8
130



Material : 250 to 350 grs yarn —  US 0.3 — UK 14 - 11
4 to 7 buttons according to the size

Pattern stitches : 1/1 rib - Close rib - Fair Isle

| 5a | 7a | 9a | 11a | 13a |
|-----|-----|-----|-----|-----|
| 108 | 108 | 108 | 108 | 108 |
| 416 | 416 | 416 | 416 | 416 |
| H | H | H | H | H |
| L | L | L | L | L |
| 40 | 42 | 46 | 48 | 50 |
| 68 | 72 | 76 | 80 | 84 |
| 68 | 72 | 76 | 80 | 84 |
| 195 | 195 | 195 | 195 | 195 |
| C | C | C | C | C |
| 7 | 7 | 7 | 7 | 7 |
| 6 | 6 | 6 | 6 | 6 |
| 166 | 166 | 166 | 166 | 166 |
| 40 | 42 | 46 | 48 | 50 |
| 68 | 72 | 76 | 80 | 84 |
| 68 | 72 | 76 | 80 | 84 |
| 20 | 22 | 24 | 25 | 26 |
| 36 | 39 | 43 | 46 | 48 |
| E | E | E | E | E |
| 67 | 67 | 67 | 67 | 67 |
| 191 | 191 | 191 | 191 | 191 |
| 138 | 138 | 139 | 139 | 140 |
| 23 | 24 | 28 | 30 | 30 |
| 103 | 103 | 103 | 103 | 103 |
| 178 | 178 | 178 | 178 | 178 |
| 145 | 145 | 145 | 145 | 145 |
| 146 | 155 | 155 | 146 | 146 |
| 7 | 7 | 7 | 7 | 7 |
| 13 | 13 | 15 | 18 | 18 |
| 187 | 187 | 189 | 189 | 189 |
| 133 | 135 | 137 | 139 | 141 |
| 0 | 0 | 0 | 0 | 0 |

| 5a | 7a | 9a | 11a | 13a |
|-----|-----|-----|-----|-----|
| 108 | 108 | 108 | 108 | 108 |
| 160 | 160 | 160 | 160 | 160 |
| H | H | H | H | H |
| L | L | L | L | L |
| 84 | 92 | 95 | 100 | 108 |
| 68 | 72 | 76 | 80 | 84 |
| 68 | 72 | 76 | 80 | 84 |
| 195 | 195 | 195 | 195 | 195 |
| C | C | C | C | C |
| 7 | 7 | 7 | 7 | 7 |
| 6 | 6 | 6 | 6 | 6 |
| 38 | 38 | 38 | 38 | 38 |
| 84 | 92 | 95 | 100 | 108 |
| 68 | 72 | 76 | 80 | 84 |
| 68 | 72 | 76 | 80 | 84 |
| 20 | 22 | 24 | 25 | 26 |
| 35 | 38 | 42 | 45 | 47 |
| E | E | E | E | E |
| 231 | 231 | 231 | 231 | 232 |
| 153 | 178 | 178 | 153 | 161 |
| 164 | 145 | 145 | 164 | 153 |
| 146 | 146 | 146 | 146 | 145 |
| 7 | 7 | 7 | 7 | 146 |
| 11 | 13 | 14 | 16 | 7 |
| 187 | 187 | 189 | 189 | 16 |
| 133 | 135 | 137 | 139 | 189 |
| 69 | 69 | 69 | 69 | 141 |
| 185 | 185 | 185 | 185 | 99 |
| 128 | 129 | 129 | 128 | 185 |
| 185 | 185 | 185 | 185 | 128 |
| 134 | 130 | 130 | 131 | 185 |
| 169 | 169 | 169 | 169 | 131 |
| 0 | 0 | 0 | 0 | 169 |
| 0 | 0 | 0 | 0 | 0 |

| 5a | 7a | 9a | 11a | 13a |
|-----|-----|-----|-----|-----|
| 108 | 108 | 108 | 108 | 108 |
| 160 | 160 | 160 | 160 | 160 |
| H | H | H | H | H |
| L | L | L | L | L |
| 46 | 50 | 52 | 54 | 56 |
| 19 | 20 | 21 | 22 | 23 |
| 19 | 20 | 21 | 22 | 23 |
| 195 | 195 | 195 | 195 | 195 |
| C | C | C | C | C |
| 7 | 7 | 7 | 7 | 7 |
| 1 | 1 | 1 | 1 | 1 |
| 38 | 38 | 38 | 38 | 38 |
| 64 | 68 | 72 | 74 | 76 |
| 26 | 27 | 28 | 29 | 30 |
| 26 | 27 | 28 | 29 | 30 |
| 26 | 28 | 30 | 32 | 36 |
| 35 | 38 | 41 | 44 | 49 |
| E | E | E | E | E |
| 104 | 104 | 103 | 103 | 103 |
| 153 | 153 | 153 | 153 | 153 |
| 189 | 188 | 179 | 162 | 145 |
| 131 | 129 | 191 | 191 | 191 |
| 191 | 191 | 134 | 136 | 139 |
| 128 | 131 | 134 | 136 | 139 |
| 128 | 131 | 145 | 145 | 145 |
| 145 | 145 | 153 | 153 | 153 |
| 153 | 153 | 0 | 0 | 0 |
| 0 | 0 | | | |

| 5a | 7a | 9a | 11a | 13a |
|-----|-----|-----|-----|-----|
| 110 | 110 | 110 | 110 | 110 |
| 259 | 259 | 259 | 259 | 259 |
| H | H | H | H | H |
| L | L | L | L | L |
| 3 | 3 | 3 | 3 | 3 |
| 12 | 12 | 12 | 12 | 12 |
| 3 | 3 | 3 | 3 | 3 |
| 3 | 3 | 3 | 3 | 3 |
| 98 | 98 | 98 | 98 | 98 |
| 4 | 4 | 4 | 4 | 4 |
| 9 | 9 | 9 | 9 | 9 |
| 38 | 38 | 38 | 38 | 38 |
| 19 | 21 | 21 | 25 | 26 |
| 3 | 3 | 3 | 3 | 3 |
| 3 | 3 | 3 | 3 | 3 |
| 24 | 26 | 28 | 30 | 32 |
| 26 | 28 | 30 | 32 | 34 |
| E* | E* | E* | E* | E* |
| 38 | 38 | 38 | 38 | 38 |
| 16 | 17 | 17 | 19 | 19 |
| 3 | 3 | 3 | 3 | 3 |
| 3 | 3 | 3 | 3 | 3 |
| 70 | 74 | 78 | 80 | 84 |
| 96 | 102 | 108 | 112 | 118 |
| E | E | E | E | E |
| 0 | 0 | 0 | 0 | 0 |



1/2 Front

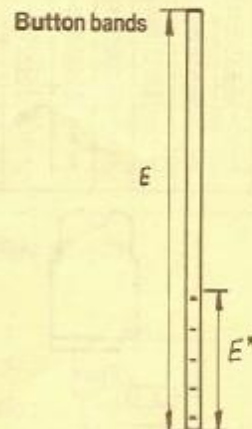
Reverse shaping to knit the second front part.



Back



Sleeve



Back - Front - Sleeves :

H = Length in mm of 40 rows in Fair Isle
L = Width in mm of 40 stitches in Fair Isle
C = Length in mm of 40 rows in 1/1 rib
E = Total length in cm

Button bands :

H = Length in mm of 40 rows in close rib
E* = Length of button band
E = Total length in cm

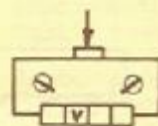
Back - Front - Sleeves :

- 1 = Casting-on in 1/1 rib
- 2 = Transfer into Fair Isle
- 3 = Divide the knitting for neckline
- 4 = End of the neckline first side
- 5 = End of knitting

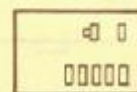
Button bands :

- 1 = Casting-on in close rib
 - 5 = End of knitting
- The sign + 1 indicates the location of a button hole.

FANCY PATTERN STITCH



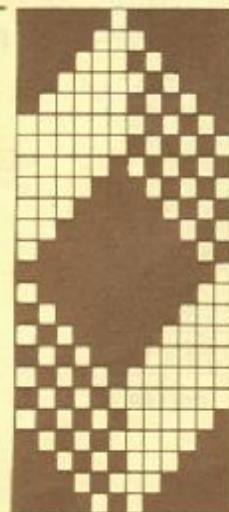
Fair Isle



Fair Isle III
Card 13 - Design 4



Card 86




Without selection box : Move the needles corresponding to the black squares into position 2 and always proceed from the bottom to the top of the scheme.

GIRL'S SWEATER Sizes : 2, 3, 5, 7, 9, 11, 13, 15 years

9
131



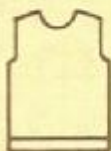
Material : 200 to 400 grs yarn —  US 0.1
1 zip for the first four sizes UK 14.13

Pattern stitches : 1/1 rib - Racking pattern

| 2a | 3a | 5a | 7a | 9a | 11a | 13a | 15a |
|-----|-----|-----|-----|-----|-----|-----|-----|
| 75 | 75 | 75 | 75 | 75 | 75 | 75 | 75 |
| 230 | 230 | 230 | 230 | 230 | 230 | 230 | 230 |
| H | H | H | H | H | H | H | H |
| L | L | L | L | L | L | L | L |
| 54 | 56 | 58 | 62 | 66 | 70 | 74 | 76 |
| 3 | 3 | 3 | 3 | 3 | 3 | 3 | 3 |
| 3 | 3 | 3 | 3 | 3 | 3 | 3 | 3 |
| 195 | 195 | 195 | 195 | 195 | 195 | 195 | 195 |
| C | C | C | C | C | C | C | C |
| 7 | 7 | 7 | 7 | 7 | 7 | 7 | 7 |
| 8 | 8 | 8 | 8 | 8 | 8 | 8 | 8 |
| 38 | 38 | 38 | 38 | 38 | 38 | 38 | 38 |
| 54 | 56 | 58 | 62 | 66 | 70 | 74 | 76 |
| 3 | 3 | 3 | 3 | 3 | 3 | 3 | 3 |
| 3 | 3 | 3 | 3 | 3 | 3 | 3 | 3 |
| 16 | 18 | 20 | 22 | 24 | 26 | 30 | 34 |
| 34 | 37 | 40 | 43 | 46 | 50 | 55 | 60 |
| E | E | E | E | E | E | E | E |
| 231 | 231 | 231 | 231 | 231 | 232 | 232 | 232 |
| 153 | 153 | 153 | 153 | 153 | 153 | 153 | 161 |
| 145 | 145 | 145 | 145 | 145 | 145 | 145 | 145 |
| 146 | 146 | 146 | 146 | 146 | 146 | 146 | 146 |
| 7 | 7 | 7 | 7 | 7 | 7 | 7 | 7 |
| 18 | 21 | 24 | 26 | 29 | 32 | 34 | 34 |
| 189 | 189 | 189 | 189 | 189 | 191 | 191 | 191 |
| 131 | 131 | 132 | 133 | 135 | 136 | 136 | 136 |
| 70 | 70 | 70 | 70 | 70 | 1 | 1 | 3 |
| 161 | 161 | 161 | 161 | 161 | 70 | 70 | 70 |
| 153 | 153 | 153 | 153 | 153 | 161 | 161 | 161 |
| 145 | 145 | 162 | 162 | 162 | 153 | 153 | 153 |
| 137 | 146 | 137 | 137 | 137 | 162 | 162 | 162 |
| 7 | 7 | 7 | 7 | 7 | 146 | 146 | 155 |
| 5 | 4 | 4 | 4 | 4 | 7 | 7 | 7 |
| 0 | 0 | 0 | 0 | 0 | 4 | 4 | 4 |

| 2a | 3a | 5a | 7a | 9a | 11a | 13a | 15a |
|-----|-----|-----|-----|-----|-----|-----|-----|
| 75 | 75 | 75 | 75 | 75 | 75 | 75 | 75 |
| 230 | 230 | 230 | 230 | 230 | 230 | 230 | 230 |
| H | H | H | H | H | H | H | H |
| L | L | L | L | L | L | L | L |
| 54 | 56 | 58 | 62 | 66 | 70 | 74 | 76 |
| 3 | 3 | 3 | 3 | 3 | 3 | 3 | 3 |
| 3 | 3 | 3 | 3 | 3 | 3 | 3 | 3 |
| 195 | 195 | 195 | 195 | 195 | 195 | 195 | 195 |
| C | C | C | C | C | C | C | C |
| 7 | 7 | 7 | 7 | 7 | 7 | 7 | 7 |
| 8 | 8 | 8 | 8 | 8 | 8 | 8 | 8 |
| 38 | 38 | 38 | 38 | 38 | 38 | 38 | 38 |
| 54 | 56 | 58 | 62 | 66 | 70 | 74 | 76 |
| 3 | 3 | 3 | 3 | 3 | 3 | 3 | 3 |
| 3 | 3 | 3 | 3 | 3 | 3 | 3 | 3 |
| 16 | 18 | 20 | 22 | 24 | 26 | 30 | 34 |
| 33 | 36 | 39 | 42 | 45 | 49 | 54 | 59 |
| E | E | E | E | E | E | E | E |
| 103 | 103 | 103 | 103 | 103 | 104 | 104 | 104 |
| 153 | 153 | 153 | 153 | 153 | 153 | 153 | 161 |
| 145 | 145 | 145 | 145 | 145 | 145 | 145 | 145 |
| 146 | 146 | 146 | 146 | 146 | 146 | 146 | 146 |
| 7 | 7 | 7 | 7 | 7 | 7 | 7 | 7 |
| 17 | 18 | 21 | 24 | 26 | 29 | 31 | 31 |
| 189 | 189 | 189 | 189 | 189 | 191 | 191 | 191 |
| 131 | 131 | 132 | 133 | 135 | 136 | 136 | 136 |
| 0 | 0 | 0 | 0 | 0 | 1 | 1 | 3 |

| 2a | 3a | 5a | 7a | 9a | 11a | 13a | 15a |
|-----|-----|-----|-----|-----|-----|-----|-----|
| 75 | 75 | 75 | 75 | 75 | 75 | 75 | 75 |
| 230 | 230 | 230 | 230 | 230 | 230 | 230 | 230 |
| H | H | H | H | H | H | H | H |
| L | L | L | L | L | L | L | L |
| 28 | 30 | 32 | 32 | 34 | 36 | 38 | 40 |
| 16 | 17 | 18 | 19 | 20 | 21 | 22 | 23 |
| 16 | 17 | 18 | 19 | 20 | 21 | 22 | 23 |
| 195 | 195 | 195 | 195 | 195 | 195 | 195 | 195 |
| C | C | C | C | C | C | C | C |
| 7 | 7 | 7 | 7 | 7 | 7 | 7 | 7 |
| 8 | 8 | 8 | 8 | 8 | 8 | 8 | 8 |
| 38 | 38 | 38 | 38 | 38 | 38 | 38 | 38 |
| 40 | 42 | 44 | 46 | 48 | 48 | 50 | 52 |
| 23 | 24 | 25 | 26 | 27 | 28 | 29 | 30 |
| 23 | 24 | 25 | 26 | 27 | 28 | 29 | 30 |
| 22 | 24 | 26 | 28 | 30 | 32 | 36 | 40 |
| 34 | 37 | 40 | 43 | 46 | 49 | 54 | 59 |
| E | E | E | E | E | E | E | E |
| 100 | 100 | 100 | 100 | 100 | 100 | 100 | 100 |
| 145 | 145 | 145 | 145 | 145 | 145 | 145 | 153 |
| 191 | 191 | 191 | 191 | 191 | 191 | 191 | 191 |
| 134 | 135 | 138 | 136 | 137 | 136 | 137 | 137 |
| 11 | 14 | 16 | 19 | 21 | 24 | 26 | 29 |
| 0 | 0 | 0 | 0 | 0 | 0 | 0 | 0 |



Front



Back



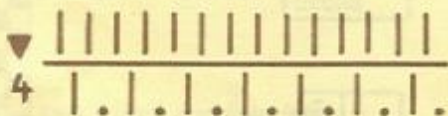
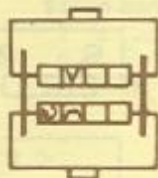
Sleeve

| 2-3a | 5-7-9a | 11-13-15a |
|------|--------|-----------|
| 84 | 84 | 84 |
| 75 | 75 | 75 |
| H | H | H |
| L | L | L |
| 116 | 122 | 128 |
| 3 | 3 | 3 |
| 3 | 3 | 3 |
| 103 | 103 | 103 |
| 7 | 7 | 7 |
| 20 | 29 | 33 |
| 69 | 69 | 69 |
| 1 | 1 | 1 |
| 71 | 71 | 71 |
| 2 | 2 | 2 |
| 1 | 1 | 1 |
| 0 | 0 | 0 |

COLLAR

FANCY PATTERN STITCH

Racking pattern



Flow combs alternate

Knit two rows; racking lever : 1 notch to the left-hand side.
Knit two rows; racking lever : 1 notch to the right-hand side.

Repeat these operations.

Back - Front - Sleeves :

H = Length in mm of 40 rows in racking pattern
L = Width in mm of 40 stitches in racking pattern
C = Length in mm of 40 rows in 1/1 rib
E = Total length in cm

Collar :

H = Length in mm of 40 rows in 1/1 rib
L = Width in mm of 40 stitches in 1/1 rib

Back - Front - Sleeves :

- 1 = Casting-on in 1/1 rib
- 2 = Transfer into fancy pattern stitch and take care to fill the empty needles with the heel of the next stitch.
- 3 = Divide the knitting for neckline
- 4 = End of the neckline first side
- 5 = End of knitting

Collar :

- 1 = Casting-on in 1/1 rib
- 5 = End of knitting
- 7 = Knit in circular
- 8 = Knit with an auxiliary yarn


Finishing :

For the first four sizes, sew a zip on the shoulder.

LADY'S VEST Size : 40

9 / 132



Material : 300 grs yarn —  US 1.3
UK 13.11

Pattern stitches : Circular hem - Fancy close rib

| |
|-----|
| 40 |
| 88 |
| 108 |
| H |
| L |
| 80 |
| 3 |
| 3 |
| 98 |
| 7 |
| 7 |
| 69 |
| 7 |
| 73 |
| 32 |
| 7 |
| 51 |
| 86 |
| 64 |
| 7 |
| 56 |
| 191 |
| 171 |
| 68 |
| 0 |

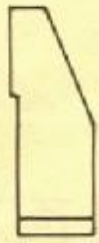
| |
|-----|
| 40 |
| 88 |
| 108 |
| H |
| L |
| 140 |
| 3 |
| 3 |
| 98 |
| 7 |
| 7 |
| 118 |
| 64 |
| 7 |
| 73 |
| 32 |
| 7 |
| 51 |
| 0 |

| |
|-----|
| 40 |
| 67 |
| 134 |
| H |
| L |
| 150 |
| 3 |
| 3 |
| 100 |
| 7 |
| 8 |
| 69 |
| 2 |
| 0 |

| |
|-----|
| 40 |
| 67 |
| 134 |
| H |
| L |
| 130 |
| 3 |
| 3 |
| 100 |
| 7 |
| 8 |
| 69 |
| 2 |
| 0 |

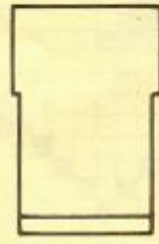
Armhole band
Front edge band

Neckband



1/2 Front

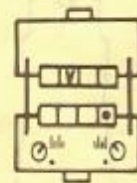
Reverse shaping to knit the second front part.



Back

FANCY PATTERN STITCH

Fancy close rib :



Back - Front :

H = Length in mm of 40 rows in fancy close rib
L = Width in mm of 40 stitches in fancy close rib

Armhole bands and neckband - Front edge band :

H = Length in mm of 40 rows in circular
L = Width in mm of 40 stitches in circular

Back - Front :

1 = Casting-on in circular
5 = End of knitting
7 = Transfer from hem into fancy close rib

Neckband - Armhole bands and edge bands in rib :

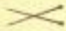
1 = Casting-on in circular
5 = End of knitting
8 = Knit with an auxiliary yarn

Important : The number of needles on the front needle bed must be even.

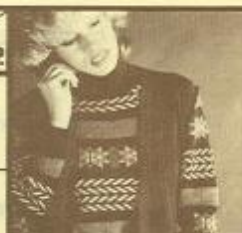
Armhole bands : to be knitted twice
Front edge bands : to be knitted twice
Neckband : to be knitted once

DRESS Size : 40

9
132

Material : 900 grs yarn —  US 1.3
UK 13.11

Pattern stitches : 1/1 rib - Circular - Circular hem - Jacquard



| 40 | |
|----|-----|
| H | 110 |
| L | 135 |
| | 180 |
| | 3 |
| | 3 |
| | 97 |
| | 6 |
| | 55 |
| | 64 |
| | 120 |
| | 2 |
| | 2 |
| | 62 |
| | 104 |
| E | |
| | 235 |
| | 63 |
| | 128 |
| | 43 |
| | 177 |
| | 153 |
| | 162 |
| | 137 |
| | 7 |
| | 24 |
| | 188 |
| | 153 |
| | 72 |
| | 185 |
| | 131 |
| | 161 |
| | 153 |
| | 162 |
| | 146 |
| | 7 |
| | 1 |
| | 0 |

| 40 | |
|----|-----|
| H | 110 |
| L | 135 |
| | 180 |
| | 3 |
| | 3 |
| | 97 |
| | 6 |
| | 55 |
| | 64 |
| | 120 |
| | 2 |
| | 2 |
| | 62 |
| | 104 |
| E | |
| | 106 |
| | 63 |
| | 128 |
| | 43 |
| | 177 |
| | 153 |
| | 146 |
| | 7 |
| | 25 |
| | 188 |
| | 151 |
| | 0 |

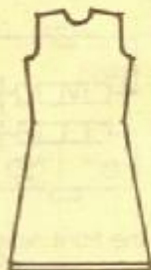
| 40 | |
|----|-----|
| H | 110 |
| L | 135 |
| | 70 |
| | 3 |
| | 3 |
| | 97 |
| C | |
| | 7 |
| | 18 |
| | 38 |
| | 104 |
| | 2 |
| | 2 |
| | 2 |
| | 37 |
| | 54 |
| E | |
| | 105 |
| | 169 |
| | 161 |
| | 153 |
| | 191 |
| | 141 |
| | 13 |
| | 145 |
| | 153 |
| | 181 |
| | 0 |

| 40 | |
|----|-----|
| H | 76 |
| L | 72 |
| H | |
| | 150 |
| | 3 |
| | 3 |
| | 100 |
| | 7 |
| | 38 |
| | 69 |
| | 2 |
| | 0 |

Collar

| 40 | |
|----|-----|
| H | 50 |
| L | 3 |
| | 3 |
| | 4 |
| | 3 |
| | 3 |
| | 99 |
| | 7 |
| | 127 |
| | 234 |
| | 38 |
| | 4 |
| | 3 |
| | 3 |
| | 60 |
| | 120 |
| E | |
| | 0 |

Belt



Front



Back



Sleeves

Important :
The sample in Jacquard must not measure less than 135 mm for 40 stitches.

Back - Front - Sleeves :

- H = Length in mm of 40 rows in jacquard
- L = Width in mm of 40 stitches in jacquard
- E = Total length in cm
- C = Length in mm of 40 rows in 1/1 rib

Collar :

- H = Length in mm of 40 rows in 1/1 rib
- L = Width in mm of 40 stitches in 1/1 rib

Belt :

- H = Length in mm of 40 rows in circular
- E = Total length in cm

Back - Front :

- 1 = Casting-on for hem in circular
- 3 = Divide the knitting for neckline
- 4 = End of the neckline first side
- 5 = End of knitting
- 7 = Transfer into jacquard

Sleeves :

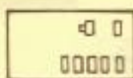
- 1 = Casting-on in 1/1 rib
- 5 = End of knitting
- 7 = Transfer into jacquard. Fill the empty needles with the hill of the next stitch after the section in 1/1 rib

Collar :

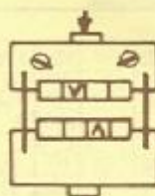
- 1 = Casting-on in 1/1 rib
- 5 = End of knitting, knit a few rows with an auxiliary yarn
- 8 = Knit in circular

Belt :

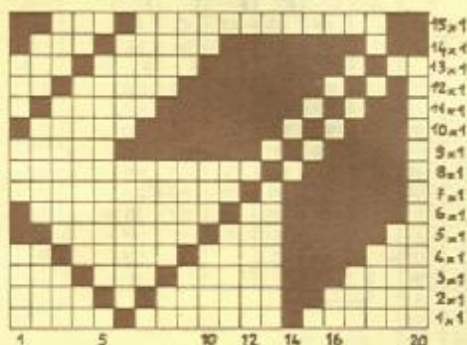
- 1 = Casting-on in close rib, then knit in circular
- 5 = End of knitting



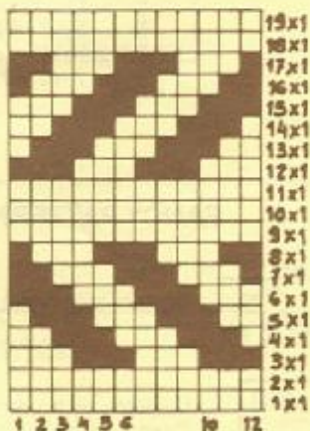
Card 5 - Design 1
+ Card 5 - Design 2
+ Design without card
A 15 in Jacquard VI



Knit some rows in Jacquard without selection between each design



1



2



3

Without selection box :

- Design 1 : selection according to the scheme. Proceed from the right-hand side to the left-hand side and then from the left-hand side to the right-hand side, from the bottom line to the top line and from the top line to the bottom line. On the back needle bed, move the needles corresponding to the black squares into position 2.
- Design 2 : On the back needle bed, move the needles corresponding to the black squares into position 2.
- Design 3 : Always repeat the two lines of the scheme.

MEN'S SWEATER Sizes : 15, 17 years - 44 - 48 - 52

9
133



Material : 400 - 500 grs yarn —  US 0.1
UK 14.13

Pattern stitches : 1/1 rib - Pattern with needles in holding position

| 15a | 17a | 44 | 48 | 52 |
|-----|-----|-----|-----|-----|
| 91 | 91 | 91 | 91 | 91 |
| 154 | 154 | 154 | 154 | 154 |
| H | H | H | H | H |
| L | L | L | L | L |
| 126 | 130 | 136 | 145 | 156 |
| 86 | 90 | 96 | 104 | 112 |
| 86 | 90 | 96 | 104 | 112 |
| 195 | 195 | 195 | 195 | 195 |
| C | C | C | C | C |
| 7 | 7 | 7 | 7 | 7 |
| 8 | 8 | 8 | 8 | 8 |
| 38 | 38 | 38 | 38 | 38 |
| 120 | 130 | 136 | 146 | 156 |
| 86 | 90 | 96 | 104 | 112 |
| D | D | D | D | D |
| 37 | 37 | 37 | 37 | 37 |
| 63 | 64 | 66 | 67 | 68 |
| E | E | E | E | E |
| 233 | 233 | 233 | 233 | 233 |
| 169 | 169 | 169 | 169 | 169 |
| 161 | 153 | 153 | 153 | 178 |
| 145 | 145 | 145 | 179 | 179 |
| 146 | 146 | 155 | 146 | 137 |
| 7 | 7 | 7 | 7 | 7 |
| 25 | 28 | 31 | 33 | 36 |
| 191 | 191 | 191 | 191 | 191 |
| 150 | 153 | 155 | 157 | 160 |
| 128 | 128 | 128 | 128 | 128 |
| 71 | 71 | 71 | 71 | 71 |
| 177 | 177 | 177 | 177 | 177 |
| 161 | 161 | 161 | 161 | 161 |
| 178 | 178 | 178 | 178 | 178 |
| 162 | 162 | 162 | 162 | 162 |
| 137 | 137 | 137 | 137 | 137 |
| 7 | 7 | 7 | 7 | 7 |
| 8 | 8 | 8 | 8 | 8 |
| 0 | 0 | 0 | 0 | 0 |

| 15a | 17a | 44 | 48 | 52 |
|-----|-----|-----|-----|-----|
| 91 | 91 | 91 | 91 | 91 |
| 154 | 154 | 154 | 154 | 154 |
| H | H | H | H | H |
| L | L | L | L | L |
| 116 | 120 | 124 | 136 | 146 |
| 86 | 90 | 96 | 104 | 112 |
| 86 | 90 | 96 | 104 | 112 |
| 195 | 195 | 195 | 195 | 195 |
| C | C | C | C | C |
| 7 | 7 | 7 | 7 | 7 |
| 8 | 8 | 8 | 8 | 8 |
| 38 | 38 | 38 | 38 | 38 |
| 116 | 120 | 124 | 136 | 146 |
| 86 | 90 | 96 | 104 | 112 |
| D | D | D | D | D |
| 37 | 37 | 37 | 37 | 37 |
| 62 | 63 | 65 | 66 | 67 |
| E | E | E | E | E |
| 235 | 235 | 235 | 236 | 237 |
| 169 | 169 | 169 | 177 | 177 |
| 153 | 153 | 153 | 161 | 161 |
| 155 | 146 | 146 | 145 | 153 |
| 7 | 7 | 7 | 155 | 145 |
| 3 | 6 | 10 | 7 | 150 |
| 31 | 31 | 31 | 5 | 7 |
| 8 | 8 | 8 | 39 | 4 |
| 5 | 5 | 5 | 13 | 47 |
| 191 | 191 | 191 | 5 | 18 |
| 150 | 153 | 155 | 191 | 5 |
| 128 | 128 | 128 | 157 | 191 |
| 71 | 71 | 71 | 128 | 160 |
| 185 | 185 | 185 | 71 | 128 |
| 131 | 131 | 131 | 185 | 71 |
| 169 | 169 | 169 | 131 | 185 |
| 153 | 153 | 153 | 169 | 131 |
| 145 | 145 | 145 | 153 | 169 |
| 137 | 137 | 137 | 145 | 153 |
| 1 | 1 | 1 | 137 | 145 |
| 0 | 0 | 0 | 1 | 137 |
| | | | 0 | 1 |
| | | | | 0 |

| 15a | 17a | 44 | 48 | 52 |
|-----|-----|-----|-----|-----|
| 91 | 91 | 91 | 91 | 91 |
| 154 | 154 | 154 | 154 | 154 |
| H | H | H | H | H |
| L | L | L | L | L |
| 62 | 68 | 72 | 78 | 84 |
| 24 | 26 | 28 | 30 | 32 |
| 24 | 26 | 28 | 30 | 32 |
| 195 | 195 | 195 | 195 | 195 |
| C | C | C | C | C |
| 7 | 7 | 7 | 7 | 7 |
| 8 | 8 | 8 | 8 | 8 |
| 38 | 38 | 38 | 38 | 38 |
| 88 | 94 | 98 | 104 | 110 |
| 34 | 36 | 38 | 40 | 42 |
| F | F | F | F | F |
| 43 | 43 | 43 | 43 | 43 |
| 63 | 63 | 64 | 64 | 64 |
| E | E | E | E | E |
| 101 | 103 | 102 | 102 | 104 |
| 153 | 153 | 153 | 153 | 161 |
| 191 | 145 | 145 | 145 | 153 |
| 149 | 191 | 191 | 191 | 145 |
| 21 | 147 | 150 | 153 | 191 |
| 153 | 19 | 22 | 25 | 148 |
| 0 | 145 | 162 | 161 | 20 |
| | 153 | 0 | 0 | 145 |
| | 0 | | | 178 |
| | | | | 0 |

| 15a | 17a | 44 | 48 | 52 |
|-----|-----|----|----|----|
| 80 | 80 | | | |
| 67 | 67 | | | |
| H | H | | | |
| L | L | | | |
| 80 | 90 | | | |
| 3 | 3 | | | |
| 3 | 3 | | | |
| 103 | 103 | | | |
| 7 | 7 | | | |
| 2 | 2 | | | |
| 68 | 68 | | | |
| 1 | 1 | | | |
| 71 | 71 | | | |
| 2 | 2 | | | |
| 2 | 2 | | | |
| 0 | 0 | | | |

| 80 |
|-----|
| 67 |
| H |
| L |
| 56 |
| 3 |
| 3 |
| 103 |
| 7 |
| 2 |
| 68 |
| 1 |
| 71 |
| 2 |
| 2 |
| 0 |

Neckband
Front

Neckband
Back

Back - Front - Sleeves :

- 1 = Casting-on in 1/1 rib
- 2 = Transfer into fancy pattern
- 3 = Divide the knitting for neckline
- 4 = End of the neckline first side
- 5 = End of knitting

Neckbands back, front :

- 1 = Casting-on in 1/1 rib
- 5 = End of knitting
- 7 = Knit in circular
- 8 = Knit with an auxiliary yarn



Sleeve

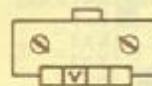


Front

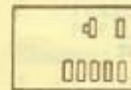


Back

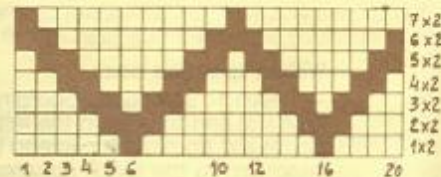
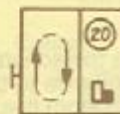
FANCY PATTERN STITCH



Pattern with needles in holding position



Needles in holding position IX
Card 3 - Design 1



Without selection box : Move the needles corresponding to the black squares of the scheme into position 3. Knit one row. Move these needles into position 2 and move the needles corresponding to the black squares of the next row into position 3. Knit one row. Go on this way and always repeat the design from the bottom line to the top line and from the top line to the bottom line.

Back - Front - Sleeves :

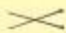
- H = Length in mm of 40 rows in pattern with needles in holding position
- L = Width in mm of 40 stitches in pattern with needles in holding position
- C = Length in mm of 40 rows in 1/1 rib
- D = Chest measurement in cm
- E = Total length in cm
- F = Repeat the number just above unless D is increased

Neckbands back, front :

- H = Length in mm of 40 rows in 1/1 rib
- L = Width in mm of 40 stitches in 1/1 rib

MEN'S POLO SWEATER Sizes : 44 - 48 - 52

10
134

Material : 450 - 500 grs yarn —  US 0 - 1
4 buttons UK 14 - 13

Pattern stitches : 1/1 rib - Close rib - Slip stitch or tuck stitch



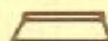
| 44 | 48 | 52 |
|-----|-----|-----|
| 87 | 87 | 87 |
| 166 | 166 | 166 |
| H | H | H |
| L | L | L |
| 126 | 138 | 144 |
| 96 | 104 | 112 |
| 96 | 104 | 112 |
| 195 | 195 | 195 |
| C | C | C |
| 7 | 7 | 7 |
| 6 | 6 | 6 |
| 38 | 38 | 38 |
| 126 | 136 | 144 |
| 96 | 104 | 112 |
| D | D | D |
| 35 | 35 | 35 |
| 61 | 62 | 63 |
| E | E | E |
| 230 | 230 | 231 |
| 161 | 161 | 161 |
| 153 | 178 | 187 |
| 179 | 162 | 130 |
| 146 | 164 | 162 |
| 7 | 7 | 164 |
| 34 | 35 | 7 |
| 72 | 72 | 36 |
| 161 | 161 | 73 |
| 7 | 7 | 161 |
| 27 | 30 | 7 |
| 161 | 161 | 31 |
| 178 | 178 | 160 |
| 145 | 145 | 161 |
| 146 | 146 | 178 |
| 5 | 5 | 145 |
| 0 | 0 | 146 |
| | | 5 |
| | | 0 |

| 44 | 48 | 52 |
|-----|-----|-----|
| 87 | 87 | 87 |
| 166 | 166 | 166 |
| H | H | H |
| L | L | L |
| 116 | 126 | 134 |
| 96 | 104 | 112 |
| 96 | 104 | 112 |
| 195 | 195 | 195 |
| C | C | C |
| 7 | 7 | 7 |
| 6 | 6 | 6 |
| 38 | 38 | 38 |
| 116 | 126 | 134 |
| 96 | 104 | 112 |
| D | D | D |
| 35 | 35 | 35 |
| 61 | 62 | 63 |
| E | E | E |
| 104 | 105 | 105 |
| 161 | 161 | 161 |
| 162 | 153 | 178 |
| 146 | 162 | 162 |
| 7 | 146 | 146 |
| 16 | 7 | 7 |
| 191 | 15 | 16 |
| 151 | 191 | 191 |
| 13 | 153 | 153 |
| 0 | 13 | 13 |
| | 0 | 0 |

| 44 | 48 | 52 |
|-----|-----|-----|
| 87 | 87 | 87 |
| 166 | 166 | 166 |
| H | H | H |
| L | L | L |
| 82 | 82 | 92 |
| 34 | 36 | 38 |
| 34 | 36 | 38 |
| 195 | 195 | 195 |
| C | C | C |
| 7 | 7 | 7 |
| 2 | 2 | 2 |
| 55 | 55 | 55 |
| 32 | 32 | 32 |
| 90 | 92 | 102 |
| 38 | 40 | 42 |
| F | F | F |
| 15 | 15 | 15 |
| 29 | 30 | 31 |
| E | E | E |
| 99 | 99 | 99 |
| 191 | 191 | 191 |
| 154 | 156 | 160 |
| 18 | 21 | 23 |
| 0 | 0 | 0 |

| 44 | 48 | 52 |
|-----|-----|----|
| 72 | 72 | |
| 172 | 172 | |
| H | H | |
| L | L | |
| 100 | 108 | |
| 3 | 3 | |
| 3 | 3 | |
| 103 | 103 | |
| 191 | 191 | |
| 130 | 130 | |
| 18 | 18 | |
| 68 | 68 | |
| 1 | 1 | |
| 69 | 69 | |
| 2 | 2 | |
| 0 | 0 | |

| |
|-----|
| 80 |
| 259 |
| H |
| 3 |
| 10 |
| 3 |
| 3 |
| 98 |
| 6 |
| 9 |
| 38 |
| 18 |
| 3 |
| 3 |
| 16 |
| 20 |
| E |
| 97 |
| 4 |
| 0 |



Collar



Button bands



Sleeves

Caution : The test sample should not measure less than 135 mm for 40 stitches.



Back



Front

Back - Front - Sleeves :

- H = Length in mm of 40 rows in fancy pattern stitch
- L = Width in mm of 40 stitches in fancy pattern stitch
- C = Length in mm of 40 rows in 1/1 rib
- D = Bust measurement in cm
- E = Total length in cm
- F = Repeat the number just above unless D is increased

Collar :

- H = Length in mm of 40 rows in close rib
- L = Width in mm of 40 stitches in close rib

Button bands :

- H = Length in mm of 40 rows in close rib
- E = Total length in cm of the band

Front - Back - Sleeves :

- 1 = Casting-on in 1/1 rib
- 2 = Transfer into fancy pattern stitch
- 3 = Divide the knitting for neckline
- 4 = End of the neckline first side
- 5 = End of knitting
- 6 = Mark for armhole. Attach an auxiliary yarn to each edge stitch

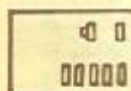
Collar :

- 1 = Casting-on in close rib
- 5 = End of knitting
- 7 = Transfer from stocking stitch into circular
- 8 = Knit with an auxiliary yarn

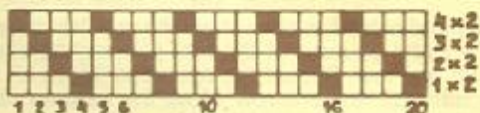
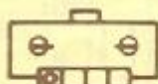
Button bands :

- 1 = Casting-on in close rib
- 5 = End of knitting
- +1 = Location of a buttonhole

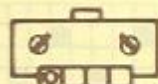
FANCY PATTERN STITCH



Slip stitch II
Card 2 - Design 4



Without selection box : Move the needles corresponding to the white squares into position 3. Take care to repeat twice each pattern line and always proceed from the bottom line to the top line. Needle return buttons in lower position.

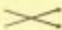


LADIES' DRESS

Sizes : 36/38 - 42/44

10
135



Material : 550 - 600 grs yarn —  US 0 - 1

UK 14 - 13

Pattern stitches : Tuck stitch - Close rib - 1/1 rib

| 36 | 38 | 42 | 44 |
|-----|-----|----|----|
| 78 | 78 | | |
| 146 | 146 | | |
| H | H | | |
| L | L | | |
| 178 | 178 | | |
| 3 | 3 | | |
| 3 | 3 | | |
| 98 | 98 | | |
| 7 | 7 | | |
| 3 | 3 | | |
| 55 | 55 | | |
| 64 | 64 | | |
| 136 | 146 | | |
| 3 | 3 | | |
| 3 | 3 | | |
| 54 | 60 | | |
| 110 | 115 | | |
| E | E | | |
| 239 | 239 | | |
| 191 | 191 | | |
| 137 | 137 | | |
| 38 | 33 | | |
| 63 | 63 | | |
| 129 | 130 | | |
| 47 | 47 | | |
| 161 | 161 | | |
| 153 | 178 | | |
| 162 | 162 | | |
| 137 | 146 | | |
| 7 | 7 | | |
| 32 | 30 | | |
| 191 | 191 | | |
| 142 | 142 | | |
| 45 | 45 | | |
| 7 | 7 | | |
| 8 | 8 | | |
| 0 | 0 | | |

| 36 | 38 | 42 | 44 |
|-----|-----|----|----|
| 78 | 78 | | |
| 146 | 146 | | |
| H | H | | |
| L | L | | |
| 178 | 178 | | |
| 3 | 3 | | |
| 3 | 3 | | |
| 98 | 98 | | |
| 7 | 7 | | |
| 3 | 3 | | |
| 55 | 55 | | |
| 64 | 64 | | |
| 136 | 146 | | |
| 3 | 3 | | |
| 3 | 3 | | |
| 54 | 60 | | |
| 110 | 115 | | |
| E | E | | |
| 110 | 110 | | |
| 191 | 191 | | |
| 137 | 137 | | |
| 38 | 33 | | |
| 63 | 63 | | |
| 129 | 130 | | |
| 47 | 47 | | |
| 161 | 161 | | |
| 153 | 178 | | |
| 162 | 179 | | |
| 7 | 7 | | |
| 33 | 31 | | |
| 191 | 191 | | |
| 153 | 153 | | |
| 1 | 1 | | |
| 0 | 0 | | |

| 36 | 38 | 42 | 44 |
|-----|-----|----|----|
| 78 | 78 | | |
| 146 | 146 | | |
| H | H | | |
| L | L | | |
| 60 | 60 | | |
| 3 | 3 | | |
| 3 | 3 | | |
| 98 | 98 | | |
| 7 | 7 | | |
| 3 | 3 | | |
| 55 | 55 | | |
| 64 | 64 | | |
| 94 | 102 | | |
| 3 | 3 | | |
| 3 | 3 | | |
| 47 | 47 | | |
| 62 | 62 | | |
| E | E | | |
| 104 | 104 | | |
| 161 | 161 | | |
| 153 | 153 | | |
| 145 | 145 | | |
| 191 | 191 | | |
| 149 | 152 | | |
| 149 | 152 | | |
| 145 | 145 | | |
| 153 | 153 | | |
| 0 | 0 | | |

| 36 | 38 | 42 | 44 |
|-----|----|----|----|
| 80 | | | |
| 170 | | | |
| H | | | |
| L | | | |
| 160 | | | |
| 3 | | | |
| 3 | | | |
| 102 | | | |
| 7 | | | |
| 3 | | | |
| 67 | | | |
| 2 | | | |
| 67 | | | |
| 3 | | | |
| 0 | | | |

| 36 | 38 | 42 | 44 |
|-----|----|----|----|
| 100 | | | |
| 3 | | | |
| 3 | | | |
| 12 | | | |
| 3 | | | |
| 99 | | | |
| 7 | | | |
| 127 | | | |
| 199 | | | |
| 0 | | | |

Belt

Neckband

Back - Front - Sleeves :

- 1 = Open casting-on
- 3 = Divide the knitting for neckline
- 4 = End of the neckline first side
- 5 = End of knitting
- 7 = Fold the knitting and rehang the stitches to make a hem

Neckband :

- 1 = Casting-on in 1/1 rib
- 5 = End of knitting
- 8 = Transfer from rib into stocking stitch
- 9 = Knit with an auxiliary yarn

Belt :

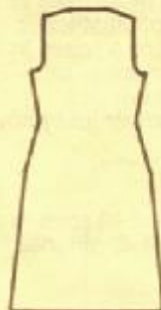
- 1 = Casting-on in close rib
- 5 = End of knitting



Sleeve

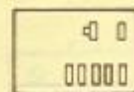


Front

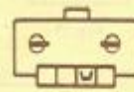


Back

FANCY PATTERN STITCH



Tuck stitch pattern I
Card 1 - Design 7



Card 16

Back - Front - Sleeves :

- H = Length in mm of 40 rows in tuck stitch
- L = Width in mm of 40 stitches in tuck stitch
- E = Total length in cm

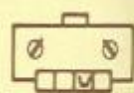
Neckband :

- H = Length in mm of 40 rows in 1/1 rib
- L = Width in mm of 40 stitches in 1/1 rib

Belt :

- H = Length in mm of 40 rows in close rib

Without selection box : Move the needles corresponding to the white squares of the first pattern line into position 3. Knit one row. Repeat the operation. Move all needles into position 3. Knit one row. Move the needles corresponding to the white squares of the third pattern line into position 3. Knit one row. Repeat the operation. Move all needles into position 3. Knit one row. Always repeat these 6 rows. Needle return buttons in lower position.

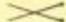


GIRLS' DRESS

Sizes : 4 years - 6 years

11
136

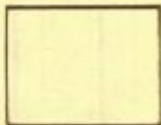


Material : 300 - 350 grs yarn —  US 0 - 1
6 buttons

US 0 - 1
UK 14 - 13

Pattern stitches : 4/3 rib - Lace pattern

| 4a | 6a |
|-----|-----|
| 92 | 92 |
| 151 | 151 |
| H | H |
| L | L |
| 174 | 174 |
| 3 | 3 |
| 3 | 3 |
| 38 | 38 |
| 174 | 174 |
| 3 | 3 |
| 3 | 3 |
| 50 | 55 |
| 66 | 71 |
| E | E |
| 0 | 0 |



Skirt

| 4a | 6a |
|-----|-----|
| 96 | 96 |
| 118 | 118 |
| H | H |
| L | L |
| 84 | 90 |
| 3 | 3 |
| 3 | 3 |
| 228 | 229 |
| 7 | 7 |
| 20 | 20 |
| 189 | 191 |
| 146 | 149 |
| 89 | 128 |
| 161 | 70 |
| 178 | 169 |
| 145 | 153 |
| 173 | 188 |
| 5 | 129 |
| 0 | 137 |
| 6 | |
| 0 | |



Front

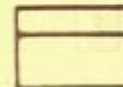
| 4a | 6a |
|-----|-----|
| 99 | 99 |
| 374 | 374 |
| H | H |
| L | L |
| 52 | 56 |
| 3 | 3 |
| 3 | 3 |
| 100 | 101 |
| 7 | 7 |
| 20 | 20 |
| 189 | 191 |
| 146 | 149 |
| 0 | 128 |
| 0 | |



Half Back

Reverse shaping to knit the second half back

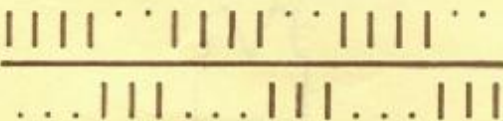
| 4a | 6a |
|-----|-----|
| 96 | 96 |
| 118 | 118 |
| H | H |
| L | L |
| 100 | 100 |
| 3 | 3 |
| 3 | 3 |
| 100 | 100 |
| 7 | 7 |
| 26 | 26 |
| 65 | 65 |
| 1 | 1 |
| 131 | 131 |
| C | C |
| 7 | 7 |
| 7 | 7 |
| 0 | 0 |



Sleeve

4/3 rib

Flow combs alternate



Skirt :

H = Length in mm of 40 rows in 4/3 rib
L = Width in mm of 40 stitches in 4/3 rib
E = Total length in cm of the dress

Bodice back - Front :

H = Length in mm of 40 rows in lace pattern
L = Width in mm of 40 stitches in lace pattern

Sleeves :

H = Length in mm of 40 rows in lace pattern
L = Width in mm of 40 stitches in lace pattern
C = Length in mm of 40 rows in 4/3 rib

Skirt :

1 = Chain cast-on, then set the needles to knit in 4/3 rib
5 = End of knitting

Bodice back - Front :

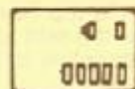
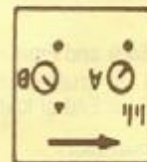
1 = Chain casting-on
3 = Divide the knitting for neckline
4 = End of the neckline first side
5 = End of knitting

Sleeves :

1 = Chain casting-on
5 = End of knitting
7 = Transfer into 4/3 rib

Finishing : Make a hem of 2,5 cm at each side of the middle of the back. Crochet along neckline and straight opening at the back and make 6 bars for the buttonholes. Gather the 2 panels of the skirt leaving 3 cms at each side to sew the top of the sleeve in order to obtain the same width as the bodice to allow the assembling. Sew the sleeves leaving 3 cms open which correspond to the 3 cms left at each side of the gathered waist of the skirt.

FANCY PATTERN STITCH



Lace pattern XI
Card 9 - Design 4

For any type of selection, refer to the booklet for the double garter knit and lace carriage, pattern N° 7.

LADIES' DRESS

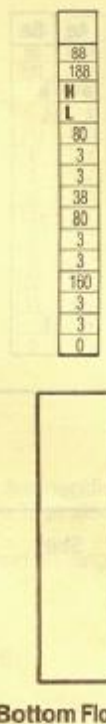
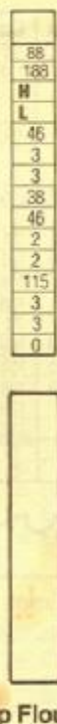
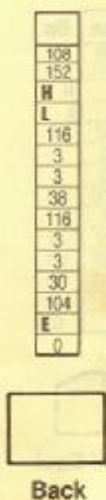
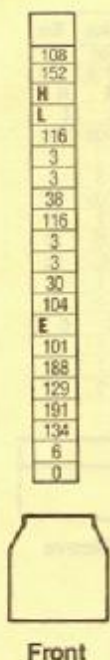
Single size : to fit bust measurement of 85 to 90 cm

11 / 137



Material : 450 grs yarn — US 1 - 3 UK 13 - 11

Pattern stitches : Lace pattern - Close rib



FANCY PATTERN STITCH

Back and Front - Top and Bottom Founces :

H = Length in mm of 40 rows in lace pattern
L = Width in mm of 40 stitches in lace pattern

Back - Front :

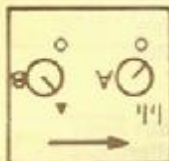
E = Total length in cm of the dress without the straps.
Measure on the front. Any length alteration of the dress will only change the length of the back and the front.

Back and Front - Top and Bottom Founces :

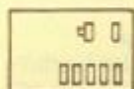
1 = Chain casting-on
5 = End of knitting

Finishing :

Gather the bottom founce and sew it at the top founce. Assemble the two parts of the bodice. Sew the skirt at the bodice. Make the straps and sew them according to your choice.



Lace pattern




Lace pattern XI
Card 9 - Design 4

For any type of selection, refer to the booklet for the double garter knit and lace carriage, pattern N° 7.

LADIES' SLEEVELESS SWEATER

Sizes : 38 - 40 - 42

11
137

Material : 250 - 350 grs yarn —  US 0 - 3
UK 14 - 11

Pattern stitches : 1/1 rib - Lace pattern



| 38 | 40 | 42 |
|-----|-----|-----|
| 88 | 88 | 88 |
| 132 | 132 | 132 |
| H | H | H |
| L | L | L |
| 138 | 144 | 150 |
| 3 | 3 | 3 |
| 3 | 3 | 3 |
| 195 | 195 | 195 |
| C | C | C |
| 7 | 7 | 7 |
| 24 | 24 | 24 |
| 166 | 166 | 166 |
| 138 | 144 | 150 |
| 87 | 90 | 93 |
| D | D | D |
| 25 | 25 | 25 |
| 60 | 61 | 62 |
| E | E | E |
| 67 | 67 | 67 |
| 191 | 191 | 191 |
| 151 | 151 | 151 |
| 52 | 55 | 57 |
| 105 | 105 | 105 |
| 169 | 169 | 169 |
| 153 | 153 | 153 |
| 179 | 179 | 179 |
| 164 | 164 | 164 |
| 7 | 7 | 7 |
| 28 | 31 | 33 |
| 191 | 191 | 191 |
| 142 | 145 | 148 |
| 128 | 128 | 128 |
| 0 | 0 | 0 |

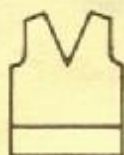
| 38 | 40 | 42 |
|-----|-----|-----|
| 88 | 88 | 88 |
| 132 | 132 | 132 |
| H | H | H |
| L | L | L |
| 138 | 144 | 150 |
| 3 | 3 | 3 |
| 3 | 3 | 3 |
| 195 | 195 | 195 |
| C | C | C |
| 7 | 7 | 7 |
| 24 | 24 | 24 |
| 38 | 38 | 38 |
| 138 | 144 | 150 |
| 87 | 90 | 93 |
| D | D | D |
| 25 | 25 | 25 |
| 60 | 61 | 62 |
| E | E | E |
| 105 | 105 | 105 |
| 169 | 169 | 169 |
| 153 | 153 | 153 |
| 179 | 179 | 179 |
| 164 | 164 | 164 |
| 7 | 7 | 7 |
| 28 | 31 | 33 |
| 191 | 191 | 191 |
| 142 | 145 | 148 |
| 128 | 128 | 128 |
| 0 | 0 | 0 |

| |
|-----|
| 83 |
| 76 |
| H |
| L |
| 100 |
| 3 |
| 3 |
| 102 |
| 7 |
| 128 |
| 65 |
| 1 |
| 69 |
| 2 |
| 0 |

| |
|-----|
| 83 |
| 76 |
| H |
| L |
| 132 |
| 3 |
| 3 |
| 102 |
| 7 |
| 128 |
| 65 |
| 1 |
| 69 |
| 2 |
| 0 |

Neckband

Armhole bands



Front



Back

FANCY PATTERN STITCH

Back - Front :

- H = Length in mm of 40 rows in lace pattern
- L = Width in mm of 40 stitches in lace pattern
- C = Length in mm of 40 rows in 1/1 rib
- D = Bust measurement in cm
- E = Total length in cm

Neckband and Armhole bands :

- H = Length in mm of 40 rows in 1/1 rib
- L = Width in mm of 40 stitches in 1/1 rib

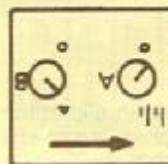
Back - Front :

- 1 = Casting-on in 1/1 rib
- 2 = Transfer into fancy pattern stitch
- 3 = Divide the knitting for neckline
- 4 = End of the neckline first side
- 5 = End of knitting

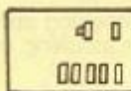
Neckband and Armhole bands :

- 1 = Casting-on in 1/1 rib
- 5 = End of knitting
- 7 = Knit in circular
- 8 = Knit with an auxiliary yarn

Lace pattern



Double garter stitch and lace carriage




Lace pattern XI
Card 9 - Design 1

For any type of selection, refer to the booklet for the double garter knit and lace carriage, pattern N° 11.

LADIES' SKIRT

Sizes : 36 - 38 - 42 - 46 - 48 - 50

11
137

Material : 400 - 500 grs yarn —  US 0 - 3
Elastic US 0 - 3
UK 14 - 11

Pattern stitches : Stocking stitch - Slip stitch pattern



| 36 | 38 | 42 | 46 | 48 | 50 |
|-----|-----|-----|-----|-----|-----|
| 108 | 108 | 108 | 108 | 108 | 108 |
| 160 | 160 | 160 | 160 | 160 | 160 |
| H | H | H | H | H | H |
| L | L | L | L | L | L |
| 46 | 48 | 52 | 58 | 60 | 66 |
| 64 | 68 | 72 | 80 | 84 | 88 |
| A | A | A | A | A | A |
| 38 | 38 | 38 | 38 | 38 | 38 |
| 64 | 66 | 70 | 75 | 78 | 84 |
| 89 | 92 | 96 | 104 | 107 | 113 |
| B | B | B | B | B | B |
| 20 | 20 | 20 | 20 | 20 | 20 |
| 3 | 3 | 3 | 3 | 3 | 3 |
| 3 | 3 | 3 | 3 | 3 | 3 |
| 38 | 38 | 38 | 38 | 38 | 38 |
| 94 | 96 | 100 | 106 | 108 | 114 |
| 3 | 3 | 3 | 3 | 3 | 3 |
| 3 | 3 | 3 | 3 | 3 | 3 |
| 45 | 45 | 45 | 45 | 45 | 45 |
| 65 | 65 | 65 | 65 | 65 | 65 |
| E | E | E | E | E | E |
| 0 | 0 | 0 | 0 | 0 | 0 |

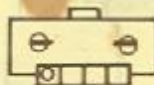


Skirt
4 panels

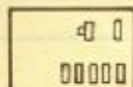
| 36 | 38 | 42 | 46 | 48 | 50 |
|-----|-----|-----|-----|-----|-----|
| 108 | 108 | 108 | 108 | 108 | 108 |
| 160 | 160 | 160 | 160 | 160 | 160 |
| H | H | H | H | H | H |
| L | L | L | L | L | L |
| 18 | 18 | 18 | 18 | 18 | 18 |
| 3 | 3 | 3 | 3 | 3 | 3 |
| 3 | 3 | 3 | 3 | 3 | 3 |
| 38 | 38 | 38 | 38 | 38 | 38 |
| 18 | 18 | 18 | 18 | 18 | 18 |
| 3 | 3 | 3 | 3 | 3 | 3 |
| 3 | 3 | 3 | 3 | 3 | 3 |
| 64 | 68 | 72 | 80 | 84 | 88 |
| 64 | 68 | 72 | 80 | 84 | 88 |
| A | A | A | A | A | A |
| 0 | 0 | 0 | 0 | 0 | 0 |

Belt

FANCY PATTERN STITCH



Slip stitch pattern

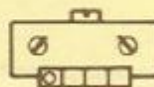


Slip stitch pattern II
Card 2 - Design 4



| | | | | | | | | | |
|-----|---|---|---|---|---|----|----|----|----|
| 1 | 2 | 5 | 4 | 5 | 6 | 10 | 12 | 14 | 20 |
| 4x2 | | | | | | | | | |
| 3x2 | | | | | | | | | |
| 2x2 | | | | | | | | | |
| 1x2 | | | | | | | | | |

Without selection box : Move the needles corresponding to the white squares into position 3. Take care to repeat twice each line of the scheme and always proceed from the bottom line to the top line. Needle return buttons in lower position.



Skirt :

- H = Length in mm of 40 rows in slip stitch pattern
- L = Width in mm of 40 stitches in slip stitch pattern
- A = Waist measurement in cm
- B = Hips measurement in cm
- E = Total length in cm

Belt :

- H = Length in mm of 40 rows in stocking stitch
- L = Width in mm of 40 stitches in stocking stitch
- A = Waist measurement in cm

Skirt - Belt :

- 1 = Chain casting-on
- 5 = End of knitting

LADIES' SKIRT and SWEATER

Sizes : 36 - 38 - 42
- 46 - 48

11
138

Material : 400 + 400 grs yarn —  US 1 - 3
1 zip for the skirt UK 13 - 11

Pattern stitches : 1/1 rib - Purl side of stocking stitch - Part-row knitting for the skirt



| 36 | 38 | 42 | 46 |
|-----|-----|-----|-----|
| 80 | 80 | 80 | 80 |
| 148 | 148 | 148 | 148 |
| H | H | H/2 | H/2 |
| L | L | L/2 | L/2 |
| 120 | 124 | 134 | 142 |
| 3 | 3 | 3 | 3 |
| 3 | 3 | 3 | 3 |
| 195 | 195 | 195 | 195 |
| C | C | C/2 | C/2 |
| 7 | 7 | 7 | 7 |
| 1 | 1 | 1 | 1 |
| 36 | 38 | 38 | 38 |
| 120 | 124 | 134 | 142 |
| 3 | 3 | 3 | 3 |
| 3 | 3 | 3 | 3 |
| 38 | 38 | 38 | 38 |
| 60 | 60 | 61 | 62 |
| E | E | E/2 | E/2 |
| 230 | 230 | 230 | 230 |
| 56 | 56 | 56 | 56 |
| 129 | 129 | 129 | 129 |
| 7 | 7 | 7 | 7 |
| 38 | 41 | 41 | 43 |
| 189 | 189 | 189 | 189 |
| 165 | 167 | 170 | 174 |
| 67 | 67 | 67 | 67 |
| 191 | 191 | 191 | 191 |
| 145 | 145 | 147 | 147 |
| 38 | 41 | 41 | 43 |
| 0 | 0 | 0 | 0 |

| 36 | 38 | 42 | 46 |
|-----|-----|-----|-----|
| 80 | 80 | 80 | 80 |
| 148 | 148 | 148 | 148 |
| H | H | H | H |
| L | L | L | L |
| 120 | 124 | 134 | 142 |
| 3 | 3 | 3 | 3 |
| 3 | 3 | 3 | 3 |
| 195 | 195 | 195 | 195 |
| C | C | C | C |
| 7 | 7 | 7 | 7 |
| 1 | 1 | 1 | 1 |
| 38 | 38 | 38 | 38 |
| 120 | 124 | 134 | 142 |
| 3 | 3 | 3 | 3 |
| 3 | 3 | 3 | 3 |
| 38 | 38 | 38 | 38 |
| 60 | 60 | 61 | 62 |
| E | E | E | E |
| 220 | 230 | 230 | 230 |
| 56 | 56 | 56 | 56 |
| 129 | 129 | 129 | 129 |
| 7 | 7 | 7 | 7 |
| 38 | 38 | 41 | 43 |
| 189 | 189 | 189 | 189 |
| 165 | 167 | 170 | 174 |
| 69 | 69 | 69 | 69 |
| 185 | 185 | 185 | 185 |
| 131 | 131 | 133 | 133 |
| 177 | 177 | 177 | 177 |
| 161 | 161 | 161 | 161 |
| 162 | 162 | 162 | 162 |
| 0 | 0 | 0 | 0 |

| 36 | 42 |
|-----|-----|
| 80 | 80 |
| 148 | 148 |
| H | H |
| L | L |
| 135 | 140 |
| 3 | 3 |
| 3 | 3 |
| 102 | 102 |
| 7 | 7 |
| 128 | 128 |
| 65 | 65 |
| 1 | 1 |
| 68 | 68 |
| 2 | 2 |
| 0 | 0 |

| 38 | 42 | 46 |
|-----|-----|-----|
| 80 | 80 | 80 |
| 148 | 148 | 148 |
| H | H | H |
| L | L | L |
| 90 | 96 | 96 |
| 3 | 3 | 3 |
| 3 | 3 | 3 |
| 102 | 102 | 102 |
| 7 | 7 | 7 |
| 128 | 128 | 128 |
| 65 | 65 | 65 |
| 1 | 1 | 1 |
| 68 | 68 | 68 |
| 2 | 2 | 2 |
| 0 | 0 | 0 |

Neckband

Armhole bands

Front - Back :

- 1 = Casting-on in 1/1 rib
- 2 = Transfer into stocking stitch
- 3 = Divide the knitting for neckline
- 4 = End of the neckline first side

Neckbands - Armhole bands :

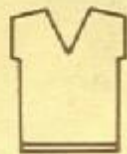
- 1 = Casting-on in 1/1 rib
- 7 = Transfer into stocking stitch
- 5 = End of knitting
- 8 = Knit with an auxiliary yarn

Skirt :

- 1 = Chain casting-on
- 5 = End of knitting. Depress the key GO and go on knitting. The programme has to be knitted 6 times.

Belt :

- 1 = Chain casting-on
- 5 = End of knitting



Front



Back

Front - Back - Neckband - and Armhole bands :

- H = Length in mm of 40 rows in stocking stitch
L = Width in mm of 40 stitches in stocking stitch
C = Length in mm of 40 rows in 1/1 rib
D = Bust measurement in cm
E = Total length in cm

Skirt :

- H = Length in mm of 40 rows in stocking stitch
L = Width in mm of 40 stitches in stocking stitch
Test sample in stocking stitch :
It must not measure less than the sample of the garment i.e. 40 rows = 108 mm
40 stitches = 152 mm
E = Total length in cm
must be between 55 and 68 cm

Belt :

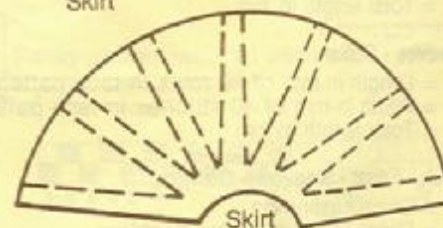
- H = Length in mm of 40 rows in stocking stitch
L = Width in mm of 40 stitches in stocking stitch

| 36 | 38 | 42 | 46 | 48 |
|-----|-----|-----|-----|-----|
| 108 | 108 | 108 | 108 | 108 |
| 408 | 408 | 408 | 408 | 408 |
| H | H | H | H | H |
| L | L | L | L | L |
| 180 | 180 | 180 | 180 | 180 |
| 68 | 68 | 68 | 68 | 68 |
| E | E | E | E | E |
| 108 | 108 | 108 | 109 | 109 |
| 6 | 6 | 6 | 7 | 7 |
| 190 | 190 | 190 | 128 | 128 |
| 211 | 211 | 211 | 190 | 190 |
| 56 | 56 | 56 | 211 | 211 |
| 211 | 211 | 211 | 56 | 56 |
| 7 | 7 | 7 | 211 | 211 |
| 4 | 4 | 8 | 7 | 7 |
| 184 | 184 | 184 | 8 | 10 |
| 211 | 211 | 211 | 184 | 184 |
| 62 | 62 | 62 | 211 | 211 |
| 211 | 211 | 211 | 62 | 62 |
| 5 | 5 | 5 | 211 | 211 |
| 0 | 0 | 0 | 6 | 6 |
| | | | 0 | 0 |

Skirt

| 36 | 38 | 42 | 46 | 48 |
|-----|-----|-----|-----|-----|
| 108 | 108 | 108 | 108 | 108 |
| 148 | 148 | 148 | 148 | 148 |
| H | H | H | H | H |
| L | L | L | L | L |
| 18 | 18 | 18 | 18 | 18 |
| 3 | 3 | 3 | 3 | 3 |
| 3 | 3 | 3 | 3 | 3 |
| 98 | 99 | 99 | 99 | 99 |
| 7 | 7 | 7 | 7 | 7 |
| 126 | 127 | 127 | 127 | 127 |
| 0 | 138 | 144 | 160 | 169 |
| 0 | 0 | 0 | 0 | 0 |

Belt




Skirt

Caution : The symbol — indicates a number X of stitches to be moved into holding position (at the side opposite to the carriage). The symbol + indicates a number X of stitches to be set into working position (at the side of the carriage).

LADIES' DRESS Size : 38/40

12
139



Material : 550 grs yarn —  US 1 - 3
UK 13 - 11

Pattern stitches : Stocking stitch - Lace pattern

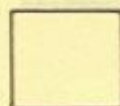
| |
|----------|
| 125 |
| 165 |
| H |
| L |
| 126 |
| 3 |
| 3 |
| 38 |
| 126 |
| 3 |
| 3 |
| 96 |
| 119 |
| E |
| 230 |
| 184 |
| 135 |
| 7 |
| 23 |
| 189 |
| 146 |
| 104 |
| 185 |
| 128 |
| 186 |
| 129 |
| 178 |
| 145 |
| 137 |
| 3 |
| 0 |

| |
|----------|
| 125 |
| 165 |
| H |
| L |
| 126 |
| 3 |
| 3 |
| 38 |
| 126 |
| 3 |
| 3 |
| 96 |
| 119 |
| E |
| 102 |
| 184 |
| 133 |
| 7 |
| 23 |
| 189 |
| 151 |
| 0 |

| |
|----------|
| 98 |
| 135 |
| H |
| L |
| 124 |
| 3 |
| 3 |
| 38 |
| 124 |
| 3 |
| 3 |
| 47 |
| 47 |
| E |
| 0 |

| |
|----------|
| 93 |
| 176 |
| H |
| L |
| 120 |
| 3 |
| 3 |
| 96 |
| 7 |
| 43 |
| 0 |

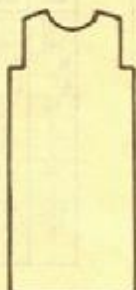
Collar



Sleeve



Back



Front

Back - Front :

- H = Length in mm of 40 rows in stocking stitch
- L = Width in mm of 40 stitches in stocking stitch
- E = Total length in cm

Sleeves - Collar :

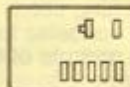
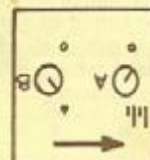
- H = Length in mm of 40 rows in lace pattern
- L = Width in mm of 40 stitches in lace pattern
- E = Total length in cm

Back - Front - Sleeves - Collar :

- 1 = Chain casting-on
- 3 = Divide the knitting for neckline
- 4 = End of the neckline first side
- 5 = End of knitting

FANCY PATTERN STITCH

Lace pattern

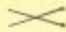


Lace pattern XI
Card 9 - Design 3

For any type of selection, refer to the booklet for the double garter knit and lace carriage, pattern N° 8.

LADIES' COAT Size 38

12
140

Material : 950 grs yarn —  US 0 - 1
UK 14 - 13

Pattern stitches : Close rib - Fancy pattern stitch

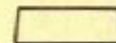


| |
|-----------|
| 38 |
| 80 |
| 364 |
| H |
| L |
| 112 |
| 3 |
| 3 |
| 195 |
| C |
| 7 |
| 2 |
| 38 |
| 82 |
| 3 |
| 3 |
| 89 |
| 117 |
| E |
| 235 |
| 185 |
| 129 |
| 178 |
| 162 |
| 191 |
| 133 |
| 5 |
| 7 |
| 36 |
| 191 |
| 163 |
| 5 |
| 71 |
| 190 |
| 133 |
| 191 |
| 133 |
| 5 |
| 7 |
| 5 |
| 0 |

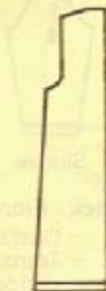
| |
|-----------|
| 38 |
| 80 |
| 364 |
| H |
| L |
| 112 |
| 3 |
| 3 |
| 195 |
| C |
| 7 |
| 2 |
| 38 |
| 84 |
| 3 |
| 3 |
| 89 |
| 117 |
| E |
| 106 |
| 178 |
| 162 |
| 191 |
| 137 |
| 9 |
| 7 |
| 34 |
| 191 |
| 169 |
| 5 |
| 0 |

| |
|-----------|
| 38 |
| 80 |
| 108 |
| H |
| L |
| 140 |
| 3 |
| 3 |
| 195 |
| C |
| 7 |
| 2 |
| 38 |
| 164 |
| 44 |
| 44 |
| 42 |
| 86 |
| E |
| 109 |
| 185 |
| 131 |
| 185 |
| 129 |
| 177 |
| 161 |
| 145 |
| 191 |
| 145 |
| 21 |
| 188 |
| 129 |
| 178 |
| 0 |

| |
|-----------|
| 38 |
| 80 |
| 108 |
| H |
| L |
| 178 |
| 3 |
| 3 |
| 102 |
| 2 |
| 191 |
| 133 |
| 32 |
| 70 |
| 1 |
| 0 |



Collar



Left half back



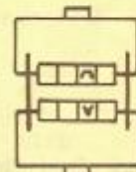
Sleeve



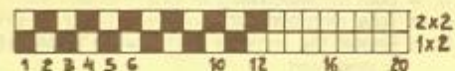
Right half front

Reverse shaping to knit the half front and back pieces.

FANCY PATTERN STITCH



Fancy pattern without card A 12



Back - Front - Sleeves - Collar :

- H = Length in mm of 40 rows in fancy pattern stitch
- L = Width in mm of 40 stitches in fancy pattern stitch
- C = Length in mm of 40 rows in close rib
- E = Total length in cm

Half front - Half back - Sleeves - Collar :

- 1 = Casting-on in close rib
- 2 = Transfer into fancy pattern stitch
- 5 = End of knitting
- 7 = Knit in circular

Without selection box : on the front bed, move the needles corresponding to the black squares of the scheme into holding position 3. Each pattern line has to be selected twice. Set the needle return buttons in lower position.

LADIES' CARDIGAN

Sizes : 36/38 - 42 - 46 - 48 - 50

12
141

Material : 250 - 350 grs yarn —
7 buttons

US 1 - 3
UK 13 - 11

Pattern stitches : 2/2 industrial rib - Close rib - Tuck stitch pattern



| 36 | 38 | 42 | 46 | 48 | 50 |
|-----|-----|-----|-----|-----|-----|
| 100 | 100 | 100 | 100 | 100 | 100 |
| 406 | 406 | 406 | 406 | 406 | 406 |
| H | H | H | H | H | H |
| L | L | L | L | L | L |
| 58 | 58 | 64 | 66 | 68 | 74 |
| 84 | 87 | 93 | 99 | 102 | 108 |
| 84 | 87 | 93 | 99 | 102 | 108 |
| 195 | 195 | 195 | 195 | 195 | 195 |
| C | C | C | C | C | C |
| 7 | 7 | 7 | 7 | 7 | 7 |
| 6 | 6 | 6 | 6 | 6 | 6 |
| 38 | 38 | 38 | 38 | 38 | 38 |
| 58 | 58 | 64 | 66 | 68 | 74 |
| 84 | 87 | 93 | 99 | 102 | 108 |
| D | D | D | D | D | D |
| 36 | 36 | 36 | 36 | 36 | 36 |
| 58 | 58 | 59 | 60 | 61 | 62 |
| E | E | E | E | E | E |
| 233 | 232 | 234 | 234 | 234 | 234 |
| 161 | 153 | 186 | 186 | 186 | 186 |
| 153 | 162 | 129 | 129 | 129 | 129 |
| 162 | 155 | 153 | 153 | 153 | 178 |
| 137 | 7 | 145 | 145 | 137 | 145 |
| 7 | 23 | 155 | 155 | 155 | 146 |
| 24 | 191 | 7 | 7 | 7 | 7 |
| 191 | 145 | 24 | 26 | 30 | 30 |
| 145 | 1 | 191 | 191 | 191 | 191 |
| 1 | 72 | 148 | 150 | 153 | 156 |
| 72 | 186 | 1 | 1 | 1 | 1 |
| 186 | 131 | 72 | 72 | 72 | 72 |
| 131 | 161 | 186 | 186 | 186 | 186 |
| 161 | 153 | 131 | 131 | 131 | 131 |
| 153 | 162 | 161 | 161 | 161 | 161 |
| 162 | 155 | 153 | 153 | 153 | 153 |
| 137 | 7 | 145 | 145 | 145 | 145 |
| 7 | 5 | 155 | 146 | 146 | 146 |
| 5 | 0 | 7 | 7 | 7 | 7 |
| 0 | | 5 | 5 | 5 | 5 |
| | | 0 | 0 | 0 | 0 |

| 36 | 38 | 42 | 46 | 48 | 50 |
|-----|-----|-----|-----|-----|-----|
| 100 | 100 | 100 | 100 | 100 | 100 |
| 150 | 150 | 150 | 150 | 150 | 150 |
| H | H | H | H | H | H |
| L | L | L | L | L | L |
| 118 | 122 | 122 | 136 | 142 | 146 |
| 84 | 87 | 93 | 99 | 102 | 108 |
| 84 | 87 | 93 | 99 | 102 | 108 |
| 195 | 195 | 195 | 195 | 195 | 195 |
| C | C | C | C | C | C |
| 7 | 7 | 7 | 7 | 7 | 7 |
| 6 | 6 | 6 | 6 | 6 | 6 |
| 38 | 38 | 38 | 38 | 38 | 38 |
| 118 | 122 | 122 | 136 | 142 | 146 |
| 84 | 87 | 93 | 99 | 102 | 108 |
| D | D | D | D | D | D |
| 36 | 36 | 36 | 36 | 36 | 36 |
| 57 | 57 | 58 | 59 | 60 | 61 |
| E | E | E | E | E | E |
| 233 | 233 | 233 | 234 | 234 | 234 |
| 161 | 161 | 161 | 186 | 186 | 186 |
| 153 | 153 | 153 | 129 | 129 | 129 |
| 145 | 179 | 179 | 153 | 153 | 153 |
| 146 | 146 | 137 | 145 | 145 | 145 |
| 7 | 7 | 7 | 146 | 146 | 146 |
| 22 | 20 | 25 | 7 | 7 | 7 |
| 191 | 191 | 191 | 25 | 27 | 26 |
| 145 | 145 | 142 | 191 | 191 | 191 |
| 1 | 1 | 129 | 144 | 147 | 150 |
| 66 | 66 | 66 | 129 | 129 | 129 |
| 187 | 187 | 187 | 66 | 66 | 66 |
| 145 | 145 | 145 | 187 | 187 | 187 |
| 0 | 0 | 0 | 145 | 145 | 145 |
| | | | 0 | 0 | 0 |

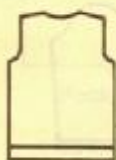
| 36 | 38 | 42 | 46 | 48 | 50 |
|-----|-----|-----|-----|-----|-----|
| 100 | 100 | 100 | 100 | 100 | 100 |
| 150 | 150 | 150 | 150 | 150 | 150 |
| H | H | H | H | H | H |
| L | L | L | L | L | L |
| 64 | 68 | 74 | 80 | 86 | 90 |
| 24 | 26 | 28 | 30 | 32 | 34 |
| 24 | 26 | 28 | 30 | 32 | 34 |
| 195 | 195 | 195 | 195 | 195 | 195 |
| C | C | C | C | C | C |
| 7 | 7 | 7 | 7 | 7 | 7 |
| 2 | 2 | 2 | 2 | 2 | 2 |
| 38 | 38 | 38 | 38 | 38 | 38 |
| 90 | 94 | 102 | 106 | 112 | 118 |
| 34 | 36 | 38 | 40 | 42 | 44 |
| F | F | F | F | F | F |
| 40 | 40 | 40 | 40 | 40 | 40 |
| 54 | 54 | 54 | 54 | 54 | 54 |
| E | E | E | E | E | E |
| 103 | 103 | 104 | 103 | 105 | 106 |
| 153 | 153 | 161 | 161 | 186 | 186 |
| 145 | 179 | 153 | 176 | 129 | 129 |
| 191 | 191 | 162 | 191 | 180 | 190 |
| 145 | 143 | 191 | 143 | 131 | 133 |
| 145 | 143 | 143 | 143 | 191 | 191 |
| 145 | 145 | 143 | 178 | 140 | 137 |
| 153 | 153 | 145 | 161 | 140 | 137 |
| 0 | 0 | 153 | 0 | 186 | 162 |
| | | 0 | | 129 | 186 |
| | | | | 0 | 129 |
| | | | | | 0 |

| 36 | 38 | 42 | 46 | 48 | 50 |
|-----|-----|-----|-----|-----|-----|
| 94 | 94 | 94 | 94 | 94 | 94 |
| 259 | 259 | 259 | 259 | 259 | 259 |
| H | H | H | H | H | H |
| L | L | L | L | L | L |
| 3 | 3 | 3 | 3 | 3 | 3 |
| 10 | 10 | 10 | 10 | 10 | 10 |
| 3 | 3 | 3 | 3 | 3 | 3 |
| 3 | 3 | 3 | 3 | 3 | 3 |
| 98 | 98 | 98 | 98 | 98 | 98 |
| 5 | 5 | 5 | 5 | 5 | 5 |
| 9 | 9 | 9 | 9 | 9 | 9 |
| 38 | 38 | 38 | 38 | 38 | 38 |
| 22 | 22 | 22 | 22 | 22 | 22 |
| 3 | 3 | 3 | 3 | 3 | 3 |
| 3 | 3 | 3 | 3 | 3 | 3 |
| 46 | 46 | 49 | 50 | 51 | 53 |
| 49 | 49 | 52 | 53 | 54 | 56 |
| E | E | E | E | E | E |
| 97 | 97 | 97 | 97 | 97 | 97 |
| 3 | 3 | 3 | 3 | 3 | 3 |
| 0 | 0 | 0 | 0 | 0 | 0 |

Button bands

| | |
|---|-----|
| | 100 |
| | 150 |
| H | |
| L | |
| | 82 |
| | 3 |
| | 3 |
| | 101 |
| | 6 |
| | 68 |
| | 1 |
| | 68 |
| | 2 |
| | 0 |

Neckband



Back



Sleeve



Reverse shaping to knit the second front part.

1/2 Front

Button bands :

- 1 = Casting-on in close rib
- +1 = Location of a buttonhole
- 5 = End of knitting

Back - Front - Sleeves :

- 1 = Casting-on in 2/2 industrial rib
- 2 = Transfer into tuck stitch pattern
- 3 = Divide the knitting for neckline
- 4 = End of the neckline first side
- 5 = End of knitting

Neckband :

- 1 = Casting-on in 2/2 industrial rib
- 7 = Knit in circular
- 8 = Knit with an auxiliary yarn
- 5 = End of knitting

Back - Front - Sleeves :

- H = Length in mm of 40 rows in tuck stitch pattern
- L = Width in mm of 40 stitches in tuck stitch pattern
- C = Length in mm of 40 rows in 2/2 industrial rib
- D = Bust measurement in cm
- E = Total length in cm
- F = Repeat the number just above unless D is increased

Neckband :

- H = Length in mm of 40 rows in 2/2 industrial rib
- L = Width in mm of 40 stitches in 2/2 industrial rib

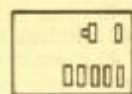
Button bands :

- H = Length in mm of 40 rows in close rib
- E = Total length in cm

FANCY PATTERN STITCH



Card 15



Tuck stitch pattern 1
Card 2 - Design 6

Without selection box : Move the needles corresponding to the white squares of the scheme into position 3. Take care to always repeat the 4 lines of the scheme. Needle return buttons in lower position.




MEN'S SWEATER

Sizes : 44 - 48 - 52

13
142



Material : 450 grs yarn —  US 0 - 3
UK 14 - 11

Pattern stitches : 1/1 rib - Racking pattern in 7/5 rib

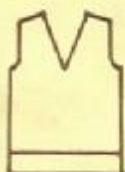
| 44 | 48 | 52 |
|-----|-----|-----|
| 118 | 118 | 118 |
| 174 | 174 | 174 |
| H | H | H |
| L | L | L |
| 110 | 120 | 130 |
| 96 | 104 | 112 |
| 96 | 104 | 112 |
| 195 | 195 | 195 |
| C | C | C |
| 7 | 7 | 7 |
| 11 | 11 | 11 |
| 38 | 38 | 38 |
| 110 | 120 | 130 |
| 96 | 104 | 112 |
| D | D | D |
| 35 | 36 | 37 |
| 65 | 67 | 69 |
| E | E | E |
| 232 | 232 | 233 |
| 161 | 169 | 169 |
| 153 | 161 | 161 |
| 145 | 153 | 153 |
| 146 | 146 | 145 |
| 7 | 7 | 146 |
| 22 | 24 | 7 |
| 187 | 187 | 26 |
| 142 | 144 | 187 |
| 67 | 67 | 147 |
| 191 | 191 | 67 |
| 144 | 144 | 191 |
| 28 | 28 | 144 |
| 0 | 0 | 28 |
| | | 0 |

| 44 | 48 | 52 |
|-----|-----|-----|
| 118 | 118 | 118 |
| 174 | 174 | 174 |
| H | H | H |
| L | L | L |
| 110 | 120 | 130 |
| 96 | 104 | 112 |
| 96 | 104 | 112 |
| 195 | 195 | 195 |
| C | C | C |
| 7 | 7 | 7 |
| 11 | 11 | 11 |
| 38 | 38 | 38 |
| 110 | 120 | 130 |
| 96 | 104 | 112 |
| D | D | D |
| 35 | 36 | 37 |
| 65 | 67 | 69 |
| E | E | E |
| 104 | 104 | 105 |
| 161 | 169 | 169 |
| 153 | 161 | 161 |
| 145 | 153 | 153 |
| 146 | 146 | 145 |
| 7 | 7 | 146 |
| 22 | 24 | 7 |
| 187 | 187 | 26 |
| 142 | 144 | 187 |
| 0 | 0 | 147 |
| | | 0 |

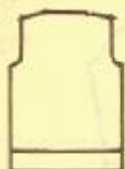
| 44 | 48 | 52 |
|-----|-----|-----|
| 118 | 118 | 118 |
| 174 | 174 | 174 |
| H | H | H |
| L | L | L |
| 56 | 60 | 60 |
| 24 | 26 | 26 |
| 24 | 26 | 26 |
| 195 | 195 | 195 |
| C | C | C |
| 7 | 7 | 7 |
| 11 | 11 | 11 |
| 38 | 38 | 38 |
| 84 | 88 | 92 |
| 36 | 38 | 40 |
| F | F | F |
| 35 | 36 | 37 |
| 60 | 61 | 62 |
| E | E | E |
| 102 | 102 | 102 |
| 153 | 153 | 153 |
| 145 | 145 | 145 |
| 191 | 191 | 191 |
| 146 | 146 | 147 |
| 18 | 18 | 19 |
| 153 | 145 | 153 |
| 0 | 0 | 0 |

| |
|-----|
| 90 |
| 130 |
| H |
| L |
| 144 |
| 3 |
| 3 |
| 102 |
| 7 |
| 2 |
| 65 |
| 1 |
| 68 |
| 2 |
| 0 |

Neckband



Front



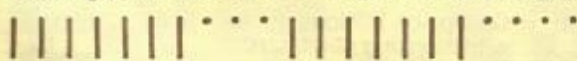
Back



Sleeves

FANCY PATTERN STITCH

Racking pattern in 7/5 rib — Flow combs alternate



4

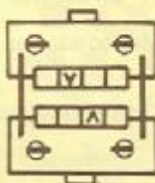


▼ Knit one row

4

▼ Knit one row

5



Back - Front - Sleeves :

- H = Length in mm of 40 rows in racking pattern in 7/5 rib
- L = Width in mm of 40 stitches in racking pattern in 7/5 rib
- C = Length in mm of 40 rows in 1/1 rib
- D = Chest measurement in cm
- E = Total length in cm
- F = Repeat the number just above unless D is increased

Neckband :

- H = Length in mm of 40 rows in 1/1 rib
- L = Width in mm of 40 stitches in 1/1 rib

Back - Front - Sleeves :

- 1 = Casting-on in 2/2 rib
- 2 = Transfer into fancy pattern stitch
- 3 = Divide the knitting for neckline
- 4 = End of the neckline first side
- 5 = End of knitting

Neckband :

- 1 = Casting-on in 2/2 rib
- 5 = End of knitting
- 7 = Knit one row in stocking stitch
- 8 = Knit a few rows with an auxiliary yarn

MEN'S POLO SWEATER

Single size, to fit chest measurement of 86 - 90 - 96 cm

13 / 143

Material : 450 - 500 grs yarn —
1 zip

US 4
UK 9

Pattern stitches : 1/1 rib - Striped stocking stitch - Close rib



| |
|-----|
| 136 |
| 176 |
| H |
| L |
| 106 |
| 3 |
| 3 |
| 195 |
| C |
| 7 |
| 3 |
| 38 |
| 114 |
| 96 |
| 96 |
| 35 |
| 67 |
| E |
| 232 |
| 161 |
| 153 |
| 145 |
| 137 |
| 7 |
| 21 |
| 188 |
| 146 |
| 72 |
| 137 |
| 7 |
| 12 |
| 185 |
| 131 |
| 179 |
| 182 |
| 4 |
| 0 |

| |
|-----|
| 136 |
| 176 |
| H |
| L |
| 106 |
| 3 |
| 3 |
| 195 |
| C |
| 7 |
| 3 |
| 38 |
| 114 |
| 96 |
| 96 |
| 35 |
| 67 |
| E |
| 103 |
| 161 |
| 153 |
| 145 |
| 7 |
| 22 |
| 188 |
| 145 |
| 0 |

| |
|-----|
| 136 |
| 176 |
| H |
| L |
| 54 |
| 3 |
| 3 |
| 195 |
| C |
| 7 |
| 6 |
| 38 |
| 92 |
| 40 |
| 40 |
| 38 |
| 61 |
| E |
| 106 |
| 161 |
| 153 |
| 145 |
| 191 |
| 135 |
| 135 |
| 145 |
| 153 |
| 161 |
| 169 |
| 0 |

| |
|-----|
| 109 |
| 122 |
| H |
| L |
| 142 |
| 3 |
| 3 |
| 109 |
| 7 |
| 128 |
| 71 |
| 1 |
| 128 |
| 71 |
| 2 |
| 1 |
| 71 |
| 3 |
| 1 |
| 68 |
| 4 |
| 99 |
| 71 |
| 5 |
| 2 |
| 0 |



Front



Back



Sleeve



Collar

Back - Front - Sleeves :

H = Length in mm of 40 rows in striped stocking stitch
L = Width in mm of 40 stitches in striped stocking stitch
C = Length in mm of 40 rows in 1/1 rib
E = Total length in cm

Collar :

H = Length in mm of 40 rows in close rib
L = Width in mm of 40 stitches in close rib

Working instructions :

Before knitting the sleeves, make the programme advance manually and take notice of the number of rows to be knitted until the armhole shapings. Make the stripes at the same rows as for the back and the front starting from the armhole shaping.

Back - Front - Sleeves :

- 1 = Casting-on in 1/1 rib
- 2 = Transfer into striped stocking stitch
- 3 = Divide the knitting for neckline
- 4 = End of the neckline first side
- 5 = End of knitting

Collar :

- 1 = Casting-on in close rib, then knit with stocking stitch size
- 5 = End of knitting
- 7 = Decrease stitch size
- 8 = Decrease stitch size
- 9 = Decrease stitch size (stitch size as for close rib)
- 10 = Knit in circular
- 11 = Knit with an auxiliary yarn

Striped stocking stitch : make a stripe of two rows at regular intervals


Finishing : Sew a zip along the straight vertical opening

LADIES' POLO SWEATER

Sizes : 38 - 40/42 - 44/46

13
144



Material : 400 - 450 grs yarn —  US 0 - 1
UK 14 - 13

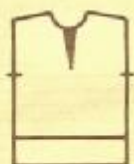
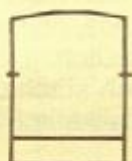
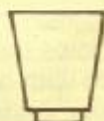
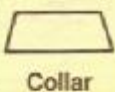
Pattern stitches : 2/2 industrial rib - Fair Isle

| 38 | 40/42 | 44/46 |
|-----|-------|-------|
| 110 | 110 | 110 |
| 145 | 145 | 145 |
| H | H | H |
| L | L | L |
| 130 | 140 | 148 |
| 87 | 93 | 99 |
| 87 | 93 | 99 |
| 195 | 195 | 195 |
| C | C | C |
| 7 | 7 | 7 |
| 14 | 14 | 14 |
| 55 | 55 | 55 |
| 160 | 160 | 160 |
| 130 | 140 | 148 |
| 87 | 93 | 99 |
| 87 | 93 | 99 |
| 28 | 28 | 28 |
| 62 | 64 | 65 |
| E | E | E |
| 228 | 228 | 228 |
| 7 | 7 | 7 |
| 33 | 35 | 37 |
| 188 | 188 | 188 |
| 165 | 169 | 172 |
| 72 | 72 | 72 |
| 7 | 7 | 7 |
| 19 | 19 | 19 |
| 177 | 177 | 177 |
| 161 | 161 | 161 |
| 178 | 178 | 178 |
| 145 | 148 | 148 |
| 155 | 146 | 155 |
| 5 | 6 | 6 |
| 0 | 0 | 0 |

| 38 | 40/42 | 44/46 |
|-----|-------|-------|
| 110 | 110 | 110 |
| 145 | 145 | 145 |
| H | H | H |
| L | L | L |
| 130 | 140 | 148 |
| 87 | 93 | 99 |
| 87 | 93 | 99 |
| 195 | 195 | 195 |
| C | C | C |
| 7 | 7 | 7 |
| 14 | 14 | 14 |
| 55 | 55 | 55 |
| 160 | 160 | 160 |
| 130 | 140 | 148 |
| 87 | 93 | 99 |
| 87 | 93 | 99 |
| 28 | 28 | 28 |
| 62 | 64 | 65 |
| E | E | E |
| 100 | 100 | 100 |
| 7 | 7 | 7 |
| 33 | 35 | 37 |
| 188 | 188 | 188 |
| 165 | 169 | 172 |
| 0 | 0 | 0 |

| 38 | 40/42 | 44/46 |
|-----|-------|-------|
| 110 | 110 | 110 |
| 145 | 145 | 145 |
| H | H | H |
| L | L | L |
| 92 | 96 | 98 |
| 2 | 2 | 2 |
| 2 | 2 | 2 |
| 38 | 38 | 38 |
| 122 | 126 | 128 |
| 3 | 3 | 3 |
| 3 | 3 | 3 |
| 44 | 44 | 44 |
| 49 | 49 | 49 |
| E | E | E |
| 100 | 100 | 100 |
| 2 | 2 | 2 |
| 120 | 120 | 120 |
| 128 | 128 | 128 |
| 191 | 195 | 197 |
| 131 | 131 | 131 |
| C | C | C |
| 7 | 7 | 7 |
| 3 | 3 | 3 |
| 0 | 0 | 0 |

| |
|-----|
| 109 |
| 122 |
| H |
| L |
| 142 |
| 2 |
| 2 |
| 106 |
| 7 |
| 128 |
| 69 |
| 1 |
| 69 |
| 3 |
| 60 |
| 4 |
| 67 |
| 5 |
| 0 |



Back - Front - Sleeves :

- H = Length in mm of 40 rows in Fair Isle
- L = Width in mm of 40 stitches in Fair Isle
- C = Length in mm of 40 rows in 2/2 industrial rib
- E = Total length in cm

Collar :

- H = Length in mm of 40 rows in 2/2 industrial rib with stocking stitch size
- L = Width in mm of 40 stitches in 2/2 industrial rib with stocking stitch size

Back - Front :

- 1 = Casting-on in 2/2 industrial rib
- 2 = Transfer for Fair Isle pattern
- 3 = Divide the knitting for the straight vertical opening
- 4 = End of the neckline first side
- 5 = End of knitting
- 8 = Attach an auxiliary yarn to mark the armholes

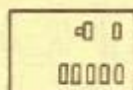
Sleeves :

- 1 = Open casting-on with an auxiliary yarn
- 5 = End of knitting
- 6 = Cast-off the stitches, then rehang the beginning onto the indicated number of stitches to knit the rib section

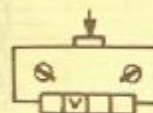
Collar :

- 1 = Casting-on in 2/2 industrial rib. Knit with stocking stitch size
- 5 = End of knitting, then knit a few rows with an auxiliary yarn
- 7-9-10 = Decrease stitch size
- 11 = Knit in circular

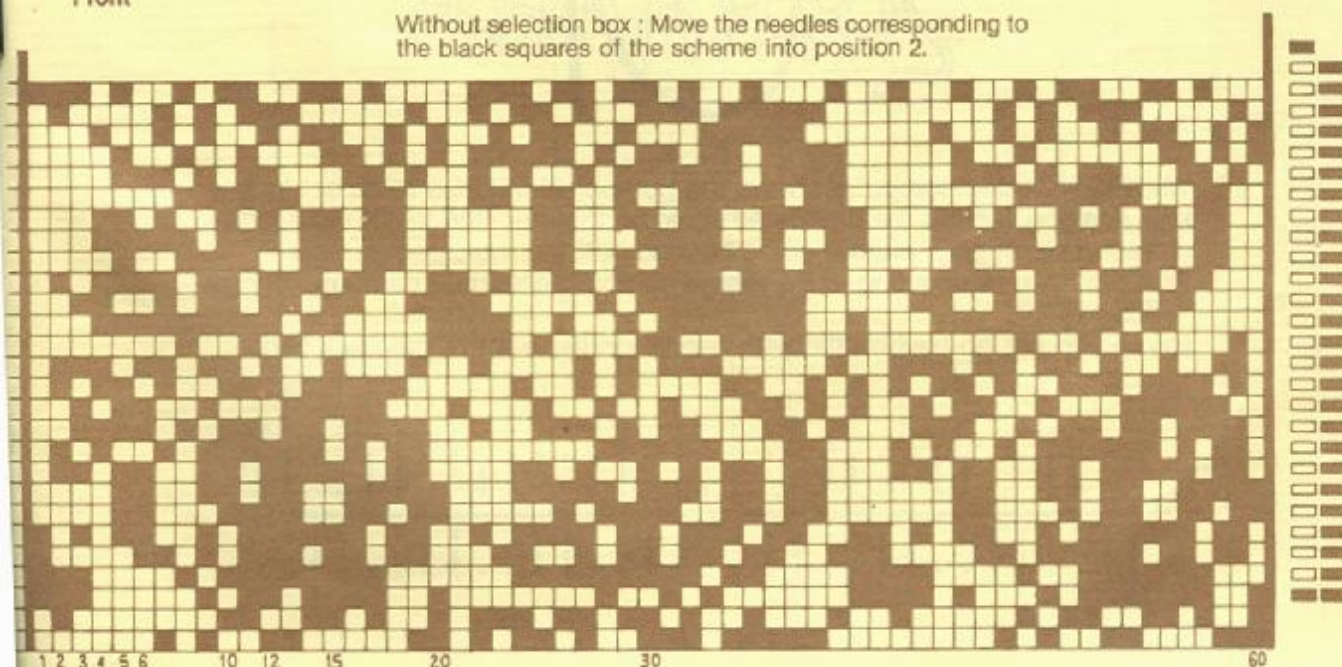
FANCY PATTERN STITCH



Fair Isle III
Design according to scheme



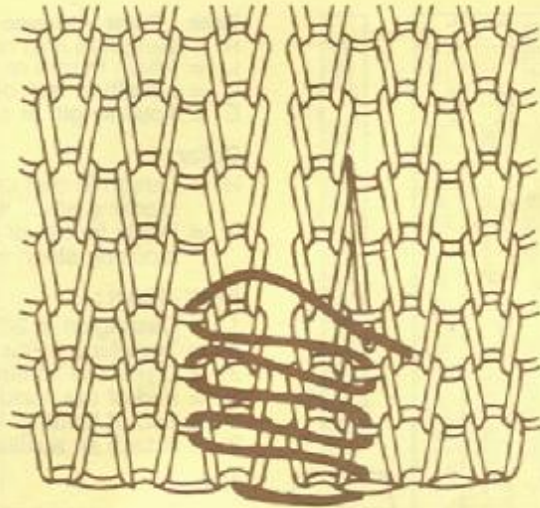
Without selection box : Move the needles corresponding to the black squares of the scheme into position 2.



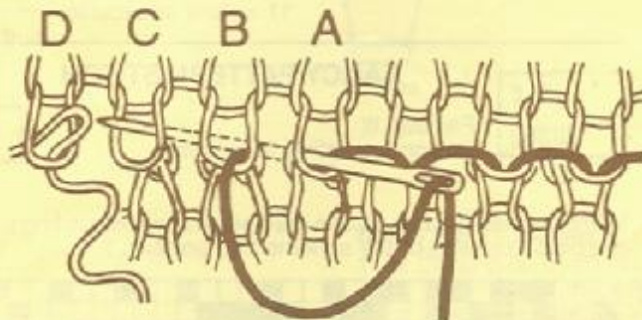
SOME KNITTING HINTS

For all casting-on with an auxiliary yarn, press on key STOP. When the casting-on is finished and you are using the chosen yarn, press on key GO.

It is advisable to assemble your garments, neckbands, button bands a.s.o. with an invisible seam.



To assemble the parts finished with some rows in auxiliary yarn which have to be sewn stitch after stitch, slightly press the last two rows (neckbands, rib sections...) knitted in stocking stitch and sew each stitch with a backstitch. If the last two rows of stocking stitch are knitted in circular, fasten each stitch on the plain side with a backstitch and on the purl side either with a backstitch or with a slip stitch.



When the knitting computer shows the number of stitches to be set in working position, look at the graduated scale on the machine to set the needles on each side of zero without going beyond half the indicated number.

Example : You are knitting in 2/2 simple rib and the knitting computer shows + 108 ;

you should not go beyond the 54th needle on the front or the back bed.

