

Studio

KNITTING MACHINE

"The Most Wanted Automatic Home Knitter"

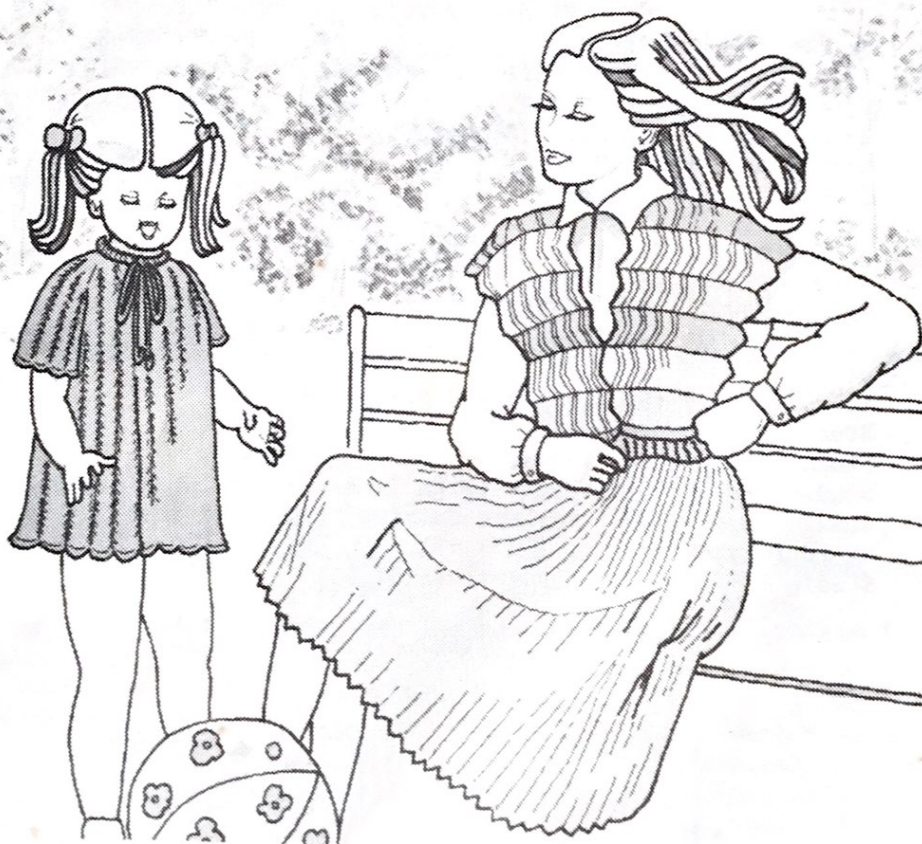
NEWSLETTER

MARCH/APRIL, 1982

VOLUME 162



Knits for Joy



FROM THE DESK OF DAVE BRATZ

Of course, the biggest excitement in the knitting field right now is new SR-120 Ribber for the Bulky Knitter. The ease of mounting, adjustment and general appearance is very impressive. The ribber bed has a double drop like the other ribbers, can be racked ten spaces right or left, half pitch lever, coupled carriages, and mounting bracket for attaching the knit contour is available separately. I am sure this welcome addition to the existing knitting machine capabilities will result in many more bulky type garments. The initial shipment has already been sent out to the distributors and dealers so be sure to ask about it.

Another recent highlight was the Seminar in Houston, Texas. It had been several years since I had been in Houston and after viewing the fashion show and seeing the general enthusiasm of machine knitting in this area, we have to give credit to the distributor and dealers in the Texas area for a superb job. As they say in other product advertising, "You've come a long way".

On the lighter side, perhaps the part of Texas that will be remembered the longest was a visit to Mickey Gilley's. To any of you familiar with Country and Western music I need not say anymore. No, I didn't ride it. A sincere thank you to our hosts for this unforgettable event.

Many times we have dealers, as well as customers, ask how old a particular model machine is, or what was the original cost. As a matter of information we thought it might be interesting to publish this for you. I guess it could also have the possibility of dating some of us older 'knitters', but I've also heard a saying that beauty comes with age.

STUDIO KNITTING MACHINES

1959 - Knitten Kitten SK-7	1960 - Studio SK-8 (\$260.00)
1962 - Studio SK-101 (\$199.95)	1963 - Studio SK-103 (\$200.00)
Ribber (\$80.00)	1965 - Studio SK-105 (\$149.95)
1964 - Studio SK-301 (\$219.95)	Studio SD-502 (\$349.95)
1967 - Studio SK-106 (\$149.95)	1969 - Studio SK-312 (\$279.95)
Studio SK-303 (\$219.95)	1970 - Studio SK-313 (\$279.95)
Studio SD-503 (\$349.95)	1971 - Studio SK-305 (\$219.95)
1972 - Studio SK-321 (\$329.95)	SR-321 (\$124.95)
Studio SK-810 (\$149.95)	1973 - Studio SK-322 (\$399.95)
1976 - Studio SK-324 (\$399.95)	Studio SK-323 (\$359.95)
Studio SK-326 (\$439.95)	SRP Ribber (\$169.95)
1977 - Studio SK-327 (\$459.95)	
Studio SK-329 (\$414.95)	SRP-20 Ribber (\$179.95)
1978 - Studio SK-328 (\$499.95)	
Studio SK-500 (\$895.95)	SRP-50 Ribber (\$279.90)
Studio SK-120 Bulky Eight (With Intarsia Carriage) (\$299.95)	
1980 - Studio SK360K/260L and Lace Carriage (SK-360 \$528.95) (L \$179.00)	
MK-70 Folding Machine (\$379.95)	(SK-260 \$483.50) (M \$167.90)
1982 - Studio SR-120 Ribber (Bulky) (\$289.95)	

Happy Knitting!!!!

SEMINAR NEWS ON PAGE 14!!!!

The following article is reproduced from "Knits for Joy" with permission of Silver Knitting Institute, Tokyo, copyright holder 1978.

SYMBOLS/ABBREVIATIONS

SD① - SD stands for Stitch Dial and the figure in circle indicates Stitch Dial number.

SD3-- Number and the dots indicate the position for Stitch Dial setting.

pos. - position

H-5 - H or P denotes the position

(P-5) of the Half-Pitch Lever and the number indicates the swing position.

Needle arrangement

|| ○ ○ || ○ ○ ||

| - working needle

○ - non-working needle

LADY'S WAISTCOAT

This is a very attractive waistcoat knitted in Herringbone stitch, and if you change colours, its uniqueness will be enhanced, or you may try it in Punch Tuck Rib.

Materials:

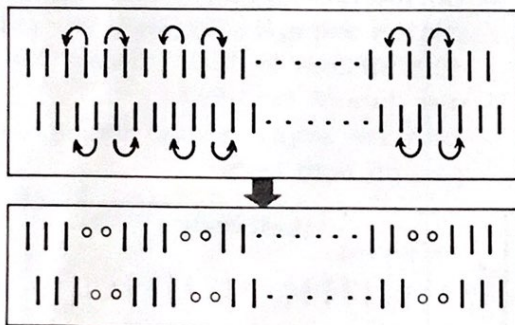
2-ply wool or acrylic yarn.....130gs.

Tension Gauge:

23 stitches by 84 rows over a swatch of Herringbone stitch with the Stitch Dial at 5 (approx.)

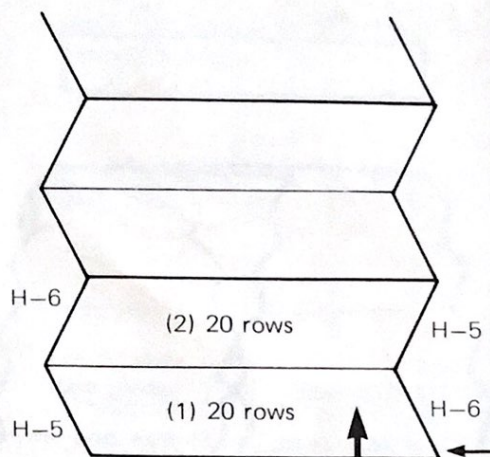
To knit (two pieces alike)

- Set the Close Knit Bar in position and the Swing Indicator to H-5.
- Arrange 80 needles on both beds for Double Rib and work the closed edge cast on.
- SD⑤, knit 2 rows in Double Rib.
- Counting from the left, transfer every 4th and 5th stitches to their adjacent needles on both beds, and push the empty needles back to A pos.



- Set the machine as follows:—
Knitter Carriage — Cam Lever...Tuck
— Side Lever...▲(R)
■(L)
Ribber Carriage — Set Levers... I
Row Counter000

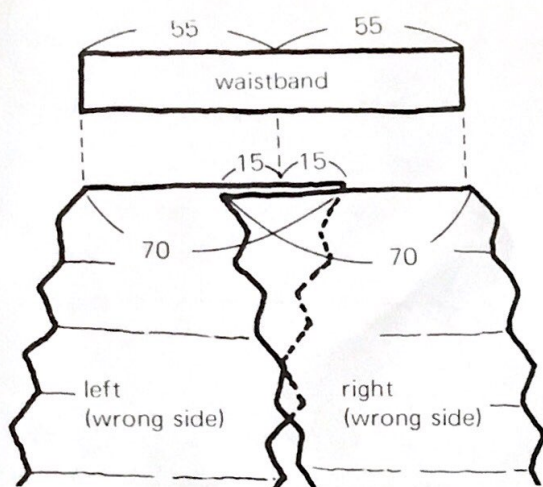
- (1) Knit 1 row at H-5 and knit 1 row at H-6. Repeat the manner 10 times in all. (Row Counter 020)
Knit 1 row at H-6 and knit 1 row at H-5. Repeat the manner 10 times in all. (Row Counter 040)



- A zigzag pattern has been completed. Repeat steps (1)–(2) 14 times in all. (Row Counter 560)
- Set the Half-Pitch Lever to P and transfer all the Ribber stitches onto the Knitter needles.
- Lower the Ribber and exchange the Ribber Arm for the Knitter Arm.
- Knit 1 row with main yarn and several rows of waste knitting. Remove the fabric from the machine.
- * Knit the other piece in the same manner.

(waistbands)

- Half-Pitch Lever at P, arrange 55 needles on both beds for K1.P1. Rib. (110 needles altogether)
- Using two strands of 2-ply yarn, work the closed edge cast on.
- SD③–④, knit 25 rows in K1.P1. Rib.
- Transfer the Ribber stitches onto the Knitter empty needles.
- Lower the Ribber and exchange the Ribber Arm for the Knitter Arm.
- Hold one of the fabrics with its wrong side facing you, starting from the left edge, pick up 70 stitches from the last row of the main knitting and place them onto the left side of the waistband as shown.



- For the other fabric, work in the same manner as for the first piece but start from the right edge, so that 30 stitches overlap at the centre.
- Push the needles in B pos. up to D pos.
- SD⑨, knit 1 row, and cast off with the Tappet Tool.
- * Work in the same manner for the other waistband, and join the side seams of the waistband, then give a final pressing.

LADY'S PLEATED SKIRT

Adjust the number of the pleat folds to your desired size and split the knitting to a few pieces as shown in the table below.

Hip	Number of pleat folds needed	Number of piece to be knit.
85cm.	50	162 stitches x 1 172 stitches x 2
90cm.	54	182 stitches x 3
95cm.	56	182 stitches x 1 192 stitches x 2
100cm.	59	192 stitches x 1 200 stitches x 2
105cm.	62	152 stitches x 2 162 stitches x 2
110cm.	65	162 stitches x 2 172 stitches x 2

The instruction given below is based on the hip size of 90cm. and its length 65cm. But the garment fits to sizes 90–95 of the hip, 65–75 of the waist.

Materials:

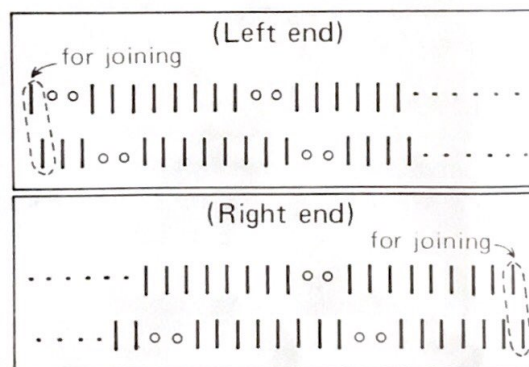
2-ply wool or acrylic yarn 310gs.
elastic band 3cm. wide x 70cm. long

Tension Gauge:

60 stitches by 44 rows over a swatch knitted in the same needle arrangement as shown below with the Stitch Dial at 4 (approx.)

To knit (three pieces alike)

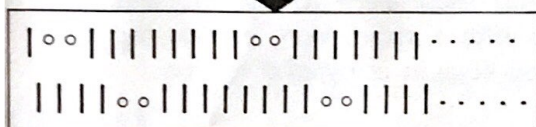
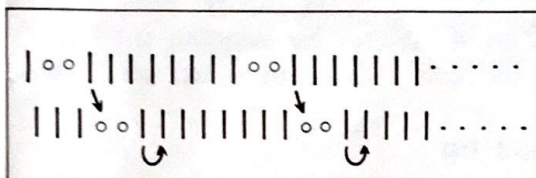
- Set the Close Knit Bar in position and the Swing Indicator to H–5.
- Arrange 182 needles on both beds for Double Rib.
- SD 1, work the closed edge cast on.
- Knit 1 row in Double Rib.
- Counting from the left end on the Knitter, transfer the 2nd and 3rd stitches and following 9th and 10th stitches to their adjacent needles through the row.
- On the Ribber, transfer 4th and 5th stitches and every following 9th and 10th stitches to their adjacent needles through the row.
- Push the empty needles back to A pos. on both beds.



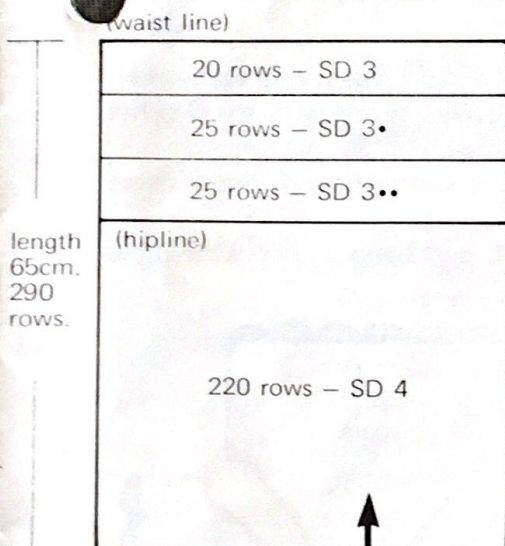
- Set the Row Counter to 000.
- SD④, knit 220 rows without shaping up to hipline.

* Follow the instruction below to have the garment good fit above the hips.

- Continuing from the left end on the Knitter, pick up 4th and every following 10th loop of the previous row, and fill the opposite empty needles on the Ribber through the row.
- On the Ribber, transfer 6th and every following 10th stitches to the adjacent needle in B pos.
- Push the empty needles back to A pos. on both beds.



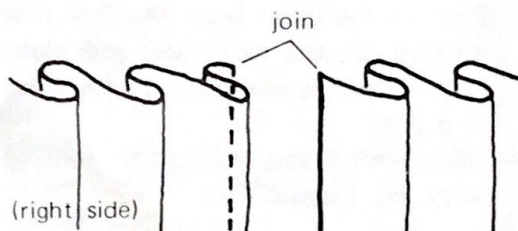
- Knit straight up to the waist line by adjusting the Stitch Dial as instructed below. (Row Counter 290)



- Transfer the Ribber stitches onto the Knitter.
- Lower the Ribber and exchange the Ribber Arm for the Knitter Arm.
- SD 5, knit 1 row with main yarn and several rows of waste knitting.
- Remove the fabric from the machine.

* Knit two more pieces in the same manner.

- Join two seams with blind stitch as shown below.

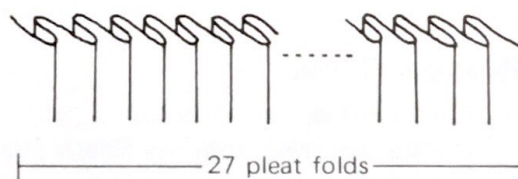
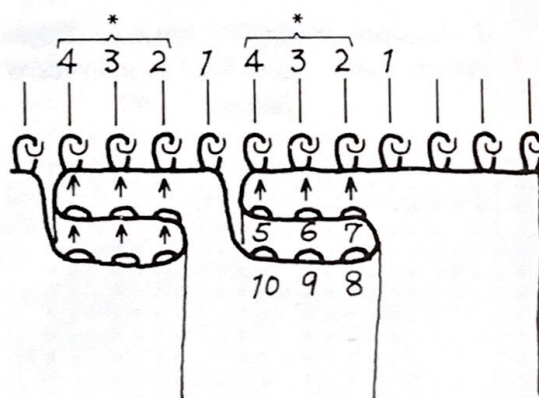


- Place the fabric on the ironing board and give steam over it while pulling it lengthwise.

(waistbands)

- Arrange 109 needles in B pos. on the Knitter.
- Holding the right edge of the fabric with its wrong side facing, pick up 3 stitches from the waist edge and place them onto 3 needles in B pos. on the right side.
- To make a pleat fold, place 10 stitches onto the next 4 needles as shown below, then repeat this manner until the first 27 pleat folds are held on 109 needles.

* Needles holding 3 stitches.



- Push the needles in B pos. up to D pos. and knit 1 row with SD④.
- SD②–③, knit 40 rows in stockinet.
- Pick up the loops from the first row knitted for the waistband and place them onto the corresponding needles in B pos.
- SD⑤, knit 1 row and cast off loosely with the Tappet Tool.
- * Knit the second half of the waistband in the same manner and unravel the waste knitting.

To make up

- Join side and waistband seams with blind stitch.
- Insert elastic through the waistband and join both ends of the elastic.
- Give a final press lightly.

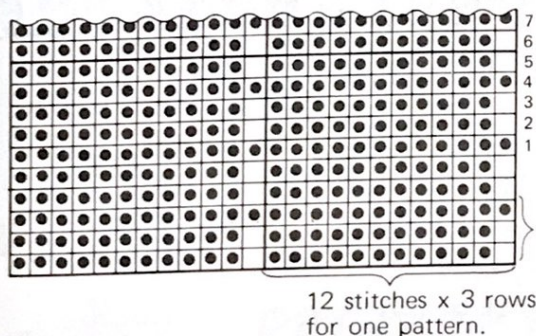
CHILD'S DRESS

(Using the Knit Contour)

This garment is sized for a child of 3 years old, but by changing the Stitch Dial, Stitch Scale and row number, you may be able to obtain different sizes for the garment.

Materials:

- 2-ply wool or acrylic yarn.....90gs.
- * Punch card – punched as instructed below.



Tension Gauge:

30 stitches by 60 rows over a swatch of Lace Knitting with the Stitch Dial at 4 (approx.) for an example.

To knit

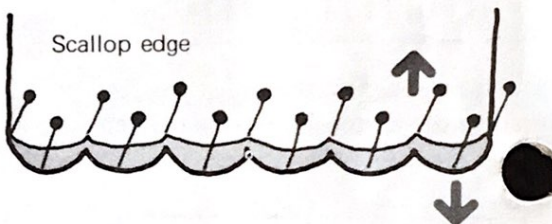
Make scallops and knit the front, back, neckband, sleeves, following the patterns and instructions given on page 8-9.

(cord)

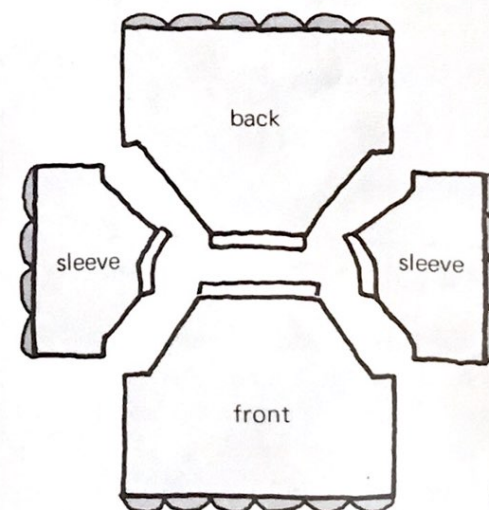
- Set the Carriage as follows:–
Cam Lever.....Slip
Side Lever.....▲ (left)
 ■ (right)
- Cast on 4 stitches by winding the yarn and knit 150cm., then cast off.

To make up

- Pin out each piece to the size and press with a steam iron, pulling the scallop edge in arrowed direction.



- With the right side facing each other, join 4 raglan seams with the Crochet Hook matching the patterns.
- Join side seams through under sleeve seams.
- Join 4 neckband seams with blind stitch.



- Insert the cord through the neckband and tie it at the front.

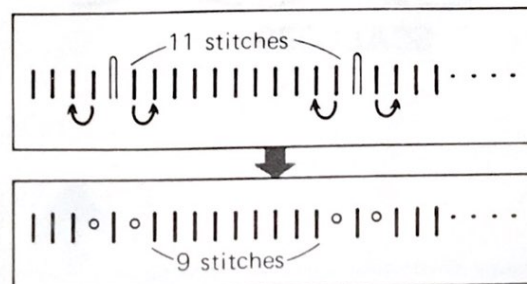
PATTERN FOR CHILD'S DRESS

(2) FRONT & BACK

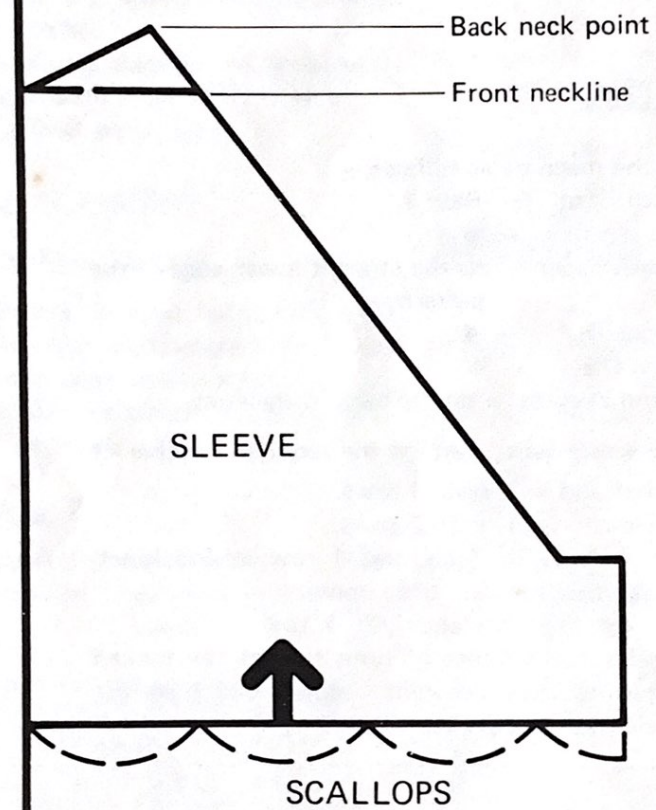
- Set the machine as follows:-
 - Change Dial - 30-60 Side Levers - ▲
 - Stop Knob - ▲ Row Counter- 000
 - Cam Lever - Tuck Stitch Dial - 4
- Knit straight up to the raglan armhole.
- Following the contour line, knit up to front or back neckline by decreasing stitches on both ends.

(1) SCALLOPS

- Set the machine as follows:-
 - Punch Card - Row 1
 - Stop Knob - ●
 - Pattern Paper - to the straight lower edge of the pattern
 - Change Dial - ◀
 - Stitch Dial - 4
 - Round Brushes - on the back of the Arm.
- With waste yarn, cast on the required number of stitches and knit several rows.
- With main yarn, knit 2 rows.
- Knit 4 rows in Tuck and 1 row in Stockinet. Repeat this manner once more.
- Turn up the hem and knit 1 row.
- Transfer the stitches of both side of the tucked stitches to their adjacent needles, and push the empty needles back to A pos.



Patterns for Child's Dress



Back neckline

Front neckline

FRONT & BACK

SCALLOPS

Trace the patterns on the blank pattern paper, or set this paper in the Knit Contour.

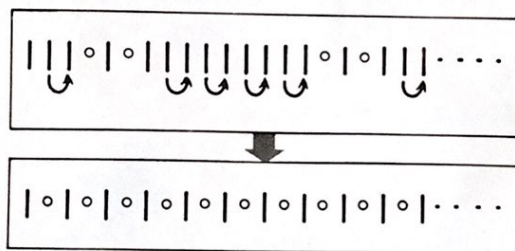
Child's Dress (Continued)

(4) SLEEVES (two pieces alike)

- Make scallops in the same manner as for (1).
 - With the same machine settings as for the FRONT & BACK, knit up to the front neckline.
 - On the opposite side of the Carriage, push the needles for the straight part (front neckline) up to D pos. and work partial knitting following the back neckline, and shape the raglan armhole by decreasing stitches.
 - At the back neck point, push the needles in D pos. back to C pos., and knit 1 row in stockinet.
 - Knit the neckband continuously in the same manner as for (3).
- * Knit the other sleeve in the same manner, but reverse the shaping.

(3) NECKBAND

- Transfer every other stitches to their adjacent needles as shown below and push the empty needles back to A pos.



- Knit 1 row in stockinet.
- SD①, knit 18 rows in stockinet.
- Pick up loops from the first row knitted for the neckband and place them onto the empty needles as for mock rib.
- SD⑥, knit 1 row and cast off with the Tappet Tool.

Skirt (Continued)

double-eye transfer tool with a ravel cord and pick off the stitches from the knitter onto the ravel cord just like you would be stringing beads.

With wrong side facing you, hang skirt back onto knitter to knit waistband, at the same time keeping the material pleated. To make smaller for waist, overlap each pleat or every other pleat just a bit at the waist depending on how small your waist is.

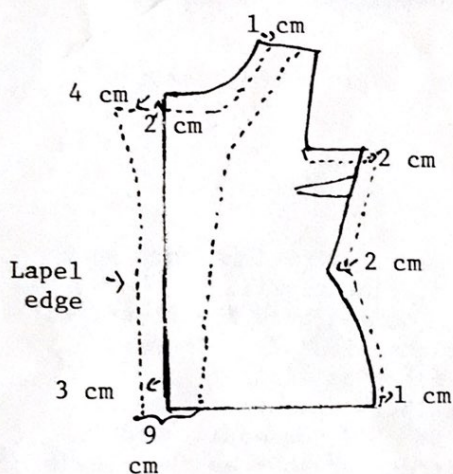
Push the needles to D position and knit 1 row Tension 2. Make a marking row and knit 1-1/2" (to fit in 3/4" elastic). Pick up marking row and do latch tool (crochet bind-off) around 2 posts. This makes waist elastic enough to slide over hips.

II. JACKET - 20 oz. Crepe (Millor) Tension 3.1

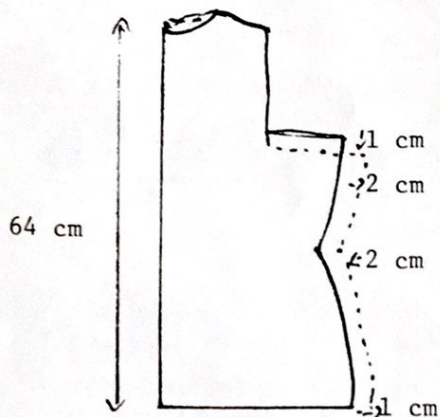
Gauge - R. 61 - Sts. 38

This jacket is drafted from body measurements.

Front



Back



_____ Actual body measurements
----- Knitted garment

Armhole is lowered 1 cm from actual body measurement.

Bust is added 2 cm each side from actual body measurement.

Waist comes in 2 cm from new bust measurement.

Neck domes down 2 cm from center front neck.

Neck comes out 1 cm from neck at shoulder
Lapel comes out 4 cm from center front of body.

Hip comes out 1 cm from actual hip.

Front edge of jacket comes out 3 cm from center front of body.

Side body length is 42.8 cm + 2 cm dart

Facing is knit 9 cm wide at bottom of facing widening to correspond to lapel and curving up around neck and shoulder.

Space 3 buttonholes evenly on right front and facing for right front.

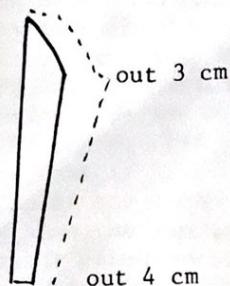
Back - Same ease as front, but omit dart and knit back neck straight across.

Length from nape of neck to bottom - 64 cm

(Continued to next page)

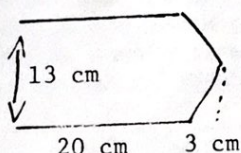
Jacket (Continued)

Sleeve



from your actual arm measurements. Come out 3 cm at upper arm and 4 cm at wrist. Sleeve cap depth should be $\frac{3}{4}$ " shorter than depth of front armhole. To check sleeve cap stand a tape measure on edge and measure around sleeve cap. Then measure around armhole. Sleeve cap should be slightly larger than armhole.

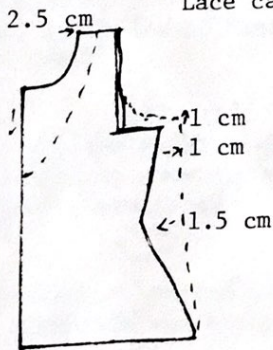
Collar



Collar is knit double. Cast on sts. for 20 cm. Increase to point (3 cm) and decrease back to 20 cm. Start and take off on scrap.

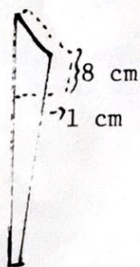
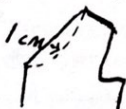
Entire jacket is started by crochet cast on. When done, join pieces with mattress stitch. Attach facing and graft collar facing is also attached with mattress stitch (2 bars by 2 bars). Do 1 row single crochet around hem edges and facing. Then do a shell stitch over row of single crochet. Attach hem and facing to jacket using the sewing method of hemstitching.

III. BLOUSE 8 ozs. Millor Crepe (5 white, 3 blue)
Tension 5 on Studio SK-360 R 50, Sts. 31
Lace card on next page.



Armhole comes up 1 cm from body measurement.
Bust comes out 1 cm from body measurement.
(If desired) waist comes in 1.5 cm from new bust measurement.

Neck edge comes in 2.5 cm from neck.
V is 1 cm from actual base of neck or 21 cm from top of shoulder. To make V lie flatter, scoop out 1 cm from midpoint of V, curving slightly to neck edge and point of V.



Sleeve - To upper arm measurement add 1 cm at each side. Length of sleeve from underarm to edge of sleeve is 8 cm. Sleeve cap depth is $\frac{3}{4}$ " less than depth of front armhole.

Body: Cast on in 1/1 rib, Tension 2/2 and knit for 6 cm. Carriage on left. Put sts. to knitter. Tension 5.0. Insert card. Attach lace carriage and knit 1 row from left to right to memorize pattern. Knit in lace to row 13. Change color and knit in lace to row 31. Change color. Change colors when rows on lace card are 13 and 31.

Sleeve: Cast on in 1/1 rib, Tension 2/2. Knit in rib for 6 cm. Put sts. to knitter, Tension 5.0. Insert card, add lace carriage. Match stripes to front. Lace card is on page 14.

KNITTING MACHINE SEMINARS

At ALDEA's in Anaheim, CA - Friday and Saturday, April 23 - 24, 1982
10:00 AM to 5:00 PM - Doors open at 9:30 AM
FREE FASHION SHOW Friday evening - 7:00 PM
Lots of new items - new yarns - new machines - lot of prizes & specials
\$2.50 per day - pre-registration up to April 15 - \$2.00 per day
ALDEA's - 114 E. Orangethorpe Ave., Anaheim, CA (Just off 91 Freeway -
1-1/2 blocks East of Harbor - between Lemon & Raymond). Tel: (714) 870-4184.

OLYMPIA SEMINAR - "KNITS BORDER TO BORDER" - April 23, 24 & 25, 1982

FOUR STYLE SHOWS FOR YOUR PLEASURE

Friday, 23rd, Registration 6 PM, Dinner & Show 7-9 PM

Saturday, 24th Registration 8 AM, Lunch & Show 12-1:30 PM

Browse 9-11 AM, Classes 11-9 Dinner & Show 5-7 PM

Sunday, 25th Classes 10-3:30 Lunch & Show 12 noon

Make hotel reservations by phone or mail to Westwater Inn, 2300 Evergreen
Pk. Dr., Olympia, WA 98502, (206) 943-4000 BEFORE APRIL 1. Be sure to
mention Olympia Knitting Seminar. Capital Aeroporter Service from SeaTac
direct to Westwater in Olympia, phone 754-7113 or 866-8660.

Style show, lunch and dinner reservation MUST be in by April 19th.

ALL TICKETS WILL BE PICKED UP AT THE DOOR. Send seminar reservations
to Donna's Knit Shop, 1214-1/2 W. Harrison, Olympia, WA 98502, or call
(206) 943-9711. Total for all three days at the Seminar - \$50.80.

Special package price if paid by April 10th, \$45.00. Canadians, please
note - U.S. funds. Hotel reservations and prices are separate.

Barbara Miller will be teaching her machine knitting classes again at the
Highline Community Art Center, 425 SW 144th St., Seattle, WA 98166.
Classes will be on Wednesdays and Thursdays, and registration is from
March 22nd to April 3rd. For more information, you can call the Art
Center at 242-3172, or Barbara Miller at 255-6062 in Renton, WA.

Betty Steffens, Studio dealer in Colorado Springs, CO, announces the new
location of her shop, High Country Machine Knitting, to E. Pikes Peak
Avenue in Colorado Springs. Business hours are: 10:00 to 5:00 MTFS and
1:00 to 5:00 Wednesdays. She carries Studio Knitting Machines, yarn and
accessories, and gives lessons. Her phone number is (303) 633-8340.

Lace Card for
Studio SK-360
For Blouse on
page 13.

R 31

R 13

R 1

WE NEED YOUR ORIGINAL PATTERNS

This "Newsletter" is your publication. Help support it by submitting your helpful hints and original patterns, so other home knitters can learn from your experience. We would like to urge all of you with older machines to share your favorite originals with our other readers. So many knitters are beginning to use their older machines again, and patterns for these are needed. We are also getting a lot of requests for patterns for the Bulky Knitters. You will receive a gift of yarn for any original pattern or hint that is printed. When sending in your patterns, be sure to include the size of the garment and the knitting gauge (number of stitches and rows per inch) - this is most important - and the machine for which your particular pattern was designed. It also helps if you know approximately how much yarn your pattern takes. Please check and recheck your patterns for errors and type or print clearly. We do not have time to knit each pattern sent in, so cannot check for mistakes. It also helps if you do not abbreviate, as many of your terms are unfamiliar to us and to other readers. A black and white snapshot and/or brief description of your garment will make it easier to visualize by other readers. A gift of yarn will be sent for snapshots (black and white) printed with the patterns.

There is a wonderful opportunity awaiting you to become a STUDIO Knitting Machine and yarn dealer. Good money can be made in your spare time with only a small investment. We are interested in contacting men and women who would like to become a part of our growing group of STUDIO dealers throughout the United States. Our assistance and guidance can make this a very profitable venture for you, and our only requirements are that you know how to operate a knitting machine and that you have space available in which to set up your STUDIO shop, either in your home or place of business. You will find this a fascinating business which affords you the opportunity to become acquainted with new and interesting people. Contact Mr. David Bratz, Manager, STUDIO Yarn Farms, Inc., P.O. Box 46017, Seattle, WA 98146.

If you are planning to move soon, let us know both your old and new addresses, complete with zip codes. We cannot change your address without this information.

Patterns submitted and published in this "Newsletter" are submitted by individuals and are purported to be original patterns.

Canadian subscribers - Please remember, when sending in your subscription, all checks and money orders from Canada must be marked "Payable in U.S. funds".

It seems a lot of you do not know that we always notify you when your subscription expires. Your last issue is stamped across the Subscription Order Blank on the back page in red, "Your subscription expires with this issue." This issue is then mailed to you in an envelope and sent by first class mail. If you miss an issue, without having received this notification, please let us know, because it means that your mail isn't reaching you, and we will send you another copy.
