

*Studio*

KNITTING MACHINE

*"The Most Wanted Automatic Home Knitter"*

NEWSLETTER

MAY/JUNE, 1982

VOLUME 163



FROM THE DESK OF DAVE BRATZ . . . . .

What people have been asking for several years is now a reality. When will the Electronic have a Lace Carriage? It's here, and it's pretty neat. It is called the Model SK-560 Electronic and comes complete with the Lace Carriage. An on-off switch is built in and the dust cover/card holder unit is included. The method of doing lace is similar to the SK-360 - in other words, it transfers and knits at the same time with each pass of the carriage. The Electronic options possible by the simple push of a button or varying the pattern width gives a much greater lace pattern variation possibility off of each pattern drawing than ever before. I am sure more books and patterns will soon be appearing with many lace variations that are not possible with the mechanical type of needle selection.

The Bulky Ribber continues to be a very popular item and a greater number of new bulky designs and garments are beginning to appear at fashion shows. The Ribber Transfer Tool RT-1 is also becoming a tried and tested item and the people using it are very pleased with its performance.

It appears that no new items will be forthcoming for a little while, but we do expect some exciting things to be on the horizon again by early fall.

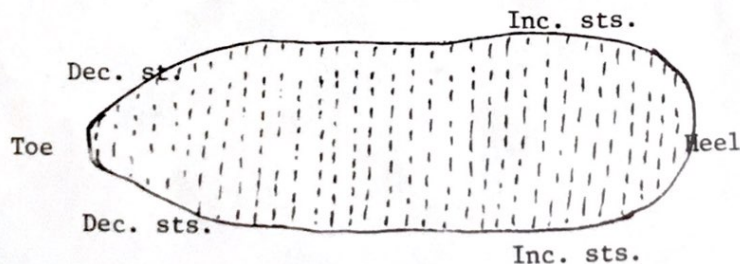
Several seminars are now history again and it was a real pleasure to renew old acquaintances once more. No doubt there will be a greater number of workshop and seminar events scheduled for fall.

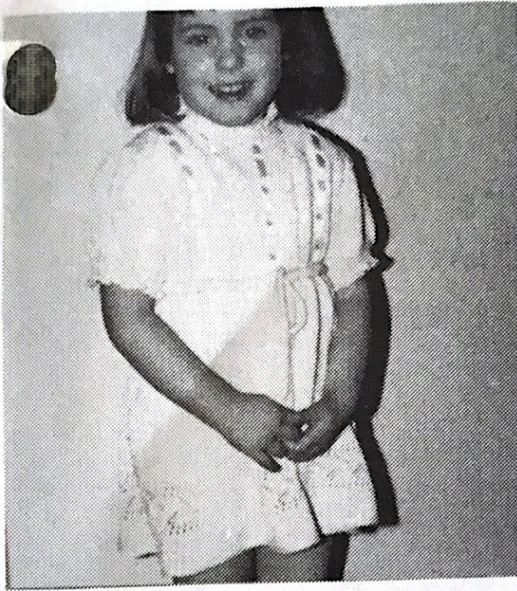
In the meantime, we wish you happy vacations as well as Happy Knitting!!!!

\*\*\*\*\*

Mrs. Ruth Downing, Yachats, OR, sent in this helpful hint on how to make your slippers last longer. Since the top doesn't wear out, but the sole does, this is how she puts on a new sole.

TO PROLONG THE LIFE OF YOUR SLIPPERS - - - With the carriage on the right side, stretch the heel of your slipper, with the right side out, and hang as many stitches as you have in the heel of the slipper on the same amount of needles. Knit to the left and back to the right. Pick up a stitch of the slipper on each side and hang on the outside needles every other row. Continue in this manner until you reach the toe, increasing and decreasing on the sides as needed. You can Bind Off and sew the toe of the knitted piece to the toe of the slipper or you can pick up the stitches of the toe on the needles and knit across and then Bind Off.





The pattern pictured on the cover of this issue was designed by Terri Pennant here in Seattle, WA.

### LITTLE GIRL'S DRESS

Made on a Studio SK-500 Electronic

Size: 3-4

Yarn: Lur Safir, 2 strands

Tension: No. 7

Gauge: 9 sts. and 12 rows = 1 inch

Overall length - 18-1/2"

SKIRT - Crochet cast on 162 sts. - 3 rows. RCO, knit in stockinette to row 134. Scrap off or take off on garter bar.

BODICE - Rehang skirt on 96 needles, spacing decreases evenly. Mark row. RCO, knit 6 rows, move the 2nd st. to the third both sides of 0, knit 6 more rows. Hang marked row - this makes the tie casing. RCO. Knit 16 rows. RCO. Armhole: Take off 6 sts., either on pin or string, at beginning of next 2 rows. Dec. 1 st. each side every row 3 times, 1 st. each side every other row 3 times (72) sts. Knit to row 36.

Shape front neck: Place half of stitches opposite carriage in hold. Set machine to NWP. Pull 5 neck sts. in hold, knit across, (1 st. hold, knit across) 6 times. Dec. with 2-prong tool, 1 st. every other row 3 times, 1 st. every third row

once. Knit to row 60. Short row shoulder: With carriage at neck edge, pull 7 sts. at arm edge in hold, knit across, pull next 7 sts. into hold, wrapping them. Knit across. Push all 21 sts. into working position and knit one row. Scrap off. Repeat same for other side. Pick up 18 sts. from neckline each side of existing 22 sts. (total 58 sts.) Knit 1 row and scrap off.

BACK - Repeat same as front to row 36 of armhole, omitting eyelets on rope casing. Split for back opening. Scrap half of sts. one side of 0. Knit to row 60. Short row shoulders same as back...but pull last group of 7 sts. of shoulder sts. into hold and knit across neck sts. Scrap off 15 neck sts. Knit 1 row over 21 shoulder sts. Scrap off. Rehang other side and repeat procedure.

Join shoulder seams, placing right sides together, pull one set of sts. through other. Bind off.

SLEEVE - Scrap on 98 sts. with waste yarn. RCO. Knit 18 rows. RCO. Set machine to partial knit. At end of next 2 rows, place 6 sts. opposite carriage in hold. Pull 1 needle each side of sleeve into hold position every row 31 times, (1 st. in front of carriage, 2 sts. opposite carriage in hold, knit 1 row) twice. 18 sts. remain in NWP. Scrap off, or take off on garter bar. Pick up 80 sts., right side of garment facing you, along front and back armhole, including 6 sts. each side taken off on waste yarn or pin. Now hang sleeve sts. on these 80 sts., doubling the center 18 sts. Double bind off.

At bottom of sleeve, re-hang cast-on sts. on 63 sts., doubling 35 sts. evenly spaced. Rib T4/3 for 12 rows. Either bind off or do \*\*\*lettuce trim. Repeat other sleeve.

NECK - Cast on with scrap yarn 88 sts. (58 sts. of front, and 15 sts. of both back pieces.) Knit 10 rows with waste yarn. Knit 1 row ravel cord. Knit 15 rows T4/3. Hang garment neck on these sts., pull through and double bind-off.

(Continued)

### Little Girl's Dress (Cont.)

(This will have to be hung on machine in two sections as neck will not stretch because of both shoulder seams being joined.) Do lettuce trim around neck. Pull out ravel cord.

Single crochet around back opening, crocheting a loop for buttonhole. Sew button on opposite side of opening.

Make a 3-stitch cord, (560-600) rows. Sew side seams. Run cord through casing, beginning at center front. Launder and block.

\*\*\*Lettuce trim: With wrong side of garment facing you crochet in ribbing stitches. Single crochet in knit st., chain 2, single crochet in purl st., chain 2 -- rpt to end. Break yarn. Pull out ravel cord. Edging will be ruffled.

Variations: Dress can be done completely in lace or just partially, as long as the st. gauge is the same. I chose a lace pattern for a border on the bottom on the skirt, and repeated this pattern in the bodice front only.

I did another with lace on skirt, but did eyelets running vertically. After the dress was completed, I laced this up with matching ribbon for another effect.

\*\*\*\*\*

June Reed, our Studio dealer in Beaverton, OR, brought in this baby dress which was designed by Mary Hilt. We immediately took a picture, so you can see what a pretty little dress it is.

#### BABY DRESS WITH ROUND YOKE

Made on a Studio

Size - 12 to 18 months

Tension - No. 3

Gauge - 17 sts. & 29 rows = 2 inches

1 strand 2/15 orlon

YOKE - Cast on 28 sts. Knit 4 rows, \*Russell lever I, put 4 sts. on left to HP, knit across, put 1 more st. on left to HP, \* repeat 4 more times (total 5)

\*\*Russell lever II, knit 6 rows all



needles.\*\* Repeat both steps until 366 rows, then knit 4 rows even (370 rows). Bind off.

SKIRT - Cast on 186 sts. Tension 2 or 2. and knit 16 rows, transfer sts. for eyelets every other needle, knit 16 rows, hang hem. RC 0 - Tension 5 for one row to close hem, then tension 3 to row 140. Shape Armhole: Bind off 4 sts. next 2 rows, 2 sts. next 2 rows, then 1 st. next 4 rows. (152 rows). Bind off.

SLEEVES - Cast on 11 sts., increase 2 sts. beginning of next 20 rows, increase 1 stitch beginning of next 20 rows, increase 3 stitches beginning of next 2 rows. Knit 12 rows. (56 rows - 79 stitches) Bind off - OR remove on scrap. Block. If you bind off sts., crochet over 1/4" elastic to gather sleeve at cuff. If on scrap yarn, decrease evenly to 48 sts. Knit 8 rows make eyelet, knit 8 rows, rehang first row and bind off tog. OR bind off and hem by hand.

FINISHING - Block all pieces.

Attach underarm of sleeve cap to armhole curve of skirt. Seam sides of skirt and underarm of sleeve. Using sewing machine run gathering threads completely around skirt and sleeve tops. Pin to yoke, centering at front and back and center of sleeve. Have less gathering at sleeve top than there is on back and front so armhole is large enough.

Sew yoke onto body of dress with



sewing machine. Crochet back neck opening and around neck, making button loops.

\*\*\*\*\*

Anna Maendel, Fordville, ND, designed the following two patterns.

KNIT BABY BIB

Made on a Studio

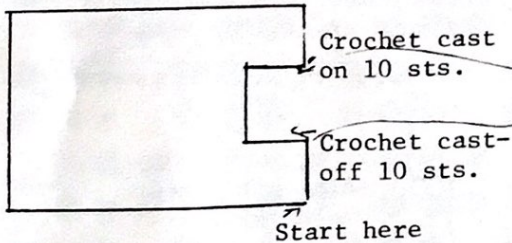
Sports weight yarn (washable)

Tension - No. 7

Gauge - 7 sts. and 8 rows = 1 inch

Work with 2 strands. Crochet cast on 40 stitches. Row counter at 000.

Knit 29 rows. Carriage on right, take yarn out of carriage and crochet cast off 10 stitches. Put yarn back in carriage. Knit rows 30 through 54. Crochet cast on 10 sts. to form neck. Knit 29 rows. Crochet cast off. Crochet all around bib. Sew on 10-inch long ribbon for ties.



\*\*\*\*\*

CHILD'S PULLOVER AND CAP

Size - 6

3 skeins 4-ply worsted Sayelle - main color - MC. Contrasting color - CC  
 Knit on every other needle.

Rib on Tension 8, Body on Tension 10

Gauge - 5 sts. and 6 rows = 1 inch

FRONT AND BACK (Make 2)

With MC crochet cast on 72 sts.

Rib 12 rows. Counter at 000.

Knit 54 rows. With CC knit 2 rows.

With MC knit 4 rows.

With CC knit 2 rows.

With MC knit 4 rows.

With CC knit 2 rows.

With MC knit 4 rows. Counter is at 72 rows.

On rows 73 to 94 decrease 1 st. each side for armholes. Crochet cast off very loosely.

SLEEVES - Crochet cast on 32 sts.

Rib 12 rows. Counter at 000.

Increase 1 st. each side every 6 rows 11 times. Counter is at 75.

Decrease 1 st. each end of row until 7 sts. remain.

Rib 10 rows. Crochet cast off very loosely.

CAP - With MC crochet cast on 80 sts.

Rib 18 rows.

With CC knit 48 rows.

Decrease every other st. across row. Knit 1 row.

Knit on scrap yarn 10 rows. Break off yarn.

With needle and thread, pick up sts. and unravel scrap yarn. Draw sts. together, sew sides together, make a small pompom and sew on top of cap.

\*\*\*\*\*

From Mabel Schlatter, our Studio dealer in Estes Park, CO, comes this pattern for a -

TWO-PIECE DRESS

Made on a Studio SK-360 Lace Maker

Size - 14

Material - crepe or any firm twist yarn.

Tension - 4 and 5 or 6

Gauge - 7 sts. and 11 rows = 1 inch

PLEATED SKIRT - Pattern set-up: Cast on 197 sts. Tension 5 or 6

Row 1, knit 4 rows with single strand  
 Row 2, put 30 needles in hold and knit 2 rows

Row 3, with double strands knit 2 rows over all needles.

Row 4, repeat rows 1 - 3 as many  
 (Continued)

Pleated Skirt (Continued)

times as needed for your measurements. The skirt is made sideways and worn on the knit side.

PULLOVER TOP <sup>BACK</sup> Cast on 130 sts. Knit 16 rows at Ten. 4, knit 1 row at Ten. 6 for turn, knit 16 rows at Ten. 5, hang hem. Insert lace card of your choice and begin pattern. I used Lace card #2, Ten. 5. Knit to row 166 or length to underarm you need. Bind off 8 sts. each side, then divide work in half and finish right side first, remembering to mark down row number on row counter and also number on pattern card for finishing left side later. Continue knitting while decreasing every 2nd row on armhole side and straight on neck opening side. Knit to row 268 and bind off. Finish left side the same only in reverse.

FRONT - Cast on 130 sts. same as back and knit even to row 166. Begin arm side shaping. Shape neck at row 245 (bind off 20 sts. in center then decrease every other row each side until 2 sts. remain at top. Next finish left side same as right.

SLEEVE - Cast on 80 sts. and rib for 20 rows. Begin pattern increasing one st. each side every 5 rows. Knit to row 80 (104 sts.). Bind off each side 8 sts. and then decrease every 3 rows 4 times, then every other row until 10 sts. are left. Bind off. Weave parts together. Knit a narrow band of ribbing around neck and sew zipper in back opening.

\*\*\*\*\*

Sandy Dominiak, South Bend, IN, sent us this timely pattern.

LADIES SHORTS (Easy beginner)

Made on a Studio SK-360

Size 10 (12)

Coats & Clark Pompador - approx. 7 oz.

Tension - No. 8

Gauge - 8 sts. and 10 rows = 1 inch

Make 2 pieces reversing shaping.

Seam sides and crotch.

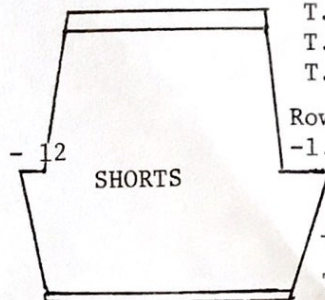
Hem waistband down.

Cut 1" wide elastic 2 - 3" less waist measurement, pull through waist band.

(Waistband can also be ribbed or

-6-

mock ribbed.



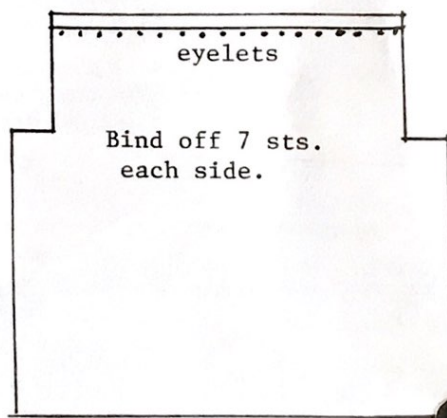
Scrap off  
T. 6, K 15 r  
T.10, K 1 row  
T. 7, K 14 rows

Row 140 (150)  
-1. 10 R x 10  
- 24  
Row 40 (50)  
+1. 10 R x 3 T.8  
T. 7, K 20 rows  
T.10, K 1 row  
T. 6, K 19 rows  
Cast on 182 sts. (190)

\*\*\*\*\*

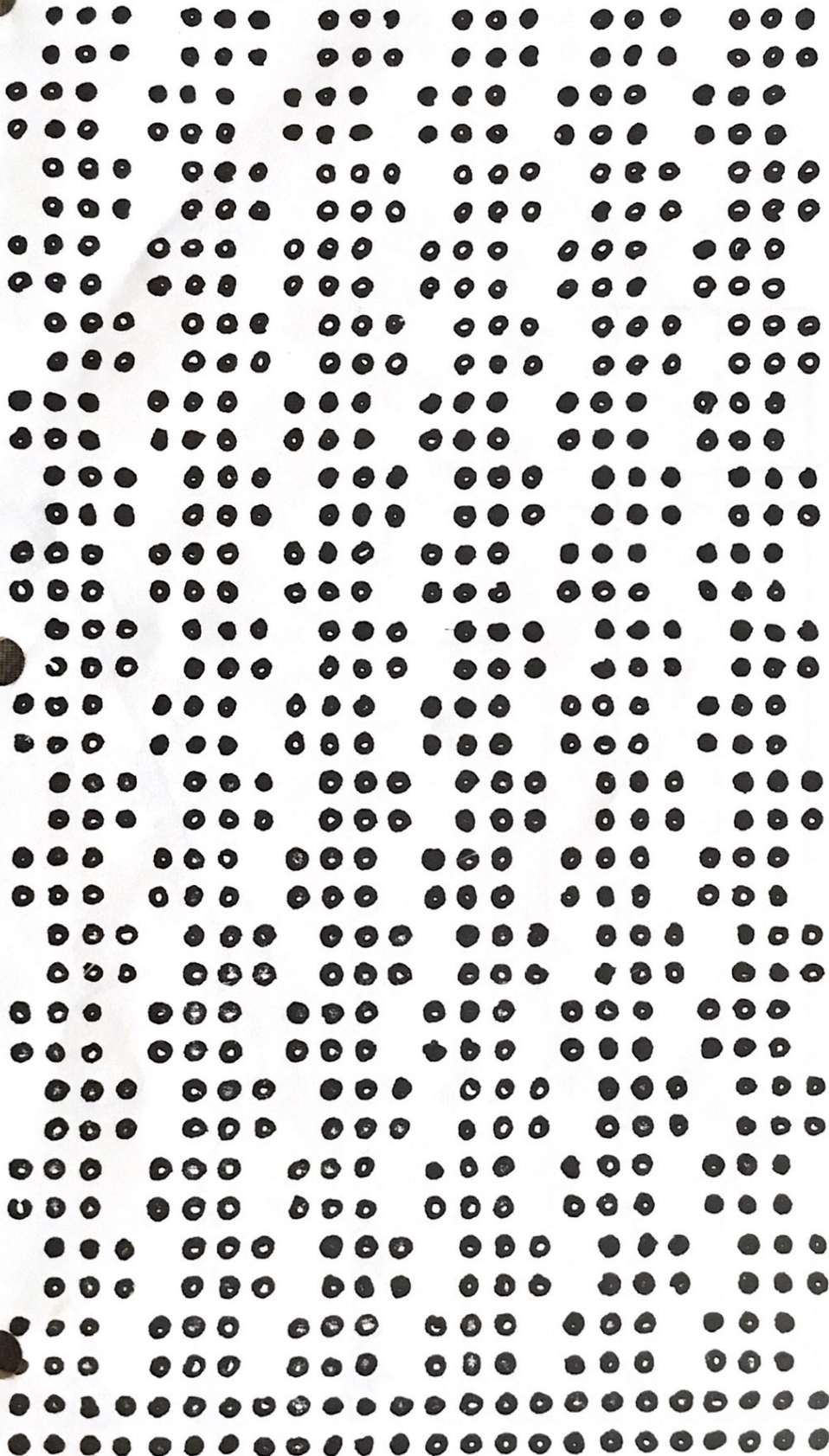
Evelyn Hamilton, Denver, CO, sent us this idea for a finished edge for blouses, dresses, sleeves, etc. Using card #4, Studio (shown on next page), put in card (lock it in). Knit 2 rows stockinette (with card locked in put on tuck)  
Knit 2 rows Tension 4  
Knit 8 rows Tension 6  
Knit 2 rows stockinette  
Unlock card, dial on tuck and continue knitting. Evelyn continues saying she belongs to the Knit Pickers Club and one of their knitters came up with this edge by forgetting to unlock the card.

She has made several blouses using this edge and she has 2 great-granddaughters, and made them each a dress using it. She used the same pattern as she used for the adult blouses, only using their measurements for a dress. They are 1-1/2 and 4 years. She used crystalline yarn.



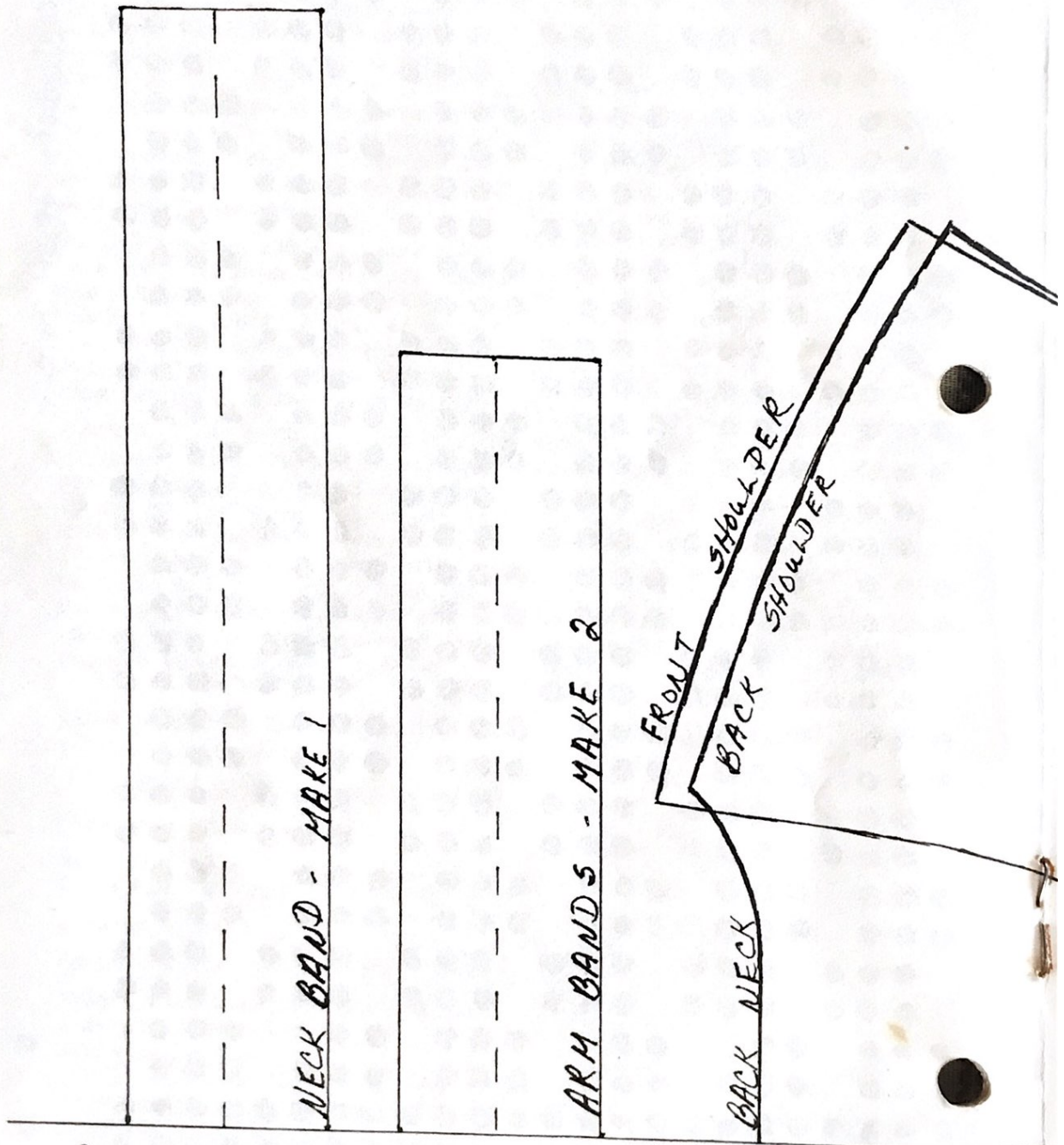
Make a cord and run through the eyelets. Use cord for belt, too, if desired.

Pu card used in edging and blouse and dress pattern.



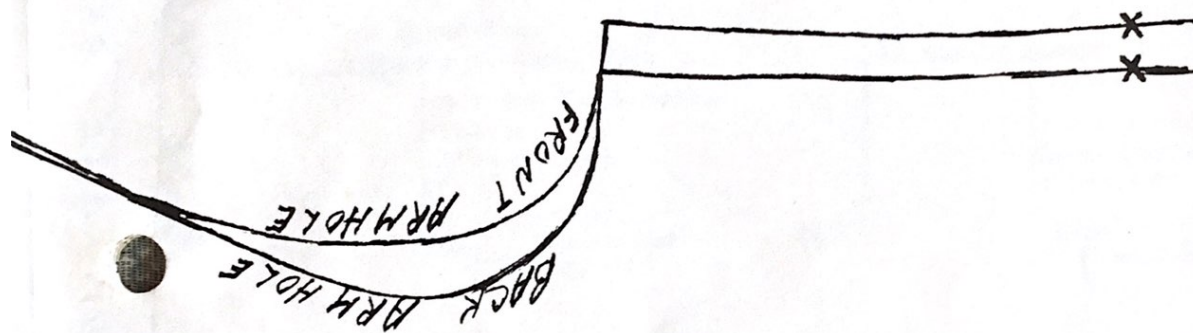
Bottom portion of Studio Card #4

Irene Woods, our Studio dealer in Weippe, ID, de  
ladies size 14 summer top. This makes up beauti  
used it in plain stockinette stitch, tuck or sli  
This is the actual size for your Knit Contour, a





Designed this Knit Contour pattern for a  
sleeve in any dress type yarn. She has  
tried slip stitch patterns with very good results.  
and continues on to page 10.



Radius Size 14

Join Pattern, matching x's

x x

BACK SIDE SEAM

FRONT SIDE SEAM

Fold of Hem - - - - -

Bottom half of Knit Contour pattern for ladies summer top on pages 8 and 9. Actual size.

Ye Wood, Green Bay, WI, submitted her original pattern for an -

ADAPTED - BASIC BLOUSE

Made on a Studio

Size - Ladies 10 - 12

Yarn - 2/11, 2/11-1/2, 2/12

Tension - In Pattern - Tension #5, Ribbing # $\frac{1}{1}$

Gauge - Approx. 6.2 sts. - 18.8 rows = 1 inch

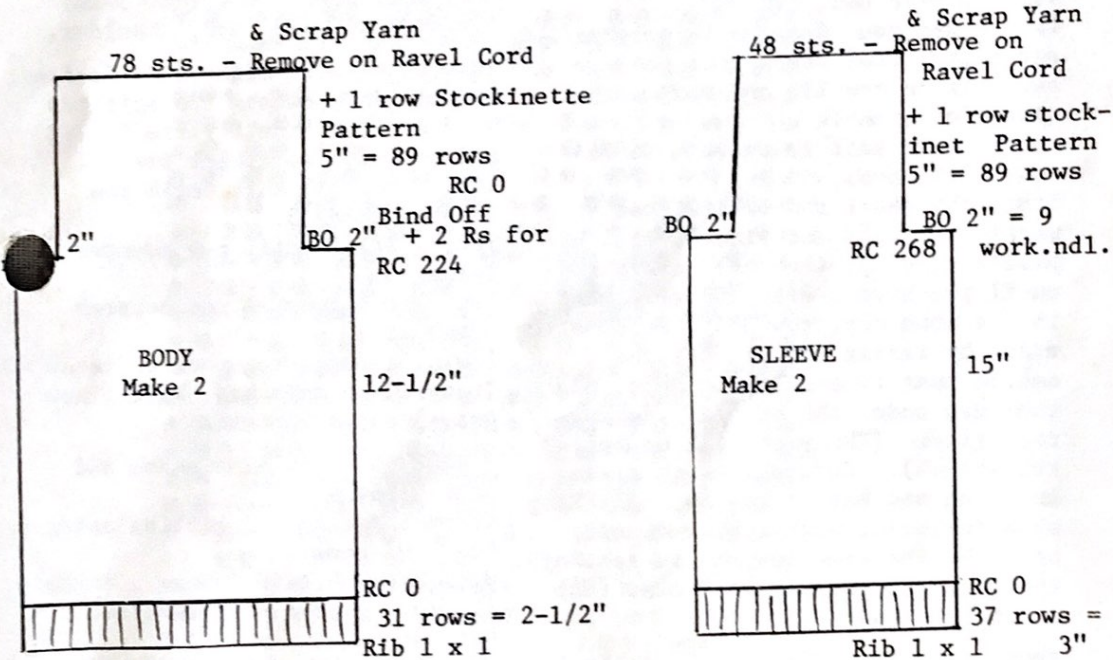
Pattern - Studio Card 7A with skipped needles - TUCK.

Set-up as follows: Every 4th needle out of work.

111 o 111 "0" o 111 o 111 etc.

center of  
machine

NOTE: This is made with 1 x 1 RIB over needle span and then transfer the stitches to get correct needle set-up for pattern stitch.



Start with needle #63 left to #64 right. This equals 96 needles in work position and 31 in non-work over the span of 127 needles.

Start with needle #43 left to #44 right. This equals 66 needles in work and 21 needles in non-work over the span of 87 needles.

NECKBAND: This is stockinette Tension #5, every needle.

Pick up from ravel cord: 1 Body and 1 Sleeve on each side of Body, double center sts. between pieces. Don't remove scrap yarn. Knit 4 rows, transfer 2nd stitch each side of "0" for cord eyelet. Knit 16 rows. Pick up first row of Band sts. from ravel cord and hang on corresponding needles for hem. Bind off through both sts. on needle, across row. Remove scrap yarn by pulling out ravel cord.

Pick up from ravel cord: 1 Body, 78 sts., hang on every needle. Knit 20 rows. Hang hem as before. Bind off. Remove scrap yarn.

CORD: 2 stitch - Ten. #2 - 1000 on Row Counter.

FINISHING: Sew seams. Insert cord for neck drawstring. Knot ends of cord.

Kathy Wagner, a Studio dealer in Casselton, ND, submitted this pattern courtesy of the Upper Midwest Knitting Machine Dealers Association.

COOL COTTON SHELL

Size 34 (36) Finished 36" (38")

Yarn: J.C.Bates Fashion Tone Cotton  
6 balls

Tension: 3 Ribbing 1/1

Gauge: 7.75 sts. per inch) Tuck  
20 rows per inch )Pattern

BACK - C.O. 140 (148) sts. with scrap yarn. Knit approx. 10 rows, knit 1 row ravel cord. Ten. 3, knit 1 row with main yarn. Hang weights and transfer sts. to ribber for 1x1 rib. Ten. 1/1, knit 34 rows. Transfer all sts. to main bed. RC 000.

Ten. 3 set your machine to program and knit 1 row, start your pattern and knit to row 196 and mark both sides for armhole.

Continue to knit in pattern to 364 rows (362 rows).

Start the short row series, set machine to hold and place 5 sts. opposite carriage into hold every row until you have 4 sts. (3) remaining in the shoulder, row 383. Be sure to wrap, by taking the st. off the needle next to needles in hold, place the yarn under the needle. Rehang the stitch. (The yarn will be behind the stitch). Set machine to plain knitting and knit 1 row over 49 (53) shoulder sts., with m.y. and scrap off. Do the same for the 42 sts. of the neck and the other 49 sts. (53) of the shoulder.

FRONT - Knit the front same as back to row 196, mark for armhole, knit to row 210 and start neck shaping. PLEASE MARK THE ROW YOUR PATTERN CARD IS ON. Take 1/2 sts. plus 7 sts. off on scrap yarn. On rows 210, 211, 212, 213, 214, 215, 216, 217, dec. 1 st. on neck edge using the 2-prong tool. Dec. 1 st. on the following rows 219, 221, 223, 225, 227, 230 on the neck edge. Continue in pattern to 364 rows (362 rows). Start the short row series 5,5,5,5,5,5,5,5,4 (5,5,5,5,5,5,5,5,3) on the shoulder side. Knit 1 row over all 49 sts. (53) in stockinette stitch and scrap off.

Pick up the other side, put RC on 210. Set your pattern as it was before taking off on s.y. Continue knitting as the other side but reverse all shapings.

NECKBAND - Join 1 shoulder by hanging right sides (purl) together, knit 1 row and bind off.

Hang the neckband onto the machine with the right side of garment (purl) facing the machine. 184 sts. in all. 42 sts. from the back, 64 sts. down the front, 14 center stitches and 64 stitches from the other neck front, Ten. 3, knit 1 row and transfer to ribber for 1x1 rib, add 1 stitch each side for seam. Ten. 1/1 knit 40 rows, transfer all stitches to main bed, knit 1 row Ten. 3 and scrap off. Join other shoulder.

ARMBANDS - With right side facing the machine, rehang 126 stitches onto machine. Knit 1 row Ten. 3 and transfer to ribber for 1x1 rib. Ten. 2/2 knit until row counter reads 5.

Ten. 1.2/1.2 until row counter reads 10.

Ten. 1.1/1.1 until row counter reads 15

Ten. 1/1 until row counter reads 40. Transfer to main bed, knit 1 row Ten. 3 and scrap off.

FINISHING - Sew side seams and neck ribbing.

Crochet around all ribbing using a Boyle #7 hook.

Single crochet in 1st st., \* chain 3, s.c. in next st.\* continue between \*.

Turn back the ribbings of armhole and neck and fasten down.

ALL DONE!!!!

If you don't want the ruffle on the waist, just cast on the usual way.

Punch card for this pattern is on next page.

\*\*\*\*\*

PUNCH CARD FOR COOL COTTON SHELL

The punch card contains a grid of 57 rows and 10 columns. The grid is divided into four main sections by horizontal lines at rows 10, 20, 30, and 40. Each section contains a repeating pattern of dots and dashes. The row numbers 1 through 57 are listed on the right side of the grid. A handwritten 'T 222K' is written vertically on the right side of the grid.

Dorthie Mallison, Beaverton, OR,  
adapted this pattern from a baby dress  
pattern by June Reed.

### EASY RIBBER SWEATER

Made on a Studio

5 oz. Acridel            Size 38  
1 strand

Tension 5 (T = Tension)

Gauge: 8.5 st. & 12.6 rows per inch  
Pattern Card 7    Half Pitch 5

Front and Back (alike)

Cast on 177 sts. (88 on main bed, 87 on ribber) in DOUBLE RIB. Follow instructions for TUBULAR HEM. T 5, insert PATTERN CARD, knit 4 rows DOUBLE rib. Row Counter 000, set CAM LEVER TO TUCK, release card and knit 190 rows. Cast off 10 sts. on the carriage side. Knit one row, cast off 10 sts. on carriage side. Knit 32 rows. Remove Pattern Card, set CAM LEVER to STOCKINETTE and knit 12 rows T 5, 12 rows T 4, 12 rows T 3. Transfer st. so every other needle is working on Main Bed and transfer st. on Ribber in same manner (1 x 1 rib). Put empty needles back out of work. Set PITCH to P4. Knit 8 rows on T 2, 1 row on T 5. Transfer stitches on Main Bed to every other needle, putting empty needles in working position (eyelet). T 2, knit 3 rows. Transfer all stitches to Main Bed and bind off. Make 2.

SLEEVES - Cast on 120 sts. 60/60 (60 on each bed) in DOUBLE RIB, (remember to set PITCH to HALF PITCH 5) same as above. TUBULAR HEM, then T 5, insert PATTERN CARD, knit 4 rows DOUBLE RIB. Row Counter 000, set CAM LEVER to TUCK, release card, knit 52 rows. Cast off 10 sts. each side as above. Knit 32 rows. Remove card, knit 12 rows T 5, 12 rows T 4, 12 rows T 3. Transfer st. on Main Bed and Ribber to every other needle so you have a 1 x 1 rib. Knit 8 rows T 2, 1 row T 5, transfer stitches on Main Bed to every other needle (eyelet), bring empty needles to working position, T 2, knit 3 rows. Transfer stitches to Main Bed, bind off. Make 2

FINISHING - Sew front to sleeve from the top down to first cast off stitch. Sew other sleeve to opposite side.

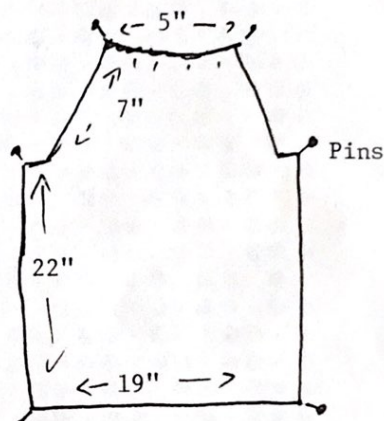
-14-

Sew back to sleeve. Sew underarm seams. Make a 4-needle cord, following the instructions in the instruction book, about 36 to 40 inches long. Thread through eyelets at the top and tie in bow.

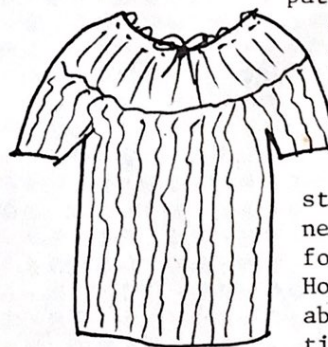
Hints: Cool light summer sweater, loose and casual.

If the person you are making the sweater for is larger through the hips, change to Ten. 5 after you knit the cast on row. The sleeves are loose fitting. You may wish to make them smaller, or add elastic.

Rehang the cast-on comb when the weights touch the floor. Stretch sideways when you take the pieces from the machine. Block to these dimensions.



Pin out at each corner. Pat so



pattern forms a curve at the yoke. Gently ease into shape, making sure the pattern lines are straight. The neckline will form a curve. Hold steam iron above the knitting. Don't set

the iron down as this will flatten the pattern. Steam well and let dry.

This sweater looks best in the pale pastels, as the pattern has more depth than in white or dark colors.

\*\*\*\*\*

WE NEED YOUR ORIGINAL PATTERNS

"Newsletter" is your publication. Help support it by submitting your original patterns and helpful hints, so other home knitters can learn from your experience. We would like to urge all of you with older machines to share your favorite originals with our other readers. So many knitters are beginning to use their older machines again, and patterns for these are needed. We are also getting a lot of requests for patterns for the Bulky Knitters. You will receive a gift of yarn for any original pattern or hint that is printed. When sending in your patterns, be sure to include the size of the garment and the knitting gauge (number of stitches and rows per inch) - this is most important - and the machine for which your particular pattern was designed. It also helps if you know approximately how much yarn your pattern takes. Please check and recheck your patterns for errors and type or print clearly. We do not have time to knit each pattern sent in, so cannot check for mistakes. It also helps if you do not abbreviate, as many of your terms are unfamiliar to us and to other readers. A black and white snapshot and/or brief description of your garment will make it easier to visualize by other readers. A gift of yarn will be sent for snapshots (black and white) printed with the patterns.

\*\*\*\*\*

There is a wonderful opportunity awaiting you to become a STUDIO Knitting Machine and yarn dealer. Good money can be made in your spare time with only a small investment. We are interested in contacting men and women who would like to become a part of our growing group of STUDIO dealers throughout the United States. Our assistance and guidance can make this a very profitable venture for you, and our only requirements are that you know how to operate a knitting machine and that you have space available in which to set up your STUDIO shop, either in your home or place of business. You will find this a fascinating business which affords you the opportunity to become acquainted with new and interesting people. Contact Mr. David Bratz, Manager, STUDIO Yarn Farms, Inc., P.O. Box 46017, Seattle, WA 98146.

\*\*\*\*\*

If you are planning to move soon, let us know both your old and new addresses, complete with zip codes. We cannot change your address without this information.

\*\*\*\*\*

Patterns submitted and published in this "Newsletter" are submitted by individuals and are purported to be original patterns.

\*\*\*\*\*

CANADIAN SUBSCRIBERS - Please remember, when sending in your subscription, all checks and money orders from Canada must be marked "Payable in U.S. funds."

\*\*\*\*\*

It seems a lot of you do not know that we always notify you when your subscription expires. Your last issue is stamped across the Subscription Order Blank on the back page in red, "Your subscription expires with this issue." This issue is then mailed to you in an envelope and sent by first class mail. If you miss an issue, without having received this notification, please let us know, because it means that your mail isn't reaching you, and we will send you another copy.

\*\*\*\*\*