

**Studio**

**KNITTING MACHINE**

*"The Most Wanted Automatic Home Knitter"*

**NEWSLETTER**

SEPTEMBER/OCTOBER, 1982

VOLUME 165





FROM THE DESK OF JOHN ROBY . . . . .

The top of the knitting season is starting again as the kids are back in school. Summer vacations are over and everyone has their garden harvested and their flower beds put away for the winter. Studio has a lot of new machines and gadgets to offer to make your knitting more fun and profitable.

We have the new SR-120 Ribbing Attachment which fits all the old Bulky Eights and the SK-120 Knitting Machines. For heavy, double-knit garments, it can't be beat. Going the other way, we now have the new fine knit (7-gauge) FK-370 and the FRP-70 Ribber which is ideal for those high style, fine knit dresses, skirts, etc. The trend in styles seems to be going this year to the fine knit garments and this FK-370 really fits the bill as it has all the features of our SK-360 machine which includes the punch card patterns, knit contour, and numerous other features the Studio machines are known for. A special bonus - the FK-370 has 250 needles.

The new SK-560 Electronic Knitting Machine is fantastic with its computerized brain and card reader. The factory completely redesigned the electronics which is a great improvement over the first SK-500. The new SK-560 comes complete with the Lace Carriage which gives you the ability to make those gorgeous delicate knits so popular in fine garments today.

Studio's easy payment plan of one-third down and 12 months to pay the balance at only 12% interest allows anyone to afford a Studio machine. Our time payment plan can be arranged through any Studio dealer or direct from Seattle. New contract forms have been sent out to all of our customers. If you already have a late model Studio machine, then give the contract to one of your friends who would like to own a Studio machine and just have them fill out the contract and mail it to Seattle with their down payment. We will send them their machine immediately.

A lot of our knitters have been asking us to make up some good bargain specials on coned yarn for their knitting machines. With the cost involved today for labor, along with the high UPS, freight or postage cost which must be prepaid, along with the packaging involved, our study shows that a \$40.00 package is about the break-even amount we will have to get if we offer you these specials. Under separate cover a bulletin has been sent out to all "Newsletter" readers with our new retail price list, contracts, and the yarn specials for this month. If you all like these specials, we will continue to offer them in the coming season.

We have about 800 Studio Knitting Machine dealers across the U.S.A. and we are having a big drive among the dealers to get the guarantee cards mailed in to Studio, Seattle. If you find a guarantee card still with your machine that hasn't been mailed in, fill it out and mail it in today. It could mean thousands of dollars to your Studio dealers that we want you to support to the fullest.

\*\*\*\*\*

STUDIO SEMINARS - Verla Crisp, Village Yarn Shop sent in the following announcement. 4th ANNUAL BAY AREA KNITTING MACHINE SEMINAR  
October 2nd and 3rd, 1982, Red Coach Restaurant, Homestead and Wolfe Rs.,  
Cupertino, CA 95014. YARNS BOOKS DEMONSTRATIONS  
Richard Smith, Myrle Carrett, Stella Kotyluk, Tami, Yo  
Saturday 10:00-5:00 Registration and demonstration; 6:00-7:00 No Host  
cocktail party; 7:00 - Dinner and Style Show  
Sunday 10:00-4:00 Demonstrations and learning sessions  
For more information, phone Verla at (408)255-6233.  
Saturday and Sunday, Style Show & Dinner, \$18.00. Dinner and Style Show,  
\$15.00. Saturday or Sunday, \$3.00. (Continued to page 14)



## TO READERS:

This issue brings you an elegant blouson top and matching skirt using the Lace Carriage on the Model 360 knitter.

The following blouse and skirt pattern, shown on this issue's cover, are reproduced from "Knits for Joy" with permission of Silver Knitting Institute Tokyo, copyright holder 1978.

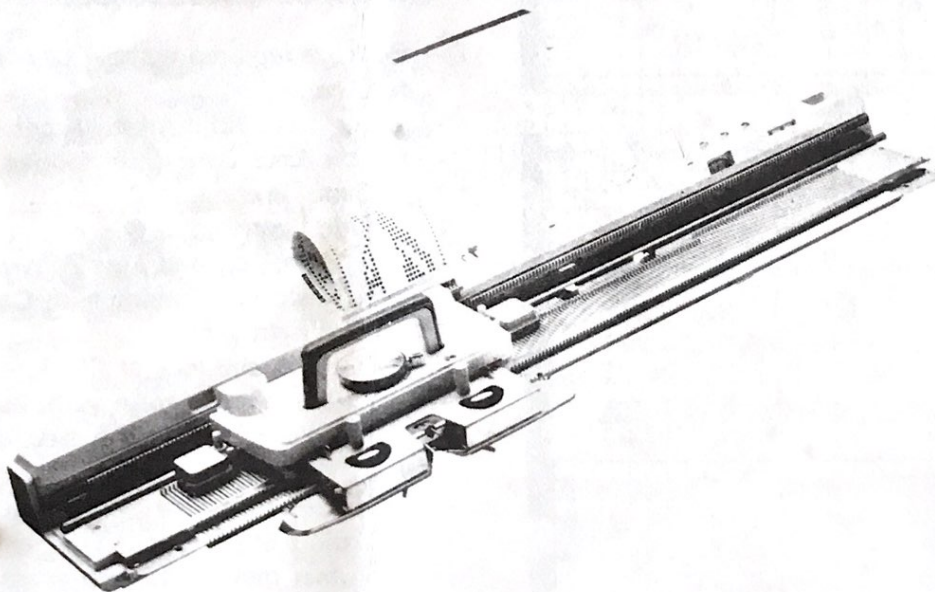
It looks like such an ideal outfit for this fall, we know many of you will want to start knitting right away.

## SYMBOLS/ABBREVIATIONS

- SD ① — SD stands for Stitch Dial and the figure in circle indicates Stitch Dial number.
- SD ③·· — Number and the dots indicate the position for Stitch Dial setting.
- pos. — position.
- st. (sts.) — stitch or stitches
- Nd. (Nds.) — needle or needles
- R.C. — Row Counter number
- CM — Card Memory number of Punch Card.

## MODEL 360 KNITTER WITH LACE CARRIAGE

A new addition to the line of popular knitting machines. Model 360 incorporates a knit contour unit and numerous other practical functions so that even beginners can knit easily. It allows a wide variety of knitting patterns. Adding an optional lace carriage makes it also possible to produce fine lace fabrics.



# Lady's Lacy Blouson Top and Skirt

Finished Measurements Size: cm.

	A	B	C	D
Bust	88	91	94	98
Waist	66	69	72	76
Hip	92	96	100	104
Skirt Length	63	65	67	70

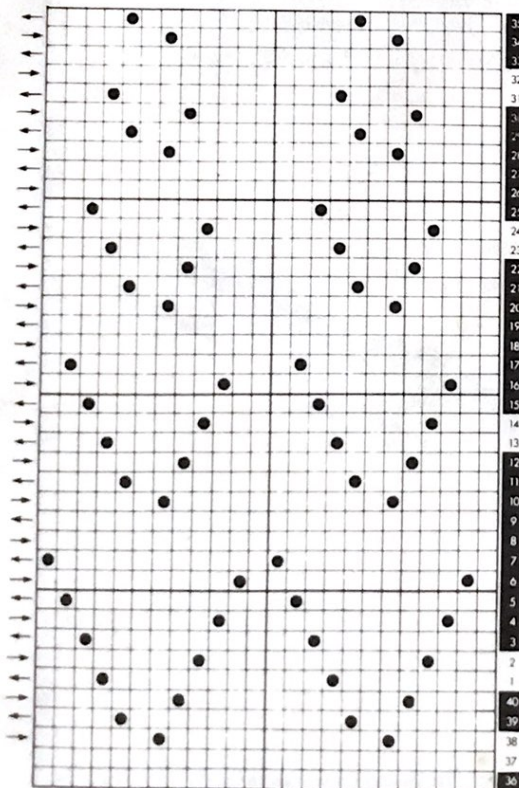
## Materials / others:

- 3-ply yarn { Top..... 290-380gs.  
Skirt..... 270-440gs.
- Elastic band..... 3cm. wide, 80-95cm. long
- Elastic thread..... 20-25cm. long (2 pieces)
- 2 wooden or plastic beads
- Model 360K/L Knitting Machine.

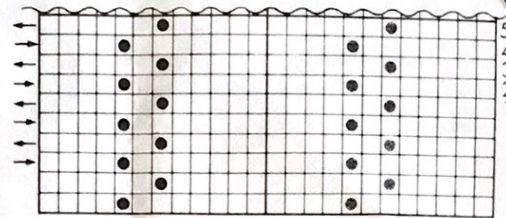
### Punch Cards

- Card A } Punch as shown below.
- Card B }
- Card No. L-6 (Accessory Card)

### Card A



### Card B

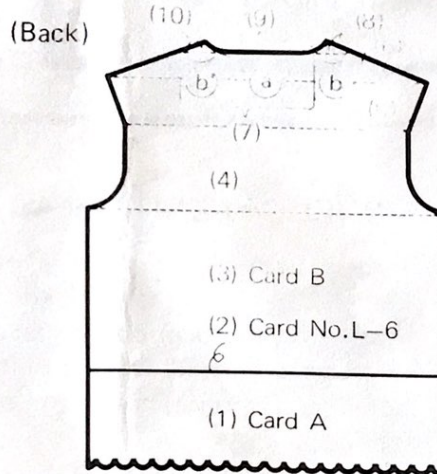


### Tension gauge:

33 sts. by 46 rows over the width of Plain Lace (Card B) with stitches in at ④.

## Blouson Top

### To knit



- (1) - Push up required number of Nds. to B pos.
  - Every other Nd. back to A pos.
  - Set the Lace Carriage as follows:  
Cam Lever.....  $\wedge$   
Side Levers.....  $\bullet$
  - SD ⑤, Cast on and knit 20 rows with waste yarn ending with Carriage at right side.
  - Set Card A and lock at CM 1.
  - Prepare 2 balls of main yarn, put each yarn through both side of Auto Tension.
  - One main yarn into Yarn Feeder ①, knit 1 row.
  - The other main yarn (extra yarn) into Yarn Feeder ①, knit 1 row with 2 yarns together.



- Break the extra yarn.
- Pick up loops from the first row of single main yarn and place them onto empty Nds.
- Hang Comb Weight with Claw Weights evenly along the waste knitting.
- (Edge Pins must be placed in pos.)
- Row Counter to 000.
- Referring to Operation Manual on page 57–58, work Fashion Lace until R.C. 048 (all sizes).

(2) Eyelets for draw string.

- Exchange Card A for Card No.L-6-A and lock at CM 1.
- Knit 2 rows in Stockinet. (Carriage at right side.)
- Set Carriage as follows:
  - Cam Lever..... ▲
  - Side Lever..... ▼ (left)
  - (right)
- Knit 1 row to left.

(3)– Exchange Card No.L-6 for Card B and lock at CM 1, knit 1 row to right.

- SD ④, Set Side Levers to ▼, release Card and knit up to beginning of armhole.

(4)– Shape both armholes by decreasing sts. following contour line. (The Edge Pins must be replaced following decreasing or increasing sts.)

(5)– Knit increasing 1 st. in fully fashioned method with 2 prong Transfer Tool on both sides following contour line.

(6)– At shoulder point, refer to Knitting Manual on page 26, work partial knitting by decreasing sts. to shape both shoulder up to back neck.

- Put yarn mark at centre of neck.

(7)– Push up Nds. in section (a) and (b') to D pos., with Ravel Cord, knit them back to A pos. (non working pos.) by hand.

- Mark the CM number on the Card, replace left Edge Pin to the right neck edge in pos.

(8)– Knit section (b) shaping neckline by decreasing sts., continue partial knitting at the shoulder side.

- Remove the section on waste knitting.
- Return the Card to marked CM number and lock it.

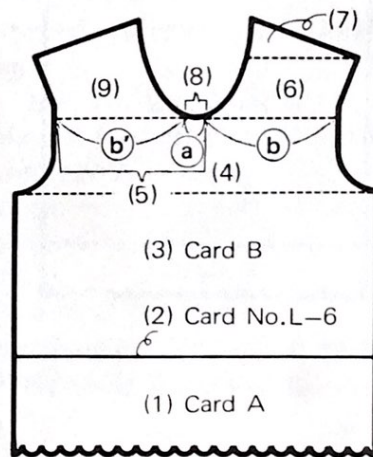
(9)– Remove section (a) on waste knitting.

*Carriage at the side to correspond with arrow mark on Card.*

(10)– Return the Pattern Paper to knit section (b').

- Unravel the Ravel Cord on section (b') and place back sts. in hooks.
- Replace both Edge Pins in pos.
- Release Card, work section (b') in the same manner as done for section (b), but reverse shaping.

(Front)



(1)–(4) – Work in the same manner as instructed in (1)–(4) for back.

(5)– At beginning of front neck, work section (a) and (b') in the same manner as instructed in (7) for back.

- Put yarn mark at centre of section (a).

(6)– Knit section (b) shaping neckline and armhole in the same manner as done for back.

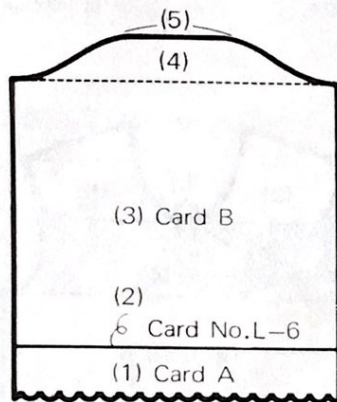
(7)– Referring to page 26 in Knitting Manual, work partial knitting by



decreasing sts. to shape shoulder while decreasing sts. at neck edge.

- Remove the section on waste knitting.
- (8)- Return Card to marked CM number and lock it.
- Remove section (a) on waste knitting.
- Carriage at the side to correspond with arrow mark on Card.*
- (9)- Return the Pattern Paper to knit section (b) .
- Release Card, work section (b) in the same manner as done for section (b) but reverse shaping.

(Sleeves) - both alike -



- (1)- Work in the same manner as instructed in (1) for back till R.C. 018.
- (2)-(3) - Work eyelets and knit up to beginning of Cap in Plain Lace.
- (4)- Work Cap Shaping by decreasing following contour line.
- (5)- Put yarn mark at Centre and Cast off with Tappet Tool.

(Collars) - both alike -

(Numbers in bracket refer to the sizes B, C and D)

- Push up 151 (155, 157, 163) Nds. to B pos.
- Every other Nd. back to A pos.
- Work scalloped edge in Fashion Lace

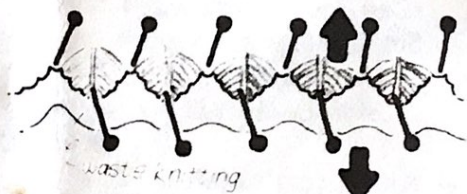
in the same manner as instructed (1) for back until R.C. 030.

- Transfer every other st. onto its adjacent Nds. along the row.
- Push back the empty Nds. to A pos.
- SD ③, knit 1 row in Stockinet.
- Transfer both end sts. onto its adjacent Nds. on st. and remove 74 (76, 77, 80) sts. on waste knitting.

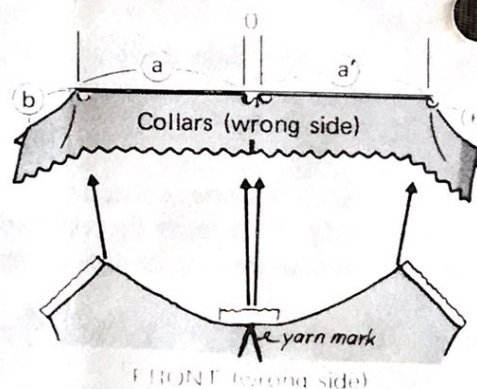
### To make up

- Block each pieces to size and press with steam iron, pulling the scalloped edge in arrowed direction.

#### Scalloped edge



(Join collars to front neckline)



- Push up 50 (51, 52, 53) Nds. to B pos. on left of centre (0).
- Pick up sts. of section a of a collar from the last row of main yarn with wrong side facing and place them onto Nds. in B pos., remaining 24 (25, 26, 27) sts. on section b .
- Hang section a' of the other collar on right side of centre(0) in the same manner as done for section a .
- With wrong side facing you, pick both ends of front neck edge sts. place them onto end Nds. holding sts. of collar.

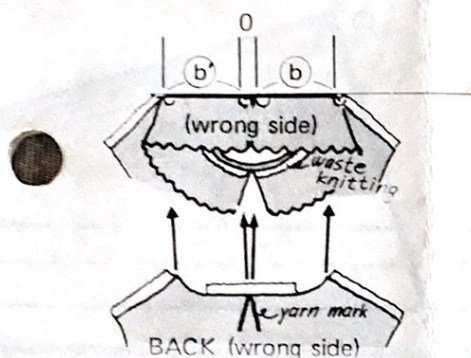


- Pick up sts. at the yarn mark and place them onto the centre Nds.
- Pick up sts. from the neck edge evenly and fill the corresponding Nds.

### Knit piping

- SD ⑥ on Main Carriage, knit 1 loose row.
- SD ③, knit 8-9 rows in Stockinet ending with Carriage at left.
- Pick up loops from the first loose row and place them onto corresponding Nds. in B pos.
- Knit 1 row on SD ⑥, knit 1 row on SD ⑩.
- Cast off with Tappet Tool or Automatic Linker.

(Join collar to back neckline)

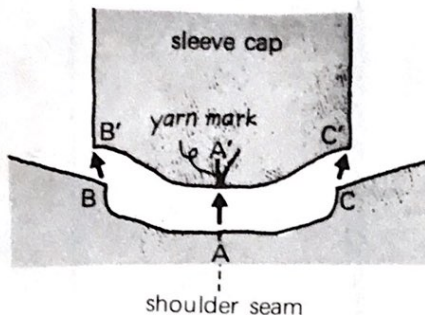


- Push up 48 (50, 52, 54) Nds. to B pos.
- With wrong side facing you, pick up sts. of section b' from below the waste knitting and place them onto Nds. in B pos. on left of centre(0).
- Hang section b on right of centre(0) in the same manner as done for left.
- Hang the back neck edge with wrong side facing you, in the same manner as done for front neck edge.
- Knit piping in the same manner as done for front neck.
- Unravel the waste knitting.

- Join both shoulder on the machine.
- Sew back collar seam with mattress stitch.

(Join sleeve to armhole)

- With right side facing each other, pin, matching A, B and C at armhole edge to A', B' and C' at top sleeve edge as shown below.



- Pin Armhole to sleeve at close intervals and work slip stitch with crochet hook or back stitch with Tapestry Needle.
- Join side seams and sleeve seams continuously with any method.
- Knit cord over 3 sts. and 150-180cm. long.
- Put the knitted cord through the eyelets at the waist and attach beads on both ends of cord.
- Put an elastic thread through the eyelets at the Sleeves and tie both ends.
- Give a final pressing.
- Remove waste knitting from below all scalloped edge.

### Details







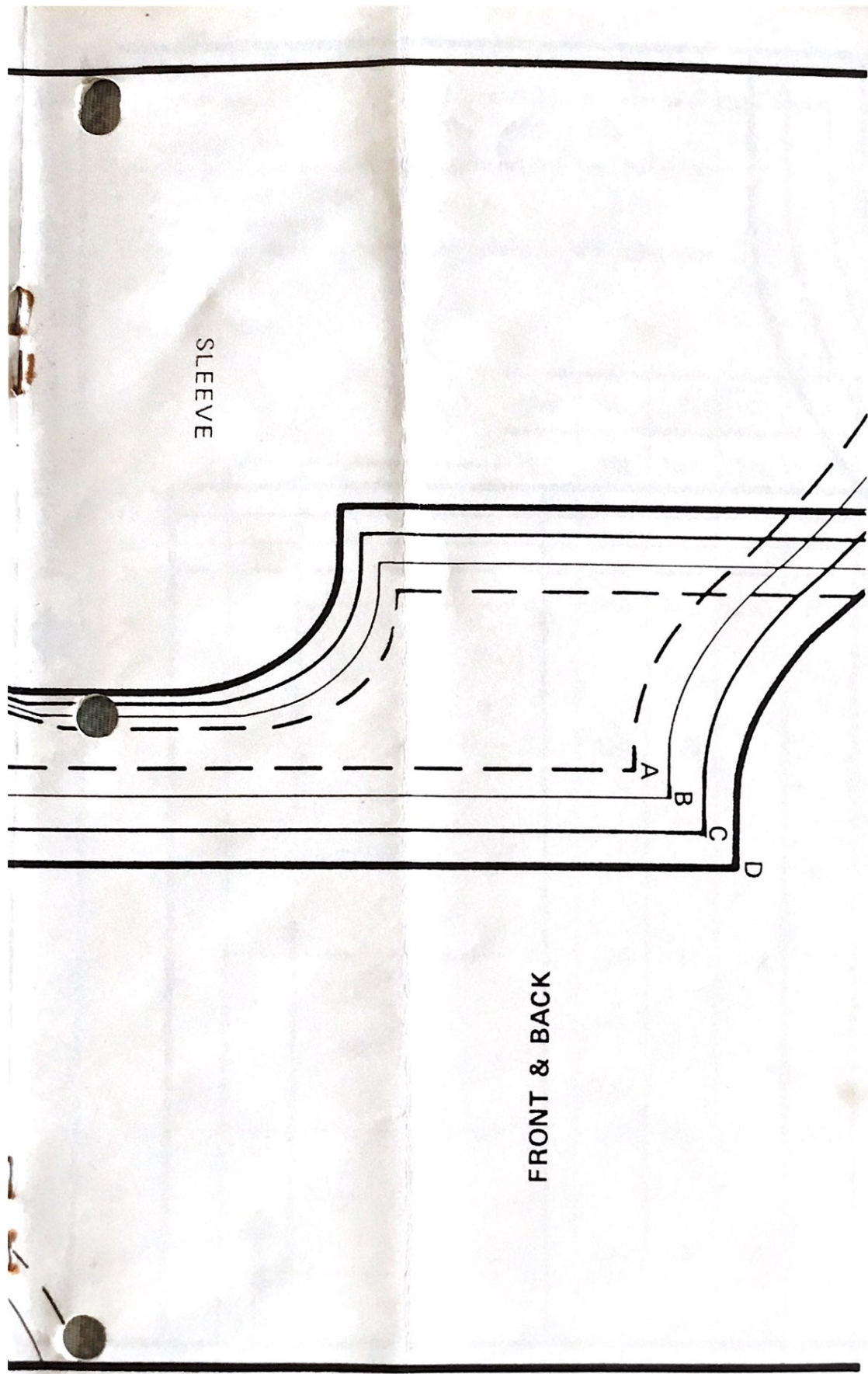
A  
B  
C  
D

D  
C  
B  
A

BACK

FRONT





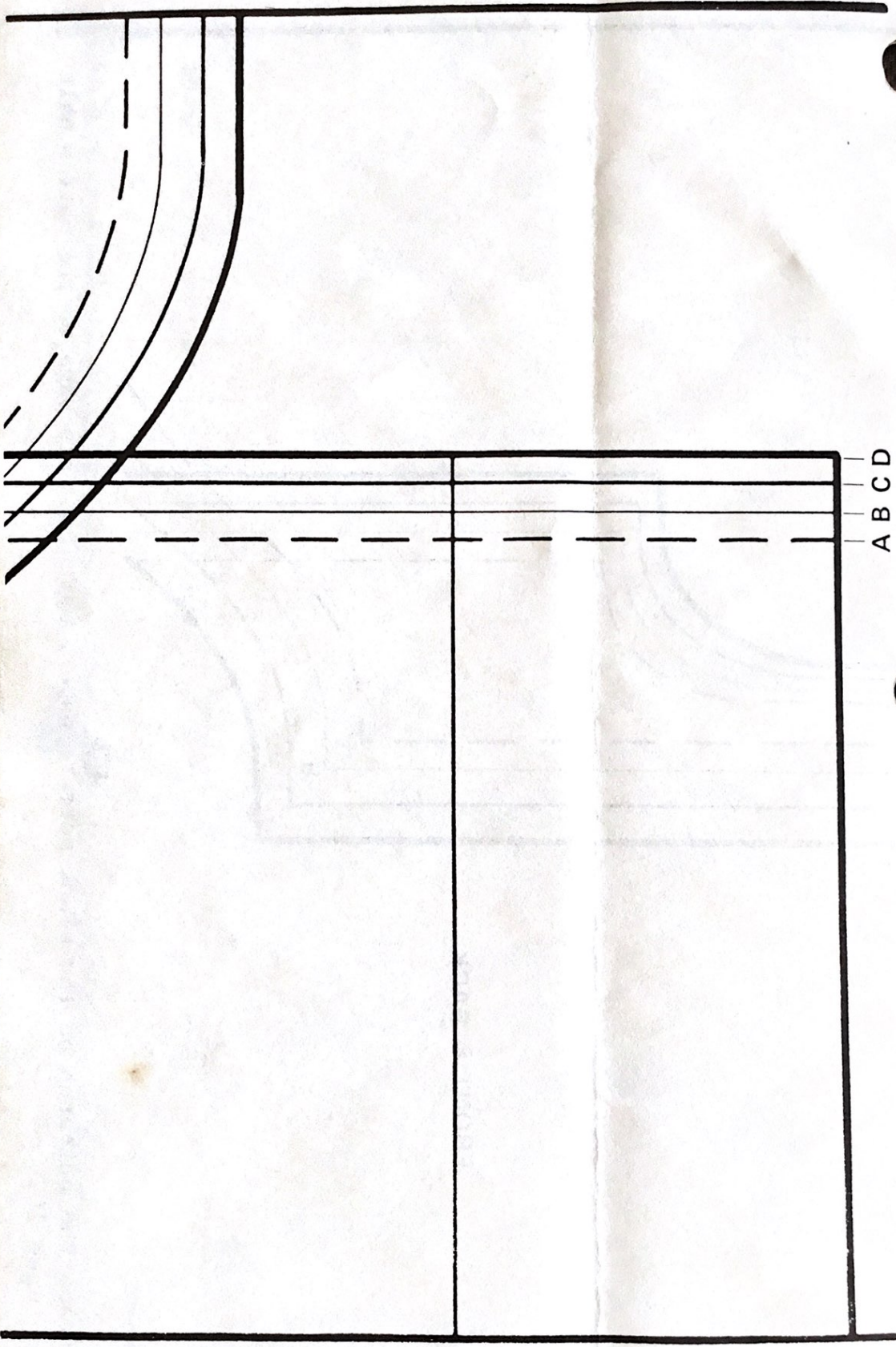
SLEEVE

FRONT & BACK



Trace the patterns on the blank pattern paper, matching this page to the bottom half on page 10.





Trace the patterns on the blank pattern paper, or set this paper in the  
Knit Contour. → Attach to bottom of blouse on page 9.



**To make up**

- Join side seam.
- Put elasticband through the waistband and sew both ends.
- Join waistband seams.
- Give final pressing.
- Remove the waste knitting from below the scalloped edge.

Directions for making Skirt are on page 12.

**Chart for Skirt**

Size	A	B	C	D
R.C.	290	300	310	320
SD 3				
R.C.	240	248	256	264
SD 3				
R.C.	190	196	202	208
(2) SD 4				
R.C.	120	124	128	132
SD 4				
R.C.	060	062	064	066
SD 4				
Card B				
R.C.	020	020	020	020
R.C.	018	018	018	018
(1) SD 5				
Card A				
R.C.	000	000	000	000
Number of sts.	198	138	144	152
Number of pieces	2	3	3	3



## Skirt

size A..... 2 pieces  
sizes B, C and D ..... 3 pieces

### To knit

(Numbers in bracket refer to the sizes B, C and D)

- (1) — Push up 198 (138, 144, 152) Nds. to B pos.
  - Every other Nd. back to A pos.
  - Work scalloped edge as instructed in (1) for back on page 2. (R.C. 018)
- (2) — Exchange Card A for Card B and lock at CM 1.
  - SD (4·0), knit 2 rows in Stockinet. (R.C. 020)
  - Set Carriage for Plain Lace, knit in Plain Lace throughout by adjusting SD following the chart on page 5 without decreasing sts.
  - Remove on waste knitting.
  - Knit required number of pieces in the same manner.
  - Block each pieces to size and press with steam iron.
  - Join 1 (2, 2, 2) side seams.

### (waistband)

- Push up 198 (103, 108, 114) Nds. to B pos.
- With wrong side facing you, pick up sts. from the last row of main knitting by placing 2 sts. onto a Nd. along the row.
- SD (5) on Main Carriage, knit 1 row from right to left in Stockinet.
- SD (3·0), knit 32 rows (all sizes) in Stockinet.
- Pick up loops from the first row of the waistband and place them onto corresponding Nds.
- SD (5), knit 1 row to right side, knit 1 row with SD (10) and cast off with Automatic Linker or Tappet Tool.
- For sizes B, C and D work the other waistband in the same way.

Gini Woodward, our Studio dealer in Bonners Ferry, ID, sent us this pattern which is her version of a currently popular skirt.

### SIDEWAYS PLEATED SKIRT

Made on a Studio

Yarn: Serreta, about 12-15 oz.

Tension No. 6

Gauge: 8 sts. = 1 inch  
4 pleats = 7 inches

Pattern Card #1

Length - 25"

Size 4 - 80 (vary with number of pleats) size 14 about 21 pleats, depending on fit you prefer.

Bring out 175 needles to knit (for 25" skirt, add or subtract 8 needles for each inch longer or shorter. Note you need to allow about 3 inches for drop on this skirt).

Hint, you will have an easier time keeping track of short-rowing if you will start with 85 sts. on left and 90 sts. on the right. Cast on with waste yarn and knit about 10 rows ending on right side. Transfer 13th needle from left end to the next needle and remove this needle from work. This will separate the waste band from the skirt. Insert punch card and lock on row #1.

With garment yarn knit 2 rows Tension 6 over all needles.



## Sideways Pleated Skirt

Carriage on right.

Begin pleat repeat as follows:

1. Put russell levers on 1 and bring first 13 needles with stitches to D position.

Knit one row to left.

2. Bring the next needle (14th) to D position. This makes an automatic wrap and prevents a hole in the knitting. Knit 1 row to right.

3. Bring next 19 adjacent needles to D position. Knit one row to left.

4. Repeat steps 2 and 3 until all needles are in D position with carriage on right.

5. With a 1x1 needle pusher return every other needle to C position. Reduce tension to 4 and knit to left.

6. Put russell levers on II and return to right, knitting all sts.

7. Raise tension to 6 and knit 2 rows all needles, carriage on right.

8. Bring all needles except last 19 needles on right to D position. Return russell levers to 1. Knit to

9. Wrap yarn under the next (20th) needle and back over the top of remaining needles to carriage. Push wrapped needle to C position. This again prevents a hole.

Knit to right.

10. Push next 19 needles to C position. Knit to left.

11. Repeat steps 9 and 10 until all needles are back in work. Carriage on left.

12. Knit 4 rows over all needles. Carriage on left.

13. Raise tension to 8. Set cam lever to tuck. Knit to right.

14. Return cam lever to stockinette. Lower tension to 6. Knit 8 rows over all stitches.

Carriage on right.

This completes one pleat repeat (say that fast a few times!). Repeat steps 1-14 until desired number of pleats are completed. On last repeat knit 5 rows instead of 8 over all stitches.

Take off on waste yarn leaving long strand of yarn to sew seam.

FINISHING: Kitchener stitch side seam. Turn down casing and sew in

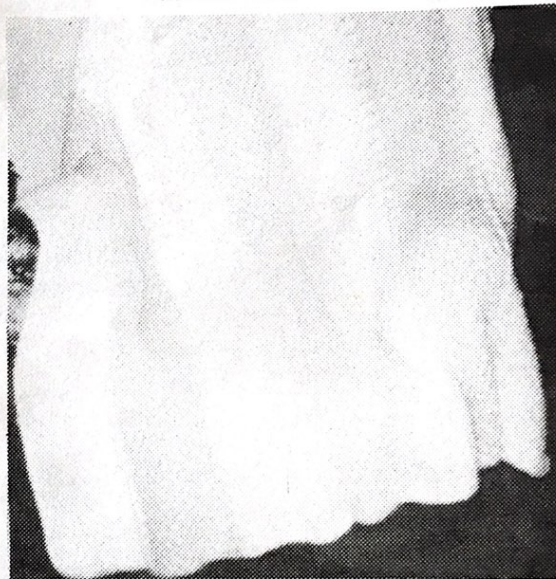
place leaving opening to insert 3/4" elastic. Fit to waist and close up.

BLOCKING: At this point, you have something huge and ugly, and you think I am crazy and you got a bad pattern, but don't give up yet. Turn your skirt inside out and carefully steam, removing curl at the bottom...don't stretch out of shape.

Turn right side out and block pleats one at a time. The large tension row forms an outer pleat and the tight row forms the inner pleat. Take plenty of time on this step to assure a professional finish.

VARIATIONS: Try a picot row on the large tension row, or how about some lace or fair isle on the straight rows. Just make a swatch and adapt the pattern to your gauge. Have fun, knit a dozen!!!

\*\*\*\*\*



Noreen Drake in Eugene, OR, sent us this pattern for this beautiful

### AFGHAN

Made on a Studio

62 x 67 inches, each panel is 9 x 67 inches.

Made with Dazzle Aire yarn, worsted weight. 3-3/4 oz. per panel.

Make 7 panels, 4 main color and 3 contrasting color.

Tension No. 10

(Continued to next page)

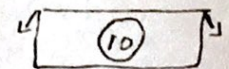


STUDIO SEMINAR

Sponsored by Bonnie Triola, Bonnie's Knitting Machines, Fairview, PA. This Studio Seminar will be held October 29 and 30, 1982, at Holiday Inn South, I-90 and Rt. 97, Erie, PA 16509, phone (814)864-4911. There will be top demonstrators, plus local talent. Banquet and fashion show, Friday night, 7:00 p.m. Deadline for special room rates is October 15, 1982, single \$37, double \$44. Make room reservations through Holiday Inn. Make seminar and banquet reservations through Bonnie, whose phone number is (814)474-3554.

\*\*\*\*\*

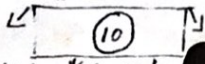
Afghan (Continued from page 13)

With carriage on right,  bring needles to D position.

46 - 43 - 37 - 31 - 25 - 19 - 13 - 7 - 1 - 0 - 6 - 12 - 18 - 24 - 30 - 36  
42 - 45

Put separators on each end of working needles. Hang cast-on comb and weights as soon as possible to prevent floating stitches. I found out I could do it after 3 rows were knit.

E-wrap needles and knit 3 rows stockinette. \*Row 4, with carriage

 bring needles 37 - 25 - 13 - 1 - 0 - 12 - 24 - 36 - to C position, knit 4 rows. (Be sure needles 46 and 43 left and 42 and 45 right are always in B position.

Row 8, Push needles in D position to C position, and bring needles

31 - 19 - 7 - 0 - 6 - 18 - 30 - to D position and knit 4 rows. \*\* Repeat from \* to \*\*, to Row 439. Put claw weights on edges as needed to prevent floating stitches. Row 440, put all needles in C position, knit 2 rows stockinette and bind off very, very loosely, leaving one stitch each side to rip for joining panels.

Join panels by ripping 4 stitches at a time, as for Hairpin Lace.

NOTE: This is a hand picked pattern and takes a little time, but it is well worth it.

\*\*\*\*\*

Evelyn Wolfgram, our Studio dealer in Grand Forks, ND, sent in the following poem which her knitting student, Thelma Dailey, Red Lake Falls, MN, wrote.

"My knitting machine is a hungry thing,  
It eats up my yarn, like everything.  
It turns out a cap, a scarf or sweater,  
Whatever it is, I wish it were better.  
  
Evie has facts, well worth knowing,  
So keep your eye on what she is showing.  
Then keep your eye on what you are knitting,  
And all your garments will be fitting."

\*\*\*\*\*