

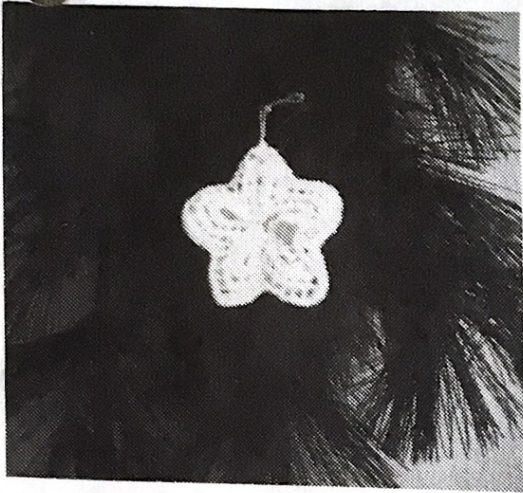
From the desks of

The Studio Yarn Farm Staff

Merry Christmas



A Happy and Prosperous New Year



Pictured on the cover of this issue is a Christmas star sent to us from Gerda Landis, our Studio dealer in Talbott, TN.

Gerda writes that while using L Card 393 she came upon the idea for the star by accident. By using different needle set-ups, various sizes and loops of 5-point stars can be knit. The picture shows her 24-needle star.

DIRECTIONS FOR 5-POINT STAR

Knit on a Studio SK-360 - Lace Carriage Card No.393.

Gauge - Unimportant

Tension number according to yarn used.

Takes small amount of yarn.

Needle set-up for different stars:

24 st. x - x	} 1st needle of star start on ◊
19 st. ◊	
16 st. ◊	
14 st. ◊	
12 st. ◊	

1. Push up required number of needles. Knit several rows of waste yarn. Knit 1 row of ravel cord

2. Put card No. 393 in machine. RC 000 Lock card.

3. Knit 1 row stockinette with main yarn.

4. Start card, knit 101 rows. (5 points).

5. Turn with Garter Bar.
6. Hang cast-on edge, pull stitches through from end, bind off.
7. Pull into star shape.
8. Tack points in center.

(Note: Pattern Card No. 393 is included in Punch Card Series #63 for use with the SK-360 and Lace Carriage.)

Patterns and pictures on pages 4 to 10 are reproduced from "Knits for Joy" with permission of the Silver Knitting Institute, Tokyo, copyright holder 1978.

These patterns seem quite appropriate for holiday gift knitting as well as for your own use.

SYMBOLS/ ABBREVIATIONS

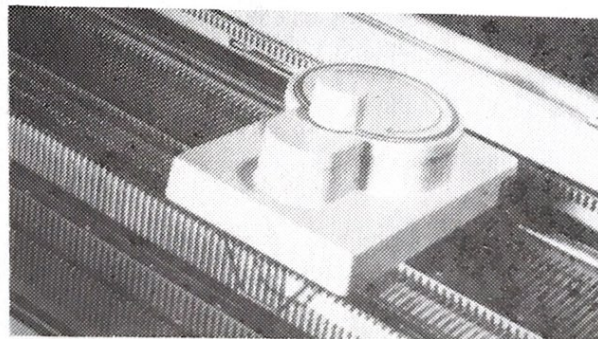
SD	- SD stands for Stitch Dial and the figure in circle indicates Stitch Dial number.
Col.A (Col.B)	- identifies colour of each yarn.
pos.	- position
st.(sts.)	- stitch or stitches
Nds.(Nds.)	- needle or needles
CM	- Card Memory Number of Punch Card.



RIB TRANSFER CARRIAGE RT-1

Great help for knitting enthusiasts!!

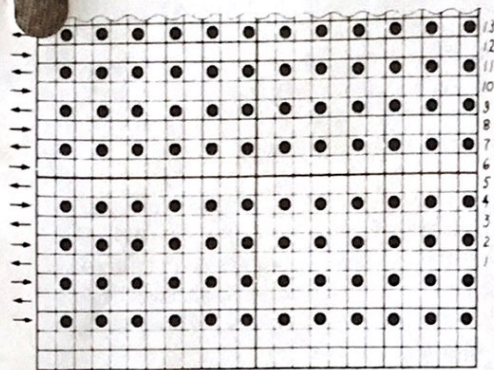
Transferring stitches from ribber onto knitter is no more a time-consuming job. Place the Rib Transfer Carriage, when ribbing is finished, and turn the Crank Handle Knob in clockwise direction, the stitches on the ribbers are transferred onto the confronting knitter needles one by one.



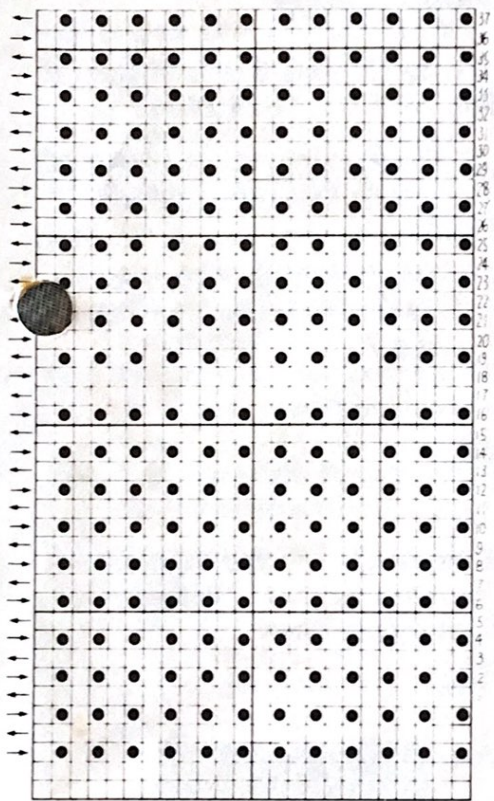
Knits for Joy



Card A



Card B



COASTER

Materials / others:

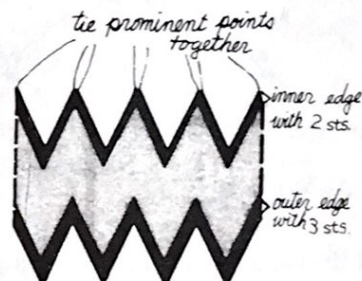
- Fine cotton thread..... 30gs.
 (for 6 pieces)
 P. Card A..... Punch as shown
 above.

To knit

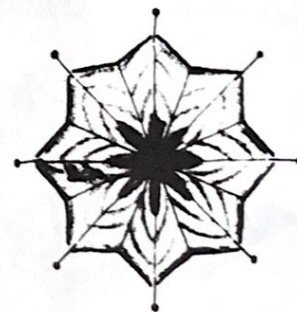
- Set up Model 360/260
 - Set the Lace Carriage as follows:
 Cam Lever..... \wedge
 Side Levers..... \bullet
 - Set Punch Card A and lock it at CM1.
 - Cast on 10 sts. using waste yarn and knit 20-30 rows.
 - Carriage at the right side and set Side Levers to ∇ .
 - Release the card and thread the main yarn into Yarn Feeder.
 - SD ③, knit 145 rows in Plain Lace and remove the fabric on waste knitting.
- 8 zigzag patterns have been completed.

To make up

- Join both ends on the machine, picking up sts. so as to face the right side inside.
- Using Tapestry Needle with main yarn, pick up 2 loops together at each prominent point, draw up and fasten off.



- Block out to size and press with steam iron.



DOILY

Materials/others:

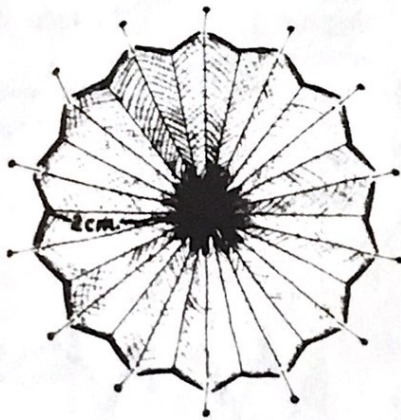
Fine cotton thread..... 30gs.

Punch Card B Punch as shown
on page 5.

To knit and make up

Knit in the same manner as done for coaster.

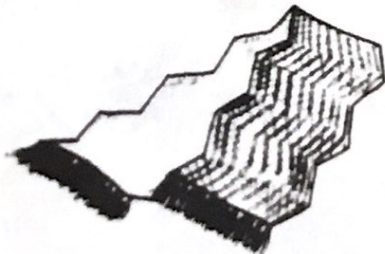
- Cast on 40 sts. and knit 589 rows in Plain Lace, using Card B.
14 zigzag patterns have been completed.
- Make up in the same manner as done for coaster.
- Block out to size and press with steam iron.



SHAWL

With Card A or B, knit shawl in the same manner as done for doily.

- Cast on the required number of sts. and knit as long as desired in Plain Lace.
- Make fringes on both ends of the shawl.



Child's Vest and Pochette

This is sized for a child of 3 - 4 years old.

Materials/others:

4 ply wool

Col. A 120gs.

Col. B 20gs.

Col. C 20gs.

Punch Card C Punch as shown
on page 7.

Tension Gauge:

29 sts. by 36 rows over a swatch of STOCKINET with Stitch Dial at ⑧.

29 sts. by 68 rows over a swatch of SLIP STITCH PATTERN with Stitch Dial at ⑧.

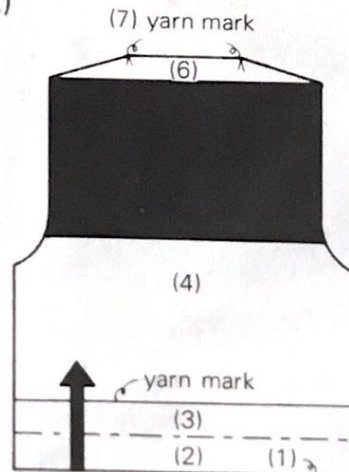
N.B. Knit Slip Stitch Pattern following the instruction in stpe (5) on page 7

VEST

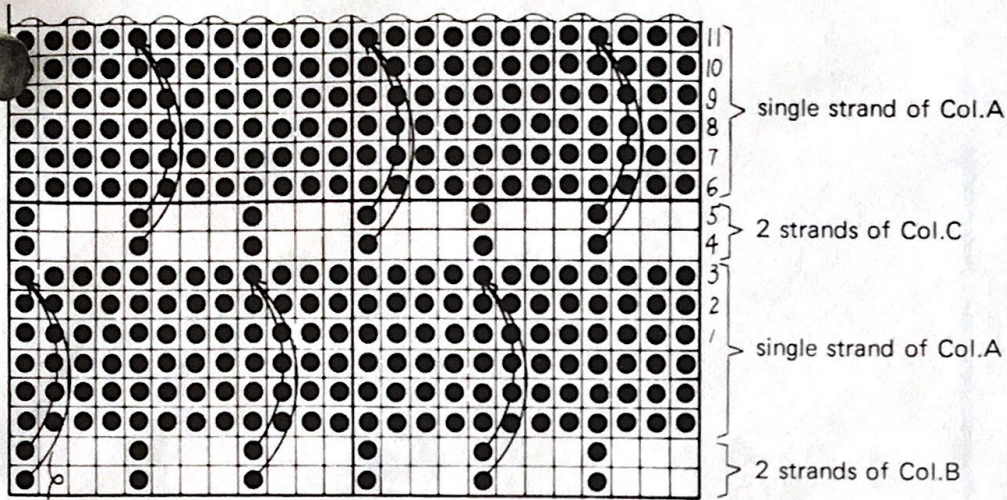
To knit

Knit the back, fronts and bands following the patterns given on pages 8 - 9 and instructions below.

(back)



Card C



Pick up 2 needle loops together and place them onto corresponding Nds.

—Set Punch Card and lock at CM1.

- (1) — Bring out the required number of Nds. to D pos., and cast on by winding method using Col.A.
- (2) — SD ⑦, knit up to the folding line in Stockinet with Col.A.
- (3) — SD ⑧, knit up to the joining line and put yarn mark through the row with a Tapestry Needle using a contrast yarn.
- (4) — Following the contour line, shape armhole by decreasing sts. on both sides.
- (5) — Knit Slip Stitch Pattern following the instructions below.
 - ① Release Card and Set the Carriage as follows.
 Cam Lever.....SLIP
 Side Levers.....▼
 - ② Knit 2 rows with 2 strands of Col.B.
 - ③ Knit 6 rows with single strand of Col.A.
 - ④ Following the diagram above, pick up 2 needle loops together and place them onto corresponding Nds. to have honeycomb smocking pattern.
 - ⑤ Knit 2 rows with 2 strands of Col.C.
 - ⑥ Knit 6 rows with single strand of Col.A.

- ⑦ Pick up 2 needle loops together and place them onto the corresponding Nds. following the diagram.

— Repeat the procedure ② — ⑦.

- (6) — Set the Carriage as follows.

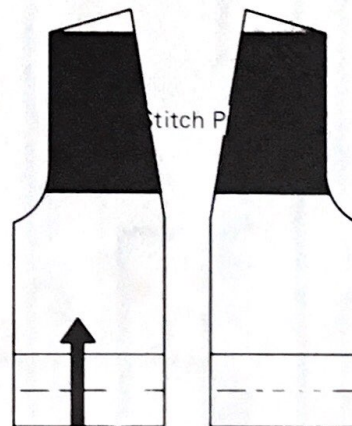
Cam Lever..... STOCKINET
 Side Levers.....▼
 Russel Levers..... I

— Lock Punch Card at CM1.

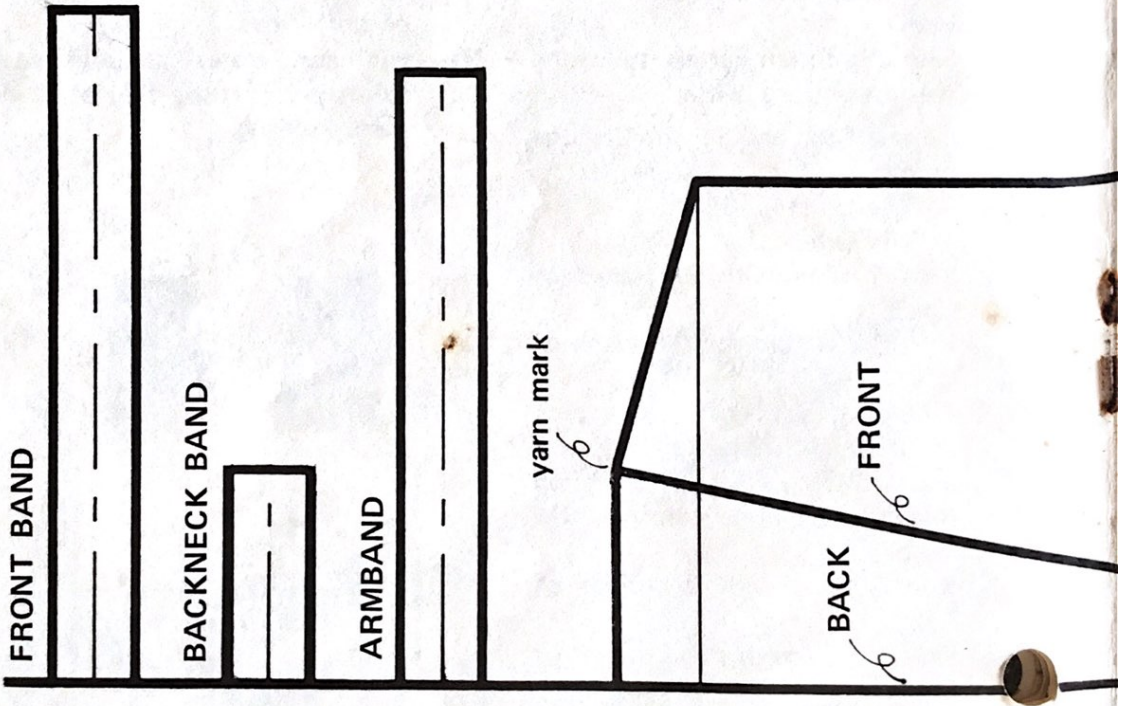
— With Col.A, work partial knitting by decreasing to shape shoulder on both sides.

- (7) — Put yarn marks at both neck points and remove the fabric on waste knitting.

(fronts)



(Continued to page 10.)



FRONT & BACK

Joining line
(yarn mark)

Folding line

* Put yarn mark through the joining row with a Tapestry Needle using a contrast yarn.



Trace the patterns on the blank pattern paper, or set this paper in the
Knit Contour

VEST (Continued)

- Knit fronts in the same manner as for back but for shaping front neckline by decreasing sts. at the edge.
- Knit right front and left front alike but reverse shapings.

(armbands)

- Block out each piece to size and press with steam iron.
- Join both shoulder on the machine.
- Bring out the required number of Nds. for armband to B pos.
- With wrong side facing, pick up sts. evenly from armhole edge and place them onto the Nds. in B pos.
- SD ⑥, knit up straight.
- Pick up loops from the first row knitted for armband and place them onto the corresponding Nds.
- SD ⑩, knit 1 row and cast off with a Tappet Tool or Automatic Linker.

(front and neck bands)

- Turn hem at lower edge to wrong side and slipstitch in place.
- Work front and neck bands in the same manner as for armband.

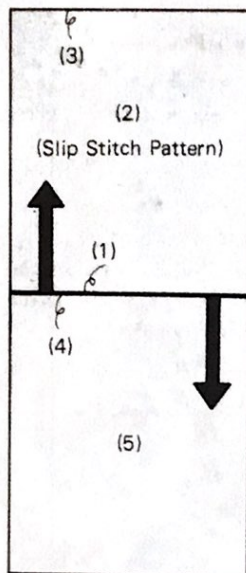
To make up

- Join both side seams and band seams with blind stitch.
- Make fringes of 5cm. long along the first row of Slip Stitch Pattern on the fronts.
- Give final pressing.



POCHETTE

To knit

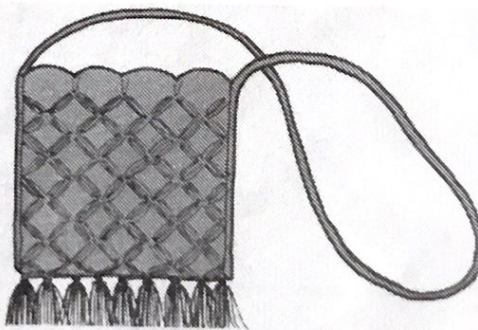


- (1)- SD ⑧, cast on 35 sts. with waste yarn and knit several rows.
- (2)- Carriage at left and set it as follows:
Cam Lever.....
STOCKINET
Side Levers.....▼
- (3)- Set Punch Card and lock it at CM1.
- (4)- With single strand of Col.A, knit 1 row.
- (5)- Cam Lever to slip Stitch, knit 72 rows in Slip Stitch, working honey-comb smocking pattern in the same manner as for the Vest.
- (3)- Knit 2 rows in Stockinet with single strand of Col.A.

- SD ⑩, knit 1 row and cast off with a Tappet Tool or Automatic Linker.
- (4)- Pick up sts. from the first row with its purl side facing and put the sts. back onto machine.
- (5)- Knit and cast off in the same manner in steps (2), (3).

To make up

- Join side seams.
- With 2 strands of Col.A, knit a cord of 4 sts. for 100cm. long.
- Stitch down the cord on both side seams.
- Put fringes of 4cm. long on the bottom of pochette.



Faye Wood, Green Bay, WI, sent us this timely pattern for -

LEAF TIME - CHRISTMAS CHERRIES -
ORNAMENT

Materials: 2/12 Yarn - Small amounts of Red, Green, White & Pink or Yellow Cotton Balls for stuffing
"The Knittery" punch card (B or K)
#20 Ruffles & Flourishes

Gauge: Not important

Tension: As per directions

CHERRIES: (Make 2) Red Yarn.

*NOTE: For the first few rows watch carefully that every stitch knits, if not, work it manually.

T #3 - Carriage at the right. RC 000. Bring 10 needles all the way forward. "e" wrap cast-on. Knit 1 row. Set Hold Position lever(s).

*Bring 3 sts. at right side to H.P. Knit 1 row, manually wrap inside H.P. needle. Bring 3 sts. at left side to H.P. Knit 1 row, manually wrap inside H.P. needle. To the right of 4 center sts. in W.P. with your thumb push 2 needles back to yarn receiving position. Knit 1 row. Bring 1 needle (next to the 1 right side H.P. needle) back out to H.P. Now push 2 needles on the left of center 5 sts. back to yarn receiving position. Knit 1 row. Bring 1 needle (next to the 1 left side H.P. needle) back out to H.P. Repeat pushing 2 needles to yarn receiving position. Knit 1 row and bring 1 needle back out to H.P. until you are down to 1 needle each side. Push 1 of these at a time, to yarn receiving position and Knit 1 row. Knit 1 row over all needles. *RC reads 10. Carriage at the right. Repeat "short rows" - 2 more times, always opposite the carriage. RC reads 28. Latch tool Bind Off, around gate pegs rather tightly. Break yarn tail about 12".

FINISHING: Thread yarn tail into double eye ribber tool. Weave into every other stitch (along actual side of knitting) draw up tight. Tack, then sew seam. (Cast On & Bound Off stitches together) overcast about half way up, stuff in 1 cotton ball, finish seaming. At this end, weave into

every other stitch, draw up tight, tack, run yarn tail out the side and cut off.

STEM: (Make 1) Green Yarn. Set up for cord knitting on your machine. T. #2. "e" wrap Cast On 3 sts. RC 000.

Knit 30 rows (on counter).

Take hold of cord with your finger and thumb, close to gate pegs (for a marking row).

Knit 20 rows.

Pick up center stitch from row where you held on, hang this stitch onto center needle.

Knit 20 rows. Break yarn tail 8" and thread into double eye ribber tool.

Bring needles with sts. all the way forward and using threaded tool take off each stitch, pull tight. Tack each stem end, to a cherry.

LEAF: (Make 1) Green Yarn. T. #3. Open Cast On 3 sts. Carriage at the right. RC 000. With Green Yarn - Knit 1 row. Increase by "e" wrap method (1 needle brought all the way forward on carriage side, wrap yarn around) each row until there are 7 sts. working. Knit 6 rows even. On carriage side decrease 1 edge stitch each row until 3 sts. remain in W.P. Knit 1 row even. RC reads 16. Repeat Increases - 6 rows even - Decreases. Knit 1 row even. Hang open Cast On sts. on corresponding 3 needles. Don't remove ravel cord and waste yarn. Knit 1 row. Repeat Inc.'s - 6 rows even - Dec's, 2 more times. Pick up same C.O. sts. Bring needles all the way forward. Bind off tightly through both sts. on needle. Leave yarn tail 36" for crochet.

FINISHING: Slip stitch crochet (with machine crochet hook) all around double leaf. Tack to stem just below loop.

FLOWER PETALS: (Make 1) White Yarn. T. #3.

"The Knittery" card (B or K) #20, Use Single Ruffle Variation: 5 needles working. RC 000. Carriage at left, backward "e" wrap, set machine to brain, Knit 1 row. Release card. Knit until RC reads

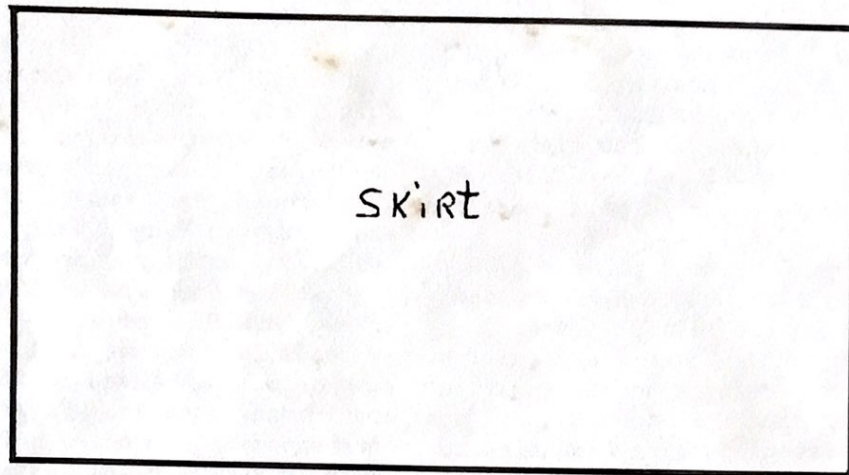
(Continued)

Christmas Cherries (Continued)

56, stop card. Knit 1 row. Break yarn, remove sts. onto threaded ribber tool, draw tight and fasten both ends of petals together.

FLOWER CENTER: Your Choice! Pink or Yellow Yarn. Make either a 1/4" pom-pom (wind 20 times) or crochet in center of flower with Single Crochet. Tack flower to center of leaves in a couple of places. Attach an ornament hook, in top of stem loop.

Noreen Drake, Eugene, OR, sent in an assortment of Barbie Doll clothes. Unfortunately we don't have room to print them all in this issue, but will continue in the January "Newsletter". Noreen made these on a Studio SK-322 with Ribber. Patterns are 1/2 size and ready to be transferred to contour paper. All are cast on by E-wrapping. Instead of hems, she found that turning one or two rows at the start with Garter Bar makes a nice edge that does not roll.



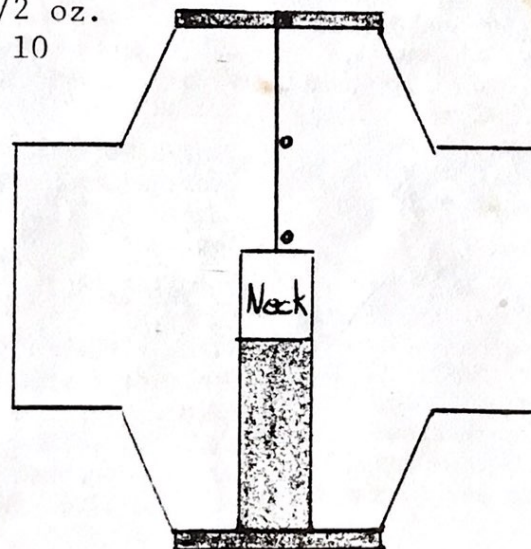
DRESS - with contrasting waistband and bib front.

Sports yarn

Less than 1/2 oz.

Tension No. 10

(25 x 40)



Top

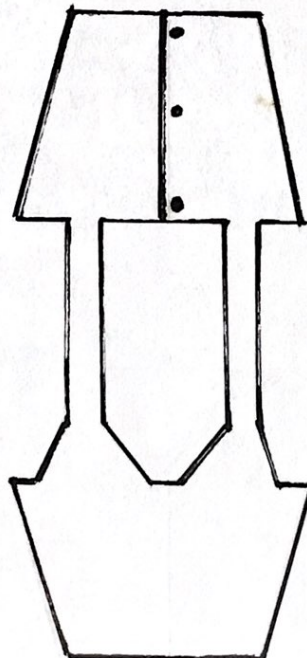


DRESSES: Knit the top first and take off on scrap yarn. Then knit skirt, taking off on scrap after last row is knit and rehang on the number of waist stitches, knit one row and hang top and bind off on machine. Sew up sides and attach snaps to back opening.

skirt

DRESS - with full skirt.

1/2 oz. sports yarn
Tension No. 8
(27 x 40)



Top

STUDIO DEALERS

Anna D. Valles announces the opening of her new business "A & R Knitting Supplies", centrally located in Pico Rivera, CA. She will carry Studio Knitting Machines, accessories, coned yarns, lessons and classes. By appointment only. Please call (213)949-6030.

Phalice's Thread Web in Spokane, WA, announces that Gini Woodward will be there every Friday, 10:00 to 5:00, for instruction on the knitting machines. Phone 624-3423 for further information.

Lucy's Knits has moved to the Southbriar Shopping Center in Sylvania, OH. Hours: Mon. - Thurs. 10 - 5. Friday 10 - 7. Sat. 10 - 5. She offers Studio Knitting Machines, lessons, supplies, custom knits; plus a variety of cone yarns, patterns, books and designs. Phone (419)882-5880.

Erma Jeanne Argyle, Provo, UT, designed this draft dodger which makes a marvelous toy when he isn't guarding the door.

DRAFT DODGER

Yarn: 1-1/2 to 2 oz. 2/12, 3/15 or similar, plus a few yards red.

Gauge: 6 sts. and 8 rows = 1 inch. Tension: No. 10 Size: About 36"

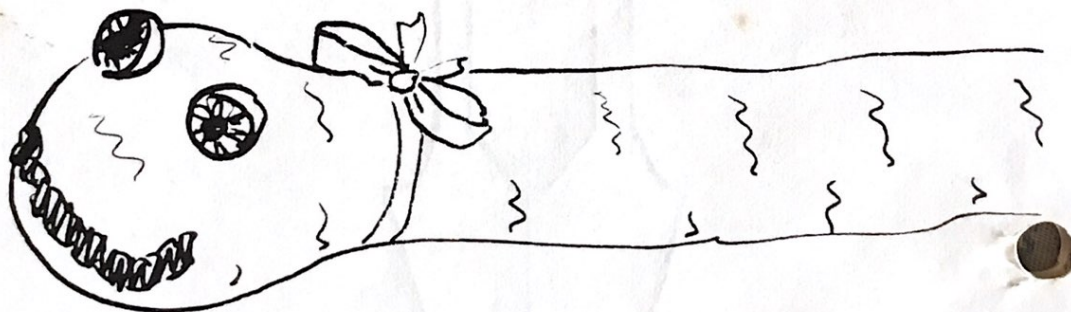
Cast on with scrap, 20 sts. on main bed and 20 on ribber. Knit several rows at Ten. 10/10, circular. (Machine settings are those used for the two rows of cast-on immediately following the initial zig-zag row. The only setting you change is the tension. You may prefer to increase gradually as you knit the scrap.)

Change to main yarn, leaving end 18" long. Knit 600 rows (300 complete circles). Using red, bind off loosely around the circle; or take off on scrap and crochet into loops with red.

If you do not have a ribber: Instead of a tube, make a straight piece and seam it. Cast on 40 sts., knit 300 rows at Ten. 10. Bind off with red and sew seam with main color.

Finishing: Gather sts. at beginning (tail) end, fasten securely. Sew, glue or embroider eyes near red "mouth". Stuff through mouth - you'll want a stuffing material somewhat heavier than poly filling, perhaps old nylons or even marbles. He needs to stay put to keep the drafts out. Tie a ribbon around his neck and put extra stuffing in his head. Sew the mouth closed, forming it upwards into a smile.

I used ombre limes to produce a striped effect, with moving plastic "frog" eyes from a craft store. It doesn't matter that the stuffing makes him lumpy. And the grandchildren love him!



Studio

KNITTING MACHINE

"The Most Wanted Automatic Home Knitter"

NEWSLETTER

NOVEMBER/DECEMBER, 1982

VOLUME 166

