

*Studio*

KNITTING MACHINE

*"The Most Wanted Automatic Home Knitter"*

NEWSLETTER

MARCH/APRIL, 1983

VOLUME 168



FROM THE DESK OF DAVE BRATZ . . . . .

Spring is popping out all over with crocus and flowering crab trees in full bloom. Of the four seasons, spring has to be my favorite. I am sure this is much more understood when you are standing up to your knees in a snowbank as some of you have been this past winter.

I find it rather amusing to page through various magazines of knitwear items or read editorials predicting the upcoming styles and colors for a coming season. One will emphatically refer to bright and vivid colors and another will be subdued, darker tones. I hate to be the one accused of saying it, but I sometimes can't help but feel it all depends on what colors are still in large quantities in our warehouses. One thing is certain, however, the hemlines can be anywhere they happen to end; short, medium or long. So you don't have to worry too much if you run out of yarn or you have too much, when it is all used up, the length will be okay. In skimming through some of the Japanese knitting magazines, it is obvious you don't have to worry much about the hemline being the same length in front or back either. By the time you digest all of this, the only thing that matters is that it is "knit". The popularity of knits continues to grow each year, for which we are most thankful.

In the new item category we do have a brand new model Super Bulky Knitter. It is an extra wide 11 m.m. needle spacing, thus the name "Super Bulky 11". The standard Studio Bulky is 8 m.m. which accounted for Bulky Eight. The basic configuration is about the same as the regular Bulky except the needle spacing is further apart, the needles, of course, are larger, and the sinkers are like a peg - no bar across the top. As mentioned in the beginning, the model is brand new and may not yet be at your dealer's shop. If interested, ask about it or watch for it at seminars, workshops etc. Retail Price - \$299.95.

Happy Knitting!!!!!!!!!!

\*\*\*\*\*

FASHION SHOWS AND WORKSHOPS

Phalice's Thread Web, Studio dealers in Spokane, Washington, will be sponsoring a fashion show at the Ivy Restaurant in Spokane, WA, on April 23rd, 1983, at noon. Gini Woodward from Bonners Ferry, ID, will be giving a demonstration on the Studio SK-360 Lace Machine. Call Phalice's Thread Web for details - 624-3423.

\*\*\*\*\*

"FOCUS ON OLYMPICS" - By Amimono Club - sponsored by Mary Nishizaki, Studio dealer in Montebello, CA. PLACE: Montebello Country Club  
TIME: April 24, 1983, Sunday - 9:30 AM to 11:30 AM, Demonstration - 12:00 noon, Luncheon and Fashion Show. PROCEEDS to: Special Olympics (Handicapped). Donation: \$15.00. Call or write for tickets: Mary Nishizaki, Montebello, CA, phone (213)723-7017.

\*\*\*\*\*

MARK YOUR CALENDARS NOW FOR ALDEA'S SPRING SEMINAR, Friday & Saturday, April 22 and 23, 1983. Place: At Aldea's "Remodeled" Shop in Anaheim, CA, phone (714)870-4184. Time: Doors open 9:30 a.m. Demonstrations begin Friday at 10:00 a.m. to 5:00 p.m. Saturday 10:00 a.m. to 4:00 p.m. Fashion Show - Friday at 7:00 p.m. Tickets: \$2.50 per day - includes free Fashion Show Friday evening. This is just off the 91 Freeway - 1½ blocks East of Harbor (between Lemon & Raymond). Basics to advanced for all machine and would be machine knitters. Most knowledgeable and courteous demonstrators you could ask for. Well worth your time. Many new techniques. Lots of door prizes. Sales - sales - sales!!!! Come one, come

Get ready for spring and summer in this Lady's Polo Shirt and Mini Pleated Skirt, pictured on the cover, which are reproduced from "Knits for Joy" with permission of Silver Knitting Institute, Tokyo, copyright holder 1978.

### SYMBOLS / ABBREVIATIONS

- SD ① — SD stands for Stitch Dial and the figure in circle indicates Stitch Dial number and first number for knitter and second for ribber.
- SD ①/① — Number and the dots indicate the position for Stitch Dial setting.
- Col.A (●) — identifies colour of each yarn.
- pos. — position
- st. (sts.) — stitch or stitches
- Nd. (Nds.) — needle or needles
- CM — Card Memory Number of Punch Card
- R.C. — Row Counter Number of Punch Card.
- sec. — section
- S.H. — End Stitch Holder

### 200-Needle Garter Bar Set

This set makes easy time-consuming stitchwork such as in transferring multiple stitches, or purling a complete row. comes with two 100-needle-wide bars, and one 50-needle-wide cast-on comb.

### Lady's Polo Shirt

finished measurement size: cm.

	A	B	C	D
Bust	88	92	96	100
Length	51.5	54	55.5	56

### Materials / others:

Fine cotton thread

Col.A.....100 - 175gs.

Col.B..... 50 - 75gs.

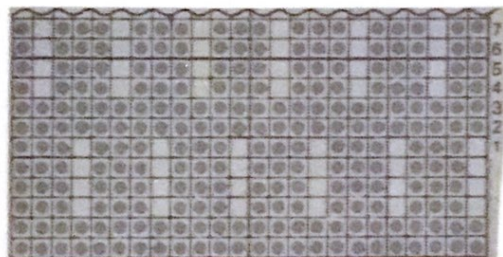
Col.C..... 50 - 75gs.

3 buttons (1.0cm in diameter)

SRP-50, YC-5

Punch Card A (Punch as shown below)

### Card A



### Operation Table for Card A

Order	Holders				Driving Lever	Carriage direction
	A	B	C	D		
1-2	②	①	①	①	⏏	⇒)2
3-4	①	②			⏏	⇒)2
5-6					⏏	⇒)2
7	②	①				—
8		①	①			—
9-10	①		②		⏏	⇒)2
11-12					⏏	⇒)2

Holder A = Col.A

Holder B = Col.B

Holder C = Col.C

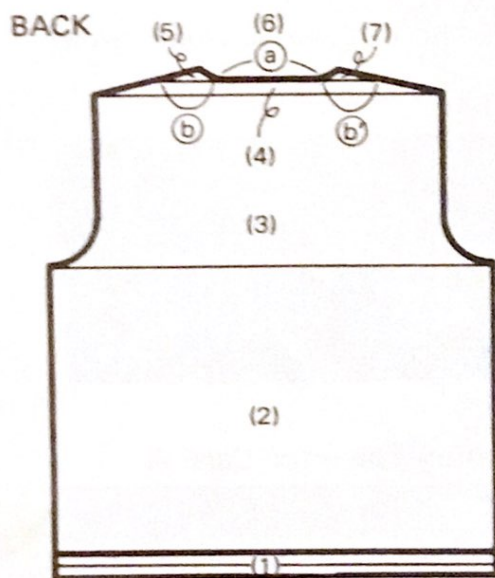
### Tension gauge:

33 sts. by 62 rows over the swatch of Tuck Stitch with Stitch Dial at ④.

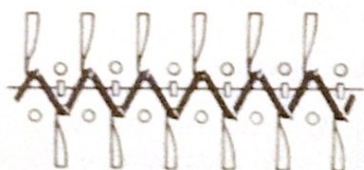
- Knit tension gauge in the same manner as instructed for back without hemming and remove on waste knitting.
- Since cotton yarn may shrink after washing, we recommend to dip the tension swatch into water, dry, press and measure it.

### To knit

The patterns are given on page 6-9. Knit each pattern following the instructions below.



- Set Machine for Double Rib and close Knit Bar in pos.
- Referring to Instruction Book for YC-5, put Col.A, Col.B, Col.C and waste yarn through out Tension and Holder Hook on YC-5.
- Arrange required number of Nds. for Double Rib.
- Using waste yarn, knit one row.
- Insert Cast-on Comb between knitter and ribber as shown below.



- Suspend weights on the Comb.
- Drop Ribber sts. by moving Ribber Carriage twice.
- Push back ribber needles to A pos.
- Set Card A and lock at CM 1.
- Set S.H. in pos.
- Knit several rows in Stockinet ending with Carriage at left.

(1)- Col.A, SD 3, knit hem in Stockinet.

- Remove weights, lower the Ribber and turn up hem.
- Push up Ribber in pos., hook weights on the comb.
- Set the Carriage as follows.

Cam Lever..... Tuck  
Side Levers .....▼  
Driving Lever .....Upright pos.

(2)- SD 4, release Card.

- Following "Operation Table for Card A" on page 3, knit up to armhole.

(3)- Shape armholes by decreasing sts. (S.H. must be shifted to end Nds. along with shaping.)

(4)- At the shoulder point, work partial knitting by decreasing sts. on both sides up to back neck ending with Carriage at left. (When holding needles in D pos. by partial knitting, S.H. doesn't need to be shifted.)

(5)- Mark the CM number on the card.  
- Push up the Nds. on sec. (a) & (b) to D pos., continue shaping left shoulder and neckline.

- Remove the sec. on waste knitting.  
(6)- Put yarn mark at the centre of sec. (a).

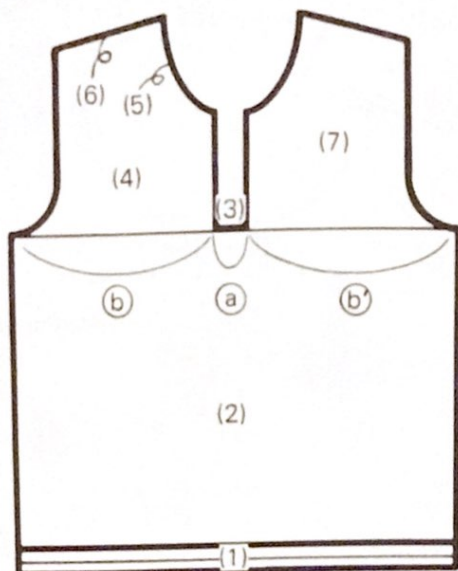
- Return the card to the marked CM number and lock it.  
- Remove the sts. of sec. (a) on waste knitting.

(7)- Push back the Nds. of sec. (b) to B pos.

- Reset left S.H. in pos.
- Select the correct Col. yarn to be knit for next row.
- Release card, continue shaping right shoulder and neck edge.

- Remove the sec. on waste knitting.

## FRONT



- (1)-(2)- Work in the same manner as instructed in (1)-(2) for back.
- (3)- At Front opening, mark the CM and lock it.
  - Push up the Nds. of sec. (b) and (b') to D pos.
  - Set both Russel Levers to I, remove the sts. of sec. (a) on waste knitting.
  - Remain a needle on each side of sec. (a) for seaming, push back the empty needles to A pos.
- (4)- Push back the sts. of sec. (b) to B pos.
  - Set S.H. in pos., release card, shape armhole at left side and knit up to beginning of neck opening.
- (5)- Shape front neck at the right side by decreasing sts. up to shoulder point.
- (6)- Work partial knitting at left shoulder side and continue decreasing sts. at neck side.
  - Return the card to the marked CM number and lock it.
  - Remove the sec. (b) on waste knitting ending with Carriage at left.
- (7)- Push back Nds. from D to B pos.
  - Set Carriage for tuck and set S.H.

- Select the correct Col. yarn to be knit for the next row and release card.
- Work right front following Contour line.

## SLEEVE -both alike-

- Work hem in the same manner as instructed in (1) for back.
- Work coloured tuck pattern by increasing sts. on both sides till beginning of cap.
- Shape cap by decreasing sts.
- Put yarn mark at centre of top and cast off.

## FRONT BAND

- Set machine for Double Rib.
- Arrange required number of Nds. on both beds.
- ✕ Work waste knitting in the same manner as for back ending with Carriage at left.
- SD ①/①, using Col.A, knit zigzag row to right and 4 rows in circular knitting

- Set Carriage as follows:

Knitter-

Cam Lever ..... Stockinet  
Side Levers ..... ●

Ribber-

Set Levers (left) ..... 0  
(right)..... 1

Pick knob..... ✕

- SD ①/①, knit up to dotted line in simulated Double Rib ending with Carriage at left.  
(Tension Gauge for simulated Double Rib is 33 sts. by 84 rows with Stitch Dial at ①/①.)
- Transfer st. at each buttonhole to its adjacent Nd. remaining empty Nds. in B pos.
- Continue knitting to the end.
- Transfer all ribber sts. onto knitter Nds., knit 1 row with SD ⑤.
- Remove on waste knitting.
- Work left front band in the same manner without buttonholes.

- Put yarn mark at the centre of top side.

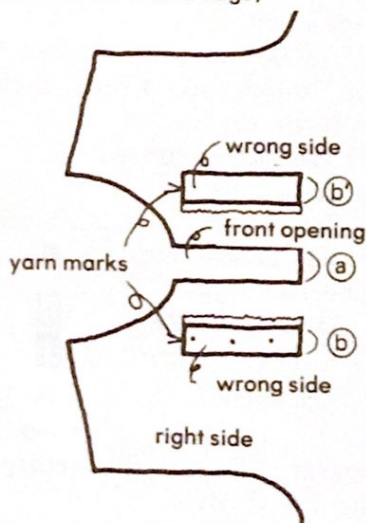
### COLLAR

- Arrange required number of Nds. for Double Rib, work closed edge cast on in the same manner as instructed ~~X~~ to ~~X~~ for front band.
- SD ①/①, knit shaping both edges by decreasing st. with 3 prong Transfer Tool on both beds.
- Transfer ribber sts. onto knitter Nds.
- Put yarn mark at the centre of last row, remove on waste knitting.

### To make up

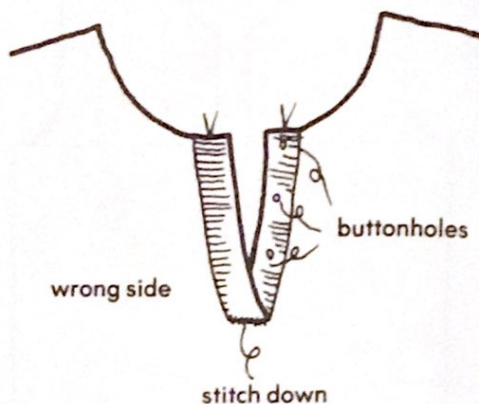
- Block each pieces to size and press with steam iron.
- Set machine for Stokinnet, take out Close Knit Bar.

(Join bands to front edge)



- Holding the right front edge and buttonhole band with right side facing each other, place them onto knitter Nds.
- Knit 1 loose row and cast off with Tappet Tool.
- Join the other band to left front edge in the same manner and unravel the waste knitting.
- Holding sts. of sec. (a) & (b) with right side facing each other, place them onto knitter Nds.

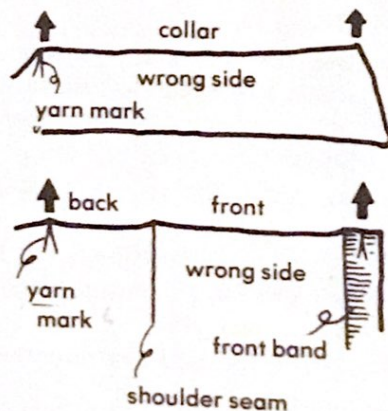
- Knit 1 loose row and cast off with Tappet Tool.
- With wrong side up, stitch down s (b) to the seam of sec. (a).



- Remove the waste knitting.
- Join left shoulder on the machine.

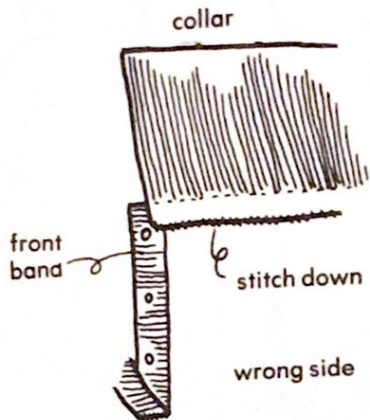
(Join Collar to neck edge)

- With ribber side of collar facing you, place back 2 sts. together from last row knitted in Col.A from the right edge to the centre mark.
- With wrong side of the left front edge facing, place it onto the Nds. holding collar sts. evenly from the centre of band to the centre of back neck.



- Push up all Nds. to D pos., knit 1 r with SD ④ and 6-7 rows with ⑦ in Stockinet.

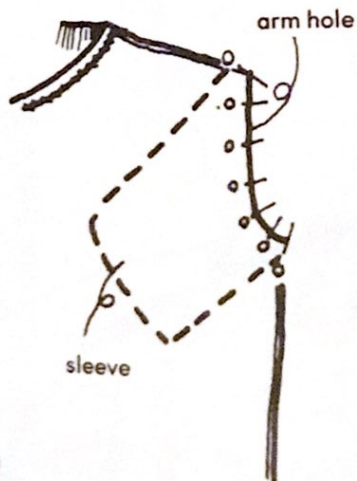
- Knit 1 row with SD ⑩ and link off.
- In the right shoulder on the main line, work the other side of collar in the same manner and join centre seam.
- Stitch down the edge of facing onto wrong side of round neck.



- Join side seams and underarm of sleeve.

(sleeves)

- Holding armhole and cap of sleeve with right side facing each other, pin at the shoulder seam to the yarn mark on cap and at side seam to underarm seam.
- Pin armhole to sleeve at close intervals, join with crochet slip stitch or back stitch.



- Give a final press and put button in pos.

## Lady's Mini Pleated Skirt

finished measurements size: cm.

	A	B	C
waist	66	70	74
hip	90	94	98
skirt length	35	36	38

### Chart for pleats

sizes	number of pleats	punch card	number of piece to be knit
A	28	B	169sts. x 4
B	30	B	169sts. x 2
		C	193sts. x 2
C	32	C	193sts. x 4

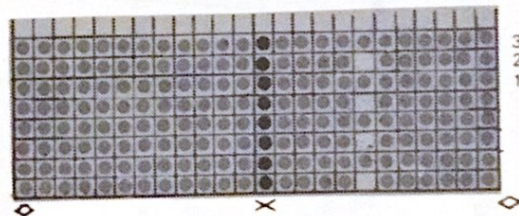
### Materials / others:

Fine cotton.....200 - 290gs.

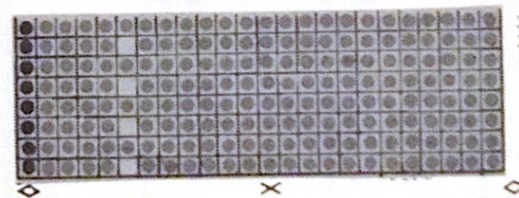
elastic band (25cm wide, 70-80cm long)

Punch Card B & C (Punch as shown below)

### Card B



### Card C



●.....needles to correspond this pos. must be in A pos. (become inside crease)

### Tension Gauge:

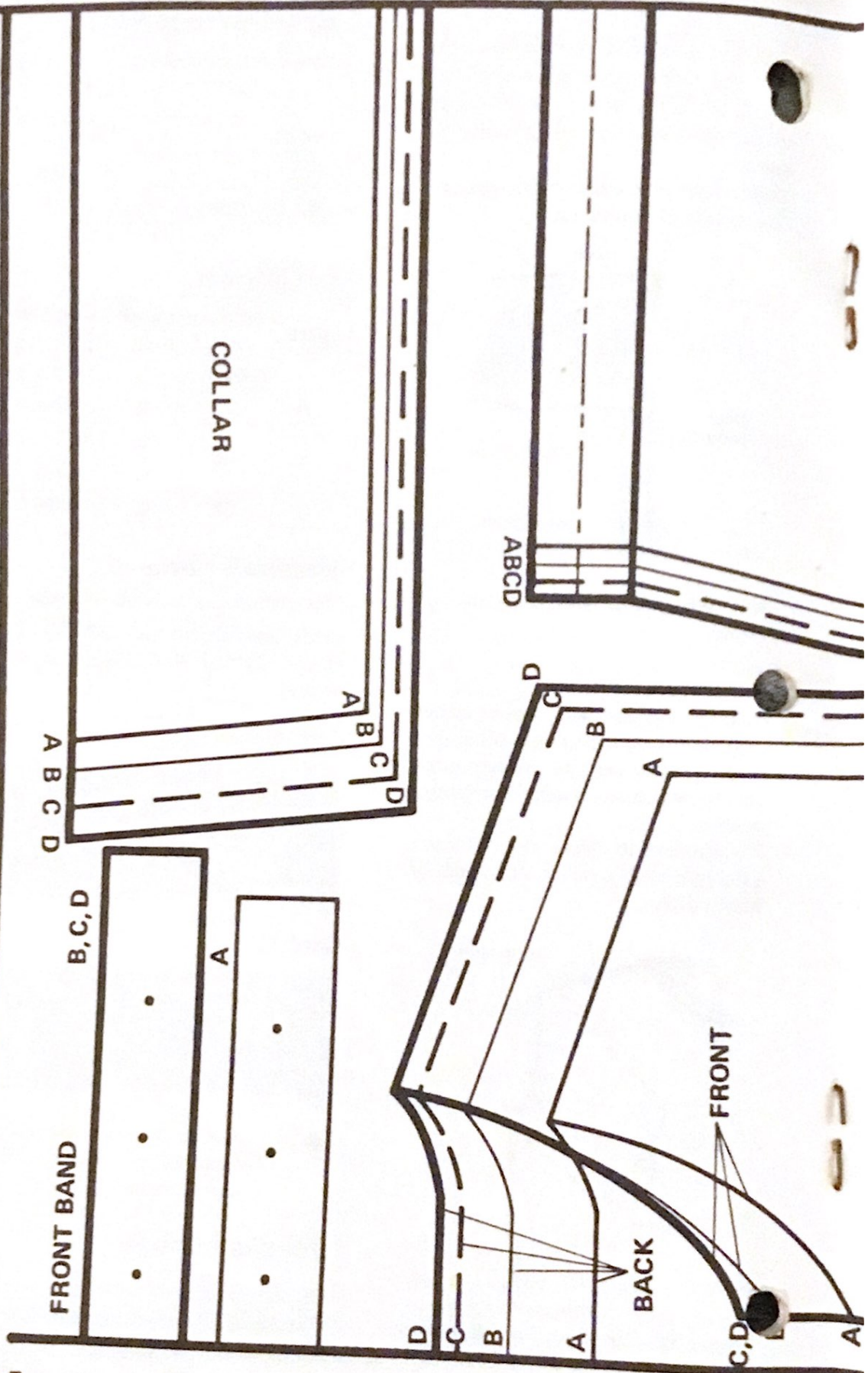
33 sts. by 50 rows over the swatch of STOCKINET with Stitch Dial at ③.①

Continued to page

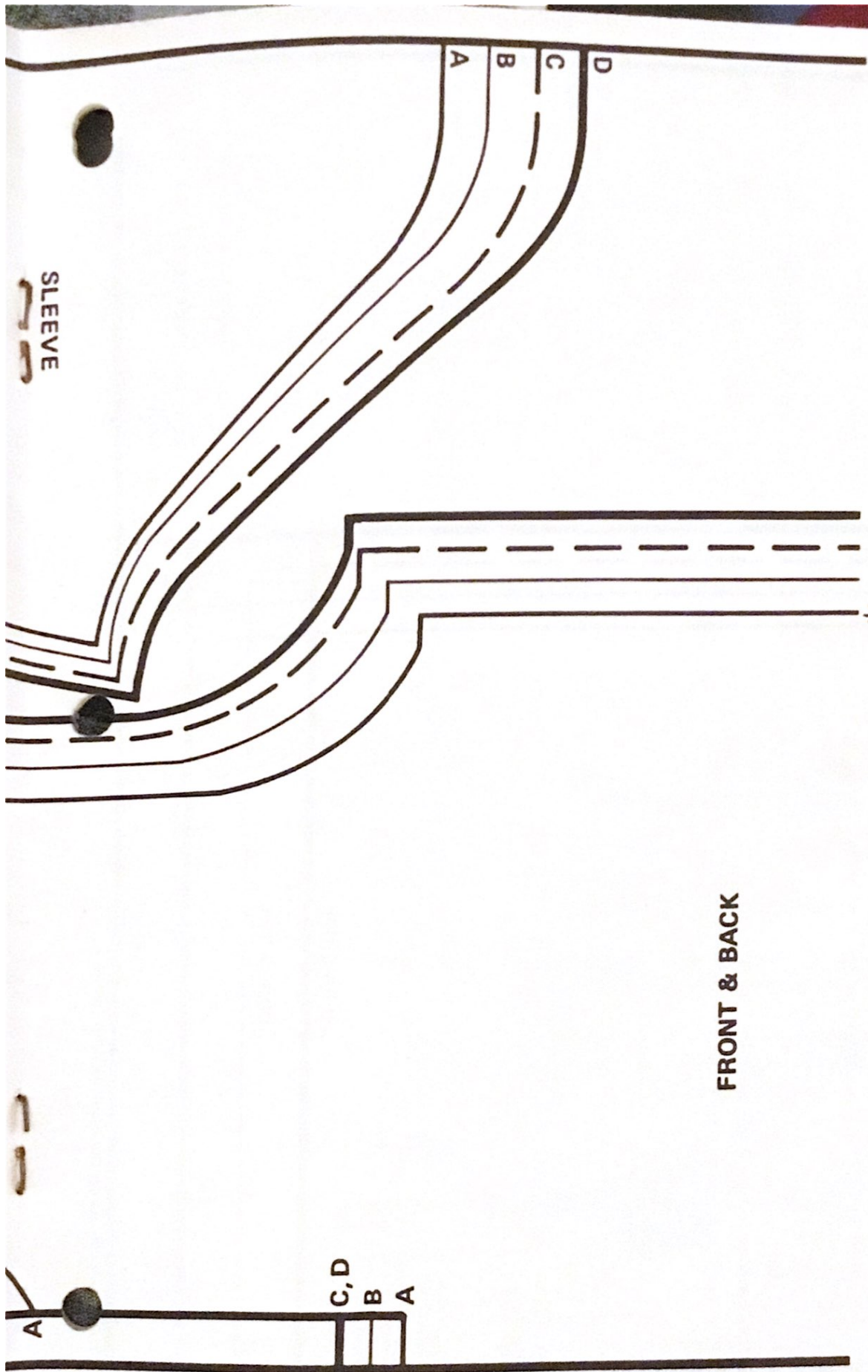
11.

- 7 -

TOP

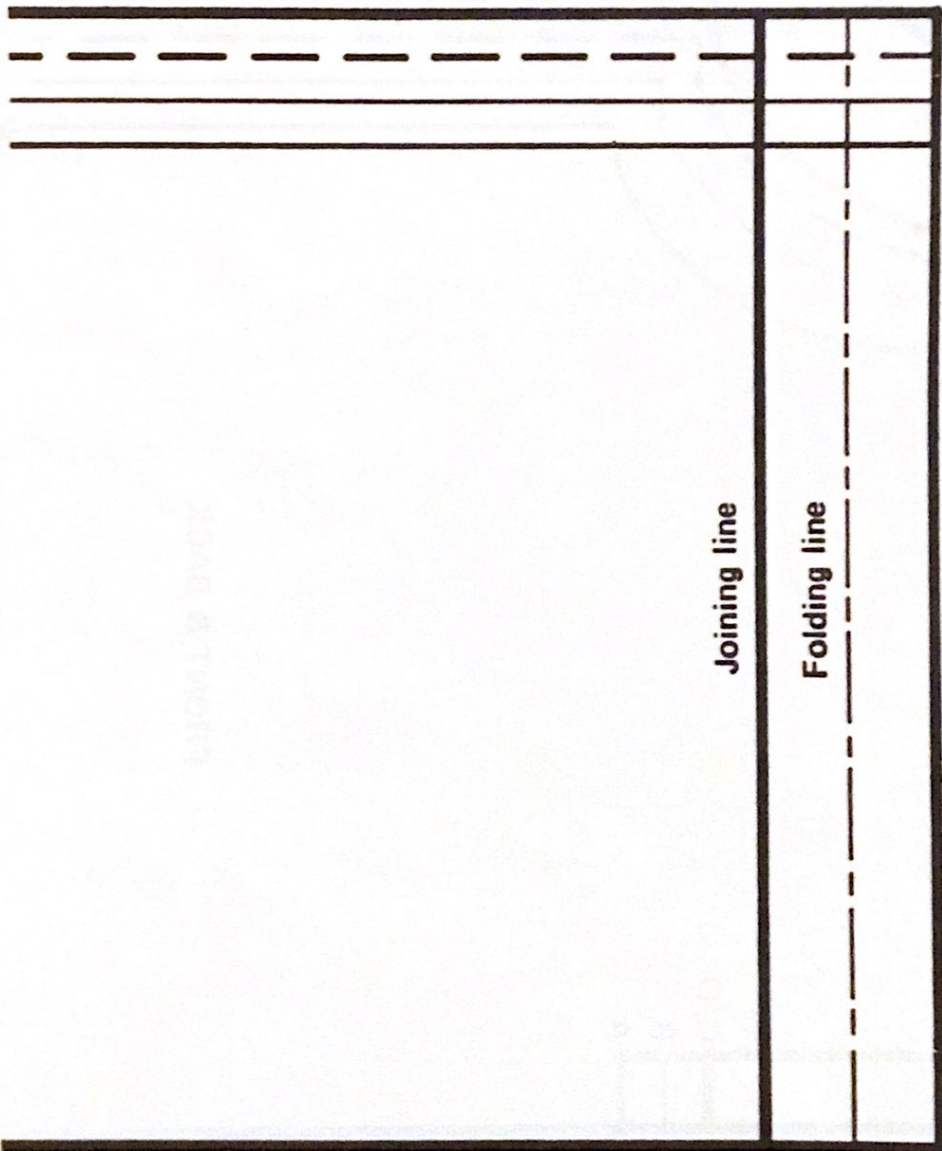






**FRONT & BACK**

Trace the patterns on the blank pattern paper, matching this page to the bottom half on page 10.



Joining line

Folding line

Attach to bottom of shirt  
on page 9.

A B C D

Trace the patterns on the blank pattern paper,

Continued from page 7.

### To knit

Numbers in bracket refer to the sizes B and C)

Set machine for Stockinet and Close Knit Bar in pos.

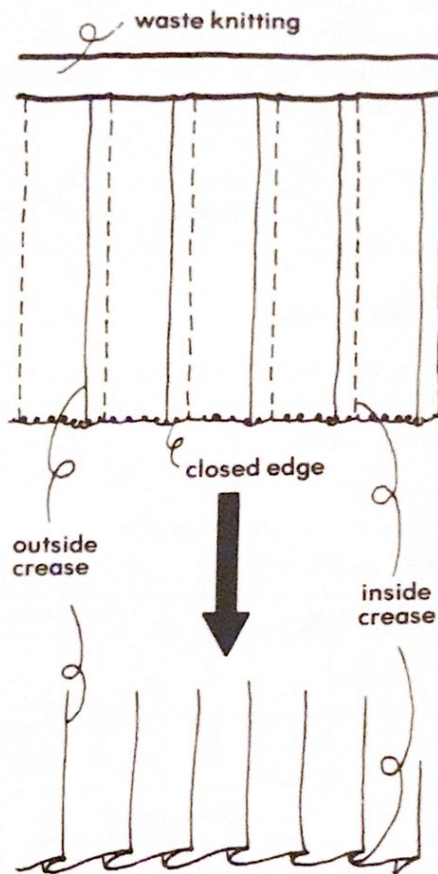
- Arrange 85 Nds. (for Card B) or 97 Nds. (for Card C) on right side, 84 Nds. (for Card B) or 96 Nds. (for Card C) on the left side to centre(0).
- Cast on and knit 10 rows of waste knitting and 1 row with ravel cord to right side.
- Push up the Nds. to D pos., work closed edge from the left end Nd. by winding main yarn anticlockwise along the Nds. in D pos.
- Put the yarn through Yarn Feeder ①, set card B or C and lock at CM 1.
- SD ③, R.C.000, knit 1 row in Stockinet.

### (Needle setting)

Counting from the right end Nd., transfer 25th and every following 24th st. onto its adjacent Nds. along the row except the last one and empty Nds. must be A pos.

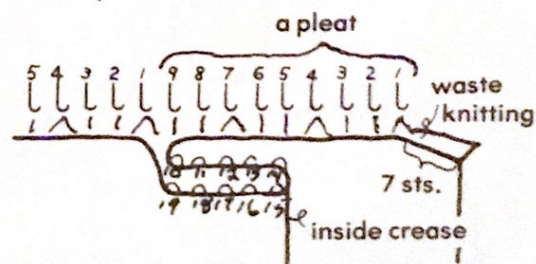
- SD ③, set Carriage for Slip, release card and knit straight up to R.C.90 (100, 110)
- Knit required number of panels continuously according to "Chart for pleats" on page 7.  
Knit 10 rows of waste knitting followed by one row with ravel cord before the main knitting.
- Remove on waste knitting and pull it slightly lengthwise.
- Pin out the work to size and press with steam iron.
- Pull out each ravel cord to separate to each panel.
- Join two centre seams on the machine.
- Spread over the panel with closed edge on the right side on ironing board, fold at each slipped stitch row and press with steam iron hardly one by one.

- Fold the fabric as shown below, press inside creases.



### (Knit waistband)

- Arrange 126 (126, 144) Nds. in B pos.
- Holding the right edge of the panel with wrong side facing, leave 7 sts. as it is.
- Pick up sts. from the last row of main yarn and place them onto Nds. in B pos. as illustrated below.

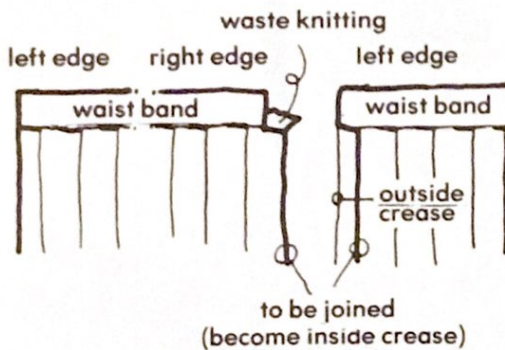


- I ..... single st.
- A ..... two sts. together

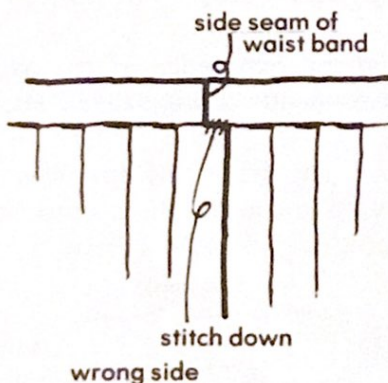
- Push the Nds. to D pos. knit 32-34 rows in Stockinet ending with Carriage at left.
- Pick up loops from the first row of waistband and place them onto corresponding Nds. in B pos.
- Knit 1 row with SD ⑤.
- SD ⑨ - ⑩, knit to left and link off.
- Arrange 126 (144, 144) Nds, work the other waistband in the same manner.

### To make up

- Join side seams on the machine in the same manner as done for the centre seams.



- Stitch down remaining 7 sts.



- Remove waste knitting.
- Put elastic band through the waistband and join the ends.
- Fold up pleats and give a final press.

Fran Stachowicz, Menasha, WI sent this pattern which is for these still-cold days many of us are experiencing.

### STRIPED PULLOVER

Made on a Studio

Size - 34

Gauge - About 6-3/4 sts. & 10-1/2 rows per inch.

Ribbing - 3 strands Delaine at Ten. 6/6 or 2/27 yarn

Body - 2 strands Delaine at Ten. 5 or 2/27 yarn.

Cast on 134 sts. and rib 1x1 rib at T 6/6 for 36 rows, 3 strands rust color yarn.

T 5 - 2 strands light camel yarn knit 30 rows

2 strands dark taupe yarn, knit 30 rows. Alternate these two colors every 30 rows to row 156 inc. ribbing - 4 stripes. Mark for armhole.

Knit stripes of 4 rows each alternating the same two colors to row 246. (neck at 204). This gives you ten light color 4-row stripes and ten dark color 4-row stripes. Start shaping neck at row 204.

Divide front for neck - row 204 - put needles on the left in hold 67 - 0 - 14. Knit on 15 - 67 right side of machine. Put one more stitch in hold for neckline on rows 206 - 208 210-212-214-216-218-220. Dec. 1 st. on rows 232-234-236 neck sts. Change to 3 strands rust yarn. Row 246 scrap off. Repeat for right side. Scrap off and also scrap off neck sts.

Back - Same - Do not divide



Striped Pullover (Continued)

for neck until row 236. Put in hold 67 - 21 left side 67 - 0 - 21 - then put 1 more st. in hold on rows 238-240-242-244. Row 246 scrap off. Repeat for right side.

Sleeve - these are knit sideways. Cast on 100 sts. Knit 4 rows camel and then 4 rows dark taupe. Alternate until you have 10 light stripes and 10 dark stripes. Change to 3 strands rust yarn. Knit 20 rows. Now change to 2 strands dark taupe knit 4 rows, then camel knit 4 rows alternate until you have 10 dark and ten light stripes. Bind off.

Neck - Pick up sts. purl side facing you. 61 - 0 - 61. Knit 1 row with 3 strands rust yarn on the 122 sts. Put every other st. on the ribber and rib 5/5 10 rows, 6/6 10 rows, 7/7 10 rows, 8/8 10 rows, 9/9 10 rows. Put all sts. on main machine and bind off over 2 sinker posts.

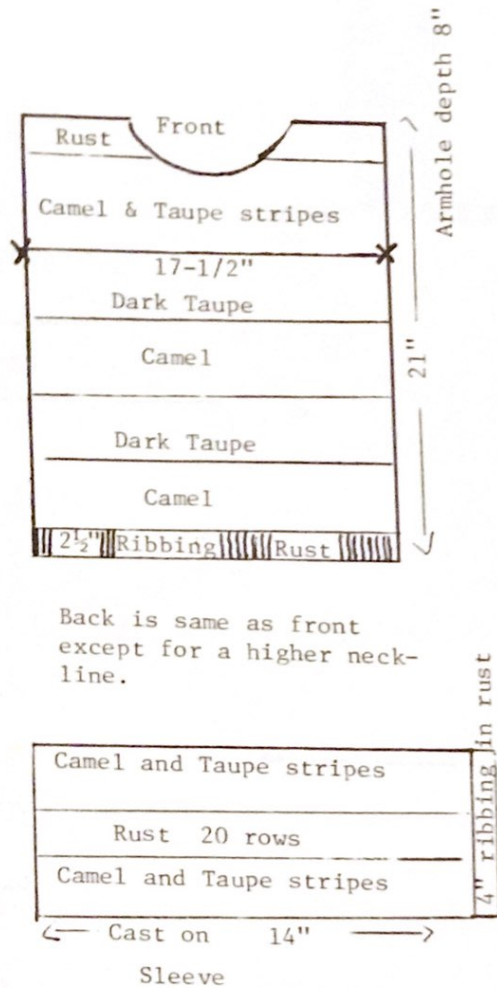
Cuff - Pick up end of sleeve - purl side facing you. Pick up 66 sts. Rib 50 rows 6/6 last row 10/10. Bind off without yarn. (crochet bind off)

Finishing - I kitchner stitched the shoulder together. Then pick up the neck sts. as above. Then finish other shoulder the same way. Sew sleeves onto the dropped shoulders matching the stripes. Sew arm and side seams.

\*\*\*\*\*

Two more of the Barbie Doll patterns from Noreen Drake in Eugene, OR, are drawn to half size on the next page. These are ready to be transferred to knit contour paper for Studio Knitting Machines. Rib waist to give better fit on the slacks, or they can be mock ribbed or slip stitch a small rubber band around waist. Sew up seams. No back opening. For the Coat, sew up sides and attach snaps or buttons.

(Continued to next page)



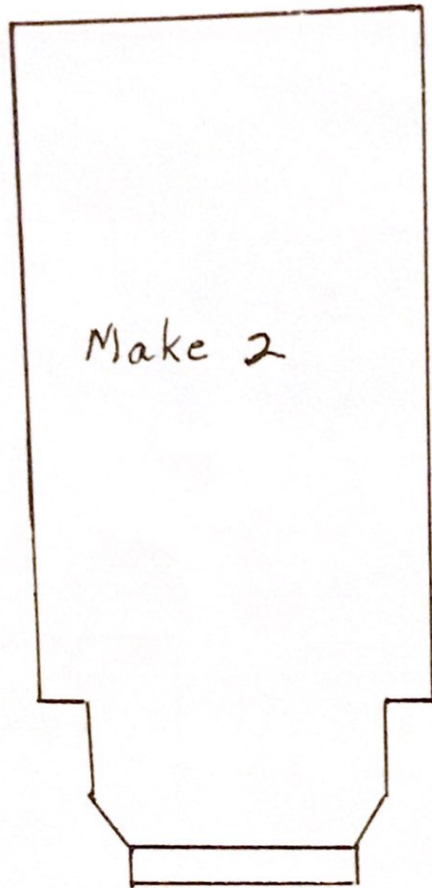
Armhole depth 8"

21"

Back is same as front except for a higher neckline.

4" ribbing in rust

← Cast on 14" →  
Sleeve

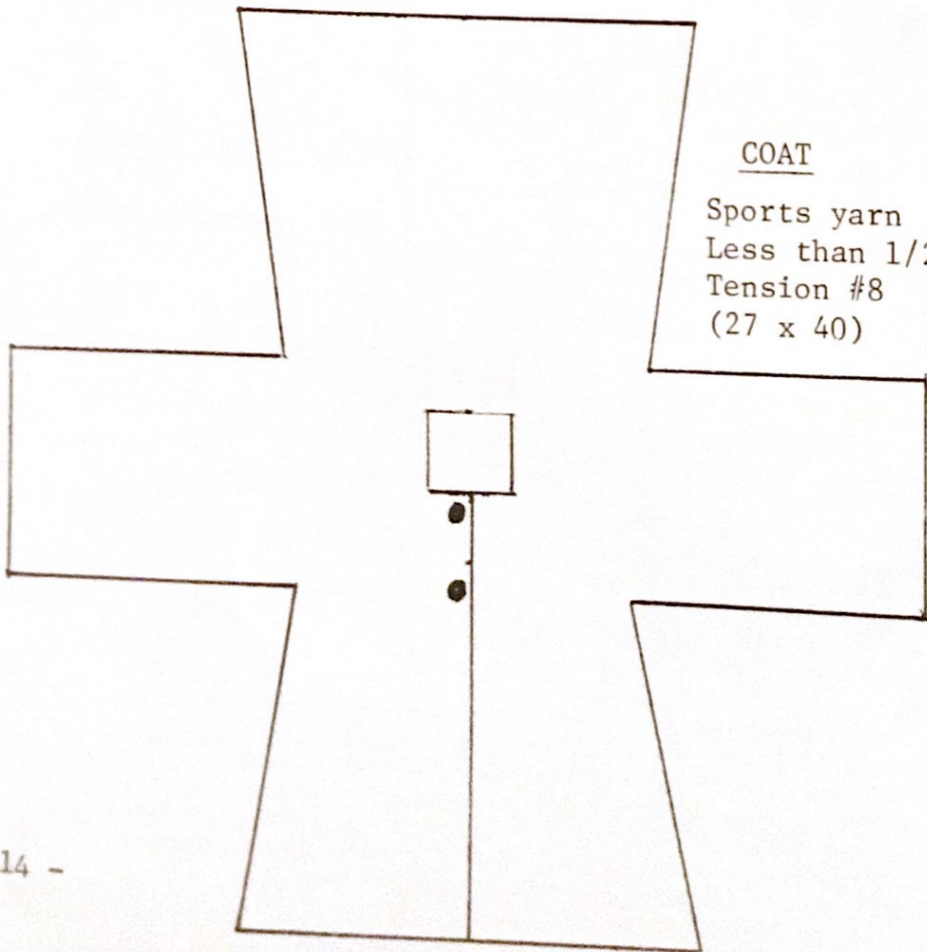


Make 2

SLACKS

Sports yarn  
Less than 1/2 oz.  
Tension #8  
(27 x 40)

Crotch



COAT

Sports yarn  
Less than 1/2 oz.  
Tension #8  
(27 x 40)

WE NEED YOUR ORIGINAL PATTERNS

This "Newsletter" is your publication. Help support it by submitting your original patterns and helpful hints, so other home knitters can learn from your experience. We would like to urge all of you with older machines to share your favorite originals with our other readers. Many of our readers write in requesting simple, beginner patterns. You will receive a gift of yarn for any original pattern or hint that is printed. When sending in your patterns, be sure to include the size of the garment and the knitting gauge (number of stitches and rows per inch) - this is most important - and the knitting machine for which your particular pattern was designed. It also helps if you know approximately how much yarn your pattern takes. Please check and recheck your patterns for errors and type or print clearly. We do not have time to knit each pattern sent in, so cannot check for mistakes. It also helps if you do not abbreviate, as many of your terms are unfamiliar to us and to other readers. A black and white snapshot and/or brief description of your garment will make it easier to visualize by other readers. A gift of yarn will be sent for snapshots (black and white) printed with the patterns.

\*\*\*\*\*

There is a wonderful opportunity awaiting you to become a STUDIO Knitting Machine and yarn dealer. Good money can be made in your spare time with only a small investment. We are interested in contacting men and women who would like to become a part of our growing group of STUDIO dealers throughout the United States. Our assistance and guidance can make this a very profitable venture for you, and our only requirements are that you know how to operate a knitting machine and that you have space available in which to set up your STUDIO shop, either in your home or place of business. You will find this a fascinating business which affords you the opportunity to become acquainted with new and interesting people. Contact Mr. David Bratz, Manager, STUDIO Yarn Farms, Inc., P.O. Box 46017, Seattle, WA 98146.

\*\*\*\*\*

If you are planning to move soon, let us know both your old and new addresses, complete with zip codes. We cannot change your address without this information.

\*\*\*\*\*

Patterns submitted and published in this "Newsletter" are submitted by individuals and are purported to be original patterns.

\*\*\*\*\*

CANADIAN SUBSCRIBERS - Please remember, when sending in your subscription, all checks and money orders from Canada must be marked "Payable in U.S. Funds".

\*\*\*\*\*

Please Note - We always notify you when your subscription expires. Your last issue is stamped across the Subscription Order Blank on the back page in red, "Your subscription expires with this issue". This issue is then mailed to you in an envelope and sent by first class mail. If you miss an issue, without having received this notification, please let us know, because it means that your mail isn't reaching you, and we will send you another copy. All the "Newsletters" are mailed out, altogether, just as soon as the mailer receives them from the printer.