

Studio

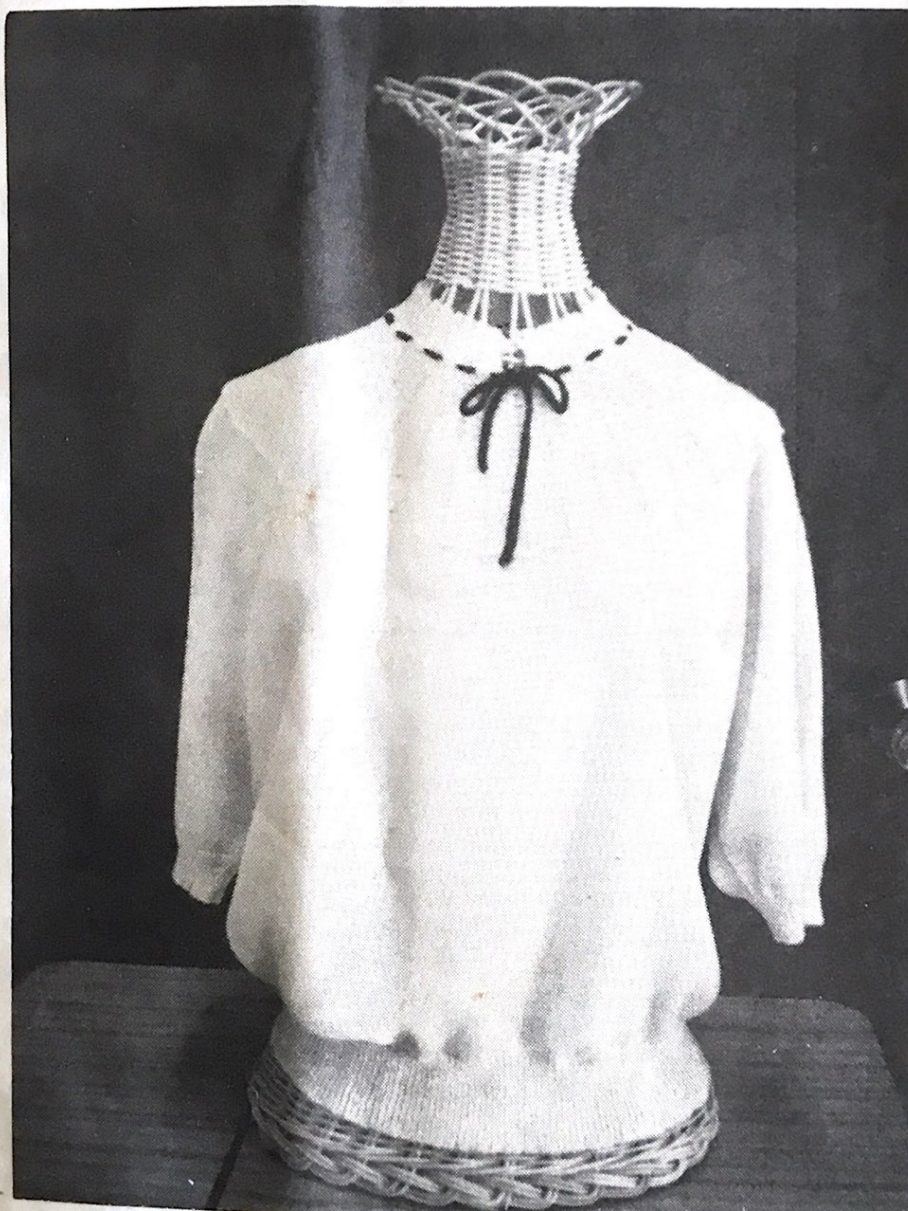
KNITTING MACHINE

"The Most Wanted Automatic Home Knitter"

NEWSLETTER

SEPTEMBER/OCTOBER, 1983

VOLUME 171



FROM THE DESK OF DAVE BRATZ

Where did it go? Can it be possible that school has already started and knitting is again back in full swing? Shipments of machines and accessories are coming in and out the back door faster than ever. It would certainly appear that the interest in machine knitting is increasing rapidly.

Again we are happy to announce a new item for knitters. It is a Super Cone Winder designed primarily for the bulkier yarns. Perhaps the easiest description would be an overgrown ball winder. It will hold up to a pound and a half of yarn. It is a well constructed and balanced unit and winds at a high speed. The retail cost is \$49.95. Extra cones are available. Look for it at your local dealer or distributor. Sometimes it seems that a good item is discontinued just about the time we finally decide it was a good thing and we really need it. If we only have the patience to wait a little bit longer it seems there is always an improved version of what they took away. I feel this describes the new Super Cone Winder very well as it could be used to replace some of the electric units we still feel are necessary but are no longer available.

The other big news item this month is a huge shipment of Lur yarn from Mexico, four semi-trailer loads, as a matter of fact. I'll try to describe these yarns as best I can and hope to whet your appetite. Shipments are already being made to dealers and distributors so we suggest you contact them for availability, colors, first-hand look at samples, swatches, gauges, etc. We think you will be pleasantly surprised at the quality and texture of these yarns.

<u>Price Per Lb.</u>	<u>Name</u>	<u>Colors</u>	<u>Content</u>	<u>Type</u>
\$9.95	Softy	30 Colors	100% Acrylic	2/15 - smooth
\$10.60	Frosty	20 Colors	80% Acry./20 Nylon	2/15 - smooth
\$14.90	Safir	13 Colors	72% Acry./28 Nylon	About 2/24 Hi Twist - very dressy type
\$14.70	Serreta	9 Colors	95% Acry./5 Nylon	About 2/12 Hi Twist - Dress yarn
\$14.90	Arista (New)	7 Colors	75% Acry./25 Nylon	About 2/18 Excellent, very dressy yarn, Hi Twist

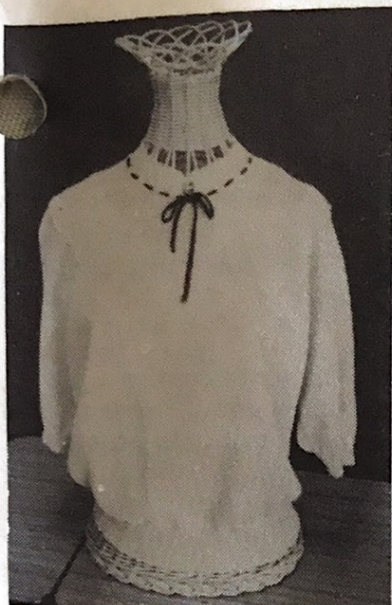
We hope you will look at and try these yarns on your next garments.

KNITTING MACHINE SEMINARS!!!!!!

There will be a Seminar at Aldea's Knit Shop, 114 E. Orangethorpe Ave., Anaheim, CA 92801, phone (714)870-4184 - November 4th and 5th, 1983, Friday and Saturday - Admission \$2.50 per person - per day. Doors open at 9:30 a.m. Hours: 10:00 a.m. - 5:00 p.m. Friday - 10:00 a.m. - 4:00 p.m. Saturday. Fashion Show Friday at 7:00 p.m. - Free to All - Come along and bring a friend. Lots of free drawings.

Valley Machine Knitters Seminar, September 22, 23, & 24, 1983, at the Westward Ho Motel, Highway 2-West, Grand Forks, ND 58201. Phone (701)775-5341. For more information, contact Avis Mullin, 225 Lincoln Dr., Grand Forks, ND 58201.

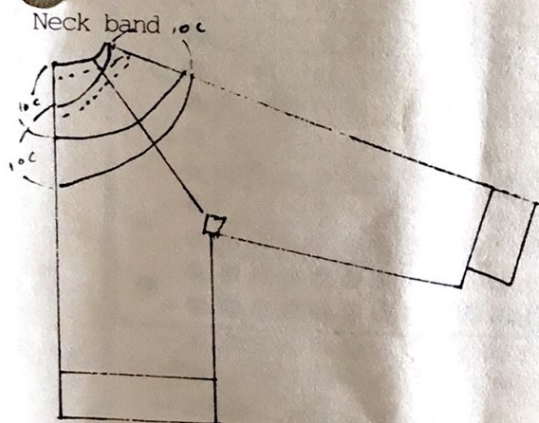
Studio dealer Marge McKenzie has moved from Houston, TX, to Missouri, about 30 miles from St. Louis. She will be at Marge's Knit Shop, Festus, MO, phone (314)937-6858 - hours 10:00 a.m. to 8:00 p.m. Anyone interested in machine knitting will be welcome. Her new knitting club will meet at 7:30 the third Thursday of every month. Studio machines, yarns, accessories, patterns, lessons and custom knits are all available.



ROUND YOKE IN LACE TUCK

Barbara Miller, our Studio dealer in Renton, WA, brought in the lovely blouse shown on this issue's cover.

She knit it with a single strand of Dellite by Delaine, on a tension 2, a Studio Cardmatic machine.



This is the Raglan Knit Contour pattern, and can be knit in any size. Barbara knit her yoke in size 38, with a Tension of #3 in the tuck pattern. Her gauge was 35 sts. and 56 rows = 10 cm. in stockinette.

Knit in stockinette using raglan pattern to 10 centimeters (4 inches) below neck line. To do this draw a curved line on radar pattern to 10 cm. down from neck on front, back and sleeves. After partial knitting for curves, mark center of front, back and sleeves, and remove on

waste yarn. Include the neck band in the 10 cm. measurement.

Rehang front and front half of both sleeves on machine with knit side facing you. Hang with center of front in center of machine. Fold under edge st. on each piece for seam, (2 st on this needle).

Knit one row. Transfer needles for pattern set up as follows.

etc. 01111110111111101111111011111110
etc.

center o on machine.

Pull out to D position all working needles and crochet cast on in front of knitting. Chain one at each empty needle.

Put in punch card and lock on row 1. Knit 2 rows stockinette and 2 rows tuck. Repeat for _____ rows. (3½ cen.)

End after one row of stockinette. Write down number of rows so back and front have the same.

Transfer stitches like this.

Arrow shows direction of transfer.

etc. 01111110111111101111111011111110
etc.

line shows st. that tucks.

Knit one row with the ravel cord.

If knitting at a tight tension, loosen stitch dial for this one row. (change stitch dial back)

Remove half on garter bar and rehang, from center out. On needles like this.

etc. 01111110111111101111111011111110
etc.

Remove other half and move in.

Push needles back to B position and unravel ravel cord row carefully.

Turn row counter back one row.

Set punch card to row 3 and lock.

Knit 1 row of stockinette and then 2 rows of tuck and 2 rows of stockinette. Repeat the 2 rows for

_____ rows (3½ cen.). End with 1 row of stockinette. Transfer stitches like this.

etc. 01111110111111101111111011111110
etc.

Continued to next page.

Round Yoke in Lace Tuck (Continued)

Knit one row with ravel cord like before. Remove half on garter bar and move in on needles like this. Move in other side.

etc. 0111011101110111011101110 etc.

Lock punch card on row 5 and knit 1 row stockinette, 2 rows tuck, and 2 rows stockinette. Repeat 2 rows for ____ rows (3 cen.). End with 1 row of stockinette.

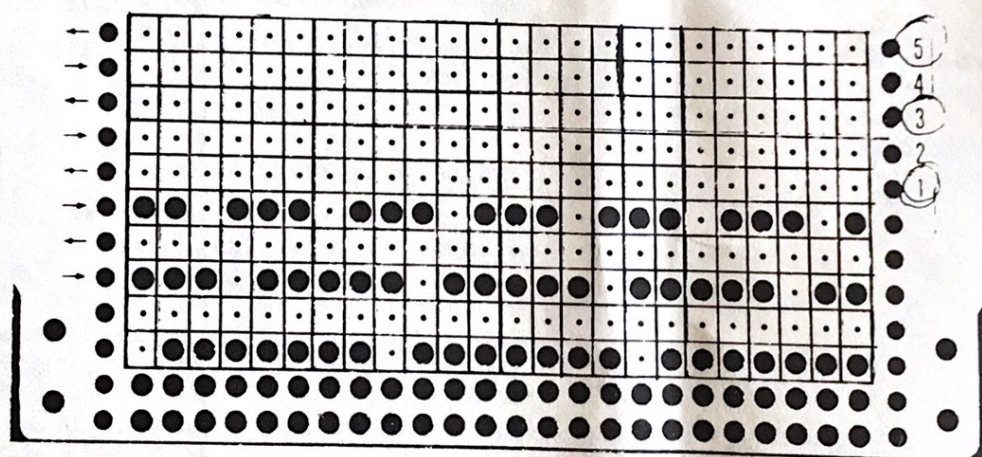
For rib neck transfer every center needle of the 3 working needles (tuck stitch) to the ribber. Bring in to work position every other needle on the ribber, the ones opposite the empty needles. Rib at one number tighter tension for 12 rows. Transfer every other main bed stitch onto the adjacent ribber needle. Every 4 needle eyelet. Leave transferred needles in work and knit 2 rows. Bind off loosely. A back-stitch bind-off is good.

Knit back yoke same as front. On small children's, knit back in two pieces for opening.

Sew up shoulder yoke seams and underarm and side seams.

Knit a cord in a contrast color 4 stitches for 80 cm. (32 inches). Run through neck below ribbing.

PUNCH CARD FOR TUCK STITCH



Joan Stiles, our Studio distributor in Satellite Beach, FL, sent in this simple

1 x 1 Rib Cast On

Lt. weight yarn T 0/0
Heavy yarn T 1/1

Set stitches to be used in hold position on both beds.

1 1 1 1 1
1 1 1 1

Carriage on the right. Set Cam levers Main bed - knit

Ribber - hold (not knitting)

Knit 1 row from right to left. (Yarn will pick up in hook of needles on main bed and lay around the shank of the needles on the ribber bed.)

Set Cam lever Main bed - slip (part - empty -- not knitting)

Ribber - knit

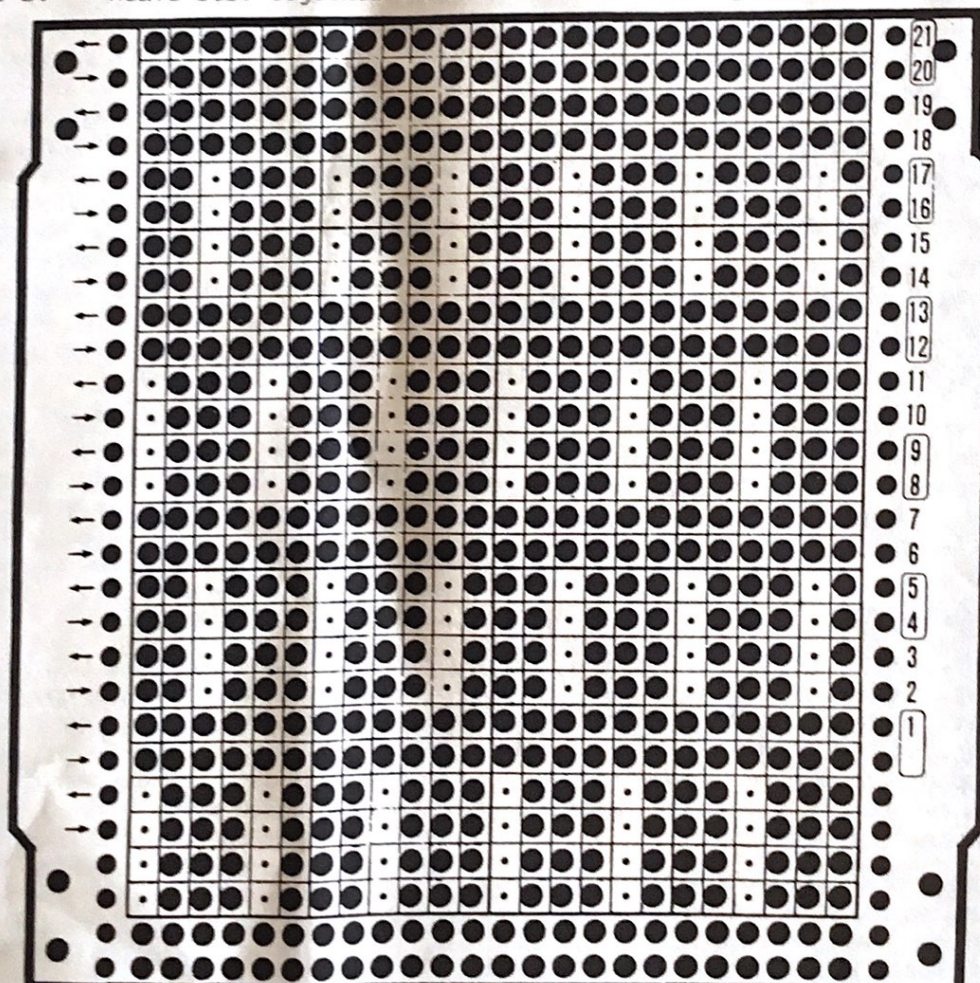
Knit 1 row from left to right. (Yarn will knit ribber needles locking over the yarn on the main bed.) Hang cast-on comb and weights.

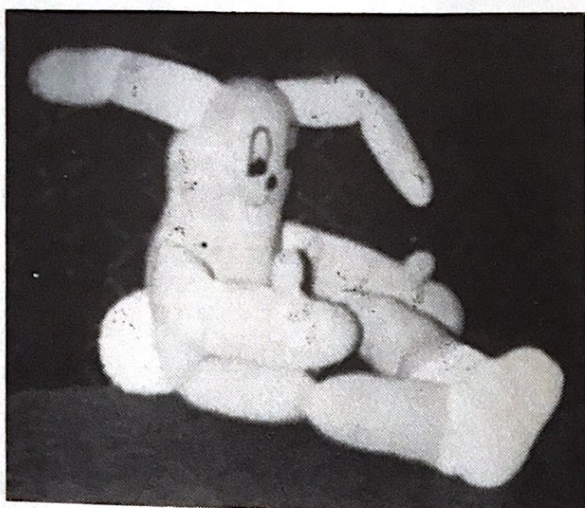
Set Cam tensions to MT for the ribbing of the garment and continue as normal.

BABY BOOTIE

Demonstrated by Barbara Miller, our Studio dealer in Renton, WA. We didn't have room in the last issue to include this with the other Seminar patterns. Yarn: 1 oz. 3/15 sports weight (Nomes) or 2 strands Lur Softy or Frosty, Knit on a Studio punch card machine. Can be adapted to any machine. 2/15 Cast on 60 sts. with waste yarn & ravel cord. Knit 9 rows on Ten. (SD - St. Dial) 6. Color A. Knit 1 row on SD 8. Knit 4 rows on SD 6. Hang like a hem on loose row, 4 rows back. Knit 1 row SD 8. Put in punch card & lock on row 1. Knit 1 row SD 6. Put color B in yarn feeder, set cam lever on tuck, release punch card. *Knit 4 rows. Knit 2 rows color A.* Knit 4 rows color B. Remove Punch Card, set cam lever at stockinette. Color A, knit 1 row. Remove 24 sts. opposite carriage onto waste yarn. Knit 1 row and remove 24 sts. on other side on waste yarn. Set row counter to 0. Knit 1 row. Hang first st. on waste yarn onto end working needle, opposite carriage. Knit 1 row. There will be 2 sts. on this needle. Hang first st. opposite carriage onto end working needle. Continue knitting and hanging sts. from waste yarn onto end needle every row to row 25. Hang remaining 12 sts. opposite carriage onto next 12 needles. Knit 1 row, & hang 12 sts. on other side onto next 12 needles. There are 36 sts. on needles. Knit 2 rows & make eyelets on every other needle. Put all needles back in work position. Put in punch card & lock on row 1. Knit 2 rows. Knit pattern like before but do color B 4 times * to *. End with 2 rows color A. Bind off loosely. Embroider a flower on the front. Knit a cord 3 sts. for 18 inches, in color B. Weave sts. together on the bottom and sew up the back seam.

P
U
N
C
H
C
A
R
D
F
O
R
B
O
O
T
I
E





The time is drawing near to start knitting for those bazaars, and the holidays will soon be here, so we are including several good patterns for all those projects.

Sandy Dominiak, South Bend, IN, sent us the following patterns for three terrific animals.

FUNNY BUNNY 25" Pet

Made on a Studio SK-360

Yarn - Nomis Yarn 3/15

Tension - #7

Gauge - 7 sts. & 11 rows = 1" Approx.

BODY - Make 2 (Gray)

Cast on 54 sts. Knit 70 rows. Bind off 7 sts. next 2 rows for shoulders. 40 sts. remain. Increase 1 st. each side every row 3 times. (46 sts.) Increase 1 st. each side every other row 3 times. (52 sts.) Increase 1 st. each side every 3rd row 3 times (58 sts.) Knit 20 rows straight.

Decrease for top of head---

1 st. each side every 3 rows 3 times
1 st. each side every 2 rows 1 time
1 st. each side every 1 row 1 time
1 st. each side every 2 rows 1 time
1 st. each side every 1 row 11 times

Bind off remaining 24 sts.

Sew two pieces together. Leave opening for stuffing.

Arms - Make 2 (Gray) Reverse shaping for 2nd hand. Cast on 48 sts. Knit 30 rows even. Place marker on end needles. Knit 42 rows. (41 rows for 2nd arm) Place 38 sts. opposite

-6-

carriage in hold position.

Thumb - On the 10 remaining sts. in work, knit 12 rows, then short row down to 2 sts. and back out. Knit 12 rows. (Counter 000) Knit 17 rows on all sts. Place 24 sts. on right side of "0" in hold position. Short row down to 10 sts. on needles in work position and back out. Take off on scrap. Weave sts. together. This makes a hand like a mitten. Sew side seams and close thumb. Leave tops open for stuffing.

Legs - Make 2 (Gray), reverse shaping for 2nd leg. Cast on 56 sts. in scrap yarn. Knit 10 rows. Knit 1 row with ravel cord. Change to white and knit 1 row. Place 28 sts. on left side of "0" in holding position. Short row on remaining 28 sts. in work position down to 10 sts. and back out to 28 sts. Knit 21 rows on all 56 sts. Place 28 sts. on right side of "0" in holding position. Short row on remaining 28 sts. in work down to 10 sts. and back out to 28 sts. Knit 1 row on all 56 needles. Row counter "000". Change to gray. Knit 66 rows even, place marker on end needles. Cont. until counter reads 134 rows. Bind off. Weave toe to foot. Sew side seams leaving tops open for stuffing.

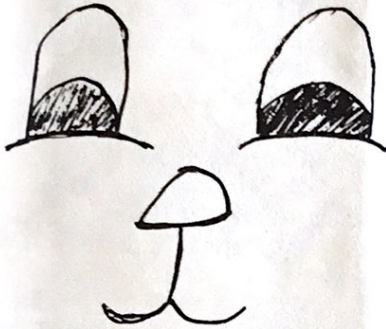
Ears - Cast on 20 sts. (Pink) Knit 40 rows even. Place marker. Knit to row counter is 80 rows. Short row down to 2 sts. Change to gray. Short row back out to 20 sts. Knit 80 rows even. Bind off. Sew sides and leave opening for stuffing. (Pink side is front of ears.)

Stuffing - Caution: Knit fabric stretches so do not stuff too firmly. Fill head and body. Sew bottom together. Stuff hands and arms to "markers" and stitch across at markers to make bend in arm. Finish stuffing arms and sew top together. Sew arms to body at shoulders. Stuff legs and foot to marker. Sew across as for arms for bend of knee. Finish stuffing and close top. Sew to body.
(Cont.)

Funny Bunny (Cont.)

● Off ears to marker and sew across for arms and legs. Finish stuffing and sew to top of head.

Embroider face on head.



Make 1 large white pompom for tail. Sew to body.

LAZY LEO LION 25"

Made on a Studio SK-360

Yarn - Nomis 3/15

● Tension - #7

Gauge - 7 sts. & 11 rows = 1" Approx.

Make basic animal as instructed for Funny Bunny in light to medium brown.

Ears - Make 2 - Cast on 30 sts. Knit 30 rows even. Short row down to 2 sts. and back out. Knit 30 rows even. Bind off. Sew sides and leave opening for stuffing.

Tail - Cast on 12 sts. Knit 140 rows even. Short row down to 2 sts. and back out. Knit 140 rows. Bind off. Sew sides and leave opening for stuffing.

Mane - 4-ply, 1 skein gold - Mane is fringed. Ten. 8 - 10, approx. 1,000 rows. Needle set-up -

XOXOXOXOXOXOXOXOXOXOX

X is needle in work - O is needle out of work.

Stuff and sew basic animal together as previously instructed.

Sew ears and stuff. Sew bottom together and stitch to head. Sew and stuff tail and sew to back of body.

● medium size pompom and sew to tail end.

Mane - Starting at center back of

head and sewing in a circle stitch mane to head through center sts., and unravel the 2 outside stitches to make "looped fringe".

Embroider face on head.

Use same face pattern as for Bunny.

Add whiskers.

POOH POOH POODLE

Made on a Studio SK-360

Yarn - Nomis 3/15

Tension - #7

Gauge - 7 sts. & 11 rows = 1" Approx.

Make basic body as instructed in previous patterns - your choice of color (I used black.)

Ears - Make 2 (white) Cast on 20 sts. Knit 40 rows even. Short row down to 2 sts. and back out. Knit 40 rows even. Bind off. Sew sides and leave opening for stuffing.

Tail - Make medium size (white) pompom or cast on 12 sts. Knit 20 rows even. Short row down to 2 sts. and back out. Knit 20 rows. Sew sides leaving opening for stuffing and sew pompom to end of tail.

Fringe - Poodle cut sculptur. 4-ply worsted weight (white) Ten. 8-10. Approx. 1,000 rows. Needle set-up -

XOXOXOXOXOXOXOXOXOXOX

X = needle in work, O = needle out of work.

Sew and stuff basic animal together as instructed.

Sew ears and stuff. Sew bottom together and stitch to head. On outside (top) of ears sew rows of fringe to make fuzzy ears. Sew and stuff tail and attach pompom. Sew several rows of fringe around bottom of legs and arms to give Pooh Pooh his special poodle cut. Several rows of fringe stitched around the top of body gives a special poodle effect also.

Embroider face on head, the same as on the other animals.

XXXXXXXXXXXXX



Another pattern Sandy sent us is this one for a

CHILD'S MATCHING PANTS & VEST

Made on a Studio SK-360

Size 5/6

Yarn - Nomis 3/15

Tension - #8

Gauge - 8 sts. & 10 rows per inch

PANTS - *(levers Left Right)
(I II)

Cast on 101 stitches, Ten. 6. Knit 19 rows Ten. 6
Knit 1 row Ten. 10 (turn row)
Knit 20 rows Ten. 7. Hem on every other needle.
Ten. 8. Row counter 20.
*Pull the 26th needle to hold "D" position every other row for front crease. (right of 0). Knit to row 170 increasing 1 st. each side 6 times every 24 rows. (Inc. on rows 24, 48, 72, 96, 120, 144). 113 sts.
R.C. - 000. Right of 0 - bind off 4 sts. (front) Knit 1 row.
Left of 0 - bind off 12 sts. (back). Decrease full fashion 1 st. each side EOR 4 times, 89 sts. Knit to row 90 (stop doing crease stitch).
Ten. 7 - Knit 11 rows. Ten. 10 - Knit 1 row. Ten. 6 - Knit 12 rows. Take off on waste or bind off. Make

-8-

2nd piece the same except (pull 26th needle to "D" hold position EOR on left of 0. Bind off 4 stitches left side and 12 stitches right side to reverse crotch shaping.

Right sides facing, sew waist to crotch seams front and back. Sew leg seams. Hem down waist band, leaving small opening for approx. 19" elastic 1/2" wide.

VEST - V-neck front (plain, striped, or Fairisle)

Cast on 106 sts. Rib 30 rows Ten. 5-6.

Transfer to main bed. Ten. 8
Knit to row 84. Pull all needles left of 0 into hold position.

Working on right front, bind off 8 sts. for underarm. Full fashion decrease 1 st. EOR 8 times. At the same time full-fashion decrease 1 st. at neck edge 1 st. EOR 16 times. 21 sts. Knit to row 58. Bind off 7 sts. 3 times.

Repeat for left front.

BACK - Cast on 106 sts. Rib 30 rows. Ten. 5-6. Transfer to main bed, Ten. 8. Knit to row 84. Counter 0. Bind off 8 sts. each side. Dec. 1 st. EOR each side 8 times (74 sts.) Knit to row 58. Bind off 7 stitches each side 6 times. 30 sts. remain.
Ten. 8 Knit 9 rows.
Ten. 10 Knit 1 row.
Ten. 7 Knit 10 rows. Take off on waste yarn.

V-NECK BAND - Ten. 8 - Pick up sts. along one edge. Knit 2 rows. Full-fashion dec. 1 st. EOR 5 times at point of V-neck edge. Knit last row Ten. 10. Now increase 1 st. at point of V-neck EOR 5 times (12 rows) Take off on waste. Repeat same for other side.

Arm Bands - Seam both shoulders. Pick up sts. along armhole edge. Ten. 8. Dec. 1 st. each side every 4 rows 3 times. Knit last row Ten. 10. Knit 12 rows Ten. 7. Take off on waste yarn. Seam sides. Hem neck and armbands in place.

Suggestions - Crease of pants could also be on front and back by casting on 102 stitches and pulling the 26th needle on each side of 0 into "D" hold position EOR. If using str.

or fairisle, use the same pattern along lower edge of pants.

Waist - 22"
Hips - 24"
Inseam - 15"
Chest - 24 - 26"



Joyce Osthus in Renton, WA, designed the following doll clothes which are ideal for the holiday knitting.

CLOTHES FOR "MY FRIEND" DOLLS

16" Doll

Gauge - 7 sts. & 11 rows = 1 inch

DRESS - Skirt - With garment yarn permanent cast-on 138 sts. every other needle - bring all needles to work position and knit 7 rows. Turn tension 2 looser and knit 1 row. Back to garment tension and knit 9 rows, hang hem to loose row, with tension 2 looser knit 1 row, back to garment tension and knit 1 row, put in any suitable punch card (about 12 to 15 rows) put in contrasting color, knit in pattern and then continue to row 60 for short dress or row 92 for long dress. Put in marker for center and take off on waste yarn.

Bodice front - starting with waste yarn, cast on 14 sts. - with garment yarn knit 2 rows, increase by pulling 1 needle next to carriage each row to row 24, should have 36 stitches. Knit 8 rows, mark center and take off on waste yarn.

Bodice back - With waste yarn cast on 7 sts., right side of 0 - with

garment yarn knit 2 rows and pull out 1 needle next to carriage on right side to row 24, should have 18 sts. Knit 8 more rows. Take off on waste yarn.

Knit other side same only reversing to left side.

Sleeves - With waste yarn cast on 6 sts. - with garment yarn knit 2 rows. Pick up 12 loops from back bodice. Bring these stitches to D position - Russel levers to 1. Push 1 needle next to carriage into work until all needles are in work - should be row 28 - knit 10 rows - 1 row 2 looser for turning row and knit 10 rows and hang hem on loose row and cast off. (or do 5 rows then a picot edge and 5 more rows and hang hem). For longer sleeve knit 15 rows.

Second sleeve - Same

To join skirt and bodice - hang skirt with 2 sts. on each needle then hang bodice - matching center sts. - cast off. Or go behind knitting and do latch tool cast on in contrast color and then bind off.

Neck - on neck edge with wrong side facing you, pick up 40 sts., knit 2 rows at garment tension, 2 rows 1 tension tighter, 2 rows 1 tension tighter. Reverse this procedure to row 12, then pick up stitches along neck edge and cast off with latch tool. Or you may wish to pick up neck edge, knit 1 row and cast off and crochet a small shell edge around neck.

For a ruffled neck edge - I did a crochet cast on 80 sts. Knit 12 rows and off on waste yarn, then back on the neck edge doubling up 2 sts. per needle then latch tool cast off. Sew up back of skirt and side seams and sleeves and crochet an edge and button-holes on bodice and 3 or 4 small buttons.

SLACKS - Permanent cast on 42 sts. every other needle, bring all needles to work and knit 9 rows garment ten. Change tension 2 looser, knit 1 row (Continued)



Slacks (Continued)

for turning, back to garment tension and knit 12 rows and hang hem. Knit 1 row 2 tensions looser. Garment tension knit 4 rows and increase 1 st. each side. Knit 8 rows and increase 1 st. each side, do this 5 times, should have 54 sts. Knit 4 rows. Cast off 2 sts. next to carriage for next 2 rows and then 1 st. decrease each side 3 rows. (Should have 42 sts. left). Knit 23 rows, knit 1 row 2 tensions looser, then back to garment tension and knit 12 rows and hang hem on loose row and latch tool cast off. Make second one and sew up legs and crotch, put elastic through waist. Sweater top was made like dress bodice only a little long and added a waistband. Backs become the fronts and pick up stitches and do fronts the same as on any sweater with bands and buttonholes. You can add stripes or punch card pattern as you prefer.

HAT - With waste yarn cast on 24 to 30 sts. - whatever you like - knit 80 rows, take off on needle through sts. and pull tight forming a tight circle - do the same at the cast-on edge. Make two 3-needle cords about 6 inches long each - sew on gathered ends and PRESTO you have a doll hat.

This is the basic pattern - from

this you can take off and design your own - do different things - have fun!

Jennifer Lynch, Waterville, VT, sent us this pattern. She says these snowmen ornaments sold out at a local bazaar and there were many requests for more. They make up fast and easy by machine. She used a Studio SK-328.



For each snowman you will need 2 styrofoam balls (1 - 1" dia. & 1 - 1½" dia.), small amounts of white, green or red two-ply yarn and black sequins.

Body - weave cast on 26 sts. with white. Knit 4 rows ten. 6, 12 rows ten. 8, 4 rows ten. 4, 8 rows ten. 6, 4 rows ten. 4. Break off white, leaving a 12" tail. Take off on waste yarn. Gather last row of white and pull tight. Seam down back. Insert balls, pull up cast-on edge and fasten.

Hat - weave cast on 22 sts. at ten. 4. Knit 10 rows and hang hem. Knit 12 more rows, take off on waste yarn. Gather top and seam down back. Attach small pom pom. Glue hat to head.

Scarf - Cast on 3 sts. and knit about 6". Bind off. Tie around neck. Add sequins for buttons and face. Add string to hang.

Hats and scarves could be made of any color. Striped hats are nice.

Faye Wood, Green Bay, WI, sent us the following pattern. She says she and her friends have made dozens of pairs. Many beginners at machine knitting have requested this pattern from her, so she decided to share it with all of you. These potholders are very easy. Beginners learn to operate the weaving feature on their machine and end up with a usable item instead of just a sample swatch. She adds that Card 8A works the very best, of all the different cards she tried.

ATTRACTIVE "Double Thick" POTHOLDERS

For any machine that weaves.

Size: Approx. 6-1/2 x 7 inches

Materials: Punchcard - Studio 8A or punch one from card below.

2 ozs. - 1 strd Solid Color 2/11 or 2/12

1 oz. - Multi Colored Variegated 4-ply for weaving

1 oz. - Solid Color 4-ply for crochet

Size: F or G crochet hook

Tension: #8

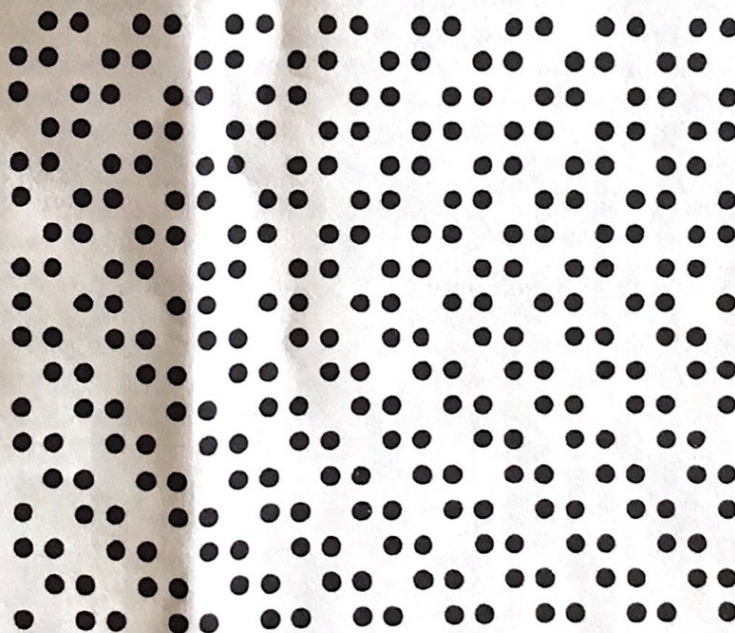
Gauge: Not important

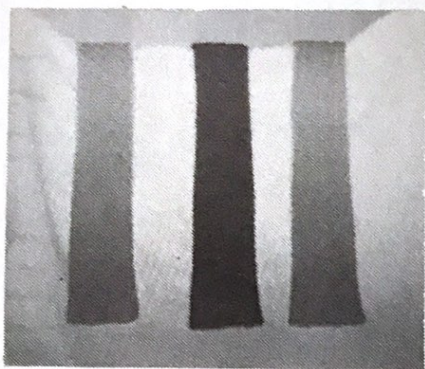
Note: Follow basic directions in manual for weaving. Put end needle carriage side, all the way forward to Hold Position each row. Carriage set for H.P. knitting. On opposite side of carriage - by hand - push back the Hold needle so it will knit. (These work well in the microwave under a cup or bowl of soup.)

Carriage on Left. With fine yarn, Backward "e" wrap C.O. 40 sts. Card on Lock. Set carriage to Brain. RC 000. Knit across. Release card. Begin weaving pattern with 4-ply. Weave until RC reads 109, ending with carriage on right. Stop card. Bring all needles to H.P. Bind off with the fine yarn.

FINISHING: Fold in half. With Solid Color 4-ply, starting at C.O. and B.O. edges together, crochet 1 row SC all around, putting 3 SC in each corner. 1 row Backward crochet. Make loop in corner for hanging.

Repeat 2 more times on your card,
plus 2 rows completely punched at end.





Christine Julson, Chippewa Falls, WI, sent in the following pattern which she has made several times, and they always turn out very nice.

NECKTIE

Made on a Studio SK-500

Economy "South Maid" crochet cotton
400 yard spools.

Tension #6

Tuck Card 1 (3)

Cast on - E wrap 38 sts., 19 sts.
each side of 0.

Knit even for 214 rows.

Then decrease 1 stitch each end,
every 8th row. (22 sts. remain).

Knit through row 400 on 22 stitches.

Now increase 1 stitch every 6th row
until you have 28 stitches.

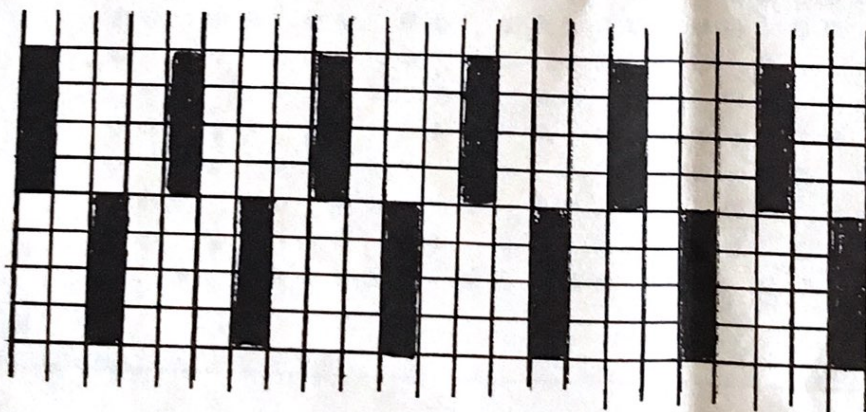
Knit even through row 656.

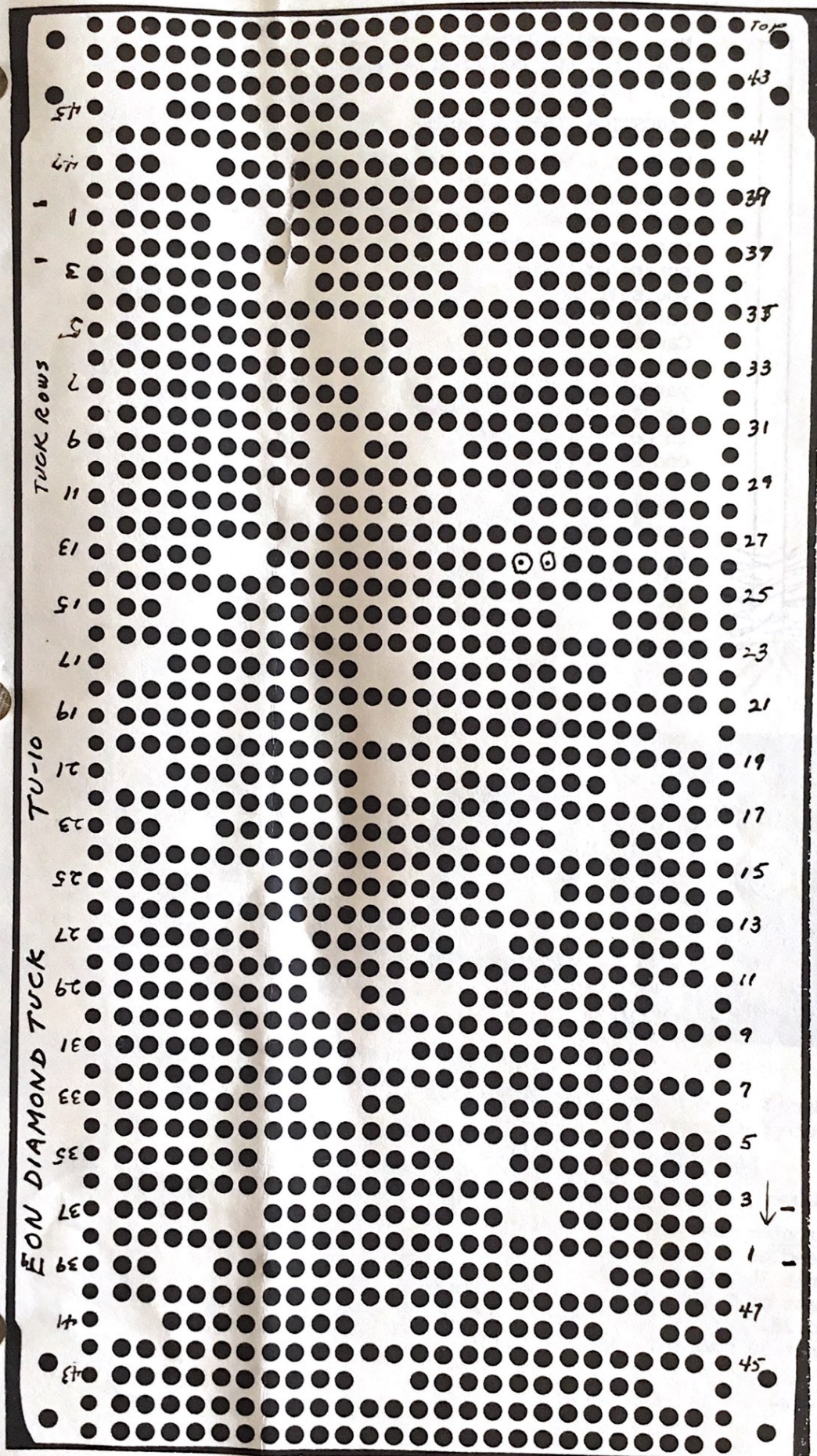
Bind off. Sew up seam and ends,
or you can leave 1 stitch each side
plain and then pull one side stitch
through other with crochet hook.

Erma Jeanne Argyle, Provo, UT, wrote to tell us there is an error in her pattern for Kay's Puffed Sleeve Sweater published on pages 11-13 of the May/June, 1983 (#169) issue. She says, "I failed to specify that you must use every other needle throughout the pattern. With the pattern card as published in that issue the working needles are 2,4,6,8,10, 12, (etc.) right of the center zero and 1,3,5,7,9,11, (etc.) left of center. Sleeves: 69L-70R. Back and front: 99L-100R. If you wish to use that card for an every-other-needle tuck fabric, then the blank columns of the card as shown on P.13 should be punched out completely so these needles will knit. Punched in this manner, the card could be used both every-needle and E.O.N. However you would have to be sure to cast-on E.O.N. on the needles that will be selected to tuck, as listed above.

If you wish to avoid the worry of casting-on on the right needles, punch the card like the diagram on the next page. It is the same card except that each column of design is repeated in an adjoining column. You need not punch a new card; just add punches to the previous one. This card cannot be used for an every-needle tuck pattern because there are two side-by-side tuck needles. In addition, if you do the neckband ribbing by machine, it must be made in two sections and seamed.

This is the tuck pattern 1(3) used on the Necktie







Mrs. Lorella Jackson, Sterling, CO, designed this pattern for a -

YARDSTICK COVER & DUSTER

Made on a Bulky Machine

1 skein of 4-ply should make 2 dusters. This is very pretty made of scraps of yarn you ply yourself of left-over colors of yarn.

Cast on 12 sts. Ten. 9 Knit the length of the yardstick. Seam the length, placing the seam in center back. Seam one end and crochet a loop to hang it by on the other end. Loop yarn fringe in rows for about 6 or 8 inches.

This yardstick duster is good to reach under furniture and hard to reach places.

A GOOD BAZAAR ITEM.



Mary Mann, Albany, OR, made up this cute pattern for -

BABY ROMPER 15 to 20 lb.

Gauge - 8 sts. & 10 rows = 1 inch

Front - Cast on 8 sts. left on needles #21 to 28. g.t.

Knit 30 rows w/y off.

Cast on 8 sts. on right needles #21 to 28.

Knit 30 rows g.t. w/y off.

Cast on 20 center sts. & rehang shoulder straps on needles #21 to 28 on each side.

Knit 35 rows on 36 sts. (Fairisle in this section optional) RC 0. Cast on 18 sts. in mock rib on each side. 123456789101112131415161718

Tighten tension 2 numbers. Knit 15 rows.

Fill in mock rib st. g.t. RC0 Knit 45 rows Inc. 1x5x8 start at RC 5 RC0.

Bind off 4 sts. each side. Knit 30 rows decrease 1x1x30 each side.

You should have 20 sts. for crotch. Knit 4 rows. RC0.

Knit 28 rows Inc. 1x1 each side. C.O. each side in next 2 rows to 88 st. total RC0

Knit 45 rows. Dec. 1x5 to 72 sts.

NOTE at RC 22 of 45 row, partial knit 25 sts. each side, 5 at a time as for bust dart. This is for diaper ease. RC0

Place all sts. in mock rib. Tighten tension 2#. Knit 15 rows. RC0 g.t. Bind off side st. leaving center 36 sts. Knit 35 rows.

Partial K. buttons on.

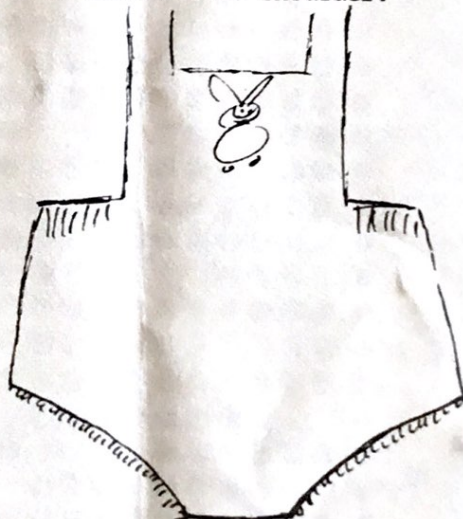
Place all but 8 side sts. in hold.


Knit 30 rows. B.O.

B. O. center 20 sts.

Knit other shoulder 8 sts. 30 rows. B.O.

Finishing - Hang leg sections in mock or 1x1 rib and make 1/2" finish or crochet around leg sections as well as upper sections. Sew side seams. Place narrow elastic in mock rib finish if necessary. Put buttons and buttonholes at shoulder.





If you are planning to move soon, let us know both your old and new addresses, complete with zip codes. We cannot change your address without this information.

Patterns submitted and published in this "Newsletter" are submitted by individuals and are purported to be original patterns.

CANADIAN SUBSCRIBERS - Please remember, when sending in your subscription, all checks and money orders from Canada must be marked "Payable in U.S. Funds".

Please Note - We always notify you when your subscription expires. Your last issue is stamped across the Subscription Order Blank on the back page in red, "Your subscription expires with this issue". This issue is then mailed to you in an envelope and sent by first class mail. If you miss an issue, without having received this notification, please let us know, because it means that your mail isn't reaching you, and we will send you another copy. All the "Newsletters" are mailed out, altogether, as soon as the mailer receives them from the printer.