

Studio

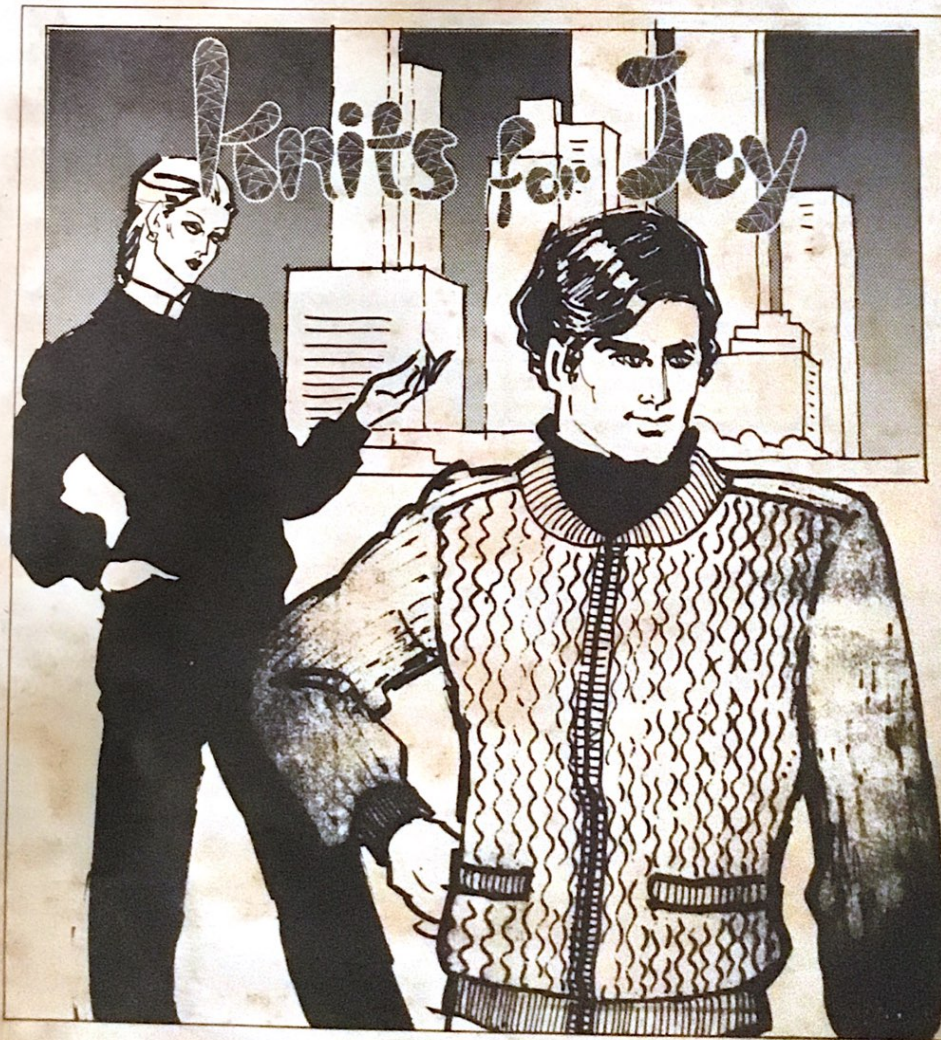
KNITTING MACHINE

"The Most Wanted Automatic Home Knitter"

NEWSLETTER

JANUARY/FEBRUARY, 1984

VOLUME 173



FROM THE DESK OF DAVE BRATZ

Another year is history, and after the holiday season, it may be a welcome change to get back to your knitting again. Apparently a great number of you are knitting on the new Chunky Bulky as the bulky garments continue to dominate the fashion scene. This has been one of the most talked about new model machines since the advent of the punch card machine. Everyone is amazed at the ease of knitting bulky and difficult yarns that were next to impossible to knit on any machine before. If you have any interest in knitting bulky yarns, be sure to check out the SK-150 Chunky before making up your mind. The popularity of the bulky garments somewhat surprises me, but when you see the number of records being broken this year by "Old Man Winter" it may tend to explain it a little easier.

It seems to have become an expected thing to be able to tell you about something new or expected soon in every issue of the "Newsletter". It appears we have to break tradition this time and tell you we only have the same old "good" things we have always had, namely, a good product with dedicated people over the entire United States to do their best to see that you are able to get the most use from your knitting machine and accessories. What gets a little scary sometimes is to think of the quantity of accessories and parts that are now necessary for inventory. When you think of people still wanting parts for models earlier than the SK-303 and also asking for stitch scales and gauges that were just included with the Chunky Knitter, you begin to see the complexity of trying to out-guess what you knitters may want. Even though you may have reason to sometime wonder, we do try our best.

Happy Knitting!!!!!!!

SEMINAR NEWS - The 1984 Northwest Machine Knitting Seminar will be held on March 16th, 17th and 18th, 1984, at the Red Lion Inn, Sea-Tac, Seattle, Washington. If you want more information, call Studio Yarn Farms or Donna's Knit Shop, Olympia, Washington.

Studio Dealer - Laura Heffner of Laura's Knit Shoppe is a Studio dealer for northwestern Michigan. She is located at Bear Lake, MI, phone (616)864-2080 and handles Studio Knitting Machines, a good supply of various yarns and equipment, and gives demonstrations and lessons.

RIBBER NEEDLE BED COVER

Thanks to this easy-to-fit plastic cover you can operate your Lace Carriage with the Ribber attached.

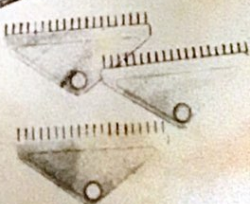
\$5.45



HANGER COMB SET

Consists of three separate hanger combs for use with the ribber edge weights. Each comb covers 38-needle-wide fabric and can be used singly or all together.

\$13.30



TO READERS:

For knitting the saddle shoulder cardigan featured in this issue, it is recommended to use the Ribber Needle Bed Covers, and the Hanger Comb Set, because it is easier for shaping when the fabric is brought in front of the ribber needle bed.

This article is reproduced from "Knits for Joy" with permission of Silver Knitting Institute, Tokyo, copyright holder 1978.

Man's Jumper with Saddle Shoulder (unisex)

Finished Measurements Size: cm.

	A	B	C	D
Chest	108	116	120	124
Back width	39	40	41	42
Length	66	68	70	72
Sleeve Length	62	63	64	65

Materials / others:

4 ply yarn (medium soft yarn)

size A - 600gs., B - 700gs.

C - 800gs., D - 900gs.

Open Fastener

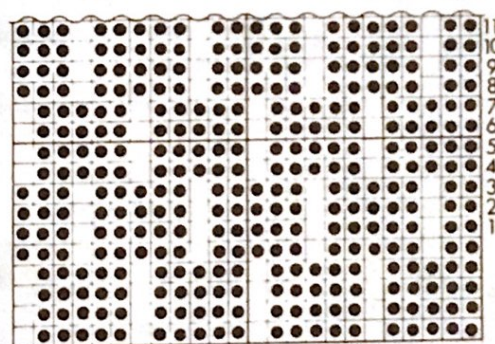
size A - 58cm., B - 60cm.

C - 61cm., D - 62cm.

Machine.....All machines with SRP-50

Punch Card (Punch Tuck Rib)

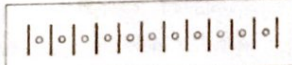
Punch as shown below.



SYMBOLS/ABBREVIATIONS

- SD 1 - SD stands for Stitch Dial
SD 1 / 1 and the figure in circle indicates Stitch Dial number, and first number for knitter and second for ribber.
- pos. - position
st. (sts.) - stitch or stitches
Nd. (Nds.) - needle or needles
R. C. - Row Counter number
CM - Card Memory number of Punch Card.
- P-5 - P denotes the position of the Half-Pitch Lever and the number indicates the swing position.

Needle arrangement



| - working needle

o - non-working needle

Tension gauge:

Use Ribber side of these fabrics as right side.

- (a) 32 sts. by 55 rows over a swatch of Punch Tuck Rib with the Stitch Dial at 6 / 6 for body.
- (b) 32 sts. by 50 rows over a swatch of English Rib with the Stitch Dial at 6 / 6 for Sleeves.

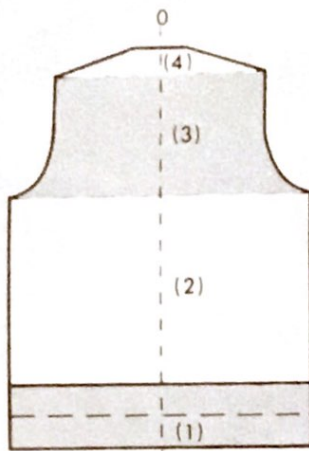


Fig. 1

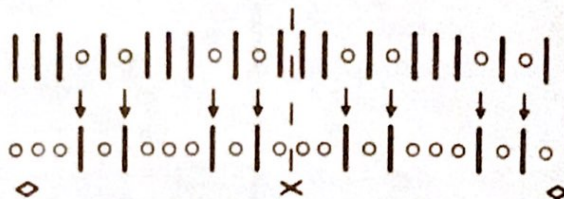


Fig. 2

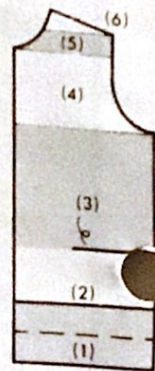


Fig. 3

TO KNIT

Knit the back, fronts and sleeves following the patterns given on page 5-7 and instructions below.

(Numbers in bracket refer to the sizes B, C and D.)

Back (Tension Gauge: (a) - Fig. 1

- Set Punch Card and lock at CM 1.
- Set Knit Contour for Back and lock at beginning of (2).

Waste knitting

- Arrange required number of Nds. in B pos. for K1.P1. Rib.
- SD 6/6, using contrast yarn, knit 1 row.
- Hang Cast-on Comb with Weights.
- Drop Ribber sts. with P Carriage.
- On Knitter, push up alternate empty Nds. to B pos. and knit about 10 rows in Stockinet.

- (1)- SD 6, using main yarn, knit 2 rows in Stockinet.

- Transfer every other Nd. from Knitter to Ribber Nd.
- Push back empty Nds. to A pos.
- SD 4/4, R.C.000, knit 60 (all sizes) rows in K1.P1. Rib, but the last row must be knit with SD 6/6.

- Transfer Ribber sts. onto Knitter empty Nds.
- Lower the Ribber, remove Weights.
- Bring out the fabric with Cast-on Comb over front Bed.
- Turn up hem, rehang Weights on Comb.

- Push up Ribber in pos.

- (2)- Set machine for Punch Tuck Rib referring to Instruction Book (SRP-50), Half Pitch Lever at P-5.

- Arrange Ribber Nds. in B pos. (Fig. 2), transfer corresponding sts. from knitter to Ribber Nds. in B pos. Make sure empty Nds. are in A pos.

- SD 6/6, release Punch Card and Knit Contour.

- Knit throughout in Punch Tuck Rib.

- (3)- Shape armhole following contour line as follows.

- On Carriage side, transfer Ribber sts. to be decreased onto Knitter empty Nds. and cast off required number of sts. as usual way.

- Knit across, work on the other side in the same manner.

- Single st. decreasing must be worked on both sides at once.

- (4)- Shape shoulders by decreasing sts. in the following manner.

- Russel Levers at I.

- * On opposite side of Carriage, push up required number of Nds. to be decreased to D pos. on both Beds, transfer those Ribber sts. onto Knitter empty Nds. Empty Nds. on Ribber are in A pos.

- Knit across, bring yarn first inside Nd. in D pos.

- Work on the other side in the same manner.*

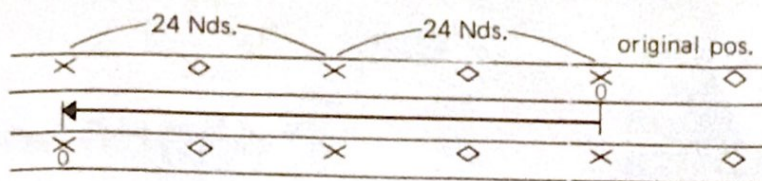


Fig. 4

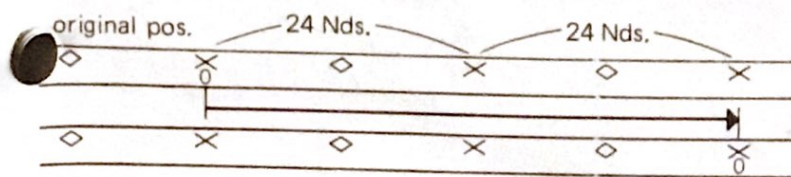


Fig. 5

- Repeat from * to * following contour line.
- Transfer all Ribber sts. onto Knitter empty Nds.
- Remove left and right shoulder and backneck separately on waste knitting.

Fronts (Tension Gauge: (a)) – Fig. 3 (left front)

- Shift the Vinyl Tape as Fig.4 in order to shift left front to middle of machines.

(1), (2) – Work in the same manner as instructed in (1)–(2) for Back.

(3) Pocket

- Push up required number of Nds. for pocket opening to D pos., transfer Ribber sts. across pocket onto empty Nds. on Knitter.
- Using contrast yarn, knit 1 row manually and replace the sts. belonging to Ribber onto Ribber Nds.

- Continue knitting up to beginning of armhole ending with Carriage at right side.

(4)– Work armhole shaping following contour line up to beginning of front neck ending with Carriage at left side.

(5)– Work neck shaping in the same manner as done for armhole shaping following contour line up to shoulder point ending with Carriage at neck side.

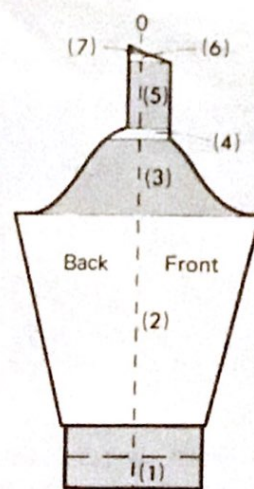


Fig. 6

- (6)– Work shoulder shaping in the same manner as done for Back shoulder and continue decreasing on neck edge.

- Remove on waste knitting.

- Shift the Vinyl Tape as shown on Fig.5, knit right front in the same manner as done for left front, but reverse shaping.

Sleeves (Tension Gauge: (b)) – Fig.6. (right sleeve)

- Shift the Vinyl Tape back to original pos.

- Set Knit Contour for sleeve, and lock at beginning of (2).

(1)– Set machine for K1.P1. Rib.

- Work cuff in the same manner as instructed in (1) for Back.

(2)– Transfer every other sts. from Knitter to Ribber.

- Set machine for English Rib.

- SD ⑥/⑥, knit underarm shaping by single st. increasing following contour line up to beginning of top sleeve.

(3)– Shape top sleeve by decreasing in the same manner as done for armhole shaping following contour line up to (4).

(4)– On right edge, add 1 Nd. for seaming and knit up to (5).

(5)– On left edge, add 1 Nd. for seaming, knit straight up to (6) ending with Carriage at left side.

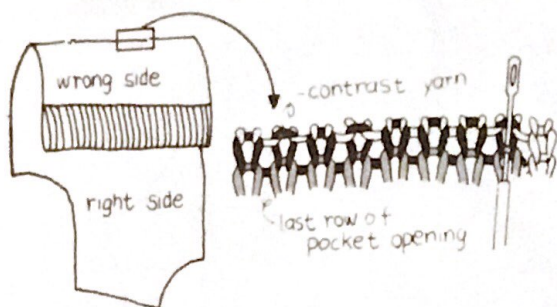


Fig. 7

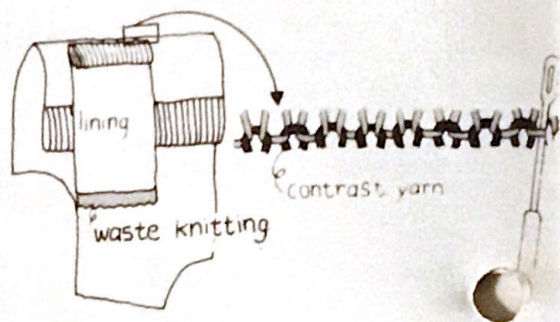


Fig. 8

- (6)– Work partial knitting by decreasing in the same manner as done for shoulder shaping.
- (7)– Work single st. decreasing to left of center 0 on the machine following contour line.
 - Break the yarn, and put yarn through remaining st.
 - Remove (6) on waste knitting.
 - Work left sleeve in the same manner as done for right sleeve, but reverse shaping by reading right for left and vice versa.
 - Block each pieces to size and give a steam iron before work pocket.

Slit Pockets (both alike)

- With Knitter side of front facing, pick up across the last row of pocket opening, and place them onto Nds. on Knitter. (Fig. 7)
- Add an empty Nd. in B pos. on both sides, attach Hanger Comb.
- Knit 1 row with main yarn in Stockinet, set machine for K1.P1. Rib.
- Transfer every other st. from Knitter to Ribber Nd., knit 20 (all sizes) rows in K1.P1. Rib with SD ④/④.
- Transfer all Ribber sts. onto Knitter empty Nds., turn up hem.
- Set machine for stockinet, knit 100 (all sizes) rows in Stockinet for pocket lining.
- Remove on waste knitting.
- With Knitter side of front facing, pick up sts. across top pocket and place them onto Nds. on Knitter. (Fig. 8)

- Turn up lining, unravel waste knitting.
- SD ⑩, knit 1 row from right to left and link off.
- Pull out the contrast yarn to open pocket opening.
- Sew both edge of top pocket in pos., and both sides of lining with Tapestry Needle.

Joining

Join saddle shoulder and sleeves as instructed below. (Fig. 9)

- Arrange required number of Nds. for part A in B pos.
- Holding part A of front and part A' of sleeve with right side facing each other, and place both loops or sts. evenly onto Knitter Nds. in B pos. knit 1 row from left to right with SD ⑥ and back to left with SD ⑩, and link off.
- Join part B to B', C to C' and D to D' separately in the same manner as done for part A.
- Join other side in the same manner.

Neckband – (Fig. 10)

- (1)– Arrange 165 (171, 179, 183) Nds. on Knitter, pick up sts. around neck edge with wrong side facing, and place them onto Nds. in B pos.
 - SD ⑥, knit 1 row in Stockinet.
 - Hang some Weights on the fabric.
 - Set machine for K1.P1. Rib, transfer every other st. onto Ribber Nds.

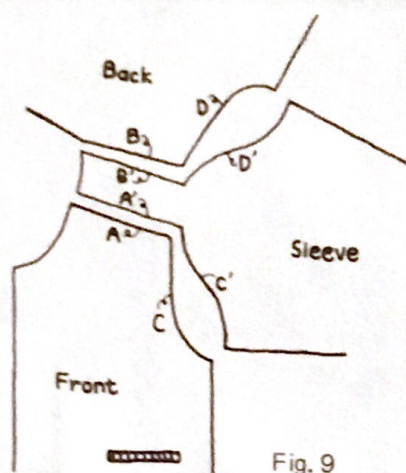


Fig. 9

- (2)– Work partial knitting by increasing sts. in the following manner.
 - Russel Levers on both Carriage at I.
 - On opposite side of Carriage, push up 32 (36, 40, 44) Nds. in D pos. on both Beds.
 - Knit 1 row, bring yarn first inside Nd. in D pos., work the other side in the same manner.
 - *On opposite side of Carriage, push back inside 4 Nds. in D pos. on both Beds to C pos., and knit across, bring yarn first inside Nd. in D pos.
 - Work the other side in the same manner.*
 - Repeat from *to* 7 (8, 9, 10) times in all.
- (3)– Knit 4 (all sizes) rows without shaping.
- (4)– Work partial knitting by decreasing sts. in the following manner.
 - ** On opposite side of Carriage, push up 4 Nds. to D pos.
 - Knit 1 row, bring yarn first inside Nd. in D pos.
 - Work the other side in the same manner.**
 - Repeat from **to** 7 (8, 9, 10) times in all.
 - On opposite side of Carriage, push back Nds. in D to C pos.
 - Knit the other side in the same manner.

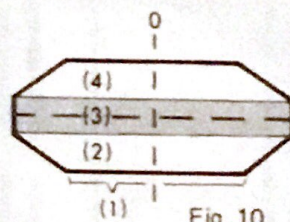


Fig. 10

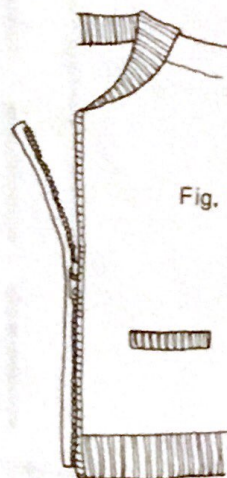


Fig. 11

- Pick up loops from first row of neckband and place them onto corresponding Nds. on B pos.
- Push up all Nds. to D pos.
- Russel Levers at II, knit 1 row from left to right, knit back with SD ⑩, link off.

Front Openings (both alike)

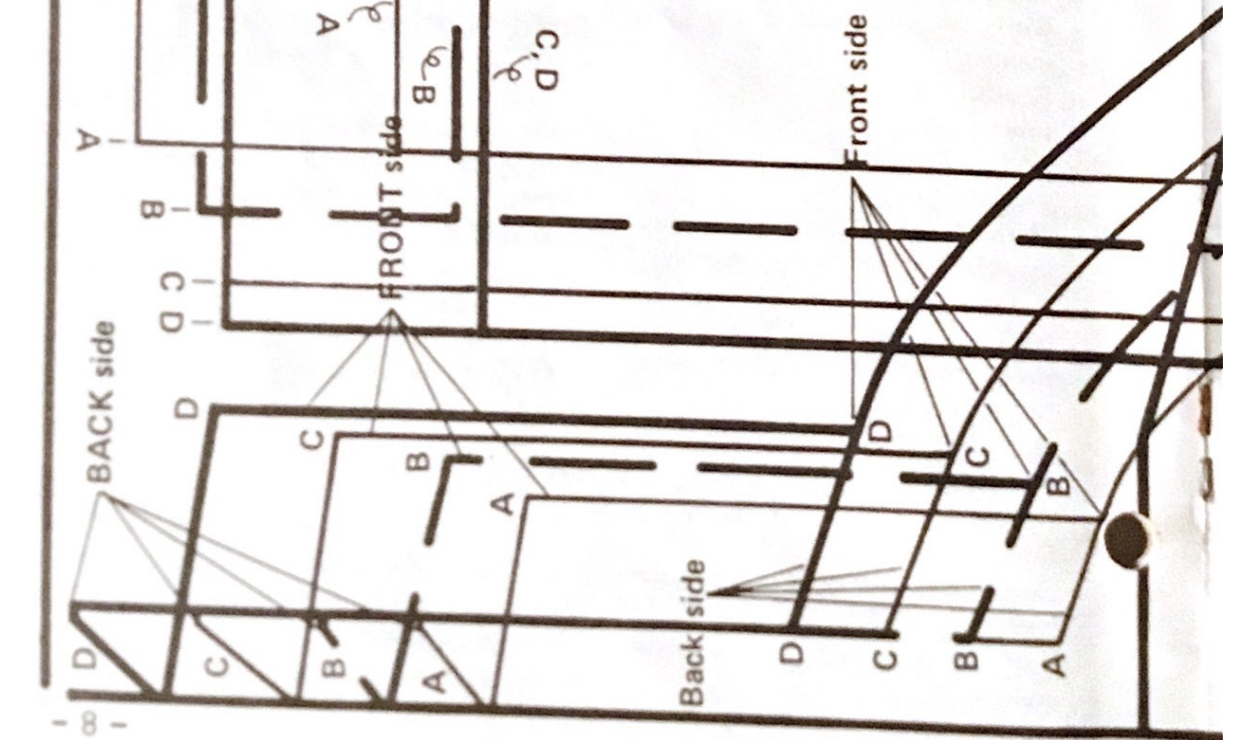
- Set machine for Stockinet, arrange 145 (150, 153, 156) Nds. in B pos.
- With wrong side of front edge facing, hang both end loops on each end Nds., fill Nds. with loops evenly along front edge.
- SD ⑤, starting from right side, knit 9 (all sizes) rows in Stockinet.
- Turn up hem, knit 1 row from left to right, and back to left with SD ⑩, link off.

TO MAKE UP

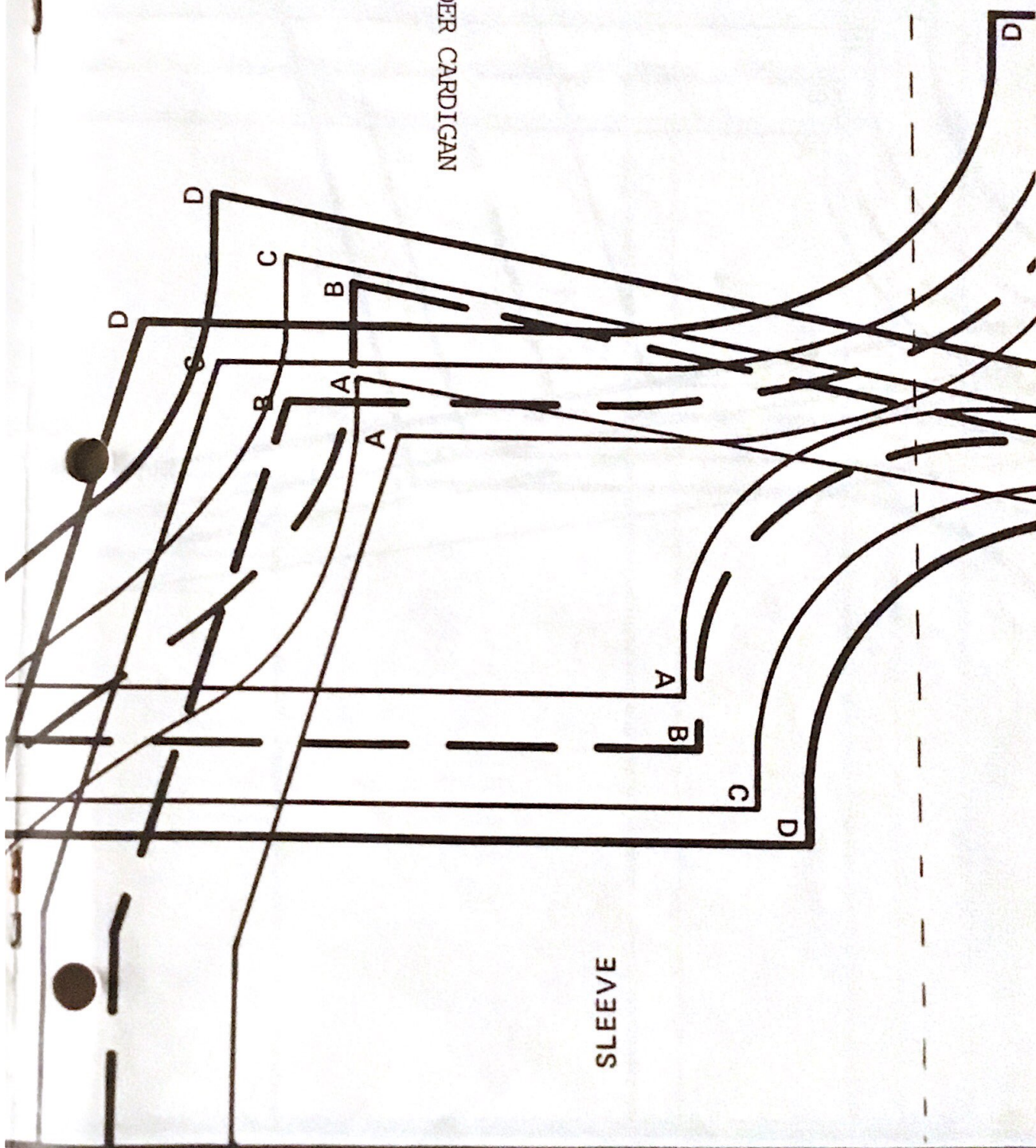
- Sew zipper on wrong side of front opening. (Fig. 11)
- Join side seams and underarm seams continuously.
- Sew in ends, give a final press.

POCKET Opening

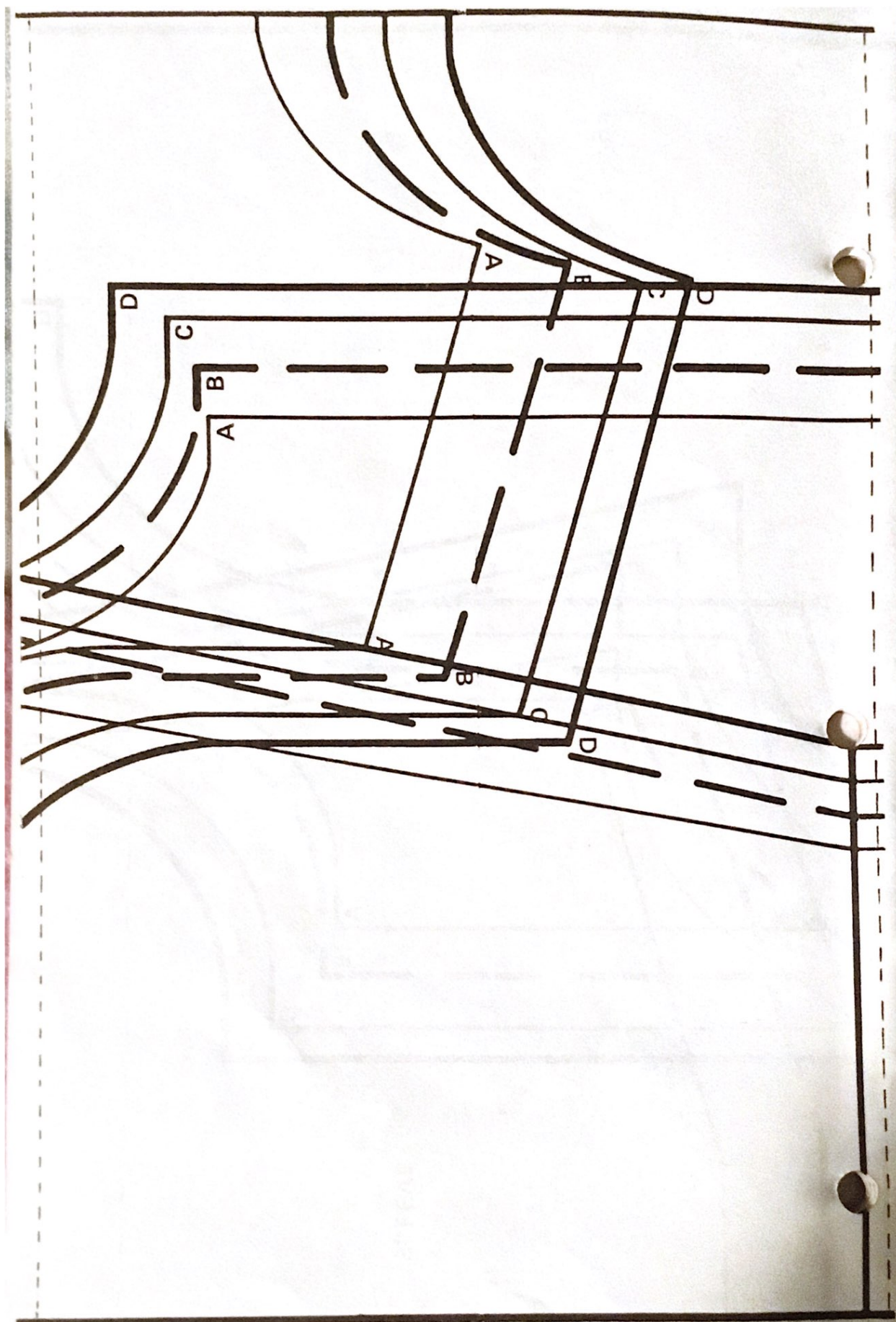
A, B, C, D

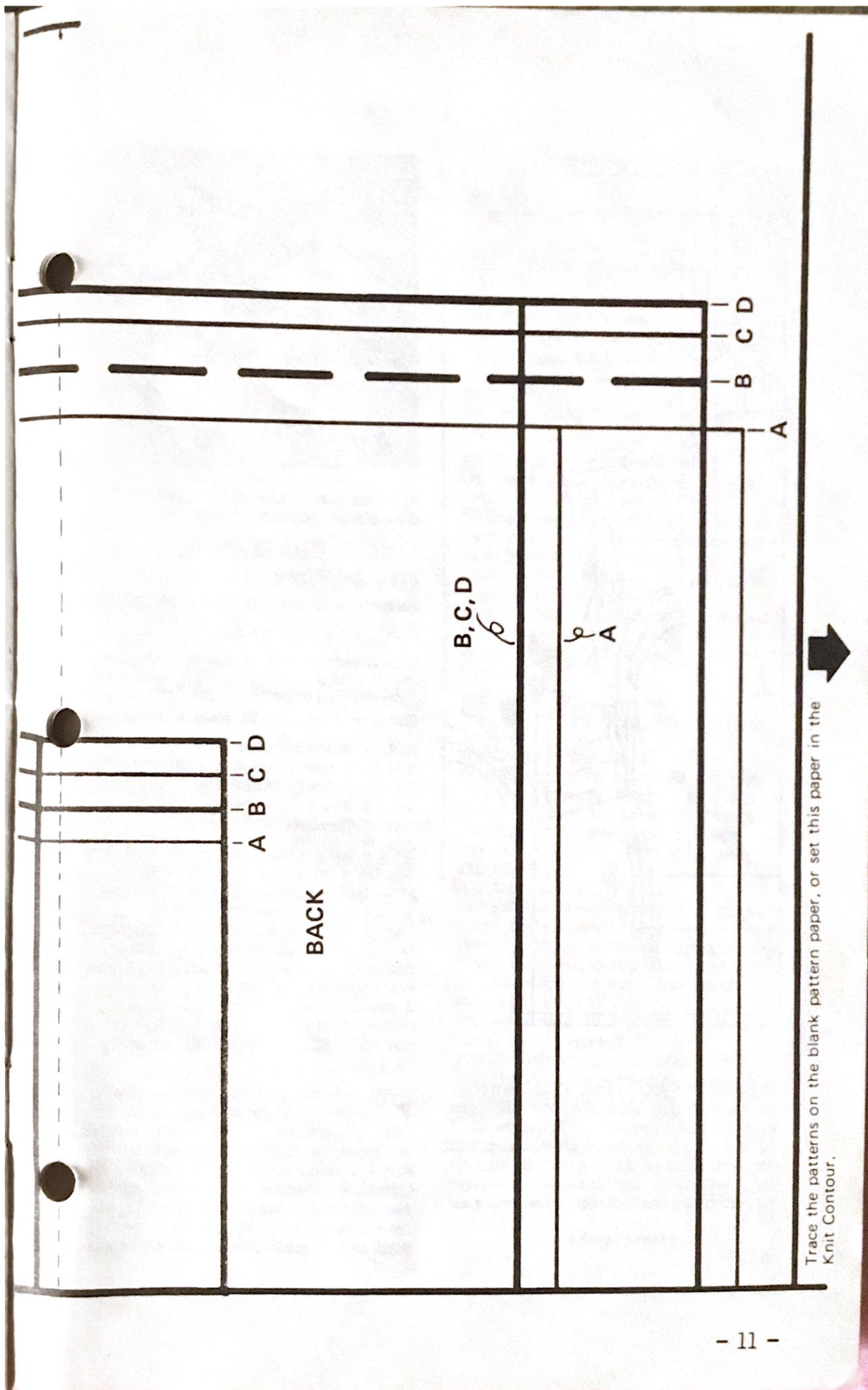


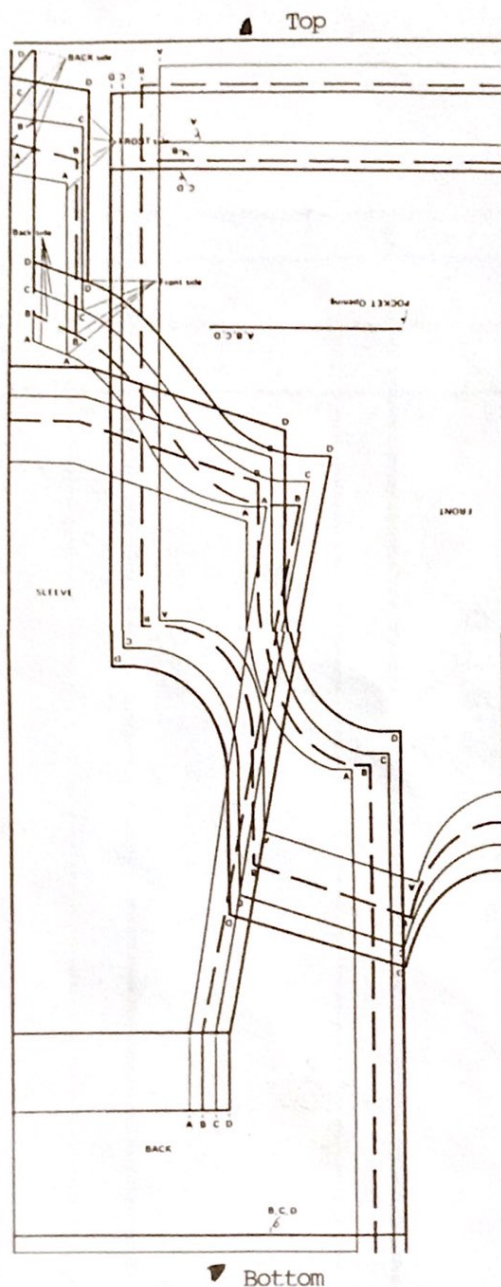
SADDLE SHOULDER CARDIGAN
FRONT



SLEEVE







This is how your final Knit Contour pattern should look for the Cardigan with Saddle Shoulders. On pages 8, 9, 10 and 11 the pattern is drawn to the correct size to fit in all Studio knit contours, and all you have to do is match up the dotted lines on 9 to 10 to 11.



From Noreen Drake in Eugene, OR, comes this pattern for a

CHILD'S PULLOVER SWEATER

For a 1-1/2 year old

Made on a Studio SK-322 with Ribber

Chest size - 22 inches

4 oz. variegated Cresglow 2-9 yarn

Tension - $\frac{4}{4}$ Ribber, 6 on M.M.

Gauge - 7 sts. & 10 rows = 1 inch

M.M. = Main Machine

N.W.P. - Non-working position

E.O.R. = Every other row

Sts. & St. = Stitches & Stitch

Ten. = Tension

BACK - With ribber attached and Ten set on $\frac{4}{4}$ do 1 x 1 ribbing over 82 sts. for 15 rows. Transfer ribber sts. to empty needles on M.M. Change ten. to 6, reset row counter to 000 and knit to row 76. Reset row counter to 000. Bind off 4 sts. for underarm, at beginning of next 2 rows. Row 3, knit. Row 4, decrease 1 st. each side E.O.R. to row 52. Bind or take off on scrap 24 sts.

FRONT - Work same as back to row 40, shape front neckline. Bind or take off center 14 sts., put needles on opposite side of carriage in N.W.P., make note of row number. Continue armhole shaping and at same time decrease 1 st. E.O.R. at neckline until 1 st. left. (Row 52) Bind off. Work other side of neck,

Child's Pullover (Continued)

reversing shaping.

SLEEVE - Make 2 With ribber attached and ten. set on $\frac{1}{4}$ do 1 x 1 ribbing over 50 sts. for 25 rows. Transfer ribber sts. to empty needles on M.M. Change ten. to 6, reset row counter to 000. Work 5 rows over 50 sts. Row 6 start sleeve shaping. Increase 1 st. each side on rows 6, 12, 18, 24, 30, 36, 40, 46 and 52. Work even to row 60. Reset row counter to 000. Bind off 4 sts. for underarm at beginning of next 2 rows. Row 3, knit. Row 4, start shaping, decrease 1 st. each side to row 42. Work even to row 46. Then decrease 1 st. each side on rows 46, 50, 54. Work row 55 on 18 sts. and bind off or take off on scrap.

Sew together leaving one side open.

NECK BAND - With wrong side toward you, pick up sts. around neck opening and put on M.M. Work 1 row ten. 4. Change ten. to $\frac{2}{2}$ and transfer E.O. st. to ribber. Knit even for 12 rows. Bind off loosely in knit 1, purl 1.

Finish by sewing up sleeves and underarms.

Mrs. Charlotte Chamitoff, Barton, VT, sent in this pattern which she says is for a stockinette V-neck raglan which sounds very 'ordinary'. However, if you will note, it is for a size 50 and size 52". Everyone seems to have a large person they would like to knit a gift for and get stumped because there are so few patterns available it becomes a real problem.

V-NECK RAGLAN SWEATER

Made on a Studio SK-328 and Ribber

Size - 50" (52 finished) and size 52" (54 finished)

Main Tension - No. 8

Rib Tension - No. 5

Gauge - 7 sts. & 10 rows = 1 inch

Yarn - 2 strands 2/15

BACK - Row Counter 000

Cast on 184 (192) sts. and K1P1 rib 24 rows.

Row Counter 000

Transfer sts. to main bed and knit stockinette to row counter 128 (both sizes)

Row counter 000**

Decrease 3 sts. beginning of next two rows (both sizes)

Then decrease 1 st. each side with three-prong tool every alternate row 61 times (64 times) Row Counter 124 (130).

Put remaining 56 (58) sts. on waste yarn.

FRONT - Row Counter 000**

Decrease 3 sts. beginning of next two rows (both sizes)

Then decrease armhole edge same as back and at the same time proceed with V-neck when row counter reaches 42 (both sizes). Decrease 1 st. every 3rd row 27 times (29 times) also using three prong tool. Row Counter: 124 (130). Do opposite side likewise. Cast off last stitch.

SLEEVE - Row Counter 000

Cast on 78 (80) sts. and K1 P1 rib 24 rows.

Row Counter 000

Transfer sts. to main bed and proceed stockinette increasing 1 st. every 5th row 30 times (31 times).

Continue till row counter reads 158 (both sizes). You will have 138 (142) sts.

Row Counter 000.

Decrease 3 sts. beginning next two rows (both sizes)

Then decrease using three-prong tool 1 st. each end every alternate row 61 times (64 times). Row counter will be 124 (130).

Put remaining 10 (8) sts. on waste yarn.

Proceed with your favorite V-neck. The stockinette garter bar method happens to be my favorite.

Christine Julson, Chippewa Falls, WI, submitted the following pattern which is shown on the following page, modeled by Denise Julson.

CHILD'S VEST

Made on a Studio

Size 13

2 strands 2/24 Used 5 oz. total

Ten. #4 garment, Ten. 2/2 ribbing
Gauge - 8 sts. & 10 rows = 1 inch

Three colors - M.C. orchid
2 C.C. colors - red & bright blue.

Did 2 by 2 rib

FRONT - C.O. 130 sts. Rib for 38 rows
Ten. 2/2 Transfer to main bed.
Ten. 4 R.C. 00 Knit 16 rows M.C.
At Ten. #10, knit 2 rows of C.C. &
then hang 1st row of C.C. up on 2nd
row of C.C. Ten. 4, knit 16 more
rows. Then change tension & knit 2
more rows of C.C. and hang as above.
Continue in this manner, until
through row 112. Bind off 12 sts.
for armband inserts. R.C. 00.
Continue pattern sequence through
row 70. Take center 22 sts. off
on scrap. Decrease neck side only
every other row until you have 24
sts. left for each shoulder.
Take shoulder stitches off on scrap.

BACK - Do same - up to arm B.O.
Row counter 00. And while continuing
pattern - knit through row 100.
Take center 22 sts. off on scrap. On
each neck side (work divided) de-
crease every other row until 24 sts.
left for shoulders. Scrap off
shoulder sts. Hang 2 shoulders on
machine - knit one row Ten. 10 -
link off.

NECK BAND - 128 sts. 2/2 rib. Ten.
2/2. On row 7 insert 1 C.C., knit 2
rows. Insert other C.C. & knit 2 more
rows. Then continue ribbing through
row 20. Hang neck sts. from garment
onto band on machine. Knit 1 row
Ten. 10. Latch tool bind-off - going
around 2 pegs to insure give for
neckline. Close other shoulder seams

ARM BANDS - Cast on 108 sts. Ten. 2/2
& rib 2/2 make same as neckband for
20 rows. Then hang garment back on
& knit 1 row Ten. 10. Latch tool
B.O. going around only 1 peg. (I
used linker). Sew together. Block.
Note: Bottom of arm bands are sewn
to 12 B.O. arm sts.



CHILD'S VEST

Gini Woodward, our Studio dealer in
Bonners Ferry, ID, submitted the
following item of interest -

WASTE NOT!!!

Have you ever wondered why when you
knit a swatch it needs to be 70 sts.
wide? Is it just because the book
says, or because of the green ruler?
Take a minute & bring 70 sts. out to
D in the center of the needlebed.
Run the carriage to the center &
stop. Note each end of the carriage.
There are a few left that the car-
riage doesn't cover, right? On a
narrower piece the carriage isn't
covering needles completely at any
one time & for some reason this
causes the knitting to be longer &
narrower. So, if you knit a narrow
swatch the gauge will not be accu-
rate for a wider piece, say a
sweater back. Then, if you knit a
standard swatch for your garment &
then in knitting the garment come to
a place where the knitting is narrow
say a facing, your knitting will tend
to become longer & narrower than the
swatch gauge. A simple remedy is to
lower the tension slightly in the
narrow place (up to 1 number). This
should help keep the desired size.

This "Newsletter" is your publication. Help support it by submitting your original patterns and helpful hints, so other home knitters can learn from your experience. We would like to urge all of you with older machines to share your favorite originals with our other readers. Many of our readers write in requesting simple, beginner patterns. You will receive a gift of yarn for any original pattern or hint that is printed. When sending in your patterns, be sure to include the size of the garment and the knitting gauge (number of stitches and rows per inch) - this is most important - and the knitting machine for which your particular pattern was designed. It also helps if you know approximately how much yarn your pattern takes. Please check and recheck your patterns for errors and type or print clearly. We do not have time to knit each pattern sent in, so cannot check for mistakes. It also helps if you do not abbreviate, as many of your terms are unfamiliar to us and to other readers. A black and white snapshot and/or brief description of your garment will make it easier to visualize by other readers. A gift of yarn will be sent for snapshots (black and white) printed with the patterns.

There is a wonderful opportunity awaiting you to become a STUDIO Knitting Machine and yarn dealer. Good money can be made in your spare time with only a small investment. We are interested in contacting men and women who would like to become a part of our growing group of STUDIO dealers throughout the United States. Our assistance and guidance can make this a very profitable venture for you, and our only requirements are that you know how to operate a knitting machine and that you have space available in which to set up your STUDIO shop, either in your home or place of business. You will find this a fascinating business which affords you the opportunity to become acquainted with new and interesting people. Contact Mr. David Bratz, Manager, STUDIO Yarn Farms, Inc., P.O. Box 46017, Seattle, WA 98146.

If you are planning to move soon, let us know both your old and new addresses, complete with zip codes. We cannot change your address without this information.

Patterns submitted and published in this "Newsletter" are submitted by individuals and are purported to be original patterns.

CANADIAN SUBSCRIBERS - Please remember, when sending in your subscription, all checks and money orders from Canada must be marked "Payable in U.S. Funds".

Please Note - We always notify you when your subscription expires. Your last issue is stamped across the Subscription Order Blank on the back page in red, "Your subscription expires with this issue". This issue is then mailed to you in an envelope and sent by first class mail. If you miss an issue, without having received this notification, please let us know, because it means that your mail isn't reaching you, and we will send you another copy. All the "Newsletters" are mailed out, altogether, just as soon as the mailer receives them from the printer.