

Studio

KNITTING MACHINE

"The Most Wanted Automatic Home Knitter"

NEWSLETTER

MAY/JUNE, 1984

VOLUME 175



FROM THE DESK OF DAVE BRATZ

Spring seems to be coming very slowly in most parts of the country and when you see the severity of the weather in many parts of the nation it makes our complaints of a little cold rain seem rather insignificant. Don't get the totally wrong impression however, cause we do get sunshine now and then.

The advent of the AW-1 Weaving Arm seemed to stimulate a renewed interest in weaving. The last issue of the "Newsletter" Knits for Joy pattern also featured a weaving pattern. I've also noticed an increase in garments being shown at seminars and style shows are incorporating weaving techniques in all or parts of the garments. I find it quite satisfying to see some of the machine features that have been possible for so many years have their day on the fashion ramp. As you know, the AW-1 Weaving Arm was originally designed for the carriages that had a jam release button. This meant the older models experienced difficulty in using the arm as the carriage would flip up with no "hold down" provisions. This has now been solved as a small hold-down device is available so the weaving arm can be used on all models from "321" up. Contact your dealer or distributor if you have the older cardmatic machines and want to do automatic weaving.

In the yarn department, we continue to be unable to obtain any 100% acrylic from Mexico due to the quota system being imposed by our government. We are investigating a domestic source of cotton yarns, especially suited for the chunky machines. If we have further developments on this, we will let you know. You might help us decide by giving us your interest in a heavy weight cotton yarn suitable for the chunky machines or even hand knitting or weaving. Look for more news on this in a later issue.

Happy Knitting!!!!!!!!!!!!

Studio dealer Marcella Johnson has moved her Knit Kraft shop to a new location in Muncie, Indiana. For more information on where she is now, please call her at (317) 288-5515.

Marcella also sent in this pattern for

PLATED SLIPPERS FOR CHUNKY

Tension 4 or 5 4-ply yarn for knit and plating

Cast on 35 sts. Knit 1 row left - in plating knit 1 row right. Set for partial knit (still plating) short row for heel to 9 sts. and back out to 35 sts., then short row for toe to 7 sts. and back to 35 sts. Take plating yarn out and knit 1 row to left. Bind off 7 sts. together 5 times.

These are extra warm!

Katherine Dehn, Alburg, VT, designed this pattern for a

DIAMOND SHAPED BABY WRAPPING BLANKET

Made on a Studio Bulky "8"

Tension No. 10

11-1/2 oz. of 4-ply worsted weight yarn

Cast on 2 sts. (E Wrap)

Knit one row.

Increase one stitch at the beginning of every row (Carriage side) by picking up the loop of the stitch from the row below.

Continue increasing until all needles are in

(Continued to page 14.)



hope that by the time you receive this issue, summer weather will be with us, and what could be more appropriate than a cardigan in combination with a tank top in a lace stitch. You can try this pattern in different stitch types and different yarns, as the seasons change.

COLLAR AND TANK TOP

SD ① — SD stands for Stitch Dial
SD ①/① and the figure in circle
indicates Stitch Dial
number, and first number
for knitter and second
for ribber.

- pos. — position
- st. (sts.) — stitch or stitches
- Nd. (Nds.) — needle or needles
- CM — Card Memory Number of Punch Card.
- R.C. — Row Counter Number of Punch Card.

|•|•|•|•|•|•|•|•|•|•|

- | — working needle
- — non-working needle

A 60x56 grid of dots representing a 2D lattice. The grid is divided into four quadrants by a vertical line at column 30 and a horizontal line at row 30. The dots are arranged in a pattern that suggests a 2D lattice structure, with some dots missing or highlighted. The grid is labeled with numbers 1 to 60 on the left and 1 to 56 on the top.

A 20x20 grid with a wavy top edge and arrows on the left. Five black dots are plotted at (row, column) coordinates: (1, 10), (3, 15), (7, 10), (11, 15), and (19, 10).

Cardigan with shawl collar and Tank Top

Finished Measurements

size: cm.

Cardigan

	A	B	C	D
Bust	96	100	104	108
Length	56	57.5	58.5	59.5

Tank Top

	A	B	C	D
Bust	88	92	96	100
Length of strap	43	44	45	46

Materials / others:

Medium type cotton thread.....460 – 550gs.

6 buttons (1.5cm in diameter)

Punch Cards: Card A and Card B (Punch as shown on page 1.)

Tension gauge:

30 sts. by 45 rows over the swatch of Plain Lace (Card B) with Stitch Dial at ⑤.

33 sts. by 50 rows over the swatch of Stockinet with Stitch Dial at ⑤.

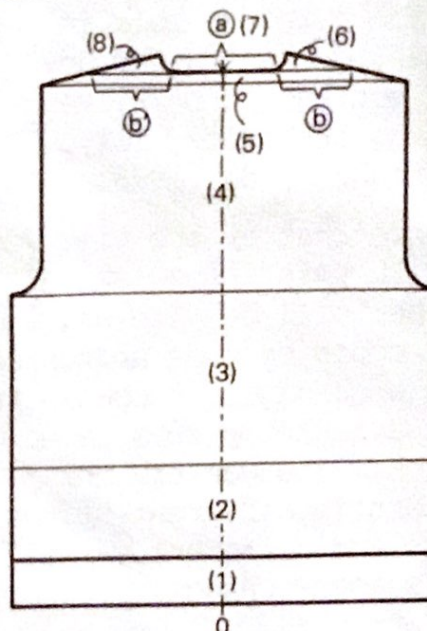
CARDIGAN

To knit

Knit the back, fronts, sleeves, front borders and collar, following the patterns given on pages 8 – 11 and instructions below.

(Set the Row Number and the Stitch Scale according to the tension gauge for Plain Lace.)

(Back)




- (1)– Arrange the needles for K1.P1. rib.
 - SD ①/①, work closed edge cast on.
 - SD ②/②, knit the required number of rows in K1.P1. rib ending with Carriage at left.
 - Transfer Ribber sts. onto Knitter Nds.
 - Remove weights and Cast-on Comb.
 - Lower the Ribber, cover the Ribber needle bed with hard paper or heavy cloth and bring out the fabric over front bed. (Optional Plastic Ribber Needle Bed Cover is available.)
 - Hang Comb Weight with Claw Weights evenly. (Edge Pins must be placed in pos.)
- (2)– Exchange the Carriage for Lace Carriage.
 - Set Card A and lock at CM 1.
 - Set the Lace Carriage as follows:
 - Cam Lever.....Λ
 - Side Levers.....●
 - SD ⑤, knit 1 row in Stockinet.
 - Row Counter to 000.
 - Release Card.
 - Referring to Operation Manual,

work Fashion Lace until R.C. 074 (all sizes).

- (3)– Exchange Card A for Card B and lock at CM 1.

– Set the Carriage as follows:

Cam Lever.....

Side Levers.....●

● Remove yarn from Yarn Feeder.

– Move the Carriage twice to memorize the pattern.

– Carriage at right side.

– Release Card.

– Rethread the yarn, set the Carriage as follows:

Cam Lever.....

Side Levers.....▼

Stitch Dial.....⑤

– Knit up to beginning of armhole.

- (4)– Shape both armhole by decreasing sts. following contour line. (The Edge Pin must be replace following decreasing.)

- (5)– At shoulder point, refer to Knitting Manual, work partial knitting by decreasing sts. to shape both shoulder up to back neck.

– Put yarn mark at the centre of neck.

- (6)– Push up the needles in sections (a) and (b) to D pos., with Ravel Cord, knit them back to A pos. (non working pos.) by hand.

– Mark the CM on the Card, replace left Edge Pin to the right neck edge in pos.

– Knit section (b) shaping neckline by decreasing sts., continue partial knitting at the shoulder side.

– Remove the section on waste knitting.

– Return the Card to marked CM and lock it.

- (7)– Unravel the Ravel Cord on section (a)

● Remove section (a) on waste knitting.

– Carriage at the side to correspond with arrow mark on card.

- (8)– Return the Pattern Paper to knit section (b)

– Unravel the Ravel Cord on section (b) and place back sts.

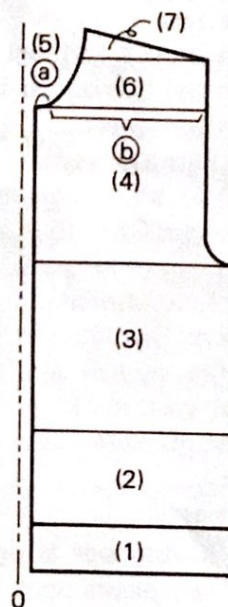
– Replace both Edge Pins in pos.

– Release Card, work section (b) in the same manner as done for section (b), but reverse shaping.

– Remove the fabric on waste knitting.

(Fronts)

Knit two fronts in a symmetrical pattern.



- (1)–(4) – Work in the same manner as instructed in (1)–(4) for back.

- (5)– Push up the needles in section (b) to D pos., with Ravel Cord, knit them back to A pos. by hand.

– Lock the Card.

– Remove section (a) on waste knitting.

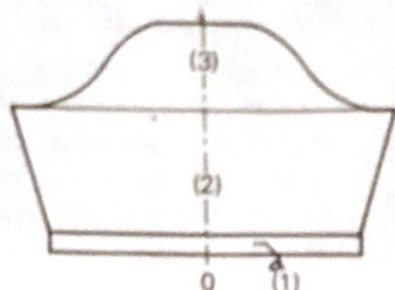
- (6)– Unravel the Ravel Cord on section (b) and place back sts. in hooks.

– Release Card, knit section (b) shaping neckline in the same manner as done for back.

- (7)– Work partial knitting by decreasing sts. to shape shoulder while decreasing sts. at neck edge.

– Remove the fabric on waste knitting.

(Sleeves) — both alike —



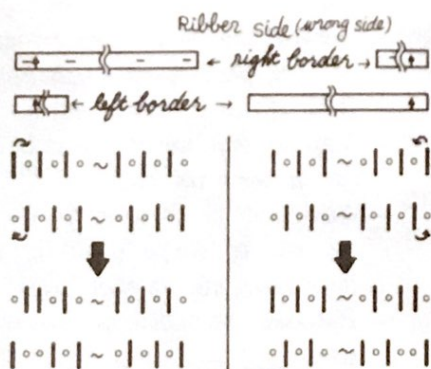
- (1) — Work in the same manner as instructed in (1) for back.
- (2) — Exchange the Carriage for Lace Carriage.
 - Set Card B and lock at CM 1.
 - Set the Carriage as follows:

Cam Lever.....	Λ
Side Levers.....	●
 - SD ⑤, knit 1 row in Stockinet.
 - Release Card, Side Levers to ▼.
 - Knit increasing sts. on both sides in fully fashioned method.
- (3) — Work Cap shaping by decreasing following contour line.
 - Put yarn mark at the centre and cast off with Tappet Tool.

(front borders)

Use the Knitter side as right side.

- Knit two pieces (long and short) for each front border, and make buttonholes on right one.
- Exchange the Stitch Scale for another with the number which is 30% added to the Stockinet st. gauge.
- Set up the machine for K1.P1. rib.
- Work closed edge cast on.
- Arrange the needles as shown below by transferring sts.

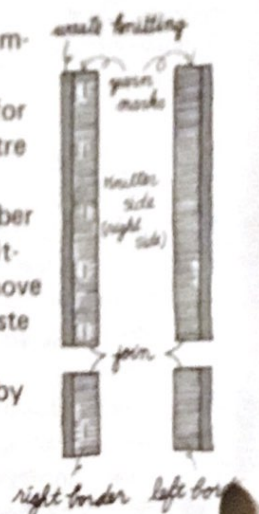


- Knit K1.P1. rib.
- Make the buttonholes as follows.
- *Transfer the sts. from the Ribber to the Knitter and the other sts. from the Knitter to the Ribber as shown below.



*Push up the empty needles from B pos. to D pos.

- Knit required number of rows.
- Put yarn marks for collar at the centre of top side.
- Transfer the Ribber sts. onto the Knitter Nds. and remove the fabric on waste knitting.
- Join two pieces by blind stitch as shown on the right.



(Collar)

Use the Knitter side as right side.

- Exchange the Stitch Scale for another with the number which is 20% added to the Stockinet st. gauge.
- Arrange the needles for K1.P1. rib.
- Work closed edge cast on.
- Rearrange the needles in the same manner as done for front border.



- Knit in K1.P1. rib, adjusting the Stitch Dial as instructed below.

	SD ②/②	
	SD ②②/②②	
	SD ③③/③③	
Λ	0	Λ

- Put yarn marks at the required pos.
- Transfer the Ribber sts. onto the Knitter and remove the fabric on waste knitting.

To make up

- Block each piece to size and press with steam iron.
- Join both front borders to the front edges as instructed below.
- *Measure the sts. of the front border on pattern paper with the Stitch Scale for Stockinet st. gauge and arrange the number of needles to B pos.
- *With right side of front edge facing, hang both end loops on each end Nds., fill Nds. with loops evenly along front edge.
- *With wrong side of the front border facing you, pick up the sts. on the last row of the main knitting and place them onto corresponding Nds. evenly.
- *Push up the needles to D pos., and knit 1 row with SD ⑧ from right to left.
- *Cast off the sts. using Automatic Linker or Tappet Tool.
- Join both shoulders on the machine.
- Measure the sts. of the neck edge on pattern paper with the Stitch Scale for Stockinet st. gauge.
- Join the collar to the neck edge in the same manner as done for front borders but hang collar facing right side.
- Join the side and sleeve seams.
- Set in sleeves.
- Sew 6 buttons on the left border.
- Give a final pressing.

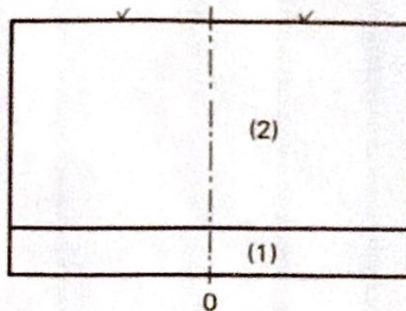


TANK TOP

To knit

Knit the back, front and borders following the patterns given on pages 8-9 and instructions below.
(Set the Row Number and the Stitch Scale according to the tension gauge for Plain Lace.)

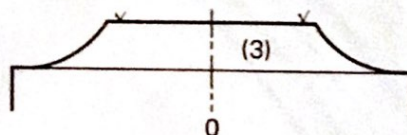
(Back)



- (1)— Work in the same manner as instructed in (1) for back of cardigan on page 2.
- (2)— Exchange the Carriage for Lace Carriage.
 - Set Card A and lock at CM 1.
 - Set the Lace Carriage as follows:
 - Cam Lever.....Λ
 - Side Levers.....●
 - SD ⑤, knit 1 row in Stockinet.
 - Release Card.
 - Referring to Operation Manual, work Fashion Lace without shaping.
 - Put yarn marks for straps.
 - Remove the fabric on waste knitting.

(Front)

- (1)–(2) — Work in the same manner as instructed in (1)–(2) for back.



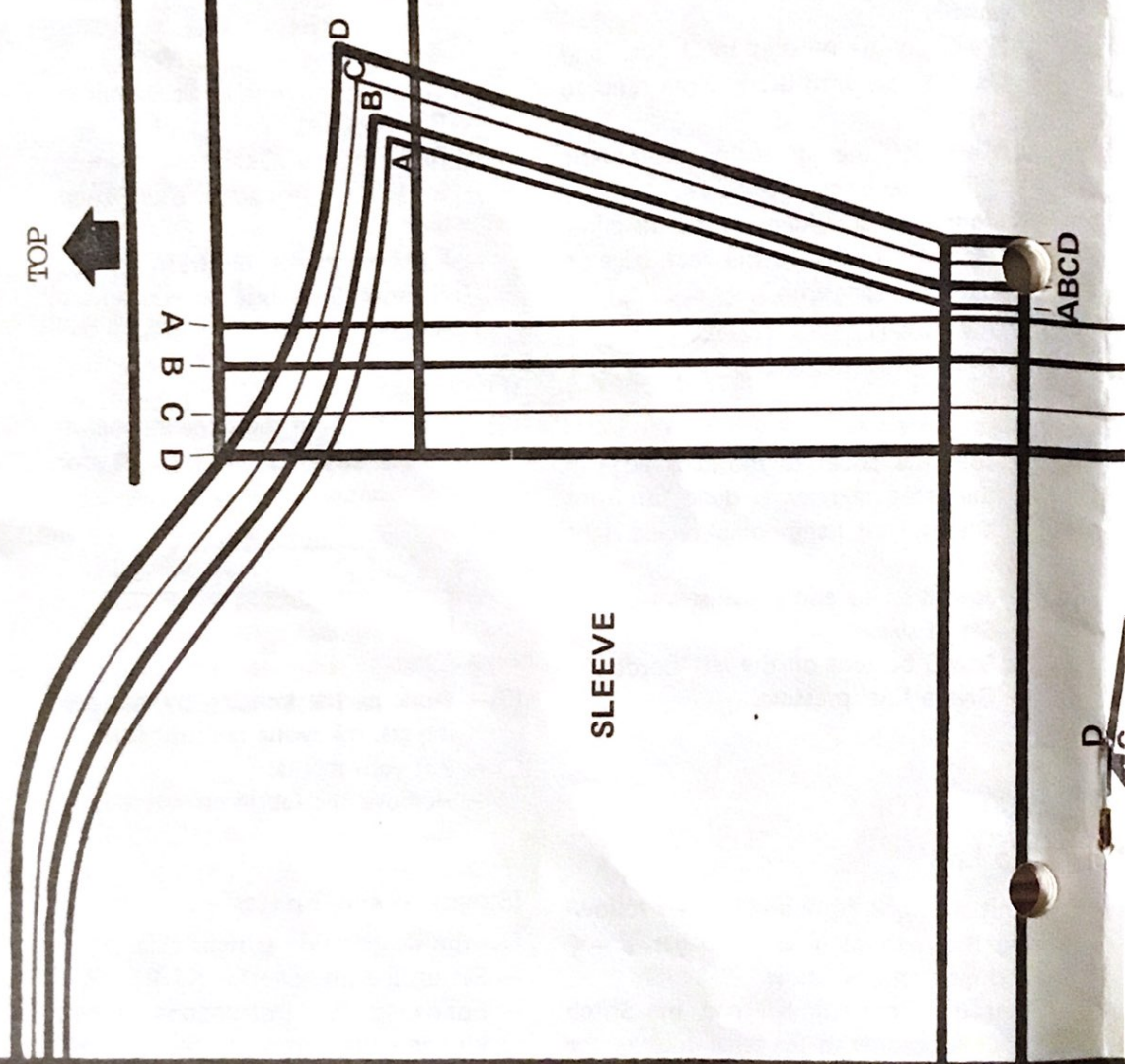
- (3)— Work partial knitting by decreasing sts. following contour line.
 - Put yarn marks.
 - Remove the fabric on waste knitting.

(Straps) — knit 2 pieces —

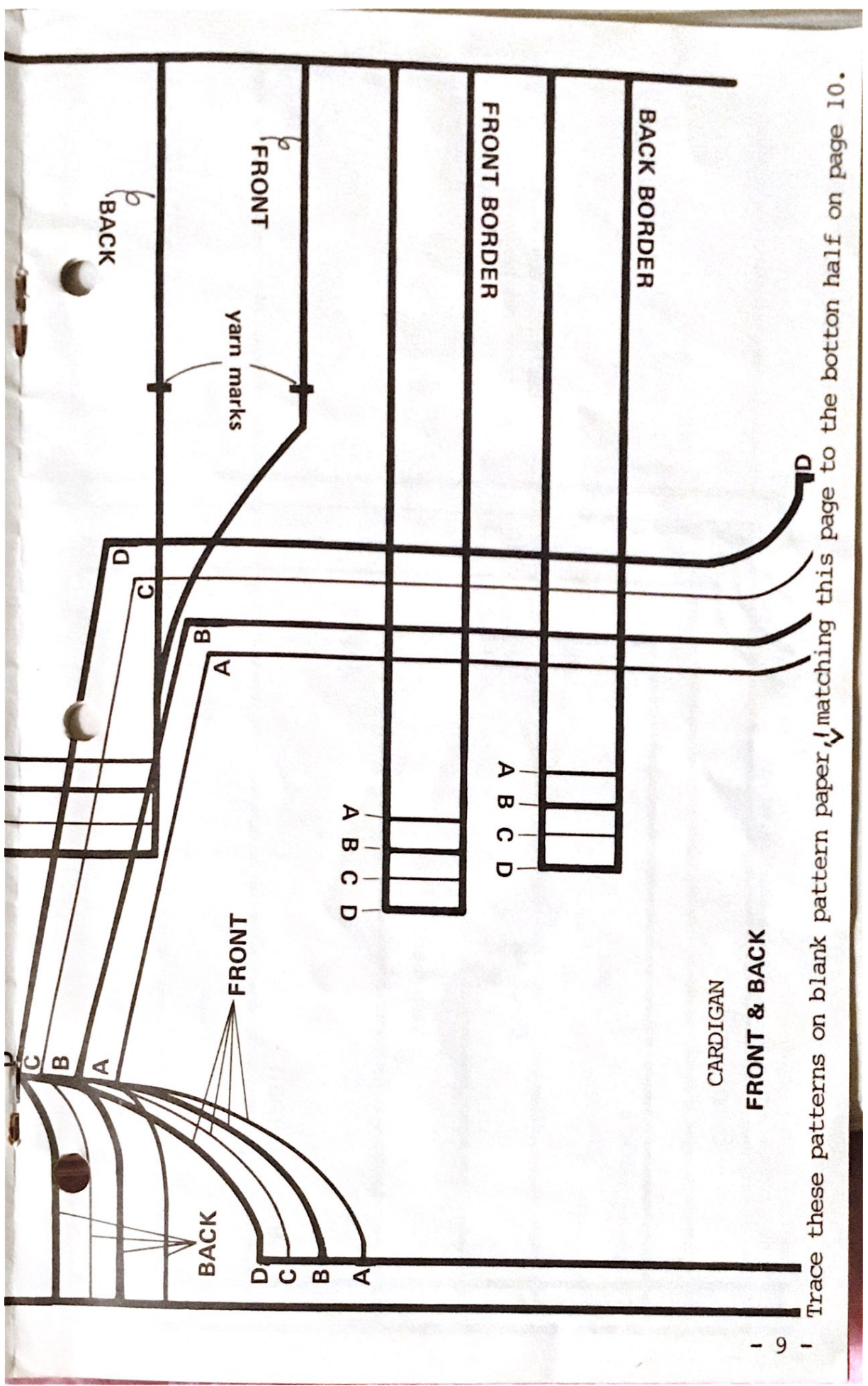
Use the Knitter side as right side.

- Set up the machine for K1.P1. rib.
- Following the instructions below, knit an extra tension swatch of K1.P1. rib and take tension gauge for straps.

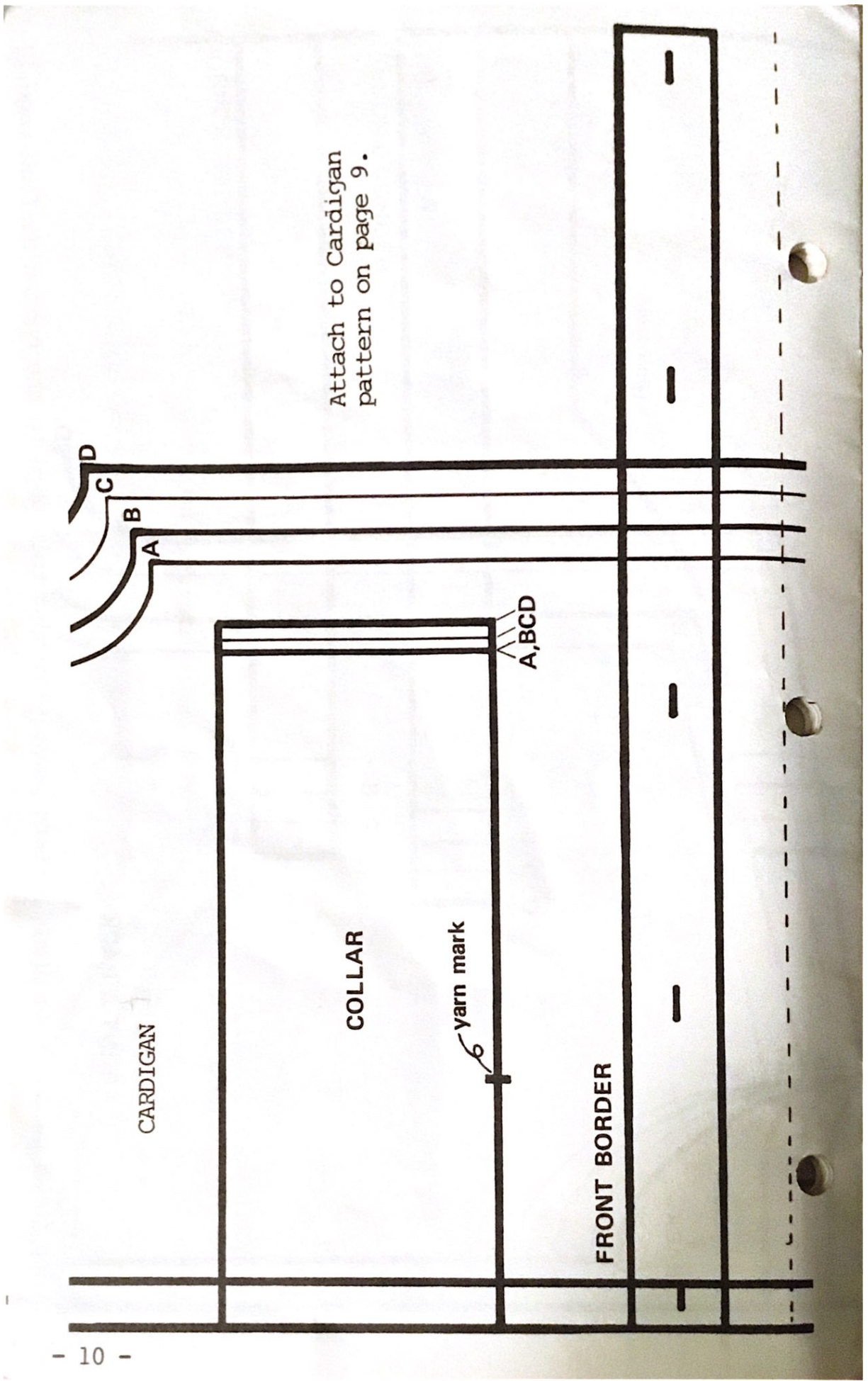
TANK TOP
FRONT & BACK



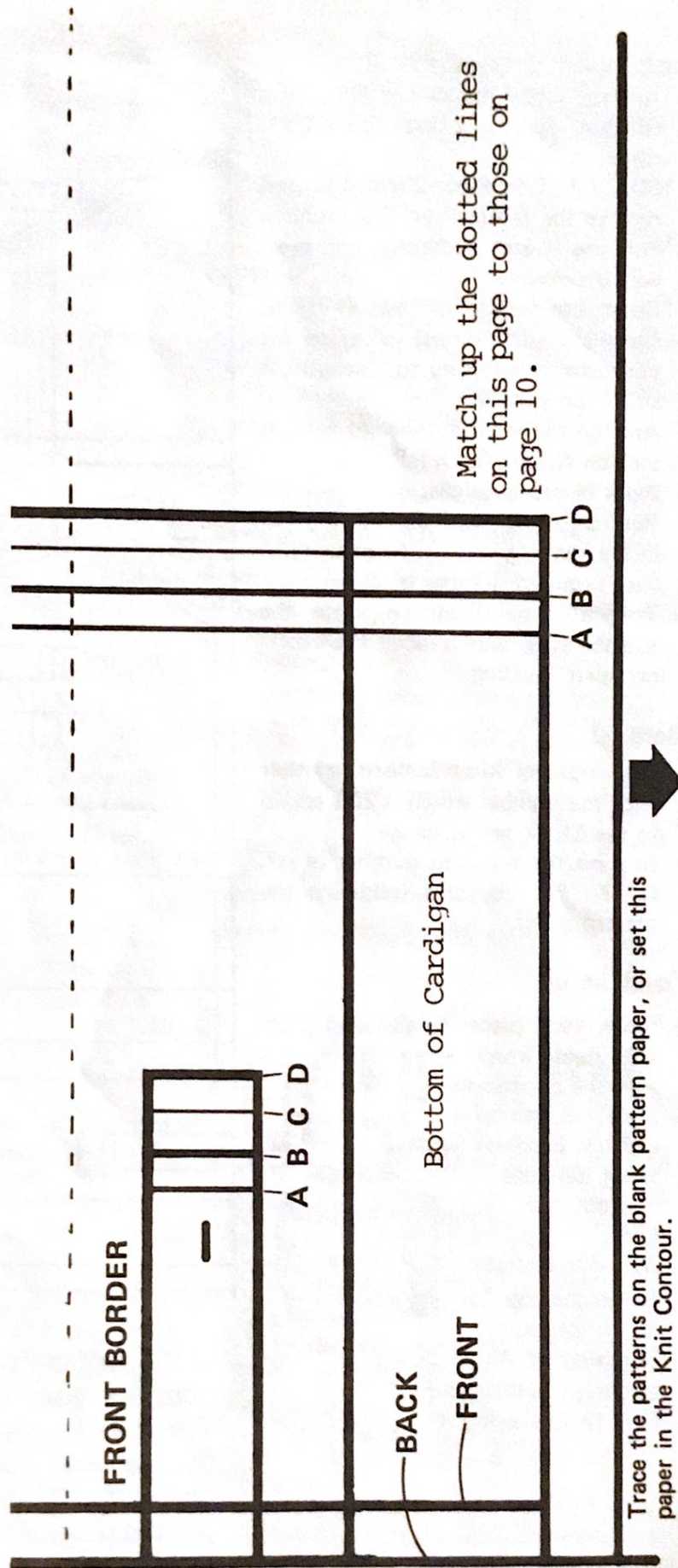
SLEEVE



Trace these patterns on blank pattern paper, matching this page to the bottom half on page 10.



Attach to Cardigan
pattern on page 9.



Continued from page 7.

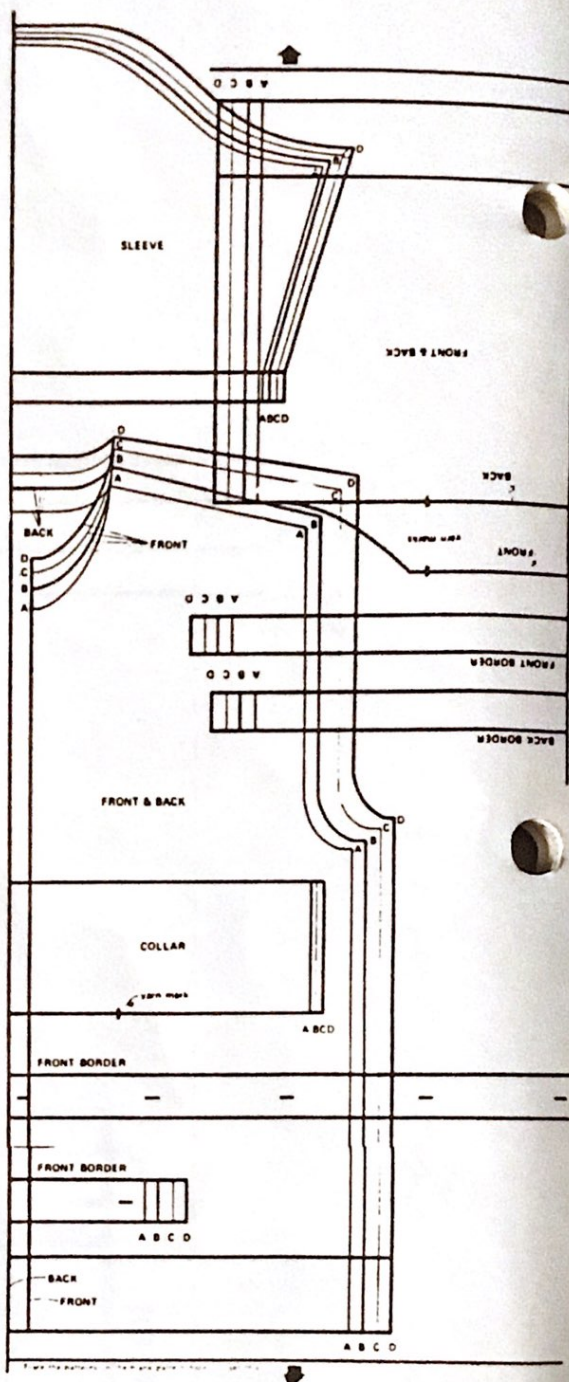
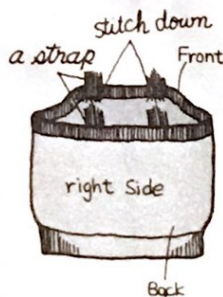
- *Arrange likely number of Nds. for a width of approx. 2.5cm., for K1.P1. rib.
- *SD ②/②, knit about 20cm. long and remove the fabric from the machine.
- *Pull the swatch vertically, and press with steam iron.
- *Count the number of rows in 10cm.
- Calculate the number of rows for your straps referring to "Length of strap" on page 2.
- Arrange the same number of Nds. as tension swatch for K1.P1. rib.
- Work closed edge cast on.
- Rearrange the Nds. transferring sts. in the same manner as front band.
- Knit required number of rows.
- Transfer the Ribber sts. onto the Knitter Nds. and remove the fabric on waste knitting.

(Borders)

- Exchange the Stitch Scale for another with the number which is 20% added to the Stockinet st. gauge.
- Cast on the required number of sts. for K1.P1. rib, knit following the pattern paper.

To make up

- Block each pieces to size and press with steam iron.
- Join the borders in the same manner as front borders along top edge of front and back.
- Join side seams.
- Finish the top of the straps.
- Stitch down the straps as shown.
- Give final pressing.



This is how your final Knit Contour pattern should look for the Cardigan with Shawl Collar and Tank Top. On pages 8, 9, 10 and 11 the pattern is drawn to the correct size to fit all Studio Knit Contours.

Rachel Perri, Auburn, NH, sent in this pattern which she has designed in a larger size. She says she made it in white, and when lined, it's very rich looking. These jackets have a puffy-ness around the body and do not fit tight like a sweater. The original pattern is for size 40/38. The 48/46 size is in parenthesis.

LADY'S JACKET

Made on a Studio SK-360.

Set in sleeve

Studio card No. 3

6 buttons 1-1/8"

Body - 15" long

Sleeve - 18" long

Yarn - 3-ply sport (1-1/2 lb.)

Ten. Rib 8/9

Main 10

Crochet hook No. 6 or G

Gauge - 6.4 sts. or 1-1/2 tuck per inch.

13.7 rows per inch.

Size 40 unlined or Size 38 lined will fit someone who wears blouse size 36 if lined, 20" across back.

Size 48 unlined or Size 46 lined, actual measurement 25" across back for fullness.

BACK: Cast on 128 (162) sts. Rib 26 rows, tuck to row 206 - 31 tucks across back (41 tucks across back).

ARMHOLES: Counter 000, bind off 6 (11) sts. at next 2 rows. Decrease 1 st. each end every other row 14 (10) times. Work even to row 116 - 8-1/2" (row 132 - 9-1/2").

SHOULDERS: Bind off 7 (10) sts. at beginning of next 4 rows, and 6 (9) sts. at following 4 rows. Put remaining 36 (44) sts. on waste yarn.

FRONT: Cast on 64 (84) sts. Work same as back to armholes.

Counter 000, bind off 6 (11) sts. at arm edge only, dec. 1 st. at arm edge 14 (10) times. Work even to row 85 - 5-1/4" (97 - 5-1/2"), bind off 9 (13) sts. at neck edge. Dec. 1 st. at neck edge 9 (12) times, work even to row 116 (132).

SHOULDER: Bind off 7 (10) sts. twice at arm edge. Bind off 6 (9) sts. twice. Reverse shaping for other side.

SLEEVES: On waste yarn cast on 72 (90) sts. Knit a few rows. With main yarn knit 1 row stockinette, tuck 20 rows - 21 rows total (tuck 14 rows - 15 rows total). Inc. 1 st. each end, knit row 22 (16), continue inc. on row 22 (16) to 92 (116) sts. Counter will be 208. Knit even to row 224.

ARMHOLE: Counter 000, bind off 6 (11) sts. at next 2 rows, *knit 4 rows, dec. 1 st. each end, knit row 5,* continue dec. on row 5 22 (27) times in all, after last dec., knit 4 rows even. Bind off 3 (4) sts. at beg. of next 8 (6) rows, bind off remaining 12 (16) sts.

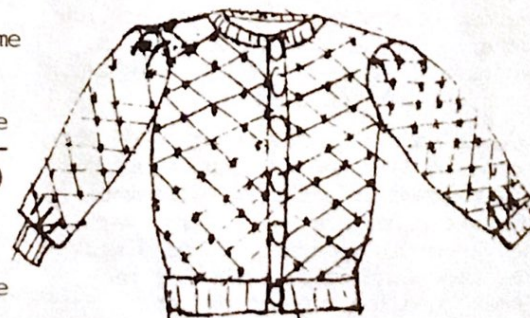
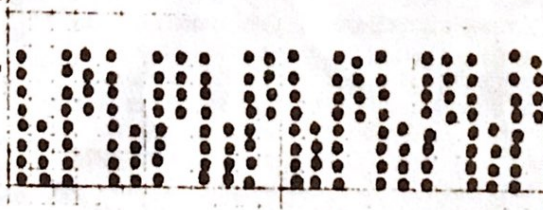
CUFF: Ten. 10, bring forward 55 (59) needles, hang the 72 (90) sts. of bottom of sleeve on the 55 (59) needles evenly spaced, knit 1 row, ribber ten. 8/9, trans. for ribbing, counter 000, rib 25 rows, bind off loosely.

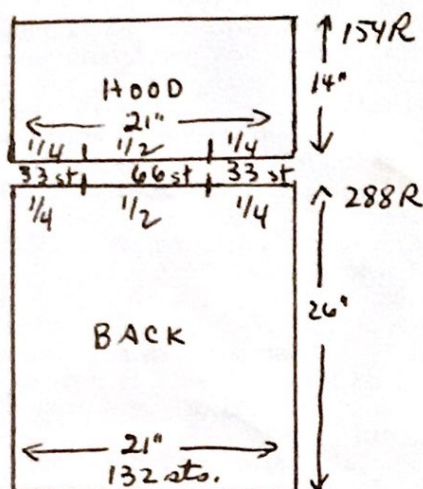
LINING: Make paper pattern of all pieces not including ribbing before stitching.

NECK RIBBING: Ten. 10, bring forward 96 (119) needles, put 36 (44) sts. from back of neck in center bed, put one front on each side of back, knit one row, trans. every other st. to rib, ten. 8/9 rib 9 rows. Bind off.

FINISHING: Single crochet 5 rows along each side of fronts, make 6 3-st. buttonholes on row 3.

Repeat pattern on full card.





Raymonda Dane, Seaside, OR, designed this jacket, patterning it after a jacket she had purchased in Mexico.

RAYMONDA'S PULLOVER JACKET

Made on a Studio SK-560

Tension: #7

Gauge: 25 sts. & 44 rows = 10 cm.

4-ply for weaving - 12 oz.

3/15 Nomis for knitting - 11 oz.

SK-560 Studio pattern No. 10 (30) -

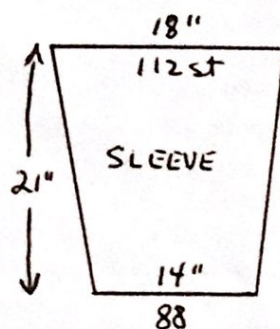
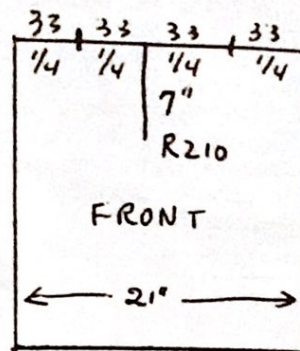
May be made on any machine that does weaving. The new AW-1 Automatic Weaving Arm is a terrific aid.

Measurements are given to aid charting for any gauge, or change in size.

Knit at least a 1-inch hem on each piece.

BACK - Cast on 132 sts. Ten. 6, knit 4 rows stockinette, programming pattern. Start pattern knitting and continue to row 16. RC 0, continue pattern knitting to row 15, knit 1 row Ten. 8. Remove all sts. on garter bar and turn, hang hem. Do NOT KNIT. Turn with garter bar again (2 sts. on needles this time). T. 7 Continue weaving to row 288. Note pattern row number. Remove sts. on scrap yarn, separately, shoulder, neck, shoulder. Block. Check measurements.

HOOD to knit as a continuation of the back. On same needles that shoulders were removed on scrap yarn, cast on and knit a few rows with scrap yarn, each shoulder separately. Hang neck sts. from back onto the center neck opening needles. Reset pattern. Knit 154 rows. Remove all sts. on scrap.



FRONT - same as back to row 210. Note pattern row number, divide and knit each side separately to row 288. Remove shoulder 33 sts. and 1/2 neck 33 sts. on scrap.

SLEEVE - Cast on 88 sts. Knit hem as on back, inc. 1 st. each side rows 20, 40, 60, 80, 99, 118, 137, 156, 175, 194, 213, 230. Row 232 bind off or remove on scrap yarn.

FINISHING - knit 14 sts. on ten. 5, enough rows to apply around neck opening and hood. Knit 2 more pieces for each side opening at hem for a slit 5". Seam shoulders on knitting machine. Weave hood to front neck opening. Seam top of hood on knitting machine. Attach sleeves on knitting machine or sew in place on sewing machine. Sew underarm seams.

Diamond Shaped Baby Wrapping Blanket (Continued from page 2)

work. Knit 3 rows. Dec. 1 st. at beg. of every row (Carriage side) by placing the end st. onto its adjacent needle. Continue to dec. until there is 1 st. left. With "I" crochet hook SC in each large loop all the way around the blanket, inc. at points & making SC's very loose. Cont. to bottom of next page.

WE NEED YOUR ORIGINAL PATTERNS

6/84

This "Newsletter" is your publication. Help support it by submitting your original patterns and helpful hints, so other home knitters can learn from your experience. We would like to urge all of you with older machines to share your favorite originals with our other readers. Many of our readers write in requesting simple, beginner patterns. You will receive a gift of yarn for any original pattern or hint that is printed. When sending in your patterns, be sure to include the size of the garment and the knitting gauge (number of stitches and rows per inch) - this is most important - and the knitting machine for which your particular pattern was designed. It also helps if you know approximately how much yarn your pattern takes. Please check and recheck your patterns for errors and type or print clearly. We do not have time to knit each pattern sent in, so cannot check for mistakes. It also helps if you do not abbreviate, as many of your terms are unfamiliar to us and to other readers. A black and white snapshot and/or brief description of your garment will make it easier to visualize by other readers. A gift of yarn will be sent for snapshots (black and white) printed with the patterns.

There is a wonderful opportunity awaiting you to become a STUDIO Knitting Machine and yarn dealer. Good money can be made in your spare time with only a small investment. We are interested in contacting men and women who would like to become a part of our growing group of STUDIO dealers throughout the United States. Our assistance and guidance can make this a very profitable venture for you, and our only requirements are that you know how to operate a knitting machine and that you have space available in which to set up your STUDIO shop, either in your home or place of business. You will find this a fascinating business which affords you the opportunity to become acquainted with new and interesting people. Contact Mr. David Bratz, Manager, STUDIO Yarn Farms, Inc., P.O. Box 46017, Seattle, WA 98146.

If you are planning to move soon, let us know both your old and new addresses, complete with zip codes. We cannot change your address without this information.

Patterns submitted and published in this "Newsletter" are submitted by individuals and are purported to be original patterns.

CANADIAN SUBSCRIBERS - Please remember, when sending in your subscription, all checks and money orders from Canada must be marked "Payable in U.S. Funds".

Please Note - We always notify you when your subscription expires. Your last issue is stamped across the Subscription Order Blank on the back page in red, "Your subscription expires with this issue". This issue is then mailed to you in an envelope and sent by first class mail. If you miss an issue, without having received this notification, please let us know, because it means that your mail isn't reaching you, and we will send you another copy. All the "Newsletters" are mailed out, altogether, just as soon as the mailer receives them from the printer.

Diamond Shaped Baby Wrapping Blanket (Continued)
Change to "G" hook and chain 4, DC in next SC, *CH 1, DC in next SC *
continue from * to * around blanket. Do five rows.
