

Studio

KNITTING MACHINE

"The Most Wanted Automatic Home Knitter"

NEWSLETTER

JULY/AUGUST, 1984

VOLUME 176



FROM THE DESK OF DAVE BRATZ

Last issue we had mentioned some new yarns that we were considering. Although it is not cotton, we are happy to tell you we do have, not only new yarns, but some other products as well. To best explain it we are quoting a section of a recent dealer bulletin which pretty well covers it. If you have any questions, please contact your local dealer.

NEW ITEMS AND YARNS

Yarns - We are proud to announce two brand new yarns we now have in stock. Both yarns are imported from England and have been especially selected for the U.S. market. Unlike delivery of many imported yarns, these are received by air freight direct from England and arrive within ten days. We already have a large shipment in our warehouse and although we do not intend to run out, it should never be more than two weeks before you would have any size order or unusual quantities of a specific color readily available. Both yarns have been featured in English and European machine knit magazines and are enjoying excellent acceptance.

Hobby Knop Yarn - 83 acrylic/17 nylon (dress yarn) - 22 colors - Samples available on request. Can be used single strand or double strand. \$19.70 lb.

Marquess Yarn - 90 acrylic/10 polyester - 12 colors - Samples on request. Perfect weight for the SK-150 Chunky and bulky gauge machines. \$17.50 per lb. (Both yarns are wrapped in cellophane and are one-pound cones.)

New Items - Books

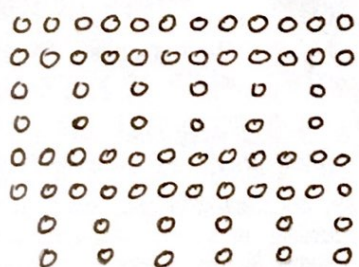
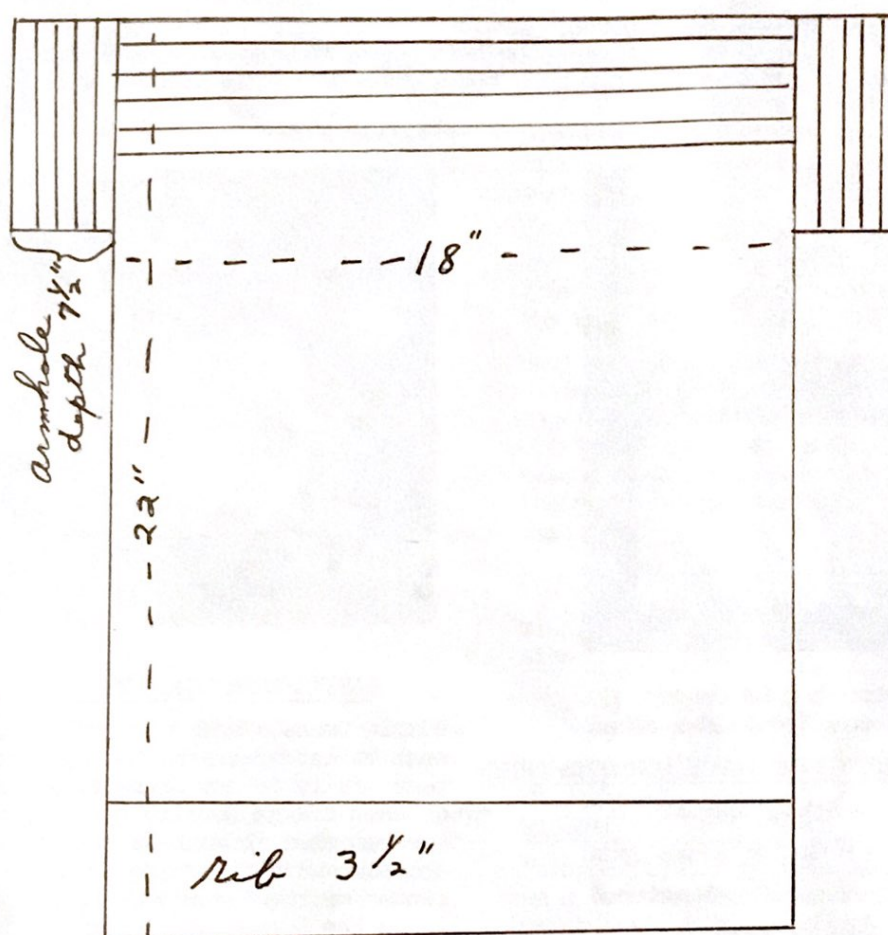
1. #41-31 Hobby Knop Collection Instruction Book contains 16 basic patterns - all using the Hobby Knop yarn. Each in 5 different sizes. \$14.85
2. #41-32 Bramwell Book - Machine knitting in fine 4-ply. A great collection of round and v-neck sweaters, cardigans and slipovers. \$8.75
3. #41-30 Chunky Pattern Book - Pattern designs and intarsia ideas. \$14.95
4. #14-542 Electronic Pattern Book (SK-560) Pattern designs and diagrams for both the SK-560 and SK-500 Electronic. \$15.95
5. #17-167 PS-150 Blank Punch Cards - \$5.60 per package of 10.
6. #17-170 Tapestry Needle for SK-150 - \$.40 each.
7. #42-36 Triangle Ruler 1/4 and 1/2 Centimeter - \$4.25
8. #42-37 Mini Curved Triangle Centimeter - \$1.70
9. #46-102 De-Knit - Remove rows of knitting rapidly and efficiently while allowing your knitting to remain intact - \$14.95

Happy Knitting! ! ! ! ! ! !

STUDIO KNITTING MACHINE SEMINARS

The Huston, Texas, Knitting Machine Association is having their annual Seminar, September 8th and 9th, 1984, at the Hobby Hilton Hotel. For information, please call Studio dealer Dreda Hill at 1-713-771-9574 in Huston.

The Corvallis, Oregon, Knitting Club is having a 3-day Seminar, October 19th, 20th and 21st, 1984, at the Corvallis Elk's Club. For more information, write or call Jaxine Heatherington, 33043 Peoria Road, Corvallis, OR 97333, phone (503) 753-8000.



seed stitch

Pictured on the cover is this - EASY SUMMER SWEATER

Designed by Fran Stachowicz of Menasha, WI.

Made on a Studio

2 strands white cotton yarn 2/28 (Pharr mercerized yarn.)

Cast on 140 sts. Rib 40 rows, T. 3/3. Program seed stitch card. Knit T. 5 row 290. Set machine for stockinette knitting. Knit 6 rows with a darker contrast colored yarn. (I used 3 strands Delaine). Knit 6 rows white, 6 contrast, 6 white, then 6 more contrast. Scrap off 1/3 of the stitches for each shoulder and bind off remaining neck stitches. Make back exactly the same. Pick up about 100 stitches for armhole (after seaming shoulders), or 7-1/2" armhole depth. Knit in stockinette the same stripes you have on the

Continued

Easy Summer Sweater (continued)

boat neck. Seam sides. Finish the neck and armholes with 1 row single crochet and 1 row backward crochet, but 2 rows of single crochet will also lay flat after steaming.



Evelyn Hamilton of Denver, CO, came up with this novel idea of an

ENVELOPE TYPE PURSE FOR NOTE PAPER

Made on a Studio SK-360

Yarn used - Cotton Astra Spun

E cast on 20-0-20 Tension 6

Use any lace pattern.

Knit 4 rows in stockinette, then release lace card and knit to row 115, put in marker.

Knit to row 120. Then decrease on each side 1 stitch until there are 4 stitches left. Bind off.

Single crochet 1 row on these 4 sts. Then single crochet on the 40 sts. at the beginning. Fold up to the marker.

Start at the fold and single crochet all around, as you come to the top (4 stitches bound off), make a loop of 8 stitches. Continue crocheting around other side.

When finished, fold flap down and sew on a button for closing.

Evelyn writes that she changes the tension according to the size notes she is using. She used Tension 5 for ones that measured 6 inches, and Tension 4 for notes that measured 5-1/4".



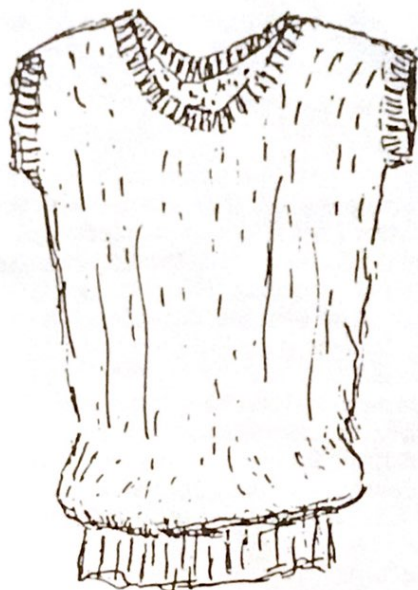
LADY'S SUMMER TOP

Bessie Owens, Rancho Cordova, CA, sent in this pattern which makes up beautifully in any dress type yarn or some of the novelty type yarns. She has used it with a tuck pattern and also with the fancy panel up the center of the front. On pages 13 and 14 is the actual size pattern for the knit contour. If you just trace this pattern onto your knit contour paper, you'll be ready to start knitting. Made on a Studio.

The finished garment length is 53 cm and the width is 46 cm.

Work Ribbing then set up needles for fancy panel at center front.

1. Transfer 1 st. each side of the 2 center sts. to its adjacent needle, leave 9 sts., then transfer the next st. to its adjacent needle. Push the empty needles back to A position.
 2. Set main tension.
 3. Cont. in stockinette stitch and work the fancy panel over each set of 9 sts. between the needles in A position as follows:
 4. Counting from the right, cross sts. 1 and 2 with sts. 3 and 4, then cross sts. 6 and 7 with sts. 8 and 9. Work 1 row.
 6. Transfer the 4th and 6th sts. to the 5th needle.
 7. Keeping the empty needles in B position, work 2 rows.
- (Continued on pages 13 & 14)



PULLOVER CAP SLEEVE TOP

Designed by Jeanette Ashton, our Studio dealer at Jeanette's Yarn Shop in Sacramento, CA.

Jeanette writes, "This is a basic pattern that I have used to demonstrate at many seminars within the United States and Canada in the past four years.

It is a versatile pattern and can be worn by many shapes and sizes. Whatever the stitch pattern, neckline finish or yarn you use, every garment looks so different.

Read the instructions over very carefully. Make your swatch, wash it, let it dry and steam it. When dry, measure it to determine your stitch and row gauge. Plan your garment before you start to knit.

Don't try making a swatch and knitting your garment the same day. Your swatch should be given time to relax for a more accurate measure and a better fitting garment. Let your swatch relax 2 or 3 days.

Place dressmakers carbon under the pattern size you want and carefully trace it onto a piece of bond typing paper. After tracing your pattern on typing paper, cut off the margin adjacent to the centerline.

With the dressmakers carbon under your pattern, place the centerline against the vertical standard line of your

radar sheet, 6 centimeters up from the horizontal standard line and trace your pattern onto the radar sheet.

Use your triangle to draw the straight lines. Use weights to hold your pattern in place.

From the bottom line of your bodice and at the ribbing width measurement, draw the 6 centimeter depth line to the horizontal standard line."

Body measurements are based on the U. S. Bureau of Standards (averages). All major measurements have been rounded off to the nearest centimeter for ease in making computations to draft the basic sloper required for garment design.

| | A | B | C | D |
|-------------|-----|-----|-----|-----|
| Misses | | | | |
| Size | 10 | 12 | 14 | 16 |
| Bust | 32" | 34" | 36" | 38" |
| Finished | | | | |
| Measurement | | | | |
| at Bust | 82C | 88C | 92C | 98C |

This particular garment was knitted in a lace pattern with ribbing at the waist for a blousey effect. The neckline and armbands are also ribbing. I used a dress weight yarn, but pattern is adaptable to many yarns. Use a lace pattern of your choice and yarn of your choice providing it is suitable for lace and ribbing.

If you would prefer to do a stockinette stitch instead of ribbing at the neckline and armholes, use one of the 3 neckline finishes included in this instruction.

Neckline and armhole are creative points and finishing should be the same.

If you plan to do your garment in stockinette stitch, add a cable up the front, see figure A. How about a cable with lace, figure B. Maybe a double cable, figure C, or a double cable with lace, figure D.

If you do decide to finish your armband and neckline with ribbing, do all your ribbing first, including the waistband ribbing. Take each piece off on scrap and set aside.

(Continued)

Cap Sleeve Top (Continued)

Whether you use a lace pattern or stockinette stitch for your bodice, the stitch gauge, (from your swatch) divided by 10 and multiplied by the width measurement of the piece you are ribbing will determine the stitches to cast on. The row gauge divided by 10, multiplied by the depth measurement will determine the number of rows to rib.

EXAMPLE:

Lace Pattern - T-5 = 29 stitches and
41 rows = 10C

$$\frac{29}{10} = 2.9 = 1C \text{ of sts.}$$

$$\frac{41}{10} = 4.1 = 1C \text{ of rows}$$

Waistband width each side of "0" =
18C X 2.9 = 52 sts. to cast on each
side of "0".

Depth = 6C X 4.1 = 24 rows to rib

Neckband = 2.5C X 4.1 = 10 rows to rib

Ribbing to be knitted 2 whole numbers
tighter than garment tension.

NOTE: Measure your waistband ribbing
depth. If measurement is more than
0.5C over the required 6C depth you
may want to adjust your radar pattern
and mark it accordingly before you
start your bodice.

With the wrong side facing you, pick
up the waistband ribbing stitches held
on scrap, increasing stitches evenly
spaced across to match the stitches
needed for the bodice.

Insert lace card, set on row 1 and
lock in position. Turn row counter to
"0", turn levers to stockinette and
knit 2 rows. Turn levers to lace,
turn on lace card and knit in pattern
up to the armhole mark.

Use a contrast color yarn to mark the
armhole on both sides. Annotate the
row number on the radar sheet so you
will know where you should be when you
knit the front. Continue on in pat-
tern and knit up to the back neck
plateau and shaping. Knit the right
side first, placing the stitches on the
left side in hold or rest position.

Draw a line at the neckline and anno-
tate the row number at this point so
you will know where to roll your pat-
- 6 -

tern and row counter back to after
you finish the right side. Don't for-
get to annotate the row showing in
the window if you are using a lace
card.

NOTE: If you are using a lace card,
before you knit the last row of the
shoulder, turn off your lace card,
flip your levers to stockinette and
knit one row over the shoulder sts.
This makes a nicer shoulder seam.

Take shoulder stitches off on scrap.

Before you place the stitches of the
left side into work, roll the lace
card back to the row in the window as
annotated and lock in position. Run
the carriage across and back to memo-
rize the lace row. Place stitches
required into work, turn the row
counter back as annotated on the radar
pattern, turn on the lace card, flip
the levers to lace and complete the
left side the same as the right side.

Don't forget to knit one row of
stockinette stitch on the last row of
your left shoulder stitches.

Take left shoulder stitches off on
scrap.

Before you take the neck stitches o
on scrap, pick up loops and knots to
equal the back neck measurement. Knit
one row over all stitches at garment
tension. Then take neck stitches off
on scrap.

EXAMPLE: - 1/2 back neck measurement
equals 11C

$$11C \times 2.9 = 32 \text{ sts. each side of "0"}$$

Roll and pull your garment lengthwise
to pop the stitches.

Lightly steam the garment and set
aside to set and dry.

Knit the front the same as the back
up to the armhole mark.

Continue to knit in pattern up to the
start of the front neck shaping. Draw
a line at the neckline, annotate the
row counter number and the row show-
ing in the window of your lace card.

Work the right hand side first, plac
stitches on the left in hold or rest
position and shape the neckline fol-
lowing the contour.

When you reach the shoulder, remember
to turn off the lace card, flip the
(Continued)

Cap Sleeve Top (Continued)

levers to stockinette and knit one row over shoulder stitches.

Take the shoulder stitches off on scrap.

Before you place the stitches of the left side into work, roll the lace card back to the row in the window as annotated and lock in position. Run the carriage across and back to memorize the lace row. Place stitches required into work, turn the row counter back as annotated on the radar pattern, turn on the lace card, flip the levers to lace and complete the left side the same as you did the right side.

Don't forget to knit one row of stockinette over left shoulder stitches.

Take shoulder stitches off on scrap.

Before you take front neck stitches off on scrap, pick up loops and knots to equal front neck measurement. At garment tension knit one row over neck stitches, then take stitches off on scrap.

EXAMPLE: - $1/2$ front neck measurement
= 18C

X 2.9 = 52 sts. each side of "0".

Roll and pull your front bodice lengthwise to pop the stitches, steam lightly and set aside to dry.

Shoulder Seaming - With the right side of your back facing you, pick up right shoulder stitches from scrap and place them on the machine.

Remove the scrap yarn.

With the wrong side of your front bodice facing you, pick up the right shoulder stitches from scrap and place them on the machine. After picking up 4 or 5 stitches from the front, push the back stitches behind the latches and catch the front stitches into the needle hook with the latches closed. When all the stitches have been picked up in this manner, push the needles all the way back to manually knit the stitches through for a firm shoulder seam.

Remove scrap yarn and do a latch tool bind-off of the shoulder stitches, binding off firmly and remove from the machine.

Steam shoulder seam.

Attaching Neckband - With the right side of the garment facing you, start placing front and back neck stitches on the machine. Be sure to start at the far right side to accommodate the total number for front and back. Then remove the scrap yarn.

With the wrong side of the neckband ribbing facing you, pick up stitches held on scrap and place them on the machine. After 4 or 5 stitches have been picked from the ribbing, push the back stitches behind the latches and catch the ribbing stitches into the needle hook with the latches closed. Then manually knit the same as you did the shoulder stitches. Latch tool bind off neckband stitches. This technique prevents stitches from stretching and results in a nicer neckline finish.

Do the left shoulder in the same manner as you did the right.

Steam shoulder seam lightly.

Attaching Armband

With the right side of your garment facing you, pick up stitches *(loops and knots) starting at the armhole mark and work toward the shoulder seam.

NOTE: Pick up 3 loops and a knot, then pick up the loop adjacent to the knot, this will be the first loop of the next group of 3 loops. Continue in this manner until you have the number of stitches you need to equal the armhole measurement from mark to shoulder seam each side of "0".

EXAMPLE:

$1/2$ armband = $19 C \times 2.9 = 55$ sts.
from armhole mark to shoulder seam or stitches to pick up each side of "0".
Check armband ribbing, stitches should be the same.

With the wrong side of the armband ribbing facing you, pick up stitches held on scrap and place them on the machine. Manually knit the same way you did the shoulder and neckband.

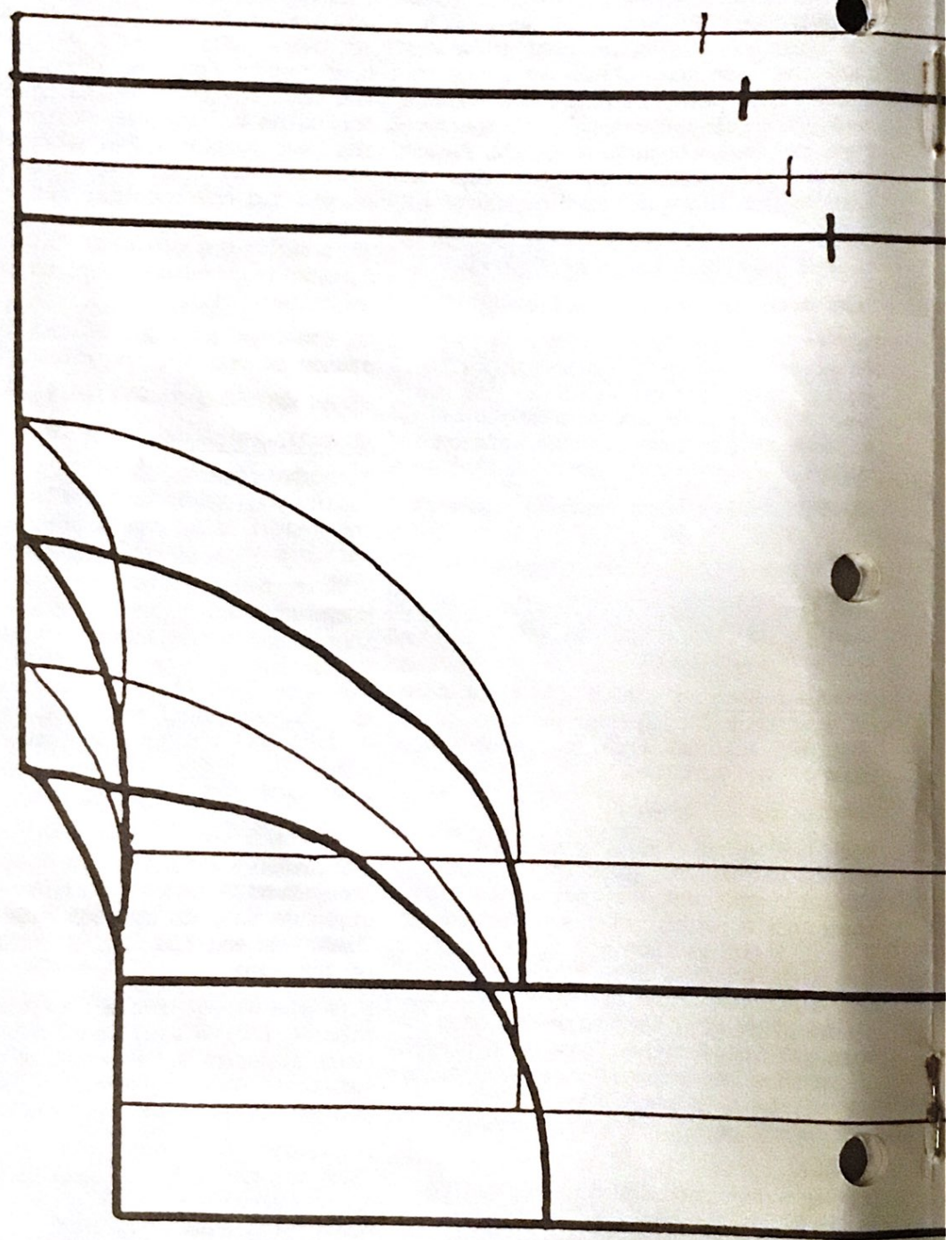
Do a latch tool bind-off and remove from the machine. Do the other band in the same way.

Weave side seams together.

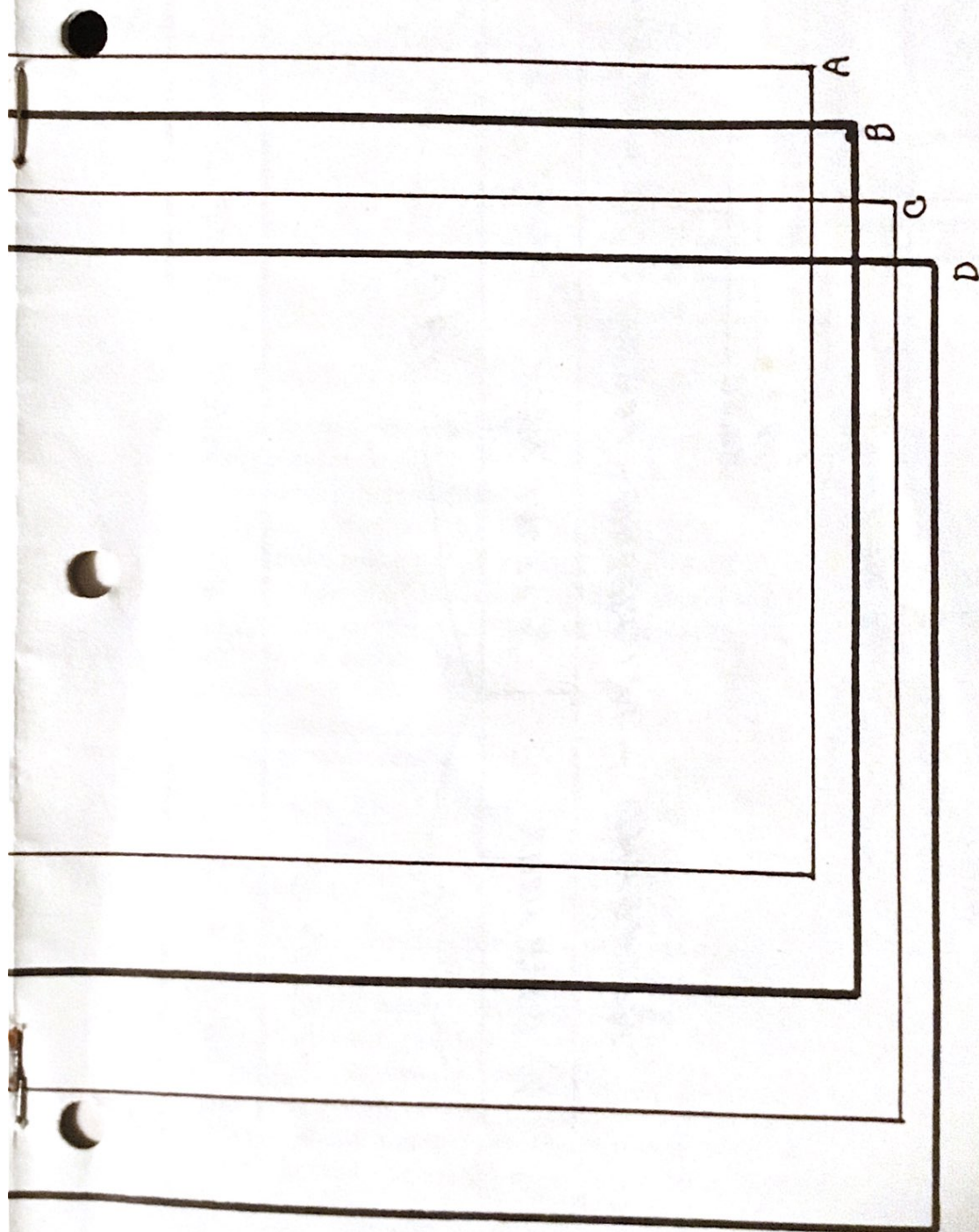
Give your garment a final touch with a little steam, being careful not to steam the ribbing.

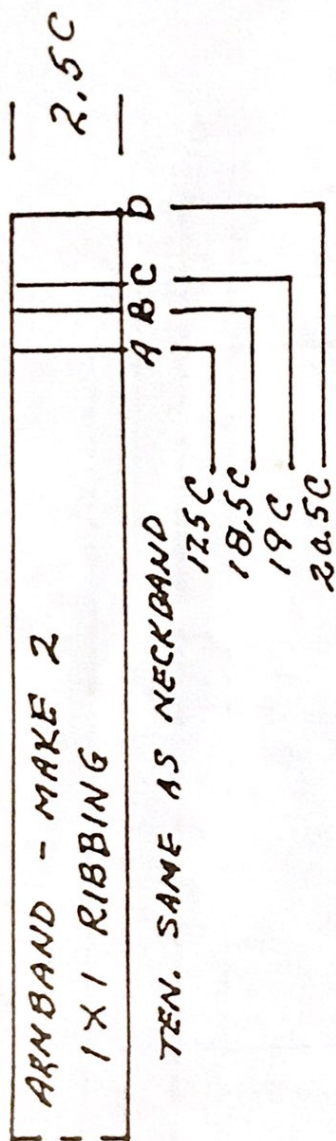
ACTUAL SIZE KNIT CONTOUR PATTERN FOR THE

MARK FOR
A. H.

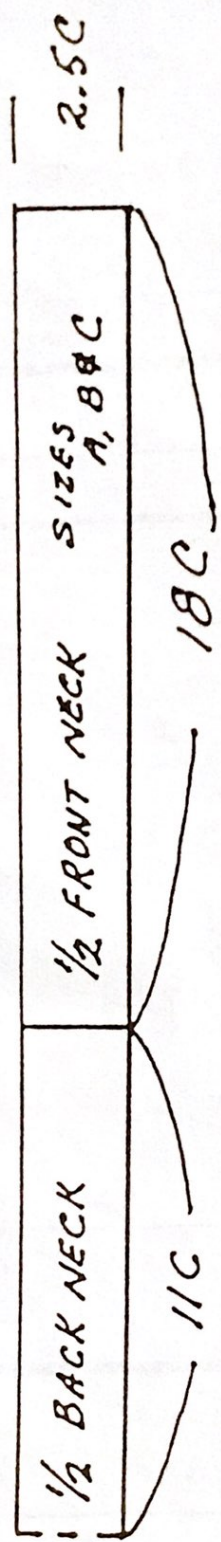


E PULLOVER CAP SLEEVE TOP

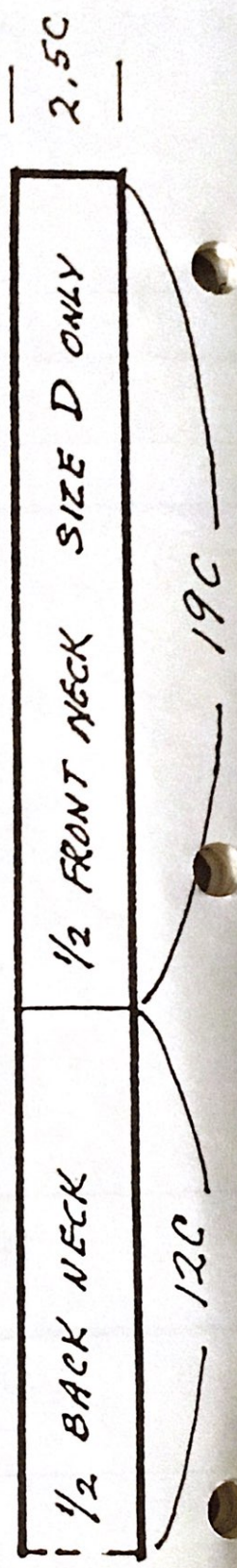




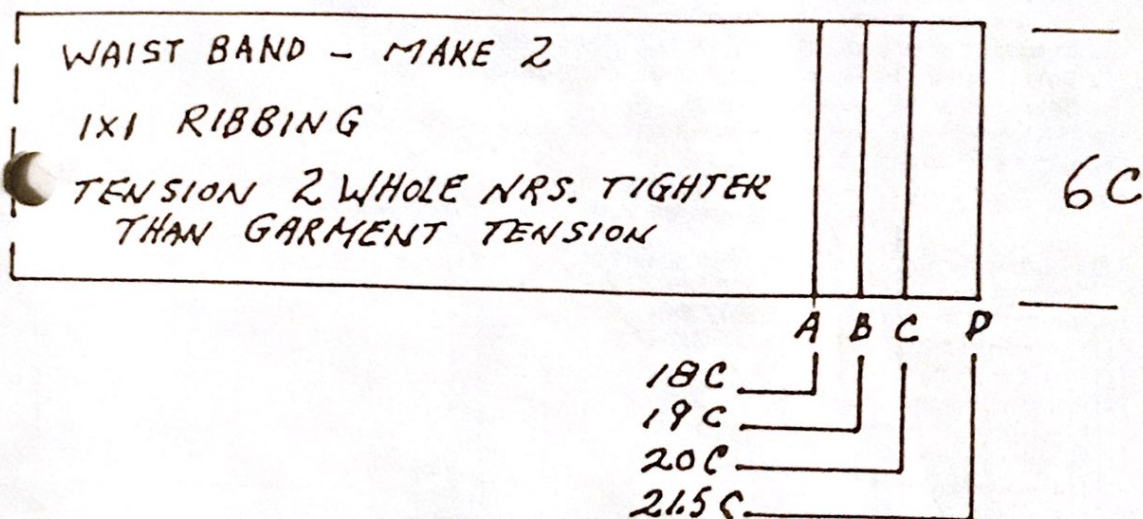
NECKBAND - 1x1 Ribbing - Ten. same as waist band



NECKBAND



Actual size Knit Contour Pattern for Pullover Cap Sleeve Top



Tensioned Neck Band

- Knit 2 rows at garment Tension (4)
 - Knit 2 rows one point less (3.2)
 - Knit 2 rows 2 points less (3.1)
 - Knit 2 rows 1 whole number less (3)
 - Knit 2 rows 1 whole number plus 1 point less (2.2)
 - Now reverse the above for the other half of your band.
 - Knit 2 rows 1 whole number plus 1 point less (2.2)
 - Knit 2 rows 1 whole number less (3)
 - Knit 2 rows 2 points less (3.1)
 - Knit 2 rows one point less (3.2)
 - Knit 2 rows at garment tension (4)
- Bind off. Tack band down by hand.

Picot Neckline Finish

1. Knit 1 row garment tension over all neck stitches.
2. Slip one row on every other needle at garment tension.
3. Knit 9 rows 1 whole number less than garment tension.
4. Knit 1 row at garment tension
5. Transfer every other needle for picot.
6. Knit 1 row at garment tension.
7. Knit 9 rows 1 whole number less than garment tension.
8. Pick up slip stitch row and hang on every other needle.
9. Bind off with latch tool.

Pullover Cap Sleeve Top (Continued)

Eyelet Neckline

1. Pick up stitches of neck.
2. Knit 1 row at garment tension over all needles.
3. Transfer every other needle for eyelet row.
4. Knit 9 rows 1 whole number less than garment tension.
5. Knit 1 row at garment tension.
6. Knit 9 rows 1 whole number less than garment tension.
7. Bind off with latch tool.

8. Tack neck band down just above the eyelet row.

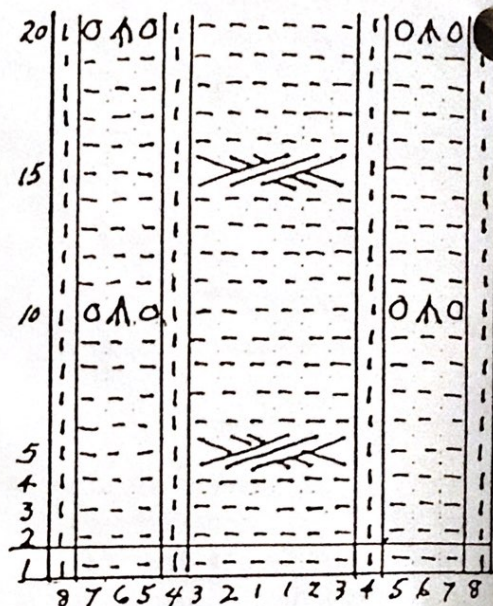
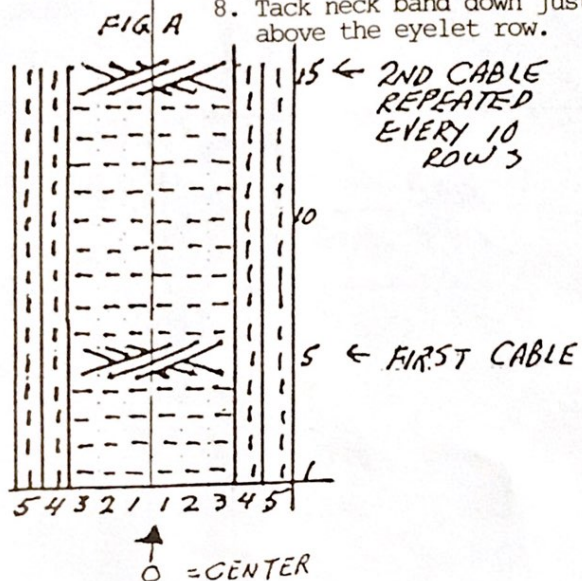


FIG. B

CABLE DESIGNS SUGGESTED ON PAGE 5.

FIG. C

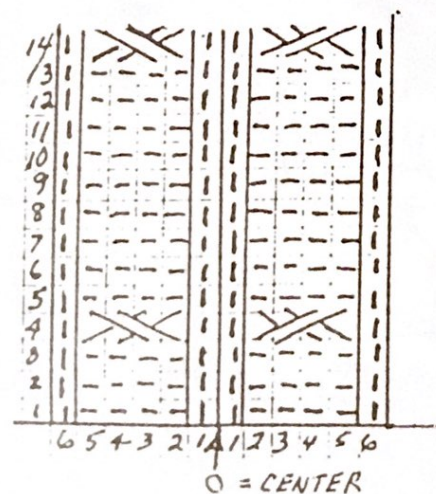
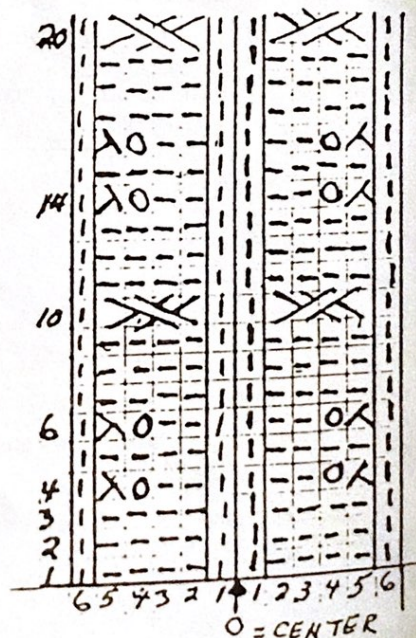


FIG. D



ACTUAL SIZE KNIT CONTOUR PATTERN for Lady's Summer Top
on page 4. Match dotted lines to dotted lines on page
14 and draw your pattern on knit contour paper.

Neck band - make one

Arm band - make 2

Top of pattern

Place yarn marker - - -

Place yarn marker --- +

Finished garment length 53 cm
width 46 cm

Ribbing

Bottom of pattern

Continued from pages 4 and 13. 8. Transfer the 3rd st. to the 2nd needle, the 7th st. to the 8th needle. 9. Keeping the empty needles in B position work 5 rows. These 8 rows form the pattern. Repeat them throughout.

This "Newsletter" is your publication. Help support it by submitting your original patterns and helpful hints, so other home knitters can learn from your experience. We would like to urge all of you with older machines to share your favorite originals with our other readers. Many of our readers write in requesting simple, beginner patterns. You will receive a gift of yarn for any original pattern or hint that is printed. When sending in your patterns, be sure to include the size of the garment and the knitting gauge (number of stitches and rows per inch) - this is most important - and the knitting machine for which your particular pattern was designed. It also helps if you know approximately how much yarn your pattern takes. Please check and recheck your patterns for errors and type or print clearly. We do not have time to knit each pattern sent in, so cannot check for mistakes. It also helps if you do not abbreviate, as many of your terms are unfamiliar to us and to other readers. A black and white snapshot and/or brief description of your garment will make it easier to visualize by other readers. A gift of yarn will be sent for snapshots (black and white) printed with the patterns.

There is a wonderful opportunity awaiting you to become a STUDIO Knitting Machine and yarn dealer. Good money can be made in your spare time with only a small investment. We are interested in contacting men and women who would like to become a part of our growing group of STUDIO dealers throughout the United States. Our assistance and guidance can make this a very profitable venture for you, and our only requirements are that you know how to operate a knitting machine and that you have space available in which to set up your STUDIO shop, either in your home or place of business. You will find this a fascinating business which affords you the opportunity to become acquainted with new and interesting people. Contact Mr. David Bratz, Manager, STUDIO Yarn Farms, Inc., P.O. Box 46017, Seattle, WA 98146.

If you are planning to move soon, let us know both your old and new addresses, complete with zip codes. We cannot change your address without this information.

Patterns submitted and published in this "Newsletter" are submitted by individuals and are purported to be original patterns.

CANADIAN SUBSCRIBERS - Please remember, when sending in your subscription, all checks and money orders from Canada must be marked "Payable in U.S. Funds".

Please Note - We always notify you when your subscription expires. Your last issue is stamped across the Subscription Order Blank on the back page in red, "Your subscription expires with this issue". This issue is then mailed to you in an envelope and sent by first class mail. If you miss an issue, without having received this notification, please let us know, because it means that your mail isn't reaching you, and we will send you another copy. All the "Newsletters" are mailed out, altogether, just as soon as the mailer receives them from the printer.