

Studio

KNITTING MACHINE

"The Most Wanted Automatic Home Knitter"

NEWSLETTER

MARCH/APRIL, 1985

VOLUME 180



FROM THE DESK OF DAVE BRATZ.

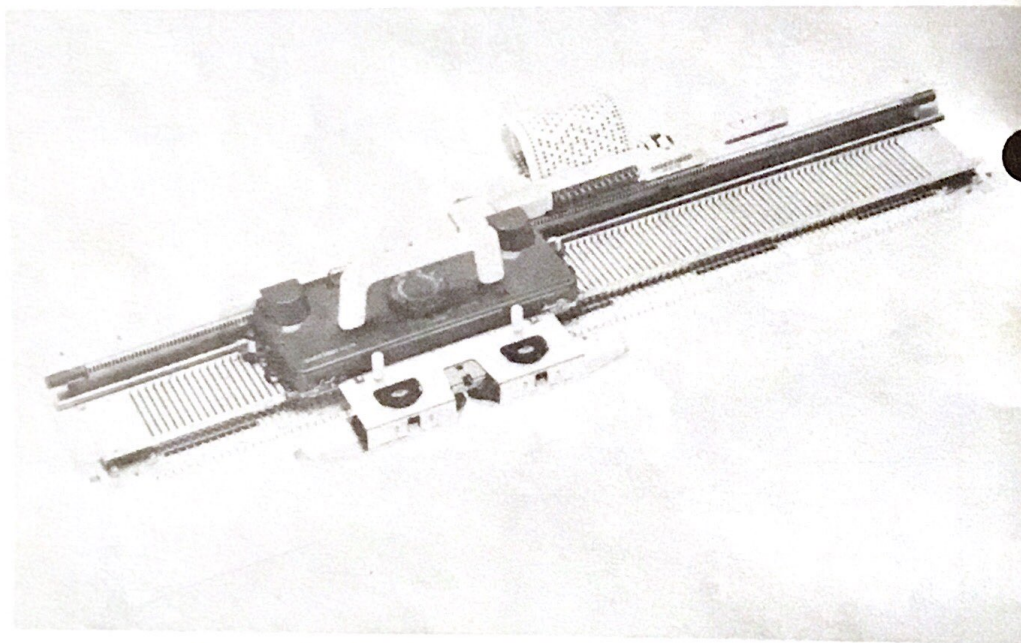
Seems like time to tell you about all the new and neat items available to make your machine knitting more enjoyable and fun to do.

Many of you may have already seen the new Chunky Punch Card Knitter SK-155. This machine is basically the same as the SK-150 with the addition of the 12-needle pattern punch card. Besides the pattern, they have added a small bearing on each end of the carriage. This allows the carriage to be moved almost effortlessly and still knit bulky yarns. You almost have to try it believe it.

To go along with the new Chunky, a new Knit Contour KR-7 is also available. The basic operation is similar to the KR-6 except the garment is drawn full size in half pattern, or a complete pattern can be drawn in half scale for intarsia type knitting. The stitch scale set is also to a larger scale to accommodate the bulky yarns. Blank Graph Paper, Tracing Paper and Side '0' Stitch Scales are also available.

The other new item is an SYC-6 Yarn Changer. The configuration is similar to the YC-5 with the addition of an extra carriage arm for color changing on the single-bed as well as the double-bed.

All of these new items should be available from your local dealer or distributor and we urge you to check them out. Check your knitting machine publications for seminars and other gatherings as I'm sure many of these new items will be appearing there.



The new Studio Chunky Punch Card Knitter SK-155

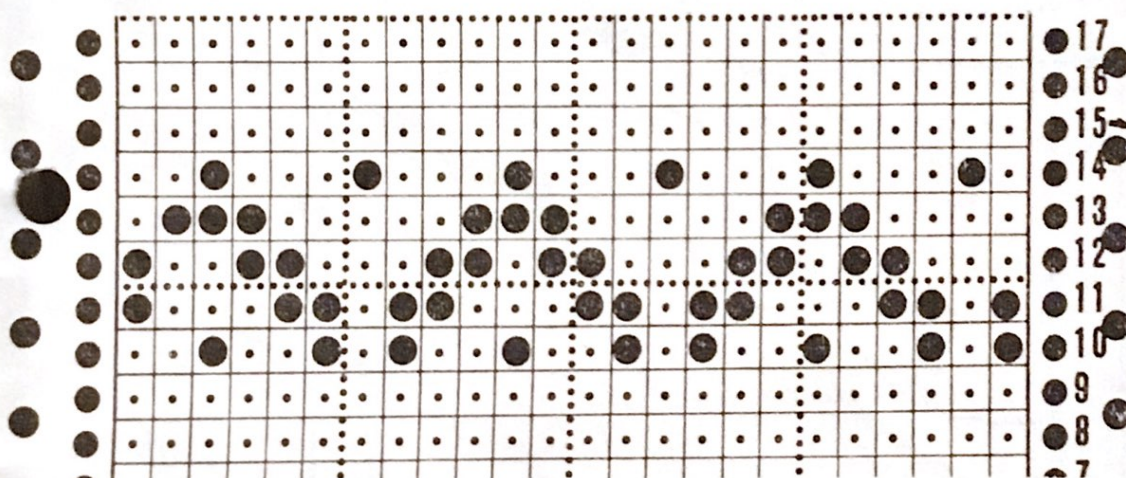
KNITTING MACHINE SEMINAR - Sponsored by Norma Doolen, Norma's Knitting Machines and Supplies in Peabody, MA, this New England Seminar will be April 27th and 28th, 1985 - Saturday and Sunday - at the Sheraton Tara Hotel and Resort at Ferncroft Danvers, MA 01923, phone (617) 777-2500. For more information please contact Norma at (617) 535-5215.

In the December, 1984, "Newsletter" a mistake was made in the name of Lucy Koles shop and her phone number. It should have read - Lucy's Knits has moved to a new location in Saxon Square in Sylvania, OH. For more information on this, you can phone her at (419) 882-5880.

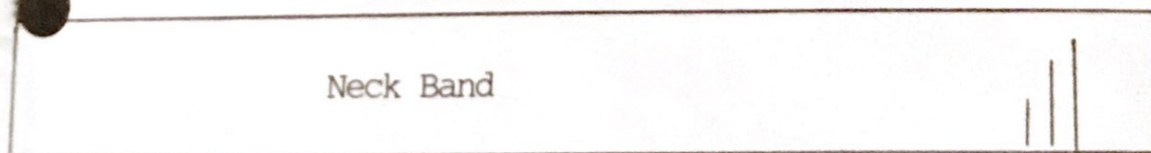
Bessie Owens, Rancho Cordova, CA, sent in her knit contour pattern for the Man's Pullover pictured on the cover of this issue. Below is a copy of the fairisle pattern which she used for the sweater in the picture. She writes that she makes several of these each year for her grandson who is in college in Illinois where the winters are cold and sweaters are almost a must. She put stripes just above the ribbing on some, or a wider stripe across the chest. The possibilities for the different garments that can be made from one pattern are endless.

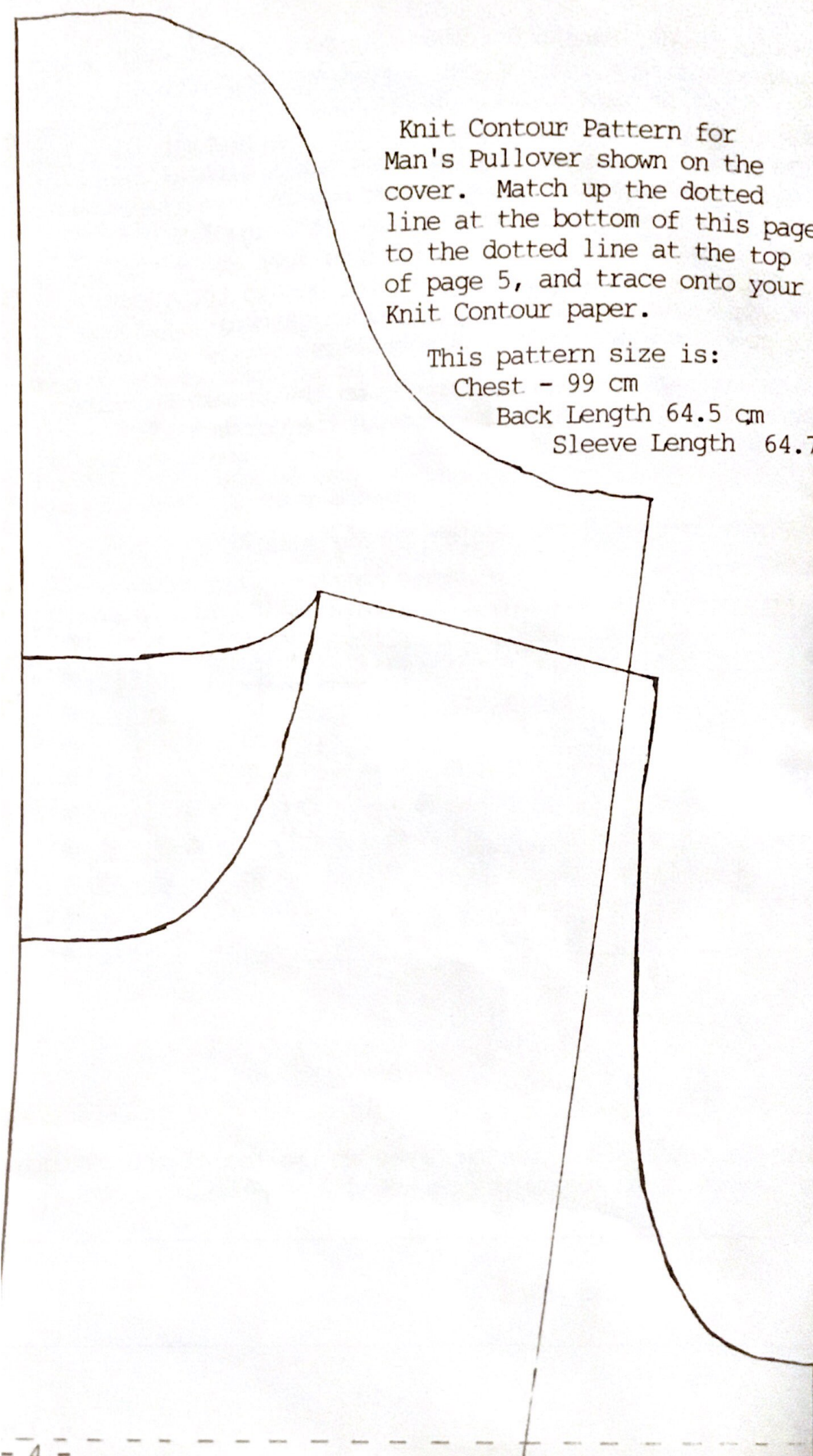
This contour pattern is for use on the Studio Knitting Machine. The pattern is drawn in the correct size on pages 4 and 5.

Punch card used for design in the sweater on the cover.



This is the actual size to trace at the top of the pattern on page 4 to give you the neckband using the knit contour.





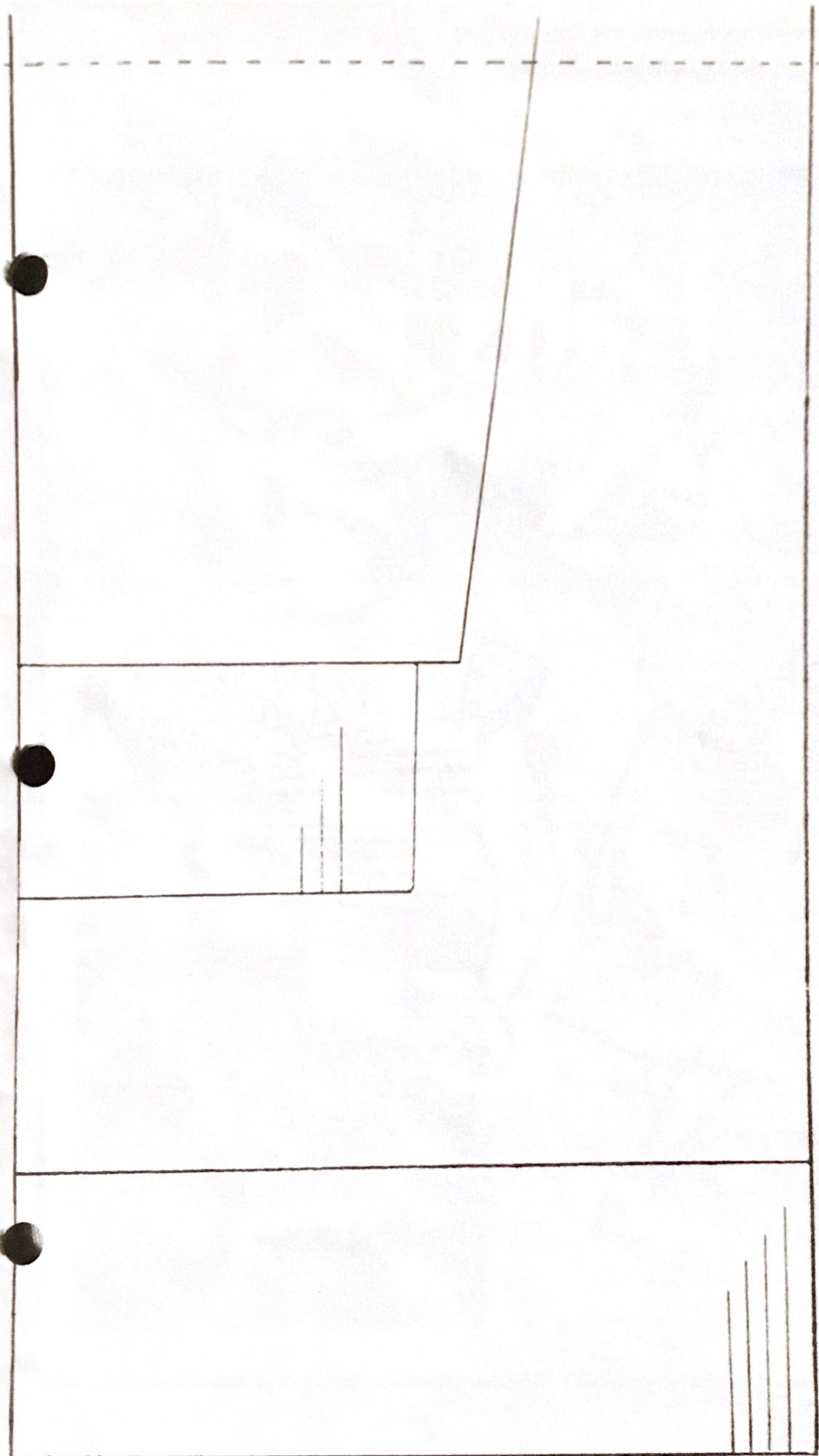
Knit Contour Pattern for
Man's Pullover shown on the
cover. Match up the dotted
line at the bottom of this page
to the dotted line at the top
of page 5, and trace onto your
Knit Contour paper.

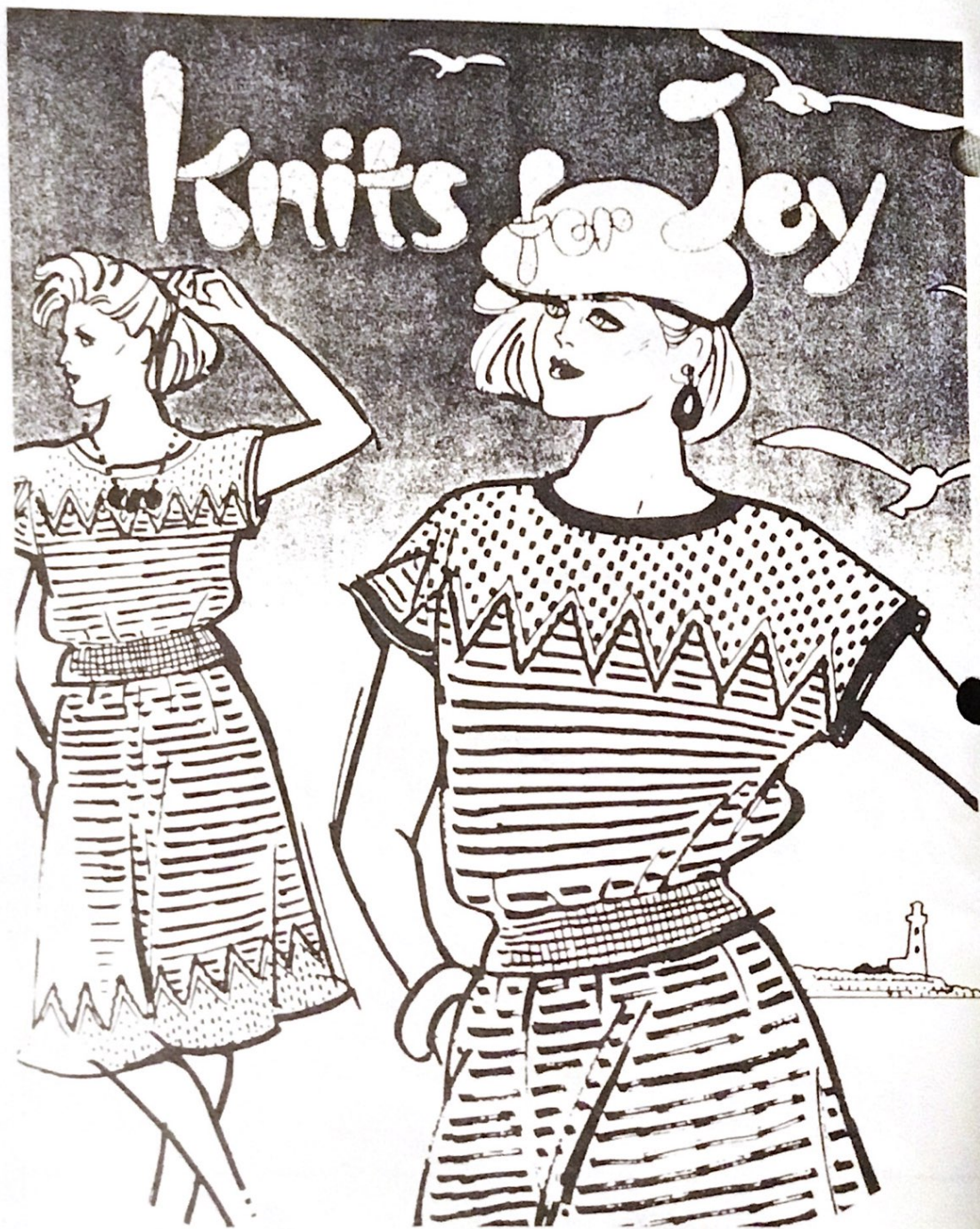
This pattern size is:

Chest - 99 cm

Back Length 64.5 cm

Sleeve Length 64.75 cm





This lady's pullover and skirt pattern from "Knits for Joy" will help put us in the mood for spring and summer knitting.

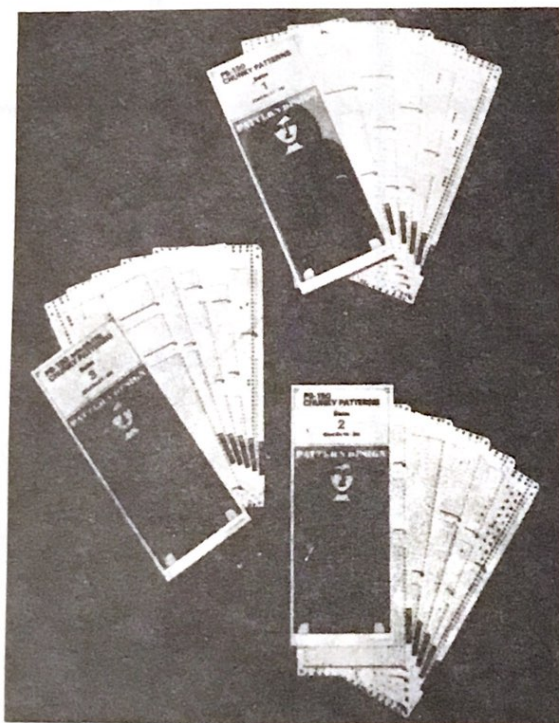
This article is reproduced from "Knits for Joy" with permission of Silver Knitting Institute, Tokyo, copyright holder 1978.

The Knit Contour pattern is drawn on pages 8, 9 and 10. Detailed instructions begin on page 11.

SYMBOLS/ABBREVIATIONS

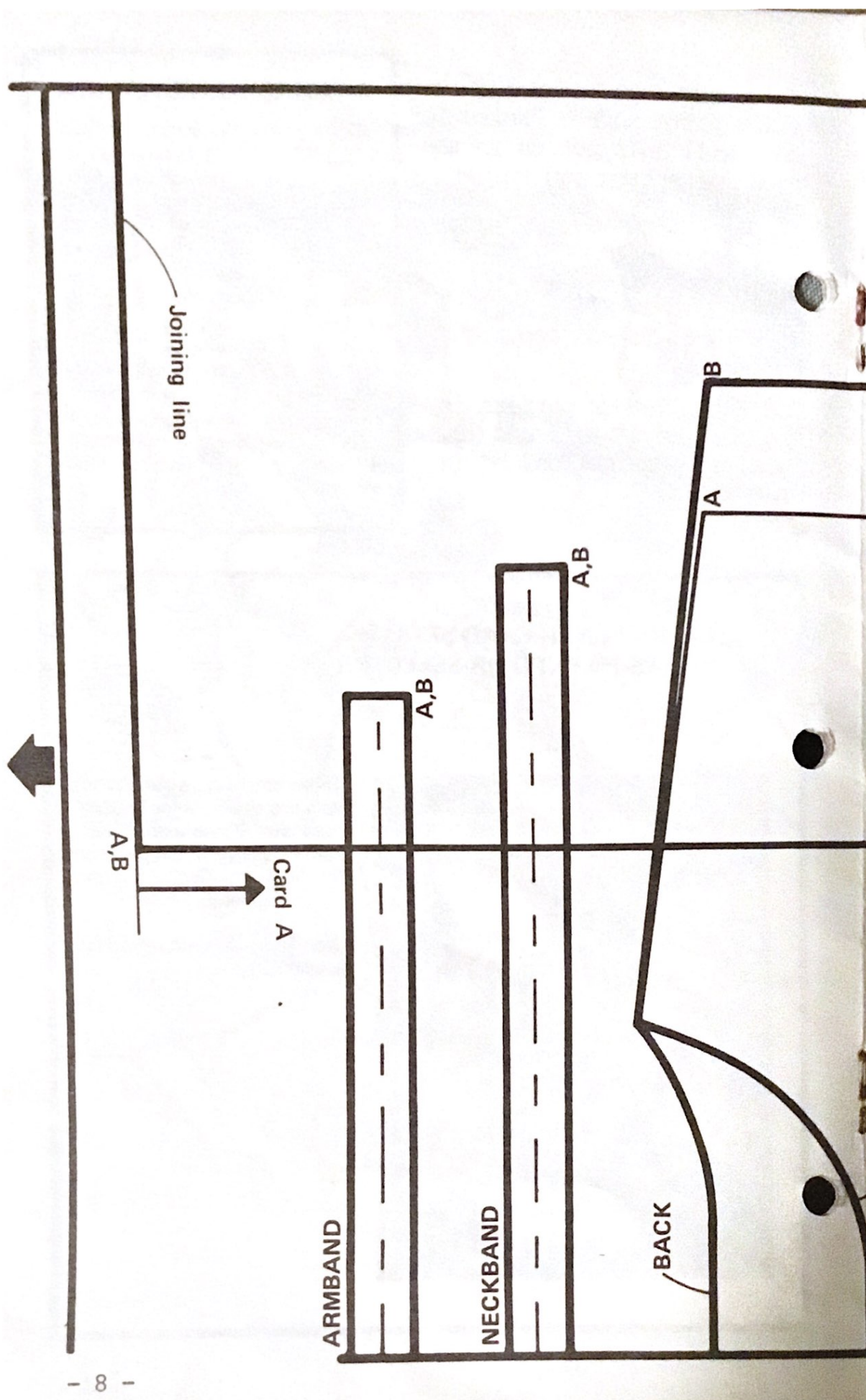
SD①	— SD stands for Stitch
SD①/①	Dial and the figure in circle indicates Stitch Dial number and first number for knitter and second for ribber.
Col.A (Col.B)	— identifies colour of each yarn.
pos.	— position
st.(sts.)	— stitch or stitches
Nd.(Nds.)	— needle or needles
CM	— Card Memory number of Punch Card.
R.C.	— Row Counter number

EXTRA PUNCH CARD SETS FOR PS-150 PATTERN SELECTOR



Three sets of extra punch card sets are available for optional purchase. Those extra punch card sets cover stitch patterns for the Knitter (Mod. 150) and for the Ribber (SR-150).

(Non-Punched Card set is also available.)



FRONT

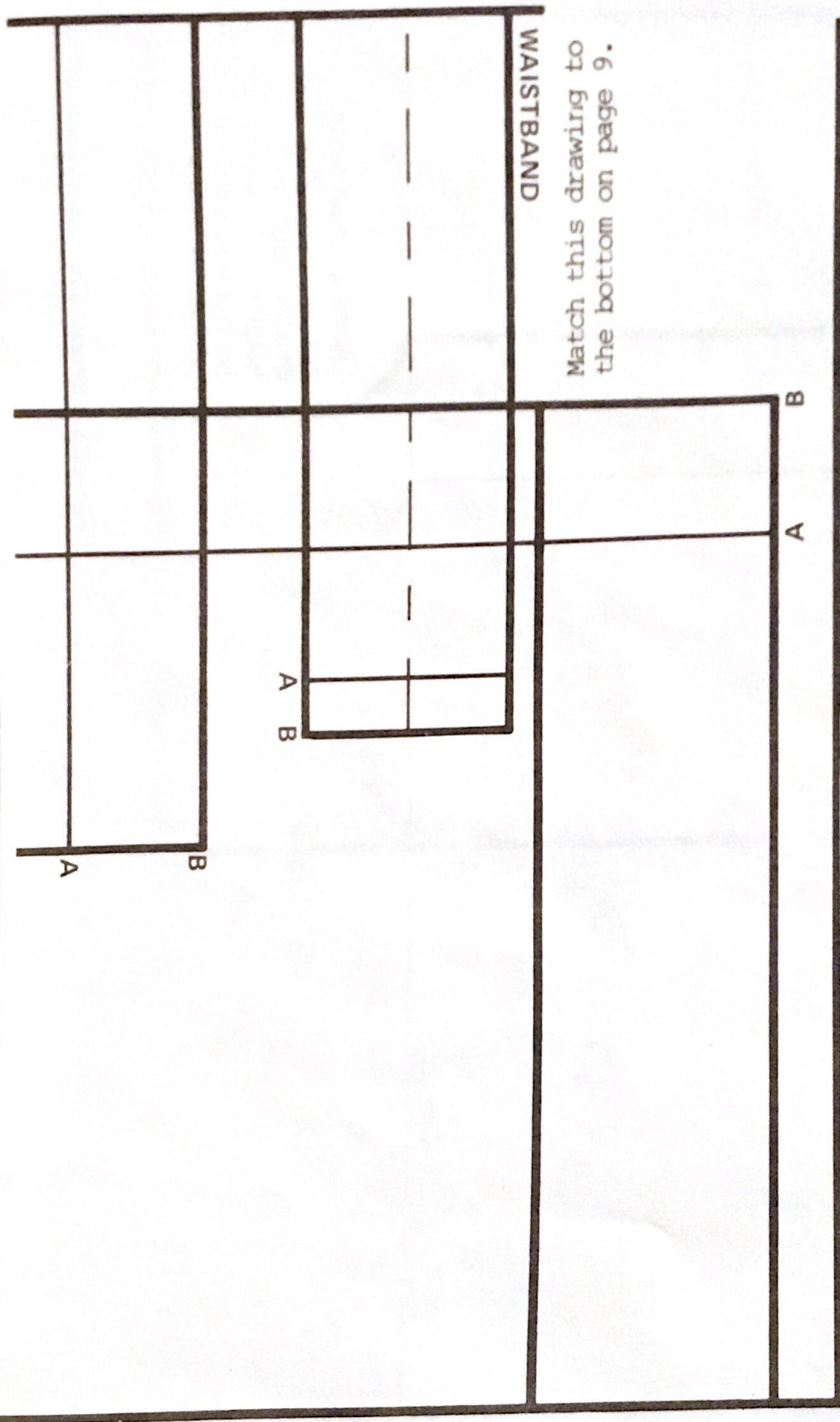
FRONT & BACK

Card A

SKIRT

Actual size knit
contour pattern for
Studio Knitting
Machines. Match up
to bottom half of
pattern on page 10.

A



Match this drawing to
the bottom on page 9.

Trace the patterns on the blank pattern paper or set this
paper in the Knit Contour.



Lady's Pullover and Skirt

Finished measurements size: cm.

	Bust	Top length	Waist	Skirt length
A	96	54	72	65
B	112		76	69

Materials/others:

Synthetic regular yarn (polyester 65%, wool 25%, nylon 10%)

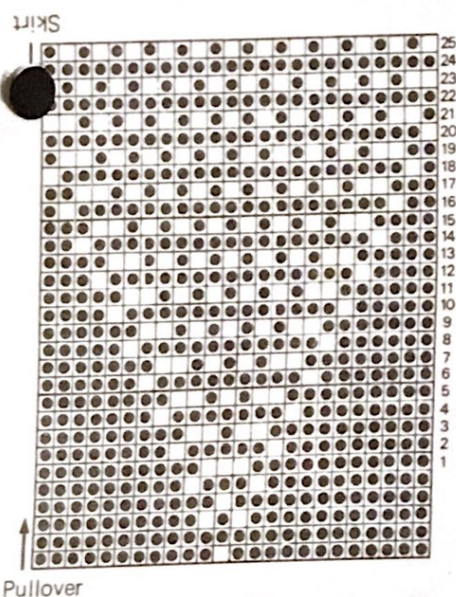
Col.A(light blue).....240gs.

Col.B(white).....230gs.

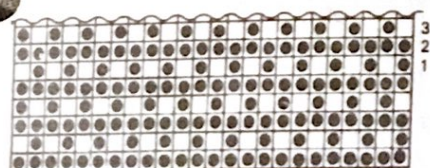
Elastic band(3cm. wide, 70-80cm. long)
SRP-50, YC-5

Punch Card A & B (Punch as shown below.)

Card A



Card B



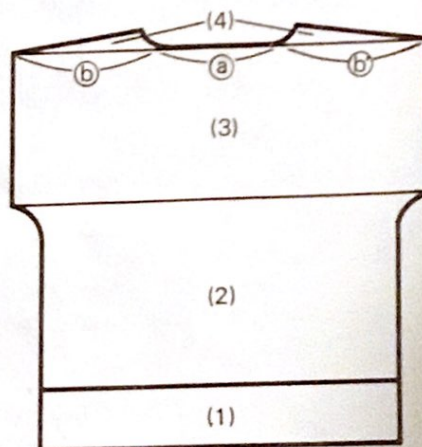
Tension Gauge:

- 32 sts. by 44 rows over the swatch of K1.P1. rib with Stitch Dials at ①/①. (Knit changing two yarns alternately every 2 rows using Yarn Changer.)
- 32 sts. by 40 rows over the swatch of Stripe Pattern in Stockinet with Stitch Dial at ⑤. (Knit changing two yarns alternately every 2 rows using Yarn Changer.)
- 32 sts. by 64 rows over the swatch of Tuch Stitch (Card B) with Stitch Dial at ⑤. (Knit changing two yarns alternately every 2 rows using Yarn Changer.)

PULLOVER

To knit

The patterns are given on pages 8, 9, 10. Knit each pattern following the instructions below.

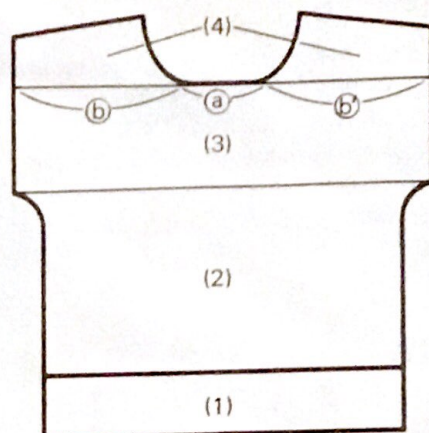


- Set the Stitch Scale and Row Number according to the tension gauge ①.
 - Set Machine for K1.P1. rib.
 - Arrange the required number of Nds. for K1.P1. rib.
 - SD ①/①, work closed edge cast on with Col.A.
 - Hook the contrast yarn, Col.B, on Holder Hook B.
 - Set Holder A at ②, Holder B at ① and rise Driving Lever.
 - SD ①/①, knit the required number of rows in K1.P1. rib, changing two yarns alternately every 2 rows.

- (2) — Transfer ribber sts. onto the knitter Nds.
 - Change the Row Number according to the tension gauge (b).
 - Push back ribber Nds. to A pos.
 - Disconnect Ribber Carriage from Arm and remove it from the Needle Bed.
 - Set End Stitch Holder in pos.
 - SD (5), knit changing two yarns alternately every 2 rows and knit Stripe Pattern in Stockinet.
 - Increase the sts. following the contour line.
- (3) — Before knitting the last row of Stripe Pattern with Col.A, set Card A and lock at CM1.
 - Knit 1 row.
 - Change the Row Number according to the tension gauge (c).
 - Set the Carriage as follows:
 Cam Lever Tuck
 Side Levers ▼
 - Knit 1 row.
 - Set L knob to "L" and release the Card.
 - Knit 59 rows.
 - Exchange the Card A for Card B and lock at CM1.
 - Memorize the Card.
 - Continue to knit referring to pattern.
- (4) — At the shoulder point, work partial knitting by decreasing sts. on both sides up to back neck ending the Carriage at left.
 - Mark the CM on the Card.
 - Push up the Nds. on section (a) and (b) to D pos., continue shaping left shoulder and neckline.
 - Remove the section on waste knitting.
 - Put the yarn mark at the centre of section (a).
 - Return the Card to the marked CM and lock it.
 - Remove the section (a) on waste knitting and leave the Carriage at left side.
 - Push back the Nds. of section (b) to B pos. placing back the sts. on Nd. hooks.
 - Return the Pattern Paper to knit section (b).

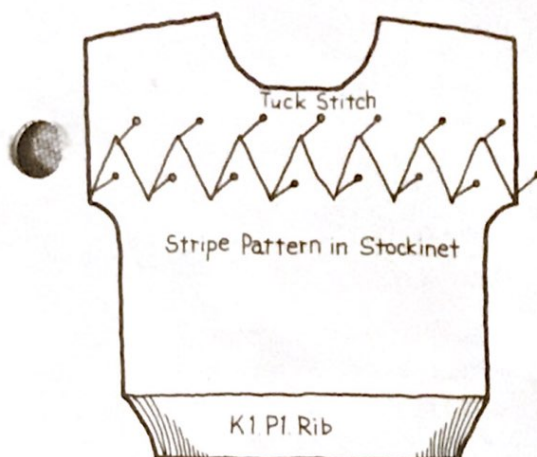
- Reset left End Stitch Holder in pos.
- Select the correct colour yarn to be knit for next row.
- Release the Card, continue to knit shaping right shoulder and neck edge following the contour line.
- Remove the section on waste knitting.

(front)



- (1)–(3) — Work in the same manner as instructed in (1)–(3) for back.
- (4) — Mark CM on the Card.
 - Push up the Nds. on section (a) and (b) to D pos., continue to knit shaping neckline.
 - At shoulder point, work partial knitting by decreasing sts. to shape shoulder while decreasing sts. at the neck edge.
 - Remove the section on waste knitting.
 - Return the Card to marked CM and lock it.
 - Put yarn mark at the centre of section (a).
 - Remove the section (a) on waste knitting.
 - Push back the Nds. of section (b) to B pos. placing back the sts. on Nd. hooks.
 - Return the pattern paper to knit section (b).
 - Release the Card, work section (b) in the same manner as done for section (b) but reverse shaping.

- Block each pieces to size as shown below and press with steam iron.



- Join the right shoulder on the machine.

(neckband)

Exchange the Stitch Scale for the one which has a number 10% less than the number of sts. of the tension gauge (b). Set the Row Number according to the tension gauge (b).

- Bring out the required number of needles for neckband to B pos.
- With wrong side facing you, pick up sts. evenly from neck edge and place them onto the Nds. in B pos.
- SD⑤, with Col.A, knit up straight in Stockinet.
- Pick up loops from the first row of neckband and place them onto the corresponding Nds.
- SD⑩, knit 1 row and cast off with a Teppet Tool or Automatic Linker.

(armbands)

- Join left shoulder on the machine.
- Work armband in the same manner as done for neckband.

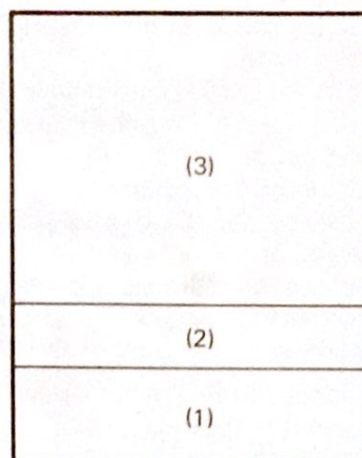
To make up

- Join both side seams and band seams with blind stitch.
- Give final pressing.

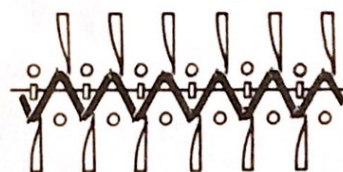
SKIRT

To knit

The pattern is given on pages 7, 8, 10. Knit 3 pieces in the same manner following the instructions below.



- (1) — Set the pattern paper and lock it.
 - Set Machine for Double Rib.
 - Arrange the required number of Nds. for Double Rib.
 - Using waste yarn, knit 1 row.
 - Insert Cast-on Comb between knitter and ribber as shown below.



- Suspend weights on the Comb.
- Drop ribber sts. by moving Ribber Carriage twice and remove it from the Needle Bed.
- Push back ribber Nds. to A pos.
- Set the Card B and lock at CM1.
- Set End Stitch Holder in pos.
- Knit a few rows in Stockinet ending with Carriage at left.
- Set the Carriage as follows:
Cam Lever Tuck
Side Levers ▼
- Set R.C.000, S.D. ④, Col.B, knit 1 row.
- Hook Col.A on Holder Hook A.
- Set Holder B at ②, Holder B at ① and rise Driving Lever.

- Set L Knob to "L" and release the Card.
 - Knit 17 rows changing two yarns alternately every 2 rows.
 - SD ⑤, knit up to joining line until R.C. shows 036.
 - Turn up hem and knit 1 row with SD ⑥.
 - SD ⑤, knit until R.C. shows 124 (both sizes).
 - (2) — Turn the Card A upside down and exchange the Card B with Card A and lock at CM20.
 - Memorize the pattern.
 - Release the Card and pattern paper.
 - Set the Row Number according to the tension gauge ③ and knit 60 rows.
 - (3) — Change the Row Number according to the tension gauge ④.
 - Knit the required number of rows in Stockinet changing two yarns alternately every 2 rows.
 - Remove the fabric on waste knitting.
 - Knit another 2 pieces in the same manner.
 - Block each piece to size and press with steam iron.
- (waistband)
- Push up the required number of Nds. to B pos.
 - With wrong side facing you, pick up sts. from the last row of main knitting by placing 2 sts. onto a Nd. along the row evenly.
 - SD ⑤, knit the required number of rows for waistband in Stockinet, changing two yarns alternately every 2 rows.
 - Pick up loops from the first row of the waistband and place them onto corresponding Nds.
 - Knit 1 row with SD ⑩ and cast off with Automatic Linker or Tappet Tool.

To make up

- Join side seams.
- Put elastic band through the waistband and sew both ends.
- Join waistband seam.
- Give final pressing.



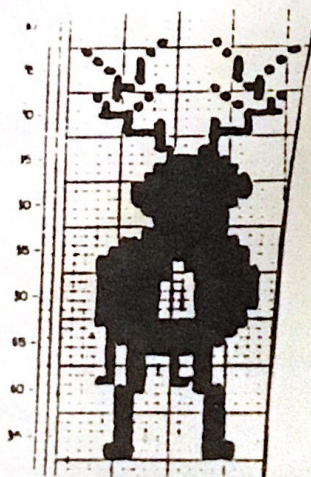
*front
view as
punched*



*back view
don't punch
the X's*

Studio dealer, Aileen Hohman in Salt Lake City, UT, wrote to remind us that we didn't point out the elephant "walks away" from you on the back of her Wrap Collar Pullover which was on pages 8 and 9 in the last "Newsletter" - Jan./Feb., 1985, issue. By not punching where the X's appear on the punch card, you get the back view of the elephant.

She also did a forward-backward reindeer, (copy below for the electronic machine). As he is designed he "walks away". You can make him walk forward by punching in the tail and sewing a nose and eye. He can also be punched on a 24 unit card.



This "Newsletter" is your publication. Help support it by submitting your original patterns and helpful hints, so other home knitters can learn from your experience. We would like to urge all of you with older machines to share your favorite originals with our other readers. Many of our readers write in requesting simple, beginner patterns. You will receive a gift of yarn for any original pattern or hint that is printed. When sending in your patterns, be sure to include the size of the garment and the knitting gauge (number of stitches and rows per inch) - this is most important - and the knitting machine for which your particular pattern was designed. It also helps if you know approximately how much yarn your pattern takes. Please check and recheck your patterns for errors and type or print clearly. We do not have time to knit each pattern sent in, so cannot check for mistakes. It also helps if you do not abbreviate, as many of your terms are unfamiliar to us and to other readers. A black and white snapshot and/or brief description of your garment will make it easier to visualize by other readers. A gift of yarn will be sent for snapshots (black and white) printed with the patterns.

There is a wonderful opportunity awaiting you to become a STUDIO Knitting Machine and yarn dealer. Good money can be made in your spare time with only a small investment. We are interested in contacting men and women who would like to become a part of our growing group of STUDIO dealers throughout the United States. Our assistance and guidance can make this a very profitable venture for you, and our only requirements are that you know how to operate a knitting machine and that you have space available in which to set up your STUDIO shop, either in your home or place of business. You will find this a fascinating business which affords you the opportunity to become acquainted with new and interesting people. Contact Mr. David Bratz, Manager, STUDIO Knitting Farms, Inc., P.O. Box 46017, Seattle, WA 98146.

If you are planning to move soon, let us know both your old and new addresses, complete with zip codes. We cannot change your address without this information.

Patterns submitted and published in this "Newsletter" are submitted by individuals and are purported to be original patterns.

CANADIAN SUBSCRIBERS - Please remember, when sending in your subscription, all checks and money orders from Canada must be marked "Payable in U.S. Funds".

Please Note - We always notify you when your subscription expires. Your last issue is stamped across the Subscription Order Blank on the back page in red, "Your subscription expires with this issue". This issue is then mailed to you in an envelope and sent by first class mail. If you miss an issue, without having received this notification, please let us know, because this means that your mail isn't reaching you, and we will send you another copy. All the "Newsletters" are mailed out, altogether, just as soon as the mailer receives them from the printer.