

*Studio*

KNITTING MACHINE

*"The Most Wanted Automatic Home Knitter"*

# NEWSLETTER

JULY/AUGUST, 1985

VOLUME 182





FROM THE DESK OF JOHN ROBY. . . . .

New STUDIO SK-700 Knitting Machine!

I have just returned from my annual trip to Japan, Taiwan and Hong Kong, and it was extremely interesting to see all the new innovations in the knitting world. At the Silver factory they were producing the new SK-700 machine which will replace our SK-360. This machine is fabulous as it incorporates many new features. The most outstanding improvements are the new ball bearing runners on the carriage. It is only about half as hard to push the carriage across the needlebed as any of our competitors' machines. Also, it features a new heavy-duty steel needlebed as Silver has found many of our machines are used for industrial or commercial knitting, and the new heavy-duty bed will hold up under these conditions much better than any of our competitors'. In fact, all machines were tested by Mainland China and Silver was selected as the best, and Silver has shipped over 30,000 machines this year and are now in the process of setting up an assembly factory in China to serve their requirements which are tremendous.

The new STUDIO SK-700 machine will include many other new features including a built-in intarsia in the standard carriage. Also, the knit contour will feature full patterns drawn in half scale. This will enable you to draw intarsia designs directly on the pattern paper, or draw slant knitting, crosswise knitting, non-symmetric patterns, etc. The four bearings in the carriage act similar to a roller skate, eliminating much of the drag, torque and noise and insures extremely smooth knitting.

The existing model SRP-50 Ribbing Attachment will fit this machine, along with the existing YC-5 and YC-6 Yarn Changers, the AW-1 Weaving Arm, the SC-3 Linker, the RT-1 Transfer Carriage, and the Lace Carriage.

Silver has had this new generation SK-700 in operation in the Orient for thorough testing before releasing it to the United States and Canadian market August 1, 1985. The suggested retail price will be \$535.95. Order from your dealer today, as only a limited amount are available on our first shipment.

\*\*\*\*\*

Marion Lillie, Bayview, ID, wrote to tell us she has a correction to her Neat Trick Swatch Scarf pattern which appeared on page 10 of the May/June, 1985, "Newsletter". You must turn down an inch of the narrow end for a casing.

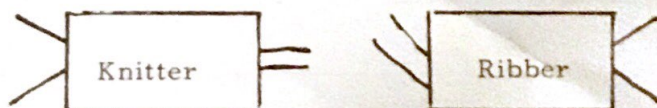
\*\*\*\*\*

Katherine Dehn, Alburg, VT, sent in this handy storage idea. Contour patterns are more easily stored and handled if hung on clip type skirt hangers (single or multiple), and hung on hook. They stay nice and flat instead of curling up from being rolled.

\*\*\*\*\*

Consuelo Walker, Columbus, OH, would like to share this hint with our readers who have the Studio Bulky 8 machine. The books tell you how to do a double English rib on the regular Studio machines, but not on the Bulky 8. So, one day she sat down and figured it out.

Set the machine as follows, after casting on 1x1 rib.



Tuck Nob pushed  
down on both carriages



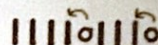
This month's pattern for a Two-piece outfit which is shown on the cover is reproduced from "Knits for Joy" with permission of Silver Knitting Institute, Tokyo, copyright holder 1978.



## SYMBOLS/ABBREVIATIONS

- SD① — SD stands for Stitch Dial and the figure in circle indicates Stitch Dial number.
- pos. — position.
- st. (sts.) — stitch or stitches
- Nd. (Nds.) — needle or needles
- R.C. — Row Counter number
- CM — Card Memory number of Punch Card.

needle arrangement

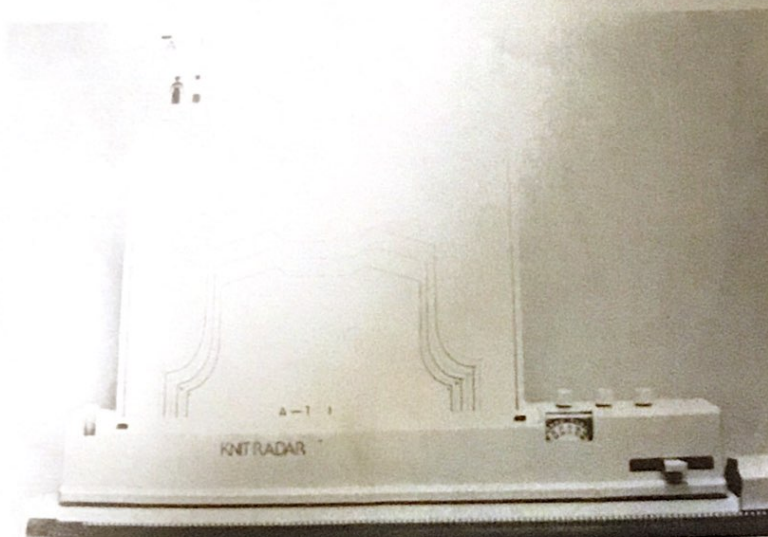


- | — working Nd.
- — non-working Nd.
- | — working Nd. having 2 or 3 sts.

## KNIT CONTOUR ATTACHMENT — KR7

*New*

Designed to adapt a pattern of fully drawn in 1/2 scale, which will facilitate drawing an intarsia design directly on the pattern paper for needle selection guide, asymmetrical pattern in no more complicated to read, and many other advantages.





## TWO PIECE OUTFIT

Finished Measurements size: cm.

	A	B	C
Bust	92	96	102
Waist	63	66	72
Hip	88	92	98
Skirt Length	68	70	72

### Materials/others:

Medium type of yarn (75% Acrylic, 25% Nylon) — 230 ~ 300gs. for a Top and 320 ~ 450gs. for a Skirt.

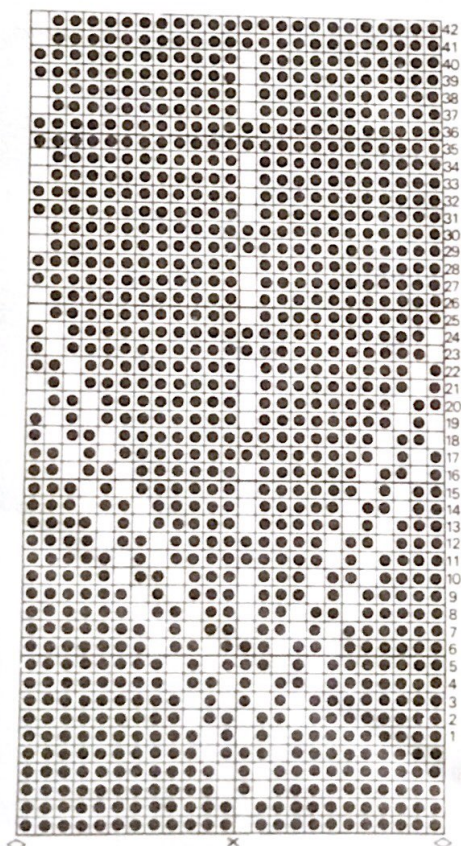
(AM " U ACTURED BY LUR is available 16 colours in U.S.A.)

Elastic — 1cm. wide, 75 ~ 85cm. long

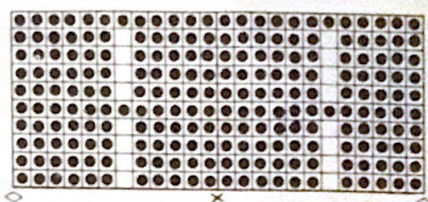
Elastic band — 3cm. wide, 70 ~ 85cm. long.

Punch Cards A & B — Punch as shown below.

### Card A



### Card B



### Tension Gauge:

31 sts. by 48 rows over the swatch of Stockinet with Stitch Dial at ⑥.

### TOP WITH ROUND YOKE

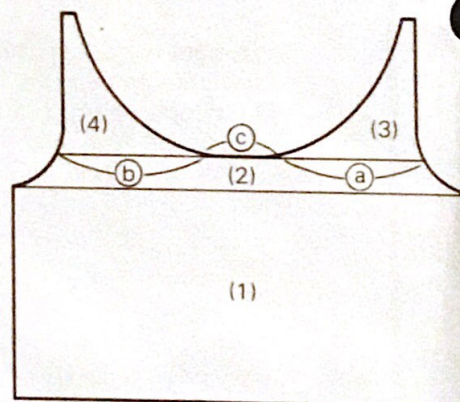
Purl side is worn.

(Numbers in bracket refer to the sizes B and C.)

### To knit

Knit back, front and sleeves following the patterns given on pages 8,9,10 and instructions below.

(Front & Back)



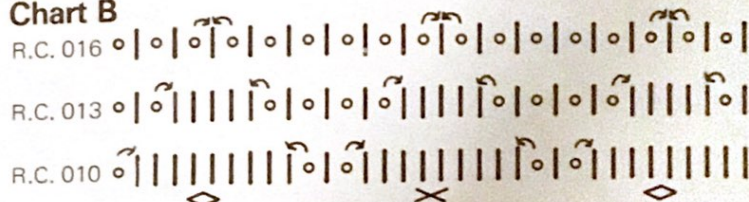
- (1) — Set the Pattern Paper for Front and lock at starting line.
- Set the Carriage for Stockinet, but Tuck Levers at ①.
- Arrange required number of Nds. in B pos., cast on with waste yarn.
- Release the Pattern Paper, SD ②, knit up to beginning of Armhole with main yarn.



### Chart A



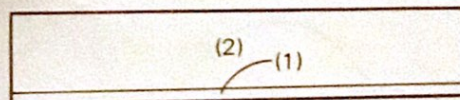
### Chart B



- (2) — Shape Armhole at both sides by decreasing sts. following contour line up to beginning of Yoke ending the Carriage at right side.
  - Put yarn mark at centre(0).
- (3) — Push Nds. on section (b) & (c) to C pos.
  - Lay Ravel Cord in the Nd. hooks and push them back to A pos. knitting it one by one manually.
  - Decrease section (a) by partial knitting following the contour line up to the end.
  - Remove remaining sts. in B pos. on waste knitting.
  - Push back empty Nds. to A pos.
- (4) — Undo Ravel Cord on section (c) replacing the sts. to the Nd. hooks.
  - Remove sts. on section (a) & (c) together on waste knitting ending the Carriage at left.
  - Push back the empty Nds. to A pos.
  - Undo Ravel Cord on section (b), return Pattern Paper to beginning of Yoke.
  - Work section (b) in the same way as for section (a) but reverse shaping.

— Work Back as done for Front.

(Peplum — 2 pieces)



- (1) — Set Punch Card A and lock at CM 1.
  - Arrange 170 (194, 194) Nds. in B pos. and cast on with waste yarn.
  - SD (6), knit 5 rows in Stockinet and turn up hem.
  - Push Nds. to D pos., Russel Levers at II, knit 1 row with SD (7).
- (2) — \*RC 000, set the Carriage for Tuck Stitch and release the Card.
  - SD (6), knit 16 rows without shaping.
  - Referring to Chart A, transfer sts. on both sides of tucked sts. to its outer Nds. on each group of pattern.
  - Push back empty Nds. to A pos.



- Continue to knit in Tuck Stitch and transfer sts. as given on Chart A, following every 4th row, 6 times in all to R.C. shows 036.
- SD ⑤, continue knitting in Tuck Stitch to R.C. 047, and knit 4 rows in Stockinet\*.
- Remove remaining 85 (97, 97) sts. on waste knitting.
- Knit another piece in the same way.

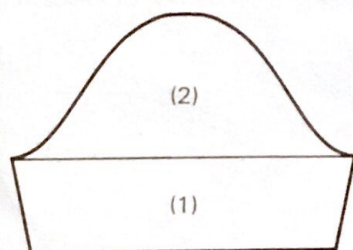
#### (Front Yoke)

- Set Punch Card A and lock at CM 1.
- Arrange 61 Nds. on both sides of centre(0) (all sizes) and cast on with waste yarn.
- SD ⑥, knit 2 rows in Stockinet and put yarn mark at centre(0).
- Knit Front Yoke from \*to\* in the instructions for Peplum.
- Remove remaining 66 (all sizes) sts. on waste knitting.

#### (Back Yoke)

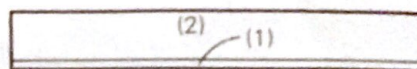
- Arrange 61 Nds. on left and 37 Nds. on right side of centre(0) (all sizes). to match the Pattern at shoulder seams.
- Knit Back Yoke as done for Front Yoke.
- Remove remaining 49 (all sizes) sts. on waste knitting.

#### (Sleeve — both alike)



- (1) — Set the Pattern Paper for Sleeve.
  - Arrange the required number of Nds. and cast-on with waste yarn.
  - SD ⑥, knit following contour line in Stockinet by increasing single st. to beginning of sleeve head.
- (2) — Shape sleeve head following contour line by decreasing sts.
  - Put yarn mark at centre(0), cast off remaining sts.

#### (Frill — 2 pieces)



- (1) — Set Punch Card B and lock at CM 1.
  - Arrange 122 (122, 134) Nds. in B pos. and cast-on with waste yarn.
  - SD ⑥, knit 5 rows in Stockinet.
  - Turn up hem and knit 1 row with SD ⑦.
- (2) — R.C. 000, SD ⑥, set the Carriage for Tuck Stitch.
  - Release the Card and knit 10 rows in Tuck Stitch.
  - Referring to Chart B, transfer sts. on both sides of tucked stitch to its outer Nds.
  - Push back the empty Nds. to A pos.
  - Set the Carriage for Stockinet.
  - SD ⑤, continue to knit and as given on chart B, transfer sts. following every 3rd row 3 times in all till R.C. 016.
  - Knit 4 rows in Stockinet.
  - Remove remaining 61 (61, 67) sts. on waste knitting.

#### To make up

Pin out each piece to size curving Yokes, Peplums and Frills naturally, and steam.

#### (Join Yoke)

- Arrange 122 (all sizes) Nds. for Front in B pos.
- Pick up sts. at yarn mark of Front Top edge with purl side facing, place them on Nds. at centre(0).
- Fill the Nds. with sts. from the edge knitted in main yarn.
- Unravel the waste knitting.
- Push up the Nds. from B to C pos.
- With knit side facing, pick up sts. from lower edge of Front Yoke at yarn mark and place them in the Nd. hooks at centre(0).
- Fill the Nds. with sts. knitted in main yarn.
- Push back the Nds. from C to B pos. the rear sts. will slip off the Nds. and inter-loop with the front sts.



- Cast off with back stitch method.
- Unravel waste knitting and remove the fabric from the machine.
- Arrange 98 (all sizes) Nds. in B pos., and join Back Yoke as done for Front.

#### (Join Peplum)

- Arrange 162 (178, 196) Nds. in B pos. Holding lower edge of Top with purl side facing, pick up sts. from the first row knitted in main yarn and place them on the corresponding Nds. in B pos.
- Holding a piece of peplum with knit side facing, pick up sts. from the last row of main yarn and place them on the Nds. in B pos. evenly.
- Knit 1 row from left to right with main yarn and transfer every 3rd sts. to its adjacent Nds. along the row to form eyelet for elastic.
- Leave empty Nds. in B pos., knit 1 row to right and last row to left with SD ⑩.
- Cast off with Automatic Linker or Tappet Tool.

#### (Join Frill — both alike)

- Arrange 86 (92, 100) Nds. in B pos. Holding lower edge of sleeve with purl side facing, pick up sts. from the first row of main yarn and place them on the Nds. in B pos.
- Unravel waste knitting.
- With knit side of a frill facing, pick up sts. from the last row of main yarn and place them onto the Nds. in B pos. evenly.
- SD ⑥, knit 1 row.
- Transfer 3rd st. from the right side to its adjacent Nds. and following every 3rd st. along the row.
- Leave empty Nds. in B pos. and knit 1 row from left to right.
- With SD ⑩, knit 1 row and cast off with Automatic Linker or Tappet Tool.
- Unravel waste knitting.

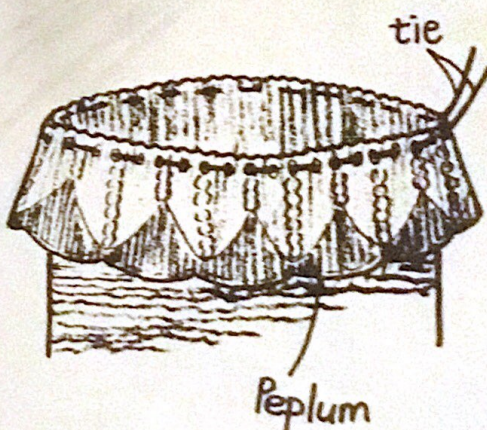
#### (Join shoulder sts.)

- Arrange required number of Nds. in D pos.
- Holding one side of Front & Back of shoulder sts. with purl side facing each other, place them on machine.

- Push back the rear sts. behind the latches, then push back the Nds. to B pos. the rear sts. will be interlooped with front sts.
- Cast off with back stitch method using Tapestry Needle.

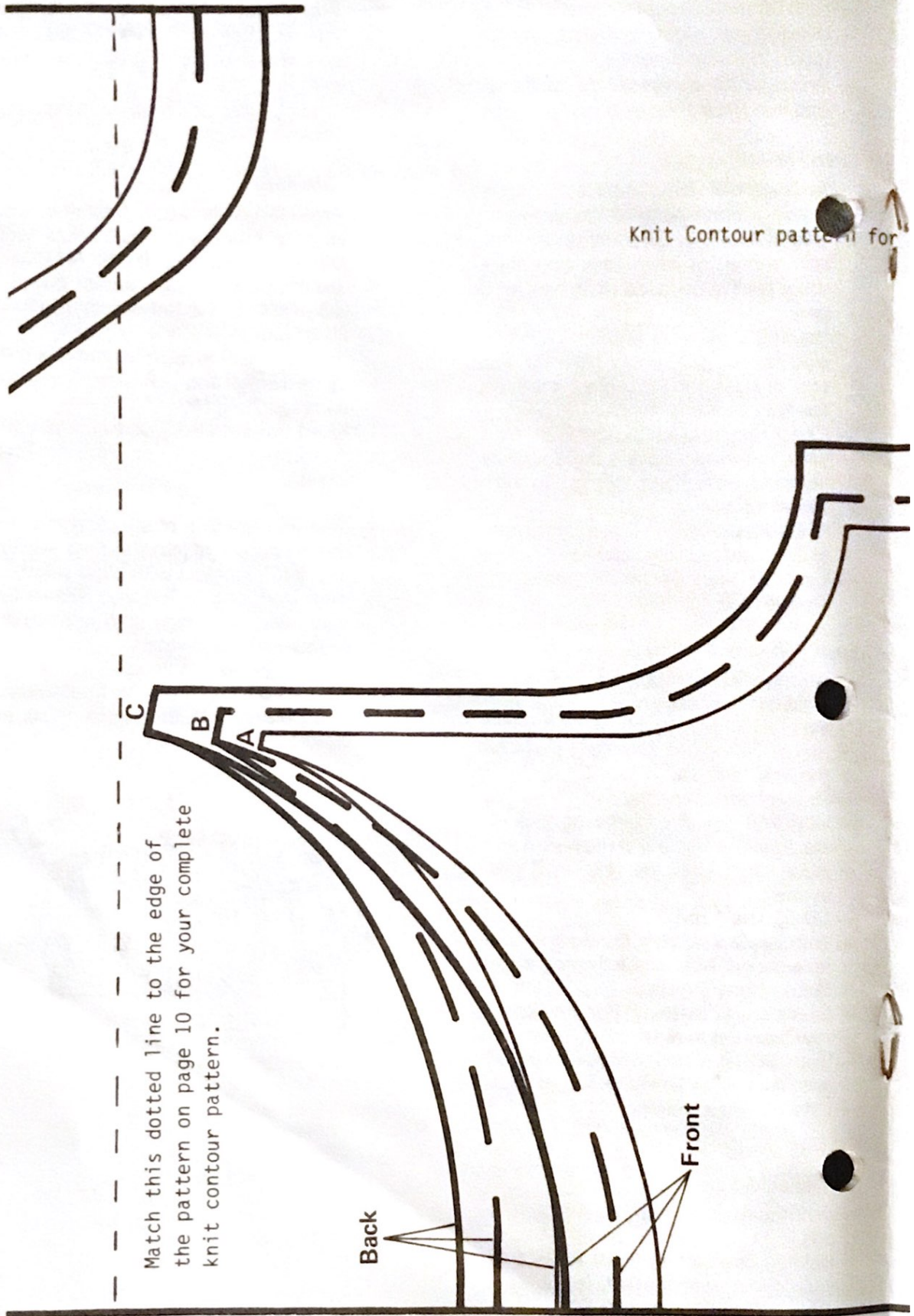
#### (Neckband)

- Arrange 108 (all sizes) Nds. in B pos.
- Holding Front and Back Yokes with knit side facing you, fill the Nds. with sts. from the last row of neck edge.
- SD ⑤, knit 12 (all sizes) rows in Stockinet.
- Pick up sinker loops from the first row of neckband and place them on the corresponding Nds.
- Knit 1 row with SD ⑩ and cast off with Automatic Linker or Tappet Tool loosely.
- Join another side of shoulder sts. on the machine and join shoulder seams through Neckband with blind stitch.
- With purl side of Top and Sleeve as right side, join side and underarm seams with blind stitch.
- Set in Sleeves.
- Sew in yarn ends and give final steam.
- Insert elastic into the eyelet holes at waist and tie the ends.





Knit Contour pattern for





or Two Piece Outfit

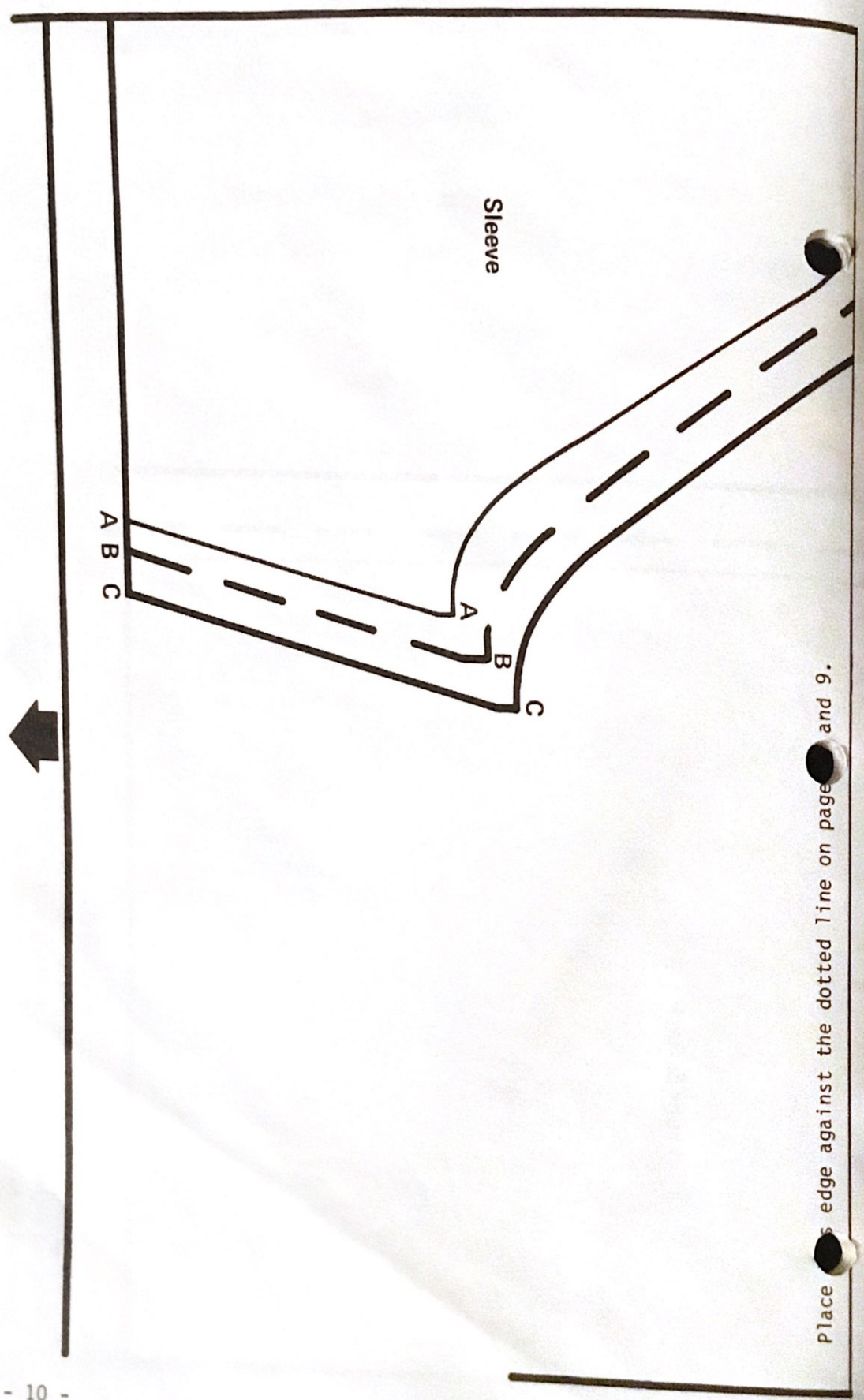
Front & Back

A B C



Trace the patterns on the blank pattern paper or set this paper in the Knit Contour.





Place edge against the dotted line on page 9.

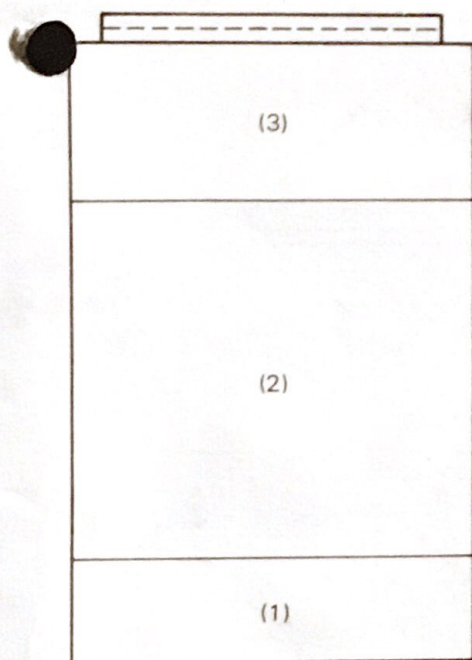


## SKIRT

Knit side is worn.

(Numbers in bracket refer to the sizes B and C.)

### To knit



- (1) — Set the Carriage for Stockinet, but Tuck Levers at  $\nabla$ .  
— Arrange 162 (178, 194) Nds. in B pos., and cast-on with waste yarn.  
— R.C. 000, SD⑩, with main yarn, knit 40 rows (all sizes) in Stockinet without shaping for Flounce.
- (2) — \*Transfer 4th st. from the left and following every other st. to their adjacent Nd. 7 times in all\* for a group of pleat as shown below.

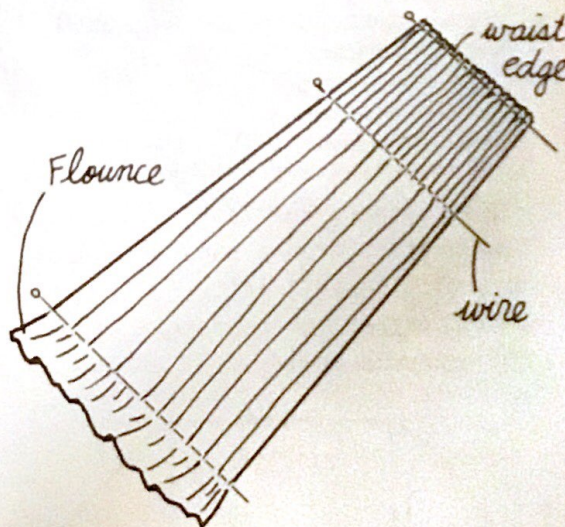


- Repeat from \*to\* along the row.
- Push back empty Nds. to A pos.

- SD①, Russel Levers at II, knit 1 row and push the Nds. from B to D pos.
- SD③, knit to R.C.176 (180, 190) in Stockinet.
- (3) — Push 10th empty Nd. from the left and every following 16th empty Nd. from A to B pos. as shown below.



- Fill the Nds. with loops from the previous row by increasing method.
- Knit to R.C.246 (254, 268) and remove the fabric on waste knitting.
- Knit another 3 pieces in the same way.
- Prepare three wires as used for the Cast on Comb for Ribber.
- Spread each Flounce on iron board and steam.
- Laying each piece lengthways with knit side up, insert the wire through the middle st. of a ridge at waist edge.
- Insert another 2 wires in the same way as for waist edge as shown below.



- Pull the fabric lengthways so that ridges close each other, then pin it out.
- Hold the steam iron close to the fabric and steam evenly over it.



### (Waistband)

Knit waistband at one time for size A and B, and at twice for size C.

- Join 3 (3, 2) seams with blind stitch.
- Arrange 182 (200, 110) Nds. in B pos.
- Hold the waist edge with purl side facing, fill the Nds. with sts. from the last row of main yarn by decreasing sts. as shown below.

Repeat the work	Size A	Size B	Size C
▲▲▲▲▲▲▲▲	20 times	22 times	1/2 x 2 times

▲ — pick up 3 sts on a Nd

▲ — pick up 2 sts on a Nd

| — pick up 1 st on a Nd

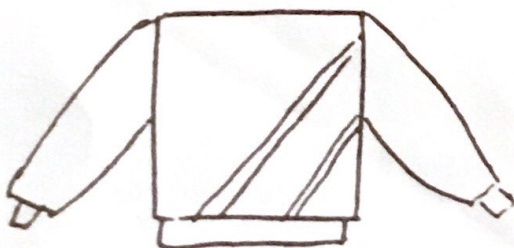
- Unravel waste knitting and push the Nds. from B to D pos.
- SD⑤, starting from left side, knit 34 rows in Stockinet.
- Turn up waistband.
- Push Nds. to D pos., knit 1 row.
- SD⑩, knit 1 row and cast off with Automatic Linker or a Tappet Tool.
- Knit another waistband for size C in the same way.

### To make up

- Join side seams leaving an opening for elasticband.
- Insert elasticband into the waistband and join the ends.
- Close the opening.
- Sew in yarn ends.
- Give final steam.

\*\*\*\*\*

Ingrid Hansen, Portland, OR, adapted this pattern from a hand-knit book to a machine-knit pattern. It is a great pattern for beginners, and fun for everyone to try.



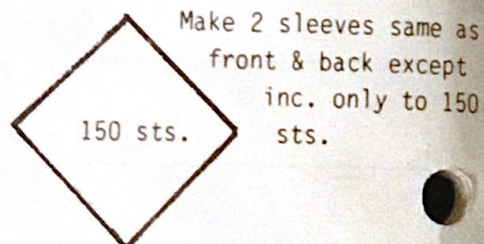
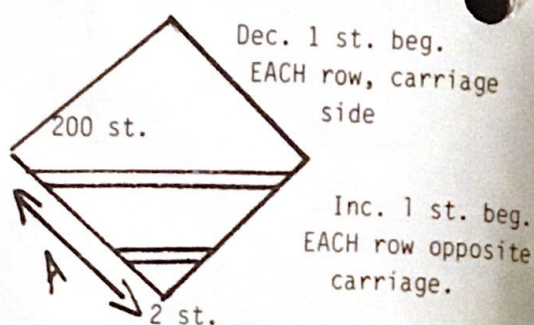
### DIAGONAL SWEATER

Good way to use odds 'n ends of yarn. No stitch gauge necessary.

Use tension you like.

Following is basic idea of original pattern.

### FRONT & BACK ALIKE



While knitting, stretch knitting widthwise or stitchwise instead of lengthwise like we usually do. Measure as you knit along the arrow marked A. When that is 1/2 your total bust usually needed, start your decrease.

Use two color patterns in stripes, strips with a few rows of metallic, on either end or all the way, knit the increases with one color and the decreases with another color. Be a creative designer.

Sleeve as directed above is full and is gathered for cuff. Sleeve may also be knit from the top down, decreasing sts. as you knit, then transfer to rib or mock rib. You may start sleeve at ribbing and inc. to width needed at top. Any drop should pattern

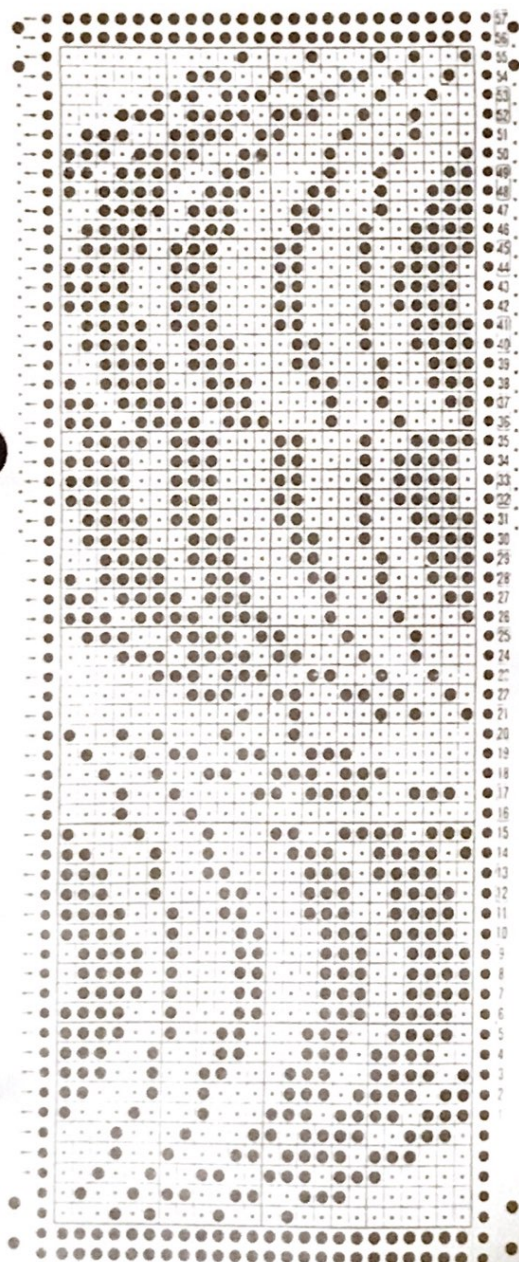


measurements may be used as a guide for charting your sleeve.

Pull into square shape and block firmly. When dry, fold in half, hold up to machine and see how many needles you need for waist ribbing. Knit ribbing or mock ribbing, have all sts. on knitter, hang bottom edge of sweater piece onto needles and bind off together.

\*\*\*\*\*

Dorothy Menear, Salem, OR, designed the punch card pictured below. It is very effective when used with the Diagonal Sweater pattern above.



Studio dealer Barb Stalp in Salem, OR, designed the following two patterns which, she says, are super simple summer tops.

### HALF COLLAR SWEATER

Made on a Studio

1 Strand Tamm Diamante

Size 36 (38 and 40)

Tension 6 =  $7\frac{1}{2}$  sts. and 10 rows per inch

Back: Tension 2/2 cast on 136 (142, 150) sts. for a 1 x 1 rib.

Row Counter 000, rib 20 rows.

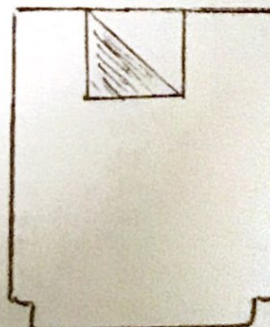
Transfer sts. to the main bed, row counter 000, Tension 6, knit to row 128 (134, 134). Place a marker on each side to mark for armhole. Row counter 000, knit to row 80, then remove sts. onto scrap as follows: 47 (49, 52) sts. on carriage for one shoulder, 42 (44, 46) center sts. for neck opening and 47 (49, 52) sts. for the other shoulder.

Front: Same as back to row 30 of armhole. Ending with carriage on the right, free move carriage to the left and scrap off the 47 (49, 52) sts. on the left side of the machine. Reset row counter to 30 and knit on the remaining 89 (93, 98) sts. to row 80.

Remove on scrap 47 (49, 52) shoulder sts. and 42 (44, 46) neck sts. Row counter 30, return the 47 (49, 52) sts. from scrap to the machine and knit to row 80 and remove onto scrap.

Block and put the shoulders back onto the machine with right sides together and bind off. Crochet around the arm openings and the neck. Let the open flap turn back to create a partial collar.

Collar turns back.





# SUMMER LACE

Size - 38

Tension 4 = 8 sts.

& 11 rows per inch

Studio Lace pattern  
card #391

## FRONT AND BACK:

Cast on 152 sts. for  
ribbing. Ten. 3,  
rib 19 rows.

Transfer stitches to  
main bed. RC 000,  
Ten. 4, insert lace  
card and knit to  
row 168. RC 000,  
bind off 3 sts. at  
the beginning of the  
next 2 rows.

Decrease 1 stitch at  
the beginning of the following rows: 2, 3, 4, 6, and 9. Knit even to  
row 74. Transfer to ribbing for 1x1 rib. Ten. 3, knit 14 rows, transfer  
to main bed and bind off.

Seam top of shoulders, leaving 8 inches open for neck.

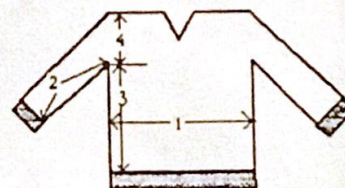
Ten. 3, cast on 111 sts. for ribbing, knit 16 rows, transfer to main bed,  
hang armhole over ribbing, knit 1 row over stitches, bind off.

Block and seam.

\*\*\*\*\*

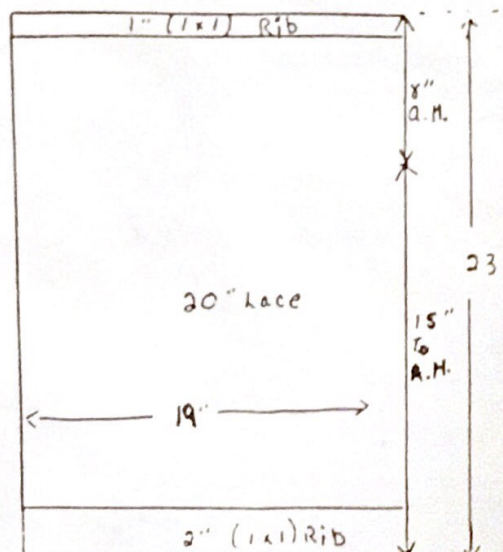
S. Hoagland, Yuma, AZ, looked for years for a chart on sizes, but could  
never find one. With the knitting machine, they became necessary, so he  
took old patterns and put together the following chart.

Size	Chest	Arm Length	Length to Underarm	Length to Top From Underarm
9 mo.	19	4-1/2	5	3-1/4
1	20	5-1/2	5-1/2	3-3/4
2	21	6-1/2	6	4-1/2
3	22	7-1/2	6-1/2	4-1/2
4	23	8-1/2	7-1/2	5
5	24	9	8	5-1/4
6	25	9-1/2	8-1/2	5-1/2
6x	25-1/2	10	9	5-3/4
7	26	10-1/2	9-1/2	6
8	27	10-1/2	9-1/2	6-1/2
10	28	11-1/2	9-1/2	7
12	30	13	10	7-1/2
32	32	14	11	7-3/4
34	34	15	12	8
36	36	15	14	8-1/2
38	38	15-1/2	14	9
40	40	16	15	9-1/2
42	42	16	14	10
44	44	16	15	10-1/2
46	46	17	15	11
48	48	17	15	11-1/2
50	50	17	15	12



- 1 CHEST
- 2 ARM LENGTH
- 3 LENGTH TO UNDERARM
- 4 LENGTH TO TOP FROM UNDERARM

■ RIBBING





## WE NEED YOUR ORIGINAL PATTERNS

7/85

This "Newsletter" is your publication. Help support it by submitting your original patterns and helpful hints, so other home knitters can learn from your experience. We would like to urge all of you with older machines to share your favorite originals with our other readers. Many of our readers write in requesting simple, beginner patterns. You will receive a gift of yarn for any original pattern or hint that is printed. When sending in your patterns, be sure to include the size of the garment and the knitting gauge (number of stitches and rows per inch) - this is most important - and the knitting machine for which your particular pattern was designed. It also helps if you know approximately how much yarn your pattern takes. Please check and recheck your patterns for errors and type or print clearly. We do not have time to knit each pattern sent in, so cannot check for mistakes. It also helps if you do not abbreviate, as many of your terms are unfamiliar to us and to other readers. A black and white snapshot and/or brief description of your garment will make it easier to visualize by other readers. A gift of yarn will be sent for snapshots (black and white) printed with the patterns.

\*\*\*\*\*

There is a wonderful opportunity awaiting you to become a STUDIO Knitting Machine and yarn dealer. Good money can be made in your spare time with only a small investment. We are interested in contacting men and women who would like to become a part of our growing group of STUDIO dealers throughout the United States. Our assistance and guidance can make this a very profitable venture for you, and our only requirements are that you know how to operate a knitting machine and that you have space available in which to set up your STUDIO shop, either in your home or place of business. You will find this a fascinating business which affords you the opportunity to become acquainted with new and interesting people. Contact Mr. David Bratz, Manager, STUDIO Yarn Farms, Inc., P.O. Box 46017, Seattle, WA 98146.

\*\*\*\*\*

If you are planning to move soon, let us know both your old and new addresses, complete with zip codes. We cannot change your address without this information.

\*\*\*\*\*

Patterns submitted and published in this "Newsletter" are submitted by individuals and are purported to be original patterns.

\*\*\*\*\*

CANADIAN SUBSCRIBERS - Please remember, when sending in your subscription, all checks and money orders from Canada must be marked "Payable in U.S. Funds".

\*\*\*\*\*

Please Note - We always notify you when your subscription expires. Your last issue is stamped across the Subscription Order Blank on the back page in red, "Your subscription expires with this issue". This issue is then mailed to you in an envelope and sent by first class mail. If you miss an issue, without having received this notification, please let us know, because it means that your mail isn't reaching you, and we will send you another copy. All the "Newsletters" are mailed out, altogether, just as soon as the printer receives them from the printer.

\*\*\*\*\*

As stated in the last "Newsletter", we need your original patterns. Readers are requesting patterns for the HK-100 model, as well as the bulky machines. Our supply is getting low, so please send your patterns in.