

Studio

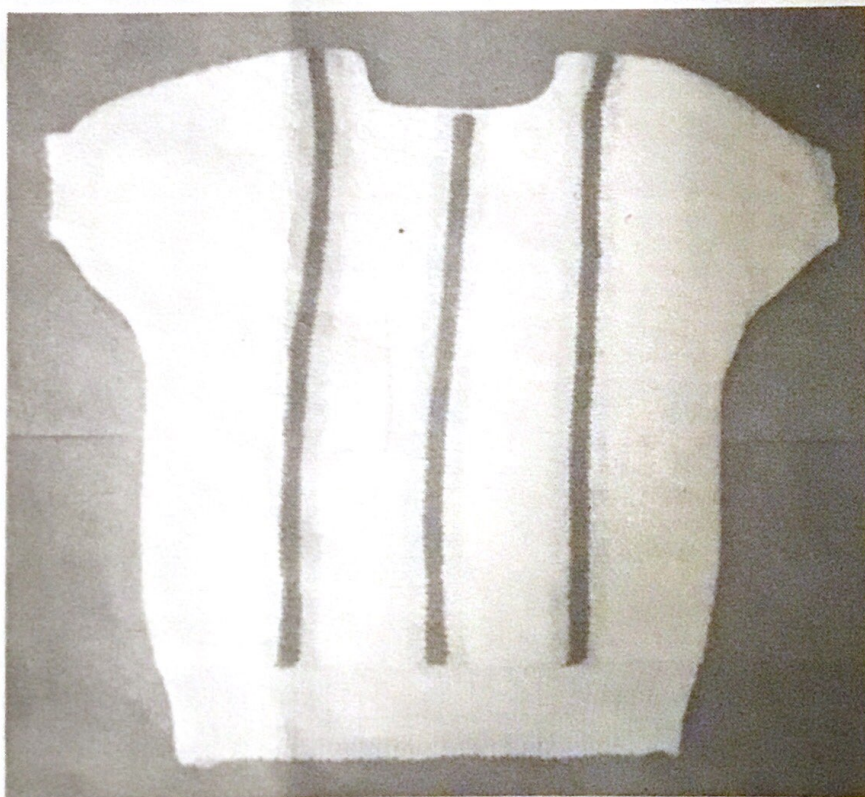
KNITTING MACHINE

"The Most Wanted Automatic Home Knitter"

NEWSLETTER

SEPTEMBER/OCTOBER, 1985

VOLUME 183



FROM THE DESK OF DAVE BRATZ

Another knitting season is well under way and what a start it has. With the combination of the new SK-700 and ribber attachment for the SK-155 Chunky, the month of August became the biggest sales month in the history of our company. At the time of this writing sales are still at a staggering pace. It appears obvious the knitters are very pleased with the performance of the SK-700. The most outstanding feature of both the SK-155 Chunky and the SK-700 is the roller system at the corners of the carriage. It is difficult to believe such a small addition to the carriages could make such a noticeable difference in knitter fatigue from pushing the carriage back and forth.

As a major importer of knitting machines and related items, we, of course, get a large number of knitting magazines, leaflets, patterns, etc. Along with these complimentary samples, of course, is the usual request for endorsement or advertising space for sale. My point of this is to put a feather in the hats of the people involved in these publications. The quality of the patterns, information and related articles to machine knitting is a real pleasure to peruse. Feature articles referring to marketing, advertising, new products and yarns make for some real informative reading. Just think of how much easier it is for the new machine knitter to find helps, aids and even video instructions than when knitting machines were a thing you were afraid to admit you had.

Happy Knitting!!!!!!!

Janice Russak, DeLeon Springs, FL, sent us this helpful hint to use with your Studio SK-360.

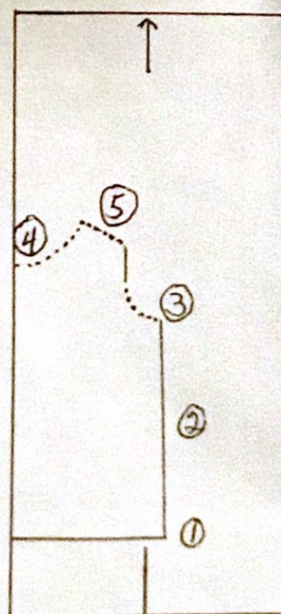
"If you have found sweater directions that produce a well-fitting or stylish garment but you'd like to use a yarn that would knit at a different gauge than the one in the instructions, simply use your knit contour and a blank pattern paper.

Set the machine for the row gauge in your favorite pattern instructions (4 in. = approx. 10 cm.) and insert pattern paper in the knit contour. Insert stitch scale and grab a soft lead pencil. From the cast on to the increases and decreases of the pattern, simply mark the pattern paper as you "pretend" to knit your garment as per instructions for your proper size, without yarn on the machine, and just move the feeding dial or hand press the feed lever the number of rows instructed.

When finished, connect any dots where you increased or decreased and you have a pattern for your garment in your size that can be now used for any gauge by simply resetting the machine and using a different stitch scale. Much easier than trying to re-figure all of the rows and stitches in the pattern for finer or heavier yarn."

ILLUSTRATION:

Start here →



Pictured on the cover of this issue is this pattern designed by Roberta Benedict, Seattle, WA.

SQUARE NECK SIDEWAYS TOP

Made on a Studio Chunky SK-150

Yarn - Marque 8 oz. Color A,
1 oz. Color B, 1/2 oz. Color
C. 1 oz. Conny for Ribbing

Size - Large

Tension - 5 4 sts. & 8 rows = 1 inch

Cast on 37 stitches with waste yarn and ravel cord. Remove on garter bar.

Cast on 34 stitches from 38 to 4 on the right side of the machine.

With waste yarn knit 20 rows and put in ravel cord. With Color A knit 10 rows and increase 1 stitch 7 times on the right side of the machine. At row 10 increase 1 stitch on the left side and knit 2 rows.

Increase 1 stitch on the left side of the machine and knit 2 rows.

Then add 2 stitches on the left side and knit 2 rows.

Then add 3 stitches on the left side and knit 2 rows.

Knit to row 18. Now take the 37 stitches on the garter bar and hang on from 1 to 38 on the left side of the machine. Knit to row 45, then knit 4 rows with Color B and 4 rows with Color C and 4 rows with Color B. Then, with Color A, knit to row 60. Bind off 10 stitches on the right side of the machine.

Knit to row 75, then 4 rows color B,
4 rows Color C, 4 rows Color B.

Knit with Color A to row 102. E on 10 stitches on the right side of the machine.

Knit to row 105, knit 4 rows Color B,
4 rows Color C, 4 rows Color B
Row 117.

Decrease 1 stitch 7 times on right side of machine.

Knit with Color A to row 144. Take off 37 stitches on the left side of the machine on waste yarn. Knit on the 41 stitches. On the left side of machine bind off 3 stitches, knit 2 rows, bind off 2 more stitches, knit 2 rows.

Decrease 1 stitch, knit 2 rows, decrease 1 stitch. Knit on the remaining 34 stitches to row 162. Take off on waste yarn.

Make a second one the same.

Sew up shoulder seams.

Knit ribbing on Tension 0 and 32 sts.
for 12 rows. Hang on the sleeve
stitches and latch tool off.

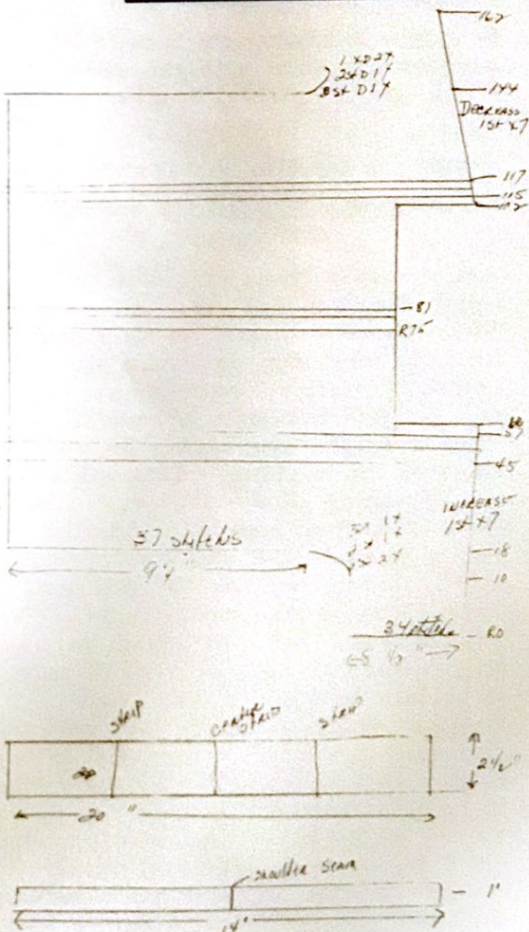
Repeat for second sleeve.

Make ribbing on Tension 0 and 88 stitches for 30 rows. Pick up stitches from the bottom of the sweater and latch tool off.

Repeat ribbing for the second bottom.

Side seams - Hang on the machine
stitches on waste yarn, right sides
together and latch tool off.

Sew the rest of side seams and ribbing.





Cheryl Hunt, Everett, WA,
designed this very attractive

BUTTONED TRI-COLOR SWEATER

Knit on a Studio SK-150 Chunky
Pengouin Bourrette de Soie (Silk)
yarn or any yarn with the same
stitch gauge. Total weight 11 oz.

Tension - 4

Gauge - 4-1/2 sts. & 7 rows = 1"

Accessories - 5 1/2-inch wooden
buttons

BACK - Cast on 81 sts. with primary
color (Plum) in 1x1 rib. Rib 24 rows.
Then transfer all sts. to main bed.
Knit one row then do a multiple in-
crease of 9 sts. You now have 90
sts. total. Knit plain to row 84.
Place a waste yarn marker on both
sides of the machine. This will mark
the beginning of the armhole. Con-
tinue to knit to row 134. *At this
point, place half of the sts. on right
side of "0" in hold or "D" position.
Then place 12 sts. on left side of "0"
in hold also. Set carriage to partial
knit. Place 10 sts. in front of car-
raige into hold and wrap. Knit
across. Put 13th needle into hold on
right and ten more sts. on left in
hold. Knit back. Place 10 more sts.
in hold in front of carriage and one
st. on neck edge. Knit across. Put
out 1 st. on neck edge and put 30
sts. of shoulder back to work position
Knit one row across all needles. Knit
one row of ravel cord and take off on

10 rows waste yarn. Repeat for
other shoulder from *. Then place
one row ravel cord over neck sts. and
take off on waste.

FRONT - Cast on same as back with
81 sts. Knit 1 row and inc. 9 sts.
Knit plain to row 54. Take off center
6 sts. on waste. Take rest of sts.
on right side of machine off on waste.
Knit plain again to row 84 and place
marker row. Continue to knit to
row 110. At this row put carriage
to partial knit. On neck edge put
2 sts. in hold, knit across. Put 1
st. in hold and knit back. Repeat
3 more times. Place 1 st. at neck
edge in hold and knit over and back.
Do 4 times. Dec. 1 st. neck edge
and knit 4 rows. Dec. 1 st. neck
edge and knit 6 rows. Place 10 sts.
on shoulder edge in hold. Knit
across. Place 10 sts. in front of
carriage in hold and wrap. Knit
across. Place all sts. back to work
position. Knit one row. Knit 1 row
ravel - 10 rows waste. Bind off neck
sts. Pick up other sts. off waste
except center 6 and repeat from row
54.

Hang one shoulder with right side
facing you. Put needles to "D"
position. Push fabric to back of
needles. Hang next shoulder with
wrong side facing you over the same
needles, keeping these sts. in front
of latches. Remove waste yarns
carefully. Pull sts. in front through
sts. in back. Then bind off. Re-
peat for other shoulder.

SLEEVES - In contrast color #1 (Blue)
cast on 39 sts. in 1 x 1 rib. Knit
24 rows. Transfer all to main bed.
Knit one row, then do 7 st. multi-
increase. Knit 31 more rows in blue
to row 56. Change to contrast color
#2 (natural). Knit 38 rows to row
94 on row counter. Change back to
plum and knit to row 124. During
the color changing you will be doing
increases on both sides of the sleeve
every 11th row 7 times, and every
12th row 1 time. Then knit 11 rows
from last dec. to end on row 124.
Take off on garter bar or 1 row
ravel and 10 rows waste.

Repeat for other sleeve. Next hang
sweater armhole from marker yarn to
marker yarn over 64 sts. with right
side facing you. Push needles to

Buttoned Tri-Color Sweater (Cont.)

"D" position. Hang sleeve with wrong side facing you over same needles in front of latches. Pull through shoulder and do double bind-off. Repeat for other side.

BANDS - Cast on 37 sts. in blue yarn in 1 x 1 rib and rib 9 rows. Take off on waste. Do 37 sts. for 9 rows in natural. Put in 5 buttonholes in whichever band you prefer. Hang front neck opening on machine. Pull rib through and bind off. Repeat for other side. Put buttonhole band on left side for women's sweaters. Hang bottom 6 sts. and then add bottoms of 2 bands in front of latches. Pull through and bind off. Sew on 5 buttons.

FINISHING - Single crochet 19 sts. with plum from front to shoulder edge. 30 sts. across back. 19 more sts. from shoulder to front of band. Turn row and do double crochet over all sts. Then do 6 sts. each over the bands in their respective colors, with 6 sc and 6 dc. Be sure to tie in with plum crocheting. Sew side seams.

This yarn is nice and lightweight. Silk is very cool and comfortable to wear in summer. Cotton would be good for this sweater also. But be sure to check your stitch gauge.

T-4

4 1/2 sts. - 7 rs. = 1"

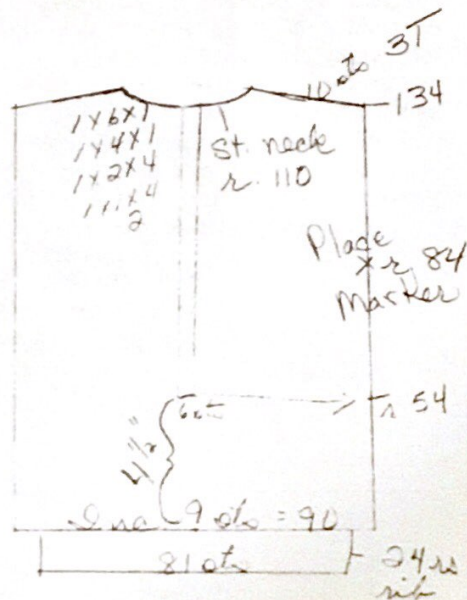
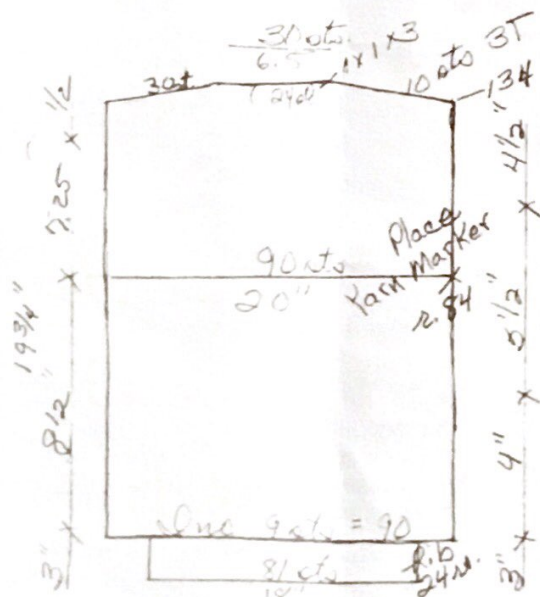
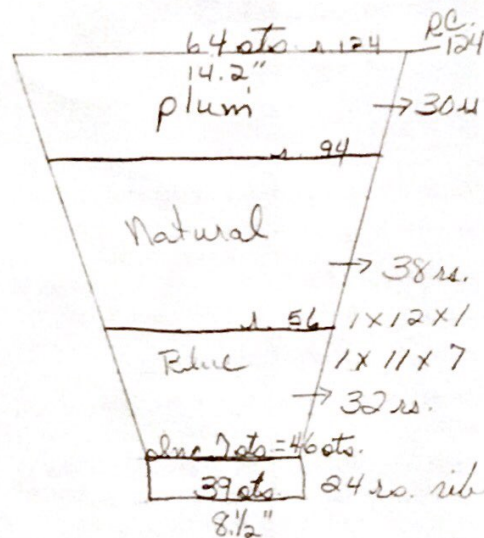
Pingouin

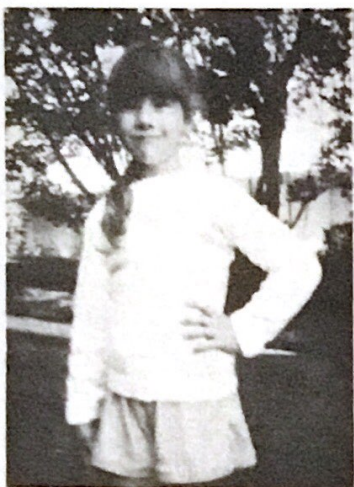
Bourrette

de Soie

100% SILK

Dry clean only





Cheryl Hunt also designed and made this

LITTLE GIRL'S
PULLOVER

Made on a Studio Cardmatic

Size - 5/6

Tension - #6

Gauge - 8 sts. & 10 rows = 1"

Wabbit and Fairisle yarns

Front and back are knit the same.

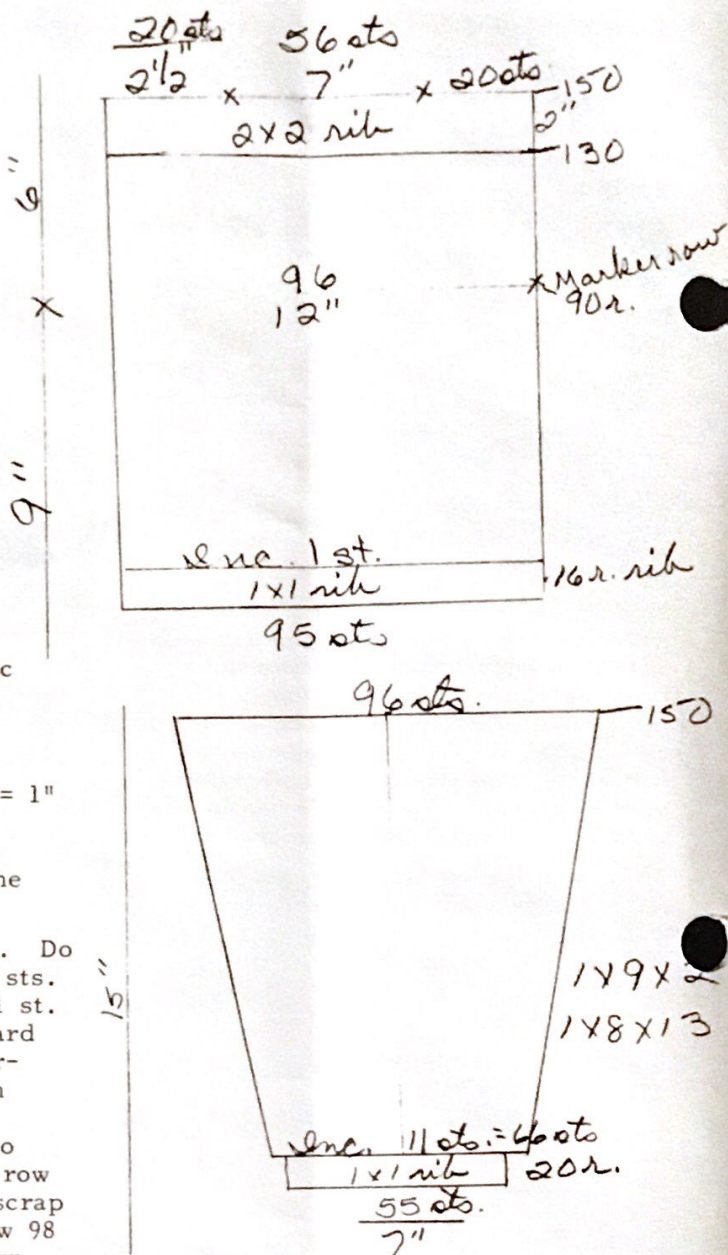
Cast on 95 sts. in 1x1 rib. Do 16 rows, then transfer all sts. to main bed and increase 1 st. On row 20 start a Fleck card pattern. Knit in with Fairisle yarn to row 73. Then continue in knit-in with a small star pattern. Knit to row 94. Be sure to mark row 90. Use a small piece of scrap yarn on each side. At row 98 go back to the fleck pattern. Continue to row 130. Transfer

sts. to ribber in 2x2 rib and rib to row 150. Take off 20 sts. on waste on each side. Do a loose single bind-off on center 56 sts. Knit one more piece identical to the one just done. Hang the shoulders together, pull through and bind off. Both sides.

Sleeve is started with 1x1 rib, 55 sts. for 20 rows. Transfer all sts. to main bed and do multi-inc. of 11 sts.. On row 24 start in with the fleck pattern. The whole sleeve is done in the fleck pattern. On row 28, do first increase. Repeat 12 more times, then every 9 rows 2 times. Knit to row 150 and take off on the garter bar or waste yarn.

Finishing - Hang body with right side facing you from marker to marker over 96 sts. and push needles to "D" position. Hang sts. from garter bar in front of latches and pull through. Do a double bind-off. Sew sides together. Finish off the float threads and you are all done.

- 6 -





Getting a head start on our holiday knitting, Sandra Dominiak, South Bend IN, sent in this pattern for a -

SANTA DOOR KNOB COVER

Made on a Studio SK-360

Yarn: Nomis 3/15 Sport - red & white
1 bell, 1 small rubber band, 2 15mm moveable eyes

Tension: 7

FACE COVER: Cast on 14 stitches with waste. Knit 9 rows. Change to RED. Knit 1 row. (carriage on right). Set part buttons on 1 to hold. Put 3 stitches opposite carriage into hold, knit 1 row, wrap needle to avoid holes, knit 1 row. Put 3 stitches opposite carriage into hold, knit 1 row, wrap, knit 1 row. Put 4 stitches opposite carriage into hold, knit 1 row, wrap, knit 1 row. Knit 2 rows over 4 remaining stitches in working position.

Return 4 stitches opposite carriage back into working position, knit 2 rows. Return 3 more stitches into work, knit 2 rows. Return remaining 3 stitches to working position, knit 2 rows.

One section complete. Make a total of ten sections. Scrap off on waste.

Pick up 35 stitches along 1/2 of outside edge. Knit 10 rows. Bind off. Pick up 35 stitches along other half of circle, knit 10 rows, bind off.

Kitchner stitch seam together, sew sides of bands, gather up center of circle. Weave in ends. Work 1 row of single crochet around outside edge. Work 1 more row of single crochet, crocheting over rubberband.

HAT: Knit side facing you, pick up 26 stitches along outside edge of circle. Change to WHITE, knit 2 rows. Put 1 stitch on carriage side into hold position, knit across. Continue putting 1 stitch on carriage side until 2 needles on each side are in hold position. Change to RED. Continuing putting needles into hold position until only 2 stitches remain in work. Return 1 needle opposite carriage until 2 needles on each side remain in hold. Change to WHITE. Continue until all needles are in work. Knit 2 rows, bind off. Lightly stuff hat with yarn scraps and sew down.

***Work 3 rows of looped fringe for beard. 1 row looped fringe for mustache. Work 1 more row of looped fringe just under white of hat for hair. Sew on moveable eyes, and attach bell to top of hat.

***LOOPED FRINGE: Insert crochet hook under a stitch where you want first loop. Place 1st finger of opposite hand you crochet with close to work. Wrap yarn around finger 3-4 times. Slip crochet hook under loops on finger and single crochet off of finger. Repeat around.



Another pattern from Sandra is for these "Knit Wits" which she convert- from a hand-knit pattern.

"KNIT WITS"

YARN: Fingering weight (Nomis 3/15)

TENSION: 6-7

Polyester Filling

BASIC DOLL: (with shoes, pants, shirt, face and hat/hair knitted in 1 piece).

With shoe color, "e" wrap cast on 32 stitches. Knit even for 6 rows.

Change to pants color and knit even for 14 rows.

Change to shirt color and knit even for 12 rows.

Change to face color and knit even for 8 rows.

Change to hat or hair color and knit even for 12 rows.

Decrease evenly across by putting 2 stitches on each needle. Move all stitches toward center so only 16 stitches are in work. Knit 1 row. With a double strand of yarn, gather off the 16 stitches tightly and secure.

Sew back seam and stuff lightly. Sew bottom seam. Weave a length of yarn the same as face color along the first row of the face just above the shirt and gather tightly for neck. Working through the thickness of body, use a running stitch the same color as shirt to form the arms. Repeat the same for the legs. Leave hair as is or work looped fringe around the head.

VARIATIONS: HAT: Knit hat in stripe pattern, garter stitch, add a tassel or pom pom.

SEPARATE HAT: Cast on 34 stitches. Work in ribbed pattern for 10 rows. Bind off. Gather top and sew seam.

BIB: pick up 8 stitches along center of last pants rows. Knit 4 rows even and bind off. Sew in place.

SUSPENDERS: Make two chains and sew in place.

COLLAR: Pick up 32 stitches along last row of shirt and knit desired length. Bind off.

APRON: Sew in place a small piece of 1" eyelet ribbon for girl. Attach chain straps if desired.

Use RED and WHITE and a small amount of black to knit MR. and MRS. SANTA CLAUS. Give him a looped

- 8 -

beard and her a pretty apron.

These dolls are about 5" tall, and are ideal for infants, children's pockets and Christmas stockings. Arms and legs are created with tight stitching lines, and you can add details with embroidery. Let your imagination run wild.

Faye Wood, Green Bay, WI, made up the following patterns while learning to use her ribber. She punched the pattern cards from designs shown in the "Pattern Library No. 1" book.

Both items would make ideal gifts, and the punched cards are shown on the next two pages.

LAP AFGHAN

Made on a Studio Cardmatic and Ribber

Card #13 - Punch Tuck Rib -
48-row pattern card
92 - 0 - 91 Full needle both beds -
Pitch: H - Racking: 5
1 strand 2/24 yarn

C. O. & 3 rows circular - Tension # 0/0
2 rows dbl. rib - Tension #3/3 -
Brain on 2nd row
TUCK - Tension #4/4 - 576 rows =
12 repeats
1 row dbl. rib - Tension #4/4
1 row dbl. rib - Tension #8/8
Transfer ribber stitches to main bed.
Bind off around 2 gate pegs, with yarn.

Punch card shown on page

BABY BLANKET

Card #24 - Punch Tuck Rib -
46 row pattern card
85 - 0 - 84 Full needle both beds -
Pitch: H - Racking: 5
1 strand 2/15 or 2/17½

C.O. Tension #0/0
3 rows circular - Tension #3/3
2 rows dbl. rib, Tension #3/3 - Brain on 2nd row
TUCK - T. #6/6 - 460 rows = 10 repeats. 1 row dbl. rib T. #6/6. 1 row dbl. rib T. #8/8. Transfer ribber sts. to main bed. B.O. around 2 gate pegs with yarn.

PUNCH CARD PATTERN FOR BABY BLANKET

48-0-58

454 6012600 10000 010000

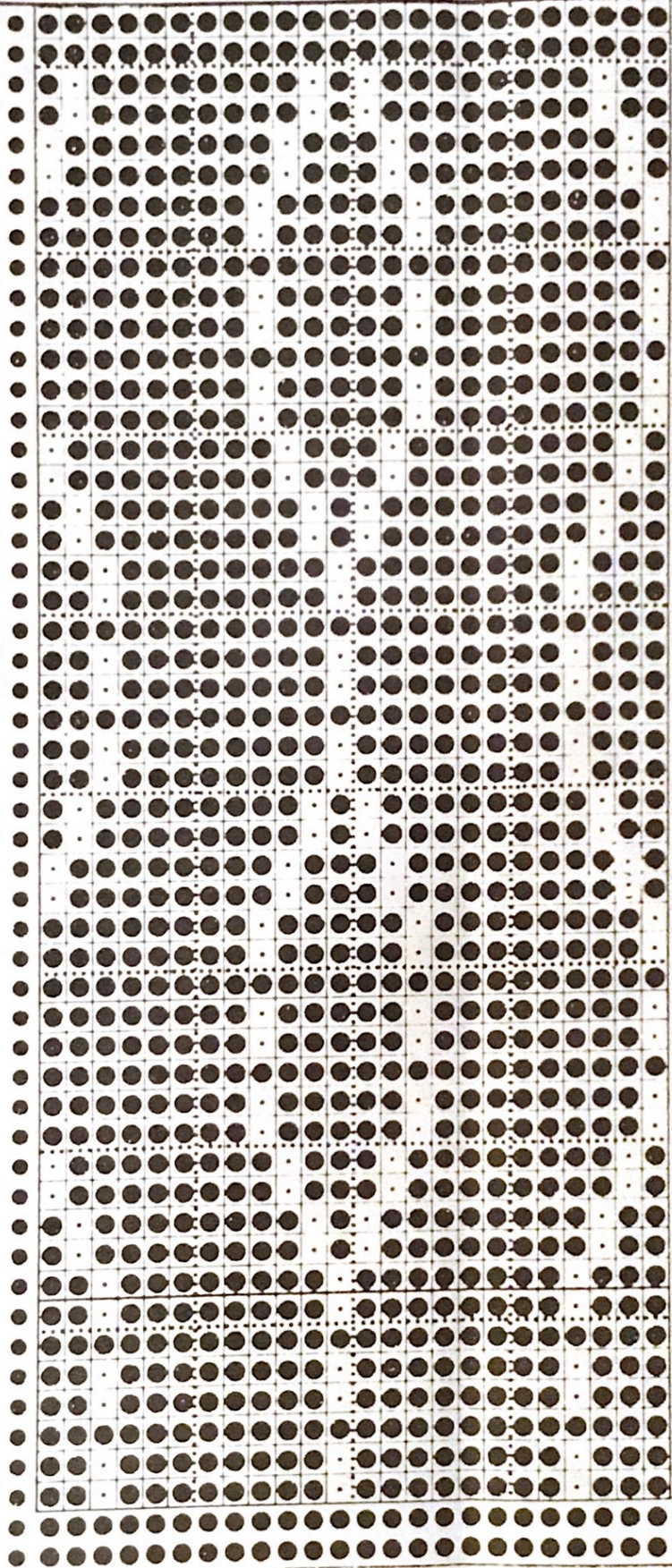
46 New Pattern

PUNCH TUCK R1B

PUNCH CARD PATTERN FOR
LAP AFGHAN

92-0-91

STUDIO MC #1 page 254 #13



43
42
41
40
39
38
37
36
35
34
33
32
31
30
29
28
27
26
25
24
23
22
21
20
19
18
17
16
15
14
13
12
11
10
9
8
7
6
5
4
3
2
1
60
59
58
57
56

4 Row pattern

PUNCH TUCK 218

More for your holiday knitting -

Kristin Glatz, Dwight, IL, sent us this pattern for a -

LONG SLEEVED "CABBAGE PATCH"
SWEATER

Made on a Studio HK-100

This is a good beginner's pattern.

1 skein 4-ply knitting worsted

Tension - #10

Gauge - 4 sts. & 6 rows = 1"

Front and Back - Using every other needle cast on 22 sts. and work about 8 rows with waste yarn. Set counter back to 000, and using main yarn, work a 12-row picot hem (HK-100 manual will explain). Set counter back to 000, work 12 rows, mark each end with a piece of contrast yarn because these will be the armholes. Continue to knit till counter reads 30 rows. Follow your manual and rib down for 8 rows. Using yarn needle, draw contrast yarn through the 4 sts. at each end. These are the shoulder seams. Bind off remaining sts. for neck.

With right sides together, pick up shoulder sts. and bind off front and back together.

Sleeve - With wrong side facing you, pick up shoulder st., each armhole st. (contrast mark) then the sts. between these. You should have 18 sts. Set counter back to 000 and knit 24 rows. Bind off and remove. Lightly press the sweater and seam garment. A good way is to split the plys and this will insure a nice flat seam.

This little pattern can teach you about cables, tuck stitch and how to use colors effectively.

Evelyn Portrait, Lynn, MA, submitted her pattern for a sweater that fits the Cabbage Patch Kid by Coleco. It was made on an SK-360 Cardmatic and takes very little yarn to make. She says it's a great way to finish off those small cones you have lying around. The sweater is made in one piece from sleeve to sleeve. The bottom mock rib is added last. Any side to side punch card can be used

that is no longer than 43 rows. If it is less knit divide the difference by 2 and knit that many extra rows before starting the punch card. A two-digit number or the kid's name would also look nice on the sweater. The lines on the directions that are underlined indicate where the punch card begins and where to set the magic cams for single motif.

SIDEWAYS SWEATER TO FIT
CABBAGE PATCH KID

3-ply 2/24 yarn

7 sts. & 10 rows = 1" approx.

RC 000

Tension 5, cast on 30-0-20 stitches for 1x1 mock rib. Knit 15 rows, turn up. Tension 8, knit to row 50. Carriage on left E-wrap 20 stitches and knit 1 row. Carriage on right E-wrap 20 sts. (50-0-40 sts.) Knit to row 58.

Put sts. 5-0-40 on hold with ravel cord in A position.

RC 000 - Insert punch card and lock on 1st row. Decrease 1 st. every 3rd row 5 times. AT THE SAME TIME beginning with row 8 start punch card set for single motif using needles 13-36 on left of bed. In-crease 1 st. on rows 45, 48, 51, 54 & 57.

Remove ravel cord and put needles into play. Put needles 50-5 on the left side on to ravel cord and into A position.

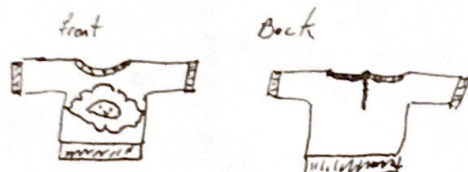
RC 000 With carriage on right decrease 1 st. every 3rd row 3 times. Knit to row 27. Bind off 10 sts. knit to row 29 and E-wrap the 10 sts. back. Continue knitting increasing 1 st. on rows 51, 54 & 57. Knit one more row carriage is on right. Put all sts. into play and knit to row 65.

RC 000 Bind off 20 sts. beginning of next 2 rows. Knit to row 35. Transfer sts. to EON for 1x1 mock rib Tension 5 knit to row 50. Turn up and bind off. Sew up one side of sweater.

Cast on 60-0-60 sts. for 1x1 mock rib in Tension 5 and knit 15 rows. Turn up. Place bottom of sweater onto needles and take off half at a

Cabbage Patch Sideways Sweater-Cont. time.

Sew other side of sweater.
Crochet 2 rows around neck and back opening making a loop for a button at left neck edge. Sew button on right side.



Pat Dack, Horseshoe Bay,
TX, sent us this inter-
esting pattern for a

CUSHION COVER

"Bridge" Pattern -
Fairisle

Made on a Studio
Cardmatic

17" x 17"

3-ply Sports weight yarn
(total 8 ozs. 4 ozs.
beige

2 ozs. red/2 ozs. black
(Fairisle)

Tension #6 (approx. 10-
3/4 rows & 8 sts. = 1"

Gauge not really impor-
tant.

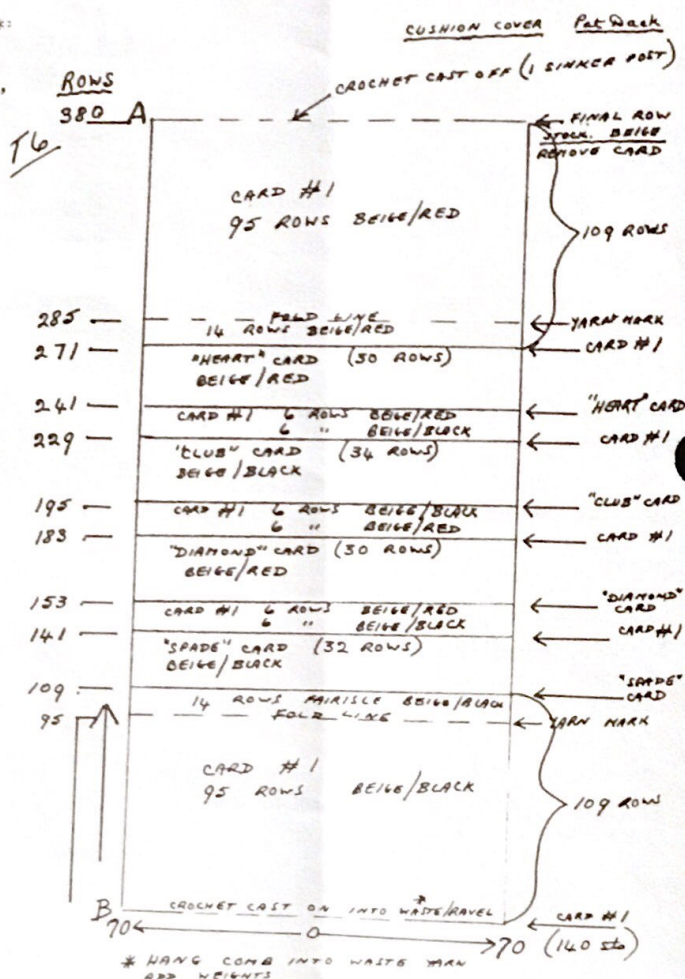
Punchcards used -
Studio card #1 for back
of cushion/border rows
on front. 4 cards for
"Bridge" pattern: -
Spade/Diamond/Club/
Heart. Copies of these
cards are on next 2
pages.

First I punched each
motif, then punched the
background for every
other stitch - fairisle -
like card #1.

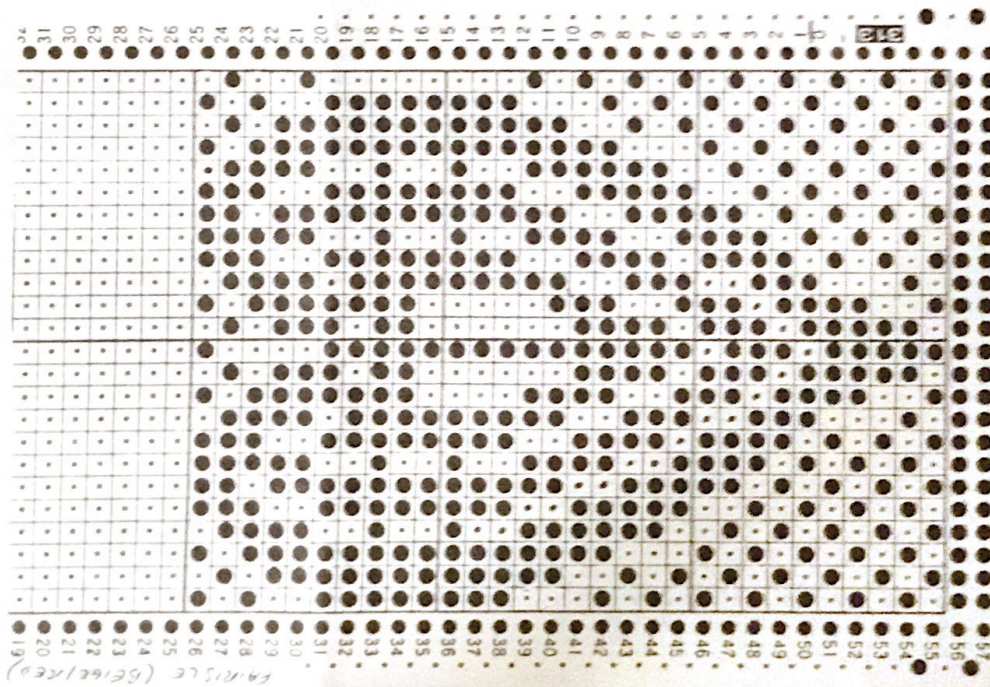
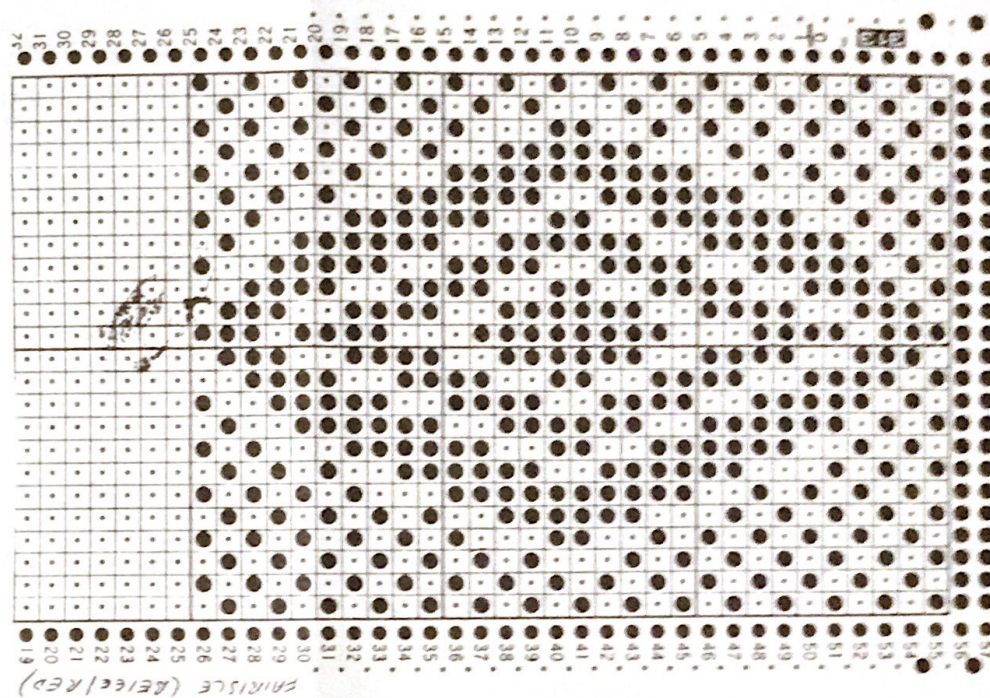
Notes: Follow diagram. Make yourself a "reminder" card to clip to yarn
mast, stating:- "New punchcard - run carriage across for memory row
(according to your manual); change fairisle yarn; switch card on".
To complete cushion: Fold A to B and insert 14" nylon zipper. I used
sewing machine/roller foot. (tack into place by hand). Weave together the
seams on either side of zipper.

Weave side seams of cushion together or add cord trim. Insert 17" x 17"
pillow form.
Makes an acceptable gift.

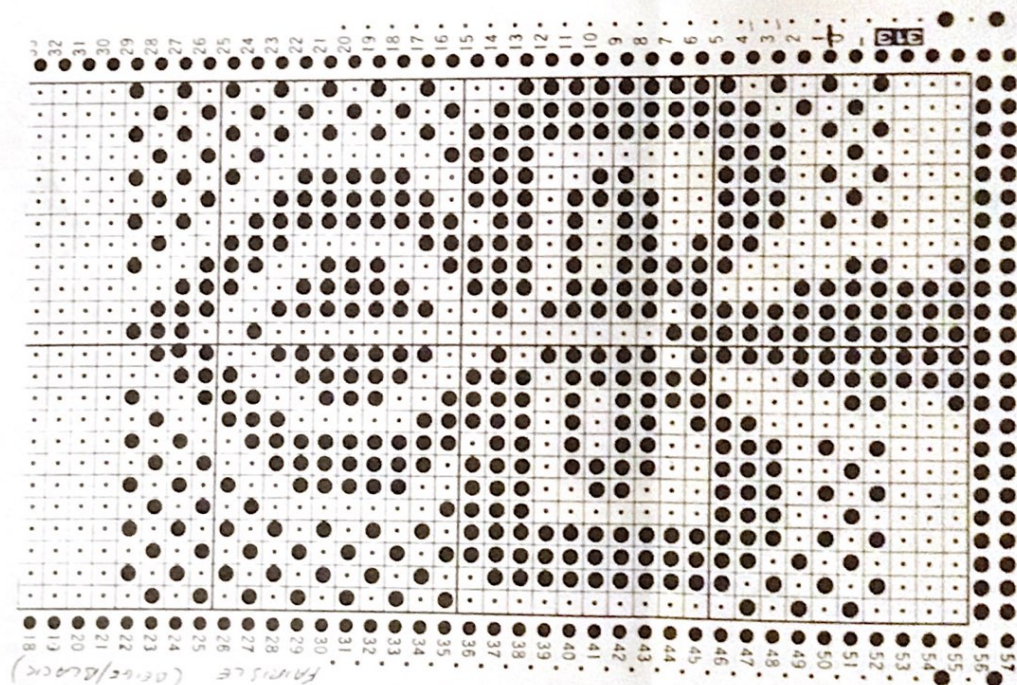
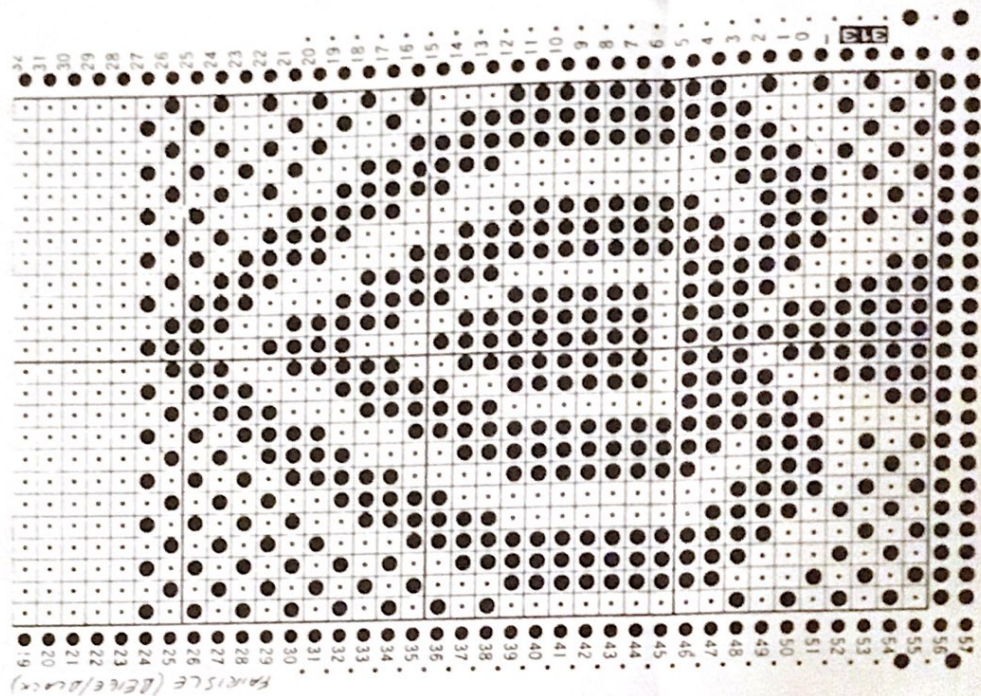
- 12 -



Punch Cards used with Cushion Cover - Diamond and Heart
Knit in Beige and Red (Fairisle)



Punch Cards used with Cushion Cover - Club and Spade
Knit in Beige and Black (Fairisle)



WE

This
orig
you
sha
wri
yar
pat
(nu
hi
hel
che
not
also
us
of
yar

The
Mac
onl
won
the
ver
a l
ST
fas
wit
Ya

co
ma

Pa
viduals and are purported to be original patterns.

CANADIAN SUBSCRIBERS - Please remember, when sending in your subscription, all checks and money orders from Canada must be marked "Payable in U.S. Funds".

Please Note - We always notify you when your subscription expires. Your last issue is stamped across the Subscription Order Blank on the back page in red, "Your subscription expires with this issue". This issue is then mailed to you in an envelope and sent by first class mail. If you miss an issue, without having received this notification, please let us know, because it means that your mail isn't reaching you, and we will send you another copy. All the "Newsletters" are mailed out, altogether, just as soon as the mailer receives them from the printer.

(We need patterns desparately for the "Newsletter". Please send in your original patterns to share with other readers.)