

Studio

KNITTING MACHINE

"The Most Wanted Automatic Home Knitter"

NEWSLETTER

NOVEMBER/DECEMBER, 1985

VOLUME 184





A Time To Say Thank You

To Our Special Friends:

One of the joys of the Holiday Season is remembering those who are important to us...

We truly appreciate the confidence you have placed in us, as it is the loyalty of customers like yourself that enables us to succeed. We promise to continue doing our best for you in every way possible.

May we convey warm Season's Greetings and extend our best wishes for good health, happiness and prosperity in the coming year.

Happy Holidays!

*From all of us at
Studio Yarn Farm*



Linda Edison, our Studio dealer at the Imag-A-Knit Shop in Kernersville, NC, sent us a great assortment of her patterns using the various models of Studio Knitting Machines.

This first pattern is made on the Studio Cardmatic.

TUCK SWEATER

Sizes - S (34, M (36, L (38)

Materials - Style 1, 4 cones Del-lite; Style 2, 3 cones.

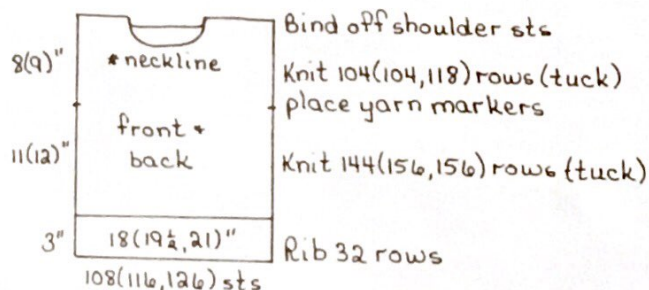
Tension - 8.1 tuck, 4 ribbing, 9 stockinet.

Gauge - Tuck, 6 sts. = 1" and 13 rows = 1";

Stockinet, 6.8 sts. = 1" and 9-1/2 rows = 1"

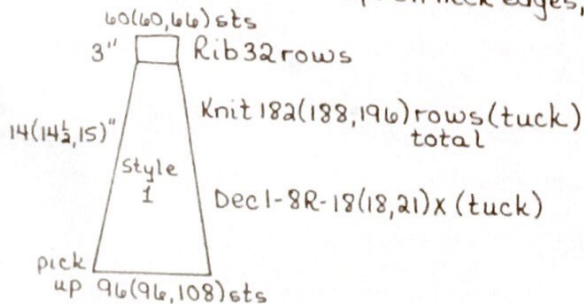
NECKBAND - Pick up neck sts. and rib for 16-18 rows at ten. 4. Bind off.

FINISHING - Purl side is the right side for all pieces. To pick up the sleeve so that the seam is not on the outside, you must hang the shoulder edge onto the needles with the knit side facing you. Knit one row and take off on scrap. Turn work over and rehang sts. Purl side is facing you. Now set counter = 0 and work sleeve according to pattern.



Tuck Sweater Style 1

* front - on row 48(48, 62) above yarn markers, take center 24 sts off on scrap. On neck edges Dec 1-4R-8x.
 * back - on row 90(90, 104) above yarn markers, take center 36 sts off on scrap. On neck edges, Dec 1-4R-2x.

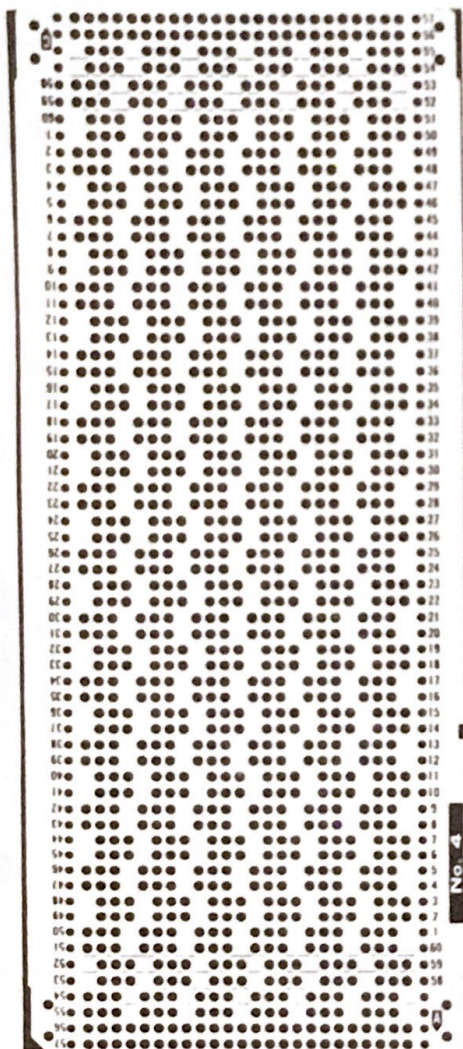


Tuck Sweater Style 2

82(82, 88) sts
 3" 94(94, 100) sts
 10" Style 2
 pick up 108(108, 122) sts
 Rib 32 rows
 Dec 12 sts evenly
 Knit 96 rows total (stockinet)
 Dec 1-2R-7(7, 11)x (Stockinet)

Punch card is shown on next page.

Punch card for Tuck Sweater on page 3.



HINTS FOR THE STUDIO LACE CARRIAGE

From Linda Edison, Kernersville, NC

1. While using the lace carriage, never bring any needles out to D position. If you need to divide a neck, with the main carriage take one side off on scrap.
2. While knitting lace, always bring your work over the front of the ribber and keep even weight across the piece.
3. Hang all the claw weights and weight bars with the prongs facing you. This will keep the weights from

- 4 -

catching onto the ribber. Also, always hang the weights no less than an inch down from the carriage. Lace carriages like to eat weights that are hung any closer!

4. The lace carriage tends to knit looser than the main carriage. If a lace border is being knitted, you may want to knit it a tension tighter than your tension used with the main carriage.

5. While working lace, always move the edge pins when you increase or decrease.

6. Whenever you change from your lace carriage to your main carriage, always remove the edge pins from the needle bed! Your main carriage has no mercy on those poor edge pins!

7. Knit fairly quickly across the rows. If you push the carriage too slowly, your stitches may not transfer properly.

8. I have found that knitting with the lace carriage on a hot humid day does not work. The humidity hinders the transfer of stitches from one needle to the next. I almost sent a carriage back because of this! Once the air conditioner was on, everything worked fine.

Linda sent the following basic patterns which will make quick gifts, and use the new SK-700 as well as the Chunky machines.

LINED HAT

Made on the Studio SK-700

Materials - 4 ozs. 2/24 yarn, 2 strands throughout.

Tension - 5 large child, 6 adult.

Gauge - Approx. 7-1/2 sts. & 11 rows per inch.

Cast on every other needle from 73 left to 74 right. Knit 4 rows. Bring the alternate empty needles out to work position. Knit 264 rows. Move every other stitch over so that you have two sts. on one needle and an empty needle alternating. Push empty needles out of work. Knit 4 rows. Hang cast on edge onto needles making a hem. Knit one row. Take off on scrap. Gather top sts. tightly. Sew back seam. Sew pompom to top. To knit fair-isle, start your card so that the pattern will end near row 238 from beginning. Fair-isle should

(Continued to next page)

Lined Hat (Cont.)

be knitted one full tension looser
than tension used for plain stockinet.

MATCHING SCARF

Made on an SK-700

Materials - 4-8 ozs. 2/24 yarn,
2 strands throughout.

Tension - 6 stockinet, 7 fair-isle

| | Cast on | sts. | Knit | rs. |
|--------------|---------|------|---------|-----|
| Infant | 82 | | 502 | |
| Small Child | 98 | | 550 | |
| Medium Child | 98 | | 622 | |
| Large Child | 106 | | 694 | |
| Adult | 134 | | 836-856 | |

Fair-isle should start on row 22 above
beginning of scarf and end 22 rows
before end of scarf. Sew seam.
Fringe ends.

TUCK SCARF

Materials - 6 ozs. 2/24 yarn, 2 strands
throughout

Tension - 8

Studio card #4

Cast on 80 sts. Knit 2 rows
stockinet. Knit 800 rows in tuck.
Knit 2 rows stockinet. Bind off.
Sew seam. Either fringe ends or tie
knots on ends.

CHUNKY ENGLISH RIB SCARF

Made on the Studio Chunky SK-150 or
SK-155 and Ribber

4 oz. sport yarn
Tension - 3-4 both beds

E-cast-on from 16 left to 17 right.
Knit 1 row. Transfer for 1 x 1 rib
with end sts. on ribber. Hang comb
and weights. Work English rib for
450 rows. Bind off. Leave ends
plain or add fringe.

CABLED AFGHAN

Made on the Studio Chunky SK-150 or
" SK-155

Materials: 40 oz. worsted Sayelle
Tension: 8 for edge strips
10 for panels

X - needles in work
. - needles out of work

For all pieces, knit 294 rows. Bind
off all the sts. except the two end
sts.

Edges - knit 2

X.XXXXXXXXXX.X
9 sts.

Plain Panels - knit 3

X.XXX←→XXX.X
33 sts.

Cabled Panels - knit 2

X.XXXXXXXXXX.XXXXXX.XXXXXXXXXX
26 sts.

On center 6 sts., twist a 3x3 cable
every 6th row.

Unravel edge sts. and hairpin lace
panels by drawing 2 loops through 2
loops. Fold edge strips lengthwise
and draw 4 edge loops through 2
panel loops.

Top and Bottom edges - with a J
crochet hook, work 1 row sc, 1 row
hdc, and 1 row sc.

CHECKERBOARD AFGHAN

Made on a Studio Chunky SK-150 or
" SK-155

Materials: 2 colors worsted Sayelle
16 ozs. each color (small),
20 ozs. each color (larger)

Edges - (Make 2)

Cast on 11 sts. and knit 266 (304)
rows at tension 8. Bind off all
sts.

Panels - (Make 3 starting with color
A, make 2 starting with color B).

Cast on 28 sts. and knit 266 (304)
rows at tension 10. Alternate colors
every 38 rows. Bind off all sts.

Sew panels together. Hem edges at
sides. On top and bottom edges,
with a J crochet hook, work 1 row sc,
1 row hdc, and 1 row sc.



Barbara Miller, our Studio dealer in Renton, WA, brought in this very pretty vest and the pattern she wrote for it.

LIGHT - FLUFFY BOAT
NECK VEST

Made on a Studio Chunky
SK-155

Yarn: Nomis Conny 4 or 5 ozs.
Yes, that's all.

Stitch gauge: 12-1/2 sts. & 28
rows = 10 cm. or 4 in. on a
st. dial 7.

Pattern st. Tuck using punch card
with pattern. Card A

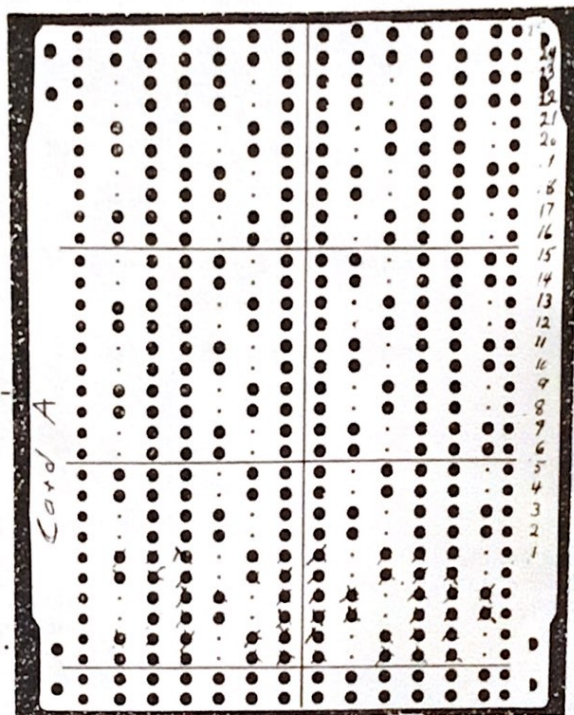
Size: Around small, (med. & large).
Length short, (med. & tall)

Back: Cast on 60 (64-68) sts. in a
knit 1 purl 1 rib. Rib 20 rows on st.
dial 1/1. Transfer ribber sts. to main
bed. Lower ribber & remove weights,
but leave the cast-on comb on. Change
to main arm, put side levers back to **A**.
Put st. dial on 7. Put in punch card
& lock on row 1. Knit 1 row. Put cam
lever on tuck & put in tuck brushes.
Release punch card & knit to row 94.
Make sure the end needle knits every
row. On row 94 put in marker thread
on both sides for armhole. Knit to row
146 (154-162). Knit one row in stock-
inet. Roll cast-on comb up in knitting
toward you & hang weights over the
comb, at the ends of the knitting, from
the back. Transfer every other st. to
the ribber. Set for ribbing, *St. dial
on 1/1. Rib 8 or 9 rows, ending on
the right if you are right handed and
on the left if left handed. Knit 1 row
on st. dial 10/10. Slip st. bind-off.
See Note.

Front - Knit like back but cast on 64
(68-72) sts. Knit to row 140 (148-156).
Mark same row 94 for armhole.

Finishing - Sew shoulders tog. leaving
opening for boat neck. Sew up under

- 6 -



arm to marker. Crochet around
armhole.

Note - Ribber slip stitch bind-off.

Last row must be knit very loose.

From right to left if you are right
handed & left to right if you are left
handed. Remove the cast-on comb &
weights. Push working needles on both
beds to D position. Lower the ribber
one notch. Be careful not to lower it
2 times because you will drop the
ribber sts. Start on the side opposite
carriage. Holding the latch tool
horizontal for the main bed sts. &
vertical for the ribber sts., remove
the 1st st. onto the latch tool. Holding
this st. with your index finger, re-
move the 2nd st. onto the latch tool,
pulling the 1st st. behind the latch
with your finger. Then pull the 2nd
st. through the 1st. Take off the 3rd
st. & pull the 3rd st. through the
2nd. Repeat to end of row. Break
yarn & pull end of yarn through last
st.

Barbara also brought in this pattern
which will be a real challenge to the
more experienced knitter.

The directions and knit contour pattern
are on pages 7, 8, 9, 10 and 11.

V-NECK SWEATER WITH LARGE V STRIPES

This sweater is knit from sleeve to
sleeve. The knit contour is used for
(Continued to top of page 11.)



Back Neck C-B
K1-P1 rib

V Neck Sweater with Large V Stripes

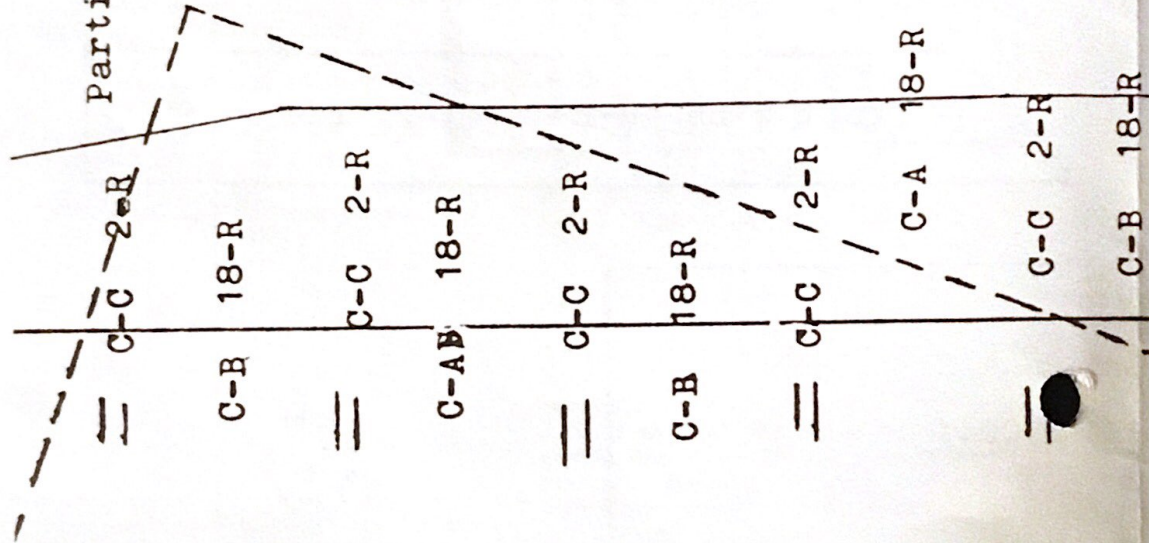
Front Neck C-B K1-P1 rib

K1-P1 rib
Cuff C-A

Bottom ribbing C-A

Partial knit. use manual wrap.

Knit Contour pattern for V P
(Pages 6, 7, 8, 9 and



Neck Sweater with Large V Stripes.
 d 10)

C-B 18-R

C-C 2-R

C-A 18-R

C-C 2-R.

C-B 18-R

C-C; 2-R

C-A 18-R

C-C 2 R

18 R.

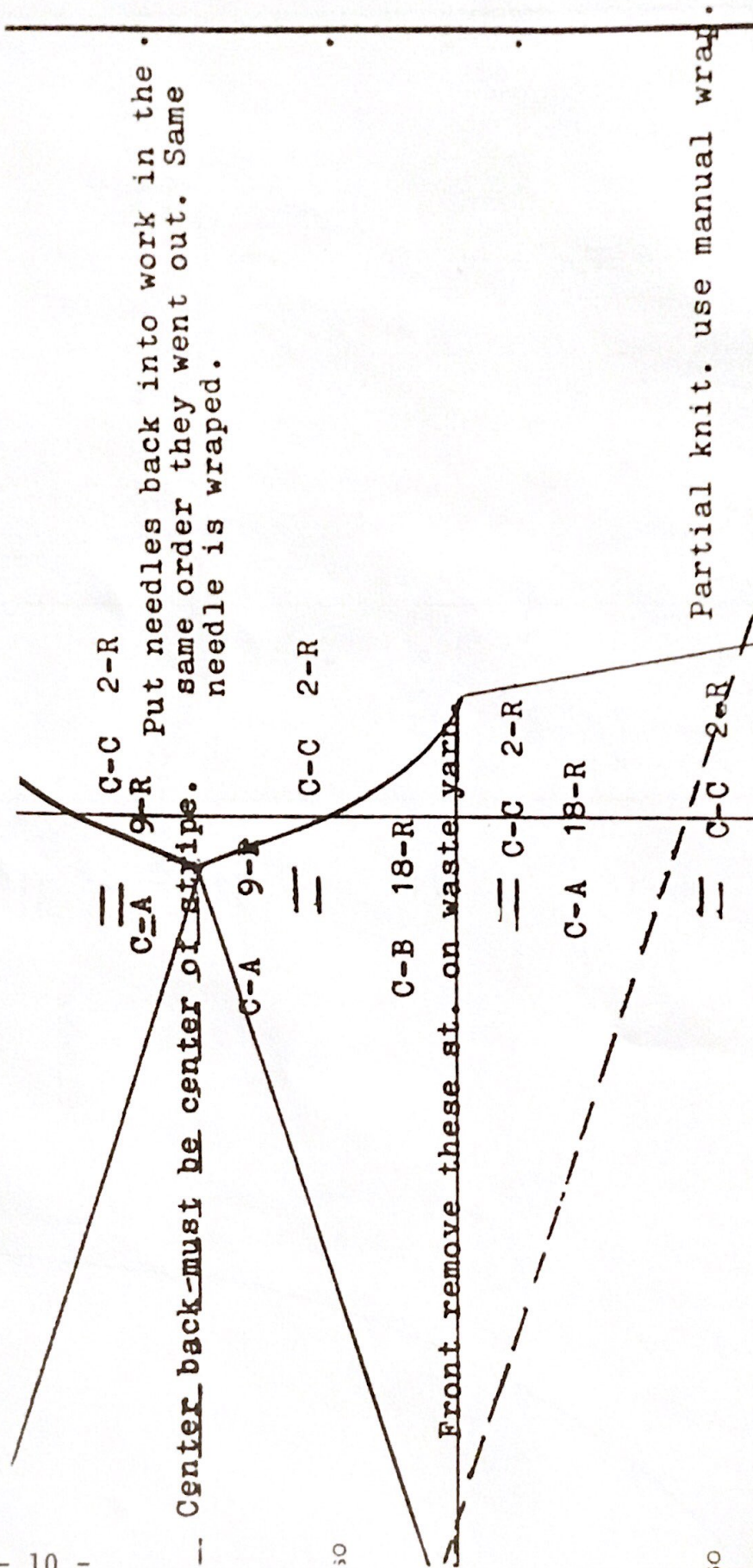
Sleeve

C-C 2R.

C-A 5 R.

cast on with waste yarn & R.C.

Lengthen or shorten here



Match this page to the corresponding place on page 8 when drawing the total pattern.

V-Neck Sweater with Large V Stripes (Continued from page 6.)

shaping. This pattern takes 1-1/2 sheets of knit contour paper taped together. Tracing paper works the best. Knit contour pattern is for use with a Studio Cardmatic.

Trace pattern on paper from sleeve to center back and then turn paper over and trace from center back to sleeve. This puts pattern on the wrong side, but you turn the paper over and trace onto the front.

Size: Large

Yarn: Lur Frosty used double strand for the A & B colors. Color C is Opal (a new yarn from England). 9 ozs. of A; 8 ozs. of B; & 4 ozs. of C.

Gauge: 25 sts. & 37 rows = 10 cm. Knit on a stitch dial 9.2.

If row gauge is changed, the pattern must be remarked from the center back out to the sleeves for the stripes.

To follow the pattern on your machine, the _____ line is on the right side of the machine and the ----- line is on the left side.

The V stripes are made by putting needles into hold and then back into work at the center back. Front is done the same to the straight line.

Remove those sts. on waste yarn and put them back on with waste yarn and turn pattern to next straight line after center back.

Colors: C-A - Brown; C-B - White; C-C - Green.

Aileen Hohmann, our Studio dealer in Salt Lake City, UT, sent the following letter and patterns:

"I thought your readers might enjoy hearing about one of the nicest knitting projects I have had the pleasure of participating in. I brought two of your Studio Hobby machines to the Hill Haven Rest Home in Salt Lake City. Two of the residents were interested in knitting and we knitted the following projects." (Unfortunately, the picture Aileen sent of her special knitters and their projects was too dark to reproduce, but the sketches give a good idea of what these items will look like.)

WHEELCHAIR AFGHAN

Sketched at bottom of this page.

Needle arrangement

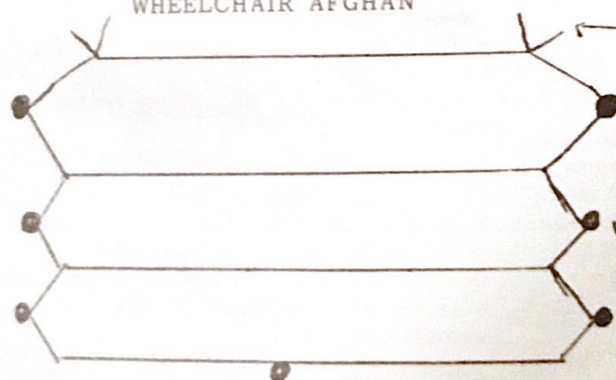
xxoxxxoxxxoxxo (for 22 patterns: xx is a pattern; x is in work; o is out of work). Cast on by bringing one of the pair of needles forward, knit 1 row. Bring the other of the pair of needles forward. Knit 175 rows. Sew off with double-eye needle. You can gather the ends of the strips by just pulling the cast-on or sewing off threads. The strips are knit sideways. Attach a pompom on the end of each strip.

Bag



Bag - Cast on as for afghan & knit 150 rows. Sew sides of bag tog. Knit 2 3-st. strips for handle & closing tie. Make a pompom to decorate bottom of bag.

WHEELCHAIR AFGHAN



Small ties used to tie to the wheelchair handle.

Pom poms hold the afghan down.

We have lots of good patterns and ideas this month for quick and easy gifts and bazaar items.

Patti Skogquist, Ramsey, MN, sent us the following two patterns:-

HANGER COVER

Made on an SK-120 Bulky Studio

Yarn - Sport weight

Materials - Tubular Plastic Hanger
1/2" Foam Rubber 3-1/2"
x 21"
1-1/2 yards 1/8" ribbon
Sprig of Silk Flowers



Tension 3 - "E" wrap 20 needles.
Knit 3 rows stockinette. Increase both sides (use 2-prong tool).
Continue increases every 4th row to row 60. (50 stitches in work).
Short row (do not wrap) - 2 needles in hold opposite cam each row until 10 needles are left. Then 3 needles in hold for 2 rows.
(Row 80) Remove remaining 4 stitches onto a piece of yarn. "E" wrap the 4 empty needles with another piece of yarn. (Weight yarn tails down out of way.)
Put back 3 needles into work position for 2 rows. Continue putting 2 needles into work position each row until all needles are back in work.
(Row 102)
Decrease 1 stitch each side (use 3-prong tool). Knit 3 rows. Continue decreasing 1 stitch each side every 4th row to Row 162. (Last decrease made on Row 159)
Latch tool bind off remaining 20 sts.
Make slit in foam piece for hanger hook. Trim ends to fit curved ends. Insert hook into foam then into four-stitch opening of cover. Tie tail ends of the added pieces of yarn tightly around bottom of hanger hook. Seam long sides together.
Gather ends with 1/8" x 12" ribbon. Tie bow on bottom of each end.

- 12 -

Weave 1/8" x 28" ribbon through holes left from not wrapped short-rowing. Tie bow at top. Add sprig of small silk flowers.

MR. SHIVERS

Snowman Candy Holder



Made on an SK-120 Studio Bulky
(or EON on regular machine)

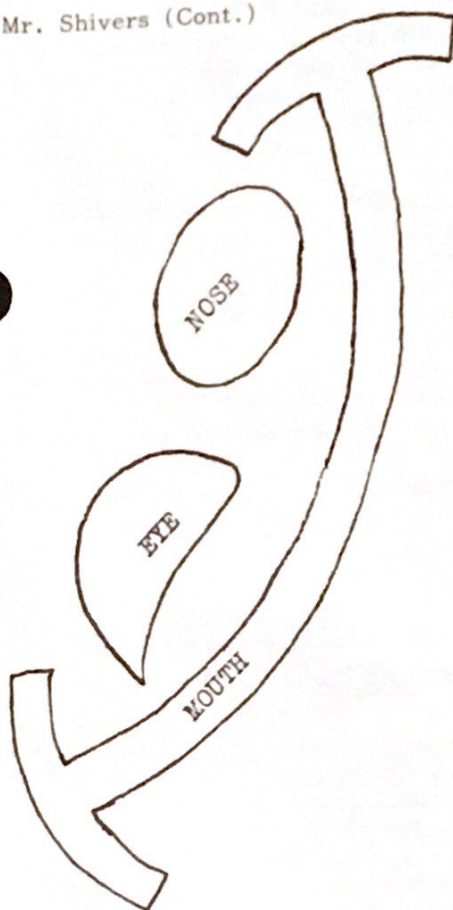
Yarn - 4-ply worsted weight
2-3 ozs. black & 2-3 ozs.
white

BODY - Tension 3. With white, cast on 50 stitches. Knit 55 rows. Change to Tension 8. Knit 46 rows. Remove stitches on double-eye needle and yarn tail. (Do not gather this end yet.) Gather bottom tightly and fasten. Sew side seam. Cut bottom of plastic 2-liter pop bottle off 3-1/2" high. Insert into bottom of knitted tube. (Wrong side will be out.) Wrap with quilt batting a few layers thick. Fold knitted tube over batting. Pull open stitches together tightly on bottom and fasten.

HAT - Tension 6. With black, cast on 68 stitches. Knit 46 rows. Hang hem. Knit 20 rows. Remove stitches on double-eye needle and yarn tail. Pull stitches tightly and fasten. Sew side seam. Attach pompom to top, if desired.

FACE - Cut mouth and eyes out of
(Continued to next page)

Mr. Shivers (Cont.)



black felt and nose out of red felt.
Glue or sew on face.

From Kristin Glatz, Dwight, IL, comes
this pattern which was made on a
Studio HK-100.

CABBAGE PATCH DOLL PANTS

Yarn used - Coats and Clark
Handknitting yarn

Gauge - 4 sts. and 6 rows = 1 inch

Tension - 10, every other needle
used throughout.

FRONT and BACK -

Begin right leg of front.
Cast on 14 sts. right of 0, work a
few rows of waste yarn. Attach main
color and knit 6 rows. Using trans-
fer tool, make a hem by lifting 1st
st. of row 1 and transferring to 1st
st. of row 6, work across row.
Knit even for 14 more rows.

Push these needles to D position.

Left leg - Set counter at 000.
Beginning at left of 0, push out 14
needles. Work same as right leg,
leave needles at B position.

Crotch to Waist -

Push right needles to C position. Set
counter to 000. Knit even for 20
rows. Work an eyelet row by
transferring 3rd st. to second st.,
5th st. to 4th st. etc. Repeat across
row. Push these needles back into
position (3rd, 5th, etc.) and knit
for 8 more rows and rib down for 6
rows. Bind off and remove.

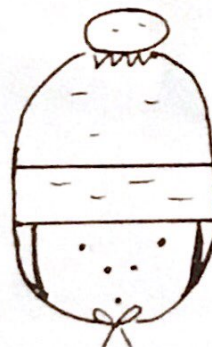
Work back in the same manner.

Finishing - Seam pants by splitting
ply of yarn and sewing an overcast
seam.

Make a tie by casting on 6 sts. and
knitting 40 rows. Bind off both
ends. Run through eyelet row of
pants. Make a pompom and sew to
ends of tie.

Mary Lee, Portland, OR, designed this
timely pattern for a

CHILD'S CAP with EAR FLAPS



Made on a Studio SK-360

4-ply yarn - 3 ozs.

Size - Approx. 1-1/2 year old child

Gauge - 5 sts. & 7 rows = 1 inch

Knit in stockinette

Flaps - Knit two, set aside.

Cast on 18 sts. on every other
needle. Knit 18 rows.

Dec. 1 each side every row down to
3 sts. Knit 124 rows of cording.

(Continued to next page)

Child's Cap with Ear Flaps (Cont.)

Cap - Cast on 65 sts. on every other needle. Knit 4 rows blue (main color) Knit 2 rows red
" 6 rows blue
2 rows red
4 rows blue
1 row blue - Ten. 10
(turn row)
18 rows blue - Ten. 9

Hang hem.

Hang ear flaps with purl side facing, starting with the 6th needle from each end.

Knit 1 row - Ten. 10

Ten. 9 - Knit 35 rows blue (use pattern card on these 35 rows if desired).

Knit 2 rows red, 6 rows blue, 2 rows red, 4 rows blue. Double up sts. (each needle will have 2 sts.)

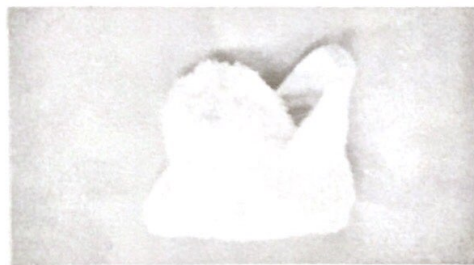
Knit 1 row - Ten. 10

Take sts. off with large needle and draw up. Sew back seam.

Attach pom-pom.

Note: Add additional sts. for a larger size, but adjust placement of flaps.

Monica Kapelos, one of our Studio dealers in Seattle, WA, brought in these cute little slippers and her pattern to share with you.



QUICK & EASY LINED SLIPPERS

For any machine.

Material: 4-ply worsted - 1 sk. green,
1 sk. beige

Tension: 9 Gauge: 5 sts., 7 rows =
1 inch

Size: Child's or Adult medium

With scrap yarn cast on 35 sts. for adult size or 25 sts. for child's size and knit a few rows. Cast on with green and knit 1 row. Carriage on left. Put first needle next to

- 14 -

carriage in Hold Position and short row and down to 7 sts. and back out. Knit 4 rows plain. Repeat above down to 9 sts., then back out.

For contrast lining, change to beige yarn and short row down to 9 needles and out. Knit 4 rows plain and short row down to 7 needles and back out. Carriage should be on the left side. Short row one more time. Hang sts. from scrap yarn. Loosen tension to 10 and knit across to right. Leave about 12" of yarn. Thread a needle through all sts. and pull up for toe. Attach a pom-pom.

Another quick and easy pattern from Monica is this

7 MINUTE SLIPPER

For any machine

Material: 1 skein 4-ply yarn

Tension: 9 for cuff, 10 for rest of slipper.

Cast on EON 43 sts. "e" wrap only every fourth needle, but have EON in work. Ten. 9, knit 20 rows. Hang hem on EON.

Ten. 10, knit 6 rows, short row by putting 1 needle into hold on carriage side every row until 9 sts. remain in the center. Then reverse by putting 1 needle in work every row until all needles are back in work.

For women's size 9, knit 40 rows at Ten. 10. Transfer every other st. to the next needle, leaving 2 sts. in work at each end. Push empty needles out of work. Knit 8 rows at Ten. 5, then break yarn, leaving a 12" end. Thread double-eye needle and run yarn through sts. and take off machine. Pull up tight and tie. Sew top of slipper and cuff.

For children, cast on fewer sts. and knit less rows. For men cast on 51 sts. and knit 4 rows additional for each larger size. If you wish, leave cuff open and run a cord through it.

This "Newsletter" is your publication. Help support it by submitting your original patterns and helpful hints, so other home knitters can learn from your experience. We would like to urge all of you with older machines to share your favorite originals with our other readers. Many of our readers write in requesting simple, beginner patterns. You will receive a gift of yarn for any original pattern or hint that is printed. When sending in your patterns, be sure to include the size of the garment and the knitting gauge (number of stitches and rows per inch) - this is most important - and the knitting machine for which your particular pattern was designed. It also helps if you know approximately how much yarn your pattern takes. Please check and recheck your patterns for errors and type or print clearly. We do not have time to knit each pattern sent in, so cannot check for mistakes. It also helps if you do not abbreviate, as many of your terms are unfamiliar to us and to other readers. A black and white snapshot and/or brief description of your garment will make it easier to visualize by other readers. A gift of yarn will be sent for snapshots (black and white) printed with the patterns.

There is a wonderful opportunity awaiting you to become a STUDIO Knitting Machine and yarn dealer. Good money can be made in your spare time with only a small investment. We are interested in contacting men and women who would like to become a part of our growing group of STUDIO dealers throughout the United States. Our assistance and guidance can make this a very profitable venture for you, and our only requirements are that you know how to operate a knitting machine and that you have space available in which to set up your STUDIO shop, either in your home or place of business. You will find this a fascinating business which affords you the opportunity to become acquainted with new and interesting people. Contact Mr. David Bratz, Manager, STUDIO Yarn Farms, Inc., P.O. Box 46017, Seattle, WA 98146.

If you are planning to move soon, let us know both your old and new addresses, complete with zip codes. We cannot change your address without this information.

Patterns submitted and published in this "Newsletter" are submitted by individuals and are purported to be original patterns.

CANADIAN SUBSCRIBERS - Please remember, when sending in your subscription, all checks and money orders from Canada must be marked "Payable in U.S. Funds".

Please Note - We always notify you when your subscription expires. Your last issue is stamped across the Subscription Order Blank on the back page in red, "Your subscription expires with this issue". This issue is then mailed to you in an envelope and sent by first class mail. If you miss an issue, without having received this notification, please let us know, because it means that your mail isn't reaching you, and we will send you another copy. All the "Newsletters" are mailed out, altogether, just as soon as the mailer receives them from the printer.