

Studio

KNITTING MACHINE

"The Most Wanted Automatic Home Knitter"

NEWSLETTER

JANUARY/FEBRUARY, 1986

VOLUME 185



FROM THE DESK OF DAVE BRATZ

Another year in the home knitting machine field is history and what a banner year it was. It does not appear that the economy has had any effect on the industry as a whole. My prediction for the year is a continued increase in sales and interest in the knitting machine. It seems like a major breakthrough has finally occurred with hand-knit shops and other craft related stores suddenly becoming aware that there is a different method of using up yarn and creating useful garments other than the two-needle system of hand knitting.

As with almost any article you read these days, there seems to be a bit of good news as well as bad news. So too is the case at the time of this writing. The bad news was a price increase effective January 13, 1986. This has been brought about primarily as a result of the American dollar dropping in value on the world market, in our particular case, the Japanese market. I am sure you are aware this increase in price is not unique to knitting machines or Studio particularly. In fact, the decline of the dollar value will affect all imports, including cars, textiles, machinery, electronics, etc. This includes not only Japan, but also Taiwan, Korea, R.O.C., as well as European and United Kingdom imports. We are still very optimistic about the coming year and look for the upward trend of knitting to continue.

On a more pleasant note, we are pleased to announce a new ribber, the SRP-60 Coupled Ribber. It is designed for and will only fit the SK-700 Knitters. This is because of the new and easier mounting system, making it very quick to attach or remove. No more thumb screws. The new features, in addition to the present features already possible with the SRP-50, are a Pick Rib, Plating Rib, Double Face (multi-color slip) and the best feature, Double Face Fair Isle. Although we have not yet had much of an opportunity to do much experimenting with the new features, I am sure by the time you read this, the dealers and distributors will be very knowledgeable and able to show it off to its fullest capabilities. I am sure it will create a lot of new excitement at upcoming seminars and workshops. Be sure and check it out.

Happy Knitting! ! ! ! !

UPCOMING KNITTING MACHINE SEMINARS

Norma Doolen announces her New England Seminar II, to be held March 22nd and 23rd, 1986, at the Colonial Hilton Hotel in Wakefield, MA 01800. For more information, contact Norma, our Studio dealer at 672 Lowell St., Peabody, MA 01960, phone (617)535-5212.

June 27th and 28th, 1986, at the Newark (Delaware) Sheraton Inn
FIRST STATE KNITTING MACHINE SEMINAR.
For more information, contact the Concord Yarn Bar, 4 Garden of Eden Road, Wilmington, DE 19803, phone (302)478-5476.

"Newsletter" Trivia - In checking back through the files, it was interesting to find that this month we are celebrating the 27th anniversary of the Studio "Newsletter". Our first issue was printed on January 2, 1959, and consisted of two pages with one pattern. Both the "Newsletter" and the Studio Knitting Machines have come a long way since that time. But the basic format for this publication has remained the same - with the exception of the terrific "Knits for Joy" patterns we receive from time to time from Silver in Japan, we rely solely upon our readers to send in their original patterns and hints to share with our other readers. Thanks to all of you who contribute your ideas.

This month's pattern for a Lady's Fancy Cardigan with Flat Collar, which is shown on the cover, is reproduced from "Knits for Joy" with permission of Silver Knitting Institute, Tokyo, copyright holder 1978.



SYMBOLS/ABBREVIATIONS

- SD① — SD stands for Stitch Dial and the figure in circle indicates Stitch Dial number and first number for knitter and second for ribber.
SD①/①
Col.a — identifies colour of each yarn.
(Col.b)
st. (sts.) — stitch or stitches
Nd. (Nds.) — needle or needles
CM — Card Memory number of Punch Card.
R.C. — Row Counter number

needle arrangement

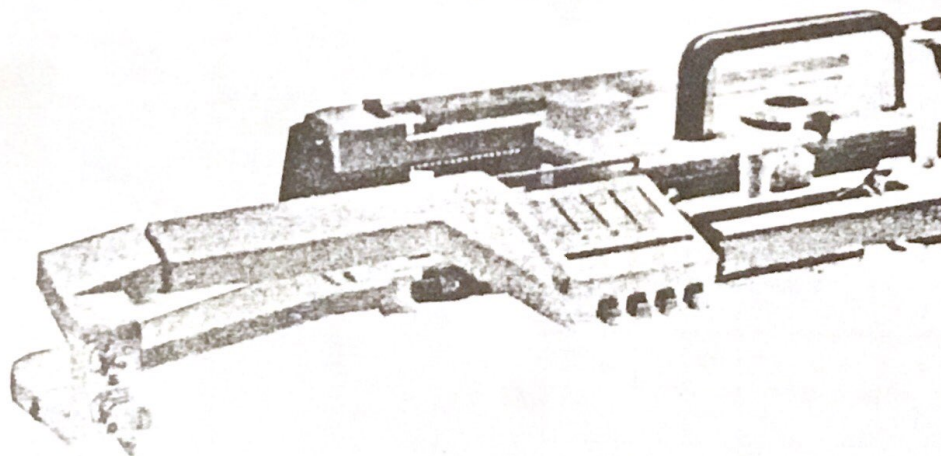


- | — working needle
○ — non-working needle
| — needle having 2 or 3 stitches

AUTOMATIC YARN CHANGER YC6

New

The Automatic Yarn Changer selects any two yarns out of four. When this changer is used on the single bed with YC Arm, accessory, colourfull designs in slip and tuck stitches, as well as fair isle patterns are produced. It also can be used in combination with the rib knitter by changing head angle, offering double jacquard.



Lady's Fancy Cardigan with Flat Collar

Finished Measurements size: cm.

	A	B	C	D
Bust	100	108	116	124
length	60	62	64	66
sleeve Length	55	56	57	58

Materials/others:

Col.a (white)
medium wool yarn.....300 – 400gs.
Col. b, c and d (light pink, light green
and light violet)
fine mohair.....60 – 100gs. for each
Col.

7 buttons (1.5cm. in diameter)

Standard gauge punch card knitter or
electronic knitter, SRP-50 and YC6
(YC5 is also available)

Punch a card or draw a design card as
shown on page 2.

Tension Gauge:

24 sts. by 68 rows over the swatch of
multi coloured Tuck Stitch with Stitch
Dial at ⑦.

Referring to instruction book for YC6,
set up the machine for Tuck Stitch.

Knit tension swatch by changing
colours according to Operation Table
below.

30 sts. by 48 rows over the swatch of
Stockinet with Col.a, Stitch Dial at ⑥.

Operation Table

	①	②	A	B	C	D	
1	↑	a	②	①	①	①	→
2		b	①	②	①	①	→
3		a	②	①	②	①	→
4		c	①	①	②	①	→
5		a	②	①	①	②	→
6		d	①	①	①	②	→

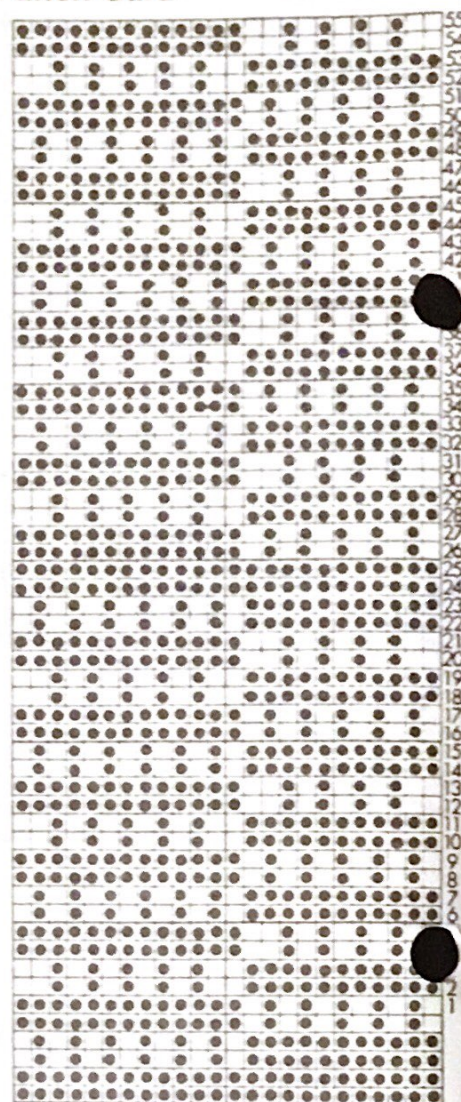
Holder A — Col.a

Holder B — Col.b

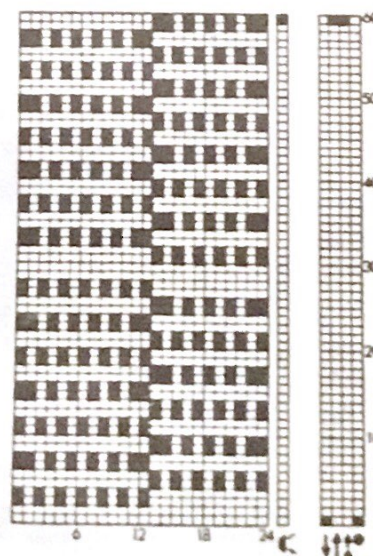
Holder C — Col.c

Holder D — Col.d

Punch Card



Design Card

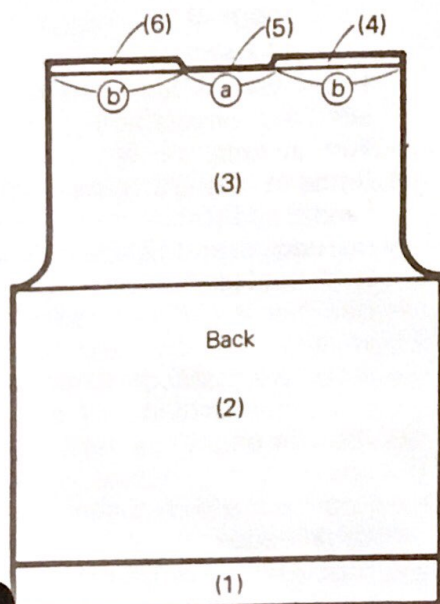


TO KNIT

Knit back, front and sleeves following the patterns given on pages 3, 7, 10, 11 and instructions below.

Back

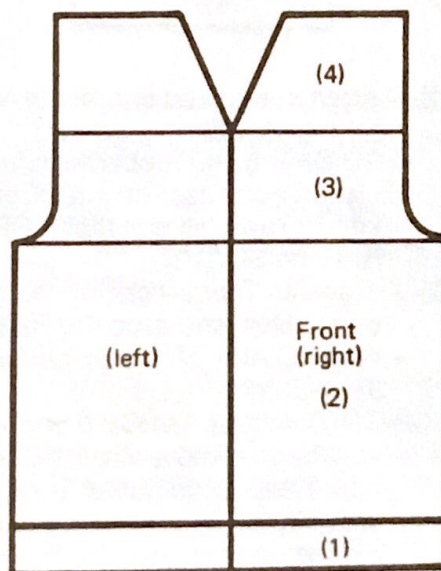
- Set Pattern Paper for Back and lock at the starting line.
- Set Punch Card and lock at CM1.



- (1)— Knit the welt referring to Operation Table "A" for K2.P2. Rib of SRP-50 Instruction Book.
 - Arrange required number of Nds. on both Knitter and Ribber with 2/1 Needle Pusher.
 - SD ①/①, work closed edge cast-on.
 - SD ④/④ knit 26 rows (all sizes) in K2.P2. Rib ending the Carriage at the left side.
 - Set Half Pitch Lever to P, transfer Ribber sts. onto corresponding Knitter Nds. and drop the Ribber.
- (2)— Exchange Ribber Arm for YC6 Arm with Col.a in Yarn Feeder.
 - Release card and pattern paper.
 - Knit in coloured Tuck by changing colours every 2 rows referring to Operation Table.

- (3)— Shape Armholes on both sides following the contour line ending the Carriage at left side.
- (4)— Mark CM number on Card.
 - Push Nds. in section (a) and (b) to holding pos.
 - Russel Levers at I, continue to knit section (b) by decreasing sts. at neck edge following the contour line.
 - Push the empty Nds. back to A pos.
- (5)— Return Punch Card to marked CM and lock.
 - Put yarn mark at centre(0).
 - Push Nds. in section (a) back to C pos., remove them on waste knitting.
 - Push the empty Nds. back to A pos.
- (6)— Push the Nds. in D pos. back to B pos. using Transfer Tool.
 - Release Card, set Carriage for coloured Tuck, work section (b) in the same way as for section (b) but reverse shaping at neck edge.
 - Remove the section on waste knitting.

Front

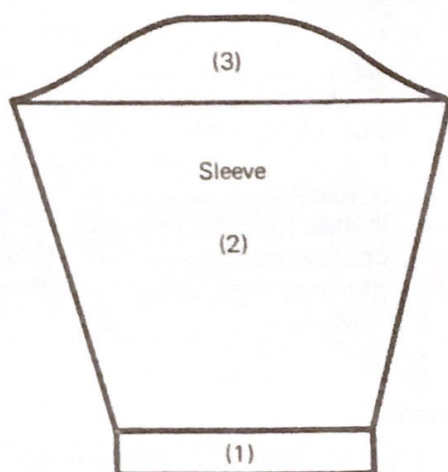


- (1)—(3) — Work right front in the same way as for (1)—(3) of back.
- (4) — Put yarn mark at beining of front neck.

- Knit following the contour line by decreasing sts. at neck edge (left side).
- Remove the section on waste knitting.
- Arrange required number of Nds. for left front on left side of centre(0) and work in the same way as done for right front, but reverse shaping.

Sleeve — both alike —

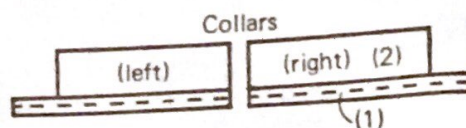
- Set the Pattern Paper for sleeve and lock at starting line.
- Set the Punch Card and lock at CM1.



- (1) — Arrange required number of Nds. for K1.P1. Rib.
 - SD①/①, using Ribber Arm, work closed edge cast-on with Col. a, knit 22 rows (all sizes) in K1.P1. Rib with SD③/③.
 - (2) — Transfer Ribber sts. to Knitter empty Nds. and drop the Ribber.
 - With YC Arm, set the machine for Tuck Stitch.
 - SD⑦, release the Card and Pattern Paper, knit following the Operation Table in coloured Tuck, increasing sts. at both edges following the contour line.
 - (3) — Shape sleeve cap following the contour line.
 - Put yarn mark at centre(0).
 - Cast off remaining sts.
- Knit another sleeve in the same way as done for the first one.

Collar (left & right)

(Numbers in bracket refer to the sizes B, C and D.)



- (1) — Arrange 108 (112, 116, 120) Nds. and knit several rows on waste knitting using main Arm ending the Carriage at left.
 - With Col.a, knit 3 rows with SD⑥, 1 row with SD⑩, 3 rows with SD⑥ in Stockinet.
 - Turn up hem.
 - Remove the yarn from Yarn Feeder and rest.
 - Leaving left end 12 Nds. in B pos., Push the Nds. to holding pos.
 - Remove left 12 sts. on waste knitting.
 - Move the Carriage to the right side of the knitting.
 - Push the empty needles back to A pos.
- (2) — Replace the yarn, Col.a, into the Yarn Feeder.
 - Russel Levers at II, knit 1 row with SD⑧.
 - Set R.C.000
 - Counting from right, push 7th and every 12th (all sizes) Nds. to D pos. 8 (8, 8, 9) times in all.
 - *Russel Levers at I, SD⑥, knit 4 rows in Stockinet.
 - Russel Levers at II, knit 1 row.*
 - Push the same Nds. to D pos. and repeat from *to*.
 - Knit 3 rows in Stockinet.
 - Referring to Chart as shown below, transfer the sts. on both sides of tucked sts. to its outer Nds.



- SD⑤, knit 4 rows and transfer the sts. every 4 rows twice.

- SD ④, knit 4 rows and remove 48 (50, 52, 54) sts. on waste knitting.
- Knit right piece in the same way but reading left for right and vice versa.

Front band (left & right)

(Numbers in bracket refer to the sizes B, C and D)

- Set machine for K1.P1. Rib and arrange 151 (153, 157, 159) Nds. on both beds.
- SD ①/①, work closed edge cast-on with Col.a.
- SD ③/③, knit 13 rows in K1.P1. Rib.
- Set Carriage for circular knitting, move the Carriage 4 times across the Needle Beds with SD ⑤/⑦.
- With waste yarn, continue to knit several rows in circular knitting and remove from machine.
- Work closed edge cast-on and knit 7 rows in K1.P1. Rib in the same way as done for left band.
- Counting from left edge, push 7th Nds. (all sizes) on both beds and every 23(23, 24, 24)th Nds. to D pos. 6 times in all remaining 6(8, 6, 8) Nds. in B pos. on right edge.
- Transfer Knitter sts. on Nds. in D pos. to their adjacent Ribber Nds. in B pos. and Ribber sts. on Nds. in D pos. to their adjacent Knitter Nds.
- Leave the empty Nds. in B pos.
- Continue to knit 6 rows.
- Set the Carriage for circular knitting, move the Carriage 4 times across the Needle Beds with SD ⑤/⑦.
- Remove the sts. on waste circular knitting.

TO MAKE UP

- Block out each pieces to size and steam.

Join front band to front edge

- Arrange 151 (153, 157, 159) Nds. on both beds.
- Holding left front edge with right side facing you, pick up loops along the edge evenly and place them on corresponding Nds. in B pos.

- Push the Nds. alternately to D pos. using 1/1 Needle Pusher.
- Holding left band (without button-holes) with wrong side facing you, pick up sts. from back line of circular knitting and place them in alternate Nd. hooks in D pos.
- Push the Nds. in D pos. back to B position. The loops of front edge will slip off the needles.
- Push the other alternate Nds. to C pos. using 1/1 Needle Pusher.
- Pick up sts. from front line of circular knitting and place them on the Nds. in C pos.
- Push the Nds. in C pos. to D pos.
- SD ④, knit 1 row from left with Col.a. and SD ⑩, knit last row.
- Cast off the sts. with Tappet Tool or Automatic Linker.
- Unravel waste knitting.
- Join right front band in the same way as for left band.

Join collar to neck edge

- Join both shoulders on machine.
- Join centre seams of right and left collars.
- Join trimmings to collar edge on machine or grafting.



- Holding collar with wrong side facing you, pick up sts. at centre and place them on the Nds. in centre(0).
- Counting from centre(0), fill the Nds. with sts. omitting 13th Nd. (all sizes) 8 times on both sides of centre(0).
- Leave empty Nds. in B pos.
- Holding back neck edge with wrong side facing you, pick up sts. at yarn mark from just below the waste knitting and place them on the Nds. at centre(0).

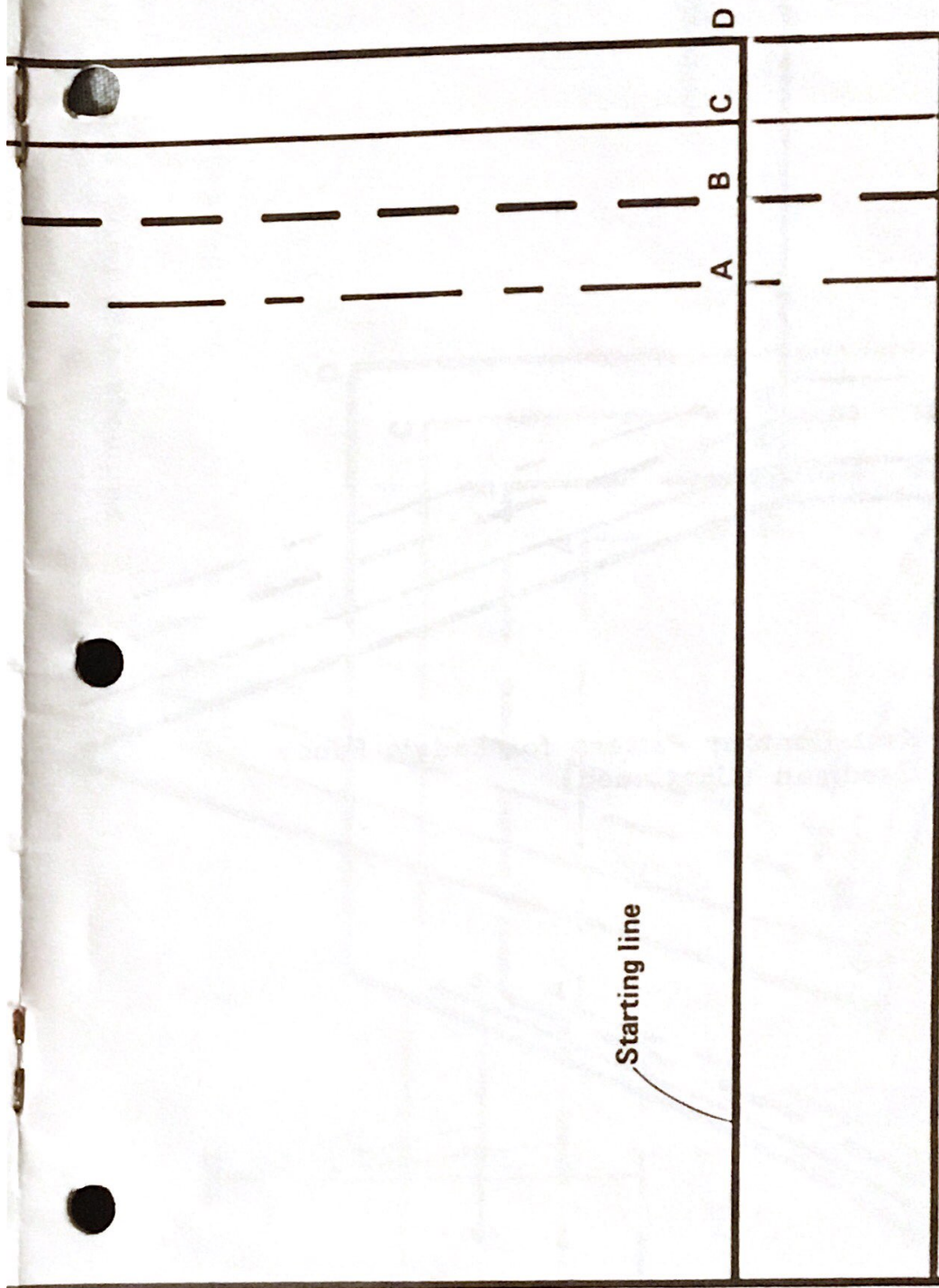
Cont. to page 13.

Knit Contour Pattern for

Match this dotted line to the dotted line
on the edge of the pattern on page 11.

FRONT & BACK

for Lady's Fancy Cardigan with Flat Collar



Trace the patterns on the blank pattern paper or set this paper
in the Knit Contour. →

Place this edge against corresponding edge on page 11.

Starting line

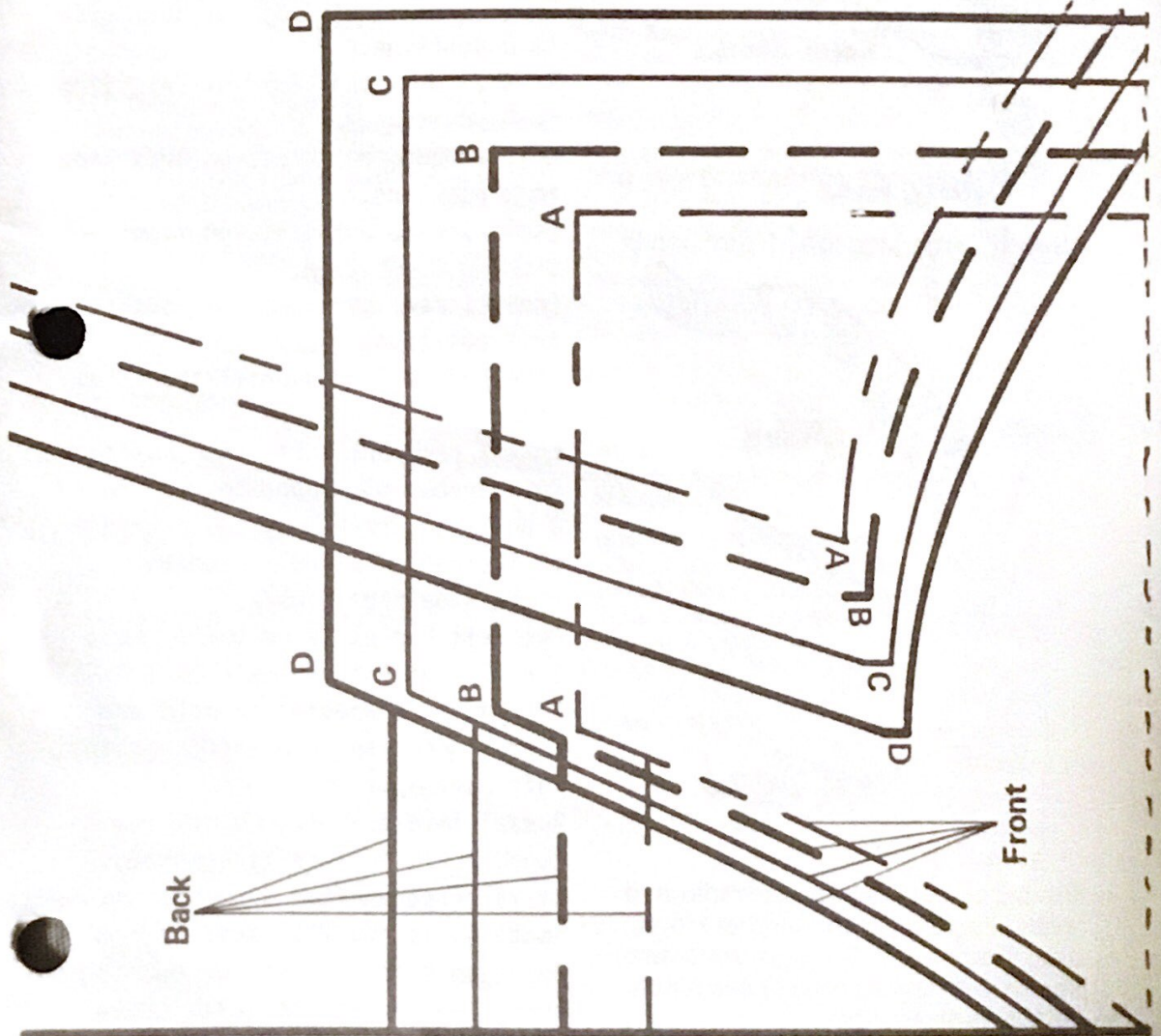
A
B
C
D

Knit Contour Pattern for Lady's Fancy
Cardigan (Continued)

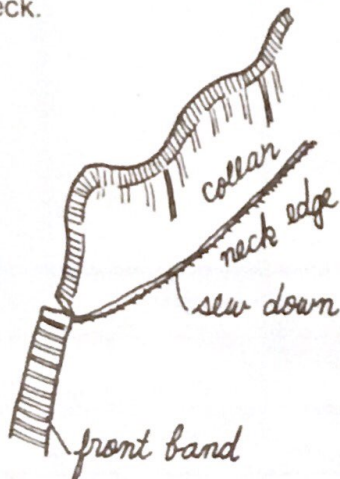


Place against dotted line
on page 8.

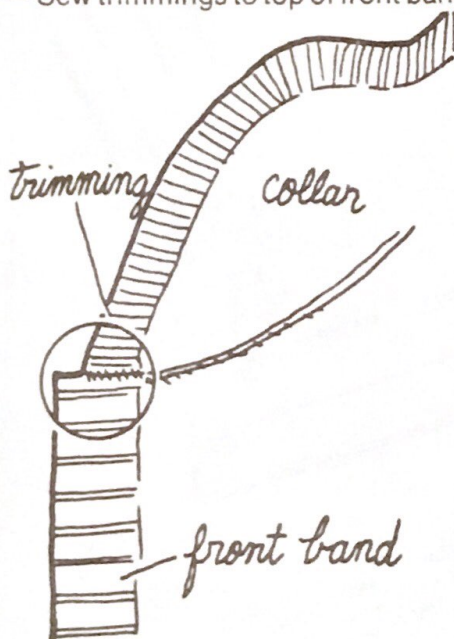
SLEEVE



- Continue placing sts. of back neck on corresponding Nds. in B pos.
- Pick up loops at yarn mark of front edge on Nd. on both ends in B pos. and fill the Nds. with loops of front edge evenly.
- Push the Nds. to D pos.
- SD③, with Col. a, knit 1 row from right, 2nd row with SD⑧, last row with SD⑩.
- Break yarn and cast off loosely.
- Stitch down the facing edge around neck.



- Sew trimmings to top of front bands.



- Pin up sleeve head to armhole and work slip stitch with Crochet Hook.
- Join side seams through underarm seams with blind stitch or slip stitch.
- Attach Button in pos.
- Sew in yarn ends and steam.

Sylvia Waltenburg, Lakebay, WA,
sent us this pattern for a

BABY EARFLAP HAT

Made on a Studio SK-360

Baby or fingering yarn - 2-ply
Gauge is not necessary. One size
fits 9 months to 2 years.

E cast on 120 needles.

Knit 35 rows in stockinette.

Russel levers on 1, put 75 needles
on left in hold or D position.

Hold

4-.-3-.-2-.-1-0-1-.-2-.-3-.-4

Lock row counter at 35.

Knit 2 rows, put 1 st. on left side
to D position.

Knit 2 rows, put 1 st. on left side
in D position.

Knit 2 rows, put 1 st. on left side
in D position.

(Knit 1 row, put 1 st. on right
side in D position.

(Knit 1 row, put 1 st. on left side
in D position.

Repeat Knit 1 rows until four sts.
remain.

Knit 1 row, put 1 st. in C position.

Knit 1 row, put opposite st. in
C position, reversing the decrease
to increase until all needles on
right side are in work.

Put left Russel lever to 11, knit
1 row. Put Russel lever to 1.

Put right 75 needles in hold and
repeat decreases and increases for
left earflap.

Russel levers to 11. Unlock row
counter. If pattern is desired,
start pattern after 9 rows stockinette
Hang hem at row 70. Knit to row 90
Decrease every 3rd st. by putting
every 3rd st. to the left. Leave
empty needles in A or non-work
position. Knit 4 rows.

Take off on ravel cord. Rehang end 4 sts. on 5 needles on Ten. #4, cam slip, right side lever forward. Knit 150 rows. Take off on ravel cord.



Knit another cord on other earflap. Sew up back seam. Draw up top and stitch shut. Put pompoms on top and end of cords.

Lillie Davis, Roseburg, OR, submitted the following pattern for a

CHILD'S HOODED SWEATER WITH FRONT POCKET

Made on a Studio SK-360

This sweater has dolman sleeves and a front neck zipper. I use the basic pullover patterns for the front and back. To get sleeve length measure child's arm from shoulder sleeve seam to wrist. Since this is a dolman sleeve you usually need to subtract 1" from your measurement to get correct length. I enlarge the hood a little for larger sizes and add a front pocket. The size A pattern is too small for a front pocket. I also use punchcards and place a design just above the zipper opening on larger sizes (below on size A) and above sleeve ribbing and hood mock ribbing.

Yarn - 7 ozs. Heirloom Size B
Small amount other pattern
shades for punchcard
designs.

On your pattern draw a new neckline 3/8" above the original neckline. Do this for all sizes you make. The back has no neck shaping. No armhole shaping. Knit straight up.
Finished size after washing (cold water wash; dry cool cycle)
Chest 24" - 25" Length - 14-1/2"
Sleeve from underarm - 13" - 13-1/2"

Main tension - 10	Dials	28 sts.
Rib at dials - 6		34 rows
Tension 1	7 1/2 sts. = 1"	
	8 rows = 1"	

Front - Cast on 45 and 44 sts. Rib 14 rows. (1x1 rib) Transfer to main bed. Waste off 20 sts. on each end. Needles 26-45. Work on center 25-25 stitches. Knit even to 48 rows on

(including 14 rib rows) for pocket. Waste off. Rehang the 20 end sts. (both sides) and pick up the back sts. on last row of ribbing center 25-25 stitches (14 rows on) Knit even to 48 rows on. Waste off. Rehang pocket sts. on needles 25-25, then hang sweater sts. 45-45 sts. You will have 2 sts. on center 25-25 sts. Now working on all sts. knit 10 rows even. (58 total rows including 14 ribbing rows). Divide work in half. Waste one-half off. Knit even to 75 rows on. Mark each end stitch with contrast yarn for armholes. Continue knitting even until 109 rows on. Start neck shaping following B pattern Neck 0-7 sts. Continue knitting decreasing neck edge to needle 20. Knit 127 total rows. Stitches on needles 20-45 left for shoulder. Waste off. Work other side of front.

Back - Cast on 45 and 44 sts. (1x1 rib) Rib 14 rows. Transfer to main bed. Knit even to 75 rows on. Mark end sts. for armholes with contrast yarn. Continue knitting even to row 127. Waste off. Neck sts. 19-19.

Sleeves - Sew shoulder seams together. Hang sleeve edges on needles 40-40. Knit 10 rows even, then decrease 1 stitch each side every 5th row until 24-24 sts. left, 98 rows on. Transfer for 1x1 rib. Row counter 0, rib 21 rows. Work last row at dial 10. Cast off sts.

Hood - Cast on 71 and 70 sts. every other needle. Mock rib at dial 7 for 30 rows. Hang hem. Dial 10. Knit even until 94 rows on. Waste off. Sew back seam. Sew hood to neck edge.

Finishing - Sew sleeve and side seams. Work 1 row single crochet around pocket edges. Work 2 rows single crochet around zipper opening. 1st row worked with wrong side facing you. Make a 5-needle cord 550 rows long. Insert in hood. Sew in neck zipper.



Another pattern from Lillie Davis is this one for a -

BABY BUNTING

Made on a Studio SK-360

13 ozs. Phentex Chunky Yarn (Pink)
Use every other needle throughout

5 sts. - 1"

6 rows - 1"

Main Tension 10

Rib dials 5 except last row of ribs are at 7

Tension - 1

Back - With waste yarn cast on 76 & 75 sts. on every other needle. Knit 10 rows in waste and change to main yarn. Knit even until 100 rows on. Row counter 0. Transfer sts. to ribber for 1x1 rib. Rib 7 rows (7th row worked at dials 7). Transfer back to main bed. Knit 7 rows. Mark each end st. with contrast yarn for armholes. Raglan Armhole - Decrease 1 st. every row each side 28 times. Now knit even to 48 rows on (20 sts. left) Waste off.

Front - Pick up bottom sts. of back (76-75 sts.) Knit 30 rows even. Divide work in half. Waste off one-half work on other half. Knit even until 100 rows on. Row counter 0. Transfer and rib 7 rows (same as back). Transfer back to main bed. Knit 7 rows. Mark each end with contrast yarn for armholes.

Raglan armhole and neck shaping - Decrease 1 st. on armhole edge every row 28 times. At same time start neck shaping when you have 36 rows on. Neck shaping is done by holding sts. as follows:

Row 37 - Hold 2 sts. on neck edge (carriage is on right side when 36 rows on)

Row 38 - hold 1 st. neck edge.

Row 39 - hold 0 sts. " "

Row 40 - hold 1 st. " "

Row 41 - hold 0 st. " "

Row 42 - hold 1 st. " "

Row 43 - hold 0 st. " "

Row 44 - hold 1 st. " "

Row 45 - hold 0 st. " "

Row 46 - hold 1 st. " "

Row 47 - hold 0 st. " "

Row 48 - hold 1 st. " "

Knit 1 row across 10 sts. Waste off. Work other side of front the same, starting with 30 rows on.

Sleeves - Starting at top of sleeve,

cast on 8 sts. (E.O.N.) with waste yarn. Knit 10 rows with waste. Change to main yarn. Knit 2 rows even, then inc. 1 st. each side every other row 19 times. 46 sts., 40 rows on. Knit even to 48 rows on. Row counter 0. Mark each end st. with contrast yarn for armhole. Now decrease 1 st. each side every 3rd row 10 times. 26 sts. left, 30 rows on. Transfer and rib 7 rows (1x1 rib). Transfer back to main bed. Knit 9 rows. Leave on machine for mitten. Row counter 0.

Mitten - (for 2nd mitten hold sts. on opposite side) Put 1/2 sts. in hold and work 1 side of mitten by putting 1 needle in hold at carriage side every row until only 5 sts. are left not in hold. Knit 1 row across sts. left then put 1 needle opposite carriage back to work position every row, (don't forget to wrap or you will have holes) until all sts. are back in work position. Knit 1 row across all 26 sts. Waste off. 17 rows on. Fold in half and weave sts. together. Fold sleeve under at wrist ribbing and make a cuff and tack down. The tacked sts. can be removed as baby grows to make sleeves longer. Work other sleeve and mitten the same.

Hood - Work mock ribbing on every 4th needle on needles 65-66. Knit 15 rows even. Hang hem on every other needle. Row counter 0. Knit even to 35 rows on. Waste off. Sew back seam.

Neck Ribbing - Hang neck edges, placing 1 sleeve st. on same needle as front and back stitch. 2 sts. on one needle at seams. Wrong side facing you, pick up 52 sts. Rib 7 rows. Transfer to main bed. Knit 4 rows at dial 10. Waste off. Use crochet hook and slipstitch hood to neck edge.

Neck Cord - Make a 3-needle cord, 351 rows on every other needle. Follow instructions in knitting bibles.

Finishing - Single crochet 1 row around front zipper opening.

Sew in zipper.

Insert cord in hat and attach a pom pom to each end of cord.

Sew sleeve and side seams.

This "Newsletter" is your publication. Help support it by submitting your original patterns and helpful hints, so other home knitters can learn from your experience. We would like to urge all of you with older machines to share your favorite originals with our other readers. Many of our readers write in requesting simple, beginner patterns. You will receive a gift of yarn for any original pattern or hint that is printed. When sending in your patterns, be sure to include the size of the garment and the knitting gauge (number of stitches and rows per inch) - this is most important - and the knitting machine for which your particular pattern was designed. It also helps if you know approximately how much yarn your pattern takes. Please check and recheck your patterns for errors and type or print clearly. We do not have time to knit each pattern sent in, so cannot check for mistakes. It also helps if you do not abbreviate, as many of your terms are unfamiliar to us and to other readers. A black and white snapshot and/or brief description of your garment will make it easier to visualize by other readers. A gift of yarn will be sent for snapshots (black and white) printed with the patterns.

There is a wonderful opportunity awaiting you to become a STUDIO Knitting Machine and yarn dealer. Good money can be made in your spare time with only a small investment. We are interested in contacting men and women who would like to become a part of our growing group of STUDIO dealers throughout the United States. Our assistance and guidance can make this a very profitable venture for you, and our only requirements are that you know how to operate a knitting machine and that you have space available in which to set up your STUDIO shop, either in your home or place of business. You will find this a fascinating business which affords you the opportunity to become acquainted with new and interesting people. Contact Mr. David Bratz, Manager, STUDIO Yarn Farms, Inc., P.O. Box 46017, Seattle, WA 98146.

If you are planning to move soon, let us know both your old and new addresses, complete with zip codes. We cannot change your address without this information.

Patterns submitted and published in this "Newsletter" are submitted by individuals and are purported to be original patterns.

CANADIAN SUBSCRIBERS - Please remember, when sending in your subscription, all checks and money orders from Canada must be marked "Payable in U.S. Funds".

Please Note - We always notify you when your subscription expires. Your last issue is stamped across the Subscription Order Blank on the back page in red, "Your subscription expires with this issue". This issue is then mailed to you in an envelope and sent by first class mail. If you miss an issue, without having received this notification, please let us know, because it means that your mail isn't reaching you, and we will send you another copy. All the "Newsletters" are mailed out, altogether, just as soon as the mailer receives them from the printer.